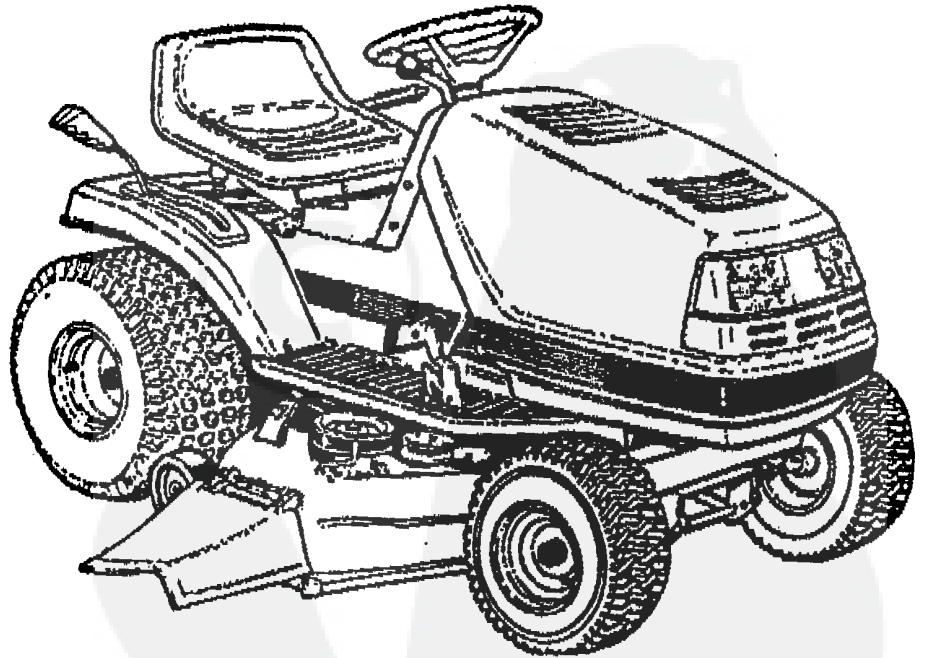
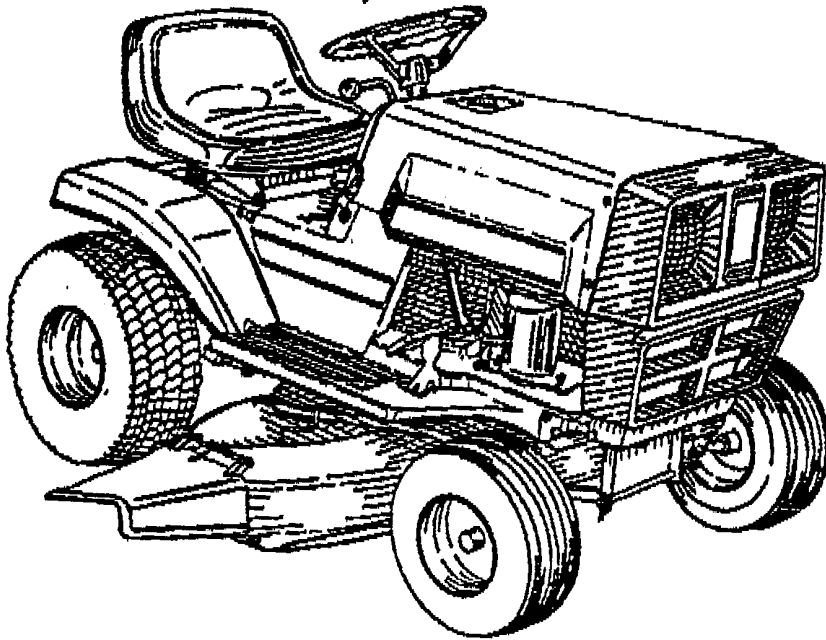
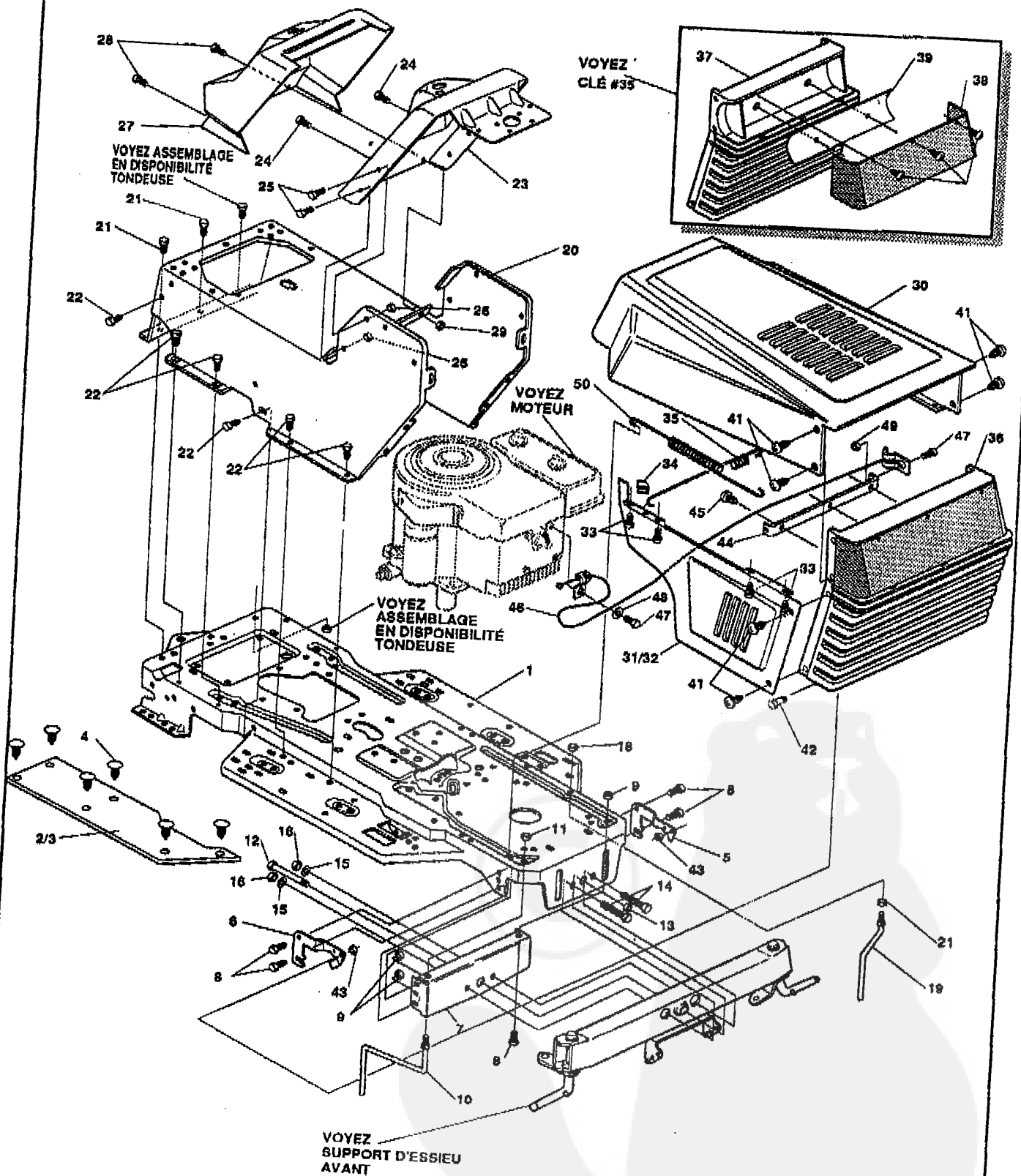


TRACTEUR TONDEUSE MANUEL PIÈCES DE RECHANGE



MODELE C3560-570

ENSEMBLE CHASSIS & CAPOT



UTILISEZ DES PIECES D'ORIGINE POUR CONSERVER L'APPLICATION DE LA GARANTIE.

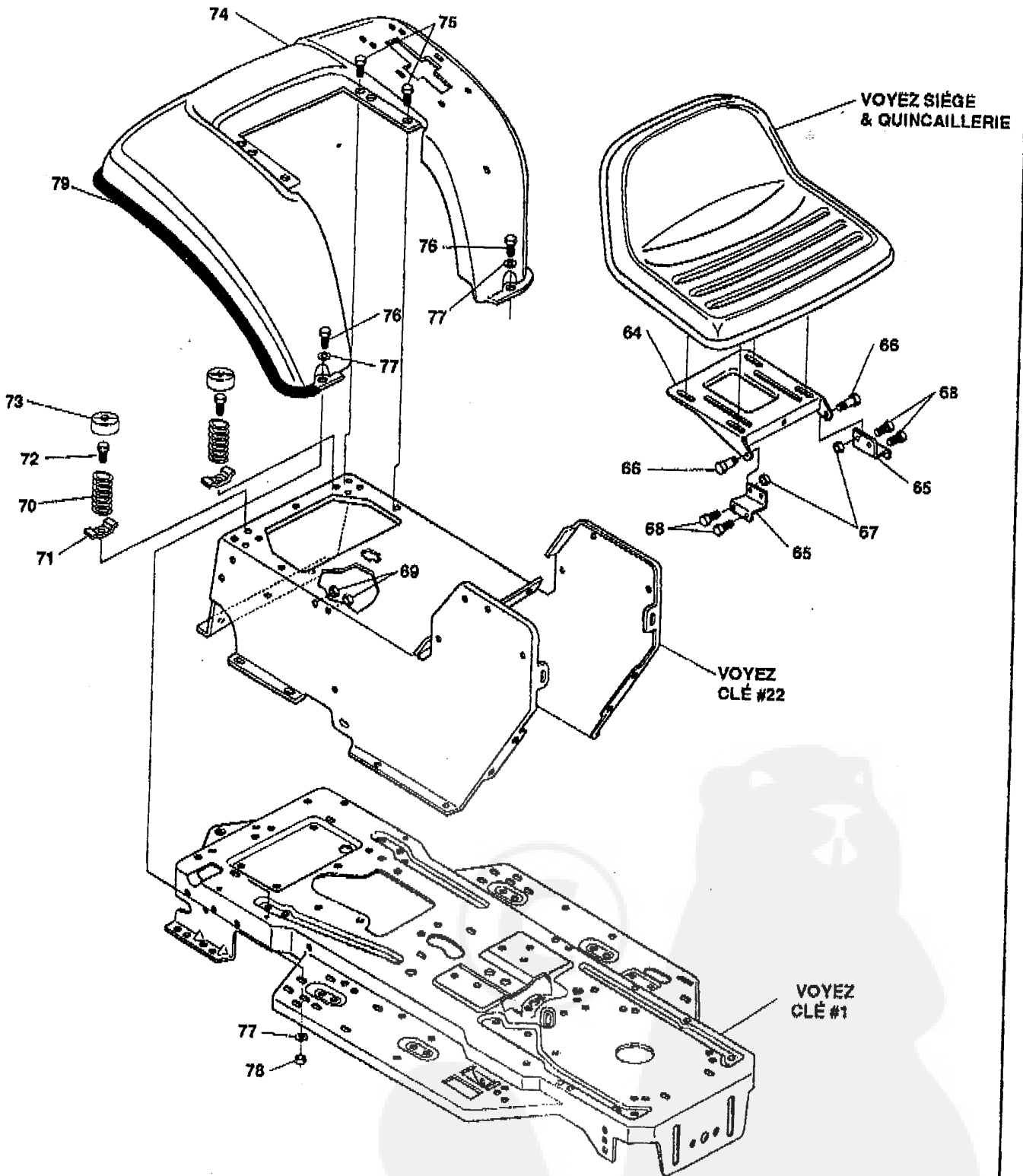
TOUTES LES PIECES NON REFEREES SONT INTERCHANGEABLES AVEC LEURS OPPOSEES.

324163A

Key#	Part#	Description	Qty.
1	321709-860	FRAME, LF MAIN P920/F4360	
2	310005	FOOTPAD, LH	1
3	310008	FOOTPAD, RH	1
4	309235	FASTENER, RATCHET	1
5	58089-853	BRKT.GRILLE, L.H.	12
6	58089-853	BRKT GRILLE R.H.	1
7	313541-853	BRACKET, FRONT AXLE	1
8	056030	SCREW, 5/16-18X.75WDFLLK	1
9	055273	NUT, 5/16-18 HXWDFLLK	5
10	300440	GUIDE, BELT, RIDER	5
11	01498	NUT, 5/16-18 REGHEXCTRLK	1
12	308207	BOLT, .625X2.180 HSSH	1
13	0309008	NUT, 1/2-13 REGHCTRLK	1
14	0122207	SCREW, 3/8-16X3.00 HHC	1
15	2483	WASHER, .391DX1.25DX.07 BELLVIL	2
16	01499	NUT, 3/8-16 REGHXCTRLK	2
17	300635	GUIDE, SHORT BELT RIDER	2
18	0124824	NUT, 5/16-18 HEXJAM	1
19	0271190	NUT, 3/8-16 HEXKEPS	1
20	309657-860	CONSOLE, H14/H15/STL STD SHIFT	1
21	035497	SCREW, 5/16-18X .50 WAHTAP	1
22	0995346	SCREW, 1/4-20X .50 WAHTAP	2
23	324071-853	DASH, STEEL	12
24	0995346	SCREW, 1/4-20X .50 WAHTAP	1
25	0995338	SCREW, 1/4-20X .63 HHWATAP	2
26	050352	NUT, 1/4-20 WDFLLK TOPLOCK	4
27	314953	DASH, LOWES, NO GRAPHICS SUS	4
28	0995338	SCREW, 1/4-20X .69 HHWATAP	1
29	050352	NUT, 1/4-20 WDFLLK TOPLOCK	2
30	57469-860	HOOD, LOWES H-10	2
31	57483-860	PANEL, SIDE, HOOD, LH	1
32	57482-860	PANEL, SIDE, HOOD RH	1
33	01503	SCREW, 10-16X .50 WAHTAP	1
34	58143	CLIP, U-TYPE, TINNERMAN	8
35	57470	SPRING, HOOD SINGLE CYL	2
36	303054	ASSY, GRILLE G-13 LOWES	1
37	303052	GRILLE, LOWES G-13	1
38	57473	LENS, LOWES	1
39	70566	DECAL, REFLECTOR, GRILL	1
40	057796	SCREW, #6 X .50 PLASTITE	1
41	049050	SCREW, 1/4-10X .75PHPNTAP	3
42	36149	BOLT, .375X .500 HSSH 5/16-18	8
43	01498	NUT, 5/16-18 REGHEXCTRLK	2
44	300196-853	BRACKET, GRILLE	2
45	049050	SCREW, 1/4-10X .75PHPNTAP	1
46	310749	LANYARD, HOOD	3
47	0180018	SCREW, 1/4-20X .62 HHC	1
48	0120380	WASHER, REGSPTLK.263X.49X.07	2
49	01502	NUT, 1/4-20 REGHEXCTRLK	1
50	57478	SPRING, HOOD LATCH	1
51	324524	PARTS MANUAL, ENGLISH	1
52	322810	OPERATOR'S MANUAL, FRENCH	1
53	324253	AIR ASSIST MANUAL, FRENCH	1
54	317077	GRASS CATCHER MANUAL, ENGLISH/FRENCH	1

◊ Indicates STANDARD HARDWARE ITEMS.

ENSEMBLE CHASSIS & CAPOT



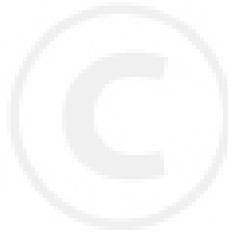
UTILISEZ DES PIÈCES D'ORIGINE POUR CONSERVER L'APPLICATION DE LA GARANTIE.

TOUTES LES PIÈCES NON RÉFÉRÉES SONT INTERCHANGEABLES AVEC LEURS OPPOSÉS.

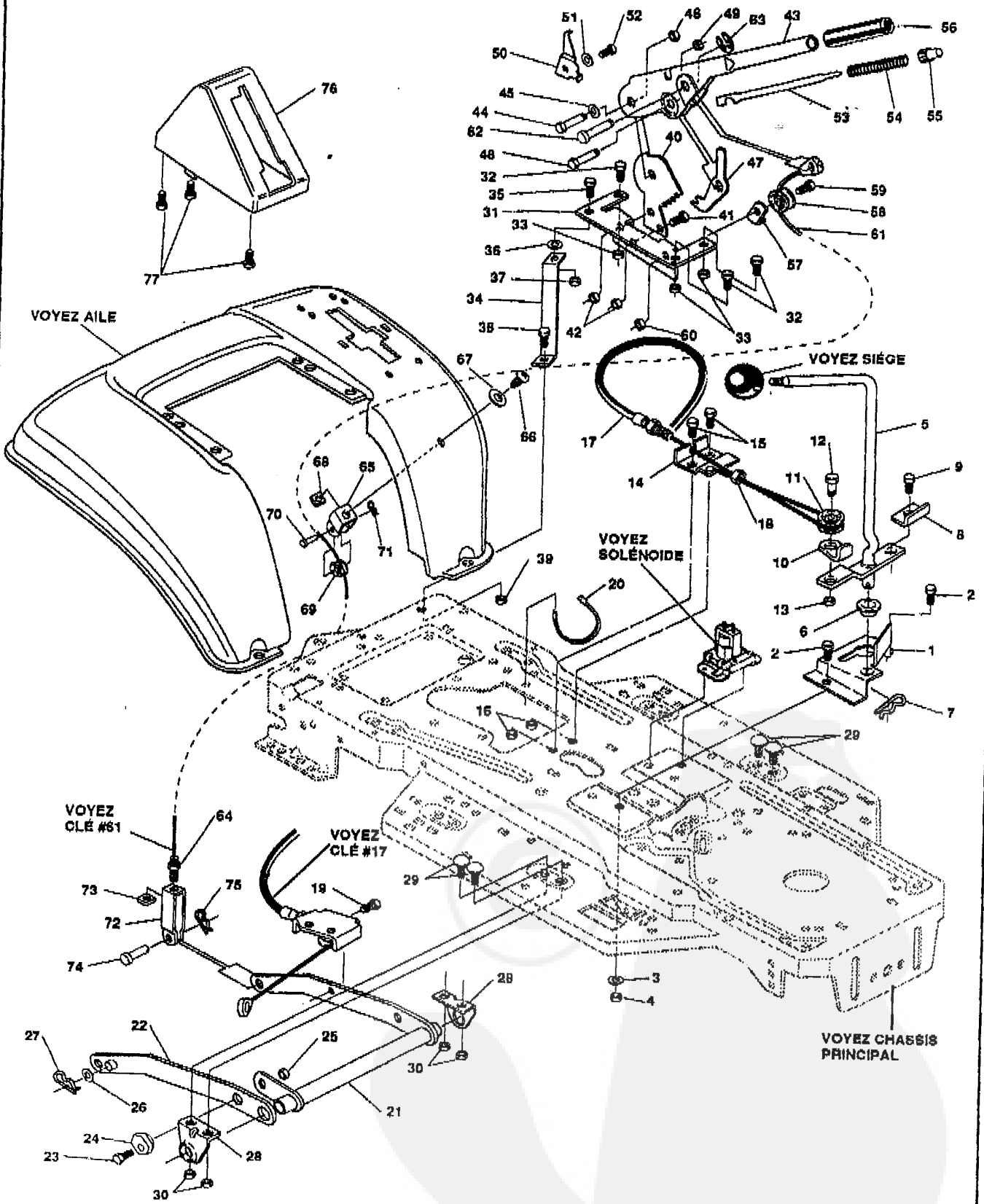
324153A

Key#	Part#	Description	Qty.
64	58367-860	PLATE, SEAT	1
65	310660-860	BRACKET, F-5 SEAT SUPPORT	2
66	20507	BOLT, .437X .166 HSH 5/16-18	2
67	01498	NUT, 5/16-18 REGHEXCTRLK	2
68	048901	SCREW, 5/16-18X .63 HHC	4
69	01498	NUT, 5/16-18 REGHEXCTRLK	4
70	57153	SPRING, SEAT 2.63LG,1.49OD	2
71	300284-953	CLAMP, SPRING 1.17"ID	2
72	044811	SCREW, 1/4-20X .75 HXWATAP	2
73	56907	COVER, SEAT SPRING 1.51DX1.0LG	2
74	58334-860	FENDER ,F-5 SUS LF	1
75	0995346	SCREW, 1/4-20X .50 WAHTAP	4
76	0122017	SCREW, 5/16-18X1.00 HHC	2
77	0446363	WASHER, FLAT .375X .88X.082	4
78	01498	NUT, 5/16-18 REGHEXCTRLK	2
79	55021	TRIM, STRIP,BLACK	77.5"

◇ STANDARD HARDWARE ITEMS



ENSEMBLE SUSPENSION TONDEUSE



UTILISEZ DES PIÈCES D'ORIGINE POUR CONSERVER L'APPLICATION DE LA GARANTIE.

TOUTES LES PIÈCES NON RÉFÉRÉES SONT INTERCHANGEABLES AVEC LEURS OPPOSÉS.

321271B

Key#	Part#	Description	Qty.
1	320075-853	BRACKET, CLUT-ENGAGE LEVER	
2	* 180079	SCREW, 5/16-18X1.00 HHC	1
3	120393	WASHER, FLAT .344X.69X.085	2
4	* 1498	NUT, 5/16-18 REGHEXCTRLK	2
5	303063-953	ASSY, CLUTCH LEVER	2
6	50148	BEARING, FL. .503IDX.628OD	1
7	8260	PIN, HAIR .091 DIA X1.66LG	1
8	318341	BRACKET, SWITCH ENGAGE	1
9	* 95498	SCREW, 5/16-18X.75 WAHHTAP	1
10	300699-953	BRKT, CABLE RETAINER	1
11	48306	PULLEY, .906X.305 PM	1
12	58338	BOLT, .375X.375 HHS 1/4-20	1
13	* 1502	NUT, 1/4-20 REGHEXCTRLK	1
14	300698-853	BRKT, FRAME CABLE	1
15	* 180020	SCREW, 1/4-20X.75 HHC	1
16	* 1502	NUT, 1/4-20 REGHEXCTRLK	2
17	301503	ASSY, CABLE, BLADE ENGAGE	2
18	* 120613	NUT, 1/4-28 HJAM	1
19	* 35498	SCREW, 5/16-18X.75 WAHHTAP	1
20	57444	TIE, CABLE BLACK NYLON	1
21	300158-853	ASSY, REAR LIFT	1
22	300169-853	ASSY, LINK, RIGHT SIDE	1
23	* 180079	SCREW, 5/16-18X1.00 HHC	1
24	58247	ADJUSTING NUT	1
25	* 1498	NUT, 5/16-18 REGHEXCTRLK	1
26	417098	WASHER, FLAT .531X1.06X.095	1
27	8260	PIN, HAIR .091 DIA X1.66LG	2
28	58248-853	BRKT, REAR, HANG, SUSP.	2
29	128211	BOLT, 5/16-18X.83 CARR	2
30	* 1498	NUT, 5/16-18 REGHEXCTRLK	4
31	58333	BRACKET, HGT/ADJUST SUPPORT	4
32	* 180077	SCREW, 5/16-18X.75 HHC	1
33	* 1498	NUT, 5/16-18 REGHEXCTRLK	3
34	300336-880	BRACE, FENDER F-5 SUS	3
35	* 180079	SCREW, 5/16-18X1.00 HHC	1
36	45602	WASHER, FLAT .333X.87X.119	1
37	* 1498	NUT, 5/16-18 REGHEXCTRLK	1
38	* 180079	SCREW, 5/16-18X1.00 HHC	1
39	* 1498	NUT, 5/16-18 REGHEXCTRLK	1
40	301238	QUADRANT, HEIGHT ADJUST	1
41	* 180077	SCREW, 5/16-18X.75 HHC	1
42	* 1498	NUT, 5/16-18 REGHEXCTRLK	2
43	322282-853	HANDLE, LIFT SHORT BLK	2
44	300171	BOLT, .500X.270 HHS 5/16-18	1
45	998418	WASHER, FLAT .508X.75X.024	1
46	* 44108	NUT, 5/16-18 HWDFLCTRLK	1
47	301238	PAWL, HEIGHT ADJUST	1
48	300171	BOLT, .500X.270 HHS 5/16-18	1
49	* 44108	NUT, 5/16-18 HWDFLCTRLK	1
50	300782-953	POINTER 2-PL	1
51	138479	WASHER, EXLK .195X.41X.03	1
52	* 35287	SCREW, #8-32X.38 HI MAT	1
53	303027	ROD, ACTUATOR-SHORT	1
54	58326	SPRING, HEIGHT ADJUST	1
55	58325	KNOB, HGT ADJ PUSH BUTTON	1
56	58329	GRIP, .750 OD W/ HOLE	1
57	58335-953	BRKT, CABLE RETAIN	1
58	39298	PULLEY, .906X.305 NYLON	1
59	58336	BOLT, .375X.375 HHS 1/4-20	1
60	* 1502	NUT, 1/4-20 REGHEXCTRLK	1
61	300341	CABLE, LIFT 21.70 F-5 20X8-8	1
62	300310	PIN, CLEVIS .310DIA+.475LG	1
63	300311	RING, RET E .31X.24	1
64	* 120375	NUT, 1/4-20 REGHEX	1
65	300298-953	CLEVIS	1
66	* 120228	SCREW, 5/16-18X.63HHC	1
67	301551	WASHER, .344IDX1.50DX.09 CU BPH	1
68	* 120373	NUT, 5/16-18 SQ	1
69	39298	PULLEY, .906X.305 NYLON	1
70	300317	PIN, CLEVIS .38 DIA X1.00 LG	1
71	8260	PIN, HAIR .091 DIA X1.66LG	1
72	300703-953	CLEVIS, LIFT CABLE	1
73	* 120372	NUT, 1/4-20 REGSO	1
74	39522	PIN CLEVIS .312 X .812	1
75	121222	PIN, COTTER .090/.088X.75LG	1
76	300335	LIFT COVER-38* F5	1
77	* 300340	SCREW, #10 X .75 HI PLAST	1

* STANDARD HARDWARE ITEMS.

ENSEMBLE DIRECTION AVANT

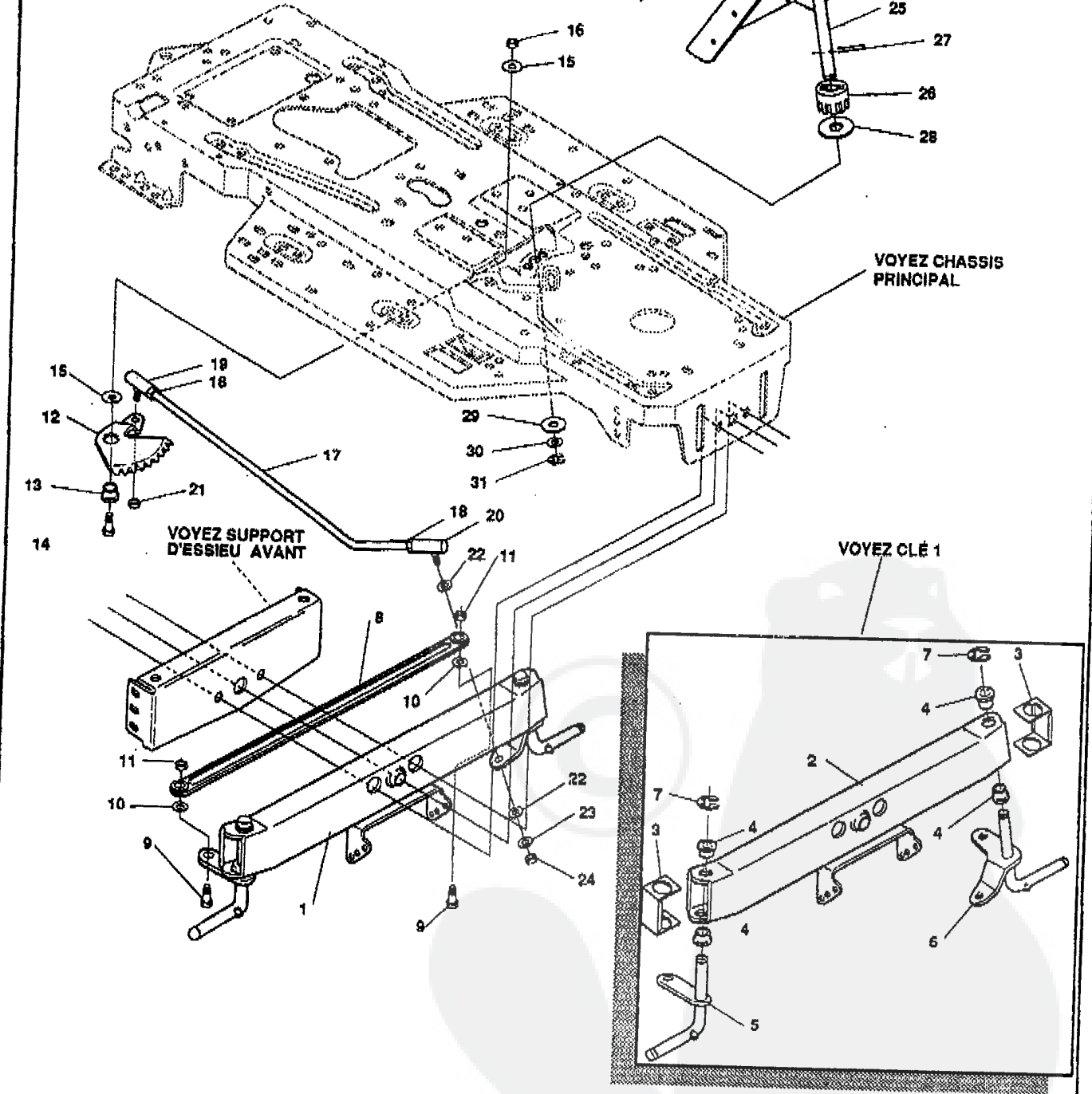
VOYEZ VOLANT
ASSEMBLAGE

VOYEZ TABLEAU
DE BORD

VOYEZ CHASSIS
PRINCIPAL

VOYEZ SUPPORT
D'ESSIEU AVANT

VOYEZ CLÉ 1



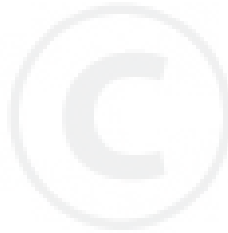
UTILISEZ DES PIÈCES D'ORIGINE POUR CONSERVER L'APPLICATION DE LA GARANTIE.

TOUTES LES PIÈCES NON
REFERÉES SONT
INTERCHANGÉABLES AVEC
LEURS OPPOSÉES.

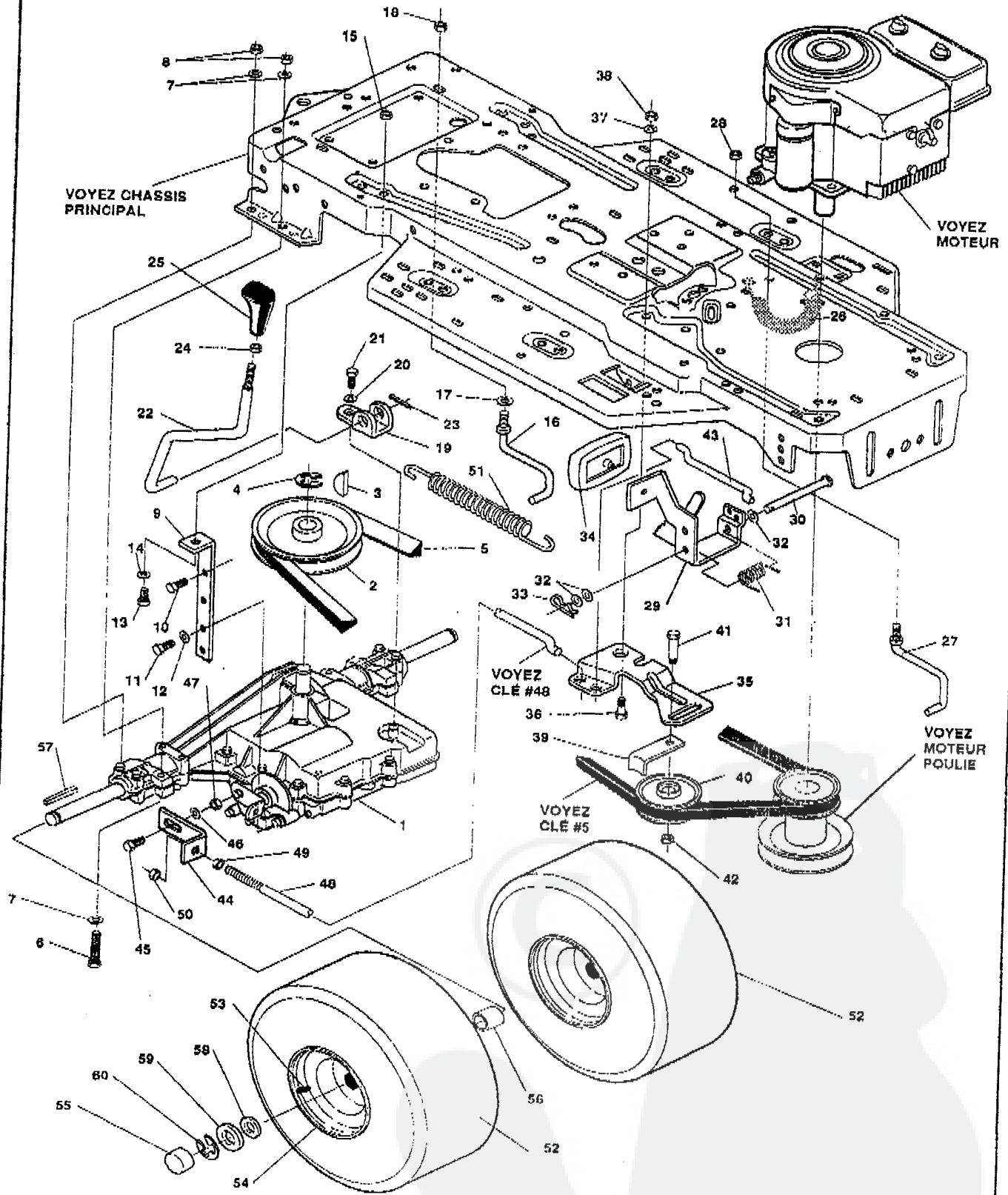
315650F

Key#	Part#	Description	Qty.
1.	"	ASSY, AXLE FRONT 4/WS SUSP	1
2.	300272	ASSY, FRONT AXLE SUSPENDED	1
3.	53373	AXLE COVER	2
4.	52407	SPINDLE BEARING	4
5.	302926	ASSY, SPINDLE RH	1
6.	315886	ASSY, SPINDLE LH	1
7.	36625	RING, RETEX .57X.05TRU5133-75	2
8.	304590	TIE ROD ASSY, 19.81LG W-SECTION	1
9.	•180128	SCREW, 3/8-16X1.75 HHC	2
10.	120382	WASHER, REGSPTLK.393X.68X.10	2
11.	•1499	NUT, 3/8-16 REGHXCTRLK	2
12.	58289	SECTOR, STEERING LF	1
13.	52406	BRNG, FL ECC.510IDX .998ODX .56	1
14.	•180177	SCREW, 1/2-13X1.50 HHC	1
15.	22265	WASHER, FLAT .515X1.38X.119PL	2
16.	•1500	NUT, 1/2-13 REGHCTRLK	1
17.	58291	STEERING LINK	1
18.	•124925	NUT, 3/8-24 REGHEXJAM	2
19.	57158	BALL JOINT 3/8 THD SHORT STUD	1
20.	21275	BALL JOINT 3/8 TH'D LONG STUD	1
21.	•46692	NUT, 3/8-24 WDFLHLK WHIZ	1
22.	996416	WASHER, FLAT .391X1.00X.125	2
23.	120382	WASHER, REGSPTLK.393X.68X.10	1
24.	•120369	NUT, 3/8-24 REGHEX	1
25.	58243	SHAFT, STEERING LF	1
26.	58244	PINION, STEERING LF	1
27.	58274	PIN, DOWEL .2500 OD+1.75LG PL	1
28.	301410	BRNG, FL .752IDX1.061ODX .24	1
29.	301398	WASHER, FORMED1.135X1.53X.12	1
30.	21682	WASHER, FLAT .765X1.25X.042	1
31.	36625	RING, RETEX .57X.05TRU5133-75	1

- STANDARD HARDWARE ITEMS
- ORDER INDIVIDUAL PARTS.



TRANSMISSION



UTILISEZ DES PIÈCES D'ORIGINE POUR CONSERVER L'APPLICATION DE LA GARANTIE.

TOUTES LES PIÈCES NON RÉFÉRÉES SONT INTERCHANGEABLES AVEC LEURS OPPOSÉS.

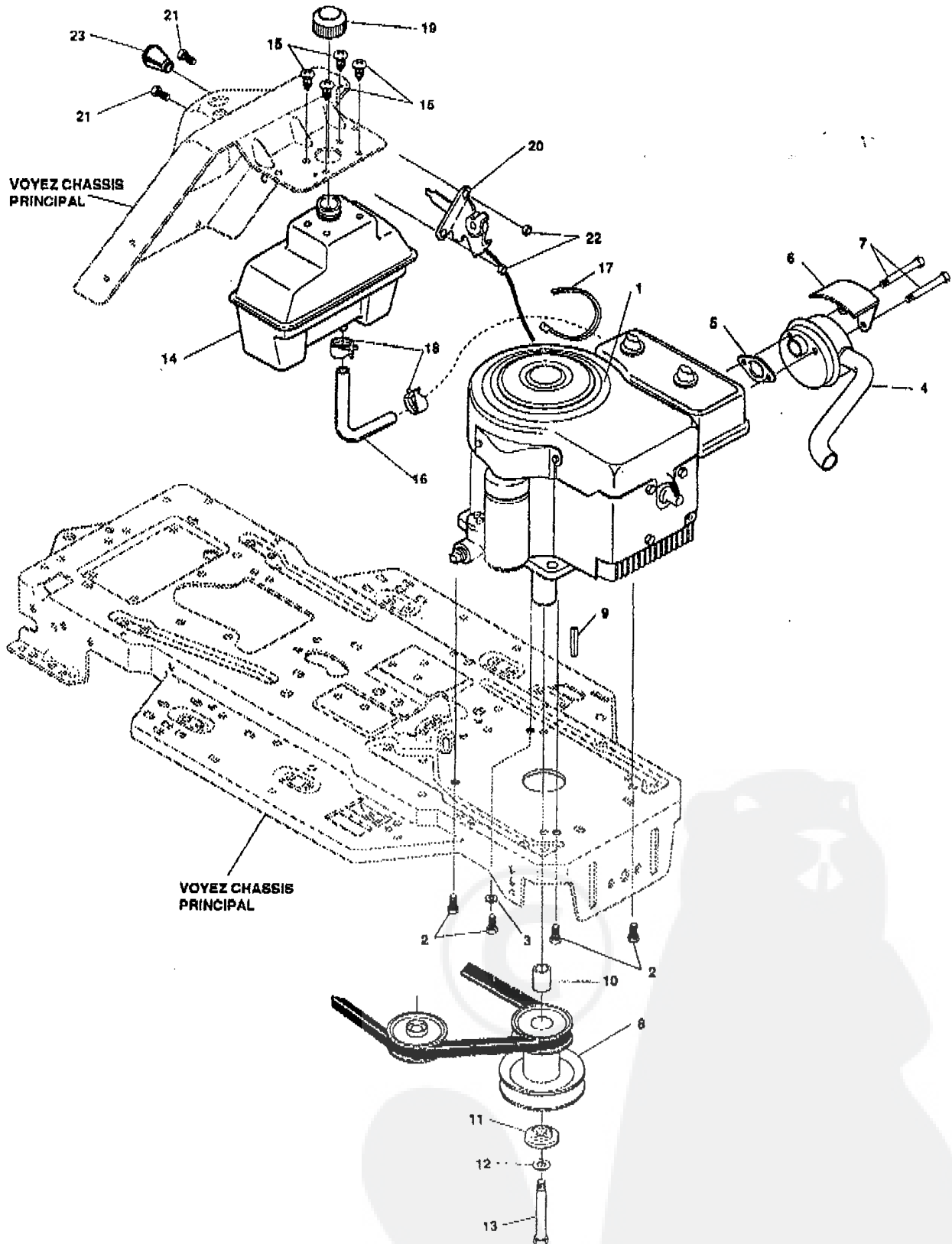
318105A

Key#	Part#	Description	Qty.
1	*	TRANSAXLE FOOTE 4360-5	1
2	302745	PULLEY, V 4L 6.60 OD	1
3	3021	KEY, WDRF 605 .750X.187X.312	1
4	22053	RING, RETEX .58X.04TRU5100-62	1
5	314120	BELT, V 4L 84.75	1
6	0180112	SCREW, 5/16-18X2.75 HHC GR5	4
7	120393	WASHER, FLAT .344X .69X.065	8
8	01498	NUT, 5/16-18 REGHEXCTRLK	4
9	322471	BRACKET, STABILIZER	1
10	050947	SCREW, 3/8-16X1.25 WAHTAP	1
11	035498	SCREW, 5/16-18X .75 WAHTAP	1
12	120638	WASHER, HVSPTLK .328X.60X.09	1
13	0122017	SCREW, 5/16-18X1.00 HHC GR2	1
14	120393	WASHER, FLAT .344X .69X.065	1
15	01498	NUT, 5/16-18 REGHEXCTRLK	1
16	57259	GUIDE, BELT 5/16-18THD	1
17	138538	WASHER, REGINTLK.320X.61X.03	1
18	01498	NUT, 5/16-18 REGHEXCTRLK	1
19	310754-955	BRKT, SHIFT P920-5/F4360-5&3	1
20	57157	WASHER, .750X.250 SP-TRANSAXLE	1
21	056255	SCREW, 1/4-28X .75 NYLHHOGR8	1
22	302743	LEVER, SHIFT FOOT 4360-5&6 LF	1
23	137165	PIN, COTTER .125 DIA X1.00LG	1
24	0120238	NUT, 1/2-13 HEXJAM	1
25	304438-653	KNOB, SHIFT NOMA 1/2-13	1
26	321514	SPRING BIAS DRAGLINK	1
27	304016	GUIDE, BELT	1
28	01498	NUT, 5/16-18 REGHEXCTRLK	1
29	300308	PEDAL ASSY, BRAKE/CLUTCH LF	1
30	319675	PIN CLEVIS	1
31	57847	SPRING, BRAKE PEDAL	1
32	2968	WASHER, FLAT 504X .75X.059	3
33	56180	PIN HAIR	1
34	48160	PAD, CLUTCH BRAKE W/PRINTING	1
35	300154	ARM, IDLER TRACTION DR. LF	1
36	300793	BOLT, .625X .135 HHSH 5/16-18	1
37	45602	WASHER, FLAT .333X .87X.119	1
38	01498	NUT, 5/16-18 REGHEXCTRLK	1
39	39659	RETAINER, BELT	1
40	35374	PULLEY, IDLER V4L 3.06X .62	1
41	45892	BOLT, 3/8-16X1.50 CARR GR2	1
42	01499	NUT, 3/8-16 REGHXCTRLK	1
43	57204	ROD, CLUTCH	1
44	57217	BRACKET, BRAKE ROD	1
45	20507	BOLT, .437X .156 HHSH 5/16-18	1
46	45602	WASHER, FLAT .333X .87X.119	1
47	01498	NUT, 5/16-18 REGHEXCTRLK	1
48	313659	ROD, BRAKE LT 920 LF 22.25	1
49	0271184	NUT, 5/16-18 HEXKEPS	1
50	01498	NUT, 5/16-18 REGHEXCTRLK	1
51	56359	SPRING, CLUTCH .113X.750X8.75	1
52	314584	TIRE, PU20X8.00-8TURFWHI134	2
53	24167	VALVE STEM	1
54	57165	WHEEL, 20X8.00 WHITE .75 DIAHUB	1
55	40394	HUBCAP, 1.500IDX7/8LG HUB	2
56	57479	SPACER, .75 X 1.25 X 1.32	2
57	52928	KEY, SQUARE .1875SQX2.25LG	2
58	0642	WASHER, FLAT .755X1.31X.075	4
59	042815	WASHER, FLAT .755X1.53X.07	2
60	36625	RING, RETEX .57X.05TRU5133-75	2

0STANDARD HARDWARE ITEMS

*CONTACT YOUR NEAREST FOOTE TRANSAXLE DEALER FOR PARTS & SERVICE.

MOTEUR ENSEMBLE



UTILISEZ DES PIÈCES D'ORIGINE POUR CONSERVER L'APPLICATION DE LA GARANTIE.

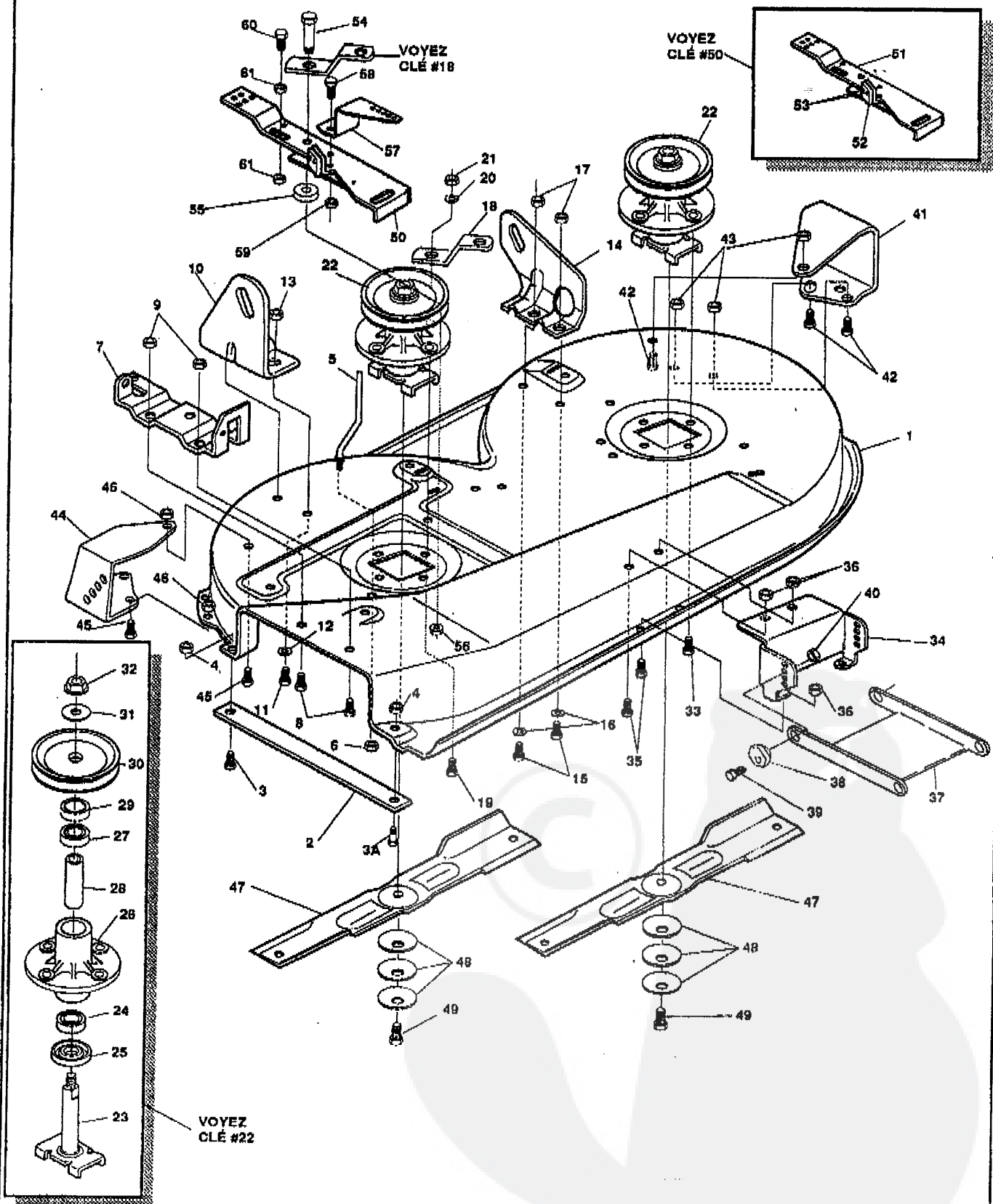
TOUTES LES PIÈCES NON RÉFÉRÉES SONT INTERCHANGEABLES AVEC LEURS OPPOSÉS.

310823A

Key#	Part#	Description	Qty.
1	ENGINE	12 HP B&S 1/C (SEE ENGINE MANUAL)	1
2	050947	SCREW, 3/8-16X1.25 WAHHTAP	4
3	0138489	WASHER, EXLK .384X.69X.04	1
4	305387	MUFFLER, 10-12 HP W/TUBE FR EXH	1
5	46708	GASKET, MUFFLER	1
6	54767	SHIELD, HEAT	1
7	0173063	SCREW, 5/16-18X3.50 HHC	2
8	58361	PULLEY ASSY, 4.75OFFS 5.5DIA	1
9	57791	KEY, SQUARE .250SQX5.00LG	1
10	304246	SPACER, 1.01X1.484 ENGIN PULLEY	1
11	056431	WASHER, .980IDX1.38ODX.437PILOT	1
12	0120383	WASHER, REGSPTLK.459X.78X.12	1
13	0428644	SCREW, 7/16-20X5.00 HHC	1
14	314989	TANK, FUEL	1
15	049050	SCREW, 1/4-10X .75PHPNTAP	4
16	47452	GAS LINE, .25ID	13.50"
17	57444	TIE, CABLE	1
18	48672	CLAMP, FUEL LINE	2
19	46704	GAS CAP, 1-1/2-7 THD	1
20	321273	CONTROL, THROTTLE LF 12HP	1
21	0320553	SCREW, 10-24X .63PHPNMA	2
22	0271166	NUT, #10-24 HEXKEPS	2
23	50607	KNOB, ROUND THROTTLE	1

◇ Indicates STANDARD HARDWARE ITEMS.

CARTER DE TONDEUSE



UTILISEZ DES PIÈCES D'ORIGINE POUR CONSERVER L'APPLICATION DE LA GARANTIE.

TOUTES LES PIÈCES NON RÉFÉRÉES SONT INTERCHANGEABLES AVEC LEURS OPPOSÉS.

ID: TRACTEUR TONDEUSE 39" MODELE C3560-570

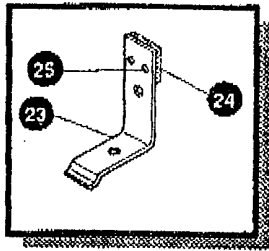
OCT 23 '98 13:42 No.026 P.16

Key#	Part#	Description	Qty.
1	315610-173	DECK, 39"SD MOWER	1
2	57314	BAR, SKID	1
3	126216	BOLT, 5/16-18X .75 CARR	1
3A	126358	BOLT, 5/16-18 X 1.000 CARR.	1
4	01498	NUT, 5/16-18 REGHEXCTRLK	2
5	57318	GUIDE, BELT 5/16-18 THD	1
6	01498	NUT, 5/16-18 REGHEXCTRLK	1
7	57360	BRACKET, CHUTE	1
8	0120834	SCREW, 5/16-18X .50 HHC	2
9	01498	NUT, 5/16-18 REGHEXCTRLK	2
10	58250	LIFT BRACKET, REAR,RH	1
11	0180077	SCREW, 5/16-18X .75 HHC	2
12	120393	WASHER, FLAT .344X .69X.065	2
13	01498	NUT, 5/16-18 REGHEXCTRLK	2
14	58251	BRACKET, DECK LIFTREAR LH	1
15	0180077	SCREW, 5/16-18X .75 HHC	2
16	120393	WASHER, FLAT .344X .69X.065	2
17	01498	NUT, 5/16-18 REGHEXCTRLK	2
18	315302	BRACKET, IDLER SUPPORT	1
19	0300345	SCREW, 5/16-18X1.38 WATAP	1
20	120393	WASHER, FLAT .344X .69X.065	1
21	01498	NUT, 5/16-18 REGHEXCTRLK	1
22	56424	QUILL ASSY, 36/39/40/43	2
23	56425	SHAFT/SADDLE 36"	1
24	49562	BRNG, BALL	1
25	50616	DUST SHIELD	1
26	55547	QUILL CASTING	1
27	49562	BRNG, BALL	1
28	50818	SPACER, 3.797LGX.669IDX.880D	1
29	51449	SPACER, .438LGX.932ODX.672ID-PM	1
30	56390	PULLEY, 26/36" QUILL	1
31	56365	SPECIAL WASHER	1
32	01292	NUT, 7/16-20 WDFLLK	1
33	050634	SCREW, 5/16-18X .88 WAHTAP	7
34	58315	LIFT SUPPORT FRONT DECK	1
35	0180075	SCREW, 5/16-18X .63 HHC	4
36	01498	NUT, 5/16-18 REGHEXCTRLK	4
37	58305	LINK BRACKET, DECK FR	1
38	58247	ADJUSTING NUT	2
39	0122017	SCREW, 5/16-18X1.00 HHC	2
40	01498	NUT, 5/16-18 REGHEXCTRLK	2
41	300103	WHEEL BRKT, LH	1
42	0180075	SCREW, 5/16-18X .63 HHC	3
43	01498	NUT, 5/16-18 REGHEXCTRLK	3
44	300102	WHEEL BRKT, RH	1
45	0180075	SCREW, 5/16-18X .63 HHC	3
46	01498	NUT, 5/16-18 REGHEXCTRLK	3
47	58190	BLADE, 19.69 HI-LIFT	2
48	2483	WASHER, .39IDX1.25OX.07 BELLVIL	6
49	039573	SCREW, 3/8-24X1.00 NYLHHC	2
50	320565	IDLER ARM ASSY.	1
51	300490	IDLER ARM	1
52	306973	BRAKE PAD	1
53	135624	RIVET, TRSET .185 DIAx.41	2
54	300180	BOLT, .50 X .188 HHSH3/8-16	1
55	996416	WASHER, FLAT .391 X 1.--- X .125	1
56	45171	NUT, 5/16-18 X .75 HHC WHIZ-LOCK	1
57	300700	BRACKET EXTENSION IDLER	1
58	180077	SCREW, 5/16-18 X .75 HHC	1
59	1498	NUT, 5/16-18 REGHEXCTRLK	1
60	121954	SCREW, 1/4-20X2.00 HHC	1
61	271172	NUT, 1/4-20 REGHEXCTRLK	1

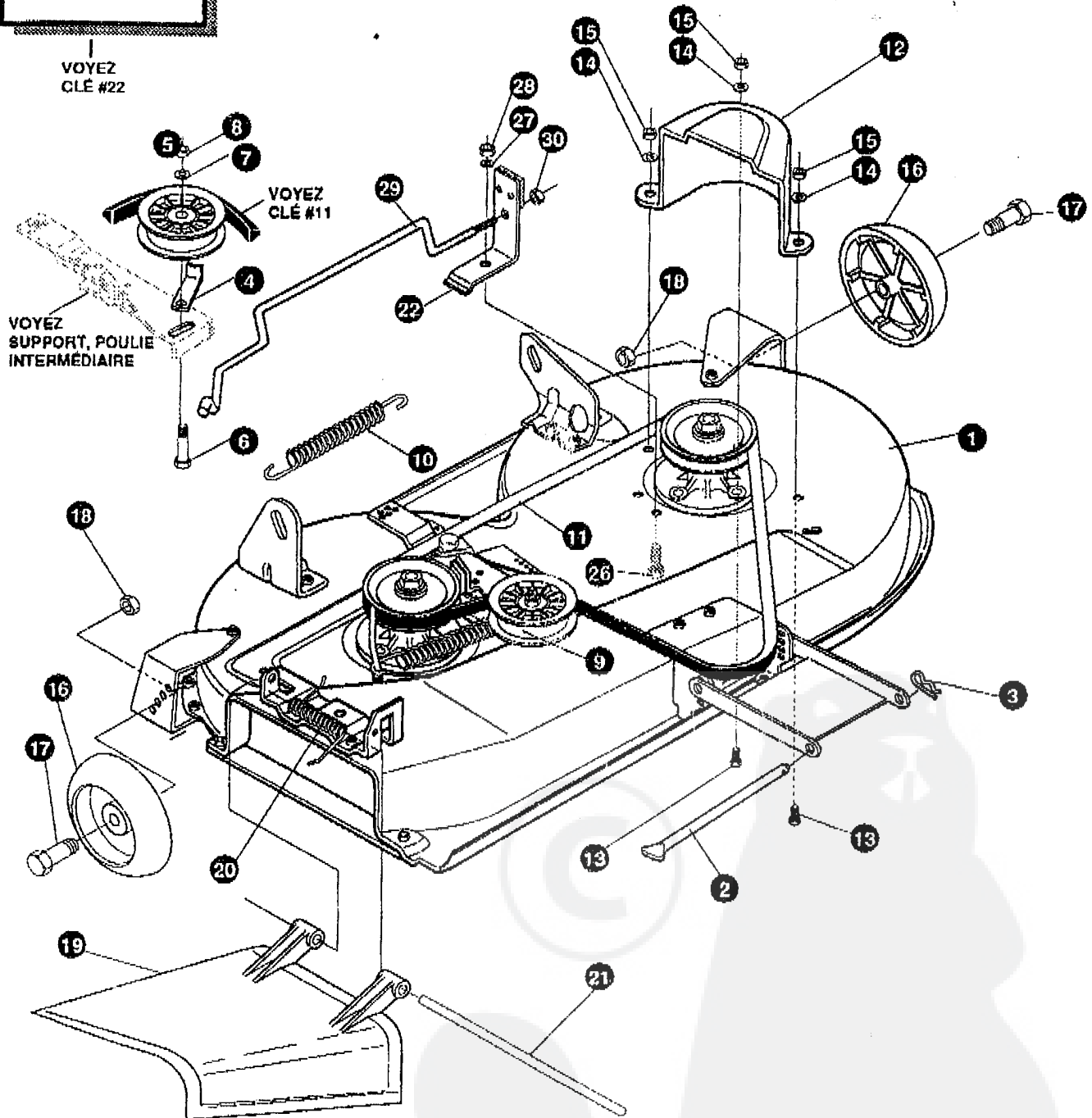
0 Indicates STANDARD HARDWARE ITEMS

TRACTEUR TONDEUSE 39" MODELE C3560-570

CARTER DE TONDEUSE



VOYEZ
CLÉ #22



UTILISEZ DES PIÈCES D'ORIGINE POUR CONSERVER L'APPLICATION DE LA GARANTIE.

TOUTES LES PIÈCES NON
REFERÉES SONT
INTERCHANGEABLES AVEC
LEURS OPPOSÉS.

324130A

TRACTEUR TONDEUSE 39" MODELE C3560-570

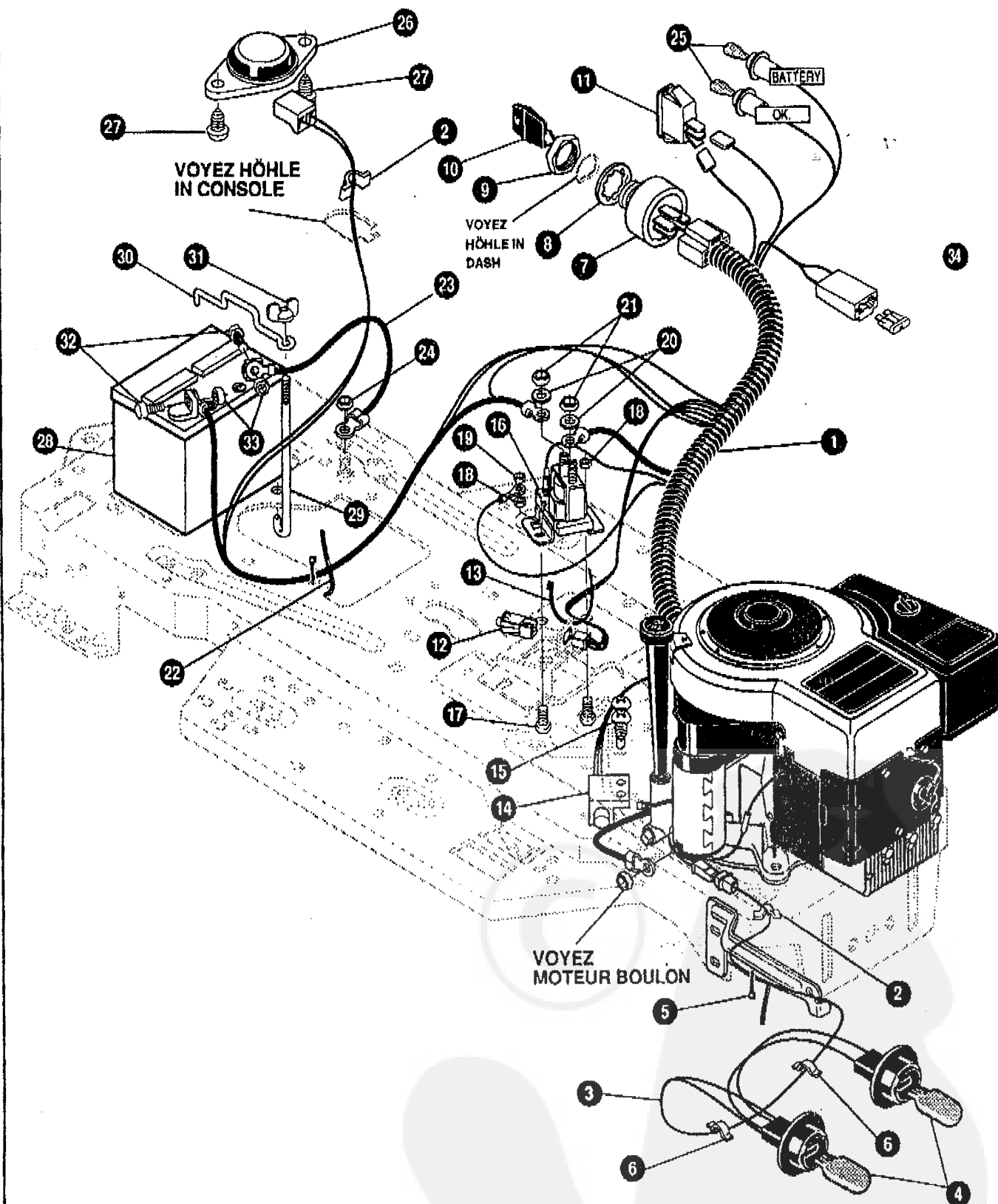
Key#	Part#	Description	Qty.
1	*	ASSY DECK, 39" SUS FOR AIR	1
2	58306	ROD, DECK HITCH	1
3	8260	PIN, HAIR .091 DIA X 1.66	1
4	300844-953	BELT RETAINER, 2.65 OD	1
5	310326	PULLEY, IDLER BFF 4.00	1
6	57325	BOLT, 3/8-16 X 2.00 CARR	1
7	120382	WASHER, REGSPTLK.393X.68X.10	1
8	0 120377	NUT, 3/8-16 REGHX	1
9	322064	SPRING, .071 X .62 X 4.37	1
10	300473	SPRING, TENSION	1
11	300680	BELT, V 6L 77.75	1
12	302833	GUARD, BELT LH	1
13	120228	SCREW, 5/16-18 X .63 HHC	3
14	120393	WASHER, FLAT .344 X .69 X .065	3
15	0 1498	NUT, 5/16-18 REGHEXCTRLK	3
16	302611	WHEEL, SD	2
17	29763	BOLT, .500 X 1.390 HSSH 3/8-16	2
18	0 1499	NUT, 3/8-16 REGHXCTRLK	2
19	67818	CHUTE-36SD,39SD	1
20	314975	SPRING, TORSION	1
21	57917	PIVOT ROD, CHUTE	1
22	303247-853	ASM. BLADE RBAKE	1
23	303246	BRAKE ARM	1
24	306973	BRAKE PAD	1
25	135624	RIVET, TRSET .185 DIA. X .41	2
26	120228	SCREW, 5/16-18 X .63 HHC	1
27	120393	WASHER, FLAT .344 X .69 X .65	1
28	1498	NUT, 5/16-18 REGHEXCTRLK	1
29	315306	ROD, BRAKE	1
30	1502	NUT, 1/4-20 REGHEXCTRLK	1

0 Indicates STANDARD HARDWARE ITEMS.

* ORDER INDIVIDUAL PARTS.

TRACTEUR TONDEUSE 39" MODELE C3560-570

FAISCEAU ELECTRIQUE



UTILISEZ DES PIECES D'ORIGINE POUR CONSERVER L'APPLICATION DE LA GARANTIE.

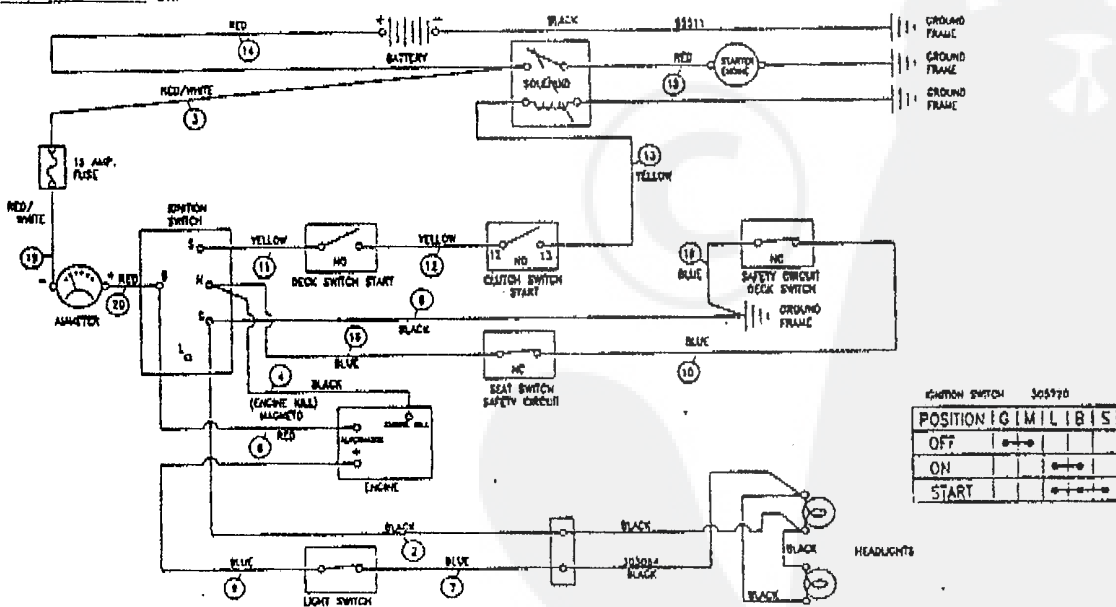
TOUTES LES PIECES NON REFEREES SONT INTERCHANGEABLES AVEC LEURS OPPOSEES.

321268A

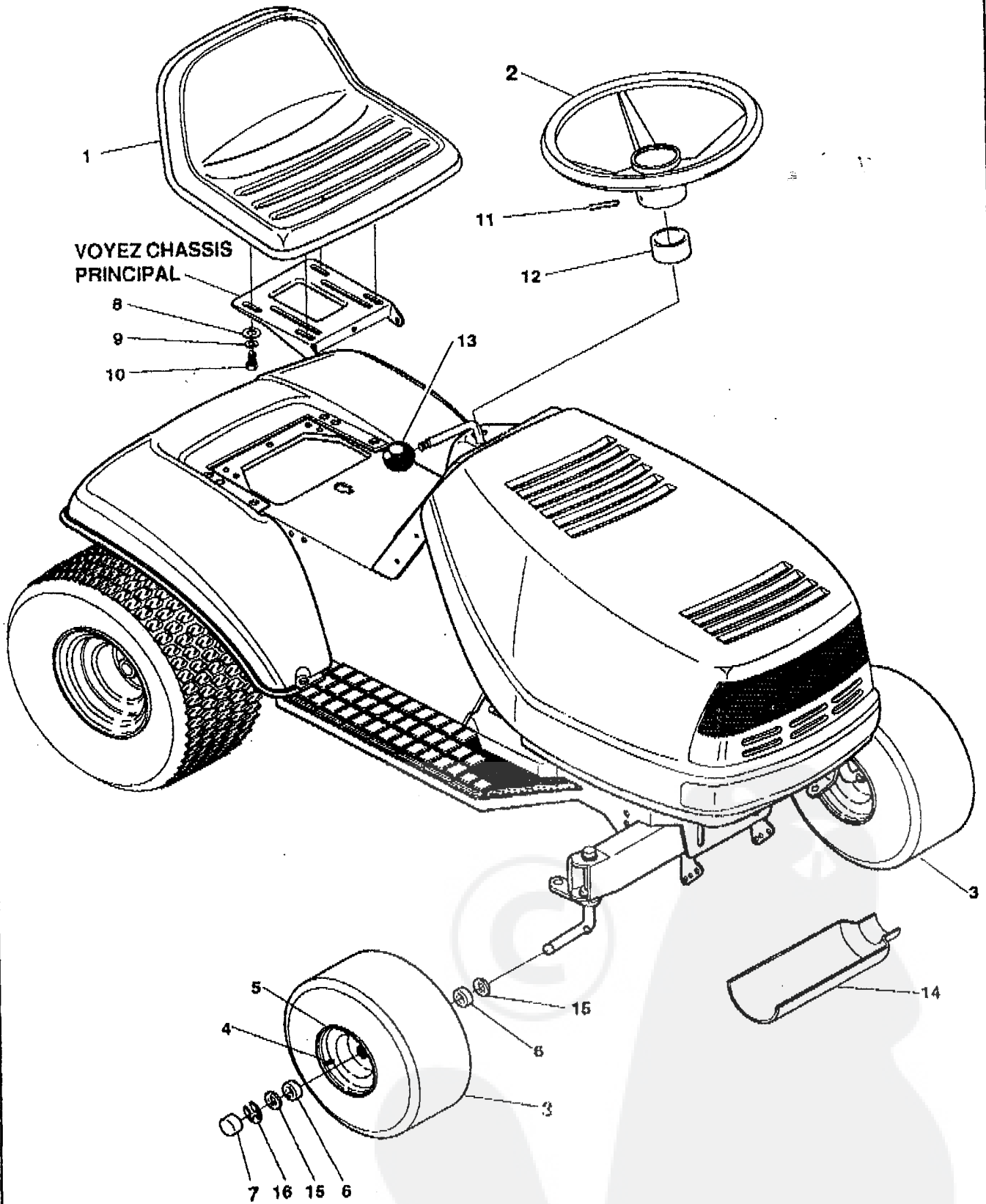
Key#	Part#	Description	Qty.
1	320066	HARNES 12-12.5 BS,H10,WRAP,LF	1
2	41482	PRESS,CLIP	2
3	303064	ASSY, LIGHT WIRE-1/4 TURN	1
4	52572	BULB, HEADLIGHT	2
6	57444	TIE, CABLE	1
6	41482	PRESS,CLIP	2
7	305720	SWITCH-IGN	1
8	136557	WASHER, REGINTLK .640X1.1X.05	1
9	48140	NUT, 5/8-32 HXHD IGN SWIT	1
10	300626	KEY, IGNITION	1
11	300334	LIGHT SWITCH ON/OFF PANEL	1
12	320082	SWITCH, DOUBLE POLE	1
13	57444	TIE, CABLE	1
14	57476	SWITCH, SCR MNT	1
15	57220	SCREW, #12 X.50 PHPNTAP	2
16	53716	SOLENOID	1
17	187745	SCREW, 1/4-20 REGHEXCTRLK	2
18	1502	NUT, 1/4-20 REGHEXCTRLK	2
19	271172	NUT, 1/4-20 REGHEXKEPS	1
20	138485	WASHER, EXLK .320X.61X.03	2
21	120368	NUT, 5/16-24 REGHEX	2
22	57444	TIE, CABLE	1
23	55511	WIRE, GROUND, 12.5"	1
24	271184	NUT, 5/16-18 HEXKEPS	1
25	57769	BULB, INDICATOR	2
26	57547	SWITCH, SEAT	1
27	160505	SCREW, 1/4-20X.38	2
28	57486	BATTERY 12V, 5 PLATE-18 AMP	1
29	57551	ROD, BATTERY	1
30	57552	ROD, BATTERY, TOP	1
31	310067	NUT, WING 1/4-20X.63 HHC	1
32	120854	SCREW, 1/4-20 X.63 HHC	2
33	271172	NUT, 1/4-20 REGHEXKEPS	2
34	302031	FUSE, 15 amp SPADE TYPE	1

STANDARD HARDWARE ITEMS

SCHEMATIC DRAWING:



CHALAND ASSEMBLAGE



316185C

TRACTEUR TONDEUSE 39" MODELE C3960-570

CUSTOMER ASSEMBLY VIEW

315857 PARTS BAG ASSY QTY1

Key#	Part#	Description	Qty
1	57464	SEAT,450 MICH.	1
2	301251	WHEEL, STEERING, 13"	1
3	313852	TIRE , PU 15X6.0X6 TURF	2
4	24167	VALVE STEM	1
5	39829	WHEEL W/BRG.	1
6	39979	BEARING,FL1.38OD+.753ID PM	2
7	40394	HUBCAP, 1.500IDX7/8LG	2
8	120393	WASHER, FLAT .344X .69X.065	4
9	120638	WASHER, HVSP TLK .32BX.60X.09	4
10	122007	SCREW, 5/16-18X .75 HHC	4
11	456378	PIN, SPRING.250DIA X2.00LG HVPL	1
12	57212	COVER, STEERING SHAFT	1
13	55514	SHIFT KNOB	1
14	54873	TROUGH, OIL DRAIN	1
15	642	WASHER, FLAT .755X1.31X.075	4
16	36625	RING, RETEX .57X.05TRU5133-75	2

