

REPAIR PARTS MANUAL

40" - 16 H.P. LAWN TRACTOR

MODEL C3560-670

ONE YEAR LIMITED WARRANTY

For one (1) year from date of purchase by the first consumer for residential use (thirty (30) days commercial use), NOMA Outdoor Products Incorporated warrants that it will replace free of charge, including labor, any original part of any NOMA Outdoor Products Incorporated product found to be defective by any authorized Service Dealer or the factory, except the battery which is warranted for ninety (90) days from date of purchase.

This warranty does not cover engine, transmission, transaxle or differential (these items are covered by their manufacturer's own warranty). This warranty does not cover parts that have failed due to normal wear or parts that have failed subject to misuse or abuse. Transportation of the unit or part to and from an authorized Service Dealer or factory is the responsibility of the owner.

A step by step explanation as to what procedure should be followed for this warranty is:

1. If a part becomes defective, contact the store where the unit was purchased for the name and address of the authorized Service Dealer nearest to you.
2. If you cannot locate an authorized Service Dealer, write Service Department of NOMA Outdoor Products Incorporated for the name and address of the authorized Service Dealer in your area or call the Service Department at 1-901-422-1690.
3. Return the defective product, along with proof of purchase to such authorized Service Dealer for replacement of any defective part where covered by this warranty.

There is no other express warranty. Implied warranties, including those of merchantability and fitness for a particular purpose are limited to one (1) year from date of purchase. Liability for incidental or consequential damages are excluded.

Some states do not allow limitations on how long an implied warranty lasts, so the above limitation may not apply to you. Some states do not allow the exclusion of incidental or consequential damages, so the above exclusion may not apply to you. This warranty gives you specific legal rights, and you may have other rights which vary from state to state.

NOMA Outdoor Products Incorporated

Caller 8000

Jackson, TN 38308-8000

UNIT PARTS AND SERVICE

Fill in and mail the registration card packed with the unit. For service other than covered in this manual, contact an authorized service dealer. When ordering repair parts, always give the following information: 1. The Part Name; 2. The Part Number; 3. The Quantity desired; 4. The Full (eight digit) Model Number of the unit. The model number will be found on a plate attached to the unit.

Look for this symbol.



It means - **ATTENTION! BECOME ALERT! A HAZARD TO OPERATOR, BYSTANDER, PROPERTY OR EQUIPMENT MAY EXIST.**

NOMA Outdoor Products Incorporated

Caller 8000

Jackson, TN 38308-8000

Part No. 324607A

2/92

OWNER'S INFORMATION

Record the following information about your unit so that you will be able to provide it in case of loss or theft.

MODEL NUMBER: - (Enter complete 8 digit number from model plate on unit)
PURCHASE DATE: ___ / ___ / ___ CODE NO.: _____ SERIAL NO.: _____
DEALER'S NAME AND ADDRESS: _____
CITY: _____ STATE: _____ TELEPHONE: _____

CONTENTS OF SHIPPING CARTON

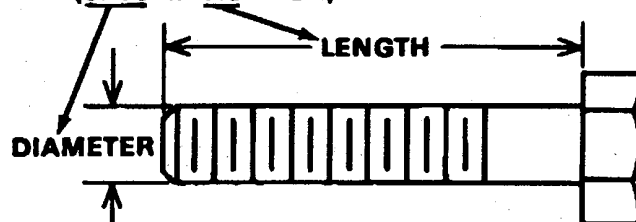
- 1 - Lawn Tractor with 40 inch Mower Deck
- 1 - Operator's Manual
- 1 - Repair Parts Manual
- 1 - Engine Manual
- 1 - Steering Wheel (see Note)
- 1 - Seat (see Note)
- 2 - Tire & Rim Assemblies
- 1 - Bag of Assembly Parts Containing (see Note):
 - 1 - Oil Drain Trough
 - 4 - 5/16 x 3/4 inch Hex Head Screws
 - 4 - 5/16 inch Split Lockwashers
 - 4 - 11/32 inch Flatwashers
 - 1 - Spring Pin
 - 4 - Flatwashers
 - 2 - Retaining Rings
 - 2 - Hub Caps
 - 1 - Cover, Steering Shaft
 - 1 - Knob, Shift
 - 1 - Torsion Spring
 - 1 - Rod, Pivot
 - 1 - Nut, Push
 - 1 - Bolt, .500x1.390 HSH 3/8-16
 - 1 - Nut, 3/8-16 Reghxctrk
 - 1 - Chute Deflector
 - 2 - Deck Wheels

NOTE: Refer to page 22 & 23(Customer Assembly Parts) for more detailed description.

TOOLS REQUIRED FOR ASSEMBLY

- 2 - 7/16 inch Wrenches (or adjustable wrench)
- 1 - 1/2 inch Wrench (or adjustable wrench)
- 1 - Small Phillips Screwdriver with a 1/4 inch shank
- 1 - Hammer

HOW TO MEASURE SCREW SIZE (5/16 x 1 1/2 INCH)



DANGER



This lawn tractor can be dangerous if carelessly used.

Read your Operator's Manual thoroughly before operating your lawn tractor.

Always wear safety glasses or eye shields while assembling or operating your lawn tractor.

DO NOT carry passengers at any time.

Keep your hands, feet, hair and loose clothing away from the discharge area, the underside of the mower deck or any moving parts while the engine is running.

DO NOT allow children or young teenagers to operate or be near your lawn tractor while it is operating.

ALWAYS GIVE THE FOLLOWING INFORMATION WHEN ORDERING REPAIR PARTS:

1. The PART NUMBER; 2. The PART NAME; 3. QUANTITY DESIRED; 4. The MODEL NUMBER (As shown on Model Plate).

SEND PART ORDERS AS PER INSTRUCTIONS ON THE FRONT PAGE.

DO NOT USE KEY NUMBERS WHEN ORDERING REPAIR PARTS, ALWAYS USE PART NUMBERS.

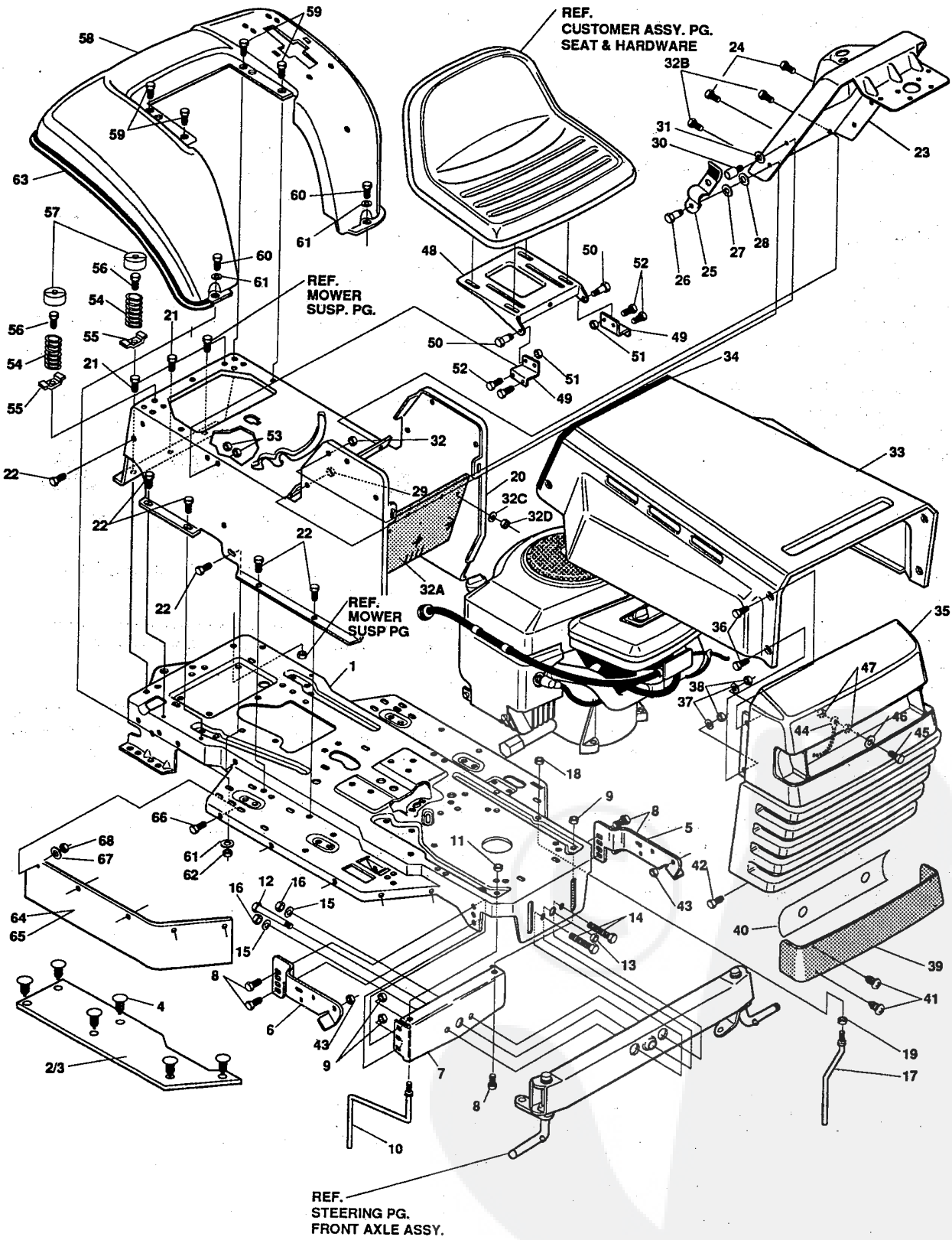
All replacement parts will be supplied in current production colors or in a neutral color.

A handling fee is applicable to small parts orders.

YOUR UNIT IS RIGHT HAND (RH) OR LEFT HAND(LH) AS YOU STAND BEHIND IT.

40" LAWN TRACTOR MODEL C3560-670

CHASSIS & HOOD ASSEMBLY



NOTE: ALWAYS USE ORIGINAL EQUIPMENT PARTS. Use of service/replacement parts other than original equipment parts may void your warranty.

ALL UNNUMBERED ITEMS ARE INTERCHANGABLE WITH OPPOSITE SIDE

324519A

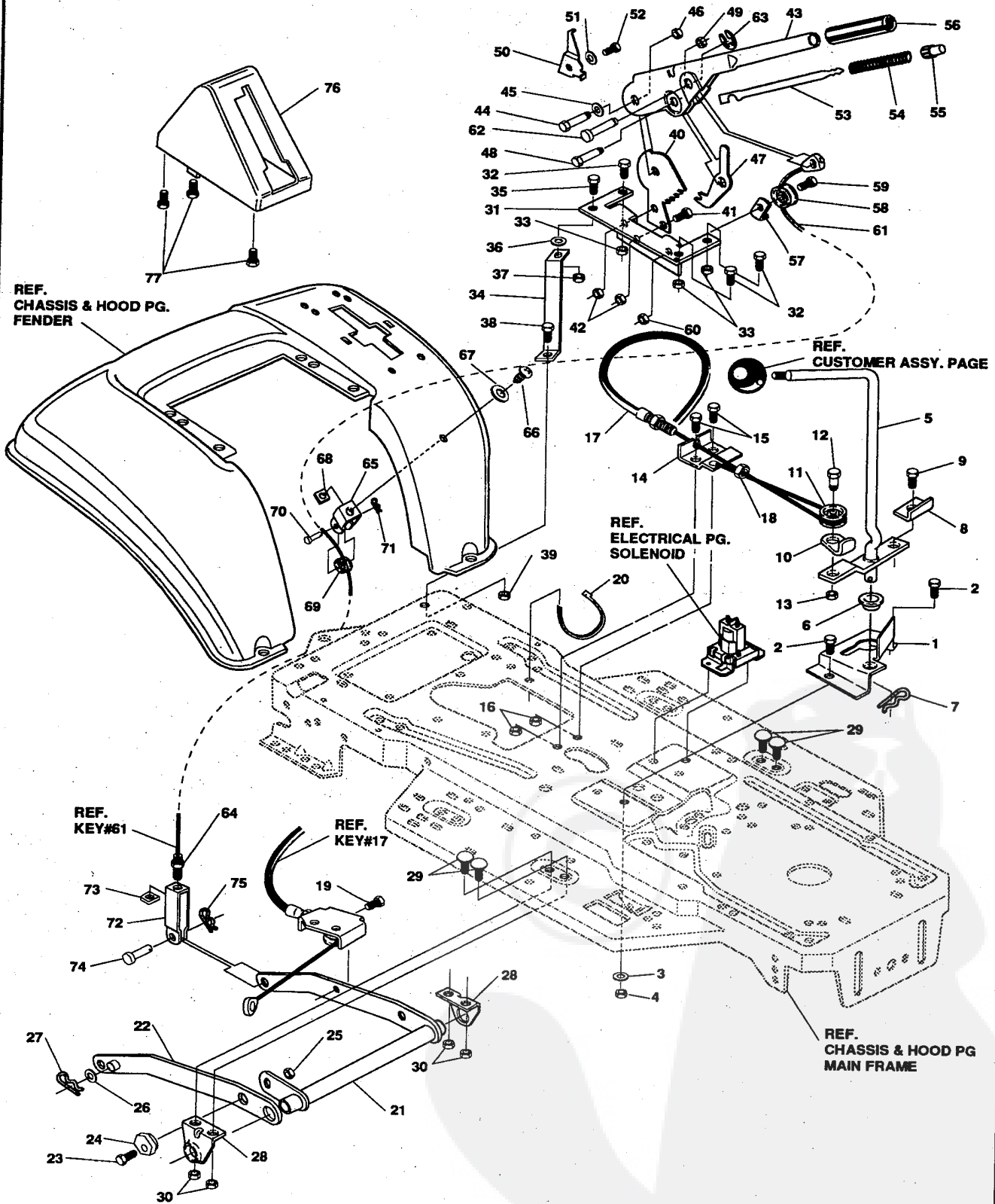
40" LAWN TRACTOR MODEL C3560-670

Key#	Part#	Description	Qty.
1	321760-860	FRAME, LF MAIN P920/F4360 DRILLED	1
2	310005	FOOTPAD ,LH 22.12LG DYNA F-5	1
3	310006	FOOTPAD, RH 22.12LG DYNA F-5	1
4	309235	FASTENER, RATCHET	12
5	313001-853	BRKT, GRILL LH	1
6	313002-853	BRKT, GRILL RH	1
7	313541-853	BRACKET, FRONT AXLE	1
8	56030	SCREW, 5/16-18X.75WDFLLK GR5	5
9	55273	NUT, 5/16-18 HXWDFLLK	5
10	300440	GUIDE, BELT, RIDER	1
11	◇1498	NUT, 5/16-18 REGHEXCTRLK	1
12	308207	BOLT, .625X2.18 HHSH 1/2-13	1
13	309008	NUT, 1/2-13 HEXJAM CTRLK	1
14	◇122207	SCREW, 3/8-16X3.00 HHC GR2	2
15	2483	WASHER, .39IDX1.25DX.07 BELLVIL	2
16	◇1499	NUT, 3/8-16 REGHXCTRLK	2
17	300635	GUIDE, BELT SHORT 15" WHEEL	1
18	◇124824	NUT, 5/16-18 HEXJAM	1
19	◇271190	NUT, 3/8-16 HEXKEPS	1
20	309657-860	CONSOLE, LF TOPSHIFT	1
21	35497	SCREW, 5/16-18X .50 WAHTAP	1
22	995346	SCREW, 1/4-20X .50 WAHTAP	13
23	309447-860	DASHBOARD, LF SUSP DYNA	1
24	995346	SCREW, 1/4-20X .50 WAHTAP	2
25	57159	LATCH, .94WDX.047 ASSY HOOD	2
26	8482	BOLT, .375X .156 HHSH 5/16-18	2
27	120394	WASHER, FLAT .406X .81X.065	2
28	120393	WASHER, FLAT .344X .69X.065	2
29	◇1498	NUT, 5/16-18 REGHEXCTRLK	2
30	53446	PIN, 5/16-18 HOOD LATCH GR2-	2
31	138538	WASHER, REGINTLK.320X.61X.03	2
32	45174	NUT, 5/16-18 HEXWDFLLK WHIZ	2
32A	312306	BAFFLE, CONSOLE	1
32B	300314	SCREW, 1/4-20 X .88 WAHTAP	2
32C	120392	WASHER, FLAT .281 X .63 X .065	2
32D	1502	NUT, 1/4-20 REGHEXCTRLK	1
33	314537-860	HOOD, LF H-20 DYNA/PRO	1
34	47453	EDGING, WIDE BLK	27.5"
35	314476	GRILLE, DYNA-PRO G-17	1
36	◇274672	SCREW, 1/4-20X .63 WAHHC GR2	4
37	120392	WASHER, FLAT .281X .63X.065	4
38	◇1502	NUT, 1/4-20 REGHEXCTRLK	4
39	302333	LENS, SMOKED W/TAB NO LOGO	1
40	314948	FOIL, LENS DYNA-PRO REFLECTOR	1
41	57796	SCREW, #6 X .50 PLASTITE/HI-LO	4
42	36149	BOLT, .375X .500 HHSH 5/16-18	2
43	◇1498	NUT, 5/16-18 REGHEXCTRLK	2
44	310748	LANYARD, HOOD 15.77LG H15	1
45	◇48900	SCREW, 1/4-20X1.00 WAHHC GR2	1
46	120392	WASHER, FLAT .281X .63X.065	1
47	◇1502	NUT, 1/4-20 REGHEXCTRLK	2
48	58367-860	PLATE, SEAT F-5 SF & LF	1
49	310660-860	BRACKET, F-5 SEAT SUPPORT	1
50	20507	BOLT, .437X .156 HHSH 5/16-18	2
51	◇1498	NUT, 5/16-18 REGHEXCTRLK	2
52	◇48901	SCREW, 5/16-18X .63 HHC	4
53	◇1498	NUT, 5/16-18 REGHEXCTRLK	4
54	57153	SPRING, SEAT 2.63LG,1.49OD	2
55	300284-999	CLAMP, SPRING 1.17"ID ZPL	2
56	44811	SCREW, 1/4-20X .75 HXWATAP	2
57	56907	COVER, SEAT SPRING 1.5IDX1.0LG	2
58	58334-860	FENDER, F-5 SUSP LF	1
59	995346	SCREW, 1/4-20X .50 WAHTAP	4
60	◇122017	SCREW, 5/16-18X1.00 HHC GR2	2
61	446363	WASHER, FLAT .375X .88X.082	4
62	◇1498	NUT, 5/16-18 REGHEXCTRLK	2
63	55021	TRIM, STRIP ,BLACK—SMALL,W/ ADH	75"
64	305386	GUARD	1
65	305354	GUARD	1
66	57034	SCREW, #10-24 X .68 TRHMA	10
67	1501	WASHER, FLAT .203 X .56 X .040	10
68	271166	NUT, #10-24 HEX KEPS	10

◇ Indicates STANDARD HARDWARE ITEMS.

40" LAWN TRACTOR MODEL C3560-670

MOWER SUSPENSION ASSEMBLY



NOTE: ALWAYS USE ORIGINAL EQUIPMENT PARTS. Use of service/replacement parts other than original equipment parts may void your warranty.

ALL UNNUMBERED ITEMS ARE INTERCHANGABLE WITH OPPOSITE SIDE

321414B

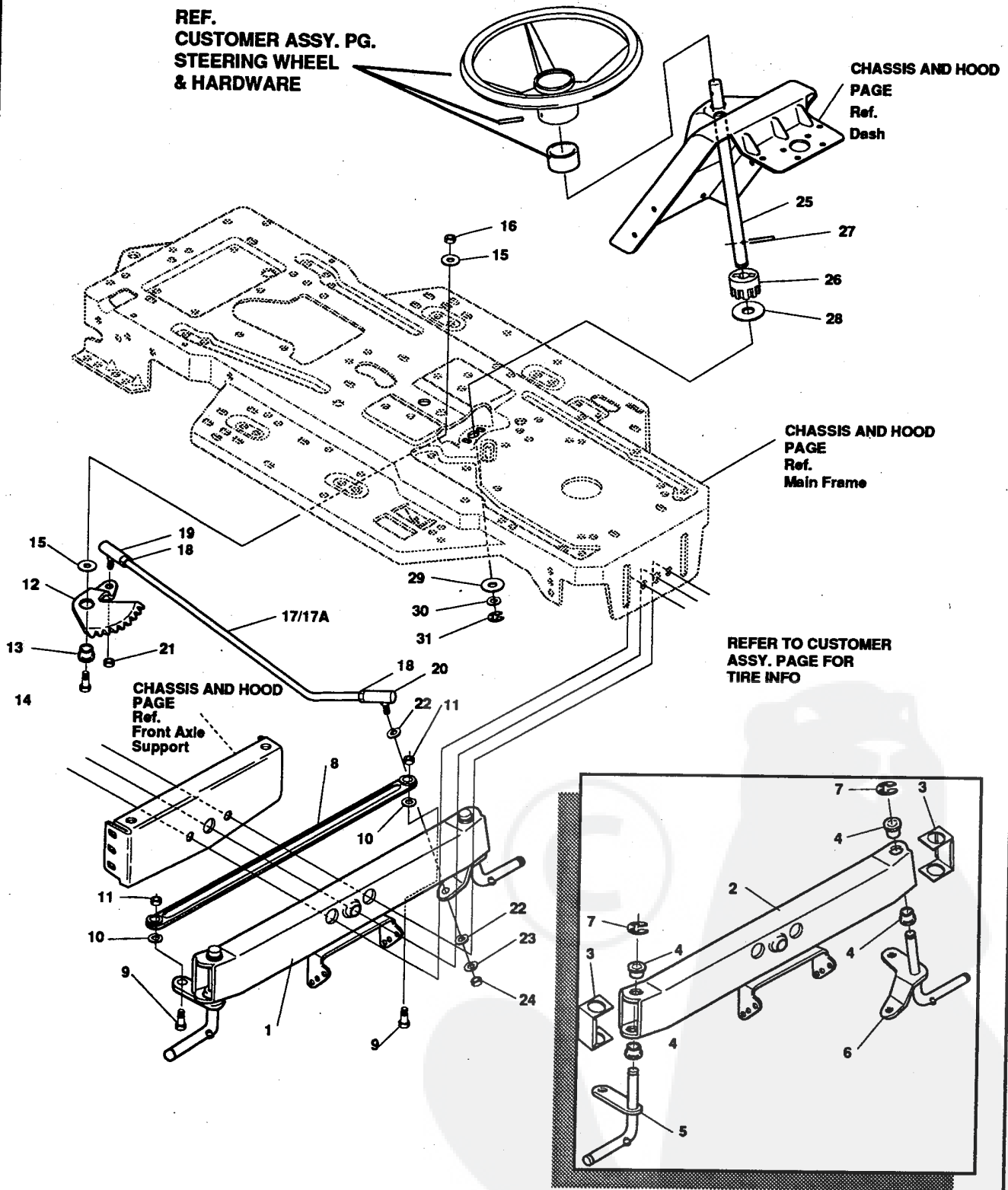
40" LAWN TRACTOR MODEL C3560-670

Key#	Part#	Description	Qty.
1	320075-853	BRACKET, CLUT-ENGAGE LEVER	1
2	180079	SCREW, 5/16-18X1.00 HHC	2
3	120393	WASHER, FLAT .344X .69X.065	2
4	1498	NUT, 5/16-18 REGHEXCTRLK	2
5	303063-953	ASSY, CLUTCH LEVER	1
6	50148	BEARING, FL. .503IDX.628OD	1
7	8260	PIN, HAIR .091 DIA X1.66LG	1
8	300699-953	BRACKET, SWITCH ENGAGE	1
9	35498	SCREW, 5/16-18X .75 WAHTAP	1
10	52456-953	BRKT, CABLE RETAINER	1
11	48306	PULLEY, .906X.305 PM	1
12	58336	BOLT, .375X .375 HSH 1/4-20	1
13	1502	NUT, 1/4-20 REGHEXCTRLK	1
14	300698-853	BRKT, FRAME CABLE	1
15	180020	SCREW, 1/4-20X .75 HHC	2
16	1502	NUT, 1/4-20 REGHEXCTRLK	2
17	301503	ASSY, CABLE, BLADE ENGAGE	1
18	120613	NUT, 1/4-28 HJAM	1
19	35498	SCREW, 5/16-18X .75 WAHTAP	1
20	57444	TIE, CABLE BLACK NYLON	1
21	300158-853	ASSY, REAR LIFT	1
22	300169-853	ASSY, LINK, RIGHT SIDE	1
23	180079	SCREW, 5/16-18X1.00 HHC	1
24	58247	ADJUSTING NUT	1
25	1498	NUT, 5/16-18 REGHEXCTRLK	1
26	417098	WASHER, FLAT .531X1.06X.095	2
27	8260	PIN, HAIR .091 DIA X1.66LG	2
28	58248-853	BRKT, REAR, HANG, SUSP.	2
29	126211	BOLT, 5/16-18X .63 CARR	4
30	1498	NUT, 5/16-18 REGHEXCTRLK	4
31	58333	BRACKET, HGT/ADJUST SUPPORT	1
32	180077	SCREW, 5/16-18X .75 HHC	3
33	1498	NUT, 5/16-18 REGHEXCTRLK	3
34	300336	BRACE, FENDER F-5 SUS	1
35	180079	SCREW, 5/16-18X1.00 HHC	1
36	45602	WASHER, FLAT .333X .87X.119	1
37	1498	NUT, 5/16-18 REGHEXCTRLK	1
38	180079	SCREW, 5/16-18X1.00 HHC	1
39	1498	NUT, 5/16-18 REGHEXCTRLK	1
40	301238	QUADRANT, HEIGHT ADJUST	1
41	180077	SCREW, 5/16-18X .75 HHC	2
42	1498	NUT, 5/16-18 REGHEXCTRLK	2
43	303026-853	HANDLE, LIFT SHORT BLK	1
44	300171	BOLT, .500X .270 HSH 5/16-18	1
45	996418	WASHER, FLAT .506X .75X.024	1
46	44108	NUT, 5/16-18 HWDFLCTRLK	1
47	301239	PAWL, HEIGHT ADJUST	1
48	300171	BOLT, .500X .270 HSH 5/16-18	1
49	44108	NUT, 5/16-18 HWDFLCTRLK	1
50	300782-953	POINTER Z-PL	1
51	138479	WASHER, EXLK .195X.41X.03	1
52	35287	SCREW, #8-32X .38 HHWAT	1
53	303027	ROD, ACTUATOR-SHORT	1
54	58326	SPRING, HEIGHT ADJUST	1
55	58325	KNOB, HGT ADJ PUSH BUTTON	1
56	58329	GRIP, .750 OD W/ HOLE	1
57	58335-953	BRKT, CABLE RETAIN	1
58	39298	PULLEY, .906X.305 NYLON	1
59	58336	BOLT, .375X .375 HSH 1/4-20	1
60	1502	NUT, 1/4-20 REGHEXCTRLK	1
61	314177	CABLE, LIFT 23.30 F-5 20X8-8	1
62	300310	PIN, CLEVIS .310DIA+.475LG	1
63	300311	RING, RET E .31X.24	1
64	120375	NUT, 1/4-20 REGHEX	1
65	300298	CLEVIS	1
66	439455	SCREW, 5/16-18X .56PHPNMA BKPH	1
67	301551	WASHER, .344IDX1.50DX.09 CU BPH	1
68	120373	NUT, 5/16-18 SQ	1
69	39298	PULLEY, .906X.305 NYLON	1
70	300317	PIN, CLEVIS .38 DIA X1.00 LG	1
71	8260	PIN, HAIR .091 DIA X1.66LG	1
72	300703-953	CLEVIS, LIFT CABLE	1
73	120372	NUT, 1/4-20 REGSQ	1
74	39522	PIN CLEVIS, .312 X .812	1
75	121222	PIN, COTTER, .090/.086X.75LG	1
76	300335	LIFT COVER-39" F5	1
77	300340	SCREW, #10 X .75 HHPLAST	3

* INDICATES STANDARD HARDWARE ITEMS.

40" LAWN TRACTOR MODEL C3560-670

STEERING ASSEMBLY



315650E

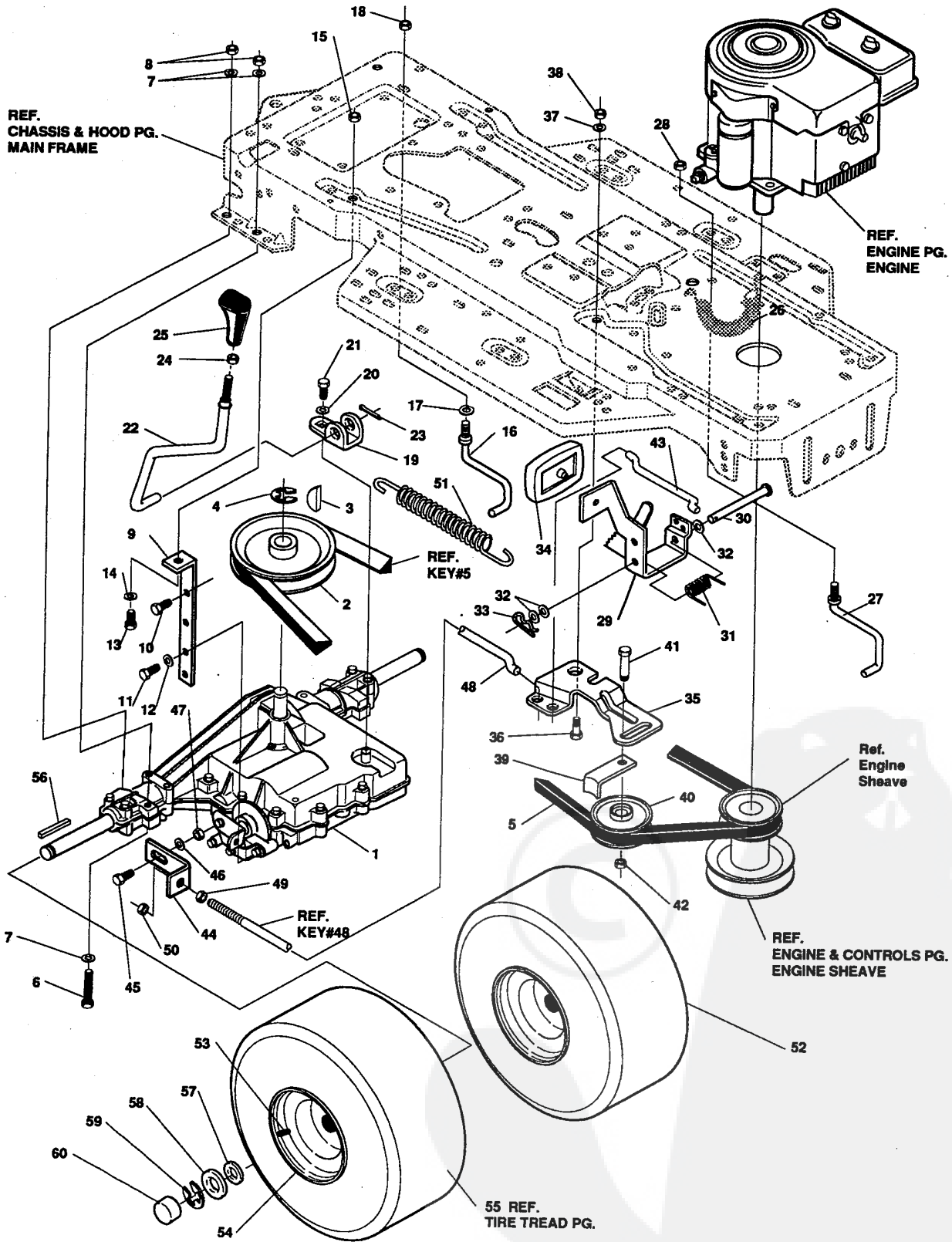
40" LAWN TRACTOR MODEL C3560-670

Key#	Part#	Description	Qty.
1.	*	ASSY, AXLE FRONT 4/WS SUSP	1
2.	300272	ASSY FRONT AXLE SUSPENDED	1
3.	53373	AXLE COVER	2
4.	52407	SPINDLE BEARING	4
5.	302926	ASSY, SPINDLE RH	1
6.	315886	ASSY, SPINDLE LH	1
7.	36625	RING, RETEX .57X.05TRU5133-75	2
8.	304590	TIE ROD ASSY, 19.81LG W-SECTION	1
9.	• 180128	SCREW, 3/8-16X1.75 HHC	2
10.	120382	WASHER, REGSPTLK.393X.68X.10	2
11.	• 1499	NUT, 3/8-16 REGHXCTRLK	2
12.	58289	SECTOR, STEERING LF	1
13.	52406	BRNG, FL ECC.510IDX .998ODX .56	1
14.	• 180177	SCREW, 1/2-13X1.50 HHC	1
15.	22265	WASHER, FLAT .515X1.38X.119PL	2
16.	• 1500	NUT, 1/2-13 REGHCTRLK	1
17.	300146	DRAGLINK ASSY	1
17A.	58291	STEERING LINK	1
18.	• 124925	NUT, 3/8-24 REGHEXJAM	2
19.	57158	BALL JOINT, 3/8 THD SHORT STUD	1
20.	21275	BALL JOINT, 3/8 TH'D LONG STUD	1
21.	• 46692	NUT, 3/8-24 WDFLHLK WHIZ	1
22.	996416	WASHER, FLAT .391X1.00X.125	2
23.	120382	WASHER, REGSPTLK.393X.68X.10	1
24.	• 120369	NUT, 3/8-24 REGHEX	1
25.	58243	SHAFT, STEERING LF	1
26.	58244	PINION, STEERING LF	1
27.	58274	PIN, DOWEL .2500 OD+1.75LG PL	1
28.	301410	BRNG, FL .752IDX1.061ODX .24	1
29.	301398	WASHER, FORMED1.135X1.53X.12	1
30.	21682	WASHER, FLAT .765X1.25X.042	1
31.	36625	RING, RETEX .57X.05TRU5133-75	1

- STANDARD HARDWARE ITEMS
- ORDER INDIVIDUAL PARTS.

40" LAWN TRACTOR MODEL C3560-670

MOTION DRIVE ASSEMBLY



NOTE: ALWAYS USE ORIGINAL EQUIPMENT PARTS.
Use of service/replacement parts other than original equipment parts may void your warranty.

**ALL UNNUMBERED
ITEMS ARE INTERCHANGABLE
WITH OPPOSITE SIDE**

324348A

40" LAWN TRACTOR MODEL C3560-670

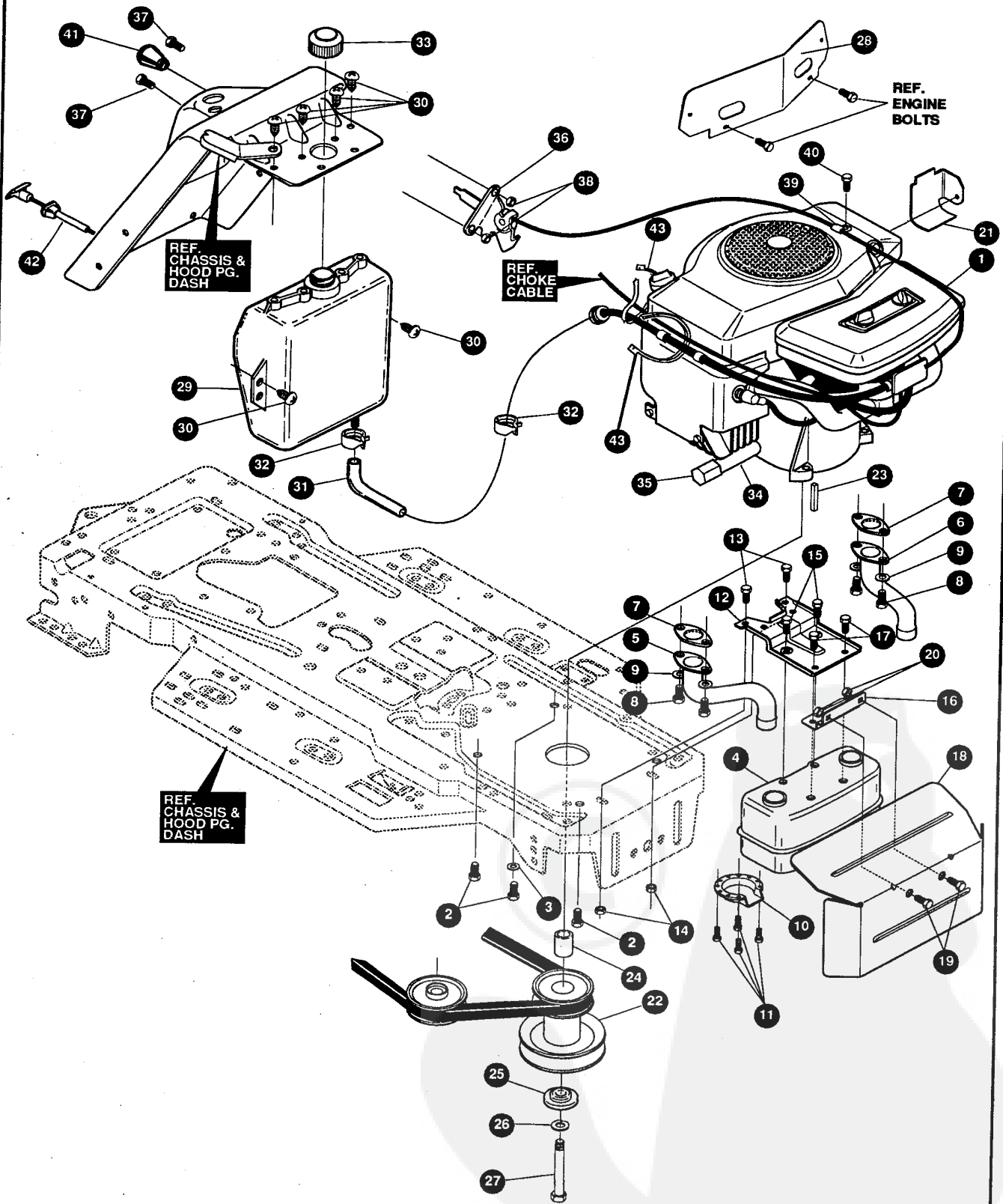
Key#	Part#	Description	Qty.
1	*	TRANSAXLE PEERLESS PG30-5	1
2	302745	PULLEY,V 4L 6.60 OD	1
3	3021	KEY, WDRF 606 .750X.187X.312	1
4	22053	RING, RETEX .58X.04TRU5100-62	1
5	314120	BELT	1
6	◇180089	SCREW, 5/16-18X2.25 HHC	4
7	120393	WASHER, FLAT .344X .69X.065	8
8	◇1498	NUT, 5/16-18 REGHEXCTRLK	4
9	323471	STABILIZER BRKT	1
10	◇50947	SCREW, 3/8-16X1.25 WAHHTAP	1
11	◇35498	SCREW, 5/16-18X .75 WAHHTAP	1
12	120638	WASHER, HVSP TLK .328X.60X.09	1
13	◇122017	SCREW, 5/16-18X1.00 HHC	1
14	120393	WASHER, FLAT .344X .69X.065	1
15	◇1498	NUT, 5/16-18 REGHEXCTRLK	1
16	57259	GUIDE, BELT 5/16-18THD	1
17	138538	WASHER, REGINTLK.320X.61X.03	1
18	◇1498	NUT, 5/16-18 REGHEXCTRLK	1
19	310754-955	BRKT,SHIFT	1
20	57157	WASHER,.750X.250 SP-TRANSAXLE	1
21	◇56255	SCREW, 1/4-28X .75 NYLHHC	1
22	57169	LEVER, SHIFT	1
23	137185	PIN, COTTER .125 DIA X1.00	1
24	◇120238	NUT, 1/2-13 HEXJAM	1
25	304438	KNOB,SHIFT NOMA 1/2-13	1
26	321514	SPRING BIAS DRAGLINK	1
27	304016	GUIDE,BELT	1
28	1498	NUT, 5/16-18 REGHEXCTRLK	1
29	300308	PEDAL ASSY,BRAKE/CLUTCH	1
30	319675	PIN CLEVIS	1
31	57847	SPRING, BRAKE PEDAL	1
32	2968	WASHER, FLAT .504X .75X.059	3
33	56180	PIN,HAIR	1
34	48160	PAD, CLUTCH BRAKE	1
35	300154	ARM,IDLER TRACTION DR.	1
36	300793	BOLT, .625X .135 HSSH 5/16-18	1
37	45602	WASHER, FLAT .333X .87X.119	1
38	◇1498	NUT, 5/16-18 REGHEXCTRLK	1
39	39659	RETAINER, STRAP BELT	1
40	35374	PULLEY, IDLER	1
41	45892	BOLT, 3/8-16X1.50 CARR	1
42	◇1499	NUT, 3/8-16 REGHXCTRLK	1
43	57204	ROD, CLUTCH	1
44	57217	BRACKET, BRAKE ROD	1
45	20507	BOLT, .437X .156 HSSH 5/16-18	1
46	45602	WASHER, FLAT .333X .87X.119	1
47	◇1498	NUT, 5/16-18 REGHEXCTRLK	1
48	313659	ROD, BRAKE	1
49	◇271184	NUT, 5/16-18 HEXKEPS	1
50	◇1498	NUT, 5/16-18 REGHEXCTRLK	1
51	301318	SPRING, CLUTCH .113X.750X8.75	1
52	57164	TIRE , PU 20X10-8 WHITE	2
53	24167	VALVE STEM	1
54	310366	WHEEL 20X8.00 WHITE	1
55		REFER TO TIRE TREAD PAGE	1
56	52928	KEY, SQUARE .187SQX2.25	2
57	642	WASHER, FLAT .755X1.31X.075	4
58	42815	WASHER, FLAT .755X1.53X.07	2
59	36625	RING, RETEX .57X.05TRU5133-75	2
60	40394	CAP, 1.500ID X 7/8LG HUB	2

◇ Indicates STANDARD HARDWARE ITEMS.

* CONTACT YOUR NEAREST TRANSAXLE DEALER FOR PARTS & SERVICE.

40" LAWN TRACTOR MODEL C3560-670

ENGINE & CONTROL ASSEMBLY



NOTE: ALWAYS USE ORIGINAL EQUIPMENT PARTS.
Use of service/replacement parts other than original equipment parts may void your warranty.

**ALL UNNUMBERED
ITEMS ARE INTERCHANGABLE
WITH OPPOSITE SIDE**

324518A

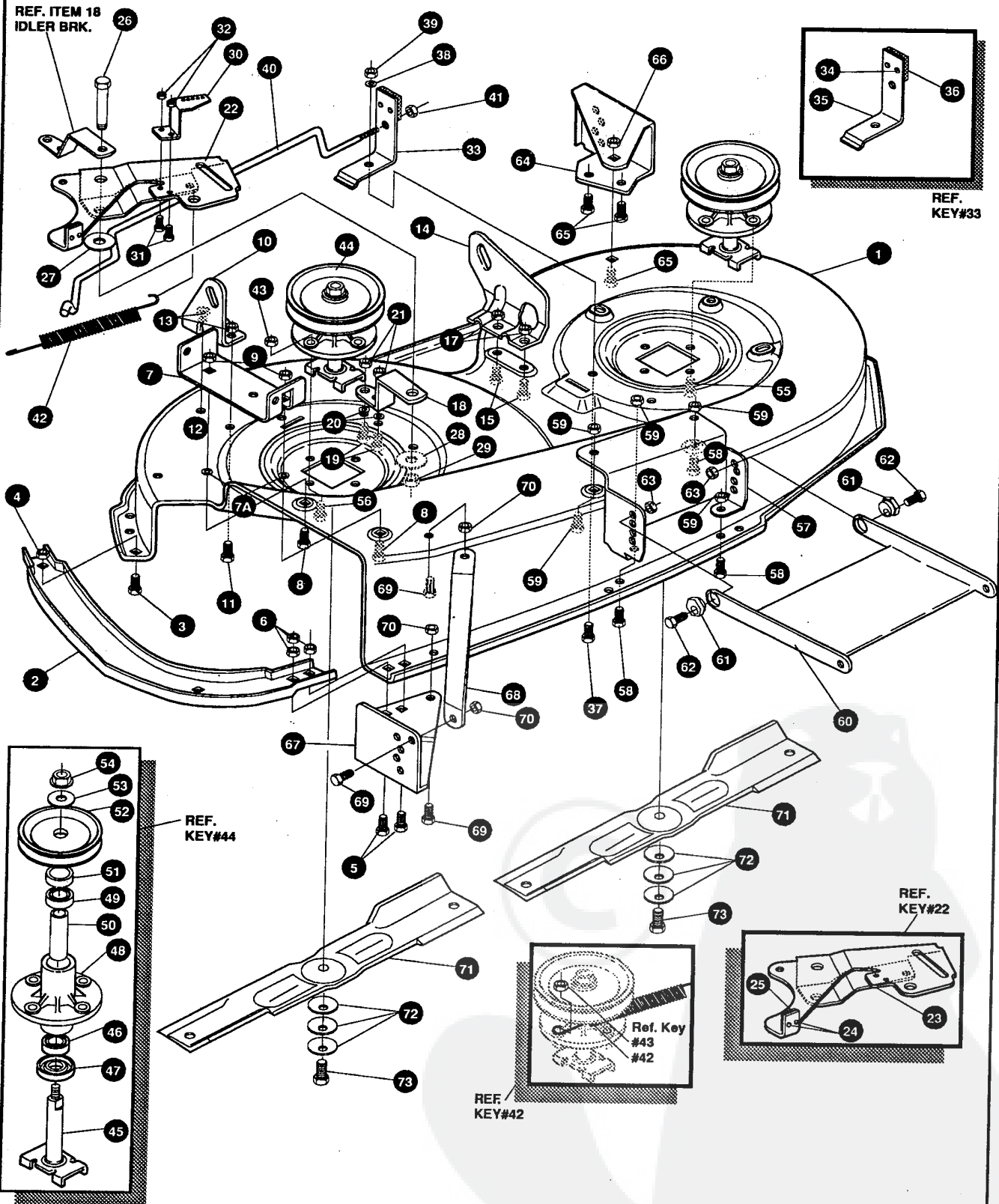
40" LAWN TRACTOR MODEL C3560-670

Key#	Part#	Description	Qty.
1.	ENGINE	B&S 16HPTWIN OPPI/C (SEE ENGINE MANUAL)	1
2.	50947	SCREW, 3/8-16X1.25 WAHHTAPBLK	4
3.	138489	WASHER, EXLK .384X.69X.04	1
4.	305550	MUFFLER, 16/18HP LARGE LO-TONE	1
5.	305552	EXHAUST TUBE, 18HP B&S RH	1
6.	305551	EXHAUST TUBE, 18HP LH	1
7.	56640	GASKET, MUFFLER	2
8.	180020	SCREW, 1/4-20X .75 HHC GR5	4
9.	120380	WASHER, REGSPTLK.263X.49X.07	4
10.	56472	DEFLECTOR SIDE OUT (BS222573)	1
11.	35287	SCREW, #8-32X .38 HHWATAPGR2	4
12.	304709-853	BRACKET, MUFFLER	1
13.	56030	SCREW, 5/16-18X.75WDFLLK GR5	2
14.	55273	NUT, 5/16-18 HXWDFLLK	2
15.	995346	SCREW, 1/4-20X .50 WAHHTAP	2
16.	303096-953	ML BRACKET, TRANSAXLE MOUNTING	1
17.	995338	SCREW, 1/4-20X .63 HHWATAP	2
18.	308644-853	MP SHIELD, MUFFLER HEAT 18HPB&S	1
19.	180077	SCREW, 5/16-18X .75 HHC GR5	2
20.	55273	NUT, 5/16-18 HXWDFLLK	2
21.	56470-853	MP DEFLECTOR, COOL AIR	1
22.	310250	PULLEY, ENG V3L 4.00 OFFSET	1
23.	303151	KEY, SQUARE .249SQX4.50LG	1
24.	304246	SPACER, SLEV1.01X1.484X .	1
25.	56431	WASHER, .980IDX1.38ODX.437PILOT	1
26.	120383	WASHER, REGSPTLK.459X.78X.12	1
27.	433146	SCREW, 7/16-20X4.25 HHC BLK PH	1
28.	52796-853	MP BULKHEAD, HOOD H-8	1
29.	314992	TANK, FUEL 2 GAL CLEAR	1
30.	49050	SCREW, 1/4-10X .75PHPNTAPGR2BK	6
31.	47452	TUBING, .25X.50X BULK GAS LINE	15
32.	48672	CLAMP, FUEL LINE RED	2
33.	46704	CAP, GAS 1-1/2-7 THD BLK	1
34.	52404	TUBE, OIL DRAIN 3/8-18NPT X 5"	1
35.	47828	CAP, PIPE 3/8-18 NPT ZN PL	1
36.	300456	CONTROL, THROTTLE 31LG TWIN BS	1
37.	320553	SCREW, 10-24X.63PHPNMA CRSS	2
38.	271166	NUT, #10-24 HEXKEPS	2
39.	56538	RETAINER, WIRE	1
40.	35258	SCREW, 10-24X.38 SLHWATAPGR2	1
41.	50607	KNOB, ROUND THROTTLE BLACK	1
42.	300432	CONTROL, CHOKE 47.13LG PAN TK	1
43.	57444	TIE, CABLE BLACK NYLON 5.62L	2

40" LAWN TRACTOR MODEL C3560-670

PRE-PAINTED DECK

REF. ITEM 18
IDLER BRK.



NOTE: ALWAYS USE ORIGINAL EQUIPMENT PARTS. Use of service/replacement parts other than original equipment parts may void your warranty.

ALL UNNUMBERED ITEMS ARE INTERCHANGABLE WITH OPPOSITE SIDE

318345C

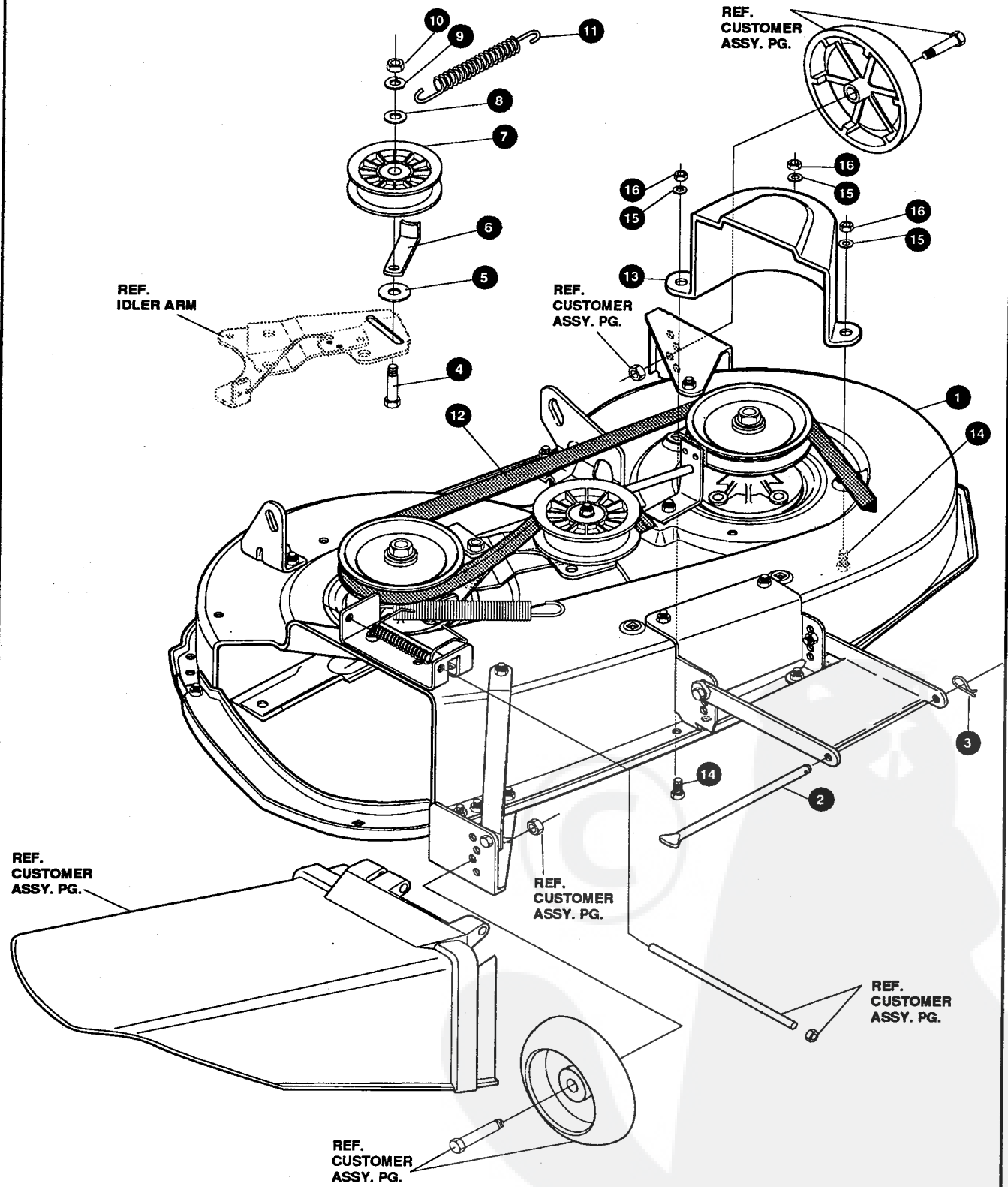
40" LAWN TRACTOR MODEL C3560-670

Key#	Part#	Description	Qty.
1.	322114-853	MOWER DECKS, RIDER 40"	1
2.	304102	TOE GUARD	1
3.	• 180075	SCREW, 5/16-18X .63 HHC	1
4.	• 1498	NUT, 5/16-18 REGHEXCTRLK	1
5.	• 122007	SCREW, 5/16-18X .75 HHC	2
6.	• 1498	NUT, 5/16-18 REGHEXCTRLK	2
7.	302364	BRACKET CHUTE MOUNT	1
7A	120393	WASHER, FLAT .344X.69X.065	2
8.	• 180075	SCREW, 5/16-18X .63 HHC	2
9.	• 1498	NUT, 5/16-18 REGHEXCTRLK	2
10.	58250	BRACKET, RH LIFT REAR	1
11.	180077	SCREW, 5/16-18X .75 HHC	2
13.	• 1498	NUT, 5/16-18 REGHEXCTRLK	2
14.	58251	BRACKET, LH LIFT REAR	1
15.	• 180077	SCREW, 5/16-18X .75 HHC	2
17.	• 1498	NUT, 5/16-18 REGHEXCTRLK	2
18.	302363	BRACE IDLER	1
19.	• 180077	SCREW, 5/16-18X .75 HHC	2
20.	120393	WASHER, FLAT .344X .69X.065	2
21.	44108	NUT, 5/16-18 HWDFLCTRLK	2
22.	320576	IDLER ARM ASSEMBLY	1
23.	322116	ARM IDLER, 40"DECK EURO	1
24.	41601	RIVET, OVSET .187DIA X .50	2
25.	306973	BRAKE PAD - HARD	1
26.	304420	BOLT, .500X2.15 HXHDCPSH	1
27.	996307	WASHER, FLAT .391X1.00X.209	1
28.	996416	WASHER, FLAT .391X1.00X.125	2
29.	45171	NUT, 3/8-16 HWDFL WHIZ-LOCK	1
30.	300700	BRACKET, EXTENSION IDLER	1
31.	120228	SCREW, 5/16-18 X .63 HHC	2
32.	1498	NUT, 5/16-18 REGHEXCTRLK	2
33.	321828	BLADE BRAKE ASSY.	1
34.	135624	RIVET, TRSET .185DIA X .41LG	2
35.	304119	BRAKE ARM	1
36.	306973	BRAKE PAD	1
37.	• 120228	SCREW, 5/16-18X .63 HHC	1
38.	120393	WASHER, FLAT .344X .69X.065	1
39.	• 1498	NUT, 5/16-18 REGHEXCTRLK	1
40.	302714	ROD, BRAKE	1
41.	1502	NUT, 1/4-20 REGHEXCTRLK	1
42.	35410	SPRING .071 X .62 X 4.37	1
43.	• 1498	NUT, 5/16-18 REGHEXCTRLK	1
44.	56424	QUILL ASSY, 36/39/40/43	2
45.	56425	SHAFT/SADDLE 36"	1
46.	49562	BRNG, BALL .669IDX1.575ODX.472	1
47.	50616	DUST SHIELD	1
48.	55547	QUILL CASTING (1046)	1
49.	49562	BRNG, BALL .669IDX1.575ODX.472	1
50.	50818	SPACER, SLEV .669X .88X3.797	1
51.	51449	SPACER, SLEV .672X .93X .438PM	1
52.	56390	PULLEY, 26/36" QUILL	1
53.	56365	WASHER, SPECIAL QUILL	1
54.	1282	NUT, 7/16-20 WDFLLK	1
55.	50634	SCREW, 5/16-18X .88 WAHHTAP	7
56.	300345	SCREW, 5/16-18X1.38 WATAP	1
57.	318445	BRACKET, 40 LF FRONT DECK	1
58.	• 180075	SCREW, 5/16-18X .63 HHC	4
59.	• 1498	NUT, 5/16-18 REGHEXCTRLK	4
60.	58305	BRACKET, LINK DECK FRONT	1
61.	58247	ADJUSTING NUT	2
62.	• 122017	SCREW, 5/16-18X1.00 HHC	2
63.	• 1498	NUT, 5/16-18 REGHEXCTRLK	2
64.	304426	BRACKET, GAGE WHEEL L.H.	1
65.	• 180075	SCREW, 5/16-18X .63 HHC	3
66.	• 1498	NUT, 5/16-18 REGHEXCTRLK	3
67.	313925	BRACKET, GAGE WHEEL R.H. FRNT	1
68.	314282	BRACKET, STABILIZER	1
69.	• 180075	SCREW, 5/16-18X .63 HHC	3
70.	• 1498	NUT, 5/16-18 REGHEXCTRLK	3
71.	303065	BLADE, 20.32 HIGH-LIFT	2
72.	2483	WASHER, .391DX1.25DX.07 BELLVIL	6
73.	39573	SCREW, 3/8-24X1.00 NYLHHC	2

• Indicates STANDARD HARDWARE ITEMS.

40" LAWN TRACTOR MODEL C3560-670

FINAL DECK ASSEMBLY



NOTE: ALWAYS USE ORIGINAL EQUIPMENT PARTS.
Use of service/replacement parts other than original equipment parts may void your warranty.

ALL UNNUMBERED
ITEMS ARE INTERCHANGABLE
WITH OPPOSITE SIDE

318347B

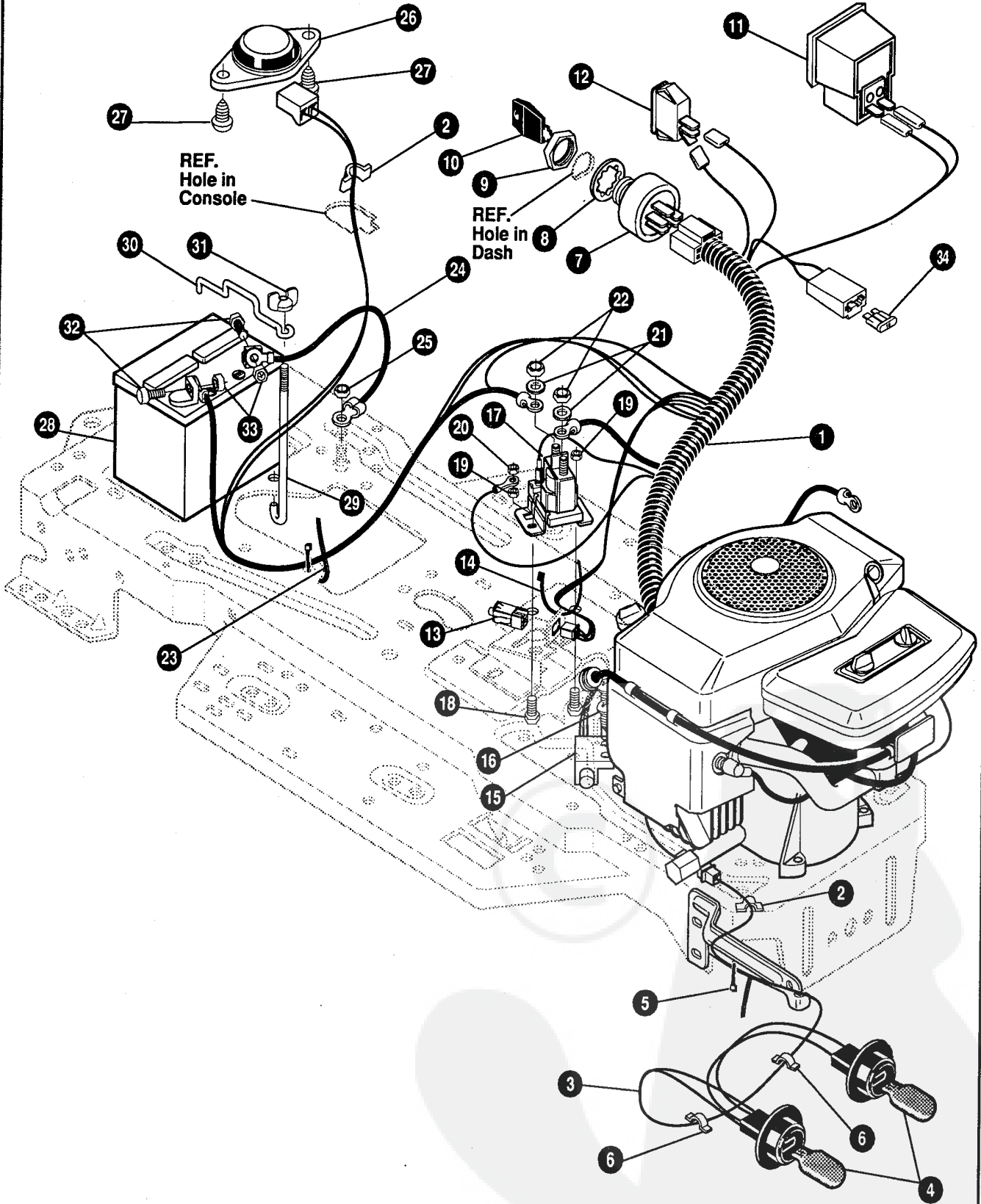
40" LAWN TRACTOR MODEL C3560-670

Key#	Part#	Description	Qty.
1.	*	DECK,40" MOWER 2-WH DOM	1
2.	58306	ROD, DECK HITCH	1
3.	8260	PIN, HAIR .091 DIA X 1.66LG	1
4.	57325	BOLT, 3/8-16 X 2.00 CARR	1
5.	25210	WASHER, FLAT .392 X 1.25 X .09	1
6.	300844-953	RETAINER, BELT	1
7.	310326	PULLEY, IDLER BFF 4.00 WIDE FL	1
8.	996307	WASHER, FLAT .391 X 1.00 X .209	1
9.	120382	WASHER, REGSPTLK.393 X .68 X .10	1
10.	◦ 120377	NUT, 3/8-16 REGHX	1
11.	300473	SPRING, TENSION 7.52LG+17LB/IN	1
12.	319005	BELT, V 5L 81.00 DECK 40 LF	1
13.	302833	GUARD, BELT LH PLASTIC	1
14.	◦ 120228	SCREW, 5/16-18 X .63 HHC	3
15.	120393	WASHER, FLAT .344 X .69 X .065	3
16.	◦ 1498	NUT, 5/16-18 REGHEXCTRLK	3

◦ Indicates STANDARD HARDWARE ITEMS.
 * ORDER INDIVIDUAL PARTS.

40" LAWN TRACTOR MODEL C3560-670

ELECTRICAL ASSEMBLY



NOTE: ALWAYS USE ORIGINAL EQUIPMENT PARTS.
Use of service/replacement parts other than original equipment parts may void your warranty.

**ALL UNNUMBERED
ITEMS ARE INTERCHANGABLE
WITH OPPOSITE SIDE**

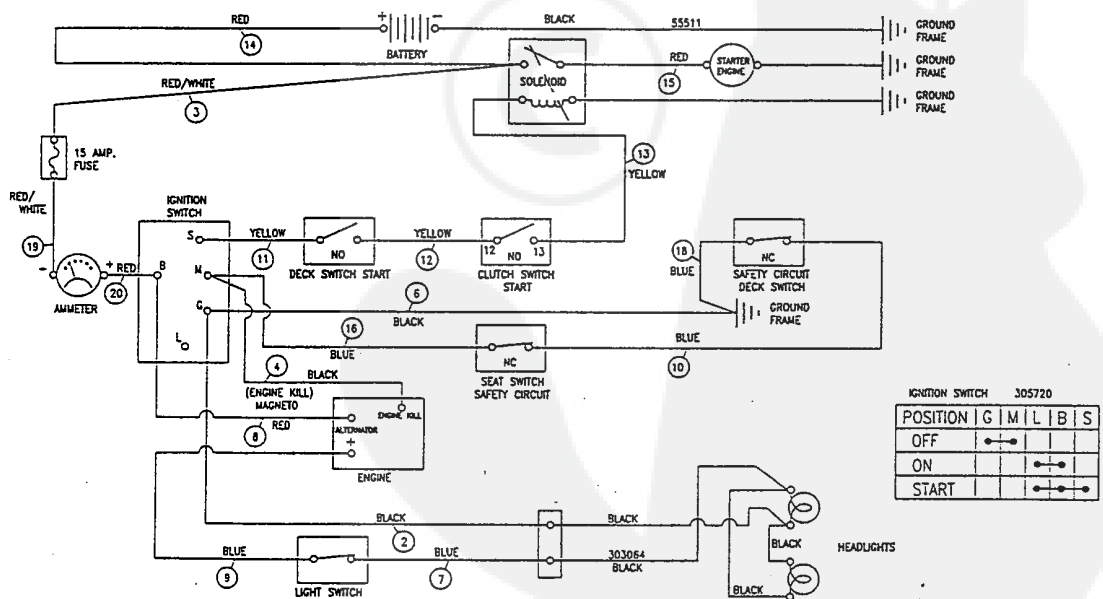
322813A

40" LAWN TRACTOR MODEL C3560-670

Key#	Part#	Description	Qty.
1.	322798	WIRE HARNESS, 14-18TWIN OPP DYN	1
2.	41482	PRESS CLIP, 1.380LG .255ID	2
3.	303064	ASSY, LIGHT WIRE-1/4 TURN	1
4.	52572	BULB, HEADLAMP	2
5.	57444	TIE, CABLE BLACK NYLON 5.62L	1
6.	41482	PRESS CLIP, 1.380LG .255ID	2
7.	305720	SWITCH-IGN.(AFTER FIRE) 3 POSN	1
8.	138557	WASHER, REGINTLK.640X1.1X.05	1
9.	48140	NUT, 5/8-32 HXHD IGN SWIT	1
10.	300626	KEY, IGNITION SWITCH	1
11.	300133	AMMETER	1
12.	300334	LIGHT SWITCH ON/OFF PANEL	1
13.	320082	SWITCH, DOUBLE POLE NO/NC BLACK	1
14.	57444	TIE, CABLE BLACK NYLON 5.62L	1
15.	57476	SWITCH, SCR MNT DP NC NO	1
16.	57220	SCREW, #12 X .50 PHPNHTAP	2
17.	53716	SOLENOID	1
18.	187745	SCREW, 1/4-20X .75 HXSEMMA	2
19.	1502	NUT, 1/4-20 REGHEXCTRLK	2
20.	271172	NUT, 1/4-20 REGHEXKEPS	1
21.	138485	WASHER, EXLK .320X.61X.03	2
22.	120368	NUT, 5/16-24 REGHEX	2
23.	57444	TIE, CABLE BLACK NYLON	1
24.	55511	WIRE, GROUND, 12.5"	1
25.	271184	NUT, 5/16-18 HEXKEPS	1
26.	57547	SWITCH, SEAT	1
27.	160505	SCREW, 1/4-20X .38PHPNHMA	2
28.	302257	BATTERY 12VOLT, 7 PLATE / 24 AMP HR	1
29.	57551	ROD, BATTERY	1
30.	57552	ROD, BATTERY, TOP	1
31.	310067	NUT, WING 1/4-20 SMALL PLASTIC	1
32.	120854	SCREW, 1/4-20X .63 HHC	2
33.	271172	NUT, 1/4-20 REGHEXKEPS	2
34.	** 302031	FUSE, 15 AMP SPADE TYPE	1

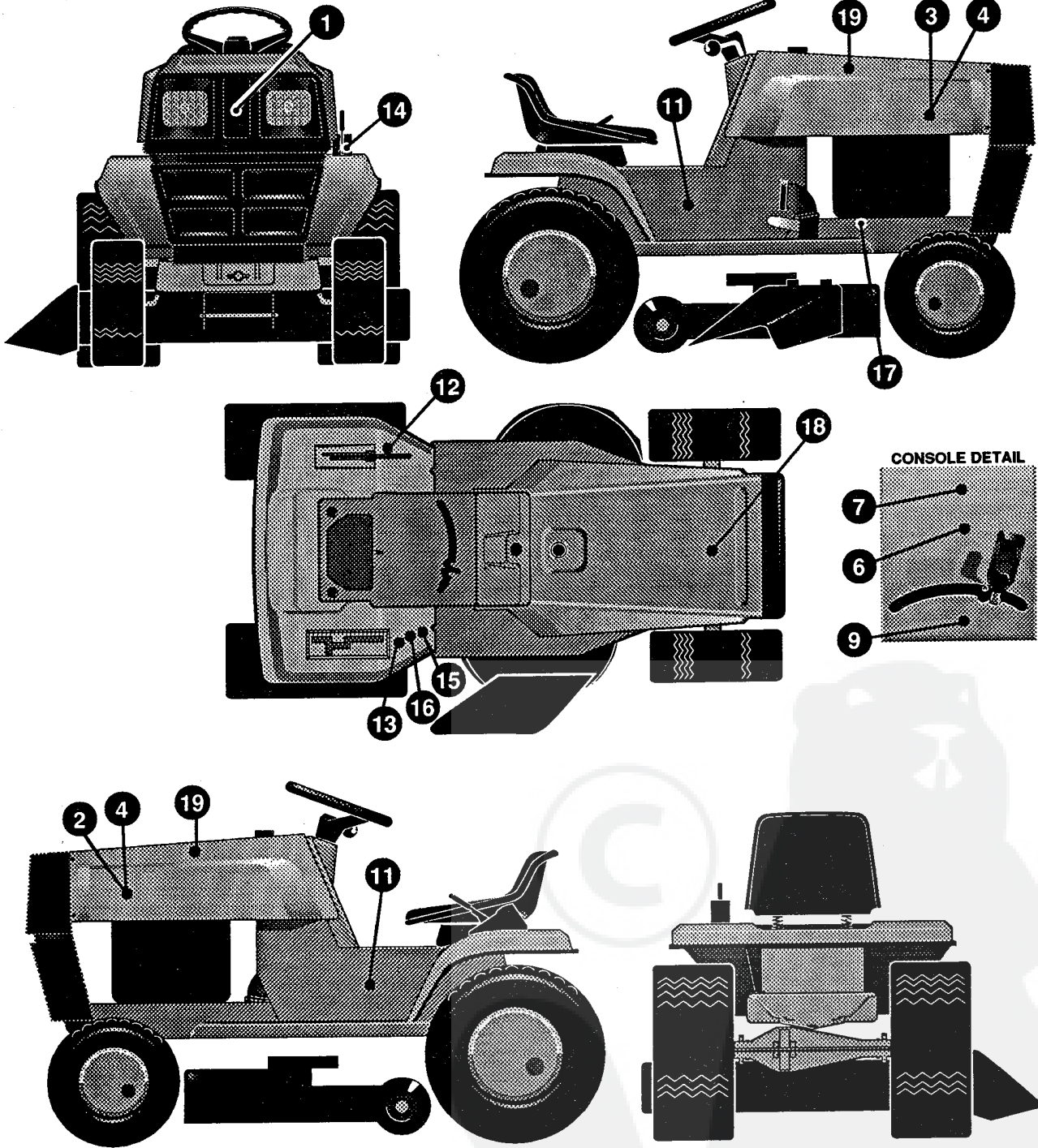
• Indicates STANDARD HARDWARE ITEMS.
 ** SPADE TYPE FUSES ARE INCLUDED WITH THE WIRE HARNESS.

SCHEMATIC DRAWING:



40" LAWN TRACTOR MODEL C3560-670

DECALS



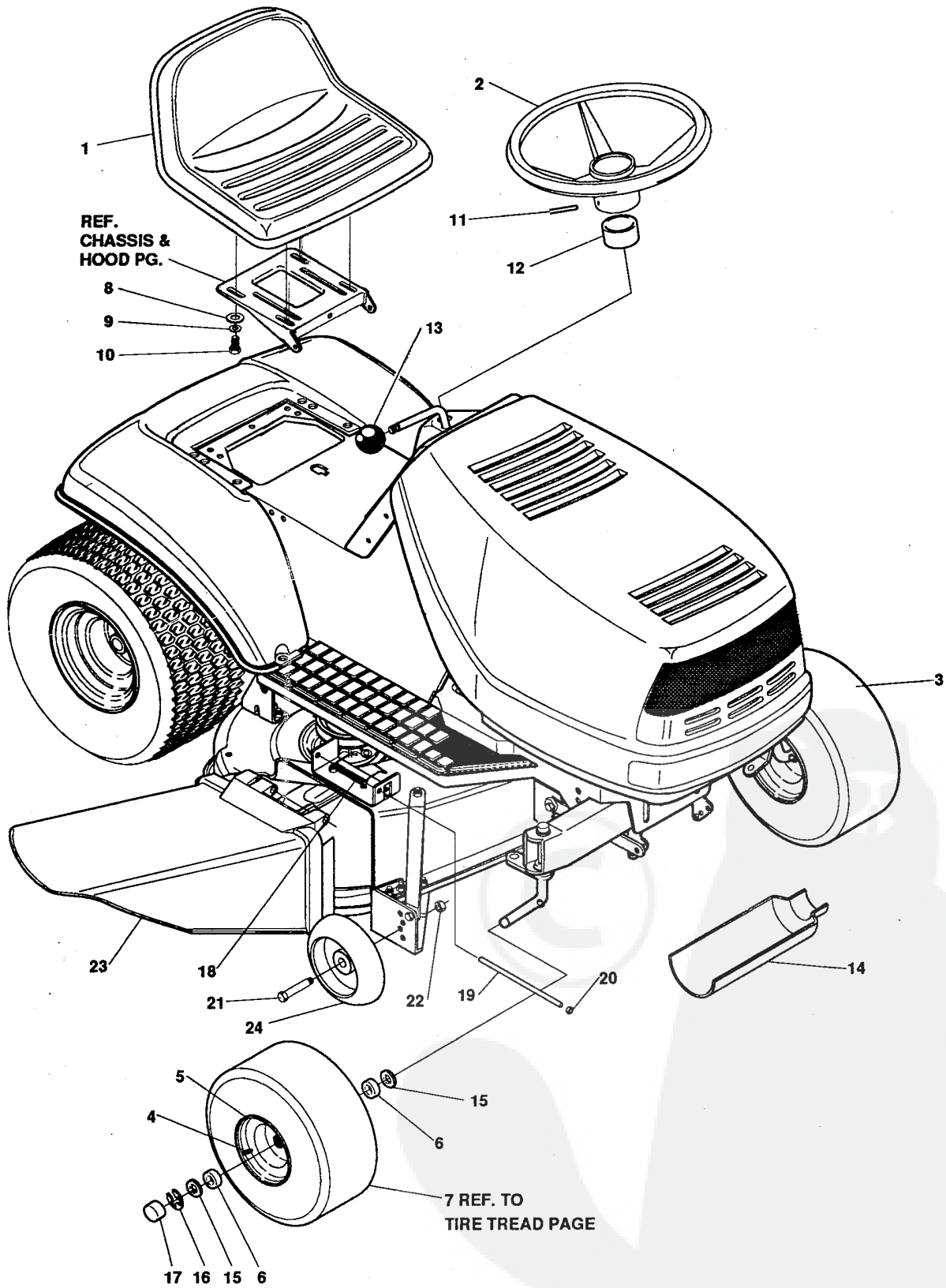
324498A

40" LAWN TRACTOR MODEL C3560-670

Key#	Part#	Description	Qty.
1.	312002	DECAL,GRILL INSERT UNI G8/7 SM	1
2.	324343	DECAL,HOOD,UNITECH,LH	1
3.	324344	DECAL,HOOD,UNITECH,RH	1
4.	324345	NAMEPLATE,UNITECH	2
5.	321764	DECAL,LF DASH,PTO/LIGHT SW DOM	1
6.	69524	DECAL,INSTRUCT CONSOLE TOP GER	1
7.	69525	DECAL,INSTRUCT CONSOLE TOP FR	1
8.		REFERENCE ONLY	
9.	301104	DECAL,CONSOLE TOP SHIFT 5-SP	1
10.		REFERENCE ONLY	
11.	324540	NAMEPLATE 16/40	2
12.	68901	DECAL,BLADE HEIGHT ADJ, EUROPE	1
13.	68902	DECAL,WARNING FRENCH/GERMAN	1
14.	301897	DECAL,LIFT DECAL BLADE HEIGHT	1
15.	305770	DECAL,CAUTION TRIANGLE	1
16.	310553	DECAL,DANGER ENGLISH	1
17.	68903	DECAL,BRAKE/CLUTCH ISO	1
18.	55835	PAD,FOAM HOOD TOP H-6/7	1
19.	55836	PAD,FOAM HOOD SIDE H-6/7	2

40" LAWN TRACTOR MODEL C3560-670

CUSTOMER ASSEMBLY



317892A

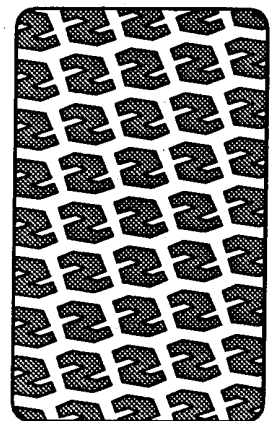
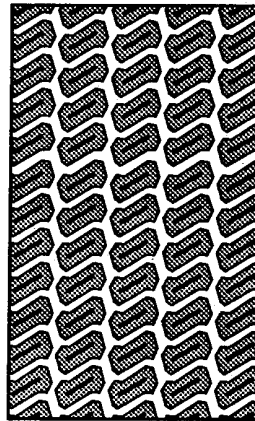
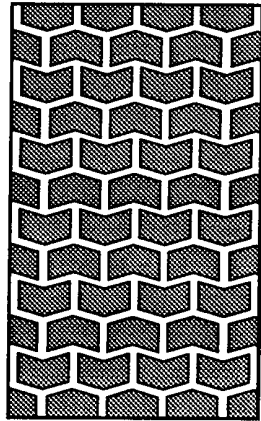
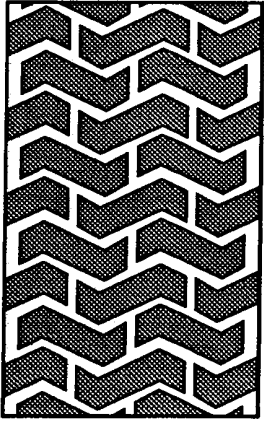
40" LAWN TRACTOR MODEL C3560-670

CUSTOMER ASSEMBLY VIEW

317355 PARTS BAG ASSY QTY1

Key#	Part#	Description	Qty
1	57455	SEAT 550	1
2	301251	STEERING WHEEL 13" STD	1
3	301140	TIRE, ASSY. 15X6-6 WHITE	2
4	24167	VALVE STEM	1
5	39829	WHEEL W/BEARINGS	1
6	39979	BEARINGS	2
7		REFER TO TIRE TREAD PAGE	
8	120393	WASHER, FLAT .344X.69X.065	4
9	120638	WASHER, HVSP TLK .328X.60X.09	4
10	122007	SCREW, 5/16-18X.75 HHC	4
11	456378	PIN, SPRING .250DIA X2.00LG	1
12	57212	COVER, STEERING	1
13	55514	KNOB, SHIFT	1
14	54873	OIL TROUGH	1
15	642	WASHER, FLAT .755X1.31X.075	4
16	36625	RING, RETEX	2
17	40394	HUB CAP	2
18	314975	TORSION SPRING	1
19	304424	ROD, PIVOT	1
20	3535	NUT, PUSH	1
21	23763	BOLT, .500X1.390 HSSH 3/8-16	2
22	1499	NUT, 3/8-16 REGHXCTRLK	2
23	304422	CHUTE DEFLECTOR	1
24	302611	DECK WHEEL	2

TREAD PATTERNS



"A"

"B"

"C"

"D"

TIRE SIZE	"A"	"B"	"C"	"D"
11 X 4.00 - 5	42295	319679		
13 X 5.00 - 6	41060	319680		
15 X 6.00 - 6	39830	316702	301140	313952
16 X 6.50 - 8	41081	319682		314539
18 X 8.50 - 8	319683	317400		
18 X 9.50 - 8	41106	316701		313950
20 X 8.00 - 8	319685	319684	57164	314584
20 X 10.00 - 8	58276	319686		313654
20 X 10.00 - 10	55893	319687		
23 X 9.50 - 12	53655	319690	319689	314370

ACCESSORIES

Contact the dealer where your tractor was purchased for the available accessories. If you are unable to contact the dealer, write to the address on the front cover of this manual.

Rear Engine Rider

Model	Description
5708-16	Bagger - Fits 32" Side Discharge
5708-17	Bagger - Fits 36" Side Discharge
5709-02	Front Weight Box - holds 35 lbs.
5648-16	Lawn Sweeper w/dump Release

Lawn Tractor

Model	Description
5708-22	Bagger - Fits 30" Top Discharge
5708-13	Bagger - Fits 36", 38", 39" & 45" Side Discharge
5708-14	Bagger - Fits 40", 42", 43" & 46" Side Discharge
5661-06	42" Snowblade
5661-08	48" Snowblade
5592-00	Tire Chains - 18" x 6.50"
5585-00	Tire Chains - 18" x 9.50" & 20" x 8"
5672-01	Wheel Weights - Front - 1 pr. w/mtg. hdw. - Fits 15" tires
5673-02	Wheel Weights - Rear - 1 pr. w/mtg. hdw. - Fits 18" & 20" tires
5709-03	Front Weights - Fits 30" & 32" Side Discharge
5648-16	Lawn Sweeper w/dump Release
5705-06	42" Two-Stage Snowblower

Garden Tractor - Light Ground Engaging

Model	Description
5708-13	Bagger - Fits 36", 38", 39", & 45" Side Discharge
5708-14	Bagger - Fits 40", 42", 43" & 46" Side Discharge"
5661-06	42" Snowblade
5672-01	Wheel Weights - Front 1 pr. w/mtg. hdw. - Fits 15" tires
5673-02	Wheel Weights - Rear - 1 pr. w/mtg. hdw. - Fits 18" & 20" tires
5648-16	Lawn Sweeper w/dump Release
5667-02	Sleeve Hitch - w/lift bar
5668-01	Adaptor (sleeve hitch) for use w/23" tires
5706-00	Tire Chains - 20" x 10"
5671-00	Tire Chains - 23" x 9.50"
5672-02	Wheel Weights - Front - 1 pr. w/mtg. hdw. Fits 16" tires
5673-00	Wheel Weights - Rear - 1 pr. w/mtg. hdw. Fits 23" tires
5674-01*	10" One Bottom Moldboard Plow
5675-01*	Cultivator - 7 row - Adj. 6" - 42" width
5676-01*	Disc Harrow - 8" & 11" disc - Adj. width & disc angle
5677-02*	Tiller - 5 H.P. Self-Powered - 28" width
5705-06	42" Two-Stage Snowblower
5661-08	48" Snowblade

Euro Four Wheel Steer

Model	Description
5708-14	Bagger - Fits 40", 42", 43" & 46" Side Discharge
5705-05	42" One-Stage Snowblower
5661-07	48" Snowblade
5709-04	Rear Weight Box
5648-16	Lawn Sweeper w/dump Release
5706-00	Tire Chains 20" x 10"
5671-00	Tire Chains 23" x 9.50"
5672-02	Wheel Weights - Front - 1 pr. w/mtg. hdw. Fits 16" tires
5673-00	Wheel Weights - Rear - 1 pr. w/mtg. hdw. Fits 23" tires
5672-01	Wheel Weights - Front - 1 pr. w/mtg. hdw. Fits 15" tires
5673-02	Wheel Weights - Rear - 1 pr. w/mtg. hdw. Fits 18" & 20" tires

Euro Two Wheel Steer Garden Tractor

Model	Description
5667-04	Sleeve Hitch - w/lift bar Fits 46"
5674-01*	10" One Bottom Moldboard Plow
5675-01*	Cultivator - 7 row - Adj. 6" - 42" width
5676-01*	Disc Harrow 8" & 11" Disc. Adj. width & disc angle
5677-02*	Tiller 5 H.P. Self-Powered - 28" width
5648-16	Lawn Sweeper w/dump Release

*Requires a sleeve hitch