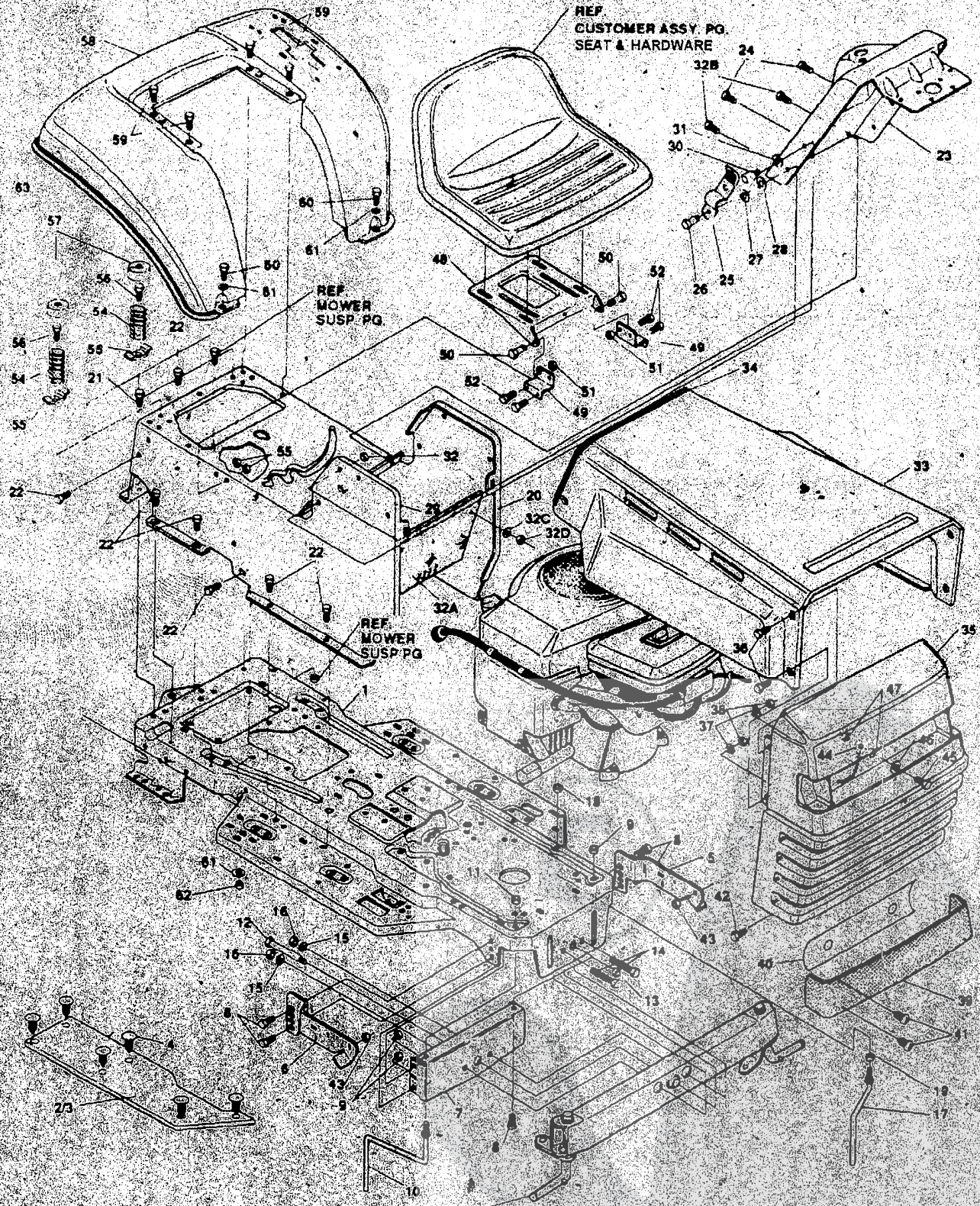


43" LAWN TRACTOR MODEL C3560-700

CHASSIS & HOOD ASSEMBLY



NOTE: ALWAYS USE ORIGINAL EQUIPMENT PARTS. Use of service/replacement parts other than original equipment parts may void your warranty.

ALL UNNUMBERED ITEMS ARE INTERCHANGEABLE WITH OPPOSITE SIDE

324593A

43" LAWN TRACTOR MODEL C3560-700

MOTION DRIVE ASSEMBLY

REF.
CHASSIS & HOOD PG.
MAIN FRAME

REF.
ENGINE PG.
ENGINE

REF.
KEY#5

Ref.
Engine
Sheave

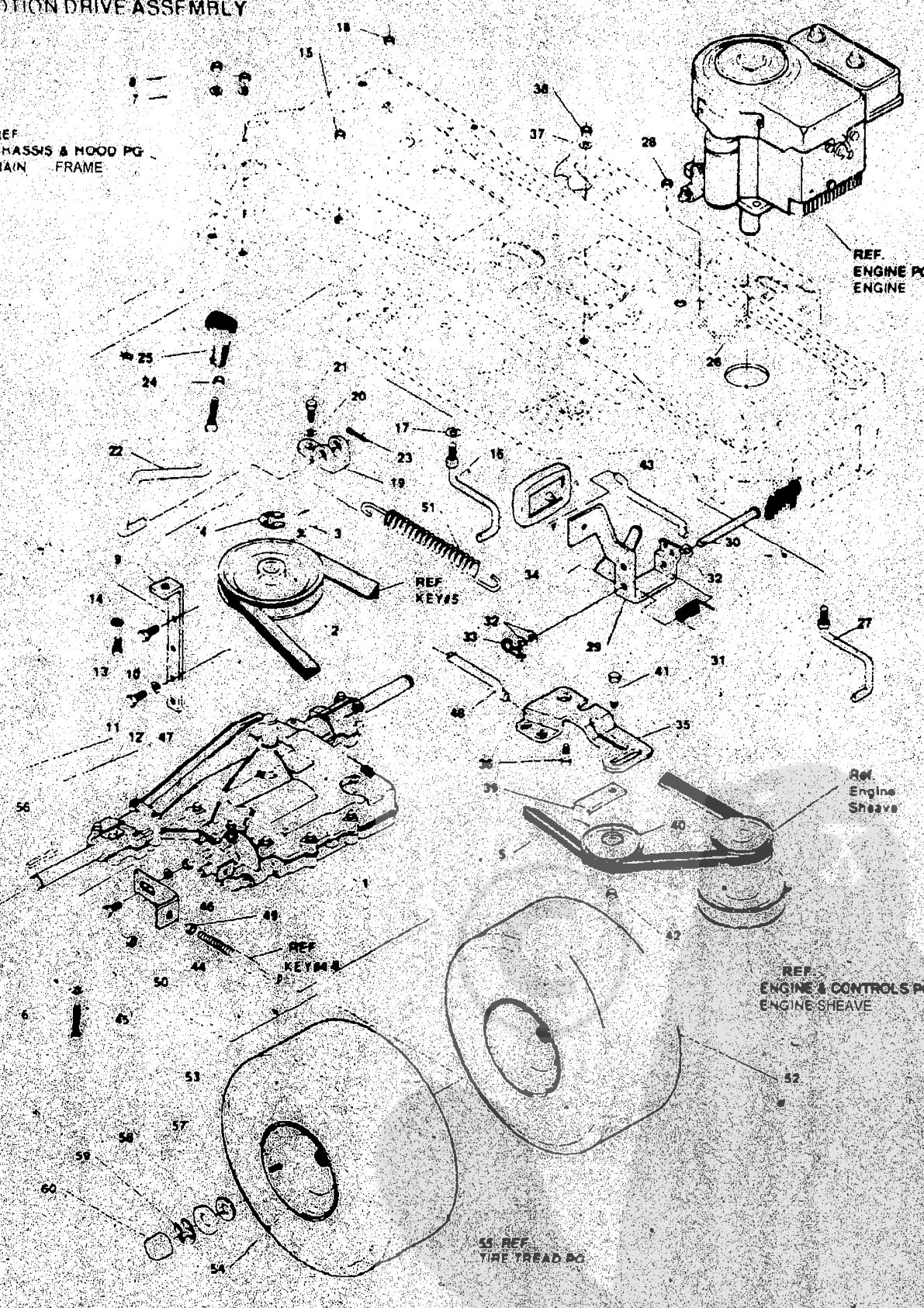
REF.
ENGINE & CONTROLS PG.
ENGINE SHEAVE

55 REF.
TIRE TREAD PG.

NOTE: ALWAYS USE ORIGINAL EQUIPMENT PARTS
Use of service/replacement parts other than original equipment parts may void your warranty.

ALL UNNUMBERED ITEMS ARE INTERCHANGEABLE WITH OPPOSITE SIDE

317830F

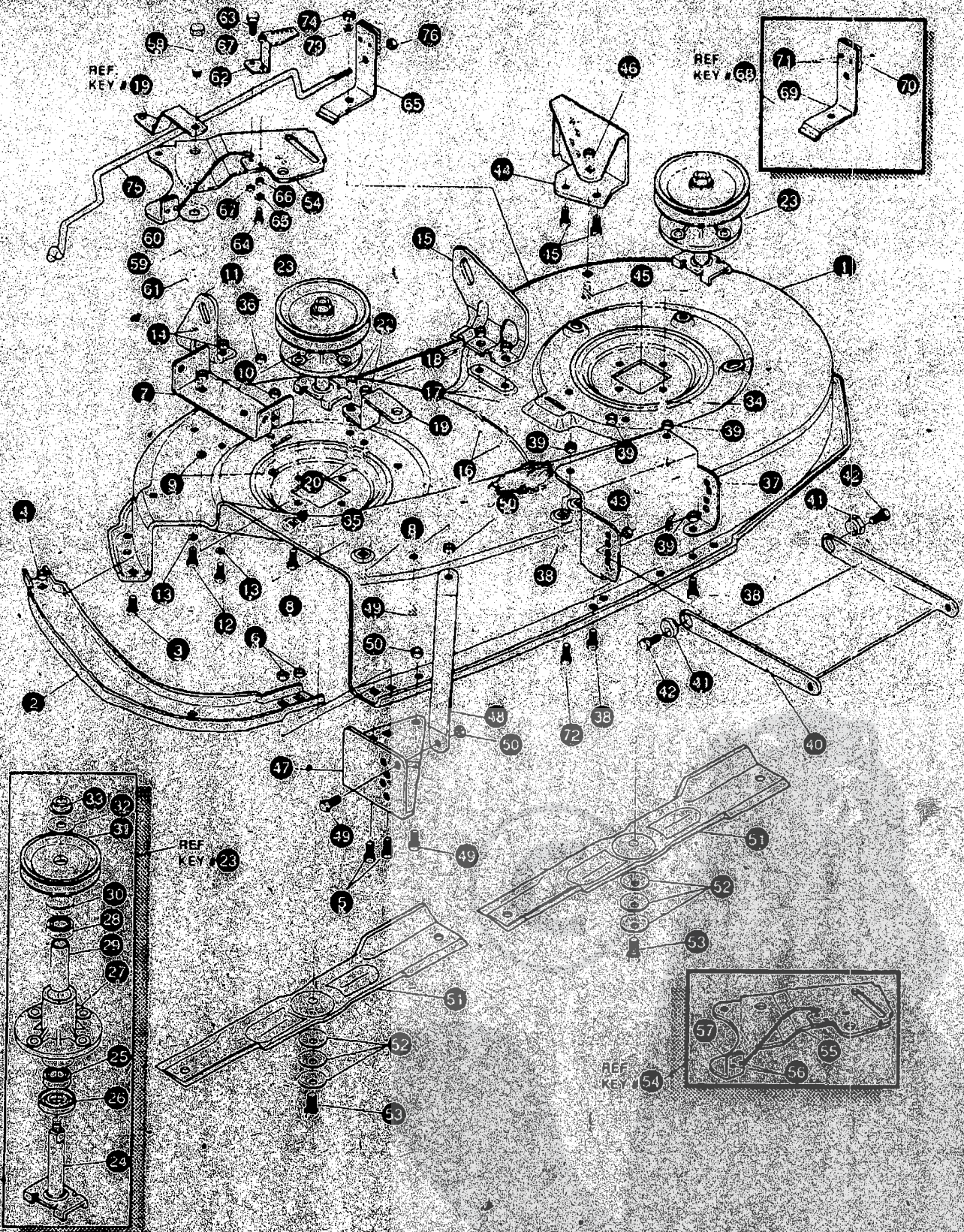


13" LAWN TRACTOR MODEL C3560-700

Key#	Part#	Description	Qty
1	ENGINE	B&S 16HP TWIN OPP/C (SEE ENGINE MANUAL)	1
2	50947	SCREW, 3/8-16X1.25 WAHHTAPBLKP	4
3	136489	WASHER, EXLK .384X.69X.04	1
4	305550	MUFFLER, 16/18HP LARGE LO-TONE	1
5	305552	EXHAUST TUBE, 18HP BBS RH	1
6	305551	EXHAUST TUBE, 18HP LH	1
7	56640	GASKET, MUFFLER	2
8	180380	SCREW, 1/4-20X.75 HHC GR5	4
		WASHER, REGSPTLK 263X.49X.07	4
10	58472	DEFLECTOR SIDE OUT (BS222573)	1
11	35287	SCREW, #8-32X.38 HHWATAPGR2	4
12	304709-853	BRACKET, MUFFLER	1
13	56030	SCREW, 5/16-18X.75 WDFLLK GR5	2
14	55273	NUT, 5/16-18 HXWDFLLK	2
15	995346	SCREW, 1/4-20X.50 WAHHTAP	2
16	303096-953	ML BRACKET, TRANSAXLE MOUNTING	1
17	995338	SCREW, 1/4-20X.63 HHWATAP	2
18	308644-853	MP SHIELD, MUFFLER HEAT 18HP B&S	1
19	180077	SCREW, 5/16-18X.75 HHC GR5	2
20	55273	NUT, 5/16-18 HXWDFLLK	2
21	56470-853	MP DEFLECTOR, COOL AIR	1
22	316802	PULLEY, ENGV3L 4.00 OFFSET	1
23	57791	KEY, SQUARE 250SQ X 5.00 LG	1
24	304246	S P A C E R S L E E V 1 0 1 X 1 4 8 4 X	1
25	56431	WASHER, 980IDX1380DX.437PILOT	1
26	120383	WASHER, REGSPTLK 459X.78X.12	1
27	428644	SCREW, 7/16-20X5.00 HHC BCK PH	1
28	52796-853	MP BULKHEAD HOOD H-8	1
29	314992	TANK, FUEL 2 GAL CLEAR	1
30	49050	S C R E W 1 0 X 7 5 P H P N T A P G R 2 B K	6
31	47452	TUBING, 25X50X BULK GAS LINE	15
32	48672	C L A M P F U E L L I N E R E D	2
33	46704	CAP GAS 1-1/2-7 THD BLK	1
34	52404	TUBE, OIL DRAIN 3/8-19NPT X 5	1
35	47828	CAP PIPE 3/8-18NPT ZN PL	1
36	300456	CONTROL THROTTLE 31 LG TWIN-BS	1
37	320563	SCREW, 10-24X.63 P H P N M A G R S S	2
38	271166	NUT, #10-24 HEX KEPS	2
39	56538	RETAINER WIRE	1
40	36258	SCREW, 10-24X.38 SLHWATAPGR2	1
41	50607	KNOB ROUND THROTTLE BLACK	1
42	300432	CONTROL CHOKE 47 13LG PAN TK	1
43	57444	TIE CABLE BLACK NYLON #5 62L	2

43" LAWN TRACTOR MODEL C3560-700

RE-PAINTED DECK



NOTE: ALWAYS USE ORIGINAL EQUIPMENT PARTS. Use of service/replacement parts other than original equipment parts may void your warranty.

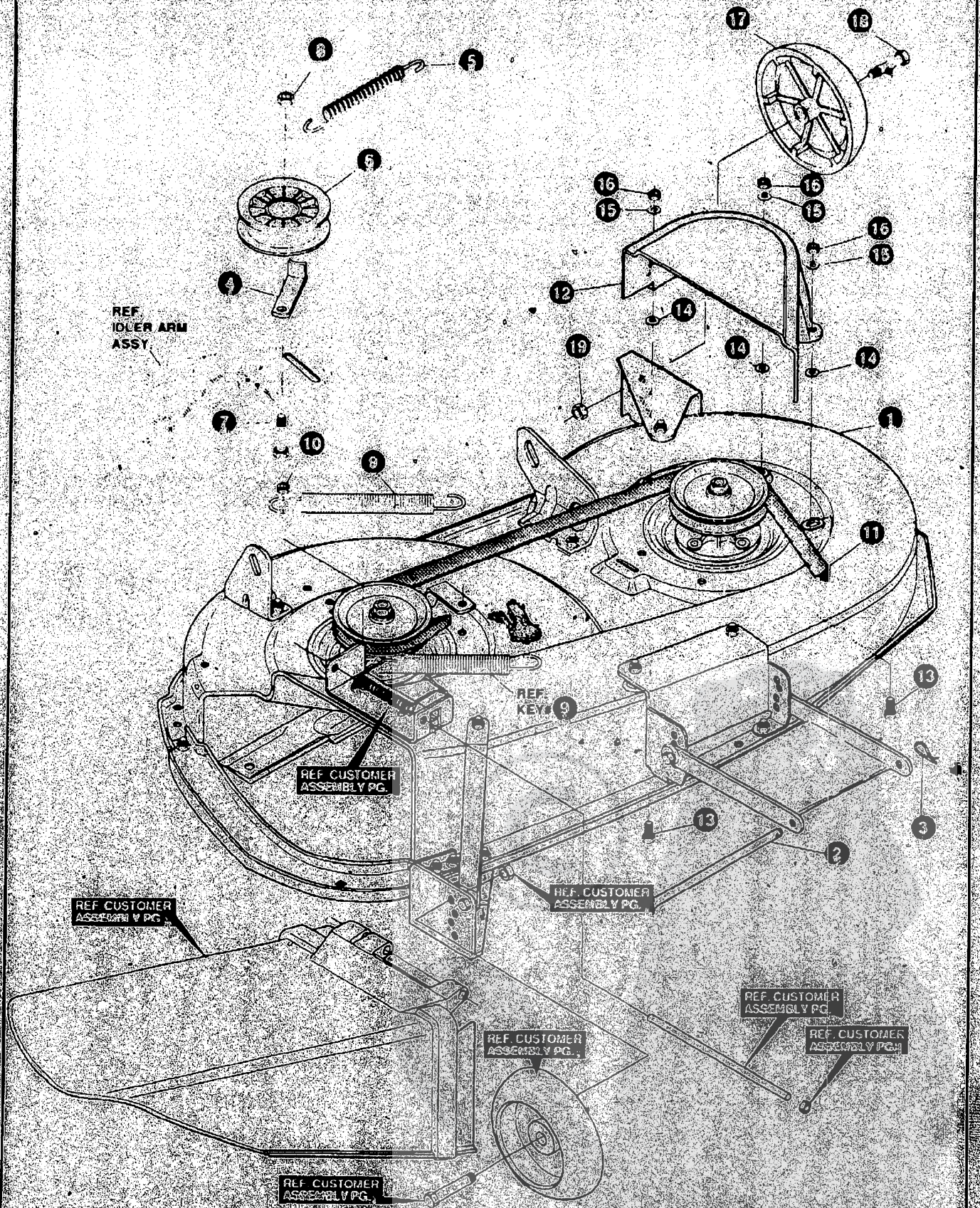
ALL UNNUMBERED ITEMS ARE INTERCHANGEABLE WITH OPPOSITE SIDE

13" LAWN TRACTOR MODEL C3560-700

Key#	Part#	Description	Qty
1	322115	MOWER DECKS, RIDER 43"	266,256
2	304102	TOE GUARD	
3	180075	SCREW 5/16-18X 63 HHC	
4	1498	NUT 5/16-18 REGHEXCTRLK	
5	122007	SCREW 5/16-18X 75 HHC	2
6	1498	NUT 5/16-18 REGHEXCTRLK	2
7	302364	BRACKET CHUTE MOUNT	
8	180075	SCREW 5/16 18X 63 HHC	2
9	120393	WASHER FLAT 344X 69X 065	2
10	1448	NUT 5/16-18 REGHEXCTRLK	2
11	56250	LIFT BRACKET REAR RH	1
12	180077	SCREW 5/16-18X 75 HHC	2
13	120393	WASHER FLAT 344X 69X 065	2
14	1498	NUT 5/16-18 REGHEXCTRLK	2
15	56251	BRACKET DECK LIFT REAR LH	1
16	180077	SCREW 5/16-18X 75 HHC GR 5	2
17	120393	WASHER FLAT 344X 69X 065	2
18	1498	NUT 5/16-18 REGHEXCTRLK	2
19	302363	BRACE IDLER	1
20	180077	SCREW 5/16-18X 75 HHC	2
22	44108	NUT 5/16-18 HWDFLCTRLK	2
23	56424	QUILL ASSY 36/39/40/43	2
24	56425	SHAFT/SADDLE 36"	
25	49562	BRNG BALL	1
26	50616	DUST SHIELD	
27	55547	QUILL CASTING (1046)	
28	49662	BRNG BALL	1
29	50818	SPACER 3/797L GX 669DX 88OD	1
30	51449	SPACER 438L GX 932ODX 672.10	1
31	56390	PULLEY 26/36 QUILL V5L	
32	56365	SPECIAL WASHER	1
33	1262	NUT 7/16-20 WDFLLK	
34	50634	SCREW 5/16-18X 88 WAHHTAP	7
35	300345	SCREW 5/16-18X1 38 WATAP	1
36	1498	NUT 5/16-18 REGHEXCTRLK	1
37	313778	BRACKET FRNT	1
38	180075	SCREW 5/16-18X 63 HHC	4
39	1498	NUT 5/16-18 REGHEXCTRLK	4
40	58305	LINK BRACKET DECK FR	
41	58247	ADJUSTING NUT	2
42	122017	SCREW 5/16-18X1 00 HHC	2
43	1498	NUT 5/16-18 REGHEXCTRLK	2
44	304426	BRACKET GAGE WHEEL L H	1
45	180075	SCREW 5/16-18X 63 HHC	3
46	1498	NUT 5/16-18 REGHEXCTRLK	3
47	322464	BRACKET GAGE WHEEL RH FRNT	1
48	314282	BRACKET STABILIZER	1
49	180075	SCREW 5/16 18X 63 HHC	3
50	1498	NUT 5/16-18 REGHEXCTRLK	3
51	314369	BLADE LOW-LIFT 21 70	2
52	24831	WASHER 39IDX1 25DX 07 BELLVIL	6
53	39573	SCREW 3/8-24X1 00 NYLHHC	1
54	320576	IDLER ARM ASSY	2
55	322116	IDLER ARM	1
56	41601	RIVET	2
57	306973	BRAKE PAD	1
58	304420	SHOULDER BOLT	1
59	396416	WASHER FLAT 391X100X 125	1
60	396307	WASHER FLAT 391X100X 209	1
61	45171	NUT 3/8-16 HWDFL WHIZ-LOCK	1
62	300700	BRACKET EXTENSION IDLER	1
63	180075	SCREW 5/16-18X 63 HHC GR 5	1
64	180083	SCREW 5/16-18X1 50 HHC GR 5	1
65	446363	WASHER FLAT	1
66	271184	NUT 5/16-18 HEX KEPS	1
67	1498	NUT	2
68	304118	BLADE BRAKE ASSY	1
69	304119-853	BRAKE ARM	
70	306973	BRAKE PAD	
71	135624	RIVET	2
72	20228	SCREW 5/16-18X 63	
73	120393	WASHER FLAT 344X 69X 065	1
74	1498	NUT 5/16-18 REGHEXCTRLK	1
75	314079	ROD BRAKE	1
76	1502	NUT 1/4-20 REGHEXCTRLK	

43" LAWN TRACTOR MODEL C3560-700

FINAL DECK ASSEMBLY



VOTE: ALWAYS USE ORIGINAL EQUIPMENT PARTS
 Use of service/replacement parts other than original equipment parts may void your warranty.

ALL UNNUMBERED
 ITEMS ARE INTERCHANGEABLE
 WITH OPPOSITE SIDE

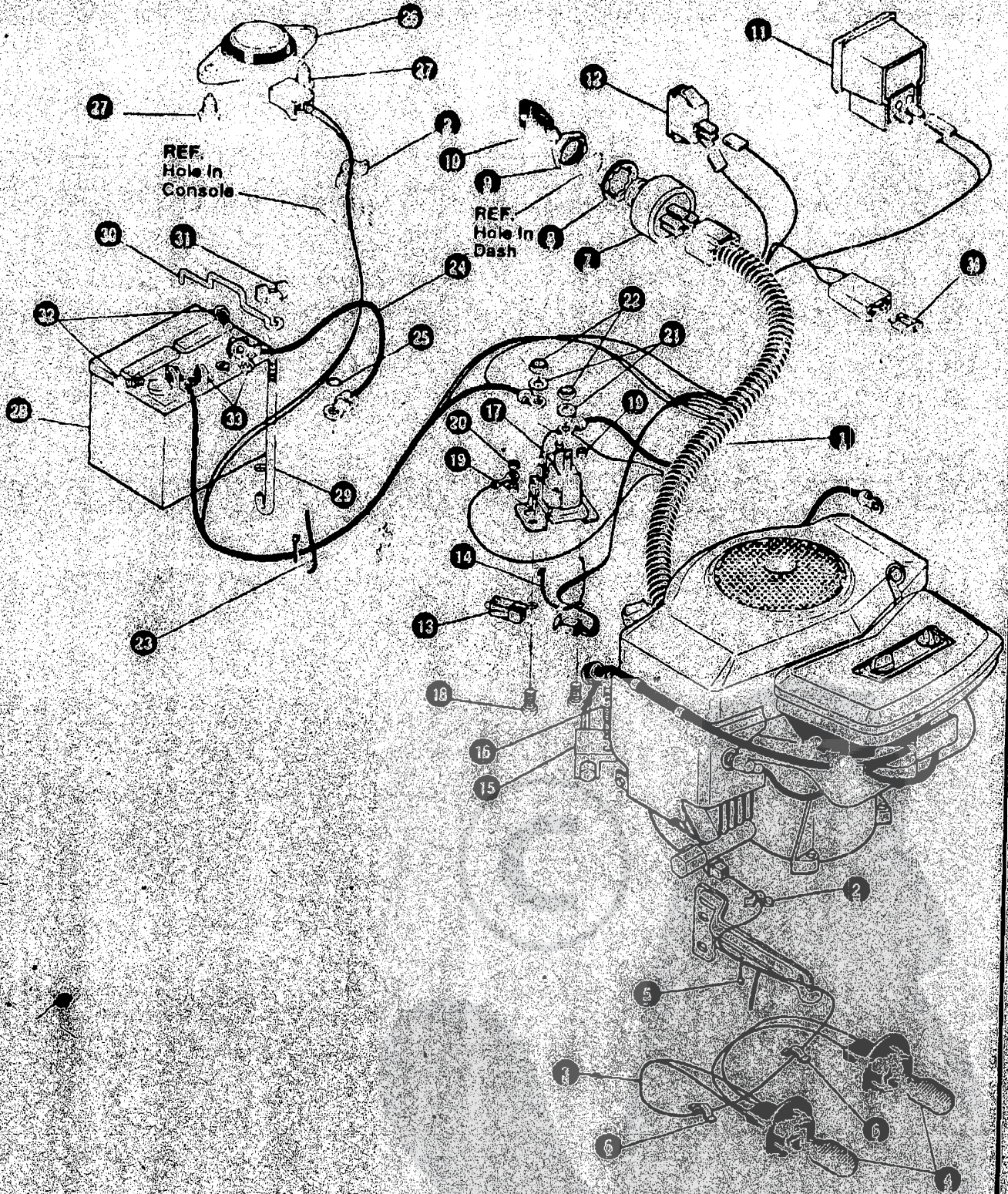
3" LAWN TRACTOR MODEL C3560-700

Key#	Part#	Description	Qty
1	a	DECK, 43" MOWER 2 WH BLACK 853 EXPORT	1
2	58306	ROD, DECK HITCH	1
3	8260	PIN, HAIR .091 DIA X 1.66 LG	1
4	1346	GUIDE, BELT, IDLER	1
5	314107	SPRING, TENSION 5.00 LG, 17 LB/IN	1
6	310328	PULLEY, IDLER BFF 4.00 WIDE FL	1
7	126416	BOLT, 3/8 1.6 X 1.75 CARR	1
8	38870	SPRING, 0.75 1.00 X 0.625 1.37	1
10	1498	NUT, 5/16 1.8 REG HEX CTRLK	1
11	318372	BELT, V 5L 85.00 KEVLAR	1
12	322306	GUARD, BELT LH PLASTIC	1
13	57101	CARRIAGE BOLT	3
14	309436	PUSHNUT, 5/16 NON-SERVICEABLE	3
15	120393	WASHER, FIAT 344X .69X .665	3
16	1498	NUT, 5/16 1.8 REG HEX CTRLK	3

STANDARD HARDWARE ITEMS
ORDER INDIVIDUAL PARTS.

43" LAWN TRACTOR MODEL C3560-700

ELECTRICAL ASSEMBLY



NOTE: ALWAYS USE ORIGINAL EQUIPMENT PARTS.
Use of service/replacement parts other than original equipment parts may void your warranty.

**ALL UNNUMBERED
ITEMS ARE INTERCHANGEABLE
WITH OPPOSITE SIDE**

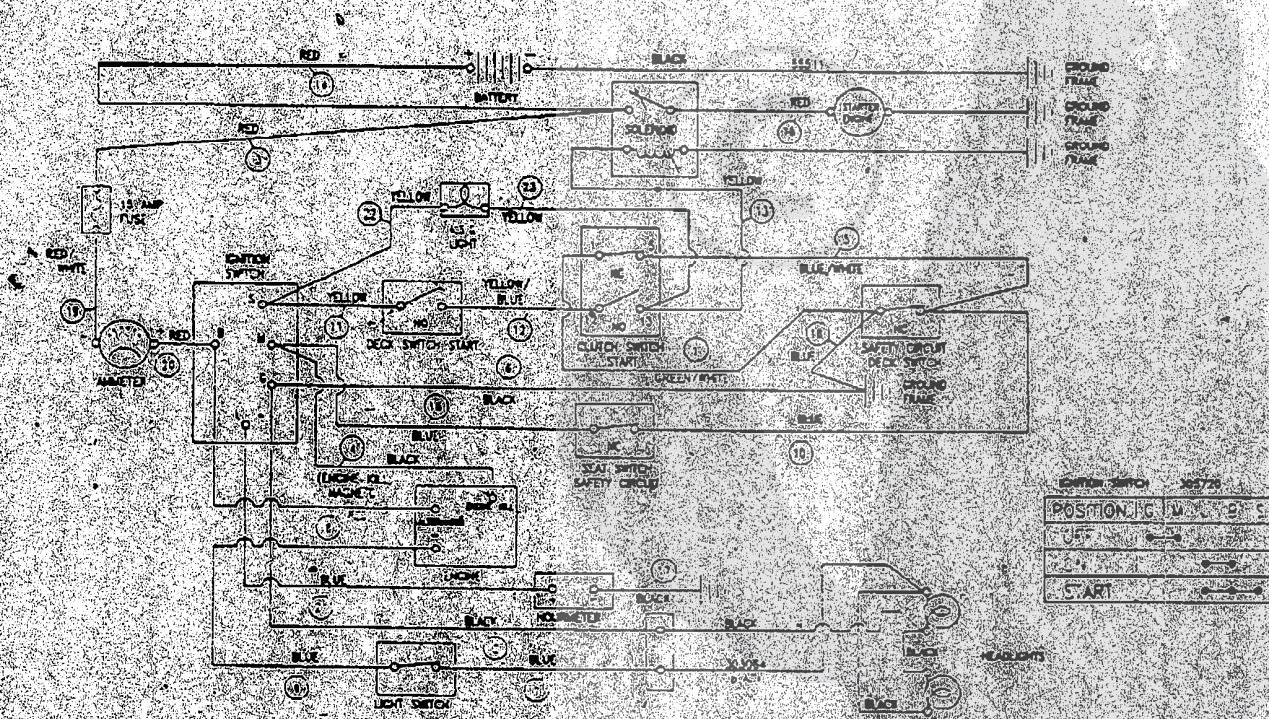
322813A

3" LAWN TRACTOR MODEL C3560-700

Qty	Part#	Description	Qty
1	322798	WIRE HARNESS, 14 18TWIN OPP DYN	1
2	4 1482	PRESS CLIP, 1.380LG 255ID	2
3	303064	ASSY LIGHT WIRE 1/4 TURN	1
4	52572	BULB HEADLAMP	2
5	5 7444	TIE, CABLE BLACK NYLON 562L	1
6	41482	PRESS CLIP, 1.380LG 255ID	2
8	305 720	SWITCH IGN (AFTER FIRE) 3 POSN	1
9	48140 138557	WASHER, NUT, 5/8 32 REG INT LK HX HD IGN 840X15 SWIT 1X DE	1
10	300626	KEY, IGNITION SWITCH	1
11	300133	AMMETER	1
12	300334	LIGHT SWITCH ON/OFF PANEL	1
13	320082	SWITCH, DOUBLE POLE NO/NC BLACK	1
14	57444	TIE, CABLE BLACK NYLON 5 62L	1
15	57416	SWITCH, SCRMNT DP NC NO	1
16	57220	SCREW, #12 X 50 PHPNHTAP	2
17	53716	SOLENOID	1
18	187745	SCREW, 1/4 20X 75 HXSEMMA	2
19	1502	NUT, 1/4 20 REG HEX GTRLK	2
20	271172	NUT, 1/4 20 REG HEX KEPS	1
21	138485	WASHER, EXLK 320X 61X 03	2
22	126368	NUT, 5/16 24 REG HEX	2
23	57444	TIE, CABLE BLACK NYLON	1
24	55511	WIRE, GROUND, 12 5	1
25	271184	NUT, 5/16 18 HEX KEPS	1
26	57547	SWITCH, SEAT	1
27	160505	SCREW, 1/4 20X 38 PHPNHMA	2
28	302257	BATTERY, 12VOLT, 7 PLATE, 24 AMP HR	1
29	57551	ROD, BATTERY	1
30	57552	ROD, BATTERY, TOP	1
31	310067	NUT, WING 1/4 20 SMALL PLASTIC	1
32	120854	SCREW, 1/4 20X 63 HHC	2
33	271172	NUT, 1/4 20 REG HEX KEPS	2
34	302031	FUSE, 15 AMP SPADE TYPE	1

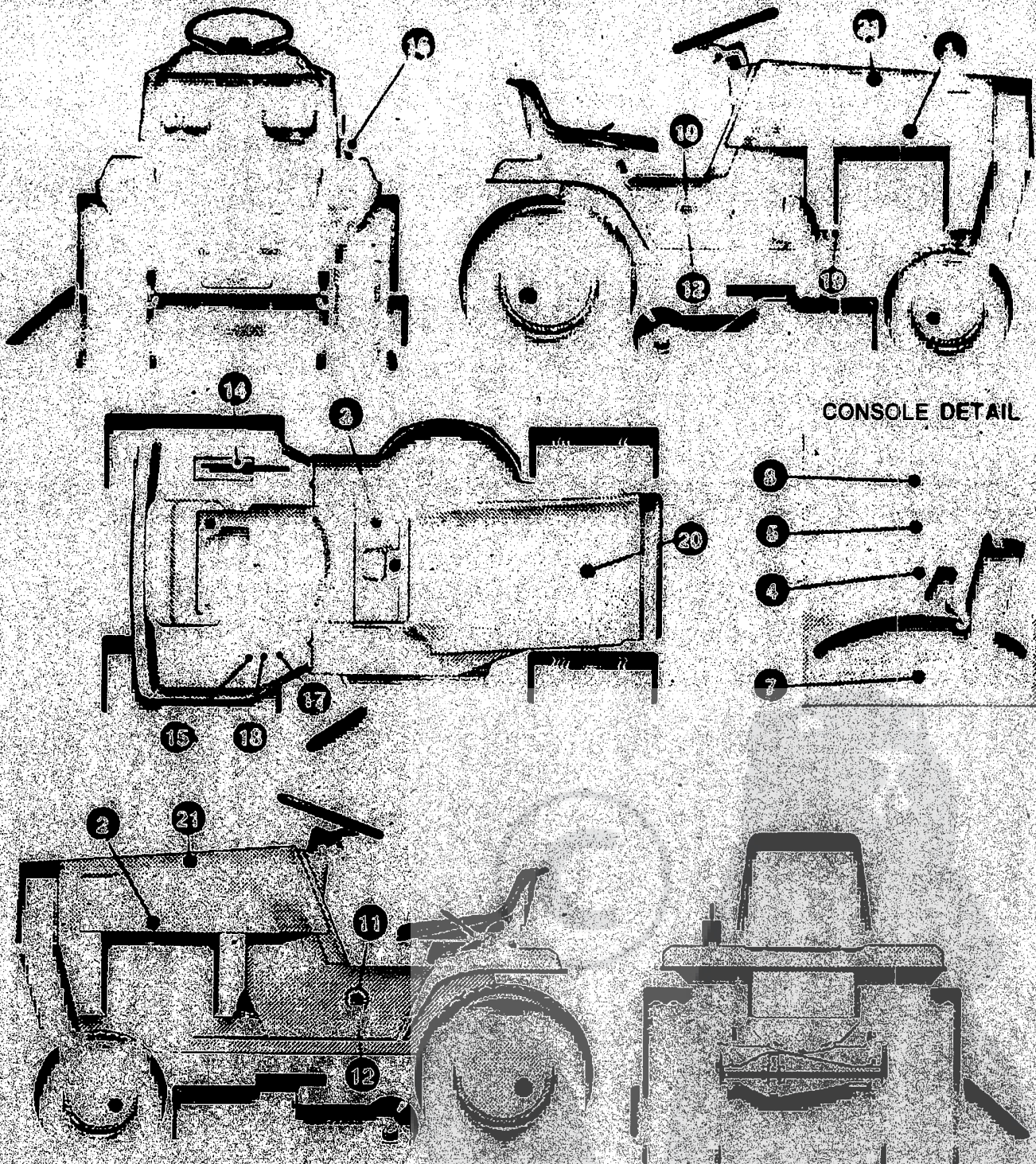
*SPADE TYPE FUSES ARE INCLUDED WITH THE WIRE HARNESS

CHEMATIC DRAWING:

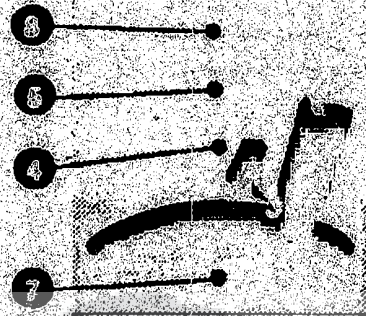


43" LAWN TRACTOR MODEL C3560-700

DFCA15

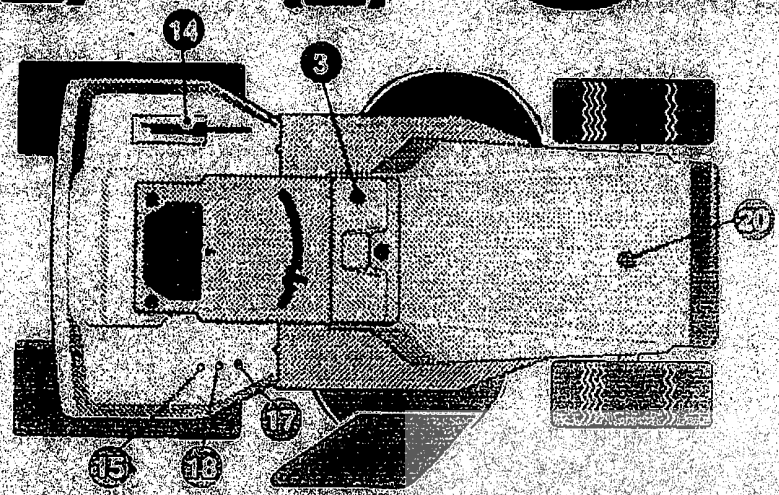
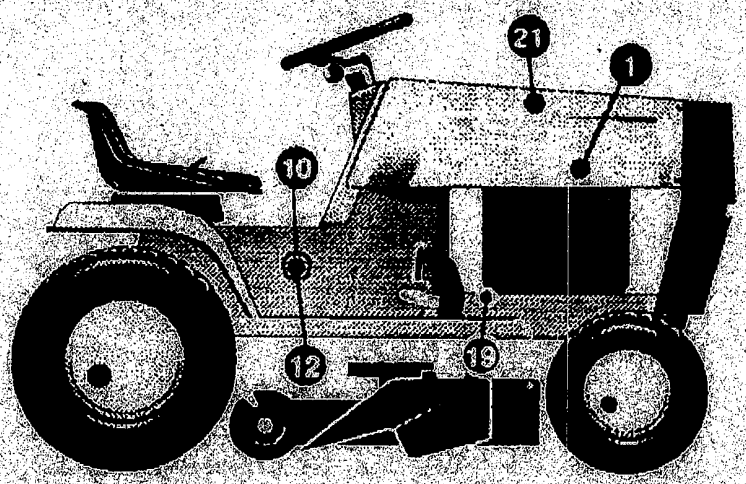
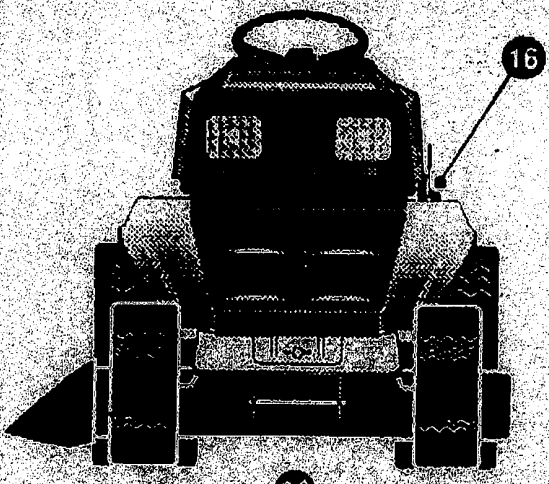


CONSOLE DETAIL

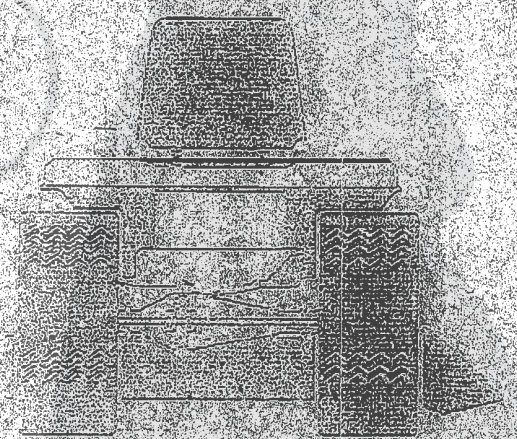
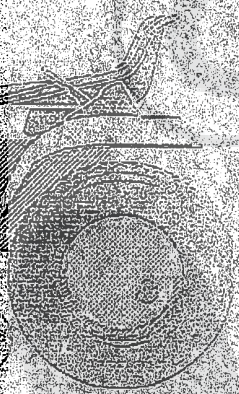
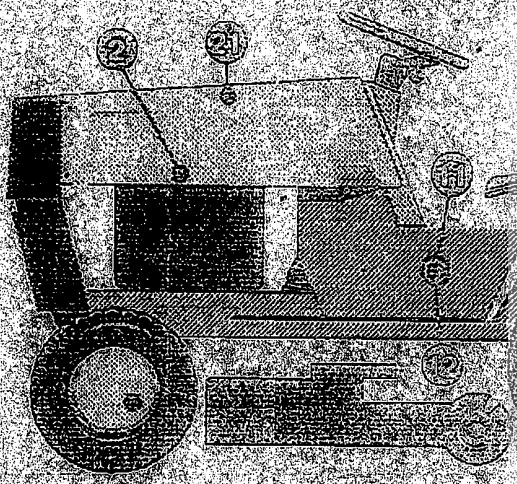
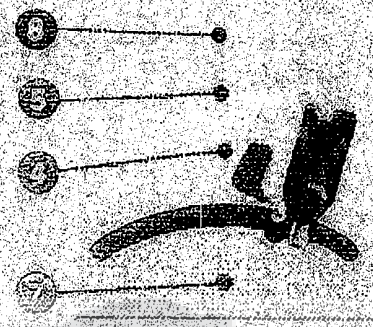


LAWN TRACTOR MODEL C3560-700

DECALS



CONSOLE DETAIL

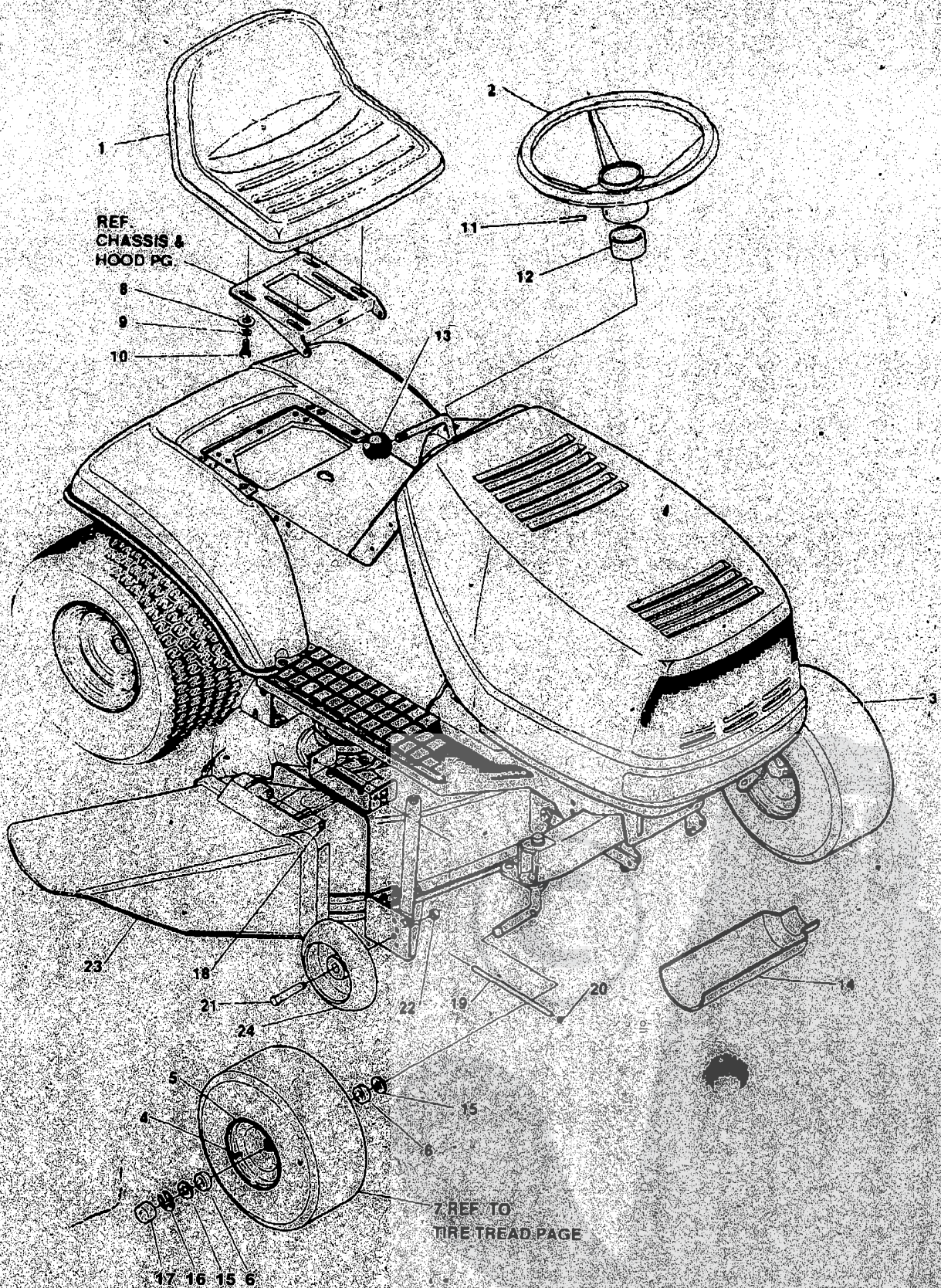


3" LAWN TRACTOR MODEL C3560-700

Key#	Part#	Description	Qty
1	314456	DECAL, HOODSIDE, RH H-21	1
2	314457	DECAL, HOODSIDE, LH H-21	1
3	324534	DECAL, LF DASH, LSW/CHOK EXP	1
4	69524	DECAL, INSTRUCT CONSOLE TOP GER	1
5	69525	DECAL, INSTRUCT CONSOLE TOP FR	1
6		REFERENCE ONLY	
7	301104	DECAL, CONSOLE TOP SHIFT 5-SP	1
8	307383	DECAL, INSTR. CONSOLE TOP ENGL	1
9		REFERENCE ONLY	
10	314462	DECAL, CONSOLE RH LARGE FRAME	1
11	314463	DECAL, CONSOLE LH LARGE FRAME	1
12	316046	DECAL, 16/43 PLASTIC PLATE	2
13		REFERENCE ONLY	
14	6890-1	DECAL, BLADE HEIGHT ADJ. EUROPE	1
15	68902	DECAL, WARNING, FRENCH/GERMAN	1
16	301897	DECAL, LIFT DECK BLADE HEIGHT	1
17	305770	DECAL, CAUTION TRIANGLE, EUROPE	1
18	310553	DECAL, DANGER, ENGLISH	1
19	66903	DECAL, BRAKE/CLUTCH EUROPE	1
20	55835	PAD, FOAM HOOD TOP H-6/7	1
21	55836	PAD, FOAM HOOD SIDE H-W	2

43" LAWN TRACTOR MODEL C3560-700

CUSTOMER ASSEMBLY



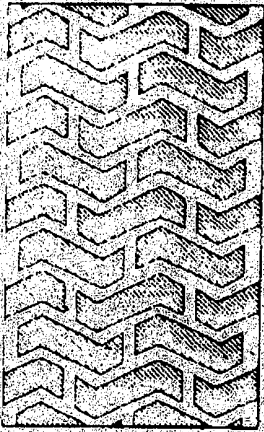
3" LAWN TRACTOR MODEL C3560-700

CUSTOMER ASSEMBLY VIEW

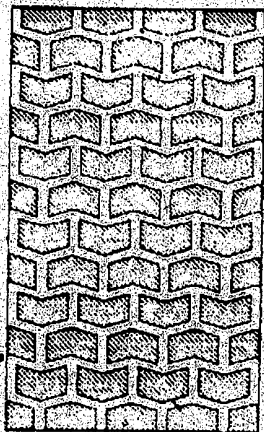
317355 PARTS BAG ASSY QTY 1

Key#	Part#	Description	Qty
1	57455	SEAT MV450	1
2	301251	STEERING WHEEL 13" STD	1
3	301140	TIRE, 15X6-6 WHITE	2
4	24167	VALVE STEM	1
5	39829	WHEEL W/BEARINGS	1
6	39979	BEARINGS	2
7		REFER TO TIRE TREAD PAGE	
8	120393	WASHER, FLAT .344X.69X.065	4
9	120638	WASHER, HVSP TLK .328X.60X.09	4
10	122007	SCREW, 5/16-18X.75 HHC	4
11	456378	PIN, SPRING .250DIAX2.00LG	1
12	57212	COVER, STEERING SHAFT	1
13	55514	KNOB, SHIFT	1
14	54873	OIL TROUGH	1
15	642	WASHER, FLAT .755X1.31X.075	4
16	36625	RING, RETEX	2
17	40394	HUB CAP	2
18	314975	TORSION SPRING	1
19	364424	ROD, PIVOT	1
20	3535	NUT, PUSH	1
21	23763	BOLT, .500X1.390 HSSH 3/8-16	2
22	1499	NUT, 3/8-16 REGHXCTRLK	2
23	364422	CHUTE DEFLECTOR	1
24	302611	DECK WHEEL	2

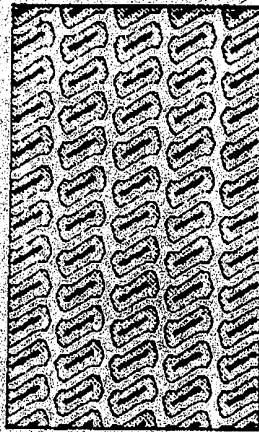
TREAD PATTERNS



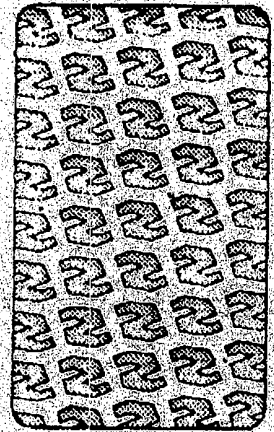
"A"



"B"



"C"



"D"

TIRE SIZE	"A"	"B"	"C"	"D"
11 X 4.00 - 5	42295	319679		
13 X 5.00 - 6	41060	319680		
15 X 6.00 - 6	39830	316702	301140	313952
16 X 6.50 - 8	41081	319682		314539
18 X 8.50 - 8	319683	317400		
18 X 9.50 - 8	41106	316701		313950
20 X 8.00 - 8	319685	319684	57164	314584
20 X 10.00 - 8	58276	319686		313654
20 X 10.00 - 10	55893	319687		
23 X 9.50 - 12	53655	319690	319689	314370

ACCESSORIES

Contact the dealer where your tractor was purchased for the available accessories. If you are unable to contact the dealer, write to the address on the front cover of this manual,

Rear Engine Rider

Model	Description
5708 16	Bagger Fits 32" Side Discharge
5708 17	Bagger - Fits 36" Side Discharge
5709 02	Front Weight Box - holds 35 lbs
5648 16	Lawn Sweeper w/dump Release

Lawn Tractor

Model	Description
5708 22	Bagger Fits 30" Top Discharge
5708 13	Bagger - Fits 36", 38", 39" & 45" Side Discharge
5708 14	Bagger - Fits 40", 42", 43" & 46" Side Discharge
5661 06	42" Snowblade
5661 08	48" Snowblade
5592 00	Tire Chains 18" x 6.50
5585 00	Tire Chains - 18" x 9.50 & 20" x 8"
5672 01	Wheel Weights - Front - 1 pr w/mtg hdw - Fits 15" tires
5 6 7 3 0 2	Wheel Weights - Rear - 1 pr w/mtg hdw - Fits 18" & 20" tires
709 03	Front Weights - Fits 30" & 32" Side Discharge
5648 16	Lawn Sweeper w/dump Release
5705 06	42" Two-Stage Snowblower

Garden Tractor - Light Ground Engaging

Model	Description
5708 13	Bagger - Fits 36", 38", 39" & 45" Side Discharge
5708 14	Bagger - Fits 40", 42", 43" & 46" Side Discharge
5661 06	42" Snowblade
5672 01	Wheel Weights - front 1 pr w/mtg hdw - Fits 15" tires
5673 102	Wheel Weights - Rear - 1 pr w/mtg hdw Fits 18" & 20" tires
5648 1	Lawn Sweeper w/dump Release
567 0 2	Sleeve Hitch - w/lift bar
5668 01	Adaptor (sleeve, hitch) for use w/23" tires
5706 00	Tire Chains - 20" x 10"
5671 00	Tire Chains - 23" x 9.50"
5672 02	Wheel Weights - Front - 1 pr w/mtg hdw Fits 16" tires
5673 00	Wheel Weights - Rear - 1 pr w/mtg hdw Fits 23" tires
5674 01	10" One Bottom Moldboard Plow
5675 01	Cultivator - 7 row - Adj 6" - 42" width
76 01	Disc Harrow - 8" & 11" disc - Adj width & disc angle
5677 02	Tiller - 5 H.P. Self-Powered - 28" width
5705 06	42" Two-Stage Snowblower
61 08	48" Snowblade

Euro Four Wheel Steer

Model	Description
5708 14	Bagger - Fits 40" 42" 43" & 46" Side Discharge
570505	42" One-Stage Snowblower
5661 07	48" Snowblade
5709 04	Rear Weight Box
5648 16	Lawn Sweeper w/dump Release
570600	Tire Chains 20" x 10"
590	Tire Chains 23" x 9.50"
5672 02	Wheel Weights - Front - 1 pr w/mtg hdw - Fits 16" tires
5673 00	Wheel Weights - Rear - 1 pr w/mtg hdw - Fits 23" tires
5672 01	Wheel Weights - Front - 1 pr w/mtg hdw Fits 15" tires
5 6 7 3 0 2	Wheel Weights - Rear - 1 pr w/mtg hdw - Fits 18" & 20" tires

Euro Two Wheel Steer Garden Tractor

Model	Description
5667 04	Sleeve Hitch - w/lift bar Fits 46"
5 6 7 4 0 1	10" One Bottom Moldboard Plow
5 6 7 5 0 3	Cultivator - 7 row - Adj 6" - 42" width
5676 01	Disc Harrow 8" & 11" Disc Adj width & disc angle
5677 02	Tiller - 5 H.P. Self-Powered - 28" width
5648 1 6	Lawn Sweeper w/dump Release

quires a sleeve hitch