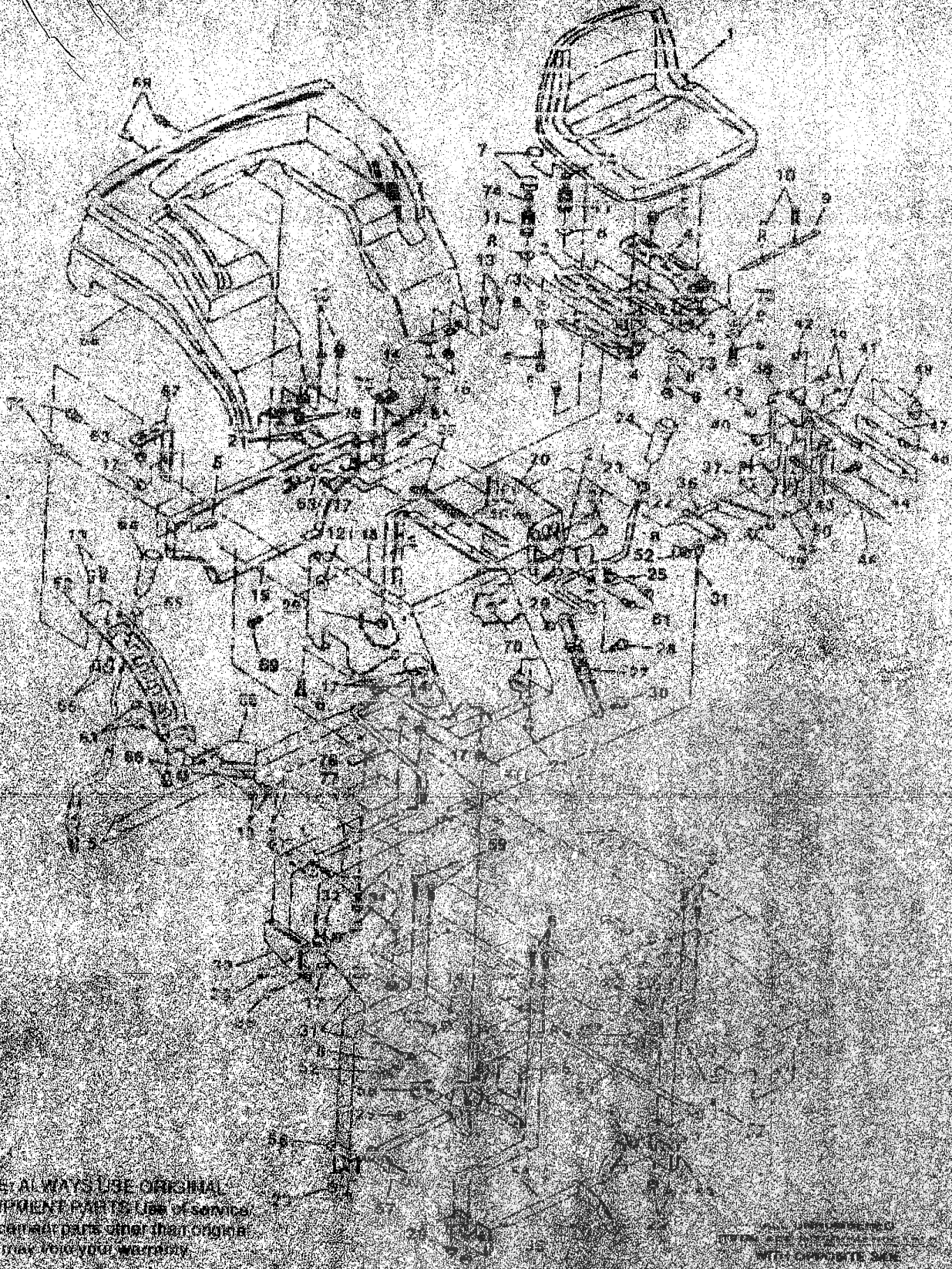


TRACTOR REPAIR PARTS

TRACTOR MODEL NUMBER [REDACTED]



NOTE: ALWAYS USE ORIGINAL EQUIPMENT PARTS FOR SERVICE. REPLACEMENT PARTS SIMILAR TO ORIGINAL MAKE TRUCK YOUR OWN RISK.

© 1980 INTERNATIONAL HARVESTER COMPANY
MILWAUKEE, WISCONSIN 53001
WITH COPYRIGHT SIGN

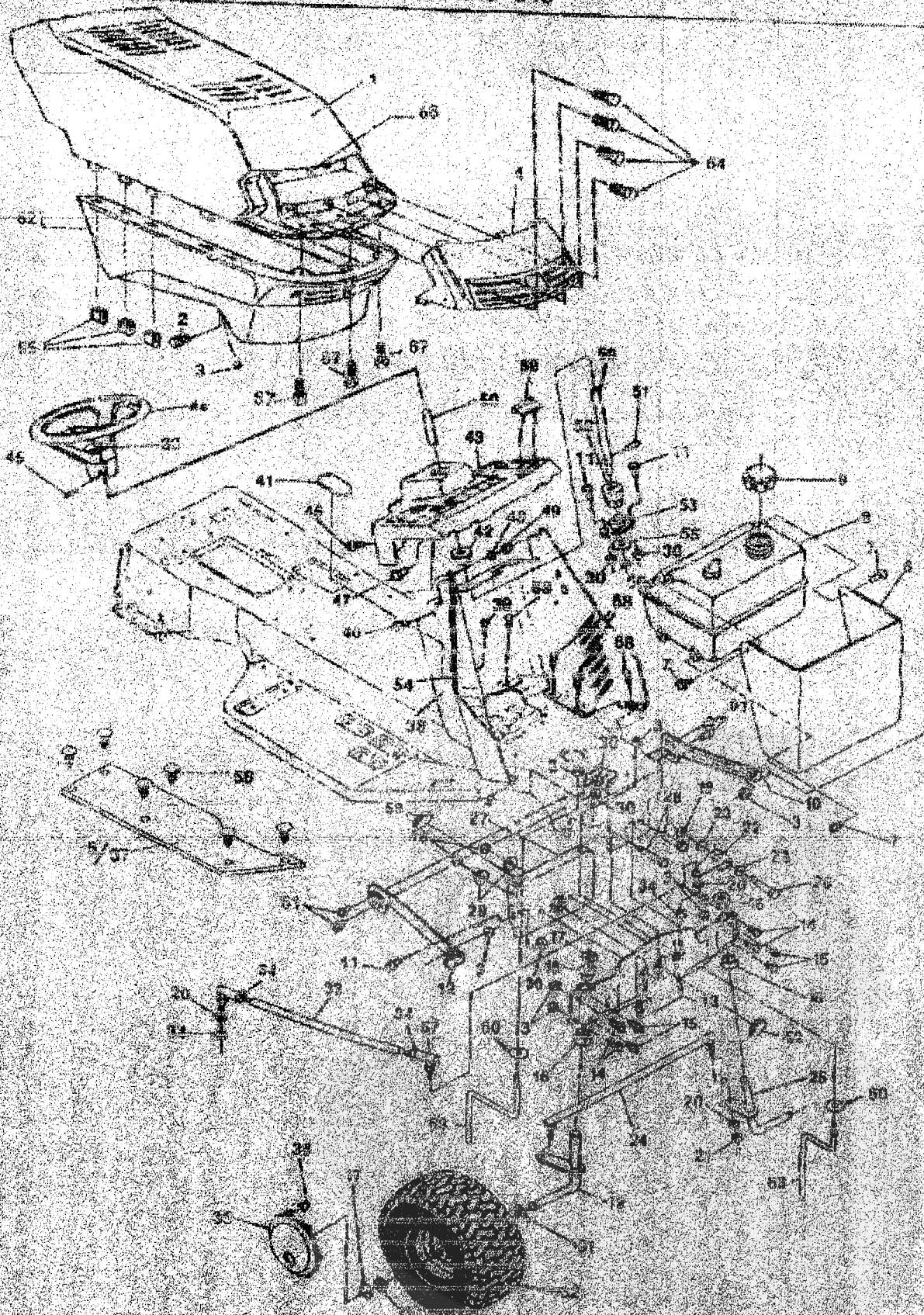
TRACTOR REPAIR PARTS

40" TRACTOR MODEL NUMBER C4014-030 and -040

Key No.	Part No.	Description	Key No.	Part No.	Description
1	210384	Seat	48	58325	Knob, Height Adjust
2	122188	Screw, Hex, 3/8-16 x 2-1/4 in.	49	304730	Handle, Lift
3	315847	Channel, Seat L. H.	50	301239	Pawl, Height Adjust
4	315848	Channel, Seat R. H.	51	302360	Tie Rod
5	50000	Screw, Hx Hd, Wd Fl	52	121822	Collar Pin
		5/16-18 x 3/4 in.	53	308339	Bracket L. H. Front Hanger
6	122007	Screw, Tap, 6, 5/16-18 x 3/4 in.	54	308345	Assembly, Front Lift Shaft
7	50001	Seat Spring Cover	55	308340	Bracket R. H. Front Hanger
8	120363	Washer, Flat, 1 1/32 in.	56	308343	Bracket Hanger
9	304431	Rod, Seat Support	57	308342	Assembly, Rear Lift Shaft
10	30006	Nail Pin, 0/73 Dia. x 1.13 in.	58	38626	E-Ring
11	305320	Seat Spring	59	120228	Screw, Hx Hd, 5/16-18 x 5/8 in.
12	1004	Washer, Flat, 9/32 in.	60	305401	Support, Seat Plate
13	100016	Screw, Hx Hd, 1/4-20 x 5/8 in.	61	180016	Screw, 1/4-20 x 1/2 in.
14	274517	Flatwasher, 13/32 in.	62	308294	Quadrant
15	300387	Fender Support, L. H.	63	51535	Nut, Hx, Wd Fl, 1/4-20 Thd.
16	1502	Nut, Lock, 1/4-20 Thd.	64	304730	Handle
17	50279	Nut, Hx, Wd Fl, 1/4-20 Thd.	65	120377	Nut, Hx 3/8-16 Thd.
18	322484	Seat Support	66	300302	Screw, Hx Hd, Tap #10 x 1/2 in.
19	322469	Support, Fender & Seat	67	306399	Fender Support, R. H.
20	302209	Bracket, Support, Engage	68	310575	Fender
21	35497	Screw, Hx Wdr Hd Tap	69	995326	Screw, Hx, Wdr Hd, Tap 1/4-20 x 5/8 in.
		5/16-18 x 1/2 in.			
22	307403	Assembly, Engagement Rod			
23	120238	Nut, Hx Cnk, 1/2-13 Thd.	70	271190	Nut, Hex Keps, 3/8-16 Thd.
24	304730	Handle, Lift			
25	302187	Clip	71	50634	Screw, Tap, 5/16-18 x 7/8 in.
26	305305	Spring, Tension			
27	304148	Assembly, Spring Carriage	72	180020	Screw, 1/4-20 x 3/4 in.
28	305003	Shoulder Bolt, 7/16 in.			
29	1430	Nut, Hx Cnk, 5/16-18 Thd.	73	120638	Washer, Split Lock
30	20507	Shoulder Bolt, 5/16-18 Thd.	74	451814	Screw, 5/16-18 x 5/8 in.
31	303227	Cable, Deck Lift	75	120985	Flatwasher
32	46306	Pulley	76	319387	Support, Foot Rest Stiffener, L.H.
33	303230	Assembly, Pulley Bracket	77	319388	Support, Foot Rest Stiffener, R.H.
34	305522	Shoulder Bolt, 5/16-18 Thd.	78	323144	Operator's Manual
35	126211	Bolt, Carriage, 5/16-18 x 5/8 in.			(Not Illustrated) C4014-040 in English, French, German & Dutch
36	302205	Assembly, Upper Shaft			(Not Illustrated) C4014-030 Danish, Swedish, Finnish & Norwegian
37	302383	Quadrant	79	323144	Operator's Manual
38	8143	Lift Lever			
39	300177	Shoulder Bolt, 5/16-18 Thd.			
40	44108	Nut, Hx Wd Fl, 5/16-18 Thd.			
41	300310	Clevis Pin			
42	300311	E-Ring			
43	302357	Link			
44	36149	Shoulder Bolt, 5/16-18 Thd.			
45	45802	Washer, Flat			
46	58330	Adjuster Rod			
47	58328	Spring, Height Adjust			

TRACTOR REPAIR PARTS

5-40 TRACTOR MODEL NUMBER C4014-030 and -040



TRACTOR REPAIR PARTS

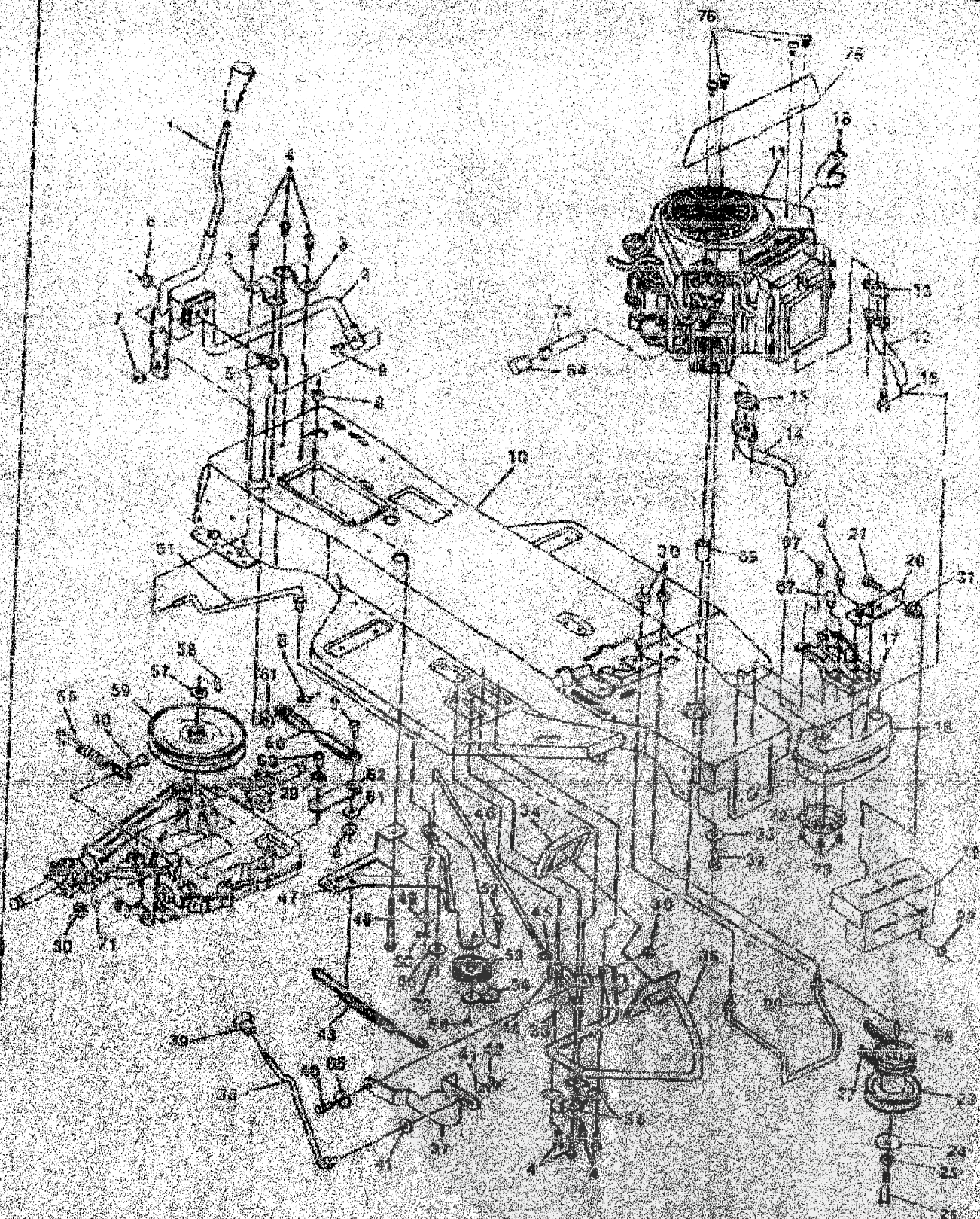
40" TRACTOR MODEL NUMBER C4014-530 thru -640

Key No.	Part No.	Description	Key No.	Part No.	Description
1	310577	Hood	46	305500	Screw, Tap, 1/4-20 x 1/2 in.
2	25088	Shoulder Bolt, 5/16-18 Thd.	47	120854	Screw, Hx Hd, 1/4-20 x 5/8 in.
3	1498	Nut, Hx, Circl, 5/16-18 Thd.	48	120392	Washer, Flat, 5/32 in.
4	305059	Lens, Headlight	49	1502	Nut, Hx, Circl, 1/4-20 Thd
5	314909	Assembly, Foot Ped L. H.	50	302307	Shaft, Steering
6	307487	Hood Shield	51	302524	Pin, Dowel
7	300203	Screw, Hx Hd, Fastener 1/4 Dia. x 3/4 in.	52	302314	Pinion, Steering
8	305820	Tank, Gas 1.5 Gal W/Sensor	53	302498	Bearing, Flange
	305804	Low Fuel Sensor	54	47453	Trim
9	12501	Cap, Fuel	55	2968	Washer, Flat, 1/2 in.
10	309461	Bracket, Hood L. H.	56	20864	E-Ring
11	55030	Screw, Hx Hd, 5/16-18 x 3/4 in.	57	57158	Ball Joint, 3/8 Thd.
12	309460	Bracket, Hood R. H.	58	311087	Ratchet Fasteners
13	310879	Front Axle W/Bearings	59	307112	Plug, Front Axle
14	120228	Screw, Hx Hd, 5/16-18 x 5/8 in.	60	188588	Washer, Internal Tooth
15	706	Grease Fitting	61	53652	Screw, Hex Fl, 5/16-18 x 3/4 in.
16	302203	Bearing, Spindle	62	306856	Grille
17	36625	E-Ring	63	300440	Belt Guide
18	1499	Nut, Hx, Circl, 3/8-18 Thd.	64	312085	Screw, #1-24 x 1/2 in.
19	305340	Spindle, R. H.	65	306867	Clip, Tinnerman
20	120382	Washer, Split Lock 3/8 in.	66	310534	Decal, Reflector
21	120389	Nut, Hx, 3/8-24 Thd	67	300309	Screw, #10 x 1/2 in.
22	302306	Steering Arm, Upper	68	35497	Screw, 5/16-18 x 1/2 in.
23	996416	Washer, Flat, 25/64 in.	69	321910	Pad, Hood Bumper
24	300328	Assembly, Tie Rod			
25	305399	Spindle, L.H.			
26	180134	Screw, Hx Hd, 3/8-16 x 2-1/2 in.			
27	306103	Support Bracket, Front Axle			
28	122207	Screw, Hx Hd, 3/8-16 x 3 in.			
29	2483	Washer, Spring			
30	55273	Nut, Hx, Wd FILL 5/16-18 Thd.			
31	642	Washer, Flat, 3/4 in.			
32	*	Wheel & Tire Assembly, Front			
	Tire	Refer to Tire Tread Pattern			
	315678	Wheel/Wdr Bearing			
	24167	Valve Stem			
	314416	Bearing			
33	302907	Drag Link			
34	124028	Nut, Hx, Jam, 3/8-24 Thd.			
35	306588	Hubcap, Front			
36	306368	Clip, Hubcap			
37	314908	Assembly, Foot Ped R. H.			
38	315844	Dash, Lower			
39	48263	Screw, Tap, 5/16-18 x 3/8 in.			
40	986346	Screw, Self-Tap, 1/4-20 x 1/2 in.			
41	305280	Cover			
42	305228	Bushing, Upper Steering			
43	323133	Dash, Upper			
44	303132	Steering Wheel			
45	458378	Pin, Spring, 1/4 x 2 in.			

(*) Order Parts Individually

TRACTOR REPAIR PARTS

40" TRACTOR MODEL NUMBER C4014-030 and -040



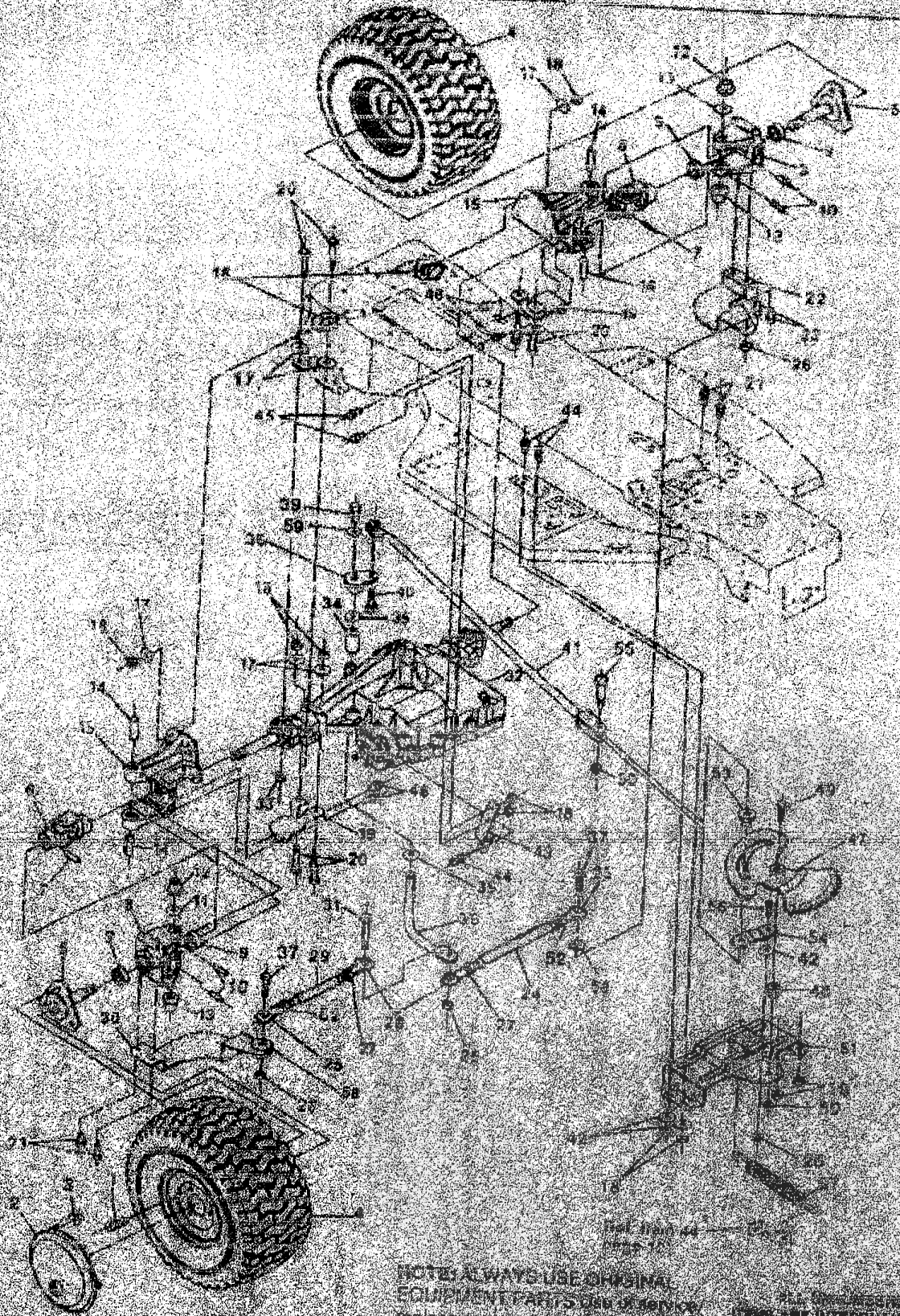
TRACTOR REPAIR PARTS

40th TRACTOR MODEL NUMBER C4014-030 and -040

Key No.	Part No.	Description	Key No.	Part No.	Description
1	304406	Tube Assembly, Shift Pivot	41	120385	Washer, 9/16 In.
2	304024	Tube Assembly, Shift	42	121283	Cotter Pin
3	30253A	Clip, Shift Lever	43	304209	Spring, Clutch
4	35497	Screw, Hx Hd, Wash Tap, 5/16-18 x 1/2 In.	44	304125	Bracket, Brake Rod
5	304086	Shoulder Bolt, 1/4-20	45	271184	Nut, Hx, Kept, 5/16-18 Thd
6	1502	Nut, Hx, Cnk, 1/4-20 Thd	46	304212	Rod, Clutch
7	7104E	Nut, Hx, Nylon, Lock 3/8-18 Thd	47	304049	Arm, Idler
8	1499	Nut, Hx, Cnk, 3/8-18 Thd	48	51189	Shoulder Bolt, 3/8-18 Thd
9	122145	Screw, 3/8-18 x 1-1/4 In.	49	274517	Washer, Flat, 13/32 In.
10	322811	Main Frame	50	3636A	Hairpin
11		Engine 14 Horsepower 6468	51	304089	Rod, Shift-On-The-Go
12	305555	Exhaust Tube, L. H.	52	57325	Carriage Bolt, 3/8-16 x 2 In.
13	18700	Gasket, Muffler	53	40223	Idler Shoe, Backside
14	305554	Exhaust Tube, R. H.	54	304105	Bell Retainer
15	180077	Screw, Hx Hd, 5/16-18 x 3/4 In.	55	304130	Spring, Brake
16	305553	Muffler	56	45171	Nut, Flange, 2/8-16 Thd
17	305577	Bracket Muffler	57	22052	Retaining Ring
18	57559	Wire Retainer	58	3021	Key, Woodruff, #606
19	320923	Heat Shield, Muffler	59	303109	Pulley
20	5756	Bracket, Transaxle (or Muffler)	60	309846	Shift Link
21	128211	Bolt, Carriage, 5/16-18 x 5/8 In.	61	120304	Washer, Flat, 13/32 In.
22	55273	Nut, Hx, Wd Fl, Lk 5/16-18 Thd	62	302582	Shift Lever, Transaxle
23	58381	Pulley Assembly, Engine	63	55255	Screw, Hx Hd, 1/4-20 x 3/4 In.
24	56431	Washer, Pilot	64	47820	Cap, Pipe
25	120383	Washer, Split, Lock 7/8 In.	65	20280	Washer, Yravn
26	428644	Screw, Hx Hd, 7/16-20 x 5 In.	66	120382	Washer
27	303241	V-Belt, 90 In. Long	67	505338	Screw, Hex Hd Tap, 1/4-20 x 5/8 In.
28	310162	Belt Guide	68	5779	Key, Square 1/4
29	57157	Washer, Special	69	304246	Spacer, Engine Pulley
30	1498	Nut, Hex, Cnk, 5/16-18 Thd	70	121223	Pin, Cotter
31	309430	Push Nut	71	305183	Washer
32	50947	Screw, Hx Hd Tap, 3/8-18 x 1-1/4 In.	72	56172	Collector
33	130469	Washer, 3/8 In.	73	55287	Screw, Hx Hd, #6-32 x 3/8 In.
34	302386	Part, Clutch/Brake Molded Assembly, Clutch/Brake Arm	74	307174	Nipple, 3/8-18 x 1 In.
35	306083	Bracket, Clutch/Brake Arm	75	321307	Heat Shield
36	313271	Lever, Park Brake	76	57368	Screw, #10-16 x 1/2 Drill
37	304208	Rod, Park Brake			
38	304217	Knob, Park Brake			
39	304387	Shoulder Bolt, 5/16-18 Thd			
40	2508A				

TRACTOR REPAIR PARTS

40" TRACTOR MODEL NUMBER C4014-030 and -040



NOTE: ALWAYS USE ORIGINAL EQUIPMENT PARTS OR IDENTICAL EQUIVALENT PARTS. OTHER INFORMATION PARTS MAY VOID YOUR WARRANTY.

ALL DIMENSIONS ARE IN INCHES UNLESS OTHERWISE SPECIFIED.
PARTS ARE INTERCHANGEABLE WITH OPPOSITE SIDE.

TRACTOR REPAIR PARTS

40" TRACTOR MODEL NUMBER C4014-030 and -040

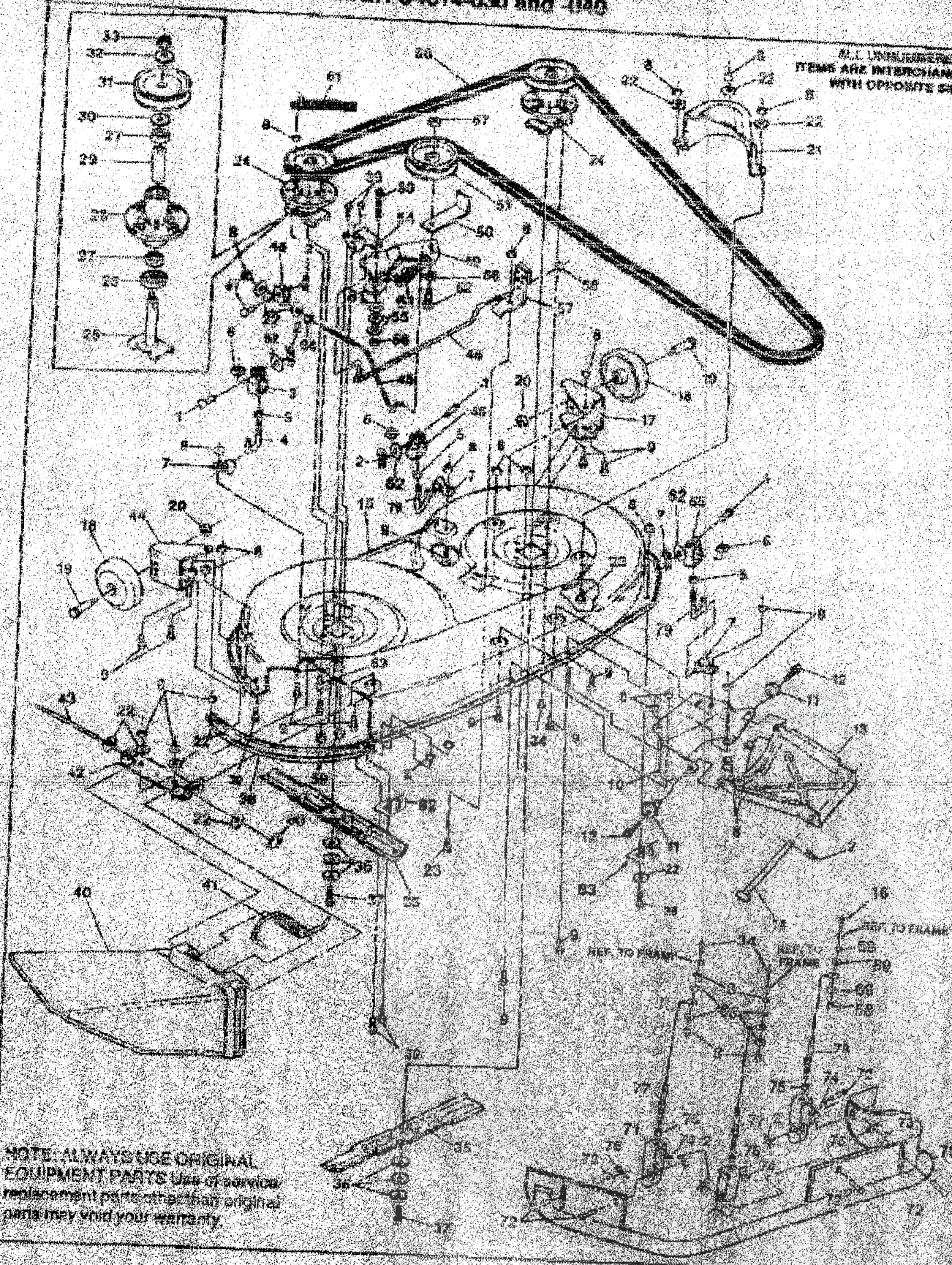
Key No.	Part No.	Description	Key No.	Part No.	Description
1	123418	Screw, Hx Hd, 1/2-20 x 1/2 in.	32		Transaxle, 6-Speed
2	305570	Hubcap, 6 in.	33	44106	Nut, Hx, Wrt Cl, Lk #15-10 Thd.
3	305569	Clip, Hubcap	34	304115	Spacer
4		Wheel & Tire Assembly, Rear	35	25177	Washer, Flat, 49/64 in.
	Tire	Roller to Tire Tread Page	36	308719	Steering Pivot
	12407	Wheel	37	181539	Screw, Hx Hd, 3/8-24 x 1-1/4 in.
	24187	Valve Stem	38	308720	Shell, Steering Pivot
5	315400	Hub Assembly	39	421051	Screw, 5/16-24 x 1 in.
6	320531	U-Joint Assembly	40	12916	Bolt, Shoulder, 3/8-24 Thd.
	320570	Grease Fitting	41	302593	Rod Assembly, Rear Wheel Steer
7	36511	Pin, Grooved, 1/4 x 1-1/2 in.	42	446363	Washer, Flat, 3/8 in.
8	12455	Bracket, Steering Pivot, Outer	43	321392	Bracket, Transaxle Stabilizer
9	12225	Bearing	44	35498	Screw, Hx Hd, Self-Tap, 5/16-18 x 3/4 in.
10	456722	Pin, Spring, 1/4 x 1-1/2 in.	45	120228	Screw, Hx Hd, 5/16-18 x 5/8 in.
11	21682	Washer, Flat	46	451814	Screw, Hx Hd, Self-Tap, 5/16-18 x 5/8 in.
12	12288	Bushing, Shouldered	47	302877	Assembly, Sector Gear
13	12321	Bushing, Shouldered	48	302878	Bushing, Sector Gear
14	12389	Pin, Steering Hinge	49	304256	Screw, Hx Hd, 1/2-20 x 2-3/8 in.
15	12485	Bracket, Steering Pivot, Inner	50	274864	Nut, Hx, Ctrk, 1/2-20 Thd.
16	122017	Screw, Hx Hd, 5/16-18 x 1 in.	51	302341	Plate, 4-Wheel Steer Pivot
17	120393	Washer, Flat, 11/32 in.	52	305399	Nut, Jam, 3/8-24 Thd.
18	1498	Nut, Hx, Ctrk, 5/16-18 Thd.	53	304116	Cam Yoke Roller
19	306901	Bracket, Transaxle Mounting	54	302594	Arm, Roller Swing
20	180083	Screw, Hx Hd, 5/16-18 x 2-1/4 in.	55	304122	Shoulder Bolt, Cam Roller
21	35497	Screw, Tap, 5/16-18 x 1/2 in.	56	362589	Shoulder Bolt, Cam Follower Arm Pivot
22	305218	Arm, Rear Wheel Steer, L. H.	57	35410	Spring, Clutch/Brake Pedal Return
23	47792	Screw, Self-Tap, 3/8-16 x 1 in.	58	120382	Washer, Split Lock
24	308446	Tie Rod, L. H.	59	45602	Washer, Flat
25	308364	Tie Rod End, L. H.			
26	412349	Nut, Hx, Ctrk, 3/8-24 Thd.			
27	124925	Nut, Hx, Jam, 3/8-24 Thd.			
28	306260	Rod End, R.H.			
29	308447	Tie Rod End, R. H.			
30	306237	Arm, Rear Wheel Steer, R. H.			
31	181646	Screw, Hx Hd, 3/8-24 x 1-3/4 in.			

(*) Order Individual Parts

TRACTOR REPAIR PARTS

40" TRACTOR MODEL NUMBER C4014-030 and -040

ALL UNLUBRICATED ITEMS ARE INTERCHANGEABLE WITH OPPOSITE SIDE



NOTE: ALWAYS USE ORIGINAL EQUIPMENT PARTS. Use of service replacement parts other than original parts may void your warranty.

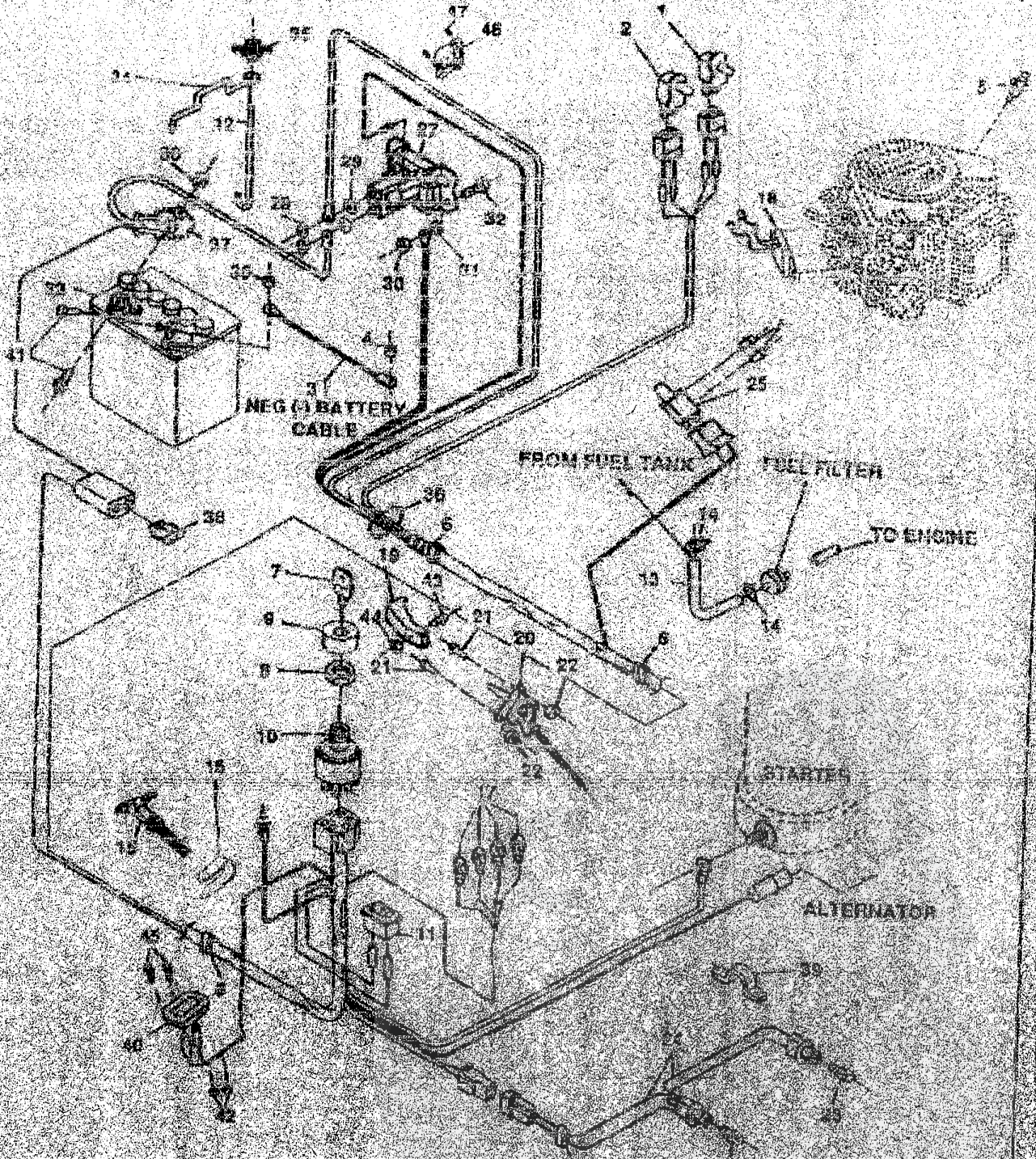
TRACTOR REPAIR PARTS

30" TRACTOR MODEL NUMBER L4014-030 and -040

Key No.	Part No.	Description	Key No.	Part No.	Description
1	300117	Pin, Clevis	48	302714	Rear Brake
2	52120	Mainpin, Collar	49	322120	Idler Assembly
3	305233	Clevis			Includes the following parts
4	300815	Lift Rod		322119	Idler Arm
5	120228	Nut, Hex Jam 1/2-13 Thd.		306973	Brake Pad
6	103227	Nut, Sq. 1/2-13 Thd.		135824	Rivet
7	312222	Cap	50	1345	Belt Retainer
8	1499	Nut, Hx. Lock 5/16-18 Thd.	51	310322	Idler Pulley
9	180275	Screw, Hx Hd, 5/16-18 x 1 in.	52	57325	Camshaft Bolt, 3/8-16 x 2 in.
10	303210	Bracket, Front	53	304420	Shoulder Bolt, 3/8-16 x 3/4 in.
11	52247	Nut, Adjusting	54	302163	Idler Brace
12	180079	Screw, Hx Hd, 5/16-18 x 1 in.	55	302415	Washer, Flat
13	311941	Channel, Draw Bar	56	45171	Nut, Hx. Wd Fl, 3/8-16 Thd.
14	302203	Rod, Drawbar	57	304112	Brake Spring Assembly
15	323077	Mower Deck			Includes the following parts.
16	180120	Screw, 1/4-20 x 3/4 in.		302241	Brake Arm
17	317041	Wheel Bracket, L. H.		302270	Brake Pad
18	302611	Wheel		125824	Rivet
19	23763	Shoulder Bolt, 3/8-16 Thd.	58	1502	Nut, Hx. Cnk, 1/4-20 Thd.
20	1499	Nut, Hex, Cnk, 3/8-16 Thd.	59	44125	Nut, 5/16-18
21	302633	Belt Cover, Left Pulley	60	43044	Belt, 52 in. Long
22	120393	Flatwasher, 11/32 in.	61	35410	Spring
23	120228	Screw, Hx Hd, 5/16-18 x 5/8 in.	62	274517	Washer, Flat, 13/32 in.
24	307534	Quill Assembly (incl. Hex. 25-32)	63	300345	Screw, Tap 5/16-18 x 1-3/8 in.
25	56425	Saddle & Shaft Assembly	64	120376	Nut, Hx, 5/16-18 Thd.
26	30616	Dust Shield	65	304443	Clevis
27	49562	Bearing	66	120382	Washer, Spilt, Lock 3/8 in.
28	55547	Quill Casting	67	120377	Nut, Hx 3/8-16 Thd.
29	50816	Spacer Tube	68	416924	Flatwasher
30	51449	Spacer	69	416904	Flatwasher
31	56390	Pulley	70	305865	Toe Guard Assembly
32	52365	Washer	71	3405	Clevis
33	1282	Nut, Wd Fl, Lk 7/16-20 Thd.	72	38512	Clevis Pin
34	50634	Screw, Wdr Hd, 5/16-18 x 7/8	73	45602	Flatwasher
35	313316	Blade	74	120372	Nut, Square, 1/4-20 Thd.
36	2423	Washer, Spring	75	120375	Nut, Hex 1/4-20 Thd.
37	39573	Screw, Hx Hd, 3/8-24 x 1 in.	76	137185	Copper Pip, 1/8 x 1 in.
38	317030	Toe Guard	77	306583	Cable, 10.8 inches Long
39	180077	Screw, Hx Hd, 5/16-18 x 3/4 in.	78	306584	Cable, 6.5 inches Long
40	304422	Clutch Deflector	79	312302	Lift Rod
41	314975	Spring	80	13535	Push Nut
42	317017	Bracket, Clutch Mount	81	306307	Flatwasher
43	304124	Rod, Clutch	82	305984	Bracket, Toe Guard
44	317015	Wheel Bracket, R. H.	83	305985	Bracket, Toe Guard
45	303072	Clutch Rod			
46	305234	Clevis, Clutch			
47	49332	Pin, Clevis			

TRACTOR REPAIR PARTS

307 TRACTOR MODEL NUMBER C4014-030 and -040



NOTE: ALWAYS USE ORIGINAL EQUIPMENT PARTS. Use of service replacement parts other than original parts may void your warranty.

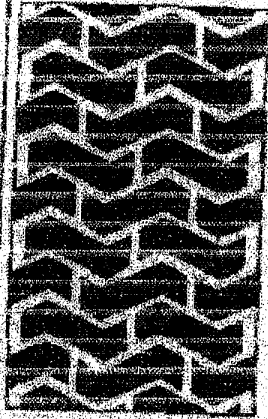
ALL DIMENSIONS ARE IN INCHES UNLESS OTHERWISE SPECIFIED

TRACTOR REPAIR PARTS

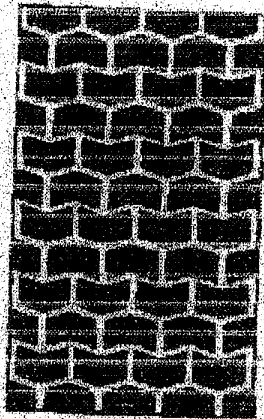
40" TRACTOR MODEL NUMBER C4014-030 and -040

Key No.	Part No.	Description	Key No.	Part No.	Description
1	308187	Snap Switch	51	1502	Nut, Hx. Cldk, 1/4-20 Thd.
2	12553	Deck Safety Switch	52	187745	Screw, 1/4-20 x 3/4 In.
3	55511	Cable, Battery, Negative	53	302257	Battery
4	271184	Nut, Hx. Keys, 5/16-18 Thd.	54	302912	Bracket, Battery Hold-Down
5	315602	Regulator, Generator	55	310067	Wingnut
6	57444	Tie Cable	56	315695	Wiring Harness
7	300628	Key, Ignition Switch	57	308201	Boot, Rubber (Battery Cable)
8	300193	Nut, Switch	58	302031	Fuse, 15A-32V
9	300194	Boot, Switch	59	41482	Press Clip
10	305720	Switch, Ignition	60	304799	Miniature Hour Meter
11	300934	Switch, Light	61	120854	Screw, 1/4-20 x .63
12	57551	Rod, Battery Hold-Down	62	271482	Nut, Hex, #8-32 Thd.
13	47432	Gas Line, 10" (cut to length)	63	189585	Screw, Ph Pn, #8-32 x 3/8 In.
14	48672	Clamp, Gas Line	64	120622	Nut, Hex, #8-32 Thd.
15	307113	Choke Control	65	120554	Screw, Ph Pn, #8-32 x 3/8 In.
16	314522	Choke Clip	66	57547	Coat Switch
17	57769	Bulb Indicator	67	180505	Screw, 1/4-20 x 3/8 In.
18	314797	Oil Sensor			
19	304439	Knob, Throttle Control			
20	307362	Throttle Control			
21	320563	Screw, #10-24 X 5/8 In.			
22	308458	Nut, Hx. Nylon Lock, #10-24 Thd.			
23	52572	Bulb Headlamp			
24	309064	Assembly, Light Wire			
25	57211	Switch			
26	57320	Screw, Ph Hd, Tap #12 x 1/2 In.			
27	53716	Solenoid			
28	120368	Nut, Hx 5/16-24 Thd.			
29	138485	Washer, Lock 5/16 In.			
30	271172	Nut, Hx. Keys, 1/4-20 Thd.			

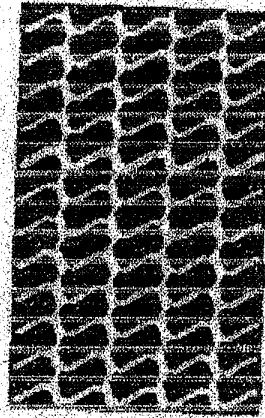
TREAD PATTERNS



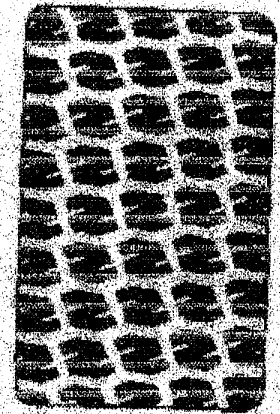
"A"



"B"

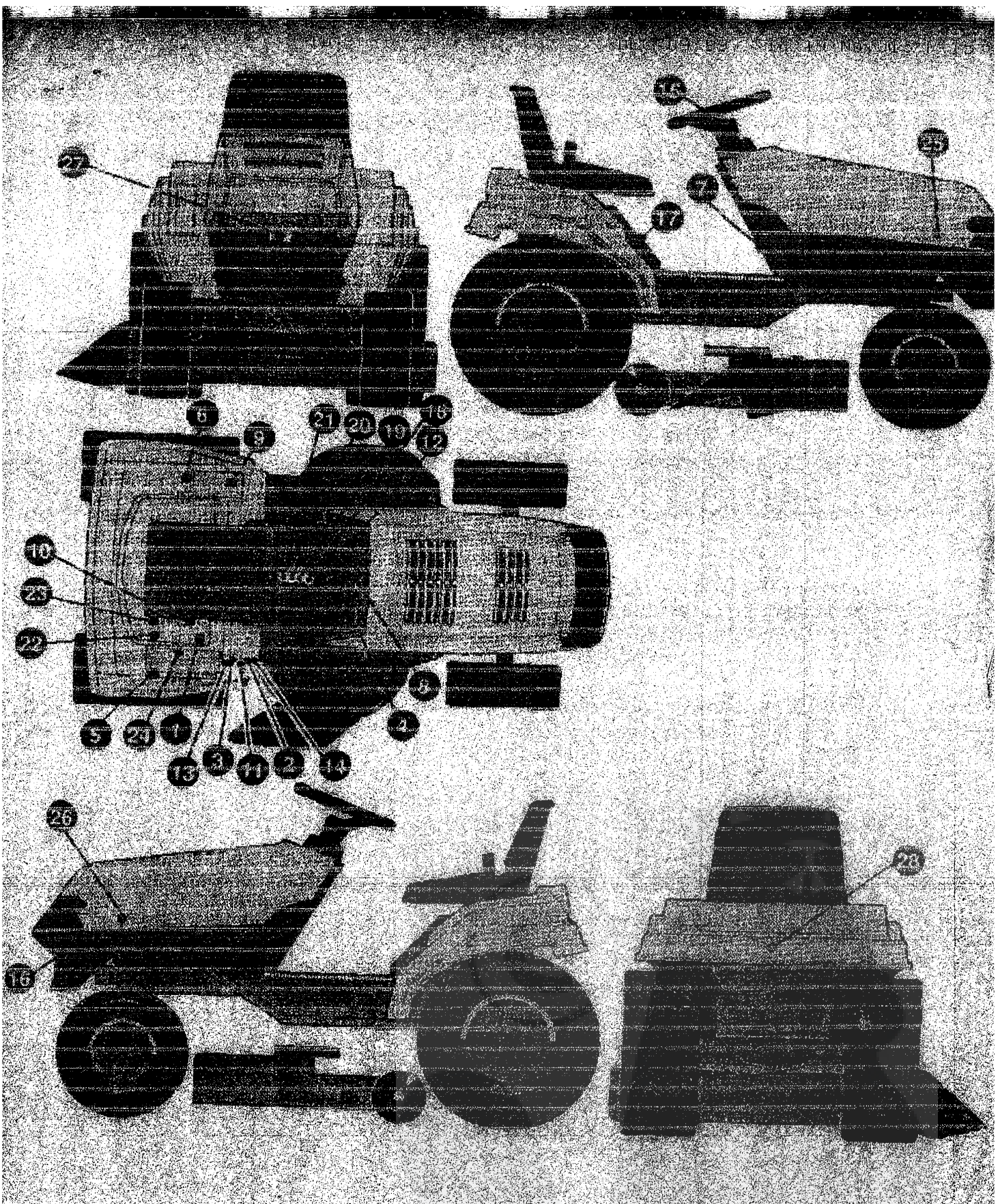


"C"



"D"

TIRE SIZE	"A"	"B"	"C"	"D"
11 X 4.00 - 5	42295	319679		
13 X 5.00 - 6	41060	319680		
15 X 6.00 - 6	39830	316702	501140	313952
16 X 6.50 - 8	41081	319682		314639
18 X 8.50 - 8	319683	317400		
18 X 9.50 - 8	41108	316701		313950
20 X 8.00 - 8	319685	319684	57164	314584
20 X 10.00 - 8	58276	319685		313654
20 X 10.00 - 10	55893	319587		
23 X 9.50 - 12	53655	319690	319689	314370



322076A

NOMA OUTDOOR PRODUCTS <small>27th AMERICAN DR. B.C. BOX 7000 JACKSON, MISS.</small>	
DECAL LAYOUT C 1014940 (019931)	322076 (1,3)

QTY	PNL#	Description	QTY
1	308828	DECAL EXPORT LWA1000B	1
2	305775	DECAL CAUTION TRIANGLE EUROPE	1
3	308052	DECAL DANGER FRENCH	1
4	307800	DECAL DASH RH ISO CH. HD. LG. SW	1
5	307815	DECAL SHIFT INDICATOR EXPORT	1
6	307929	DECAL PTO EXPORT	1
7	309015	DECAL PARK BRAKE EXPORT	1
8	309573	DECAL DASH CHG. OIL FUEL ALL SYS	1
9	310435	DECAL HEIGHT OF CUT EXPORT	1
10	310559	DECAL FRENCH SAFETY CERT	1
11	311070	DECAL DANGER ENGLISH	1
12	311098	DECAL DASH LH ISO	1
13	311070	DECAL DANGER GERMAN	1
14	311728	DECAL DANGER DUTCH	1
15	311730	DECAL GUNNONT CENT. STEER WHEEL	1
16	311731	DECAL WHEEL & STEER HUSQ. BUM	1
17	311071	DECAL LAWN TRACTOR SEAT BUMP	1
18	311973	DECAL INSTR. CON DUTCH	1
19	311878	DECAL INSTRUCTION CONSOLE TOP ENGLISH	1
20	311877	DECAL INSTR. CONSOLE TOP FR	1
21	313000	DECAL INSTR. CONSOLE TOP GER	1
22		DECAL PATENT PENDING AWS	1
23		REFERENCE ONLY	1
24	322172	DECAL GEAR SHIFT & SPEED ERG	1
25	322173	DECAL HOOD HUSQ. RH	1
26	322174	DECAL HOOD HUSQ. LH	1
27	322175	DECAL SPOILER FRONT HUSQ.	1
28	322175	DECAL FENDER REAR HOOD HUSQ. REAR	1

*328106 HUSQAL/APAN DECK KIT