

REPAIR PARTS MANUAL

40" - 12.5 H.P. LAWN TRACTOR

MODEL D3554-080

ONE YEAR LIMITED WARRANTY

For one (1) year from date of purchase by the first consumer for residential use (thirty (30) days commercial use), NOMA Outdoor Products Incorporated warrants that it will replace free of charge, including labor, any original part of any NOMA Outdoor Products Incorporated product found to be defective by any authorized Service Dealer or the factory, except the battery which is warranted for ninety (90) days from date of purchase.

This warranty does not cover engine, transmission, transaxle or differential (these items are covered by their manufacturer's own warranty). This warranty does not cover parts that have failed due to normal wear or parts that have failed subject to misuse or abuse. Transportation of the unit or part to and from an authorized Service Dealer or factory is the responsibility of the owner.

A step by step explanation as to what procedure should be followed for this warranty is:

1. If a part becomes defective, contact the store where the unit was purchased for the name and address of the authorized Service Dealer nearest to you.
2. If you cannot locate an authorized Service Dealer, write Service Department of NOMA Outdoor Products Incorporated for the name and address of the authorized Service Dealer in your area or call the Service Department at 1-901-422-1690.
3. Return the defective product, along with proof of purchase to such authorized Service Dealer for replacement of any defective part where covered by this warranty.

There is no other express warranty. Implied warranties, including those of merchantability and fitness for a particular purpose are limited to one (1) year from date of purchase. Liability for incidental or consequential damages are excluded.

Some states do not allow limitations on how long an implied warranty lasts, so the above limitation may not apply to you. Some states do not allow the exclusion of incidental or consequential damages, so the above exclusion may not apply to you. This warranty gives you specific legal rights, and you may have other rights which vary from state to state.

NOMA Outdoor Products Incorporated

Caller 8000

Jackson, TN 38308-8000

UNIT PARTS AND SERVICE

Fill in and mail the registration card packed with the unit. For service other than covered in this manual, contact an authorized service dealer. A nationwide parts and service organization has been established to provide locally available parts and service. A list of authorized parts distributors has been included in this manual. When ordering repair parts, always give the following information: 1. The Part Name; 2. The Part Number; 3. The Quantity desired; 4. The Full (eight digit) Model Number of the unit. The model number will be found on a plate attached to the unit.

Look for this symbol.



It means - **ATTENTION! BECOME ALERT! A HAZARD TO OPERATOR, BYSTANDER, PROPERTY OR EQUIPMENT MAY EXIST.**

NOMA Outdoor Products Incorporated

Caller 8000

Jackson, TN 38308-8000

Part No. 329688A

5/93



SAFETY RULES

THESE INSTRUCTIONS ARE FOR YOUR PROTECTION. PLEASE READ THEM CAREFULLY.



IMPORTANT

THIS CUTTING MACHINE IS CAPABLE OF AMPUTATING HANDS AND FEET AND THROWING OBJECTS. FAILURE TO OBSERVE THE FOLLOWING SAFETY INSTRUCTIONS COULD RESULT IN SERIOUS INJURY OR DEATH.

I. GENERAL OPERATION:

- Know controls and how to stop quickly.
- Read, understand, and follow all instructions in the manual and on the machine before starting.
- Only allow responsible adults, who are familiar with instructions, to operate the machine.
- Wear safety glasses or eye shields when assembling or operating the machine.
- Do not operate machine when barefooted. Always wear substantial footwear, preferably steel-toed shoes.
- Do not wear loose fitting clothing that could get caught in moving parts.
- Clear the area of objects such as rocks, toys, wire, etc., which could be picked up and thrown by the blade(s).
- Be sure the area is clear of other people before mowing. Stop machine if anyone enters the area.
- Never carry passengers.
- Do not mow in reverse unless absolutely necessary. Always look down and behind before and while backing.
- Be aware of the mower discharge direction and do not point it at anyone. Do not operate the mower without either the entire grass catcher or the guard in place.
- Slow down before turning.
- Never leave a running machine unattended. Always turn off blades, set parking brake, stop engine, and remove keys before dismounting.
- Turn off blade(s) when not mowing.
- Stop engine before removing grass catcher or unclogging chute.
- Mow only in daylight or good artificial light.
- Do not operate the machine while under the influence of alcohol or drugs.
- Watch for traffic when operating near or crossing roadways.
- Use care when mowing around a fixed object to prevent the blade(s) from striking it. Never deliberately run over any foreign object.
- Use extra care when loading or unloading the machine into a trailer or truck.
- Use care when pulling loads or using heavy equipment.
 - a. Use only approved drawbar hitch points.
 - b. Limit loads to those that you can safely control.
 - c. Do not turn sharply. Use care when backing.
 - d. Use counterweight(s), wheel weight or tire chains when suggested in attachment(s) instructions.

II. SLOPE OPERATION:

Slopes are a major factor related to loss-of-control and tip-over accidents, which can result in severe injury or death. *All slopes require extra caution.* If you cannot back up the slope or if you feel uneasy on it, do not mow it.

DO

- Mow up and down slopes, not across.
- Remove obstacles such as rocks, tree limbs, etc.
- Watch for holes, ruts, or bumps. Uneven terrain could overturn the machine. *Tall grass can hide obstacles.*
- Use slow speed. Choose a low gear so that you will not have to stop or shift while on the slope.
- Follow the manufacturer's recommendations for wheel weights or counterweights to improve stability.
- Use extra care with grass catchers or other attachments. These can change the stability of the machine.
- Keep all movement on the slopes *slow and gradual*. Do not make sudden changes in speed or direction.
- Avoid starting or stopping on a slope. If tires lose traction, turn off the blade(s) and proceed slowly *straight* down the slope.

DO NOT

- Do not turn on slopes unless necessary, and then slowly and gradually downhill, if possible.
- Do not mow near drop-offs, ditches or embankments. The

mower could suddenly turn over if a wheel is over the edge of a cliff or ditch, or if an edge caves in.

- Do not mow on wet grass. Reduced traction could cause sliding.
- Do not try to stabilize the machine by putting your foot on the ground.
- Do not use grass catcher on steep slopes.

III. CHILDREN:

Tragic accidents can occur if the operator is not alert to the presence of children. Children are often attracted to the machine and the mowing activity. *Never* assume that children will remain where you last saw them.

- Keep children out of the mowing area and under the watchful care of another responsible adult.
- Be alert and turn machine off if children enter the area.
- Before and when backing, look behind and down for small children.
- Never carry children. They may fall off and be seriously injured or interfere with safe machine operation.
- Never allow children to operate the machine.
- Use extra care when approaching blind corners, shrubs, trees, or other objects that may obscure vision.

IV. SERVICE:

- Use extra care in handling gasoline and other fuels. They are flammable and vapors are explosive.
 - a. Use only an approved container.
 - b. Never remove gas cap or add fuel with the engine running. Allow engine to cool before refueling. Do not smoke.
 - c. Never refuel the machine indoors.
 - d. Never store the machine or fuel container inside where there is an open flame, such as in a water heater.
- Check fuel supply before each use allowing space for expansion as the heat of the engine and/or sun can cause gasoline to expand and overflow the tank.
- Use extra care when handling battery acid. Acid contact with skin may cause severe burns. Eye contact may cause blindness.
- Use extra care when servicing the battery. Explosive gas is produced in the battery. Do not service the battery while smoking or near an open spark or flame. This may cause the battery to explode causing serious injury.
- Never run a machine inside a closed area. Exhaust fumes contain CARBON MONOXIDE, an ODORLESS and DEADLY GAS.
- Keep nuts and bolts, especially blade attachment bolts, tight and keep equipment in good condition.
- Never tamper with safety devices. Check their operation regularly.
- Do not change the engine governor settings or overspeed engine.
- Reduce fire hazards. Keep machine free of grass, leaves, or other debris build-up. Clean up oil or fuel spillage. Allow machine to cool before storing.
- Stop and inspect the equipment if you strike an object. Repair, if necessary, before restarting.
- Never make adjustments or repairs with the engine running.
- Grass catcher components are subject to wear, damage, and deterioration, which could expose moving parts or allow objects to be thrown. Frequently check components and replace with manufacturer's recommended parts, when necessary.
- Mower blade(s) are sharp and can cut. Wrap the blade(s) or wear gloves, and use extra caution when servicing them.
- Check brake operation frequently. Adjust and service as required.



LOOK FOR THIS SYMBOL TO POINT OUT IMPORTANT SAFETY PRECAUTIONS. IT MEANS-- ATTENTION!!! BECOME ALERT!!! YOUR SAFETY IS INVOLVED.

OWNER'S INFORMATION

Record the following information about your unit so that you will be able to provide it in case of loss or theft.

MODEL NUMBER: - (Enter complete 8 digit number from model plate on unit)
PURCHASE DATE: ___ / ___ / ___ CODE NO.: _____ SERIAL NO.: _____
DEALER'S NAME AND ADDRESS: _____
CITY: _____ STATE: _____ TELEPHONE: _____

CONTENTS OF SHIPPING CARTON

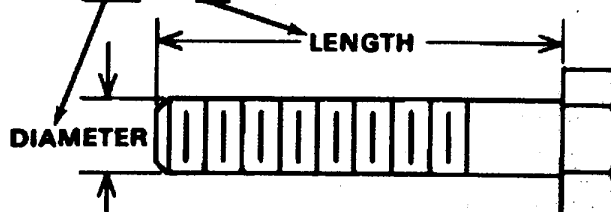
- 1 - Lawn Tractor with 40 inch Mower Deck
- 1 - Operator's Manual (English)
- 1 - Operator's Manual (French)
- 1 - Operator's Manual (German)
- 1 - Repair Parts Manual
- 1 - Engine Manual
- 1 - Steering Wheel (see Note)
- 1 - Seat (see Note)
- 1 - Bag of Assembly Parts Containing (see Note):
 - 4 - 5/16 x 3/4 inch Hex Head Screws
 - 4 - 5/16 inch Split Lockwashers
 - 4 - 11/32 inch Flatwashers
 - 1 - Steering Sleeve
 - 1 - Roll Pin

NOTE: Refer to page 28 (Customer Assembly Parts) for more detailed description.

TOOLS REQUIRED FOR ASSEMBLY

- 2 - 7/16 inch Wrenches (or adjustable wrench)
- 1 - 1/2 inch Wrench (or adjustable wrench)
- 1 - Small Phillips Screwdriver with a 1/4 inch shank
- 1 - Hammer

HOW TO MEASURE SCREW SIZE (5/16 x 1 1/2 INCH)



DANGER



This lawn tractor can be dangerous if carelessly used.

Read your Operator's Manual thoroughly before operating your lawn tractor.

Always wear safety glasses or eye shields while assembling or operating your lawn tractor.

DO NOT carry passengers at any time.

Keep your hands, feet, hair and loose clothing away from the discharge area, the underside of the mower deck or any moving parts while the engine is running.

DO NOT allow children or young teenagers to operate or be near your lawn tractor while it is operating.

ALWAYS GIVE THE FOLLOWING INFORMATION WHEN ORDERING REPAIR PARTS:

1. The PART NUMBER; 2. The PART NAME; 3. QUANTITY DESIRED; 4. The MODEL NUMBER (As shown on Model Plate).

SEND PART ORDERS AS PER INSTRUCTIONS ON THE FRONT PAGE.

DO NOT USE KEY NUMBERS WHEN ORDERING REPAIR PARTS, ALWAYS USE PART NUMBERS.

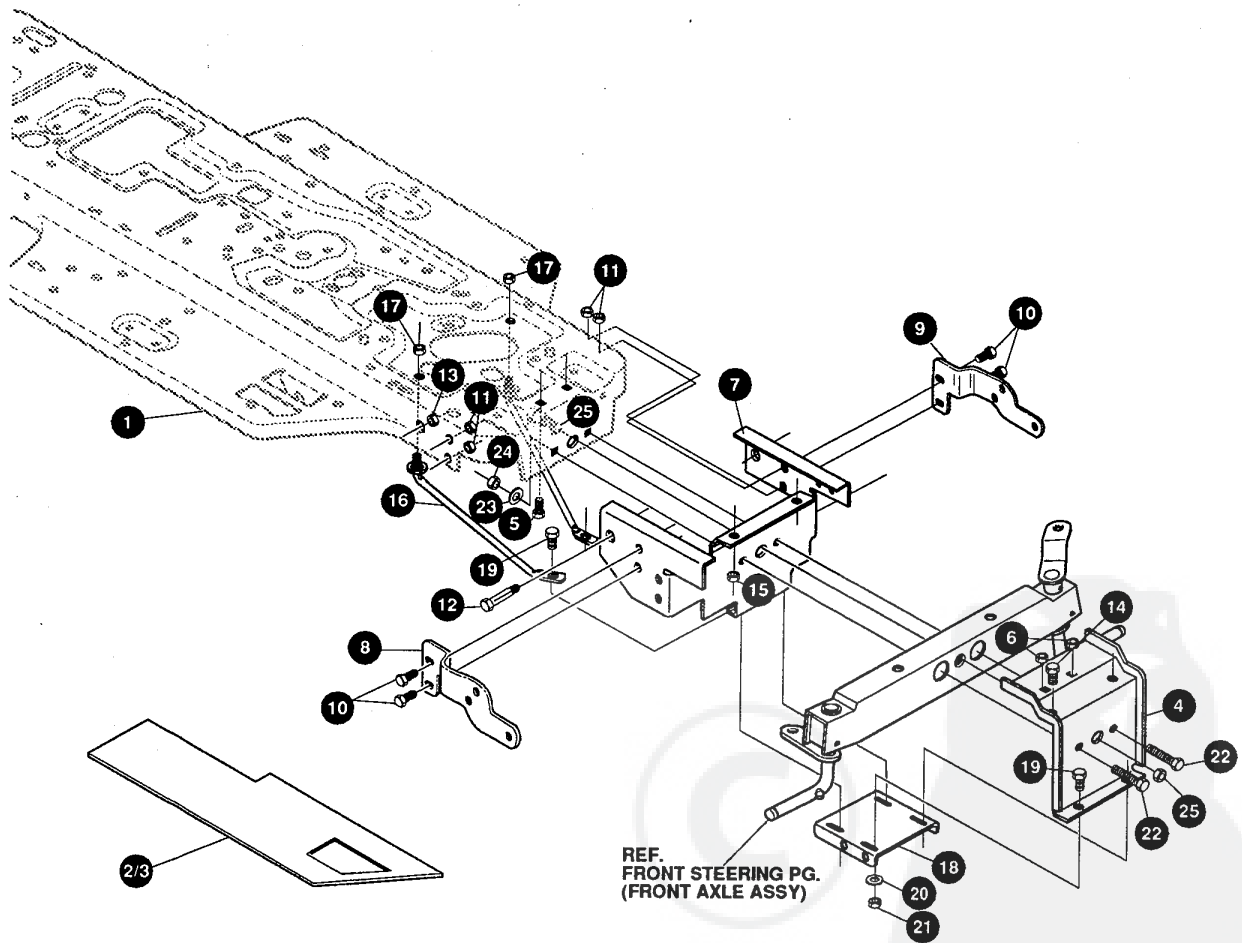
All replacement parts will be supplied in current production colors or in a neutral color.

A handling fee is applicable to small parts orders.

YOUR UNIT IS RIGHT HAND (RH) OR LEFT HAND (LH) AS YOU STAND BEHIND IT.

40" LAWN TRACTOR MODEL D3554-080

CHASSIS & HOOD ASSEMBLY



NOTE: ALWAYS USE ORIGINAL EQUIPMENT PARTS. Use of service/replacement parts other than original equipment parts may void your warranty.

ALL UNNUMBERED ITEMS ARE INTERCHANGEABLE WITH OPPOSITE SIDE

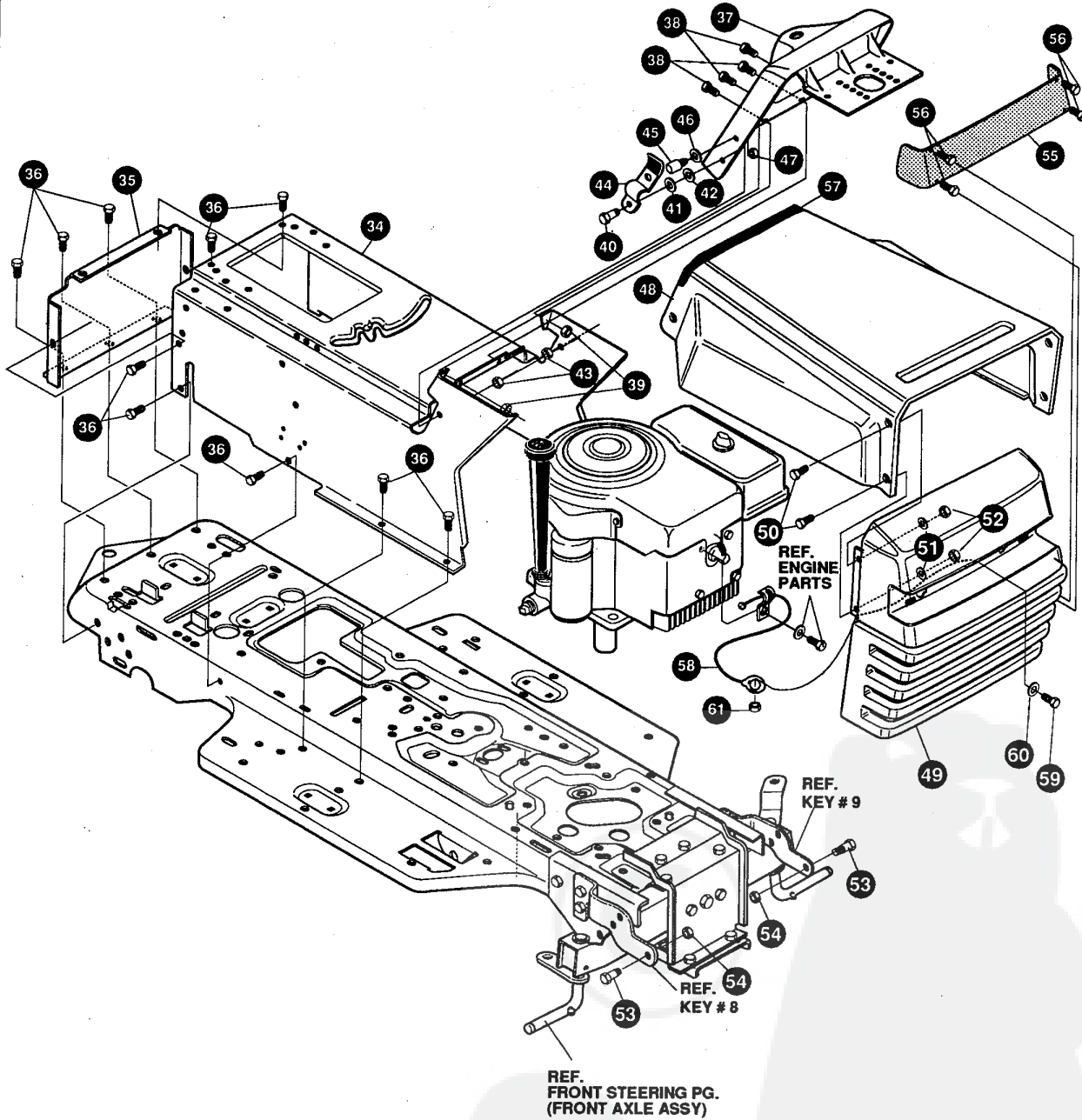
329327A

40" LAWN TRACTOR MODEL D3554-080

KEY#	PART#	DESCRIPTION	QTY.
1.	321997-860	MP FRAME,MAIN SF RIDER	1
2.	302917	FOOT PAD, LH SF WIDE	1
3.	302916	FOOT PAD, RH SF WIDE	1
4.	324815-860	BRACKET, SF FRNT XL UP SUPP	1
5.	57081	BOLT, 3/8-16X.75 CARR GR5Z	2
6.	1499	NUT, 3/8-16 REGHXCTRLK Z	2
7.	324816-860	BRACKET, SF FRNT XL LO SUPP	1
8.	325746-853	MP BRACKET GRILLE RH G17 EXTSF	1
9.	325747	MP BRACKET GRILLE LH G17 EXTSF	1
10.	328154	SCREW, 5/16-18X1.00 HHC	4
11.	55273	NUT, 5/16-18HXWDFLLK	4
12.	123567	SCREW, 7/16-20X1.00 HHC GR2	2
13.	1282	NUT, 7/16-20 WDFLLK	2
14.	122007	SCREW, 5/16-18X.75 HHC	2
15.	1498	NUT, 5/16-18 REGHEXCTRLK	2
16.	326297	ROD, SUPPORT FRAME SF	2
17.	1499	NUT, 3/8-16 REGHXCTRLK	2
18.	326296-853	MW BRACKET FRONT HANGER	1
19.	180077	SCREW, 5/16-18X.75 HHC GR5	4
20.	120393	WASHER, FLAT .344X.69X.065	4
21.	1498	NUT, 5/16-18 REGHEXCTRLK	4
22.	122201	SCREW, 3/8-16X2.75 HHC GR2	2
23.	2483	WASHER, .39IDX1.25DX.07 BELLVIL	2
24.	1499	NUT, 3/8-16 REGEHXCTRLK	2
25.	29616	BOLT, .625X1.890HHSH 1/2-20	1
26.	274654	NUT, 1/2-20 REGHXCTRLK	1
27.	329688	PARTS MANUAL	1
28.	329058	OPERATOR'S MANUAL (ENGLISH)	1
29.	329059	OPERATOR'S MANUAL (FRENCH)	1
30.	329060	OPERATOR'S MANUAL (GERMAN)	1
31.	323195	AIR ASSIST MANUAL	1
32.	327707	GRASS CATCHER MANUAL	1

40" LAWN TRACTOR MODEL D3554-080

CHASSIS & HOOD ASSEMBLY



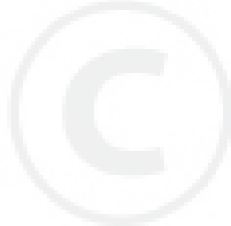
NOTE: ALWAYS USE ORIGINAL EQUIPMENT PARTS. Use of service/replacement parts other than original equipment parts may void your warranty.

ALL UNNUMBERED ITEMS ARE INTERCHANGEABLE WITH OPPOSITE SIDE

329327A

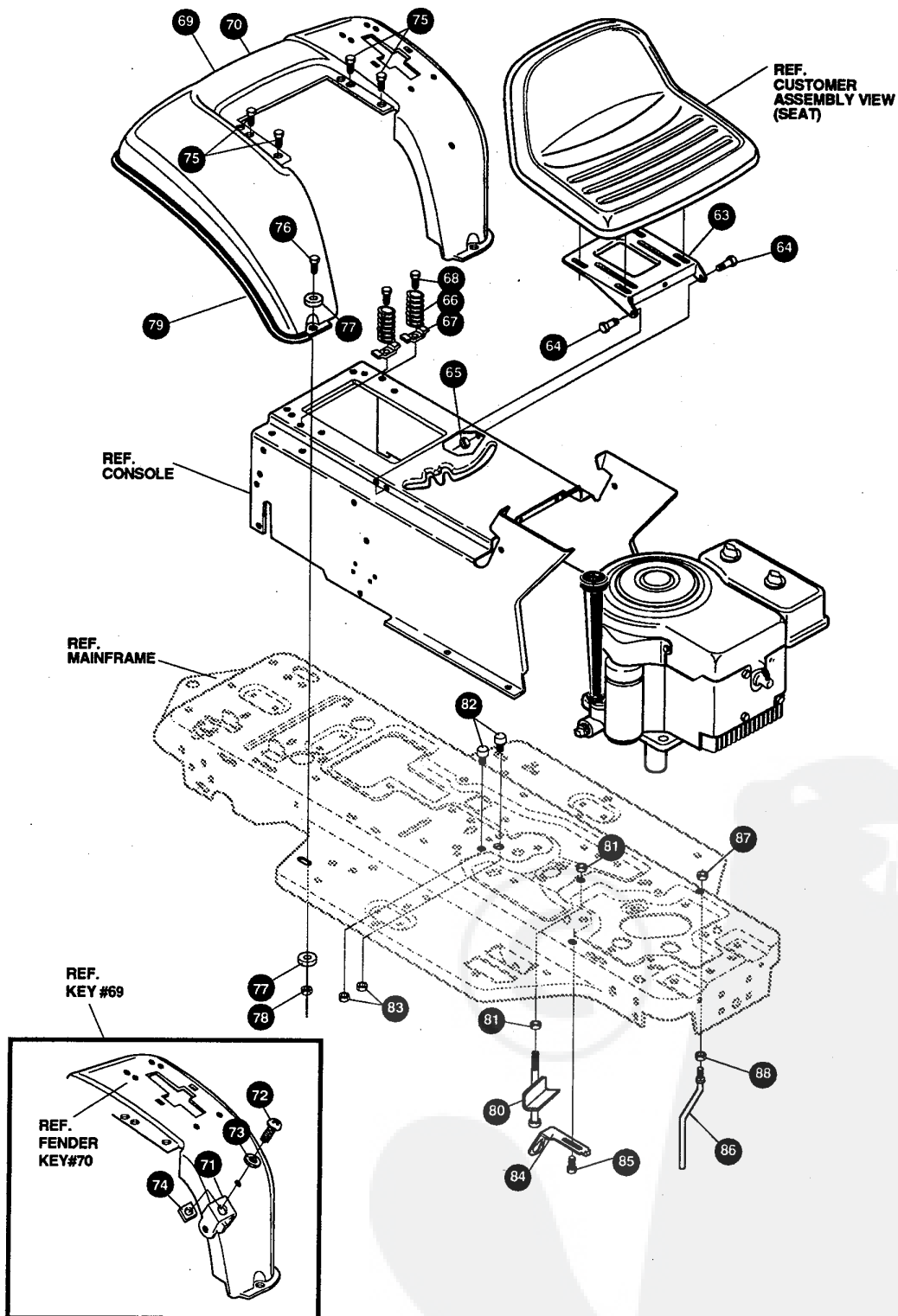
40" LAWN TRACTOR MODEL D3554-080

KEY#	PART#	DESCRIPTION	QTY.
34.	314491-860	MP CONSOLE, SF DYNA FNDR SHFT	1
35.	56235-860	MP CONSOLE, REAR COVER	1
36.	995346	SCREW, 1/4-20X.50 WAHHATP	15
37.	320466-860	MP DASH, SF NOMA DYNA STYLING	1
38.	995338	SCREW, 1/4-20X.63 HHWATAP	6
39.	50352	NUT, 1/4-20 WDFLLK TOPLOCK	4
40.	8482	BOLT, .375X.156 HSH 5/16-18	2
41.	120394	WASHER, FLAT .406X.81X.065	2
42.	120393	WASHER, FLAT .344X.69X.065	2
43.	1498	NUT, 5/16-18 REGHEXCTRLK	2
44.	57159	LATCH, .94WDX.047 ASSY HOOD	1
45.	53446	PIN, 5/16-18 HOOD LATCH GR2	2
46.	138538	WASHER, REGINTLK .320X.61X.03	2
47.	45174	NUT, 5/16-18 HEXWDFFLK WHIZ	2
48.	314538-860	HOOD, SF	1
49.	325401	GRILLE G17	1
50.	274672	SCREW, 1/4-20X.63 WAHHC GR2	4
51.	120392	WASHER, FLAT .281X.63X.065	4
52.	1502	NUT, 1/4-20 REGHEXCTRLK	4
53.	36149	BOLT, .375X.500 HSH 5/16-18	2
54.	1498	NUT, 5/16-18 REGHEXCTRLK	2
55.	302333	LENS SMOKED W/TAB NO LOGO	1
56.	57796	SCREW, #6X.50 PLASTITE/HI-LO	4
57.	47453	EDGING, WIDE BLK	25"
58.	311094	LANYARD, HOOD	1
59.	121887	SCREW, 1/4-20X.75 HHC	1
60.	120392	WASHER, FLAT.281X.63X.065	1
61.	1502	NUT, 1/4-20 REGHEXCTRLK	1



40" LAWN TRACTOR MODEL D3554-080

CHASSIS & HOOD ASSEMBLY



NOTE: ALWAYS USE ORIGINAL EQUIPMENT PARTS. Use of service/replacement parts other than original equipment parts may void your warranty.

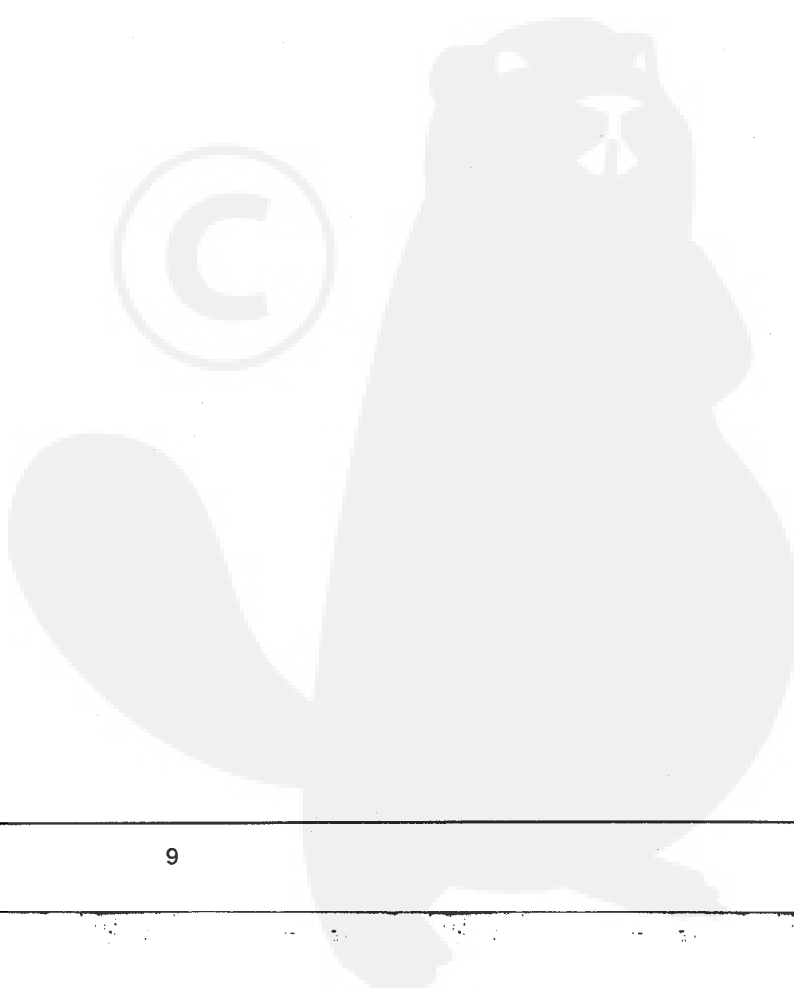
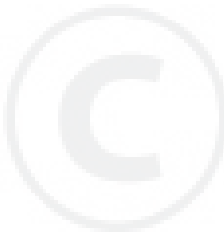
ALL UNNUMBERED ITEMS ARE INTERCHANGEABLE WITH OPPOSITE SIDE

329327A

40" LAWN TRACTOR MODEL D3554-080

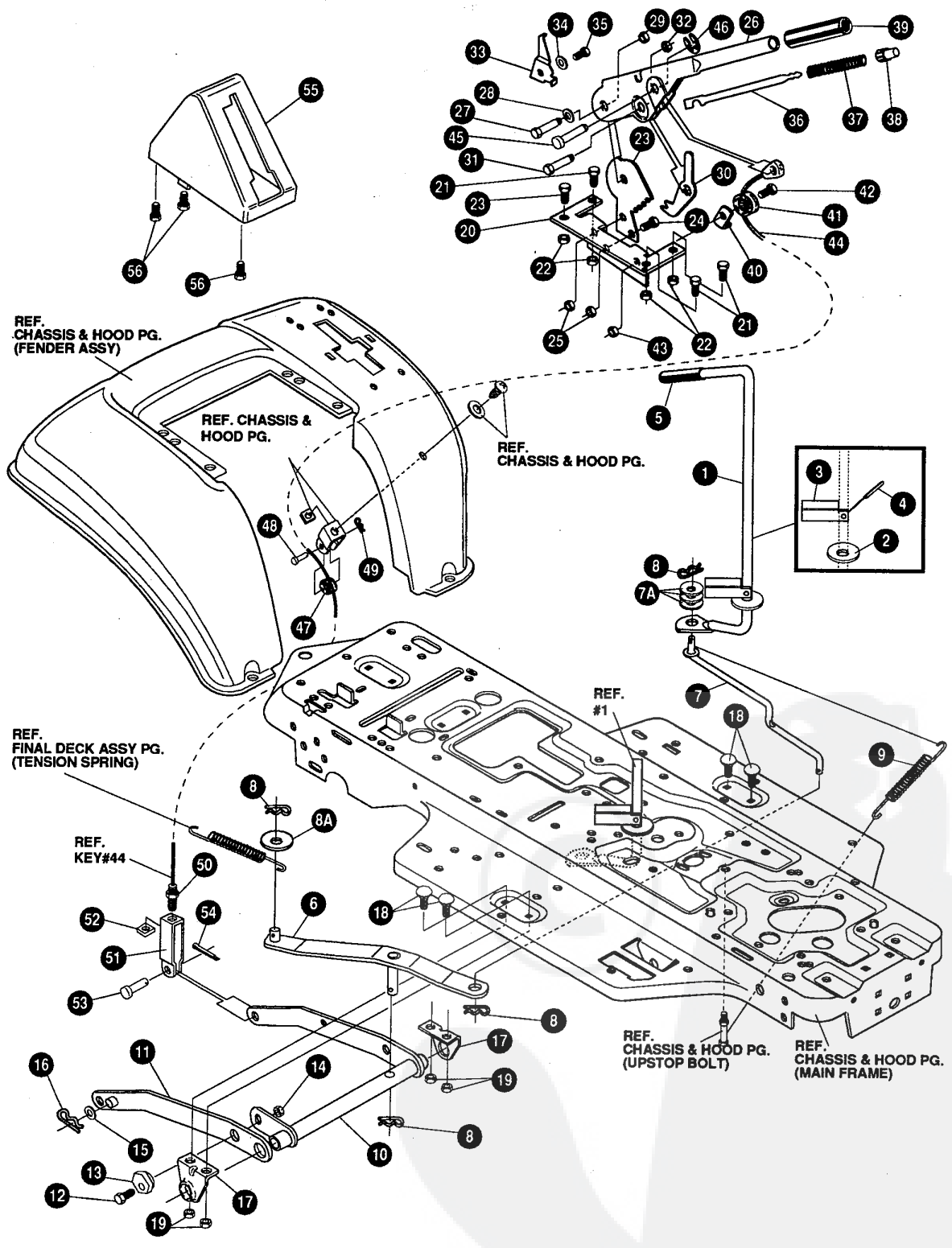
KEY#	PART#	DESCRIPTION	QTY.
63.	58367-853	MP PLATE, SEAT F5 SF,LF	1
64.	20507	BOLT, .437X.156 HSH 5/16-18	2
65.	1498	NUT, 5/16-18 REGHEXCTRLK	2
66.	56220	SPRING, 1.43X2.38X.162 COM SEAT	2
67.	300284	ML CLAMP SPRING 1.17 ID	2
68.	995346	SCREW, 1/4-20X.50 WAHTAP	2
69.	^	MP FENDER F-5 SF	1
70.	321157-860	MP FENDER F-5 SF S.O.C./L.O.F.	1
71.	300298	ML CLEVIS	1
72.	439455	SCREW, 5/16-18X.56 PHPNMA	1
73.	301551	WASHER, .344IDX1.50DX.09	1
74.	120373	NUT, 5/16-18 SQ.	1
75.	995346	SCREW, 1/4-20X.50 WAHTAP	4
76.	122007	SCREW, 5/16-18X.75 HHC	2
77.	446363	WASHER .375X.88X.082	4
78.	1498	NUT, 5/16-18 REGHEXCTRLK	2
79.	55023	TRIM, STRIP, BLACK—SMALL. W/ADH	75"
80.	327894	ASM. UPSTOP, PLATEW/HOSE	1
81.	1499	NUT, 3/8-16 REGHXCTRLK	2
82.	53446	PIN, 5/16-18 HOOD LATCH	2
83.	271184	NUT, 5/16-18 HEXKEPS	2
84.	302610-853	MP BRACKET, SWITCH MOUNTING	1
85.	995346	SCREW, 1/4-20X.50 WAHTAP	1
86.	50653	GUIDE, BELT	1
87.	41529	NUT, 3/8-16 HXCTRLKJAM	1
88.	271190	NUT, 3/8-16 HEXKEPS	1

^ ORDER INDIVIDUAL PARTS.



40" LAWN TRACTOR MODEL D3554-080

MOWER SUSPENSION



NOTE: ALWAYS USE ORIGINAL EQUIPMENT PARTS. Use of service/replacement parts other than original equipment parts may void your warranty.

ALL UNNUMBERED ITEMS ARE INTERCHANGEABLE WITH OPPOSITE SIDE

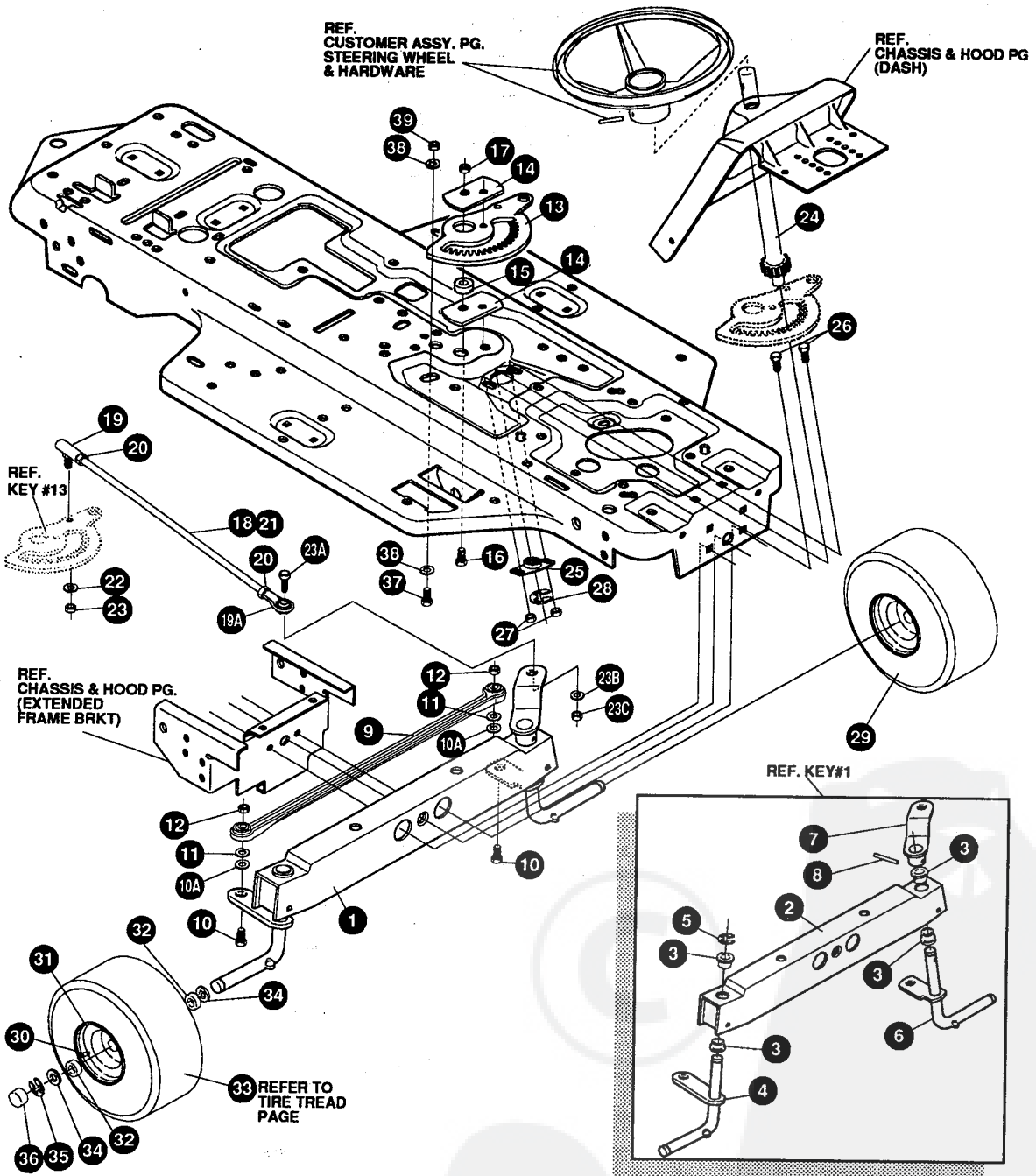
324784B

40" LAWN TRACTOR MODEL D3554-080

KEY#	PART#	DESCRIPTION	QTY.
1	3255911	HANDLE, RH PTO NOMA DASH SF	1
2	22265	WASHER, FLAT .515X1.38X.119PL	1
3	305225	ML STOP, PTO ENGAGEMENT	1
4	326386	PIN, SPRING. 187DIA X1.00LG HVPL	1
5	46478	GRIP, HAND .50ID 3.37 LG BLK	1
6	325587-853	WS STRAP ASSY, PTO BELCRANK	1
7	325590	ROD, BELCRANK LINK	1
7A	274517	FLAT WASHER .406X.73X.063	3
8	8260	HAIR PIN	4
8A	25210	FLAT WASHER, .392X1.25X.09	1
9	325802	SPRING, .63X7.75X.0897 TENSION	1
10	326114-853	WP LIFT ASSY, LH	1
11	325130-853	WP LIFT ASSY, RH	1
12	180079	SCREW, 5/16 18X1.00 HHC GR5Z	1
13	58247	NUT, ADJUST	1
14	1498	NUT, 5/16-18 REGHEXCTRLK	1
15	417098	WASHER, FLAT .5331X1.06X.063Z	2
16	8260	PIN, HAIR .091 DIA X1.66LG	2
17	325495-853	MP BRACKET, REAR HANG SUSP	2
18	126211	BOLT, 5/16-18X.63 CARR GR2Z	4
19	1498	NUT, 5/16-18 REGHEXCTRLK	4
20	313926	MF BRACKET, HEIGHT ADJUST	1
21	180077	SCREW, 5/16-18X .75 HHC GR5Z	4
22	1498	NUT, 5/16-18 REGHEXCTRLK	4
23	301238	QUADRANT, HEIGHT ADJUST	1
24	180077	SCREW, 5/16-18X .75 HHC GR5Z	2
25	1498	NUT, 5/16-18 REGHEXCTRLK	2
26	322292-853	MP HANDLE, LIFT SHORT(30" S.F.)	1
27	300171	BOLT, .500X .270 HSSH 5/16-18Z	1
28	996418	WASHER, FLAT .506X .75X.024Z	1
29	44108	NUT, 5/16-18 HWDFLCTRLK	1
30	301239	HF PAWL, SQUARE HTR955	1
31	300171	BOLT, .500X .270 HSSH 5/16-18Z	1
32	44108	NUT, 5/16-18 HWDFLCTRLK	1
33	9435	ML POINTER	1
34	138479	WASHER, EXLK .195X.41X.03Z	1
35	35287	SCREW, #8-32X .38 HHWATAPGR2	1
36	303027	ROD, ACTUATOR-SHORT	1
37	58326	SPRING, HEIGHT ADJUST	1
38	58325	KNOB, HEIGHT ADJ PUSH BUTTON	1
39	58329	GRIP, .750 OD W/ HOLE BLACK	1
40	9149	ML CABLE RETAINING BRACKET	1
41	48306	PULLEY, POWDER METAL	1
42	58336	BOLT, .375X .375 HSSH 1/4-20	1
43	1502	NUT, 1/4-20 REGHEXCTRLK	1
44	321430	CABLE, LIFT 21.50- 30" S.F.	1
45	300310	PIN, CLEVIS .310 DIA + .475 LG ZPL	1
46	300311	RING, RET E .31X .25TRUX5133-31	1
47	48306	PULLEY, POWDER METAL	1
48	300317	PIN, CLEVIS .375 DIA. X .81 LG	1
49	8260	PIN, HAIR .091 DIA. X 1.66 LG	1
50	120375	NUT, 1/4-20 REGHEX	1
51	9405	ML CLEVIS, LIFT CABLE	1
52	120372	NUT, 1/4-20 REGSQ	1
53	39522	PIN, CLEVIS .312 X .812	1
54	121222	PIN, COTTER .090/.086X.75LG	1
55	300335	LIFT COVER-39" F5	1
56	300340	SCREW, #10 X .75 HHPLAST BLK	3

40" LAWN TRACTOR MODEL D3554-080

STEERING ASSEMBLY (FRONT)



NOTE: ALWAYS USE ORIGINAL EQUIPMENT PARTS. Use of service/replacement parts other than original equipment parts may void your warranty.

ALL UNNUMBERED ITEMS ARE INTERCHANGEABLE WITH OPPOSITE SIDE

324817C

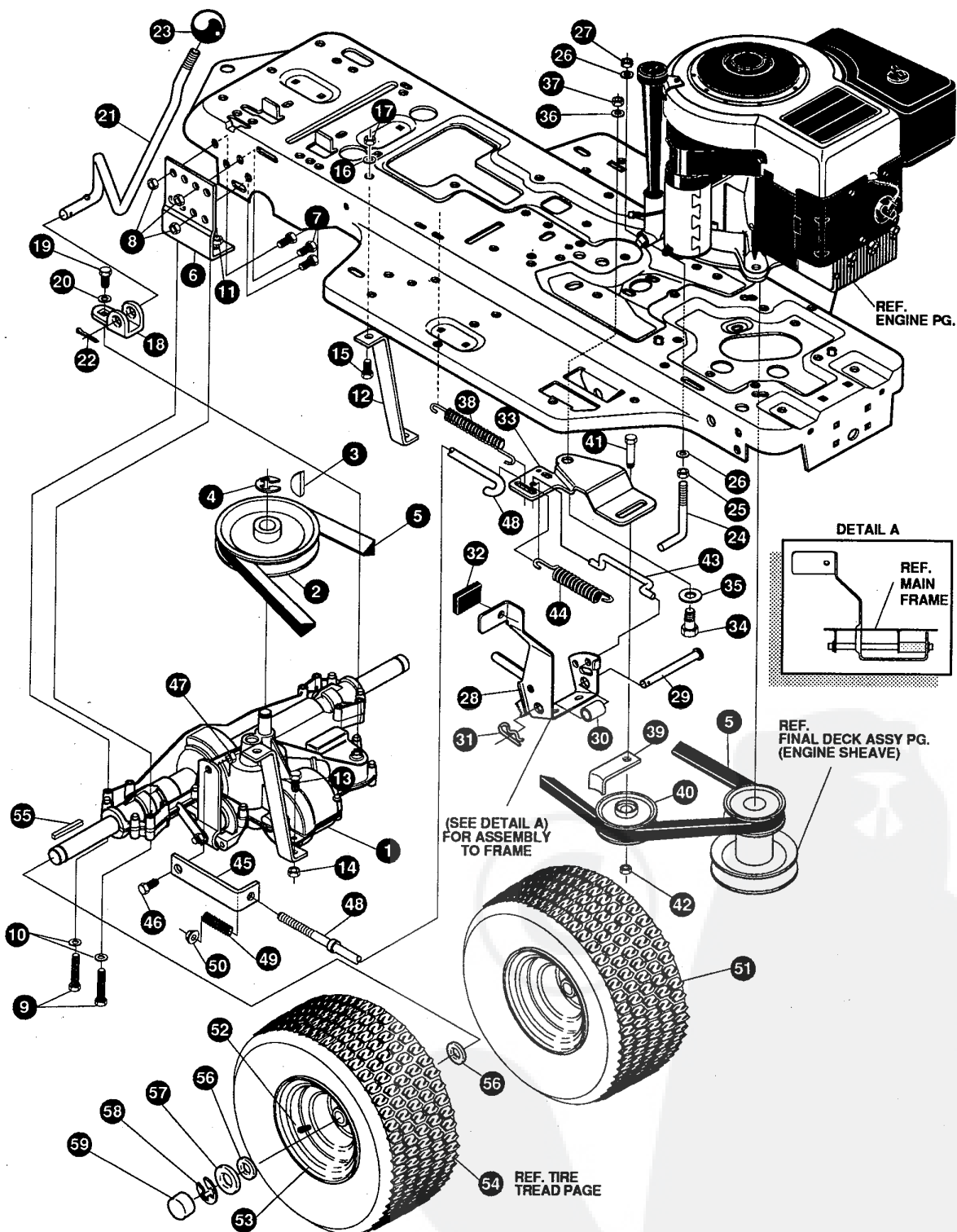
40" LAWN TRACTOR MODEL D3554-080

KEY#	PART#	DESCRIPTION	QTY.
1.	^	FRONT AXLE ASSEMBLY SF	1
2.	312280	AXLE FRONT	1
3.	50546	BEARING FLANGE	4
4.	310368	SPINDLE,RH	1
5.	36625	RING,RETEX	1
6.	310367	SPINDLE,LH	1
7.	327620-853	ARM,ASSY, SF 4WS FRT. STEER	1
8.	454565	PIN,SPRING	1
9.	302688	TIE ROD	1
10.	120918	SCREW, 3/8-16X1.50 HHC	2
10A.	327611	WASHER, FLAT .391 x 1.00 x .194	2
11.	120382	WASHER, .393X.68X.10 REGSPTLK	2
12.	1499	NUT, 3/8-16 REGHCTRLK	2
13.	324752	SECTOR GEAR	1
14.	327833	PLATE, SECTOR	2
15.	324753	BUSHING, SECTOR	1
16.	180124	SCREW, 3/8-16X1.25 GR5	1
17.	1499	NUT 3/8-16 REGHX CTRLK	1
18.	326432	DRAG LINK ASSEMBLY	1
19.	57158	BALL JOINT	1
19A	304260	BALL JOINT	1
20.	124925	NUT, 3/8-24 REGHEXJAM	2
21.	325228	DRAG LINK	1
22.	120382	WASHER, EGSPTLK	1
23.	120369	NUT, 3/8-24 REGHEX	1
23A	122145	SCREW, 3/8-16x1.25 HHC	1
23B	120382	WASHER, EGSPTLK	1
23C	120377	NUT, 3/8-16 REGHX	1
24.	327834	STEERING SHAFT	1
25.	325692	BRNG FLANGE	1
26.	326505	SCR 1/4-20X.75	2
27.	46931	NUT 1/4-20 WDFL MAC LOCK	2
28.	20864	RING,RETEX .39X.04TRU5133	1
29.	^	ASSEMBLY, TIRE & RIM	2
30.	24167	VALVE STEM	1
31.	39829	WHEEL W/BEARING	1
32.	314416	BEARING, 1.380DX.753ID FLANGE	2
33.		REFER TO TIRE TREAD PAGE	
34.	642	WASHER,FLAT .755X1.31X.075	4
35.	36625	RING,RETEX .57X.05	2
36.	40394	HUB CAP	2
37.	122145	SCREW, 3/8-16X1.25	1
38.	120394	WASHER, FLAT	2
39.	44374	NUT, 3/8-16 HXWDFLLK	1

^ ORDER INDIVIDUAL PARTS.

40" LAWN TRACTOR MODEL D3554-080

MOTION DRIVE ASSEMBLY



NOTE: ALWAYS USE ORIGINAL EQUIPMENT PARTS. Use of service/replacement parts other than original equipment parts may void your warranty.

ALL UNNUMBERED ITEMS ARE INTERCHANGEABLE WITH OPPOSITE SIDE

326632B

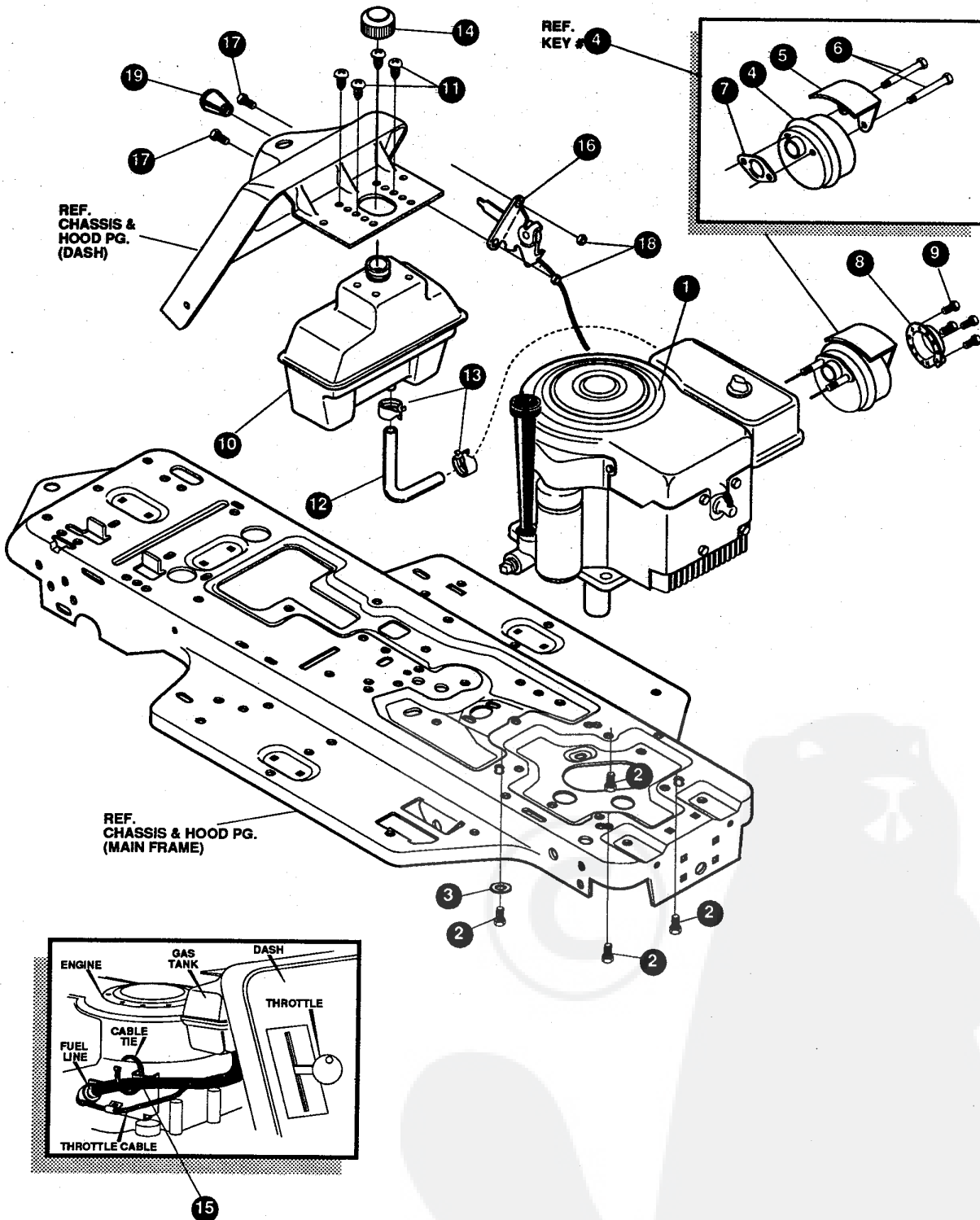
40" LAWN TRACTOR MODEL D3554-080

KEY#	PART#	DESCRIPTION	QTY.
1.	^	TRANSAXLE P-940-5SP SF FER	1
2.	302745	PULLEY, IDLER V4L 6.60	1
3.	3021	KEY, WDRF 606 .750X.187X.312	1
4.	22053	RING, RETEX .58X.035TRU5100-62	1
5.	310275	BELT, V 4L 82.50 SF DRIVE	1
6.	326615-853	MP BRACKET, TRANSAXLE 40,43 EXT.	2
7.	180075	SCREW, 5/16-18X .63 HHC	6
8.	1498	NUT, 5/16-18 REGHEXCTRLK	6
9.	180089	SCREW, 5/16-18X2.25 HHC	4
10.	120393	WASHER, FLAT .344X .69X.065	4
11.	1498	NUT, 5/16-18 REGHEXCTRLK	4
12.	323213	MF BRACKET, T/A TORQ. 915 S/F	1
13.	180087	SCREW, 5/16-18X2.00 HHC	1
14.	1498	NUT, 5/16-18 REGHEXCTRLK	1
15.	122017	SCREW, 5/16-18X1.00 HHC	1
16.	138485	WASHER, EXLK .320X.61X.03	1
17.	1498	NUT, 5/16-18 REGHEXCTRLK	1
18.	12616	MH BRACKET, SHIFT P920-3SP	1
19.	56255	SCREW, 1/4-28X .75 NYLHHC	1
20.	57157	WASHER, .750X.250 SP-TRANSAXLE	1
21.	329153	LEVER, SHIFT	1
22.	137185	PIN, COTTER .125 DIA X1.00LG	1
23.	55514	KNOB, ROUND 1.50 DIA BLACK	1
24.	49896	MF BELT GUIDE	1
25.	271184	NUT, 5/16-18 HEXKEPS	1
26.	120393	WASHER, FLAT .344X .69X.065	2
27.	1498	NUT, 5/16-18 REGHEXCTRLK	1
28.	302603-853	SF ASSY, BRAKE PEDAL S.F.	1
29.	319676	PIN, CLEVIS .5 DIA, 4.87LG, ZN PL	1
30.	302601	SPACER, SLEV .53 X .62X1.406	1
31.	56180	PIN, HAIR .091 DIA X1.62LG	1
32.	48761	PAD, CLUTCH/BRAKE PEDAL	1
33.	321969	MF IDLER ARM BRKT TRACTION SF	1
34.	41890	BOLT, .625X .218 HSSH 5/16-18Z	1
35.	4107	WASHER, FLAT .635X1.31X.07	1
36.	45602	WASHER, FLAT .333X .87X.119	1
37.	1498	NUT, 5/16-18 REGHEXCTRLK	1
38.	327867	SPRING, 3/4 ODX6.75X.091 TENSIO	1
39.	39659	MF RETAINER, BELT	1
40.	35374	PULLEY, IDLER V4L 3.06X .62	1
41.	45892	BOLT, 3/8-16X1.50 CARR	1
42.	1499	NUT, 3/8-16 REGHXCTRLK	1
43.	43980	ROD, .268 DIA CLUTCH	1
44.	50562	SPRING, 3/8 ODX1.625X.055 TENSIO	1
45.	323210	BRACKET, TRACTION BRAKE S/F	1
46.	46824	BOLT, .500X .188 HSSH 5/16-18Z	1
47.	1498	NUT, 5/16-18 REGHEXCTRLK	1
48.	323211	ROD, BRAKE 915 T/A SF	1
49.	53820	SPRING, CLUTCH .625 OD	1
50.	50352	NUT, 1/4-20 WDFLLK TOPLOCK	1
51.	*	TIRE & RIM, PU 20X8X8 TURWHI	2
52.	24167	VALVE STEM	1
53.	326362	WHEEL & HUB ASSY 20X8 WHITE	1
54.		REFER TO TIRE TREAD PAGE	
55.	52928	KEY, SQUARE .1875SQX2.25LG	2
56.	642	WASHER, FLAT .755X1.31X.075	4
57.	42815	WASHER, FLAT .755X1.53X.07	2
58.	36625	RING, RETEX .57X.05TRU5133-75	2
59.	40394	HUB CAP, 1.500ID X 7/8LG	2

^ CONTACT YOUR NEAREST TRANSAXLE DEALER FOR PARTS AND SERVICE.
 * ORDER INDIVIDUAL PARTS.

40" LAWN TRACTOR MODEL D3554-080

ENGINE & CONTROL ASSEMBLY



NOTE: ALWAYS USE ORIGINAL EQUIPMENT PARTS. Use of service/replacement parts other than original equipment parts may void your warranty.

ALL UNNUMBERED ITEMS ARE INTERCHANGEABLE WITH OPPOSITE SIDE

325648A

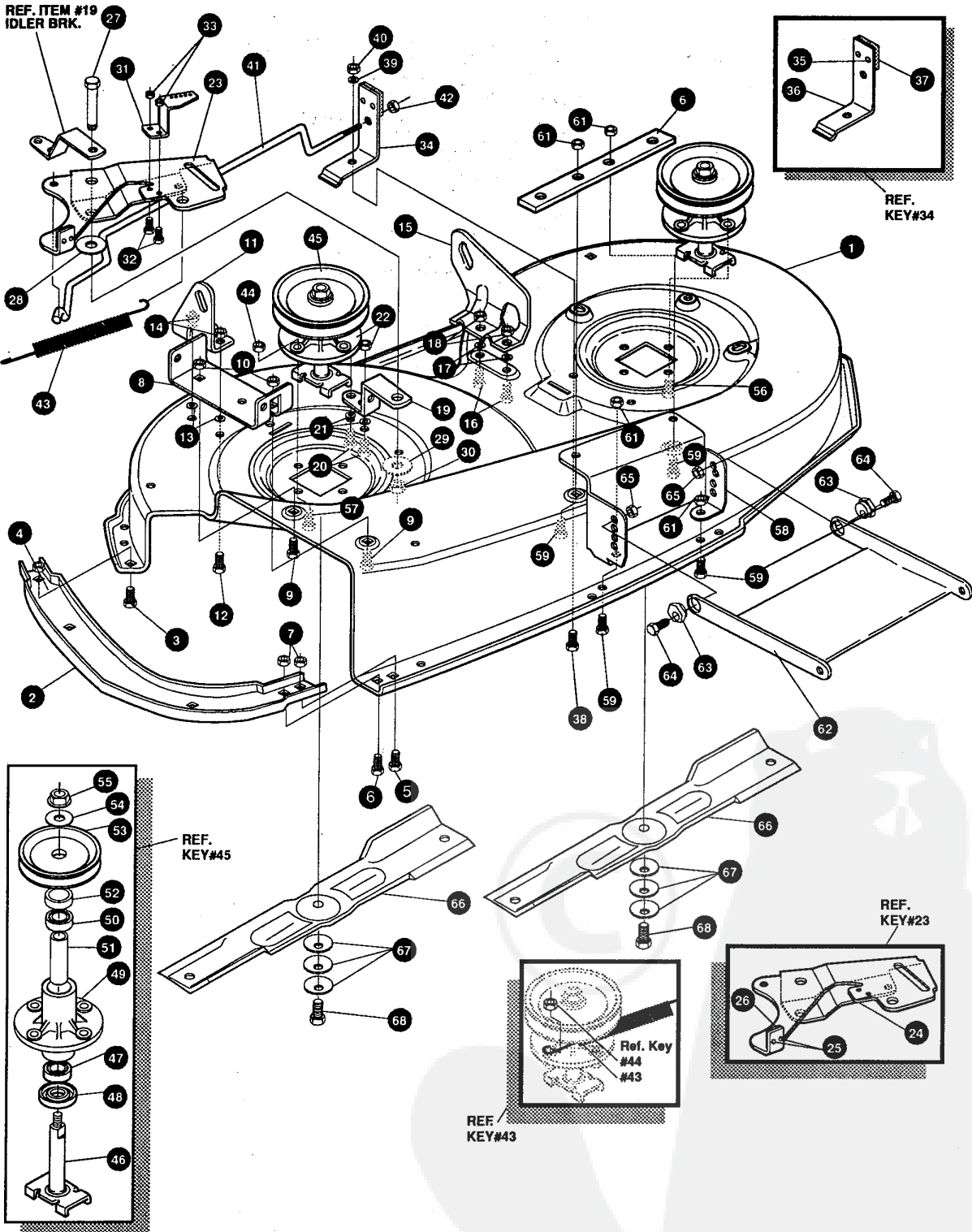
40" LAWN TRACTOR MODEL D3554-080

KEY#	PART#	DESCRIPTION	QTY.
1	ENGINE	12.5 B&S I/C DUAL CIR (SEE ENGINE MANUAL)	1
2	50947	SCREW, 3/8-16X1.25 WAHHTAP	4
3	138489	WASHER, EXLK .384X.69X.04	1
4	57908	MUFFLER NELSON LO-TONE	1
5	54767	SHIELD, HEAT FOR ROUND MUFFLER	1
6	173063	SCREW, 5/16-18X3.50 HHC	2
7	46708	GASKET MUFFLER	1
8	323423	DEFLECTOR SIDE OUT	1
9	35287	SCREW, 8-32X.38 HHWATAP	3
10	314989	TANK, FUEL 1 GALLON	1
11	49050	SCREW, 1/4-10X .75PHPNTAP	4
12	47452	GAS LINE .25ID BULK LENGTH	12"
13	47345	CLAMP, GAS LINE (1/2 DIA HOSE)	2
14	46704	GAS CAP	1
15	57444	TIE, CABLE	1
16	320031	THROTTLE CONTROL	1
17	35291	SCREW, 10-24X .50 SLHHMA	2
18	271166	NUT, #10-24 HEXKEPS	2
19	50607	KNOB, ROUND THROTTLE	1

40" LAWN TRACTOR MODEL D3554-080

PRE-PAINTED DECK

REF. ITEM #19
IDLER BRK.



NOTE: ALWAYS USE ORIGINAL EQUIPMENT PARTS. Use of service/replacement parts other than original equipment parts may void your warranty.

ALL UNNUMBERED ITEMS ARE INTERCHANGEABLE WITH OPPOSITE SIDE

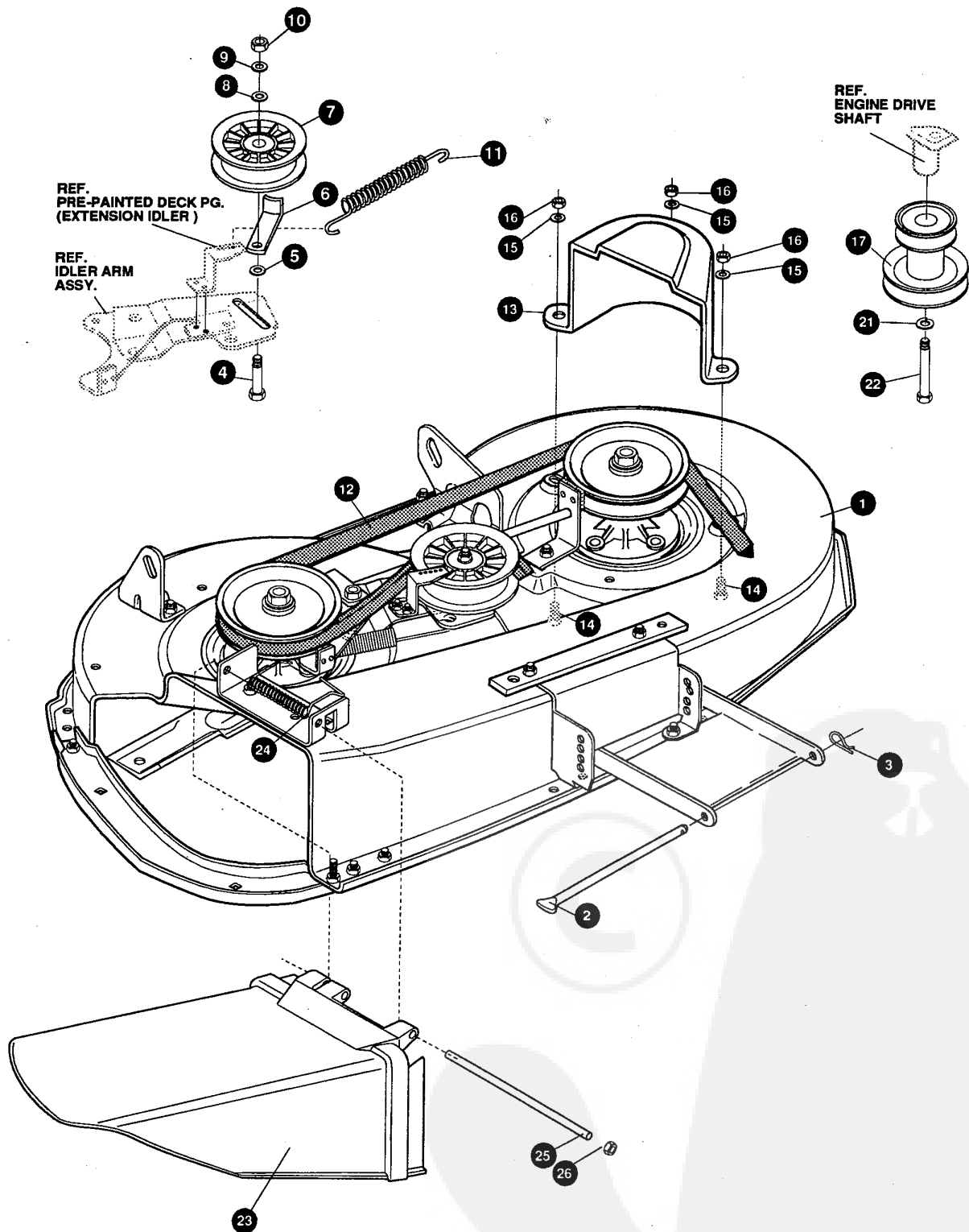
329275B

40" LAWN TRACTOR MODEL D3554-080

KEY#	PART#	DESCRIPTION	QTY.
1.	325103-853	MOWER DECKS, RIDER 40"	1
2.	326480-853	TOE GUARD MULCHER	1
3.	180075	SCREW, 5/16-18X .63 HHC	1
4.	1498	NUT, 5/16-18 REGHEXCTRLK	1
5.	180073	SCREW, 5/16-18X .50 HHC	1
6.	180081	5/16-18X1.25 HHC	1
7.	1498	NUT, 5/16-18 REGHEXCTRLK	2
8.	317017	BRACKET CHUTE MOUNT	1
9.	180075	SCREW, 5/16-18X .63 HHC	2
10.	1498	NUT, 5/16-18 REGHEXCTRLK	2
11.	325652-853	BRACKET,RH LIFT REAR	1
12.	180077	SCREW, 5/16-18X .75 HHC	2
13.	120393	WASHER, FLAT .344X .69X.065	2
14.	1498	NUT, 5/16-18 REGHEXCTRLK	2
15.	325653-853	BRACKET,LH LIFT REAR	1
16.	180077	SCREW, 5/16-18X .75 HHC	2
17.	120393	WASHER, FLAT .344X .69X.065	2
18.	1498	NUT, 5/16-18 REGHEXCTRLK	2
19.	326893	BRACE IDLER	1
20.	180077	SCREW, 5/16-18X .75 HHC	2
21.	120393	WASHER, FLAT .344X .69X.065	2
22.	44108	NUT, 5/16-18 HWDFLCTRLK	2
23.	320576-853	IDLER ARM ASSEMBLY	1
24.	322116-853	ARM IDLER 40"DECK EURO	1
25.	41601	RIVET, OVSET .187DIA X .50	2
26.	306973	BRAKE PAD - HARD	1
27.	304420	BOLT, .500X2.15 HXHDCPSH	1
28.	996307	WASHER, FLAT .391X1.00X.209	1
29.	996416	WASHER, FLAT .391X1.00X.125	2
30.	45171	NUT, 3/8-16 HWDFL WHIZ-LOCK	1
31.	326249-853	BRACKET, EXTENSION IDLER	1
32.	180075	SCREW, 5/16-18 X .63 HHC	2
33.	1498	NUT, 5/16-18 REGHEXCTRLK	2
34.	321828-853	BLADE BRAKE ASSY.	1
35.	135624	RIVET, TRSET .185DIA X .41LG	2
36.	304119-853	BRAKE ARM	1
37.	306973	BRAKE PAD	1
38.	180075	SCREW, 5/16-18X .63 HHC	1
39.	120393	WASHER, FLAT .344X .69X.065	1
40.	1498	NUT, 5/16-18 REGHEXCTRLK	1
41.	315396	ROD, BRAKE, FOR AIR ASSIST	1
42.	1502	NUT, 1/4-20 REGHEXCTRLK	1
43.	35410	SPRING .071 X .62 X 4.37	1
44.	1498	NUT, 5/16-18 REGHEXCTRLK	1
45.	56424-853	QUILL ASSY, 36/39/40/43	2
46.	56425	SHAFT/SADDLE 36"	1
47.	49562	BRNG, BALL .669IDX1.575ODX.472	1
48.	50616	DUST SHIELD	1
49.	55547	QUILL CASTING (1046)	1
50.	49562	BRNG, BALL .669IDX1.575ODX.472	1
51.	50818	SPACER, SLEV .669X .88X3.797	1
52.	51449	SPACER, SLEV .672X .93X .438PM	1
53.	313898	PULLEY,26/36" QUILL	1
54.	56365	WASHER, SPECIAL QUILL	1
55.	1282	NUT, 7/16-20 WDFLLK	1
56.	50634	SCREW, 5/16-18X .88 WAHHTAP	7
57.	300345	SCREW, 5/16-18X1.38 WATAP	1
58.	318445-853	BRACKET,40 LF FRONT DECK	1
59.	180075	SCREW, 5/16-18X .63 HHC	4
60.	328155	PLATE MOUNT, AIR ASSIST	1
61.	1498	NUT, 5/16-18 REGHEXCTRLK	4
62.	58305-853	BRACKET,LINK DECK FRONT	1
63.	58247	ADJUSTING NUT	2
64.	122017	SCREW, 5/16-18X1.00 HHC	2
65.	1498	NUT, 5/16-18 REGHEXCTRLK	2
66.	313316	BLADE, 40" HI-LIFT 20.324	2
67.	2483	WASHER, .39IDX1.25DX.07 BELLVIL	6
68.	39573	SCREW, 3/8-24X1.00 NYLHHC	2

40" LAWN TRACTOR MODEL D3554-080

FINAL DECK ASSEMBLY



NOTE: ALWAYS USE ORIGINAL EQUIPMENT PARTS. Use of service/replacement parts other than original equipment parts may void your warranty.

ALL UNNUMBERED ITEMS ARE INTERCHANGEABLE WITH OPPOSITE SIDE

329276B

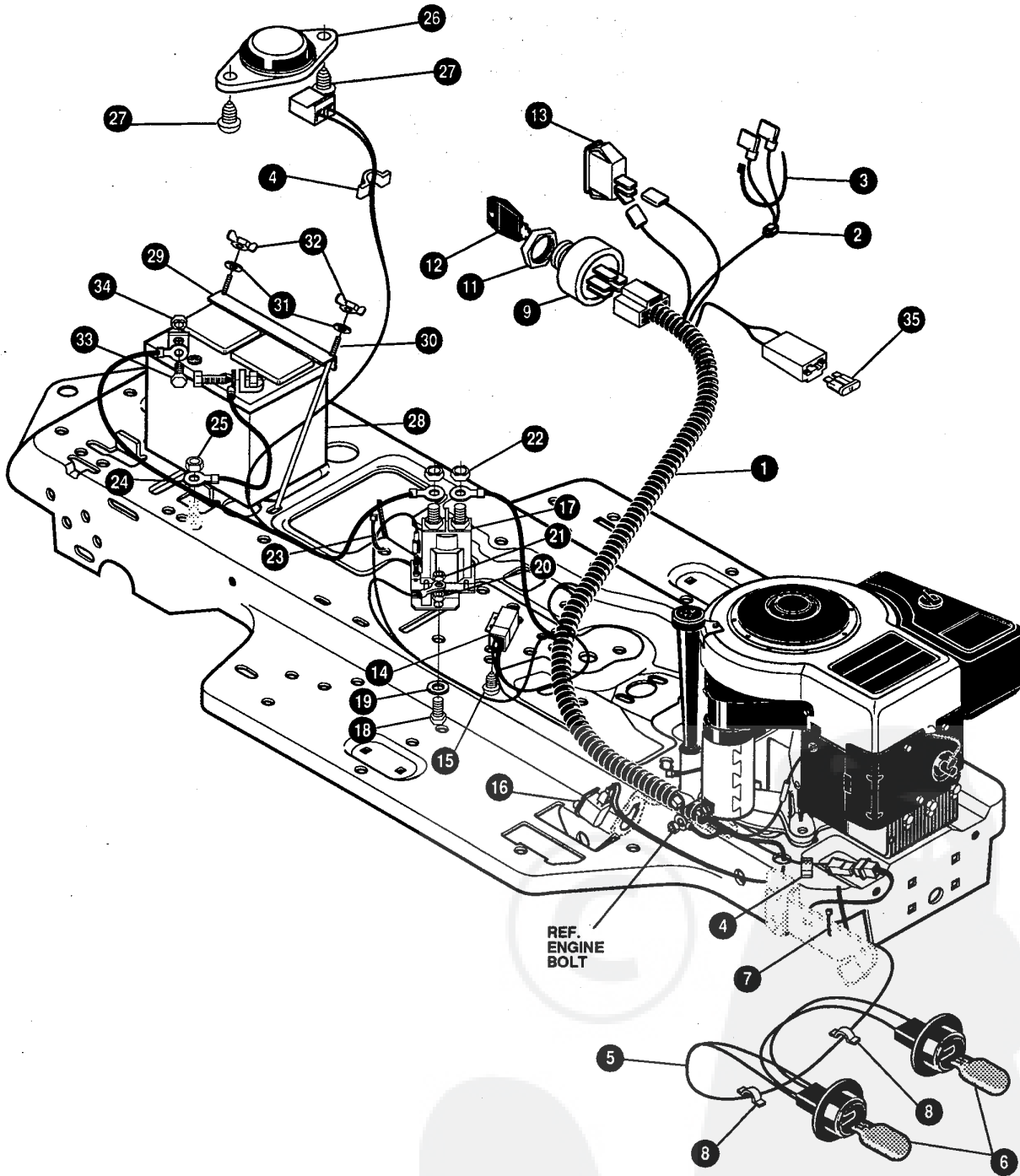
40" LAWN TRACTOR MODEL D3554-080

KEY#	PART#	DESCRIPTION	QTY.
1.	^	DECK,40" MOWER FOR AIR ASSSIST	1
2.	58306	ROD, DECK HITCH	1
3.	8260	PIN, HAIR .091 DIA X 1.66LG	1
4.	57325	BOLT, 3/8-16 X 2.00 CARR	1
5.	25210	WASHER, FLAT .392 X 1.25 X .09	1
6.	1346	RETAINER, BELT	1
7.	310326	PULLEY, IDLER BFF 4.00 WIDE FL	1
8.	996307	WASHER, FLAT .391 X 1.00 X .209	1
9.	120382	WASHER, REGSPTLK .393 X .68 X .10	1
10.	120377	NUT, 3/8-16 REGHX	1
11.	325773	SPRING, TENSION .75 X 11.0 X .105	1
12.	300680	BELT, V 5L 77.75 DECK 40 LF	1
13.	328257	GUARD, BELT LH PLASTIC	1
14.	180075	SCREW, 5/16-18 X .63 HHC	3
15.	120393	WASHER, FLAT .344 X .69 X .065	3
16.	1498	NUT, 5/16-18 REGHEXCTRLK	3
17.	328034	PULLEY, ENG. V3L 4.00 OFFSET	1
21.	120383	WASHER REGSPTLK .459 X .78 X .12	1
22.	433146	SCREW, 7/16-20 X 4.25 HHC	1
23.	304422	CHUTE DEFLECTOR 40", 42" & 43"	1
24.	314975	SPRING TORISON CHUTE DEFLECTOR	1
25.	304424	ROD PIVOT DECK .312 X 7.25	1
26.	3535	NUT PUSH ON CAP	1

^ ORDER INDIVIDUAL PARTS.

40" LAWN TRACTOR MODEL D3554-080

ELECTRICAL ASSEMBLY



NOTE: ALWAYS USE ORIGINAL EQUIPMENT PARTS. Use of service/replacement parts other than original equipment parts may void your warranty.

ALL UNNUMBERED ITEMS ARE INTERCHANGEABLE WITH OPPOSITE SIDE

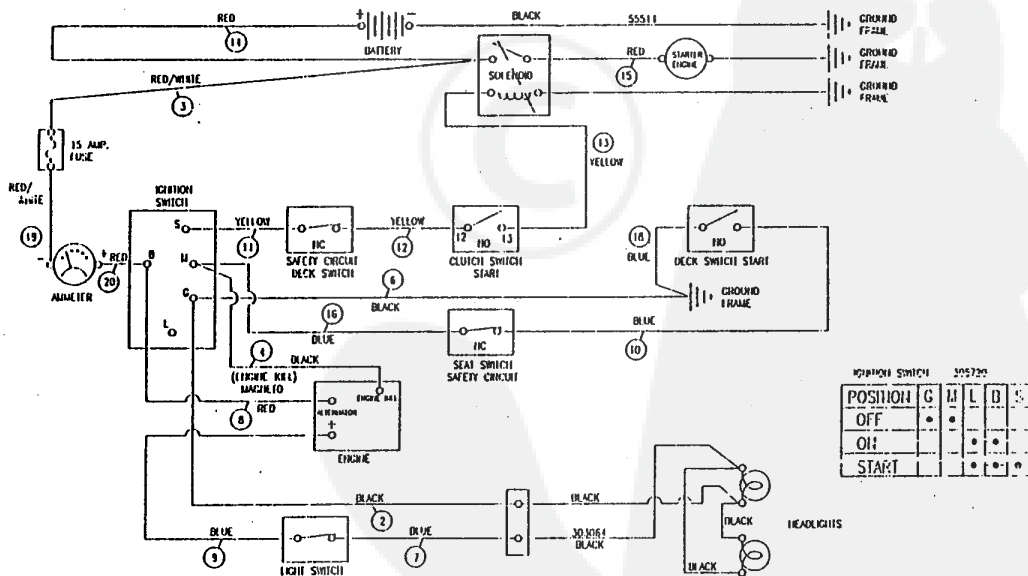
326872A

40" LAWN TRACTOR MODEL D3554-080

KEY#	PART#	DESCRIPTION	QTY.
1.	325084	WIRE HARNESS SF 12B&S IC W/AMM	1
2.	322298	SPLICER	1
3.	57444	TIE, CABLE	1
4.	41482	PRESS CLIP, 1.380LG .255ID	2
5.	303064	ASSY, LIGHT WIRE-1/4 TURN	1
6.	316823	BULB, HEADLAMP	2
7.	57444	TIE, CABLE BLACK NYLON 5.62L	1
8.	41482	PRESS CLIP, 1.380LG .255ID	2
9.	327355	SWITCH-IGN. (AFTER FIRE) 3 POSN	1
11.	327352	NUT, 5/8-8 ACME DELTA	1
12.	327350	KEY, IGNITION SWITCH, STEEL	1
13.	300334	LIGHT SWITCH ON/OFF PANEL MNT	1
14.	57476	SWITCH, SCR MNT DP NC NO BLK	1
15.	57220	SCREW, #12 X .50 PHPNHTAP BLK	2
16.	326653	SWITCH, SNAPMNT NO .055/.116BLK	1
17.	53716	SOLENOID	1
18.	187745	SCREW, 1/4-20X .75 HXSEMMA	2
19.	1084	WASHER, FLAT .281X1.00X.063PL	1
20.	1502	NUT, 1/4-20 REGHEXCTRLK	2
21.	271172	NUT, 1/4-20 REGHEXKEPS	1
22.	271187	NUT, 5/16-24 HKEPS	2
23.	57444	TIE, CABLE BLACK NYLON 5.62L	1
24.	55511	WIRE, GROUND, 12.5"	1
25.	271184	NUT, 5/16-18 HEXKEPS	1
26.	57547	SWITCH, SEAT	1
27.	160505	SCREW, 1/4-20X .38PHPNHMA	2
28.	302257	BATTERY, YUASA 12V 5-PLATE	1
29.	324719	BATTERY BRACKET	1
30.	40234	BATTERY ROD	2
31.	120392	WASHER, FLAT .281X .63X.065	2
32.	325232	WINGNUT, 1/4-20 NYLON	2
33.	120854	SCREW, 1/4-20X .63 HHC	2
34.	271172	NUT, 1/4-20 REGHEXKEPS	2
35	** 302031	FUSE, 15 AMP SPADE TYPE	1

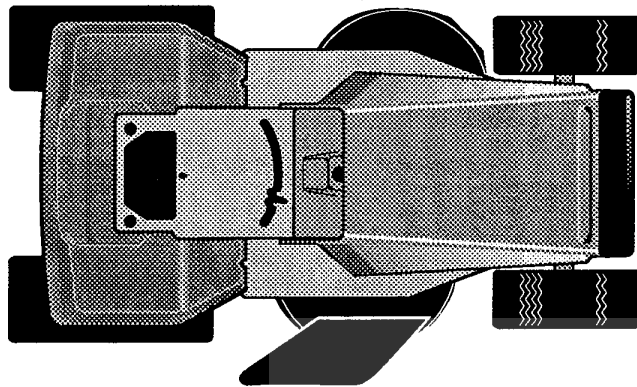
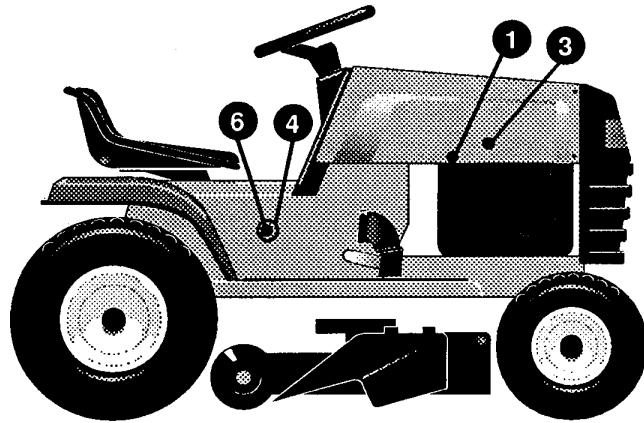
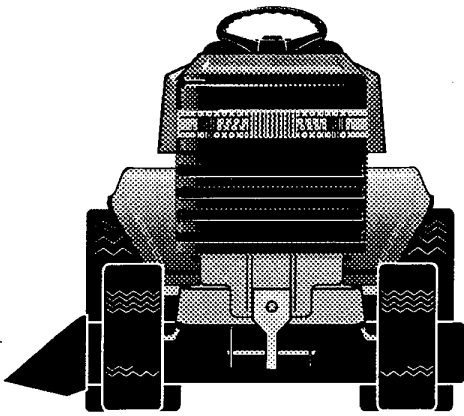
** Spade type fuse included with the wire harness.

SCHEMATIC DRAWING

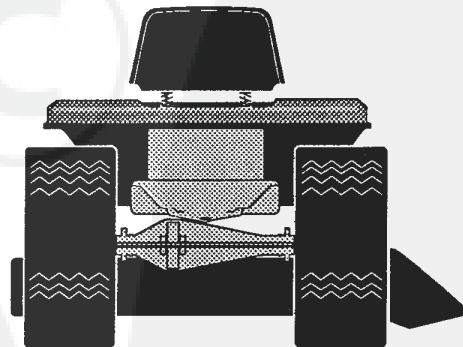
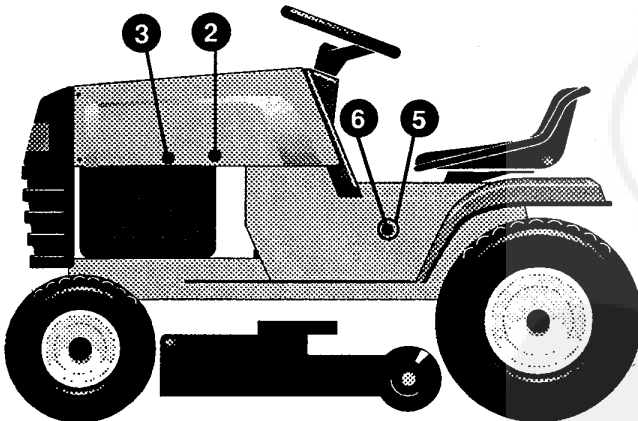
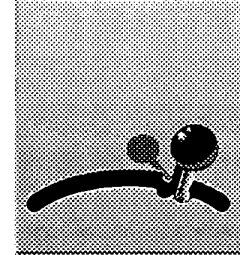


40" LAWN TRACTOR MODEL D3554-080

DECALS (DECORATIVE)



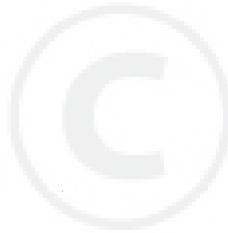
CONSOLE DETAIL



329332A

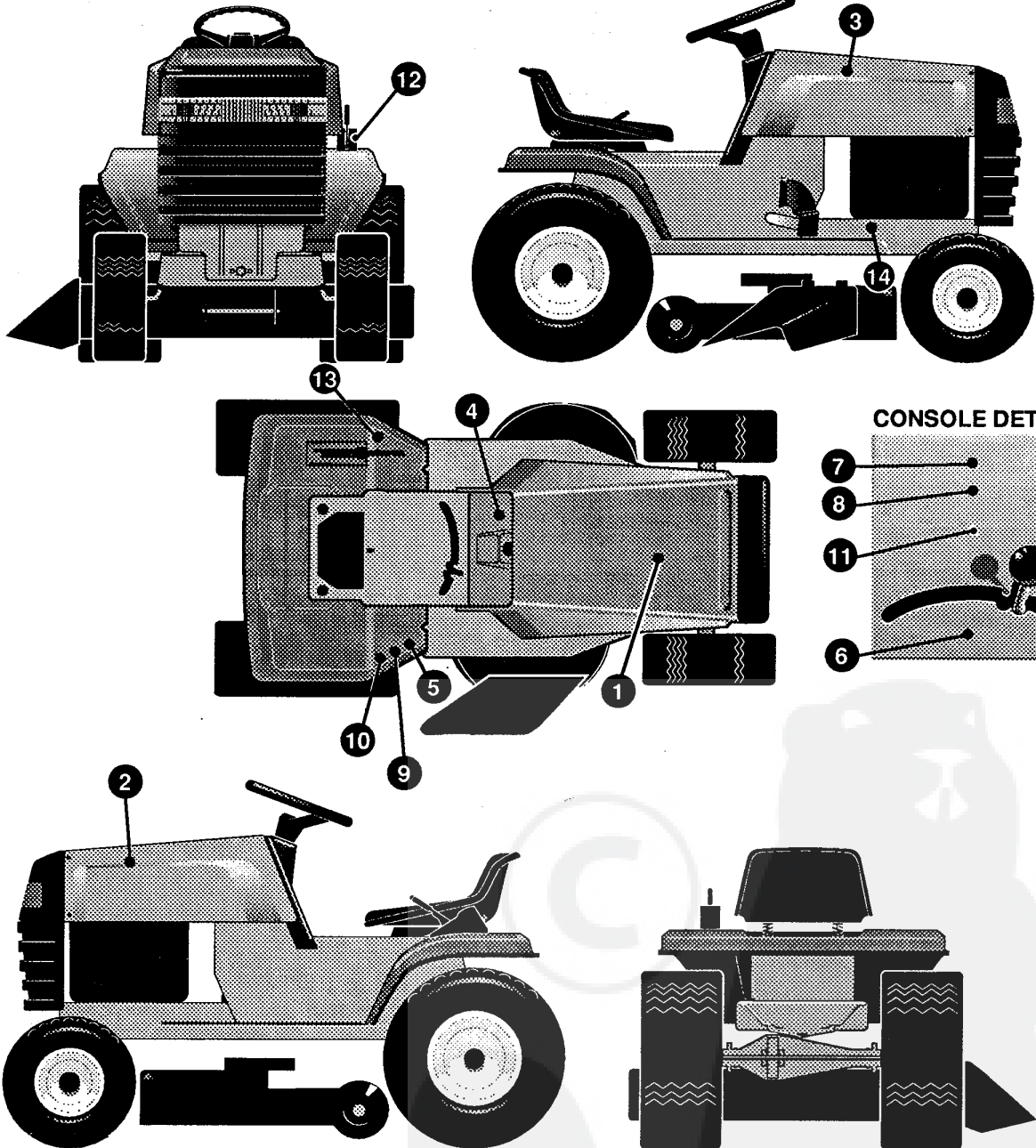
40" LAWN TRACTOR MODEL D3554-080

KEY#	PART#	DESCRIPTION	QTY.
1.	320713	DECAL, HOODSIDE LH H-21	1
2.	320714	DECAL, HOODSIDE RH H-21	1
3.	402142	TURFMASTER NAMEPLATE	2
4.	320872	DECAL, PRO CONSOLE (LONGER) RH	1
5.	320873	DECAL, PRO CONSOLE (LONGER) LH	1
6.	402154	NAMEPLATE 12.5/40	2
7.		REFERENCE ONLY	1



40" LAWN TRACTOR MODEL D3554-080

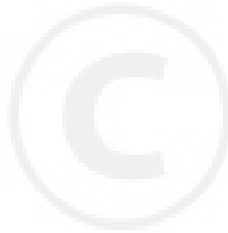
DECALS (INSTRUCTIONAL)



329331A

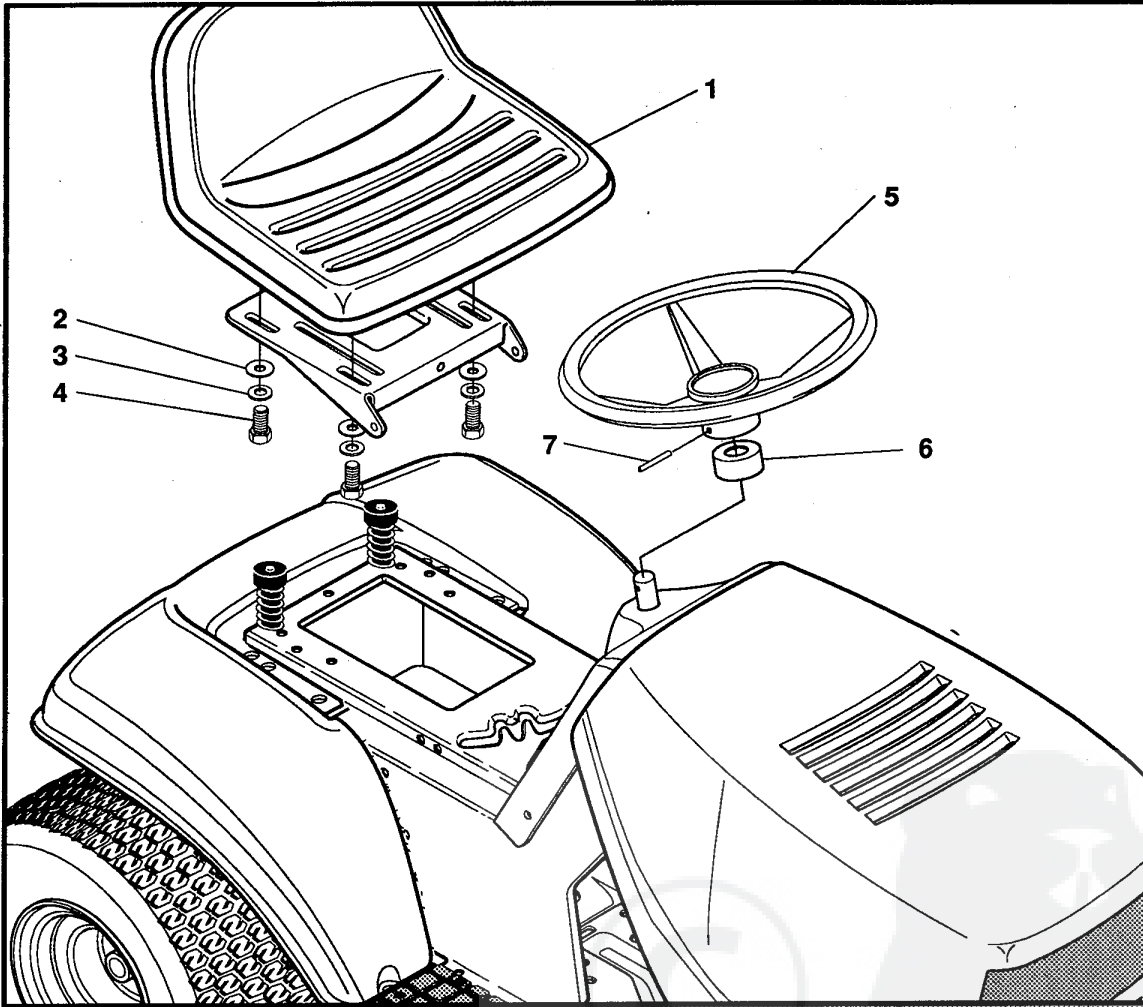
40" LAWN TRACTOR MODEL D3554-080

KEY#	PART#	DESCRIPTION	QTY.
1.	55832	PAD, FOAM TOP HOOD H-4	1
2.	55833	PAD, FOAM HOOD H-4 SIDE LH	1
3.	55834	PAD, FOAM HOOD H-4 SIDE RH	1
4.	324989	DECAL DASH, DYNAMARK	1
5.	305770	DECAL, CAUTION TRIANGLE EUROPE	1
6.	301104	DECAL, 5-SPEED CONSOLE TOP	1
7.	69524	DECAL, INSTRUCT CONSOLE TOP GER	1
8.	69525	DECAL, INSTRUCT CONSOLE TOP FR	1
9.	310553	DECAL, DANGER ENGLISH	1
10.	68902	DECAL, WARNING, FRENCH/GERMAN	1
11.	307383	DECAL, INSTRUCT ENGLISH	1
12.	301897	DECAL, LIFT DECK BLADE HEIGHT	1
13.	68901	DECAL, BLADE HEIGHT ADJ. EUROPE	1
14.	68903	DECAL, BRAKE/CLUTCH EUROPE	1
15.		REFERENCE ONLY	1
16.		REFERENCE ONLY	1



40" LAWN TRACTOR MODEL D3554-080

CUSTOMER ASSEMBLY



CUSTOMER ASSEMBLY VIEW

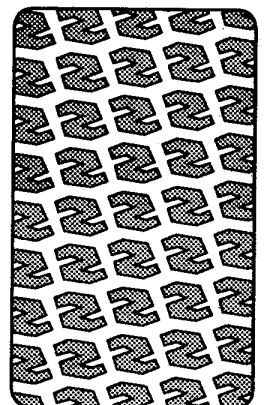
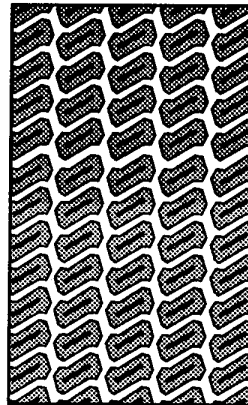
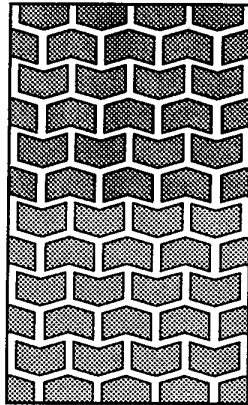
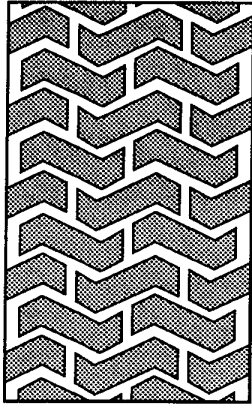
315134 PARTS BAG ASSY QTY1

KEY#	PART#	DESCRIPTION	QTY
1	57452	SEAT MV350	1
2	120393	WASHER, FLAT .344X.69X.065	4
3	120638	WASHER, HVSPLTLK .328X.60X.109	4
4	122007	SCREW, 5/16-18X.75 HHC	4
5	301251	STEERING WHEEL	1
6	323758	STEERING, SLEEVE	1
7	456378	ROLL PIN .250DIA X 2.0LG	1

316235C

40" LAWN TRACTOR MODEL D3554-080

TREAD PATTERNS



"A"

"B"

"C"

"D"

TIRE SIZE

	"A"	"B"	"C"	"D"
11 X 4.00 - 5	42295	319679		
13 X 5.00 - 6	41060	319680		
15 X 6.00 - 6	39830	316702	301140	313952
16 X 6.50 - 8	41081	319682		314539
18 X 8.50 - 8	319683	317400		
18 X 9.50 - 8	41106	316701		313950
20 X 8.00 - 8	319685	319684	57164	314584
20 X 10.00 - 8	58276	319686		313654
20 X 10.00 - 10	55893	319687		
23 X 9.50 - 12	53655	319690	319689	314370

CONTACT ANY OF THE FOLLOWING DISTRIBUTORS: Parts for: HOMKO - LAWN SCOUT - AMF - TURFMASTER - DYNAMARK - or any other CANADIANA, WESTERN INTERNATIONAL INCORPORATED or NOMA OUTDOOR PRODUCTS INCORPORATED product.

CALIFORNIA

Billiou's
1343 S. Main
Porterville, CA 93257
(209) 784-4102
WATS 800-245-5468
FAX (209) 781-1875
(auto)
*b,c,e,f,g,h

COLORADO

Spitzer Ind. Prod.
6601 N Washington
Thornton, CO 80229
(303) 287-3414
FAX (303) 287-0549
WATS 800-346-3027
(auto)
*b,c,e,f,g,h

FLORIDA

Radcó Distributors Inc.
6261 Powers Ave.
Box 5459
Jacksonville, FL 32207-0459
(904) 733-7957
WATS 800-727-8701
FAX (904) 737-9575
(auto)
*b,c,e,g,h

ILLINOIS

Garmoe Distr. Inc.
2620 N Mannheim Road
Franklin Park, IL 60131
(708) 455-3588
FAX (708) 455-6069
(auto)
*b,c,e,f,g

INDIANA

Thompson Sales & Service
2400 W. Ridge Road
Gary, IN 46408
(219) 980-3282
FAX (219) 980-3283
WATS 800-234-1470
*c,f,g,h

KENTUCKY

Auto-Electric
715 W. Hwy 80, Box 671
Somerset, KY 42501
(606) 679-1171
FAX (606) 678-4559
KY WATS 800-264-5296
*c,e,f,g,h

Cayce Mill Supply Co.
505 E 1st St.
Hopkinsville, KY 42240
(502) 886-3335
FAX (502) 886-5117
WATS 800-462-8362
*b,c,f,g,h

Kentucky Engine Service
1003 E. Broadway
Louisville, KY 40204
(502) 587-7976
FAX (502) 583-0555
WATS 800-844-2120
*b,c,e,f,g,h

MAINE

Automatic Dist. Inc.
22 Target Industrial Cir.
Bangor, ME 04401
(207) 942-6769
FAX (207) 941-0247
WATS 800-341-1658
*b,c,e

MICHIGAN

Air Cooled Engine Div.
1116 26th Ave.
Menominee, MI 49858
(906) 863-6332
WATS 800-334-9535
FAX (906) 863-1204
*c,e,f,g,h

MINNESOTA

Hance Distr.
12795 16th Ave. N.
Plymouth, MN 55441
(612) 559-2299
FAX (612) 559-2365
WATS 800-535-1184
(auto)
*b,c,e,f,g,h

MISSOURI

Gunther's Serv. & Supply
7320 Wornall Road
Kansas City, MO 64114
(816) 523-1952
WATS 800-397-1952
FAX 816-523-3737
*a,d,e,f,g,h

Wilson Engine & Parts Inc.
4159 Shoreline Drive
Earth City, MO 63045
(314) 739-1313
WATS 800-873-6722
FAX (314) 739-8767
(auto)
*b,d,e,f,g,h

NEW JERSEY

Power Distributors, Inc.
12 Melrich Road, RD 3
Cranbury, NJ
08512-9517
(609) 860-8060
FAX (609) 860-8040
WATS 800-336-6290
*i

NEW YORK

Loegler & Ladd Inc.
3950 Broadway, Box 214
Buffalo, NY 14225
(716) 684-0600
*c,e

Stiefvater Dist.
Clinton Road, Route 12B
New Hartford, NY 13413
(315) 853-5581
FAX (315) 853-5147
NY WATS 800-452-2206
DLR ONLY
*c,b,e,f,g,h

NORTH CAROLINA

Dixie Sales Co. Inc.
Box 1408
Greensboro, NC 27402
(919) 375-7500
WATS 800-753-4943
FAX (919) 621-3555
*b,c,e,f,g,h

OHIO

American Power Distr.
2430 Tremainsville Rd.
Box 5815
Toledo, OH 43613
(419) 475-7261
OH WATS 800-336-2969
FAX (419) 475-4815 (auto after 5.00 pm)
*a,b,c,d,e,f,g,h
Gardner, Inc.
1150 Chesapeake Ave.
Columbus, OH 43212
(614) 488-7951
FAX 614-486-7122
WATS 800-848-8946
*a,c,b,d,e,g,h

OKLAHOMA

Original Equipment Inc.
5829 S. Garnett
Tulsa, OK 74146
(918) 664-4992
WATS 800-645-2031
*a,c,e,f,i

TENNESSEE

Chilton A/C Engine
319 4th Ave. S.,
Box 150806
Nashville, TN 37215
(615) 254-3356
FAX (615) 242-6618
WATS 800-621-6934
*b,c,e,f,g,h
Ace Dist.
2103 Magnolia Ave.
Knoxville, TN 37917
(615) 524-5359
FAX (615) 524-8263
WATS 800-332-9904
WATS 800-343-2403
*b,c,e,f,g,h

Medart Engine of Memphis
4365 Old Lamar
Memphis, TN 38118
(901) 795-4365
WATS 800-765-4365
FAX 901-368-0654
*c,b,e,g,h

TEXAS

Marr Bros. Inc.
423 E. Jefferson
Dallas, TX 75203
(214) 948-7387
FAX (214) 946-6259
WATS 800-627-7296
*a,d,e,f,g,h

VIRGINIA

Norva Small Engines
7941 Wellington Dr.
Manassas, VA 22110
(703) 369-3387
FAX (703) 369-9788
WATS 800-444-9390
*c,b,e,f,g,h
RBI Corporation
101 Cedar Ridge Rd.
Ashland, VA 23005
(804) 550-2210
FAX (804) 550-2386
WATS 800-825-8530
WATS 800-888-7149
*b,d,e,f,h

WASHINGTON

Pacific A/C Engine
4109 Airport Way S.
P.O. Box 80863
Seattle, WA 98108
(206) 622-8262
FAX (206) 622-1736
WATS 800-628-5827
a,b,c,e,f,g,h

WISCONSIN

Praefke A/C Engine
4050 N. 128th St
Brookfield, WI 53005
(414) 781-7010
FAX (414) 781-9546
*a,c,e,f,g,h
Wiggert Parts Ctr.
219 South, 3rd Street
La Crosse, WI 54602
(608) 784-4715
FAX (608) 784-4736
*c,e,f,g,h

CANADA

Noma Outdoor Prod., Inc.
155 Orenda Rd.
Brampton, Ontario L6W 1W3
(416) 457-1433
*i

Rev. 12/23/92

(*) General Information Codes:

- (a) Advance Payment Required
- (b) Accepts Credit Cards
- (c) C.O.D. okay
- (d) No C.O.D.
- (e) Accessories Available
- (f) Briggs & Stratton dealer or distributor
- (g) Tecumseh/Peerless dealer or distributor
- (h) Foote dealer or distributor
- (i) Dealer sales only, contact for closest dealer.