

REPAIR PARTS MANUAL

38" - 12 H.P. LAWN TRACTOR

MODEL D3554-090

ONE YEAR LIMITED WARRANTY

For one (1) year from date of purchase by the first consumer for residential use (thirty (30) days commercial use), NOMA Outdoor Products Incorporated warrants that it will replace free of charge, including labor, any original part of any NOMA Outdoor Products Incorporated product found to be defective by any authorized Service Dealer or the factory, except the battery which is warranted for ninety (90) days from date of purchase.

This warranty does not cover engine, transmission, transaxle or differential (these items are covered by their manufacturer's own warranty). This warranty does not cover parts that have failed due to normal wear or parts that have failed subject to misuse or abuse. Transportation of the unit or part to and from an authorized Service Dealer or factory is the responsibility of the owner.

A step by step explanation as to what procedure should be followed for this warranty is:

1. If a part becomes defective, contact the store where the unit was purchased for the name and address of the authorized Service Dealer nearest to you.
2. If you cannot locate an authorized Service Dealer, write Service Department of NOMA Outdoor Products Incorporated for the name and address of the authorized Service Dealer in your area or call the Service Department at 1-901-422-1690.
3. Return the defective product, along with proof of purchase to such authorized Service Dealer for replacement of any defective part where covered by this warranty.

There is no other express warranty. Implied warranties, including those of merchantability and fitness for a particular purpose are limited to one (1) year from date of purchase. Liability for incidental or consequential damages are excluded.

Some states do not allow limitations on how long an implied warranty lasts, so the above limitation may not apply to you. Some states do not allow the exclusion of incidental or consequential damages, so the above exclusion may not apply to you. This warranty gives you specific legal rights, and you may have other rights which vary from state to state.

NOMA Outdoor Products Incorporated

Call 800

Jackson, TN 38308-8000

UNIT PARTS AND SERVICE

Fill in and mail the registration card packed with the unit. For service other than covered in this manual, contact an authorized service dealer. A nationwide parts and service organization has been established to provide locally available parts and service. When ordering repair parts, always give the following information: 1. The Part Name; 2. The Part Number; 3. The Quantity desired; 4. The Full (eight digit) Model Number of the unit. The model number will be found on a plate attached to the unit.

Look for this symbol.



It means - ATTENTION! BECOME ALERT! A HAZARD TO OPERATOR, BYSTANDER, PROPERTY OR EQUIPMENT MAY EXIST.

NOMA Outdoor Products Incorporated

Call 800

Jackson, TN 38308-8000

Part No. 3E8834A

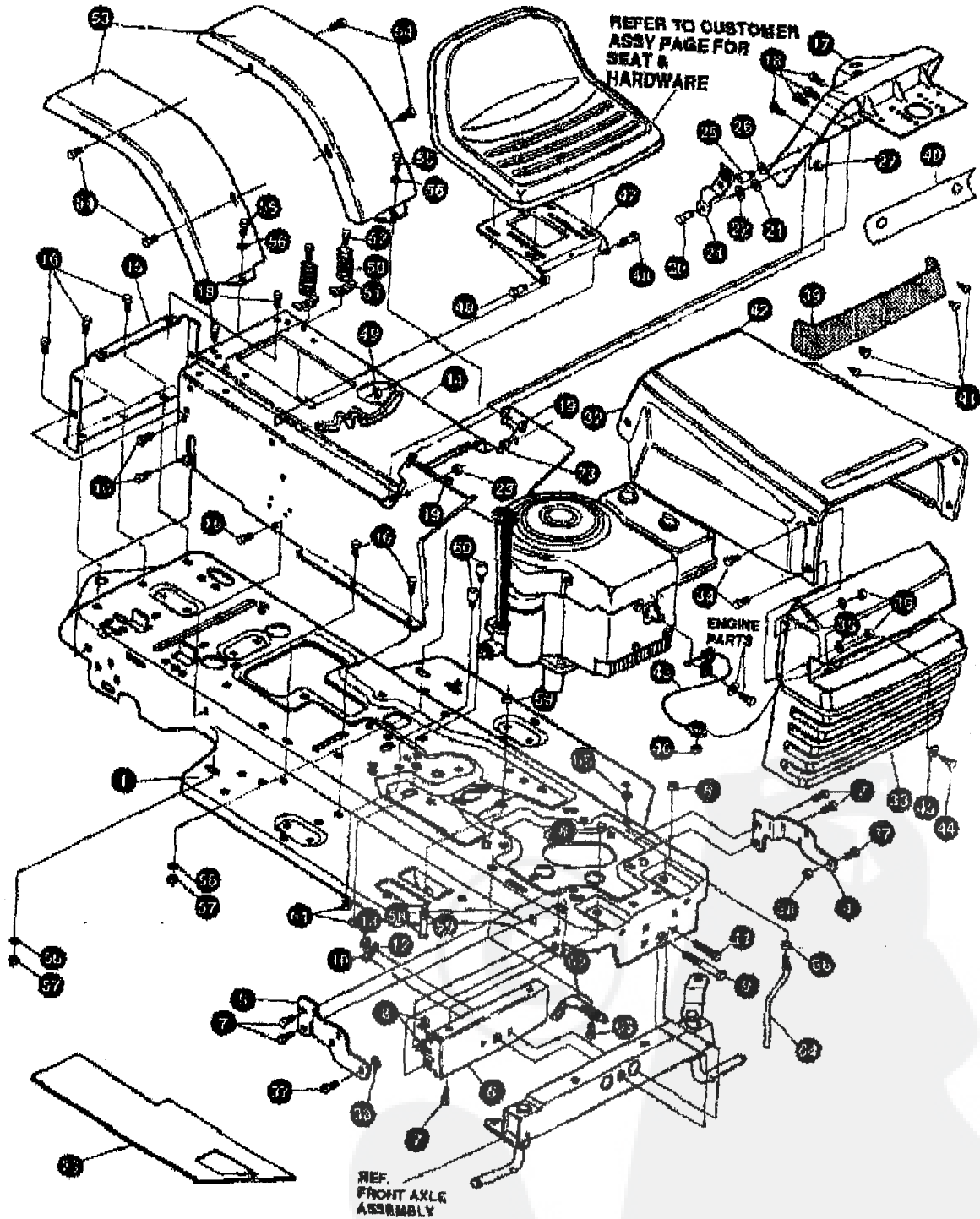
49/82

Price \$5.00

Printed in U.S.A.

38" LAWN TRACTOR MODEL D3554-090

CHASSIS & HOOD ASSEMBLY



NOTE: ALWAYS USE ORIGINAL EQUIPMENT PARTS. Use of service/replacement parts other than original equipment parts may void your warranty.

ALL UNNUMBERED ITEMS ARE INTERCHANGEABLE WITH OPPOSITE SIDE

324795A

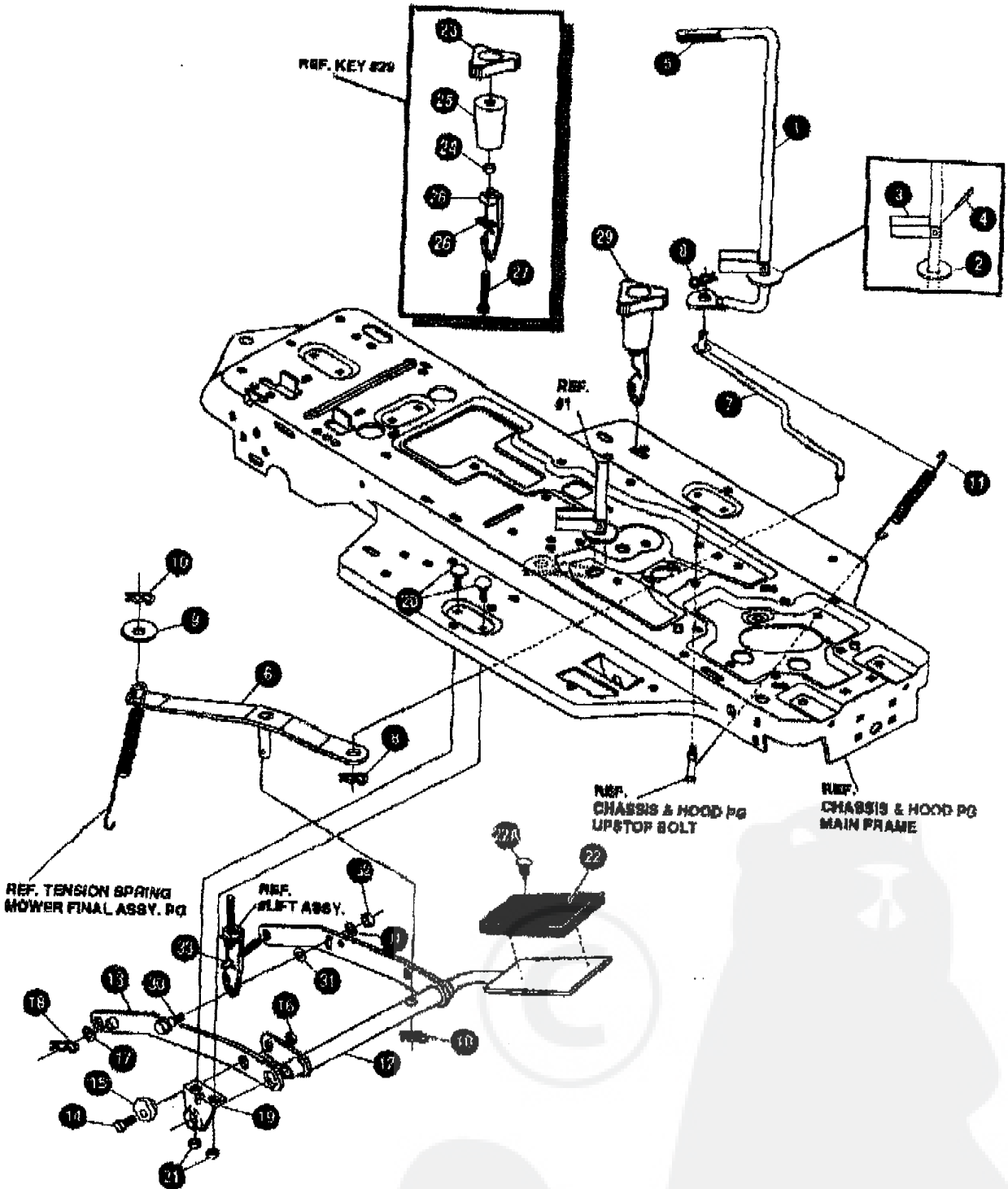
38" LAWN TRACTOR MODEL D3554-090

KEY#	PART#	DESCRIPTION	QTY.
1	321997-854	FRAME, MAIN SF RIDER	1
2	326732	FOOTPAD, LH SF WIDE	1
3	302016	FOOTPAD, RH SF WIDE	1
4	314579-853	BRACKET, GRILLE L.H.	1
5	314578-853	BRACKET, GRILLE R.H.	1
6	56962-853	BRACKET, SUPT FRT AXLE	1
7	328154	SCREW, 5/16-18 X .75 WDFLLK	1
8	55273	NUT, 5/16-18 HXWDFLLK	6
9	29816	BOLT, .625 X 2.875 SP6H 1/2-20	6
10	274654	NUT, 1/2-20 REGHXCTRLK	1
11	122201	SCREW, 3/8-16 X 2.75 HHC	1
12	2493	WASHER, .90 ID X 1.25 D X .07 BELLVIL	2
13	1499	NUT, 3/8-16 REGHXCTRLK	2
14	314491-854	CONSOLE, SF DYNA STYLE TOPSH	1
15	66236-854	CONSOLE, REAR COVER	1
16	995346	SCREW, 1/4-20 X .50 WAHHTAP	1
17	320466-854	DASH, SF NOMA DYNA STYLING	15
18	995338	SCREW, 1/4-20 X .69 HHWATAP	1
19	50352	NUT 1/4-20 WDFLLK TOP LOCK	4
20	8482	BOLT, .375 X .156 HNSH 5/16-18	2
21	120384	WASHER, FLAT .406 X .81 X .055	2
22	120393	WASHER, FLAT .344 X .89 X .053	2
23	1498	NUT, 5/16-18 REGHEXCTRLK	2
24	57159	LATCH, .34 WD X .047 ASSEMBLY HOOD	2
25	53446	PIN, 5/16-18 HOOD LATCH	2
26	199539	WASHER, REGINTLK .320 X .51 X .03	2
27	45174	NUT, 5/16-18 HEXWDFLLK WHIZ	2
28	314639-854	HOOD	2
29	925401	GRILLE, DYNA-PRO	1
30	274672	SCREW, 1/4-20 X .63 WAHHC	1
31	120392	WASHER, FLAT .281 X .83 X .065	4
32	1502	NUT, 1/4-20 REGHEXCTRLK	4
33	1502	BOLT, .375 X .500 HNSH 5/16-18	4
34	35149	NUT, 5/16-18 REGHEXCTRLK	2
35	1498	LENS, HEADLAMP	2
36	302393	FOIL, LENS DYNA-PRO REFLECTOR	1
37	314948	SCREW, #6 X .50 PLASTITE	1
38	57798	EDGING, WIDE BLK	4
39	47453	LANYARD, HOOD	1
40	911094	SCREW, 1/4-20 X .75 HHC	1
41	121687	FLATWASHER, .281 X .83 X .065	1
42	120392	LOCKNUT, 1/4-20	1
43	1502	PLATE, SEAT F-5 SF & LF	1
44	58367-853	BOLT, .497 X .156 HNSH 5/16-18	1
45	20507	NUT, 5/16-18 REGHEXCTRLK	1
46	1498	SPRING, 1.48 X 2.38 X .152 COM BEAT	2
47	55220	CLAMP, SPRING 1.17" ID	2
48	1341	SCREW, 1/4-20 X .50 WAHHTAP	2
49	995346	FENDER F-1	2
50	43970-854	SCREW, 1/4-20 X .50 WAHHTAP	2
51	995346	SCREW, 5/16-18 X 1.00 HHC	4
52	122017	WASHER, FLAT .375 X .88 X .082	4
53	446383	NUT, 5/16-18 REGHEXCTRLK	2
54	1498	SCREW, 3/8-16 X 6.50 HHC	2
55	427342	NUT, 5/16-18 REGHEXCTRLK	1
56	1498	PIN, 5/16-18	1
57	53446	NUT, 5/16-18 HEX KEPS	2
58	271184	BRACKET, SWITCH MOUNT	2
59	302610-853	SCREW, 1/4-20 X .50 WAHHTAP	1
60	995346	GUIDE, BELT	1
61	50553	NUT, 3/8-16 HXCTRLKJAM	1
62	41089	NUT, 3/8-16 HEXKEPS	1
63	271180	PARTS MANUAL	1
64	328834	OPERATOR'S MANUAL (ENGLISH)	1
65	328856	OPERATOR'S MANUAL (FRENCH)	1
66	928852	OPERATOR'S MANUAL (GERMAN)	1
67	328833		1

* INDICATES STANDARD HARDWARE ITEMS.

38" LAWN TRACTOR MODEL D3554-090

MOWER SUSPENSION



NOTE: ALWAYS USE ORIGINAL EQUIPMENT PARTS. Use of service/replacement parts other than original equipment parts may void your warranty.

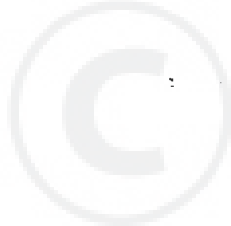
ALL UNNUMBERED ITEMS ARE INTERCHANGEABLE WITH OPPOSITE SIDE

324978B

38" LAWN TRACTOR MODEL D3554-090

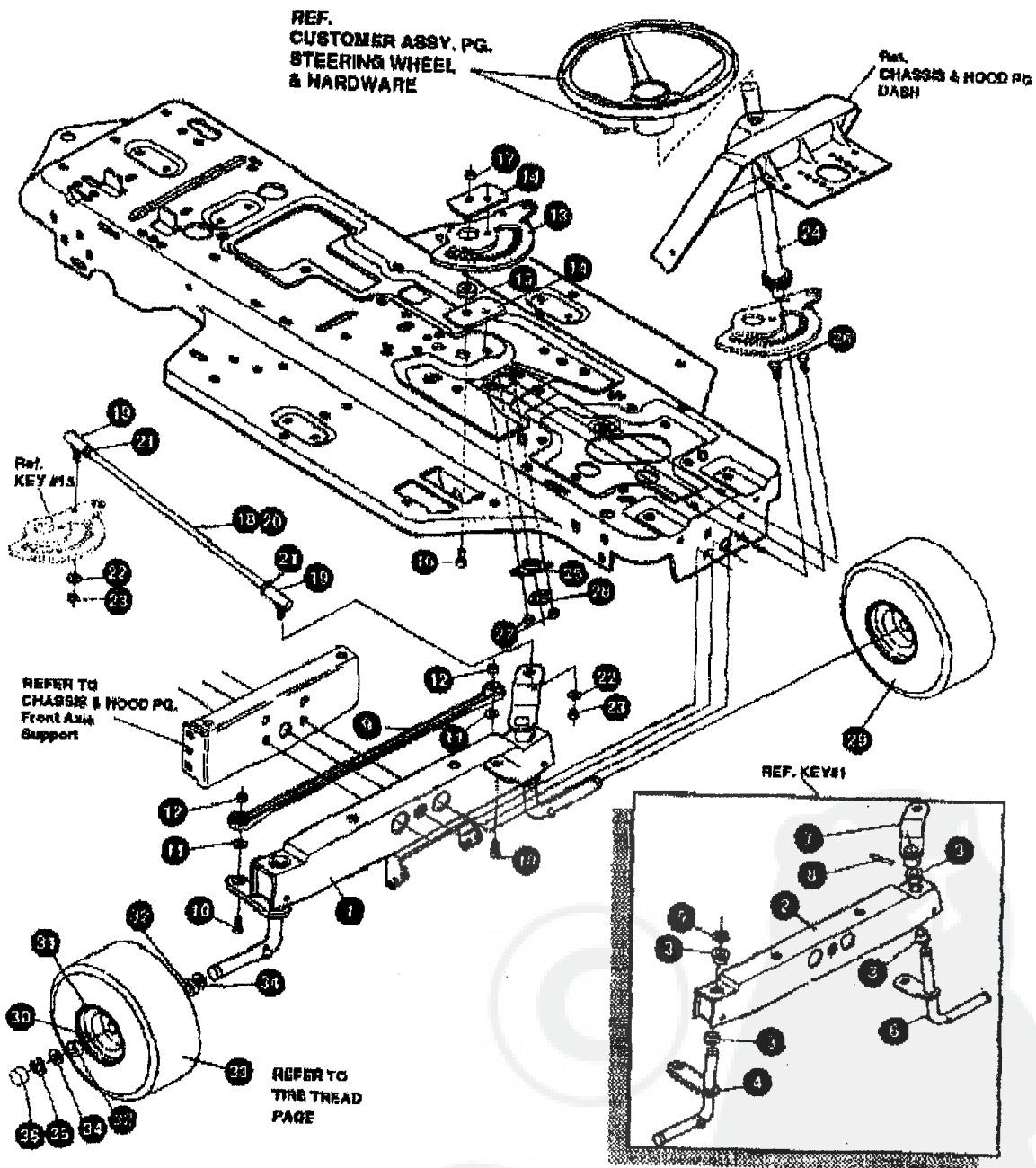
KEY#	PART#	DESCRIPTION	QTY.
1	325591	HANDLE, RH PTO DASH SF	1
2	22286	WASHER, FLAT .516 X 1.38 X .119 PL	1
3	305225	ML STOP, PTO ENGAGEMENT	1
4	326386	PIN, SPRING, .187 DIA X 1.13LG HD	1
5	48478	GRIP, HAND .50 ID 3.37 LG BLK	1
6	325587	WS STRAP ASSEMBLY, PTO BELCRANK SF	1
7	325590	ROD, BELCRANK LINK	1
8	8260	PIN, HAIR .091 DIA X 1.86 LGZ	1
9	25210	WASHER, FLAT .392 X 1.25 X .09	2
10	8260	PIN, HAIR .091 DIA X 1.86 LGZ	1
11	325802	SPRING, .69 X 7.75 X .0897 TENSION	2
12	325533-853	WP LIFT ASSEMBLY, LH PEDAL-LIFT	1
13	325130-859	WP LIFT ASSEMBLY, RH SF	1
14	180079	• SCREW, 5/16-18 X 1.00 HMC GR6 Z	1
15	58247	• NUT, ADJUST	1
16	1498	• NUT, 5/16-18 REGHEXOTRKL Z	1
17	417098	WASHER, FLAT .831 X 1.06 X .063 Z	1
18	8260	PIN, HAIR .091 DIA X 1.86 LG	2
19	325485-853	MP BRACKET, REAR HANG SUSP	1
20	126211	BOLT, 5/16-18 X .63 CARRIAGE GR2Z	1
21	1498	• NUT, 5/16-18 REGHEXOTRKL	4
22	328596	PAD, LIFT PEDAL	4
22A	309235	FASTENER RATCHET	1
23	325860	KNOB, FLUTED TORQUE BLACK	1
24	48905	• NUT, 3/8-18 HWDFLK MACK Z	1
25	326113	COVER, TOP SLEEVE PEDAL-LIFT	1
26	324983	WASHER, RUBBER 3/8 X .75 SO	1
27	325832	• BOLT, SUS MOWER LATCH SF	1
28	325831-853	WP LATCH, SUS MOWER SF	1
29	327934	MOWER, ASM LATCH	1
30	25046	• BOLT, .500 X .375 HHSH 5/16-18Z	1
31	4230	WASHER, FLAT .325 X .68 X .104	2
32	1498	• NUT, 5/16-18 HWDFLCTRKL	1
33	35410	SPRING, .071 X .52 X 4.37	1

• INDICATES STANDARD HARDWARE ITEMS



38" LAWN TRACTOR MODEL D3554-090

STEERING ASSEMBLY



NOTE: ALWAYS USE ORIGINAL EQUIPMENT PARTS. Use of service/replacement parts other than original equipment parts may void your warranty.

ALL UNNUMBERED ITEMS ARE INTERCHANGEABLE WITH OPPOSITE SIDE

324972C

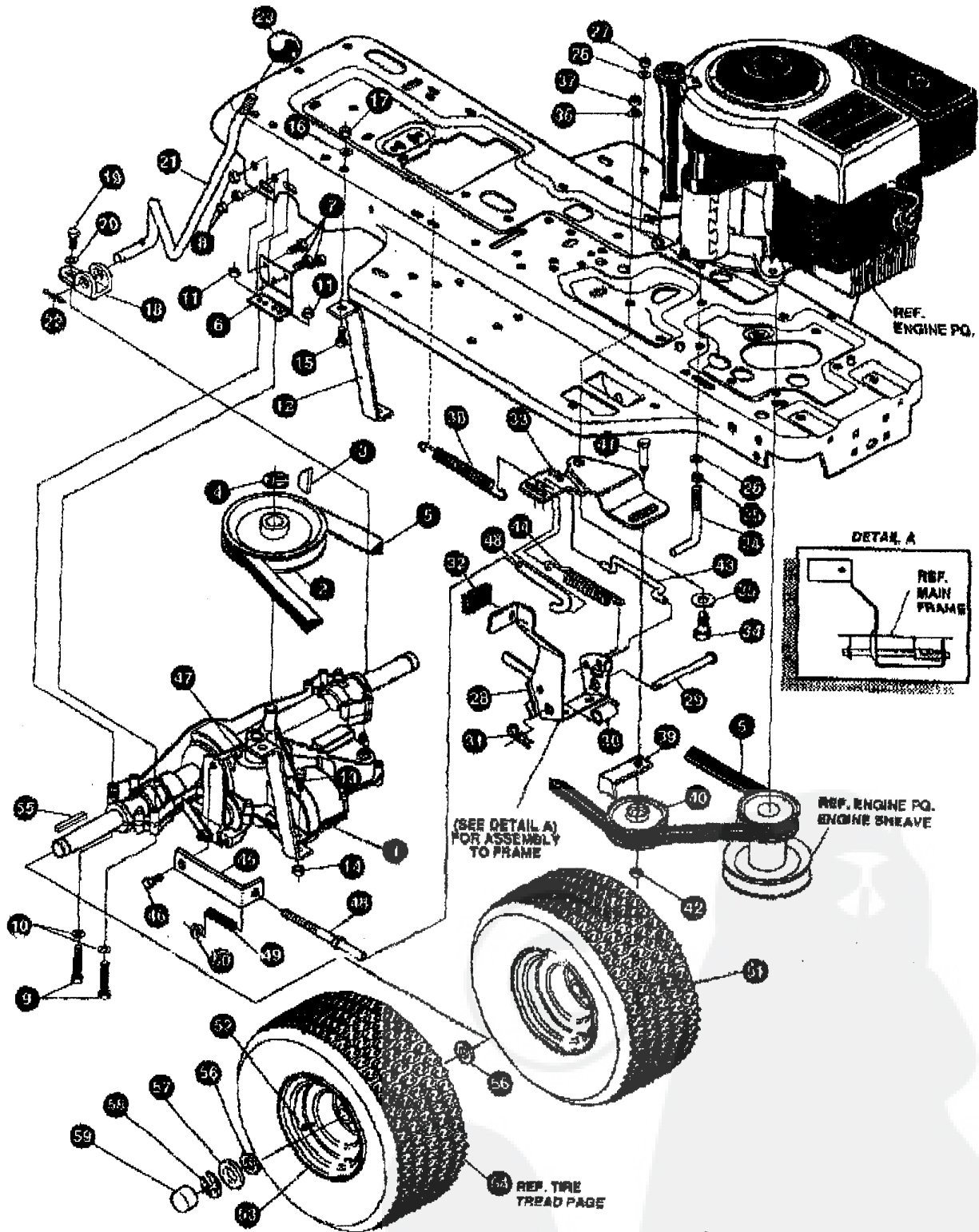
38" LAWN TRACTOR MODEL D3554-090

KEY#	PART#	DESCRIPTION	QTY.
1	^	FRONT AXLE ASSEMBLY SF	1
2	524915-859	AXLE, FRONT	1
3	50546	BEARING, FLANGE	4
4	310368	SPINDLE, RH	1
5	36625	RING, RETEX	1
6	310367	SPINDLE, LH	1
7	325229	ARM, STEERING LH	1
8	454886	PIN, SPRING	1
9	302688	TIE ROD	1
10	◇ 122145	SCREW, 3/8-16X1.25 HHC	2
11	◇ 120382	WASHER, .393X.68X.10 REGSPTLK	2
12	◇ 1499	NUT, 3/8-16 REGHCTRLK	2
13	324752	SECTOR, GEAR	1
14	327833	PLATE SECTOR SF 4WS	2
15	324753	BUSHING SECTOR GEAR SF 4WS	1
16	180124	SCREW, 3/8-16X1.25	1
17	1499	NUT, 3/8-16 REGHXCTRLK	1
18	◇ 328808	DRAGLINK ASSEMBLY	1
19	57158	BALL JOINT	2
20	56180	DRAGLINK	1
21	124825	NUT, 3/8-24 REGHEXJAM	2
22	120382	WASHER, REGSPTLK	2
23	120369	NUT, 3/8-24 REGHEX	2
24	327834	SHAFT PINION STEERING	1
25	328692	BRG. FL.	1
26	326505	SCREW, 1/4-20X.75 GRD 5	2
27	46931	NUT, 1/4-20 FLK NUT SIDE LOCK	2
28	20964	RING RET E	1
29	^	ASSEMBLY TIRE	2
30	24167	VALVE STEM	1
31	39829	WHEEL W/BEARING	1
32	314416	BEARING, 1.3800X.7531Q FLANGE	2
33		REFER TO TIRE TREAD PAGE	
34	642	WASHER, FLAT .755X1.31X.076	4
35	36625	RING, RETEX .57X.05	2
36	40394	HUB CAP	2

◇ Indicates STANDARD HARDWARE ITEMS.
 ^ ORDER INDIVIDUAL PARTS

38" LAWN TRACTOR MODEL D3554-090

MOTION DRIVE ASSEMBLY



NOTE: ALWAYS USE ORIGINAL EQUIPMENT PARTS.
Use of service/replacement parts other than original equipment parts may void your warranty.

**ALL UNNUMBERED
ITEMS ARE INTERCHANGEABLE
WITH OPPOSITE SIDE**

327141B

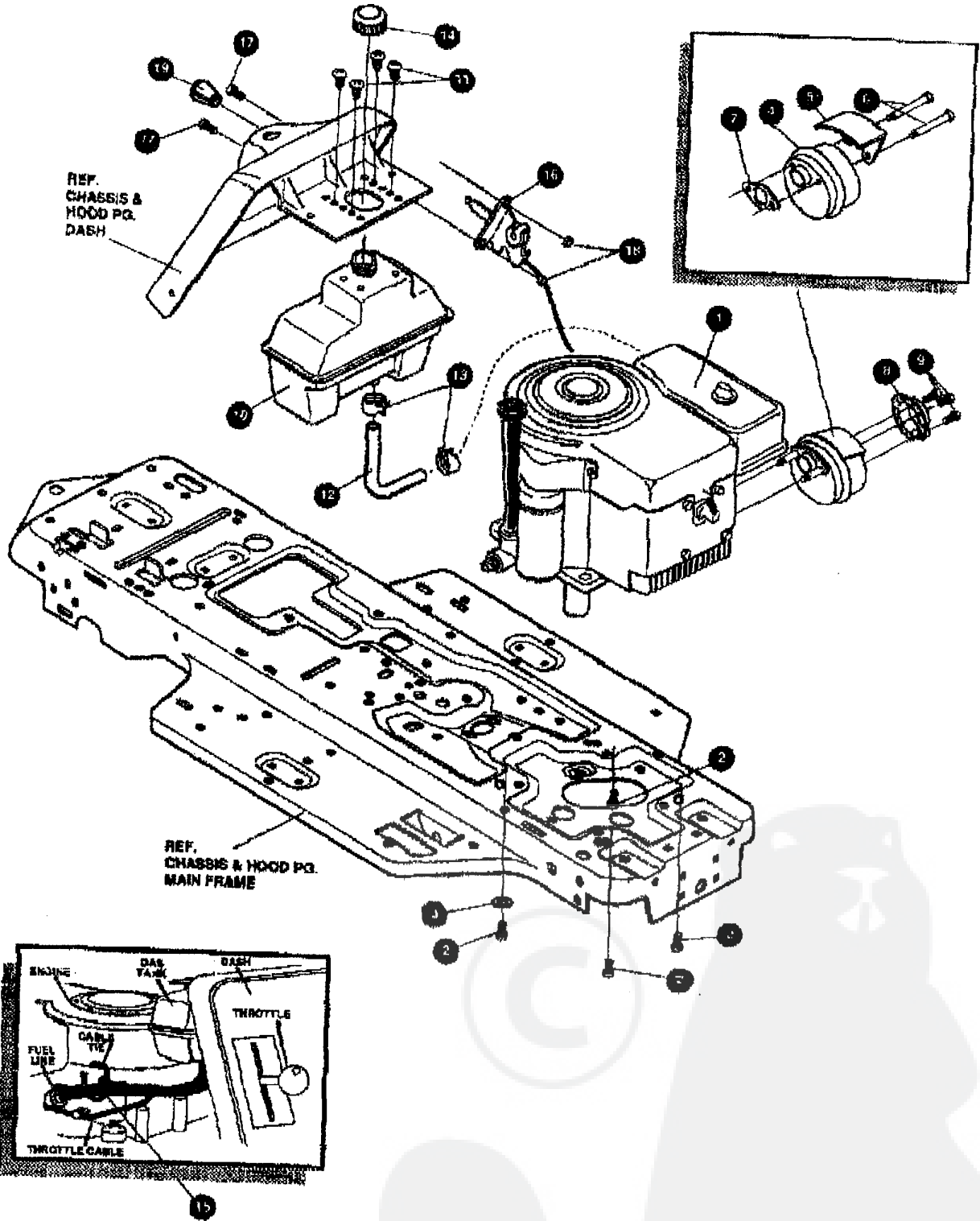
38" LAWN TRACTOR MODEL D3554-090

KEY#	PART#	DESCRIPTION	QTY.
1.	^	TRANSAXLE P940-SSP SF FER	1
2.	302745	PULLEY, IDLER V4L 6.60	1
3.	3021	KEY, WDRF 606 .750X.187X.312	1
4.	22053	RING, RETEX .69X.035TRU5100-82	1
5.	54768 → 54758	BELT, V 4L 82.00 SF DRIVE	1
6.	53768-853	MF BRACKET, TRANSAXLE	2
7.	120228	SCREW, 5/16-18X .69 HHC	6
8.	1498	NUT, 5/16-18 REGHEXCTRLK	6
9.	180088	SCREW, 5/16-18X2.25 HHC	4
10.	120398	WASHER, FLAT .344X .69X.065	4
11.	1498	NUT, 5/16-18 REGHEXCTRLK	4
12.	313587	MF BRACKET, T/A TORQ. 915 S/F	1
13.	180087	SCREW, 5/16-18X2.00 HHC	1
14.	1498	NUT, 5/16-18 REGHEXCTRLK	1
15.	122017	SCREW, 5/16-18X1.00 HHC	1
16.	138485	WASHER, EXLK 320X.61X.03	1
17.	1498	NUT, 5/16-18 REGHEXCTRLK	1
18.	12616	MH BRACKET, SHIFT P920-SSP	1
19.	58255	SCREW, 1/4-28X .75 NYLHHC	1
20.	67167	WASHER, 750X.250 SF-TRANSAXLE	1
21.	313934	LEVER, SHIFT 915 T/A S/F	1
22.	137185	PIN, COTTER .125 DIA X 1.00 LG	1
23.	55514-653	KNOB, ROUND 1.50 DIA BLACK	1
24.	49896	MF BELT GUIDE	1
25.	271184	NUT, 5/16-18 HEXKEPS	1
26.	120393	WASHER, FLAT .344X .69X.065	2
27.	1498	NUT, 5/16-18 REGHEXCTRLK	1
28.	302603-853	SF ASSY, BRAKE PEDAL S.F.	1
29.	318676	PIN, CLEVIS .5 DIA, 4.87LG, ZN-PL	1
30.	302601	SPACER, SLEV .63 X .62X1.406	1
31.	56180	PIN, HAIR .091 DIA X 1.62LG	1
32.	48761	PAD, CLUTCH/BRAKE PEDAL	1
33.	321968	MF IDLER ARM BRKT TRACTION SF	1
34.	41890	BOLT, .625X .218 HSSH 5/16-18Z	1
35.	4107	WASHER, FLAT .635X1.31X.07	1
36.	45602	WASHER, FLAT .333X .87X.119	1
37.	1498	NUT, 5/16-18 REGHEXCTRLK	1
38.	327887	SPRING, 3/4 ODX 6.76X.091 TENSIO	1
39.	39859	MF RETAINER, BELT	1
40.	30311	PULLEY, IDLER V4L 3.06X .62	1
41.	46882	BOLT, 3/8-16X1.60 OARR	1
42.	1498	NUT, 3/8-16 REGHXCTRLK	1
43.	43980	ROD, 268 DIA CLUTCH	1
44.	50552	SPRING, 3/8 ODX 1.625X.055 TENSIO	1
45.	323210	BRACKET, TRACTION BRAKE S/F	1
46.	46824	BOLT, .500X .188 HSSH 5/16-18Z	1
47.	1498	NUT, 5/16-18 REGHEXCTRLK	1
48.	323211	ROD, BRAKE 915 T/A SF	1
49.	53820	SPRING, CLUTCH .625 OD	1
50.	50352	NUT, 1/4-20 WDFLLK TOPLOCK	1
51.	*	TIRE & RIM, PU 20X8.0-8 TURWHI	2
52.	24167	VALVE STEM	1
53.	326362	WHEEL & HUB ASSY 20X8 WHITE	1
54.		REFER TO TIRE TREAD PAGE	
55.	52928	KEY, SQUARE .1875OX2.25LG	2
56.	642	WASHER, FLAT .755X1.31X.075	4
57.	42815	WASHER, FLAT .755X1.53X.07	2
58.	36625	RING, RETEX .57X.05TRU5133-75	2
59.	40394	HUB CAP, 1.500ID X 7/8LG	2

* CONTACT YOUR NEAREST PEERLESS TRANSAXLE DEALER FOR PARTS AND SERVICE.
 * ORDER INDIVIDUAL PARTS.

38" LAWN TRACTOR MODEL D3554-090

ENGINE & CONTROL ASSEMBLY



NOTE: ALWAYS USE ORIGINAL EQUIPMENT PARTS. Use of service/replacement parts other than original equipment parts may void your warranty.

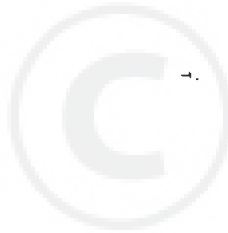
ALL UNNUMBERED ITEMS ARE INTERCHANGEABLE WITH OPPOSITE SIDE

325601A

38" LAWN TRACTOR MODEL D3554-090

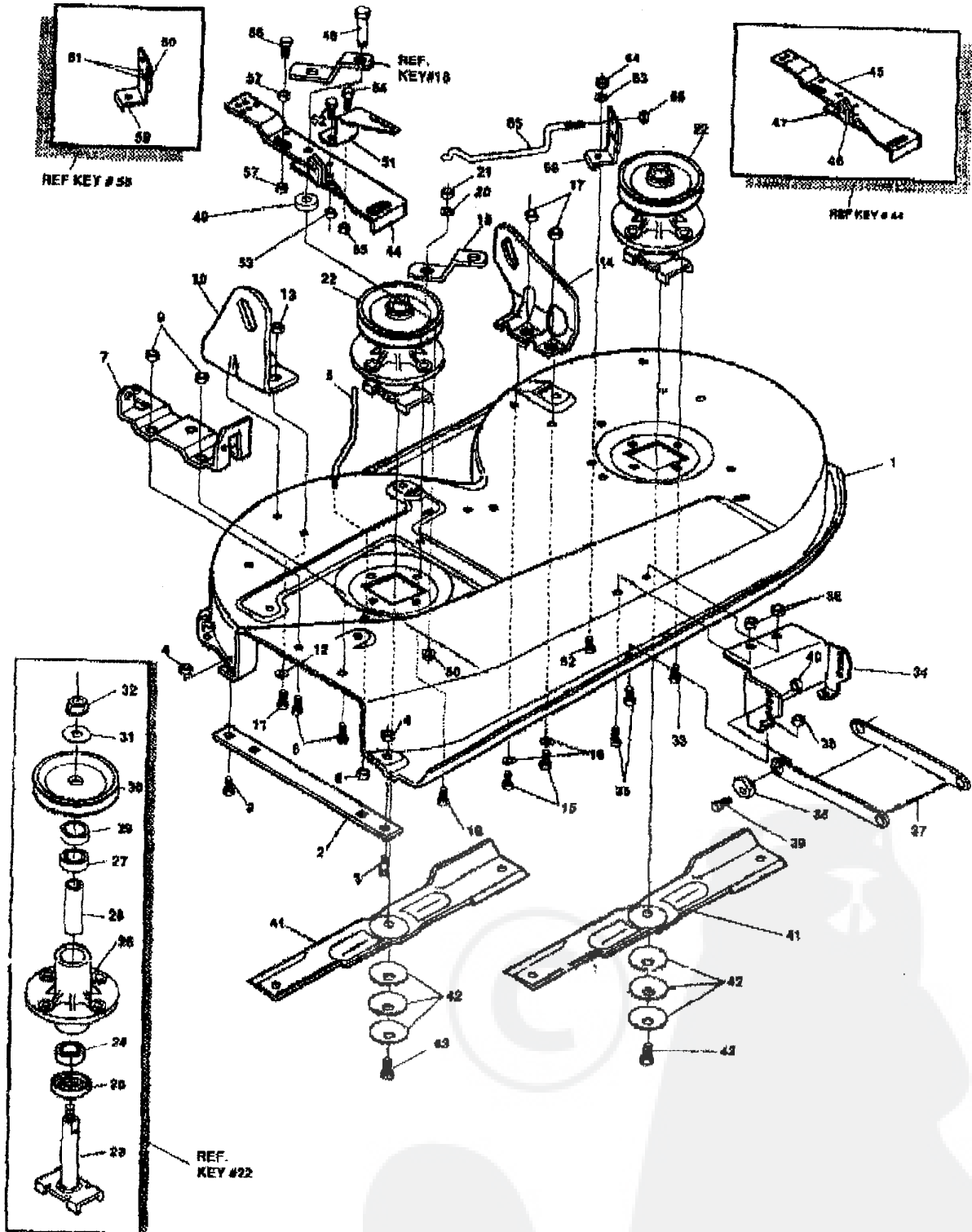
KEY#	PART#	DESCRIPTION	QTY.
1	ENGINE	ENGINE, 12 HP B&S VC (SEE ENGINE MANUAL)	1
2	Y 50947	SCREW, 3/8-16 X 1.25 WASHHTAP	4
3	Y 138489	WASHER, EXLK 384 X .68 X .04	1
4	57908	MUFFLER-LO TONE NELSON EXPORT	1
5	54767	SHIELD, HEAT, FOR ROUND MUFFLER	1
6	Y 178063	SCREW, 5/16-18 X 3.50 HNC	2
7	46708	GASKET, MUFFLER	1
8	323423	DEFLECTOR, MUFFLER PARTIAL	1
9	35287	SCREW, #8-32 X .38 HMWATAP GR2	3
10	314989	TANK, FUEL 1 GAL	1
11	Y 49050	SCREW, 1/4-10 X .75PHPTAP	4
12	42258	GAS LINE, .25 ID	12'
13	47348	GLAMP, FUEL LINE	2
14	46704	GAS CAP, 1-1/2-7 THD	1
15	57444	CABLE TIE	1
16	320031	THROTTLE CONTROL	1
17	Y 96291	SCREW, 10-24 X .50 SLHMA	2
18	Y 271186	NUT, #10-24 HEXKEPS	2
19	50607	KNOB, ROUND THROTTLE	1

• INDICATES STANDARD HARDWARE ITEMS.



38" LAWN TRACTOR MODEL D3554-090

PRE-PAINTED DECK



NOTE: ALWAYS USE ORIGINAL EQUIPMENT PARTS. Use of service/replacement parts other than original equipment parts may void your warranty.

ALL UNNUMBERED ITEMS ARE INTERCHANGEABLE WITH OPPOSITE SIDE

326046F

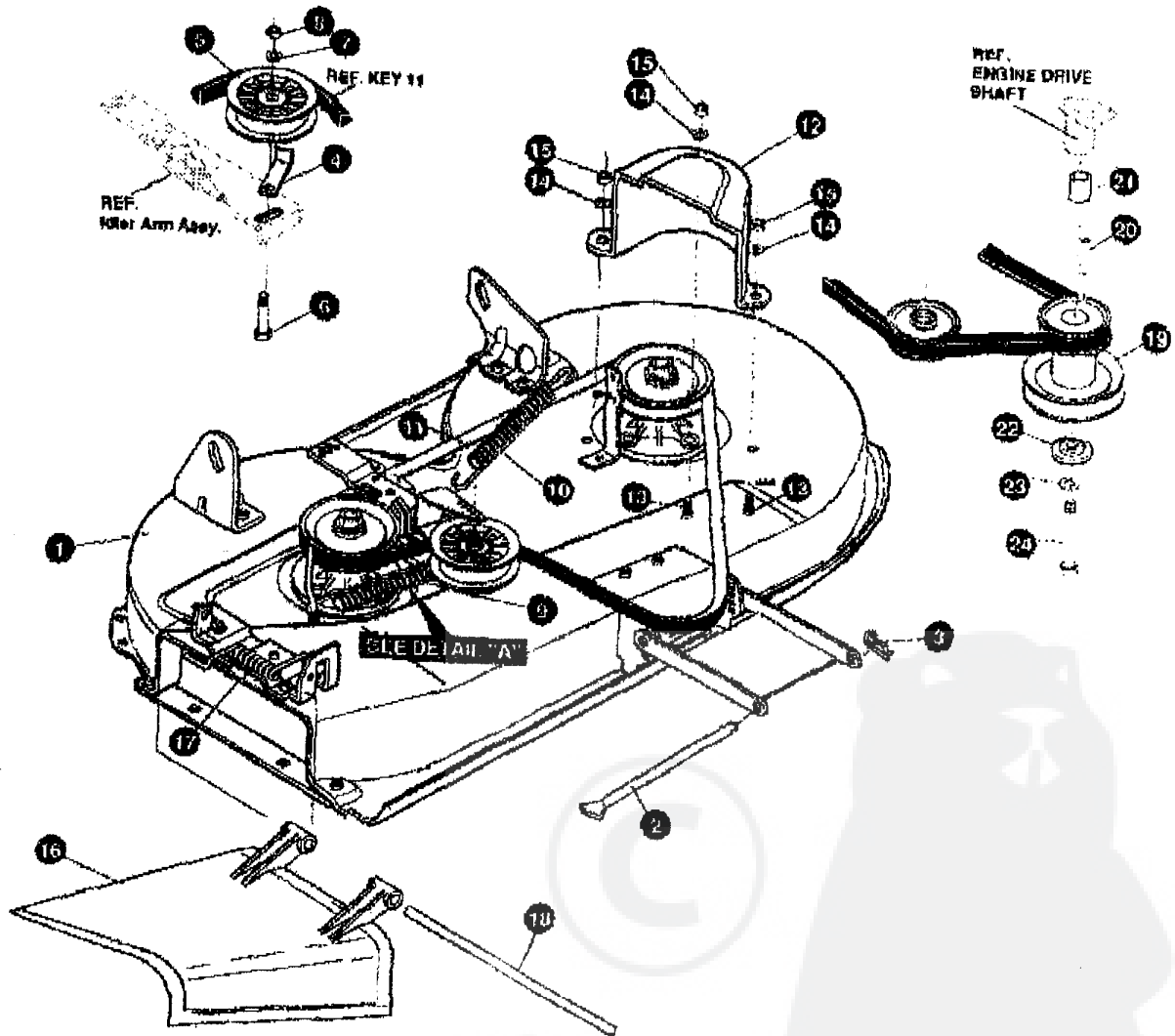
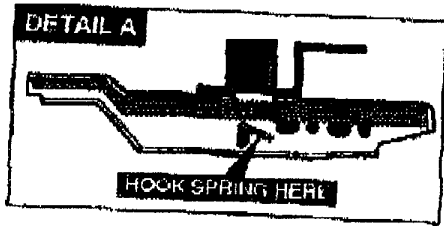
38" LAWN TRACTOR MODEL D3554-090

KEY#	PART#	DESCRIPTION	QTY.
1	325106	DECK, 38"SD MOWER	
2	326295	BAR, SKID-MULCH	1
3	126216	BOLT, 5/16-18 X .75 CARRIAGE	1
4	01498	NUT, 5/16-18 REGHEXCTRLK	2
5	57318	GUIDE, BELT 5/16-18 THD	2
6	01498	NUT, 5/16-18 REGHEXCTRLK	1
7	313929	BRACKET, CHUTE	1
8	0180076	SCREW, 5/16-18 X .50 HHC	1
9	01498	NUT, 5/16-18 REGHEXCTRLK	2
10	313929	LIFT BRACKET, REAR, RH	2
11	0180077	SCREW, 5/16-18 X .75 HHC	1
12	120393	WASHER, FLAT .344 X .69 X .068	2
13	01498	NUT, 5/16-18 REGHEXCTRLK	2
14	310667	BRACKET, DECK LIFTREAR L/H	2
15	0180077	SCREW, 5/16-18 X .75 HHC	1
16	120393	WASHER, FLAT .344 X .69 X .065	2
17	01498	NUT, 5/16-18 REGHEXCTRLK	2
18	316302-853	BRACKET, IDLER SUPPORT	2
19	0300345	SCREW, 5/16-18 X 1.38 WATAP	1
20	120393	WASHER, FLAT .344 X .69 X .065	1
21	01498	NUT, 5/16-18 REGHEXCTRLK	1
22	56424-853	QUILL ASSEMBLY, 36/39/40/43	1
23	56426	SHAFT/SADDLE 38"	2
24	49562	BEARING, BALL	1
25	50616	DUST SHIELD	1
26	55547	QUILL CASTING	1
27	49562	BEARING, BALL	1
28	50818	SPACER, 3.797 LG X .569 ID X .88 OD	1
29	51449	SPACER, .435 LG X .232 OD X .672 ID-PM	1
30	313898	PULLEY, 26/36" QUILL	1
31	56305	SPECIAL WASHER	1
32	01282	NUT, 7/16-20 WDFLLK	1
33	050834	SCREW, 5/16-18 X .80 WAHNTAP	1
34	312826	LIFT SUPPORT FRONT DECK	8
35	0180075	SCREW, 5/16-18 X .63 HHC	1
36	01498	NUT, 5/16-18 REGHEXCTRLK	4
37	53305-853	LINK BRACKET, DECK FR	4
38	58247	ADJUSTING NUT	1
39	0122017	SCREW, 5/16-18 X 1.00 HHC	2
40	01498	NUT, 5/16-18 REGHEXCTRLK	2
41	309069	BLADE, 19.89 LO-LIFT	2
42	2483	WASHER, .99 ID X 1.25 O X .07 BELLVIL	8
43	039573	SCREW, 3/8-24 X 1.00 NYLMHC	6
44	020565-853	IDLER ARM ASSEMBLY	2
45	300490-853	IDLER ARM	1
46	306973	BRAKE PAD	1
47	41601	RIVET, QVSET 187 DIA X .50 LG BT	1
48	300180	BOLT, .60 X .188 HSH3/8-16	2
49	095416	WASHER, FLAT .381 X 1.125 X .125	1
50	45171	NUT, 5/16-18 X .75 HHC WHIZ-LOCK	1
51	026249-853	BRACKET, EXTENSION IDLER	1
52	180077	SCREW, 5/16-18 X .75 HHC	1
53	1498	NUT, 5/16-18 REGHEXCTRLK	1
54	120854	SCREW, 1/4-20 X .63 HHG-GR2	1
55	1502	NUT, 1/4-20 REGHXCTRLK	1
56	121854	SCREW, 1/4-20 X 2.00 HHC	1
57	271172	NUT, 1/4-20 REGHEXKEPS	1
58	303247-853	ASSEMBLY BLADE BRAKE	2
59	303248-853	BRAKE ARM	1
60	306973	BRAKE PAD	1
61	135624	RIVET, TRSET .185 DIA X .41	1
62	180075	SCREW, 5/16-18 X .63 HHC	2
63	120393	WASHER, FLAT .344 X .69 X .65	1
64	1498	NUT, 5/16-18 REGHEXCTRLK	1
65	300318	ROD, BRAKE	1
66	1502	NUT, 1/4-20 REGHEXCTRLK	1

0 INDICATES STANDARD HARDWARE ITEMS

38" LAWN TRACTOR MODEL D3554-090

FINAL DECK ASSEMBLY



NOTE: ALWAYS USE ORIGINAL EQUIPMENT PARTS.
Use of service/replacement parts other than original equipment parts may void your warranty.

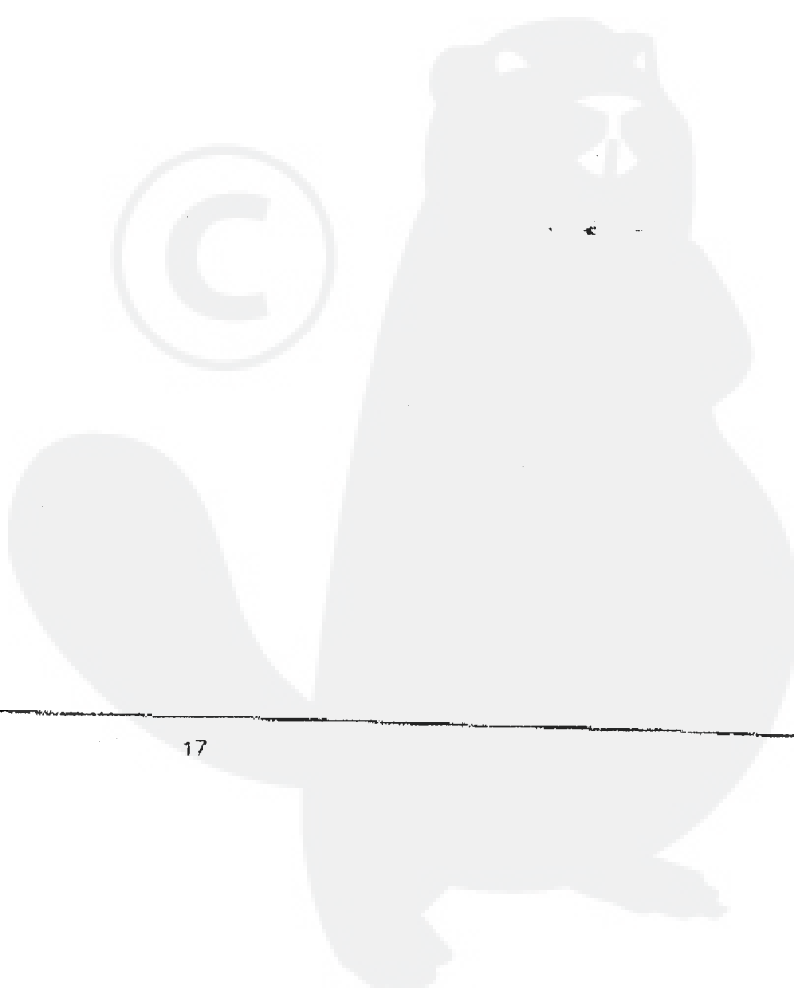
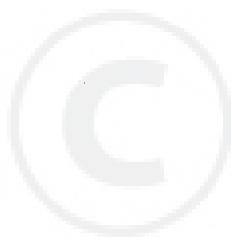
ALL UNNUMBERED
ITEMS ARE INTERCHANGEABLE
WITH OPPOSITE SIDE

326048B

38" LAWN TRACTOR MODEL D3554-090

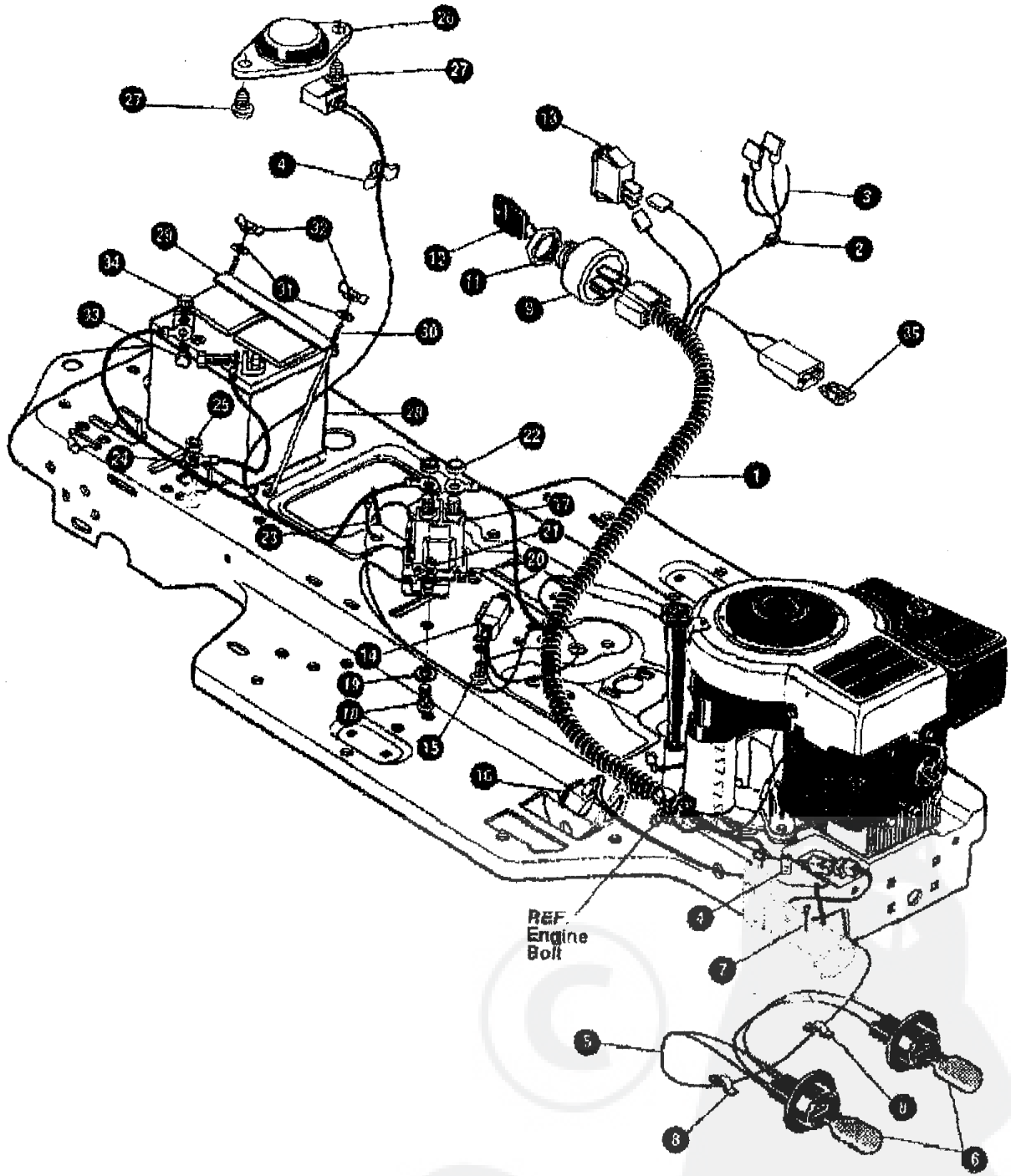
KEY#	PART#	DESCRIPTION	QTY.
1	-	ASSEMBLY DECK 36SD 2-DECKWH	1
2	59306	ROD, DECK HITCH	1
3	9260	PIN, HAIR .091 DIA X 1.66	1
4	1348	BELT RETAINER, 2.55 OD	1
5	310326	PULLEY, IDLER BFF 4.00	1
6	67326	BOLT, 3/8-16 X 2.00 CARRIAGE	1
7	120382	WASHER, REGSPTLK .390 X .68 X .10	1
8	◇ 120377	NUT, 3/8-16 REGHX	1
9	322064	SPRING, .071 X .62 X 4.37	1
10	329256	SPRING, TENSION	1
11	300680	BELT, V 5L 77.75	1
12	329267	GUARD, BELT LH	1
13	180075	SCREW, 5/16-18 X .63 HHC	1
14	120393	WASHER, FLAT .344 X .69 X .065	3
15	◇ 1498	NUT, 5/16-18 REGHEXCTRLK	3
16	57818	CHUTE-36SD, 30 SD	3
17	314975	SPRING, TORSION	1
18	57317	PIVOT ROD, CHUTE	1
19	310280	PULLEY ENGINE	1
20	303151	KEY SQUARE .249X4.50	1
21	304246	SPACER SLEEVE 1.01 X 1.48	1
22	56431	WASHER .960 X 1.38 X 4.37 PILOT	1
23	120363	WASHER, REGSPTLK .459 X .78 X .12	1
24	433146	SCREW, 7/16-20 X 4.25	1

◇ Indicates STANDARD HARDWARE ITEMS.
 * ORDER DECK KIT # 317578 FOR COMPLETE DECK.



38" LAWN TRACTOR MODEL D3554-090

ELECTRICAL ASSEMBLY



NOTE: ALWAYS USE ORIGINAL EQUIPMENT PARTS.
Use of service/replacement parts other than original equipment parts may void your warranty.

**ALL UNNUMBERED
ITEMS ARE INTERCHANGEABLE
WITH OPPOSITE SIDE**

326872A

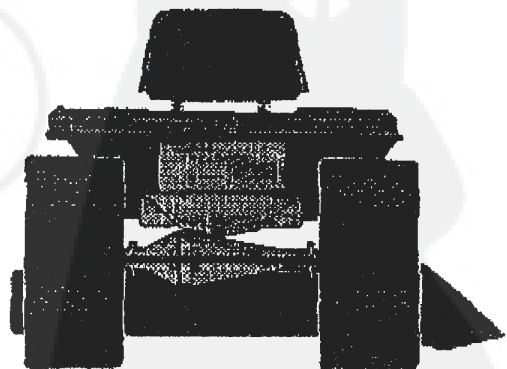
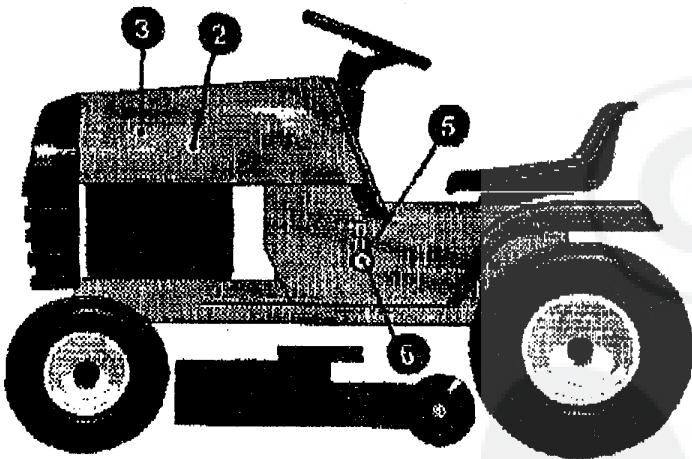
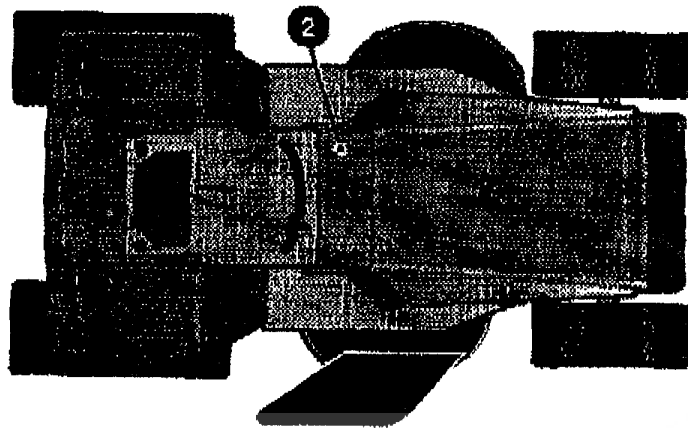
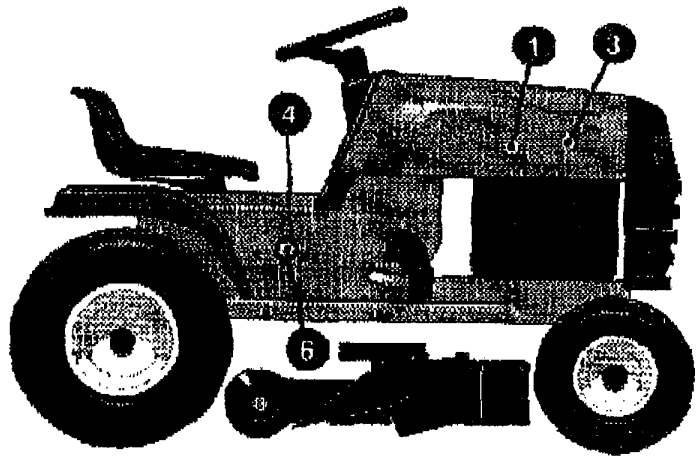
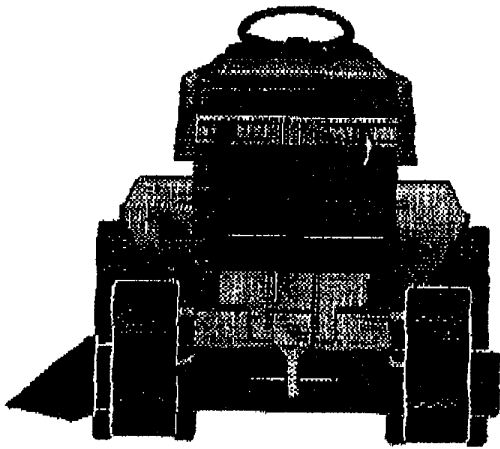
38" LAWN TRACTOR MODEL D3554-090

KEY#	PART#	DESCRIPTION	QTY.
1.	325084	WIRE HARNESS SF 12 B&S IO W/AMM	1
2.	322298	SPLICER	1
3.	57444	TIE, CABLE	1
4.	41482	PRESS CLIP, 1.380 LG .265 ID	2
5.	303064	ASSEMBLY, LIGHT WIRE-1/4 TURN	1
6.	318823	BULB, HEADLAMP	2
7.	57444	TIE, CABLE BLACK NYLON 5.62 L	1
8.	41482	PRESS CLIP, 1.380 LG .265 ID	2
9.	327355	SWITCH-IGNITION (AFTER FIRE) 3 POSITION	1
11.	327352	NUT, 5/8-8 AOME DELTA	1
12.	327349	KEY, IGNITION SWITCH, STEEL	1
13.	300334	LIGHT SWITCH, ON/OFF PANEL MNT	1
14.	57476	SWITCH, SCREW MOUNT DP NO NO BLACK	1
15.	57220	SCREW, #12 X .50 PHNHTAP BLACK	2
16.	326663	SWITCH, SNAPMNT NO .086/.116 BLK	1
17.	53716	SOLENOID	1
18.	187745	SCREW, 1/4-20 X .75 HXSEMMA	2
19.	1084	WASHER, FLAT .281 X 1.00 X .083 PL	1
20.	1502	NUT, 1/4-20 REGHEXCTRLK	2
21.	271172	NUT, 1/4-20 REGHEXKEPS	1
22.	271187	NUT, 5/16-24 HKEPS	2
23.	57444	TIE, CABLE BLACK NYLON 5.62L	1
24.	55511	WIRE, GROUND, 12.5'	1
25.	271184	NUT, 5/16-18 HEXKEPS	1
26.	57547	SWITCH, SEAT	1
27.	160605	SCREW, 1/4-20X .98PHPNHMA	2
28.	57486	BATTERY, YUASA 12V 5-PLATE	1
29.	324719	BATTERY BRACKET	1
30.	40234	BATTERY ROD	2
31.	120892	WASHER, FLAT .281X .63X.065	2
32.	325292	WASHER, FLAT .281X .63X.065	2
33.	120854	SCREW, 1/4-20X .63 HHC	2
34.	271172	NUT, 1/4-20 REGHEXKEPS	2
35.	302031	FUSE, 15 AMP SPADE TYPE	1

- INDICATES STANDARD HARDWARE ITEMS
- Spade type fuse included with the wire harness.

38" LAWN TRACTOR MODEL D3554-090

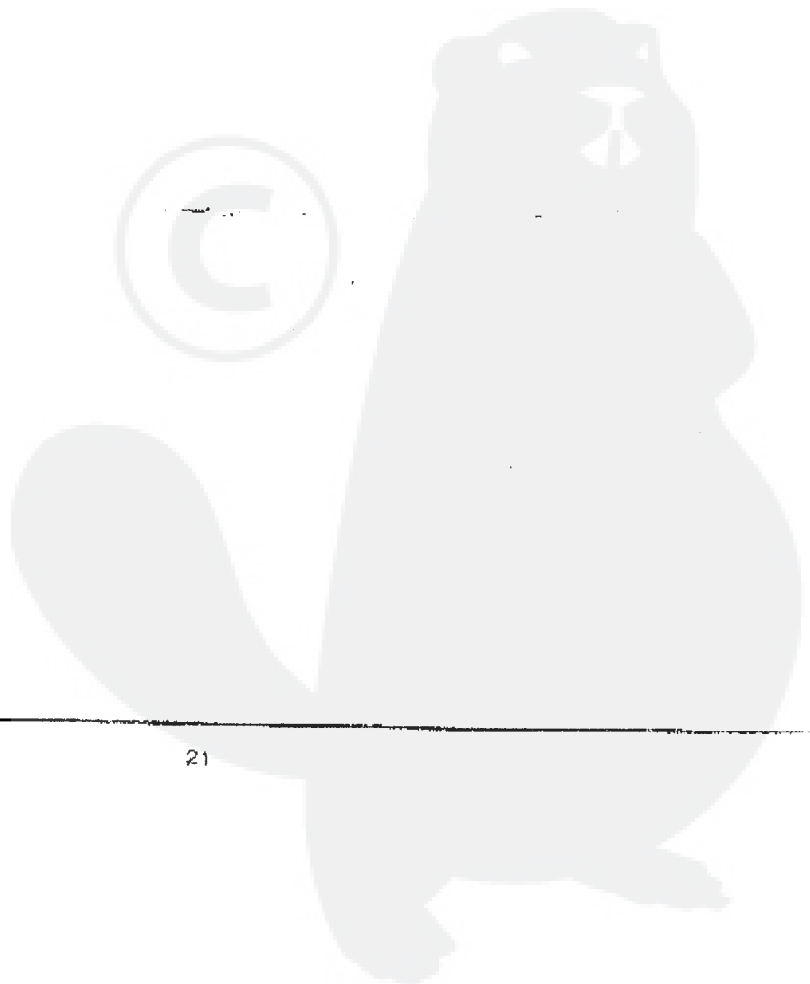
DECALS (DECORATIVE)



32869DA

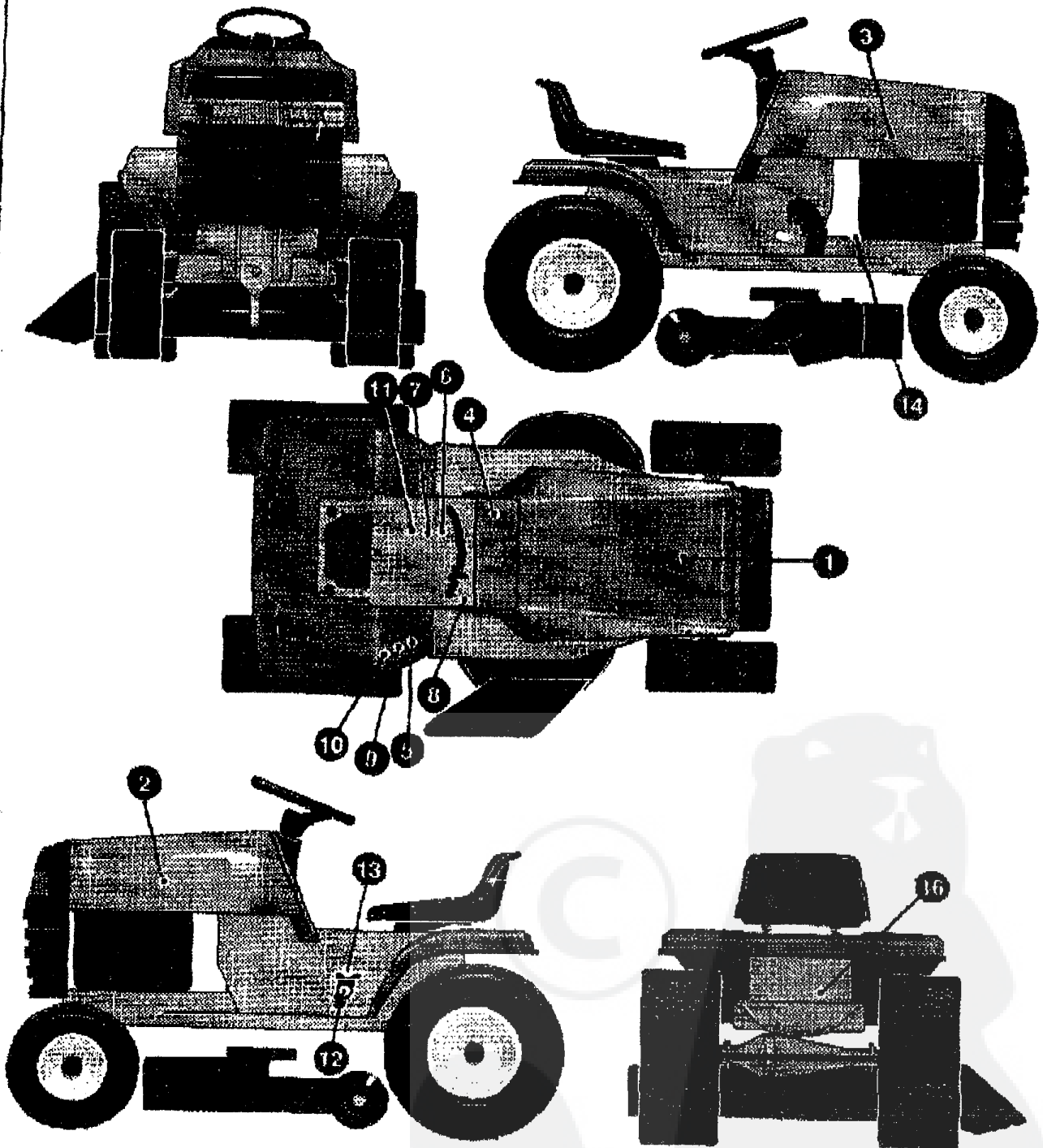
38" LAWN TRACTOR MODEL D3554-090

KEY#	PART#	DESCRIPTION	QTY.
1.	320714	DECAL, HOODSIDE RH H-21	1
2.	320713	DECAL, HOODSIDE LH H-21	1
3.	402142	NAMEPLATE, TURFMASTER WHT/BLK	1
4.	320872	DECAL, PRO CONSOLE (LONGER) RH	1
5.	320873	DECAL, PRO CONSOLE (LONGER) LH	1
6.	311957	NAMEPLATE 12/38 SATIN SILVER	2
7.		REFERENCE ONLY	1



38" LAWN TRACTOR MODEL D3554-090

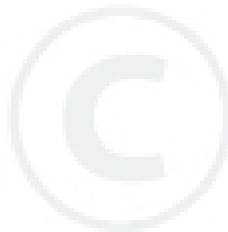
DECALS (INSTRUCTIONAL)



328639A

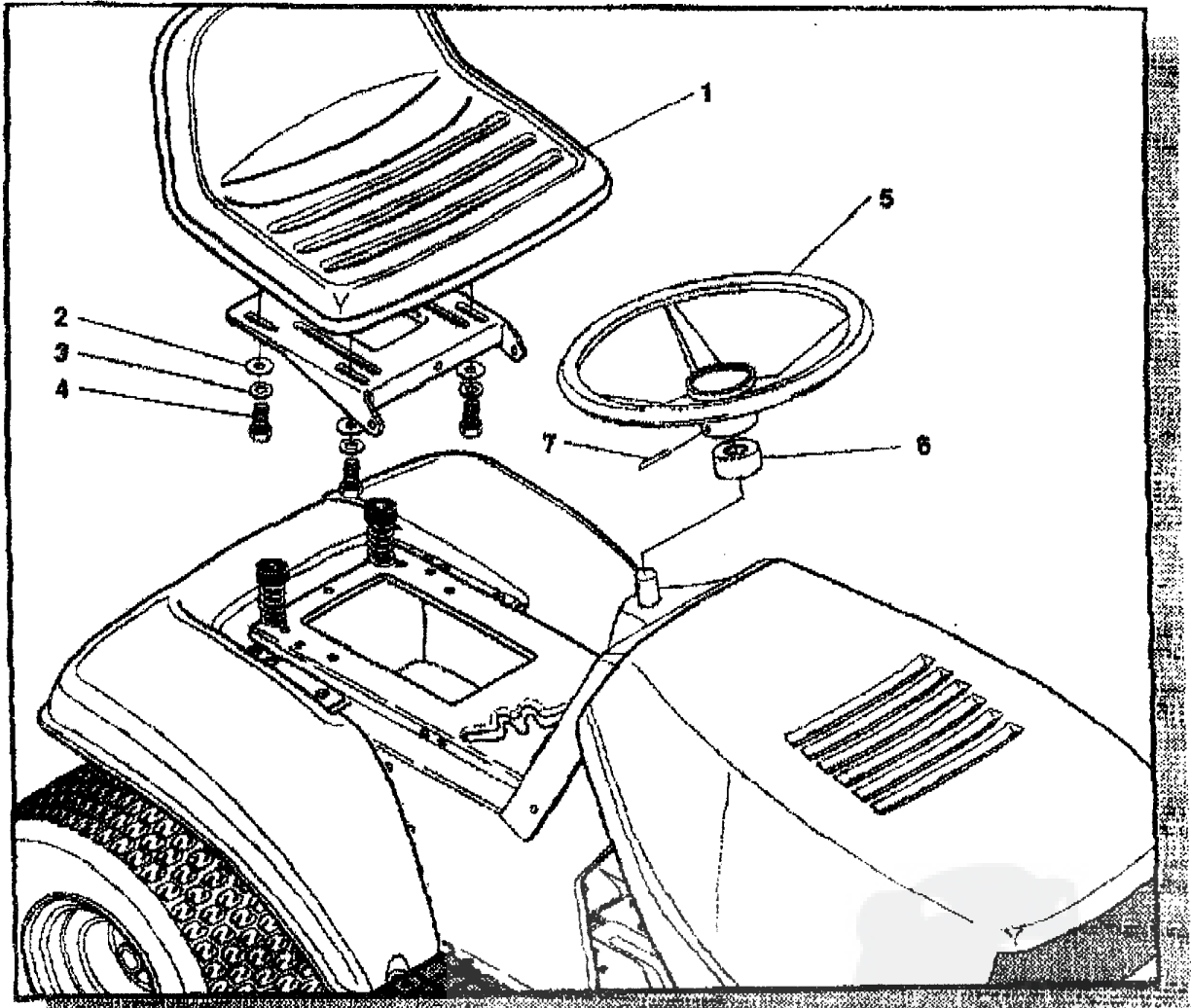
38" LAWN TRACTOR MODEL D3554-090

KEY#	PART#	DESCRIPTION	QTY.
1.	65832	PAD, FOAM TOP HOOD H-4	1
2.	55833	PAD, FOAM HOOD H-4 SIDE LH	1
3.	55834	PAD, FOAM HOOD H-4 SIDE RH	1
4.	324989	DECAL, DASH, DYNAMARK EXP	1
5.	305770	DECAL, CAUTION TRIANGLE EUROPE	1
6.	89524	DECAL, INSTRUCT CONSOLE TOP GER	1
7.	69625	DECAL, INSTRUCT CONSOLE TOP FR	1
8.	301104	DECAL, CONSOLE TOP SHIFT & SP	1
9.	310553	DECAL, DANGER ENGLISH	1
10.	68902	DECAL, WARNING, FRENCH/GERMAN	1
11.	307383	DECAL, INSTR. CONSOLE TOP ENGL	1
12.	320892	DECAL, INSTR. PEDAL LIFT	1
13.	327146	DECAL, PEDAL-LIFT INDICATOR	1
14.	68903	DECAL, BRAKE/CLUTCH ISO	1
15.		REFERENCE ONLY	1
16.	310436	DECAL, FRENCH SAFETY CERT.	1



38" LAWN TRACTOR MODEL D3554-090

CUSTOMER ASSEMBLY



CUSTOMER ASSEMBLY VIEW

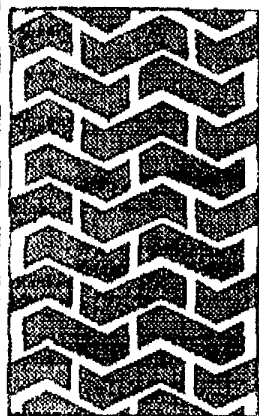
315134 PARTS BAG ASSY QTY1

KEY#	PART#	DESCRIPTION	QTY
1	57452	SEAT MV350	1
2	120393	WASHER, FLAT .344X.69X.065	4
3	120638	WASHER, HVSPLTLK .328X.60X.109	4
4	122007	SCREW, 5/16-18X.75 HHC	4
5	301251	STEERING WHEEL	1
6	323758	STEERING, SLEEVE	1
7	456978	ROLL PIN .250DIA X 2.0LG	1

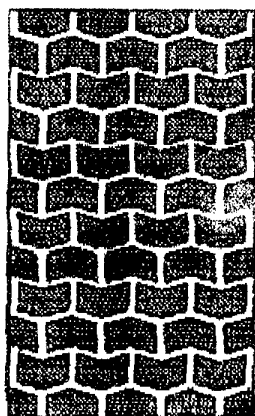
516255C

38" LAWN TRACTOR MODEL D3554-260

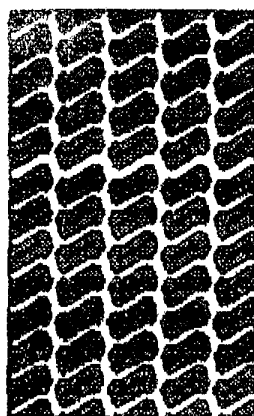
TREAD PATTERNS



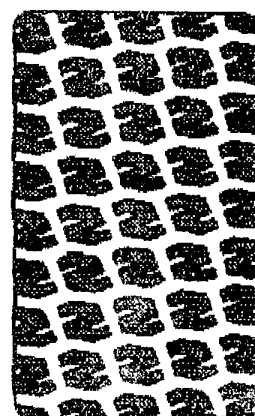
"A"



"B"



"C"



"D"

TIRE SIZE	"A"	"B"	"C"	"D"
11 X 4.00 - 5	42295	319679		
13 X 5.00 - 6	41060	319680		
15 X 6.00 - 6	39830	316702	301140	313952
16 X 6.50 - 8	41081	319682		314539
18 X 8.50 - 8	319683	317400		
18 X 9.50 - 8	41106	316701		313950
20 X 8.00 - 8	319685	319684	57164	314584
20 X 10.00 - 8	58276	319686		313654
20 X 10.00 - 10	55893	319687		
23 X 9.50 - 12	53655	319689	319689	314370