

REPAIR PARTS MANUAL

40" - 12.5 H.P. LAWN TRACTOR

MODEL D3554-110

ONE YEAR LIMITED WARRANTY

For one (1) year from date of purchase by the first consumer for residential use (thirty (30) days commercial use), NOMA Outdoor Products Incorporated warrants that it will replace free of charge, including labor, any original part of any NOMA Outdoor Products Incorporated product found to be defective by any authorized Service Dealer or the factory, except the battery which is warranted for ninety (90) days from date of purchase.

This warranty does not cover engine, transmission, transaxle or differential (these items are covered by their manufacturer's own warranty). This warranty does not cover parts that have failed due to normal wear or parts that have failed subject to misuse or abuse. Transportation of the unit or part to and from an authorized Service Dealer or factory is the responsibility of the owner.

A step by step explanation as to what procedure should be followed for this warranty is:

1. If a part becomes defective, contact the store where the unit was purchased for the name and address of the authorized Service Dealer nearest to you.
2. If you cannot locate an authorized Service Dealer, write Service Department of NOMA Outdoor Products Incorporated for the name and address of the authorized Service Dealer in your area or call the Service Department at 1-901-422-1690.
3. Return the defective product, along with proof of purchase to such authorized Service Dealer for replacement of any defective part where covered by this warranty.

There is no other express warranty. Implied warranties, including those of merchantability and fitness for a particular purpose are limited to one (1) year from date of purchase. Liability for incidental or consequential damages are excluded.

Some states do not allow limitations on how long an implied warranty lasts, so the above limitation may not apply to you. Some states do not allow the exclusion of incidental or consequential damages, so the above exclusion may not apply to you. This warranty gives you specific legal rights, and you may have other rights which vary from state to state.

NOMA Outdoor Products Incorporated

Caller 8000

Jackson, TN 38308-8000

UNIT PARTS AND SERVICE

Fill in and mail the registration card packed with the unit. For service other than covered in this manual, contact an authorized service dealer. A nationwide parts and service organization has been established to provide locally available parts and service. A list of authorized parts distributors has been included in this manual. When ordering repair parts, always give the following information: 1. The Part Name; 2. The Part Number; 3. The Quantity desired; 4. The Full (eight digit) Model Number of the unit. The model number will be found on a plate attached to the unit.

Look for this symbol.



It means - ATTENTION! BECOME ALERT! A HAZARD TO OPERATOR, BYSTANDER, PROPERTY OR EQUIPMENT MAY EXIST.

NOMA Outdoor Products Incorporated
Caller 8000

Jackson, TN 38308-8000

Part No. 329594E

09/98

Price \$5.00



SAFETY RULES

THESE INSTRUCTIONS ARE FOR YOUR PROTECTION. PLEASE READ THEM CAREFULLY.



IMPORTANT

THIS CUTTING MACHINE IS CAPABLE OF AMPUTATING HANDS AND FEET AND THROWING OBJECTS. FAILURE TO OBSERVE THE FOLLOWING SAFETY INSTRUCTIONS COULD RESULT IN SERIOUS INJURY OR DEATH.

I. GENERAL OPERATION:

- Know controls and how to stop quickly.
- Read, understand, and follow all instructions in the manual and on the machine before starting.
- Only allow responsible adults, who are familiar with instructions, to operate the machine.
- Wear safety glasses or eye shields when assembling or operating the machine.
- Do not operate machine when barefooted. Always wear substantial footwear, preferably steel-toed shoes.
- Do not wear loose fitting clothing that could get caught in moving parts.
- Clear the area of objects such as rocks, toys, wire, etc., which could be picked up and thrown by the blade(s).
- Be sure the area is clear of other people before mowing. Stop machine if anyone enters the area.
- Never carry passengers.
- Do not mow in reverse unless absolutely necessary. Always look down and behind before and while backing.
- Be aware of the mower discharge direction and do not point it at anyone. Do not operate the mower without either the entire grass catcher or the guard in place.
- Slow down before turning.
- Never leave a running machine unattended. Always turn off blades, set parking brake, stop engine, and remove keys before dismantling.
- Turn off blade(s) when not mowing.
- Stop engine before removing grass catcher or unlogging chute.
- Mow only in daylight or good artificial light.
- Do not operate the machine while under the influence of alcohol or drugs.
- Watch for traffic when operating near or crossing roadways.
- Use care when mowing around a fixed object to prevent the blade(s) from striking it. Never deliberately run over any foreign object.
- Use extra care when loading or unloading the machine into a trailer or truck.
- Use care when pulling loads or using heavy equipment.
 - a. Use only approved drawbar hitch points.
 - b. Limit loads to those that you can safely control.
 - c. Do not turn sharply. Use care when backing.
 - d. Use counterweight(s), wheel weight or tire chains when suggested in attachment(s) instructions.

II. SLOPE OPERATION:

Slopes are a major factor related to loss-of-control and tip-over accidents, which can result in severe injury or death. All slopes require extra caution. If you cannot back up the slope or if you feel uneasy on it, do not mow it.

DO

- Mow up and down slopes, not across.
- Remove obstacles such as rocks, tree limbs, etc.
- Watch for holes, ruts, or bumps. Uneven terrain could overturn the machine. *Tall grass can hide obstacles.*
- Use slow speed. Choose a low gear so that you will not have to stop or shift while on the slope.
- Follow the manufacturer's recommendations for wheel weights or counterweights to improve stability.
- Use extra care with grass catchers or other attachments. These can change the stability of the machine.
- Keep all movement on the slopes slow and gradual. Do not make sudden changes in speed or direction.
- Avoid starting or stopping on a slope. If tires lose traction, turn off the blade(s) and proceed slowly straight down the slope.

DO NOT

- Do not turn on slopes unless necessary, and then slowly and gradually downhill, if possible.
- Do not mow near drop-offs, ditches or embankments. The

- mower could suddenly turn over if a wheel is over the edge of a cliff or ditch, or if an edge caves in.
- Do not mow on wet grass. Reduced traction could cause sliding.
- Do not try to stabilize the machine by putting your foot on the ground.
- Do not use grass catcher on steep slopes.

III. CHILDREN:

Tragic accidents can occur if the operator is not alert to the presence of children. Children are often attracted to the machine and the mowing activity. Never assume that children will remain where you last saw them.

- Keep children out of the mowing area and under the watchful care of another responsible adult.
- Be alert and turn machine off if children enter the area.
- Before and when backing, look behind and down for small children.
- Never carry children. They may fall off and be seriously injured or interfere with safe machine operation.
- Never allow children to operate the machine.
- Use extra care when approaching blind corners, shrubs, trees, or other objects that may obscure vision.

IV. SERVICE:

- Use extra care in handling gasoline and other fuels. They are flammable and vapors are explosive.
 - a. Use only an approved container.
 - b. Never remove gas cap or add fuel with the engine running. Allow engine to cool before refueling. Do not smoke.
 - c. Never refuel the machine indoors.
 - d. Never store the machine or fuel container inside where there is an open flame, such as in a water heater.
- Check fuel supply before each use allowing space for expansion as the heat of the engine and/or sun can cause gasoline to expand and overflow the tank.
- Use extra care when handling battery acid. Acid contact with skin may cause severe burns. Eye contact may cause blindness.
- Use extra care when servicing the battery. Explosive gas is produced in the battery. Do not service the battery while smoking or near an open spark or flame. This may cause the battery to explode causing serious injury.
- Never run a machine inside a closed area. Exhaust fumes contain CARBON MONOXIDE, an ODORLESS and DEADLY GAS.
- Keep nuts and bolts, especially blade attachment bolts, tight and keep equipment in good condition.
- Never tamper with safety devices. Check their operation regularly.
- Do not change the engine governor settings or overspeed engine.
- Reduce fire hazards. Keep machine free of grass, leaves, or other debris build-up. Clean up oil or fuel spillage. Allow machine to cool before storing.
- Stop and inspect the equipment if you strike an object. Repair, if necessary, before restarting.
- Never make adjustments or repairs with the engine running.
- Grass catcher components are subject to wear, damage, and deterioration, which could expose moving parts or allow objects to be thrown. Frequently check components and replace with manufacturer's recommended parts, when necessary.
- Mower blade(s) are sharp and can cut. Wrap the blade(s) or wear gloves, and use extra caution when servicing them.
- Check brake operation frequently. Adjust and service as required.



LOOK FOR THIS SYMBOL TO POINT OUT IMPORTANT SAFETY PRECAUTIONS. IT MEANS... ATTENTION!!! BECOME ALERT!!! YOUR SAFETY IS INVOLVED.

OWNER'S INFORMATION

Record the following information about your unit so that you will be able to provide it in case of loss or theft.

MODEL NUMBER: -

(Enter complete 8 digit number from model plate on unit)

PURCHASE DATE: ___ / ___ / ___ CODE NO.: ___ SERIAL NO.: ___

DEALER'S NAME AND ADDRESS: _____

CITY: _____ STATE: _____ TELEPHONE: _____

CONTENTS OF SHIPPING CARTON

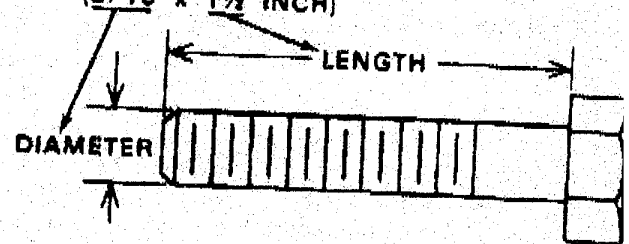
- 1 - Lawn Tractor with 40 Inch Mower Deck
- 1 - Operator's Manual
- 1 - Repair Parts Manual
- 1 - Engine Manual
- 1 - Steering Wheel (see Note)
- 1 - Seat (see Note)
- 1 - Bag of Assembly Parts Containing (see Note):
 - 4 - 5/16 x 3/4 inch Hex Head Screws
 - 4 - 5/16 inch Split Lockwashers
 - 4 - 11/32 inch Flatwashers
 - 1 - Roll Pin
 - 1 - Cover, Steering Shaft
 - 1 - Spacer, Steering Shaft

NOTE: Refer to page 30 (Customer Assembly Parts) for more detailed description.

TOOLS REQUIRED FOR ASSEMBLY

- 2 - 7/16 inch Wrenches (or adjustable wrench)
- 1 - 1/2 inch Wrench (or adjustable wrench)
- 1 - Small Phillips Screwdriver with a 1/4 inch shank
- 1 - Hammer

HOW TO MEASURE SCREW SIZE (5/16 x 1 1/2 INCH)



DANGER



This lawn tractor can be dangerous if carelessly used.

Read your Operator's Manual thoroughly before operating your lawn tractor.

Always wear safety glasses or eye shields while assembling or operating your lawn tractor.

DO NOT carry passengers at any time.

Keep your hands, feet, hair and loose clothing away from the discharge area, the underside of the mower deck or any moving parts while the engine is running.

DO NOT allow children or young teenagers to operate or be near your lawn tractor while it is operating.

ALWAYS GIVE THE FOLLOWING INFORMATION WHEN ORDERING REPAIR PARTS:

1. The PART NUMBER; 2. The PART NAME; 3. QUANTITY DESIRED; 4. The MODEL NUMBER (As shown on Model Plate)

SEND PART ORDERS AS PER INSTRUCTIONS ON THE FRONT PAGE.

DO NOT USE KEY NUMBERS WHEN ORDERING REPAIR PARTS. ALWAYS USE PART NUMBERS.

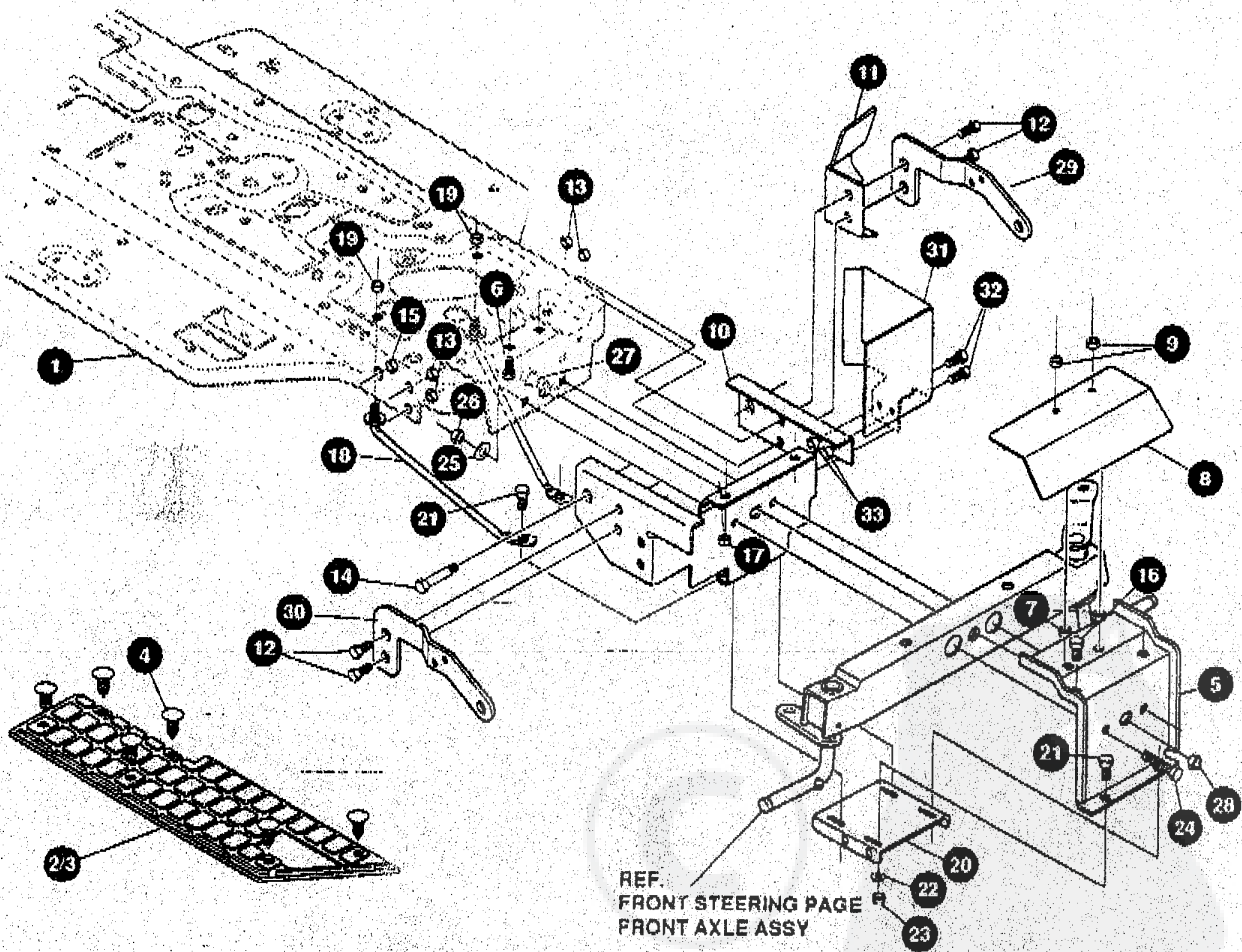
All replacement parts will be supplied in current production colors or in a neutral color.

A handling fee is applicable to small parts orders.

YOUR UNIT IS RIGHT HAND (RH) OR LEFT HAND (LH) AS YOU STAND BEHIND IT.

40" LAWN TRACTOR MODEL D3554-110

CHASSIS & HOOD ASSEMBLY



NOTE: ALWAYS USE ORIGINAL EQUIPMENT PARTS. Use of service/replacement parts other than original equipment parts may void your warranty.

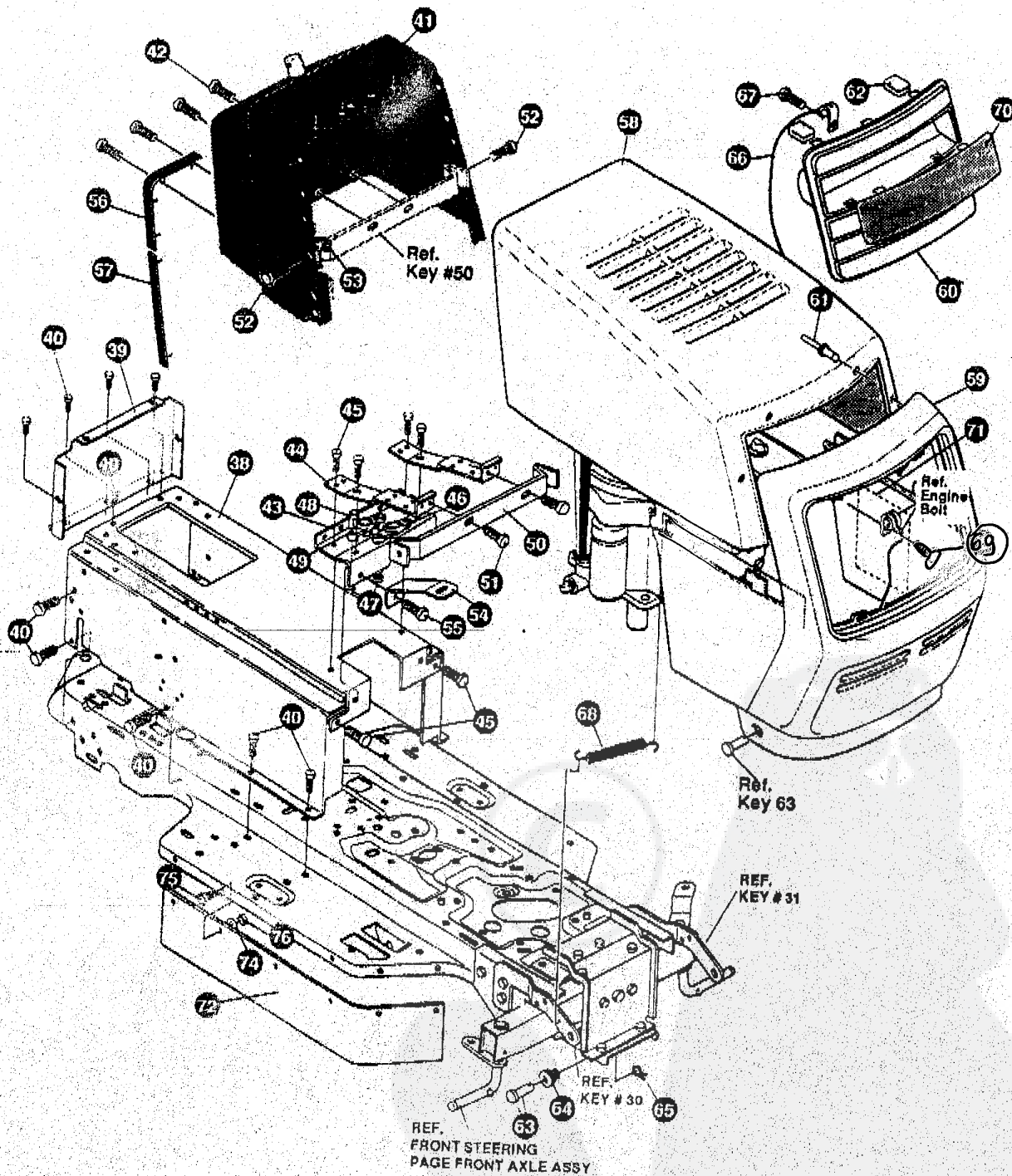
ALL UNNUMBERED
ITEMS ARE INTERCHANGEABLE
WITH OPPOSITE SIDE

40" LAWN TRACTOR MODEL D3554-110

KEY#	PART#	DESCRIPTION	QTY.
1.	328885-879	FRAME,MAIN	1
2.	310003	FOOT PAD, LH SF MOLDED DYNA	1
3.	310004	FOOT PAD, RH SF MOLDED DYNA	1
4.	309235	FASTENER, RATCHET BLACK	12
5.	324815-879	BRACKET, SF FRNT XL UP SUPP	1
6.	327744	BOLT, 3/8-16X1.25 CARR	2
7.	1500	NUT, 1/2-13 REGHCTRLK Z	2
8.	327414-853	SHIELD HEAT SF B&S	1
9.	1499	NUT, 3/8-18 REGHXCTRLK Z	2
10.	324816-879	BRACKET, SF FRNT XL, LO SUPP	1
11.	327687-853	SHIELD HEAT SF B&S	1
12.	328154	SCREW, 5/16-18X1.00 HHC	4
13.	55273	NUT, 5/16-18HXWDFLLK	4
14.	181666	SCREW, 7/16-20X1.00 HHC	2
15.	1282	NUT, 7/16-20 WDFLLK	2
16.	180077	SCREW, 5/16-18X.75 HHC	2
17.	1498	NUT, 5/16-18 REGHEXCTRLK	2
18.	326297	HOD, SUPPORT FRAME SF	2
19.	1499	NUT, 3/8-18 REGHXCTRLK	2
20.	326296-879	BRACKET FRONT HANGER	1
21.	180077	SCREW, 5/16-18X.75 HHC	4
22.	120393	WASHER, FLAT .344X.69X.065	4
23.	1498	NUT, 5/16-18 REGHEXCTRLK	4
24.	180138	SCREW, 3/8-16X3.00HHC	2
25.	2483	WASHER, .391DX1.25DX.07 BELLVIL	2
26.	1499	NUT, 3/8-18 REGHEXCTRLK	2
27.	29616	BOLT, .625X1.890HSH 1/2-20	1
28.	274654	NUT, 1/2-20 REGHXCTRLK	1
29.	326873-853	BRACKET GRILLE LH	1
30.	326874-853	BRACKET GRILLE RH	1
31.	326848-853	SHIELD,HEAT SF	1
32.	180016	SCREW, 1/4-20X.50 HHC	2
33.	51335	NUT, 1/4-20 WDFL,WHIZ-LK	2
	329594	PARTS MANUAL	1
	329598	OPERATOR'S MANUAL (ENGLISH)	1
	329599	OPERATOR'S MANUAL (FRENCH)	1
	329600	OPERATOR'S MANUAL (GERMAN)	1
	323000	GRASS CATCHER MANUAL (ENGLISH)	1
	323207	GRASS CATCHER MANUAL (FRENCH)	1
	323208	GRASS CATCHER MANUAL (GERMAN)	1

40" LAWN TRACTOR MODEL D3554-110

CHASSIS & HOOD ASSEMBLY



NOTE: ALWAYS USE ORIGINAL EQUIPMENT PARTS. Use of service/replacement parts other than original equipment parts may void your warranty.

ALL UNNUMBERED ITEMS ARE INTERCHANGEABLE WITH OPPOSITE SIDE

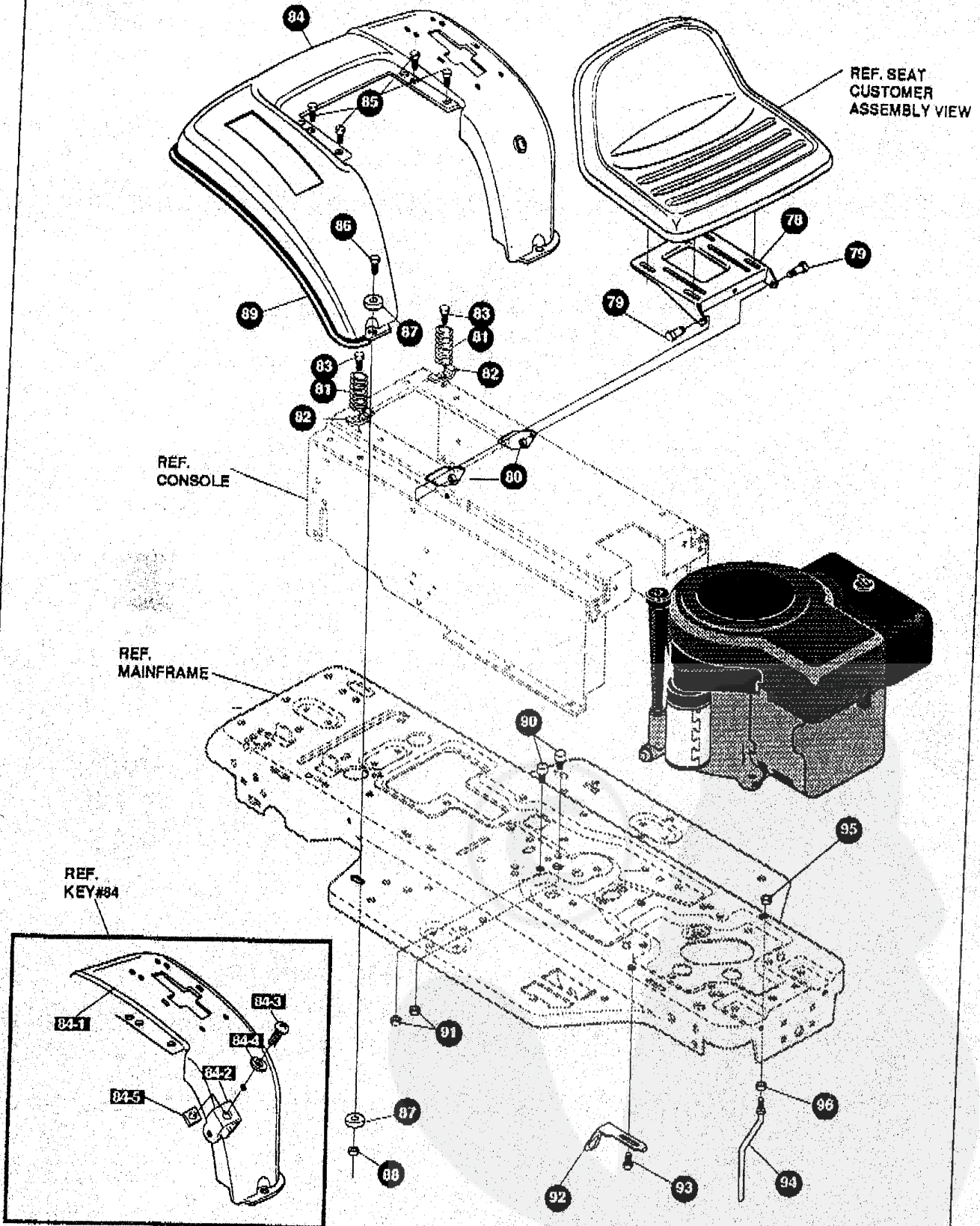
327099C

40" LAWN TRACTOR MODEL D3554-110

KEY#	PART#	DESCRIPTION	QTY.
38.	324996-830	CONSOLE	1
39.	56235-830	CONSOLE, REAR COVER	1
40.	710264	SCREW, 1/4-20X.50 WAHHTAP	15
41.	325766	DASH	1
42.	305850	SCREW, 1/4-20X.50 PHPNTAP	4
43.	327853-853	SUPPORT, DASH	1
44.	327584	SUPPORT, GAS TANK	2
45.	710264	SCREW, 1/4-20X.50 WAHHTAP	6
46.	327444	BEARING, FL	1
47.	180020	SCREW, 1/4-20X.75	4
48.	46931	NUT, 1/4-20 WDFL LOCK	4
49.	327390	BEARING, FL	1
50.	327078	STRAP, DASH SUPPORT	1
51.	710264	SCREW, 1/4-20X.50 WAHHTAP	2
52.	155941	SCREW, 10-24X.63 PHFLTMA	2
53.	308459	NUT, #10-24 HXHONYLK	2
54.	328924	CONSOLE SUPPORT BRKT	2
55.	710264	SCREW, 1/4-20X.50 WAHHTAP	2
56.	328141	BUMPER, HOOD/DASH TOP&CORNER	2
57.	328142	BUMPER, HOOD/DASH SIDE STRIP	2
58.	325180	HOOD	1
59.	325493	GRILLE	1
60.	325496	INSERT, GRILLE	1
61.	325238	RIVET, POP 3/16DIA X.75LG	6
62.	306867	CLIP, TINNEMAN	7
63.	323044	PIN, CLEVIS	2
64.	326522	BEARING, HOOD	2
65.	710343	HAIR PIN, 38DIA X 1.64LG	2
66.	315899	LANYARD, HOOD	1
67.	49050	SCREW, 1/4-10X.75	1
68.	304784	SPRING, HOOD LATCH	1
69.	180020	SCREW, 1/4-20X.75	1
70.	325194	LENS	1
71.	301452	FOIL, HEAT REFLECTOR	1
72.	305395	BELT GUARD	2
74.	1501	WASHER FLAT .203X.56X.040	12
75.	57034	SCREW, 10-24X.63	12
76.	308459	NUT, #10-24X.63	12

40" LAWN TRACTOR MODEL D3554-110

CHASSIS & HOOD ASSEMBLY

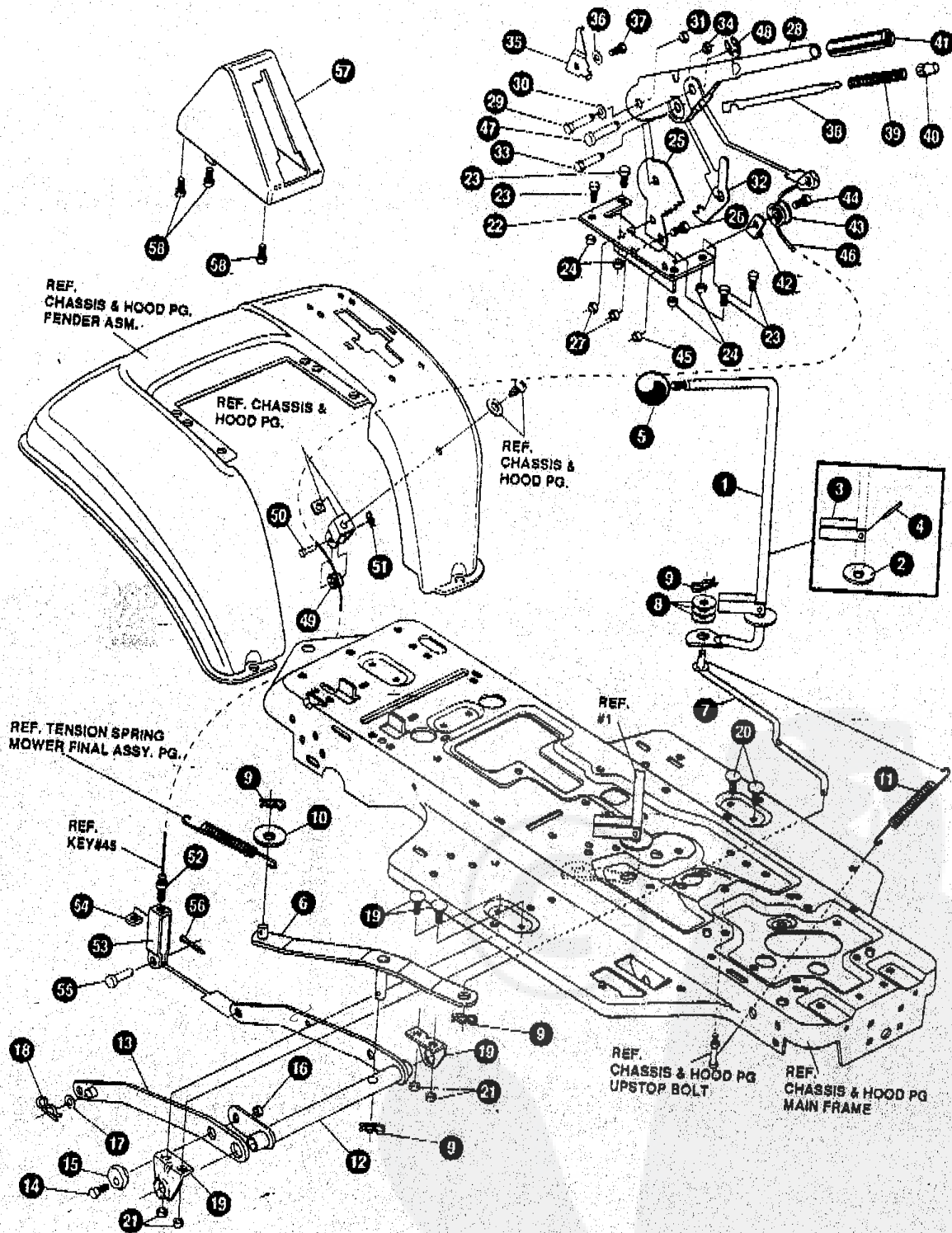


40" LAWN TRACTOR MODEL D3554-110

KEY#	PART#	DESCRIPTION	QTY.
78.	58367-879	PLATE, SEAT	1
79.	20507	BOLT, .437X.156 HSSH 5/16-18	2
80.	1498	NUT, 5/16-18 REGHEXCTRLK	2
81.	56220	SPRING, 1.43X2.38X.162 COM SEAT	2
82.	1341	CLAMP SPRING 1.17" ID	2
83.	710264	SCREW, 1/4-20X.50 WAHHTAP	2
84.	321156-879	FENDER ASSY.	1
84-1	321156	FENDER	1
84-2	300298	CLEVIS	1
84-3	439455	SCREW, 5/16-18X.56	1
84-4	301551	WASHER, .344IDX1.500X.09	1
84-5	120373	NUT, 5/16-18 SQ	1
85.	710264	SCREW, 1/4-20X.50 WAHHTAP	4
86.	180077	SCREW, 5/16-18X.75 HHC	2
87.	446363	WASHER .375X.88X.082	4
88.	1498	NUT, 5/16-18 REGHEXCTRLK	2
89.	55023	TRIM, STRIP, BLACK—SMALL. W/ADH.	75"
90.	53446	PIN, 5/16-18 HOOD LATCH	2
91.	271184	NUT, 5/16-18 HEXKEPS	2
92.	302610-853	BRACKET, SWITCH MOUNTING	1
93.	710264	SCREW, 1/4-20X.50 WAHHTAP	1
94.	50653	GUIDE, BELT	1
95.	41529	NUT, 3/8-16 HXCTRLKJAM	1
96.	271190	NUT, 3/8-16 HEXKEPS	2

40" LAWN TRACTOR MODEL D3554-110

MOWER SUSPENSION



NOTE: ALWAYS USE ORIGINAL EQUIPMENT PARTS. Use of service/replacement parts other than original equipment parts may void your warranty.

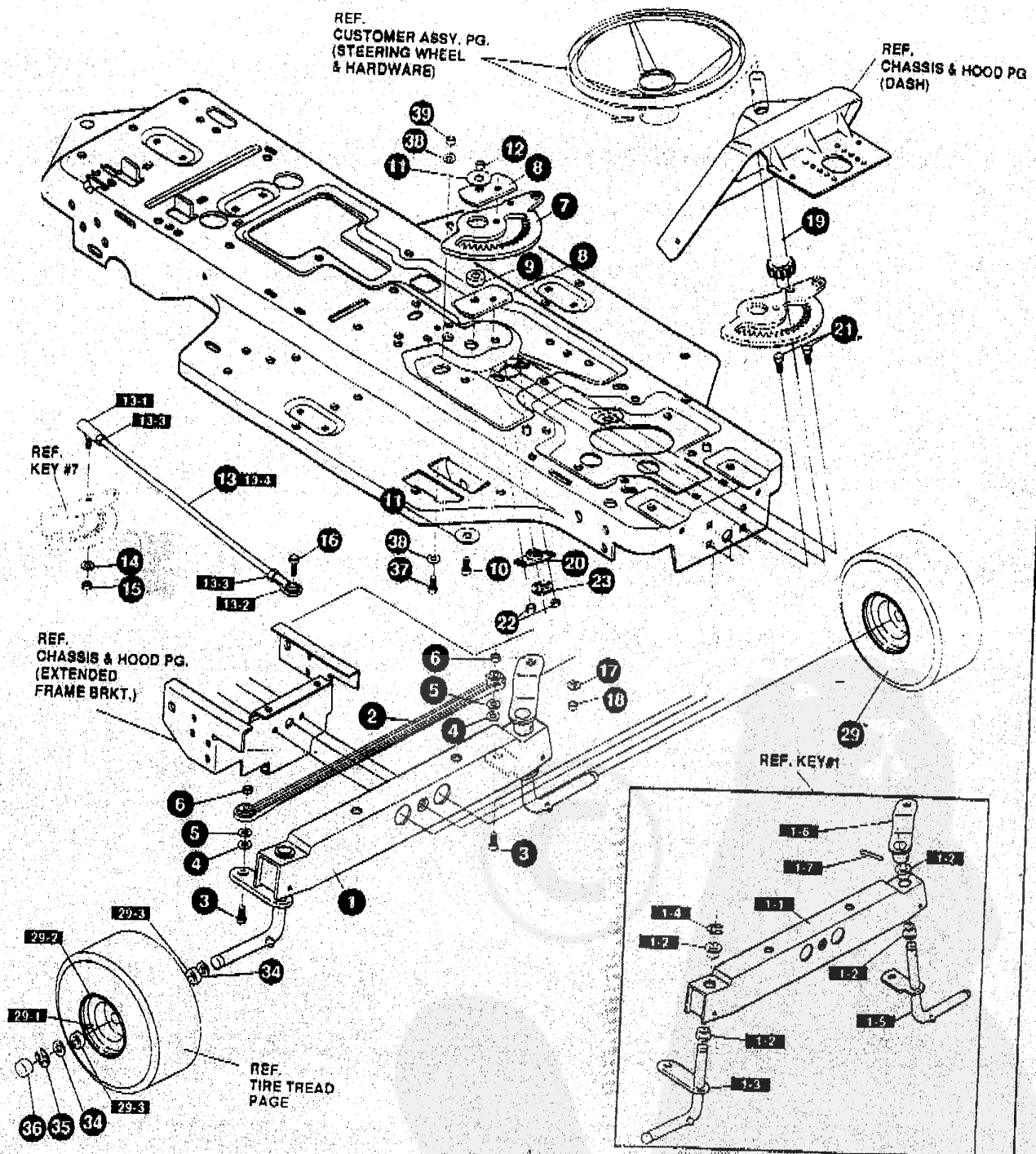
ALL UNNUMBERED ITEMS ARE INTERCHANGEABLE WITH OPPOSITE SIDE

40" LAWN TRACTOR MODEL D3554-110

KEY#	PART#	DESCRIPTION	QTY.
1	325593	HANDLE, RH PTO H-25	1
2	22265	WASHER, FLAT .515X1.38X.119PL	1
3	305225	STOP, PTO ENGAGEMENT	1
4	325386	PIN, SPRING. 187DIA X1.00LG HVPL	1
5	55514	STRAP ASSY, PTO BELCRANK	1
6	325587-853	STRAP ASSY, PTO BELCRANK LINK	1
7	325590	ROD, BELCRANK LINK	1
8	274517	FLAT WASHER .406X.73X.063	1
9	8260	HAIR PIN	3
10	25210	FLAT WASHER, .392X1.25X.09	4
11	325802	SPRING, .89X7.75X.0897 TENSION	1
12	326114-853	LIFT ASSY, LH	1
13	325130-853	LIFT ASSY, RH	1
14	180079	SCREW, 5/16-18X1.00 HHC	1
15	58247	NUT, ADJUST	1
16	1498	NUT, 5/16-18 REGHEXCTRLK	1
17	417098	WASHER, FLAT .5331X1.06X.063Z	1
18	8260	PIN, HAIR .091 DIA X1.66LG	2
19	325495-853	BRACKET, REAR HANG SUSP	2
20	126211	BOLT, 5/16-18X.63 CARR.	2
21	1498	NUT, 5/16-18 REGHEXCTRLK	4
22	58333	BRACKET, HEIGHT ADJUST	4
23	180077	SCREW, 5/16-18X .75 HHC	1
24	1498	NUT, 5/16-18 REGHEXCTRLK	4
25	301238	QUADRANT, HEIGHT ADJUST	4
26	180077	SCREW, 5/16-18X .75 HHC	1
27	1498	NUT, 5/16-18 REGHEXCTRLK	2
28	322292-853	HANDLE, LIFT SHORT	2
29	300171	BOLT, .500X .270 HSSH 5/16-18Z	1
30	996418	WASHER, FLAT .506X .75X.024Z	1
31	44108	NUT, 5/16-18 HWDFLCTRLK	1
32	301239	PAWL, SQUARE	1
33	300171	BOLT, .500X .270 HSSH 5/16-18Z	1
34	44108	NUT, 5/16-18 HWDFLCTRLK	1
35	9435	POINTER	1
36	138479	WASHER, EXLK .195X.41X.03Z	1
37	35287	SCREW, #8-32X .38 HHWATAP	1
38	303027	ROD, ACTUATOR-SHORT	1
39	58328	SPRING, HEIGHT ADJUST	1
40	58325	KNOB, HEIGHT ADJ PUSH BUTTON	1
41	58329	GRIP, .750 OD W/ HOLE BLACK	1
42	9149	CABLE RETAINING BRACKET	1
43	48306	PULLEY, POWDER METAL	1
44	58338	BOLT, .375X .375 HSSH 1/4-20	1
45	1502	NUT, 1/4-20 REGHEXCTRLK	1
46	321430	CABLE, LIFT 21.50	1
47	300310	PIN, CLEVIS .310 DIA + .475 LG ZPL	1
48	300311	RING, RET. E .31X .25TRUX5133-31	1
49	48306	PULLEY, POWDER METAL	1
50	300317	PIN, CLEVIS .375 DIA X .81 LG	1
51	8260	PIN, HAIR .091DIA X 1.66 LG	1
52	120375	NUT, 1/4-20 REGHEX	1
53	9405	CLEVIS, LIFT CABLE	1
54	120372	NUT, 1/4-20 REGSQ	1
55	39522	PIN, CLEVIS .312 X .812	1
56	121222	PIN, COTTER .090X.086X.75LG	1
57	300335	LIFT COVER	1
58	300340	SCREW, #10 X .75 HHPLAST BLK	3

40" LAWN TRACTOR MODEL D3554-110

STEERING ASSEMBLY



NOTE: ALWAYS USE ORIGINAL EQUIPMENT PARTS. Use of service/replacement parts other than original equipment parts may void your warranty.

ALL UNNUMBERED ITEMS ARE INTERCHANGEABLE WITH OPPOSITE SIDE

329286D

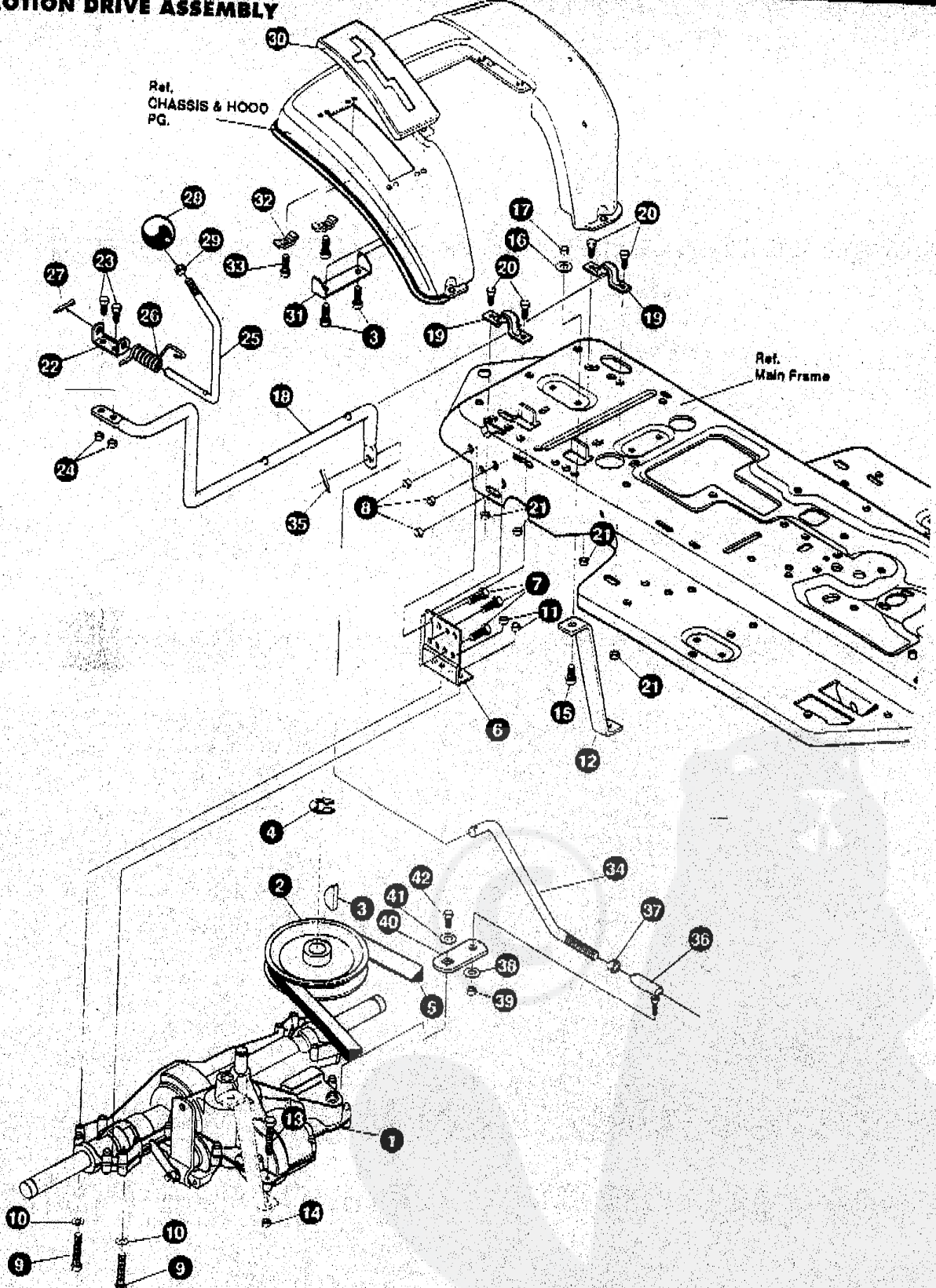
40" LAWN TRACTOR MODEL D3554-110

KEY#	PART#	DESCRIPTION	QTY.
1.	^	FRONT AXLE ASSEMBLY	1
1-1	56400	FRONT AXLE	1
1-2	50546	BEARING, FLANGE	1
1-3	310368	SPINDLE ASSY, RH	4
1-4	710103	E-RING	1
1-5	310367	SPINDLE ASSY, LH	1
1-6	327619	ARM ASSY, FRT STEER	1
1-7	454565	PIN, SPRING	1
2.	302691	TIE ROD	1
3.	710082	SCREW, 3/8-16X1.5	1
4.	996307	WASHER, FLAT .391X1.00X.209	2
5.	120382	WASHER, REGSPTLK	2
6.	1499	NUT, 3/8-16 REGHXCTRLK	2
7.	327399	GEAR SECTOR	2
8.	330789	PLATE, SECTOR	1
9.	330021	BUSHING, SECTOR	2
10.	181643	SCREW, 3/8-24X1.50 HHC	1
11.	845	WASHER, FLAT .390X1.25X.119	1
12.	412349	NUT, 3/8-24 HXCTRLK	2
13.	326432	DRAG LINK ASSY.	1
13-1	57158	BALL JOINT	1
13-2	304260	BALL JOINT	1
13-3	124925	NUT, 3/8-24 REGHEXJAM	1
13-4	325228	DRAG LINK	2
14.	120382	WASHER, EGSPTLK	1
15.	120369	NUT, 3/8-24 REGHEX	1
16.	180124	SCREW, 3/8-16x1.25 HHC	1
17.	120382	WASHER, EGSPTLK	1
18.	120377	NUT, 3/8-16 REGHX	1
19.	327395	STEERING SHAFT	1
20.	325892	BRNG FLANGE	1
21.	326505	SCR 1/4-20X.75	1
22.	46931	NUT 1/4-20 WDFL MAC LOCK	2
23.	20864	RING, RETEX .39X.04TRU5133	2
29.	^	ASSEMBLY, TIRE & RIM	1
29-1.	24167	VALVE STEM	2
29-2.	39829	WHEEL W/BEARING	1
29-3.	314416	BEARING, 1.380DX.753ID FLANGE REFER TO TIRE TREAD PAGE	2
34.	710131	WASHER, FLAT .755ID	4
35.	710103	E RING	2
36.	40394	HUB CAP	2
37.	180124	SCREW, 3/8-16X1.25	1
38.	120394	WASHER, FLAT	2
39.	45171	NUT, 3/8-16 HWDFL WHIZ-LOCK	1

^ ORDER INDIVIDUAL PARTS.

40" LAWN TRACTOR MODEL D3554-110

MOTION DRIVE ASSEMBLY



NOTE: ALWAYS USE ORIGINAL EQUIPMENT PARTS. Use of service/replacement parts other than original equipment parts may void your warranty.

ALL UNNUMBERED ITEMS ARE INTERCHANGEABLE WITH OPPOSITE SIDE

329292C

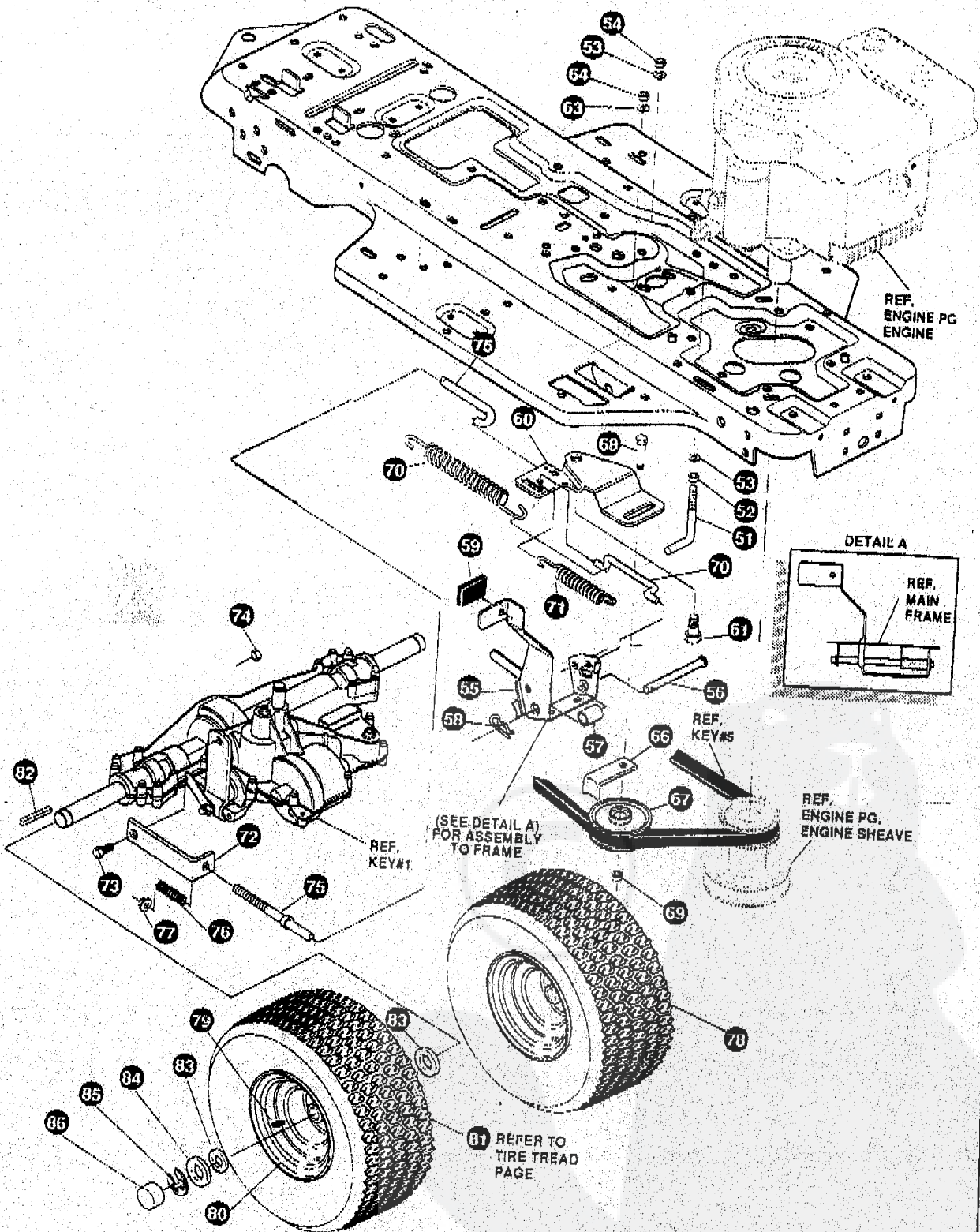
40" LAWN TRACTOR MODEL D3554-110

KEY#	PART#	DESCRIPTION	QTY.
1	^	TRANSAXLE P940-55P SF FER	1
2.	302745	PULLEY, IDLER V4L 6.60X	1
3.	3021	KEY, WDRF 608 .750X.187X.312	1
4.	22053	RING, RETEX .58X.035TRU5100-62	1
5.	54768	BELT, V 4L 82.50 SF DRIVE	1
6.	326615-853	MP BRACKET, TRANSAXLE	1
7.	180077	SCREW, 5/16-18X .75 HHC	2
8.	1498	NUT, 5/16-18 REGHEXCTRLK	6
9.	180091	SCREW, 5/16-18X2.50 HHC	6
10.	120393	WASHER, FLAT .344X .69X.085	4
11.	1498	NUT, 5/16-18 REGHEXCTRLK	4
12.	323213	BRACKET, T/A TORQ. 915 S/F	4
13.	180087	SCREW, 5/16-18X2.00 HHC GR5	1
14.	1498	NUT, 5/16-18 REGHEXCTRLK	1
15.	180077	SCREW, 5/16-18X .75	1
16.	138485	WASHER, EXLK .320X.61X.03	1
17.	1498	NUT, 5/16-18 REGHEXCTRLK	1
18.	321849	LEVER, SHIFT LOW SF FNSFT	1
19.	302760	MS.MF CLAMP .625DIA	1
20.	180077	SCREW, 5/16-18X .75	2
21.	1498	NUT, 5/16-18 REGHEXCTRLK	4
22.	310356	BRACKET, PIVOT SHIFT LEVER LFSF	4
23.	180020	SCREW, 1/4-20X .75	1
24.	1502	NUT, 1/4-20 REGHEXCTRLK	2
25.	309635	LEVER, SHIFT UPPER S/F 1/2-13	2
26.	310265	SPRING, TORS. .58X.95X.085	1
27.	137185	PIN, COTTER .125 DIA X1.00LG	1
28.	304729	HANDLE 1/2-13 MOLDED GREY	1
29.	120230	NUT, 1/2-13 HEX JAM	1
30.	311209	COVER PLASTIC LF P930/F4360-6	1
31.	311257-853	BRACKET COVER F-5 FNDR SHIFT	1
32.	1341	CLAMP, SPRING 1.17"ID	1
33.	311331	SCREW, 1/4-15X.44/.53 HILOHWA	2
34.	321844	ROD, CONNECTING, SHIFT ZINC	4
35.	137185	PIN, COTTER .125 DIA X1.00LG	1
36.	57158	BALL JOINT 3/8 THD SHORT STUD	1
37.	124925	NUT, 3/8-24 REGHEXJAM	1
38.	120382	WASHER, REGSPTLK.393X.68X.10	1
39.	120369	NUT, 3/8-24 REGHEX	1
40.	323212	BRKT, SHIFT LEVER S/F FND	1
41.	57157	WASHER, .750X.250 SP-TRANSAXLE	1
42.	56255	SCREW, 1/4-28X .75 NYLHHCGR8	1

^ CONTACT YOUR NEAREST TRANSAXLE DEALER FOR PARTS AND SERVICE.

40" LAWN TRACTOR MODEL D3554-110

MOTION DRIVE ASSEMBLY



NOTE: ALWAYS USE ORIGINAL EQUIPMENT PARTS. Use of service/replacement parts other than original equipment parts may void your warranty.

ALL UNNUMBERED ITEMS ARE INTERCHANGEABLE WITH OPPOSITE SIDE

329282C

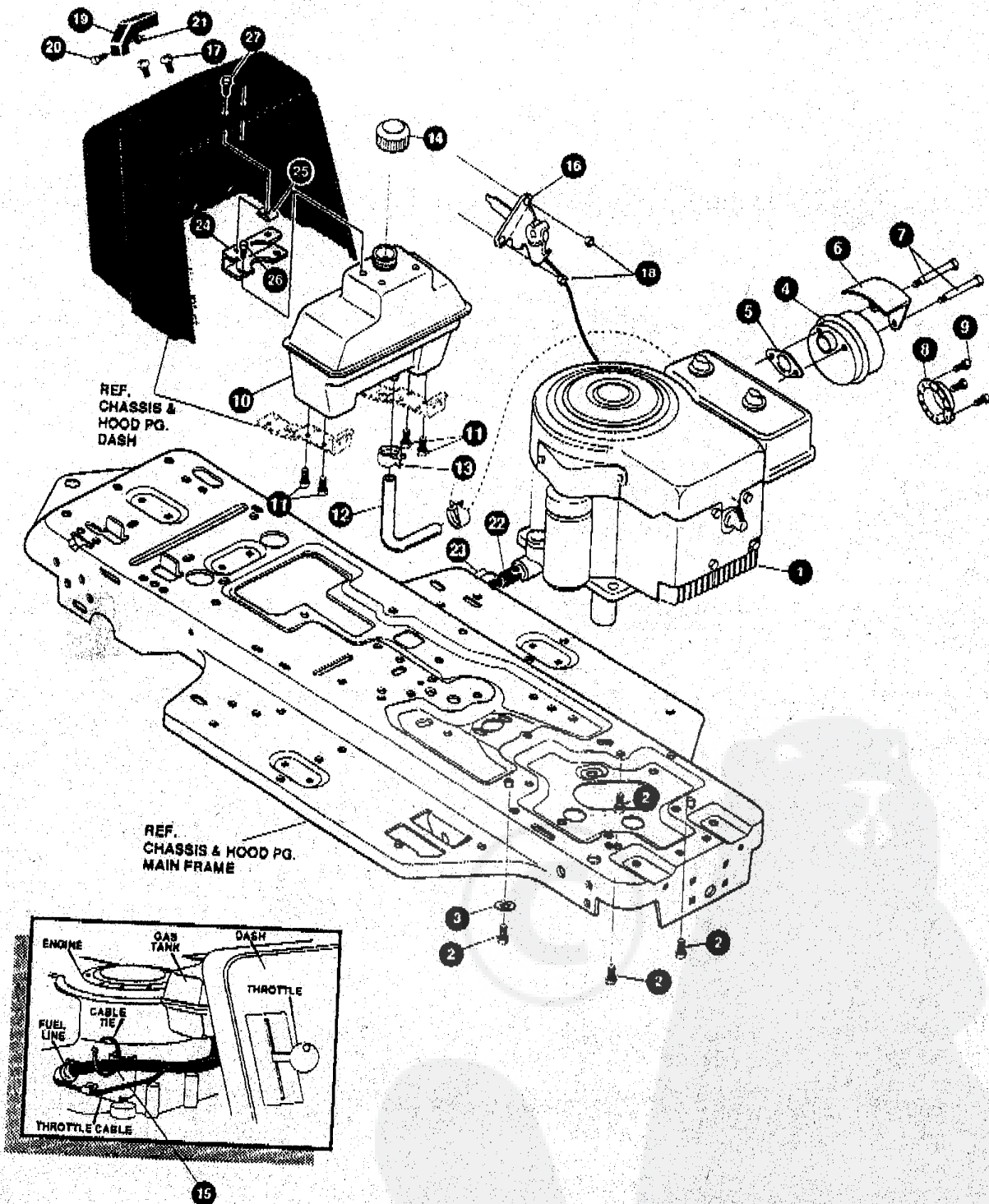
40" LAWN TRACTOR MODEL D3554-110

KEY#	PART#	DESCRIPTION	QTY.
51.	49896	BELT GUIDE	1
52.	271184	NUT, 5/16-18 HEXKEPS	1
53.	120393	WASHER, FLAT .344X .69X.065	1
54.	1498	NUT, 5/16-18 REGHEXCTRLK	2
55.	302603-853	ASSY,BRAKE PEDAL	1
56.	319676	PIN,CLEVIS .5 DIA,4.87LG,ZN PL	1
57.	302601	SPACER, SLEV .53 X .62X1.406	1
58.	56180	PIN, HAIR .091 DIA X1.62LG	1
59.	46761	PAD,CLUTCH/BRAKE PEDAL	1
60.	321969	IDLER ARM BRKT TRACTION	1
61.	329989	BOLT, .625X .135 HSSH 5/16-18	1
63.	45602	WASHER, FLAT .333X .87X.119	1
64.	1498	NUT, 5/16-18 REGHEXCTRLK	1
65.	327867	SPRING,3/4 ODX6.75X.091 TENSIO	1
66.	39659	MF RETAINER,BELT	1
67.	35374	PULLEY, IDLER V4L 3.06X .62	1
68.	45892	BOLT, 3/8-16X1.50 CARR GR2	1
69.	1499	NUT, 3/8-18 REGHXCTRLK	1
70.	43980	ROD, .268 DIA CLUTCH	1
71.	50562	SPRING,3/8ODX1.625X.055 TENSIO	1
72.	323210	BRACKET, TRACTION BRAKE S/F	1
73.	46824	BOLT, .500X .188 HSSH 5/16-18Z	1
74.	1498	NUT, 5/16-18 REGHEXCTRLK	1
75.	323211	ROD, BRAKE 915 T/A SF RAW 999	1
76.	53820	SPRING, CLUTCH .625 OD	1
77.	50352	NUT, 1/4-20 WDFLLK TOPLOCK	1
78.	^	TIRE & RIM, PU 18X8.5X8TURFWHI	1
79.	24167	VALVE STEM	2
80.	326362	HUB, WHEEL	1
82.	52928	KEY, SQUARE 1875QX2.25LG	1
83.	642	WASHER, FLAT .755X1.31X.075	2
84.	42815	WASHER, FLAT .755X1.53X.07	4
85.	36625	RING, RETEX .57X.05TRU5133-75	2
86.	40394	HUB CAP, 1.500ID X 7/8LG	2

^ ORDER INDIVIDUAL PARTS. SEE TIRE TREAD PAGEE 31.

40" LAWN TRACTOR MODEL D3554-110

ENGINE & CONTROL ASSEMBLY



NOTE: ALWAYS USE ORIGINAL EQUIPMENT PARTS. Use of service/replacement parts other than original equipment parts may void your warranty.

ALL UNNUMBERED ITEMS ARE INTERCHANGEABLE WITH OPPOSITE SIDE

329281D

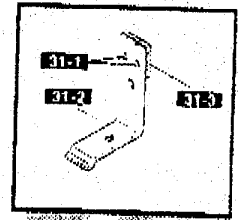
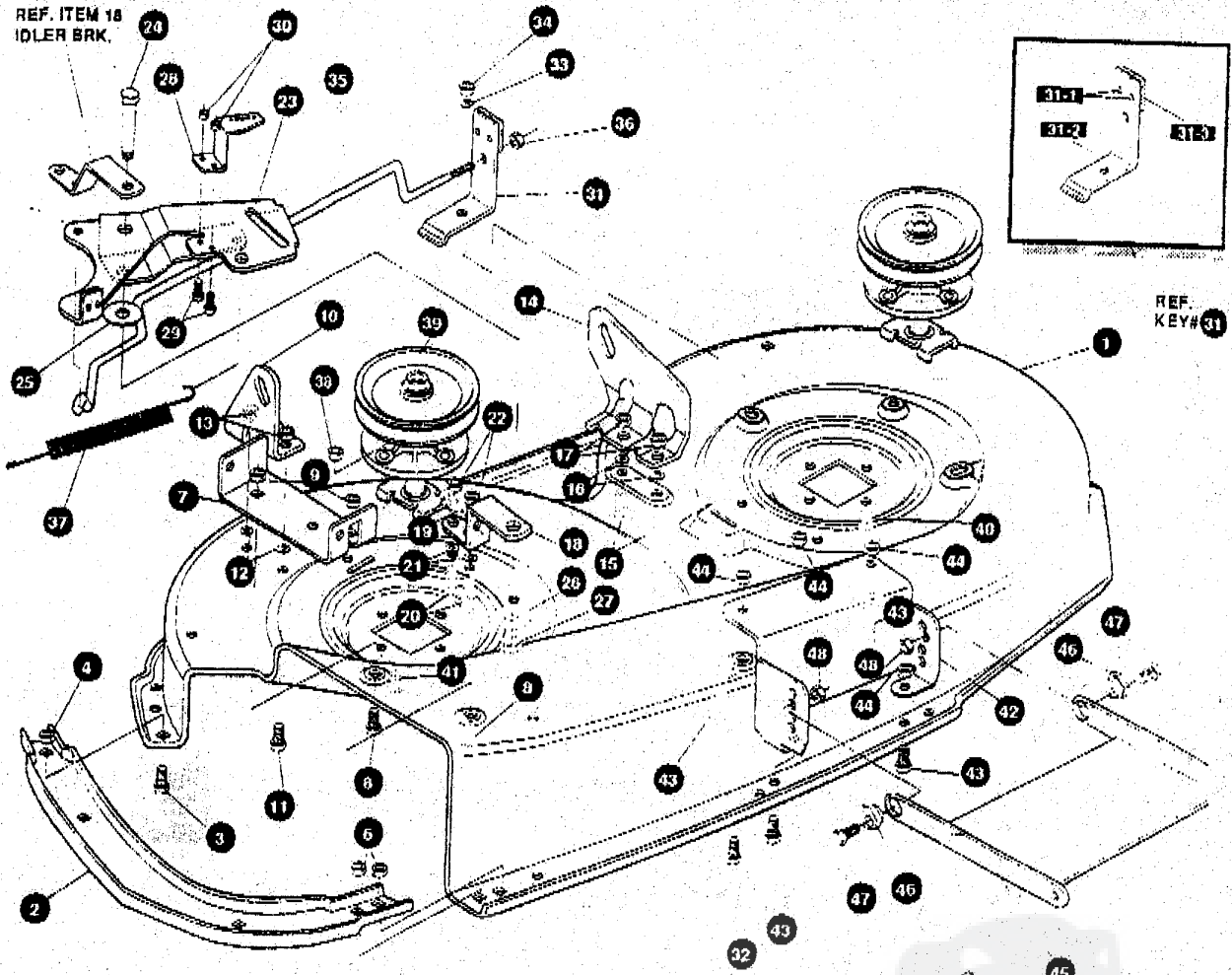
40" LAWN TRACTOR MODEL D3554-110

KEY#	PART#	DESCRIPTION	QTY.
1	ENGINE	12.5 BS 1/2 DUAL CIR (SEE ENGINE MANUAL)	1
2	50947	SCREW, 3/8-16X1.25 WAHHTAP	4
3	130489	WASHER, EXLK .384X.69X.04	1
4	57908	MUFFLER NELSON LO-TONE	1
5	91309	GASKET, MUFFLER	1
6	54767	SHIELD, HEAT	1
7	549807	SCREW, 5/16-18X3.50 HHC	2
8	56472	DEFLECTOR SIDE OUT	1
9	35287	SCREW, 8-32X.38 HHWTAP	3
10	314989	TANK, FUEL 1 GALLON	1
11	300303	SCREW, .25X.75X.51 HHWAPLASTITE	4
12	42258	GAS LINE 25ID BULK LENGTH	12'
13	48672	CLAMP, GAS LINE (1/2 DIA HOSE)	2
14	46704	GAS CAP	1
15	57444	CABLE TIE	1
16	303159	THROTTLE CONTROL	1
17	155941	SCREW, 10-24X .63 PHFLTMA	2
18	308459	NUT, #10-24 HXHDNYLK	2
19	300508	KNOB, THROTTLE CONTROL GP SYTYLE	1
20	159585	SCREW, 8-32X.38 PHPNMA	1
21	120622	NUT, #8-32 REGHX	1
22	325547	OIL DRAIN VALVE ASSEMBLY	1
23	327422	CAP, OIL DRAIN VALVE, ASM.	1

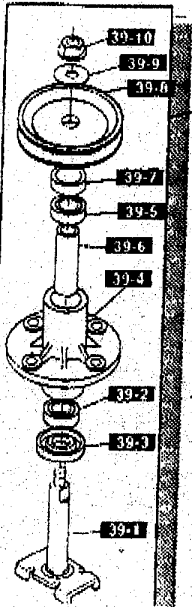
40" LAWN TRACTOR MODEL D3554-110

PRE-PAINTED DECK

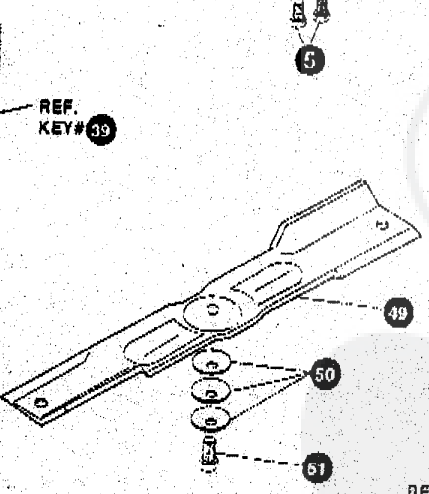
REF. ITEM 18
IDLER BRK.



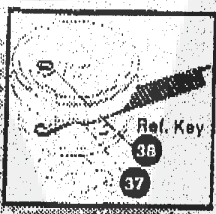
REF. KEY# 31



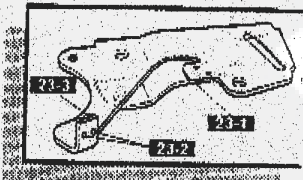
REF. KEY# 39



REF. KEY# 23



REF. KEY# 37



NOTE: ALWAYS USE ORIGINAL EQUIPMENT PARTS. Use of service/replacement parts other than original equipment parts may void your warranty.

ALL UNNUMBERED ITEMS ARE INTERCHANGEABLE WITH OPPOSITE SIDE

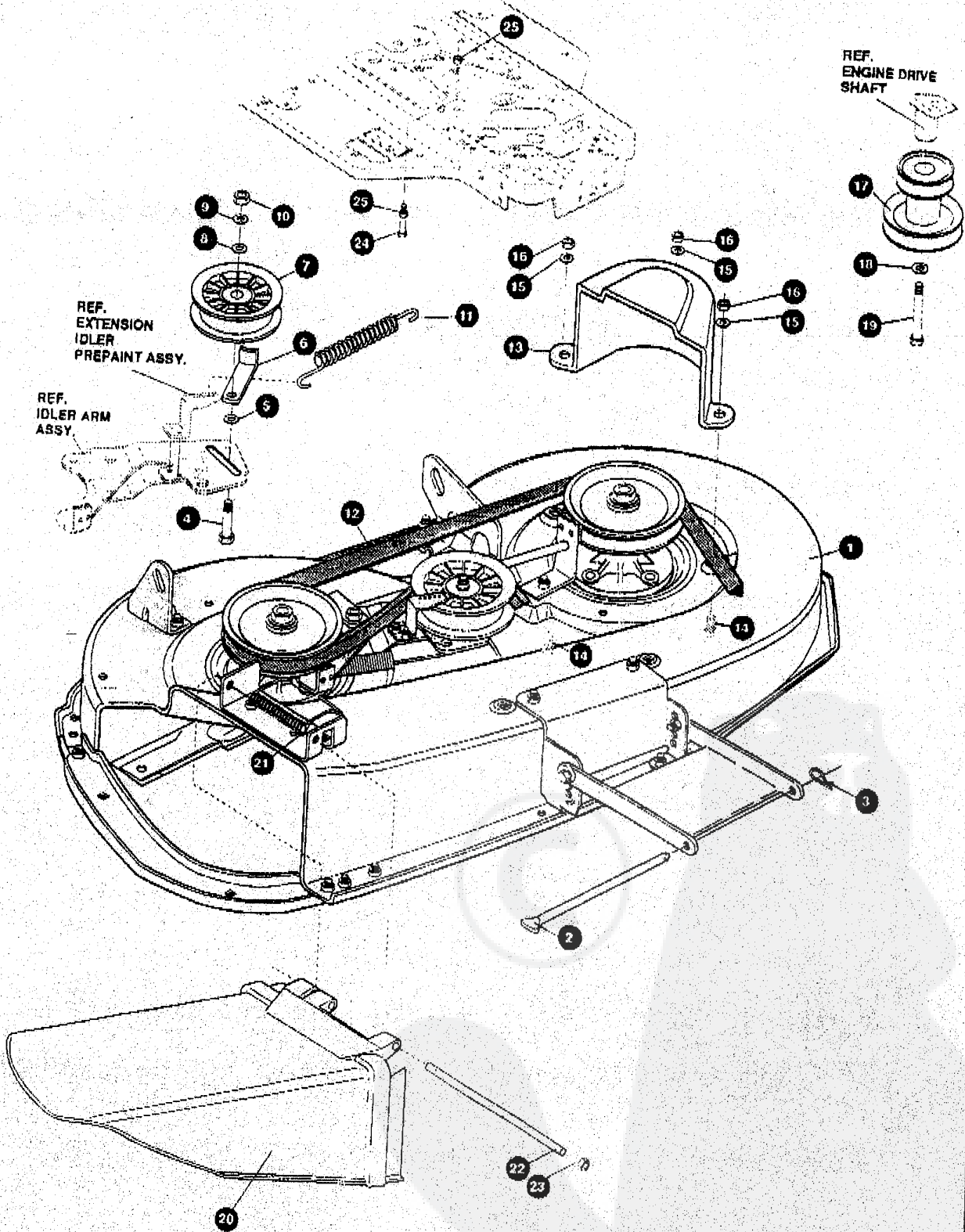
326040G

40" LAWN TRACTOR MODEL D3554-110

KEY#	PART#	DESCRIPTION	QTY.
1.	325103-830	MOWER DECKS, RIDER 40"	1
2.	326480-853	TOE GUARD MULCHER	1
3.	180077	SCREW, 5/16-18X .75 HHC	1
4.	1498	NUT, 5/16-18 REGHEXCTRLK	1
5.	180077	SCREW, 5/16-18X .75 HHC	2
6.	1498	NUT, 5/16-18 REGHEXCTRLK	2
7.	317017	BRACKET CHUTE MOUNT	1
8.	180077	SCREW, 5/16-18X .75 HHC	2
9.	1498	NUT, 5/16-18 REGHEXCTRLK	2
10.	325652-853	BRACKET,RH LIFT REAR	1
11.	180077	SCREW, 5/16-18X .75 HHC	2
12.	120393	WASHER, FLAT .344X .69X.065	2
13.	1498	NUT, 5/16-18 REGHEXCTRLK	2
14.	325653-853	BRACKET,LH LIFT REAR	1
15.	180077	SCREW, 5/16-18X .75 HHC	2
16.	120393	WASHER, FLAT .344X .69X.065	2
17.	1498	NUT, 5/16-18 REGHEXCTRLK	2
18.	326893	BRACE IDLER SUPPORT	1
19.	308231	SCREW, 1/4-20X.75	2
20.	180077	SCREW, 5/16-18X.75	2
21.	120393	WASHER, FLAT .344X .69X.065	2
22.	710205	NUT, 5/16-18 WDFLLK	2
23.	320576-853	IDLER ARM ASSEMBLY	1
23-1	322116	IDLER ARM	1
23-2	41601	RIVET, OVSET	2
23-3	306973	BRAKE PAD-HARD	1
24.	304420	BOLT, .500X2.15 HXHDCPSH	1
25.	996307	WASHER, FLAT .391X1.00X.209	1
26.	996416	WASHER, FLAT .391X1.00X.125	2
27.	45171	NUT, 3/8-16 HWDFL WHIZ-LOCK	1
28.	326249-853	BRACKET, EXTENSION IDLER	1
29.	180077	SCREW, 5/16-18 X .75 HHC	2
30.	1498	NUT, 5/16-18 REGHEXCTRLK	2
31.	321828	BLADE BRAKE ASSY.	1
31-1	135624	RIVET, TRSET	2
31-2	304119-853	BRAKE ARM	1
31-3	306973	BRAKE PAD	1
32.	180077	SCREW, 5/16-18X .75 HHC	1
33.	120393	WASHER, FLAT .344X .69X.065	1
34.	1498	NUT, 5/16-18 REGHEXCTRLK	1
35.	302714	ROD, BRAKE	1
36.	1502	NUT, 1/4-20 REGHEXCTRLK	1
37.	35410	SPRING .071 X .62 X 4.37	1
38.	1498	NUT, 5/16-18 REGHEXCTRLK	1
39.	56424-853	QUILL ASSY, 36/39/40/43	2
39-1.	56425	SHAFT/SADDLE 36"	1
39-2.	49562	BRNG, BALL .669IDX1.575ODX.472	1
39-3.	50616	DUST SHIELD	1
39-4.	55547	QUILL CASTING (1046)	1
39-5.	49562	BRNG, BALL .669IDX1.575ODX.472	1
39-6.	50818	SPACER, SLEV .689X .88X3.797	1
39-7.	331067	SPACER, QUILL	1
39-8.	333132	PULLEY,26/36" QUILL	1
39-9.	56365	WASHER, SPECIAL QUILL	1
39-10.	1282	NUT, 7/16-20 WDFLLK	1
40.	35498	SCREW, 5/16-18X .75WAHHTAP	7
41.	300345	SCREW, 5/16-18X1.38 WATAP	1
42.	318445-853	BRACKET,40 LF FRONT DECK	1
43.	180077	SCREW, 5/16-18X .75HHC	4
44.	1498	NUT, 5/16-18 REGHEXCTRLK	4
45.	58305-853	BRACKET, LINK DECK FRONT	1
46.	58247	ADJUSTING NUT	2
47.	710312	SCREW, 5/16-18X1.00 HHC	2
48.	1498	NUT, 5/16-18 REGHEXCTRLK	2
49.	305012	BLADE, 40" HI-LIFT 20.32	2
50.	2483	WASHER, .39IDX1.25DX.07 BELLVIL	6
51.	39573	SCREW, 3/8-24X1.00 NYLHHC	2

40" LAWN TRACTOR MODEL D3554-110

FINAL DECK ASSEMBLY



NOTE: ALWAYS USE ORIGINAL EQUIPMENT PARTS. Use of service/replacement parts other than original equipment parts may void your warranty.

ALL UNNUMBERED ITEMS ARE INTERCHANGEABLE WITH OPPOSITE SIDE

328044E

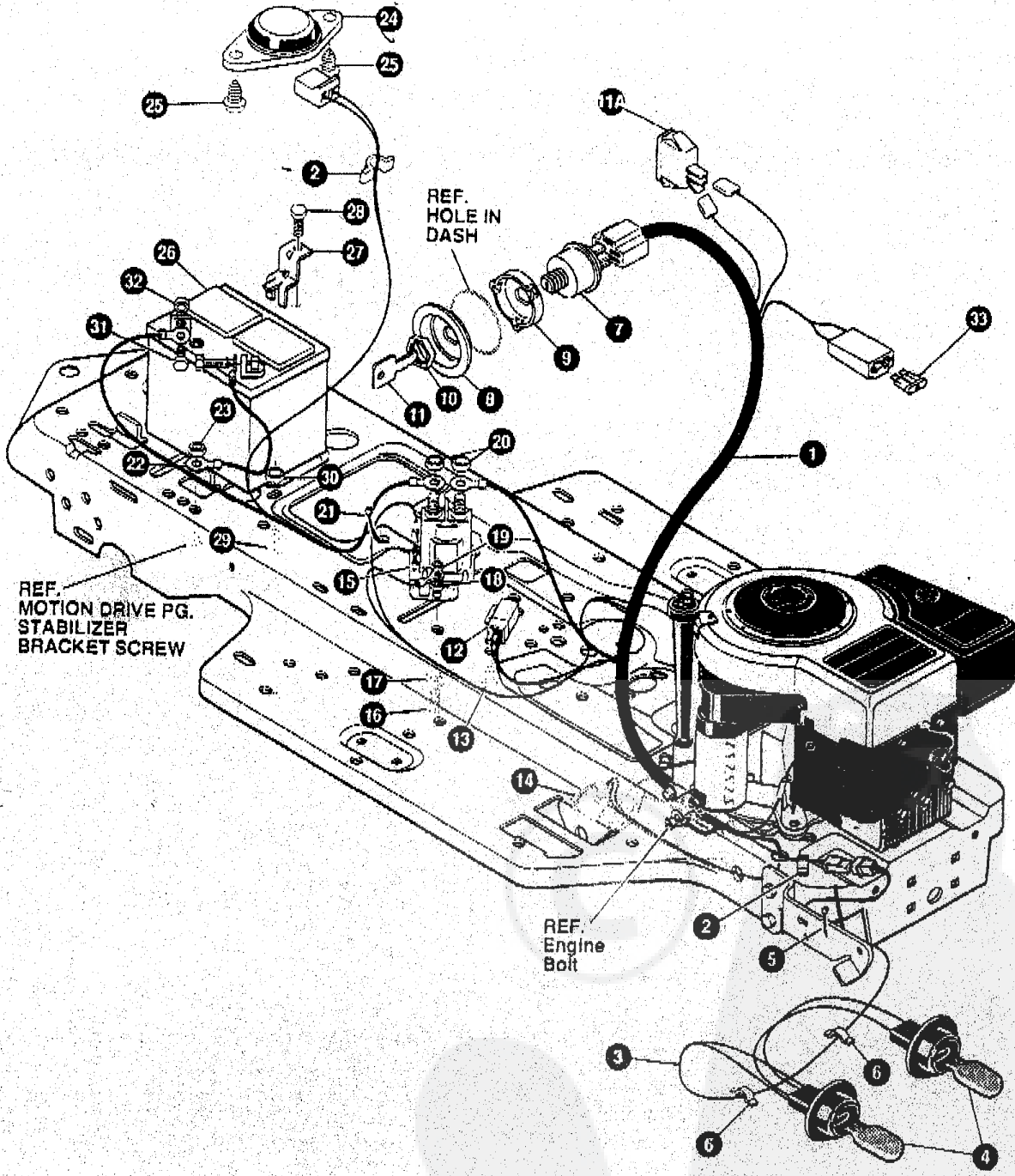
40" LAWN TRACTOR MODEL D3554-110

KEY#	PART#	DESCRIPTION	QTY.
1.	^	DECK,40" MOWER DOM	1
2.	58306	ROD, DECK HITCH	1
3.	710343	PIN, HAIR .38 DIA X 1.84 LG	1
4.	57325	BOLT, 3/8-16 X 2.00 CARR	1
5.	25210	WASHER, FLAT .392 X 1.25 X .09	1
6.	1346	RETAINER, BELT	1
7.	310326	PULLEY, IDLER BFF 4.00 WIDE FL	1
8.	886307	WASHER, FLAT .391 X 1.00 X .209	1
9.	120382	WASHER, REGSPTLK.393 X .68 X .10	1
10.	120377	NUT, 3/8-16 REGHX	1
11.	325773	SPRING, TENSION .75 X 11.0 X 105	1
12.	300680	BELT, V 5L 77.75 DECK 40 LP	1
13.	328257	GUARD, BELT LH PLASTIC	1
14.	180077	SCREW, 5/16-18 X .75 HHC	3
15.	120393	WASHER, FLAT .344 X .89 X .065	3
16.	1498	NUT, 5/16-18 REGHEXCTRLK	3
17.	328034	PULLEY, ENG. V3L 4.00 OFFSET	1
18.	120383	WASHER, REGSPTLK	1
19.	433146	SCREW, 7/16-20 X 4.25	1
20.	304422	CHUTE DEFLECTOR	1
21.	314975	SPRING, TORSION	1
22.	304424	ROD PIVOT DECK 312 X 7.25	1
23.	3535	NUT PUSH ON CAP	1
24.	49930	SCREW, 3/8-16 X 7.50	1
25.	1499	NUT, 3/8-16 REGHEXCTRLK	2

^ ORDER INDIVIDUAL PARTS.

40" LAWN TRACTOR MODEL D3554-110

ELECTRICAL ASSEMBLY



NOTE: ALWAYS USE ORIGINAL EQUIPMENT PARTS. Use of service/replacement parts other than original equipment parts may void your warranty.

ALL UNNUMBERED ITEMS ARE INTERCHANGEABLE WITH OPPOSITE SIDE

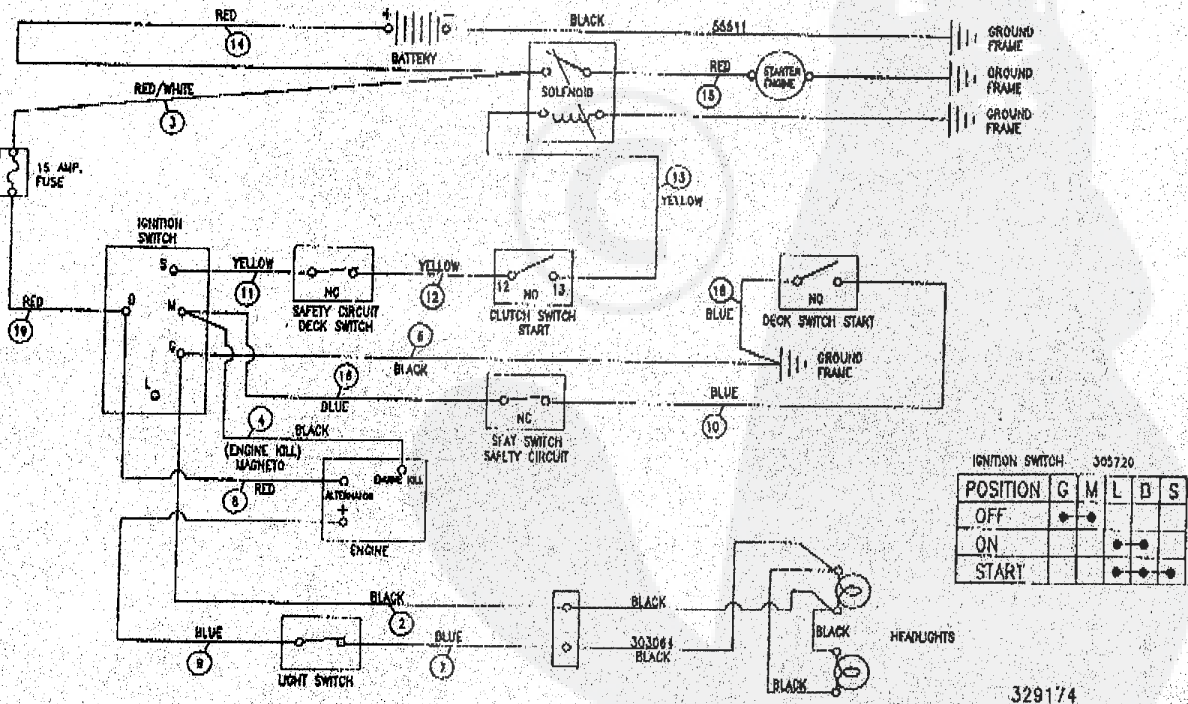
329295A

40" LAWN TRACTOR MODEL D3554-110

KEY#	PART#	DESCRIPTION	QTY.
1.	329174	WIRE HARNESS SF 12B&S IC W/AMM	1
2.	41482	PRESS CLIP, 1.380LG .255ID	2
3.	303064	ASSY, LIGHT WIRE-1/4 TURN	1
4.	52572	BULB, HEADLAMP	2
5.	57444	TIE, CABLE BLACK NYLON 5.62L	1
6.	41482	PRESS CLIP, 1.380LG .255ID	2
7.	327355	SWITCH-IGN.(AFTER FIRE) 3 POSN	1
8.	321692	CUP, IGNITION (OFF-ON-START)	1
9.	327238	CAP, IGNITION INSIDE	1
10.	327352	NUT, 5/8-32 HXHDD IIGN SWIT	1
11.	327350	KEY, IGNITION SWITCH	1
11A.	328826	LIGHT SWITCH OON/OFF PANEL MNT	1
12.	57476	SWITCH.SCR MNT DP NC NO BLK	1
13.	57220	SCREW, #12 X .50 PHPNHTAP BLK	2
14.	326853	SWITCH.SNAPMNT NO .055/.116BLK	1
15.	53716	SOLENOID	1
16.	187745	SCREW, 1/4-20X .75 HXSEMMA	2
17.	1084	WASHER, FLAT .281X1.00X.063PL	1
18.	1502	NUT, 1/4-20 REGHEXCOTRLK	2
19.	271172	NUT, 1/4-20 REGHEXKEPS	1
20.	271187	NUT, 5/16-24 HKEPS	2
21.	57444	TIE, CABLE BLACK NYLON 5.62L	1
22.	55511	WIRE, GROUND, 12.5"	1
23.	271184	NUT, 5/16-18 HEXKEPS	1
24.	57547	SWITCH, SEAT	1
25.	160505	SCREW, 1/4-20X .38PHPNHMA	2
26.	302257	BATTERY, YUASA 12V 7-PLATE	1
27.	324718	BATTERY BRACKET	1
28.	895346	SCREW, 1/4-20X.50 WAHTTAP	1
29.	120708	SCREW, 1/4-20X.50 HHC	1
30.	46931	NUT, 1/4-20 WDFL MAC-LOCK	1
31.	120854	SCREW, 1/4-20X.63	2
32.	271172	NUT, 1/4-20 REGHEXKEPS	2
33.	** 302031	FUSE, 15 AMP SPADE TYPE	1

**Spade type fuse included with the wire harness.

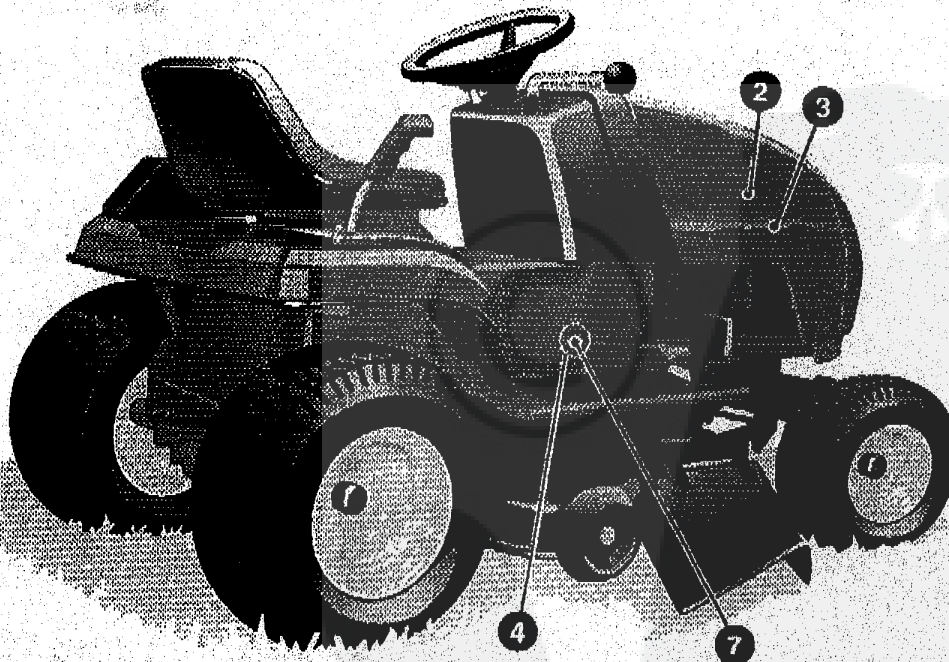
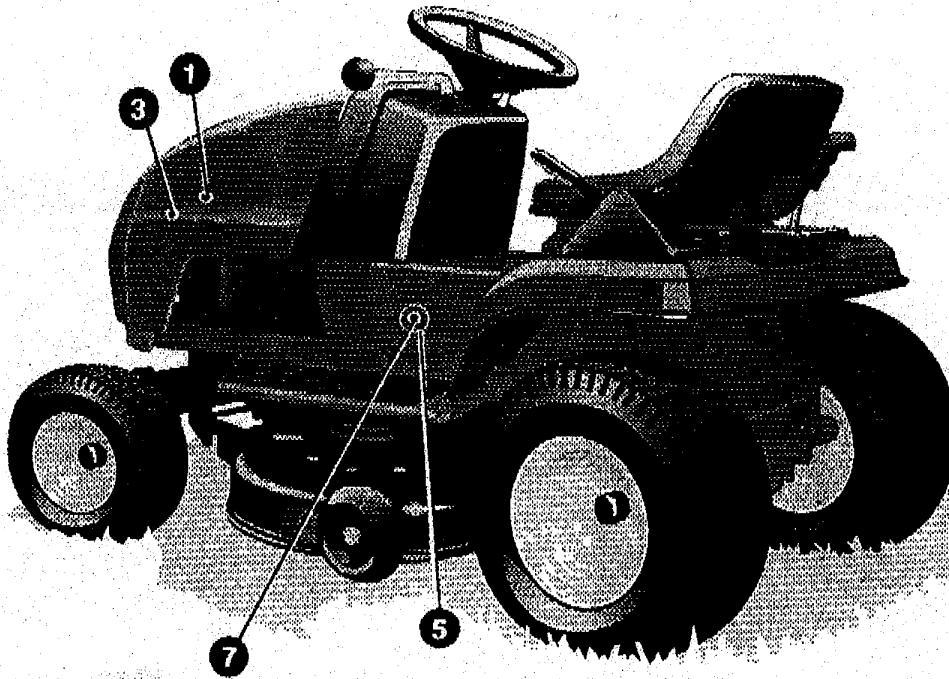
SCHEMATIC DRAWING



329174

40" LAWN TRACTOR MODEL D3554-110

DECALS (DECORATIVE)

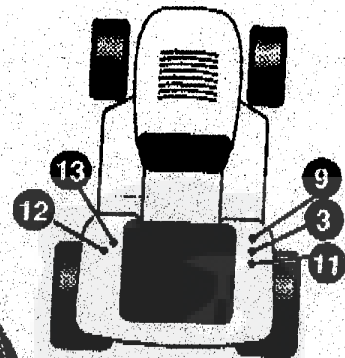
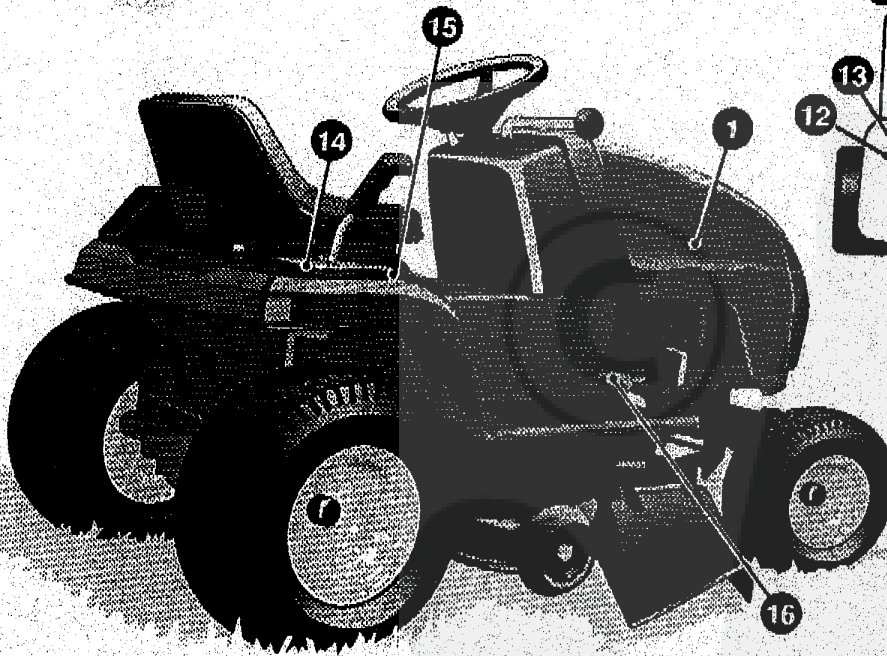
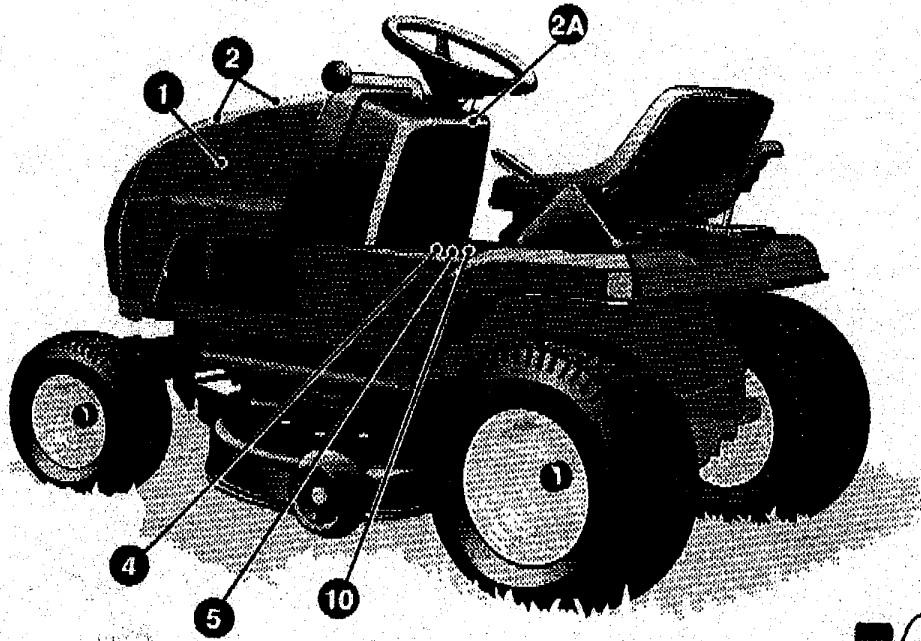


40" LAWN TRACTOR MODEL D3554-110

KEY#	PART#	DESCRIPTION	QTY.
1.	320849	DECAL, PERFORMER HOOD LH SF	1
2.	320850	DECAL, PERFORMER RH SF	1
3.	402137	NAMEPLATE UNITECH MEDIUM	2
4.	320858	DECAL, CONSOLE RH SF	1
5.	320857	DECAL, CONSOLE LH SF	1
6.		REFERENCE ONLY	1
7.	402154	NAMEPLATE, 12.5/40	2

40" LAWN TRACTOR MODEL D3554-110

DECALS (INSTRUCTIONAL)

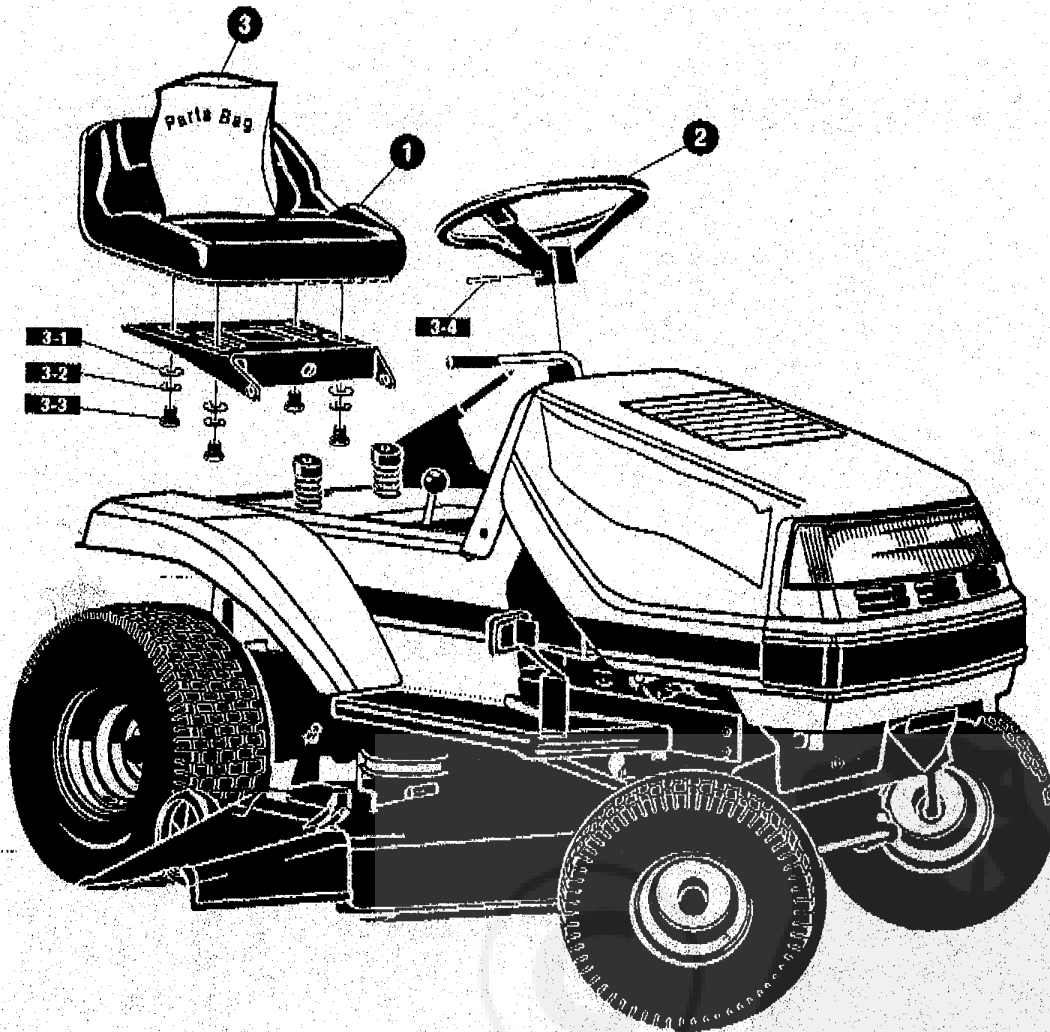


40" LAWN TRACTOR MODEL D3554-110

KEY#	PART#	DESCRIPTION	QTY.
1.	305602	FOAM HOOD 4X15	2
2.	305603	PAD, 18X6 FOAM HOOD	2
2A.	329369	DECAL, DASH	1
3.	68902	DECAL, WARNING FRENCH/GERMAN	1
4.	69524	DECAL, INSTRUCT CONSOLE TOP GER	1
5.	69525	DECAL, INSTRUCT CONSOLE TOP FR	1
6.		REFERENCE ONLY	1
7.		REFERENCE ONLY	1
8.		REFERENCE ONLY	1
9.	305770	DECAL, CAUTION TRIANGLE EUROPE	1
10.	307383	DECAL, INSTR. CONSOLE TOP ENGL	1
11.	310553	DECAL, DANGER ENGLISH	1
12.	301897	DECAL, LIFT DECK BLADE HEIGHT	1
13.	68901	DECAL, BLADE HEIGHT ADJ. EUROPE	1
14.	311394	DECAL, SHIFT/NEUTRAL	1
15.	329464	DECAL, SHIFTER POSITION	1
16.	68903	DECAL, BRAKE /CLUTCH ISO	1

40" LAWN TRACTOR MODEL D3554-110

CUSTOMER ASSEMBLY



CUSTOMER ASSEMBLY VIEW

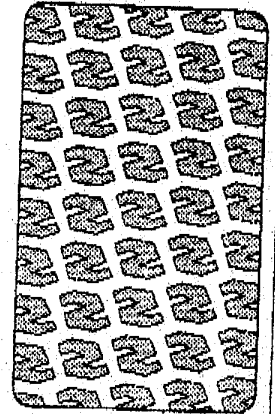
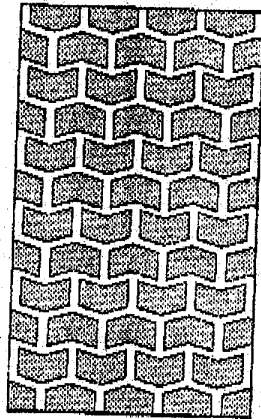
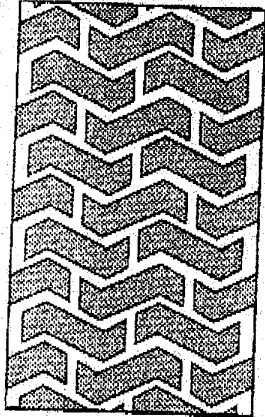
323760 PARTS BAG ASSY QTY1 (NON-SERVICEABLE)

KEY#	PART#	DESCRIPTION	QTY
1	310384	SEAT MV550	1
2	330847	STEERING WHEEL	1
3		REFERENCE ONLY	1
3-1	120393	WASHER, FLAT .344X.69X.065	4
3-2	120638	WASHER, HVSP LTLK .328X.60X.109	4
3-3	180077	SCREW, 5/16-18X.75 HHC	4
3-4	456378	ROLL PIN .250DIA X2.0LG	1

329130C

40" LAWN TRACTOR MODEL D3554-110

TREAD PATTERNS



"A"

"B"

"C"

"D"

TIRE SIZE

TIRE SIZE	"A"	"B"	"C"	"D"
11 X 4.00 - 5	42295	319679		
13 X 5.00 - 6	41060	319680		
15 X 6.00 - 6	39830	316702	301140	313952
16 X 6.50 - 8	41081	319682		314539
18 X 8.50 - 8	319683	317400		
18 X 9.50 - 8	41106	316701		313950
20 X 8.00 - 8	319685	319684	57164	314584
20 X 10.00 - 8	58276	319686		313654
20 X 10.00 - 10	55893	319687		
23 X 9.50 - 12	53655	319690	319689	314370

ACCESSORIES

Contact the dealer where your tractor was purchased for the available accessories. If you are unable to contact the dealer, write to the address on the front cover of this manual.

Model	Description	Rear Engine Rider
5708-16	Bagger - Fits 32" Side Discharge	
5708-17	Bagger - Fits 36" Side Discharge & 30" Top Discharge	
5709-02	Front Weight Box - holds 35 lbs.	
5646-16	Lawn Sweeper w/dump Release	
5714-00	Mulching Kit - 30" Top Discharge	

Model	Description	Lawn Tractor
5708-22	Bagger - Fits 30" Side Discharge	
5708-13	Bagger - Fits 36", 38", 39" & 45" Side Discharge	
5705-04	36" Two-Stage Snowblower - Fits 36", 38", 39", & 45" Side Discharge	
5661-06	42" Snowblade - Fits 36", 38", 39", & 45"	
5592-00	Tire Chains - 18" x 6.50"	
5585-00	Tire Chains - 18" x 9.50" & 20" x 8"	
5672-01	Wheel Weights - Front - 1 pr. w/mtg. hdw. - Fits 15" tires	
5673-02	Wheel Weights - Rear - 1 pr. w/mtg. hdw. - Fits 18" & 20" tires	
5709-03	Front Weights - Fits 30" & 32" Side Discharge	
5648-16	Lawn Sweeper w/dump Release	
5714-00	Mulching Kit - 30" Top Discharge	

Model	Description	Garden Tractor - Light Ground Engaging
5708-13	Bagger - Fits 36", 38", 39", & 45" Side Discharge	
5705-04	36" Two-Stage Snowblower - Fits 36", 38", 39", & 45"	
5661-06	42" Snowblade - Fits 36", 38", 39", & 45"	
5672-01	Wheel Weights - Front 1 pr. w/mtg. hdw. - Fits 15" tires	
5673-02	Wheel Weights - Rear - 1 pr. w/mtg. hdw. - Fits 18" & 20" tires	
5648-16	Lawn Sweeper w/dump Release	
5667-02	Sleeve Hitch - w/lift bar - Fits 45"	
5668-01	Adaptor (sleeve hitch) for use w/23" tires	
5706-00	Tire Chains - 20" x 10"	
5671-00	Tire Chains - 23" x 9.50"	
5672-02	Wheel Weights - Front - 1 pr. w/mtg. hdw. Fits 16" tires	
5673-00	Wheel Weights - Rear - 1 pr. w/mtg. hdw. Fits 23" tires	
5674-01*	10" One Bottom Moldboard Plow	
5675-01*	Cultivator - 7 row - Adj. 6" - 42" width	
5676-01*	Disc Harrow - 8" & 11" disc - Adj. width & disc angle	
5677-02*	Tiller - 5 H.P. Self-Powered - 28" width	

Model	Description	Four Wheel Steer
5708-14	Bagger - Fits 40" & 46" Side Discharge	
5705-05	42" One-Stage Snowblower - Fits 40" & 46"	
5661-07	48" Snowblade - Fits 40" & 46"	
5709-04	Rear Weight Box for 40" & 46"	
5648-16	Lawn Sweeper w/dump Release	
5706-00	Tire Chains 20" x 10"	
5671-00	Tire Chains 23" x 9.50"	
5672-02	Wheel Weights - Front - 1 pr. w/mtg. hdw. Fits 16" tires	
5673-00	Wheel Weights - Rear - 1 pr. w/mtg. hdw. Fits 23" tires	
5672-01	Wheel Weights - Front - 1 pr. w/mtg. hdw. Fits 15" tires	
5673-02	Wheel Weights - Rear - 1 pr. w/mtg. hdw. Fits 18" & 20" tires	

Model	Description	Two Wheel Steer Garden Tractor
5667-04	Sleeve Hitch - w/lift bar Fits 46"	
5674-01*	10" One Bottom Moldboard Plow	
5675-01*	Cultivator - 7 row - Adj. 6" - 42" width	
5676-01*	Disc Harrow 8" & 11" Disc - Adj. width & disc angle	
5677-02*	Tiller 5 H.P. Self-Powered - 28" width	
5648-16	Lawn Sweeper w/dump Release	

*Requires a sleeve hitch.