

# REPAIR PARTS MANUAL

## 38" - 12 H.P. LAWN TRACTOR

### MODEL D3554-140

#### ONE YEAR LIMITED WARRANTY

For one (1) year from date of purchase by the first consumer for residential use (thirty (30) days commercial use), NOMA Outdoor Products Incorporated warrants that it will replace free of charge, including labor, any original part of any NOMA Outdoor Products Incorporated product found to be defective by any authorized Service Dealer or the factory, except the battery which is warranted for ninety (90) days from date of purchase.

This warranty does not cover engine, transmission, transaxle or differential (these items are covered by their manufacturer's own warranty). This warranty does not cover parts that have failed due to normal wear or parts that have failed subject to misuse or abuse. Transportation of the unit or part to and from an authorized Service Dealer or factory is the responsibility of the owner.

A step by step explanation as to what procedure should be followed for this warranty is:

1. If a part becomes defective, contact the store where the unit was purchased for the name and address of the authorized Service Dealer nearest to you.
2. If you cannot locate an authorized Service Dealer, write Service Department of NOMA Outdoor Products Incorporated for the name and address of the authorized Service Dealer in your area or call the Service Department at 1-901-422-1690.
3. Return the defective product, along with proof of purchase to such authorized Service Dealer for replacement of any defective part where covered by this warranty.

There is no other express warranty. Implied warranties, including those of merchantability and fitness for a particular purpose are limited to one (1) year from date of purchase. Liability for incidental or consequential damages are excluded.

Some states do not allow limitations on how long an implied warranty lasts, so the above limitation may not apply to you. Some states do not allow the exclusion of incidental or consequential damages, so the above exclusion may not apply to you. This warranty gives you specific legal rights, and you may have other rights which vary from state to state.

NOMA Outdoor Products Incorporated

Caller 8000

Jackson, TN 38308-8000

#### UNIT PARTS AND SERVICE

Fill in and mail the registration card packed with the unit. For service other than covered in this manual, contact an authorized service dealer. A nationwide parts and service organization has been established to provide locally available parts and service. A list of authorized parts distributors has been included in this manual. When ordering repair parts, always give the following information; 1. The Part Name; 2. The Part Number; 3. The Quantity desired; 4. The Full (eight digit) Model Number of the unit. The model number will be found on a plate attached to the unit.



Look for this symbol. **It means - ATTENTION! BECOME ALERT! A HAZARD TO OPERATOR, BYSTANDER, PROPERTY OR EQUIPMENT MAY EXIST.**

NOMA Outdoor Products Incorporated

Caller 8000

Jackson, TN 38308-8000

Part No 329379A

2/83



## SAFETY RULES

THESE INSTRUCTIONS ARE FOR YOUR PROTECTION. PLEASE READ THEM CAREFULLY.



### IMPORTANT

THIS CUTTING MACHINE IS CAPABLE OF AMPUTATING HANDS AND FEET AND THROWING OBJECTS. FAILURE TO OBSERVE THE FOLLOWING SAFETY INSTRUCTIONS COULD RESULT IN SERIOUS INJURY OR DEATH.

#### I. GENERAL OPERATION:

- Know controls and how to stop quickly.
- Read, understand, and follow all instructions in the manual and on the machine before starting.
- Only allow responsible adults, who are familiar with instructions, to operate the machine.
- Wear safety glasses or eye shields when assembling or operating the machine.
- Do not operate machine when barefooted. Always wear substantial footwear, preferably steel-toed shoes.
- Do not wear loose fitting clothing that could get caught in moving parts.
- Clear the area of objects such as rocks, toys, wire, etc., which could be picked up and thrown by the blade(s).
- Be sure the area is clear of other people before mowing. Stop machine if anyone enters the area.
- Never carry passengers.
- Do not mow in reverse unless absolutely necessary. Always look down and behind before and while backing.
- Be aware of the mower discharge direction and do not point it at anyone. Do not operate the mower without either the entire grass catcher or the guard in place.
- Slow down before turning.
- Never leave a running machine unattended. Always turn off blades, set parking brake, stop engine, and remove keys before dismantling.
- Turn off blade(s) when not mowing.
- Stop engine before removing grass catcher or unclogging chute.
- Mow only in daylight or good artificial light.
- Do not operate the machine while under the influence of alcohol or drugs.
- Watch for traffic when operating near or crossing roadways.
- Use care when mowing around a fixed object to prevent the blade(s) from striking it. Never deliberately run over any foreign object.
- Use extra care when loading or unloading the machine into a trailer or truck.
- Use care when pulling loads or using heavy equipment.
  - a. Use only approved drawbar hitch points.
  - b. Limit loads to those that you can safely control.
  - c. Do not turn sharply. Use care when backing.
  - d. Use counterweight(s), wheel weight or tire chains when suggested in attachment(s) instructions.

#### SLOPE OPERATION:

Slopes are a major factor related to loss-of-control and tip-over accidents, which can result in severe injury or death. *All slopes require extra caution.* If you cannot back up the slope or if you feel uneasy on it, do not mow it.

- Mow up and down slopes, not across.
- Remove obstacles such as rocks, tree limbs, etc.
- Watch for holes, ruts, or bumps. Uneven terrain could overturn the machine. *Tall grass can hide obstacles.*
- Use slow speed. Choose a low gear so that you will not have to stop or shift while on the slope.
- Follow the manufacturer's recommendations for wheel weights or counterweights to improve stability.
- Use extra care with grass catchers or other attachments. These can change the stability of the machine.
- Keep all movement on the slopes *slow and gradual*. Do not make sudden changes in speed or direction.
- Avoid starting or stopping on a slope. If tires lose traction, turn off the blade(s) and proceed slowly *straight* down the slope.

#### NOT

- Do not turn on slopes unless necessary, and then slowly and gradually downhill, if possible.
- Do not mow near drop-offs, ditches or embankments. The

mower could suddenly turn over if a wheel is over the edge of a cliff or ditch, or if an edge caves in.

- Do not mow on wet grass. Reduced traction could cause sliding.
- Do not try to stabilize the machine by putting your foot on the ground.
- Do not use grass catcher on steep slopes.

#### III. CHILDREN:

Tragic accidents can occur if the operator is not alert to the presence of children. Children are often attracted to the machine and the mowing activity. *Never assume that children will remain where you last saw them.*

- Keep children out of the mowing area and under the watchful care of another responsible adult.
- Be alert and turn machine off if children enter the area.
- Before and when backing, look behind and down for small children.
- Never carry children. They may fall off and be seriously injured or interfere with safe machine operation.
- Never allow children to operate the machine.
- Use extra care when approaching blind corners, shrubs, trees, or other objects that may obscure vision.

#### IV. SERVICE:

- Use extra care in handling gasoline and other fuels. They are flammable and vapors are explosive.
  - a. Use only an approved container.
  - b. Never remove gas cap or add fuel with the engine running. Allow engine to cool before refueling. Do not smoke.
  - c. Never refuel the machine indoors.
  - d. Never store the machine or fuel container inside where there is an open flame, such as in a water heater.
- Check fuel supply before each use allowing space for expansion as the heat of the engine and/or sun can cause gasoline to expand and overflow the tank.
- Use extra care when handling battery acid. Acid contact with skin may cause severe burns. Eye contact may cause blindness.
- Use extra care when servicing the battery. Explosive gas is produced in the battery. Do not service the battery while smoking or near an open spark or flame. This may cause the battery to explode causing serious injury.
- Never run a machine inside a closed area. Exhaust fumes contain CARBON MONOXIDE, an ODORLESS and DEADLY GAS.
- Keep nuts and bolts, especially blade attachment bolts, tight and keep equipment in good condition.
- Never tamper with safety devices. Check their operation regularly.
- Do not change the engine governor settings or overspeed engine.
- Reduce fire hazards. Keep machine free of grass, leaves, or other debris build-up. Clean up oil or fuel spillage. Allow machine to cool before storing.
- Stop and inspect the equipment if you strike an object. Repair, if necessary, before restarting.
- Never make adjustments or repairs with the engine running.
- Grass catcher components are subject to wear, damage, and deterioration, which could expose moving parts or allow objects to be thrown. Frequently check components and replace with manufacturer's recommended parts, when necessary.
- Mower blade(s) are sharp and can cut. Wrap the blade(s) or wear gloves, and use extra caution when servicing them.
- Check brake operation frequently. Adjust and service as required.



LOOK FOR THIS SYMBOL TO POINT OUT IMPORTANT SAFETY PRECAUTIONS. IT MEANS--  
ATTENTION!!! BECOME ALERT!!! YOUR SAFETY IS INVOLVED.

## OWNER'S INFORMATION

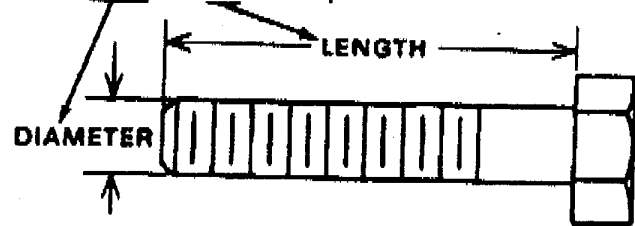
Record the following information about your unit so that you will be able to provide it in case of loss or theft.

MODEL NUMBER:     -     (Enter complete 8 digit number from model plate on unit)  
 PURCHASE DATE:    /    /    CODE NO.:    SERIAL NO.:  
 DEALER'S NAME AND ADDRESS:  
 CITY:    STATE:    TELEPHONE:

### CONTENTS OF SHIPPING CARTON

- 1 - Lawn Tractor with 38 inch Mower Deck
- 1 - Operator's Manual
- 1 - Repair Parts Manual
- 1 - Engine Manual
- 1 - Steering Wheel (see Note)
- 1 - Seat (see Note)
- 1 - Bag of Assembly Parts Containing (see Note):
  - 4 - 5/16 x 3/4 inch Hex Head Screws
  - 4 - 5/16 inch Split Lockwashers
  - 4 - 11/32 inch Flatwashers
  - 1 - Roll Pin

### HOW TO MEASURE SCREW SIZE (5/16 x 1 1/2 INCH)



**NOTE:** Refer to page 26 (Customer Assembly Parts) for more detailed description.

### TOOLS REQUIRED FOR ASSEMBLY

- 2 - 7/16 inch Wrenches (or adjustable wrench)
- 1 - 1/2 inch Wrench (or adjustable wrench)
- 1 - Small Phillips Screwdriver with a 1/4 inch shank
- 1 - Hammer



## DANGER



This lawn tractor can be dangerous if carelessly used.

Read your Operator's Manual thoroughly before operating your lawn tractor.

Always wear safety glasses or eye shields while assembling or operating your lawn tractor.

**DO NOT** carry passengers at any time.

Keep your hands, feet, hair and loose clothing away from the discharge area, the underside of the mower deck or any moving parts while the engine is running.

**DO NOT** allow children or young teenagers to operate or be near your lawn tractor while it is operating.

ALWAYS GIVE THE FOLLOWING INFORMATION WHEN ORDERING REPAIR PARTS:  
 1. The PART NUMBER; 2. The PART NAME; 3. QUANTITY DESIRED; 4. The MODEL NUMBER (As shown on Model Plate).  
 SEND PART ORDERS AS PER INSTRUCTIONS ON THE FRONT PAGE.

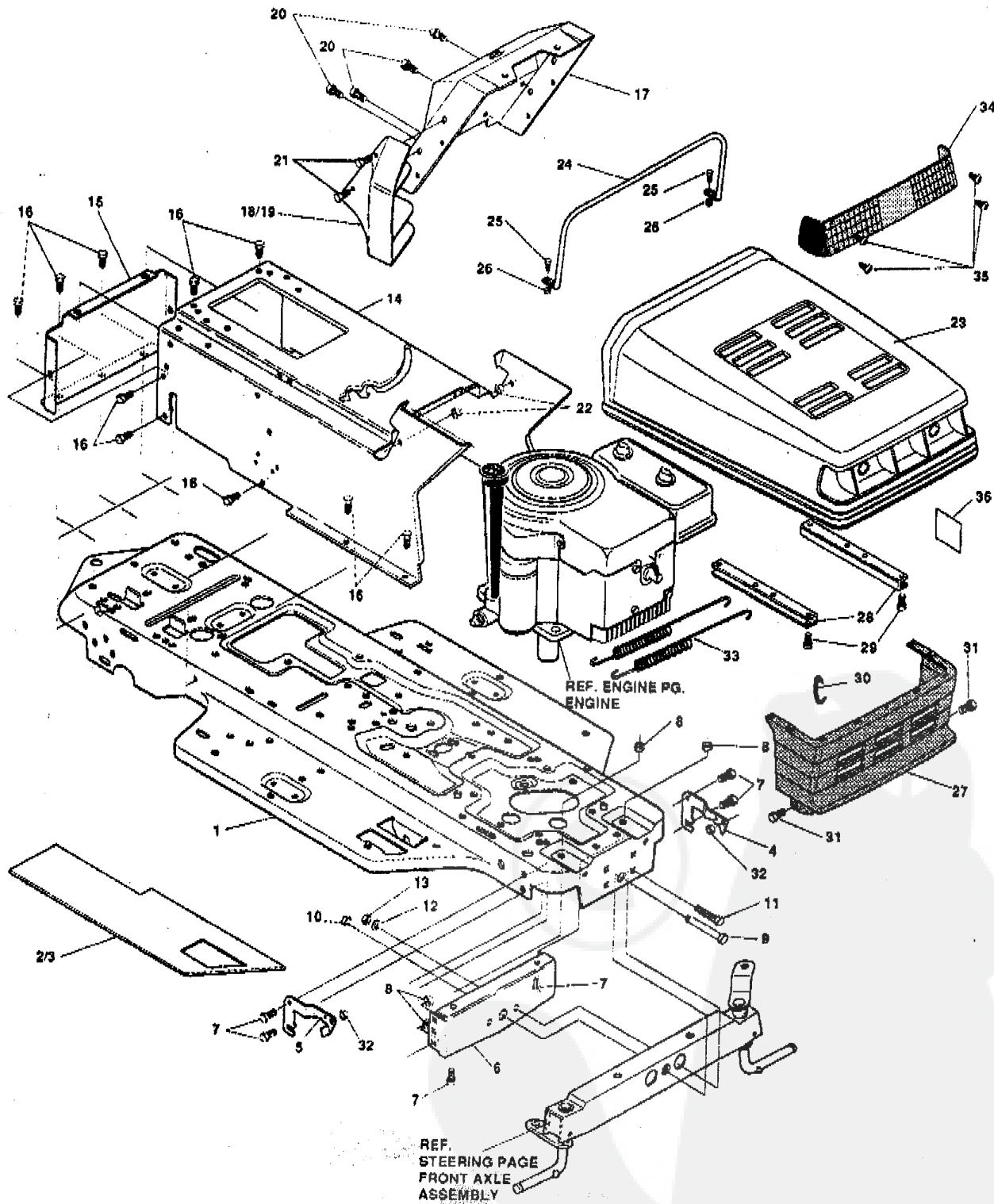
**DO NOT USE KEY NUMBERS WHEN ORDERING REPAIR PARTS, ALWAYS USE PART NUMBERS.**

All replacement parts will be supplied in current production colors or in a neutral color.  
 A handling fee is applicable to small parts orders.

YOUR UNIT IS RIGHT HAND (RH) OR LEFT HAND (LH) AS YOU STAND BEHIND IT.

# 38" LAWN TRACTOR MODEL D3554-140

## CHASSIS & HOOD ASSEMBLY



**NOTE: ALWAYS USE ORIGINAL EQUIPMENT PARTS.** Use of service/replacement parts other than original equipment parts may void your warranty.

**ALL UNNUMBERED ITEMS ARE INTERCHANGEABLE WITH OPPOSITE SIDE**

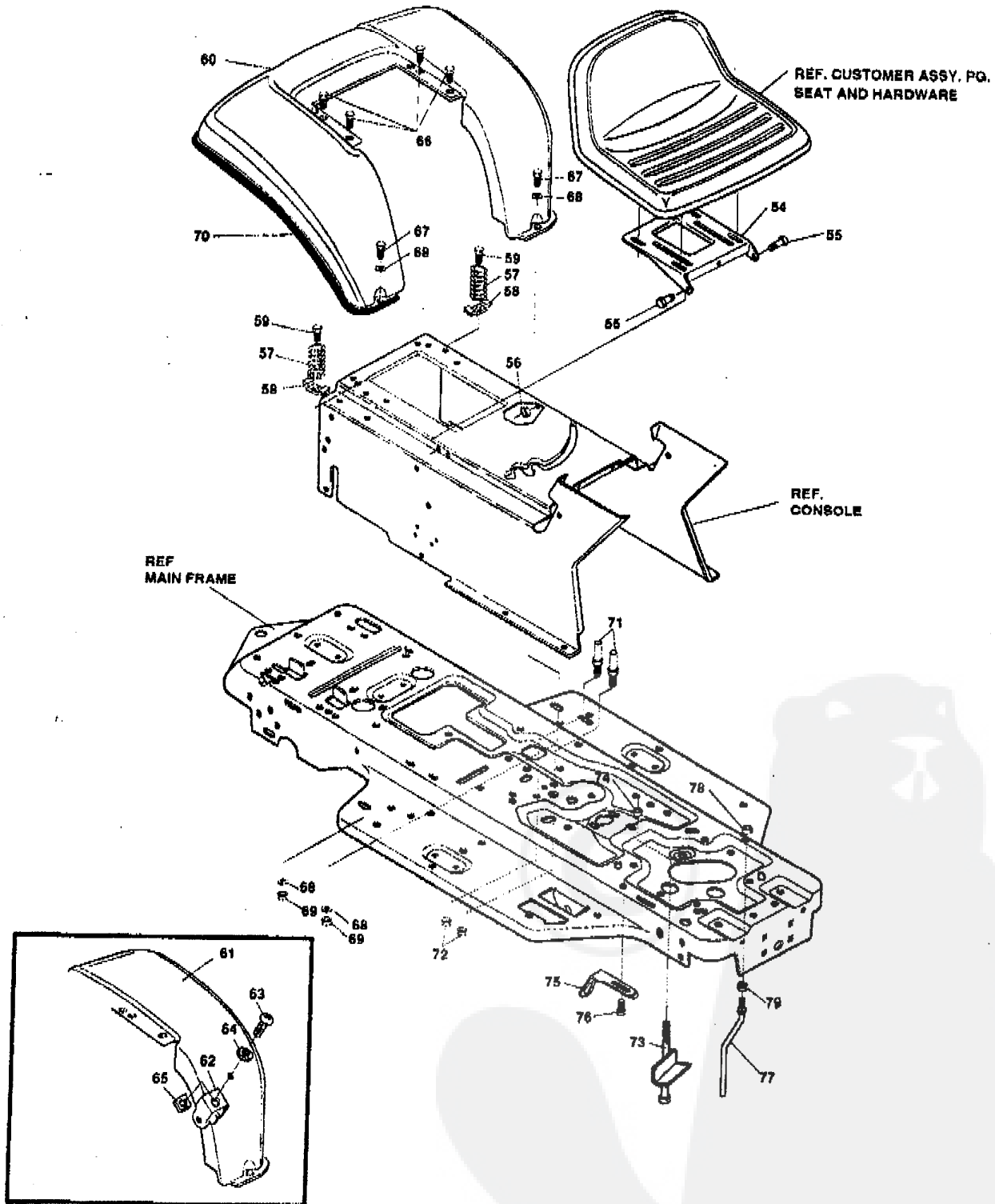
329209A

## 38" LAWN TRACTOR MODEL D3554-140

KEY#	PART#	DESCRIPTION	QTY.
1	321997-879	FRAME, MAIN SF RIDER	1
2	302917	FOOTPAD, LH SF	1
3	302916	FOOTPAD, RH SF	1
4	313003-853	BRKT. GRILLE, L.H.	1
5	313004-853	BRKT GRILLE R.H.	1
6	56362-853	BRACKET, SUPT FRT AXLE-SF	1
7	328154	SCREW, 5/16-18X.75WDFLLK GR5	6
8	55273	NUT, 5/16-18 HXWDFLLK	6
9	29616	BOLT, .625 X 1.890 SPSH 1/2-20	1
10	274654	NUT, 1/2-20 REGHXCTRLK	1
11	122201	SCREW, 3/8-16X2.75 HHC	2
12	2483	WASHER, 39IDX1.25DX.07	2
13	1499	NUT, 3/8-16 REGHXCTRLK	2
14	321368-830	CONSOLE, SF GPWR NOTCHED TOP	1
15	56235-830	CONSOLE REAR COVER	1
16	995346	SCREW, 1/4-20 X .50 WAHHTAP	15
17	321980-830	DASH, SM.FR. W/O AMMET GPWR	1
18	302723	INSERT DASH LH 11 HP	1
19	302724	INSERT DASH RH 11 HP	1
20	995338	SCREW, 1/4-20X.63HHWATAP	4
21	274672	SCREW, 1/4-20X.63 WAHHC	4
22	51335	NUT, 1/4-20 WDFLLK	4
23	329257	HOOD H-12 PLASTIC	1
24	307278	SUPPORT HOOD H-12 GP 11 HP	1
25	301542	SCREW, 10-24X1.00HWATAP	4
26	271166	NUT, #10-24 HEXKEPS	4
27	302722	GRILL, G-15 GPWR SM LWR	1
28	9783	BRACKET, TIE HOOD	2
29	35055	SCREW, 10 24X.50 SLHWATAP	8
30	310203	CLIP HOG RING	1
31	56676	BOLT, .375X.580 HSSH 5/16-18	2
32	1498	NUT, 5/16-18 REGHEXCTRLK	2
33	57478	SPRING, HOOD LATCH	2
34	305716	LENS 11 HP HAKO SMOKED	1
35	57796	SCREW, #6X.50 PLASTITE	4
36	301452	FOIL, HEAT REFLECTOR	1
37	329379	PARTS MANUAL	1
38	329380	OPERATOR'S MANUAL	1
39	329389	AIR ASSIST MANUAL	1
40	327716	GRASS COLLECTOR MANUAL (ENG/FR/GER)	1

# 38" LAWN TRACTOR MODEL D3554-140

## CHASSIS & HOOD ASSEMBLY



**DTE: ALWAYS USE ORIGINAL EQUIPMENT PARTS.** Use of service/replacement parts other than original equipment parts may void your warranty.

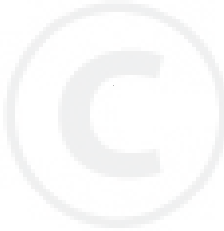
**ALL UNNUMBERED ITEMS ARE INTERCHANGEABLE WITH OPPOSITE SIDE**

329209A

**38" LAWN TRACTOR MODEL D3554-140**

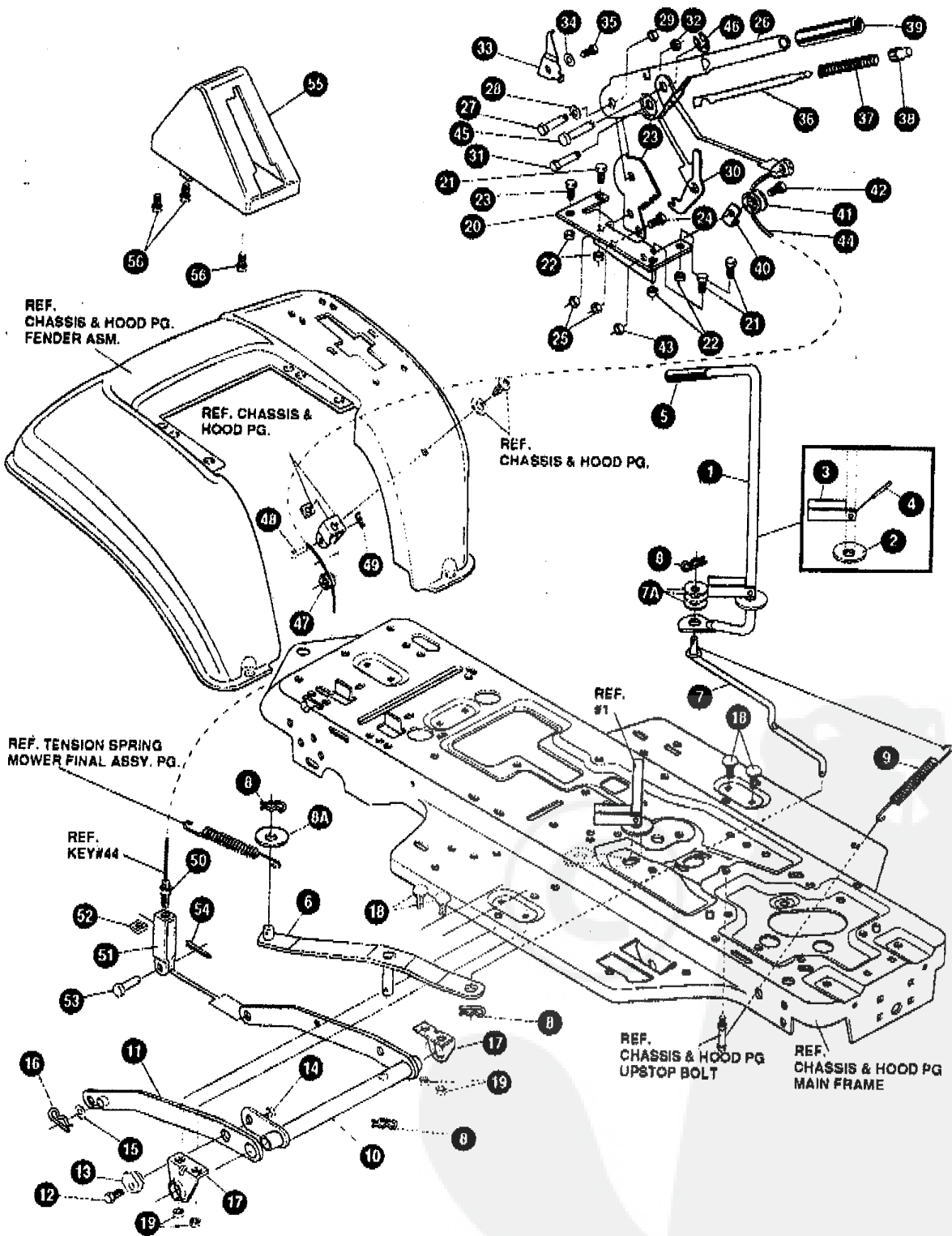
KEY#	PART#	DESCRIPTION	QTY.
54	58367-879	PLATE, SEAT	1
55	20507	BOLT, .437X.156 HSH 5/16-18	2
56	1498	NUT, 5/16-18 REGHEXCTRLK	2
57	56220	SPRING, 1.49X2.98X.162	2
58	1341	CLAMP SPRING	2
59	995346	SCREW, 1/4-20X.50 WAHTAP	2
60	^	FENDER ASM F-5	1
61	321157-879	FENDER, F5 LOF	1
62	9239	CLEVIS	1
63	439456	SCREW, 5/16-18X.56 PHPNMA	1
64	301551	WASHER, .344IDX1.50X.09	1
65	120373	NUT, 5/16-18 SQUARE	1
66	995346	SCREW, 1/4-20 X .5 WAHTAP	4
67	122007	SCREW, 5/16-18X.75 HHC	2
68	446363	WASHER, FLAT .375X.88X.082	4
69	1498	NUT, 5/16-18 REGHEXCTRLK	2
70	55023	TRIM, STRIP	77.5
71	53446	PIN, 5/16-18	2
72	271184	NUT, 5/16-18 HEXKEPS	2
73	327894	ASSY, UPSTOP FOR AIR ASSIST	1
74	1499	NUT, 3/8-16 REGHXCTRLK	2
75	302610-853	BRACKET SWITCH MOUNT	1
76	995346	SCREW, 1/4-20X.50 WAHTAP	1
77	50653	GUIDE, BELT	1
78	41529	NUT, 3/8-16 HXCTRLKJAN GRD	1
79	271190	NUT, 3/8-16 HEXKEPS	1

^ ORDER INDIVIDUAL PARTS.



# 38" LAWN TRACTOR MODEL D3554-140

## MOWER SUSPENSION



**OPE:** ALWAYS USE ORIGINAL EQUIPMENT PARTS. Use of service/replacement parts other than original equipment parts may void your warranty.

ALL UNNUMBERED ITEMS ARE INTERCHANGEABLE WITH OPPOSITE SIDE

328358B

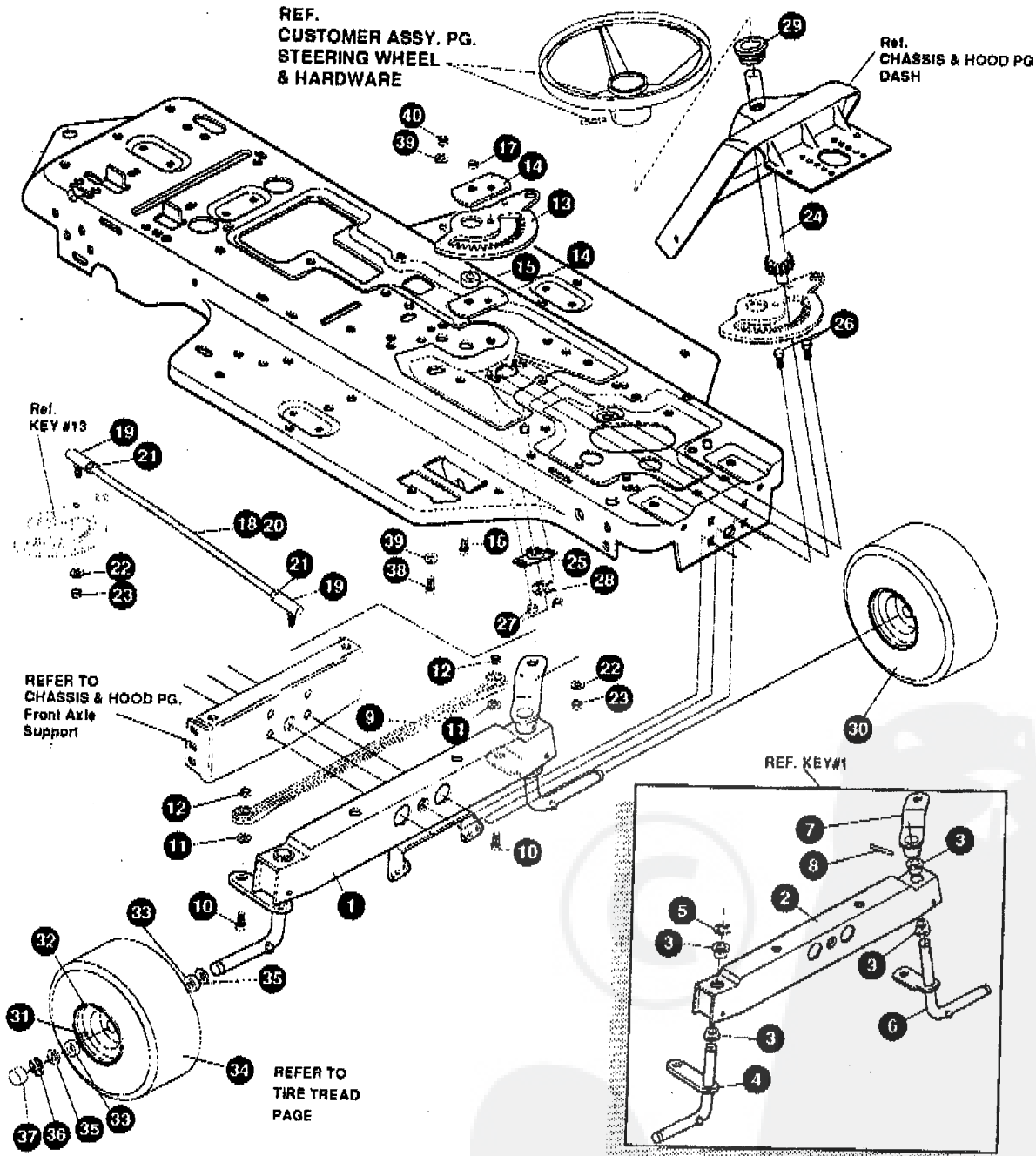


# 38" LAWN TRACTOR MODEL D3554-140

KEY#	PART#	DESCRIPTION	QTY.
1	325592	HANDLE, RH PTO DASH SF	1
2	22265	WASHER, FLAT .515X1.36X.119PL	1
3	305225	ML STOP, PTO ENGAGEMENT	1
4	326386	PIN, SPRING. 187DIA X 1.00LG HVPL	1
5	46478	GRIP, HAND .50ID 3.37 LG BLK	1
6	325587-853	WS STRAP ASSY, PTO BELCRANK	1
7	325590	ROD, BELCRANK LINK	1
7A	274517	WASHER, FLAT .406X.73X.082	3
8	8260	HAIR PIN	4
8A	25210	FLAT WASHER, .392X1.25X.09	1
9	325802	SPRING, .63X7.75X.0897 TENSION	1
10	326114-853	WP LIFT ASSY, LH	1
11	325130-853	WP LIFT ASSY, RH	1
12	180079	SCREW, 5/16 18X1.00 HHC GR5Z	1
13	58247	NUT, ADJUST	1
14	1498	NUT, 5/16-18 REGHEXCTRLK	1
15	417098	WASHER, FLAT .5331X1.06X.063Z	2
16	8260	PIN, HAIR .091 DIA X 1.66LG	2
17	325495-853	MP BRACKET, REAR HANG SUSP	2
18	126211	BOLT, 5/16-18X.63 CARR GR2Z	4
19	1498	NUT, 5/16-18 REGHEXCTRLK	4
20	313926	MF BRACKET, HEIGHT ADJUST	1
21	180077	SCREW, 5/16-18X .75 HHC GR5Z	4
22	1498	NUT, 5/16-18 REGHEXCTRLK	4
23	301238	QUADRANT, HEIGHT ADJUST	1
24	180077	SCREW, 5/16-18X .75 HHC GR5Z	2
25	1498	NUT, 5/16-18 REGHEXCTRLK	2
26	322292-853	MP HANDLE, LIFT SHORT(30" S.F.)	1
27	300171	BOLT, .500X .270 HSSH 5/16-18Z	1
28	996418	WASHER, FLAT .506X .75X.024Z	1
29	44108	NUT, 5/16-18 HWDFLCTRLK	1
30	301239	HF PAWL, SQUARE HTRR955	1
31	300171	BOLT, .500X .270 HSSH 5/16-18Z	1
32	44108	NUT, 5/16-18 HWDFLCTRLK	1
33	9435	ML POINTER	1
34	138479	WASHER, EXLK .195X.41X.03Z	1
35	35287	SCREW, #8-32X .38 HHWATAPGR2	1
36	303027	ROD, ACTUATOR-SHORT	1
37	58326	SPRING, HEIGHT ADJUST	1
38	58325	KNOB, HEIGHT ADJ PUSH BUTTON	1
39	58329	GRIP, .750 OD W/ HOLE BLACK	1
40	9149	ML CABLE RETAINING BRACKET	1
41	48306	PULLEY, POWDER METAL	1
42	58336	BOLT, .375X .375 HSSH 1/4-20	1
43	1502	NUT, 1/4-20 REGHEXCTRLK	1
44	321430	CABLE, LIFT 21.50- 30" S.F.	1
45	300310	PIN, CLEVIS .310 DIA X .475 LG ZPL	1
46	300311	RING, RET E .31X .25TRUX5133-31	1
47	48306	PULLEY, POWDER METAL	1
48	300317	PIN, CLEVIS .375 DIA. X .81 LG	1
49	8280	PIN, HAIR .091 DIA. X 1.66 LG	1
50	120375	NUT, 1/4-20 REGHEX	1
51	9405	ML CLEVIS, LIFT CABLE	1
52	120372	NUT, 1/4-20 REGSQ	1
53	39522	PIN, CLEVIS .312 X .812	1
54	121222	PIN, COTTER .090/.086X.75LG	1
55	300335	LIFT COVER-39" F5	1
56	300340	SCREW, #10 X .75 HHPLAST BLK	3

# 38" LAWN TRACTOR MODEL D3554-140

## STEERING ASSEMBLY



**NOTE:** ALWAYS USE ORIGINAL EQUIPMENT PARTS. Use of service/replacement parts other than original equipment parts may void your warranty.

ALL UNNUMBERED ITEMS ARE INTERCHANGEABLE WITH OPPOSITE SIDE

3275920

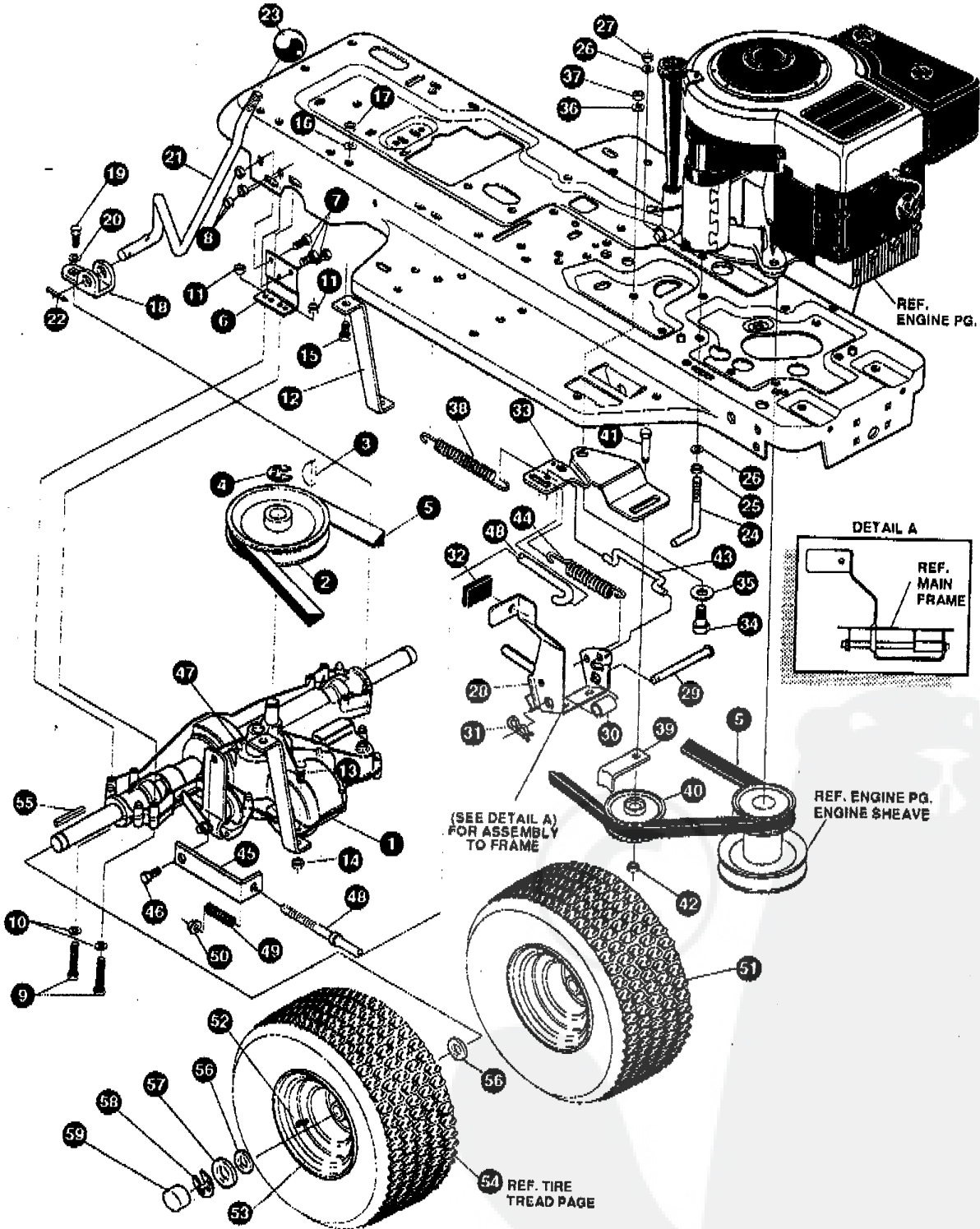
## 38" LAWN TRACTOR MODEL D3554-140

KEY#	PART#	DESCRIPTION	QTY.
1	^	FRONT AXLE ASSEMBLY SF	1
2	324915-853	AXLE, FRONT	1
3	50546	BEARING, FLANGE	1
4	310368	SPINDLE, RH	4
5	36625	RING, RETEX	1
6	310367	SPINDLE, LH	1
7	327619-853	ARM, STEERING LH	1
8	454565	PIN, SPRING	1
9	302688	TIE ROD	1
10	122145	SCREW, 3/8-16X1.25 MHC	1
11	120382	WASHER, .393X.68X.10 REGSPTLK	2
12	1499	NUT, 3/8-16 REGHCTRLK	2
13	324752	SECTOR, GEAR	2
14	327833	PLATE SECTOR SF 4WS	1
15	324753	BUSHING SECTOR GEAR SF 4WS	2
16	180124	SCREW, 3/8-16X1.25	1
17	1499	NUT, 3/8-16 REGHXCTRLK	1
18	328808	DRAGLINK ASSEMBLY	1
19	57158	BALL JOINT	2
20	56190	DRAGLINK	1
21	124925	NUT, 3/8-24 REGHEXJAM	2
22	120382	WASHER, REGSPTLK	2
23	120369	NUT, 3/8-24 REGHEX	2
24	327690	SHAFT PINION STEERING	1
25	325692	BRG. FL	1
26	326505	SCREW, 1/4-20X.75 GRD 5	2
27	46931	NUT, 1/4-20 FLLK NUT SIDE LOCK	2
28	20864	RING RET E	1
29	54902	BRNG, FL .753IDX1.37ODX.50	1
30	^	ASSEMBLY TIRE	2
31	24167	VALVE STEM	1
32	39829	WHEEL W/BEARING	1
33	314416	BEARING, 1.36ODX.753ID FLANGE	2
34		REFER TO TIRE TREAD PAGE	
35	642	WASHER, FLAT .755X1.31X.075	4
36	36625	RING, RETEX .57X.05	2
37	40394	HUB CAP	2
38	122145	SCREW, 3/8-16X1.25 GRD2	1
39	120394	WASHER, FLAT 406X.81X.065	2
40	44374	NUT, 3/8-16 HXWDFLLK	1

^ ORDER INDIVIDUAL PARTS.

# 38" LAWN TRACTOR MODEL D3554-140

## MOTION DRIVE ASSEMBLY



**NOTE:** ALWAYS USE ORIGINAL EQUIPMENT PARTS. Use of service/replacement parts other than original equipment parts may void your warranty.

ALL UNNUMBERED ITEMS ARE INTERCHANGEABLE WITH OPPOSITE SIDE

327141C

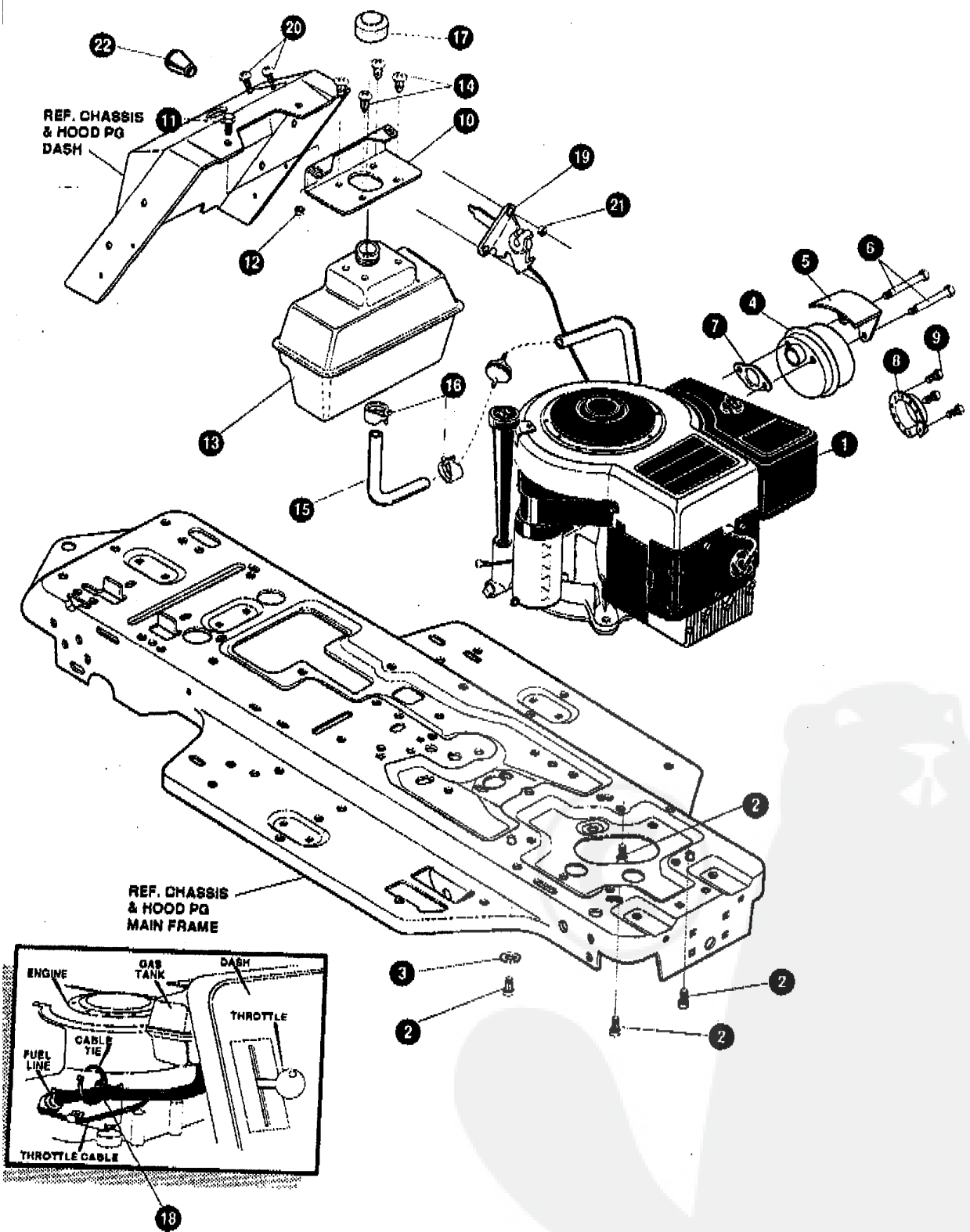
# 38" LAWN TRACTOR MODEL D3554-140

KEY#	PART#	DESCRIPTION	QTY.
1.	^	TRANSAXLE P940-5SP SF FER	1
2.	302745	PULLEY, IDLER V4L 6.60	1
3.	3021	KEY, WDRF 606 .750X.187X.312	1
4.	22053	RING, RETEX .58X.035TRU5100-62	1
5.	54758	BELT, V 4L 82.00 SF DRIVE	1
6.	53768-853	MP BRACKET, TRANSAXLE	2
7.	180075	SCREW, 5/16-18X .63 HHC	6
8.	1498	NUT, 5/16-18 REGHEXCTRLK	6
9.	180089	SCREW, 5/16-18X2.25 HHC	4
10.	120393	WASHER, FLAT .344X .69X.065	4
11.	1498	NUT, 5/16-18 REGHEXCTRLK	4
12.	323213	MF BRACKET, T/A TORQ. 915 S/F	1
13.	180087	SCREW, 5/16-18X2.00 HHC	1
14.	1498	NUT, 5/16-18 REGHEXCTRLK	1
15.	122017	SCREW, 5/16-18X1.00 HHC	1
16.	138485	WASHER, EXLK .320X.61X.03	1
17.	1498	NUT, 5/16-18 REGHEXCTRLK	1
18.	12616	MH BRACKET, SHIFT P920-3SP	1
19.	56255	SCREW, 1/4-28X .75 NYLHHC	1
20.	57157	WASHER, .750X.250 SP-TRANSAXLE	1
21.	313934	LEVER, SHIFT 915 T/A S/F	1
22.	137185	PIN, COTTER .125 DIA X 1.00 LG	1
23.	55514	KNOB, ROUND 1.50 DIA BLACK	1
24.	49896	MF BELT GUIDE	1
25.	271184	NUT, 5/16-18 HEXKEPS	1
26.	120393	WASHER, FLAT .344X .69X.065	2
27.	1498	NUT, 5/16-18 REGHEXCTRLK	1
28.	302603-853	SF ASSY, BRAKE PEDAL S.F.	1
29.	319676	PIN, CLEVIS .5 DIA. 4.87 LG, ZN PL	1
30.	302601	SPACER, SLEV .53 X .62 X 1.406	1
31.	56180	PIN, HAIR .091 DIA X 1.62 LG	1
32.	48761	PAD, CLUTCH/BRAKE PEDAL	1
33.	321969	MF IDLER ARM BRKT TRACTION SF	1
34.	41890	BOLT, .625X .218 HSSH 5/16-18Z	1
35.	4107	WASHER, FLAT .635X1.31X.07	1
36.	45602	WASHER, FLAT .333X .87X.119	1
37.	1498	NUT, 5/16-18 REGHEXCTRLK	1
38.	327867	SPRING, 3/4 ODX 7.75X.091 TENSIO	1
39.	39659	MF RETAINER, BELT	1
40.	35374	PULLEY, IDLER V4L 3.06X .62	1
41.	45892	BOLT, 3/8-16X1.50 CARR	1
42.	1498	NUT, 3/8-16 REGHXCTRLK	1
43.	43980	ROD, .268 DIA CLUTCH	1
44.	50562	SPRING, 3/8 ODX 1.625X.055 TENSIO	1
45.	323210	BRACKET, TRACTION BRAKE S/F	1
46.	46824	BOLT, .500X .188 HSSH 5/16-18Z	1
47.	1498	NUT, 5/16-18 REGHEXCTRLK	1
48.	323211	ROD, BRAKE 915 T/A SF	1
49.	313881	SPRING, CLUTCH .625 OD	1
50.	50352	NUT, 1/4-20 WDFLLK TOPLOCK	1
51.	*	TIRE & RIM, PU 20X8.0-8 TURWHI	2
52.	24167	VALVE STEM	1
53.	326362	WHEEL & HUB ASSY 20X8 WHITE	1
54.		REFER TO TIRE TREAD PAGE	
55.	52928	KEY, SQUARE .187SQ X 2.25 LG	2
56.	642	WASHER, FLAT .755X1.31X.075	4
57.	42815	WASHER, FLAT .755X1.53X.07	2
58.	36625	RING, RETEX .57X.05TRU5133-75	2
59.	40394	HUB CAP, 1.500ID X 7/8LG	2

^ CONTACT YOUR NEAREST TRANSAXLE DEALER FOR PARTS AND SERVICE.  
\* ORDER INDIVIDUAL PARTS.

# 38" LAWN TRACTOR MODEL D3554-140

## ENGINE & CONTROL ASSEMBLY



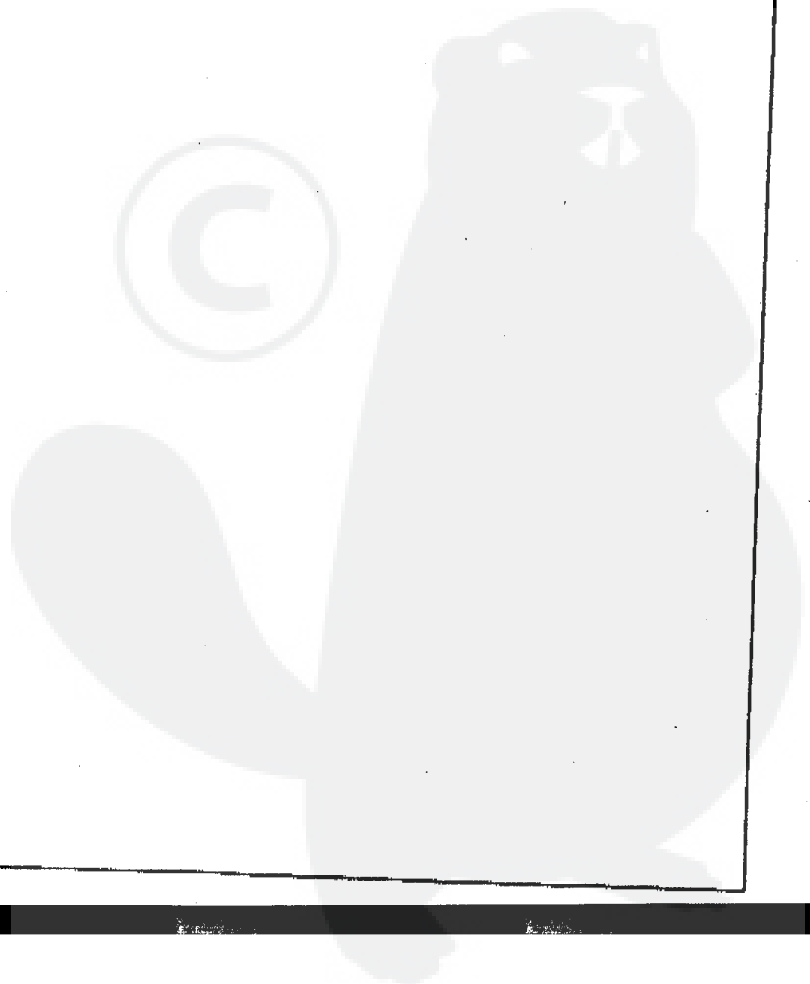
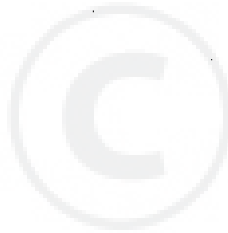
**E: ALWAYS USE ORIGINAL EQUIPMENT**  
 U.S. Use of service/replacement parts other than  
 original equipment parts may void your warranty.

**ALL UNNUMBERED  
 ITEMS ARE INTERCHANGEABLE  
 WITH OPPOSITE SIDE**

327911A

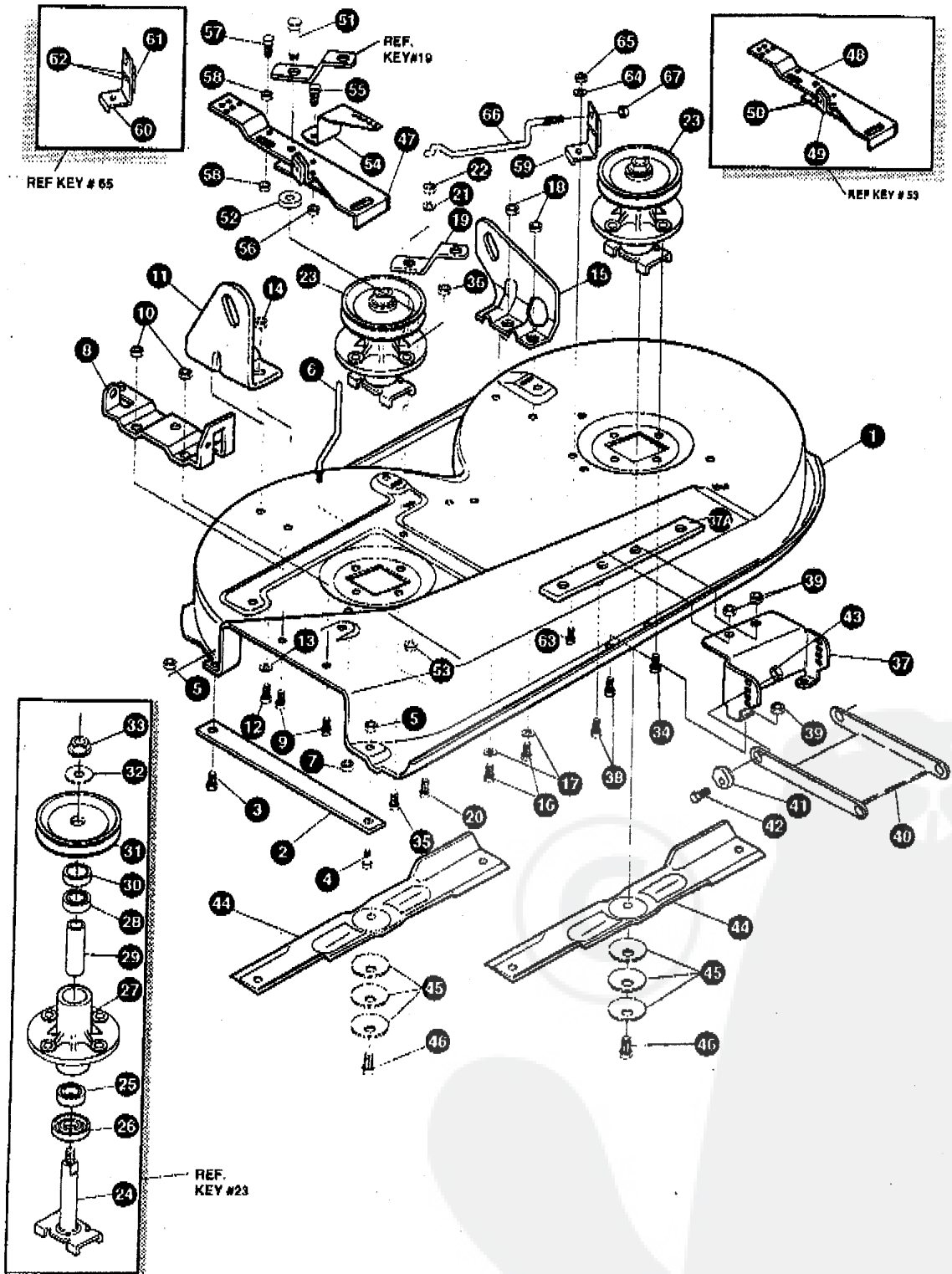
# 38" LAWN TRACTOR MODEL D3554-140

KEY#	PART#	DESCRIPTION	QTY.
1	ENGINE	12 HP B&S IC (SEE ENGINE MANUAL)	1
2	50947	SCREW, 3/8-16X1.25 WAHHTAP	4
3	138489	WASHER, EXLK .384X.69X.04	1
4	57908	MUFFLER-LO TONE NELSON EXPORT	1
5	54767	SHIELD, HEAT, FOR ROUND MUFFLER	1
6	173063	SCREW, 5/16-18X3.50 HHC	2
7	46708	GASKET, MUFFLER	1
8	323423	DEFLECTOR MUFFLER	1
9	35287	SCREW, #8-32X.38 HHWATAP GR 2	1
10	302814-853	BRACKET, GAS TANK	1
11	55886	SCREW, 1/4-20X .63 SLTRMA	2
12	51335	NUT, 1/4-20 WDFLLK	2
13	314989	TANK, FUEL 1 GAL	1
14	49050	SCREW, 1/4-10X .75PHPNTAP	4
15	41007	GAS LINE .25ID	16'
16	47345	CLAMP, FUEL LINE	2
17	46704	GAS CAP 1-1/2-7	1
18	57444	TIE, CABLE	1
19	320031	THROTTLE, CONTROL	1
20	35291	SCREW, #10-24 X .50	2
21	271166	NUT, #10-24 HEX REPS	2
22	50607	KNOB, ROUND THROTTLE	1



# 38" LAWN TRACTOR MODEL D3554-140

## PRE-PAINTED DECK



**NOTE: ALWAYS USE ORIGINAL EQUIPMENT PARTS.** Use of service/replacement parts other than original equipment parts may void your warranty.

**ALL UNNUMBERED ITEMS ARE INTERCHANGEABLE WITH OPPOSITE SIDE**

328680C

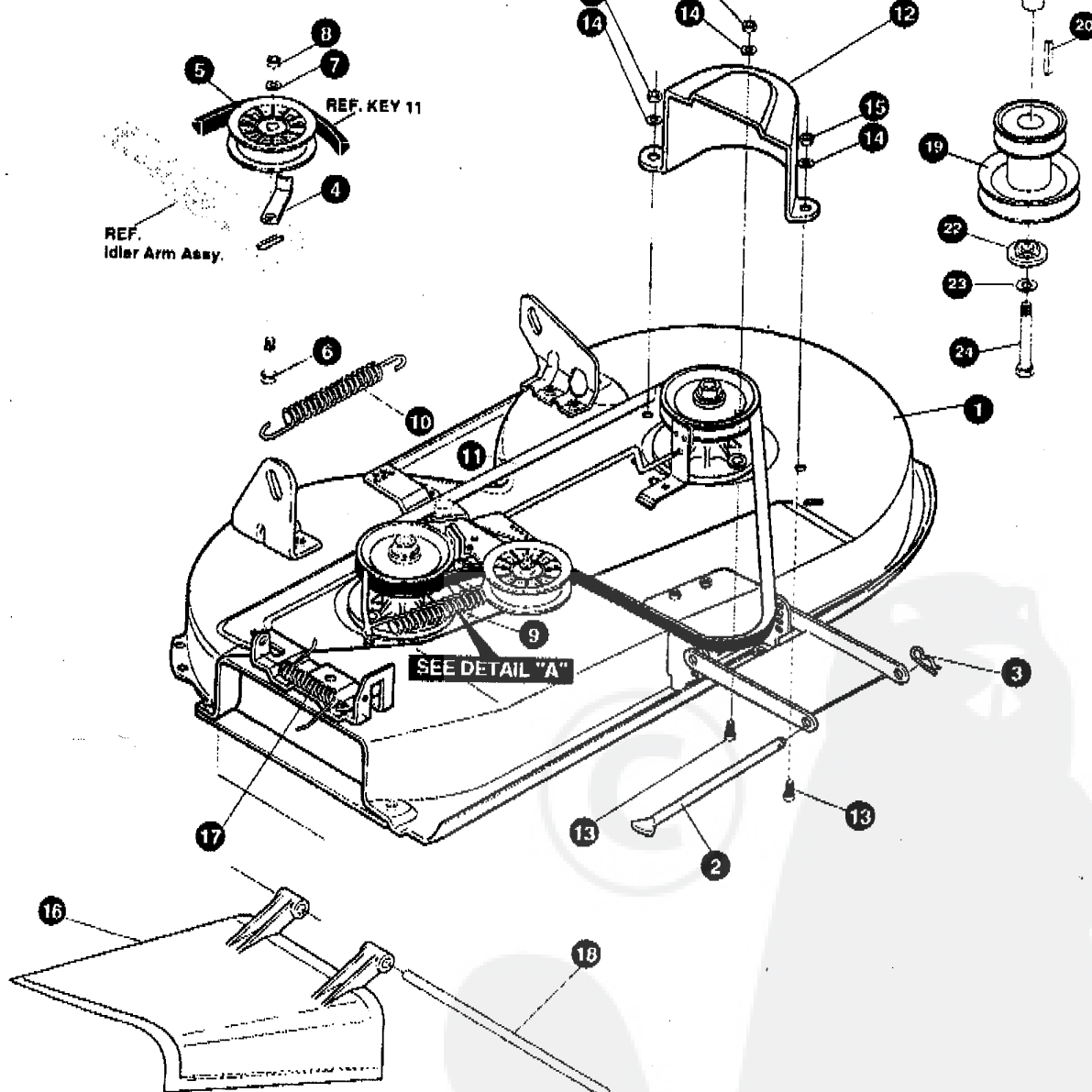
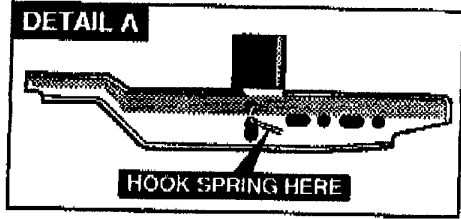


**38" LAWN TRACTOR MODEL D3554-140**

KEY#	PART#	DESCRIPTION	QTY.
1	325106	DECK,38"SD MOWER	1
2	328295-853	BAR, SKID	1
3	126216	BOLT, 5/16-18X .75 CARR	1
4	120230	BOLT, 5/16-18X1.25 CARR	1
5	271184	NUT, 5/16-18 HEXKEPS	2
6	57318	GUIDE, BELT 5/16-18 THD	1
7	1498	NUT, 5/16-18 REGHEXCTRLK	1
8	313928	BRACKET, CHUTE	1
9	180073	SCREW, 5/16-18X .50 HHC	2
10	1498	NUT, 5/16-18 REGHEXCTRLK	2
11	313929	LIFT BRACKET, REAR,RH	1
12	180077	SCREW, 5/16-18X .75 HHC	2
13	120393	WASHER, FLAT .344X .69X.065	2
14	1498	NUT, 5/16-18 REGHEXCTRLK	2
15	310667	BRACKET,DECK LIFTREAR LH	1
16	180077	SCREW, 5/16-18X .75 HHC	2
17	120393	WASHER, FLAT .344X .69X.065	2
18	1498	NUT, 5/16-18 REGHEXCTRLK	2
19	315302-853	BRACKET, IDLER SUPPORT	1
20	300345	SCREW, 5/16-18X1.38 WATAP	1
21	120393	WASHER, FLAT .344X .69X.065	1
22	1498	NUT, 5/16-18 REGHEXCTRLK	1
23	56424-853	QUILL ASSY, 36/39/40/43	2
24	56425	SHAFT/SADDLE 36"	1
25	49562	BRNG, BALL	1
26	50616	DUST SHIELD	1
27	55547	QUILL CASTING	1
28	49562	BRNG, BALL	1
29	50818	SPACER,3.797LGX.669IDX.88OD	1
30	313898	SPACER,.438LGX.932ODX.672ID-PM	1
31	56390	PULLEY,26/36" QUILL	1
32	56365	SPECIAL WASHER	1
33	1282	NUT, 7/16-20 WDFLLK	1
34	50634	SCREW, 5/16-18X .88 WAHTAP	6
35	300345	SCREW, 5/16-18X1.38 WATAP	1
36	1498	NUT, 5/16-18 REGHEXCTRLK	1
37	312526	LIFT SUPPORT FRONT DECK	1
37A	328155	MOUNTING PLATE	1
38	180075	SCREW, 5/16-18X .63 HHC	4
39	1498	NUT, 5/16-18 REGHEXCTRLK	4
40	58305-853	LINK BRACKET,DECK FR	1
41	58247	ADJUSTING NUT	2
42	122017	SCREW, 5/16-18X1.00 HHC	2
43	1498	NUT, 5/16-18 REGHEXCTRLK	2
44	58190	BLADE, 19.69 HI-LIFT	2
45	2483	WASHER,.39IDX1.25DX.07 BELLVIL	6
46	39573	SCREW, 3/8-24X1.00 NYLHHC	2
47	320565-853	IDLER ARM ASSY.	1
48	300490-853	IDLER ARM	1
49	306973	BRAKE PAD	1
50	41601	RIVET,TRSET .187 DIA X.50LG	2
51	300180	BOLT,.50 X .188 HSH3/8-16	1
52	996416	WASHER,FLAT .391 X 1.-- X .125	1
53	45171	NUT,5/16-18 X .75 HHC WHIZ-LOCK	1
54	300700-853	BRACKET EXTENSION IDLER	1
55	180077	SCREW,5/16-18 X .75 HHC	1
56	1498	NUT, 5/16-18 REGHEXCTRLK	1
57	121954	SCREW,1/4-20X2.00 HHC	1
58	271172	NUT, 1/4-20 REGHEXKEPS	2
59	303247-853	ASSY BLADE BRAKE	1
60	303246-853	BRAKE ARM	1
61	306973	BRAKE PAD	1
62	135624	RIVET,TRSET .185 DIA X.41	2
63	120228	SCREW,5/16-18X.63 HHC	1
64	120393	WASHER,FLAT .344 X .69 X .65	1
65	1498	NUT, 5/16-18 REGHEXCTRLK	1
66	315306	ROD,BRAKE	1
67	1502	NUT,1/4-20 REGHEXCTRLK	1

# 38" LAWN TRACTOR MODEL D3554-140

## FINAL DECK ASSEMBLY



**NOTE: ALWAYS USE ORIGINAL EQUIPMENT PARTS.** Use of service/replacement parts other than original equipment parts may void your warranty.

**ALL UNNUMBERED ITEMS ARE INTERCHANGEABLE WITH OPPOSITE SIDE**

328679B

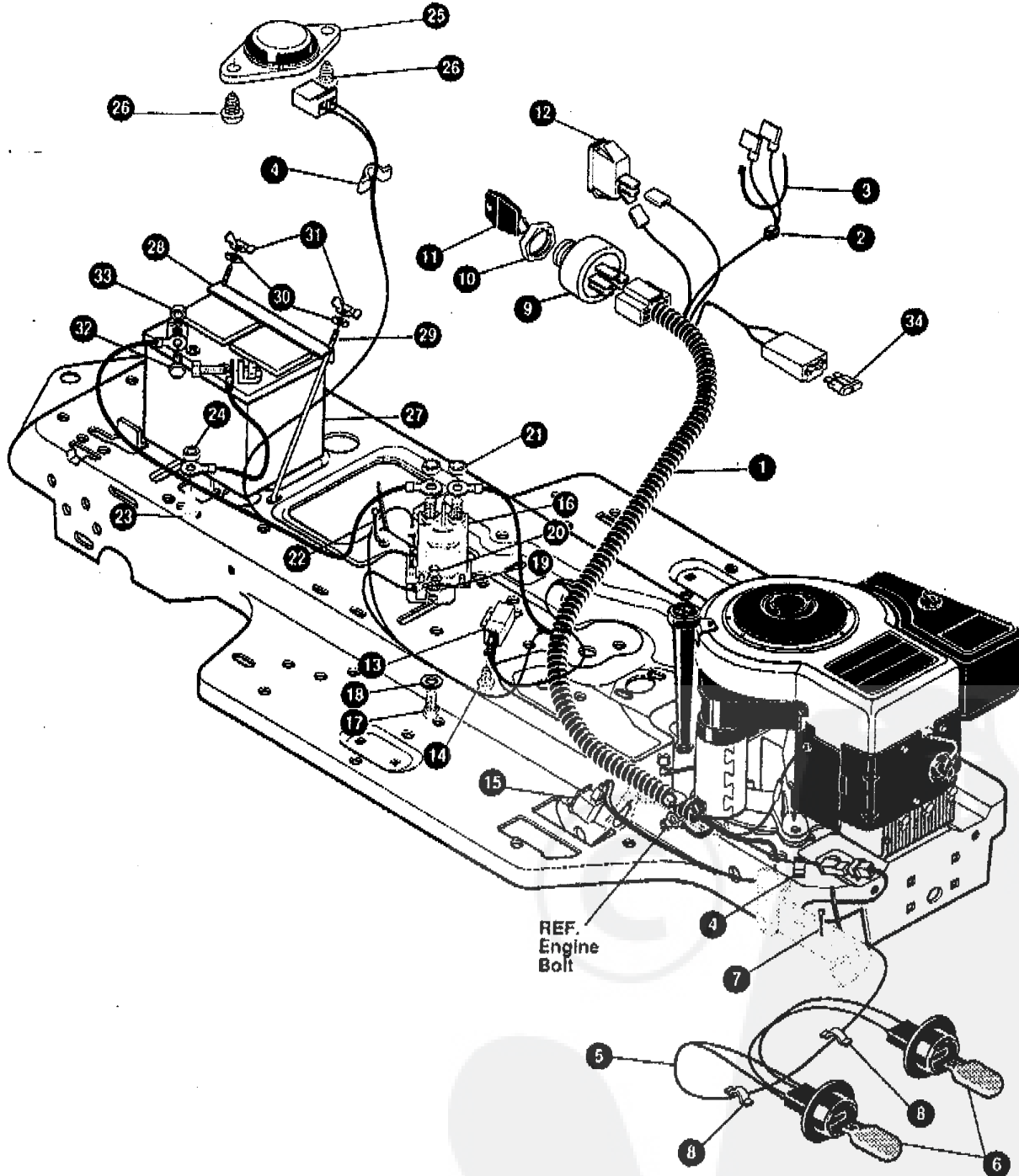
**38" LAWN TRACTOR MODEL D3554-140**

KEY#	PART#	DESCRIPTION	QTY.
1	^	ASSY DECK 38" SUS FOR AIR	1
2	58306	ROD, DECK HITCH	1
3	8260	PIN, HAIR .091 DIA X 1.66	1
4	1346	BELT RETAINER 2.55 OD	1
5	310326	PULLEY, IDLER BFF 4.00	1
6	57325	BOLT, 3/8-16 X 2.00 CARR	1
7	120382	WASHER, REGSPTLK.393X.68X.10	1
8	120377	NUT, 3/8-16 REGHX	1
9	322064	SPRING .071 X .62 X 4.37	1
10	326256	SPRING, TENSION	1
11	300680	BELT, V 5L 77.75	1
12	328257	GUARD, BELT LH	1
13	180075	SCREW, 5/16-18 X .63 HHC	3
14	120393	WASHER, FLAT .344X .69X.085	3
15	1498	NUT, 5/16-18 REGHEXCTRLK	3
16	57818	CHUTE-36SD,39SD	1
17	314975	SPRING, TORSION	1
18	57317	PIVOT ROD, CHUTE	1
19	310250	PULLEY ENG.	1
20	303151	KEY SQUARE	1
21	304246	SPACER	1
22	56431	WASHER, PILOT	1
23	120383	WASHER, REGSPTLK	1
24	433146	SCREW, 7/16-20 X 4.25	1

^ ORDER DECK KIT# 317579 FOR COMPLETE DECK.

# 38" LAWN TRACTOR MODEL D3554-140

## ELECTRICAL ASSEMBLY



**NOTE: ALWAYS USE ORIGINAL EQUIPMENT PARTS.** Use of service/replacement parts other than original equipment parts may void your warranty.

**ALL UNNUMBERED ITEMS ARE INTERCHANGEABLE WITH OPPOSITE SIDE**

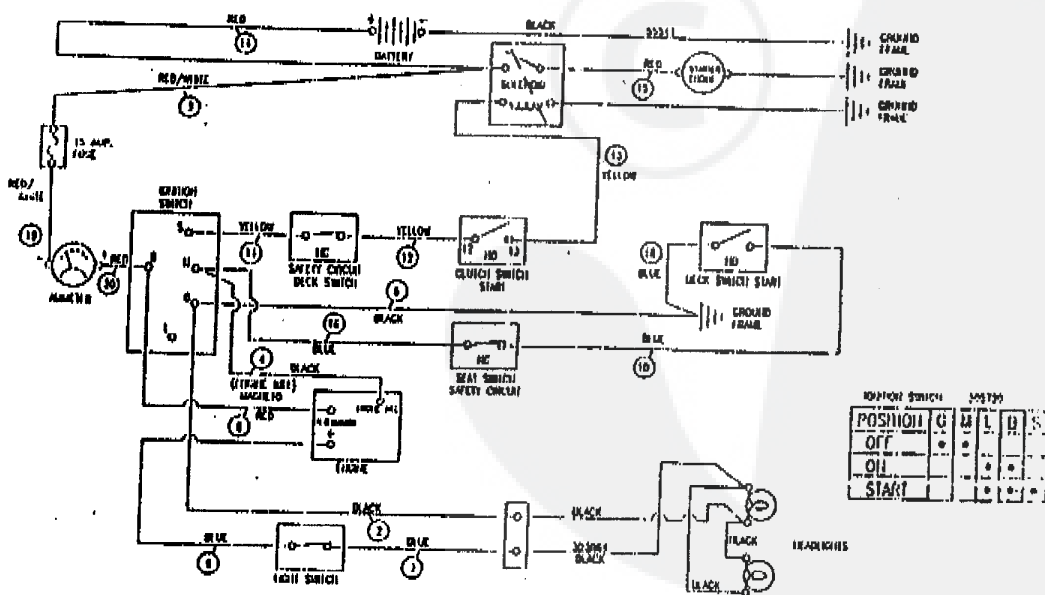
327768A

# 38" LAWN TRACTOR MODEL D3554-140

KEY#	PART#	DESCRIPTION	QTY.
1.	325084	WIRE HARNESS SF 12B&S IC W/AMM	1
2.	322298	SPLICER	1
3.	57444	CABLE TIE	1
4.	41482	PRESS CLIP, 1.380LG .255ID	1
5.	303064	ASSY, LIGHT WIRE-1/4 TURN	2
6.	52572	BULB, HEADLAMP	1
7.	57444	TIE, CABLE BLACK NYLON 5.62L	2
8.	41482	PRESS CLIP, 1.380LG .255ID	1
9.	327355	SWITCH-IGN. (AFTER FIRE) 3 POSN	2
10.	327352	NUT, 5/8-32 HXHD IGN SWIT	1
11.	327350	KEY, IGNITION SWITCH	1
12.	300334	LIGHT SWITCH ON/OFF PANEL MNT	1
13.	57476	SWITCH, SCR MNT DP NC NO BLK	1
14.	57220	SCREW, #12 X .50 PHPNHTAP BLK	1
15.	326653	SWITCH, SNAPMNT NO .055/.116BLK	2
16.	53716	SOLENOID	1
17.	187745	SCREW, 1/4-20X .75 HXSEMMA	1
18.	1084	WASHER, FLAT .281X1.00X.063PL	2
19.	1502	NUT, 1/4-20 REGHEXCTRLK	1
20.	271172	NUT, 1/4-20 REGHEXKEPS	2
21.	271187	NUT, 5/16-24 HKEPS	1
22.	57444	TIE, CABLE BLACK NYLON 5.62L	2
23.	55511	WIRE, GROUND, 12.6"	1
24.	271184	NUT, 5/16-18 HEXKEPS	1
25.	57547	SWITCH, SEAT	1
26.	160505	SCREW, 1/4-20X .38PHPNHMA	1
27.	302257	BATTERY, YUASA 12V 7-PLATE	2
28.	324719	BATTERY BRACKET	1
29.	40234	BATTERY ROD	1
30.	120392	WASHER, FLAT .281X .63X.065	2
31.	325232	WINGNUT, 1/4-20 NYLON	2
32.	120854	SCREW, 1/4-20X .63 HHC	2
33.	271172	NUT, 1/4-20 REGHEXKEPS	2
34	** 302031	FUSE, 15 AMP SPADE TYPE	1

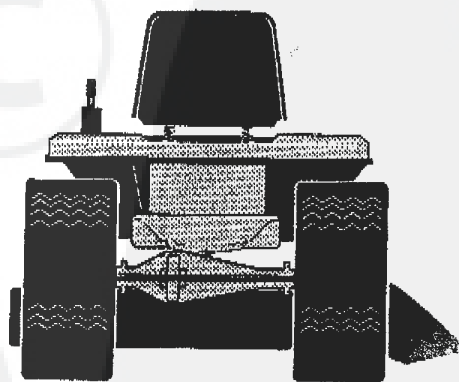
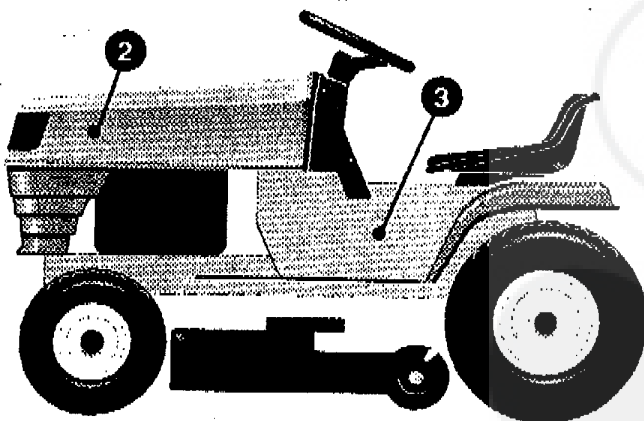
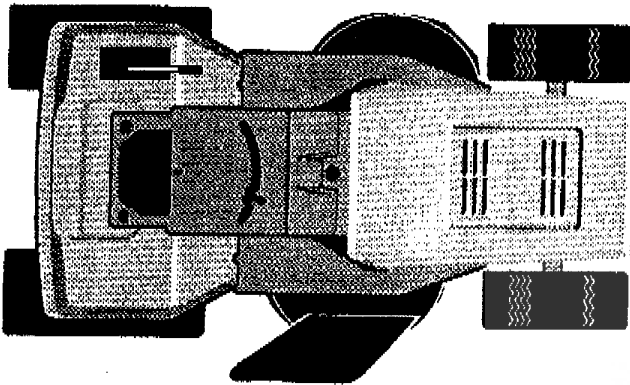
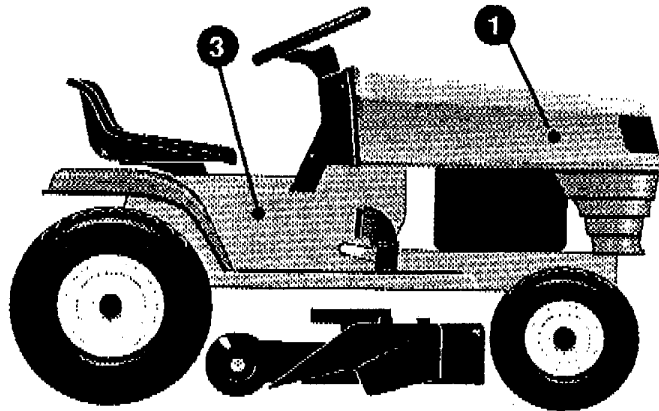
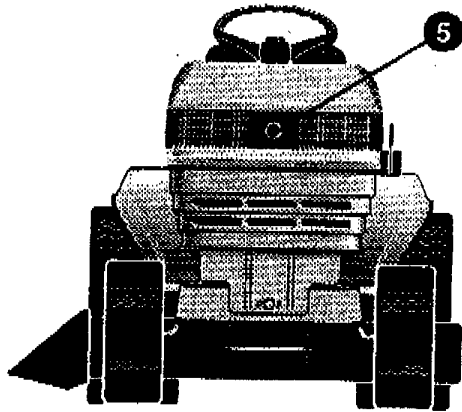
\*\*Spade type fuse included with the wire harness.

## SCHEMATIC DRAWING



# 38" LAWN TRACTOR MODEL D3554-140

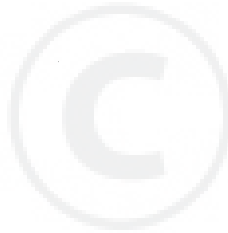
DECALS (DECORATIVE)



328320B

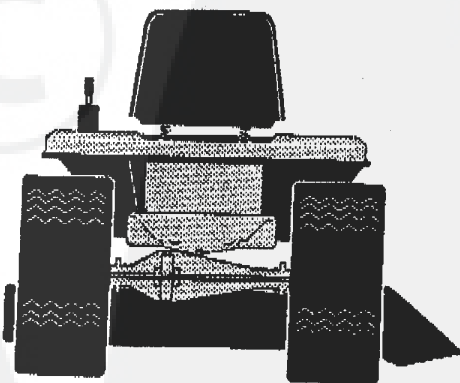
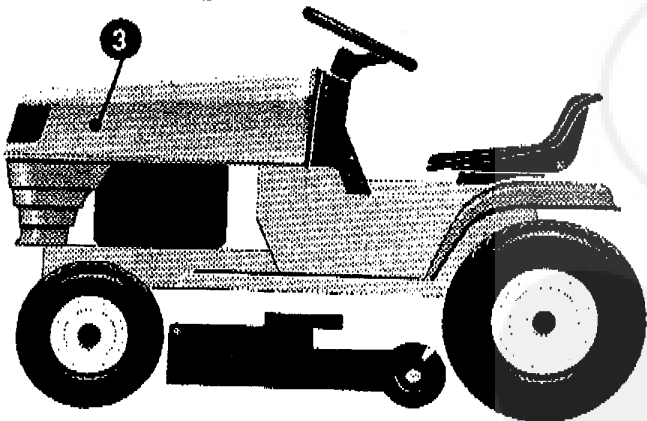
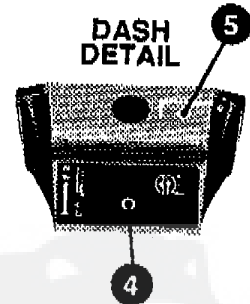
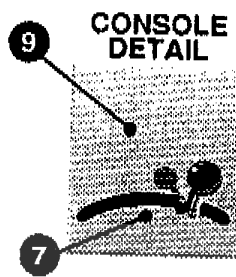
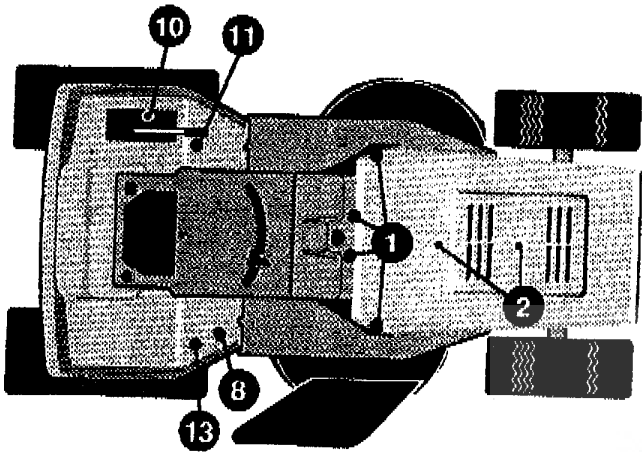
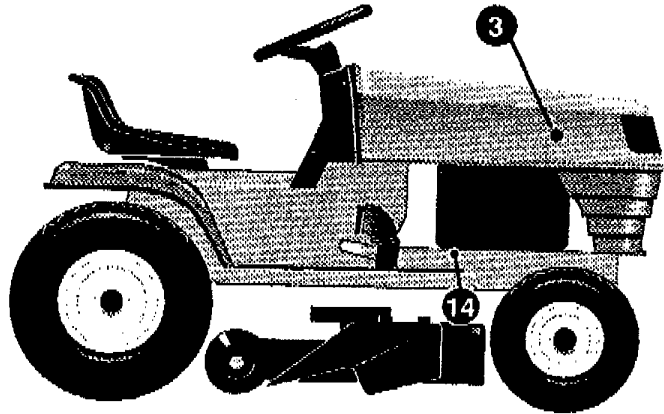
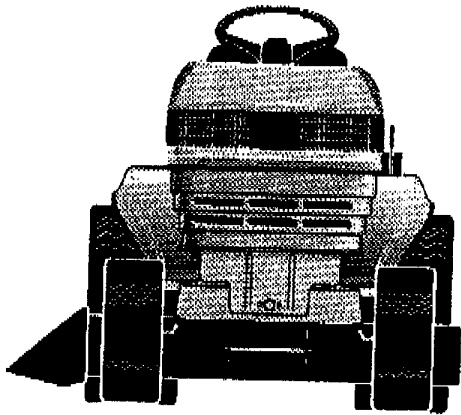
**38" LAWN TRACTOR MODEL D3554-140**

KEY#	PART#	DESCRIPTION	QTY
1.	329084	DECAL,RH FIABA TURBO	1
2.	329083	DECAL, LH FIABA TURBO	1
3.	311957	NAME PLATE, 12/38 SILVER	2
4.		REFERENCE ONLY	1
5.	307732	DECAL, LENS CENTER SMOKED	1



# 38" LAWN TRACTOR MODEL D3554-140

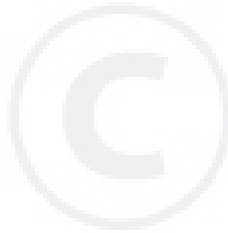
## DECALS (INSTRUCTIONAL)





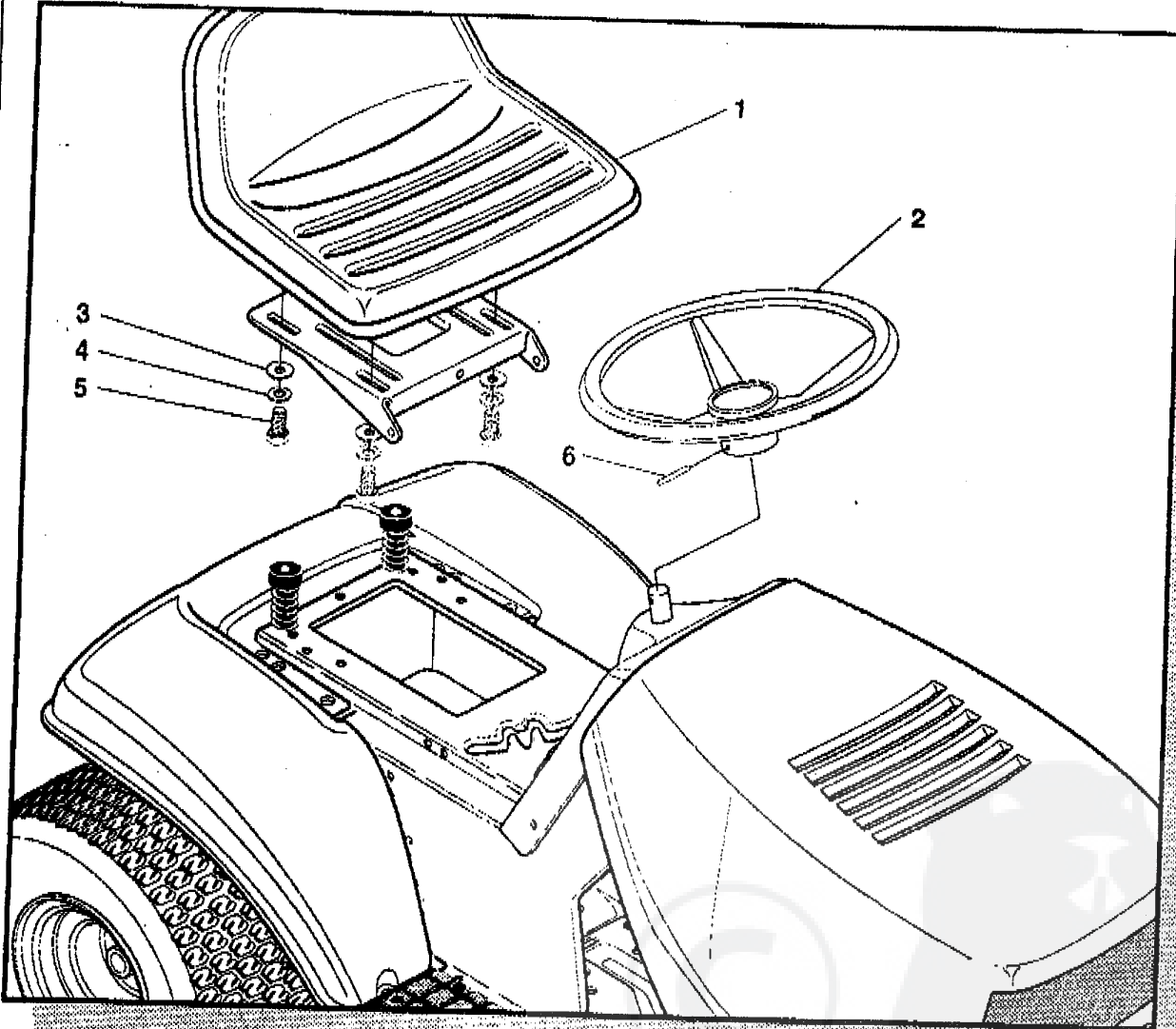
**38" LAWN TRACTOR MODEL D3554-140**

KEY#	PART#	DESCRIPTION	QTY
1.	318197	PAD. ADHESIVE 1.00X1.50X.12	4
2.	305602	FOAM HOOD 4X15	2
3.	305603	PAD. 18 X 6 FOAM HOOD	2
4.	320717	DECAL. DASH PLAIN EXPORT	1
5.	327610	DECAL. PTO ENGAGEMENT. ISO EXP	1
6.		REFERENCE ONLY	1
7.	301104	DECAL. CONSOLE TOP SHIFT 5-SP	1
8.	305770	DECAL. CAUTION TRIANGLE EUROPE	1
9.	307388	DECAL. INSTR. CONS. TOP ENG.	1
10.	301897	DECAL. LIFT DECK BLADE HEIGHT	1
11.	68901	DECAL. BLADE HEIGHT ADJ. EUROPE	1
12.	310856	DECAL. DANGER FINNISH	1
13.	310553	DECAL. DANGER ENG.	1
14.	68903	DECAL. BRAKE/CLUTCH ISO	1



# 38" LAWN TRACTOR MODEL D3554-140

## CUSTOMER ASSEMBLY



## CUSTOMER ASSEMBLY VIEW

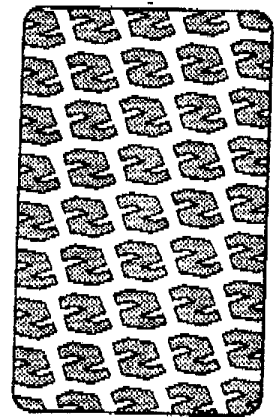
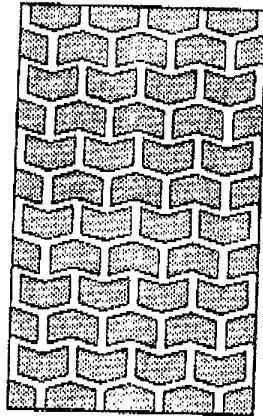
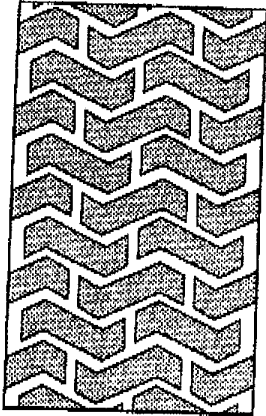
315984 PARTS BAG ASSY QTY1

KEY#	PART#	DESCRIPTION	QTY
1	304314	SEAT MV350	1
2	306654	STEERING WHEEL, 14" EURO	1
3	120393	WASHER, FLAT .344X.69X.065	1
4	120638	WASHER, HVSP LTK .328X.60X.109	4
5	122007	SCREW, 5/16-18X.75 HHC	4
6	456378	ROLL PIN .250DIA X 2.0LG	1

329215A

# 38" LAWN TRACTOR MODEL D3554-140

## TREAD PATTERNS



### 'A'

### 'B'

### 'C'

### 'D'

#### TIRE SIZE

TIRE SIZE	"A"	"B"	"C"	"D"
11 X 4.00 - 5	42295	319679		
13 X 5.00 - 6	41060	319680		
15 X 6.00 - 6	39830	316702	301140	313952
16 X 6.50 - 8	41081	319682		314539
18 X 8.50 - 8	319683	317400		
18 X 9.50 - 8	41106	316701		313950
20 X 8.00 - 8	319685	319684	57164	314584
20 X 10.00 - 8	58276	319686		313654
20 X 10.00 - 10	55893	319687		
23 X 9.50 - 12	53655	319690	319689	314370