

REPAIR PARTS MANUAL

40" - 12 H.P. LAWN TRACTOR

MODEL D3554-150

File Copy

ONE YEAR LIMITED WARRANTY

For one (1) year from date of purchase by the first consumer for residential use (thirty (30) days commercial use), NOMA Outdoor Products Incorporated warrants that it will replace free of charge, including labor, any original part of any NOMA Outdoor Products Incorporated product found to be defective by any authorized Service Dealer or the factory, except the battery which is warranted for ninety (90) days from date of purchase.

This warranty does not cover engine, transmission, transaxle or differential (these items are covered by their manufacturer's own warranty). This warranty does not cover parts that have failed due to normal wear or parts that have failed subject to misuse or abuse. Transportation of the unit or part to and from an authorized Service Dealer or factory is the responsibility of the owner.

A step by step explanation as to what procedure should be followed for this warranty is:

1. If a part becomes defective, contact the store where the unit was purchased for the name and address of the authorized Service Dealer nearest to you.
2. If you cannot locate an authorized Service Dealer, write Service Department of NOMA Outdoor Products Incorporated for the name and address of the authorized Service Dealer in your area call the Service Department at 1-801-422-1690.
3. Return the defective product, along with proof of purchase to such authorized Service Dealer for replacement of any defective part where covered by this warranty.

There is no other express warranty. Implied warranties, including those of merchantability and fitness for a particular purpose are limited to one (1) year from date of purchase. Liability for incidental or consequential damages are excluded.

Some states do not allow limitations on how long an implied warranty lasts, so the above limitation may not apply to you. Some states do not allow the exclusion of incidental or consequential damages, so the above exclusion may not apply to you. This warranty gives you specific legal rights, and you may have other rights which vary from state to state.

NOMA Outdoor Products Incorporated

Call 800

Jackson, TN 38302-800

UNIT PARTS AND SERVICE

Fill in and mail the registration card packed with the unit. For service other than covered in this manual, or authorized service dealer. A nationwide parts and service organization has been established to provide available parts and service. A list of authorized parts distributors has been included in this manual. When repair parts, always give the following information: 1. The Part Name; 2. The Part Number; 3. The Quantity; 4. The Full (eight digit) Model Number of the unit. The model number will be found on a plate attached to the unit.

Look for this symbol.



It means - ATTENTION! BECOME ALERT! A HAZARDOUS OPERATOR, BYSTANDER, PROPERTY OR EQUIPMENT MAY EXIST.

NOMA Outdoor Products Incorporated
Call 800



THESE INSTRUCTIONS ARE FOR YOUR PROTECTION. PLEASE READ THEM CAREFULLY.

IMPORTANT

THIS CUTTING MACHINE IS CAPABLE OF AMPUTATING HANDS AND FEET AND THROWING OBJECTS. FAILURE TO OBSERVE FOLLOWING SAFETY INSTRUCTIONS COULD RESULT IN SERIOUS INJURY OR DEATH.

GENERAL OPERATION:

- Know controls and how to stop quickly.
- Read, understand, and follow all instructions in the manual and on the machine before starting.
- Only allow responsible adults, who are familiar with instructions, to operate the machine.
- Wear safety glasses or eye shields when assembling or operating the machine.
- Do not operate machine when intoxicated. Always wear substantial footwear, preferably steel-toed shoes.
- Do not wear loose fitting clothing that could get caught in moving parts.
- Clear the area of objects such as rocks, toys, etc., which could be picked up and thrown by the blade(s).
- Be sure the area is clear of other people before mowing. Stop machine if anyone enters the area.
- Never carry passengers.
- Do not mow in reverse unless absolutely necessary. Always look down and behind before and while backing.
- Be aware of the mower discharge direction and do not point it at anyone. Do not operate the mower without either the entire grass catcher or the guard in place.
- Slow down before turning.
- Never leave a running machine unattended. Always turn off blades, set parking brake, stop engine, and remove keys before dismounting.
- Turn off blade(s) when not mowing.
- Stop engine before removing grass catcher or unclogging chute.
- Mow only in daylight or good artificial light.
- Do not operate the machine while under the influence of alcohol or drugs.
- Watch for traffic when operating near or crossing roadways.
- Use care when mowing around a fixed object to prevent the blade(s) from striking it. Never deliberately run over any foreign object.
- Use extra care when loading or unloading the machine into a trailer or truck.
- Use care when putting loads or using heavy equipment.
 - a. Use only approved drawbar hitch points.
 - b. Limit loads to those that you can safely control.
 - c. Do not turn sharply. Use care when backing.
 - d. Use counterweight(s), wheel weight or the chains when suggested in attachment(s) instructions.

III. SLOPE OPERATION:

Slopes are a major factor related to loss-of-control and improper accidents, which can result in severe injury or death. All slopes require extra caution. If you cannot back up the slope or if you feel uneasy on it, do not mow it.

DO

- Mow up and down slopes, not across.
- Remove obstacles such as rocks, tree limbs, etc.
- Watch for holes, ruts, or bumps. Uneven terrain could overturn the machine. Tall grass can hide obstacles.
- Use slow speed. Check a low gear so that you will not have to stop or shift while on the slope.
- Follow the manufacturer's recommendations for wheel weights or counterweights to improve stability.
- Use extra care with grass catchers or other attachments. These can change the stability of the machine.
- Keep all movement on the slopes slow and gradual. Do not make sudden changes in speed or direction.
- Avoid starting or stopping on a slope. If tires lose traction, turn off the blade(s) and proceed slowly straight down the slope.

DO NOT

- Do not turn on slopes unless necessary, and then slowly and gradually downhill, if possible.
- Do not mow near drop-offs, ditches or embankments. The

- mower could suddenly turn over if a wheel is over the edge or ditch, or if an edge caves in.
- Do not mow on wet grass. Reduced traction could sliding.
- Do not try to stabilize the machine by putting your feet on ground.
- Do not use grass catcher on steep slopes.

IV. CHILDREN:

Tragic accidents can occur if the operator is not alert to the presence of children. Children are often attracted to the machine mowing activity. Never assume that children will remain where you saw them.

- Keep children out of the mowing area and under the care of another responsible adult.
- Be alert and turn machine off if children enter the area.
- Before and when backing, look behind and down for children.
- Never carry children. They may fall off and be serious or interfere with safe machine operation.
- Never allow children to operate the machine.
- Use extra care when approaching blind corners, shrub or other objects that may obscure vision.

IV. SERVICE:

- Use extra care in handling gasoline and other fuels because fumes and vapors are explosive.
 - a. Use only an approved container.
 - b. Never remove gas cap or add fuel with the engine running. Allow engine to cool before refueling. Do not smoke.
 - c. Never refuel the machine indoors.
 - d. Never store the machine or fuel containers in a place where there is an open flame, such as in a water heater.
- Check fuel supply before each use allowing expansion as the heat of the engine and air sun gasoline to expand and overflow the tank.
- Use extra care when handling battery acid. Acid contact with skin may cause severe burns. Eye contact may cause blindness.
- Use extra care when servicing the battery. Explosive produced in the battery. Do not service the battery in an open area or flame. This may cause the battery to explode causing serious injury.
- Never run a machine inside a closed area. Fumes contain CARBON MONOXIDE, or CO, which is a GAS.
- Keep nuts and bolts, especially blade attachment and keep equipment in good condition.
- Never tamper with safety devices. Check the regularly.
- Do not change the engine governor settings or engine.
- Reduce fire hazards. Keep machine free of grass and other debris build-up. Clean up oil or fuel sp on machine to cool before starting.
- Stop and inspect the equipment if you strike an object, before restarting.
- Never make adjustments or repairs with the engine running.
- Grass catcher components are subject to wear, deterioration, which could expose moving parts to be thrown. Frequently check and replace with manufacturer's recommended parts.
- Mower blade(s) are sharp and can cut. Wrap it with gloves, and use extra caution when service is required.
- Check brake operation frequently. Adjust as required.

THE SAFETY PRECAUTIONS. I

RECORD THE FOLLOWING INFORMATION

MODEL NUMBER: - (Enter complete 8 digit number from model plate on unit)
 PURCHASE DATE: ___/___/___ CODE NO.: _____ SERIAL NO.: _____
 DEALER'S NAME AND ADDRESS: _____ TELEPHONE: _____
 CITY: _____ STATE: _____

CONTENTS OF SHIPPING CARTON

- 1 - Lawn Tractor with 40 inch Mower Deck
- 1 - Operator's Manual
- 1 - Repair Parts Manual
- 1 - Engine Manual
- 1 - Steering Wheel (see Note)
- 1 - Seat (see Note)
- 1 - Bag of Assembly Parts Containing (see Note):
 - 4 - 5/16 x 3/4 inch Hex Head Screws
 - 4 - 5/16 inch Split Lockwashers
 - 4 - 11/32 inch Flatwashers
 - 1 - Roll Pin

NOTE: Refer to page 30 (Customer Assembly Parts) for more detailed description.

TOOLS REQUIRED FOR ASSEMBLY

- 2 - 7/16 inch Wrenches (or adjustable wrench)
- 1 - 1/2 inch Wrench (or adjustable wrench)
- 1 - Small Phillips Screwdriver with a 1/4 inch shank
- 1 - Hammer

HOW TO MEASURE SCREW SIZE
(5/16 x 1 1/2 INCH)



DANGER

This lawn tractor can be dangerous if care used.

Read your Operator's Manual thoroughly before operating your lawn tractor.

Always wear safety glasses or eye shield assembling or operating your lawn tractor.

DO NOT carry passengers at any time.

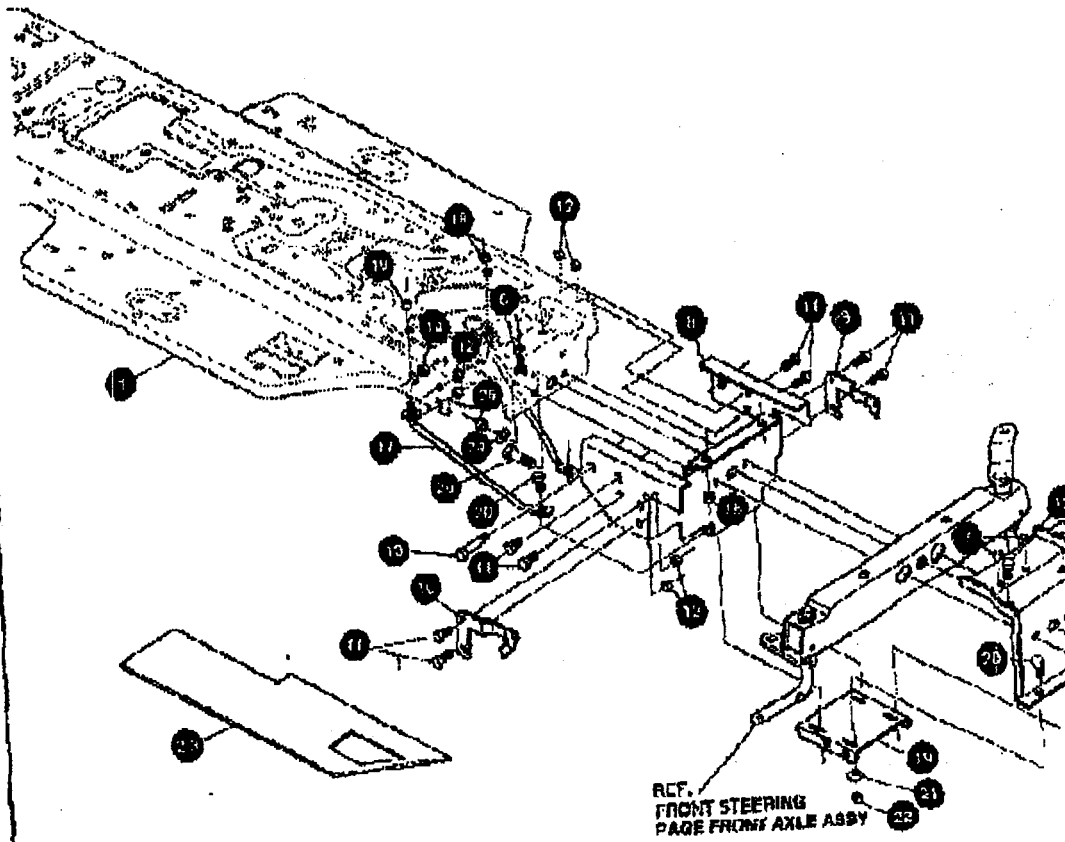
Keep your hands, feet, hair and loose clo from the discharge area, the underside of deck or any moving parts while the engine running.

DO NOT allow children or young teenage operate or be near your lawn tractor while operating.

ALWAYS GIVE THE FOLLOWING INFORMATION WHEN ORDERING REPAIR PARTS:
 1. The PART NUMBER; 2. The PART NAME; 3. QUANTITY DESIRED; 4. The MODEL NUMBER (As shown on Mu)
 SEND PART ORDERS AS PER INSTRUCTIONS ON THE FRONT PAGE.
 DO NOT USE KEY NUMBERS WHEN ORDERING REPAIR PARTS, ALWAYS USE PART NUMBERS.
 All replacement parts will be supplied in current production colors or in a neutral color.
 A handling fee is applicable to small parts orders.
 YOUR UNIT IS RIGHT HAND (RH) OR LEFT HAND (LH) AS YOU STAND BEHIND IT.



CHASSIS & HOOD ASSEMBLY

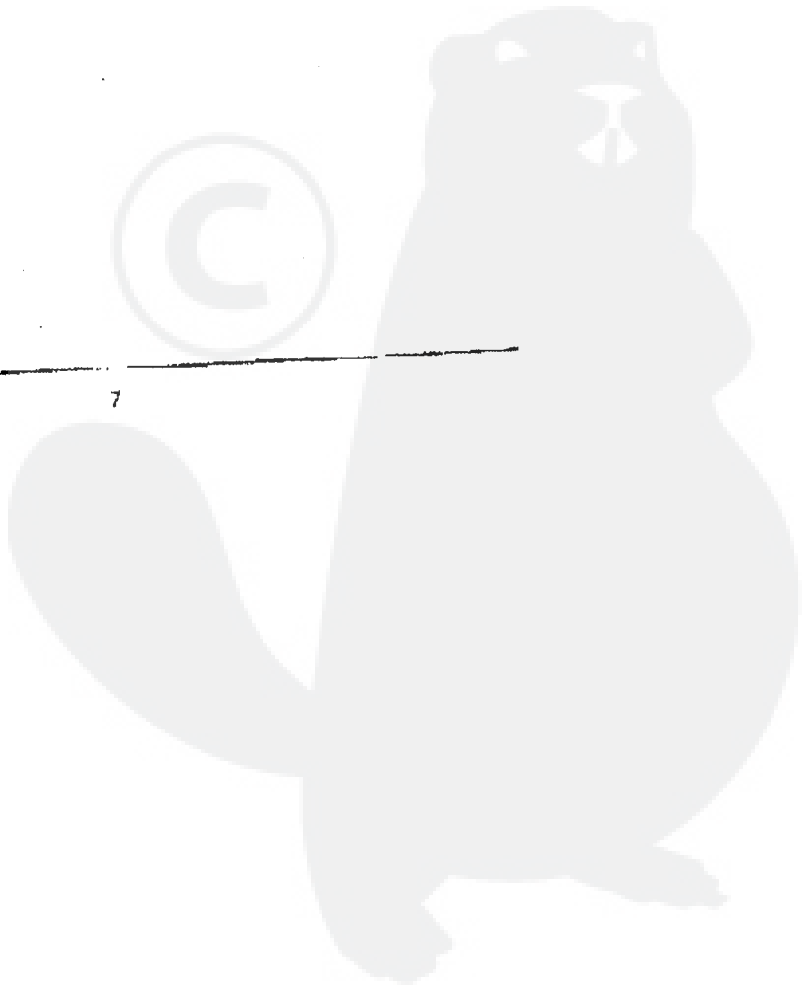


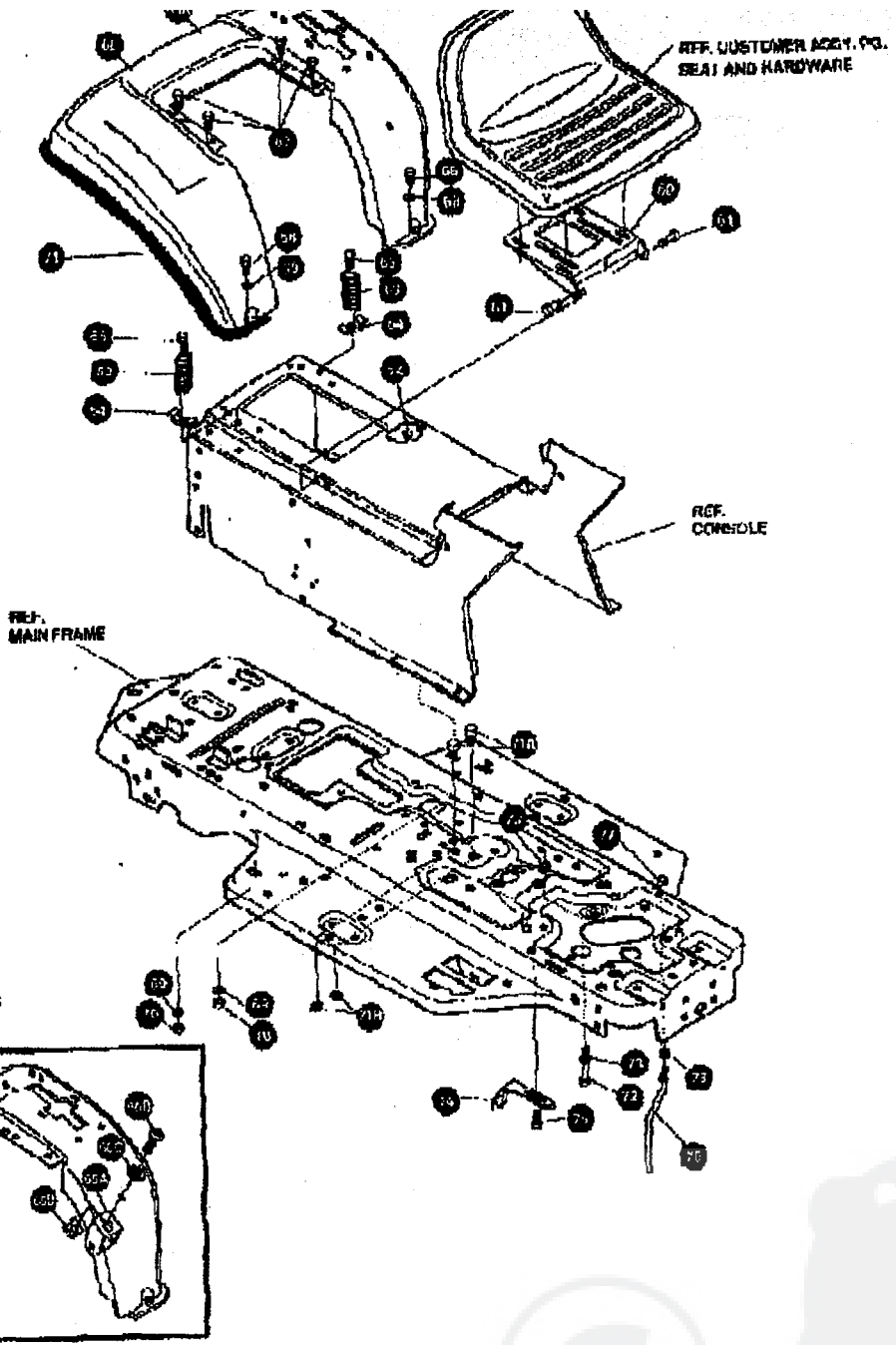
ALWAYS USE ORIGINAL EQUIPMENT

ALL UNNUMBERED ITEMS ARE INTERCHANGABLE WITH OPPOSITE SIDE



35.	309504-060	MP CONSOLE. SF GPWR NOTCHED FEN	1
36.	58235-860	MP CONSOLE. REAR COVER	1
37.	995346	SCREW, 1/4-20X.50 W/WHATP	15
38.	321890-060	MP DASH. SM. PPL W/O AMMET GPWR	1
39.	302723	INSERT, DASH. LH 11 HP	1
40.	302724	INSERT, DASH. RH 11 HP	7
41.	995338	SCREW, 1/4-20X.63 HWATAP	4
42.	274672	SCREW, 1/4-20X.63 W/WHC GR2	4
43.	51335	NUT, 1/4-20 W/FLWHIZ-LK	1
44.	307032	HOOD, H-12 PLASTIC GREY	1
45.	307278	SUPPORT, HOOD H-12 GP 11 HP	1
46.	301642	SCREW, 10-24X1.00 HWATAPBLKPHCS	4
47.	271166	NUT, #10-24 HEXKEPS	4
48.	302727	GRILL, G-150PWR SMLWR	1
49.	9783	ML BRACKET, TIE HOOD & GRILL	2
50.	35055	SCREW, 10-24X.60 SI HWATAPGR2	4
51.	310203	CLIP, HOG RING C-SHAPED	1
52.	58878	BOLT, .875X.500 H/SH 5/16-18	2
53.	1498	NUT, 5/16 18 REGHEX/TKL	2
54.	57478	SPRING HOOD LATCH	1
55.	305716	LENS 11 LIT HAKO SMOKE H-12	4
56.	57796	SCREW, 30X.50 PLASITE/H-12	1
57.	301462	FOIL HEAT REFLECTOR	1

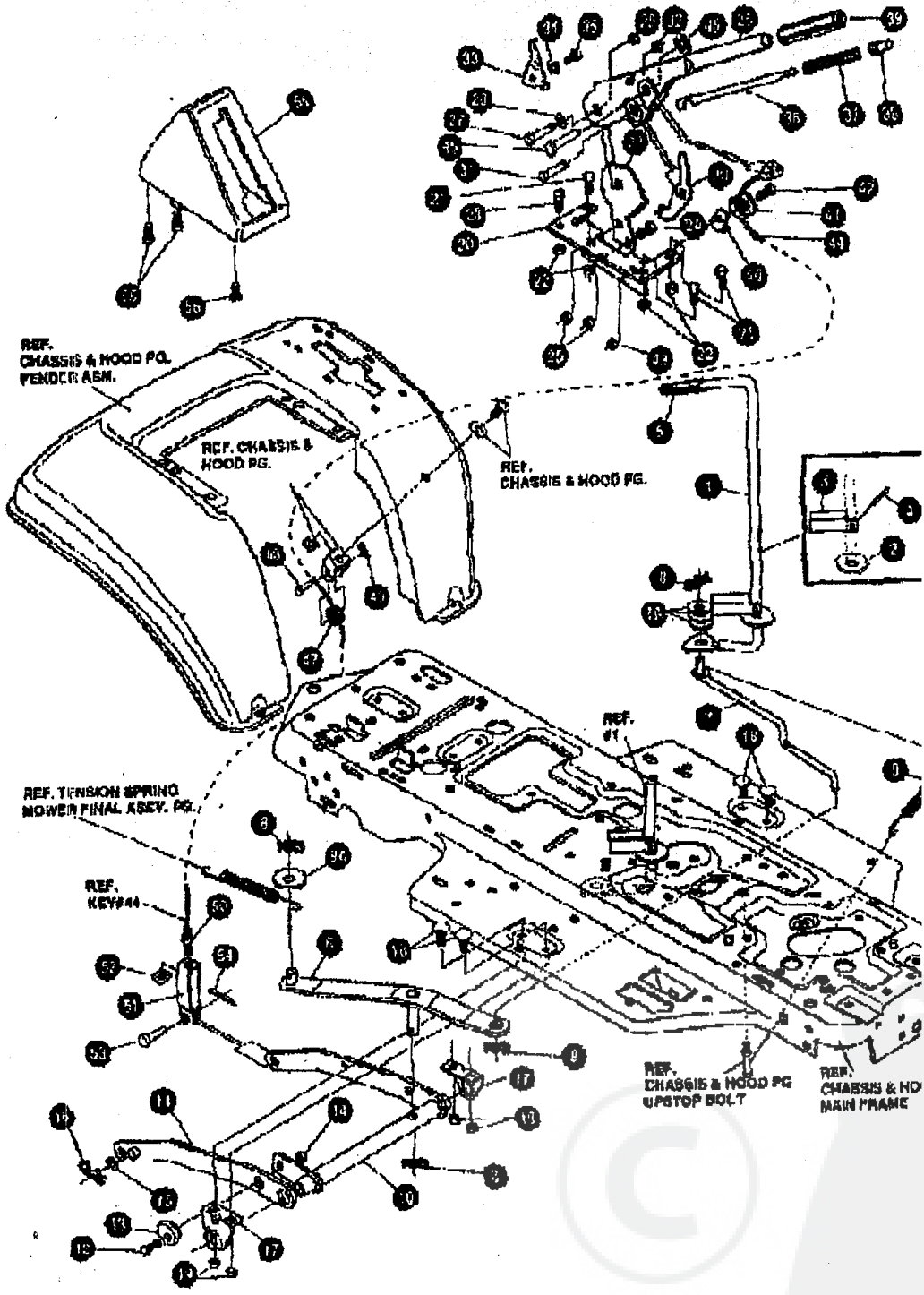




NOTE: ALWAYS USE ORIGINAL EQUIPMENT PARTS. Use of service/replacement parts other than original equipment parts may void your warranty.

ALL UNNUMBERED ITEMS ARE INTERCHANGEABLE WITH OPPOSITE SIDE.

MOWER SUSPENSION

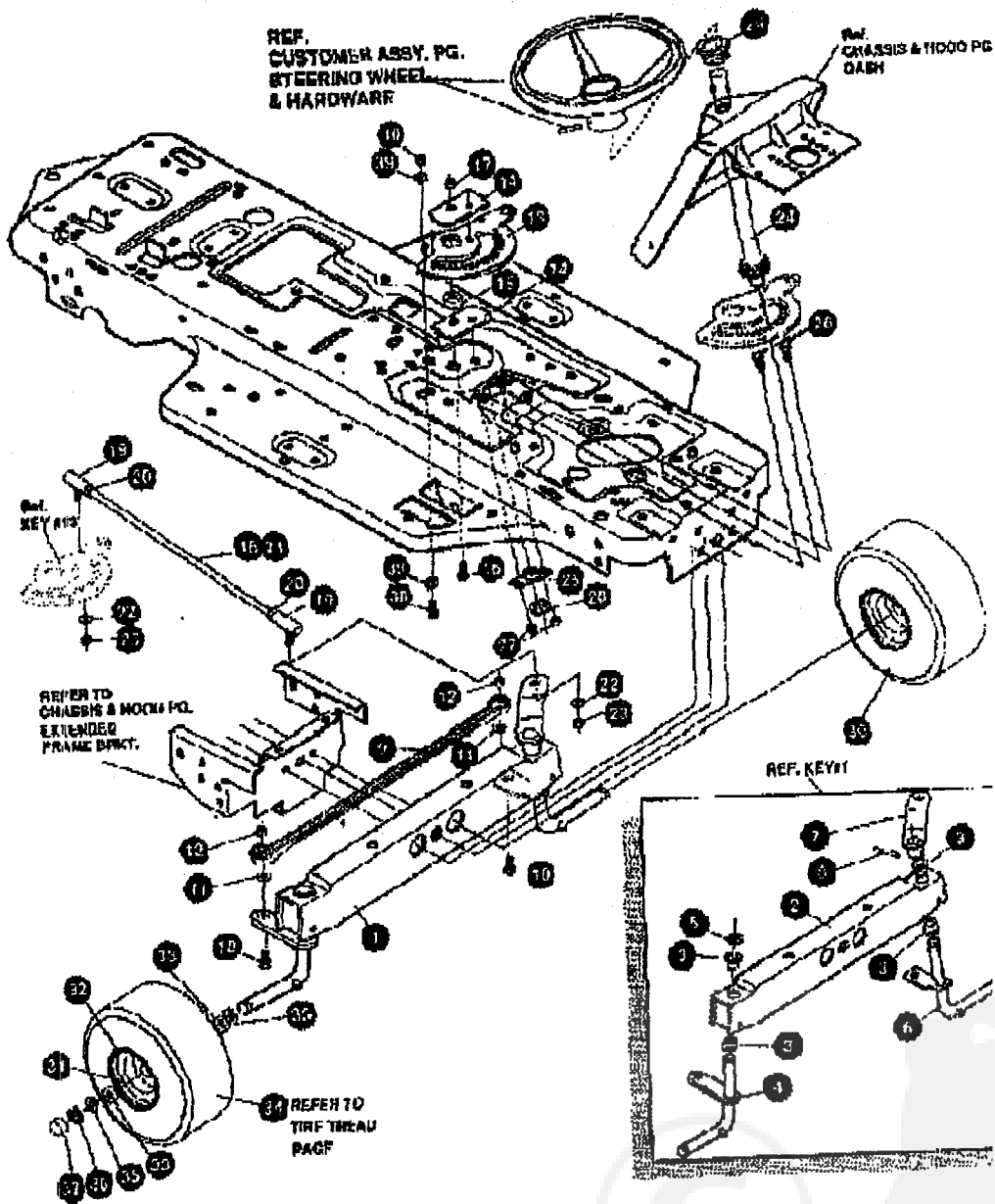


ALL UNNUMBERED PARTS ARE AVAILABLE

KEY#	PART#	DESCRIPTION	QTY.
1	325597	HANDLE, RH PTO NOMA DASH 9F	1
2	22265	WASHER, FLAT .515X1.38X.119PL	1
3	306226	ML STOP, PTO ENGAGEMENT	1
4	826388	PIN, SPRING. 1.87DIA X1.00LG HVFL	1
5	46478	GRIP, HAND. 5.0ID 3.37 LG BLK	1
6	826587-853	WS STRAP ASSY, PTO HLLCRANK	1
7	025600	ROD, BELCRANK LINK	3
7A	274517	WASHER, FLAT .406X.79X.082	4
8	8260	HAIR PIN	1
8A	25210	FLAT WASHER. .302X1.25X.09	1
9	025802	SPRING. .89X7.75X.0897 TENSION	1
10	327114 853	WP LIFT ASSY, LH	1
11	325190-953	WP LIFT ASSY, RH	1
12	100079	SCREW. 5/16 18X1.00 HHC GR52	1
13	56247	NUT, ADJUST	1
14	1498	NUT, 5/16-18 REGHEXCTRLK	2
15	417098	WASHER, FLAT .800X1.06X.063Z	2
16	8260	PIN, HAIR .081 DIA X1.86LG	2
17	325485-853	MP BRACKET, REAR HANG BUSP	4
18	126211	BOLT, 5/16-18X.63 CARR GR52	4
19	1498	NUT, 5/16-18 REGHEXCTRLK	1
20	313826	MF BRACKET, HEIGHT ADJUST	4
21	180077	SCREW, 5/16-18X 75 HHC GR52	4
22	1498	NUT, 5/16-18 REGHEXCTRLK	1
23	301238	QUADRANT, HEIGHT ADJUST	2
24	180077	SCREW, 5/16-18X 75 HHC GR52	2
25	1498	NUT, 5/16-18 REGHEXCTRLK	1
26	322292-853	MP HANDLE, LIFT SHORT(30" S.F.)	1
27	300171	BOLT, .500X .271 HNSH 5/16-18Z	1
28	496418	WASHER, FLAT .506X .78X.024Z	1
29	44118	NUT, 5/16-18 HWDFLCTRLK	1
30	301234	HP PAWL, SQUARE MTTR865	1
31	300171	BOLT, .500X .270 HNSH 5/16-18Z	1
32	44108	NUT, 5/16-18 HWDFLCTRLK	1
33	8495	ML POINTER	1
34	158479	WASHER, EXLK. 1.85X .41X.03Z	1
35	35287	SCREW, #8-32X .36 HWATAPGR2	1
36	303027	ROD, ACTUATOR SHORT	1
37	58326	SPRING, HEIGHT ADJUST	1
38	58326	KNOB, HEIGHT ADJ PUSH HUTTON	1
39	58329	GRIP, 750 OD W/ HOLE BLACK	1
40	8149	ML CABLE RETAINING BRACKET	1
41	46308	PULLEY, POWDER METAL	1
42	58336	ROLT, .375X .375 HNSH 1/4-20	1
43	1582	NUT, 1/4-20 REGHEXCTRLK	1
44	321430	CABLE, LIFT 21.50-80 "S.F.	1
45	300210	PIN, CLEVIS .310 DIA. 1.475 LG ZP1	1
46	300311	HING, RET E. .31X .25TRUX5193-31	1
47	46308	PULLEY, POWDER METAL	1
48	300317	PIN, CLEVIS .375 DIA. X .81 LG	1
49	8260	PIN, HAIR .081 DIA. X 1.86 LG	1
50	120075	NUT, 1/4-20 REGHEX	1
51	9405	ML CLEVIS, LIFT CABLE	1
52	120372	NUT, 1/4-20 REG30	1
53	39522	PIN, CLEVIS .312 X .812	1
54	121222	PIN, COVER .080X.086X.75LG	1
55	300335	LIFT COVER 34" PB	1
56	300340	SCREW, #10 X 75 HWPLAST BLK	3



STEERING ASSEMBLY



NOTE: ALWAYS USE ORIGINAL EQUIP. PARTS FOR SERVICE/REPLACEMENT

ALL UNNUMBERED PARTS ARE SUPPLEMENTARY

40" LAWN TRACTOR MODEL D3554-150

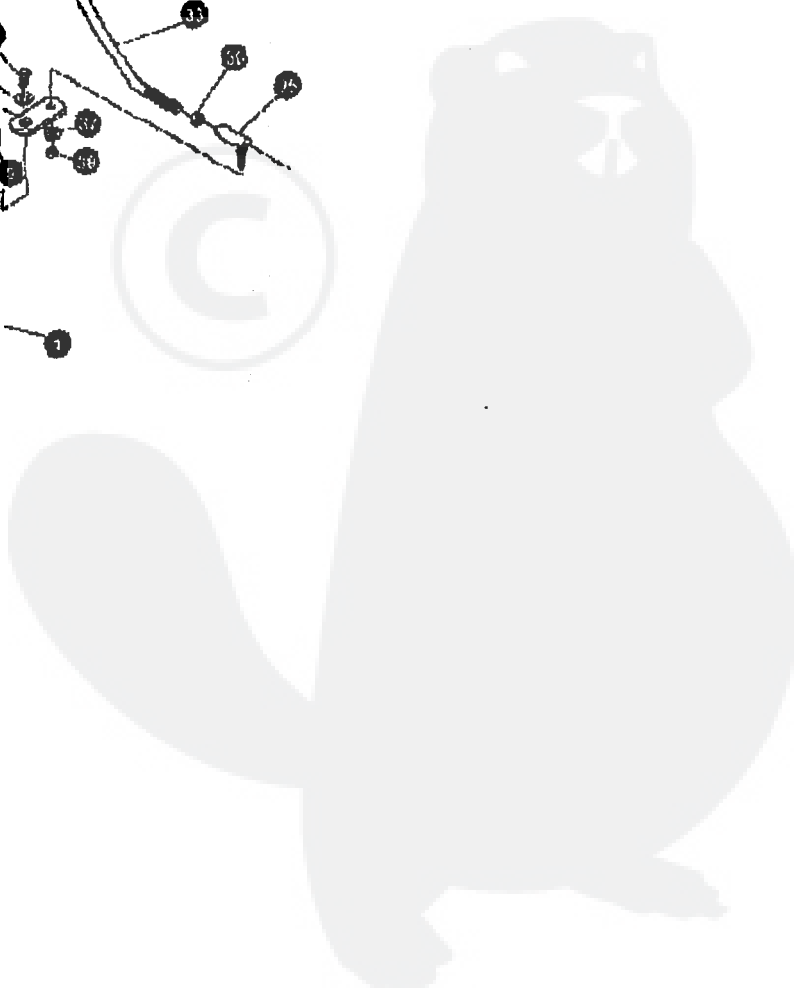
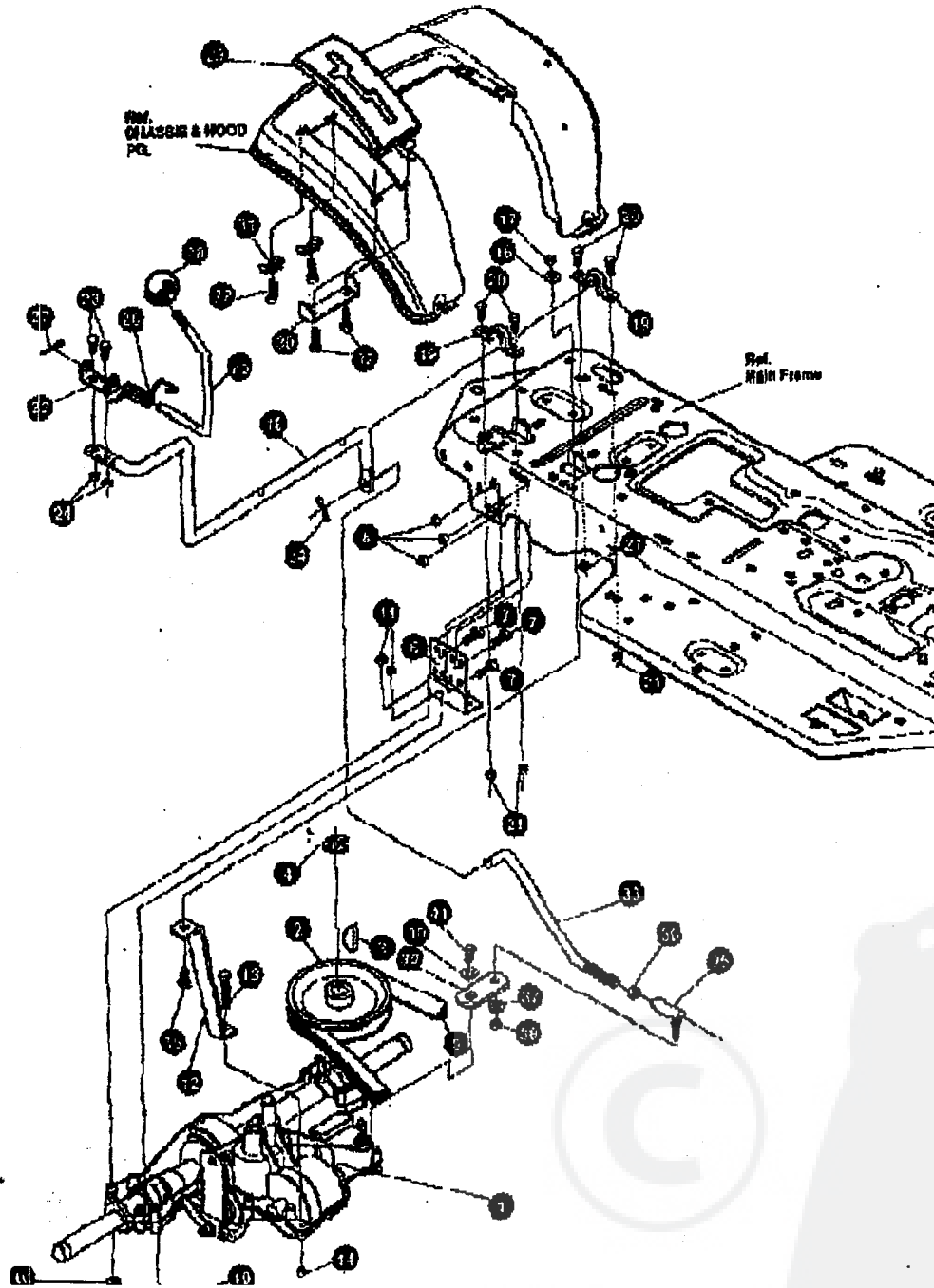
KEY#	PART#	DESCRIPTION	QTY.
1.	A	FRONT AXLE ASSEMBLY OF	1
2.	312000	AXLE FRONT	1
3.	60548	BEARING FLANGE	4
4.	310300	SPINDLE, RH	1
5.	30625	RING, RETEX	1
6.	310367	SPINDLE, LH	1
7.	327800-053	ARM, ASSY, RF 4WS FRT. STEER	1
8.	454066	PIN, SPRING	1
9.	302608	TIE ROD	2
10.	122145	SCREW, 3/8-10X1.25 HHG	2
11.	120352	WASHER, 3/8X.68X.10 REGSPTLK	2
12.	1489	NUT, 3/8-16 REGHCYTRLK	1
13.	324752	SECTOR GEAR	2
14.	327833	PLATE, SECTOR	1
15.	324754	BUSHING, SECTOR	1
16.	180124	SCREW, 3/8-16X1.25 GRG	1
17.	1489	NUT, 3/8-16 REGHX OTHK	1
18.	328432	DRAG LINK ASSEMBLY	2
19.	57158	BALL JOINT	2
20.	124875	NUT, 3/8-24 REGHEXJAM	1
21.	325226	DRAG LINK	2
22.	120362	WASHER, REGSPTLK	2
23.	120369	NUT, 3/8-24 REGHEX	1
24.	327890	STEERING SHAFT	1
25.	325892	BRNG FLANGE	2
26.	328508	SCR 1/4-20X.75	2
27.	48921	NUT 1/4-20 WDFL MAC LOCK	1
28.	20864	RING, RETEX. 30X.04TRUS133	1
29.	54902	RRNG FL. 753IDX1.870DX.501	1
30.	A	ASSEMBLY, TIRE & RIM	2
31.	24167	VALVE STEM	1
32.	39820	WHEEL W/BEARING	2
33.	314418	BEARING, 1.5800X.753ID FLANGE	2
34.		REFER TO TIRE TREAD PAGE	4
35.	642	WASHER, FLAT. 756X1.81X.075	2
36.	30625	RING, RETEX. 57X.05	2
37.	40984	NLB CAP	1
38.	122145	SCREW, 3/8-10X1.25	2
39.	120394	WASHER, FLAT	1
40.	44374	NUT, 3/8-16 HXWDFLLK	1

* ORDER INDIVIDUAL PARTS.



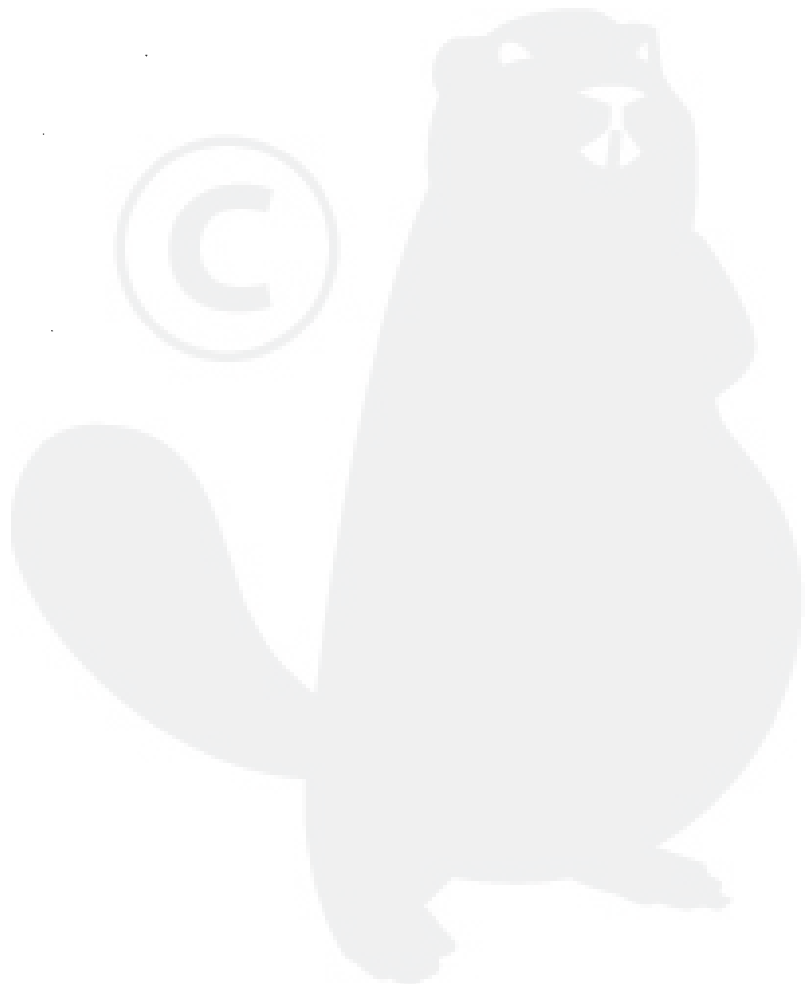
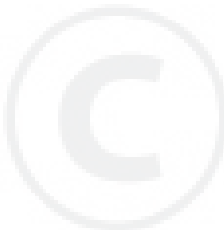
40" LAWN TRACTOR MODEL D3554-150

MOTION DRIVE ASSEMBLY

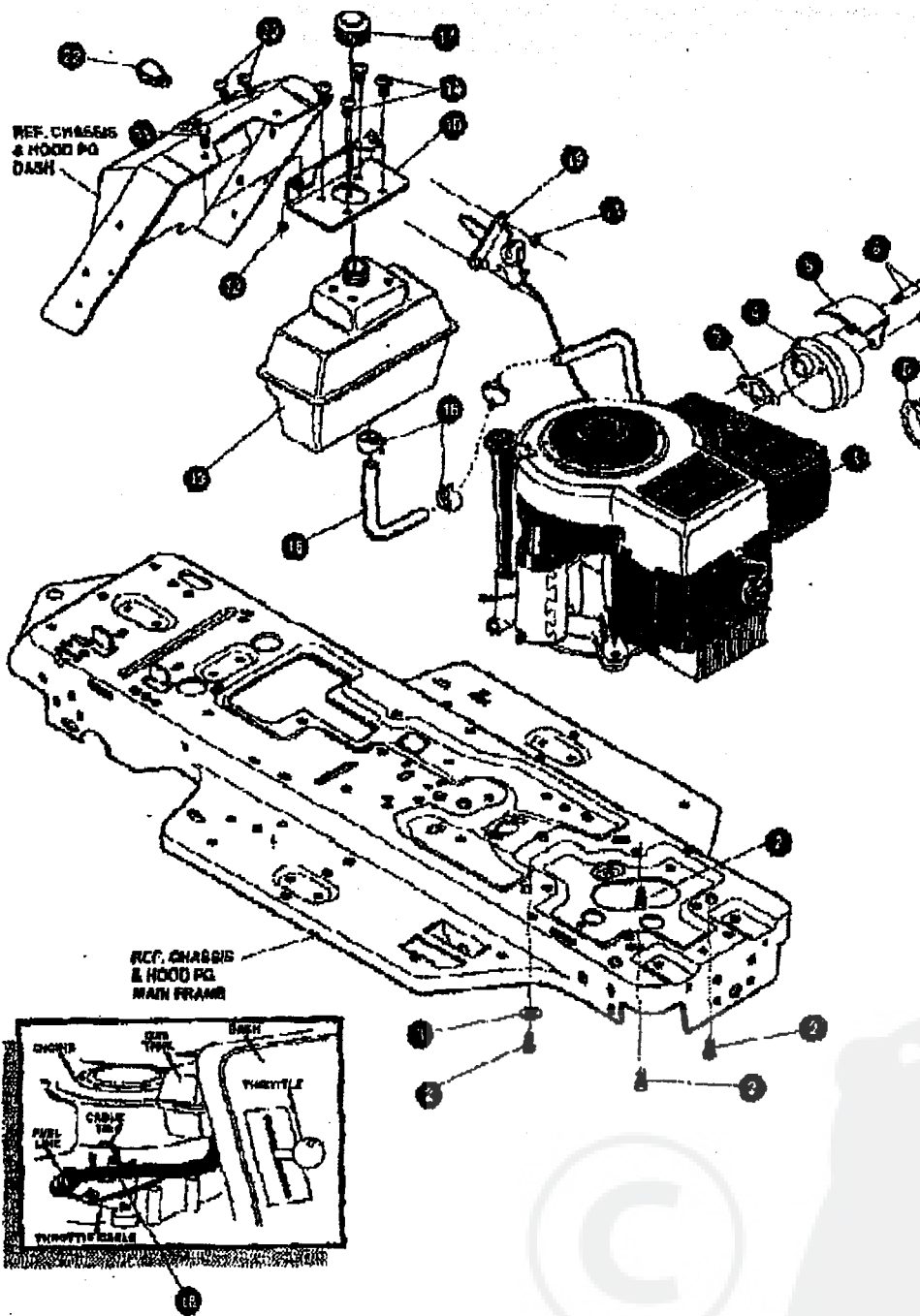


KEY#	PART#	DESCRIPTION	QTY.
51.	49896	MF BELT GUIDE	1
52.	271184	NUT, 5/16-18 HEXKEPS	1
53.	120293	WASHER, FLAT .344X .80X.005	2
54.	1498	NUT, 5/16-18 REGHEXOTRLK	1
55.	302609-853	BF ASSY, BRAKE PEDAL S.F.	1
56.	319476	PIN, CLEVIS .5 DIA, 4.67LG, 2V PL	1
57.	302901	SPACER, 9LEV 2.1 X .82X1.406	1
58.	56180	PIN, HAIR .001 DIA X1.08LG	1
59.	48761	HND, CLUTCH/BRAKE PEDAL	1
60.	321960	MF IDLER ARM BRKT TRACTION SF	1
61.	41890	BOLT, .625X .218 HGH11 5/16-18	1
62.	4107	WASHER, FLAT .635X1.31X.07 PL	1
63.	45602	WASHER, FLAT .333X .87X.119	1
64.	1498	NUT, 5/16-18 REGHEXOTRLK	1
65.	327937	SPRING, 3/4 ODK6.75X.091 TENSIO	1
66.	38659	MF RETAINFR, BELT	1
67.	35374	PULLEY, IDLER VAL 3.06X .62	1
68.	46892	BOLT, 3/8-16X1.50 CARR OR2	1
69.	1498	NUT, 3/8-18 REGHEXOTRLK	1
70.	43860	ROD, .268 DIA CLUTCH	1
71.	50562	SPRING, 2WODX1.625X.056 TENSIO	1
72.	323210	BRACKET, IMACTION BRAKE SF	1
73.	46824	BOLT, .500X .188 HSH 5/16-18Z	1
74.	1498	NUT, 5/16-18 REGHEXOTRLK	1
75.	323211	ROD, BRAKE Q15 1/4 SF RAW 390	1
76.	313881	SPRING, CLUTCH .595 OD	1
77.	501352	NUT, 1/4-20 WDF LK TOPLOCK	1
78.	*	TIRE & RIM, PU 18X6 6X8TURFWHI	2
79.	24187	VALVE STEM	1
80.	375352	HUB, WHEEL	1
81.		REFER TO TIRE TREAD PATF	1
82.	82828	KEY, SQUARE .1875X2.25LG	2
83.	842	WASHER, FLAT .755X1.31X.025	4
84.	48815	WASHER, FLAT .755X1.59X.01	2
85.	35526	RING, RETEX .67X.05TRUS133-76	2
86.	40384	HUB CAP, 1.500ID X 7/8LG	2

* ORDER INDIVIDUAL PARTS.



ENGINE & CONTROL ASSEMBLY



NOTE: ALWAYS USE ORIGINAL EQUIPMENT PARTS. Use of service/aftermarket parts other than

ALL UNNUMBERED

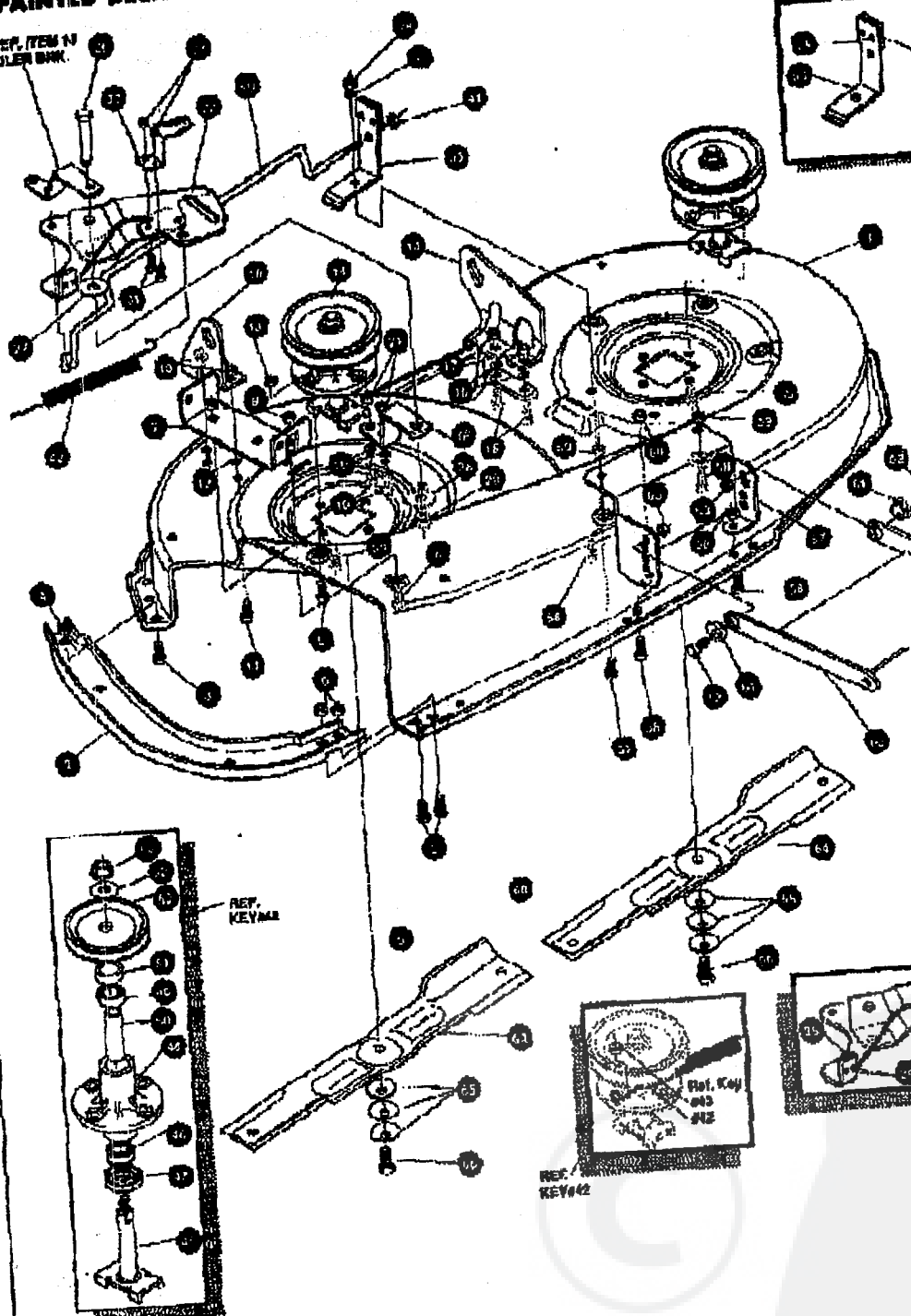
KEY#	PART#	DESCRIPTION	QTY.
1	ENGINE	12 HP 8&S 10 (SEE ENGINE MANUAL)	1
2	50847	SCREW, 3/8-18X1.25 W/HTAP	4
3	138488	WASHER, EXLK .384X.68X.04	1
4	57908	MUFFLER-LO TONE NELSON EXPORT	1
5	54757	SHIELD, HEAT FOR ROUND MUFFLER	1
6	173063	SCREW, 5/16-18X2.00 HHD	2
7	46708	GASKET, MUFFLER	1
8	323423	DEFLECTOR MUFFLER	1
9	35287	SCREW, #8-32X.36 H/HTAP GR 2	1
10	302811-853	BRACKET, GAS TANK	1
11	55685	SCREW, 1/4-20X .63 SLTRMA	2
12	51335	NUT, 1/4-20 W/FLK	2
13	314989	TANK, FUEL 1 GAL	1
14	40050	SCREW, 1/4-10X .75PHNTAP	4
15	41007	GAS LINE .25ID	16'
16	47345	CLAMP, FUEL LINE	2
17	46704	GAS CAP 1-1/2-7	1
18	57444	TIE, CABLE	1
19	320091	THROTTLE, CONTROL	1
20	85291	SCREW, #10-24 X .50	2
21	271155	NUT, #10-24 HEX REPS	2
22	50607	KNOB, ROUND THROT H E	1



40" LAWN TRACTOR

PRE-PAINTED DECK

REF. ITEM 11
OILER BDK.



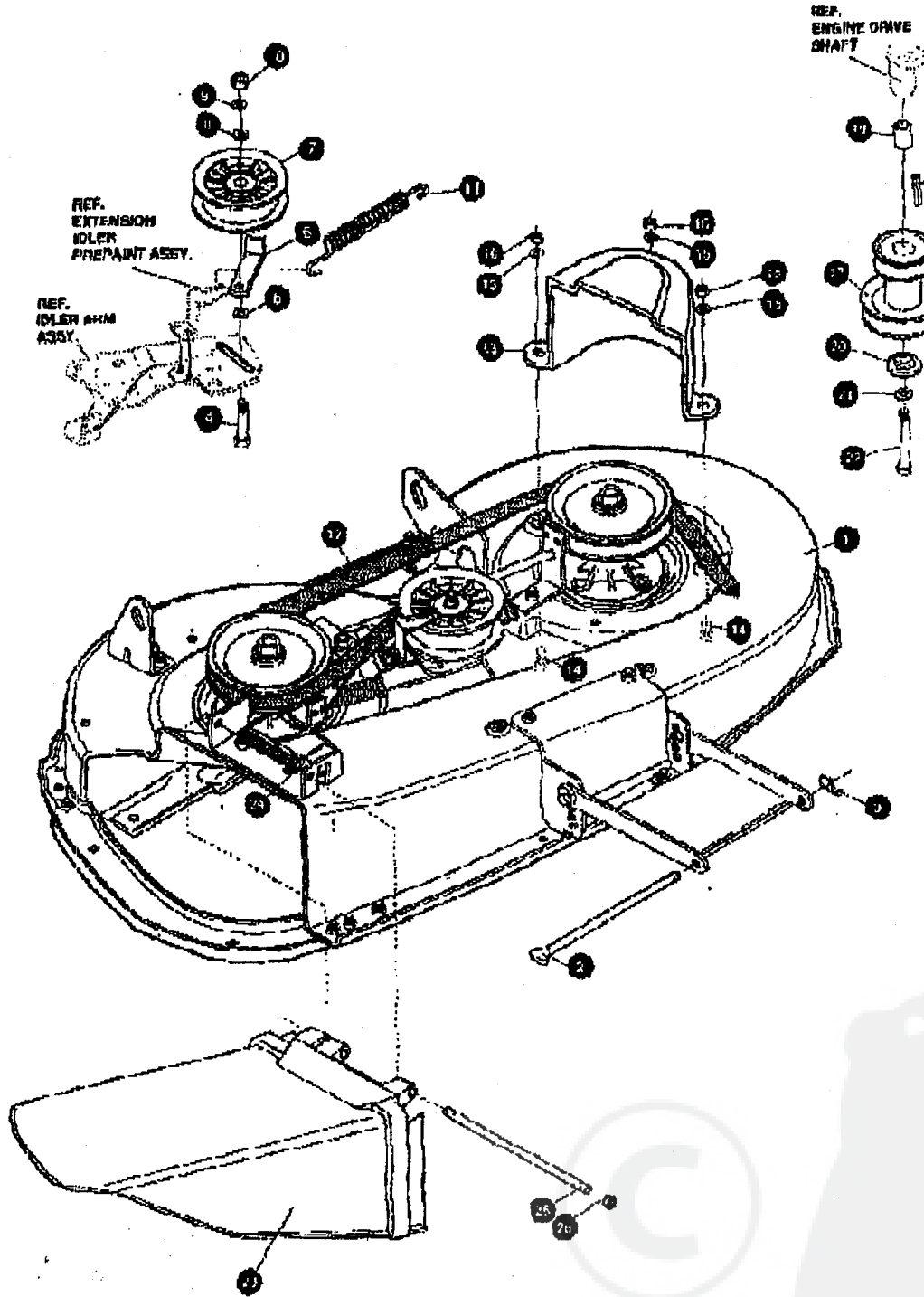
NOTE: ALWAYS USE ORIGINAL
EQUIPMENT PARTS. Use of serv-

ALL UNNUMBERED
PARTS ARE INTERCHANGEABLE

KEY#	PART#	DESCRIPTION	QTY.
1.	325103-853	MCWFR DECKS, RIDER 40"	1
2.	826483-853	TOE GUARD MULCHER	1
3.	180075	SCREW, 5/16-18X .63 HHC	1
4.	1498	NUT, 5/16-18 REGHEXOTRLK	1
5.	122007	SCREW, 5/16-18X .75 HHC	2
6.	1498	NUT, 5/16-18 REGHEXOTRLK	2
7.	317017	BRACKET CHUTE MOUNT	1
8.	100075	SCREW, 5/16-18X .63 HHC	2
9.	1498	NUT, 5/16-18 REGHEXOTRLK	2
10.	825652-853	BRACKET, RH LIFT REAR	1
11.	180077	SCREW, 5/16-18X .75 HHC	2
12.	120393	WASHER, FLAT .344X .69X.065	2
13.	1498	NUT, 5/16-18 REGHEXOTRLK	2
14.	825653-853	BRACKET, LH LIFT REAR	1
15.	180077	SCREW, 5/16-18X .75 HHC	2
16.	120393	WASHER, FLAT .344X .69X.065	2
17.	1498	NUT, 5/16-18 REGHEXOTRLK	2
18.	312273	BRAKE IDLER	1
19.	180077	SCREW, 5/16-18X .75 HHC	2
20.	120393	WASHER, FLAT .344X .69X.065	2
21.	44108	NUT, 5/16-18 HWDFLOTRK	2
22.	320576-853	IDLER ARM ASSEMBLY	1
23.	322116-853	ARM IDLER 40" DECK EURO	1
24.	41811	RIVET, CVSET .187DIA X .50	2
25.	306973	BRAKE PAD - HARD	1
26.	304420	BOLT, .600X2.16 HXHD CPM	1
27.	995303	WASHER, FLAT .391X1.00X.209	1
28.	996116	WASHER, FLAT .391X1.00X.126	2
29.	45171	NUT, 3/8-18 HWDFL WHIZ-LOCK	1
30.	328248-853	BRACKET, EXTENSION IDLER	1
31.	180075	SCREW, 5/16-18 X .63 HHC	2
32.	1498	NUT, 5/16-18 REGHEXOTRLK	2
33.	321828-853	BLADE BRAKE BODY	1
34.	135624	RIVET, TRSET .185DIA X .41L3	2
35.	304114-853	BRAKE ARM	1
36.	306973	BRAKE PAD	1
37.	180075	SCREW, 5/16-18X .63 HHC	1
38.	120393	WASHER, FLAT .344X .69X.065	1
39.	1498	NUT, 5/16-18 REGHEXOTRLK	1
40.	302714	ROD, BRAKE	1
41.	11603	NUT, 1/4-20 REGHEXOTRLK	1
42.	35410	SPRING .071 X .62 X 1.37	1
43.	1498	NUT, 5/16-18 REGHEXOTRLK	1
44.	56424-853	QUILL ASSY, 38/39/40/43	2
45.	56425	SHAFT/SHAFDIN F 38"	1
46.	48508	BRNG, BALL .669DX1.675ODX.472	1
47.	50616	DUST SHIELD	1
48.	55547	QUILL CASTING (1046)	1
49.	48558	BRNG, BALL .669DX1.675ODX.472	1
50.	50010	SPACER, SLEV .669X .88X3.797	1
51.	51449	SPACER, SLEV .677X .93X .438PM	1
52.	318098	PULLEY, 26/36" QUILL	1
53.	50365	WASHER, SPECIAL QUILL	1
54.	1282	NUT, 7/16-20 WDF LK	1
55.	50634	SCREW, 5/16-18X AB WAMTAP	7
56.	300345	SCREW, 5/16-18X1.88 WATAP	1
57.	318445-853	BRACKET, 40 LF FRONT DECK	1
58.	180075	SCREW, 5/16-18X HHC	4
59.	1498	NUT, 5/16-18 REGHEXOTRLK	4
60.	58305-853	BRACKET, LINK DECK FRONT	1
61.	58247	ADJUSTING NUT	2
62.	122017	SCREW, 5/16-18X1.00 HHC	2
63.	1498	NUT, 5/16-18 REGHEXOTRLK	2
64.	313316	BLADE, 40" HI-LIFT 20.824	2
65.	2483	WASHER, .391DX1.25DX.07 BELLVIL	6
66.	39573	SCREW, 3/8 24X1.00 NYLHHC	2



FINAL DECK ASSEMBLY



NOTE: ALWAYS USE ORIGINAL EQUIPMENT PARTS.

ALL UNNUMBERED PARTS ARE NOT TO BE USED.

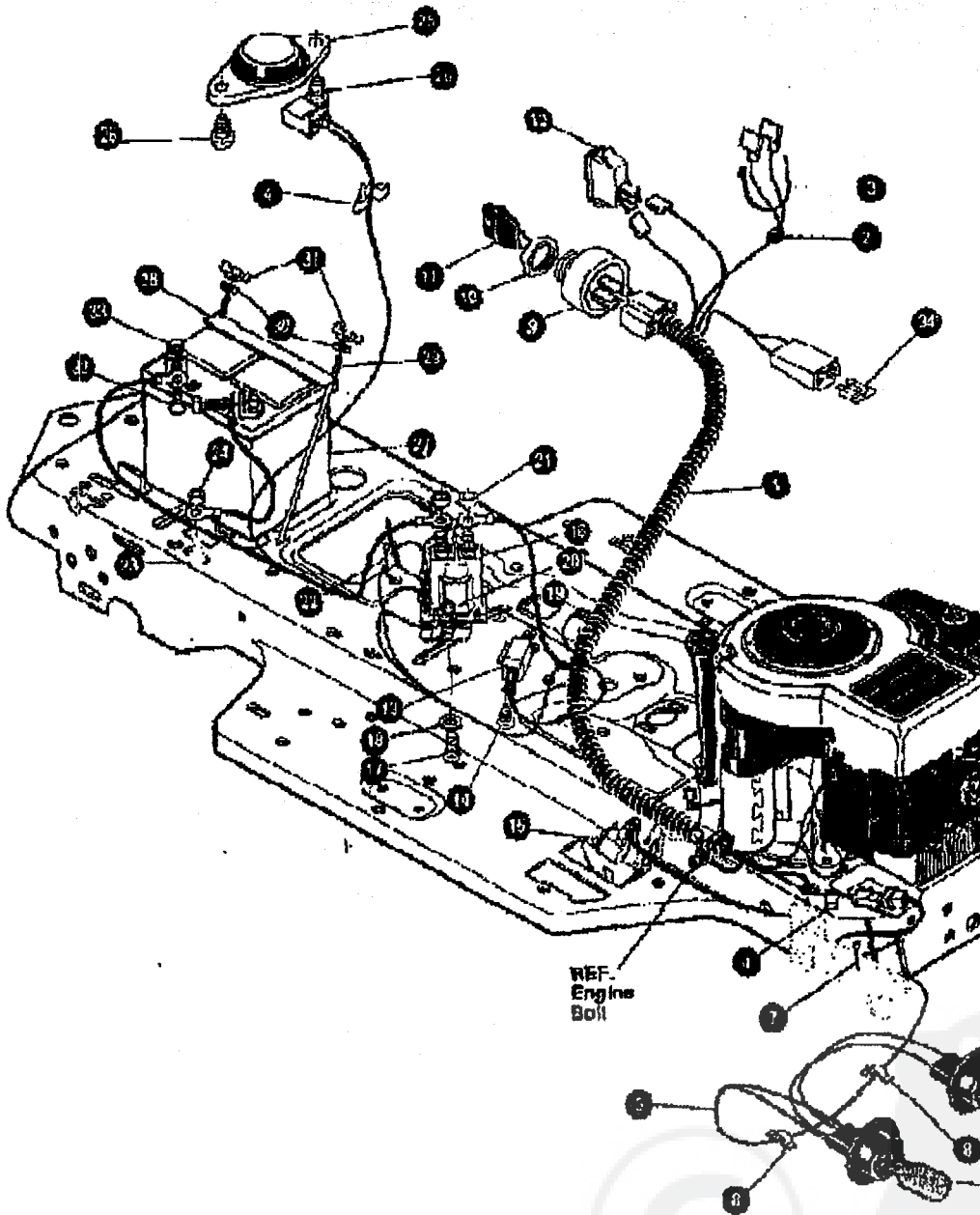
KEY#	PART#	DESCRIPTION	QTY.
1.	^	DECK, 40" MOWER DOM	1
2.	58306	ROD, DECK HITCH	1
3.	8260	PIN, HAIR .091 DIA X 1.661 L	1
4.	57325	BOLT, 3/8-16 X 2.00 CARB	1
5.	25210	WASHER, FLAT .397 X 1.25 X .08	1
6.	7346	RETAINER, BELT	1
7.	310326	PULLEY, IDLER WFF 4.00 WIDE FL	1
8.	904307	WASHER, FLAT .301 X 1.00 X .08	1
9.	120382	WASHER, REG SPFLK 3/8 X .68 X .10	1
10.	120977	NUT, 3/8-16 REG HEX	1
11.	325773	SPRING, TENSION .75 X 1.10 X .105	1
12.	318105	BELT, V SL 81.00 DECK 40 IF	1
13.	328257	GUARD, DELT LH PLASTIC	1
14.	180075	SCREW, 5/16 18 X .63 HHC	3
15.	120393	WASHER, FLAT .344 X .59 X .085	3
16.	1498	NUT, 5/16-18 REG HEX CTRLK	3
17.	310250	PULLEY, ENG. VSL 4.00 OFFSET	1
18.	303151	KEY SQUARE .249 SQ X 4.80 LG	1
19.	304346	SPACER SLEEVE 1.01 X 1.48 X	1
20.	56491	WASHER .8610 X 1.88 X .457 PULCIT	1
21.	120293	WASHER REG SPFLK .468 X .78 X .12	1
22.	438148	SCREW, 7/16-20 X 1.25 HHC	1
23.	304422	CHUTE DEFLECTOR 40", 42" & 43"	1
24.	314975	SPRING TENSION CHUTE DEFLECTOR	1
25.	304424	PLU PIVOT DECK .512 X 7.25	1
26.	5588	NUT PUSH ON CAP	1

* ORDER INDIVIDUAL PARTS.



40" LAWN TRACTOR MODEL D3554-150

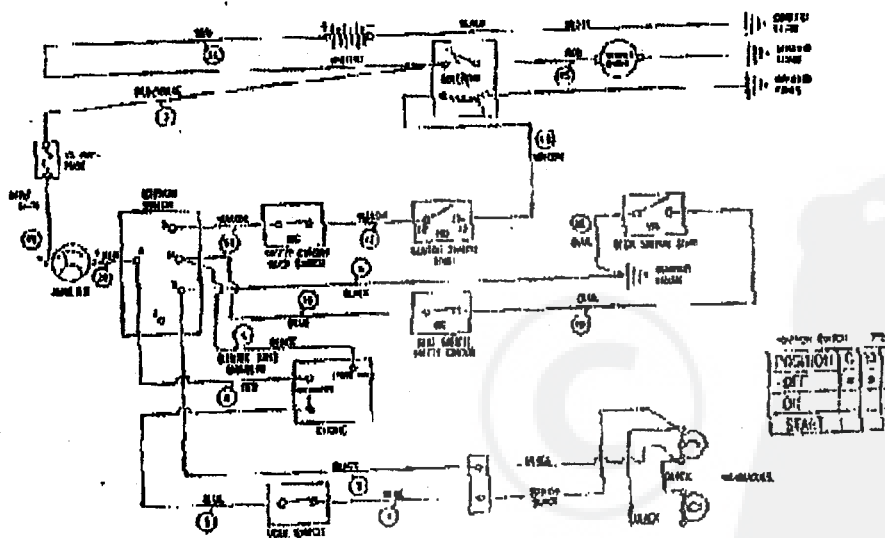
ELECTRICAL ASSEMBLY



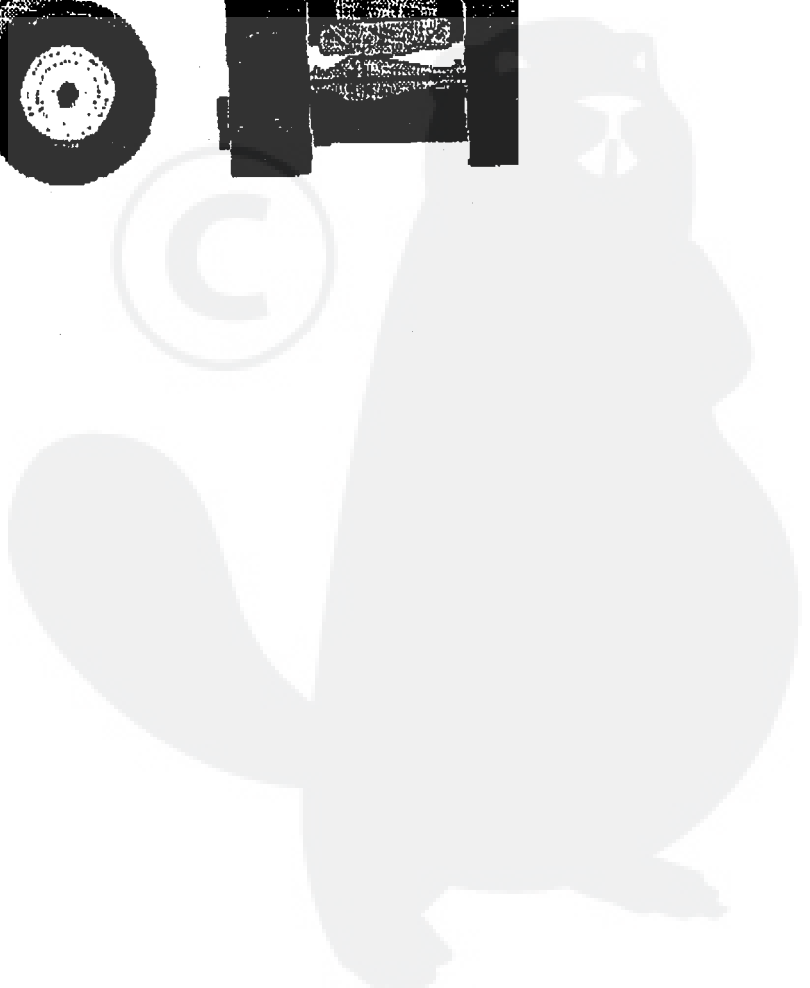
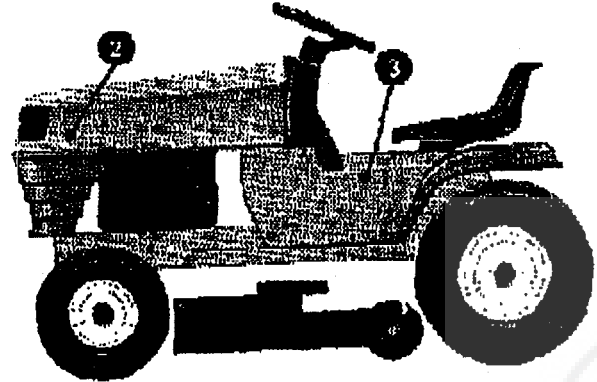
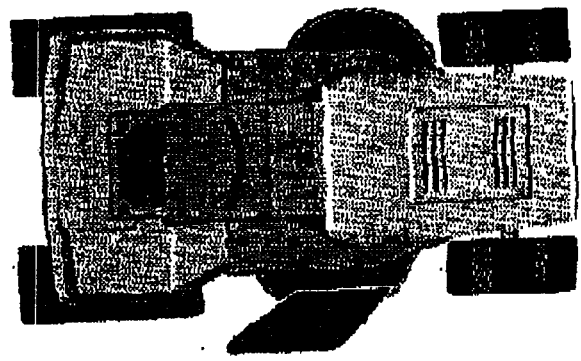
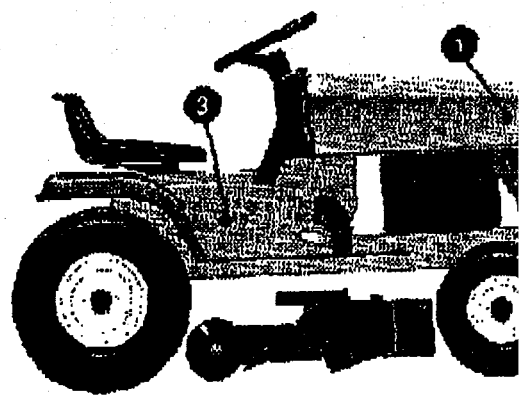
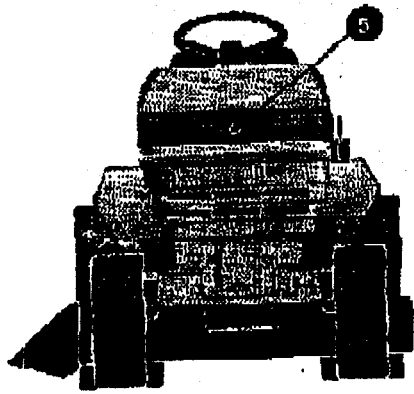
KEY#	PART#	DESCRIPTION	QTY.
1.	325004	WIHF HARNESS SF 128&6 10 W/AMM	1
2.	322280	SPLK CFR	1
3.	57444	CABLE TIE	1
4.	41402	PRESS CLIP, 1.380LG, 256ID	2
5.	303004	ASSY, LIGHT WIRE-1/4 TURN	1
6.	52572	BULB, HEADLAMP	2
7.	57444	TIE, CABLE BLACK NYLON 5.62L	1
8.	41402	PRESS CLIP, 1.380LG, 256ID	2
9.	327355	SWITCH-IGN (AFTER FIRE) 3 POSN	1
10.	A27352	NUT, 5/8-32 HXHD IGN SWIT	1
11.	327340	KEY, IGNITION SWITCH	1
12.	300334	LIGHT SWITCH ON/OFF PANEL MNT	1
13.	57476	SWITCH SCR MNT DP NO NO BLK	1
14.	57220	SCREW, #12 X .50 PHNHTAP BLK	2
15.	326653	SWITCH, SNAPMNT NO. 055, 110DLX	1
16.	53716	SOLENOID	1
17.	183745	SCREW, 1/4-20X .75 HXSEMMA	2
18.	1084	WASHER, FLAT .281X1.00X.063PL	1
19.	1802	NUT, 1/4-20 REGHEXTRLK	2
20.	271172	NUT, 1/4-20 REGHEXKEPS	1
21.	571187	NUT, 5/16-24 HKEPS	2
22.	67444	TIE, CABLE BLACK NYLON 5.62L	1
23.	55511	WIRE, GROUND, 12.5'	1
24.	271184	NUT, 5/16-18 HEXKEPS	1
25.	57847	SWITCH, SEAT	1
26.	180506	SCREW, 1/4-20X .54PHNMMMA	2
27.	302257	BATTERY, YUASA 12V 7-PLATE	1
28.	324719	BATTERY BRACKET	1
29.	40234	BATTERY ROD	2
30.	120392	WASHER, FLAT .281X .83X.065	2
31.	325232	WINGNUT, 1/4-20 NYLON	2
32.	180854	SCREW, 1/4-20X .65 HMC	2
33.	271172	NUT, 1/4-20 REGHEXKEPS	2
34.	302031	FUSE, 15 AMP SPADE TYPE	1

*Spade type fuse included with the wire harness.

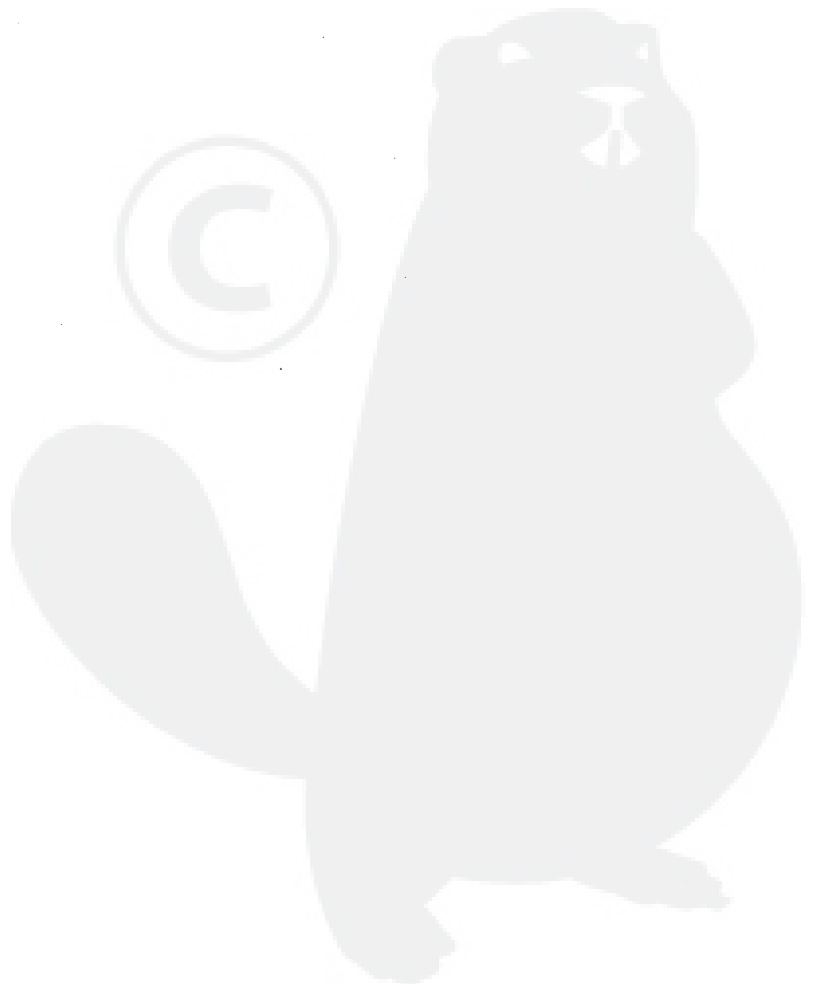
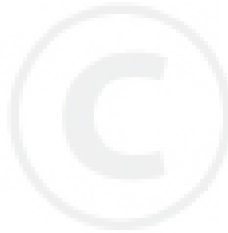
SCHEMATIC DRAWING



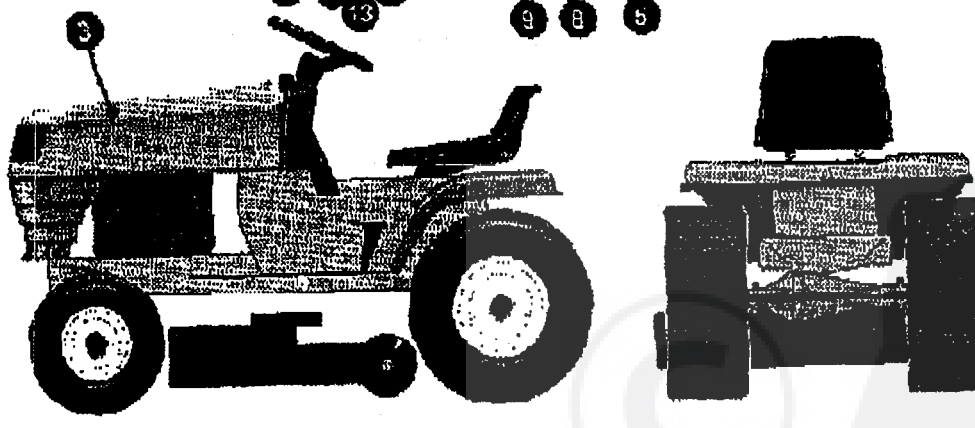
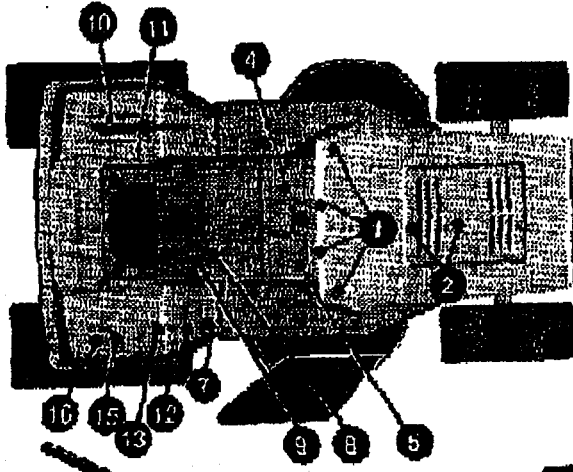
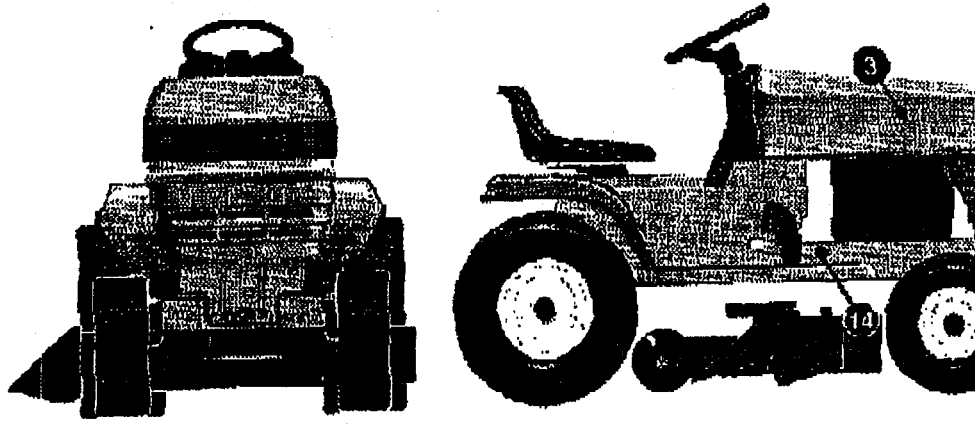
DECALS (DECORATIVE)



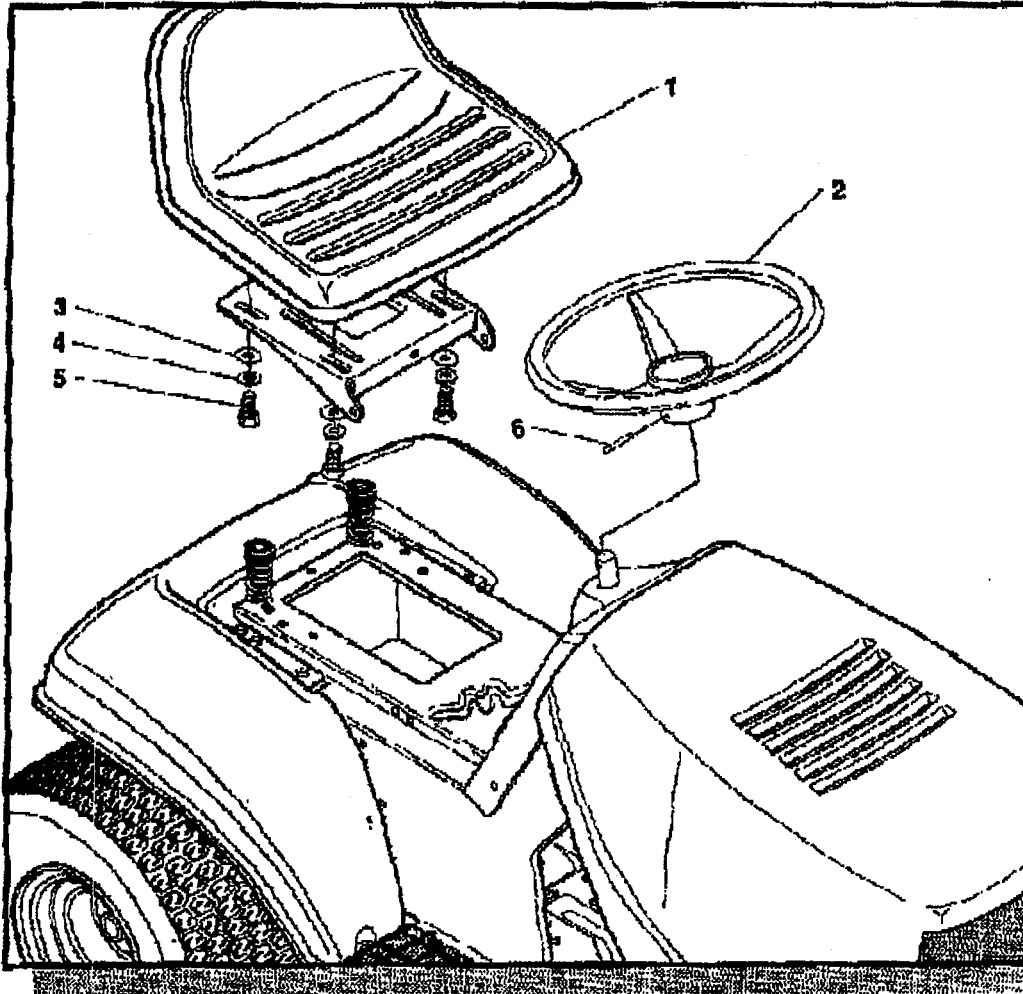
KEY#	PART#	DESCRIPTION	QTY.
1.	320324	DECAL, SOLIFER RH	1
2.	320325	DECAL, SOLIFER LH	1
3.	322801	NAMEPLATE, 12/40 WHITE/BLK	2
4.		REFERENCE ONLY	1
5.	307732	DECAL, LENS CENTERED BMOCKED	1



DECALS (INSTRUCTIONAL)



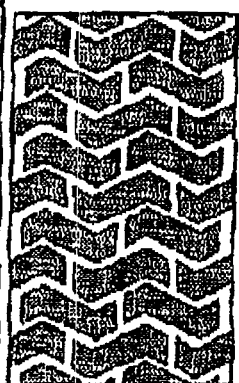
CUSTOMER ASSEMBLY



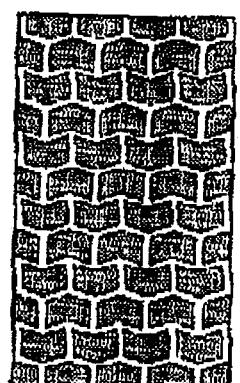
CUSTOMER ASSEMBLY VIEW
315894 PARTS BAG ASSY QTY1

KEY#	PART#	DESCRIPTION	QTY
1	57454	SEAT MV350	1
2	301251	STEERING WHEEL	1
3	120383	WASHER, FLAT .344X.63X .056	4
4	120636	WASHER, HVSP/L LK .32RX 60X.109	4
5	122007	SCREW, 5/16-18X.75 HHG	4
6	456376	ROLL PIN .250DIA X2.01 LG	1

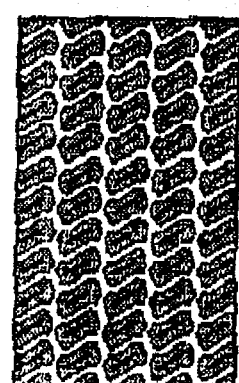
TREAD PATTERNS



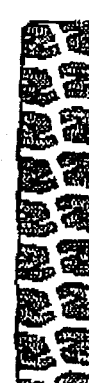
"A"



"B"



"C"



"D"

TIRE SIZE	"A"	"B"	"C"	"D"
11 X 4.00 - 5	42295	319679		
13 X 6.00 - 6	41060	319680		
15 X 6.00 - 6	39830	316702	301140	313952
16 X 6.50 - 8	41081	319682		314539
18 X 8.50 - 8	319683	317400		
18 X 9.50 - 8	41106	316701		313950
20 X 8.00 - 8	319685	319684	57164	314584
20 X 10.00 - 8	58276	319686		313654
20 X 10.00 - 10	55893	319687		
23 X 9.50 - 12	53655	319688	319689	314370



contact the dealer where your tractor was purchased for the available accessories. If unable to contact the dealer, write to the address on the front cover of this manual.

Rear Engine Rider

I	Description
16	Bagger - Fits 32" Side Discharge
17	Bagger - Fits 36" Side Discharge & 30" Top Discharge
02	Front Weight Box - holds 35 lbs.
16	Lawn Sweeper w/dump Release
00	Mulching Kit - 30" Top Discharge

Lawn Tractor

I	Description
22	Bagger - Fits 30" Side Discharge
13	Bagger - Fits 36", 38", 39" & 45" Side Discharge
04	36" Two-Stage Snowblower - Fits 36", 38", 39", & 45" Side Discharge
06	42" Snowblade - Fits 36", 38", 39", & 45"
00	Tire Chains - 18" x 6.50"
00	Tire Chains - 18" x 9.50" & 20" x 8"
01	Wheel Weights - Front - 1 pr. w/mtg. hdw. - Fits 15" tires
02	Wheel Weights - Rear - 1 pr. w/mtg. hdw. - Fits 18" & 20" tires
03	Front Weights - Fits 30" & 32" Side Discharge
16	Lawn Sweeper w/dump Release
00	Mulching Kit - 30" Top Discharge

Garden Tractor - Light Ground Engaging

I	Description
13	Bagger - Fits 36", 38", 39", & 45" Side Discharge
04	36" Two-Stage Snowblower - Fits 36", 38", 39", & 45"
06	42" Snowblade - Fits 36", 38", 39", & 45"
01	Wheel Weights - Front 1 pr. w/mtg. hdw. - Fits 15" tires
02	Wheel Weights - Rear - 1 pr. w/mtg. hdw. - Fits 18" & 20" tires
16	Lawn Sweeper w/dump Release
02	Sleeve Hitch - w/lift bar - Fits 45"
01	Adaptor (sleeve hitch) for use w/23" tires
00	Tire Chains - 20" x 10"
00	Tire Chains - 23" x 9.50"
02	Wheel Weights - Front - 1 pr. w/mtg. hdw. Fits 16" tires
00	Wheel Weights - Rear - 1 pr. w/mtg. hdw. Fits 23" tires
01*	10" One Bottom Moldboard Plow
01*	Cultivator - 7 row - Adj. 6" - 42" width
01*	Disc Harrow - 8" & 11" disc - Adj. width & disc angle
02*	Tiller - 5 H.P. Self-Powered - 28" width

Four Wheel Steer

M	Description
-14	Bagger - Fits 40" & 46" Side Discharge
-05	42" One-Stage Snowblower - Fits 40" & 46"
-07	48" Snowblade - Fits 40" & 46"
-04	Rear Weight Box for 40" & 46"
-16	Lawn Sweeper w/dump Release
-00	Tire Chains 20" x 10"
-00	Tire Chains 23" x 9.50"
-02	Wheel Weights - Front - 1 pr. w/mtg. hdw. Fits 16" tires
-00	Wheel Weights - Rear - 1 pr. w/mtg. hdw. Fits 23" tires

