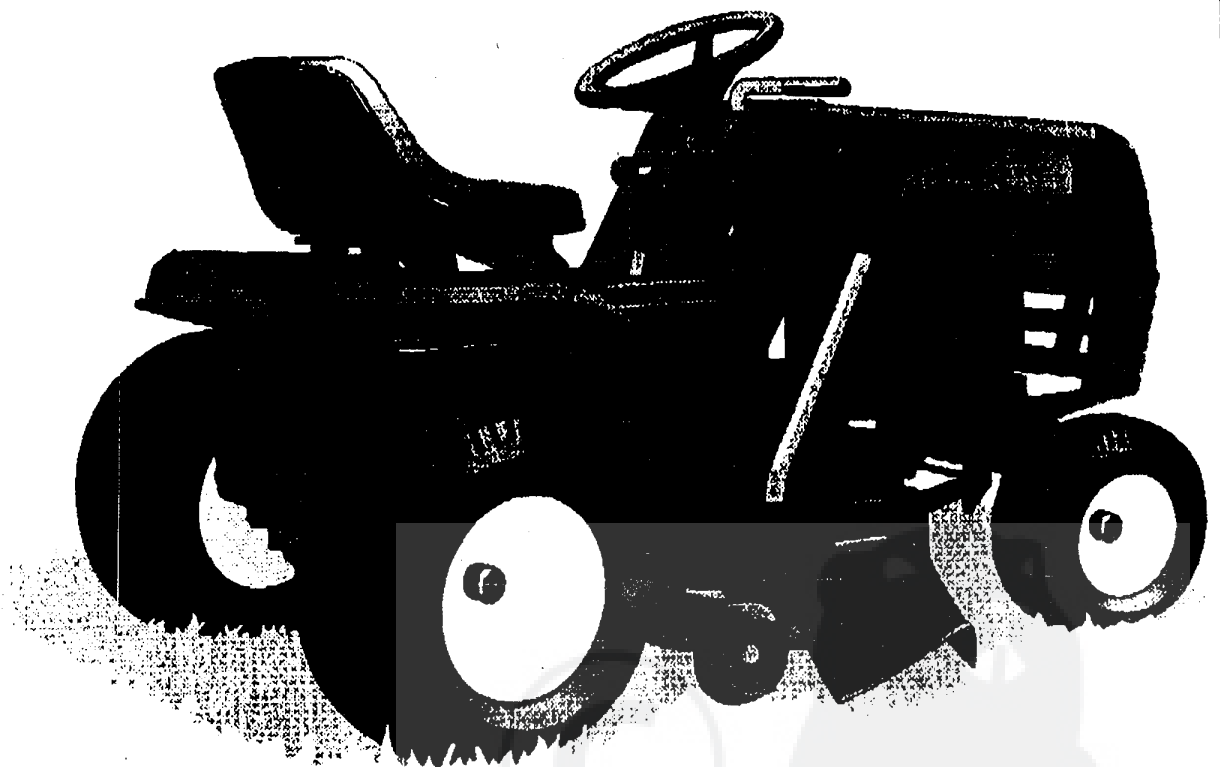


TONDEUSE AUTOPORTEE
CAST 12 *Spring*
MANUEL PIÈCES DE RECHANGE

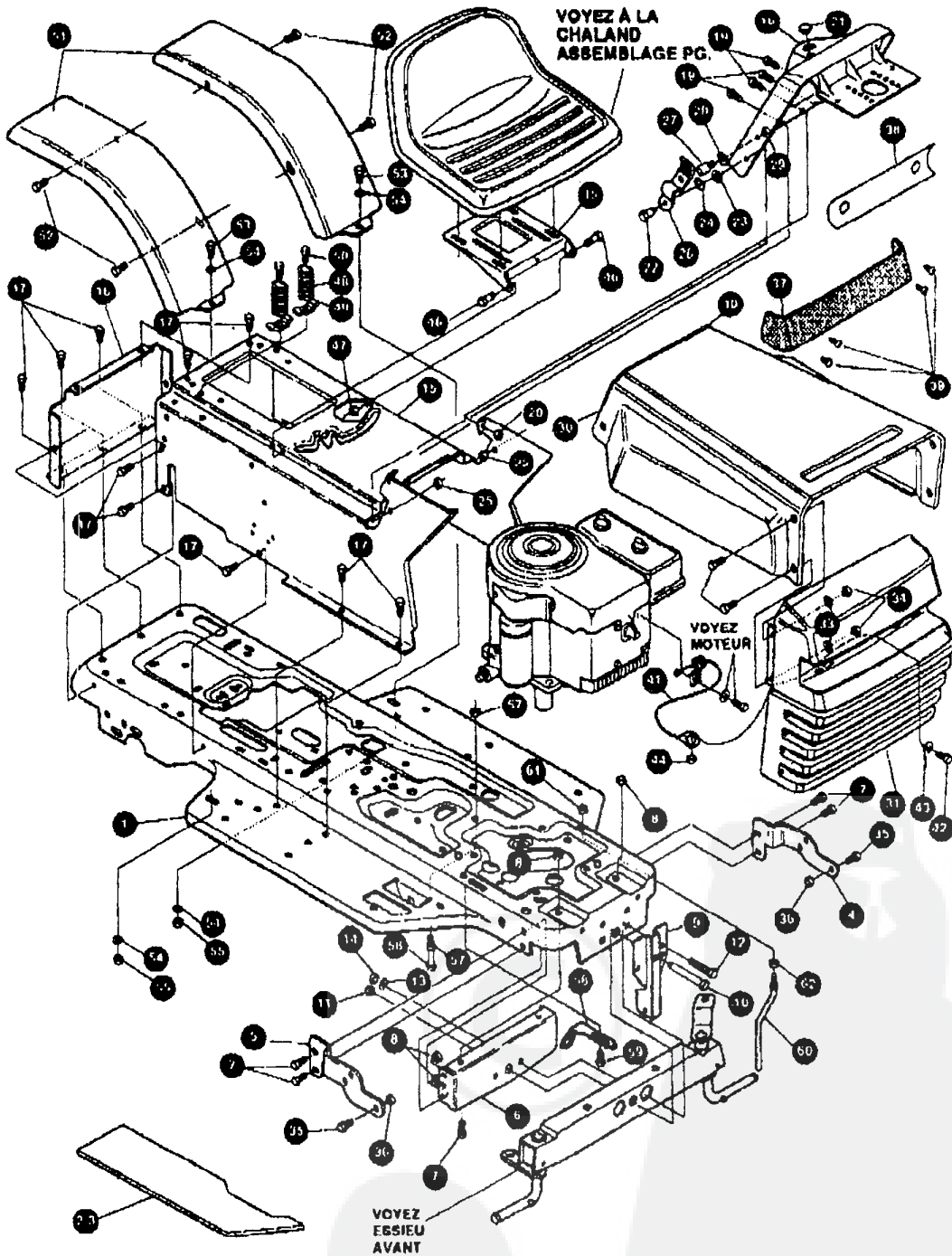


328430A

Modèle D3554-200

TRACTEUR TONDEUSE 36" MODELE D3554-200

ENSEMBLE CHASSIS & CAPOT



UTILISEZ DES PIÈCES D'ORIGINE POUR CONSERVER L'APPLICATION DE LA GARANTIE.

TOUTES LES PIÈCES NON REFERÉES SONT INTERCHANGÉABLES AVEC LEURS OPPOSÉS.

328107A

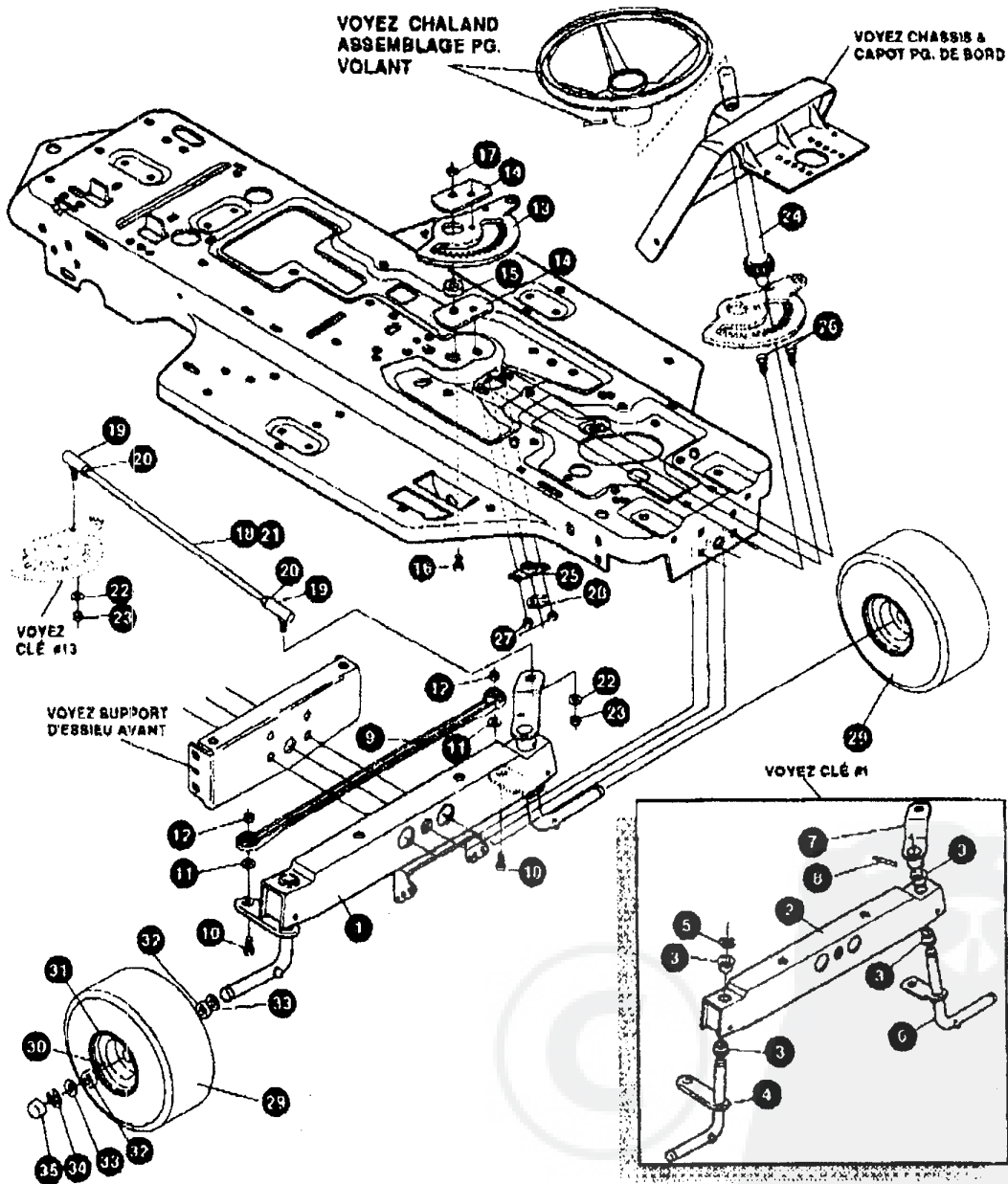
TRACTEUR TONDEUSE 36" MODELE D3554-200

KEY#	PART#	DESCRIPTION	QTY.
1	321997-860	FRAME, MAIN SF RIDER	1
2	302917	FOOTPAD, LH	1
3	302916	FOOTPAD, RH	1
4	314578-853	BRACKET, GRILLE L.H.	1
5	314578-853	BRACKET, GRILLE R.H.	1
6	56362-853	BRACKET, SUPPORT FRONT AXLE-	1
7	328154	SCREW, 5/16-18 X 75WDFLLK	6
8	59273	NUT, 5/16-18 HXWDFLLK	6
9	56261-853	HANGER BRACKET	1
10	50720	BOLT, 625 X 2.875 SPSH 1/2-20	1
11	274654	NUT, 1/2-20 REGHXCTRLK	1
12	122201	SCREW, 3/8-16 X 2 75 HMC	1
13	2483	WASHER, 39 ID X 1.25 D X .07 BELLVIL	1
14	1499	NUT, 3/8-16 REGHXCTRLK	1
15	314491-880	CONSOLE, SF DYNA STYLE TOPSH	1
16	56235-860	CONSOLE, REAR COVER	1
17	995346	SCREW, 1/4-20 X .50 WAHHTAP	15
18	320466-860	DASH, SF NOMA DYNA STYLING	1
19	995338	SCREW, 1/4-20 X .63 HHWATAP	4
20	50352	NUT, 1/4-20 WDFLLK TOP LOCK	2
21	318202	PLUG DOME	1
22	8482	BOLT, 375 X 156 HSH 5/16-18	2
23	120394	WASHER, FLAT 406 X 81 X .065	2
24	120393	WASHER, FLAT 344 X .69 X .065	2
25	1498	NUT, 5/16-18 REGHEXCTRLK	2
26	57159	LATCH, .94 WD X .047 ASSEMBLY HOOD	2
27	53446	PIN, 5/16-18 HOOD LATCH	2
28	138538	WASHER, REGINTLK 320 X 61 X .03	2
29	45174	NUT, 5/16-18 HEXWDFLLK WHIZ	2
30	314538-860	HOOD	1
31	325401	GRILLE DYNA-PRO	1
32	274672	SCREW, 1/4-20 X .63 WAHHC	4
33	120392	WASHER, FLAT 281 X 63 X .065	4
34	1502	NUT, 1/4-20 REGHEXCTRLK	4
35	36149	BOLT, 375 X 500 HSH 5/16-18	2
36	1498	NUT, 5/16-18 REGHEXCTRLK	2
37	302333	LENS HEADLAMP	1
38	314948	FOIL, LENS DYNA-PRO REFLECTOR	1
39	57796	SCREW #6 X .50 PLASTITE	4
40	47463	EDGING, WIDE BLK	25
41	311094	LANYARD, HOOD	1
42	121887	SCREW 1/4-20 X 75 HHC	1
43	120392	FLATWASHER 281 X 63 X .065	1
44	1502	LOCKNUT 1/4-20	1
45	58367-853	PLATE, SEAT F-5 SF & LF	1
46	20507	BOLT, 437 X 156 HSH 5/16-18	2
47	1498	NUT, 5/16-18 REGHEXCTRLK	2
48	56220	SPRING, 1.43 X 2.38 X .162 COM SEAT	2
49	1341	CLAMP, SPRING 1 17" ID	2
50	995346	SCREW, 1/4-20 X .50 WAHHTAP	2
51	43970-880	FENDER	2
52	995346	SCREW 1/4-20 X .50 WAHHTAP	4
53	122017	SCREW 5/16 18 X 1.00 HMC	2
54	446363	WASHER, FLAT 375 X 88 X .082	4
55	1498	NUT, 5/16-18 REGHEXCTRLK	2
56	49930	SCREW, 3/8-16 X 7.50 HHC	1
57	1499	NUT, 3/8-16 REGHEXCTRLK	2
58	302610-853	BRACKET, SWITCH MOUNT	1
59	995346	SCREW, 1/4-20 X .50 WAHHTAP	1
60	50653	GUIDE BELT	1
61	41529	NUT, 3/8-16 HXCTRLKJAM	1
62	271190	NUT, 3/8-16 HEXKEPS	1
63	328430	PARTS MANUAL	1
64	328677	OPERATOR'S MANUAL	1

• STANDARD HARDWARE ITEMS

TRACTEUR TONDEUSE 36" MODELE D3554-200

ENSEMBLE DIRECTION AVANT



UTILISEZ DES PIÈCES D'ORIGINE POUR CONSERVER L'APPLICATION DE LA GARANTIE.

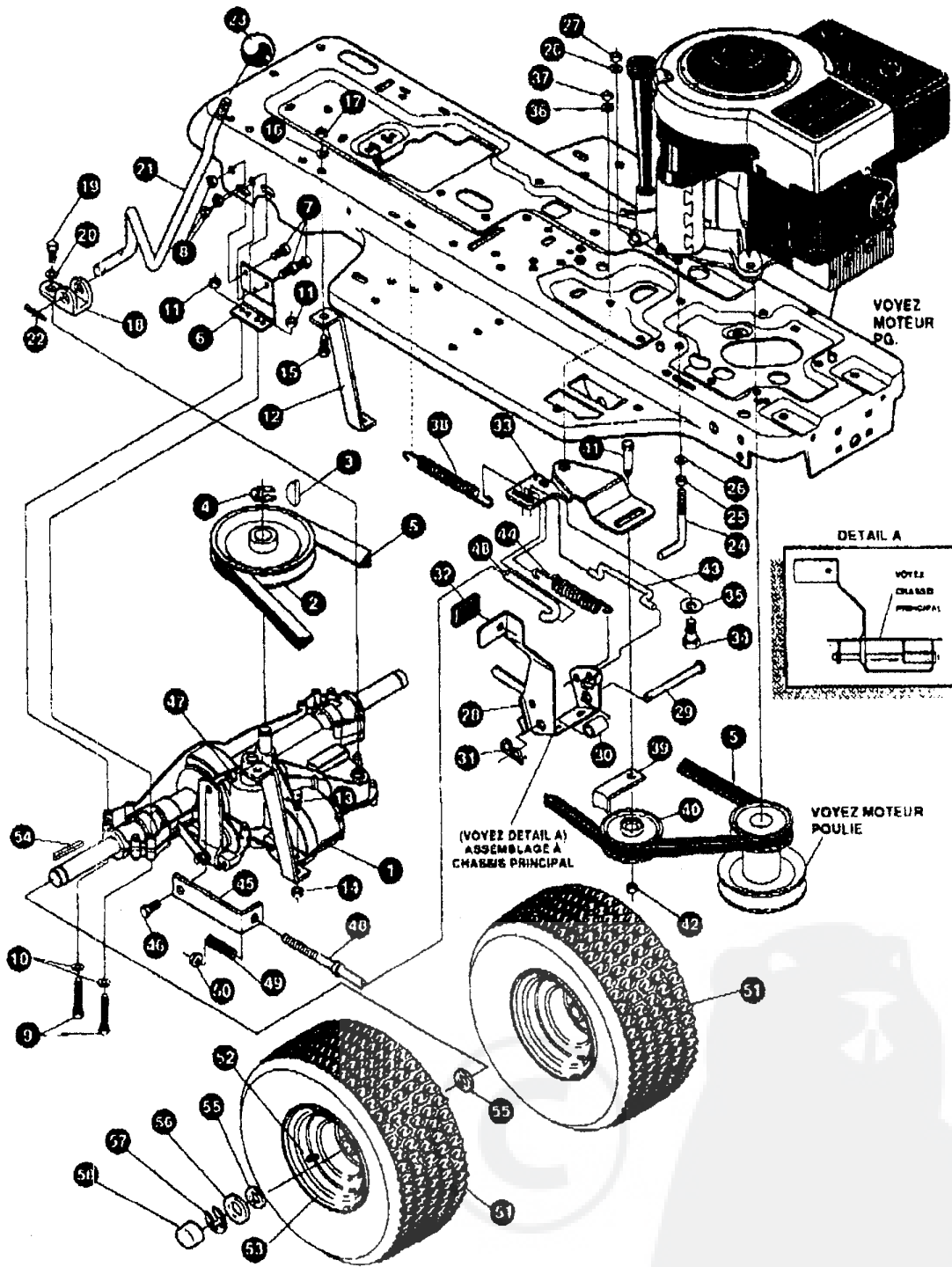
TOUTES LES PIÈCES NON REFÉREES SONT INTERCHANGEABLES AVEC LEURS OPPOSEES.

326426A

TRACTEUR TONDEUSE 36" MODELE D3554-200

KEY#	PART#	DESCRIPTION	QTY.
1.	A	FRONT AXLE ASSEMBLY SF	1
2.	56400	AXLE FRONT	1
3.	50546	BEARING FLANGE	4
4.	310368	SPINDLE, RH	1
5.	36625	RING, RETEX	1
6.	310367	SPINDLE, LH	1
7.	325223	ARM, ASSEMBLY	1
8.	454666	PIN, SPRING	1
9.	302691	TIE ROD	1
10.	• 122145	SCREW, 3/8-16 X 1.25 HHC	2
11.	120382	WASHER, .393 X .68 X .10 REGSPTLK	2
12.	• 1499	NUT, 3/8-16 REGHCTRLK	2
13.	324752	SECTOR GEAR	1
14.	325225	PLATE, SECTOR	2
15.	324753	BUSHING, SECTOR	1
16.	180124	SCREW, 3/8-18 X 1.25 GRD 5	1
17.	1499	NUT 3/8-16 REGHX CTRLK	1
18.	56191	DRAG LINK ASSEMBLY	1
19.	21275	BALL JOINT	2
20.	• 124925	NUT, 3/8-24 REGHEXJAM	2
21.	56190	DRAG LINK	1
22.	• 120382	WASHER, EGSPTLK	2
23.	120369	NUT, 3/8-24 REGHEX	2
24.	327834	STEERING SHAFT	1
25.	325692	BEARING FLANGE	1
26.	326505	SCR 1/4-20X.75	2
27.	46931	NUT 1/4-20 WDFLLK SIDE LOCK	2
28.	20864	RING, RETEX .39 X .04 TRU 5133	1
29.	41059	ASSEMBLY, TIRE & RIM	2
30.	24167	VALVE STEM	1
31.	39937	WHEEL W/BEARING	1
32.	39979	BEARING, 1.380 D X 763 ID FLANGE	2
33.	642	WASHER, FLAT .755 X 1.31 X .075	4
34.	36625	RING, RETEX .67 X .05	2
35.	40394	HUB CAP	2

• INDICATES STANDARD HARDWARE ITEMS



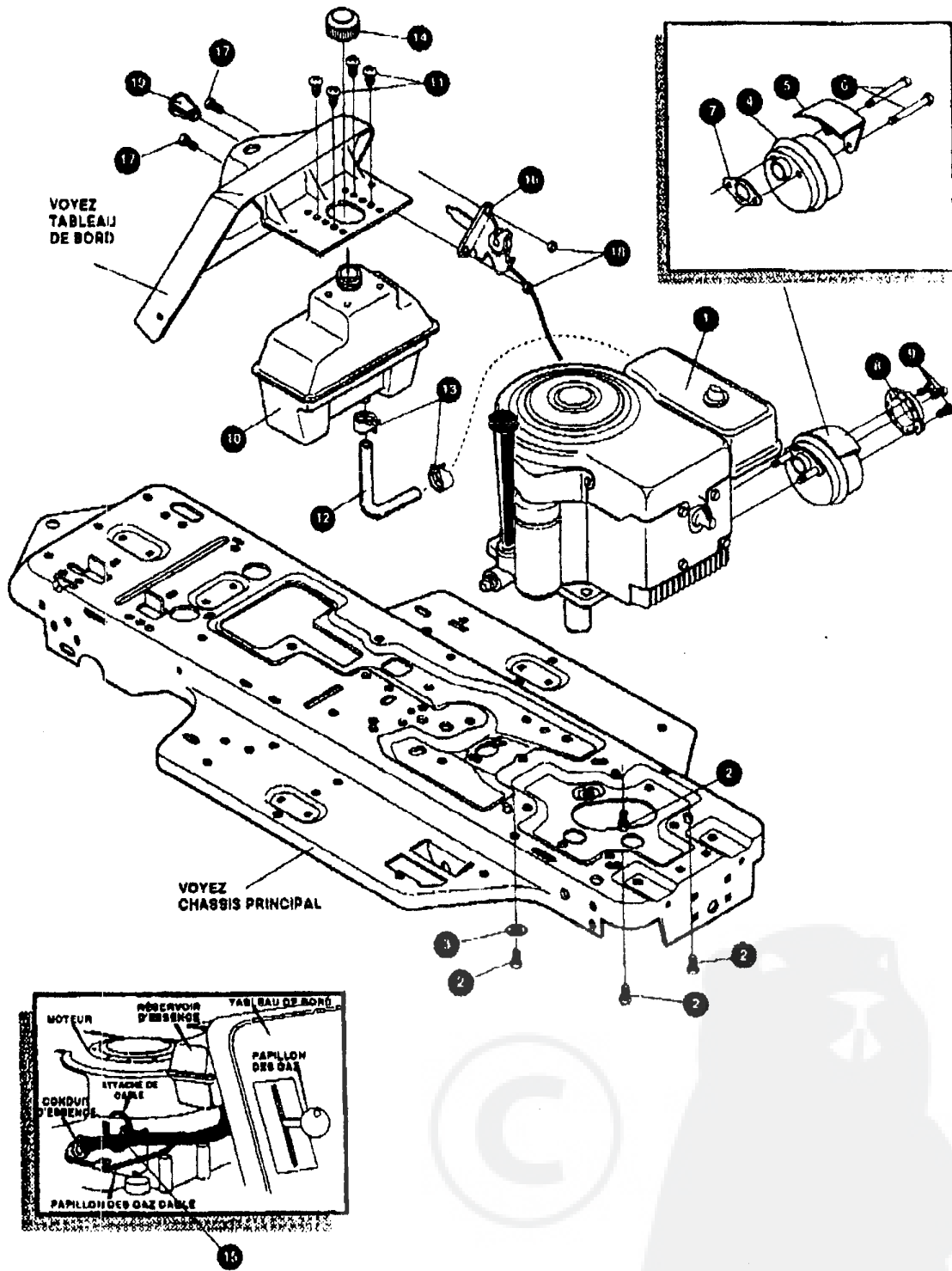
UTILISEZ DES PIÈCES D'ORIGINE POUR CONSERVER L'APPLICATION DE LA GARANTIE.

TOUTES LES PIÈCES NON REPERÉES SONT INTERCHANGEABLES AVEC LEURS OPPOSÉS.

3255708

KEY#	PART#	DESCRIPTION	QTY.
1.	^	TRANSAXLE P940-SSP SF FER	1
2.	302745	PULLEY, IDLER V4L 6.60	1
3.	3021	KEY, WDRF 806 .750 X .187 X .312	1
4.	22053	RING, RETEX 68 X .035 TRU 5100-82	1
5.	54758	BELT, V 4L B2.00 SF DRIVE	1
6.	53768-853	MP BRACKET, TRANSAXLE	2
7.	120228	SCREW, 5/16-18 X .83 HHC	6
8.	1498	NUT, 5/16-18 REGHEXCTRLK	6
9.	180089	SCREW, 5/16-18 X 2.25 HHC	4
10.	120393	WASHER, FLAT .344 X .69 X .065	4
11.	1498	NUT, 5/16-18 REGHEXCTRLK	4
12.	313587	MF BRACKET, T/A TORQUE 915 S/F	1
13.	180087	SCREW, 5/16-18 X 2.00 HHC	1
14.	1498	NUT, 5/16-18 REGHEXCTRLK	1
15.	122017	SCREW, 5/16-18 X 1.00 HHC	1
16.	138485	WASHER, EXLK .320 X .81 X .03	1
17.	1498	NUT, 5/16-18 REGHEXCTRLK	1
18.	310753-953	MH BRACKET, SHIFT P920-3SP	1
19.	58255	SCREW, 1/4-28 X .75 NYLHHC	1
20.	57157	WASHER, .750 X .250 SP-TRANSAXLE	1
21.	313934	LEVER, SHIFT 916 T/A S/F	1
22.	137185	PIN, COTTER .125 DIA X 1.00 LG	1
23.	55514-053	KNOB, ROUND 1.60 DIA BLACK	1
24.	49896	MF BELT GUIDE	1
25.	271184	NUT, 5/16-18 HEXKEPS	1
26.	120393	WASHER, FLAT .344 X .69 X .065	2
27.	1498	NUT, 5/16-18 REGHEXCTRLK	1
28.	302603-853	SF ASSEMBLY, BRAKE PEDAL S.F.	1
29.	319876	PIN, CLEVIS 6 DIA, 4.87 LG, ZN PL	1
30.	302601	SPACER, SLEEVE 53 X .82 X 1.406	1
31.	66180	PIN, HAIR .091 DIA X 1.62 LG	1
32.	48761	PAD, CLUTCH/BRAKE PEDAL	1
33.	321969	MF IDLER ARM BRACKET TRACTION SF	1
34.	41890	BOLT, .625 X .218 HSH 5/16-18Z	1
35.	4107	WASHER, FLAT .825 X 1.31 X .07	1
36.	45602	WASHER, FLAT .333 X .87 X .119	1
37.	1498	NUT, 5/16-18 REGHEXCTRLK	1
38.	327867	SPRING, 3/4 OD X 6.75 X .091 TENSIO	1
39.	39659	MF RETAINER, BELT	1
40.	35374	PULLEY, IDLER V4L 3.06 X .62	1
41.	45892	BOLT, 3/8-16 X 1.60 CARR	1
42.	1498	NUT, 3/8-18 REGHXCTRLK	1
43.	43980	ROD, .268 DIA CLUTCH	1
44.	60562	SPRING, 3/8 OD X 1.625 X .065 TENSIO	1
45.	323210	BRACKET, TRACTION BRAKE S/F	1
46.	46824	BOLT, .800 X .188 HSH 5/16-18Z	1
47.	1498	NUT, 5/16-18 REGHEXCTRLK	1
48.	323211	ROD, BRAKE 915 T/A SF	1
49.	63820	SPRING, CLUTCH .625 OD	1
50.	50352	NUT, 1/4-20 WDFLLK TOPLOCK	1
51.	317398	TIRE & RIM, PU 18X 8.5 X 8 TURWHI	2
52.	24167	VALVE STEM	1
53.	41105	WHEEL & HUB ASSEMBLY 9.60 X 8 WHITE	1
54.	52928	KEY, SQUARE .187 SQ X 2.25 LG	2
55.	842	WASHER, FLAT .765 X 1.31 X .075	4
56.	42816	WASHER, FLAT .765 X 1.53 X .07	2
57.	36625	RING, RETEX .57 X .05 TRU 5133-76	2
58.	40394	HUB CAP, 1.500 ID X 7/8 LG	2

* ORDER INDIVIDUAL PARTS



UTILISEZ DES PIÈCES D'ORIGINE POUR CONSERVER L'APPLICATION DE LA GARANTIE.

TOUTES LES PIÈCES NON RÉFÉRÉES SONT INTERCHANGEABLES AVEC LEURS OPPOSÉS.

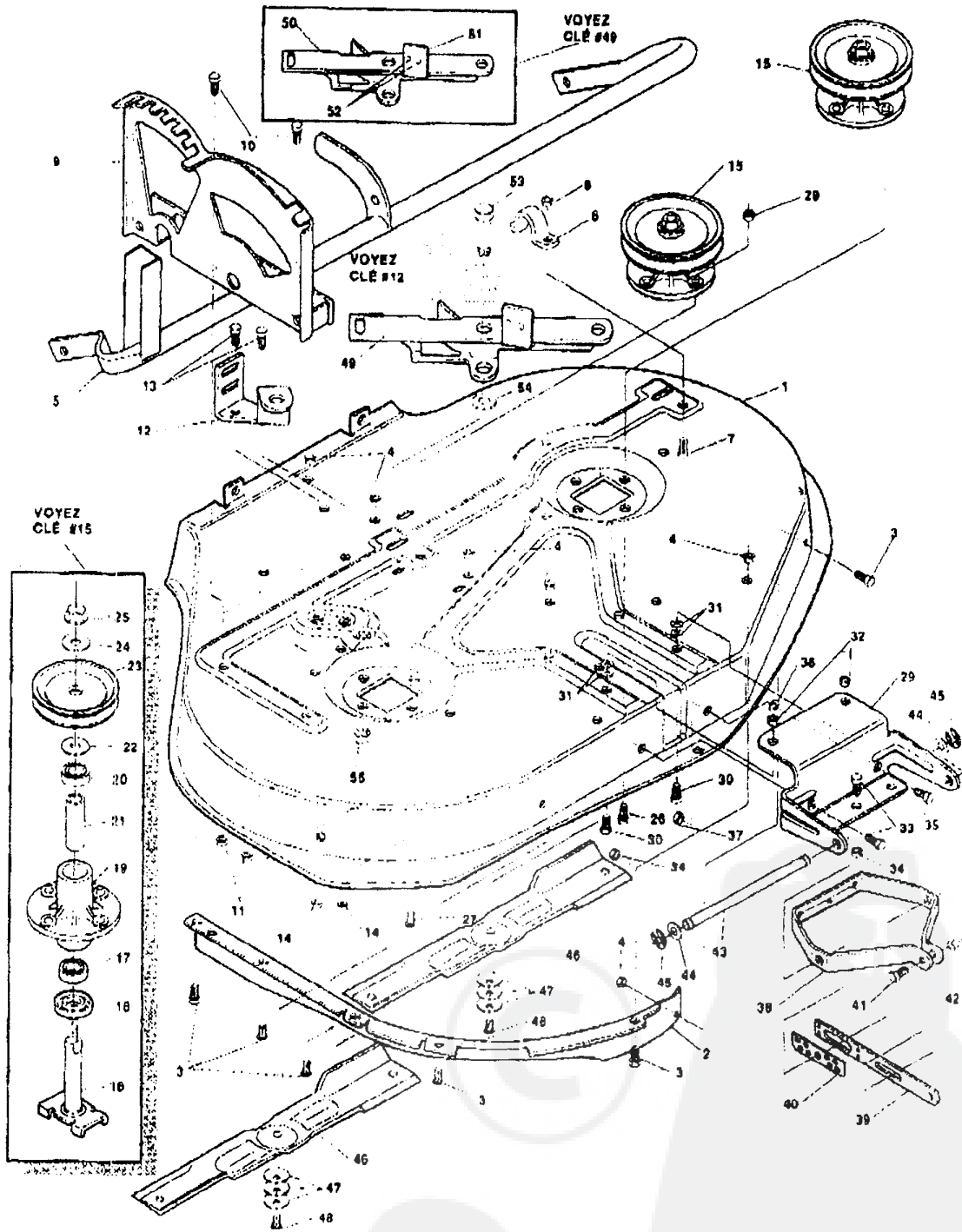
325601A

KEY#	PART#	DESCRIPTION	QTY.
1	ENGINE	12 HP B&S I/C (SEE ENGINE MANUAL)	1
2	• 50947	SCREW, 3/8-18 X 1.25 WAHHTAP	4
3	• 138489	WASHER, EXLK .384 X .89 X .04	1
4	57908	MUFFLER-LO TONE NELSON EXPORT	1
5	54767	SHIELD, HEAT. FOR ROUND MUFFLER	1
6	• 173063	SCREW, 5/16-18 X 3.60 HHC	2
7	46708	GASKET, MUFFLER	1
8	323423	DEFLECTOR, MUFFLER PARTIAL	1
9	36287	SCREW, #8-32 X .38 HHWATAP GR2	3
10	314989	TANK, FUEL 1 GAL	1
11	• 49050	SCREW, 1/4-10 X .75PHPNTAP	4
12	47452	GAS LINE .26 ID	12'
13	48672	CLAMP, FUEL LINE	2
14	46704	GAS CAP 1-1/2-7 THD	1
15	57444	CABLE TIE	1
16	320031	THROTTLE CONTROL	1
17	• 36291	SCREW, 10-24 X .50 SLHHMA	2
18	• 271166	NUT, #10-24 HEXKEPS	2
19	50607	KNOB, ROUND THROTTLE	1

• INDICATES STANDARD HARDWARE ITEMS

TRACTEUR TONDEUSE 36" MODELE D3554-200

CARTER DE TONDEUSE



UTILISEZ DES PIÈCES D'ORIGINE POUR CONSERVER L'APPLICATION DE LA GARANTIE.

TOUTES LES PIÈCES NON REFERÉES SONT INTERCHANGEABLES AVEC LEURS OPPOSÉS.

316030C

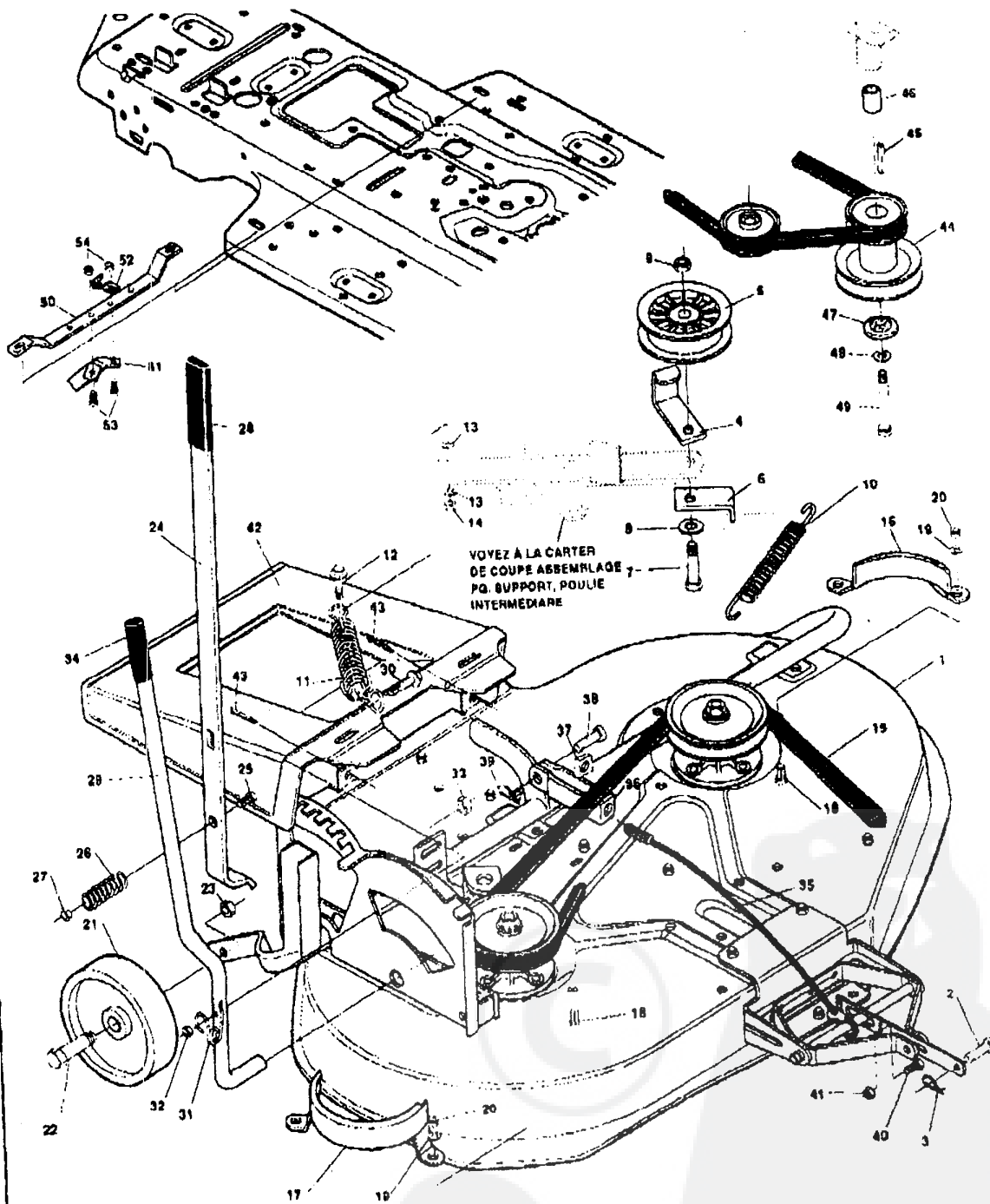
TRACTEUR TONDEUSE 36" MODELE D3554-200

KEY#	PART#	DESCRIPTION	QTY.
1	55883	DECK, 36WH RD MOWER	1
2	55855	BAFFLE, 36RD LH DECK	1
3	* 120228	SCREW, 5/16-18 X .83 HHC	8
4	* 1498	NUT, 5/16-18 REGHEXCTRLK	8
5	52813	ASSEMBLY TORQUE TUBE	1
6	51985	SUPPORT, PIVOT TUBE	1
7	* 120834	SCREW, 5/16-18 X .50 HHC	1
8	* 1498	NUT, 5/16-18 REGHEXCTRLK	1
9	53247	QUADRANT	1
10	* 120834	SCREW, 5/16-18 X .50 HHC	2
11	* 1498	NUT, 5/16-18 REGHEXCTRLK	2
12	57514	BRACKET, IDLER	1
13	* 120228	SCREW, 5/16-18 X .83 HHC	2
14	* 1498	NUT, 5/16-18 REGHEXCTRLK	2
15	56424	QUILL ASSEMBLY, 36/39/40/43	2
16	56425	SHAFT/SADDLE 38"	1
17	49562	BEARING, BALL	1
18	50616	DUST SHIELD	1
19	55547	QUILL CASTING	1
20	49562	BEARING, BALL	1
21	50818	SPACER, 3.797 LG X .689 ID X .88	1
22	51449	SPACER, .438 LG X .932 OD X .672	1
23	56390	PULLEY, 28/36" QUILL	1
24	56365	SPECIAL WASHER	1
25	* 1282	NUT, 7/16-20 WDFLLK	1
26	* 50834	SCREW, 5/16-18 X .88 WAHHTAP	7
27	* 300345	SCREW, 5/16-18 X 1.38 WATAP	1
28	* 1498	NUT, 5/16-18 REGHEXCTRLK	1
29	48878	LIFT PLATE	1
30	* 122007	SCREW, 5/16-18 X .75 HHC	2
31	998416	WASHER, FLAT .391 X 1.00 X .125	4
32	* 1498	NUT, 5/16-18 REGHEXCTRLK	2
33	* 120228	SCREW, 5/16-18 X .83 HHC	2
34	* 1498	NUT, 5/16-18 REGHEXCTRLK	2
35	* 122017	SCREW, 5/16-18 X 1.00 HHC	1
36	996416	WASHER, FLAT .391 X 1.00 X .125	1
37	* 1498	NUT, 5/16-18 REGHEXCTRLK	1
38	50613	BRACKET, PIVOT	1
39	49059	BAR, HITCH	1
40	49058	BRACKET, LOCK	1
41	* 120918	SCREW, 3/8-18 X 1.50 HHC	1
42	* 1499	NUT, 3/8-18 REGHXCTRLK	1
43	55724	PIN, PIVOT ROD .600 X 7.55	1
44	996425	WASHER, FLAT .315 X .88 X .064	2
45	20864	RING, RET E .39 X .04 TRU 5133-50	2
46	56821	BLADE, 36" STD-LIFT 18	2
47	2483	WASHER, .39 ID X 1.25 D X .07 BELLVIL	8
48	* 39573	SCREW, 3/8-24 X 1.00 NYLHHC	2
49	311427	IDLER ASSEMBLY, PIVOT ARM	1
50	311425-853	PIVOT ARM IDLER	1
51	306973	BRAKE PAD-HARD-232 AF	1
52	41601	RIVET, OVSET .187 DIA X .50 LG	2
53	47516	BOLT, .500 I 950 HNSH 3/8-16	1
54	996416	WASHER, FLAT .391 X 1.00 X .125	1
55	1499	NUT 3/8-16 REGHXCTRLK	1

* Indicates STANDARD HARDWARE ITEMS

TRACTEUR TONDEUSE 36" MODELE D3554-200

CARTER DE TONDEUSE



UTILISEZ DES PIÈCES D'ORIGINE POUR CONSERVER L'APPLICATION DE LA GARANTIE.

TOUTES LES PIÈCES NON RÉFÉRÉES SONT INTERCHANGEABLES AVEC LEURS OPPOSÉS.

325630C

TRACTEUR TONDEUSE 36" MODELE D3554-200

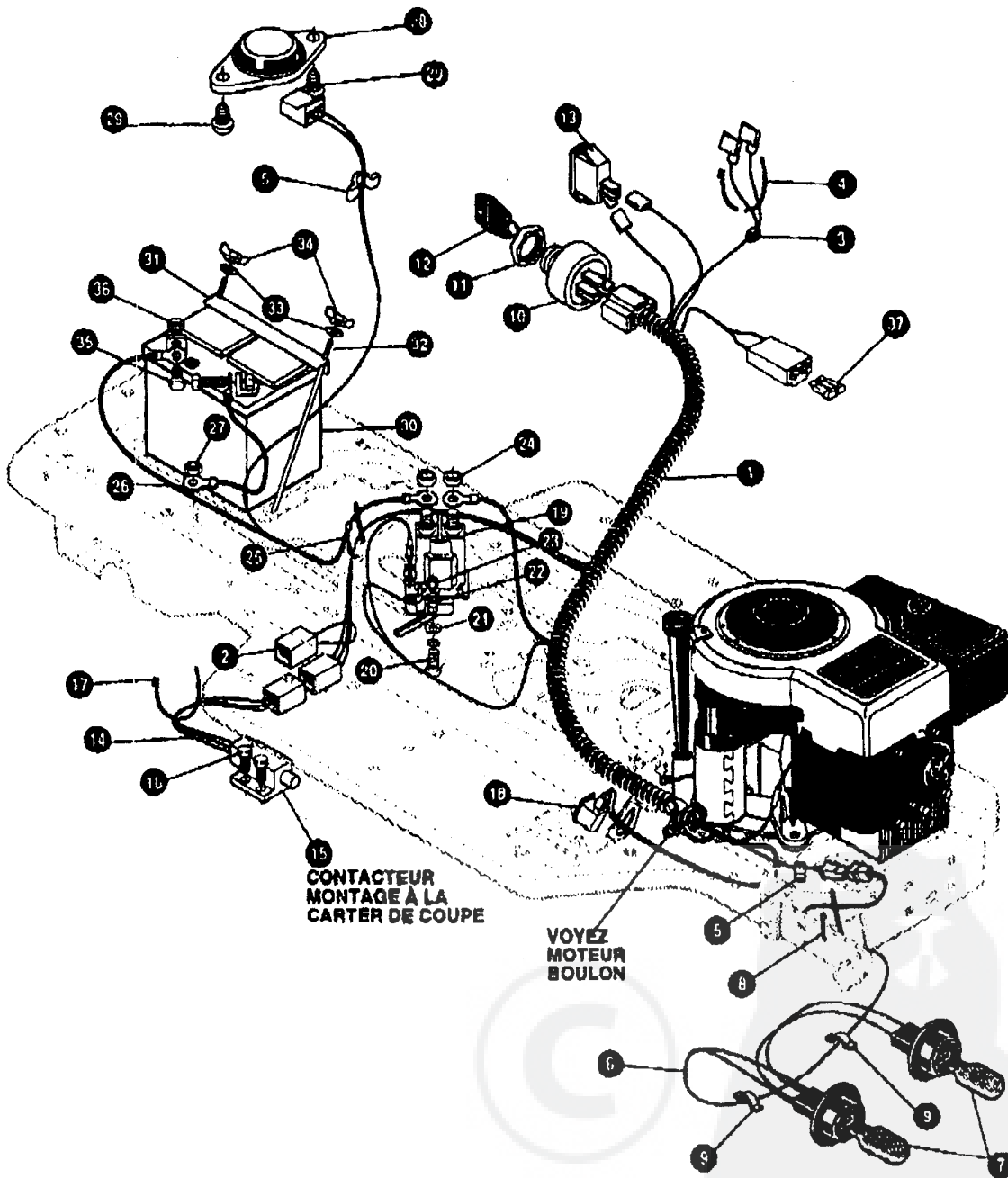
KEY#	PART#	DESCRIPTION	QTY.
1	^	SP ASSEMBLY, MOWER 36" RD DECK	1
2	47816	PIN, .495 X 1.750 CLEVIS-SHORT	1
3	56180	PIN, HAIR .091 DIA X 1.62 LG	1
4	7354	RETAINER BELT	1
5	303028	PULLEY, IDLER BFF 3.13 DIA	1
6	57217-853	BRACKET, L-SHAPED BRAKE ROD	1
7	• 122168	SCREW, 3/8-16 X 1.75 HHC	1
8	• 448363	WASHER, FLAT .375 X .89 X .082	1
9	• 1498	NUT, 3/8-16 REGHXCTRLK	1
10	35410	SPRING, .071 X .52 X 4.37	1
11	52836	SPRING	1
12	48563	BOLT, .375 X .250 SHWA 1/4-20	1
13	• 120392	WASHER, FLAT .281 X .63 X .065	2
14	• 1502	NUT, 1/4-20 REGHEXCTRLK	1
15	308701	BELT, V 5L 80.00 DECK 36RD EXP	1
16	46365-853	COVER, QUILL LH	1
17	46364-853	COVER, QUILL RH	1
18	• 120228	SCREW, 5/16-18 X 1.00 HHC	4
19	• 120393	WASHER, FLAT .344 X .89 X .085	4
20	• 1498	NUT, 5/16-18 REGHEXCTRLK	4
21	302811	WHEEL, SD 8.00 OD X 1.38 WD	2
22	23763	BOLT, .500 X 1.390 HSH 3/8-16	2
23	• 1498	NUT, 3/8-16 REGHXCTRLK	2
24	307050	LEVER HEIGHT ADJ	1
25	• 120696	SCREW, 5/16-18 X 2.25 HHC	1
26	53246	SPRING	1
27	• 1498	NUT, 5/16-18 REGHEXCTRLK	1
28	53985	GRIP, HAND	1
29	305383	LEVER, BLADE ENGAGE 32 RD & 36 RD	1
30	1289	BOLT, .375 X .250 SHWA 1/4-20	1
31	46561	SPRING, TORSION 36 RD, 32 RD	1
32	• 1502	NUT, 1/4-20 REGHEXCTRLK	1
33	63697	NUT, 1/2 PUSHON	1
34	46478	GRIP, HAND .50ID 3.37 LG BLK	1
35	300341	CABLE, LIFT 21.70 F-5 20 X 8-8	1
36	8405	CLEVIS, LIFT CABLE	1
37	• 120372	NUT, 1/4-20 REGSQ	1
38	39522	PIN CLEVIS .312 X .812	1
39	56180	PIN, HAIR .091 DIA X 1.62 LG	1
40	• 120228	SCREW, 5/16-18 X .83 HHC	1
41	• 1498	NUT, 5/16-18 REGHEXCTRLK	1
42	50993	CHUTE EXTENSION PLASTIC 36" RD	1
43	120123	PIN, COTTER .125 DIA X 1.25 LG	2
44	315317	PULLEY ENGINE 3.0 X 4.0 LG X 5.00	1
45	303151	KEY SQUARE .249 X 4.50	1
46	304246	SPACER SLEEVE 1.01 X 1.48	1
47	56431	WASHER, .980 ID X 1.38 X 4.37 PILOT	1
48	120383	WASHER, REGSPTLK	1
49	433146	SCREW, 7/16-20 X 4.25 HHC	1
50	323102	SUPPORT GUIDE	1
51	523105	GUIDE MOWER DECK	1
52	57569	RETAINER .31 ID X .62 X .03 WIRE	1
53	122017	SCREW, 5/16-18 X 1.00 HHC GR2	2
54	• 1498	NUT, 5/16-18 REGHEXCTRLK	2

• INDICATES STANDARD HARDWARE ITEMS.

^ ORDER INDIVIDUAL PARTS

TRACTEUR TONDEUSE 36" MODELE D3554-200

FAISCEAU ELECTRIQUE



UTILISEZ DES PIÈCES D'ORIGINE POUR CON-
SERVER L'APPLICATION DE LA GARANTIE.

TOUTES LES PIÈCES NON
REFEREES SONT
INTERCHANGEABLES AVEC
LEURS OPPOSEES.

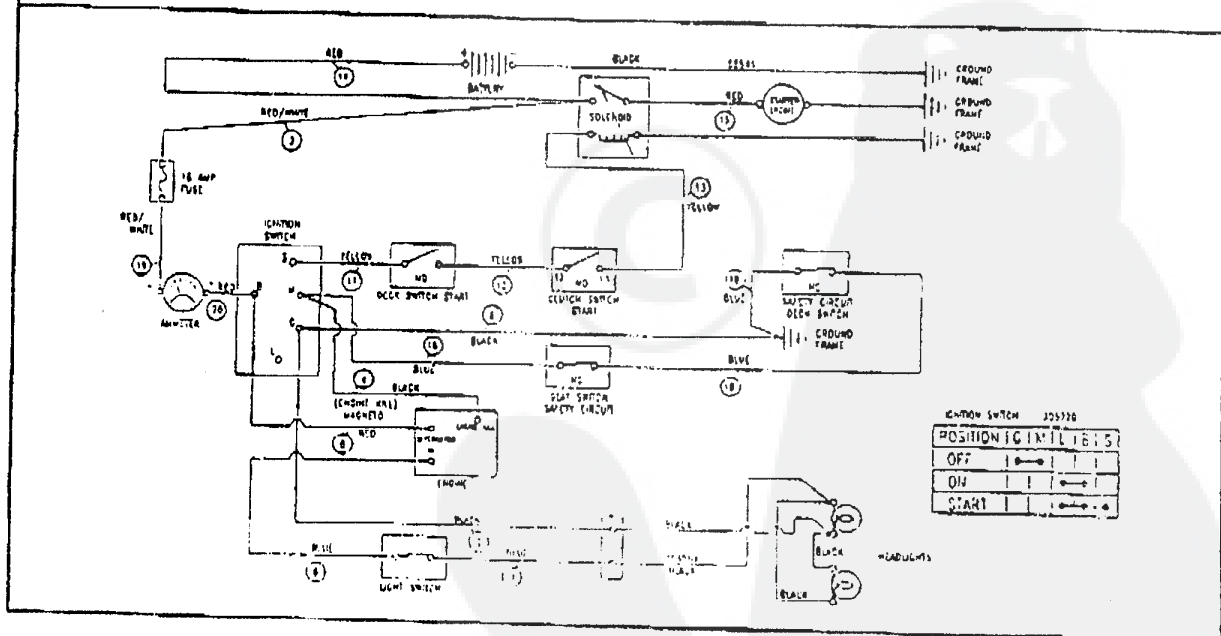
328109A

TRACTEUR TONDEUSE 36" MODELE D3554-200

KEY#	PART#	DESCRIPTION	QTY.
1.	320048	WIRE HARNESS SF 12 B&S IC W/AMM	1
2.	322296	BY-PASS FOR GROUND SUPPORT	1
3.	322298	SPLICER	1
4.	57444	CABLE TIE	1
6.	41482	PRESS CLIP, 1.380 LG .265 ID	1
8.	303084	ASSEMBLY, LIGHT WIRE-1/4 TURN	2
7.	316823	BULB, HEADLAMP	1
8.	57444	TIE, CABLE BLACK NYLON 5.62 L	2
9.	41482	PRESS CLIP, 1.380 LG .265 ID	1
10.	327354	SWITCH, IGNITION & LIGHTS	2
11.	327352	NUT, 5/8-8 ACME DELTA	1
12.	327349	KEY IGNITION SWITCH, STEEL	1
13.	300334	LIGHT SWITCH ON/OFF PANEL MNT.	1
14.	57588	HARNESS, DECK WIRE SHORT 4 WIRE	1
15.	57476	SWITCH, SCREW MOUNT DP NC NO BLK	1
16.	57220	SCREW, #12 X .50 PHPNHTAP BLK	1
17.	57444	TIE, CABLE BLACK NYLON 5.62 L	2
18.	326653	SWITCH,SNAPMNT NO .055/118 BLK	1
19.	53716	SOLENOID	1
20.	187745	SCREW, 1/4-20 X .75 HXSEMMA	2
21.	1084	WASHER, FLAT .281 X 1.00 X .083	1
22.	1502	NUT, 1/4-20 REGHEXCTRLK	1
23.	271172	NUT, 1/4-20 REGHEXKEPS	2
24.	271187	NUT, 5/16-24 HKEPS	1
25.	57444	TIE, CABLE BLACK NYLON 5.62 L	2
26.	55511	WIRE, GROUND, 12.5"	1
27.	271184	NUT, 5/16-18 HEXKEPS	1
28.	57647	SWITCH, SEAT	1
29.	180505	SCREW, 1/4-20 X .38PHPNMA GR2	1
30.	57488	BATTERY, YUASA 12V 6-PLATE	2
31.	324719	BATTERY BRACKET	1
32.	40234	BATTERY ROD	1
33.	120392	WASHER, FLAT .281 X .63 X .085	2
34.	325232	WINGNUT, 1/4-20 NYLON	2
35.	120854	SCREW, 1/4-20 X .63 HHC	2
36.	271172	NUT, 1/4-20 REGHEXKEPS	2
37.	302031	FUSE, 15 AMP SPADE TYPE	1

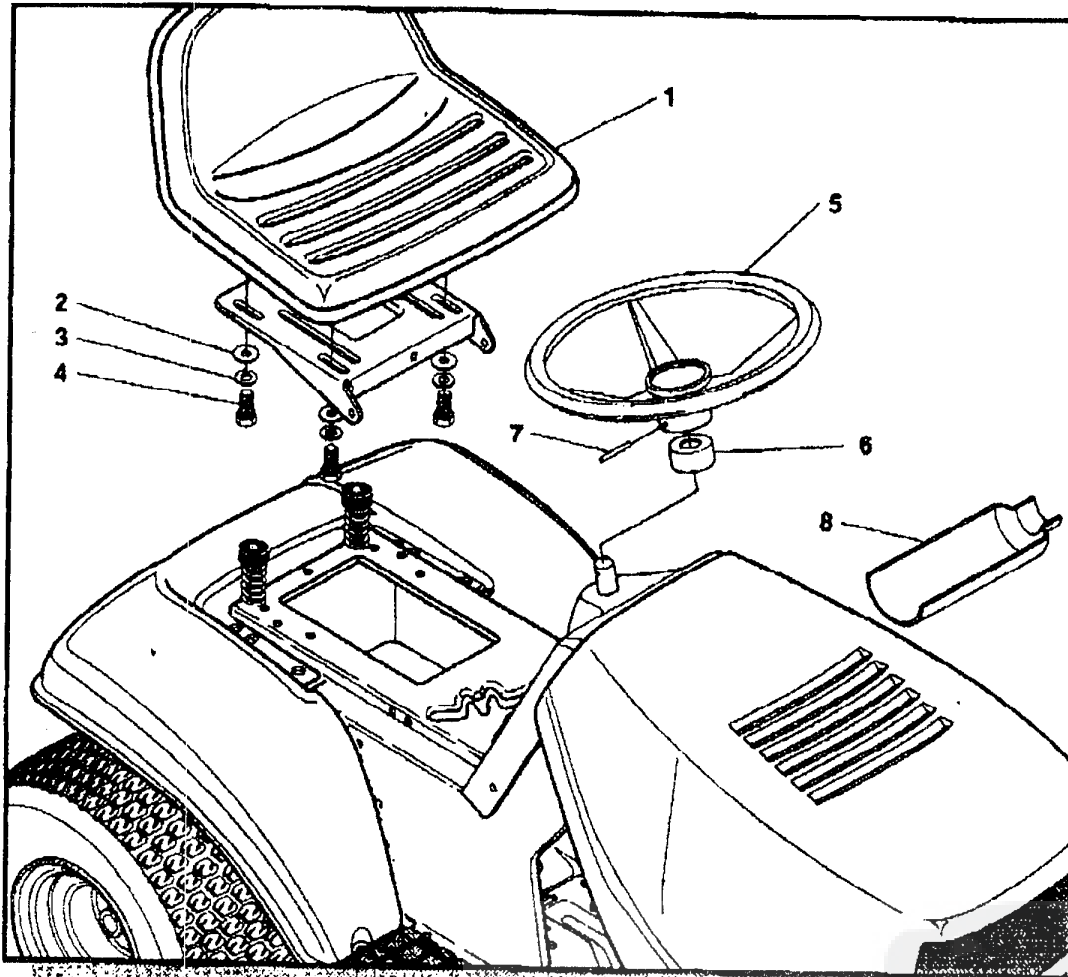
- INDICATES STANDARD HARDWARE ITEMS
- SPADE TYPE FUSE INCLUDED WITH THE WIRE HARNESS.

SCHEMATIC WIRING:



TRACTEUR TONDEUSE 36" MODELE D3554-200

CHALAND ASSEMBLAGE



CUSTOMER ASSEMBLY VIEW 315134 PARTS BAG ASSY QTY1

KEY#	PART#	DESCRIPTION	QTY
1	57452	SEAT MV350	1
2	120393	WASHER,FLAT .344 X .69 X .065	4
3	120530	WASHER, HVSPLTLK .328 X .60 X .109	4
4	122007	SCREW, 5/16-18 X .75 HHC	4
5	301251	STEERING WHEEL	1
6	323758	STEERING, SLEEVE	1
7	456378	ROLL PIN .250 DIA X 2.0 LG	1
8	54873	OIL TROUGH	1

316235D