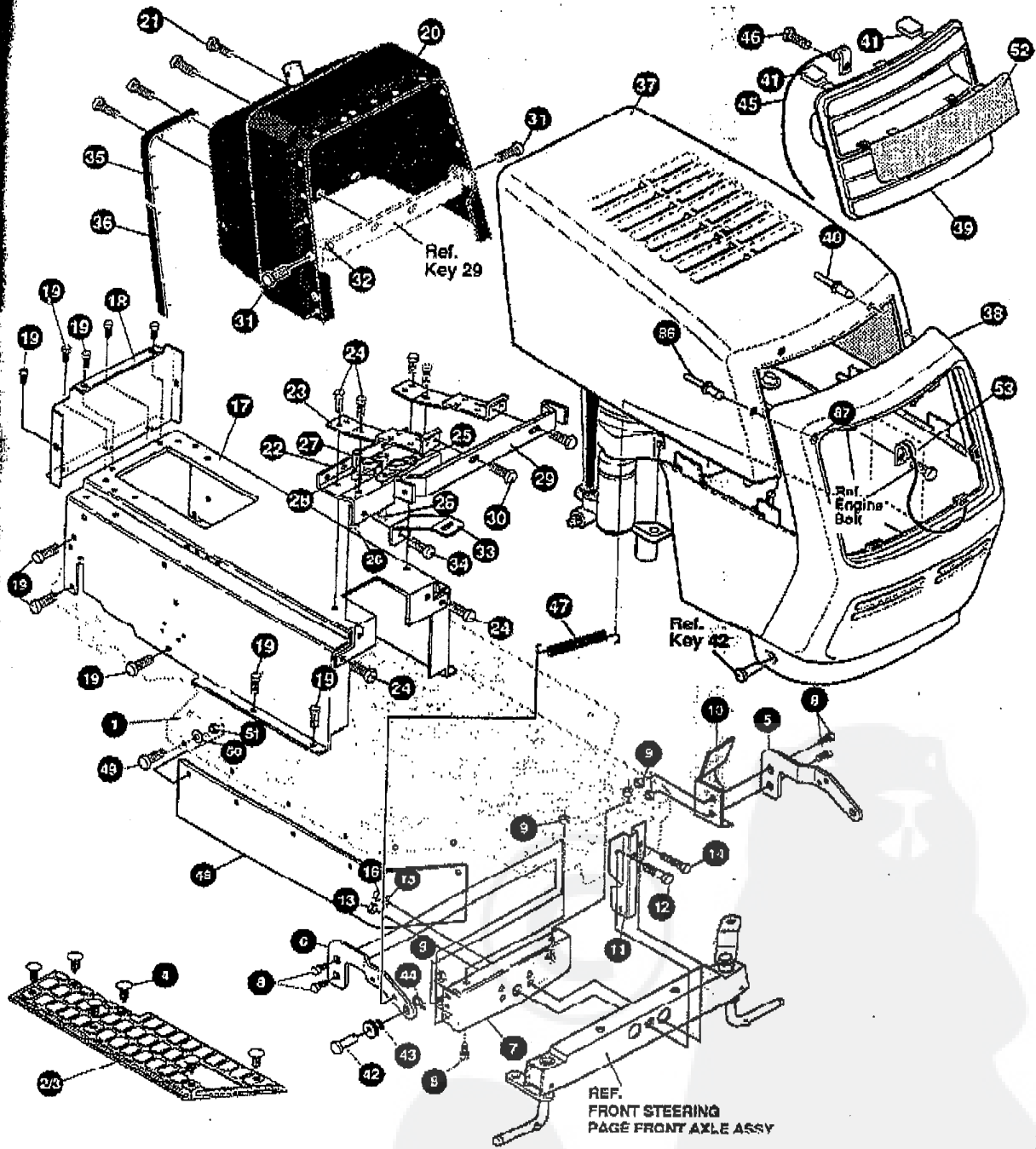


3554-220

REPAIR PARTS



NOTE: ALWAYS USE ORIGINAL EQUIPMENT PARTS. Use of service/replacement parts other than original equipment parts may void your warranty.

ALL UNNUMBERED ITEMS ARE INTERCHANGEABLE WITH OPPOSITE SIDE

329120E

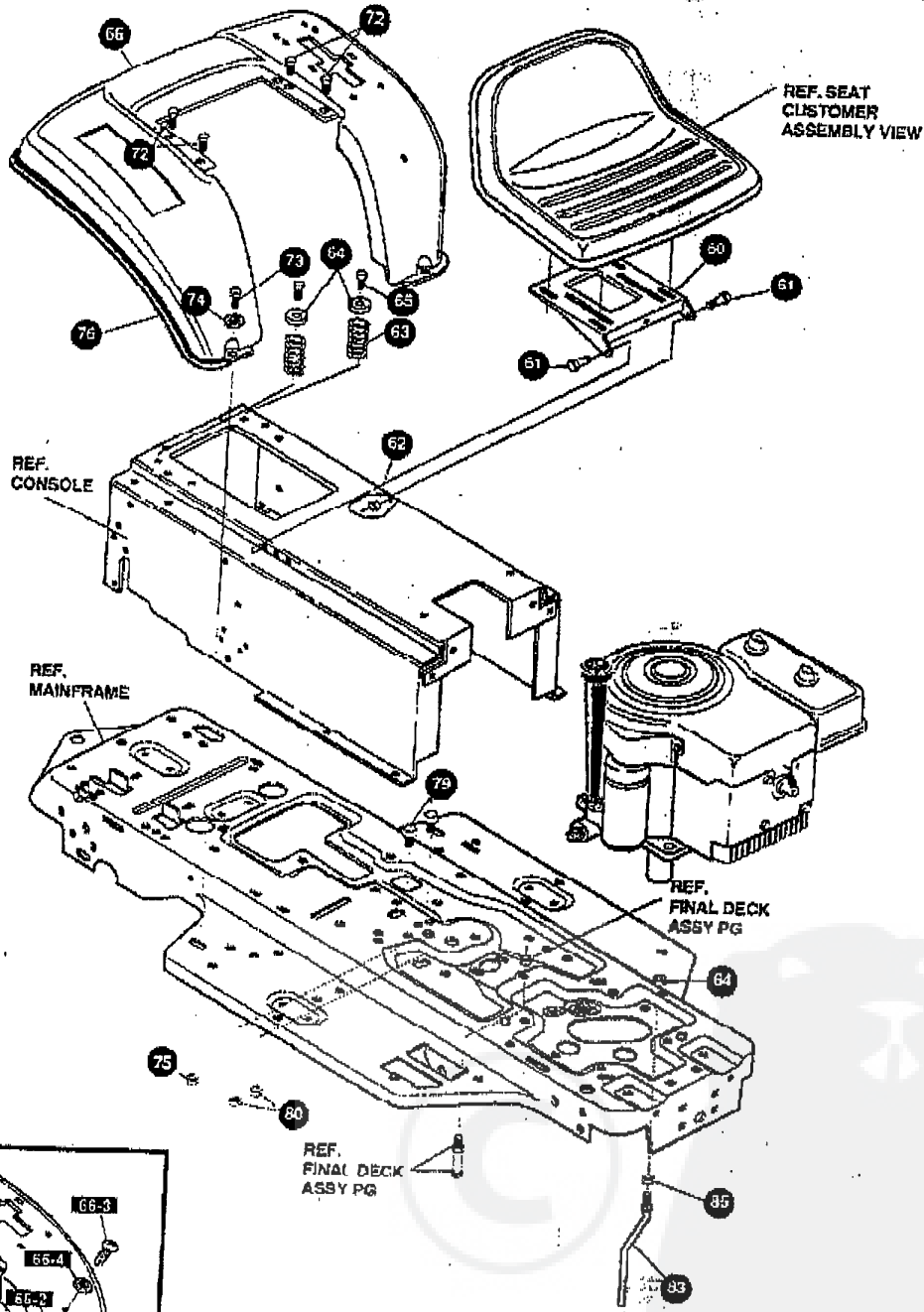
CHASSIS & BODY

E3554-220

KEY #	PART #	DESCRIPTION	QTY.
1	332319-878	MAIN FRAME	1
2	310003	FOOT PAD, LH	1
3	310004	FOOT PAD, RH	1
4	309236	FASTENER, RATCHET	12
5	326873-853	BRACKET, GRILLE LH	1
6	326874-853	BRACKET, GRILLE RH	1
7	56362-859	BRKT, SUPPORT, FRONT AXLE	1
8	328154	SCREW, 5/16-18X1 DWDFLLK	6
9	55273	NUT, 5/16-18 HXWDFLLK	6
10	327687-853	SHIELD HEAT SF B&S	1
11	321136-070	BRACKET, HANGER 30"	1
12	50720	BOLT, .625X2.875 SPSH 1/2-20	1
13	274654	NUT, 1/2-20 REGHXCTRLK	1
14	180138	SCREW, 3/8-16X3.00 HHC	4
15	2483	WASHER, 3/8ID X 1.25DX .07 BELLVL	4
16	1499	NUT, 3/8-16 REGHXCTRLK	4
17	324996-830	CONSOLE, MOLDED DASH	1
18	56235-830	CONSOLE, REAR COVER	1
19	550042	SCREW, 1/4-20X .50 WAHHTAP	15
20	325766	DASH	1
21	305850	SCREW, 1/4-20X .50PHPTAP	4
22	327583-853	SUPPORT, SF MLD DSH	2
23	327684-853	SUPPORT, SF MLD DSH GAS TANK	2
24	995346	SCREW, 1/4-20X .50 WAHHTAP	6
25	327444	BRNG FL, .755ID, .226 MTNG HOLES	1
26	180020	SCREW, 1/4-20X .75 HHC	4
27	46931	NUT, 1/4-20 WDFL MAC-LOCK	4
28	327390	BRNG FL, .560ID, .228 MTG HOLES	1
29	327078-853	STRAP, DASH SUPPORT	1
30	995346	SCREW, 1/4-20X .50 WAHHTAP	2
31	165941	SCREW, 10-24X .63 PHFLTMA	2
32	308459	NUT, #10-24 HXHDNYLK	2
33	326924-853	CONSOLE SUPPORT BRKT	2
34	995346	SCREW, 1/4-20X .50 WAHHTAP	2
35	328141	BUMPER, HOOD/DASH TOP & CORNER	2
36	328142	BUMPER, HOOD/DASH SIDE STRIP	2
37	329145	HOOD	1
38	329178	GRILLE	1
39	329144	INSERT, GRILLE	1
40	329235	RIVET, POP 3/16DIA X .75 LG FLG	2
41	306857	CLIP, TINNEMAN VER II HOOD	7
42	323044	PIN, CLEVIS .500 X .49/51 LGTH	2
43	326522	BRNG HOOD .505ID X .625OD X 1.12FL	2
44	8260	PIN, HAIR .091 DIA X 1.66LG	2
45	315899	LANYARD, HOOD 15.00 LG	1
46	49050	SCREW, 1/4-10X .75PHPTAP	1
47	304784	SPRING, HOOD LATCH	1
48	305395	BELT GUARD SF RUBBER 7 X 25.46	2
49	57094	SCREW, 10-24X .63 TRHMA	12
50	1501	WASHER, FLAT .203X .56X .040	12
51	308459	NUT, #10-24 HXHDNYLK	1
52	326194	LENS	1
53	301452	FOIL, HEAT REFLECTOR	1
86	333225	RIVET, POP 3/16DIA X 1.0LG FLG	2
87	1501	FLATWASHER, .203X .56X .040	2
	303383	ENGLISH OPERATOR MANUAL	1
	333384	FRENCH OPERATOR MANUAL	1
	333385	GERMAN OPERATOR MANUAL	1
	333316	ENGLISH PARTS MANUAL	1
	323000	ENGLISH GRASS CATCHER MANUAL	1
	323207	FRENCH GRASS CATCHER MANUAL	1
	323208	GERMAN GRASS CATCHER MANUAL	1

554-220

REPAIR PARTS



NOTE: ALWAYS USE ORIGINAL EQUIPMENT PARTS. Use of service/replacement parts other than original equipment parts may void your warranty.

ALL UNNUMBERED ITEMS ARE INTERCHANGEABLE WITH OPPOSITE SIDE

329120E

E3554-220

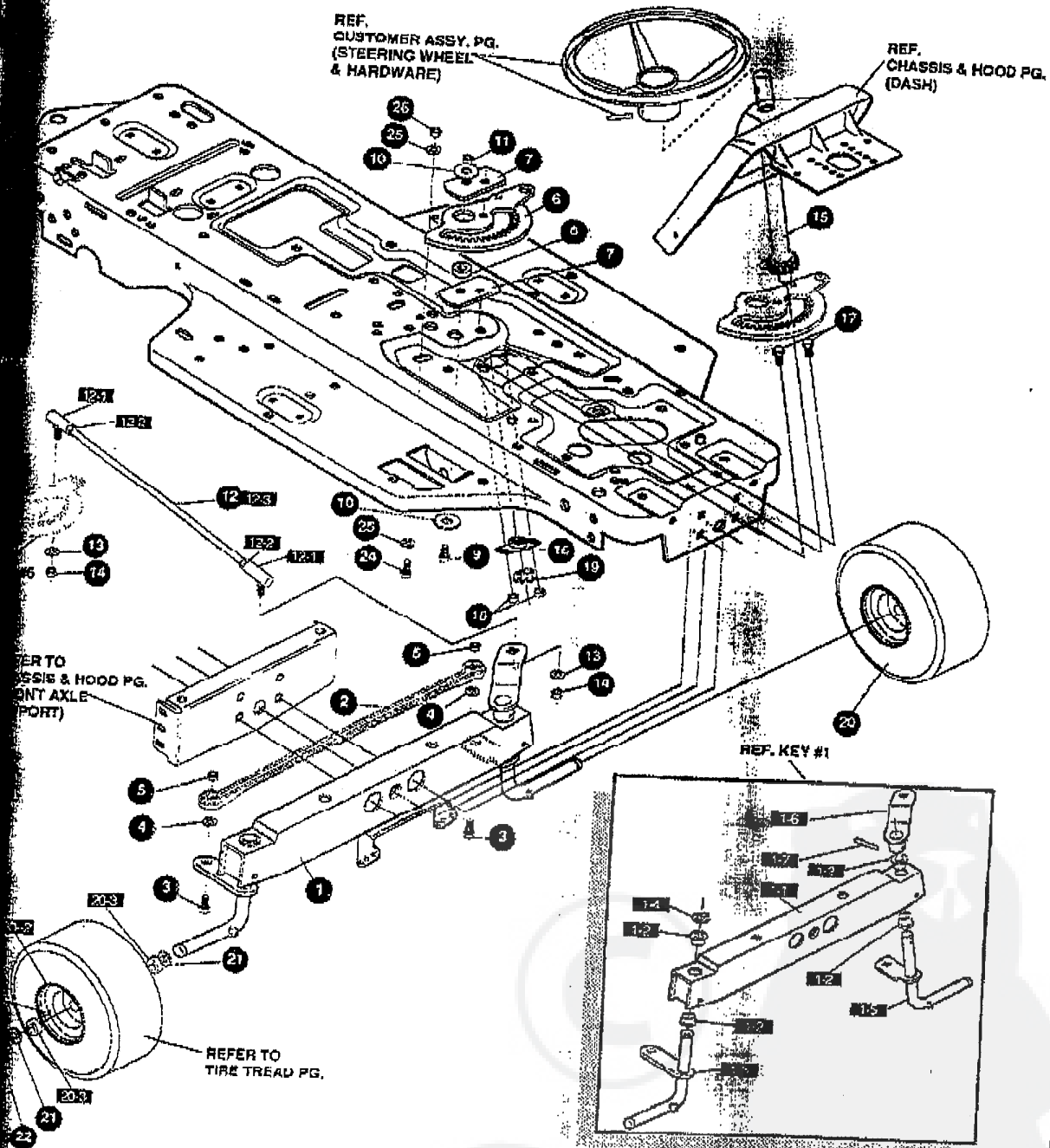
CHASSIS & HOOD ASSEMBLY

KEY #	PART #	DESCRIPTION	QTY.
60	56867-878	SEAT PLATE	1
61	20507	BOLT, .437X.156 HSH 5/16-18	2
62	1498	NUT, 5/16-18 REGHEXCTRLK	2
63	330463	SPRING, SEAT 1.500DX2.25LG	2
64	120392	FLATWASHER, .281X.63X.065	2
65	995346	SCREW 1/4-20X.50 WAHHTAP	2
66	*	ASSEMBLY, FENDER	1
66-1	932423-879	FENDER	1
66-2	9239	CLEVIS	1
66-3	439455	SCREW, 5/16-18X.56PMPNMA BKPH	1
66-4	301551	WASHFR, 344IDX1.50DX.08 CU ZN	1
66-5	120373	NUT, 5/16-18 SQ	1
72	995346	SCREW, 1/4-20X.50 WAHHTAP	4
73	180081	SCREW, 5/16-18X1.25 HHC	2
74	446363	WASHER, FLAT .375X.88X.082	2
75	55273	NUT, 5/16-18 HXWDFLLK	2
76	55023	TRIM, STRIP, BLACK—SMALL, W/ ADH	75IN.
79	53446	PIN, 5/16-18 HOOD LATCH	2
80	271184	NUT, 5/16-18 HEXKEPS	2
83	50653	GUIDE, BELT	1
84	41529	NUT, 3/8-16 HXCTRLKJAM	1
85	271190	NUT, 3/8-16 HEXKEPS	1

* ORDER INDIVIDUAL PARTS.

554-220

REPAIR PARTS



ALWAYS USE ORIGINAL EQUIPMENT
 Use of service/replacement parts other than
 original equipment parts may void your warranty.

ALL UNNUMBERED
 ITEMS ARE INTERCHANGEABLE
 WITH OPPOSITE SIDE

329283D

E3554-220

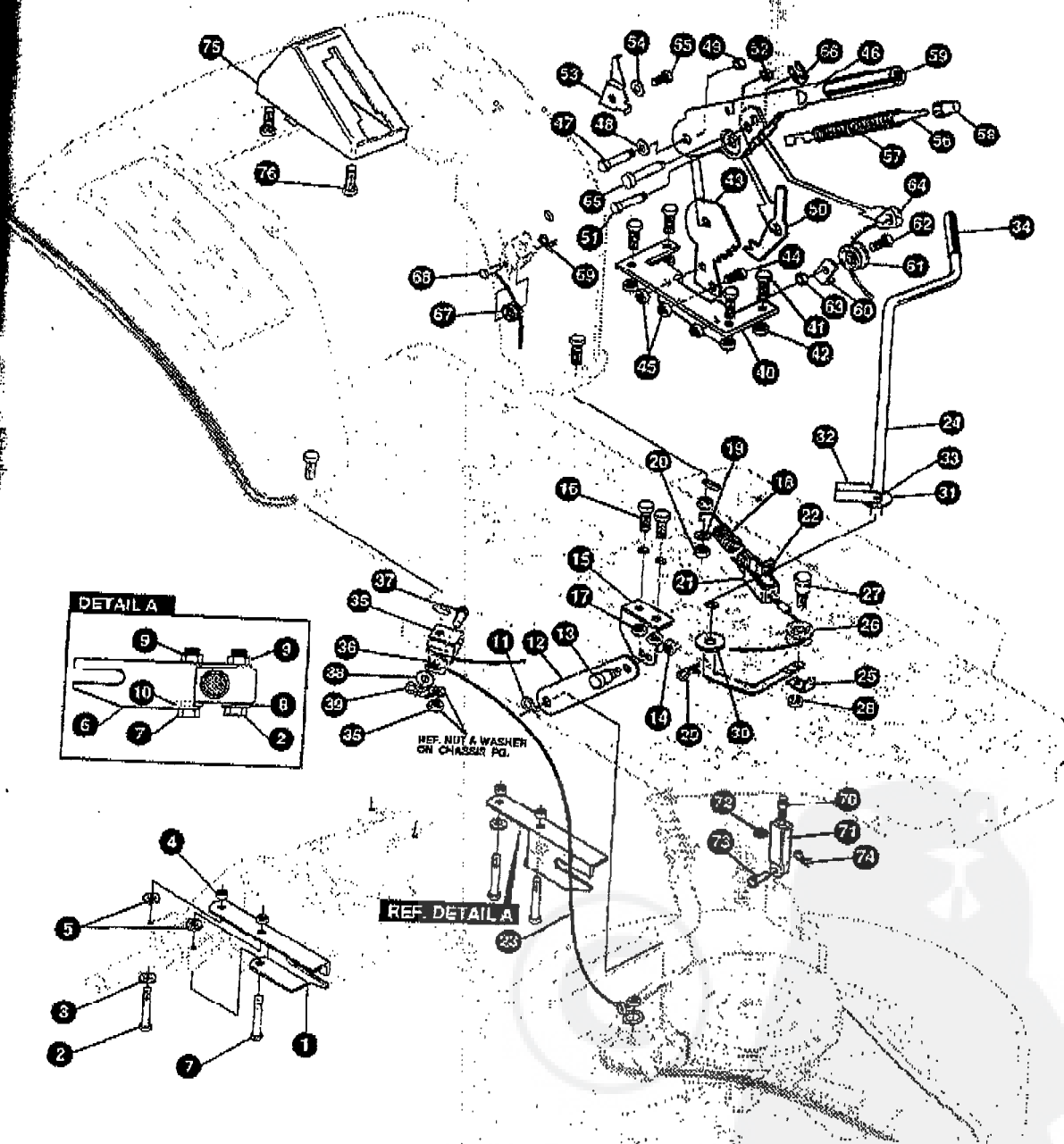
STEERING ASSEMBLY

KEY #	PART #	DESCRIPTION	QTY.
1		AXLE FRONT ASSY, SF LONG	1
1-1	312280-879	FRONT AXLE	1
1-2	50545	BEARING, FL .759IDX1.002ODX 75	4
1-4	36625	RING, RETEX .57X.05TRU5133-75	1
1-5	310367	SPINDLE ASSY, LH LONG	1
1-6	327619	ARM ASSY, FRONT STEERING	1
1-7	454565	PIN, SPRING.250DIA X1.25LG HVPL	1
2	302688	TIE ROD, STAMPED 19.31LG W-SEC	1
3	180124	SCREW, 3/8-16X1.25 HHC	2
4	120382	WASHER, REGSPTLK.393X.68X.10	2
5	1499	NUT, 3/8-16 REGHXCTRLK	2
6	324752	GEAR, SECTOR SF4WS HT	1
7	333289	PLATE SECTOR	2
8	330021	BUSHING, SECTOR GEAR	1
9	181643	SCREW, 3/8-24X1.50 HHC	1
10	845	WASHER, FLAT .390X1.25X.119	2
11	412349	NUT, 3/8-24 HXCTRLK	1
12	328808	DRAG LINK ASSY 17.69LG	1
12-1	57158	BALL JOINT 3/8 THD SHORT STUD	2
12-2	124925	NUT, 3/8-24 REGHEXJAM	2
12-3	56190	DRAG LINK	1
13	120382	WASHER, REGSPTLK.393X.68X.10	2
14	120369	NUT, 3/8-24 REGHEX	2
15	327395	SHAFT, PIN-STR	1
16	325692	BRNG, FL .50 IDX1.970ODX	1
17	325505	SCR 1/4-20X.75 (TO 30-35 FT#)	2
18	46931	NUT, 1/4-20 WDPL MAC-LOCK	2
19	20864	RING, RET E .39X.04TRU5133-50	1
20	41059	TIRE & RIM, PU 13X5.0X6 TUR	2
		SEE TIRE TREAD PAGE	
20-1	24167	VALVE STEM	2
20-2	39937	HUB	2
20-3	314416	BEARING	4
21	642	WASHER, FLAT .755X1.31X.075	4
22	36625	RING, RETEX .57X.05TRU5133-75	2
23	40394	HUB CAP, 1.500ID X 7/8LG	2
24	180124	SCREW, 3/8-16X1.25 HHC	1
25	120394	WASHER, FLAT .406X.81X.065	2
26	45171	NUT, 3/8-16 HWDFL WHIZ-LOCK 2N	1

* ORDER INDIVIDUAL PARTS.

3554-220

REPAIR PARTS



NOTE: ALWAYS USE ORIGINAL EQUIPMENT PARTS. Use of service/replacement parts other than original equipment parts may void your warranty.

ALL UNNUMBERED ITEMS ARE INTERCHANGEABLE WITH OPPOSITE SIDE

331231B

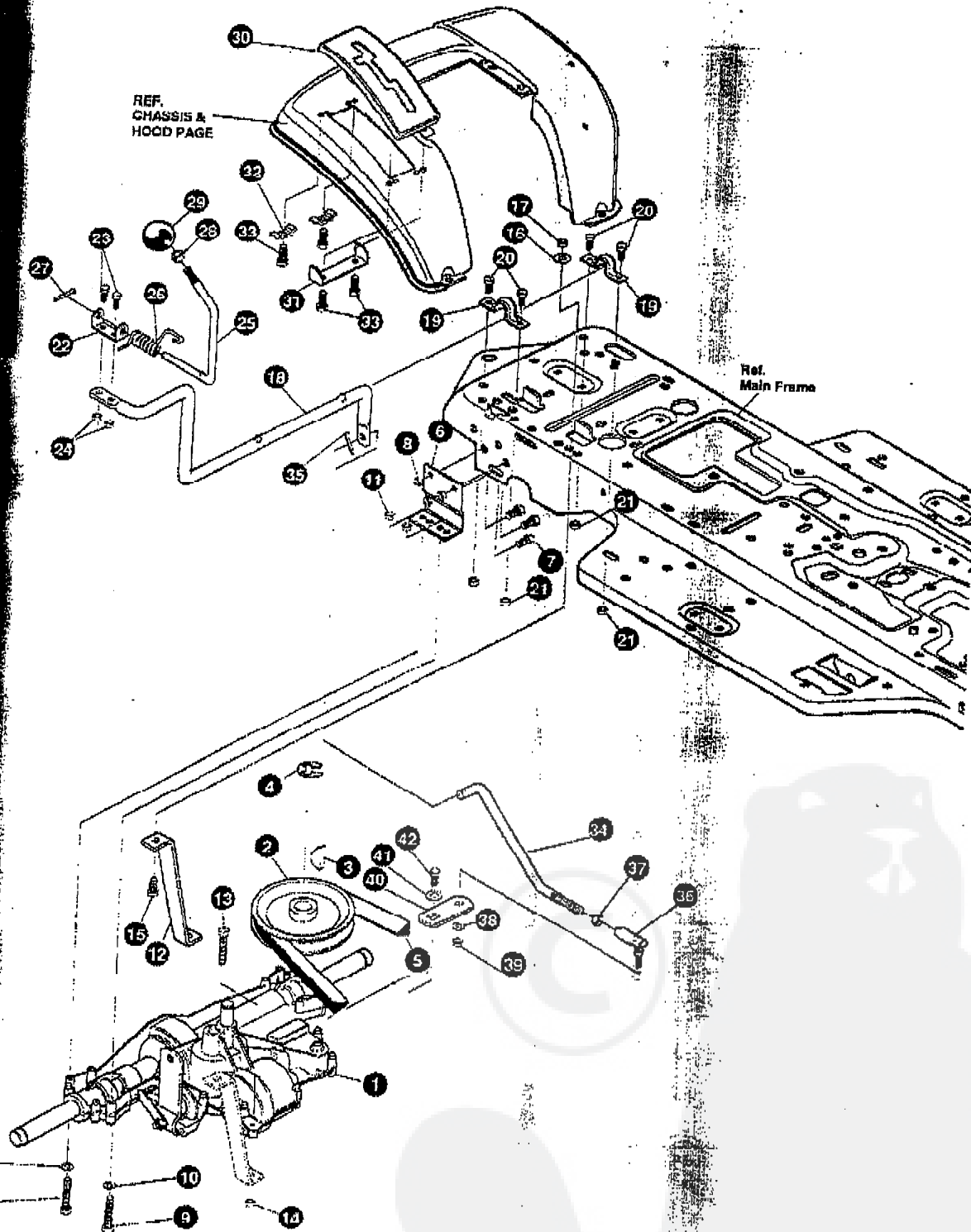
E3554-220

MOWER SUSPENSION ASSEMBLY

KEY #	PART #	DESCRIPTION	QTY
1	321371	BRKT, REAR SUPT RH	1
2	180091	SCREW, 5/16-18X2.50 HHC	2
3	120393	WASHER, FLAT .344X.69X.065	1
4	1498	NUT, 5/16-18 REGHEXCTRLK	2
5	314702	SPACER, SLEV .344X1.00X .500PM	2
6	321370	BRKT, REAR SUPT LH	1
7	180113	SCREW, 5/16-18X3.00 HHC	2
8	120393	WASHER, FLAT .344X.69X.065	1
9	1498	NUT, 5/16-18 REGHEXCTRLK	2
10	314702	SPACER, SLEV .344X1.00X .500PM	1
11	56180	PIN, HAIR .091 DIA X 1.62LG	1
12	323899	BRKT, LINK LOWER BLKPHOS	1
13	813560	BOLT, .500X .225 HSSH 5/16-18	1
14	1498	NUT, 5/16-18 REGHEXCTRLK	1
15	920605	BRACKET, LIFT BAR 30"	1
16	180077	SCREW, 5/16-18X .75 HHC	2
17	1498	NUT, 5/16-18 REGHEXCTRLK	2
18	300473	SPRING, TENSION 7.52LG+17LB/IN	1
19	418924	WASHER, FLAT .344X1.13X.062	1
20	1498	NUT, 5/16-18 REGHEXCTRLK	1
21	9405	CLEVIS, LIFT CABLE	1
22	120372	NUT, 1/4-20 REGSQ	1
23	322261	CABLE, CLUTCH 31.31 LG (30"SF)	1
24	328139	LEVER, CLUTCH SF 30" SUS ZINC	1
25	1288	BRKT, CABLE RETAIN	1
26	48306	PULLEY, POWDER METAL	1
27	58336	BOLT, .375X .375 HSSH 1/4-20	1
28	1502	NUT, 1/4-20 REGHEXCTRLK	1
29	8260	PIN, HAIR .091 DIA X 1.66LG	1
30	996425	WASHER, FLAT .515X .88X.064	1
31	22265	WASHER, FLAT .515X1.38X.119PL	1
32	305225	STOP, PTO ENGAGE	1
33	326386	PIN, SPRING .187 DIA X 1.13LG HD	1
34	331624	KNOB, ROUND 1.50DIA OR GRIP	1
35	321295-853	CLEVIS, P.T.O. PULLEY	1
36	48306	PULLEY, POWDER METAL	1
37	300317	PIN, CLEVIS .375DIA X .81 LG	1
38	996416	WASHER, FLAT .391X1.00X.125	1
39	8260	PIN, HAIR .091 DIA X 1.66LG	1
40	313926	BRACKET, HEIGHT ADJUST	1
41	180077	SCREW, 5/16-18X .75 HHC	4
42	1498	NUT, 5/16-18 REGHEXCTRLK	4
43	301238	QUADRANT, HEIGHT ADJUST	1
44	180077	SCREW, 5/16-18X .75 HHC	2
45	1498	NUT, 5/16-18 REGHEXCTRLK	2
46	322292-853	HANDLE, LIFT SHORT (30" C.F.)	1
47	300171	BOLT, .500X .270 HSSH 5/16-18	1
48	996418	WASHER, FLAT .506X .75X.024	1
49	44108	NUT, 5/16-18 HWD FLOTRK	1
50	301239	PAWL, SQUARE	1
51	300171	BOLT, .500X .270 HSSH 5/16-18	1
52	44108	NUT, 5/16-18 HWD FLOTRK	1
53	9495	POINTER, HEIGHT ADJ	1
54	136479	WASHER, EXLK .195X.41X.03	1
55	35287	SCREW, #8-32X .38 HHWATAP	1
56	303027	ROD, ACTUATOR-SHORT	1
57	58326	SPRING, HEIGHT ADJUST	1
58	58325	KNOB, HEIGHT ADJ PUSH BUTTON	1
59	58329	GRIP, .750 OD W/ HOLE BLACK	1
60	9149	BRKT, CABLE RETAIN	1
61	48306	PULLEY, POWDER METAL	1
62	58336	BOLT, .375X .375 HSSH 1/4-20	1
63	1502	NUT, 1/4-20 REGHEXCTRLK	1
64	321430	CABLE, LIFT 21.50 - 30"	1
65	300310	PIN, CLEVIS .310DIA+ .478LG	1
66	300311	RING, RET E .31X.25TRUX5133-31	1
67	48306	PULLEY, POWDER METAL	1
68	300317	PIN, CLEVIS .375DIA X .81 LG	1
69	8260	PIN, HAIR .091 DIA X 1.66LG	1
70	120375	NUT, 1/4-20 REGHEX	1
71	9405	CLEVIS, LIFT CABLE	1
72	120372	NUT, 1/4-20 REGSQ	1
73	39522	PIN, CLEVIS .312 X .812	1
74	121222	PIN, COTTER .090 DIA X .75LG	1
75	300335	LIFT COVER	1
76	300340	SCREW, #10 X .75 HHPLAST	3

E 554-220

REPAIR PARTS



ALWAYS USE ORIGINAL EQUIPMENT
 Use of service/replacement parts other than
 original equipment parts may void your warranty.

**ALL UNNUMBERED
 ITEMS ARE INTERCHANGEABLE
 WITH OPPOSITE SIDE**

332252C

3554-220

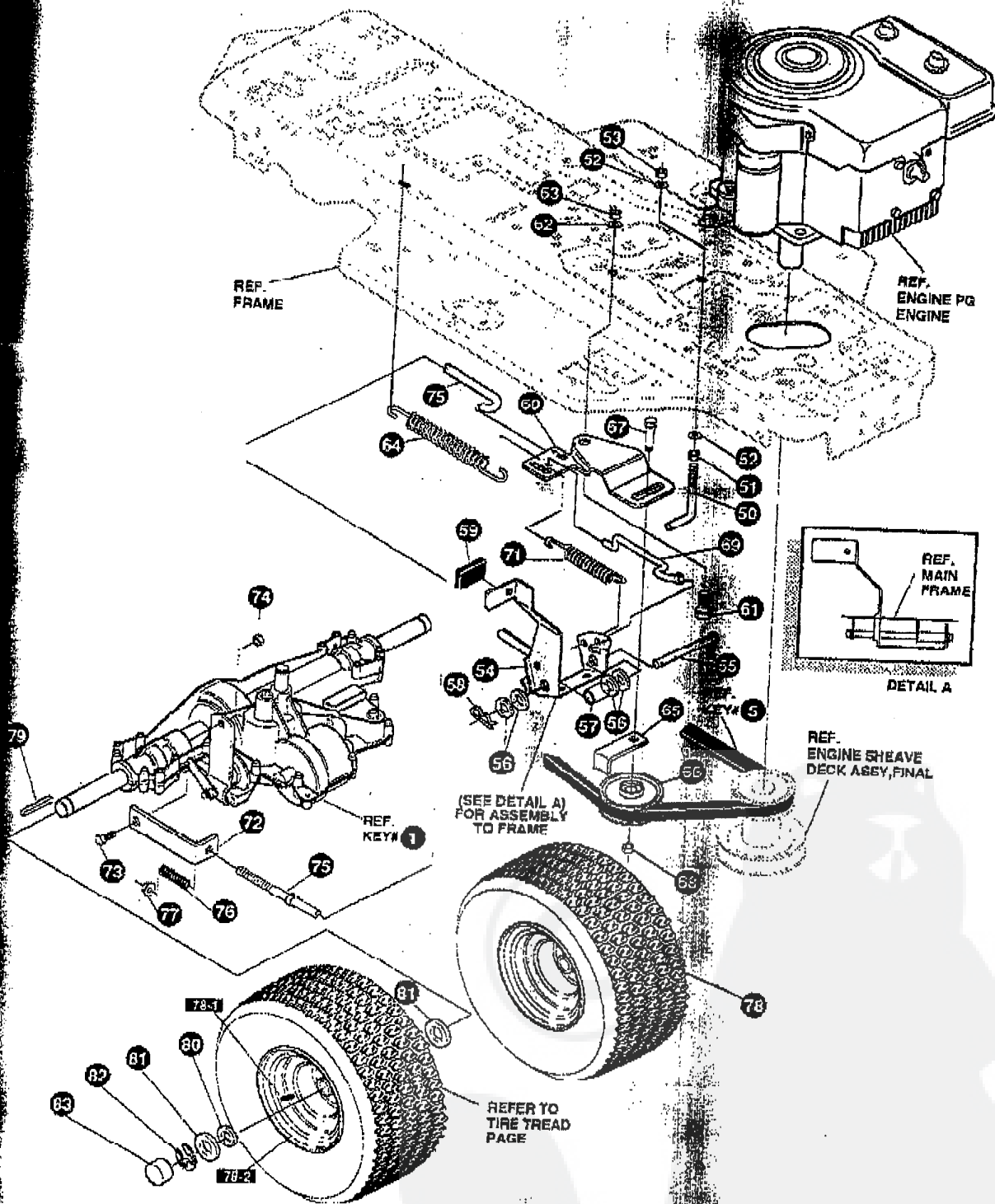
MOTION DRIVE ASSEMBLY

KEY #	PART #	DESCRIPTION	QTY
1		TRANSAXLE 940-007	1
2	303109	PULLEY, 6.6 OD V4L T/A	1
3	50795	KEY, HI-PRO 606 .75DIA X .187WD	1
4	22053	RING, RETEX .58X.035TRU5100-62	1
5	54758	BELT, V 4L 92.00 SF DRIVE	1
6	53768-853	BRACKET, TRANSAXLE	2
7	180077	SCREW, 5/16-18X .75 HHC	6
8	1498	NUT, 5/16-18 REGHEXCTRLK	6
9	180091	SCREW, 5/16-18X2.50 HHC	4
10	120393	WASHER, FLAT .344X .69X.065	4
11	1498	NUT, 5/16-18 REGHEXCTRLK	4
12	323213	BRKT, T/A TORQ.	1
13	180087	SCREW, 5/16-18X2.00 HHC	1
14	1498	NUT, 5/16-18 REGHEXCTRLK	1
15	180079	SCREW, 5/16-18X1.00 HHC	1
16	138485	WASHER, EXLK .320X.61X.03	1
17	1498	NUT, 5/16-18 REGHEXCTRLK	1
18	321849	LEVER, SHIFT LOW SF FNSFT	1
19	802760	CLAMP, 625DIA	2
20	180077	SCREW, 5/16-18X .75 HHC	4
21	1498	NUT, 5/16-18 REGHEXCTRLK	4
22	310356	BRKT, PIVOT SH LEV	1
23	180020	SCREW, 1/4-20X .75 HHC	2
24	1502	NUT, 1/4-20 REGHEXCTRLK	2
25	309635	LEVER, SHIFT UPPER SOF 1/2-13	1
26	310265	SPRING, TORS. .56X.95X.095	1
27	137185	PIN, COTTER .125 DIA X 1.00LG	1
28	120238	NUT, 1/2-13 HEXJAM	1
29	55514	KNOB, ROUND 1.50DIA OR GRIP	1
30	311209	COVER PLASTIC LF P930/F4360-6	1
31	311257-853	BRACKET COVER F-5 FNDR SHIFT	1
32	1841	CLAMP, SPRG 1.17"ID	2
33	311331	SCREW, 1/4-15X.44/.53 HILOHWA	4
34	321844	ROD, CONNECTING, SHIFT	1
35	137185	PIN, COTTER .125 DIA X 1.00LG	1
36	5715A	BALL JOINT 3/8 THD SHORT STUD	1
37	124825	NUT, 3/8-24 REGHEXJAM	1
38	120382	WASHER, REGSPTLK.393X.68X.10	1
39	120369	NUT, 3/8-24 REGHEX	1
40	323212	BRKT, SHIFT	1
41	57157	WASHER, .750X.250 SP-TRANSAXLE	1
42	56255	SCREW, 1/4-28X .75 NYLHHC	1

* ORDER INDIVIDUAL PARTS.

3554-220

REPAIR PARTS



NOTE: ALWAYS USE ORIGINAL EQUIPMENT PARTS. Use of service/replacement parts other than original equipment parts may void your warranty.

ALL UNNUMBERED ITEMS ARE INTERCHANGEABLE WITH OPPOSITE SIDE

332252C

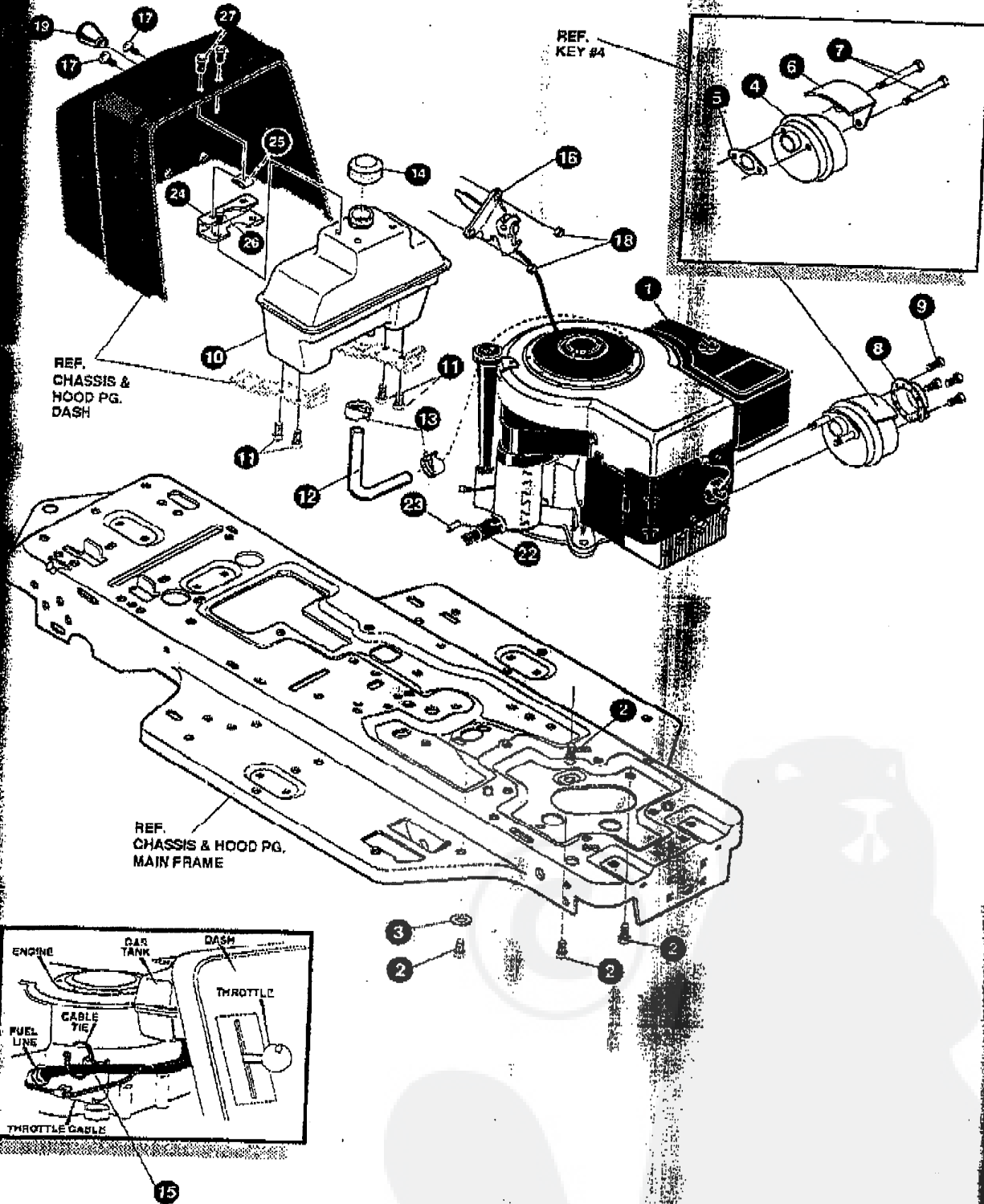
3554-220

MOTION DRIVE ASSEMBLY

KEY #	PART #	DESCRIPTION	QTY
50	49896	BELT GUIDE	1
51	271184	NUT, 5/16-18 HEXKEPS	1
52	120393	WASHER, FLAT .344X.169X.055	2
53	1498	NUT, 5/16-18 REGHEXCTRLK	1
54	331836	ASSY, PEDAL, BRAKE, CLUTCH	1
56	319876	PIN, CLEVIS .500DX4.87LG	1
56	2968	WASHER, FLAT .504X .75X.059	4
57	331972	SPACER, SLEV .53 X .62X1.240	1
58	55180	PIN, HAIR .091 DIA X1.62LG	1
59	46761	PAD, CLUTCH/BRAKE PEDAL	1
60	321969	IDLER ARM BRKT TRACTION	1
61	329989	BOLT, .625X .135 HSSH 5/16-18	1
62	45602	WASHER, FLAT .333X .87X.119	1
63	1498	NUT, 5/16-18 REGHEXCTRLK	1
64	327867	SPRING, 3/4 ODX7.75X.091 TENSION	1
65	39659	RETAINER, BELT	1
66	35374	PULLEY, IDLER V4L 3.06X .62	1
67	45892	BOLT, 3/8-16X1.50 CARR	1
68	1499	NUT, 3/8-16 REGHXCTRLK	1
69	333175	CLUTCH ROD ASSY, .268 DIA 3.92	1
71	326780	SPRING, 3/8ODX2.18 X.055 TENSION	1
72	323210	BRKT, TRCTN	1
73	46824	BOLT, .500X .188 HSSH 5/16-18	1
74	1498	NUT, 5/16-18 REGHEXCTRL	1
75	333263	SF ROD, BRAKE	1
76	313881	SPRING, CLUTCH .625 OD	1
77	90453	NUT, 1/4-20 WDFLLK TOPLOCK	1
78	42090	TIRE & RIM, PU 18X6.5X8TURFWHI	2
		SEE TIRE TREAD PAGE	
77-1	24167	VALVE STEM	2
77-2	35182	HUB	2
79	52928	KEY, SQUARE .1875CX2.25LG	2
80	642	WASHER, FLAT .755X1.31X.075	4
81	42815	WASHER, FLAT .755X1.53X.07	2
82	36625	RING, RETEX .57X.05TRU5133-75	2
83	40394	HUB CAP, 1.500ID X 7/8LG	2

3554-220

REPAIR PART



NOTE: ALWAYS USE ORIGINAL EQUIPMENT PARTS. Use of service/replacement parts other than original equipment parts may void your warranty.

ALL NUMBERED ITEMS ARE INTERCHANGEABLE WITH OPPOSITE SIDE

331113B

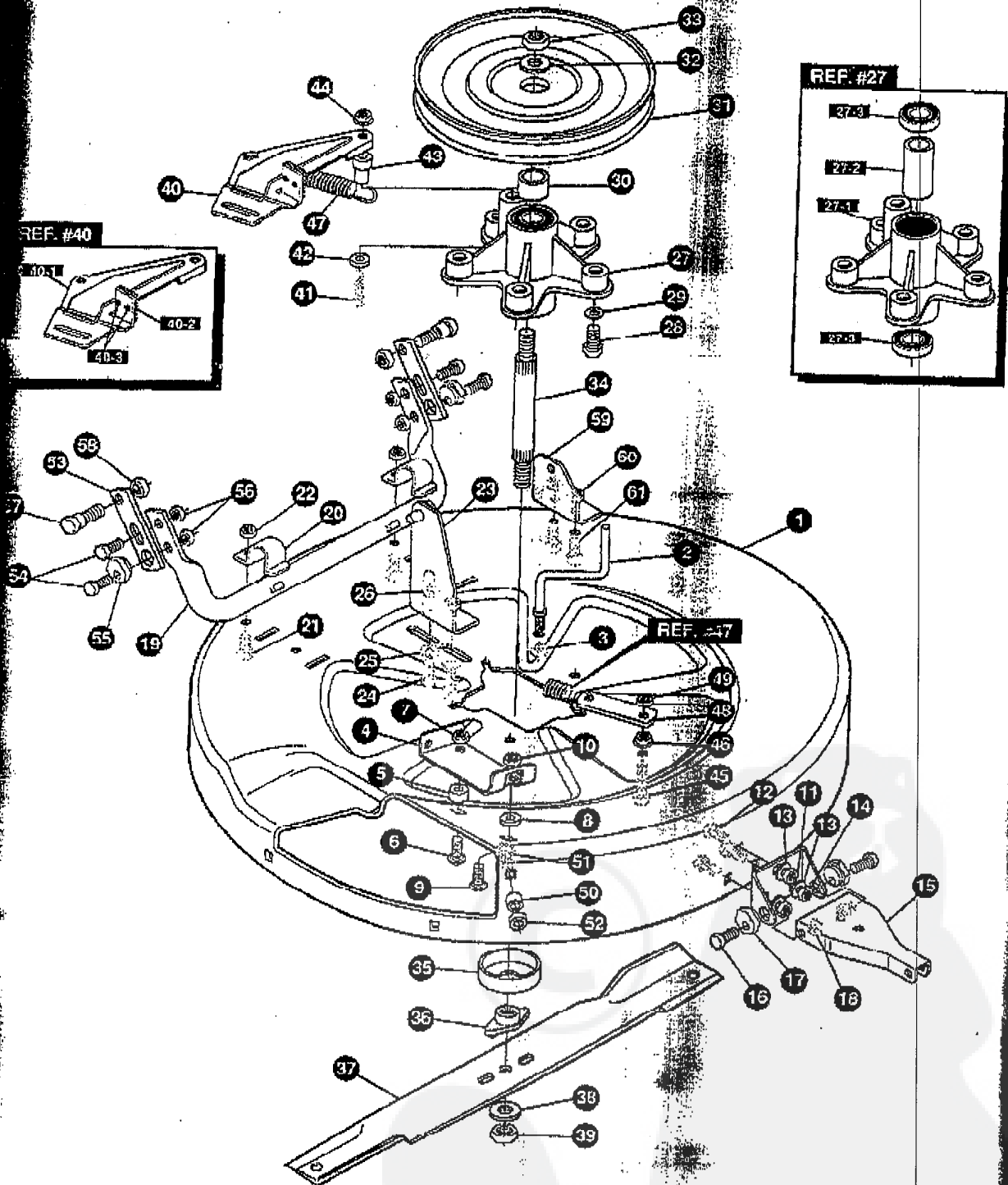
E3554-220

ENGINE & CONTROL ASSEMBLY

KEY #	PART #	DESCRIPTION	QTY
1	ENGINE	10-12HP B&S 3A (SEE ENGINE MANUAL)	1
2	50947	SCREW, 3/8-16X1.25 WAHHTAPBLK	4
3	138489	WASHER, EXLK 384X.89X.04	1
4	57908	MUFFLER, DOM/EXP ROUND	1
5	46708	GASKET, MUFFLER	1
6	54787	SHIELD, HEAT FOR ROUND MUFFLER	1
7	54980	SCREW, 5/16-18X3.50 HHC	2
8	58472	DEFLECTOR SIDE OUT (BS222578)	1
9	35287	SCREW, #8-32X .38 HHWATAP	4
10	314989	TANK, FUEL 1 GAL CLEAR	1
11	300303	SCREW, .25X.75X.51HHWAPLASTITE	4
12	42258	TUBING, .25X.50X BULK GAS LINE	12 IN.
13	47345	CLAMP, FUEL LINE RED	2
14	46704	CAP, GAS 1-1/2-7 THD BLK	1
15	57444	TIE, CABLE BLACK NYLON 5.62L	1
16	56534	CONTROL, THROTTLE LF 12HP 20.5	1
17	155941	SCREW, 10-24X.63 PHFLTMA	2
18	308459	NUT, #10-24 HXHDNYLK	2
19	50607	KNOB, ROUND THROTTLE BLACK	1
22	325547	OIL DRAIN VALVE ASSEMBLY	1
23	327422	CAP, OIL DRAIN VALVE ASM, YELLOW	1
24	328942 953	CENTER SUPPORT, PLASTIC DASH	1
25	328585	TINNERMAN CLIP CB114-1024-4	2
26	300303	SCREW, .26X.75X.51HHWAPLASTITE	2
27	274707	SCREW, 10-24X .50 WAH IMA	2

554-220

REPAIR PARTS



NOTE: ALWAYS USE ORIGINAL EQUIPMENT PARTS. Use of service/replacement parts other than original equipment parts may void your warranty.

ALL UNNUMBERED ITEMS ARE INTERCHANGEABLE WITH OPPOSITE SIDE

321244C

E3554-220

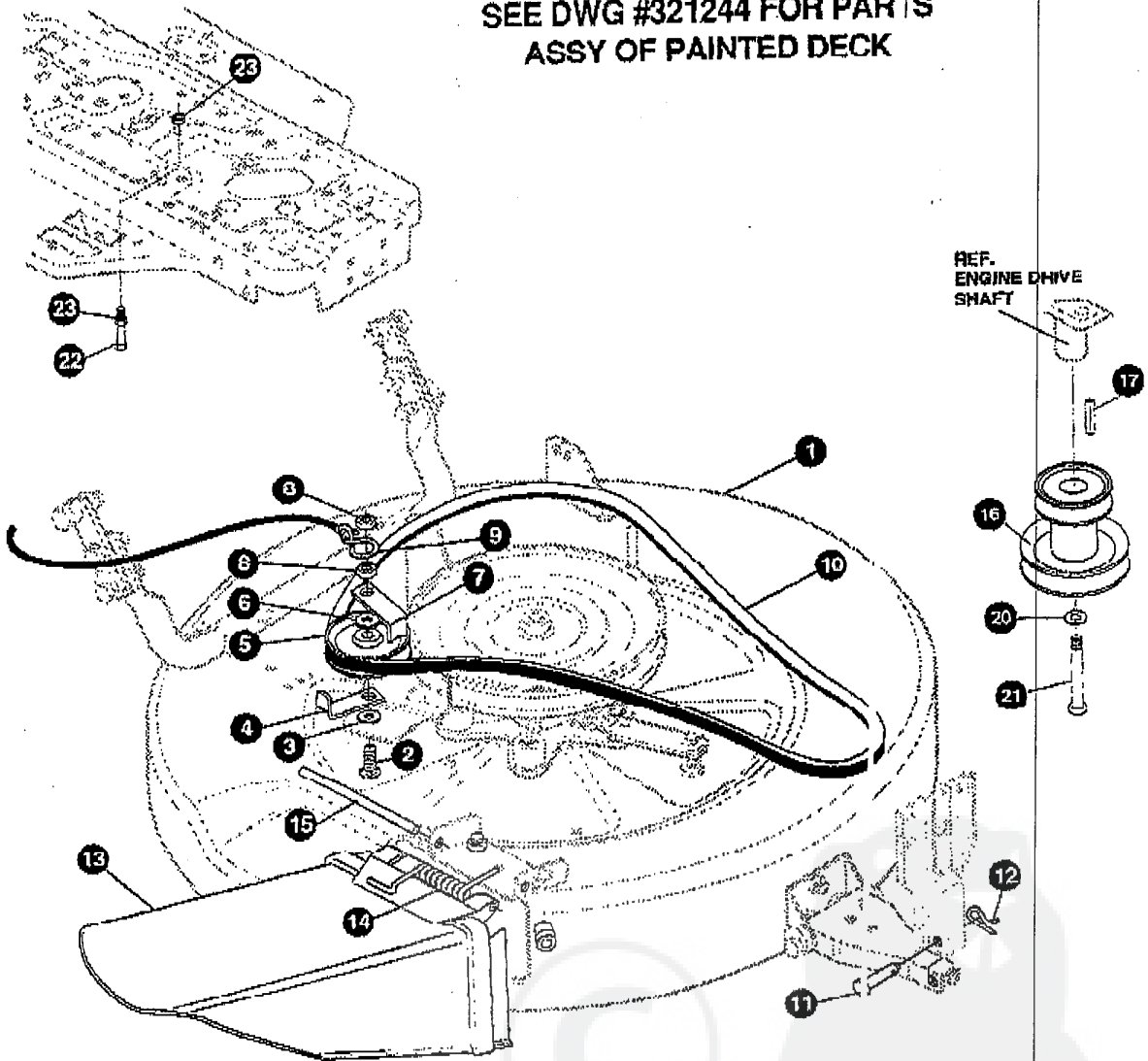
PRE-PAINTED DECK ASSEMBLY

KEY #	PART #	DESCRIPTION	QTY
1	321982-853	DECK, MOWER 30"	1
2	57010	GUIDE, BELT 5/16-18 THD	1
3	1498	NUT, 5/16-18 REGHEXCTRLK	1
4	317017	BRACKET, CHUTE MOUNT	1
5	314702	SPACER, SLEV .341X1.00X .500PM	1
6	120230	BOLT, 5/16-18X1.25 CARRLN	1
7	1498	NUT, 5/16-18 REGHEXCTRLK	1
8	45602	WASHER, FLAT .333X .87X.119	1
9	126216	BOLT, 5/16-18X .75 CARRLN	1
10	1498	NUT, 5/16-18 REGHEXCTRLK	1
11	311237-853	BRACKET, MOUNTING, FRONT	1
12	57072	BOLT, 5/16-18X .63 CARRLN	3
13	120393	WASHER, FLAT .344X .69X.065	3
14	1498	NUT, 5/16-18 REGHEXCTRLK	3
15	311236-853	BRACKET, BAR, TOW, FRONT	1
16	180079	SCREW, 5/16-18X1.00 HHC	2
17	58247	NUT, ADJUST	2
18	1498	NUT, 5/16-18 REGHEXCTRLK	2
19	313372-853	ASSY. TUBE, PIVOT	1
20	310672	SUPPORT, PIVOT TUBE	2
21	180077	SCREW, 5/16-18X .75 HHC	2
22	1498	NUT, 5/16-18 REGHEXCTRLK	2
23	314119-853	ASSY LIFT BRKT.	1
24	180077	SCREW, 5/16-18X .75 HHC	2
25	120393	WASHER, FLAT .344X .69X.065	2
26	1498	NUT, 5/16-18 REGHEXCTRLK	2
27	313588	ASSEMBLY, QUILL	1
27-1	314272	QUILL, MACHINED CASTING	1
27-2	314274	TUBE, SPACER, STEEL	1
27-3	313576	BRNG, BALL 6204-2AA-C3	2
28	35498	SCREW, 5/16-18X .75 WAHHTAP	5
29	138485	WASHER, EXLK .320X.61X.03	5
30	321146	SPACER, SLEV .790X1.250X .500	1
31	314273	PULLEY ASSEMBLY	1
32	22265	WASHER, FLAT .516X1.38X.119PL	1
33	1500	NUT, 1/2-13 REGHCTRLK	1
34	321144	SHAFT, QUILL 30" MOWER	1
35	313577	SHIELD, DUST, BEARING	1
36	313584	HUB, BLADE ADAPTOR	1
37	325751	BLADE, 30" TO MOWER 1.4 WING	1
38	22265	WASHER, FLAT .515X1.38X.119PL	1
39	1500	NUT, 1/2-13 REGHCTRLK	1
40	12229-853	BRACKET, IDLER ASSEMBLY	1
40-1	313510-853	BRACKET, ARM, IDLER	1
40-2	306973	BRAKE PAD - HARD - 232AF	1
40-3	41601	RIVET, OVSET .187DIA X .50LG ST	2
41	180113	SCREW, 5/16-18X3.00 HHC	1
42	45602	WASHER, FLAT .333X .87X.119	1
43	321145	SPACER, SLEV .322X .63X2.310	1
44	44108	NUT, 5/16-18 HWDFLCTRLK	1
45	180081	SCREW, 5/16-18X1.25 HHC	1
46	44108	NUT, 5/16-18 HWDFLCTRLK	1
47	35410	SPRING .071 X .62 X 4.37	1
48	302357	LINK	1
49	1498	NUT, 5/16-18 REGHEXCTRLK	1
50	50520	SPACER	1
51	126216	BOLT, 5/16-18X .75 CARRLN	1
52	1498	NUT, 5/16-18 REGHEXCTRLK	1
53	314099-853	BRACKET, BAR, REAR STABIL	2
54	180079	SCREW, 5/16-18X1.00 HHC	4
55	58247	NUT, ADJUST	2
56	1498	NUT, 5/16-18 REGHEXCTRLK	4
57	51940	BOLT, .500X .437 HSSH 3/8-16	2
58	1498	NUT, 3/8-16 REGHCTRLK	3
59	320605-853	BRACKET, LIFT BAR 30"	1
60	1498	NUT, 5/16-18 REGHEXCTRLK	2
61	180077	SCREW, 5/16-18X .75 HHC	2

REPAIR PARTS

13554-220

SEE DWG #321244 FOR PARTS
ASSY OF PAINTED DECK



NOTE: ALWAYS USE ORIGINAL EQUIPMENT PARTS. Use of service/replacement parts other than original equipment parts may void your warranty.

ALL UNNUMBERED ITEMS ARE INTERCHANGEABLE WITH OPPOSITE SIDE

325642C

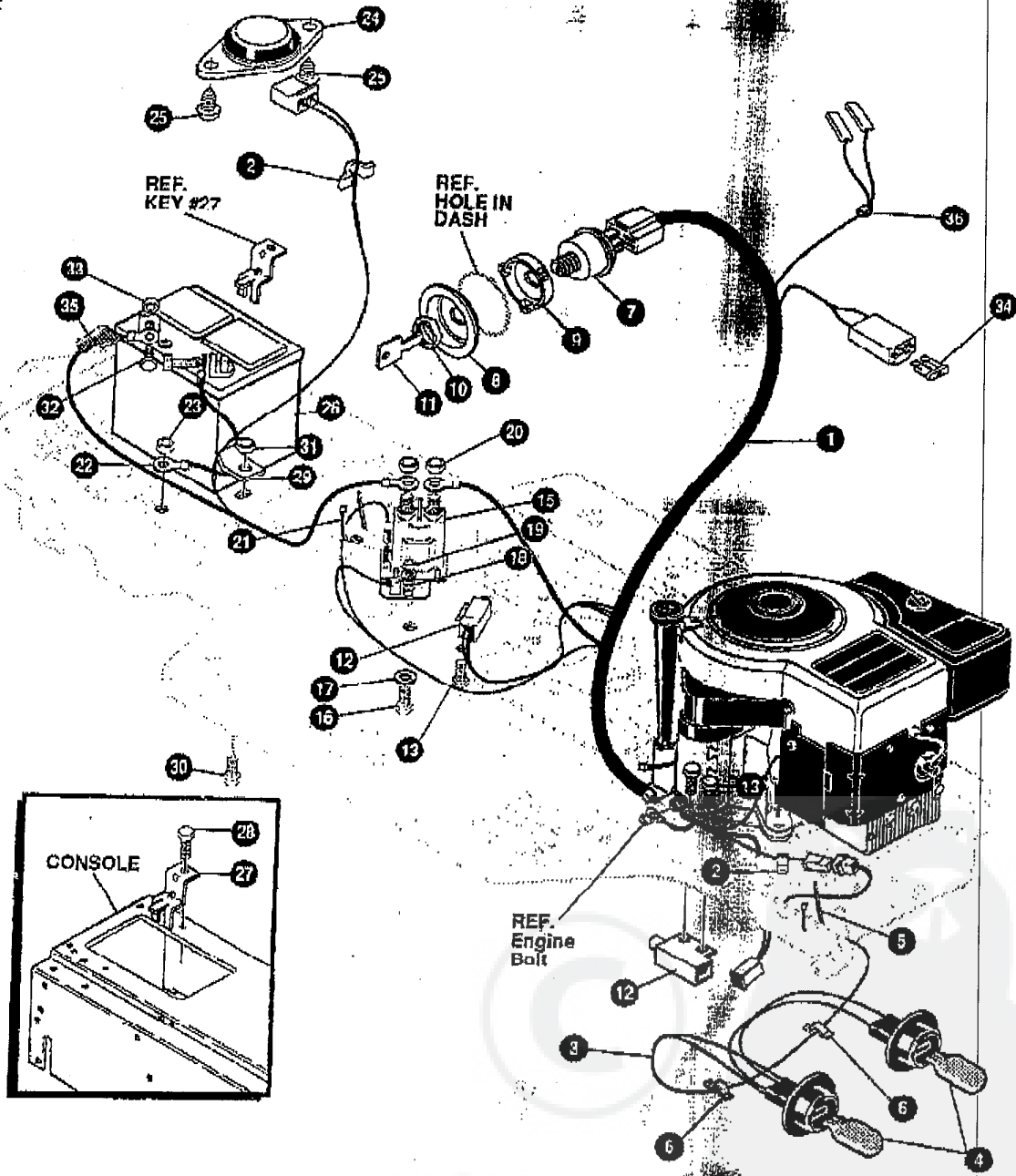
E3554-220**FINAL DECK ASSEMBLY**

KEY #	PART #	DESCRIPTION	QTY
1		DECK 30° ASSY	1
2	301340	BOLT, 3/8-16X2.50 CARB	1
3	22265	WASHER, FLAT .515X1.38X.119PL	1
4	39659	RETAINER, BELT	1
5	45074	PULLEY, IDLER V4L 3.06X .72	1
6	25210	WASHER, FLAT .386X1.25X.09HTZ	1
7	39659	RETAINER, BELT	1
8	1499	NUT, 3/8-16 REGHXCTRLK	2
9	310734	HOOK, S, 10 GA. STEEL	1
10	321147	BELT, V 4L 54.0 - MOD SEC	1
11	47817	PIN, .495X1.750 CLEVIS-SHORT	1
12	56180	PIN, HAIR .091 DIA X 1.62 LG	1
13	315314	CHUTE DEFLECTOR 30° DECK	1
14	314975	SPRING, TORSION CHUTE DEFLECTOF	1
15	304424	ROD, PIVOT DECK .312DX7.25	1
16	328035	PULLEY, ENG 2.94OF/5.5D/3.00D	1
17	26655	KEY, SQUARE .250SQX2.50LG	1
20	120989	WASHER, REGSP 1LK.459X.78X.12	1
21	182764	SCREW, 7/16-20X3.25 HHC	1
22	48930	SCREW, 3/8-16X7.50 HHC	1
23	1499	NUT, 3/8-16 REGHXCTRLK	2

* ORDER INDIVIDUAL PARTS

554-220

REPAIR PARTS



NOTE: ALWAYS USE ORIGINAL EQUIPMENT PARTS. Use of service/replacement parts other than original equipment parts may void your warranty.

ALL UNNUMBERED ITEMS ARE INTERCHANGEABLE WITH OPPOSITE SIDE

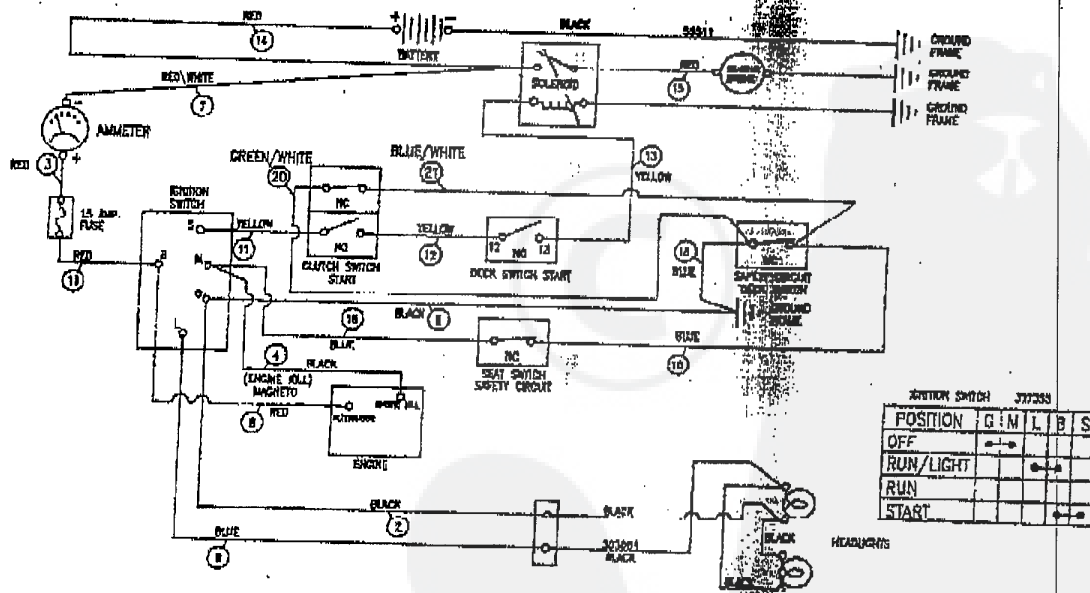
332051C

E3554-220

ELECTRICAL ASSEMBLY

KEY #	PART #	DESCRIPTION	QTY
1	331453	WIRE HARNESS SF 8-12B&S W/AMM	1
2	41482	PRESS CLIP, 1.380LG .255ID	2
3	303064	ASSY, LIGHT WIRE-1/4 TURN	1
4	52572	BULB, HEADLAMP	1
5	57444	TIE, CABLE BLACK NYLON 5.62L	2
6	41482	PRESS CLIP, 1.380LG .255ID	1
7	327354	SWITCH, IGNITION & LIGHTS DELTA	1
8	327234	CUP-IGN (OFF-LIGHT-ON-START)	1
9	327238	CAP-IGN INSIDE	1
10	327352	NUT, 5/8-8ACME DELTA FOR BOOT	1
11	327350	KEY, IGNITION	1
12	57476	SWITCH, SCR MNT DP NC NO DLK	1
13	300302	SCREW, #10 X .50 HHTAPPST BLK	2
15	53718	SOLENOID	4
16	187745	SCREW, 1/4-20X .75 HXSEMMA	1
17	1084	WASHER, FLAT .281X1.00X.063	2
18	1502	NUT, 1/4-20 REGHEXCTRLK	1
19	271172	NUT, 1/4-20 REGHEXKEPS	2
20	271187	NUT, 5/16-24 HKEPS	1
21	57444	TIE, CABLE BLACK NYLON 5.62L	2
22	55511	WIRE, GROUND, 12.5"	1
23	271184	NUT, 5/16-18 HEXKEPS	1
24	67647	SWITCH, SEAT	1
25	160505	SCREW, 1/4-20X .38PHPNHMA	2
26	302257	BATTERY, 12V	1
27	329175	BATTERY BRACKET	1
28	995346	SCREW, 1/4-20X .50 WAHHTAP	1
29	9149	BRACKET, CABLE RETAINER	1
30	187745	SCREW, 1/4-20X .75 HXSEMMA	1
31	1502	NUT, 1/4-20 REGHEXCTRLK	1
32	180020	SCREW, 1/4-20X .75 HHC	1
33	271172	NUT, 1/4-20 REGHEXKEPS	2
34	302031	FUSE SPADE TYPE 32V 15A	2
35	308201	INSULATOR, BATTERY BOOT EURO	1
36	322288	SPLICER	1

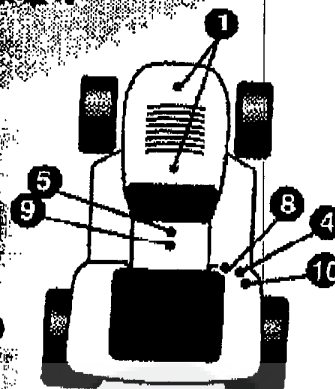
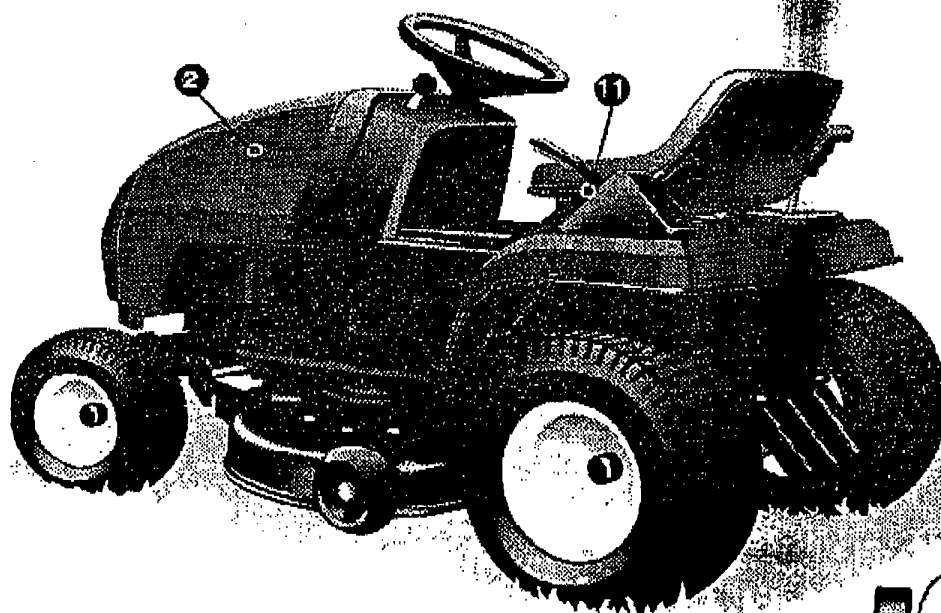
WIRING SCHEMATIC



331453

554-220

REPAIR PARTS



333002A

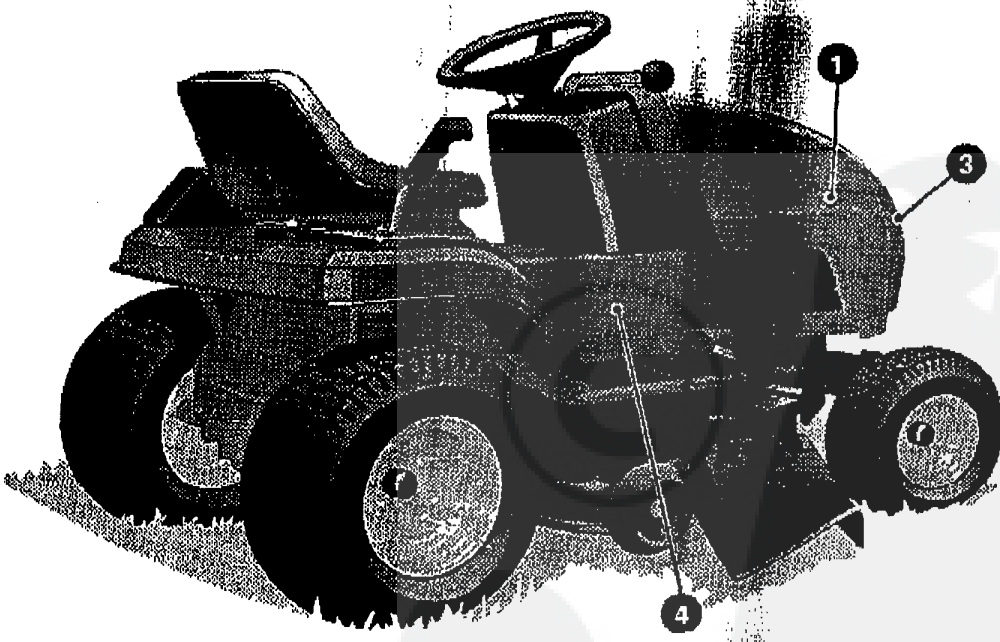
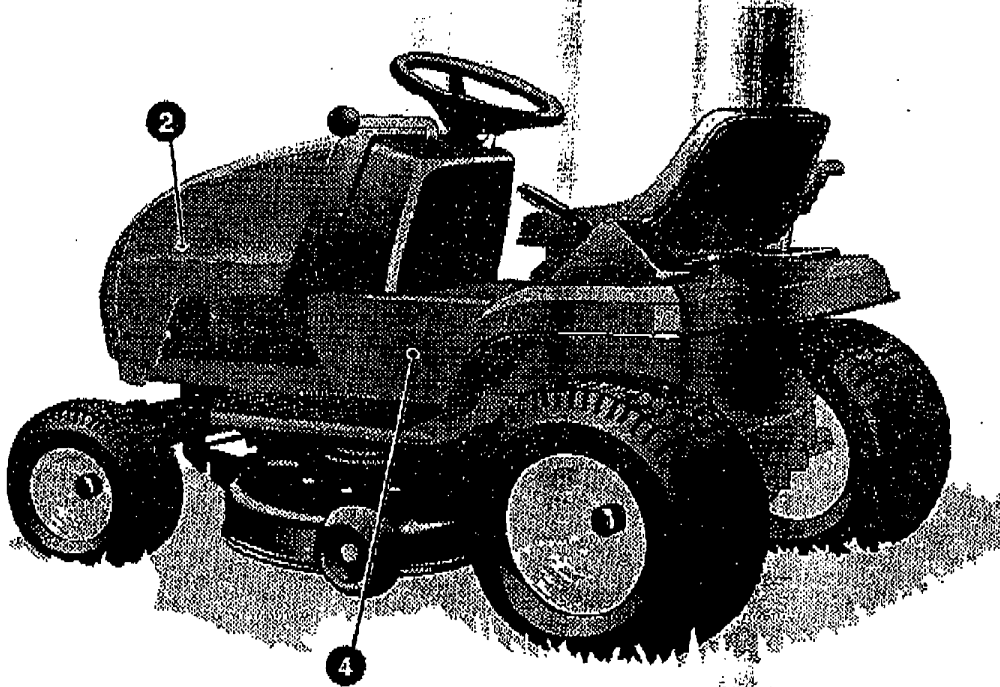
E3554-220

DECAL ASSEMBLY

KEY #	PART #	DESCRIPTION	QTY.
1	305602	FOAM HOOD 4X15	2
2	305603	PAD, 18 X 6 FOAM HOOD	2
3	329371	DECAL, DASH PLAIN EXPORT	1
4	68902	DECAL, WARNING, FRENCH/GERMAN	1
5	68624	DECAL, INSTRUCT CONSOLE TOP GER	1
7	318010	DECAL, TUV GS	1
8	305770	DECAL, CAUTION TRIANGLE EUROPE	1
9	307383	DECAL, INSTR. CONSOLE TOP ENGL	1
10	310553	DECAL, DANGER ENGLISH	1
11	402214	DECAL, HEIGHT ADJUST	1
12	311394	DECAL SHIFT REV/NEUTRAL	1
13	331013	DECAL SHIFTER POSITION	1
14	68903	DECAL, BRAKE/CLUTCH ISO	1

554-220

REPAIR PART



333003A

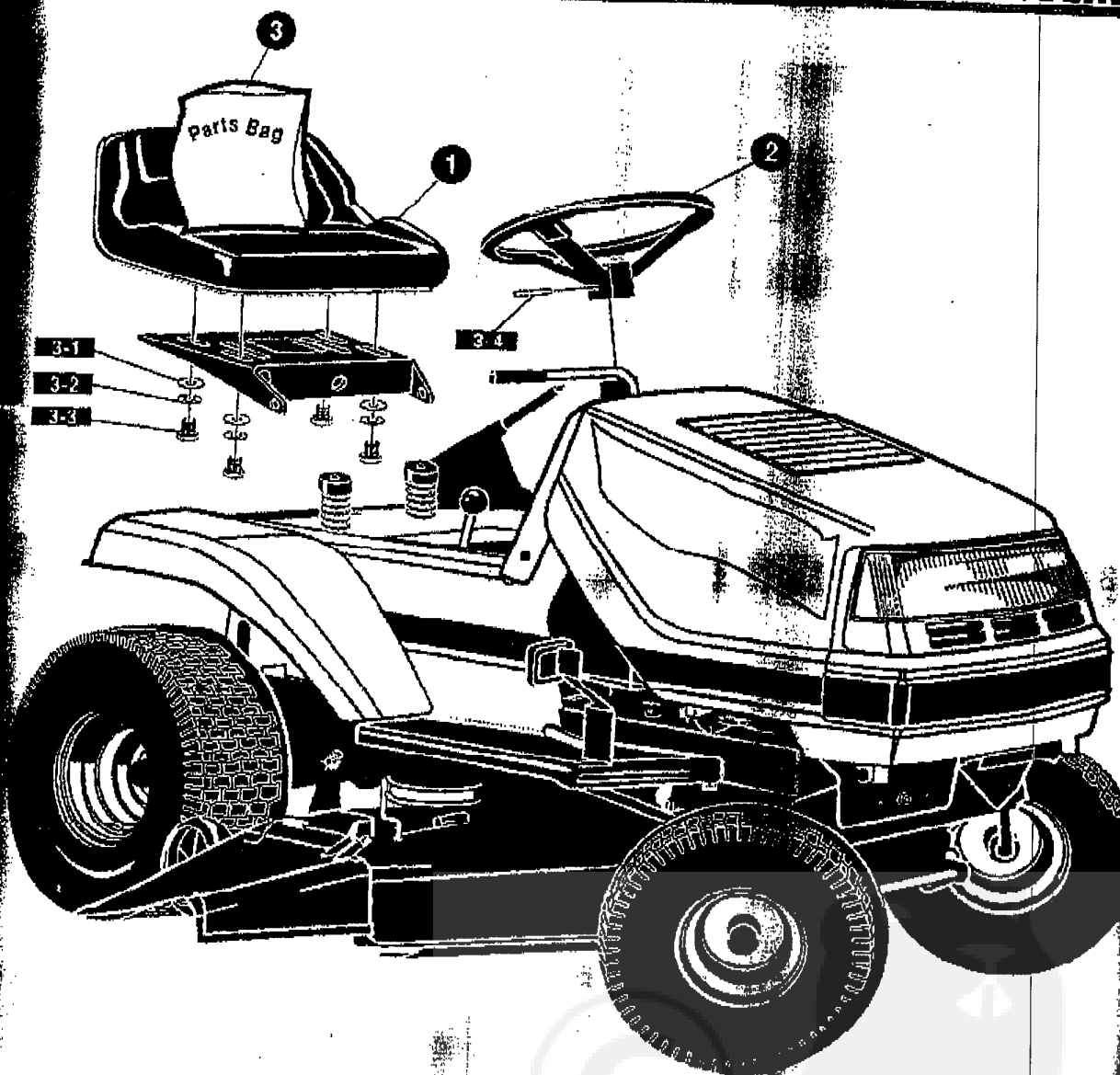
E3554-220

DECAL ASSEMBLY

KEY #	PART #	DESCRIPTION	QTY
1	329076	DECAL, HOOD POWERTRAC RH	1
2	329076	DECAL, HOOD POWERTRAC LH	1
3	329077	DECAL, POWERTRAC HOOD TOPSIDE	1
4	307062	NAMEPLATE 1 1/30 CHROME	2

3554-220

CUSTOMER ASSEMBLY



KEY #	PART #	DESCRIPTION	QTY
1	310384	SEAT, MICHIGAN, W/SW HOLE	1
2	330847	STEERING WHEEL	1
3		PARTS BAG, ASSY SEAT/STEER	1
3-1	120393	WASHER, FLAT, .344X.69X.055	4
3-2	120638	WASHER, HVSTLK, .328X.60X.05	4
3-3	180077	SCREW, 5/16 X .75 HHC	4
3-4	456378	PIN, SPRING, DIA X 2.00 LG HV	1
		BATTERY ACID, PACK, 80 OZ	1

BATTERY ACID MAY BE PURCHASED AT YOUR LOCAL HARDWARE STORES.

330869