

REPAIR PARTS MANUAL

30" - 10 H.P. LAWN TRACTOR

MODEL D3554-310

ONE YEAR LIMITED WARRANTY

For one (1) year from date of purchase by the first consumer for residential use (thirty (30) days commercial use), NOMA Outdoor Products Incorporated warrants that it will replace free of charge, including labor, any original part of any NOMA Outdoor Products Incorporated product found to be defective by any authorized Service Dealer or the factory, except the battery which is warranted for ninety (90) days from date of purchase.

This warranty does not cover engine, transmission, transaxle or differential (these items are covered by their manufacturer's own warranty). This warranty does not cover parts that have failed due to normal wear or parts that have failed subject to misuse or abuse. Transportation of the unit or part to and from an authorized Service Dealer or factory is the responsibility of the owner.

A step by step explanation as to what procedure should be followed for this warranty is:

1. If a part becomes defective, contact the store where the unit was purchased for the name and address of the authorized Service Dealer nearest to you.
2. If you cannot locate an authorized Service Dealer, write Service Department of NOMA Outdoor Products Incorporated for the name and address of the authorized Service Dealer in your area or call the Service Department at 1-901-422-1690.
3. Return the defective product, along with proof of purchase to such authorized Service Dealer for replacement of any defective part where covered by this warranty.

There is no other express warranty. Implied warranties, including those of merchantability and fitness for a particular purpose are limited to one (1) year from date of purchase. Liability for incidental or consequential damages are excluded.

Some states do not allow limitations on how long an implied warranty lasts, so the above limitation may not apply to you. Some states do not allow the exclusion of incidental or consequential damages, so the above exclusion may not apply to you. This warranty gives you specific legal rights, and you may have other rights which vary from state to state.

NOMA Outdoor Products Incorporated

Caller 8000

Jackson, TN 38308-8000

UNIT PARTS AND SERVICE

Fill in and mail the registration card packed with the unit. For service other than covered in this manual, contact an authorized service dealer. A nationwide parts and service organization has been established to provide locally available parts and service. When ordering repair parts, always give the following information: 1. The Part Name; 2. The Part Number; 3. The Quantity desired; 4. The Full (eight digit) Model Number of the unit. The model number will be found on a plate attached to the unit.



Look for this symbol. It means - ATTENTION! BECOME ALERT! A HAZARD TO OPERATOR, BYSTANDER, PROPERTY OR EQUIPMENT MAY EXIST.

NOMA Outdoor Products Incorporated
Caller 8000
Jackson, TN 38308-8000

Part No. 328957

50/92



OPERATIONAL PRECAUTIONS

THESE INSTRUCTIONS ARE FOR YOUR PROTECTION. PLEASE READ THEM CAREFULLY.



1. Know the controls and how to stop quickly. READ THIS OPERATOR'S MANUAL and instructions furnished with attachments.
2. Wear safety glasses or eye shields when assembling or operating riding mower.
3. Do not allow children to operate the machine. Do not allow adults to operate it without proper instruction.
4. Do not carry passengers. Do not mow when children and others are around. Disengage power to blade(s) or attachment(s) and stop the engine while others are in the vicinity of the mower.
5. Battery fluid (electrolyte) is an ACID and is extremely dangerous. Do not smoke while servicing the battery. Do not service the battery near a open flame or spark.
6. Handle gasoline with care, it is highly flammable.
 - A. Use approved gasoline container.
 - B. Never remove the fuel cap of, or add gasoline to, a running or hot engine, or an engine that has not been allowed to cool for several minutes after running. Never fill the tank indoors and always clean up spilled fuel immediately.
 - C. Do not smoke while filling fuel tank.
 - D. Do not run the engine indoors. Open doors if engine must be run in garage. Exhaust fumes contain CARBON MONOXIDE, an ODORLESS and DEADLY GAS.
7. Check fuel supply before each use allowing space for expansion as the heat of the engine and/ or sun can cause gasoline to expand.
8. Do not operate mower when barefooted. Always wear substantial footwear, preferably steel-toed shoes. Do not wear loose fitting clothing that could get caught in moving parts.
9. Clear the work area of objects (wire, rocks, etc.) which might be picked up and thrown. Check all controls for proper function.
10. Disengage all attachment clutches, shift to neutral, and set parking brake before attempting to start the engine (motor). When starting engine equipped with a pull starter, stand firm and make sure your feet are well away from the blade(s).
11. Disengage power to blade(s) or other attachment(s) and stop the engine (motor) before leaving the operator's position. Always dismount from the left side.
12. Disengage power to blade(s) or other attachment(s) and stop the engine (motor) before making any repairs or adjustments.
13. Disengage power to blade(s) or other attachment(s) when transporting or not in use.
14. Take all possible precautions when leaving the vehicle unattended, such as disengaging power to blade(s) or attachment(s), lower the attachment(s), setting the parking brake, stopping the engine (motor), and removing the key.
15. Do not stop or start suddenly when going uphill or downhill. Mow up and down the face of steep slopes; never across the face.
16. Reduce speed and exercise extreme caution on slopes and in sharp turns to prevent tipping or loss of control. Be especially cautious when changing direction on slopes.
17. Stay alert for holes, rocks, and roots in the terrain and other hidden hazards. Keep away from drop-off. Never operate your riding mower on wet or slippery grass or at a speed which could cause a skid. Exercise care when mowing around a fixed object to prevent the blade(s) from striking it. Never deliberately run over any foreign object.
18. Always disengage blade control lever before attempting to remove the mower from a hole or other obstruction.
19. Use care when pulling loads or using heavy equipment.
 - A. Use only approved drawbar hitch points.
 - B. Limit loads to those that you can safely control.
 - C. Do not turn sharply. Use care when backing.
 - D. Use counterweight(s), wheel weights or tire chains when suggested in attachment(s) instructions.
20. Watch for traffic when crossing or near roadways.
21. When using attachment(s), never direct discharge of material toward bystanders nor allow anyone near the vehicle while in operation.
22. Keep the vehicle and attachments in good operating condition, and keep safety devices in place and in working condition.
23. Keep all nuts, bolts, and screws tight to be sure the equipment is in safe working condition.
24. Never store the equipment with gasoline in the tank inside a building where fumes may reach an open flame or spark. Allow the engine to cool before storing in any enclosure.
25. To reduce fire hazard, keep the engine free of grass, leaves or excessive grease.
26. The vehicle and attachments should be stopped and inspected for damage after striking a foreign object, and the damage should be repaired before restarting and operating the equipment.
27. Do not change the engine governor settings or over-speed engine.
28. When using the vehicle with mower, proceed as follows:
 - A. Mow only in daylight or in good artificial light.
 - B. Never make a cutting height adjustment while the engine (motor) is running if the operator must dismount to do so.
 - C. Shut the engine (motor) off when removing the grass catcher or unclogging chute.
 - D. Check the blade mounting bolts for proper tightness at frequent intervals.
29. Under normal usage, the grass catcher bag material is subject to deterioration and wear. Check the bag frequently for deterioration and wear and replace worn bags. Check that replacement bags comply with the original manufacturer's recommendations or specifications.
30. Disengage power to mower before backing up. Do not mow in reverse unless absolutely necessary and then only after careful observation of the entire area behind the mower.

OWNER'S INFORMATION

Record the following information about your unit so that you will be able to provide it in case of loss or theft.

MODEL NUMBER: - (Enter complete 8 digit number from model plate on unit)
PURCHASE DATE: ___ / ___ / ___ CODE NO.: _____ SERIAL NO.: _____
DEALER'S NAME AND ADDRESS: _____
CITY: _____ STATE: _____ TELEPHONE: _____

CONTENTS OF SHIPPING CARTON

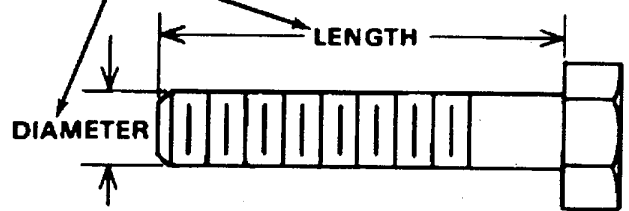
- 1 - Lawn Tractor with 30 inch Mower Deck
- 1 - Operator's Manual
- 1 - Repair Parts Manual
- 1 - Engine Manual
- 1 - Steering Wheel (see Note)
- 1 - Seat (see Note)
- 1 - Bag of Assembly Parts Containing (see Note):
 - 4 - 5/16 x 3/4 inch Hex Head Screws
 - 4 - 5/16 inch Split Lockwashers
 - 4 - 11/32 inch Flatwashers
 - 1 - Roll Pin
 - 1 - Steering Sleeve

NOTE: Refer to page 26 (Customer Assembly Parts) for more detailed description.

TOOLS REQUIRED FOR ASSEMBLY

- 2 - 7/16 inch Wrenches (or adjustable wrench)
- 1 - 1/2 inch Wrench (or adjustable wrench)
- 1 - Small Phillips Screwdriver with a 1/4 inch shank
- 1 - Hammer

HOW TO MEASURE SCREW SIZE (5/16 x 1 1/2 INCH)



DANGER



This lawn tractor can be dangerous if carelessly used.

Read your Operator's Manual thoroughly before operating your lawn tractor.

Always wear safety glasses or eye shields while assembling or operating your lawn tractor.

DO NOT carry passengers at any time.

Keep your hands, feet, hair and loose clothing away from the discharge area, the underside of the mower deck or any moving parts while the engine is running.

DO NOT allow children or young teenagers to operate or be near your lawn tractor while it is operating.

ALWAYS GIVE THE FOLLOWING INFORMATION WHEN ORDERING REPAIR PARTS:

1. The PART NUMBER; 2. The PART NAME; 3. QUANTITY DESIRED; 4. The MODEL NUMBER (As shown on Model Plate).

SEND PART ORDERS AS PER INSTRUCTIONS ON THE FRONT PAGE.

DO NOT USE KEY NUMBERS WHEN ORDERING REPAIR PARTS, ALWAYS USE PART NUMBERS.

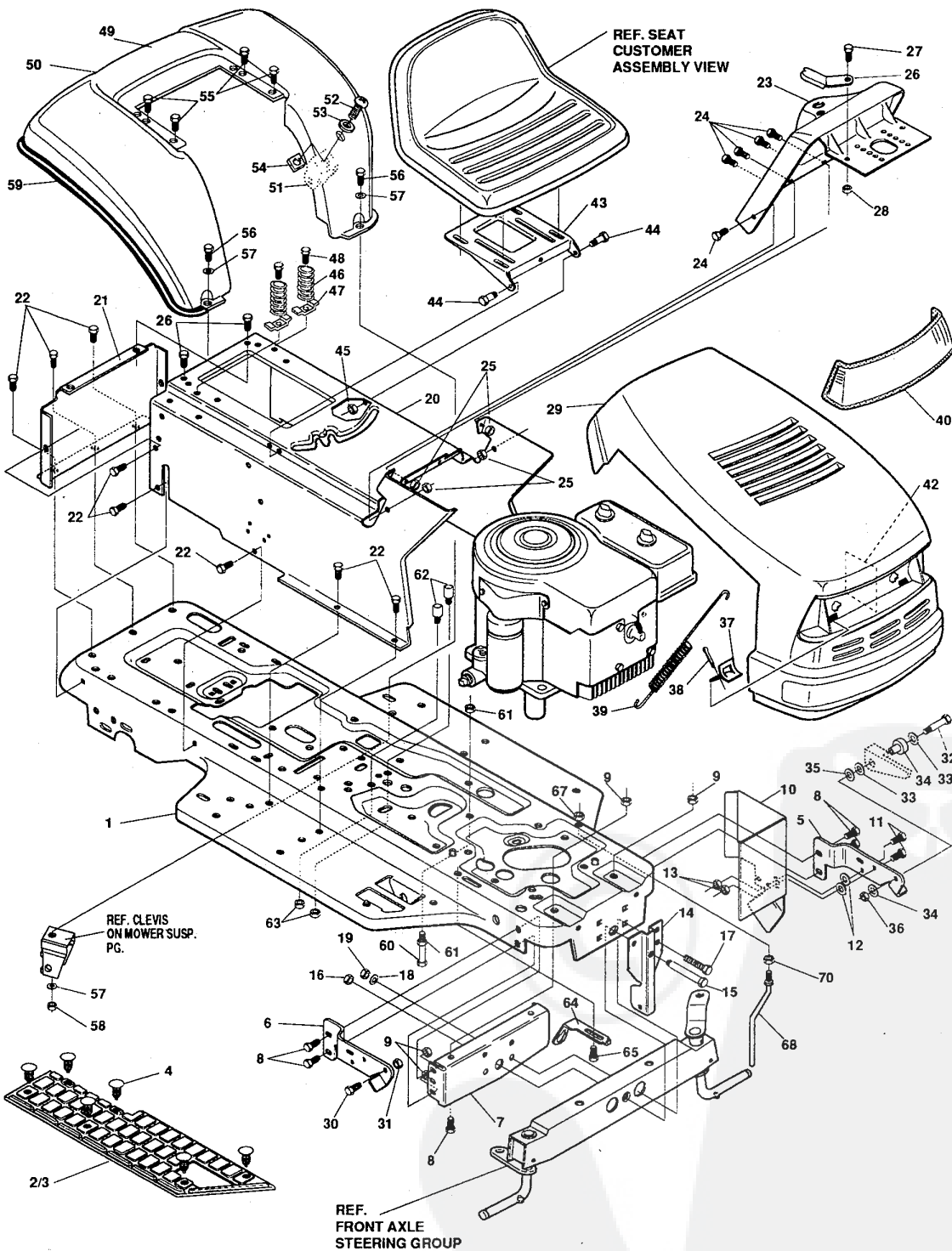
All replacement parts will be supplied in current production colors or in a neutral color.

A handling fee is applicable to small parts orders.

YOUR UNIT IS RIGHT HAND (RH) OR LEFT HAND (LH) AS YOU STAND BEHIND IT.

30" LAWN TRACTOR MODEL D3554-310

CHASSIS & HOOD ASSEMBLY



NOTE: ALWAYS USE ORIGINAL EQUIPMENT PARTS. Use of service/replacement parts other than original equipment parts may void your warranty.

ALL UNNUMBERED ITEMS ARE INTERCHANGEABLE WITH OPPOSITE SIDE

327400C

30" LAWN TRACTOR MODEL D3554-310

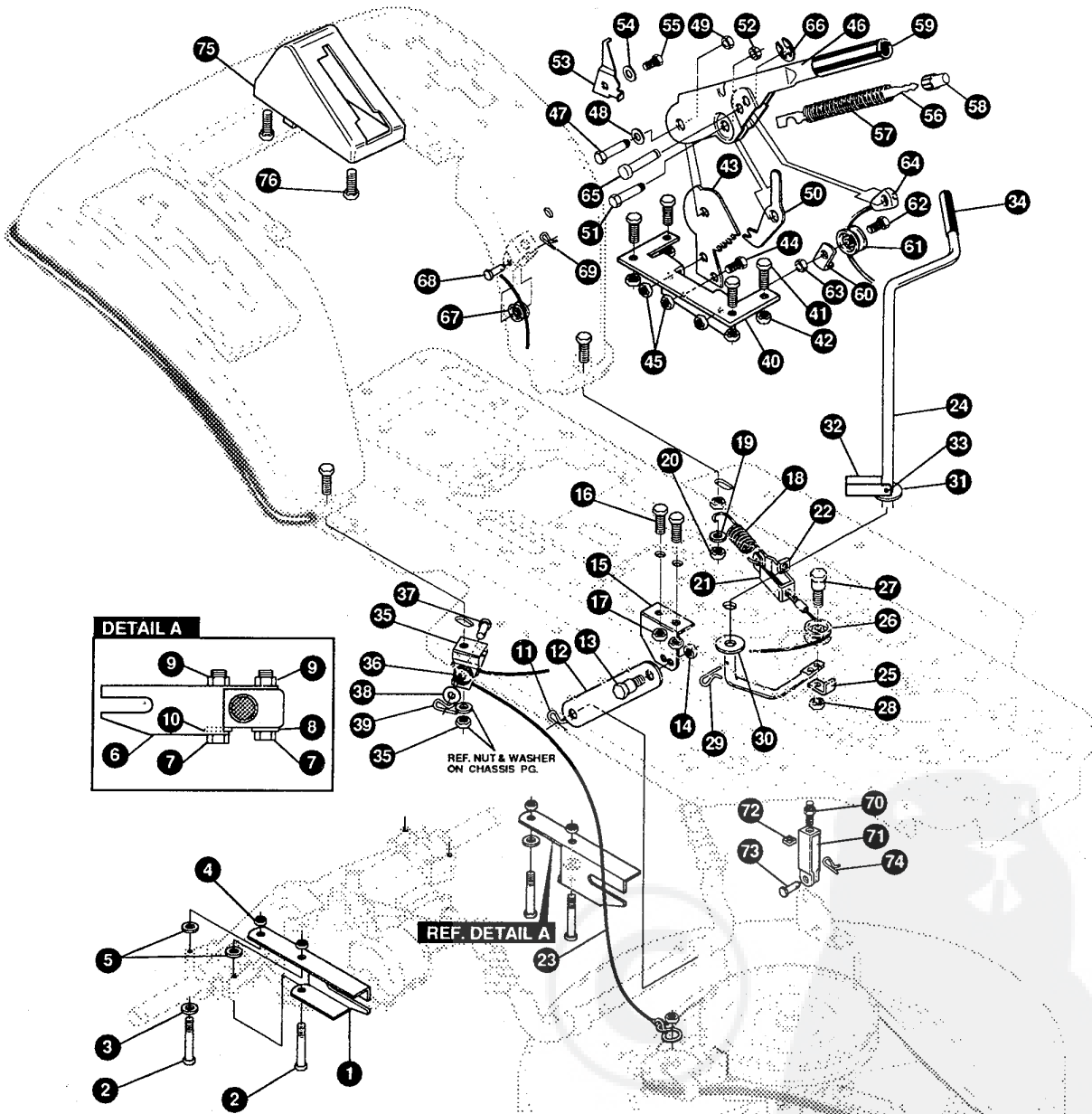
KEY#	PART#	DESCRIPTION	QTY.
1	314883-860	FRAME,MAIN SF RIDER	1
2	310003	FOOTPAD,LH	1
3	310004	FOOTPAD,RH	1
4	309235	FASTENER, RATCHET	12
5	313001-853	BRKT,GRILL LH	1
6	313002-853	BRKT,GRILL RH	1
7	56362-853	BRKT,SUPT FRT AXLE-SF	1
8	◇328154	SCREW, 5/16-18X.75WDFLLK	6
9	◇55273	NUT, 5/16-18 HXWDFLLK	6
10	312908-853	SHIELD,HEAT	1
11	◇180016	SCREW, 1/4-20X .50 HHC	2
12	311245	WASHER,FLAT.250X .75X INSULATE	2
13	◇51335	NUT, 1/4-20 WDFLLK	2
14	321136-860	HANGER BRKT	1
15	50720	BOLT, .625X2.875 SPSH 1/2-20	1
16	◇274654	NUT, 1/2-20 REGHXCTRLK	1
17	◇122201	SCREW, 3/8-16X2.75 HHC	4
18	2483	WASHER, .39IDX1.25DX.07 BELLVIL	4
19	◇1499	NUT, 3/8-16 REGHXCTRLK	4
20	324748-860	CONSOLE,SF DYNA STYLE TOPSH	1
21	56235-860	CONSOLE, REAR COVER	1
22	◇995346	SCREW, 1/4-20X .50 WAHTAP	15
23	320466-853	DASH,SF NOMA DYNA STYLING	1
24	◇995338	SCREW, 1/4-20X .63 HHWATAP	6
25	◇50352	NUT, 1/4-20 WDFLLK TOPLOCK	4
26	313021-853	GUIDE,HOOD	2
27	◇180018	SCREW, 1/4-20X .62 HHC	2
28	◇51335	NUT, 1/4-20 WDFLLK	2
29	12506-660	HOOD,NOMA SMALL	1
30	56676	BOLT, .375X .580 HSH 5/16-18	1
31	◇1498	NUT, 5/16-18 REGHEXCTRLK	1
32	◇180037	SCREW, 1/4-20X1.63 HHC	1
33	◇120392	WASHER, FLAT .281X .63X.065	3
34	309532	BUSHING,FLANGED,NYLON,INSULATO	1
35	311245	WASHER,FLAT.250X .75X INSULATE	1
36	◇1502	NUT, 1/4-20 REGHEXCTRLK	1
37	310801	SPRING ANCHOR	1
38	121222	PIN, COTTER .090/.086X.75LG	1
39	304784	SPRING, HOOD LATCH	1
40	302670	LENS,HEADLAMP DYNA HOODS	1
42	301452	FOIL, HEAT REFLECTOR	1
43	58367-860	PLATE, SEAT	1
44	20507	BOLT, .437X .156 HSH 5/16-18	2
45	◇1498	NUT, 5/16-18 REGHEXCTRLK	2
46	56220	SPRING,1.43X2.38X.162 COM SEAT	2
47	1341	CLAMP,SPRING	2
48	◇995346	SCREW, 1/4-20X .50 WAHTAP	2
49	^	FENDER, F-5 SF 999 ASM	1
50	321156-860	FENDER F-5 SF SOF LOF	1
51	9239	CLEVIS	1
52	439455	SCREW, 5/16-18X.56	1
53	301551	WASHER .344X1.50X.09	1
54	120373	NUT 5/16-18 SQ	1
55	◇995346	SCREW, 1/4-20X .50 WAHTAP	4
56	◇122027	SCREW, 5/16-18X1.25 HHC	2
57	446363	WASHER, FLAT .375X .88X.082	4
58	◇1498	NUT, 5/16-18 REGHEXCTRLK	2
59	55023	TRIM, STRIP, BLACK	77.5"
60	◇49930	SCREW, 3/8-16X7.50 HHC	1
61	◇1499	NUT, 3/8-16 REGHXCTRLK	2
62	53446	PIN 5/16-18	2
63	271184	NUT, KEPS 5/16-18	2
64	302610-853	BRACKET,SWITCH MOUNT	1
65	◇995346	SCREW, 1/4-20X .50 WAHTAP	1
66	50653	GUIDE, BELT	1
67	◇41529	NUT, 3/8-16 HXCTRLKJAM	1
68	◇271190	NUT, 3/8-16 HEXKEPS	1
69	328957	PARTS MANUAL	1
70	328958	OPERATOR'S MANUAL	1

◇ INDICATES STANDARD HARDWARE ITEMS.

^ ORDER INDIVIDUAL PARTS.

30" LAWN TRACTOR MODEL D3554-310

MOWER SUSPENSION



NOTE: ALWAYS USE ORIGINAL EQUIPMENT PARTS. Use of service/replacement parts other than original equipment parts may void your warranty.

ALL UNNUMBERED
ITEMS ARE INTERCHANGEABLE
WITH OPPOSITE SIDE

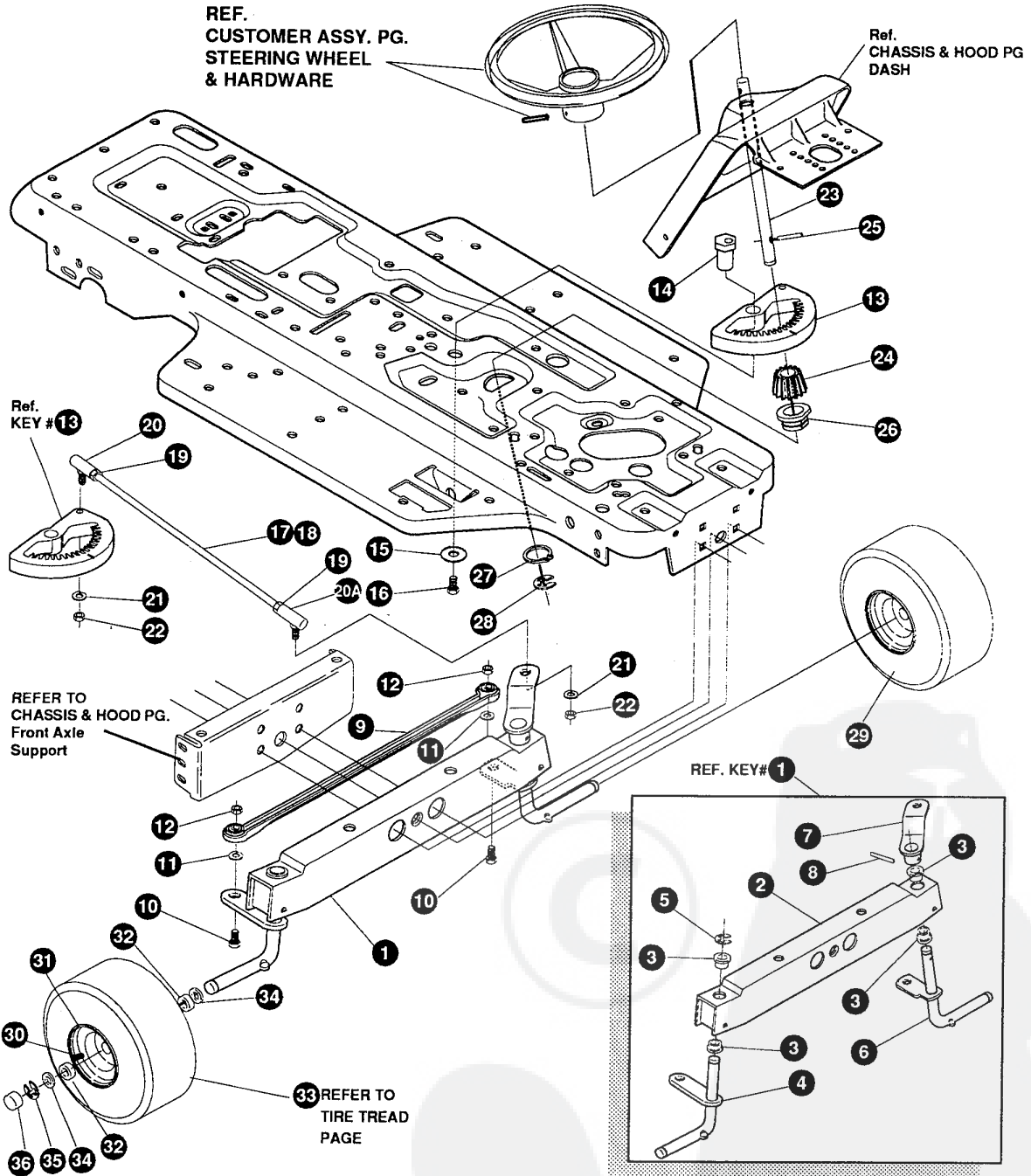
321324H

30" LAWN TRACTOR MODEL D3554-310

KEY#	PART#	DESCRIPTION	QTY.
1	321371	BRACKET REAR SUPPORT, RH	1
2	122083	SCREW,5/16-18X2.75 HHC GR2	2
3	120393	WASHER,FLAT .344X.69X.065	1
4	1498	NUT, 5/16-18 REGHEXCTRLK	2
5	314702	SPACER SLEEVE .344X1.00X.500	1
6	321370	BRACKET REAR SUPPORT, LH	1
7	122083	SCREW,5/16-18X2.75 HHC	2
8	120393	WASHER,FLAT .344X.69X.065	1
9	1498	NUT, 5/16-18 REGHEXCTRLK	2
10	314702	SPACER,SLEEVE .344X1.00X.500	1
11	56180	PIN,HAIR .091 DIA X1.62 LG	1
12	323899	BRACKET,LIFT BAR	1
13	313560	BOLT, .500X.225 HHSH 5/16-18	1
14	1498	NUT, 5/16-18 REGHEXCTRLK	1
15	320605-853	BRACKET,LIFT BAR	1
16	180077	SCREW,5/16-18X.75 HHC	2
17	1498	NUT, 5/16-18 REGHEXCTRLK	2
18	300473	SPRING TENSION 7.52LG+17LB/IN	1
19	418924	WASHER FLAT .344 X 1.13 X .062	1
20	1498	NUT, 5/16-18 REGHEXCTRLK	1
21	9405	CLEVIS, LIFT CABLE	1
22	120372	NUT,1/4-20 REGSQ	1
23	322261	CABLE CLUTCH	1
24	314877	LEVER,CLUTCH	1
25	1288	BRACKET,CABLE RETAINER	1
26	48306	PULLEY POWDER METAL	1
27	58336	BOLT, .375X.375 HHSH	1
28	1502	NUT, 1/4-20 REGHEXCTRLK	1
29	8260	PIN,HAIR .091 DIA1.66	1
30	996425	WASHER,FLAT .515X.88X.064	1
31	22265	WASHER,FLAT .515X1.38X.119	1
32	305225	LF STOP PTO ENGAGEMENT	1
33	326386	PIN,SPRING .187DIA X1.13 HD	1
34	46478	GRIP,HAND	1
35	321295-853	CLEVIS,PTO	1
36	48306	PULLEY, POWDER METAL	1
37	300317	PIN,CLEVIS	1
38	996416	WASHER,FLAT .391X1.00X.125	1
39	8260	PIN,HAIR .091DIA X1.66 LG	1
40	58333	BRACKET HEIGHT ADJUST	1
41	180077	SCREW,5/16-18X.75 HHC	4
42	1498	NUT, 5/16-18 REGHEXCTRLK	4
43	301238	QUADRANT,HEIGHT ADJUST	1
44	180077	SCREW,5/16-18X.75 HHC	2
45	1498	NUT, 5/16-18 REGHEXCTRLK	2
46	322292-853	HANDLE,LIFT HEIGHT ADJUST	1
47	300171	BOLT, .500X.270HHSH 5/16-18	1
48	996418	WASHER,FLAT .506X.75X.024	1
49	44108	NUT,5/16-18 HWDPLCTRLK	1
50	301239	PAWL,HEIGHT ADJUST	1
51	300171	BOLT, .500X.270 HHSH 5/16-18	1
52	44108	NUT,5/16-18 HWDPLCTRLK	1
53	9435	POINTER,HEIGHT ADJUST	1
54	138479	WASHER, EXLK .195X.41X.03	1
55	35287	SCREW, #8-32X.38 HHWATAPGR2	1
56	303027	ROD,ACTUATOR SHORT	1
57	58326	SPRING HEIGHT ADJUST	1
58	58325	KNOB,HEIGHT PUSH BUTTON	1
59	58329	GRIP, .750 OD W/HOLE BLACK	1
60	9149	BRACKET,CABLE RETAINER	1
61	48306	PULLEY, POWDER METAL	1
62	58336	BOLT, .375X.375 HHSH 1/4-20	1
63	1502	NUT, 1/4-20 REGHEXCTRLK	1
64	321430	CABLE,LIFT 20.50	1
65	300310	PIN,CLEVIS	1
66	300311	RING,RET E	1
67	48306	PULLEY,POWDER METAL	1
68	300317	PIN,CLEVIS .38 DIA.X.81	1

30" LAWN TRACTOR MODEL D3554-310

STEERING ASSEMBLY



NOTE: ALWAYS USE ORIGINAL EQUIPMENT PARTS. Use of service/replacement parts other than original equipment parts may void your warranty.

ALL UNNUMBERED ITEMS ARE INTERCHANGEABLE WITH OPPOSITE SIDE

321216F

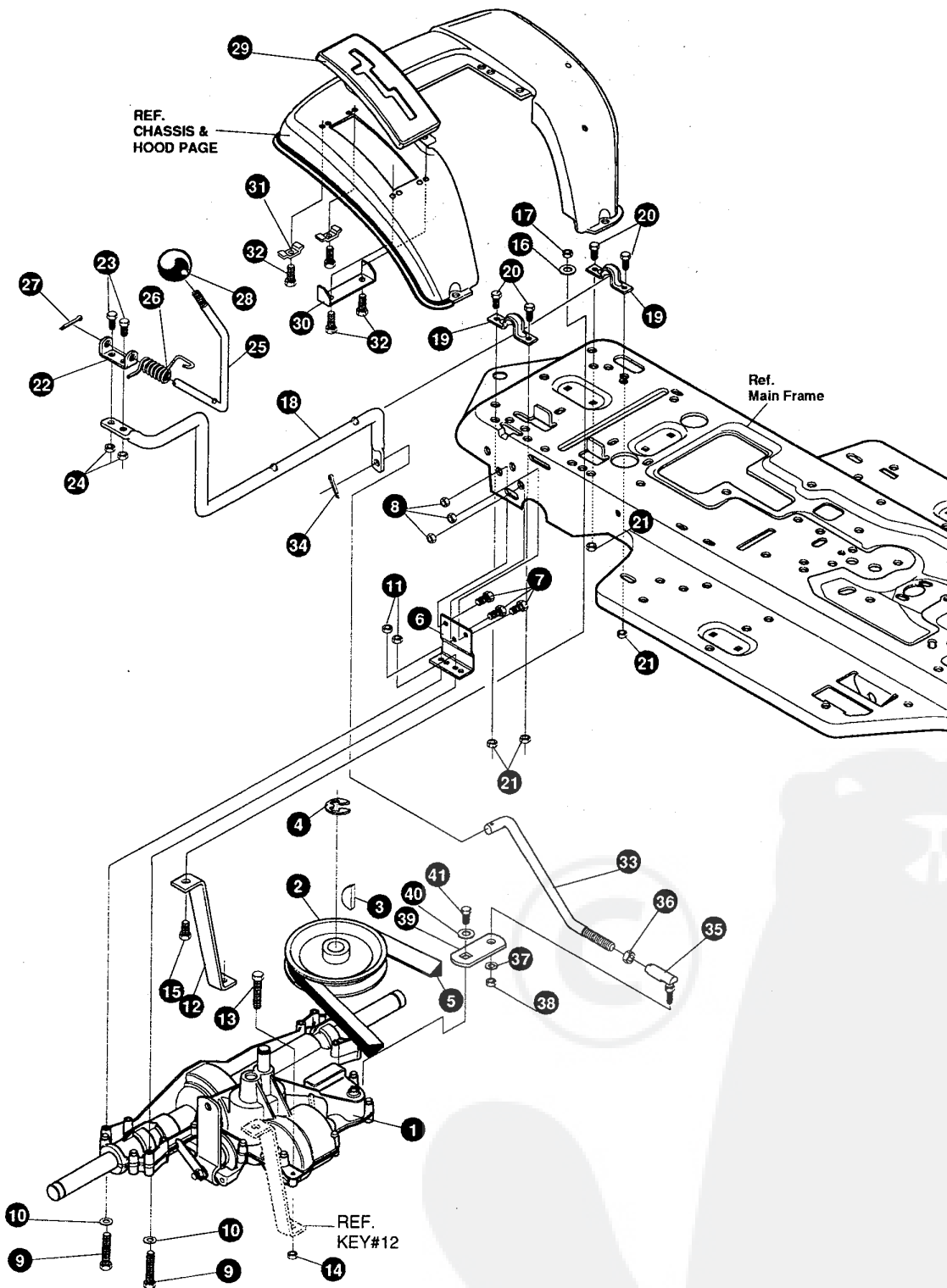
30" LAWN TRACTOR MODEL D3554-310

KEY#	PART#	DESCRIPTION	QTY.
1.	^	FRONT AXLE ASSEMBLY SF	1
2.	312280-860	AXLE FRONT	1
3.	50546	BEARING FLANGE	4
4.	310368	SPINDLE,RH	1
5.	36625	RING,RETEX	1
6.	310367	SPINDLE,LH	1
7.	49447	ARM,STEERING LH	1
8.	454565	PIN,SPRING	1
9.	302688	TIE ROD	1
10.	• 122145	SCREW, 3/8-16X1.25 HHC	2
11.	120382	WASHER, .393X.68X.10 REGSPTLK	2
12.	• 1499	NUT, 3/8-16 REGHCTRLK	2
13.	304245	SECTOR GEAR	1
14.	44011	BOLT, .750X1.40 SPSH	1
15.	2483	WASHER, .391DX1.25ODX.07	1
16.	39573	SCREW, 3/8-24X1.00 NYL	1
17.	56191	DRAG LINK ASSEMBLY	1
18.	56190	DRAG LINK	1
19.	• 124925	NUT, 3/8-24 REGHEXJAM	2
20.	21275	BALL JOINT	1
20A	57158	BALL JOINT	1
21.	• 120382	WASHER, EGSPTLK	2
22.	120369	NUT, 3/8-24 REGHEX	2
23.	323098	STEERING SHAFT	1
24.	44009	PINION,STEERING SHAFT	1
25.	454565	PIN,SPRING	1
26.	54902	BEARING,1.370X.50 FLANGE STEERING	1
27.	39492	RING,RETEX 1.27X.05	1
28.	36625	RING,RETEX .57X.05	1
29.	^	ASSEMBLY, TIRE & RIM	2
30.	24167	VALVE STEM	1
31.	39937	WHEEL W/BEARING	1
32.	39979	BEARING, 1.380DX.753ID FLANGE	2
33.		REFER TO TIRE TREAD PAGE	
34.	642	WASHER,FLAT .755X1.31X.075	4
35.	36625	RING,RETEX .57X.05	2
36.	40394	HUB CAP	2

• INDICATES STANDARD HARDWARE ITEMS.
 ^ ORDER INDIVIDUAL PARTS.

30" LAWN TRACTOR MODEL D3554-310

MOTION DRIVE ASSEMBLY



NOTE: ALWAYS USE ORIGINAL EQUIPMENT PARTS.
Use of service/replacement parts other than original equipment parts may void your warranty.

**ALL UNNUMBERED
ITEMS ARE INTERCHANGEABLE
WITH OPPOSITE SIDE**

326530C

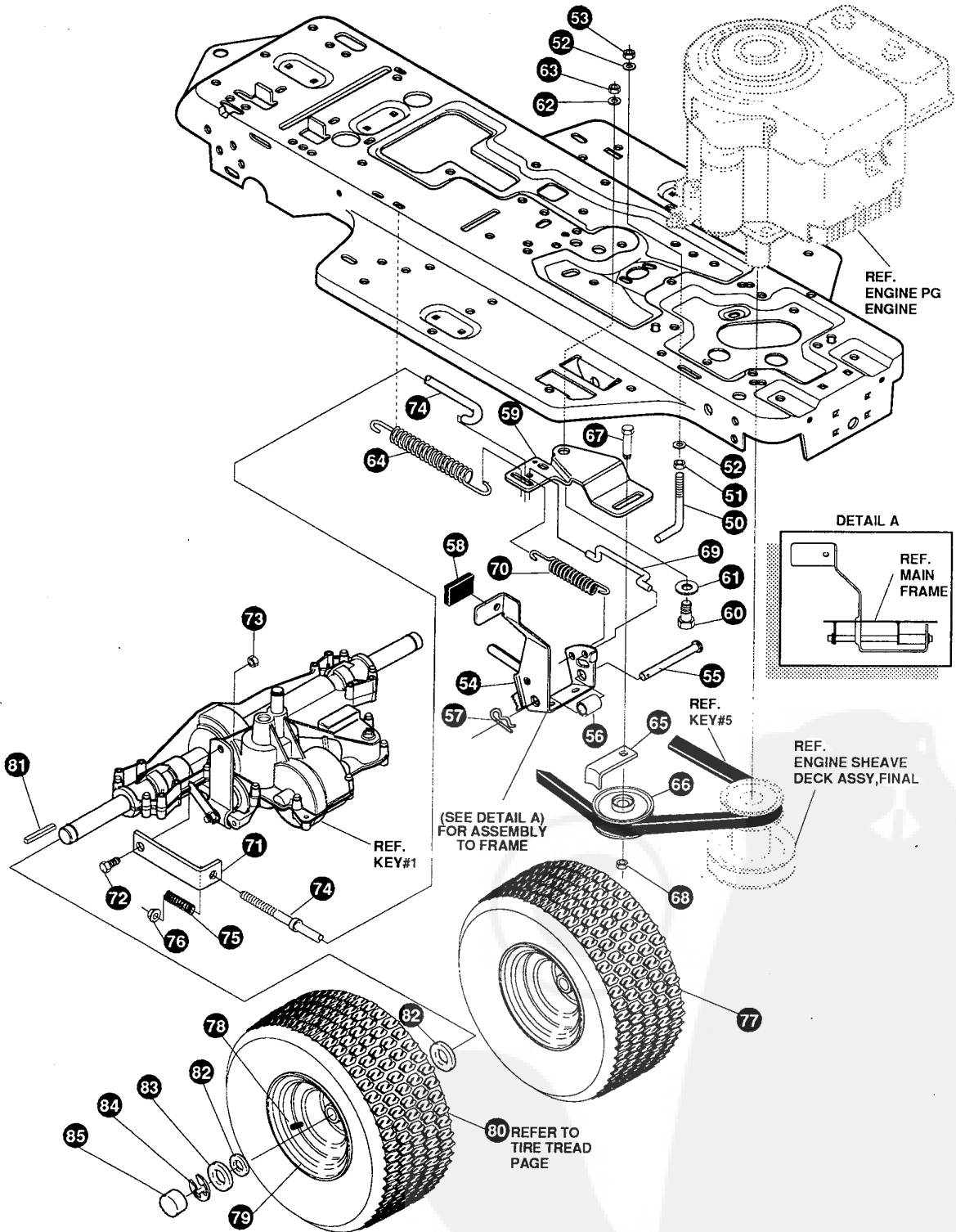
30" LAWN TRACTOR MODEL D3554-310

KEY#	PART#	DESCRIPTION	QTY.
1.	^	TRANSAXLE P940-5SP SF FER	1
2.	302745	PULLEY, IDLER V4L 6.60X	1
3.	3021	KEY, WDRF 606 .750X.187X.312	1
4.	22053	RING, RETEX .58X.035TRU5100-62	1
5.	54758	BELT, V 4L 82.00 SF DRIVE	1
6.	53768-853	MP BRACKET, TRANSAXLE	2
7.	180075	SCREW, 5/16-18X .63 HHC GR2	6
8.	1498	NUT, 5/16-18 REGHEXCTRLK	6
9.	180089	SCREW, 5/16-18X2.25 HHC GR5	4
10.	120393	WASHER, FLAT .344X .69X.065	4
11.	1498	NUT, 5/16-18 REGHEXCTRLK	4
12.	323213	MF BRACKET, T/A TORQ. 915 S/F	1
13.	180087	SCREW, 5/16-18X2.00 HHC GR5	1
14.	1498	NUT, 5/16-18 REGHEXCTRLK	1
15.	122017	SCREW, 5/16-18X1.00 HHC GR2	1
16.	138485	WASHER, EXLK .320X.61X.03	1
17.	1498	NUT, 5/16-18 REGHEXCTRLK	1
18.	321849	LEVER, SHIFT LOW SF FNSFT 940	1
19.	302760	MS, MF CLAMP .625DIA	2
20.	180075	SCREW, 5/16-18X .63 HHC GR5	4
21.	1498	NUT, 5/16-18 REGHEXCTRLK	4
22.	310356	BRACKET, PIVOT SHIFT LEVER LFSF	1
23.	180018	SCREW, 1/4-20X .62 HHC GR5	2
24.	1502	NUT, 1/4-20 REGHEXCTRLK	2
25.	309635	LEVER, SHIFT UPPER SOF 1/2-13	1
26.	310265	SPRING, TORS. .56X.95X.095	1
27.	137185	PIN, COTTER .125 DIA X1.00LG	1
28.	55514	KNOB, ROUND 1.50 DIA BLACK	1
29.	311209	COVER PLASTIC LF P930/F4360-6	1
30.	311257-853	BRACKET COVER F-5 FNDR SHIFT	1
31.	1341	ML CLAMP, SPRING 1.17"ID	2
32.	311331	SCREW, 1/4-15X.44/.53 HILOHWA	4
33.	321844	ROD, CONNECTING, SHIFT ZINC	1
34.	137185	PIN, COTTER .125 DIA X1.00LG	1
35.	57158	BALL JOINT 3/8 THD SHORT STUD	1
36.	124925	NUT, 3/8-24 REGHEXJAM	1
37.	120382	WASHER, REGSPTLK.393X.68X.10	1
38.	120369	NUT, 3/8-24 REGHEX	1
39.	323212	BRKT, SHIFT LEVER S/F FND 930	1
40.	57157	WASHER, .750X.250 SP-TRANSAXLE	1
41.	56255	SCREW, 1/4-28X .75 NYLHHCGR8	1

^ CONTACT YOUR NEAREST TRANSAXLE DEALER FOR PARTS AND SERVICE.

30" LAWN TRACTOR MODEL D3554-310

MOTION DRIVE ASSEMBLY



NOTE: ALWAYS USE ORIGINAL EQUIPMENT PARTS. Use of service/replacement parts other than original equipment parts may void your warranty.

ALL UNNUMBERED ITEMS ARE INTERCHANGEABLE WITH OPPOSITE SIDE

326530C

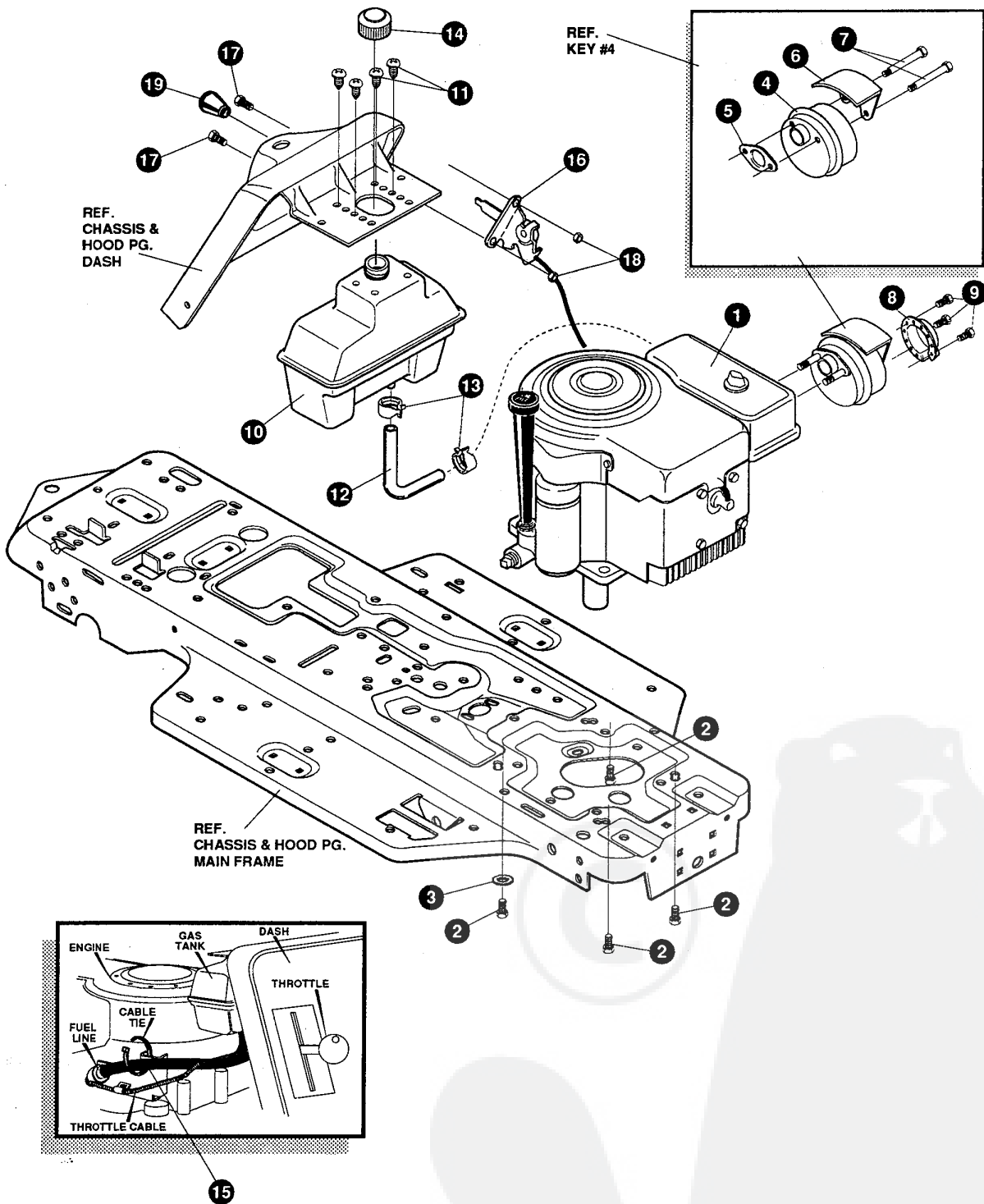
30" LAWN TRACTOR MODEL D3554-310

KEY#	PART#	DESCRIPTION	QTY.
50.	49896	MF BELT GUIDE	1
51.	271184	NUT, 5/16-18 HEXKEPS	1
52.	120393	WASHER, FLAT .344X .69X.065	2
53.	1498	NUT, 5/16-18 REGHEXCTRLK	1
54.	302603-853	SF ASSY,BRAKE PEDAL S.F.	1
55.	319676	PIN,CLEVIS .5 DIA,4.87LG,ZN PL	1
56.	302601	SPACER, SLEV .53 X .62X1.406	1
57.	56180	PIN, HAIR .091 DIA X1.62LG	1
58.	48761	PAD,CLUTCH/BRAKE PEDAL	1
59.	321969	MF IDLER ARM BRKT TRACTION SF	1
60.	41890	BOLT, .625X .218 HHSH 5/16-18	1
61.	4107	WASHER, FLAT .635X1.31X.07 PL	1
62.	45602	WASHER, FLAT .333X .87X.119	1
63.	1498	NUT, 5/16-18 REGHEXCTRLK	1
64.	327867	SPRING,3/4 ODX6.75X.091 TENSIO	1
65.	39659	MF RETAINER,BELT	1
66.	35374	PULLEY, IDLER V4L 3.06X .62	1
67.	45892	BOLT, 3/8-16X1.50 CARR GR2	1
68.	1499	NUT, 3/8-16 REGHXCTRLK	1
69.	43980	ROD, .268 DIA CLUTCH	1
70.	50562	SPRING,3/8ODX1.625X.055 TENSIO	1
71.	323210	BRACKET, TRACTION BRAKE S/F	1
72.	46824	BOLT, .500X .188 HHSH 5/16-18Z	1
73.	1498	NUT, 5/16-18 REGHEXCTRLK	1
74.	323211	ROD, BRAKE 915 T/A SF RAW 999	1
75.	313881	SPRING, CLUTCH .625 OD	1
76.	50352	NUT, 1/4-20 WDFLLK TOPLOCK	1
77.	42090	TIRE & RIM, PU 18X6.5X8TURFWHI	2
78.	24167	VALVE STEM	1
79.	36182	HUB, WHEEL WHITE	1
80.	^	TIRE, PU 18X6.5X8 TURF	1
81.	52928	KEY, SQUARE .187SQX2.25LG	2
82.	642	WASHER, FLAT .755X1.31X.075	4
83.	42815	WASHER, FLAT .755X1.53X.07	2
84.	36625	RING, RETEX .57X.05TRU5133-75	2
85.	40394	HUB CAP, 1.500ID X 7/8LG	2

^ ORDER INDIVIDUAL PARTS.

30" LAWN TRACTOR MODEL D3554-310

ENGINE & CONTROL ASSEMBLY



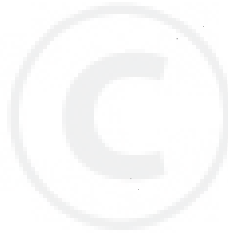
NOTE: ALWAYS USE ORIGINAL EQUIPMENT PARTS. Use of service/replacement parts other than original equipment parts may void your warranty.

ALL UNNUMBERED ITEMS ARE INTERCHANGEABLE WITH OPPOSITE SIDE

325626A

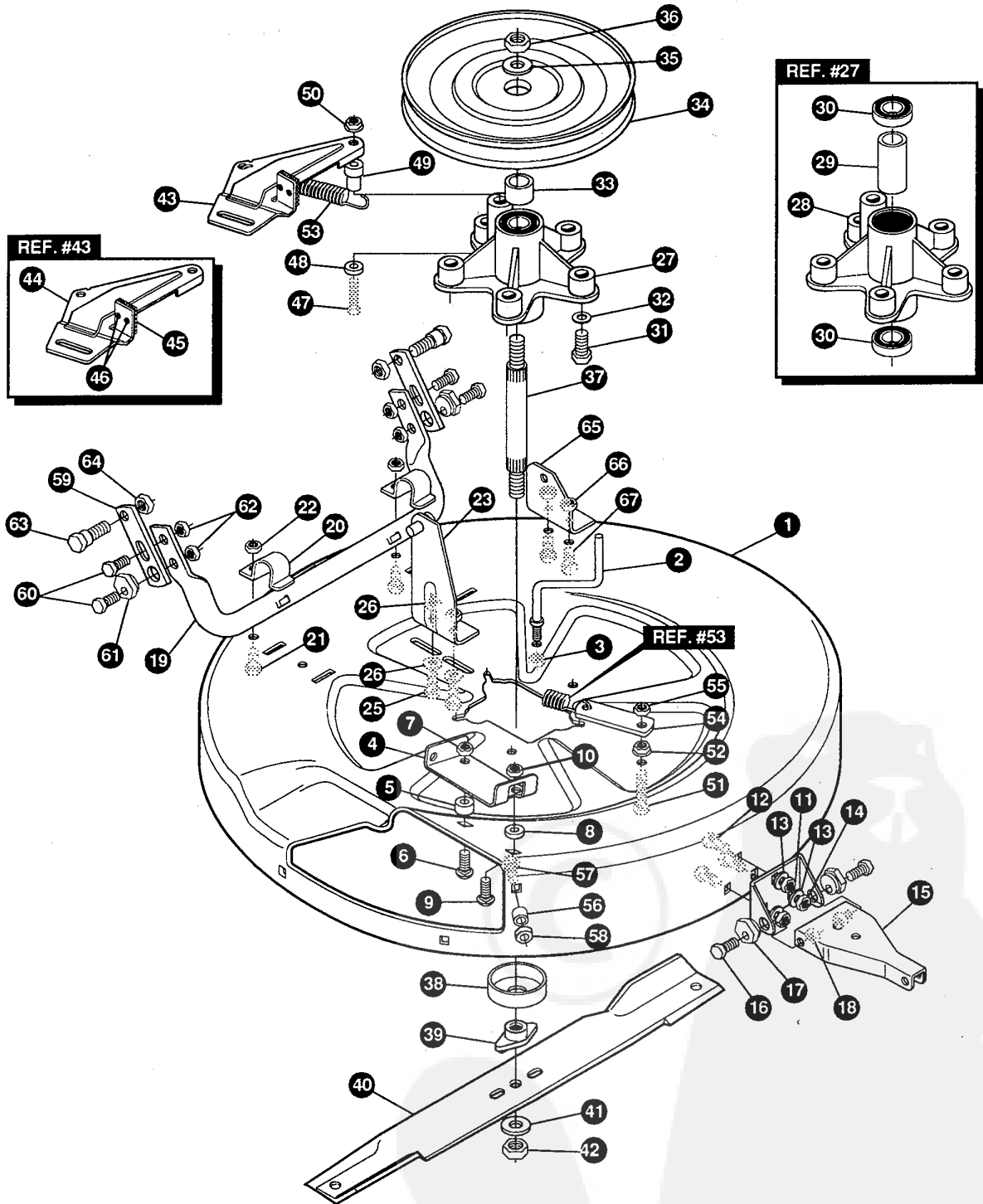
30" LAWN TRACTOR MODEL D3554-310

KEY#	PART#	DESCRIPTION	QTY.
1.	ENGINE	B&S 10VER ELEC RER (SEE ENGINE MANUAL)	1
2.	50947	SCREW, 3/8-16X1.25 WAHHTAPBLKP	4
3.	138489	WASHER, EXLK .384X.69X.04	1
4.	57908	MUFFLER-LO TONE NELSON	1
5.	46708	GASKET, MUFFLER	1
6.	54767	SHIELD, HEAT, FOR ROUND MUFFLER	1
7.	173063	SCREW, 5/16-18X3.50 HHC GR2	2
8.	56472	DEFLECTOR SIDE OUT	1
9.	35287	SCREW, #8-32X.38	4
10.	314989	TANK, FUEL 1 GAL CLEAR	1
11.	49050	SCREW, 1/4-10X .75PHPNTAPGR2BK	4
12.	42258	TUBING, .25X.50X BULK GAS LINE	12"
13.	47345	CLAMP, FUEL LINE RED	2
14.	46704	CAP, GAS 1-1/2-7 THD BLK	1
15.	57444	TIE, CABLE BLACK NYLON 5.62L	1
16.	320031	THROTTLE CONTROL	1
17.	35291	SCREW, 10-24X .50 SLHHMA GR2	2
18.	271166	NUT, #10-24 HEXKEPS	2
19.	50607	KNOB, ROUND THROTTLE BLACK	1



30" LAWN TRACTOR MODEL D3554-310

PRE-PAINTED DECK



NOTE: ALWAYS USE ORIGINAL EQUIPMENT PARTS. Use of service/replacement parts other than original equipment parts may void your warranty.

ALL UNNUMBERED ITEMS ARE INTERCHANGEABLE WITH OPPOSITE SIDE

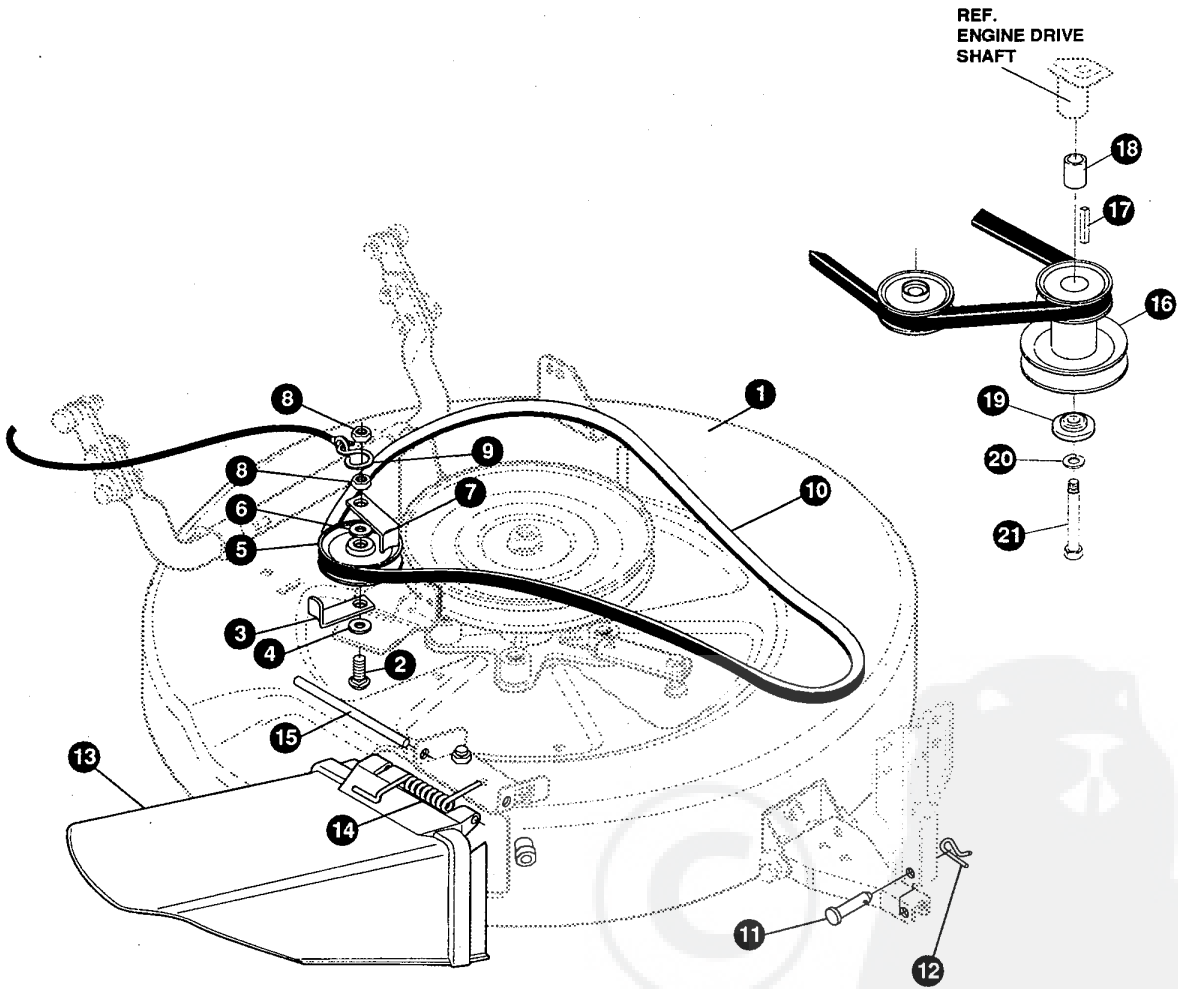
323276B

30" LAWN TRACTOR MODEL D3554-310

KEY#	PART#	DESCRIPTION.	QTY.
1	321982-853	DECK,MOWER 30 INCH S.F.	1
2	57318	GUIDE,BELT 5/16-18 THD.	1
3	1498	NUT,5/16-18 REGHEXCTRLK	1
4	317017	BRACKET CHUTE MOUNT	1
5	314702	SPACER,SLEEVE .344X1.0X5.00	1
6	120230	BOLT, 5/16-18X1.25 CARR GR2	1
7	1498	NUT,5/16-18 REGHEXCTRLK	1
8	45602	WASHER,FLAT .333X.87X.119	1
9	126216	BOLT,5/16-18X.75CARR GR2	1
10	1498	NUT,5/16-18 REGHEXCTRLK	1
11	311237-853	MS BRACKET MOUNTING,FRONT	1
12	57072	BOLT, 5/16-18 REGHEXCTRLK	3
13	120393	WASHER,FLAT .344X.69X.065	3
14	1498	NUT,5/16-18 REGHEXCTRLK	3
15	311236-853	BRACKET,BAR,TOW,FRONT	1
16	122017	SCREW,5/16-18X1.00 HHC GR2	2
17	58247	ADJUSTING NUT	2
18	1498	NUT,5/16-18 REGHEXCTRLK	2
19	313372-853	WS,ASSY,TUBE,PIVOT	1
20	310672	SUPPORT PIVOT TUBE	1
21	180077	SCREW,5.16-18X.75 HHC	2
22	1498	NUT,5/16-18 REGHEXCTRLK	2
23	314119-853	ASSY LIFT BRKT.	1
24	180077	SCREW,5.16-18X.75 HHC	2
25	120393	WASHER,FLAT .344X.69X.065	2
26	1498	NUT,5/16-18 REGHEXCTRLK	2
27	313588	ASSEMBLY QUILL	1
28	314272	QUILL	1
29	314274	TUBE,SPACER	1
30	313576	BRNG,BALL	2
31	50634	SCREW, 5/16-18X.88 WAHTAP	5
32	138485	WASHER, EXLK .320X.61X.03	5
33	321146	SPACER SLEEVE .790X1.250X.500	1
34	314273	PULLEY ASSEMBLY	1
35	22265	WASHER,FLAT .515X1.38X.119	1
36	1500	NUT,1/2-13 REGHCTRLK	1
37	321144	SHAFT,QUILL 30"MOWER S.F.	1
38	313577	SHIELD,DUST,BEARING	1
39	313584	HUB,BLADE ADAPTOR	1
40	314826	BLADE 30" TD MOWER	1
41	22265	WASHER,FLAT .515X1.38X.119	1
42	1500	NUT,1/2-13 REGHCTRLK	1
43	12229-853	BRACKET IDLER ASSEMBLY	1
44	313510-853	BRACKET ARM IDLER	1
45	306973	BRAKE-PAD HARD	1
46	41601	RIVET, OVSET .187DIA X.50LG	2
47	180113	SCREW,5/16-18X3.00 HHC GR5	1
48	45602	WASHER,FLAT .333X.87X.119	1
49	321145	SPACER,SLEEVE .322X.63X2.310	1
50	44108	NUT, 5/16-18 HWDFLCTRLK	1
51	122027	SCREW,5/16-18X1.25 HHC GR2	1
52	44108	NUT,5/16-18 HWDFLCTRLK	1
53	35410	SPRING .071X.62X4.37	1
54	302357	LINK	1
55	1498	NUT,5/16-18 REGHEXCTRLK	1
56	50520	SPACER	1
57	126216	BOLT,5/16-18X.75 CARR.	1
58	1498	NUT,5/16-18 REGHEXCTRLK	1
59	314099-853	BRACKET,BAR,REAR STABILIZER	2
60	122017	SCREW, 5/16-18X1.00 HHC	4
61	58247	ADJUSTING NUT	2
62	1498	NUT,5/16-18 REGHEXCTRLK	4
63	51940	BOLT, .500X.437 HSH 3/8-16	2
64	1499	NUT,3/8-16 REGHXCTRLK	2
65	320605-853	BRACKET,BAR LIFT	1
66	1498	NUT,5/16-18 REGHEXCTRLK	2
67	180077	SCREW,5/16-18X.75 HHC GR5	2

30" LAWN TRACTOR MODEL D3554-310

FINAL DECK ASSEMBLY



NOTE: ALWAYS USE ORIGINAL EQUIPMENT PARTS.
Use of service/replacement parts other than original equipment parts may void your warranty.

**ALL UNNUMBERED
ITEMS ARE INTERCHANGEABLE
WITH OPPOSITE SIDE**

325643A

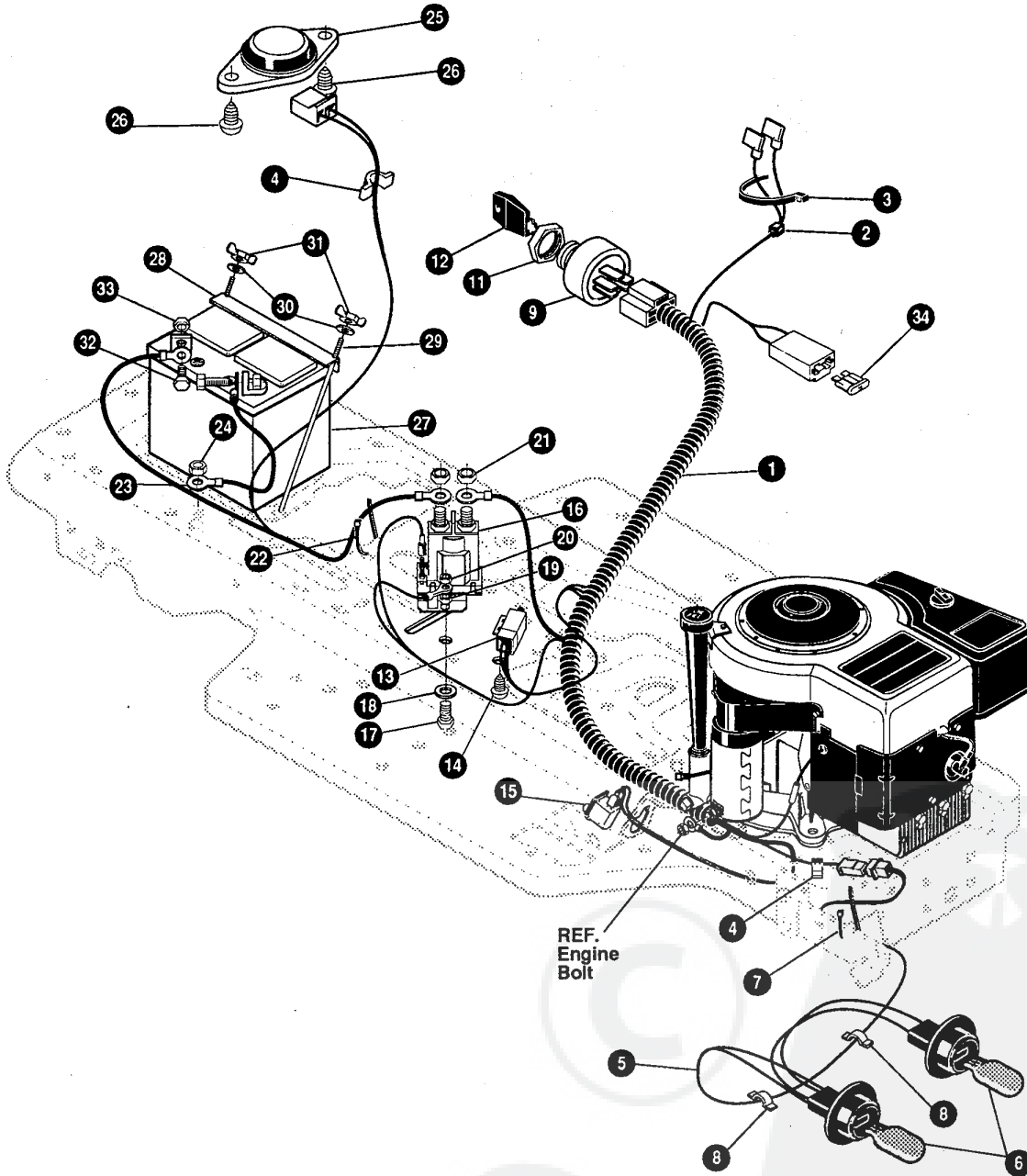
30" LAWN TRACTOR MODEL D3554-310

KEY#	PART#	DESCRIPTION	QTY.
1.	^	DECK, 30SD ASSY PTD BLK 853	1
2.	301340	BOLT, 3/8-16X2.50 CARR	1
3.	39659	RETAINER BELT	1
4.	22265	WASHER, FLAT .515 X 1.38 X .119 PL	1
5.	45074	PULLEY, IDLER V4L 3.06X .72	1
6.	25210	WASHER, FLAT .392X1.25X.09	1
7.	39659	RETAINER, BELT	1
8.	1499	NUT, 3/8-16 REGHXCTRLK	2
9.	310734	HOOK, S, 10 GA. STEEL	1
10.	321147	BELT, V 4L 54.0 - MOD SEC	1
11.	47817	PIN, .495X1.750 CLEVIS-SHORT	1
12.	56180	PIN, HAIR .091 DIA X 1.62LG	1
13.	315314	CHUTE, DEFLECTOR	1
14.	314975	SPRING TORSION CHUTE DEF.	1
15.	304424	ROD, PIVOT DECK .312DX7.25	1
16.	300577	PULLEY ENGINE 2.94 OF/5, 5D/3.00	1
17.	26655	KEY SQUARE .250SQX2.50LG	1
18.	304246	SPACER SLEV 1.01X1.484	1
19.	56431	WASHER, 980IDX1.38ODX.437 PILOT	1
20.	120383	WASHER, REGSPTLK 459X.78X.12	1
21.	182764	SCREW, 7/16-20X3.25 HHC	1

* INDICATES STANDARD HARDWARE ITEMS.
^ ORDER INDIVIDUAL PARTS.

30" LAWN TRACTOR MODEL D3554-310

ELECTRICAL ASSEMBLY



NOTE: ALWAYS USE ORIGINAL EQUIPMENT PARTS. Use of service/replacement parts other than original equipment parts may void your warranty.

ALL UNNUMBERED
ITEMS ARE INTERCHANGEABLE
WITH OPPOSITE SIDE

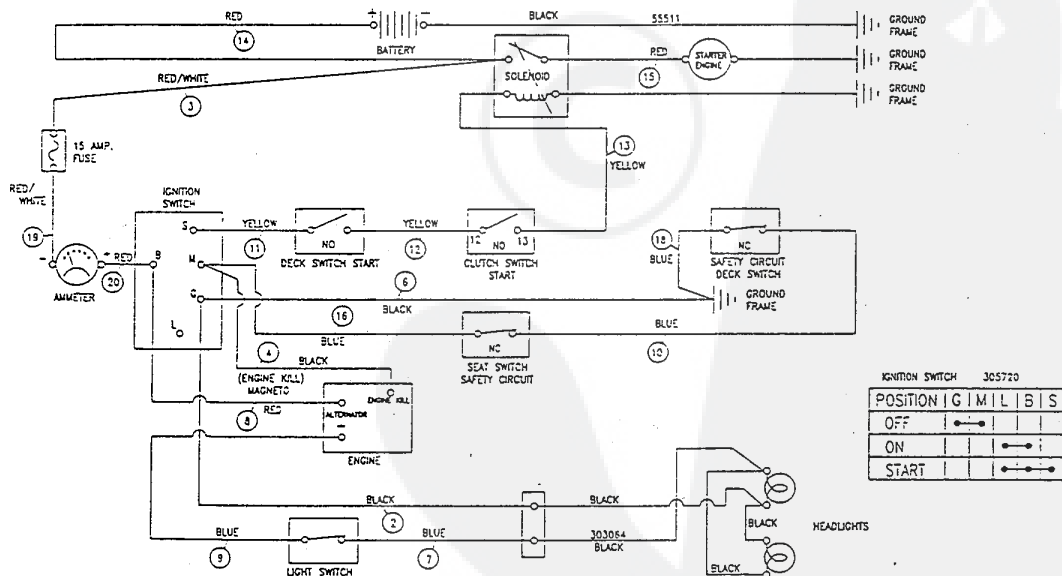
328213A

30" LAWN TRACTOR MODEL D3554-310

KEY#	PART#	DESCRIPTION	QTY.
1.	322087	WIRE HARNESS SF 8-12B&S	1
2.	322298	SPLICER	1
3.	57444	TIE, CABLE BLACK NYLON 5.62L	1
4.	41482	PRESS CLIP, 1.380LG .255ID	2
5.	303064	ASSY, LIGHT WIRE-1/4 TURN	1
6.	316823	BULB, HEADLAMP	2
7.	57444	TIE, CABLE BLACK NYLON 5.62L	1
8.	41482	PRESS CLIP, 1.380LG .255ID	2
9.	327354	SWITCH, IGNITION & LIGHTS	1
11.	327352	NUT, 5/8-8 ACME DELTA, W/O BOOT	1
12.	327349	KEY IGN SWITCH STEEL	1
13.	57476	SWITCH, SCR MNT DP NC NO BLK	1
14.	57220	SCREW, #12 X .50 PHPNHTAP BLK	2
15.	326653	SWITCH, SNAPMNT NO .055/.116BLK	1
16.	53716	SOLENOID	1
17.	187745	SCREW, 1/4-20X .75 HXSEMMA	2
18.	1084	WASHER, FLAT .281X1.00X.063PL	1
19.	1502	NUT, 1/4-20 REGHEXCTRLK	2
20.	271172	NUT, 1/4-20 REGHEXKEPS	1
21.	271187	NUT, 5/16-24 HKEPS	2
22.	57444	TIE, CABLE BLACK NYLON 5.62L	1
23.	55511	WIRE, GROUND, 12.5"	1
24.	271184	NUT, 5/16-18 HEXKEPS	1
25.	57547	SWITCH, SEAT	1
26.	160505	SCREW, 1/4-20X .38PHPNHMAGR2	2
27.	302257	BATTERY 12V 5 PLATE	1
28.	324719	MF BATTERY BRACKET	1
29.	40234	BATTERY ROD	2
30.	120392	WASHER, FLAT .281X .63X.065	2
31.	325232	WINGNUT, 1/4-20 NYLON	2
32.	120854	SCREW, 1/4-20X .63 HHC GR2	2
33.	271172	NUT, 1/4-20 REGHEXKEPS	2
34.	302031	FUSE, 15 AMP SPAPE TYPE	1

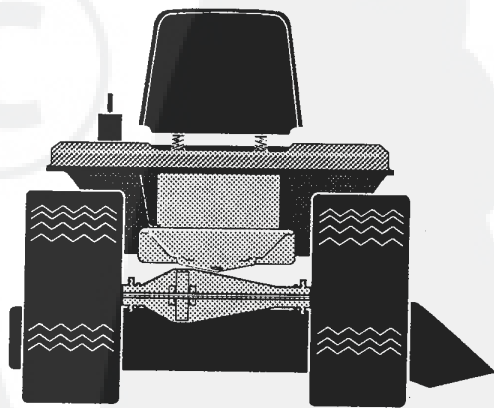
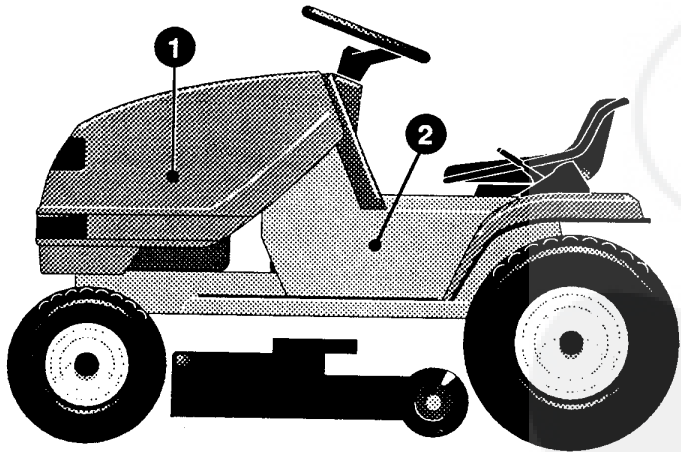
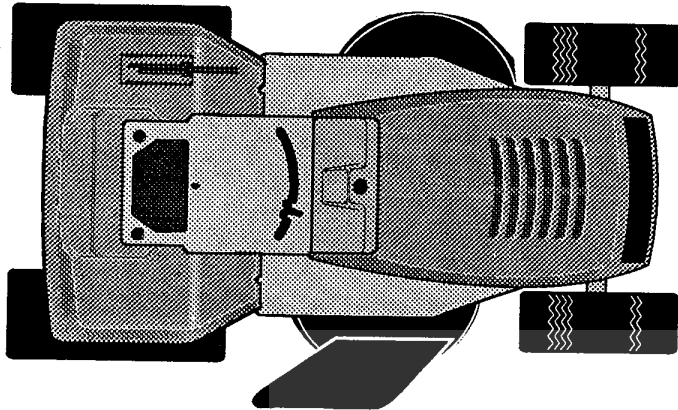
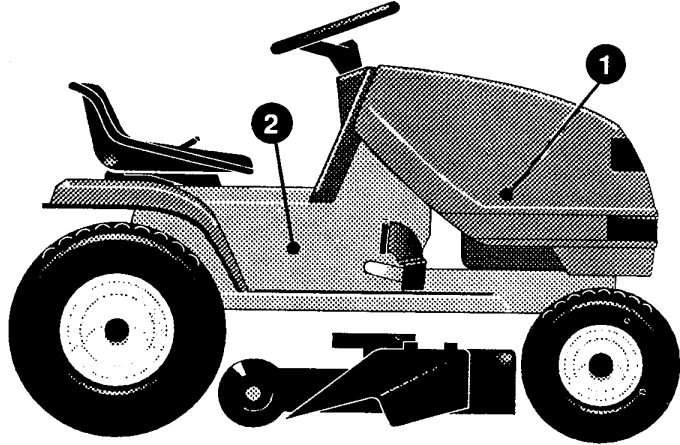
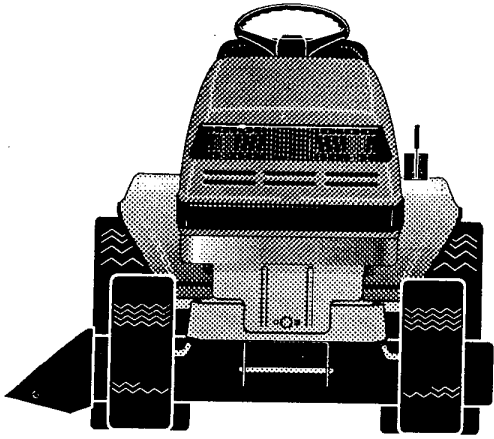
• INDICATES STANDARD HARDWARE ITEMS
 **Spade type fuse included with the wire harness.

WIRING SCHEMATIC



30" LAWN TRACTOR MODEL D3554-310

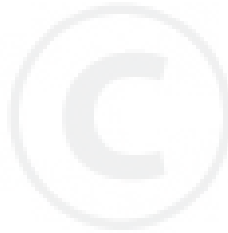
DECALS (DECORATIVE)



328746A

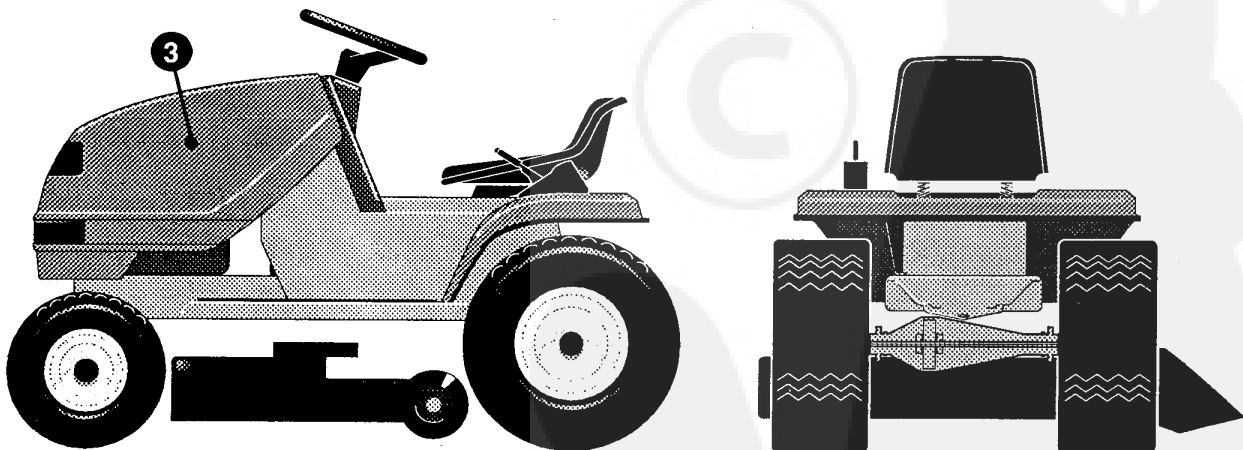
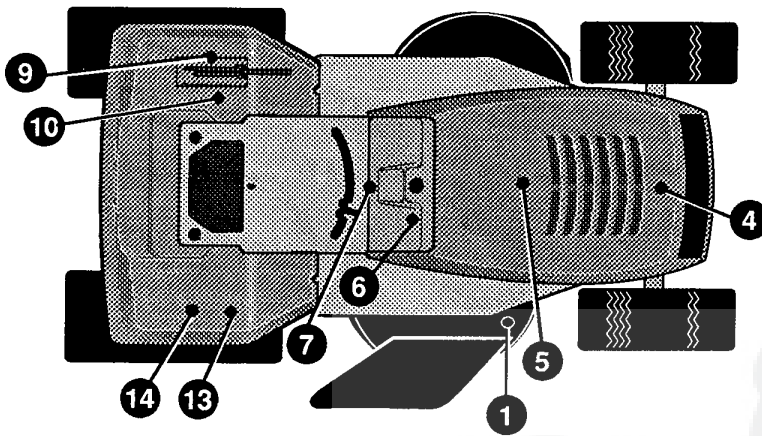
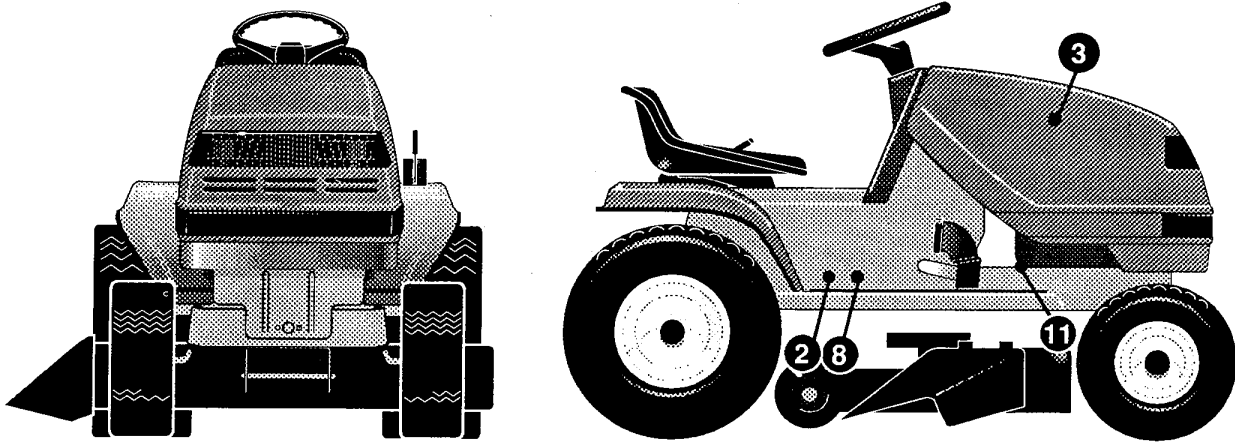
30" LAWN TRACTOR MODEL D3554-310

KEY#	PART#	DESCRIPTION	QTY.
1.	402189	DECAL, HOOD RH/LH	2
2.	307537	10/30/NAMEPLATE	2



30" LAWN TRACTOR MODEL D3554-310

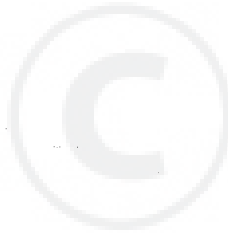
DECALS (INSTRUCTIONAL)



328745A

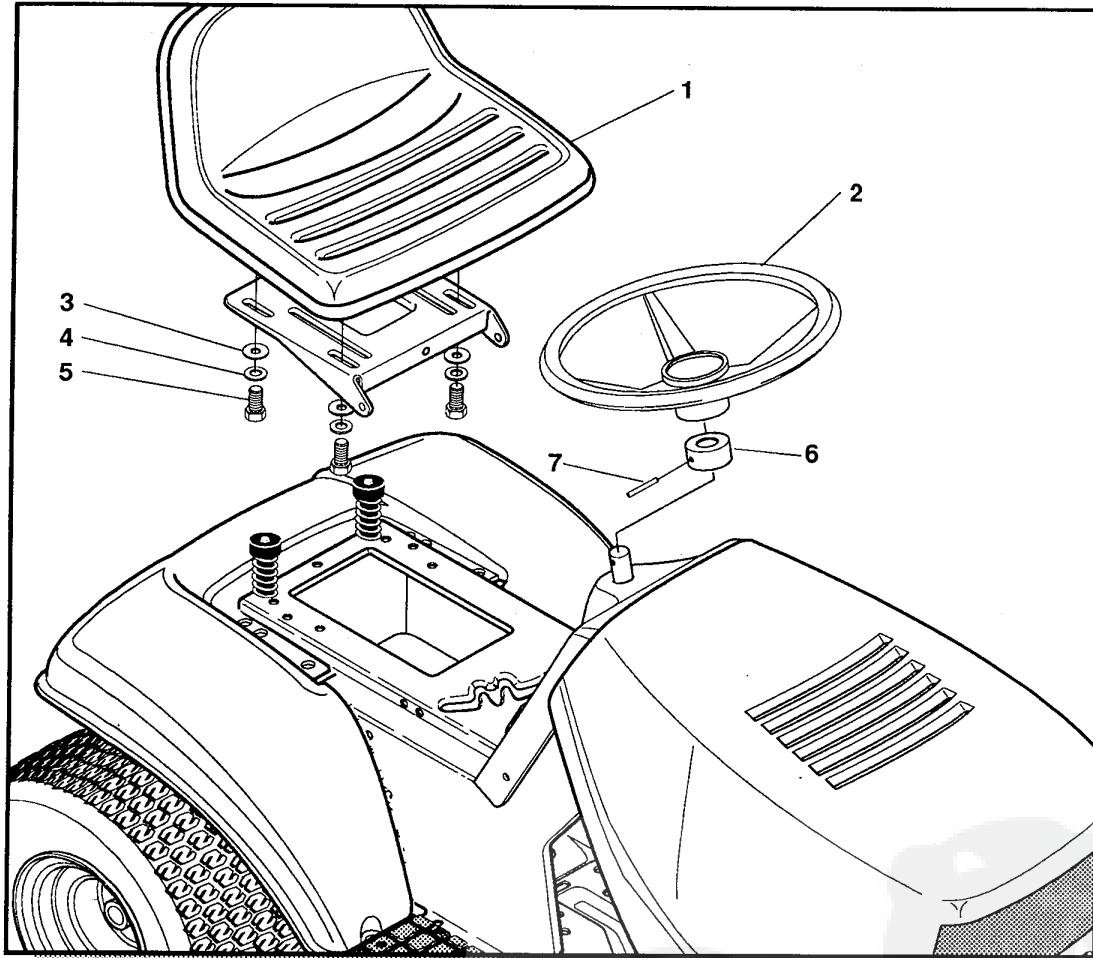
30" LAWN TRACTOR MODEL D3554-310

KEY#	PART#	DESCRIPTION	QTY.
1.	308687	DECAL,DECK WARN FI,SW,DN,& NOR	1
2	327461	DECAL,DECK WARN GR,FR,DU, & ITA	1
3.	305603	PAD, 18X6 FOAM HOOD	2
4.	307276	PAD, 15 X 7 FOAM HOOD	1
5.	307277	PAD, 12 X 4 FOAM HOOD	1
6.	320686	DECAL DASH, DYNAMARK EXP	1
7.	327462	DECAL, INSTRUCTION EXPORT	1
8.	305770	DECAL,CAUTION TRIANGLE EUROPE	1
9.	301931	DECAL, HEIGHT ADJUSTMENT FRENCH	1
10.	68901	DECAL,BLADE HEIGHT ADJ. EUROPE	1
11.	68903	DECAL,BRAKE/CLUTCH ISO	1
12.		REFERENCE ONLY	1
13.	323464	DECAL,SHIFTER POSITION	1
14.	311394	DECAL,SHIFT REV/NEUTRAL	1



30" LAWN TRACTOR MODEL D3554-310

CUSTOMER ASSEMBLY



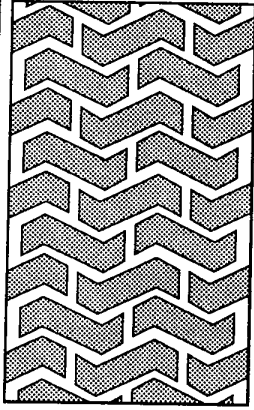
CUSTOMER ASSEMBLY VIEW 315134 PARTS BAG ASSY QTY1 (NON-SERVICABLE)

KEY#	PART#	DESCRIPTION	QTY
1	57455	SEAT MV550	1
2	301251	STEERING WHEEL	1
3	120393	WASHER, FLAT .344X.69X.065	4
4	120638	WASHER, HV SPLTLK .328X.60X.109	4
5	122007	SCREW, 5/16-18X.75 HHC	4
6	323758	COVER, STEERING SHAFT	1
7	456378	ROLL PIN .250DIA X 2.0LG	1

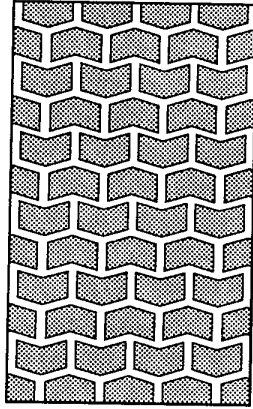
315821C

30" LAWN TRACTOR MODEL D3554-310

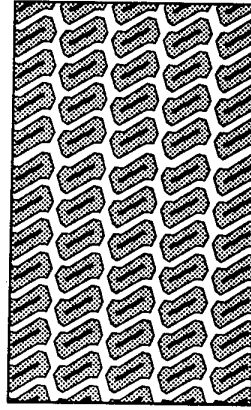
TREAD PATTERNS



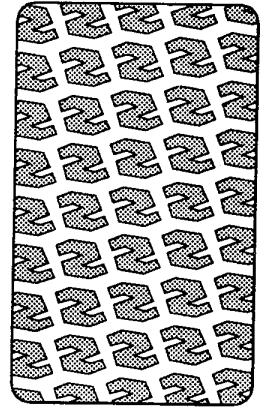
"A"



"B"



"C"



"D"

TIRE SIZE

TIRE SIZE	"A"	"B"	"C"	"D"
11 X 4.00 - 5	42295	319679		
13 X 5.00 - 6	41060	319680		
15 X 6.00 - 6	39830	316702	301140	313952
16 X 6.50 - 8	41081	319682		314539
18 X 8.50 - 8	319683	317400		
18 X 9.50 - 8	41106	316701		313950
20 X 8.00 - 8	319685	319684	57164	314584
20 X 10.00 - 8	58276	319686		313654
20 X 10.00 - 10	55893	319687		
23 X 9.50 - 12	53655	319690	319689	314370

ACCESSORIES

Contact the dealer where your tractor was purchased for the available accessories. If you are unable to contact the dealer, write to the address on the front cover of this manual.

Rear Engine Rider	
Model	Description
5708-16	Bagger - Fits 32" Side Discharge
5708-17	Bagger - Fits 36" Side Discharge & 30" Top Discharge
5709-02	Front Weight Box - holds 35 lbs.
5648-16	Lawn Sweeper w/dump Release
5714-00	Mulching Kit - 30" Top Discharge

Lawn Tractor	
Model	Description
5708-22	Bagger - Fits 30" Side Discharge
5708-13	Bagger - Fits 36", 38", 39" & 45" Side Discharge
5705-04	36" Two-Stage Snowblower - Fits 36", 38", 39", & 45" Side Discharge
5661-06	42" Snowblade - Fits 36", 38", 39", & 45"
5592-00	Tire Chains - 18" x 6.50"
5585-00	Tire Chains - 18" x 9.50" & 20" x 8"
5672-01	Wheel Weights - Front - 1 pr. w/mtg. hdw. - Fits 15" tires
5673-02	Wheel Weights - Rear - 1 pr. w/mtg. hdw. - Fits 18" & 20" tires
5709-03	Front Weights - Fits 30" & 32" Side Discharge
5648-16	Lawn Sweeper w/dump Release
5714-00	Mulching Kit - 30" Top Discharge

Garden Tractor - Light Ground Engaging	
Model	Description
5708-13	Bagger - Fits 36", 38", 39", & 45" Side Discharge
5705-04	36" Two - Stage Snowblower - Fits 36", 38", 39", & 45"
5661-06	42" Snowblade - Fits 36", 38", 39", & 45"
5672-01	Wheel Weights - Front 1 pr. w/mtg. hdw. - Fits 15" tires
5673-02	Wheel Weights - Rear - 1 pr. w/mtg. hdw. - Fits 18" & 20" tires
5648-16	Lawn Sweeper w/dump Release
5667-02	Sleeve Hitch - w/lift bar - Fits 45"
5668-01	Adaptor (sleeve hitch) for use w/23" tires
5706-00	Tire Chains - 20" x 10"
5671-00	Tire Chains - 23" x 9.50"
5672-02	Wheel Weights - Front - 1 pr. w/mtg. hdw. Fits 16" tires
5673-00	Wheel Weights - Rear - 1 pr. w/mtg. hdw. Fits 23" tires
5674-01*	10" One Bottom Moldboard Plow
5675-01*	Cultivator - 7 row - Adj. 6" - 42" width
5676-01*	Disc Harrow - 8" & 11" disc - Adj. width & disc angle
5677-02*	Tiller - 5 H.P. Self-Powered - 28" width

Four Wheel Steer	
Model	Description
5708-14	Bagger - Fits 40" & 46" Side Discharge
5705-05	42" One-Stage Snowblower - Fits 40" & 46"
5661-07	48" Snowblade - Fits 40" & 46"
5709-04	Rear Weight Box for 40" & 46"
5648-16	Lawn Sweeper w/dump Release
5706-00	Tire Chains 20" x 10"
5671-00	Tire Chains 23" x 9.50"
5672-02	Wheel Weights - Front - 1 pr. w/mtg. hdw. Fits 16" tires
5673-00	Wheel Weights - Rear - 1 pr. w/mtg. hdw. Fits 23" tires
5672-01	Wheel Weights - Front - 1 pr. w/mtg. hdw. Fits 15" tires
5673-02	Wheel Weights - Rear - 1 pr. w/mtg. hdw. Fits 18" & 20" tires

Two Wheel Steer Garden Tractor	
Model	Description
5667-04	Sleeve Hitch - w/lift bar Fits 46"
5674-01*	10" One Bottom Moldboard Plow
5675-01*	Cultivator - 7 row - Adj. 6" - 42" width
5676-01*	Disc Harrow 8" & 11" Disc. Adj. width & disc angle
5677-02*	Tiller 5 H.P. Self-Powered - 28" width
5648-16	Lawn Sweeper w/dump Release

*Requires a sleeve hitch