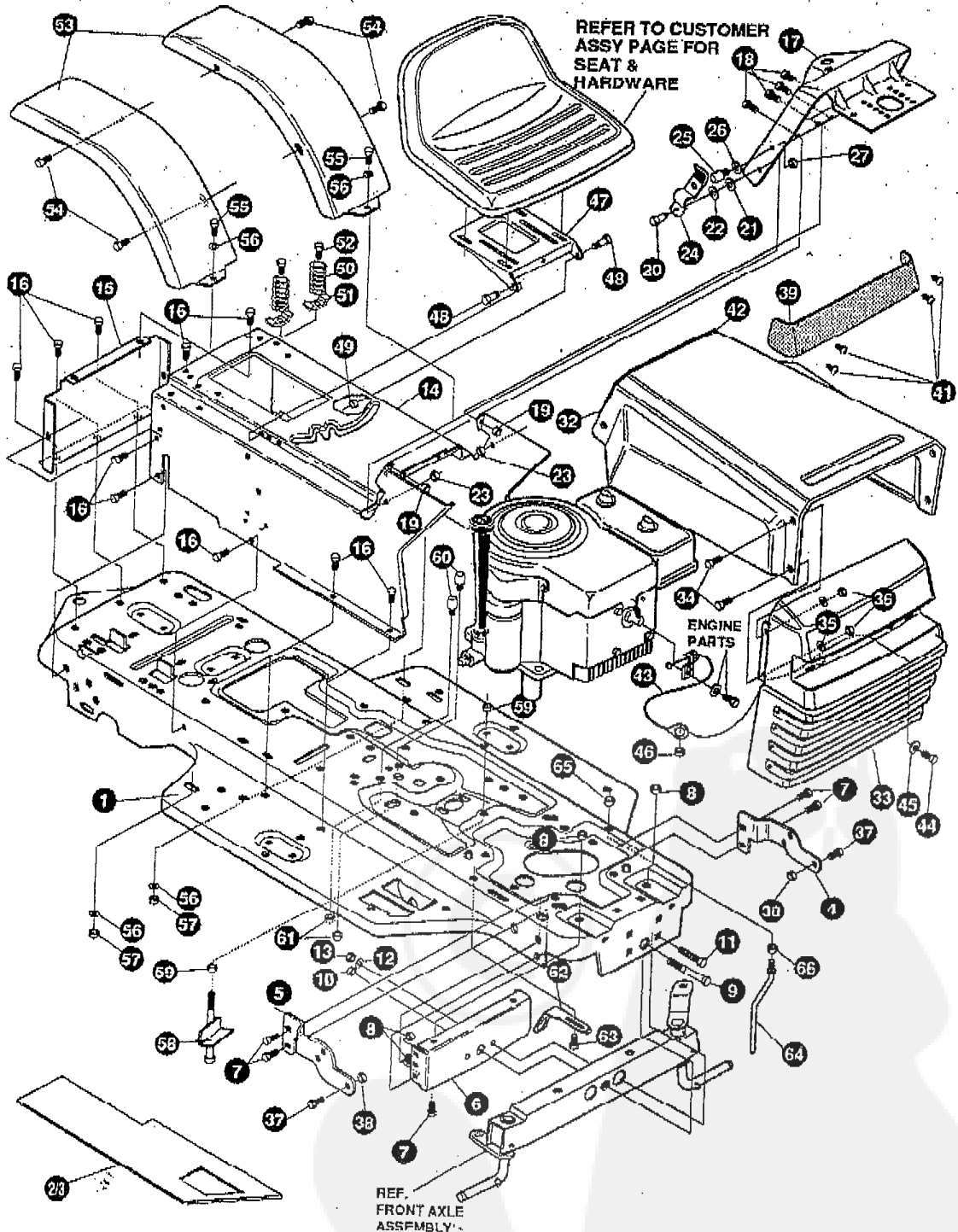


# 38" LAWN TRACTOR MODEL D3554-420

## CHASSIS & HOOD ASSEMBLY



**NOTE: ALWAYS USE ORIGINAL EQUIPMENT PARTS.** Use of service/replacement parts other than original equipment parts may void your warranty.

**ALL UNNUMBERED ITEMS ARE INTERCHANGEABLE WITH OPPOSITE SIDE**

329404A

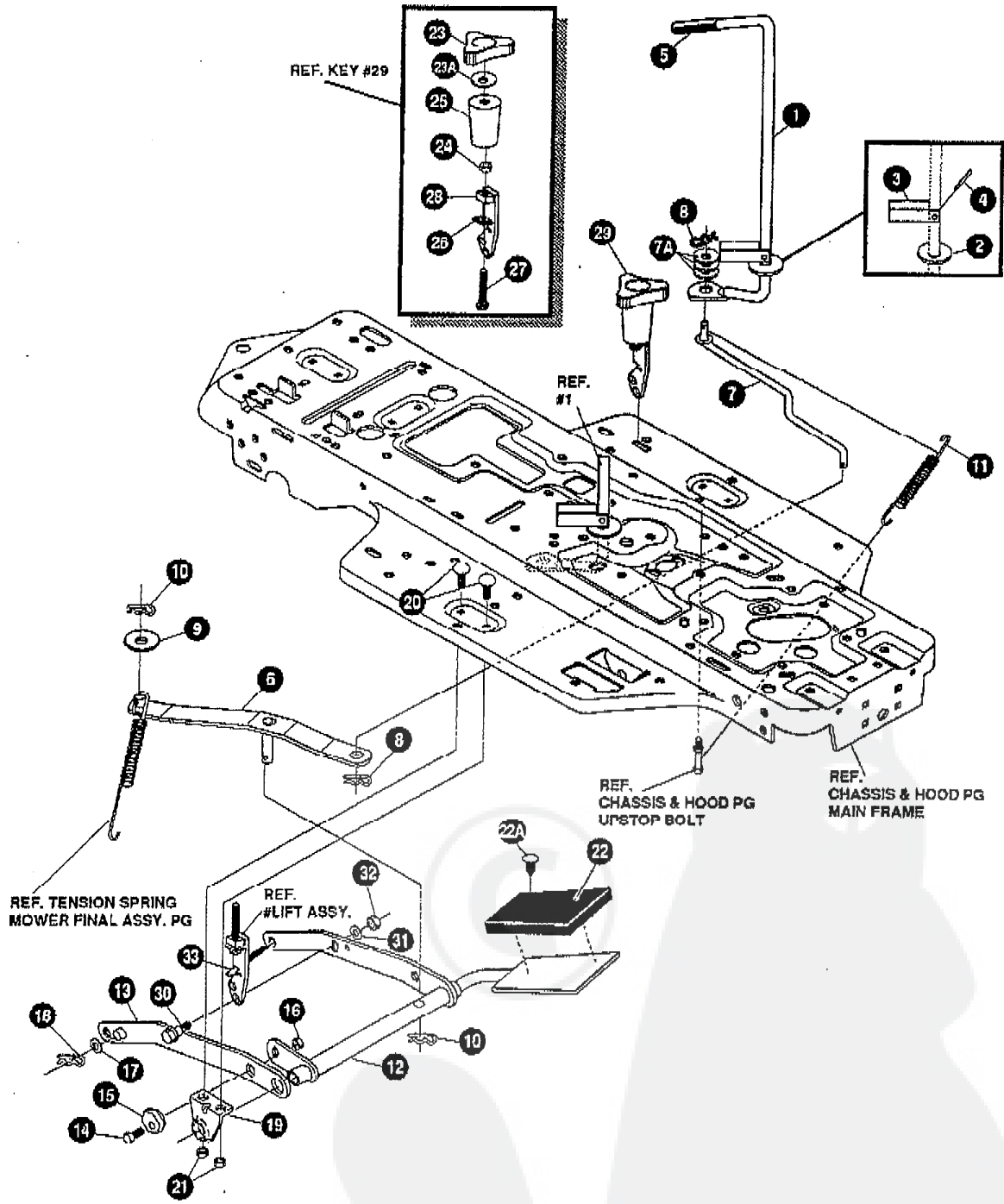
# 38" LAWN TRACTOR MODEL D3554-420

KEY#	PART#	DESCRIPTION	QTY.
1	321997-854	FRAME, MAIN SF RIDER	1
2	326732	FOOTPAD, LH SF WIDE	1
3	302916	FOOTPAD, RH SF WIDE	1
4	314579-853	BRACKET, GRILLE L.H.	1
5	314578-853	BRACKET, GRILLE R.H.	1
6	56362-853	BRKT, SUPT FRNT AXLE	1
7	328154	SCREW, 5/16-18X.75WDFLLK	6
8	55273	NUT, 5/16-18 HXWDFLLK	6
9	29616	BOLT, .625X2.875 SPSH 1/2-20	1
10	274654	NUT, 1/2-20 REGHXCTRLK	1
11	122201	SCREW, 3/8-16X2.75 HHC	2
12	2483	WASHER, .391DX1.25DX.07 BELLVIL	2
13	1499	NUT, 3/8-16 REGHXCTRLK	2
14	314491-854	CONSOLE, SF DYNA STYLE TOPSH	1
15	56235-854	CONSOLE, REAR COVER	1
16	995346	SCREW, 1/4-20X .50 WAHHTAP	15
17	320466-854	DASH, SF NOMA DYNA STYLING	1
18	995338	SCREW, 1/4-20X .63 HHWATAP	4
19	50352	NUT 1/4-20 WDFLLK TOP LOCK	2
20	8482	BOLT, .375X .156 HSH 5/16-18	2
21	120394	WASHER, FLAT .406X .81X.065	2
22	120393	WASHER, FLAT .344X .69X.065	2
23	1498	NUT, 5/16-18 REGHEXCTRLK	2
24	57159	LATCH, .94WDX.047 ASSY HOOD	2
25	53446	PIN, 5/16-18 HOOD LATCH	2
26	138538	WASHER, REGINTLK.320X.61X.03	2
27	45174	NUT, 5/16-18 HEXWDFLLK WHIZ	2
32	314538-854	HOOD	1
33	325401	GRILLE	1
34	274672	SCREW, 1/4-20X .63 WAHHC	4
35	120392	WASHER, FLAT .281X .63X.065	4
36	1502	NUT, 1/4-20 REGHEXCTRLK	4
37	36149	BOLT, .375X .500 HSH 5/16-18	2
38	1498	NUT, 5/16-18 REGHEXCTRLK	2
39	302333	LENS HEADLAMP	1
41	57796	SCREW, #8 X .50 PLASTITE	4
42	56304	EDGING WIDE BLK	1
43	311094	LANYARD, HOOD	25"
44	121887	SCREW 1/4-20 X .75 HHC	1
45	120392	FLAT WASHER, .281 X .63 X .065	1
46	1502	LOCKNUT 1/4-20	1
47	58367-853	PLATE, SEAT	1
48	20507	BOLT, .437X .156 HSH 5/16-18	2
49	1498	NUT, 5/16-18 REGHEXCTRLK	2
50	56220	SPRING, 1.43X2.38X.162 COM SEAT	2
51	1341	CLAMP, SPRING 1.17"ID	2
52	995346	SCREW, 1/4-20X .50 WAHHTAP	2
53	43970-854	FENDER	2
54	995346	SCREW, 1/4-20X .50 WAHHTAP	4
55	122007	SCREW, 5/16-18X.75 HHC	2
56	446363	WASHER, FLAT .375X .88X.082	4
57	1498	NUT, 5/16-18 REGHEXCTRLK	2
58	328360	ASSY UPSTOP	1
59	1499	NUT, 5/16-18 REGHEXCTRLK	2
60	53446	PIN 5/16-18	2
61	271184	NUT, 5/16-18 HEX KEPS	2
62	302610-853	BRACKET, SWITCH MOUNT	1
63	995346	SCREW, 1/4-20X .50 WAHHTAP	1
64	50653	GUIDE, BELT	1
65	41529	NUT, 3/8-16 HXCTRLKJAM	1
66	271190	NUT, 3/8-16 HEXKEPS	1
	328833	GERMAN OPERATOR'S MANUAL (NOT ILLUSTRATED)	1
	329852	PARTS MANUAL (NOT ILLUSTRATED)	1
	329389	AIR ASSIST MANUAL	1
	327716	GRASS CATCHER MANUAL	1

● Standard Hardware Items.

# 38" LAWN TRACTOR MODEL D3554-420

## MOWER SUSPENSION



**NOTE:** ALWAYS USE ORIGINAL EQUIPMENT PARTS. Use of service/replacement parts other than original equipment parts may void your warranty.

**ALL UNNUMBERED ITEMS ARE INTERCHANGEABLE WITH OPPOSITE SIDE**

324978C

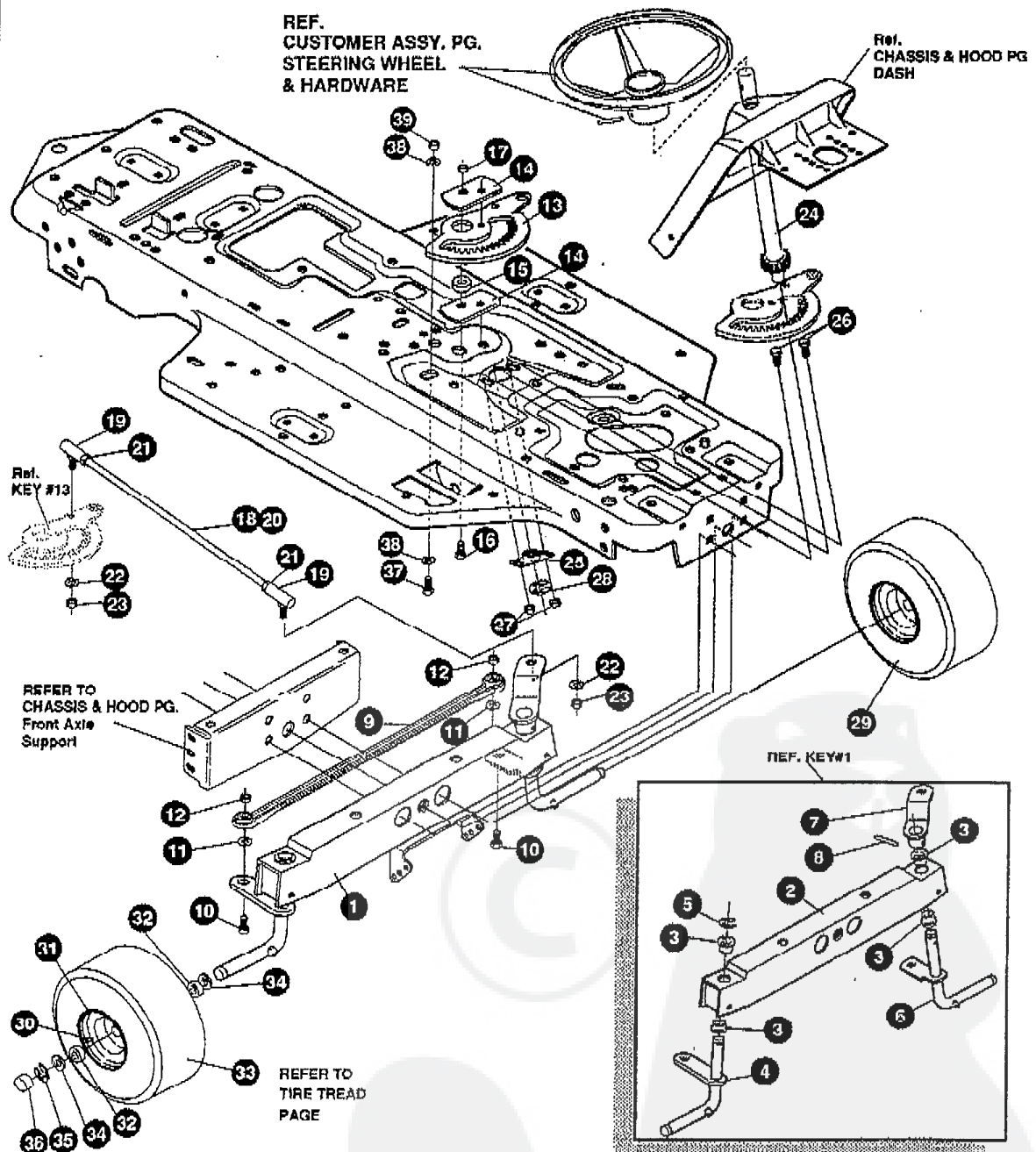
## 38" LAWN TRACTOR MODEL D3554-420

KEY#	PART#	DESCRIPTION	QTY.
1	325591	HANDLE, RH PTO DASH SF	1
2	22265	WASHER, FLAT .515X1.39X.119PL	1
3	305226	STOP, PTO ENGAGEMENT	1
4	326386	PIN, SPRING. 187DIA X1.13LG HD	1
5	46478	GRIP, HAND .50ID 3.37 LG BLK	1
6	925587-853	WS STRAP ASSY, PTO BELCRANK SF	1
7	325590	ROD, BELCRANK LINK	1
7A	274571	FLAT WASHER .375X.88X.082	3
8	8260	PIN, HAIR .091 DIA X1.66LGZ	2
9	25210	WASHER, FLAT .392X1.25X.09	1
10	8260	PIN, HAIR .091 DIA X1.66LGZ	2
11	325802	SPRING, .69X7.75X.0897 TENSION	1
12	326533-853	WP LIFT ASSY, LH PEDAL-LIFT	1
13	325130-853	WP LIFT ASSY, RH SF	1
14	180079	• SCREW, 5/16-18X1.00 HHC GR5 Z	1
15	58247	• NUT, ADJUST	1
16	1498	• NUT, 5/16-18 REGHEXCTRLK Z	1
17	417098	WASHER, FLAT .531X1.06X.063Z	2
18	8260	PIN, HAIR .091 DIA X1.66LG	2
19	325495-853	MP BRACKET, REAR HANG SUSP	1
20	126211	BOLT, 5/16-18X.63 CARR GR2Z	4
21	1498	• NUT, 5/16-18 REGHEXCTRLK	4
22	328596	PAD, LIFT PEDAL	1
22A	309235	FASTENER RATCHET	1
23	325860	KNOB, FLUTED TORQUE BLACK	1
23A	446363	FLAT WASHER .375X.88X.082	1
24	45905	• NUT, 3/8-16 HWDFLK MACK Z	1
25	326113	COVER, TOP SLEEVE PEDAL-LIFT	1
26	324988	WASHER, RUDDER 3/8X.75SQ	1
27	326632	• BOLT, SUS MOWER LATCH SF	1
28	325831-853	WP LATCH, SUS MOWER SF	1
29	327934	MOWFR, ASM LATCH	1
30	25086	• BOLT, .500X.375 HSSH 5/16-18Z	1
31	4230	WASHER, FLAT .328X.68X.104	1
32	1498	• NUT, 5/16-18 HWDFLCTRLK	1
33	35410	SPRING .071X.62X4.37	1

• STANDARD HARDWARE ITEMS

# 38" LAWN TRACTOR MODEL D3554-420

## STEERING ASSEMBLY



**NOTE:** ALWAYS USE ORIGINAL EQUIPMENT PARTS. Use of service/replacement parts other than original equipment parts may void your warranty.

ALL UNNUMBERED ITEMS ARE INTERCHANGEABLE WITH OPPOSITE SIDE

324972D

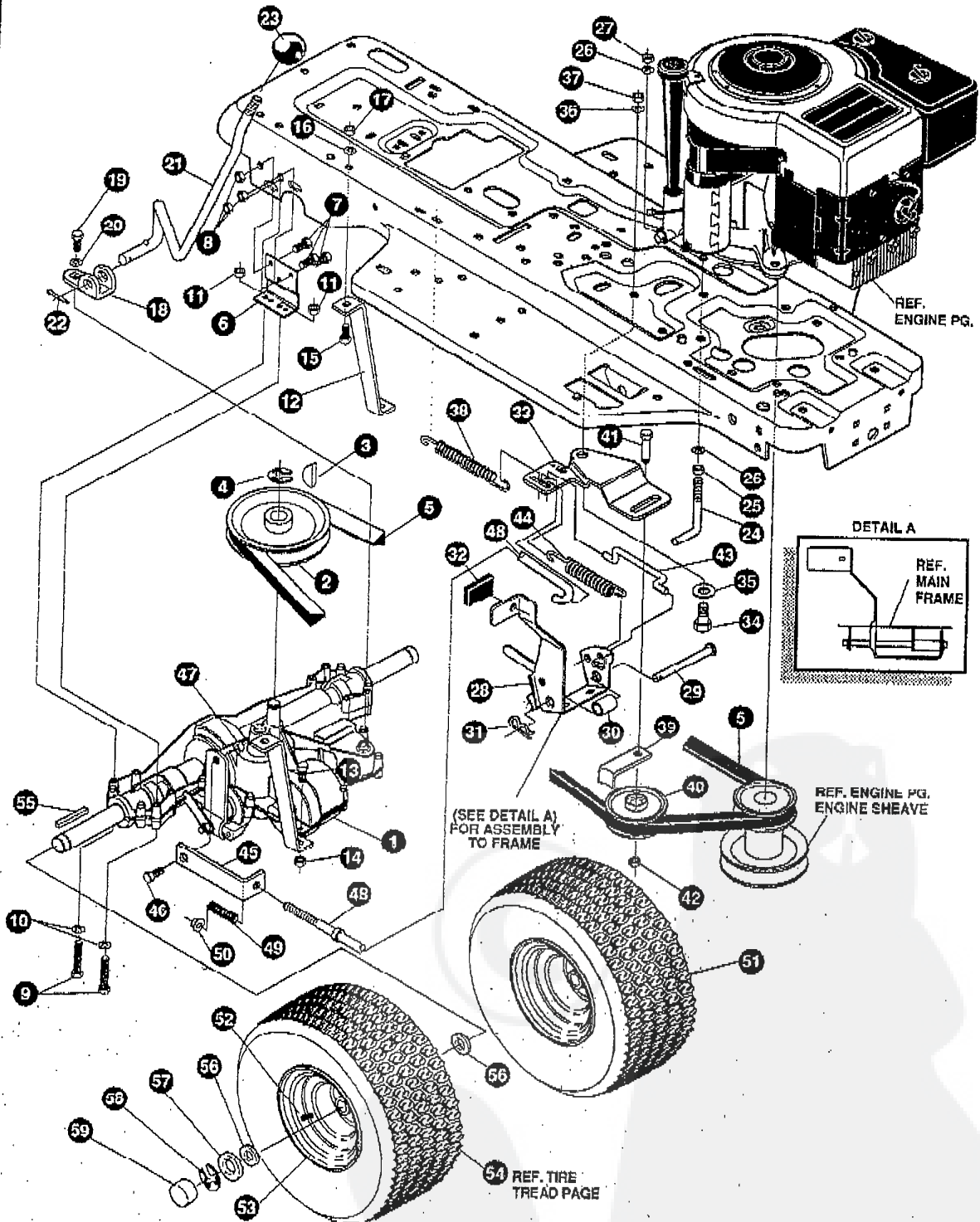
# 38" LAWN TRACTOR MODEL D3554-420

KEY#	PART#	DESCRIPTION	QTY.
1	*	FRONT AXLE ASSEMBLY SF	1
2	324915-853	AXLE, FRONT	1
3	50546	BEARING, FLANGE	4
4	310368	SPINDLE, RH	1
5	36625	RING, RETEX	1
6	310367	SPINDLE, LH	1
7	327619-853	ARM, STEERING LH	1
8	454565	PIN, SPRING	1
9	302688	TIE ROD	1
10	◇ 122145	SCREW, 3/8-16X1.25 HHC	2
11	◇ 120382	WASHER, .393X.68X.10 REGSPTLK	2
12	◇ 1499	NUT, 3/8-16 REGHXTRLK	2
13	324752	SECTOR, GEAR	1
14	327833	PLATE SECTOR SF 4WS	2
15	324753	BUSHING SECTOR GEAR SF 4WS	1
16	150124	SCREW, 3/8-16X1.25	1
17	1499	NUT, 3/8-16 REGHXCTRLK	1
18	◇ 328808	DRAGLINK ASSEMBLY	1
19	57169	BALL JOINT	2
20	56190	DRAGLINK	1
21	124925	NUT, 3/8-24 REGHEXJAM	2
22	120382	WASHER, REGSPTLK	2
23	120369	NUT, 3/8-24 REGHEX	2
24	327834	SHAFT PINION STEERING	1
25	325692	BRG. FL	1
26	326505	SCREW, 1/4-20X.75 GRD 5	2
27	46931	NUT, 1/4-20 FLLK NUT SIDE LOCK	2
28	20864	RING RET E	1
29	-	ASSEMBLY TIRE	2
30	24167	VALVE STEM	1
31	39829	WHEEL W/BEARING	1
32	314416	BEARING, 1.38ODX.753ID FLANGE	2
33		REFER TO TIRE TREAD PAGE	
34	642	WASHER, FLAT .755X1.31X.075	4
35	36625	RING, RETEX .57X.05	2
36	40394	HUB CAP	2
37	122145	SCREW, 3/8-16X1.25 GRD2	1
38	120394	WASHER, FLAT	2
39	44374	NUT, 3/8-16 HXWDFLLK	1

\* ORDER INDIVIDUAL PARTS.  
 ◇ Indicates STANDARD HARDWARE ITEMS.

# 38" LAWN TRACTOR MODEL D3554-420

## MOTION DRIVE ASSEMBLY



**NOTE:** ALWAYS USE ORIGINAL EQUIPMENT PARTS. Use of service/replacement parts other than original equipment parts may void your warranty.

**ALL UNNUMBERED ITEMS ARE INTERCHANGEABLE WITH OPPOSITE SIDE**

327141C



# 38" LAWN TRACTOR MODEL D3554-420

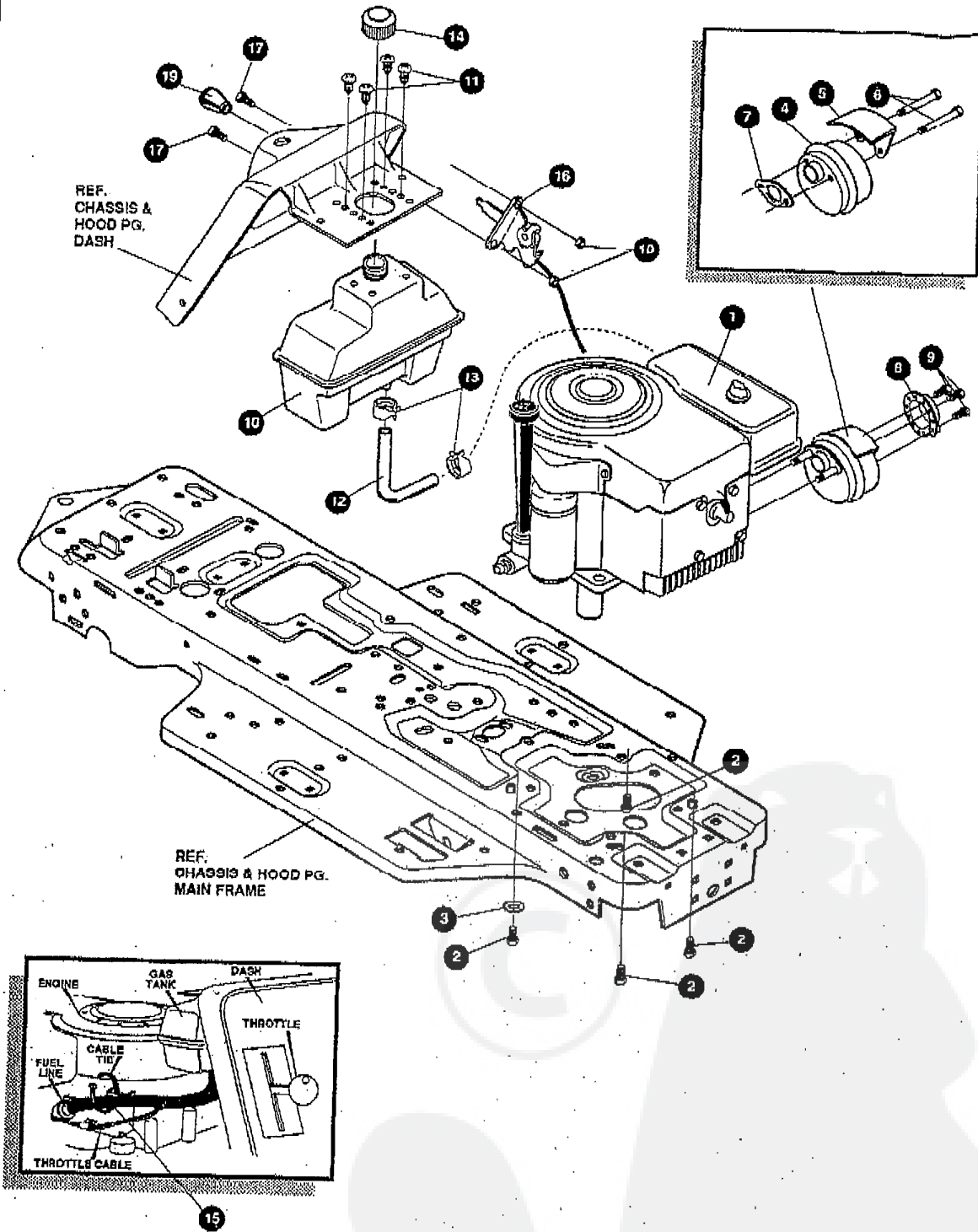
KEY#	PART#	DESCRIPTION	QTY.
1.	*	TRANSAXLE P940-5SP SF FER	1
2.	302745	PULLEY, IDLER V4L 6.60	1
3.	3021	KEY, WDRF 606 .750X.187X.312	1
4.	22053	RING, RETEX .58X.035TRU15100-62	1
5.	54758	BELT, V 4L 82.00 SF DRIVE	1
6.	53768-853	BRACKET, TRANSAXLE	2
7.	120228	SCREW, 5/16-18X.63 HHC	6
8.	1498	NUT, 5/16-18 REGHEXCTRK	6
9.	180009	SCREW, 5/16-18X2.25 HHC	4
10.	120393	WASHER, FLAT .34X.69X.065	4
11.	1498	NUT, 5/16-18 REGHEXCTRK	4
12.	313587	MF BRACKET, T/A TORO 915 SF	1
13.	180087	SCREW, 5/16-18X2.00 HHC	1
14.	1498	NUT, 5/16-18 REGHEXCTRK	1
15.	122017	SCREW, 5/16-18X1.00 HHC	1
16.	198485	WASHER, EXLK .320X.61X.03	1
17.	1498	NUT, 5/16-18 REGHEXCTRK	1
18.	310753-953	BRACKET, SHIFT P920-8SP	1
19.	56255	SCREW, 1/4-20X .75 NYLHHC	1
20.	57157	WASHER, 750X.250 SP-TRANSAXLE	1
21.	313934	LEVER, SHIFT 915 T/A SF	1
22.	137185	PIN, COTTER .125 DIA X1.00 LG	1
23.	55514	KNOB, ROUND 1.50 DIA BLACK	1
24.	49896	BELT GUIDE	1
25.	271184	NUT, 5/16-18 HEXKEPS	1
26.	120393	WASHER, FLAT .34X.69X.065	2
27.	1498	NUT, 5/16-18 REGHEXCTRK	1
28.	302608-853	ASSY, BRAKE PEDAL	1
29.	319676	PIN, CLEVIS .5 DIA, 4.87 LG, ZN PL	1
30.	302601	SPACER, SLEV .53 X .62 X1.406	1
31.	56180	PIN, HAIR .091 DIA X1.62 LG	1
32.	48761	PAD, CLUTCH BRAKE PEDAL	1
33.	321969	IDLER ARM BRKT TRACTION SF	1
34.	41890	BOLT, .625X .218 H/SH 5/16-18Z	1
35.	4107	WASHER, FLAT .695X1.31X.07	1
36.	45602	WASHER, FLAT .333X.87X.119	1
37.	1498	NUT, 5/16-18 REGHEXCTRK	1
38.	327867	SPRING, 3/4 ODK 7.75X.091 TENSIO	1
39.	39659	RETAINER, BELT	1
40.	35374	PULLEY, IDLER V4L 3.06X .62	1
41.	45892	BOLT, 3/8-16X1.50 CARR	1
42.	1499	NUT, 3/8-16 REGHEXCTRK	1
43.	43980	ROD, .268 DIA CLUTCH	1
44.	50562	SPRING, 3/8 ODK 1.625X.055 TENSIO	1
45.	323210	BRACKET, TRACTION BRAKE SF	1
46.	46824	BOLT, .500X .188 H/SH 5/16-18Z	1
47.	1498	NUT, 5/16-18 REGHEXCTRK	1
48.	323211	ROD, BRAKE 915 T/A SF	1
49.	53820	SPRING, CLUTCH .625 OD	1
50.	50352	NUT, 1/4-20 WDFLK TOPLOCK	1
51.	*	TIRE & RIM, PU 20X8 8-8 TURNIN	2
52.	24167	VALVE STEM	1
53.	326362	WHEEL/HUB ASSY 2008 WHITE	1
54.		REFER TO TIRE TREAD PAGE	
55.	52928	KEY, SQUARE .18750X2.25 LG	2
56.	642	WASHER, FLAT .755X1.31X.075	4
57.	42815	WASHER, FLAT .755X1.59X.07	2
58.	36625	RING, RETEX .57X.05TRU133-75	2
59.	40394	HUB CAP, 1.5000 X 7.88 LG	2

\* STANDARD HARDWARE ITEMS.



# 38" LAWN TRACTOR MODEL D3554-420

## ENGINE & CONTROL ASSEMBLY



**NOTE: ALWAYS USE ORIGINAL EQUIPMENT PARTS.** Use of service/replacement parts other than original equipment parts may void your warranty.

**ALL UNNUMBERED ITEMS ARE INTERCHANGEABLE WITH OPPOSITE SIDE**

325601A

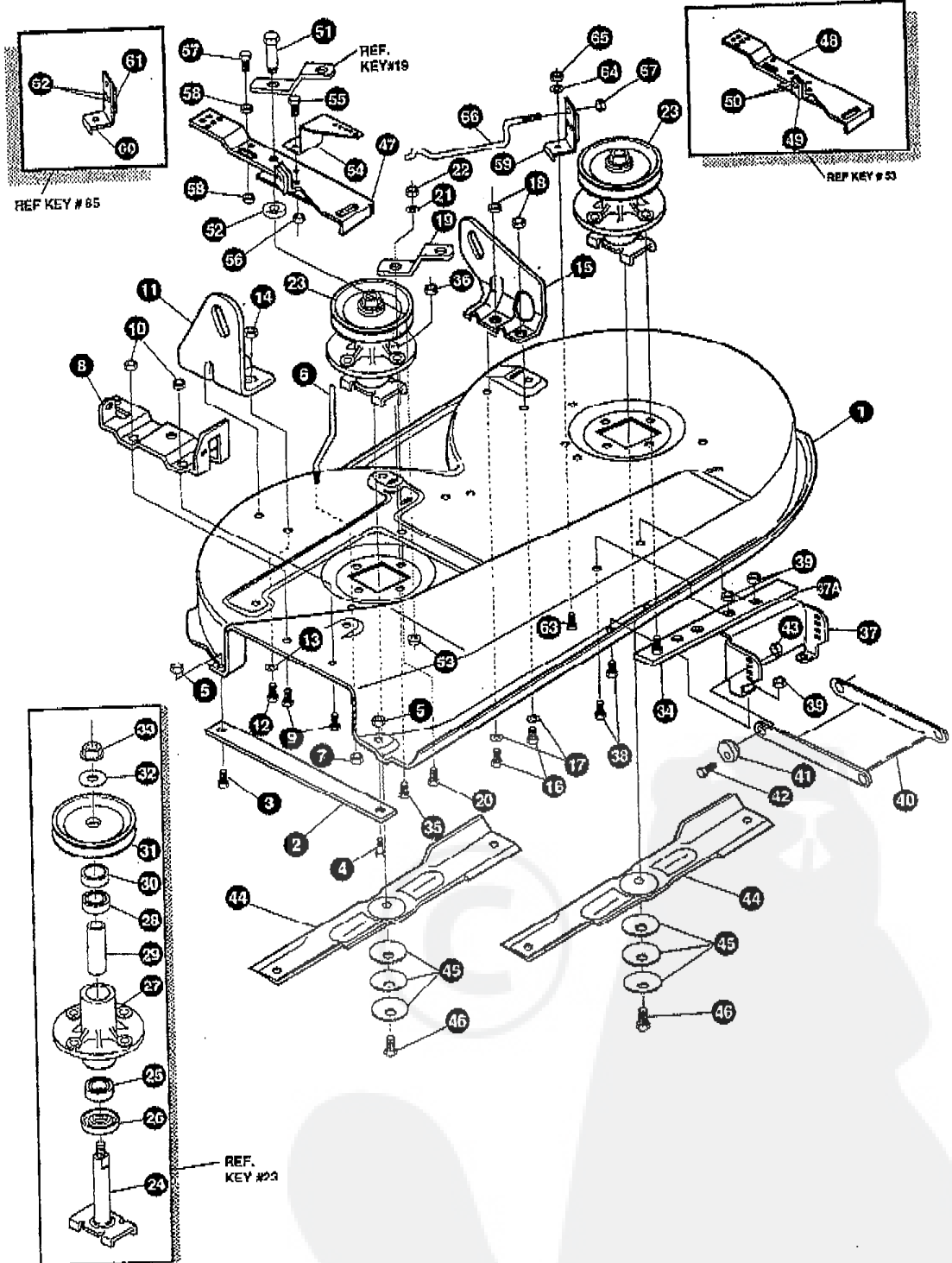
# 38" LAWN TRACTOR MODEL D3554-420

KEY#	PART#	DESCRIPTION	QTY.
1	ENGINE	12 HP B&S I/C (SEE ENGINE MANUAL)	1
2	• 50947	SCREW, 3/8-16X1.25 WAHHTAP	4
3	• 138489	WASHER, EXLK .384X.69X.04	1
4	57908	MUFFLER-LO TONE NELSON EXPORT	1
5	54767	SHIELD, HEAT, FOR ROUND MUFFLER	1
6	• 173063	SCREW, 5/16-18X3.50 HHC	2
7	46708	GASKET, MUFFLER	1
8	323423	DEFLECTOR, MUFFLER PARTIAL	1
9	35287	SCREW, #8-32X.38 HHWATAP GR2	3
10	314989	TANK, FUEL 1 GAL	1
11	• 49050	SCREW, 1/4-10X .75PHPNTAP	4
12	42250	GAS LINE .25ID	12"
13	47345	CLAMP, FUEL LINE	2
14	46704	GAS CAP 1-1/2-7 THD	1
15	57444	CABLE TIE	1
16	320031	THROTTLE CONTROL	1
17	• 35291	SCREW, 10-24X .50 SLHHMA	2
18	• 271166	NUT, #10-24 HEXKEPS	2
19	50607	KNOB, ROUND THROTTLE	1

• Indicates STANDARD HARDWARE ITEMS.

# 38" LAWN TRACTOR MODEL D3554-420

## PRE-PAINTED DECK



**NOTE: ALWAYS USE ORIGINAL EQUIPMENT PARTS.** Use of service/replacement parts other than original equipment parts may void your warranty.

**ALL UNNUMBERED ITEMS ARE INTERCHANGEABLE WITH OPPOSITE SIDE**

3286801

# 38" LAWN TRACTOR MODEL D3554-420

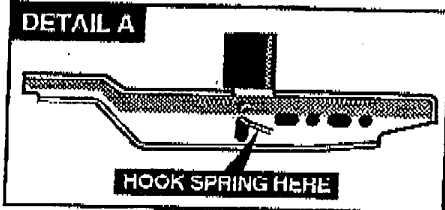
KEY#	PART#	DESCRIPTION	QTY.
1	325106-853	DECK,38"SD MOWER	1
2	326295-853	BAR, SKID	1
3	126216	BOLT, 5/16-18X .75 CARR	1
4	120230	BOLT, 5/16-18X1.25 CARR	1
5	Q271184	NUT, 5/16-18 HEXKEPS	2
6	57318	GUIDE, BELT 5/16-18 THD	1
7	Q1498	NUT, 5/16-18 REGHEXCTRLK	1
8	313928	BRACKET, CHUTE	1
9	180073	SCREW, 5/16-18X .50 HHC	2
10	Q1498	NUT, 5/16-18 REGHEXCTRLK	2
11	313929	LIFT BRACKET, REAR,RH	1
12	Q180077	SCREW, 5/16-18X .75 HHC	2
13	120393	WASHER, FLAT .344X .69X.065	2
14	Q1498	NUT, 5/16-18 REGHEXCTRLK	2
15	310667	BRACKET,DECK LIFTREAR LH	1
16	Q180077	SCREW, 5/16-18X .75 HHC	2
17	120393	WASHER, FLAT .344X .69X.065	2
18	Q1498	NUT, 5/16-18 REGHEXCTRLK	2
19	315302-853	BRACKET, IDLER SUPPORT	1
20	Q300345	SCREW, 5/16-18X1.38 WATAP	1
21	120393	WASHER, FLAT .344X .69X.065	1
22	Q1498	NUT, 5/16-18 REGHEXCTRLK	1
23	56424 853	QUILL ASSY, 36/39/40/43	2
24	56425	SHAFT/SADDLE 36"	1
25	49562	BRNG, BALL	1
26	50616	DUST SHIELD	1
27	55547	QUILL CASTING	1
28	49562	BRNG, BALL	1
29	50818	SPACER,3.797LGX.869IDX.88OD	1
30	51449	SPACER, .438LGX.932ODX.67/2ID-PM	1
31	313898	PULLEY,26/36" QUILL	1
32	58365	SPECIAL WASHER	1
33	Q1282	NUT, 7/16-20 WDFLLK	1
34	Q50634	SCREW, 5/16-18X .88 WAHTAP	6
35	Q300345	SCREW, 5/16-18X1.38 WATAP	1
36	Q1498	NUT, 5/16-18 REGHEXCTRLK	1
37	312526	LIFT SUPPORT FRONT DECK	1
37A	328155-853	MOUNTING PLATE	1
38	Q180075	SCREW, 5/16-18X .63 HHC	4
39	Q1498	NUT, 5/16-18 REGHEXCTRLK	4
40	58305-853	LINK BRACKET,DECK FR	1
41	58247	ADJUSTING NUT	2
42	Q122017	SCREW, 5/16-18X1.00 HHC	2
43	Q1498	NUT, 5/16-18 REGHEXCTRLK	2
44	306932	BLADE, 19.69 HI-LIFT	2
45	2463	WASHER, .39IDX1.25DX.07 BELLVIL	6
46	Q39573	SCREW, 3/8-24X1.00 NYLHHC	2
47	320565-853	IDLER ARM ASSY.	1
48	300490-853	IDLER ARM	1
49	306973	BRAKE PAD	1
50	41601	RIVET,TRSET .187 DIAx.50LG	2
51	300180	BOI T, .50 X .188 HSH3/8-16	1
52	896416	WASHER,FLAT .391 X 1.— X .125	1
53	45171	NUT,5/16-18 X .75 HHC WHIZ-LOCK	1
54	326249-853	BRACKET EXTENSION IDLER	1
55	180077	SCREW,5/16-18 X .75 HHC	1
56	1498	NUT, 5/16-18 REGHEXCTRLK	1
57	121954	SCREW,1/4-20X2.00 HHC	1
58	271172	NUT,1/4-20 REGHEXKEPS	2
59	303247	ASSY BLADE BRAKE	1
60	303246-853	BRAKE ARM	1
61	306973	BRAKE PAD	1
62	135624	RIVET,TRSET .185 DIAx.41	2
63	120228	SCREW,5/16-18X.63 HHC	1
64	120393	WASHER,FLAT .344 X .69 X .65	1
65	1498	NUT, 5/16-18 REGHEXCTRLK	1
66	315306	ROD,BRAKE	1
67	1502	NUT,1/4-20 REGHEXCTRLK	1

Q indicates STANDARD HARDWARE ITEMS

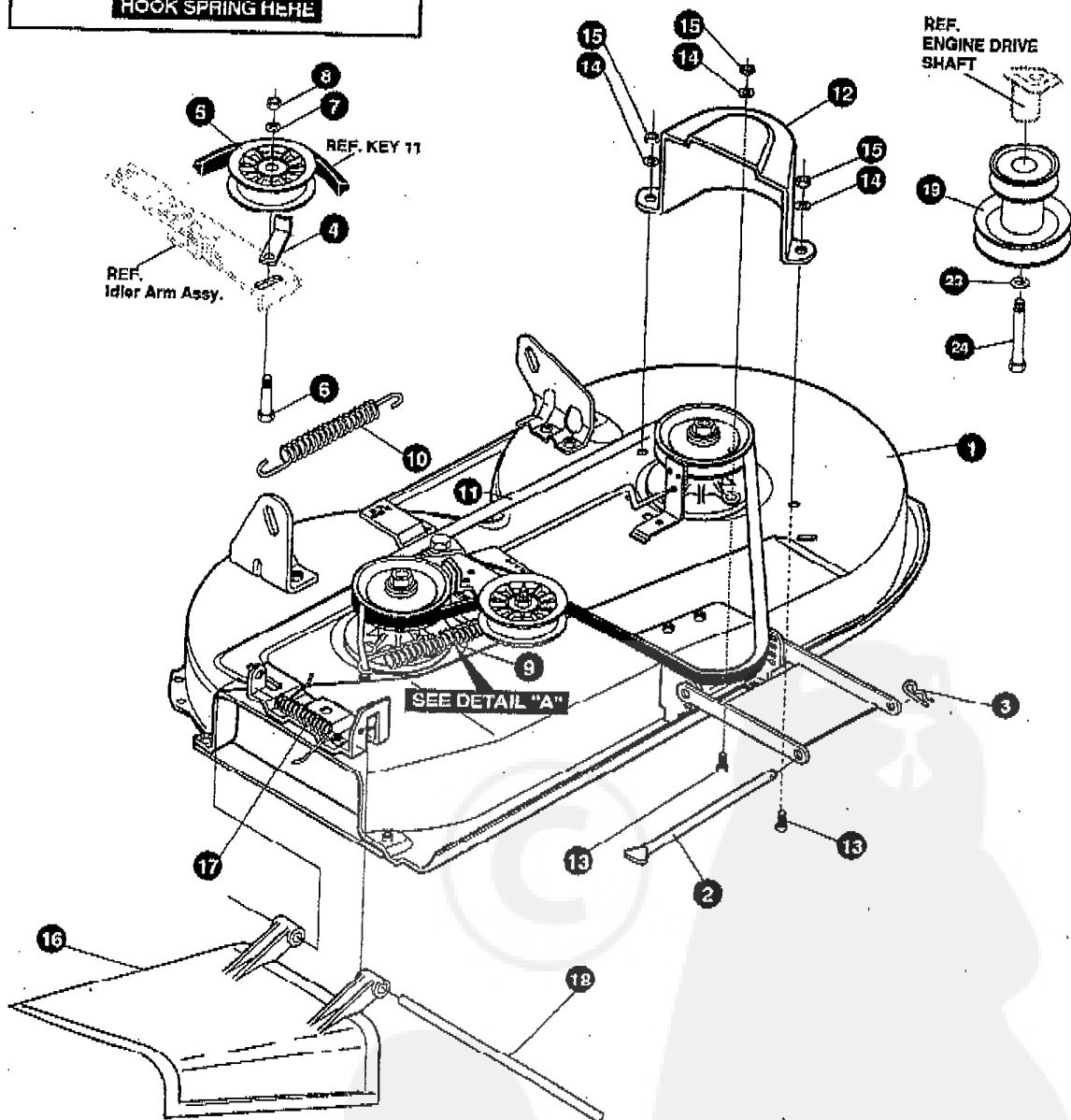
# 38" LAWN TRACTOR MODEL D3554-420

## FINAL DECK ASSEMBLY

### DETAIL A



SEE DWG. 328680 FOR PART ASSY OF PAINTED DECK



**NOTE: ALWAYS USE ORIGINAL EQUIPMENT PARTS.** Use of service/replacement parts other than original equipment parts may void your warranty.

**ALL UNNUMBERED ITEMS ARE INTERCHANGEABLE WITH OPPOSITE SIDE**

328679C

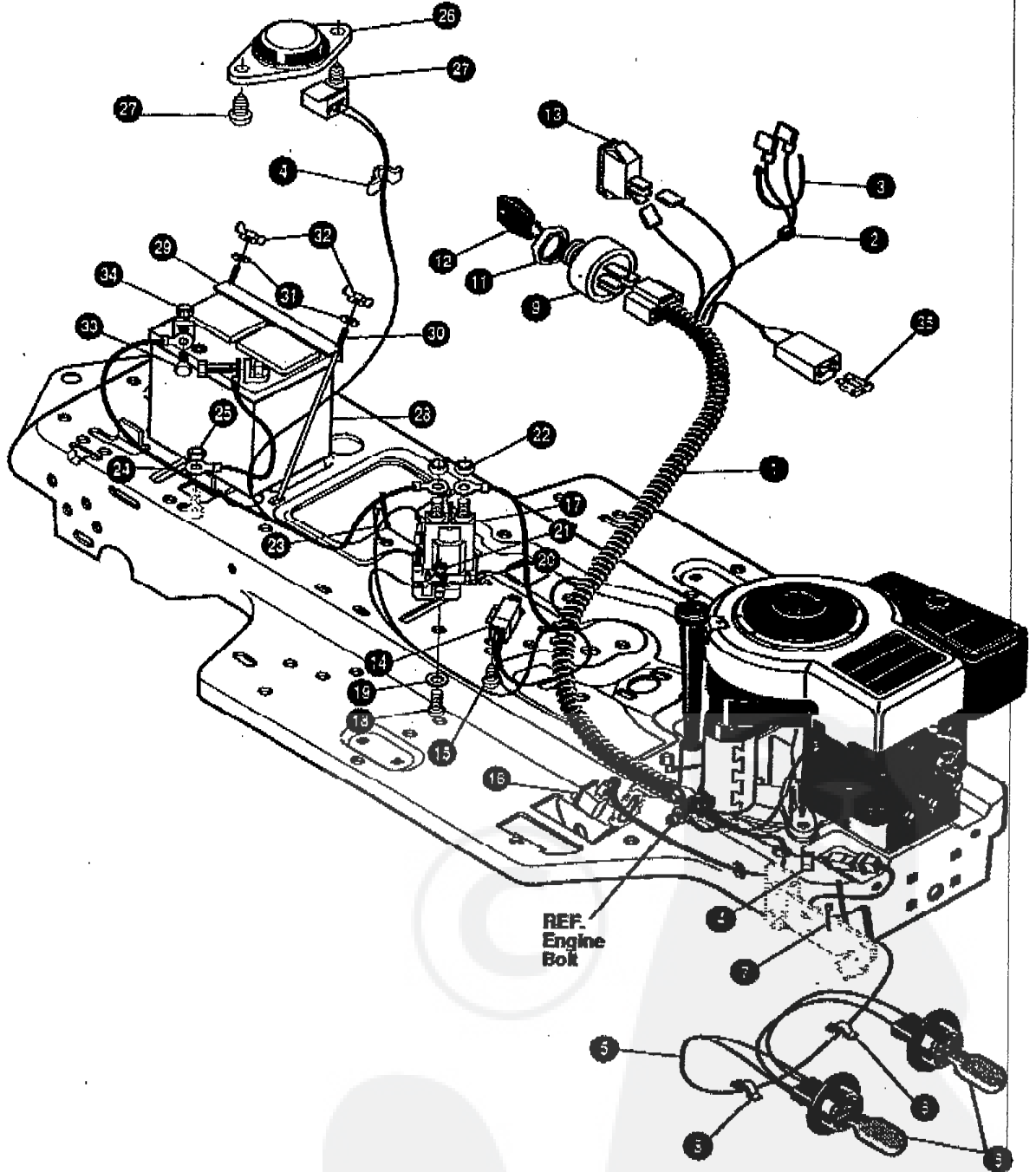
## 38" LAWN TRACTOR MODEL D3554-420

KEY#	PART#	DESCRIPTION	QTY.
1	*	ASSY DECK 38" SUS FOR AIR	1
2	58306	ROD, DECK HITCH	1
3	8260	PIN, HAIR .091 DIA X 1.66	1
4	1346	BELT RETAINER 2.55 OD	1
5	310326	PULLEY, IDLER BFF 4.00	1
6	57325	BOLT, 3/8-16 X 2.00 CARR	1
7	120382	WASHER, REGSPTLK.393X.68X.10	1
8	◊ 120377	NUT, 3/8-16 REGHX	1
9	322064	SPRING .071 X .62 X 4.37	1
10	328256	SPRING, TENSION	1
11	300680	BELT, V 5L 77.75	1
12	328257	GUARD, BELT LH	1
13	180075	SCREW, 5/16-18 X .63 HHC	3
14	120393	WASHER, FLAT .344X.69X.065	3
15	◊ 1498	NUT, 5/16-18 REGHEXCTRLK	3
16	57818	CHUTE-36SD,39SD	1
17	314975	SPRING, TORSION	1
18	57317	PIVOT ROD, CHUTE	1
19	328034	PULLEY ENG.	1
23	120383	WASHER, REGSPTLK	1
24	433146	SCREW, 7/16-20 X 4.25	1

\* ORDER DECK KIT #325456 FOR COMPLETE DECK.  
 ◊ Indicates STANDARD HARDWARE ITEMS.

# 38" LAWN TRACTOR MODEL D3554-420

## ELECTRICAL ASSEMBLY



**NOTE: ALWAYS USE ORIGINAL EQUIPMENT PARTS.** Use of service/replacement parts other than original equipment parts may void your warranty.

**ALL UNNUMBERED ITEMS ARE INTERCHANGEABLE WITH OPPOSITE SIDE**

325872A



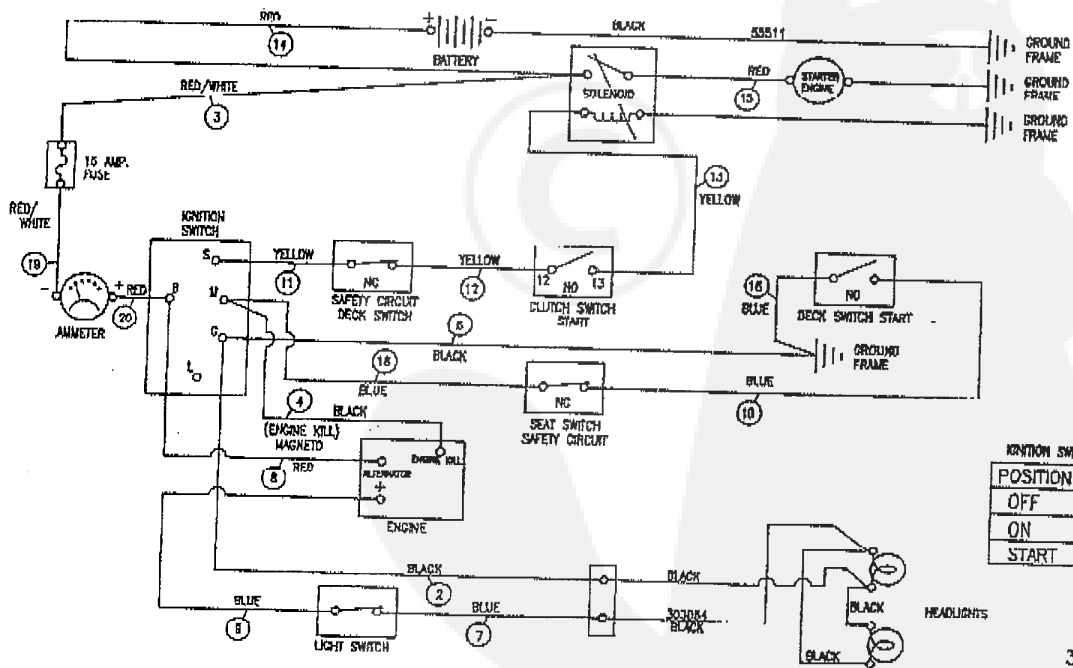
# 38" LAWN TRACTOR MODEL D3554-420

KEY#	PART#	DESCRIPTION	QTY.
1.	325084	WIRE HARNESS SF 12B&S IC W/AMM	1
2.	322298	SPLICE	1
3.	57444	TIE, CABLE	1
4.	41482	PRESS CLIP, 1.380LG .255ID	1
5.	303064	ASSY, LIGHT WIRE-1/4 TURN	2
6.	316823	BULB, HEADLAMP	1
7.	57444	TIE, CABLE BLACK NYLON 5.62L	2
8.	41482	PRESS CLIP, 1.380LG .255ID	1
9.	327355	SWITCH-IGN.(AFTER FIRE) 3 POSN	2
11.	327352	NUT, 5/8-8 ACME DELTA	1
12.	327350	KEY, IGNITION SWITCH, STEEL	1
13.	300334	LIGHT SWITCH ON/OFF PANEL MNT	1
14.	57476	SWITCH, SCR MNT DP NC NO BLK	1
15.	57220	SCREW, #12 X .50 PHPNHTAP BLK	1
16.	326653	SWITCH, SNAPMNT NO .055/116BLK	2
17.	53716	SOLENOID	1
18.	187745	SCREW, 1/4-20X .75 HXSEMMA	1
19.	1084	WASHER, FLAT .281X1.00X.063PL	2
20.	1502	NUT, 1/4-20 REGHEXCTRLK	1
21.	271172	NUT, 1/4-20 REGHEXKPS	2
22.	271187	NUT, 5/16 24 HKEPS	1
23.	57444	TIE, CABLE BLACK NYLON 5.62L	2
24.	55511	WIRE, GROUND, 12.5"	1
25.	271184	NUT, 5/16-18 HEXKEPS	1
26.	57547	SWITCH, SEAT	1
27.	160505	SCREW, 1/4-20X .38PHPNHMA	1
28.	302257	BATTERY, YUASA 12V 5-PLATE	2
29.	324719	BATTERY BRACKET	1
30.	40234	BATTERY ROD	1
31.	120392	WASHER, FLAT .281X.63X.065	2
32.	325232	WINGNUT, 1/4-20 NYLON	2
33.	120854	SCREW, 1/4-20X .63 HHC	2
34.	271172	NUT, 1/4-20 REGHEXKEPS	2
35.	302031	FUSE, 15 AMP SPADC TYPE	2

• STANDARD HARDWARE ITEMS

•• Spade type fuse included with the wire harness.

## SCHEMATIC DRAWING

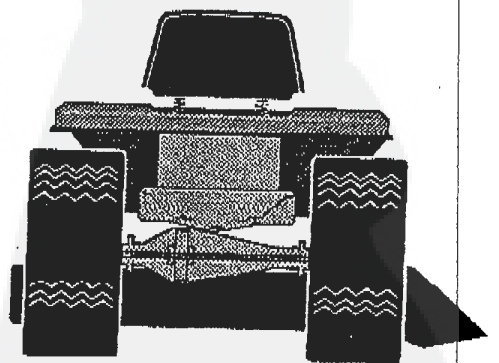
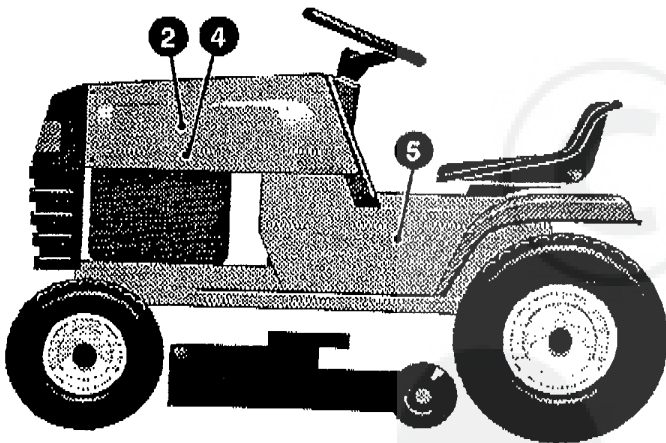
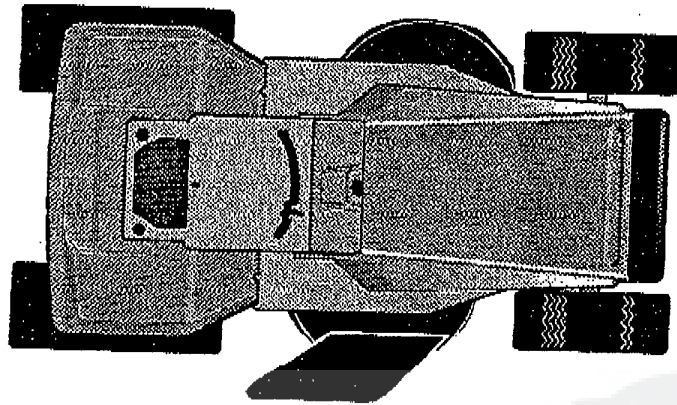
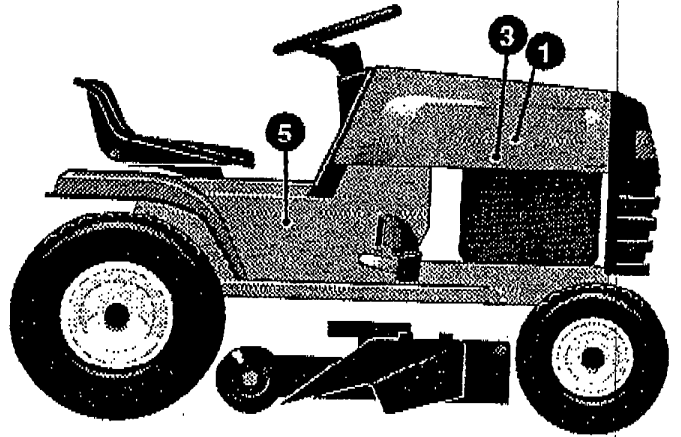
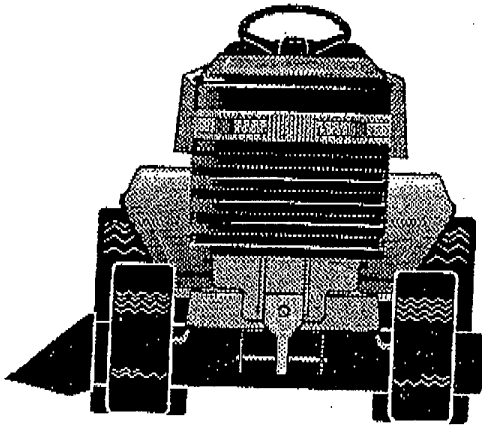


POSITION	G	M	L	B	S
OFF	•	•			
ON			•	•	
START					•

325084

# 38" LAWN TRACTOR MODEL D3554-420

DECALS (DECORATIVE)



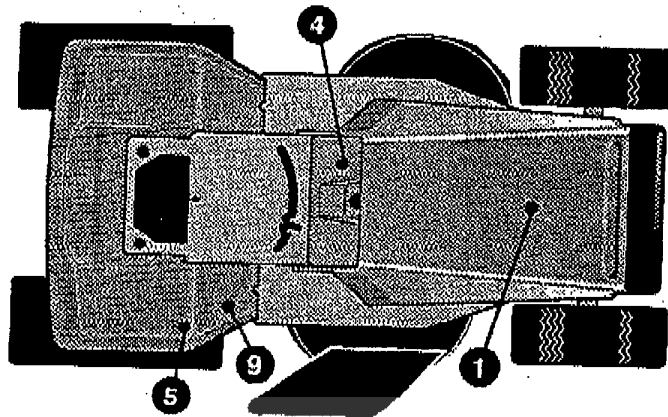
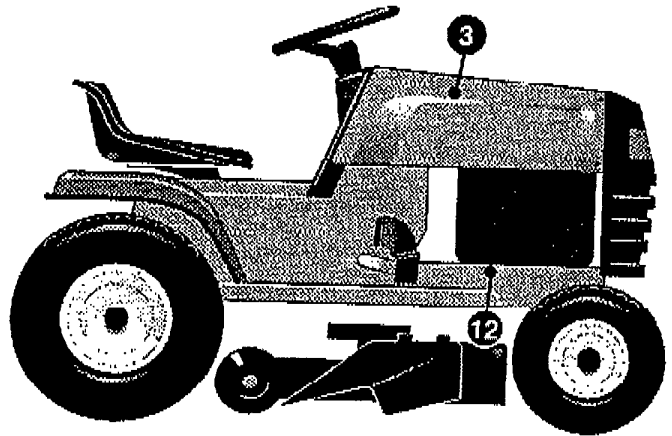
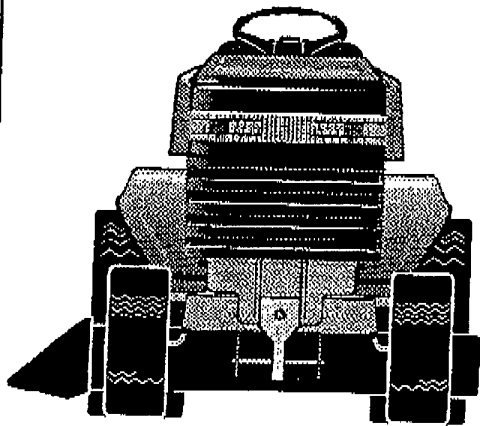
# 38" LAWN TRACTOR MODEL D3554-420

KEY#	PART#	DESCRIPTION	QTY.
1.	329534	DECAL, HOOD RH GARDEN STAR	1
2.	329533	DECAL, HOOD LH GARDEN STAR	1
3.	324318	DECAL, HOOD STRIPE RH	1
4.	324319	DECAL, HOOD STRIPE LH	1
5.	314208	NAMEPLATE, 12/28	2

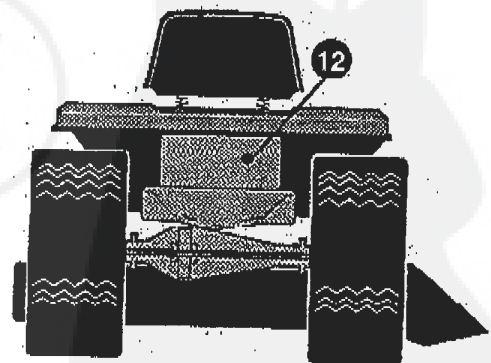
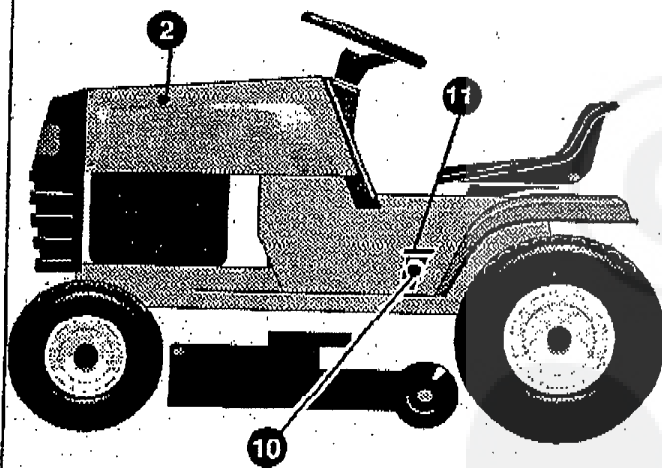
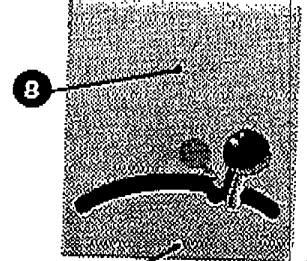


# 38" LAWN TRACTOR MODEL D3554-420

## DECALS (INSTRUCTIONAL)



### CONSOLE DETAIL

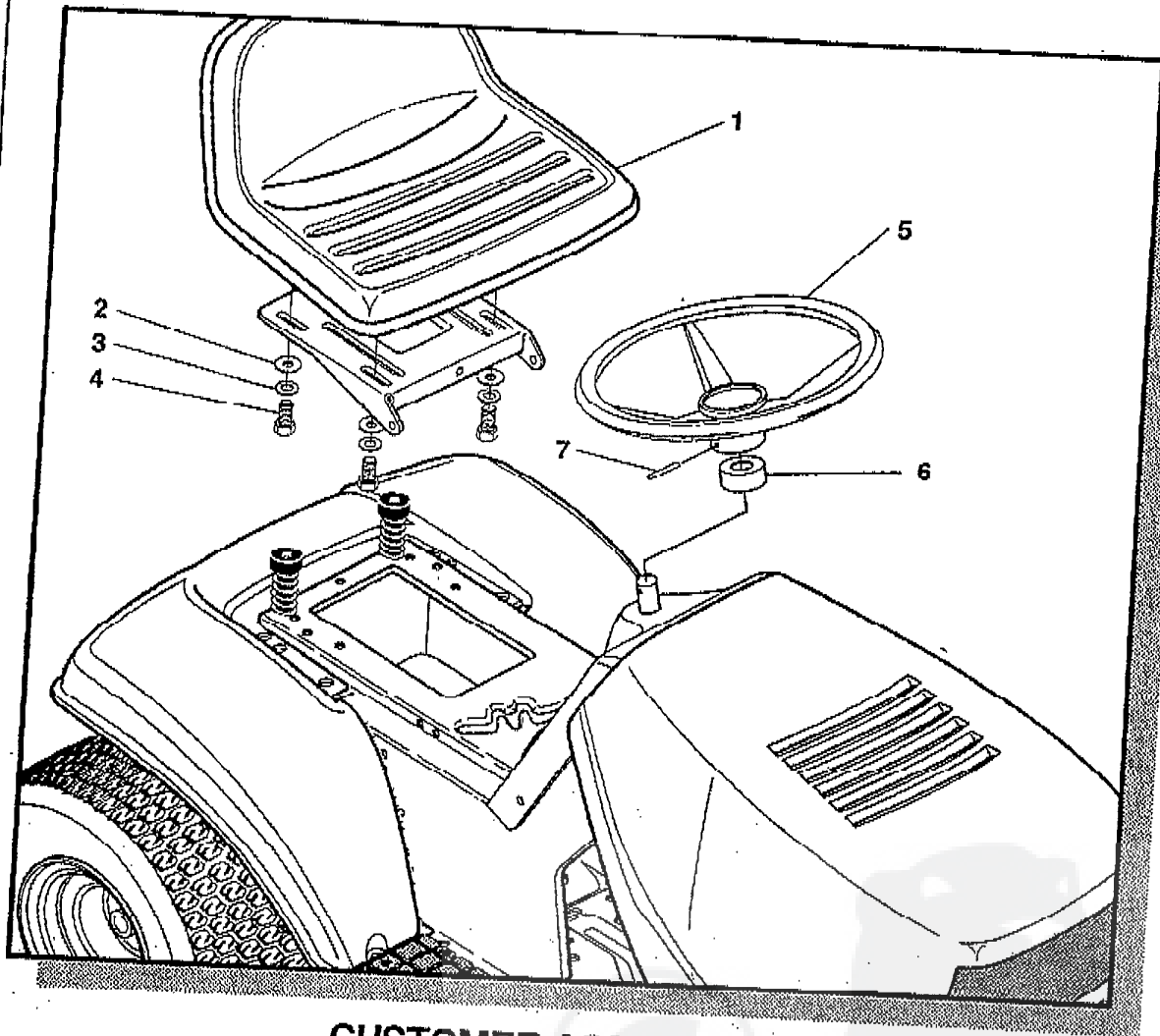


# 38" LAWN TRACTOR MODEL D3554-420

KEY#	PART#	DESCRIPTION	QTY.
1.	55832	PAD, FOAM TOP HOOD H-4	1
2.	55833	PAD, FOAM HOOD H-4 SIDE LH	1
3.	55834	PAD, FOAM HOOD H-4 SIDE RH	1
4.	324989	DECAL DASH, DYNAMARK	1
5.	68902	DECAL, WARNING, FRENCH/GERMAN	1
6.	69524	DECAL, INSTRUCT CONSOLE TOP GER	1
7.		REFERENCE ONLY	1
8.	301104	DECAL, CONSOLE TOP SHIFT 5-SP	1
9.	305770	DECAL, CAUTION TRIANGLE EUROPE	1
10.	320892	DECAL, INST. PEDAL LIFT	1
11.	327146	DECAL, PEDAL-LIFT INDICATOR	1
12.	68903	DECAL, BRAKE/CLUTCH EUROPE	1

# 38" LAWN TRACTOR MODEL D3554-420

## CUSTOMER ASSEMBLY



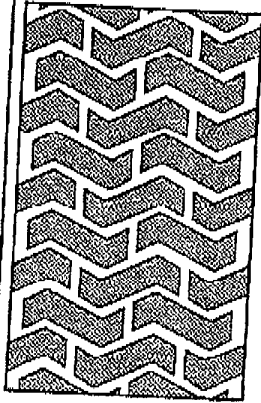
## CUSTOMER ASSEMBLY VIEW

315134 PARTS BAG ASSY QTY1

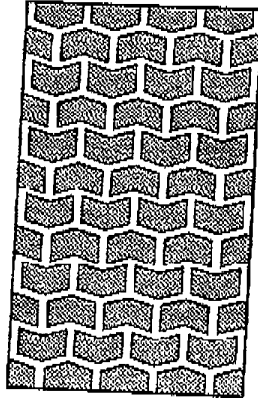
key#	part#	description	qty
1	304914	SEAT MV350	
2	120393	WASHER, FLAT .344X.69X.065	1
3	120638	WASHER, HV SPLTLK .328X.60X.109	4
4	122007	SCREW, 5/16-18X.75 HHC	4
5	301251	STEERING WHEEL	4
6	323758	STEERING, SLEEVE	1
7	456378	ROLL PIN .250DIA X 2.0LG	1

# 38" LAWN TRACTOR MODEL D3554-420

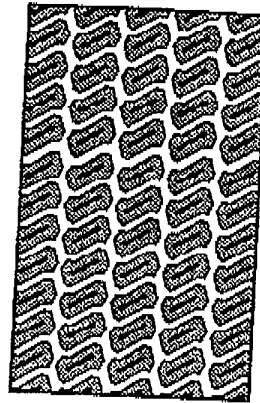
## TREAD PATTERNS



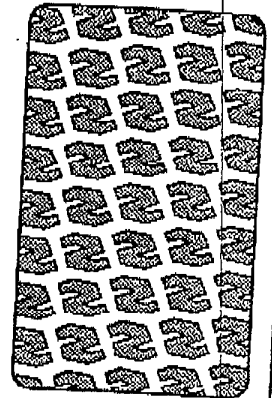
"A"



"B"



"C"



"D"

TIRE SIZE	"A"	"B"	"C"	"D"
11 X 4.00 - 5	42295	319679		
13 X 5.00 - 6	41060	319680		
15 X 6.00 - 6	39830	316702	301140	313952
16 X 6.50 - 6	41081	319682		
18 X 8.50 - 8	319683	317400		314539
18 X 9.50 - 8	41106	316701		313950
20 X 8.00 - 8	319685	319684	57164	314584
20 X 10.00 - 8	58276	319686		
20 X 10.00 - 10	55893	319687		313654
23 X 9.50 - 12	53655	319690	319689	314370



## ACCESSORIES

Contact the dealer where your tractor was purchased for the available accessories. If you are unable to contact the dealer, write to the address on the front cover of this manual.

Model	Description	Rear Engine Rider
5708-16	Bagger - Fits 32" Side Discharge	
5708-17	Bagger - Fits 36" Side Discharge & 30" Top Discharge	
5709-02	Front Weight Box - holds 35 lbs.	
5648-16	Lawn Sweeper w/dump Release	
5714-00	Mulching Kit - 30" Top Discharge	

Model	Description	Lawn Tractor
5708-22	Bagger - Fits 30" Side Discharge	
5708-13	Bagger - Fits 36", 38", 39" & 45" Side Discharge	
5705-04	36" Two-Stage Snowblower - Fits 36", 38", 39", & 45" Side Discharge	
5661-06	42" Snowblade - Fits 36", 38", 39", & 45"	
5592-00	Tire Chains - 18" x 6.50"	
5585-00	Tire Chains - 18" x 9.50" & 20" x 8"	
5672-01	Wheel Weights - Front - 1 pr. w/mtg. hdw. - Fits 15" tires	
5673-02	Wheel Weights - Rear - 1 pr. w/mtg. hdw. - Fits 18" & 20" tires	
5709-03	Front Weights - Fits 30" & 32" Side Discharge	
5648-16	Lawn Sweeper w/dump Release	
5714-00	Mulching Kit - 30" Top Discharge	

Model	Description	Garden Tractor - Light Ground Engaging
5708-13	Bagger - Fits 36", 38", 39", & 45" Side Discharge	
5705-04	36" Two-Stage Snowblower - Fits 36", 38", 39", & 45"	
5661-06	42" Snowblade - Fits 36", 38", 39", & 45"	
5672-01	Wheel Weights - Front 1 pr. w/mtg. hdw. - Fits 15" tires	
5673-02	Wheel Weights - Rear - 1 pr. w/mtg. hdw. - Fits 18" & 20" tires	
5648-16	Lawn Sweeper w/dump Release	
5667-02	Sleeve Hitch - w/lift bar - Fits 45"	
5668-01	Adaptor (sleeve hitch) for use w/23" tires	
5706-00	Tire Chains - 20" x 10"	
5671-00	Tire Chains - 23" x 9.50"	
5672-02	Wheel Weights - Front - 1 pr. w/mtg. hdw. Fits 16" tires	
5673-00	Wheel Weights - Rear - 1 pr. w/mtg. hdw. Fits 23" tires	
5674-01*	10" One Bottom Moldboard Plow	
5675-01*	Cultivator - 7 row - Adj. 6" - 42" width	
5676-01*	Disc Harrow - 8" & 11" disc - Adj. width & disc angle	
5677-02*	Tiller - 5 H.P. Self-Powered - 28" width	

Model	Description	Four Wheel Steer
5708-14	Bagger - Fits 40" & 46" Side Discharge	
5705-05	42" One-Stage Snowblower - Fits 40" & 46"	
5661-07	48" Snowblade - Fits 40" & 46"	
5709-04	Rear Weight Box for 40" & 46"	
5648-16	Lawn Sweeper w/dump Release	
5706-00	Tire Chains 20" x 10"	
5671-00	Tire Chains 23" x 9.50"	
5672-02	Wheel Weights - Front - 1 pr. w/mtg. hdw. Fits 16" tires	
5673-00	Wheel Weights - Rear - 1 pr. w/mtg. hdw. Fits 23" tires	
5672-01	Wheel Weights - Front - 1 pr. w/mtg. hdw. Fits 15" tires	
5673-02	Wheel Weights - Rear - 1 pr. w/mtg. hdw. Fits 18" & 20" tires	

Model	Description	Two Wheel Steer Garden Tractor
5667-04	Sleeve Hitch - w/lift bar Fits 46"	
5674-01*	10" One Bottom Moldboard Plow	
5675-01*	Cultivator - 7 row - Adj. 6" - 42" width	
5676-01*	Disc Harrow 8" & 11" Disc. Adj. width & disc angle	
5677-02*	Tiller 5 H.P. Self-Powered - 28" width	
5648-16	Lawn Sweeper w/dump Release	

\*Requires a sleeve hitch