

REPAIR PARTS MANUAL

39" - 12 H.P. LAWN TRACTOR

MODEL D354-430

ONE YEAR LIMITED WARRANTY

For one (1) year from date of purchase by the first consumer for residential use (thirty (30) days commercial use), NOMA Outdoor Products Incorporated warrants that it will replace free of charge, including freight, any defective NOMA Outdoor Products Incorporated product found to be defective by any authorized service dealer or the factory, except the battery which is warranted for ninety (90) days from date of purchase.

This warranty covers the engine and transmission, transaxle or differential (these items are covered on a "no-deductible" basis). This warranty does not cover parts that have failed due to normal wear and tear, or parts failed subject to misuse or abuse. Transportation of the unit or parts and return freight to the factory is the responsibility of the owner.

An owner should follow the following procedure should be followed for this warranty is:

1. Return the defective unit to the store where the unit was purchased for the dealer and authorized service dealer nearest to you.
2. If you do not have an authorized Service Dealer, write Office Department of NOMA Outdoor Products for the name and address of the authorized Service Dealer. You may also call the Service Department at 1-901-422-8000.
3. Return the defective product, along with proof of purchase, to such authorized Service Dealer for replacement of any defective part which is covered by this warranty.

There is no other express warranty, implied warranties, including those of merchantability, and fitness for a particular purpose are limited to one (1) year from date of purchase. Liability for incidental or consequential damages are excluded.

Some states do not allow limitations on how long an implied warranty lasts, so the above limitation may not apply to you. Some states do not allow the exclusion of incidental or consequential damages, so the above exclusion may not apply to you. This warranty gives you certain legal rights, and you may have other rights which vary from state to state.

NOMA Outdoor Products Incorporated Call 800 Jackson, TN 38308-8000

UNIT PARTS AND SERVICE

Fill in and mail the registration card located with the unit for service data, then contact an authorized service dealer. A nationwide parts and service organization has been established to provide locally available parts and service. A list of authorized parts distributors has been included in this manual. When ordering repair parts, always give the following information: 1. The Part Name; 2. The Part Number; 3. The Quantity Required; 4. The Full (eight digit) Model Number of the unit. The model number will be found on a plate attached to the unit.

Look for this symbol.



It means - ATTENTION! BECOME ALERT! A HAZARD TO OPERATOR, BYSTANDER, PROPERTY OR EQUIPMENT MAY EXIST.

NOMA Outdoor Products Incorporated

Call 800

JACKSON, TN 38308-8000

Part No. 329050

500



SAFETY RULES

THESE INSTRUCTIONS ARE FOR YOUR PROTECTION. PLEASE READ THEM CAREFULLY.



IMPORTANT

THIS CUTTING MACHINE IS CAPABLE OF AMPUTATING HANDS AND FEET AND THROWING OBJECTS. FAILURE TO OBSERVE THE FOLLOWING SAFETY INSTRUCTIONS COULD RESULT IN SERIOUS INJURY OR DEATH.

I. GENERAL OPERATION:

- Know controls and how to stop quickly.
- Read, understand, and follow all instructions in the manual and on the machine before starting.
- Only allow responsible adults, who are familiar with instructions, to operate the machine.
- Wear safety glasses or eye shields when assembling or operating the machine.
- Do not operate machine when barefooted. Always wear substantial footwear, preferably steel-toed shoes.
- Do not wear loose fitting clothing that could get caught in moving parts.
- Clear the area of objects such as rocks, toys, wire, etc., which could be picked up and thrown by the blade(s).
- Be sure the area is clear of other people before mowing. Stop machine if anyone enters the area.
- Never carry passengers.
- Do not mow in reverse unless absolutely necessary. Always look down and behind before and while backing.
- Be aware of the mower discharge direction and do not point it at anyone. Do not operate the mower without either the entire grass catcher or the guard in place.
- Slow down before turning.
- Never leave a running machine unattended. Always turn off blades, set parking brake, stop engine, and remove keys before dismantling.
- Turn off blade(s) when not mowing.
- Stop engine before removing grass catcher or unclogging chute.
- Mow only in daylight or good artificial light.
- Do not operate the machine while under the influence of alcohol or drugs.
- Watch for traffic when operating near or crossing roadways.
- Use care when mowing around a fixed object to prevent the blade(s) from striking it. Never deliberately run over any foreign object.
- Use extra care when loading or unloading the machine into a trailer or truck.
- Use care when pulling loads or using heavy equipment.
 - a. Use only approved drawbar hitch points.
 - b. Limit loads to those that you can safely control.
 - c. Do not turn sharply. Use care when backing.
 - d. Use counterweight(s), wheel weight or tire chains when suggested in attachment(s) instructions.

II. SLOPE OPERATION:

Slopes are a major factor related to loss-of-control and tip-over accidents, which can result in severe injury or death. All slopes require extra caution. If you cannot back up the slope or if you feel uneasy on it, do not mow it.

DO

- Mow up and down slopes, not across.
- Remove obstacles such as rocks, tree limbs, etc.
- Watch for holes, ruts, or bumps. Uneven terrain could overturn the machine. Tall grass can hide obstacles.
- Use slow speed. Choose a low gear so that you will not have to stop or shift while on the slope.
- Follow the manufacturer's recommendations for wheel weights or counterweights to improve stability.
- Use extra care with grass catchers or other attachments. These can change the stability of the machine.
- Keep all movement on the slopes slow and gradual. Do not make sudden changes in speed or direction.
- Avoid starting or stopping on a slope. If tires lose traction, turn off the blade(s) and proceed slowly straight down the slope.

DO NOT

- Do not turn on slopes unless necessary, and then slowly and gradually downhill, if possible.
- Do not mow near drop-offs, ditches or embankments. The

mower could suddenly turn over if a wheel is over the edge of a cliff or ditch, or if an edge caves in.

- Do not mow on wet grass. Reduced traction could cause sliding.
- Do not try to stabilize the machine by putting your foot on the ground.
- Do not use grass catcher on steep slopes.

III. CHILDREN:

Tragic accidents can occur if the operator is not alert to the presence of children. Children are often attracted to the machine and the mowing activity. Never assume that children will remain where you last saw them.

- Keep children out of the mowing area and under the watchful care of another responsible adult.
- Be alert and turn machine off if children enter the area.
- Before and when backing, look behind and down for small children.
- Never carry children. They may fall off and be seriously injured or interfere with safe machine operation.
- Never allow children to operate the machine.
- Use extra care when approaching blind corners, shrubs, trees, or other objects that may obscure vision.

IV. SERVICE:

- Use extra care in handling gasoline and other fuels. They are flammable and vapors are explosive.
 - a. Use only an approved container.
 - b. Never remove gas cap or add fuel with the engine running. Allow engine to cool before refueling. Do not smoke.
 - c. Never refuel the machine indoors.
 - d. Never store the machine or fuel container inside where there is an open flame, such as in a water heater.
- Check fuel supply before each use allowing space for expansion as the heat of the engine and/or sun can cause gasoline to expand and overflow the tank.
- Use extra care when handling battery acid. Acid contact with skin may cause severe burns. Eye contact may cause blindness.
- Use extra care when servicing the battery. Explosive gas is produced in the battery. Do not service the battery while smoking or near an open spark or flame. This may cause the battery to explode causing serious injury.
- Never run a machine inside a closed area. Exhaust fumes contain CARBON MONOXIDE, an ODORLESS and DEADLY GAS.
- Keep nuts and bolts, especially blade attachment bolts, tight and keep equipment in good condition.
- Never tamper with safety devices. Check their operation regularly.
- Do not change the engine governor settings or overspeed engine.
- Reduce fire hazards. Keep machine free of grass, leaves, or other debris build-up. Clean up oil or fuel spillage. Allow machine to cool before storing.
- Stop and inspect the equipment if you strike an object. Repair, if necessary, before restarting.
- Never make adjustments or repairs with the engine running.
- Grass catcher components are subject to wear, damage, and deterioration, which could expose moving parts or allow objects to be thrown. Frequently check components and replace with manufacturer's recommended parts, when necessary.
- Mower blade(s) are sharp and can cut. Wrap the blade(s) or wear gloves, and use extra caution when servicing them.
- Check brake operation frequently. Adjust and service as required.



LOOK FOR THIS SYMBOL TO POINT OUT IMPORTANT SAFETY PRECAUTIONS. IT MEANS-- ATTENTION!!! BECOME ALERT!!! YOUR SAFETY IS INVOLVED.

OWNER'S INFORMATION

Record the following information about your unit so that you will be able to provide it in case of loss or theft.

MODEL NUMBER: - (Enter complete 8 digit number from model plate on unit)
PURCHASE DATE: ___/___/___ CODE NO.: _____ SERIAL NO.: _____
DEALER'S NAME AND ADDRESS: _____
CITY: _____ STATE: _____ TELEPHONE: _____

CONTENTS OF SHIPPING CARTON

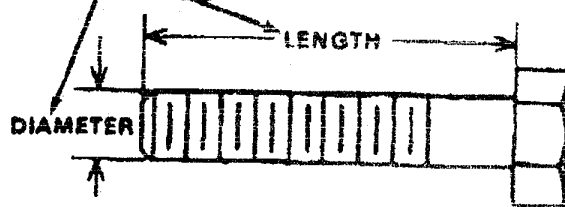
- 1 - Lawn Tractor with 39 inch Mower Deck
- 1 - Operator's Manual
- 1 - Repair Parts Manual
- 1 - Engine Manual
- 1 - Steering Wheel (see Note)
- 1 - Seat (see Note)
- 1 - Bag of Assembly Parts Containing (see Note):
 - 4 - 5/16 x 3/4 inch Hex Head Screws
 - 4 - 5/16 inch Split Lockwashers
 - 4 - 11/32 inch Flatwashers
 - 1 - Roll Pin

NOTE: Refer to page 26 (Customer Assembly Parts) for more detailed description.

TOOLS REQUIRED FOR ASSEMBLY

- 2 - 7/16 inch Wrenches (or adjustable wrench)
- 1 - 1/2 inch Wrench (or adjustable wrench)
- 1 - Small Phillips Screwdriver with a 1/4 inch shank
- 1 - Hammer

HOW TO MEASURE SCREW SIZE (5/16 x 1 1/2 INCH)



DANGER



This lawn tractor can be dangerous if carelessly used.

Read your Operator's Manual thoroughly before operating your lawn tractor.

Always wear safety glasses or eye shields while assembling or operating your lawn tractor.

DO NOT carry passengers at any time.

Keep your hands, feet, hair and loose clothing away from the discharge area, the underside of the mower deck or any moving parts while the engine is running.

DO NOT allow children or young teenagers to operate or be near your lawn tractor while it is operating.

ALWAYS GIVE THE FOLLOWING INFORMATION WHEN ORDERING REPAIR PARTS.

1. The PART NUMBER, 2. The PART NAME, 3. QUANTITY DESIRED, 4. The MODEL NUMBER (As shown on Model Plate)

SEND PART ORDERS AS PER INSTRUCTIONS ON THE FRONT PAGE.

DO NOT USE KEY NUMBERS WHEN ORDERING REPAIR PARTS. ALWAYS USE PART NUMBERS.

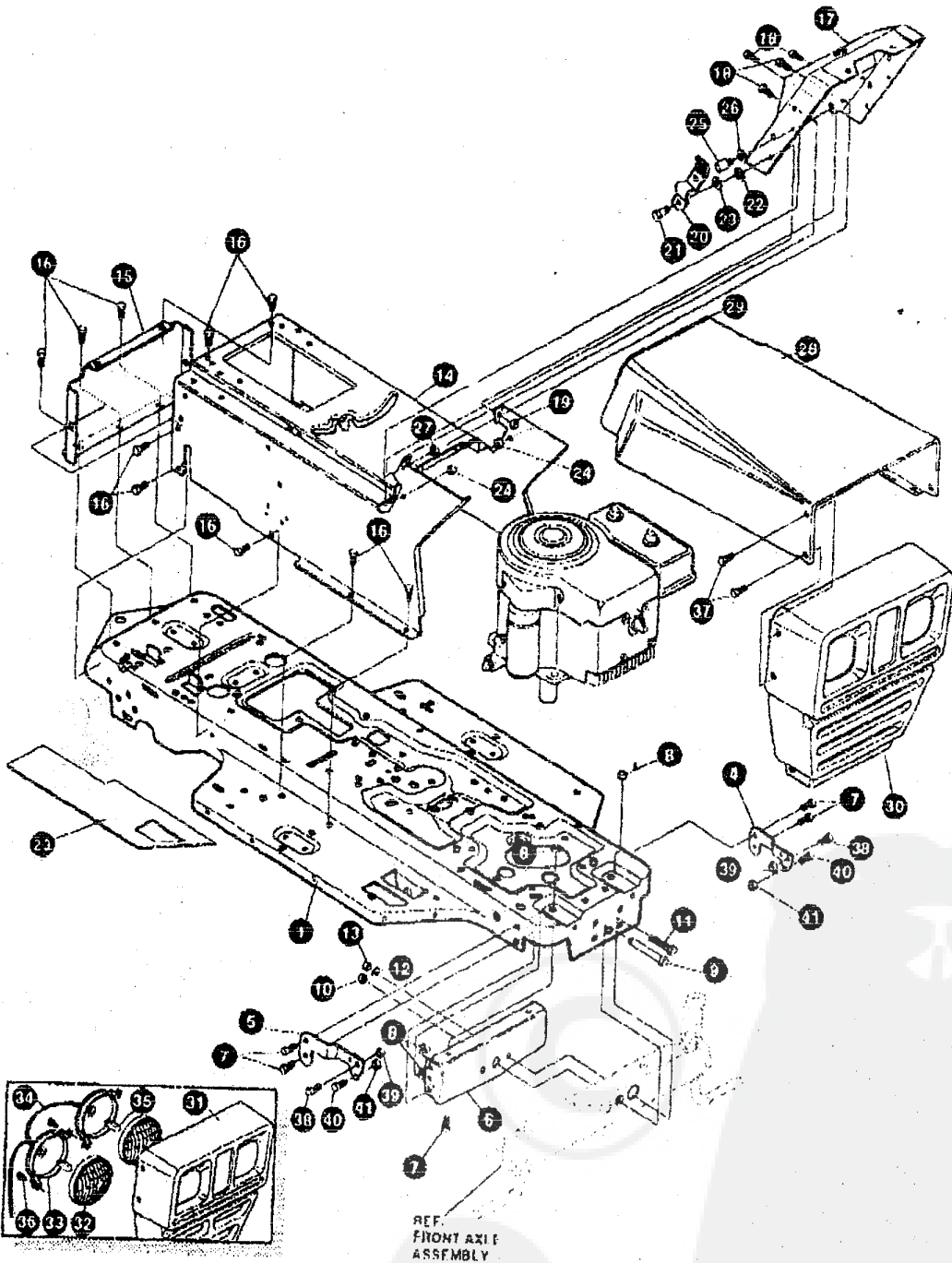
All replacement parts will be supplied in current production colors or in a neutral color.

A handling fee is applicable to small parts orders.

YOUR UNIT IS RIGHT HAND (RH) OR LEFT HAND (LH) AS YOU STAND BEHIND IT

39" LAWN TRACTOR MODEL D3554-430

CHASSIS & HOOD ASSEMBLY



NOTE: ALWAYS USE ORIGINAL EQUIPMENT PARTS. Use of service/replacement parts other than original equipment parts may void your warranty.

ALL UNNUMBERED ITEMS ARE INTERCHANGEABLE WITH OPPOSITE SIDE

329770A

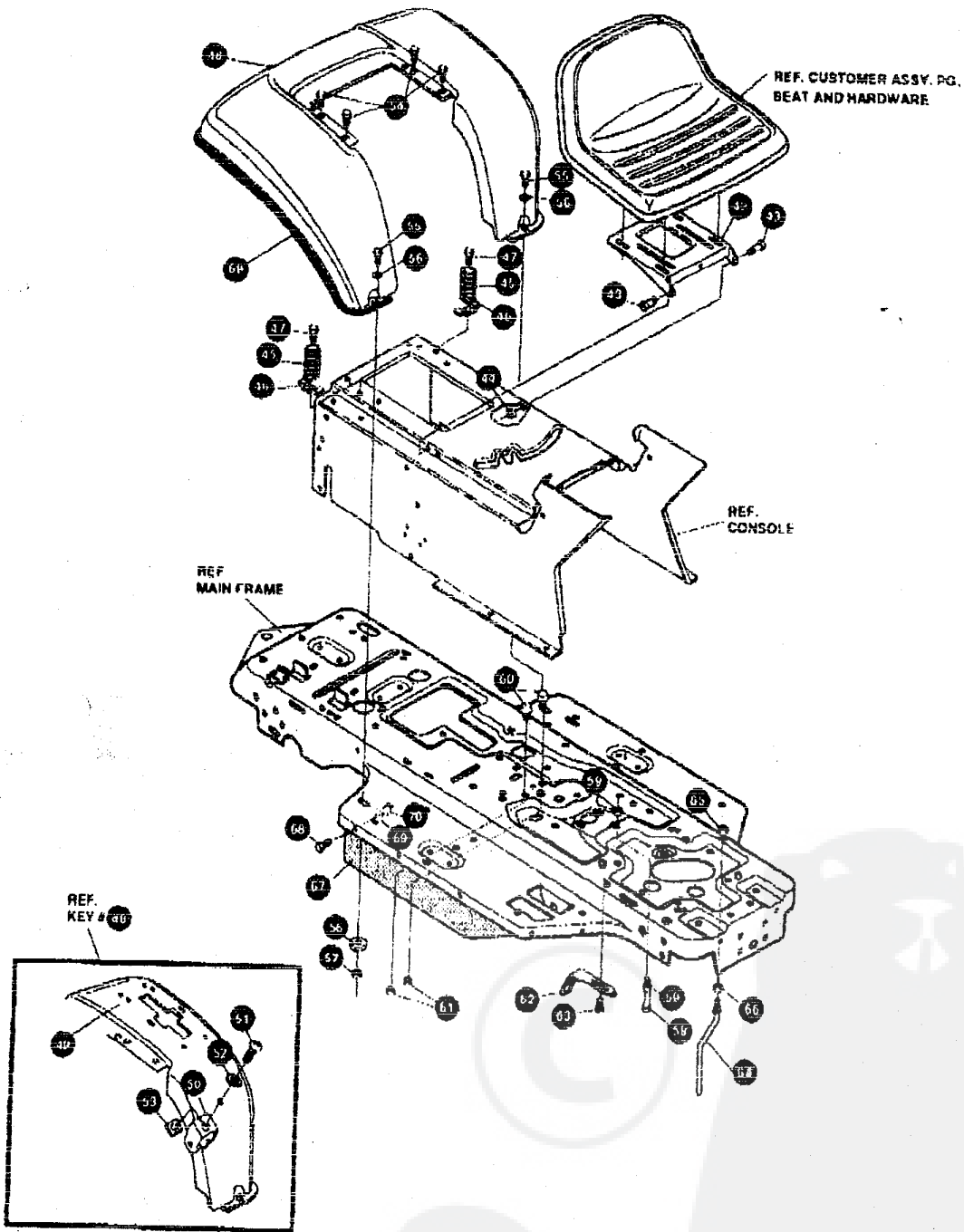
39" LAWN TRACTOR MODEL D3554-430

key#	part#	description	qty.
1	32885-860	FRAME,MAIN SF RIDER TUV	1
2	302917	FOOTPAD,LH SF GRIT	1
3	302918	FOOTPAD,RH SF GRIT	1
4	56259-853	BRACKET GRILLE L.H.	1
5	56260-853	BRACKET GRILLE R.H.	1
6	56362-853	BRKT,SUPT FRT AXLE-SF	1
7	328154	SCREW, 5/16-18X1.00WDFLLK	6
8	55273	NUT, 5/16-18 HKWDFLLK	6
9	29616	BOLT, .625X2.875 SPSH 1/2-20	1
10	274654	NUT, 1/2-20 REGHXCTRLK	1
11	122201	SCREW, 3/8 16X2.75 HHC	2
12	2483	WASHER, .39IDX1.25DX.07 BELLVIL	2
13	1499	NUT, 3/8-16 REGHXCTRLK	2
14	321308-860	CONSOLE	2
15	56235-860	CONSOLE, REAR COVER	1
16	895346	SCREW, 1/4-20X .50 WAHHTAP	15
17	321350-860	DASH NO ILL/AMMETER ELEC	1
18	895330	SCREW, 1/4 20X .63 HHWATAP	4
19	50352	NUT, 1/4 20 WDFLLK TOPLOCK	2
20	57159	LATCH, .94WDX.047 ASSY HOOD	2
21	8482	BOLT, .375X .156 HHSH 5/16-18	2
22	120394	WASHER, FLAT .406X .81X.065	2
23	120393	WASHER, FLAT .344X .69X.065	2
24	1498	NUT, 5/16-18 REGHEXCTRLK	2
25	53440	PIN, 5/16-18 HOOD LATCH GR2-	2
26	138538	WASHER, REGINTLK.320X 61X 03	2
27	45174	NUT, 5/16-18 HEXWDFLLK WHIZ	2
28	53954-860	HOOD	1
29	55040	TRIM,STRIP,BLACK	23.750 IN
30	*	GRILLE ASSY	1
31	50668	SCREW, 10-14X .50 WAHHTAP	4
32	52570	LAMP LENS	2
33	52571	LAMP BEZEL	2
34	52572	BULB, HEADLAMP	2
36	53401	GRILLE	2
36	56189	WIRE ASSY, HEADLAMP	1
37	57215	SCREW, 5/16-9X .75 WAHHTAP	4
38	120233	BOLT, 3/8-16 X 1.00 HHC GRZ	2
39	1499	NUT, 3/8-16 REGHEXCTRLK	2
40	180075	SCREW,5/16-18 X .63	2
41	1498	NUT, 5/16-18 REGHEXCTRLK	2
	329848	GERMAN OPERATOR'S MANUAL	1
	329850	PARTS MANUAL	1

* ORDER INDIVIDUAL PARTS.

39" LAWN TRACTOR MODEL D3554-430

CHASSIS & HOOD ASSEMBLY



NOTE: ALWAYS USE ORIGINAL EQUIPMENT PARTS. Use of service/replacement parts other than original equipment parts may void your warranty.

ALL UNNUMBERED ITEMS ARE INTERCHANGEABLE WITH OPPOSITE SIDE

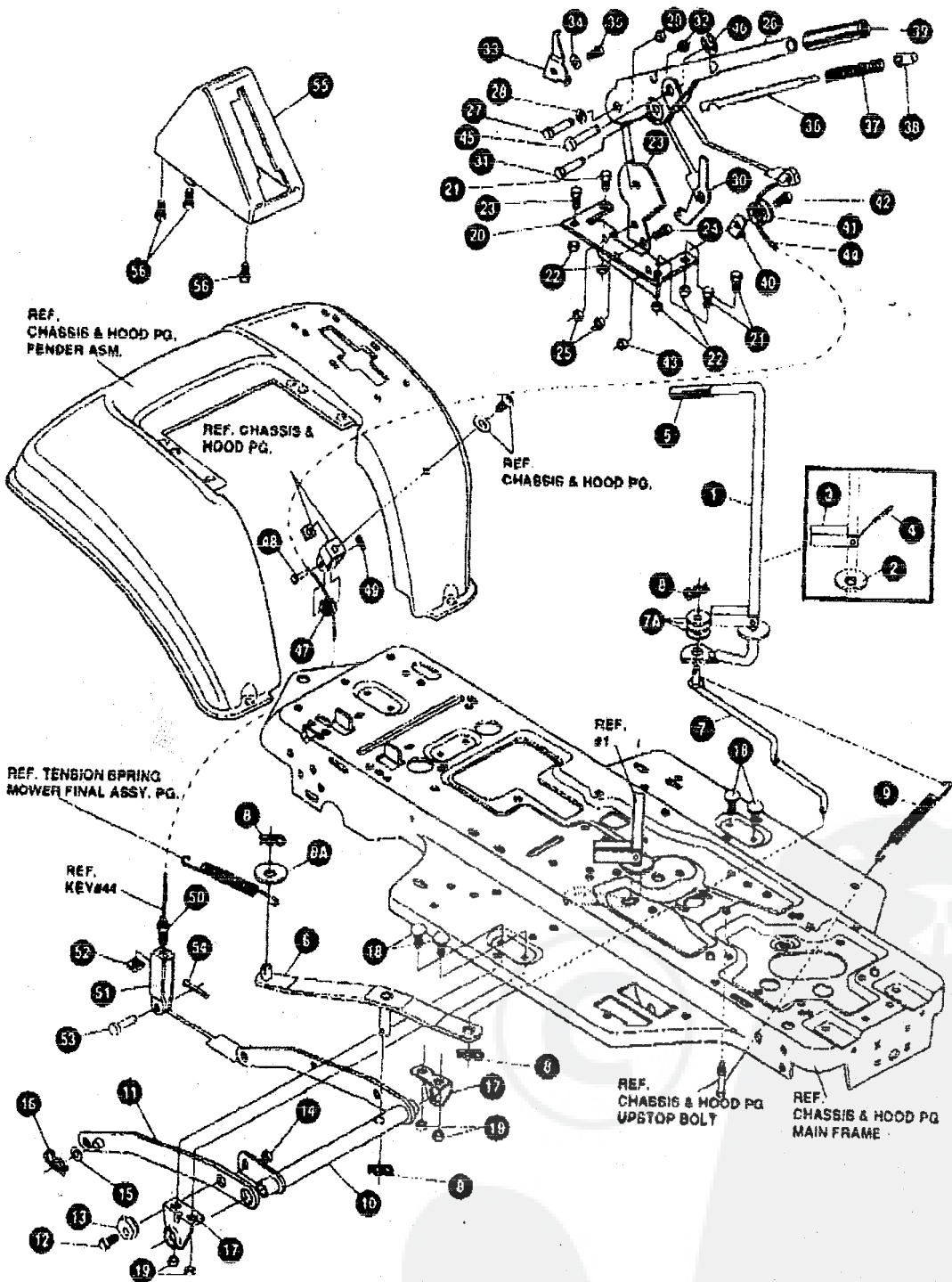
329770A

39" LAWN TRACTOR MODEL D3554-430

key#	part#	description	qty.
42	58367-860	PLATE,SEAT	1
43	20507	BOLT, .437X .156 HSH 5/16-18	2
44	1498	NUT, 5/16-18 REGHEXCTRLK	2
45	56220	SPRING, 1.43X2.38X .162 COM SEAT	2
46	1341	CLAMP, SPRING 1.17"ID	2
47	995348	SCREW, 1/4-20X .50 WAHTAP	2
48		ASSEMBLY, FENDER	1
49	321156-860	FENDER	1
50	300298	CLEVIS	1
51	439455	SCREW, 5/16-18X.56 PHPNMA	1
52	301551	WASHER, .344IDX1.50 09	1
53	120373	NUT, 5/16-18 SQ	1
54	995346	SCREW, 1/4-20X .50 WAHTAP	4
55	122007	SCREW, 5/16-18X.75HHC GR2	2
56	446363	WASHER, FLAT .375X .00X.082	4
57	1498	NUT, 5/16-18 REGHEXCTRLK	2
58	427342	UPSTOP 3/8-16X.50 HHC	1
59	1499	NUT, 3/8-16 REGHXCTRLK	2
60	53446	PIN, 5/16-18 HOOD LATCH	2
61	271184	NUT, 5/16-18 HEXKEPS	2
62	302610-853	BRACKET, SWITCH MOUNTING	1
63	995346	SCREW, 1/4-20X .50 WAHTAP	1
64	50659	GUIDE, BELT	1
65	41529	NUT, 3/8-16 HXCTRLKJAM GRD B.	1
66	271190	NUT, 3/8-16 HEXKEPS	1
67	305395	BELT GUARD RH	2
68	57034	SCREW, 10-24X.63 TRHMA	12
69	1501	WASHER, FLAT	12
70	271166	NUT, 10-24 HEXKEPS	12

39" LAWN TRACTOR MODEL D3554-430

MOWER SUSPENSION



NOTE: ALWAYS USE ORIGINAL EQUIPMENT PARTS. Use of service/replacement parts other than original equipment parts may void your warranty.

ALL UNNUMBERED ITEMS ARE INTERCHANGEABLE WITH OPPOSITE SIDE

328358B

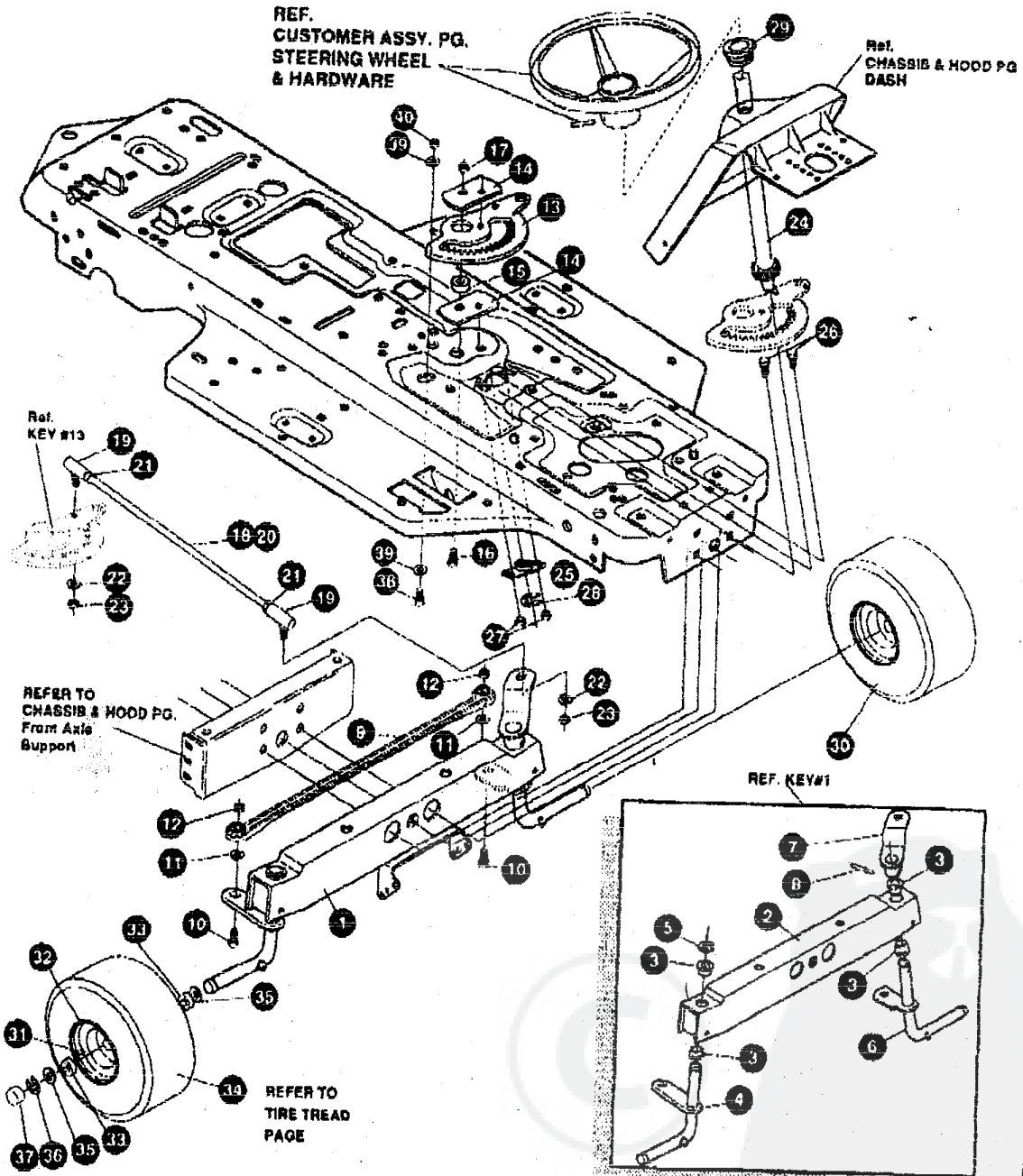
39" LAWN TRACTOR MODEL D3554-430

key#	part#	description	qty.
1	325502	HANDLE, RH PTO NOMA DASH SF	1
2	22205	WASHER, FLAT .515X1.38X.119PL	1
3	305225	STOP, PTO ENGAGEMENT	1
4	326386	PIN, SPRING. 187DIA X1.00LG HVPL	1
6	46478	GRIP, HAND. 50ID 3.37 LG BLK	1
6	325587	WS STRAP ASSY. PTO BELCRANK	1
7	325590	ROD, BELCRANK LINK	1
7A	274517	WASHER, FLAT .406X.73X.082	3
8	8260	HAIR PIN	4
8A	25210	FLAT WASHER, .392X1.25X.08	1
9	325802	SPRING, .63X7.75X.0897 TENSION	1
10	326114-853	WP LIFT ASSY, LH	1
11	326130-853	WP LIFT ASSY, RH	1
12	180079	SCREW, 5/16 18X1.00 HHC GR5Z	1
13	58247	NUT, ADJUST	1
14	1498	NUT, 5/16-18 REGHEXCTRLK	1
15	417098	WASHER, FLAT .5331X1.06X.063Z	2
16	8260	PIN, HAIR .091 DIA X1.66LG	2
17	325495-853	MP BRACKET, REAR HANG SUSP	2
18	126211	BOLT, 5/16-18X.63 CARR GR2Z	4
19	1498	NUT, 5/16-18 REGHEXCTRLK	4
20	313926	MF BRACKET, HEIGHT ADJUST	1
21	180077	SCREW, 5/16-18X.75 HHC GR5Z	4
22	1498	NUT, 5/16-18 REGHEXCTRLK	4
23	301238	QUADRANT, HEIGHT ADJUST	1
24	180077	SCREW, 5/16-18X.75 HHC GR5Z	2
25	1498	NUT, 5/16-18 REGHEXCTRLK	2
26	322292-853	MP HANDLE, LIFT SHORT(30" S.F)	1
27	300171	BOLT, .500X.270 HSSH 5/16-18Z	1
28	996418	WASHER, FLAT .506X.75X.024Z	1
29	44108	NUT, 5/16-18 HWDFLCTRLK	1
30	301239	PAWI, SQUARE HTR955	1
31	300171	BOLT, .500X.270 HSSH 5/16-18Z	1
32	44108	NUT, 5/16-18 HWDFLCTRLK	1
33	9435	POINTER	1
34	130479	WASHER, EXLK. 195X.41X.03Z	1
35	35207	SCREW, #8-32X.38 HHWATAPGR2	1
36	303027	ROD, ACTUATOR SHORT	1
37	58326	SPRING, HEIGHT ADJUST	1
38	58325	KNOB, HEIGHT ADJ PUSH BUTTON	1
39	58328	GRIP, 750 OD W/HOLE BLACK	1
40	9149	CABLE RETAINING BRACKET	1
41	48306	PULLEY, POWDER METAL	1
42	58336	BOLT, .375X.375 HSSH 1/4-20	1
43	1502	NUT, 1/4-20 REGHEXCTRLK	1
44	321430	CABLE, LIFT 21.50-30" S.F.	1
45	300310	PIN, CLEVIS .310 DIA X .475 LG ZPL	1
46	300311	RING, RET E .31X.25TRUX5133-31	1
47	48306	PULLEY, POWDER METAL	1
48	300317	PIN, CLEVIS .375 DIA X .81 LG	1
49	8260	PIN, HAIR .091 DIA. X 1.66 LG	1
50	120375	NUT, 1/4-20 REGHEX	1
51	9405	CLEVIS, LIFT CABLE	1
52	120372	NUT, 1/4-20 REGSQ	1
53	39522	PIN, CLEVIS .312 X .812	1
54	121222	PIN, COTTER .090/.086X.75LG	1
55	300335	LIFT COVER-39" F5	1
56	300340	SCREW, #10 X .75 HHPLAST BLK	3

• STANDARD HARDWARE ITEMS

39" LAWN TRACTOR MODEL D3554-430

STEERING ASSEMBLY



NOTE: ALWAYS USE ORIGINAL EQUIPMENT PARTS. Use of service/replacement parts other than original equipment parts may void your warranty.

ALL UNNUMBERED ITEMS ARE INTERCHANGEABLE WITH OPPOSITE SIDE

327592D

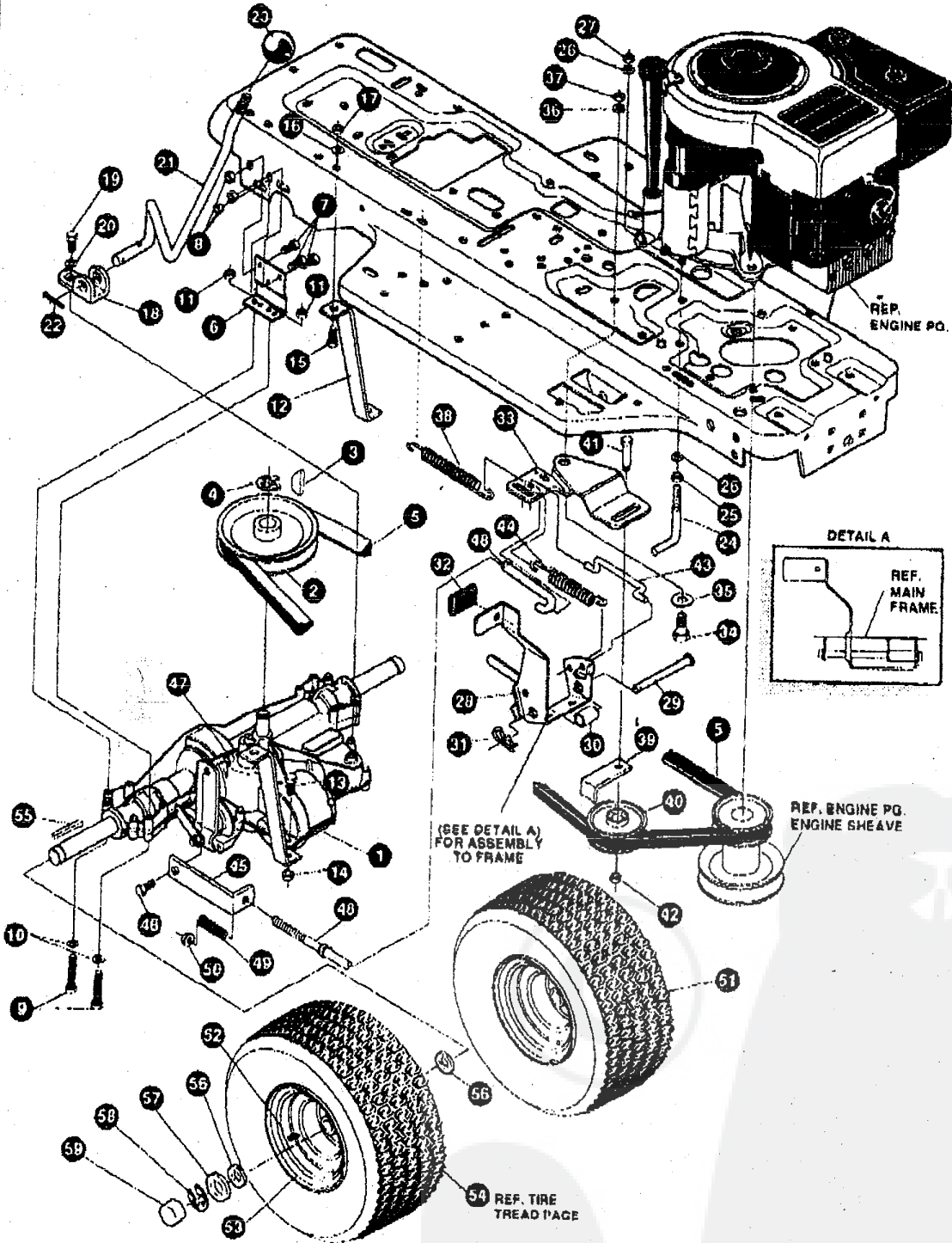
39" LAWN TRACTOR MODEL D3554-430

key#	part#	description	qty.
1	.	FRONT AXLE ASSEMBLY	1
2	324916-853	AXLE, FRONT	1
3	50548	BEARING, FLANGE	4
4	310368	SPINDLE, RH	1
5	36826	RING, RETEX	1
6	310367	SPINDLE, LH	1
7	327619	ARM, STEERING LH	1
8	454585	PIN, SPRING	1
9	302891	TIE ROD	1
10	◊ 122145	SCREW, 3/8-16X1.25 MMC	2
11	◊ 120382	WASHER, .393X.88X.10 REGSPTLK	2
12	◊ 1499	NUT, 3/8-16 REGHXTRLK	2
13	324752	SECTOR, GEAR	1
14	327833	PLATE SECTOR SF 4WS	2
15	324753	BUSHING SECTOR GEAR SF 4WS	1
16	180124	SCREW, 3/8-16X1.25	1
17	1499	NUT, 3/8-16 REGHXCTRLK	1
18	◊ 328808	DRAGLINK ASSEMBLY	1
19	57158	BALL JOINT	2
20	56190	DRAGLINK	1
21	124826	NUT, 3/8-24 REGHEXJAM	2
22	120382	WASHER, REGSPTLK	2
23	120369	NUT, 3/8-24 REGHEX	2
24	327680	SHAFT PINION STEERING	1
25	325892	BRG. FL	1
26	326505	SCREW, 1/4-20X.76 GRD 5	2
27	48931	NUT, 1/4-20 FLK NUT SIDE LOCK	2
28	20864	RING RET E	1
29	54902	BRNG, FL .753IDX1.37ODX.50	1
30	.	ASSEMBLY TIRE	2
31	24187	VALVE STEM	1
32	39829	WHEEL W/BEARING	1
33	314416	BEARING, 1.38ODX.753ID FLANGE	2
34		REFER TO TIRE TREAD PAGE	
35	642	WASHER, FLAT .755X1.31X.075	4
36	36625	RING, RETEX .57X.05	2
37	40394	HUB CAP	2
38	122145	SCREW, 3/8-16X1.25 GRD2	1
39	120394	WASHER, FLAT .406X.81X.085	2
40	44374	NUT, 3/8-16 HXWDFLLK	1

* ORDER INDIVIDUAL PARTS.
◊ indicates STANDARD HARDWARE ITEMS.

39" LAWN TRACTOR MODEL D3554-430

MOTION DRIVE ASSEMBLY



NOTE: ALWAYS USE ORIGINAL EQUIPMENT PARTS. Use of service/replacement parts other than original equipment parts may void your warranty.

ALL UNNUMBERED ITEMS ARE INTERCHANGEABLE WITH OPPOSITE SIDE

327141C

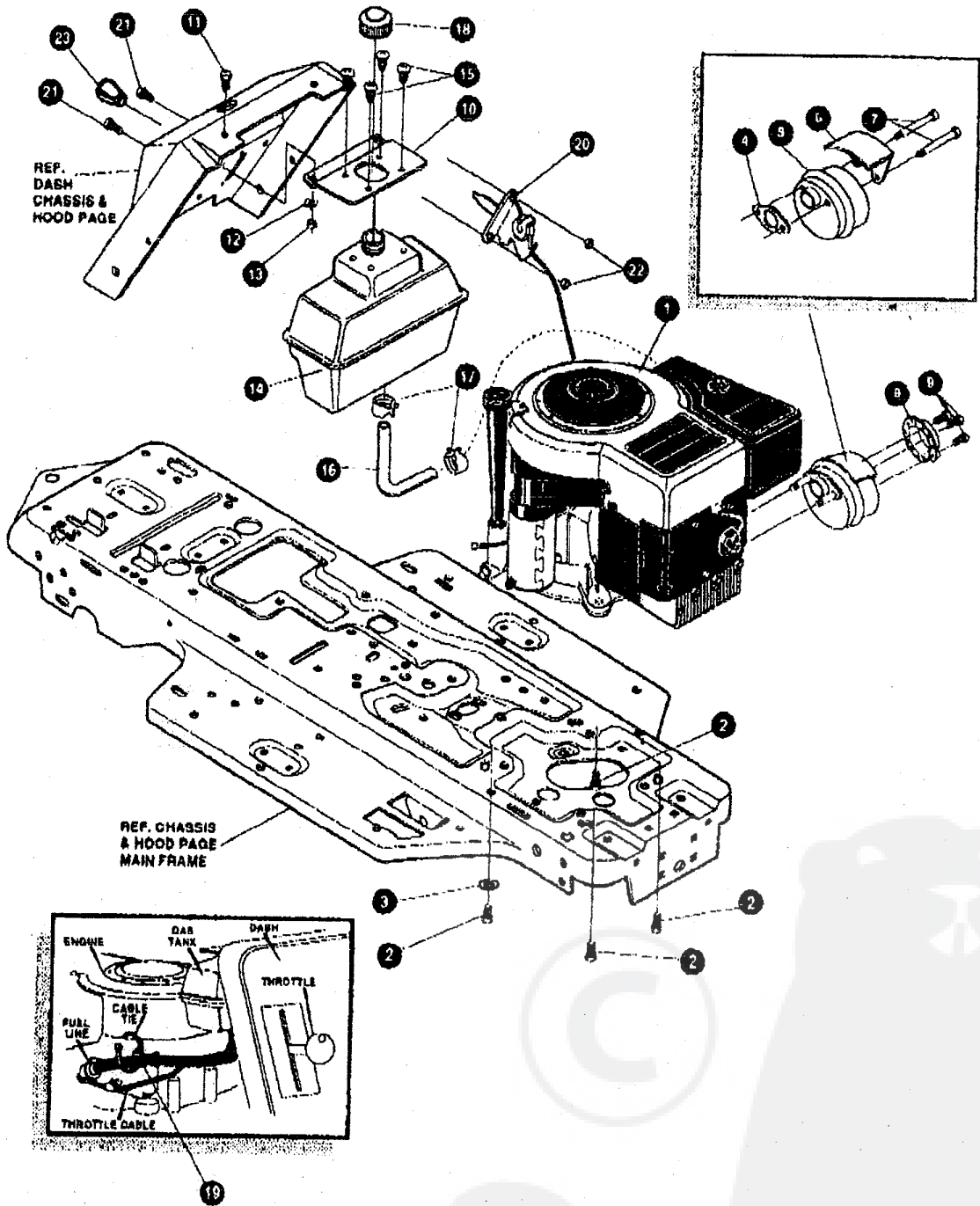
39" LAWN TRACTOR MODEL D3554-430

KEY#	PART#	DESCRIPTION	QTY.
1	*	TRANSAXLE P940-5SP SF FER	1
2	302745	PULLEY, IDLER V4L 6.50	1
3	3021	KEY, WDRF 608 .750X 187X.312	1
4	22053	RING, RETEX .58X.035TRU5100-62	1
5	54750	BELT, V 4L B2.00 SF DRIVE	1
6	53768-653	MP BRACKET, TRANSAXLE	2
7	120228	SCREW, 5/16-18X .63 HHC	6
8	1498	NUT, 5/16-18 REGHEXCTRLK	6
9	180089	SCREW, 5/16-18X2.25 HHC	4
10	120393	WASHER, FLAT .344X .69X.065	4
11	1498	NUT, 5/16-18 REGHEXCTRLK	4
12	323213	BRACKET, T/A TORQ. 915 S/F	1
13	180087	SCREW, 5/16-18X2.00 HHC	1
14	1498	NUT, 5/16-18 REGHEXCTRLK	1
15	122017	SCREW, 5/16-18X1.00 HHC	1
16	136485	WASHER, EXLK .320X.61X.03	1
17	1498	NUT, 5/16-18 REGHEXCTRLK	1
18	12616	MH BRACKET, SHIFT P920-3SP	1
19	56255	SCREW, 1/4-28X .75 NYLHHC	1
20	57157	WASHER, 750X 260 SP-TRANSAXLE	1
21	313934	LEVER, SHIFT 915 T/A S/F	1
22	137185	PIN, COTTER .125 DIA X 1.00 LG	1
23	55514	KNOB, ROUND 1.50 DIA BLACK	1
24	49896	MF BELT GUIDE	1
25	271184	NUT, 5/16-18 HEXKEPS	1
26	120393	WASHER, FLAT .344X .69X .065	2
27	1498	NUT, 5/16-18 REGHEXCTRLK	1
28	302803-853	SF ASSY, BRAKE PEDAL S/F	1
29	319676	PIN, CLEVIS 5 DIA, 4.87 LG, ZN PL	1
30	302601	SPACER, SLEV .53 X .62 X 1.406	1
31	56180	PIN, HAIR .091 DIA X 1.62 LG	1
32	48761	PAD, CLUTCH/BRAKE PEDAL	1
33	321969	MF IDLER ARM DRKT TRACTION SF	1
34	41890	BOLT, .625X .218 HSH 5/16-18Z	1
35	4107	WASHER, FLAT .635X1.31X.07	1
36	45602	WASHER, FLAT .333X .87X .119	1
37	1498	NUT, 5/16-18 REGHEXCTRLK	1
38	327867	SPRING, 3/4 ODX 7.75X.091 TENSIO	1
39	39650	MF RETAINER, BELT	1
40	35374	PULLEY, IDLER V4L 3.06X .52	1
41	45892	BOLT, 3/8-16X1.50 CARR	1
42	1499	NUT, 3/8-16 REGHXCTRLK	1
43	43980	ROD, .268 DIA CLUTCH	1
44	50562	SPRING, 3/8 ODX 1.625X .055 TENSIO	1
45	323210	BRACKET, TRACTION BRAKE S/F	1
46	46824	BOLT, .500X .188 HSH 5/16-18Z	1
47	1498	NUT, 5/16-18 REGHEXCTRLK	1
48	323211	ROD, BRAKE 915 T/A SF	1
49	313881	SPRING, CLUTCH .625 OD	1
50	50352	NUT, 1/4-20 WDFLLK TOPLOCK	1
51	^	TIRE & RIM, PU 20XB.0-8 TURWHI	2
52	24167	VALVE STEM	1
53	326362	WHEEL & HUB ASSY 20XB WHITE	1
54		REFER TO TIRE TREAD PAGE	
55	52928	KEY, SQUARE .1875OX2.25LG	2
56	642	WASHER, FLAT .753X1.31X.075	4
57	42816	WASHER, FLAT .755X1.53X.07	2
58	36625	RING, RETEX .57X.05TRU5133.75	2
59	40394	HUB CAP, 1.500ID X 7/8LG	2

* CONTACT YOUR NEAREST TRANSAXLE DEALER FOR PARTS AND SERVICE
 ^ ORDER INDIVIDUAL PARTS

39" LAWN TRACTOR MODEL D3554-430

ENGINE & CONTROL ASSEMBLY



NOTE: ALWAYS USE ORIGINAL EQUIPMENT PARTS. Use of service/replacement parts other than original equipment parts may void your warranty.

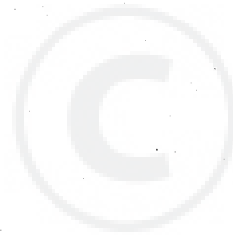
ALL UNNUMBERED ITEMS ARE INTERCHANGEABLE WITH OPPOSITE SIDE

325610B

39" LAWN TRACTOR MODEL D3554-430

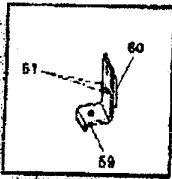
key#	part#	description	qty.
1	ENGINE	12 HP B&S IC (SEE ENGINE MANUAL)	1
2	• 50947	SCREW, 3/8-18X1.25 WASH TAP	4
3	• 138489	WASHER, EXLK .384X.69X.04	1
4	46708	GASKET, MUFFLER	1
5	67908	MUFFLER-LO-TONE	1
6	54787	SHIELD HEAT FOR MUFFLER	1
7	173063	SCREW, 5/16-18X3.50 HH2	2
8	66472	DEFLECTOR SIDE OUT	1
9	35287	SCREW #8-32 X .38 HHWATAP GR2 Z	4
10	56387	BRACKET FUEL TANK SUPT 863	1
11	• 120854	SCREW, 1/4-20X .83 MMC	2
12	• 120393	WASHER, FLAT .344X .89X.065	2
13	• 1502	NUT, 1/4-20 REG HEX CTRLK	2
14	314989	TANK, FUEL 1 GAL	1
15	• 49050	SCREW, 1/4-10X .75 PHPNTAP	4
16	42258	GAS LINE .25ID BULK LENGTH	12IN
17	47345	CLAMP, FUEL LINE	2
18	46704	GAS CAP 1-1/2-7 THD	1
19	57444	CABLE TIE	1
20	320031	THROTTLE CONTROL	1
21	• 35291	SCREW, #10 4X 50	2
22	271166	NUT, #10-24 HEX KEPS	2
23	50607	KNOB, ROUND THROTTLE	1

• STANDARD HARDWARE ITEMS.

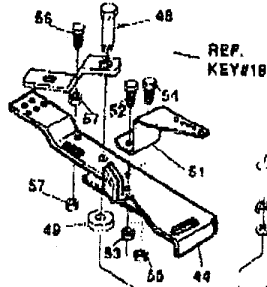


39" LAWN TRACTOR MODEL D3554-430

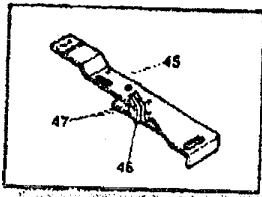
PRE-PAINTED DECK



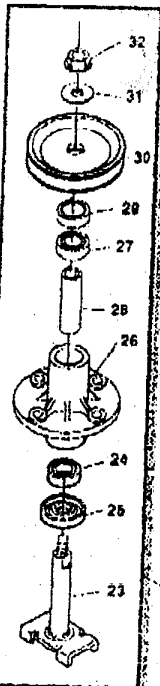
REF KEY # 59



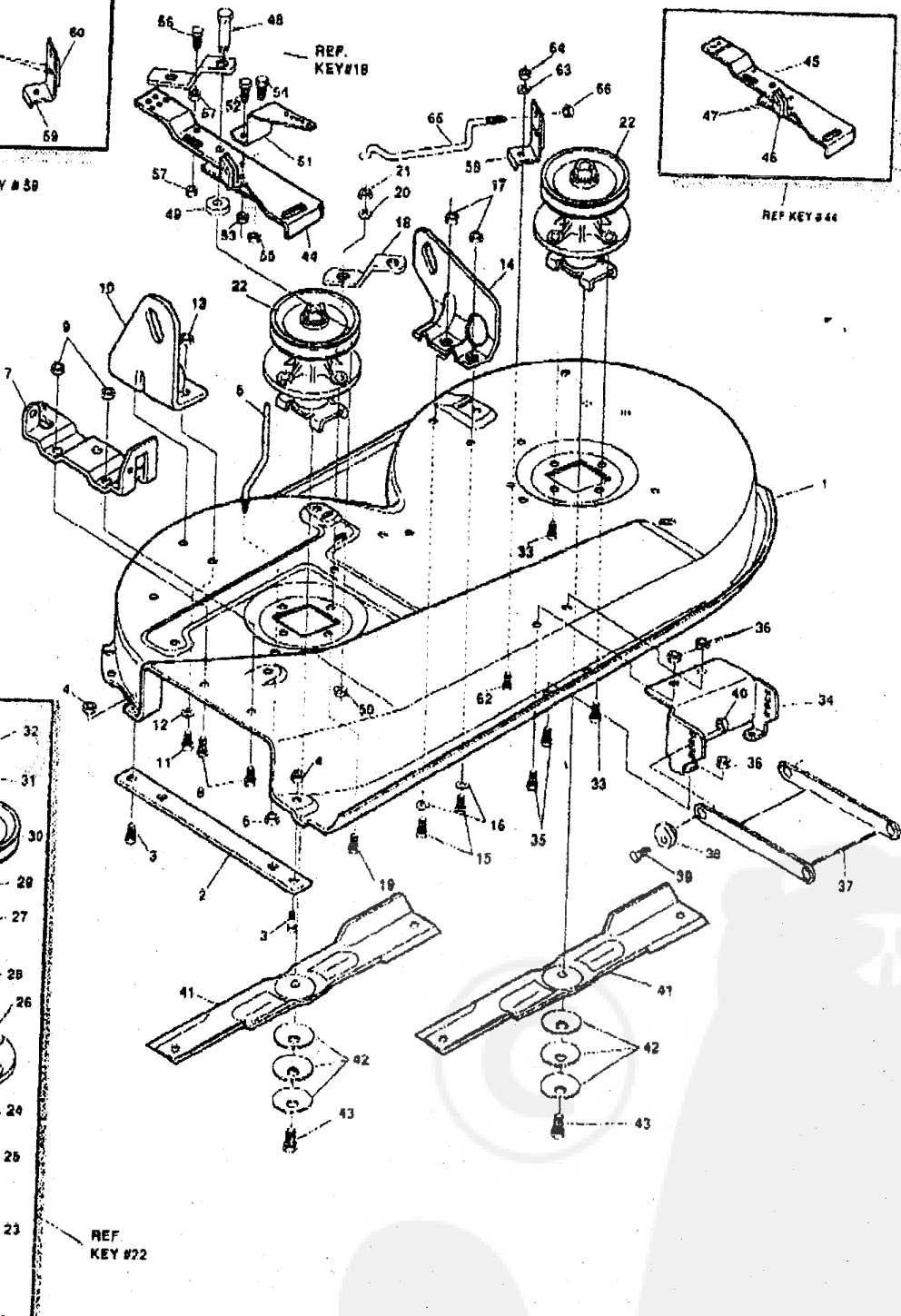
REF. KEY#18



REF KEY # 46



REF KEY #22



NOTE: ALWAYS USE ORIGINAL EQUIPMENT PARTS. Use of service/replacement parts other than original equipment parts may void your warranty.

ALL UNNUMBERED ITEMS ARE INTERCHANGEABLE WITH OPPOSITE SIDE

32497511

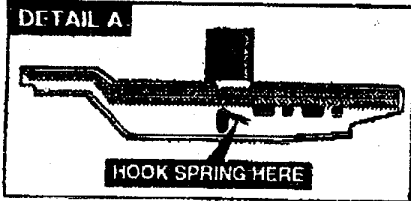
39" LAWN TRACTOR MODEL D3554-430

key#	part#	description	qty
1	325106-853	DECK,39"SD MOWER	1
2	326295-959	BAR, SKID	1
3	126216	BOLT, 5/16 18X .75 CARR	1
4	0271184	NUT, 5/16-18 HEXKEPS	2
5	57318	GUIDE, BELT 5/16-18 THD	2
6	01498	NUT, 5/16-18 REGHEXCTRLK	1
7	57360	BRACKET, CHUTE	1
8	0120834	SCREW, 5/16-18X .60 HHC	1
9	01498	NUT, 5/16-18 REGHEXCTRLK	2
10	58250	LIFT BRACKET, REAR, RH	2
11	0180077	SCREW, 5/16-18X .75 HHC	1
12	120393	WASHER, FLAT .344X .69X.065	2
13	01498	NUT, 5/16-18 REGHEXCTRLK	2
14	58251	BRACKET, DECK LIFT REAR LH	2
15	0180077	SCREW, 5/16-18X .75 HHC	1
16	120393	WASHER, FLAT .344X .69X.065	2
17	01498	NUT, 5/16-18 REGHEXCTRLK	2
18	315302-953	BRACKET, IDLER SUPPORT	1
19	300345	SCREW, 5/16-18X1.38 WATAP	1
20	120393	WASHER, FLAT .344X .69X.065	1
21	01498	NUT, 5/16-18 REGHEXCTRLK	1
22	56424-853	QUILL ASSY, 36/39/40/43	1
23	56425	SHAFT/SADDLE 36"	2
24	49562	BRNG, BALL	1
25	50616	DUST SHIELD	1
26	55547	QUILL CASTING	1
27	49562	BRNG, BALL	1
28	50616	SPACER, 3 797LGX.659IDX.88OD	1
29	51449	SPACER, 438LGX.932ODX.672ID-PM	1
30	56390	PULLEY.26/36" QUILL	1
31	56365	SPECIAL WASHER	1
32	01282	NUT, 7/16-20 WDFLLK	1
33	050634	SCREW, 5/16-18X .88 WAHTAP	8
34	58315	LIFT SUPPORT FRONT DECK	1
35	0180075	SCREW, 5/16 18X .63 HHC	4
36	01498	NUT, 5/16-18 REGHEXCTRLK	4
37	58305-853	LINK BRACKET, DECK FR	1
38	58247	ADJUSTING NUT	2
39	0122017	SCREW, 5/16-18X1.00 HHC	2
40	01498	NUT, 5/16-18 REGHEXCTRLK	2
41	58190	BLADE, 19.69 HI-LIFT	2
42	2483	WASHER, .39IDX1.25DX.07 BELLVIL	6
43	039573	SCREW, 3/8-24X1.00 NYLHHC	2
44	320565	IDLER ARM ASSY	1
45	300480-853	IDLER ARM	1
46	306973	BRAKE PAD	1
47	135624	RIVET, TRSET .185 DIA X .41	1
48	300180	BOLT, .50 X 1.88 HHSH3/8-18	2
49	996416	WASHER, FLAT .391 X 1 -- X .125	1
50	45171	NUT, 5/16-18 X .75 HHC WHIZ-LOCK	1
51	326249	BRACKET EXTENSION IDLER	1
52	180077	SCREW, 5/16 18 X .75 HHC	1
53	1498	NUT, 5/16 18 REGHEXCTRLK	1
54	120854	SCREW, 1/4 20X .63 HHC	1
55	1502	NUT, 1/4-20 REGHXCTRLK	1
56	121954	SCREW, 1/4-20X2.00 HHC	1
57	271172	NUT, 1/4-20 REGHEXKEPS	1
58	303247	ASSY BLADE BRAKE	2
59	303246	BRAKE ARM	1
60	306973	BRAKE PAD	1
61	135624	RIVET TRSET .185 DIA X .41	1
62	180075	SCREW, 5/16-18X .63 HHC	2
63	120393	WASHER, FLAT .344 X .69 X .65	1
64	1498	NUT, 5/16 18 REGHEXCTRLK	1
65	300316	ROD, BRAKE	1
66	1502	NUT, 1/4-20 REGHEXCTRLK	1

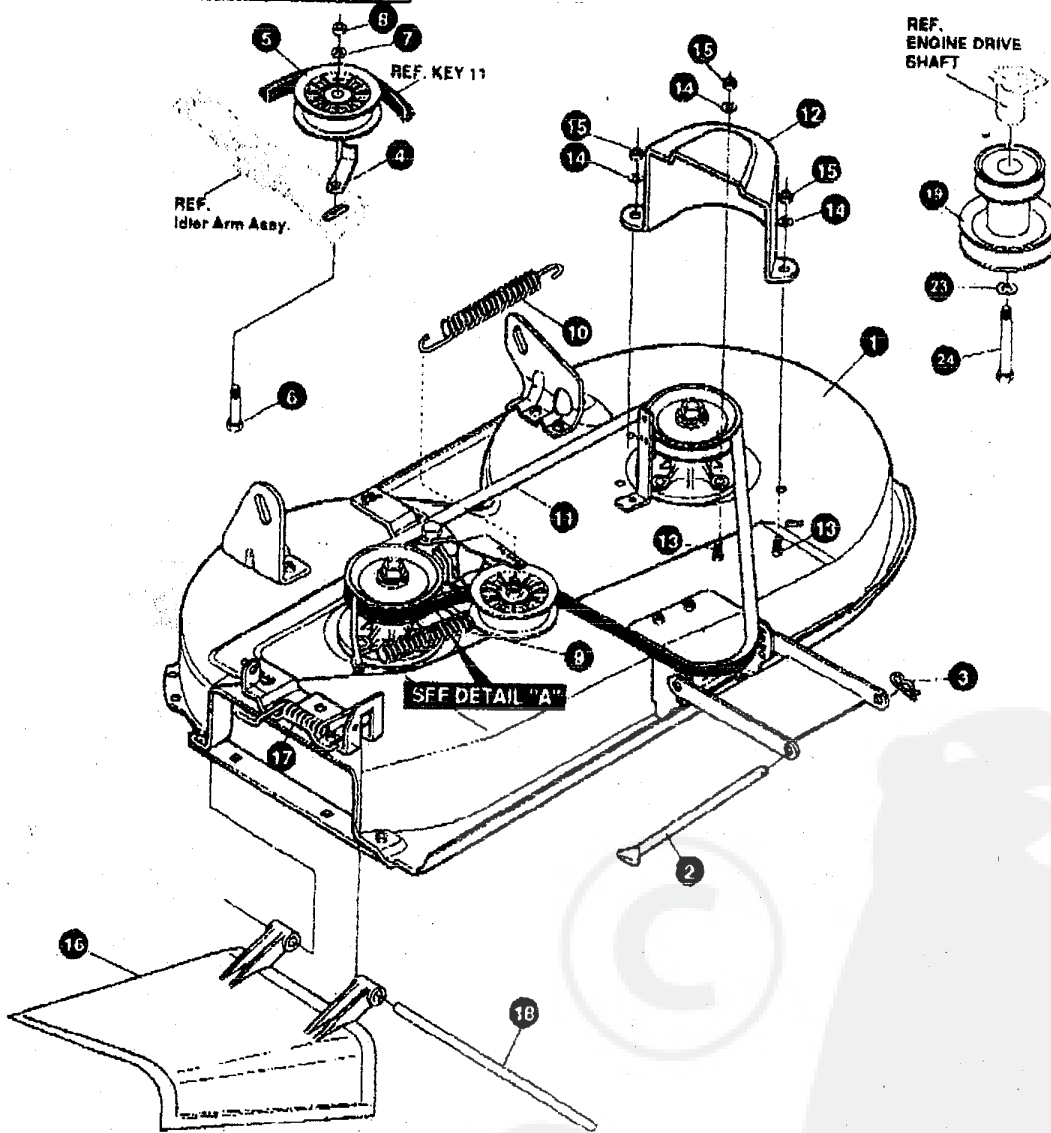
0 Indicates STANDARD HARDWARE ITEMS

39" LAWN TRACTOR MODEL D3554-430

FINAL DECK ASSEMBLY



SEE DWG. 324875 FOR PART ASSY OF PAINTED DECK



NOTE: ALWAYS USE ORIGINAL EQUIPMENT PARTS. Use of service/replacement parts other than original equipment parts may void your warranty.

ALL UNNUMBERED ITEMS ARE INTERCHANGEABLE WITH OPPOSITE SIDE

324877C

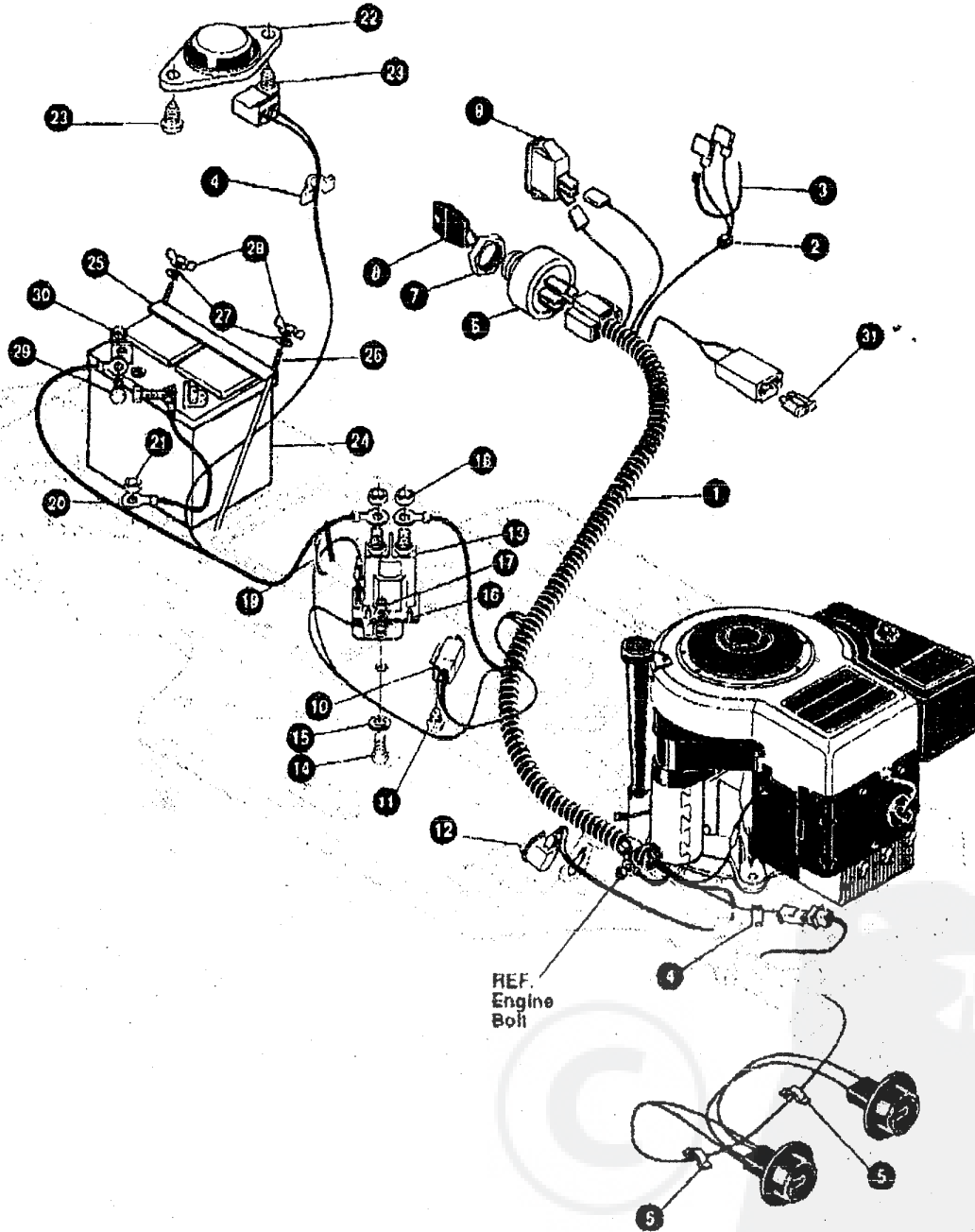
39" LAWN TRACTOR MODEL D3554-430

key#	part#	description	qty.
1		ASSY DECK 39SD 2-DECKWH	1
2	68306	ROD, DECK HITCH	1
3	8280	PIN, HAIR .091 DIA X 1.66	1
4	1346	BELT RETAINER 2.55 OD	1
5	310328	PULLEY, IDLER BFF 4.00	1
6	57325	BOLT, 3/8-16 X 2.00 CARR	1
7	120382	WASHER, REGSPTLK 393X 68X .10	1
8	0 120377	NUT, 3/8-16 REGHX	1
9	322064	SPRING, 75X8.4X.105	1
10	328256	SPRING, TENSION .75X10.0X.105	1
11	300680	BELT, V 5L 77.75	1
12	328257	GUARD, BELT LH	1
13	120328	SCREW, 5/16-18X .63 HHC	3
14	120393	WASHER, FLAT .344X .69X.065	3
15	0 1498	NUT, 5/16-18 REGHEXCTRLK	3
16	57818	CHUTE, 36SD, 39SD	1
17	314975	SPRING, TORSION	1
18	57317	PIVOT ROD, CHUTE	1
19	328034	PULLEY ENGINE	1
23	120383	WASHER, REGSPTLK .459X 78X.12	1
24	433146	SCREW, 7/16-20X4.25	1

* ORDER DECK KIT #329456 FOR COMPLETE DECK.
 0 Indicates STANDARD HARDWARE ITEMS.

39" LAWN TRACTOR MODEL D3554-430

ELECTRICAL ASSEMBLY



NOTE: ALWAYS USE ORIGINAL EQUIPMENT PARTS. Use of service/replacement parts other than original equipment parts may void your warranty.

ALL UNNUMBERED ITEMS ARE INTERCHANGEABLE WITH OPPOSITE SIDE

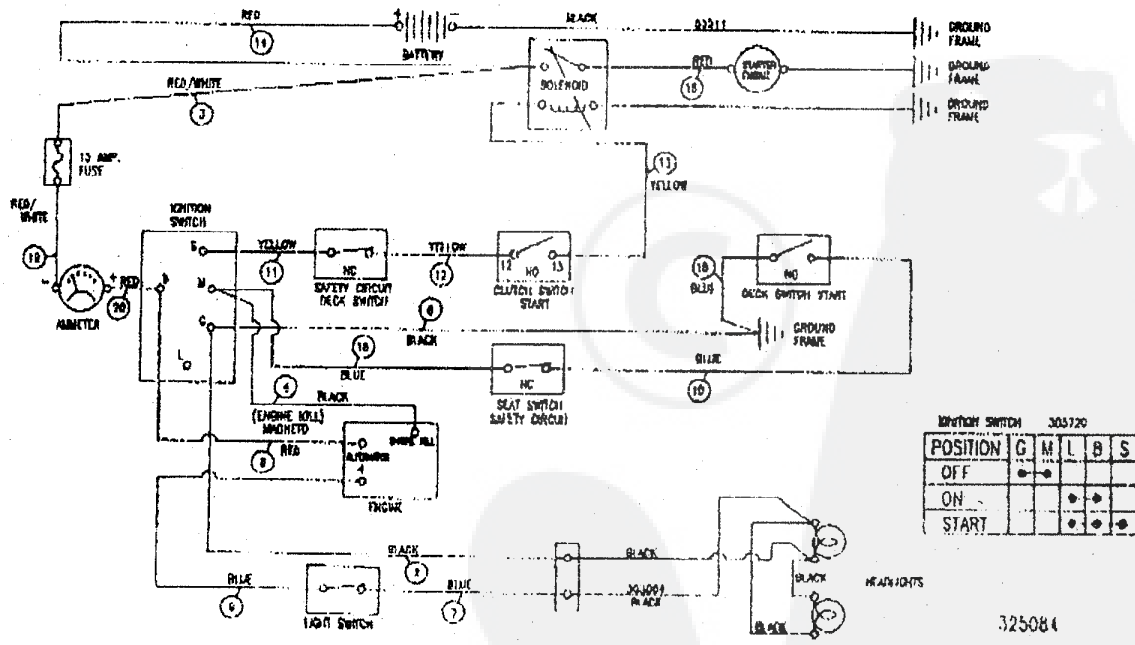
328356A

39" LAWN TRACTOR MODEL D3554-430

key#	part#	description	qty
1.	325084	WIRE HARNESS SF	1
2.	322298	SPLICER	1
3.	57444	CABLE TIE	1
4.	41482	PRESS CLIP, 1.380LG .255ID	2
5.	41482	PRESS CLIP, 1.380LG .255ID	2
6.	327356	SWITCH-IGN. (AFTER FIRE) 3 POS	1
7.	327352	NUT, 5/8-8 ACME DELTA FOR BOOT	1
8.	327350	KEY IGNITION SWITCH STL. DELTA	1
9.	300334	LIGHT SWITCH ON/OFF PANEL MNT	1
10.	57476	SWITCH SCR MNT DP NC	1
11.	57220	SCREW, #12 X .50 PHPNTAP	2
12.	326653	SWITCH, SNAPMNT NO. .055/.116	1
13.	53716	SOLENOID	1
14.	187745	SCREW, 1/4-20X.75 HXSEMMA	2
15.	1084	WASHER, FLAT .281X1.00X.063	1
16.	1502	NUT, 1/4-20 REGHEXCTRLK	2
17.	271172	NUT, 1/4-20 REGHEXKEPS	1
18.	281187	NUT, 5/16-24 HKEPS	2
19.	57444	TIE, CABLE 5 62L	1
20.	55511	WIRE, GROUND, 12 5"	1
21.	271184	NUT, 5/16-18 HEXKEPS	1
22.	57547	SWITCH SEAT	1
23.	160505	SCREW, 1/4-20X.38 PHPNHMAGR2	2
24.	302257	BATTERY 12V 7 PLATE	1
25.	56360	BATTERY BRACKET	1
26.	40234	ROD, BATTERY	2
27.	120392	WASHER, FLAT .281X.63X.065	2
28.	325232	NUT, WING 1/4-20	2
29.	120854	SCREW, 1/4-20X.63 HHC	2
30.	271172	NUT, 1/4-20 REGHEXKEPS	2
31	•• 302031	FUSE, 15 AMP SPAPE TYPE	1

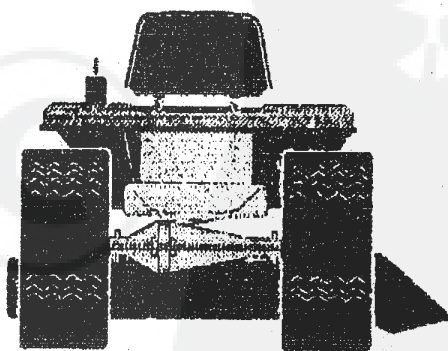
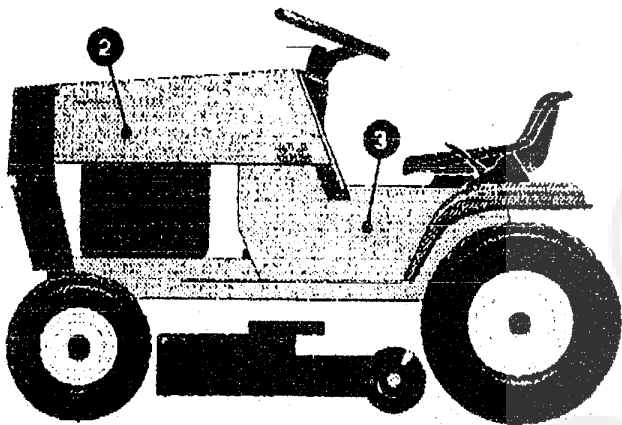
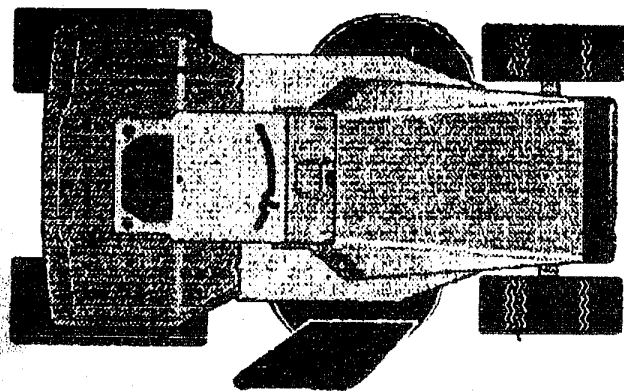
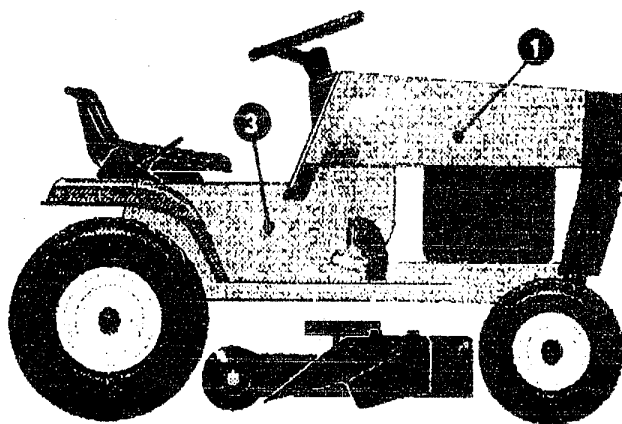
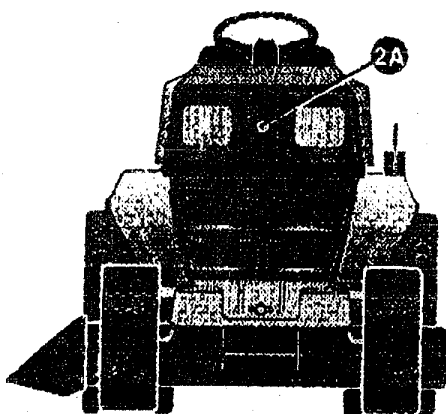
••Spade type tusa included with the wire harness

SCHEMATIC DRAWING



39" LAWN TRACTOR MODEL D3554-430

DECALS (DECORATIVE)



329774A

39" LAWN TRACTOR MODEL D3554-430

key#	part#	description	qty.
1.	329086	DECAL, HOOD SENTINAL RH	1
2A	312002	DECAL, GRILLE INSERT	1
2.	329087	DECAL, HOOD SENTINAL LM	1
3.	300442	12/39 NAMEPLATE, WHT	2

