

Bolens®

Parts Catalog

Suburban Tractor

Model

13048 = D3560-060

Serial Number 130480100101 & Up

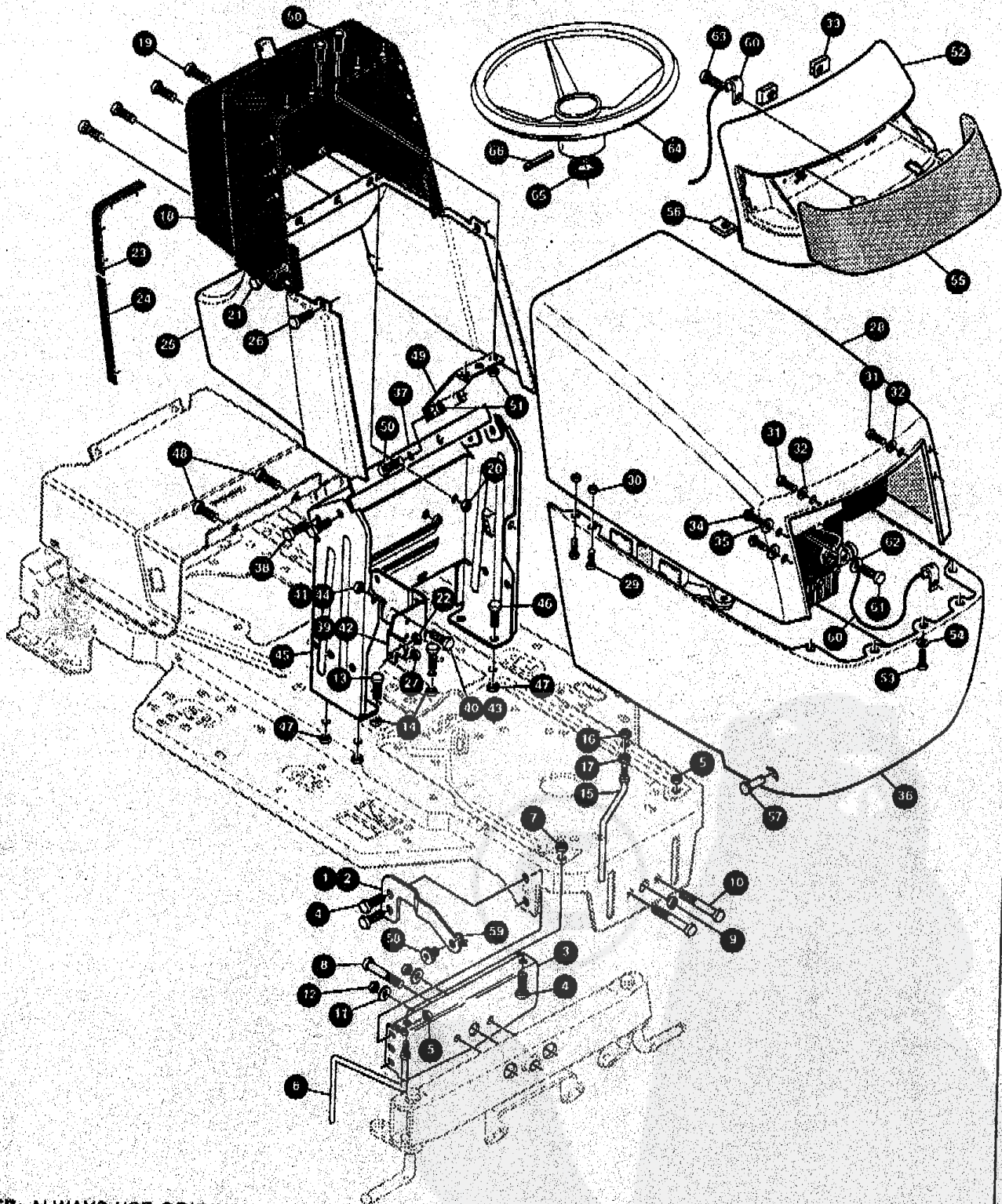


GARDEN WAY, INC.

Part Number 1830537 (01/93)

SUBURBAN TRACTOR MODEL 13048

CHASSIS & HOOD (FRONT)



NOTE: ALWAYS USE ORIGINAL EQUIPMENT PARTS. Use of service/replacement parts other than original equipment parts may void your warranty.

ALL UNNUMBERED ITEMS ARE INTERCHANGEABLE WITH OPPOSITE SIDE

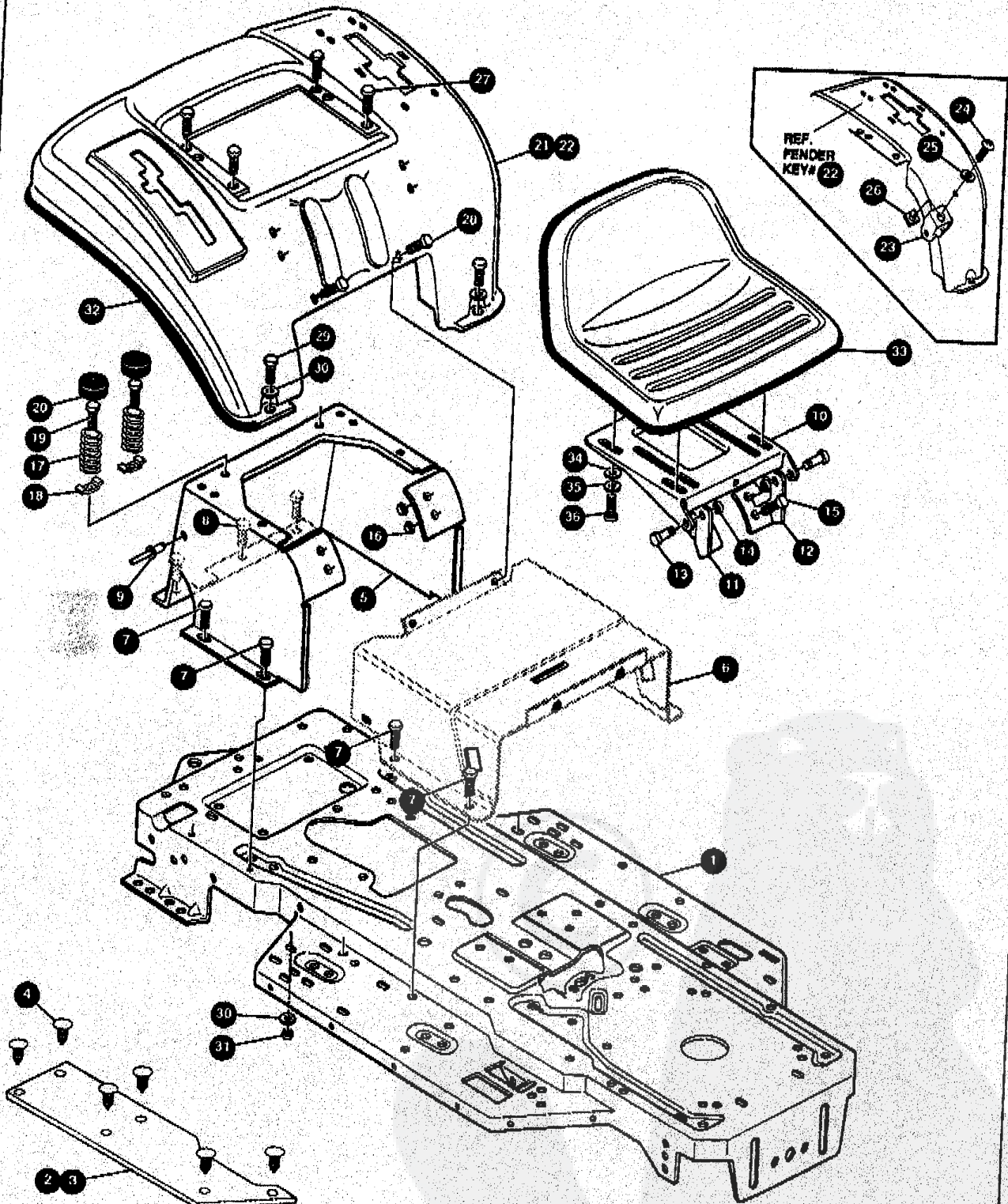
327645A

SUBURBAN TRACTOR MODEL 13048

| key# | part# | description | qty. |
|-----------------------|------------|---------------------------------------|------|
| 1. | 1830602 | MP BRCKT,HOOD LF BOLENS RH | 1 |
| 2. | 1830603 | MP BRCKT,HOOD LF BOLENS LH | 1 |
| 3. | 1830517001 | MP BRACKET, FRONT AXLE | 1 |
| 4. | 1830095 | SCREW, 5/16-18X.75WDFLLK | 1 |
| 5. | 1830088 | NUT, 5/16-18HXWDFLLK | 5 |
| 6. | 1830252 | GUIDE, BELT, RIDER | 5 |
| 7. | 1830005 | NUT, 5/16-18 REGHEXCTRLK | 1 |
| 8. | 1830309 | BOLT, .625X2.18 HHS 1/2-13 | 1 |
| 9. | 1830311 | NUT, 1/2-13 HEXJAM CTRLK | 1 |
| 10. | 1830196 | SCREW, 3/8-16X3.00 HHC | 1 |
| 11. | 1830010 | WASHER, .39IDX1.25DX.07 BELLVIL | 2 |
| 12. | 1830006 | NUT, 3/8-16 REGHXCTRLK | 2 |
| 13. | 1830175 | SCREW, 5/16-18X .88 HHC | 2 |
| 14. | 1830005 | NUT, 5/16-18 REGHEXCTRLK | 2 |
| 15. | 1830256 | GUIDE,BELT SHORT 15" WHEEL | 2 |
| 16. | 1830197 | NUT, 5/16-18 HEXJAM | 1 |
| 17. | 1830223 | NUT, 3/8-16 HEXKEPS | 1 |
| 18. | 1830541 | DASH,W/O CHOKE,W/O AMM,H-PTO | 1 |
| 19. | 1830624 | SCREW, 1/4-20X.75PHPNHTAP | 1 |
| 20. | 1830070 | NUT, 1/4-20 WDFLLK TOPLOCK | 4 |
| 21. | 1830601 | SCREW, 10-24X.63 PHFLTMA | 4 |
| 22. | 1830605 | NUT, #10-24HXDNVLYK | 2 |
| 23. | 1830606 | BUMPER,HOOD/DASH TOP & CORNER | 2 |
| 24. | 1830604 | BUMPER,HOOD/DASH SIDE STRIP | 2 |
| 25. | 1830607 | DASH, LOWER BOLENS SKIRT | 2 |
| 26. | 1830419 | SCREW, 1/4-20X .63 HHWATAP | 1 |
| 27. | 1830070 | NUT, 1/4-20 WDFLLK TOPLOCK | 2 |
| 28. | 1830608040 | 'B' HOOD,LF H24 | 2 |
| 29. | 1830211 | SCREW, 1/4-20X .75 HHC | 1 |
| 30. | 1830625 | NUT, 1/4-20 WDFL MAC-LOCK | 2 |
| 31. | 1830609 | SCREW, 10-14X .63 HHWAPHTAPB | 2 |
| 32. | 1830376 | WASHER, FLAT .203X .56X.040 | 2 |
| 33. | 1830610 | CLIP, TINNERMAN C14810-10 | 2 |
| 34. | 1830611 | SCREW, 1/4-18X .62 HHWA HI-LO | 2 |
| 35. | 1830626 | WASHER, FLAT .281X1.00X.063PL | 4 |
| 36. | 1830612021 | LT GRILL,SKIRT G-19 FOR B HOOD | 4 |
| 37. | 1830613001 | MP SUPPORT,STEERING/PTO LF | 1 |
| 38. | 1830627 | SCREW, 1/4-20X .38 WAHTAP | 1 |
| 39. | 1830614001 | BRACKET, DASH/TANK LF RH | 4 |
| 40. | 1830210 | SCREW, 1/4-20X .62 HHC | 1 |
| 41. | 1830008 | NUT, 1/4-20 REGHEXCTRLK | 1 |
| 42. | 1830615001 | BRACKET, DASH/TANK LF LH | 1 |
| 43. | 1830210 | SCREW, 1/4-20X .62 HHC | 1 |
| 44. | 1830008 | NUT, 1/4-20 REGHEXCTRLK | 1 |
| 45. | 1830616001 | MP DASH,TOWER WALK-THRU LF | 1 |
| 46. | 1830210 | SCREW, 1/4-20X .62 HHC | 1 |
| 47. | 1830008 | NUT, 1/4-20 REGHEXCTRLK | 3 |
| 48. | 1830420 | SCREW, 1/4-20X .50 WAHTAP | 3 |
| 49. | 1830618001 | MP DASH,SUPPORT BRACKET STEEL | 2 |
| 50. | 1830210 | SCREW, 1/4-20X .62 HHC | 1 |
| 51. | 1830008 | NUT, 1/4-20 REGHEXCTRLK | 4 |
| 52. | 1830618040 | 'B' GRILLE, G-20 | 4 |
| 53. | 1830609 | SCREW, 10-14X .63 HHWAPHTAPB | 1 |
| 54. | 1830376 | WASHER, FLAT .203X .56X.040 | 5 |
| 55. | 1830619 | LENS FOR 'B' (G-20) GRILLE | 5 |
| 56. | 1830610 | CLIP, TINNERMAN C14810-10 | 1 |
| 57. | 1830626 | PIN, CLEVIS .500 X .49/51 LGTH | 5 |
| 58. | 1830620 | BRNG HOOD .505IDX.625ODX1.12FL | 2 |
| 59. | 1830013 | PIN, HAIR .091 DIA X1.66LG | 2 |
| 60. | 1830621 | LANYARD,HOOD 11.76LG H16 VANG. | 2 |
| 61. | 1830210 | SCREW, 1/4-20X .62 HHC | 1 |
| 62. | 1830183 | WASHER, REGSPTLK.263X.49X.07 | 2 |
| 63. | 1830067 | SCREW, 1/4-18X .75PHPNHTAPGR2BK | 1 |
| *****BOXED ITEMS***** | | | |
| 64. | 1830270 | STEERING WHEEL | 1 |
| 65. | 1830622 | SPACER, STEERING SHAFT | 1 |
| 66. | 1830416 | PIN, SPRING 250DIA X2.00LG HVPL | 1 |
| 67. | 1830628 | OPERATOR'S MANUAL ENGLISH (NOT SHOWN) | 1 |
| 68. | 1830632 | OPERATOR'S MANUAL FRENCH (NOT SHOWN) | 1 |
| 69. | 1830533 | OPERATOR'S MANUAL SPANISH (NOT SHOWN) | 1 |
| 70. | 1830534 | OPERATOR'S MANUAL GERMAN (NOT SHOWN) | 1 |
| 71. | 1830535 | OPERATOR'S MANUAL DUTCH (NOT SHOWN) | 1 |
| 72. | 1830536 | OPERATOR'S MANUAL SWEDISH (NOT SHOWN) | 1 |
| 73. | 1830530 | OPERATOR'S MANUAL ITALIAN (NOT SHOWN) | 1 |
| 74. | 1830537 | PART'S MANUAL (NOT SHOWN) | 1 |

SUBURBAN TRACTOR MODEL 13048

CHASSIS & HOOD (REAR)



NOTE: ALWAYS USE ORIGINAL EQUIPMENT PARTS. Use of service/replacement parts other than original equipment parts may void your warranty.

ALL UNNUMBERED ITEMS ARE INTERCHANGEABLE WITH OPPOSITE SIDE

327582A

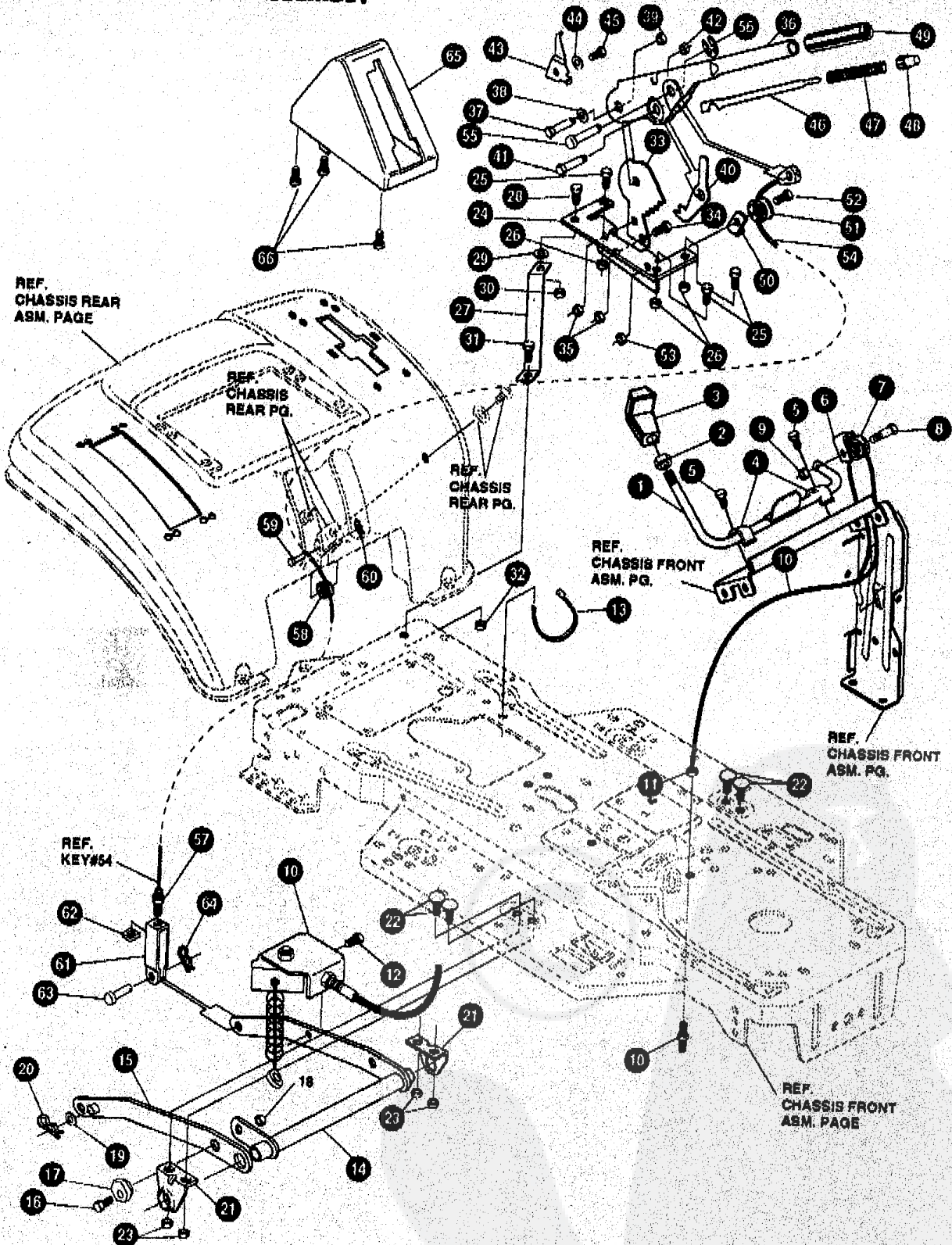
SUBURBAN TRACTOR MODEL 13048

| key# | part# | description | qty. |
|-----------------------|------------|--------------------------------|-------|
| 1. | 1830542001 | MP FRAME,LF DRILLED P920/F4360 | 1 |
| 2. | 1830316 | FOOT PAD, LH | 1 |
| 3 | 1830317 | FOOT PAD, RH | 1 |
| 4 | 1830312 | FASTENER, RATCHET BLACK | 12 |
| 5 | 1830591021 | SEAT/FNDR.SUPPORT WALK-THRU | 1 |
| 6 | 1830592021 | CONSOLE,WALK-THRU | 1 |
| 7 | 1830420 | SCREW, 1/4-20X .50 WAHHTAP | 1 |
| 8 | 1830041 | SCREW, 5/16-18X .50 WAHHTAP | 2 |
| 9 | 1830060 | RIVET, POP .187DIA X .450LG ST | 3 |
| 10. | 1830166001 | MP PLATE,SEAT F5 8F,LF | 1 |
| 11. | 1830593001 | MP BRACKET SEAT WALK-THRU RH | 1 |
| 12. | 1830594001 | MP BRACKET SEAT WALK-THRU LH | 1 |
| 13. | 1830031 | BOLT, .437X .156 HSH 5/16-18 | 2 |
| 14. | 1830005 | NUT, 5/16-18 REGHEXCTRLK | 2 |
| 15. | 1830066 | SCREW, 5/16-18X .63WAHHC GR2 | 4 |
| 16. | 1830005 | NUT, 5/16-18 REGHEXCTRLK | 4 |
| 17. | 1830108 | SPRING,SEAT 2.63LG,1.49OD | 2 |
| 18. | 1830003 | ML CLAMP, SPRING 1.17"ID | 2. |
| 19. | 1830053 | SCREW, 1/4-20X .75 HXWATAP | 2 |
| 20. | 1830106 | COVER,SEAT SPRING 1.51DX1.0LG | 2 |
| 21. | 0 | FENDER ASSEMBLY | 1 |
| 22. | 1830595040 | MP,FENDER,WALK-THRU CONSOLE | 1 |
| 23. | 1830623 | ML CLEVIS | 1 |
| 24. | 1830482 | SCREW, 5/16-18X .56PHPNMA BKPH | 1 |
| 25. | 1830274 | WASHER,.344DX1.50DX.09 | 1 |
| 26. | 1830180 | NUT, 5/16-18 SC | 1 |
| 27. | 1830420 | SCREW, 1/4-20X .50 WAHHTAP | 4 |
| 28. | 1830041 | SCREW, 5/16-18X .50 WAHHTAP | 2. |
| 29. | 1830583 | SCREW, 5/16-18X1.00 HHC | 2 |
| 30. | 1830415 | WASHER, FLAT .375X .88X.082 | 4 |
| 31. | 1830005 | NUT, 5/16-18 REGHEXCTRLK | 2 |
| 32. | 1830087 | TRIM,STRIP,BLACK—SMALL,W/ ADH | 77.5" |
|BOXED ITEMS..... | | | |
| 33. | 1830124 | SEAT,MICHIGAN 7X7.50 W/SW | 1 |
| 34. | 1830186 | WASHER, FLAT .344X .69X.065 | 4. |
| 35. | 1830189 | WASHER, HV5PTLK .328X.60X.09 | 4 |
| 36. | 1830194 | SCREW, 5/16-18X .75 HHC | 4 |

◊ ORDER INDIVIDUAL PARTS

SUBURBAN TRACTOR MODEL 13048

MOWER SUSPENSION ASSEMBLY



NOTE: ALWAYS USE ORIGINAL EQUIPMENT PARTS. Use of service/replacement parts other than original equipment parts may void your warranty.

ALL UNNUMBERED ITEMS ARE INTERCHANGEABLE WITH OPPOSITE SIDE

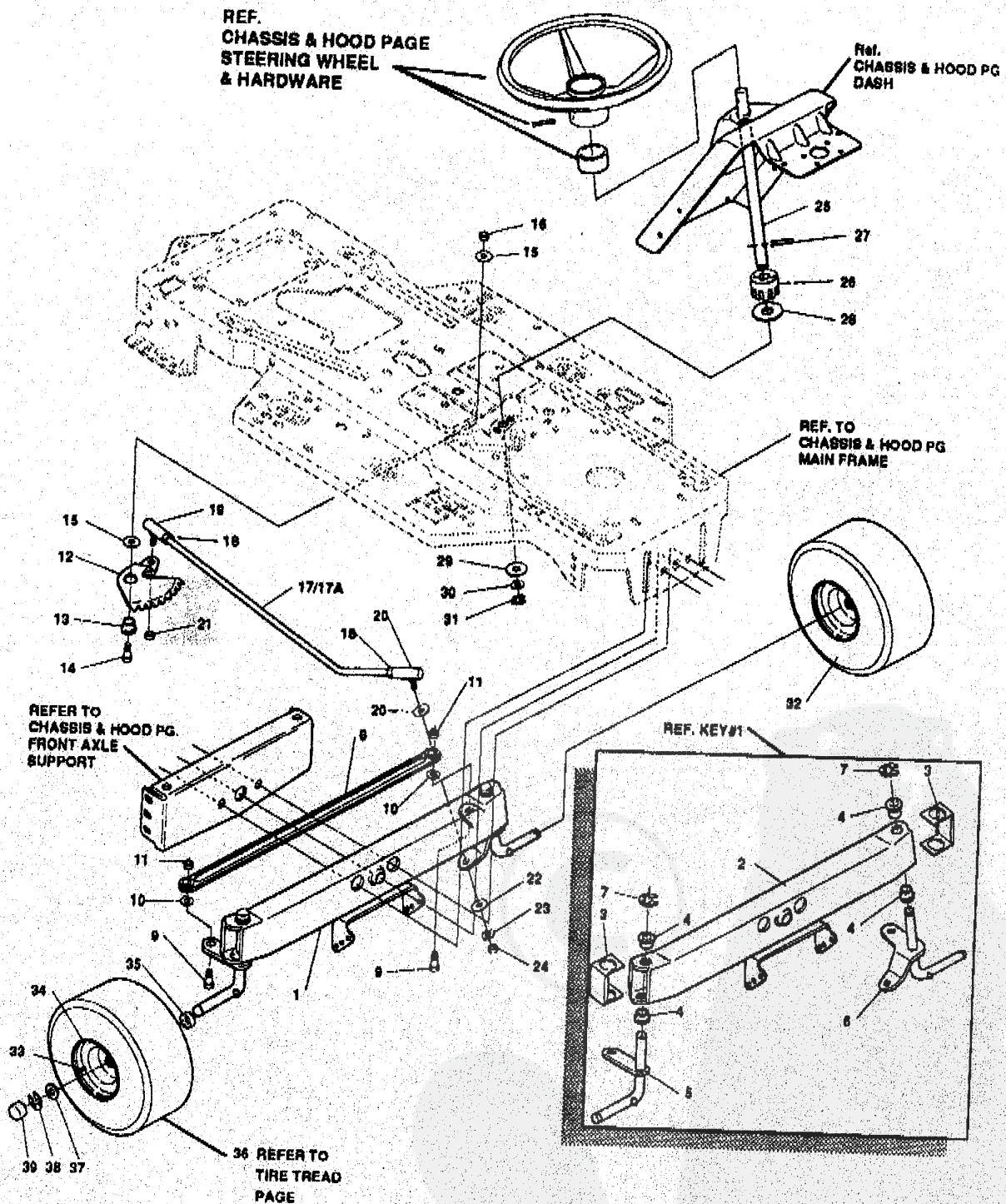
327579A

SUBURBAN TRACTOR MODEL 13048

| key# | part# | description | qty. |
|------|------------|----------------------------------|------|
| 1 | 1830543 | LEVER WELD ASM. PTO | 1 |
| 2 | 1830176 | NUT, 1/2-13 HEXJAM | 1 |
| 3 | 1830475 | KNOB, SHIFT NOMA 1/2-13 | 1 |
| 4 | 1830476 | CLIP, RETAINING BRKT | 2 |
| 5 | 1830419 | SCREW, 1/4-20X .63 WAHHTAP | 2 |
| 6 | 1830002 | BRKT, CABLE RETAINER | 1 |
| 7 | 1830064 | PULLEY, .906X.305 NYLON | 1 |
| 8 | 1830477 | BOLT, .375X .375 HHS 1/4-20 | 1 |
| 9 | 1830008 | NUT, 1/4-20 REGHEXCTRLK | 1 |
| 10 | 1830544 | ASSY, PTO, CABLE LF H 25 | 1 |
| 11 | 1830188 | NUT, 1/4-28 HJAM | 1 |
| 12 | 1830042 | SCREW, 5/16-18X .75 WAHHTAP | 1 |
| 13 | 1830123 | TIE, CABLE BLACK NYLON 5.62 | 1 |
| 14 | 1830017001 | ASSY, REAR LIFT | 1 |
| 15 | 1830018001 | ASSY, LINK, RIGHT SIDE | 1 |
| 16 | 1830214 | SCREW, 5/16-18X1.00 HHC | 1 |
| 17 | 1830147 | ADJUSTING NUT | 1 |
| 18 | 1830005 | NUT, 5/16-18 REGHEXCTRLK | 1 |
| 19 | 1830413 | WASHER, FLAT .531X1.06X.085 | 2 |
| 20 | 1830013 | PIN, HAIR .091 DIA X1.66LG | 2 |
| 21 | 1830015001 | BRKT, REAR, HANG, SUSP | 2 |
| 22 | 1830199 | BOLT, 5/16-18X .63 CARR | 4 |
| 23 | 1830005 | NUT, 5/16-18 REGHEXCTRLK | 4 |
| 24 | 1830161 | BRACKET, HGT/ADJUST SUPPORT | 1 |
| 25 | 1830213 | SCREW, 5/16-18X .75 HHC | 3 |
| 26 | 1830005 | NUT, 5/16-18 REGHEXCTRLK | 3 |
| 27 | 1830248021 | BRACE, FENDER F-5 SUS | 1 |
| 28 | 1830214 | SCREW, 5/16-18X1.00 HHC | 1 |
| 29 | 1830055 | WASHER, FLAT .333X .87X.119 | 1 |
| 30 | 1830005 | NUT, 5/16-18 REGHEXCTRLK | 1 |
| 31 | 1830214 | SCREW, 5/16-18X1.00 HHC | 1 |
| 32 | 1830005 | NUT, 5/16-18 REGHEXCTRLK | 1 |
| 33 | 1830268 | QUADRANT, HEIGHT ADJUST | 1 |
| 34 | 1830213 | SCREW, 5/16-18X .75 HHC | 2 |
| 35 | 1830005 | NUT, 5/16-18 REGHEXCTRLK | 2 |
| 36 | 1830481001 | HANDLE, LIFT SHORT | 1 |
| 37 | 1830233 | BOLT, .500X .270 HHS 5/16-18 | 1 |
| 38 | 1830421 | WASHER, FLAT .506X .75X.024 | 1 |
| 39 | 1830052 | NUT, 5/16-18 HWDFLCTRLK | 1 |
| 40 | 1830269 | PAWL, HEIGHT ADJUST | 1 |
| 41 | 1830233 | BOLT, .500X .270 HHS 5/16-18 | 1 |
| 42 | 1830052 | NUT, 5/16-18 HWDFLCTRLK | 1 |
| 43 | 1830024 | POINTER | 1 |
| 44 | 1830203 | WASHER, EXLK .195X.41X.03 | 1 |
| 45 | 1830038 | SCREW, #8-32X .38 HHWATAP | 1 |
| 46 | 1830288 | ROD ACTUATOR-SHORT | 1 |
| 47 | 1830159 | SPRING, HEIGHT ADJUST | 1 |
| 48 | 1830158 | KNOB, HGT ADJ PUSH BUTTON | 1 |
| 49 | 1830160 | GRIP, 750 OD W/ HOLE | 1 |
| 50 | 1830162 | BRKT, CABLE RETAIN | 1 |
| 51 | 1830045 | PULLEY, .906X.305 NYLON | 1 |
| 52 | 1830163 | BOLT, .375X .375 HHS 1/4-20 | 1 |
| 53 | 1830008 | NUT, 1/4-20 REGHEXCTRLK | 1 |
| 54 | 1830250 | CABLE, LIFT 21.70 F-5 20XB-8 | 1 |
| 55 | 1830242 | PIN, CLEVIS .310DIA+.475LG | 1 |
| 56 | 1830243 | RING, RET E .31X.24 | 1 |
| 57 | 1830181 | NUT, 1/4-20 REGHEX | 1 |
| 58 | 1830064 | PULLEY, .906X .305 NYLON | 1 |
| 59 | 1830245 | PIN, CLEVIS .375 DIA. X .81 LG Z | 1 |
| 60 | 1830013 | PIN, HAIR .091 DIA X1.66 LG | 1 |
| 61 | 1830023 | ML CLEVIS, LIFT CABLE | 1 |
| 62 | 1830179 | NUT, 1/4-20 REGSQ | 1 |
| 63 | 1830046 | PIN, CLEVIS .312 X .812 | 1 |
| 64 | 1830192 | PIN, COTTER .090/086X.75LG | 1 |
| 65 | 1830247 | LIFT COVER-39" F5 | 1 |
| 66 | 1830249 | SCREW, #10 X .75 HHPLAST | 3 |

SUBURBAN TRACTOR MODEL 13048

STEERING ASSEMBLY



NOTE: ALWAYS USE ORIGINAL EQUIPMENT PARTS. Use of service/replacement parts other than original equipment parts may void your warranty.

ALL UNNUMBERED ITEMS ARE INTERCHANGEABLE WITH OPPOSITE SIDE

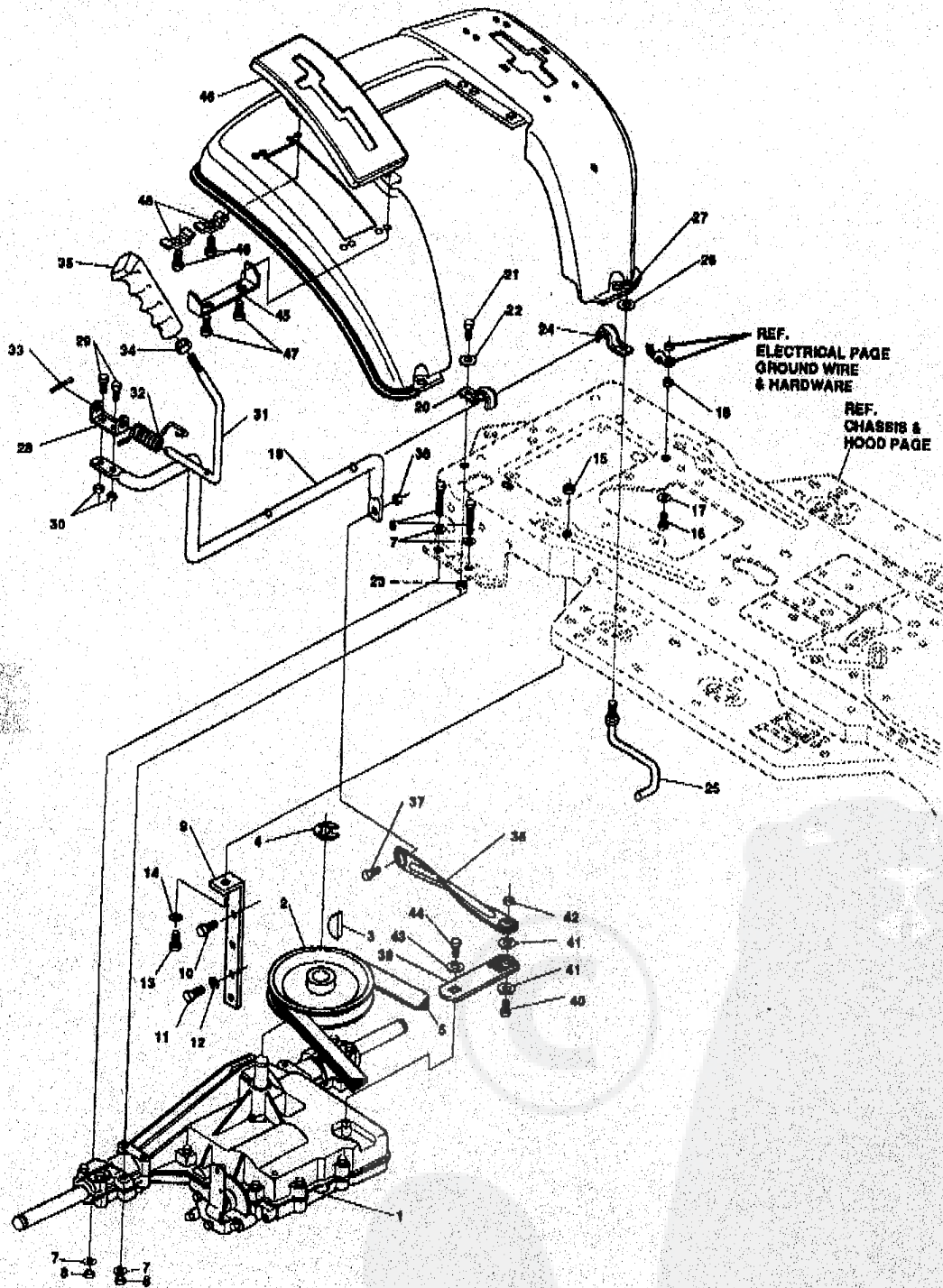
SUBURBAN TRACTOR MODEL 13048

| key# | part# | description | qty. |
|------|------------|---------------------------------|------|
| 1 | * | ASSY, AXLE FRONT | 1 |
| 2 | 1830237 | AXLE, FRONT | 1 |
| 3 | 1830083001 | AXLE COVER | 2 |
| 4 | 1830078 | SPINDLE BEARING | 4 |
| 5 | 1830286 | SPINDLE RH | 1 |
| 6 | 1830364 | SPINDLE LH | 1 |
| 7 | 1830044 | RING, RETEX .57X.05TRU5133-75 | 2 |
| 8 | 1830299 | TIE ROD ASSY 19.81LG | 1 |
| 9 | 1830217 | SCREW, 3/8-16X1.75 HHC | 2 |
| 10 | 1830184 | WASHER, REGSPTLK.393X.68X.10 | 2 |
| 11 | 1830182 | NUT, 3/8-16 REGHEX | 2 |
| 12 | 1830153 | SECTOR, STEERING LF | 1 |
| 13 | 1830077 | BRNG, FL ECC.510IDX .998ODX .56 | 1 |
| 14 | 1830218 | SCREW, 1/2-13X1.50 HHC | 1 |
| 15 | 1830036 | WASHER, FLAT .515X1.38X.119 | 2 |
| 16 | 1830007 | NUT, 1/2-13 REGHOTRLK | 1 |
| 17 | 1830632 | DRAGLINK ASSEMBLY | 1 |
| 17A | 1830154 | STEERING LINK | 1 |
| 18 | 1830198 | NUT, 3/8-24 REGHEXJAM | 2 |
| 19 | 1830110 | BALL JOINT 3/8 THD SHORT STUD | 1 |
| 20 | 1830033 | BALL JOINT 3/8 TH'D LONG STUD | 1 |
| 21 | 1830057 | NUT, 3/8-24 WDFLHLK | 1 |
| 22 | 1830633 | WASHER, FLAT .531X1.06X.095 | 2 |
| 23 | 1830184 | WASHER, REGSPTLK.393X.68X.10 | 1 |
| 24 | 1830178 | NUT, 3/8-24 REGHEX | 1 |
| 25 | 1830145 | SHAFT, STEERING LF | 1 |
| 26 | 1830146 | PINION, STEERING LF | 1 |
| 27 | 1830151 | PIN, DOWEL .2500 OD+1.75 | 1 |
| 28 | 1830272 | BRNG, FL .752IDX1.061ODX .24 | 1 |
| 29 | 1830271 | WASHER, FORMED1.135X1.53X.12 | 1 |
| 30 | 1830034 | WASHER, FLAT .765X1.25X.042 | 1 |
| 31 | 1830044 | RING, RETEX .57X.05TRU5133-75 | 1 |
| 32 | * | TIRE & RIM, PU 15X8.0X6 | 2 |
| 33 | 1830094 | VALVE STEM | 1 |
| 34 | 1830105 | WHEEL W/BRG. | 1 |
| 35 | 1830137 | BEARING, FL1.38OD+.753ID | 1 |
| 36 | | REFER TO TIRE TREAD PAGE | 1 |
| 37 | 1830000 | WASHER, FLAT .765X1.31X.075 | 4 |
| 38 | 1830044 | RING, RETEX .57X.05TRU5133-75 | 2 |
| 39 | 1830049 | CAP, 1.500ID X 7/8LG HUB | 2 |

* Order Individual Parts

SUBURBAN TRACTOR MODEL 13048

MOTION DRIVE ASSEMBLY



NOTE: ALWAYS USE ORIGINAL EQUIPMENT PARTS.
 Use of service/replacement parts other than original equipment parts may void your warranty.

ALL UNNUMBERED ITEMS ARE INTERCHANGEABLE WITH OPPOSITE SIDE

327635A

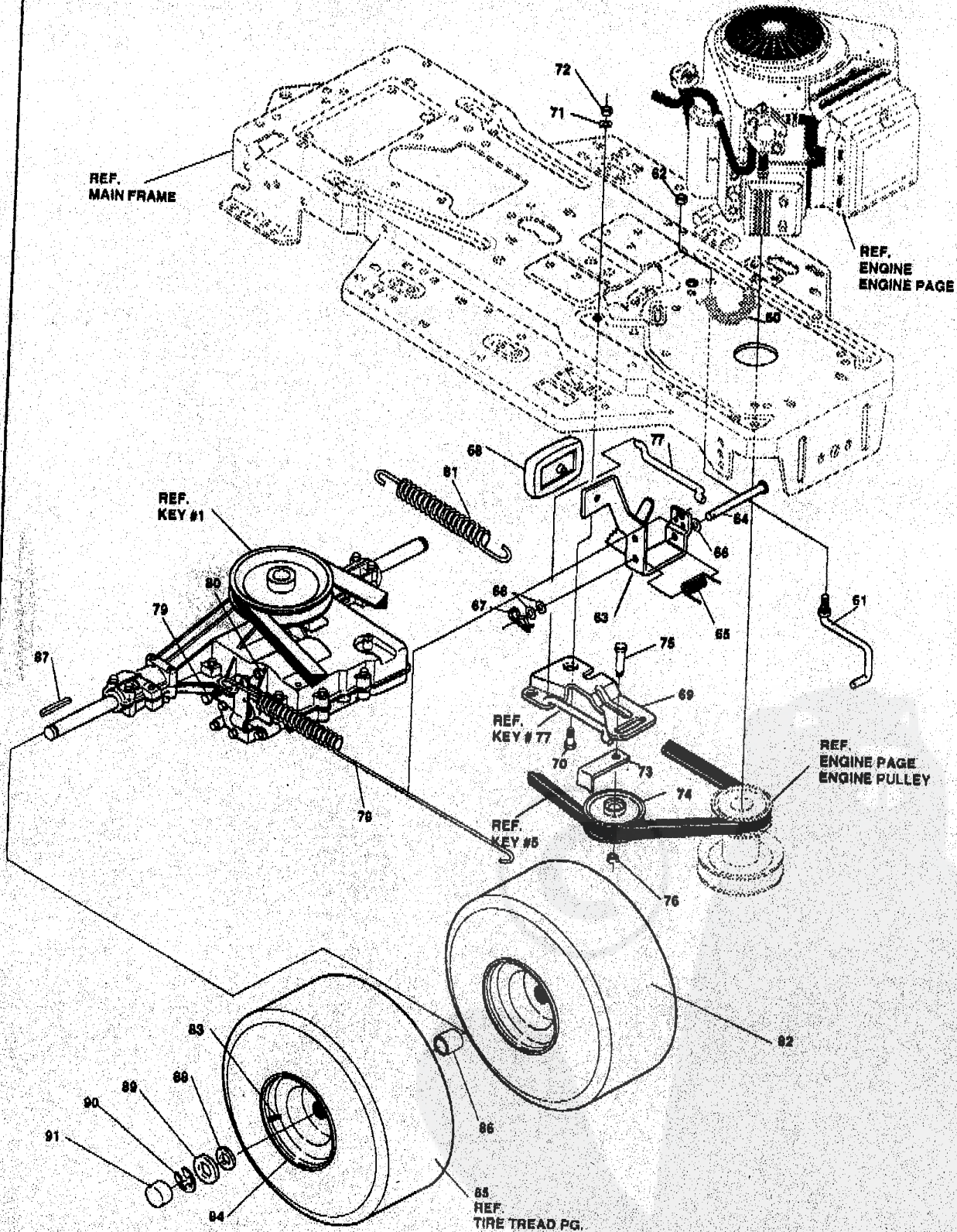
SUBURBAN TRACTOR MODEL 13048

| key# | part# | description | qty. |
|------|------------|--------------------------------|------|
| 1 | * | TRANSAXLE LF P930-5 | 1 |
| 2 | 1830282 | PULLEY | 1 |
| 3 | 1830012 | KEY, WDRF 606 .750X.187X.312 | 1 |
| 4 | 1830035 | RING, RETEX .58X.04TRU5100-62 | 1 |
| 5 | 1830345 | BELT | 1 |
| 6 | 1830215 | SCREW, 5/16-18X2.25 HHC | 4 |
| 7 | 1830186 | WASHER, FLAT .344X .69X.065 | 8 |
| 8 | 1830005 | NUT, 5/16-18 REGHEXCTRLK | 4 |
| 9 | 1830484 | MF STABILIZER BRKT P920,F4150 | 1 |
| 10 | 1830076 | SCREW, 3/8-16X1.25 WAHHTAP | 1 |
| 11 | 1830042 | SCREW, 5/16-18X .75 WAHHTAP | 2 |
| 12 | 1830189 | WASHER, HV6PTLK .328X.60X.09 | 2 |
| 13 | 1830583 | SCREW, 5/16-18X1.00 HHC | 1 |
| 14 | 1830186 | WASHER, FLAT .344X .69X.065 | 1 |
| 15 | 1830005 | NUT, 5/16-18 REGHEXCTRLK | 1 |
| 16 | 1830194 | SCREW, 5/16-18X .75 HHC | 1 |
| 17 | 1830206 | WASHER, REGINTLK.320X.61X.09 | 1 |
| 18 | 1830005 | NUT, 5/16-18 REGHEXCTRLK | 1 |
| 19 | 1830380 | LEVER, SHIFT, LWR 4360 LF | 1 |
| 20 | 1830322001 | CLIP-SHIFT LEVER .62 ROD | 1 |
| 21 | 1830213 | SCREW, 5/16-18X .75 HHC | 1 |
| 22 | 1830421 | WASHER, FLAT .391X1.00X.125 | 1 |
| 23 | 1830005 | NUT, 5/16-18 REGHEXCTRLK | 1 |
| 24 | 1830322001 | CLIP-SHIFT LEVER .62 ROD | 1 |
| 25 | 1830116 | GUIDE, BELT 5/16-18THD | 1 |
| 26 | 1830421 | WASHER, FLAT .391X1.00X.125 | 1 |
| 27 | 1830005 | NUT, 5/16-18 REGHEXCTRLK | 1 |
| 28 | 1830323 | PIVOT BRKT LEVER | 1 |
| 29 | 1830210 | SCREW, 1/4-20X .62 HHC | 2 |
| 30 | 1830008 | NUT, 1/4-20 REGHEXCTRLK | 2 |
| 31 | 1830314 | LEVER, SHIFT UPPER SF 1/2-13TH | 1 |
| 32 | 1830320 | SPRING, TORS. .56X.95X.095 | 1 |
| 33 | 1830202 | PIN, COTTER .125 DIA X1.00LG | 1 |
| 34 | 1830176 | NUT, 1/2-13 HEXJAM | 1 |
| 35 | 1830306 | HANDLE 1/2-13 MOLDED | 1 |
| 36 | 1830351 | LNK TIE ROD SHIFTER P930-6 LF | 1 |
| 37 | 1830216 | SCREW, 3/8-16X1.25 HHC | 1 |
| 38 | 1830006 | NUT, 3/8-16 REGHXOTRLK | 1 |
| 39 | 1830315 | BRACKET, SHIFT 58P SF FEN HT | 1 |
| 40 | 1830216 | SCREW, 3/8-16X1.25 HHC | 1 |
| 41 | 1830187 | WASHER, FLAT .406X .81X.065 | 2 |
| 42 | 1830006 | NUT, 3/8-16 REGHXOTRLK | 1 |
| 43 | 1830109 | WASHER, .750X.250 SP-TRANSAXLE | 1 |
| 44 | 1830096 | SCREW, 1/4-28X .75 NYLHHC | 1 |
| 45 | 1830338001 | BRACKET COVER | 1 |
| 46 | 1830330 | COVER PLASTIC | 1 |
| 47 | 1830332 | SCREW, 1/4-15X .44/.53 HILOHWA | 2 |
| 48 | 1830003 | CLAMP SPRING | 2 |
| 49 | 1830332 | SCREW, 1/4-15X .44/.53 HILOHWA | 2 |

* CONTACT YOUR NEAREST PEERLESS DEALER FOR PARTS AND SERVICE.

SUBURBAN TRACTOR MODEL 13048

MOTION DRIVE ASSEMBLY



NOTE: ALWAYS USE ORIGINAL EQUIPMENT PARTS.
 Use of service/replacement parts other than original equipment parts may void your warranty.

**ALL UNNUMBERED
 ITEMS ARE INTERCHANGEABLE
 WITH OPPOSITE SIDE**

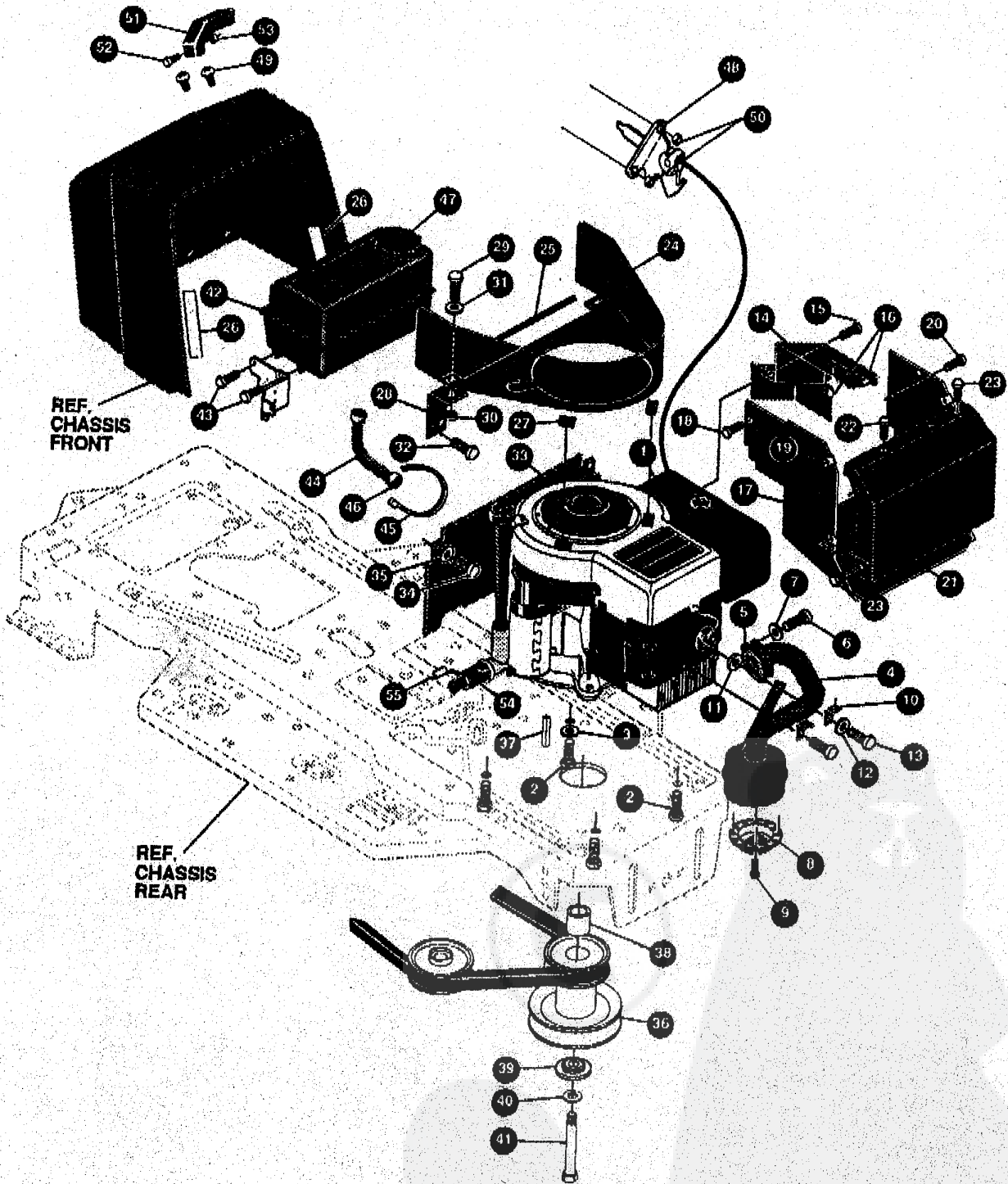
SUBURBAN TRACTOR MODEL 13048

| key# | part# | description | qty |
|------|---------|-------------------------------|-----|
| 60 | 1830486 | SPRING BIAS DRAGLINK | 1 |
| 61 | 1830487 | GUIDE BELT | 1 |
| 62 | 1830005 | NUT, 5/16-18 REGHEXCTRLK | 1 |
| 63 | 1830575 | PEDAL ASSY, BRAKE/CLUTCH LF | 1 |
| 64 | 1830488 | PIN, CLEVIS | 1 |
| 65 | 1830140 | SPRING, BRAKE PEDAL | 1 |
| 66 | 1830011 | WASHER, FLAT .504X .75X.059 | 3 |
| 67 | 1830489 | PIN, HAIR | 1 |
| 68 | 1830063 | PAD, CLUTCH BRAKE W/PRINTING | 1 |
| 69 | 1830490 | ARM, IDLER TRACTION DR. LF | 1 |
| 70 | 1830266 | BOLT, .625X .135 HH8H 5/16-18 | 1 |
| 71 | 1830055 | WASHER, FLAT .333X .87X.119 | 1 |
| 72 | 1830005 | NUT, 5/16-18 REGHEXCTRLK | 1 |
| 73 | 1830048 | RETAINER, STRAP BELT | 1 |
| 74 | 1830039 | PULLEY, IDLER V4L 3.06X .62 | 1 |
| 75 | 1830056 | BOLT, 3/8-16X1.50 CARR | 1 |
| 76 | 1830006 | NUT, 3/8-16 REGHXCTRLK | 1 |
| 77 | 1830113 | ROD, CLUTCH | 1 |
| 78 | 1830576 | SPRING BRAKE | 1 |
| 79 | 1830577 | SHOULDER BOLT | 1 |
| 80 | 1830005 | NUT, 5/16-18 REGHEXCTRLK | 1 |
| 81 | 1830097 | SPRING, CLUTCH .113X.750X8.75 | 1 |
| 82 | * | TIRE & RIM ASSY | 2 |
| 83 | 1830094 | VALVE STEM | 1 |
| 84 | 1830139 | RIM, WHEEL 20X8.00 | 1 |
| 85 | | REFER TO TIRE TREAD PAGE | |
| 86 | 1830275 | SPACER | 2 |
| 87 | 1830082 | KEY | 2 |
| 88 | 1830000 | WASHER, FLAT .755X1.31X.075 | 4 |
| 89 | 1830051 | WASHER, FLAT .755X1.53X.07 | 2 |
| 90 | 1830044 | RING, RETEX | 2 |
| 91 | 1830049 | CAP, HUB | 2 |

* Order Individual Parts

SUBURBAN TRACTOR MODEL 13048

ENGINE & CONTROL ASSEMBLY



REF. CHASSIS FRONT

REF. CHASSIS REAR

NOTE: ALWAYS USE ORIGINAL EQUIPMENT PARTS. Use of service/replacement parts other than original equipment parts may void your warranty.

ALL UNNUMBERED ITEMS ARE INTERCHANGEABLE WITH OPPOSITE SIDE

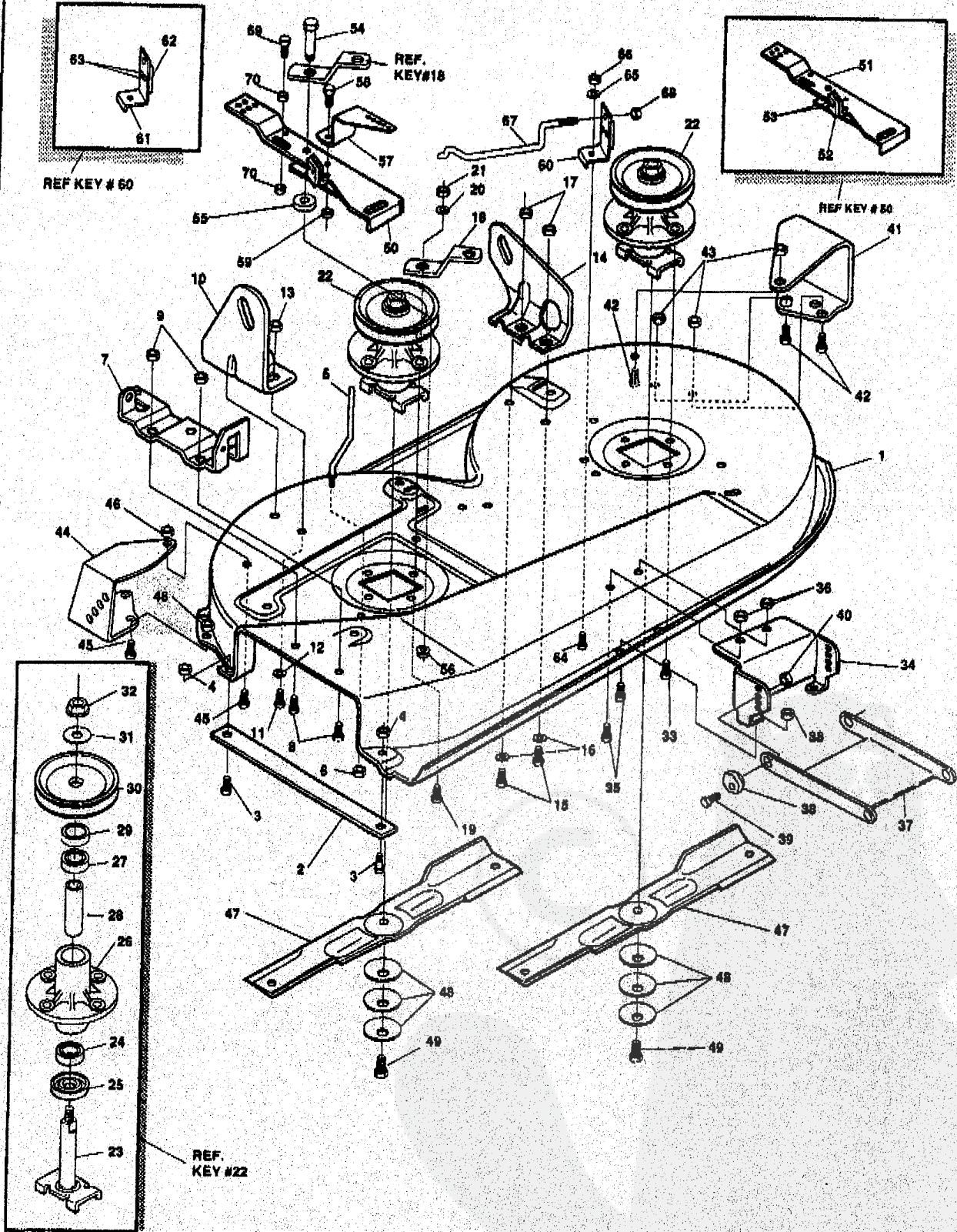
328758A

SUBURBAN TRACTOR MODEL 13048

| key# | part# | description | qty. |
|------|---------|---|------|
| 1. | ENGINE | 12-12.5HP BS IC DUAL(SEE ENGINE MANUAL) | 1 |
| 2. | 1830075 | SCREW, 3/8-16X1.25 WAHHTAPBLKP | 4 |
| 3. | 1830205 | WASHER, EXLK .384X.69X.04 | 1 |
| 4. | 1830597 | MUFFLER-ASM.H24/G19/G20 NELSON | 1 |
| 5. | 1830059 | GASKET, MUFFLER | 1 |
| 6. | 1830213 | SCREW, 5/16-18X.75 HHC | 2 |
| 7. | 1830189 | WASHER, HV&PTLK .328X.60X.09 | 2 |
| 8. | 1830551 | DEFLECTOR,EXHAUST,LOUVERED B&S | 1 |
| 9. | 1830038 | SCREW, #8-32X.38 HHWATAP | 4 |
| 10. | 1830552 | MOUNT,HEAT SHIELD ASM. LF | 2 |
| 11. | 1830553 | SPACER, 6LEV .328X.75X.312PM | 1 |
| 12. | 1830183 | WASHER, REGSPTLK.253X.49X.07 | 1 |
| 13. | 1830554 | SCREW, 1/4-20X.88 HHC | 1. |
| 14. | 1830558 | HEAT SHIELD,CARB.DEFLECT.SIDE | 1 |
| 15. | 1830556 | SCREW, 1/4-20X.50 WAHHC | 1 |
| 16. | 1830557 | TINNERMAN CLIP C8114-1024-4 | 3 |
| 17. | 1830558 | HEAT SHIELD,ASSEMBLY | 1 |
| 18. | 1830559 | SCREW, 5/16-18X.50WDFLLK | 1 |
| 19. | 1830557 | TINNERMAN CLIP C8114-1024-4 | 4 |
| 20. | 1830560 | SCREW, 10-24X.50 WAHMA | 2. |
| 21. | 1830561 | HEAT DEFLECTOR,FRONT LF | 1 |
| 22. | 1830556 | SCREW, 1/4-20X.50 WAHHC | 2 |
| 23. | 1830560 | SCREW, 10-24X.50 WAHMA | 5. |
| 24. | 1830562 | PLENUM,HOOD H24G19G20,12HP LF | 1 |
| 25. | 1830598 | TRIM,STRIP,BLACK--SMALL,W/ADH | 12 |
| 26. | 1830599 | FOAM,DASH BOLENS 1/2"X2"X12" | 2 |
| 27. | 1830563 | FASTENER,VELCRO, 2" X 1" | 2. |
| 28. | 1830565 | BRACKET, PLENUM MOUNT | 2 |
| 29. | 1830564 | SCREW, 1/4-20X.63 WAHHC | 2 |
| 30. | 1830008 | NUT, 1/4-20 REGHEXCTRLK | 2 |
| 31. | 1830378 | WASHER, FLAT .281X1.25X.08 | 2 |
| 32. | 1830420 | SCREW, 1/4-20X.50 WAHHTAP | 2 |
| 33. | 1830566 | BAFFLE CONSOLE AIR BOLENS LF | 1 |
| 34. | 1830420 | SCREW, 1/4-20X.50 WAHHTAP | 2 |
| 35. | 1830378 | WASHER, FLAT .281X1.25X.08 | 2 |
| 36. | 1830165 | BF PULLEY ASSY,4.75OFF@ 5.5 | 1 |
| 37. | 1830195 | KEY, SQUARE.2508OX5.00LG | 1 |
| 38. | 1830298 | SPACER, 6LEV1.01X1.484X | 1 |
| 39. | 1830104 | WASHER,.980DX1.38ODX.437PILOT | 1 |
| 40. | 1830185 | WASHER, REGSPTLK.459X.78X.12 | 1 |
| 41. | 1830414 | SCREW, 7/16-20X5.00 HHC | 1 |
| 42. | 1830567 | TANK, FUEL 1.5 WO/SENSOR CLEAR | 1 |
| 43. | 1830067 | SCREW, 1/4-18X.75PHNTAP | 4 |
| 44. | 1830568 | TUBING, .25X.50X BULK GAS LINE | 10" |
| 45. | 1830123 | TIE, CABLE BLACK NYLON 5.62L | 1 |
| 46. | 1830569 | CLAMP, FUEL LINE | 2 |
| 47. | 1830570 | CAP. FUEL -2.5" THROAT | 1 |
| 48. | 1830600 | THROTTLE,CONTROL 12HP BS H24 | 1 |
| 49. | 1830601 | SCREW, 10-24X.63 PHFLTMA | 2 |
| 50. | 1830220 | NUT, #10-24 HEXKEPS | 2 |
| 51. | 1830496 | KNOB,THROTTLE CONTROL GP STYLE | 1 |
| 52. | 1830497 | SCREW, #8-32X.38 PHPNMA | 1 |
| 53. | 1830498 | NUT, #8-32 REGHX | 1 |
| 54. | 1830571 | OIL DRAIN VALVE ASSEMBLY | 1 |
| 55. | 1830572 | CAP.OIL DRAIN VALVE ASM. | 1 |

SUBURBAN TRACTOR MODEL 13048

PRE-PAINTED DECK ASSEMBLY



NOTE: ALWAYS USE ORIGINAL EQUIPMENT PARTS. Use of service/replacement parts other than original equipment parts may void your warranty.

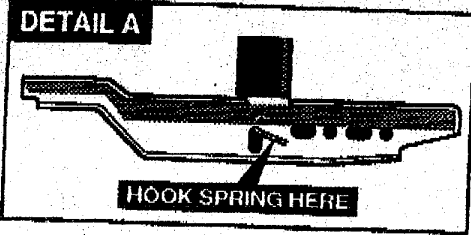
ALL UNNUMBERED ITEMS ARE INTERCHANGEABLE WITH OPPOSITE SIDE

SUBURBAN TRACTOR MODEL 13048

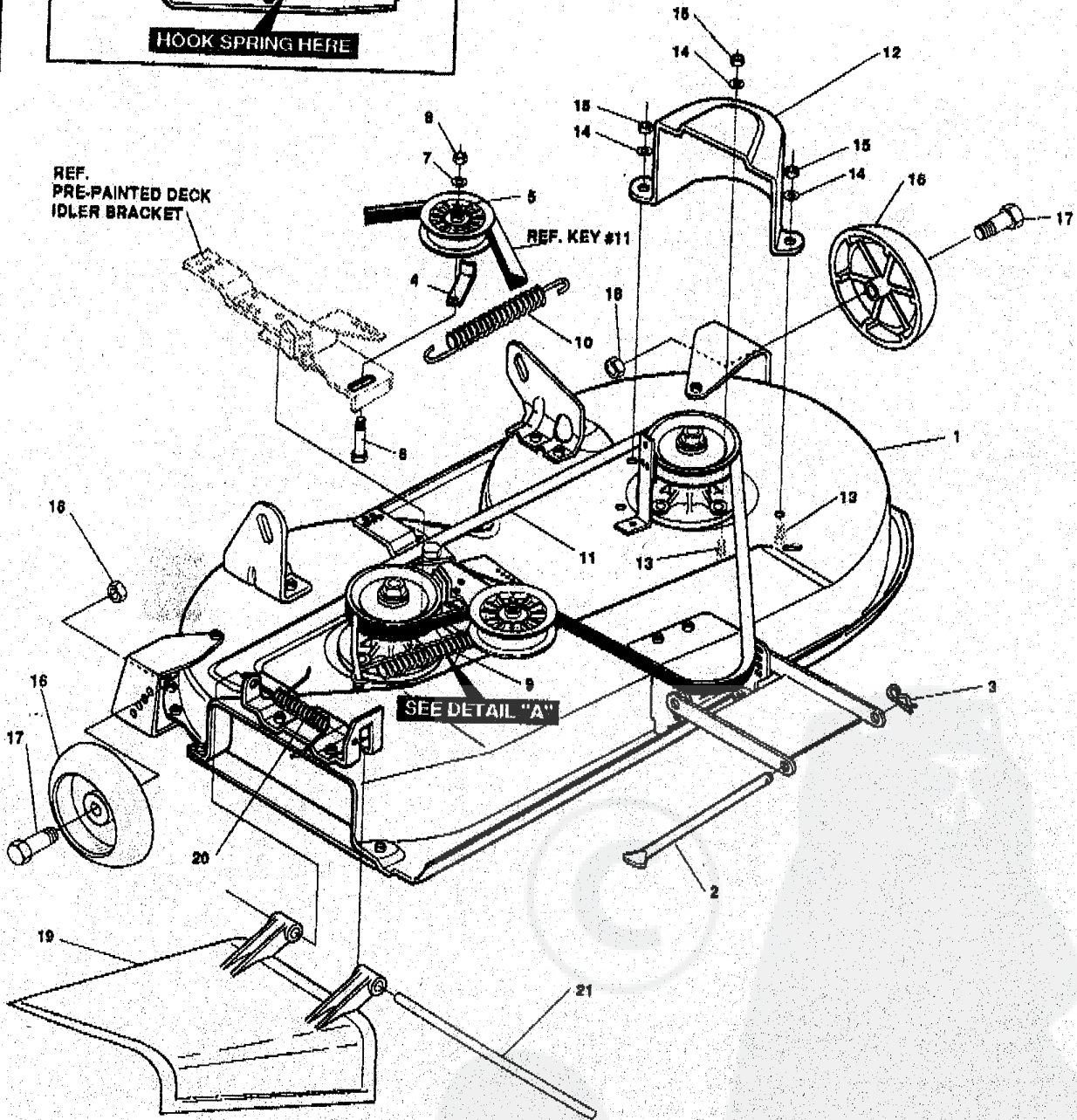
| key# | part# | description | qty. |
|------|------------|----------------------------------|------|
| 1 | 1830648 | DECK,39"SD MOWER | 1 |
| 2 | 1830649001 | BAR, SKID | 1 |
| 3 | 1830200 | BOLT, 5/16-18X .75 CARR | 2 |
| 4 | 1830005 | NUT, 5/16-18 REGHEXCTRLK | 2 |
| 5 | 1830120 | GUIDE, BELT 5/16-18 THD | 1 |
| 6 | 1830005 | NUT, 5/16-18 REGHEXCTRLK | 1 |
| 7 | 1830122 | BRACKET, CHUTE | 1 |
| 8 | 1830190 | SCREW, 5/16-18X .50 HHC | 2 |
| 9 | 1830005 | NUT, 5/16-18 REGHEXCTRLK | 2 |
| 10 | 1830149 | LIFT BRACKET, REAR,RH | 1 |
| 11 | 1830213 | SCREW, 5/16-18X .75 HHC | 2 |
| 12 | 1830186 | WASHER, FLAT .344X .69X.065 | 2 |
| 13 | 1830005 | NUT, 5/16-18 REGHEXCTRLK | 2 |
| 14 | 1830150 | BRACKET,DECK LIFTREAR LH | 1 |
| 15 | 1830213 | SCREW, 5/16-18X .75 HHC | 2 |
| 16 | 1830186 | WASHER, FLAT .344X .69X.065 | 2 |
| 17 | 1830005 | NUT, 5/16-18 REGHEXCTRLK | 2 |
| 18 | 1830348001 | BRACKET, IDLER SUPPORT | 1 |
| 19 | 1830251 | SCREW, 5/16-18X1.38 WATAP | 1 |
| 20 | 1830186 | WASHER, FLAT .344X .69X.065 | 1 |
| 21 | 1830005 | NUT, 5/16-18 REGHEXCTRLK | 1 |
| 22 | 1830650001 | QUILL ASSY, 36/39/40/43 | 2 |
| 23 | 1830102 | SHAFT/SADDLE 36" | 1 |
| 24 | 1830068 | BRNG, BALL | 1 |
| 25 | 1830072 | DUST SHIELD | 1 |
| 26 | 1830092 | QUILL CASTING | 1 |
| 27 | 1830068 | BRNG, BALL | 1 |
| 28 | 1830074 | SPACER,3.797LGX.669IDX.89OD | 1 |
| 29 | 1830076 | SPACER,4.38LGX.932ODX.672ID-PM | 1 |
| 30 | 1830100 | PULLEY 26/36" QUILL | 1 |
| 31 | 1830099 | SPECIAL WASHER | 1 |
| 32 | 1830001 | NUT, 7/16-20 WDFLLK | 1 |
| 33 | 1830073 | SCREW, 5/16-18X .88 WAHHTAP | 7 |
| 34 | 1830157 | LIFT SUPPORT FRONT DECK | 1 |
| 35 | 1830174 | SCREW, 5/16-18X .63 HHC | 4 |
| 36 | 1830005 | NUT, 5/16-18 REGHEXCTRLK | 4 |
| 37 | 1830155001 | LINK BRACKET,DECK FR | 1 |
| 38 | 1830147 | ADJUSTING NUT | 2 |
| 39 | 1830583 | SCREW, 5/16-18X1.00 HHC | 2 |
| 40 | 1830005 | NUT, 5/16-18 REGHEXCTRLK | 2 |
| 41 | 1830225 | WHEEL BRKT, LH | 1 |
| 42 | 1830174 | SCREW, 5/16-18X .63 HHC | 3 |
| 43 | 1830005 | NUT, 5/16-18 REGHEXCTRLK | 3 |
| 44 | 1830224 | WHEEL BRKT, RH | 1 |
| 45 | 1830174 | SCREW, 5/16-18X .63 HHC | 3 |
| 46 | 1830005 | NUT, 5/16-18 REGHEXCTRLK | 3 |
| 47 | 1830117 | BLADE, 39" STD-LIFT 19.5 | 2 |
| 48 | 1830010 | WASHER, 39IDX1.25DX.07 BELLVIL | 6 |
| 49 | 1830047 | SCREW, 3/8-24X1.00 NYLHHC | 2 |
| 50 | 1830386001 | IDLER ARM ASSY. | 1 |
| 51 | 1830851001 | IDLER ARM | 1 |
| 52 | 1830308 | BRAKE PAD | 1 |
| 53 | 1830210 | RIVET,TRSET .185 DIA X.41 | 2 |
| 54 | 1830234 | BOLT, .50 X .188 HHSH3/8-16 | 1 |
| 55 | 1830421 | WASHER,FLAT .391 X 1. - X .125 | 1 |
| 56 | 1830054 | NUT, 5/16-18 X .75 HHC WHIZ-LOCK | 1 |
| 57 | 1830652001 | BRACKET EXTENSION IDLER | 1 |
| 58 | 1830312 | SCREW, 5/16-18 X .75 HHC | 1 |
| 59 | 1830005 | NUT, 5/16-18 REGHEXCTRLK | 1 |
| 60 | 1830653001 | ASSY BLADE BRAKE | 1 |
| 61 | 1830504 | BRAKE ARM | 1 |
| 62 | 1830308 | BRAKE PAD | 1 |
| 63 | 1830201 | RIVET,TRSET .185 DIA X.41 | 2 |
| 64 | 1830174 | SCREW, 5/16-18X .63 HHC | 1 |
| 65 | 1830186 | WASHER,FLAT .344 X .69 X.65 | 1 |
| 66 | 1830005 | NUT, 5/16-18 REGHEXCTRLK | 1 |
| 67 | 1830505 | ROD,BRAKE | 1 |
| 68 | 1830008 | NUT, 1/4-20 REGHEXCTRLK | 1 |
| 69 | 1830505 | SCREW, 1/4-20X2.00 HHC | 1 |
| 70 | 1830221 | NUT, 1/4-20 REGHEXKERS | 2 |

SUBURBAN TRACTOR MODEL 13048

FINAL DECK ASSEMBLY



SEE DWG. 316186 FOR PART ASSEMBLY OF PAINTED DECK



NOTE: ALWAYS USE ORIGINAL EQUIPMENT PARTS.
Use of service/replacement parts other than original equipment parts may void your warranty.

ALL UNNUMBERED ITEMS ARE INTERCHANGEABLE WITH OPPOSITE SIDE

316198E

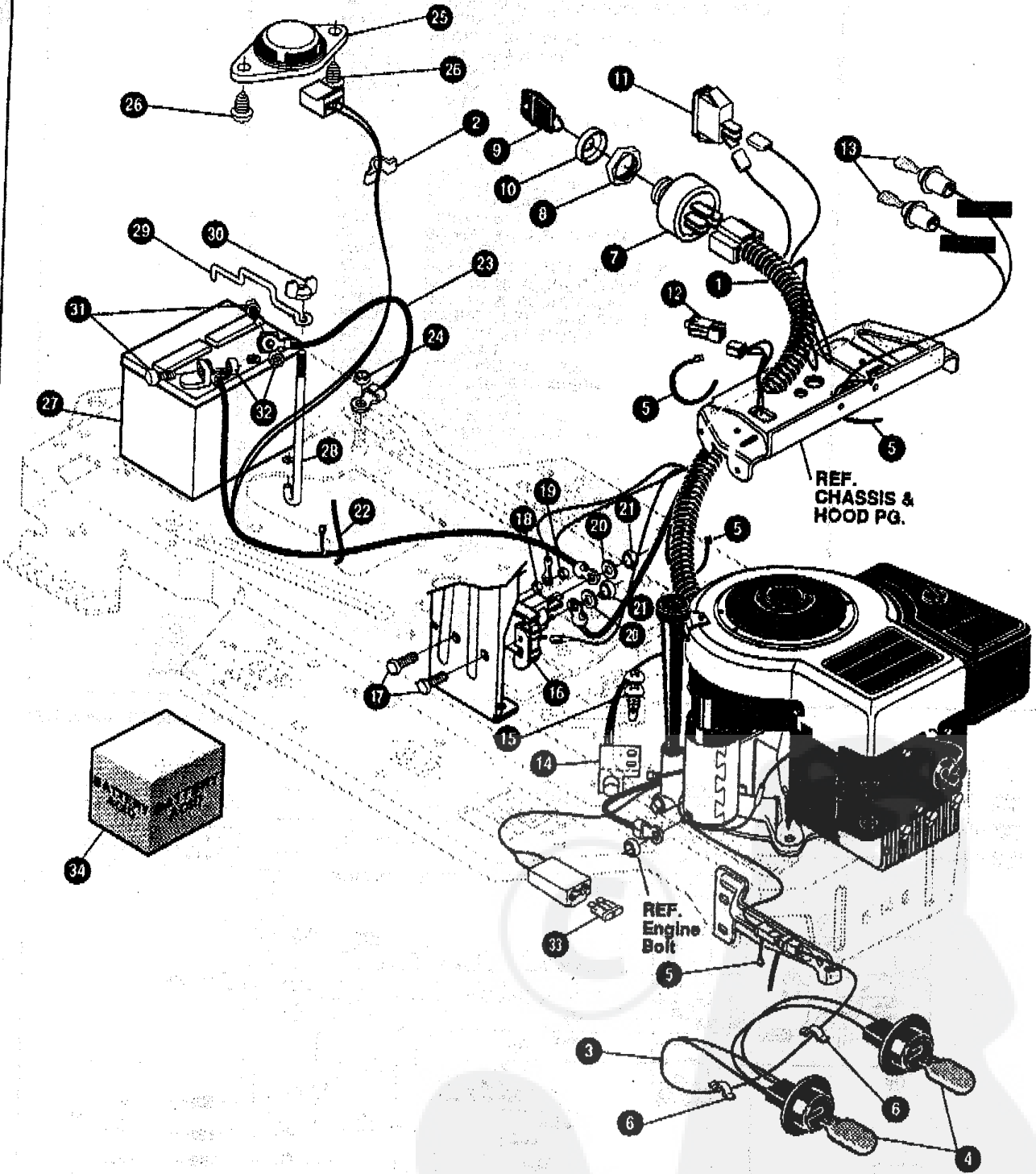
SUBURBAN TRACTOR MODEL 13048

| key# | part# | description | qty. |
|------|---------|--------------------------------|------|
| 1. | 0 | DECK,ASSY 39"SD 8US | 1 |
| 2. | 1830156 | ROD, DECK HITCH | 1 |
| 3. | 1830013 | PIN, HAIR .091 DIA X 1.66 LG | 1 |
| 4. | 1830004 | RETAINER, BELT | 1 |
| 5. | 1830289 | PULLEY, IDLER BFF | 1 |
| 6. | 1830121 | BOLT, 3/8-16 X 2.00 CARR | 1 |
| 7. | 1830184 | WASHER, REGSPTLK.393X.68X.10 | 1 |
| 8. | 1830182 | NUT, 3/8-16 REGHX | 1 |
| 9. | 1830507 | SPRING .071 X .62 X 4.37 | 1 |
| 10. | 1830253 | SPRING, TENSION | 1 |
| 11. | 1830258 | BELT, V 5L 77.75 KEVLAR | 1 |
| 12. | 1830636 | GUARD, BELT LH PLASTIC | 1 |
| 13. | 1830174 | SCREW, 5/16-18 X .63 HHC | 3 |
| 14. | 1830186 | WASHER, FLAT .344X.68X.065 | 3 |
| 15. | 1830005 | NUT, 5/16-18 REGHEXCTRLK | 3 |
| 16. | 1830281 | WHEEL, SD 6.00OD X 1.38WD | 2 |
| 17. | 1830037 | BOLT, .500 X 1.390 HSSH 3/8-16 | 2 |
| 18. | 1830006 | NUT, 3/8-16 REGHXCTRLK | 2 |
| 19. | 1830136 | CHUTE-36SD,39SD,45SD | 1 |
| 20. | 1830352 | SPRING TORSION CHUTE DEF. | 1 |
| 21. | 1830119 | PIVOT ROD, CHUTE | 1 |

◇ ORDER DECK KIT NUMBER 1830635001 FOR COMPLETE DECK.

SUBURBAN TRACTOR MODEL 13048

ELECTRICAL ASSEMBLY



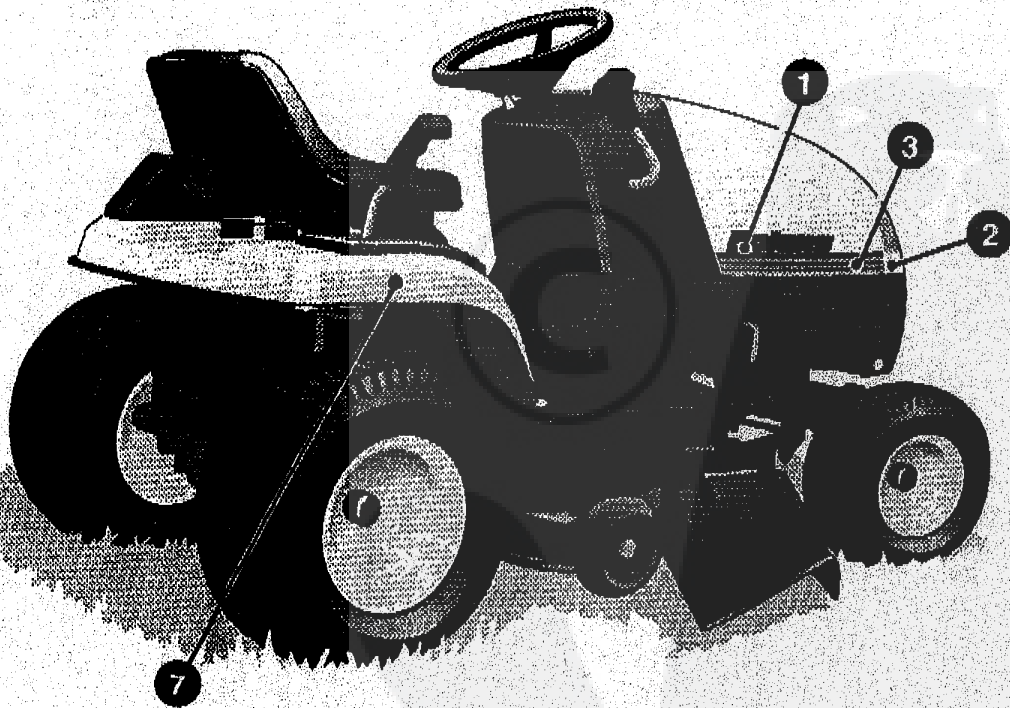
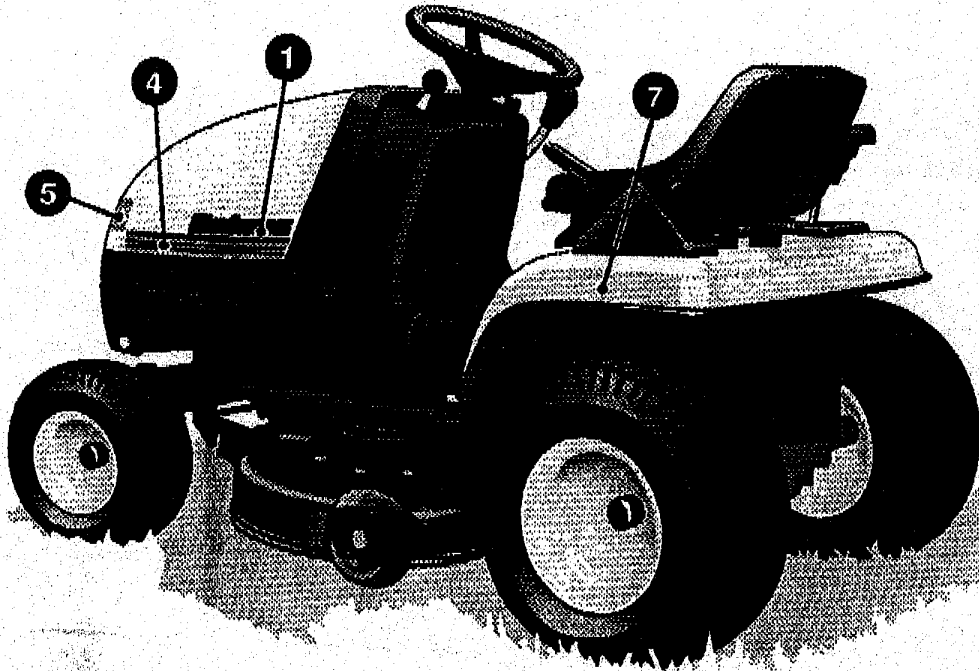
NOTE: ALWAYS USE ORIGINAL EQUIPMENT PARTS.
 Use of service/replacement parts other than original equipment parts may void your warranty.

ALL UNNUMBERED ITEMS ARE INTERCHANGEABLE WITH OPPOSITE SIDE

328783A

SUBURBAN TRACTOR MODEL 13048

DECALS (DECORATIVE)

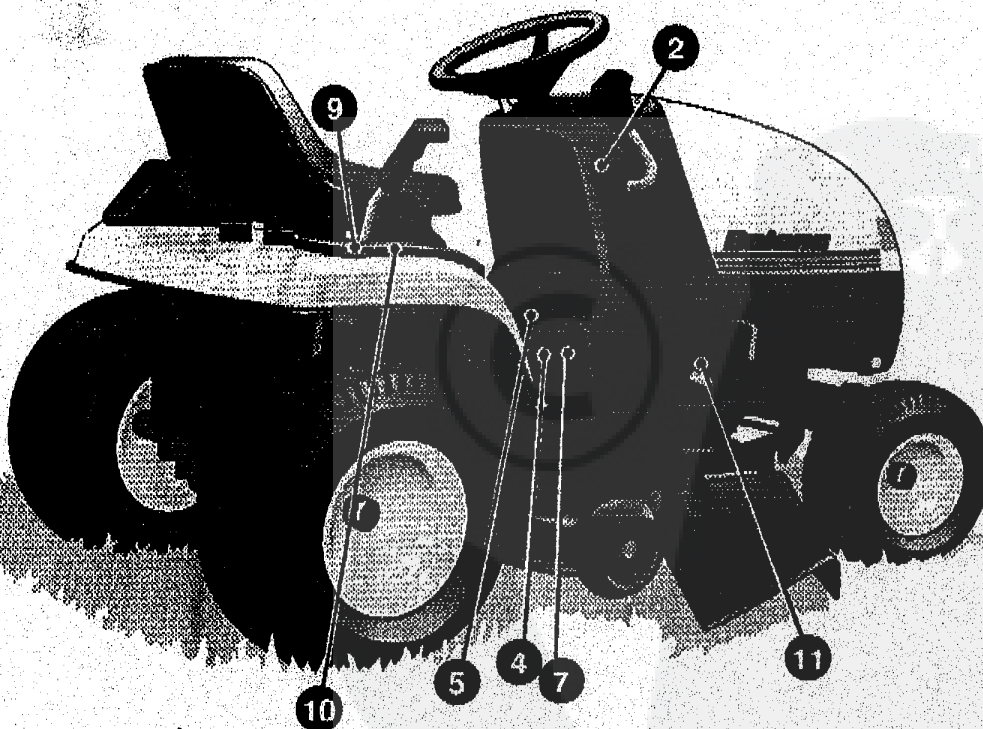
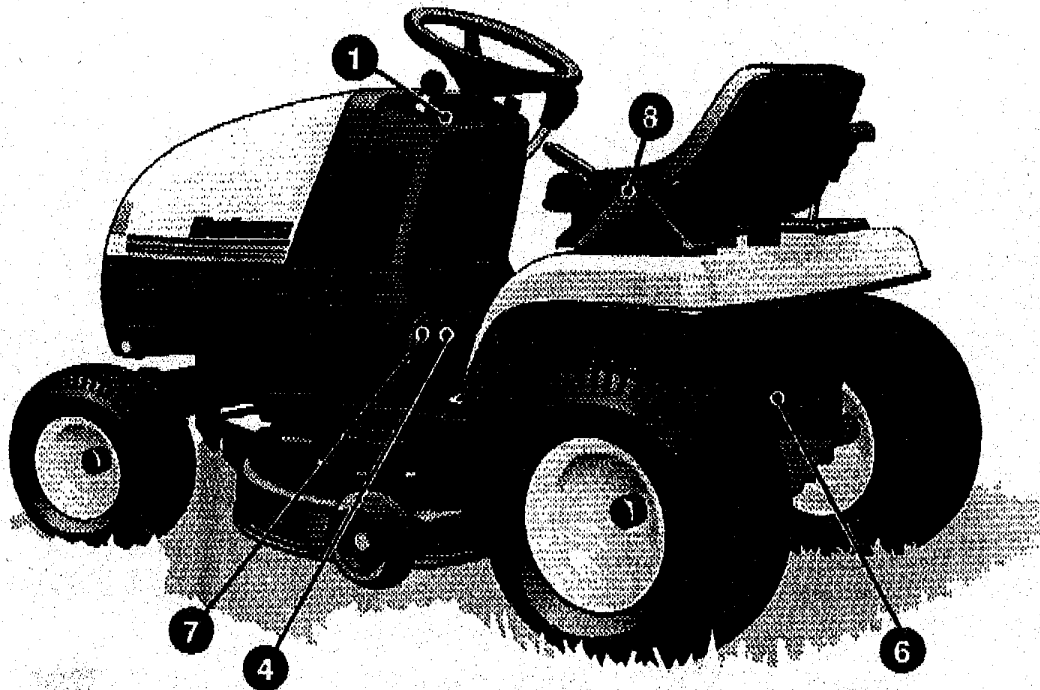


SUBURBAN TRACTOR MODEL 13048

| key# | part# | description | qty. |
|------|---------|----------------------------------|------|
| 1. | 1830401 | DECAL, HOOD BOLENS | 2 |
| 2. | 1830637 | DECAL, GRILLE STRIPE (BOLENS) | 1 |
| 3. | 1830638 | DECAL, GRILLE STRIPE RH (BOLENS) | 1 |
| 4. | 1830639 | DECAL, GRILLE STRIPE LH (BOLENS) | 1 |
| 5. | 1830640 | FOIL LENS REFLECTOR BOLENS | 1 |
| 6. | | REFERENCE ONLY | |
| 7. | 1830641 | DECAL, STG 125 STEP THRU CONSOLE | 2 |

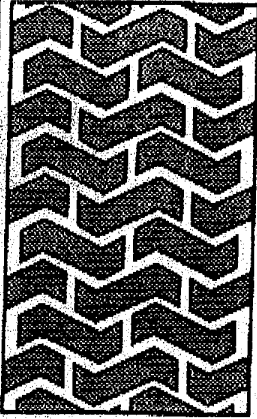
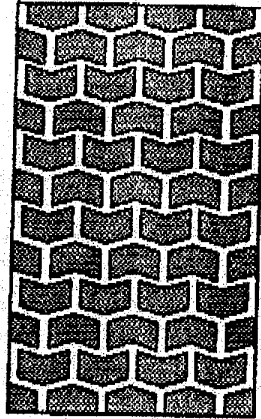
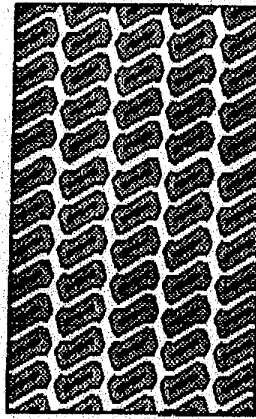
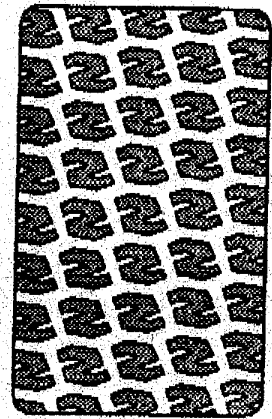
SUBURBAN TRACTOR MODEL 13048

DECALS (INSTRUCTIONAL)



SUBURBAN TRACTOR MODEL 13048

| key# | part# | description | qty. |
|------|---------|--------------------------------|------|
| 1 | 1830643 | DECAL, DASH BOLENS | 1 |
| 2 | 1830168 | DECAL, BLADE ENGAGE EUROPE | 1 |
| 3 | | REFERENCE ONLY | |
| 4 | 1830302 | DECAL, CAUTION TRIANGLE EUROPE | 2 |
| 5 | 1830645 | DECAL, INSTR. CONSOLE TOP ENGL | 1 |
| 6 | 1830324 | DECAL, FRENCH SAFETY CERT | 1 |
| 7 | 1830325 | DECAL, DANGER ENGLISH | 2 |
| 8 | 1830276 | DECAL, LIFT DECK BLADE HEIGHT | 1 |
| 9 | 1830333 | DECAL, SHIFT REV/NEUTRAL | 1 |
| 10 | 1830394 | DECAL, SHIFTER POSITION P930-5 | 1 |
| 11 | 1830170 | DECAL, BRAKE/CLUTCH ISO | 1 |

SUBURBAN TRACTOR MODEL 13048**TREAD PATTERNS****"A"****"B"****"C"****"D"****TIRE SIZE**

| | "A" | "B" | "C" | "D" |
|---------------|------------|------------|------------|------------|
| 15 X 6.00 - 6 | 1830144 | 1830292 | 1830307 | 1830235 |
| 20 X 8.00 - 8 | 1830193 | 1830265 | 1830319 | 1830239 |

ACCESSORIES

Contact the dealer where your tractor was purchased for the available accessories.

Model

14016

14017

14018

Description

Collector, Export 36-45

Attachment, Air Assist 39"/45"

Kit, TUV compliance Export LF

Bolens[®]

