

REPAIR PARTS MANUAL

43" - 16 H.P. LAWN TRACTOR

D3560-200

ONE YEAR LIMITED WARRANTY

For one year from date of purchase by the first consumer for residential use (thirty (30) days commencing from date of purchase), NOMA Outdoor Products Incorporated warrants that it will replace free of charge, including labor, any part of any NOMA Outdoor Products Incorporated product found to be defective in material or workmanship, except the battery which is warranted for ninety (90) days.

This warranty does not cover engine, transmission, transaxle or differential (these items are covered by their own warranty). This warranty does not cover parts that have failed due to normal wear and tear or parts that have failed subject to misuse or abuse. Transportation of the unit or part to and from the authorized Service Dealer or factory is the responsibility of the owner.

For more information as to what procedure should be followed for this warranty is:

1. In the event of a defective product, contact the store where the unit was purchased for the name and address of the authorized Service Dealer nearest to you.

2. If you do not locate an authorized Service Dealer, write Service Department of NOMA Outdoor Products Incorporated for the name and address of the authorized Service Dealer in your area or call Service Department at 1-901-422-1800.

3. Return the defective product, along with proof of purchase to such authorized Service Dealer for replacement of any defective part where covered by this warranty.

There is no other express warranty. Implied warranties, including those of merchantability and fitness for a particular purpose are limited to one (1) year from date of purchase. Liability for incidental or consequential damages are excluded.

Some states do not allow limitations on how long an implied warranty lasts, so the above limitation may not apply in you. Some states do not allow the exclusion of incidental or consequential damages, so the above exclusion may not apply to you. This warranty gives you specific legal rights, and you may have other rights which vary from state to state.

NOMA Outdoor Products Incorporated Caller 8000 Jackson, TN 38308-8000

UNIT PARTS AND SERVICE

Fill in and mail the registration card packed with the unit. For service other than covered in this manual, contact an authorized service dealer. A nationwide parts and service organization has been established to provide quality service parts and service. A list of authorized parts distributors has been included in this manual. When ordering wear parts, always give the following information: 1. The Part Name; 2. The Part Number; 3. The Quantity desired; 4. The Full (eight digit) Model Number of the unit. The model number will be found on a plate attached to the unit.



Look for this symbol. **It means - ATTENTION! BECOME ALERT! A HAZARD TO OPERATOR, BYSTANDER, PROPERTY OR EQUIPMENT MAY EXIST.**

NOMA Outdoor Products Incorporated
 Caller 8000
 Jackson, TN 38308-8000

Part No. 322763A

5-93

**SAFETY RULES**

THESE INSTRUCTIONS ARE FOR YOUR PROTECTION. PLEASE READ THEM CAREFULLY.

**IMPORTANT**

THIS CUTTING MACHINE IS CAPABLE OF AMPUTATING HANDS AND FEET AND THROWING OBJECTS. FAILURE TO OBSERVE THE FOLLOWING SAFETY INSTRUCTIONS COULD RESULT IN SERIOUS INJURY OR DEATH.

I. GENERAL OPERATION:

- Know controls and how to stop quickly.
- Read, understand, and follow all instructions in the manual and on the machine before starting.
- Only allow responsible adults, who are familiar with instructions, to operate the machine.
- Wear safety glasses or eye shields when assembling or operating the machine.
- Do not operate machine when barefooted. Always wear substantial footwear, preferably steel-toed shoes.
- Do not wear loose fitting clothing that could get caught in moving parts.
- Clear the area of objects such as rocks, toys, wire, etc., which could be picked up and thrown by the blade(s).
- Be sure the area is clear of other people before mowing. Stop machine if anyone enters the area.
- Never carry passengers.
- Do not mow in reverse unless absolutely necessary. Always look down and behind before and while backing.
- Be aware of the mower discharge direction and do not point it at anyone. Do not operate the mower without either the entire grass catcher or the guard in place.
- Slow down before turning.
- Never leave a running machine unattended. Always turn off blades, set parking brake, stop engine, and remove keys before dismounting.
- Turn off blade(s) when not mowing.
- Stop engine before removing grass catcher or unclogging chute.
- Mow only in daylight or good artificial light.
- Do not operate the machine while under the influence of alcohol or drugs.
- Watch for traffic when operating near or crossing roadways.
- Use care when mowing around a fixed object to prevent the blade(s) from striking it. Never deliberately run over any foreign object.
- Use extra care when loading or unloading the machine into a trailer or truck.
- Use care when pulling loads or using heavy equipment.
 - a. Use only approved drawbar hitch points.
 - b. Limit loads to those that you can safely control.
 - c. Do not turn sharply. Use care when backing.
 - d. Use counterweight(s), wheel weight or tire chains when suggested in attachment(s) instructions.

II. SLOPE OPERATION:

Slopes are a major factor related to loss-of-control and tip-over accidents, which can result in severe injury or death. All slopes require extra caution. If you cannot back up the slope or if you feel uneasy on it, do not mow it.

DO

- Mow up and down slopes, not across.
- Remove obstacles such as rocks, tree limbs, etc.
- Watch for holes, ruts, or bumps. Uneven terrain could overturn the machine. Tall grass can hide obstacles.
- Use slow speed. Choose a low gear so that you will not have to stop or shift while on the slope.
- Follow the manufacturer's recommendations for wheel weights or counterweights to improve stability.
- Use extra care with grass catchers or other attachments. These can change the stability of the machine.
- Keep all movement on the slopes slow and gradual. Do not make sudden changes in speed or direction.
- Avoid starting or stopping on a slope. If tires lose traction, turn off the blade(s) and proceed slowly straight down the slope.

DO NOT

- Do not turn on slopes unless necessary, and then slowly and gradually downhill, if possible.
- Do not mow near drop-offs, ditches or embankments. The

- mower could suddenly turn over if a wheel is over the edge of a cliff or ditch, or if an edge caves in.
- Do not mow on wet grass. Reduced traction could cause sliding.
- Do not try to stabilize the machine by putting your foot on the ground.
- Do not use grass catcher on steep slopes.

III. CHILDREN:

Tragic accidents can occur if the operator is not alert to the presence of children. Children are often attracted to the machine and the mowing activity. Never assume that children will remain where you last saw them.

- Keep children out of the mowing area and under the watchful care of another responsible adult.
- Be alert and turn machine off if children enter the area.
- Before and when backing, look behind and down for small children.
- Never carry children. They may fall off and be seriously injured or interfere with safe machine operation.
- Never allow children to operate the machine.
- Use extra care when approaching blind corners, shrubs, trees, or other objects that may obscure vision.

IV. SERVICE:

- Use extra care in handling gasoline and other fuels. They are flammable and vapors are explosive.
 - a. Use only an approved container.
 - b. Never remove gas cap or add fuel with the engine running. Allow engine to cool before refueling. Do not smoke.
 - c. Never refuel the machine indoors.
 - d. Never store the machine or fuel container inside where there is an open flame, such as in a water heater.
- Check fuel supply before each use allowing space for expansion as the heat of the engine and/or sun can cause gasoline to expand and overflow the tank.
- Use extra care when handling battery acid. Acid contact with skin may cause severe burns. Eye contact may cause blindness.
- Use extra care when servicing the battery. Explosive gas is produced in the battery. Do not service the battery while smoking or near an open spark or flame. This may cause the battery to explode causing serious injury.
- Never run a machine inside a closed area. Exhaust fumes contain CARBON MONOXIDE, an ODORLESS and DEADLY GAS.
- Keep nuts and bolts, especially blade attachment bolts, tight and keep equipment in good condition.
- Never tamper with safety devices. Check their operation regularly.
- Do not change the engine governor settings or over-speed engine.
- Reduce fire hazards. Keep machine free of grass, leaves, or other debris build-up. Clean up oil or fuel spillage. Allow machine to cool before storing.
- Stop and inspect the equipment if you strike an object. Repair, if necessary, before restarting.
- Never make adjustments or repairs with the engine running.
- Grass catcher components are subject to wear, damage, and deterioration, which could expose moving parts or allow objects to be thrown. Frequently check components and replace with manufacturer's recommended parts, when necessary.
- Mower blade(s) are sharp and can cut. Wrap the blade(s) or wear gloves, and use extra caution when servicing them.
- Check brake operation frequently. Adjust and service as required.



LOOK FOR THIS SYMBOL TO POINT OUT IMPORTANT SAFETY PRECAUTIONS. IT MEANS-- ATTENTION!!! BECOME ALERT!!! YOUR SAFETY IS INVOLVED.

OWNER'S INFORMATION

Record the following information about your unit so that you will be able to provide it in case of loss or theft.

MODEL NUMBER: - (Enter complete 8 digit number from model plate on unit)

PURCHASE DATE: ___ / ___ / ___ CODE NO.: _____ SERIAL NO.: _____

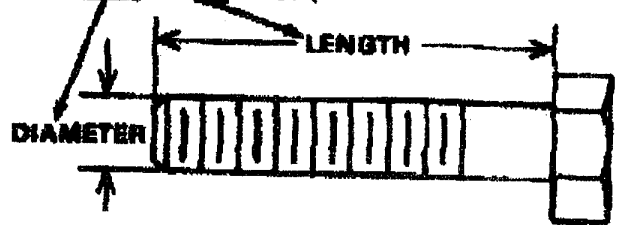
DEALER'S NAME AND ADDRESS: _____

CITY: _____ STATE: _____ TELEPHONE: _____

CONTENTS OF SHIPPING CARTON

- 1 - Lawn Tractor with 43 inch Mower Deck
- 1 - Operator's Manual
- 1 - Repair Parts Manual
- 1 - Engine Manual
- 1 - Steering Wheel
- 1 - Seat
- 1 - Bag of Assembly Parts Containing :
 - 4 - 5/16 x 3/4 inch Hex Head Screws
 - 4 - 5/16 inch Split Lockwashers
 - 4 - 11/32 inch Flatwashers
 - 1 - Pin, Spring
 - 1 - Spacer, Steering Shaft
- 2 - Hub Caps
- 2 - Ring, Retax
- 4 - Washers, Flat .755 x 1.31 x .075
- 2 - Tire & Rims, 15 x 6-6
- 1 - Nut, Push-On Cap
- 1 - Pivot Rod
- 1 - Spring, Torston
- 1 - Chute Deflector
- 2 - Nuts, 3/8-16
- 2 - Bolts, .500 x .390
- 2 - Gauge Wheels

HOW TO MEASURE SCREW SIZE (5/16 x 1 1/2 INCH)



TOOLS REQUIRED FOR ASSEMBLY

- 2 - 7/16 inch Wrenches (or adjustable wrench)
- 1 - 1/2 inch Wrench (or adjustable wrench)
- 1 - Small Phillips Screwdriver with a 1/4 inch shank
- 1 - Hammer



DANGER



This lawn tractor can be dangerous if carelessly used.

Read your Operator's Manual thoroughly before operating your lawn tractor.

Always wear safety glasses or eye shields while assembling or operating your lawn tractor.

DO NOT carry passengers at any time.

Keep your hands, feet, hair and loose clothing away from the discharge area, the underside of the mower deck or any moving parts while the engine is running.

DO NOT allow children or young teenagers to operate or be near your lawn tractor while it is operating.

ALWAYS GIVE THE FOLLOWING INFORMATION WHEN ORDERING REPAIR PARTS:

1. The PART NUMBER; 2. The PART NAME; 3. QUANTITY DESIRED; 4. The MODEL NUMBER (As shown on Model Plate).

SEND PART ORDERS AS PER INSTRUCTIONS ON THE FRONT PAGE.

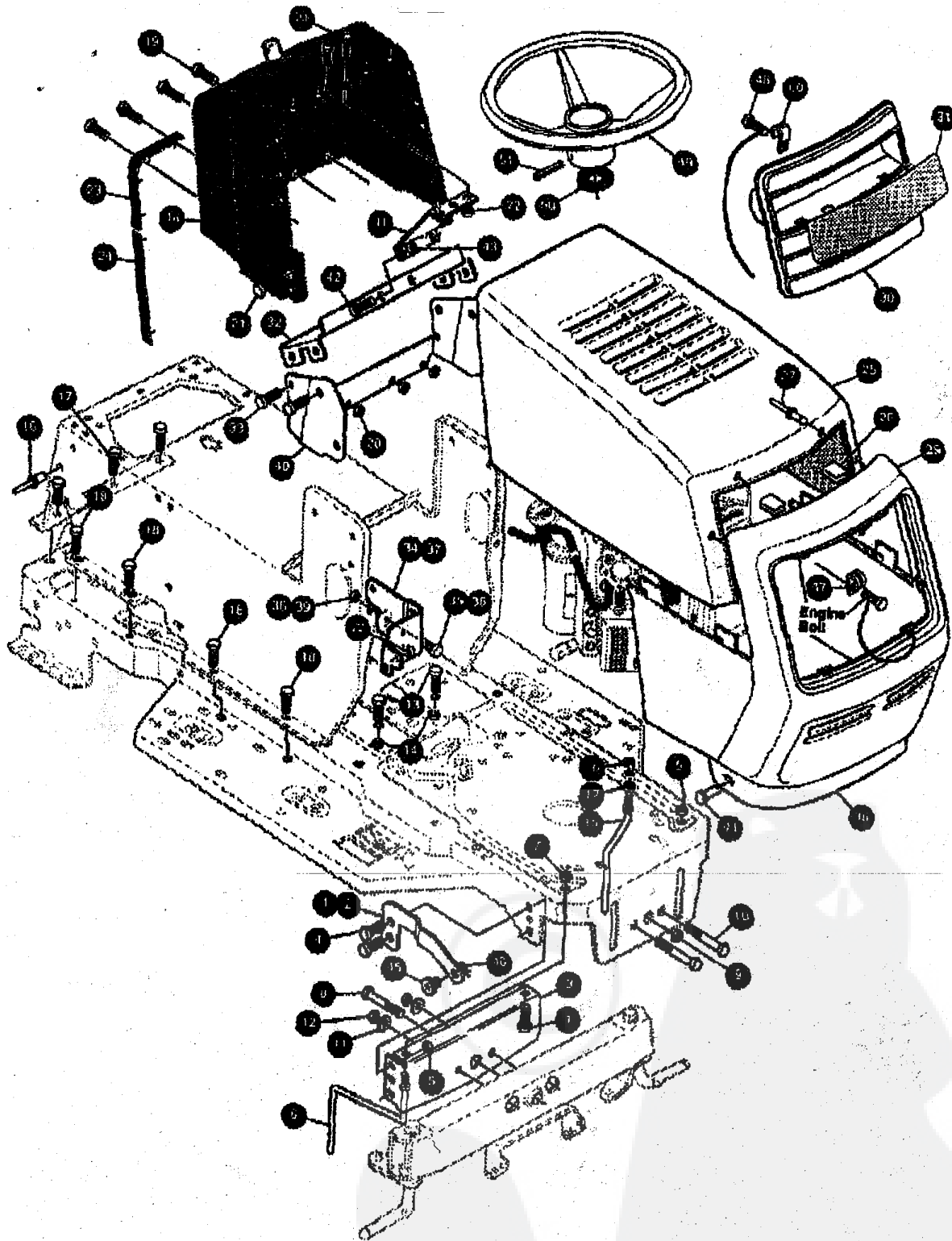
DO NOT USE KEY NUMBERS WHEN ORDERING REPAIR PARTS. ALWAYS USE PART NUMBERS.

All replacement parts will be supplied in current production colors or in a neutral color.

A handling fee is applicable to small parts orders.

YOUR UNIT IS RIGHT HAND (RH) OR LEFT HAND (LH) AS YOU STAND BEHIND IT.

TRACTOR MODEL D3560-200
CHASSIS & HOOD ASSEMBLY (FRONT)



NOTE: ALWAYS USE ORIGINAL EQUIPMENT PARTS. Use of service/replacement parts other than original equipment parts may void your warranty.

ALL UNNUMBERED ITEMS ARE INTERCHANGEABLE WITH OPPOSITE SIDE

329221A

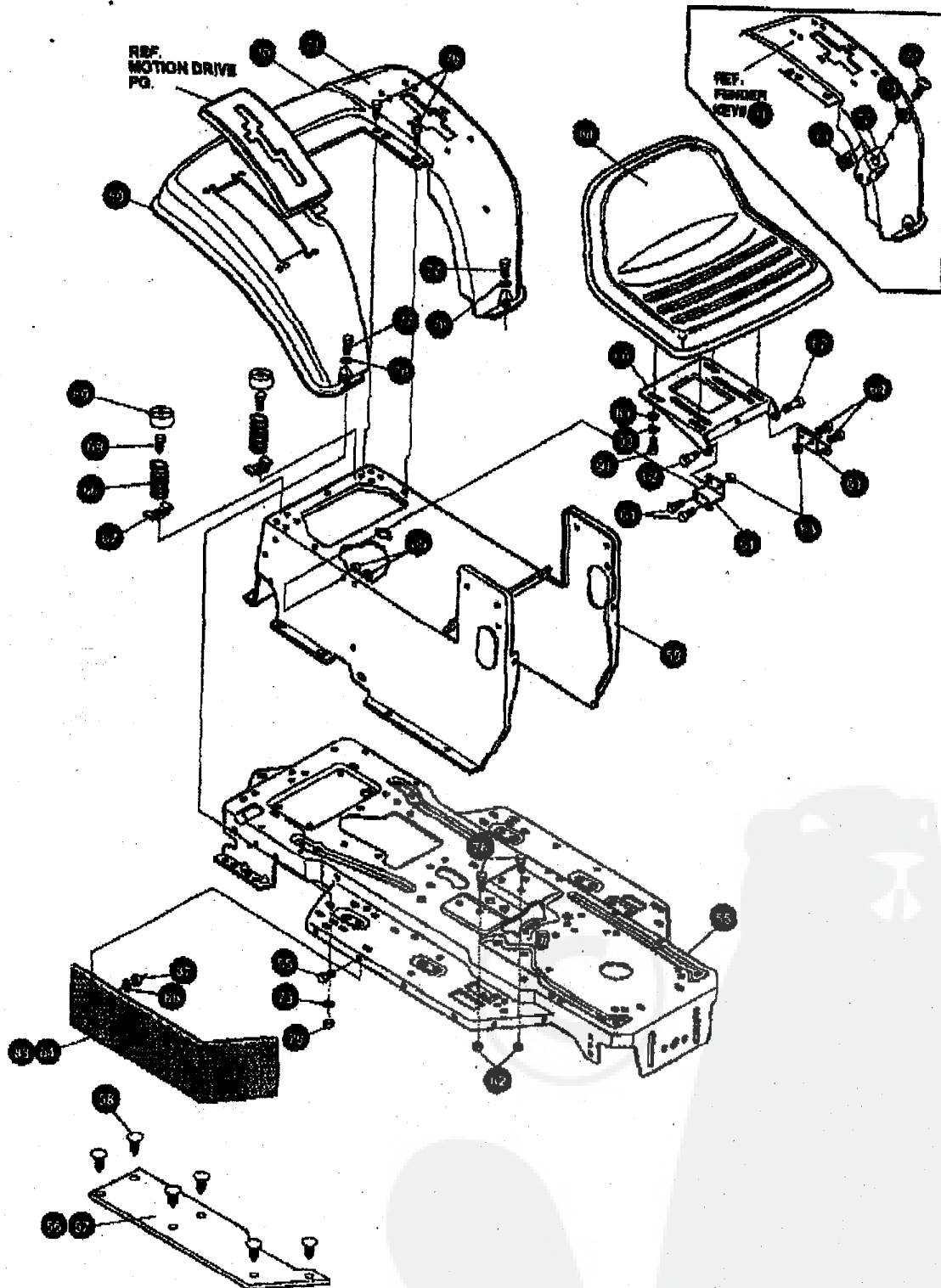
43" LAWN TRACTOR MODEL D3560-200

KEY#	PART#	DESCRIPTION	QTY.
1.	326203-853	MP BRKT,HOOD LF G21/22/23/24	1
2.	328204-853	MP BRKT,HOOD LF G19/21/22/23	1
3.	318541-853	MP BRACKET, FRONT AXLE	1
4.	58030	SCREW, 5/16-18X.75WDPLK	1
5.	56273	NUT, 5/16-18 HXWDPLK	5
6.	300440	GUIDE, BELT, RIDER	5
7.	1498	NUT, 5/16-18 REGHEXCTRLK	1
8.	308207	BOLT, .825X2.18 HSSH 1/2-13	1
9.	308008	NUT, 1/2-13 HEXJAM CTRLK	1
10.	122207	SCREW, 3/8-16X3.00 HHC	1
11.	2453	WASHER, .991DX1.25DX.07 BELLVIL	2
12.	1499	NUT, 3/8-16 REGHXCTRLK	2
13.	120229	SCREW, 5/16-18X .88 HHC	2
14.	1498	NUT, 5/16-18 REGHEXCTRLK	2
15.	300895	GUIDE,BELT SHORT 16" WHEEL	2
16.	124824	NUT, 5/16-18 HEXJAM	1
17.	271190	NUT, 3/8-16 HEXKEPS	1
18.	329226	DASH, W/CHOKE, H-PTO, V-IGN. LF	1
19.	318304	SCREW, 1/4-20X.75PHPHDTAP	1
20.	50952	NUT, 1/4-20 WDPLK TOPLOCK	4
21.	155941	SCREW, 10-24X.63 PHFLTMA	4
22.	308459	NUT, #10-24 HXHDNYLK	4
23.	328141	BUMPER,HOOD/DASH TOP & CORNER	4
24.	328142	BUMPER,HOOD/DASH SIDE STRIP	2
25.	328145	HOOD,H28 LF/SP,MOLDED,LOUVERS	2
26.	308857	CLIP, TINNERMAN	1
27.	329238	RIVET, POP 3/16 DIA.X .75 FLG	7
28.	329225	'K' GRILLE, G-22	4
29.	829144	INSERT,GRILLE G22 'K'	1
30.	325184	LENS,G22 'K'	1
31.	324909-853	MP SUPPORT,STEERING/PTO LF	1
32.	40886	SCREW, 1/4-20X .38 WAHHTAP	1
33.	328320-853	BRACKET, DASH/TANK LF RH	4
34.	180018	SCREW, 1/4-20X .62 HHC	1
35.	1502	NUT, 1/4-20 REGHEXCTRLK	1
36.	328321-853	BRACKET, DASH/TANK LF LH	1
37.	180018	SCREW, 1/4-20X .62 HHC	1
38.	1502	NUT, 1/4-20 REGHEXCTRLK	1
39.	328840-853	MP SUPPORT, LOWER DASH	1
40.	327099-853	MP DASH,SUPPORT BRACKET	1
41.	180018	SCREW, 1/4-20X .62 HHC	1
42.	1502	NUT, 1/4-20 REGHEXCTRLK	2
43.	323044	PIN, CLEVIS .500 X .48/51LGTH	2
44.	325522	BRNG HOOD .60SIDX.625ODX1.12FL	2
45.	3280	PIN, HAIR .091 DIA X 1.56LG	2
46.	311094	LANYARD,HOOD 11.75LG H15 VANG.	2
47.	49050	SCREW, 1/4-10X .75PHPTAPO	1
*****BOXED ITEMS*****			
48.	301251	STEERING WHEEL	1
49.	301413	SPACER, STEERING SHAFT	1
50.	458378	PIN, SPRING .250DIA X 2.00LG HVPL	1
51.	529763	PARTS MANUAL	1
52.	329780	OPERATOR'S MANUAL (ENGLISH)	1
53.	329781	OPERATOR'S MANUAL (FRENCH)	1
54.	329781	OPERATOR'S MANUAL (GERMAN)	1
55.	329782		1

117
43" LAWN TRACTOR MODEL D3560-200

APR 28 '00 10:06 No.007 P.06

CHASSIS & HOOD ASSEMBLY (REAR)



NOTE: ALWAYS USE ORIGINAL EQUIPMENT PARTS. Use of service/replacement parts other than original equipment parts may void your warranty.

ALL UNNUMBERED ITEMS ARE INTERCHANGEABLE WITH OPPOSITE SIDE

327732C

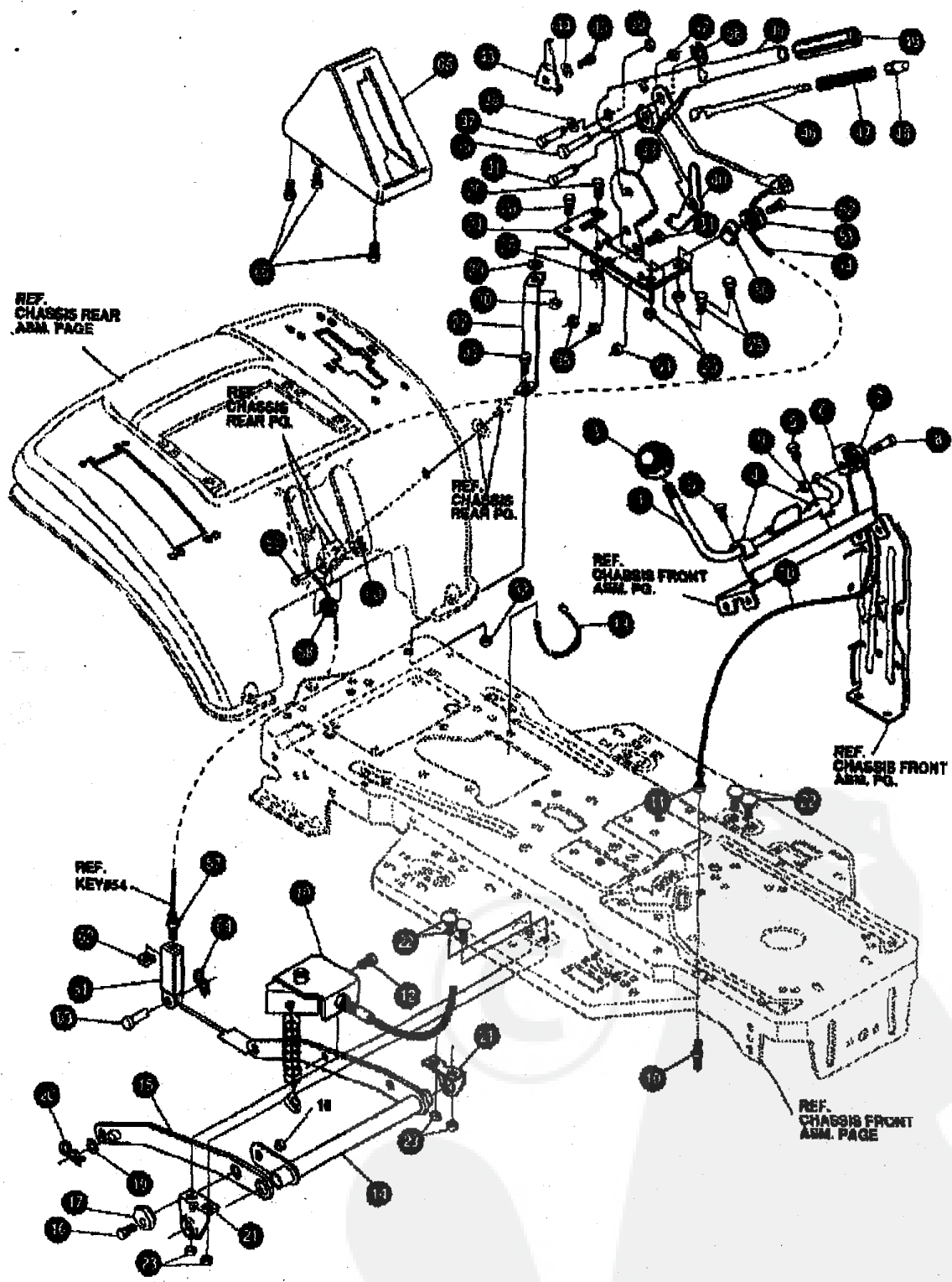
43" LAWN TRACTOR MODEL D3560-200

APR 28 '00 10:07 No.007 P.07

KEY#	PART#	DESCRIPTION	QTY.
65	326579-879	FRAME, LF MAIN 930/4360 TUV DRILLED	1
66	310006	FOOTPAD LH	1
67	310008	FOOTPAD RH	1
68	309236	FASTENER, RATCHET	1
69	327575-830	CONSOLE, G.P.NON-WALKTHRU	12
80	58387-979	PLATE, SEAT	1
81	310660-879	BRACKET, F-5 SEAT SUPPORT	1
62	20507	BOLT, .497X .166 HHSB 5/16-18	1
63	1498	NUT, 5/16-18 REGHEXOTRLK	2
64	48901	SCREW, 5/16-18X .68 HHC	2
65	1498	NUT, 5/16-18 REGHEXOTRLK	4
66	57153	SPRING, SEAT 2.63LG, 1.490D	4
67	1341	CLAMP, SPRING 1.17"ID	2
68	44811	SCREW, 1/4-20X .75 HXWATAP	2
69	56907	COVER, SEAT SPRING 1.51DX1.0LG	2
70	4	FENDER, ASM F-5 SUSP.	2
71	908853-879	FENDER F5 SUSP	1
72	9239	CLEVIS	1
73	439455	SCREW, 5/16-18X.55 PHPNMA BR PH	1
74	301651	WASHER, .344IDX1.600DX.09	1
75	120373	NUT, 5/16-18 SQ.	1
76	995346	SCREW, 1/4-20X .50 WAHTAP	1
77	122017	SCREW, 5/16-18X1.00 HHC	4
78	446363	WASHER, FLAT .375X .88X.082	2
79	1498	NUT, 5/16-18 REGHEXOTRLK	4
80	55023	TRIM, STRIP, BLACK	2
81	180079	SCREW, 5/16-18X1.00 HHC GR.5	77.5IN
82	1498	NUT, 5/16-18 REGHEXOTRLK	2
83	306386	FLAP LONG TUV	2
84	305354	FLAP SHORT TUV	1
85	57034	SCREW, 10-24X.63 TRHMA	1
86	1601	WASHER, FLAT	10
87	271166	NUT 10-24 HEXKEPS	10
88	57455	SEAT GENERIC	10
89	120993	WASHER, FLAT .344X.88X.065	1
90	120638	WASHER, HVSP TLK	4
91	122007	SCREW, 5/16-18X.75 HHC	4

^ ORDER INDIVIDUAL PARTS.

MOWER SUSPENSION



NOTE: ALWAYS USE ORIGINAL EQUIPMENT PARTS. Use of service/replacement parts other than original equipment parts may void your warranty.

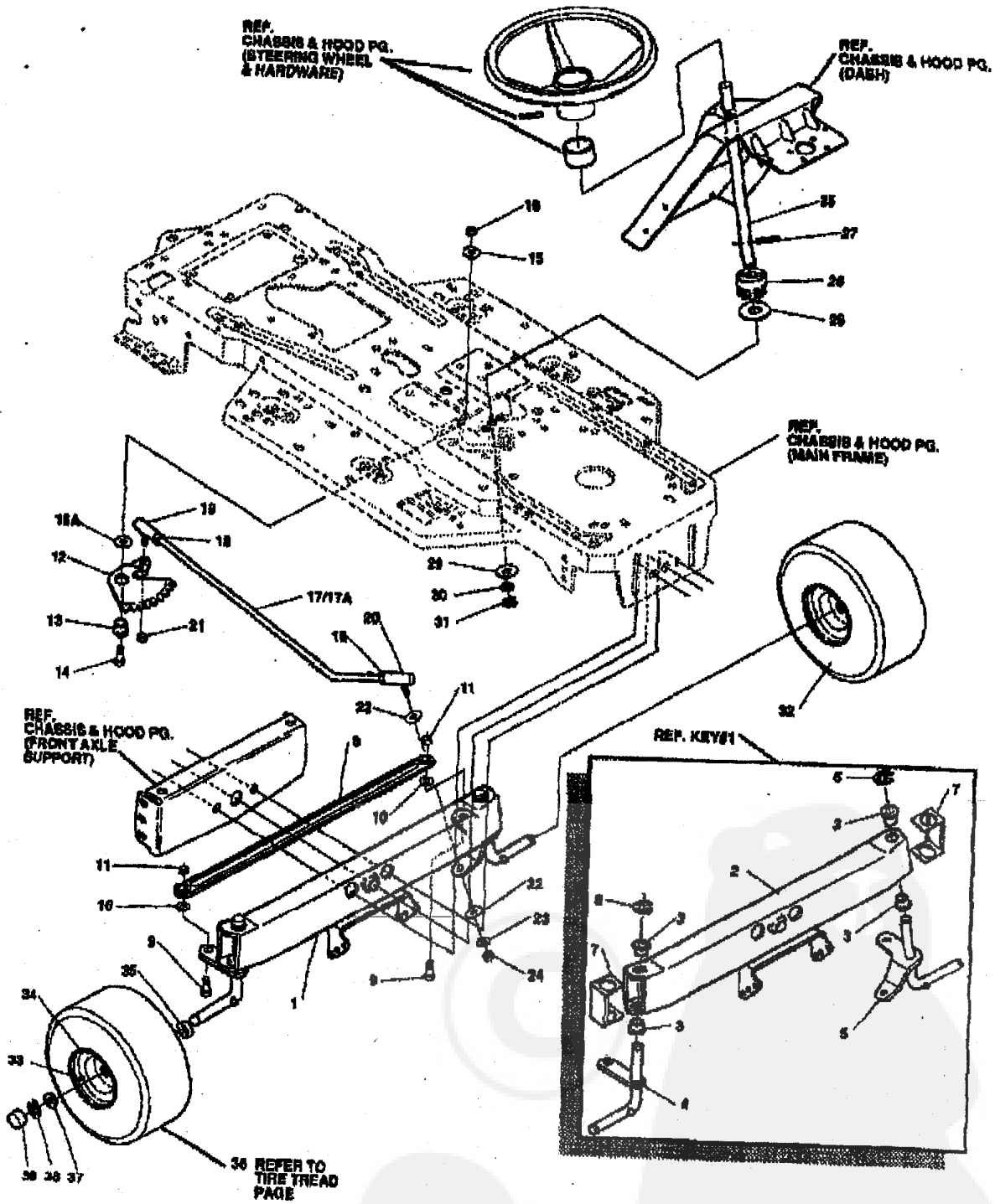
ALL UNNUMBERED ITEMS ARE INTERCHANGEABLE WITH OPPOSITE SIDE

329633A

43" LAWN TRACTOR MODEL D3560-200

KEY#	PART#	DESCRIPTION	QTY.
1	327021-053	LEVER WELD ASM. PTO	1
3	55514	KNOB,SHIFT NOMA 1/2-18	1
4	9129	CLIP, RETAINING BRKT	1
5	995938	SCREW, 1/4-20X .63 WAHHTAP	2
6	1288	BRKT,CABLE RETAINER	2
7	48306	PULLEY, .906X.308 NYLON	1
8	57322	BOLT, .375X .375 HSSH 1/4-20	1
9	1502	NUT, 1/4-20 REGHEXCTRLK	1
10	828369	ASSY,PTO. CABLE LF H 24/H25	1
11	120618	NUT, 1/4-28 HJAM	1
12	35498	SCREW, 5/16-18X .75 WAHHTAP	1
13	57444	TIE, CABLE BLACK NYLON 5.62	1
14	300168-853	ASSY,REAR LIFT	1
15	300169-853	ASSY,LINK,RIGHT SIDE	1
16	180079	SCREW, 5/16-18X1.00 HHC	1
17	58247	ADJUSTING NUT	1
18	1498	NUT, 5/16-18 REGHEXCTRLK	1
19	417098	WASHER, FLAT .531X1.08X.095	1
20	8260	PIN, HAIR .081 DIA X1.98 LG	2
21	58246-853	BRKT,REAR,HANG,BUSP.	2
22	126211	BOLT, 5/16-18X .63 CARR	2
23	1498	NUT, 5/16-18 REGHEXCTRLK	4
24	313926	BRACKET,HGT/ADJUST SUPPORT	4
25	180077	SCREW, 5/16-18X .75 HHC	3
26	1498	NUT, 5/16-18 REGHEXCTRLK	3
27	900938-830	BRACE, FENDER F-5 BUS	3
28	180079	SCREW, 5/16-18X1.00 HHC	1
29	45802	WASHER, FLAT .399X .87X.119	1
30	1498	NUT, 5/16-18 REGHEXCTRLK	1
31	180079	SCREW, 5/16-18X1.00 HHC	1
32	1498	NUT, 5/16-18 REGHEXCTRLK	1
33	301238	QUADRANT,HEIGHT ADJUST	1
34	180077	SCREW, 5/16-18X .75 HHC	1
35	1498	NUT, 5/16-18 REGHEXCTRLK	2
36	322292-853	HANDLE,LIFT SHORT	2
37	300171	BOLT, .500X .270 HSSH 5/16-18	1
38	898418	WASHER, FLAT .506X .75X.024	1
39	44108	NUT, 5/16-18 HWDFLGTRLK	1
40	301239	PAWL, HEIGHT ADJUST	1
41	300171	BOLT, .500X .270 HSSH 5/16-18	1
42	44108	NUT, 5/16-18 HWDFLGTRLK	1
43	9435	POINTER	1
44	139479	WASHER, EXLK .195X.41X.03	1
45	85287	SCREW, #6-32X .38 HWHTAP	1
46	303027	ROD,ACTUATOR-SHORT	1
47	58326	SPRING, HEIGHT ADJUST	1
48	58325	KNOB, HGT ADJ PUSH BUTTON	1
49	58328	GRIP, .750 OD W/ HOLE	1
50	9149	BRKT, CABLE RETAIN	1
51	48306	PULLEY, .906X.308 NYLON	1
52	58398	BOLT, .375X .375 HSSH 1/4-20	1
53	1502	NUT, 1/4-20 REGHEXCTRLK	1
54	314177	CABLE, LIFT 28.30 F-5	1
55	300310	PIN,CLEVIS .310DIA+.475LG	1
56	300311	RING, RET E .31X.24	1
57	120875	NUT, 1/4-20 REGHEX	1
58	48306	PULLEY, .906X.308 NYLON	1
59	300317	PIN, CLEVIS .375 DIA X .81 LG Z	1
60	8260	PIN, HAIR .081 DIA X1.98 LG	1
61	9405	ML CLEVIS, LIFT CABLE	1
62	120372	NUT, 1/4-20 REGSQ	1
63	38522	PIN, CLEVIS .312 X .812	1
64	121222	PIN, COTTER .090/.088X.75LG	1
65	300395	LIFT COVER-.99" FS	1
66	300340	SCREW, #10 X .75 MHPLAST	3

STEERING ASSEMBLY



NOTE: ALWAYS USE ORIGINAL EQUIPMENT PARTS. Use of service/replacement parts other than original equipment parts may void your warranty.

ALL UNNUMBERED ITEMS ARE INTERCHANGEABLE WITH OPPOSITE SIDE

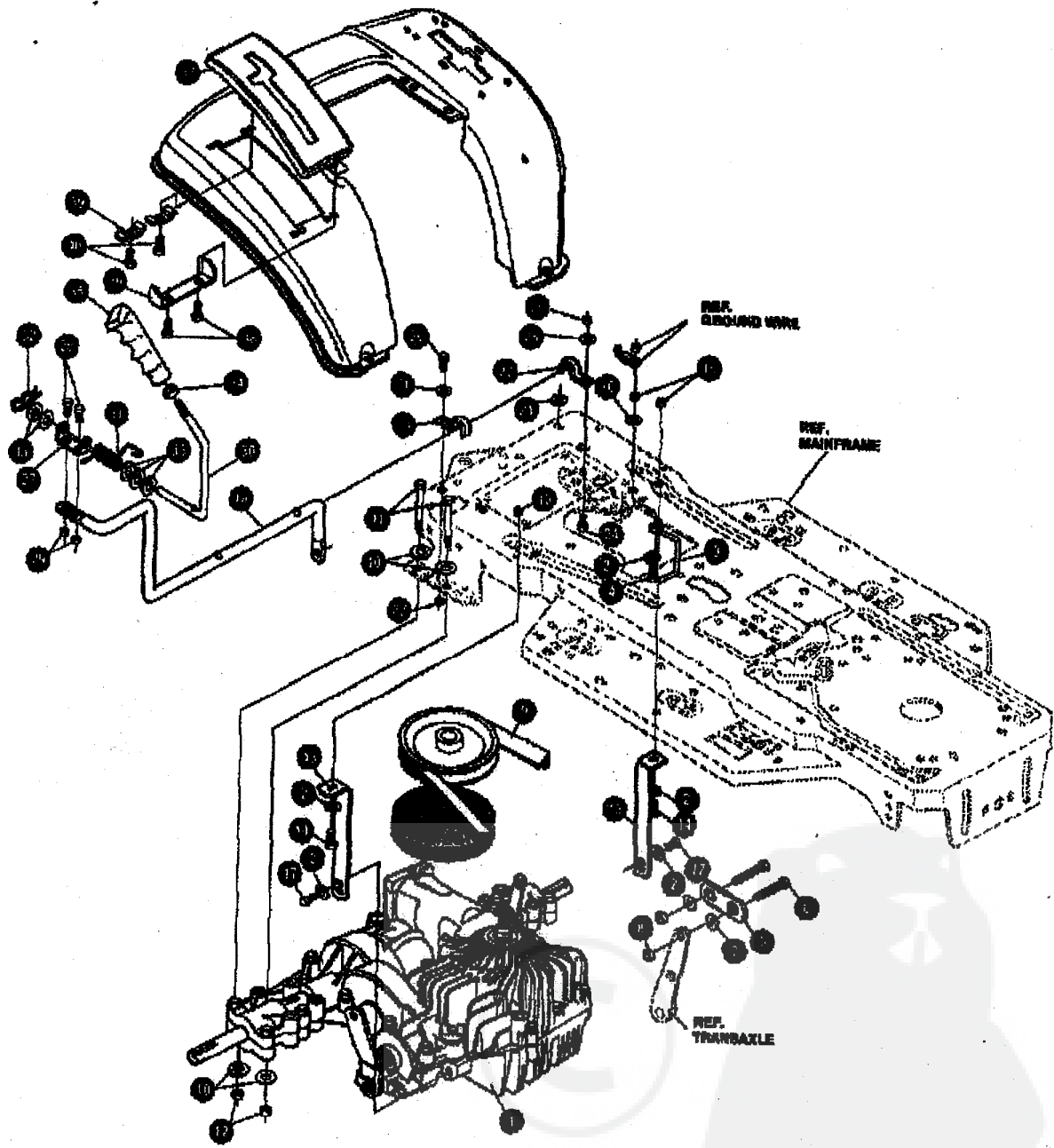
317124G

KEY#	PART#	DESCRIPTION	QTY.
1	A	ASSY,AXLE FRONT	1
2	300272-979	AXLE, FRONT	1
3	52407	SPINDLE BEARING	4
4	9180	SPINDLE RH LONG	1
5	314098	SPINDLE LH LONG	1
6	36825	RING, RETEX .57X.05TRU6133-75	2
7	53373-975	AXLE COVER	2
8	904590	TIE ROD ASSY 19.81LG	1
9	180128	SCREW, 3/8-16X1.75 HHC	2
10	120382	WASHER, REGSPTLK.363X.66X.10	2
11	1499	NUT, 3/8-19 REGHXCTRLK	2
12	58289	SECTOR, STEERING LF	1
13	52408	BRNG, FL ECC.510IDK .900ODX .56	1
14	180177	SCREW, 1/2-13X1.50 HHC	1
15	22285	WASHER, FLAT .515X1.38X.119	1
15A	49898	WASHER, FLAT .520X1.25X.209	1
16	1500	NUT, 1/2-13 REGHCTRLK	1
17	311100	DRAGLINK ASSY	1
17A	58281	STEERING LINK	1
18	124925	NUT, 3/8-24 REGHEXJAM	2
19	57158	BALL JOINT 3/8 THD SHORT STUD	1
20	21275	BALL JOINT 3/8 THD LONG STUD	1
21	48882	NUT, 3/8-24 WDFLHLK	1
22	120396	WASHER, FLAT .531X1.08X.095	2
23	120382	WASHER, REGSPTLK.603X.69X.10	1
24	120389	NUT, 3/8-24 REGHEX	1
25	58243	SHAFT, STEERING LF	1
26	58244	PINION, STEERING LF	1
27	58274	PIN, DOWEL .2500 OD+1.75	1
28	301410	BRNG, FL .752IDX1.081ODX .24	1
29	301398	WASHER, FORMED1.195X1.63X.12	1
30	21682	WASHER, FLAT .765X1.25X.042	1
31	36825	RING, RETEX .57X.05TRU5133-75	1
32	A	TIRE & RIM, PU 16X6.0X6	2
33	24187	VALVE STEM	1
34	39929	WHEEL W/BRG.	1
35	39979	BEARING, FL1.98OD+1.75ID	1
36	301140	REFER TO TIRE TREAD PAGE	1
37	542	WASHER, FLAT .755X1.31X.075	4
38	36825	RING, RETEX .57X.05TRU5133-75	2
39	40394	CAP, HUB	2

^ ORDER INDIVIDUAL PARTS.

43" LAWN TRACTOR MODEL D3560-200

MOTION DRIVE ASSEMBLY



NOTE: ALWAYS USE ORIGINAL EQUIPMENT PARTS. Use of service/replacement parts other than original equipment parts may void your warranty.

ALL UNNUMBERED ITEMS ARE INTERCHANGEABLE WITH OPPOSITE SIDE

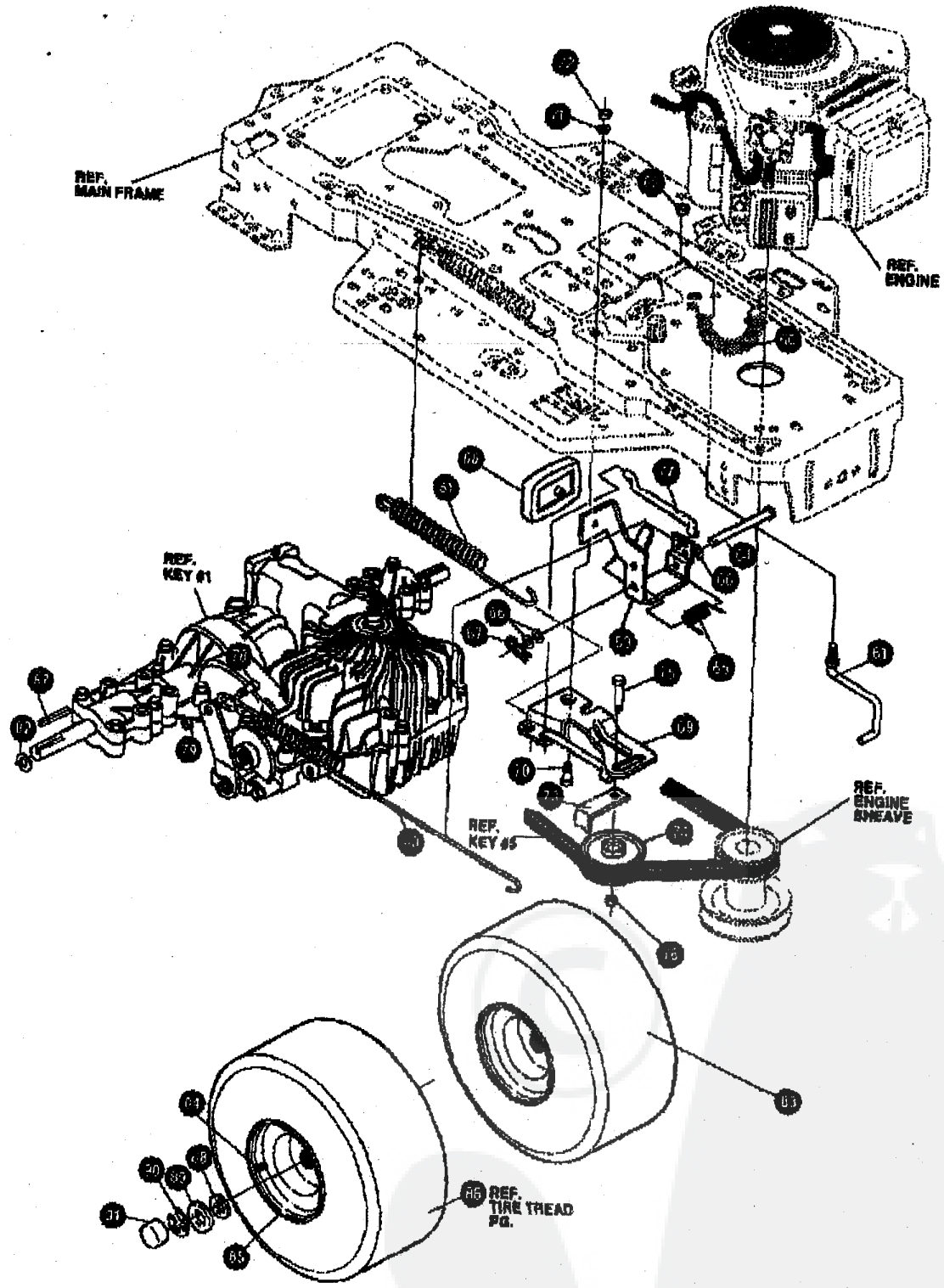
326735C

43" LAWN TRACTOR MODEL D3560-200

KEY#	PART#	DESCRIPTION	QTY.
1	A	TRANSAXLE, T1800 PEERLESS 2WS HYDRO	1
2	120393	WASHER, FLAT .344X .69X.065	6
3	326633	GUIDE, BELT	1
4	122017	SCREW, 5/16-18X1.00HHC	1
5	325391	LINK, SHIFT LF HYDRO	1
6	122145	SCREW, 3/8-18X1.25 HHC	2
7	274517	WASHER, FLT. 406X.73X.063	2
8	1499	NUT, 3/8-18 REGHXCTRLK	2
9	314572	BELT, V 4L 80.18 HYDRO LF	1
10	120393	WASHER, FLAT .344 X .69 X .065	6
11	180082	SCREW, 5/16-18X2.35 HHC	4
12	1498	NUT, 5/16-18 HWDPLCTRLK	4
13	326694	STABILIZER BRACKET LF HYDRO	2
14	122007	SCREW, 5/16-18X.75 HHC	1
15	1498	NUT, 5/16-18 REGHEXCTRLK	3
16	138538	WASHER, REGINLK .320X.51X.08	1
17	35498	SCREW, 5/16-18X.75 WAHHTAP	2
18	326392	LEVER, SHIFT-LWR LF HYDRO	1
19	310347-853	CLIP-SHIFT LEVER .82 ROD	1
20	180077	SCREW, 5/16-18X .75 HHC	1
21	996418	WASHER, FLAT .391X1.00X.125	1
22	1498	NUT, 5/16-18 REGHEXCTRLK	1
23	310347-853	CLIP-SHIFT LEVER .82 ROD	1
24	180077	SCREW, 5/16-18 REGHEXCTRLK	1
25	996418	WASHER, FLAT .391X1.00X.125	1
26	1498	NUT, 5/16-18 REGHEXCTRLK	1
27	310336	PIVOT BRKT LEVER	1
28	180018	SCREW, 1/4-20X .82 HHC	2
29	1602	NUT, 1/4-20 REGHEXCTRLK	2
30	318452	LEVER, SHIFT UPPER SF 1/2-13TH	1
31	318451	SPRING, TORS. .68X.95X.095	1
32	8260	PIN, HAIR .125 O/D X 1.00 LG	1
33	2968	WASHERS	6
34	120236	NUT, 1/2-13 HEXJAM	1
35	306690	HANDLE 1/2-13 MOLDED BLACK 173	1
36	311257-853	BRACKET COVER	1
37	314244	COVER PLASTIC	1
38	311331	SCREW, 174-15X.44/.533 HILOHHWA	2
39	1341	CLAMP SPRING	2
40	311331	SCREW, 174-16X.44/.533 HILOHHWA	2

^ CONTACTB YOUR NEAREST TRANSAXLE DEALER FOR PARTS AND SERVICE.

MOTION DRIVE ASSEMBLY



NOTE: ALWAYS USE ORIGINAL EQUIPMENT PARTS. Use of service/replacement parts other than original equipment parts may void your warranty.

ALL UNNUMBERED ITEMS ARE INTERCHANGEABLE WITH OPPOSITE SIDE

326735C

43" ^{1.D.} LAWN TRACTOR MODEL D3560-200

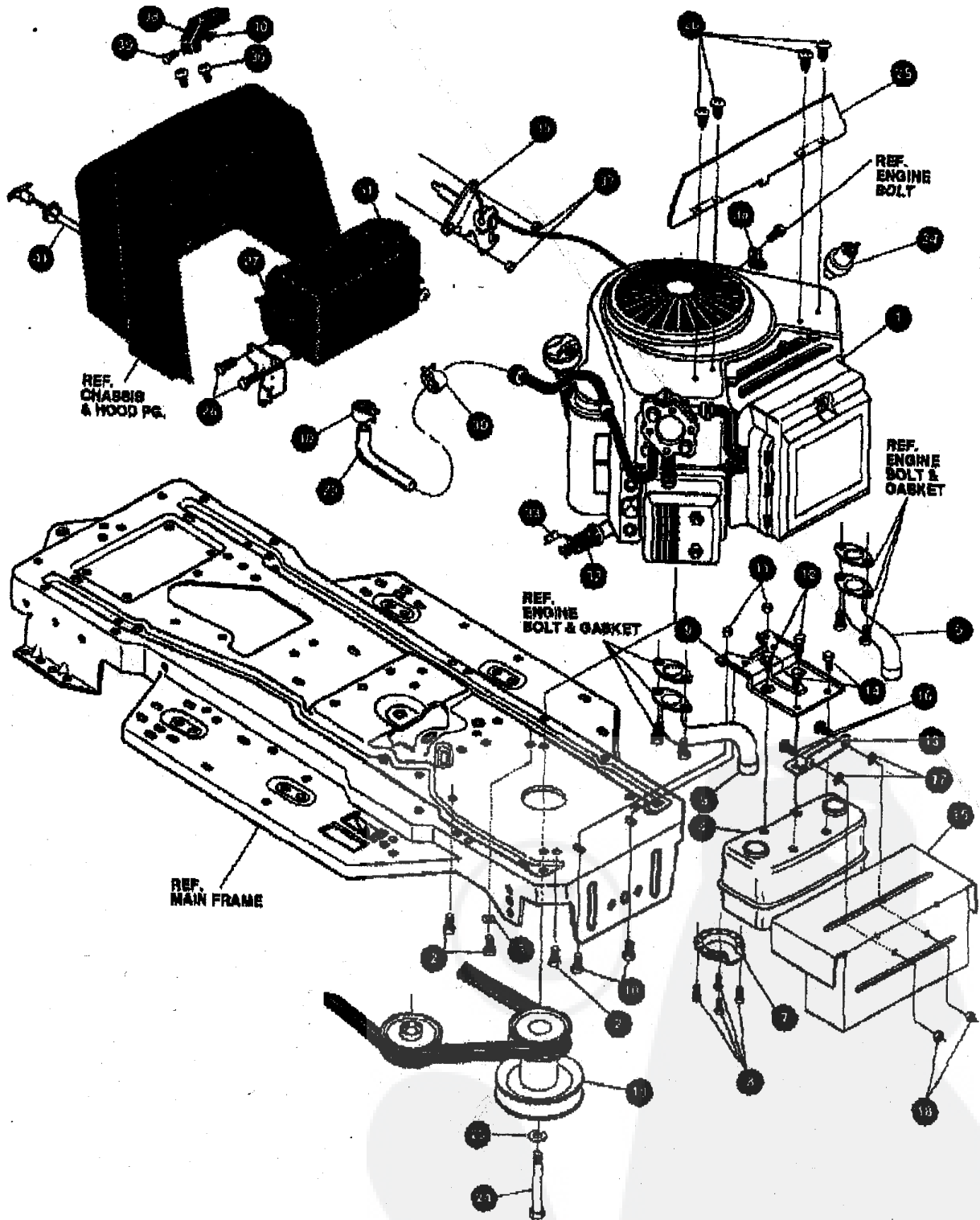
HPK 28'00 10:12 No.007 P.15

KEY#	PART#	DESCRIPTION	QTY.
60	321514	SPRING BIAS DRAGLINK	1
61	304016	GUIDE BELT	1
62	1498	NUT, 5/16-18 REGHEXCTRLK	1
63	325942	PEDAL ASSY, BRAKE/CLUTCH LF	1
64	319675	PIN, CLEVIS	1
65	57947	SPRING, BRAKE PEDAL	1
66	2968	WASHER, FLAT .504X.75X.058	1
67	56180	PIN, HAIR	3
68	48180	PAD, CLUTCH BRAKE W/PRINTING	1
69	320381-853	ARM, IDLER TRACTION DR. LF	1
70	300789	BOLT, .625X.135 HGH 5/16-18	1
71	45802	WASHER, FLAT .333X.87X.119	1
72	1498	NUT, 5/16-18 REGHEXCTRLK	1
73	39859	RETAINER, STRAP BELT	1
74	35374	PULLEY, IDLER V4L 3.08X.62	1
75	49892	BOLT, 3/8-16X1.50 CARR	1
76	1498	NUT, 5/16-18 REGHEXCTRLK	1
77	57204	ROD, CLUTCH	1
78	328131	BOLT SHOULDER 5/16-18	1
79	1498	NUT, 5/16-18 REGHEXCTRLK	1
80	327947	BRAKE SPRING T1800 PEBBLESS HYDRO	1
81	35359	SPRING, CLUTCH .113X.750X8.75	1
82	42815	WASHER, FLAT .755X1.53X.07	1
83	A	TIRE & RIM, PU 20X10-8	4
84	24167	VALVE STEW	2
85	301368	RIM, WHEEL 20X8.00	1
86		REF. TIRE TREAD PG.	1
87	52928	KEY SQUARE	1
88	642	WASHER, FLAT .755X1.91X.075	2
89	42815	WASHER, FLAT .755X1.53X.07	4
90	35525	RING RETEX .87X.05 TRU5133-75	2
91	40394	HUB CAP 1.50010X7/8	2

* ORDER INDIVIDUAL PARTS.

43" LAWN TRACTOR MODEL D3560-200

ENGINE & CONTROL ASSEMBLY



NOTE: ALWAYS USE ORIGINAL EQUIPMENT PARTS. Use of service/replacement parts other than original equipment parts may void your warranty.

ALL UNNUMBERED ITEMS ARE INTERCHANGEABLE WITH OPPOSITE SIDE

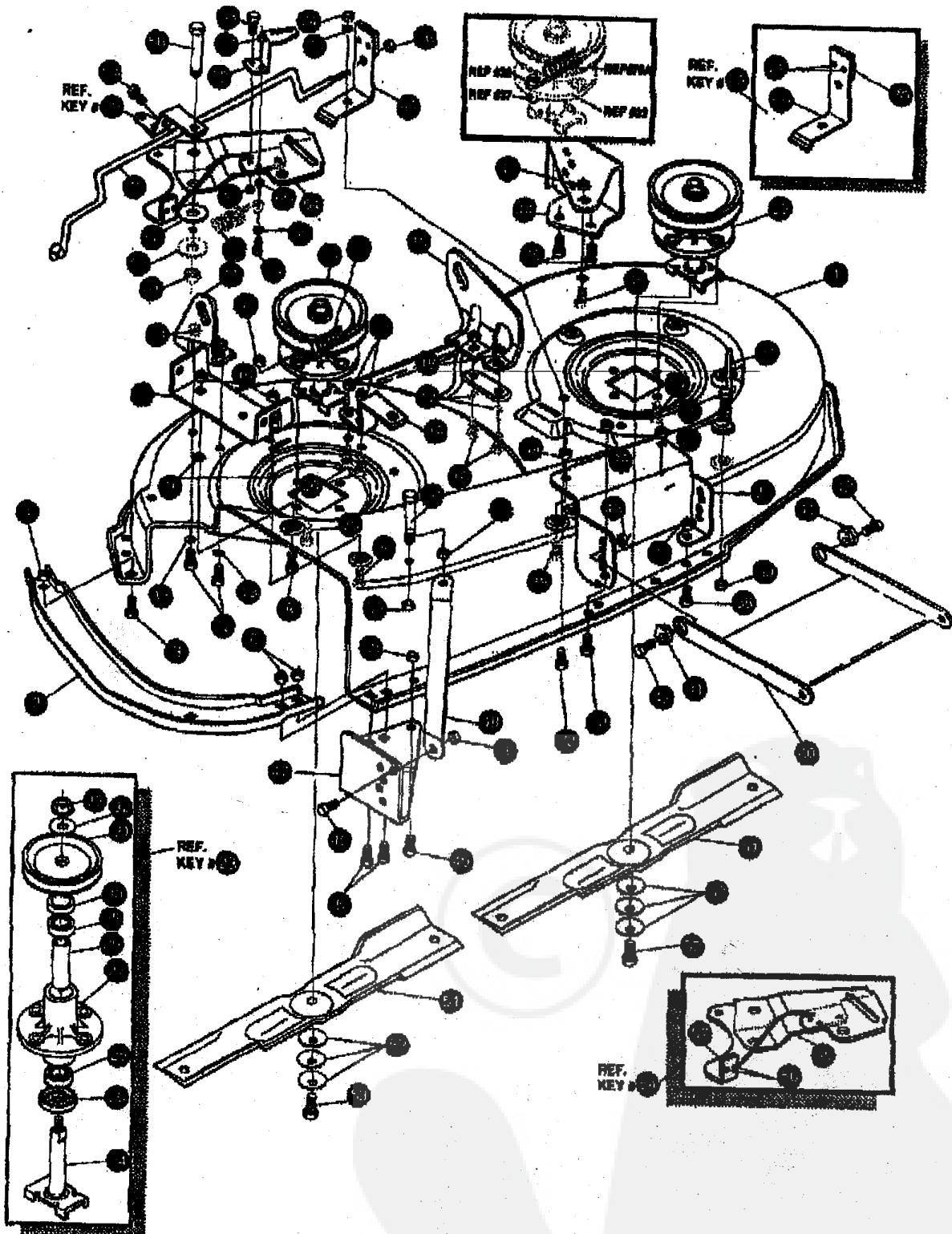
329220A

43" LAWN TRACTOR MODEL D3560-200

KEY#	PART#	DESCRIPTION	QTY.
1		ENGINE	
2	50947	14HP BS VTWIN (SEE ENGINE MANUAL)	1
3	138489	SCREW, 3/8-16X1.25 WAHTAP	4
4	905553	WASHER, EXLK.384X.99X.04	1
5	305554	MUFFLER 15HP B&S VANG	1
6	305555	EXHAUST TUBE 15HP RH	1
7	56472	EXHAUST TUBE 15HP LH	1
8	35287	DEFLECTOR SIDE OUT	1
9	304709-853	SCREW, #8-32X .38 HHWATAPGR2	1
10	56090	BRACKET, MUFFLER	4
11	55273	SCREW, 5/16-18X.75WDFLLK	1
12	995346	NUT, 5/16-18 HXWDFLLK	2
13	303096-853	SCREW, 1/4-20X .50 WAHTAP	2
14	995338	BRKT, TRANSAXLE	2
15	320922-853	SCREW, 1/4-20X .63 HHWATAP	1
16	126211	HEAT SHIELD,MUFFLER	2
17	309436	BOLT, 5/16-18X .63 CARR	1
18	55273	PUSHNUT, 5/16 BOLT RETAINER	2
19	326585	NUT, 5/16-18 HXWDFLLK	2
23	120389	PULLEY,ENG 4.40OFF/6.00D/4.00D 43" HYDRO	1
24	428644	WASHER, REGSPTLK.459X.78X.12	1
25	312728-853	SCREW, 7/16-20X5.00 HHC	1
26	67386	HEAT SHIELD	1
27	309853	SCREW, 10-18X .50 DRILLTITE	1
28	49050	TANK,FUEL 1.5 W/O SENSOR,CLEAR	4
29	48049	SCREW, 1/4-10X .75PHPNTAPGR	1
30	47345	GAS LINE .25ID	4
31	12501	CLAMP, FUEL LINE	10
32	326547	GAS CAP-2.5" THROAT	2
33	327422	OIL DRAIN ITW	1
34	314797	CAP OIL DRAIN	1
35	329219	OIL SENSOR, B&S TWIN CYL.	1
36	155941	CONTROL,THROTTLE 39.5LG	1
37	271166	SCREW, 10-24X .63FLTMA	1
38	300508	NUT, #10-24 HEXKEPS	2
39	159585	KNOB,ROUND THROTTLE GP STYLE	2
40	120622	SCREW, #8-32X.38 PHPNMA	1
41	329219	NUT, #8-32 REGHX	1
		CONTROL,CHOKE	1

43" LAWN TRACTOR MODEL D3560-200

PRE-PAINTED DECK



NOTE: ALWAYS USE ORIGINAL EQUIPMENT PARTS. Use of service/replacement parts other than original equipment parts may void your warranty.

ALL UNNUMBERED ITEMS ARE INTERCHANGEABLE WITH OPPOSITE SIDE

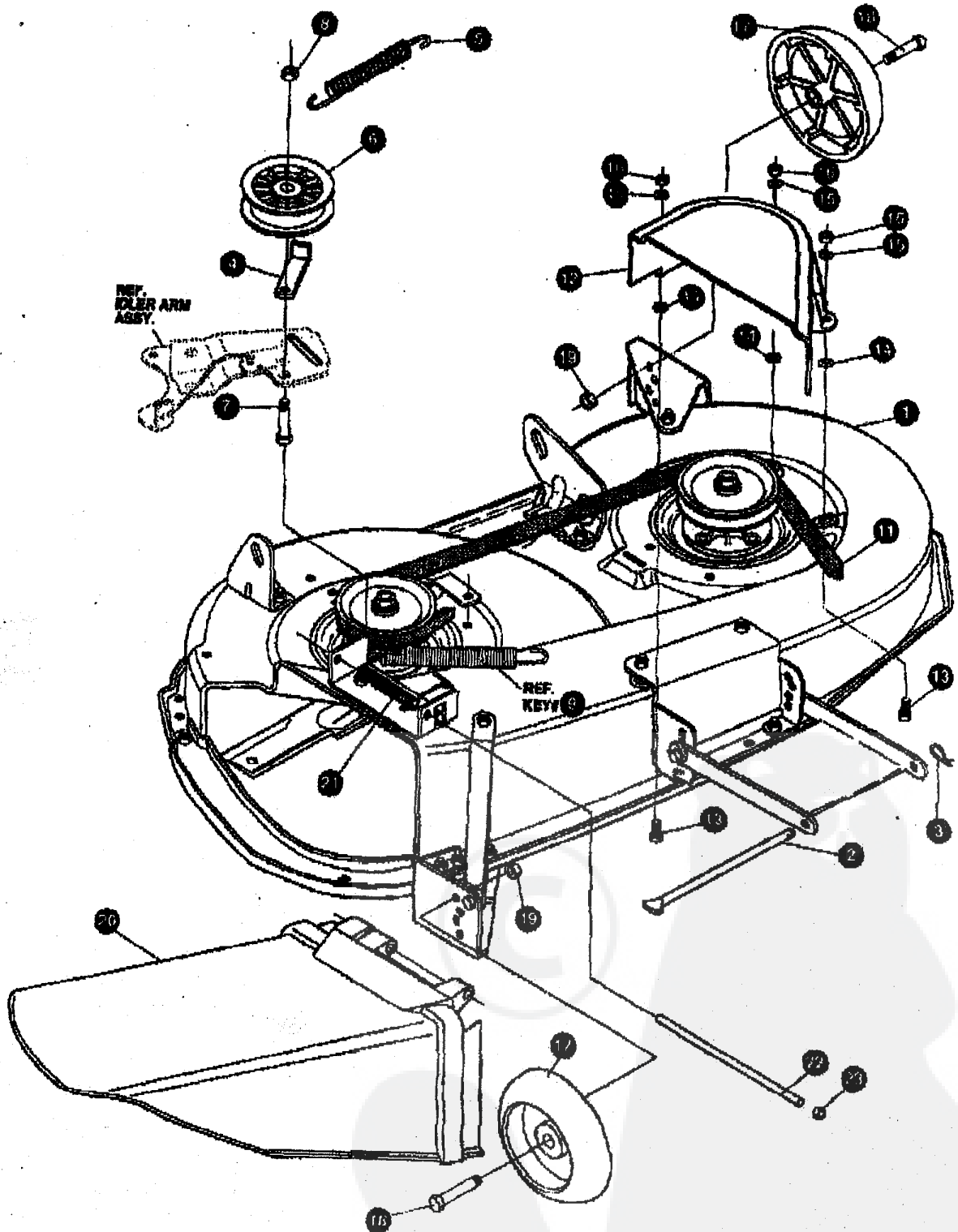
325770D

43" LAWN TRACTOR MODEL D3560-200

KEY#	PART#	DESCRIPTION	QTY.
1	825116	MOWER DECKS, RIDER 43"	1
2	328480-853	TOE GUARD	1
3	180075	SCREW, 5/16-18X .88 HHC	1
4	1498	NUT, 5/16-18 REGHEXCTRLK	1
5	123007	SCREW, 5/16-18X .75 HHC	1
6	1498	NUT, 5/16-18 REGHEXCTRLK	1
7	317017	BRACKET CHUTE MOUNT	1
8	180075	SCREW, 5/16-18X .83 HHC	1
9	120393	WASHER, FLAT .344X .89X .065	1
10	1498	NUT, 5/16-18 REGHEXCTRLK	1
11	318829	LIFT BRACKET, REAR RH	1
12	180077	SCREW, 5/16-18X .75 HHC	1
13	120393	WASHER, FLAT .344X .89X .065	1
14	1498	NUT, 5/16-18 REGHEXCTRLK	1
15	310887	BRACKET DECK LIFT REAR LH	1
16	180077	SCREW, 5/16-18X .75 HHC GR5	1
17	120393	WASHER, FLAT .344X .89X .065	1
18	1498	NUT, 5/16-18 REGHEXCTRLK	1
19	328593-853	BRACE IDLER	1
19A	308231	SCREW, 1/4-20X1.25 HAWATAP	1
20	180077	SCREW, 5/16-18X .75 HHC	1
22	44108	NUT, 5/16-18 HWDFLCTRLK	1
23	50424-853	CALL ASSY, 3939/4043	1
24	82425	SHAFT/BAOILE 36"	1
25	48562	BRNG, BALL	1
26	80616	DUST SHIELD	1
27	85547	CALL CASTING (1048)	1
28	48582	BRNG, BALL	1
29	50818	SPACER, 3.791 GX BRNDX BRCD	1
30	51448	SPACER, 438LX.5320X.672D	1
31	313880	RULLEY, 28.98" CALL VSL	1
32	56365	SPECIAL WASHER	1
33	1282	NUT, 7/16-20 WDFLLK	1
34	50854	SCREW, 5/16-18X .88 WASH-TAP	1
35	300345	SCREW, 5/16-18X1.33 WATAP	1
36	1498	NUT, 5/16-18 REGHEXCTRLK	1
37	317040	BRACKET FRF	1
38	180075	SCREW, 5/16-18X .63 HHC	1
39	1498	NUT, 5/16-18 REGHEXCTRLK	1
40	56395-853	LINK BRACKET DECK FR	1
41	58247	ADJUSTING NUT	1
42	123017	SCREW, 5/16-18X1.00 HHC	1
43	1498	NUT, 5/16-18 REGHEXCTRLK	1
44	317041	BRACKET GAGE WHEEL L.H.	1
45	180075	SCREW, 5/16-18X .63 HHC	1
46	1498	NUT, 5/16-18 REGHEXCTRLK	1
47	322484-853	BRACKET GAGE WHEEL R.H. FRNT	1
48	314282-853	BRACKET STABILZER	1
48A	311104	SCREW, 5/16-18 X 3.00 HHC GR.5	1
48B	271184	NUT, 5/16-18 HEX KEPS	1
49	180075	SCREW, 5/16-18X .83 HHC	1
50	1498	NUT, 5/16-18 REGHEXCTRLK	1
51	318608	BLADE, HIGH-LIFT 21.70	1
52	2483	WASHER, 390X1.250X.07 BELLVIL	1
53	39578	SCREW, 3/8-24X1.00 NYLH4C	1
54	320576-853	IDLER ARM ASSY	1
55	322116-853	IDLER ARM	1
56	41801	RIVET	1
57	308973	BRAKE PAD	2
58	304420	SHOULDER BOLT	1
59	808416	WASHER, FLAT 391X1.00X.125	1
60	806307	WASHER, FLAT .391X1.00X.209	1
61	45171	NUT, 3/8-18 HWDFL WHIZ-LOCK	1
62	300700-853	BRACKET, EXTENSION IDLER	1
63	180075	SCREW 5/16-18X.63 HHC GR.5	1
64	180089	SCREW, 5/16-18X1.50 HHC GR.5	1
65	448389	WASHER, FLAT	1
66	271184	NUT 5/16-18 HEX KEPS	1
67	1498	NUT	1
68	321028-853	BLADE BRAKE ASSY	1
69	304118-853	BRAKE ARM	1
70	308973	BRAKE PAD	1
71	185824	RIVET	1
72	180075	SCREW, 5/16-18X.63	2
73	720393	WASHER, FLAT .344X .89X .065	1
74	1498	NUT, 5/16-18 REGHEXCTRLK	1
75	314078	RDD BRAKE	1
76	1502	NUT 1/4-20 REGHEXCTRLK	1
76A	35410	SPRING	1
78	180075	SCREW, 5/16-18 X 1.00 HHC GR5	1
79	120393	WASHER, FLAT .344X .89X .065	1
80	1498	5/16-18 REGHEXCTRLK	1
81	325985	BELT GUIDE, 43" DECK UPSTOP	1

43" LAWN TRACTOR MODEL D3560-200

FINAL DECK ASSEMBLY



NOTE: ALWAYS USE ORIGINAL EQUIPMENT PARTS. Use of service/replacement parts other than original equipment parts may void your warranty.

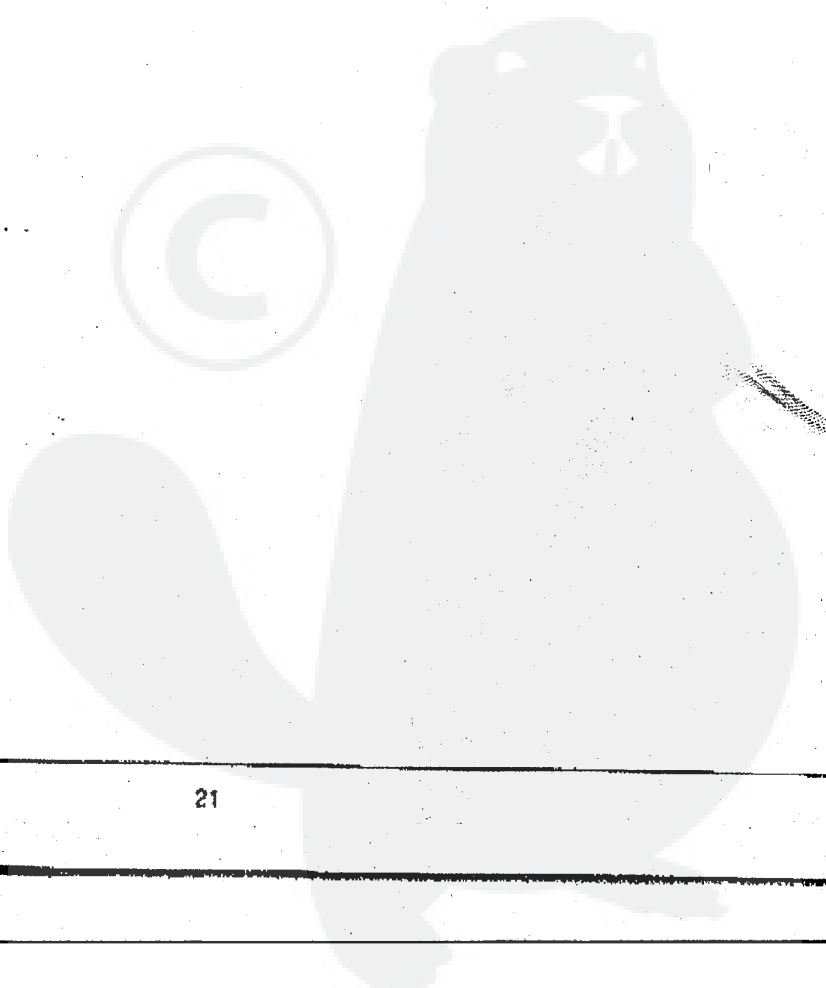
ALL UNNUMBERED ITEMS ARE INTERCHANGEABLE WITH OPPOSITE SIDE

9264158

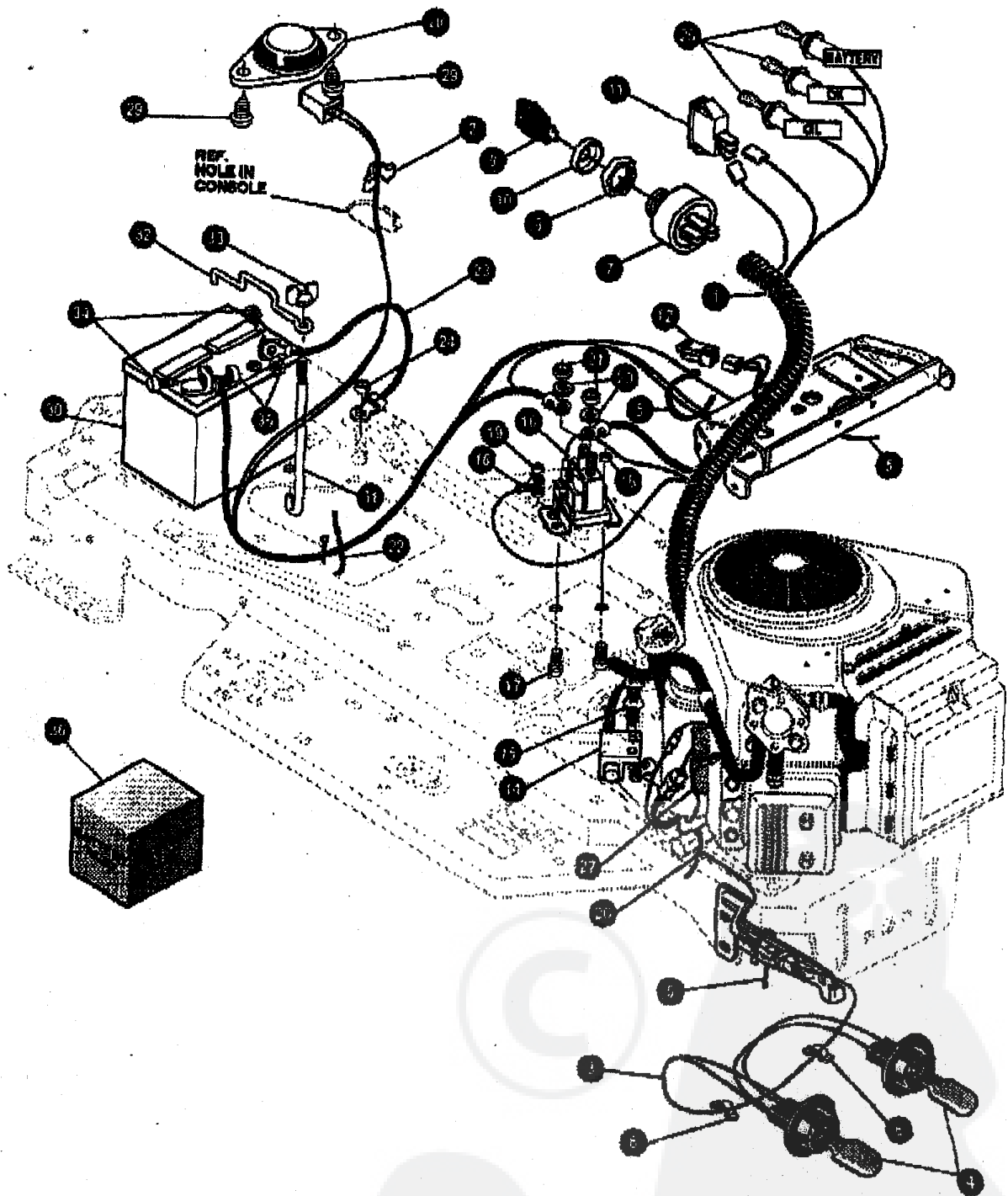
43" LAWN TRACTOR MODEL D3560-200

KEY#	PART#	DESCRIPTION	QTY.
1	A	DECK, 43" MOWER 2-WH BLACK 863 DOMESTIC	1
2	88308	ROD, DECK HITCH	1
3	8280	PIN, HAIR .001 DIA X 1.66 LG	1
4	1346	GUIDE, BELT, IDLER	1
5	314107	SPRING, TENSION 5.00 LG + 17 LB IN	1
6	310328	PULLEY, IDLER BFF 4.00 WIDE FL	1
7	128418	BOLT, 3/8-18 X 1.75 CARR	1
8	44974	NUT, 3/8-18 HX WDFLLK	1
11	314108	BELT, V 5L 88.00 KEVLAR	1
12	824814	GUARD, BELT LH PLASTIC	1
13	57101	CARRIAGE BOLT	1
14	308438	PUSHNUT 5/16 NON-SERVICEABLE	3
15	120393	WASHER, FLAT 3/4 X .69 X .065	3
16	1498	NUT, 5/16-18 REG HEX CTRLK	3
17	302611	GUAGE WHEELS	2
18	23783	BOLT, .500 X 1.390 H HSH	2
19	1499	NUT, 3/8-18 REG HEX CTRLK	2
20	304422	CHUTE DEFLECTOR	1
21	314975	TORSION SPRING	1
22	304424	ROD PIVOT DECK	1
23	3535	PUSH NUT	1

* ORDER DECK KIT# 829036 FOR COMPLETE DECK.



ELECTRICAL ASSEMBLY



NOTE: ALWAYS USE ORIGINAL EQUIPMENT PARTS. Use of service/replacement parts other than original equipment parts may void your warranty.

ALL UNNUMBERED ITEMS ARE INTERCHANGEABLE WITH OPPOSITE SIDE

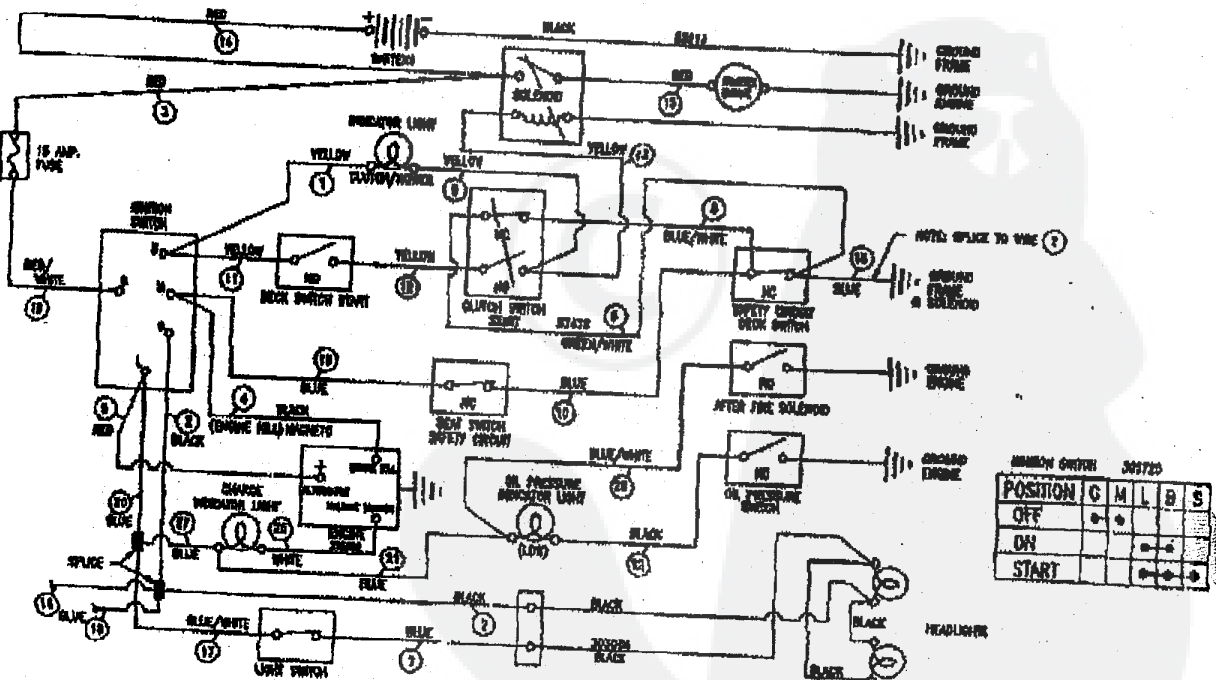
329224A

43" LAWN TRACTOR MODEL D3560-200

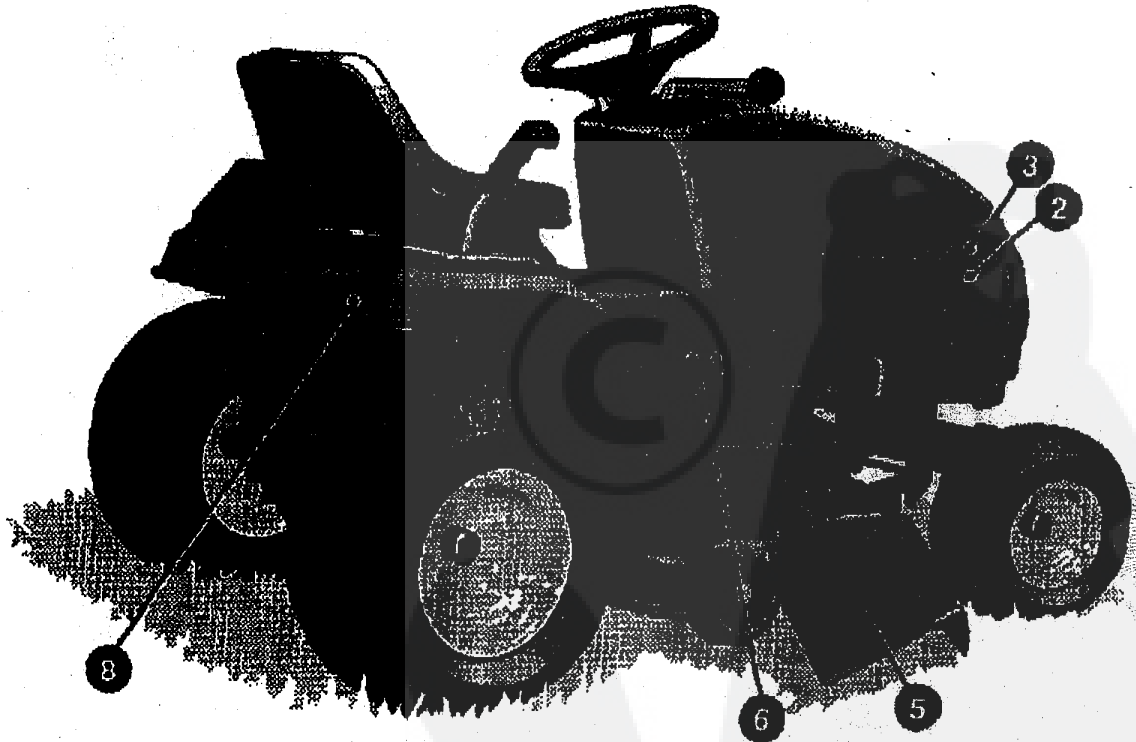
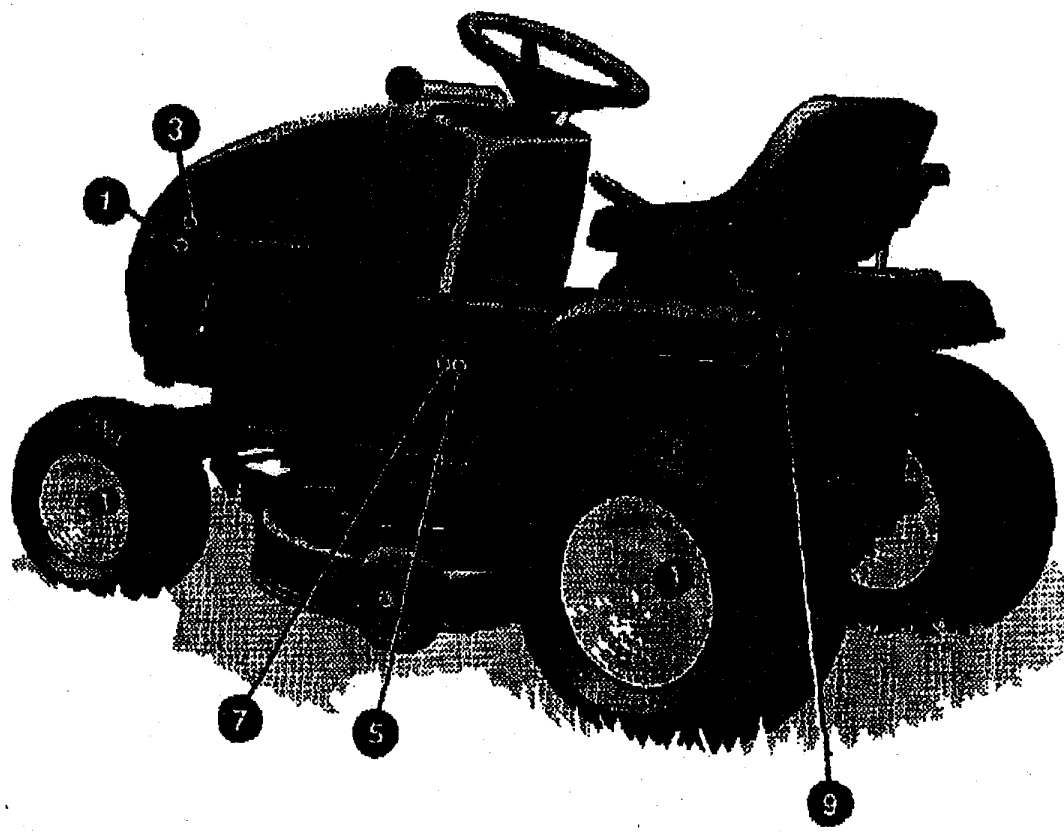
KEY#	PART#	DESCRIPTION	QTY.
1.	320223	WIRE HARNESS 14-18VAN H25G22	1
2.	41482	PRESS CLIP, 1.380LG .256ID	1
3.	303084	ASSY LIGHT WIRE-1/4 TURN	1
4.	52572	BULB, HEADLAMP	1
5.	57444	TIE, CABLE BLACK NYLON 5.62L	1
6.	41482	PRESS CLIP, 1.380LG .256ID	2
7.	327355	SWITCH-IGN.(AFTER FIRE) 3 POSN	4
8.	327352	NUT, 5/8-8ACME DELTA FOR BOOT	2
9.	327950	KEY IGNITION GENERIC DELTA	1
10.	300194	BOOT, IGN SWITCH	1
11.	300334	LIGHT SWITCH ON/OFF PANEL MNT	1
12.	320062	SWITCH, DOUBLE POLE	1
13.	57444	TIE, CABLE BLACK NYLON 5	1
14.	57476	SWITCH, SCR MNT DP NC NO	1
15.	57220	SCREW, #12 X .50 PHNHTAP	1
16.	59716	SOLENOID	1
17.	167745	SCREW, 1/4-20X .75 HXSEMMA	2
18.	1502	NUT, 1/4-20 REGHEXCTRLK	1
19.	271172	NUT, 1/4-20 REGHEXCTRLK	2
20.	138485	NUT, 1/4-20 REGHEXKEPS	2
21.	120368	WASHER, EXLK .520X.61X.03	2
22.	57444	NUT, 5/16-24 REGHEX	1
23.	56611	TIE, CABLE BLACK NYLON	2
24.	271194	WIRE, GROUND, 12.5"	2
25.	57768	NUT, 5/16-18 HEXKEPS	1
26.	57444	BULB, INDICATOR	1
27.	315602	TIE, CABLE BLACK NYLON	1
28.	57647	REGULATOR, SEN VOLT BS W/SENSOR	3
29.	160505	SWITCH, SEAT	1
30.	302257	SCREW, 1/4-20X .38PHPNHMA	1
31.	57551	BATTERY, 12V GENERIC	2
32.	57552	MOD, BATTERY	1
33.	325232	MOD, BATTERY, TOP	1
34.	120854	NUT, WING 1/4-20 NYLON	1
35.	271172	SCREW, 1/4-20X .63 HHC	1
36.	A	NUT, 1/4-20 REGHEXKEPS	2
		BATTERY ACID PACK, 60 OZ.	1

* CAN BE PURCHASED LOCALLY.

SCHEMATIC DRAWING



DECALS (DECORATIVE)



45 LAWN TRACTOR MODEL D3560-200

KEY#	PART#	DESCRIPTION	QTY.
1.	320847	DECAL, AUTOMATIC HOOD LH LF	1
2.	320848	DECAL, AUTOMATIC HOOD RH LF	1
3.	402137	NAMEPLATE UNITECH MEDIUM SIL	2
4.		REFERENCE ONLY	1
5.	402152	NAMEPLATE, 18/43	2
6.	320856	DECAL, CONSOLE RH LF	1
7.	320855	DECAL, CONSOLE SIDE LH LF	1
8.	402138	NAMEPLATE UNITECH SMALL	1
9.	402159	NAMEPLATE, AUTO TRANS	1



43" LAWN TRACTOR MODEL D3560-200

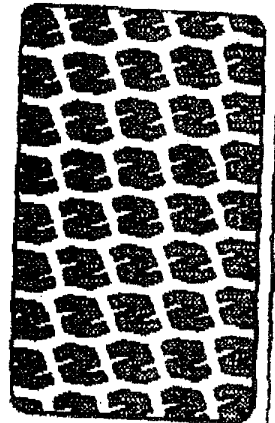
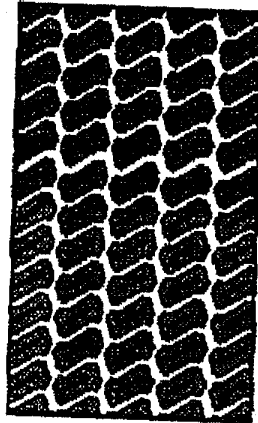
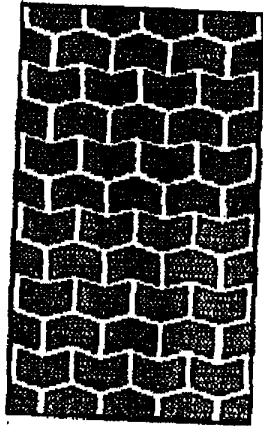
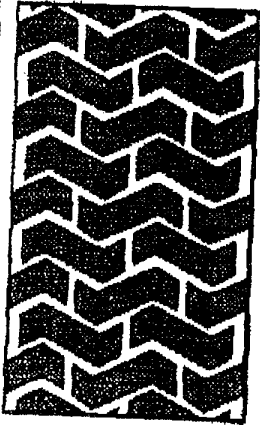
APR 28 '00

10:20 No.007 P.27

KEY#	PART#	DESCRIPTION	QTY.
1.	329211	DECAL, DASH (KMART HOOD)	1
2.	68900	DECAL, BLADE ENGAGE EUROPE	1
3.	69525	DECAL, INSTRUCT CONSOLE TOP FR	1
4.	307383	DECAL, INSTR. CONSOLE TOP ENGL	1
5.	69524	DECAL, INSTRUCT CONSOLE TOP GER	1
6.		REFERENCE ONLY	1
7.		REFERENCE ONLY	1
8.	68902	DECAL, WARNING, FRENCH/GERMAN	1
9.	301897	DECAL, LIFT DECK BLADE HEIGHT	1
10.	305770	DECAL, CAUTION TRIANGLE EUROPE	1
11.	310553	DECAL, DANGER ENGLISH	1
12.	314925	DECAL, SHIFT LF HYDRO REVERSE	1
13.	314923	DECAL, SHIFTER LF HYDRO FORWARD	1
14.	68903	DECAL, BRAKE/CLUTCH ISO	1
15.		REFERENCE ONLY	1

43" LAWN TRACTOR MODEL D3560-200

TREAD PATTERNS



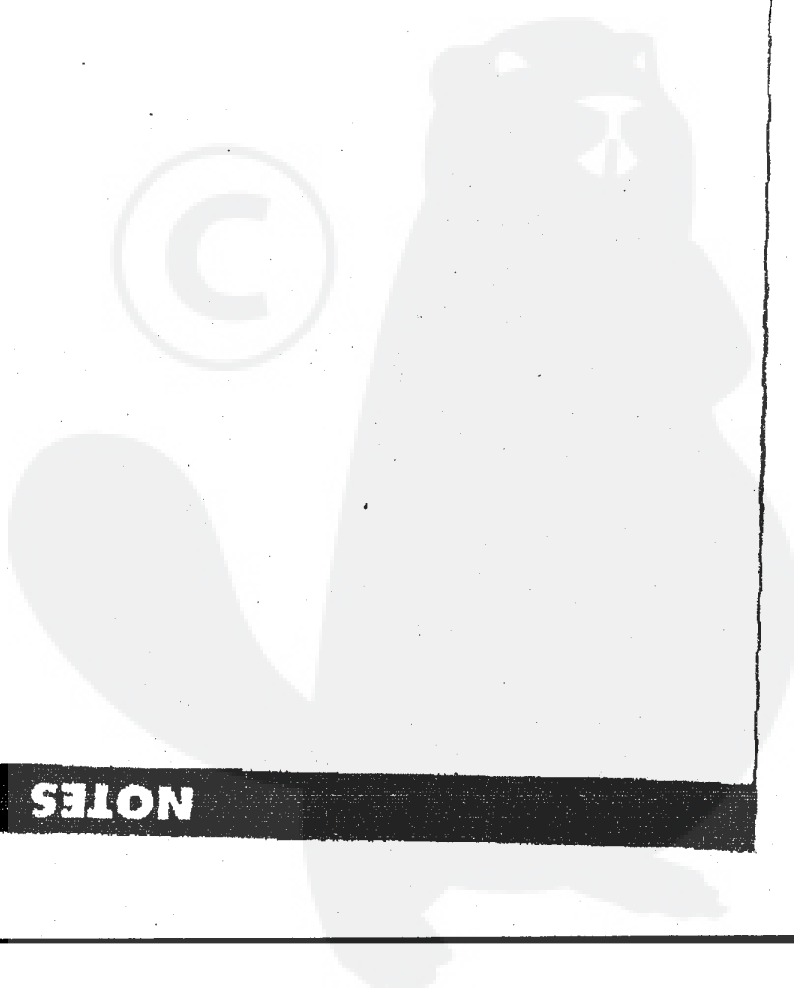
"A"

"B"

"C"

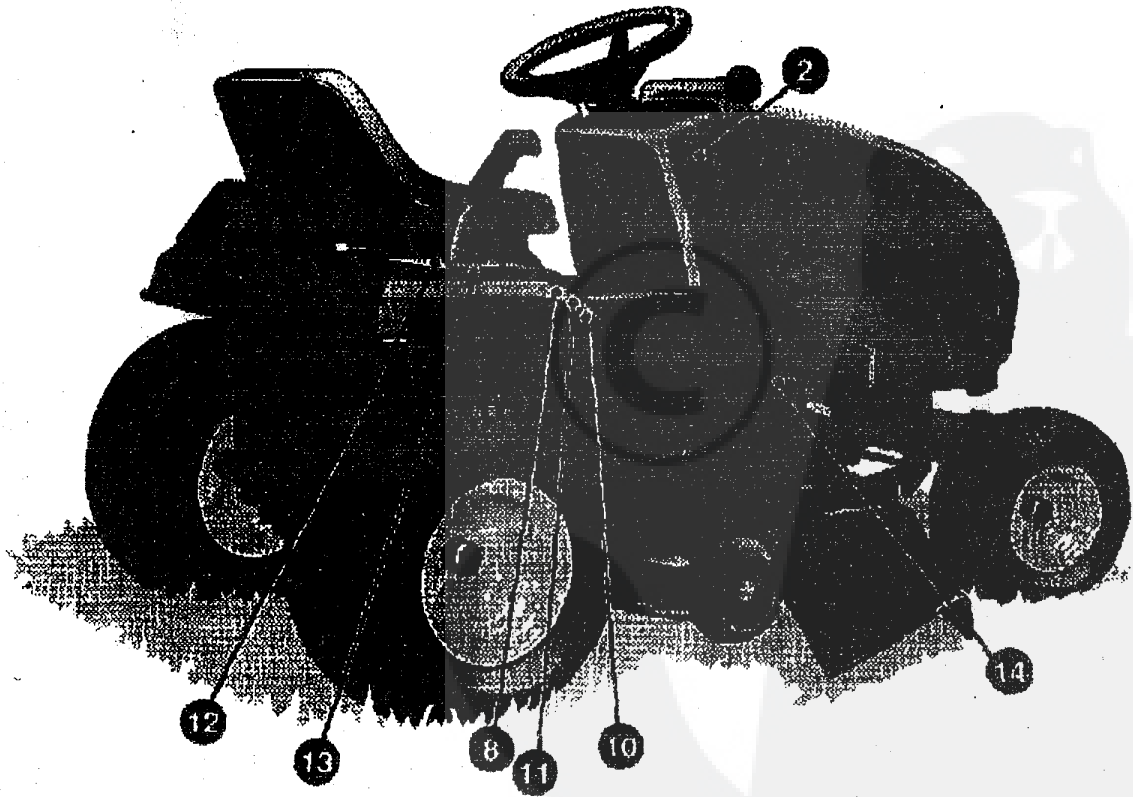
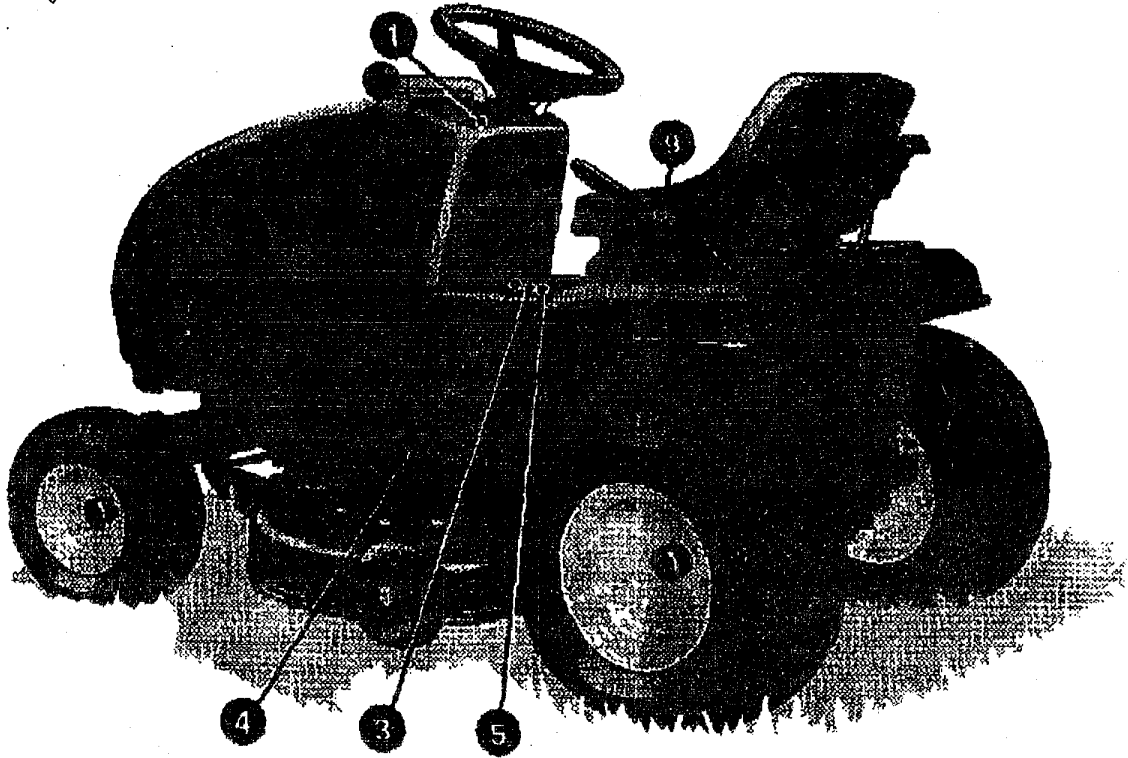
"D"

TIRE SIZE	"A"	"B"	"C"	"D"
11 X 4.00 - 5	42295	319679		
13 X 5.00 - 6	41060	319680		
15 X 6.00 - 6	39830	316702	301140	313952
16 X 6.50 - 8	41081	319682		314539
18 X 8.50 - 8	319683	317400		
18 X 9.50 - 8	41106	316701		313950
20 X 8.00 - 8	319685	319684	57164	314584
20 X 10.00 - 8	58276	319686		313654
20 X 10.00 - 10	55893	319687		
23 X 9.50 - 12	53655	319689	319689	314370



43" LAWN TRACTOR MODEL D3560-200

DECALS (INSTRUCTIONAL)



329244B

ACCESSORIES

Contact the dealer where your tractor was purchased for the available accessories. If you are unable to contact the dealer, write to the address on the front cover of this manual.

Model	Description	Rear Engine Rider
5708-16	Bagger - Fits 32" Side Discharge	
5708-17	Bagger - Fits 36" Side Discharge & 30" Top Discharge	
5709-02	Front Weight Box - holds 35 lbs.	
5648-16	Lawn Sweeper w/dump Release	
5714-00	Mulching Kit - 30" Top Discharge	

Model	Description	Lawn Tractor
5709-22	Bagger - Fits 30" Side Discharge	
5708-18	Bagger - Fits 36", 38", 39" & 45" Side Discharge	
5705-04	36" Two-Stage Snowblower - Fits 38", 39", & 45" Side Discharge	
5861-06	42" Snowblade - Fits 36", 38", 39", & 45"	
5582-00	Tire Chains - 18" x 6.50"	
5585-00	Tire Chains - 18" x 8.50" & 20" x 8"	
5672-01	Wheel Weights - Front - 1 pr. w/mtg. hdw. - Fits 15" tires	
5673-02	Wheel Weights - Rear - 1 pr. w/mtg. hdw. - Fits 18" & 20" tires	
5709-03	Front Weights - Fits 30" & 32" Side Discharge	
5648-18	Lawn Sweeper w/dump Release	
5714-00	Mulching Kit - 30" Top Discharge	

Model	Description	Garden Tractor - Light Ground Engaging
5708-13	Bagger - Fits 36", 38", 39", & 45" Side Discharge	
5705-04	36" Two-Stage Snowblower - Fits 36", 38", 39", & 45"	
5861-06	42" Snowblade - Fits 36", 38", 39", & 45"	
5672-01	Wheel Weights - Front - 1 pr. w/mtg. hdw. - Fits 15" tires	
5673-02	Wheel Weights - Rear - 1 pr. w/mtg. hdw. - Fits 18" & 20" tires	
5648-18	Lawn Sweeper w/dump Release	
5667-02	Sleeve Hitch - w/lift bar - Fits 45"	
5660-01	Adaptor (sleeve hitch) for use w/23" tires	
5706-00	Tire Chains - 20" x 10"	
5671-00	Tire Chains - 23" x 9.50"	
5672-02	Wheel Weights - Front - 1 pr. w/mtg. hdw. Fits 16" tires	
5673-00	Wheel Weights - Rear - 1 pr. w/mtg. hdw. Fits 23" tires	
5674-01*	10" One Bottom Moldboard Plow	
5675-01*	Cultivator - 7 row - Adj. 8" - 42" width	
5676-01*	Disc Harrow - 8" & 11" disc - Adj. width & disc angle	
5677-02*	Tiller - 5 H.P. Self-Powered - 28" width	

Model	Description	Four Wheel Steer
5708-14	Bagger - Fits 40" & 46" Side Discharge	
5705-05	42" One-Stage Snowblower - Fits 40" & 46"	
5861-07	48" Snowblade - Fits 40" & 46"	
5709-04	Rear Weight Box for 40" & 46"	
5648-16	Lawn Sweeper w/dump Release	
5706-00	Tire Chains 20" x 10"	
5671-00	Tire Chains 23" x 9.50"	
5672-02	Wheel Weights - Front - 1 pr. w/mtg. hdw. Fits 16" tires	
5673-00	Wheel Weights - Rear - 1 pr. w/mtg. hdw. Fits 23" tires	
5672-01	Wheel Weights - Front - 1 pr. w/mtg. hdw. Fits 15" tires	
5673-02	Wheel Weights - Rear - 1 pr. w/mtg. hdw. Fits 18" & 20" tires	

Model	Description	Two Wheel Steer Garden Tractor
5667-04	Sleeve Hitch - w/lift bar - Fits 46"	
5674-01*	10" One Bottom Moldboard Plow	
5675-01*	Cultivator - 7 row - Adj. 6" - 42" width	
5676-01*	Disc Harrow 8" & 11" Disc - Adj. width & disc angle	
5677-02*	Tiller 5 H.P. Self-Powered - 28" width	
5648-16	Lawn Sweeper w/dump Release	

*Requires a sleeve hitch