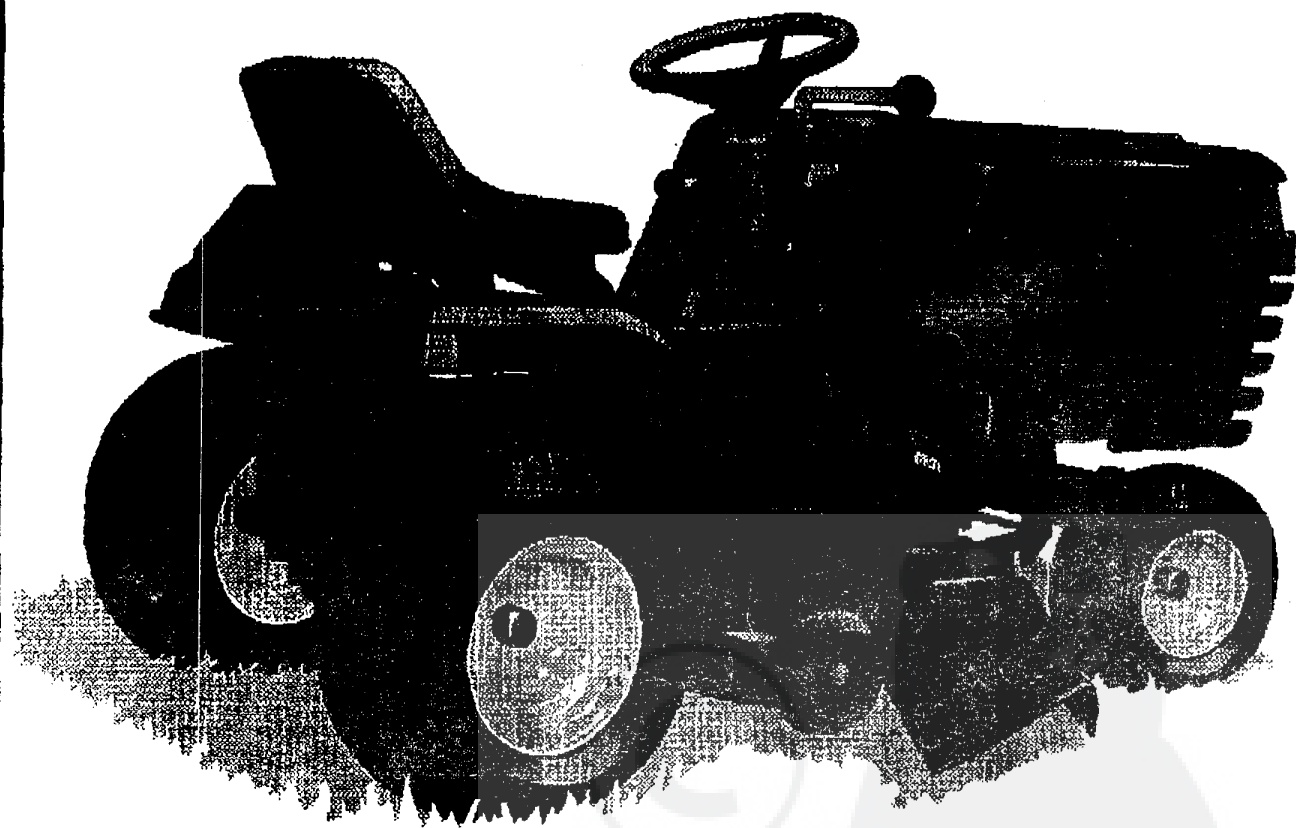


**TONDEUSE AUTOPORTEE**  
**CAST 12**  
**MANUEL PIÈCES DE RECHANGE**

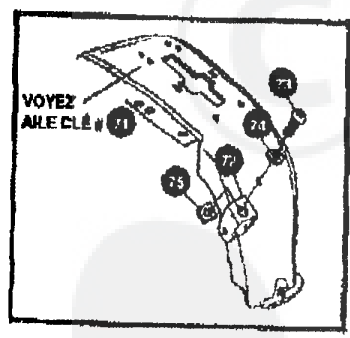
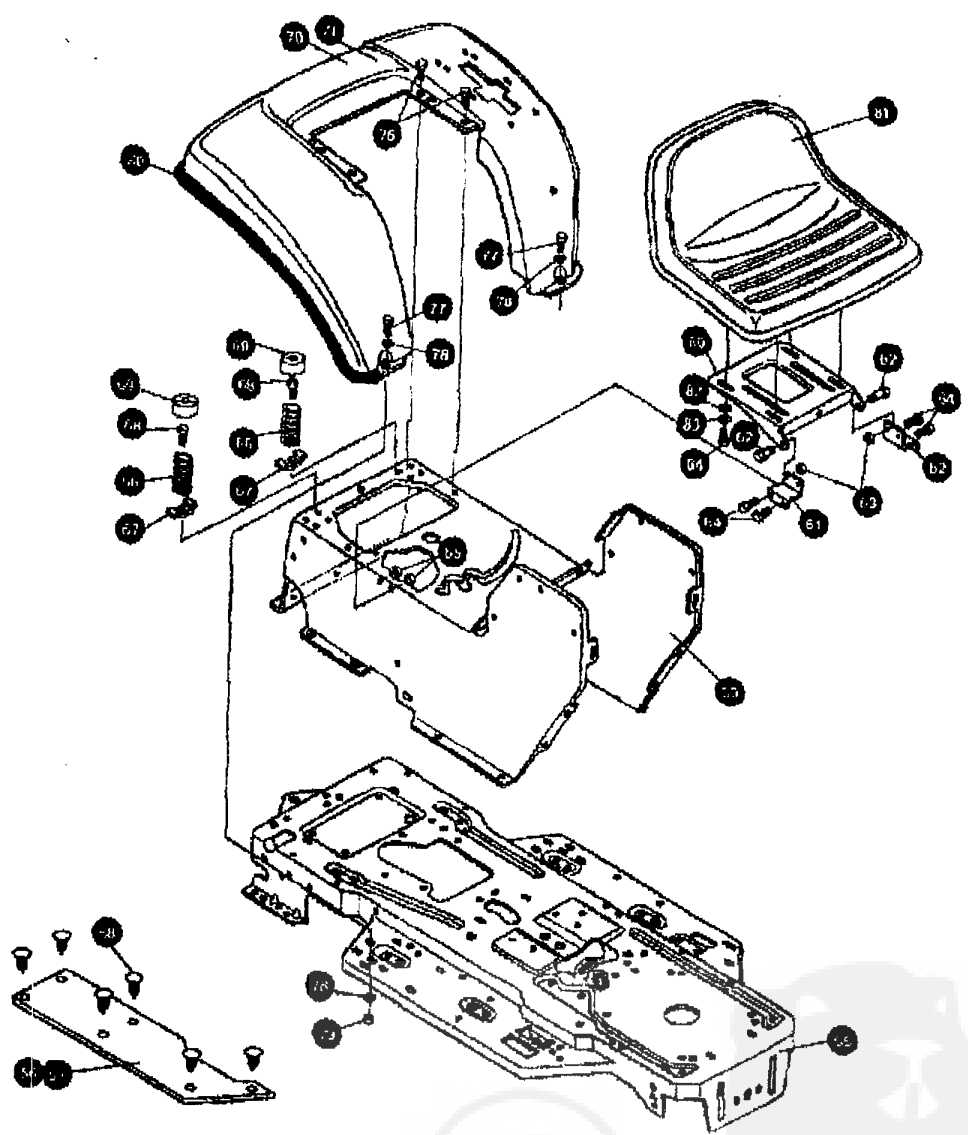


328654A

**Modèle D3560-260**

TRACTEUR TONDEUSE 39" MODELE D3560-260

ENSEMBLE CHASSIS & CAPOT (ARRIERE)



UTILISEZ DES PIECES D'ORIGINE POUR CONSERVER L'APPLICATION DE LA GARANTIE.

TOUTES LES PIECES NON REFEREES SONT INTERCHANGEABLES AVEC LEURS OPPOSEES.

32585DA

# TRACTEUR TONDEUSE 39" MODELE D3560-260

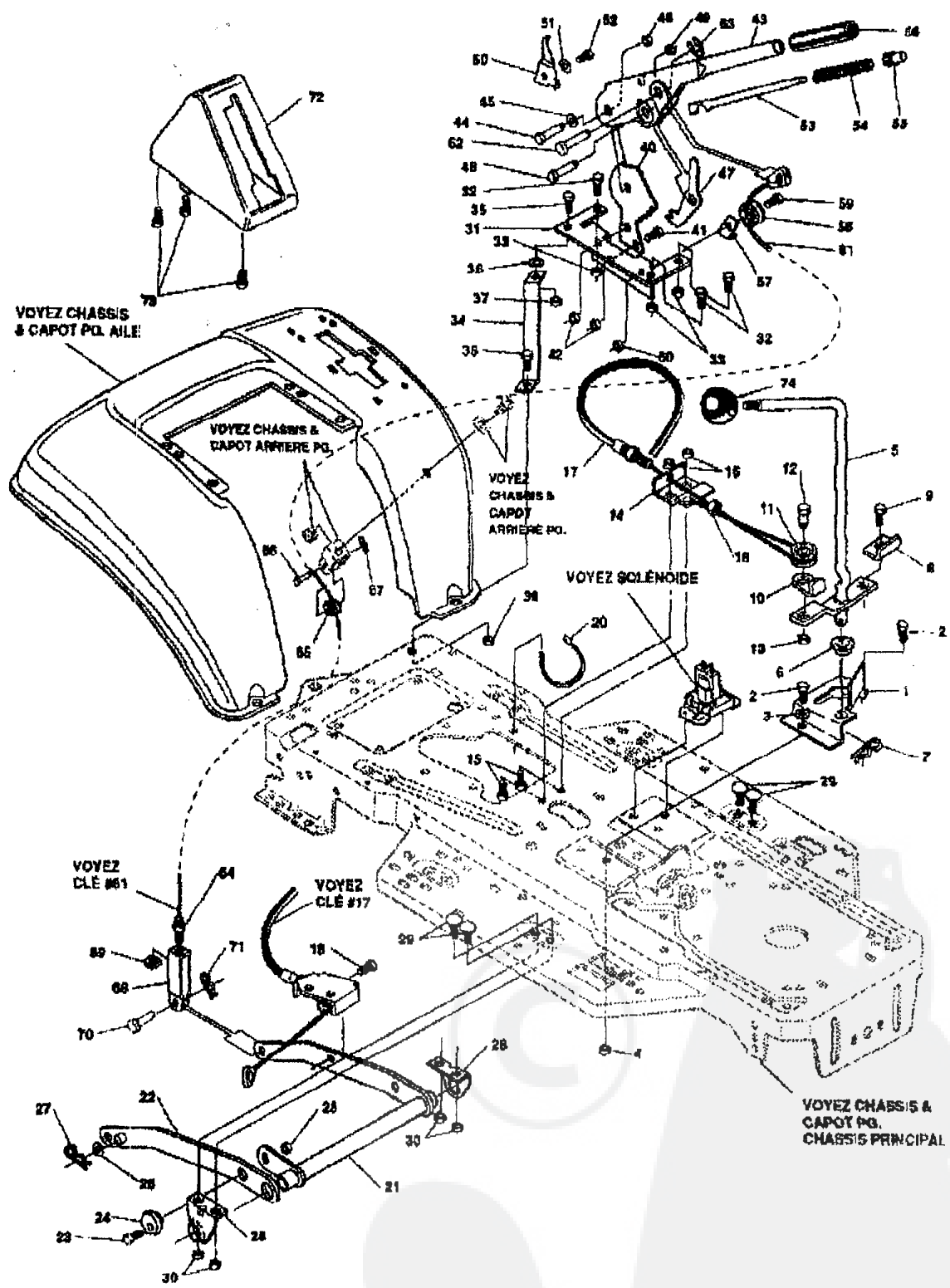
KEY#	PART#	DESCRIPTION	QTY.
55	326577-854	FRAME, LF MAIN 930/4380	1
56	310005	FOOTPAD, LH	1
57	310006	FOOTPAD, RH	1
58	309235	FASTENER RATCHET	12
59	309557-854	CONSOLE TOPSHIFT	1
60	58387-854	PLATE, SEAT	1
61	310660-854	BRACKET, F-5 SEAT SUPPORT	2
62	20507	BOLT, .437 X .188 HSSH 5/16-18	2
63	- 1498	NUT, 5/16-18 REGHEXCTRLK	2
64	- 48901	SCREW, 5/16-18 X .69 HHC	4
65	- 1498	NUT, 5/16-18 REGHEXCTRLK	4
66	57153	SPRING, SEAT 2.83 LG, 1.49 OD	2
67	1341	CLAMP, SPRING 1.17" ID	2
68	- 44811	SCREW, 1/4-20 X .75 HXWATAP	2
69	56907	COVER, SEAT SPRING 1.5 ID X 1.0 LG	2
70	"	FENDER, ASSEMBLY, F-5 SUSP	1
71	58334-896	FENDER F5 SUSP	1
72	9238	CLEVIS	1
73	439455	SCREW, 5/16-18 X .56 PHPNMA	1
74	301551	WASHER, .344 ID X 1.50 OD X .09	1
75	120573	NUT, 5/16-18 SQ.	1
76	- 995245	SCREW, 1/4-20 X .60 WAHHTAP	4
77	- 122017	SCREW, 5/16-18 X 1.00 HHC	2
78	- 446363	WASHER, FLAT .375 X .88 X .082	4
79	- 1498	NUT, 5/16-18 REGHEXCTRLK	2
80	55023	TRIM, STRIP, BLACK	77.5"
81	304818	SEAT GENERIC	1
82	120393	WASHER FLAT, .344 X .69 X .065	4
83	120638	WASHER HVSPTLK .328 X .60 X .09	4
84	122007	SCREW 5/16-18 X .75 HHC	4

\* INDICATES STANDARD HARDWARE ITEMS

\* ORDER INDIVIDUALPARTS.

# TRACTEUR TONDEUSE 39" MODELE D3560-260

## ENSEMBLE SUSPENSION TONDEUSE



UTILISEZ DES PIÈCES D'ORIGINE POUR CONSERVER L'APPLICATION DE LA GARANTIE.

TOUTES LES PIÈCES NON RÉFÉRÉES SONT INTERCHANGEABLES AVEC LEURS OPPOSÉS.

325614B

**TRACTEUR TONDEUSE 39" MODELE D3560-260**

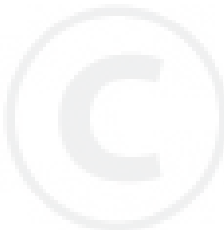
KEY#	PART#	DESCRIPTION	QTY.
1	320075-853	BRACKET, CLUT-ENGAGE LEVER	1
2	• 180079	SCREW, 5/16-18 X 1.00 HHC	2
3	120393	WASHER, FLAT .344 X .68 X .065	2
4	• 1498	NUT, 5/16-18 REGHEXCTRLK	2
5	304791	ASSEMBLY, CLUTCH LEVER	1
6	53148	BEARING, FLANGE .503 ID X .828 OD	1
7	8260	PIN, HAIR .091 DIA X 1.66 LG	1
8	318341	BRACKET, SWITCH ENGAGE	1
9	• 35498	SCREW, 5/16-18 X .75 WAHTAP	1
10	318341	BRACKET, CABLE RETAINER	1
11	48305	PULLEY, .906 X .305 PM	1
12	58336	BOLT, .375 X .375 HSSH 1/4-20	1
13	• 1502	NUT, 1/4-20 REGHEXCTRLK	1
14	300698-853	BRACKET, FRAME CABLE	1
15	• 180020	SCREW, 1/4-20 X .75 HHC	2
16	• 1502	NUT, 1/4-20 REGHEXCTRLK	2
17	301503	ASSEMBLY, CABLE, BLADE ENGAGE	1
18	• 120613	NUT, 1/4-28 HJAM	1
19	• 35498	SCREW, 5/16-18 X .75 WAHTAP	1
20	57444	TIE, CABLE BLACK NYLON	1
21	300158-853	ASSEMBLY, REAR LIFT	1
22	300169-853	ASSEMBLY, LINK, RIGHT SIDE	1
23	• 180079	SCREW, 5/16-18 X 1.00 HHC	1
24	58247	ADJUSTING NUT	1
25	• 1498	NUT, 5/16-18 REGHEXCTRLK	1
26	417098	WASHER, FLAT .591 X 1.08 X .095	2
27	8260	PIN, HAIR .091 DIA X 1.66 LG	2
28	58248-853	BRACKET, REAR, HANG, BUSH	2
29	126211	BOLT, 5/16-18 X .53 CARRIAGE	4
30	• 1498	NUT, 5/16-18 REGHEXCTRLK	4
31	313928	BRACKET, HEIGHT/ADJUST SUPPORT	1
32	• 180077	SCREW, 5/16-18 X .75 HHC	3
33	• 1498	NUT, 5/16-18 REGHEXCTRLK	3
34	300336-854	BRACE, FENDER F-5 SUS	1
35	• 180079	SCREW, 5/16-18 X 1.00 HHC	1
36	45802	WASHER, FLAT .383 X .87 X .119	1
37	• 1498	NUT, 5/16-18 REGHEXCTRLK	1
38	• 180079	SCREW, 5/16-18 X 1.00 HHC	1
39	• 1498	NUT, 5/16-18 REGHEXCTRLK	1
40	301238	QUADRANT, HEIGHT ADJUST	1
41	• 180077	SCREW, 5/16-18 X .75 HHC	2
42	• 1498	NUT, 5/16-18 REGHEXCTRLK	2
43	322292-853	HANDLE, LIFT SHORT BLK	1
44	300171	BOLT, .500 X .270 HSSH 5/16-18	1
45	998418	WASHER, FLAT .506 X .76 X .024	1
46	• 44108	NUT, 5/16-18 HWDFLCTRLK	1
47	301239	PAWL, HEIGHT ADJUST	1
48	300171	BOLT, .500 X .270 HSSH 5/16-18	1
49	• 44108	NUT, 5/16-18 HWDFLCTRLK	1
50	9435	POINTER Z-PL	1
51	138479	WASHER, EXLK .195 X .41 X .03	1
52	• 35287	SCREW, #8-32 X .38 HHWAT	1
53	303027	ROD, ACTUATOR-SHORT	1
54	58326	SPRING, HEIGHT ADJUST	1
55	58325	KNOB, HEIGHT ADJUST PUSH BUTTON	1
56	58329	GRIP, .760 OD W/ HOLE	1
57	9148	BRACKET, CABLE RETAIN	1
58	48306	PULLEY, .906 X .305 NYLON	1
59	58336	BOLT, .375 X .375 HSSH 1/4-20	1
60	• 1502	NUT, 1/4-20 REGHEXCTRLK	1
61	325007	CABLE, LIFT 21.70 F-5 20 X 8-8	1
62	300310	PIN, CLEVIS .310 DIA+.475 LG	1
63	300311	RING, RET E .31X.24	1
64	• 120375	NUT, 1/4-20 REGHEX	1
65	48306	PULLEY, .906 X .305 NYLON	1
66	300317	PIN, CLEVIS .38 DIA X 1.00 LG	1
67	8260	PIN, HAIR .091 DIA X 1.66 LG	1
69	9405	CLEVIS, LIFT CABLE	1
69	• 120372	NUT, 1/4-20 REGSQ	1
70	38522	PIN, CLEVIS .312 X .812	1
71	121222	PIN, COTTER .090/.088 X .75 LG	1
72	300335	LIFT COVER-39" F5	1
73	• 300340	SCREW, #10 X .75 HHPLAST	3
74	55514	KNOB, ROUND 1.50 DIA BLACK	1

• INDICATES STANDARD HARDWARE ITEMS.

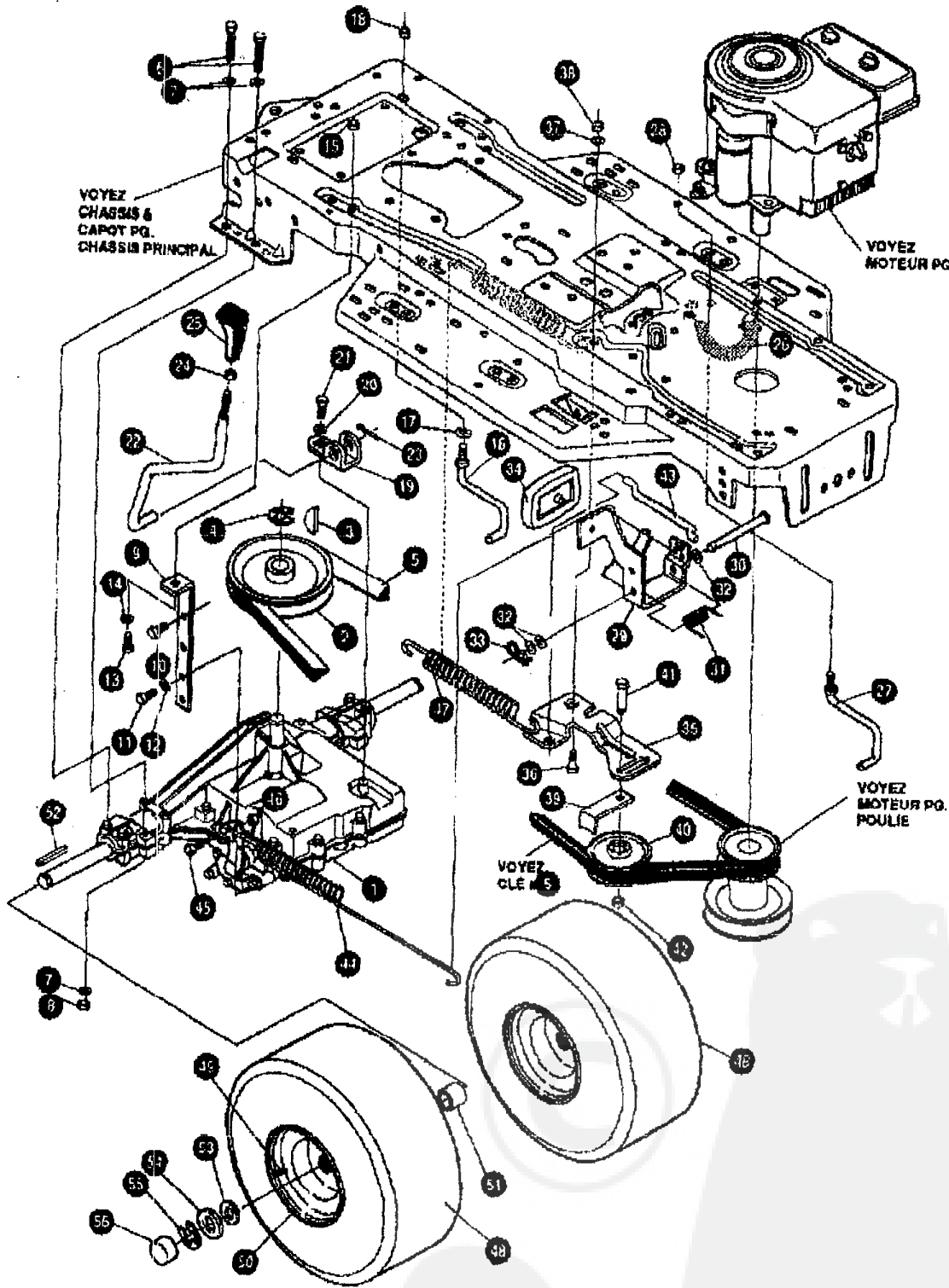
# TRACTEUR TONDEUSE 39" MODELE D3560-260

KEY#	PART#	DESCRIPTION	QTY.
1	A	ASSEMBLY, AXLE FRONT	1
2	300272-854	AXLE, FRONT	1
3	53973-854	AXLE COVER	2
4	52407	SPINDLE, BEARING	4
5	302828	SPINDLE, RH	1
6	315886	SPINDLE, LH	1
7	36625	RING, RETEX .57 X .05 TRU 5133-75	2
8	304590	TIE ROD ASSEMBLY 19.81 LG	1
9	* 180128	SCREW, 3/8-16 X 1.75 HHC	2
10	120382	WASHER, REGSPTLK .393 X .68 X .10	2
11	* 120377	NUT, 3/8-16 REGHEX	2
12	58289	SECTOR, STEERING LF	1
13	52406	BEARING, FLANGE ECC.610 IDX .998 OD X .58	1
14	* 180177	SCREW, 1/2-13 X 1.50 HHC	1
15	22265	WASHER, FLAT .615 X 1.39 X .119	2
18	* 1500	NUT, 1/2-13 REGHCTRLK	1
17	311100	DRAGLINK ASSEMBLY	1
17A	58291	STEERING LINK	1
18	* 124925	NUT, 3/8-24 REGHEXJAM	2
19	57158	BALL JOINT, 3/8 THD SHORT STUD	1
20	21275	BALL JOINT, 3/8 THD LONG STUD	1
21	* 46592	NUT, 3/8-24 WDFLHLK	1
22	120388	WASHER, FLAT .531 X 1.08 X .095	2
23	120382	WASHER, REGSPTLK .393 X .68 X .10	1
24	* 120389	NUT, 3/8-24 REGHEX	1
25	58243	SHAFT, STEERING LF	1
26	58244	PINION, STEERING LF	1
27	58274	PIN, DOWEL .2500 OD+.175	1
28	301410	BEARING, FLANGE .752 ID X 1.081 OD X .24	1
29	301398	WASHER, FORMED 1.135 X 1.39 X .12	1
30	21682	WASHER, FLAT .765 X 1.25 X .042	1
31	36625	RING, RETEX .57 X .05 TRU 5133-75	1
32	316702	TIRE & RIM, PU 15 X 6.0 X 6	2
33	24167	VALVE STEM	1
34	38829	WHEEL W/BRG.	1
35	39979	BEARING, FLANGE 1.38 OD+.753 ID	1
36	642	WASHER, FLAT .755 X 1.31 X .075	4
37	36625	RING, RETEX .57 X .05 TRU 5133-75	2
38	40394	CAP, 1.500ID X 7/8LG HUB	2

\* INDICATES STANDARD HARDWARE ITEMS.  
 \* ORDER INDIVIDUAL PARTS.



# TRANSMISSION



UTILISEZ DES PIECES D'ORIGINE POUR CONSERVER L'APPLICATION DE LA GARANTIE.

TOUTES LES PIECES NON REFEREES SONT INTERCHANGEABLES AVEC LEURS OPPOSEES.

328261A

# TRACTEUR TONDEUSE 39" MODELE D3560-260

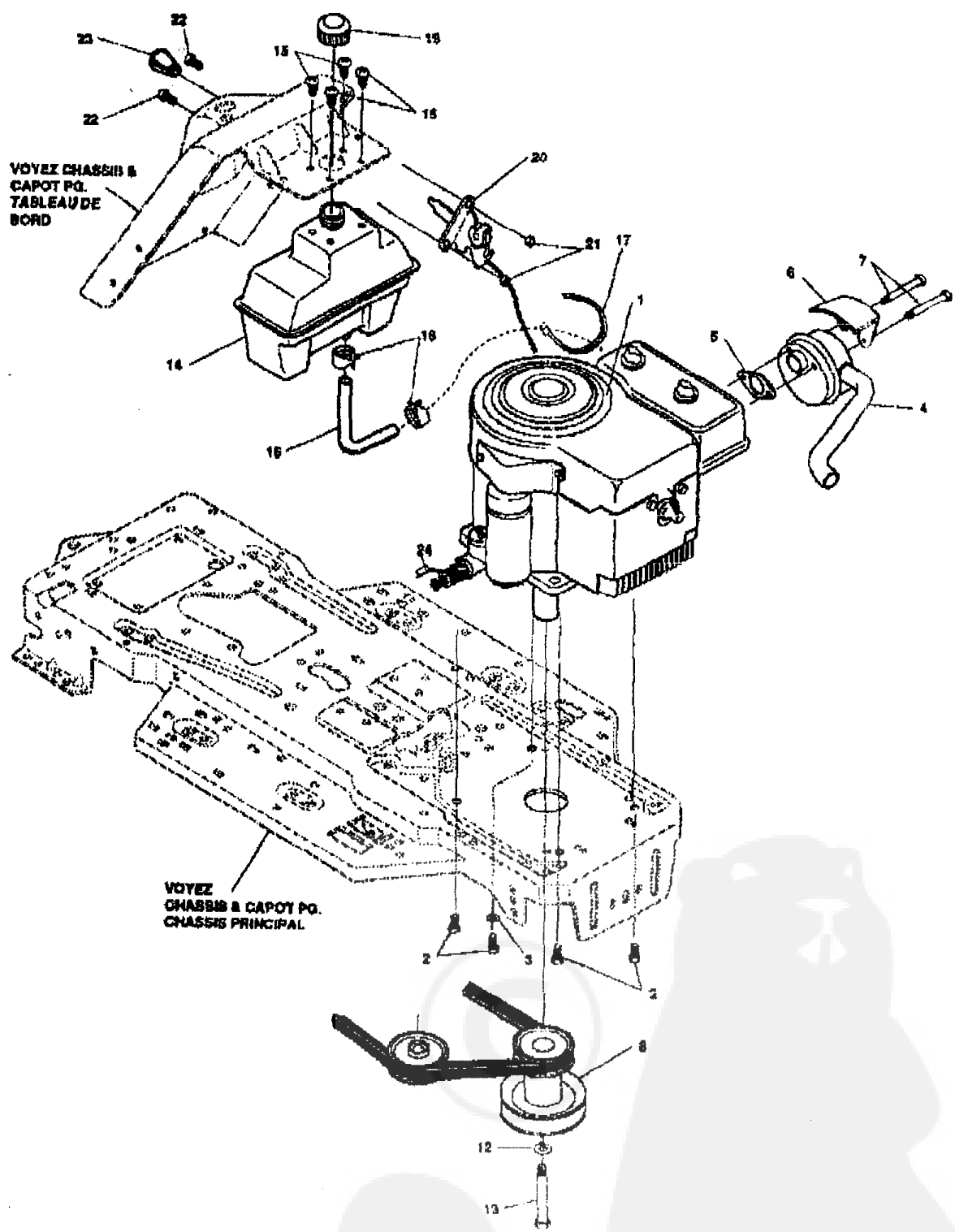
KEY#	PART#	DESCRIPTION	QTY.
1	^	TRANSAXLE FOOTE 4360-S 2WS	1
2	302745	PULLEY, V 4L 8.60 DD	1
3	3021	KEY, WDRF 608 .750 X .187 X .312	1
4	22053	RING, RETEX .58 X .04 TRU 5100-62	1
5	314120	BELT, V 4L 84.75	1
6	180112	SCREW, 5/16-18 X 2.75 HHC GR5	4
7	120393	WASHER, FLAT .344 X .69 X .065	8
8	1498	NUT, 5/16-18 REGHEXCTRLK	4
9	323471	BRACKET, STABILIZER	1
10	60947	SCREW, 3/8-16 X 1.25 WAHTAP	1
11	35498	SCREW, 5/16-18 X .76 WAHTAP	1
12	120638	WASHER, HVSFTLK .328 X .60 X .09	1
13	122017	SCREW, 5/16-18 X 1.00 HHC GR2	1
14	120393	WASHER, FLAT .344 X .69 X .065	1
15	1498	NUT, 5/16-18 REGHEXCTRLK	1
16	57259	GUIDE, BELT 5/16-18 THD	1
17	138638	WASHER, REGINTLK .320 X .61 X .03	1
18	1498	NUT, 5/16-18 REGHEXCTRLK	1
19	67480	BRACKET, SHIFT P920-5/F4360-583	1
20	57157	WASHER, .750 X .250 SP-TRANSAXLE	1
21	56256	SCREW, 1/4-28 X .75 NYLHHC GR8	1
22	302743	LEVER, SHIFT FOOT 4360-586 LF	1
23	137185	PIN, COTTER .125 DIA X 1.00 LG	1
24	120238	NUT, 1/2-13 HEXJAM	1
25	304436	KNOB, SHIFT NOMA 1/2-13	1
26	321514	SPRING BIAS DRAGLINK	1
27	304015	GUIDE, BELT	1
28	1498	NUT, 5/16-18 REGHEXCTRLK	1
29	325942	PEDAL ASSEMBLY, BRAKE/CLUTCH LF	1
30	319675	PIN, CLEVIS	1
31	57847	SPRING, BRAKE PEDAL	1
32	2968	WASHER, FLAT .504 X .75 X .059	3
33	56180	PIN HAIR	1
34	48160	PAD, CLUTCH BRAKE W/PRIINTING	1
35	320381-853	ARM, IDLER TRACTION DR. LF	1
36	300793	BOLT, .625 X .135 HHSH 5/16-18	1
37	45902	WASHER, FLAT .333 X .87 X .119	1
38	1498	NUT, 5/16-18 REGHEXCTRLK	1
39	39659	RETAINER, BELT	1
40	35374	PULLEY, IDLER V4L 3.08X .82	1
41	45892	BOLT, 3/8-16 X 1.50 CARRIAGE GR2	1
42	1498	NUT, 3/8-16 REGHXCTRLK	1
43	57204	ROD, CLUTCH	1
44	325937	SPRING BRAKE	1
45	326131	BOLT, .437 X .156 HHSH 5/16-18	1
46	1498	NUT, 5/16-18 REGHEXCTRLK	1
47	56359	SPRING, CLUTCH .113 X .750 X 8.75	1
48	319684	TIRE & RIM, PU 20 X 8.00-8GENERIC	2
49	24167	VALVE STEM	1
50	57165	WHEEL 20 X 8.00 WHITE .75 DIAHUB	1
51	57479	SPACER, .75 X 1.25 X 1.92	2
52	52928	KEY, SQUARE .187 SQ X 2.25 LG	2
53	642	WASHER, FLAT .755 X 1.31 X .075	4
54	42819	WASHER, FLAT .755 X 1.63 X .07	2
55	36625	RING, RETEX .67 X .05 TRU 5133-75	2
56	40384	CAP, 1.500 ID X 7/8LG HUB	2

\* INDICATES STANDARD HARDWARE ITEMS.

^ CONTACT YOUR NEAREST FOOTE TRANSAXLE DEALER FOR PARTS & SERVICE.



# MOTEUR ENSEMBLE



VOYEZ CHASSIS & CAPOT PG. TABLEAU DE BORD

VOYEZ CHASSIS & CAPOT PG. CHASSIS PRINCIPAL

UTILISEZ DES PIECES D'ORIGINE POUR CONSERVER L'APPLICATION DE LA GARANTIE.

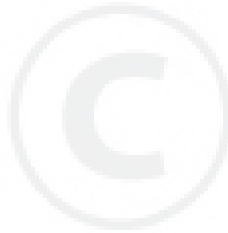
TOUTES LES PIECES NON REFEREES SONT INTERCHANGEABLES AVEC LEURS OPPOSEES.

326215B

TRACTEUR TONDEUSE 39" MODELE D3560-260

KEY#	PART#	DESCRIPTION	QTY.
1	ENGINE	12-12.6 HP B&S 1/2 (SEE ENGINE MANUAL)	1
2	50947	SCREW, 3/8-16 X 1.25 WASH-TAP	4
3	138489	WASHER, EXLK .384 X .69 X .04	1
4	305367	MUFFLER-LO TONE NELSON EXPORT	1
5	48708	GASKET, MUFFLER	1
6	54767	SHIELD, HEAT, FOR ROUND MUFFLER	1
7	• 173063	SCREW, 5/16-18 X 3.50 HHC	2
8	328027	PULLEY ASSEMBLY, 4.75 OFFS 6.6 DIA 39"	1
12	• 120383	WASHER, REGSPTLK .459 X .78 X .12	1
13	428644	SCREW, 7/16-20 X 5.00 HHC	1
14	314989	TANK, FUEL 1 GAL	1
15	48050	SCREW, 1/4-10 X .76 PHNTAP	4
16	57876	GAS LINE, .28ID BULK LENGTH	13'
17	57444	WIRE TIE	1
18	47345	CLAMP, FUEL LINE	2
19	48704	GAS CAP, 1-1/2-7 THD	1
20	58634	CONTROL, THROTTLE	1
21	• 35291	SCREW, 10-24 X .50 SLHMA	2
22	• 271166	NUT, #10-24 HEXKEPS	2
23	50907	KNOB, ROUND THROTTLE	1
24	325547	OIL DRAIN ITW	1

• INDICATES STANDARD HARDWARE ITEMS.



13:14 NO.007 P.15

MHT 05 00

# TRACTEUR TONDEUSE 39" MODELE D3560-260

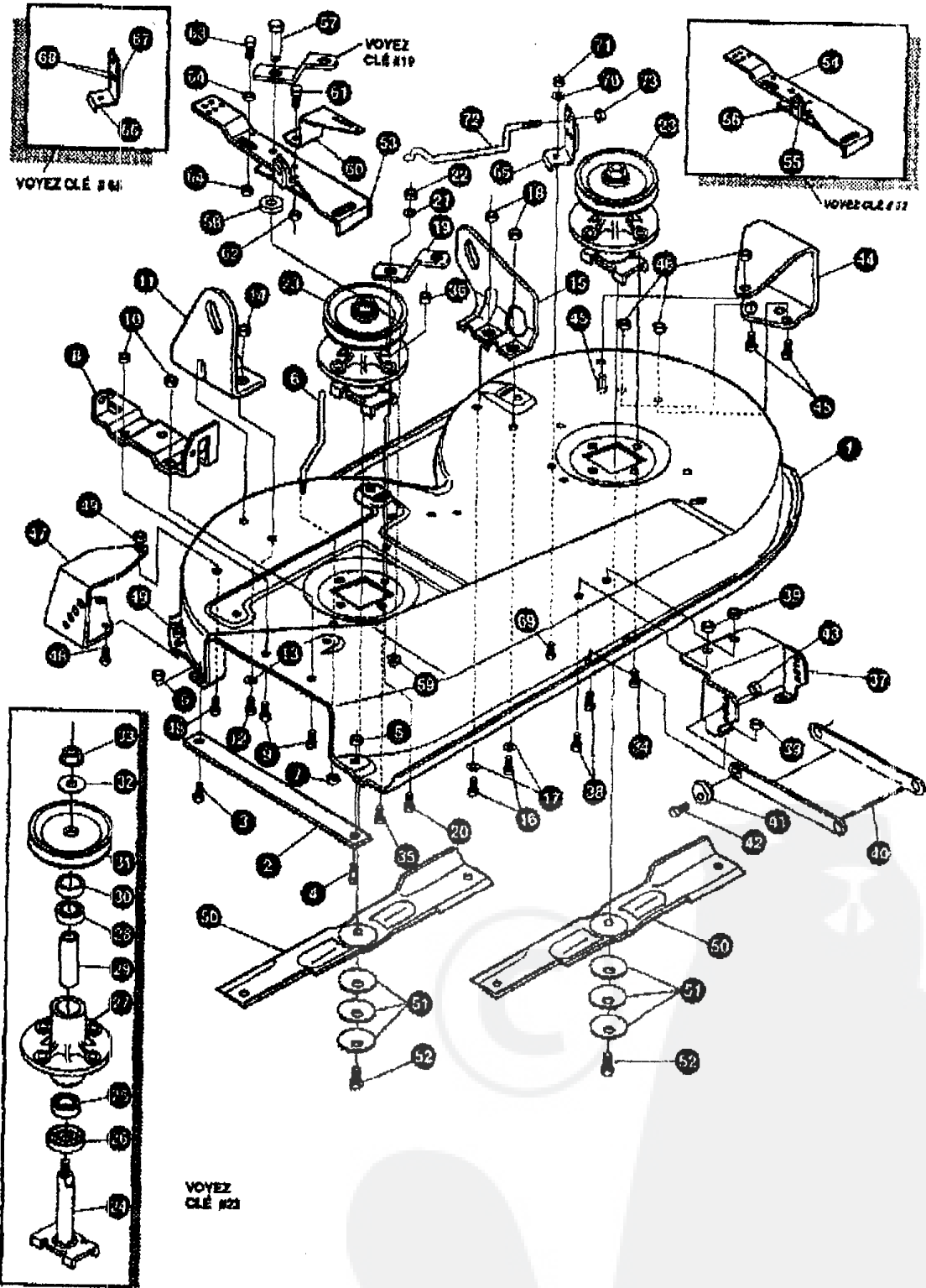
KEY#	PART#	DESCRIPTION	QTY.
1	ENGINE	12-12.6 HP B&S I/C (SEE ENGINE MANUAL)	1
2	60947	SCREW, 3/8-16 X 1.25 WAHHTAP	1
3	138489	WASHER, EXLK .384 X .69 X .04	1
4	305367	MUFFLER-LO TONE NELSON EXPORT	1
5	46708	GASKET, MUFFLER	1
6	54767	SHIELD, HEAT, FOR ROUND MUFFLER	1
7	173053	SCREW, 5/16-18 X 3.50 HHC	2
8	323027	PULLEY ASSEMBLY, 4 76OFFS 5.6 DIA 99°	1
12	120383	WASHER, REGSPTLK .459 X .78 X .12	1
13	429644	SCREW, 7/16-20 X 5.00 HHC	1
14	314889	TANK, FUEL 1 GAL	1
16	49080	SCREW, 1/4-10 X .75 PHNTAP	4
18	57876	GAS LINE, 28ID BULK LENGTH	19'
17	57444	WIRE TIE	1
18	47346	CLAMP, FUEL LINE	2
19	48704	GAS CAP, 1-1/2-7 THD	1
20	58634	CONTROL, THROTTLE	1
21	38291	SCREW, 10-24 X .50 SLHMA	2
22	271166	NUT, #10-24 HEXKEPS	2
23	50907	KNOB, ROUND THROTTLE	1
24	325647	OIL DRAIN ITW	1

\* INDICATES STANDARD HARDWARE ITEMS.



TRACTEUR TONDEUSE 39" MODELE D3560-260

CARTER DE TONDEUSE



UTILISEZ DES PIÈCES D'ORIGINE POUR CONSERVER L'APPLICATION DE LA GARANTIE.

TOUTES LES PIÈCES NON RÉFÉRÉES SONT INTERCHANGEABLES AVEC LEURS OPPOSÉS.

3241310

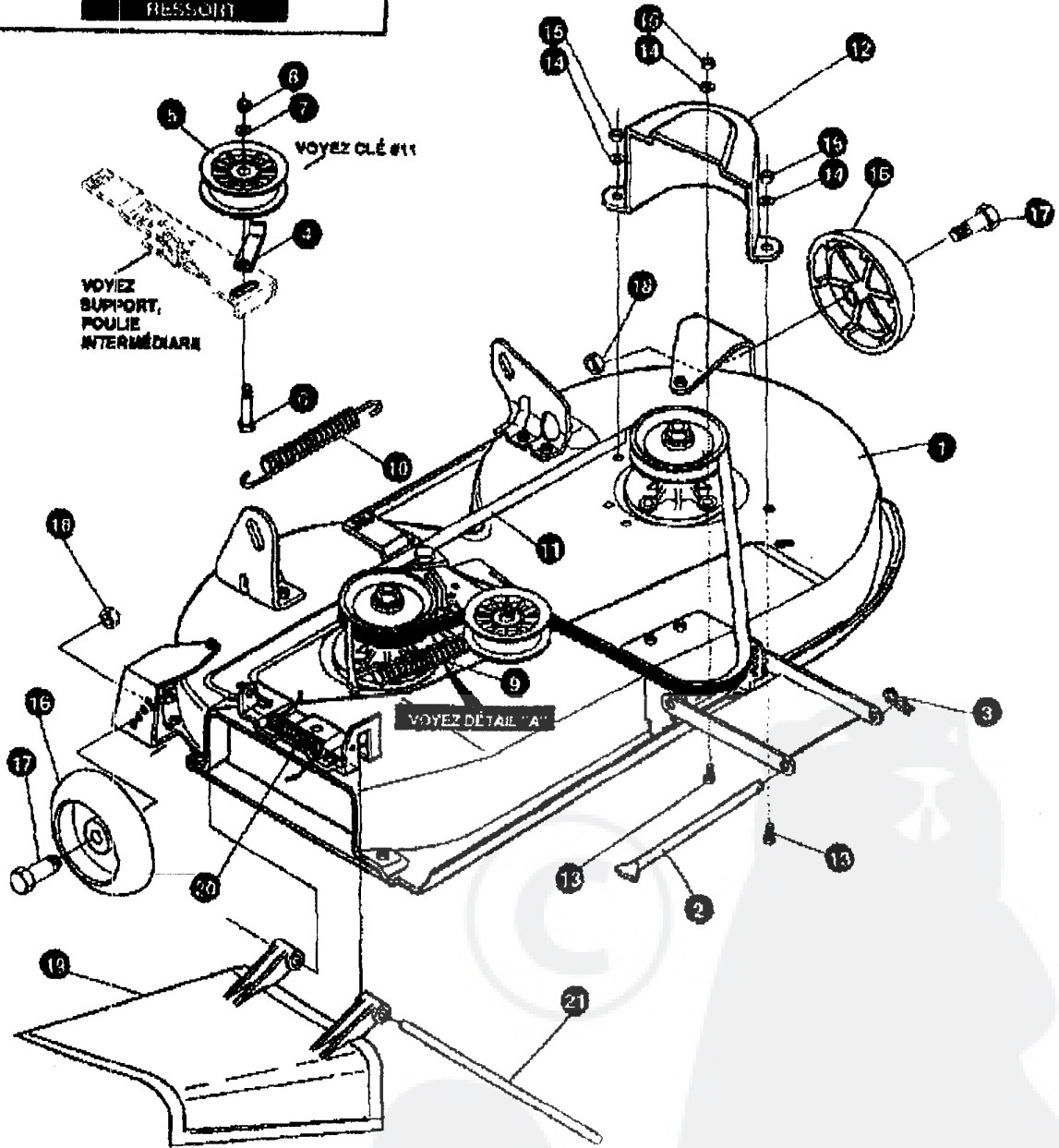
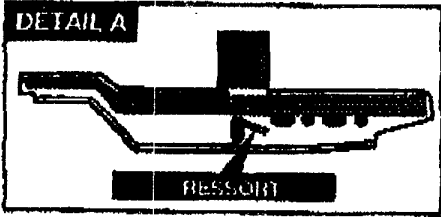
# TRACTEUR TONDEUSE 39" MODELE D3560-260

KEY#	PART#	DESCRIPTION	QTY.
1	325106-853	DECK, 39"SD MOWER	1
2	326296-853	BAR, SKID	1
3	126216	BOLT, 5/16-18 X .75 CARRIAGE	1
4	126358	BOLT, 5/16-18 X 1.00 CARRIAGE	1
5	• 1498	NUT, 5/16-18 REGHEXCTRLK	2
6	57318	GUIDE, BELT 5/16-18 THD	1
7	• 1498	NUT, 5/16-18 REGHEXCTRLK	1
8	313928	BRACKET, CHUTE	1
9	• 120894	SCREW, 5/16-18 X .50 HHC	2
10	• 1498	NUT, 5/16-18 REGHEXCTRLK	2
11	313928	LIFT BRACKET, REAR, RH	1
12	• 180077	SCREW, 5/16-18 X .75 HHC	2
13	120393	WASHER, FLAT .344 X .69 X .065	2
14	• 1498	NUT, 5/16-18 REGHEXCTRLK	2
15	310667	BRACKET, DECK LIFTREAR LH	1
16	• 180077	SCREW, 5/16-18 X .75 HHC	2
17	120393	WASHER, FLAT .344 X .69 X .065	2
18	• 1498	NUT, 5/16-18 REGHEXCTRLK	2
19	315302-853	BRACKET, IDLER SUPPORT	1
20	• 300345	SCREW, 5/16-18 X 1.38 WATAP	1
21	120393	WASHER, FLAT .344 X .69 X .065	1
22	• 1498	NUT, 5/16-18 REGHEXCTRLK	1
23	56424-853	QUILL ASSEMBLY, 36/39/40/43	2
24	56425	SHAFT/SAODLE 38"	1
25	49562	BEARING, BALL	1
26	50616	DUST SHIELD	1
27	55547	QUILL CASTING	1
28	49562	BEARING, BALL	1
29	50818	SPACER, 3.787 LG X .669 ID X .88 OD	1
30	51449	SPACER, .438 LG X .932 ODK .572 ID-PM	1
31	313998	PULLEY, 25/36" QUILL	1
32	56365	SPECIAL WASHER	1
33	• 1282	NUT, 7/16-20 WDFLLK	1
34	• 50634	SCREW, 5/16-18 X .88 WAHTAP	6
35	• 300345	SCREW, 5/16-18 X 1.38 WATAP	1
36	• 1498	NUT, 5/16-18 REGHEXCTRLK	1
37	312526	LIFT SUPPORT FRONT DECK	1
38	• 180075	SCREW, 5/16-18 X .63 HHC	4
39	• 1498	NUT, 5/16-18 REGHEXCTRLK	4
40	58305-853	LINK BRACKET, DECK FR	1
41	58247	ADJUSTING NUT	2
42	• 122017	SCREW, 5/16-18 X 1.00 HHC	2
43	• 1498	NUT, 5/16-18 REGHEXCTRLK	2
44	312477	WHEEL BRACKET, LH	1
45	• 180075	SCREW, 5/16-18 X .69 HHC	3
46	• 1498	NUT, 5/16-18 REGHEXCTRLK	3
47	300102-853	WHEEL BRACKET, RH	1
48	• 180075	SCREW, 5/16-18 X .63 HHC	3
49	• 1498	NUT, 5/16-18 REGHEXCTRLK	3
50	306932	BLADE, 19.69 HI-LIFT	2
51	2483	WASHER, .39 ID X 1.26 D X .07 BELLVIL	6
52	• 39573	SCREW, 3/8-24 X 1.00 NYLHHC	2
53	320565-853	IDLER ARM ASSEMBLY	1
54	300490-853	IDLER ARM	1
55	306973	BRAKE PAD	1
56	41801	RIVET, TRSET .187 DIA X .50 LG	2
57	300180	BOLT, .50 X .188 HNSH3/8-16	1
58	986416	WASHER, FLAT .391 X 1.00 X .125	1
59	45171	NUT, 5/16-18 X .76 HHC WHIZ-LOCK	1
60	300700-853	BRACKET EXTENSION IDLER	1
61	180077	SCREW, 5/16-18 X .75 HHC	1
62	1498	NUT, 5/16-18 REGHEXCTRLK	1
63	121954	SCREW, 1/4-20 X 2.00 HHC	1
64	271172	NUT, 1/4-20 REGHEXKEPS	2
65	303247-853	ASSEMBLY BLADE BRAKE	1
66	303246	BRAKE ARM	1
67	306973	BRAKE PAD	1
68	135624	RIVET, TRSET .185 D A X .41	2
69	180075	SCREW, 5/16-18 X .63 HHC	1
70	120393	WASHER, FLAT .344 X .69 X .65	1
71	1498	NUT, 5/16-18 REGHEXCTRLK	1
72	915306	ROD, BRAKE	1
73	1502	NUT, 1/4-20 REGHEXCTRLK	1

• INDICATES STANDARD HARDWARE ITEMS

TRACTEUR TONDEUSE 39" MODELE D3560-260

CARTER DE TONDEUSE



UTILISEZ DES PIÈCES D'ORIGINE POUR CONSERVER L'APPLICATION DE LA GARANTIE.

TOUTES LES PIÈCES NON RÉFÉRÉES SONT INTERCHANGEABLES AVEC LEURS OPPOSÉS.

324130D

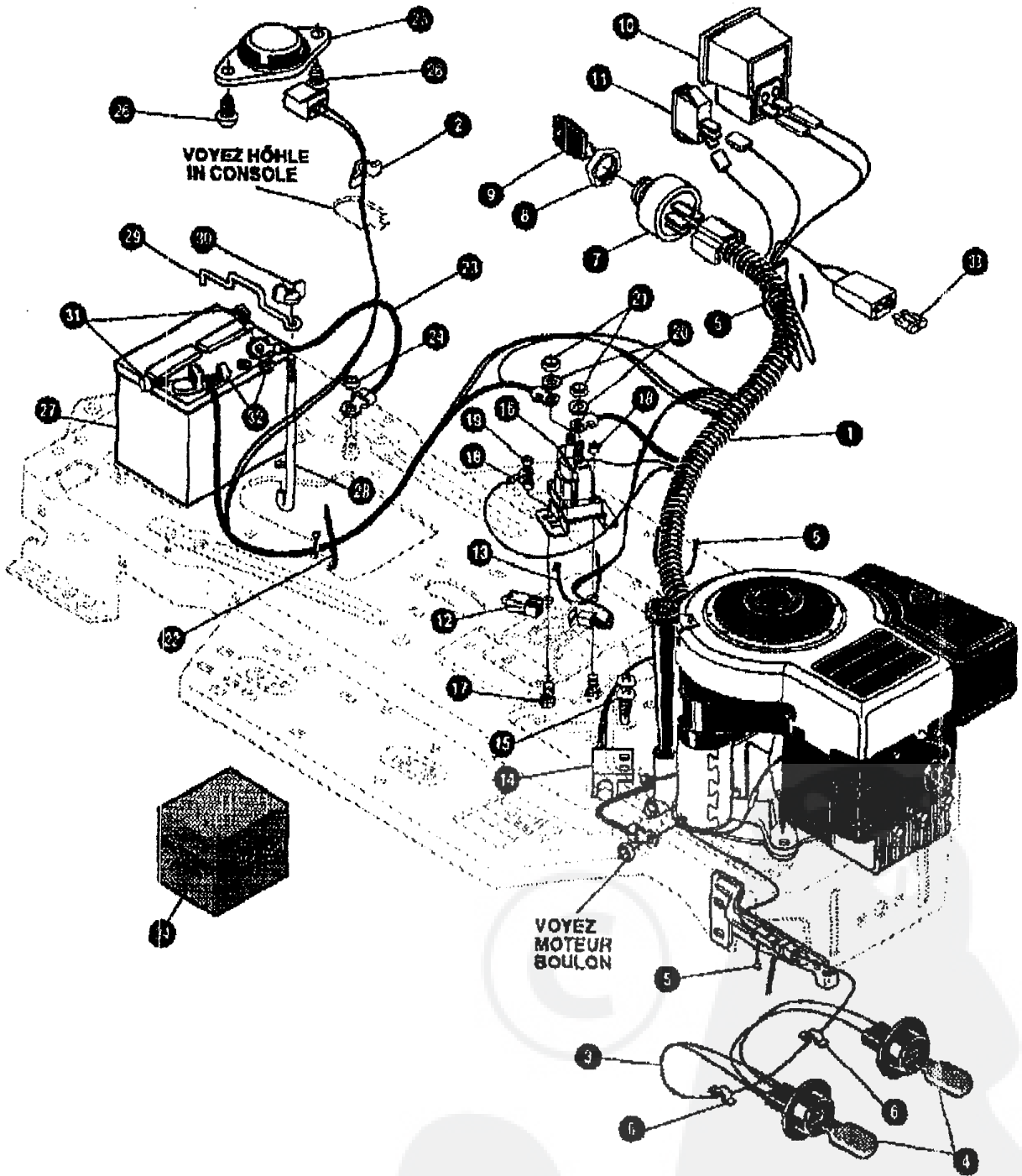
**TRACTEUR TONDEUSE 39" MODELE D3560-260**

KEY#	PART#	DESCRIPTION	QTY.
1	A	ASSEMBLY DECK 39" SUS FOR AIR	1
2	58306	ROD, DECK HITCH	1
3	8280	PIN, HAIR .091 DIA X 1.66	1
4	1346	BELT RETAINER 2.55 OD	1
5	310328	PULLEY, IDLER BFF 4.00	1
6	57326	BOLT, 3/8-16 X 2.00 CARRIAGE	1
7	120362	WASHER, REGSPTLK .393 X .68 X .10	1
8	120377	NUT, 3/8-16 REGHX	1
9	322064	SPRING, .071 X .62 X 4.37	1
10	300473	SPRING, TENSION	1
11	300680	BELT, V 5L 77.75	1
12	302833	GUARD, BELT LH	1
13	180075	SCREW, 5/16-18 X .63 HMC	3
14	120383	WASHER, FLAT .344 X .69 X .065	3
15	1498	NUT, 5/16-18 REGHEXCTRLK	3
16	302611	WHEEL, SD	2
17	23763	BOLT, .500 X 1.380 HHSB 3/8-16	2
18	1499	NUT, 3/8-16 REGHXCTRLK	2
19	57618	CHUTE-36SD, 39SD	1
20	314075	SPRING, TORSION	1
21	67317	PIVOT ROD, CHUTE	1

• INDICATES STANDARD HARDWARE ITEMS.  
 ^ ORDER INDIVIDUAL PARTS.

# TRACTEUR TONDEUSE 39" MODELE D3560-260

## FAISCEAU ELECTRIQUE



UTILISEZ DES PIECES D'ORIGINE POUR CONSERVER L'APPLICATION DE LA GARANTIE.

TOUTES LES PIECES NON REFEREES SONT INTERCHANGEABLES AVEC LEURS OPPOSEES.

326502B



TRACTEUR TONDEUSE 39" MODELE D3560-260

KEY#	PART#	DESCRIPTION	QTY.
1	320085	HARNES 12-12.5 BS, DYN, WRAP, LF	1
2	41482	PRESS, CLIP	1
3	303064	ASSEMBLY, LIGHT WIRE-1/4 TURN	1
4	52572	BULB, HEADLIGHT	2
5	57444	TIE, CABLE	3
6	41482	PRESS, CLIP	2
7	327355	SWITCH-IGNITION	1
8	327352	NUT, 5/8-32 HXHD IGNITION SWITCH	1
9	327340	KEY, IGNITION	1
10	300133	AMMETER	1
11	300334	LIGHT SWITCH ON/OFF PANEL	1
12	320082	SWITCH, DOUBLE POLE	1

