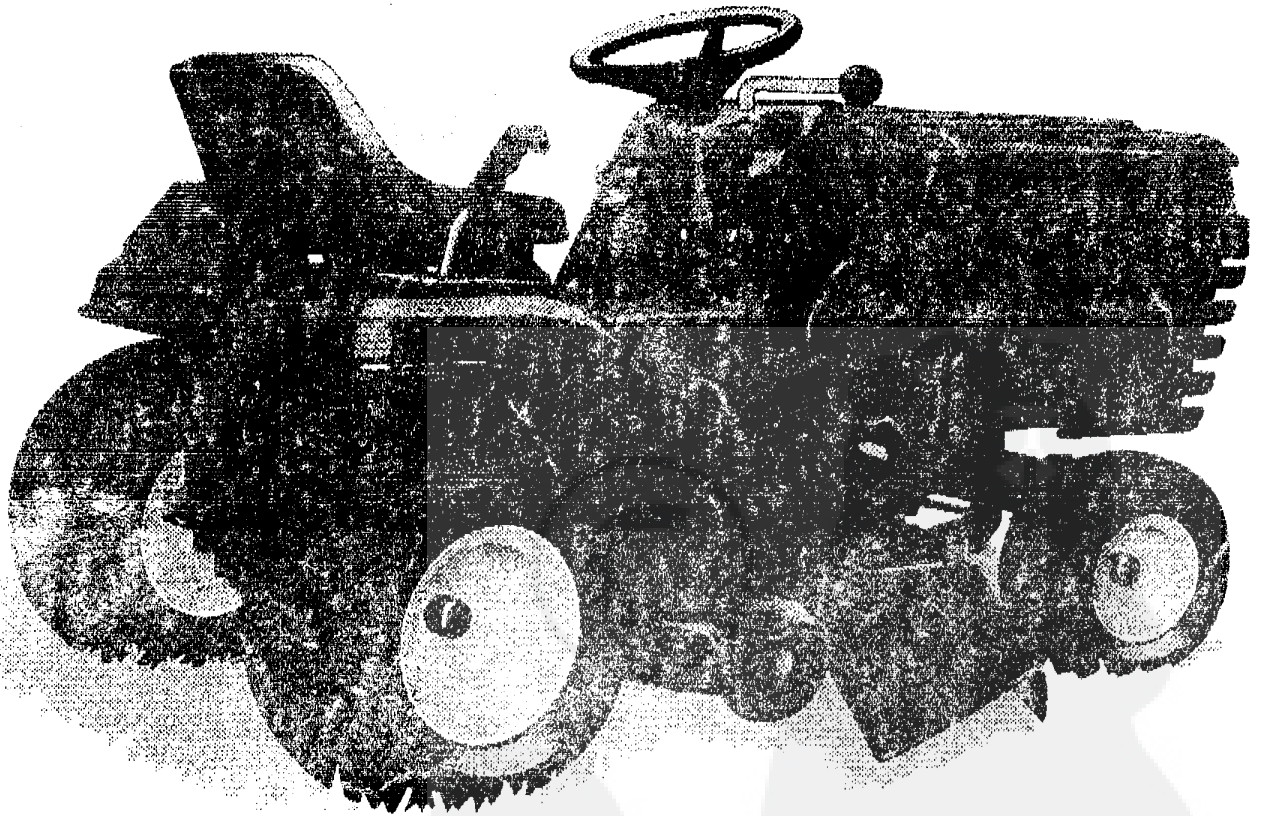


**TONDEUSE AUTOPORTEE**  
**CAST 18**  
**PROPULSION HYDROSTATIQUE**  
**MANUEL PIÈCES DE RECHANGE**

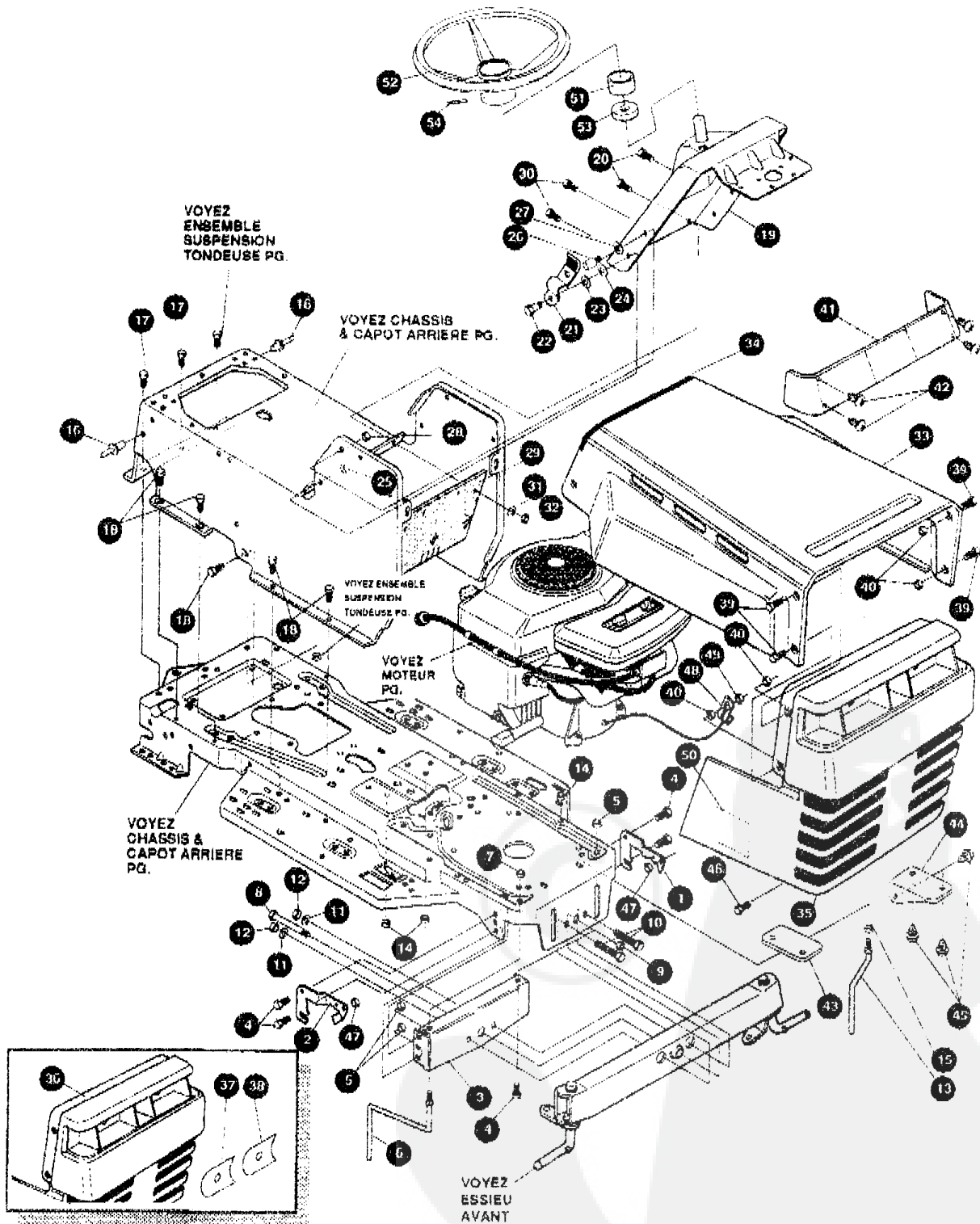


6281270

**Modèle D3560-280**

# TRACTEUR TONDEUSE 43" MODELE D3560-280

## ENSEMBLE CHASSIS & CAPOT (AVANT)



UTILISEZ DES PIECES D'ORIGINE POUR CONSERVER L'APPLICATION DE LA GARANTIE.

TOUTES LES PIECES NON REFEREES SONT INTERCHANGEABLES AVEC LEURS OPPOSEES.

328205A

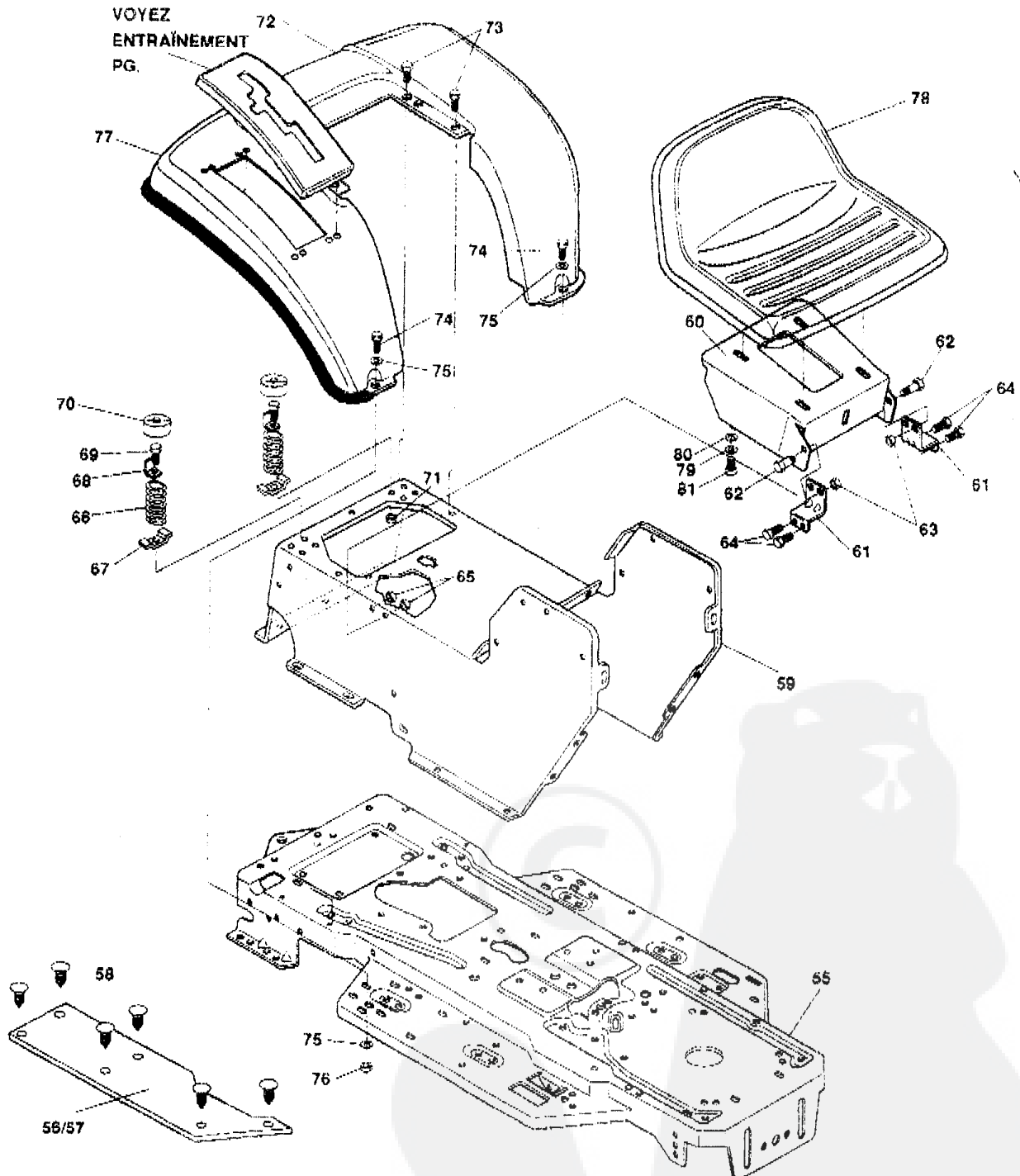
**TRACTEUR TONDEUSE 43" MODELE D3560-280**

KEY#	PART#	DESCRIPTION	QTY.
1	58089-853	BRACKET,GRILLE, L.H.	1
2	58088-853	BRACKET, GRILLE R.H.	1
3	313541-853	BRACKET, FRONT AXLE	1
4	• 56030	SCREW, 5/16-18 X .75WDFLLK	5
5	• 55273	NUT, 5/16-18 HXWDFLLK	5
6	300440	GUIDE, BELT RIDER	1
7	• 1498	NUT, 5/16-18 REGHEXCTRLK	1
8	308207	BOLT, .625 X 2.180 HSH 1/2-13NC	1
9	• 309008	NUT, 1/2-13 REGHCTRLK	1
10	• 122207	SCREW, 3/8-16 X 3.00 HHC	2
11	2483	WASHER, .39 ID X 1.25 D X .07 BELLVIL	2
12	• 1499	NUT, 3/8-16 REGHXCTRLK	2
13	300635	GUIDE, BELT SHORT 16" WHEEL	1
14	• 124824	NUT, 5/16-18 HEXJAM	1
15	• 271190	NUT, 3/8-16 HEXKEPS	1
16	46763	RIVET, POP, 187 DIA X 450 LG ST	3
17	• 35497	SCREW, 5/16-18 X .50 WAHTAP	2
18	• 995346	SCREW, 1/4-20 X .50 WAHTAP	10
19	309447-853	DASH	1
20	• 995346	SCREW, 1/4-20 X .50 WAHTAP	2
21	57159	LATCH, 94 WD X 047 ASSEMBLY HOOD	2
22	8482	BOLT, 375 X .156 HSH 5/16-18	2
23	• 120394	WASHER FLAT 406 X 81 X .065	2
24	• 120393	WASHER FLAT 344 X 69 X .065	2
25	• 1498	NUT, 5/16-18 REGHEXCTRLK	2
26	53446	PIN, 5/16-18 HOOD LATCH	2
27	138538	WASHER, REGINTLK 320 X 61 X .03	2
28	• 45174	NUT, 5/16-18 HEXWDFLLK WHIZ	2
29	312306	BAFFLE CONSOLE	1
30	300314	SCREW, 1/4-20 X .88 WAHTAP	2
31	120392	WASHER, FLAT 281 X 63 X .065	2
32	1502	NUT, 1/4-20 REGHEXCTRLK	2
33	52661-896	HOOD	1
34	56304	EDGING, WIDE	27 5"
35	303055	ASSEMBLY, GRILLE G-12	1
36	303055	GRILLE	1
37	301628	FOIL, REFLECTOR, RH WA GRILL	1
38	301629	FOIL, REFLECTOR, LH WA GRILL	1
39	• 53225	SCREW, 1/4-20 X 1.25 WAHHC	4
40	• 50352	NUT, 1/4-20 WDFLLK TOPLOCK	4
41	302073	LENS, CLEAR W/O TABS NO LOGO	1
42	• 57796	SCREW, #6 X .50 PLASTITE	4
43	301894-853	SUPPORT, GRILLE RH	1
44	301895-853	SUPPORT, GRILLE LH	1
45	• 56021	SCREW, 1/4-14 X .75 SLWATAP	6
46	36149	BOLT, 375 X .500 HSH 5/16-18	2
47	• 1498	NUT, 5/16-18 REGHEXCTRLK	2
48	310748	LANYARD, HOOD	1
49	• 50352	NUT, 1/4-20 WDFLLK TOPLOCK	1
50	301452	FOIL, HEAT REFLECTOR	2
51	311465	COVER STEERING SHAFT	1
52	309393	STEERING WHEEL	1
53	301413	SPACER FOAM	1
54	456378	ROLL PIN	1
55	328727	PARTS MANUAL	1
56	328721	OPERATOR'S MANUAL	1

• INDICATES STANDARD HARDWARE ITEMS

# TRACTEUR TONDEUSE 43" MODELE D35

## ENSEMBLE CHASSIS & CAPOT (ARRIERE)



UTILISEZ DES PIÈCES D'ORIGINE POUR CONSERVER L'APPLICATION DE LA GARANTIE.

TOUTES LES PIÈCES NON RÉFÉRÉES SONT INTERCHANGEABLES AVEC LEURS OPPOSÉS.

325851A

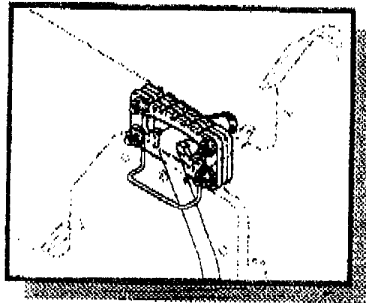
**TRACTEUR TONDEUSE 43" MODELE D3560-280**

KEY#	PART#	DESCRIPTION	QTY.
55	326577-854	FRAME, MAIN LF 930/4360	1
58	314769	FOOTPAD, LH PEDAL LIFT	1
57	310006	FOOTPAD, RH	1
59	309235	FASTENER, RATCHET	12
59	315120-854	CONSOLE, SOF, P-LIFT	1
60	58221-854	PLATE, SEAT F4 & F5 SOG	1
61	53746-854	BRACKET, F-5 SEAT SUPPORT F4 & F5 SOG	2
62	20507	BOLT, .437 X .156 HSH 5/16-18	2
63	• 1498	NUT, 5/16-18 REGHEXCTRLK	2
64	• 48901	SCREW, 5/16-18 X .63 HHC	4
65	• 1498	NUT, 5/16-18 REGHEXCTRLK	4
66	49335	SPRING, SEAT, 250 X 1.75 X 450	2
67	53744	CLAMP, SPRING	2
68	300292	STOP SEAT	2
69	• 44811	SCREW, 1/4-20 X .75 HXWAT	2
70	53205	COVER, SEAT SPRING 1.5 ID X 1.0 LG	2
71	1502	NUT, 1/4-20 REGHEXCTRLK	2
72	306654-896	FENDER, F-5 SUSP	1
73	• 995346	SCREW, 1/4-20 X .60 WAMHTAP	4
74	• 122017	SCREW, 5/16-18 X 1.00 HHC	2
75	• 446363	WASHER, FLAT .375 X .88 X .082	4
76	• 1498	NUT, 5/16-18 REGHEXCTRLK	2
77	55023	TRIM, STRIP, BLACK	77.5IN
78	307661	SEAT GENERIC	1
79	120398	WASHER, FLAT, .344 X .69 X .065	4
80	120638	WASHER HVSPTLK, .328 X .60 X .09	4
81	122007	SCREW, 5/16-18X.75 HHC	4

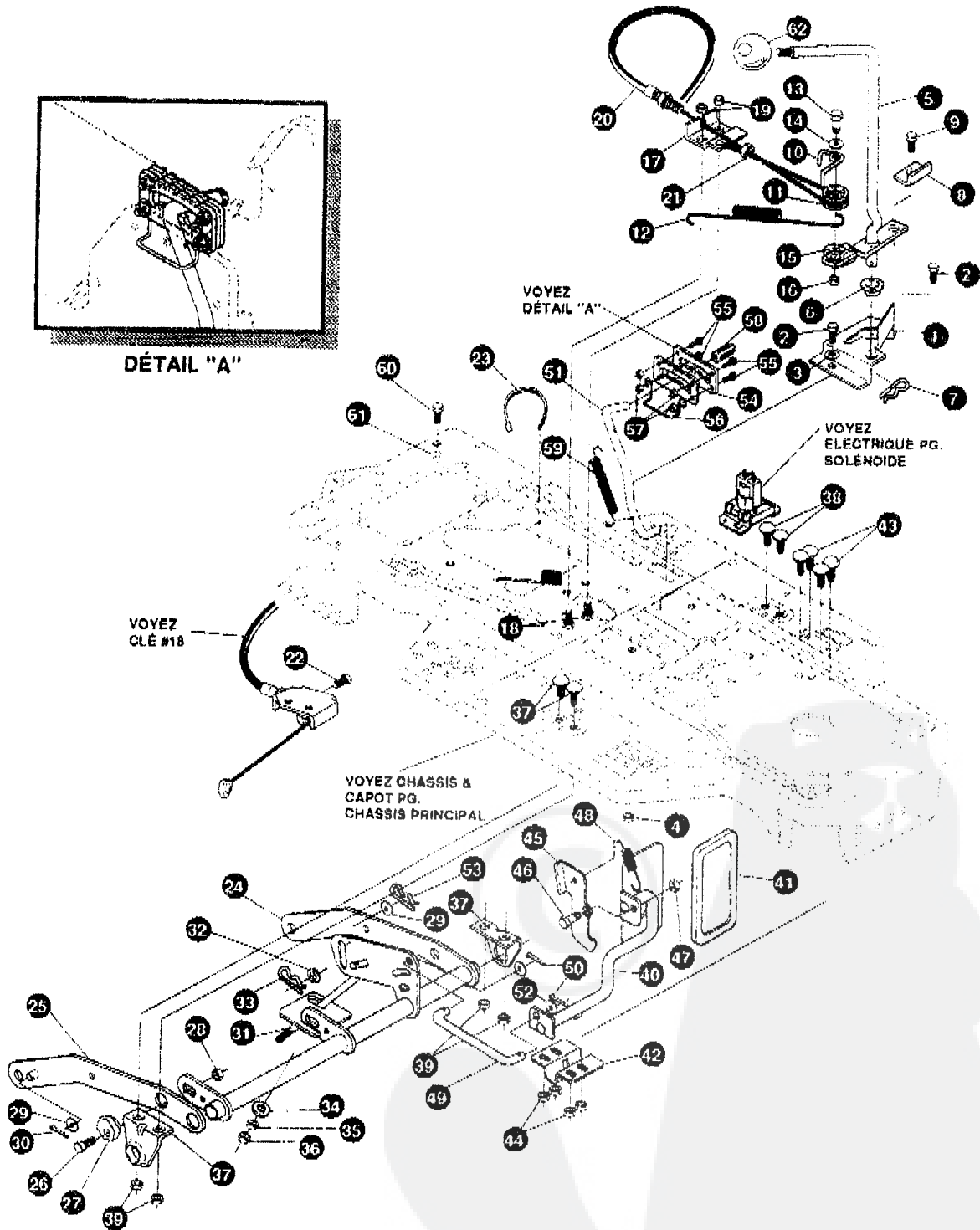
• INDICATES STANDARD HARDWARE ITEMS

# TRACTEUR TONDEUSE 43" MODELE D3560-280

## ENSEMBLE SUSPENSION TONDEUSE



DÉTAIL "A"



UTILISEZ DES PIÈCES D'ORIGINE POUR CONSERVER L'APPLICATION DE LA GARANTIE.

TOUTES LES PIÈCES NON RÉFÉRÉES SONT INTERCHANGEABLES AVEC LEURS OPPOSÉS.

32581 1B

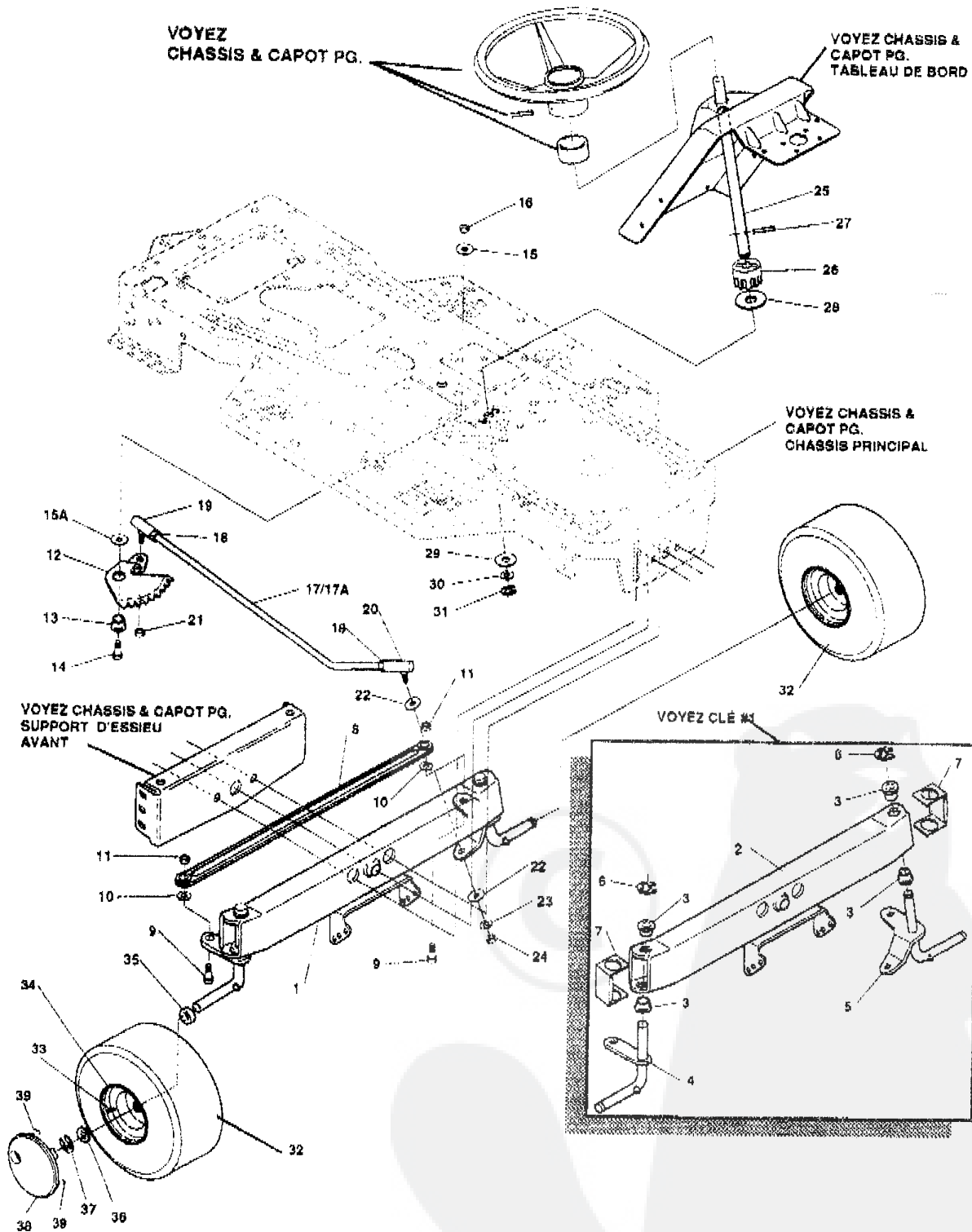
**TRACTEUR TONDEUSE 43" MODELE D3560-280**

KEY#	PART#	DESCRIPTION	QTY.
1	320075-853	BRACKET, CLUTCH ENGAGE LEVER BLACK	1
2	• 180079	SCREW, 5/16-18 X 1.00 HHC	2
3	120393	WASHER, FLAT .344 X .69 X .065	2
4	• 1498	NUT, 5/16-18 REGHEXCTRLK	2
5	304791	ASSEMBLY, CLUTCH LEVER, SHORT	1
6	50148	BEARING, FLANGE .503 ID X .628 OD	1
7	8260	PIN, HAIR .091 DIA X 1.66 LG	1
8	318341	BRACKET, SWITCH ENGAGE	1
9	35498	SCREW, 5/16-18 X .75 WAHTAP	1
10	324032	CABLE KEEPER	1
11	48306	PULLEY, POWDER METAL	1
12	316648	SPRING, 12.88 LONG	1
13	324045	BOLT, .375 X .565 HSSH 1/4-20	1
14	315194	WASHER, FLAT 1.38 X .51 X .043 2/YZ	1
15	1288	BRACKET RETAINER	1
16	• 1502	NUT, 1/4-20 REGHEXCTRLK	1
17	300698-853	BRACKET, FRAME CABLE	1
18	• 180020	SCREW, 1/4-20 X .75 HHC	2
19	• 1502	NUT, 1/4-20 REGHEXCTRLK	2
20	324055	ASSEMBLY, CABLE, BLADE ENGAGE	1
21	120613	NUT, 1/4-28 HJAM	1
22	35498	SCREW, 5/16-18 X .75 WAHTAP	1
23	57444	TIE, CABLE BLACK	1
24	322835-853	LIFT ASSEMBLY, LH P-LIFT J	1
25	300169-853	ASSEMBLY, LINK, RIGHT SIDE	1
26	• 180079	SCREW, 5/16-18 X 1.00 HHC	1
27	58247	ADJUSTING NUT	1
28	• 1498	NUT, 5/16-18 REGHEXCTRLK	1
29	417098	WASHER, FLAT .531 X 1.06 X .095	2
30	8260	PIN, HAIR .091 DIA X 1.66 LG	2
31	322921	ROD, ADJUSTING "J" P-LIFT	1
32	120394	WASHER, FLAT .406 X .81 X .065	1
33	36368	PIN, HAIR .072 DIA X 1.13 LG	1
34	996416	WASHER, FLAT .391 X 1.00 X .125	1
35	120377	NUT, 3/8-16 REG HX	1
36	322467	NUT, 3/8-16 REG HX NK LOC	1
37	58248-853	BRACKET, REAR, HANG, SUSPENSION	2
38	126211	BOLT, 5/16-18 X .63 CARRIAGE	4
39	• 1498	NUT, 5/16-18 REGHEXCTRLK	4
40	314952-853	PEDAL ASSEMBLY, DECK HEIGHT BLACK	1
41	314488	PAD, LIFT PEDAL	1
42	323751	BRACKET, LIFT ARM	1
43	126211	BOLT, 5/16-18 X .63 CARRIAGE	4
44	44108	NUT, 5/16-18 HWDFLCTRLK	4
45	315342	LATCH, PEDAL LIFT	1
46	314829	BOLT, .56 X .13 HSSH 3/8-16	1
47	• 1499	NUT, 3/8-16 REGHEXCTRLK	1
48	314489	SPRING, LIFT LATCH	1
49	314792	ROD, PIVOT	1
50	121222	PIN, COTTER .090/.086 X .75	2
51	321385	ROD, MEMORY	1
52	274517	WASHER, FLAT .406 X .73 X .063	1
53	36368	PIN, HAIR .072 DIA X 1.13 LG	1
54	315341	BRACKET, MEMORY	2
55	44811	SCREW, 1/4-20 X .75 HXWATAP	4
56	324038	GUIDE, MEMORY ROD	1
57	• 1502	NUT, 1/4-20 REGHEXCTRLK	4
58	314969	CAP, MEMORY ROD .38 ID X .75	1
59	314837	SPRING, MEMORY	1
60	180077	SCREW, 5/16-18 X .75 HHC	1
61	1498	NUT, 5/16-18 REGHEXCTRLK	1
62	55514	KNOB, ROUND 1.50 DIA. BLACK	1

• INDICATES STANDARD HARDWARE ITEMS.

# TRACTEUR TONDEUSE 43" MODELE D3560-280

## ENSEMBLE DIRECTION AVANT



UTILISEZ DES PIÈCES D'ORIGINE POUR CONSERVER L'APPLICATION DE LA GARANTIE.

TOUTES LES PIÈCES NON RÉFÉRÉES SONT INTERCHANGEABLES AVEC LEURS OPPOSÉS.

322616D



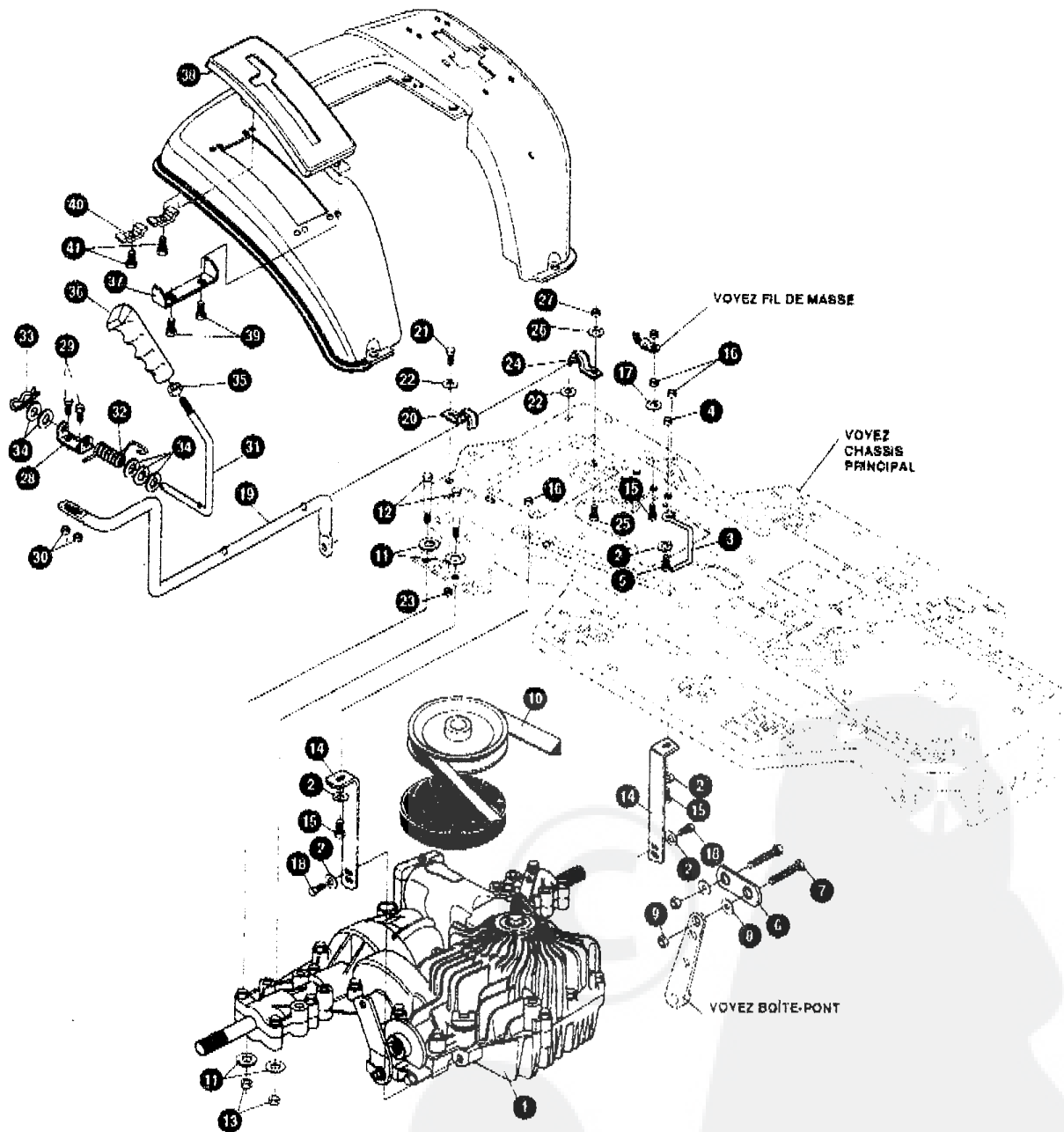
**TRACTEUR TONDEUSE 43" MODELE D3560-280**

KEY#	PART#	DESCRIPTION	QTY.
1	^	ASSEMBLY, AXLE FRONT	1
2	300272-854	AXLE, FRONT	1
3	52407	SPINDLE, BEARING	4
4	9180	SPINDLE, RH LONG	1
5	314088	SPINDLE, LH LONG	1
6	36625	RING, RETEX .57 X .05 TRU 5133-75	2
7	53373-854	AXLE COVER	2
8	304590	TIE ROD ASSEMBLY, 19.81 LG	1
9	• 180128	SCREW, 3/8-16 X 1.75 HHC	2
10	120382	WASHER, REGSPTLK .393 X .68 X .10	2
11	• 1499	NUT, 3/8-16 REGHXCTRLK	2
12	58289	SECTOR, STEERING LF	1
13	52406	BEARING, FLANGE ECC.510 ID X .998 OD X .55	1
14	• 180177	SCREW, 1/2-13 X 1.50 HHC	1
15	22285	WASHER, FLAT .515 X 1.38 X .119	1
15A	49998	WASHER, FLAT 520 X 1.25 X .209	1
16	• 1500	NUT, 1/2-13 REGHCTRLK	1
17	311100	DRAGLINK ASSEMBLY	1
17A	58291	STEERING LINK	1
18	• 124925	NUT, 3/8-24 REGHEXJAM	2
19	57158	BALL JOINT, 3/8 THD SHORT STUD	1
20	21275	BALL JOINT, 3/8 THD LONG STUD	1
21	• 46692	NUT, 3/8-24 WDFLHLK	1
22	120396	WASHER, FLAT .531 X 1.06 X .095	2
23	120382	WASHER, REGSPTLK .393 X .68 X .10	1
24	• 120369	NUT, 3/8-24 REGHEX	1
25	58243	SHAFT, STEERING LF	1
26	58244	PINION, STEERING LF	1
27	58274	PIN, DOWEL .2500 OD+1.75	1
28	301410	BEARING, FLANGE .752 ID X 1.061 OD X .24	1
29	301398	WASHER, FORMED 1.135 X 1.53 X .12	1
30	21682	WASHER, FLAT .765 X 1.25 X .042	1
31	36625	RING, RETEX .57 X .05 TRU 5133-75	1
32	313952	TIRE & RIM, PU 15 X 6.0 X 6	2
33	24167	VALVE STEM	1
34	315876	WHEEL W/BEARING	1
35	39979	BEARING, FLANGE 1.38 OD+.753 ID	1
36	642	WASHER, FLAT .755X1.91X.075	4
37	36625	RING, RETEX .57X.05TRU5133-75	2
38	304444	HUBCAP, 6" EURO	2
39	306669	CLIP	8

• INDICATES STANDARD HARDWARE ITEMS.  
 ^ ORDER INDIVIDUAL PARTS.

# TRACTEUR TONDEUSE 43" MODELE D3560-280

## ENTRAÎNEMENT



UTILISEZ DES PIÈCES D'ORIGINE POUR CONSERVER L'APPLICATION DE LA GARANTIE.

TOUTES LES PIÈCES NON RÉFÉRÉES SONT INTERCHANGEABLES AVEC LEURS OPPOSÉS.

326645A

**TRACTEUR TONDEUSE 43" MODELE D3560-280**

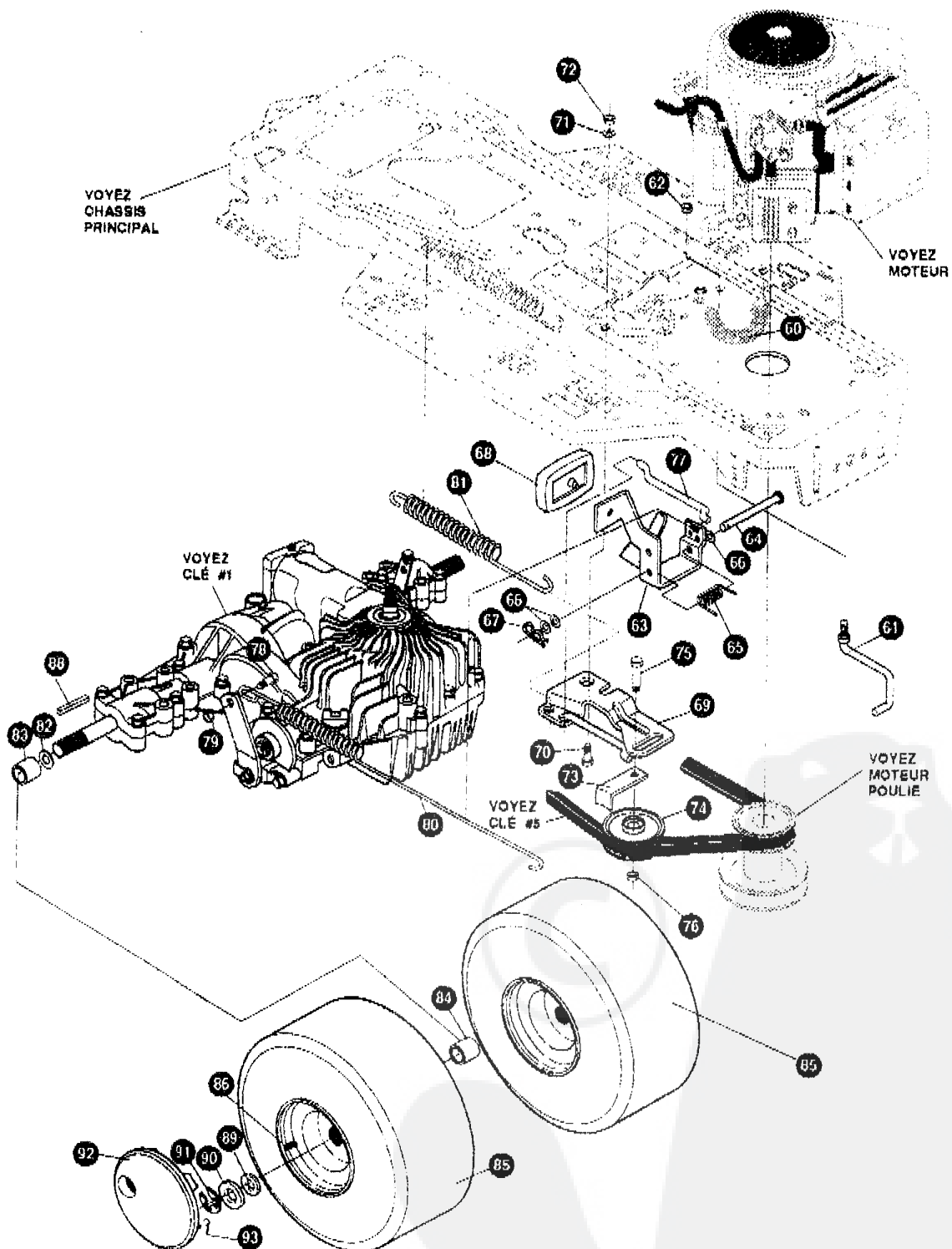
KEY#	PART#	DESCRIPTION	QTY.
1	^	TRANSAXLE, T1800 PEERLESS 2WS HYDRO	1
2	120393	WASHER, FLAT .344 X .69 X .065	5
3	326633	GUIDE, BELT	1
4	• 1498	NUT, 5/16-18 REGHEXCTRLK	1
5	122017	SCREW, 5/16-18 X 1.00HHC	1
6	325391	LINK, SHIFT LF HYDRO	1
7	122146	SCREW, 3/8-16 X 1.25 HHC	2
8	274517	WASHER, FLAT .406 X .73 X .063	2
9	• 1499	NUT, 3/8-16 REGHXCTRLK	2
10	314572	BELT, V 4L 80 16 HYDRO LF	1
11	120393	WASHER, FLAT .344 X .69 X .065	4
12	180089	SCREW, 5/16-18 X 2.75 HHC	4
13	• 1498	NUT, 5/16-18 HWDFLCTRLK	4
14	326664	STABILIZER BRACKET LF HYDRO	2
15	122007	SCREW, 5/16-18 X .75 HHC	2
16	• 1498	NUT, 5/16-18 REGHEXCTRLK	3
17	138538	WASHER, REGINLK .320 X .61 X .03	1
18	35498	SCREW, 5/16-18 X .75 WAHTAP	2
19	325392	LEVER, SHIFT-LWR LF HYDRO	1
20	310347-853	CLIP-SHIFT LEVER .62 ROD	1
21	180077	SCREW, 5/16-18 X .75 HHC	1
22	• 996416	WASHER, FLAT .391 X 1.00 X .125	1
23	• 1498	NUT, 5/16-18 REGHEXCTRLK	1
24	310347-853	CLIP-SHIFT LEVER .62 ROD	1
25	180077	SCREW, 5/16-18 REGHEXCTRLK	1
26	996416	WASHER, FLAT .391 X 1.00 X .125	1
27	• 1498	NUT, 5/16-18 REGHEXCTRLK	1
28	310356	PIVOT BRACKET LEVER	1
29	180018	SCREW, 1/4-20 X .62 HHC	2
30	• 1502	NUT, 1/4-20 REGHEXCTRLK	2
31	318452	LEVER, SHIFT UPPER SF 1/2-13TH	1
32	318451	SPRING, TORSION 56 X .95 X .095	1
33	• 8260	PIN, HAIR 125 DIA X 1.00 LG	1
34	• 2968	WASHERS	5
35	• 120238	NUT, 1/2-13 HEXJAM	1
36	306690	HANDLE, 1/2-13 MOLDED BLACK 173	1
37	311257-853	BRACKET COVER	1
38	314244	COVER PLASTIC	1
39	311331	SCREW, 174-15 X .44 X .533 HILOHWA	2
40	1341	CLAMP SPRING	2
41	311331	SCREW, 174-15 X .44 X .533 HILOHWA	2

• INDICATES STANDARD HARDWARE ITEMS.

^ CONTACT YOUR NEAREST PEERLESS DEALER FOR PARTS

# TRACTEUR TONDEUSE 43" MODELE D3560-280

## ENTRAÎNEMENT



UTILISEZ DES PIÈCES D'ORIGINE POUR CONSERVER L'APPLICATION DE LA GARANTIE.

TOUTES LES PIÈCES NON RÉFÉRÉES SONT INTERCHANGEABLES AVEC LEURS OPPOSÉS.

326645A

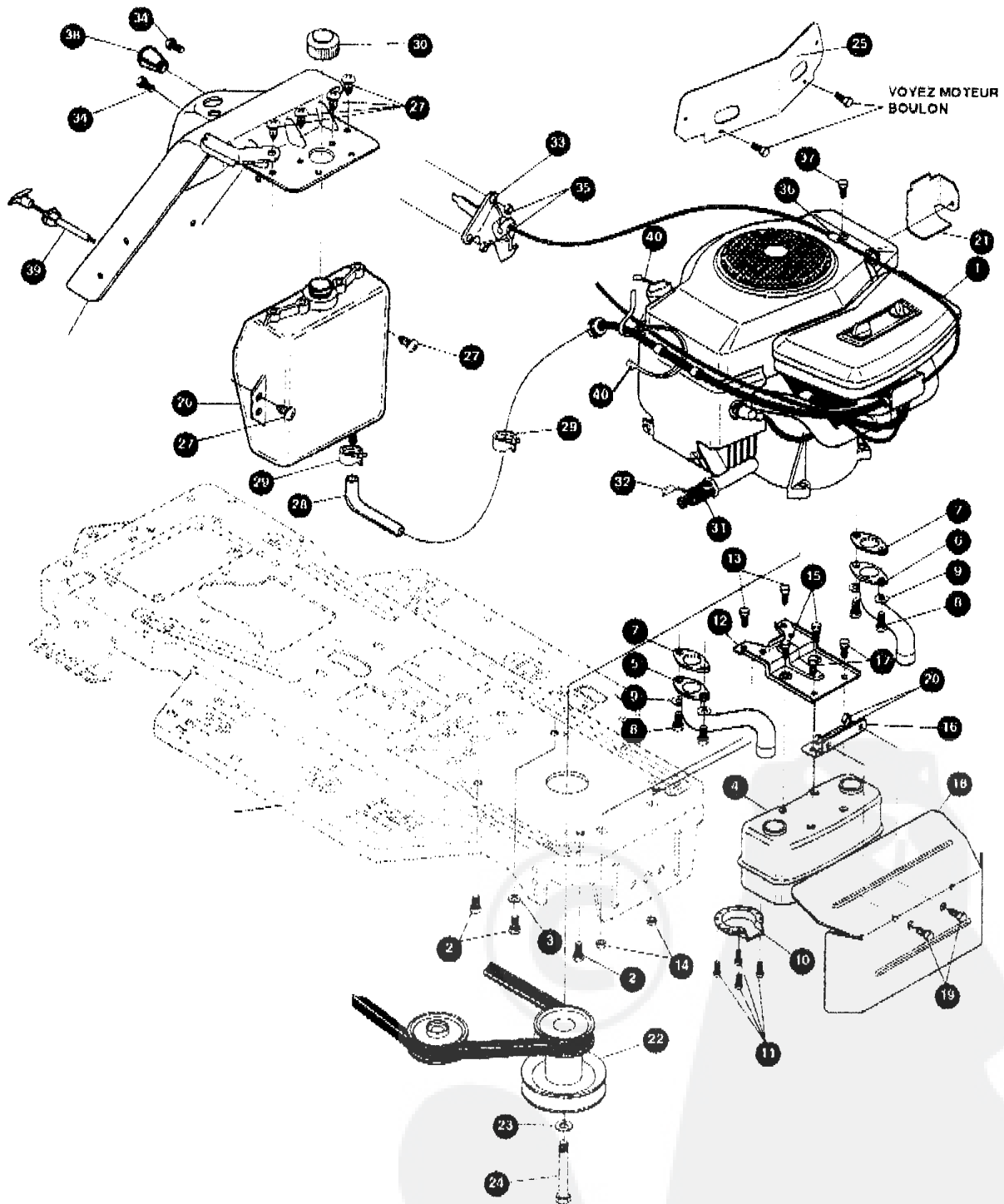
**TRACTEUR TONDEUSE 43" MODELE D3560-280**

KEY#	PART#	DESCRIPTION	QTY.
60	321614	SPRING, BIAS DRAGLINK	1
61	304016	GUIDE BELT	1
62	• 1498	NUT, 5/16-18 REGHEXCTRLK	1
63	325942	PEDAL ASSEMBLY, BRAKE/CLUTCH LF	1
64	319675	PIN, CLEVIS	1
65	57847	SPRING, BRAKE PEDAL	1
66	2968	WASHER, FLAT .504 X .75 X .059	3
67	56180	PIN, HAIR	1
68	48160	PAD, CLUTCH BRAKE W/PRINTING	1
69	320981-853	ARM, IDLER TRACTION DR. LF	1
70	300793	BOLT, .625 X .135 HSSH 5/16-18	1
71	• 45602	WASHER, FLAT .333 X .87 X .119	1
72	• 1498	NUT, 5/16-18 REGHEXCTRLK	1
73	39659	RETAINER, STRAP BELT	1
74	35374	PULLEY, IDLER V4L 3.06 X .62	1
75	45892	BOLT, 3/8-16 X 1.50 CARRIAGE	1
76	• 1499	NUT, 3/8-16 REGHXCTRLK	1
77	57204	ROD, CLUTCH	1
78	326131	BOLT, SHOULDER 5/16-18	1
79	• 1498	NUT, 5/16-18 REGHEXCTRLK	1
80	327947	BRAKE SPRING, T1800 PEERLESS HYDRO	1
81	56359	SPRING, CLUTCH .113 X .750 X 8.75	1
82	• 42815	WASHER, FLAT .755 X 1.53 X .07	1
83	57479	SPACER SLEEVE .75 X 1.25 X 1.32	2
84	301565	SPACER SLEEVE .750 X 1.25 X .50	2
85	313654	TIRE & RIM, PU 20 X 10 X 8 TURF 134	2
86	24167	VALVE STEM	1
87	301366	RIM, WHEEL 20 X 8.00	1
88	52928	KEY SQUARE	2
89	• 642	WASHER FLAT 755 X 1.31 X .075	4
90	42815	WASHER, FLAT 755 X 1.53 X .07	2
91	36625	RING RETEX, 57 X .05 TRU 5133-75	2
92	306670	HUB CAP ERO 8" WHITE 869	2
93	306669	CLIP, HUBCAP TINN #C25467-017-4	10

• INDICATES STANDARD HARDWARE ITEMS.

# TRACTEUR TONDEUSE 43" MODELE D3560-280

## MOTEUR ENSEMBLE



UTILISEZ DES PIECES D'ORIGINE POUR CONSERVER L'APPLICATION DE LA GARANTIE.

TOUTES LES PIECES NON REFEREES SONT INTERCHANGEABLES AVEC LEURS OPPOSEES.

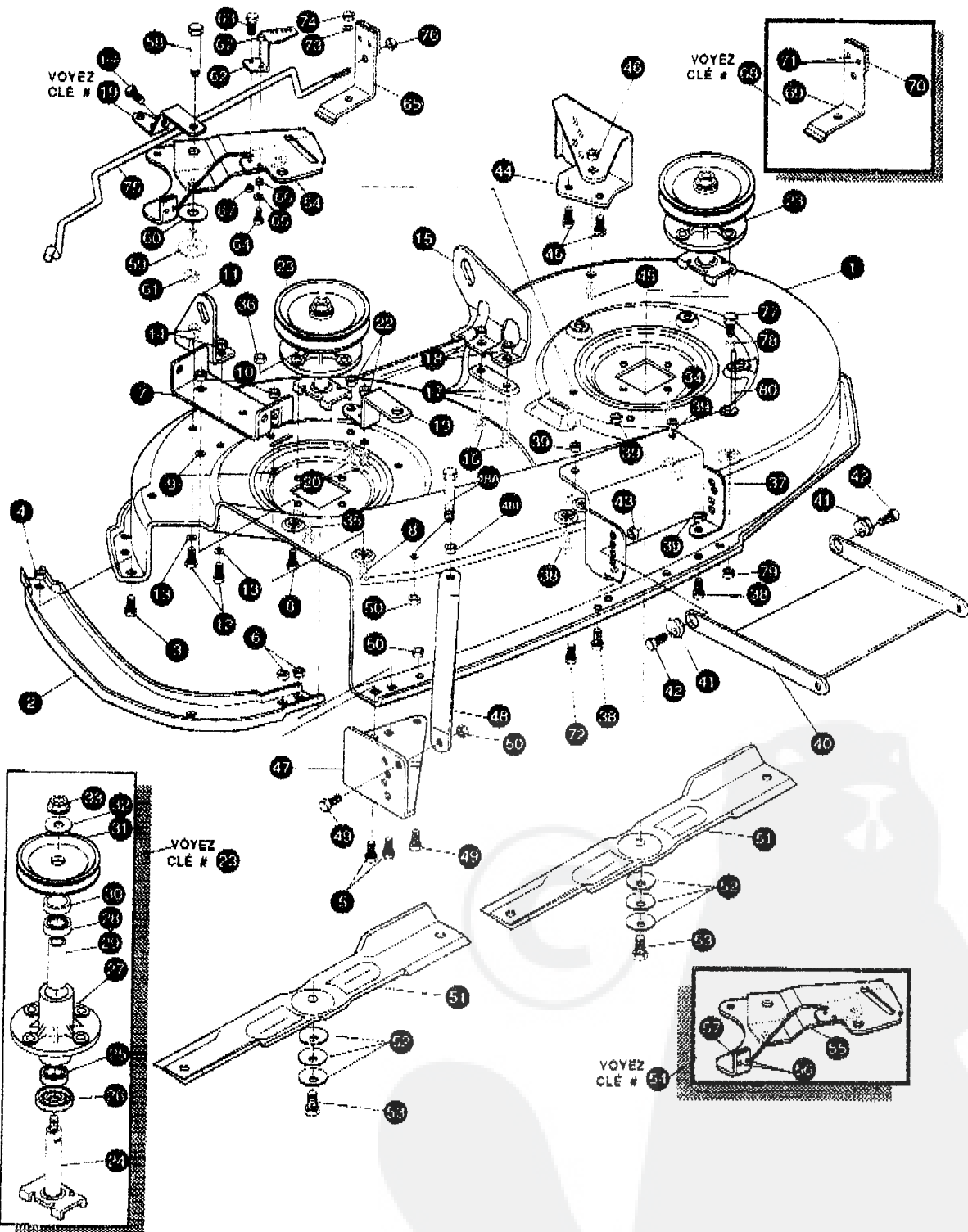
328203A

**TRACTEUR TONDEUSE 43" MODELE D3560-280**

KEY#PART#	DESCRIPTION	QTY.
1. A	B&S 14-18 STD/IG DUAL CIRCUIT	1
2. 50947	SCREW, 3/8-16 X 1.25 WAHHTAPBLKP	4
3. 138489	WASHER, EXLK .384 X .69 X .04	1
4. 305550	MUFFLER, 18/18HP LARGE LO-TONE	1
5. 305552	EXHAUST TUBE, 18HP B&S RH	1
6. 305551	EXHAUST TUBE 18HP LH	1
7. 66640	GASKET, MUFFLER	2
8. 180020	SCREW, 1/4-20 X .75 HHC GR5	4
9. 120380	WASHER, REGSPTLK .263 X .49 X .07	4
10. 56472	DEFLECTOR SIDE OUT (BS222573)	1
11. 35287	SCREW, #8-32 X .38 HHWATAPGR2	4
12. 304709-853	BRACKET, MUFFLER	1
13. 56030	SCREW, 5/16-18 X .75 WDFFLK GR5	2
14. 55273	NUT, 5/16-18 HXWDFLLK	2
15. 995346	SCREW, 1/4-20 X .50 WAHHTAP	2
16. 9796	ML BRACKET, TRANSAXLE MOUNTING	1
17. 995338	SCREW, 1/4-20 X .63 HHWATAP	2
18. 308644-853	MP SHIELD, MUFFLER HEAT 18HPB&S	1
19. 180077	SCREW, 5/16-18 X .75 HHC GR5	2
20. 55273	NUT, 5/16-18 HXWDFLLK	2
21. 56470-853	MP DEFLECTOR, COOL AIR	1
22. 326565	PULLEY, ENG V3L 4.00 OFFSET 43" HYDRO	1
23. 120383	WASHER, REGSPTLK .459 X .78 X .12	1
24. 428644	SCREW, 7/16-20 X 5.00 HHC BLK PH	1
25. 52796-353	MP BULKHEAD, HOOD H-8	1
26. 314992	TANK, FUEL 2 GAL (CLEAR)	1
27. 49050	SCREW, 1/4-10 X .75PHNTAPGR2BK	6
28. 41007	TUBING, .25 X .50 X BULK GAS LINE	15
29. 47345	CLAMP, FUEL LINE (RED)	2
30. 46704	CAP, GAS 1-1/2-7 THD BLK	1
31. 325547	OIL DRAIN, ITW	1
32. 327422	CAP, OIL DRAIN	1
33. 300456	CONTROL, THROTTLE 31LG TWIN BS	1
34. 320553	SCREW, 10-24 X .63PHPNMA CRSS	2
35. 271166	NUT, #10-24 HEXKEPS	2
36. 56538	RETAINER, WIRE	1
37. 35258	SCREW, 10-24 X .38 SLHWATAPGR2	1
38. 50607	KNOB, ROUND THROTTLE (BLACK)	1
39. 300432	CONTROL, CHOKE 47 13 LG PAN TK	1
40. 57444	TIE, CABLE BLACK NYLON 5.62 L	2

# TRACTEUR TONDEUSE 43" MODELE D3560-280

## CARTER DE TONDEUSE



UTILISEZ DES PIÈCES D'ORIGINE POUR CONSERVER L'APPLICATION DE LA GARANTIE.

TOUTES LES PIÈCES NON  
REFERÉES SONT  
INTERCHANGEABLES AVEC  
LEURS OPPOSÉES.

324144E

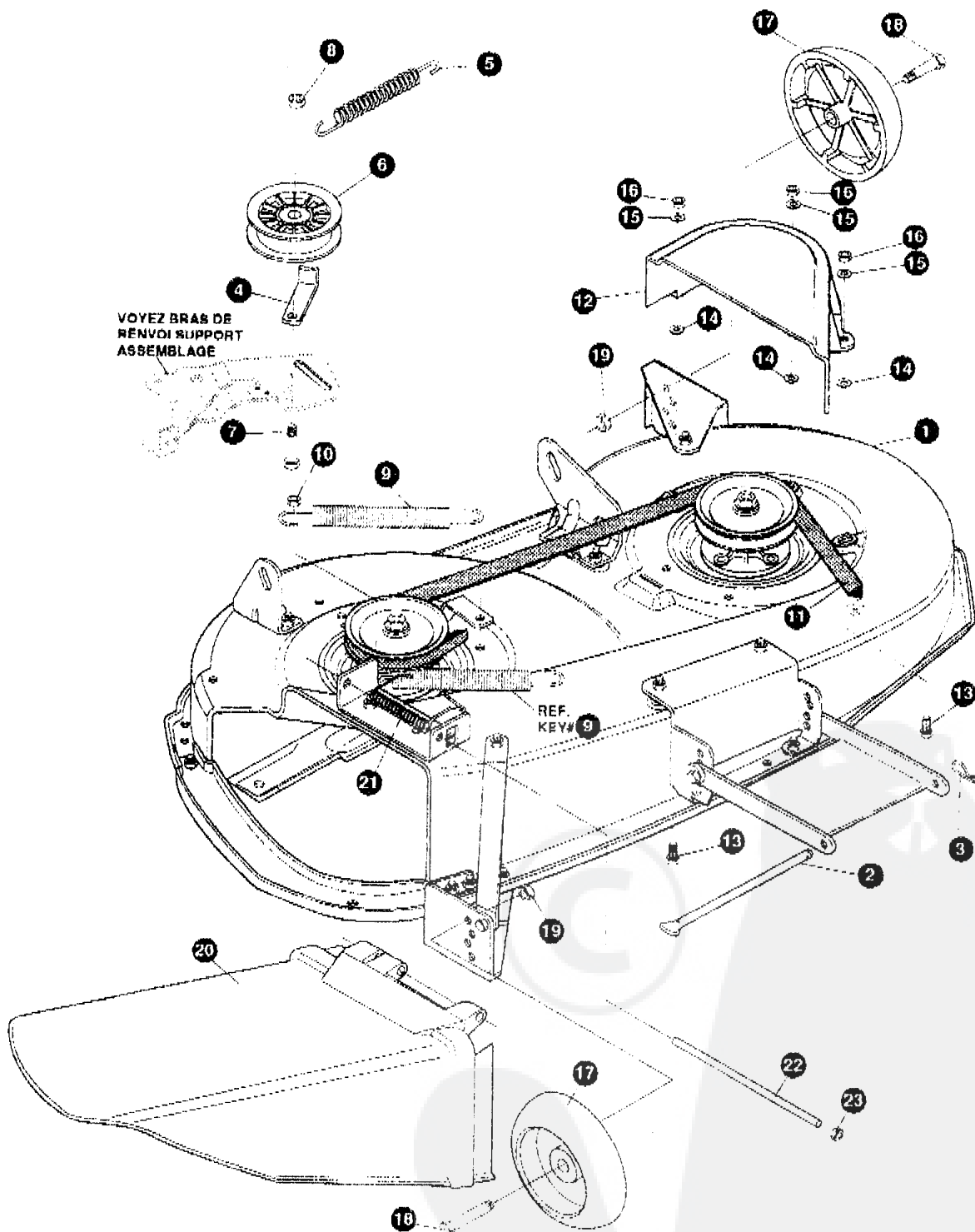


**TRACTEUR TONDEUSE 43" MODELE D3560-280**

KEY#	PART#	DESCRIPTION	QTY.
1	325110-853	MOWER DECKS, RIDER 43"	1
2	326400-853	TOE GUARD	1
3	180075	SCREW, 5/16-18 X .63 HHC	1
4	1498	NUT, 5/16-18 REGHEXCTRLK	1
5	122007	SCREW, 5/16-18 X .75 HHC	2
6	1498	NUT, 5/16-18 REGHEXCTRLK	2
7	317017	BRACKET, CHUTE MOUNT	1
8	180075	SCREW, 5/16-18 X .63 HHC	2
9	120393	WASHER, FLAT .344 X .69 X .065	2
10	1498	NUT, 5/16-18 REGHEXCTRLK	2
11	313929	LIFT BRACKET, REAR, RH	1
12	180077	SCREW, 5/16-18 X .75 HHC	2
13	120393	WASHER, FLAT .344 X .69 X .065	2
14	1498	NUT, 5/16-18 REGHEXCTRLK	2
15	310667	BRACKET, DECK LIFT REAR LH	1
16	180077	SCREW, 5/16-18 X .75 HHC GR5	2
17	120393	WASHER, FLAT .344 X .69 X .065	2
18	1498	NUT, 5/16-18 REGHEXCTRLK	2
19	326893-853	BRACE IDLER	1
19A	308231	SCREW, 1/4-20 X 1.25 HHWATAP	1
20	180077	SCREW, 5/16-18 X .75 HHC	2
22	44108	NUT, 5/16-18 HWDF/LCTRLK	2
23	56424-853	QUILL ASSEMBLY, 38/39/40/43	2
24	56425	SHAFT/SADDLE 38"	1
25	49562	BEARING, BALL	1
26	50616	DUST SHIELD	1
27	55547	QUILL CASTING (1046)	1
28	49562	BEARING, BALL	1
29	50818	SPACER, 3.797 LG X .069 ID X .88 OD	1
30	51449	SPACER, 4.38 LG X .932 OD X .672 ID	1
31	313898	PULLEY, 28/38" QUILL V5L	1
32	56365	SPECIAL WASHER	1
33	1282	NUT, 7/16-20 WDFLLK	1
34	50634	SCREW, 5/16-18 X .88 WATITAP	7
35	300345	SCREW, 5/16-18 X 1.38 WATAP	1
36	1498	NUT, 5/16-18 REGHEXCTRLK	1
37	317040	BRACKET FRONT	1
38	180075	SCREW, 5/16-18 X .63 HHC	4
39	1498	NUT, 5/16-18 REGHEXCTRLK	4
40	58305-853	LINK BRACKET, DECK FR	1
41	58247	ADJUSTING NUT	2
42	122017	SCREW, 5/16-18 X 1.00 HHC	2
43	1498	NUT, 5/16-18 REGHEXCTRLK	2
44	317041	BRACKET, GAGE WHEEL L.H.	1
45	180075	SCREW, 5/16-18 X .63 HHC	3
46	1498	NUT, 5/16-18 REGHEXCTRLK	3
47	322484-853	BRACKET, GAGE WHEEL R.H. FRONT	1
48	314282-853	BRACKET, STABILIZER	1
48A	311104	SCREW 5/16-18 X 5.00 HHC GR.5	1
48B	271184	NUT, 5/16 HEX KEPS	1
49	180075	SCREW, 5/16-18 X .63 HHC	2
50	1498	NUT, 5/16-18 REGHEXCTRLK	3
51	326961	BLADE, LOW-LIFT 21.70	2
52	2483	WASHER, .39 ID X 1.25 D X .07 BEI L.VIL	8
53	39573	SCREW, 3/8-24 X 1.00 NYLHHC	2
54	320576-853	IDLER ARM ASSEMBLY	1
55	322116-853	IDLER ARM	1
56	41601	RIVET	2
57	308973	BRAKE PAD	1
58	304420	SHOULDER BOLT	1
59	996416	WASHER, FLAT 391 X 1.00 X .125	1
60	996307	WASHER, FLAT 391 X 1.00 X .209	1
61	45171	NUT, 3/8-16 HWDFL WHIZ-LOCK	1
62	300700-853	BRACKET, EXTENSION IDLER	1
63	180075	SCREW, 5/16-18 X .63 HHC GR.5	1
64	180083	SCREW, 5/16-18 X 1.50 HHC GR.5	1
65	448363	WASHER, FLAT	1
66	271184	NUT 5/16-18 HEX KEPS	1
67	1498	NUT	2
68	321820-853	BLADE BRAKE ASSEMBLY	1
69	304119-853	BRAKE ARM	1
70	308973	BRAKE PAD	1
71	135624	RIVET	2
72	180075	SCREW, 5/16-18 X .63	1
73	120393	WASHER, FLAT .344 X .69 X .065	1
74	1498	NUT, 5/16-18 REGHEXCTRLK	1
75	314079	ROD, BRAKE	1
76	1502	NUT, 1/4-20 REGHEXCTRLK	1
77	180079	SCREW, 5/16-18 X 1.00 HHC GR5	1
78	120393	WASHER, FLAT .344 X .69 X .065	1
79	1498	NUT, 5/16-18 REGHEXCTRLK	1

# TRACTEUR TONDEUSE 43" MODELE D3560-280

## CARTER DE TONDEUSE



UTILISEZ DES PIÈCES D'ORIGINE POUR CONSERVER L'APPLICATION DE LA GARANTIE.

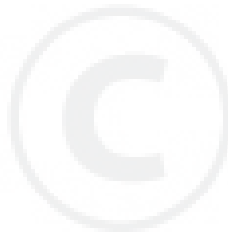
TOUTES LES PIÈCES NON  
REFERÉES SONT  
INTERCHANGEABLES AVEC  
LEURS OPPOSÉES.

926401B

**TRACTEUR TONDEUSE 43" MODELE D3560-280**

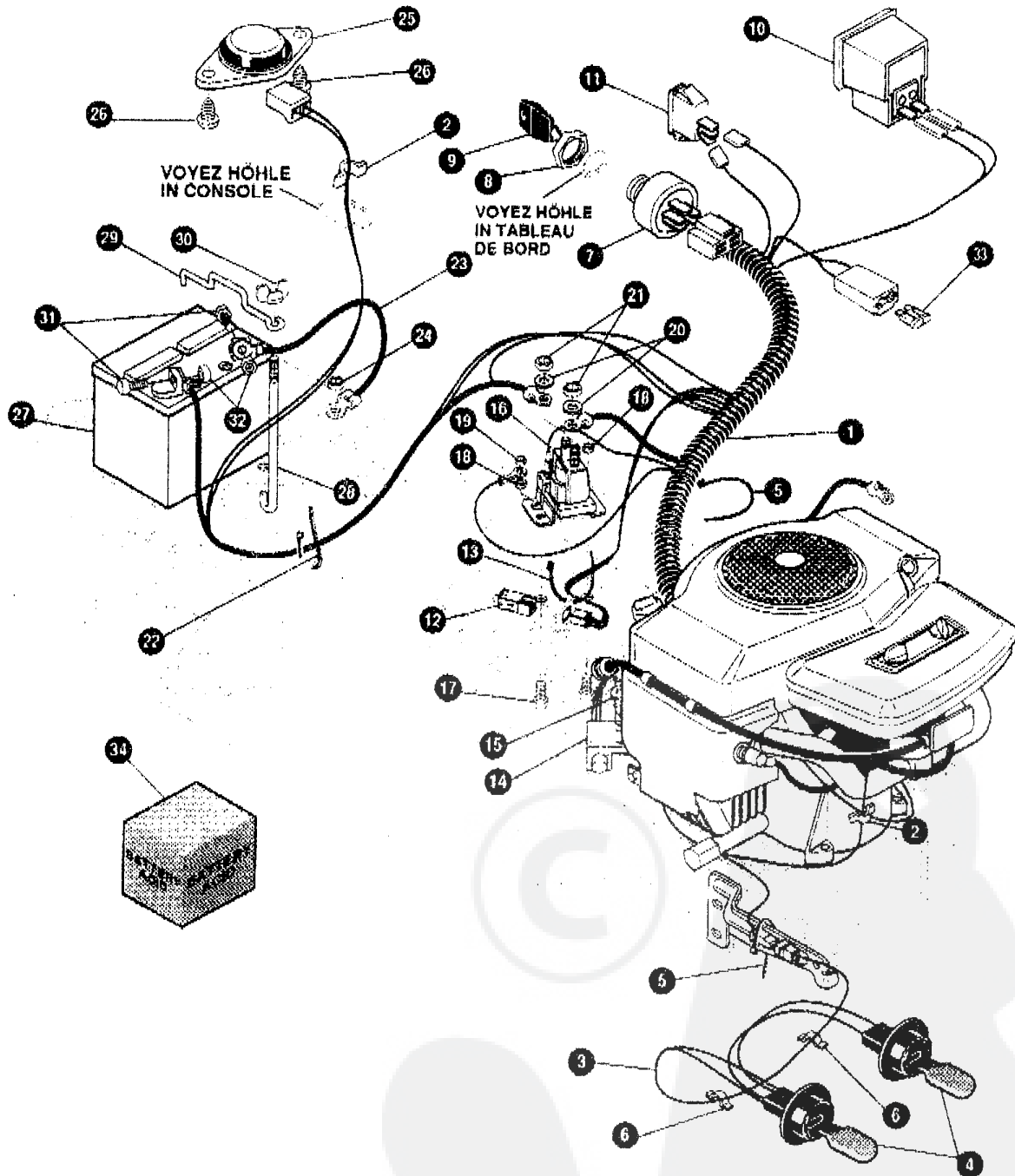
KEY#	PART#	DESCRIPTION	QTY.
1	324144	DECK, 43" MOWER 2-WH BLACK 853 EXPORT	1
2	58305	ROD, DECK HITCH	1
3	8260	PIN, HAIR .091 DIA X 1.66 LG	1
4	1346	GUIDE BELT, IDLER	1
5	314107	SPRING, TENSION 5.00 LG, 17 LB/IN	1
6	310326	PULLEY, IDLER BFF 4.00 WIDE FL	1
7	126416	BOLT 3/8-16 X 1.75 CARRIAGE	1
8	44374	NUT, 3/8-16 HXWDFLLK	1
9	36410	SPRING, .071 X .62 X 4.97	1
10	1498	NUT 5/16-18 REGHEXCTRLK	1
11	318372	BELT, V 5L 85.00 KEVLAR	1
12	324814	GUARD, BELT LH PLASTIC	1
13	57101	CARRIAGE BOLT	3
14	309436	PUSHNUT, 5/16 NON-SERVICEABLE	3
15	120393	WASHER, FLAT .344 X .69 X .065	3
16	1498	NUT 5/16-18 REGHEXCTRLK	3
17	302611	GAUGE WHEEL EURO	2
18	23763	BOLT, 5.00 X 1.39 HHSH	2
19	1499	NUT, 3/8-16 REGHEXCTRLK	2
20	304422	CHUTE DEFLECTOR, 40", 42", 43"	1
21	314975	TORSION SPRING	1
22	304424	ROD, PIVOT DECK	1
23	3635	PUSH NUT	1

\* INDICATES STANDARD HARDWARE ITEMS



# TRACTEUR TONDEUSE 43" MODELE D3560-280

## FAISCEAU ELECTRIQUE



UTILISEZ DES PIECES D'ORIGINE POUR CONSERVER L'APPLICATION DE LA GARANTIE.

TOUTES LES PIECES NON REFEREES SONT INTERCHANGEABLES AVEC LEURS OPPOSEES.

3255130

# TRACTEUR TONDEUSE 43" MODELE D3560-280

KEY#	PART#	DESCRIPTION	QTY.
1	322798	WIRE HARNESS 14-18TWIN OPP DYN	1
2	41482	PRESS CLIP, 1.380 LG, 265 ID	2
3	303064	ASSEMBLY LIGHT WIRE 1/4 TURN	1
4	52572	BULB, HEADLAMP	2
5	322585	TIE CABLE BLACK NYLON 5.62 L	2
6	41482	PRESS CLIP, 1.380 LG, 265 ID	2
7	327355	SWITCH,IGNITION (AFTER FIRE) 3 POSN	1
8	327352	NUT, 5/8-32 HXHD IGNITION SWITCH	1
9	327349	KEY, IGNITION SWITCH	1
10	300133	AMMETER	1
11	300334	LIGHT SWITCH ON/OFF PANEL	1
12	320082	SWITCH, DOUBLE POLE NO/NC BLACK	1
13	57444	TIE CABLE BLACK NYLON 5.62 L	1
14	57476	SWITCH, SCREW MOUNT DP NO NC	1
15	57220	SCREW, #12 X .50 PHPNHTAP	2
16	53716	SOLENOID	1
17	187745	SCREW, 1/4-20 X .75 HXSEMMA	2
18	1502	NUT, 1/4-20 REGHEXCTRLK	2
19	271172	NUT, 1/4-20 REGHEXKEPS	1
20	138485	WASHER, EXLK 320 X .61 X .03	2
21	120368	NUT, 5/16-24 REGHEX	2
22	57444	TIE CABLE BLACK NYLON	1
23	55511	WIRE, GROUND, 12.5"	1
24	271184	NUT,5/16-18 HEXKEPS	1
25	57547	SWITCH, SEAT	1
26	190505	SCREW, 1/4-20 X .38 PHPNHMA	2
27	302257	BATTERY 12VOLT, GENERIC	1
28	57551	ROD, BATTERY	1
29	57552	ROD, BATTERY, TOP	1
30	325232	NUT, WING 1/4-20 NYLON	1
31	120854	SCREW, 1/4-20 X .63 HHC	2
32	271172	NUT, 1/4-20 REGHEXKEPS	2
33	** 302031	FUSE, 15 AMP SPADE TYPE	1
34		BATTERY ACID, 80 OZ.	1

\* CAN BE PURCHASED LOCALLY.

\*\* SPADE TYPE FUSES ARE INCLUDED WITH THE WIRE HARNESS.

## WIRING SCHEMATIC

