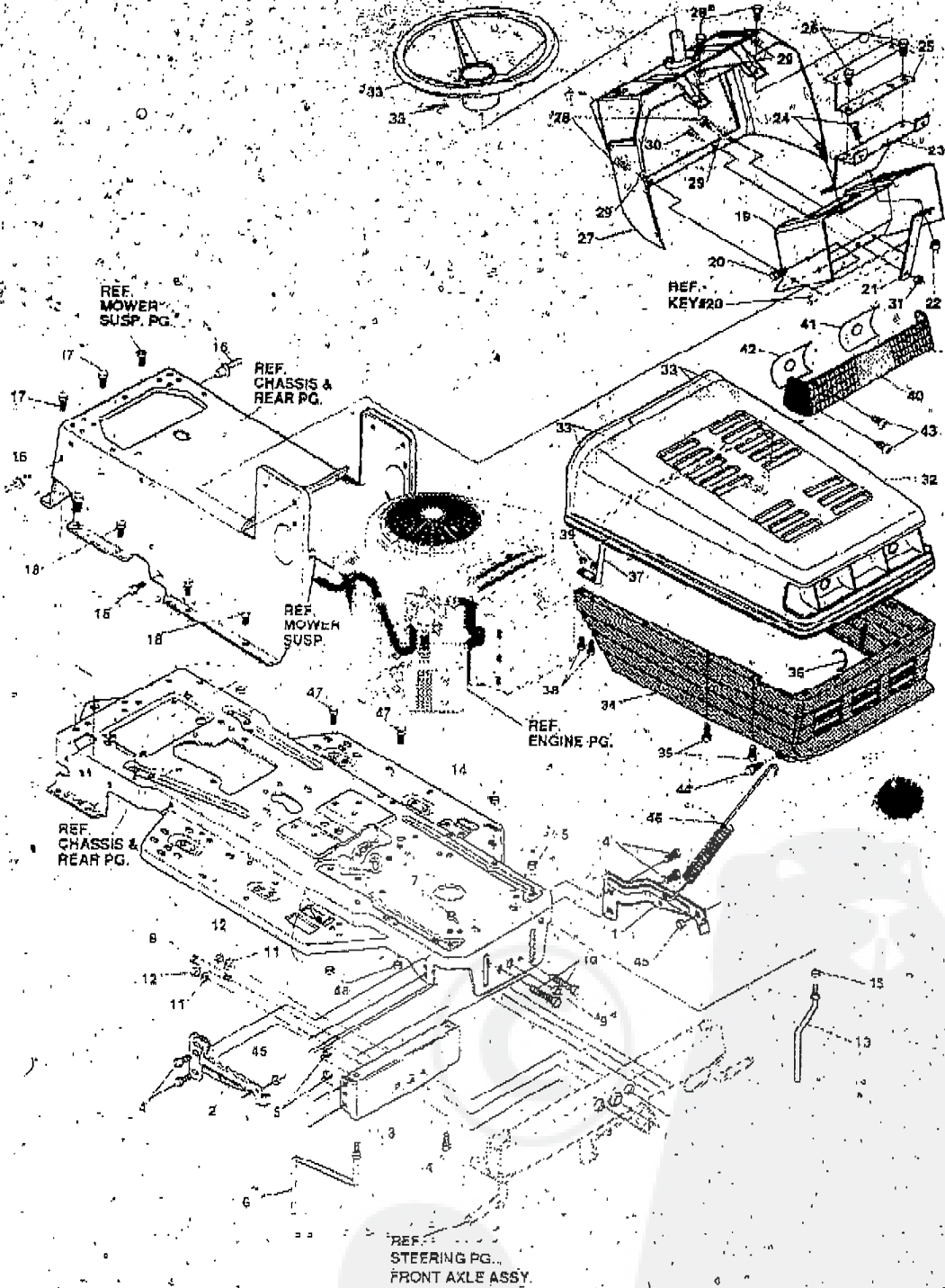


TRACTEUR TONDEUSE 43" MODELE D3560-320

ENSEMBLE CHASSIS & CAPOT (AVANT)



UTILISEZ DES PIÈCES D'ORIGINE POUR CONSERVER L'APPLICATION DE LA GARANTIE.

TOUTES LES PIÈCES NON
RÉFÉREES SONT
INTERCHANGEABLES AVEC
LEURS OPPOSÉES.

325877A

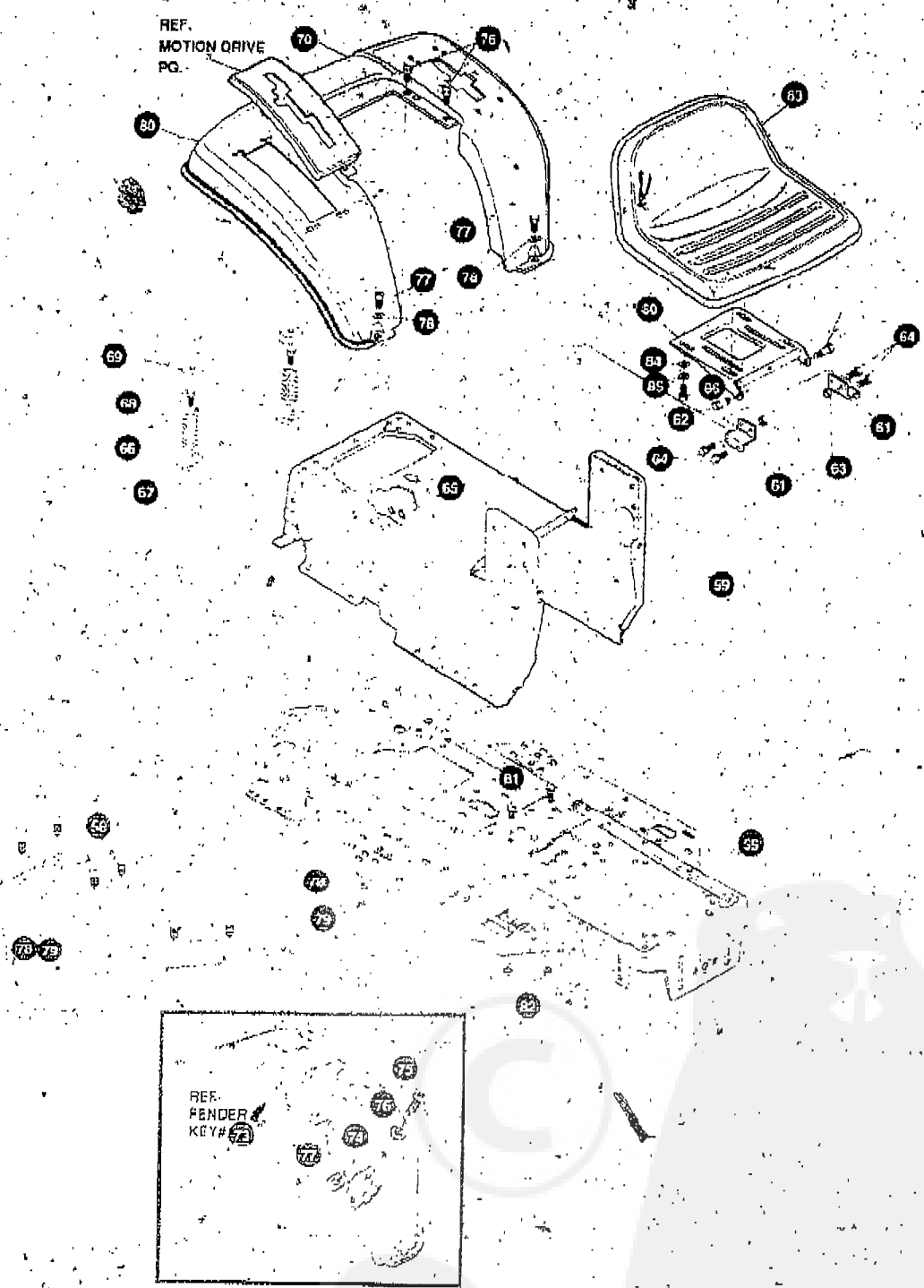
TRACTEUR TONDEUSE 43" MODELE D3560-320

REV#	PART#	DESCRIPTION	QTY.
1	326560-853	B R A C K E T , G R I L L E L H ---	1
2	326568-853	BRACKET, GRILLE AH,	1
3	313541-853	BRACKET, FRONT AXLE	1
4	56030	SCREW, 5/16-18 X 75WDFLLK	5
5	55273	NUT, 5/16-18 HXWDFLLK	5
6	300440	GUIDE, BELT, K I D E R	1
7	1498	NUT, 5/16-18 REGHEXCTRLK	1
8	308207	BOLT, .625 X 2.180 HSSH 1/2-1 3	1
9	309008	NUT, 1/2-13 REGHCTRLK	1
10	122207	SCREW, 3/8-16 X 3.00 HHC	2
11	2483	WASHER, .39 ID X 1.25 D X .07 BELLVIL	2
12	1499	NUT, 3/8-16 REGHXCTRLK	2
13	300635	GUIDE, SHORT BELT RIDER 15"WH	1
14	124824	NUT, 5/16-18 HEXJAM	1
15	271190	NUT, 3/8-16 HEXKEPS	1
16	46783	RIVET, POP, 187 DIA X 450 LG	3
17	35497	SCREW, 5/16-18 X .50 WAHTAP	2
18	995346	SCREW, 1/4-20 X .50 WAHTAP	10
19	583 12-853	SUPPORT, DASH	1
20	300903	SCREW, .25 X 75 X .75 HHWAPLASTITE	2
21	300201-853	BRACE, DASH SUPT LOWER	1
22	1502	NUT, 1/4-20 REGHEXCTRLK	1
23	302530-853	BRACKET, GAS TANK	1
24	995346	SCREW, 1/4-20 X .50 WAHTAP	2
25	300264-853	BRACE, DASH SUPT UPPER	1
26	995346	SCREW, 1/4-20 X .50 WAHTAP	2
27	305429	DASH, GP W/O GRAPHIC SUS	1
28	995346	SCREW, 1/4-20 X .50 WAHTAP	4
29	316868	WASHER, SHOULDER NYLON .255 X 48	4
30	44811	SCREW, 1/4-20 X .75 HXWATAP	1
31	1502	NUT, 1/4-20 REGHEXCTRLK	1
32	307058-660	HOOD	1
33	318197	PAD, ADHESIVE 1.00 X	4
34	303037	GRILLE, LWR GPWR	1
35	300302	SCREW, #10 X .50 HHTAFPST	4
36	310203	CLIP, HOG RING C-SHAPED,	1
37	301425	BRACE, HOOD SUPPORT	4
38	301542	SCREW, 1/4-2451 00 HWATAPBLKPHOS	4
39	271166	NUT, #10-24 HEXKEPS	4
40	302333	LENS, SMOKED W/TAB	1
41	301541	FOIL, REFLECTOR LENS H-11 LH	1
42	301540	FOIL, REFLECTOR LENS M-1 RH	1
43	57796	SCREW, #6 X .50 PLASTITE	4
44	56676	B O L T , .375 X .580 HSSH 5/16-18	2
45	1498	NUT, 5/16-18 REGHEXCTRLK	2
46	5747s	SPRING, HOOD LATCH	2
47	-180079	SCREW, 5/16-18 X 1.00 HHC	2
48	1498	NUT, 5/16-18 REGHEXCTRLK	2
49	301251	STEERING WHEEL	1
50	456378	ROLL PIN	1
51	328783	PARTS MANUAL	1
52	328721	OPERATOR'S MANUAL	1

* INDICATES STANDARD HARDWARE ITEMS

TRACTEUR TONDEUSE 43" MODELE D3560-320

ENSEMBLE CHASSIS & CAPOT (ARRIERE)



UTILISEZ DES PIÈCES D'ORIGINE POUR CONSERVER L'APPLICATION DE LA GARANTIE.

TOUTES LES PIÈCES NON RÉFÉRÉES SONT INTERCHANGEABLES AVEC LEURS OPPOSÉS.

32590-1A

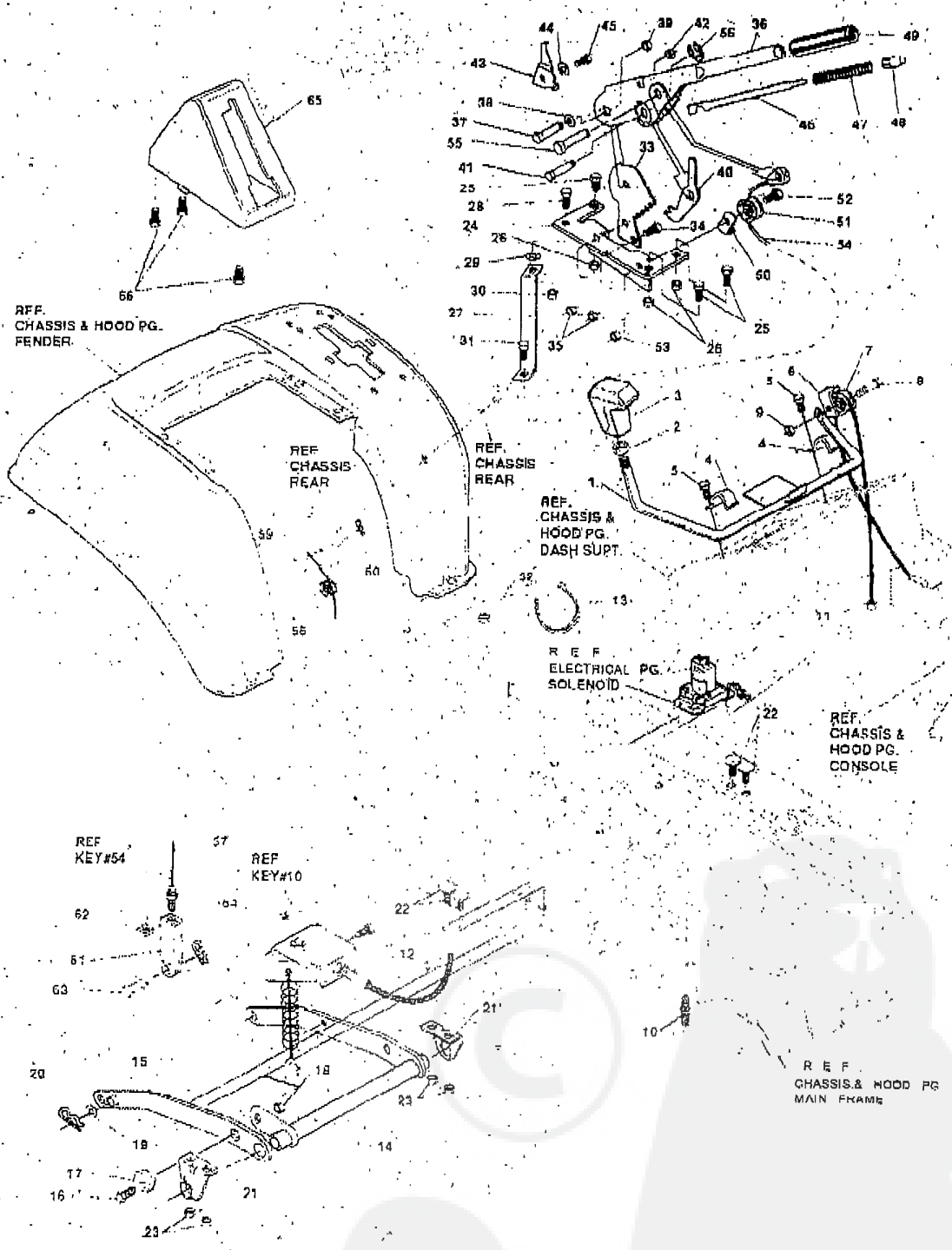
TRACTEUR TONDEUSE 43" MODELE D3560-320

KEY#	PART#	DESCRIPTION	QTY.
55	326577-860	FRAME, LF MAIN 930/4360	1
56	310005	FOOTPAD LH	1
57	310006	FOOTPAD RH	1
58	309235	FASTENER, RATCHET	1 2
59	327575-860	CONSOLE, GNPR SOF	1
60	50867-860	PLATE, SEAT	1
61	310660-860	BRACKET, F-5 SEA; SUPPORT	1
62	2 0 5 0 7	BOLT, 437 X 156 HSSH 5/16-18	2
63	1498	NUT, 5/16-18 REGHEXCTRLK	2
64	48901	SCREW, 5/16-18X.83 HHC	4
65	1498	NUT, 5/16-18 REGHEXCTRLK	4
66	57153	SPRING, SEAT 2.63 LG.1.49 OD	2
67	1341	CLAMP, SPRING 1.17" ID	2
68	44811	SCREW, 1/4-20 X 7.5 HXWATAP	2
69	5 6 9 0 7	COVER, SEAT SPRING 1.5 ID X 1.0 LG	2
70	^	FENDER ASSEMBLY F5, SUSP, SOF	1
71	308653-860	FENDER F5, SOF, SUS	1
72	300298	CLFVIS	1
73	4 3 9 4 5 5	SCREW, 5/16-18 X 1.56 PHNMA	1
74	301551	WASHER, 344 ID X 1.50 X .09	1
75	120373	NUT, 5/16-18 SO	1
76	995346	SCREW, 1/4-20 X .50 WAHHTAP	4
77	122017	SCREW, 5/16-18 X 1.00 HHC	2
78	446363	WASHER, FLAT 375 X .88 X .082	4
79	1498	NUT, 5/16-18 REGHEXCTRLK	2
80	55023	TRIM, STRIP > BLACK	77.5IN
81	1 8 0 0 7 9	SCREW, 5/16-18 X 1.00 HHC GR 5	2
82	1498	NUT, 5/16-18 REGHEXCTRLK	2
83	307651	SEAT GENERIC	1
84	120393	WASHER FLAT 344 X .69 X .065	4
85	120638	WASHER H V S P T L K	4
86	122007	SCREW 5 16-18 X 75 HHC	4

^ INDICATES STANDARD HARDWARE ITEMS
 ^ ORDER INDIVIDUAL PARTS

TRACTEUR TONDEUSE 43" MODELE D3560-320

ENSEMBLE SUSPENSION TONDEUSE



UTILISEZ DES PIECES D'ORIGINE POUR CONSERVER L'APPLICATION DE LA GARANTIE.

TOUTES LES PIECES NON REFEREES SONT INTERCHANGEABLES AVEC LEURS OPPOSEES.

315597F

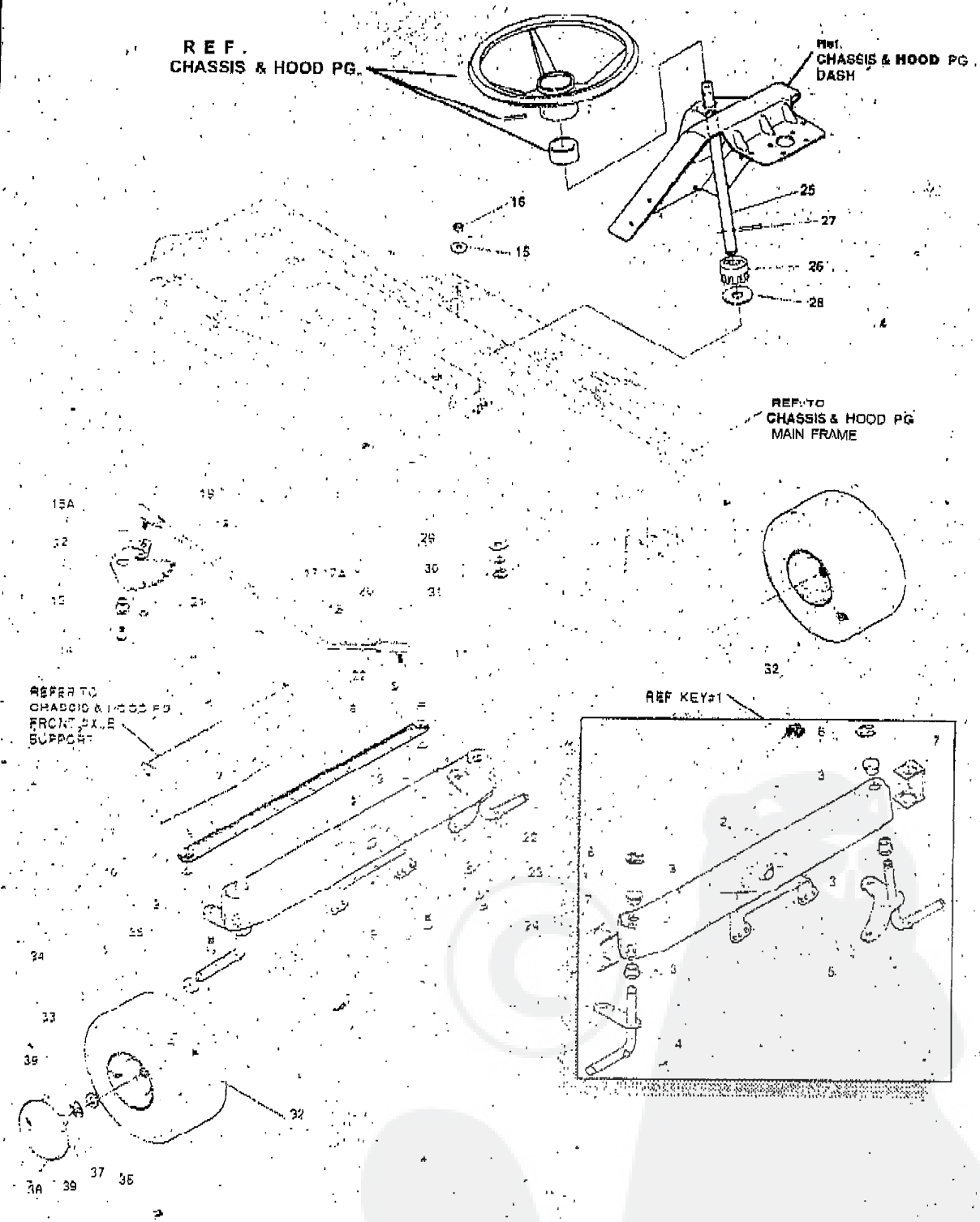
TRACTEUR TONDEUSE 43" MODELE D3560-320

KEY#	PART#	DESCRIPTION	QTY.
1	9792	ASSEMBLY, WELD, CLUTCH HANDLE	1
2	120238	NUT, 1/2-13 HEXJAM	1
3	304438	KNOB, SHIFT NOMA 1/2-13	1
4	9129	CLIP, RETAINING BRACKET	2
5	995338	SCREW, 1/4-20 X .63 HHWATAP	2
6	1288	BRACKET, CABLE RETAINER	1
7	40306	PULLEY, 906 X 305 NYLON	1
8	57322	BOLT, .375 X .375 HHSM 1/4-20	1
9	1502	NUT, 1/4-20 REGHEXCTRLK	1
10	301491	ASSEMBLY, CLUTCH CABLE GEN PWR	1
11	120613	NUT, 1/4-28 HJAM	1
12	35496	SCREW, 5/16-18 X .75 WAHTAP	1
13	57444	TIE, CABLE BLACK NYLON 5.62 L	1
14	300158-853	ASSEMBLY, REAR LIFT	1
15	300169-853	ASSEMBLY, LINK, RIGHT SIDE	1
16	160079	SCREW, 5/16-18 X 1.00 HHC	1
17	58247	ADJUSTING NUT	1
18	1496	NUT, 5/16-18 REGHEXCTRLK	1
19	417098	WASHER, FLAT .531 X 1.06 X .095	2
20	8260	PIN, HAIR .091 DIA X 1.66 LG	2
21	58248-853	BRACKET, REAR HANGER SUSP	2
22	126211	BOLT, 5/16-18 X .63 CARRIAGE	4
23	1458	NUT, 5/16-18 REGHEXCTRLK	4
24	313926	BRACKET, HEIGHT ADJUST	1
25	160077	SCREW, 5/16-18 X .75 HHC	3
26	1498	NUT, 5/16-18 REGHEXCTRLK	3
27	300336-850	BRACE, FENDER F-5 SUS	1
28	180079	SCREW, 5/16-18 X 1.00 HHC	1
29	45602	WASHER, FLAT .333 X .87 X .119	1
30	1498	NUT, 5/16-18 REGHEXCTRLK	1
31	180079	SCREW, 5/16-18 X 1.00 HHC	1
32	1498	NUT, 5/16-18 REGHEXCTRLK	1
33	301238	QUADRANT, HEIGHT ADJUST	1
34	180077	SCREW, 5/16-18 X .75 HHC	2
35	1498	NUT, 5/16-18 REGHEXCTRLK	2
36	322292-853	HANDLE, LIFT HEIGHT ADJUST	1
37	300171	BOLT, 500 X 270 HHSH 5/16-18	1
38	996418	WASHER, FLAT 506 X 75 X .024	1
39	44108	NUT 5/16-18 HWDFLCTRLK	1
40	301239	P A W L L, HEIGHT ADJUST	1
41	300171	BOLT, 500 X 270 HHSH 5/16-18	1
42	44108	NUT 5/16-18 HWDFLCTRLK	1
43	9435	POINTER, HEIGHT ADJUST	1
44	138479	WASHER, EXLK 195 X 41 X .03	1
45	35287	SCREW, #8-32 X .38 HHWATAPGR2	1
46	303027	ROD, ACTUATOR-SHORT	1
47	58325	SPRING HEIGHT ADJUST	1
48	58325	KNOB HEIGHT ADJUST-PUSH BUTTON	1
49	58329	GRIP, 750 OD W/ HOLE BLK	1
50	9149	B R A C K E T, C A B L E R E T A I N E R	1
51	48306	PULLEY, 906 X 305 NYLON	1
52	58336	BOLT, .375 X .375 HHSM 1/4-20	1
53	1502	NUT, 1/4-20 REGHEXCTRLK	1
54	314177	CABLE, LIFT 23 30 F-5 20X80	1
55	300310	PIN, CLEVIS 310 DIA. 476 LG	1
56	300311	RING RET-E 31 X 24	1
57	120375	NUT, 1/4-20 REGHEX	1
58	46306	PULLEY, 906 X 305 NYLON	1
59	300317	PIN, CLEVIS 38 DIA X 1.00 LG	1
60	8260	PIN, HAIR .091 DIA X 1.66 LG	1
61	9405	CLEVIS, LIFT CABLE	1
62	120372	NUT, 1/4-20 REGSO	1
63	30522	PIN, CLEVIS 312 X 812	1
64	121222	PIN, COTTER .090 086 X 75 LG	1
65	300335	LIFT COVER-39 F5	1
66	300340	SCREW, #10 X 75 HHPLAST	1

*INDICATES STANDARD HARDWARE ITEMS

TRACTEUR TONDEUSE 43" MODELE D3560-320

ENSEMBLE DIRECTION AVANT



UTILISEZ DES PIÈCES D'ORIGINE POUR CONSERVER L'APPLICATION DE LA GARANTIE.

TOUTES LES PIÈCES NOM
RÉFÉRÉES SONT
INTERCHANGEABLES AVEC
LEURS OPPOSÉS.

322616D

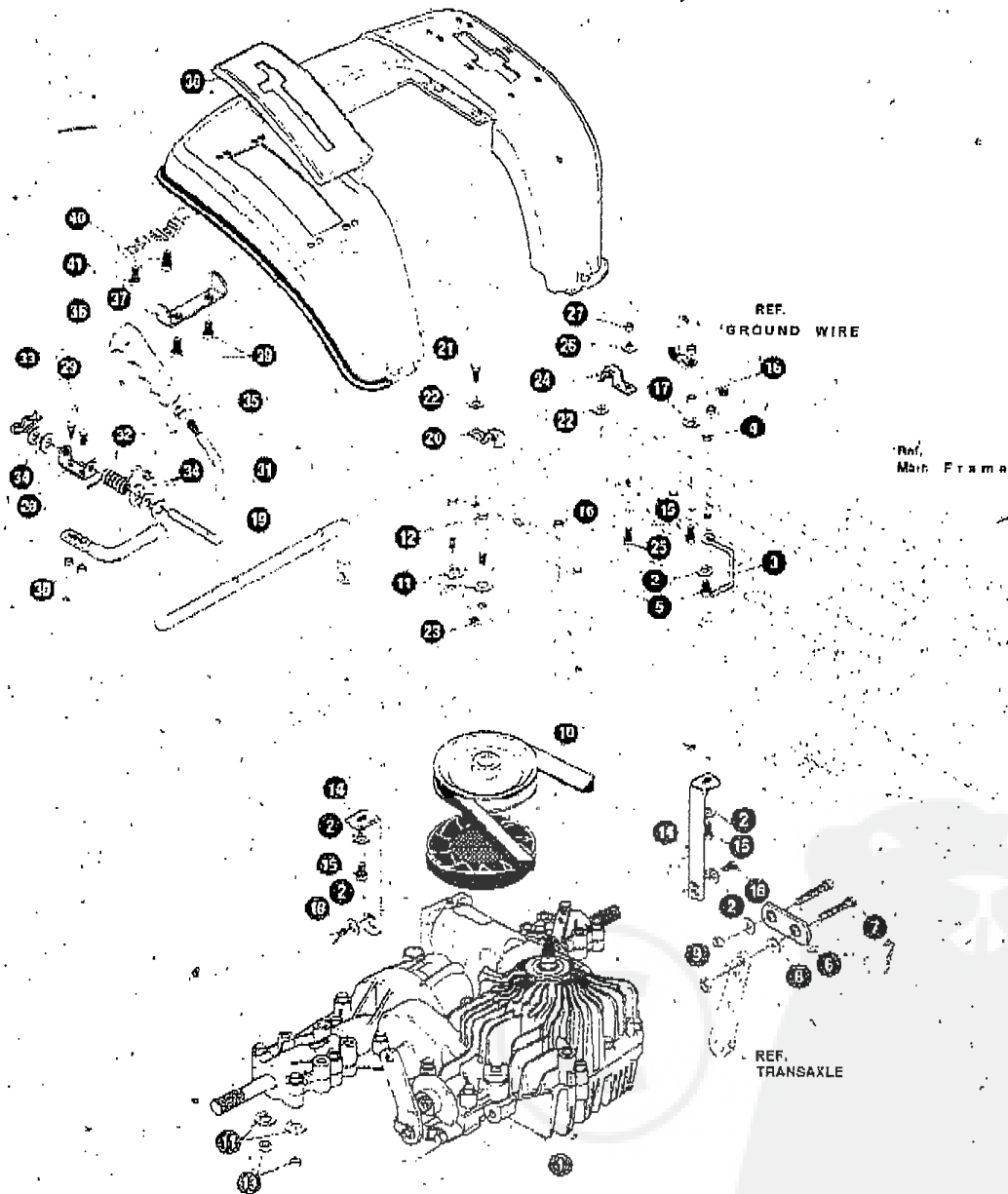
TRACTEUR TONDEUSE 43" MODELE D3560-320

KEY#	PART#	DESCRIPTION	QTY.
1		ASSEMBLY, AXLE FRONT	1
2	300272-860	AXLE, FRONT	1
3	52407	SPINDLE, BEARING	4
4	9 1 8 0	SPINDLE, RH LONG	1
5	3 14008	SPINDLE, LH LONG	1
6	36625	RING, RETEX .57 X .05 TRU 5133-75	2
7	53373-860	AXLE COVER	2
8	304590	TIE ROD ASSEMBLY 19.81 LG	1
9	180128	SCREW, 3/8-16 X 1.75 HHC	2
10	120382	WASHER, REGSPTLK 393 X 68 X 10	2
11	1489	NUT, 3/8-16 REGHXCTRLK	2
12	58289	SECTOR, STEERING LF	1
13	52406	BEARING, FLANGE ECC.510 ID X 99800 X 58	1
14	180177	SCREW, 1/2-13 X 1.50 HHC	1
15	2 2 2 6 5	WASHER, FLAT .515 X 1.38 X .119	1
15A	49998	WASHER, FLAT .520 X 1.25 X .209	1
16	1500	NUT, 1/2-13 REGHXCTRLK	1
17	311100	DRAGLINK ASSEMBLY	1
17A	58291	STEERING LINK	1
18	124925	NUT, 3/8-24 REGHEXJAM	2
19	57158	BALL JOINT, 3/8 THD SHUKI STUD	1
20	21275	BALL JOINT, 3/8 THD LONG STUD	1
21	46692	NUT, 3/8-24 WDFLHLK	1
22	120396	WASHER, FLAT 631 X 1.06 X 095	2
23	120382	WASHER, REGSPTLK 393 X 68 X 10	1
24	120369	NUT, 3/8-24 REGHEX	1
25	5 8 2 4 3	SHAFT, STEERING LF	1
26	58244	PINION, STEERING LF	1
27	58274	PIN, DOWEL 2500 OD-1.75	1
28	301410	BEARING FLANGE 752 ID X 1061 OD X 24	1
29	301398	WASHER, FORMED 1.135 X 1.53 X 1.2	1
30	21682	WASHER, FLAT .765 X 1.25 X .042	1
31	36625	RING, RETEX .57 X .05 TRU 5133-75	1
32	36830	TIRE & RIM, PU 15 X 6.5 X 6	2
33	24167	VALVE STEM	1
34	3 1 5 6 7 6	WHEEL W/BEARING	1
35	39979	BEARING, FLANGE 138 OD-753 ID	1
36	6 4 2	WASHER, FLAT .755 X 1.31 X 075	4
37	3 6 6 2 5	RING RETEX 57 X 05 TRU 5133-75	2
38	304444	HUBCAP 6" EURO	2
39	306669	CLIP	8

* INDICATES STANDARD HARDWARE ITEMS
 ^ ORDER INDIVIDUAL PARTS

TRACTEUR TONDEUSE 43" MODELE D3560-320

ENTRAÎNEMENT



UTILISEZ DES PIÈCES D'ORIGINE POUR CONSERVER L'APPLICATION DE LA GARANTIE.

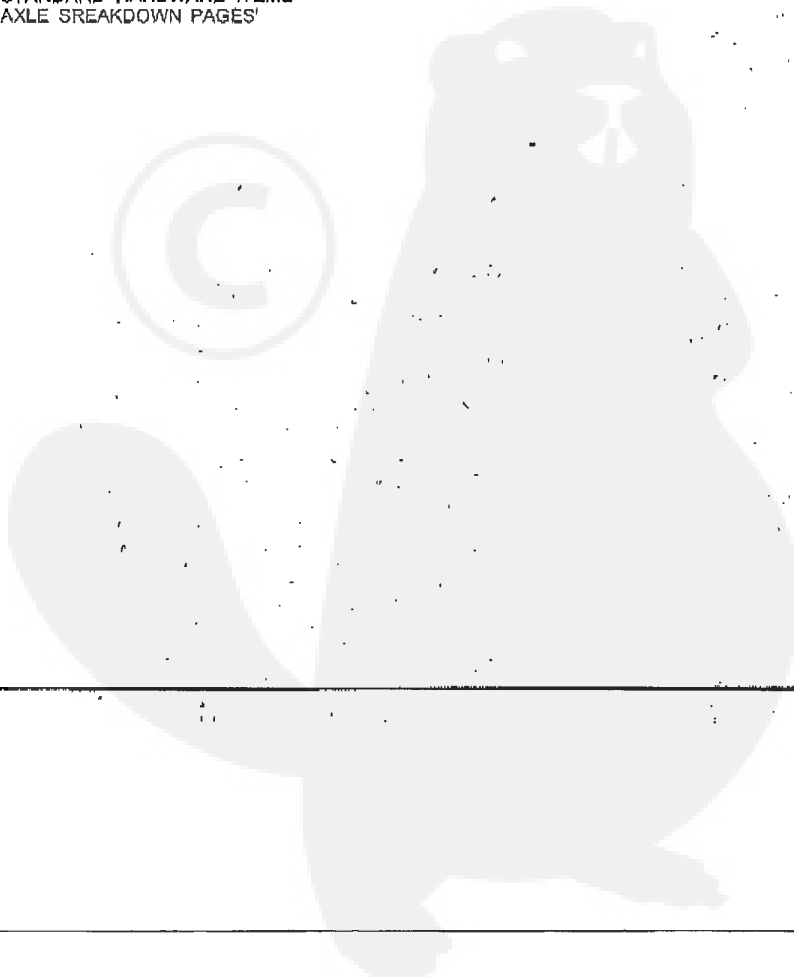
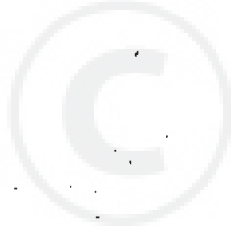
TOUTES LES PIÈCES NON RÉFÉRÉES SONT INTERCHANGÉABLES AVEC LEURS OPPOSÉS.

326645A

TRACTEUR TONDEUSE 43" MODELE D3560-320

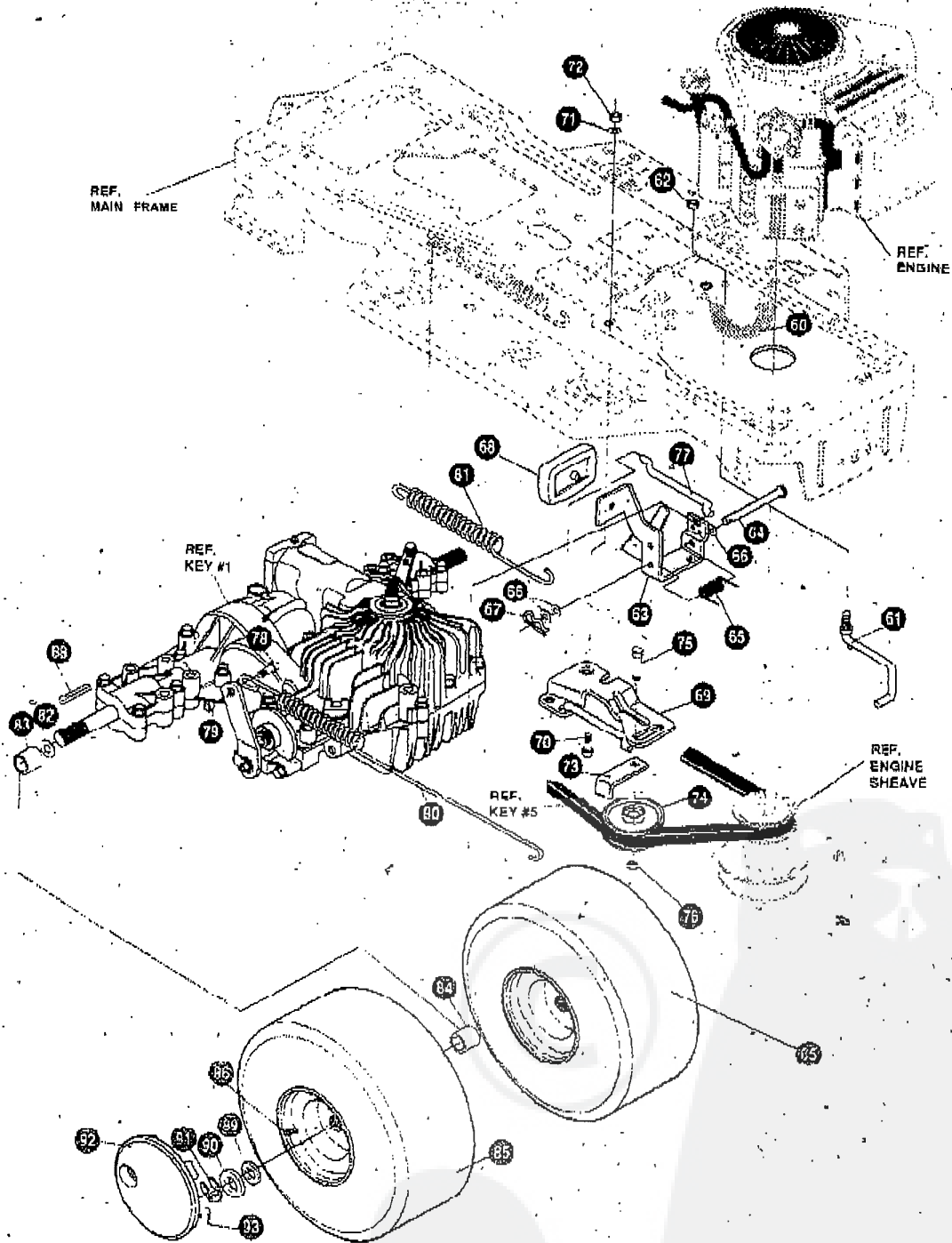
KEY#	PART#	DESCRIPTION	QTY.
1	^	TRANSAXLE: T1800 PEERLESS 2WS HYDRO	1
2	120393	WASHER, FLAT .344 X .69 X .065	5
3	3 2 6 6 3 3	GUIDE BELT	1
4	1496	NUT, 5/16-18 REGHEXCTRLK	1
5	122017	SCREW, 5/16-18 X 1.00 HHC	1
6	32538 1	LINK, SHIFT LF HYDRO	1
7	122145	SCREW, 3/8-16 X 1.25 HHC	2
8	2 7 4 5 1 7	WASHER, FLAT .406 X .73 X .083	2
9	1499	NUT, 3/8-16 REGHXCTRLK	2
10	314572	BELT, V 4L 80.16 HYDRO LF	1
11	120393	WASHER, FLAT .344 X .69 X .065	4
12	180089	SCREW, 5/16-18 X 2.75 HHC	4
13	1 4 9 8	NUT, 5/16-18 HWDFLCTRLK	4
14	328684	STABILIZER BRACKET, LF HYDRO	2
15	122007	SCREW, 5/16-18 X .75 HHC	2
16	1498	NUT, 5/16-18 REGHEXCTRLK	3
17	138538	WASHER, REGINLK .320 X .61 X .03	1
18	35498	SCREW, 5/16-18 X .75 WAHMTAP	2
19	325392	LEVER, SHIFT-LWR LF HYDRO	1
20	310347-853	CLIP-SHIFT, LEVER .62 ROD,	1
21	180077	SCREW, 5/16-18 X .75 HHC	1
22	9 9 5 4 1 6	WASHER, FLAT .391 X 1.00 X 125	1
23	1498	NUT, 5/16-18 REGHEXCTRLK	1
24	310347 853	CLIP-SHIFT LEVER- 62 ROD	1
25	1 8 0 0 7 7	SCREW, 5/16-18 REGHEXCTRLK	1
26	996416	WASHER, FLAT .391 X 1.00 X 125	1
27	1498	NUT, 5/16-18 REGHEXCTRLK	1
28	310356	-PIVOT BRACKET LEVER	1
29	180018	SCREW, 1/4-20 X .62 HHC	2
30	1502	NUT, 1/4-20 REGHEXCTRLK	2
31	318452	LEVER, SHIFT UPPER SF 1/2-13TH	1
32	318451	SPRING, TORSION 56 X 95-X 095	1
33	8260	PIN, HAIR 125 DIA X 1.00 LG	1
34	2968	WASHERS	5
35	120238	NUT, 1/2-13 HEXJAM	1
36	306690	HANDLE, 1/2-13 MOLDED BLACK 173	1
37	311257-853	BRACKET COVER	1
38	914244	COVER PLASTIC	1
39	311331,	SCREW, 174-15 X 44 X 533 HILOHHWA	2
40	1341	CLAMP SPRING	2
41	31 1331	SCREW, 174-15 X 44 X 533 HILOHHWA	2

. INDICATES STANDARD HARDWARE ITEMS
 ^ SEE TRANSAXLE BREAKDOWN PAGES



TRACTEUR TONDEUSE 43" MODELE D3560-320

ENTRAÎNEMENT



UTILISEZ DES PIÈCES D'ORIGINE POUR CONSERVER L'APPLICATION DE LA GARANTIE.

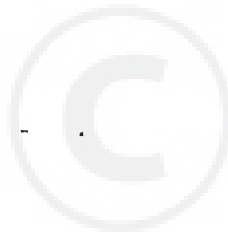
TOUTES LES PIÈCES NON
RÉFÉRÉES SONT
INTERCHANGEABLES AVEC
LEURS OPPOSÉES.

326645A

TRACTEUR TONDEUSE 43" MODELE D3560-320

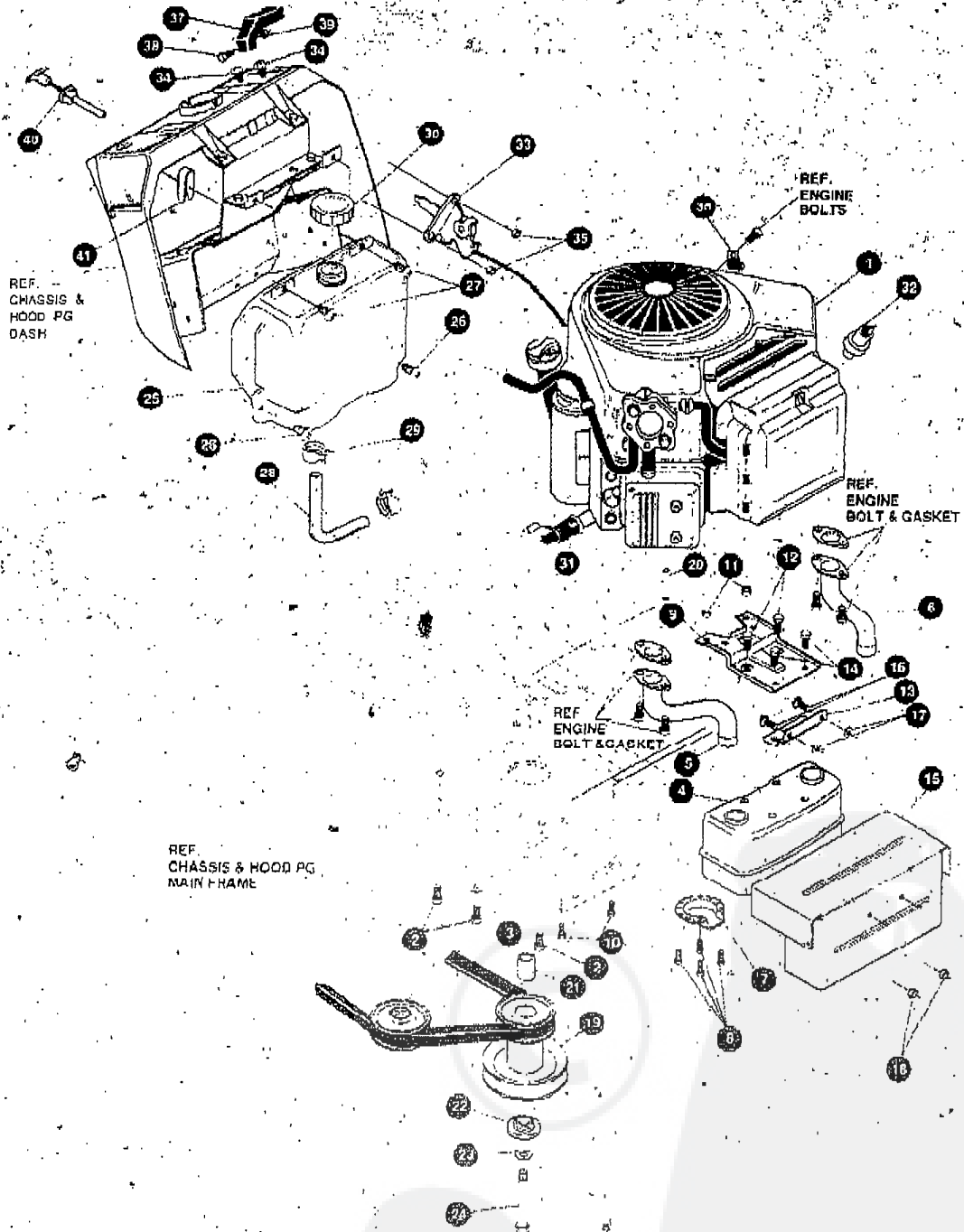
KEY#	PART#	DESCRIPTION	QTY.
6 0	321514	SPRING, BIAS DRAGLINK	1
61	304016	GUIDE BELT	1
62	1498	NUT, 5/16-18 REGHEXCTRLK	1
63	325942	PEDAL ASSEMBLY, BRAKE/CLUTCH LF	1
64	319875	P I N , CLEVIS	1
65	57847	SPRING, BRAKE PEDAL	1
66	2968	WASHER, FLAT .504 X .75 X .039	3
67	56180	PIN, HAIR	1
6 8	48160	PAD, CLUTCH BRAKE W/PRINTING	1
69	320381-853	ARM, IDLER TRACTION DR. DE	1
70	300793	BOLT, .625 X .135 HHSH 5/16-18	1
71	45602	WASHER, FLAT .333 X .87 X .119	1
72	1498	NUT, 5/16-18 REGHEXCTRLK	1
73	39659	RETAINER, STRAP BELT	1
74	35374	PULLEY, IDLER V4L 3.06 X .62	1
75	4 5 6 9 2	BOLT, 3/8-16 X 1.50 CARRIAGE	1
76	1498	NUT, 3/8-16 REGHXCTRLK	1
77	57204	ROD, CLUTCH	1
78	326131	BOLT SHOULDER 5/16-18	1
79	1498	NUT, 5/16-18 REGHEXCTRLK	1
80	327947	BRAKE SPRING, T1800 PEERLESS HYDRO	1
81	56359	SPRING, CLUTCH .113 X .750 X 8.75	1
82	42815	WASHER, FLAT .755 X 1.53 X .07	1
83	57479	SPACER SLEEVE; .75 X 1.25 X 1.32	2
84	301565	SPACER SLEEVE, .750 X 1.25 X .50	2
85	58276	TIRE & RIM, PU 20 X 10 X 8 TURF 134	2
86	24107	V A L V E S T E M	1
87	301366	AIM, WHEEL 20 X 8.00	1
88	52928	KEY SQUARE	2
89	642	WASH&, FLAT 755 X 1.31 X .075	4
90	42515	WASHER, FLAT .755 X 1.53 X .07	2
9 1	36625	RING RETEX .57 X .05 TRU 5133-75	2
9 2	306570	HUB CAP, ERO 8" WHITE 869	2
93	306669	CLIP, HUBCAP TINN #C25467-017-4	10

* INDICATES STANDARD HARDWARE ITEMS



TRACTEUR TONDEUSE 43" MODELE D3560-320

MOTEUR ENSEMBLE



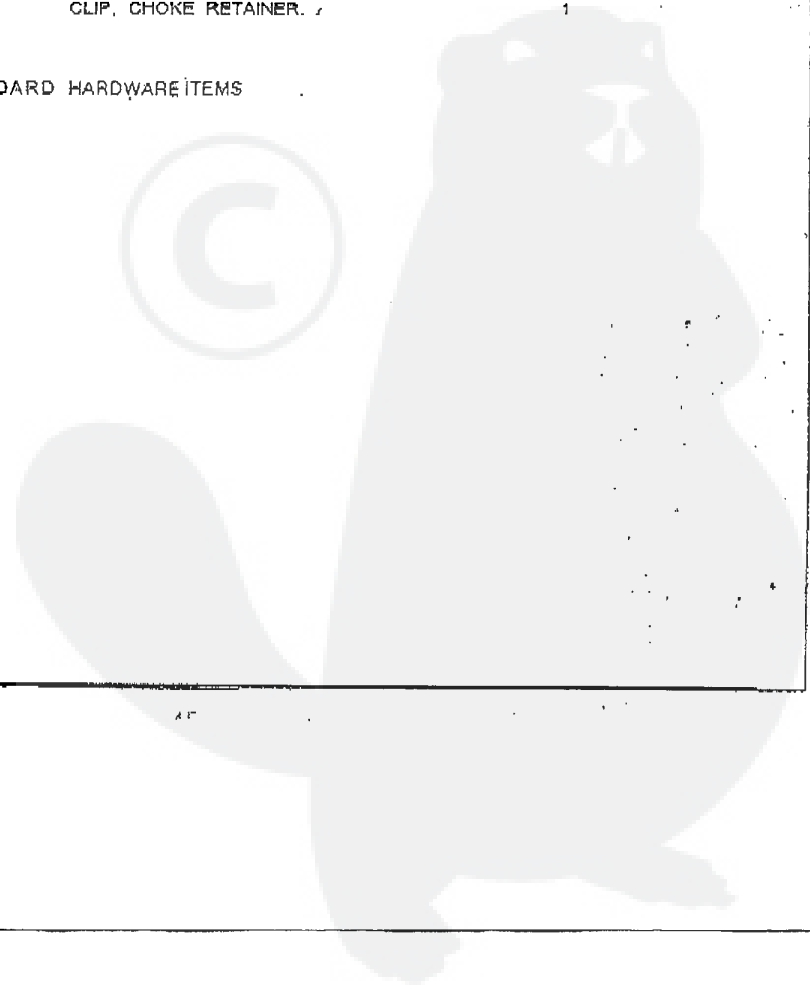
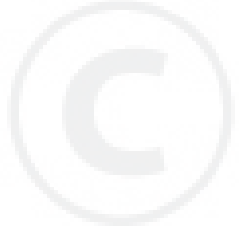
UTILISEZ DES PIÈCES D'ORIGINE POUR CONSERVER L'APPLICATION DE LA GARANTIE.

TOUTES LES PIÈCES NON RÉFÉRÉES SONT INTERCHANGEABLES AVEC LEURS OPPOSÉES.

TRACTEUR TONDEUSE 43" MODELE D3560-320

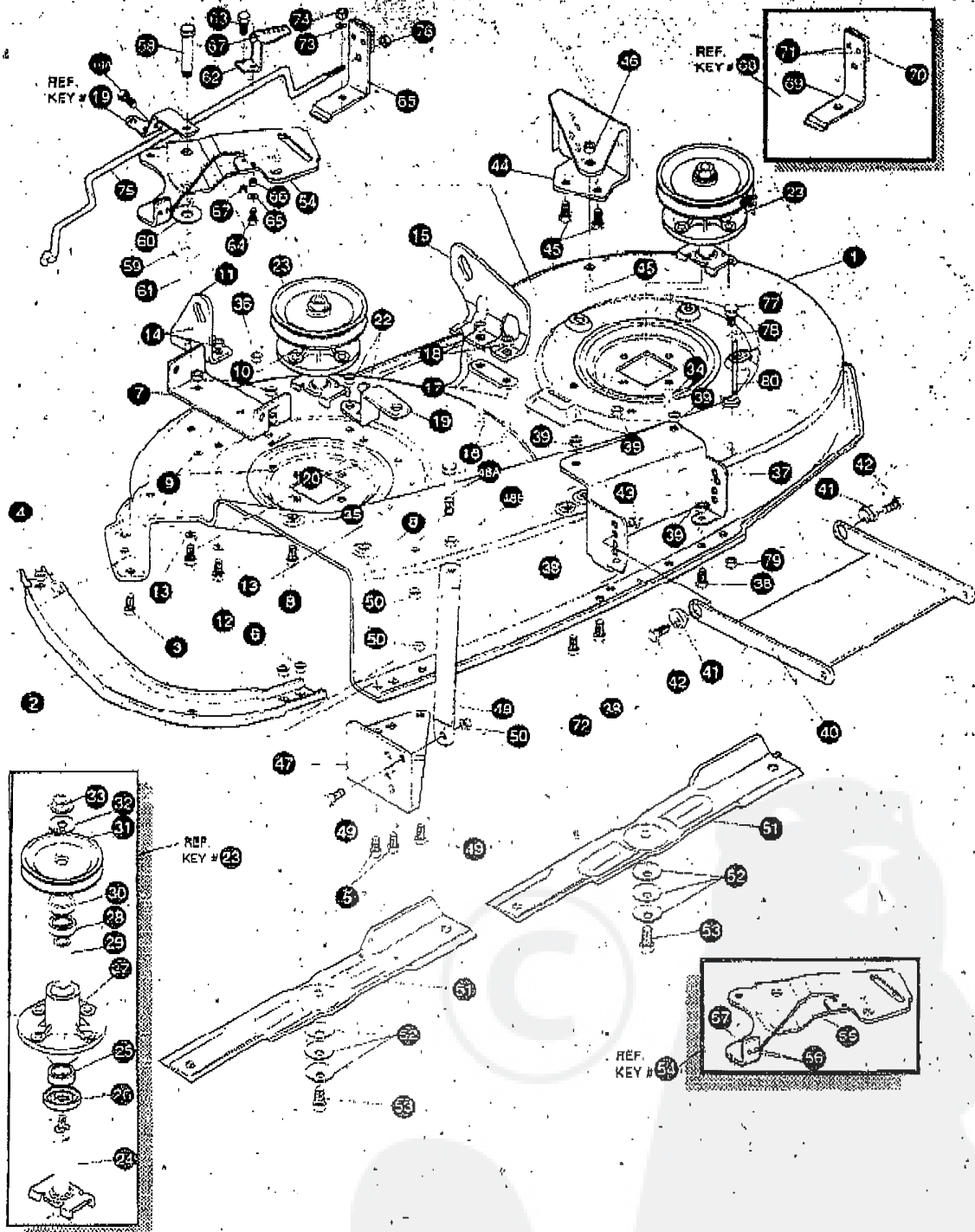
KEY#	PART#	DESCRIPTION	QTY.
1	ENGINE	311PPBS V/TWIN 16AMP (SEE ENG INC MANUAL)	1
2	50947	SCREW, 3/8-16 X 1.25 WAHHTAP	4
3	138489	WASHER, EXLK .364 X-.69-X .04	1
4	305553	MUFFLER 15HP BBS VANG	1
5	305554	EXHAUST TUBE, 15HP RH B&S VANG	1
6	305555	EXHAUST TUBE, 15HP LH B&S VANG	1
7	56472	DEFLECTOR SIDE OUT (83222573)	1
8	35287	SCREW, #8-32 X .38 HHWATAP GR2	4
9	304709-853	BRACKET, MUFFLER	1
10	56030	SCREW, 5/16-18 X .75 WDFLLK	2
11	55273	NUT, 5/16-18 HXWDFLLK	2
12	995346	SCREW, 1/4-20 X .50 WAHHTAP	2
13	9796	BRACKET, TRANSAXLE	1
14	995338	SCREW, 1/4-20 X .63 HHWATAP	2
15	320922-853	HEAT SHIELD, MUFFLER	1
16	126211	BOLT, 5/16-18 X .63 CARRIAGE	2
17	309436	PUSHNUT, 5/16 BOLT RETAINER	2
18	55273	NUT, 5/16-18 HXWDFLLK	2
19	316802	PULLEY, ENGINE 4 40OFF/500D/3 00 D	1
20	57791	KEY, SQUARE .250 SQ X 5 00 LG	1
21	304246	SPACER, 1 01 X 1 404 ENGINE PULLEY	1
22	56431	WASHER, 980 ID X 1.38 OD X 437 PILOT.	1
23	120383	WASHER, REGSPTLK .459 X .78 X .12	1
24	428644	SCREW, 7/16-20 X 5.00 HHC	1
25	314991	TANK, FUEL 2-GAL GPWR	1
26	300303	SCREW, 1/4-10 X .75 PHPNTAP GR2	2
27	995346	SCREW, 1/4-20 X 50	2
28	48049	GAS LINE .25 ID BULK LENGTH	10'
29	4 7 3 4 5	CLAMP, FUEL LINE	2
30	300304	CAP, FUEL 2 0 THROAT	1
31	325547	OIL DRAIN ITW	1
32	314797	OIL SENSOR	1
33	309092	THROTTLE CONTROL 34 00 LG	1
34	320553	SCREW, 10-24 X .83 PHPNMA GR2BK	2
35	2 7 7 1 6 6	NUT, #10-24 H E X K E P S	2
36	57569	RETAINER, 31 ID X .62 X .03 WIRE	1
37	300506	KNOB, THROTTLE CONTROL HANDGRIP	1
38	159585	SCREW, #8-32 X .38 PHPNMA	1
39	120622	NUT, #8-32 REGHX	1
40	307113	CHOKE CONTROL .42 O.LG 12 PAN	1
41	314522	CLIP, CHOKE RETAINER	1

* INDICATES STANDARD HARDWARE ITEMS



TRACTEUR TONDEUSE 43" MODELE D3560-320

CARTER DE TONDEUSE



UTILISEZ DES PIÈCES D'ORIGINE POUR CONSERVER L'APPLICATION DE LA GARANTIE.

TOUTES LES PIÈCES NON RÉFÉRÉES SONT INTERCHANGEABLES AVEC LEURS OPPOSÉS.

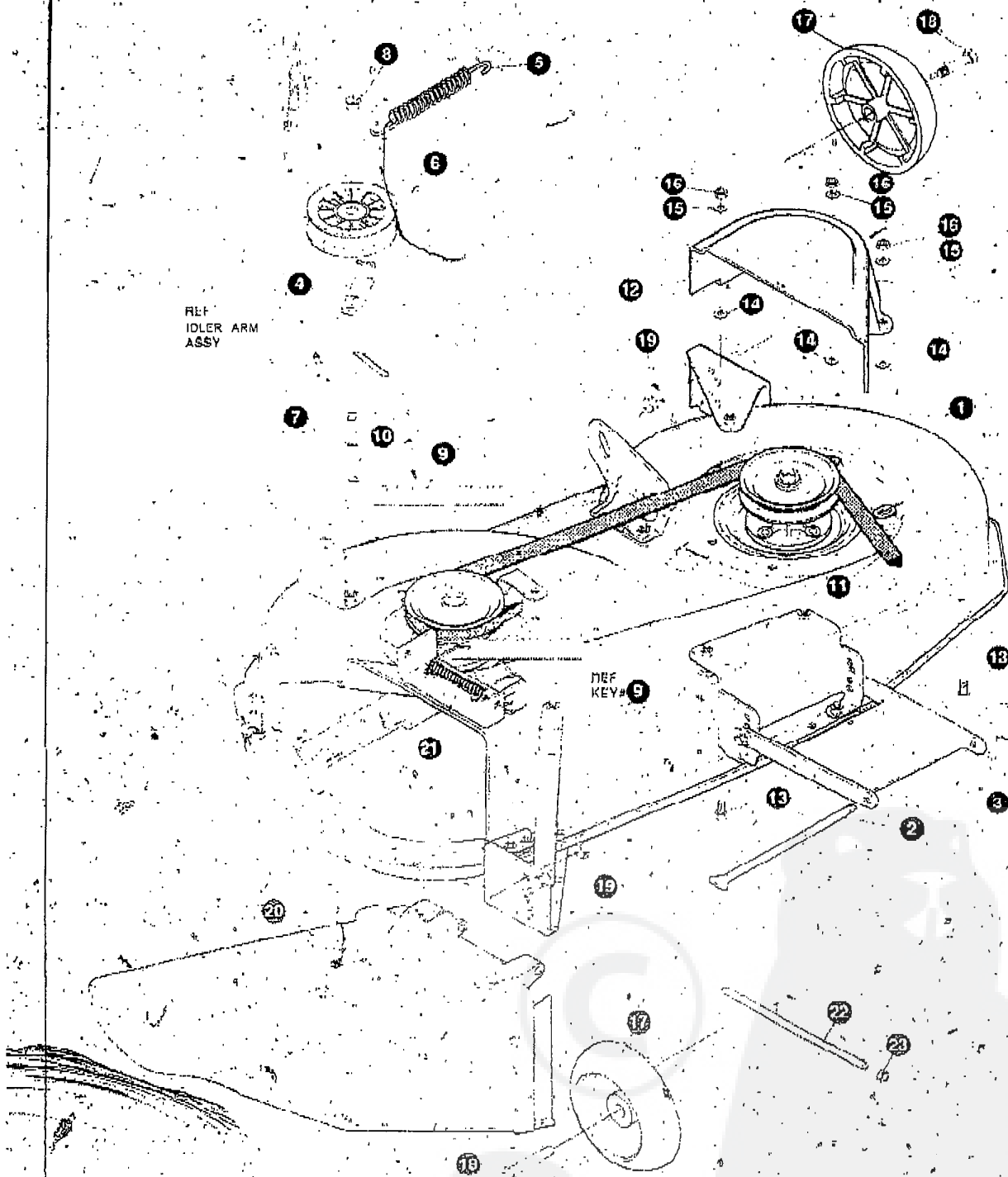
324144E

TRACTEUR TONDEUSE 43" MODELE D3560-320

KEY#	PART#	DESCRIPTION	QTY.
1	325780-853	POWER DECKS, RIDER 43"	1
2	180075	TOE GUARD	1
3	1498	SCREW, 5/16-18 X .63 HHC	1
4	1220071	NUT, 5/16-18 REGHEXCTRLK	1
5	1498	SCREW, 5/16-18 X .75 HHC	2
6	1498	NUT, 5/16-18 REGHEXCTRLK	2
7	317017	BRACKET, CHUTE MOUNT	2
8	1 6 0 0 7 5	SCREW, 5/16-18 X .63 HHC	2
9	120393	WASHER, FLAT .344 X .69 X .065	2
10	1498	NUT, 5/16-18 REGHEXCTRLK	2
11	313929	LIFT BRACKET, REAR, RH	1
12	180077	SCREW, 5/16-18 X .75 HHC	2
13	120393	WASHER, FLAT, .344 X .69 X .065	2
14	1498	NUT, 5/16-18 REGHEXCTALK	2
15	310667	BRACKET, DECK LIFREAR LH	1
16	180077	SCREW, 5/16-18 X .75 HHC GR5	2
17	120393	WASHER, FLAT, .344 X .69 X .065	2
18	1498	NUT, 5/16-18 REGHEXCTRLK	2
19	320693-853	BRACE IDLER	1
19A	308231	SCREW, 1/4-20 X 1.25 HHWATAP	1
20	180077	SCREW, 5/16-18 X .75 HHC	2
22	44106	NUT, 5/16-18 HWDFLOTRLK	2
23	56424-853	QUILL ASSEMBLY, 36/39/40/43	2
24	56425	SHAFT/SADDLE 36"	1
25	45562	BEARING, BALL	1
26	50616	DUST SHIELD	1
27	55547	QUILL CASTING (1046)	1
28	49562	BEARING, BALL	1
29	50818	SPACER, .3797 LG X .669 ID X .88 OD	1
30	51449	SPACER, .438 LG X .932 OD X .672 ID	1
31	313898	PULLEY, 26/36" QUILL VSL	1
32	56365	SPECIAL WASHER	1
33	1262	NUT, 7/16-20 WDFLLK	1
34	50632	SCREW, 5/16-18 X .88 WHTAP	7
35	300345	SCREW, 5/16-18 X 1.38 WATAP	1
36	1498	NUT, 5/16-18 REGHEXCTRLK	2
37	317040	BRACKET FRONT	1
38	180075	SCREW, 5/16-18 X .63 HHC	4
39	1498	NUT, 5/16-18 REGHEXCTRLK	4
40	58325-853	LINK BRACKET, DECK FRONT	1
41	58247	ADJUSTING NUT	2
42	122017	SCREW 5/16-18 X .63 HHC	2
43	1498	NUT, 5/16-18 REGHEXCTRLK	2
44	317041	BRACKET GAGE WHEEL LH	1
45	180075	SCREW 5/16-18 X .63 HHC	3
46	1498	NUT 5/16-18 REGHEXCTRLK	3
47	322464-853	BRACKET GAGE WHEEL RH FRONT	1
48	3 4282-853	BRACKET STABILIZER	1
48A	311104	SCREWS 5/16-18 X .50 HHC GR 5	1
48B	271184	NUT, 5/16-18 HEX KEPS	1
49	180075	SCREW, 5/16-18 X .63 HHC	2
50	1498	NUT, 5/16-18 REGHEXCTRLK	2
51	320961	BLADE LOW-LIFT 2" 70	1
52	2483	WASHER .39 ID X .725 O X .07 BELLW	2
53	39573	SCREW, 3/8-24 X 1.00 NYLHHC	3
54	320376-853	IDLER ARM ASSEMBLY	1
55	322116-853	IDLER ARM	1
56	41601	RIVET	2
57	306973	BRAKE PAD	1
58	304420	SHOCK DEF ROHT	1
59	996416	WASHER FLAT 391 X 1.00 X .25	1
60	996307	WASHER, FLAT 391 X 1.00 X .209	1
61	45171	NUT, 3/8-16 HWQFL, WHIZ-LOCK	1
62	300x0-853	BRACKET, EXTENSION IDLER	1
63	180075	SCREW 5/16-18 X .63 HHC GR 5	1
64	180083	SCREW, 5/16-18 X 1.50 HHC GR 5	1
65	446369	WASHER, FLAT	1
66	271184	NUT 5/16-18 HEX KEPS	1
67	1498	NUT	2
68	321820-853	BLADE BRAKE ASSEMBLY	1
69	304118-853	BRAKE ARM	1
70	304079	BRAKE PAD	1
71	135624	RIVET	2
72	120228	SCREW, 5/16-18 X .65	1
73	120393	WASHER, FLAT .344 X .69 X .065	1
74	1498	NUT, 5/16-18 REGHEXCTRLK	1
75	314079	ROD, BRAKE	1
76	1502	NUT, 1/4-20 REGHEXCTRLK	1
77	180079	SCREW, 5/16-18 X 1.00 HHC GR5	1
78	120393	WASHER, FLAT .344 X .69 X .065	1
79	1498	NUT, 5/16-18 REGHEXCTRLK	1
80	325665-853	BELT GUIDE 43" DECK UPSTOP	1

TRACTEUR TONDEUSE 43" MODELE D3560-320

CARTER DE TONDEUSE



UTILISEZ DES PIÈCES D'ORIGINE POUR CONSERVER L'APPLICATION DE LA GARANTIE.

TOUTES LES PIÈCES NON RÉFÉRÉES SONT INTERCHANGÉABLES AVEC LEURS OPPOSÉES.

325401B

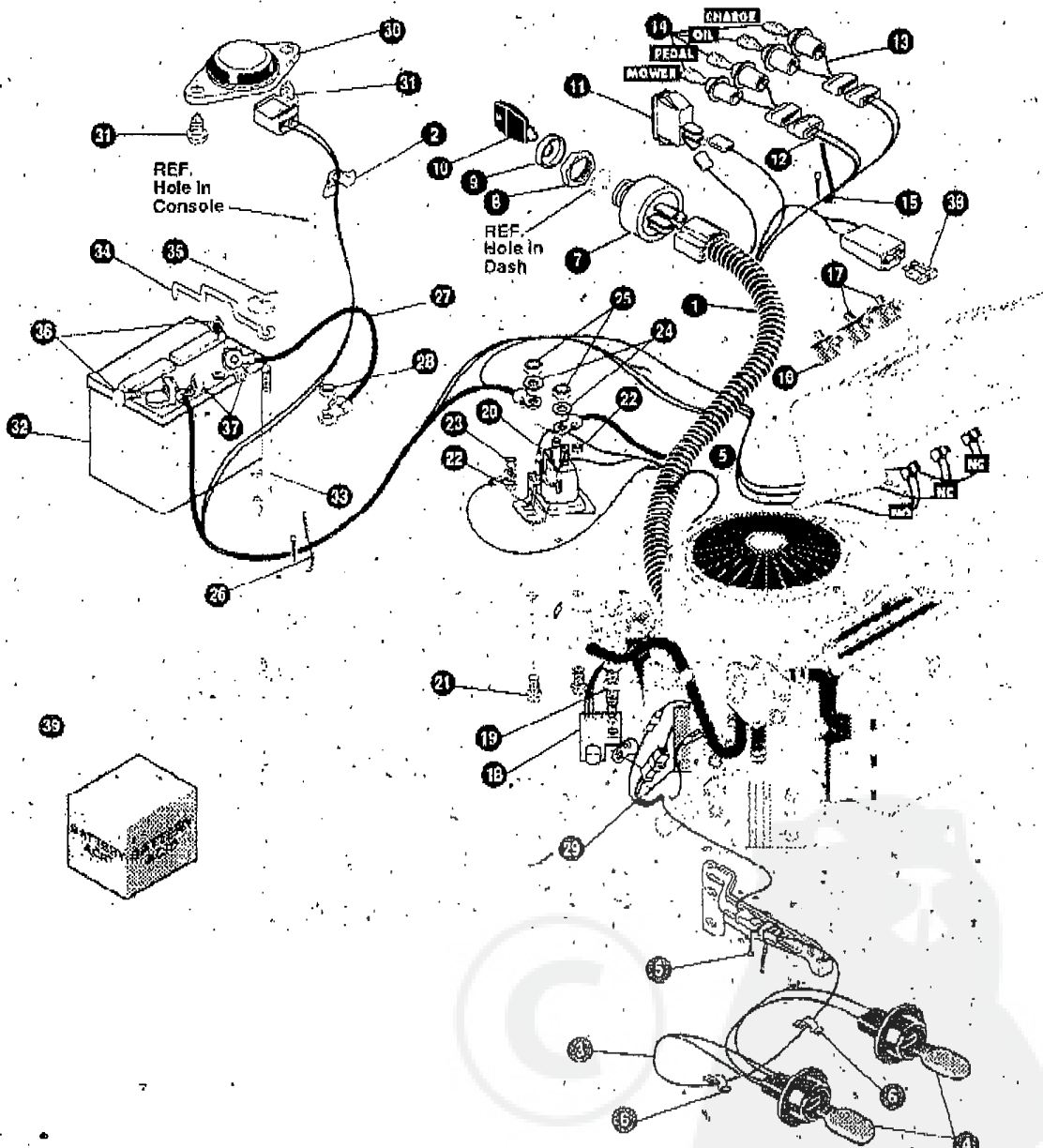
TRACTEUR TONDEUSE 43" MODELE D3560-320

KEY#	PART#	DESCRIPTION	QTY..
1	A	DECK, 43" MOWER 2-WH BLACK 853 EXPORT	1
2	58906	ROD, DECK HITCH	1
3	8260	PIN, HAIR .001 DIA X 1.66 LG	1
4	1346	GUIDE BELT, IDLER	1
5	319107	SPRING, TENSION 5.00 LG+17 LB/IN	1
6	310326	PULLEY, IDLER BFF 4.00 WIDE FL	1
7	126416	BOLT, 3/8-16 X 1.75 CARRIAGE	1
8	44374	NUT, 3/8-16 HXWDFLLK	1
9	35410	SPRING, .071 X .62 X 4.37	1
10	1498	NUT, 5/16-18 REGHEXCTRLK	1
11	318372	BELT, V 5L 85.00 KEVLAR	1
12	324814	GUARD, BELT LH PLASTIC	1
13	57101	CARRIAGE BOLT	3
14	309436	PUSHNUT, 5/16 NON-SERVICEABLE	3
15	120393	WASHER, FLAT .344 X .69 X .085	3
16	1498	NUT, 5/16-18 REGHEXCTRLK	3
17	302611	GUAGE WHEEL, EURO	2
18	23763	BOLT, 5.00 X 1 39, HSSH	2
19	1498	NUT, 3/8-16 REGHEXCTRLK	2
20	304422	CHUTE DEFLECTOR, 40", 42", 43"	1
21	314975	TORSION SPRING	1
22	304424	ROD, PIVOT DECK	1
23	3536	PUSH NUT	1

* INDICATES STANDARD HARDWARE ITEMS
 * ORDER INDIVIDUAL PARTS

TRACTEUR TONDEUSE 43" MODELE D3560-320

FAISCEAU ELECTRIQUE



UTILISEZ DES PIECES D'ORIGINE POUR CONSERVER L'APPLICATION DE LA GARANTIE.

TOUTES LES PIÈCES NON RÉFÉRÉES SONT INTERCHANGÉABLES AVEC LEURS OPPOSÉES.

325531C

TRACTEUR TONDEUSE 43" MODELE D3560-320

KEY#	PART#	DESCRIPTION	QTY
1	314899	HARNASS 14-18 VAN	1
2	41482	BRESS CLIP, 1.380 LG, 255 ID	1
3	303664	ASSEMBLY LIGHT WIRE 1/4 TURN	1
4	52672	BULB HEADLAMP	2
5	57444	TIE, CABLE BLACK NYLON 5/62 L	2
6	41482	BRESS CLIP, 1.380 LG, 255 ID	2
7	327355	SWITCH-IGNITION (AFTER FIRE) 3 POSITION	1
8	327352	NUT, 5/8-32 ACC #125 PLAST BLACK	1
9	300194	BOOT, IGNITION SWITCH	1
10	327349	KEY, IGNITION SWITCH	1
11	300334	LIGHT SWITCH, ON/OFF	1
12	317005	LIGHT HARNASS, 2 M. MOWER CL.	1
13	305702	HARNASS LIGHT 2 I.L.	4
14	57769	BULB, INDICATOR	4
15	57444	TIE, CABLE BLACK NYLON 5/62 L	1
16	328653	SWITCH, SNAP MOUNT .055/116 BLACK	1
17	326654	SWITCH, SNAPMNT NC .140 BLUE	2
18	57476	SWITCH, SCREW MOUNT DP NC NO BLACK	1
19	57220	SCREW, #12 X .50 PHPNHTAP BLK	2
20	53716	SOLENOID	1
21	187745	SCREW, 1/4-20 X .75 HXSEMMA	2
22	1502	NUT, 1/4-20 REGHEXCTRLK	2
23	271172	NUT, 1/4-20 REGHEXKEPS	2
24	138485	WASHER, EXLK 320 X 6.1 'X 03	2
25	120368	NUT, 5/16-24 REGHEX	2
26	57,444	TIE, CABLE BLACK NYLON 5/62 L	1
27	55511	WIRE, GROUND, 12.5"	1
28	271 1a4	NUT, 5/16-18 HEXKEPS	1
29	315602	REGULATOR, SEN VOLT BS W/SENSOR	1
30	57517	SWITCH, SEAT	1
31	160505	SCREW, 1/4-20 X 3/8 PHPNHMA GR2	2
32	302257	BATTERY 12V GENERIC	1
33	57551	ROD, BATTERY	1
34	57332	ROD, BATTERY, TOP	1
35	325232	NUT, WING 1/4-20 NYLON	1
36	120854	SCREW, 1/4-20 X .63, HHC GR2	2
37	271172	NUT, 1/4-20 REGHEXKEPS	2
38	302031	FUSE, 15 AMP SPADE TYPE	1
39		BATTERY ACID, 80 OZ	1

CAN BE PURCHASED LOCALLY
 - INDICATES STANDARD HARDWARE ITEMS
 -- SPADE TYPE FUSES ARE INCLUDED WITH THE WIRE HARNASS

WIRING SCHEMATIC

