

REPAIR PARTS MANUAL

40" - 12.5 H.P. LAWN TRACTOR

MODEL D3560-400

ONE YEAR LIMITED WARRANTY

For one (1) year from date of purchase by the first consumer for residential use (thirty (30) days commercial use), NOMA Outdoor Products Incorporated warrants that it will replace free of charge, including labor, any original part of any NOMA Outdoor Products Incorporated product found to be defective by any authorized Service Dealer or the factory, except the battery which is warranted for ninety (90) days from date of purchase.

This warranty does not cover engine, transmission, transaxle or differential (these items are covered by their manufacturer's own warranty). This warranty does not cover parts that have failed due to normal wear or parts that have failed subject to misuse or abuse. Transportation of the unit or part to and from an authorized Service Dealer or factory is the responsibility of the owner.

A step by step explanation as to what procedure should be followed for this warranty is:

1. If a part becomes defective, contact the store where the unit was purchased for the name and address of the authorized Service Dealer nearest to you.
2. If you cannot locate an authorized Service Dealer, write Service Department of NOMA Outdoor Products Incorporated for the name and address of the authorized Service Dealer in your area or call the Service Department at 1-901-422-1690.
3. Return the defective product, along with proof of purchase to such authorized Service Dealer for replacement of any defective part where covered by this warranty.

There is no other express warranty. Implied warranties, including those of merchantability and fitness for a particular purpose are limited to one (1) year from date of purchase. Liability for incidental or consequential damages are excluded.

Some states do not allow limitations on how long an implied warranty lasts, so the above limitation may not apply to you. Some states do not allow the exclusion of incidental or consequential damages, so the above exclusion may not apply to you. This warranty gives you specific legal rights, and you may have other rights which vary from state to state.

NOMA Outdoor Products Incorporated

Caller 8000

Jackson, TN 38308-8000

UNIT PARTS AND SERVICE

Fill in and mail the registration card packed with the unit. For service other than covered in this manual, contact an authorized service dealer. A nationwide parts and service organization has been established to provide locally available parts and service. When ordering repair parts, always give the following information: 1. The Part Name; 2. The Part Number; 3. The Quantity desired; 4. The Full (eight digit) Model Number of the unit. The model number will be found on a plate attached to the unit.



Look for this symbol. It means - ATTENTION! BECOME ALERT! A HAZARD TO OPERATOR, BYSTANDER, PROPERTY OR EQUIPMENT MAY EXIST.

NOMA Outdoor Products Incorporated

Caller 8000

Jackson, TN 38308-8000

Part No. 329249A

1/93



SAFETY RULES

THESE INSTRUCTIONS ARE FOR YOUR PROTECTION. PLEASE READ THEM CAREFULLY.



IMPORTANT

THIS CUTTING MACHINE IS CAPABLE OF AMPUTATING HANDS AND FEET AND THROWING OBJECTS. FAILURE TO OBSERVE THE FOLLOWING SAFETY INSTRUCTIONS COULD RESULT IN SERIOUS INJURY OR DEATH.

I. GENERAL OPERATION:

- Know controls and how to stop quickly.
- Read, understand, and follow all instructions in the manual and on the machine before starting.
- Only allow responsible adults, who are familiar with instructions, to operate the machine.
- Wear safety glasses or eye shields when assembling or operating the machine.
- Do not operate machine when barefooted. Always wear substantial footwear, preferably steel-toed shoes.
- Do not wear loose fitting clothing that could get caught in moving parts.
- Clear the area of objects such as rocks, toys, wire, etc., which could be picked up and thrown by the blade(s).
- Be sure the area is clear of other people before mowing. Stop machine if anyone enters the area.
- Never carry passengers.
- Do not mow in reverse unless absolutely necessary. Always look down and behind before and while backing.
- Be aware of the mower discharge direction and do not point it at anyone. Do not operate the mower without either the entire grass catcher or the guard in place.
- Slow down before turning.
- Never leave a running machine unattended. Always turn off blades, set parking brake, stop engine, and remove keys before dismounting.
- Turn off blade(s) when not mowing.
- Stop engine before removing grass catcher or unclogging chute.
- Mow only in daylight or good artificial light.
- Do not operate the machine while under the influence of alcohol or drugs.
- Watch for traffic when operating near or crossing roadways.
- Use care when mowing around a fixed object to prevent the blade(s) from striking it. Never deliberately run over any foreign object.
- Use extra care when loading or unloading the machine into a trailer or truck.
- Use care when pulling loads or using heavy equipment.
 - a. Use only approved drawbar hitch points.
 - b. Limit loads to those that you can safely control.
 - c. Do not turn sharply. Use care when backing.
 - d. Use counterweight(s), wheel weight or tire chains when suggested in attachment(s) instructions.

II. SLOPE OPERATION:

Slopes are a major factor related to loss-of-control and tip-over accidents, which can result in severe injury or death. *All slopes require extra caution.* If you cannot back up the slope or if you feel uneasy on it, do not mow it.

DO

- Mow up and down slopes, not across.
- Remove obstacles such as rocks, tree limbs, etc.
- Watch for holes, ruts, or bumps. Uneven terrain could overturn the machine. *Tall grass can hide obstacles.*
- Use slow speed. Choose a low gear so that you will not have to stop or shift while on the slope.
- Follow the manufacturer's recommendations for wheel weights or counterweights to improve stability.
- Use extra care with grass catchers or other attachments. These can change the stability of the machine.
- Keep all movement on the slopes *slow and gradual*. Do not make sudden changes in speed or direction.
- Avoid starting or stopping on a slope. If tires lose traction, turn off the blade(s) and proceed slowly *straight* down the slope.

DO NOT

- Do not turn on slopes unless necessary, and then slowly and gradually downhill, if possible.
- Do not mow near drop-offs, ditches or embankments. The

mower could suddenly turn over if a wheel is over the edge of a cliff or ditch, or if an edge caves in.

- Do not mow on wet grass. Reduced traction could cause sliding.
- Do not try to stabilize the machine by putting your foot on the ground.
- Do not use grass catcher on steep slopes.

III. CHILDREN:

Tragic accidents can occur if the operator is not alert to the presence of children. Children are often attracted to the machine and the mowing activity. *Never* assume that children will remain where you last saw them.

- Keep children out of the mowing area and under the watchful care of another responsible adult.
- Be alert and turn machine off if children enter the area.
- Before and when backing, look behind and down for small children.
- Never carry children. They may fall off and be seriously injured or interfere with safe machine operation.
- Never allow children to operate the machine.
- Use extra care when approaching blind corners, shrubs, trees, or other objects that may obscure vision.

IV. SERVICE:

- Use extra care in handling gasoline and other fuels. They are flammable and vapors are explosive.
 - a. Use only an approved container.
 - b. Never remove gas cap or add fuel with the engine running. Allow engine to cool before refueling. Do not smoke.
 - c. Never refuel the machine indoors.
 - d. Never store the machine or fuel container inside where there is an open flame, such as in a water heater.
- Check fuel supply before each use allowing space for expansion as the heat of the engine and/or sun can cause gasoline to expand and overflow the tank.
- Use extra care when handling battery acid. Acid contact with skin may cause severe burns. Eye contact may cause blindness.
- Use extra care when servicing the battery. Explosive gas is produced in the battery. Do not service the battery while smoking or near an open spark or flame. This may cause the battery to explode causing serious injury.
- Never run a machine inside a closed area. Exhaust fumes contain CARBON MONOXIDE, an ODORLESS and DEADLY GAS.
- Keep nuts and bolts, especially blade attachment bolts, tight and keep equipment in good condition.
- Never tamper with safety devices. Check their operation regularly.
- Do not change the engine governor settings or overspeed engine.
- Reduce fire hazards. Keep machine free of grass, leaves, or other debris build-up. Clean up oil or fuel spillage. Allow machine to cool before storing.
- Stop and inspect the equipment if you strike an object. Repair, if necessary, before restarting.
- Never make adjustments or repairs with the engine running.
- Grass catcher components are subject to wear, damage, and deterioration, which could expose moving parts or allow objects to be thrown. Frequently check components and replace with manufacturer's recommended parts, when necessary.
- Mower blade(s) are sharp and can cut. Wrap the blade(s) or wear gloves, and use extra caution when servicing them.
- Check brake operation frequently. Adjust and service as required.



LOOK FOR THIS SYMBOL TO POINT OUT IMPORTANT SAFETY PRECAUTIONS. IT MEANS-- ATTENTION!!! BECOME ALERT!!! YOUR SAFETY IS INVOLVED.

OWNER'S INFORMATION

Record the following information about your unit so that you will be able to provide it in case of loss or theft.

MODEL NUMBER: - (Enter complete 8 digit number from model plate on unit)
PURCHASE DATE: ___ / ___ / ___ CODE NO.: _____ SERIAL NO.: _____
DEALER'S NAME AND ADDRESS: _____
CITY: _____ STATE: _____ TELEPHONE: _____

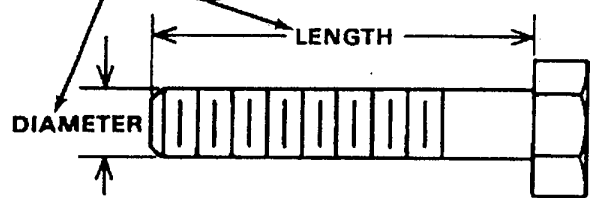
CONTENTS OF SHIPPING CARTON

- 1 - Lawn Tractor with 40 inch Mower Deck
- 1 - Operator's Manual
- 1 - Repair Parts Manual
- 1 - Engine Manual
- 1 - Steering Wheel
- 1 - Seat
- 1 - Bag of Assembly Parts Containing :
 - 1 - Spacer Steering Shaft
 - 1 - Steering Shaft Cover (Steering Wheel Assembly)
 - 1 - Spring Pin (Steering Wheel Assembly)
 - 4 - 5/16 x 3/4 inch Hex Head Screws (Seat Assembly)
 - 4 - 5/16 inch Split Lockwashers (Seat Assembly)
 - 4 - 11/32 inch Flatwashers (Seat Assembly)
- 2 - Gauge Wheels
 - 2 - Bolts, .500 x 1.39 D HSSH
 - 2 - Nuts, 3/8-16 Reghexctrik
- 1 - Chute Deflector
- 1 - Spring, Torsion Chute Deflector
- 1 - Rod, Pivot Deck .312 D x 7.2
- 1 - Nut, Push-On Cap .312 OD
- 1 - Knob, Round
- 2 - Tires & Rims PU 15 x 6 x 6
- 2 - Washer, Flat .755 x 1.31
- 2 - Ring, Retex .57 x .05 TRU 51
- 2 - Hub Cap, 1.500 ID x 7/8 Lg

TOOLS REQUIRED FOR ASSEMBLY

- 2 - 7/16 inch Wrenches (or adjustable wrench)
- 1 - 9/16 inch Wrench (or adjustable wrench)
- 1 - 3/4 inch Wrench (or adjustable wrench)
- 1 - 1/2 inch Wrench (or adjustable wrench)
- 1 - Small Phillips Screwdriver with a 1/4 inch shank
- 1 - Hammer

HOW TO MEASURE SCREW SIZE (5/16 x 1 1/2 INCH)



DANGER



This lawn tractor can be dangerous if carelessly used.

Read your Operator's Manual thoroughly before operating your lawn tractor.

Always wear safety glasses or eye shields while assembling or operating your lawn tractor.

DO NOT carry passengers at any time.

Keep your hands, feet, hair and loose clothing away from the discharge area, the underside of the mower deck or any moving parts while the engine is running.

DO NOT allow children or young teenagers to operate or be near your lawn tractor while it is operating.

ALWAYS GIVE THE FOLLOWING INFORMATION WHEN ORDERING REPAIR PARTS:

1. The PART NUMBER; 2. The PART NAME; 3. QUANTITY DESIRED; 4. The MODEL NUMBER (As shown on Model Plate).

SEND PART ORDERS AS PER INSTRUCTIONS ON THE FRONT PAGE.

DO NOT USE KEY NUMBERS WHEN ORDERING REPAIR PARTS, ALWAYS USE PART NUMBERS.

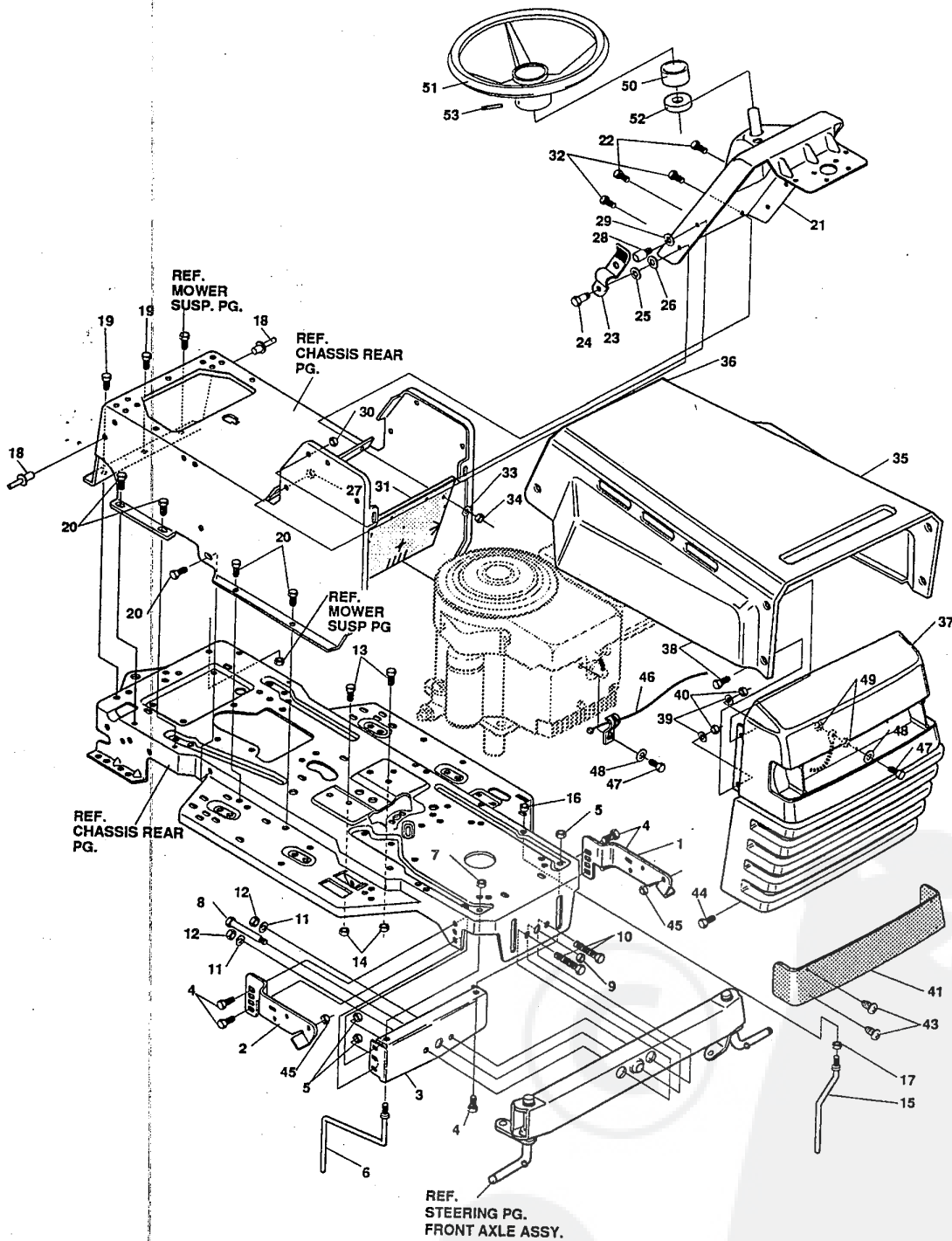
All replacement parts will be supplied in current production colors or in a neutral color.

A handling fee is applicable to small parts orders.

YOUR UNIT IS RIGHT HAND (RH) OR LEFT HAND (LH) AS YOU STAND BEHIND IT.

40" LAWN TRACTOR MODEL D3560-400

CHASSIS & HOOD (FRONT)



NOTE: ALWAYS USE ORIGINAL EQUIPMENT PARTS. Use of service/replacement parts other than original equipment parts may void your warranty.

ALL UNNUMBERED ITEMS ARE INTERCHANGEABLE WITH OPPOSITE SIDE

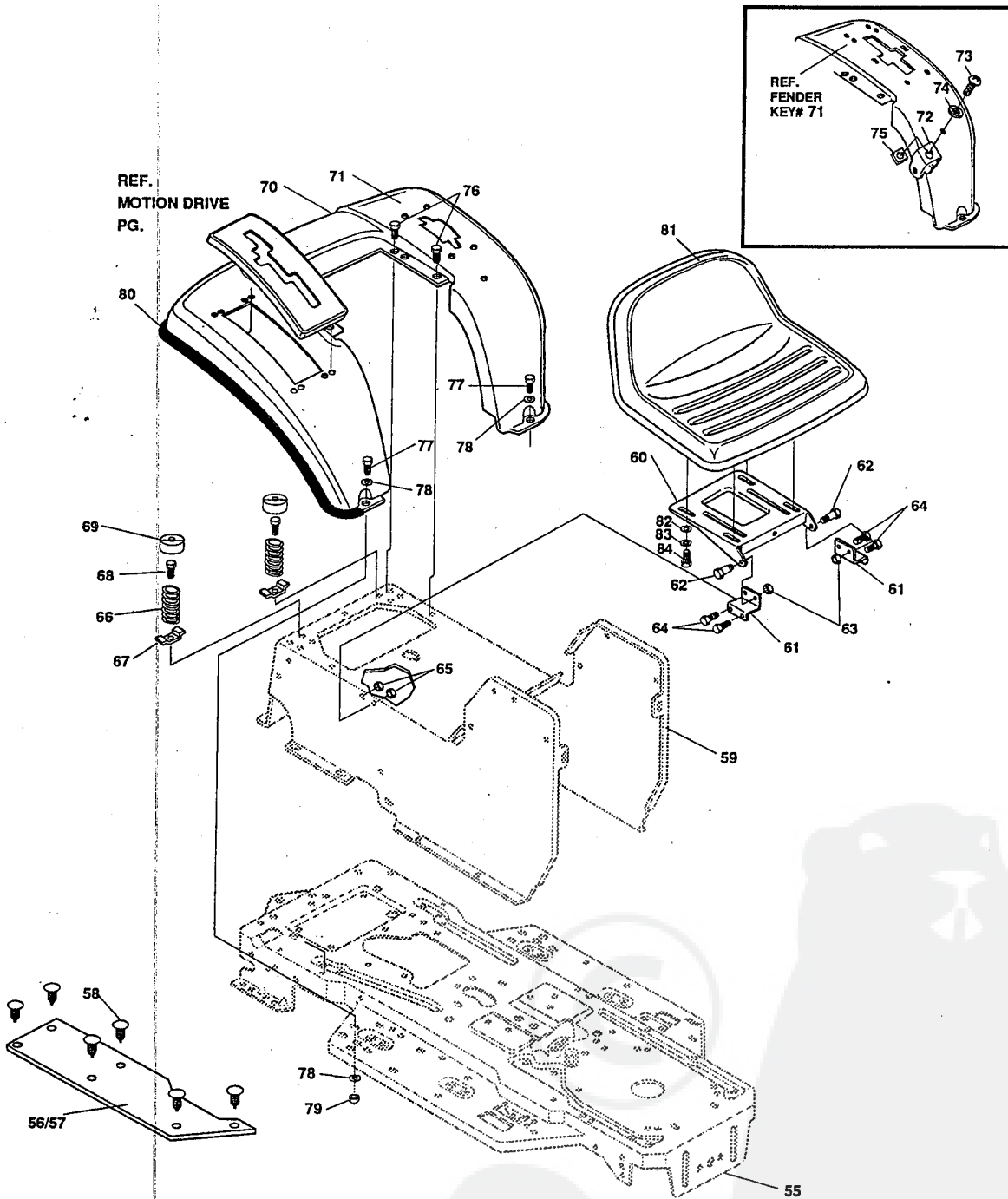
325873C

40" LAWN TRACTOR MODEL D3560-400

KEY#	PART#	DESCRIPTION	QTY.
1	313001-853	BRKT,GRILL LH	1
2	313002-853	BRKT,GRILL RH	1
3	313541-853	BRACKET, FRONT AXLE	1
4	56030	SCREW, 5/16-18X.75WDFLLK	5
5	55273	NUT, 5/16-18 HXWDFLLK	5
6	300440	GUIDE, BELT, RIDER	1
7	1498	NUT, 5/16-18 REGHEXCTRLK	1
8	308207	BOLT, .625X2.18 HSSH 1/2-13	1
9	309008	NUT, 1/2-13 HEXJAM CTRLK	1
10	122207	SCREW, 3/8-16X3.00 HHC	2
11	2483	WASHER, .39IDX1.25DX.07 BELLVIL	2
12	1499	NUT, 3/8-16 REGHXCTRLK	2
13	120229	SCREW, 5/16-18X .88 HHC	2
14	1498	NUT, 5/16-18 REGHEXCTRLK	2
15	300635	GUIDE,BELT SHORT 15" WHEEL	1
16	124824	NUT, 5/16-18 HEXJAM	1
17	271190	NUT, 3/8-16 HEXKEPS	1
18	46763	RIVET, POP	3
19	35497	SCREW, 5/16-18X .50 WAHHTAP	2
20	995346	SCREW, 1/4-20X .50 WAHHTAP	10
21	309447-860	DASHBOARD	1
22	995346	SCREW, 1/4-20X .50 WAHHTAP	2
23	57159	LATCH, .94WDX.047 ASSY HOOD	2
24	8482	BOLT, .375X .156 HSSH 5/16-18	2
25	120394	WASHER, FLAT .406X .81X.065	2
26	120393	WASHER, FLAT .344X .69X.065	2
27	1498	NUT, 5/16-18 REGHEXCTRLK	2
28	53446	PIN, 5/16-18 HOOD LATCH	2
29	138538	WASHER, REGINTLK.320X.61X.03	2
30	45174	NUT, 5/16-18 HEXWDFLLK WHIZ	2
31	312306	BAFFLE CONSOLE SOUND EXPORT	1
32	300314	SCREW, 1/4-20X .88WAHHTAP	2
33	120392	WASHER, FLAT .281X .63X.065	2
34	1502	NUT, 1/4-20 REGHEXCTRLK	2
35	314537-860	HOOD, LF H-20 DYNA/PRO	1
36	56304	EDGING,WIDE BLK	27.5"
37	325401	GRILLE DYNA-PRO G-17	1
38	274672	SCREW, 1/4-20X .63 WAHHC	4
39	120393	WASHER, FLAT .344X .69X.065	4
40	1502	NUT, 1/4-20 REGHEXCTRLK	4
41	302333	LENS, SMOKED W/TAB NO LOGO	1
43	57796	SCREW, #6 X .50 PLASTITE	4
44	36149	BOLT, .375X .500 HSSH 5/16-18	2
45	1498	NUT, 5/16-18 REGHEXCTRLK	2
46	311094	LANYARD,HOOD 11.75	1
47	48900	SCREW, 1/4-20X1.00 WAHHC	1
48	120392	WASHER, FLAT .281X .63X.065	1
49	1502	NUT, 1/4-20 REGHEXCTRLK	2
50	311465	COVER STEERING SHAFT	1
51	301251	STEERING WHEEL	1
52	301413	SPACER FOAM	1
53	456378	ROLL PIN	1
54	329249	PARTS MANUAL	1
55	329274	OPERATOR'S MANUAL (ENGLISH)	1
56	328657	OPERATOR'S MANUAL (FRENCH)	1
57	329250	OPERATOR'S MANUAL (GERMAN)	1
58	327627	GRASS COLLECTOR MANUAL	1
59	323588	AIR ASSIST MANUAL (ENGLISH)	1
60	324360	AIR ASSIST MANUAL (FRENCH)	1
61	327312	AIR ASSIST MANUAL (GERMAN)	1

40" LAWN TRACTOR MODEL D3560-400

CHASSIS & HOOD (REAR)



NOTE: ALWAYS USE ORIGINAL EQUIPMENT PARTS. Use of service/replacement parts other than original equipment parts may void your warranty.

ALL UNNUMBERED ITEMS ARE INTERCHANGEABLE WITH OPPOSITE SIDE

325855A

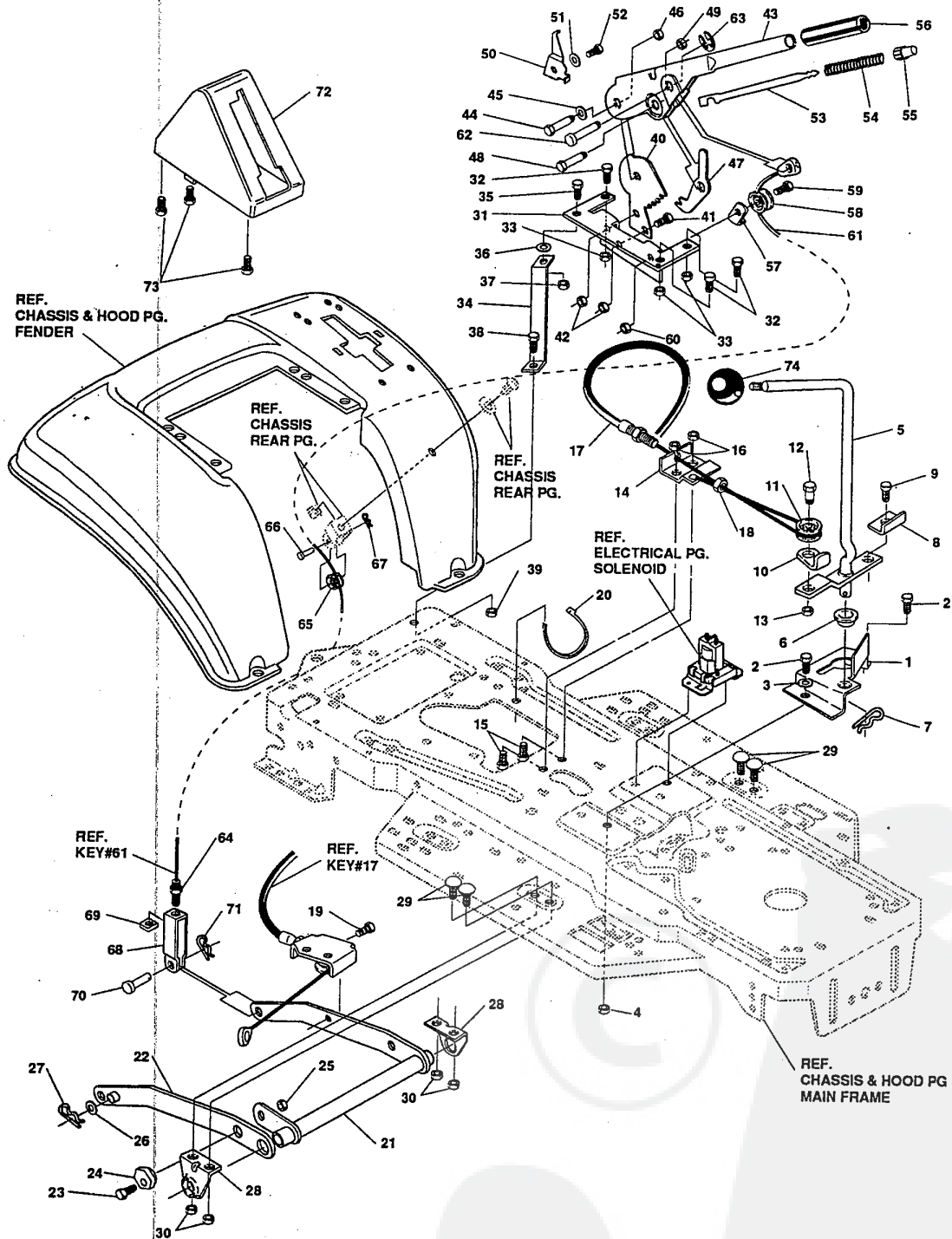
40" LAWN TRACTOR MODEL D3560-400

KEY#	PART#	DESCRIPTION	QTY.
55	326577-860	FRAME,LF MAIN 930/4360 DRILLED	1
56	310005	FOOTPAD L/H	1
57	310006	FOOTPAD R/H	1
58	309235	FASTENER RATCHET	12
59	308665-860	CONSOLE GENERIC SOF	1
60	58367-853	PLATE, SEAT	1
61	310660-853	BRACKET, F-5 SEAT SUPPORT	2
62	20507	BOLT, .437X .156 HSSH 5/16-18	2
63	1498	NUT, 5/16-18 REGHEXCTRLK	2
64	48901	SCREW, 5/16-18X .63 HHC	4
65	1498	NUT, 5/16-18 REGHEXCTRLK	4
66	57153	SPRING,SEAT 2.63LG,1.49OD	2
67	1341	CLAMP,SPRING 1.17"ID	2
68	44811	SCREW, 1/4-20X .75 HXWATAP	2
69	56907	COVER,SEAT SPRING 1.51DX1.0LG	2
70	^	FENDER ASM F5 SUSP	1
71	308653-860	FENDER F5 SUSP	1
72	9239	CLEVIS	1
73	439455	SCREW, 5/16-18X.56 PHPNMA	1
74	301551	WASHER, .344IDX1.50X.09	1
75	120373	NUT, 5/16-18 SQ	1
76	995346	SCREW, 1/4-20X .50 WAHHTAP	4
77	122017	SCREW, 5/16-18X1.00 HHC	2
78	446363	WASHER, FLAT .375X .88X.082	4
79	1498	NUT, 5/16-18 REGHEXCTRLK	2
80	55023	TRIM,STRIP,BLACK	77.5"
81	304314	SEAT,GENERIC	1
82	120393	WASHER,FLAT .344X.69X.065	4
83	120638	WASHER,HVSPTLK .328X.60X.04	4
84	122007	SCREW 5/16-18X.75 HHC	4

^ ORDER INDIVIDUAL PARTS.

40" LAWN TRACTOR MODEL D3560-400

MOWER SUSPENSION ASSEMBLY



NOTE: ALWAYS USE ORIGINAL EQUIPMENT PARTS. Use of service/replacement parts other than original equipment parts may void your warranty.

ALL UNNUMBERED ITEMS ARE INTERCHANGEABLE WITH OPPOSITE SIDE

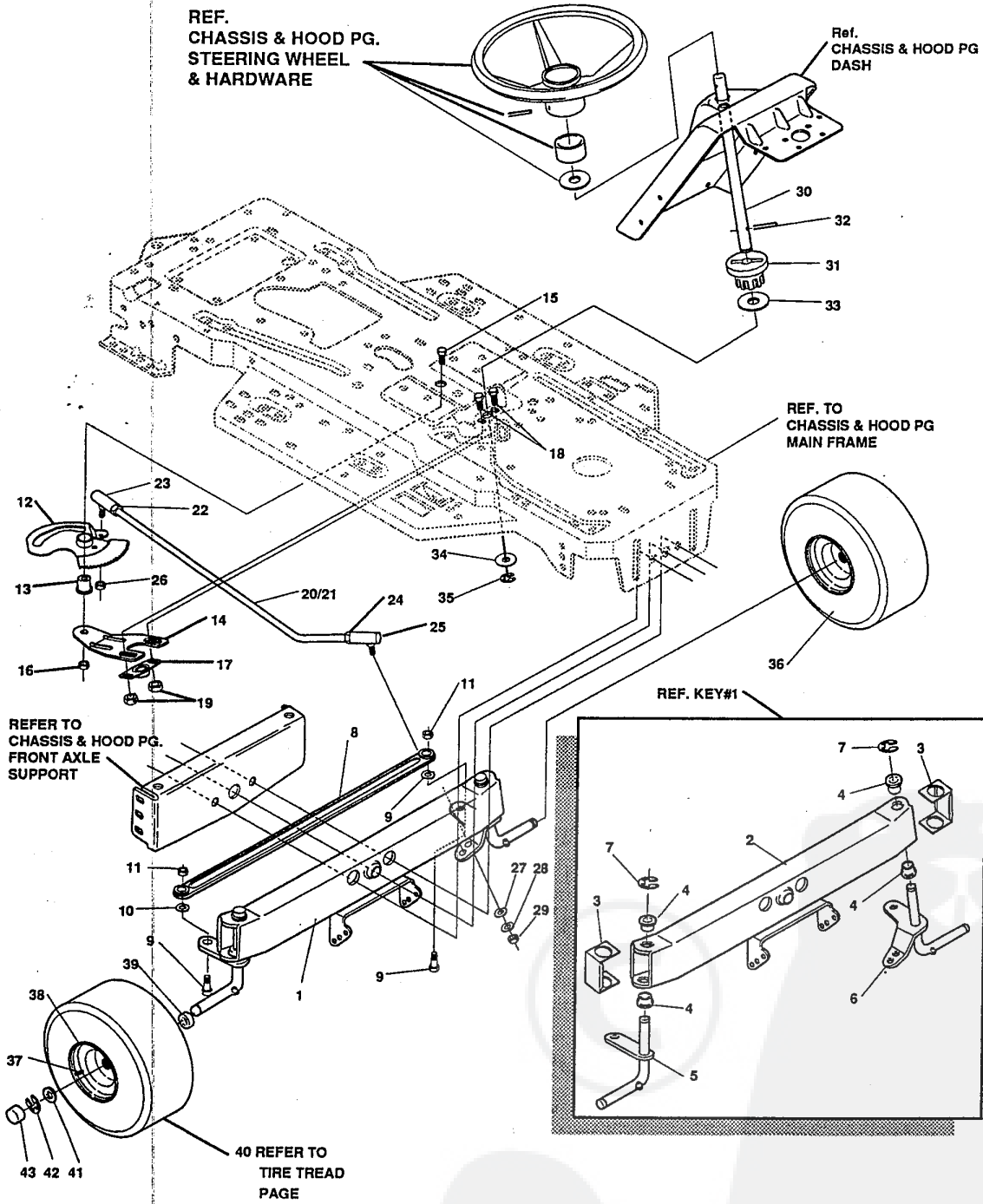
325815C

40" LAWN TRACTOR MODEL D3560-400

KEY#	PART#	DESCRIPTION	QTY.
1	320075-853	BRACKET,CLUT-ENGAGELEVER	1
2	180079	SCREW, 5/16-18X1.00 HHC	2
3	120393	WASHER, FLAT .344X.69X.065	2
4	1498	NUT, 5/16-18 REGHEXCTRLK	2
5	304791	ASSY,CLUTCH LEVER	1
6	50148	BEARING,FL. .503IDX.628OD	1
7	8260	PIN, HAIR .091 DIA X1.66LG	1
8	318341	BRACKET,SWITCH ENGAGE	1
9	35498	SCREW, 5/16-18X.75 WAHHTAP	1
10	1288	BRKT,CABLE RETAINER	1
11	48306	PULLEY, .906X.305 PM	1
12	58336	BOLT, .375X.375 HSH 1/4-20	1
13	1502	NUT, 1/4-20 REGHEXCTRLK	1
14	300698-853	BRKT, FRAME CABLE	1
15	180020	SCREW, 1/4-20X.75 HHC	2
16	1502	NUT, 1/4-20 REGHEXCTRLK	2
17	301503	ASSY,CABLE, BLADE ENGAGE	1
18	120613	NUT, 1/4-28 HJAM	1
19	35498	SCREW, 5/16-18X.75 WAHHTAP	1
20	57444	TIE, CABLE BLACK NYLON	1
21	300158-853	ASSY,REAR LIFT	1
22	300169-853	ASSY.LINK,RIGHT SIDE	1
23	180079	SCREW, 5/16-18X1.00 HHC	1
24	58247	ADJUSTING NUT	1
25	1498	NUT, 5/16-18 REGHEXCTRLK	1
26	417098	WASHER, FLAT .531X1.06X.095	2
27	8260	PIN, HAIR .091 DIA X1.66LG	2
28	58248-853	BRKT,REAR,HANG,SUSP.	2
29	126211	BOLT, 5/16-18X.63 CARR	4
30	1498	NUT, 5/16-18 REGHEXCTRLK	4
31	313926	BRACKET,HGT/ADJUST SUPPORT	1
32	180077	SCREW, 5/16-18X.75 HHC	3
33	1498	NUT, 5/16-18 REGHEXCTRLK	3
34	300336-860	BRACE, FENDER F-5 SUS	1
35	180079	SCREW, 5/16-18X1.00 HHC	1
36	45602	WASHER, FLAT .333X.87X.119	1
37	1498	NUT, 5/16-18 REGHEXCTRLK	1
38	180079	SCREW, 5/16-18X1.00 HHC	1
39	1498	NUT, 5/16-18 REGHEXCTRLK	1
40	301238	QUADRANT,HEIGHT ADJUST	1
41	180077	SCREW, 5/16-18X.75 HHC	2
42	1498	NUT, 5/16-18 REGHEXCTRLK	2
43	322292-853	HANDLE,LIFT SHORT BLK	1
44	300171	BOLT, .500X.270 HSH 5/16-18	1
45	996418	WASHER, FLAT .506X.75X.024	1
46	44108	NUT, 5/16-18 HWDFLCTRLK	1
47	301239	PAWL, HEIGHT ADJUST	1
48	300171	BOLT, .500X.270 HSH 5/16-18	1
49	44108	NUT, 5/16-18 HWDFLCTRLK	1
50	9435	POINTER Z-PL	1
51	138479	WASHER, EXLK.195X.41X.03	1
52	35287	SCREW, #8-32X.38 HHWAT	1
53	303027	ROD,ACTUATOR-SHORT	1
54	58326	SPRING, HEIGHT ADJUST	1
55	58325	KNOB, HGT ADJ PUSH BUTTON	1
56	58329	GRIP .750 OD W/ HOLE	1
57	9149	BRKT, CABLE RETAIN	1
58	48306	PULLEY, .906X.305 NYLON	1
59	58336	BOLT, .375X.375 HSH 1/4-20	1
60	1502	NUT, 1/4-20 REGHEXCTRLK	1
61	314177	CABLE, LIFT 23.30 F-5 20X8-8	1
62	300310	PIN,CLEVIS .310DIA+.475LG	1
63	300311	RING, RET E .31X.24	1
64	120375	NUT, 1/4-20 REGHEX	1
65	48306	PULLEY, .906X.305 NYLON	1
66	300317	PIN, CLEVIS .38 DIA X1.00 LG	1
67	8260	PIN, HAIR .091 DIA X1.66LG	1
68	9405	CLEVIS, LIFT CABLE	1

40" LAWN TRACTOR MODEL D3560-400

FRONT STEERING ASSEMBLY



NOTE: ALWAYS USE ORIGINAL EQUIPMENT PARTS. Use of service/replacement parts other than original equipment parts may void your warranty.

ALL UNNUMBERED ITEMS ARE INTERCHANGEABLE WITH OPPOSITE SIDE

3150031

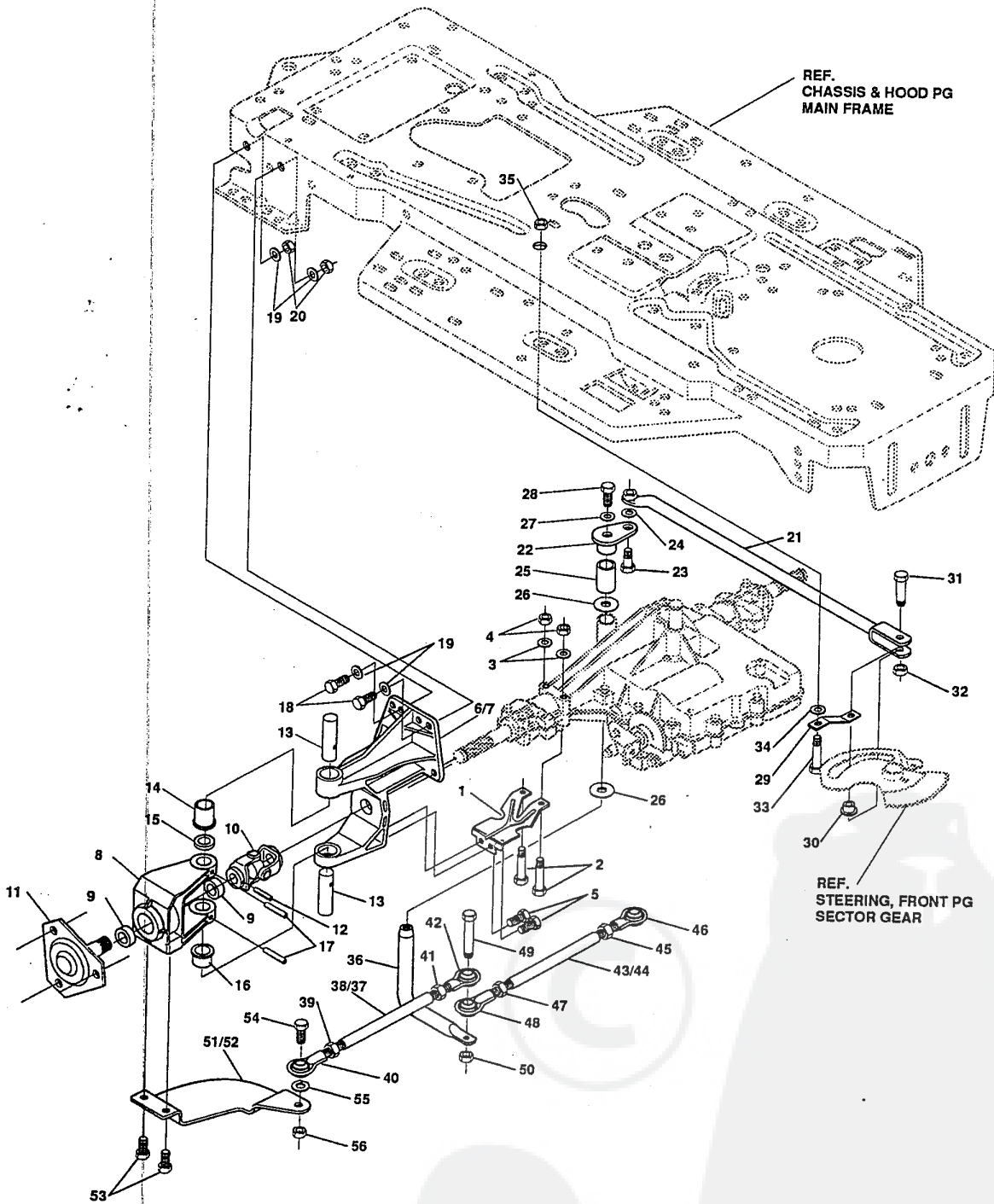
40" LAWN TRACTOR MODEL D3560-400

KEY#	PART#	DESCRIPTION	QTY.
1	^		
2	300272-853	AXLE,FRONT ASSY SUS 4WS LF	1
3	53373-853	ASSY,FRONT AXLE SUS	1
4	52407	AXLE COVER	2
5	302926	SPINDLE BEARING	4
6	315886	ASSY,SPINDLE RH LONG	1
7	36625	ASSY,SPINDLE,LH LONG	1
8	304590	RING, RETEX .57X.05TRU5133-75	2
9	180128	TIE ROD ASSY 19.81LG W-SECTION	1
10	120382	SCREW, 3/8-16X1.75 HHC	2
11	120377	WASHER, REGSPTLK.393X.68X.10	2
12	313634	NUT, 3/8-24 REGHEX	2
13	313629	ASSY SECTOR GEAR 4WS LF	1
14	313671-853	BUSHING,SECTOR GEAR 4WS LF	1
15	315196	SUPPORT,SECTOR GEAR 4WS LF	1
16	274654	SCREW, 1/2-20X3.00 HHC	1
17	302498	NUT, 1/2-20 REGHXCTRLK	1
18	323731	BEARING FLANGE 0.5 BORE	1
19	71100	SCREW, 5/16-24X.75SQ. CONE SEMS	2
20	323752	NUT, 5/16-24 HXWDFLLK	2
21	321449	ASM. DRAGLINK	1
22	124925	DRAG LINK .625 DIA LF 4WS	1
23	57158	NUT, 3/8-24 REGHEXJAM	1
24	272123	BALL JOINT 3/8 THD SHORT STUD	1
25	302865	NUT, 7/16-20 HXJAM	1
26	46692	JOINT, BALL ASSY 7/16-20	1
27	120396	NUT, 3/8-24 WDFLHLK WHIZ	1
28	120383	WASHER, FLAT .531X1.06X.095	2
29	271506	WASHER, REGSPTLK.459X.78X.12	1
30	313699	NUT, 7/16-20 REGHX	1
31	302314	SHAFT, STEERING 4WS LF	1
32	302524	PINION STEERING	1
33	315194	PIN DOWEL STR ERO LT	1
34	2968	WASHER,FLAT 1.38 X .51X.043	1
35	20864	WASHER, FLAT .504X.75X.059	1
36	^	RING, RET E .39X.04TRU5133-50	1
37	24167	TIRE & RIM, PU 15X6.0X6 TURF	2
38	39829	VALVE STEM	1
39	39979	WHEEL W/BRG.	1
40	301140	BEARING	1
41	642	REFER TO TIRE TREAD PAGE	1
42	36625	WASHER, FLAT .755X1.31X.075	4
43	40394	RING, RETEX .57X.05TRU5133-75	2
		CAP, HUB	2

^ ORDER INDIVIDUAL PARTS.

40" LAWN TRACTOR MODEL D3560-400

REAR STEERING ASSEMBLY



NOTE: ALWAYS USE ORIGINAL EQUIPMENT PARTS. Use of service/replacement parts other than original equipment parts may void your warranty.

ALL UNNUMBERED ITEMS ARE INTERCHANGEABLE WITH OPPOSITE SIDE

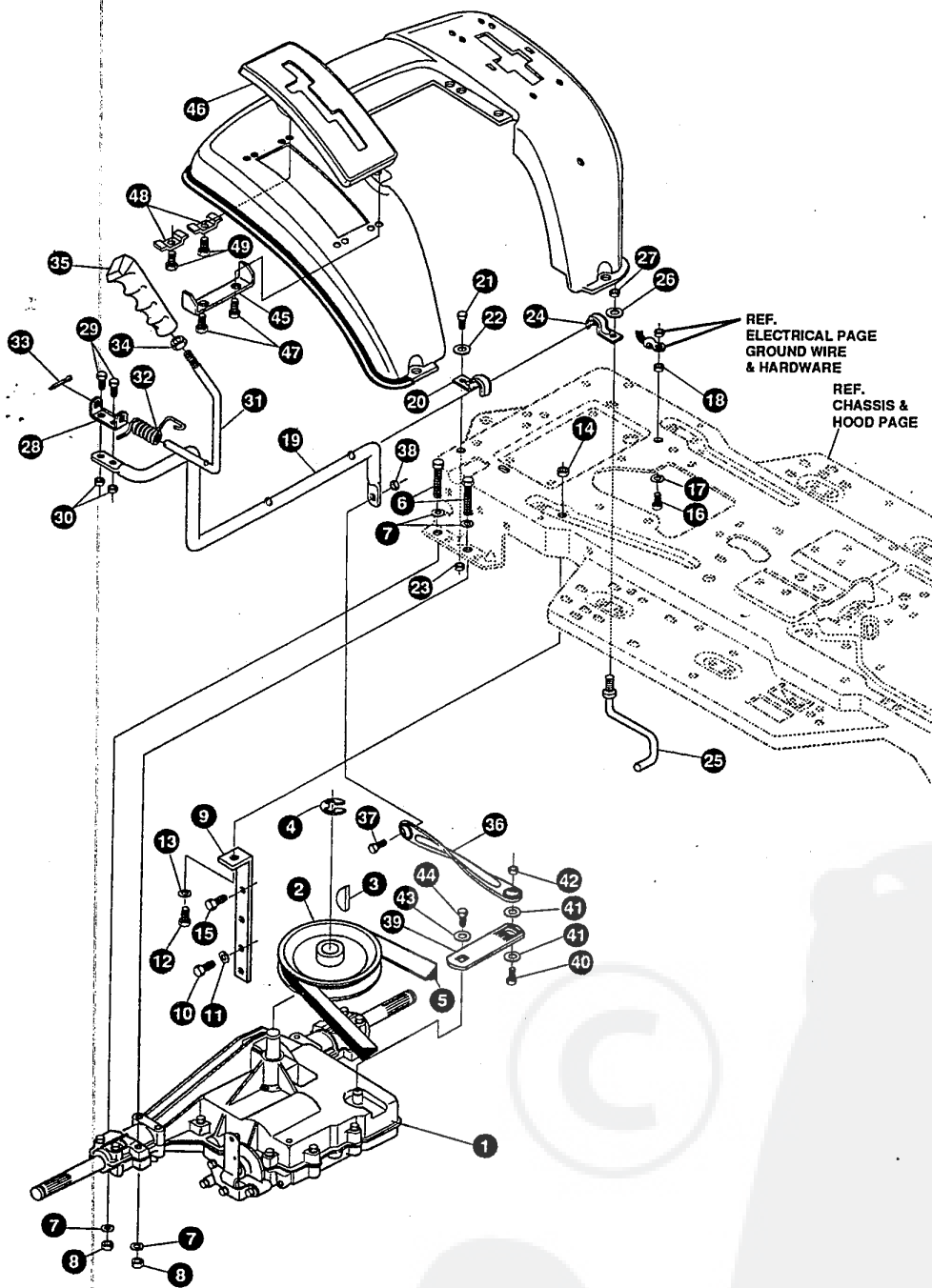
326137A

40" LAWN TRACTOR MODEL D3560-400

KEY#	PART#	DESCRIPTION	QTY.
1	303222-853	BRKT X-AXLE MTG	2
2	180091	SCREW, 5/16-18X2.50 HHC	4
3	120393	WASHER, FLAT .344X .69X.065	4
4	1498	NUT, 5/16-18 REGHEXCTRLK	4
5	35498	SCREW, 5/16-18X .75 WAHTAP	4
6	326135	U-JOINT ASM. 4WS LD LF	2
7	314267	BRCKT,STRG PIVOT W/DRILL HOLES	2
8	12465	BRACKET,STR PIVOT	2
9	12325	BEARING	4
10	320531	U-JOINT ASSEMBLY (LONG)	2
11	12280-830	HUB ASSEMBLY GREY 861	2
12	36311	PIN, GROOVED .250 DIA X1.50LG	2
13	12289	PIN, STEERING HINGE	4
14	324578	BUSHING, SHOULDERED (OILITE	2
15	21682	WASHER, FLAT .765X1.25X.042 PL	2
16	324578	BUSHING, SHOULDERED (OILITE	2
17	456722	PIN, SPRING.250DIA X1.50LG HVPL	4
18	122017	SCREW, 5/16-18X1.00 HHC	8
19	120393	WASHER, FLAT .344X .69X.065	16
20	1498	NUT, 5/16-18 REGHEXCTRLK	8
21	324514	ROD ASM., DRAGLINK	1
22	308719	PIVOT, STEERING	1
23	12319	BOLT, .562X .340 HSSH 3/8-24	1
24	120394	WASHER, FLAT .406X .81X.065	1
25	304115	SPACER, STEERING SHAFT	1
26	25177	WASHER, FLAT .765X1.19X.048	2
27	45602	WASHER, FLAT .333X .87X.119	1
28	421051	SCREW, 5/16-24X1.00 HHC	1
29	302594	ARM ROLLER SWING 4 W	1
30	304116	CAM YOKE ROLLER	1
31	304122	SHOULDER BOLT CAM ROLLER	1
32	274654	NUT, 1/2-20 REGHXCTRLK	1
33	324638	SHOULD BOLT CAM FOLLOWER	1
34	996307	WASHER, FLAT .391X1.00X.209	1
35	412349	NUT, 3/8-24 HXCTRLK	1
36	308720	SHAFT, STEERING PIVOT	1
37	323634	TIE ROD ASSY RH	1
38	308447	ROD, TIE 1/2"D X 8.00LG	1
39	308399	NUT, 3/8-24 LH THD REGHJAM	1
40	308384	ROD,TIE END LH 3/8-24 EURO	1
41	124925	NUT, 3/8-24 REGHEXJAM	1
42	304260	ROD, TIE END RH	1
43	323635	TIE ROD ASSY LH	1
44	308446	ROD, TIE 1/2"D X 9.5LG	1
45	308399	NUT, 3/8-24 LH THD REGHJAM	1
46	308384	ROD,TIE END LH 3/8-24 EURO	1
47	124925	NUT, 3/8-24 REGHEXJAM	1
48	304260	ROD, TIE END RH	1
49	181646	SCREW, 3/8-24X1.75 HHC	1
50	412349	NUT, 3/8-24 HXCTRLK	1
51	304120-853	ARM RW STR ERO RH	1
52	304121-853	ARM RW STR ERO LH	1
53	39728	SCREW, 3/8-16X .75WAHTAP BK	4
54	181639	SCREW, 3/8-24X1.25 HHC	2
55	120382	WASHER, REGSPTLK.393X.68X.10	2
56	412349	NUT, 3/8-24 HXCTRLK	2

40" LAWN TRACTOR MODEL D3560-400

MOTION DRIVE ASSEMBLY



NOTE: ALWAYS USE ORIGINAL EQUIPMENT PARTS.
Use of service/replacement parts other than original equipment parts may void your warranty.

**ALL UNNUMBERED
ITEMS ARE INTERCHANGEABLE
WITH OPPOSITE SIDE**

327673A

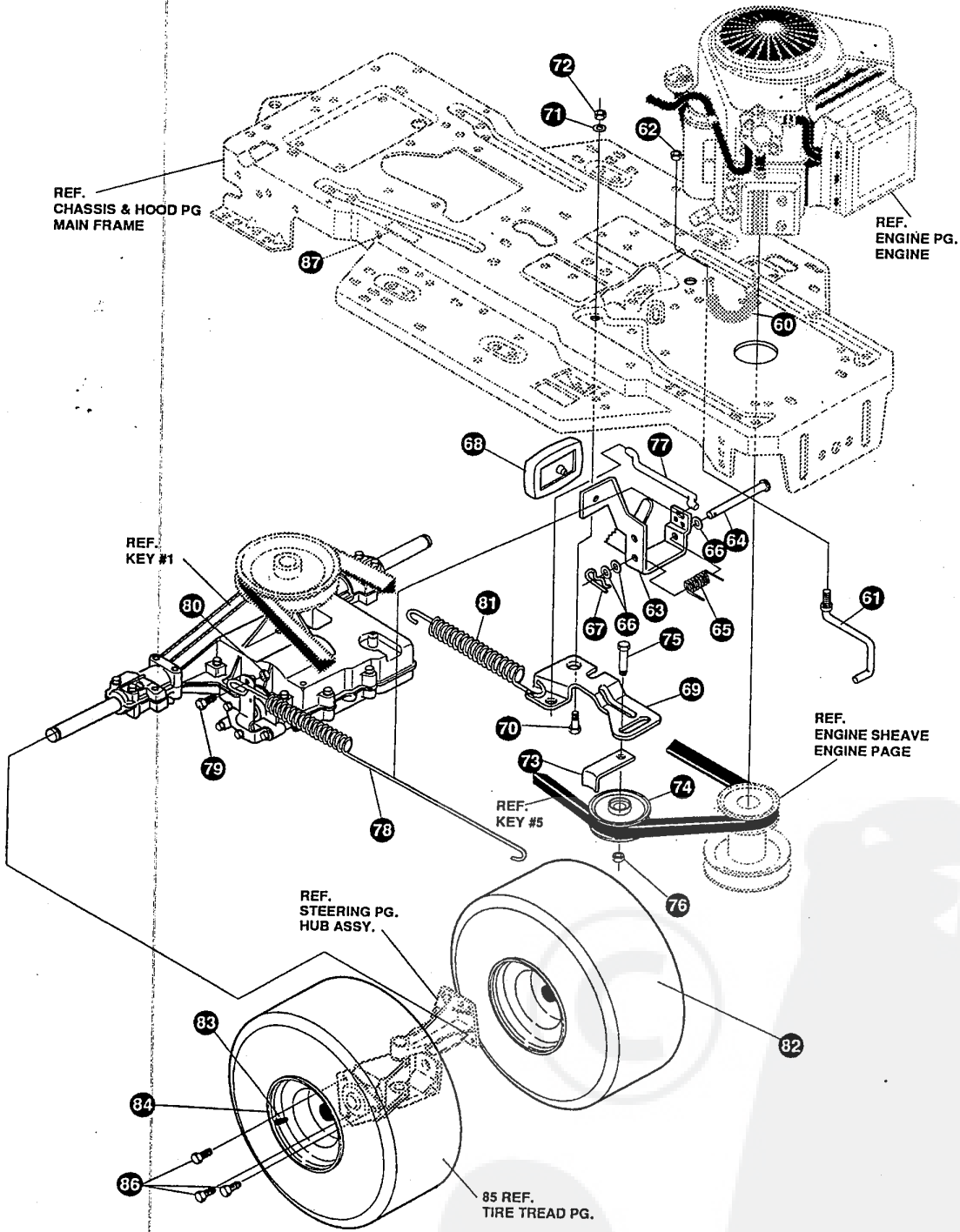
40" LAWN TRACTOR MODEL D3560-400

KEY#	PART#	DESCRIPTION	QTY.
1	^	TRANSAXLE P930-6 4WS LF	1
2	303109	PULLEY, V4L 920TA	1
3	3021	KEY, WDRF 606 .750X.187X.312	1
4	22053	RING, RETEX .58X.04TRU5100-62	1
5	314120	BELT, V 4L 87.25	1
6	180089	SCREW, 5/16-18X2.25 HHC	1
7	120393	WASHER, FLAT .344X .69X.065	4
8	1498	NUT, 5/16-18 REGHEXCTRLK	8
9	323471	STABILIZER BRKT P920,F4150	4
10	35498	SCREW, 5/16-18X .75 WAHHTAP	1
11	120638	WASHER, HVSP TLK .328X.60X.09	2
12	122017	SCREW, 5/16-18X1.00 HHC	2
13	120393	WASHER, FLAT .344X .69X.065	1
14	1498	NUT, 5/16-18 REGHEXCTRLK	1
15	50947	SCREW 3/8-16X1.25 WAHHHTAP	1
16	122007	SCREW, 5/16-18X .75 HHC	1
17	138538	WASHER, REGINTLK.320X.61X.03	1
18	1498	NUT, 5/16-18 REGHEXCTRLK	1
19	319111	LEVER,SHIFT,LWR 4360	1
20	310347-853	CLIP-SHIFT LEVER .62 ROD	1
21	180077	SCREW, 5/16-18X .75 HHC	1
22	996416	WASHER, FLAT .391X1.00X.125	1
23	1498	NUT, 5/16-18 REGHEXCTRLK	1
24	310347-853	CLIP-SHIFT LEVER .62 ROD	1
25	57259	GUIDE, BELT 5/16-18THD	1
26	996416	WASHER, FLAT .391X1.00X.125	1
27	1498	NUT, 5/16-18 REGHEXCTRLK	1
28	310356	PIVOT BRKT LEVER	1
29	180018	SCREW, 1/4-20X .62 HHC	1
30	1502	NUT, 1/4-20 REGHEXCTRLK	2
31	309635	LEVER, SHIFT UPPER SF 1/2-13TH	2
32	310265	SPRING, TORS. .56X.95X.095	1
33	137185	PIN, COTTER .125 DIA X1.00LG	1
34	120238	NUT, 1/2-13 HEXJAM	1
35	306690	HANDLE 1/2-13	1
36	314965	LINK TIE ROD SHIFTER	1
37	180124	SCREW, 3/8-16X1.25 HHC	1
38	1499	NUT, 3/8-16 REGHXCTRLK	1
39	309637	BRACKET,SHIFT 5SP	1
40	180124	SCREW, 3/8-16X1.25 HHC	1
41	120394	WASHER, FLAT .406X .81X.065	1
42	1499	NUT, 3/8-16 REGHXCTRLK	2
43	57157	WASHER, .750X.250 SP-TRANSAXLE	1
44	56255	SCREW, 1/4-28X .75 NYLHHC	1
45	311257-853	BRACKET COVER	1
46	311209	COVER PLASTIC	1
47	311331	SCREW, 1/4-15X.44/.53 HILOHWWA	1
48	1341	CLAMP SPRING	2
49	311331	SCREW, 1/4-15X.44/.53 HILOHWWA	2

^ CONTACT YOUR NEAREST TRANSAXLE DEALER FOR PARTS AND SERVICE.

40" LAWN TRACTOR MODEL D3560-400

MOTION DRIVE ASSEMBLY



NOTE: ALWAYS USE ORIGINAL EQUIPMENT PARTS.
Use of service/replacement parts other than original equipment parts may void your warranty.

**ALL UNNUMBERED
ITEMS ARE INTERCHANGEABLE
WITH OPPOSITE SIDE**

327673A

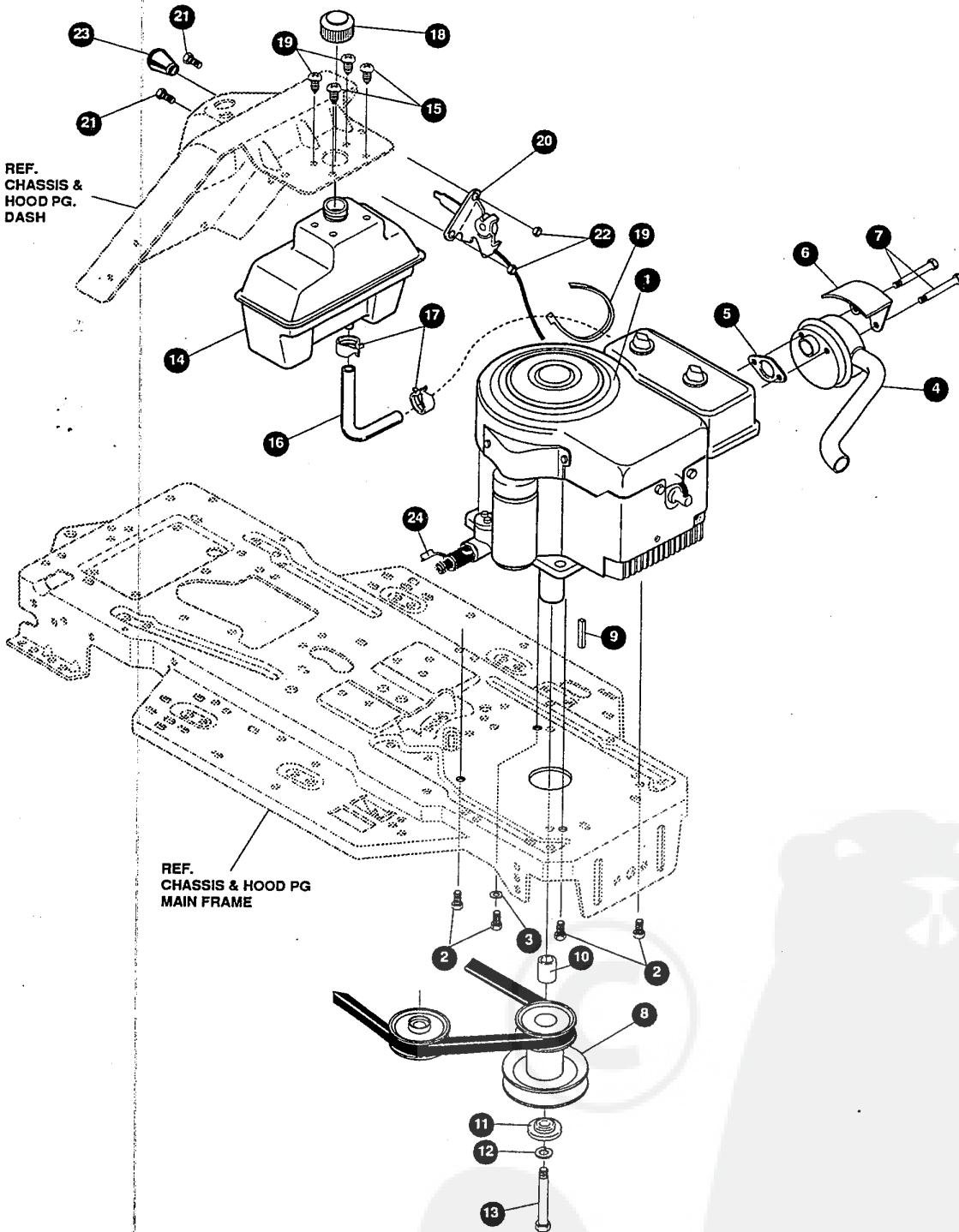
40" LAWN TRACTOR MODEL D3560-400

KEY#	PART#	DESCRIPTION	QTY.
60	321514	SPRING BIAS DRAGLINK	
61	304016	GUIDE BELT	1
62	1498	NUT, 5/16-18 REGHEXCTRLK	1
63	325942	PEDAL ASSY, BRAKE/CLUTCH	1
64	319675	ROD, PIVOT	1
65	57847	SPRING, BRAKE PEDAL	1
66	2968	WASHER, FLAT .504X .75X.059	1
67	56180	PIN, HAIR	3
68	48160	PAD, CLUTCH BRAKE	1
69	320381-853	ARM, IDLER TRACTION DR.	1
70	300793	BOLT, .625X .135 HSSH 5/16-18	1
71	45602	WASHER, FLAT .333X .87X.119	1
72	1498	NUT, 5/16-18 REGHEXCTRLK	1
73	39659	RETAINER, STRAP BELT	1
74	35374	PULLEY, IDLER V4L 3.06X .62	1
75	45892	BOLT, 3/8-16X1.50 CARR	1
76	1499	NUT, 3/8-16 REGHXCTRLK	1
77	57204	ROD, CLUTCH	1
78	325937	SPRING BRAKE CLUTCH	1
79	326131	SHOULDER BOLT	1
80	1498	NUT, 5/16-18 REGHEXCTRLK	1
81	313660	SPRING, CLUTCH .113X.750X8.75	1
82	^	TIRE & RIM, PU 20-10X8 GENERIC	2
83	24167	VALVE STEM	1
84	316667	RIM, WHEEL 20X8	1
85	58276	TIRE, PU 20X10X8 SQSH	1
86	123418	SCREW, 1/2-20X .50 HHC	1
87	313039	DECAL, 4WS PATENT NO. 5048853	6
			1

^ ORDER INDIVIDUAL PARTS.

40" LAWN TRACTOR MODEL D3560-400

ENGINE & CONTROL ASSEMBLY



NOTE: ALWAYS USE ORIGINAL EQUIPMENT PARTS. Use of service/replacement parts other than original equipment parts may void your warranty.

ALL UNNUMBERED ITEMS ARE INTERCHANGEABLE WITH OPPOSITE SIDE

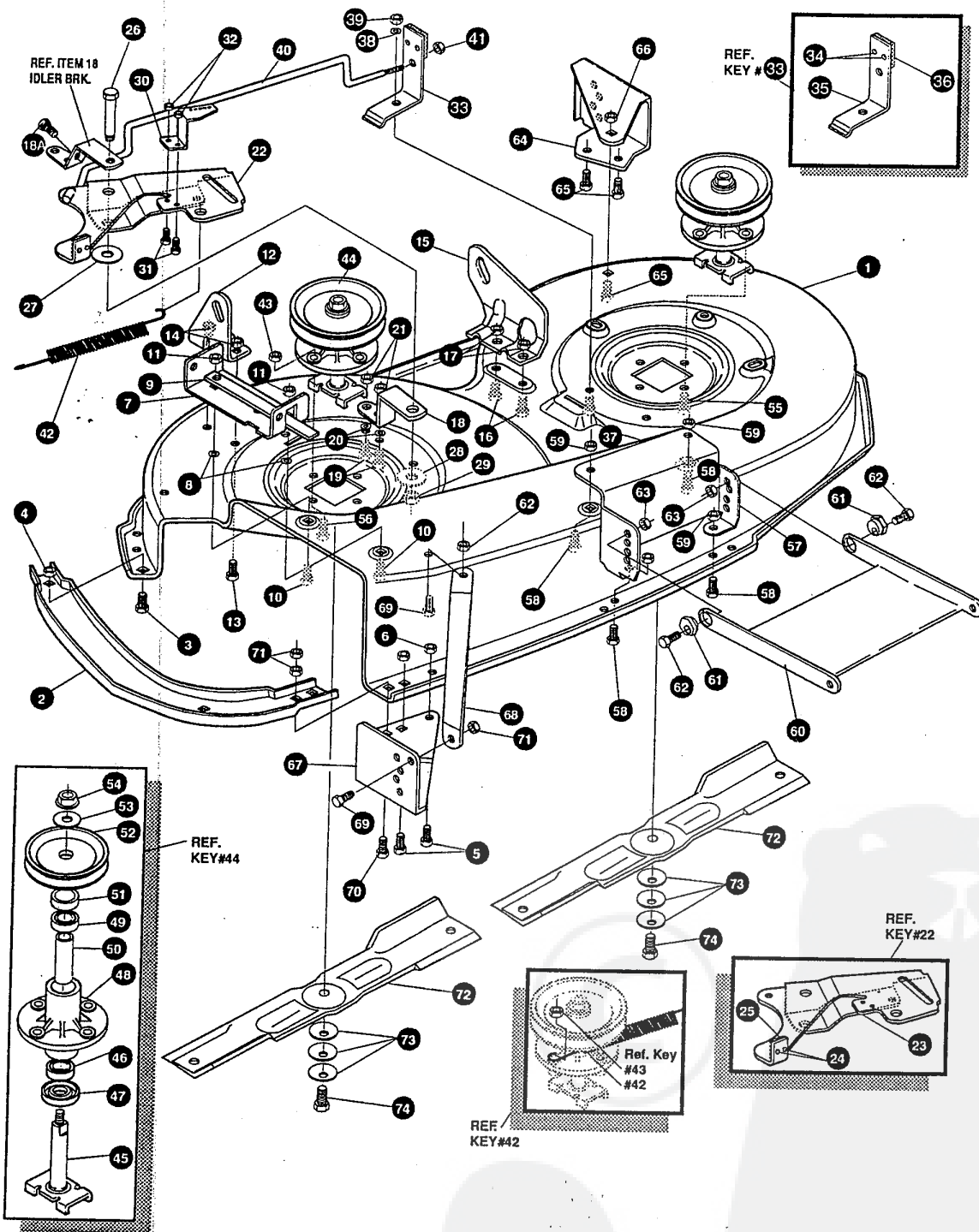
326187C

40" LAWN TRACTOR MODEL D3560-400

KEY#	PART#	DESCRIPTION	QTY.
1	ENGINE	12-12.5 HP B&S I/C DUAL (SEE ENGINE MANUAL)	1
2	50947	SCREW, 3/8-16X1.25 WAHHTAP	4
3	138489	WASHER, EXLK .384X.69X.04	1
4	305367	MUFFLER-LO TONE NELSON EXPORT	1
5	46708	GASKET, MUFFLER	1
6	54767	SHIELD, HEAT, FOR ROUND MUFFLER	1
7	173063	SCREW, 5/16-18X3.50 HHC	2
8	315317	PULLEY ASSY, 3.0DX4.0LGX5.0D 40"	1
9	303151	KEY SQUARE .249 SQ.X4.50 LG	1
10	304246	SPACER, SLEV 1.01X1.484	1
11	56431	WASHER, .908IDX1.38ODX.437 PILOT	1
12	120383	WASHER, REGSPTLK.459X.78X.12	1
13	433146	SCREW, 7/16-20X5.00 HHC	1
14	314989	FUEL TANK	1
15	49050	SCREW, 1/4-10X.75	4
16	57876	GAS LINE	13"
17	47345	CLAMP, FUEL LINE	2
18	46704	GAS CAP 1-1/2-7 THD	1
19	57444	WIRE TIE	1
20	321273	CONTROL THROTTLE	1
21	320553	SCREW, 10-24X.50 SLHHMA	2
22	271166	NUT, #10-24 HEXKEPS	2
23	50607	KNOB, ROUND THROTTLE	1
24	325547	OIL DRAIN ITW	1

40" LAWN TRACTOR MODEL D3560-400

PRE-PAINTED DECK ASSEMBLY



NOTE: ALWAYS USE ORIGINAL EQUIPMENT PARTS. Use of service/replacement parts other than original equipment parts may void your warranty.

ALL UNNUMBERED ITEMS ARE INTERCHANGEABLE WITH OPPOSITE SIDE

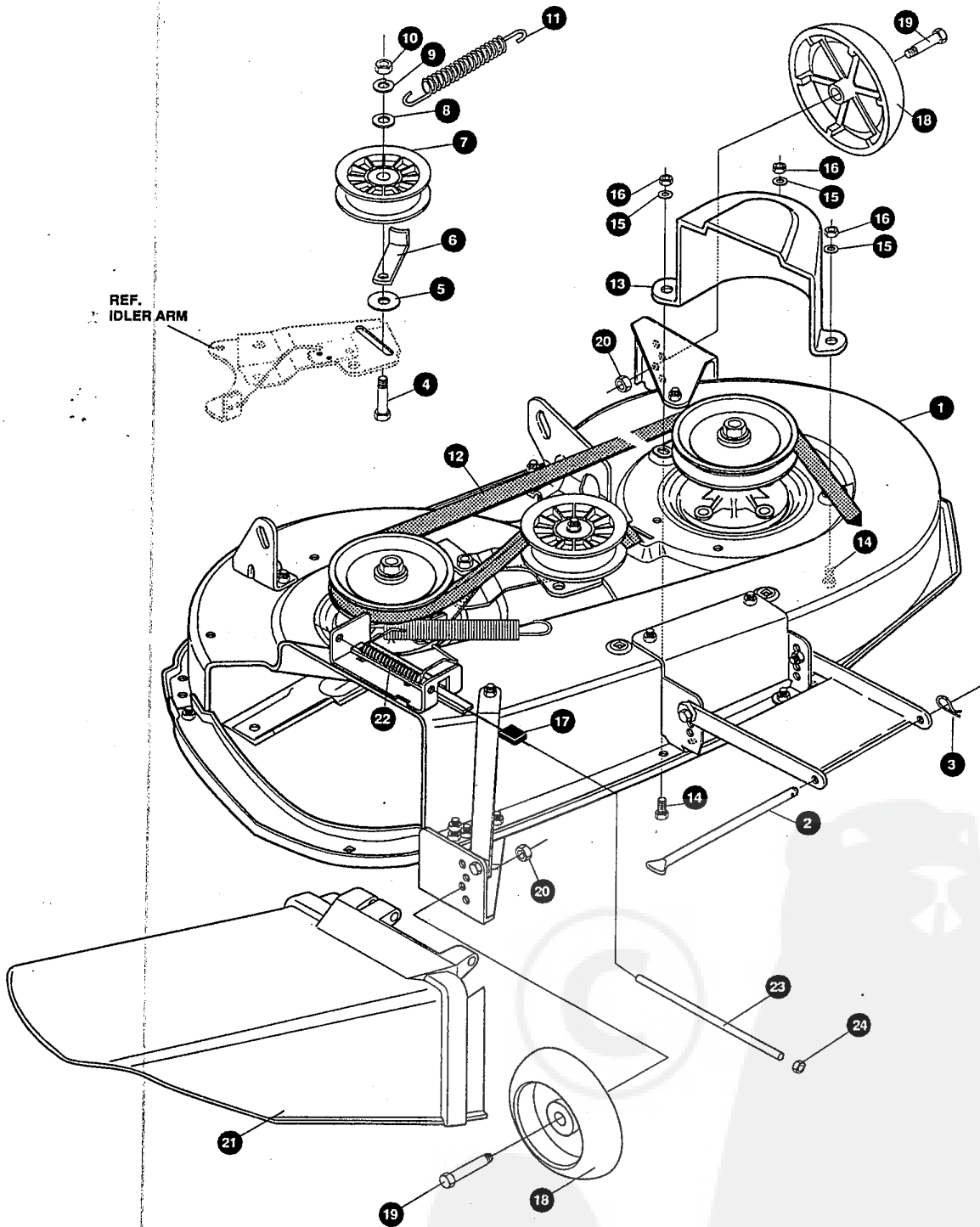
324063H

40" LAWN TRACTOR MODEL D3560-400

KEY#	PART#	DESCRIPTION	QTY.
1.	325103-853	MS MOWER DECKS, 40" LF/EURO	1
2.	326480-853	TOE GUARD	1
3.	180075	SCREW, 5/16-18X .63 HHC GR5	1
4.	1498	NUT, 5/16-18 REGHEXCTRLK	1
5.	180075	SCREW, 5/16-18X .50 HHC GR5	2
6.	1498	NUT, 5/16-18 REGHEXCTRLK	2
7.	317017	BRACKET CHUTE MOUNT	1
8.	120393	WASHER, FLAT .344X.69X.065	2
9.	322320-853	LEVER ASSY	1
10.	180075	SCREW, 5/16-18X .63 HHC GR5	2
11.	1498	NUT, 5/16-18 REGHEXCTRLK	2
12.	313929	MS BRACKET, RH LIFT REAR	1
13.	180077	SCREW, 5/16-18X .75 HHC GR5	2
14.	1498	NUT, 5/16-18 REGHEXCTRLK	2
15.	310667	MS/MP BRACKET, LH LIFT REAR	1
16.	180077	SCREW, 5/16-18X .75 HHC GR5	2
17.	1498	NUT, 5/16-18 REGHEXCTRLK	2
18.	326893-853	BRACE IDLER	1
18A	308231	SCREW, 1/4-20X1.25 HHWATAP	1
19.	180077	SCREW, 5/16-18X .75 HHC GR5	2
20.	120393	WASHER, FLAT .344X .69X.065	2
21.	44108	NUT, 5/16-18 HWDFLCTRLK	2
22.	320576-853	SF IDLER ARM ASSEMBLY	1
23.	322116-853	MP/MM ARM IDLER 40/43" DECK	1
24.	41601	RIVET, OVSET .187DIA X .50LG ST	2
25.	306973	BRAKE PAD - HARD - 232AF	1
26.	304420	BOLT, .500X2.15 HHXDCPSH GR2-	1
27.	996307	WASHER, FLAT .391X1.00X.209	1
28.	996416	WASHER, FLAT .391X1.00X.125	2
29.	45171	NUT, 3/8-16 HWDFL WHIZ-LOCK ZN	1
30.	326249-853	MP BRACKET, EXTENSION IDLER	1
31.	180075	SCREW, 5/16-18X .63 HHC GR2	2
32.	1498	NUT, 5/16-18 REGHEXCTRLK	2
33.	321828-853	BLADE BRAKE ASSY	1
34.	135624	RIVET TRSET .187DIA X .50 LGST	2
35.	304119-853	BRAKE ARM	1
36.	306973	BRAKE PAD	1
37.	180075	SCREW, 5/16-18X .63 HHC	1
38.	120393	WASHER, FLAT .344X.69X.065	1
39.	1498	NUT, 5/16-18 REGHEXCTRLK	1
40.	315396	BRAKE ROD	1
41.	1502	NUT, 1/4-20 REGHEXCTRLK	1
42.	35410	SPRING .071 X .62 X 4.37	1
43.	1498	NUT, 5/16-18 REGHEXCTRLK	1
44.	56424-853	SP/SF QUILL ASSY, 36/39/40/43	2
45.	56425	WS SHAFT/SADDLE 36"	1
46.	49562	BRNG, BALL .669ID X1.575OD X.472	1
47.	50616	MS DUST SHIELD	1
48.	55547	QUILL CASTING (1046)	1
49.	49562	BRNG, BALL .669ID X1.575OD X.472	1
50.	50818	SPACER, SLEV .669X .88X3.797	1
51.	51449	SPACER, SLEV .672X .93X .438PM	1
52.	313898	BF/BP PULLEY, 26/36" QUILL V5L	1
53.	56365	WASHER, SPECIAL QUILL	1
54.	1282	NUT, 7/16-20 WDFLLK	1
55.	50634	SCREW, 5/16-18X .88 WAHTAP	7
56.	300345	SCREW, 5/16-18X1.38 WATAPGR2	1
57.	318445-853	MS BRACKET, 40 LF FRONT DECK	1
58.	180075	SCREW, 5/16-18X .63 HHC GR5	4
59.	1498	NUT, 5/16-18 REGHEXCTRLK	4
60.	58305-853	MS, MP BRACKET, LINK DECK FRONT	1
61.	58247	ADJUSTING NUT	2
62.	122017	SCREW, 5/16-18X1.00 HHC GR2	2
63.	1498	NUT, 5/16-18 REGHEXCTRLK	2
64.	317041	BRACKET, GAGE WHEEL L.H.	1
65.	180075	SCREW, 5/16-18X .63 HHC GR5	3
66.	1498	NUT, 5/16-18 REGHEXCTRLK	3
67.	322464-853	BRACKET, GAGE WHEEL R.H. FRNT	1
68.	314282-853	BRACKET, STABILIZER	1
69.	180075	SCREW, 5/16-18X .63 HHC GR5	1
70.	12685	SCREW, 5/16-18X1.25 HHCFT YZ	1
71.	1498	NUT, 5/16-18 REGHEXCTRLK	3
72.	309070	BLADE, 20.32 HIGH-LIFT	2
73.	2483	WASHER, .391ID X1.25DX.07 BELLVIL	6
74.	39573	SCREW, 3/8-24X1.00 NYLHHCGR5	2

40" LAWN TRACTOR MODEL D3560-400

FINAL DECK ASSEMBLY



REF.
IDLER ARM

NOTE: ALWAYS USE ORIGINAL EQUIPMENT PARTS.
Use of service/replacement parts other than original equipment parts may void your warranty.

**ALL UNNUMBERED
ITEMS ARE INTERCHANGEABLE
WITH OPPOSITE SIDE**

325681B

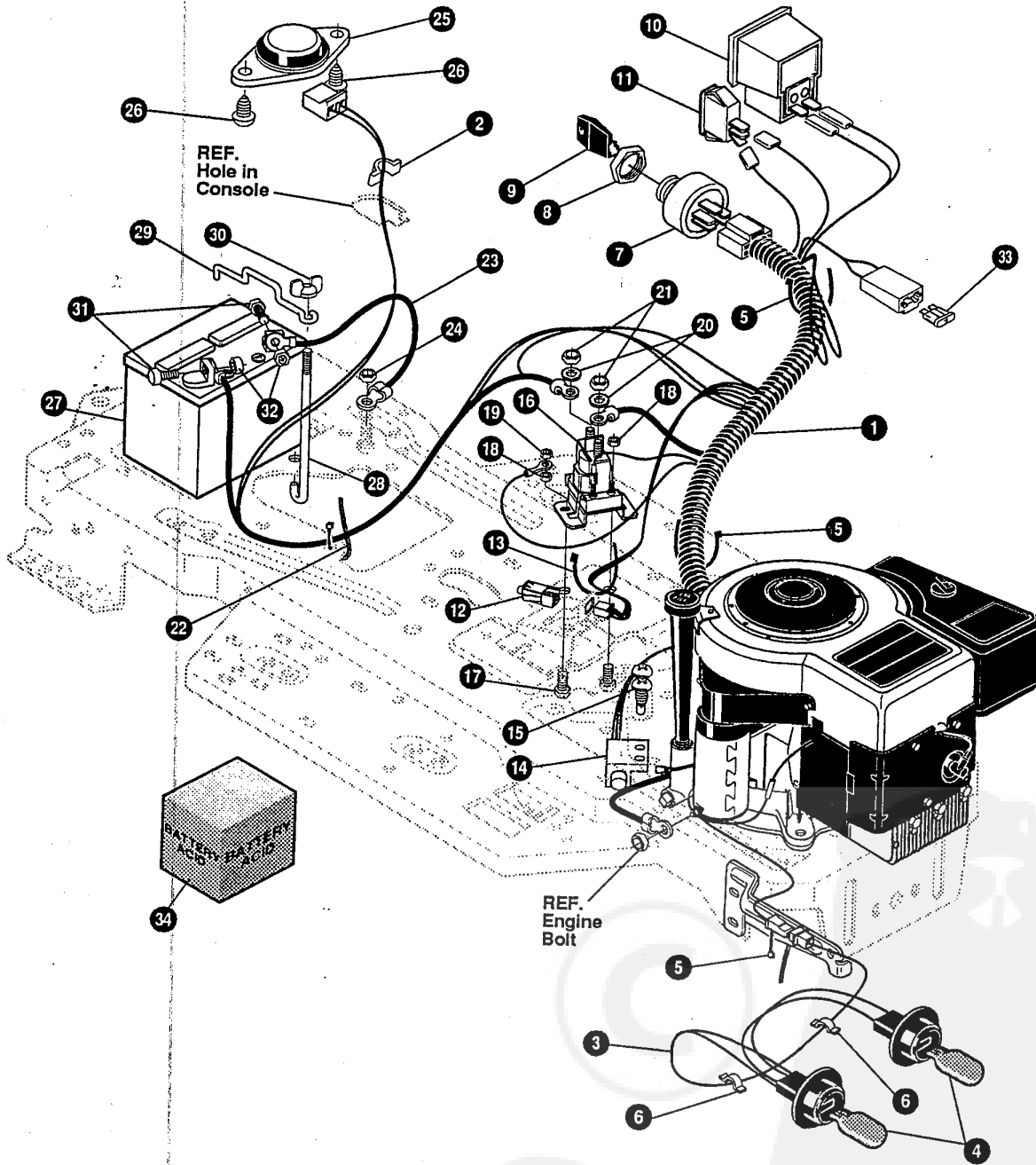
40" LAWN TRACTOR MODEL D3560-400

KEY#	PART#	DESCRIPTION	QTY.
1.	^	DECK,40" MOWER 2-WH DOMESTIC	1
2.	58306	ROD, DECK HITCH	1
3.	8260	PIN, HAIR .091 DIA X1.66LG	1
4.	57325	BOLT, 3/8-16X2.00 CARR	1
5.	25210	WASHER, FLAT .392X1.25X.09	1
6.	1346	RETAINER,BELT	1
7.	310326	PULLEY, IDLER BFF 4.00 WIDE FL	1
8.	996307	WASHER, FLAT .391X1.00X.209	1
9.	120382	WASHER, REGSPTLK.393X.68X.10	1
10.	120377	NUT, 3/8-16 REGHX	1
11.	300473	SPRING,TENSION 7.52LG+17LB/IN	1
12.	319005	BELT, V 5L 81.00 DECK 40 LF	1
13.	328257	GUARD, BELT LH PLASTIC	1
14.	180075	SCREW, 5/16-18X .63 HHC	3
15.	120393	WASHER, FLAT .344X .69X.065	3
16.	1498	NUT, 5/16-18 REGHEXCTRLK	3
17.	42348	GRIP-LEVER	1
18.	302611	GUAGE WHEEL, EURO	2
19.	23763	SHOULDER BOLT	2
20.	1499	NUT, 3/8-16 REGHEXCTRLK	2
21.	304422	CHUTE DEFLECTOR 40"-43"	1
22.	314975	SPRING TORSION	1
23.	304424	ROD,PIVOT DECK	1
24.	3535	PUSH NUT	1

^ ORDER INDIVIDUAL PARTS.

40" LAWN TRACTOR MODEL D3560-400

ELECTRICAL ASSEMBLY



NOTE: ALWAYS USE ORIGINAL EQUIPMENT PARTS.
Use of service/replacement parts other than original equipment parts may void your warranty.

**ALL UNNUMBERED
ITEMS ARE INTERCHANGEABLE
WITH OPPOSITE SIDE**

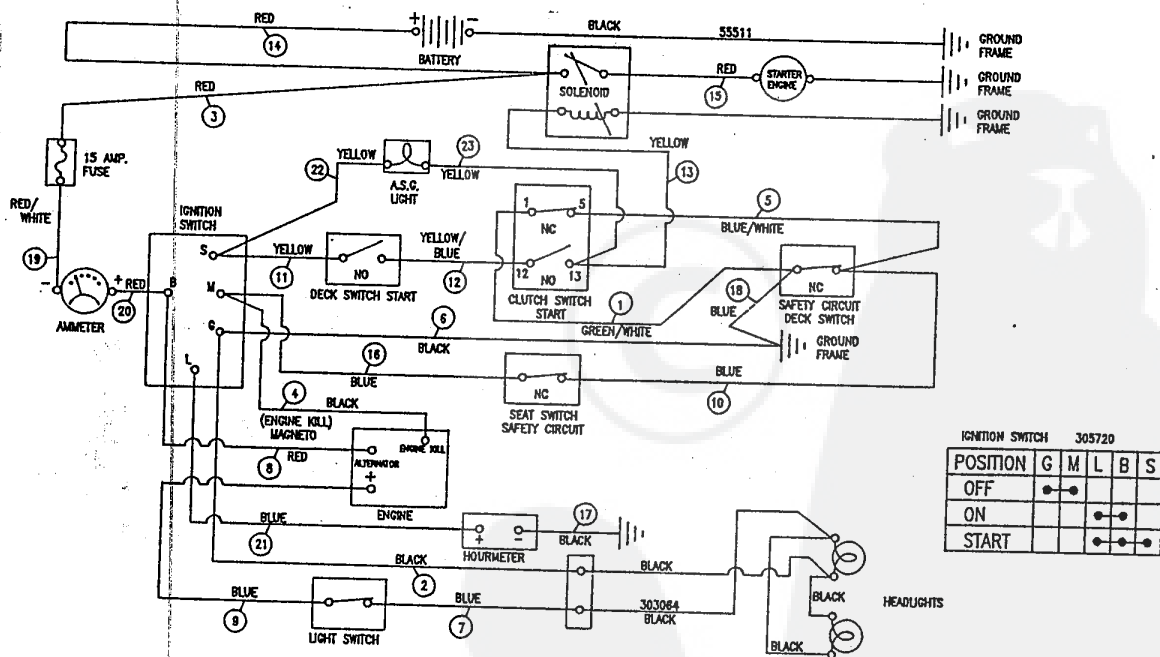
325502C

40" LAWN TRACTOR MODEL D3560-400

KEY#	PART#	DESCRIPTION	QTY.
1	320065	HARNES 12-12.5 BS,DYN,WRAP,LF	1
2	41482	PRESS.CLIP	1
3	303064	ASSY,LIGHT WIRE-1/4 TURN	1
4	52572	BULB, HEADLIGHT	2
5	57444	TIE,CABLE	3
6	41482	PRESS.CLIP	2
7	327355	SWITCH-IGN	1
8	327352	NUT, 5/8-32 HXHD IGN SWIT	1
9	327350	KEY, IGNITION	1
10	300133	AMMETER	1
11	300334	LIGHT SWITCH ON/OFF PANEL	1
12	320082	SWITCH,DOUBLE POLE	1
13	57444	TIE,CABLE	1
14	57476	SWITCH,SCR MNT	1
15	57220	SCREW, #12 X.50 PHPNTAP	2
16	53716	SOLENOID	1
17	187745	SCREW, 1/4-20 REGHEXCTRLK	2
18	1502	NUT, 1/4-20 REGHEXCTRLK	2
19	271172	NUT, 1/4-20 REGHEXKEPS	1
20	138485	WASHER, EXLK .320X.61X.03	2
21	120368	NUT, 5/16-24 REGHEX	2
22	57444	TIE,CABLE	1
23	55511	WIRE,GROUND, 12.5"	1
24	271184	NUT, 5/16-18 HEXKEPS	1
25	57547	SWITCH,SEAT	1
26	160505	SCREW, 1/4-20X.38	2
27	57486	BATTERY 12V GENERIC	1
28	57551	ROD,BATTERY	1
29	57552	ROD,BATTERY, TOP	1
30	325232	NUT,WING 1/4-20 NYLON	1
31	120854	SCREW,1/4-20 X.63 HHC	1
32	271172	NUT, 1/4-20 REGHEXKEPS	2
33	302031	FUSE, 15 amp SPADE TYPE	2
34	A	BATTERY ACID PACK,80OZ	1

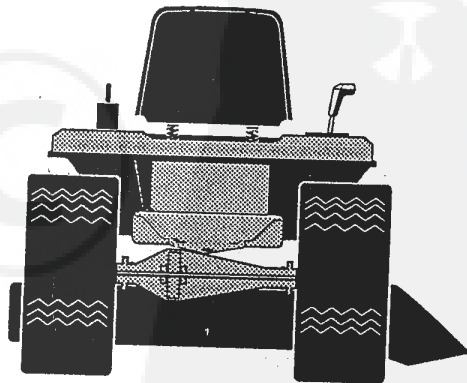
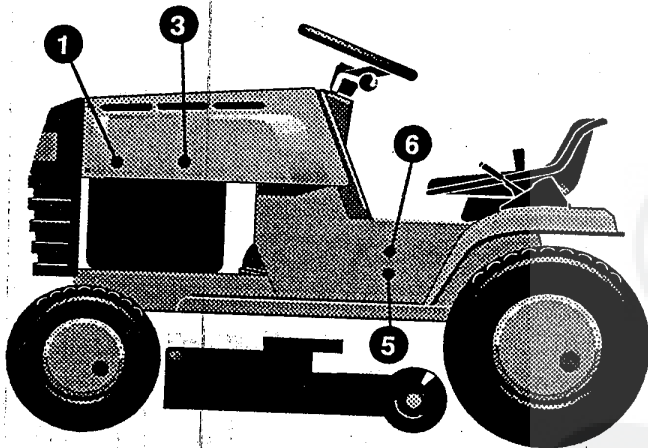
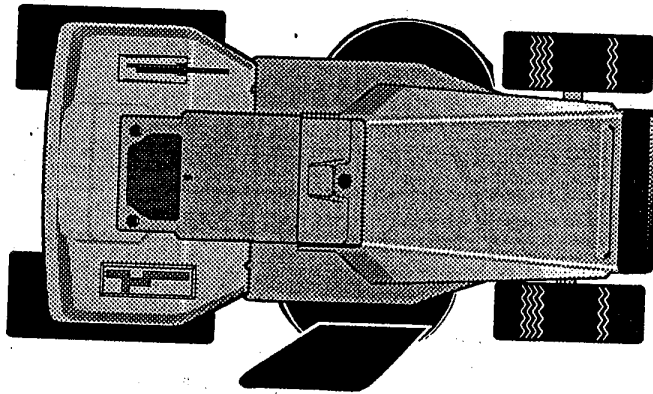
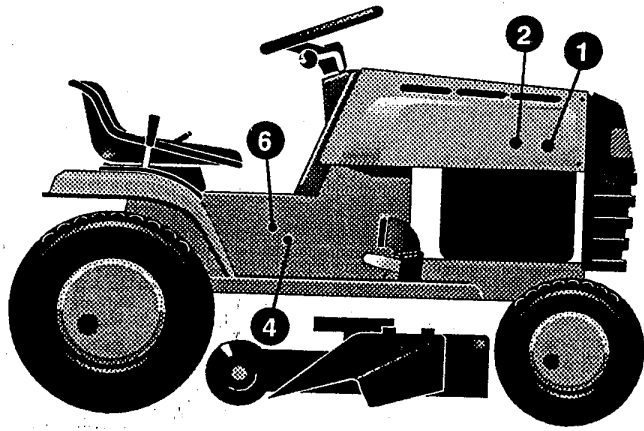
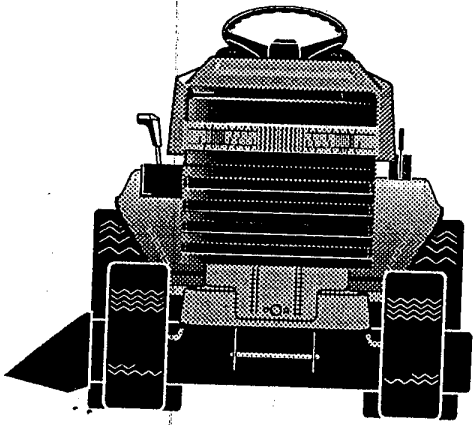
** SPADE TYPE FUSE INCLUDED WITH THE WIRE HARNES.
 ^ CAN BE PURCHASED LOCALLY.

SCHEMATIC DRAWING



40" LAWN TRACTOR MODEL D3560-400

DECALS (DECORATIVE)



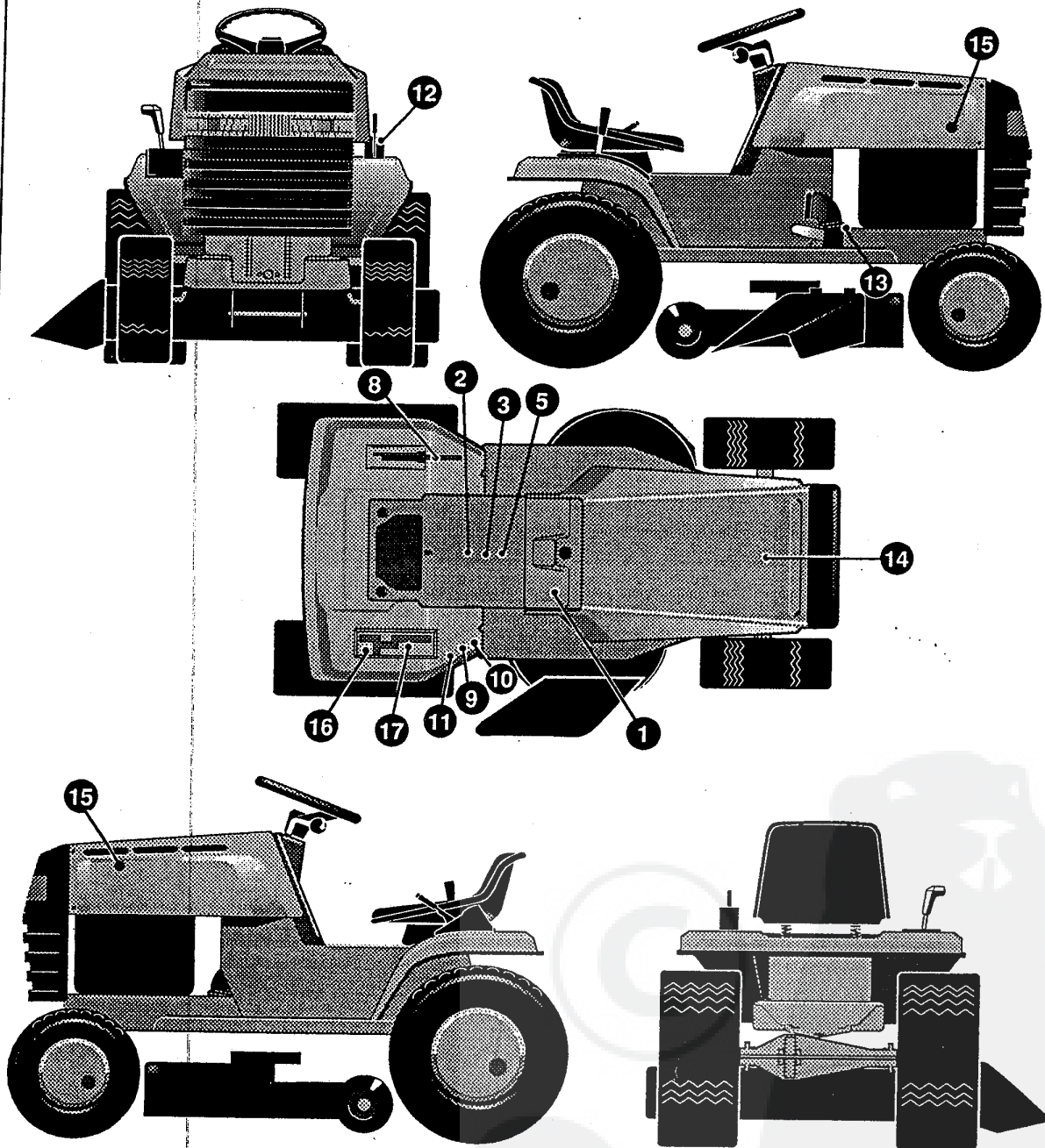
328738A

40" LAWN TRACTOR MODEL D3560-400

KEY#	PART#	DESCRIPTION	QTY.
1.	402142	NAMEPLATE TURFMASTER	2
2.	320714	DECAL, HOODSIDE RH H-21	1
3.	320713	DECAL, HOODSIDE LH H-21	1
4.	314462	DECAL, CONSOLE RH LARGE FRAME	1
5.	314463	DECAL, CONSOLE LH LARGE FRAME	1
6.	322326	NAMEPLATE 12.5/40	2

40" LAWN TRACTOR MODEL D3560-400

DECALS (INSTRUCTIONAL)



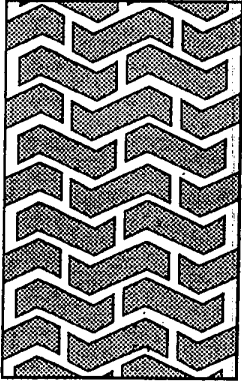
328737A

40" LAWN TRACTOR MODEL D3560-400

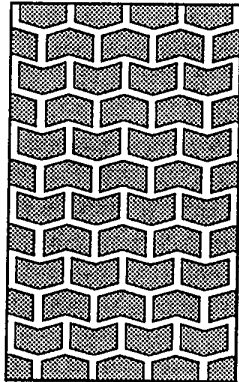
KEY#	PART#	DESCRIPTION	QTY.
1.	321765	DECAL, LF DASH PTO/LIGHT SW EXP	1
2.	69524	DECAL, INSTRUCT CONSOLE TOP GER	1
3.	69525	DECAL, INSTRUCT CONSOLE TOP FR	1
4.		REFERENCE ONLY	
5.	307383	DECAL, INSTR. CONSOLE TOP ENGL	1
6.		REFERENCE ONLY	
7.		REFERENCE ONLY	
8.	68901	DECAL, BLADE HEIGHT ADJ. EUROPE	1
9.	68902	DECAL, WARNING, FRENCH/GERMAN	1
10.	305770	DECAL, CAUTION TRIANGLE EUROPE	1
11.	310553	DECAL, DANGER ENGLISH	1
12.	324044	DECAL, CUT HEIGHT, 3 POSITION	1
13.	68903	DECAL, BRAKE/CLUTCH ISO	1
14.	55835	PAD, FOAM HOOD TOP H-6/7	1
15.	55836	PAD, FOAM HOOD SIDE H-6/7	2
16.	311394	DECAL, SHIFT REV/NEUTRAL	1
17.	314964	DECAL, SHIFTER POSITION	1

40" LAWN TRACTOR MODEL D3560-400

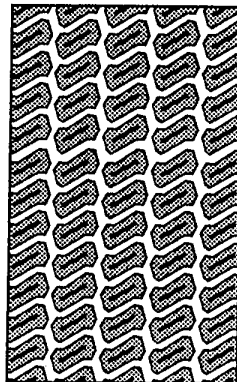
TREAD PATTERNS



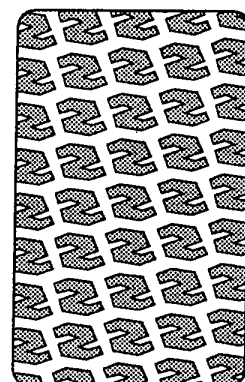
"A"



"B"



"C"



"D"

TIRE SIZE	"A"	"B"	"C"	"D"
11 X 4.00 - 5	42295	319679		
13 X 5.00 - 6	41060	319680		
15 X 6.00 - 6	39830	316702	301140	313952
16 X 6.50 - 8	41081	319682		314539
18 X 8.50 - 8	319683	317400		
18 X 9.50 - 8	41106	316701		313950
20 X 8.00 - 8	319685	319684	57164	314584
20 X 10.00 - 8	58276	319686		313654
20 X 10.00 - 10	55893	319687		
23 X 9.50 - 12	53655	319690	319689	314370

316711 B

ACCESSORIES

Contact the dealer where your tractor was purchased for the available accessories. If you are unable to contact the dealer, write to the address on the front cover of this manual.

Model	Description	Rear Engine Rider
5708-16	Bagger - Fits 32" Side Discharge	
5708-17	Bagger - Fits 36" Side Discharge & 30" Top Discharge	
5709-02	Front Weight Box - holds 35 lbs.	
5648-16	Lawn Sweeper w/dump Release	
5714-00	Mulching Kit - 30" Top Discharge	

Model	Description	Lawn Tractor
5708-22	Bagger - Fits 30" Side Discharge	
5708-13	Bagger - Fits 36", 38", 39" & 45" Side Discharge	
5705-04	36" Two-Stage Snowblower - Fits 36", 38", 39", & 45" Side Discharge	
5661-06	42" Snowblade - Fits 36", 38", 39", & 45"	
5592-00	Tire Chains - 18" x 6.50"	
5585-00	Tire Chains - 18" x 9.50" & 20" x 8"	
5672-01	Wheel Weights - Front - 1 pr. w/mtg. hdw. - Fits 15" tires	
5673-02	Wheel Weights - Rear - 1 pr. w/mtg. hdw. - Fits 18" & 20" tires	
5709-03	Front Weights - Fits 30" & 32" Side Discharge	
5648-16	Lawn Sweeper w/dump Release	
5714-00	Mulching Kit - 30" Top Discharge	

Model	Description	Garden Tractor - Light Ground Engaging
5708-13	Bagger - Fits 36", 38", 39", & 45" Side Discharge	
5705-04	36" Two - Stage Snowblower - Fits 36", 38", 39", & 45"	
5661-06	42" Snowblade - Fits 36", 38", 39", & 45"	
5672-01	Wheel Weights - Front 1 pr. w/mtg. hdw. - Fits 15" tires	
5673-02	Wheel Weights - Rear - 1 pr. w/mtg. hdw. - Fits 18" & 20" tires	
5648-16	Lawn Sweeper w/dump Release	
5667-02	Sleeve Hitch - w/lift bar - Fits 45"	
5668-01	Adaptor (sleeve hitch) for use w/23" tires	
5706-00	Tire Chains - 20" x 10"	
5671-00	Tire Chains - 23" x 9.50"	
5672-02	Wheel Weights - Front - 1 pr. w/mtg. hdw. Fits 16" tires	
5673-00	Wheel Weights - Rear - 1 pr. w/mtg. hdw. Fits 23" tires	
5674-01*	10" One Bottom Moldboard Plow	
5675-01*	Cultivator - 7 row - Adj. 6" - 42" width	
5676-01*	Disc Harrow - 8" & 11" disc - Adj. width & disc angle	
5677-02*	Tiller - 5 H.P. Self-Powered - 28" width	

Model	Description	Four Wheel Steer
5708-14	Bagger - Fits 40" & 46" Side Discharge	
5705-05	42" One-Stage Snowblower - Fits 40" & 46"	
5661-07	48" Snowblade - Fits 40" & 46"	
5709-04	Rear Weight Box for 40" & 46"	
5648-16	Lawn Sweeper w/dump Release	
5706-00	Tire Chains 20" x 10"	
5671-00	Tire Chains 23" x 9.50"	
5672-02	Wheel Weights - Front - 1 pr. w/mtg. hdw. Fits 16" tires	
5673-00	Wheel Weights - Rear - 1 pr. w/mtg. hdw. Fits 23" tires	
5672-01	Wheel Weights - Front - 1 pr. w/mtg. hdw. Fits 15" tires	
5673-02	Wheel Weights - Rear - 1 pr. w/mtg. hdw. Fits 18" & 20" tires	

Model	Description	Two Wheel Steer Garden Tractor
5667-04	Sleeve Hitch - w/lift bar Fits 46"	
5674-01*	10" One Bottom Moldboard Plow	
5675-01*	Cultivator - 7 row - Adj. 6" - 42" width	
5676-01*	Disc Harrow 8" & 11" Disc. Adj. width & disc angle	
5677-02*	Tiller 5 H.P. Self-Powered - 28" width	
5648-16	Lawn Sweeper w/dump Release	

Requires a sleeve hitch