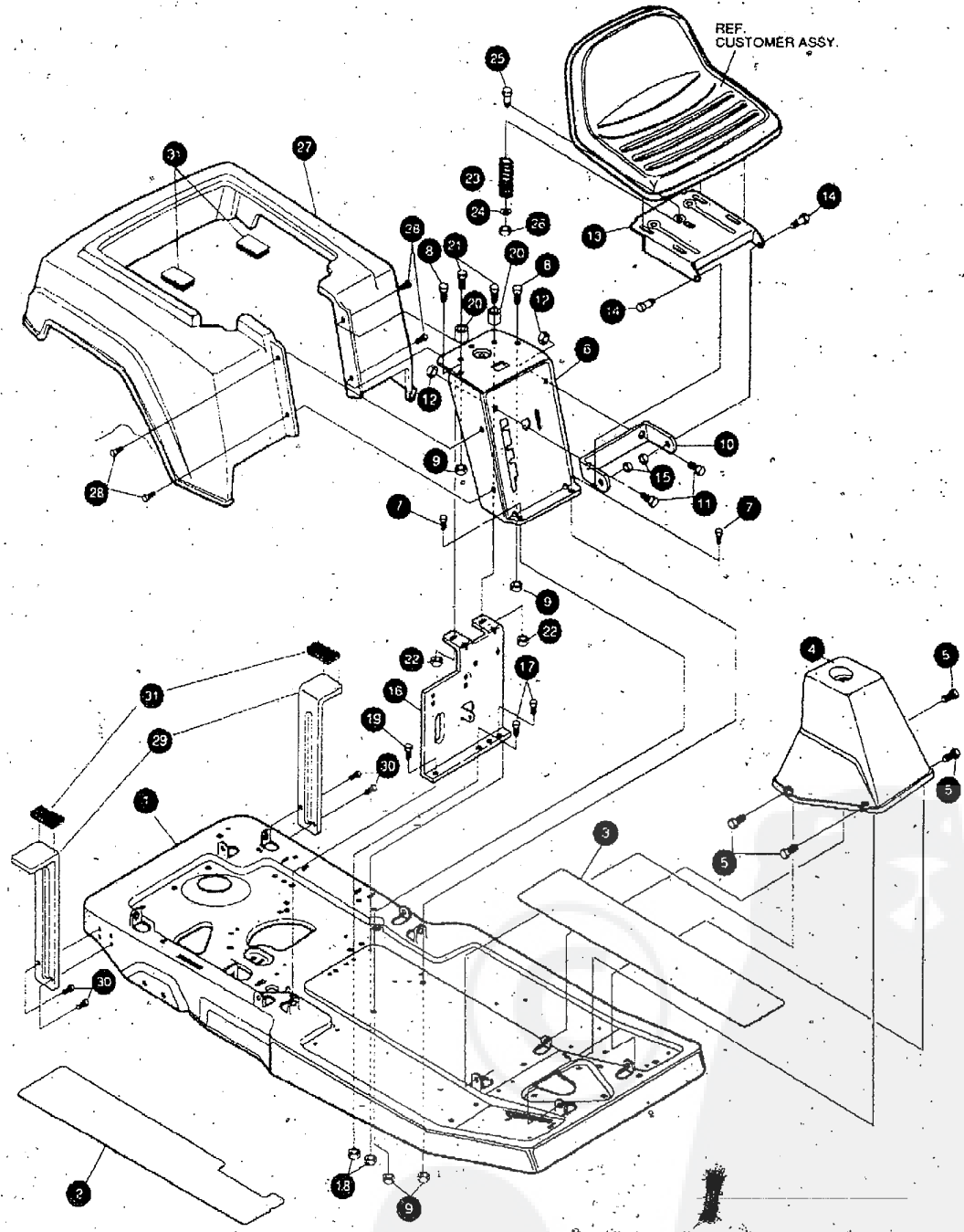


30" RIDING MOWER MODEL D3595-010

BODY GROUP ASSEMBLY



NOTE: ALWAYS USE ORIGINAL EQUIPMENT PARTS. Use of service/equipment parts other than original equipment parts may void your warranty.

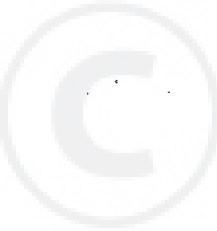
ALL UNNUMBERED ITEMS ARE INTERCHANGEABLE WITH OPPOSITE SIDE

2077704

30" RIDING MOWER MODEL D3595-010

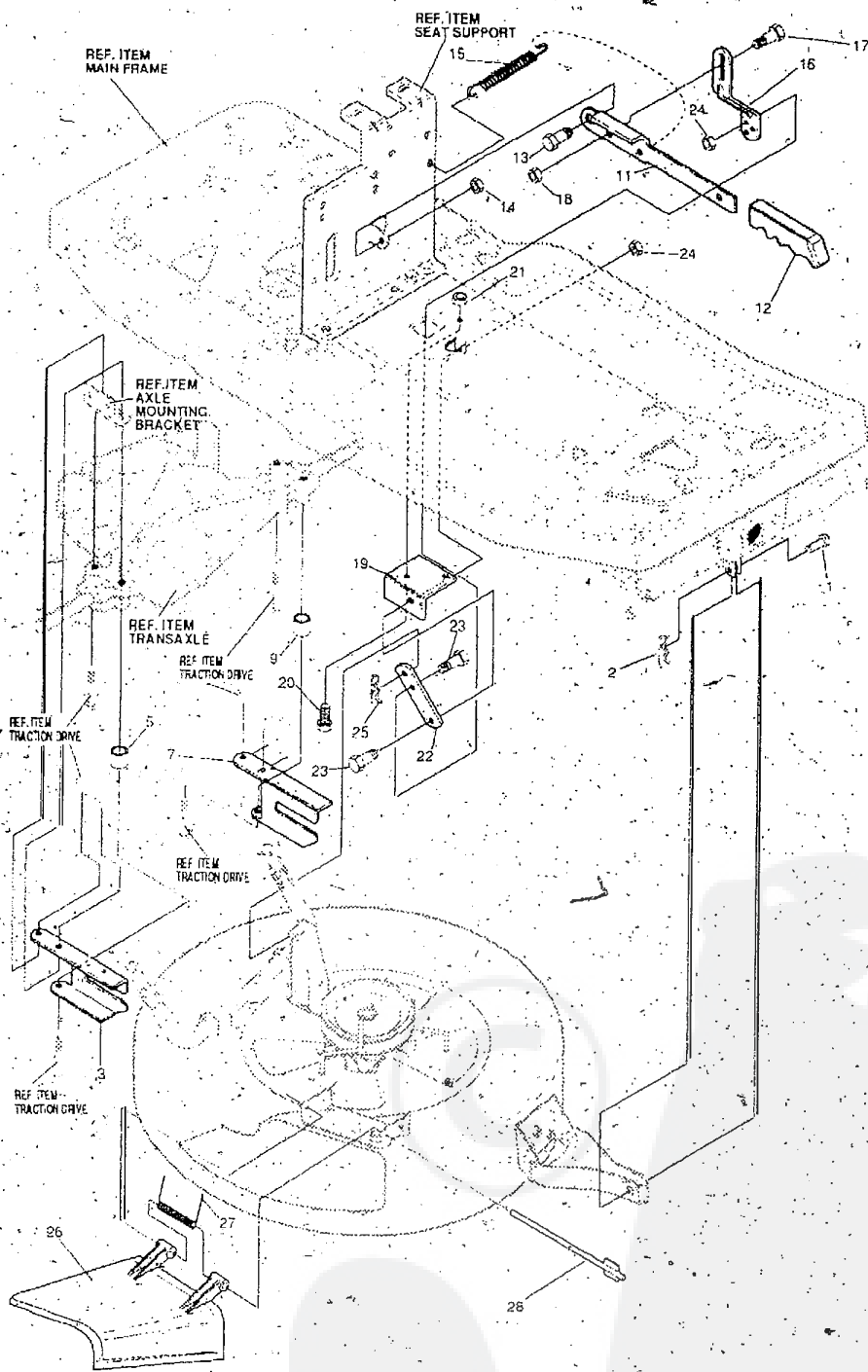
KEY#	PART#	DESCRIPTION	QTY.
1	314227-860	FRAME	1
2	301181	FOOTPAD, RH GRIT	1
3	12555	FOOTPAD, LH GRIT	1
4	304537	CONSOLE, W/O-LITE,NOMA	1
5	995346	SCREW, 1/4-20 X 50 WAH H TAP	4
6	314265-860	SEAT SUPPORT	1
7	48901	SCREW, 5/16-18 X 63 WAH HC GR2	2
a	180075	SCREW, 5/16-18 X 63 H HC GR2	2
9	1498	NUT, 5/16-18 REG H CTR LK	4
10	301330-853	SEAT BRACKET	1
11	180117	SCREW, 3/8-16 x .56 H H C	2
12	1 4 9 9	NUT, 3/8-16 REGHXCTRLK	2
13	315128-853	ASSEMBLY PLATE SEAT TUV	1
14	20507	BOLT, 437 X .156 H H S H 5/16-18	2
15	1498	NUT, 5/16-18 REGHEXCTRLK	2
16	314185-853	SEAT/SHIFT SUPPORT	1
17	120229	SCREW, 5/16-18 X .88 HHCC	2
18	1598	NUT, 5/16-18 REGHEXCTRLK	2
19	35498	SCREW, 5/16-18 X 75 WAHTAP	1
20	50520	SPACER	2
21	122027	SCREW, 5/16-18 X 1 25 HHC	2
22	1498	NUT, 5/16-18 REGHEXCTRLK	2
23	319136	SPRING COMP. 972 X 2.00 X .095	1
24	120392	WASHER, FLAT .281 X .63 X .065	1
25	120706	SCREW, 1/4-20 REGHEXCTRLK	1
26	1502	NUT, 1/4-20 REGHEXCTRLK	1
27	313511-660	FENDER, RER DYNA F-12	1
28	448111	SCREW, 1/4-20 X 75 HXWATAP	4
29	305645	FENDER SUPPORT	2
30	995346	SCREW, 1/4-20 X 50 WAHTAP	4
31	12599	FASTENER, -VELCRO	2
32	328575	PARTS- MANUAL	1
33	328576	OPERATOR'S MANUAL (ENGLISH)	1
34	328577	OPERATOR'S MANUAL (FRENCH)	1
35	328578	OPERATOR'S MANUAL (GERMAN)	1

. INDICATES STANDARD HARDWARE ITEMS.



30" RIDING MOWER MODEL D3595-010

MOWER SUSPENSION ASSEMBLY



NOTE: ALWAYS USE ORIGINAL EQUIPMENT PARTS. Use of service/equipment parts other than original equipment parts may void your warranty.

ALL UNNUMBERED ITEMS ARE INTERCHANGEABLE WITH OPPOSITE SIDE

306432G

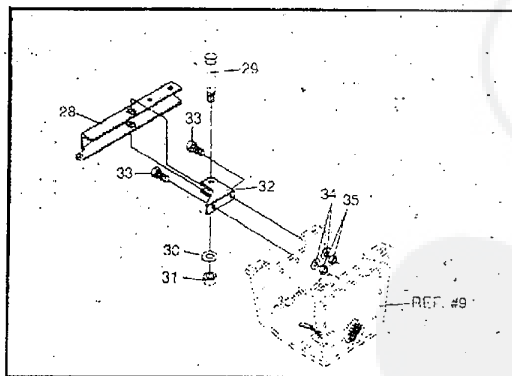
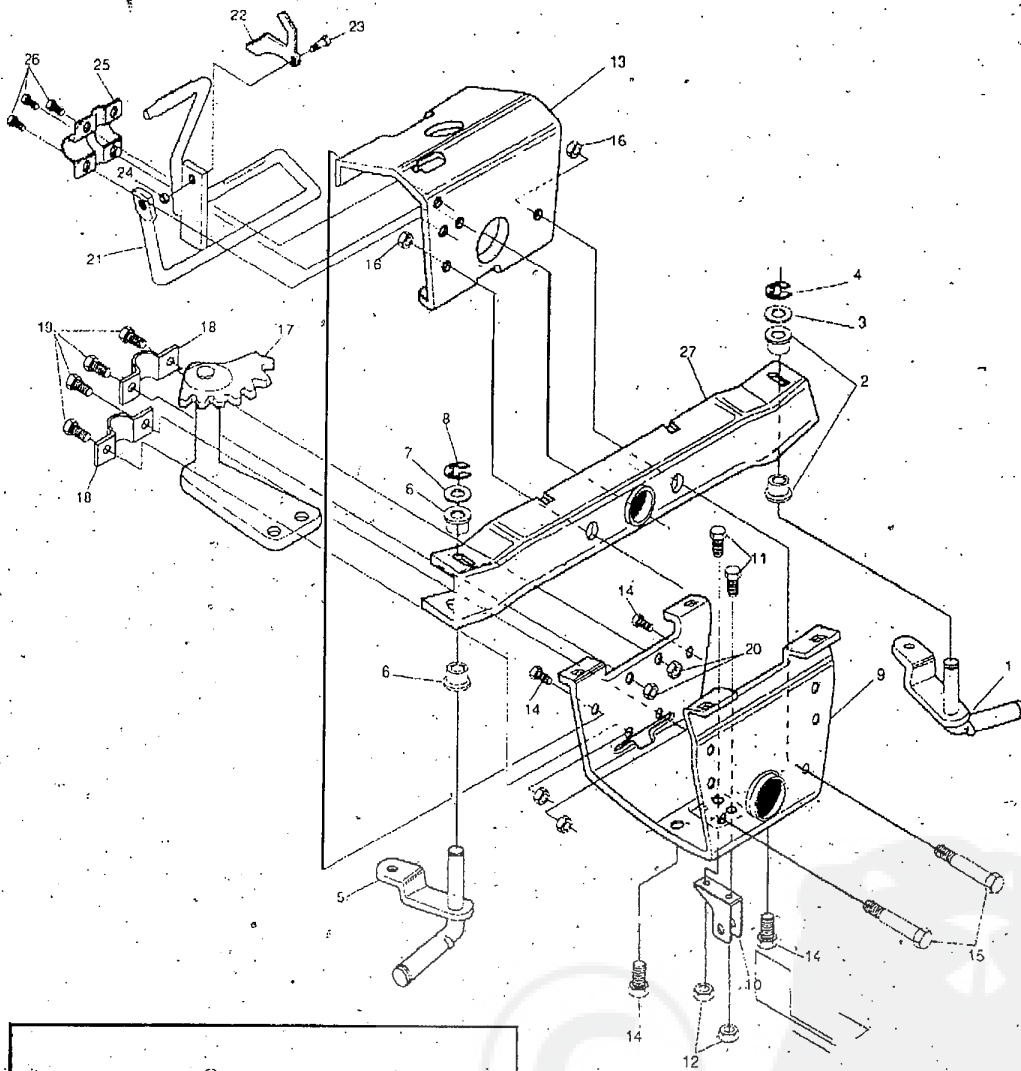
30" RIDING MOWER MODEL D3595-010

KEY #	PART#	DESCRIPTION	QTY.
1	47817	PIN. 495 X 1.750 CLEVIS-SHORT	
2	56180	PIN, HAIR .091 DIA X 1.62 LG	
3	321371	BRACKET, REAR SUPPORT RH	
5	41462	SPACER, 328 X 750 X .312	1
7	321370	BRACKET, REAR SUPPORT LH	1
9	41462	SPACE (328 X .750 X .312	1
11	313719-853	HANDLE, HEIGHT ADJUST	E A
12	313763.653	GRIP, HANDLE, LIFT	
13	54855	BOLT, 500 X .345 HSSH 3/8-16	1
14	1499	NUT, 3/8-16 REGHXCTRLK	1
15	35410	SPRING, .071 x 62 x 4 37	1
16	323897	BRACKET, LINK UPPER 30" MOW	1
17	54855	BOLT, 500 X 345 HSSH 3/8-16	1
18	1499	NUT, 3/8-16 REGHXCTRLK.	1
19	323899	BRACKET, RER FRAME	1
20	120229	SCREW, 5/16-18 X .88 HHC	1
		NUT, 5/16-18 REGHEXCTRLK.	1
22	323899	BRACKET, LINK LOWER 30" MOW	1
23	313560	BOLT, 500 X 225 HSSH 5/16-18	2
24	1498	NUT, 5/16-18 REGHEXCTRLK	2
25	8260	PIN, HAIR .091 DIA X 1.62 LG	1
26	315314	CHUTE DEFLECTOR, 30" DECK	1
27	314975	SPRING TORSION CHUTE DEF	1
28	304424	ROD, PIVOT 40" DECK 312 X 7 25.	1

INDICATES STANDARD HARDWARE ITEMS

30" RIDING MOWER MODEL D3595-010

PRE- PAINT FRONT AXLE ASSEMBLY



NOTE: ALWAYS USE ORIGINAL EQUIPMENT PARTS. Use of service/equipment parts other than original equipment parts may void your warranty.

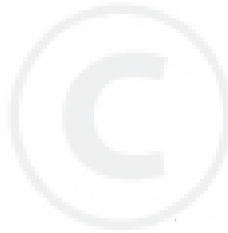
ALL UNNUMBERED ITEMS ARE INTERCHANGEABLE WITH OPPOSITE SIDE

316219B

30" RIDING MOWER MODEL D3595-010

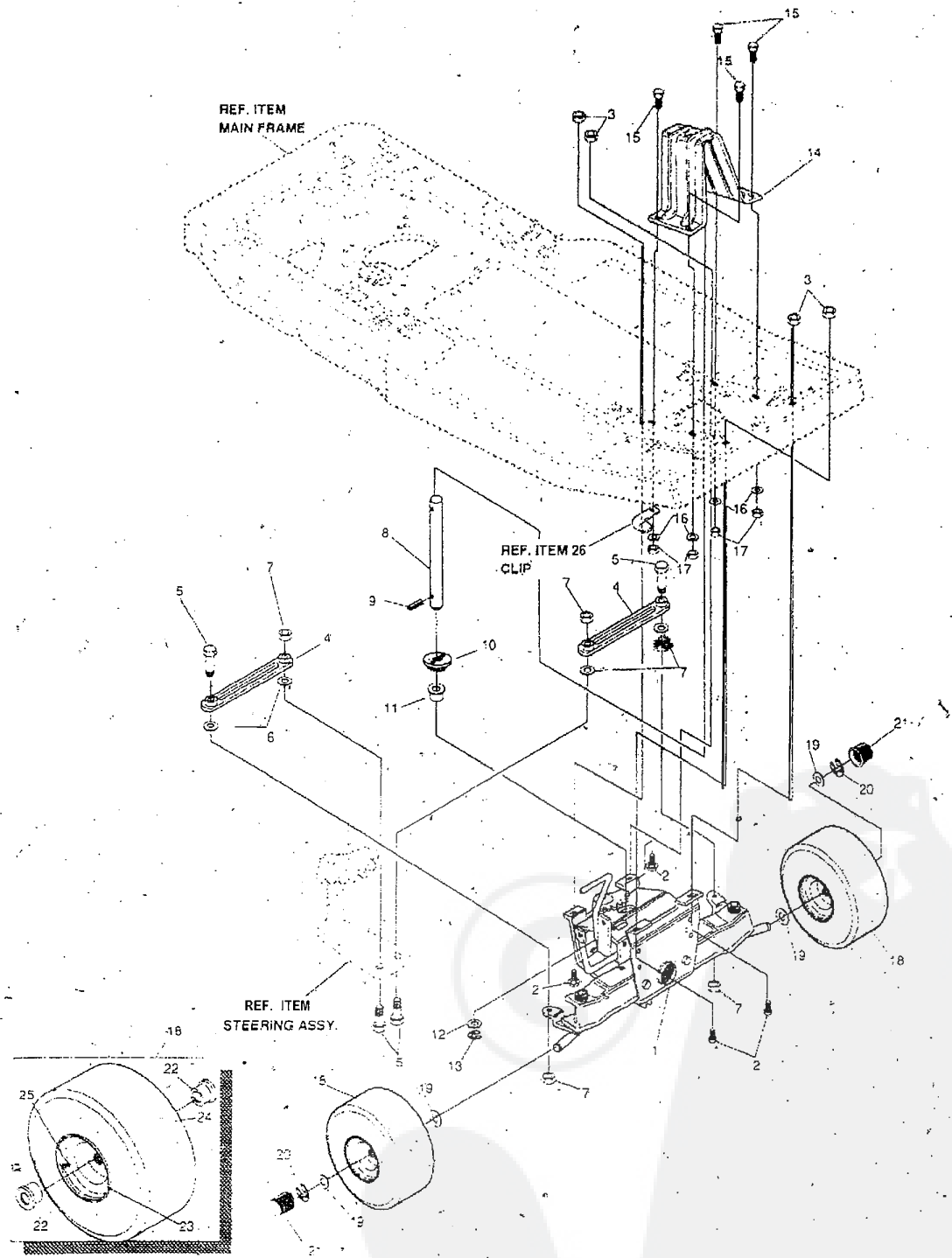
KEY#	PART#	DESCRIPTION	QTY.
	316216	ASSEMBLY SPINDLE L H	1
2	12552	BUSHING, SPINDLE	2
3	4107	WASHER, FLAT .635 X 1 31 X .07	
4	20859	RING, RET E 48 X .04 TRU 5133-62	1
5	316217	ASSEMBLY SPINDLE, R H	1
6	1 2 5 5 2	BUSHING, SPINDLE	2
7	4107	WASHER, FLAT .635 X 1 31 X .07	1
8	20859	RING, RETAINING E 48 X .04TRU5133-62	
9	314228	BRACKET, AXLE, OUTER FRONT	
10	323904	HANGER	
11	180075	SCREW, 5/16-18 X .63 HHC GR2	2
12	1498	NUT, 5/16-18 REG H CTR LK	2
13	302799	AXLE-BRACKET, INNER	
14	35497	SCREW, 5116-18 X 50 WAHH TAP	4
15	12220 1	SCREW, 3/8-16 X 2.75 H HC GR 2	2
16	1499	NUT, 3/8-16 REG HX CTR LK	2
17	302958-853	STEERING ASSEMBLY	1
18	302760	CLAMP, .625 DIA	2
19	180075	SCREW, 5116-18 X 63 H HC GR2	4
20	1498	NUT, 5/16-18 REG HEX CTR LK	4
21	303249-853	BRAKE ARM ASSEMBLY	
22	302955-860	LATCH, PARKING BRAKE	
2 3	3275	BOLT, .373 X 140 H H SH 1/4-20	
24	1502	NUT, 1/4-20 REG H CTR LK	
25	44112	BRACKET,, CLUTCH AND BRAKE	1
26	35497	SCREW, 5/16-18 X 50 WA H H TAP	5
2 7		FRONT AXLE ASSEMBLY	1
28	323903	ROCKER ARM MOWER ENGAGEMENT	1
29	3 1 0 3 6 4	BOLT, 500 X 1.18 HHC 318-16	1
30	845	WASHER,FLAT 390 X 1.25 X 119-	1
31	1499	NUT,38-16 REGHXCTRLK	1
32	323904	HANGER	1
33	180075	SCREW, 5116-18X 63 HHC GRD*2	2
34	120393	WASHER,FLAT 344 X .69 X .065	2
3.5	1498	NUT, 5/16-18 REGHXCTRLK	2

* ORDER INDIVIDUAL PARTS



30" RIDING MOWER MODEL D3595-010

FRONT AXLE & WHEELS ASSEMBLY



NOTE: ALWAYS USE ORIGINAL EQUIPMENT PARTS. Use of service/equipment parts other than original equipment parts may void your warranty.

ALL UNNUMBERED ITEMS ARE INTERCHANGEABLE WITH OPPOSITE SIDE

3162200

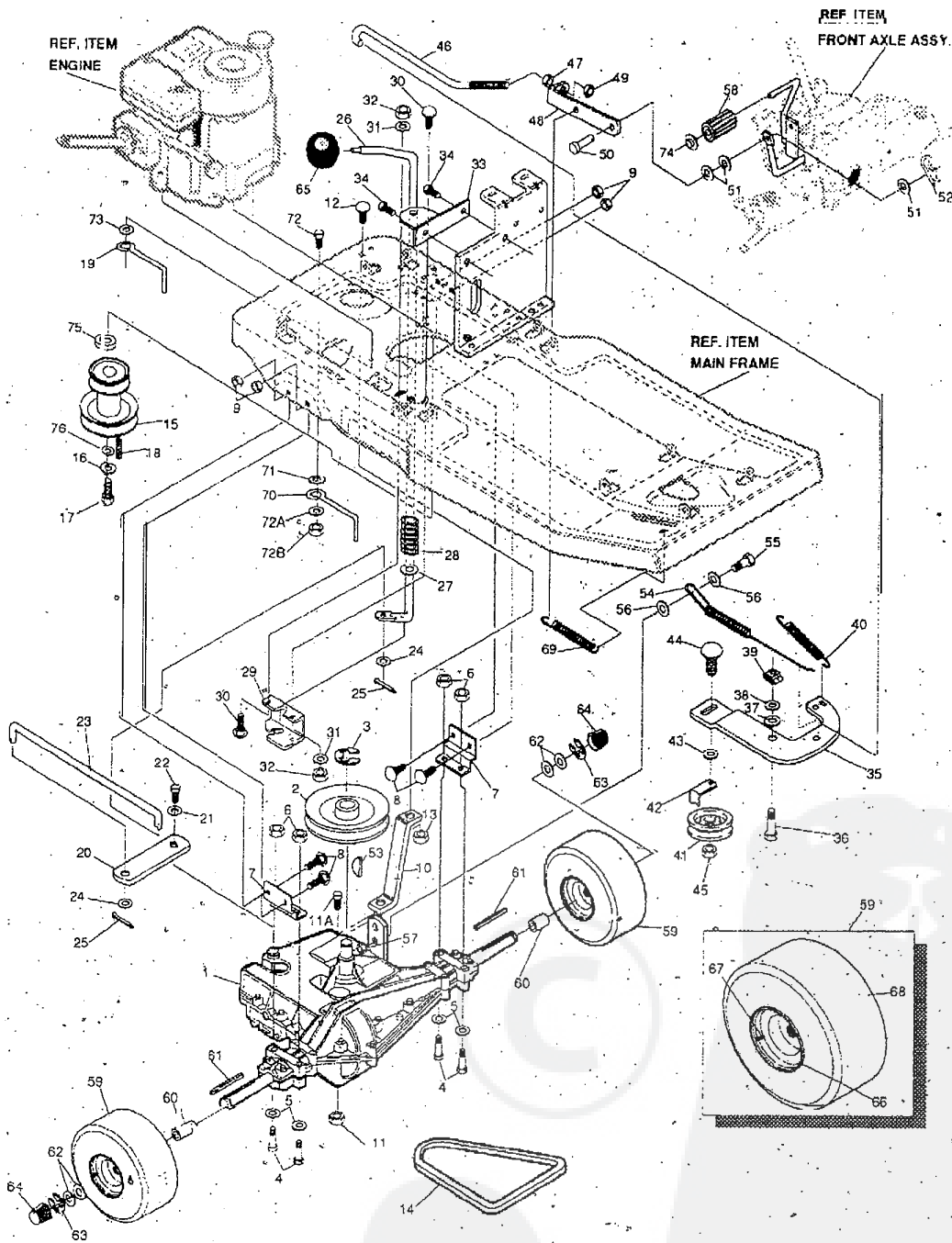
30" RIDING MOWER MODEL D3595-010

KEY#	PART#	DESCRIPTION	QTY.
		FRONT AXLE ASSEMBLY	1
2	122007	SCREW, 5/16-18 X 75 HHC GRD 2	4
3	45174	NUT, 5/16-18 HEX WD FL LK WHIZ	4
4	303140	TIE ROD	2
5	122145	SCREW, 3/8-16 X 1.25 H HC GA2	4
6	120382	WASHER, REG SRT LK 393 X 68 X .10	4
7	1499	NUT, 3/8-16 REG HX CTR LK	4
8	323906	SHAFT STEERING	1
9	454565	PIN, SPRING .250 DIA. X 1.25 LG	1
10	302766	GEAR, PINION	1
11	304010	BUSHING-STEERING	1
12	4107	WASHER, FLAT .635 X 1.31 X .07	1
13	20859	RING, RETAINING E .48 X .04 TRU 5133-62	1
14	323905	SUPPORT, STEERING SHAFT	1
1 5	48901	SCREW, 5/16-18 X .63 WA H HC GR2	4
16	120393	WASHER, FLAT .344 X .69 X .065	4
17	1498	NUT, 5/16-18 REG HEX CTR LK	4
18	^	TIRE & RIM, PNEUMATIC 11 X 4.00-5	2
19	40677	WASHER, FLAT .640 X 1.25 X-.06	4
20	20859	RING, RETAINING E .48 X .04 TRU 5133-62	2
21	36832	HUB CAP	2
22	301137	BEARING, WHEEL	2
23	301175	WHEEL	1
24		TIRE 11 X 4 - TURF (SEE TIRE TREAD PAGE)	1
25	24167	VALVE STEM	1
26		SEE ELECTRICAL SYSTEM	1

ORDER INDIVIDUAL PARTS.

30" RIDING MOWER MODEL D3595-010

TRACTION DRIVE ASSEMBLY



NOTE: ALWAYS USE ORIGINAL EQUIPMENT PARTS. Use of service/equipment parts other than original equipment parts may void your warranty.

ALL UNNUMBERED ITEMS ARE INTERCHANGEABLE WITH OPPOSITE SIDE

324114C

30" RIDING MOWER MODEL D3595-010

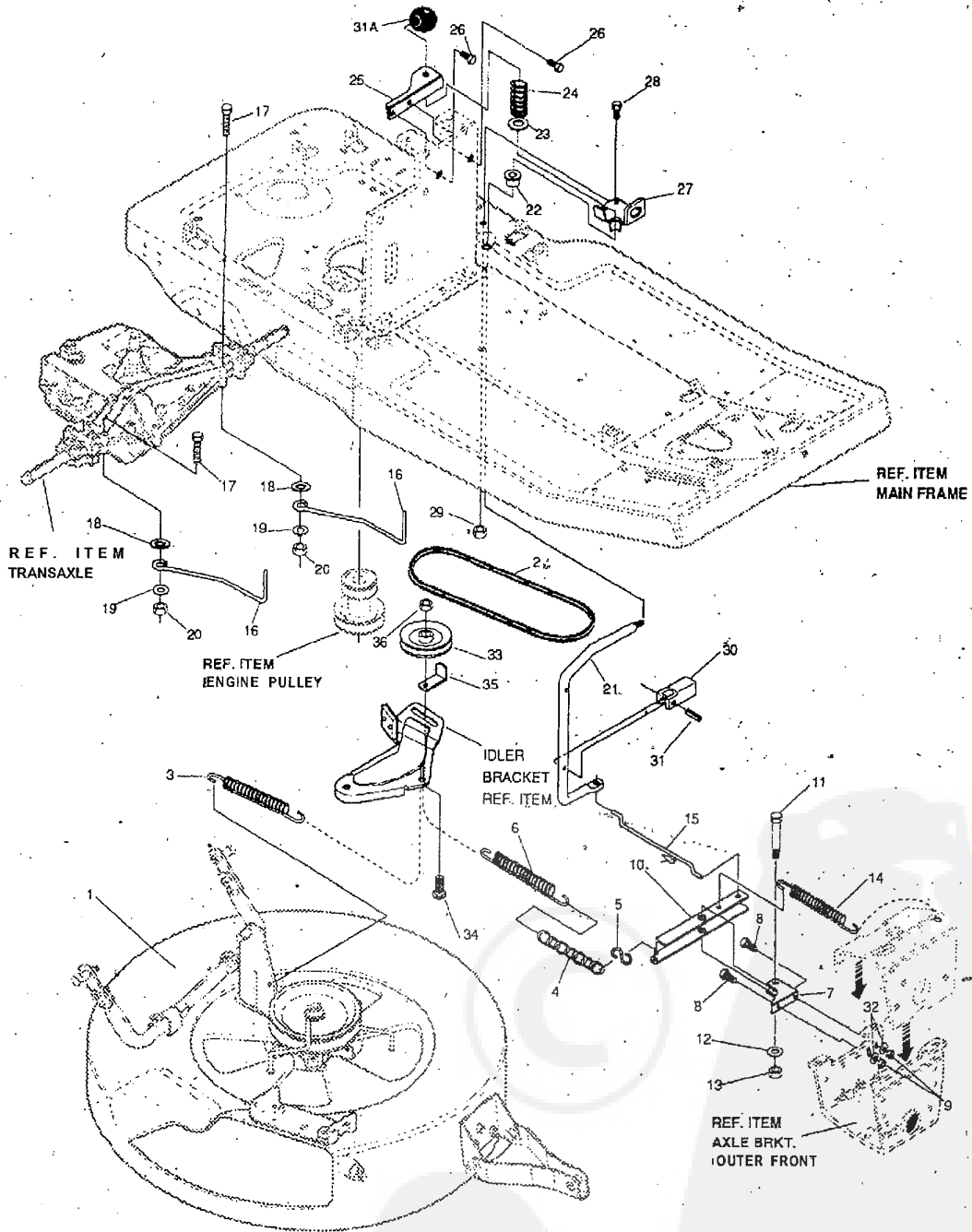
KEY#	PART#	DESCRIPTION	QTY.
		TRANSAXLE	
2	303109	PULLEY, TRANSAXLE	1
3	22053	RING, RETEX .58 X .04 TRU 5100-62	1
4	122083	SCREW, 5/16-18 X 2.50 HHC GR2	4
	120393	WASHER, FLAT .344 X .69 X .065	4
6	1498	NUT, 5/16-18 REG HEX CTR LK	4
	9796	BRACKET, TRANSAXLE	2
8	126211	BOLT, 5/16-18 X .63 CARR	4
9	1498	NUT, 5/16-18 REG HEX CTR LK	4
10	324 199	BRACKET, TRANSAXLE SUPPORT	
11	1498	NUT, 5/16-18 REG HEX CTR LK	
11A	122065	SCREW, 5/16-18 X 2.00	
12	126211	BOLT, 5/16-18 X .63 CARR	
13	1498	NUT, 5/16-18 REG HEX CTR LK	
14	300575	BELT, V 4L	
15	320600	PULLEY, ENGINE 3.315 OFF/3.87 D/3.00D	
16	120383	WASHER, REG SPT LK .459 X .78 X .12	
17	182761	SCREW, 7/16-20 X 2.50 HHC	1
18	2 6 6 5 5	KEY, SQUARE .250 SQ X 2 50 LG	3
19	55488	BELT GUIDE	
2 0	323874	SHIFT LEVER, BRKT	
21	57157	WASHER, .750 X .250	1
22	56255	SCREW, 1/4-20 X .75 NYL HH CGR8	1
23	321482	ROD, SHIFT CONNECTING	
24	120394	WASHER, FLAT .406 X .81 X .065	2
2 5	137185	PIN, COTTER .125 DIA X 1.00 LG	2
26	309255	HANDLE, SHIFT	
27	120396	WASHER, FLAT .531 X 1.06 X .095	
28	301133	SPRING, SHIFT LEVER	
29	309053	BRACKET DETENT SHIFT	
30	126216	BOLT, 5/16-18 X .75 CARR	2
31	120393	WASHER, FLAT .344 X .69 X .065	
3 2	1498	NUT, 5/16-18 REG HEX CTR LK	2
33	303098-853	SHIFT CONTROL BRACKET	
34	9 9 5 3 4 6	SCREW, 1/4-20 X .50 WA HH TAP	2
35	125931	ARM, IDLER, TRANSAXLE DRIVE	
36	41690	BOLT, .625 X .218 HH SH 5/16-18Z	
37	4 1 0 7	WASHER, FLAT .635 X 1.31 X 07	
38	45602	WASHER, FLAT .333 X .27 X .119	
39	3 0 1 1 2 4	TINNERMAN CLIP	1
40	3 5 4 1 0	SPRING, .071 X .62 X 4.37	1
41	35374	PULLEY, IDLER	
42	39659	RETAINER, STRAP BELT	1
43	274517	WASHER, FLAT .406 X .73 X .063	1
44	45892	BOLT, 3/8-16 X 1.50 CARR	
45	1499	NUT, 3/8-16 REG HEX CTR LK	
46	323532	ROD CLUTCH	
47	271184	NUT, 5/16-18 HEX KEPS	1
48	321378	BRKT, CLUTCH BRAKE	1
49	1498	NUT, 5/16-18 REG HEX CTR LK	
50	39522	PIN CLEVIS 3/2 X .812	
51	120393	WASHER, FLAT .344 X .69 X .065	3
52	8260	PIN, HAIR .091 DIA X 1.66 LG	1
53	3021	KEY, WOODRUFF	1
54	3 2 6 8 5 6	SPRING, BRAKE	1
55	25086	BOLT, .500 X .375 HH SH 5/16-18	1
56	308188	WASHER, FLAT .515 X 1.31 X .09	2
57	1498	NUT, 5/16-18 REG HEX CTR LK	1
58	52840	PEDAL PAD	1
59		TIRE & RIM, PNEUMATIC	2
60	300588	S P A C E R	2
61	5 2 9 2 8	KEY, SQUARE 187 SO X 2.25 LG	2
62	42055	WASHER, FLAT .755 X 1.53 X .07	4
63	36825	RING, RETEX 57 X .05 TRU 5133-75	2
64	40364	CAP, HUB	2
65	55514	SHIFT KNOB	1
66	305036	WHEEL	1
67	24167	VALVE STEM	1
68		TIRE 16 X 6.50 8 TURF (REFER TO TIRE TREAD PAGE)	1
69	313854	SPRING, 536 OD X 047 X 3 4	1
70	55488	BELT GUIDE	1
71	1 36469	WASHER, EXLK .384 X .69 X .04	1
72	122017	SCREW, 5/16-18 X 1.000	1
72A	120394	WASHER, FLAT .406 X .81 X .065	1
72B	1498	NUT, 5/16-18 X .75	
73	138489	WASHER, EX LK 364 X .69 X .04	
75	44582	CAP, PUSH NUT	
75	300589	SPACER, ENGINE SHEAVE	
76	56431	WASHER, .980 ID X 1.38 OD X .437 PILOT	

* CONTACT YOUR NEAREST TRANSAXLE DEALER FOR PARTS AND SERVICE.

* ORDER INDIVIDUAL PARTS

30" RIDING MOWER MODEL D3595-010

MOWER DRIVE ASSEMBLY



NOTE: ALWAYS USE ORIGINAL EQUIPMENT PARTS. Use of service/equipment parts other than original equipment parts may void your warranty.

ALL UNNUMBERED ITEMS ARE INTERCHANGEABLE WITH OPPOSITE SIDE

315603G

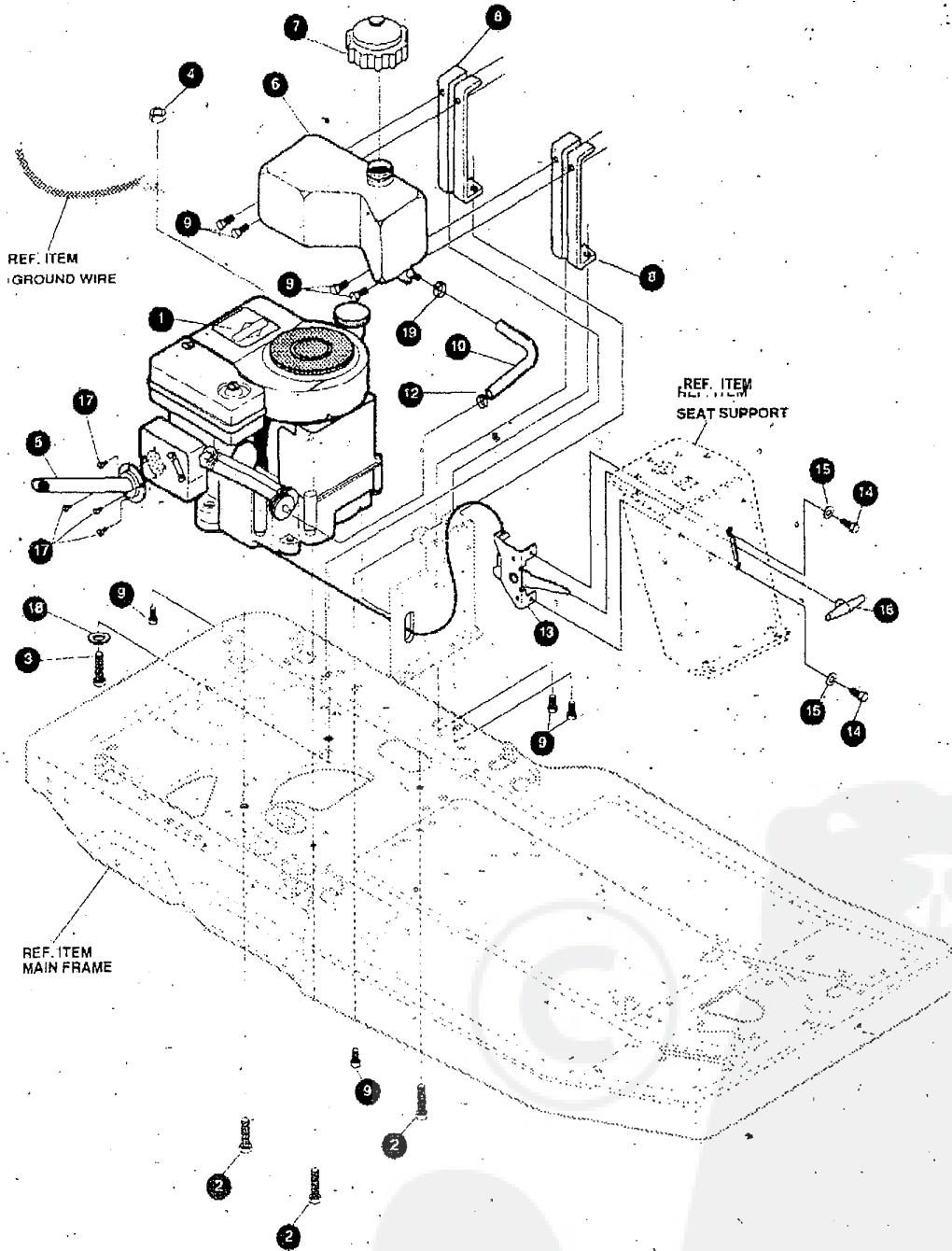
30" RIDING MOWER MODEL D3595-010

KEY#	PART#	DESCRIPTION	QTY.
1	A	ASSEMBLY, DECK, PRE-PAINT 30"	1
2	56537	BELT, V 4L 50 5 LG	1
3	35410	SPRING .071 X .62 X 4.37	1
A	310428	CHAIN, JACK	0.500 FT
5	310734	HOCK, 5/16 GA. STEEL	1
6	300683	SPRING, .75 X 6.3 X .105 TENSION	1
7	323904	HANGER	1
8	• 180075	SCREW, 5/16-18 X .63 HHC	2
9	• 1498	NUT, 5/16-18 REGHEXCTRLK	2
10	323903	ROCKER ARM, MOWER ENGAGEMENT	1
11	310364	BOLT, .500 X 1.18 HHSH 3/8-16	1
12	• 845	WASHER, FLAT .390 X 1.25 X .119	1
13	• 1499	NUT, 3/8-16 REGHXCTRLK	1
14	35410	SPRING, .071 X .62 X 4.37	1
15	309049	ROD, CONNECTING	1
16	310388	GUIDE, BELT	2
17	• 122077	SCREW, 5/16-18 X 2.50 HHC	2
18	• 138485	WASHER, EXLK .320 X .61 X .03	2
19	• 120393	WASHER, FLAT .344 X .69 X .065	2
20	• 1498	NUT, 5/16-18 REGMEXCTRLK	2
21	309048	HANDLE, MOWER ENGAGEMENT	1
22	310351	BEARING, FLANGED, NYLON,	1
23	304291	RETAINER, SPRING	1
24	304398	SPRING, COMPRESSION	1
25	311107-853	SUPPORTBRACKETPTO	1
26	• 995346	SCREW, 1/4-20 X .50 WAHTAP	2
27	3 1 0 3 0 9	BRACKET, PTO LIMIT	1
28	• 35498	SCREW, 5/16-18 X .75 WAHTAP	1
29	• 1498	NUT, 5/16-18 REGHEXCTRLK	1
30	305225	STOP, PTO ENGAGEMENT	1
31	326386	PIN, SPRING.187 DIA X 1.12 LG	1
31A	55514-653	SHIFT KNOB	1
32	120393	WASHER, FLAT .344 X .69 X .065	2
33	45074	PULLEY, IDLER V4L 3 06 X .72	1
34	A 5 8 9 2	BOLT, 3/8-16 X 1.50 CARR. GR2 Z	1
35	39659	RETAINER, BELT	1
36	1 A89	NUT, 3/8-16 REGHXCTRLK	1

• INDICATES STANDARD HARDWARE ITEMS
 ^ ORDER INDIVIDUAL PARTS

30" RIDING MOWER MODEL D3595-010

ENGINE ASSEMBLY



NOTE: ALWAYS USE ORIGINAL EQUIPMENT PARTS. Use of service equipment parts other than original equipment parts may void your warranty.

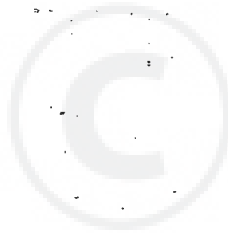
ALL UNNUMBERED ITEMS ARE INTERCHANGEABLE WITH OPPOSITE SIDE

321973

30" RIDING MOWER MODEL D3595-010

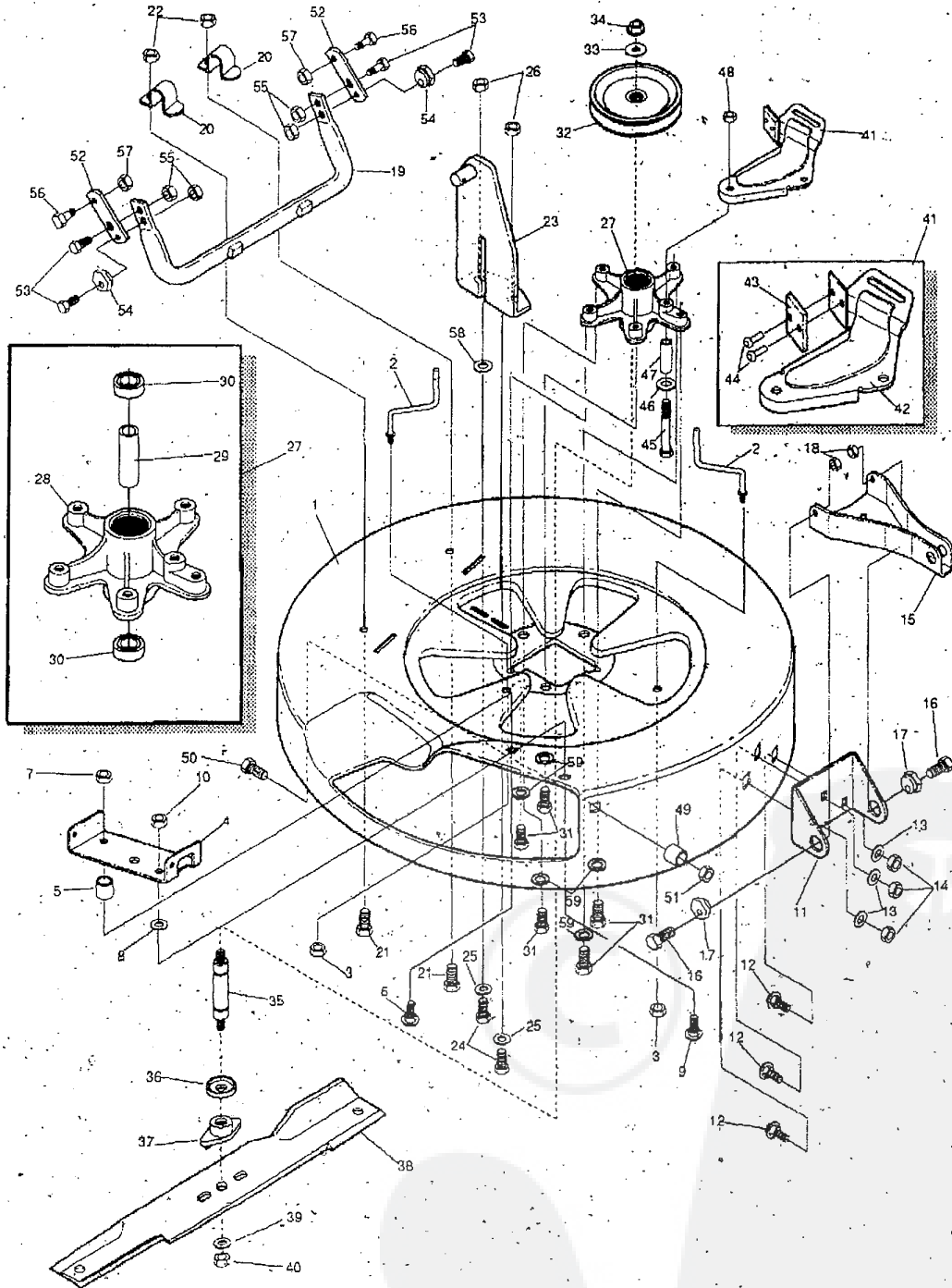
KEY#	PART#	DESCRIPTION	QTY.
1	ENGINE	SEE ENGINE MANUAL	1
2	• 50947	SCREW, 3/8-16 X 1,250 WD FL LK	3
3	• 180083	SCREW, 5/16 - 18 X 1.50 HHC	1
4	• 44108	NUT, 5/16 - 18 H WD FL LK	1
5	• 311651-853	EXHAUST ASSEMBLY	1
6	• 314986	TANK, GAS-ELEC, 1.3 GAL	1
7	• 12501	CAP, FUEL -2.5 THROAT	1
8	• 313150-853	SUPPORT, GAS TANK	2
9	• 995346	SCREW, 1/4-20 X .50 WA HH TAP	8
10	• 47216	GAS LINE .25 ID BULK LENGTH	22 IN
12	• 47345	CLAMP, FUEL LINE	1
13	• 321240	CONTROL, THROTTLE	1
14	• 35287	SCREW #8-32 X .38 HH WA TAP	2
15	• 414106	WASHER, FLAT .188 X .38 X .040	2
16	• 50607	THROTTLE CONTROL KNOB-ROUND	1
17	• 57366	SCREW, DRILL TITE	4
18	• 138485	WASHER, EX LK .320 X .61 X .03	1
19	• 47345	CLAMP HOSE	1

- INDICATES STANDARD HARDWARE ITEMS



30" RIDING MOWER MODEL D3595-010

M-PAINT DECK ASSEMBLY.



NOTE: ALWAYS USE ORIGINAL EQUIPMENT PARTS. Use of service/equipment parts other than original equipment parts may void your warranty.

ALL UNNUMBERED ITEMS ARE INTERCHANGEABLE WITH OPPOSITE SIDE

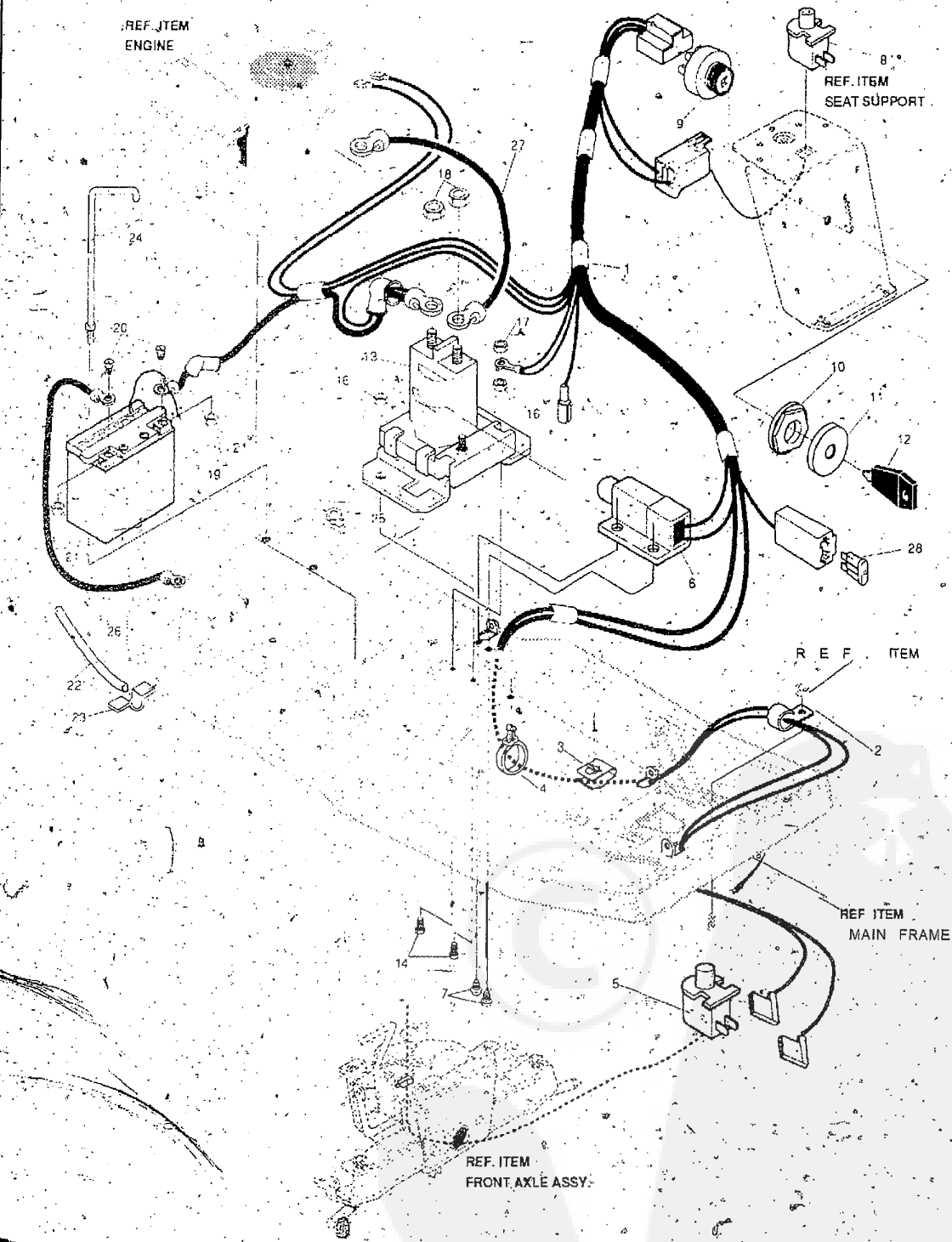
313589D

30" RIDING MOWER MODEL D3595-010

KEY#	PART#	DESCRIPTION	QTY.
1	321982-853	DECK, MOWER 30 INCH	1
2	57318	GUIDE, BELT 5/16-18 THD	2
3	1498	N U T ; 5/16-18 REGHEXCTRLK	2
4	3 1 7 0 1 7	BRACKET CHUTE MOUNT	1
5	314702	SPACER. .344 X 1.00 X .500	1
6	120230	BOLT, 5/16-18 X 1.25 CARR	1
7	1 4 9 8	NUT, 5/16-18 REGHEXCTRLK	1
a	45602	WASHER, FLAT .333 X .87 X .119 Z	1
9	126216	BOLT, 5/16-18 X .75 CARR GR2 Z	1
10.	1498	NUT, 5/16-18 REGHEXCTRLK	1
11	311237-853	BRACKET, MOUNTING, FRONT	1
12	57072	BOLT, 5/16-18 X .63 CARR	3
13	120393	WASHER, FLAT .344 X .69 X .065	3
14	1498	NUT, 5/16-18 REGHEXCTRLK	3
15	311236-853	BRACKET, BAR, TOW, FRONT	1
16	122017	SCREW, 5/16-18 X 1.00 HHC	2
17	58247	ADJUSTING NUT	2
18	1 4 9 8	NUT, 5/16-18 REGHEXCTRLK	2
19	313372-853	ASSEMBLY, TUBE, PIVOT	1
20	310672SUPPORT	PIVOT TUBE	2
21	180077	SCREW, 5/16-18 X .75 HHC	2
22	1498	N U T , 5/16-18 REGHEXCTRLK	2
23	314119-853	ASSEMBLY LIFT BRACKET	1
24	180077	SCREW, 5/16-18 X .75 HHC GR5 Z	2
25	120393	WASHER, FLAT .344 X .69 X .065	2
26	1498	NUT, 5/16-18 REGHEXCTRLK	2
27	313588	ASSEMBLY, QUILL	1
28	314272	QUILL, MACHINED CASTING	1
29	314274	TUBE, SPACER"	1
30	313576	BEARING, BALL, 6204-2RS-Q	2
31	5 0 6 3 4	SCREW, 5/16-18 x .88 WAHHTAP	5
32	314273-853	PULLEY ASSEMBLY	1
33	2 2 2 6 5	WASHER, FLAT .515 X 1.38 X .119 PL	1
34	1500	N U T , 1/2-13 REGHXCTRLK	1
35	314271	SHAFT, QUILL 30" MOWER	1
36	313577	SHIELD, DUST, BEARING	1
37	3 1 3 5 8 4	HUB, BLADE ADAPTOR	1
38	314826	BLADE, 30" TD MOWER 7 WING	1
39	22265	WASHER, FLAT .515 X 1.38 X .119 Pi	1
40	1500	NUT, 1/2-13 REGHXCTRLK	1
41	12229-853	BRACKET, IDLER ASSEMBLY	1
42	313510-853	BRACKET, ARM, IDLER	1
43	306973	BRAKE PAD - HARD - 232AE	1
44	41601	RIVET, OVSET .187DIA X .50 LG	2
45	180091	SCREW, 5/16-18 X 2.50 HHC	1
46	4 5 6 0 2	WASHER, FLAT .333 X .87 X .119	1
47	3 1 4 8 2 4	SPACER, .322 X .625 X 1.610	1
48	44108	NUT, 5/16-18 HWDFLCTRLK	1
49	5 0 5 2 0	SPACER...	1
50	126216	B O L T ; 5/16-18 X .75 CARR	1
51	1498	NUT, 5/16-18 REGHEXCTRLK	1
52	3 14099-853	BRACKET, BAR, REAR STABIL	2
53	1 2 2 0 1 7	SCREW, 5/16-18 X 1.00 HHC	4
54	58247	ADJUSTING NUT	2
55	1498	NUT, 5/16-18 REGHEXCTRLK	4
56	51940	BOLT, .500 X 437 HSH 3/8-16	2
57	1 4 9 9	NUT, 3/8-16 REGHXCTRLK	2
58	45602	WASHER, FLAT .333 X .87 X .119 Z	1
59	138485	WASHER, EXLK 320 X .61 X .03	5

30" RIDING MOWER MODEL D3595-010

ELECTRICAL ASSEMBLY



NOTE: ALWAYS USE ORIGINAL EQUIPMENT PARTS. Use of service/equipment parts other than original equipment parts may void your warranty.

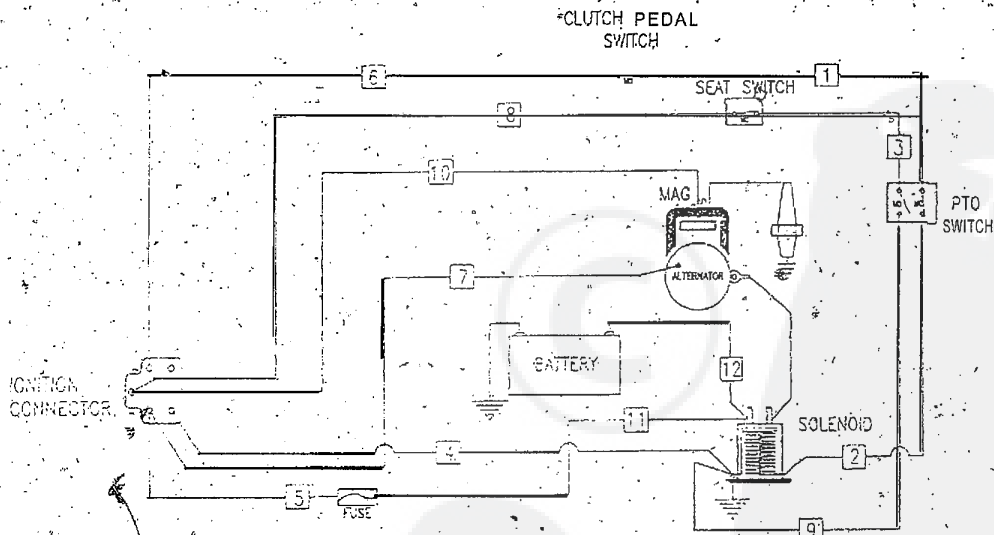
ALL UNNUMBERED ITEMS ARE INTERCHANGEABLE WITH OPPOSITE SIDE

321958F

30" RIDING MOWER MODEL D3595-010

KEY#	PART#	DESCRIPTION	QTY.
1	321952	HARNESS, ELEC RER C2 6:11B&S	
2	57569	RETAINER, 31ID X .62 X .03 WIRE	
3	309698	CLIP, WIRE#ROUTING2SNAP-IN	
5	526653	SWITCH, SNAP MNT NO 055/116	1
6	57476	SWITCH, SCREW MOUNT DP NC	1
7	57220	SCREW, #12 X 50 PHPNHTAP	2
8	326654	SWITCH, SNAPMNT NC .140	1
9	3 0 0 2 9 5	SWITCH, IGNITION W/O LIGHTS	1
10	300193	NUT, 5/8-32IGNITION SWITCH	
11	300194	BOOT, SWITCH	1
12	300626	KEY, IGNITION SWITCH	1
13	5 3 7 1 6	SOLENOID, NEW CLUM	
14	187745	SCREW, 1/4-20 X 75 HXSEMMA	2
16	01502	NUT, 1/4-20 REG HEX CTRLK	2
17	271172	NUT, 1/4-20 REG HEX KEPS	1
18	271187	NUT, 5/16-24 HKEPS	2
19	55472	BATTERY, YUASA, 12N14	1
20	13487	SCR, METRIC, 6 X 1 X 1 1	1
21	13487	NUT, METRIC, 6 X 1 HEX	1
22	55636	DRAIN TUBE, BATTERY	
23	41482	CLIP, 1 380 LG .255 ID PRESS WIRE	1
24	323648	HOLD'DOWN BRACKET	1
25	325232	NUT, WING 1/4-20 NYLON	
26	55511,	WIRE, GROUND, 12.5"	
27	322698	WIRE, STARTER,	1
28	302031	FUSE SPADE TYPE 32V 15A	

WIRING SCHEMATIC

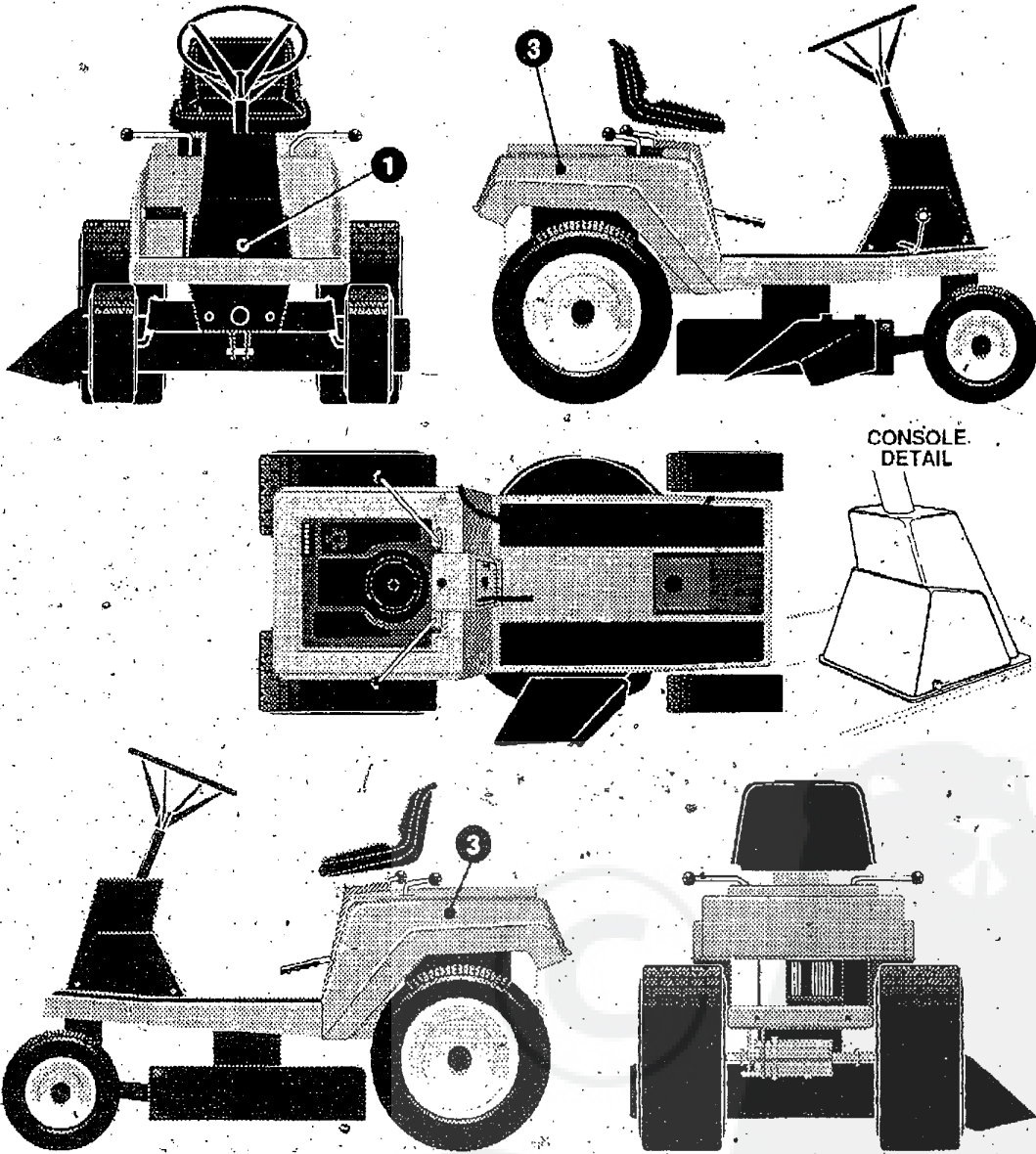


POS.	G	M	B	L	S
OFF	○	○	○	○	○
RUN/LIGHTS	○	○	○	○	○
START	○	○	○	○	○

IGNITION SWITCH
300295

30" RIDING MOWER MODEL D3595-010

DECAL ASSEMBLY (DECORATIVE)



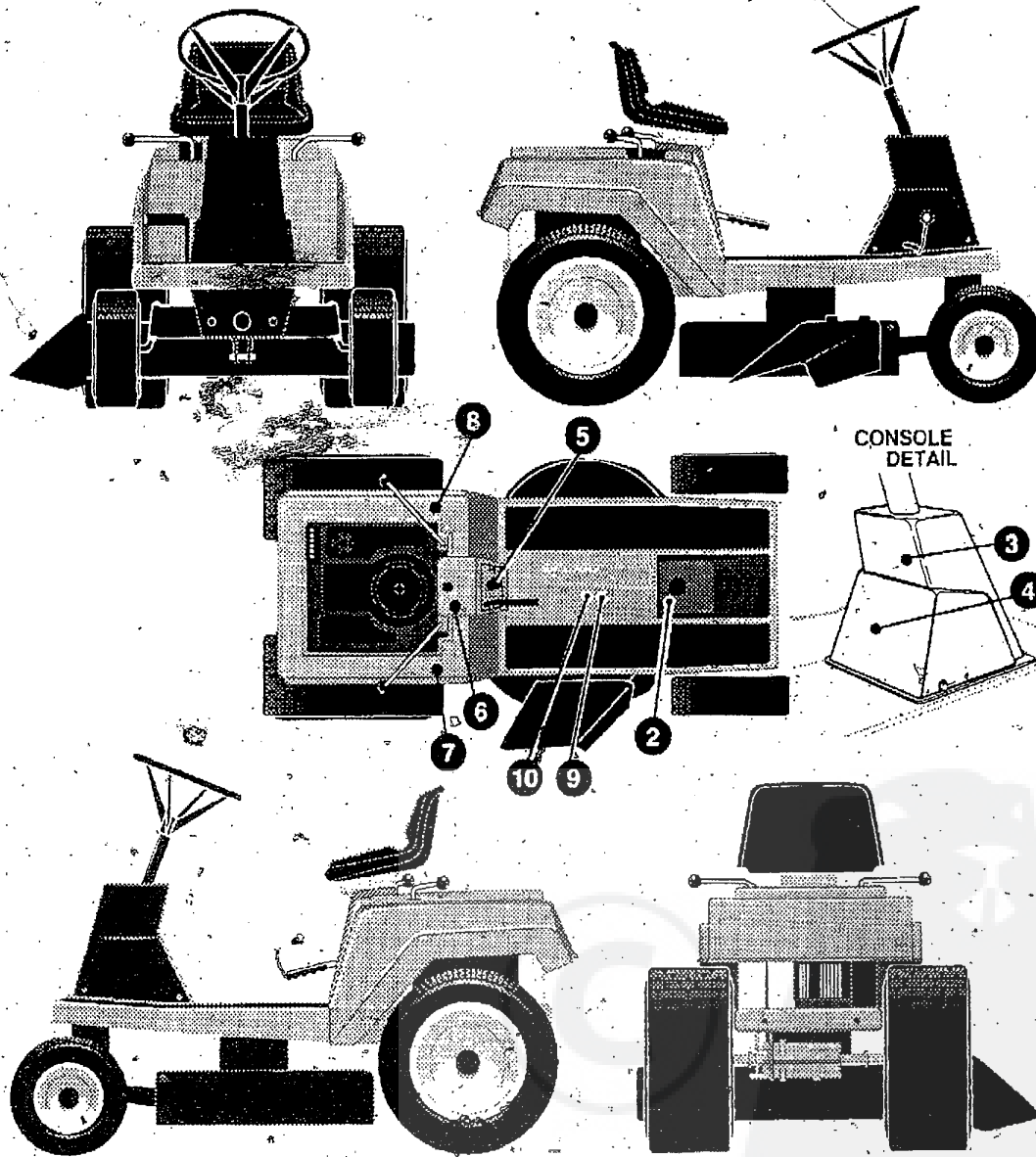
327782A

30" RIDING MOWER MODEL D3595-010

KEY#	PART#	DESCRIPTION	QTY.
1.	323627	NAME PLATE, 8130 WHITE	1
2.		REFERENCE ONLY	1
3.	302734	NAME PLATE, DYNAMARWBY NOMA	2

30" RIDING MOWER MODEL D3595-010

DECAL ASSEMBLY (INSTRUCTIONAL)



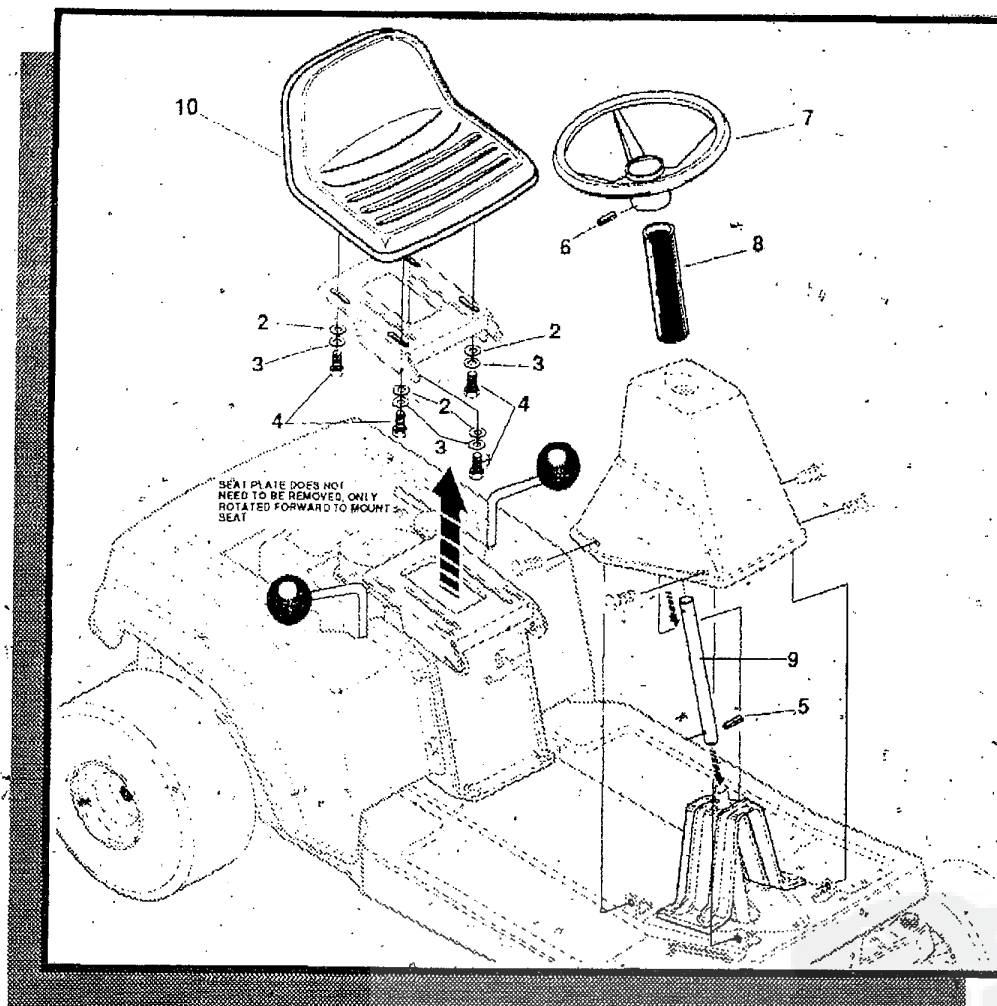
327783A

30" RIDING MOWER MODEL D3595-010

KEY#	PART#	DESCRIPTION	QTY.
1.		REFERENCE ONLY	1
3.	317348	DECAL, PARK'N/BRAKE ISO	1
4.	311227	DECAL, HEARING PROTECTION	1
	3 2 7 4 6 2	DECAL, INSTRUCTION EXPORT	1
5.	320706	DECAL, CNTRL 30". NO LITE	1
7.	310436	DECAL, FRENCH SAFETY CERT..	1
8.	311232	DECAL, SHIFT, 5SP, ISO, DOM.	1
	305397	DECAL, PTO ENGAGEMENT, ISO	1
9.	305770	DECAL, CAUTION TRIANGLE EUROPE	1
10.	32746 1	DECAL, DECK WARN, GR, FR, ITA	1

30" RIDING MOWER MODEL D3595-010

CUSTOMER ASSEMBLY



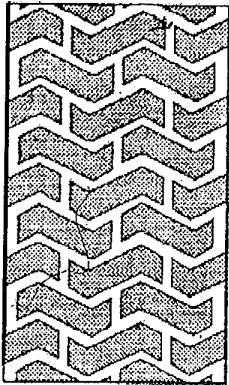
CUSTOMER ASSEMBLY VIEW

KEY##	PART#	DESCRIPTION	QTY
2	120393	WASHER, FLAT .344X .69 X .065	4
3	120638	WASHER, HV SPT LK .328X .60 X .11	4
4	122007	SCREW, 5/16 -18 X .75 HHC GR2	4
5	417375	PIN, SPRING .187 DIA X 1.25 LG MD"	1
6	456636	PIN, SPRING .250 DIA X 2.25 LG HWPL	1
7	52955	WHEEL, STEERING	1
8	316259	TUBE, DECORATIVE	1
9	300796	TUBE-STEERING	1
10	57453	SEAT	1

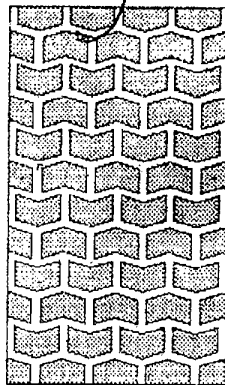
316263B

30" RIDING MOWER MODEL D3595-010

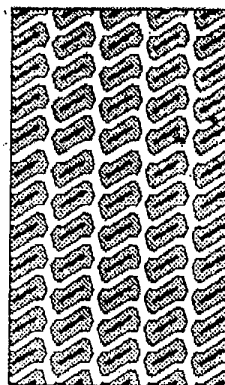
TREAD, PATTERNS



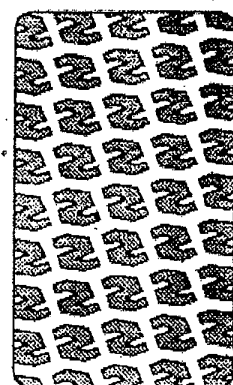
"A"



"B"



"C"



"D"

TIRE SIZE

	"A"	"B"	"C"	"D"
11 X 4.00 - 5	42295	319679		
13 X 5.00 - 6	41060	319680		
15 X 6.00 - 6	39830	316702	301140	313952:
16 X 6.50 - 8	41081	319682		314539
18 X 8.50 - 8	319683	317400		
18 X 9.50 - 8	41106	316701		313950
20 X 8.00 - 8	319685	319684	57164	314584
20 X 10.00 - 8	58276	319686		313654
20 x 10.00 - 10	55893	319687		
23x9.50 - 12	53655	319690	319688	314370'

ACCESSORIES

Contact the dealer where your tractor was purchased for the available accessories. If you are unable to contact the dealer, write to the address on the front cover of this manual.

Rdar Engine Rider	
Model	Description
5708-16	Bagger - Fits 32" Side Discharge
5708-17	Bagger - Fits 36" Side Discharge & 30" Top Discharge
5 7 0 9 - 0 2	Front Weight Box - holds 35 lbs. -
5 6 4 8 - 1 6	Lawn Sweeper w/dump Release
5714-00	Mulching Kit - 30" Top Discharge

Lawn Tractor	
Model	Description
5708-22	Bagger - Fits 30" Side Discharge
5708-13	Bagger - Fits 36", 38", 39" & 45" Side Discharge.
5705-04	36" Two-Stage Snowblower - Fits 36", 38", 39", & 45" Side Discharge
5661-06	42" Snowblade - Fits 36", 38", 39", & 45"
5592-00	Tire Chains - 18" x 6.50"
5585-00	Tire Chains- 18" x 9.50" & 20" x 8".
5672-01	Wheel Weights - Front - 1 pr. w/mtg. hdw. - Fits 15" tires
5673-02	Wheel Weights - Rear - 1 pr. w/mtg. hdw. - Fits 18" & 20" tires
5709-03	Front Weights - Fits 30" & 32" Side Discharge
5648-16	Lawn Sweeper w/dump Release
5714-00	Mulching Kit - 30" Top Discharge

Garden Tractor - Light Ground Engaging	
Model	Description
5708-13	Bagger - Fits 36", 38", 39", & 45" Side Discharge .
5705-04	36" Two - Stage Snowblower - Fits 36", 38", 39", & 45"
5661-06	42" Snowblade - Fits 36", 38", 39", & 45"
5 6 7 2 - 0 1	Wheel Weights - Front 1 pr. w/mtg. hdw. - Fits 15" tires
5673-02	Wheel Weights - Rear - 1 pr. w/mtg. hdw. - Fits 18" & 20" tires
5648-16	Lawn Sweeper w/dump Release
5667-02	Sleeve Hitch - w/lift bar - Fits 45"
5668-01	Adaptor (Sleeve hitch) for use w/23" tires .
5706-00	Tire Chains - 20" x 10"
5 6 7 1 - 0 0	Tire Chains - 23" x 9.50"
5672-02	Wheel Weights - Front - 1 pr. w/mtg. hdw. Fits 16" tires
5673-00	Wheel Weights - Rear; 1 pr. w/mtg. hdw. Fits 23" tires
5674-01	10" One Bottom Moldboard Plow
5675-0-1	Cultivator - 7 row - Adj. 6" - 42" width
5676-01	Disc Harrow - 8" & 11" disc - Adj. width & disc angle
5677-02	Tiller - 5 H.P. Self-Powered - 28" width

Four Wheel Steer	
Model	Description
5708-14	Bagger - Fits 40" & 46" Side Discharge
5705-05	42" One-Stage Snowblower - Fits 40" & 46"
5 6 6 1 - 0 7	48" Snowblade - Fits 40" & 46"
5709-04	Rear Weight Box for 40" & 46"
5648-16	Lawn Sweeper w/dump Release
5706-00	Tire chains 20" x 10"
5671-00	Tire Chains 23" x 9.56"
5672-02	Wheel Weights - Front - 1 pr. w/mtg. hdw. Fits 16" tires
5673-00	Wheel Weights - Rear - 1 pr. w/mtg. hdw. Fits 23" tires
5672-01	Wheel Weights - Front - 1 pr. w/mtg. hdw. Fits 15" tires
5673-02	Wheel Weights - Rear - 1 pr. w/mtg. hdw. Fits 18" & 20" tires

Two Wheel Steer Garden Tractor	
Model	Description
5667-04	Sleeve Hitch - w/lift bar Fits 46"
5674-01*	10" One Bottom-Moldboard Plow
5675-01*	Cultivator - 7 row - Adj. 6" - 42" width
5676-01*	Disc Harrow 8" & 11" Disc. Adj. width & disc angle
5677-02*	Tiller 5 H.P. Self-Powered - 28" width
5648-16	Lawn Sweeper w/dump Release

*Requires a sleeve hitch