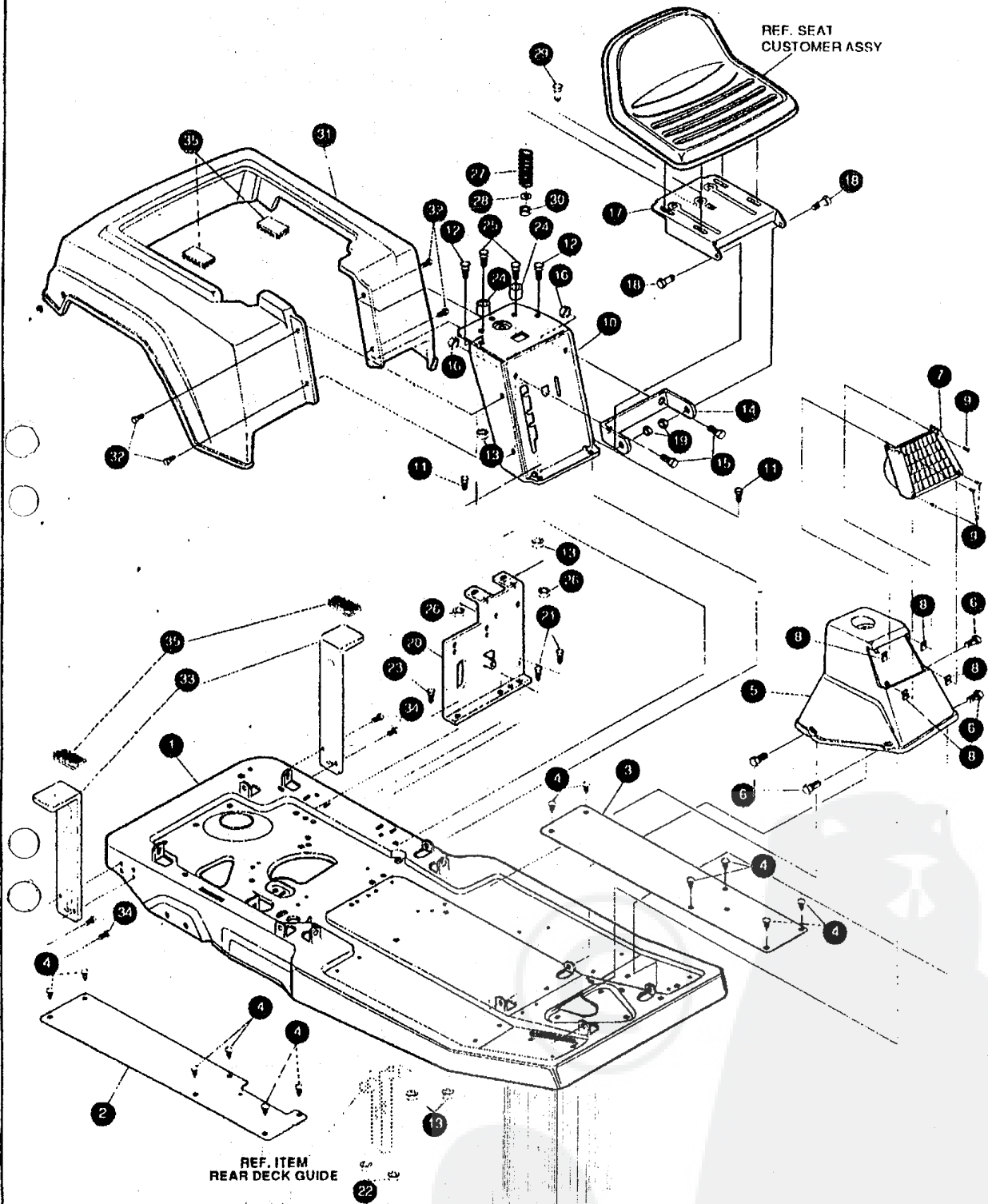


# 30" RIDING MOWER MODEL D3595-030

## BODY GROUP ASSEMBLY



**NOTE: ALWAYS USE ORIGINAL EQUIPMENT PARTS.** Use of service/replacement parts other than original equipment parts may void your warranty.

**ALL UNNUMBERED ITEMS ARE INTERCHANGEABLE WITH OPPOSITE SIDE**

316316G

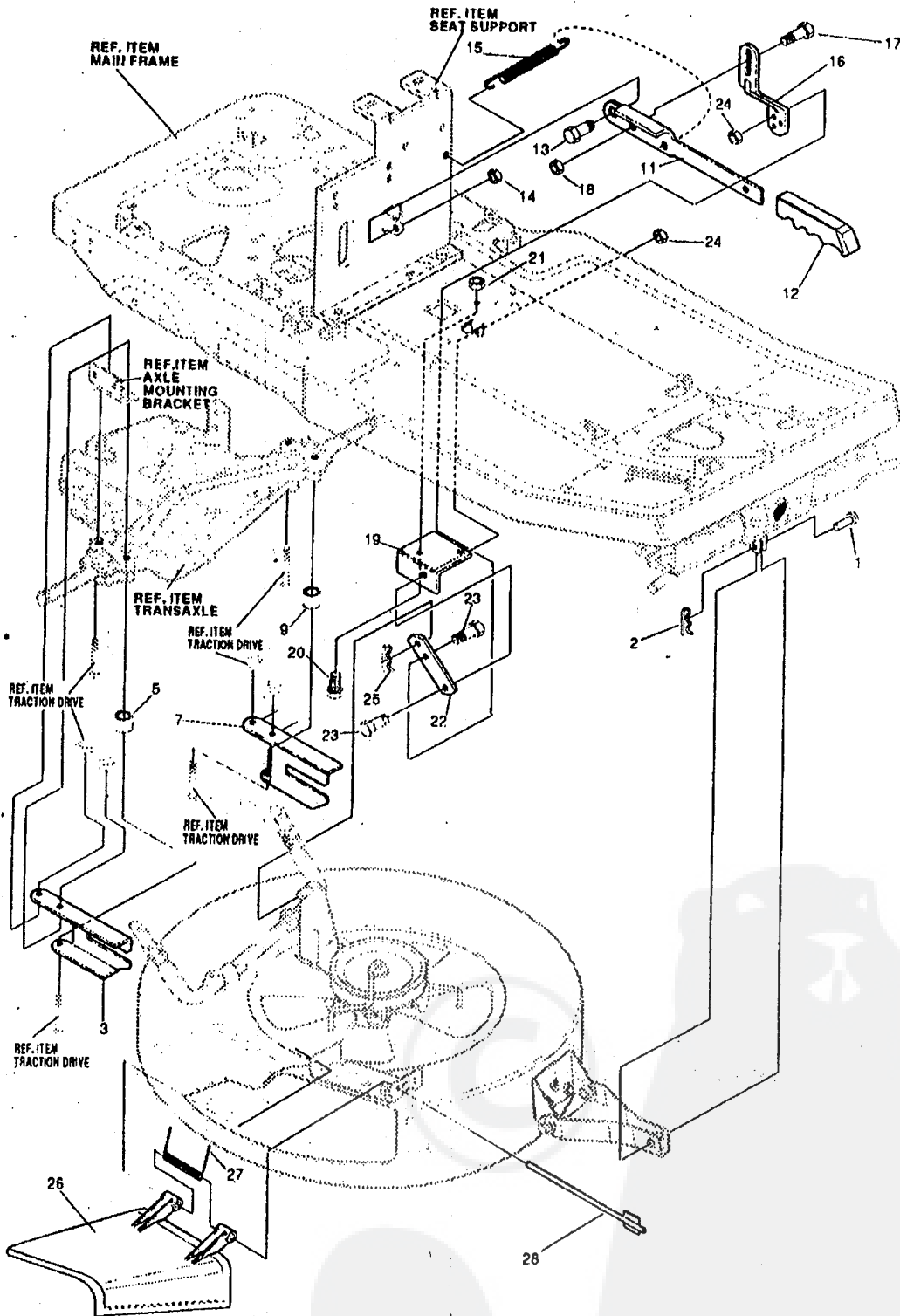
# 30" RIDING MOWER MODEL D3595-030

KEY#	PART#	DESCRIPTION	QTY.
1	314227-860	FRAME	1
2	309612	FOOTPAD RH	1
3	309613	FOOTPAD LH	1
4	309235	FASTENER, RATCHET	12
5	302805	CONSOLE	1
6	995346	SCREW, 1/4-20 X .50 WA H H TAP	4
7	303130	ASSY., HEADLIGHT LENS	1
8	303260	CLIP, TINNERMAN	4
9	308347	SCREW, #6 X .50 BLACK	4
10	314265-860	SEAT SUPPORT	1
11	48901	SCREW, 5/16-18 X .63 WA H HC GR2	2
12	180075	SCREW, 5/16-18 X .63 H HC GR2	2
13	1498	NUT, 5/16-18 REG H CTR LK	4
14	301330-853	SEAT BRACKET	1
15	180117	SCREW, 3/8-16 X .56 HHC	2
16	1499	NUT, 3/8-16 REG HX CTR LK	2
17	313476-853	ASSY, SEAT PLATE	1
18	20507	BOLT, .437 X .156 HH SH 5/16-18	2
19	1498	NUT, 5/16-18 REG H CTR LK	2
20	314185-853	SEAT/SHIFT BRACKET	1
21	120229	SCREW, 5/16-18X.88 HHC	2
22	1498	NUT, 5/16-18 REG H CTR LK	2
23	35498	SCREW, 5/16-18 X .75 WA H H TAP	1
24	50520	SPACER	2
25	122027	SCREW, 5/16-18 X 1.25 H HC GR2	2
26	1498	NUT, 5/16-18 REG H CTR LK	2
27	319136	SEAT SPRING	1
28	120392	WASHER, FLAT .281X.63X.065	1
29	120706	SCREW, 1/4-20 X .50 H HC GR2	1
30	1502	NUT, 1/4-20 REG HEX CTR LK	1
31	313511	FENDER	1
32	44811	SCREW, 1/4-20 X .75 H WA TAP	4
33	305645	FENDER SUPPORT	2
34	995346	SCREW, 1/4-20 X .50 WA H H TAP	4
35	12599	FASTENER, VELCRO	2
36	329373	PARTS MANUAL	1
37	329374	OPERATOR'S MANUAL (ENGLISH)	1
38	329376	OPERATOR'S MANUAL (FRENCH)	1
39	329377	OPERATOR'S MANUAL (GERMAN)	1
40	318307	GRASS CATCHER MANUAL (ENGLISH)	1
41	318355	GRASS CATCHER MANUAL (FRENCH)	1
42	318354	GRASS CATCHER MANUAL (GERMAN)	1

• Indicates STANDARD HARDWARE ITEMS.

# 30" RIDING MOWER MODEL D3595-030

## MOWER SUSPENSION ASSEMBLY



**NOTE: ALWAYS USE ORIGINAL EQUIPMENT PARTS.** Use of service/replacement parts other than original equipment parts may void your warranty.

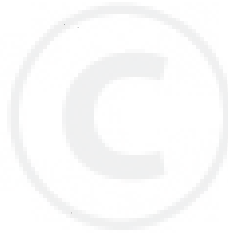
**ALL UNNUMBERED ITEMS ARE INTERCHANGEABLE WITH OPPOSITE SIDE**

306432G

# 30" RIDING MOWER MODEL D3595-030

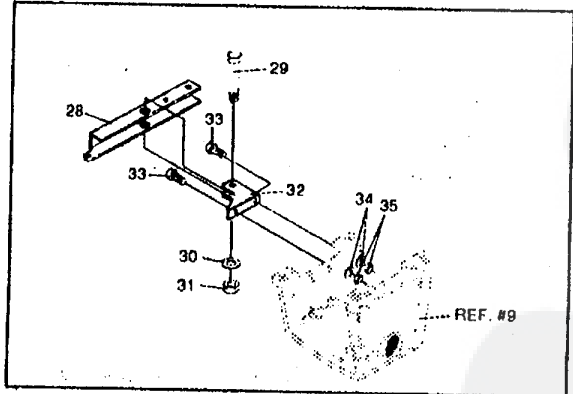
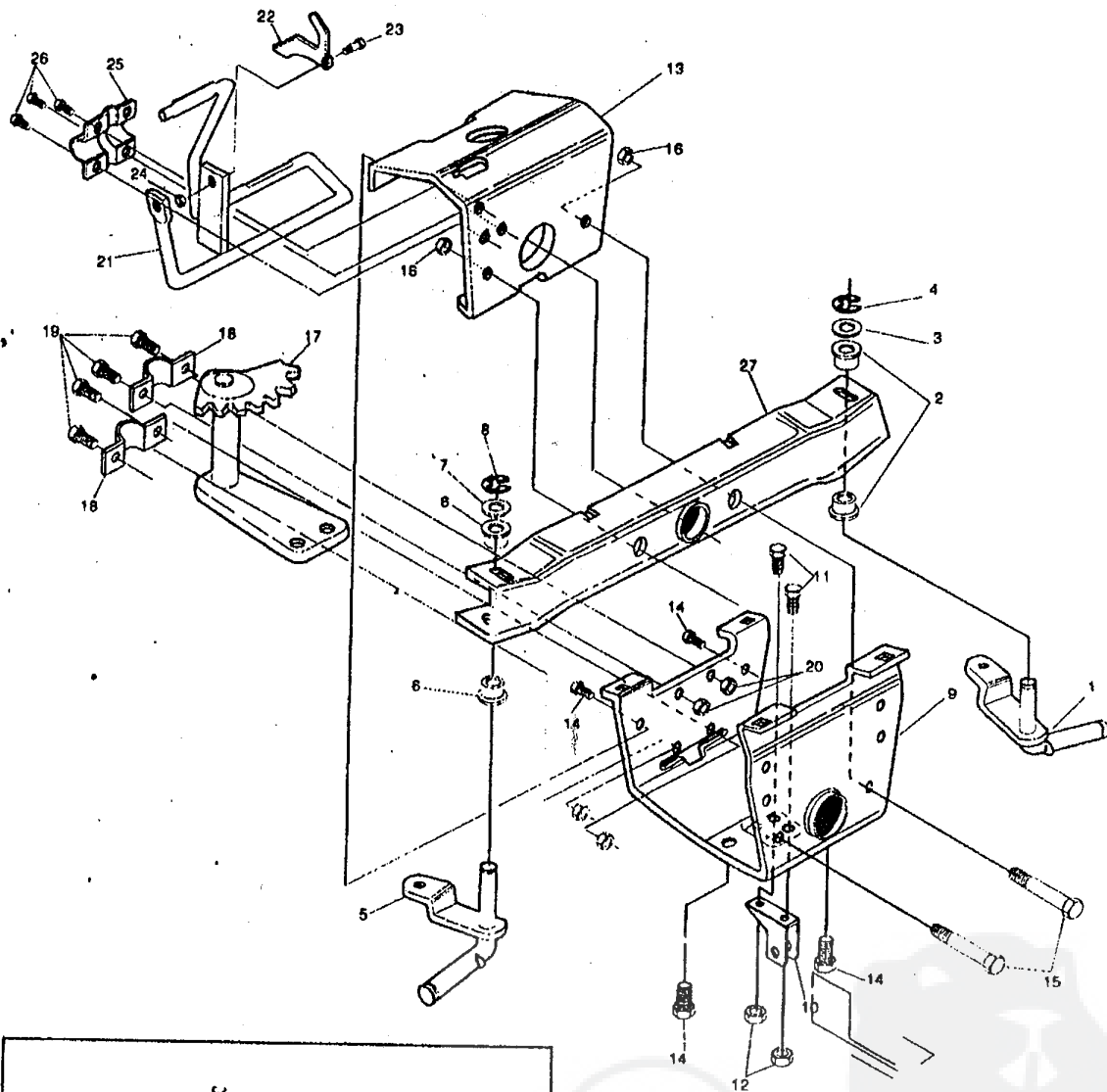
KEY#	PART#	DESCRIPTION	QTY.
1	47817	PIN, .495X1.750 CLEVIS-SHORT	1
2	56180	PIN, HAIR .091 DIA X1.62LG	1
3	321371	BRACKET, REAR SUPPORT RH	1
5	41462	SPACER .328 X .750 X .312	1
7	321370	BRACKET, REAR SUPPORT LH	1
9	41462	SPACER .328 X .750 X .312	1
11	313719-853	HANDLE, HEIGHT ADJUST	EA
12	313763	GRIP, HANDLE, LIFT	1
13	54855	BOLT, .500X .345 HSH 3/8-16	1
14	1499	NUT, 3/8-16 REGHXCTRLK	1
15	35410	SPRING .071 X .62 X 4.37	1
16	323897	BRKT, LINK UPPER 30" MOW	1
17	54855	BOLT, .500X .345 HSH 3/8-16	1
18	◊ 1499	NUT, 3/8-16 REGHXCTRLK	1
19	323898	BRACKET, RER FRAME	1
20	◊ 120229	SCREW, 5/16-18X .88 HHC	1
21	◊ 1498	NUT, 5/16-18 REGHEXCTRLK	1
22	323899	BRKT, LINK LOWER 30" MOW	1
23	313560	BOLT, .500X .225 HSH 5/16-18	2
24	◊ 1498	NUT, 5/16-18 REGHEXCTRLK	2
25	8260	PIN, HAIR .091 DIA X1.62LG	1
26	315314	CHUTE DEFLECTOR 30" DECK	1
27	314975	SPRING TORSION CHUTE DEF.	1
28	304424	ROD, PIVOT 40" DECK .312 x 7.25	1

◊ Indicates STANDARD HARDWARE ITEMS.



# 30" RIDING MOWER MODEL D3595-030

## PRE-PAINT FRONT AXLE ASSEMBLY



**NOTE: ALWAYS USE ORIGINAL EQUIPMENT PARTS.** Use of service/replacement parts other than original equipment parts may void your warranty.

**ALL UNNUMBERED ITEMS ARE INTERCHANGEABLE WITH OPPOSITE SIDE**

316219B

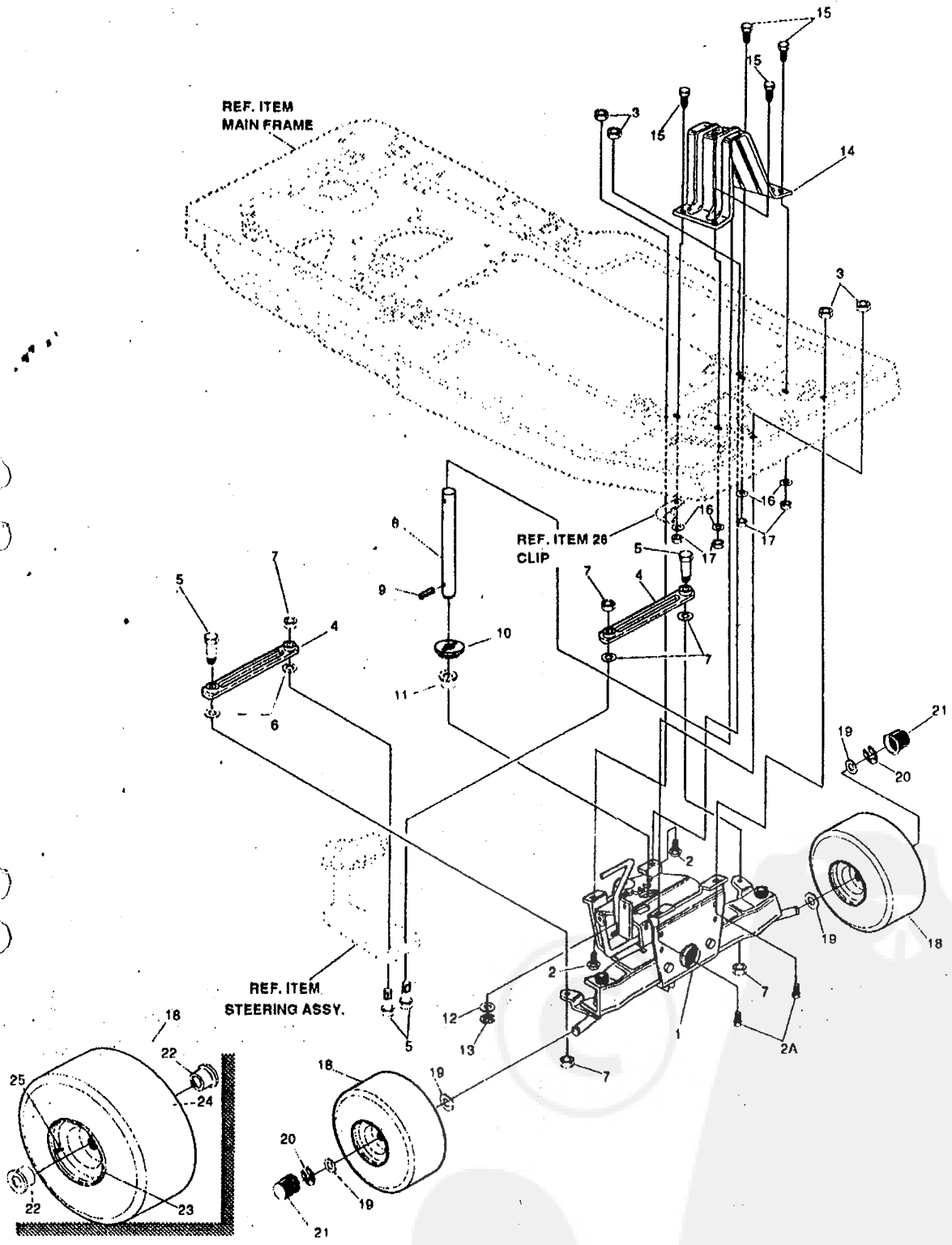
# 30" RIDING MOWER MODEL D3595-030

KEY	QTY	PART NO.	DESCRIPTION	QTY
1		316216	ASSEMBLY SPINDLE L.H.	1
2		12552	BUSHING, SPINDLE	2
3		4107	WASHER, FLAT .635 X 1.31 X .07	1
4		20859	RING, RET E. .48 X .04 TRU 5133-62	1
5		316217	ASSEMBLY SPINDLE, R.H.	1
6		12552	BUSHING, SPINDLE	2
7		4107	WASHER, FLAT .635 X 1.31 X .07	1
8		20859	RING, RETAINING E .48 X .04TRU 5133-62	1
9		314228	BRACKET, AXLE, OUTER FRONT	1
10		323904	HANGER	1
11		180075	SCREW, 5/16-18 X .63 HHC GR2	2
12		1498	NUT, 5/16-18 REG H CTR LK	2
13		302799	AXLE BRACKET, INNER	1
14		35497	SCREW, 5/16-18 X .50 WAHH TAP	4
15		122201	SCREW, 3/8-16 X 2.75 H HC GR 2	2
16		1499	NUT, 3/8-16 REG HX CTR LK	2
17		302958-853	STEERING ASSEMBLY	1
18		302760	CLAMP, .625 DIA.	2
19		180075	SCREW, 5/16-18 X .63 H HC GR2	4
20		1498	NUT, 5/16-18 REG HEX CTR LK	4
21		303249-853	BRAKE ARM ASSEMBLY	1
22		302955-853	LATCH, PARKING BRAKE	1
23		3275	BOLT, .373 X .140 H H SH 1/4-20	1
24		1502	NUT, 1/4-20 REG H CTR LK	1
25		44112	BRACKET, CLUTCH AND BRAKE	1
26		35497	SCREW, 5/16-18 X .50 WA H H TAP	5
27		^	FRONT AXLE ASSEMBLY	1
28		323903	ROCKER ARM MOWER ENGAGEMENT	1
29		310364	BOLT 500X1.18 HHC 3/8-16	1
30		845	WASHER, FLAT .390X1.25X.119	1
31		1499	NUT, 3/8-16 REGHXCTRLK	1
32		323904	HANGER	1
33		180075	SCREW, 5/16-18X.63 HHC GRD 2	2
34		120393	WASHER, FLAT .344X.69X.065	2
35		1498	NUT, 5/16-18 REGHXCTRLK	2

^ ORDER INDIVIDUAL PARTS.

# 30" RIDING MOWER MODEL D3595-030

## FRONT AXLE & WHEELS ASSEMBLY



**NOTE: ALWAYS USE ORIGINAL EQUIPMENT PARTS.** Use of service/replacement parts other than original equipment parts may void your warranty.

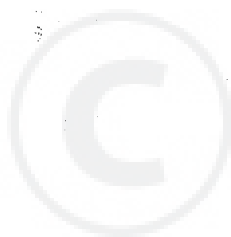
**ALL UNNUMBERED ITEMS ARE INTERCHANGEABLE WITH OPPOSITE SIDE**

316220E

# 30" RIDING MOWER MODEL D3595-030

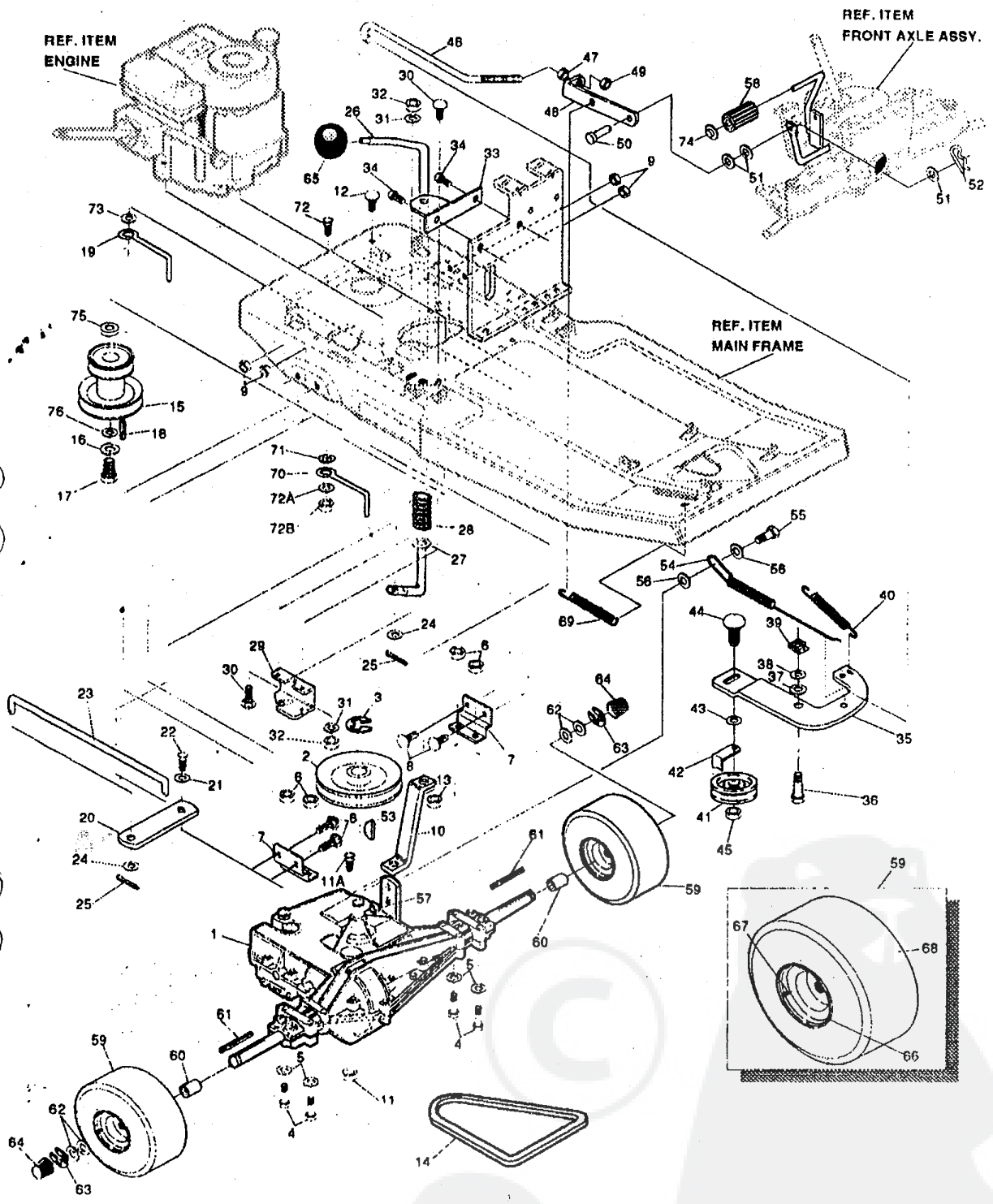
KEY#	PART#	DESCRIPTION	QTY.
1	^	FRONT AXLE ASSY.	1
2	122007	SCREW, 5/16-18 X .75 HHC GRD 2	2
2A	126211	5/16-18X.63 CARR	2
3	45174	NUT, 5/16-18 HEX WD FL LK WHIZ	4
4	303140	TIE ROD,	2
5	122145	SCREW, 3/8-16 X 1.25 H HC GR2	4
6	120382	WASHER, REG SPT LK .393 X .68 X .10	4
7	1499	NUT, 3/8-16 REG HX CTR LK	4
8	323906	SHAFT STEERING	1
9	454565	PIN, SPRING .250 DIA. X 1.25 LG	1
10	302766	GEAR, PINION	1
11	304010	BUSHING-STEERING	1
12	4107	WASHER, FLAT .635 X 1.31 X .07	1
13	20859	RING, RETAINING E .48 X .04 TRU 5133-62	1
14	323905	SUPPORT, STEERING SHAFT	1
15	48901	SCREW, 5/16-18 X .63 WA H HC GR2	4
16	120393	WASHER, FLAT .344 X .69 X .065	4
17	1498	NUT, 5/16-18 REG HEX CTR LK	4
18	^	TIRE & RIM, PNEUMATIC 11 X 4.00-5	2
19	40677	WASHER, FLAT .640 X 1.25 X .06	4
20	20859	RING, RETAINING E .48 X .04 TRU 5133-62	2
21	36832	HUB CAP	2
22	301137	BEARING, WHEEL	2
23	301175	WHEEL	1
24		TIRE 11 X 4 - TURF (SEE TIRE TREAD PAGE)	1
25	24167	VALVE STEM	1
26		SEE ELECTRICAL SYSTEM	1

^ ORDER INDIVIDUAL PARTS.





# TRACTION DRIVE ASSEMBLY



**NOTE: ALWAYS USE ORIGINAL EQUIPMENT PARTS.** Use of service/replacement parts other than original equipment parts may void your warranty.

**ALL UNNUMBERED ITEMS ARE INTERCHANGEABLE WITH OPPOSITE SIDE**

324114C

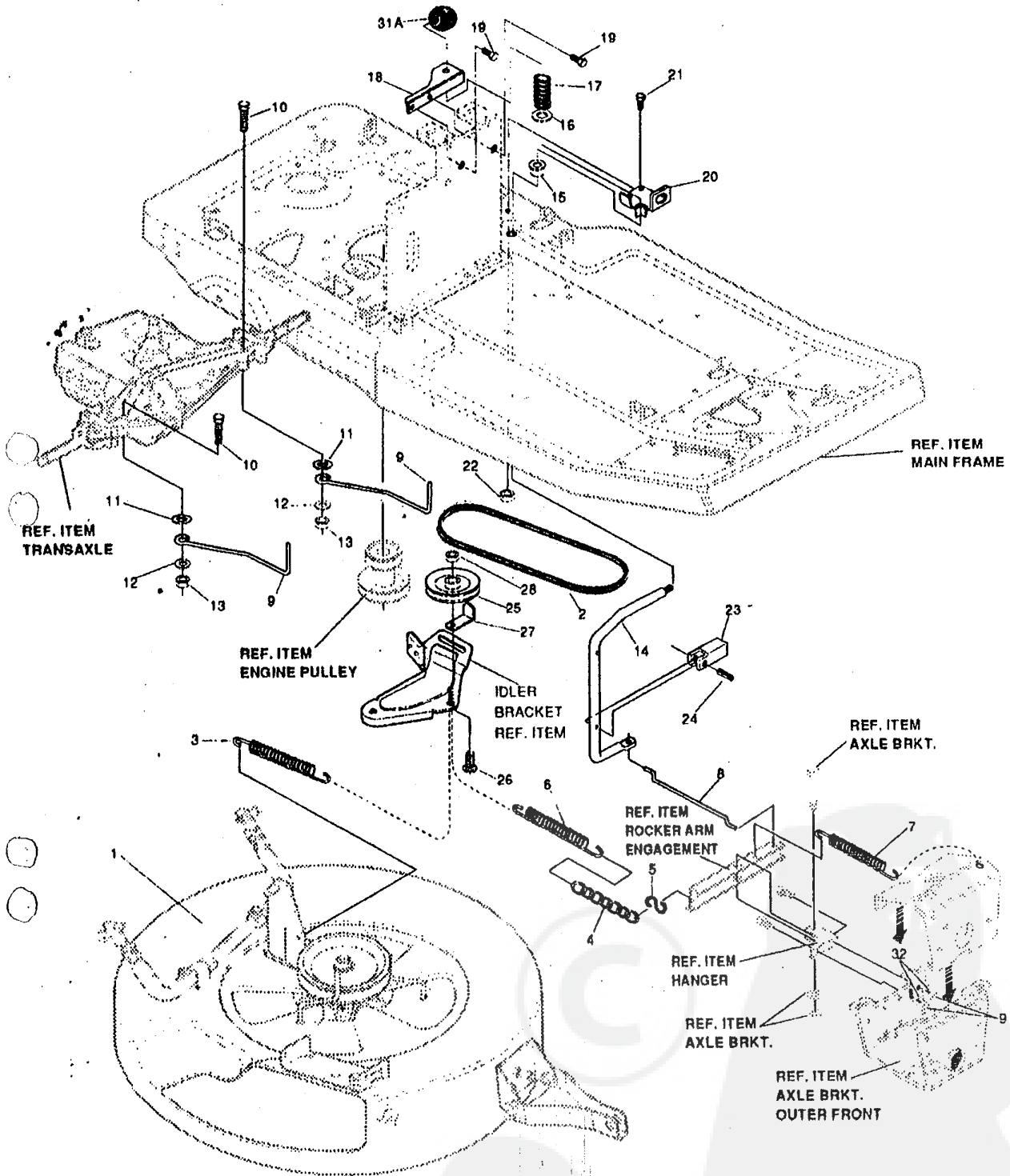
# 30" RIDING MOWER MODEL D3595-030

KEY#	PART#	DESCRIPTION	QTY.
		TRANSAXLE	1
2	303109	PULLEY, TRANSAXLE	1
3	22053	RING, RETEX .58 X .04 TRU 5100-62	1
4	122083	SCREW, 5/16-18 X 2.50 HHC GR2	4
5	120393	WASHER, FLAT .344 X .69 X .065	4
6	1498	NUT, 5/16-18 REG HEX CTR LK	4
7	9796	BRACKET, TRANSAXLE	2
8	126211	BOLT, 5/16-18 X .63 CARR	4
9	1498	NUT, 5/16-18 REG HEX CTR LK	4
10	324199	BRACKET, TRANSAXLE SUPPORT	1
11	1498	NUT, 5/16-18 REGHXCTRLK	1
11A	122065	SCREW, 5/16-18X2.000	1
12	126211	BOLT, 5/16-18 X .63 CARR	1
13	1498	NUT, 5/16-18 REG HEX CTR LK	1
14	300575	BELT, V 4L	1
15	320600	PULLEY, ENG 3.315 OFF/3.87 D/3.000	1
16	120383	WASHER, REG SPT LK .459 X .78 X .12	1
17	182761	SCREW, 7/16-20 X 2.50 HHC	1
18	26655	KEY, SQUARE .250 SQ X 2.50 LG	1
19	55488	BELT GUIDE	1
20	323874	SHIFT LEVER, BRKT	1
21	57157	WASHER, .750 X .250	1
22	56255	SCREW, 1/4-28 X .75 NYL HH CGR8	1
23	321482	ROD, SHIFT CONNECTING	1
24	120394	WASHER, FLAT .406 X .81 X .085	2
25	137185	PIN, COTTER .125 DIA X 1.00 LG	2
26	309255	HANDLE, SHIFT	1
27	120396	WASHER, FLAT .531 X 1.06 X .095	1
28	301133	SPRING, SHIFT LEVER	1
29	309053	BRACKET DETENT SHIFT	1
30	126216	BOLT, 5/16-18 X .75 CARR	2
31	120393	WASHER, FLAT .344 X .69 X .065	2
32	1498	NUT, 5/16-18 REG HEX CTR LK	1
33	303098-853	SHIFT CONTROL BRKT.	2
34	995346	SCREW, 1/4-20 X .50 WA HH TAP	1
35	12593	ARM, IDLER, TRANSAXLE DRIVE	1
36	41890	BOLT, .625 X .218 HH SH 5/16-18Z	1
37	4107	WASHER, FLAT .635 X 1.31 X .07	1
38	45602	WASHER, FLAT .333 X .87 X .119	1
39	301124	TINNERMAN CLIP	1
40	35410	SPRING, .071 X .62 X 4.37	1
41	35374	PULLEY, IDLER	1
42	39659	RETAINER, STRAP BELT	1
43	274517	WASHER, FLAT .406 X .73 X .063	1
44	45892	BOLT, 3/8-16 X 1.50 CARR	1
45	1499	NUT, 3/8-16 REG HX CTR LK	1
46	323532	ROD CLUTCH	1
47	271184	NUT, 5/16-18 HEX KEPS	1
48	321378	BRKT, CLUTCH BRAKE	1
49	1498	NUT, 5/16-18 REG HEX CTR LK	1
50	39522	PIN CLEVIS .312 X .812	1
51	120393	WASHER, FLAT .344 X .69 X .065	3
52	8260	PIN, HAIR .091 DIA X 1.66 LG	1
53	3021	KEY, WOODRUFF	1
54	326856	SPRING, BRAKE	1
55	25086	BOLT, .500 X .375 HH SH 5/16-18	1
56	308188	WASHER, FLAT .515 X 1.31 X .09	2
57	1498	NUT, 5/16-18 REG HEX CTR LK	1
58	52840	PEDAL PAD	1
59		TIRE & RIM, PNEUMATIC	2
60	300588	SPACER	2
61	52928	KEY, SQUARE .187 SQ X 2.25LG	2
62	42815	WASHER, FLAT .755 X 1.53 X .07	4
63	36625	RING, RET EX .57 X .05 TRU5133-75	2
64	40394	CAP, HUIJ	2
65	55514	SHIFT KNOB	1
66	305036	WHEEL	1
67	24167	VALVE STEM	1
68		TIRE 16 X 6.50 - 8 TURF (REFER TO TIRE TREAD PAGE)	1
69	313854	SPRING, 536 OD X .047 X 3.4	1
70	55488	BELT GUIDE	1
71	138489	WASHER, EX LK .384 X .69 X .04	1
72	122017	SCREW, 5/16-18 X 1.000	1
72A	120394	WASHER, FLAT .406 X .81 X .065	1
72B	1498	NUT, 5/16-18 X .75	1
73	138489	WASHER, EX LK .384 X .69 X .04	1
74	44582	CAP, PUSH NUT	1
75	300589	SPACER, ENGINE SHEAVE	1
76	56431	WASHER, .980ID X 1.38OD X .437 PILOT	1

\* CONTACT YOUR NEAREST TRANSAXLE DEALER FOR PARTS AND SERVICE.  
 \* ORDER INDIVIDUAL PARTS.

# 30" RIDING MOWER MODEL D3595-030

## MOWER DRIVE ASSEMBLY



**NOTE:** ALWAYS USE ORIGINAL EQUIPMENT PARTS.  
Use of service/replacement parts other than original equipment parts may void your warranty.

**ALL UNNUMBERED  
ITEMS ARE INTERCHANGEABLE  
WITH OPPOSITE SIDE**

317797G

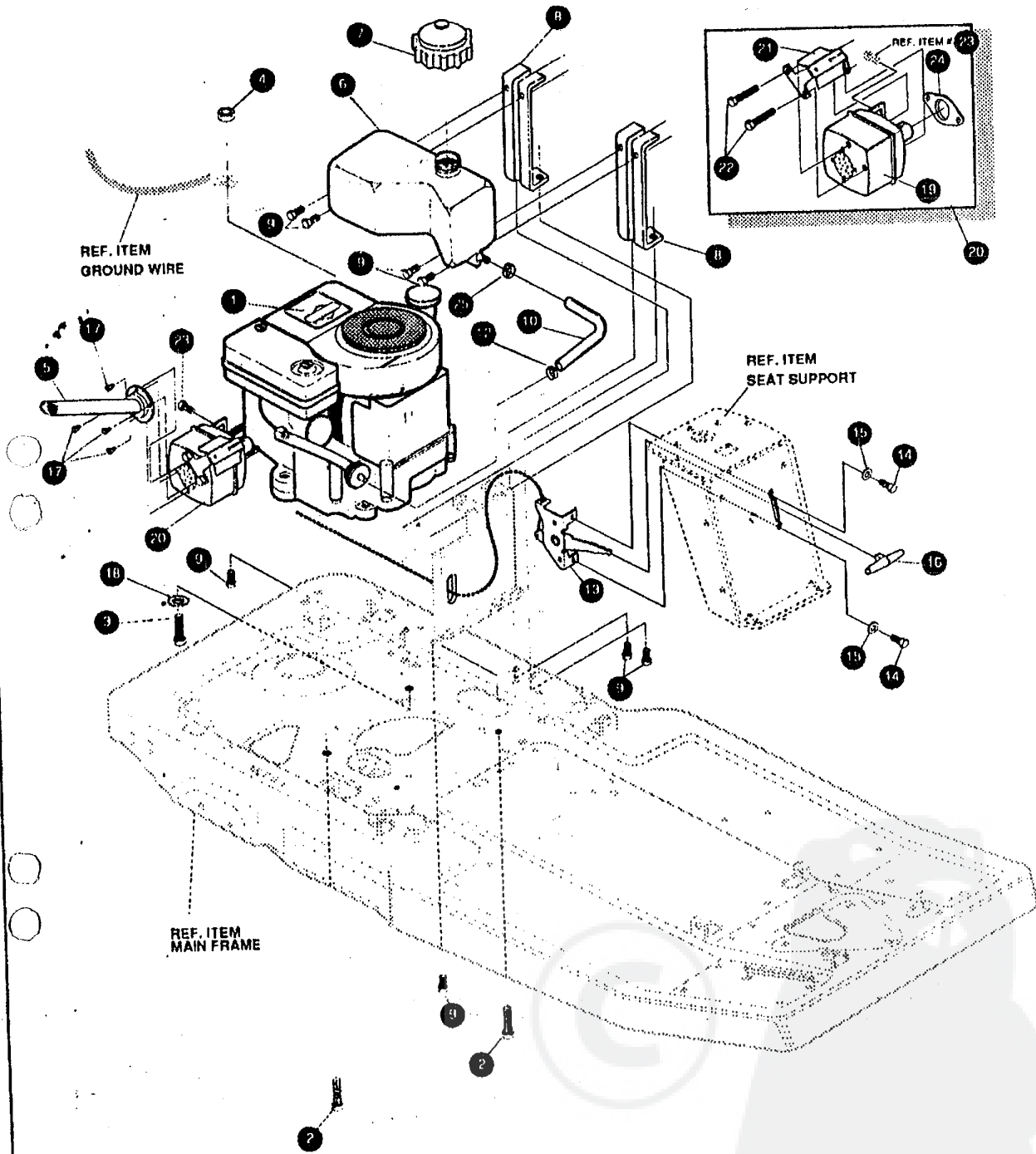
# 30" RIDING MOWER MODEL D3595-030

KEY#	PART#	DESCRIPTION	QTY.
1	321982-853	ASSY., DECK, PRE-PAINT 30"	1
2	56537	BELT, V 4L 50.6LG	1
3	35410	SPRING .071 X .62 X 4.37	1
4	310428	CHAIN, JACK	0.500 FT
5	310734	HOOK, S. 10 GA. STEEL	1
6	300683	SPRING, .75X6.3X.105 TENSION	1
7	323904	HANGER	1
8	180075	SCREW, 5/16-18X.63 HHC	2
9	1498	NUT, 5/16-18 REHHEXCTRLK	2
10	323903	ROCKER ARM, MOWER ENGAGEMENT	1
11	310364	BOLT .500X1.18 HSH 3/8-16	1
12	845	WASHER FLAT .390X1.25X.119	1
13	1499	NUT, 3/8-16 REGHXCTRLK	1
14	35410	SPRING .071 X .62 X 4.37	1
15	309049	ROD, CONNECTING	1
16	310388	GUIDE, BELT	2
17	∅ 122077	SCREW, 5/16-18X2.50 HHC	2
18	∅ 138485	WASHER, EXLK .320X.61X.03	2
19	∅ 120393	WASHER, FLAT .344X .69X.065	2
20	∅ 1498	NUT, 5/16-18 REGHEXCTRLK	2
21	309048	HANDLE, MOWER ENGAGEMENT	1
22	310351	BEARING, FLANGED, NYLON	1
23	304291	RETAINER, SPRING	1
24	304398	SPRING COMPRESSION	1
25	311107-853	SUPPORT BRACKET PTO	1
26	∅ 995346	SCREW, 1/4-20X .50 WAHTAP	2
27	310309	BRACKET, PTO LIMIT	1
28	∅ 35498	SCREW, 5/16-18X .75 WAHTAP	1
29	∅ 1498	NUT, 5/16-18 REGHEXCTRLK	1
30	305225	STOP, PTO ENGAGEMENT	1
31	326386	PIN, SPRING.187DIA X 1.12LG	1
31A	55514	SHIFT KNOB	1
32	120393	WASHER, FLAT .344X.69X.065	2
33	45074	PULLEY, IDLER V4L 3.06 X .72	1
34	45892	BOLT, 3/8-16 X 1.50 CARR GR2 Z	1
35	39659	RETAINER, BELT	1
36	1499	NUT, 3/8-16 REGHXCTRLK	1

∅ Indicates STANDARD HARDWARE ITEMS.

# 30" RIDING MOWER MODEL D3595-030

## ENGINE ASSEMBLY



**NOTE: ALWAYS USE ORIGINAL EQUIPMENT PARTS.** Use of service/replacement parts other than original equipment parts may void your warranty.

**ALL UNNUMBERED ITEMS ARE INTERCHANGEABLE WITH OPPOSITE SIDE**

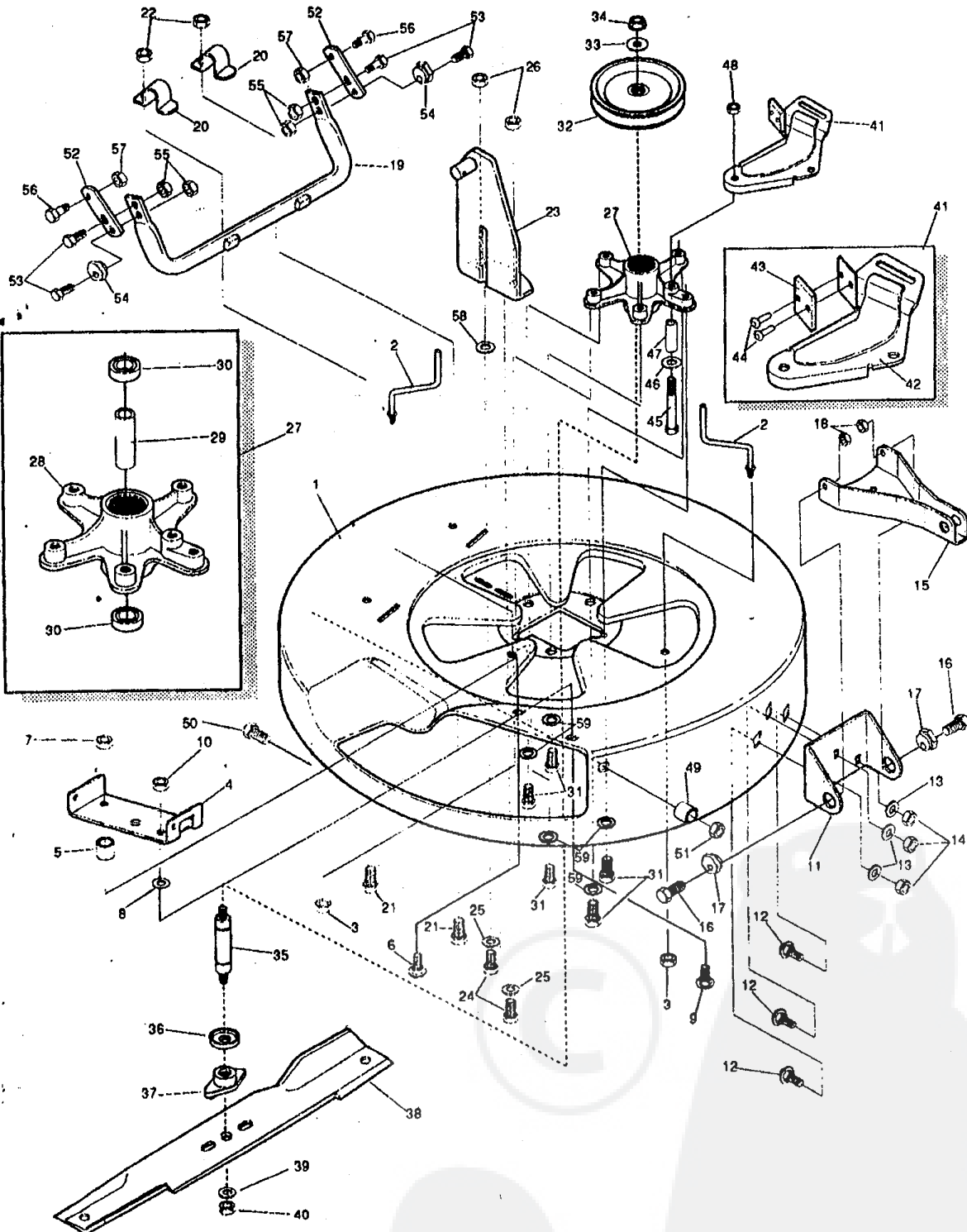
321242C

# 30" RIDING MOWER MODEL D3595-030

KEY#	PART#	DESCRIPTION	QTY.
1	ENGINE	10.5 HP (SEE ENGINE MANUAL)	1
2	50947	SCREW, 3/8-16 X 1.250 WD FL LK	3
3	180083	SCREW, 5/16 - 18 X 1.50 HHC	1
4	44108	NUT, 5/16 - 18 H WD FL LK	1
5	311721-853	EXHAUST ASSY.	1
6	314986	TANK, GAS-ELEC, 1.3 GAL	1
7	12501	CAP. FUEL -2.5 THROAT	1
8	313368	SUPPORT, GAS TANK	2
9	995346	SCREW, 1/4-20 X .50 WA HH TAP	8
10	47216	GAS LINE .25 ID BULK LENGTH	22 IN.
12	47345	CLAMP, FUEL LINE	1
13	321240	CONTROL, THROTTLE	1
14	35287	SCREW #8-32 X .38 HH WA TAP	2
15	414106	WASHER, FLAT .188 X .38 X .040	2
16	50607	THROTTLE CONTROL KNOB-T SHAPE	1
17	57366	SCREW, DRILL TITE	4
18	138485	WASHER, EX LK .320 X .61 X .03	1
19	305406	MUFFLER	1
20	305404	MUFFLER ASSY.	1
21	305409	MUFFLER SHIELD	1
22	305407	BOLT, .437 X 4.34 HSSH 5/16-18	2
23	305410	SCREW, 1/4-20 X .5 HHCSEMS	1
24	46708	GASKET, MUFFLER	1
25	47345	CLAMP, HOSE	1

# 30" RIDING MOWER MODEL D3595-030

## PRE-PAINTED DECK ASSEMBLY



**NOTE: ALWAYS USE ORIGINAL EQUIPMENT PARTS.** Use of service/replacement parts other than original equipment parts may void your warranty.

**ALL UNNUMBERED ITEMS ARE INTERCHANGEABLE WITH OPPOSITE SIDE**

313589D

# 30" RIDING MOWER MODEL D3595-030

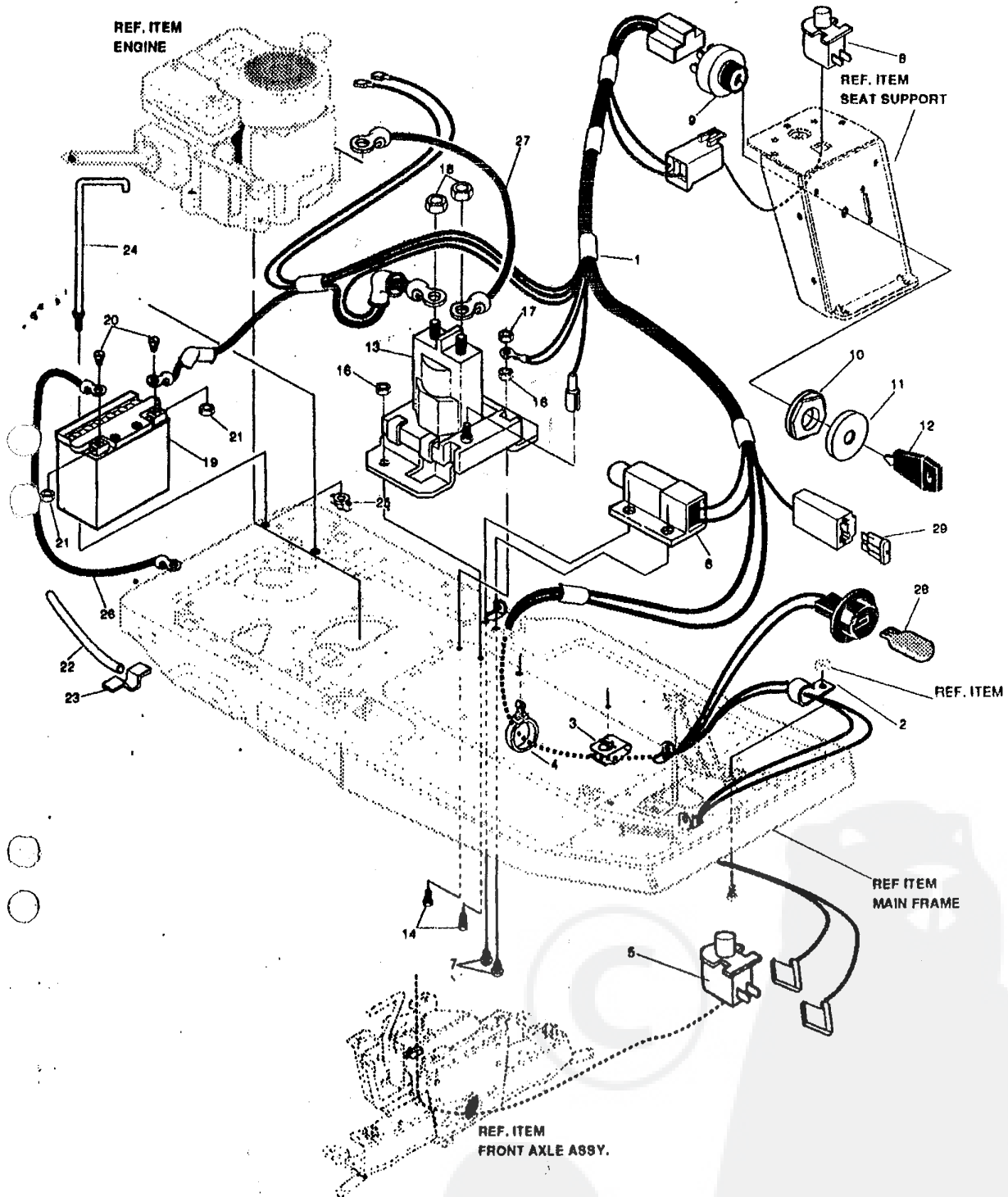
KEY#	PART#	DESCRIPTION	QTY.
1	^	DECK, MOWER 30 INCH	1
2	57318	GUIDE, BELT 5/16-18 THD	2
3	1498	NUT, 5/16-18 REGHEXCTRLK	2
4	317017	BRACKET CHUTE MOUNT	1
5	314702	SPACER .344X1.00X.500	1
6	120230	BOLT, 5/16-18X1.25 CARR	1
7	1498	NUT, 5/16-18 REGHEXCTRLK	1
8	45602	WASHER, FLAT .333X .87X.119 Z	1
9	126216	BOLT, 5/16-18X .75 CARR GR2 Z	1
10	1498	NUT, 5/16-18 REGHEXCTRLK	1
11	311237-853	BRACKET, MOUNTING, FRONT	1
12	57072	BOLT, 5/16-18X .63 CARR	3
13	120393	WASHER, FLAT .344X .69X.065	3
14	1498	NUT, 5/16-18 REGHEXCTRLK	3
15	311236-853	BRACKET, BAR, TOW, FRONT	1
16	122017	SCREW, 5/16-18X1.00 HHC	2
17	58247	ADJUSTING NUT	2
18	1498	NUT, 5/16-18 REGHEXCTRLK	2
19	313372-853	ASSY., TUBE, PIVOT	1
20	310672	SUPPORT, PIVOT TUBE	2
21	180077	SCREW, 5/16-18X .75 HHC	2
22	1498	NUT, 5/16-18 REGHEXCTRLK	2
23	314119-853	ASSY LIFT BRKT	1
24	180077	SCREW, 5/16-18X .75 HHC GR5 Z	2
25	120393	WASHER, FLAT .344X .69X.065	2
26	1498	NUT, 5/16-18 REGHEXCTRLK	2
27	313588	ASSEMBLY, QUILL	1
28	314272	QUILL, MACHINED CASTING	1
29	314274	TUBE, SPACER	1
30	313576	BEARING, BALL, 6204-2RS-Q	2
31	50634	SCREW, 5/16-18X .88 WAHHTAP	5
32	314273-853	PULLEY ASSEMBLY	1
33	22265	WASHER, FLAT .515X1.38X.119PL	1
34	1500	NUT, 1/2-13 REGHXCTRLK	1
35	314271	SHAFT, QUILL 30" MOWER	1
36	313577	SHIELD, DUST, BEARING	1
37	313584	HUB, BLADE ADAPTOR	1
38	314826	BLADE, 30" TD MOWER .7 WING	1
39	22265	WASHER, FLAT .515X1.38X.119PL	1
40	1500	NUT, 1/2-13 REGHXCTRLK	1
41	12229-853	BRACKET, IDLER ASSEMBLY	1
42	313510-853	BRACKET, ARM, IDLER	1
43	306973	BRAKE PAD - HARD - 232AF	1
44	41601	RIVET, OVSET .187DIA X .50LG	2
45	180091	SCREW, 5/16-18X2.50 HHC	1
46	45602	WASHER, FLAT .333X .87X.119	1
47	314824	SPACER, .322 X .625 X 1.810	1
48	44108	NUT, 5/16-18 HWDFLCTRLK	1
49	50520	SPACER	1
50	126216	BOLT, 5/16-18X .75 CARR	1
51	1498	NUT, 5/16-18 REGHEXCTRLK	1
52	314099-853	BRACKET, BAR, REAR STABIL	2
53	122017	SCREW, 5/16-18X1.00 HHC	4
54	58247	ADJUSTING NUT	2
55	1498	NUT, 5/16-18 REGHEXCTRLK	4
56	51940	BOLT, .500X .437 HSSH 3/8-16	2
57	1499	NUT, 3/8-16 REGHXCTRLK	2
58	45602	WASHER, FLAT .333 X .87 X .119Z	1
59	138485	WASHER, EXLX .320X.61X.03	5

^ ORDER INDIVIDUAL PARTS



# 30" RIDING MOWER MODEL D3595-030

## ELECTRICAL ASSEMBLY



**NOTE: ALWAYS USE ORIGINAL EQUIPMENT PARTS.**  
Use of service/replacement parts other than original equipment parts may void your warranty.

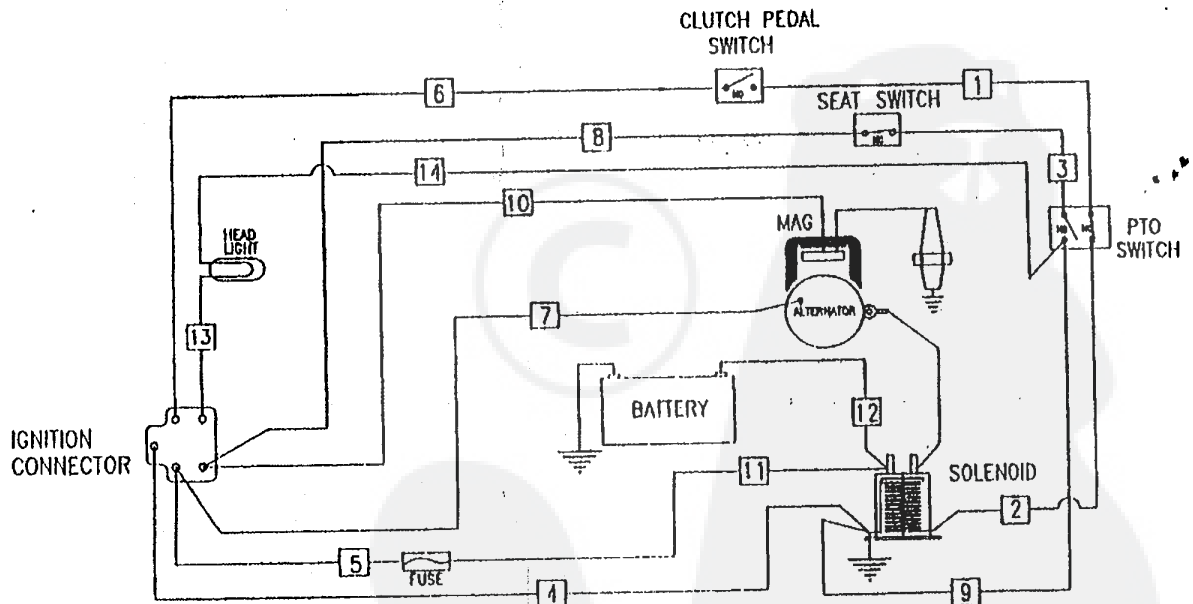
**ALL UNNUMBERED  
ITEMS ARE INTERCHANGEABLE  
WITH OPPOSITE SIDE**

321957F

# 30" RIDING MOWER MODEL D3595-030

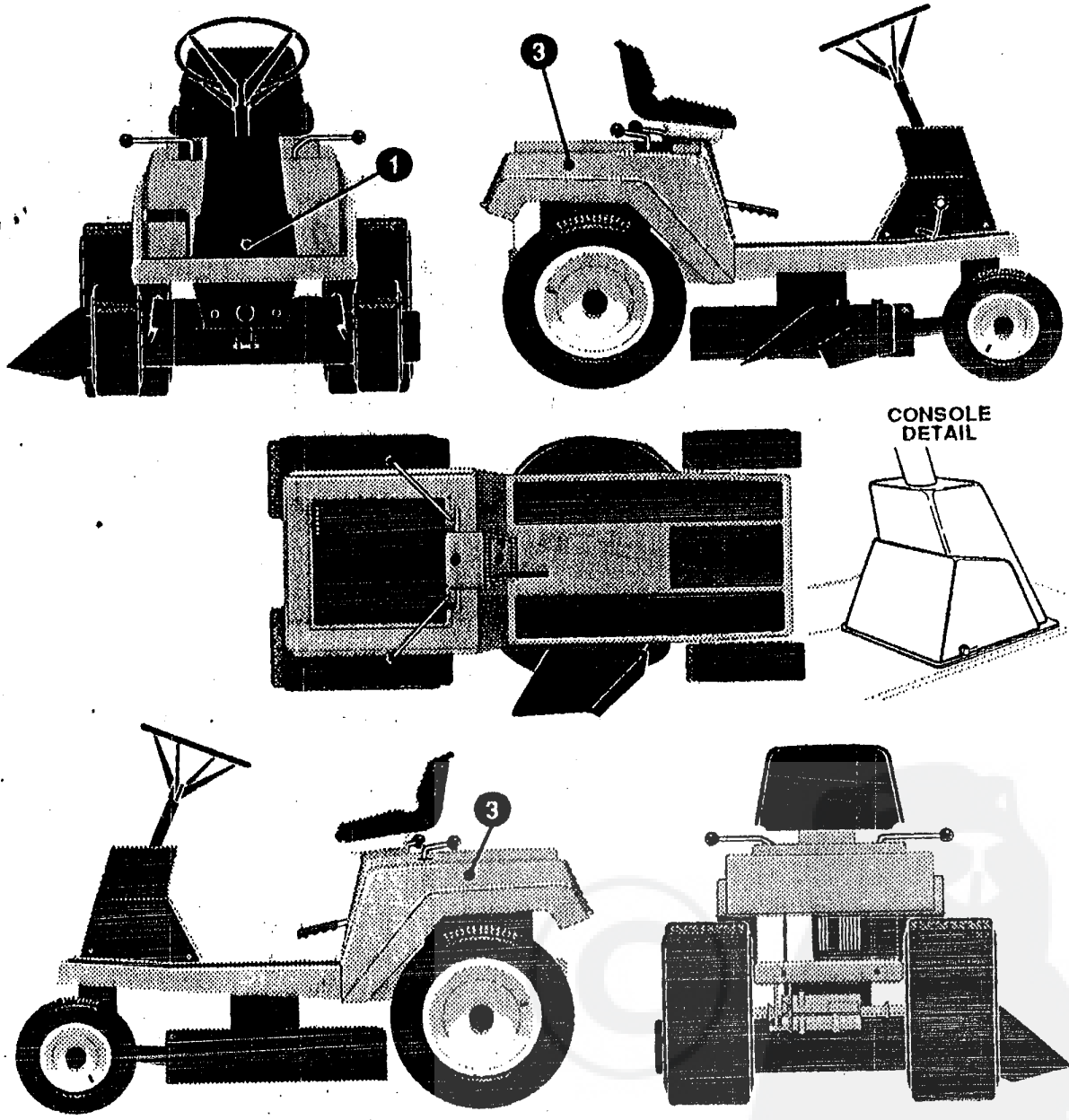
KEY#	PART#	DESCRIPTION	QTY.
1	321951	HARNESS, ELEC RER C2 8-11B&S	1
2	57569	RETAINER, .311DX.62X.03 WIRE	1
3	309098	CLIP, TRW #C4490-022-27	1
4	309698	CLIP, WIRE ROUTING, SNAP-IN	1
5	326653	SWITCH, SNAP MNT NO .055/, .116 BLK	1
6	57476	SWITCH, SCR MNT DP NC	1
7	57220	SCREW, #12 X .50 PHPNHTAP	2
8	326654	SWITCH, SNAPMNT NC .140 BLUE	1
9	327354	SWITCH, IGNITION & LIGHTS	1
10	327352	NUT, 5/8-32 IGN SWIT	1
11	300194	BOOT, SWITCH	1
12	327350	KEY, IGNITION SWITCH	1
13	53716	SOLENOID, NEW CLUM	1
14	187745	SCREW, 1/4-20X .75 HXSEMMA	2
16	1502	NUT, 1/4-20 REGHEXCTRLK	2
17	271172	NUT, 1/4-20 REGHEXKEPS	1
18	271187	NUT, 5/16-24 HKEPS	2
19	55472	BATTERY, YUASA 12N14	1
20	13487	SCR., METRIC, 6X1X11	1
21	13487	NUT, METRIC, 6X1 HEX	1
22	55636	DRAIN TUBE, BATT	1
23	41482	CLIP, 1.980LG .255ID PRESS WIRE	1
24	323648	HOLD DOWN BRKT	1
25	325232	NUT, WING 1/4-20 NYLON	1
26	55511	WIRE, GROUND, 12.5"	1
27	322698	WIRE, STARTER,	1
28	52572	BULB, HEADLAMP	1
29	302031	FUSE SPADE TYPE 32V 15A	1

## SCHEMATIC DRAWING



# 30" RIDING MOWER MODEL D3595-030

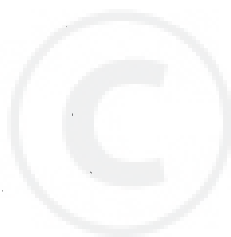
DECALS (DECORATIVE)



329022A

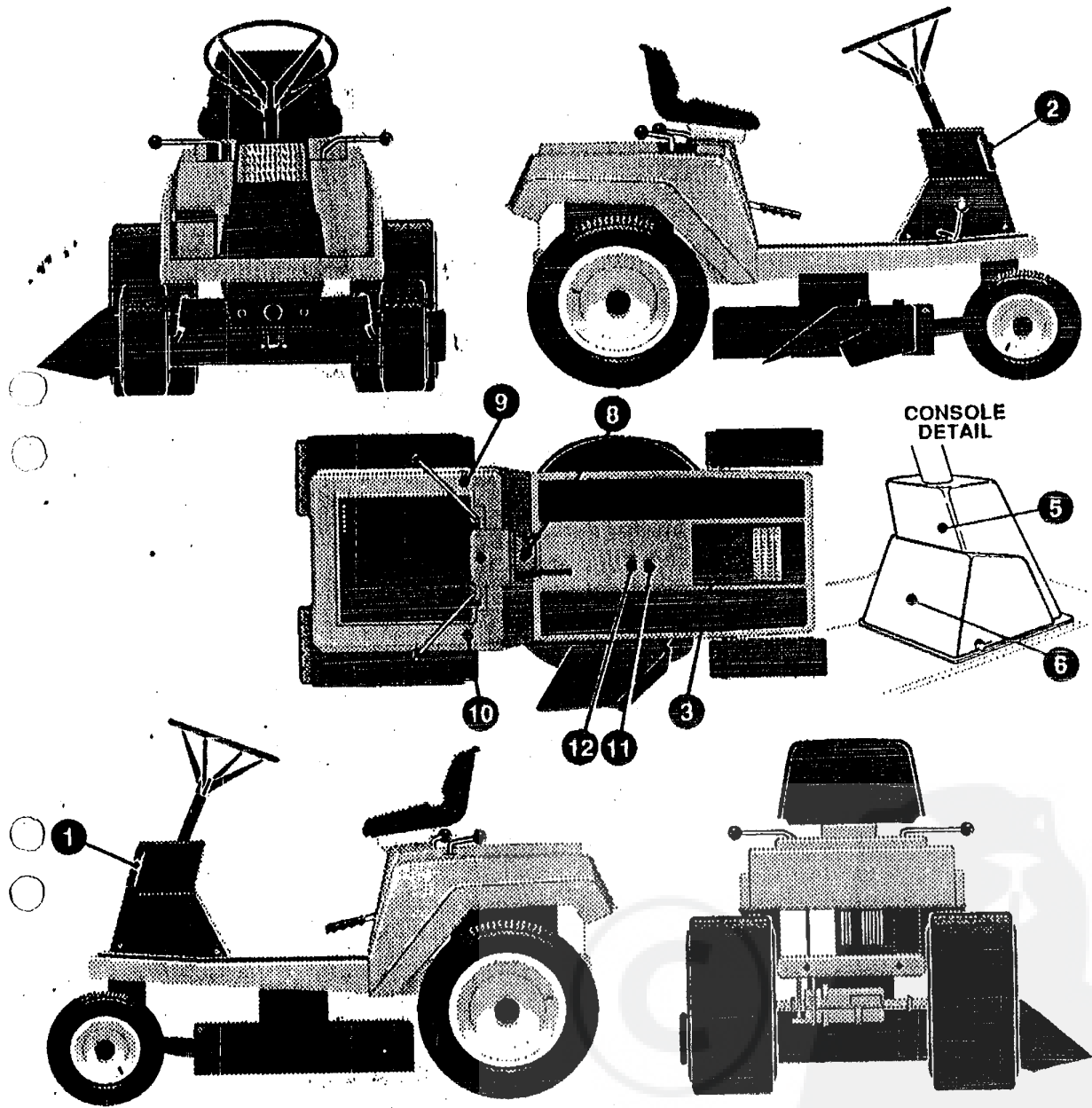
# 30" RIDING MOWER MODEL D3595-030

KEY#	PART#	DESCRIPTION	QTY.
1.	320799	NAME PLATE, 10.5/30 CHR/BLK	1
2.		REFERENCE ONLY	1
3.	402142	NAME PLATE, TURFMASTER, WHT/BLK	2



# 30" RIDING MOWER MODEL D3595-030

## DECALS (INSTRUCTIONAL)



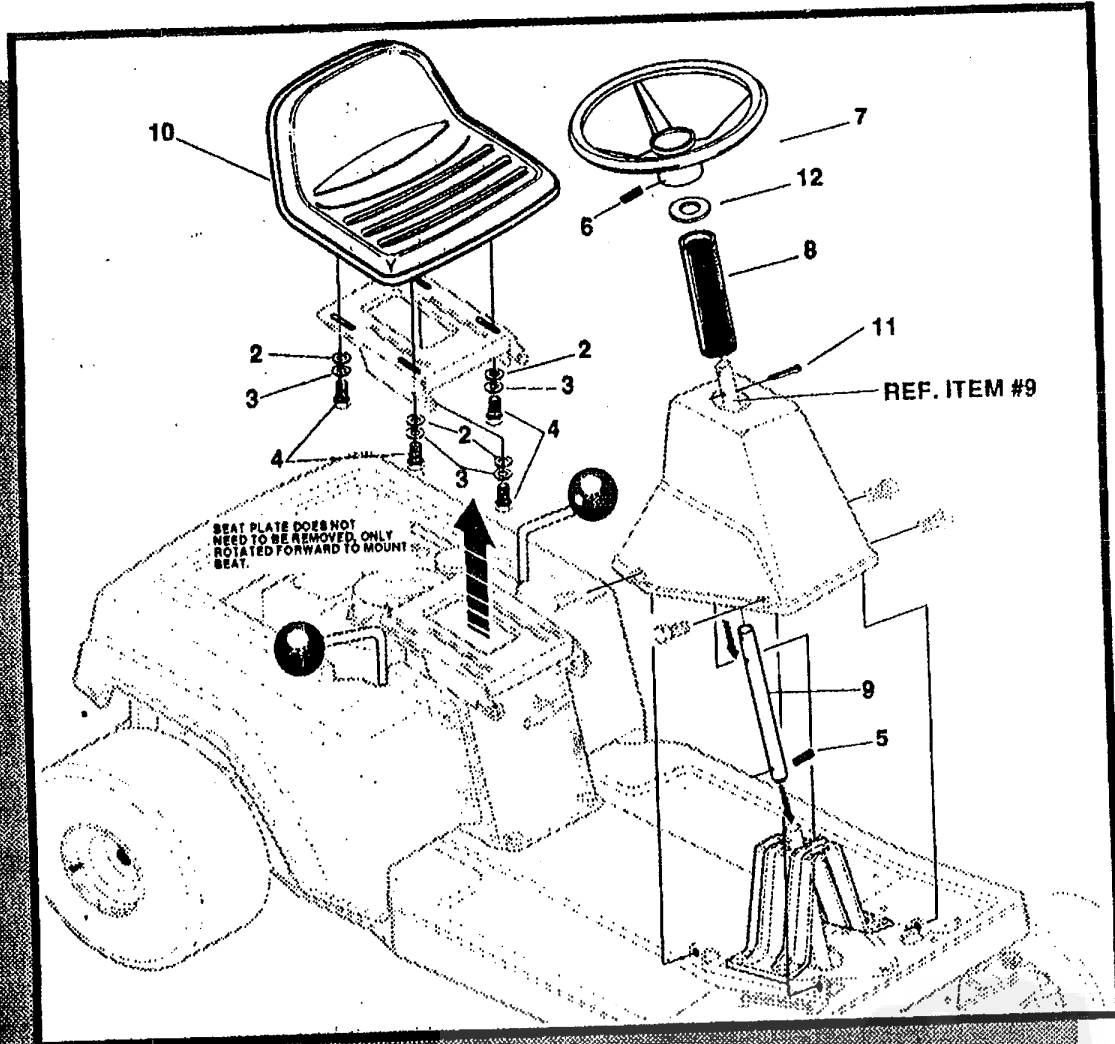
327728A

# 30" RIDING MOWER MODEL D3595-030

KEY#	PART#	DESCRIPTION	QTY.
1.	308557	DECAL, NOMA LENS, LH C-2 LITE	1
2.	306558	DECAL, NOMA LENS, RH C-2 LITE	1
3.	317348	DECAL, PARK'N/BRAKE ISO	1
4.		REFERENCE ONLY	1
5.	311227	DECAL, HEARING PROTECTION	1
6.	327462	DECAL, INSTR EXPORT	1
7.		REFERENCE ONLY	1
8.	320704	DECAL, CONTROL 30" W/LITE	1
9.	305397	DECAL, PTO ENGAGEMENT, ISO	1
10.	311232	DECAL, SHIFT, 5SP, ISO, DOM.	1
11.	305770	DECAL, CAUTION TRIANGLE EUROPE	1
12.	327461	DECAL, DECK, WARN, GR, FR	1

# 30" RIDING MOWER MODEL D3B95-030

## CUSTOMER ASSEMBLY

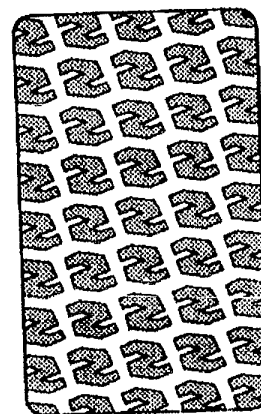
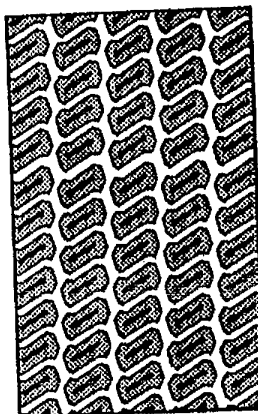
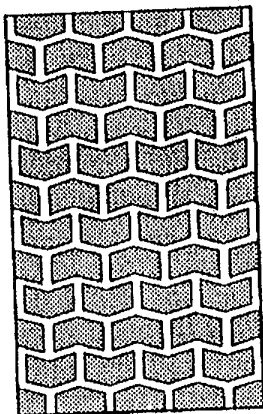
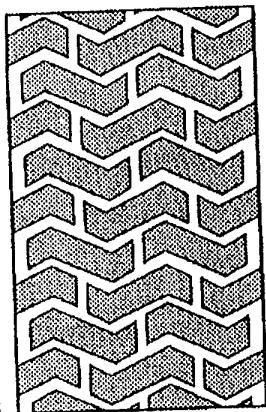


## CUSTOMER ASSEMBLY VIEW

KEY#	PART#	DESCRIPTION	QTY
2	120393	WASHER, FLAT .344 X .69 X .065	4
3	120638	WASHER, HV SPT LK .328 X .60 X .11	4
4	122007	SCREW, 5/16 -18 X .75 HHC GR2	4
5	417375	PIN, SPRING .187 DIA X 1.25 LG MD	1
6	456836	PIN, SPRING .250 DIA X 2.25 LG HVPL	1
7	301465	WHEEL, STEERING	1
8	305605	TUBE, DECORATIVE	1
9	300797	TUBE-STEERING	1
10	304315	SEAT	1
11	120123	PIN, COTTER .125 DIA X 1.25 LG Z	1
12	301702	WASHER, FLAT .90 X 1.56 X .89	1

316961B

# TREAD PATTERNS



**"A"**

**"B"**

**"C"**

**"D"**

**TIRE SIZE**

	<b>"A"</b>	<b>"B"</b>	<b>"C"</b>	<b>"D"</b>
11 X 4.00 - 5	42295	319679		
13 X 5.00 - 6	41060	319680		
15 X 6.00 - 6	39830	316702	301140	313952
16 X 6.50 - 8	41081	319682		314539
18 X 8.50 - 8	319683	317400		
18 X 9.50 - 8	41106	316701		313950
20 X 8.00 - 8	319685	319684	57164	314584
20 X 10.00 - 8	58276	319686		313654
20 X 10.00 - 10	55893	319687		
23 X 9.50 - 12	53655	319690	319689	314370