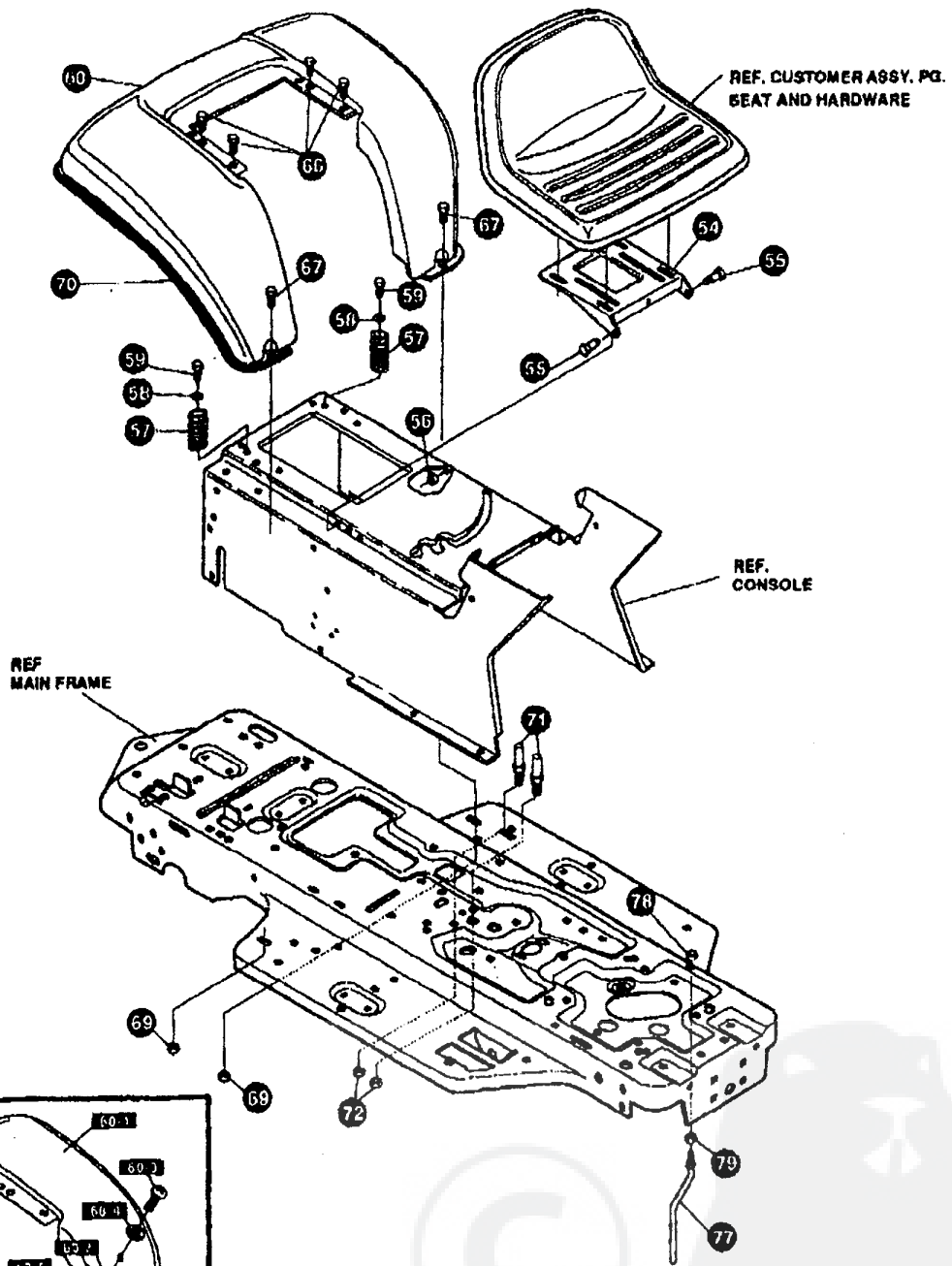


NOTE: ALWAYS USE ORIGINAL EQUIPMENT PARTS. Use of service/replacement parts other than original equipment parts may void your warranty.

ALL UNNUMBERED ITEMS ARE INTERCHANGEABLE WITH OPPOSITE SIDE

333378 A

KEY#	PART#	DESCRIPTION	QTY
1	331173-879	FRAME, MAIN SF RIDER.....	1
2	331834	FOOT PAD, RH SF, FULL WIDTH.....	1
3	331835	FOOT PAD, LH SF, FULL WIDTH.....	1
4	313003-853	BRACKET, GRILLE SUPPORT LH.....	1
5	313004-853	BRACKET, GRILLE SUPPORT RH.....	1
6	66362-853	BRACKET, SUPPORT, FRONT AXLE-SF.....	1
7	328154	SCREW, 5/16-18X1.0WDFLLK.....	6
8	55273	NUT, 6/16-18 HXWDFLLK.....	6
9	29616	BOLT, .625X1.890 HSH 1/2-20.....	1
10	274654	NUT, 1/2-20 REGHXCTRLK.....	1
11	180138	SCREW, 3/8-18X3.00 HHC.....	2
12	2483	WASHER, .991DX1.25DX.07 BELLVIL.....	2
13	1499	NUT, 3/8-18 REGHXCTRLK.....	2
14	309584-830	CONSOLE, SF GPWR NOTCHED FEN.....	1
15	56235-830	CONSOLE, REAR COVER.....	1
16	995346	SCREW, 1/4-20X .50 WAHHTAP.....	15
17	321980-830	DASH, SM. FR. W/O AMMET GPWR.....	1
18	302723	INSERT, DASH, LH 11 HP.....	1
19	302724	INSERT, DASH, RH 11HP.....	1
20	44811	SCREW, 1/4-20X .75 WAHHTAP.....	4
21	274672	SCREW, 1/4-20X .63 WAHHC.....	4
22	51335	NUT, 1/4-20 WDFLWHIZ-LK.....	4
23	329257	HOOD, H-12 PLASTIC.....	1
24	307278	SUPPORT, HOOD H-12 GP 11HP.....	1
25	301542	SCREW, 10-24X1.00HWATAPBLK.....	4
26	308459	NUT, #10-24 HXHDNYLK.....	4
27	302722	GRILLE, G-15 GPWR SM LWR.....	1
28	8783	BRACKET, TIE, HOOD.....	2
29	35056	SCREW, 10-24X.50 SLHWATAP.....	8
30	310203	CLIP, HOG RING C-SHAPED.....	1
31	56676	BOLT, .375X .580 HSH 5/16-18.....	2
32	1498	NUT, 5/16-18 REGHEXCTRLK.....	2
33	57478	SPRING, HOOD LATCH.....	2
34	305718	LENS 11 HP HAKO SMOKED H-12.....	1
35	57796	SCREW, #6 X .50 PLASTITE/HI-LO.....	4
36	301452	FOIL, HEAT REFLECTOR.....	1
37	333605	PARTS MANUAL.....	1
38	333666	OPERATOR'S MANUAL (ENGLISH).....	1
39	333667	OPERATOR'S MANUAL (GERMAN).....	1



NOTE: ALWAYS USE ORIGINAL EQUIPMENT PARTS. Use of service/replacement parts other than original equipment parts may void your warranty.

ALL UNNUMBERED ITEMS ARE INTERCHANGEABLE WITH OPPOSITE SIDE

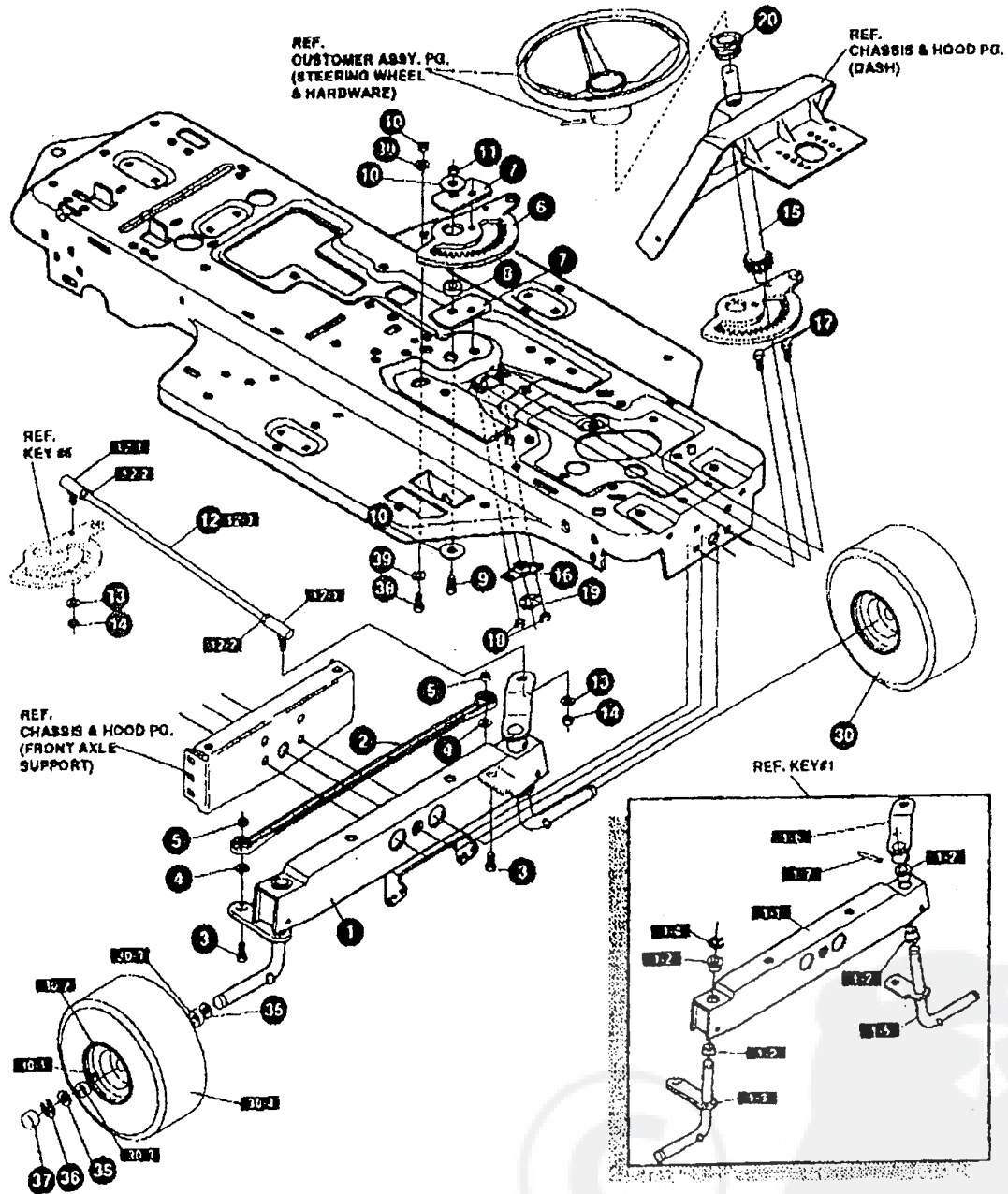
333378 A

KEY#	PART#	DESCRIPTION	QTY
54	58367-879	PLATE, SEAT F5 SF, LF	1
55	20607	BOLT, .437X .156 HSSH 5/16-18	2
56	1498	NUT, 5/16-18 REGHEXCTRK	2
57	390463	SPRING, SEAT 1.500X2.25LG	2
58	120392	WASHER, FLAT .281X .83X.065	2
59	995346	SCREW, 1/4-20X .50 WAHHTAP	2
60	^	ASM FENDER F-5 SF S0F/LOF	1
60-1	332423-879	FENDER, F-5 SF S.O.F./L.O.F.	1
60-2	9239	CLEVIS	1
60-3	439465	SCREW, 5/16-18X .68PHNMA BKPH	1
60-4	301551	WASHER, 344IDX1.50DX.09 CU	1
60-5	120373	NUT, 5/16-18 SQ	1
66	995346	SCREW, 1/4-20X .50 WAHHTAP	4
67	126358	BOLT, 5/16-18X1.00 CARRLN	2
69	55273	NUT, 5/16-18 HXWDFLLK	2
70	55023	TRIM, 77.5" BLACK NARROW	77.5"
71	53446	PIN, 5/16-18 HOOD LATCH	2
72	271184	NUT, 5/16-18 HEXKEPS	2
77	50653	GUIDE, BELT	1
78	41529	NUT, 3/8-16 HXCTRKJAM	1
79	271190	NUT, 3/8-16 HEXKEPS	1

^ ORDER INDIVIDUAL PARTS

E3554-200

REPAIR PARTS



NOTE: ALWAYS USE ORIGINAL EQUIPMENT PARTS. Use of service/replacement parts other than original equipment parts may void your warranty.

ALL UNNUMBERED ITEMS ARE INTERCHANGEABLE WITH OPPOSITE SIDE

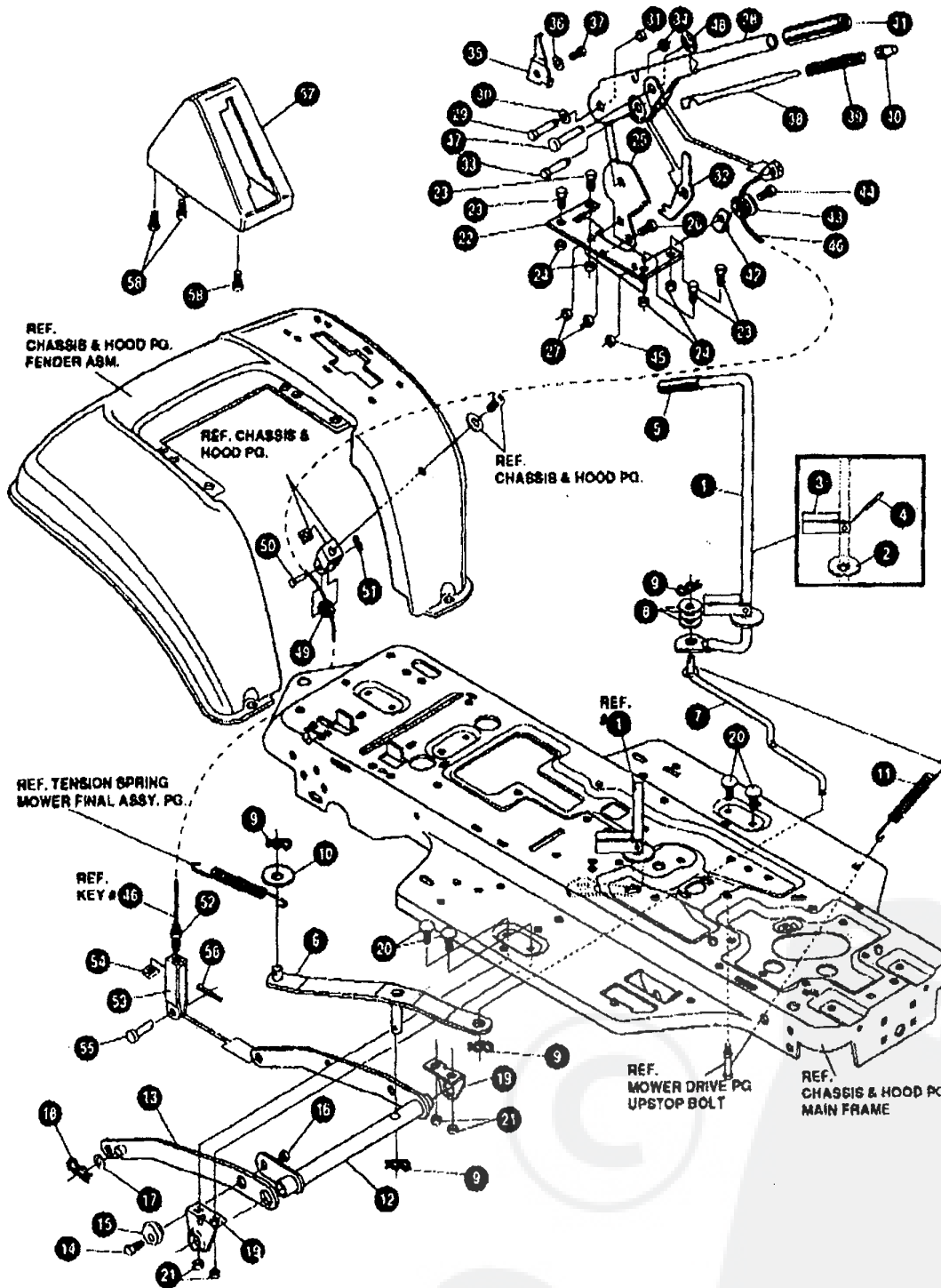
327592 H

KEY#	PART#	DESCRIPTION	QTY
1	^	AXLE FRONT ASSY, SF LONG	1
1-1	324915-879	ASSY FRONT AXLE SF GS	1
1-2	50546	BEARING, FL .769IDX1.002ODX.75	4
1-3	310368	SPINDLE, ASSY, RH LONG SF	1
1-4	36625	RING, RETEX .57X.05TRU5133-75	1
1-5	310367	SPINDLE, ASSY, LH LONG SF	1
1-6	327810-853	ARM ASSY SF 4WS FRNT STRNG	1
1-7	454565	PIN, SPRING.250DIA X1.25LG HVPL	1
2	302688	ASSY, TIE ROD 19.31 LG	1
3	180124	SCREW, 3/8-16X1.25 HHC	2
4	120382	WASHER, REGSPTLK.393X.68X.10	2
5	1489	NUT, 3/8-16 REGHXCTRLK	2
6	324752	GEAR, SECTOR SF4WS	1
7	333289	PLATE SECT SF 4WS BLK	2
8	330021	BUSHING, SECTOR GEAR SF 4WS	1
9	181843	SCREW, 3/8-24X1.50 HHC	1
10	845	WASHER, FLAT .390X1.25X.119	2
11	412349	NUT, 3/8-24 HXCTRLK	1
12	328808	DRAG LINK ASSY 17.69LG	1
12-1	57158	BALL JOINT 3/8 THD SHORT STUD	2
12-2	124925	NUT, 3/8-24 REGHEXJAM	2
12-3	56190	DRAG LINK	1
13	120382	WASHER, REGSPTLK.393X.68X.10	2
14	120369	NUT, 3/8-24 REGHEX	2
15	327395	SHAFT, PIN-STR BLK	1
16	325692	BEARING, FL .50 IDX1.370ODX	1
17	326505	SCREW, 1/4-20X.75 (TO 30-35 FT#)	2
18	46931	NUT, 1/4-20 WDFL MAC-LOCK	2
19	20864	RING, RET E .39X.04TRU5133-50	1
20	54902	BEARING, FL .763IDX1.370DX.50	1
30	302828	TIRE & RIM, PU 15X6 OX6 TUR	2
30-1	24167	VALVE STEM	
30-2	39829	RIM, WHEEL	
30-3	314416	BEARING, FL	
30-4	TIRE	REFER TO TIRE TREAD PAGE	
35	642	WASHER, FLAT .755X1.31X.075	4
36	36625	RING, RETEX .57X.05TRU5133-75	2
37	40394	HUB CAP, 1.500ID X 7/8LG	2
38	180124	SCREW, 3/8-16X1.25 HHC	1
39	120384	WASHER, FLAT .406X.81X.065	2
40	45171	NUT, 3/8-16 HWDFL WHIZ-LOCK	1

* ORDER INDIVIDUAL PARTS

E3554-200

REPAIR PARTS



NOTE: ALWAYS USE ORIGINAL EQUIPMENT PARTS. Use of service/replacement parts other than original equipment parts may void your warranty.

ALL UNNUMBERED ITEMS ARE INTERCHANGEABLE WITH OPPOSITE SIDE

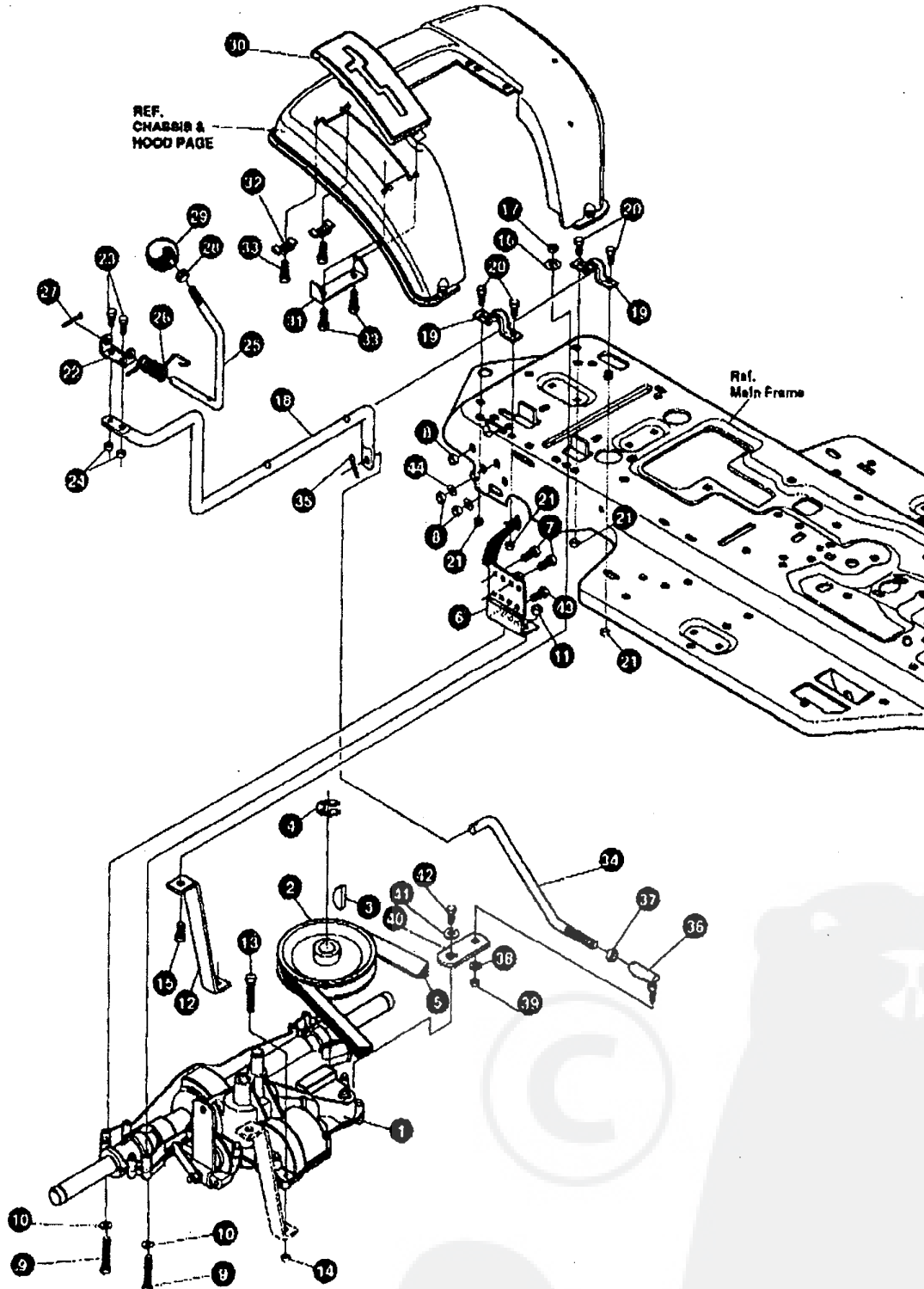
333061 A

E3554-200**MOWER SUSPENSION ASSEMBLY**

KEY#	PART#	DESCRIPTION	QTY
1	325592	LEVER, CLUTCH RH PTO.....	1
2	22265	WASHER, FLAT .515X1.38X.119PL.....	1
3	305226	STOP, PTO ENGAGE.....	1
4	326998	PIN, SPRING.187DIA X1.13LG HD.....	1
5	55514	KNOB, ROUND 1.60DIA OR GRIP SF.....	1
6	326587-853	STRAP ASSY, PTO BELCRANK SF.....	1
7	325590	ROD, BELCRANK LINK SF.....	1
8	274517	WASHER, FLAT .406X.73X.083.....	3
9	8260	PIN, HAIR .091 DIA X1.66LG.....	4
10	25210	WASHER, FLAT .386X1.25X.09.....	1
11	326802	SPRING, .69X7.75X.0897TENSION.....	1
12	326114-853	LIFT ASSY, LH.....	1
13	326130-853	LIFT ASSY, RH SF.....	1
14	180079	SCREW, 5/16-18X1.00 HHC.....	1
15	68247	NUT, ADJUST.....	1
16	1498	NUT, 5/16-18 REGHEXCTRLK.....	1
17	417008	WASHER, FLAT .531X1.06X.063.....	2
18	8260	PIN, HAIR .091 DIA X1.66LG.....	2
19	325495-853	BRACKET, REAR HANG SUSP.....	2
20	330967	BOLT, 5/16-18X1.00 CAR.....	4
21	1498	NUT, 5/16-18 REGHEXCTRLK.....	4
22	313926	BRACKET, HGT/ADJUST SUPPORT.....	1
23	180077	SCREW, 5/16-18X.75 HHC.....	4
24	1498	NUT, 5/16-18 REGHEXCTRLK.....	4
25	301238	QUADRANT, HEIGHT ADJUST.....	1
26	180077	SCREW, 5/16-18X.75 HHC.....	2
27	1498	NUT, 5/16-18 REGHEXCTRLK.....	2
28	322292-853	HANDLE, LIFT SHORT(30" S.F.).....	1
29	300171	BOLT, .500X.270 HSH 5/16-18.....	1
30	998418	WASHER, FLAT .506X.76X.024.....	1
31	44108	NUT, 5/16-18 HWDFLCTRLK.....	1
32	301239	PAWL, SQUARE.....	1
33	300171	BOLT, .500X.270 HSH 5/16-18.....	1
34	44108	NUT, 5/16-18 HWDFLCTRLK.....	1
35	9435	POINTER, HEIGHT ADJ.....	1
36	138479	WASHER, EXLK .195X.41X.03.....	1
37	35287	SCREW, #8-32X.38 HHWATAP.....	1
38	303027	ROD, ACTUATOR-SHORT.....	1
39	68326	SPRING, HEIGHT ADJUST.....	1
40	58325	KNOB, HEIGHT ADJ PUSH BUTTON.....	1
41	68329	GRIP, .760 OD W/ HOLE BLACK.....	1
42	9149	BRACKET, CABLE RETAIN.....	1
43	48306	PULLEY, POWDER METAL.....	1
44	58336	BOLT, .375X.375 HSH 1/4-20.....	1
45	1502	NUT, 1/4-20 REGHEXCTRLK.....	1
46	321430	CABLE, LIFT 21.50 - 30" S.F.....	1
47	300310	PIN, CLEVIS .310DIA X.476LG.....	1
48	300311	RING, RET E .31X.26TRUX5139-91.....	1
49	48306	PULLEY, POWDER METAL.....	1
50	300317	PIN, CLEVIS .375DIA X .81 LG.....	1
51	8260	PIN, HAIR .091 DIA X1.66LG.....	1
52	120375	NUT, 1/4-20 REGHEX.....	1
53	9405	CLEVIS, LIFT CABLE.....	1
54	120372	NUT, 1/4-20 REGSQ.....	1
55	39522	PIN, CLEVIS .312 X .812.....	1
56	121222	PIN, COTTER .090 DIA X .75LG.....	1
57	300335	LIFT COVER-39" F5.....	1
58	300340	SCREW, #10 X .75 HHPLAST BLK.....	3

E3554-200

REPAIR PARTS



NOTE: ALWAYS USE ORIGINAL EQUIPMENT PARTS. Use of service/replacement parts other than original equipment parts may void your warranty.

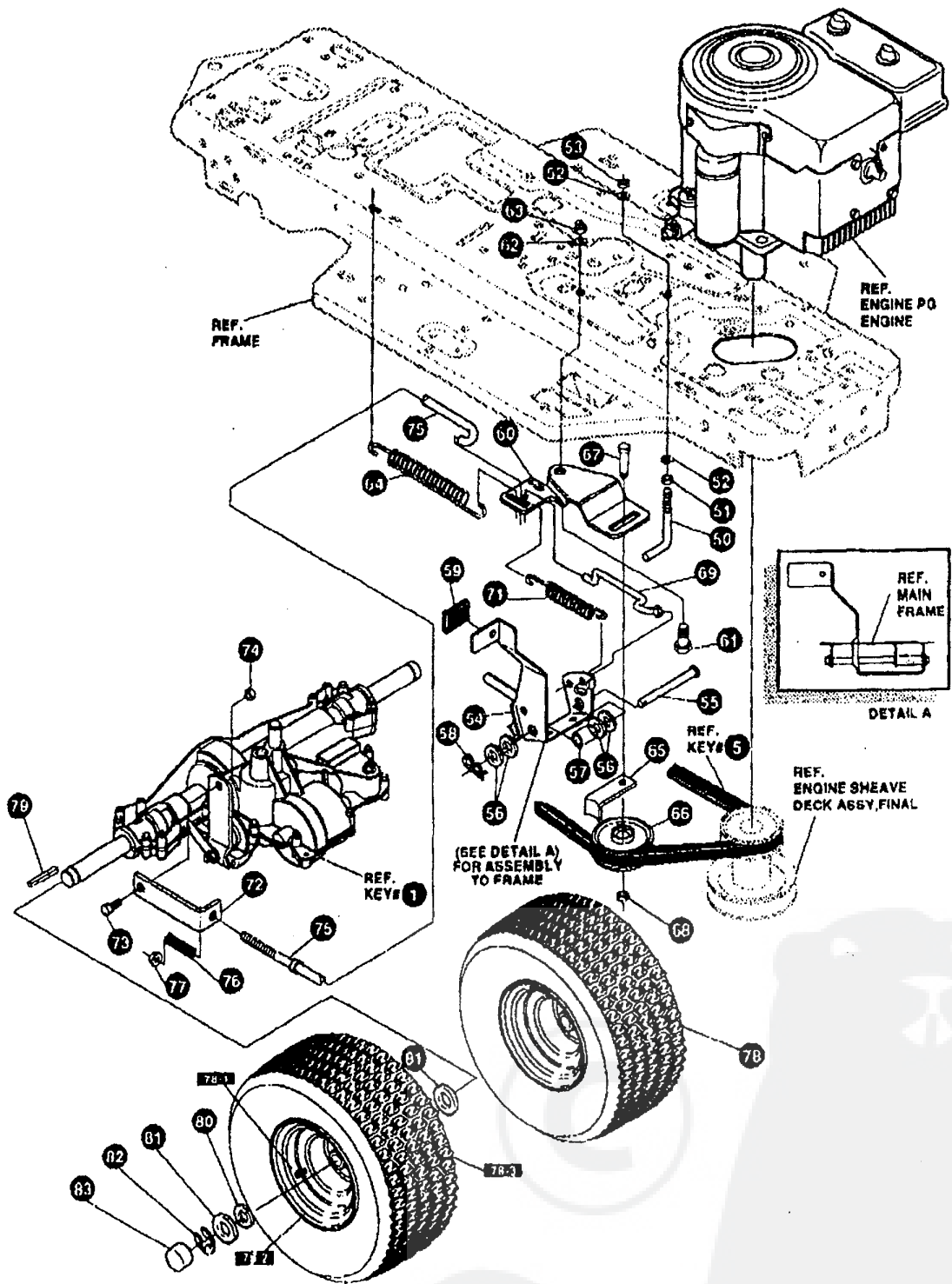
ALL UNNUMBERED ITEMS ARE INTERCHANGEABLE WITH OPPOSITE SIDE

333377 A

E3554-200**MOTION DRIVE ASSEMBLY**

KEY#	PART#	DESCRIPTION	QTY
1	A	TRANSAXLE 940-007 2WS,LF,SF	1
2	303109	PULLEY, 6.8 OD V4L T/A	1
3	50795	KEY, HI-PRO 606 .76DIA X.187WD	1
4	22053	RING, RETEX .58X.03STRUS100-62	1
5	54758	BELT, V 4L 82.00 SF DRIVE	1
6	328815-853	BRACKET, TRANSAXLE	2
7	180077	SCREW, 5/16-18X .75 HHC	4
8	1498	NUT, 5/16-18 REGHEXCTRLK	8
9	180091	SCREW, 5/16-18X2.50 HHC	4
10	120383	WASHER, FLAT .344X .69X.065	4
11	1498	NUT, 5/16-18 REGHEXCTRLK	4
12	323213	BRACKET, T/A TORQ. BLK	1
13	180087	SCREW, 5/16-18X2.00 HHC	1
14	1498	NUT, 5/16-18 REGHEXCTRLK	1
15	180079	SCREW, 5/16-18X1.00 HHC	1
16	188485	WASHER, EXLK .320X .61X .03	1
17	1498	NUT, 5/16-18 REGHEXCTRLK	1
18	321849	LEVER, SHIFT LOW SF FNSFT 915	1
19	302760	CLAMP .625DIA	2
20	180077	SCREW, 5/16-18X .75 HHC	4
21	1498	NUT, 5/16-18 REGHEXCTRLK	4
22	310356	BRACKET, PIVOT SH LEV	1
23	180020	SCREW, 1/4-20X .75 HHC	2
24	1502	NUT, 1/4-20 REGHEXCTRLK	2
25	309835	LEVER, SHIFT UPPER SOF 1/2-13	1
26	310265	SPRING, TORS. .56X.95X.095	1
27	137185	PIN, COTTER .125 DIA X1.00LG	1
28	274654	NUT, 1/2-20 HEXCTRLK	1
29	55514	KNOB, ROUND 1.50DIA OR GRIP SF	1
30	311209	COVER PLASTIC LF P930/P4360-6	1
31	311257-853	BRACKET COVER F-5 FNDR SHIFT	1
32	1341	CLAMP, SPRG 1.17"ID	2
33	311331	SCREW, 1/4-15X.44/.53 HILOHWA	4
34	321844	ROD, CONNECTING, SHIFT ZINC	1
35	137185	PIN, COTTER .125 DIA X1.00LG	1
36	57158	BALL JOINT 3/8 THD SHORT STUD	1
37	124925	NUT, 3/8-24 REGHEXJAM	1
38	120382	WASHER, REGSPTLK.393X.68X.10	1
39	120369	NUT, 3/8-24 REGHEX	1
40	323212	BRACKET, SHIFT S/F BLK	1
41	57157	WASHER, .750X.250 SP-TRANSAXLE	1
42	56255	SCREW, 1/4-28X .75 NYLHHC	1
43	327917	SCREW, 5/16-18X1.50HHCFT	4
44	73787	WASHER, FLAT 330X .75X.1793	4

* CONTACT YOUR NEAREST TRANSAXLE DEALER FOR PARTS & SERVICE

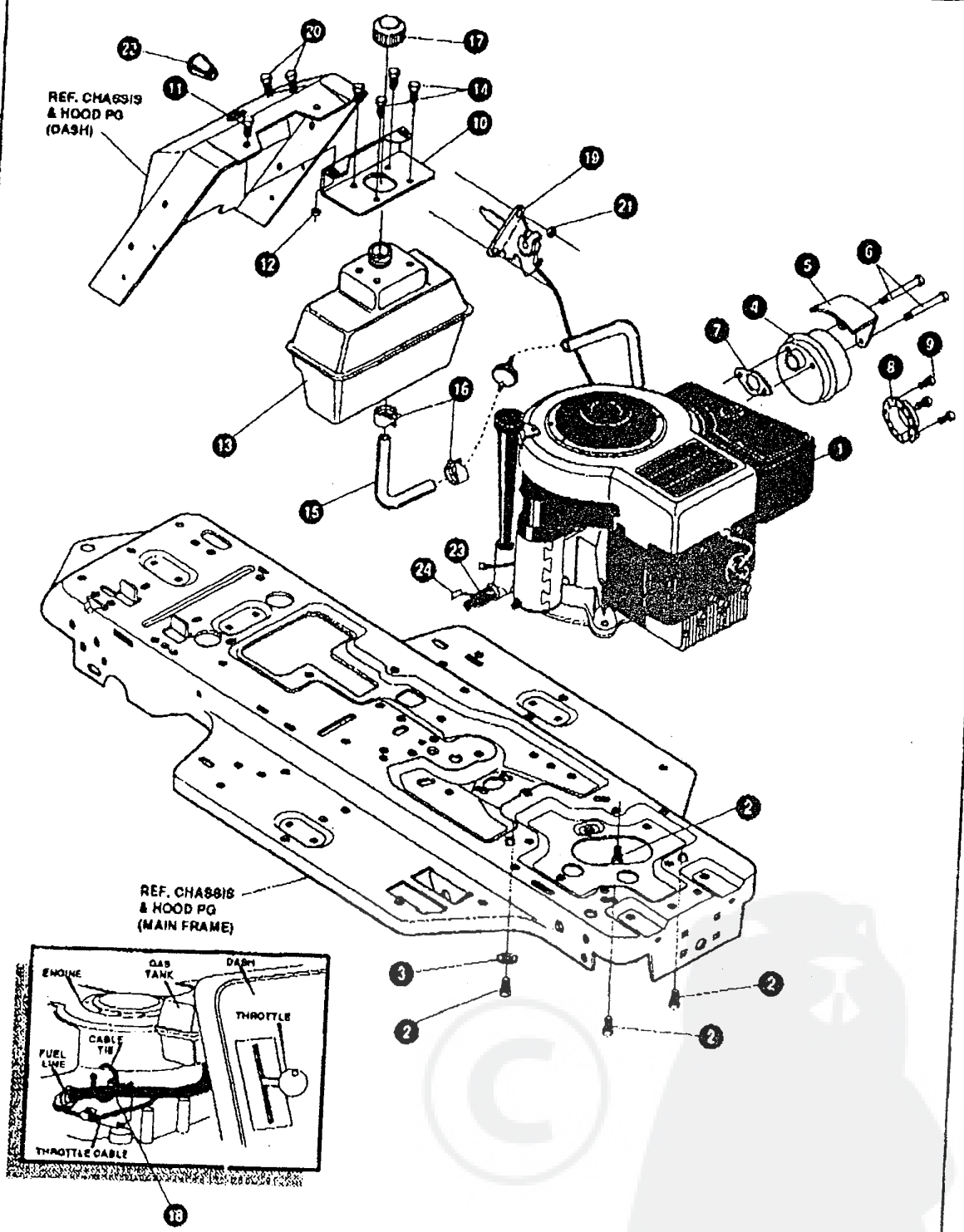


NOTE: ALWAYS USE ORIGINAL EQUIPMENT PARTS. Use of service/replacement parts other than original equipment parts may void your warranty.

ALL UNNUMBERED ITEMS ARE INTERCHANGEABLE WITH OPPOSITE SIDE

333377 A

KEY#	PART#	DESCRIPTION	QTY
50	49896	BELT GUIDE	1
51	271184	NUT, 5/16-18 HEXKEPS	1
52	120989	WASHER, FLAT .344X .89X.065	2
53	1498	NUT, 5/16-18 REGHEXCTRLK	1
54	331836	ASSY, PEDAL, BRAKE, CLUTCH SF	1
55	319676	PIN, CLEVIS .500DX4.87LG	1
56	2968	WASHER, FLAT .504X .75X.059	4
57	331972	SPACER, SLEV .59 X .62X1.240	1
58	56180	PIN, HAIR .091 DIA X1.62LG	1
59	48761	PAD, CLUTCH/BRAKE PEDAL	1
60	321869	IDLER ARM BRKT TRACTION SF	1
61	329989	BOLT, .625X .135 HSH 5/16-18	1
62	45602	WASHER, FLAT .333X .87X.110	1
63	1498	NUT, 5/16-18 REGHEXCTRLK	1
64	327867	SPRING, 3/4 ODX7.75X.091 TENSION	1
65	39659	RETAINER, BELT	1
66	35374	PULLEY, IDLER V4L 3.06X .62	1
67	45892	BOLT, 3/8-16X1.50 CARRSN	1
68	1499	NUT, 3/8-16 REGHXCTRLK	1
69	333175	CLUTCH ROD ASSY, .268 DIA 3.92	1
71	328780	SPRING, 3/8 ODX2.18 X.055 TENSION	1
72	323210	BRACKET, TRCTN S/F BLK	1
73	46924	BOLT, .500X .188 HSH 5/16-18	1
74	1498	NUT, 5/16-18 REGHEXCTRLK	1
75	333263	ROD, BRAKE 940 BLK	1
76	313881	CLUTCH SPRING	1
77	50352	NUT, 1/4-20 WDFLLK TOPLOCK	1
78	328363	TIRE & RIM, 20X8.00-8	2
78-1	24167	VALVE STEM	
78-2	326362	RIM, WHEEL	
78-3	TIRE	REFER TO TIRE TREAD PAGE	
79	52928	KEY, SQUARE .1875SQX2.25LG	2
80	642	WASHER, FLAT .755X1.31X.075	4
81	42815	WASHER, FLAT .755X1.53X.07	2
82	36625	RING, RETEX .57X.05TRU5133-75	2
83	40394	HUB CAP, 1.500ID X 7/8LG	2



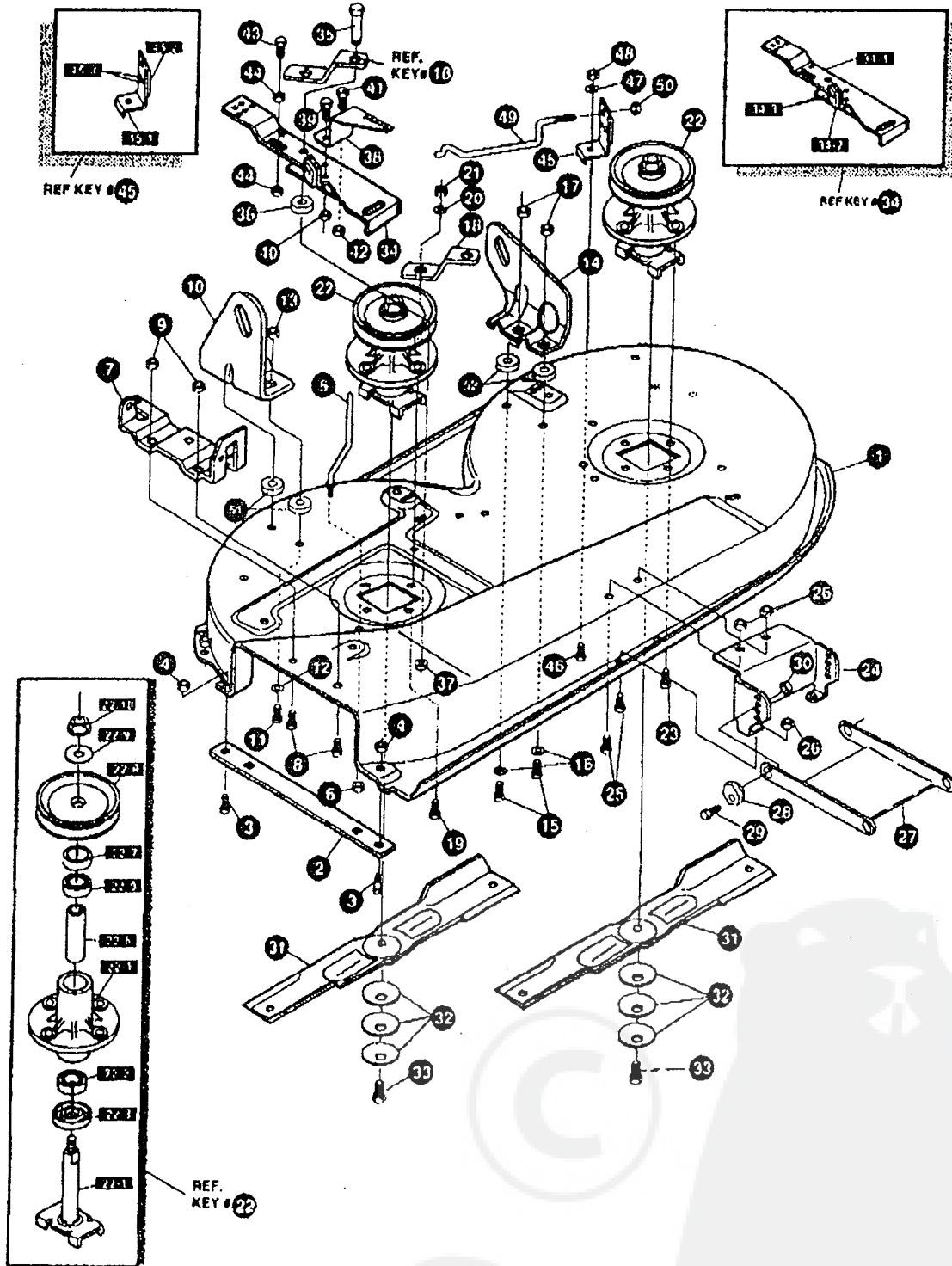
NOTE: ALWAYS USE ORIGINAL EQUIPMENT PARTS. Use of service/replacement parts other than original equipment parts may void your warranty.

ALL UNNUMBERED ITEMS ARE INTERCHANGEABLE WITH OPPOSITE SIDE

333014 A

KEY#	PART#	DESCRIPTION	QTY
1	^	12-12.5HP BS IC DUAL	1
2	50947	SCREW, 3/8-18X1.25 WAHHTAPBLKP	4
3	138489	WASHER, EXLK 384X.69X.04	1
4	57908	MUFFLER-DOM/EXP ROUND	1
5	54787	SHIELD, HEAT FOR ROUND MUFFLER	1
6	54980	SCREW, 5/16-18X3.60 HHC	2
7	45708	GASKET, MUFFLER	1
8	323423	DEFLECTOR, MUFFLER PARTIAL	1
9	35287	SCREW, #8-32X .38 HHWATAP	3
10	302814-853	BRACKET, GAS TANK	1
11	180020	SCREW, 1/4-20X .75 HHC	2
12	60952	NUT, 1/4-20 WDFLLK TOPLOCK	2
13	314989	TANK, FUEL 1 GAL CLEAR	1
14	300303	SCREW, .25X.75X.51HHWAPLASTITE	4
15	41007	TUBING, .25X.50X BULK GAS LINE	15.0'
16	47345	CLAMP, HOSE SCREW TYPE	2
17	45704	CAP, GAS 1-1/2-7 THD BLK	1
18	57444	TIE, CABLE BLACK NYLON 5.62L	1
19	320031	THROTTLE CONTROL	1
20	274707	SCREW, 10-24X .50 WAHHMA	2
21	308459	NUT, #10-24 HXHDNYLK	2
22	50607	KNOB, ROUND THROTTLE BLACK	1
23	325547	OIL DRAIN VALVE ASSEMBLY	1
24	327422	CAP, OIL DRAIN VALVE ASM. YELLOW	1

^ SEE ENGINE MANUAL

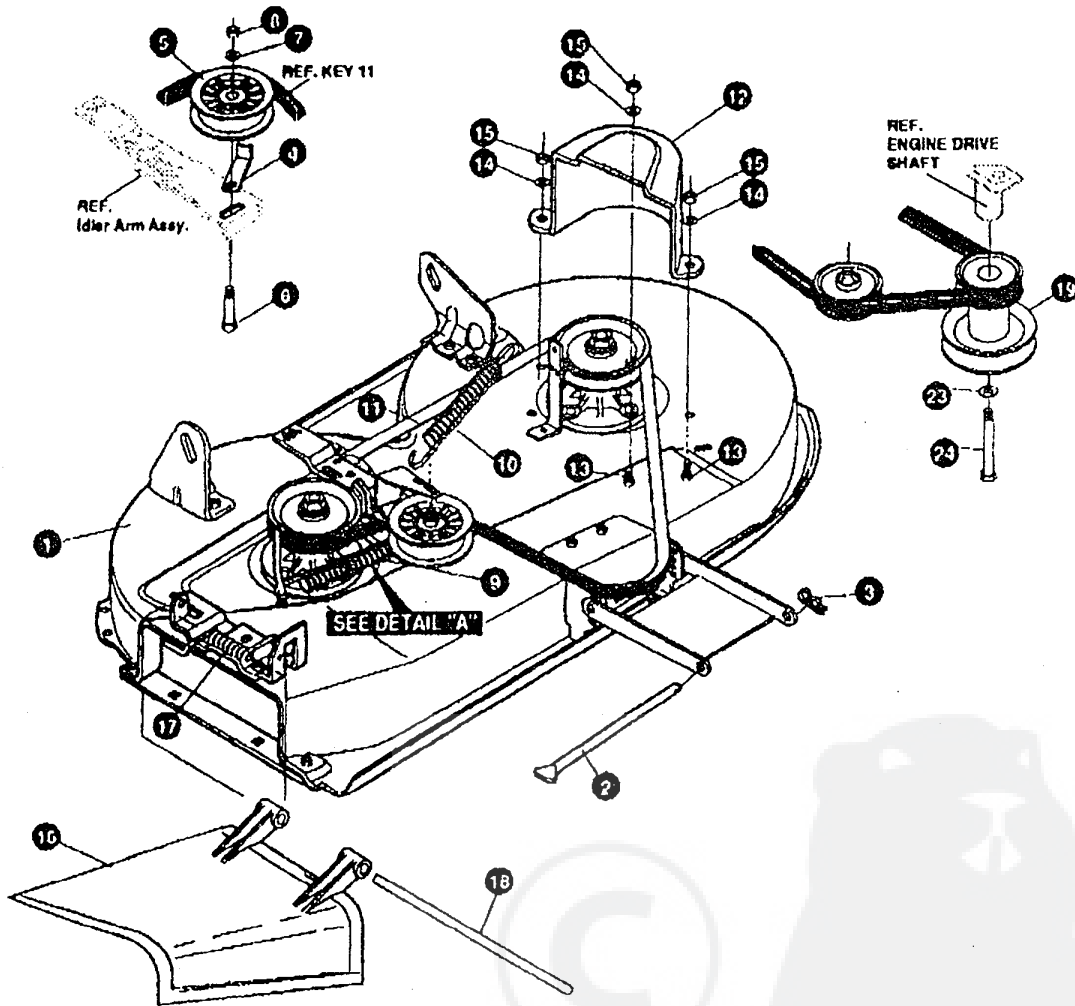
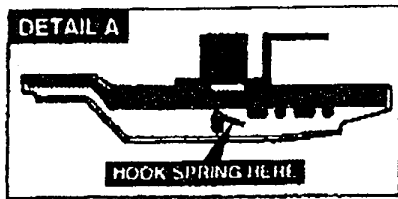


NOTE: ALWAYS USE ORIGINAL EQUIPMENT PARTS. Use of service/replacement parts other than original equipment parts may void your warranty.

ALL UNNUMBERED ITEMS ARE INTERCHANGEABLE WITH OPPOSITE SIDE

326046 F

KEY#	PART#	DESCRIPTION	QTY
1	325106	38" DECK KIT	1
2	326295-853	BAR, SKID	1
3	126216	BOLT, 5/16-18X .75 CARRLN	2
4	271184	NUT, 5/16-18 HEXKEPS	2
5	57318	GUIDE, BELT 5/16-18 THD	1
6	1498	NUT, 5/16-18 REGHEXCTRLK	1
7	313928	BRACKET, CHUTE BLK 853	1
8	180073	SCREW, 5/16-18X .50 HHC	2
9	1498	NUT, 5/16-18 REGHEXCTRLK	2
10	313929	LIFT BRKT, REAR RH BLK 853	1
11	180081	SCREW, 5/16-18X1.25 HHC	2
12	120393	WASHER, FLAT .344X .69X.065	2
13	1498	NUT, 5/16-18 REGHEXCTRLK	2
14	310667	BRACKET, DECK LIFTREAR LHBLK	1
15	180081	SCREW, 5/16-18X1.25 HHC	2
16	120393	WASHER, FLAT .344X .69X.065	2
17	1498	NUT, 5/16-18 REGHEXCTRLK	2
18	315302-853	BRACKET, IDLER SUPPORT	1
19	300345	SCREW, 5/16-18X1.38 WAHHTAP	1
20	120393	WASHER, FLAT .344X .69X.065	1
21	1498	NUT, 5/16-18 REGHEXCTRLK	1
22	56424-853	QUILL ASSY, 36/39/40/43	2
22-1	56425	SHAFT/SADDLE 38"	1
22-2	49562	BEARING, BALL 6203-2AA(SEALS)-C3	1
22-3	50816	DUST SHIELD	1
22-4	55547	QUILL CASTING (1046)	1
22-6	49562	BEARING, BALL 6203-2AA(SEALS)-C3	1
22-6	50818	SPACER, SLEV .689X .88X3.797	1
22-7	51448	SPACER, SLEV .672X .83X .438PM	1
22-8	313898	PULLEY ASSY	1
22-9	56365	WASHER, SPECIAL QUILL	1
22-10	1282	NUT, 7/16-20 WDFLLK	1
23	35498	SCREW, 5/16-18X .75 WAHHTAP	7
24	312526	LIFT SUPPORT FRONT DECK	1
25	180077	SCREW, 5/16-18X .75 HHC	4
26	1498	NUT, 5/16-18 REGHEXCTRLK	4
27	58305-853	BRACKET, LINK DECK FRONT	1
28	58247	NUT, ADJUST	2
29	180079	SCREW, 5/16-18X1.00 HHC	2
30	1498	NUT, 5/16-18 REGHEXCTRLK	2
31	306932	BLADE, 19.59 HI-LIFT BLK 853	2
32	2483	WASHER, 39IDX1.25OX.07 BELLVIL	6
33	39573	SCREW, 3/8-24X1.00 NYLHHC	2
34	300481-853	BRACKET, IDLER ARM/BRAKE	1
34-1	300490-853	IDLER ARM, 36,38,39, 645SD	1
34-2	306973	BRAKE PAD - HARD - 232AF	1
34-3	41601	RIVET, OVSET, 187DIA X .50LG ST	2
35	300180	BOLT, .50 X1.88 HSH 3/8-16	1
36	998416	WASHER, FLAT .391X1.0OX.125	1
37	45171	NUT, 3/8-16 HWDFL WHIZ-LOCK	1
38	326249-853	BRACKET, EXTENSION IDLER	1
39	180077	SCREW, 5/16-18X .75 HHC	1
40	1498	NUT, 5/16-18 REGHEXCTRLK	1
41	180020	SCREW, 1/4-20X .75 HHC	1
42	1502	NUT, 1/4-20 REGHEXCTRLK	1
43	121954	SCREW, 1/4-20X2.00 HHC	1
44	271172	NUT, 1/4-20 REGHEXKEPS	2
45	303247-853	ASSY, BLADE BRAKE 36,39,45	1
45-1	303246	BRAKE ARM	1
45-2	306973	BRAKE PAD - HARD - 232AF	1
45-3	135624	RIVET, TRSET, 185DIA X .41LG ST	2
46	180077	SCREW, 5/16-18X .75 HHC	1
47	120393	WASHER, FLAT .344X .69X.065	1
48	1498	NUT, 5/16-18 REGHEXCTRLK	1
49	300318	ROD, BRAKE RELEASE 14.7 38 DECK	1
50	1502	NUT, 1/4-20 REGHEXCTRLK	1
51	314702	SPACER, SLEV .344X1.0OX .500PM	2
52	314702	SPACER, SLEV .344X1.0OX .500PM	2

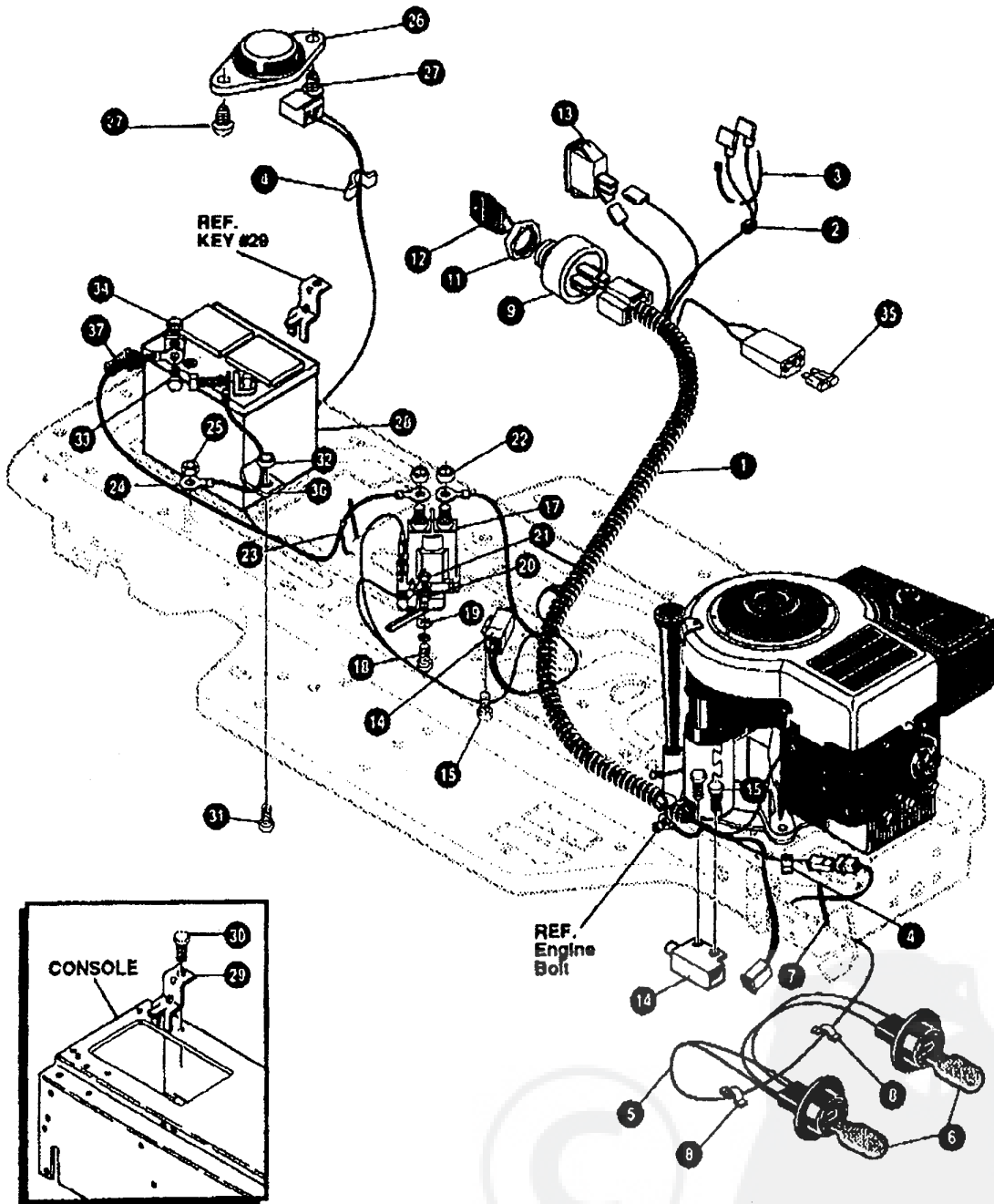


NOTE: ALWAYS USE ORIGINAL EQUIPMENT PARTS. Use of service/replacement parts other than original equipment parts may void your warranty.

ALL UNNUMBERED ITEMS ARE INTERCHANGEABLE WITH OPPOSITE SIDE

326048 D

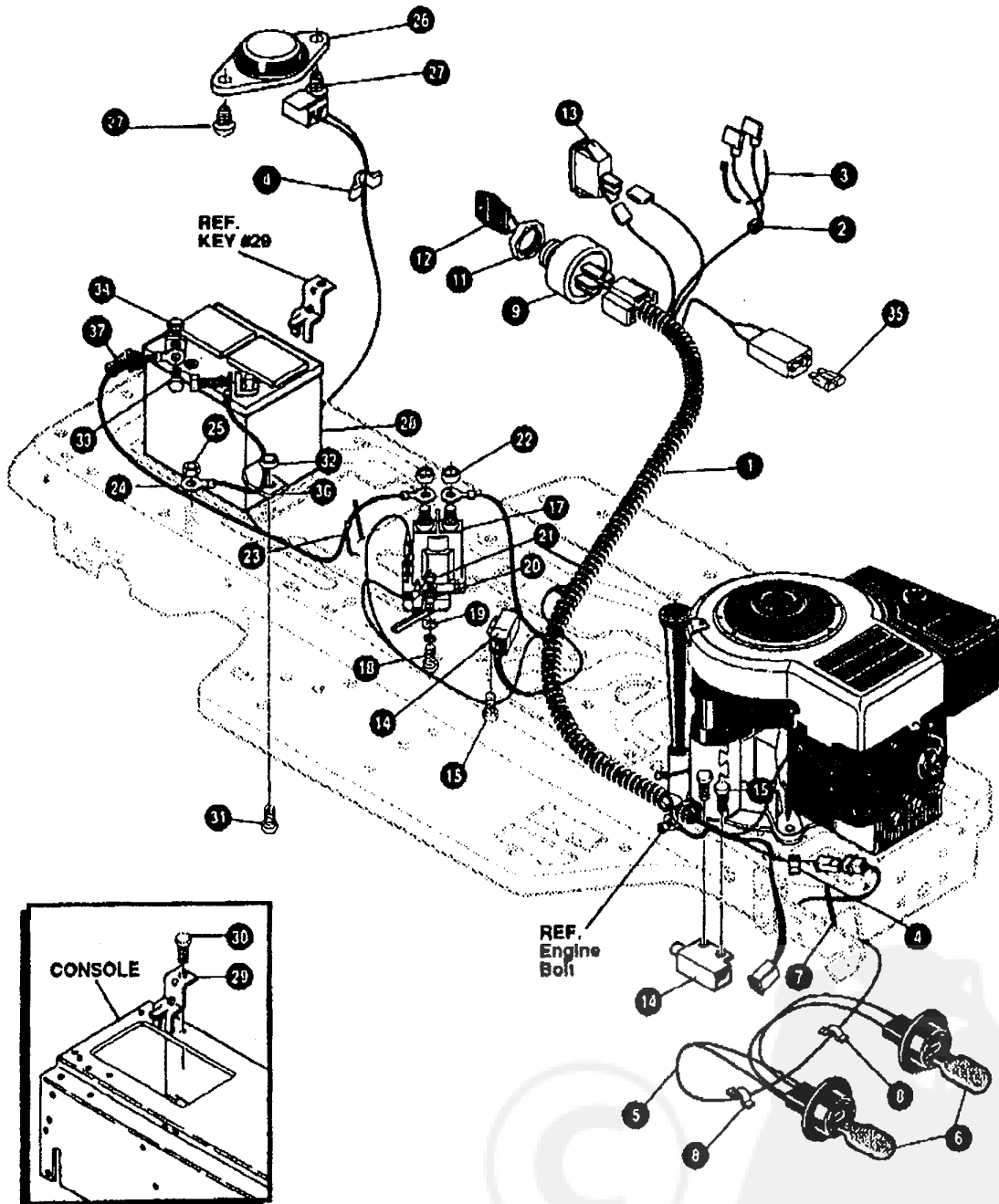
KEY#	PART#	DESCRIPTION	QTY
1	329456	SUB ASSY DECK 38 SD	1
2	58306	ROD, DECK HITCH	1
3	8260	PIN, HAIR .091 DIA X 1.88 LG	1
4	1348	RETAINER, BELT	1
5	310326	PULLEY, IDLER BFF 4.00 WIDE FL	1
6	57325	BOLT, 3/8-16 X 2.00 CARRSN	1
7	120382	WASHER, REGSPTLK 3/8 X .88 X .10	1
8	120377	NUT, 3/8-16 REGHX	1
9	322054	SPRING, .75 X 8.4 X .105 TENSION	1
10	326258	SPRING, .75 X 10.0 X .105 TENSION	1
11	300680	BELT, V 6L 77.75 KEVLAR	1
12	326257	GUARD, BELT LH PLASTIC	1
13	180077	SCREW, 5/16-18 X .75 HHC	3
14	120393	WASHER, FLAT .344 X .68 X .065	3
15	1498	NUT, 6/16-18 REGHEXCTRLK	3
16	57818	CHUTE DEFLECTOR 35°, 39°, 45°	1
17	314976	SPRING TORSION CHUTE DEFLECTOR	1
18	57317	PIVOT ROD, CHUTE	1
19	328034	PULLEY, ENG V3L 4.00 OFFSET	1
23	120383	WASHER, REGSPTLK 459 X .78 X .12	1
24	433148	SCREW, 7/16-20 X 4.25 HHC BLK PH	1
25	180128	SCREW, 3/8-16 X 1.75 HHC	1
26	1499	NUT, 3/8-16 REGHXCTRLK	2



NOTE: ALWAYS USE ORIGINAL EQUIPMENT PARTS. Use of service/replacement parts other than original equipment parts may void your warranty.

ALL UNNUMBERED ITEMS ARE INTERCHANGEABLE WITH OPPOSITE SIDE

332009 A



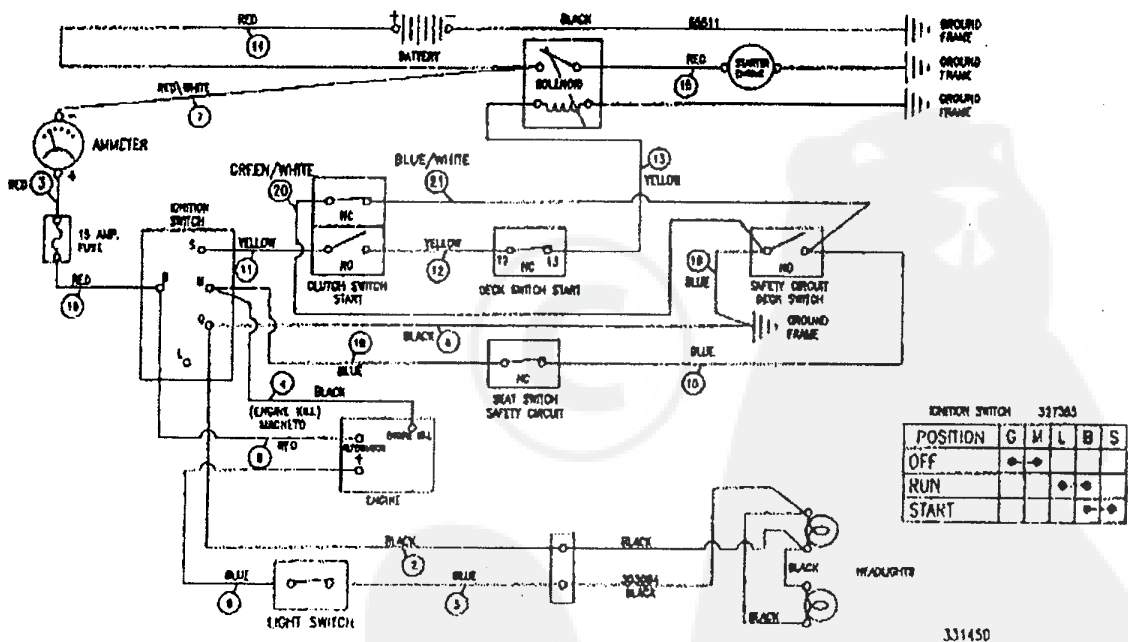
NOTE: ALWAYS USE ORIGINAL EQUIPMENT PARTS. Use of service/replacement parts other than original equipment parts may void your warranty.

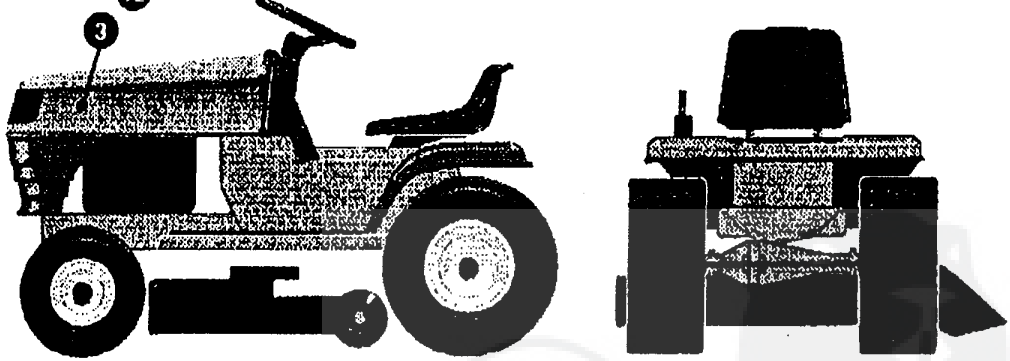
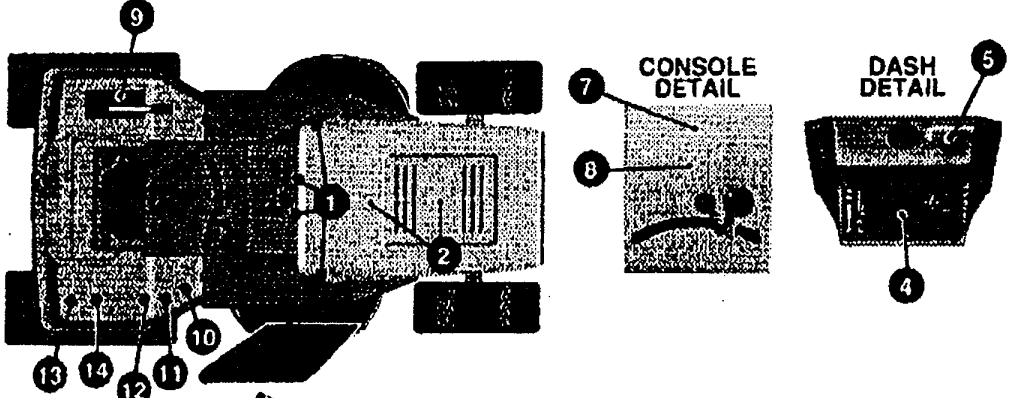
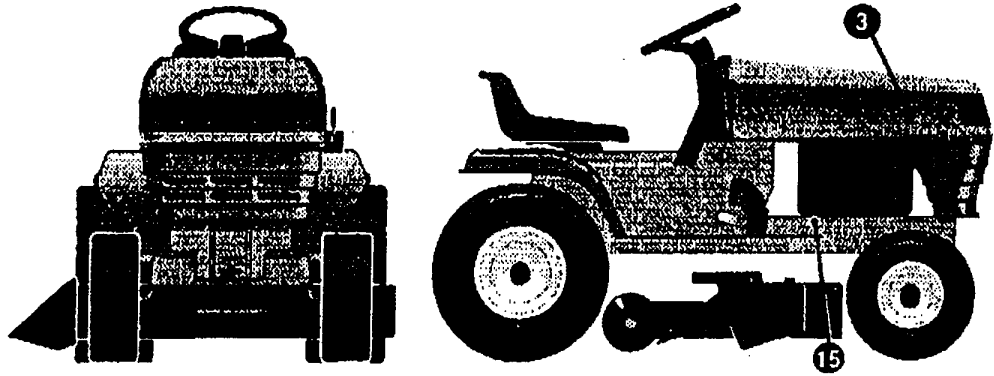
ALL UNNUMBERED ITEMS ARE INTERCHANGEABLE WITH OPPOSITE SIDE

332009 A

KEY#	PART#	DESCRIPTION	QTY
1	331450	WIRE HARNESS SF, W/AMP	1
2	322298	SPLICER	1
3	57444	TIE, CABLE BLACK NYLON 5.82L	1
4	41482	PRESS CLIP, 1.380LG .25SID	2
5	303064	ASSY, LIGHT WIRE-1/4 TURN	1
6	52572	BULB, HEADLAMP	2
7	57444	TIE, CABLE BLACK NYLON 5.62L	1
8	41482	PRESS CLIP, 1.380LG .25SID	2
9	327355	SWITCH-IGN.(AFTER FIRE) 3 POSN	1
11	327352	NUT, 5/8-8ACME DELTA FOR BOOT	1
12	327350	KEY,IGNITION DELTA	1
13	300334	LIGHT SWITCH ON/OFF PANEL MNT	1
14	57476	SWITCH,SCREW MNT DP NC NO BLK	2
15	300302	SCREW, #10 X .50 HHTAPPST BLK	4
17	53718	SOLENOID	1
18	187745	SCREW, 1/4-20X .75 HXSEMMA	2
19	1084	WASHER, FLAT .281X1.00X.063PL	1
20	1502	NUT, 1/4-20 REGHEXCTRLK	2
21	271172	NUT, 1/4-20 REGHEXKEPS	1
22	271187	NUT, 5/16-24 HKEPS	2
23	57444	TIE, CABLE BLACK NYLON 5.62L	1
24	55511	WIRE, GROUND, 12.5"	1
25	271184	NUT, 5/16-18 HEXKEPS	1
26	57547	SWITCH, SEAT	1
27	160505	SCREW, 1/4-20X .38PHPNHMA	2
28	302257	BATTERY, 12V	1
29	329175	BATTERY BRACKET	1
30	995346	SCREW, 1/4-20X .50 WAHHTAP	1
31	187745	SCREW, 1/4-20X .75 HXSEMMA	1
32	1502	NUT, 1/4-20 REGHEXCTRLK	1
33	180020	SCREW, 1/4-20X .75 HHC	2
34	271172	NUT, 1/4-20 REGHEXKEPS	2
35	302031	FUSE SPADE TYPE 32V 15A	1
36	8149	BRACKET, CABLE RETAIN	1
37	308201	INSULATOR, BATTERY BOOT EURO	1

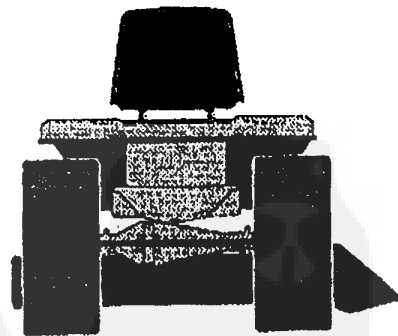
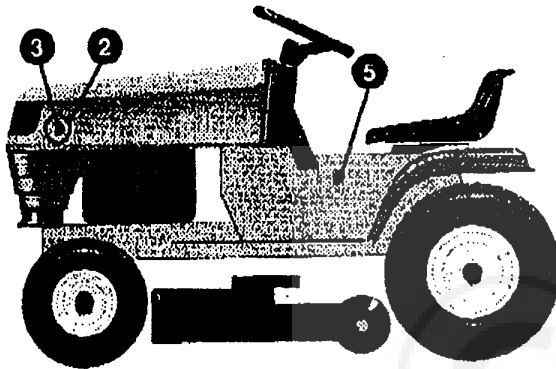
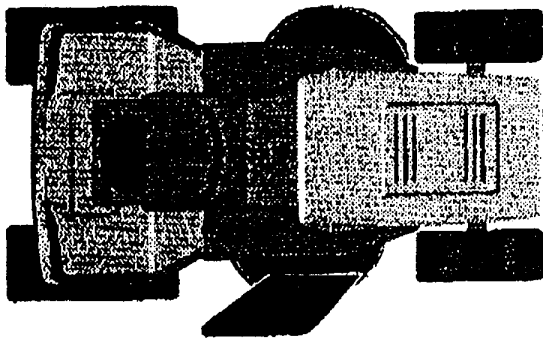
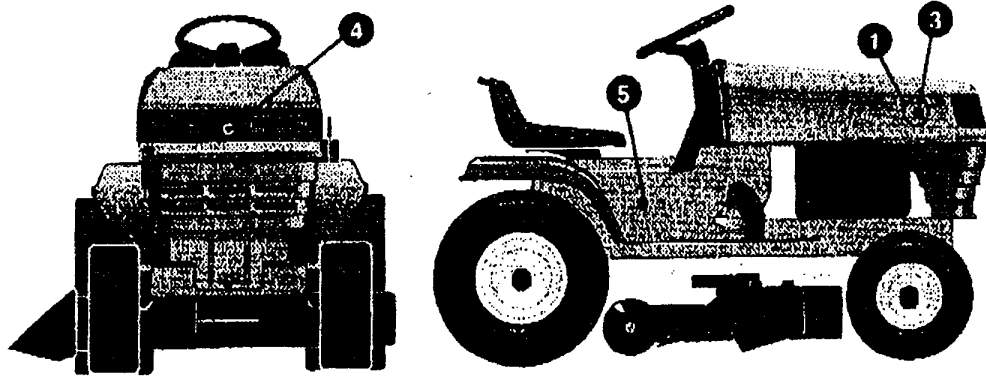
WIRING SCHEMATIC





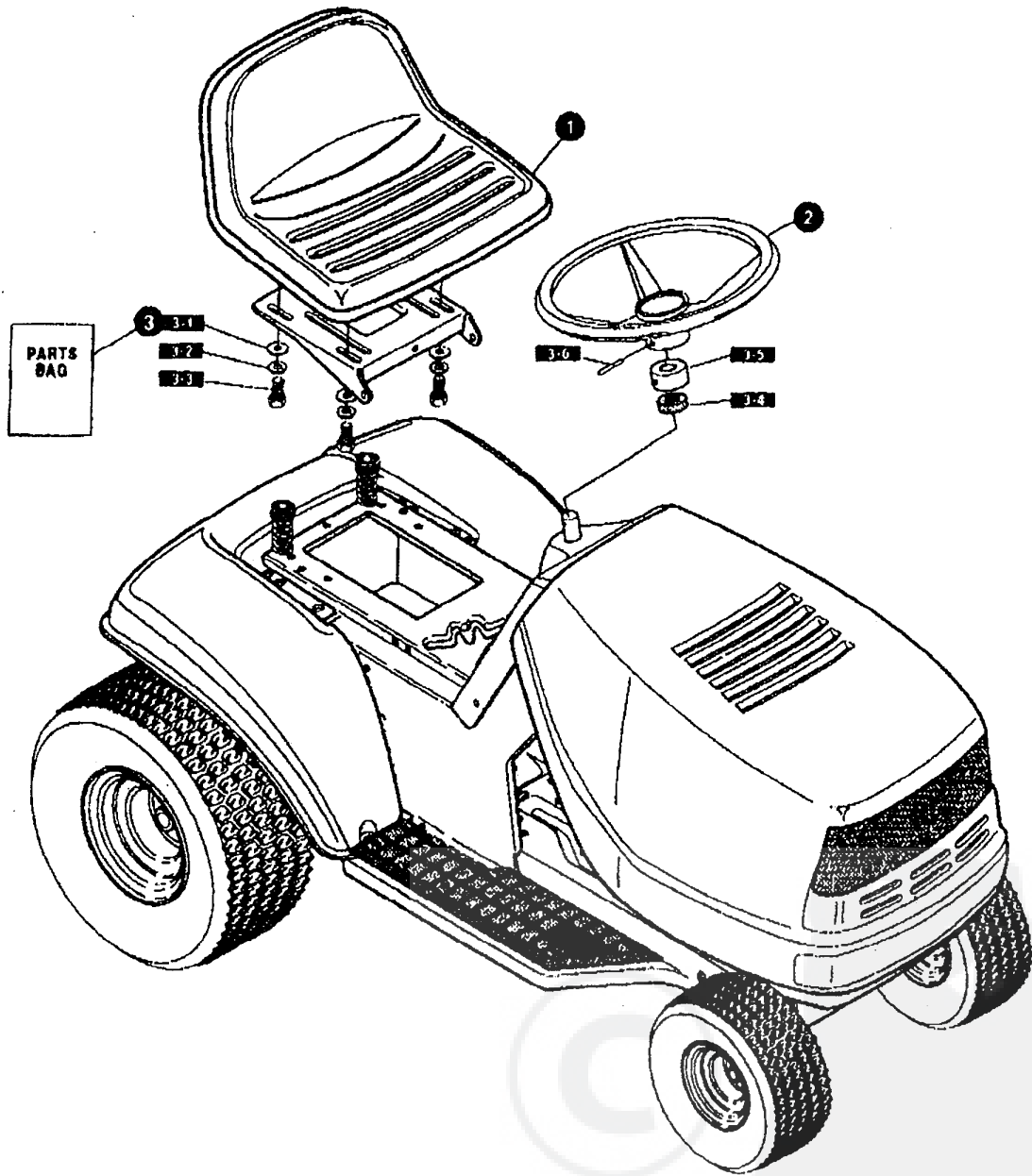
KEY#	PART#	DESCRIPTION	QTY
1	318197	PAD,ADHESIVE 1.00X1.50X.12	4
2	305802	FOAM HOOD 4X15	2
3	305603	PAD. 18 X 6 FOAM HOOD	2
4	320717	DECAL, DASH PLAIN EXPORT	1
5	327810	DECAL, PTO ENGAGEMENT, ISO EXP	1
7	89524	DECAL,INSTRUCT CONSOLE TOP GER	1
8	307383	DECAL,INSTR. CONSOLE TOP ENGL	1
9	402214	DECAL, HEIGHT ADJUST	1
10	305770	DECAL, CAUTION TRIANGLE EUROPE	1
11	68902	DECAL, WARNING, FRENCH/GERMAN	1
12	310553	DECAL, DANGER ENGLISH	1
13	311394	DECAL, SHIFT REV/NEUTRAL	1
14	331013	DECAL, SHIFTER POSITION	1
15	68903	DECAL, BRAKE/CLUTCH ISO	1

333400 A



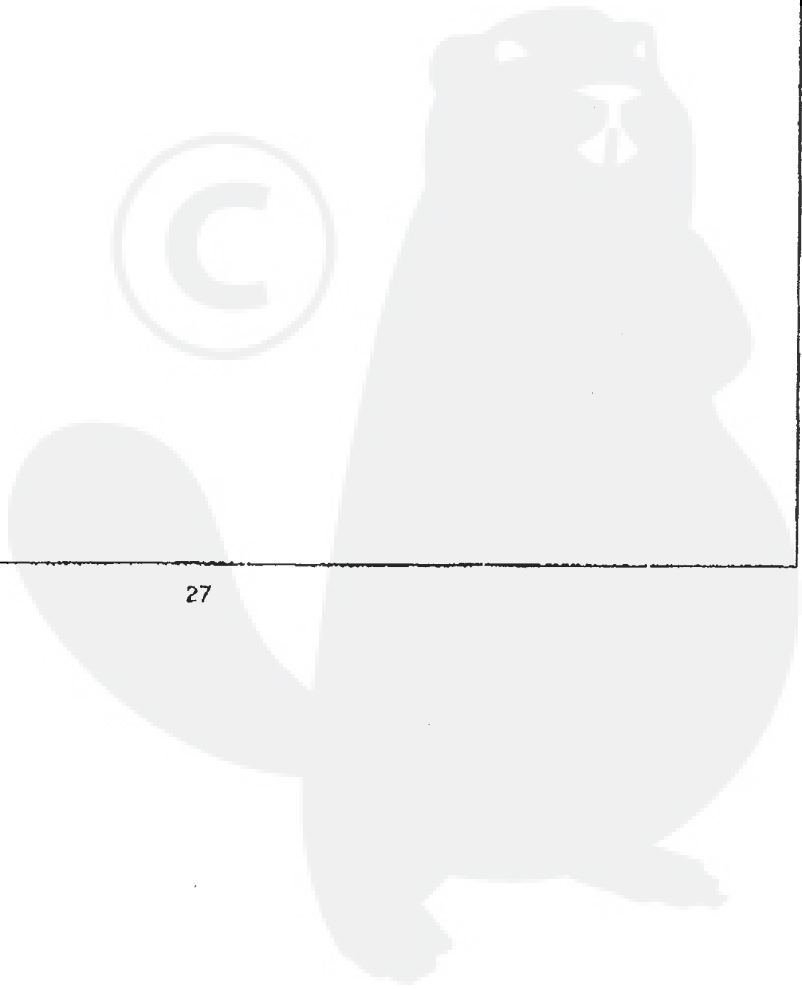
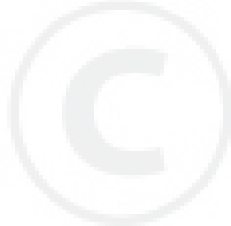
KEY#	PART#	DESCRIPTION	QTY
1	402488	DECAL, CADY HOODSTRIPE RH.....	1
2	402489	DECAL, CADY HOODSTRIPE LH.....	1
3	402138	NAMEPLATE UNITECH SMALL SIL.....	2
4	307732	DECAL LENS CENTER SMOKED.....	1
5	316297	NAMEPLATE 12.5/39 CHROME.....	2

333402 A

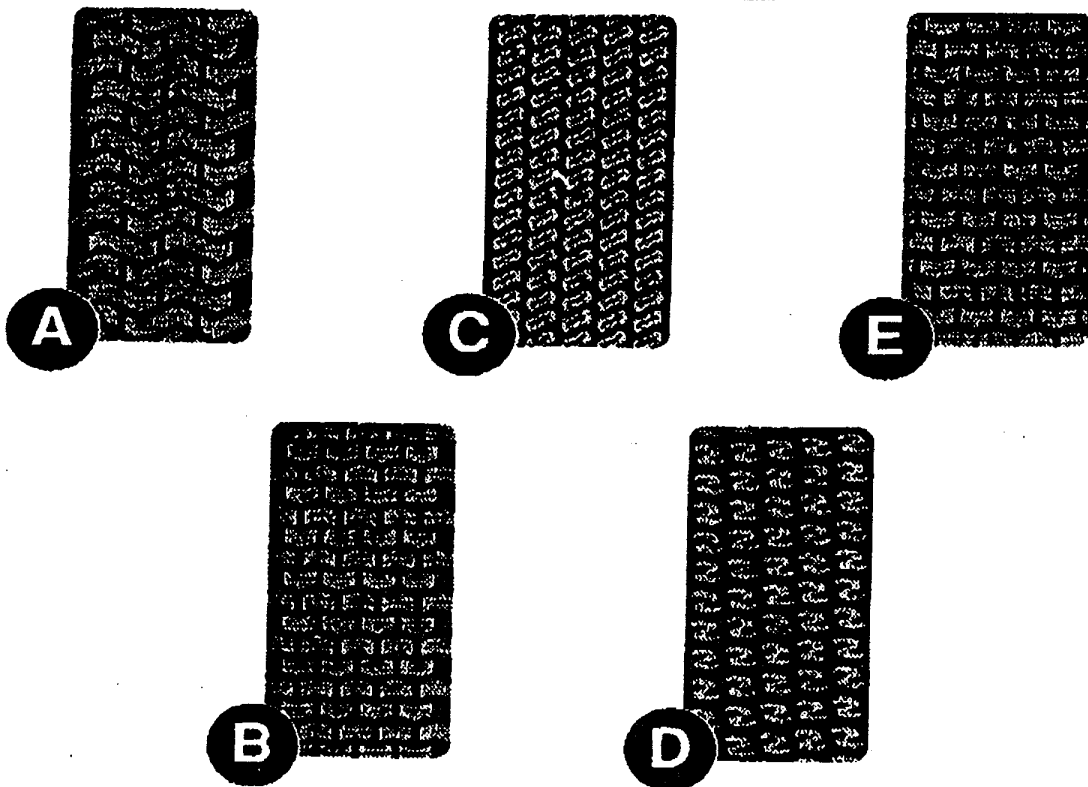


327405 D

KEY#	PART#	DESCRIPTION	QTY
1	904314	SEAT,MICHIGAN GEN, W/SW HOLE	1
2	330510	STEERING WHEEL	1
3	331424	PARTS BAG,ASSY SEAT/STEER	1
3-1	120393	WASHER, FLAT .344X.69X.065	4
3-2	120638	WASHER, HVSP TLK .328X.60X.08	4
3-3	180077	SCREW, 5/16-18X .75 HHC	4
3-4	331322	COVER, STEERING SHAFT	1
3-5	301413	SPACER, STEERING SHAFT	1
3-6	456376	PIN, SPRING.260DIA X2.00LG HVPL	1



TREAD PATTERNS

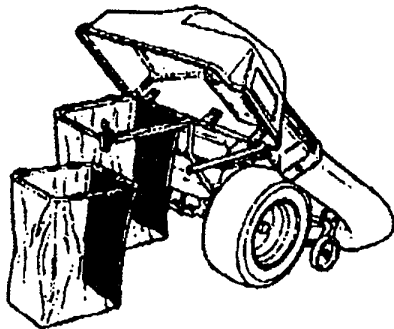


TIRE SIZE	"A"	"B"	"C"	"D"	"E"
11 X 4.00 - 5	42295	319679			
13 X 5.00 - 6	41060	319680			
15 X 6.00 - 6	39830	316702	301140	313952	
16 X 4.80 - 8		305035			
16 X 6.50 - 8	41081	319682		314539	
18 X 6.50 - 8		42091			
18 X 8.50 - 8	319683	317400			
18 X 9.50 - 8	41106	316701		313950	
20 X 8.00 - 8	319685	319684	57164	314584	331606
20 X 10.00 - 8	58276	319686		313654	
20 X 10.00 - 10	55893	319687			
23 X 9.50 - 12	53655	319690	319689	314370	

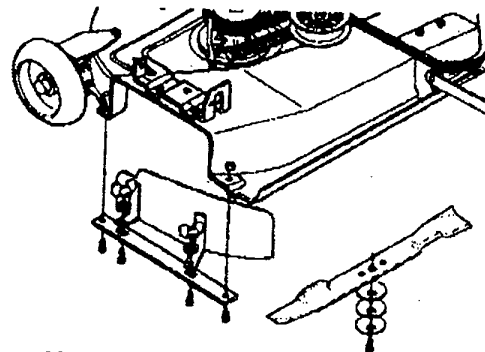
316711 D

Contact the dealer where your tractor was purchased for the available accessories. If you are unable to contact the dealer, write to the address on the front cover of this manual.

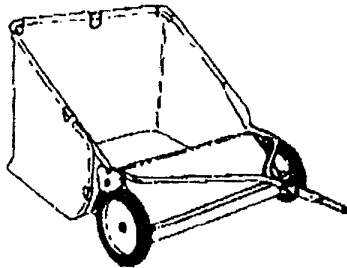
Standard Lawn Tractor



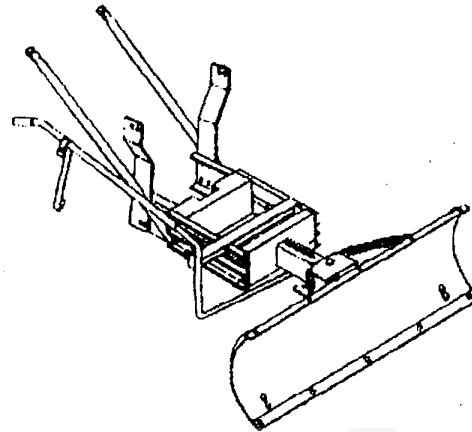
Model # 5708-13
Grass Collector for 39" decks
 For heavy duty grass collection
 order Model # 5709-10 Air Assist



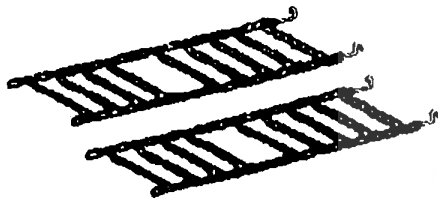
Model #5715-00
Mulching Kit (39" Deck)



Model # 5648-16
Tow behind Lawn Sweeper for
Grass and leaves



Model #5661-09
42" Snowblade - Fits 36", 38", 39", & 45"



Model # 5579-00
Tire Chains - 18" x 8.50" tires

OTHER ACCESSORIES

Model	Description
5672-01	Wheel Weights - Front - 1 pr. w/mtg. hdw. - Fits 15" tires
5673-02	Wheel Weights - Rear - 1 pr. w/mtg. hdw. - Fits 18" & 20" tires
306932	39" High lift blade for bagging or side discharge (requires 2)
326160	39" Mulching blade (requires 2)