

NOTE: ALWAYS USE ORIG. EQUIP. PARTS. Use of service/replacement parts other than original equipment parts may void the warranty.

ALL UNNUMBERED ITEMS ARE INTERCHANGEABLE OPPOSITE SIDE

329120E

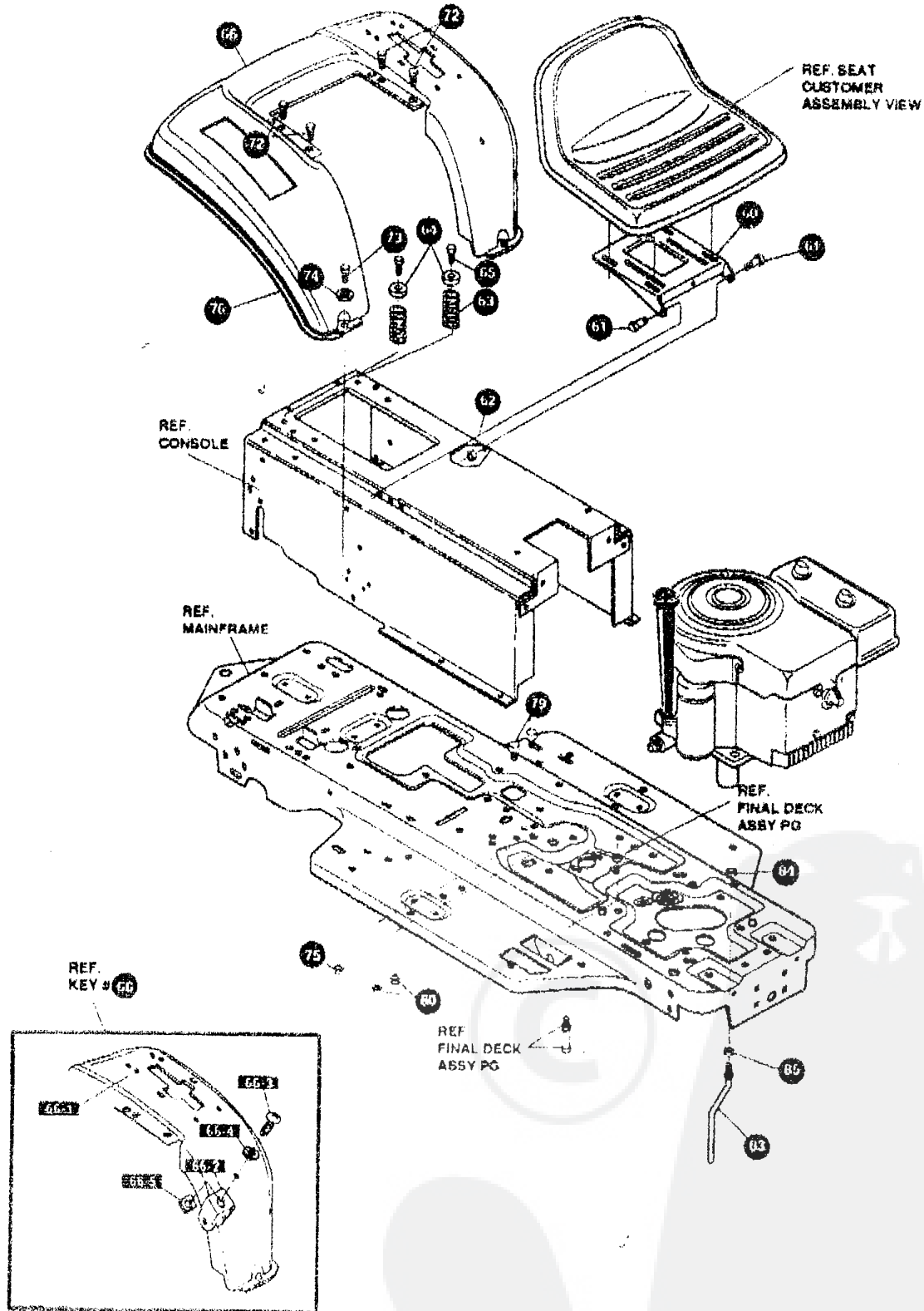
E3554-220

CHASSIS & HOOD ASSEMBLY

KEY #	PART #	DESCRIPTION	QTY.
1	332319-879	MAIN FRAME	1
2	310003	FOOT PAD, LH	1
3	310004	FOOT PAD, RH	1
4	309235	FASTENER RATCHET	12
5	326873-853	BRACKET GRILLE LH	1
6	326874-853	BRACKET GRILLE RH	1
7	56362-553	BRKT SUPPORT FRONT AXLE	1
8	328154	SCREW, 5/16-18X1.0WDFLLK	6
9	55273	NUT, 5/16-18 HXWDFLLK	6
10	327687-853	SHIELD HEAT SF B&S	1
11	321136-879	BRACKET, HANGER 30"	1
12	50720	BOLT, 625X2.875 SPSM 1/2-20	1
13	274654	NUT, 1/2-20 REGHXCTRLK	1
14	180138	SCREW, 3/8-16X3.00 HHC	4
15	2483	WASHER, 3/8IDX1.25DX.07 BELL VIL	4
16	1499	NUT, 3/8-16 REGHXCTRLK	4
17	324998-830	CONSOLE, MOLDED DASH	1
18	56236-830	CONSOLE, REAR COVER	1
19	995346	SCREW, 1/4-20X .50 WAHHTAP	15
20	325766	DASH	1
21	305850	SCREW, 1/4-20X.50PHPNTAP	4
22	327583-853	SUPPORT, SF MLD DSH	2
23	327584-853	SUPPORT SF MLD DSH GAS TANK	2
24	995346	SCREW, 1/4-20X .50 WAHHTAP	6
25	327444	BRNG, FL 75SID, 228 MTNG HOLES	1
26	180020	SCREW, 1/4-20X .75 HHC	4
27	46931	NUT, 1/4-20 WDFL MAC-LOCK	4
28	327390	BRNG, FL 560ID, 228 MTG HOLES	1
29	327078-853	STRAP, DASH SUPPORT	1
30	895346	SCREW, 1/4-20X .50 WAHHTAP	2
31	155941	SCREW, 10-24X 63 PHFLTMA	2
32	308459	NUT, #10-24 HXHONYLK	2
33	328924-853	CONSOLE SUPPORT BRKT	2
34	995346	SCREW, 1/4-20X .50 WAHHTAP	2
35	328141	BUMPER, HOOD/DASH TOP & CORNER	2
36	328142	BUMPER, HOOD/DASH SIDE STRIP	2
37	329145	HOOD	1
38	329178	GRILLE	1
39	329144	INSERT GRILLE	1
40	329238	RIVET, POP 3/16DIA X .75 LG FLG	2
41	306657	CLIP, TINNEMAN VER II HOOD	7
42	323044	PIN, CLEVIS 500 X 49/61 LGTH	2
43	326522	BRNG HOOD 505IDX 825ODX1 12FL	2
44	8260	PIN, HAIR 091 DIA X 1.66LG	2
45	315999	LANYARD HOOD 15 00 LG	1
46	49050	SCREW, 1/4-10X .75PHPNTAP	1
47	304784	SPRING, HOOD LATCH	1
48	305395	BELT GUARD SF RUBBER 7 X 25.46	2
49	57034	SCREW, 10-24X 63 TRHMA	12
50	1501	WASHER FLAT, 203X 56X 040	12
51	308459	NUT, #10-24 HXHONYLK	12
52	325194	LENS	1
53	301452	FOIL, HEAT REFLECTOR	1
56	333225	RIVET, POP 3/16DIA X 1.0LG FLG	2
57	1501	FLATWASHER, 203X 56X 040	2
	333383	ENGLISH OPERATOR MANUAL	1
	333384	FRENCH OPERATOR MANUAL	1
	333385	GERMAN OPERATOR MANUAL	1
	333316	ENGLISH PARTS MANUAL	1
	323000	ENGLISH GRASS CATCHER MANUAL	1
	323207	FRENCH GRASS CATCHER MANUAL	1
	323208	GERMAN GRASS CATCHER MANUAL	1

13854-220

REPAIR PARTS



NOTE: ALWAYS USE ORIGINAL EQUIPMENT PARTS Use of service/replacement parts other than original equipment parts may void your warranty.

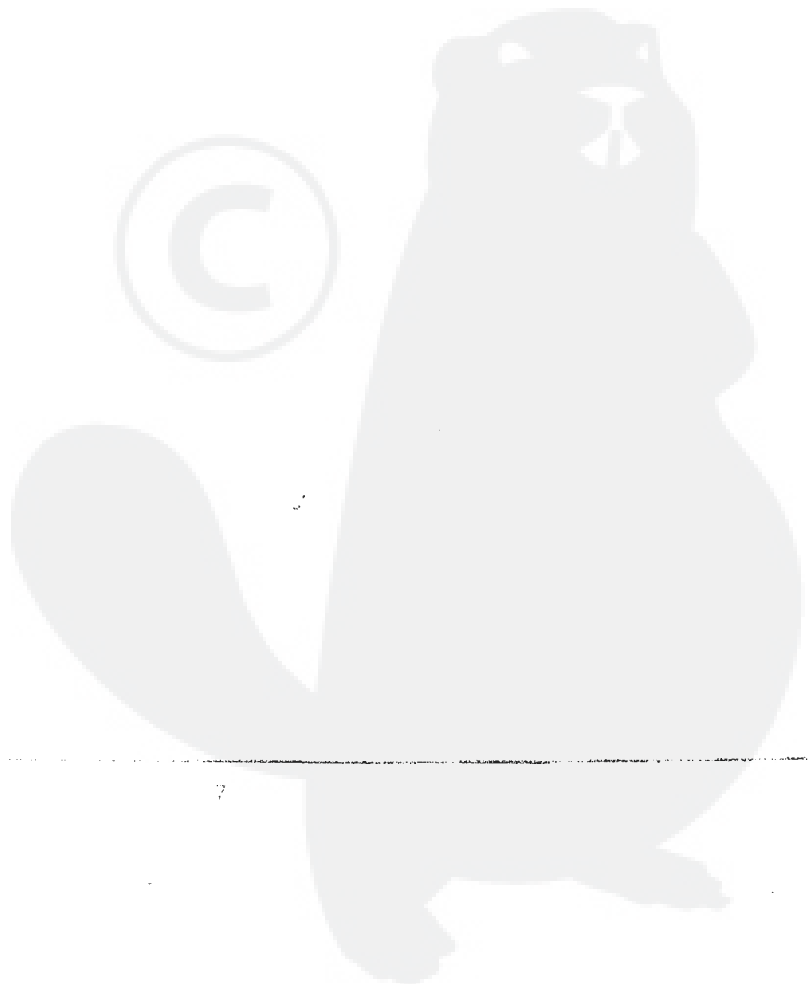
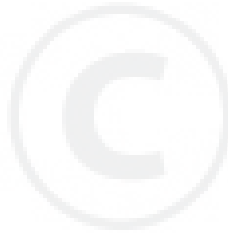
ALL UNNUMBERED ITEMS ARE INTERCHANGEABLE WITH OPPOSITE SIDE

029120E

3554-220**CHASSIS & HOOD ASSEMBLY**

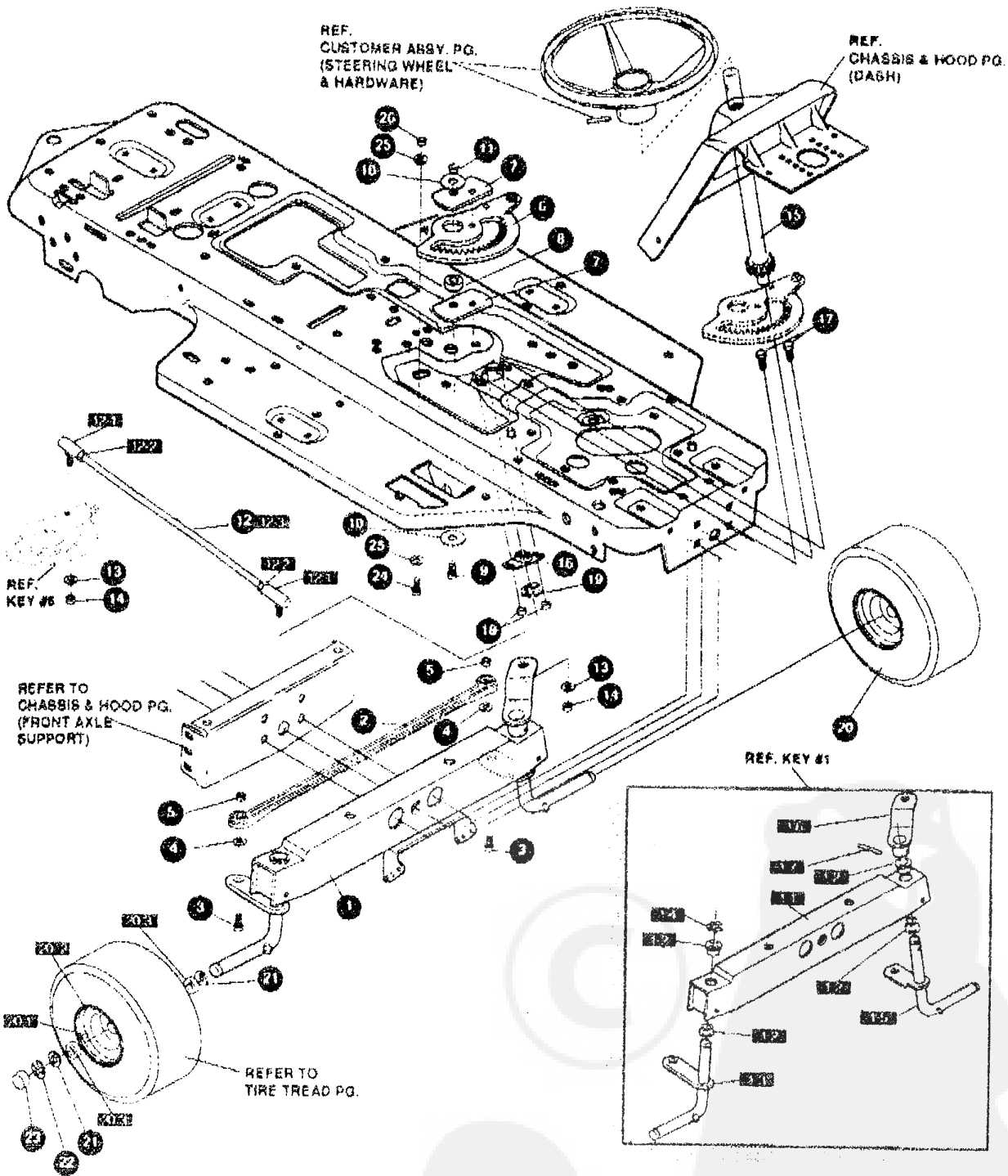
KEY #	PART #	DESCRIPTION	QTY.
60	58367-879	SEAT PLATE	1
61	20507	BOLT, 437X 158 HSH 5/16-18	2
62	1496	NUT, 5/16-18 REGHEXCTRLK	2
63	330463	SPRING, SEAT 1 500DX2.25LG	2
64	120392	FLATWASHER, 201X 63X 065	2
65	995346	SCREW 1/4-20X 50 WAHTAP	2
66	*	ASSEMBLY, FENDER	1
66-1	332423-879	FENDER	1
66-2	9239	CLEVIS	1
66-3	439455	SCREW, 5/16-18X 56PHPNMA BKPH	1
66-4	301551	WASHER, 344IDX1.50DX.09 CU ZN	1
66-5	120373	NUT, 5/16-18 SO	1
72	995346	SCREW, 1/4-20X 50 WAHTAP	4
73	180081	SCREW, 5/16-18X1.25 HHC	2
74	448363	WASHER, FLAT .375X .86X.082	2
75	55273	NUT, 5/16-18 HXWDFLLK	2
76	55023	TRIM, STRIP, BLACK—SMALL W/ ADH	75IN.
79	53446	PIN, 5/16-18 HOOD LATCH	2
80	271184	NUT, 5/16-18 HEXKEPS	2
83	50653	GUIDE, BELT	1
84	41529	NUT 3/8-16 HXCTRLKJAM	1
85	271190	NUT 3/8-16 HEXKEPS	1

* ORDER INDIVIDUAL PARTS



E3554-220

REPAIR PARTS



NOTE: ALWAYS USE ORIGINAL EQUIPMENT PARTS. Use of service/replacement parts other than original equipment parts may void your warranty.

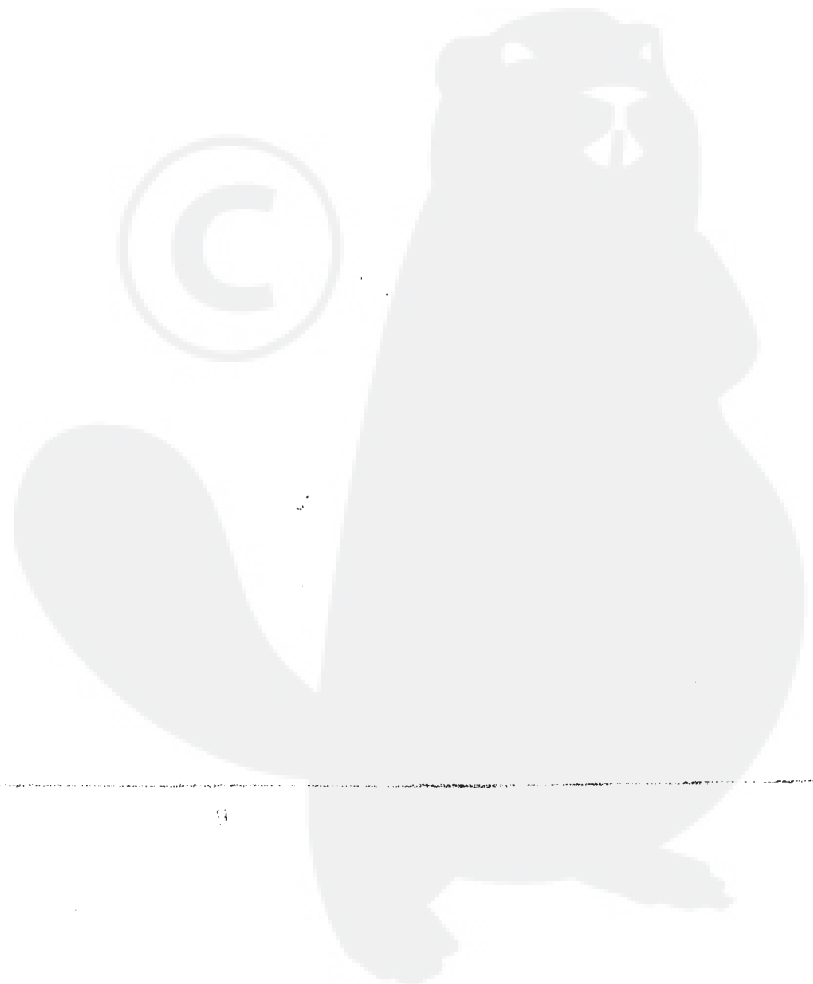
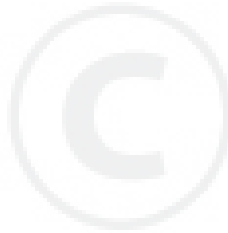
ALL UNNUMBERED ITEMS ARE INTERCHANGEABLE WITH OPPOSITE SIDE

329283D

E3554-220**STEERING ASSEMBLY**

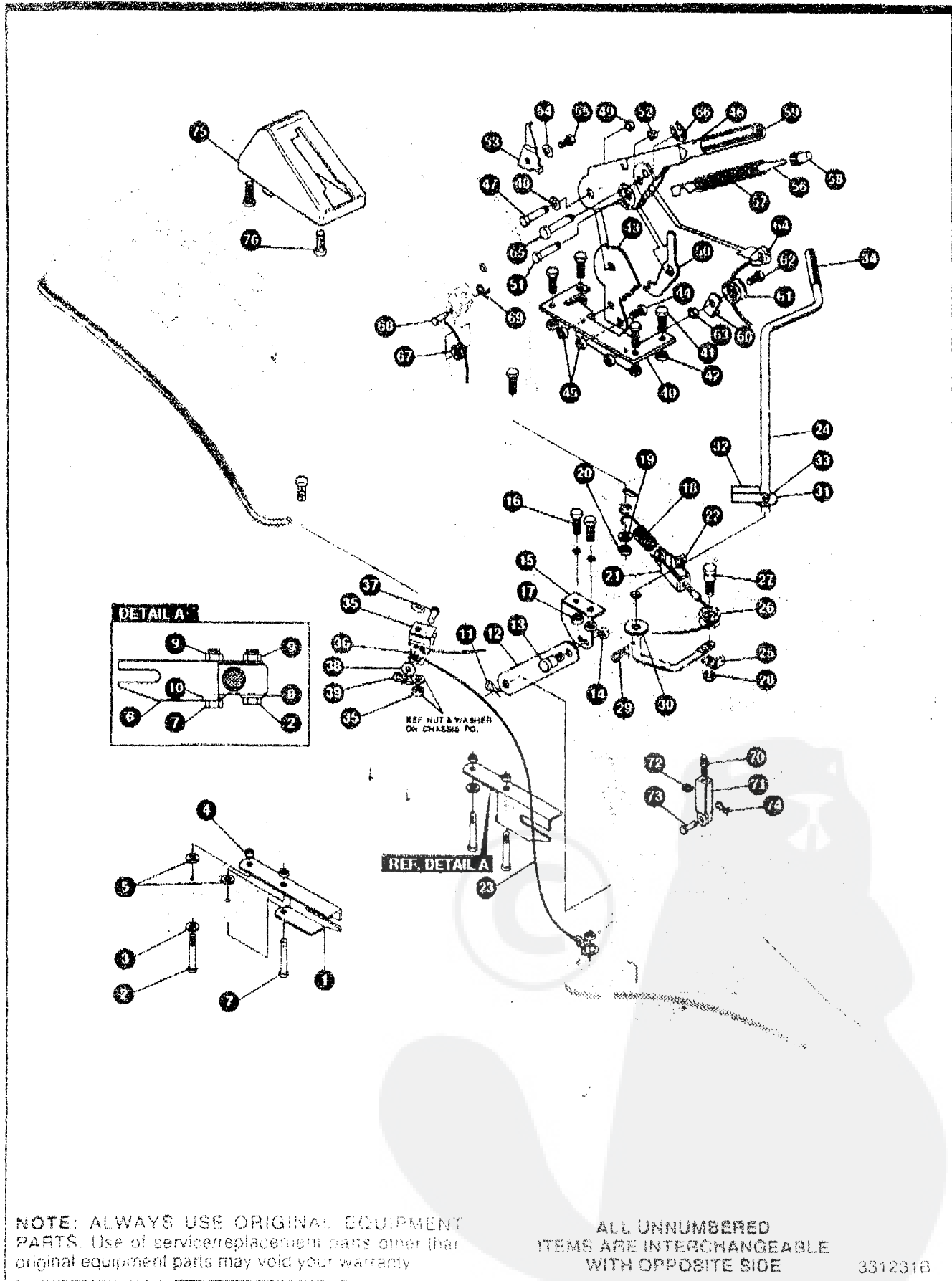
KEY #	PART #	DESCRIPTION	QTY.
1		AXLE FRONT ASSY, SF LONG	1
1-1	312280-879	FRONT AXLE	1
1-2	50546	BEARING, FL 7591DX1 002ODX 75	4
1-3	36625	RING, RETEX 57X 05TRU5133-75	1
1-5	310367	SPINDLE ASSY LH LONG	1
1-6	327619	ARM ASSY FRONT STEERING	1
1-7	454565	PIN, SPRING 250DIA X 1 25LG HVPL	1
2	302688	TIE ROD, STAMPED 19.31LG W-SEC	1
3	180124	SCREW 3/8-16X1.25 HHC	2
4	120382	WASHER, REGSPTLK 393X 68X.10	2
5	1499	NUT, 3/8-16 REGHXCTRLK	2
6	324752	GEAR, SECTOR SF4WS HT	1
7	333289	PLATE SECTOR	2
8	330021	BUSHING, SECTOR GEAR	1
9	181643	SCREW 3/8-24X1.50 HHC	1
10	645	WASHER, FLAT 390X1 25X 119	2
11	412349	NUT, 3/8-24 HXCTRLK	1
12	328808	DRAG LINK ASSY 17.69LG	1
12-1	57158	BALL JOINT 3/8 THD SHORT STUD	2
12-2	124925	NUT, 3/8-24 REGHEXJAM	2
12-3	56190	DRAG LINK	1
13	120382	WASHER, REGSPTLK 393X 68X.10	2
14	120369	NUT 3/8-24 REGHEX	2
15	327395	SHAFT, PIN STR	1
16	325692	BRNG FL 501DX1 370ODX	1
17	326505	SCR 1/4-20X 75 (TO 30-35 FT#)	2
18	46931	NUT, 1/4-20 WDFL MAC-LOCK	2
19	20864	RING, RET E 39X 04TRU5133-50	1
20	41059	TIRE & RIM PU 13X5 0X6 TUR	2
	TIRE	SEE TIRE TREAD PAGE	
20-1	24167	VALVE STEM	2
20-2	39937	HUB	2
20-3	314416	BEARING	4
21	642	WASHER, FLAT 755X1 31X 075	4
22	36625	RING, RETEX 57X 05TRU5133-75	2
23	40394	HUB CAP, 1 500ID X 7/8LG	2
24	180124	SCREW 3/8-16X1.25 HHC	1
25	120394	WASHER, FLAT 406X 81X 066	2
26	45171	NUT 3/8-16 HWDFL WHIZ-LOCK ZN	1

* ORDER INDIVIDUAL PARTS



3554-220

REPAIR PARTS



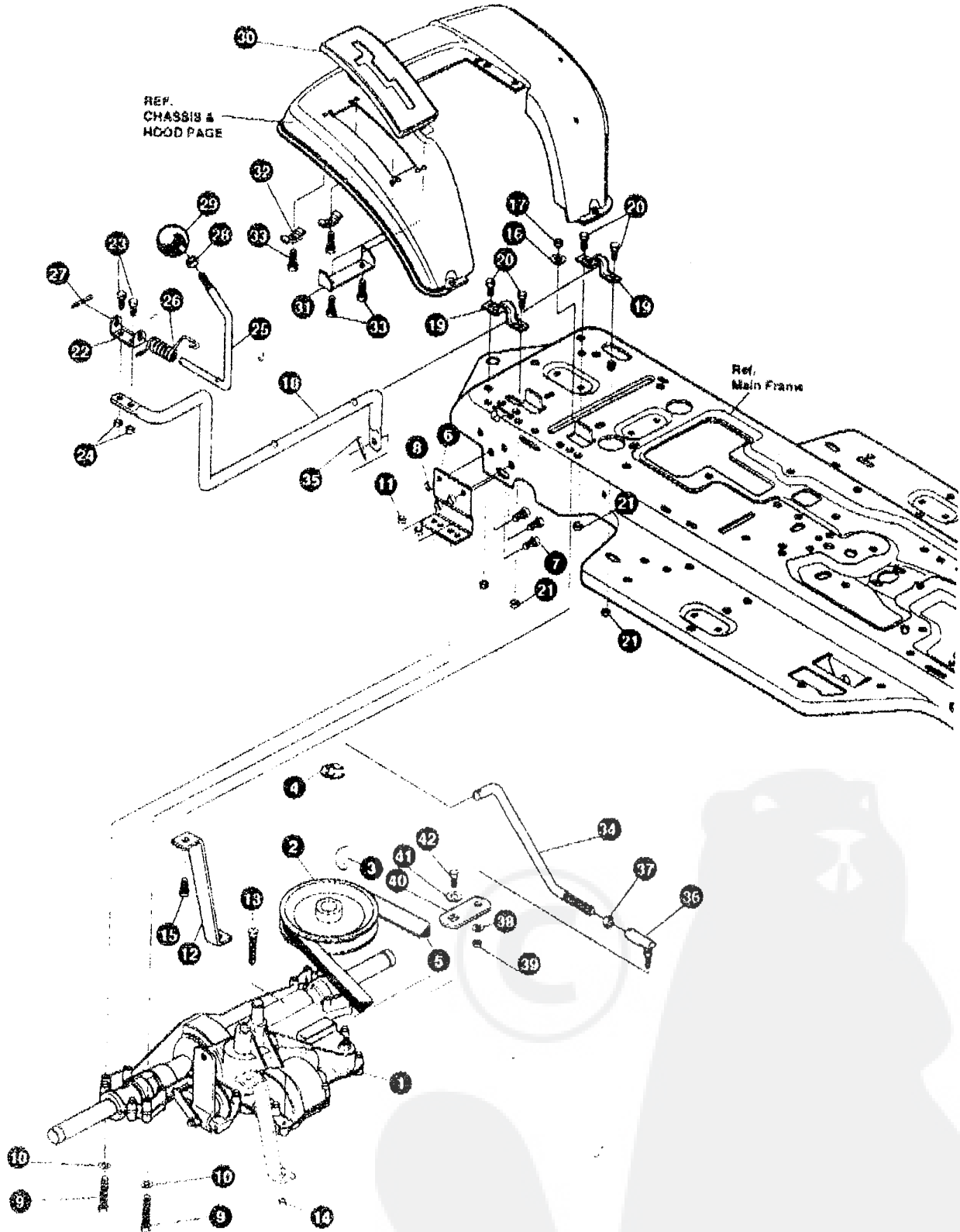
3554-220

MOWER SUSPENSION ASSEMBLY

KEY #	PART #	DESCRIPTION	QTY
1	321371	BRKT. REAR SUPT RH	1
2	180091	SCREW, 5/16-18X2.50 HHC	2
3	120393	WASHER, FLAT .344X.69X.065	1
4	1498	NUT, 5/16-18 REGHEXCTRLK	2
5	314702	SPACER, SLEV .344X1.00X .500PM	2
6	321370	BRKT. REAR SUPT LH	1
7	180113	SCREW, 5/16-18X3.00 HHC	2
8	120393	WASHER, FLAT .344X.69X.065	1
9	1498	NUT, 5/16-18 REGHEXCTRLK	2
10	314702	SPACER, SLEV .344X1.00X .500PM	1
11	56190	PIN, HAIR .091 DIA X1.62LG	1
12	323899	BRKT. LINK LOWER BLKPHOS	1
13	313560	BOLT, 500X 225 HSSH 5/16-18	1
14	1498	NUT, 5/16-18 REGHEXCTRLK	1
15	320605	BRACKET LIFT BAR 30"	1
16	180077	SCREW, 5/16-18X .75 HHC	2
17	1498	NUT, 5/16-18 REGHEXCTRLK	2
18	300473	SPRING TENSION 7.52LG+17LBSIN	1
19	418824	WASHER FLAT .344X1.13X.062	1
20	1498	NUT, 5/16-18 REGHEXCTRLK	1
21	9405	CLEVIS, LIFT CABLE	1
22	120372	NUT, 1/4-20 REGSO	1
23	322261	CABLE, CLUTCH 31.31 LG (30"SF)	1
24	328139	LEVER, CLUTCH SF 30" SUS ZINC	1
25	1288	BRKT, CABLE RETAIN	1
26	48306	PULLEY POWDER METAL	1
27	58336	BOLT, 375X .375 HSSH 1/4-20	1
28	1502	NUT, 1/4-20 REGHEXCTRLK	1
29	8260	PIN, HAIR .091 DIA X1.66LG	1
30	996425	WASHER, FLAT .515X .88X.064	1
31	22265	WASHER FLAT .515X1.38X.119PL	1
32	305225	STOP, PTO ENGAGE	1
33	326386	PIN, SPRING 187DIA X1 13LG HD	1
34	331624	KNOB, ROUND 1.50DIA OR GRIP	1
35	321295-853	CLEVIS, P.T.O. PULLEY	1
36	48306	PULLEY POWDER METAL	1
37	300317	PIN, CLEVIS 375DIA X .81 LG	1
38	996418	WASHER FLAT .391X1.00X.125	1
39	8260	PIN, HAIR .091 DIA X1.66LG	1
40	313926	BRACKET HEIGHT ADJUST	1
41	180077	SCREW, 5/16-18X .75 HHC	4
42	1498	NUT, 5/16-18 REGHEXCTRLK	4
43	301238	QUADRANT, HEIGHT ADJUST	1
44	180077	SCREW, 5/16-18X .75 HHC	2
45	1498	NUT, 5/16-18 REGHEXCTRLK	2
46	322292-853	HANDLE LIFT SHORT(30" S F)	1
47	300171	BOLT, 500X 270 HSSH 5/16-18	1
48	996418	WASHER, FLAT .506X .75X.024	1
49	44108	NUT, 5/16-18 HWDFLCTRLK	1
50	301239	PAWL SQUARE	1
51	300171	BOLT, 500X 270 HSSH 5/16-18	1
52	44108	NUT, 5/16-18 HWDFLCTRLK	1
53	9435	POINTER, HEIGHT ADJ	1
54	138479	WASHER, EXLK 185X 41X.03	1
55	35287	SCREW #8 32X .38 HHWATAP	1
56	303027	ROD ACTUATOR-SHORT	1
57	58326	SPRING HEIGHT ADJUST	1
58	58325	KNOB, HEIGHT ADJ PUSH BUTTON	1
59	58329	GRIP, 750 OD W/ HOLE BLACK	1
60	9149	BRKT, CABLE RETAIN	1
61	48306	PULLEY POWDER METAL	1
62	58336	BOLT, 375X .375 HSSH 1/4-20	1
63	1502	NUT, 1/4-20 REGHEXCTRLK	1
64	321430	CABLE LIFT 21.50 30"	1
65	300310	PIN, CLEVIS 310DIA+ 475LG	1
66	300311	RING, RETE 31X 25TRUX5133-31	1
67	48306	PULLEY POWDER METAL	1
68	300317	PIN, CLEVIS 375DIA X .81 LG	1
69	8260	PIN, HAIR .091 DIA X1.60LG	1
70	120375	NUT, 1/4-20 REGHEX	1
71	9405	CLEVIS, LIFT CABLE	1
72	120372	NUT, 1/4-20 REGSO	1
73	39522	PIN, CLEVIS 312 X 812	1
74	121222	PIN, COYTER .090 DIA X 75LG	1
75	300335	LIFT COVER	1
76	300340	SCREW, 3/8 X .25 IN PLAST	3

E3554-220

REPAIR PARTS



NOTE: ALWAYS USE ORIGINAL EQUIPMENT PARTS Use of service/replacement parts other than original equipment parts may void your warranty.

ALL UNNUMBERED ITEMS ARE INTERCHANGEABLE WITH OPPOSITE SIDE

332252C

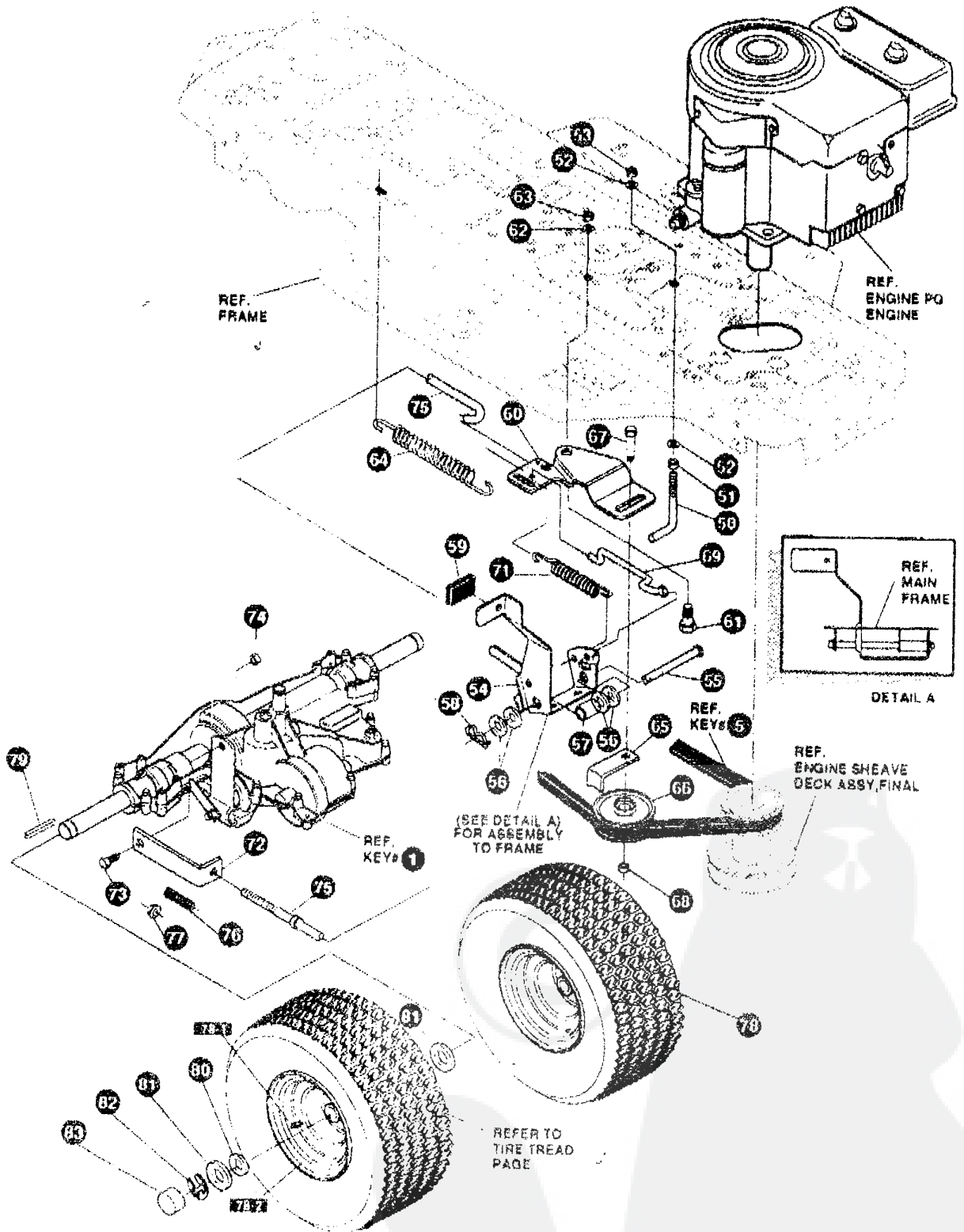
E3554-220**MOTION DRIVE ASSEMBLY**

KEY #	PART #	DESCRIPTION	QTY
1		TRANSAXLE 940-007	1
2	303109	PULLEY, 6.6 OD V4L T/A	1
3	50795	KEY, HI-PRO 806 75DIA X 187WD	1
4	22053	RING, RETEX 58X 035TRU5100-62	1
5	54758	BELT V 4L 82 00 SF DRIVE	1
6	53768-853	BRACKET, TRANSAXLE	2
7	180077	SCREW, 5/16-18X .75 HHC	6
8	1498	NUT, 5/16-18 REGHEXCTRLK	6
9	180091	SCREW, 5/16-18X2.50 HHC	4
10	120393	WASHER, FLAT 344X .69X .065	4
11	1498	NUT, 5/16-18 REGHEXCTRLK	4
12	323213	BRKT, 1/A TORQ	1
13	180087	SCREW, 5/16-18X2.00 HHC	1
14	1498	NUT, 5/16-18 REGHEXCTRLK	1
15	180079	SCREW, 5/16-18X1.00 HHC	1
16	138485	WASHER, EXLK 320X.61X.03	1
17	1498	NUT, 5/16-18 REGHEXCTRLK	1
18	321849	LEVER, SHIFT LOW SF FNSFT	1
19	302760	CLAMP, 625DIA	2
20	180077	SCREW, 5/16-18X .75 HHC	4
21	1498	NUT, 5/16-18 REGHEXCTRLK	4
22	310356	BRKT, PIVOT SH LEV	1
23	180020	SCREW, 1/4-20X .75 HHC	2
24	1502	NUT, 1/4-20 REGHEXCTRLK	2
25	309635	LEVER, SHIFT UPPER SOF 1/2-13	1
26	310265	SPRING, TORS .56X.95X.095	1
27	137185	PIN, COTTER 125 DIA X 1 00LG	1
28	120238	NUT, 1/2-13 HEXJAM	1
29	55514	KNOB, ROUND 1.50DIA OR GRIP	1
30	311209	COVER PLASTIC LF P930/F4360-6	1
31	311267-853	BRACKET COVER F-5 FNDR SHIFT	1
32	1341	CLAMP, SPRG 1.17"ID	2
33	311331	SCREW, 1/4-15X 44/53 HILOHWA	4
34	321844	ROD, CONNECTING, SHIFT	1
35	137185	PIN, COTTER 125 DIA X 1 00LG	1
36	57156	BALL JOINT 3/8 THD SHORT STUD	1
37	124925	NUT, 3/8-24 REGHEXJAM	1
38	120382	WASHER REGSPYLK 393X 68X .10	1
39	120369	NUT, 3/8-24 REGHEX	1
40	323212	BRKT, SHIFT	1
41	57157	WASHER 750X 250 SP-TRANSAXLE	1
42	56255	SCREW, 1/4-28X .75 NYL.HHC	1

* ORDER INDIVIDUAL PARTS

E3554-220

REPAIR PARTS



NOTE: ALWAYS USE ORIGINAL EQUIPMENT PARTS. Use of service/replacement parts other than original equipment parts may void your warranty

ALL UNNUMBERED ITEMS ARE INTERCHANGEABLE WITH OPPOSITE SIDE

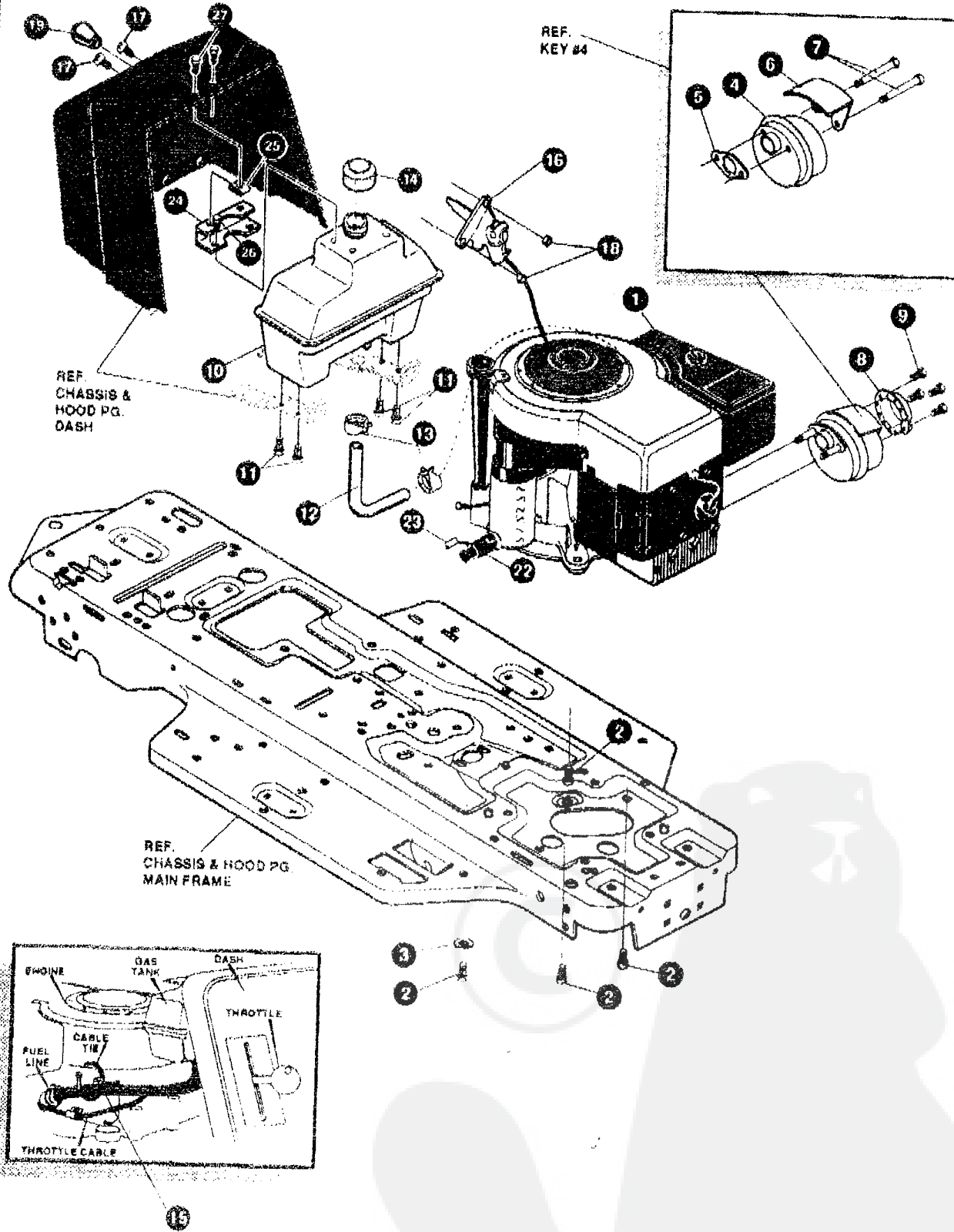
332252C

E3554-220**MOTION DRIVE ASSEMBLY**

KEY #	PART #	DESCRIPTION	QTY
50	49896	BELT GUIDE	1
51	271184	NUT, 5/16-18 HEXKEPS	1
52	120393	WASHER, FLAT .344X.69X.065	2
53	1498	NUT, 5/16-18 REGHEXCTRLK	1
54	331836	ASSY, PEDAL, BRAKE, CLUTCH	1
55	319676	PIN, CLEVIS .500DX4.87LG	1
56	2968	WASHER, FLAT .504X.75X.059	4
57	331972	SPACER, SLEV .53 X .62X1.240	1
58	56180	PIN, HAIR .091 DIA X 1.62LG	1
59	48761	PAD, CLUTCH/BRAKE PEDAL	1
60	321969	IDLER ARM BRKT TRACTION	1
61	329989	BOLT, .625X .135 HSSH 5/16-18	1
62	45602	WASHER, FLAT .333X.87X.119	1
63	1498	NUT, 5/16-18 REGHEXCTRLK	1
64	327867	SPRING, 3/4 ODX 7.75X.091 TENSION	1
65	39859	RETAINER, BELT	1
66	35374	PULLEY, IDLER V4L 3.06X .62	1
67	45892	BOLT, 3/8-16X1.60 CARR	1
68	1499	NUT, 3/8-16 REGHXCTRLK	1
69	333175	CLUTCH ROD ASSY, .268 DIA 3.92	1
71	326780	SPRING, 3/8 ODX 2.16 X .055 TENSION	1
72	323210	BRKT, TRCTN	1
73	48824	BOLT, .500X .188 HSSH 5/16-18	1
74	1498	NUT, 5/16-18 REGHEXCTRL	1
75	333263	SF ROD, BRAKE	1
76	313881	SPRING, CLUTCH .625 OD	1
77	50352	NUT, 1/4-20 WDFLLK TOPLOCK	1
78	42090	TIRE & RIM, PU 18X6.5X8TURFWHI	2
	TIRE	SEE TIRE TREAD PAGE	
77-1	24167	VALVE STEM	2
77-2	36182	HUB	2
79	52926	KEY, SQUARE .187SQX2.25LG	2
80	642	WASHER, FLAT .755X1.31X.075	4
81	42815	WASHER, FLAT .755X1.53X.07	2
82	36625	RING, RETEX .57X.05TRU5133-75	2
83	40394	HUB CAP, 1.500ID X 7/8LG	2

E3554-220

REPAIR PARTS



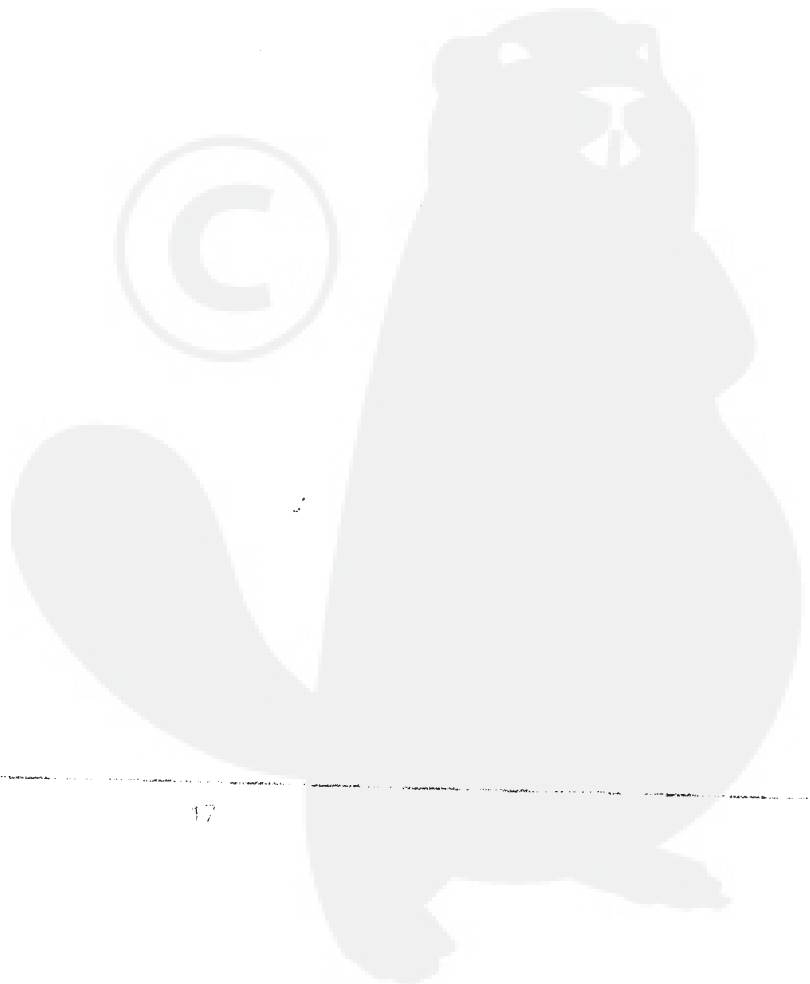
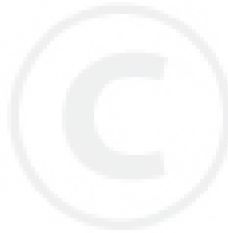
NOTE: ALWAYS USE ORIGINAL EQUIPMENT PARTS. Use of service/replacement parts other than original equipment parts may void your warranty.

ALL UNNUMBERED ITEMS ARE INTERCHANGEABLE WITH OPPOSITE SIDE

331113B

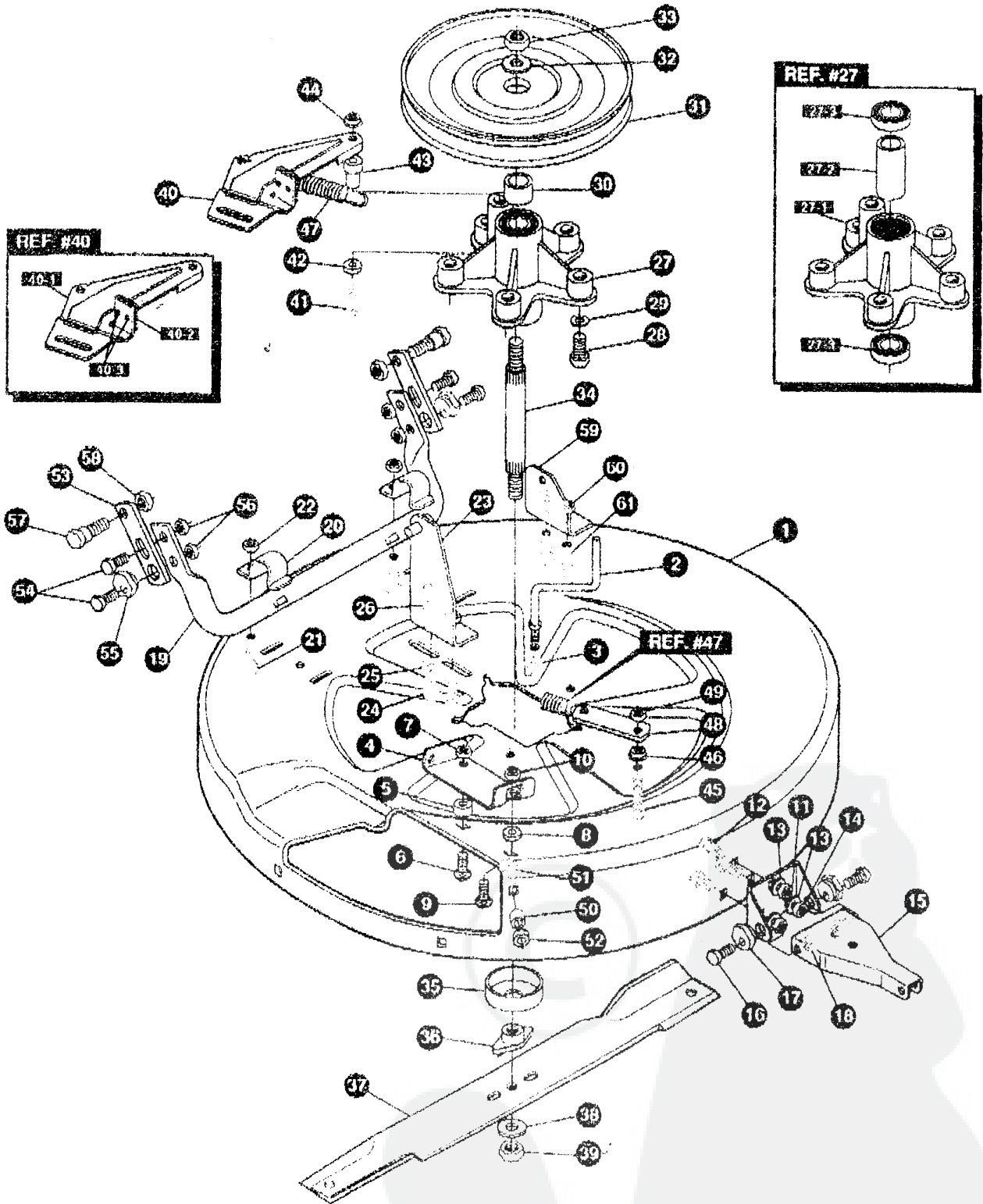
E3554-220**ENGINE & CONTROL ASSEMBLY**

KEY #	PART #	DESCRIPTION	QTY
1	ENGINE	10-12HP B&S 3A (SEE ENGINE MANUAL)	1
2	50947	SCREW, 3/8-16X1.25 WAHHTAPBLKP	4
3	198489	WASHER EXLK 384X.69X.04	1
4	57908	MUFFLER-DOM/EXP ROUND	1
5	46708	GASKET, MUFFLER	1
6	54767	SHIELD, HEAT, FOR ROUND MUFFLER	1
7	54980	SCREW, 5/16-18X3.50 HHC	2
8	56472	DEFLECTOR SIDE OUT (BS222573)	1
9	35287	SCREW, #8-32X .38 HHWATAP	4
10	314989	TANK, FUEL 1 GAL CLEAR	1
11	300303	SCREW, 25X 75X.51HHWAPLASTITE	4
12	42258	TUBING, .25X.50X BULK GAS LINE	12 IN.
13	47346	CLAMP, FUEL LINE RED	2
14	46704	CAP, GAS 1-1/2-7 THD BLK	1
15	57444	TIE, CABLE BLACK NYLON 5.62L	1
16	56534	CONTROL, THROTTLE LF 12HP 20.5	1
17	155941	SCREW, 10-24X.63 PHFLTMA	2
18	308459	NUT, #10-24 HXHONYLK	2
19	50607	KNOB, ROUND THROTTLE BLACK	1
22	325547	OIL DRAIN VALVE ASSEMBLY	1
23	327422	CAP,OIL DRAIN VALVE ASM,YELLOW	1
24	328942-853	CENTER SUPPORT, PLASTIC DASH	1
25	328685	TINNERMAN CLIP C8114-1024-4	2
26	300303	SCREW, 25X 75X.51HHWAPLASTITE	2
27	274707	SCREW, 10 24X .50 WAHMA	2



13554-220

REPAIR PARTS



NOTE: ALWAYS USE ORIGINAL EQUIPMENT PARTS. Use of service/replacement parts other than original equipment parts may void your warranty.

ALL UNNUMBERED ITEMS ARE INTERCHANGEABLE WITH OPPOSITE SIDE

321244C

3554-220

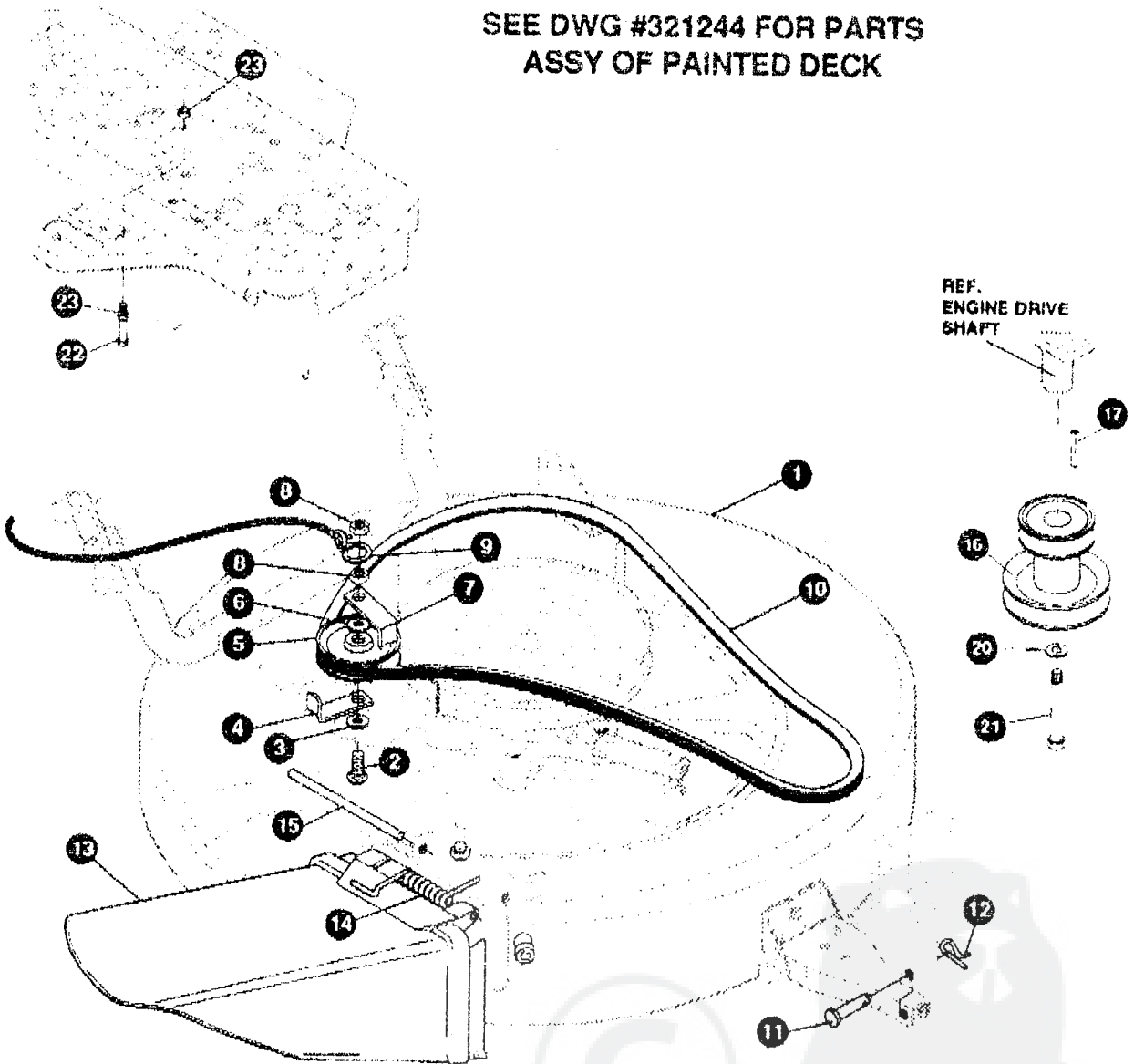
PRE-PAINTED DECK ASSEMBLY

KEY #	PART #	DESCRIPTION	QTY
1	321982-853	DECK, MOWER 30"	1
2	57318	GUIDE, BELT 5/16-18 THD	1
3	1498	NUT, 5/16-18 REGHEXCTRLK	1
4	317017	BRACKET CHUTE MOUNT	1
5	314702	SPACER, SLEV 344X1.00X.500PM	1
6	120230	BOLT, 5/16-18X1.25 CARRLN	1
7	1498	NUT, 5/16-18 REGHEXCTRLK	1
8	45602	WASHER, FLAT .333X .87X.119	1
9	126216	BOLT, 5/16-18X .75 CARRLN	1
10	1498	NUT, 5/16-18 REGHEXCTRLK	1
11	311237-853	BRACKET, MOUNTING, FRONT	1
12	57072	BOLT, 5/16-18X .63 CARRLN	3
13	120393	WASHER, FLAT 344X .69X.065	3
14	1498	NUT, 5/16-18 REGHEXCTRLK	3
15	311236-853	BRACKET, BAR, TOW, FRONT	1
16	180079	SCREW, 5/16-18X1.00 HHC	2
17	58247	NUT, ADJUST	2
18	1498	NUT, 5/16-18 REGHEXCTRLK	2
19	313372-853	ASSY, TUBE, PIVOT	1
20	310672	SUPPORT, PIVOT TUBE	2
21	180077	SCREW, 5/16-18X .75 HHC	2
22	1498	NUT, 5/16-18 REGHEXCTRLK	2
23	314119-853	ASSY LIFT BRKT	1
24	180077	SCREW 5/16-18X .75 HHC	2
25	120393	WASHER, FLAT 344X .69X.065	2
26	1498	NUT, 5/16-18 REGHEXCTRLK	2
27	313598	ASSEMBLY, QUILL	1
27-1	314272	QUILL, MACHINED CASTING	1
27-2	314274	TUBE, SPACER, STEEL	1
27-3	313576	BRNG, BALL 6204-2AA-C3	2
28	35498	SCREW, 5/16-18X .75 WAHHTAP	5
29	138485	WASHER, EXLK 320X .61X.03	5
30	321146	SPACER, SLEV .790X1.250X .500	1
31	314273	PULLEY ASSEMBLY	1
32	22265	WASHER, FLAT 515X1.38X.119PL	1
33	1500	NUT, 1/2-13 REGHCTRLK	1
34	321144	SHAFT, QUILL 30" MOWER	1
35	313577	SHIELD, DUST, BEARING	1
36	313584	HUB, BLADE ADAPTOR	1
37	325751	BLADE, 30" TD MOWER 1.4 WING	1
38	22265	WASHER, FLAT 515X1.38X.119PL	1
39	1500	NUT, 1/2-13 REGHCTRLK	1
40	12229-853	BRACKET, IDLER ASSEMBLY	1
40-1	313510-853	BRACKET, ARM, IDLER	1
40-2	306973	BRAKE PAD, HARD - 232AF	1
40-3	41601	RIVET, OVSET .187DIA X .50LG ST	2
41	180113	SCREW 5/16-18X3.00 HHC	1
42	45602	WASHER, FLAT .333X .87X.119	1
43	321145	SPACER, SLEV 322X .63X2.310	1
44	44108	NUT, 5/16-18 HWDFLCTRLK	1
45	180081	SCREW, 5/16-18X1.25 HHC	1
46	44108	NUT, 5/16-18 HWDFLCTRLK	1
47	35410	SPRING .071 X .62 X 4.37	1
48	302357	LINK	1
49	1498	NUT, 5/16-18 REGHEXCTRLK	1
50	50520	SPACER	1
51	125216	BOLT, 5/16-18X .75 CARRLN	1
52	1498	NUT, 5/16-18 REGHEXCTRLK	1
53	314099-853	BRACKET, BAR, REAR STABIL	2
54	180079	SCREW, 5/16-18X1.00 HHC	4
55	58247	NUT, ADJUST	2
56	1498	NUT, 5/16-18 REGHEXCTRLK	4
57	51940	BOLT, .500X .437 HSSH 3/8 16	2
58	1498	NUT 3/8-16 REGHCTRLK	2
59	320605-853	BRACKET LIFT BAR 30"	1
60	1498	NUT, 5/16-18 REGHEXCTRLK	2
61	180077	SCREW 5/16-18X .75 HHC	2

E3554-220

REPAIR PARTS

SEE DWG #321244 FOR PARTS
ASSY OF PAINTED DECK



REF.
ENGINE DRIVE
SHAFT

NOTE: ALWAYS USE ORIGINAL EQUIPMENT PARTS. Use of service/replacement parts other than original equipment parts may void your warranty.

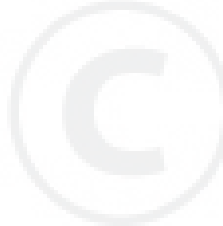
ALL UNNUMBERED
ITEMS ARE INTERCHANGEABLE
WITH OPPOSITE SIDE

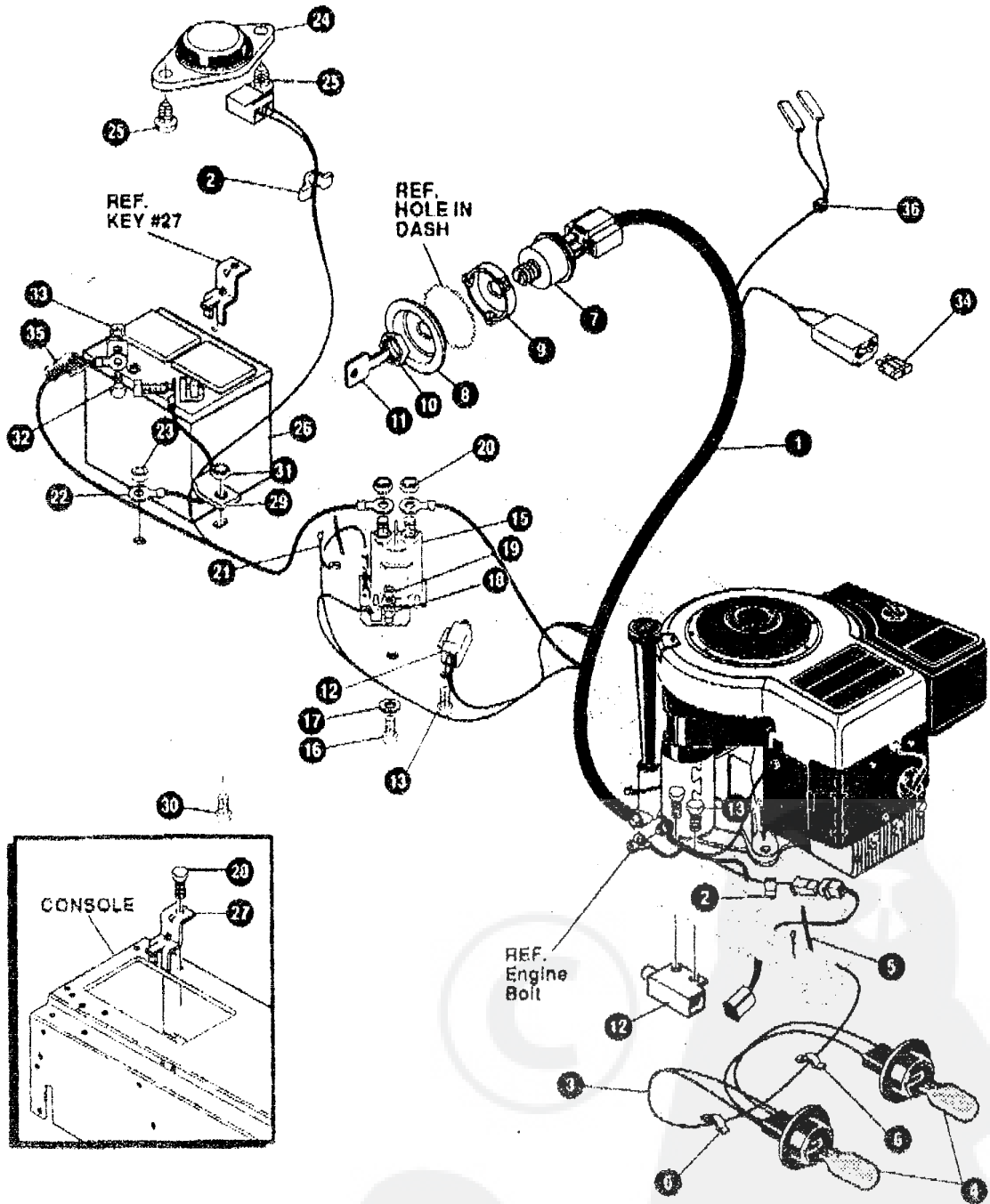
325642C

FINAL DECK ASSEMBLY

KEY #	PART #	DESCRIPTION	QTY
1	*	DECK 30" ASSY	1
2	301340	BOLT, 3/8-16X2.50 CARR	1
3	22285	WASHER, FLAT .515X1.38X.119PL	1
4	39659	RETAINER, BELT	1
5	45074	PULLEY, IDLER V4L 3.06X .72	1
6	25210	WASHER, FLAT .386X1.25X.09HTZ	1
7	39659	RETAINER, BELT	1
8	1499	NUT, 3/8-16 REGHXCTRLK	2
9	310734	HOOK, 9, 10 GA. STEEL	1
10	321147	BELT, V 4L 54.0 - MOD SEC	1
11	47817	PIN, .495X1.750 CLEVIS-SHORT	1
12	56186	PIN, HAIR .081 DIA X 1.62LG	1
13	315314	CHUTE DEFLECTOR 30" DECK	1
14	314975	SPRING, TORSION CHUTE DEFLECTOR	1
15	304424	ROD, PIVOT DECK .312DX7 25	1
16	328035	PULLEY, ENG 2.94OF/6.5D/3.00D	1
17	26655	KEY, SQUARE .250SQX2.50LG	1
20	120383	WASHER, REGSPTLK.459X.78X 12	1
21	182764	SCREW, 7/16-20X3.25 HHC	1
22	49930	SCREW, 3/8-16X7.50 HHC	1
23	1499	NUT, 3/8-16 REGHXCTRLK	2

* ORDER INDIVIDUAL PARTS





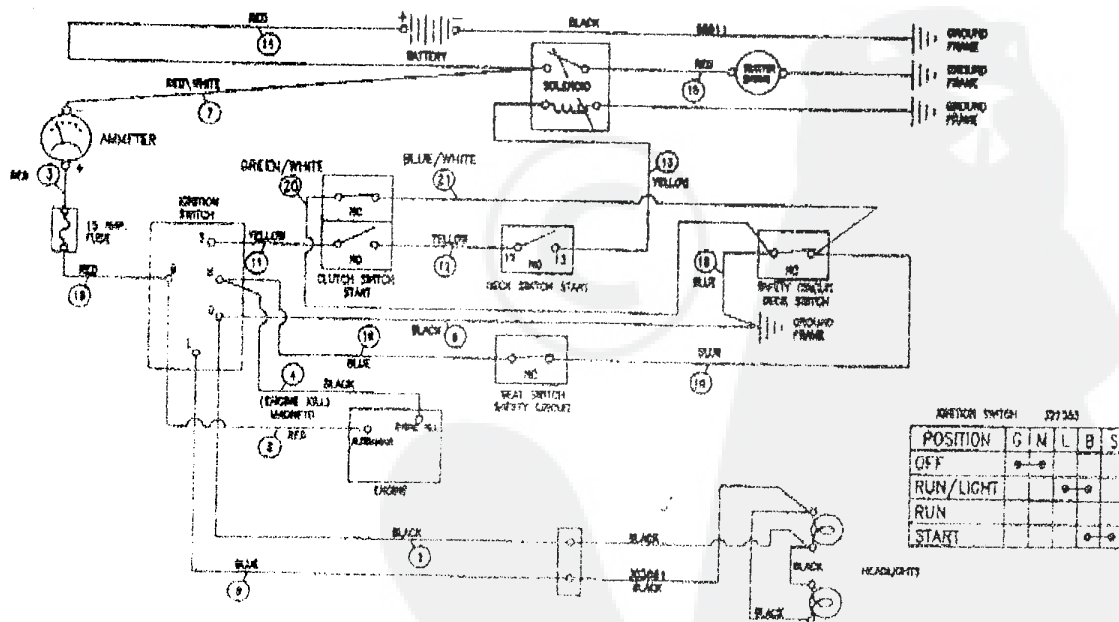
NOTE: ALWAYS USE ORIGINAL EQUIPMENT PARTS. Use of service/replacement parts other than original equipment parts may void your warranty.

ALL UNNUMBERED ITEMS ARE INTERCHANGEABLE WITH OPPOSITE SIDE

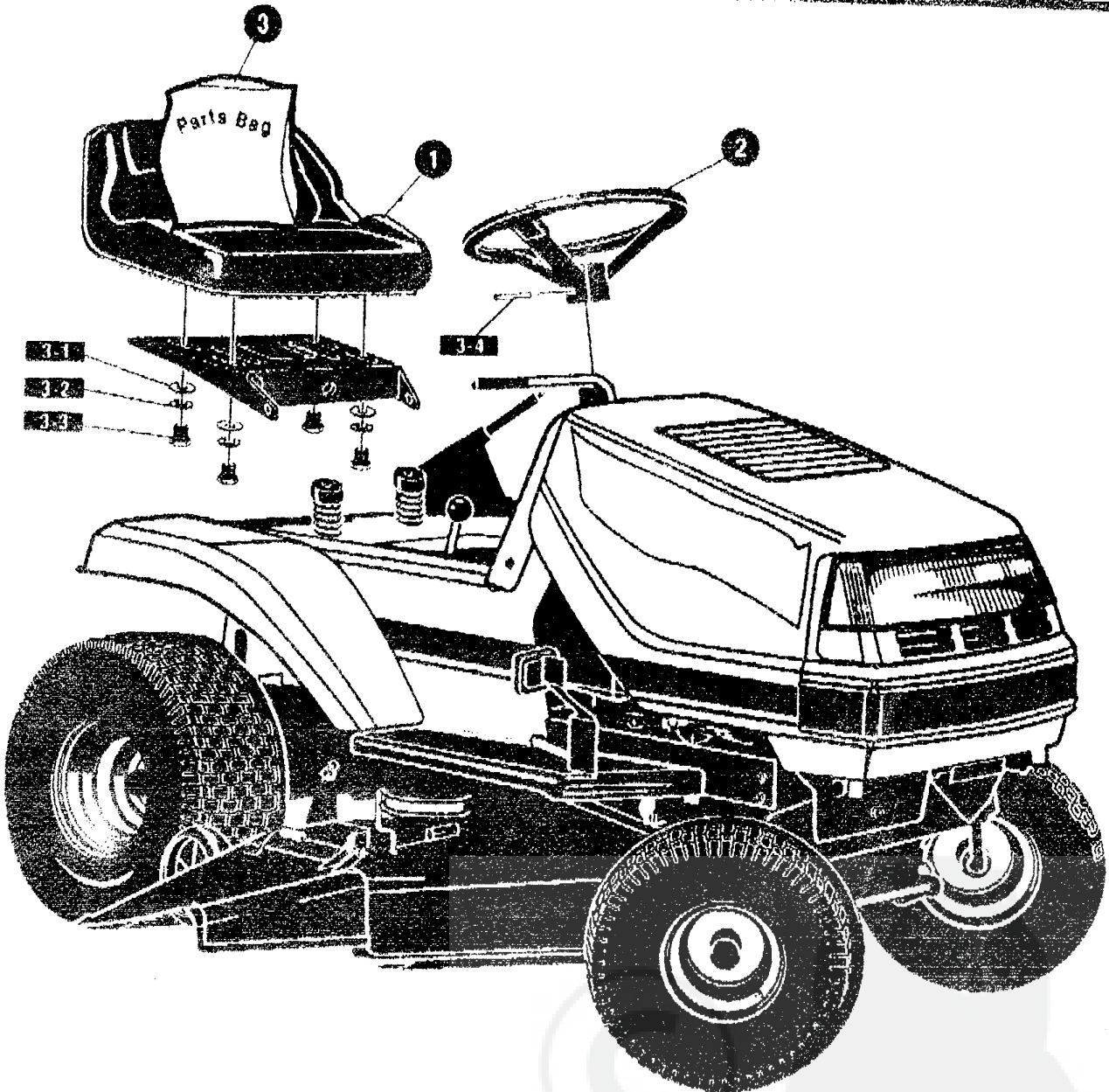
382051C

KEY #	PART #	DESCRIPTION	QTY
1	331453	WIRE HARNESS SF 8-12B&S W/AMM	1
2	41482	PRESS CLIP 1.380LG .255ID	2
3	303064	ASSY LIGHT WIRE 1/4 TURN	1
4	52572	BULB, HEADLAMP	2
5	57444	TIE, CABLE BLACK NYLON 5.62L	1
6	41482	PRESS CLIP 1.380LG .255ID	2
7	327354	SWITCH,IGNITION & LIGHTS DELTA	1
8	327234	CUP,IGN (OFF-LIGHT-ON-START)	1
9	327238	CAP,IGN INSIDE	1
10	327352	NUT, 5/8-8ACME DELTA FOR BOOT	1
11	327350	KEY,IGNITION	1
12	57476	SWITCH,SCR MNT DP NC NO BLK	2
13	300302	SCREW, #10 X .50 HHTAPPST BLK	4
15	53716	SOLENOID	1
16	187745	SCREW 1/4-20X .75 HXSEMMA	2
17	1084	WASHER, FLAT .281X1.00X.063	2
18	1502	NUT, 1/4-20 REGHEXCTRLK	1
19	271172	NUT, 1/4-20 REGHEXKEPS	1
20	271187	NUT, 5/16-24 HKEPS	2
21	67444	TIE, CABLE BLACK NYLON 5.62L	1
22	55511	WIRE, GROUND, 12.5"	1
23	271184	NUT, 5/16-18 HEXKEPS	1
24	57547	SWITCH, SEAT	1
25	160505	SCREW, 1/4-20X .38PHPNHMA	2
26	302257	BATTERY, 12V	1
27	329175	BATTERY BRACKET	1
28	995346	SCREW, 1/4-20X .50 WAHHTAP	1
29	9149	BRACKET, CABLE RETAINER	1
30	187746	SCREW, 1/4-20X .75 HXSEMMA	1
31	1502	NUT, 1/4-20 REGHEXCTRLK	1
32	180020	SCREW, 1/4-20X .75 HMC	2
33	271172	NUT, 1/4-20 REGHEXKEPS	2
34	302031	FUSE SPADE TYPE 32V 15A	1
35	308201	INSULATOR, BATTERY BOOT EURO	1
36	322298	SPLICER	1

WIRING SCHEMATIC



331453



KEY #	PART #	DESCRIPTION	QTY
1	310384	SEAT WITH CANOPY W/WHOLE	1
2	330847	STEERING WHEEL	1
3		PARTS BAG (SEE SEAT/STEER)	1
3-1	100393	WASHER HEAD 1/4X 69X 6/8	4
3-2	120836	WASHER HEAD 1/4X 328X 60X 09	4
3-3	130077	SCREW 5/16X 75 HHC	4
3-4	67139F	PT. SPRING 600-AX2 00LG HVPL	4
		BATTERY ACID PACK 30 OZ	1

NOTE: BATTERY ACID PACK MAY BE PURCHASED AT YOUR LOCAL HARDWARE STORES

330659A