

EUROGARDEN

PARTS MANUAL

Lawn Tractors



Model E3554-270



SAFETY RULES

THESE INSTRUCTIONS ARE FOR YOUR PROTECTION. PLEASE READ THEM CAREFULLY.



IMPORTANT

THIS CUTTING MACHINE IS CAPABLE OF AMPUTATING HANDS AND FEET AND THROWING OBJECTS. FAILURE TO OBSERVE THE FOLLOWING SAFETY INSTRUCTIONS COULD RESULT IN SERIOUS INJURY OR DEATH.

I. GENERAL OPERATION:

- Know controls and how to stop quickly.
- Read, understand, and follow all instructions in the manual and on the machine before starting.
- Only allow responsible adults, who are familiar with instructions, to operate the machine.
- Wear safety glasses or eye shields when assembling or operating the machine.
- Do not operate machine when barefooted. Always wear substantial footwear, preferably steel-toed shoes.
- Do not wear loose fitting clothing that could get caught in moving parts.
- Clear the area of objects such as rocks, toys, wire, etc., which could be picked up and thrown by the blade(s).
- Be sure the area is clear of other people before mowing. Stop machine if anyone enters the area.
- Never carry passengers.
- Do not mow in reverse unless absolutely necessary. Always look down and behind before and while backing.
- Be aware of the mower discharge direction and do not point it at anyone. Do not operate the mower without either the entire grass catcher or the guard in place.
- Slow down before turning.
- Never leave a running machine unattended. Always turn off blades, set parking brake, stop engine, and remove keys before dismantling.
- Turn off blade(s) when not mowing.
- Stop engine before removing grass catcher or unclogging chute.
- Mow only in daylight or good artificial light.
- Do not operate the machine while under the influence of alcohol or drugs.
- Watch for traffic when operating near or crossing roadways.
- Use care when mowing around a fixed object to prevent the blade(s) from striking it. Never deliberately run over any foreign object.
- Use extra care when loading or unloading the machine into a trailer or truck.
- Use care when pulling loads or using heavy equipment.
 - a. Use only approved drawbar hitch points.
 - b. Limit loads to those that you can safely control.
 - c. Do not turn sharply. Use care when backing.
 - d. Use counterweight(s), wheel weight or tire chains when suggested in attachment(s) instructions.

II. SLOPE OPERATION:

Slopes are a major factor related to loss-of-control and tip-over accidents, which can result in severe injury or death. *All slopes require extra caution.* If you cannot back up the slope or if you feel uneasy on it, do not mow it.

DO

- Mow up and down slopes, not across.
- Remove obstacles such as rocks, tree limbs, etc.
- Watch for holes, ruts, or bumps. Uneven terrain could overturn the machine. *Tall grass can hide obstacles.*
- Use slow speed. Choose a low gear so that you will not have to stop or shift while on the slope.
- Follow the manufacturer's recommendations for wheel weights or counterweights to improve stability.
- Use extra care with grass catchers or other attachments. These can change the stability of the machine.
- Keep all movement on the slopes *slow* and *gradual*. Do not make sudden changes in speed or direction.
- Avoid starting or stopping on a slope. If tires lose traction, turn off the blade(s) and proceed slowly *straight* down the slope.

DO NOT

- Do not turn on slopes unless necessary, and then slowly and gradually downhill, if possible.
- Do not mow near drop-offs, ditches or embankments. The

mower could suddenly turn over if a wheel is over the edge of a cliff or ditch, or if an edge caves in.

- Do not mow on wet grass. Reduced traction could cause sliding.
- Do not try to stabilize the machine by putting your foot on the ground.
- Do not use grass catcher on steep slopes.

III. CHILDREN:

Tragic accidents can occur if the operator is not alert to the presence of children. Children are often attracted to the machine and the mowing activity. *Never* assume that children will remain where you last saw them.

- Keep children out of the mowing area and under the watchful care of another responsible adult.
- Be alert and turn machine off if children enter the area.
- Before and when backing, look behind and *down* for small children.
- Never carry children. They may fall off and be seriously injured or interfere with safe machine operation.
- Never allow children to operate the machine.
- Use extra care when approaching blind corners, shrubs, trees, or other objects that may obscure vision.

IV. SERVICE:

- Use extra care in handling gasoline and other fuels. They are flammable and vapors are explosive.
 - a. Use only an approved container.
 - b. Never remove gas cap or add fuel with the engine running. Allow engine to cool before refueling. Do not smoke.
 - c. Never refuel the machine indoors.
 - d. Never store the machine or fuel container inside where there is an open flame, such as in a water heater.
- Check fuel supply before each use allowing space for expansion as the heat of the engine and/or sun can cause gasoline to expand and overflow the tank.
- Use extra care when handling battery acid. Acid contact with skin may cause severe burns. Eye contact may cause blindness.
- Use extra care when servicing the battery. Explosive gas is produced in the battery. Do not service the battery while smoking or near an open spark or flame. This may cause the battery to explode causing serious injury.
- Never run a machine inside a closed area. Exhaust fumes contain CARBON MONOXIDE, an ODORLESS and DEADLY GAS.
- Keep nuts and bolts, especially blade attachment bolts, tight and keep equipment in good condition.
- Never tamper with safety devices. Check their operation regularly.
- Do not change the engine governor settings or overspeed engine.
- Reduce fire hazards. Keep machine free of grass, leaves, or other debris build-up. Clean up oil or fuel spillage. Allow machine to cool before storing.
- Stop and inspect the equipment if you strike an object. Repair, if necessary, before restarting.
- Never make adjustments or repairs with the engine running.
- Grass catcher components are subject to wear, damage, and deterioration, which could expose moving parts or allow objects to be thrown. Frequently check components and replace with manufacturer's recommended parts, when necessary.
- Mower blade(s) are sharp and can cut. Wrap the blade(s) or wear gloves, and use extra caution when servicing them.
- Check brake operation frequently. Adjust and service as required.



LOOK FOR THIS SYMBOL TO POINT OUT IMPORTANT SAFETY PRECAUTIONS. IT MEANS-- ATTENTION!!! BECOME ALERT!!! YOUR SAFETY IS INVOLVED.

Record the following information about your unit so that you will be able to provide it in case of loss or theft.

MODEL NUMBER: - (Enter complete 8 digit number from model plate on unit)

PURCHASE DATE: ___ / ___ / ___ CODE NO.: _____ SERIAL NO.: _____

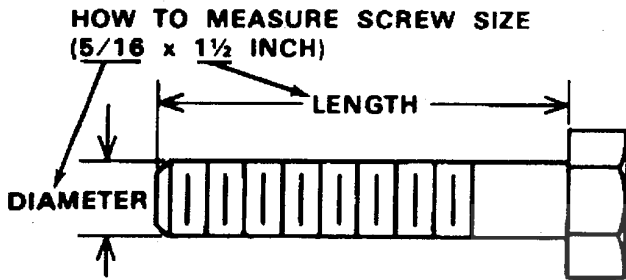
DEALER'S NAME AND ADDRESS: _____

CITY: _____ STATE: _____ TELEPHONE: _____

TOOLS REQUIRED FOR ASSEMBLY

- 2 - 7/16 inch Wrenches (or adjustable wrench)
- 1 - 1/2 inch Wrench (or adjustable wrench)
- 1 - Small Phillips Screwdriver with a 1/4 inch shank
- 1 - Hammer

SEE CUSTOMER ASSEMBLY PAGE FOR SEAT & HARDWARE



⚠ DANGER ⚠

This lawn tractor can be dangerous if carelessly used.

Read your Operator's Manual thoroughly before operating your lawn tractor.

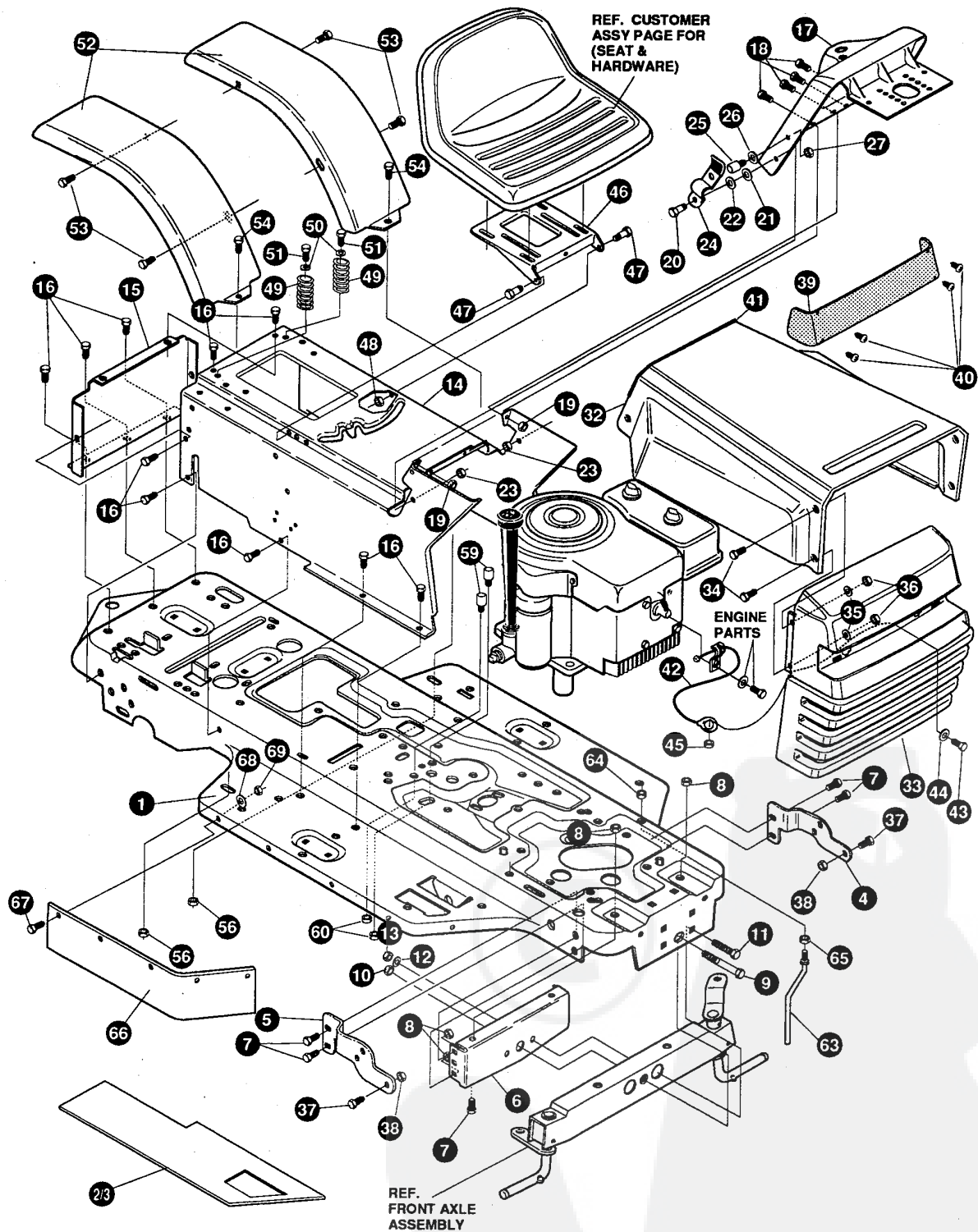
Always wear safety glasses or eye shields while assembling or operating your lawn tractor.

DO NOT carry passengers at any time.

Keep your hands, feet, hair and loose clothing away from the discharge area, the underside of the mower deck or any moving parts while the engine is running.

DO NOT allow children or young teenagers to operate or be near your lawn tractor while it is operating.

ALWAYS GIVE THE FOLLOWING INFORMATION WHEN ORDERING REPAIR PARTS:
1. The PART NUMBER; 2. The PART NAME; 3. QUANTITY DESIRED; 4. The MODEL NUMBER (As shown on Model Plate).
SEND PART ORDERS AS PER INSTRUCTIONS ON THE FRONT PAGE.
DO NOT USE KEY NUMBERS WHEN ORDERING REPAIR PARTS, ALWAYS USE PART NUMBERS.
All replacement parts will be supplied in current production colors or in a neutral color.
A handling fee is applicable to small parts orders.
YOUR UNIT IS RIGHT HAND (RH) OR LEFT HAND (LH) AS YOU STAND BEHIND IT.

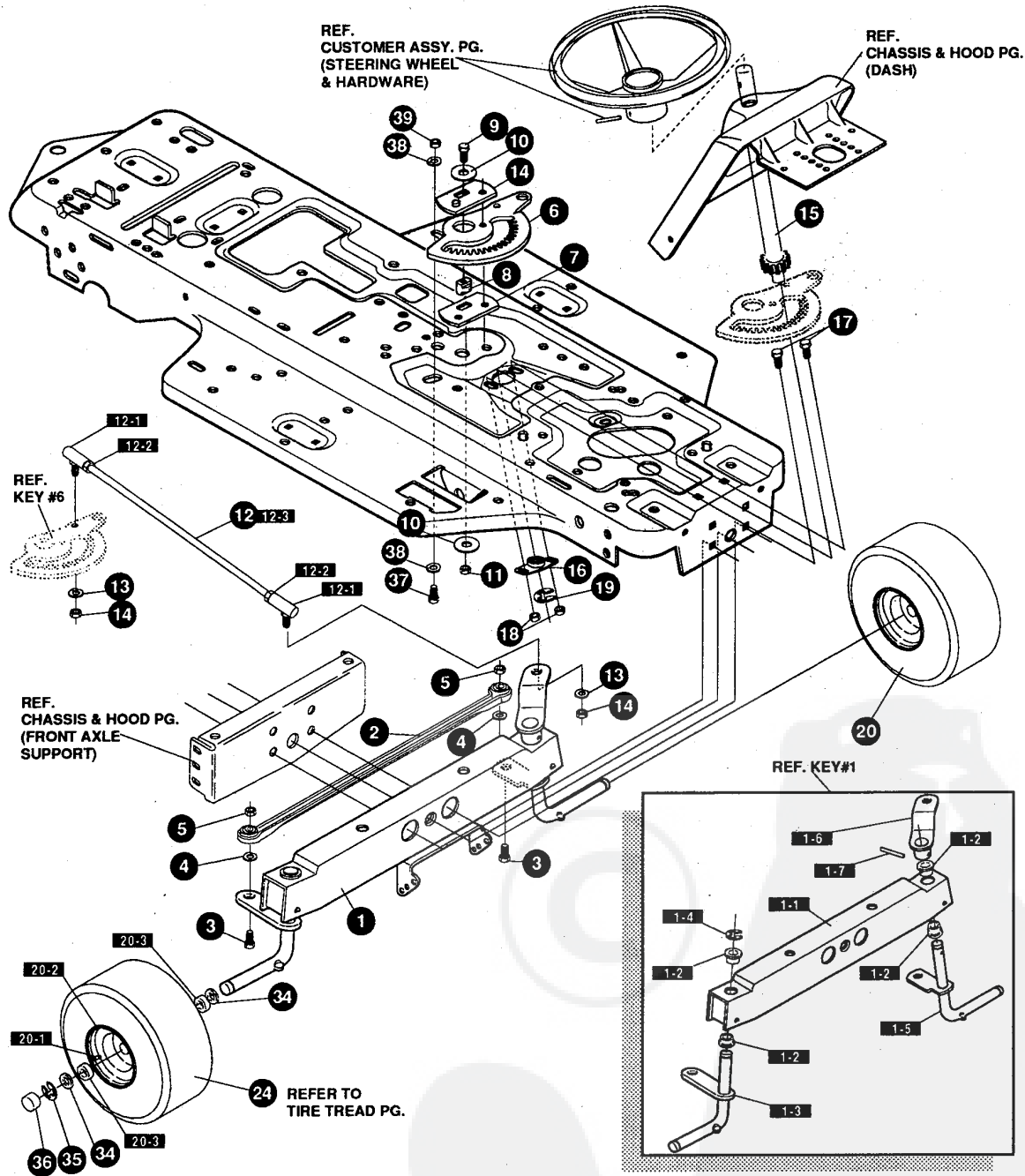


NOTE: ALWAYS USE ORIGINAL EQUIPMENT PARTS. Use of service/replacement parts other than original equipment parts may void your warranty.

ALL UNNUMBERED ITEMS ARE INTERCHANGEABLE WITH OPPOSITE SIDE

332617 A

| KEY# | PART# | DESCRIPTION | QTY |
|------|------------|---------------------------------------|------|
| 1 | 332319-854 | MAIN FRAME, SF RIDER TUV | 1 |
| 2 | 326732 | FOOT PAD, LH SF WIDE | 1 |
| 3 | 302916 | FOOT PAD, RH SF WIDE | 1 |
| 4 | 314579-853 | BRACKET,GRILLE LH SF | 1 |
| 5 | 314578-853 | BRACKET,GRILLE RH SF | 1 |
| 6 | 56362-853 | BRKT,SUPPORT,FRONT AXLE-SF | 1 |
| 7 | 328154 | SCREW, 5/16-18X1.0WDFLLK | 6 |
| 8 | 55273 | NUT, 5/16-18 HXWDFLLK | 6 |
| 9 | 29616 | BOLT, .625X1.890 HSH 1/2-20 | 1 |
| 10 | 274654 | NUT, 1/2-20 REGHXCTRLK | 1 |
| 11 | 180138 | SCREW, 3/8-16X3.00 HHC | 2 |
| 12 | 2483 | WASHER, .39IDX1.25DX.07 BELLVIL | 2 |
| 13 | 1499 | NUT, 3/8-16 REGHXCTRLK | 2 |
| 14 | 331796-854 | CONSOLE,SF DASH | 1 |
| 15 | 56235-854 | CONSOLE, REAR COVER | 1 |
| 16 | 995346 | SCREW, 1/4-20X .50 WAHHTAP | 15 |
| 17 | 320466-854 | DASH,SF | 1 |
| 18 | 44811 | SCREW, 1/4-20X .75 WAHHTAP | 4 |
| 19 | 50352 | NUT, 1/4-20 WDFLLK TOPLOCK | 2 |
| 20 | 8482 | BOLT, .375X .156 HSH 5/16-18 | 2 |
| 21 | 120394 | WASHER, FLAT .406X .81X.065 | 2 |
| 22 | 120393 | WASHER, FLAT .344X .69X.065 | 2 |
| 23 | 1498 | NUT, 5/16-18 REGHEXCTRLK | 2 |
| 24 | 57159 | LATCH, .94WDX.047 ASSY HOOD | 2 |
| 25 | 53446 | PIN, 5/16-18 HOOD LATCH | 2 |
| 26 | 138538 | WASHER, REGINTLK.320X.61X.03 | 2 |
| 27 | 45174 | NUT, 5/16-18 HEXWDFLLK WHIZ | 2 |
| 32 | 314538-854 | HOOD SF | 1 |
| 33 | 325401 | GRILLE G17 | 1 |
| 34 | 274672 | SCREW, 1/4-20X .63 WAHHC | 4 |
| 35 | 120392 | WASHER, FLAT .281X .63X.065 | 4 |
| 36 | 1502 | NUT, 1/4-20 REGHEXCTRLK | 4 |
| 37 | 36149 | BOLT, .375X .500 HSH 5/16-18 | 2 |
| 38 | 1498 | NUT, 5/16-18 REGHEXCTRLK | 2 |
| 39 | 302333 | LENS, SMOKED W/TAB NO LOGO | 1 |
| 40 | 57796 | SCREW, #6 X .50 PLASTITE/HI-LO | 4 |
| 41 | 56304 | EDGING (78"-47453) WIDE BLK | 25.0 |
| 42 | 311094 | LANYARD,HOOD 11.75LG H15 VANG. | 1 |
| 43 | 180020 | SCREW, 1/4-20X .75 HHC | 1 |
| 44 | 120392 | WASHER, FLAT .281X .63X.065 | 1 |
| 45 | 1502 | NUT, 1/4-20 REGHEXCTRLK | 1 |
| 46 | 58367-853 | PLATE,SEAT F5 SF,LF | 1 |
| 47 | 20507 | BOLT, .437X .156 HSH 5/16-18 | 2 |
| 48 | 1498 | NUT, 5/16-18 REGHEXCTRLK | 2 |
| 49 | 330463 | SPRING, SEAT 1.50ODX2.25LG | 2 |
| 50 | 120392 | WASHER, FLAT .281X .63X.065 | 2 |
| 51 | 995346 | SCREW, 1/4-20X .50 WAHHTAP | 2 |
| 52 | 43970-854 | FENDER F-1 | 2 |
| 53 | 995346 | SCREW, 1/4-20X .50 WAHHTAP | 4 |
| 54 | 126358 | BOLT, 5/16-18X1.00 CARRLN | 2 |
| 56 | 55273 | NUT, 5/16-18 HXWDFLLK | 2 |
| 59 | 53446 | PIN, 5/16-18 HOOD LATCH | 2 |
| 60 | 271184 | NUT, 5/16-18 HEXKEPS | 2 |
| 63 | 50653 | GUIDE, BELT | 1 |
| 64 | 41529 | NUT, 3/8-16 HXCTRLKJAM | 1 |
| 65 | 271190 | NUT, 3/8-16 HEXKEPS | 1 |
| 66 | 305395 | BELT GUARD SF RUBBER 7 X 25.46 | 2 |
| 67 | 57034 | SCREW, 10-24X .63 TRHMA | 12 |
| 68 | 1501 | WASHER, FLAT .203X .56X.040 | 12 |
| 69 | 271166 | NUT, #10-24 HEXKEPS | 12 |
| 70 | 333200 | PARTS MANUAL | 1 |
| 71 | 333236 | OPERATOR'S MANUAL (GERMAN) | 1 |
| 72 | 330273 | AIR ASSIST MANUAL (GERMAN) | 1 |



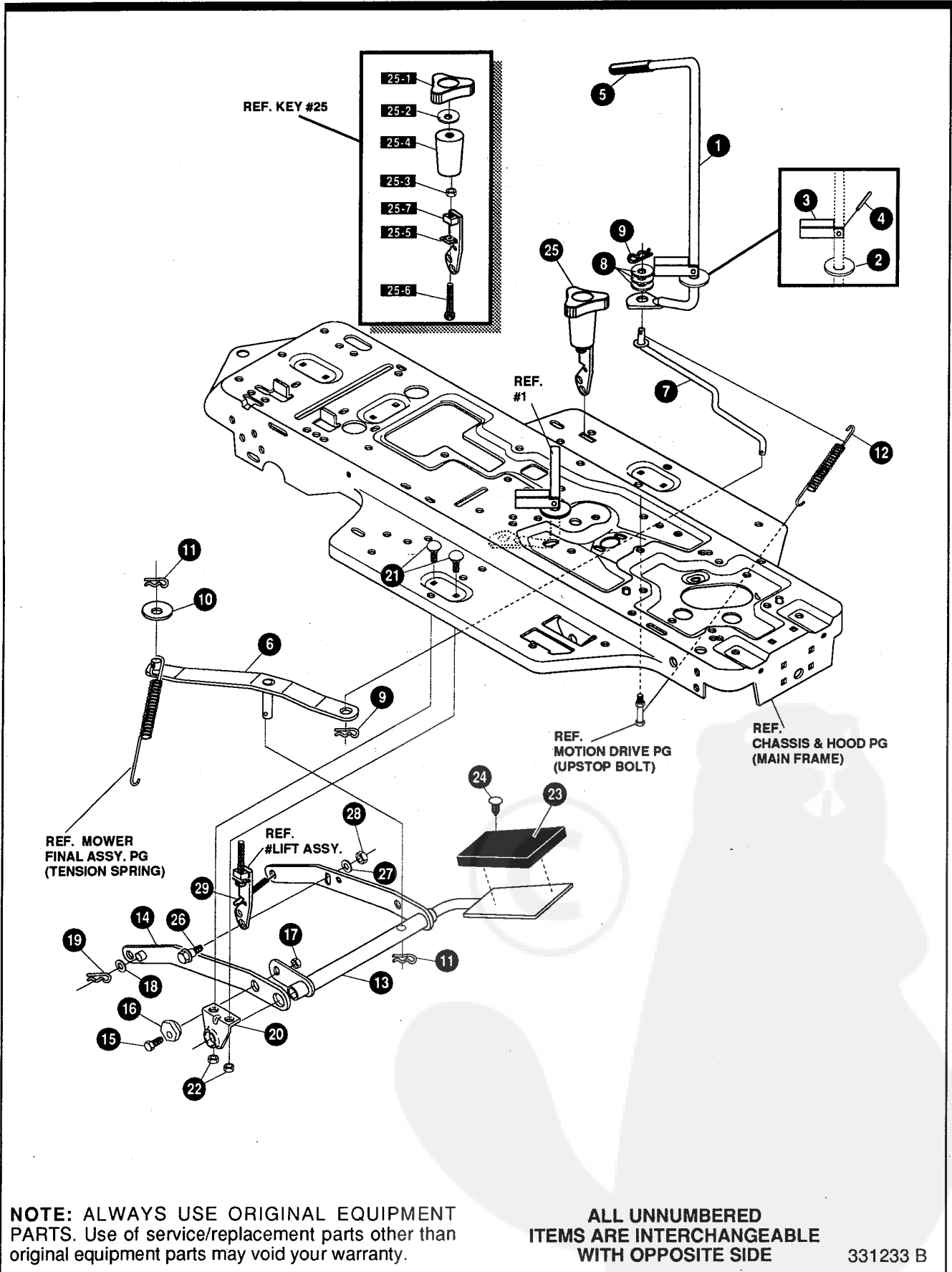
NOTE: ALWAYS USE ORIGINAL EQUIPMENT PARTS. Use of service/replacement parts other than original equipment parts may void your warranty.

ALL UNNUMBERED ITEMS ARE INTERCHANGEABLE WITH OPPOSITE SIDE

324972 G

| KEY# | PART# | DESCRIPTION | QTY |
|------|------------|--|-----|
| 1 | ^ | AXLE FRONT ASSY, SF LONG | 1 |
| 1-1 | 324915-853 | ASSY FRONT AXLE SF GS | 1 |
| 1-2 | 50546 | BRNG, FL .759IDX1.002ODX .75 | 4 |
| 1-3 | 310368 | SPINDLE,ASSY,RH LONG SF | 1 |
| 1-4 | 36625 | RING, RETEX .57X.05TRU5133-75 | 1 |
| 1-5 | 310367 | SPINDLE,ASSY,LH LONG SF | 1 |
| 1-6 | 327619-853 | ARM ASSY SF 4WS FRNT STRNG | 1 |
| 1-7 | 454565 | PIN, SPRING.250DIAX1.25LG HVPL | 1 |
| 2 | 302688 | ASSY,TIE ROD 19.31 LG | 1 |
| 3 | 180124 | SCREW, 3/8-16X1.25 HHC | 2 |
| 4 | 120382 | WASHER, REGSPTLK.393X.68X.10 | 2 |
| 5 | 1499 | NUT, 3/8-16 REGHXCTRLK | 2 |
| 6 | 324752 | GEAR, SECTOR SF4WS HT | 1 |
| 7 | 330789 | PLATE, SECT SF 4WS | 2 |
| 8 | 330021 | BUSHING, SECTOR GEAR SF 4WS | 1 |
| 9 | 181643 | SCREW, 3/8-24X1.50 HHC | 1 |
| 10 | 845 | WASHER, FLAT .390X1.25X.119 | 2 |
| 11 | 412349 | NUT, 3/8-24 HXCTRLK | 1 |
| 12 | 328808 | DRAG LINK ASSY 17.69LG | 1 |
| 12-1 | 57158 | BALL JOINT 3/8 THD SHORT STUD | 2 |
| 12-2 | 124925 | NUT, 3/8-24 REGHEXJAM | 2 |
| 12-3 | 56190 | DRAG LINK | 1 |
| 13 | 120382 | WASHER, REGSPTLK.393X.68X.10 | 2 |
| 14 | 120369 | NUT, 3/8-24 REGHEX | 2 |
| 15 | 327834 | SHAFT, PIN-STEER | 1 |
| 16 | 325692 | BRNG, FL .50 IDX1.370ODX | 1 |
| 17 | 326505 | SCREW, 1/4-20X.75 (TQ 30-35 FT#) | 2 |
| 18 | 46931 | NUT, 1/4-20 WDFL MAC-LOCK | 2 |
| 19 | 20864 | RING, RET E .39X.04TRU5133-50 | 1 |
| 20 | 302828 | TIRE & RIM, PU 15X6.0X6 TURWHI | 2 |
| 20-1 | 24167 | VALVE STEM | |
| 20-2 | 39829 | RIM, WHEEL | |
| 20-3 | 314416 | BEARING, FL | |
| 24 | | REFER TO TIRE TREAD PAGE | |
| 34 | 642 | WASHER, FLAT .755X1.31X.075 | 4 |
| 35 | 36625 | RING, RETEX .57X.05TRU5133-75 | 2 |
| 36 | 40394 | HUB CAP, 1.500ID X 7/8LG | 2 |
| 37 | 180124 | SCREW, 3/8-16X1.25 HHC | 1 |
| 38 | 120394 | WASHER, FLAT .406X .81X.065 | 2 |
| 39 | 45171 | NUT, 3/8-16 HWDFL WHIZ-LOCK | 1 |

^ ORDER INDIVIDUAL PARTS



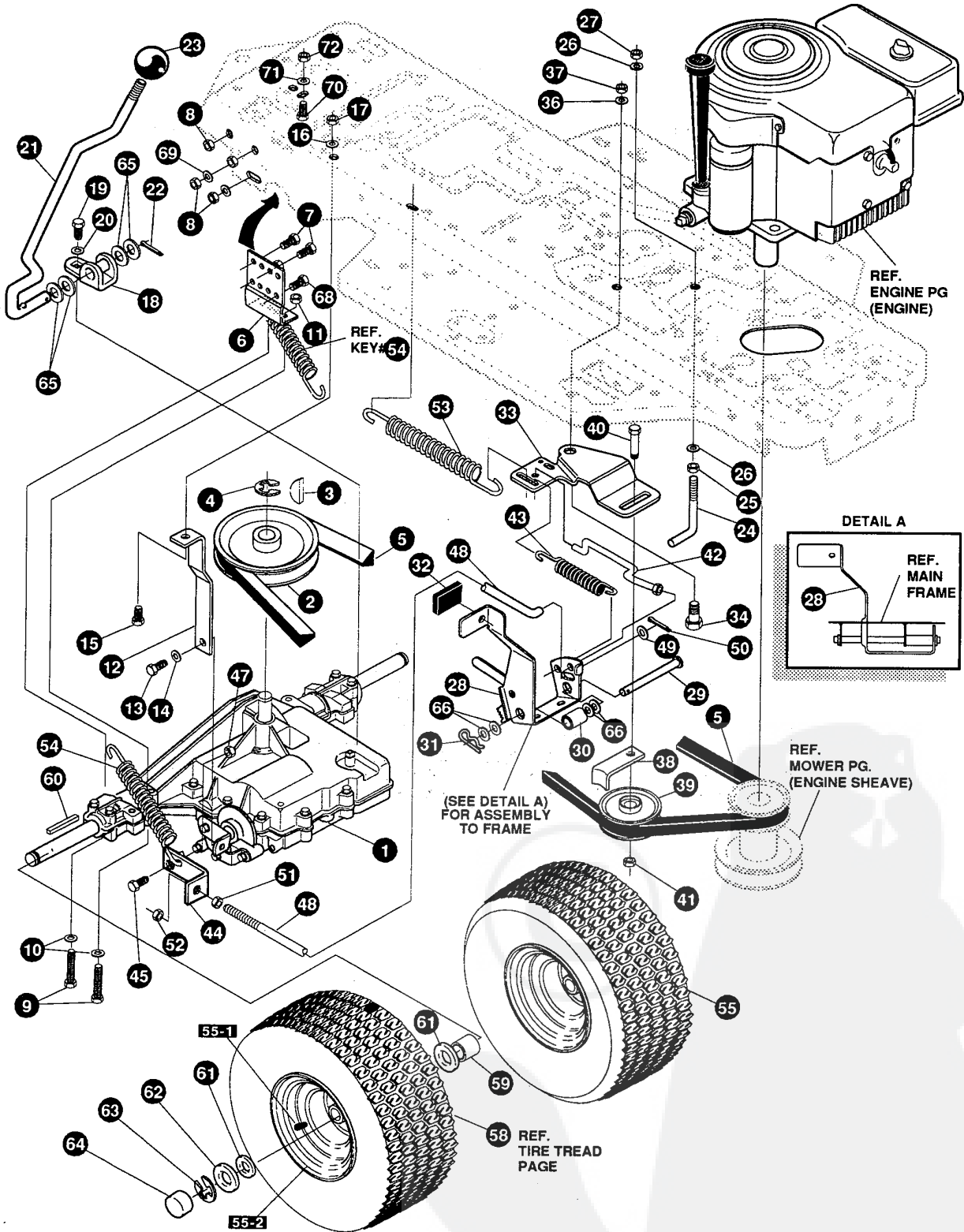
NOTE: ALWAYS USE ORIGINAL EQUIPMENT PARTS. Use of service/replacement parts other than original equipment parts may void your warranty.

ALL UNNUMBERED ITEMS ARE INTERCHANGEABLE WITH OPPOSITE SIDE

331233 B

E3554-270**MOWER SUSPENSION ASSEMBLY**

| KEY# | PART# | DESCRIPTION | QTY |
|------|------------|--------------------------------------|-----|
| 1 | 325591 | LEVER,CLUTCH RH PTO | 1 |
| 2 | 22265 | WASHER, FLAT .515X1.38X.119PL | 1 |
| 3 | 305225 | STOP, PTO ENGAGE | 1 |
| 4 | 326386 | PIN, SPRING.187DIA X1.13LG HD | 1 |
| 5 | 55514 | KNOB, ROUND 1.50DIA OR GRIP SF | 1 |
| 6 | 325587-853 | STRAP ASSY, PTO BELCRANK SF | 1 |
| 7 | 325590 | ROD, BELCRANK LINK SF | 1 |
| 8 | 274517 | WASHER, FLAT .406X .73X.063 | 3 |
| 9 | 8260 | PIN, HAIR .091 DIA X1.66LG | 2 |
| 10 | 25210 | WASHER, FLAT .386X1.25X.09 | 1 |
| 11 | 8260 | PIN, HAIR .091 DIA X1.66LG | 2 |
| 12 | 325802 | SPRING, .69X7.75X.0897TENSION | 1 |
| 13 | 326533-853 | LIFT ASSY,LH PEDAL-LIFT | 1 |
| 14 | 325130-853 | LIFT ASSY, RH SF | 1 |
| 15 | 180079 | SCREW, 5/16-18X1.00 HHC | 1 |
| 16 | 58247 | NUT, ADJUST | 1 |
| 17 | 1498 | NUT, 5/16-18 REGHEXCTRLK | 1 |
| 18 | 417098 | WASHER, FLAT .531X1.06X.063 | 2 |
| 19 | 8260 | PIN, HAIR .091 DIA X1.66LG | 2 |
| 20 | 325495-853 | BRACKET, REAR HANG SUSP | 1 |
| 21 | 330967 | BOLT, 5/16-18X1.00 CAR | 4 |
| 22 | 1498 | NUT, 5/16-18 REGHEXCTRLK | 4 |
| 23 | 328596 | PAD, LIFT PEDAL | 1 |
| 24 | 309235 | FASTENER, RATCHET BLACK | 1 |
| 25 | 327934 | ASSY LATCH SUS MOWER SF | 1 |
| 25-1 | 325860 | KNOB, FLUTED TORQUE BLACK | 1 |
| 25-2 | 446363 | WASHER, FLAT .375X .88X.082 | 1 |
| 25-3 | 45905 | NUT, 3/8-16 HWD FLLK MACK | 1 |
| 25-4 | 326113 | COVER, TOP SLEEVE PEDAL-LIFT | 1 |
| 25-5 | 324983 | WASHER, RUBBER 3/8X.75SQ | 1 |
| 25-6 | 325832 | BOLT, SUS MOWER LATCH SF | 1 |
| 25-7 | 325831-853 | LATCH, SUS MOWER SF | 1 |
| 26 | 25086 | BOLT, .500X .375 HSH 5/16-18 | 1 |
| 27 | 4230 | WASHER, FLAT .328X .68X.104 | 1 |
| 28 | 1498 | NUT, 5/16-18 REGHEXCTRLK | 1 |
| 29 | 35410 | SPRING .071 X .62 X 4.37 | 1 |



NOTE: ALWAYS USE ORIGINAL EQUIPMENT PARTS. Use of service/replacement parts other than original equipment parts may void your warranty.

ALL UNNUMBERED ITEMS ARE INTERCHANGEABLE WITH OPPOSITE SIDE

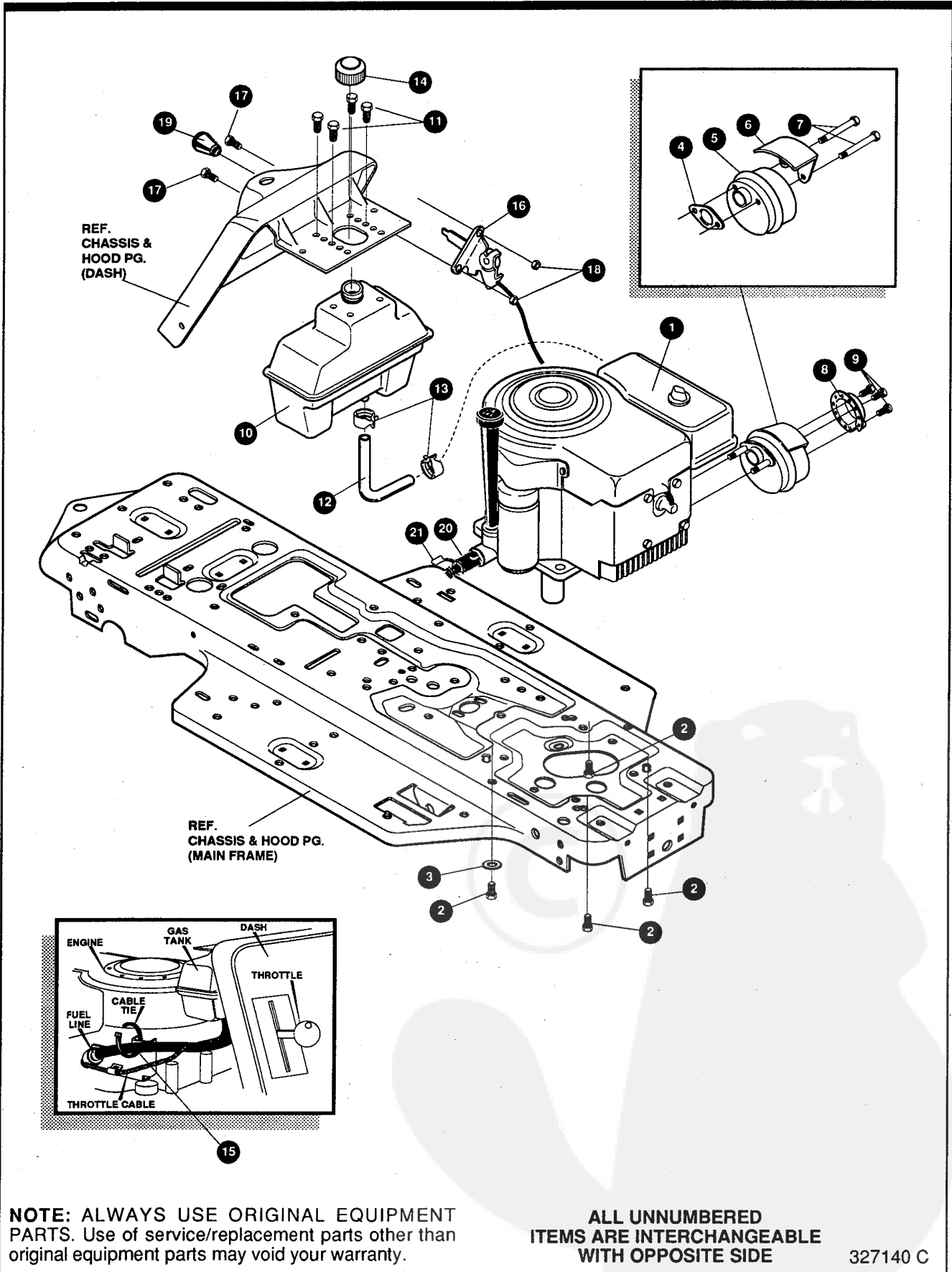
332340 A

| KEY# | PART# | DESCRIPTION | QTY |
|------|------------|--|-----|
| 1 | ^ | TRANSAXLE FOOTE 4360-5 | 1 |
| 2 | 303109 | PULLEY, 6.6 OD V4L T/A | 1 |
| 3 | 50795 | KEY, HI-PRO 606 .75DIA X.187WD | 1 |
| 4 | 22053 | RING, RETEX .58X.035TRU5100-62 | 1 |
| 5 | 54758 | BELT, V 4L 82.00 SF DRIVE | 1 |
| 6 | 326615-853 | BRACKET, TRANSAXLE | 2 |
| 7 | 180077 | SCREW, 5/16-18X .75 HHC | 4 |
| 8 | 1498 | NUT, 5/16-18 REGHEXCTRLK | 8 |
| 9 | 180091 | SCREW, 5/16-18X2.50 HHC | 4 |
| 10 | 120393 | WASHER, FLAT .344X .69X.065 | 4 |
| 11 | 1498 | NUT, 5/16-18 REGHEXCTRLK | 4 |
| 12 | 323126 | BRACKET, STABILIZER BLK | 1 |
| 13 | 35498 | SCREW, 5/16-18X .75 WAHHTAP | 1 |
| 14 | 120638 | WASHER, HVSPTLK .328X.60X.09 | 1 |
| 15 | 180079 | SCREW, 5/16-18X1.00 HHC | 1 |
| 16 | 138485 | WASHER, EXLK .320X.61X.03 | 1 |
| 17 | 1498 | NUT, 5/16-18 REGHEXCTRLK | 1 |
| 18 | 331393 | BRACKET, SHIFT F4360 | 1 |
| 19 | 56255 | SCREW, 1/4-28X .75 NYLHHC | 1 |
| 20 | 57157 | WASHER, .750X.250 SP-TRANSAXLE | 1 |
| 21 | 331800 | SHIFT LEVER (DANA) | 1 |
| 22 | 137185 | PIN, COTTER .125 DIA X1.00LG | 1 |
| 23 | 55514 | KNOB, ROUND 1.50 DIA BLACK | 1 |
| 24 | 49896 | BELT GUIDE | 1 |
| 25 | 271184 | NUT, 5/16-18 HEXKEPS | 1 |
| 26 | 120393 | WASHER, FLAT .344X .69X.065 | 2 |
| 27 | 1498 | NUT, 5/16-18 REGHEXCTRLK | 1 |
| 28 | 331836 | ASSY, PEDAL, BRAKE, CLUTCH SF | 1 |
| 29 | 319676 | PIN, CLEVIS .500DX4.87LG | 1 |
| 30 | 331972 | SPACER, SLEV .53 X .62X1.240 | 1 |
| 31 | 56180 | PIN, HAIR .091 DIA X1.62LG | 1 |
| 32 | 48761 | PAD, CLUTCH/BRAKE PEDAL | 1 |
| 33 | 321969 | IDLER ARM BRKT TRACTION SF | 1 |
| 34 | 329989 | BOLT, .625X .135 HSH 5/16-18 | 1 |
| 36 | 45602 | WASHER, FLAT .333X .87X.119 | 1 |
| 37 | 1498 | NUT, 5/16-18 REGHEXCTRLK | 1 |
| 38 | 39659 | RETAINER, BELT | 1 |
| 39 | 35374 | PULLEY, IDLER V4L 3.06X .62 | 1 |
| 40 | 45892 | BOLT, 3/8-16X1.50 CARRSN | 1 |
| 41 | 1499 | NUT, 3/8-16 REGHEXCTRLK | 1 |
| 42 | 333175 | CLUTCH ROD ASSY, .268 DIA 3.92 | 1 |
| 43 | 326780 | SPRING, 3/8ODX2.18 X.055 TENSION | 1 |
| 44 | 323127 | BRACKET, BRAKE ROD BLK | 1 |
| 45 | 20507 | BOLT, .437X .156 HSH 5/16-18 | 1 |
| 47 | 1498 | NUT, 5/16-18 REGHEXCTRLK | 1 |
| 48 | 323222 | BRAKE ROD, RIDER BLK | 1 |
| 49 | 120393 | WASHER, FLAT .344X .69X.065 | 1 |
| 50 | 121222 | PIN, COTTER .090 DIA X .75LG | 1 |
| 51 | 271184 | NUT, 5/16-18 HEXKEPS | 1 |
| 52 | 1498 | NUT, 5/16-18 REGHEXCTRLK | 1 |
| 53 | 327867 | SPRING, 3/4 ODX7.75X.091 TENSION | 1 |
| 54 | 35410 | SPRING .071 X .62 X 4.37 | 1 |
| 55 | 326363 | TIRE & RIM, 20X8.00-8 WHITE 668 | 2 |
| 55-1 | 24167 | VALVE STEM | |
| 55-2 | 326362 | RIM, WHEEL | |
| 58 | | REFER TO TIRE TREAD PAGE | |
| 59 | 57479 | SPACER, SLEV .75 X1.25X1.32 | 2 |
| 60 | 52928 | KEY, SQUARE .187SQX2.25LG | 2 |
| 61 | 642 | WASHER, FLAT .755X1.31X.075 | 4 |
| 62 | 42815 | WASHER, FLAT .755X1.53X.07 | 2 |
| 63 | 36625 | RING, RETEX .57X.05TRU5133-75 | 2 |
| 64 | 40394 | HUB CAP, 1.500ID X 7/8LG | 2 |
| 65 | 5950 | WASHER, FLAT .505X .88X.13 | 4 |
| 66 | 2968 | WASHER, FLAT .504X .75X.059 | 4 |
| 68 | 327917 | SCREW, 5/16-18X1.50HHCFT | 4 |
| 69 | 73787 | WASHER, FLAT .330X .75X.1793 | 4 |
| 70 | 180022 | SCREW, 1/4-20X1.00 HHC | 1 |
| 71 | 120380 | WASHER, REGSPTLK.263X.49X.07 | 1 |
| 72 | 120375 | NUT, 1/4-20 REGHEX | 1 |

^ CONTACT YOUR NEAREST TRANSAXLE DEALER FOR PARTS & SERVICE

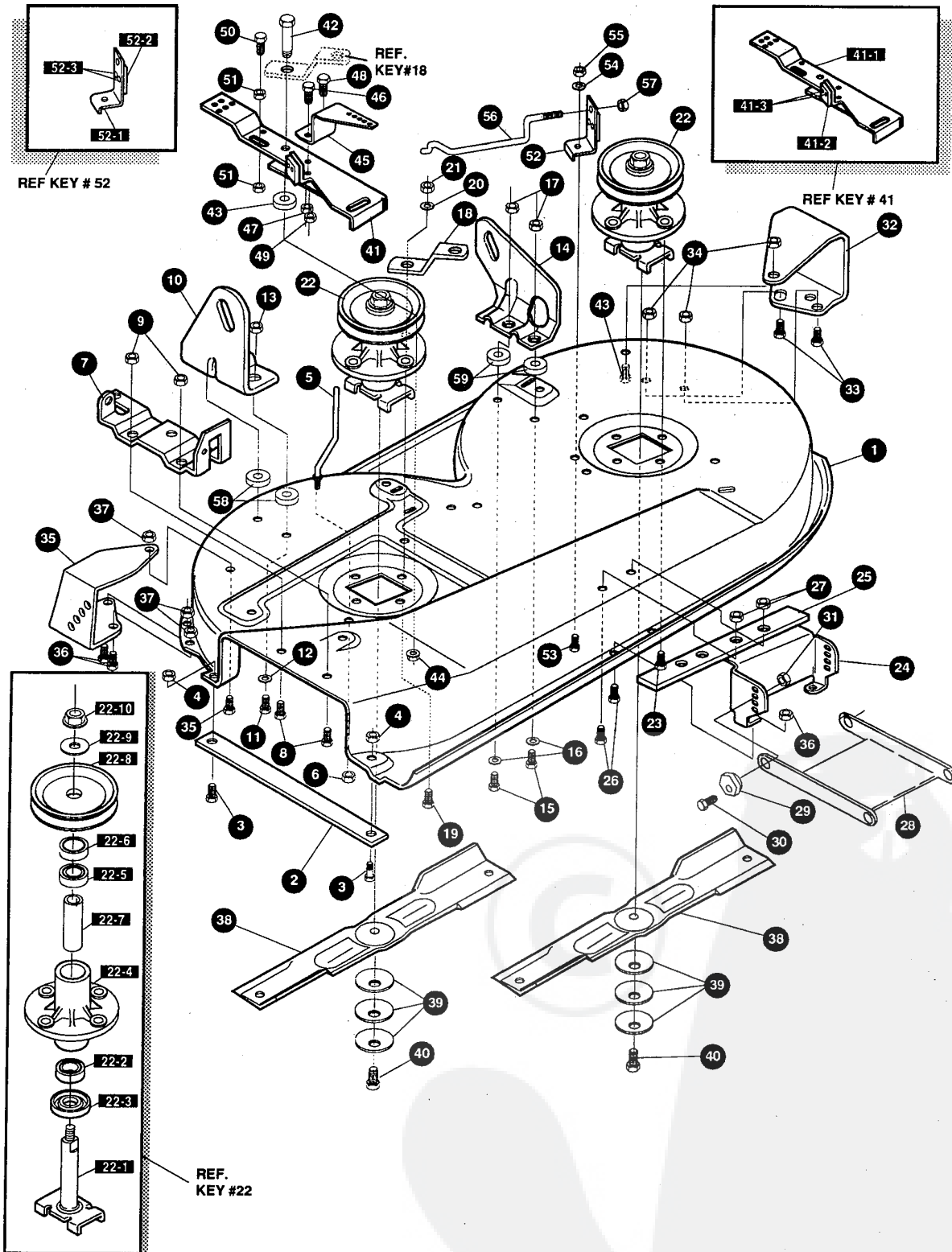
E3554-270

REPAIR PARTS



E3554-270**ENGINE & CONTROL ASSEMBLY**

| KEY# | PART# | DESCRIPTION | QTY |
|------|--------|---|------|
| 1 | ENGINE | 12-12.5HP BS IC DUAL(SEE ENGINE MANUAL) | 1 |
| 2 | 50947 | SCREW, 3/8-16X1.25 WAHHTAPBLKP | 4 |
| 3 | 138489 | WASHER, EXLK.384X.69X.04 | 1 |
| 4 | 46708 | GASKET, MUFFLER | 1 |
| 5 | 57908 | MUFFLER-DOM/EXP ROUND | 1 |
| 6 | 54767 | SHIELD, HEAT, FOR ROUND MUFFLER | 1 |
| 7 | 54980 | SCREW, 5/16-18X3.50 HHC | 2 |
| 8 | 323423 | DEFLECTOR, MUFFLER PARTIAL | 1 |
| 9 | 35287 | SCREW, #8-32X .38 HHWATAP | 3 |
| 10 | 314989 | TANK, FUEL 1 GAL CLEAR | 1 |
| 11 | 300303 | SCREW, .25X.75X.51HHWAPLASTITE | 4 |
| 12 | 42258 | TUBING, .25X.50X BULK GAS LINE | 12.0 |
| 13 | 47345 | CLAMP, HOSE SCREW TYPE | 2 |
| 14 | 46704 | CAP, GAS 1-1/2-7 THD BLK | 1 |
| 15 | 57444 | TIE, CABLE BLACK NYLON 5.62L | 1 |
| 16 | 320031 | THROTTLE CONTROL | 1 |
| 17 | 274707 | SCREW, 10-24X .50 WAHMA | 2 |
| 18 | 308459 | NUT, #10-24 HXHDNYLK | 2 |
| 19 | 50607 | KNOB, ROUND THROTTLE BLACK | 1 |
| 20 | 325547 | OIL DRAIN VALVE ASSEMBLY | 1 |
| 21 | 327422 | CAP, OIL DRAIN VALVE ASM. YELLOW | 1 |



NOTE: ALWAYS USE ORIGINAL EQUIPMENT PARTS. Use of service/replacement parts other than original equipment parts may void your warranty.

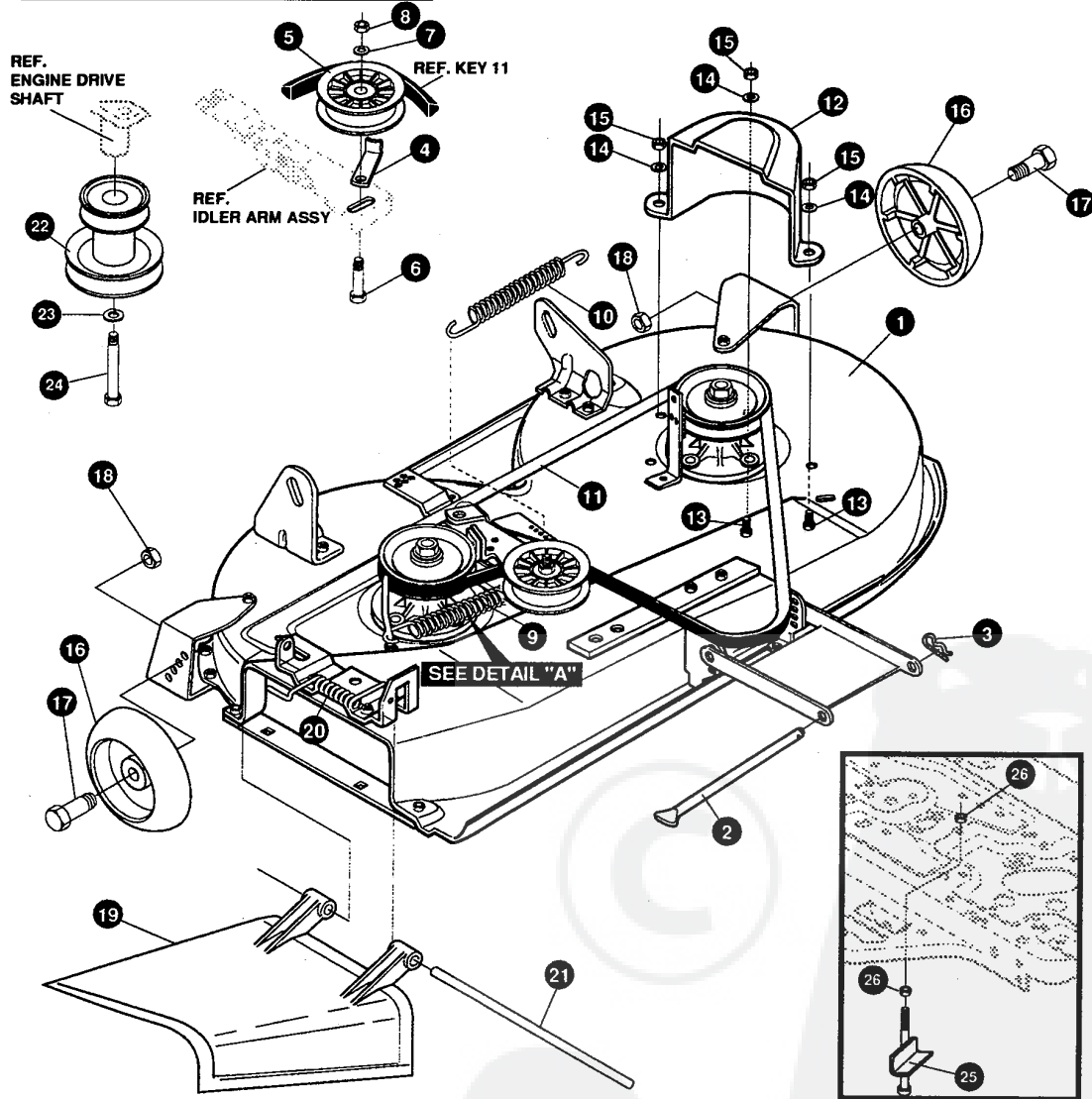
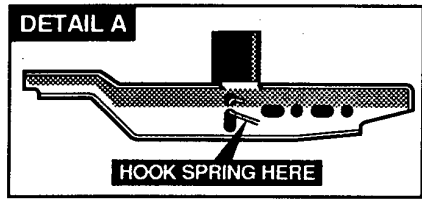
ALL UNNUMBERED ITEMS ARE INTERCHANGEABLE WITH OPPOSITE SIDE

333277 A

E3554-270

PRE-PAINTED DECK ASSEMBLY

| KEY# | PART# | DESCRIPTION | QTY |
|-------|------------|---------------------------------------|-----|
| 1 | 325106 | 39" DECK KIT | 1 |
| 2 | 326295-853 | BAR, SKID | 1 |
| 3 | 120230 | BOLT, 5/16-18X1.25 CARRLN | 2 |
| 4 | 271184 | NUT, 5/16-18 HEXKEPS | 2 |
| 5 | 57318 | GUIDE, BELT 5/16-18 THD | 1 |
| 6 | 1498 | NUT, 5/16-18 REGHEXCTRLK | 1 |
| 7 | 313928 | BRACKET, CHUTE BLK 853 | 1 |
| 8 | 180073 | SCREW, 5/16-18X .50 HHC | 2 |
| 9 | 1498 | NUT, 5/16-18 REGHEXCTRLK | 2 |
| 10 | 313929 | LIFT BRKT, REAR RH BLK 853 | 1 |
| 11 | 180081 | SCREW, 5/16-18X1.25 HHC | 2 |
| 12 | 120393 | WASHER, FLAT .344X .69X.065 | 2 |
| 13 | 1498 | NUT, 5/16-18 REGHEXCTRLK | 2 |
| 15 | 180081 | SCREW, 5/16-18X1.25 HHC | 2 |
| 16 | 120393 | WASHER, FLAT .344X .69X.065 | 2 |
| 17 | 1498 | NUT, 5/16-18 REGHEXCTRLK | 2 |
| 18 | 315302-853 | BRACKET, IDLER SUPPORT | 1 |
| 19 | 300345 | SCREW, 5/16-18X1.38 WAHHTAP | 1 |
| 20 | 120393 | WASHER, FLAT .344X .69X.065 | 1 |
| 21 | 1498 | NUT, 5/16-18 REGHEXCTRLK | 1 |
| 22 | 56424-853 | QUILL ASSY, 36/39/40/43 | 2 |
| 22-1 | 56425 | SHAFT/SADDLE 36" | 1 |
| 22-2 | 49562 | BRNG, BALL 6203-2AA(SEALS)-C3 | 1 |
| 22-3 | 50616 | DUST SHIELD | 1 |
| 22-4 | 55547 | QUILL CASTING (1046) | 1 |
| 22-5 | 49562 | BRNG, BALL 6203-2AA(SEALS)-C3 | 1 |
| 22-6 | 50818 | SPACER, SLEV .669X .88X3.797 | 1 |
| 22-7 | 51449 | SPACER, SLEV .672X .93X .438PM | 1 |
| 22-8 | 313898 | PULLEY ASSY | 1 |
| 22-9 | 56365 | WASHER, SPECIAL QUILL | 1 |
| 22-10 | 1282 | NUT, 7/16-20 WDFLLK | 1 |
| 23 | 50634 | SCREW, 5/16-18X .88 WAHHTAP | 8 |
| 24 | 312526 | LIFT SUPPORT FRONT DECK | 1 |
| 25 | 328155-853 | PLATE-MOUNTING | 1 |
| 26 | 180077 | SCREW, 5/16-18X .75 HHC | 4 |
| 27 | 1498 | NUT, 5/16-18 REGHEXCTRLK | 4 |
| 28 | 58305-853 | BRACKET, LINK DECK FRONT | 1 |
| 29 | 58247 | NUT, ADJUST | 2 |
| 30 | 180079 | SCREW, 5/16-18X1.00 HHC | 2 |
| 31 | 1498 | NUT, 5/16-18 REGHEXCTRLK | 2 |
| 32 | 312477 | WHEEL BRKT, LH BLK | 1 |
| 33 | 180077 | SCREW, 5/16-18X .75 HHC | 3 |
| 34 | 1498 | NUT, 5/16-18 REGHEXCTRLK | 3 |
| 35 | 300102-853 | WHEEL BRKT, RH | 1 |
| 36 | 180077 | SCREW, 5/16-18X .75 HHC | 3 |
| 37 | 1498 | NUT, 5/16-18 REGHEXCTRLK | 3 |
| 38 | 309069 | BLADE, 19.5 STD-LIFT BLK853 | 2 |
| 39 | 2483 | WASHER, .391DX1.25DX.07 BELLVIL | 6 |
| 40 | 39573 | SCREW, 3/8-24X1.00 NYLHHC | 2 |
| 41 | 320565-853 | IDLER ARM ASSEMBLY | 1 |
| 41-1 | 300490-853 | IDLER ARM 36,38,39,&45SD | 1 |
| 41-2 | 306973 | BRAKE PAD - HARD - 232AF | 1 |
| 41-3 | 41601 | RIVET, OVSET .187DIAX .50LG ST | 2 |
| 42 | 300180 | BOLT, .50 X1.88 HHSH 3/8-16 | 1 |
| 43 | 996416 | WASHER, FLAT .391X1.00X.125 | 1 |
| 44 | 45171 | NUT, 3/8-16 HWDFL WHIZ-LOCK | 1 |
| 45 | 326249-853 | BRACKET, EXTENSION IDLER | 1 |
| 46 | 180077 | SCREW, 5/16-18X .75 HHC | 1 |
| 47 | 1498 | NUT, 5/16-18 REGHEXCTRLK | 1 |
| 48 | 120854 | SCREW, 1/4-20X .63 HHC | 1 |
| 49 | 1502 | NUT, 1/4-20 REGHEXCTRLK | 1 |
| 50 | 121954 | SCREW, 1/4-20X2.00 HHC | 1 |
| 51 | 271172 | NUT, 1/4-20 REGHEXKEPS | 2 |
| 52 | 303247-853 | ASSY.BLADE BRAKE 36,39,45 | 1 |
| 52-1 | 303246 | BRAKE ARM, | 1 |
| 52-2 | 306973 | BRAKE PAD - HARD - 232AF | 1 |
| 52-3 | 135624 | RIVET, TRSET .185DIAX .41LG ST | 2 |
| 53 | 180077 | SCREW, 5/16-18X .75 HHC | 1 |
| 54 | 120393 | WASHER, FLAT .344X .69X.065 | 1 |
| 55 | 1498 | NUT, 5/16-18 REGHEXCTRLK | 1 |
| 56 | 315306 | ROD, BRAKE, 14.7 39" DECK ZINC | 1 |
| 57 | 1502 | NUT, 1/4-20 REGHEXCTRLK | 1 |
| 58 | 314702 | SPACER, SLEV .344X1.00X .500PM | 2 |
| 59 | 314702 | SPACER, SLEV .344X1.00X .500PM | 2 |



NOTE: ALWAYS USE ORIGINAL EQUIPMENT PARTS. Use of service/replacement parts other than original equipment parts may void your warranty.

ALL UNNUMBERED ITEMS ARE INTERCHANGEABLE WITH OPPOSITE SIDE

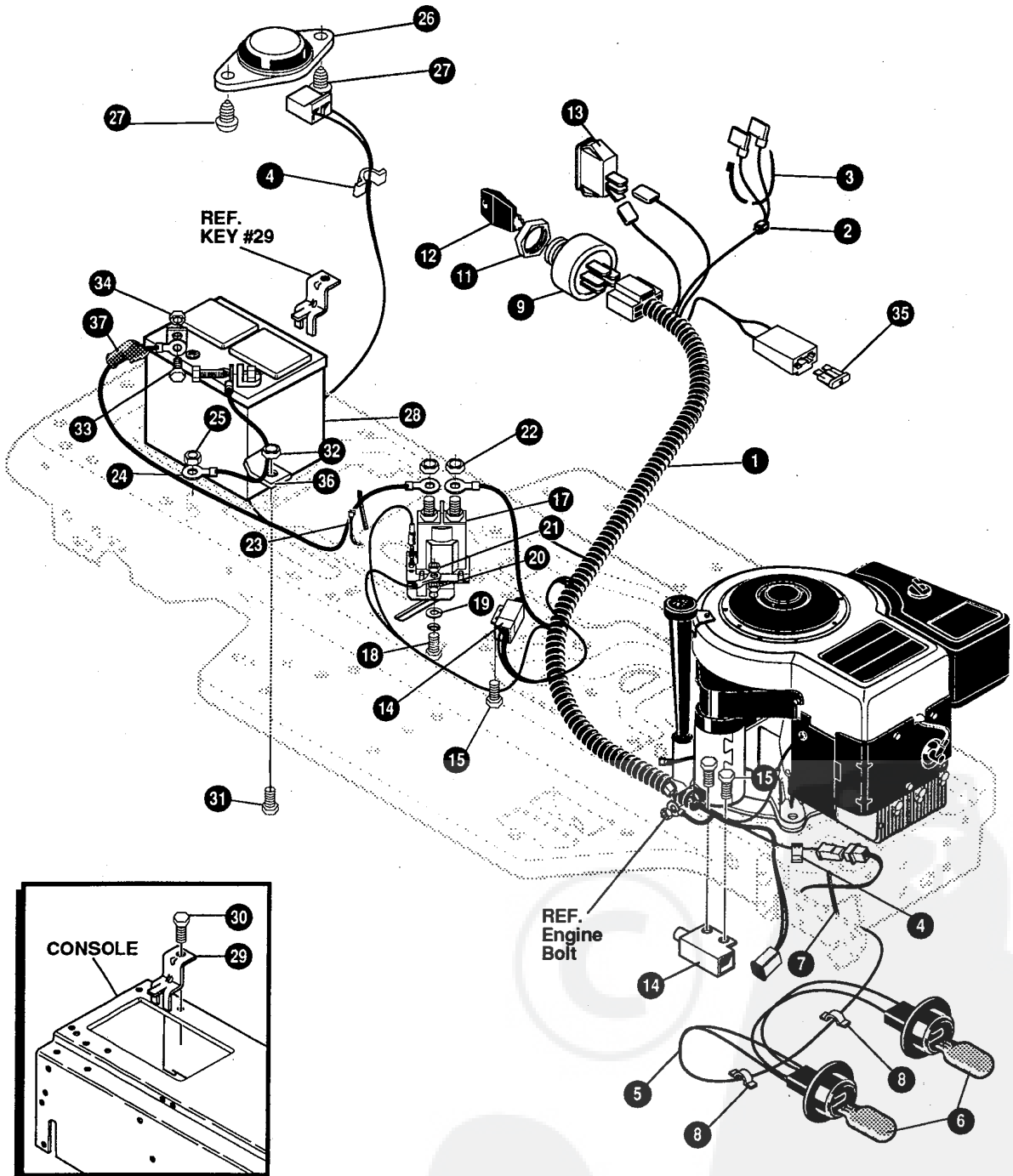
333278 A

| KEY# | PART# | DESCRIPTION | QTY |
|------|------------|--------------------------------------|-----|
| 1 | 329456-853 | ASM.DECK 39SUS SF/AIR ASST | 1 |
| 2 | 58306 | ROD, DECK HITCH Z-PL 953 | 1 |
| 3 | 8260 | PIN, HAIR .091 DIAX1.66LG | 1 |
| 4 | 1346 | RETAINER, BELT | 1 |
| 5 | 310326 | PULLEY, IDLER BFF 4.00 WIDE FL | 1 |
| 6 | 57325 | BOLT, 3/8-16X2.00 CARRSN | 1 |
| 7 | 120382 | WASHER, REGSPTLK.393X.68X.10 | 1 |
| 8 | 120377 | NUT, 3/8-16 REGHX | 1 |
| 9 | 322064 | SPRING, .75X8.4X.105 TENSION | 1 |
| 10 | 326256 | SPRING, .75X10.0X.105 TENSION | 1 |
| 11 | 300680 | BELT, V 5L 77.75 KEVLAR | 1 |
| 12 | 328257 | GUARD, BELT LH PLASTIC | 1 |
| 13 | 180077 | SCREW, 5/16-18X .75 HHC | 3 |
| 14 | 120393 | WASHER, FLAT .344X .69X.065 | 3 |
| 15 | 1498 | NUT, 5/16-18 REGHEXCTRLK | 3 |
| 16 | 302611 | GAUGE WHEEL,EURO 6.00ODX1.38WD | 2 |
| 17 | 23763 | BOLT, .500X1.390 HHSH 3/8-16 | 2 |
| 18 | 1499 | NUT, 3/8-16 REGHXCTRLK | 2 |
| 19 | 57818 | CHUTE DEFLECTOR 36",39",45" | 1 |
| 20 | 314975 | SPRING,TORSION CHUTE DEFLECTOR | 1 |
| 21 | 57317 | PIVOT ROD,CHUTE | 1 |
| 22 | 328034 | PULLEY, ENG V3L 4.00 OFFSET | 1 |
| 23 | 120383 | WASHER, REGSPTLK.459X.78X.12 | 1 |
| 24 | 433146 | SCREW, 7/16-20X4.25 HHC BLK PH | 1 |
| 25 | 327894 | ASSEMBLY UPSTOP W/HOSE PLATE | 1 |
| 26 | 1499 | NUT, 3/8-16 REGHXCTRLK | 2 |



E3554-270

REPAIR PARTS



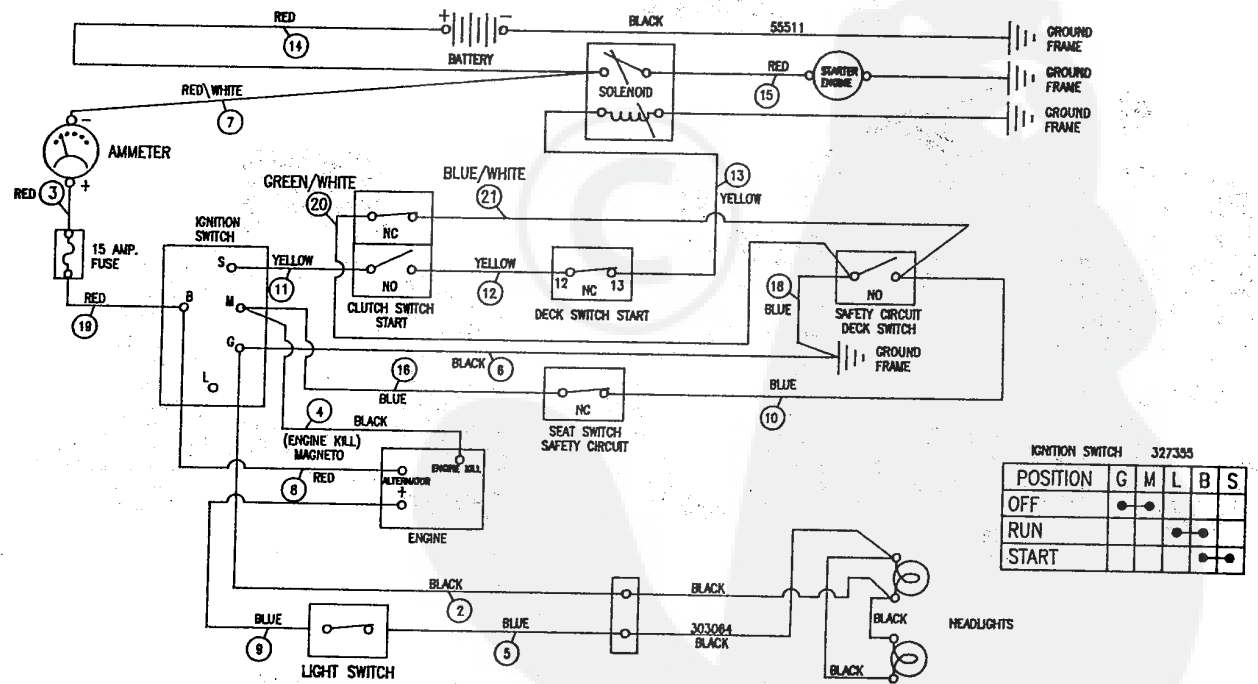
NOTE: ALWAYS USE ORIGINAL EQUIPMENT PARTS. Use of service/replacement parts other than original equipment parts may void your warranty.

ALL UNNUMBERED ITEMS ARE INTERCHANGEABLE WITH OPPOSITE SIDE

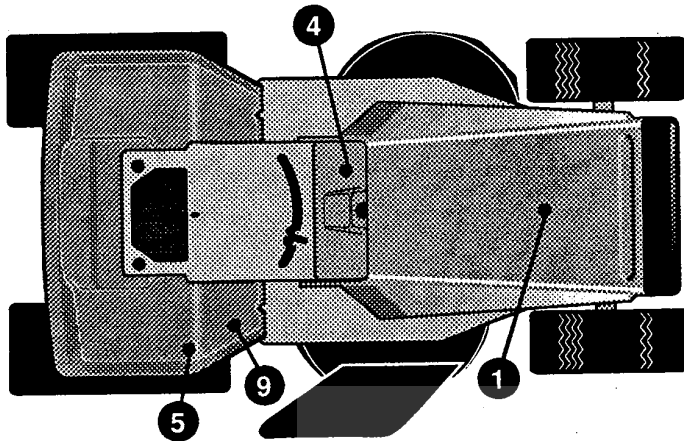
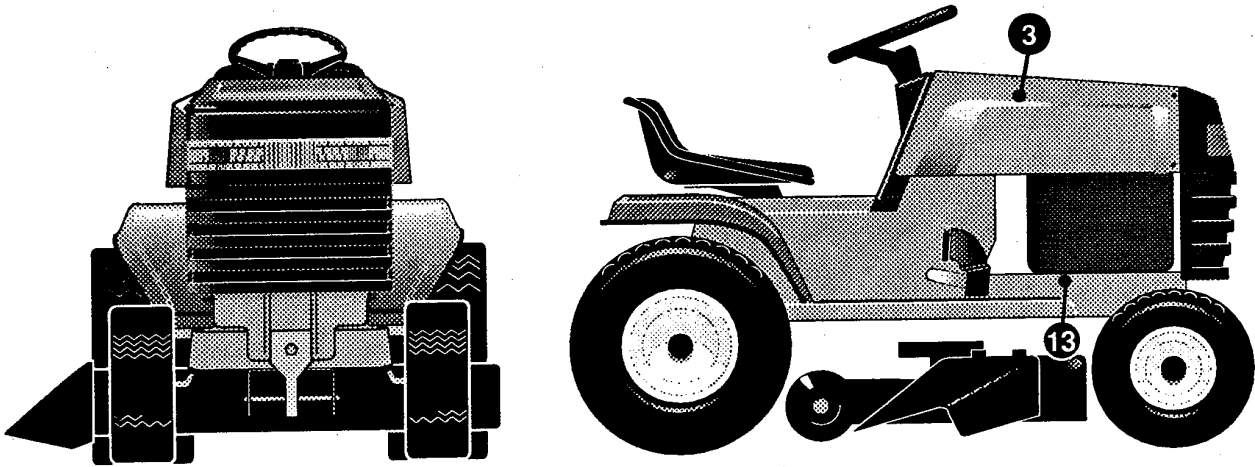
332009 A

| KEY# | PART# | DESCRIPTION | QTY |
|------|--------|---------------------------------|-----|
| 1 | 331450 | WIRE HARNESS SF, W/AMP | 1 |
| 2 | 322298 | SPLICER | 1 |
| 3 | 57444 | TIE, CABLE BLACK NYLON 5.62L | 1 |
| 4 | 41482 | PRESS CLIP, 1.380LG .255ID | 2 |
| 5 | 303064 | ASSY, LIGHT WIRE-1/4 TURN | 1 |
| 6 | 52572 | BULB, HEADLAMP | 2 |
| 7 | 57444 | TIE, CABLE BLACK NYLON 5.62L | 1 |
| 8 | 41482 | PRESS CLIP, 1.380LG .255ID | 2 |
| 9 | 327355 | SWITCH-IGN. (AFTER FIRE) 3 POSN | 1 |
| 11 | 327352 | NUT, 5/8-8ACME DELTA FOR BOOT | 1 |
| 12 | 327350 | KEY, IGNITION GENERIC DELTA | 1 |
| 13 | 300334 | LIGHT SWITCH ON/OFF PANEL MNT | 1 |
| 14 | 57476 | SWITCH, SCR MNT DP NC NO BLK | 2 |
| 15 | 300302 | SCREW, #10 X .50 HHTAPPST BLK | 4 |
| 17 | 53716 | SOLENOID | 1 |
| 18 | 187745 | SCREW, 1/4-20X .75 HXSEMMA | 2 |
| 19 | 1084 | WASHER, FLAT .281X1.00X.063PL | 1 |
| 20 | 1502 | NUT, 1/4-20 REGHEXCTRLK | 2 |
| 21 | 271172 | NUT, 1/4-20 REGHEXKEPS | 1 |
| 22 | 271187 | NUT, 5/16-24 HKEPS | 2 |
| 23 | 57444 | TIE, CABLE BLACK NYLON 5.62L | 1 |
| 24 | 55511 | WIRE, GROUND, 12.5" | 1 |
| 25 | 271184 | NUT, 5/16-18 HEXKEPS | 1 |
| 26 | 57547 | SWITCH, SEAT | 1 |
| 27 | 160505 | SCREW, 1/4-20X .38PHPNHMA | 2 |
| 28 | 302257 | BATTERY, 12V | 1 |
| 29 | 329175 | BATTERY BRACKET | 1 |
| 30 | 995346 | SCREW, 1/4-20X .50 WAHHTAP | 1 |
| 31 | 187745 | SCREW, 1/4-20X .75 HXSEMMA | 1 |
| 32 | 1502 | NUT, 1/4-20 REGHEXCTRLK | 1 |
| 33 | 120854 | SCREW, 1/4-20X .63 HHC | 2 |
| 34 | 271172 | NUT, 1/4-20 REGHEXKEPS | 2 |
| 35 | 302031 | FUSE SPADE TYPE 32V 15A | 1 |
| 36 | 9149 | BRACKET, CABLE RETAIN | 1 |
| 37 | 308201 | INSULATOR, BATTERY BOOT EURO | 1 |

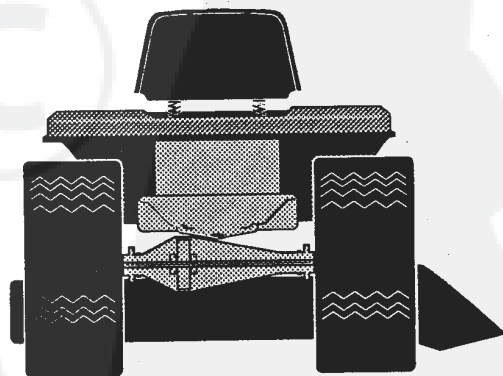
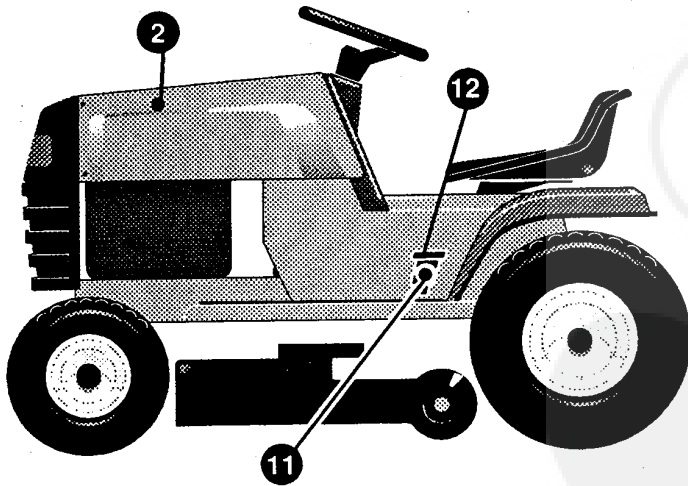
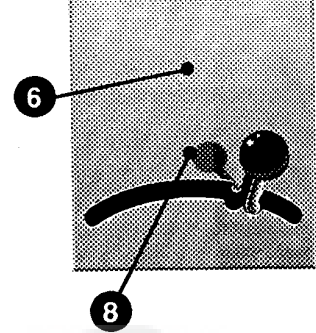
SCHEMATIC DRAWING



331450



CONSOLE DETAIL

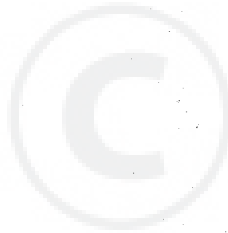


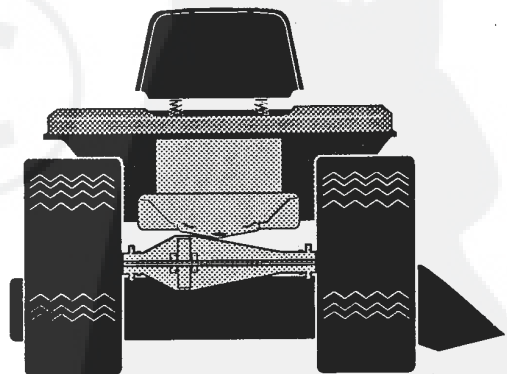
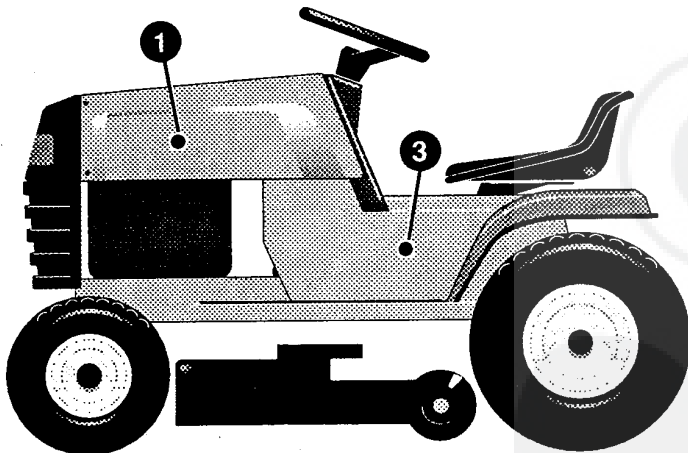
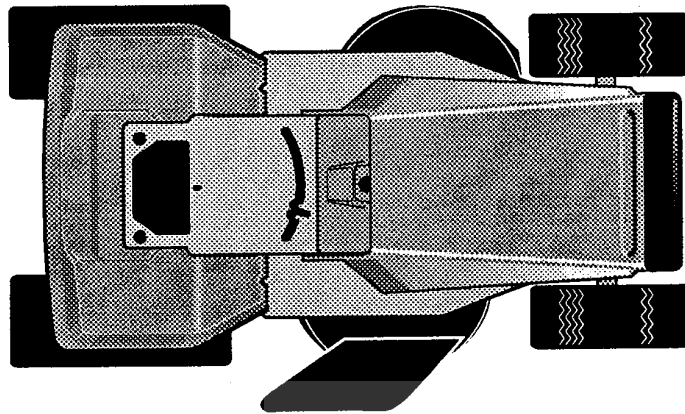
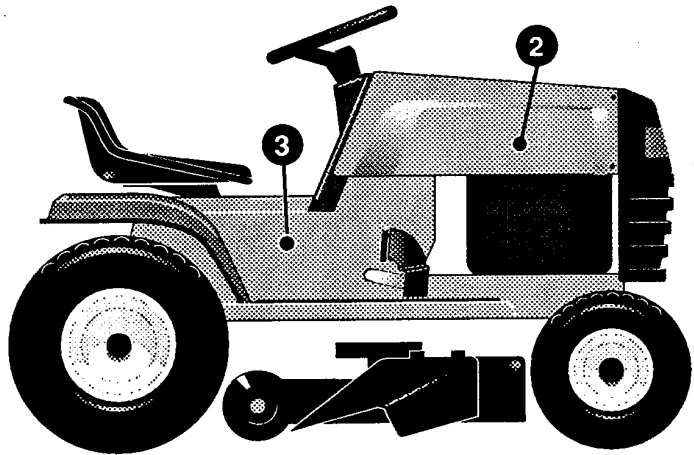
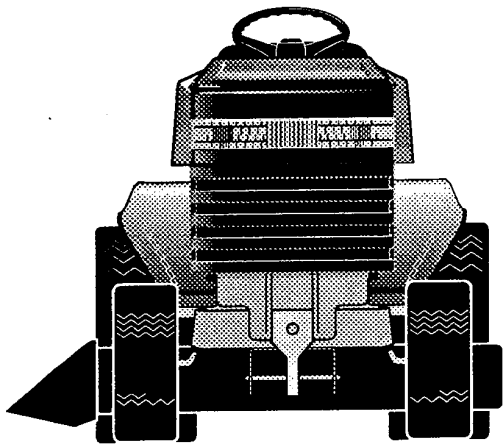
NOTE: ALWAYS USE ORIGINAL EQUIPMENT PARTS. Use of service/replacement parts other than original equipment parts may void your warranty.

ALL UNNUMBERED ITEMS ARE INTERCHANGEABLE WITH OPPOSITE SIDE

332622 A

| KEY# | PART# | DESCRIPTION | QTY |
|------|--------|---------------------------------------|-----|
| 1 | 55832 | PAD, FOAM TOP HOOD H-4 | 1 |
| 2 | 55833 | PAD, FOAM HOOD H-4 SIDE LH | 1 |
| 3 | 55834 | PAD, FOAM HOOD H-4 SIDE RH | 1 |
| 4 | 324989 | DECAL DASH EXP | 1 |
| 5 | 68902 | DECAL, WARNING, FRENCH/GERMAN | 1 |
| 6 | 69524 | DECAL, INSTRUCT CONSOLE TOP GER | 1 |
| 8 | 301104 | DECAL, CONSOLE TOP SHIFT 5-SP | 1 |
| 9 | 305770 | DECAL, CAUTION TRIANGLE EUROPE | 1 |
| 11 | 320892 | DECAL, INSTR PEDAL LIFT | 1 |
| 12 | 327146 | DECAL, PEDAL-LIFT INDICATOR | 1 |
| 13 | 68903 | DECAL, BRAKE/CLUTCH ISO | 1 |



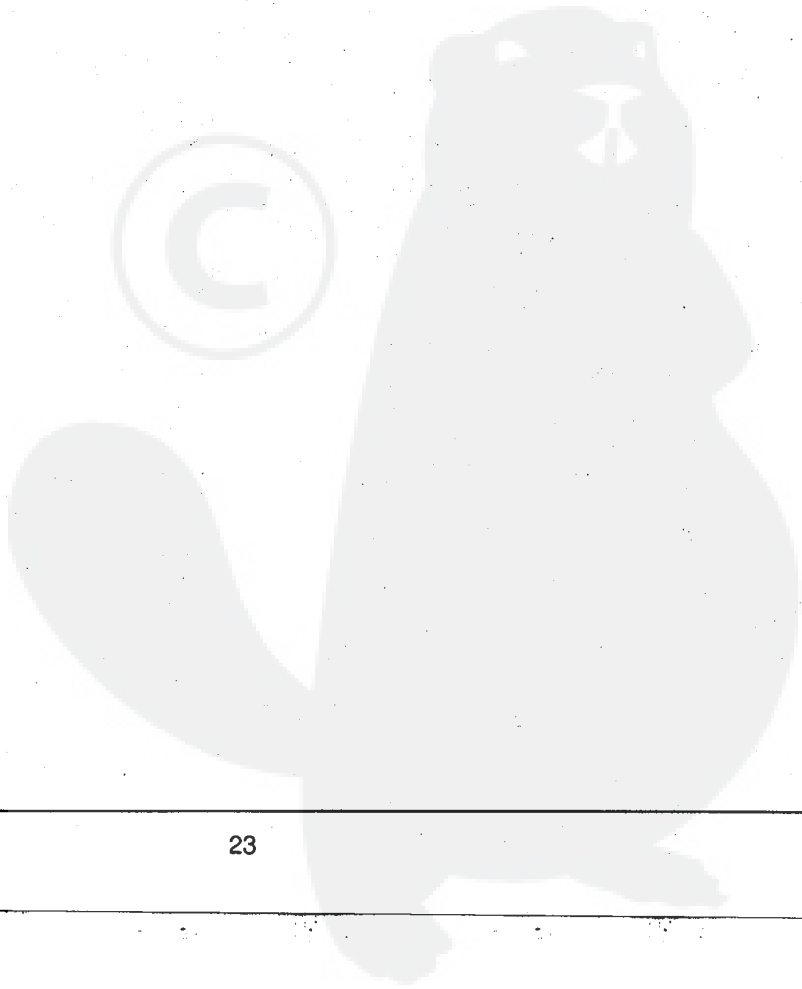
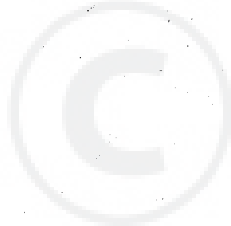


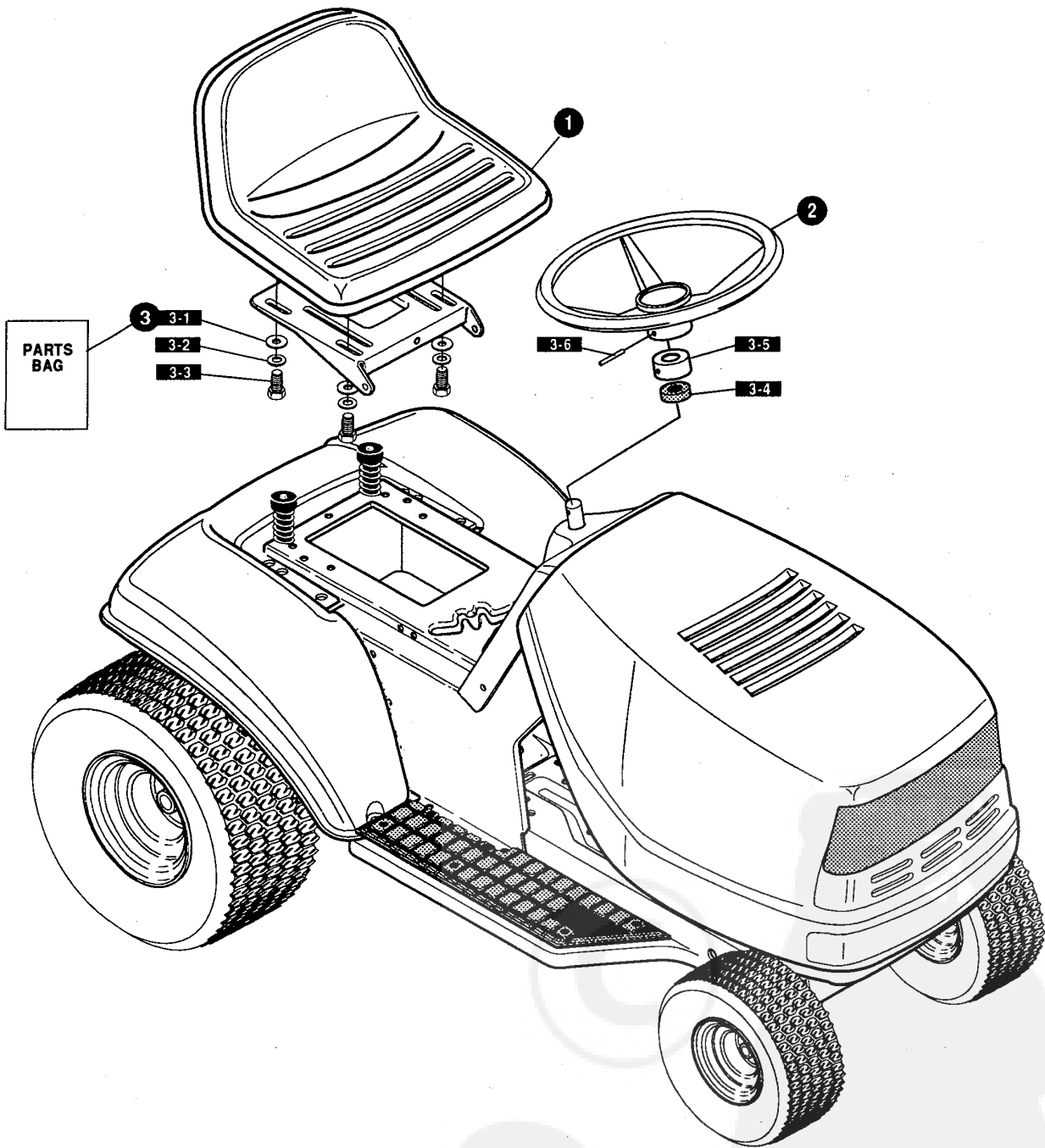
NOTE: ALWAYS USE ORIGINAL EQUIPMENT PARTS. Use of service/replacement parts other than original equipment parts may void your warranty.

ALL UNNUMBERED ITEMS ARE INTERCHANGEABLE WITH OPPOSITE SIDE

332626 A

| KEY# | PAERT# | DESCRIPTION | QTY |
|------|--------|--------------------------------------|-----|
| 1 | 329534 | DECAL, HOOD LH,GARDENSTAR 1238 | 1 |
| 2 | 329533 | DECAL, HOOD RH,GARDENSTAR 1238 | 1 |
| 3 | 314208 | NAMEPLATE,12/38 WHITE | 2 |



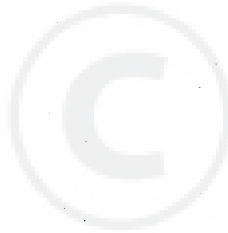


NOTE: ALWAYS USE ORIGINAL EQUIPMENT PARTS. Use of service/replacement parts other than original equipment parts may void your warranty.

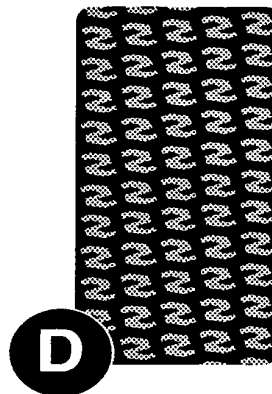
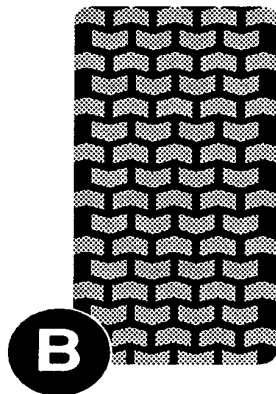
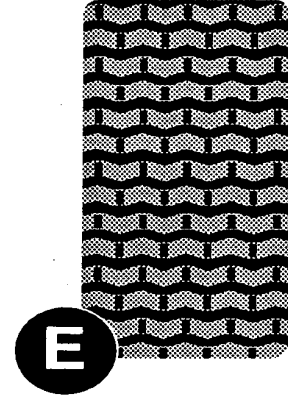
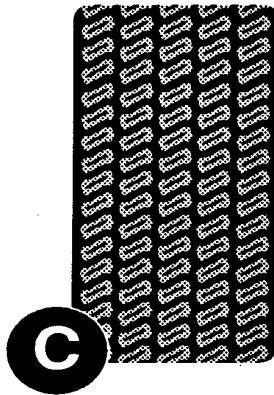
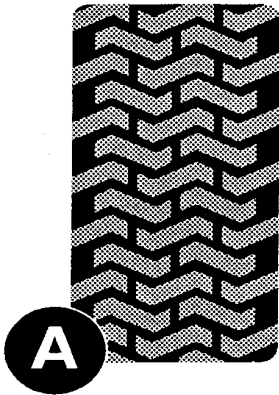
ALL UNNUMBERED ITEMS ARE INTERCHANGEABLE WITH OPPOSITE SIDE

327405 D

| KEY# | PART# | DESCRIPTION | QTY |
|------|--------|---|-----|
| 1 | 304314 | SEAT, MICHIGAN GEN, W/SW HOLE | 1 |
| 2 | 330510 | STEERING WHEEL | 1 |
| 3 | 331424 | PARTS BAG, ASSY SEAT/STEER | 1 |
| 3-1 | 120393 | WASHER, FLAT .344X .69X.065 | 4 |
| 3-2 | 120638 | WASHER, HVSP TLK .328X.60X.09 | 4 |
| 3-3 | 180077 | SCREW, 5/16-18X .75 HHC | 4 |
| 3-4 | 331322 | COVER, STEERING SHAFT | 1 |
| 3-5 | 301413 | SPACER, STEERING SHAFT | 1 |
| 3-6 | 456378 | PIN, SPRING, 250DIA X 2.00LG HVPL | 1 |



TREAD PATTERNS

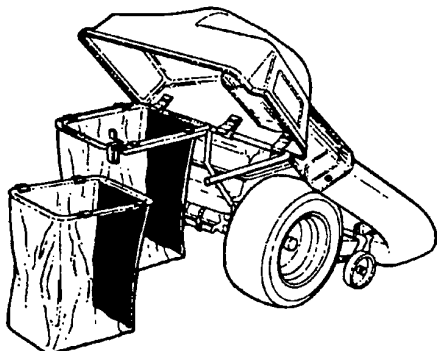


| TIRE SIZE | "A" | "B" | "C" | "D" | "E" |
|-----------------|--------|--------|--------|--------|--------|
| 11 X 4.00 - 5 | 42295 | 319679 | | | |
| 13 X 5.00 - 6 | 41060 | 319680 | | | |
| 15 X 6.00 - 6 | 39830 | 316702 | 301140 | 313952 | |
| 16 X 4.80 - 8 | | 305035 | | | |
| 16 X 6.50 - 8 | 41081 | 319682 | | 314539 | |
| 18 X 6.50 - 8 | | 42091 | | | |
| 18 X 8.50 - 8 | 319683 | 317400 | | | |
| 18 X 9.50 - 8 | 41106 | 316701 | | 313950 | |
| 20 X 8.00 - 8 | 319685 | 319684 | 57164 | 314584 | 331606 |
| 20 X 10.00 - 8 | 58276 | 319686 | | 313654 | |
| 20 X 10.00 - 10 | 55893 | 319687 | | | |
| 23 X 9.50 - 12 | 53655 | 319690 | 319689 | 314370 | |

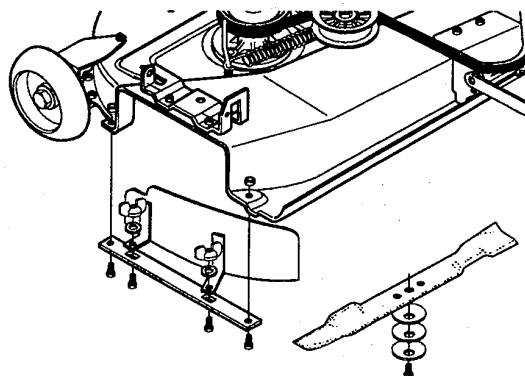
ACCESSORIES

Contact the dealer where your tractor was purchased for the available accessories. If you are unable to contact the dealer, write to the address on the front cover of this manual.

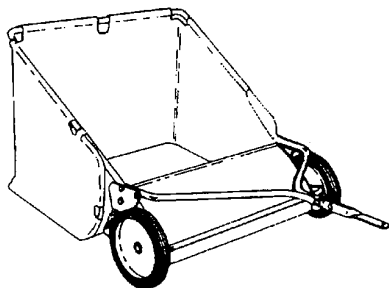
Standard Lawn Tractor



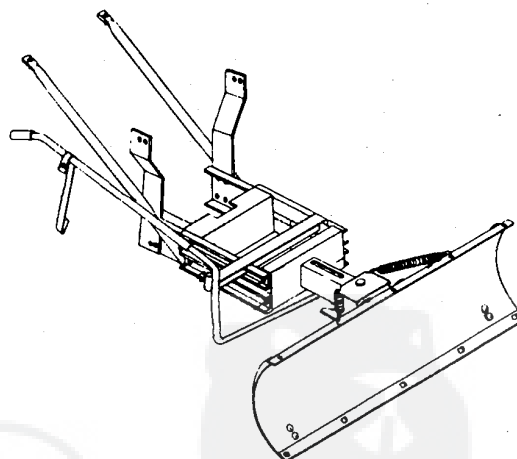
Model # 5708-13
Grass Collector for 39" decks
 For heavy duty grass collection
 order Model # 5709-10 Air Assist



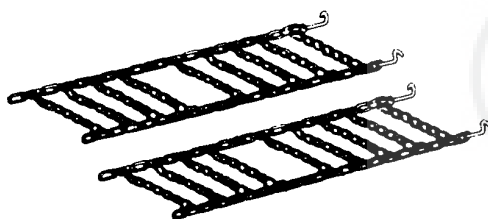
Model #5715-00
Mulching Kit (39" Deck)



Model # 5648-16
Tow behind Lawn Sweeper for
Grass and leaves



Model #5661-09
42" Snowblade - Fits 36", 38", 39", & 45"



Model # 5579-00
Tire Chains - 18" x 8.50" tires

OTHER ACCESSORIES

| Model | Description |
|---------|---|
| 5672-01 | Wheel Weights - Front - 1 pr. w/mtg. hdw. - Fits 15" tires |
| 5673-02 | Wheel Weights - Rear - 1 pr. w/mtg. hdw. - Fits 18" & 20" tires |
| 306932 | 39" High lift blade for bagging or side discharge (requires 2) |
| 326160 | 39" Mulching blade (requires 2) |