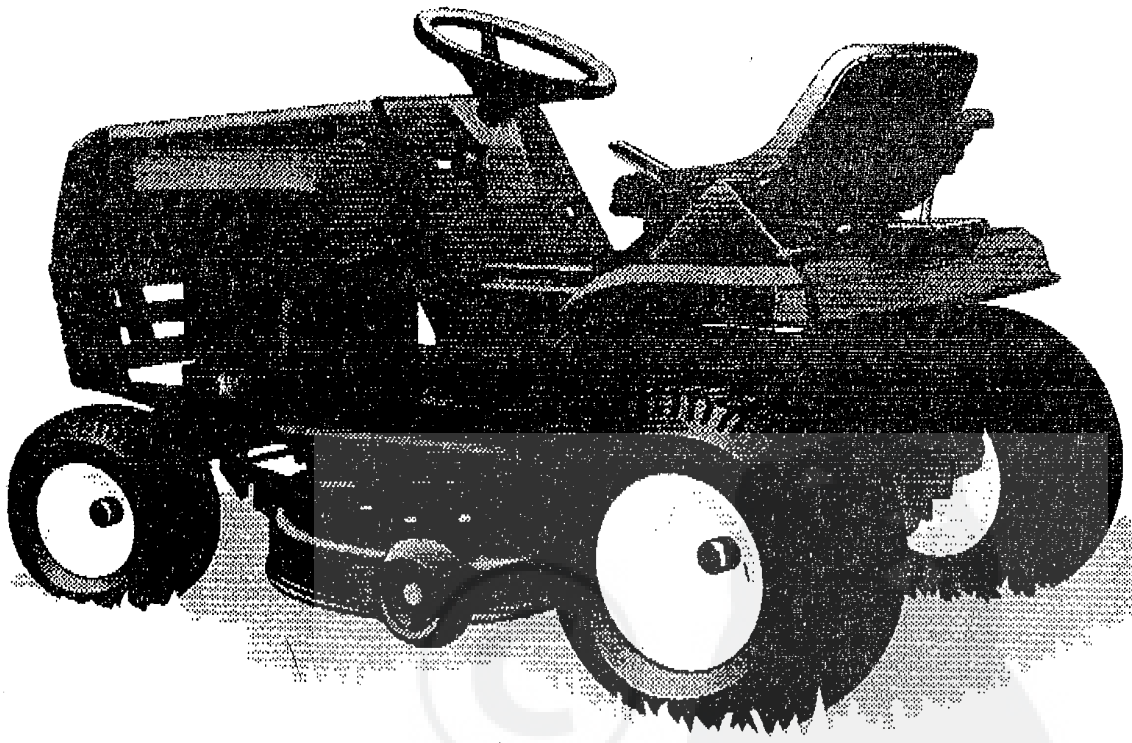
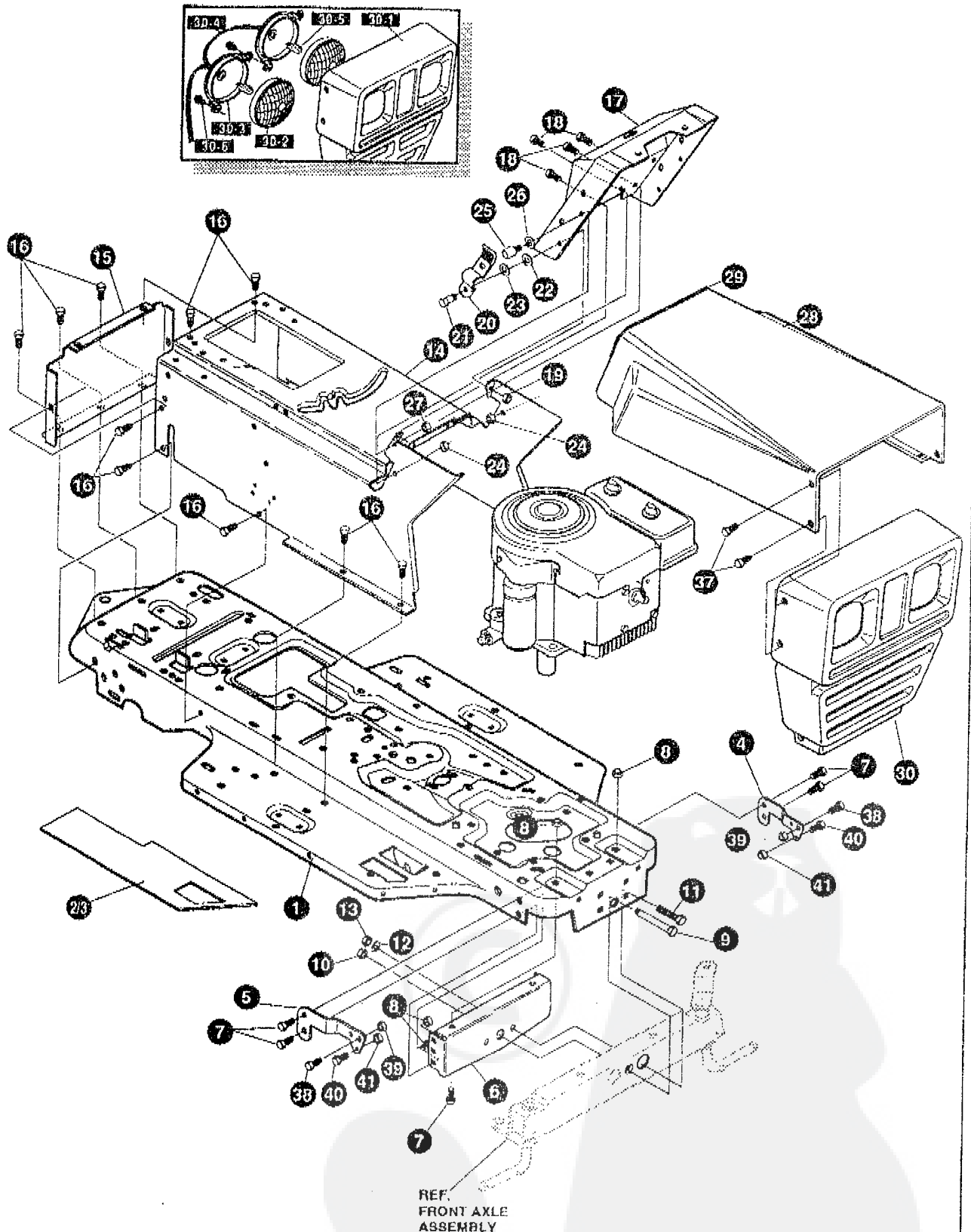


# PARTS MANUAL

## Lawn Tractor



**Model E3554-380**

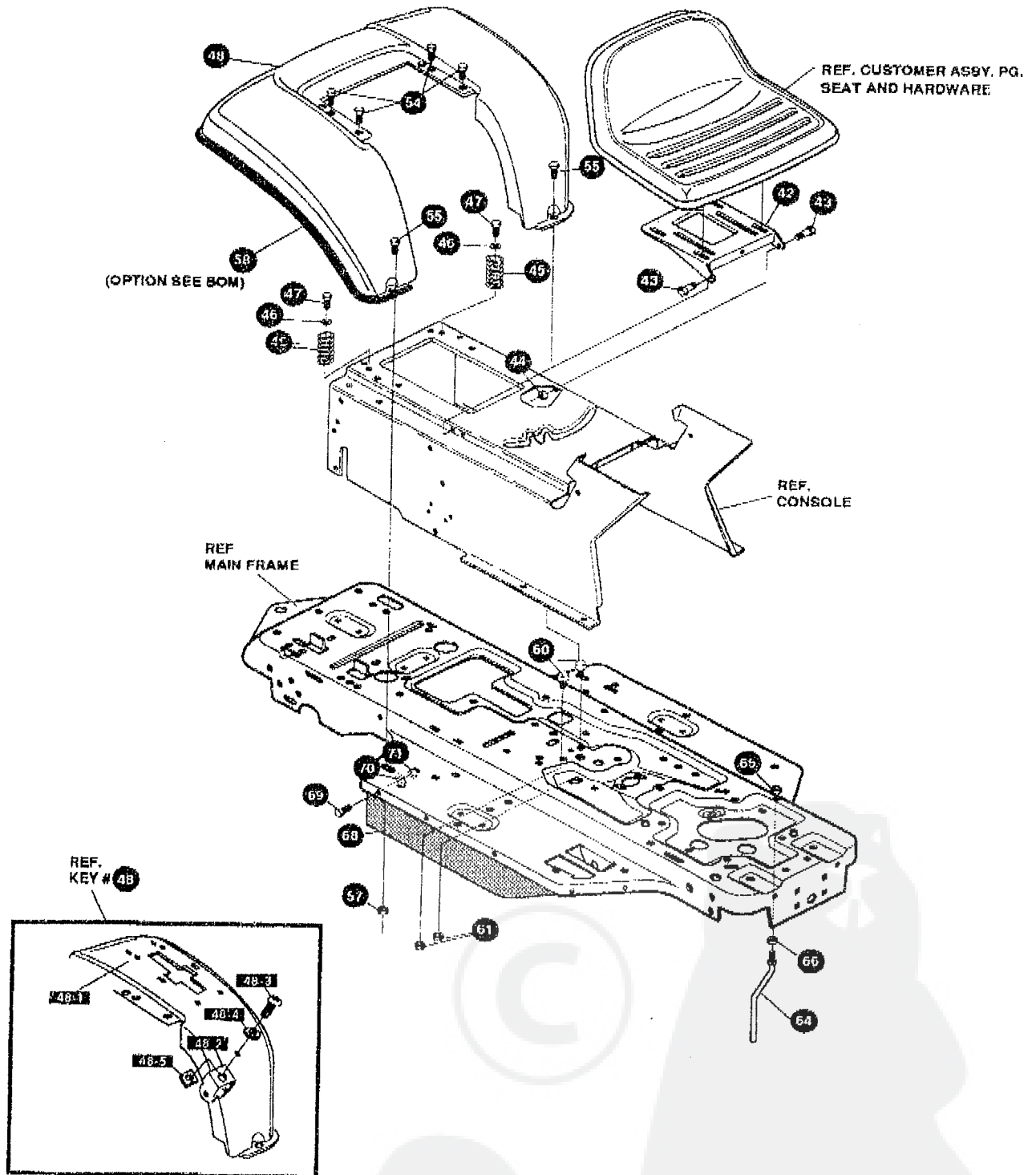


NOTE: ALWAYS USE ORIGINAL EQUIPMENT PARTS. Use of service/replacement parts other than original equipment parts may void your warranty.

ALL UNNUMBERED ITEMS ARE INTERCHANGEABLE WITH OPPOSITE SIDE

333580A

KEY#	PART#	DESCRIPTION	QTY
1	332319-860	MAIN FRAMERIDER TUV .....	1
2	331834	FOOT PAD, RH, FULL WIDTH .....	1
3	331835	FOOT PAD, LH FULL WIDTH .....	1
4	56259-853	GRILLE BRACKET, LH .....	1
5	56260-853	GRILLE BRACKET, RH .....	1
6	56362-853	BRACKET,SUPPORT,FRONT AXLE .....	1
7	328154	SCREW, 5/16-18X1.0WDFLLK .....	6
8	55273	NUT, 5/16 18 HXWDFLLK .....	6
9	29616	BOLT, .625X1.890 HSSH 1/2-20 .....	1
10	274654	NUT, 1/2-20 REGHXCTRLK .....	1
11	180138	SCREW, 3/8-16X3.00 HHC .....	2
12	2483	WASHER, .391DX1.25DX.07 BELLVIL .....	2
13	1499	NUT, 3/8-16 REGHXCTRLK .....	2
14	309584-860	CONSOLE, GPWR NOTCHED FEN .....	1
15	56235-860	CONSOLE, REAR COVER .....	1
16	996346	SCREW, 1/4-20X .50 WAHHTAP .....	15
17	321350-860	DASH NO ILL/AMMETER ELEC .....	1
18	44811	SCREW, 1/4-20X .75 WAHHTAP .....	4
19	50352	NUT, 1/4-20 WDFLLK TOPLOCK .....	2
20	57159	LATCH, .94WDX.047 ASSY HOOD .....	2
21	8482	BOLT, .375X .156 HSSH 5/16-18 .....	2
22	120394	WASHER, FLAT .406X .81X.065 .....	2
23	120393	WASHER, FLAT .344X .69X.065 .....	2
24	1498	NUT, 5/16-18 REGHEXCTRLK .....	2
25	53446	PIN, 5/16-18 HOOD LATCH .....	2
26	138538	WASHER, REGINTLK.320X.61X.03 .....	2
27	45174	NUT, 5/16-18 HEXWDFLLK WHIZ .....	2
28	53954-860	HOOD, .....	1
29	55044	TRIM, 77.5" BLACK NARROW .....	23.75 In.
30	56732	GRILLE ASSY, BLK .....	1
30-1	53401	GRILLE .....	1
30-2	52570	LAMP LENS .....	2
30-3	52571	LAMP BEZEL .....	2
30-4	56189	WIRE ASSY .....	1
30-5	52572	HEADLIGHT BULB .....	2
30-6	302677	SCREW 10- 14X.50TAP .....	2
37	57215	SCREW, 5/16 .9X .75 WAHHPAS .....	4
38	180122	SCREW, 3/8-16X1.00 HHC .....	2
39	1499	NUT, 3/8-16 REGHXCTRLK .....	2
40	180077	SCREW, 5/16-18X .75 HHC .....	2
41	1498	NUT, 5/16-18 REGHEXCTRLK .....	2
	333727	PARTS MANUAL .....	1
	333728	ENGLISH OPERATOR'S MANUAL .....	1
	333729	GERMAN OPERATOR'S MANUAL .....	1
	327717	GRASS CATCHER MANUAL .....	1
	328195	ENGLISH AIR ASSIST MANUAL .....	1
	330273	GERMAN AIR ASSIST MANUAL .....	1
	330272	FRENCH AIR ASSIST MANUAL .....	1



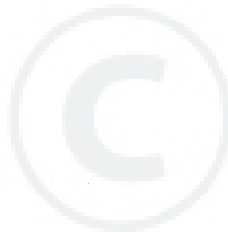
NOTE: ALWAYS USE ORIGINAL EQUIPMENT PARTS. Use of service/replacement parts other than original equipment parts may void your warranty.

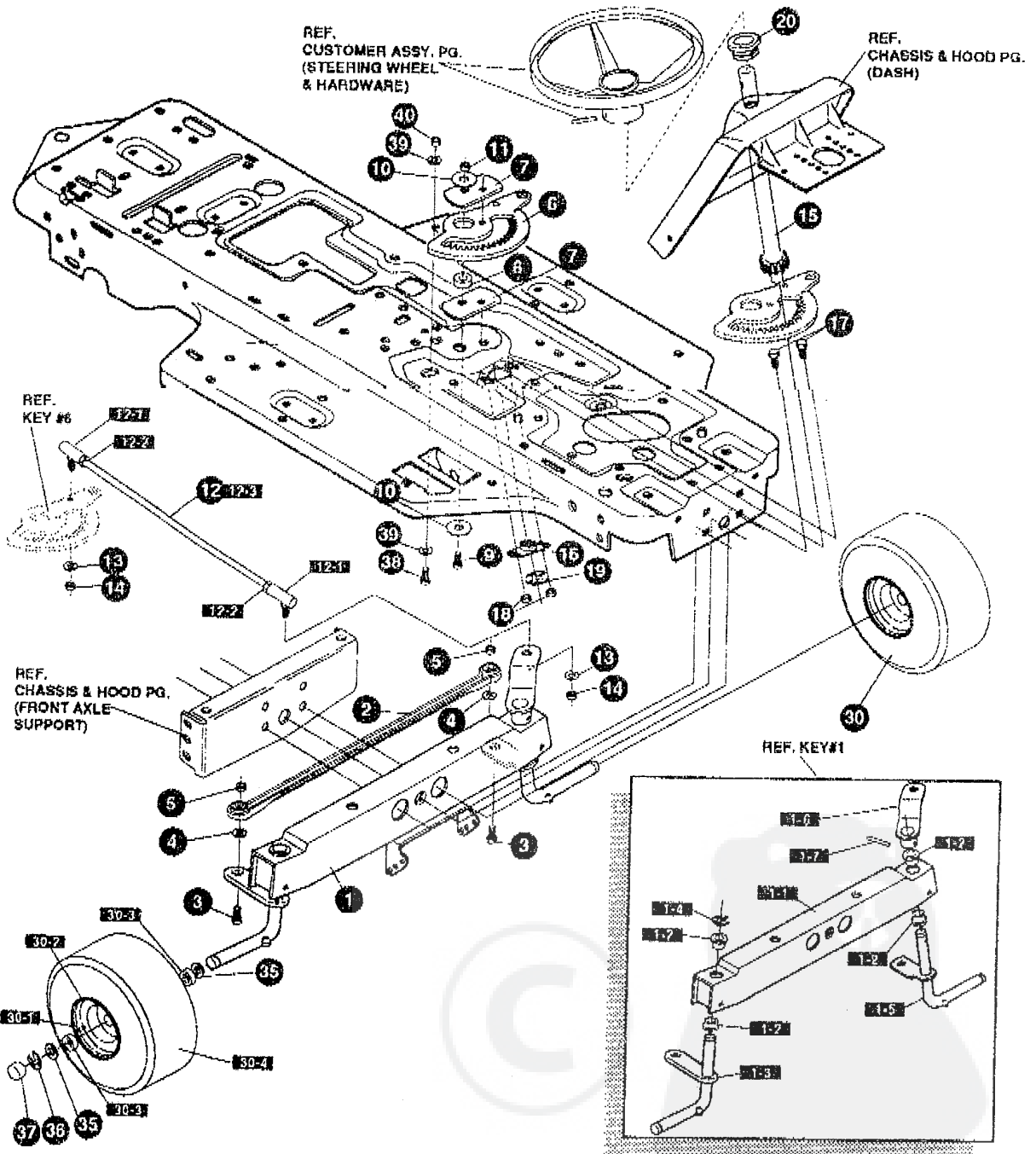
ALL UNNUMBERED ITEMS ARE INTERCHANGEABLE WITH OPPOSITE SIDE

333580A

KEY#	PART#	DESCRIPTION	QTY
42	58367-860	PLATE, SEAT .....	1
43	20507	BOLT, .437X .156 HH6H 5/16-18 .....	2
44	1498	NUT, 5/16-18 REGHEXOTRLK .....	2
45	330463	SPRING, SEAT 1.50DX2.25LG .....	2
46	120392	WASHER, FLAT .281X .63X.065 .....	2
47	995346	SCREW, 1/4-20X .50 WAHHTAP .....	2
48	^	ASM FENDER .....	1
48-1	327334-860	FENDER .....	1
48-2	9239	CLEVIS .....	1
48-3	439455	SCREW, 5/16-18X .56PHPNMA BKPH .....	1
48-4	301551	WASHER, .3441DX1.50DX.09 CU ZN .....	1
48-5	120373	NUT, 5/16-18 SQ .....	1
54	995346	SCREW, 1/4-20X .50 WAHHTAP .....	4
55	126358	BOLT, 5/16-18X1.00 CARRLN .....	2
57	55273	NUT, 5/16-18 HXWDFLLK .....	2
58	56023	TRIM, 77.5" BLACK NARROW .....	75 in.
60	53446	PIN, 5/16-18 HOOD LATCH .....	2
61	271184	NUT, 5/16-18 HEXKEPS .....	2
64	50853	GUIDE, BELT .....	1
65	41529	NUT, 3/8-16 HXOTRLKJAM GRD B .....	1
66	271190	NUT, 3/8-16 HEXKEPS .....	1
68	305395	BELT GUARD SF RUBBER 7 X 25.46 .....	2
69	57034	SCREW, 10-24X .63 TRHMA .....	12
70	1501	WASHER, FLAT .203X .56X.040 .....	12
71	308459	NUT, #10-24 HXHDNYLK .....	12

\*ORDER INDIVIDUAL PARTS





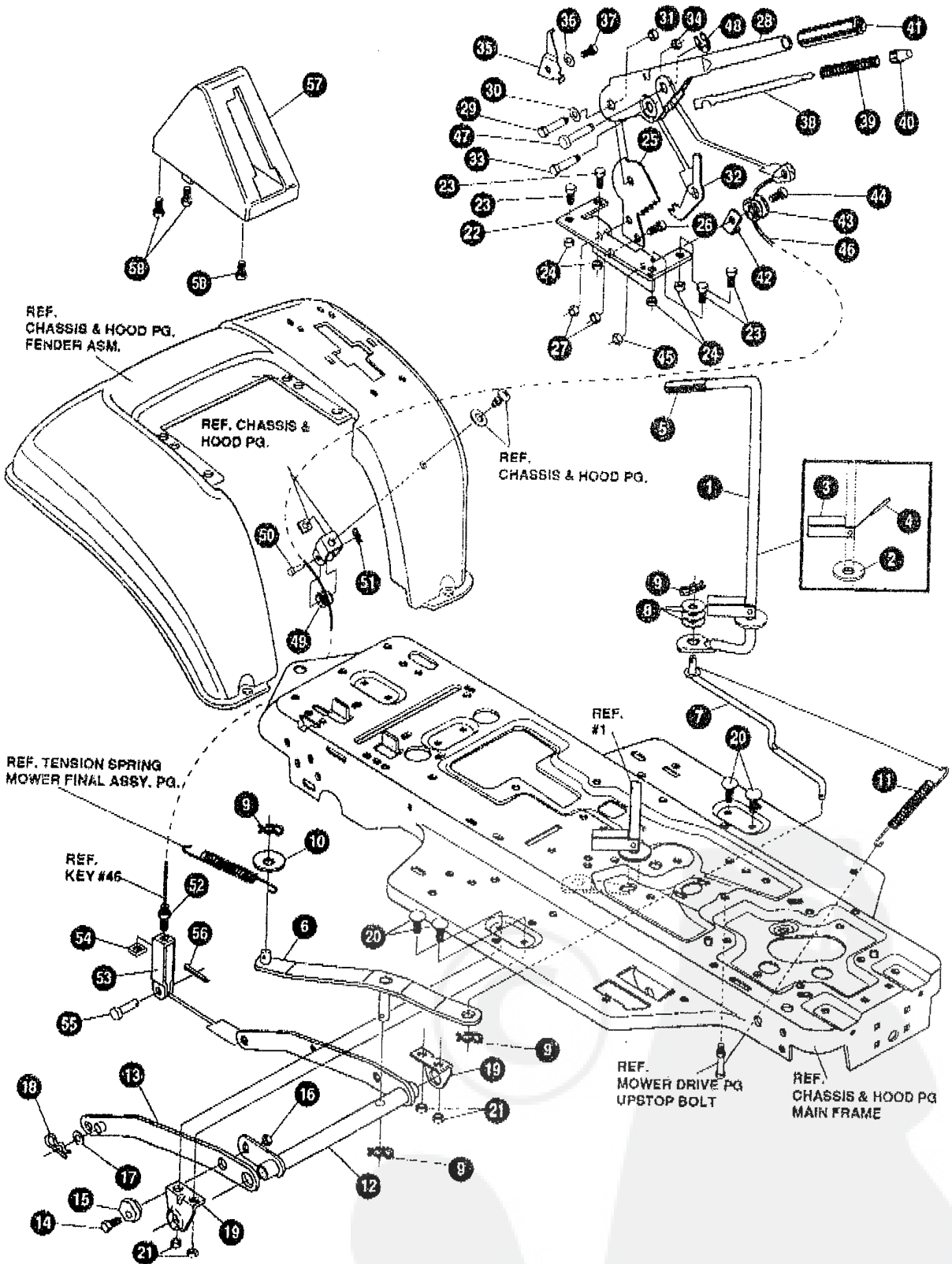
**NOTE:** ALWAYS USE ORIGINAL EQUIPMENT PARTS. Use of service/replacement parts other than original equipment parts may void your warranty.

**ALL UNNUMBERED ITEMS ARE INTERCHANGEABLE WITH OPPOSITE SIDE**

327592H



KEY#	PART#	DESCRIPTION	QTY
1	^	AXLE FRONT ASSY, SF LONG .....	1
1-1	324915-879	ASSY FRONT AXLE SF GS .....	1
1-2	50546	BEARING, FL .759IDX1.002ODX .75 .....	4
1-3	310368	SPINDLE ASSY, RH LONG SF .....	1
1-4	36625	RING, RETEX .57X.05TRU5133-75 .....	1
1-5	310367	SPINDLE ASSY, LH LONG SF .....	1
1-6	327619-853	ARM ASSY SF 4WS FRNT STRNG .....	1
1-7	454565	PIN, SPRING 250DIA X 1.25LG HVPL .....	1
2	302688	ASSY, TIE ROD 19.31 LG .....	1
3	180124	SCREW, 3/8-16X1.25 HHC .....	2
4	120382	WASHER, REGSPTLK.393X.68X.10 .....	2
5	1499	NUT, 3/8-16 REGHXCTRLK .....	2
6	324752	GEAR, SECTOR SF4WS .....	1
7	393289	PLATE SECT SF 4WS BLK .....	2
8	330021	BUSHING, SECTOR GEAR SF 4WS .....	1
9	181643	SCREW, 3/8-24X1.50 HHC .....	1
10	845	WASHER, FLAT .390X1.25X.119 .....	2
11	412349	NUT, 3/8-24 HXCTRLK .....	1
12	328808	DRAG LINK ASSY 17.69LG .....	1
12-1	57158	BALL JOINT 3/8 THD SHORT STUD .....	2
12-2	124925	NUT, 3/8-24 REGHEXJAM .....	2
12-3	56190	DRAG LINK .....	1
13	120382	WASHER, REGSPTLK.393X.68X.10 .....	2
14	120369	NUT, 3/8-24 REGHEX .....	2
15	327395	SHAFT, PIN-STR BLK .....	1
16	325692	BEARING, FL .50 IDX1.370ODX .....	1
17	326505	SCREW, 1/4-20X.75 (TO 30-35 FT#) .....	2
18	46931	NUT, 1/4-20 WDFL MAC-LOCK .....	2
19	20864	RING, RET E .39X.04TRU5133-50 .....	1
20	54902	BEARING, FL .753IDX1.37ODX .50 .....	1
30	302828	TIRE & RIM, PU 15X6.0X6 TUR .....	2
30-1	24167	VALVE STEM	
30-2	39829	RIM, WHEEL	
30-3	314416	BEARING, FL	
30-4	TIRE	REFER TO TIRE TREAD PAGE	
35	642	WASHER, FLAT .755X1.31X.075 .....	4
36	36625	RING, RETEX .57X.05TRU5133-75 .....	2
37	40394	HUB CAP, 1.500ID X 7/8LG .....	2
38	180124	SCREW, 3/8-16X1.25 HHC .....	1
39	120394	WASHER, FLAT .406X .81X.065 .....	2
40	45171	NUT, 3/8-16 HWDFL WHIZ-LOCK .....	1



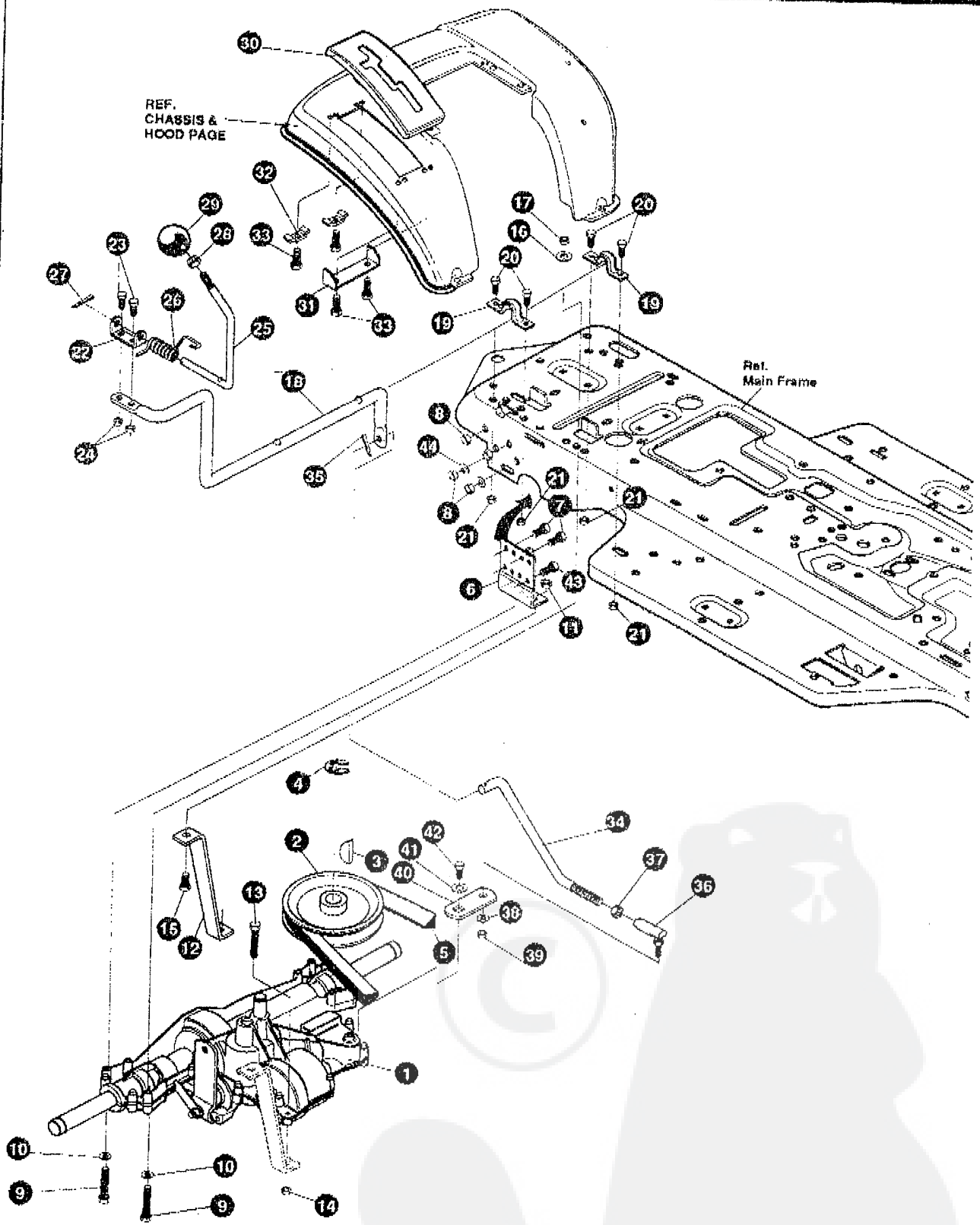
NOTE: ALWAYS USE ORIGINAL EQUIPMENT PARTS. Use of service/replacement parts other than original equipment parts may void your warranty.

ALL UNNUMBERED ITEMS ARE INTERCHANGEABLE WITH OPPOSITE SIDE

331232C



KEY#	PART#	DESCRIPTION	QTY
1	325591	LEVER, CLUTCH RH PTO	1
2	22265	WASHER, FLAT .515X1.38X.119	1
3	305225	STOP, PTO ENGAGE	1
4	326366	PIN, SPRING.187DIA X 1.13LG HD	1
5	391624	KNOB, ROUND 1.50DIA OR GRIP	1
6	325587-853	STRAP ASSY, PTO BELCRANK	1
7	325590	ROD, BELCRANK LINK	1
8	274517	WASHER, FLAT .406X .73X.063	3
9	8260	PIN, HAIR .091 DIA X 1.66LG	4
10	25210	WASHER, FLAT .386X1.25X.09HT	1
11	325802	SPRING, .69X7.75X.0897 TENSION	1
12	326114-853	LIFT ASSY, LH	1
13	325130-853	LIFT ASSY, RH	1
14	180079	SCREW, 5/16-18X1.00 HHC	1
15	58247	NUT, ADJUST	1
16	1498	NUT, 5/16-18 REG HEX CTRLK	1
17	417098	WASHER, FLAT .531X1.06X.063	2
18	8260	PIN, HAIR .091 DIA X 1.66LG	2
19	325495-853	BRACKET REAR HANG SUSP	2
20	330967	BOLT, 5/16-18X1.00 CAR	4
21	1498	NUT, 5/16-18 REG HEX CTRLK	4
22	313926	BRACKET, HGT/ADJUST SUPPORT	1
23	180077	SCREW, 5/16-18X .75 HHC	4
24	1498	NUT, 5/16-18 REG HEX CTRLK	4
25	301238	QUADRANT, HEIGHT ADJUST	1
26	180077	SCREW, 5/16-18X .75 HHC	2
27	1498	NUT, 5/16-18 REG HEX CTRLK	2
28	322292-853	HANDLE, LIFT SHORT	1
29	300171	BOLT, .500X .270 HSSH 5/16-18	1
30	996418	WASHER, FLAT .506X .75X.024	1
31	44108	NUT, 5/16-18 HWDFL CTRLK	1
32	301239	PAWL, SQUARE	1
33	300171	BOLT, .500X .270 HSSH 5/16-18	1
34	44108	NUT, 5/16-18 HWDFL CTRLK	1
35	9435	POINTER, HEIGHT ADJ	1
36	138479	WASHER, EXLK .195X.41X.03	1
37	35287	SCREW, #8-32X .38 HHWATAP	1
38	303027	ROD, ACTUATOR-SHORT	1
39	58326	SPRING, HEIGHT ADJUST	1
40	58325	KNOB, HEIGHT ADJ PUSH BUTTON	1
41	58329	GRIP, .750 OD W/ HOLE BLACK	1
42	9149	BRACKET, CABLE RETAIN	1
43	48306	PULLEY, POWDER METAL	1
44	58336	BOLT, .375X .375 HSSH 1/4-20	1
45	1502	NUT, 1/4-20 REG HEX CTRLK	1
46	57511	LIFT CABLE 20.75LG	1
47	300310	PIN, CLEVIS .310DIA+.475LG	1
48	300311	RING, RET E .31X.25TRUX5133-31	1
49	48306	PULLEY, POWDER METAL	1
50	300317	PIN, CLEVIS .375DIA X .81 LG	1
51	8260	PIN, HAIR .091 DIA X 1.66LG	1
52	120375	NUT, 1/4-20 REG HEX	1
53	9405	CLEVIS, LIFT CABLE	1
54	120372	NUT, 1/4-20 REG SQ	1
55	39522	PIN, CLEVIS .312 X .812	1
56	121222	PIN, COTTER .090 DIA X .75LG	1
57	300335	LIFT COVER-39"	1
58	300340	SCREW, #10 X .75 HHPLAST BLK	3



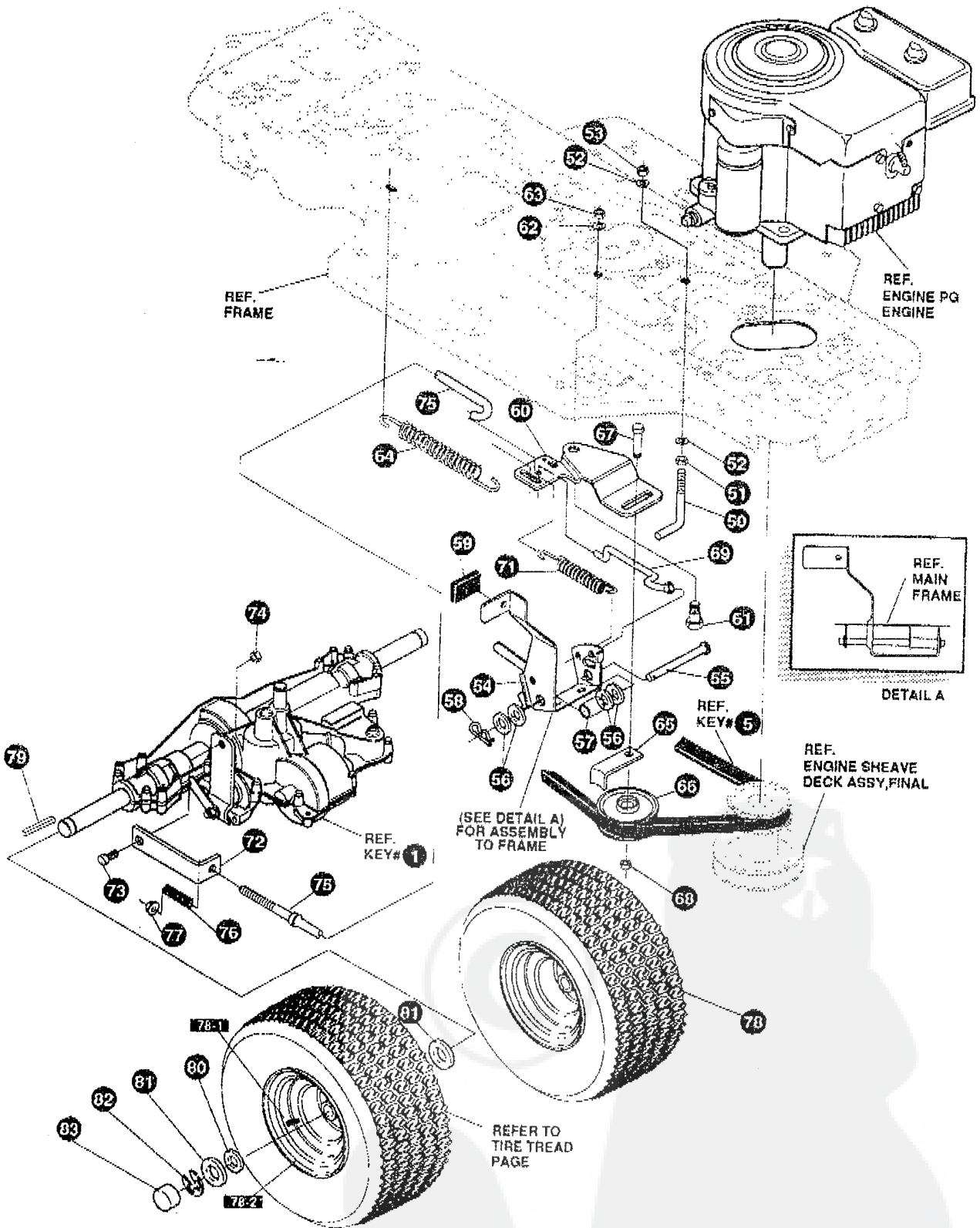
NOTE: ALWAYS USE ORIGINAL EQUIPMENT PARTS. Use of service/replacement parts other than original equipment parts may void your warranty.

ALL UNNUMBERED ITEMS ARE INTERCHANGEABLE WITH OPPOSITE SIDE

333579A

KEY#	PART#	DESCRIPTION	QTY
1	^	TRANSAXLE 940-007 2WS .....	1
2	303109	PULLEY, 5.6 OD V4L T/A .....	1
3	50795	KEY, HI-PRO 806 .75DIA X.187WD .....	1
4	22053	RING, RETEX .58X.035TRU5100-62 .....	1
5	54758	BELT, V 4L 82.00 DRIVE .....	1
6	326615-853	BRACKET, TRANSAXLE .....	2
7	180077	SCREW, 5/16-18X .75 HHC .....	4
8	1498	NUT, 5/16-18 REGHEXCTRLK .....	8
9	180091	SCREW, 5/16-18X2.50 HHC .....	4
10	120393	WASHER, FLAT .344X .69X.065 .....	4
11	1498	NUT, 5/16-18 REGHEXCTRLK .....	4
12	323213	BRACKET, T/A TORQ. BLK .....	1
13	180087	SCREW, 5/16-18X2.00 HHC .....	1
14	1498	NUT, 5/16-18 REGHEXCTRLK .....	1
15	180079	SCREW, 5/16-18X1.00 HHC .....	1
16	138485	WASHER, EXLK .320X.61X.03 .....	1
17	1498	NUT, 5/16-18 REGHEXCTRLK .....	1
18	321849	LEVER, SHIFT LOW FNSFT .....	1
19	302760	CLAMP, 625DIA .....	2
20	180077	SCREW, 5/16-18X .75 HHC .....	4
21	1498	NUT, 5/16-18 REGHEXCTRLK .....	4
22	310356	BRACKET, PIVOT SH LEV .....	1
23	180020	SCREW, 1/4-20X .75 HHC .....	2
24	1502	NUT, 1/4-20 REGHEXCTRLK .....	2
25	309635	LEVER, SHIFT UPPER SOF 1/2-13 .....	1
26	310265	SPRING, TORS. .58X.95X.095 .....	1
27	137185	PIN, COTTER .125 DIA X1.00LG .....	1
28		NOT USED ON THIS UNIT	
29	55514	KNOB, ROUND 1.50DIA OR GRIP .....	1
30	311209	COVER PLASTIC P930/F4360-6 .....	1
31	311257-853	BRACKET COVER FNDR SHIFT .....	1
32	1341	CLAMP, SPRG 1.17"ID .....	2
33	311331	SCREW, 1/4-15X.44/53 HILOHWA .....	4
34	321844	ROD, CONNECTING, SHIFT ZINC .....	1
35	137185	PIN, COTTER .125 DIA X1.00LG .....	1
36	57158	BALL JOINT 3/8 THD SHORT STUD .....	1
37	124925	NUT, 3/8-24 REGHEXJAM .....	1
38	120382	WASHER, REGSPTLK.393X.68X.10 .....	1
39	120369	NUT, 3/8-24 REGHEX .....	1
40	323212	BRACKET, SHIFT S/F BLK .....	1
41	57157	WASHER, .750X.250 SP-TRANSAXLE .....	1
42	56255	SCREW, 1/4-28X .75 NYLHHC .....	1
43	327917	SCREW, 5/16-18X1.50HHCFT .....	4
44	73787	WASHER, FLAT .330X .75X.1793 .....	4

^CONTACT YOUR NEAREST TRANSAXLE DEALER FOR PARTS AND SERVICE.

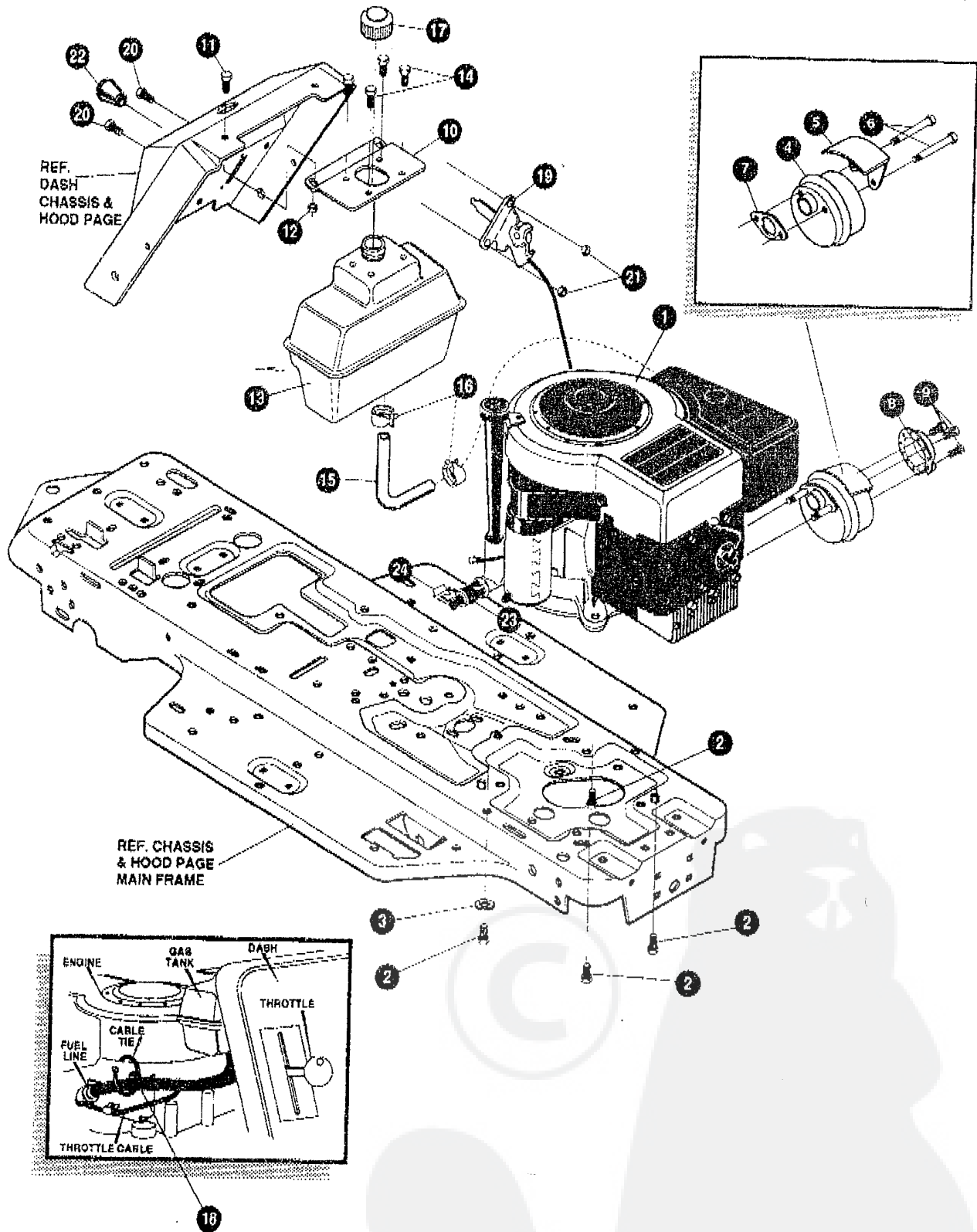


NOTE: ALWAYS USE ORIGINAL EQUIPMENT PARTS. Use of service/replacement parts other than original equipment parts may void your warranty.

ALL UNNUMBERED ITEMS ARE INTERCHANGEABLE WITH OPPOSITE SIDE

333579A

KEY#	PART#	DESCRIPTION	QTY
50	49896	BELT GUIDE .....	1
51	271184	NUT, 5/16-18 HEXKEPS .....	1
52	120393	WASHER, FLAT .344X .69X.065 .....	2
53	1498	NUT, 5/16-18 REGHEXCTRLK .....	1
54	331836	ASSY, PEDAL, BRAKE, CLUTCH .....	1
55	319676	PIN, CLEVIS .500DX4.87LG .....	1
56	2968	WASHER, FLAT .504X .75X.059 .....	4
57	331972	SPACER, SLEV .53 X .62X1.240 .....	1
58	56180	PIN, HAIR .091 DIA X 1.62LG .....	1
59	46761	PAD, CLUTCH/BRAKE PEDAL .....	1
60	321969	IDLER ARM BRACKET TRACTION .....	1
61	329989	BOLT, .625X .135 HSSH 5/16-1 .....	1
62	45602	WASHER, FLAT .333X .87X.119 .....	1
63	1498	NUT, 5/16-18 REGHEXCTRLK .....	1
64	327867	SPRING, 3/4 ODX 7.75X.091 TENSIO .....	1
65	39659	RETAINER, BELT .....	1
66	35374	PULLEY, IDLER V4L 3.06X .62 .....	1
67	45892	BOLT, 3/8-16X1.50 CARRSN .....	1
68	1499	NUT, 3/8-16 REGHXCTRLK .....	1
69	333175	CLUTCH ROD ASSY, .268 DIA 3.92 .....	1
71	326780	SPRING, 3/8 ODX 2.18 X .055 TENSIO .....	1
72	323210	BRACKET, TRCTN S/F BLK .....	1
73	46824	BOLT, .500X .188 HSSH 5/16-18 .....	1
74	1498	NUT, 5/16-18 REGHEXCTRLK .....	1
75	333263	ROD, BRAKE 940 BLK .....	1
76	313881	CLUTCH SPRING .....	1
77	50352	NUT, 1/4-20 WDFLLK TOPLOCK .....	1
78	331789	TIRE & RIM, PU 18X8.5X8 TUR65B .....	2
	TIRE	SEE TIRE TREAD PAGE	
78-1	24167	VALVE STEM	
78-2	326362	WHEEL, HUB	
79	52928	KEY, SQUARE .187SQX2.25LG .....	2
80	642	WASHER, FLAT .755X1.31X.075 .....	4
81	42815	WASHER, FLAT .755X1.53X.07 .....	2
82	36625	RING, RETEX .57X.05TRU5133-75 .....	2
83	40394	HUB CAP, 1.500ID X 7/8LG .....	2



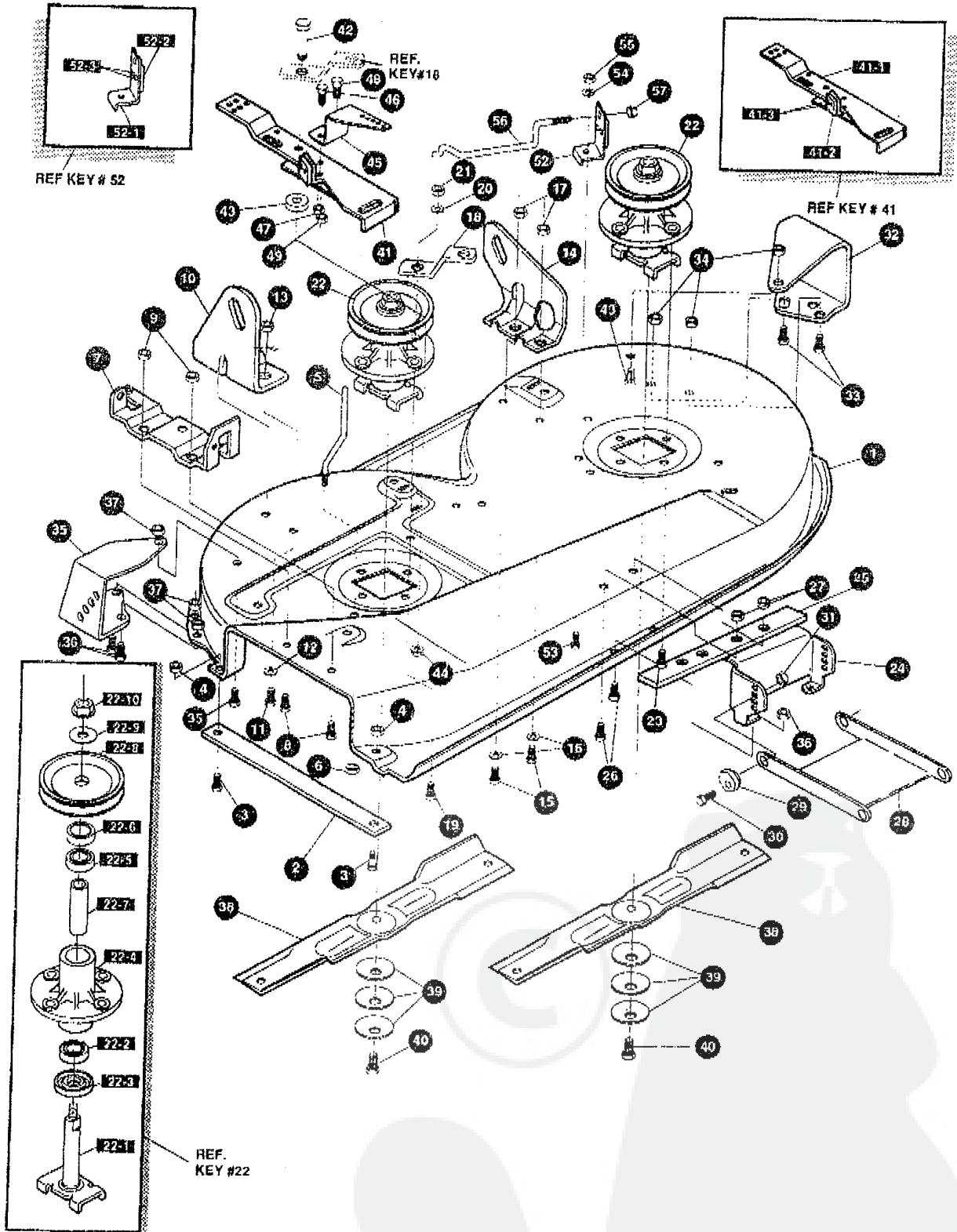
**NOTE: ALWAYS USE ORIGINAL EQUIPMENT PARTS.** Use of service/replacement parts other than original equipment parts may void your warranty.

**ALL UNNUMBERED ITEMS ARE INTERCHANGEABLE WITH OPPOSITE SIDE**

331632A



KEY#	PART#	DESCRIPTION	QTY
1	ENGINE	ENGINE 10-12HP B&S 3A (SEE ENGINE MANUAL) ...	1
2	50947	SCREW, 3/8-16X1.25 WAHHTAPBLK .....	4
3	138489	WASHER, EXLK 384X.69X.04 .....	1
4	57908	MUFFLER-DOM/EXP ROUND .....	1
5	54767	SHIELD, HEAT.FOR ROUND MUFFLER.....	1
6	54980	SCREW, 5/16-18X3.50 HHC .....	2
7	46708	GASKET, MUFFLER .....	1
8	56472	DEFLECTOR SIDE OUT (BS222573) .....	1
9	35287	SCREW, #8-32X .38 HHWATAP .....	4
10	55387-853	BRACKET, FUEL SUPPORT .....	1
11	180020	SCREW, 1/4-20X .75 HHC .....	2
12	50352	NUT, 1/4-20 WDFLLK TOPLOCK .....	2
13	314989	TANK, FUEL 1 GAL CLEAR .....	1
14	300303	SCREW, .25X.75X.51HHWAPLASTITE .....	4
15	-41007	TUBING, .25X.50X BULK GAS LINE .....	15 in.
16	47345	CLAMP, HOSE SCREW TYPE .....	2
17	46704	CAP. GAS 1-1/2-7 THD BLK .....	1
18	57444	TIE, CABLE BLACK NYLON 5.62 .....	1
19	320031	THROTTLE CONTROL .....	1
20	274707	SCREW, 10-24X .50 WAHRMA .....	2
21	308459	NUT, #10-24 HXHDNYLK .....	2
22	50607	KNOB, ROUND THROTTLE BLACK .....	1
23		NOT USED ON THIS UNIT	
24		NOT USED ON THIS UNIT	

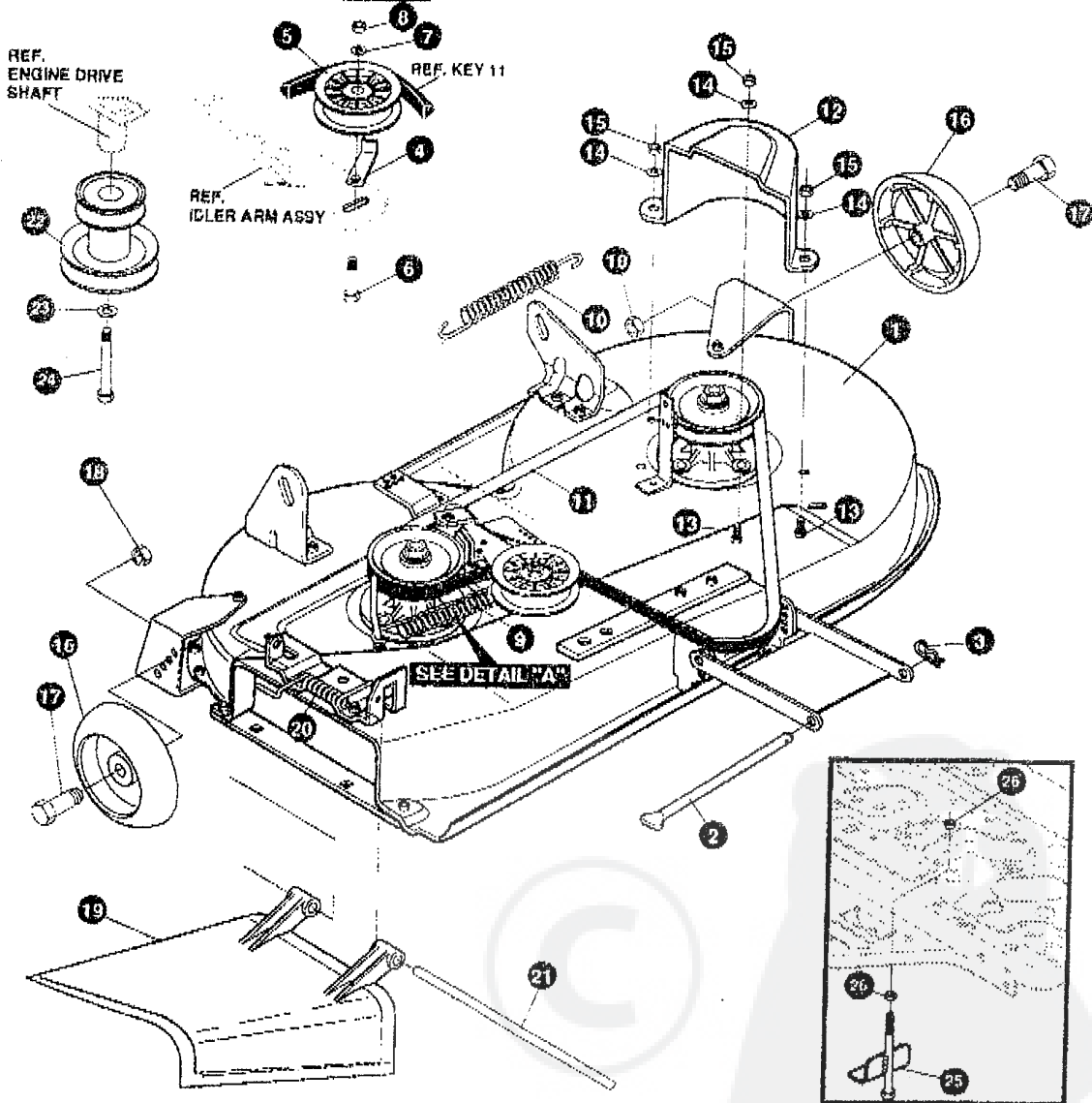


**NOTE:** ALWAYS USE ORIGINAL EQUIPMENT PARTS. Use of service/replacement parts other than original equipment parts may void your warranty.

ALL UNNUMBERED ITEMS ARE INTERCHANGEABLE WITH OPPOSITE SIDE

332343D

KEY#	PART#	DESCRIPTION	QTY
1	325106	39" DECK KIT .....	1
2	326295-853	BAR, SKID .....	1
3	120230	BOLT, 5/16-18X1.25 CARRLN .....	2
4	271184	NUT, 5/16-18 HEXKEPS .....	2
5	57318	GUIDE, BELT 5/16-18 THD .....	1
6	1498	NUT, 5/16-18 REGHEXCTRLK .....	1
7	313928	BRACKET, CHUTE BLK .....	1
8	180073	SCREW, 5/16-18X .50 HHC .....	2
9	1498	NUT, 5/16-18 REGHEXCTRLK .....	2
10	313929	LIFT BRACKET, REAR RH BLK .....	1
11	180077	SCREW, 5/16-18X .75 HHC .....	2
12	120393	WASHER, FLAT .344X .69X.065 .....	2
13	1498	NUT, 5/16-18 REGHEXCTRLK .....	2
14	310667	BRACKET, DECK LIFTREAR LHBLK .....	1
15	180077	SCREW, 5/16-18X .75 HHC .....	2
16	120393	WASHER, FLAT .344X .69X.065 .....	2
17	1498	NUT, 5/16-18 REGHEXCTRLK .....	2
18	315302-853	BRACKET, IDLER SUPPORT .....	1
19	300345	SCREW, 5/16-18X1.38 WAHHTAP .....	1
20	120393	WASHER, FLAT .344X .69X.065 .....	1
21	1498	NUT, 5/16-18 REGHEXCTRLK .....	1
22	56424-853	QUILL ASSY. 36/39/40/43 .....	2
22-1	56425	SHAFT/SADDLE 36" .....	1
22-2	49562	BEARING, BALL 6203-2AA(SEALS)-C3 .....	1
22-3	50616	DUST SHIELD .....	1
22-4	55547	QUILL CASTING (1046) .....	1
22-5	49562	BEARING, BALL 6203-2AA(SEALS)-C3 .....	1
22-6	50818	SPACER, SLEV .669X .88X3.797 .....	1
22-7	51449	SPACER, SLEV .672X .93X .438PM .....	1
22-8	313898	PULLEY ASSY .....	1
22-9	56365	WASHER, SPECIAL QUILL .....	1
22-10	1282	NUT, 7/16-20 WDFLLK .....	1
23	35498	SCREW, 5/16-18X .75 WAHHTAP .....	7
24	312526	LIFT SUPPORT FRONT DECK .....	1
25	328155-853	PLATE-MOUNTING .....	1
26	180077	SCREW, 5/16-18X .75 HHC .....	4
27	1498	NUT, 5/16-18 REGHEXCTRLK .....	4
28	58305-853	BRACKET, LINK DECK FRONT .....	1
29	58247	NUT, ADJUST .....	2
30	180079	SCREW, 5/16-18X1.00 HHC .....	2
31	1498	NUT, 5/16-18 REGHEXCTRLK .....	2
32	312477	WHEEL BRACKET, LH BLK .....	1
33	180077	SCREW, 5/16-18X .75 HHC .....	3
34	1498	NUT, 5/16-18 REGHEXCTRLK .....	3
35	300102-853	WHEEL BRKT, RH .....	1
36	180077	SCREW, 5/16-18X .75 HHC .....	3
37	1498	NUT, 5/16-18 REGHEXCTRLK .....	3
38	306932	BLADE, 19.69 HI-LIFT BLK .....	2
39	2483	WASHER, 39IDX1.25DX.07 BELLVIL .....	6
40	39573	SCREW, 3/8-24X1.00 NYLHHC .....	2
41	300491-853	BRACKET, IDLER ARM/BRAKE .....	1
41-1	300490-853	IDLER ARM 36.38.39, & 45SD .....	1
41-2	306973	BRAKE PAD - HARD - 232AF .....	1
41-3	41601	RIVET, OVSET .187DIA X .50LG ST .....	2
42	300180	BOLT, 50 X1.88 HHSH 3/8-16 .....	1
43	996416	WASHER, FLAT .391X1.00X.125 .....	1
44	45171	NUT, 3/8-16 HWDFL WHIZ-LOCK .....	1
45	326249-853	BRACKET, EXTENSION IDLER .....	1
46	180077	SCREW, 5/16-18X .75 HHC .....	1
47	1498	NUT, 5/16-18 REGHEXCTRLK .....	1
48	180020	SCREW, 1/4-20X .75 HHC .....	1
49	1502	NUT, 1/4-20 REGHEXCTRLK .....	1
52	303247-853	ASSY BLADE BRAKE 36, 39, 45 .....	1
52-1	303246	BRAKE ARM, .....	1
52-2	306973	BRAKE PAD - HARD - 232AF .....	1
52-3	135624	RIVET, TRSET .185DIA X .41LG ST .....	2
53	180077	SCREW, 5/16-18X .75 HHC .....	1
54	120393	WASHER, FLAT .344X .69X.065 .....	1
55	1498	NUT, 5/16-18 REGHEXCTRLK .....	1
56	315306	ROD, BRAKE, 14.7 39" DECK ZINC .....	1
57	1502	NUT, 1/4-20 REGHEXCTRLK .....	1



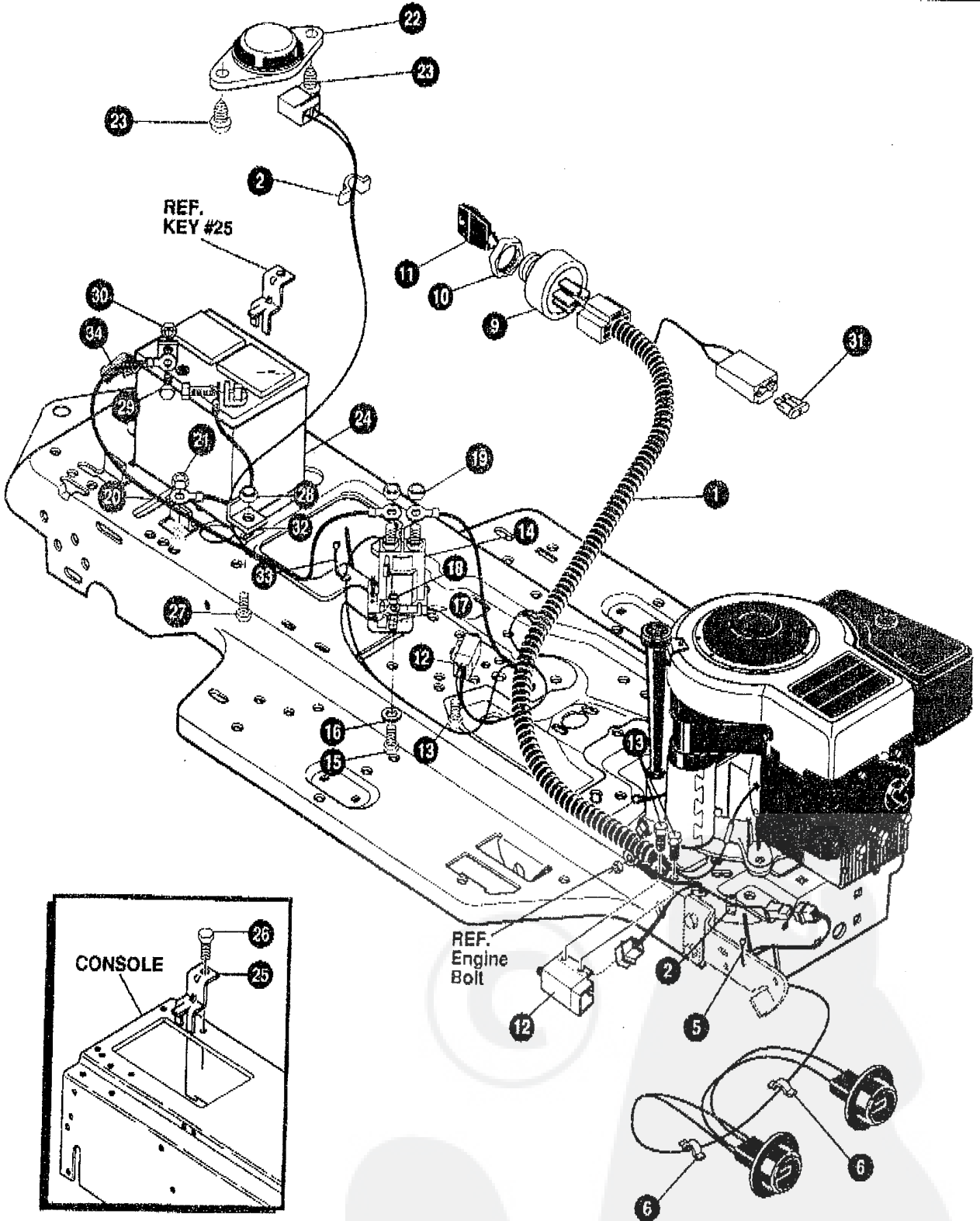
NOTE: ALWAYS USE ORIGINAL EQUIPMENT PARTS. Use of service/replacement parts other than original equipment parts may void your warranty.

ALL UNNUMBERED ITEMS ARE INTERCHANGEABLE WITH OPPOSITE SIDE

332344B

KEY#	PART#	DESCRIPTION	QTY
1	*	ASM.DECK 39SUS SF/AIR ASST .....	1
2	58306	ROD, DECK HITCH .....	1
3	8260	PIN, HAIR .091 DIA X 1.66 LG .....	1
4	1346	RETAINER, BELT .....	1
5	310326	PULLEY, IDLER BFF 4.00 WIDE FL .....	1
6	57325	BOLT, 3/8-16 X 2.00 CARBON .....	1
7	120382	WASHER, REGSPTLK .393 X .68 X .10 .....	1
8	120377	NUT, 3/8-16 REGHX .....	1
9	322064	SPRING, .75 X 8.4 X .105 TENSION .....	1
10	326256	SPRING, .75 X 10.0 X .105 TENSION .....	1
11	300680	BELT, V 5L 77.75 KEVLAR .....	1
12	326257	GUARD, BELT LH PLASTIC .....	1
13	180077	SCREW, 5/16-18 X .75 HHC .....	3
14	120393	WASHER, FLAT .344 X .69 X .065 .....	3
15	1498	NUT, 5/16-18 REGHEXCTRLK .....	3
16	302611	GAUGE WHEEL, EURO 6.00 ODX 1.38 WD .....	2
17	23763	BOLT, .500 X 1.390 HSSH 3/8-16 .....	2
18	1499	NUT, 3/8-16 REGHXCTRLK .....	2
19	57818	CHUTE DEFLECTOR 36", 39", 45" .....	1
20	314975	SPRING, TORSION CHUTE DEFLECTOR .....	1
21	57317	PIVOT ROD, CHUTE .....	1
22	328034	PULLEY, ENG V3L 4.00 OFFSET .....	1
23	120383	WASHER, REGSPTLK .459 X .78 X .12 .....	1
24	433146	SCREW, 7/16-20 X 4.25 HHC BLK .....	1
25	328630	ASSEMBLY HOSE MTG .....	1
26	1499	NUT, 3/8-16 REGHXCTRLK .....	2

\* ORDER INDIVIDUAL PARTS.



**NOTE:** ALWAYS USE ORIGINAL EQUIPMENT PARTS. Use of service/replacement parts other than original equipment parts may void your warranty.

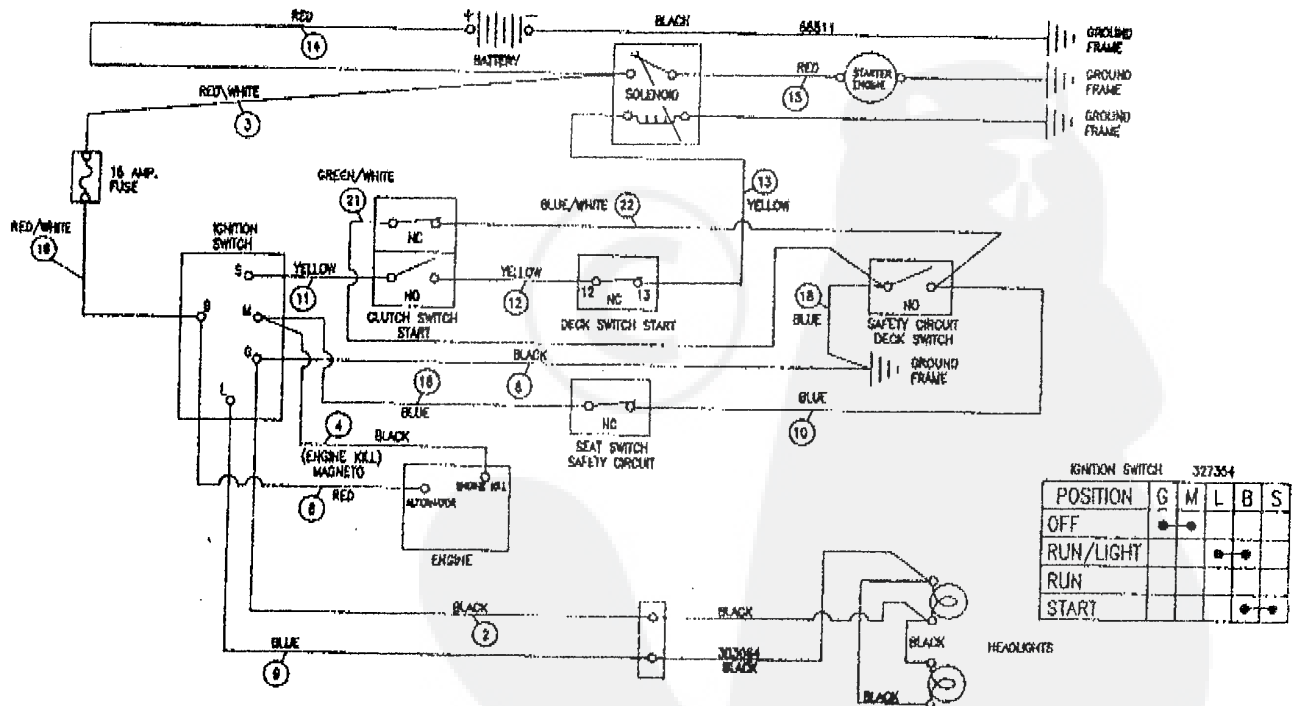
**ALL UNNUMBERED ITEMS ARE INTERCHANGEABLE WITH OPPOSITE SIDE**

333577A

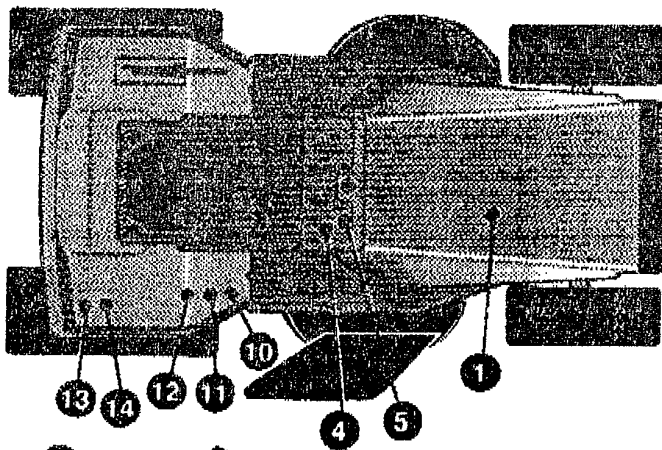
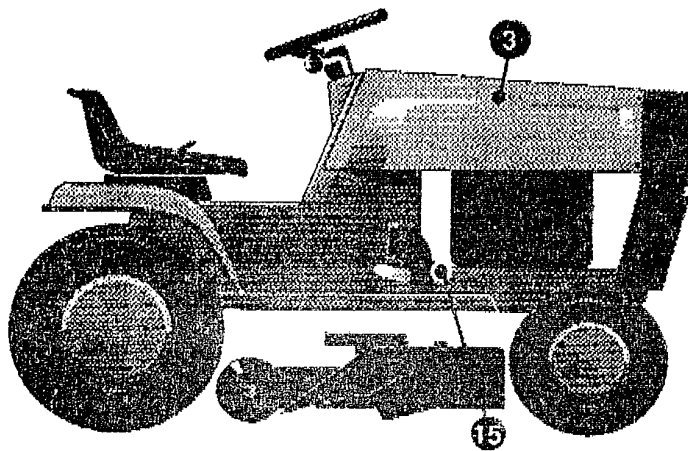
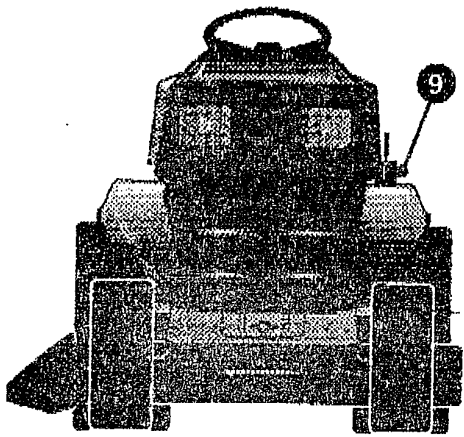


KEY#	PART#	DESCRIPTION	QTY
1	331739	WIRE HARNESS 8-12B&S	1
2	41482	PRESS CLIP, 1.380LG .255ID	2
5	57444	TIE, CABLE BLACK NYLON 5.62	1
6	41482	PRESS CLIP, 1.380LG .255ID	2
9	327354	SWITCH, IGNITION & LIGHTS DELTA	1
10	327352	NUT, 5/8-8ACME DELTA FOR BOOT	1
11	327350	KEY, IGNITION DELTA	1
12	57476	SWITCH, SCREW MNT DP NC NO BLK	2
13	300302	SCREW, #10 X .50 HHTAPPST BLK	4
14	53716	SOLENOID	1
15	187745	SCREW, 1/4-20X .75 HXSEMMA	2
16	1084	WASHER, FLAT .281X1.00X.063	1
17	1502	NUT, 1/4-20 REGHEXCTRLK	2
18	271172	NUT, 1/4-20 REGHEXKEPS	1
19	271187	NUT, 5/16-24 HKEPS	2
20	55511	WIRE, GROUND, 12.5"	1
21	271184	NUT, 5/16-18 HEXKEPS	1
22	57547	SWITCH, SEAT	1
23	160505	SCREW, 1/4-20X .38PHPNHMA	2
24	302257	BATTERY, 12V	1
25	329175	BATTERY BRACKET	1
26	995346	SCREW, 1/4-20X .50 WAHTAP	1
27	187745	SCREW, 1/4-20X .75 HXSEMMA	1
28	1502	NUT, 1/4-20 REGHEXCTRLK	1
29	180020	SCREW, 1/4-20X .75 HHC	2
30	271172	NUT, 1/4-20 REGHEXKEPS	2
31	302031	FUSE SPADE TYPE 32V 15A	1
32	9149	BRACKET, CABLE RETAIN	1
33	57444	TIE, CABLE BLACK NYLON 5.62	1
34	308201	INSULATOR, BATTERY BOOT EURO	1

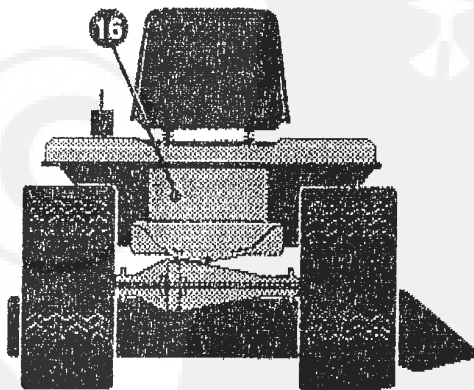
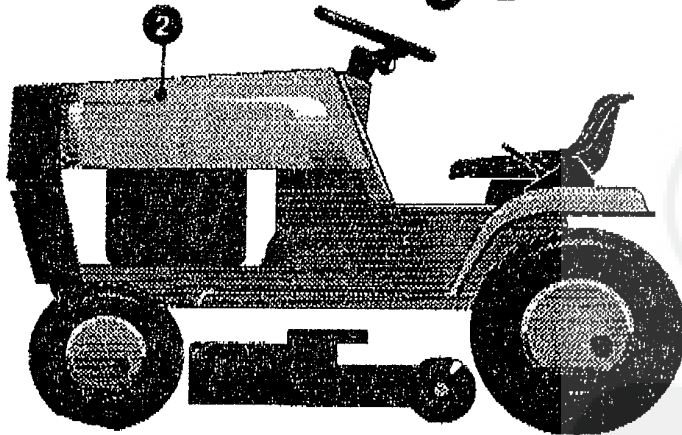
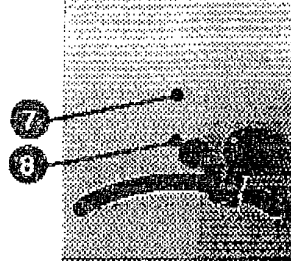
WIRING SCHEMATIC



331739

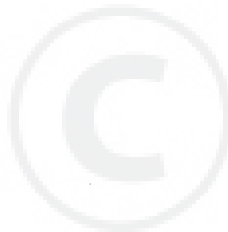


CONSOLE DETAIL

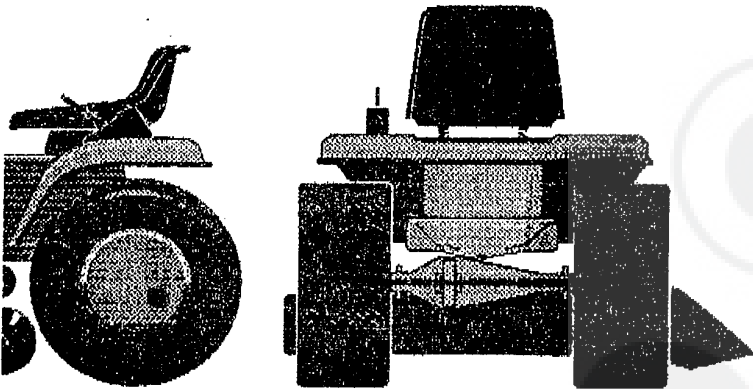
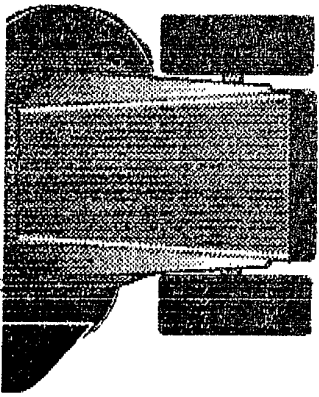
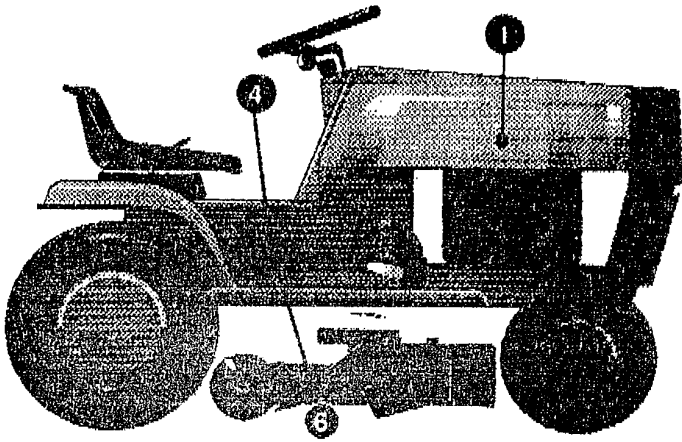


333583A

KEY #	PART #	DESCRIPTION	QTY
1	55832	PAD, FOAM TOP HOOD .....	1
2	55833	PAD, FOAM HOOD SIDE LH .....	1
3	55834	PAD, FOAM HOOD SIDE RH .....	1
4	320721	DECAL, DASH PLAIN EXPORT .....	1
5	327610	DECAL, PTO ENGAGEMENT, ISO EXP .....	1
7	69524	DECAL, INSTRUCT CONSOLE TOP GER .....	1
8	307383	DECAL, INSTR. CONSOLE TOP ENGL .....	1
9	402214	DECAL, HEIGHT ADJUST .....	1
10	305770	DECAL, CAUTION TRIANGLE EUROPE .....	1
11	68902	DECAL, WARNING, FRENCH/GERMAN .....	1
12	310553	DECAL, DANGER ENGLISH .....	1
13	311394	DECAL SHIFT REV/NEUTRAL .....	1
14	391013	DECAL SHIFTER POSITION .....	1
15	68903	DECAL, BRAKE/CLUTCH ISO .....	1
16	318010	DECAL, TUV GS .....	1

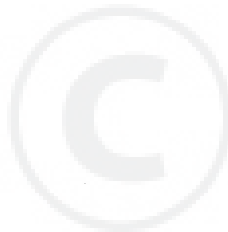


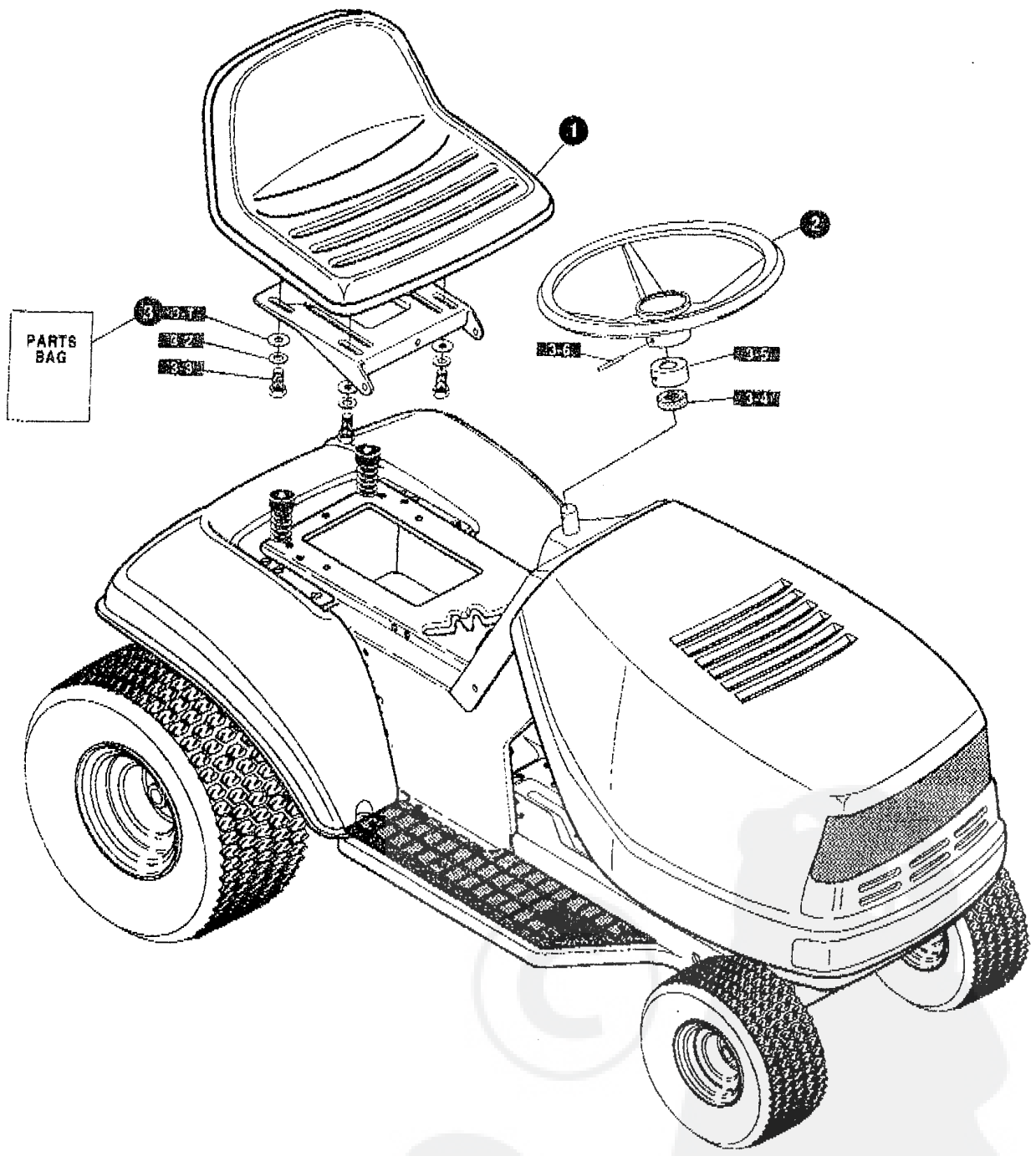
# REPAIR PARTS



333584A

KEY #	PART #	DESCRIPTION	QTY
1	70684	DECAL, HOOD B&S STRIP RH .....	1
2	70685	DECAL, HOOD B&S STRIP LH .....	1
3	312002	DECAL, GRILL INSERT UNITECH .....	1
4	70682	DECAL, RIDER CONSOL STRIP RH .....	1
5	70683	DECAL, RIDER CONSOL STRIP LH .....	1
6	300442	NAME PLATE, 12/39 WHITE .....	2





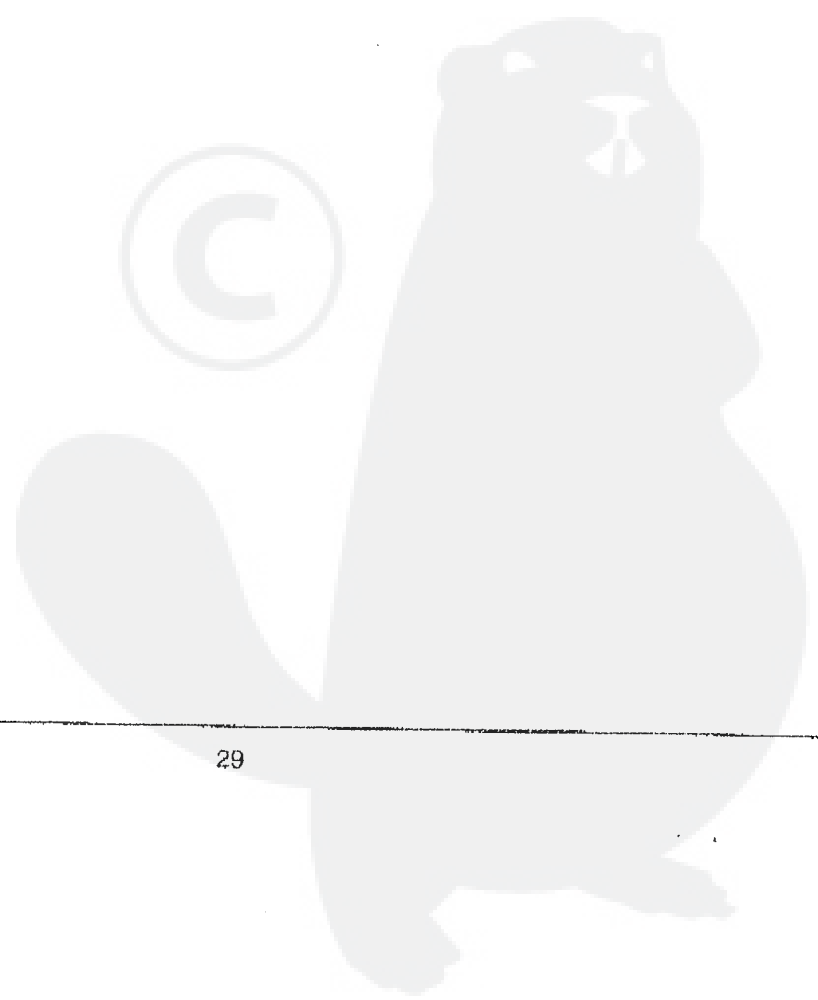
**NOTE:** ALWAYS USE ORIGINAL EQUIPMENT PARTS. Use of service/replacement parts other than original equipment parts may void your warranty.

ALL UNNUMBERED ITEMS ARE INTERCHANGEABLE WITH OPPOSITE SIDE

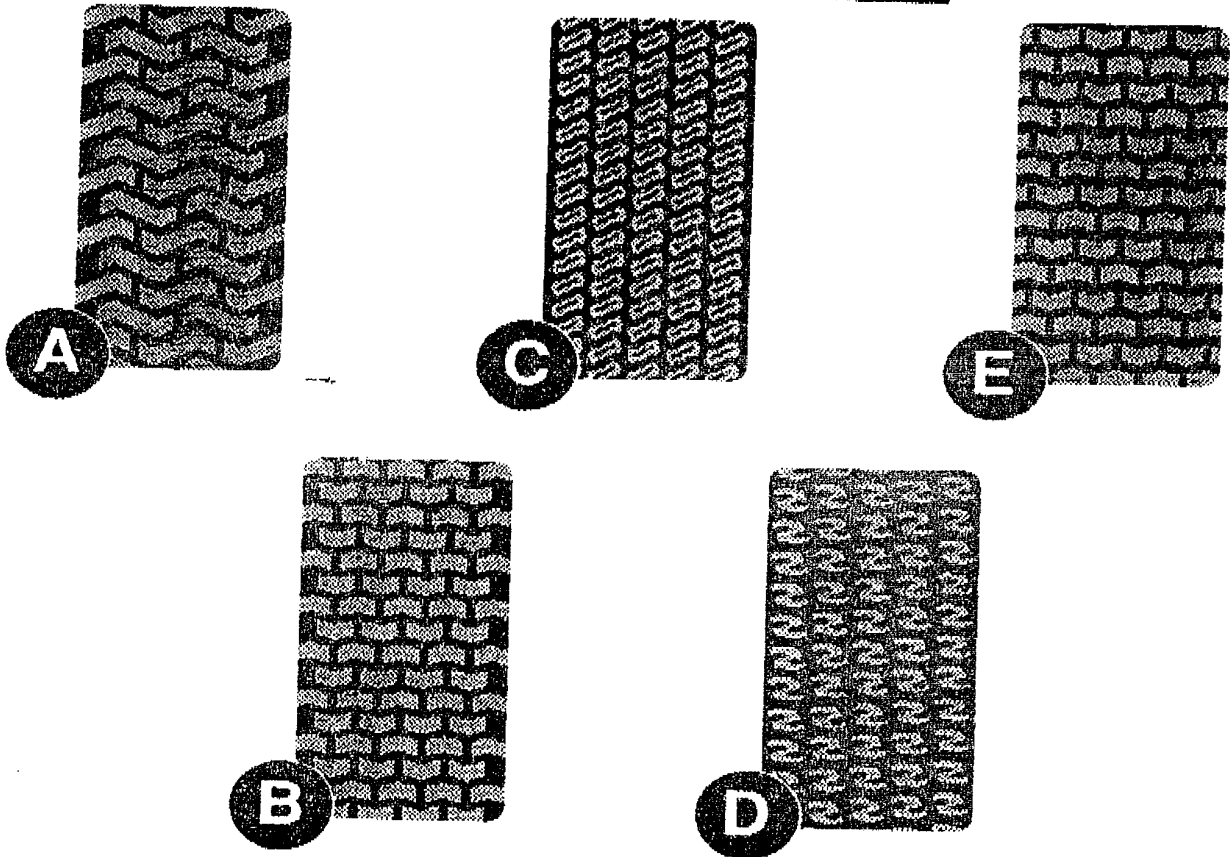
327405D



KEY#	PART#	DESCRIPTION	QTY
1	57455	SEAT, MICHIGAN W/SW HOLE.....	1
2	330510	STEERING WHEEL.....	1
3-1	120393	WASHER, FLAT .344X .69X.065.....	4
3-2	120638	WASHER, HVSP TLK .328X.60X.09.....	4
3-3	180077	SCREW, 5/16-18X .75 HHC.....	4
3-4	331322	COVER, STEERING SHAFT.....	1
3-5	301413	SPACER, STEERING SHAFT.....	1
3-6	456378	PIN, SPRING.250DIA X2.00LG HVPL.....	1



# TREAD PATTERNS



TIRE SIZE	"A"	"B"	"C"	"D"	"E"
11 X 4.00 - 5	42295	319679			
13 X 5.00 - 6	41060	319680			
15 X 6.00 - 6	39830	316702	301140	313952	
16 X 4.80 - 8		305035			
16 X 6.50 - 8	41081	319682		314539	
18 X 6.50 - 8		42091			
18 X 8.50 - 8	319683	317400			
18 X 9.50 - 8	41106	316701		313950	
20 X 8.00 - 8	319685	319684	57164	314584	331606
20 X 10.00 - 8	58276	319686		313654	
20 X 10.00 - 10	55893	319687			
23 X 9.50 - 12	53655	319690	319689	314370	