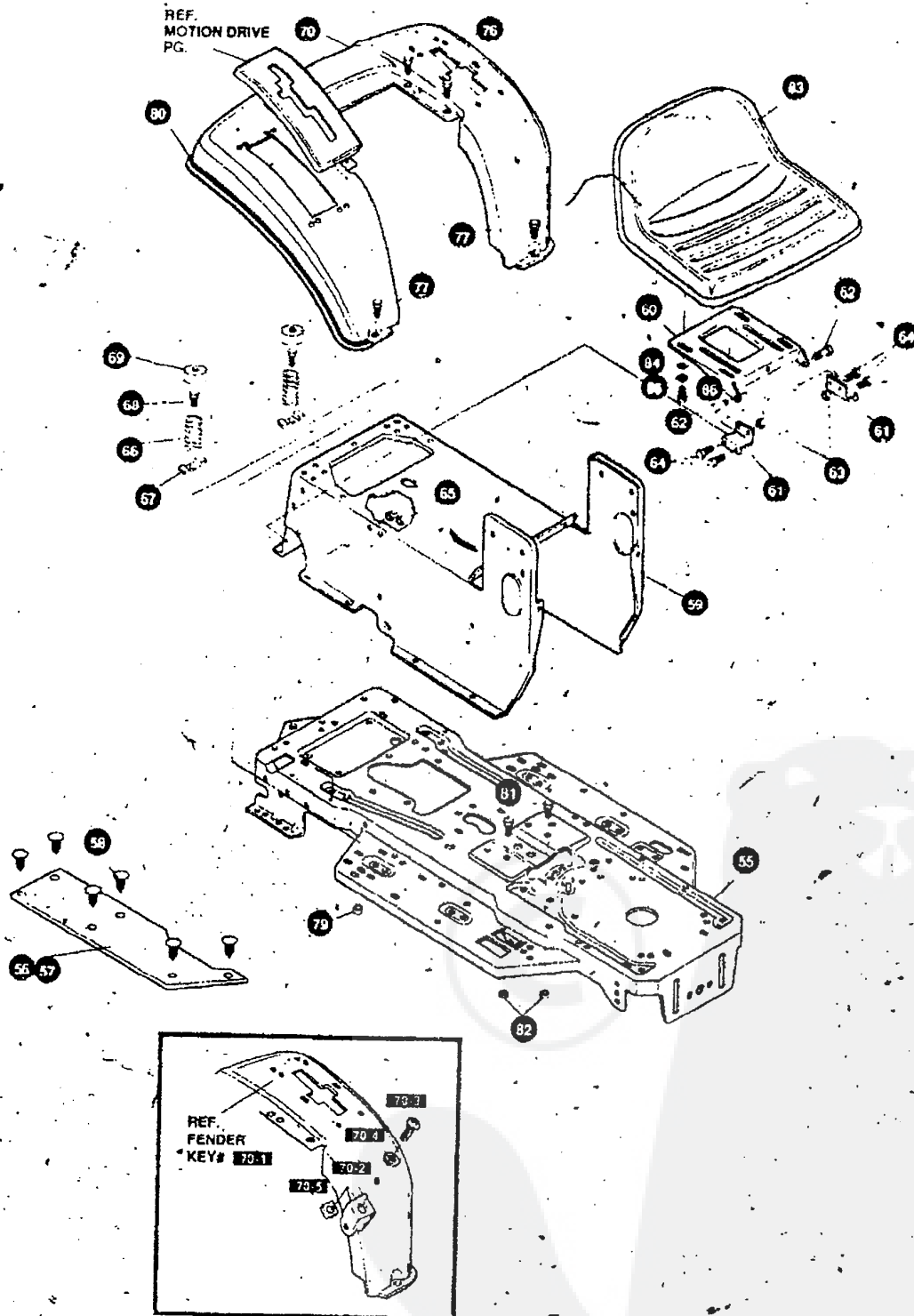


NOTE: ALWAYS USE ORIGINAL EQUIPMENT PARTS. Use of service/replacement parts other than original equipment parts may void your warranty.

ALL UNNUMBERED ITEMS ARE INTERCHANGEABLE WITH OPPOSITE SIDE

325876 D



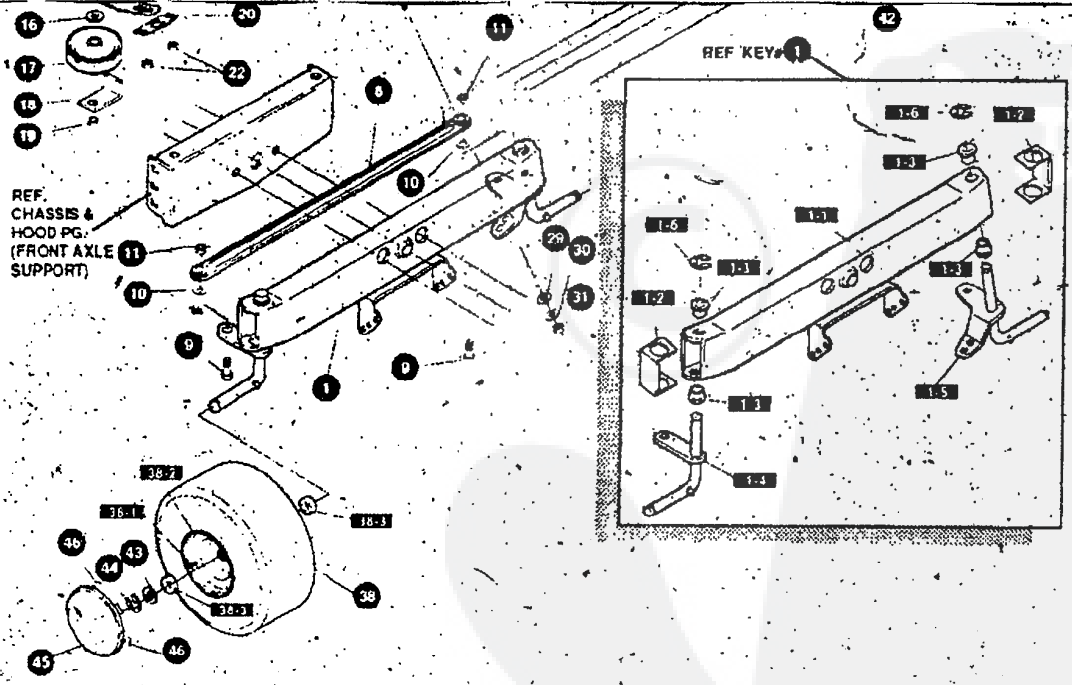
**NOTE: ALWAYS USE ORIGINAL EQUIPMENT PARTS.** Use of service/replacement parts other than original equipment parts may void your warranty.

**ALL UNNUMBERED ITEMS ARE INTERCHANGEABLE WITH OPPOSITE SIDE**

325904 B

77	126358	BOLT, 5/16-18X1.00 CARHLEN	2
79	55273	NUT, 5/16-18 HXWDFLLK	2
80	55023	TRIM, 77.5" BLACK NARROW	77.5
81	180079	SCREW, 5/16-18X1.00 HHC	2
82	1498	NUT, 5/16-18 REGHEXCTRLK	2
83	57455	SEAT, MICHIGAN GEN, W/SW HOLE	1
84	120393	WASHER, FLAT .344X .69X .065	4
85	120638	WASHER, HVSP TLK 328X .60X .09	4
86	180077	SCREW, 5/16-18X .75 HHC	4

▲ ORDER INDIVIDUAL PARTS



**NOTE:** ALWAYS USE ORIGINAL EQUIPMENT PARTS. Use of service/replacement parts other than original equipment parts may void your warranty.

**ALL UNNUMBERED ITEMS ARE INTERCHANGEABLE WITH OPPOSITE SIDE**

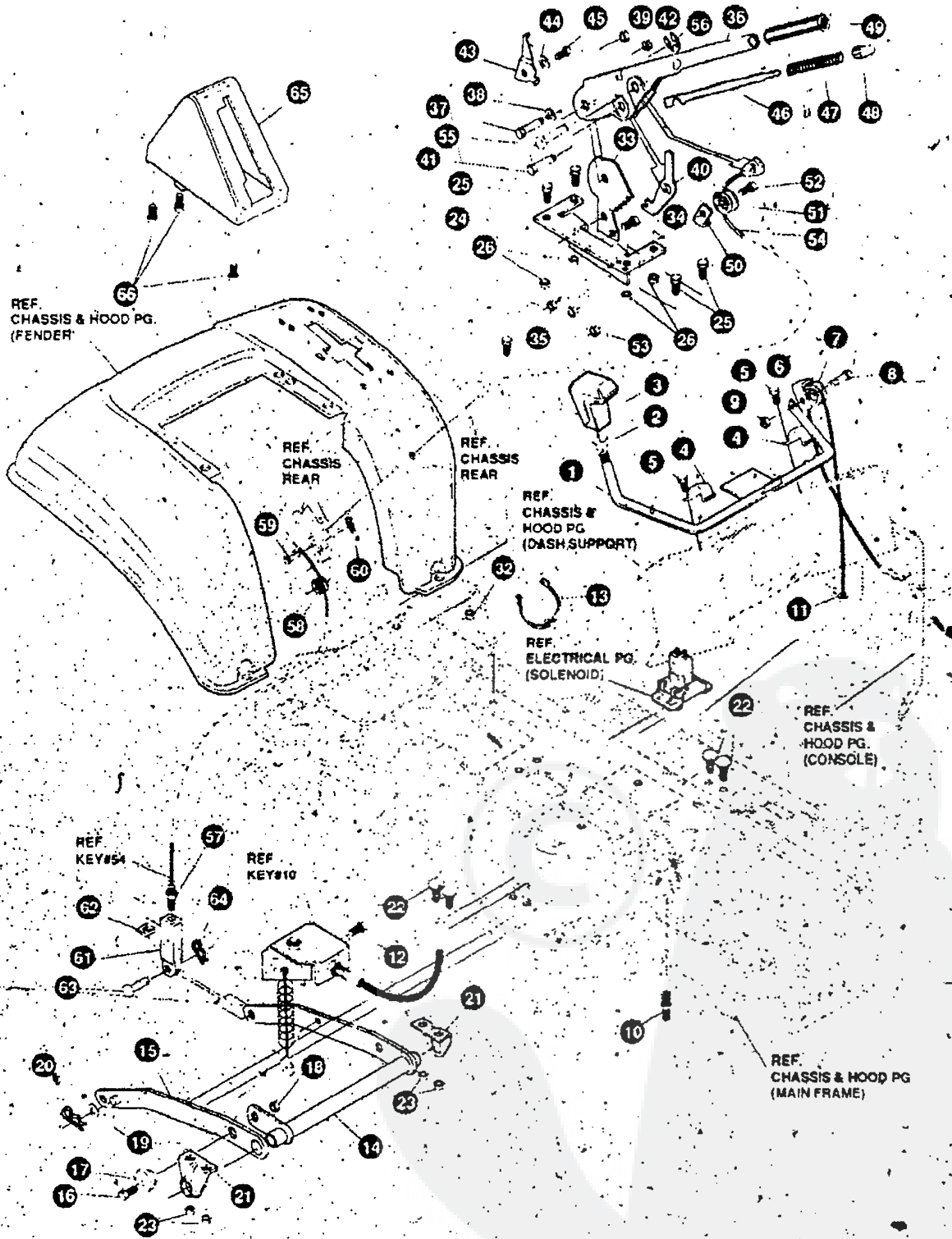
329557 B

E3560-210

## FRONT STEERING ASSEMBLY

KEY#	PART#	DESCRIPTION	QTY
1	A	ASSY.AXLE FRONT 4WS SUSP	1
1-1	310170	AXLE FRONT	1
1-2	53373 853	AXLE COVER	2
1-3	52407	SPINDLE BEARING	4
1-4	302926	ASSY SPINDLE RH	1
1-5	315886	ASSY SPINDLE LH	1
1-6	36625	RING, RETEX 57X 05TRU5133-75	2
8	304590	TIE ROD ASSY 19 81LG W SECTION	1
9	180128	SCREW, 3/8-16X1 75 HHC	2
10	120382	WASHER, REGSPTLK 393X 68X 10	2
11	120377	NUT, 3/8-16 REGHX	2
12	313634	ASSY. SECT GEAR BLK	1
13	313629	BRNG, SLEV IDX ODX	1
14	313671-853	SUPPORT SECTOR GEAR 4WS LF	1
15	323005	BOLT, 500X2 26 SHWA 3/8-16	1
16	25210	WASHER FLAT 386X1 25X 09HT	1
17	35374	PULLEY, IDLER V4L 3 06X 62	1
18	39659	RETAINER,BELT	1
19	1499	NUT, 3/8, 16 REGHXCTRLK	1
20	302498	BRNG, SFAL 500IDX, ODX .75	1
21	323731	SCREW, 5/16-24X.75 (TO 30-35 FT#)	2
22	71100	NUT, 5/16-24 HEXWDFLLK	2
23	323752	ASSEMBLY DRAG LINK 4WS GEAR LF	1
23-1	321449	DRAG LINK 625 DIA FOR 4WS LF	1
23-2	124925	NUT, 3/8-24 REGHEXJAM	1
23-3	57158	BALL JOINT 3/8 THD SHORT STUD	1
23-4	272123	NUT, 7/16-20 HXJAM	1
23-5	302865	BALL JOINT 7/16-20	1
28	46692	NUT, 3/8-24 WDFLHLK WHIZ	1
29	120396	WASHER FLAT 531X1 06X 095	1
30	120383	WASHER, REGSPTLK 459X 78X 12	1
31	271506	NUT, 7/16-20 REGHX	1
32	332530	SHAFT, STEERING 4WS, LF	1
33	302314	PINION, STEERING	1
34	302524	PIN DOWEL STR ERO LT	1
36	315194	WASHER, FLAT 51X1 38X 043	1
36	2968	WASHER, FLAT 504X 75X 059	1
37	20864	RING, RET E 39X 04TRU5133-50	1
38	321515	TIRE & RIM, PU 15X6 0X6 WHI668	2
38-1	24167	VALVE STEM	1
38-2	39829	RIM, WHEEL	1
38-3	314416	BEARING, FL	1
42	316702	TIRE, 15 X 6 X 6	4
43	642	WASHER, FLAT .755X1 31X 075	2
44	36625	RING, RETEX .57X 05TRU5133-75	2
45	304444	HUB CAP 6" EURO GREY 630	2
46	306669	CLIP, HUBCAP TINN #C25467-017-4	8

\* ORDER INDIVIDUAL PARTS



NOTE: ALWAYS USE ORIGINAL EQUIPMENT PARTS. Use of service/replacement parts other than original equipment parts may void your warranty.

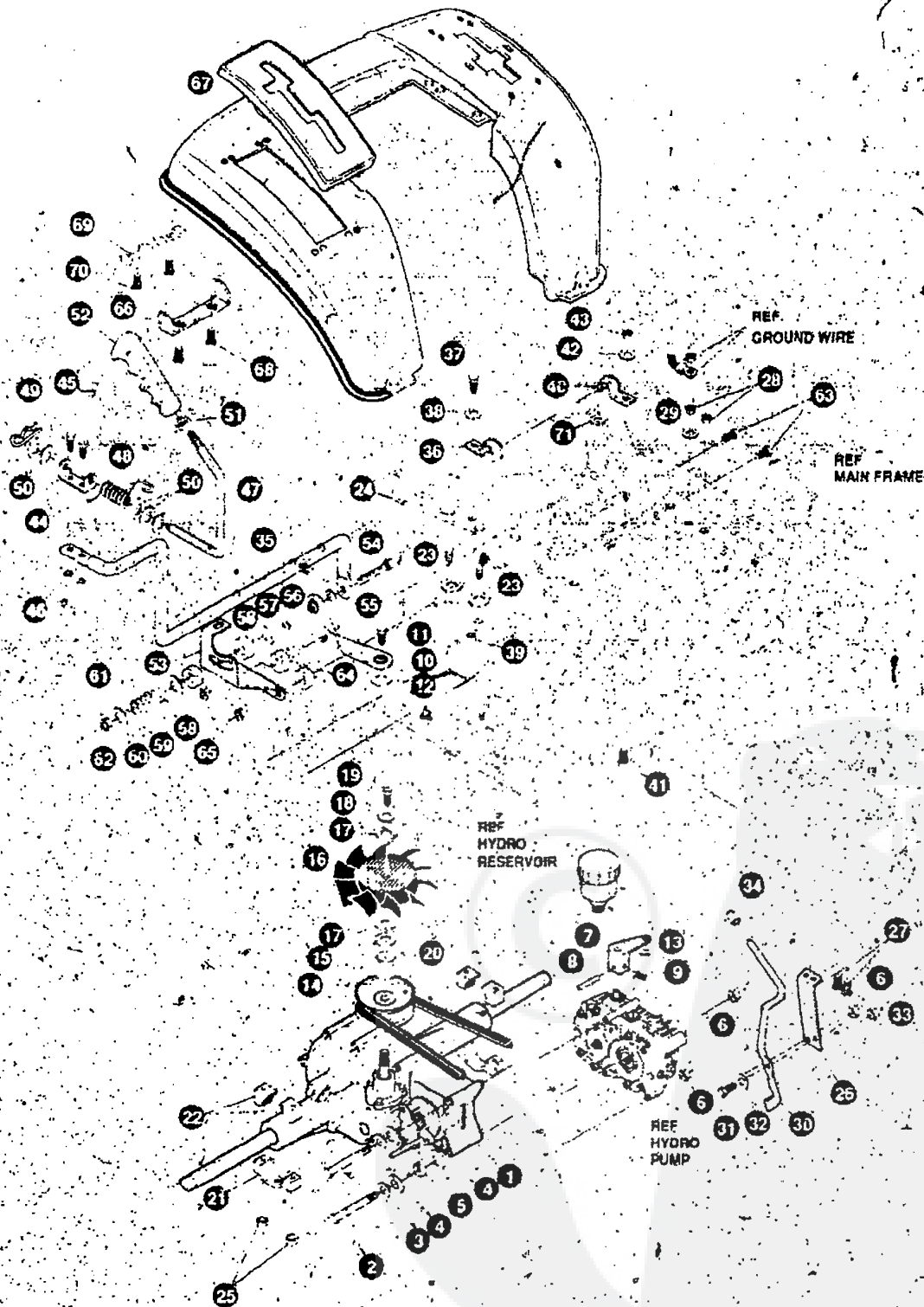
ALL UNNUMBERED ITEMS ARE INTERCHANGEABLE WITH OPPOSITE SIDE

315597 G

## E3560-210

## MOWER SUSPENSION ASSEMBLY

KEY#	PART#	DESCRIPTION	QTY
1	30304*853	ASSY.WELD CLUTCH HDLE	1
2	120238	NUT, 1/2 13 HEXJAM	1
3	304438	KNOB, SHIFT NOMA 1/2-13 BLK653	1
4	9129	CLIP, RETAIN BRKT	2
5	44811	SCREW, 1/4-20X 75 WAHTAP	2
6	1288	BRKT, CABLE RETAIN	1
7	48306	PULLEY, POWDER METAL	1
8	57322	BOLT, 375X 375 HSSH 1/4-20	1
9	1502	NUT, 1/4 20 REGHEXCTRLK	1
10	301491	ASSY CL CABLE GEN PWR 39SDSUS	1
11	120613	NUT, 1/4-28 HJAM	1
12	35498	SCREW, 5/16 18X 75 WAHTAP	1
13	57444	TIE CABLE BLACK NYLON 5 62L	1
14	300158 853	LIFT ASSY LH	1
15	300169-853	LIFT ASSY RH	1
16	180079	SCREW 5 16 18X1 00 HHC	1
17	58247	NUT ADJUST	1
18	1498	NUT, 5 16-18 REGHEXCTRLK	1
19	417098	WASHER FLAT 531X1 06X 063	2
20	8260	PIN, HAIR 091 DIA X 1 66LG	2
21	58248-853	BRACKET, REAR HANG SUSP	2
22	57072	BOLT, 5 16-18X 63 CARRLN	4
23	1498	NUT, 5 16 18 REGHEXCTRLK	4
24	313926	BRACKET, HGT ADJUST SUPPORT	1
25	180077	SCREW, 5/16-18X 75 HHC	4
26	1498	NUT, 5/16-18 REGHEXCTRLK	4
31	180077	SCREW, 5 16-18X 75 HHC	1
32	1498	NUT, 5/16-18 REGHEXCTRLK	1
33	301238	QUADRANT HEIGHT ADJUST	1
34	180077	SCREW, 5 16 18X 75 HHC	2
35	1498	NUT, 5 16-18 REGHEXCTRLK	2
36	322292-853	HANDLE, LIFT SHORT (30" S F)	1
37	300171	BOLT, 500X 270 HSSH 5/16-18	1
38	996418	WASHER, FLAT 506X 75X 024	1
39	44108	NUT, 5/16-18 HWDFLCTRLK	1
40	301239	PAWL, SQUARE	1
41	300171	BOLT, 500X 270 HSSH 5/16-18	1
42	44108	NUT, 5/16-18 HWDFLCTRLK	1
43	9435	POINTER, HEIGHT ADJ	1
44	138479	WASHER, EXLK 195X 41X 03	1
45	35287	SCREW, #8-32X 36 HHWATAP	1
46	303027	ROD, ACTUATOR-SHORT	1
47	58326	SPRINGS, HEIGHT ADJUST	1
48	58325	KNOB, HEIGHT ADJ PUSH BUTTON	1
49	58329	GRIP, 750 OD W/ HOLE, BLACK	1
50	9149	BRKT, CABLE RETAIN	1
51	48306	PULLEY, POWDER METAL	1
52	58336	BOLT, 375X 375 HSSH 1 4 20	1
53	1502	NUT, 1/4-20 REGHEXCTRLK	1
54	314177	CABLE, LIFT 22 92 F-5 20X8 8	1
55	300310	PIN CLEVIS 310DIA+ 475LG	1
56	300311	RING, RET E 31X 25TRUXS133 31	1
57	120375	NUT 1/4-20 REGHEX	1
58	48306	PULLEY, POWDER METAL	1
59	300317	PIN, CLEVIS 375DIA X 81 LG	1
60	8260	PIN, HAIR 091 DIA X 1 66LG	1
61	9405	CLEVIS, LIFT CABLE	1
62	120372	NUT 1/4-20 REGSO	1
63	39522	PIN, CLEVIS 312 X 812	1
64	121222	PIN, COTTER .090 DIA X 75LG	1
65	300335	LIFT COVER 39" F5	1
66	300340	SCREW #10 X 75 HHPLAST BLK	3



NOTE: ALWAYS USE ORIGINAL EQUIPMENT PARTS. Use of service/replacement parts other than original equipment parts may void your warranty.

ALL UNNUMBERED ITEMS ARE INTERCHANGEABLE WITH OPPOSITE SIDE

330023 C

## E3560-210

## MOTION DRIVE ASSEMBLY

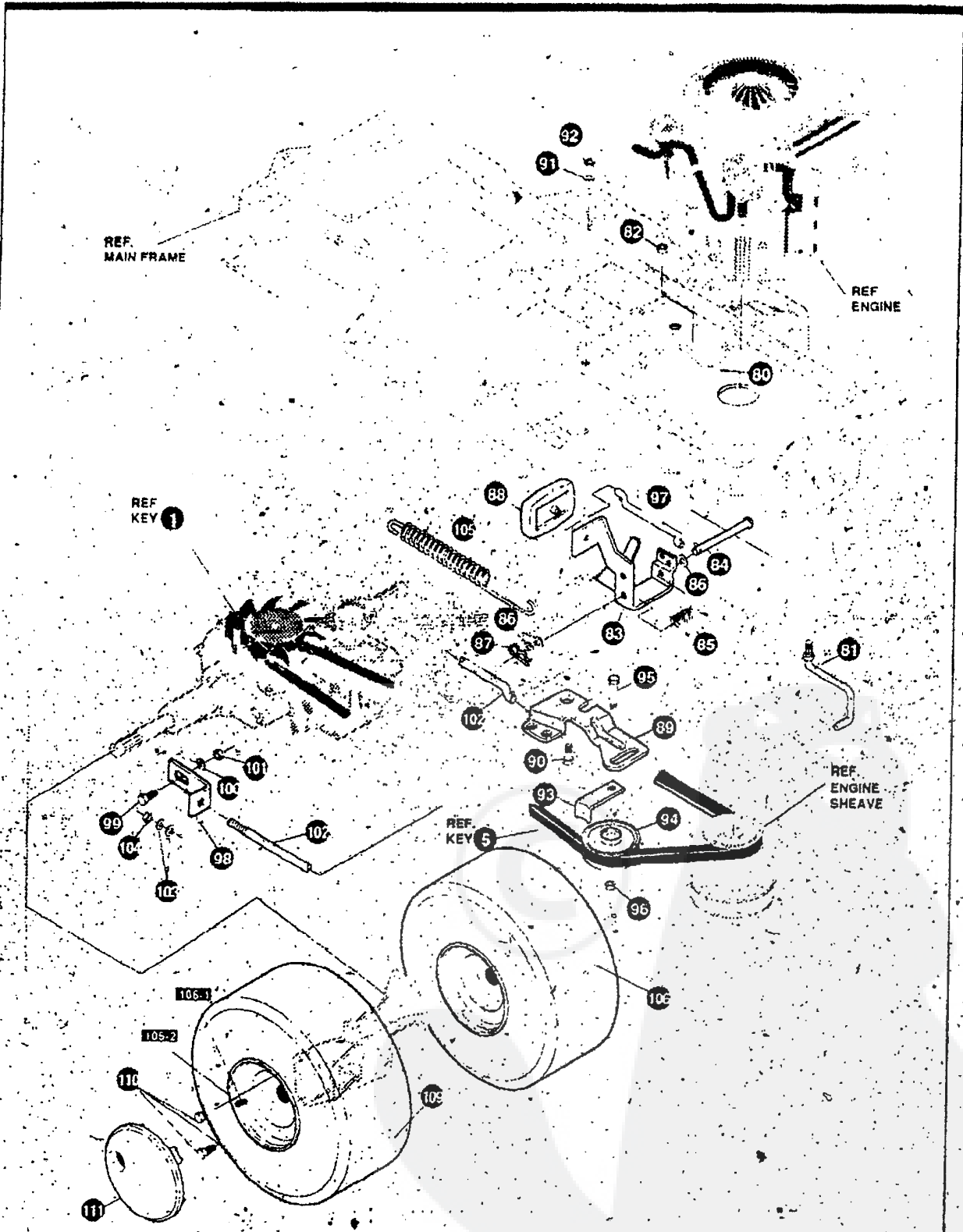
KEY#	PART#	DESCRIPTION	QTY.
1	A	4WS TRNSAXLE, HG #217 1010S	1
2	189299	SCREW, 5-16-18X4 50 HHC	2
3	120698	WASHER HVSP TLK 328X 60X 09	2
4	120393	WASHER, FLAT 344X 69X 065	3
5	55480	BELT GUIDE	1
6	1498	NUT, 5/16-18 REGHEXCTRLK	3
7	310180	ARM SPEED CONTROL HYDRO	1
8	456652	PIN, SPRING 187DIA X 88LG HVPL	1
9	102570	SCREW, 1/4-20X 38NYLALHSETCPPT	1
10	314236	LINK, SHIFT LF HYDRO	1
11	180124	SCREW, 3/8 16X1 25 HHC	1
12	120382	WASHER, REGSPTLK 393X 68X 10	1
13	1499	NUT, 3/8-16 REGHXCTRLK	1
14	322403	PULLEY ASM HYDRO	1
15	322404	NUT PULLEY 1/2 20 AND 1/4 20	1
16	308523	FAN, HYDRO 7 00DIA 10 BLADES	1
17	57626	WASHER, FLAT 281X1.25X 06	3
18	120380	WASHER, REGSPTLK 263X 49X 07	1
19	180020	SCREW, 1/4-20X 75 HHC	1
20	314572	BELT, V 4L 80 16 HYDRO LF	1
21	310187	MOUNTING BLOCKS HYDRO	2
22	310813	MOUNTING BLOCK LH HYDRO	4
23	120393	WASHER, FLAT 344X 69X.065	4
24	180089	SCREW 5-16-18X2 25 HHC	4
25	44108	NUT, 5/16-18 HWDFLCTRLK	4
26	314221	STABILIZER BRACKET LF HYDRO	1
27	180079	SCREW, 5/16-18X1.00 HHC	2
28	1498	NUT, 5/16-18 REGHEXCTRLK	2
29	138538	WASHER, REGINTLK 320X 61X 03	1
30	314222	ROD DUMP VALVE LF HYD ZINC	1
31	310088	BOLT, 250X Ø12 HSSH 1/4-20	1
32	2483	WASHER, 39IDX1 25DX 07 BELLVIL	1
33	1502	NUT, 1/4-20 REGHEXCTRLK	1
34	7289	STOP, PLASTIC 375 BLACK	1
35	319115	LEVER, SHIFT-LWR LF HYDRO	1
36	310347-853	CLIP SHIFT LEVER 625 ROD	1
37	180077	SCREW, 5/16-18X 75 HHC	1
38	996416	WASHER, FLAT 391X1 00X 125	1
39	1498	NUT, 5/16-18 REGHEXCTRLK	1
40	310347-853	CLIP, SHIFT LEVER 625 ROD	1
41	180077	SCREW, 5/16-18X 75 HHC	1
42	996416	WASHER, FLAT 391X1 00X 125	1
43	1498	NUT, 5/16-18 REGHEXCTRLK	1
44	310356	BRKT, PIVOT SH LEV	1
45	180020	SCREW, 1/4-20X 75 HHC	2
46	1502	NUT, 1/4-20 REGHEXCTRLK	2
47	318452	LEVER, SHIFT UPPER SOF 1-2-13	1
48	318451	SPRING, TORS 56X 95X 095	1
49	8260	PIN, HAIR Ø91 DIA X 166LG	1
50	2968	WASHER FLAT 604X 75X 059	5
51	120238	NUT, 1/2-13 HEXJAM	1
52	306660	HANDLE 1/2-13 MOLDED BLACK	1
53	314473-853	QUADRANT, SPEED CONTROL	1
54	7288	SCREW, 3/8-16X3 00 HHCFT	1
55	120382	WASHER, REGSPTLK 393X 68X 10	1
56	45171	NUT, 3/8-16 HWDFL WHIZ-LOCK	1
57	845	WASHER, FLAT 390X1 25X 119	1
58	314944	WASHER, FRICTION FABOND 232AF	2
59	845	WASHER FLAT 390X1 25X 119	1
60	29170	SPRING	1
61	120394	WASHER FLAT 406X 81X 065	1
62	1499	NUT, 3/8-16 REGHXCTRLK	1
63	180083	SCREW, 5-16-18X1 50 HHC	2
64	314702	SPACER, SLEV 344X1 00X 500PM	2
65	1498	NUT, 5-16-18 REGHEXCTRLK	2
66	311257-853	BRACKET COVER-F 5 FNDR-SHIFT	1
67	314244	COVER PLASTIC LF HYDRO F-5	1
68	311331	SCREW, 1/4-15X 44 53 HILOHWA	2
69	1341	CLAMP, SPRG 1 17"ID	2
70	311331	SCREW 1/4 15X 44 53 HILOHWA	2
71	309436	PUSHNUT 5 16 BOLT RETAINER	1

SEE TRANSAXLE BREAKDOWN PAGES IN THIS MANUAL



# E3560-210

# REPAIR PARTS



**NOTE: ALWAYS USE ORIGINAL EQUIPMENT PARTS.** Use of service/replacement parts other than original equipment parts may void your warranty.

**ALL UNNUMBERED ITEMS ARE INTERCHANGEABLE WITH OPPOSITE SIDE**

330023 C

**E3560-210**

**MOTION DRIVE ASSEMBLY**

KEY#	PART#	DESCRIPTION	QTY
80	321514	SPRING, DRAG LINK BIAS	1
81	304016	GUIDE, BELT R.H.	1
82	1498	NUT, 5/16-18 REGHEXCTRLK	1
83	325942	PEDAL ASSY, BRAKE/CLUTCH LF	1
84	319675	PIN, CLEVIS, 500DX4 53LG	1
85	57847	SPRING, BRAKE PEDAL	1
86	2968	WASHER, FLAT 504X 75X 059	3
87	56180	PIN, HAIR 091 DIA X 1 62LG	1
88	48160	PAD, CLUTCH BRAKE W/PRINTING	1
89	320381-853	ARM, IDLER TRACTION, SOG LF	1
90	329989	BOLT, 625X, 135 HSSH 5/16-18	1
91	45602	WASHER, FLAT 333X 87X 119	1
92	1498	NUT, 5/16-18 REGHEXCTRLK	1
93	39659	RETAINER, BELT	1
94	35374	PULLEY, IDLER V4L 3 06X 62	1
95	45892	BOLT, 3/8-16X1 50 CARRSN	1
96	1499	NUT, 3/8, 16 REGHXCTRLK	1
97	57204	ROD, CLUTCH 3 92"	1
98	57217-853	BRACKET, BRAKE ROD	1
99	20507	BOLT, 437X 156 HSSH 5/16-18	1
100	45602	WASHER, FLAT 333X 87X 119	1
101	1498	NUT, 5/16-18 REGHEXCTRLK	1
102	316293	ROD, BRAKE 22 25 LF, ZINC	1
103	120393	WASHER, FLAT 344X 69X 065	2
104	1498	NUT, 5/16-18 REGHEXCTRLK	1
105	325123	SPRING, CLUTCH 16 01X750X6 88	1
106	316685	TIRE & RIM, 20X10 00-8 WHITE 668	2
106-1	24167	VALVE STEM	
106-2	301366	RIM, WHEEL	
109	319684	TIRE, 20 X 10 X 8	
110	181683	SCREW, 1/2-20X 55 HHC	6
111	304441	HUB CAP, 8" EURO GREY 630	2
112	306669	CLIP, HUBCAP TINN #C25467-017-4	10

# E3560-210

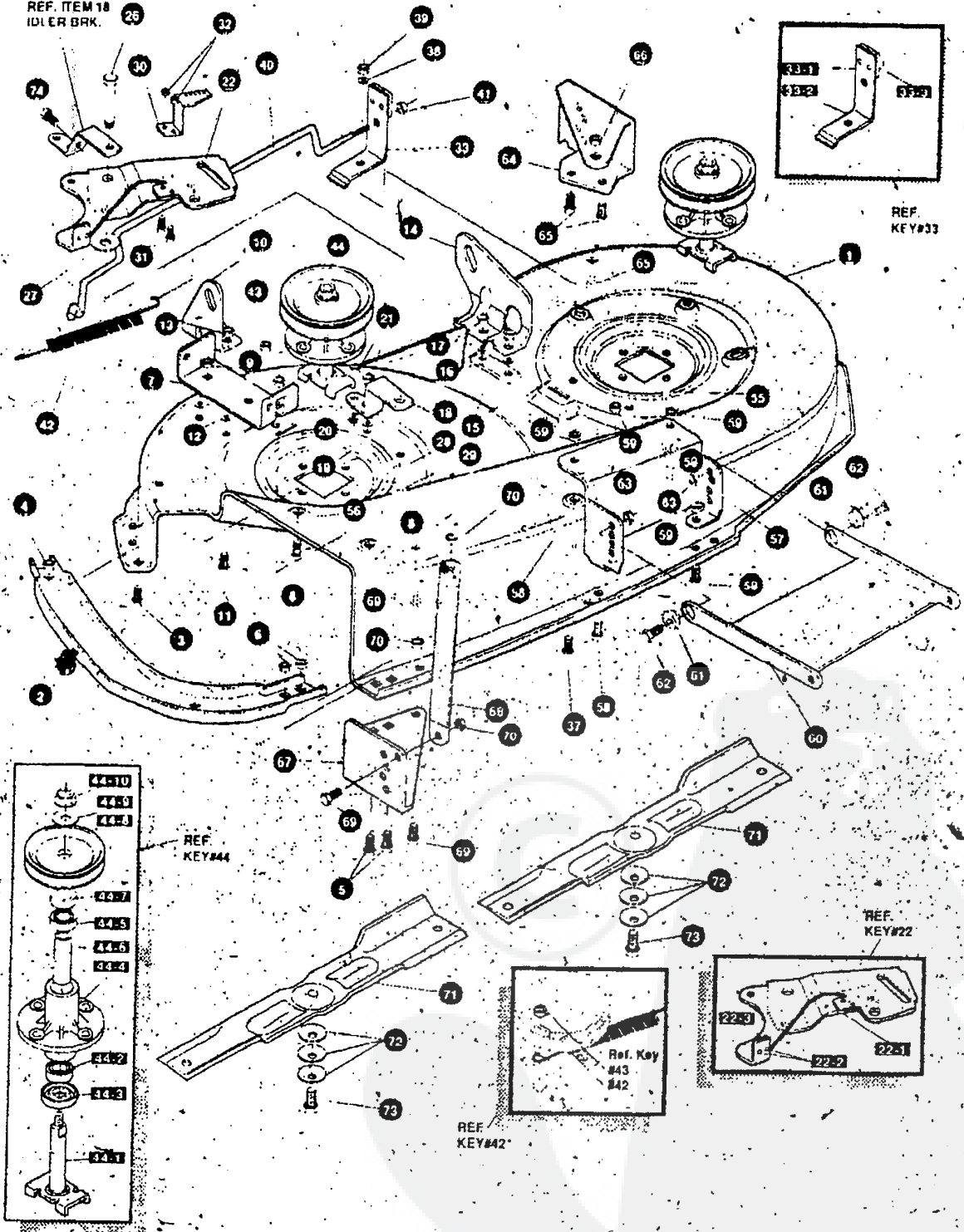
# ENGINE & CONTROL ASSEMBLY

KEY#	PART#	DESCRIPTION	QTY
1	ENGINE	14 0 BS IC OHV DUAL CIR(SEE ENGINE MANUAL)	1
2	50947	SCREW, 3/8-16X1 25 WAHHTAPBLKP	4
3	138489	WASHER, EXLK 384X 69X 04	1
4	327868	EXHAUST TUBE 14OHV B&S LF H15	1
5	328024	CLAMP EXHAUST 1 37 DIA	1
6	327785-853	HEAT SHIELD 14OHV B/S	1
7	995346	SCREW, 1/4-20X 50 WAHHTAP	3
8	328028	PULLEY, ENG 3 0D X 4 0LG X 5 0D	1
9	120383	WASHER, REGSPTLK 459X 78X 12	1
10	433146	SCREW, 7/16-20X4 25 HHC BLK PH	1
11	314991	TANK, FUEL 2-GAL GPWR CLEAR	1
12	300303	SCREW, 25X 75X 51HHWAPLASTITE	2
13	995346	SCREW, 1/4-20X 50 WAHHTAP	2
14	50118	TUBING, 25X 50X BULK GAS LINE	14 0
16	47345	CLAMP, HOSE SCREW TYPE	1
17	300304	CAP, GAS 2 0 THROAT	1
18	303159	THROTTLE, CONTROL 11HP BS GP	1
19	320553	SCREW, 10-24X 63PHPNMA CRSS	2
20	271166	NUT, #10-24 HEXKEPS	2
21	300508	KNOB THROTTLE CONTROL GP STYLE	1
22	159585	SCREW, #8-32X .38 PHPNMA	1
23	120622	NUT, #8-32 REGHX	1
24	325547	OIL DRAIN VALVE ASSEMBLY	1
25	327422	CAP, OIL DRAIN VALVE ASM, YELLOW	1
26	47345	CLAMP HOSE SCREW TYPE	1

# E3560-210

# REPAIR PARTS

REF. ITEM 18  
IDLER BAR.

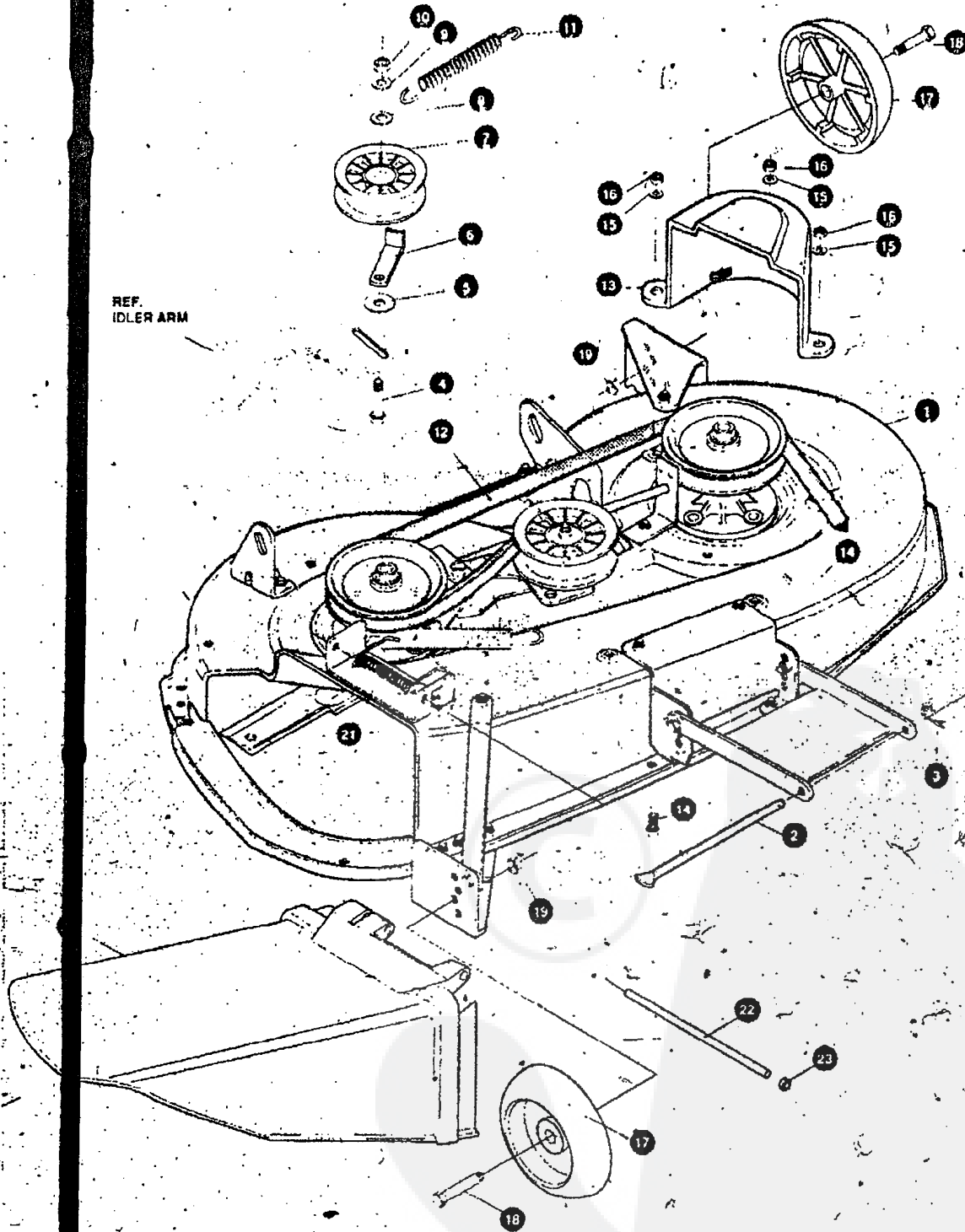


**NOTE:** ALWAYS USE ORIGINAL EQUIPMENT PARTS. Use of service/replacement parts other than original equipment parts may void your warranty.

**ALL UNNUMBERED ITEMS ARE INTERCHANGEABLE WITH OPPOSITE SIDE**

320109 H

KEY#	PART#	DESCRIPTION	QTY
1	325103	40" DECK KIT	1
2	326480-853	TOE GUARD - MULCHER	1
3	180077	SCREW, 5/16-18X 75 HHC	1
4	1498	NUT, 5/16-18 REGHEXCTRLK	1
5	180077	SCREW, 5/16-18X 75 HHC	2
6	1498	NUT, 5/16-18 REGHEXCTRLK	2
7	317017	BRACKET CHUTE MOUNT BLACK	1
8	180077	SCREW, 5/16-18X 75 HHC	2
9	1498	NUT, 5/16-18 REGHEXCTRLK	2
10	313929	LIFT BRKT, REAR RH BLK 853	1
11	180077	SCREW, 5/16-18X 75 HHC	2
12	120393	WASHER, FLAT 344X 69X 065	2
13	1498	NUT, 5/16-18 REGHEXCTRLK	2
14	310667	BRACKET, DECK LIFT REAR LMBLK	1
15	180077	SCREW, 5/16-18X 75 HHC	2
16	120393	WASHER, FLAT 344X 69X 065	2
17	1498	NUT, 5/16-18 REGHEXCTRLK	2
18	326893-853	BRACE IDLER SUPPORT 40" 43"	1
19	180077	SCREW, 5/16 18X 75 HHC	2
20	120393	WASHER, FLAT 344X 69X 065	2
21	44108	NUT, 5/16-18 HWDFLCTRLK	2
22	320576-853	IDLER ARM ASSEMBLY	1
22-1	322116-853	ARM IDLER 40/43" DECK	1
22-2	41601	RIVET, OVSET 187DIA X .50 LG ST	2
22-3	306973	BRAKE PAD - HARD - 232AF	1
26	304420	BOLT, 500X2.15 HSSH	1
27	996307	WASHER, FLAT 391X1 00X 209	1
28	996416	WASHER, FLAT 391X1 00X 125	2
29	45171	NUT, 3/8-16 HWDFL WHIZ-LOCK ZN	1
30	326249-853	BRACKET, EXTENSION IDLER	1
31	180077	SCREW, 5/16-18X 75 HHC	2
32	1498	NUT, 5/16-18 REGHEXCTRLK	2
33	321828	BLADE BRAKE ASSY	1
33-1	135624	RIVET, TRSET 185DIA X 1 LG ST	2
33-2	304119-853	BRAKE ARM	1
33-3	306973	BRAKE PAD - HARD - 232AF	1
37	180077	SCREW, 5/16-18X 75 HHC	1
38	120393	WASHER, FLAT 344X 69X 065	1
39	1498	NUT, 5/16-18 REGHEXCTRLK	1
40	302714	ROD, BRAKE	1
41	1502	NUT, 1/4-20 REGHEXCTRLK	1
42	35410	SPRING 071 X 62 X 4 37	1
43	1498	NUT, 5/16-18 REGHEXCTRLK	1
44	56424-853	QUILL ASSY 36/39/40/43	2
44-1	56425	SHAFT/SADDLE 36"	1
44-2	49562	BRNG. BALL 6203-2AA(SEALS)-C3	1
44-3	50616	DUST SHIELD	1
44-4	55547	QUILL CASTING (1046)	1
44-5	49562	BRNG. BALL 6203-2AA(SEALS)-C3	1
44-6	50818	SPACER, SLEV 669X 88X3 797	1
44-7	51449	SPACER, SLEV 672X 93X 438PM	1
44-8	313898	PULLEY ASSY	1
44-9	56365	WASHER, SPECIAL QUILL	1
44-10	1282	NUT, 7/16-20 WDFLLK	1
55	35498	SCREW, 5/16-18X 75 WAHHTAP	7
56	300345	SCREW 5/16-18X1 38 WAHHTAP	1
57	318445-853	BRACKET 40 LF FRONT DECK	1
58	180077	SCREW 5/16-18X 75 HHC	2
59	1498	NUT 5/16-18 REGHEXCTRLK	4
60	58305-853	BRACKET, LINK DECK FRONT	1
61	58247	NUT ADJUST	2
62	180079	SCREW 5/16 18X1 00 HHC	2
63	1498	NUT, 5/16 18 REGHEXCTRLK	2
64	317041	BRKT, GAGE WHEEL LH BLACK	1
65	180077	SCREW, 5/16-18X 75 HHC	3
66	1498	NUT, 5/16 18 REGHEXCTRLK	3
67	322464-853	BRACKET, GAGE WHEEL R H FRNT	1
68	314282-853	BRACKET, STABILIZER	1
69	180077	SCREW, 5/16-18X 75 HHC	3
70	1498	NUT 5/16 18 REGHEXCTRLK	3
71	313316	BLADE 40" STD-LIFT 20 32BLK	2
72	2483	WASHER 391DX1 25DX 07 BELLVIL	6
73	39573	SCREW 3/8 24X1 60 NYLHHC	2
74	308237	SCREW 1/4 20X1 25 HHWA TAR	1

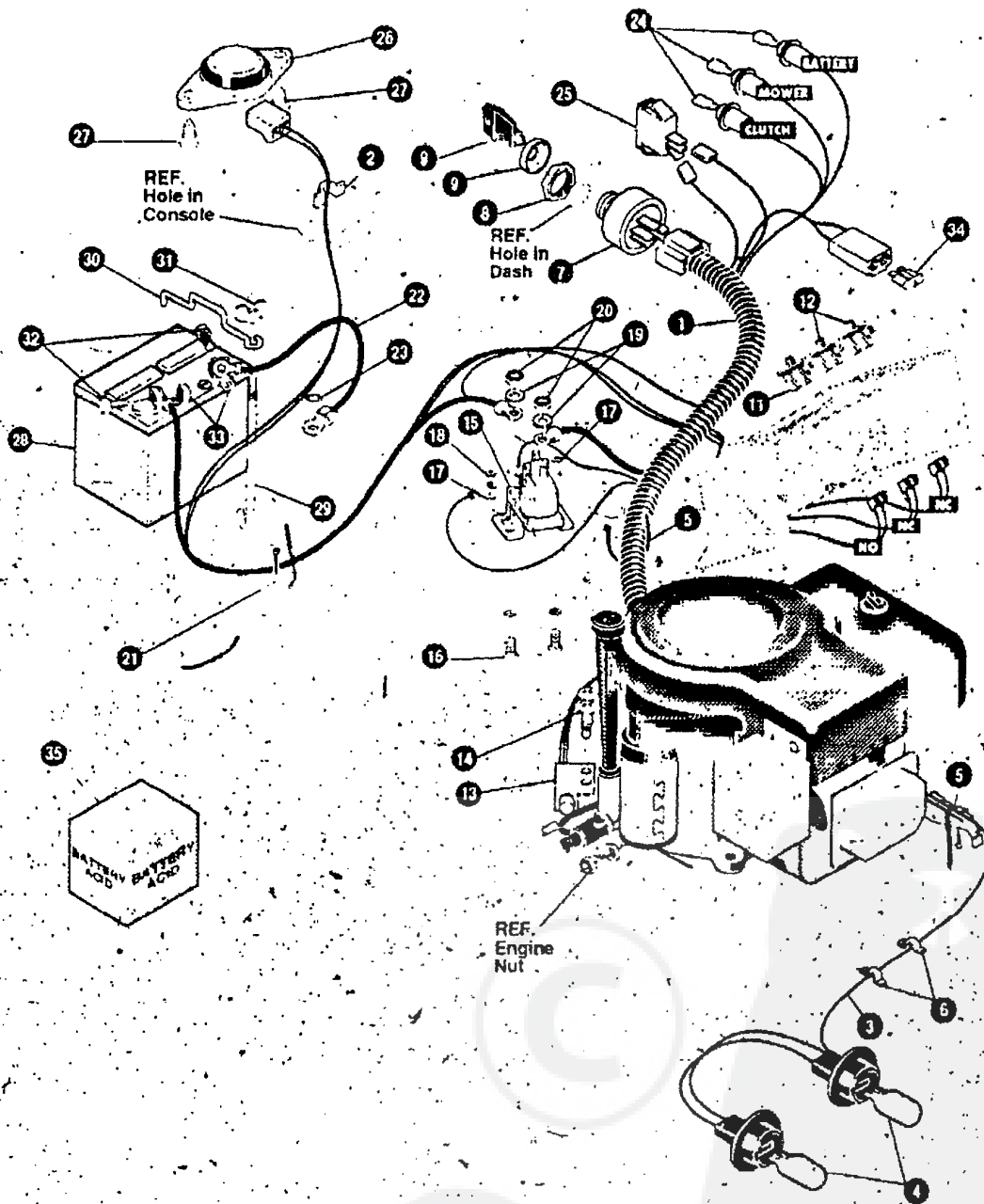


**NOTE:** ALWAYS USE ORIGINAL EQUIPMENT PARTS. Use of service/replacement parts other than original equipment parts may void your warranty

ALL UNNUMBERED ITEMS ARE INTERCHANGEABLE WITH OPPOSITE SIDE

325682 B

KEY#	PART#	DESCRIPTION	QTY
1	329035	ASM DWG 40"SUS DECK EXPORT	1
2	58306	ROD, DECK HITCH	1
3	8260	PIN, HAIR 091 DIA X 1 66LG	1
4	57325	BOLT, 3/8-16 X 2 00 CARRSN	1
5	25210	WASHER, FLAT 386 X 1 25 X 09HT	1
6	1346	RETAINER, BELT	1
7	310326	PULLEY, IDLER BFF 4 00 WIDE FL	1
8	996307	WASHER, FLAT .391 X 1 00 X 209	1
9	120382	WASHER, REGSPTLK 393 X 68 X 10	1
10	120377	NUT, 3/8-16 REGHX	1
11	300473	SPRING TENSION 7 52LG+17LB/IN	1
12	319005	BELT, V 5L 81 00 DECK 40 LF	1
13	328257	GUARD, BELT LH PLASTIC	1
14	180077	SCREW, 5/16-18 X .75 HHC	3
15	120393	WASHER, FLAT 344 X 69 X 065	3
16	1498	NUT, 5/16-18 REGHEXCTRLK	3
17	302611	GAUGE WHEEL, EURO 6 00 ODX 1 38WD	2
18	23763	BOLT, .500 X 1 390 HSH 3/8-16	2
19	1499	NUT, 3/8-16 REGHXCTRLK	2
20	304422	CHUTE DEFLECTOR 40" 42" & 49"	1
21	314975	SPRING TORSION CHUTE DEFLECTOR	1
22	304424	ROD, PIVOT DECK .312 DX 7 25	1
23	3535	NUT, PUSH ON CAP .312 OD	1



**NOTE:** ALWAYS USE ORIGINAL EQUIPMENT PARTS. Use of service/replacement parts other than original equipment parts may void your warranty

ALL UNNUMBERED ITEMS ARE INTERCHANGEABLE WITH OPPOSITE SIDE

332572 A



E3560-210

ELECTRICAL ASSEMBLY

KEY#	PART#	DESCRIPTION	QTY
1	332226	HARNESS 140HVBS H11G14 WRAP LF	1
2	41482	PRESS CLIP, 1 380LG 255ID	1
3	303064	ASSY. LIGHT WIRE 1/4 TURN	1
4	52572	BULB, HEADLAMP	1
5	57444	TIE, CABLE BLACK NYLON 5 62L	2
6	41482	PRESS CLIP, 1 380LG 255ID	2
7	327355	SWITCH-IGN (AFTER FIRE) 3 POSN	1
8	327352	NUT, 5/8-8ACME DELTA FOR BOOT	1
9	300194	BOOT, IGN SWITCH	1
10	327350	KEY, IGNITION GENERIC DELTA	2
11	326653	SWITCH, SNAPMNT NO 055/ 116GRY	1
12	326654	SWITCH, SNAP MNT NC 140 BLUE	2
13	57476	SWITCH, SCR MNT DP NC NO BLK	1
14	57220	SCREW, #12 X 50 PHPNHTAP BLK	2
15	53716	SOLENOID	1
16	187745	SCREW, 1/4-20X 75 HXSEMMA	2
17	1502	NUT, 1/4-20 REGHEXCTRLK	2
18	271172	NUT, 1/4-20 REGHEXKEPS	1
19	138485	WASHER, - EXLK 320X 61X 03	2
20	120368	NUT, 5/16-24 REGHEX	1
21	57444	TIE, CABLE BLACK NYLON 5 62L	1
22	55511	WIRE, GROUND, 12 5"	1
23	271184	NUT, 5/16-18 HEXKEPS	1
24	57769	BULB, INDICATOR	3
25	300334	LIGHT SWITCH ON/OFF PANEL MNT	1
26	57547	SWITCH, SEAT	1
27	160505	SCREW, 1/4-20X .38PHPNHMA	2
28	302257	BATTERY, 12V	1
29	57551	ROD, BATTERY	1
30	57552	ROD, BATTERY, TOP	1
31	325232	NUT, WING 1/4-20 NYLON	1
32	180020	SCREW, 1/4-20X 75 HHC	2
33	271172	NUT, 1/4-20 REGHEXKEPS	2
35		BATTERY ACID PACK, 80 OZ	1

\* CAN BE PURCHASED LOCALLY

WIRING SCHEMATIC