

PARTS MANUAL

Lawn Tractors



Model E3560-240



SAFETY RULES

THESE INSTRUCTIONS ARE FOR YOUR PROTECTION. PLEASE READ THEM CAREFULLY.



IMPORTANT

THIS CUTTING MACHINE IS CAPABLE OF AMPUTATING HANDS AND FEET AND THROWING OBJECTS. FAILURE TO OBSERVE THE FOLLOWING SAFETY INSTRUCTIONS COULD RESULT IN SERIOUS INJURY OR DEATH.

I. GENERAL OPERATION:

- Know controls and how to stop quickly.
- Read, understand, and follow all instructions in the manual and on the machine before starting.
- Only allow responsible adults, who are familiar with instructions, to operate the machine.
- Wear safety glasses or eye shields when assembling or operating the machine.
- Do not operate machine when barefooted. Always wear substantial footwear, preferably steel-toed shoes.
- Do not wear loose fitting clothing that could get caught in moving parts.
- Clear the area of objects such as rocks, toys, wire, etc., which could be picked up and thrown by the blade(s).
- Be sure the area is clear of other people before mowing. Stop machine if anyone enters the area.
- Never carry passengers.
- Do not mow in reverse unless absolutely necessary. Always look down and behind before and while backing.
- Be aware of the mower discharge direction and do not point it at anyone. Do not operate the mower without either the entire grass catcher or the guard in place.
- Slow down before turning.
- Never leave a running machine unattended. Always turn off blades, set parking brake, stop engine, and remove keys before dismounting.
- Turn off blade(s) when not mowing.
- Stop engine before removing grass catcher or unclogging chute.
- Mow only in daylight or good artificial light.
- Do not operate the machine while under the influence of alcohol or drugs.
- Watch for traffic when operating near or crossing roadways.
- Use care when mowing around a fixed object to prevent the blade(s) from striking it. Never deliberately run over any foreign object.
- Use extra care when loading or unloading the machine into a trailer or truck.
- Use care when pulling loads or using heavy equipment.
 - a. Use only approved drawbar hitch points.
 - b. Limit loads to those that you can safely control.
 - c. Do not turn sharply. Use care when backing.
 - d. Use counterweight(s), wheel weight or tire chains when suggested in attachment(s) instructions.

II. SLOPE OPERATION:

Slopes are a major factor related to loss-of-control and tip-over accidents, which can result in severe injury or death. *All slopes require extra caution.* If you cannot back up the slope or if you feel uneasy on it, do not mow it.

DO

- Mow up and down slopes, not across.
- Remove obstacles such as rocks, tree limbs, etc.
- Watch for holes, ruts, or bumps. Uneven terrain could overturn the machine. *Tall grass can hide obstacles.*
- Use slow speed. Choose a low gear so that you will not have to stop or shift while on the slope.
- Follow the manufacturer's recommendations for wheel weights or counterweights to improve stability.
- Use extra care with grass catchers or other attachments. These can change the stability of the machine.
- Keep all movement on the slopes *slow* and *gradual*. Do not make sudden changes in speed or direction.
- Avoid starting or stopping on a slope. If tires lose traction, turn off the blade(s) and proceed slowly *straight* down the slope.

DO NOT

- Do not turn on slopes unless necessary, and then slowly and gradually downhill, if possible.
- Do not mow near drop-offs, ditches or embankments. The

mower could suddenly turn over if a wheel is over the edge of a cliff or ditch, or if an edge caves in.

- Do not mow on wet grass. Reduced traction could cause sliding.
- Do not try to stabilize the machine by putting your foot on the ground.
- Do not use grass catcher on steep slopes.

III. CHILDREN:

Tragic accidents can occur if the operator is not alert to the presence of children. Children are often attracted to the machine and the mowing activity. *Never* assume that children will remain where you last saw them.

- Keep children out of the mowing area and under the watchful care of another responsible adult.
- Be alert and turn machine off if children enter the area.
- Before and when backing, look behind and *down* for small children.
- Never carry children. They may fall off and be seriously injured or interfere with safe machine operation.
- Never allow children to operate the machine.
- Use extra care when approaching blind corners, shrubs, trees, or other objects that may obscure vision.

IV. SERVICE:

- Use extra care in handling gasoline and other fuels. They are flammable and vapors are explosive.
 - a. Use only an approved container.
 - b. Never remove gas cap or add fuel with the engine running. Allow engine to cool before refueling. Do not smoke.
 - c. Never refuel the machine indoors.
 - d. Never store the machine or fuel container inside where there is an open flame, such as in a water heater.
- Check fuel supply before each use allowing space for expansion as the heat of the engine and/or sun can cause gasoline to expand and overflow the tank.
- Use extra care when handling battery acid. Acid contact with skin may cause severe burns. Eye contact may cause blindness.
- Use extra care when servicing the battery. Explosive gas is produced in the battery. Do not service the battery while smoking or near an open spark or flame. This may cause the battery to explode causing serious injury.
- Never run a machine inside a closed area. Exhaust fumes contain CARBON MONOXIDE, an ODORLESS and DEADLY GAS.
- Keep nuts and bolts, especially blade attachment bolts, tight and keep equipment in good condition.
- Never tamper with safety devices. Check their operation regularly.
- Do not change the engine governor settings or overspeed engine.
- Reduce fire hazards. Keep machine free of grass, leaves, or other debris build-up. Clean up oil or fuel spillage. Allow machine to cool before storing.
- Stop and inspect the equipment if you strike an object. Repair, if necessary, before restarting.
- Never make adjustments or repairs with the engine running.
- Grass catcher components are subject to wear, damage, and deterioration, which could expose moving parts or allow objects to be thrown. Frequently check components and replace with manufacturer's recommended parts, when necessary.
- Mower blade(s) are sharp and can cut. Wrap the blade(s) or wear gloves, and use extra caution when servicing them.
- Check brake operation frequently. Adjust and service as required.



LOOK FOR THIS SYMBOL TO POINT OUT IMPORTANT SAFETY PRECAUTIONS. IT MEANS-- ATTENTION!!! BECOME ALERT!!! YOUR SAFETY IS INVOLVED.

E3560-240

OWNER'S INFORMATION

Record the following information about your unit so that you will be able to provide it in case of loss or theft.

MODEL NUMBER: - (Enter complete 8 digit number from model plate on unit)

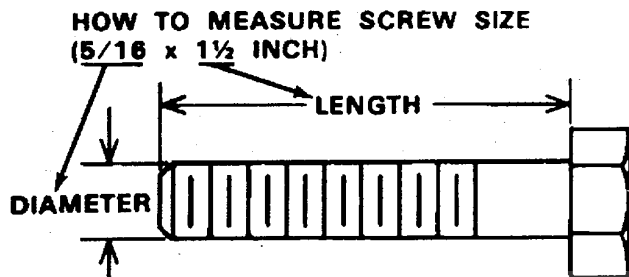
PURCHASE DATE: ___ / ___ / ___ CODE NO.: _____ SERIAL NO.: _____

DEALER'S NAME AND ADDRESS: _____

CITY: _____ STATE: _____ TELEPHONE: _____

TOOLS REQUIRED FOR ASSEMBLY

- 2 - 7/16 inch Wrenches (or adjustable wrench)
- 1 - 1/2 inch Wrench (or adjustable wrench)
- 1 - Small Phillips Screwdriver with a 1/4 inch shank
- 1 - Hammer



⚠ DANGER ⚠

This lawn tractor can be dangerous if carelessly used.

Read your Operator's Manual thoroughly before operating your lawn tractor.

Always wear safety glasses or eye shields while assembling or operating your lawn tractor.

DO NOT carry passengers at any time.

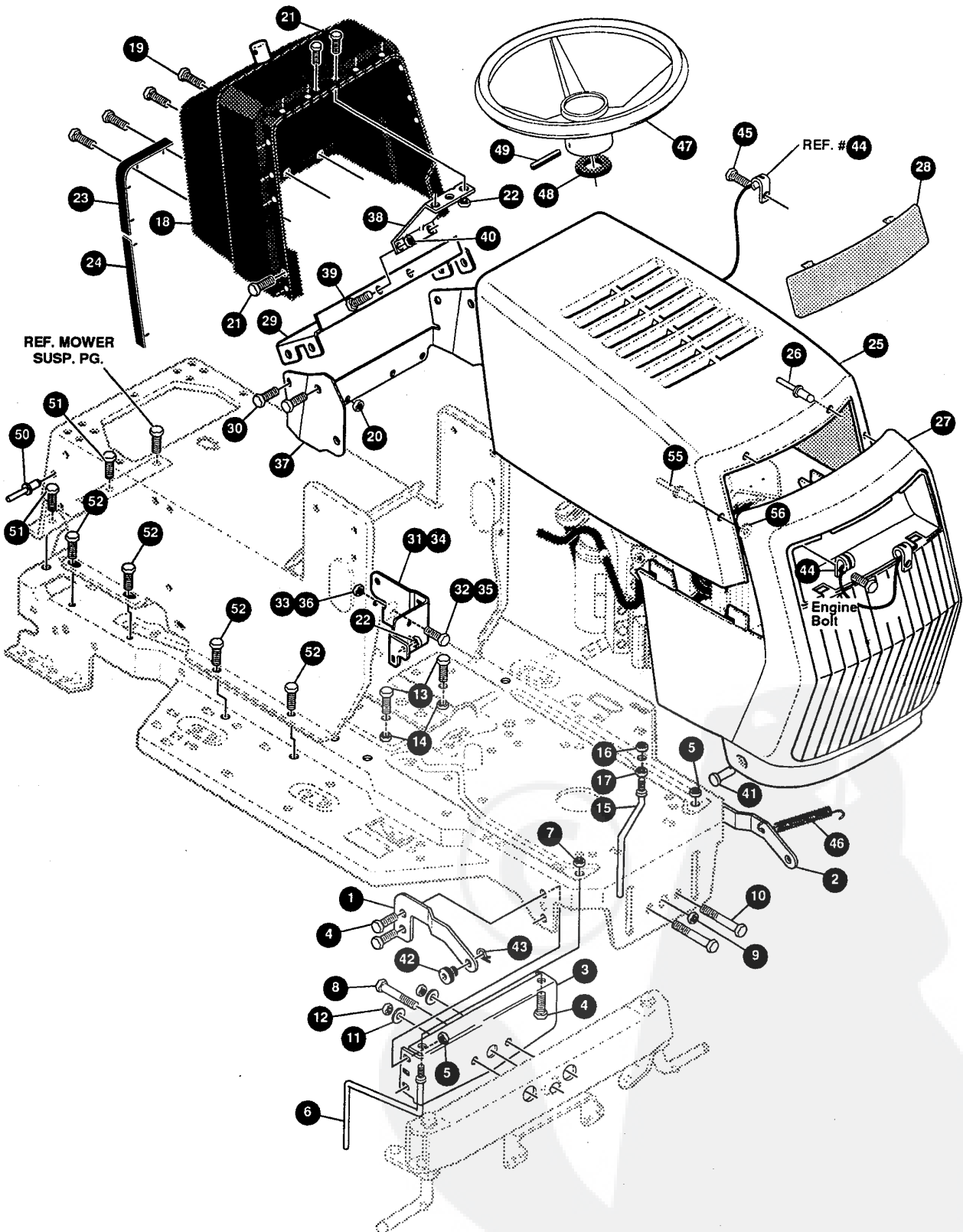
Keep your hands, feet, hair and loose clothing away from the discharge area, the underside of the mower deck or any moving parts while the engine is running.

DO NOT allow children or young teenagers to operate or be near your lawn tractor while it is operating.

ALWAYS GIVE THE FOLLOWING INFORMATION WHEN ORDERING REPAIR PARTS:
1. The PART NUMBER; 2. The PART NAME; 3. QUANTITY DESIRED; 4. The MODEL NUMBER (As shown on Model Plate).
SEND PART ORDERS AS PER INSTRUCTIONS ON THE FRONT PAGE.
DO NOT USE KEY NUMBERS WHEN ORDERING REPAIR PARTS, ALWAYS USE PART NUMBERS.
All replacement parts will be supplied in current production colors or in a neutral color.
A handling fee is applicable to small parts orders.
YOUR UNIT IS RIGHT HAND (RH) OR LEFT HAND (LH) AS YOU STAND BEHIND IT.

E3560-240

REPAIR PARTS



NOTE: ALWAYS USE ORIGINAL EQUIPMENT PARTS. Use of service/replacement parts other than original equipment parts may void your warranty.

ALL UNNUMBERED ITEMS ARE INTERCHANGEABLE WITH OPPOSITE SIDE

332592 A

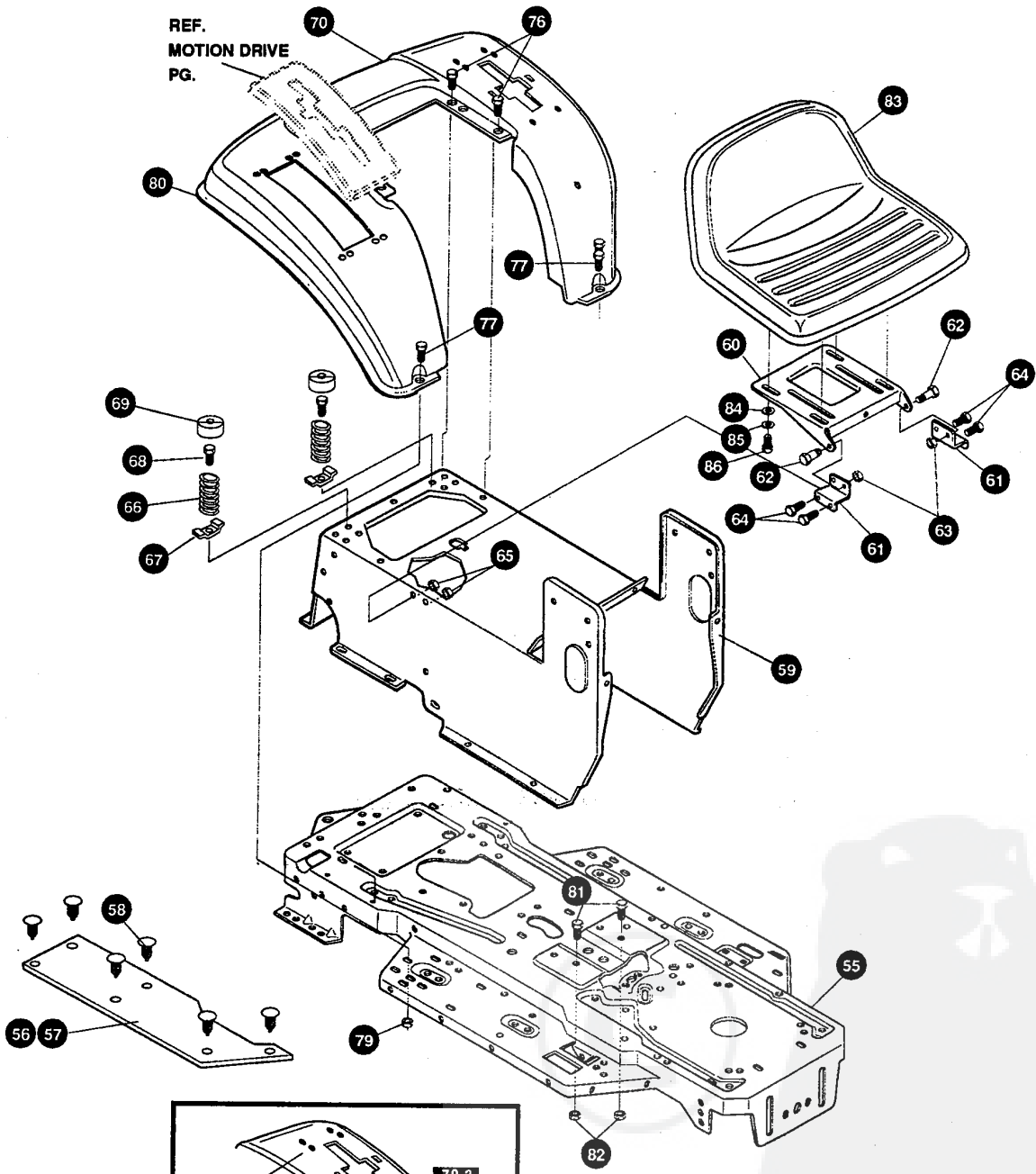
E3560-240

CHASSIS & HOOD ASSEMBLY

KEY#	PART#	DESCRIPTION	QTY
1	326203-853	BRKT,HOOD LF G21/22/23/24	1
2	326204-853	BRKT,HOOD LF G19/21/22/23	1
3	313541-853	BRACKET, FRONT AXLE	1
4	56030	SCREW, 5/16-18X.75WDFLLK	5
5	55273	NUT, 5/16-18 HXWDFLLK	5
6	300440	GUIDE, BELT, RIDER	1
7	1498	NUT, 5/16-18 REGHEXCTRLK	1
8	308207	BOLT, .625X2.18 HSH 1/2-13	1
9	309008	NUT, 1/2-13 HEXJAM CTRLK	1
10	180138	SCREW, 3/8-16X3.00 HHC	2
11	2483	WASHER, .39IDX1.25DX.07 BELLVIL	2
12	1499	NUT, 3/8-16 REGHXCTRLK	2
13	180079	SCREW, 5/16-18X1.00 HHC	2
14	1498	NUT, 5/16-18 REGHEXCTRLK	2
15	300635	GUIDE,BELT SHORT 15" WHEEL	1
16	124824	NUT, 5/16-18 HEXJAM	1
17	271190	NUT, 3/8-16 HEXKEPS	1
23	328141	BUMPER,HOOD/DASH TOP & CORNER	2
24	328142	BUMPER,HOOD/DASH SIDE STRIP	2
25	329391	HOOD,H25 LF/SF,MOLDED,LOUVERS	1
26	329238	RIVET, POP 3/16DIA X .75 LG FLG	2
27	329392	'J' GRILLE G24 MOLDED PLSTK	1
28	326960	LENS FOR 'L'G21 & 'J'G24 GRLL	1
29	324909-853	SUPPORT,STEERING/PTO LF	1
30	995346	SCREW, 1/4-20X .50 WAHHTAP	4
31	326320-853	BRACKET, DASH/TANK LF RH	1
32	180020	SCREW, 1/4-20X .75 HHC	1
33	1502	NUT, 1/4-20 REGHEXCTRLK	1
34	326321-853	BRACKET, DASH/TANK LF LH	1
35	180020	SCREW, 1/4-20X .75 HHC	1
36	1502	NUT, 1/4-20 REGHEXCTRLK	1
37	326640-853	SUPPORT, LOWER DASH STEEL	1
38	327039-853	DASH,SUPPORT BRACKET STEEL	1
39	180020	SCREW, 1/4-20X .75 HHC	2
40	1502	NUT, 1/4-20 REGHEXCTRLK	2
41	323044	PIN, CLEVIS .500 X .49/.51LGTH	2
42	326522	BRNG HOOD .505IDX.625ODX1.12FL	2
43	8260	PIN, HAIR .091 DIA X1.66LG	2
44	310748	LANYARD,HOOD 15.77LG H15	1
45	49050	SCREW, 1/4-10X .75PHPNTAP	1
46	304784	SPRING, HOOD LATCH	1
47	330847	STEERING WHEEL	1
48	301413	SPACER, STEERING SHAFT	1
49	456378	PIN, SPRING.250DIA X2.00LG HVPL	1
50	46763	RIVET, POP .187DIA X.450LG ST	3
51	35497	SCREW, 5/16-18X .50 WAHHTAP	2
52	995346	SCREW, 1/4-20X .50 WAHHTAP	9
55	333225	RIVET, POP 3/16DIA X 1.0 LG FLG	2
56	1501	WASHER, FLAT .203X .56X.040	2
57	333308	PARTS MANUAL	1
58	332212	OPERATOR'S MANUAL (ENGLISH)	1
59	332213	OPERATOR'S MANUAL (FRENCH)	1
60	332214	OPERATOR'S MANUAL (GERMAN)	1

E3560-240

REPAIR PARTS



NOTE: ALWAYS USE ORIGINAL EQUIPMENT PARTS. Use of service/replacement parts other than original equipment parts may void your warranty.

ALL UNNUMBERED ITEMS ARE INTERCHANGEABLE WITH OPPOSITE SIDE

325905 B

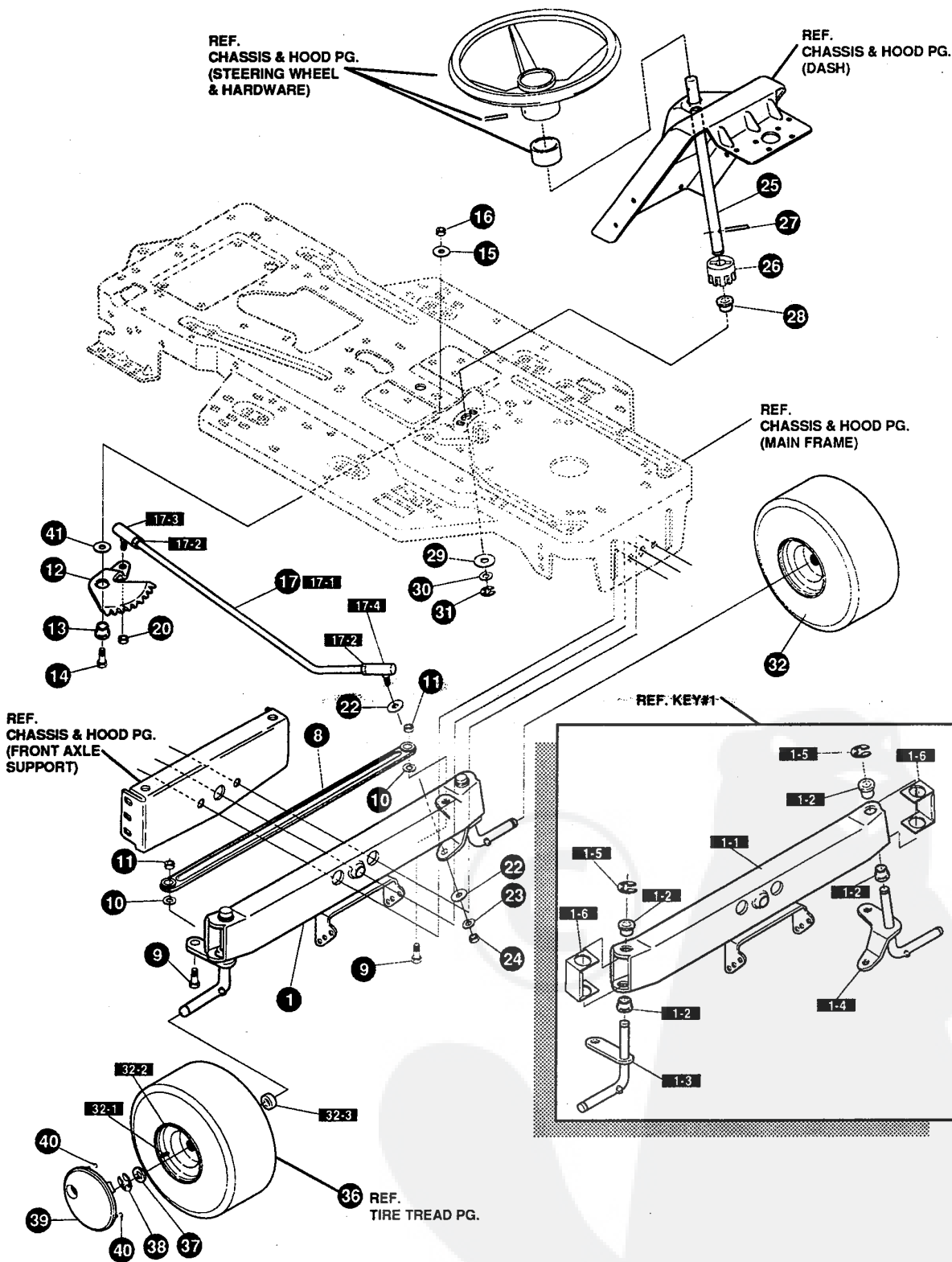
E3560-240**CHASSIS & HOOD ASSEMBLY**

KEY#	PART#	DESCRIPTION	QTY
55	326579-893	FRAME,LF DRILLED P920/F4360	1
56	310005	FOOT PAD, LH 22.12LG DYNA F-5	1
57	310006	FOOT PAD, RH 22.12LG DYNA F-5	1
58	309235	FASTENER, RATCHET BLACK	12
59	327575-830	CONSOLE,NON-WALK THRU,LF,SOF	1
60	58367-893	PLATE,SEAT F5 SF,LF	1
61	310660-893	BRACKET, F-5 SEAT SUPPORT	2
62	20507	BOLT, .437X .156 HSSH 5/16-18	2
63	1498	NUT, 5/16-18 REGHEXCTRLK	2
64	48901	SCREW, 5/16-18X .63WAHHC	4
65	1498	NUT, 5/16-18 REGHEXCTRLK	4
66	57153	SPRING,SEAT 2.63LG,1.49OD BLK	2
67	1341	CLAMP, SPRG 1.17"ID	2
68	44811	SCREW, 1/4-20X .75 WAHHTAP	2
69	56907	COVER,SEAT SPRING 1.5IDX1.0LG	2
70	^	SP ASM,FENDER F5 LF,SOF,SUSP	1
70-1	332185-893	FENDER,F5,SUS,LF,SOF	1
70-2	9239	CLEVIS	1
70-3	439455	SCREW, 5/16-18X .56PHPNMA	1
70-4	301551	WASHER, 344IDX1.50DX.09 CU	1
70-5	120373	NUT, 5/16-18 SQ	1
76	995346	SCREW, 1/4-20X .50 WAHHTAP	4
77	126358	BOLT, 5/16-18X1.00 CARRLN	2
79	55273	NUT, 5/16-18 HXWDFLLK	2
80	55023	TRIM, 77.5" BLACK NARROW	77.5
81	180079	SCREW, 5/16-18X1.00 HHC	2
82	1498	NUT, 5/16-18 REGHEXCTRLK	2
83	310384	SEAT,MICHIGAN GEN, W/SW HOLE	1
84	120393	WASHER, FLAT .344X .69X.065	4
85	120638	WASHER, HVSPTLK .328X.60X.09	4
86	180077	SCREW, 5/16-18X .75 HHC	4

^ ORDER INDIVIDUAL PARTS

E3560-240

REPAIR PARTS



NOTE: ALWAYS USE ORIGINAL EQUIPMENT PARTS. Use of service/replacement parts other than original equipment parts may void your warranty.

ALL UNNUMBERED ITEMS ARE INTERCHANGEABLE WITH OPPOSITE SIDE

317128 G

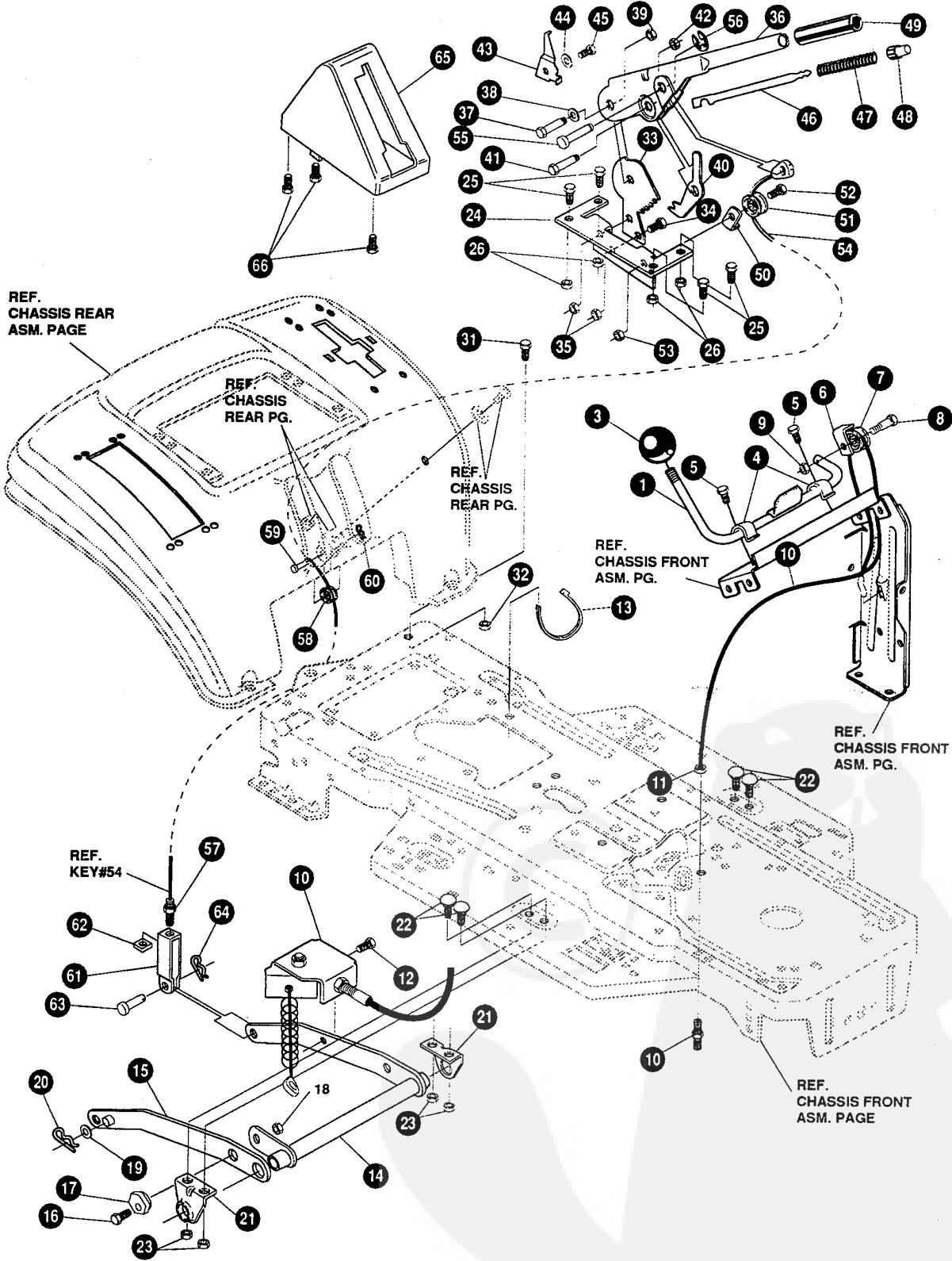
E3560-240**STEERING ASSEMBLY**

KEY#	PART#	DESCRIPTION	QTY
1	A	AXLE,FRONTASSY LONGSUS4WSLF	1
1-1	310170	AXLE, FRONT	1
1-2	52407	SPINDLE BEARING	4
1-3	9180	ASSY,SPINDLE RH LG	1
1-4	314088	ASSY,SPINDLE,LH LG	1
1-5	36625	RING, RETEX .57X.05TRU5133-75	2
1-6	53373-893	AXLE COVER	2
8	304590	TIE ROD ASSY 19.81LG W-SECTION	1
9	180128	SCREW, 3/8-16X1.75 HHC	2
10	120382	WASHER, REGSPTLK.393X.68X.10	2
11	1499	NUT, 3/8-16 REGHXCTRLK	2
12	58289	SECTOR, STEERING LF	1
13	52406	BRNG,FL ECC.510IDX .998ODX .56	1
14	180177	SCREW, 1/2-13X1.50 HHC	1
15	22265	WASHER, FLAT .515X1.38X.119PL	1
16	1500	NUT, 1/2-13 REGHCTRLK	1
17	311100	KIT 300146 DRAGLINK	1
17-1	58291	STEERING LINK	1
17-2	124925	NUT, 3/8-24 REGHEXJAM	2
17-3	57158	BALL JOINT 3/8 THD SHORT STUD	1
17-4	21275	BALL JOINT 3/8 TH'D LONG STUD	1
20	46692	NUT, 3/8-24 WDFLHLK WHIZ	1
22	996416	WASHER, FLAT .391X1.00X.125	2
23	120382	WASHER, REGSPTLK.393X.68X.10	1
24	120369	NUT, 3/8-24 REGHEX	1
25	58243	SHAFT,STEERING LF,2WS	1
26	58244	PINION, STEERING LF	1
27	58274	PIN,DOWEL .2500 OD+1.75LG PL	1
28	301410	BRNG, FL .752IDX1.061ODX .24	1
29	301398	WASHER, FORMED1.135X1.53X.12	1
30	21682	WASHER, FLAT .765X1.25X.042PL	1
31	36625	RING, RETEX .57X.05TRU5133-75	1
32	302828	TIRE & RIM, PU 15X6.0X6 TURWHI	2
32-1	24167	VALVE STEM	
32-2	39829	RIM, WHEEL	
32-3	314416	BEARING, FL	
36		REFER TO TIRE TREAD PAGE	
37	642	WASHER, FLAT .755X1.31X.075	4
38	36625	RING, RETEX .57X.05TRU5133-75	2
39	304444	HUB CAP, 6" EURO	2
40	306669	CLIP,HUBCAP TINN #C25467-017-4	8
41	49998	WASHER, FLAT .520X1.25X.209	1

^ ORDER INDIVIDUAL PARTS

E3560-240

REPAIR PARTS



NOTE: ALWAYS USE ORIGINAL EQUIPMENT PARTS. Use of service/replacement parts other than original equipment parts may void your warranty.

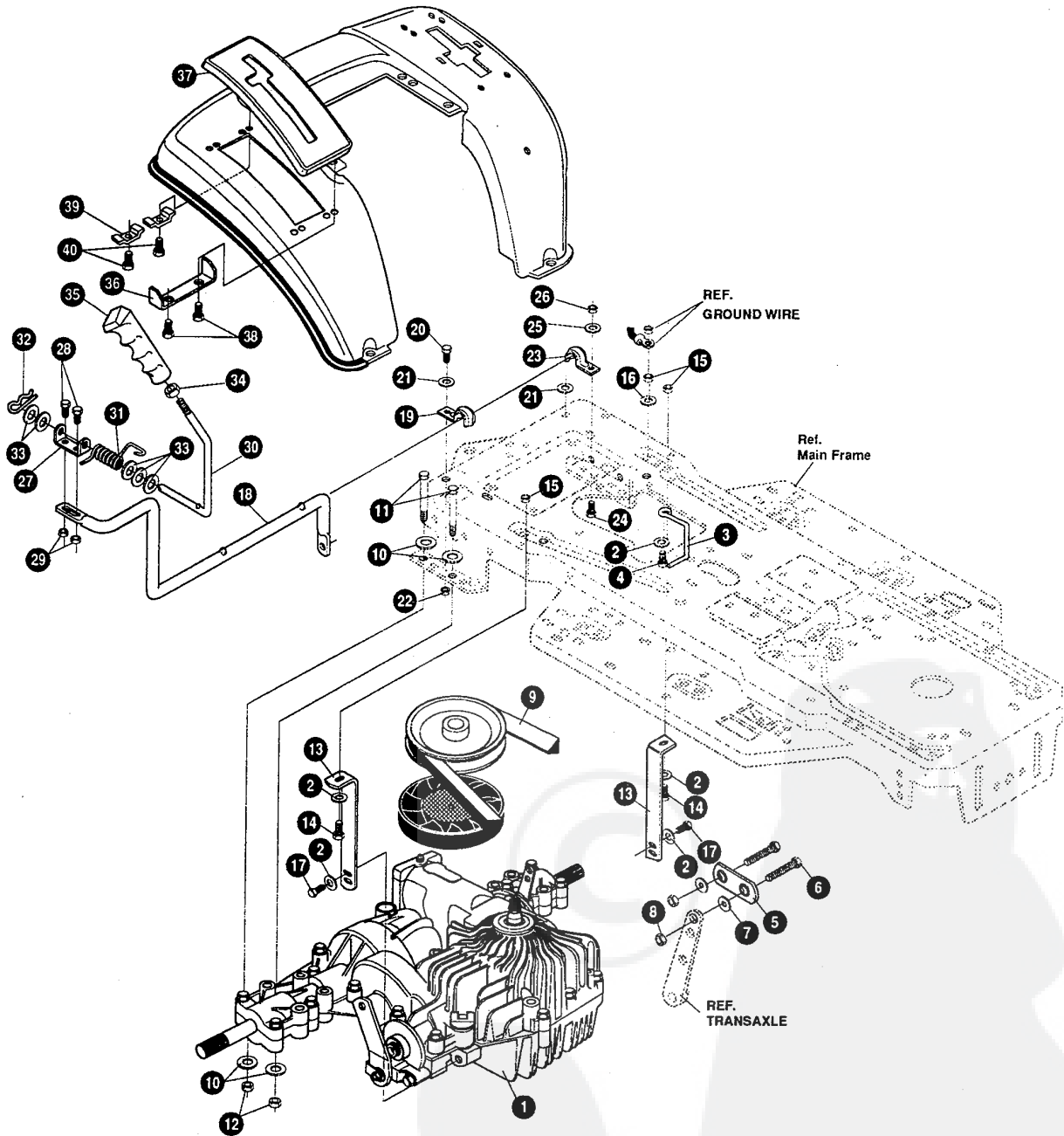
ALL UNNUMBERED ITEMS ARE INTERCHANGEABLE WITH OPPOSITE SIDE

329633 B

E3560-240

MOWER SUSPENSION ASSEMBLY

KEY#	PART#	DESCRIPTION	QTY
1	327021-853	ASSY,WELD,CLUTCH HDLE	1
3	55514	KNOB, ROUND 1.50 DIA BLACK	1
4	9129	CLIP, RETAIN BRKT	2
5	44811	SCREW, 1/4-20X .75 WAHHTAP	2
6	1288	BRKT, CABLE RETAIN	1
7	48306	PULLEY,POWDER METAL	1
8	57322	BOLT, .375X .375 HSH 1/4-20	1
9	1502	NUT, 1/4-20 REGHEXCTRLK	1
10	328369	ASM.PTO BRKT -CABLE 39"40"&43"	1
11	120613	NUT, 1/4-28 HJAM	1
12	35498	SCREW, 5/16-18X .75 WAHHTAP	1
13	57444	TIE, CABLE BLACK NYLON 5.62L	1
14	300158-853	LIFT ASSY, LH	1
15	300169-853	LIFT ASSY, RH	1
16	180079	SCREW, 5/16-18X1.00 HHC	1
17	58247	NUT, ADJUST	1
18	1498	NUT, 5/16-18 REGHEXCTRLK	1
19	417098	WASHER, FLAT .531X1.06X.063	2
20	8260	PIN, HAIR .091 DIAX1.66LG	2
21	58248-853	BRACKET, REAR HANG SUSP	2
22	57072	BOLT, 5/16-18X .63 CARRLN	4
23	1498	NUT, 5/16-18 REGHEXCTRLK	4
24	313926	BRACKET, HGT/ADJUST SUPPORT	1
25	180077	SCREW, 5/16-18X .75 HHC	4
26	1498	NUT, 5/16-18 REGHEXCTRLK	4
31	180077	SCREW, 5/16-18X .75 HHC	1
32	1498	NUT, 5/16-18 REGHEXCTRLK	1
33	301238	QUADRANT,HEIGHT ADJUST	1
34	180077	SCREW, 5/16-18X .75 HHC	2
35	1498	NUT, 5/16-18 REGHEXCTRLK	2
36	322292-853	HANDLE,LIFT SHORT(30" S.F.)	1
37	300171	BOLT, .500X .270 HSH 5/16-18	1
38	996418	WASHER, FLAT .506X .75X.024	1
39	44108	NUT, 5/16-18 HWDFLCTRLK	1
40	301239	PAWL, SQUARE	1
41	300171	BOLT, .500X .270 HSH 5/16-18	1
42	44108	NUT, 5/16-18 HWDFLCTRLK	1
43	9435	POINTER, HEIGHT ADJ	1
44	138479	WASHER, EXLK .195X.41X.03	1
45	35287	SCREW, #8-32X .38 HHWATAP	1
46	303027	ROD,ACTUATOR-SHORT	1
47	58326	SPRING, HEIGHT ADJUST	1
48	58325	KNOB, HEIGHT ADJ PUSH BUTTON	1
49	58329	GRIP, .750 OD W/ HOLE BLACK	1
50	9149	BRKT, CABLE RETAIN	1
51	48306	PULLEY,POWDER METAL	1
52	58336	BOLT, .375X .375 HSH 1/4-20	1
53	1502	NUT, 1/4-20 REGHEXCTRLK	1
54	314177	CABLE, LIFT 22.92 F-5 20X8-8	1
55	300310	PIN,CLEVIS .310DIA+.475LG	1
56	300311	RING, RET E .31X.25TRUX5133-31	1
57	120375	NUT, 1/4-20 REGHEX	1
58	48306	PULLEY,POWDER METAL	1
59	300317	PIN, CLEVIS .375DIA.X .81 LG	1
60	8260	PIN, HAIR .091 DIAX1.66LG	1
61	9405	CLEVIS, LIFT CABLE	1
62	120372	NUT, 1/4-20 REGSQ	1
63	39522	PIN, CLEVIS .312 X .812	1
64	121222	PIN, COTTER .090 DIAX .75LG	1
65	300335	LIFT COVER-39" F5	1
66	300340	SCREW, #10 X .75 HHPLAST BLK	3



NOTE: ALWAYS USE ORIGINAL EQUIPMENT PARTS. Use of service/replacement parts other than original equipment parts may void your warranty.

ALL UNNUMBERED ITEMS ARE INTERCHANGEABLE WITH OPPOSITE SIDE

326645 E

E3560-240

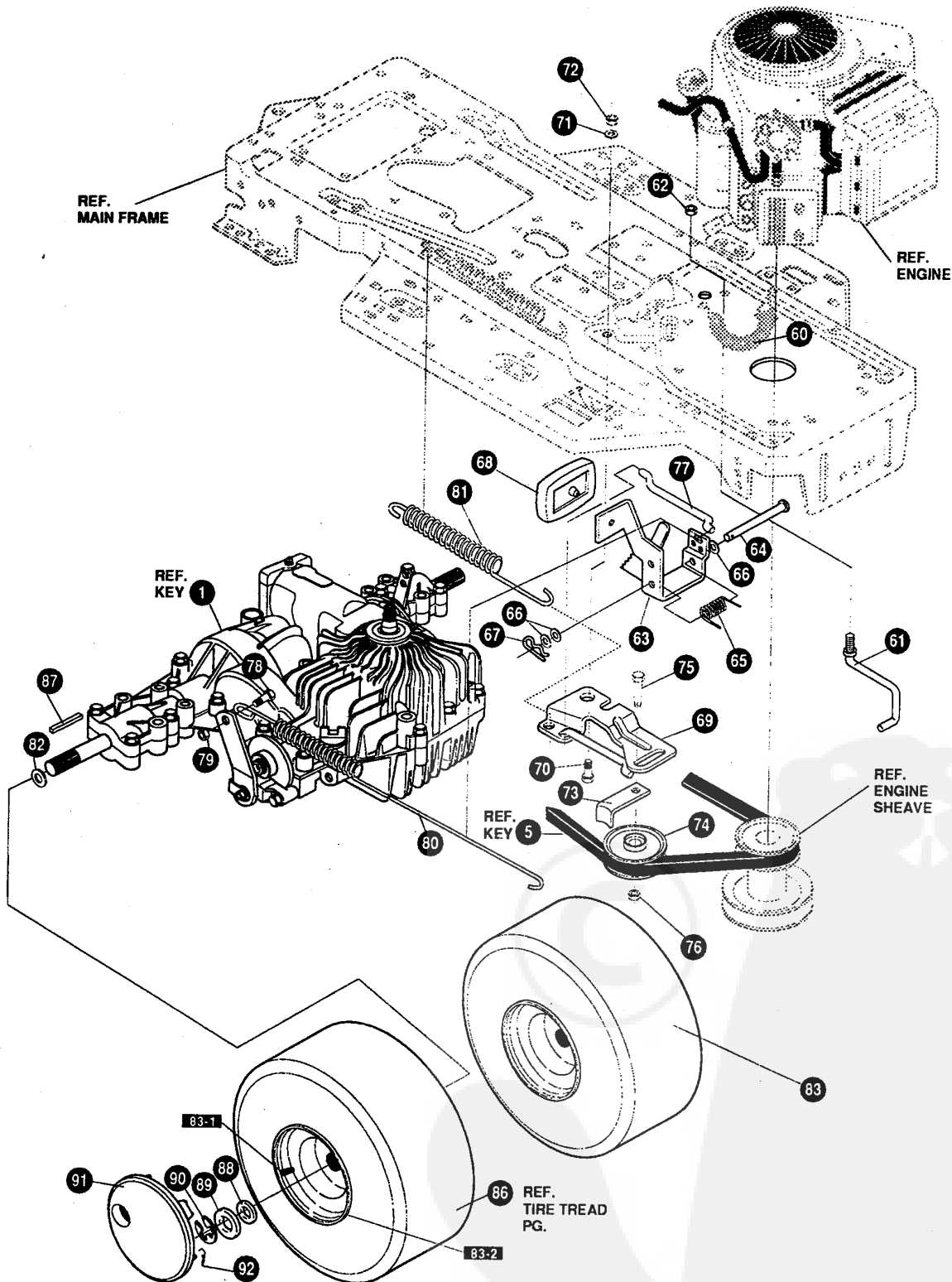
MOTION DRIVE ASSEMBLY

KEY#	PART#	DESCRIPTION	QTY
1	^	TRANSAXLE 1800-001 HYDRO2WS	1
2	120393	WASHER, FLAT .344X .69X.065	6
3	326633	BELT GUIDE	1
4	180079	SCREW, 5/16-18X1.00 HHC	1
5	325391	LINK TIEROD SHIFT PEERLESS	1
6	122145	SCREW, 3/8-16X1.25 HHC	2
7	274517	WASHER, FLAT .406X .73X.063	2
8	1499	NUT, 3/8-16 REGHXCTRLK	2
9	314572	BELT, V 4L 80.16 HYDRO LF	1
10	120393	WASHER, FLAT .344X .69X.065	2
11	180089	SCREW, 5/16-18X2.25 HHC	4
12	1498	NUT, 5/16-18 REGHEXCTRLK	4
13	326684	BRACKET,STABILIZER	2
14	180077	SCREW, 5/16-18X .75 HHC	1
15	1498	NUT, 5/16-18 REGHEXCTRLK	3
16	138538	WASHER, REGINTLK.320X.61X.03	1
17	35498	SCREW, 5/16-18X .75 WAHTAP	2
18	325392-853	LEVER,SHIFT-LWR LF BLK.....	1
19	310347-853	CLIP- SHIFT LEVER .625 ROD.....	1
20	180077	SCREW, 5/16-18X .75 HHC	1
21	996416	WASHER, FLAT .391X1.00X.125.....	1
22	1498	NUT, 5/16-18 REGHEXCTRLK	1
23	310347-853	CLIP- SHIFT LEVER .625 ROD.....	1
24	180077	SCREW, 5/16-18X .75 HHC	1
25	996416	WASHER, FLAT .391X1.00X.125.....	1
26	1498	NUT, 5/16-18 REGHEXCTRLK	1
27	310356	BRKT, PIVOT SH LEV	1
28	180020	SCREW, 1/4-20X .75 HHC	2
29	1502	NUT, 1/4-20 REGHEXCTRLK	2
30	318452	LEVER, SHIFT UPPER SOF 1/2-13	1
31	318451	SPRING, TORS. .56X.95X.095	1
32	8260	PIN, HAIR .091 DIA X1.66LG	1
33	2968	WASHER, FLAT .504X .75X.059	5
34	120238	NUT, 1/2-13 HEXJAM.....	1
35	306690	HANDLE 1/2-13 MOLDED BLACK	1
36	311257-853	BRACKET COVER F-5 FNDR SHIFT	1
37	314244	COVER PLASTIC LF HYDRO F-5.....	1
38	311331	SCREW, 1/4-15X.44/.53 HILOHHWA	2
39	1341	CLAMP, SPRG 1.17"ID	2
40	311331	SCREW, 1/4-15X.44/.53 HILOHHWA	2

^ CONTACT YOUR NEAREST TRANSAXLE DEALER FOR PARTS AND SERVICE.

E3560-240

REPAIR PARTS



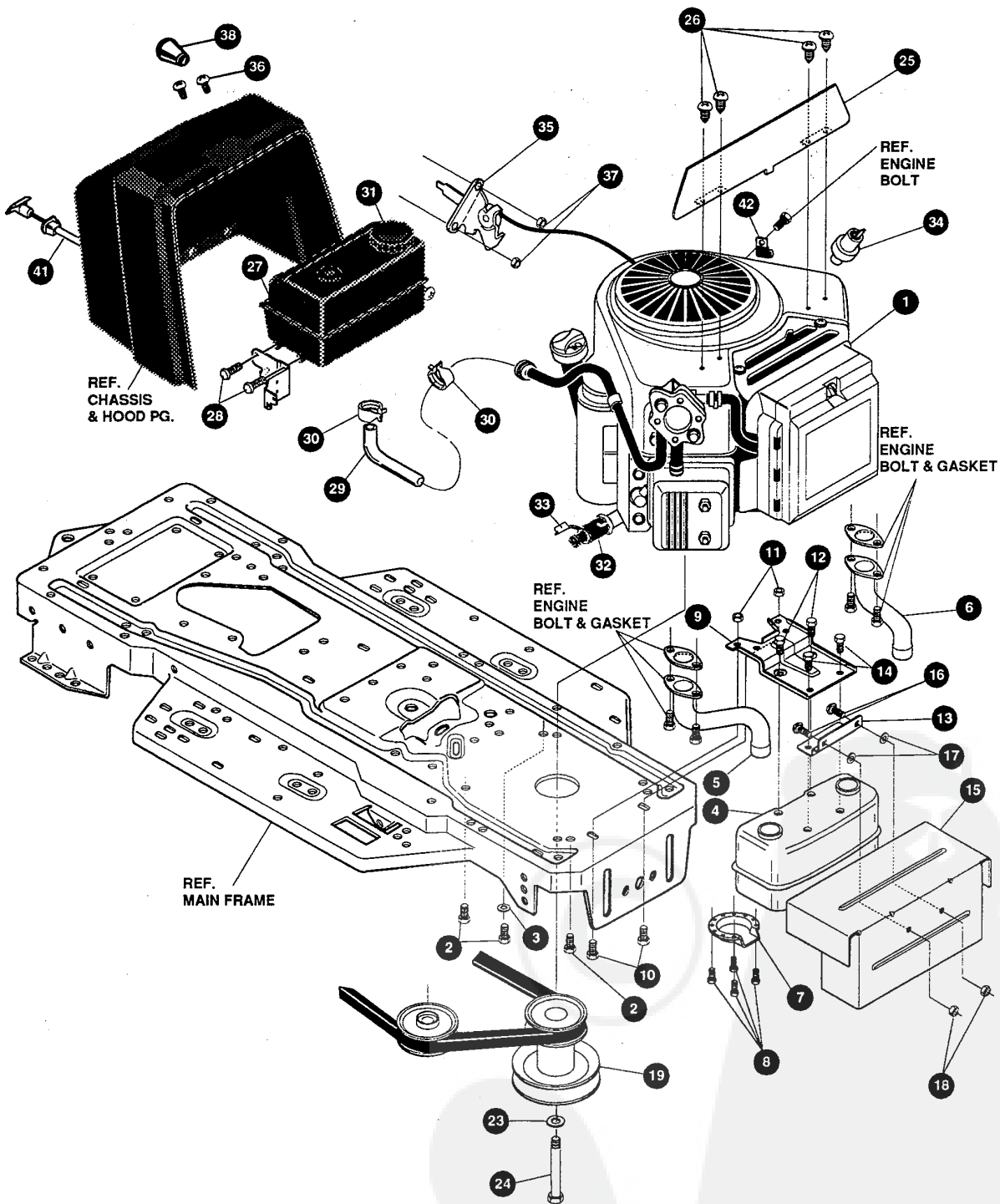
NOTE: ALWAYS USE ORIGINAL EQUIPMENT PARTS. Use of service/replacement parts other than original equipment parts may void your warranty.

ALL UNNUMBERED ITEMS ARE INTERCHANGEABLE WITH OPPOSITE SIDE

326645 E

E3560-240**MOTION DRIVE ASSEMBLY**

KEY#	PART#	DESCRIPTION	QTY
60	321514	SPRING, DRAG LINK BIAS	1
61	304016	GUIDE, BELT R.H.	1
62	1498	NUT, 5/16-18 REGHEXCTRLK	1
63	325942	PEDAL ASSY,BRAKE/CLUTCH LF	1
64	319675	PIN, CLEVIS .500DX4.53LG	1
65	57847	SPRING, BRAKE PEDAL	1
66	2968	WASHER, FLAT .504X .75X.059	3
67	56180	PIN, HAIR .091 DIA X1.62LG	1
68	48160	PAD, CLUTCH BRAKE W/PRINTING	1
69	320381-853	ARM, IDLER TRACTION, SOG LF	1
70	329989	BOLT, .625X .135 HSH 5/16-18	1
71	45602	WASHER, FLAT .333X .87X.119	1
72	1498	NUT, 5/16-18 REGHEXCTRLK	1
73	39659	RETAINER, BELT	1
74	35374	PULLEY, IDLER V4L 3.06X .62	1
75	45892	BOLT, 3/8-16X1.50 CARRSN	1
76	1499	NUT, 3/8-16 REGHXCTRLK	1
77	57204	ROD, CLUTCH 3.92"	1
78	326131	BOLT, .495X .31 HSH5/16-18	1
79	1498	NUT, 5/16-18 REGHEXCTRLK	1
80	327947	SPRING, BRAKE 29.25 LF PEERHYD	1
81	330505	SPRING, CLUTCH .113X.750X8.75	1
82	42815	WASHER, FLAT .755X1.53X.07	2
83	301318	TIRE & RIM, 20X10.00-8 WHITE	2
83-1	24167	VALVE STEM	
83-2	301366	RIM, WHEEL	
86		REFER TO TIRE TREAD PAGE	
87	52928	KEY, SQUARE .187SQX2.25LG	2
88	642	WASHER, FLAT .755X1.31X.075	4
89	42815	WASHER, FLAT .755X1.53X.07	2
90	36625	RING, RETEX .57X.05TRU5133-75	2
91	304441	HUB CAP, 8" EURO GREY	2
92	306669	CLIP, HUBCAP TINN #C25467-017-4	10



NOTE: ALWAYS USE ORIGINAL EQUIPMENT PARTS. Use of service/replacement parts other than original equipment parts may void your warranty.

ALL UNNUMBERED ITEMS ARE INTERCHANGEABLE WITH OPPOSITE SIDE

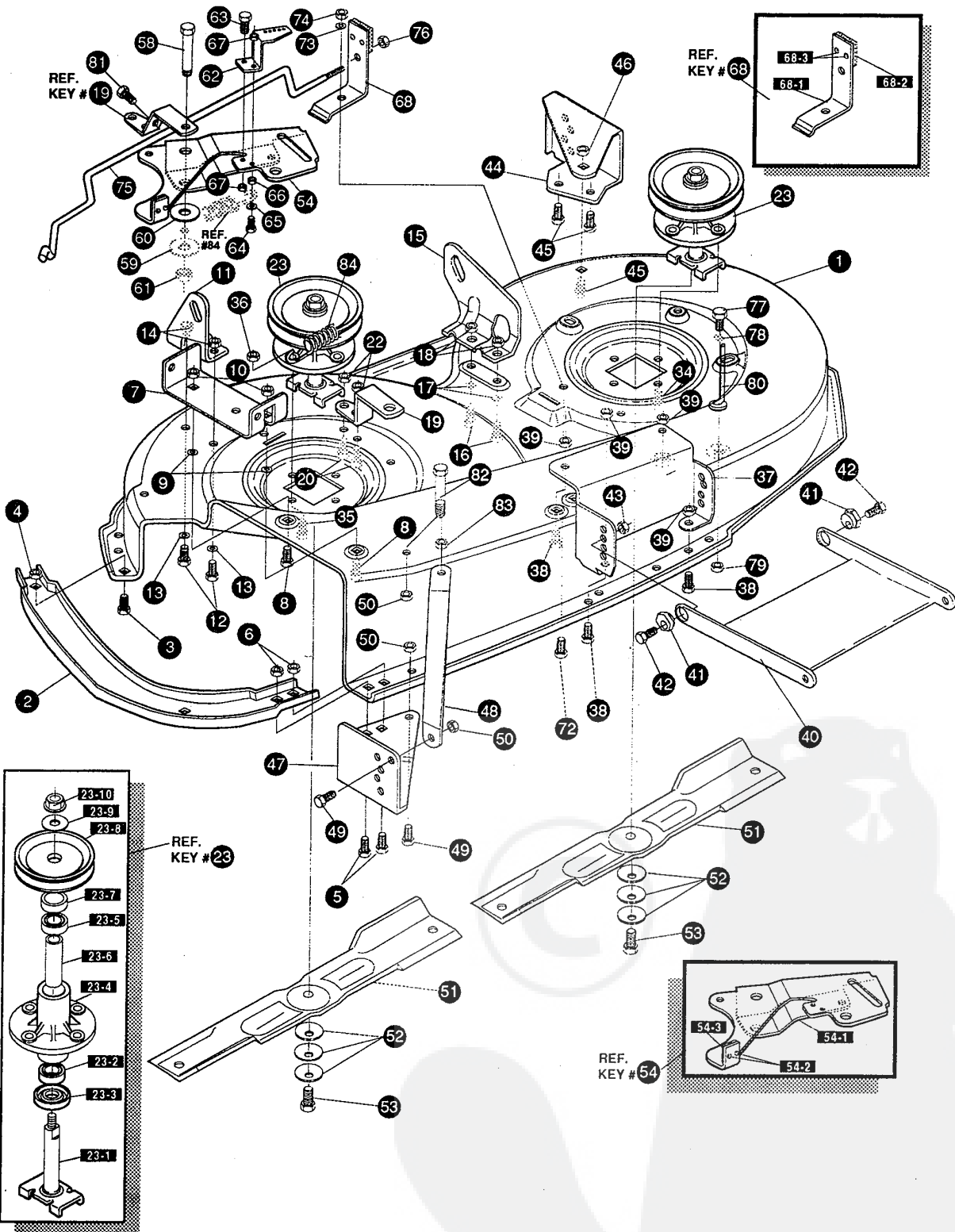
329220 B

E3560-240**ENGINE & CONTROL ASSEMBLY**

KEY#	PART#	DESCRIPTION	QTY
1	ENGINE	14-16HP VANG (SEE ENGINE MANUAL)	1
2	50947	SCREW, 3/8-16X1.25 WAHHTAPBLKP	4
3	138489	WASHER, EXLK .384X.69X.04	1
4	305553	MUFFLE R 14/18 TWIN NLSN 22785C	1
5	305554	EXHAUST TUBE 15HP RH B&S VANG	1
6	305555	EXHAUST TUBE 15HP LH B&S VANG	1
7	56472	DEFLECTOR SIDE OUT	1
8	35287	SCREW, #8-32X .38 HHWATAP	4
9	304709-853	BRACKET,MUFFLER	1
10	56030	SCREW, 5/16-18X.75WDFLLK	2
11	55273	NUT, 5/16-18 HXWDFLLK	2
12	995346	SCREW, 1/4-20X .50 WAHHTAP	2
13	9796	BRKT, TRANSAXLE	1
14	995338	SCREW, 1/4-20X .63 WAHHTAP	2
15	320922-853	SHIELD, MUFFLER HEAT TWIN	1
16	57072	BOLT, 5/16-18X .63 CARRLN	2
17	309436	PUSHNUT, 5/16 BOLT RETAINER	2
18	55273	NUT, 5/16-18 HXWDFLLK	2
19	326565	PULLEY,ENG 4.0OD X4.4LG X5.0OD	1
23	120383	WASHER, REGSPTLK.459X.78X.12	1
24	428644	SCREW, 7/16-20X5.00 HHC	1
25	312728-853	HEAT SHIELD VANG (MF. HOOD)	1
26	57366	SCREW, 10-16X .50 DRILLTITE	4
27	309853	TANK, FUEL 1.5 WO/SENSOR CLEAR	1
28	49050	SCREW, 1/4-10X .75PHPNTAP	4
29	48049	TUBING, .25X.50X BULK GAS LINE	10.0
30	47345	CLAMP,HOSE SCREW TYPE	2
31	12501	CAP,FUEL 2.5" THROAT	1
32	325547	OIL DRAIN VALVE ASSEMBLY	1
33	327422	CAP,OIL DRAIN VALVE ASM.YELLOW	1
34	314797	OIL SENSOR, B&S TWIN CYL	1
35	329218	CONTROL,THROTTLE 33.1LG BS VAN	1
36	155941	SCREW, 10-24X.63 PHFLTMA	2
37	271166	NUT, #10-24 HEXKEPS	2
38	50607	KNOB, ROUND THROTTLE BLACK	1
41	329219	CONTROL,CHOKE 28.0LG	1
42	57569	RETAINER CLIP	1

E3560-240

REPAIR PARTS



NOTE: ALWAYS USE ORIGINAL EQUIPMENT PARTS. Use of service/replacement parts other than original equipment parts may void your warranty.

ALL UNNUMBERED ITEMS ARE INTERCHANGEABLE WITH OPPOSITE SIDE

324144 F

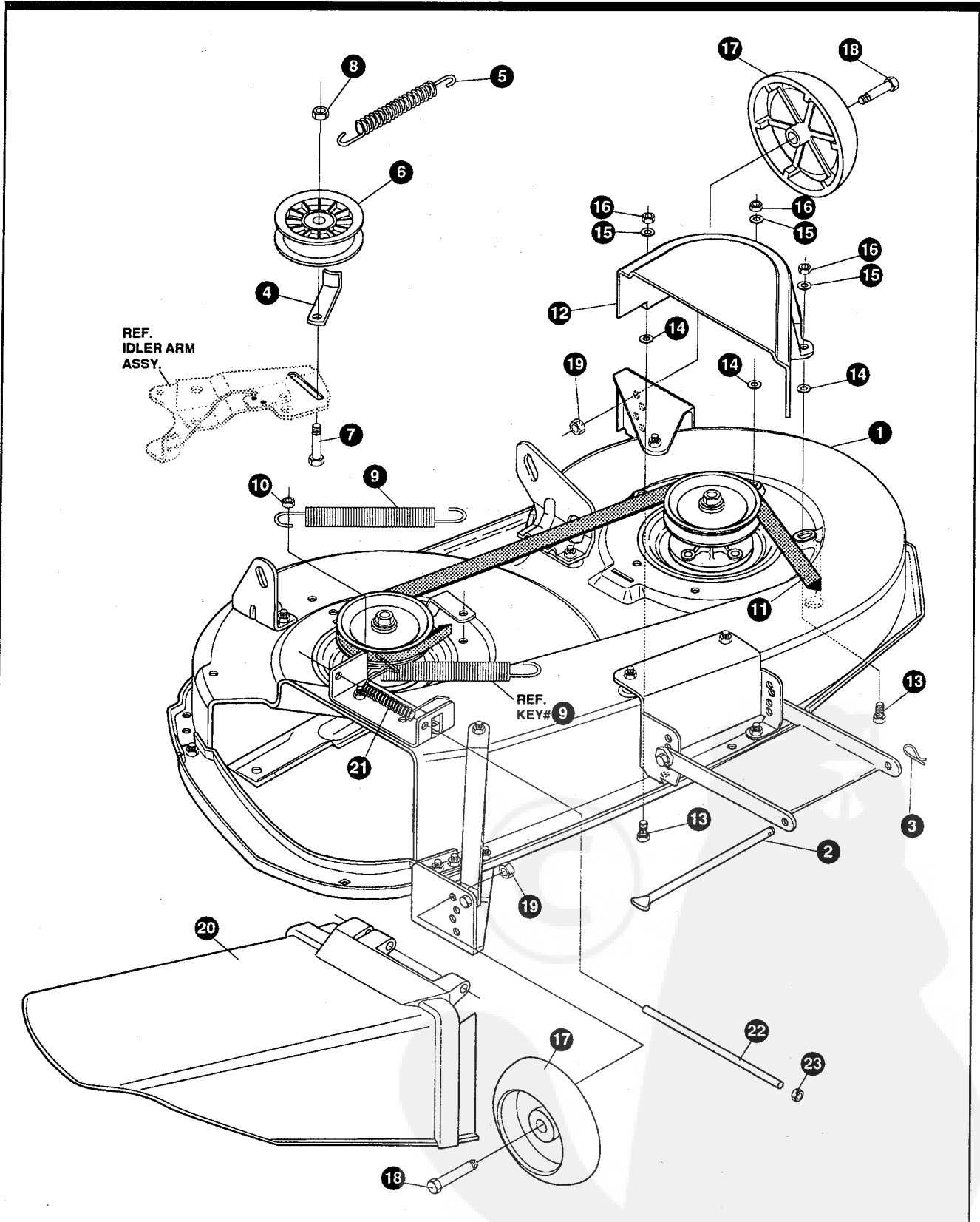
E3560-240

PRE-PAINTED DECK ASSEMBLY

KEY#	PART#	DESCRIPTION	QTY
1	325116	43" DECK KIT	1
2	326480-853	TOE GUARD - MULCHER	1
3	180077	SCREW, 5/16-18X .75 HHC	1
4	1498	NUT, 5/16-18 REGHEXCTRLK	1
5	180077	SCREW, 5/16-18X .75 HHC	2
6	1498	NUT, 5/16-18 REGHEXCTRLK	2
7	317017	BRACKET CHUTE MOUNT BLACK	1
8	180077	SCREW, 5/16-18X .75 HHC	2
9	120393	WASHER, FLAT .344X .69X.065	2
10	1498	NUT, 5/16-18 REGHEXCTRLK	2
11	313929	LIFT BRKT, REAR RH BLK 853	1
12	180077	SCREW, 5/16-18X .75 HHC	2
13	120393	WASHER, FLAT .344X .69X.065	2
14	1498	NUT, 5/16-18 REGHEXCTRLK	2
15	310667	BRACKET,DECK LIFTREAR LHBLK	1
16	180077	SCREW, 5/16-18X .75 HHC	2
17	120393	WASHER, FLAT .344X .69X.065	2
18	1498	NUT, 5/16-18 REGHEXCTRLK	2
19	326893-853	BRACE IDLER SUPPORT 40", 43"	1
20	180077	SCREW, 5/16-18X .75 HHC	2
22	44108	NUT, 5/16-18 HWDFLCTRLK	2
23	56424-853	QUILL ASSY, 36/39/40/43	2
23-2	49562	BRNG, BALL 6203-2AA(SEALS)-C3	1
23-3	50616	DUST SHIELD	1
23-4	55547	QUILL CASTING (1046)	1
23-5	49562	BRNG, BALL 6203-2AA(SEALS)-C3	1
23-6	50818	SPACER, SLEV .669X .88X3.797	1
23-7	51449	SPACER, SLEV .672X .93X .438PM	1
23-8	313898	PULLEY ASSY	1
23-9	56365	WASHER, SPECIAL QUILL	1
23-10	1282	NUT, 7/16-20 WDFLLK	1
34	35498	SCREW, 5/16-18X .75 WAHHTAP	7
35	300345	SCREW, 5/16-18X1.38 WAHHTAP	1
36	1498	NUT, 5/16-18 REGHEXCTRLK	1
37	317040	BRACKET FRT. BLACK	1
38	180077	SCREW, 5/16-18X .75 HHC	4
39	1498	NUT, 5/16-18 REGHEXCTRLK	4
40	58305-853	BRACKET, LINK DECK FRONT	1
41	58247	NUT, ADJUST	2
42	180079	SCREW, 5/16-18X1.00 HHC	2
43	1498	NUT, 5/16-18 REGHEXCTRLK	2
44	317041	BRKT, GAGE WHEEL LH BLACK	1
45	180077	SCREW, 5/16-18X .75 HHC	3
46	1498	NUT, 5/16-18 REGHEXCTRLK	3
47	322464-853	BRACKET, GAGE WHEEL R.H. FRNT	1
48	314282-853	BRACKET, STABILIZER	1
49	180077	SCREW, 5/16-18X .75 HHC	2
50	1498	NUT, 5/16-18 REGHEXCTRLK	3
51	326961	BLADE, 43"	2
52	2483	WASHER, 39IDX1.25DX.07 BELLVIL	6
53	39573	SCREW, 3/8-24X1.00 NYLHHC	2
54	320576-853	IDLER ARM ASSEMBLY	1
54-1	322116-853	ARM IDLER 40/43" DECK	1
54-2	41601	RIVET, OVSET .187DIA X .50LG ST	2
54-3	306973	BRAKE PAD - HARD - 232AF	1
58	304420	BOLT, .500X2.15 HHSH	1
59	996416	WASHER, FLAT .391X1.00X.125	1
60	996307	WASHER, FLAT .391X1.00X.209	1
61	45171	NUT, 3/8-16 HWDFL WHIZ-LOCK	1
62	326249-853	BRACKET, EXTENSION IDLER	1
63	180077	SCREW, 5/16-18X .75 HHC	1
64	180083	SCREW, 5/16-18X1.50 HHC	1
65	446363	WASHER, FLAT .375X .88X.082	1
66	271184	NUT, 5/16-18 HEXKEPS	1
67	1498	NUT, 5/16-18 REGHEXCTRLK	2
68	321828	BLADE BRAKE ASSY	1
68-1	135624	RIVET, TRSET .185DIA X .41LG ST	2
68-2	304119-853	BRAKE ARM	1
68-3	306973	BRAKE PAD - HARD - 232AF	1
72	180075	SCREW, 5/16-18X .63 HHC	1
73	120393	WASHER, FLAT .344X .69X.065	1
74	1498	NUT, 5/16-18 REGHEXCTRLK	1
75	314079	ROD, BRAKE	1
76	1502	NUT, 1/4-20 REGHEXCTRLK	1
77	180079	SCREW, 5/16-18X1.00 HHC	1
78	120393	WASHER, FLAT .344X .69X.065	1
79	1498	NUT, 5/16-18 REGHEXCTRLK	1
80	325965	BELT GUIDE, 43" DECK UPSTOP	1
81	308231	SCREW, 1/4-20X1.25 HHWATAP	1
82	311104	SCREW, 5/16-18X5.00 HHC	1
83	271184	NUT, 5/16-18 HEXKEPS	1
84	35410	SPRING .071 X .62 X 4.37	1

E3560-240

REPAIR PARTS



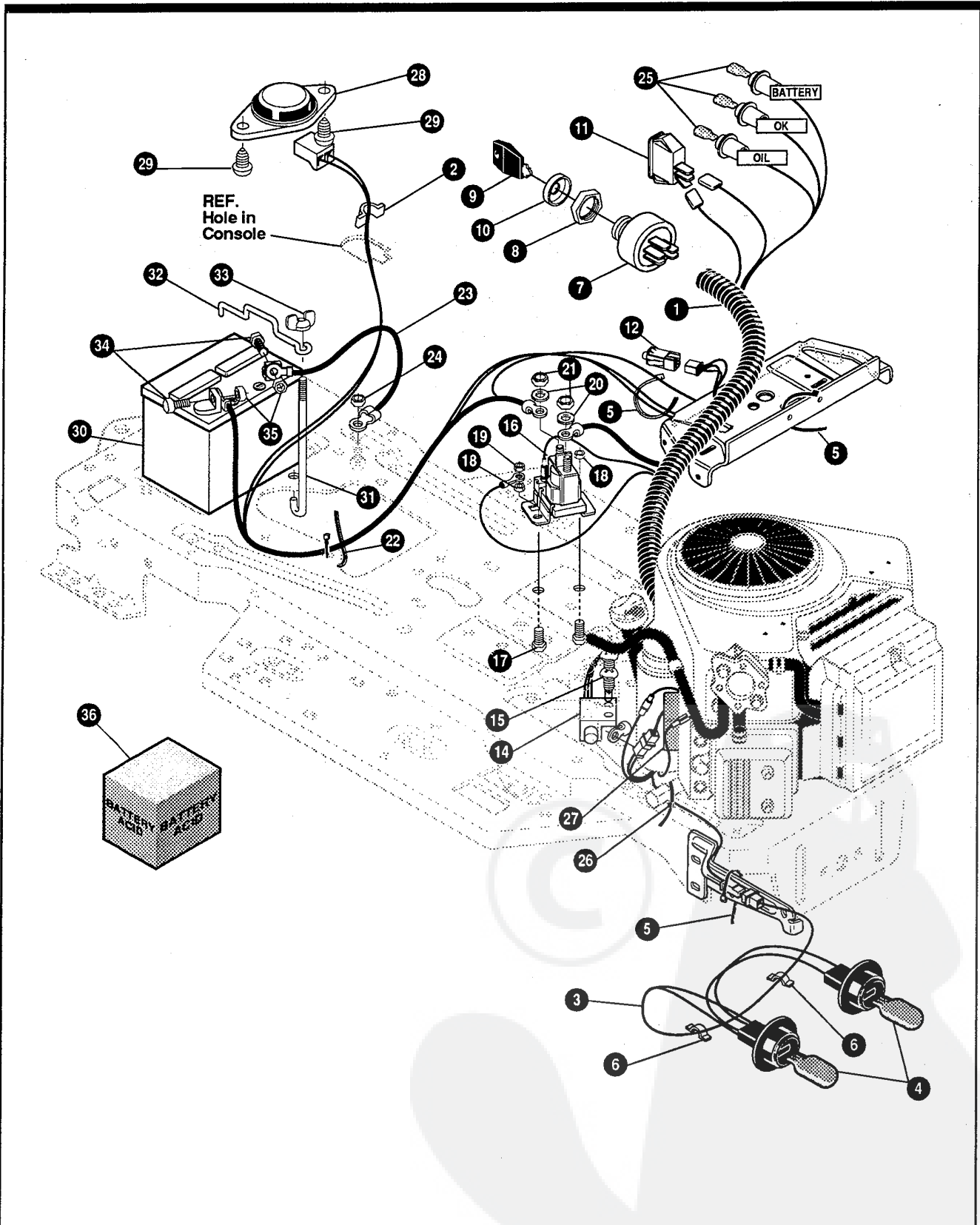
NOTE: ALWAYS USE ORIGINAL EQUIPMENT PARTS. Use of service/replacement parts other than original equipment parts may void your warranty.

ALL UNNUMBERED ITEMS ARE INTERCHANGEABLE WITH OPPOSITE SIDE

326401 C

E3560-240**FINAL DECK ASSEMBLY**

KEY#	PART#	DESCRIPTION	QTY
1	329036	DECK,43" MOWER 2-WH EXPORT	1
2	58306	ROD, DECK HITCH	1
3	8260	PIN, HAIR .091 DIAX1.66LG	1
4	1346	RETAINER, BELT	1
5	314107	SPRING,TENSION 5.00LG+17LB/IN	1
6	310326	PULLEY, IDLER BFF 4.00 WIDE FL	1
7	126416	BOLT, 3/8-16X1.75 CARRLN	1
8	45171	NUT, 3/8-16 HWDFL WHIZ-LOCK	1
9	35410	SPRING .071 X .62 X 4.37	1
10	1498	NUT, 5/16-18 REGHEXCTRLK	1
11	314108	BELT, V 5L 86.00 KEVLAR	1
12	330520	GUARD, BELT LH PLASTIC	1
13	57101	BOLT, 5/16-18X .75 CARRSN	3
14	309436	PUSHNUT, 5/16 BOLT RETAINER	3
15	120393	WASHER, FLAT .344X .69X.065	3
16	1498	NUT, 5/16-18 REGHEXCTRLK	3
17	302611	GAUGE WHEEL,EURO 6.00ODX1.38WD	2
18	23763	BOLT, .500X1.390 HSH 3/8-16	2
19	1499	NUT, 3/8-16 REGHXCTRLK	2
20	304422	CHUTE DEFLECTOR 40",42"&43"	1
21	314975	SPRING,TORSION CHUTE DEFLECTOR	1
22	304424	ROD,PIVOT DECK .312DX7.25	1
23	3535	NUT, PUSH ON CAP .312 OD	1



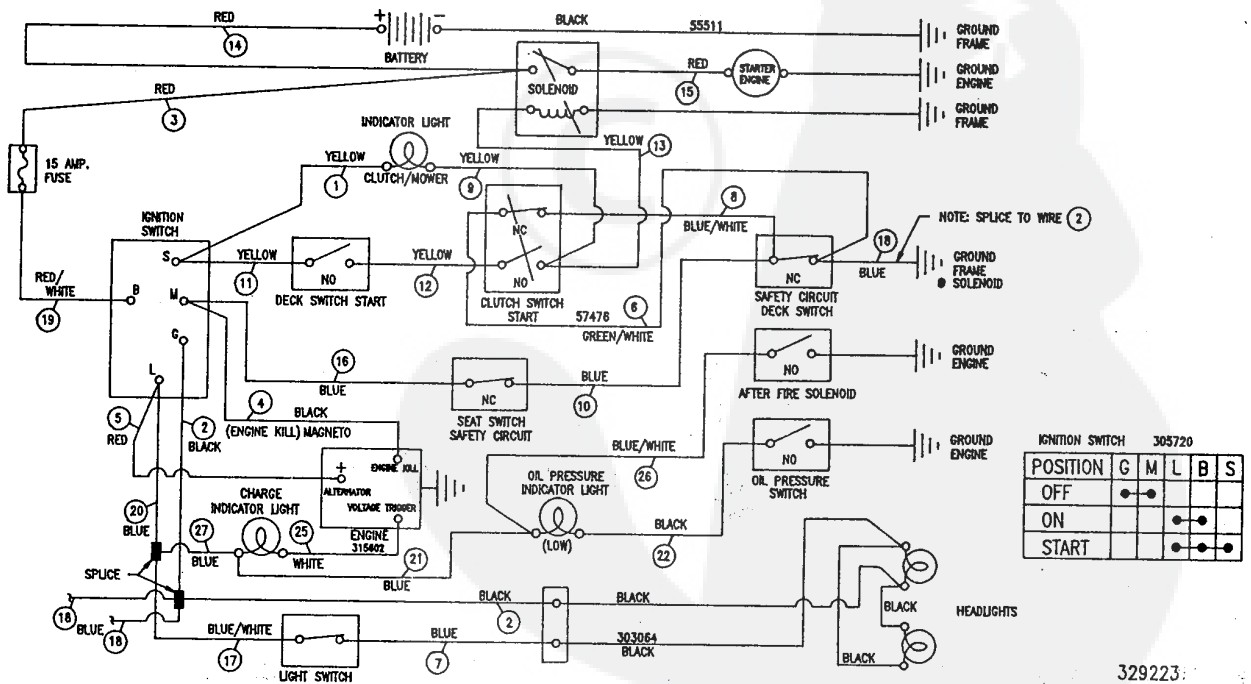
NOTE: ALWAYS USE ORIGINAL EQUIPMENT PARTS. Use of service/replacement parts other than original equipment parts may void your warranty.

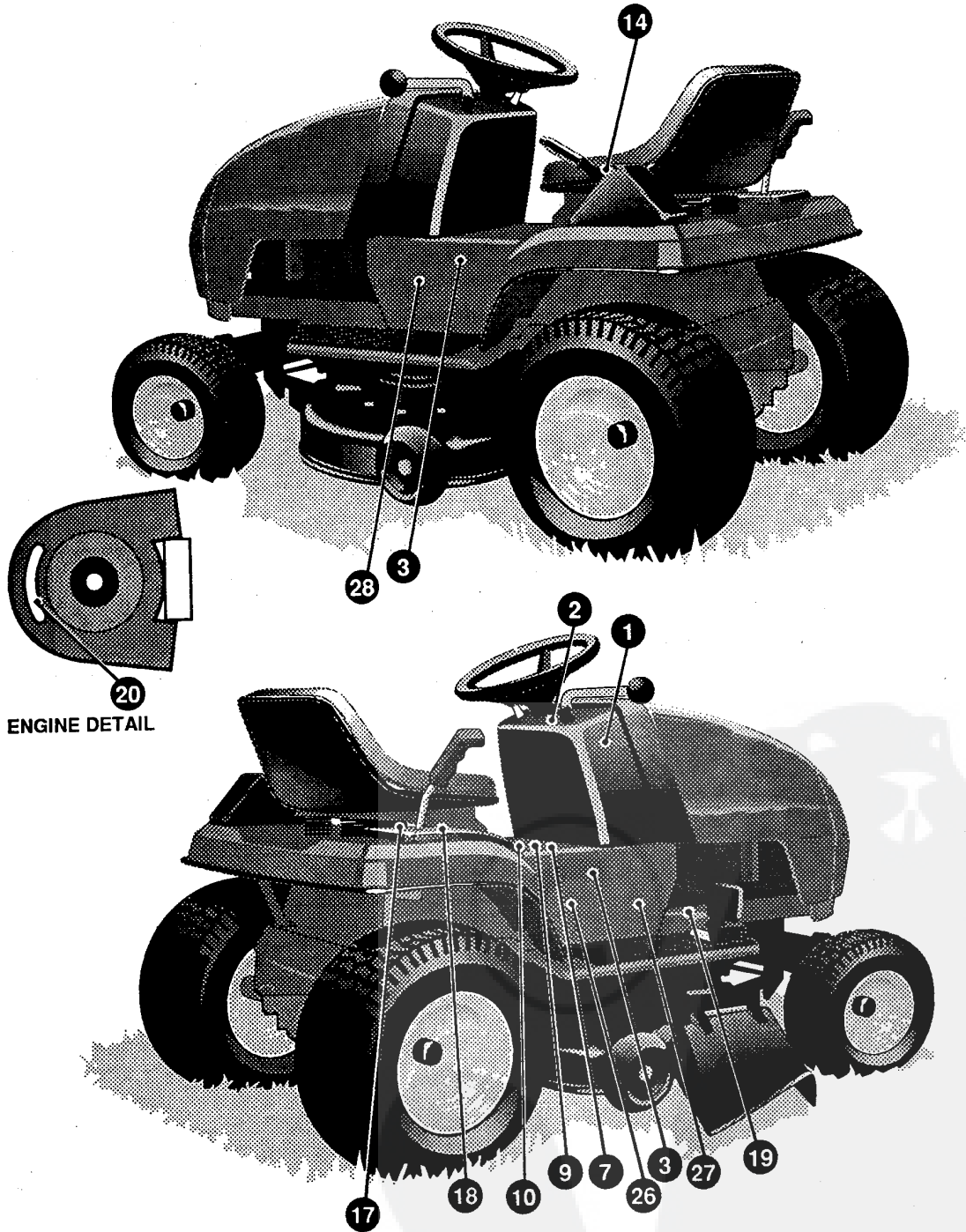
ALL UNNUMBERED ITEMS ARE INTERCHANGEABLE WITH OPPOSITE SIDE 329224 B

KEY#	PART#	DESCRIPTION	QTY
1	329223	WIRE HARNESS 14-18VAN H25G22	1
2	41482	PRESS CLIP, 1.380LG .255ID	1
3	303064	ASSY,LIGHT WIRE-1/4 TURN	1
4	52572	BULB, HEADLAMP	2
5	57444	TIE, CABLE BLACK NYLON 5.62L	4
6	41482	PRESS CLIP, 1.380LG .255ID	2
7	327355	SWITCH-IGN.(AFTER FIRE) 3 POSN	1
8	327352	NUT, 5/8-8ACME DELTA FOR BOOT	1
9	327350	KEY,IGNITION GENERIC DELTA	2
10	300194	BOOT, IGN SWITCH	1
11	328826	LIGHT SWITCH PANEL MNT	1
12	320082	SWITCH,DOUBLE POLE NO/NC GRAY	1
13	57444	TIE, CABLE BLACK NYLON 5.62L	1
14	57476	SWITCH,SCR MNT DP NC NO BLK	1
15	57220	SCREW, #12 X .50 PHPNHTAP BLK	2
16	53716	SOLENOID	1
17	187745	SCREW, 1/4-20X .75 HXSEMMA	2
18	1502	NUT, 1/4-20 REGHEXCTRLK	2
19	271172	NUT, 1/4-20 REGHEXKEPS	1
20	138485	WASHER, EXLK .320X.61X.03	2
21	120368	NUT, 5/16-24 REGHEX	2
22	57444	TIE, CABLE BLACK NYLON 5.62L	1
23	55511	WIRE, GROUND, 12.5"	1
24	271184	NUT, 5/16-18 HEXKEPS	1
25	57769	BULB, INDICATOR	3
26	57444	TIE, CABLE BLACK NYLON 5.62L	1
27	315602	REGULATOR,SEN VOLT BS W/SENSOR	1
28	57547	SWITCH, SEAT	1
29	160505	SCREW, 1/4-20X .38PHPNHMA	2
30	302257	BATTERY, 12V	1
31	57551	ROD, BATTERY	1
32	57552	ROD, BATTERY, TOP	1
33	325232	NUT, WING 1/4-20 NYLON	1
34	180020	SCREW, 1/4-20X .75 HHC	2
35	271172	NUT, 1/4-20 REGHEXKEPS	2
36	A	BATTERY ACID PACK, 80 OZ.	1

^ CAN BE PURCHASED LOCALLY

SCHEMATIC DRAWING





NOTE: ALWAYS USE ORIGINAL EQUIPMENT PARTS. Use of service/replacement parts other than original equipment parts may void your warranty.

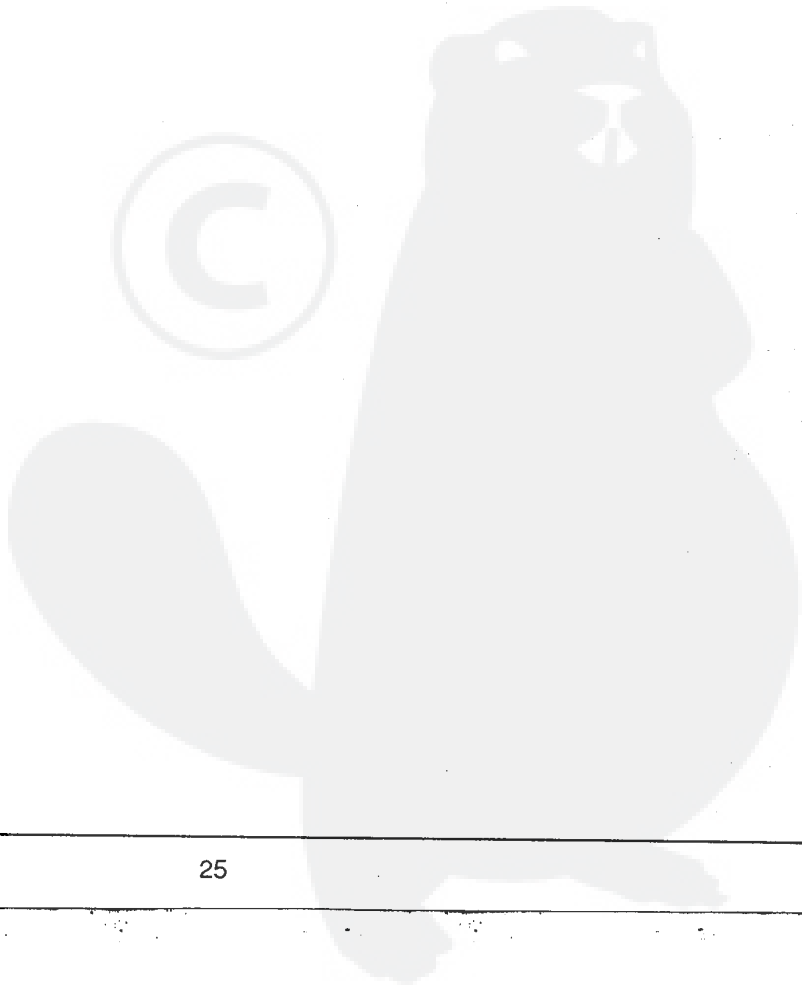
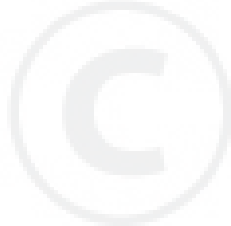
ALL UNNUMBERED ITEMS ARE INTERCHANGEABLE WITH OPPOSITE SIDE

333422 A

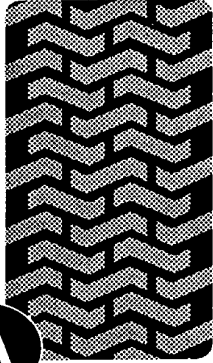
E3560-240

DECAL ASSEMBLY

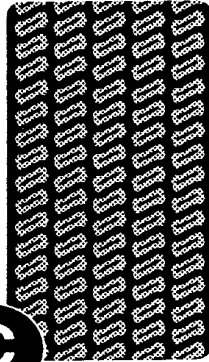
KEY#	PART#	DESCRIPTION	QTY
1	68900	DECAL, BLADE ENGAGE EUROPE	1
2	329211	DECAL, DASH, (KMART HOOD)	1
3	316594	NAMEPLATE 14/43 CHROME	2
7	69524	DECAL, INSTRUCT CONSOLE TOP GER	1
9	69525	DECAL, INSTRUCT CONSOLE TOP FR	1
10	307383	DECAL, INSTR. CONSOLE TOP ENGL	1
14	402214	DECAL, HEIGHT ADJUST	1
17	314925	DECAL SHIFT LF HYDRO REVERSE	1
18	314923	DECAL SHIFTER LF HYDRO FORWARD	1
19	68903	DECAL, BRAKE/CLUTCH ISO	1
20	311811	DECAL, ENGINE 14BS V-TWIN 2YR	1
26	317590	DECAL, DANGER, GUT BROD, 6 LANG	1
27	305770	DECAL, CAUTION TRIANGLE EUROPE	1
28	328658	DECAL, ADD OIL, GUT BROD	1



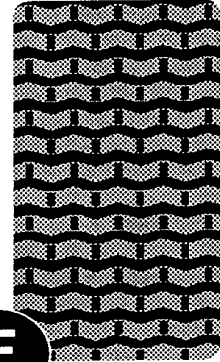
TREAD PATTERNS



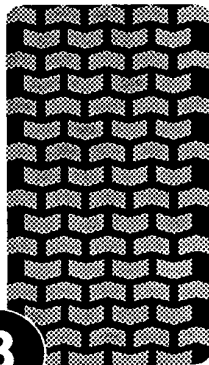
A



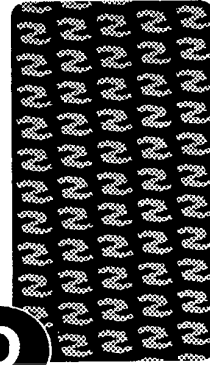
C



E



B



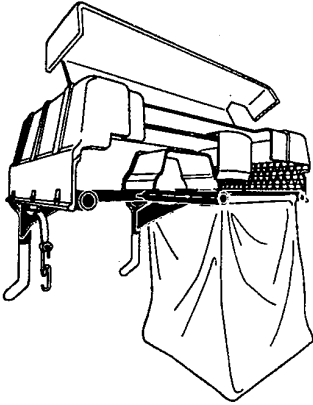
D

TIRE SIZE	"A"	"B"	"C"	"D"	"E"
11 X 4.00 - 5	42295	319679			
13 X 5.00 - 6	41060	319680			
15 X 6.00 - 6	39830	316702	301140	313952	
16 X 4.80 - 8		305035			
16 X 6.50 - 8	41081	319682		314539	
18 X 6.50 - 8		42091			
18 X 8.50 - 8	319683	317400			
18 X 9.50 - 8	41106	316701		313950	
20 X 8.00 - 8	319685	319684	57164	314584	331606
20 X 10.00 - 8	58276	319686		313654	
20 X 10.00 - 10	55893	319687			
23 X 9.50 - 12	53655	319690	319689	314370	

316711 D

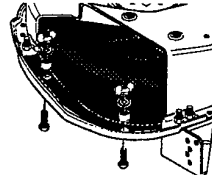
Contact the dealer where your tractor was purchased for the available accessories. If you are unable to contact the dealer, write to the address on the front cover of this manual.

Large Lawn Tractor

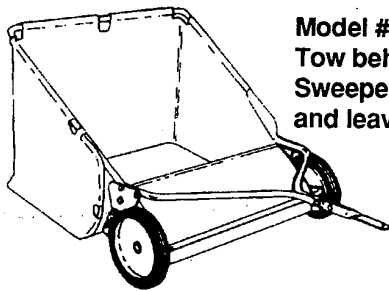
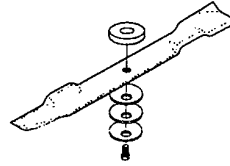


Model # 5708-34
Grass Collector for
40, 42, 43" decks

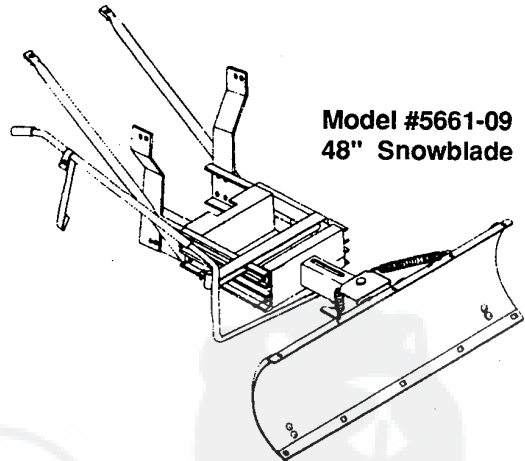
For heavy duty grass
 collection order Model
 #5709-10 Air Assist



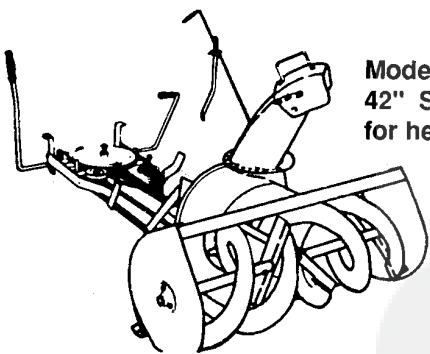
5717-00
Mulching Kit (42/43" Deck)
5716-00
Mulching Kit (40" Deck)



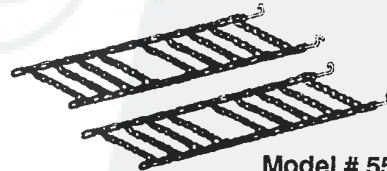
Model # 5648-16
Tow behind Lawn
Sweeper for grass
and leaves



Model #5661-09
48" Snowblade



Model #5705-06
42" Snowthrower
for heavy snowfall



Model # 5585-00
Tire Chains - 20" x 8.0" tires
Model # 5706-00
Tire Chains - 20" x 10.0" tires

OTHER ACCESSORIES

Model	Description
5672-01	Wheel Weights - Front - 1 pr. w/mtg. hdw. - Fits 15" tires
5673-02	Wheel Weights - Rear - 1 pr. w/mtg. hdw. - Fits 18" & 20" tires
316608	43" High Lift Blade for Bagging or Side Discharge (Requires 2)
325762	43" Mulching Blade (Requires 2)

ONE YEAR LIMITED WARRANTY

For one (1) year from date of purchase by the first consumer for residential use (**thirty (30) days commercial use**), NOMA Outdoor Products Incorporated warrants that it will replace free of charge, including labor, any original part of any NOMA Outdoor Products Incorporated product found to be defective by any authorized Service Dealer or the factory, except the battery which is warranted for ninety (90) days from date of purchase.

This warranty does not cover engine, transmission, transaxle or differential (**these items are covered by their manufacturer's own warranty**). This warranty does not cover parts that have failed due to normal wear or parts that have failed subject to misuse or abuse. Transportation of the unit or part to and from an authorized Service Dealer or factory is the responsibility of the owner.

A step by step explanation as to what procedure should be followed for this warranty is:

1. If a part becomes defective, contact the store where the unit was purchased for the name and address of the authorized Service Dealer nearest to you.
2. If you cannot locate an authorized Service Dealer, write Service Department of NOMA Outdoor Products Incorporated for the name and address of the authorized Service Dealer in your area or call the Service Department at 1-901-422-1690.
3. Return the defective product, along with proof of purchase to such authorized Service Dealer for replacement of any defective part where covered by this warranty.

There is no other express warranty. Implied warranties, including those of merchantability and fitness for a particular purpose are limited to one (1) year from date of purchase. Liability for incidental or consequential damages are excluded.

Some states do not allow limitations on how long an implied warranty lasts, so the above limitation may not apply to you. Some states do not allow the exclusion of incidental or consequential damages, so the above exclusion may not apply to you. This warranty gives you specific legal rights, and you may have other rights which vary from state to state.

NOMA Outdoor Products Incorporated

Caller 8000

Jackson, TN 38308-8000

UNIT PARTS AND SERVICE

Fill in and mail the registration card packed with the unit. For service other than covered in this manual, contact an authorized service dealer. A nationwide parts and service organization has been established to provide locally available parts and service. A list of authorized parts distributors has been included in this manual. When ordering repair parts, always give the following information: 1. The Part Name; 2. The Part Number; 3. The Quantity desired; 4. The Full (**eight digit**) Model Number of the unit. The model number will be found on a plate attached to the unit.



Look for this symbol. It means - ATTENTION! BECOME ALERT! A HAZARD TO OPERATOR, BYSTANDER, PROPERTY OR EQUIPMENT MAY EXIST.

NOMA Outdoor Products Incorporated

Caller 8000

Jackson, TN 38308-8000

Part No. 332781

11/18/93