

PARTS MANUAL

Lawn Tractors



Model E3560-300

333534 01/17/94

Price \$5.00



SAFETY RULES

THESE INSTRUCTIONS ARE FOR YOUR PROTECTION. PLEASE READ THEM CAREFULLY.



IMPORTANT

THIS CUTTING MACHINE IS CAPABLE OF AMPUTATING HANDS AND FEET AND THROWING OBJECTS. FAILURE TO OBSERVE THE FOLLOWING SAFETY INSTRUCTIONS COULD RESULT IN SERIOUS INJURY OR DEATH.

I. GENERAL OPERATION:

- Know controls and how to stop quickly.
- Read, understand, and follow all instructions in the manual and on the machine before starting.
- Only allow responsible adults, who are familiar with instructions, to operate the machine.
- Wear safety glasses or eye shields when assembling or operating the machine.
- Do not operate machine when barefooted. Always wear substantial footwear, preferably steel-toed shoes.
- Do not wear loose fitting clothing that could get caught in moving parts.
- Clear the area of objects such as rocks, toys, wire, etc., which could be picked up and thrown by the blade(s).
- Be sure the area is clear of other people before mowing. Stop machine if anyone enters the area.
- Never carry passengers.
- Do not mow in reverse unless absolutely necessary. Always look down and behind before and while backing.
- Be aware of the mower discharge direction and do not point it at anyone. Do not operate the mower without either the entire grass catcher or the guard in place.
- Slow down before turning.
- Never leave a running machine unattended. Always turn off blades, set parking brake, stop engine, and remove keys before dismounting.
- Turn off blade(s) when not mowing.
- Stop engine before removing grass catcher or unclogging chute.
- Mow only in daylight or good artificial light.
- Do not operate the machine while under the influence of alcohol or drugs.
- Watch for traffic when operating near or crossing roadways.
- Use care when mowing around a fixed object to prevent the blade(s) from striking it. Never deliberately run over any foreign object.
- Use extra care when loading or unloading the machine into a trailer or truck.
- Use care when pulling loads or using heavy equipment.
 - a. Use only approved drawbar hitch points.
 - b. Limit loads to those that you can safely control.
 - c. Do not turn sharply. Use care when backing.
 - d. Use counterweight(s), wheel weight or tire chains when suggested in attachment(s) instructions.

II. SLOPE OPERATION:

Slopes are a major factor related to loss-of-control and tip-over accidents, which can result in severe injury or death. *All slopes require extra caution.* If you cannot back up the slope or if you feel uneasy on it, do not mow it.

DO

- Mow up and down slopes, not across.
- Remove obstacles such as rocks, tree limbs, etc.
- Watch for holes, ruts, or bumps. Uneven terrain could overturn the machine. *Tall grass can hide obstacles.*
- Use slow speed. Choose a low gear so that you will not have to stop or shift while on the slope.
- Follow the manufacturer's recommendations for wheel weights or counterweights to improve stability.
- Use extra care with grass catchers or other attachments. These can change the stability of the machine.
- Keep all movement on the slopes *slow* and *gradual*. Do not make sudden changes in speed or direction.
- Avoid starting or stopping on a slope. If tires lose traction, turn off the blade(s) and proceed slowly *straight* down the slope.

DO NOT

- Do not turn on slopes unless necessary, and then slowly and gradually downhill, if possible.
- Do not mow near drop-offs, ditches or embankments. The

mower could suddenly turn over if a wheel is over the edge of a cliff or ditch, or if an edge caves in.

- Do not mow on wet grass. Reduced traction could cause sliding.
- Do not try to stabilize the machine by putting your foot on the ground.
- Do not use grass catcher on steep slopes.

III. CHILDREN:

Tragic accidents can occur if the operator is not alert to the presence of children. Children are often attracted to the machine and the mowing activity. *Never* assume that children will remain where you last saw them.

- Keep children out of the mowing area and under the watchful care of another responsible adult.
- Be alert and turn machine off if children enter the area.
- Before and when backing, look behind and *down* for small children.
- Never carry children. They may fall off and be seriously injured or interfere with safe machine operation.
- Never allow children to operate the machine.
- Use extra care when approaching blind corners, shrubs, trees, or other objects that may obscure vision.

IV. SERVICE:

- Use extra care in handling gasoline and other fuels. They are flammable and vapors are explosive.
 - a. Use only an approved container.
 - b. Never remove gas cap or add fuel with the engine running. Allow engine to cool before refueling. Do not smoke.
 - c. Never refuel the machine indoors.
 - d. Never store the machine or fuel container inside where there is an open flame, such as in a water heater.
- Check fuel supply before each use allowing space for expansion as the heat of the engine and/or sun can cause gasoline to expand and overflow the tank.
- Use extra care when handling battery acid. Acid contact with skin may cause severe burns. Eye contact may cause blindness.
- Use extra care when servicing the battery. Explosive gas is produced in the battery. Do not service the battery while smoking or near an open spark or flame. This may cause the battery to explode causing serious injury.
- Never run a machine inside a closed area. Exhaust fumes contain CARBON MONOXIDE, an ODORLESS and DEADLY GAS.
- Keep nuts and bolts, especially blade attachment bolts, tight and keep equipment in good condition.
- Never tamper with safety devices. Check their operation regularly.
- Do not change the engine governor settings or overspeed engine.
- Reduce fire hazards. Keep machine free of grass, leaves, or other debris build-up. Clean up oil or fuel spillage. Allow machine to cool before storing.
- Stop and inspect the equipment if you strike an object. Repair, if necessary, before restarting.
- Never make adjustments or repairs with the engine running.
- Grass catcher components are subject to wear, damage, and deterioration, which could expose moving parts or allow objects to be thrown. Frequently check components and replace with manufacturer's recommended parts, when necessary.
- Mower blade(s) are sharp and can cut. Wrap the blade(s) or wear gloves, and use extra caution when servicing them.
- Check brake operation frequently. Adjust and service as required.



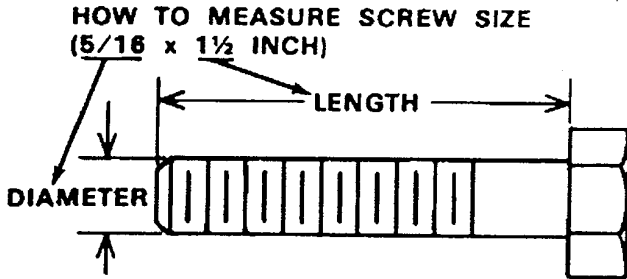
LOOK FOR THIS SYMBOL TO POINT OUT IMPORTANT SAFETY PRECAUTIONS. IT MEANS-- ATTENTION!!! BECOME ALERT!!! YOUR SAFETY IS INVOLVED.

Record the following information about your unit so that you will be able to provide it in case of loss or theft.

MODEL NUMBER: - (Enter complete 8 digit number from model plate on unit)
PURCHASE DATE: ___ / ___ / ___ CODE NO.: _____ SERIAL NO.: _____
DEALER'S NAME AND ADDRESS: _____
CITY: _____ STATE: _____ TELEPHONE: _____

TOOLS REQUIRED FOR ASSEMBLY

- 2 - 7/16 inch Wrenches (or adjustable wrench)
- 1 - 1/2 inch Wrench (or adjustable wrench)
- 1 - Small Phillips Screwdriver with a 1/4 inch shank
- 1 - Hammer



DANGER



This lawn tractor can be dangerous if carelessly used.

Read your Operator's Manual thoroughly before operating your lawn tractor.

Always wear safety glasses or eye shields while assembling or operating your lawn tractor.

DO NOT carry passengers at any time.

Keep your hands, feet, hair and loose clothing away from the discharge area, the underside of the mower deck or any moving parts while the engine is running.

DO NOT allow children or young teenagers to operate or be near your lawn tractor while it is operating.

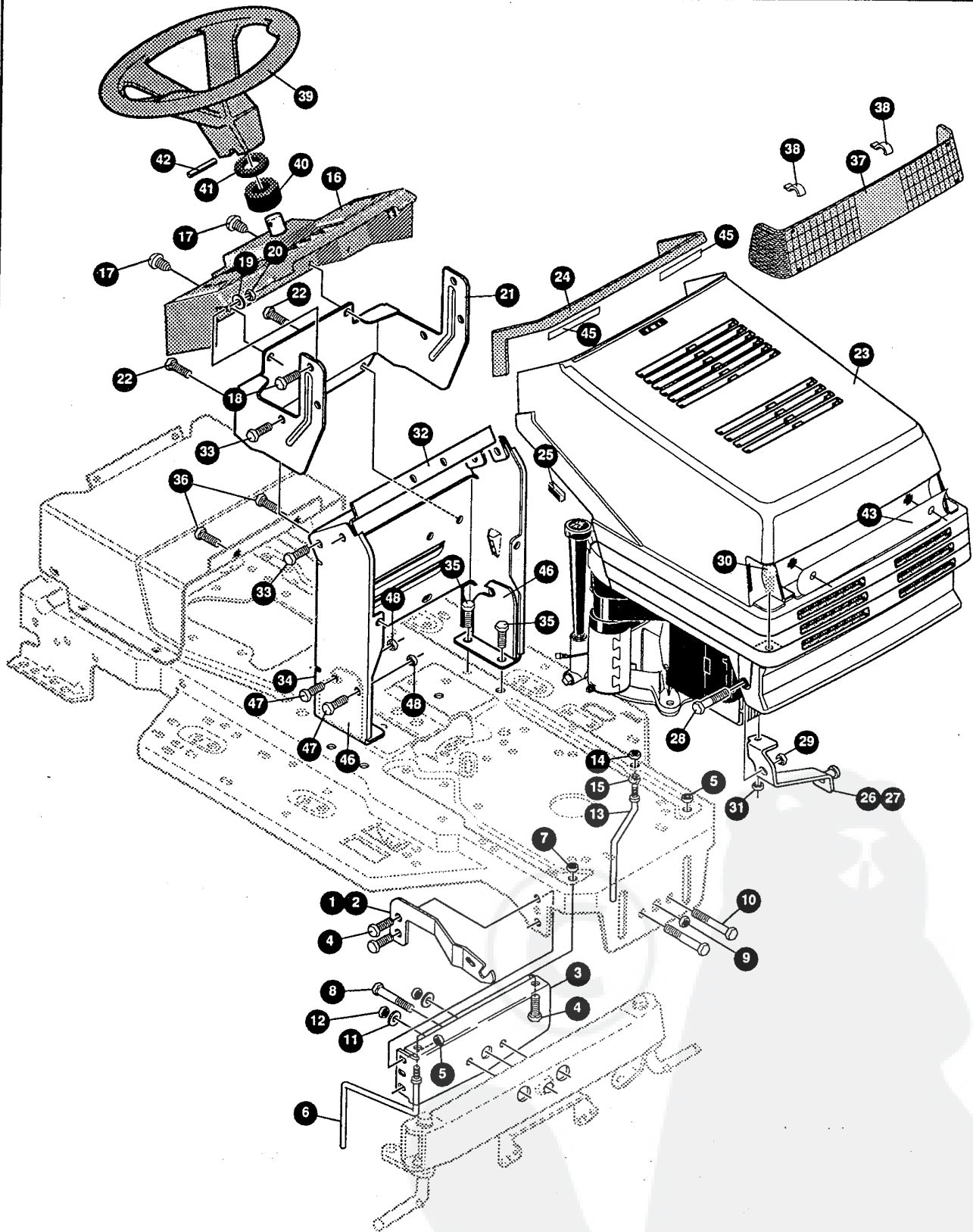
ALWAYS GIVE THE FOLLOWING INFORMATION WHEN ORDERING REPAIR PARTS:
1. The PART NUMBER; 2. The PART NAME; 3. QUANTITY DESIRED; 4. The MODEL NUMBER (As shown on Model Plate).
SEND PART ORDERS AS PER INSTRUCTIONS ON THE FRONT PAGE.

DO NOT USE KEY NUMBERS WHEN ORDERING REPAIR PARTS, ALWAYS USE PART NUMBERS.

All replacement parts will be supplied in current production colors or in a neutral color.

A handling fee is applicable to small parts orders.

YOUR UNIT IS RIGHT HAND (RH) OR LEFT HAND (LH) AS YOU STAND BEHIND IT.

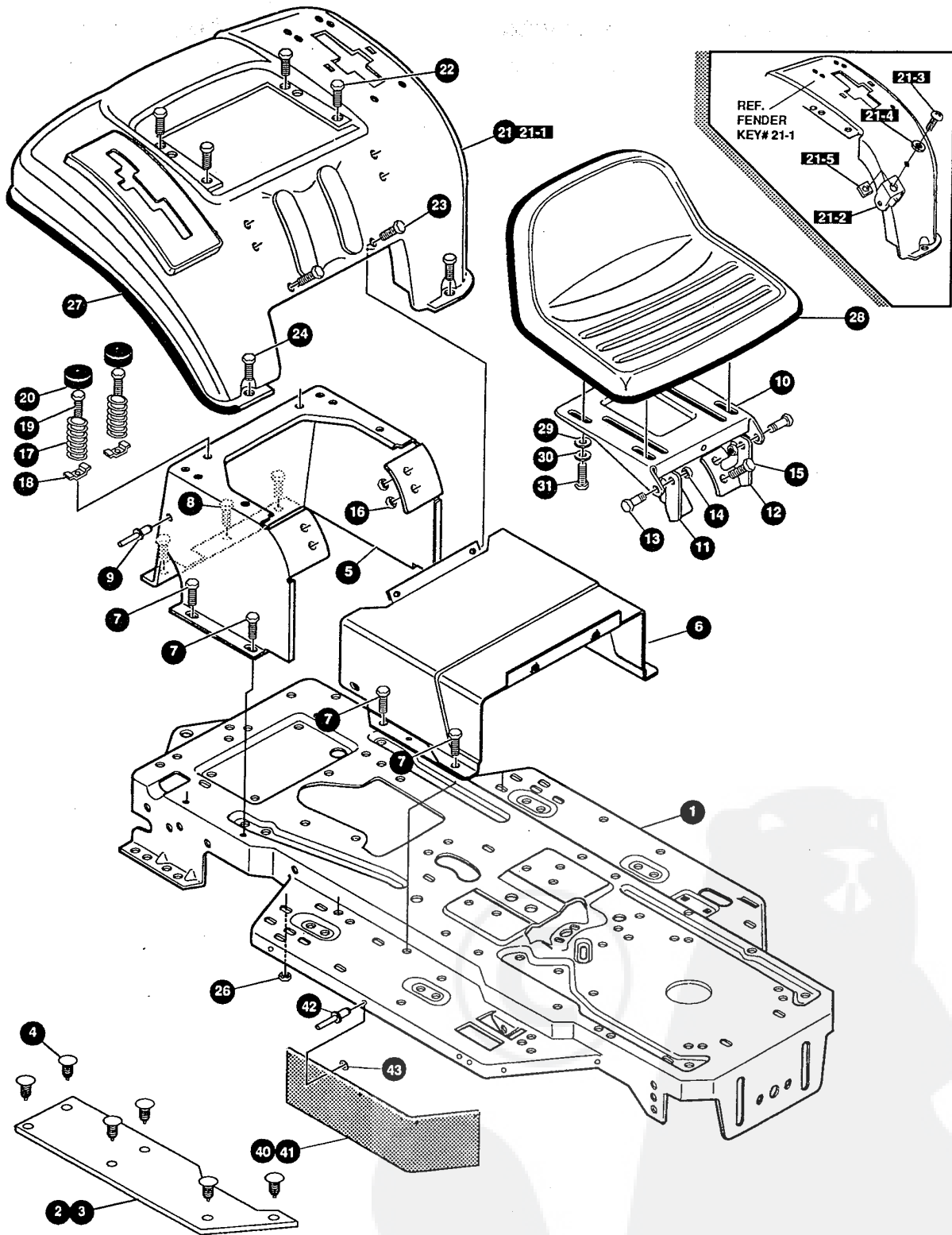


NOTE: ALWAYS USE ORIGINAL EQUIPMENT PARTS. Use of service/replacement parts other than original equipment parts may void your warranty.

ALL UNNUMBERED ITEMS ARE INTERCHANGEABLE WITH OPPOSITE SIDE

329883B

| KEY# | PART# | DESCRIPTION | QTY |
|------|------------|---------------------------------------|-----|
| 1 | 330815-853 | BRACKET, HOOD RH | 1 |
| 2 | 330816-853 | BRACKET, HOOD LH | 1 |
| 3 | 313541-853 | BRACKET, FRONT AXLE | 1 |
| 4 | 56030 | SCREW, 5/16-18X.75WDFLLK | 5 |
| 5 | 55273 | NUT, 5/16-18 HXWDFLLK | 5 |
| 6 | 300440 | GUIDE, BELT, RIDER | 1 |
| 7 | 1498 | NUT, 5/16-18 REGHEXCTRLK | 1 |
| 8 | 308207 | BOLT, .625X2.18 HSSH 1/2-13 | 1 |
| 9 | 309008 | NUT, 1/2-13 HEXJAM CTRLK | 1 |
| 10 | 180138 | SCREW, 3/8-16X3.00 HHC | 2 |
| 11 | 2483 | WASHER, .39IDX1.25DX.07 BELLVIL | 2 |
| 12 | 1499 | NUT, 3/8-16 REGHXCTRLK | 2 |
| 13 | 300635 | GUIDE, BELT SHORT 15" WHEEL | 1 |
| 14 | 124824 | NUT, 5/16-18 HEXJAM | 1 |
| 15 | 271190 | NUT, 3/8-16 HEXKEPS | 1 |
| 16 | 331135 | DASH, SHORT H16LF WO/L GREY630 | 1 |
| 17 | 318304 | SCREW, 1/4-14X.75PHPNHDTAP BLK | 2 |
| 18 | 180020 | SCREW, 1/4-20X .75 HHC | 2 |
| 19 | 120392 | WASHER, FLAT .281X .63X.065 | 2 |
| 20 | 1502 | NUT, 1/4-20 REGHEXCTRLK | 2 |
| 21 | 330807-830 | COVER, DASH | 1 |
| 22 | 318304 | SCREW, 1/4-14X.75PHPNHDTAP BLK | 2 |
| 23 | 304377 | HOOD | 1 |
| 24 | 12675 | TRIM PIECE PLASTIC | 1 |
| 25 | 306822 | CLIP,U-TYPE TINN C27637-014-4 | 2 |
| 26 | 331068-853 | BRACKET,HOOD RH EURO I WELD | 1 |
| 27 | 331069-853 | BRACKET,HOOD LH EURO I WELD | 1 |
| 28 | 313680 | BOLT, .500X .182 HSSH5/16-18 | 2 |
| 29 | 1498 | NUT, 5/16-18 REGHEXCTRLK | 2 |
| 30 | 180079 | SCREW, 5/16-18X1.00 HHC | 2 |
| 31 | 1498 | NUT, 5/16-18 REGHEXCTRLK | 2 |
| 32 | 324909-853 | SUPPORT,STEERING/PTO LF | 1 |
| 33 | 995346 | SCREW, 1/4-20X .50 WAHHTAP | 4 |
| 34 | 324908-830 | DASH,TOWER WALK-THRU LF | 1 |
| 35 | 35498 | SCREW, 5/16-18X .75 WAHHTAP | 4 |
| 36 | 995346 | SCREW, 1/4-20X .50 WAHHTAP | 2 |
| 37 | 304079 | LENS HEADLIGHT ERO LT SMOKE | 1 |
| 38 | 41482 | PRESS CLIP,1.380LG .255ID | 5 |
| 39 | 330847 | STEERING WHEEL | 1 |
| 40 | 331494 | SPACER,STEERING SHAFT | 1 |
| 41 | 301413 | SPACER, STEERING SHAFT | 1 |
| 42 | 456378 | PIN, SPRING.250DIAX2.00LG HVPL | 1 |
| 43 | 308200 | DECAL, REFLECTOR | 1 |
| 45 | 12599 | FASTENER, VELCRO 2" X 1" | 2 |
| 46 | 333123-853 | BRACE, DASH TOWER | 2 |
| 47 | 180016 | SCREW 1/4-20 X .50 | 2 |
| 48 | 46931 | NUT 1/4-20 WDFL MAC-LOCK | 2 |
| | 333534 | PARTS MANUAL | 1 |
| | 333258 | ENGLISH OPERATOR'S MANUAL | 1 |
| | 333259 | FRENCH OPERATOR'S MANUAL | 1 |
| | 333260 | GERMAN OPERATOR'S MANUAL | 1 |



NOTE: ALWAYS USE ORIGINAL EQUIPMENT PARTS. Use of service/replacement parts other than original equipment parts may void your warranty.

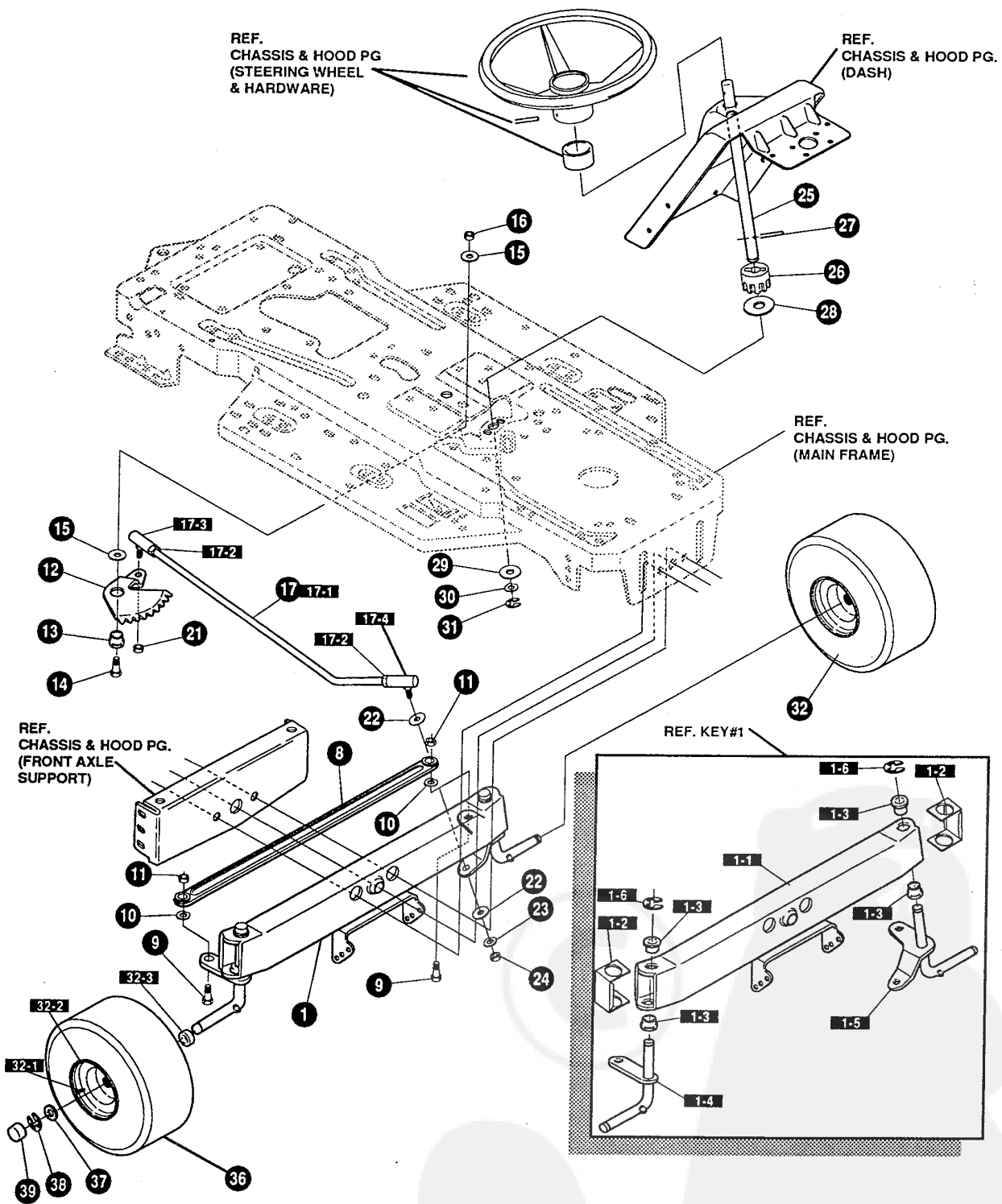
ALL UNNUMBERED ITEMS ARE INTERCHANGEABLE WITH OPPOSITE SIDE

332777A

E3560-300

CHASSIS & HOOD ASSEMBLY

| KEY # | PART # | DESCRIPTION | QTY. |
|-------|------------|---------------------------------------|----------|
| 1 | 326579-830 | FRAME | 1 |
| 2 | 310005 | FOOT PAD, LH 22.12LG | 1 |
| 3 | 310006 | FOOT PAD, RH 22.12LG | 1 |
| 4 | 309235 | FASTENER, RATCHET | 12 |
| 5 | 324912-830 | SEAT/FNDR.SUPPORT WALK-THRU | 1 |
| 6 | 330865-830 | CONSOLE,WALK-THRU NO SLT | 1 |
| 7 | 995346 | SCREW, 1/4-20X .50 WAHHTAP | 10 |
| 8 | 35497 | SCREW, 5/16-18X .50 WAHHTAP | 2 |
| 9 | 46763 | RIVET, POP .187DIA X .450LG ST | 3 |
| 10 | 58367-830 | PLATE, SEAT | 1 |
| 11 | 325053-830 | BRACKET SEAT WALK-THRU RH | 1 |
| 12 | 325054-830 | BRACKET SEAT WALK-THRU LH | 1 |
| 13 | 20507 | BOLT, .437X .156 HSSH 5/16-18 | 2 |
| 14 | 1498 | NUT, 5/16-18 REGHEXCTRLK | 2 |
| 15 | 48901 | SCREW, 5/16-18X .63WAHHC | 4 |
| 16 | 1498 | NUT, 5/16-18 REGHEXCTRLK | 4 |
| 17 | 57153 | SPRING,SEAT 2.63LG,1.49OD BLK | 2 |
| 18 | 1341 | CLAMP, SPRG 1.17"ID | 2 |
| 19 | 44811 | SCREW, 1/4-20X .75 WAHHTAP | 2 |
| 20 | 56907 | COVER, SEAT SPRING 1.5IDX1.0LG | 2 |
| 21 | * | ASM.FNDR.F5 WALK-THRU SUS | 1 |
| 21-1 | 332188-860 | FENDER,WALK-THRU | 1 |
| 21-2 | 9239 | CLEVIS | 1 |
| 21-3 | 439455 | SCREW, 5/16-18X .56PHPNMA BKPH | 1 |
| 21-4 | 301551 | WASHER, .344IDX1.50DX.09 CU | 1 |
| 21-5 | 120373 | NUT, 5/16-18 SQ | 1 |
| 22 | 995346 | SCREW, 1/4-20X .50 WAHHTAP | 4 |
| 23 | 35497 | SCREW, 5/16-18X .50 WAHHTAP | 2 |
| 24 | 126358 | BOLT, 5/16-18X1.00 CARRLN | 2 |
| 26 | 55273 | NUT, 5/16-18 HXWDFLLK | 2 |
| 27 | 55023 | TRIM,STRIP,BLACK—SMALL,W/ ADH | 77.5 IN. |
| 28 | 332779 | SEAT, MICHIGAN W/SW HOLE | 1 |
| 29 | 120393 | WASHER, FLAT .344X .69X.065 | 4 |
| 30 | 120638 | WASHER, HVSP TLK .328X.60X.09 | 4 |
| 31 | 180077 | SCREW, 5/16-18X .75 HHC | 4 |
| 40 | 305386 | SKIRT,TUV LF RUBBER 7 X 28.03 | 1 |
| 41 | 305354 | SKIRT,TUV LF RUBBER 7 X 15.64 | 1 |
| 42 | 329238 | RIVET, POP 3/16DIA X .75 LG FLG | 10 |
| 43 | 1501 | WASHER, FLAT .203X .56X.040 | 10 |



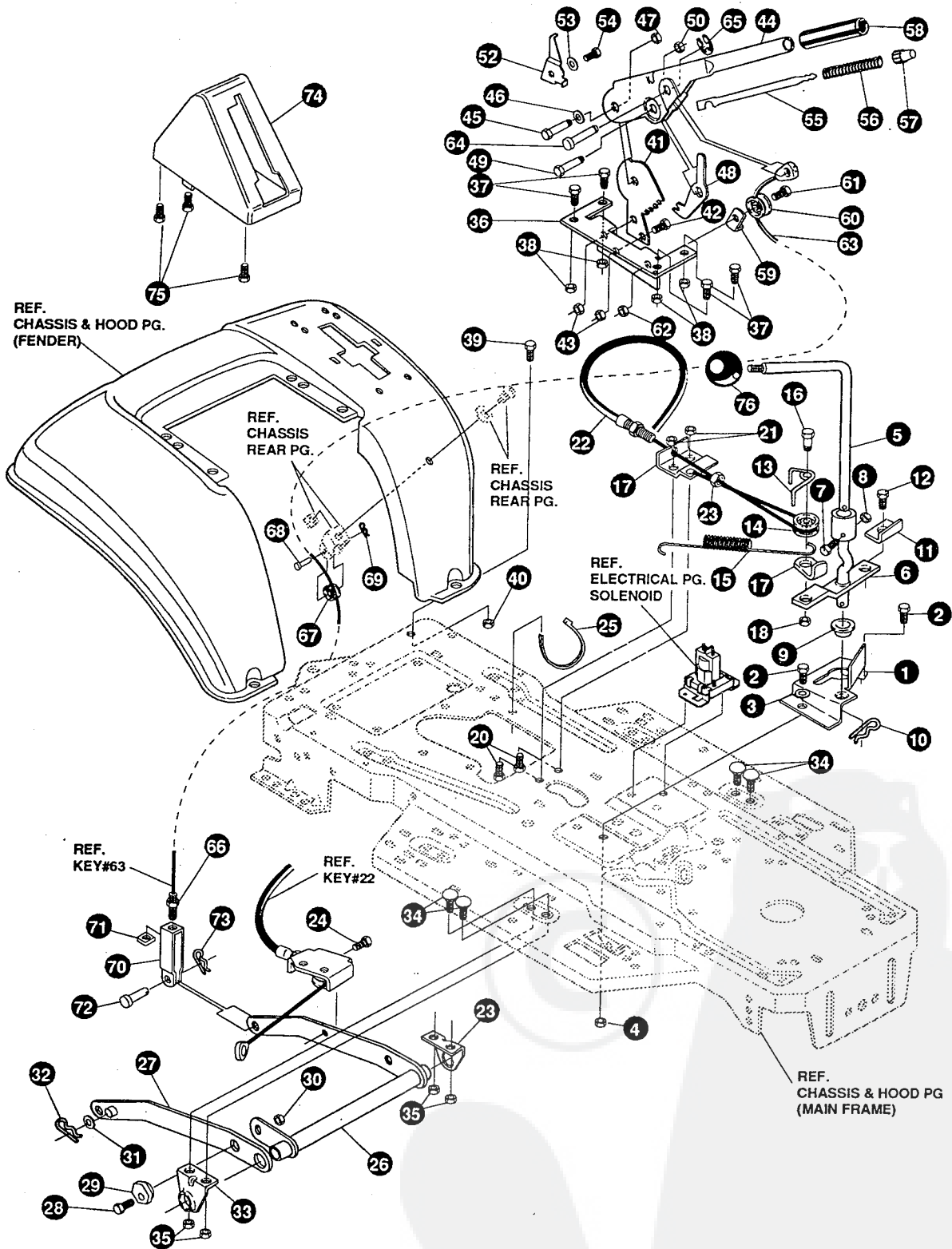
NOTE: ALWAYS USE ORIGINAL EQUIPMENT PARTS. Use of service/replacement parts other than original equipment parts may void your warranty.

ALL UNNUMBERED ITEMS ARE INTERCHANGEABLE WITH OPPOSITE SIDE

3151361

| KEY# | PART# | DESCRIPTION | QTY |
|------|------------|---------------------------------------|-----|
| 1 | ^ | ASSY, AXLE FRONT | 1 |
| 1-1 | 310170-853 | AXLE, FRONT | 1 |
| 1-2 | 53373-853 | AXLE COVER | 2 |
| 1-3 | 52407 | SPINDLE BEARING | 4 |
| 1-4 | 302926 | ASSY, SPINDLE RH | 1 |
| 1-5 | 315886 | ASSY, SPINDLE LH | 1 |
| 1-6 | 36625 | RING, RETEX .57X.05TRU5133-75 | 2 |
| 8 | 304590 | TIE ROD ASSY 19.81LG W-SECTION | 1 |
| 9 | 180128 | SCREW, 3/8-16X1.75 HHC | 2 |
| 10 | 120382 | WASHER, REGSPTLK.393X.68X.10 | 2 |
| 11 | 120377 | NUT, 3/8-16 REGHX | 2 |
| 12 | 58289 | SECTOR, STEERING | 1 |
| 13 | 52406 | BRNG, FL ECC.510IDX .998ODX .56 | 1 |
| 14 | 180177 | SCREW, 1/2-13X1.50 HHC | 1 |
| 15 | 22265 | WASHER, FLAT .515X1.38X.119 | 2 |
| 16 | 1500 | NUT, 1/2-13 REGHCTRLK | 1 |
| 17 | 311100 | KIT 300146 DRAGLINK | 1 |
| 17-1 | 58291 | STEERING LINK | 1 |
| 17-2 | 124925 | NUT, 3/8-24 REGHEXJAM | 2 |
| 17-3 | 57158 | BALL JOINT 3/8 THD SHORT STUD | 1 |
| 17-4 | 21275 | BALL JOINT 3/8 TH'D LONG STUD | 1 |
| 21 | 46692 | NUT, 3/8-24 WDFLHLK WHIZ | 1 |
| 22 | 996416 | WASHER, FLAT .391X1.00X.125 | 2 |
| 23 | 120382 | WASHER, REGSPTLK.393X.68X.10 | 1 |
| 24 | 120369 | NUT, 3/8-24 REGHEX | 1 |
| 25 | 58243 | SHAFT, STEERING | 1 |
| 26 | 58244 | PINION, STEERING | 1 |
| 27 | 58274 | PIN, DOWEL .2500 OD+1.75LG PL | 1 |
| 28 | 301410 | BRNG, FL .752IDX1.061ODX .24 | 1 |
| 29 | 301398 | WASHER, FORMED1.135X1.53X.12 | 1 |
| 30 | 21682 | WASHER, FLAT .765X1.25X.042PL | 1 |
| 31 | 36625 | RING, RETEX .57X.05TRU5133-75 | 1 |
| 32 | 300809 | TIRE & RIM, PU 15X6.0X6 | 2 |
| 32-1 | 24167 | VALVE STEM | |
| 32-2 | 39829 | RIM, WHEEL | |
| 32-3 | 314416 | BEARING, FL | |
| 36 | 39830 | TIRE, 15X6X6 | |
| 37 | 642 | WASHER, FLAT .755X1.31X.075 | 4 |
| 38 | 36625 | RING, RETEX .57X.05TRU5133-75 | 2 |
| 39 | 40394 | HUB CAP, 1.500ID X 7/8LG | 2 |





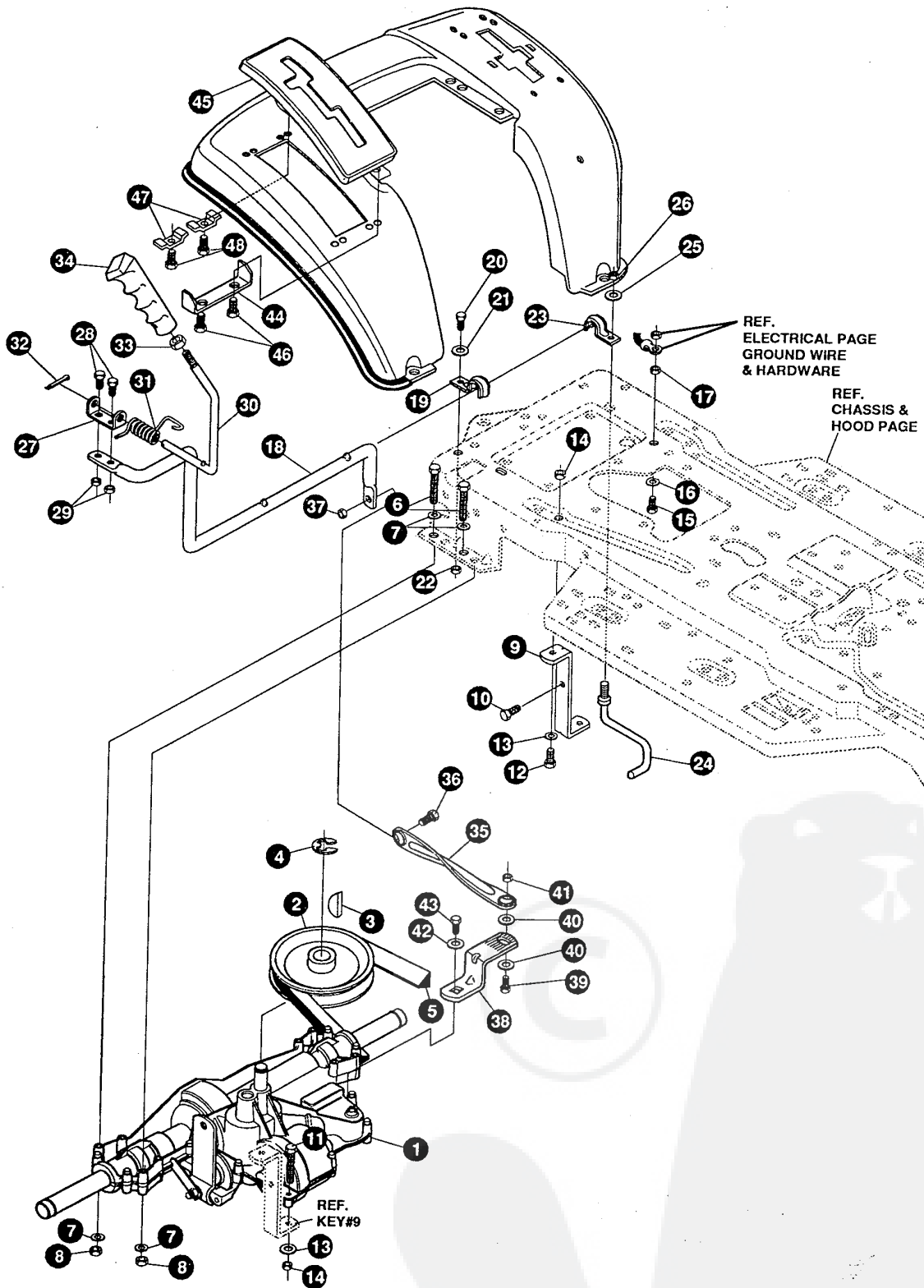
NOTE: ALWAYS USE ORIGINAL EQUIPMENT PARTS. Use of service/replacement parts other than original equipment parts may void your warranty.

ALL UNNUMBERED ITEMS ARE INTERCHANGEABLE WITH OPPOSITE SIDE

331726A

E3560-300**MOWER SUSPENSION ASSEMBLY**

| KEY# | PART# | DESCRIPTION | QTY |
|------|------------|--------------------------------------|-----|
| 1 | 320075-853 | BRACKET,CLUTCH ENGAGE LEVER | 1 |
| 2 | 180079 | SCREW, 5/16-18X1.00 HHC | 2 |
| 3 | 120393 | WASHER, FLAT .344X .69X.065 | 2 |
| 4 | 1498 | NUT, 5/16-18 REGHEXCTRLK | 2 |
| 5 | 331050 | LEVER,PTO UPPER LF EURO I & II | 1 |
| 6 | 331727 | ASM.CLUTCH LEVER LOWER | 1 |
| 7 | 308231 | SCREW, 1/4-20X1.25 HHWATAP | 1 |
| 8 | 1502 | NUT, 1/4-20 REGHEXCTRLK | 1 |
| 9 | 50148 | BRNG, FL .503IDX .63ODX .50 | 1 |
| 10 | 8260 | PIN, HAIR .091 DIA X 1.66LG | 1 |
| 11 | 318341 | BRKT, SWITCH ENGAGE | 1 |
| 12 | 35498 | SCREW, 5/16-18X .75 WAHHTAP | 1 |
| 13 | 324032 | SPRING,CABLE KEEPER .390 ID G | 1 |
| 14 | 48306 | PULLEY,POWDER METAL | 1 |
| 15 | 316648 | SPRING .071 X .62 X 12.88 | 1 |
| 16 | 324045 | BOLT, .375X .565 HSSH | 1 |
| 17 | 1288 | BRKT, CABLE RETAIN | 1 |
| 18 | 1502 | NUT, 1/4-20 REGHEXCTRLK | 1 |
| 19 | 300698-853 | BRACKET FRAME CABLE | 1 |
| 20 | 180020 | SCREW, 1/4-20X .75 HHC | 2 |
| 21 | 1502 | NUT, 1/4-20 REGHEXCTRLK | 2 |
| 22 | 324055 | ASSY,CABLE, BLADE ENGAGE | 1 |
| 23 | 120613 | NUT, 1/4-28 HJAM | 1 |
| 24 | 35498 | SCREW, 5/16-18X .75 WAHHTAP | 1 |
| 25 | 57444 | TIE, CABLE BLACK NYLON 5.62L | 1 |
| 26 | 300158-853 | LIFT ASSY, LH | 1 |
| 27 | 300169-853 | LIFT ASSY, RH | 1 |
| 28 | 180079 | SCREW, 5/16-18X1.00 HHC | 1 |
| 29 | 58247 | NUT, ADJUST | 1 |
| 30 | 1498 | NUT, 5/16-18 REGHEXCTRLK | 1 |
| 31 | 417098 | WASHER, FLAT .531X1.06X.063 | 2 |
| 32 | 8260 | PIN, HAIR .091 DIA X 1.66LG | 2 |
| 33 | 58248-853 | BRACKET, REAR HANG SUSP | 2 |
| 34 | 57072 | BOLT, 5/16-18X .63 CARRLN | 4 |
| 35 | 1498 | NUT, 5/16-18 REGHEXCTRLK | 4 |
| 36 | 313926 | BRACKET, HGT/ADJUST SUPPORT | 1 |
| 37 | 180077 | SCREW, 5/16-18X .75 HHC | 4 |
| 38 | 1498 | NUT, 5/16-18 REGHEXCTRLK | 4 |
| 39 | 180077 | SCREW, 5/16-18X .75 HHC | 1 |
| 40 | 1498 | NUT, 5/16-18 REGHEXCTRLK | 1 |
| 41 | 301238 | QUADRANT,HEIGHT ADJUST | 1 |
| 42 | 180077 | SCREW, 5/16-18X .75 HHC | 2 |
| 43 | 1498 | NUT, 5/16-18 REGHEXCTRLK | 2 |
| 44 | 322292-853 | HANDLE,LIFT SHORT(30" S.F.) | 1 |
| 45 | 300171 | BOLT, .500X .270 HSSH 5/16-18 | 1 |
| 46 | 996418 | WASHER, FLAT .506X .75X.024 | 1 |
| 47 | 44108 | NUT, 5/16-18 HWDFLCTRLK | 1 |
| 48 | 301239 | PAWL, SQUARE | 1 |
| 49 | 300171 | BOLT, .500X .270 HSSH 5/16-18 | 1 |
| 50 | 44108 | NUT, 5/16-18 HWDFLCTRLK | 1 |
| 52 | 9435 | POINTER, HEIGHT ADJ | 1 |
| 53 | 138479 | WASHER, EXLK .195X.41X.03 | 1 |
| 54 | 35287 | SCREW, #8-32X .38 HHWATAP | 1 |
| 55 | 303027 | ROD,ACTUATOR-SHORT | 1 |
| 56 | 58326 | SPRING, HEIGHT ADJUST | 1 |
| 57 | 58325 | KNOB, HEIGHT ADJ PUSH BUTTON | 1 |
| 58 | 58329 | GRIP, .750 OD W/ HOLE BLACK | 1 |
| 59 | 9149 | BRKT, CABLE RETAIN | 1 |
| 60 | 48306 | PULLEY,POWDER METAL | 1 |
| 61 | 58336 | BOLT, .375X .375 HSSH 1/4-20 | 1 |
| 62 | 1502 | NUT, 1/4-20 REGHEXCTRLK | 1 |
| 63 | 314177 | CABLE, LIFT 22.92 F-5 20X8-8 | 1 |
| 64 | 300310 | PIN,CLEVIS .310DIA+.475LG | 1 |
| 65 | 300311 | RING, RET E .31X.25TRUX5133-31 | 1 |
| 66 | 120375 | NUT, 1/4-20 REGHEX | 1 |
| 67 | 48306 | PULLEY,POWDER METAL | 1 |
| 68 | 300317 | PIN, CLEVIS .375DIA.X .81 LG | 1 |
| 69 | 8260 | PIN, HAIR .091 DIA X 1.66LG | 1 |
| 70 | 9405 | CLEVIS, LIFT CABLE | 1 |
| 71 | 120372 | NUT, 1/4-20 REGSQ | 1 |
| 72 | 39522 | PIN, CLEVIS .312 X .812 | 1 |
| 73 | 121222 | PIN, COTTER .090 DIA X .75LG | 1 |
| 74 | 300335 | LIFT COVER-39" F5 | 1 |
| 75 | 300340 | SCREW, #10 X .75 HHPLAST BLK | 3 |
| 76 | 321837 | KNOB,ROUND 1.50 DIA MATTE BLK | 1 |



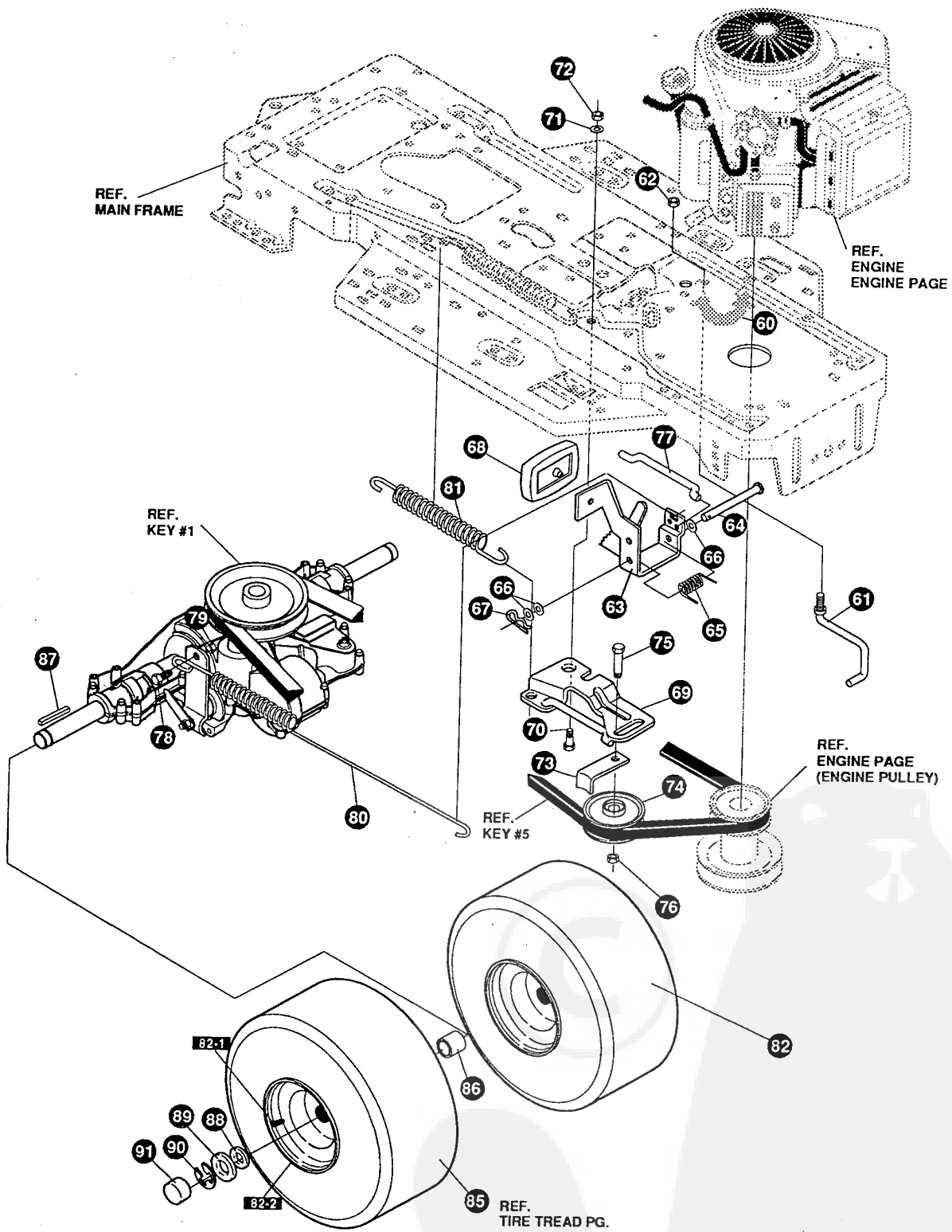
NOTE: ALWAYS USE ORIGINAL EQUIPMENT PARTS. Use of service/replacement parts other than original equipment parts may void your warranty.

ALL UNNUMBERED ITEMS ARE INTERCHANGEABLE WITH OPPOSITE SIDE

326599C

| KEY# | PART# | DESCRIPTION | QTY |
|------|------------|--------------------------------------|-----|
| 1 | ^ | TRANSAXLE P940-6 2WS,LF,SF | 1 |
| 2 | 302745 | PULLEY, 6.6 OD V4L T/A | 1 |
| 3 | 50795 | KEY, HI-PRO 606 .75DIAX.187WD | 1 |
| 4 | 22053 | RING, RETEX .58X.035TRU5100-62 | 1 |
| 5 | 314120 | BELT, V 4L 87.25 4WS LF | 1 |
| 6 | 180091 | SCREW, 5/16-18X2.50 HHC | 4 |
| 7 | 120393 | WASHER, FLAT .344X .69X.065 | 8 |
| 8 | 1498 | NUT, 5/16-18 REGHEXCTRLK | 4 |
| 9 | 325202-853 | BRACKET,STABILIZER | 1 |
| 10 | 50947 | SCREW, 3/8-16X1.25 WAHTTAPBLKP | 1 |
| 11 | 180087 | SCREW, 5/16-18X2.00 HHC | 2 |
| 12 | 180079 | SCREW, 5/16-18X1.00 HHC | 1 |
| 13 | 120393 | WASHER, FLAT .344X .69X.065 | 2 |
| 14 | 1498 | NUT, 5/16-18 REGHEXCTRLK | 2 |
| 15 | 180077 | SCREW, 5/16-18X .75 HHC | 1 |
| 16 | 138538 | WASHER, REGINTLK.320X.61X.03 | 1 |
| 17 | 1498 | NUT, 5/16-18 REGHEXCTRLK | 1 |
| 18 | 330462 | LEVER,SHIFT-LWR P940 LF | 1 |
| 19 | 310347-853 | CLIP- SHIFT LEVER .625 ROD | 1 |
| 20 | 180077 | SCREW, 5/16-18X .75 HHC | 1 |
| 21 | 996416 | WASHER, FLAT .391X1.0OX.125 | 1 |
| 22 | 1498 | NUT, 5/16-18 REGHEXCTRLK | 1 |
| 23 | 310347-853 | CLIP- SHIFT LEVER .625 ROD | 1 |
| 24 | 57259 | GUIDE, BELT 5/16-18THD | 1 |
| 25 | 996416 | WASHER, FLAT .391X1.0OX.125 | 1 |
| 26 | 1498 | NUT, 5/16-18 REGHEXCTRLK | 1 |
| 27 | 310356 | BRKT, PIVOT SH LEV | 1 |
| 28 | 180020 | SCREW, 1/4-20X .75 HHC | 2 |
| 29 | 1502 | NUT, 1/4-20 REGHEXCTRLK | 2 |
| 30 | 309635 | LEVER, SHIFT UPPER SOF 1/2-13 | 1 |
| 31 | 310265 | SPRING, TORS. .56X.95X.095 | 1 |
| 32 | 137185 | PIN, COTTER .125 DIAX1.00LG | 1 |
| 33 | 120238 | NUT, 1/2-13 HEXJAM | 1 |
| 34 | 306690 | HANDLE 1/2-13 MOLDED BLACK | 1 |
| 35 | 325192 | LINK TIEROD SHIFT P940-5 &6SPD | 1 |
| 36 | 180124 | SCREW, 3/8-16X1.25 HHC | 1 |
| 37 | 1499 | NUT, 3/8-16 REGHXCTRLK | 1 |
| 38 | 327460 | BRKT, SHIFT6SP LF FEND | 1 |
| 39 | 180124 | SCREW, 3/8-16X1.25 HHC | 1 |
| 40 | 120394 | WASHER, FLAT .406X .81X.065 | 2 |
| 41 | 1499 | NUT, 3/8-16 REGHXCTRLK | 1 |
| 42 | 57157 | WASHER, .750X.250 SP-TRANSAXLE | 1 |
| 43 | 56255 | SCREW, 1/4-28X .75 NYLHHC | 1 |
| 44 | 311257-853 | BRACKET COVER F-5 FNDR SHIFT | 1 |
| 45 | 311209 | COVER PLASTIC LF P930/F4360-6 | 1 |
| 46 | 311331 | SCREW, 1/4-15X.44/.53 HILOHHWA | 2 |
| 47 | 1341 | CLAMP, SPRG 1.17"ID | 2 |
| 48 | 311331 | SCREW, 1/4-15X.44/.53 HILOHHWA | 2 |

^ CONTACT YOUR NEAREST TRANSAXLE DEALER FOR PARTS AND SERVICE

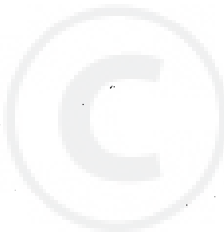


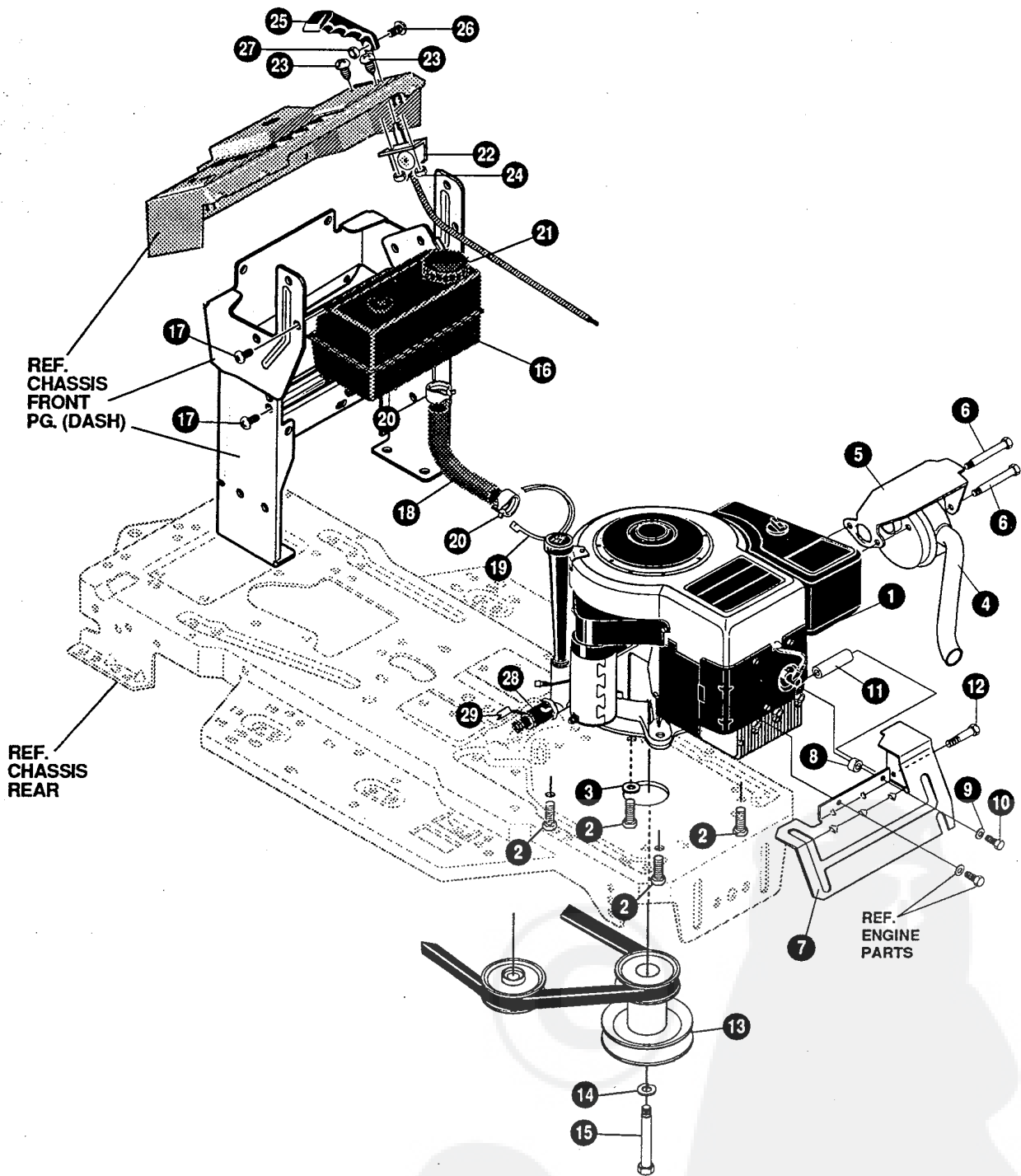
NOTE: ALWAYS USE ORIGINAL EQUIPMENT PARTS. Use of service/replacement parts other than original equipment parts may void your warranty.

ALL UNNUMBERED ITEMS ARE INTERCHANGEABLE WITH OPPOSITE SIDE

326599C

| KEY# | PART# | DESCRIPTION | QTY |
|------|------------|--------------------------------------|-----|
| 60 | 321514 | SPRING, DRAG LINK BIAS | 1 |
| 61 | 304016 | GUIDE, BELT R.H. | 1 |
| 62 | 1498 | NUT, 5/16-18 REGHEXCTRLK | 1 |
| 63 | 325942 | PEDAL ASSY, BRAKE/CLUTCH LF | 1 |
| 64 | 319675 | PIN, CLEVIS .500DX4.53LG | 1 |
| 65 | 57847 | SPRING, BRAKE PEDAL | 1 |
| 66 | 2968 | WASHER, FLAT .504X .75X.059 | 3 |
| 67 | 56180 | PIN, HAIR .091 DIA X1.62LG | 1 |
| 68 | 48160 | PAD, CLUTCH BRAKE W/PRINTING | 1 |
| 69 | 320381-853 | ARM, IDLER TRACTION | 1 |
| 70 | 329989 | BOLT, .625X .135 HSH 5/16-18 | 1 |
| 71 | 45602 | WASHER, FLAT .333X .87X.119 | 1 |
| 72 | 1498 | NUT, 5/16-18 REGHEXCTRLK | 1 |
| 73 | 39659 | RETAINER, BELT | 1 |
| 74 | 35374 | PULLEY, IDLER V4L 3.06X .62 | 1 |
| 75 | 45892 | BOLT, 3/8-16X1.50 CARRSN | 1 |
| 76 | 1499 | NUT, 3/8-16 REGHXCTRLK | 1 |
| 77 | 57204 | ROD, CLUTCH 3.92" | 1 |
| 78 | 326131 | BOLT, .495X .31 HSH 5/16-18 | 1 |
| 79 | 1498 | NUT, 5/16-18 REGHEXCTRLK | 1 |
| 80 | 325910 | SPRING, BRAKE 31.12 P940 LF | 1 |
| 81 | 330505 | SPRING, CLUTCH .113X.750X8.75 | 1 |
| 82 | 305362 | TIRE & RIM, 20X10.00-8 WHITE | 2 |
| 82-1 | 24167 | VALVE STEM | |
| 82-2 | 301366 | RIM, WHEEL | |
| 85 | TIRE | REFER TO TIRE TREAD PAGE | |
| 86 | 301565 | SPACER, SLEV .750X1.25X .50 PL | 2 |
| 87 | 52928 | KEY, SQUARE .187SQX2.25LG | 2 |
| 88 | 642 | WASHER, FLAT .755X1.31X.075 | 4 |
| 89 | 42815 | WASHER, FLAT .755X1.53X.07 | 2 |
| 90 | 36625 | RING, RETEX .57X.05TRU5133-75 | 2 |
| 91 | 40394 | HUB CAP, 1.500ID X 7/8LG | 2 |





NOTE: ALWAYS USE ORIGINAL EQUIPMENT PARTS. Use of service/replacement parts other than original equipment parts may void your warranty.

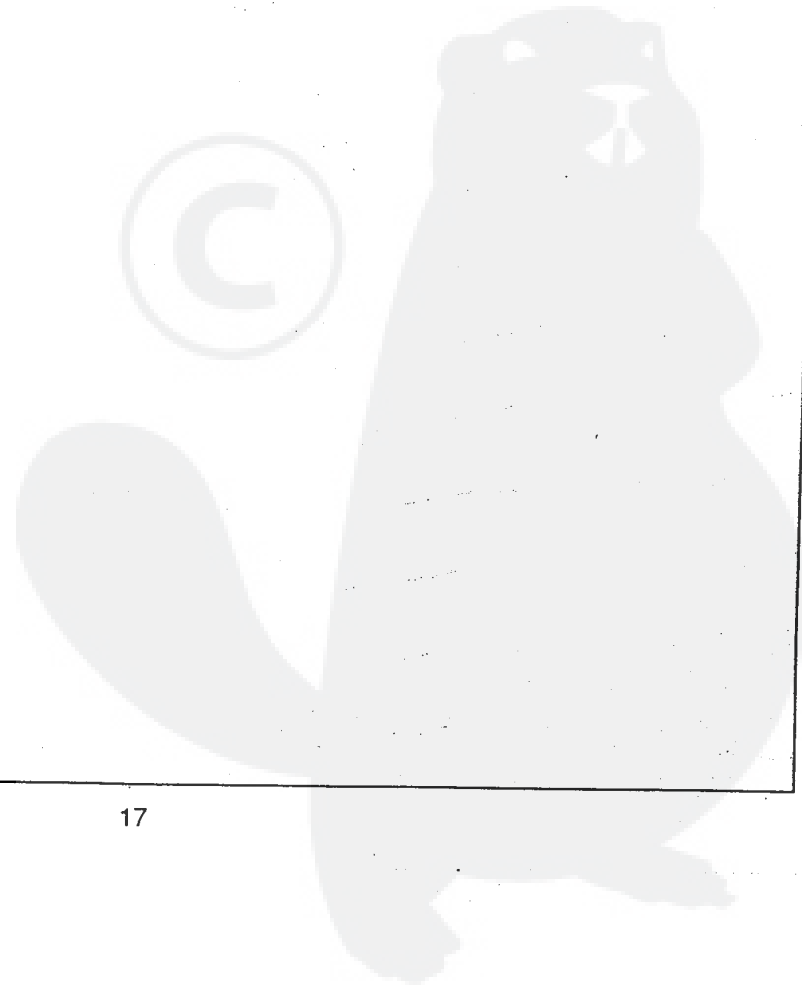
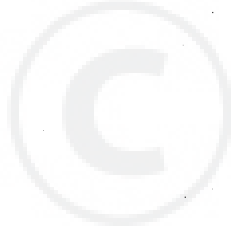
ALL UNNUMBERED ITEMS ARE INTERCHANGEABLE WITH OPPOSITE SIDE

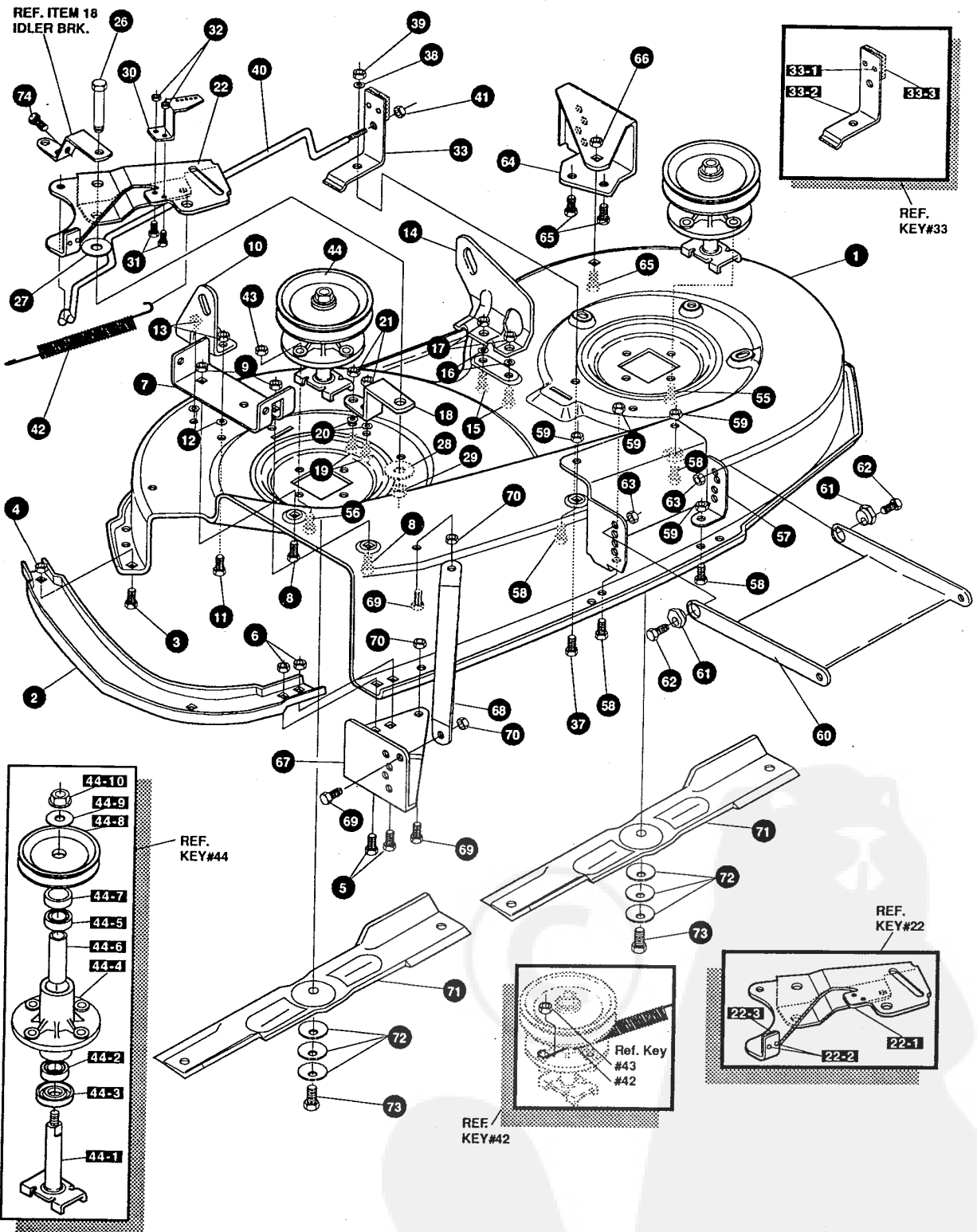
331938A

E3560-300

ENGINE & CONTROL ASSEMBLY

| KEY# | PART# | DESCRIPTION | QTY |
|------|------------|--|------|
| 1 | ENGINE | 12-12.5HP BS IC DUAL (SEE ENGINE MANUAL) | 1 |
| 2 | 50947 | SCREW, 3/8-16X1.25 WAHHTAPBLKP | 4 |
| 3 | 138489 | WASHER, EXLK .384X.69X.04 | 1 |
| 4 | 310284 | MUFFLER, ROUND 12HP 5"DIA | 1 |
| 5 | 305409 | SHIELD,MUFFLER B&S SQ. LO-TONE | 1 |
| 6 | 305407 | BOLT, .437X4.340 HSH5/16-18BL | 2 |
| 7 | 331816-853 | SHIELD,HEAT 12HP 5" MUFFLER | 1 |
| 8 | 41462 | SPACER, SLEV .328X .75X .312PM | 1 |
| 9 | 120380 | WASHER, REGSPTLK.263X.49X.07 | 1 |
| 10 | 180021 | SCREW, 1/4-20X .88 HHC | 1 |
| 11 | 310292 | SPACER, SLEV .28 X .38X3.12 | 1 |
| 12 | 189293 | SCREW, 1/4-20X3.50 HHC | 1 |
| 13 | 328028 | PULLEY,ENG 3.0D X 4.0LG X 5.0D | 1 |
| 14 | 120383 | WASHER, REGSPTLK.459X.78X.12 | 1 |
| 15 | 433146 | SCREW, 7/16-20X4.25 HHC BLK PH | 1 |
| 16 | 309853 | TANK, FUEL 1.5 WO/SENSOR CLEAR | 1 |
| 17 | 49050 | SCREW, 1/4-10X .75PHPNTAP | 4 |
| 18 | 50118 | TUBING, .25X.50X BULK GAS LINE | 13.5 |
| 19 | 57444 | TIE, CABLE BLACK NYLON 5.62L | 1 |
| 20 | 47345 | CLAMP,HOSE SCREW TYPE | 2 |
| 21 | 12501 | CAP,FUEL 2.5" THROAT | 1 |
| 22 | 315716 | THROTTLE CONTROL 17.0" CHKOMA | 1 |
| 23 | 320553 | SCREW, 10-24X.63PHPNMA CRSS | 2 |
| 24 | 271166 | NUT, #10-24 HEXKEPS | 2 |
| 25 | 300508 | KNOB,THROTTLE CONTROL GP STYLE | 1 |
| 26 | 159585 | SCREW, #8-32X .38 PHPNMA | 1 |
| 27 | 120622 | NUT, #8-32 REGHX | 1 |
| 28 | 325547 | OIL DRAIN VALVE ASSEMBLY | 1 |
| 29 | 327422 | CAP,OIL DRAIN VALVE ASM.YELLOW | 1 |



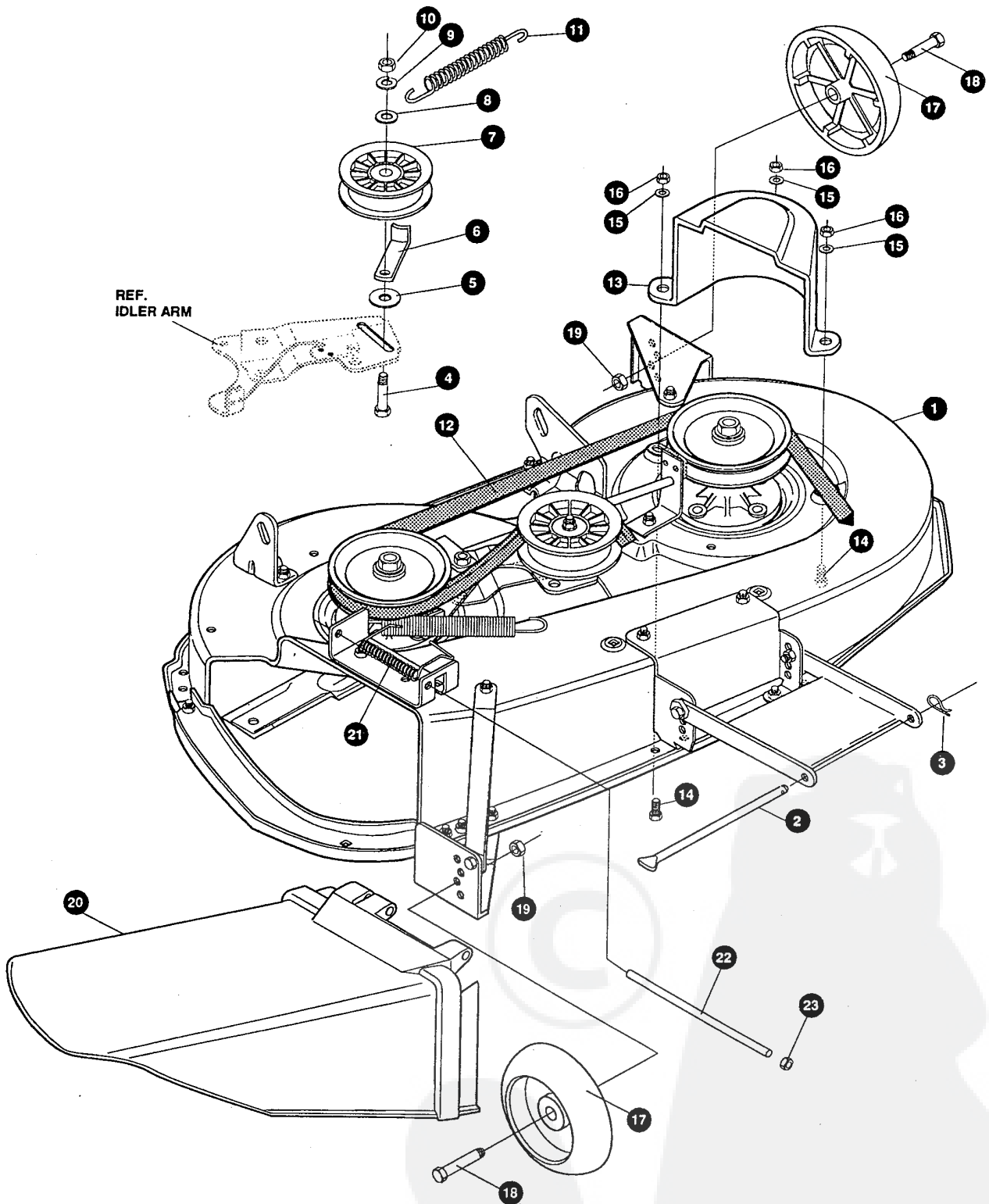


NOTE: ALWAYS USE ORIGINAL EQUIPMENT PARTS. Use of service/replacement parts other than original equipment parts may void your warranty.

ALL UNNUMBERED ITEMS ARE INTERCHANGEABLE WITH OPPOSITE SIDE

320109H

| KEY# | PART# | DEWSCRIPTON | QTY |
|-------|------------|---------------------------------------|-----|
| 1 | 325103 | 40" DECK KIT | 1 |
| 2 | 326480-853 | TOE GUARD - MULCHER | 1 |
| 3 | 180077 | SCREW, 5/16-18X .75 HHC | 1 |
| 4 | 1498 | NUT, 5/16-18 REGHEXCTRLK | 1 |
| 5 | 180077 | SCREW, 5/16-18X .75 HHC | 2 |
| 6 | 1498 | NUT, 5/16-18 REGHEXCTRLK | 2 |
| 7 | 317017 | BRACKET CHUTE MOUNT BLACK | 1 |
| 8 | 180077 | SCREW, 5/16-18X .75 HHC | 2 |
| 9 | 1498 | NUT, 5/16-18 REGHEXCTRLK | 2 |
| 10 | 313929 | LIFT BRKT, REAR RH BLK 85 | 1 |
| 11 | 180077 | SCREW, 5/16-18X .75 HHC | 2 |
| 12 | 120393 | WASHER, FLAT .344X .69X.065 | 2 |
| 13 | 1498 | NUT, 5/16-18 REGHEXCTRLK | 2 |
| 14 | 310667 | BRACKET,DECK LIFTREAR LHBLK | 1 |
| 15 | 180077 | SCREW, 5/16-18X .75 HHC | 2 |
| 16 | 120393 | WASHER, FLAT .344X .69X.065 | 2 |
| 17 | 1498 | NUT, 5/16-18 REGHEXCTRLK | 2 |
| 18 | 326893-853 | BRACE IDLER SUPPORT 40",43" | 1 |
| 19 | 180077 | SCREW, 5/16-18X .75 HHC | 2 |
| 20 | 120393 | WASHER, FLAT .344X .69X.065 | 2 |
| 21 | 44108 | NUT, 5/16-18 HWDFLCTRLK | 2 |
| 22 | 320576-853 | IDLER ARM ASSEMBLY | 1 |
| 22-1 | 322116-853 | ARM IDLER 40/43"DECK | 1 |
| 22-2 | 41601 | RIVET, OVSET .187DIA X .50LG ST | 2 |
| 22-3 | 306973 | BRAKE PAD - HARD - 232AF | 1 |
| 26 | 304420 | BOLT, .500X2.15 HSH | 1 |
| 27 | 996307 | WASHER, FLAT .391X1.00X.209 | 1 |
| 28 | 996416 | WASHER, FLAT .391X1.00X.125 | 2 |
| 29 | 45171 | NUT, 3/8-16 HWDFL WHIZ-LOCK | 1 |
| 30 | 326249-853 | BRACKET, EXTENSION IDLER | 1 |
| 31 | 180077 | SCREW, 5/16-18X .75 HHC | 2 |
| 32 | 1498 | NUT, 5/16-18 REGHEXCTRLK | 2 |
| 33 | 321828 | BLADE BRAKE ASSY. | 1 |
| 33-1 | 135624 | RIVET, TRSET .185DIA X .41LG ST | 2 |
| 33-2 | 304119-853 | BRAKE ARM | 1 |
| 33-3 | 306973 | BRAKE PAD - HARD - 232AF | 1 |
| 37 | 180077 | SCREW, 5/16-18X .75 HHC | 1 |
| 38 | 120393 | WASHER, FLAT .344X .69X.065 | 1 |
| 39 | 1498 | NUT, 5/16-18 REGHEXCTRLK | 1 |
| 40 | 302714 | ROD, BRAKE | 1 |
| 41 | 1502 | NUT, 1/4-20 REGHEXCTRLK | 1 |
| 42 | 35410 | SPRING .071 X .62 X 4.37 | 1 |
| 43 | 1498 | NUT, 5/16-18 REGHEXCTRLK | 1 |
| 44 | 56424-853 | QUILL ASSY, 36/39/40/43 | 2 |
| 44-1 | 56425 | SHAFT/SADDLE 36" | 1 |
| 44-2 | 49562 | BRNG, BALL 6203-2AA(SEALS)-C3 | 1 |
| 44-3 | 50616 | DUST SHIELD | 1 |
| 44-4 | 55547 | QUILL CASTING (1046) | 1 |
| 44-5 | 49562 | BRNG, BALL 6203-2AA(SEALS)-C3 | 1 |
| 44-6 | 50818 | SPACER, SLEV .669X .88X3.797 | 1 |
| 44-7 | 51449 | SPACER, SLEV .672X .93X .438PM | 1 |
| 44-8 | 313898 | PULLEY ASSY | 1 |
| 44-9 | 56365 | WASHER, SPECIAL QUILL | 1 |
| 44-10 | 1282 | NUT, 7/16-20 WDFLLK | 1 |
| 55 | 35498 | SCREW, 5/16-18X .75 WAHHTAP | 7 |
| 56 | 300345 | SCREW, 5/16-18X1.38 WAHHTAP | 1 |
| 57 | 318445 | BRACKET,40 LF FRONT DECK | 1 |
| 58 | 180077 | SCREW, 5/16-18X .75 HHC | 4 |
| 59 | 1498 | NUT, 5/16-18 REGHEXCTRLK | 4 |
| 60 | 58305-853 | BRACKET, LINK DECK FRONT | 1 |
| 61 | 58247 | NUT, ADJUST | 2 |
| 62 | 180079 | SCREW, 5/16-18X1.00 HHC | 2 |
| 63 | 1498 | NUT, 5/16-18 REGHEXCTRLK | 2 |
| 64 | 317041 | BRKT, GAGE WHEEL LH BLACK | 1 |
| 65 | 180077 | SCREW, 5/16-18X .75 HHC | 3 |
| 66 | 1498 | NUT, 5/16-18 REGHEXCTRLK | 3 |
| 67 | 322464-853 | BRACKET,GAGE WHEEL R.H. FRNT | 1 |
| 68 | 314282-853 | BRACKET,STABILIZER | 1 |
| 69 | 180077 | SCREW, 5/16-18X .75 HHC | 3 |
| 70 | 1498 | NUT, 5/16-18 REGHEXCTRLK | 3 |
| 71 | 313316 | BLADE,40" STD-LIFT 20.32BLK | 2 |
| 72 | 2483 | WASHER, 39IDX1.25DX.07 BELLVIL | 6 |
| 73 | 39573 | SCREW, 3/8-24X1.00 NYLHHC | 2 |
| 74 | 308231 | SCREW, 1/4-20X1.25 HHWATAP | 1 |



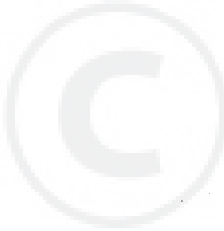
NOTE: ALWAYS USE ORIGINAL EQUIPMENT PARTS. Use of service/replacement parts other than original equipment parts may void your warranty.

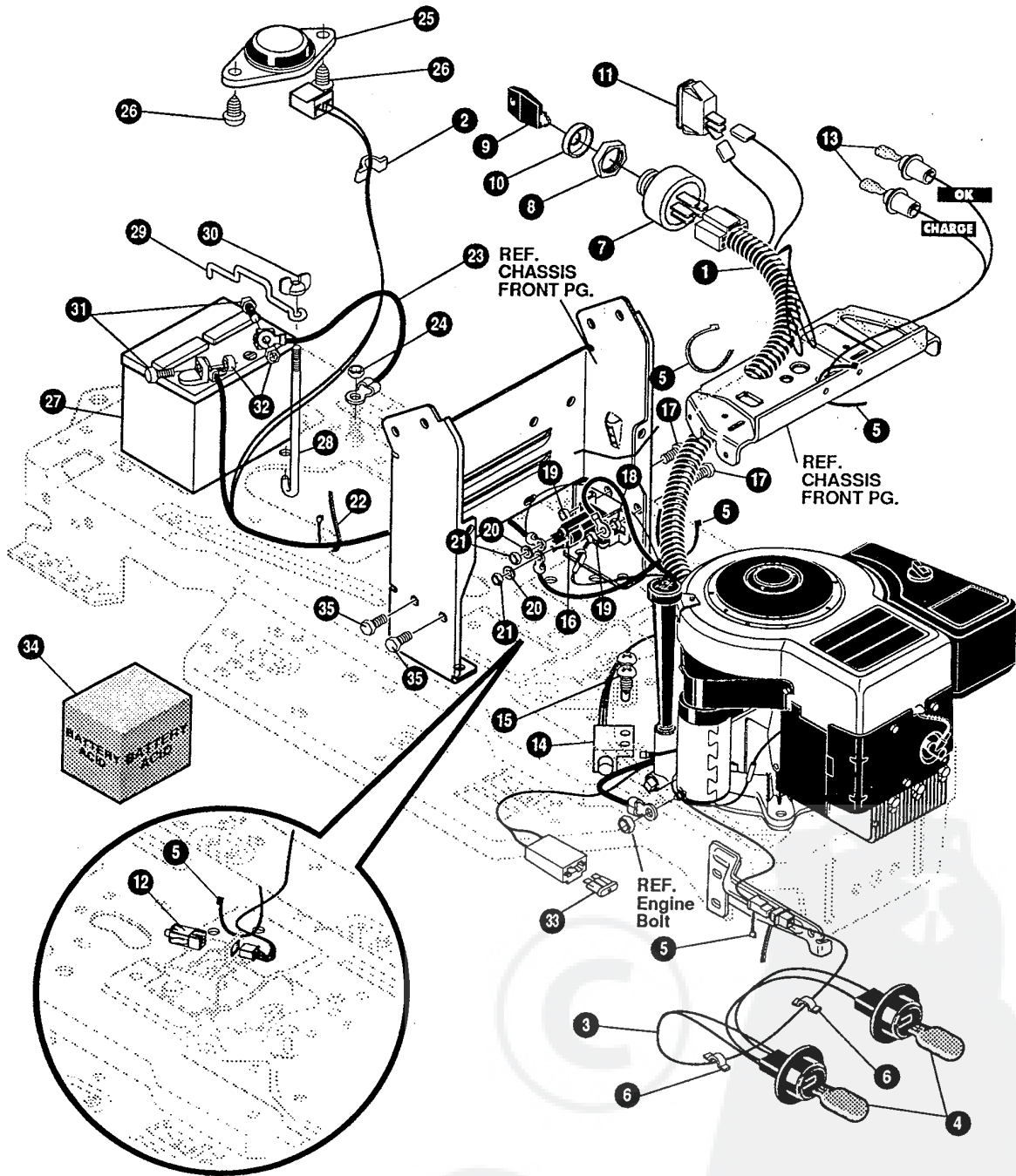
ALL UNNUMBERED ITEMS ARE INTERCHANGEABLE WITH OPPOSITE SIDE

325684A

| KEY# | PART# | DESCRIPTION | QTY |
|------|--------|---|-----|
| 1 | * | ASM. 40"SUS DECK EXPORT | 1 |
| 2 | 58306 | ROD, DECK HITCH | 1 |
| 3 | 8260 | PIN, HAIR .091 DIA X 1.66LG | 1 |
| 4 | 57325 | BOLT, 3/8-16 X 2.00 CARRSN | 1 |
| 5 | 25210 | WASHER, FLAT .386 X 1.25 X .09HT | 1 |
| 6 | 1346 | RETAINER, BELT | 1 |
| 7 | 310326 | PULLEY, IDLER BFF 4.00 WIDE FL | 1 |
| 8 | 996307 | WASHER, FLAT .391 X 1.00 X .209 | 1 |
| 9 | 120382 | WASHER, REGSPTLK.393 X .68 X .10 | 1 |
| 10 | 120377 | NUT, 3/8-16 REGHX | 1 |
| 11 | 300473 | SPRING, TENSION 7.52LG+17LB/IN | 1 |
| 12 | 319005 | BELT, V 5L 81.00 DECK 40 LF | 1 |
| 13 | 325234 | GUARD, BELT LH PLASTIC EXPORT | 1 |
| 14 | 180075 | SCREW, 5/16-18 X .63 HHC | 3 |
| 15 | 120393 | WASHER, FLAT .344 X .69 X .065 | 3 |
| 16 | 1498 | NUT, 5/16-18 REGHEXCTRLK | 3 |
| 17 | 302611 | GAUGE WHEEL, EURO 6.00 ODX 1.38WD | 2 |
| 18 | 23763 | BOLT, .500 X 1.390 HSSH 3/8-16 | 2 |
| 19 | 1499 | NUT, 3/8-16 REGHXCTRLK | 2 |
| 20 | 304422 | CHUTE DEFLECTOR 40", 42" & 43" | 1 |
| 21 | 314975 | SPRING, TORSION CHUTE DEFLECTOR | 1 |
| 22 | 304424 | ROD, PIVOT DECK .312 DX 7.25 | 1 |
| 23 | 3535 | NUT, PUSH ON CAP .312 OD | 1 |

* ORDER INDIVIDUAL PARTS.





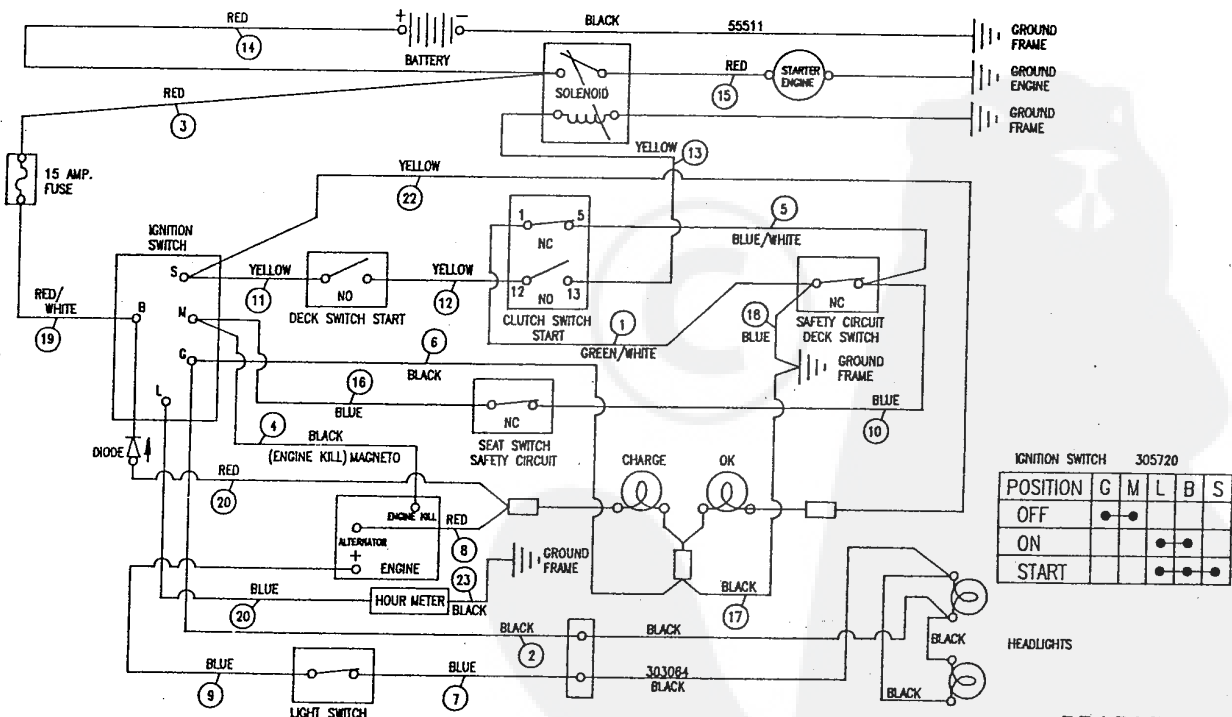
NOTE: ALWAYS USE ORIGINAL EQUIPMENT PARTS. Use of service/replacement parts other than original equipment parts may void your warranty.

ALL UNNUMBERED ITEMS ARE INTERCHANGEABLE WITH OPPOSITE SIDE

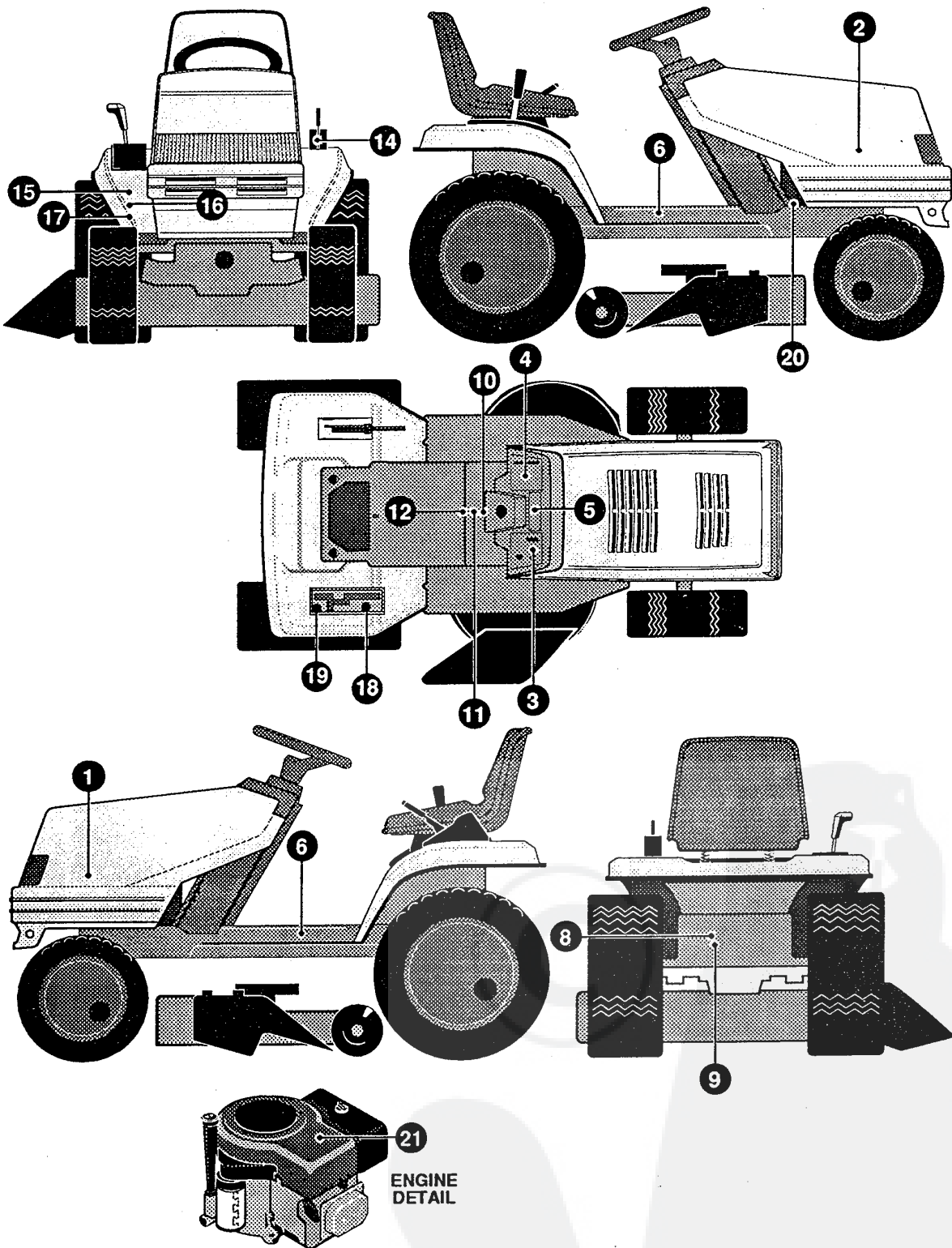
332732B

| KEY# | PART# | DESCRIPTION | QTY |
|------|--------|---------------------------------------|-----|
| 1 | 331395 | HARNES 12.5BS, EUR01&2, LF, SUS | 1 |
| 2 | 41482 | PRESS CLIP, 1.380LG .255ID | 1 |
| 3 | 303064 | ASSY, LIGHT WIRE-1/4 TURN | 1 |
| 4 | 52572 | BULB, HEADLAMP | 2 |
| 5 | 57444 | TIE, CABLE BLACK NYLON 5.62L | 5 |
| 6 | 41482 | PRESS CLIP, 1.380LG .255ID | 3 |
| 7 | 327355 | SWITCH-IGN.(AFTER FIRE) 3 POSN | 1 |
| 8 | 327352 | NUT, 5/8-8ACME DELTA FOR BOOT | 1 |
| 9 | 327350 | KEY,IGNITION GENERIC DELTA | 2 |
| 10 | 300194 | BOOT, IGN SWITCH | 1 |
| 11 | 328826 | LIGHT SWITCH PANEL MNT | 1 |
| 12 | 320082 | SWITCH,DOUBLE POLE NO/NC GRAY | 1 |
| 13 | 57769 | BULB, INDICATOR | 2 |
| 14 | 57476 | SWITCH,SCR MNT DP NC NO BLK | 1 |
| 15 | 57220 | SCREW, #12 X .50 PHPNHTAP BLK | 2 |
| 16 | 53716 | SOLENOID | 1 |
| 17 | 187745 | SCREW, 1/4-20X .75 HXSEMMA | 2 |
| 18 | 1502 | NUT, 1/4-20 REGHEXCTRLK | 2 |
| 19 | 271172 | NUT, 1/4-20 REGHEXKEPS | 1 |
| 20 | 138485 | WASHER, EXLK .320X.61X.03 | 2 |
| 21 | 120368 | NUT, 5/16-24 REGHEX | 2 |
| 22 | 57444 | TIE, CABLE BLACK NYLON 5.62L | 1 |
| 23 | 55511 | WIRE, GROUND, 12.5" | 1 |
| 24 | 271184 | NUT, 5/16-18 HEXKEPS | 1 |
| 25 | 57547 | SWITCH, SEAT | 1 |
| 26 | 160505 | SCREW, 1/4-20X .38PHPNHMA | 2 |
| 27 | 302257 | BATTERY, 12V | 1 |
| 28 | 57551 | ROD, BATTERY | 1 |
| 29 | 57552 | ROD, BATTERY, TOP | 1 |
| 30 | 325232 | NUT, WING 1/4-20 NYLON | 1 |
| 31 | 180020 | SCREW, 1/4-20X .75 HHC | 2 |
| 32 | 271172 | NUT, 1/4-20 REGHEXKEPS | 2 |
| 34 | ^ | BATTERY ACID PACK, 80 OZ | 1 |
| 35 | 311087 | FASTENER, RATCHET GREY 630 | 2 |

^ CAN BE PURCHASED LOCALLY



331395

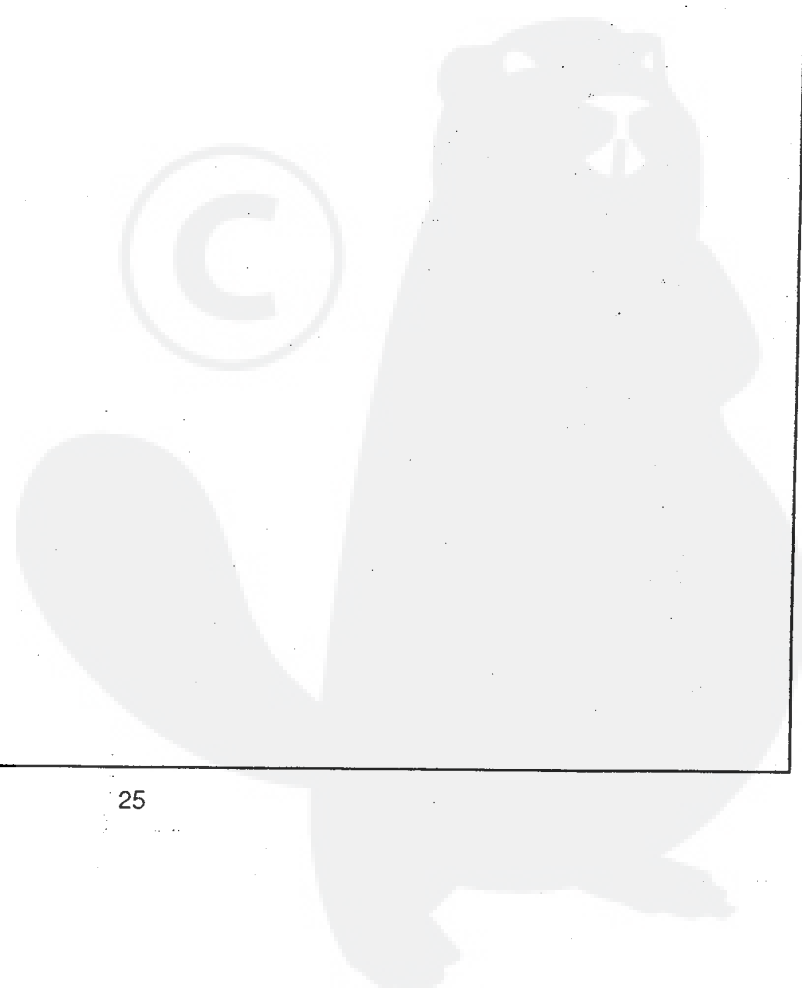
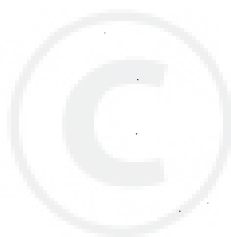


NOTE: ALWAYS USE ORIGINAL EQUIPMENT PARTS. Use of service/replacement parts other than original equipment parts may void your warranty.

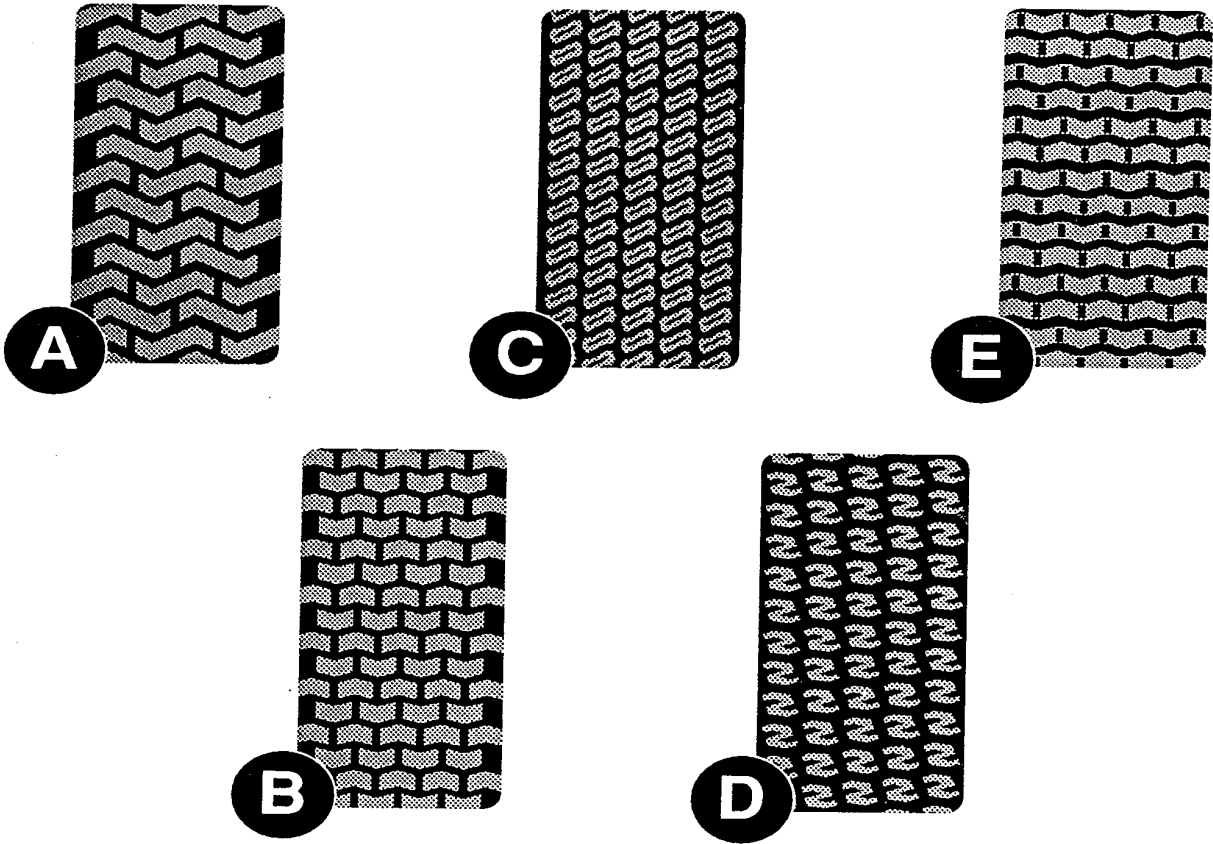
ALL UNNUMBERED ITEMS ARE INTERCHANGEABLE WITH OPPOSITE SIDE

332831B

| KEY # | PART # | DESCRIPTION | QTY |
|-------|--------|---------------------------------------|-----|
| 1 | 402387 | DECAL, STATESMAN HOOD | 1 |
| 2 | 402388 | DECAL, STATESMAN HOOD | 1 |
| 3 | 332805 | DECAL DASH RH ISO ENG N/HR,CHK | 1 |
| 4 | 315765 | DECAL DASH LH ISO CHOKE-O-MATI | 1 |
| 5 | 324934 | DECAL DASH,ALL SYS,CHRG DIODE | 1 |
| 6 | 402413 | NAMEPLATE 12.5/38 WHT HOTSTAMP | 2 |
| 8 | 318010 | DECAL,TUV GS | 1 |
| 9 | 332359 | DECAL, CERT. DE CONFORMITE 1994 | 1 |
| 10 | 307383 | DECAL, INSTR. CONSOLE TOP ENGL | 1 |
| 11 | 69524 | DECAL, INSTRUCT CONSOLE TOP GER | 1 |
| 12 | 69525 | DECAL, INSTRUCT CONSOLE TOP FR | 1 |
| 14 | 402214 | DECAL, HEIGHT ADJUST | 1 |
| 15 | 310553 | DECAL, DANGER ENGLISH | 1 |
| 16 | 68902 | DECAL, WARNING, FRENCH/GERMAN | 1 |
| 17 | 305770 | DECAL, CAUTION TRIANGLE EUROPE | 1 |
| 18 | 331007 | DECAL SHIFTER POSITION | 1 |
| 19 | 311394 | DECAL SHIFT REV/NEUTRAL | 1 |
| 20 | 68903 | DECAL, BRAKE/CLUTCH ISO | 1 |
| 21 | 402456 | DECAL, 12.5 HP BS PWB GOLD | 1 |



TREAD PATTERNS

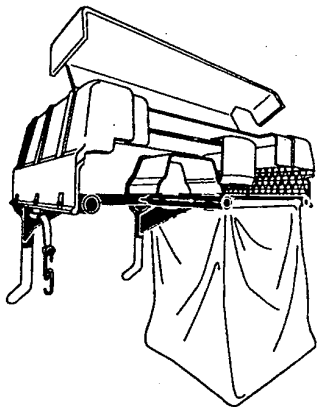


| TIRE SIZE | "A" | "B" | "C" | "D" | "E" |
|-----------------|--------|--------|--------|--------|--------|
| 11 X 4.00 - 5 | 42295 | 319679 | | | |
| 13 X 5.00 - 6 | 41060 | 319680 | | | |
| 15 X 6.00 - 6 | 39830 | 316702 | 301140 | 313952 | |
| 16 X 4.80 - 8 | | 305035 | | | |
| 16 X 6.50 - 8 | 41081 | 319682 | | 314539 | |
| 18 X 6.50 - 8 | | 42091 | | | |
| 18 X 8.50 - 8 | 319683 | 317400 | | | |
| 18 X 9.50 - 8 | 41106 | 316701 | | 313950 | |
| 20 X 8.00 - 8 | 319685 | 319684 | 57164 | 314584 | 331606 |
| 20 X 10.00 - 8 | 58276 | 319686 | | 313654 | |
| 20 X 10.00 - 10 | 55893 | 319687 | | | |
| 23 X 9.50 - 12 | 53655 | 319690 | 319689 | 314370 | |

ACCESSORIES

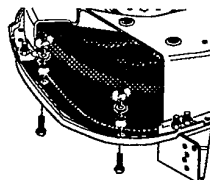
Contact the dealer where your tractor was purchased for the available accessories. If you are unable to contact the dealer, write to the address on the front cover of this manual.

Large Lawn Tractor

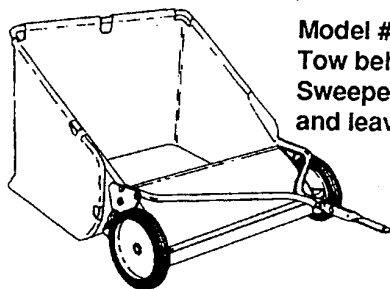
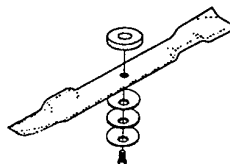


Model # 5708-34
Grass Collector for
40, 42, 43" decks

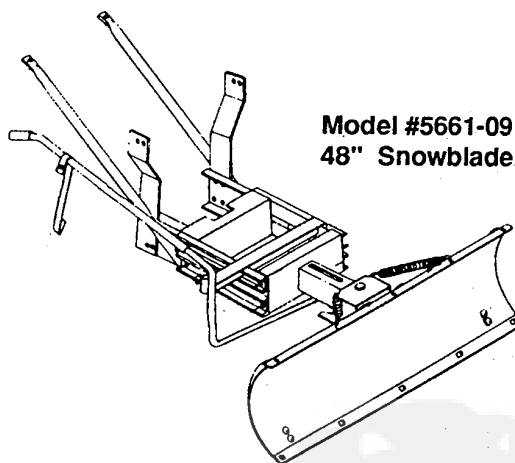
For heavy duty grass
collection order Model
#5709-10 Air Assist



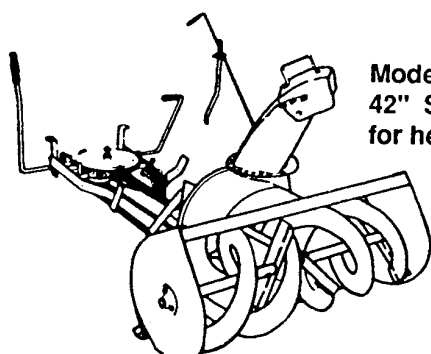
5717-00
Mulching Kit (42/43" Deck)
5716-00
Mulching Kit (40" Deck)



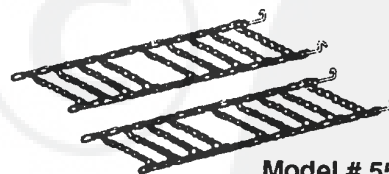
Model # 5648-16
Tow behind Lawn
Sweeper for grass
and leaves



Model #5661-09
48" Snowblade



Model #5705-06
42" Snowthrower
for heavy snowfall



Model # 5585-00
Tire Chains - 20" x 8.0" tires
Model # 5706-00
Tire Chains - 20" x 10.0" tires

OTHER ACCESSORIES

| Model | Description |
|---------|---|
| 5672-01 | Wheel Weights - Front - 1 pr. w/mtg. hdw. - Fits 15" tires |
| 5673-02 | Wheel Weights - Rear - 1 pr. w/mtg. hdw. - Fits 18" & 20" tires |
| 316608 | 43" High Lift Blade for Bagging or Side Discharge (Requires 2) |
| 325762 | 43" Mulching Blade (Requires 2) |