

EUROGARDEN

PARTS MANUAL

Lawn Tractors



Model E3560-310



SAFETY RULES

THESE INSTRUCTIONS ARE FOR YOUR PROTECTION. PLEASE READ THEM CAREFULLY.



IMPORTANT

THIS CUTTING MACHINE IS CAPABLE OF AMPUTATING HANDS AND FEET AND THROWING OBJECTS. FAILURE TO OBSERVE THE FOLLOWING SAFETY INSTRUCTIONS COULD RESULT IN SERIOUS INJURY OR DEATH.

I. GENERAL OPERATION:

- Know controls and how to stop quickly.
- Read, understand, and follow all instructions in the manual and on the machine before starting.
- Only allow responsible adults, who are familiar with instructions, to operate the machine.
- Wear safety glasses or eye shields when assembling or operating the machine.
- Do not operate machine when barefooted. Always wear substantial footwear, preferably steel-toed shoes.
- Do not wear loose fitting clothing that could get caught in moving parts.
- Clear the area of objects such as rocks, toys, wire, etc., which could be picked up and thrown by the blade(s).
- Be sure the area is clear of other people before mowing. Stop machine if anyone enters the area.
- Never carry passengers.
- Do not mow in reverse unless absolutely necessary. Always look down and behind before and while backing.
- Be aware of the mower discharge direction and do not point it at anyone. Do not operate the mower without either the entire grass catcher or the guard in place.
- Slow down before turning.
- Never leave a running machine unattended. Always turn off blades, set parking brake, stop engine, and remove keys before dismounting.
- Turn off blade(s) when not mowing.
- Stop engine before removing grass catcher or unclogging chute.
- Mow only in daylight or good artificial light.
- Do not operate the machine while under the influence of alcohol or drugs.
- Watch for traffic when operating near or crossing roadways.
- Use care when mowing around a fixed object to prevent the blade(s) from striking it. Never deliberately run over any foreign object.
- Use extra care when loading or unloading the machine into a trailer or truck.
- Use care when pulling loads or using heavy equipment.
 - a. Use only approved drawbar hitch points.
 - b. Limit loads to those that you can safely control.
 - c. Do not turn sharply. Use care when backing.
 - d. Use counterweight(s), wheel weight or tire chains when suggested in attachment(s) instructions.

II. SLOPE OPERATION:

Slopes are a major factor related to loss-of-control and tip-over accidents, which can result in severe injury or death. *All slopes require extra caution.* If you cannot back up the slope or if you feel uneasy on it, do not mow it.

DO

- Mow up and down slopes, not across.
- Remove obstacles such as rocks, tree limbs, etc.
- Watch for holes, ruts, or bumps. Uneven terrain could overturn the machine. *Tall grass can hide obstacles.*
- Use slow speed. Choose a low gear so that you will not have to stop or shift while on the slope.
- Follow the manufacturer's recommendations for wheel weights or counterweights to improve stability.
- Use extra care with grass catchers or other attachments. These can change the stability of the machine.
- Keep all movement on the slopes *slow* and *gradual*. Do not make sudden changes in speed or direction.
- Avoid starting or stopping on a slope. If tires lose traction, turn off the blade(s) and proceed slowly *straight* down the slope.

DO NOT

- Do not turn on slopes unless necessary, and then slowly and gradually downhill, if possible.
- Do not mow near drop-offs, ditches or embankments. The

mower could suddenly turn over if a wheel is over the edge of a cliff or ditch, or if an edge caves in.

- Do not mow on wet grass. Reduced traction could cause sliding.
- Do not try to stabilize the machine by putting your foot on the ground.
- Do not use grass catcher on steep slopes.

III. CHILDREN:

Tragic accidents can occur if the operator is not alert to the presence of children. Children are often attracted to the machine and the mowing activity. *Never* assume that children will remain where you last saw them.

- Keep children out of the mowing area and under the watchful care of another responsible adult.
- Be alert and turn machine off if children enter the area.
- Before and when backing, look behind and *down* for small children.
- Never carry children. They may fall off and be seriously injured or interfere with safe machine operation.
- Never allow children to operate the machine.
- Use extra care when approaching blind corners, shrubs, trees, or other objects that may obscure vision.

IV. SERVICE:

- Use extra care in handling gasoline and other fuels. They are flammable and vapors are explosive.
 - a. Use only an approved container.
 - b. Never remove gas cap or add fuel with the engine running. Allow engine to cool before refueling. Do not smoke.
 - c. Never refuel the machine indoors.
 - d. Never store the machine or fuel container inside where there is an open flame, such as in a water heater.
- Check fuel supply before each use allowing space for expansion as the heat of the engine and/or sun can cause gasoline to expand and overflow the tank.
- Use extra care when handling battery acid. Acid contact with skin may cause severe burns. Eye contact may cause blindness.
- Use extra care when servicing the battery. Explosive gas is produced in the battery. Do not service the battery while smoking or near an open spark or flame. This may cause the battery to explode causing serious injury.
- Never run a machine inside a closed area. Exhaust fumes contain CARBON MONOXIDE, an ODORLESS and DEADLY GAS.
- Keep nuts and bolts, especially blade attachment bolts, tight and keep equipment in good condition.
- Never tamper with safety devices. Check their operation regularly.
- Do not change the engine governor settings or overspeed engine.
- Reduce fire hazards. Keep machine free of grass, leaves, or other debris build-up. Clean up oil or fuel spillage. Allow machine to cool before storing.
- Stop and inspect the equipment if you strike an object. Repair, if necessary, before restarting.
- Never make adjustments or repairs with the engine running.
- Grass catcher components are subject to wear, damage, and deterioration, which could expose moving parts or allow objects to be thrown. Frequently check components and replace with manufacturer's recommended parts, when necessary.
- Mower blade(s) are sharp and can cut. Wrap the blade(s) or wear gloves, and use extra caution when servicing them.
- Check brake operation frequently. Adjust and service as required.



LOOK FOR THIS SYMBOL TO POINT OUT IMPORTANT SAFETY PRECAUTIONS. IT MEANS-- ATTENTION!!! BECOME ALERT!!! YOUR SAFETY IS INVOLVED.

Record the following information about your unit so that you will be able to provide it in case of loss or theft.

MODEL NUMBER: - (Enter complete 8 digit number from model plate on unit)

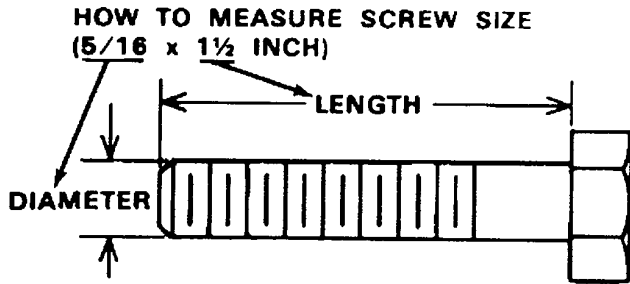
PURCHASE DATE: ___ / ___ / ___ CODE NO.: _____ SERIAL NO.: _____

DEALER'S NAME AND ADDRESS: _____

CITY: _____ STATE: _____ TELEPHONE: _____

TOOLS REQUIRED FOR ASSEMBLY

- 2 - 7/16 inch Wrenches (or adjustable wrench)
- 1 - 1/2 inch Wrench (or adjustable wrench)
- 1 - Small Phillips Screwdriver with a 1/4 inch shank
- 1 - Hammer



DANGER

This lawn tractor can be dangerous if carelessly used.

Read your Operator's Manual thoroughly before operating your lawn tractor.

Always wear safety glasses or eye shields while assembling or operating your lawn tractor.

DO NOT carry passengers at any time.

Keep your hands, feet, hair and loose clothing away from the discharge area, the underside of the mower deck or any moving parts while the engine is running.

DO NOT allow children or young teenagers to operate or be near your lawn tractor while it is operating.

ALWAYS GIVE THE FOLLOWING INFORMATION WHEN ORDERING REPAIR PARTS:

1. The PART NUMBER; 2. The PART NAME; 3. QUANTITY DESIRED; 4. The MODEL NUMBER (As shown on Model Plate).

SEND PART ORDERS AS PER INSTRUCTIONS ON THE FRONT PAGE.

DO NOT USE KEY NUMBERS WHEN ORDERING REPAIR PARTS, ALWAYS USE PART NUMBERS.

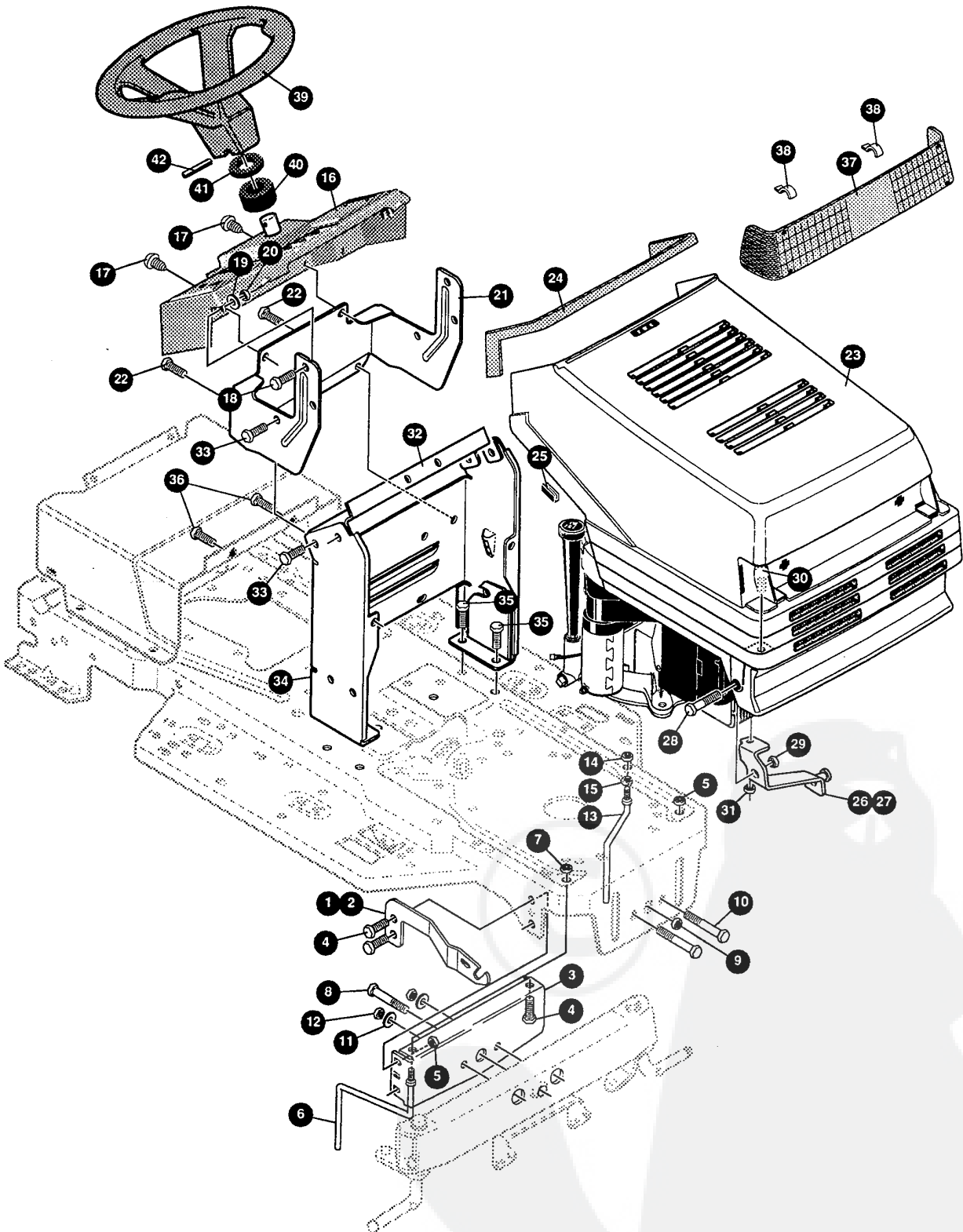
All replacement parts will be supplied in current production colors or in a neutral color.

A handling fee is applicable to small parts orders.

YOUR UNIT IS RIGHT HAND (RH) OR LEFT HAND (LH) AS YOU STAND BEHIND IT.

E3560-310

REPAIR PARTS



NOTE: ALWAYS USE ORIGINAL EQUIPMENT PARTS. Use of service/replacement parts other than original equipment parts may void your warranty.

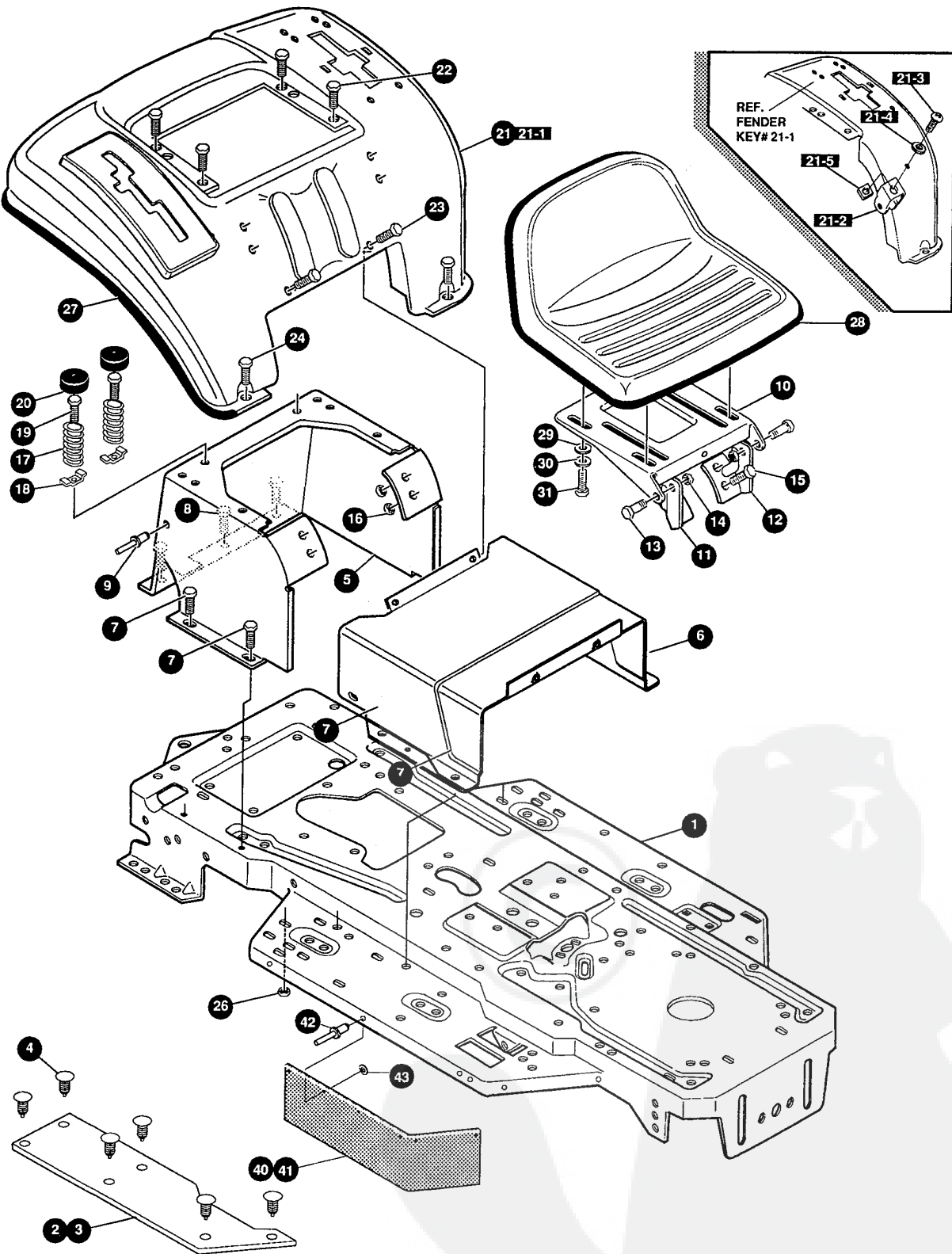
ALL UNNUMBERED ITEMS ARE INTERCHANGEABLE WITH OPPOSITE SIDE

329883 A

KEY#	PART#	DESCRIPTION	QTY
1	330815-853	BRACKET,HOOD RH EURO I & II	1
2	330816-853	BRACKET,HOOD LH EURO I & II	1
3	313541-853	BRACKET, FRONT AXLE	1
4	56030	SCREW, 5/16-18X.75WDFLLK	5
5	55273	NUT, 5/16-18 HXWDFLLK	5
6	300440	GUIDE, BELT, RIDER	1
7	1498	NUT, 5/16-18 REGHEXCTRLK	1
8	308207	BOLT, .625X2.18 HSH 1/2-13	1
9	309008	NUT, 1/2-13 HEXJAM CTRLK	1
10	180138	SCREW, 3/8-16X3.00 HHC	2
11	2483	WASHER, 3/8IDX1.25DX.07 BELLVIL	2
12	1499	NUT, 3/8-16 REGHXCTRLK	2
13	300635	GUIDE,BELT SHORT 15" WHEEL	1
14	124824	NUT, 5/16-18 HEXJAM	1
15	271190	NUT, 3/8-16 HEXKEPS	1
16	331135	DASH,SHORT H16LF WO/L GREY630	1
17	318304	SCREW, 1/4-14X.75PHPNHDTAP BLK	2
18	180020	SCREW, 1/4-20X .75 HHC	2
19	120392	WASHER, FLAT .281X .63X.065	2
20	1502	NUT, 1/4-20 REGHEXCTRLK	2
21	330807-830	COVER,DASH EURO I & II LF	1
22	318304	SCREW, 1/4-14X.75PHPNHDTAP BLK	2
23	304377	HOOD,EURO H-16 LT MOLD GREY861	1
24	12675	TRIM PIECE PLASTIC GREY861/630	1
25	306822	CLIP,U-TYPE TINN C27637-014-4	2
26	331068-853	BRACKET,HOOD RH EURO I WELD	1
27	331069-853	BRACKET,HOOD LH EURO I WELD	1
28	313680	BOLT, .500X .182 HSH5/16-18	2
29	1498	NUT, 5/16-18 REGHEXCTRLK	2
30	180079	SCREW, 5/16-18X1.00 HHC	2
31	1498	NUT, 5/16-18 REGHEXCTRLK	2
32	324909-853	SUPPORT,STEERING/PTO LF	1
33	40886	SCREW, 1/4-20X .38 WAHHTAP	4
34	324908	ASSY,DASH,TOWER WALKTHRU LF	1
35	35498	SCREW, 5/16-18X .75 WAHHTAP	4
36	995346	SCREW, 1/4-20X .50 WAHHTAP	2
37	304079	LENS HEADLIGHT ERO LT SMOKE	1
38	41482	PRESS CLIP,1.380LG .255ID	2
39	330510	STEERING WHEEL	1
40	331494	SPACER,STEERING SHAFT LF	1
41	301413	SPACER, STEERING SHAFT	1
42	456378	PIN, SPRING.250DIAx2.00LG HVPL	1
43	333244	PARTS MANUAL	1
44	333258	OPERATOR'S MANUAL (ENGLISH)	1
45	333259	OPERATOR'S MANUAL (FRENCH)	1
46	333260	OPERATOR'S MANUAL (GERMAN)	1
47	327627	GRASS CATCHER MANUAL	1
48	328195	AIR ASSIST MANUAL	1

E3560-310

REPAIR PARTS



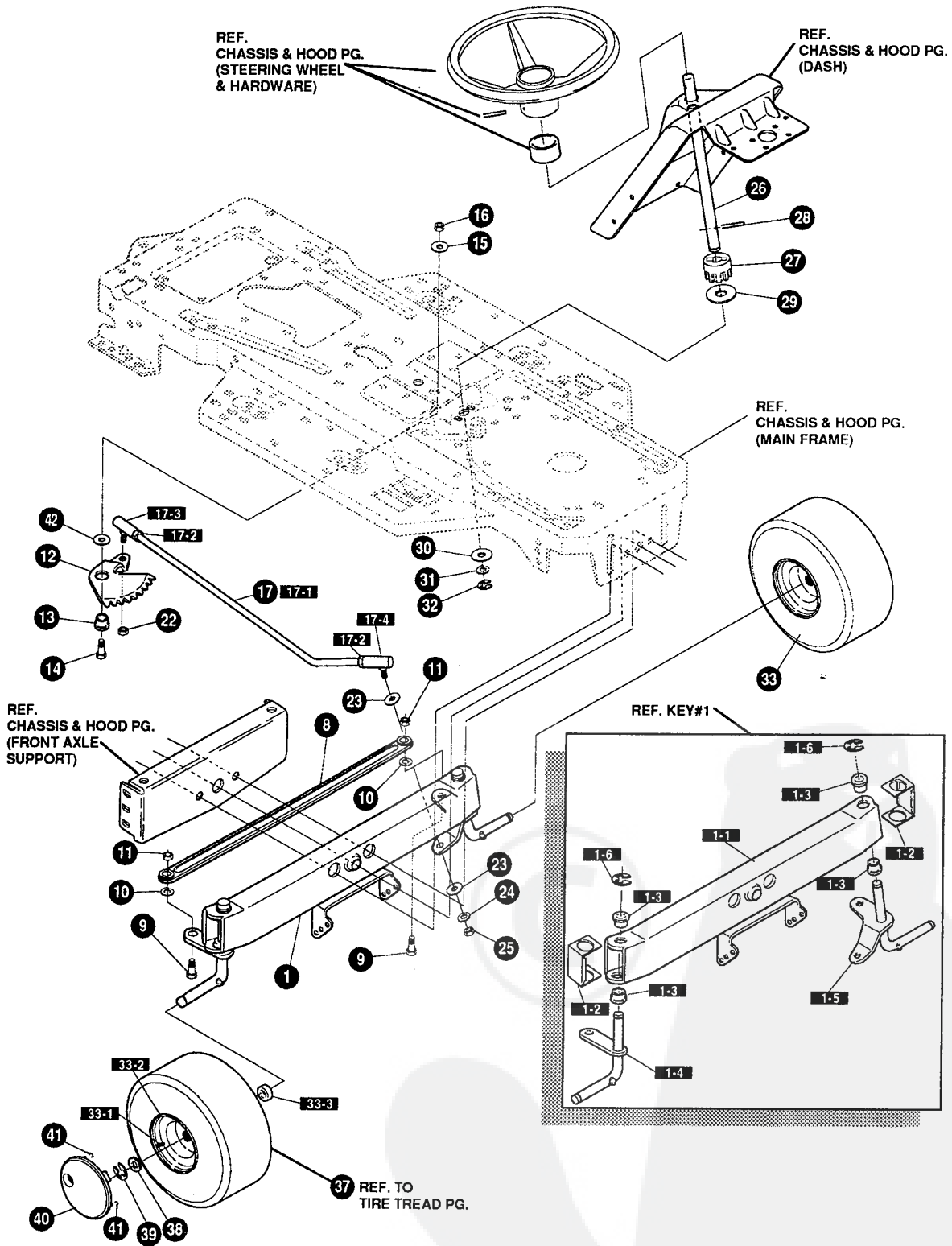
NOTE: ALWAYS USE ORIGINAL EQUIPMENT PARTS. Use of service/replacement parts other than original equipment parts may void your warranty.

ALL UNNUMBERED ITEMS ARE INTERCHANGEABLE WITH OPPOSITE SIDE

332777 A

E3560-310**CHASSIS & HOOD ASSEMBLY**

KEY#	PART#	DESCRIPTION	QTY
1	326579-830	FRAME,LF DRILLED P920/F4360	1
2	310005	FOOT PAD, LH 22.12LG DYNA F-5	1
3	310006	FOOT PAD, RH 22.12LG DYNA F-5	1
4	309235	FASTENER, RATCHET BLACK	12
5	324912-830	SEAT/FNDR.SUPPORT WALK-THRU	1
6	330865-830	CONSOLE,WALK-THRU NO SLT.LF	1
7	995346	SCREW, 1/4-20X .50 WAHHTAP	10
8	35497	SCREW, 5/16-18X .50 WAHHTAP	2
9	46763	RIVET, POP .187DIA X .450LG ST	3
10	58367-830	PLATE,SEAT F5 SF,LF	1
11	325053-830	BRACKET SEAT WALK-THRU RH	1
12	325054-830	BRACKET SEAT WALK-THRU LH	1
13	20507	BOLT, .437X .156 HSH 5/16-18	2
14	1498	NUT, 5/16-18 REGHEXCTRLK	2
15	48901	SCREW, 5/16-18X .63WAHHC	4
16	1498	NUT, 5/16-18 REGHEXCTRLK	4
17	57153	SPRING,SEAT 2.63LG,1.49OD BLK	2
18	1341	CLAMP, SPRG 1.17"ID	2
19	44811	SCREW, 1/4-20X .75 WAHHTAP	2
20	56907	COVER,SEAT SPRING 1.5ID X 1.0LG	2
21	^	ASM.FNDR.F5 WALKTHRU LF SUS	1
21-1	332188-830	FENDER,WALK-THRU,SOF,SUS,LF	1
21-2	9239	CLEVIS	1
21-3	439455	SCREW, 5/16-18X .56PHPNMA BKPH	1
21-4	301551	WASHER, .344ID X 1.50DX .09 CU ZN	1
21-5	120373	NUT, 5/16-18 SQ	1
22	995346	SCREW, 1/4-20X .50 WAHHTAP	4
23	35497	SCREW, 5/16-18X .50 WAHHTAP	2
24	126358	BOLT, 5/16-18X 1.00 CARRLN	2
26	55273	NUT, 5/16-18 HXWDFLLK	2
27	55023	TRIM, 77.5" BLACK NARROW	77.5
28	332779	SEAT,MICHIGAN GEN, W/SW HOLE	1
29	120393	WASHER, FLAT .344X .69X.065	4
30	120638	WASHER, HVSP TLK .328X.60X.09	4
31	180077	SCREW, 5/16-18X .75 HHC	4
40	305386	SKIRT,TUV LF RUBBER 7 X 28.03	1
41	305354	SKIRT,TUV LF RUBBER 7 X 15.64	1
42	328683	RIVET, POP 3/16DIA X .50 LG FLG	10
43	1501	WASHER, FLAT .203X .56X.040	10



NOTE: ALWAYS USE ORIGINAL EQUIPMENT PARTS. Use of service/replacement parts other than original equipment parts may void your warranty.

ALL UNNUMBERED ITEMS ARE INTERCHANGEABLE WITH OPPOSITE SIDE

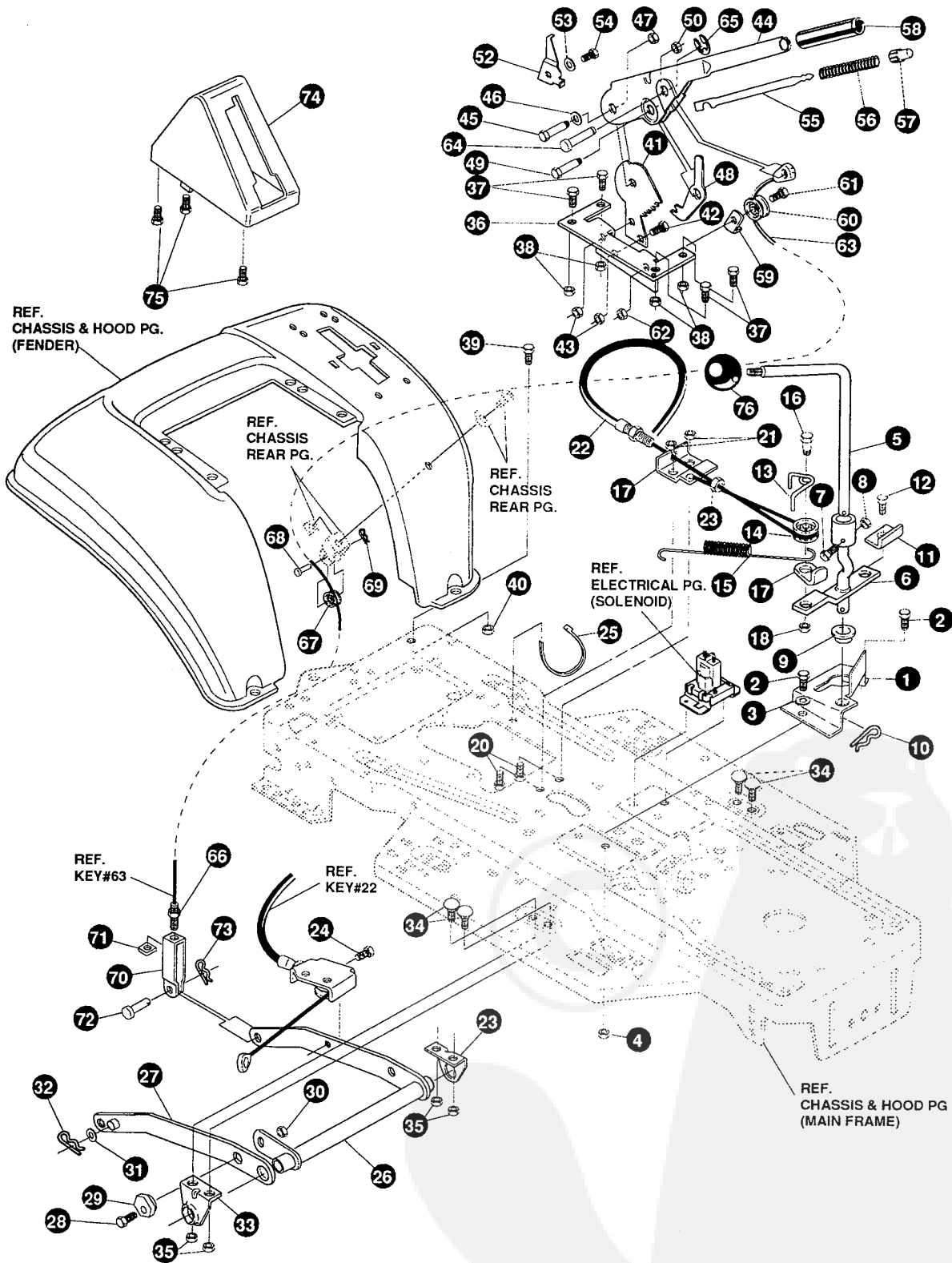
324171 E

E3560-310**STEERING ASSEMBLY**

KEY#	PART#	DESCRIPTION	QTY
1	315884-853	ASSY,AXLE FRONT 4/WS SUSP	1
1-1	310170	AXLE, FRONT	1
1-2	53373-853	AXLE COVER	2
1-3	52407	SPINDLE BEARING	4
1-4	302926	ASSY,SPINDLE RH	1
1-5	315886	ASSY,SPINDLE LH	1
1-6	36625	RING, RETEX .57X.05TRU5133-75	2
8	304590	TIE ROD ASSY 19.81LG W-SECTION	1
9	180128	SCREW, 3/8-16X1.75 HHC	2
10	120382	WASHER, REGSPTLK.393X.68X.10	2
11	1499	NUT, 3/8-16 REGHXCTRLK	2
12	58289	SECTOR, STEERING LF	1
13	52406	BRNG,FL ECC.510IDX .998ODX.56	1
14	180177	SCREW, 1/2-13X1.50 HHC	1
15	22265	WASHER, FLAT .515X1.38X.119PL	1
16	1500	NUT, 1/2-13 REGHCTRLK	1
17	311100	KIT 300146 DRAGLINK FOR SERVICE	1
17-1	58291	STEERING LINK	1
17-2	124925	NUT, 3/8-24 REGHEXJAM	2
17-3	57158	BALL JOINT 3/8 THD SHORT STUD	1
17-4	21275	BALL JOINT 3/8 TH'D LONG STUD	1
22	46692	NUT, 3/8-24 WDFLHLK WHIZ	1
23	996416	WASHER, FLAT .391X1.00X.125	2
24	120382	WASHER, REGSPTLK.393X.68X.10	1
25	120369	NUT, 3/8-24 REGHEX	1
26	58243	SHAFT,STEERING LF,2WS	1
27	58244	PINION, STEERING LF	1
28	58274	PIN,DOWEL .2500 OD+1.75LG PL	1
29	301410	BRNG, FL .752IDX1.061ODX .24	1
30	301398	WASHER, FORMED1.135X1.53X.12	1
31	21682	WASHER, FLAT .765X1.25X.042PL	1
32	36625	RING, RETEX .57X.05TRU5133-75	1
33	321515	TIRE & RIM, PU 15X6.0X6 WHI668	2
33-1	24167	VALVE STEM	
33-2	39829	RIM, WHEEL	
33-3	314416	BEARING, FL	
37		REFER TO TIRE TREAD PAGE	
38	642	WASHER, FLAT .755X1.31X.075	4
39	36625	RING, RETEX .57X.05TRU5133-75	2
40	304444	HUB CAP, 6" EURO GREY 630	2
41	306669	CLIP,HUBCAP TINN #C25467-017-4	8
42	49998	WASHER, FLAT .520X1.25X.209	1

E3560-310

REPAIR PARTS



NOTE: ALWAYS USE ORIGINAL EQUIPMENT PARTS. Use of service/replacement parts other than original equipment parts may void your warranty.

ALL UNNUMBERED ITEMS ARE INTERCHANGEABLE WITH OPPOSITE SIDE

331726 A

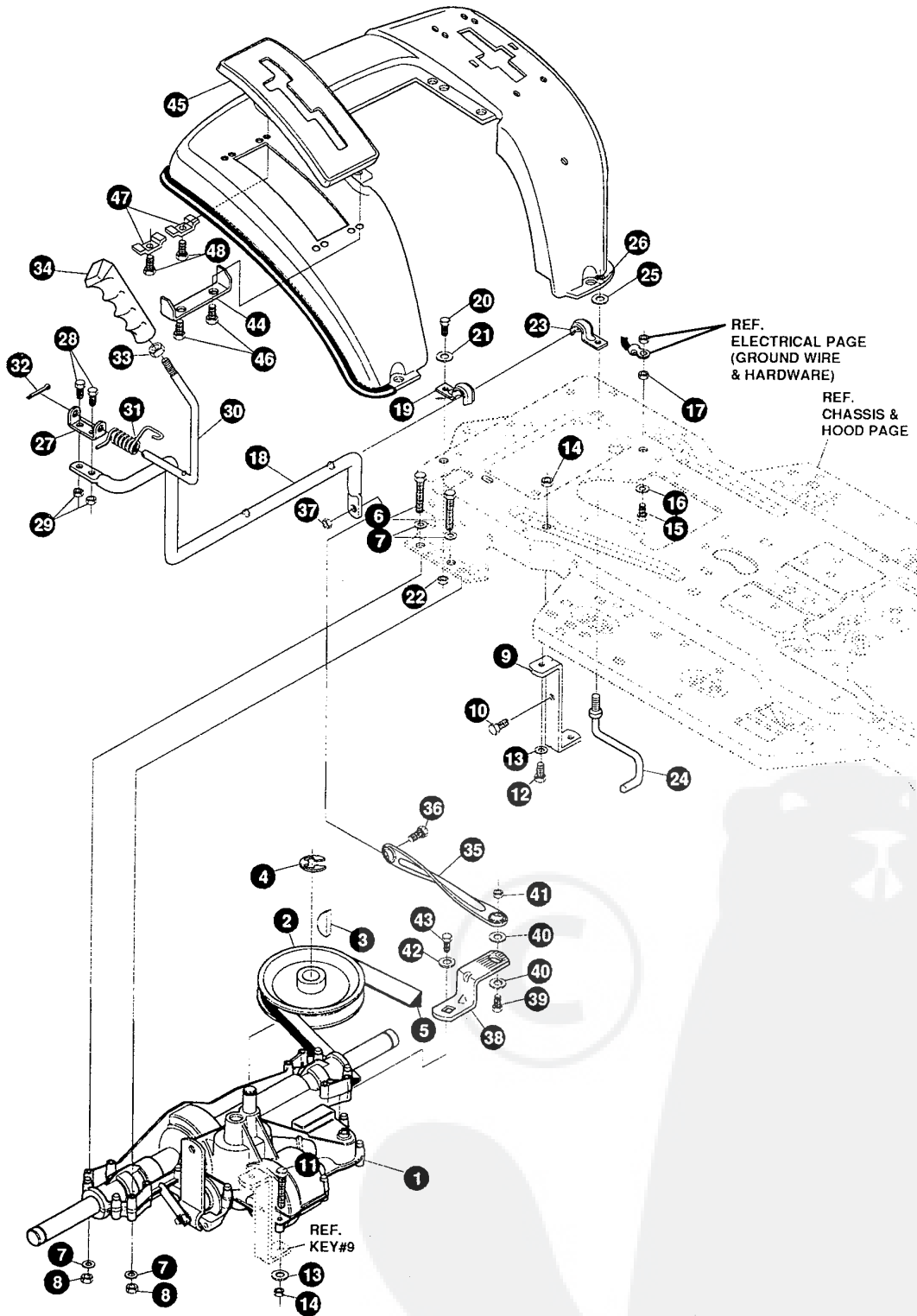
E3560-310

MOWER SUSPENSION ASSEMBLY

KEY#	PART#	DESCRIPTION	QTY
1	320075-853	BRACKET,CLUTCH ENGAGE LEVER	1
2	180079	SCREW, 5/16-18X1.00 HHC	2
3	120393	WASHER, FLAT .344X.69X.065	2
4	1498	NUT, 5/16-18 REGHEXCTRLK	2
5	331050	LEVER,PTO UPPER LF EURO I & II	1
6	331727	ASM.CLUTCH LEVER LOWER	1
7	308231	SCREW, 1/4-20X1.25 HHWATAP	1
8	1502	NUT, 1/4-20 REGHEXCTRLK	1
9	50148	BRNG, FL .503IDX .63ODX .50	1
10	8260	PIN, HAIR .091 DIA X 1.66LG	1
11	318341	BRACKET, SWITCH ENGAGE	1
12	35498	SCREW 5/16-18X .75 WAHHTAP	1
13	324032	SPRING,CABLE KEEPER .390 ID	1
14	48306	PULLEY,POWDER METAL	1
15	316648	SPRING .071 X .62 X 12.88	1
16	324045	BOLT, .375X .565 HSSH	1
17	1288	BRACKET, CABLE RETAIN	1
18	1502	NUT, 1/4-20 REGHEXCTRLK	1
19	300698-853	BRACKET FRAME CABLE	1
20	180020	SCREW, 1/4-20X .75 HHC	2
21	1502	NUT, 1/4-20 REGHEXCTRLK	2
22	324055	ASSY,CABLE, BLADE ENGAGE	1
23	120613	NUT, 1/4-28 HJAM	1
24	35498	SCREW, 5/16-18X .75 WAHHTAP	1
25	57444	TIE, CABLE BLACK NYLON 5.62L	1
26	300158-853	LIFT ASSY, LH	1
27	300169-853	LIFT ASSY, RH	1
28	180079	SCREW, 5/16-18X1.00 HHC	1
29	58247	NUT, ADJUST	1
30	1498	NUT, 5/16-18 REGHEXCTRLK	1
31	417098	WASHER, FLAT .531X1.06X.063	2
32	8260	PIN, HAIR .091 DIA X 1.66LG	2
33	58248-853	BRACKET, REAR HANG SUSP	2
34	57072	BOLT, 5/16-18X .63 CARRLN	4
35	1498	NUT, 5/16-18 REGHEXCTRLK	4
36	313926	BRACKET, HGT/ADJUST SUPPORT	1
37	180077	SCREW, 5/16-18X .75 HHC	4
38	1498	NUT, 5/16-18 REGHEXCTRLK	4
39	180077	SCREW, 5/16-18X .75 HHC	1
40	1498	NUT, 5/16-18 REGHEXCTRLK	1
41	301238	QUADRANT,HEIGHT ADJUST	1
42	180077	SCREW, 5/16-18X .75 HHC	2
43	1498	NUT, 5/16-18 REGHEXCTRLK	2
44	322292-853	HANDLE,LIFT SHORT(30" S.F.)	1
45	300171	BOLT, .500X .270 HSSH 5/16-18	1
46	996418	WASHER, FLAT .506X .75X.024	1
47	44108	NUT, 5/16-18 HWDFLCTRLK	1
48	301239	PAWL, SQUARE	1
49	300171	BOLT, .500X .270 HSSH 5/16-18	1
50	44108	NUT, 5/16-18 HWDFLCTRLK	1
52	9435	POINTER, HEIGHT ADJ	1
53	138479	WASHER, EXLK .195X.41X.03	1
54	35287	SCREW, #8-32X .38 HHWATAP	1
55	303027	ROD,ACTUATOR-SHORT	1
56	58326	SPRING, HEIGHT ADJUST	1
57	58325	KNOB, HEIGHT ADJ PUSH BUTTON	1
58	58329	GRIP, .750 OD W/ HOLE BLACK	1
59	9149	BRACKET, CABLE RETAIN	1
60	48306	PULLEY,POWDER METAL	1
61	58336	BOLT, .375X .375 HSSH 1/4-20	1
62	1502	NUT, 1/4-20 REGHEXCTRLK	1
63	314177	CABLE, LIFT 22.92 F-5 20X8-8	1
64	300310	PIN, CLEVIS .310DIA+.475LG	1
65	300311	RING, RET E .31X.25TRUX5133-31	1
66	120375	NUT, 1/4-20 REGHEX	1
67	48306	PULLEY,POWDER METAL	1
68	300317	PIN, CLEVIS .375DIA.X .81 LG	1
69	8260	PIN, HAIR .091 DIA X 1.66LG	1
70	9405	CLEVIS, LIFT CABLE	1
71	120372	NUT, 1/4-20 REGSQ	1
72	39522	PIN, CLEVIS .312 X .812	1
73	121222	PIN, COTTER .090 DIA X .75LG	1
74	300335	LIFT COVER-39" F5	1
75	300340	SCREW, #10 X .75 HHPLAST BLK	3
76	321837	KNOB,ROUND 1.50 DIA MATTE BLK	1

E3560-310

REPAIR PARTS



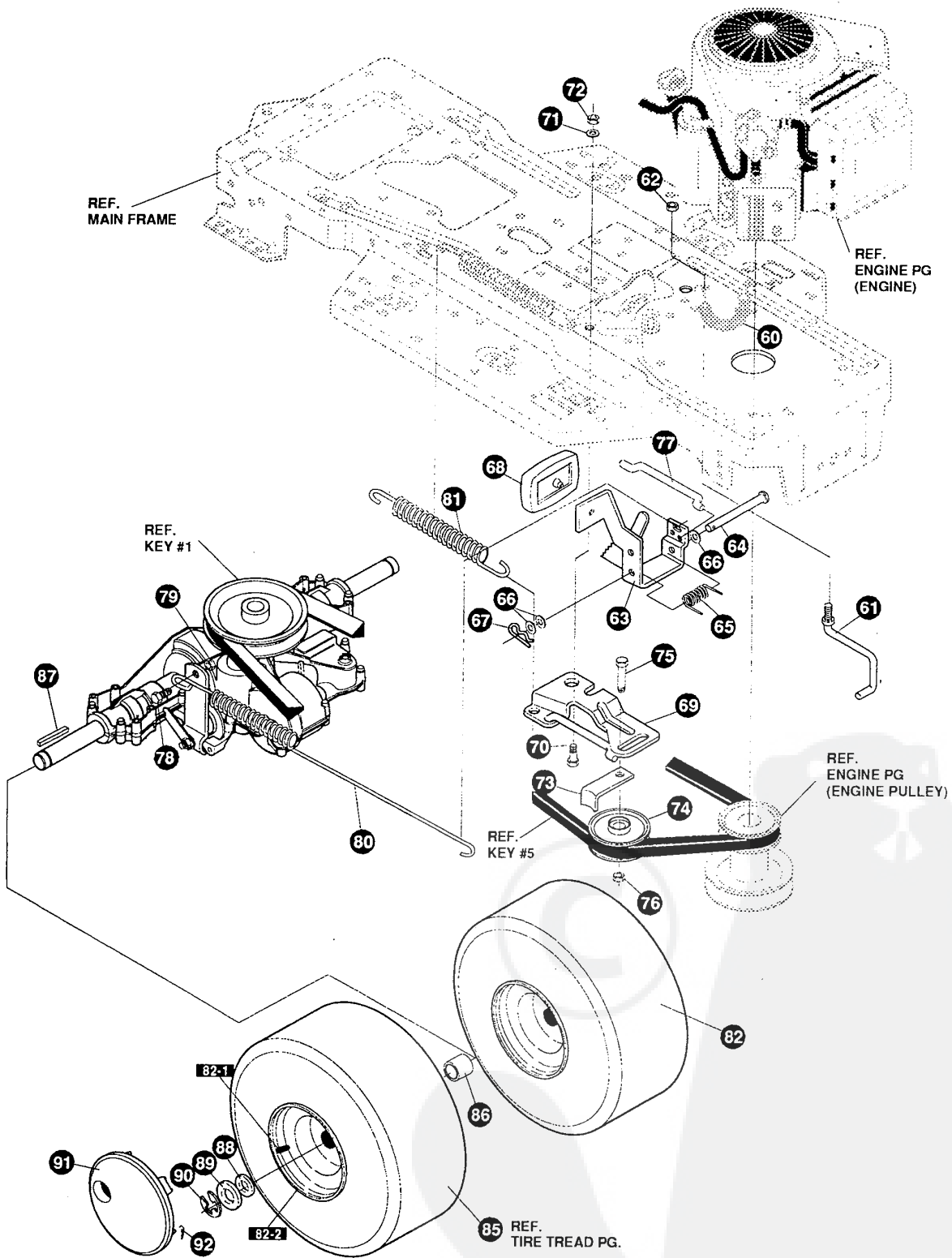
NOTE: ALWAYS USE ORIGINAL EQUIPMENT PARTS. Use of service/replacement parts other than original equipment parts may void your warranty.

ALL UNNUMBERED ITEMS ARE INTERCHANGEABLE WITH OPPOSITE SIDE

326605 C

KEY#	PART#	DESCRIPTION	QTY
1	^	TRANSAXLE P940-6 2WS,LF,SF	1
2	302745	PULLEY, 6.6 OD V4L T/A	1
3	50795	KEY, HI-PRO 606 .75DIA X.187WD	1
4	22053	RING, RETEX .58X.035TRU5100-62	1
5	314120	BELT, V 4L 87.25 4WS LF	1
6	180091	SCREW, 5/16-18X2.50 HHC	4
7	120393	WASHER, FLAT .344X .69X.065	8
8	1498	NUT, 5/16-18 REGHEXCTRLK	4
9	325202	BRACKET,STABILIZER	1
10	50947	SCREW, 3/8-16X1.25 WAHHTAPBLKP	1
11	180087	SCREW, 5/16-18X2.00 HHC	2
12	180079	SCREW, 5/16-18X1.00 HHC	1
13	120393-853	WASHER, FLAT .344X .69X.065	2
14	1498	NUT, 5/16-18 REGHEXCTRLK	2
15	180077	SCREW, 5/16-18X .75 HHC	1
16	138538	WASHER, REGINTLK.320X.61X.03	1
17	1498	NUT, 5/16-18 REGHEXCTRLK	1
18	330462	LEVER,SHIFT-LWR P940 LF	1
19	310347-853	CLIP- SHIFT LEVER .625 ROD	1
20	180077	SCREW, 5/16-18X .75 HHC	1
21	996416	WASHER, FLAT .391X1.0OX.125	1
22	1498	NUT, 5/16-18 REGHEXCTRLK	1
23	310347-853	CLIP- SHIFT LEVER .625 ROD	1
24	57259	GUIDE, BELT 5/16-18THD	1
25	996416	WASHER, FLAT .391X1.0OX.125	1
26	1498	NUT, 5/16-18 REGHEXCTRLK	1
27	310356	BRACKET, PIVOT SH LEV	1
28	180020	SCREW, 1/4-20X .75 HHC	2
29	1502	NUT, 1/4-20 REGHEXCTRLK	2
30	309635	LEVER, SHIFT UPPER SOF 1/2-13	1
31	310265	SPRING, TORS. .56X.95X.095	1
32	137185	PIN, COTTER .125 DIA X1.00LG	1
33	120238	NUT, 1/2-13 HEXJAM	1
34	306690	HANDLE 1/2-13 MOLDED BLACK	1
35	325192	LINK TIEROD SHIFT P940-5 &6SPD	1
36	180124	SCREW, 3/8-16X1.25 HHC	1
37	1499	NUT, 3/8-16 REGHXCTRLK	1
38	327460	BRACKET, SHIFT6SP LF FEND	1
39	180124	SCREW, 3/8-16X1.25 HHC	1
40	120394	WASHER, FLAT .406X .81X.065	2
41	1499	NUT, 3/8-16 REGHXCTRLK	1
42	57157	WASHER, .750X.250 SP-TRANSAXLE	1
43	56255	SCREW, 1/4-28X .75 NYLHHC	1
44	311257-853	BRACKET COVER F-5 FNDR SHIFT	1
45	311209	COVER PLASTIC LF P930/F4360-6	1
46	311331	SCREW, 1/4-15X.44/.53 HILOHHWA	2
47	1341	CLAMP, SPRG 1.17"ID	2
48	311331	SCREW, 1/4-15X.44/.53 HILOHHWA	2

^ CONTACT YOUR NEAREST TRANSAXLE DEALER FOR PARTS AND SERVICE



NOTE: ALWAYS USE ORIGINAL EQUIPMENT PARTS. Use of service/replacement parts other than original equipment parts may void your warranty.

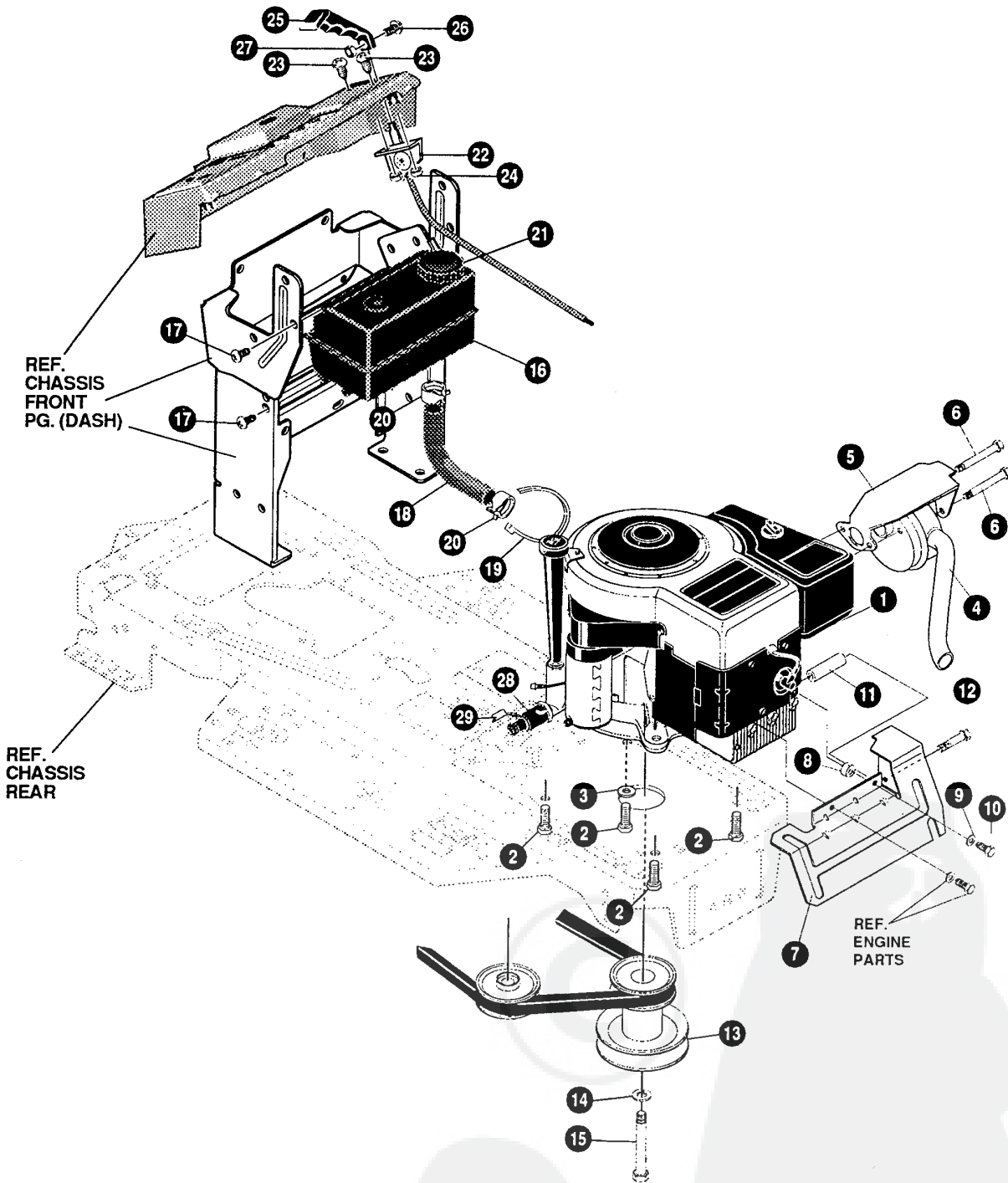
ALL UNNUMBERED ITEMS ARE INTERCHANGEABLE WITH OPPOSITE SIDE

326605 C

E3560-310

MOTION DRIVE ASSEMBLY

KEY#	PART#	DESCRIPTION	QTY
60	321514	SPRING, DRAG LINK BIAS	1
61	304016	GUIDE, BELT R.H.	1
62	1498	NUT, 5/16-18 REGHEXCTRLK	1
63	325942	PEDAL ASSY, BRAKE/CLUTCH LF	1
64	319675	PIN, CLEVIS .500DX4.53LG	1
65	57847	SPRING, BRAKE PEDAL	1
66	2968	WASHER, FLAT .504X .75X.059	3
67	56180	PIN, HAIR .091 DIA X1.62LG	1
68	48160	PAD, CLUTCH BRAKE W/PRINTING	1
69	320381	ARM, IDLER TRACTION, SOG LF	1
70	329989	BOLT, .625X .135 HSH 5/16-18	1
71	45602	WASHER, FLAT .333X .87X.119	1
72	1498	NUT, 5/16-18 REGHEXCTRLK	1
73	39659	RETAINER, BELT	1
74	35374	PULLEY, IDLER V4L 3.06X .62	1
75	45892	BOLT, 3/8-16X1.50 CARRSN	1
76	1499	NUT, 3/8-16 REGHXCTRLK	1
77	57204	ROD, CLUTCH 3.92"	1
78	326131	BOLT, .495X .31 HSH5/16-18	1
79	1498	NUT, 5/16-18 REGHEXCTRLK	1
80	325910	SPRING, BRAKE 31.12 P940 LF	1
81	330505	SPRING, CLUTCH .113X.750X8.75	1
82	301318	TIRE & RIM, 20X10.00-8 WHITE	2
82-1	24167	VALVE STEM	
82-2	301366	RIM, WHEEL	
85		REFER TO TIRE TREAD PAGE	
86	301565	SPACER, SLEV .750X1.25X .50 PL	2
87	52928	KEY, SQUARE .187SQX2.25LG	2
88	642	WASHER, FLAT .755X1.31X.075	4
89	42815	WASHER, FLAT .755X1.53X.07	2
90	36625	RING, RETEX .57X.05TRU5133-75	2
91	304441	HUB CAP, 8" EURO GREY 630	2
92	306669	CLIP, HUBCAP TINN #C25467-017-4	10



NOTE: ALWAYS USE ORIGINAL EQUIPMENT PARTS. Use of service/replacement parts other than original equipment parts may void your warranty.

ALL UNNUMBERED ITEMS ARE INTERCHANGEABLE WITH OPPOSITE SIDE

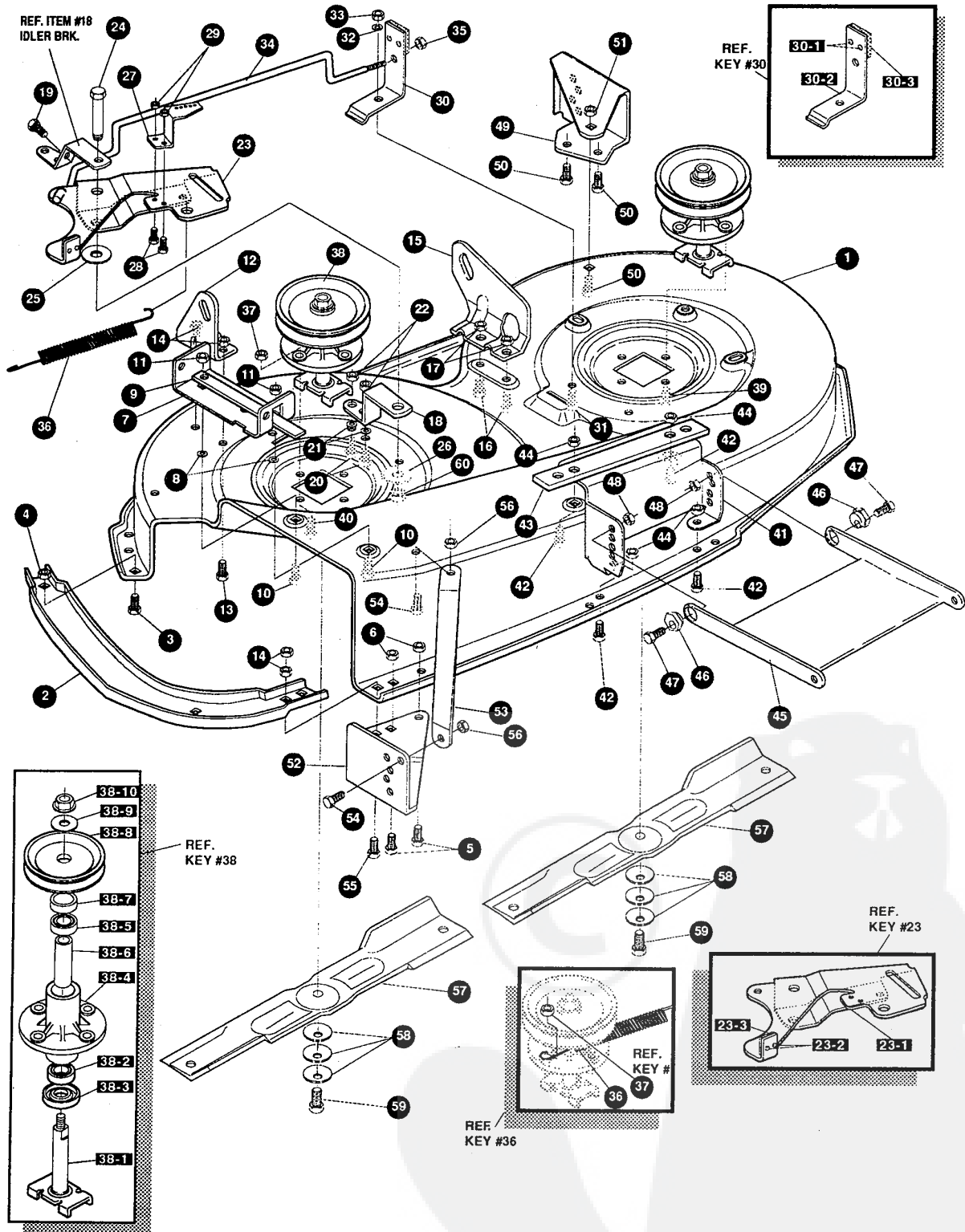
331938 A

E3560-310**ENGINE & CONTROL ASSEMBLY**

KEY#	PART#	DESCRIPTION	QTY
1	ENGINE	12-12.5HP BS IC DUAL(SEE ENGINE MANUAL)	1
2	50947	SCREW, 3/8-16X1.25 WAHHTAPBLKP	4
3	138489	WASHER, EXLK .384X.69X.04	1
4	310284	MUFFLER, ROUND 12HP 5"DIA	1
5	305409	SHIELD,MUFFLER B&S SQ. LO-TONE	1
6	305407	BOLT, .437X4.340 HSH5/16-18BL	2
7	331816-853	SHIELD,HEAT 12HP 5" MUFFLER	1
8	41462	SPACER, SLEV .328X .75X .312PM	1
9	120380	WASHER, REGSPTLK.263X.49X.07	1
10	180021	SCREW, 1/4-20X .88 HHC	1
11	310292	SPACER, SLEV .28 X .38X3.12	1
12	189293	SCREW, 1/4-20X3.50 HHC	1
13	328028	PULLEY,ENG 3.0D X 4.0LG X 5.0D	1
14	120383	WASHER, REGSPTLK.459X.78X.12	1
15	433146	SCREW, 7/16-20X4.25 HHC BLK PH	1
16	309853	TANK, FUEL 1.5 WO/SENSOR CLEAR	1
17	49050	SCREW, 1/4-10X .75PHPNTAP	4
18	50118	TUBING, .25X.50X BULK GAS LINE	13.5
19	57444	TIE, CABLE BLACK NYLON 5.62L	1
20	47345	CLAMP,HOSE SCREW TYPE	2
21	12501	CAP,FUEL 2.5" THROAT	1
22	315716	THROTTLE CONTROL 17.0" CHKOMA	1
23	320553	SCREW, 10-24X.63PHPNMA CRSS	2
24	271166	NUT, #10-24 HEXKEPS	2
25	300508	KNOB,THROTTLE CONTROL GP STYLE	1
26	159585	SCREW, #8-32X .38 PHPNMA	1
27	120622	NUT, #8-32 REGHX	1
28	325547	OIL DRAIN VALVE ASSEMBLY	1
29	327422	CAP,OIL DRAIN VALVE ASM.YELLOW	1

E3560-310

REPAIR PARTS



NOTE: ALWAYS USE ORIGINAL EQUIPMENT PARTS. Use of service/replacement parts other than original equipment parts may void your warranty.

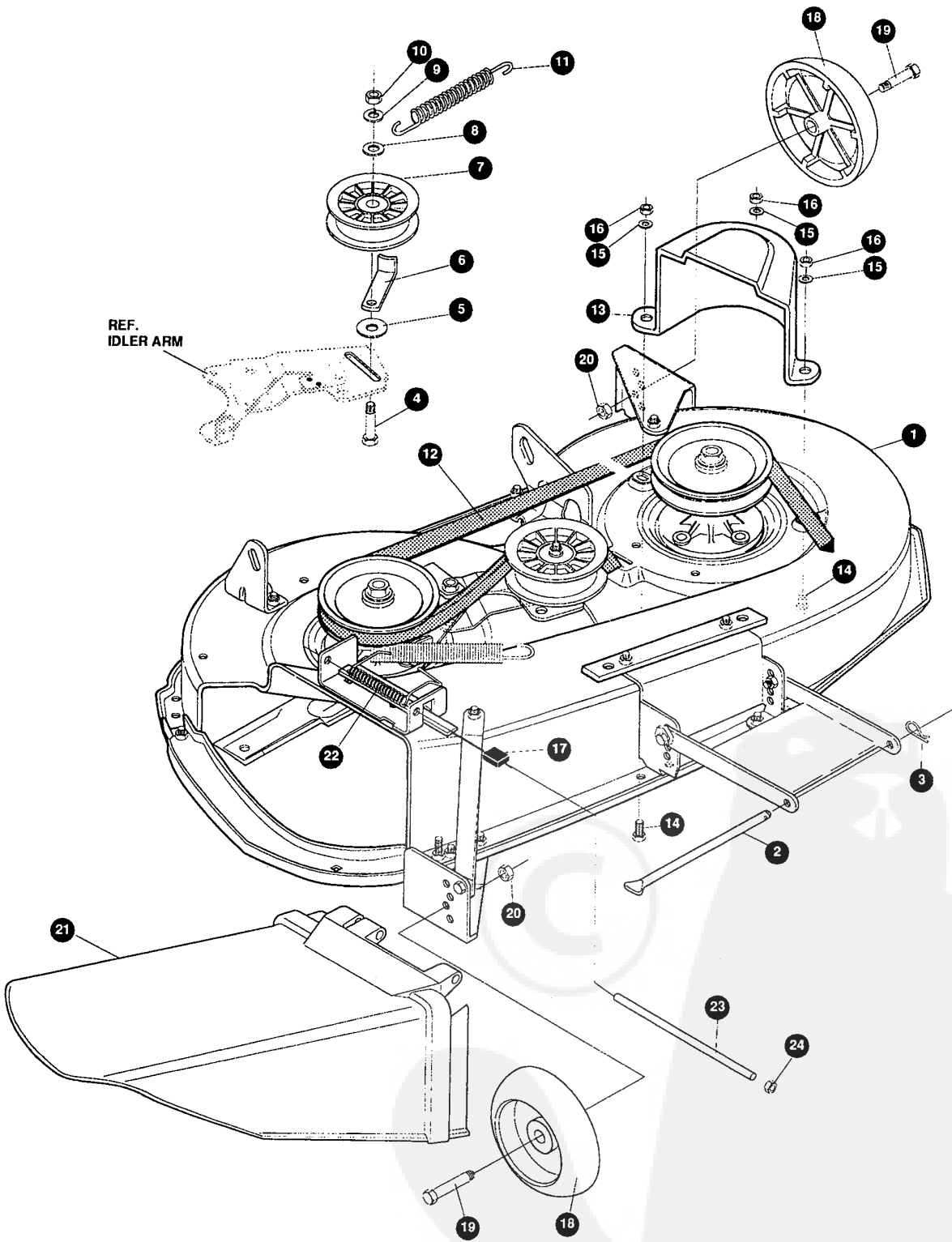
ALL UNNUMBERED ITEMS ARE INTERCHANGEABLE WITH OPPOSITE SIDE

331147 C

E3560-310

PRE-PAINTED DECK ASSEMBLY

KEY#	PART#	DESCRIPTION	QTY
1	325103	40" DECK KIT	1
2	326480-853	TOE GUARD - MULCHER	1
3	180077	SCREW, 5/16-18X .75 HHC	1
4	1498	NUT, 5/16-18 REGHEXCTRLK	1
5	180077	SCREW, 5/16-18X .75 HHC	1
6	1498	NUT, 5/16-18 REGHEXCTRLK	2
7	317017	BRACKET CHUTE MOUNT BLACK	1
8	120393	WASHER, FLAT .344X .69X.065	2
9	322320-853	LEVER ASSY (SHORT)	1
10	180077	SCREW, 5/16-18X .75 HHC	2
11	1498	NUT, 5/16-18 REGHEXCTRLK	2
12	313929	LIFT BRKT, REAR RH BLK 853	1
13	180077	SCREW, 5/16-18X .75 HHC	2
14	1498	NUT, 5/16-18 REGHEXCTRLK	2
15	310667	BRACKET,DECK LIFTREAR LHBLK	1
16	180077	SCREW, 5/16-18X .75 HHC	2
17	1498	NUT, 5/16-18 REGHEXCTRLK	2
18	326893-853	BRACE IDLER SUPPORT 40",43"	1
19	308231	SCREW, 1/4-20X1.25 HHWATAP	1
20	180077	SCREW, 5/16-18X .75 HHC	2
21	120393	WASHER, FLAT .344X .69X.065	2
22	44108	NUT, 5/16-18 HWDFLCTRLK	2
23	320576-853	IDLER ARM ASSEMBLY	1
23-1	322116-853	ARM IDLER 40/43"DECK	1
23-2	41601	RIVET, OVSET .187DIAX .50LG ST	2
23-3	306973	BRAKE PAD - HARD - 232AF	1
24	304420	BOLT, .500X2.15 HHSH	1
25	996307	WASHER, FLAT .391X1.00X.209	1
26	996416	WASHER, FLAT .391X1.00X.125	2
27	326249-853	BRACKET, EXTENSION IDLER	1
28	180077	SCREW, 5/16-18X .75 HHC	2
29	1498	NUT, 5/16-18 REGHEXCTRLK	2
30	321828	BLADE BRAKE ASSY	1
30-1	135624	RIVET, TRSET .185DIAX .41LG ST	2
30-2	304119-853	BRAKE ARM	1
30-3	306973	BRAKE PAD - HARD - 232AF	1
31	180077	SCREW, 5/16-18X .75 HHC	1
32	120393	WASHER, FLAT .344X .69X.065	1
33	1498	NUT, 5/16-18 REGHEXCTRLK	1
34	315396	ROD, BRAKE 40" DECK	1
35	1502	NUT, 1/4-20 REGHEXCTRLK	1
36	35410	SPRING .071 X .62 X 4.37	1
37	1498	NUT, 5/16-18 REGHEXCTRLK	1
38	56424-853	QUILL ASSY, 36/39/40/43	2
38-1	56425	SHAFT/SADDLE 36"	1
38-2	49562	BRNG, BALL 6203-2AA(SEALS)-C3	1
38-3	50616	DUST SHIELD	1
38-4	55547	QUILL CASTING (1046)	1
38-5	49562	BRNG, BALL 6203-2AA(SEALS)-C3	1
38-6	50818	SPACER, SLEV .669X .88X3.797	1
38-7	51449	SPACER, SLEV .672X .93X .438PM	1
38-8	313898	PULLEY ASSY	1
38-9	56365	WASHER, SPECIAL QUILL	1
38-10	1282	NUT, 7/16-20 WDFLLK	1
39	35498	SCREW, 5/16-18X .75 WAHHTAP	7
40	300345	SCREW, 5/16-18X1.38 WAHHTAP	1
41	318445-853	BRACKET,40 LF FRONT DECK	1
42	180077	SCREW, 5/16-18X .75 HHC	4
43	328155-853	PLATE-MOUNTING	1
44	1498	NUT, 5/16-18 REGHEXCTRLK	4
45	58305-853	BRACKET,LINK DECK FRONT	1
46	58247	NUT, ADJUST	2
47	180079	SCREW, 5/16-18X1.00 HHC	2
48	1498	NUT, 5/16-18 REGHEXCTRLK	2
49	317041	BRKT, GAGE WHEEL LH BLACK	1
50	180077	SCREW, 5/16-18X .75 HHC	3
51	1498	NUT, 5/16-18 REGHEXCTRLK	3
52	322464-853	BRACKET,GAGE WHEEL R.H. FRNT	1
53	314282-853	BRACKET,STABILIZER	1
54	180077	SCREW, 5/16-18X .75 HHC	1
55	12685	SCREW, 5/16-18X1.50HHCFT	1
56	1498	NUT, 5/16-18 REGHEXCTRLK	1
57	313316	BLADE,40" STD-LIFT 20.32BLK	2
58	2483	WASHER, 39IDX1.25DX.07 BELLVIL	6
59	39573	SCREW, 3/8-24X1.00 NYLHHC	2
60	45171	NUT, 3/8-16 HWDFL WHIZ-LOCK	1

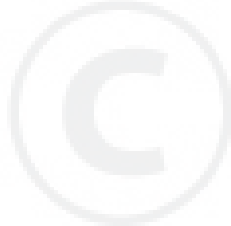


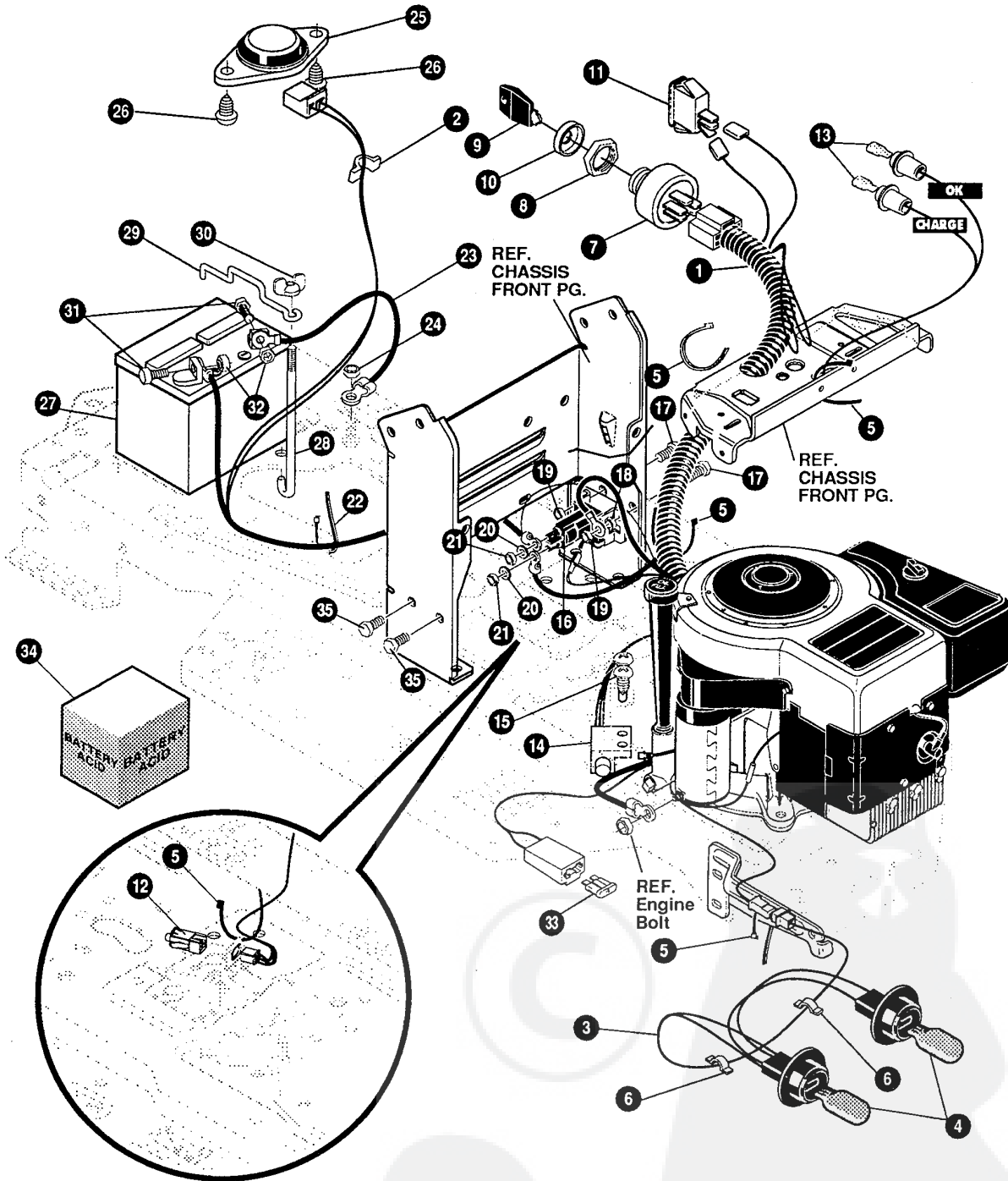
NOTE: ALWAYS USE ORIGINAL EQUIPMENT PARTS. Use of service/replacement parts other than original equipment parts may void your warranty.

ALL UNNUMBERED ITEMS ARE INTERCHANGEABLE WITH OPPOSITE SIDE

331146 B

KEY#	PART#	DESCRIPTION	QTY
1	329035	ASM.40"DECK FOR AIR ASSIST	1
2	58306	ROD, DECK HITCH	1
3	8260	PIN, HAIR .091 DIA X 1.66LG	1
4	57325	BOLT, 3/8-16 X 2.00 CARRSN	1
5	25210	WASHER, FLAT .386 X 1.25 X .09HT	1
6	1346	RETAINER, BELT	1
7	310326	PULLEY, IDLER BFF 4.00 WIDE FL	1
8	996307	WASHER, FLAT .391 X 1.00 X .209	1
9	120382	WASHER, REGSPTLK.393 X .68 X .10	1
10	120377	NUT, 3/8-16 REGHX	1
11	300473	SPRING, TENSION 7.52LG+17LB/IN	1
12	319005	BELT, V 5L 81.00 DECK 40 LF	1
13	325234	GUARD, BELT LH PLASTIC EXPORT	1
14	180075	SCREW, 5/16-18 X .63 HHC	3
15	120393	WASHER, FLAT .344 X .69 X .065	3
16	1498	NUT, 5/16-18 REGHEX CTRLK	3
17	42348	GRIP-LEVER GRASS COLLECTOR	1
18	302611	GAUGE WHEEL, EURO 6.00 ODX 1.38 WD	2
19	23763	BOLT, .500 X 1.390 HSSH 3/8-16	2
20	1499	NUT, 3/8-16 REGHX CTRLK	2
21	304422	CHUTE DEFLECTOR 40", 42" & 43"	1
22	314975	SPRING, TORSION CHUTE DEFLECTOR	1
23	304424	ROD, PIVOT DECK .312 ODX 7.25	1
24	3535	NUT, PUSH ON CAP .312 OD	1





NOTE: ALWAYS USE ORIGINAL EQUIPMENT PARTS. Use of service/replacement parts other than original equipment parts may void your warranty.

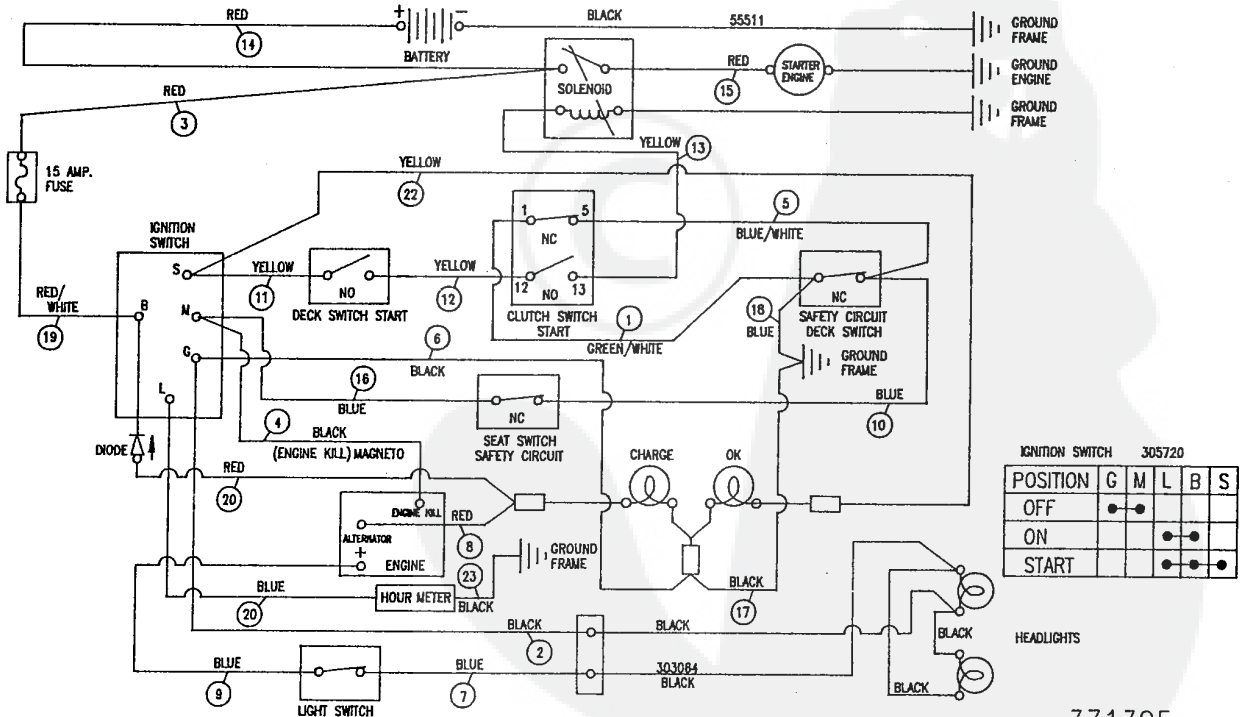
ALL UNNUMBERED ITEMS ARE INTERCHANGEABLE WITH OPPOSITE SIDE

332732 A

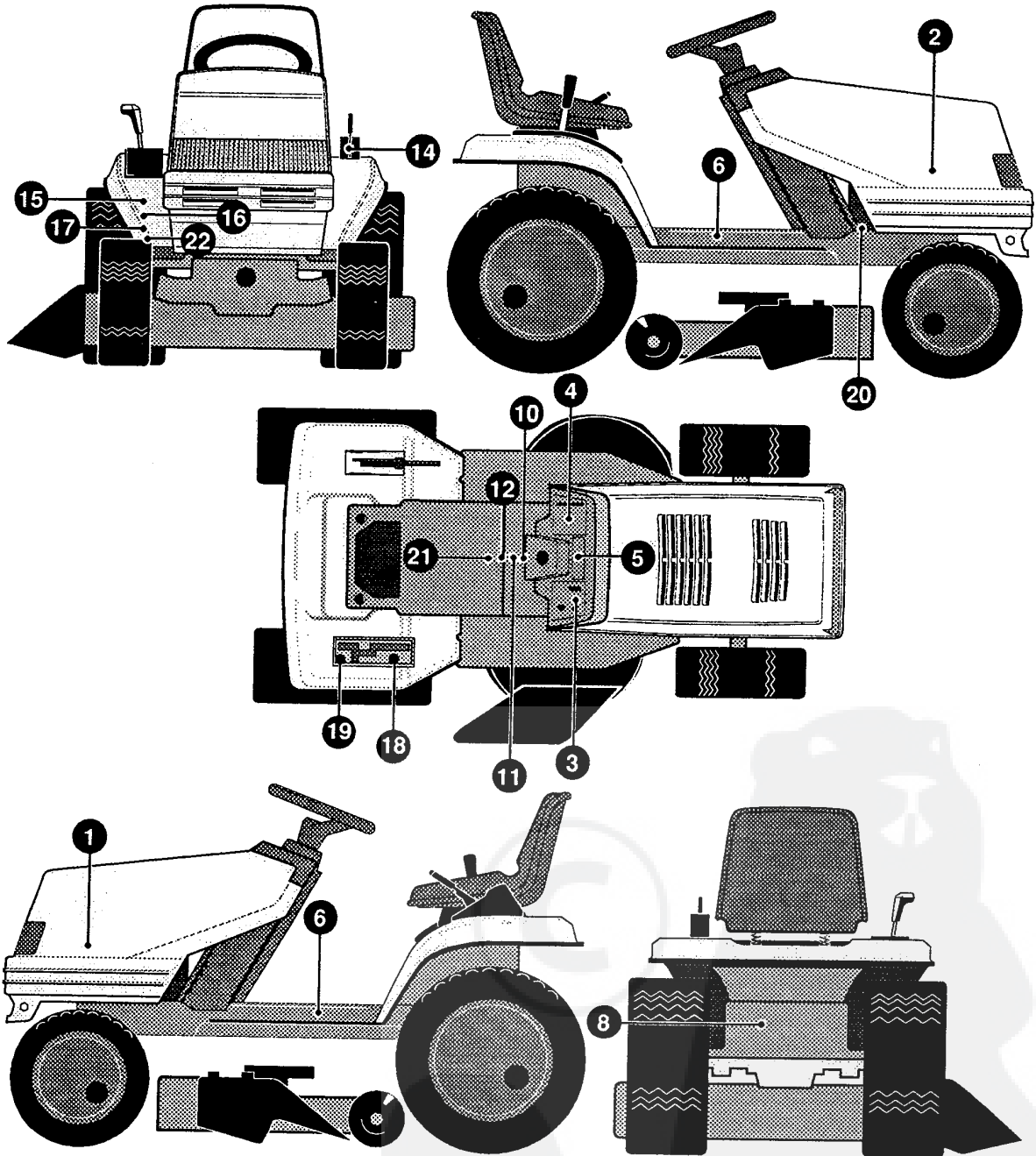
KEY#	PART#	DESCRIPTION	QTY
1	331395	HARNES 12.5BS.EUR01&2.LF,SUS	1
2	41482	PRESS CLIP,1.380LG .255ID	1
3	303064	ASSY,LIGHT WIRE-1/4 TURN	1
4	52572	BULB, HEADLAMP	2
5	57444	TIE, CABLE BLACK NYLON 5.62L	5
6	41482	PRESS CLIP,1.380LG .255ID	3
7	327355	SWITCH-IGN.(AFTER FIRE) 3 POSN	1
8	327352	NUT, 5/8-8ACME DELTA FOR BOOT	1
9	327350	KEY ,IGNITION DELTA	2
10	300194	BOOT, IGN SWITCH	1
11	328826	LIGHT SWITCH PANEL MNT	1
12	320082	SWITCH,DOUBLE POLE NO/NC GRAY	1
13	57769	BULB, INDICATOR	2
14	57476	SWITCH,SCR MNT DP NC NO BLK	1
15	57220	SCREW, #12 X .50 PHPNHTAP BLK	2
16	53716	SOLENOID	1
17	187745	SCREW, 1/4-20X .75 HXSEMMA	2
18	1502	NUT, 1/4-20 REGHEXCTRLK	2
19	271172	NUT, 1/4-20 REGHEXKEPS	1
20	138485	WASHER, EXLK.320X.61X.03	2
21	120368	NUT, 5/16-24 REGHEX	2
22	57444	TIE, CABLE BLACK NYLON 5.62L	1
23	55511	WIRE, GROUND, 12.5"	1
24	271184	NUT, 5/16-18 HEXKEPS	1
25	57547	SWITCH, SEAT	1
26	160505	SCREW, 1/4-20X .38PHPNHMA	2
27	302257	BATTERY, 12V	1
28	57551	ROD, BATTERY	1
29	57552	ROD, BATTERY, TOP	1
30	325232	NUT, WING 1/4-20 NYLON	1
31	180020	SCREW, 1/4-20X .75 HHC	2
32	271172	NUT, 1/4-20 REGHEXKEPS	2
34	^	BATTERY ACID PACK, 80 OZ.	1
35	309235	FASTENER, RATCHET BLACK	2

^ CAN BE PURCHASED LOCALLY

SCHEMATIC DRAWING



331395



NOTE: ALWAYS USE ORIGINAL EQUIPMENT PARTS. Use of service/replacement parts other than original equipment parts may void your warranty.

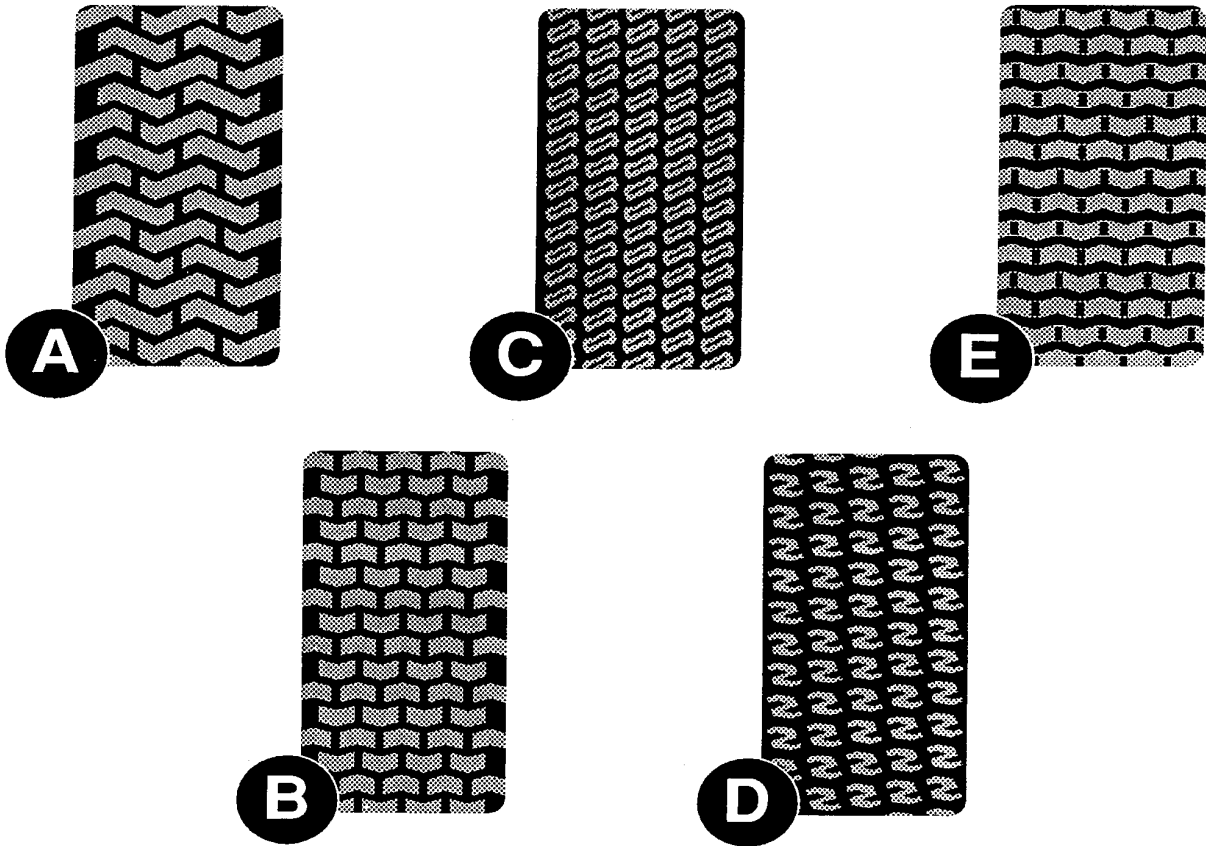
ALL UNNUMBERED ITEMS ARE INTERCHANGEABLE WITH OPPOSITE SIDE

332835 A

E3560-310**DECAL ASSEMBLY**

KEY#	PART#	DESCRIPTION	QTY
1	402387	DECAL, STATESMAN HOOD H-16	1
2	402388	DECAL, STATESMAN HOOD H-16	1
3	332805	DECAL DASH RH ISO ENG N/HR,CHK	1
4	315765	DECAL DASH LH ISO CHOKE-O-MATI	1
5	324934	DECAL DASH,ALL SYS,CHRG DIODE	1
6	322326	NAMEPLATE 12.5/40 WHITE	2
8	318010	DECAL,TUV GS	1
10	307383	DECAL,INSTR. CONSOLE TOP ENGL	1
11	69524	DECAL,INSTRUCT CONSOLE TOP GER	1
12	69525	DECAL,INSTRUCT CONSOLE TOP FR	1
14	402214	DECAL, HEIGHT ADJUST	1
15	310553	DECAL,DANGER ENGLISH	1
16	68902	DECAL,WARNING,FRENCH/GERMAN	1
17	305770	DECAL,CAUTION TRIANGLE EUROPE	1
18	331007	DECAL SHIFTER POSITION	1
19	311394	DECAL SHIFT REV/NEUTRAL	1
20	68903	DECAL,BRAKE/CLUTCH ISO	1
21	311065	DECAL,INSTR, TOP CONSOLE DUTCH	1
22	311070	DECAL, DANGER DUTCH	1

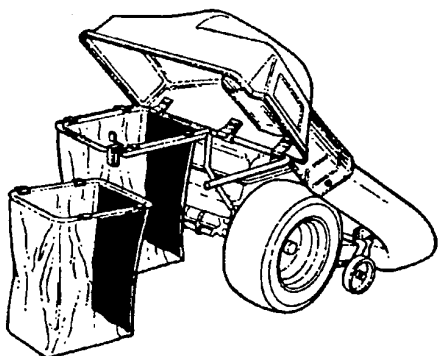
TREAD PATTERNS



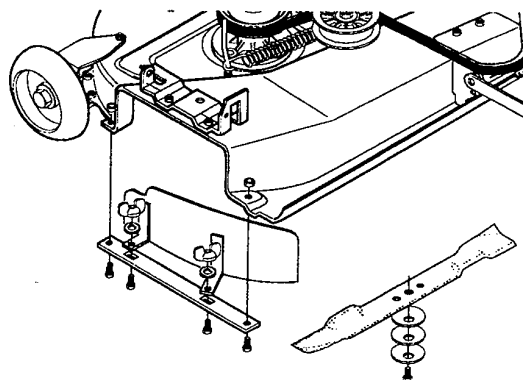
TIRE SIZE	"A"	"B"	"C"	"D"	"E"
11 X 4.00 - 5	42295	319679			
13 X 5.00 - 6	41060	319680			
15 X 6.00 - 6	39830	316702	301140	313952	
16 X 4.80 - 8		305035			
16 X 6.50 - 8	41081	319682		314539	
18 X 6.50 - 8		42091			
18 X 8.50 - 8	319683	317400			
18 X 9.50 - 8	41106	316701		313950	
20 X 8.00 - 8	319685	319684	57164	314584	331606
20 X 10.00 - 8	58276	319686		313654	
20 X 10.00 - 10	55893	319687			
23 X 9.50 - 12	53655	319690	319689	314370	

Contact the dealer where your tractor was purchased for the available accessories. If you are unable to contact the dealer, write to the address on the front cover of this manual.

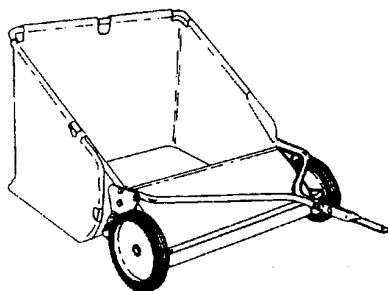
Standard Lawn Tractor



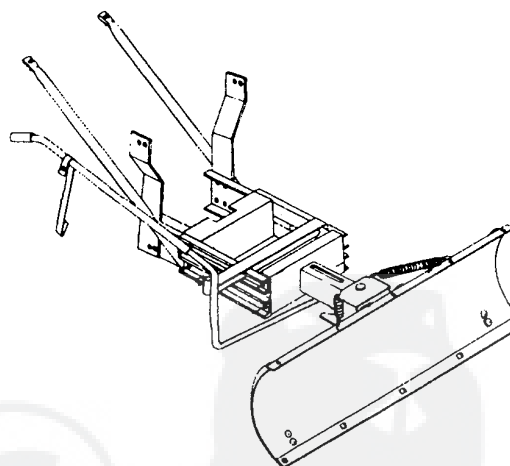
Model # 5708-13
Grass Collector for 39" decks
 For heavy duty grass collection
 order Model # 5709-10 Air Assist



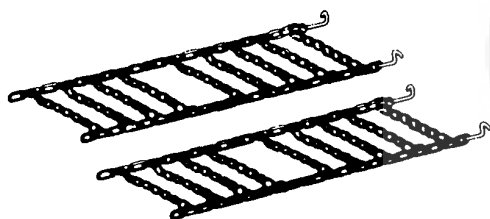
Model #5715-00
Mulching Kit (39" Deck)



Model # 5648-16
Tow behind Lawn Sweeper for
Grass and leaves



Model #5661-09
42" Snowblade - Fits 36", 38", 39", & 45"



Model # 5579-00
Tire Chains - 18" x 8.50" tires

OTHER ACCESSORIES

Model	Description
5672-01	Wheel Weights - Front - 1 pr. w/mtg. hdw. - Fits 15" tires
5673-02	Wheel Weights - Rear - 1 pr. w/mtg. hdw. - Fits 18" & 20" tires
306932	39" High lift blade for bagging or side discharge (requires 2)
326160	39" Mulching blade (requires 2)