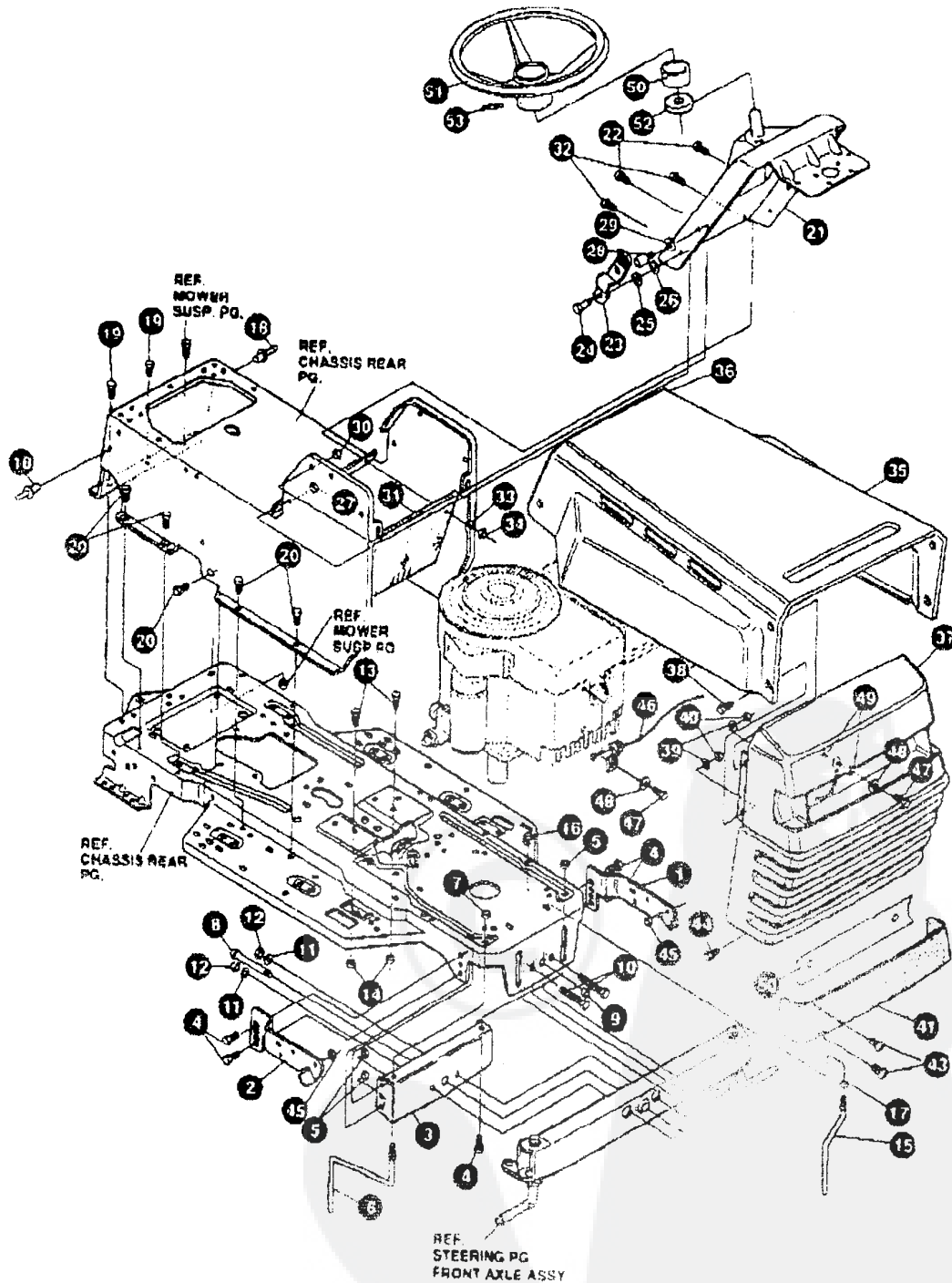


E3560-520

REPAIR PARTS



NOTE: ALWAYS USE ORIGINAL EQUIPMENT PARTS. Use of service/replacement parts other than original equipment parts may void your warranty.

ALL UNNUMBERED
ITEMS ARE INTERCHANGABLE
WITH OPPOSITE SIDE

325873D

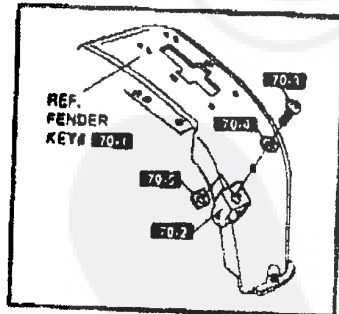
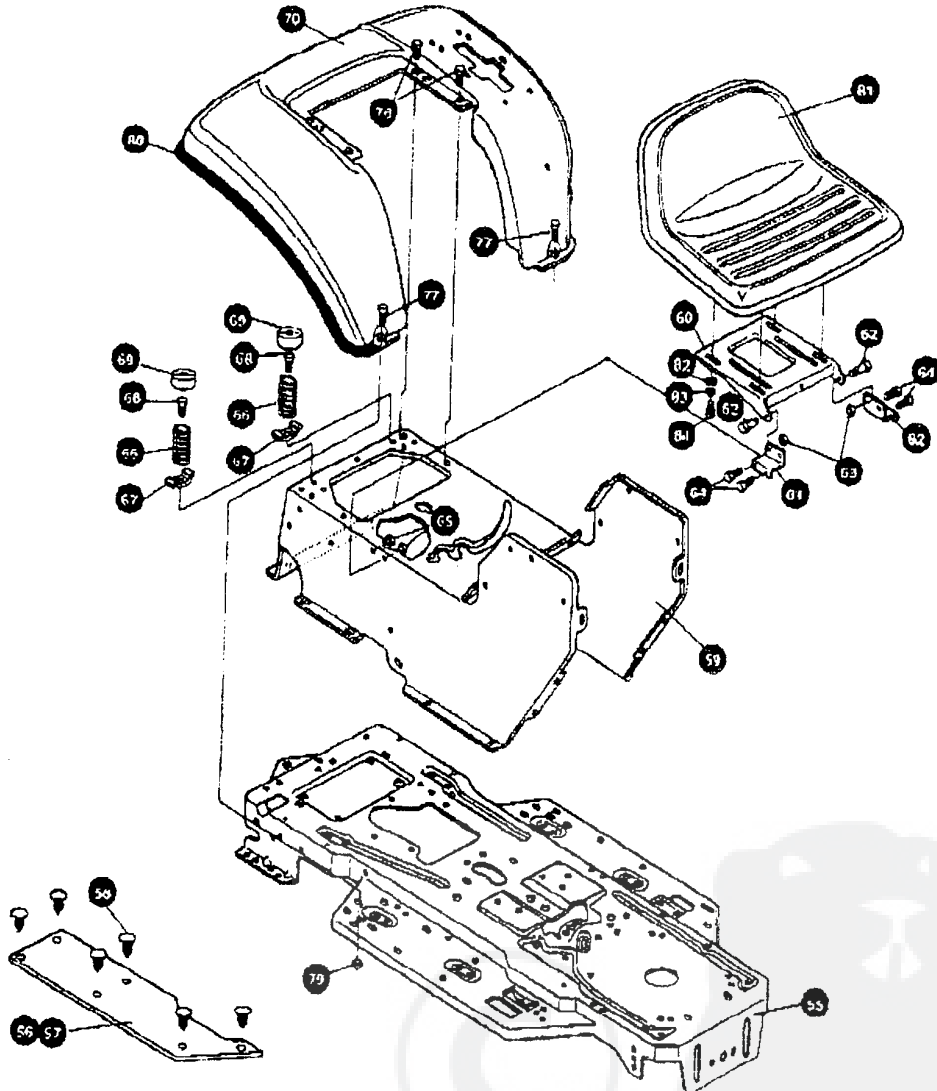
E3560-520

CHASSIS & HOOD ASSEMBLY

KEY#	PART#	DESCRIPTION	QTY
1	313001-853	BRACKET GRILLE SUPPORT LH	1
2	313002-853	BRACKET GRILLE RH	1
3	313541-853	BRACKET FRONT AXLE	1
4	56030	SCREW, 5/16-18X 75WOFLLK	5
5	55273	NUT, 5/16-18 HXWDFLLK	5
6	300440	GUIDE BELT RIDER	1
7	1498	NUT, 5/16-18 REGHEXCTRLK	1
8	308207	BOLT, .625X2.18 HSSH 1/2-13	1
9	309008	NUT, 1/2-13 HEXJAM CTRLK	1
10	180138	SCREW, 3/8-16X3.00 HHC	2
11	2483	WASHER, 3910X1 250X.07 BELLVIL	2
12	1499	NUT, 3/8-16 REGHXCTRLK	2
13	180079	SCREW, 5/16-18X1.00 HHC	2
14	1498	NUT, 5/16-18 REGHEXCTRLK	2
15	300635	GUIDE BELT SHORT 15" WHEEL	1
16	124824	NUT, 5/16-18 HEXJAM	1
17	271190	NUT, 3/8-16 HEXKEPS	1
18	45763	RIVET, POP 187DIA X .450LG ST	3
19	35497	SCREW, 5/16-18X .50 WAHHTAP	2
20	995346	SCREW, 1/4-20X .50 WAHHTAP	10
21	309447-860	DASH STEEL	1
22	995346	SCREW, 1/4-20X .50 WAHHTAP	2
23	57159	LATCH, 94WD X 047 ASSY HOOD	2
24	8482	BOLT, 375X .196 HSSH 5/16-18	2
25	120394	WASHER, FLAT 406X .81X.065	2
26	120393	WASHER, FLAT 344X .69X.065	2
27	1498	NUT, 5/16-18 REGHEXCTRLK	2
28	53446	PIN, 5/16-18 HOOD LATCH	2
29	138538	WASHER, REGINTLK 320X .61X.03	2
30	45174	NUT, 5/16-18 HEXWDFLLK WHIZ	2
31	312306	BAFFLE CONSOLE SOUND	1
32	300314	SCREW, 1/4-20X .88WAHHTAP	2
33	120392	WASHER, FLAT 281X .63X.065	2
34	1502	NUT, 1/4-20 REGHEXCTRLK	2
35	314537-860	HOOD	1
36	56304	EDGING (78"-47453) WIDE BLK	27 5/8 in
37	325401	GRILLE	1
38	274672	SCREW, 1/4-20X .63 WAHHC	4
39	120393	WASHER, FLAT 344X .69X.065	4
40	1502	NUT, 1/4-20 REGHEXCTRLK	4
41	302333	LENS, SMOKED W/TAB NO LOGO	1
43	57796	SCREW, #6 X .50 PLASTITE/HI-LO	4
44	36149	BOLT, 375X .500 HSSH 5/16-18	2
45	1498	NUT, 5/16-18 REGHEXCTRLK	2
46	311094	LANYARD, HOOD 11 75LG H15 YANG	1
47	48900	SCREW, 1/4-20X1.00 WAHHC	1
48	120392	WASHER, FLAT 281X .63X.065	1
49	1502	NUT, 1/4-20 REGHEXCTRLK	2
50	314948	FOIL, LENS REFLECTOR	1
50	311465	COVER, STEERING SHAFT	1
51	330510	STEERING WHEEL	1
52	301413	SPACER, STEERING SHAFT	1
53	456378	PIN, SPRING 250DIA X 2.00LG HVPL	1
	333535	PARTS MANUAL	1
	332212	ENGLISH OPERATOR'S MANUAL	1
	332213	FRENCH OPERATOR'S MANUAL	1
	332214	GERMAN OPERATOR'S MANUAL	1
	327627	GRASS CATCHER MANUAL	1
	328195	AIR ASSIST MANUAL	1

E3560-520

REPAIR PARTS



NOTE: ALWAYS USE ORIGINAL EQUIPMENT PARTS. Use of service/replacement parts other than original equipment parts may void your warranty.

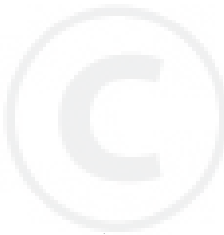
ALL UNNUMBERED
ITEMS ARE INTERCHANGEABLE
WITH OPPOSITE SIDE

3258508

E3560-520**CHASSIS & HOOD ASSEMBLY**

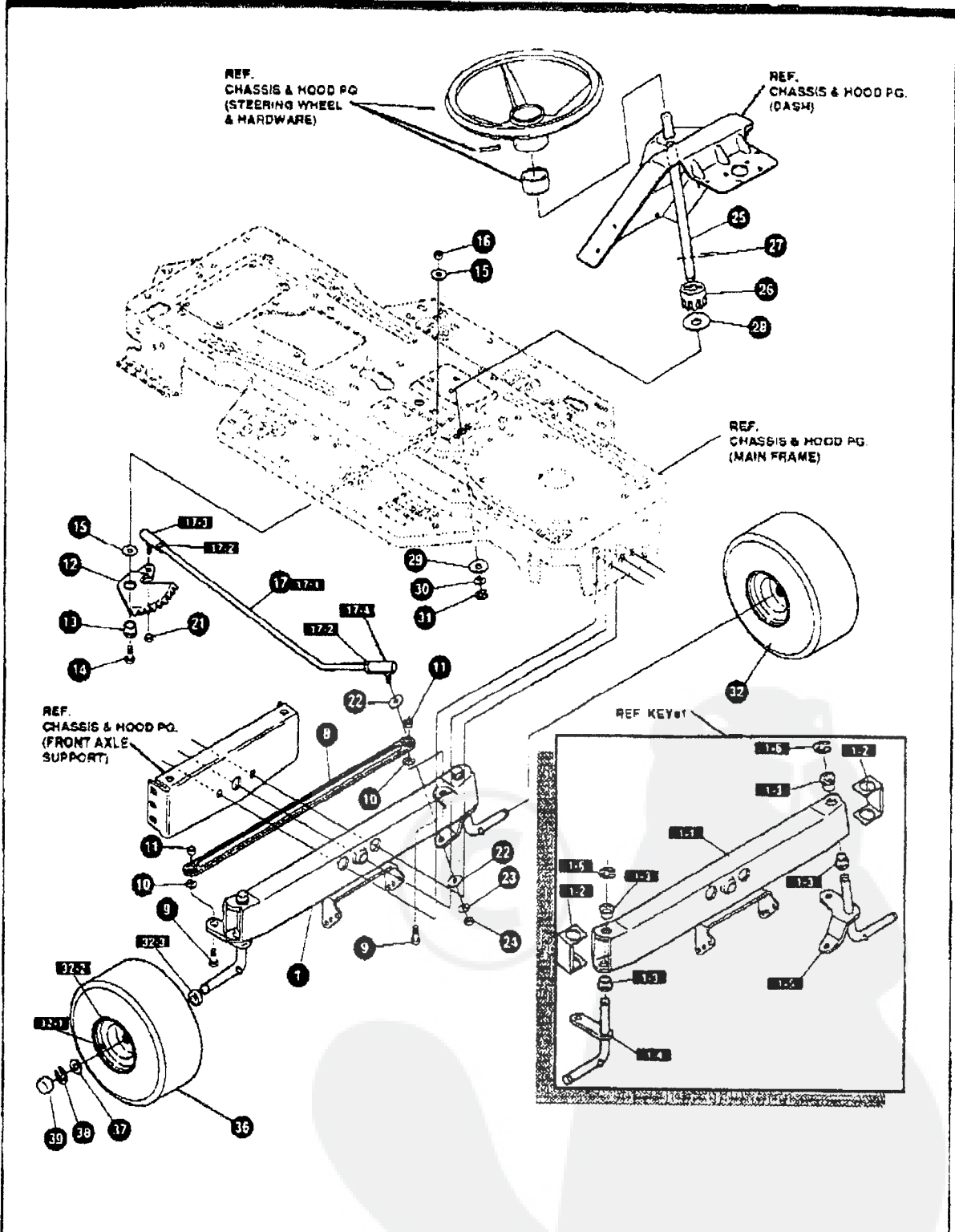
KEY#	PART#	DESCRIPTION	QTY
55	326577-860	FRAME	1
56	310005	FOOT PAD, LH 22 12LG	1
57	310006	FOOT PAD, RH 22 12LG	1
58	309235	FASTENER RATCHET BLACK	2
59	309657-860	CONSOLE	1
60	58367-853	PLATE, SEAT	1
61	310860-853	BRACKET, SEAT SUPPORT	2
62	20507	BOLT, 437X 156 HSSH 5/16-18	2
63	1498	NUT, 5/16-18 REGHEXCTRCK	2
64	48901	SCREW, 5/16-18X .63WAHHC	4
65	1498	NUT, 5/16-18 REGHEXCTRCK	4
66	57153	SPRING, SEAT 2.63LG 1.48OD BLK	2
67	1341	CLAMP, SPRG 1 17"ID	2
68	44811	SCREW, 1/4-20X 75 WAHTAP	2
69	56907	COVER SEAT SPRING 1.5IDX1 0LG	2
70	^	FENDER ASSY.	1
70-1	332187-860	FENDER	1
70-2	9239	CLEVIS	1
70-3	439455	SCREW, 5/16-18X .56PHNMA	1
70-4	301551	WASHER, .344IDX1 .50DX 09 CU	1
70-5	120373	NUT, 5/16-18 SQ	1
76	995346	SCREW, 1/4-20X 50 WAHTAP	4
77	126358	BOLT, 5/16-18X1 00 CARRLN	2
79	55273	NUT, 5/16-18 HXWDFLLK	2
80	55023	TRIM, 77.5" BLACK NARROW	77 5'
81	304316	SEAT, MICHIGAN W/SW HOLE	1
82	120393	WASHER, FLAT .344X .69X 065	4
83	120638	WASHER, HVSP TLK .328X .60X 09	4
84	180077	SCREW, 5/16-18X 75 HHC	4

^ ORDER INDIVIDUAL PARTS



E3560-520

REPAIR PARTS



NOTE: ALWAYS USE ORIGINAL EQUIPMENT PARTS. Use of service/replacement parts other than original equipment parts may void your warranty.

ALL UNNUMBERED ITEMS ARE INTERCHANGEABLE WITH OPPOSITE SIDE

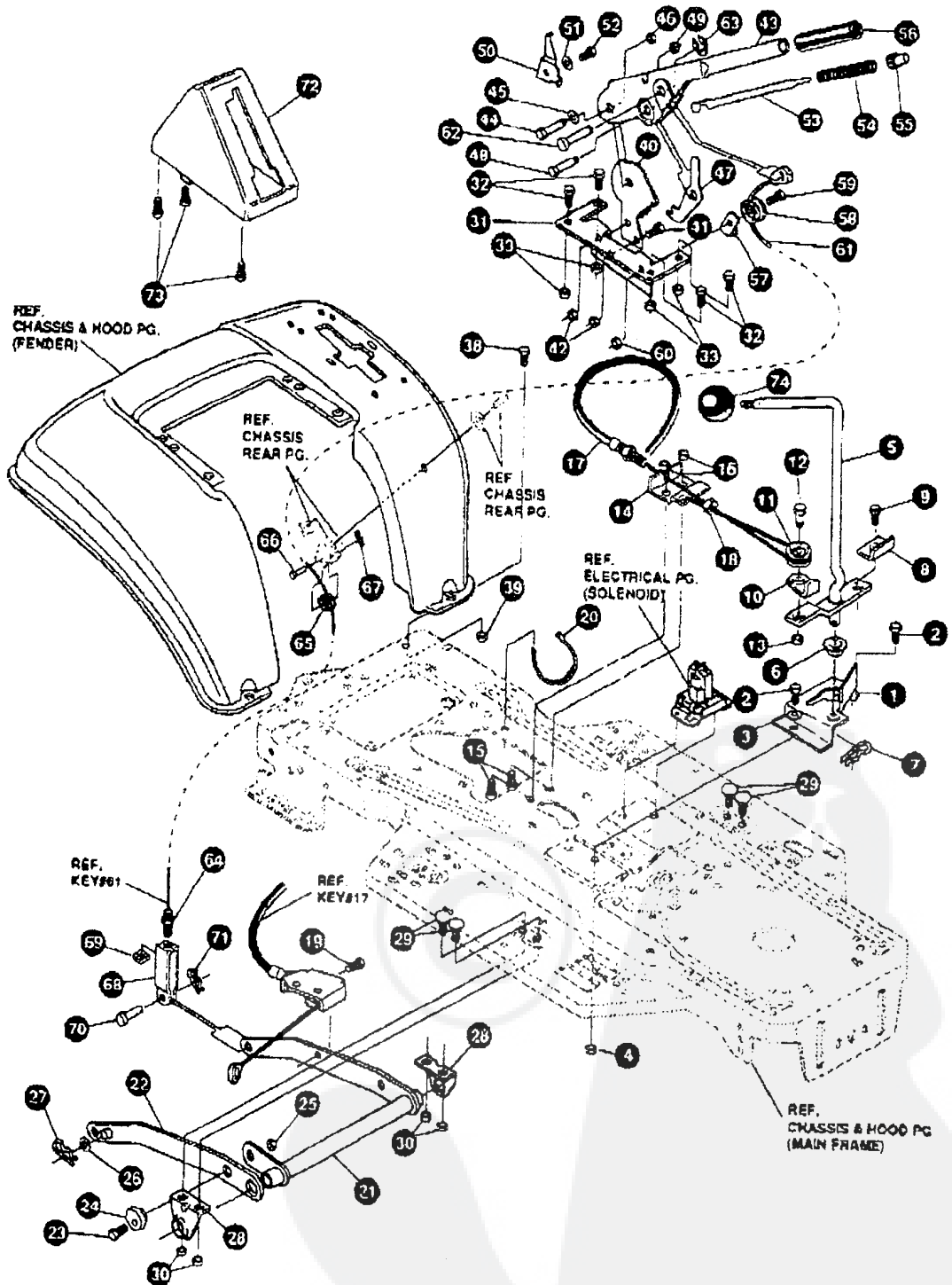
3151361

E3560-520**STEERING ASSEMBLY**

KEY#	PART#	DESCRIPTION	QTY
1	A	ASSY, AXLE FRONT	1
1-1	310170-853	AXLE FRONT	1
1-2	53373	AXLE COVER	2
1-3	52407	SPINDLE BEARING	4
1-4	302926	ASSY SPINDLE RH	1
1-5	315886	ASSY SPINDLE LH	1
1-6	36625	RING, RETEX .57X.05TRU5133-75	2
8	304590	TIE ROD ASSY 19.81LG W-SECTION	1
9	180128	SCREW, 3/8-16X1.75 HHC	2
10	120382	WASHER, REGSPTLK 393X.68X.10	2
11	120377	NUT, 3/8-16 REGHX	2
12	58289	SECTOR, STEERING	1
13	52406	BRNG, FL ECC. 510IDX .998ODX .56	1
14	190177	SCREW, 1/2-13X1.50 HHC	1
15	22265	WASHER, FLAT .515X1.38X.119	2
16	1500	NUT, 1/2-13 REGHCTRLK	1
17	311100	KIT 300146 DRAGLINK	1
17-1	58291	STEERING LINK	1
17-2	124925	NUT, 3/8-24 REGHEXJAM	2
17-3	57158	BALL JOINT 3/8 TH'D SHORT STUD	1
17-4	21275	BALL JOINT 3/8 TH'D LONG STUD	1
21	46692	NUT, 3/8-24 WDFLNLK WHIZ	1
22	996416	WASHER, FLAT .391X1.00X.125	2
23	120382	WASHER, REGSPTLK.393X.68X.10	1
24	120369	NUT, 3/8-24 REGHEX	1
25	58243	SHAFT, STEERING	1
26	58244	PINION, STEERING	1
27	58274	PIN, DOWEL .2500 OD-1.75LG PL	1
28	301410	BRNG, FL .752IDX1.061ODX .24	1
29	301398	WASHER, FORMED1.135X1.53X.12	1
30	21682	WASHER, FLAT .765X1.25X.042PL	1
31	36625	RING, RETEX .57X.05TRU5133-75	1
32	302828	TIRE & RIM, PU 15X6.0X6	2
32-1	24167	VALVE STEM	
32-2	39829	RIM, WHEEL	
32-3	314416	BEARING, FL	
36	39830	TIRE, 15X6X6	
37	642	WASHER, FLAT .755X1.31X.075	4
38	36625	RING, RETEX .57X.05TRU5133-75	2
39	40394	HUB CAP, 1.500IO X 7/8LG	2

E3560-520

REPAIR PARTS



NOTE: ALWAYS USE ORIGINAL EQUIPMENT PARTS. Use of service/replacement parts other than original equipment parts may void your warranty.

ALL UNNUMBERED ITEMS ARE INTERCHANGEABLE WITH OPPOSITE SIDE

325815D

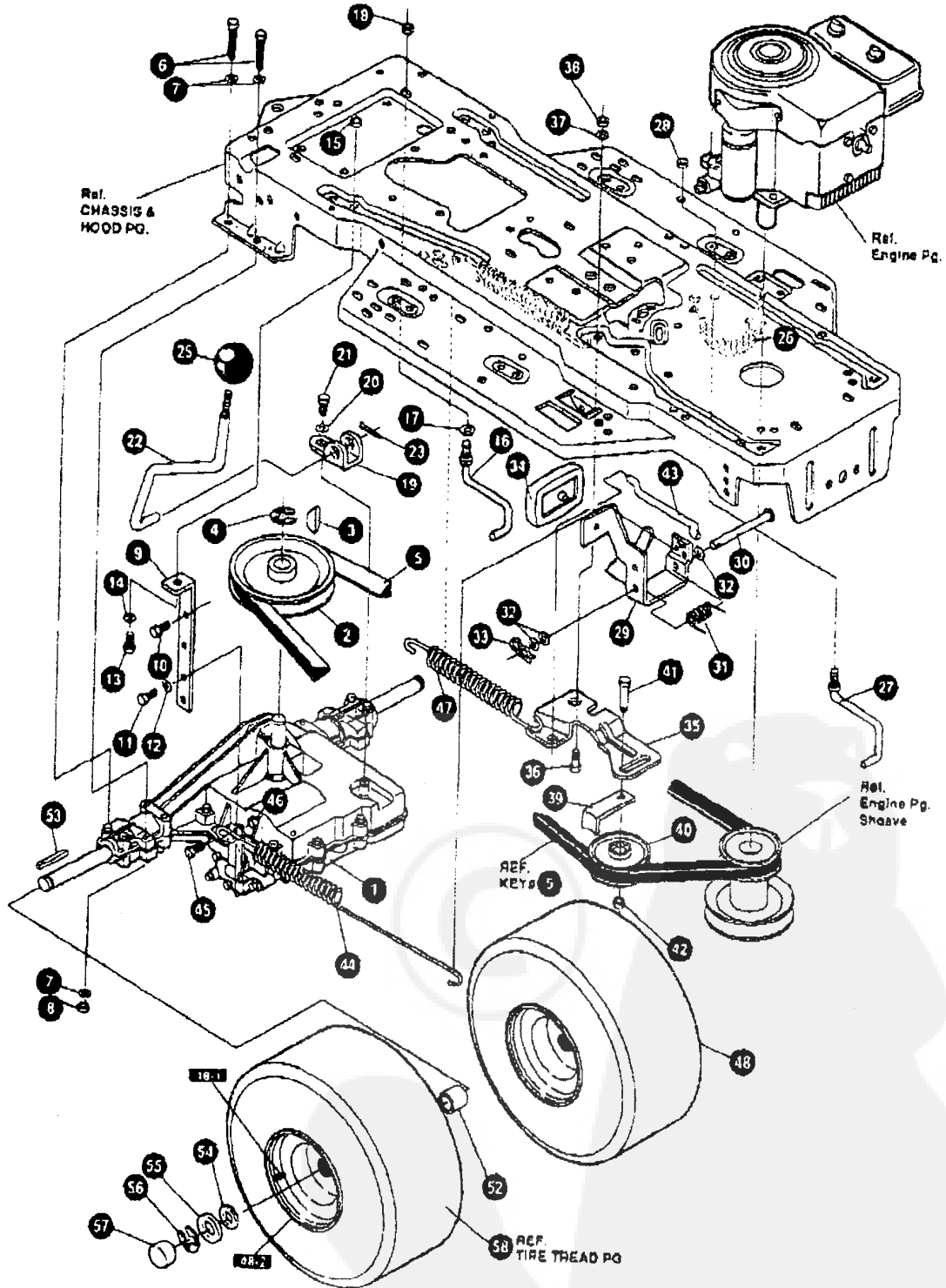
E3560-520

MOWER SUSPENSION ASSEMBLY

KEY#	PART#	DESCRIPTION	QTY
1	320075-853	BRACKET, CLUTCH ENGAGE LEVER	1
2	180079	SCREW, 5/16-18X1.00 HHC	2
3	120393	WASHER, FLAT .344X .69X .065	2
4	1498	NUT, 5/16-18 REGHEXCTRLK	2
5	304791	ASSY, CLUTCH LEVER	1
6	50148	BRNG, FL 50310X .630DX .50	1
7	8260	PIN, HAIR .091 DIA X 1.66LG	1
8	318341	BRKT, SWITCH ENGAGE	1
9	35498	SCREW, 5/16-18X .75 WAHHTAP	1
10	1298	BRKT, CABLE RETAIN	1
11	48306	PULLEY, POWDER METAL	1
12	58336	BOLT, .375X .375 HSSH 1/4-20	1
13	1502	NUT, 1/4-20 REGHEXCTRLK	1
14	300698-853	BRACKET FRAME CABLE	1
15	180020	SCREW, 1/4-20X .75 HHC	2
16	1502	NUT, 1/4-20 REGHEXCTRLK	2
17	301503	ASSY, CABLE, BLADE ENGAGE	1
18	120613	NUT, 1/4-28 HJAM	1
19	35498	SCREW, 5/16-18X .75 WAHHTAP	1
20	57444	TIE, CABLE BLACK NYLON 5.62L	1
21	300158-853	LIFT ASSY, LH	1
22	300169-853	LIFT ASSY, RH	1
23	180079	SCREW, 5/16-18X1.00 HHC	1
24	58247	NUT, ADJUST	1
25	1498	NUT, 5/16-18 REGHEXCTRLK	1
26	417098	WASHER, FLAT .531X1.06X .063	2
27	8260	PIN, HAIR .091 DIA X 1.66LG	2
28	58248-853	BRACKET, REAR HANG SUSP	2
29	57072	BOLT, 5/16-18X .83 CARBLN	4
30	1498	NUT, 5/16-18 REGHEXCTRLK	4
31	313926	BRACKET, HGT/ADJUST SUPPORT	1
32	180077	SCREW, 5/16-18X .75 HHC	4
33	1498	NUT, 5/16-18 REGHEXCTRLK	4
38	180077	SCREW, 5/16-18X .75 HHC	1
39	1498	NUT, 5/16-18 REGHEXCTRLK	1
40	301238	QUADRANT HEIGHT ADJUST	1
41	180077	SCREW, 5/16-18X .75 HHC	2
42	1498	NUT, 5/16-18 REGHEXCTRLK	2
43	322292-853	HANDLE, LIFT SHORT	1
44	300171	BOLT, 500X 270 HSSH 5/16-18	1
45	896418	WASHER, FLAT .506X .75X .024	1
46	44108	NUT, 5/16-18 HWOFLCTRLK	1
47	301239	PAWL, SQUARE	1
48	300171	BOLT, 500X 270 HSSH 5/16-18	1
49	44108	NUT, 5/16-18 HWOFLCTRLK	1
50	9435	POINTER, HEIGHT ADJ	1
51	138479	WASHER, EXLK .195X .41X .03	1
52	35287	SCREW, #8-32X .38 HHWATAP	1
53	303027	ROD, ACTUATOR, SHORT	1
54	58326	SPRING, HEIGHT ADJUST	1
55	58325	KNOB, HEIGHT ADJ PUSH BUTTON	1
56	58329	GRIP, 750 OD W/ HOLE BLACK	1
57	8148	BRKT, CABLE RETAIN	1
58	48306	PULLEY, POWDER METAL	1
59	58336	BOLT, .375X .375 HSSH 1/4-20	1
60	1502	NUT, 1/4-20 REGHEXCTRLK	1
61	314177	CABLE, LIFT 22.92 F 5.20X8-8	1
62	300310	PIN, CLEVIS 310DIA X 475LG	1
63	300311	RING, RET E 31X.25TRUX5133-31	1
64	120375	NUT, 1/4-20 REGHEX	1
65	48306	PULLEY, POWDER METAL	1
66	300317	PIN, CLEVIS 375DIA X 81LG	1
67	8260	PIN, HAIR .091 DIA X 1.66LG	1
68	9405	CLEVIS, LIFT CABLE	1
69	120372	NUT, 1/4-20 REGSQ	1
70	39522	PIN, CLEVIS 312 X 812	1
71	121222	PIN, COTTER .090 DIA X 75LG	1
72	300335	LIFT COVER	1
73	300340	SCREW, #10 X .75 HHPLAST	3
74	55514	KNOB, ROUND 1.50 DIA	1

E3560-520

REPAIR PARTS



NOTE: ALWAYS USE ORIGINAL EQUIPMENT PARTS. Use of service/replacement parts other than original equipment parts may void your warranty.

ALL UNNUMBERED ITEMS ARE INTERCHANGEABLE WITH OPPOSITE SIDE

328261D

E3560-520

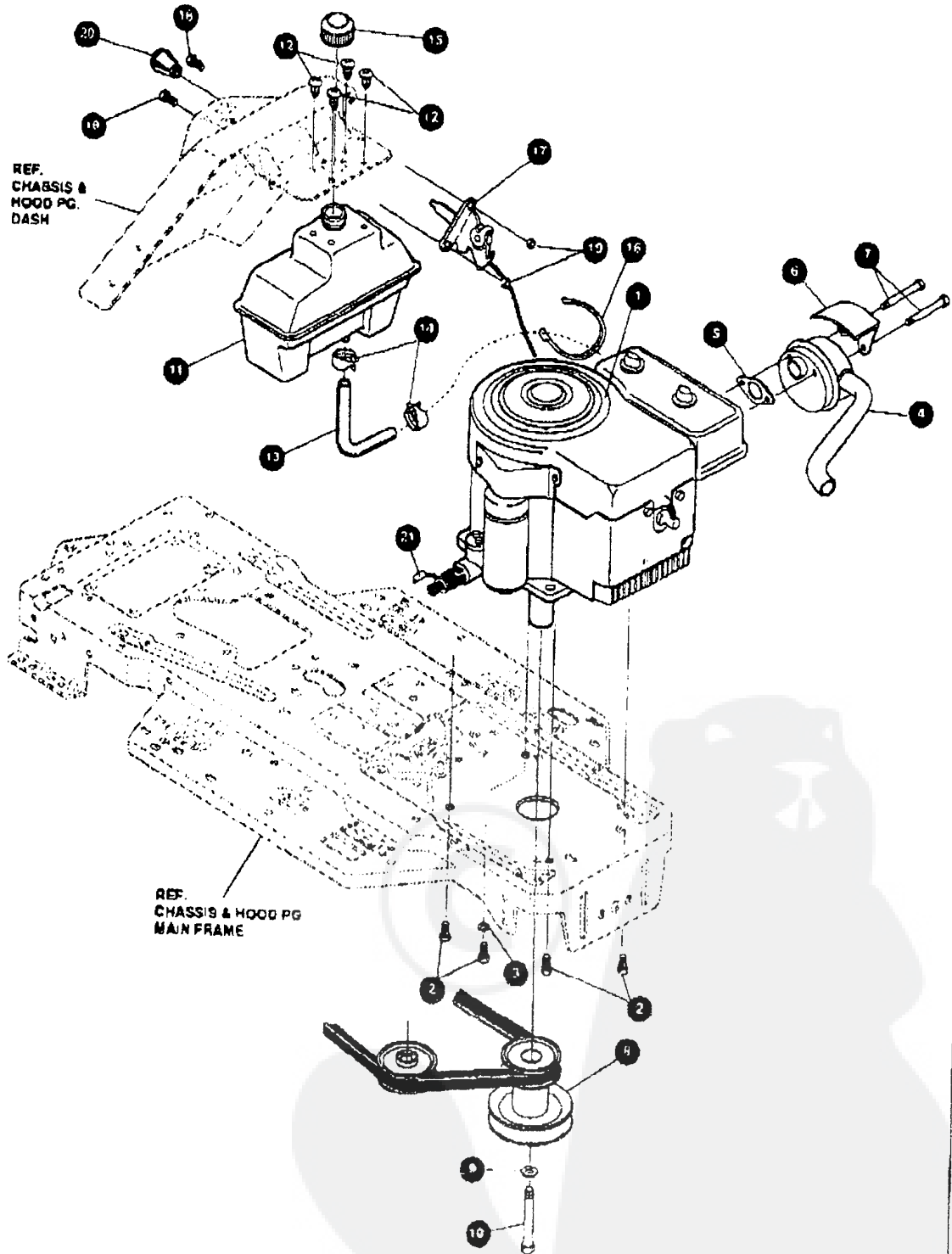
MOTION DRIVE ASSEMBLY

KEY#	PART#	DESCRIPTION	QTY
1	0	TRANSAXLE FOOTE 4360-5	1
2	302745	PULLEY, 6 6 OD V4L T/A	1
3	50795	KEY, HI-PRO 606 .750IAX 167WD	1
4	22053	RING, RETEX .58X.035TRUS100-62	1
5	314120	BELT, V 4L 87 25 4WS LF	1
6	180113	SCREW 5/16-18X3 00 HHC GR5 Z	4
7	120383	WASHER, FLAT 344X .69X .065 Z	8
8	1498	NUT, 5/16-18 REGHEXCTRLK Z	4
9	323739	BRKT, STABILIZER BLKPHOS954	1
10	50947	SCREW, 3/8-16X1.25 WAHHTAPBLK	1
11	35488	SCREW, 5/16-18X .75 WAHHTAP Z	1
12	120638	WASHER, HVSPTLK .328X.60X.09 Z	1
13	180079	SCREW 5/16-18X1.00 HHC GR5 Z	1
14	120383	WASHER, FLAT 344X .69X .065 Z	1
15	1498	NUT, 5/16-18 REGHEXCTRLK Z	1
16	57259	GUIDE, BELT 5/16-18THD	1
17	138538	WASHER, REGINTLK 320X.61X.03 Z	1
18	1498	NUT, 5/16-18 REGHEXCTRLK Z	1
19	57480	BRKT, SHIFT P020-5/ HTR055	1
20	57157	WASHER, 750X 250 SP-TRANSAXLE	1
21	56255	SCREW, 1/4-28X .75 NYLHHCGR8 Z	1
22	302743	LEVER, SHIFT FOOT 4360-5&8 LF 2	1
23	137185	PIN, COTTER .125 DIA X 1.00LG Z	1
25	55514	KNOB, ROUND 1.50 DIA BLACK	1
26	321514	SPRING, DRAG LINK BIAS	1
27	304016	GUIDE, BELT R.H.	1
28	1498	NUT, 5/16-18 REGHEXCTRLK Z	1
29	325942	PEDAL ASSY BRAKE/CLUTCH LF	1
30	319675	PIN, CLEVIS 5000X4 53LG Z	1
31	57847	SPRING, BRAKE PEDAL	1
32	2958	WASHER, FLAT 504X .75X .059 Z	3
33	56180	PIN, HAIR .091 DIA X 1.62LG Z	1
34	48160	PAD, CLUTCH BRAKE W/PRINTING	1
35	320381-853	ARM, IDLER TRACTION SOG LF	1
36	329989	BOLT, 625X 135 HHSM 5/16-18Z	1
37	45602	WASHER, FLAT .333X .87X .119 Z	1
38	1498	NUT, 5/16-18 REGHEXCTRLK Z	1
39	39659	RETAINER, BELT	1
40	35374	PULLEY, IDLER V4L 3.06X .62	1
41	45892	BOLT 3/8-16X1.50 CARRSN GR2 Z	1
42	1499	NUT, 3/8-16 REGHXCTRLK Z	1
43	57204	ROD, CLUTCH 3.82"	1
44	325937	SPRING, BRAKE 28 80 930.4360	1
45	326131	BOLT, 495X 31 HHSM 5/16-18	1
46	1498	NUT, 5/16-18 REGHEXCTRLK Z	1
47	330505	SPRING, CLUTCH 113X 750X8.75	1
48	57166	TIRE & RIM 20X8 00-8 WHITE	2
48-1	24167	VALVE STEM	
48-2	57165	RIM, WHEEL	
52	57479	SPACER, SLEV 75 X1 25X1.32	2
53	52928	KEY, SQUARE 187SOX2 25LG	2
54	642	WASHER, FLAT .755X1.31X.075 Z	4
55	42815	WASHER, FLAT .755X1.53X.07 Z	3
56	36625	RING, RETEX .57X.05TRUS133-75	2
57	40394	HUB CAP, 1.500ID X 7/8LG	2
58		SEE TIRE TREAD PAGE	

0 CONTACT YOUR NEAREST TRANSAXLE DEALER FOR PARTS AND SERVICE

E3560-520

REPAIR PARTS



NOTE: ALWAYS USE ORIGINAL EQUIPMENT PARTS. Use of service/replacement parts other than original equipment parts may void your warranty.

ALL UNNUMBERED ITEMS ARE INTERCHANGEABLE WITH OPPOSITE SIDE

326187D

E3560-520

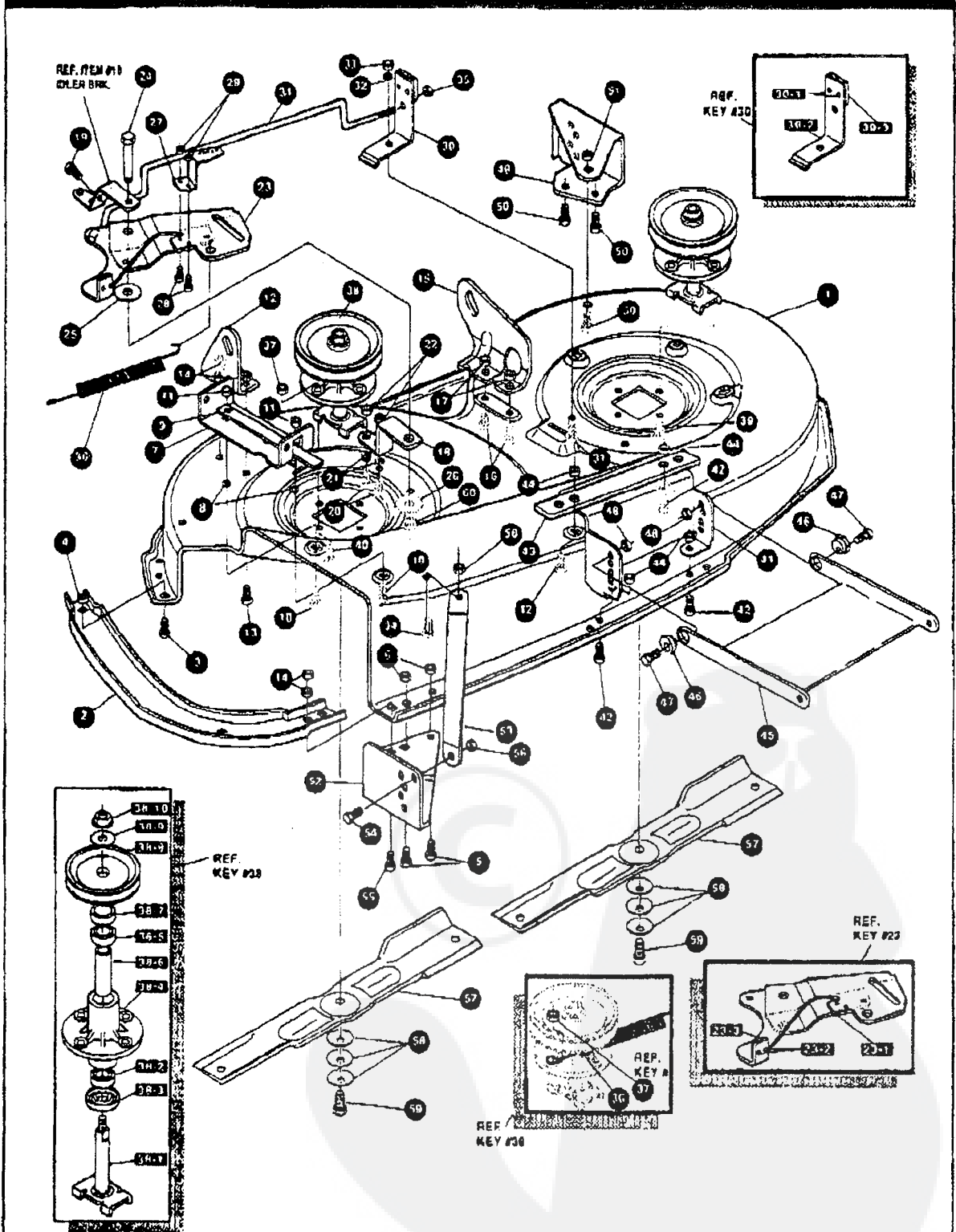
ENGINE & CONTROL ASSEMBLY

KEY #	PART #	DESCRIPTION	QTY.
1	ENGINE	12-12.5HP BS IC DUAL (SEE ENGINE MANUAL)	1
2	50947	SCREW, 3/8-16X1.25 WASHHTAPBLK	4
3	138489	WASHER, EXLK 384X.69X.04	1
4	305367	MUFFLER-LO TONE NELSON	1
5	46708	GASKET, MUFFLER	1
6	54767	SHIELD, HEAT FOR ROUND MUFFLER	1
7	54980	SCREW, 5/16-18X3.50 HHC	2
8	328028	PULLEY, ENG 3.0D X 4.0LG X 5.0D	1
9	120383	WASHER, REGSPTLK 459X.79X.12	1
10	433146	SCREW, 7/16-20X4.25 HHC BLK PH	1
11	314989	TANK, FUEL 1 GAL CLEAR	1
12	49050	SCREW, 1/4-10X.75PHNTAP	4
13	50118	TUBING, 25X.50X BULK GAS LINE	13 IN.
14	47345	CLAMP, FUEL LINE RED	2
15	46704	CAP, GAS 1-1/2-7 THD BLK	1
16	57444	TIE, CABLE BLACK NYLON 5.62L	1
17	321273	CONTROL, THROTTLE 12-12.5HP	1
18	320553	SCREW, 10-24X .63PHNMA CRSS	2
19	271166	NUT, #10-24 HEXKEPS	2
20	50607	KNOB, ROUND THROTTLE	1
21	325547	OIL DRAIN VALVE ASSEMBLY	1



E3560-520

REPAIR PARTS



NOTE: ALWAYS USE ORIGINAL EQUIPMENT PARTS. Use of service/replacement parts other than original equipment parts may void your warranty.

ALL UNNUMBERED ITEMS ARE INTERCHANGEABLE WITH OPPOSITE SIDE

331147C

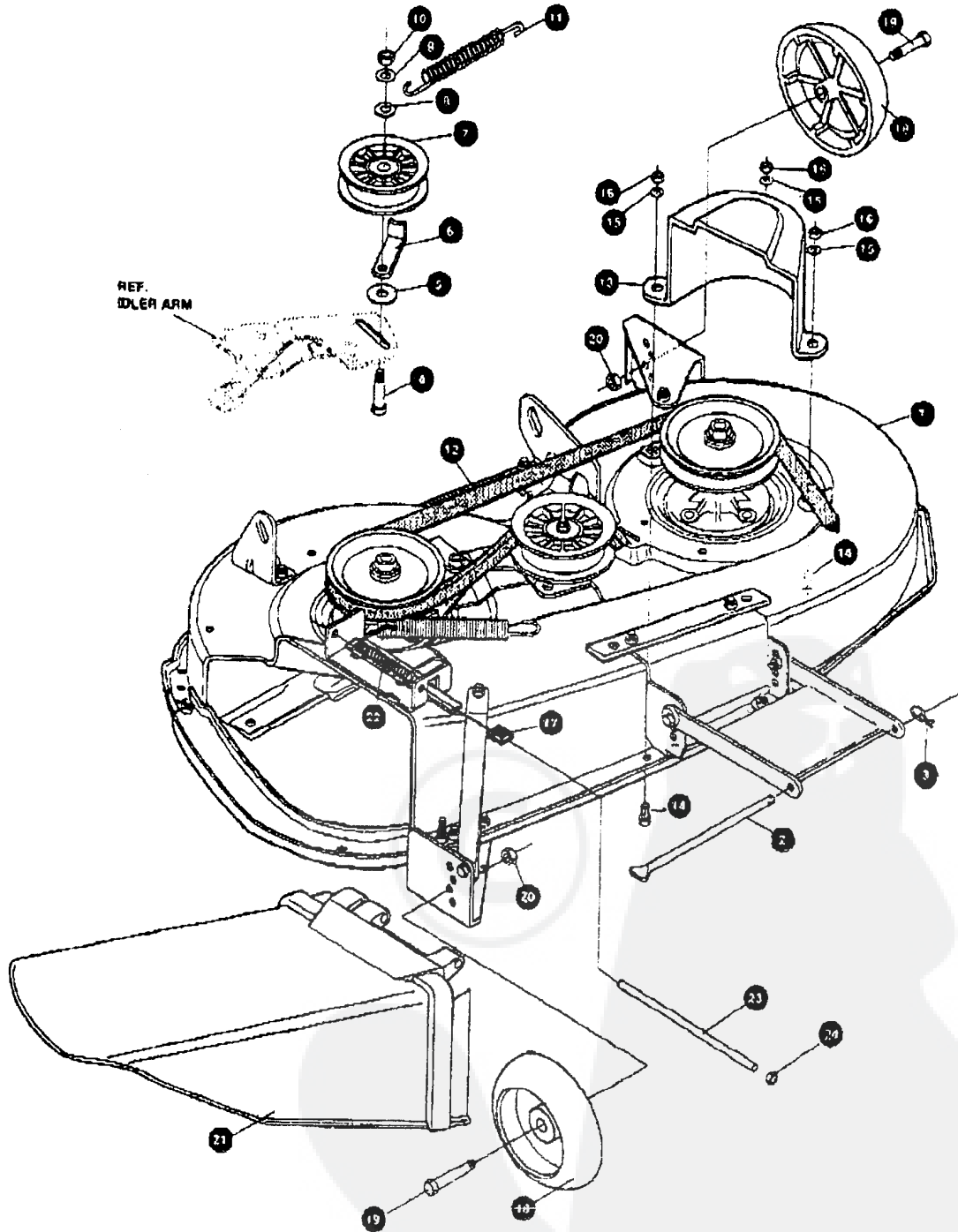
E3560-520

PRE-PAINTED DECK ASSEMBLY

KEY#	PART#	DESCRIPTION	QTY
1	325103	40" DECK KIT	1
2	326480-853	TOE GUARD - MULCHER	1
3	180077	SCREW, 5/16-18X 75 HHC	1
4	1498	NUT, 5/16-18 REGHEXCTRLK	1
5	180077	SCREW, 5/16-18X 75 HHC	1
6	1498	NUT, 5/16-18 REGHEXCTRLK	1
7	317017	BRACKET CHUTE MOUNT BLACK	2
8	120393	WASHER FLAT 344X 69X 065	1
9	322320-853	LEVER ASSY (SHORT)	2
10	180077	SCREW, 5/16-18X 75 HHC	1
11	1498	NUT, 5/16-18 REGHEXCTRLK	2
12	313929	LIFT BRKT REAR RH BLK 853	1
13	180077	SCREW, 5/16-18X 75 HHC	2
14	1498	NUT, 5/16-18 REGHEXCTRLK	2
15	310667	BRACKET DECK LIFTREAR LHBLK	1
16	180077	SCREW, 5/16-18X 75 HHC	2
17	1498	NUT, 5/16-18 REGHEXCTRLK	2
18	326893-853	BRACE IDLER SUPPORT 40" 43"	1
19	308231	SCREW, 1/4-20X1.25 HHWATAP	1
20	180077	SCREW, 5/16-18X 75 HHC	2
21	120393	WASHER FLAT 344X 69X 065	2
22	44108	NUT, 5/16-18 HWDFLCTRLK	2
23	320576-853	IDLER ARM ASSEMBLY	1
23-1	322116-853	ARM IDLER 40/43" DECK	1
23-2	41601	RIVET, OVSET 187DIA X 50LG ST	2
23-3	306973	BRAKE PAD - HARD - 232AF	1
24	304420	BOLT, 500X2 16 HSSH	1
25	996307	WASHER FLAT 391X1.00X 208	1
26	996416	WASHER, FLAT 391X1.00X 125	2
27	326248-853	BRACKET, EXTENSION IDLER	1
28	180077	SCREW, 5/16-18X 75 HHC	2
29	1498	NUT, 5/16-18 REGHEXCTRLK	2
30	321828	BLADE BRAKE ASSY	1
30-1	135624	RIVET, TRSET 185DIA X 41LG ST	2
30-2	304119-853	BRAKE ARM	1
30-3	306973	BRAKE PAD - HARD - 232AF	1
31	180077	SCREW, 5/16-18X 75 HHC	1
32	120393	WASHER, FLAT 344X 69X 065	1
33	1498	NUT, 5/16-18 REGHEXCTRLK	1
34	315396	ROD, BRAKE 40" DECK	1
35	1502	NUT, 1/4-20 REGHEXCTRLK	1
36	35410	SPRING .071 X .62 X 4 37	1
37	1498	NUT, 5/16-18 REGHEXCTRLK	1
38	56424-853	OUIL ASSY, 36/39/40/43	2
38-1	56426	SHAFT/SADDLE 36"	1
38-2	49562	BRNG, BALL 6203-2AA(SEALS)-C3	1
38-3	50616	DUST SHIELD	1
38-4	55547	OUIL CASTING (1045)	1
38-5	49562	BRNG, BALL 6203-2AA(SEALS)-C3	1
38-6	50818	SPACER, SLEV 689X 88X3 787	1
38-7	51449	SPACER, SLEV 672X 93X 438PM	1
38-8	313898	PULLEY ASSY	1
38-9	56365	WASHER, SPECIAL OUIL	1
38-10	1282	NUT, 7/16-20 WDFLLK	1
39	35498	SCREW, 5/16-18X 75 WAHHTAP	7
40	300345	SCREW, 5/16-18X1.38 WAHHTAP	1
41	318445-853	BRACKET, 40 LF FRONT DECK	1
42	180077	SCREW, 5/16-18X 75 HHC	4
43	328155-853	PLATE-MOUNTING	1
44	1498	NUT, 5/16-18 REGHEXCTRLK	4
45	58305-853	BRACKET, LINK DECK FRONT	1
46	58247	NUT, ADJUST	2
47	180079	SCREW, 5/16-18X1.00 HHC	2
48	1498	NUT, 5/16-18 REGHEXCTRLK	2
49	317041	BRKT, GAGE WHEEL LH BLACK	1
50	180077	SCREW, 5/16-18X 75 HHC	3
51	1498	NUT, 5/16-18 REGHEXCTRLK	3
52	322464-853	BRACKET, GAGE WHEEL R.H FRNT	1
53	314282-853	BRACKET, STABILIZER	1
54	180077	SCREW, 5/16-18X 75 HHC	1
55	12685	SCREW, 5/16-18X1 50HCFE	1
56	1498	NUT, 5/16-18 REGHEXCTRLK	1
57	309070	BLADE, 20.32 HIGH-LIFT 853	2
58	2483	WASHER, 3910X1 250X 07 BELLVIL	6
59	39573	SCREW, 3/8-24X1.00 NYLHHC	2
60	45171	NUT, 3/8-16 HWDFL WHIZ-LOCK	1

E3560-520

REPAIR PARTS



NOTE: ALWAYS USE ORIGINAL EQUIPMENT PARTS. Use of service/replacement parts other than original equipment parts may void your warranty

ALL UNNUMBERED ITEMS ARE INTERCHANGEABLE WITH OPPOSITE SIDE

331145B

E3560-520

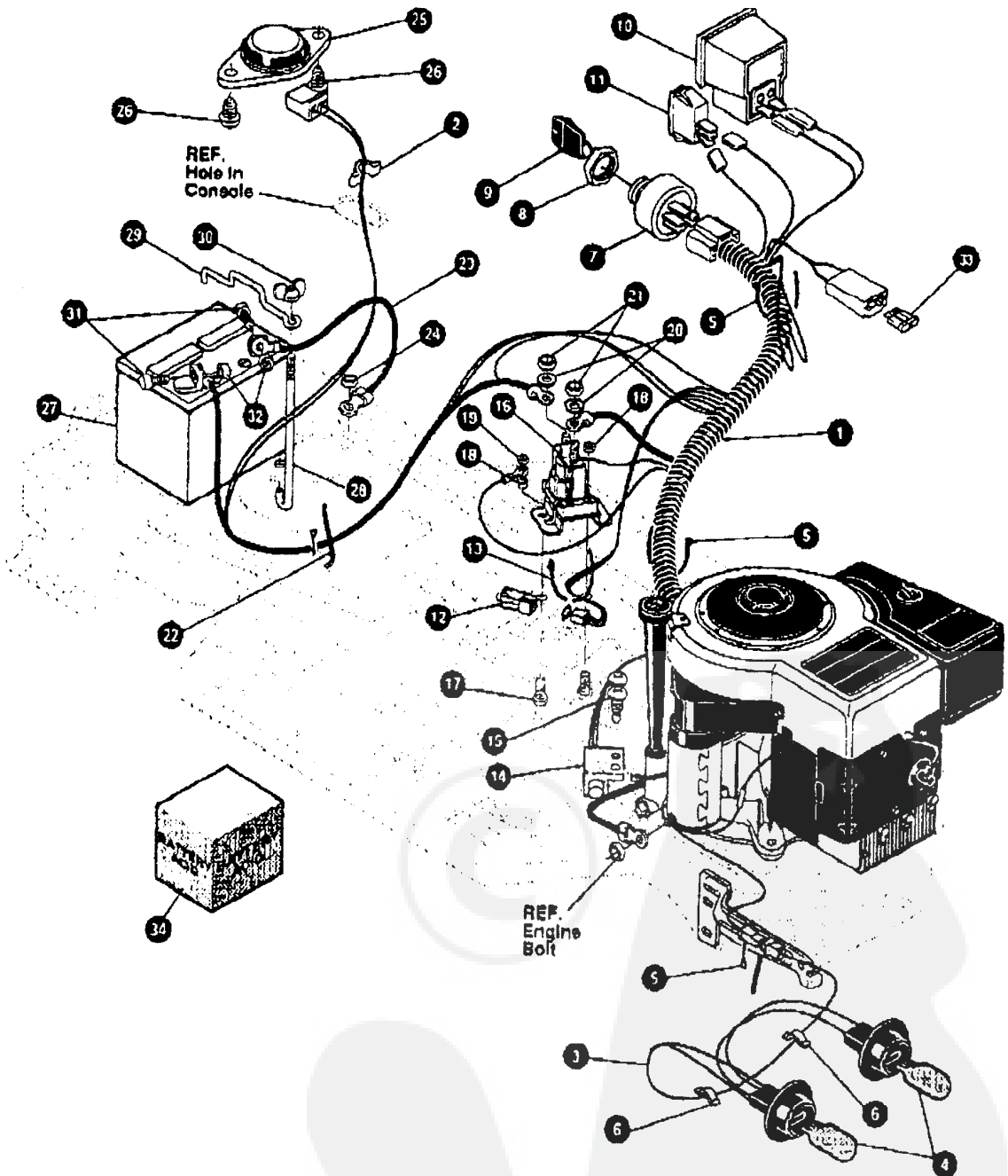
FINAL DECK ASSEMBLY

KEY#	PART#	DESCRIPTION	QTY
1	.	ASM. 40" DECK FOR AIR ASSIST	1
2	58306	ROD, DECK HITCH Z-PL	1
3	8260	PIN, HAIR .091 DIA X 1.66 LG.	1
4	57325	BOLT, 3/8-16 X 2.00 CARBON	1
5	25210	WASHER, FLAT .386 X 1.25 X .09 HT.	1
6	1348	RETAINER, BELT	1
7	310326	PULLEY, IDLER BFF 4.00 WIDE FL.	1
8	996307	WASHER, FLAT .391 X 1.00 X .209	1
9	120382	WASHER, REGSPTLK. 393 X .68 X .10	1
10	120377	NUT, 3/8-16 REGHX	1
11	300473	SPRING, TENSION 7.52 LG + 17 LB/IN	1
12	319005	BELT, V 5L 81.00 DECK 40 LF	1
13	328257	GUARD, BELT LH PLASTIC	1
14	180075	SCREW, 5/16-18 X .63 HHC	3
15	120393	WASHER, FLAT .344 X .68 X .065	3
16	1498	NUT, 5/16-18 REGHEXCTRLK	3
17	42348	GRIP, LEVER GRASS COLLECTOR	1
18	302611	GAUGE WHEEL, EURO 6.00 ODX 1.38 WD	2
19	23763	BOLT, 500 X 1.390 WSH 3/8-16	2
20	1499	NUT, 3/8-16 REGHXCTRLK	2
21	304422	CHUTE DEFLECTOR 40" 42" & 43"	1
22	314975	SPRING, TORSION CHUTE DEFLECTOR	1
23	304424	ROD, PIVOT DECK .3120 X 7.25	1
24	3535	NUT, PUSH ON CAP 312.00	1

* ORDER INDIVIDUAL PARTS.

E3560-520

REPAIR PARTS



NOTE: ALWAYS USE ORIGINAL EQUIPMENT PARTS. Use of service/replacement parts other than original equipment parts may void your warranty.

ALL UNNUMBERED ITEMS ARE INTERCHANGEABLE WITH OPPOSITE SIDE

325502C

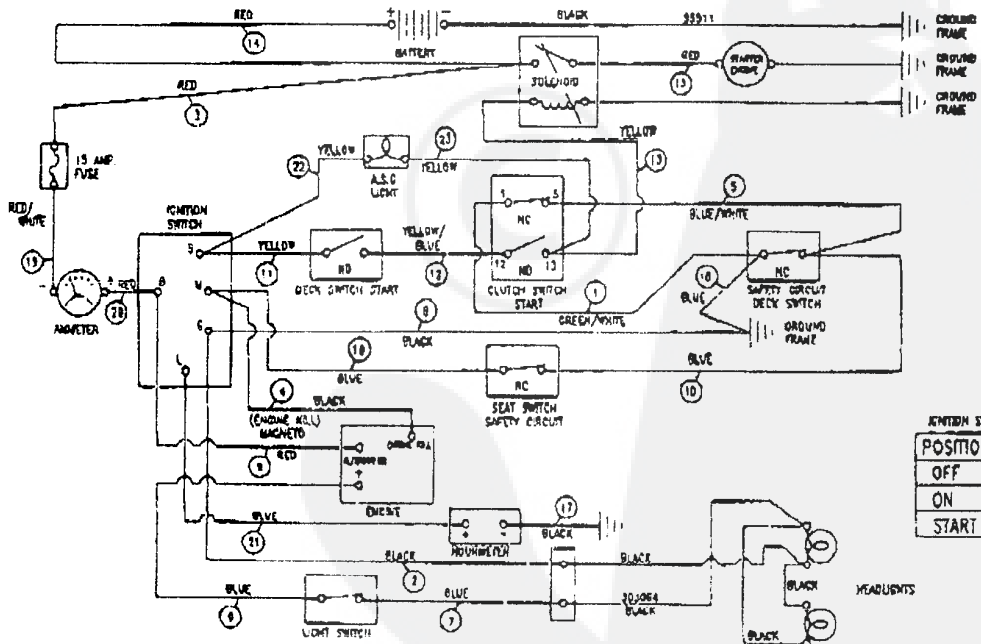
E3560-520

ELECTRICAL ASSEMBLY

KEY#	PART#	DESCRIPTION	QTY
1	320065	HARNESS 12-12.5BS.H14.WRAP LF	1
2	41482	PRESS CLIP.1.380LG.255ID	1
3	303064	ASSY LIGHT WIRE-1/4 TURN	1
4	52572	BULB HEADLAMP	2
5	57444	TIE. CABLE BLACK NYLON 5 62L	3
6	41482	PRESS CLIP.1.380LG.255ID	2
7	327355	SWITCH.IGN.(AFTER FIRE) 3 POSN	1
8	327352	NUT. 5/8-8ACME DELTA FOR BOOT	1
9	327350	KEY.IGNITION GENERIC DELTA	2
10	300133	AMMETER	1
11	300334	LIGHT SWITCH ON/OFF PANEL MNT	1
12	320082	SWITCH.DOUBLE POLE NO/NC GRAY	1
13	57444	TIE. CABLE BLACK NYLON 5 62L	1
14	57476	SWITCH.SCR MNT DP NC NO BLK	1
15	57220	SCREW. #12 X .50 PHPNHTAP BLK	2
16	53716	SOLENOID	1
17	187745	SCREW. 1/4-20X .75 MXSEMMA	2
18	1502	NUT. 1/4-20 REGHEXCTRLK	2
19	271172	NUT. 1/4-20 REGHEXKEPS	1
20	138485	WASHER. EXLK.320X.61X.03	2
21	120368	NUT. 5/16-24 REGHEX	2
22	57444	TIE. CABLE BLACK NYLON 5 62L	1
23	55511	WIRE. GROUND. 12.5'	1
24	271184	NUT. 5/16-18 HEXKEPS	1
25	57547	SWITCH. SEAT	1
26	160505	SCREW. 1/4-20X .38PHPNHMA	2
27	302257	BATTERY.12V	1
28	57551	ROD. BATTERY	1
29	57552	ROD. BATTERY. TOP	1
30	325232	NUT. WING 1/4-20 NYLON	1
31	180020	SCREW. 1/4-20X .75 HHC	2
32	271172	NUT. 1/4-20 REGHEXKEPS	2
34	A	BATTERY ACID PACK. 80 OZ	1

* CAN BE PURCHASED LOCALLY

SCHEMATIC WIRING



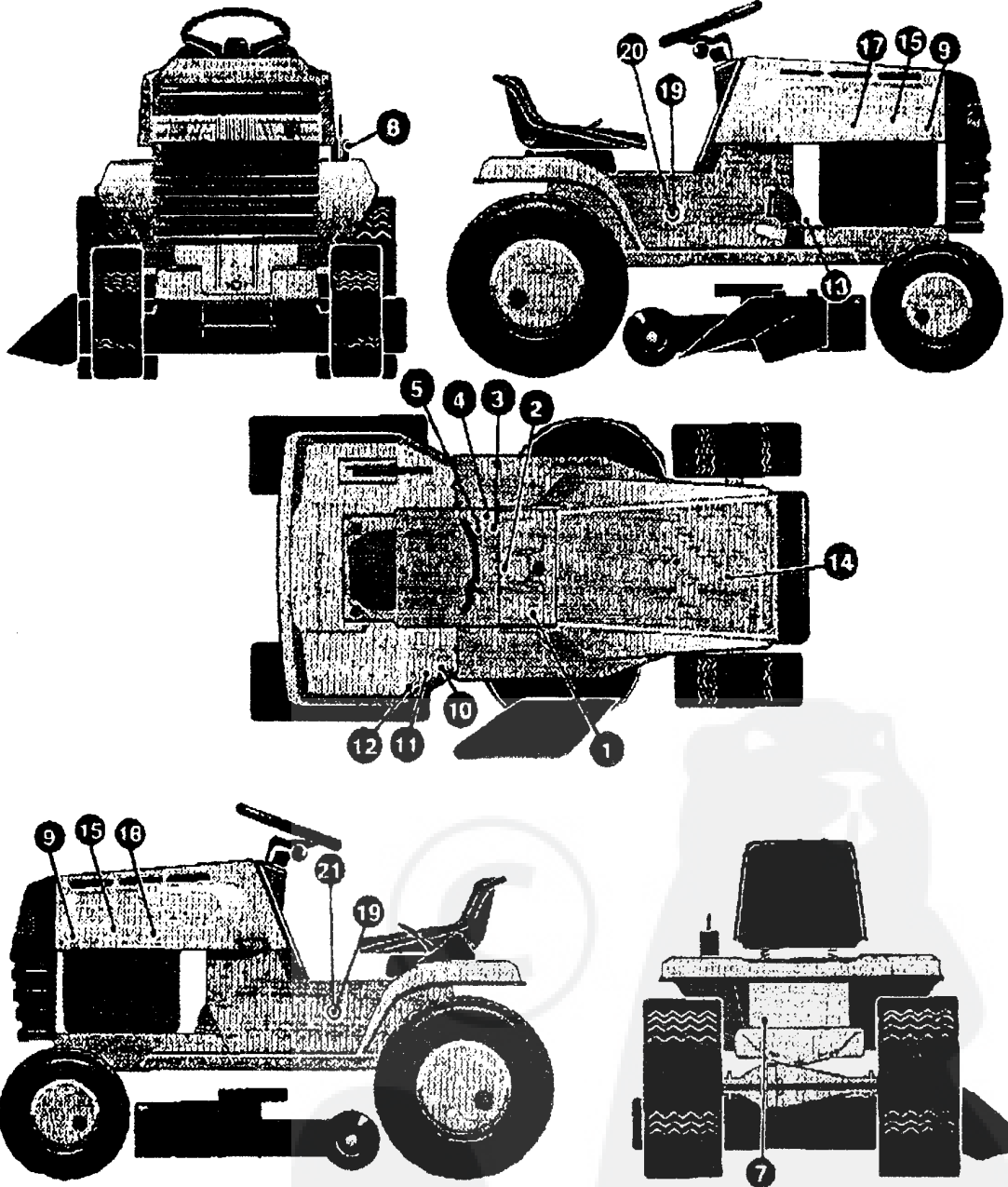
IGNITION SWITCH 305720

POSITION	G	H	L	B	S
OFF	●	●	●	●	●
ON	●	●	●	●	●
START	●	●	●	●	●

320065

E3560-520

REPAIR PARTS



NOTE: ALWAYS USE ORIGINAL EQUIPMENT PARTS. Use of service/replacement parts other than original equipment parts may void your warranty

ALL UNNUMBERED ITEMS ARE INTERCHANGEABLE WITH OPPOSITE SIDE

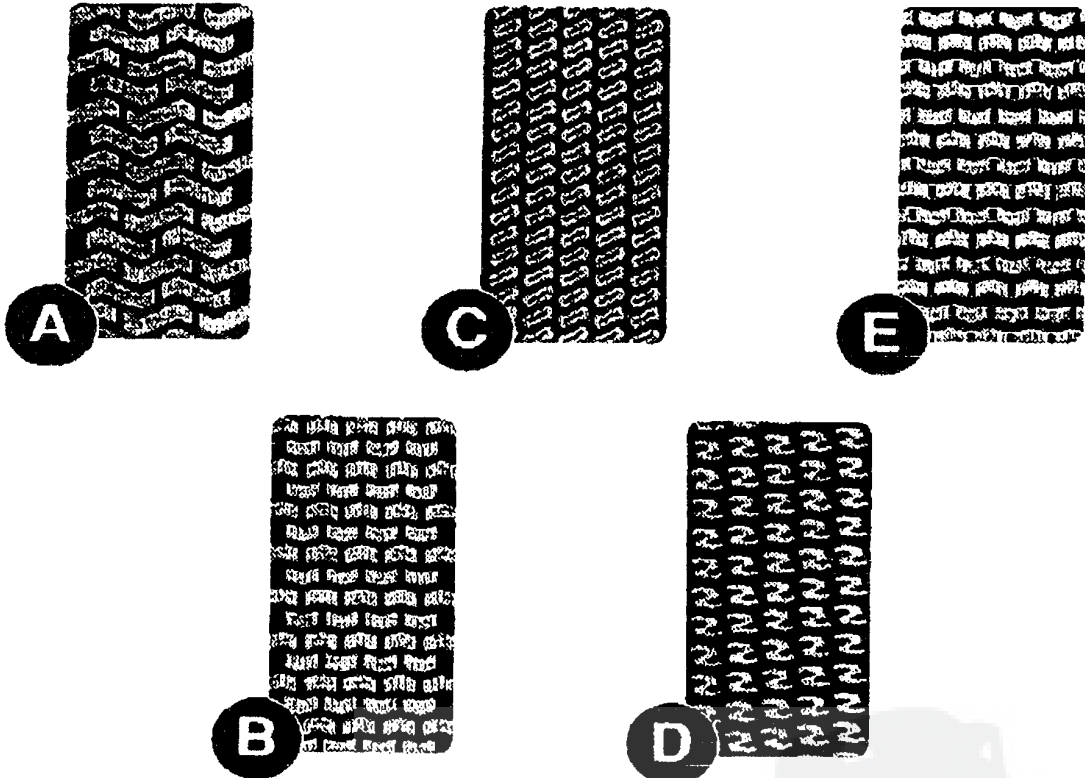
333240A

E3560-520

DECAL ASSEMBLY

KEY #	PART #	DESCRIPTION	QTY.
1	321765	DECAL, DASH. PTO/LIGHT SW EXP	1
2	307383	DECAL, INSTR. CONSOLE TOP ENGL	1
3	69524	DECAL, INSTRUCT CONSOLE TOP GER	1
4	69525	DECAL, INSTRUCT CONSOLE TOP FR	1
5	301104	DECAL, CONSOLE TOP SHIFT 5-SP	1
7	332359	DECAL, CERT DE CONFORMITE 1994	1
8	402214	DECAL, HEIGHT ADJUST	1
9	402142	NAMEPLATE, TURFMASTER WHT/BLK	2
10	305770	DECAL, CAUTION TRIANGLE EUROPE	1
11	68902	DECAL, WARNING, FRENCH/GERMAN	1
12	310553	DECAL, DANGER ENGLISH	1
13	68903	DECAL, BRAKE/CLUTCH ISO	1
14	55835	PAD, FOAM HOOD TOP	1
15	55836	PAD, FOAM HOOD SIDE	2
17	320714	DECAL, HOODSIDE RH	1
18	320713	DECAL, HOODSIDE LH	1
19	402154	NAMEPLATE, 12 5/40 SIL/BLK	2
20	314462	DECAL, CONSOLE RH LARGE FRAME	1
21	314463	DECAL, CONSOLE LH LARGE FRAME	1

TREAD PATTERNS



TIRE SIZE	"A"	"B"	"C"	"D"	"E"
11 X 4.00 - 5	42295	319679			
13 X 5.00 - 6	41060	319680			
15 X 6.00 - 6	39630	316702	301140	313952	
16 X 4.80 - 8		305035			
16 X 6.50 - 8	41081	319682		314539	
18 X 6.50 - 8		42091			
18 X 8.50 - 8	319683	317400			
18 X 9.50 - 8	41106	316701		313950	
20 X 8.00 - 8	319685	319684	57164	314584	331606
20 X 10.00 - 8	58276	319686		313654	
20 X 10.00 - 10	55893	319687			
23 X 9.50 - 12	53655	319690	319689	314370	