

PARTS MANUAL

Lawn Tractors



Model E3560-530



SAFETY RULES

THESE INSTRUCTIONS ARE FOR YOUR PROTECTION. PLEASE READ THEM CAREFULLY.

IMPORTANT

THIS CUTTING MACHINE IS CAPABLE OF AMPUTATING HANDS AND FEET AND THROWING OBJECTS. FAILURE TO OBSERVE THE FOLLOWING SAFETY INSTRUCTIONS COULD RESULT IN SERIOUS INJURY OR DEATH.

I. GENERAL OPERATION:

- Know controls and how to stop quickly.
- Read, understand, and follow all instructions in the manual and on the machine before starting.
- Only allow responsible adults, who are familiar with instructions, to operate the machine.
- Wear safety glasses or eye shields when assembling or operating the machine.
- Do not operate machine when barefooted. Always wear substantial footwear, preferably steel-toed shoes.
- Do not wear loose fitting clothing that could get caught in moving parts.
- Clear the area of objects such as rocks, toys, wire, etc., which could be picked up and thrown by the blade(s).
- Be sure the area is clear of other people before mowing. Stop machine if anyone enters the area.
- Never carry passengers.
- Do not mow in reverse unless absolutely necessary. Always look down and behind before and while backing.
- Be aware of the mower discharge direction and do not point it at anyone. Do not operate the mower without either the entire grass catcher or the guard in place.
- Slow down before turning.
- Never leave a running machine unattended. Always turn off blades, set parking brake, stop engine, and remove keys before dismounting.
- Turn off blade(s) when not mowing.
- Stop engine before removing grass catcher or unclogging chute.
- Mow only in daylight or good artificial light.
- Do not operate the machine while under the influence of alcohol or drugs.
- Watch for traffic when operating near or crossing roadways.
- Use care when mowing around a fixed object to prevent the blade(s) from striking it. Never deliberately run over any foreign object.
- Use extra care when loading or unloading the machine into a trailer or truck.
- Use care when pulling loads or using heavy equipment.
 - a. Use only approved drawbar hitch points.
 - b. Limit loads to those that you can safely control.
 - c. Do not turn sharply. Use care when backing.
 - d. Use counterweight(s), wheel weight or tire chains when suggested in attachment(s) instructions.

II. SLOPE OPERATION:

Slopes are a major factor related to loss-of-control and tip-over accidents, which can result in severe injury or death. *All slopes require extra caution.* If you cannot back up the slope or if you feel uneasy on it, do not mow it.

DO

- Mow up and down slopes, not across.
- Remove obstacles such as rocks, tree limbs, etc.
- Watch for holes, ruts, or bumps. Uneven terrain could overturn the machine. *Tall grass can hide obstacles.*
- Use slow speed. Choose a low gear so that you will not have to stop or shift while on the slope.
- Follow the manufacturer's recommendations for wheel weights or counterweights to improve stability.
- Use extra care with grass catchers or other attachments. These can change the stability of the machine.
- Keep all movement on the slopes *slow* and *gradual*. Do not make sudden changes in speed or direction.
- Avoid starting or stopping on a slope. If tires lose traction, turn off the blade(s) and proceed slowly *straight* down the slope.

DO NOT

- Do not turn on slopes unless necessary, and then slowly and gradually downhill, if possible.
- Do not mow near drop-offs, ditches or embankments. The

mower could suddenly turn over if a wheel is over the edge of a cliff or ditch, or if an edge caves in.

- Do not mow on wet grass. Reduced traction could cause sliding.
- Do not try to stabilize the machine by putting your foot on the ground.
- Do not use grass catcher on steep slopes.

III. CHILDREN:

Tragic accidents can occur if the operator is not alert to the presence of children. Children are often attracted to the machine and the mowing activity. *Never* assume that children will remain where you last saw them.

- Keep children out of the mowing area and under the watchful care of another responsible adult.
- Be alert and turn machine off if children enter the area.
- Before and when backing, look behind and *down* for small children.
- Never carry children. They may fall off and be seriously injured or interfere with safe machine operation.
- Never allow children to operate the machine.
- Use extra care when approaching blind corners, shrubs, trees, or other objects that may obscure vision.

IV. SERVICE:

- Use extra care in handling gasoline and other fuels. They are flammable and vapors are explosive.
 - a. Use only an approved container.
 - b. Never remove gas cap or add fuel with the engine running. Allow engine to cool before refueling. Do not smoke.
 - c. Never refuel the machine indoors.
 - d. Never store the machine or fuel container inside where there is an open flame, such as in a water heater.
- Check fuel supply before each use allowing space for expansion as the heat of the engine and/or sun can cause gasoline to expand and overflow the tank.
- Use extra care when handling battery acid. Acid contact with skin may cause severe burns. Eye contact may cause blindness.
- Use extra care when servicing the battery. Explosive gas is produced in the battery. Do not service the battery while smoking or near an open spark or flame. This may cause the battery to explode causing serious injury.
- Never run a machine inside a closed area. Exhaust fumes contain CARBON MONOXIDE, an ODORLESS and DEADLY GAS.
- Keep nuts and bolts, especially blade attachment bolts, tight and keep equipment in good condition.
- Never tamper with safety devices. Check their operation regularly.
- Do not change the engine governor settings or overspeed engine.
- Reduce fire hazards. Keep machine free of grass, leaves, or other debris build-up. Clean up oil or fuel spillage. Allow machine to cool before storing.
- Stop and inspect the equipment if you strike an object. Repair, if necessary, before restarting.
- Never make adjustments or repairs with the engine running.
- Grass catcher components are subject to wear, damage, and deterioration, which could expose moving parts or allow objects to be thrown. Frequently check components and replace with manufacturer's recommended parts, when necessary.
- Mower blade(s) are sharp and can cut. Wrap the blade(s) or wear gloves, and use extra caution when servicing them.
- Check brake operation frequently. Adjust and service as required.



LOOK FOR THIS SYMBOL TO POINT OUT IMPORTANT SAFETY PRECAUTIONS. IT MEANS--ATTENTION!!!
BECOME ALERT!!! YOUR SAFETY IS INVOLVED.

E3560-530

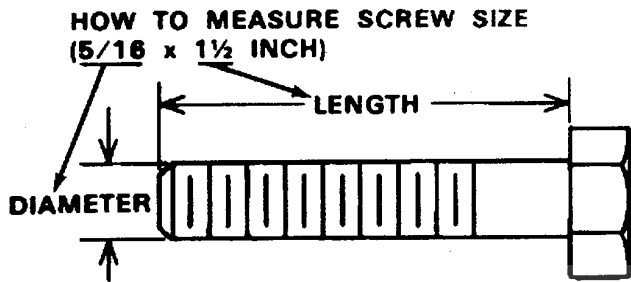
OWNER'S INFORMATION

Record the following information about your unit so that you will be able to provide it in case of loss or theft.

MODEL NUMBER: - (Enter complete 8 digit number from model plate on unit)
PURCHASE DATE: ___ / ___ / ___ CODE NO.: _____ SERIAL NO.: _____
DEALER'S NAME AND ADDRESS: _____
CITY: _____ STATE: _____ TELEPHONE: _____

TOOLS REQUIRED FOR ASSEMBLY

- 2 - 7/16 inch Wrenches (or adjustable wrench)
- 1 - 1/2 inch Wrench (or adjustable wrench)
- 1 - Small Phillips Screwdriver with a 1/4 inch shank
- 1 - Hammer



DANGER



This lawn tractor can be dangerous if carelessly used.

Read your Operator's Manual thoroughly before operating your lawn tractor.

Always wear safety glasses or eye shields while assembling or operating your lawn tractor.

DO NOT carry passengers at any time.

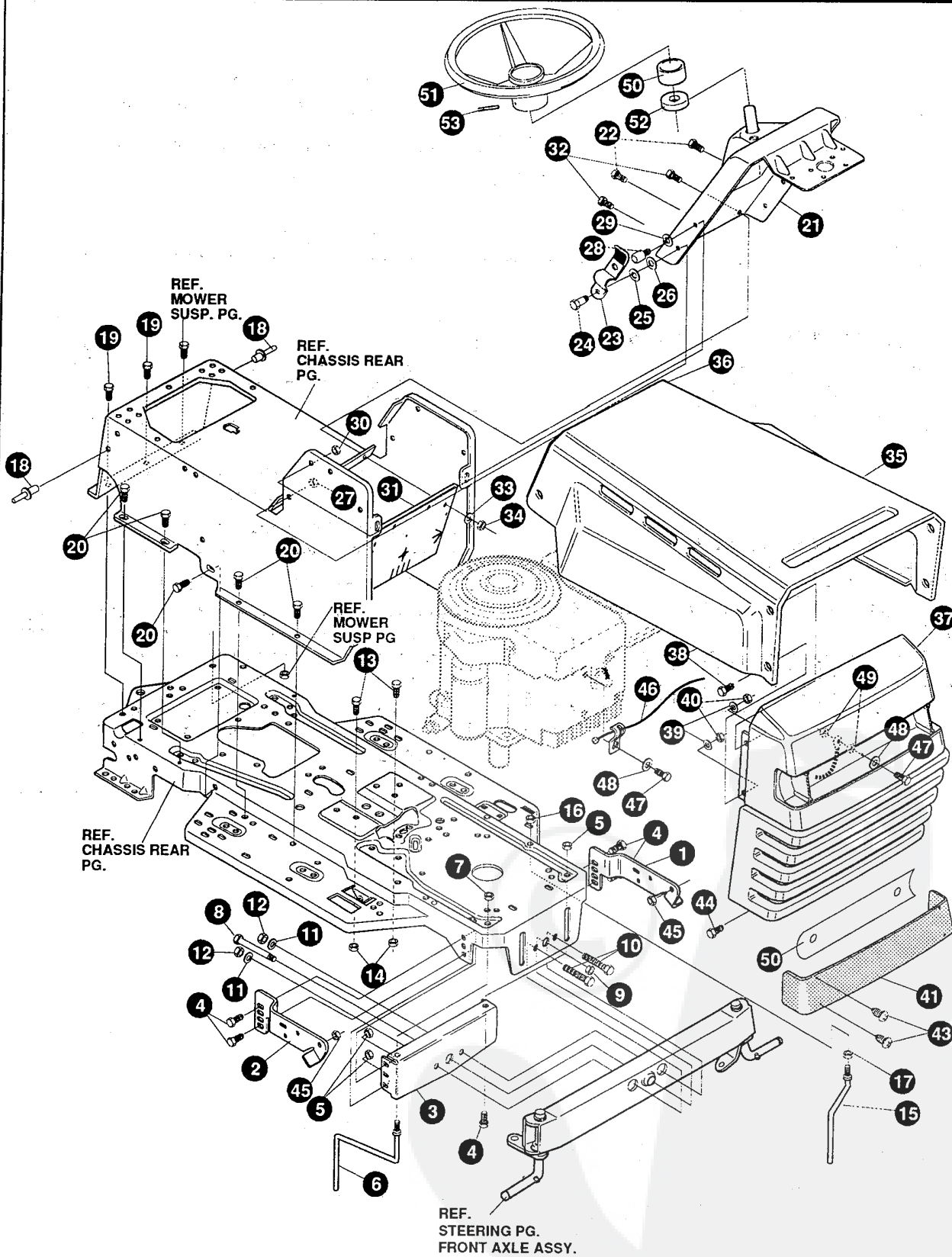
Keep your hands, feet, hair and loose clothing away from the discharge area, the underside of the mower deck or any moving parts while the engine is running.

DO NOT allow children or young teenagers to operate or be near your lawn tractor while it is operating.

ALWAYS GIVE THE FOLLOWING INFORMATION WHEN ORDERING REPAIR PARTS:
1. The PART NUMBER; 2. The PART NAME; 3. QUANTITY DESIRED; 4. The MODEL NUMBER (As shown on Model Plate).
SEND PART ORDERS AS PER INSTRUCTIONS ON THE FRONT PAGE.
DO NOT USE KEY NUMBERS WHEN ORDERING REPAIR PARTS, ALWAYS USE PART NUMBERS.
All replacement parts will be supplied in current production colors or in a neutral color.
A handling fee is applicable to small parts orders.
YOUR UNIT IS RIGHT HAND (RH) OR LEFT HAND (LH) AS YOU STAND BEHIND IT.

E3560-530

REPAIR PARTS



NOTE: ALWAYS USE ORIGINAL EQUIPMENT PARTS. Use of service/replacement parts other than original equipment parts may void your warranty.

ALL UNNUMBERED ITEMS ARE INTERCHANGEABLE WITH OPPOSITE SIDE

325873D

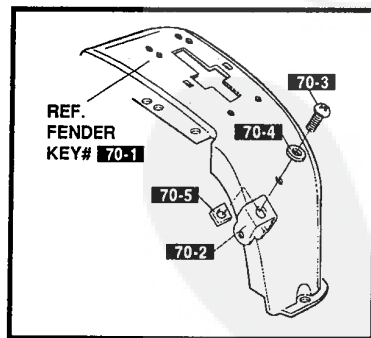
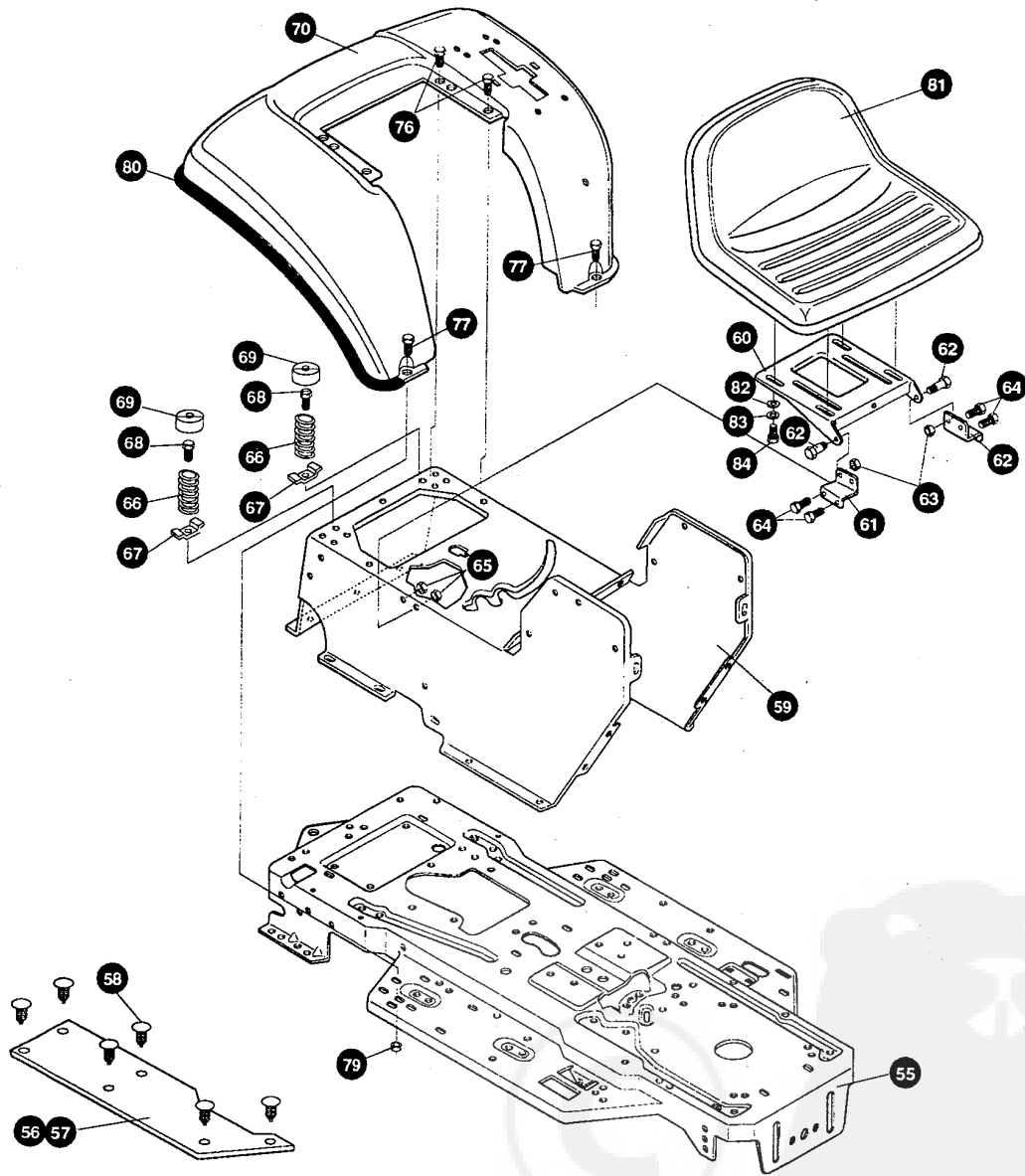
E3560-530

CHASSIS & HOOD ASSEMBLY

KEY#	PART#	DESCRIPTION	QTY
1	313001-853	BRACKET, GRILLE SUPPORT LH	1
2	313002-853	BRACKET, GRILLE RH	1
3	313541-853	BRACKET, FRONT AXLE	1
4	56030	SCREW, 5/16-18X.75WDFLLK GR5 Z	5
5	55273	NUT, 5/16-18 HXWDFLLK Z	5
6	300440	GUIDE, BELT, RIDER	1
7	1498	NUT, 5/16-18 REGHEXCTRLK Z	1
8	308207	BOLT, .625X2.18 HSH 1/2-13 Z	1
9	309008	NUT, 1/2-13 HEXJAM CTRLK Z	1
10	180138	SCREW, 3/8-16X3.00 HHC GR5 Z	2
11	2483	WASHER, .391DX1.25DX.07 BELLVIL	2
12	1499	NUT, 3/8-16 REGHEXCTRLK Z	2
13	180079	SCREW, 5/16-18X1.00 HHC GR5 Z	2
14	1498	NUT, 5/16-18 REGHEXCTRLK Z	2
15	300635	GUIDE, BELT SHORT 15" WHEEL	1
16	124824	NUT, 5/16-18 HEXJAM Z	1
17	271190	NUT, 3/8-16 HEXKEPS Z	1
18	46763	RIVET, POP .187DIA X .450LG ST	3
19	35497	SCREW, 5/16-18X .50 WAHTAP Z	2
20	995346	SCREW, 1/4-20X .50 WAHTAP Z	10
21	309447-860	DASH STEEL, LF SUSP DYN.	1
22	995346	SCREW, 1/4-20X .50 WAHTAP Z	2
23	57159	LATCH, .94WDX.047 ASSY HOOD	2
24	8482	BOLT, .375X .156 HSH 5/16-18Z	2
25	120394	WASHER, FLAT .406X .81X.065 Z	2
26	120393	WASHER, FLAT .344X .69X.065 Z	2
27	1498	NUT, 5/16-18 REGHEXCTRLK Z	2
28	53446	PIN, 5/16-18 HOOD LATCH GR2-Z	2
29	138538	WASHER, REGINTLK.320X.61X.03 Z	2
30	45174	NUT, 5/16-18 HEXWDFLLK WHIZ Z	2
31	312306	BAFFLE CONSOLE SOUND EXPORT LF	1
32	300314	SCREW, 1/4-20X .88WAHTAPGR2 Z	2
33	120392	WASHER, FLAT .281X .63X.065 Z	2
34	1502	NUT, 1/4-20 REGHEXCTRLK Z	2
35	314537-860	HOOD, LF H-20 DYNA/PRO	1
36	52151	EDGING (78"-47453) WIDE BLK	1
37	325401	GRILLE G17	1
38	274672	SCREW, 1/4-20X .63 WAHHC GR2 Z	4
39	120393	WASHER, FLAT .344X .69X.065 Z	4
40	1502	NUT, 1/4-20 REGHEXCTRLK Z	4
41	302333	LENS, SMOKED W/TAB NO LOGO	1
43	57796	SCREW, #6 X .50 PLASTITE/HI-LO	4
44	36149	BOLT, .375X .500 HSH 5/16-18Z	2
45	1498	NUT, 5/16-18 REGHEXCTRLK Z	2
46	311094	LANYARD, HOOD 11.75LG H15 VANG	1
47	48900	SCREW, 1/4-20X1.00 WAHHC GR2 Z	1
48	120392	WASHER, FLAT .281X .63X.065 Z	1
49	1502	NUT, 1/4-20 REGHEXCTRLK Z	2
50	314948	FOIL, LENS DYNA-PRO REFLECTOR	1
50	311465	COVER, STEERING SHAFT GENERIC	1
51	330510	STEERING WHEEL, GENERIC	1
52	301413	SPACER, STEERING SHAFT	1
53	456378	PIN, SPRING.250DIA X 2.00LG HVPL	1
54	332212	OPERATOR'S MANUAL, ENGLISH (NOT SHOWN)	1
55	332213	OPERATOR'S MANUAL, FRENCH (NOT SHOWN)	1
56	332214	OPERATOR'S MANUAL, GERMAN (NOT SHOWN)	1
57	333329	PARTS MANUAL, ENGLISH (NOT SHOWN)	1

E3560-530

REPAIR PARTS



NOTE: ALWAYS USE ORIGINAL EQUIPMENT PARTS. Use of service/replacement parts other than original equipment parts may void your warranty.

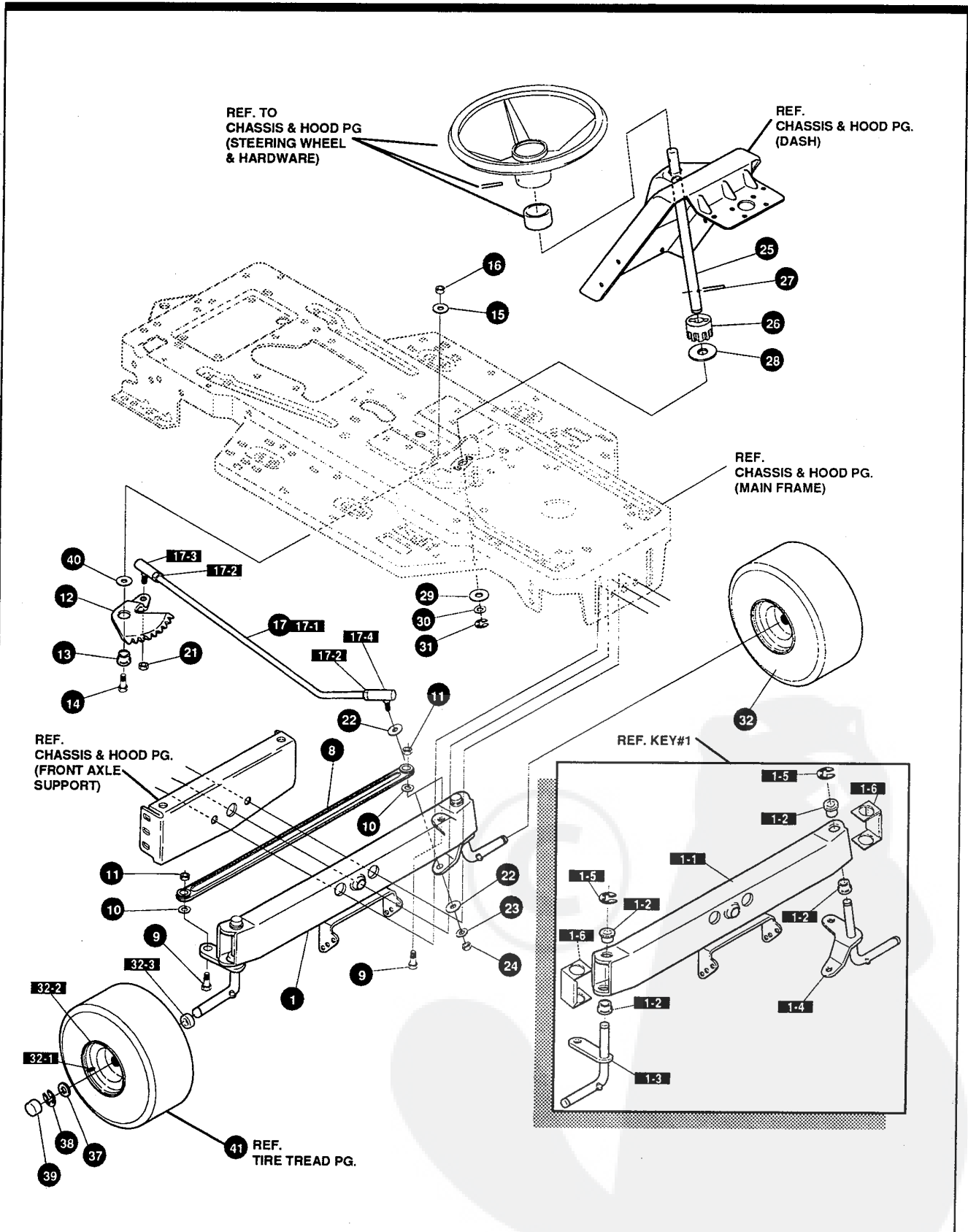
ALL UNNUMBERED ITEMS ARE INTERCHANGEABLE WITH OPPOSITE SIDE

325850B

E3560-530**CHASSIS & HOOD ASSEMBLY**

KEY#	PART#	DESCRIPTION	QTY
55	326577-860	FRAME,LF MAIN P920/F4360	1
56	310005	FOOT PAD, LH 22.12LG DYNA F-5	1
57	310006	FOOT PAD, RH 22.12LG DYNA F-5	1
58	309235	FASTENER, RATCHET BLACK	2
59	309657-860	CONSOLE GENERIC LF TOPSHIFT	1
60	58367-853	PLATE,SEAT F5 SF,LF	1
61	310660-853	BRACKET, F-5 SEAT SUPPORT	2
62	20507	BOLT, .437X .156 HSH 5/16-18Z	2
63	1498	NUT, 5/16-18 REGHEXCTRLK Z	2
64	48901	SCREW, 5/16-18X .63WAHHC GR2 Z	4
65	1498	NUT, 5/16-18 REGHEXCTRLK Z	4
66	57153	SPRING,SEAT 2.63LG,1.49OD BLK	2
67	1341	CLAMP, SPRG 1.17"ID BRZN953	2
68	44811	SCREW, 1/4-20X .75 WAHHTAP Z	2
69	56907	COVER,SEAT SPRING 1.5IDX1.0LG	2
70	^	FENDER F5 LF SUSPENDED	1
70-1	332187-860	FENDER,F5,SUS,LF,STD.SHIFT	1
70-2	9239	CLEVIS BRZN953	1
70-3	439455	SCREW, 5/16-18X .56PHPNMA BKPH	1
70-4	301551	WASHER, .344IDX1.50DX.09 CU ZN	1
70-5	120373	NUT, 5/16-18 SQ Z	1
76	995346	SCREW, 1/4-20X .50 WAHHTAP Z	4
77	126358	BOLT, 5/16-18X1.00 CARRLNGR2 Z	2
79	55273	NUT, 5/16-18 HXWDFLLK Z	2
80	55023	TRIM, 77.5" BLACK NARROW	77.5"
81	304316	SEAT,MICHIGAN GEN, W/SW HOLE	1
82	120393	WASHER, FLAT .344X .69X.065 Z	4
83	120638	WASHER, HVSPTLK .328X.60X.09 Z	4
84	180077	SCREW, 5/16-18X .75 HHC GR5 Z	4

^ ORDER INDIVIDUAL PARTS



NOTE: ALWAYS USE ORIGINAL EQUIPMENT PARTS. Use of service/replacement parts other than original equipment parts may void your warranty.

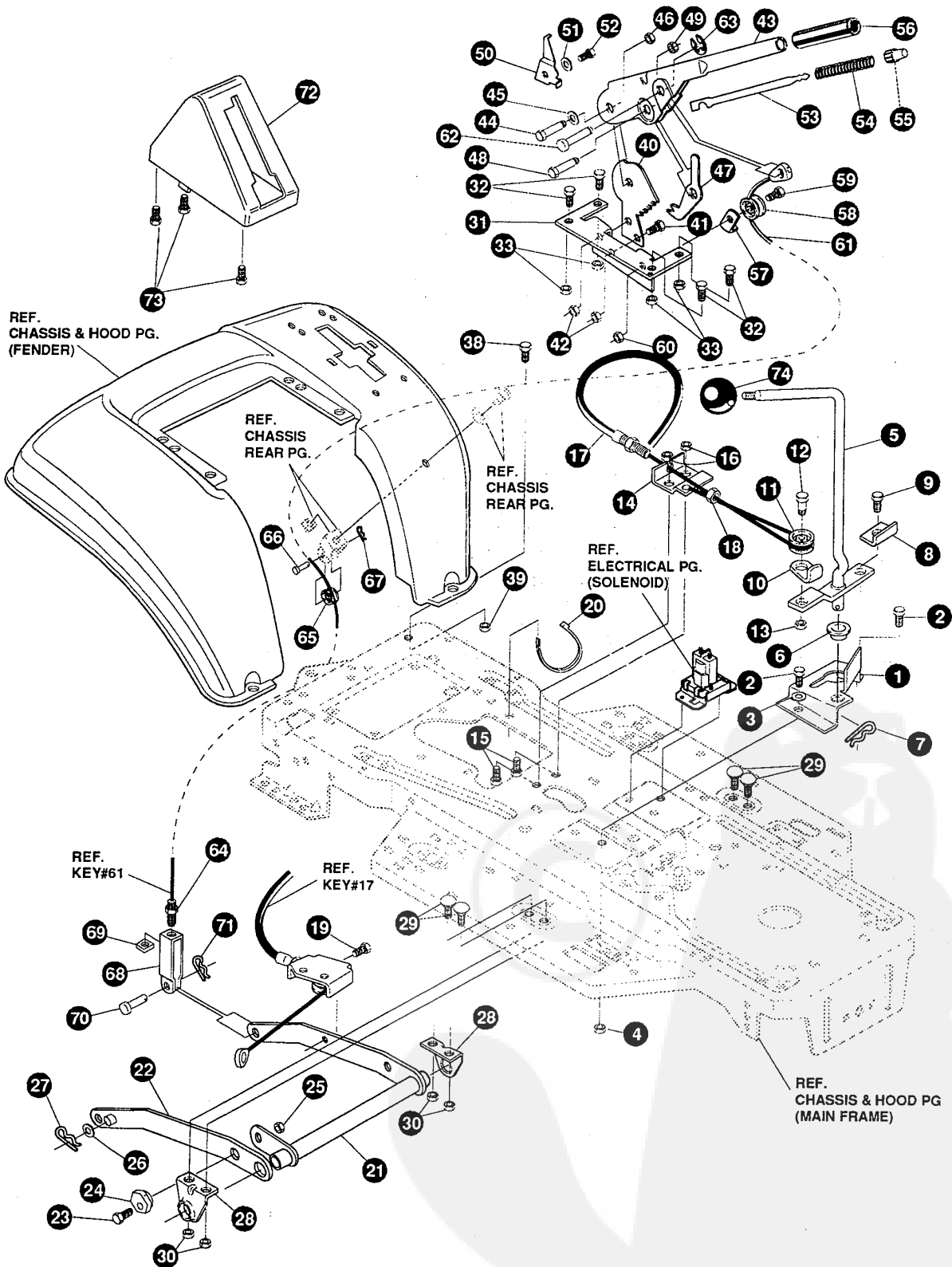
ALL UNNUMBERED ITEMS ARE INTERCHANGEABLE WITH OPPOSITE SIDE

3171241

E3560-530**STEERING ASSEMBLY**

KEY#	PART#	DESCRIPTION	QTY
1	^	AXLE,FRONTASSY LONGSUS4WSLF	1
1-1	310170	AXLE, FRONT	1
1-2	52407	SPINDLE BEARING	4
1-3	9180	ASSY,SPINDLE RH LG HTR955	1
1-4	314088	ASSY,SPINDLE,LH LG HTR955	1
1-5	36625	RING, RETEX .57X.05TRU5133-75	2
1-6	53373-860	AXLE COVER	2
8	304590	TIE ROD ASSY 19.81LG W-SECTION	1
9	180128	SCREW, 3/8-16X1.75 HHC GR5 Z	2
10	120382	WASHER, REGSPTLK.393X.68X.10 Z	2
11	1499	NUT, 3/8-16 REGHXCTRLK Z	2
12	58289	SECTOR, STEERING LF	1
13	52406	BRNG,FL ECC.510IDX .998ODX .56	1
14	180177	SCREW, 1/2-13X1.50 HHC GR5 Z	1
15	22265	WASHER, FLAT .515X1.38X.119PL	1
16	1500	NUT, 1/2-13 REGHCTRLK Z	1
17	311100	KIT 300146 DRAGLINK FOR SERVICE	1
17-1	58291	STEERING LINK	1
17-2	124925	NUT, 3/8-24 REGHEXJAM Z	2
17-3	57158	BALL JOINT 3/8 THD SHORT STUD	1
17-4	21275	BALL JOINT 3/8 TH'D LONG STUD	1
21	46692	NUT, 3/8-24 WDFLHLK WHIZ Z	1
22	996416	WASHER, FLAT .391X1.00X.125 Z	2
23	120382	WASHER, REGSPTLK.393X.68X.10 Z	1
24	120369	NUT, 3/8-24 REGHEX Z	1
25	58243	SHAFT,STEERING LF,2WS GENERIC	1
26	58244	PINION, STEERING LF	1
27	58274	PIN,DOWEL .2500 OD+1.75LG PL	1
28	301410	BRNG, FL .752IDX1.061ODX .24	1
29	301398	WASHER, FORMED1.135X1.53X.12 Z	1
30	21682	WASHER, FLAT .765X1.25X.042PL	1
31	36625	RING, RETEX .57X.05TRU5133-75	1
32	302828	TIRE & RIM, PU 15X6.0X6 TURWHI	2
32-1	24167	VALVE STEM	
32-2	39829	RIM,WHEEL	
32-3	314416	BEARING, FLANGE	
37	642	WASHER, FLAT .755X1.31X.075 Z	4
38	36625	RING, RETEX .57X.05TRU5133-75	2
39	40394	HUB CAP, 1.500ID X 7/8LG	2
40	49998	WASHER, FLAT .520X1.25X.209 Z	1
41	-	SEE TIRE TREAD PAGE	

^ORDER INDIVIDUAL PARTS



NOTE: ALWAYS USE ORIGINAL EQUIPMENT PARTS. Use of service/replacement parts other than original equipment parts may void your warranty.

ALL UNNUMBERED ITEMS ARE INTERCHANGEABLE WITH OPPOSITE SIDE

325815D

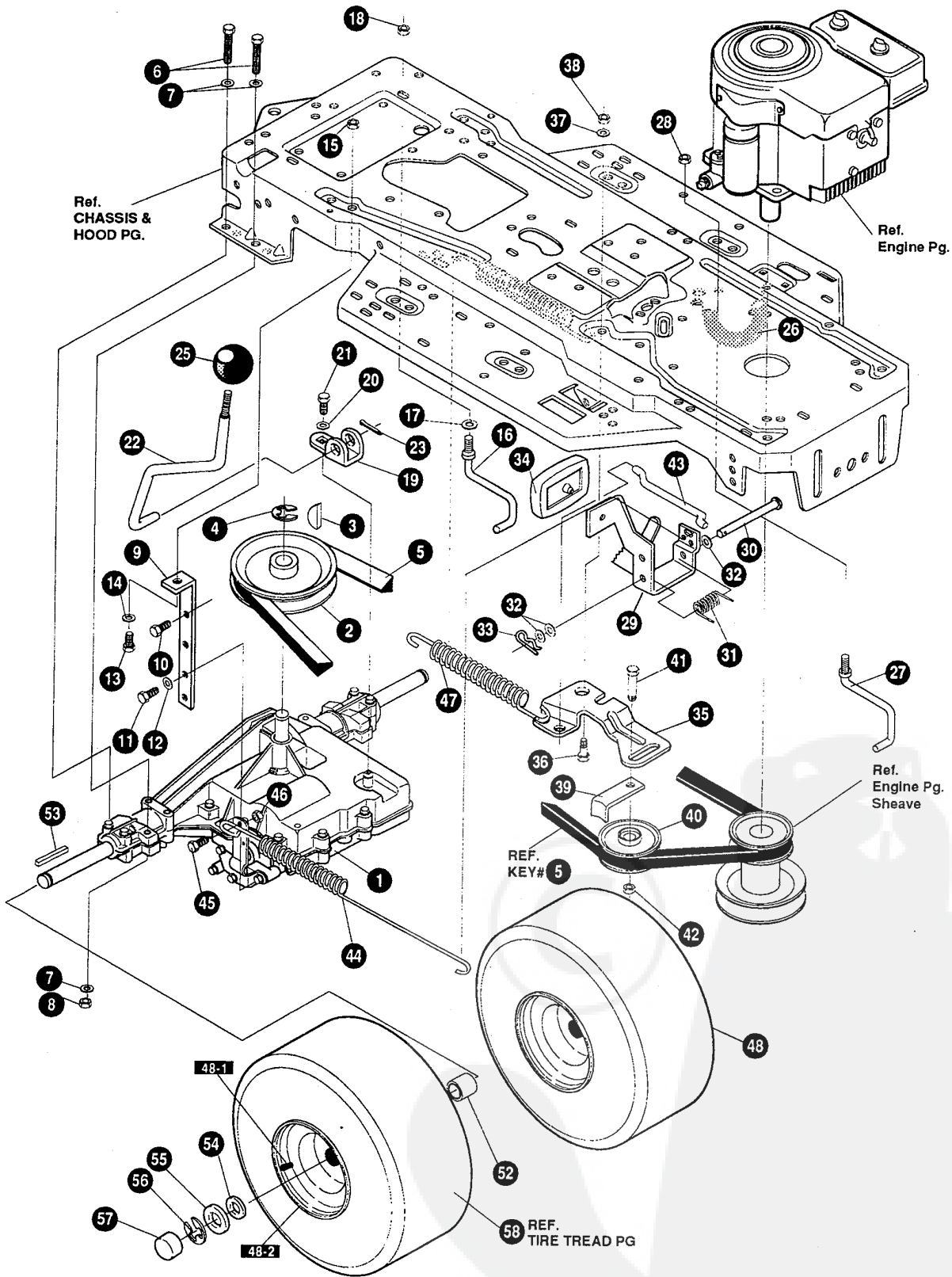
E3560-530

MOWER SUSPENSION ASSEMBLY

KEY#	PART#	DESCRIPTION	QTY
1	320075-853	BRACKET,CLUTCH ENGAGE LEVER	1
2	180079	SCREW, 5/16-18X1.00 HHC GR5 Z	2
3	120393	WASHER, FLAT .344X .69X.065 Z	2
4	1498	NUT, 5/16-18 REGHEXCTRLK Z	2
5	304791	ASSY, CLUTCH LEVER BRZN953	1
6	50148	BRNG, FL .503IDX .63ODX .50	1
7	8260	PIN, HAIR .091 DIA X1.66LG Z	1
8	318341	BRKT, SWITCH ENGAGE BRZN953	1
9	35498	SCREW, 5/16-18X .75 WAHHTAP Z	1
10	1288	BRKT, CABLE RETAIN BRZN953	1
11	48306	PULLEY,POWDER METAL	1
12	58336	BOLT, .375X .375 HSH 1/4-20 Z	1
13	1502	NUT, 1/4-20 REGHEXCTRLK Z	1
14	300698-853	BRACKET FRAME CABLE	1
15	180020	SCREW, 1/4-20X .75 HHC GR5 Z	2
16	1502	NUT, 1/4-20 REGHEXCTRLK Z	2
17	301503	ASSY,CABLE, BLADE ENGAGE 39SUS	1
18	120613	NUT, 1/4-28 HJAM Z	1
19	35498	SCREW, 5/16-18X .75 WAHHTAP Z	1
20	57444	TIE, CABLE BLACK NYLON 5.62L	1
21	300158-853	LIFT ASSY, LH	1
22	300169-853	LIFT ASSY, RH	1
23	180079	SCREW, 5/16-18X1.00 HHC GR5 Z	1
24	58247	NUT, ADJUST	1
25	1498	NUT, 5/16-18 REGHEXCTRLK Z	1
26	417098	WASHER, FLAT .531X1.06X.063Z	2
27	8260	PIN, HAIR .091 DIA X1.66LG Z	2
28	58248-853	BRACKET, REAR HANG SUSP	2
29	57072	BOLT, 5/16-18X .63 CARRLNGR5 Z	4
30	1498	NUT, 5/16-18 REGHEXCTRLK Z	4
31	313926	BRACKET, HGT/ADJUST SUPPORT	1
32	180077	SCREW, 5/16-18X .75 HHC GR5 Z	4
33	1498	NUT, 5/16-18 REGHEXCTRLK Z	4
38	180077	SCREW, 5/16-18X .75 HHC GR5 Z	1
39	1498	NUT, 5/16-18 REGHEXCTRLK Z	1
40	301238	QUADRANT,HEIGHT ADJUST	1
41	180077	SCREW, 5/16-18X .75 HHC GR5 Z	2
42	1498	NUT, 5/16-18 REGHEXCTRLK Z	2
43	322292-853	HANDLE,LIFT SHORT(30" S.F.)	1
44	300171	BOLT, .500X .270 HSH 5/16-18Z	1
45	996418	WASHER, FLAT .506X .75X.024 Z	1
46	44108	NUT, 5/16-18 HWDFLCTRLK Z	1
47	301239	PAWL, SQUARE HTR955	1
48	300171	BOLT, .500X .270 HSH 5/16-18Z	1
49	44108	NUT, 5/16-18 HWDFLCTRLK Z	1
50	9435	POINTER, HEIGHT ADJ BRZN953	1
51	138479	WASHER, EXLK .195X.41X.03 Z	1
52	35287	SCREW, #8-32X .38 HHWATAPGR2 Z	1
53	303027	ROD,ACTUATOR-SHORT	1
54	58326	SPRING, HEIGHT ADJUST	1
55	58325	KNOB, HEIGHT ADJ PUSH BUTTON	1
56	58329	GRIP, .750 OD W/ HOLE BLACK	1
57	9149	LF BRKT, CABLE RETAIN BRZN953	1
58	48306	PULLEY,POWDER METAL	1
59	58336	BOLT, .375X .375 HSH 1/4-20 Z	1
60	1502	NUT, 1/4-20 REGHEXCTRLK Z	1
61	314177	CABLE, LIFT 22.92 F-5 20X8-8	1
62	300310	PIN,CLEVIS .310DIA+.475LG ZPL	1
63	300311	RING, RET E .31X.25TRUX5133-31	1
64	120375	NUT, 1/4-20 REGHEX Z	1
65	48306	PULLEY,POWDER METAL	1
66	300317	PIN, CLEVIS .375DIA.X .81 LG Z	1
67	8260	PIN, HAIR .091 DIA X1.66LG Z	1
68	9405	CLEVIS, LIFT CABLE BRZN953	1
69	120372	NUT, 1/4-20 REGSQ Z	1
70	39522	PIN, CLEVIS .312 X .812	1
71	121222	PIN, COTTER .090 DIA X .75LG Z	1
72	300335	LIFT COVER-39" F5	1
73	300340	SCREW, #10 X .75 HHPLAST BLK	3
74	55514	KNOB, ROUND 1.50 DIA BLACK	1

E3560-530

REPAIR PARTS



NOTE: ALWAYS USE ORIGINAL EQUIPMENT PARTS. Use of service/replacement parts other than original equipment parts may void your warranty.

ALL UNNUMBERED ITEMS ARE INTERCHANGEABLE WITH OPPOSITE SIDE

328261D

E3560-530

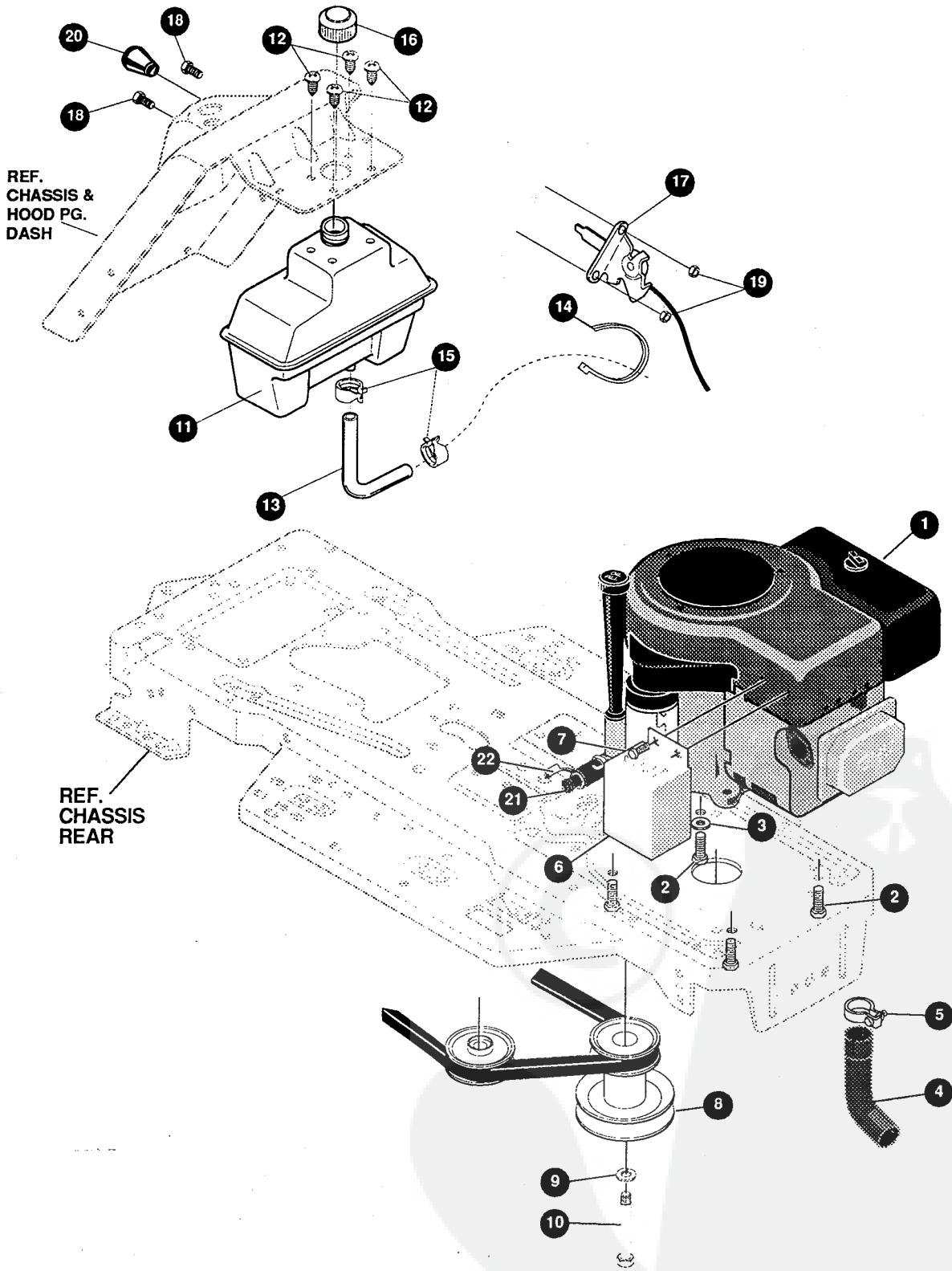
MOTION DRIVE ASSEMBLY

KEY#	PART#	DESCRIPTION	QTY
1	◇	TRANSAXLE FOOTE 4360-5	1
2	302745	PULLEY, 6.6 OD V4L T/A	1
3	50795	KEY, HI-PRO 606 .75DIAX.187WD	1
4	22053	RING, RETEX .58X.035TRU5100-62	1
5	314120	BELT, V 4L 87.25 4WS LF	1
6	180113	SCREW, 5/16-18X3.00 HHC GR5 Z	4
7	120393	WASHER, FLAT .344X .69X.065 Z	8
8	1498	NUT, 5/16-18 REGHEXCTRLK Z	4
9	323739	BRKT, STABILIZER BLKPHOS954	1
10	50947	SCREW, 3/8-16X1.25 WAHHTAPBLKP	1
11	35498	SCREW, 5/16-18X .75 WAHHTAP Z	1
12	120638	WASHER, HVSPTLK .328X.60X.09 Z	1
13	180079	SCREW, 5/16-18X1.00 HHC GR5 Z	1
14	120393	WASHER, FLAT .344X .69X.065 Z	1
15	1498	NUT, 5/16-18 REGHEXCTRLK Z	1
16	57259	GUIDE, BELT 5/16-18THD	1
17	138538	WASHER, REGINTLK.320X.61X.03 Z	1
18	1498	NUT, 5/16-18 REGHEXCTRLK Z	1
19	57480	BRKT,SHIFT P920-5/ HTTR955	1
20	57157	WASHER, .750X.250 SP-TRANSAXLE	1
21	56255	SCREW, 1/4-28X .75 NYLHHCGR8 Z	1
22	302743	LEVER,SHIFT FOOT 4360-5&6 LF Z	1
23	137185	PIN, COTTER .125 DIAX1.00LG Z	1
25	55514	KNOB, ROUND 1.50 DIA BLACK	1
26	321514	SPRING, DRAG LINK BIAS	1
27	304016	GUIDE, BELT R.H.	1
28	1498	NUT, 5/16-18 REGHEXCTRLK Z	1
29	325942	PEDAL ASSY,BRAKE/CLUTCH LF	1
30	319675	PIN, CLEVIS .500DX4.53LG Z	1
31	57847	SPRING, BRAKE PEDAL	1
32	2968	WASHER, FLAT .504X .75X.059 Z	3
33	56180	PIN, HAIR .091 DIAX1.62LG Z	1
34	48160	PAD, CLUTCH BRAKE W/PRINTING	1
35	320381-853	ARM,IDLER TRACTION,SOG LF	1
36	329989	BOLT, .625X .135 HSH 5/16-18Z	1
37	45602	WASHER, FLAT .333X .87X.119 Z	1
38	1498	NUT, 5/16-18 REGHEXCTRLK Z	1
39	39659	RETAINER,BELT	1
40	35374	PULLEY, IDLER V4L 3.06X .62	1
41	45892	BOLT, 3/8-16X1.50 CARRSN GR2 Z	1
42	1499	NUT, 3/8-16 REGHXCTRLK Z	1
43	57204	ROD, CLUTCH 3.92"	1
44	325937	SPRING,BRAKE 28.80 930,4360	1
45	326131	BOLT, .495X .31 HSH5/16-18	1
46	1498	NUT, 5/16-18 REGHEXCTRLK Z	1
47	330505	SPRING, CLUTCH .113X.750X8.75	1
48	57166	TIRE & RIM,20X8.00-8 WHITE	2
48-1	24167	VALVE STEM	
48-2	57165	RIM, WHEEL	
52	57479	SPACER, SLEV .75 X1.25X1.32	2
53	52928	KEY, SQUARE .187SQX2.25LG	2
54	642	WASHER, FLAT .755X1.31X.075 Z	4
55	42815	WASHER, FLAT .755X1.53X.07 Z	2
56	36625	RING, RETEX .57X.05TRU5133-75	2
57	40394	HUB CAP, 1.500ID X 7/8LG	2
58	-	SEE TIRE TREAD PAGE	

◇ CONTACT YOUR NEAREST TRANSAXLE DEALER FOR PARTS AND SERVICE

E3560-530

REPAIR PARTS



NOTE: ALWAYS USE ORIGINAL EQUIPMENT PARTS. Use of service/replacement parts other than original equipment parts may void your warranty.

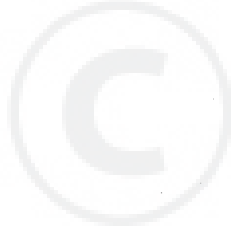
ALL UNNUMBERED ITEMS ARE INTERCHANGEABLE WITH OPPOSITE SIDE

329129C

E3560-530**ENGINE & CONTROL ASSEMBLY**

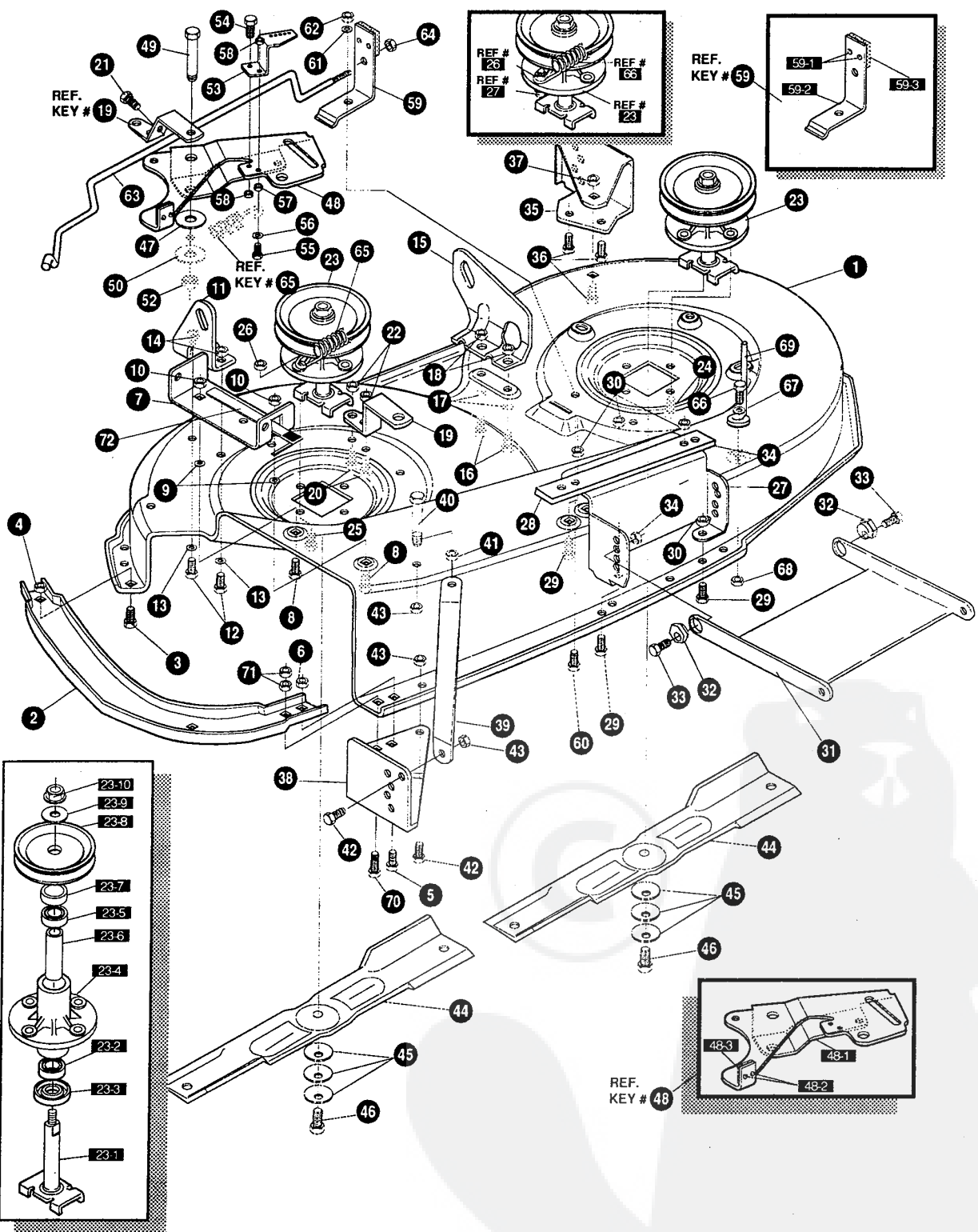
KEY#	PART#	DESCRIPTION	QTY
1	^	ENG,14.0 BS IC OHV DUAL CIR	1
2	50947	SCREW, 3/8-16X1.25 WAHHTAPBLKP	4
3	138489	WASHER, EXLK .384X.69X.04 Z	1
4	327868	EXHAUST TUBE 14OHV B&S LF H15	1
5	328024	CLAMP EXHAUST 1.37 DIA	1
6	327785-853	HEAT SHIELD 14OHV B/S	1
7	995346	SCREW, 1/4-20X .50 WAHHTAP Z	3
8	328029	PULLEY,ENG 4.40OFF/5.00D/3.00D	1
9	120383	WASHER, REGSPTLK.459X.78X.12 Z	1
10	428644	SCREW, 7/16-20X5.00 HHC GR5 P	1
11	314989	TANK, FUEL 1 GAL CLEAR	1
12	49050	SCREW, 1/4-10X .75PHPNTAPGR2BK	4
13	41007	TUBING, .25X.50X BULK GAS LINE	16"
14	57444	TIE, CABLE BLACK NYLON 5.62L	1
15	47345	CLAMP, HOSE SCREW TYPE	2
16	46704	CAP, GAS 1-1/2-7 THD BLK	1
17	321273	CONTROL, THROTTLE 12-12.5HP LF	1
18	320553	SCREW, 10-24X.63PHPNMA CRSS	2
19	271166	NUT, #10-24 HEXKEPS Z	2
20	50607	KNOB, ROUND THROTTLE BLACK	1
21	325547	OIL DRAIN VALVE ASSEMBLY	1
22	327422	CAP, OIL DRAIN VALVE ASM. YELLOW	1

^ SEE ENGINE MANUAL



E3560-530

REPAIR PARTS



NOTE: ALWAYS USE ORIGINAL EQUIPMENT PARTS. Use of service/replacement parts other than original equipment parts may void your warranty.

ALL UNNUMBERED ITEMS ARE INTERCHANGEABLE WITH OPPOSITE SIDE

331508A

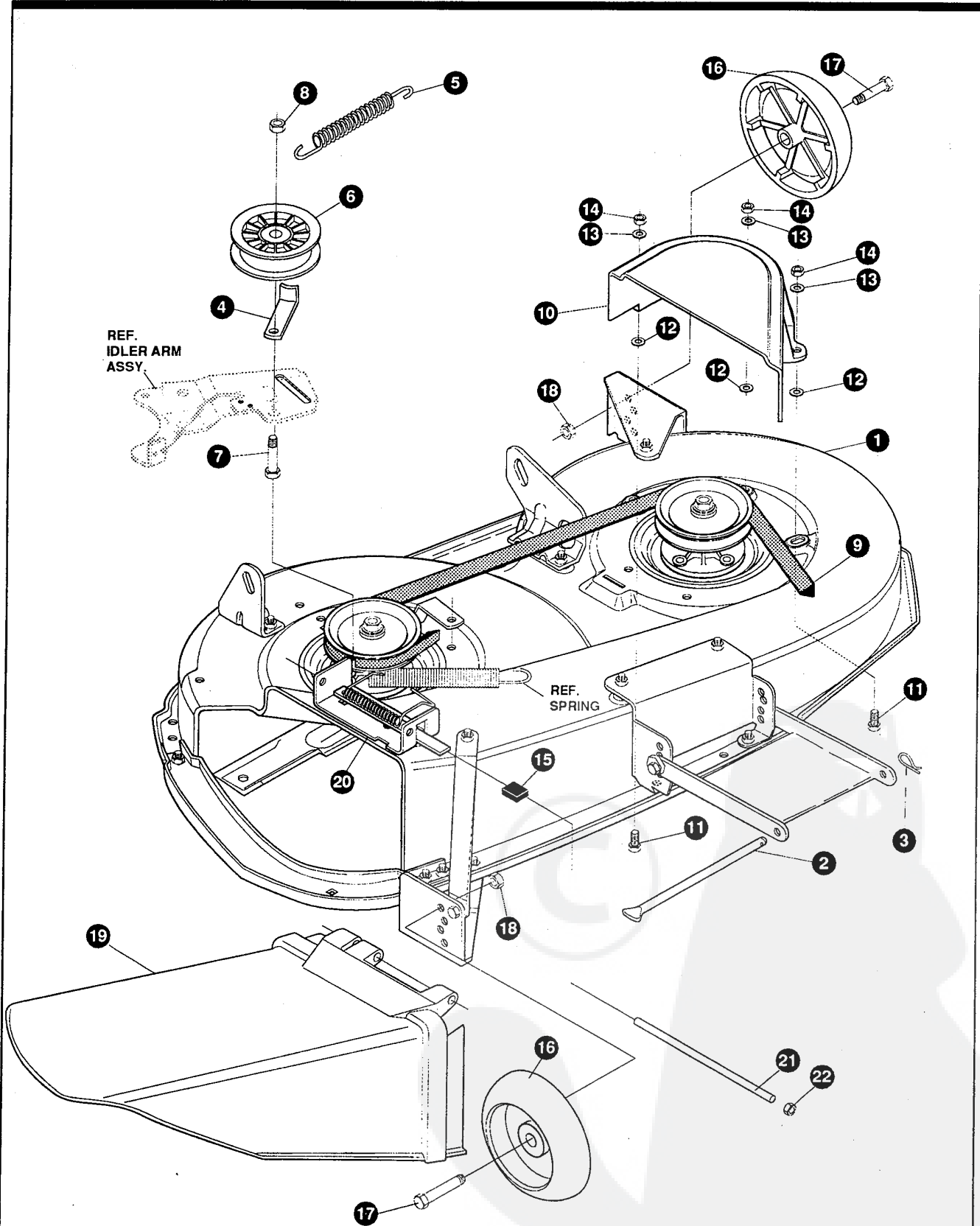
E3560-530

PRE-PAINTED DECK ASSEMBLY

KEY#	PART#	DESCRIPTION	QTY
1	325116	43" DECK KIT	1
2	326480	TOE GUARD - MULCHER	1
3	180077	SCREW, 5/16-18X .75 HHC GR5 Z	1
4	1498	NUT, 5/16-18 REGHEXCTRLK Z	1
5	180077	SCREW, 5/16-18X .75 HHC GR5 Z	1
6	1498	NUT, 5/16-18 REGHEXCTRLK Z	1
7	317017	BRACKET CHUTE MOUNT BLACK	1
8	180077	SCREW, 5/16-18X .75 HHC GR5 Z	2
9	120393	WASHER, FLAT .344X .69X.065 Z	2
10	1498	NUT, 5/16-18 REGHEXCTRLK Z	2
11	313929	LIFT BRKT, REAR RH BLK 853	1
12	180077	SCREW, 5/16-18X .75 HHC GR5 Z	2
13	120393	WASHER, FLAT .344X .69X.065 Z	2
14	1498	NUT, 5/16-18 REGHEXCTRLK Z	2
15	310667	BRACKET, DECK LIFTR EAR LHBLK	1
16	180077	SCREW, 5/16-18X .75 HHC GR5 Z	2
17	120393	WASHER, FLAT .344X .69X.065 Z	2
18	1498	NUT, 5/16-18 REGHEXCTRLK Z	2
19	326893-853	BRACE IDLER SUPPORT 40", 43"	1
20	180077	SCREW, 5/16-18X .75 HHC GR5 Z	2
21	308231	SCREW, 1/4-20X1.25 HHWATAP G5Z	1
22	44108	NUT, 5/16-18 HWDFLCTRLK Z	2
23	56424-853	QUILL ASSY, 36/39/40/43	2
23-1	56425	SHAFT/SADDLE 36"	1
23-2	49562	BRNG, BALL 6203-2AA(SEALS)-C3	1
23-3	50616	DUST SHIELD	1
23-4	55547	QUILL CASTING (1046)	1
23-5	49562	BRNG, BALL 6203-2AA(SEALS)-C3	1
23-6	50818	SPACER, SLEV .669X .88X3.797	1
23-7	51449	SPACER, SLEV .672X .93X .438PM	1
23-8	313898	PULLEY ASSY	1
23-9	56365	WASHER, SPECIAL QUILL	1
23-10	1282	NUT, 7/16-20 WDFLLK Z	1
24	35498	SCREW, 5/16-18X .75 WAHHTAP Z	7
25	300345	SCREW, 5/16-18X1.38 WAHHTAP Z	1
26	1498	NUT, 5/16-18 REGHEXCTRLK Z	1
27	317040	BRACKET FRT. BLACK	1
28	328155	PLATE-MOUNTING	1
29	180077	SCREW, 5/16-18X .75 HHC GR5 Z	4
30	1498	NUT, 5/16-18 REGHEXCTRLK Z	4
31	58305-853	BRACKET, LINK DECK FRONT	1
32	58247	NUT, ADJUST	2
33	180079	SCREW, 5/16-18X1.00 HHC GR5 Z	2
34	1498	NUT, 5/16-18 REGHEXCTRLK Z	2
35	317041	BRKT, GAGE WHEEL LH BLACK	1
36	180077	SCREW, 5/16-18X .75 HHC GR5 Z	3
37	1498	NUT, 5/16-18 REGHEXCTRLK Z	3
38	322464-853	BRACKET, GAGE WHEEL R.H. FRNT	1
39	314282-853	BRACKET, STABILIZER	1
40	311104	SCREW, 5/16-18X5.00 HHC GR 5 Z	1
41	271184	NUT, 5/16-18 HEXKEPS Z	1
42	180077	SCREW, 5/16-18X .75 HHC GR5 Z	2
43	1498	NUT, 5/16-18 REGHEXCTRLK Z	3
44	316608	BLADE, 21.70 HIGH-LIFT BLK	2
45	2483	WASHER, 39IDX1.25DX.07 BELLVIL	6
46	39573	SCREW, 3/8-24X1.00 NYLHHCGR5 Z	2
47	996307	WASHER, FLAT .391X1.00X.209 Z	1
48	320576-853	IDLER ARM ASSEMBLY	1
48-1	322116-853	ARM IDLER 40/43" DECK	1
48-2	41601	RIVET, OVSET .187DIA X .50LG ST	2
48-3	306973	BRAKE PAD - HARD - 232AF	1
49	304420	BOLT, .500X2.15 HHSH Z	1
50	996416	WASHER, FLAT .391X1.00X.125 Z	1
52	45171	NUT, 3/8-16 HWDFL WHIZ-LOCK ZN	1
53	326249-853	BRACKET, EXTENSION IDLER	1
54	180077	SCREW, 5/16-18X .75 HHC GR5 Z	1
55	180083	SCREW, 5/16-18X1.50 HHC GR5 Z	1
56	446363	WASHER, FLAT .375X .88X.082 Z	1
57	271184	NUT, 5/16-18 HEXKEPS Z	1
58	1498	NUT, 5/16-18 REGHEXCTRLK Z	2
59	321828	BLADE BRAKE ASSY	1
59-1	135624	RIVET, TRSET .185DIA X .41LG ST	2
59-2	304119-853	BRAKE ARM HT 955	1
59-3	306973	BRAKE PAD - HARD - 232AF	1
60	180075	SCREW, 5/16-18X .63 HHC GR5 Z	1
61	120393	WASHER, FLAT .344X .69X.065 Z	1
62	1498	NUT, 5/16-18 REGHEXCTRLK Z	1
63	315304	ROD, BRAKE	1
64	1502	NUT, 1/4-20 REGHEXCTRLK Z	1
65	35410	SPRING, .071 X .62 X 4.37	1
66	180079	SCREW, 5/16-18X1.00 HHC GR5 Z	1
67	120393	WASHER, FLAT .344X .69X.065 Z	1
68	1498	NUT, 5/16-18 REGHEXCTRLK Z	1
69	325965	BELT GUIDE, 43" DECK UPSTOP	1
70	12685	SCREW, 5/16-18X1.50HHCFT GR2YZ	1
71	1498	NUT, 5/16-18 REGHEXCTRLK Z	2
72	322320-853	LEVER ASSY (SHORT)	1

E3560-530

REPAIR PARTS



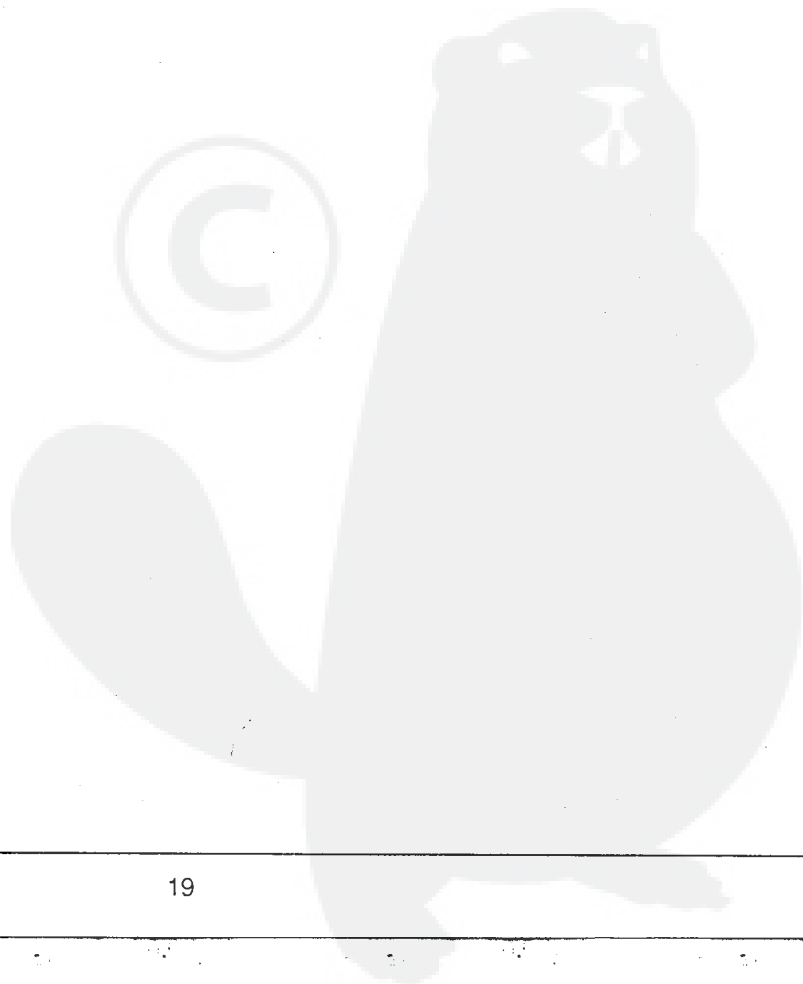
NOTE: ALWAYS USE ORIGINAL EQUIPMENT PARTS. Use of service/replacement parts other than original equipment parts may void your warranty.

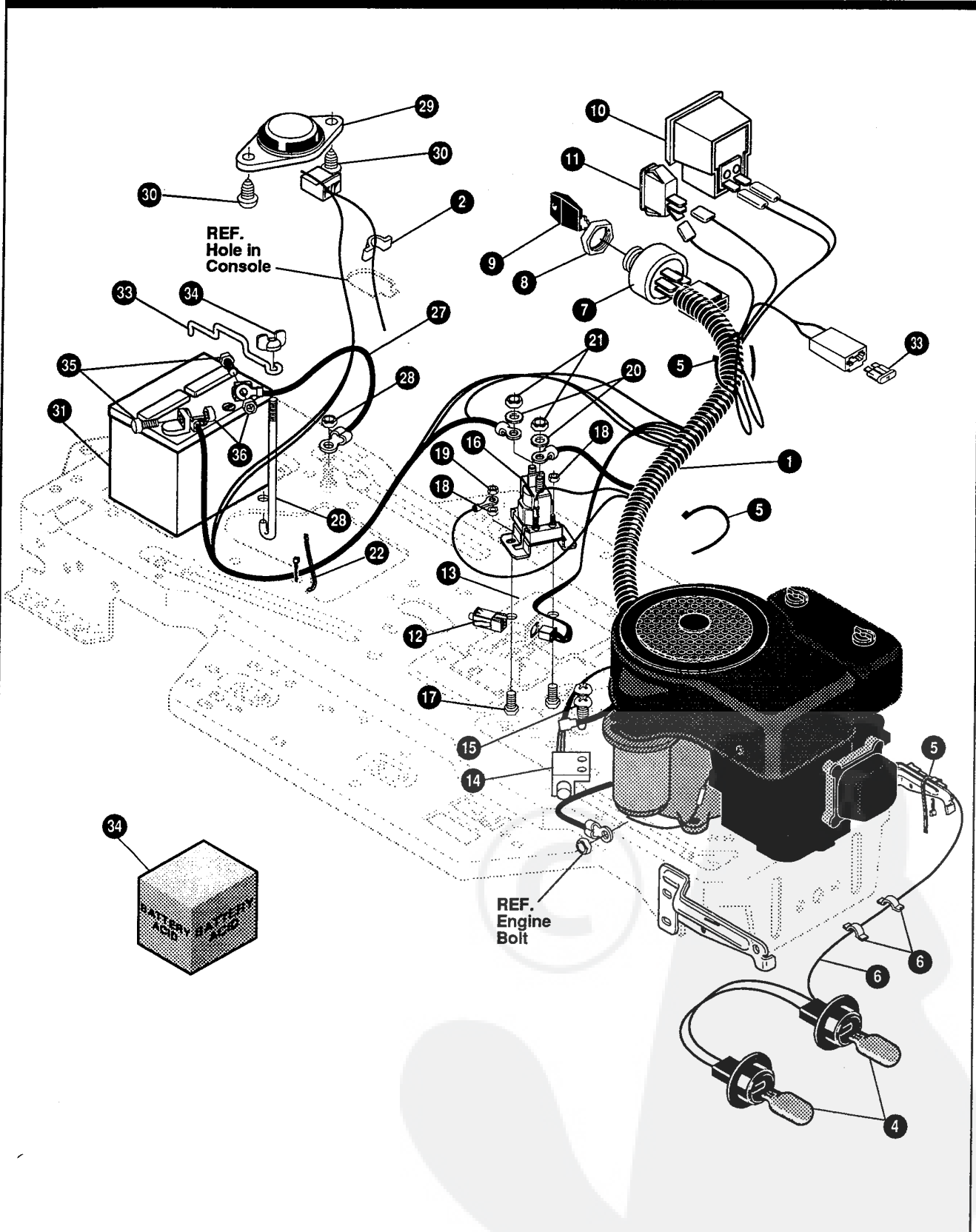
ALL UNNUMBERED ITEMS ARE INTERCHANGEABLE WITH OPPOSITE SIDE

331509A

E3560-530**FINAL DECK ASSEMBLY**

KEY#	PART#	DESCRIPTION	QTY
1	329036	DECK, 43" MOWER 2-WH DOM AIR	1
2	58306	ROD, DECK HITCH Z-PL 953	1
3	8260	PIN, HAIR .091 DIAX1.66LG Z	1
4	1346	RETAINER, BELT BRZN953	1
5	314107	SPRING, TENSION 5.00LG+17LB/IN	1
6	310326	PULLEY, IDLER BFF 4.00 WIDE FL	1
7	126416	BOLT, 3/8-16X1.75 CARRLN GR2 Z	1
8	45171	NUT, 3/8-16 HWDFL WHIZ-LOCK ZN	1
9	314108	BELT, V 5L 86.00 KEVLAR	1
10	330520	GUARD, BELT LH PLASTIC	1
11	57101	BOLT, 5/16-18X .75 CARRSNGR5 Z	3
12	309436	PUSHNUT, 5/16 BOLT RETAINER	3
13	120393	WASHER, FLAT .344X .69X.065 Z	3
14	1498	NUT, 5/16-18 REGHEXCTRLK Z	3
15	42348	GRIP-LEVER GRASS COLLECTOR	1
16	302611	GAUGE WHEEL, EURO 6.00ODX1.38WD	2
17	23763	BOLT, .500X1.390 HSH 3/8-16 Z	2
18	1499	NUT, 3/8-16 REGHXCTRLK Z	2
19	304422	CHUTE DEFLECTOR 40", 42"&43"	1
20	314975	SPRING, TORSION CHUTE DEFLECTOR	1
21	304424	ROD, PIVOT DECK .312DX7.25 Z	1





NOTE: ALWAYS USE ORIGINAL EQUIPMENT PARTS. Use of service/replacement parts other than original equipment parts may void your warranty.

ALL UNNUMBERED ITEMS ARE INTERCHANGEABLE WITH OPPOSITE SIDE

328541A

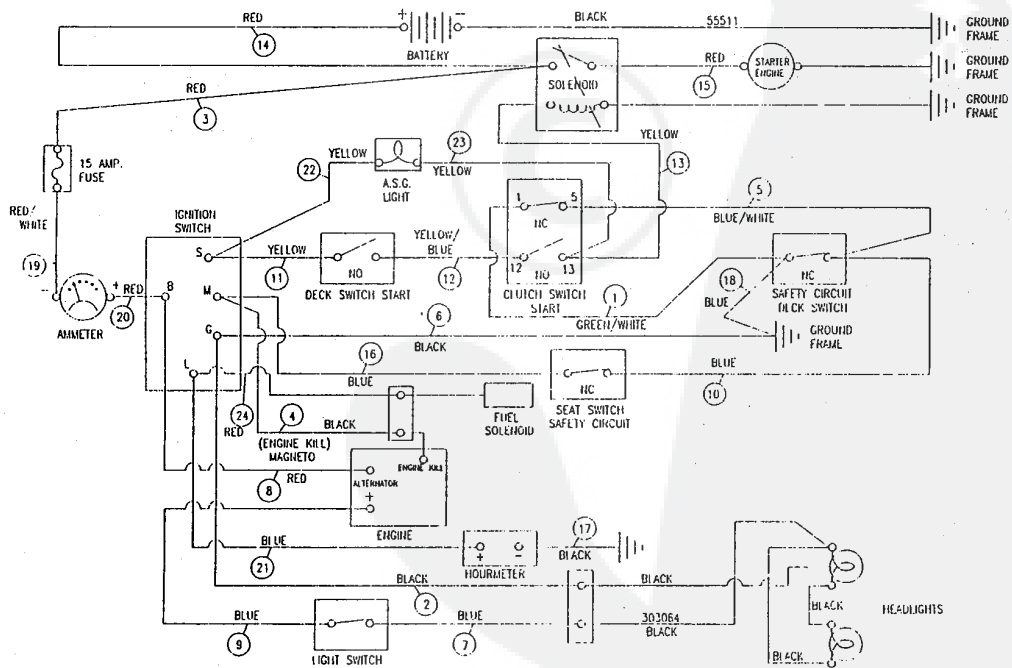
E3560-530

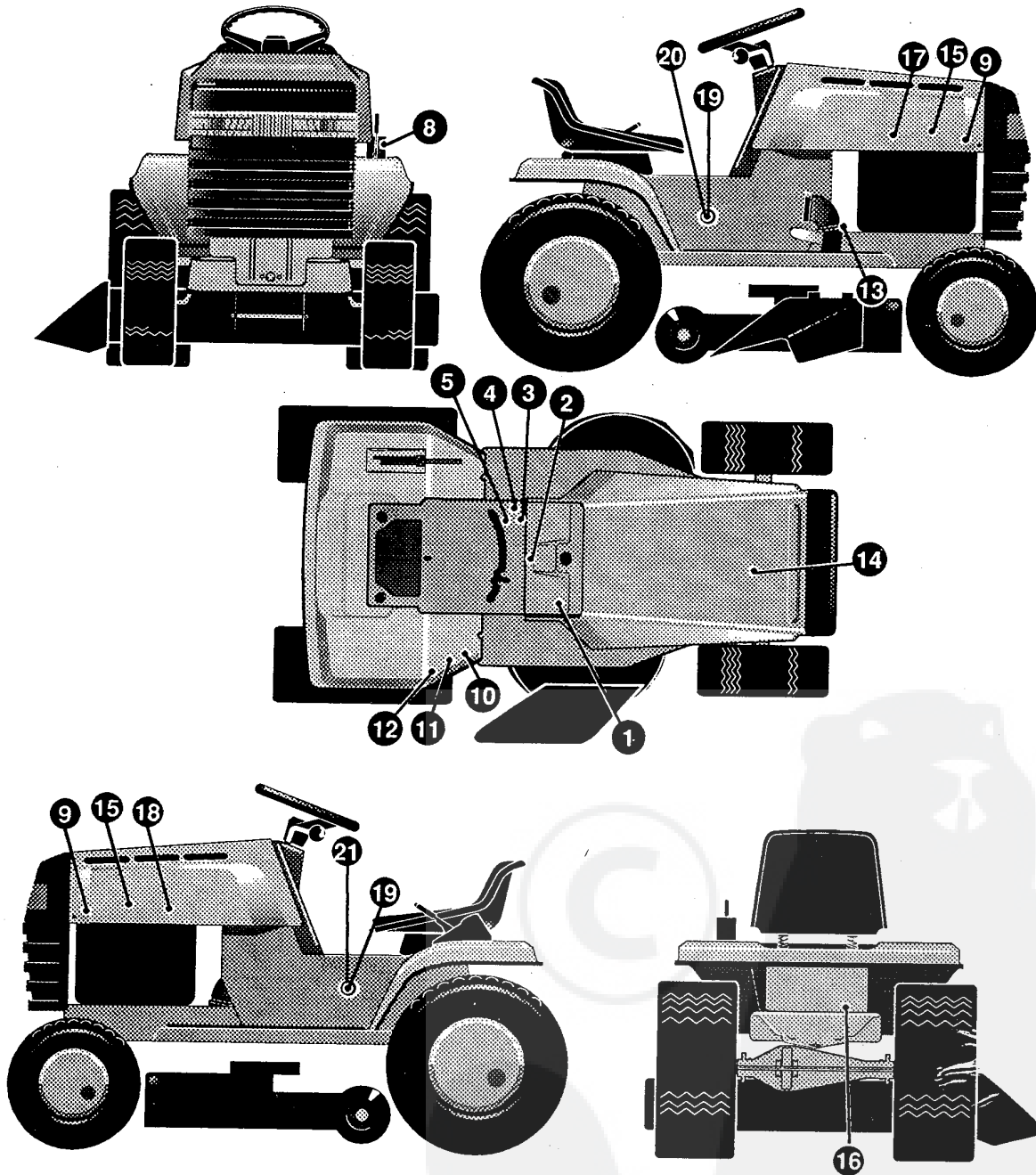
ELECTRICAL ASSEMBLY

KEY#	PART#	DESCRIPTION	QTY
1	328253	HARNASS, 14HPOHV, WRAPPED, DYN, LF	1
2	41482	PRESS CLIP, 1.380LG .255ID	1
3	303064	ASSY, LIGHT WIRE-1/4 TURN	1
4	52572	BULB, HEADLAMP	2
5	57444	TIE, CABLE BLACK NYLON 5.62L	3
6	41482	PRESS CLIP, 1.380LG .255ID	2
7	327355	SWITCH-IGN.(AFTER FIRE) 3 POSN	1
8	327352	NUT, 5/8-8ACME DELTA FOR BOOT	1
9	325350	KEY,IGNITION GENERIC DELTA	2
10	300133	AMMETER	1
11	300334	LIGHT SWITCH ON/OFF PANEL MNT	1
12	320082	SWITCH,DOUBLE POLE NO/NC GRAY	1
13	57444	TIE, CABLE BLACK NYLON 5.62L	1
14	57476	SWITCH,SCR MNT DP NC NO BLK	1
15	57220	SCREW, #12 X .50 PHPNHTAP BLK	2
16	53716	SOLENOID	1
17	187745	SCREW, 1/4-20X .75 HXSEMMA Z	2
18	1502	NUT, 1/4-20 REGHEXCTRLK Z	2
19	271172	NUT, 1/4-20 REGHEXKEPS Z	1
20	138485	WASHER, EXLK .320X.61X.03 Z	2
21	120368	NUT, 5/16-24 REGHEX Z	2
22	57444	TIE, CABLE BLACK NYLON 5.62L	1
23	55511	WIRE, GROUND, 12.5"	1
24	271184	NUT, 5/16-18 HEXKEPS Z	1
25	57547	SWITCH, SEAT	1
26	160505	SCREW, 1/4-20X .38PHPNHMAGR2 Z	2
27	302257	BATTERY, 12V	1
28	57551	ROD, BATTERY Z	1
29	57552	ROD, BATTERY, TOP	1
30	325232	NUT, WING 1/4-20 NYLON	1
31	180020	SCREW, 1/4-20X .75 HHC GR5 Z	2
32	271172	NUT, 1/4-20 REGHEXKEPS Z	2
34	^	BATTERY ACID PACK, 80 OZ.	2

^ CAN BE PURCHASED LOCALLY

WIRING SCHEMATIC





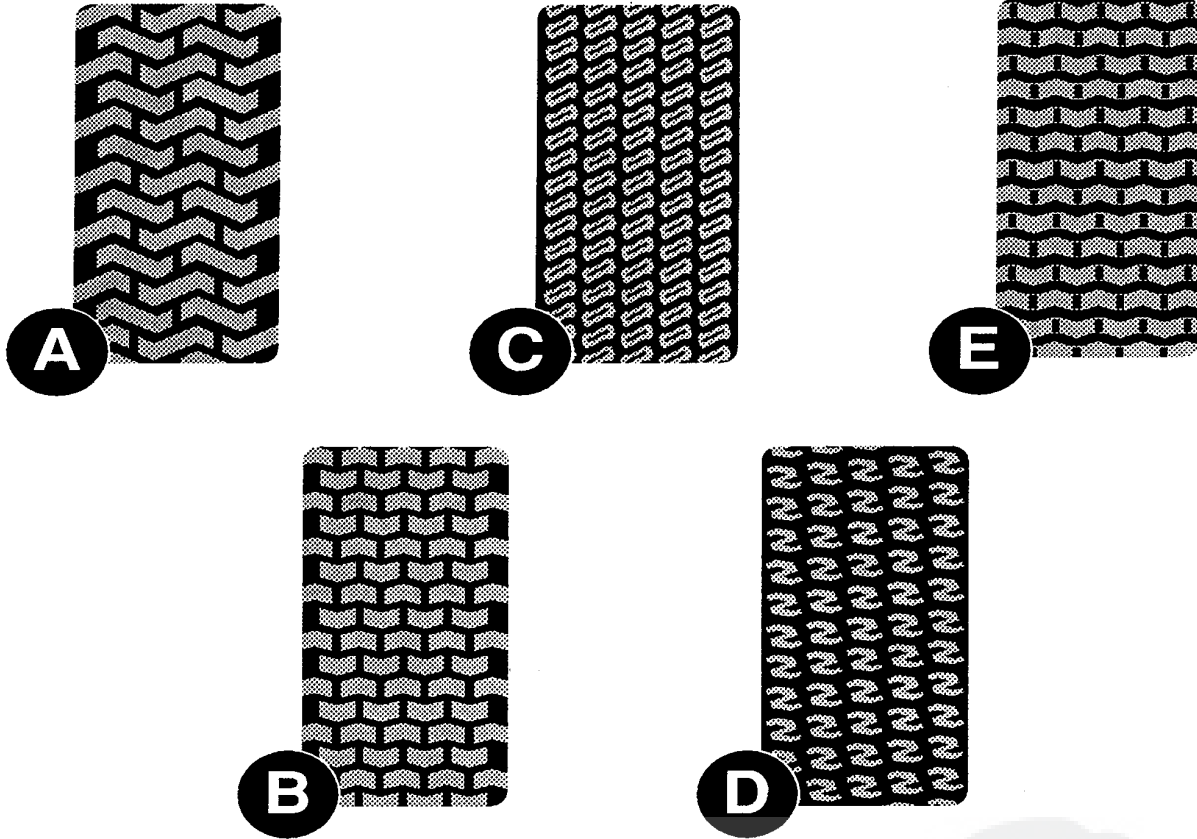
NOTE: ALWAYS USE ORIGINAL EQUIPMENT PARTS. Use of service/replacement parts other than original equipment parts may void your warranty.

ALL UNNUMBERED ITEMS ARE INTERCHANGEABLE WITH OPPOSITE SIDE

332583A

KEY#	PART#	DESCRIPTION	QTY
1	321765	DECAL, LF DASH, PTO/LIGHT SW EXP	1
2	307383	DECAL, INSTR. CONSOLE TOP ENGL	1
3	69524	DECAL, INSTRUCT CONSOLE TOP GER	1
4	69525	DECAL, INSTRUCT CONSOLE TOP FR	1
5	301104	DECAL, CONSOLE TOP SHIFT 5-SP	1
8	402214	DECAL, HEIGHT ADJUST	1
9	402142	NAMEPLATE, TURFMASTER WHT/BLK	2
10	305770	DECAL, CAUTION TRIANGLE EUROPE	1
11	68902	DECAL, WARNING, FRENCH/GERMAN	1
12	310553	DECAL, DANGER ENGLISH	1
13	68903	DECAL, BRAKE/CLUTCH ISO	1
14	55835	PAD, FOAM HOOD TOP H-6/7	1
15	55836	PAD, FOAM HOOD SIDE H-6/7	2
16	300638	DECAL, EXPORT LWA100DB	1
17	320714	DECAL, HOODSIDE RH H-21	1
18	320713	DECAL, HOODSIDE LH H-21	1
19	321759	NAMEPLATE, 14/42 WHITE/BLK	2
20	314462	DECAL, CONSOLE RH LARGE FRAME	1
21	314463	DECAL, CONSOLE LH LARGE FRAME	1

TREAD PATTERNS



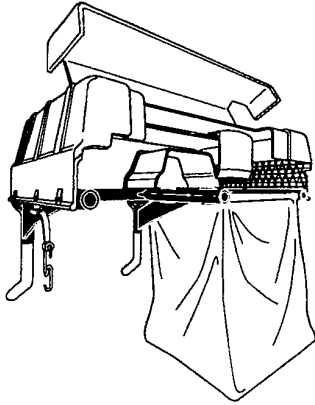
TIRE SIZE	"A"	"B"	"C"	"D"	"E"
11 X 4.00 - 5	42295	319679			
13 X 5.00 - 6	41060	319680			
15 X 6.00 - 6	39830	316702	301140	313952	
16 X 4.80 - 8		305035			
16 X 6.50 - 8	41081	319682		314539	
18 X 6.50 - 8		42091			
18 X 8.50 - 8	319683	317400			
18 X 9.50 - 8	41106	316701		313950	
20 X 8.00 - 8	319685	319684	57164	314584	331606
20 X 10.00 - 8	58276	319686		313654	
20 X 10.00 - 10	55893	319687			
23 X 9.50 - 12	53655	319690	319689	314370	

316711 D

ACCESSORIES

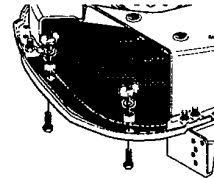
Contact the dealer where your tractor was purchased for the available accessories. If you are unable to contact the dealer, write to the address on the front cover of this manual.

Large Lawn Tractor

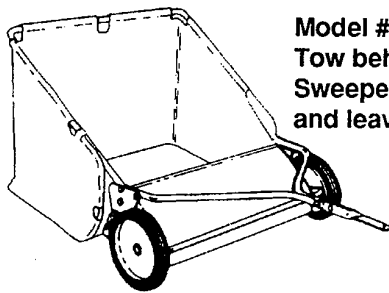
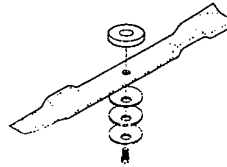


Model # 5708-34
Grass Collector for
40, 42, 43" decks

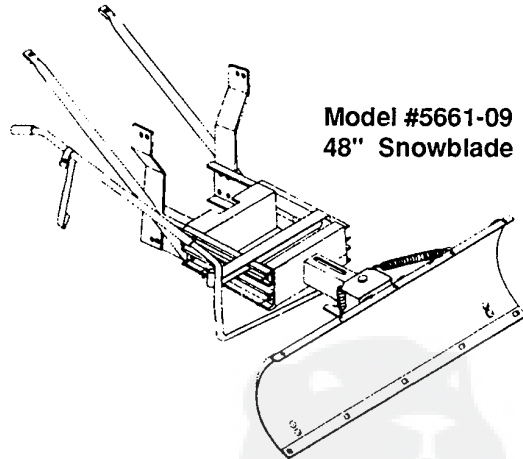
For heavy duty grass
collection order Model
#5709-10 Air Assist



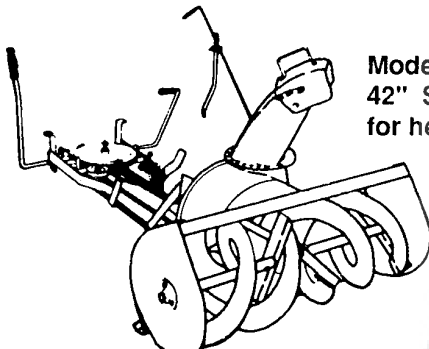
5717-00
Mulching Kit (42/43" Deck)
5716-00
Mulching Kit (40" Deck)



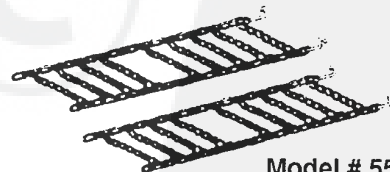
Model # 5648-16
Tow behind Lawn
Sweeper for grass
and leaves



Model #5661-09
48" Snowblade



Model #5705-06
42" Snowthrower
for heavy snowfall



Model # 5585-00
Tire Chains - 20" x 8.0" tires
Model # 5706-00
Tire Chains - 20" x 10.0" tires

OTHER ACCESSORIES

Model	Description
5672-01	Wheel Weights - Front - 1 pr. w/mtg. hdw. - Fits 15" tires
5673-02	Wheel Weights - Rear - 1 pr. w/mtg. hdw. - Fits 18" & 20" tires
316608	43" High Lift Blade for Bagging or Side Discharge (Requires 2)
325762	43" Mulching Blade (Requires 2)