

NOTE: ALWAYS USE ORIGINAL EQUIPMENT PARTS. Use of service/replacement parts other than original equipment parts may void your warranty.

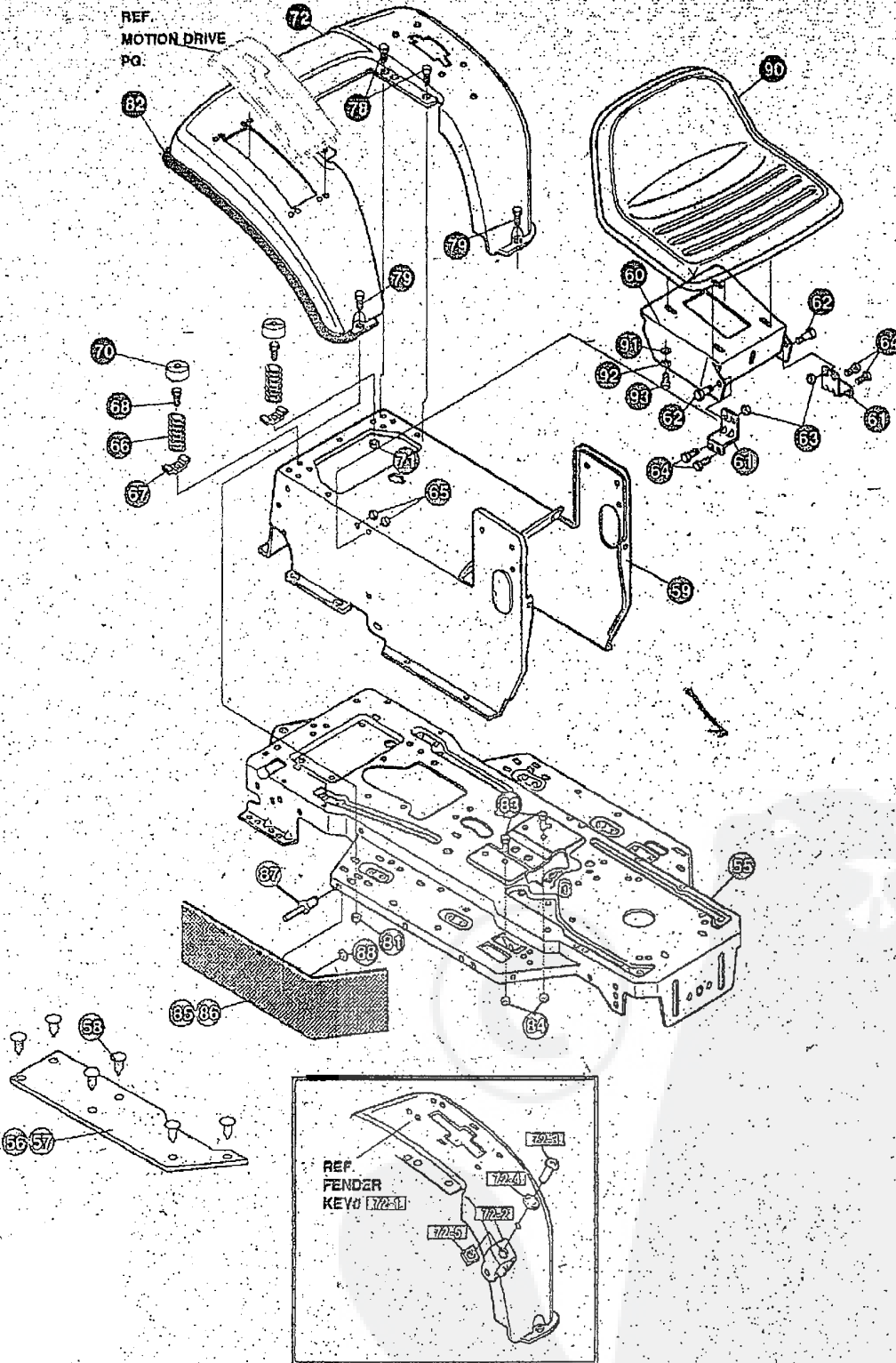
ALL UNNUMBERED ITEMS ARE INTERCHANGEABLE WITH OPPOSITE SIDE

329221 E

**E3560-640**

**CHASSIS & HOOD ASSEMBLY**

KEY#	PART#	DESCRIPTION	QTY
1	326203-853	BRKT,HOOD LF G21/22/23/24	1
2	326204-853	BRKT,HOOD LF G19/21/22/23	1
3	313541-853	BRACKET, FRONT AXLE	1
4	56030	SCREW, 5/16-18X.75WDFLLK	5
5	55273	NUT, 5/16-18 HXWDFLLK	5
6	300440	-GUIDE, BELT RIDER	1
7	1498	NUT, 5/16-18 REGHEXCTRLK	1
8	3 0 8 2 0 7	BOLT, .625X2.18 HHSH 1/2-19	1
9	309008	NUT, 1/2-19 HEXJAM CTRLK	1
10	180138	SCREW, 3/8-16X3.00 HHC	2
11	2 1/4 8 3	WASHER, 39IDX1.25DX.07 BELLVIL	2
12	1499	NUT, 3/8-16 REGHXCTRLK	2
13	180079	SCREW, 5/16-18X1.00 HHC	2
14	1498	NUT, 5/16-18 REGHEXCTRLK	2
15	300635	GUIDE,BELT SHORT 15" WHEEL	1
16	124824	NUT, 5/16-18 HEXJAM	1
17	271190	NUT, 3/8-16 HEXKEPS	1
18	329226	DASH, W/CHOKE,H-PTO,VIGN LF	1
19	318304	SCREW, 1/4-14X.75PHPNHTAP BLK	4
20	50352	NUT, 1/4-20-WDFLLK TOPLOCK	1
21	155941	SCREW, 10-24X.63 PHFLTMA	4
22	308459	NUT, #10-24 HXHDNYLK	4
23	328141	BUMPER,HOOD/DASH TOP & CORNER	2
24	328142	BUMPER,HOOD/DASH SIDE STRIP	2
25	329145	HOOD,H25 LF/SF,MOLDED,LOUVERS	1
26	306857	CLIP, TINNEMAN VER II HOOD	7
27	329238	RIVET, POP 3/16DIA X .75 LG FLG	2
29	329178	GRILLE, G-22 MOLDED PLASTICK	1
30	329144	INSERT,GRILLE G22 'K' STYLE	1
31	325194	LENS,G22 'K' STYLE	1
32	324909-853	SUPPORT,STEERING/PTO LF	1
33	995346	SCREW, 1/4-20X .50 WAHHTAP	4
34	326320-853	BRACKET, DASH/TANK LF RH	1
35	180020	SCREW, 1/4-20X .75 HHC	1
36	1502	NUT, 1/4-20-REGHEXCTRLK	1
37	326321-853	BRACKET, DASH/TANK LF LH	1
38	180020	SCREW, 1/4-20X .75 HHC	1
39	1502	NUT, 1/4-20 REGHEXCTRLK	1
40	326540-853	SUPPORT, LOWER DASH STEEL	1
41	327039-853	DASH,SUPPORT,BRACKET STEEL	1
42	180020	SCREW, 1/4-20X .75 HHC	2
43	1502	NUT, 1/4-20 REGHEXCTRLK	2
44	323044	PIN, CLEVIS .500 X .49/51LGTH	2
	526522	BRNG HOOD .505IDX.625ODX1.12FL	2
46	8260	PIN, HAIR .091 DIA X 1.66LG	2
47	310748	LANYARD,HOOD 15.77LG H15	1
48	49050	SCREW, 1/4-10X.75PHNTAP	1
4 9	330847	STEERING WHEEL	1
50	301413	SPACER, STEERING SHAFT	1
51	456378	PIN, SPRING.250DIA X 2.00LG HVPL	1
52	46763	RIVET, POP .187DIA X .450LG ST	3
53	35497	SCREW, 5/16-18X.50 WAHHTAP	2
54	995346	SCREW, 1/4-20X .50 WAHHTAP	9
55	304784	SPRING, HOOD LATCH	1
55	333225	RIVET, POP 3/16DIA X 1.0 LG FLG	2
56	1501	WASHER, FLAT .203X .56X.040	2
57	333604	PARTS MANUAL	1
58	332214	OPERATOR'S MANUAL (GERMAN)	1

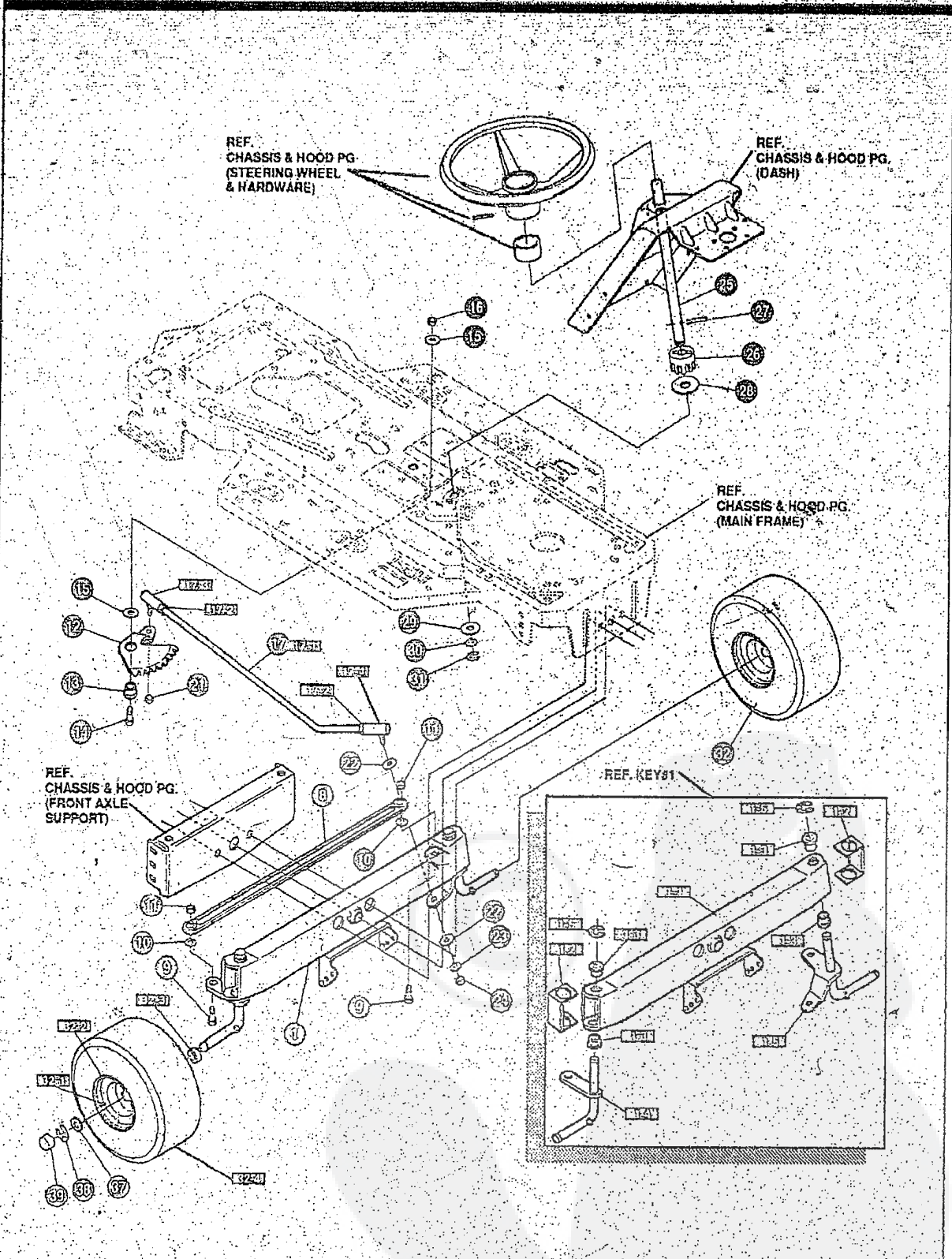


NOTE: ALWAYS USE ORIGINAL EQUIPMENT PARTS. Use of service/replacement parts other than original equipment parts may void your warranty.

ALL UNNUMBERED ITEMS ARE INTERCHANGEABLE WITH OPPOSITE SIDE

KEY#	PART#	DESCRIPTION	QTY
55	326579-879	FRAME,LF DRILLED P920/F4360	1
56	310005	FOOT PAD, LH 22.12LG DYNA F-5	1
57	310006	FOOT PAD, RH 22.12LG DYNA F-5	1
58	309235	FASTENER, RATCHET BLACK	12
59	327575-830	CONSOLE, NON-WALK THRU, LFSOF	1
60	58221-879	PLATE, SEAT LF, F4, F5-SOG	1
61	53746-879	BRKT, SEAT SUPPORT F4, F5-SOG	2
62	20507	BOLT, .437X .156 HSSH 5/16-18	2
6 3	1498	NUT, 5/16-18 REGHEXCTR LK	2
6 4	4 8 9 0 1	SCREW, 5/16-18X .63 WAHHC	4
65	1498	NUT, 5/16-18 REGHEXCTR LK	4
86	49335	SPRING .250 X 1.75 X 4.50	2
67	7 6 8 6	CLAMP, SPRING	2
68	44811	SCREW, 1/4-20X .75 WAHTAP	2
70	56907	COVER, SEAT SPRING 1.5IDX1.0LG	2
71	1502	NUT, 1/4-20 REGHEXCTR LK	2
72	A	ASM.FENDER F5 LF,SOF,SUSP	1
72-1	327471	ASM.FENDER F5 LF,SOF,SUSP	1
72-2	9239	CLEVIS	1
72-3	439455	SCREW, 5/16-18X .56 PHPNMA	1
72-4	301551	WASHER, 344IDX1.50DX.09 CU	1
72-5	120373	NUT, 5/16-18 SQ	1
78	995346	SCREW, 1/4-20X .50 WAHTAP	4
79	180079	SCREW, 5/16-18X1.00 HHC	2
81	55273	NUT, 5/16-18 HXWDEL LK	2
82	55023	TRIM, 77.5" BLACK NARROW	77.5
83	180079	SCREW, 5/16-18X1.00 HHC	2
84	1 4 9 8	NUT, 5/16-18 REGHEXCTR LK	2
85	305386	SKIRT, TUV LF RUBBER 7 X 28.03	1
86	305354	SKIRT, TUV LF RUBBER 7 X 15.64	1
8 7	329238	RIVET, POP 3/16DIA X .75 LG FLG	10
88	1501	WASHER, FLAT .203X .56X .040	10
90	310384	SEAT, MICHIGAN GEN, W/SW HOLE	1
91	120393	WASHER, FLAT .344X .69X .065	4
92	120638	WASHER, HVSP TLK .328X .60X .09	4
93	160077	SCREW, 5/16-18X .75 HHC	4

ORDER INDIVIDUAL PARTS



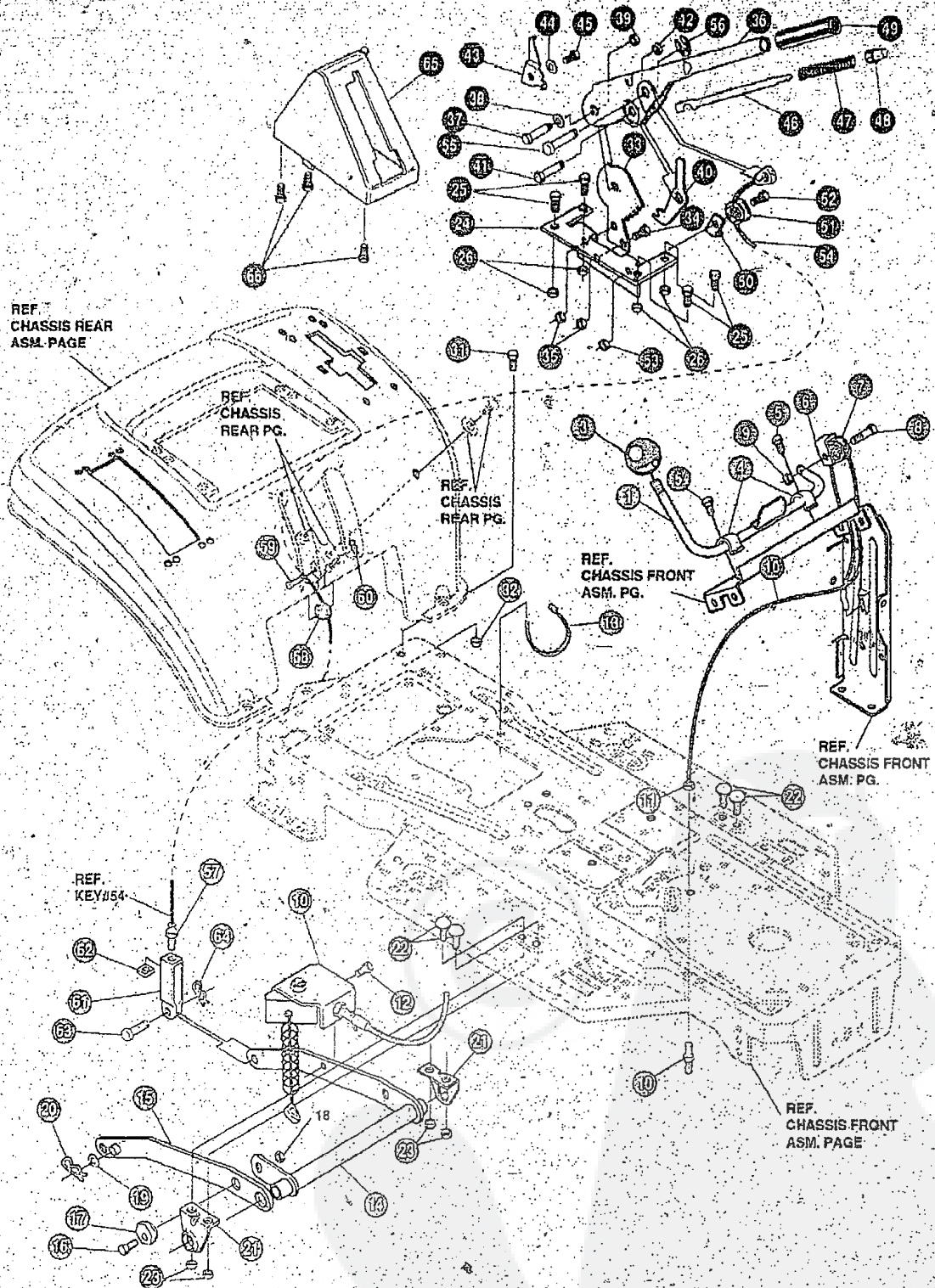
NOTE: ALWAYS USE ORIGINAL EQUIPMENT PARTS. Use of service/replacement parts other than original equipment parts may void your warranty.

ALL UNNUMBERED ITEMS ARE INTERCHANGEABLE WITH OPPOSITE SIDE.

# E3560-640

# STEERING ASSEMBLY

KEY#	PART#	DESCRIPTION	QTY
1	A	ASSY, AXLE FRONT 4WS SUSP	1
1-1	310170	AXLE, FRONT	1
1-2	53373	AXLE COVER	2
1-3	52407	SPINDLE BEARING	4
1-4	302926	ASSY, SPINDLE RH	1
1-5	315886	ASSY, SPINDLE LH	1
1-6	36625	RING, RETEX .57X.05TRU5133-75	2
8	304590	TIE ROD ASSY .19.81LG W SECTION	1
9	180128	SCREW, 3/8-16X1.75-HHC	2
10	120382	WASHER, REGSPTLK.393X.68X.10	2
11	120377	NUT, 3/8-16 REGHX	2
12	58289	SECTOR, STEERING LF	1
13	52406	BRNG, FL ECC.510IDX.9980OX.56	1
14	180177	SCREW, 1/2-13X1.50-HHC	1
15	22265	WASHER, FLAT .515X1.38X.119	2
16	1500	NUT, 1/2-13 REGHCTLK	1
17	311100	KIT-300146 DRAGLINK	1
17-1	58291	STEERING LINK	1
17-2	124925	NUT, 3/8-24 REGHEXJAM	2
17-3	57158	BALL JOINT 3/8 THD SHORT STUD	1
17-4	21275	BALL JOINT 3/8 THD LONG STUD	1
21	46582	NUT, 3/8-24 WDFLHLK WHIZ	1
22	996416	WASHER, FLAT .391X1.00X.125	2
23	120382	WASHER, REGSPTLK.393X.68X.10	1
24	120369	NUT, 3/8-24 REGHEX	1
25	58243	SHAFT, STEERING LF 2WS	1
26	58244	PINION, STEERING LF	1
27	58274	PIN, DOWEL .2500 OD X 1.75LG PL	1
28	301410	BRNG, FL .752IDX1.061ODX.24	1
29	301398	WASHER, FORMED 1.135X1.53X.12	1
30	21682	WASHER, FLAT .765X1.25X.042PL	1
31	36625	RING, RETEX .57X.05TRU5133-75	1
32	302828	TIRE & RIM, PU 15X6.0X6	2
32-1	24167	VALVE STEM	
32-2	39829	RIM, WHEEL	
32-3	314416	BEARING, FL	
32-4		REFER TO TIRE TREAD PAGE	
37	642	WASHER, FLAT .755X1.31X.075	4
38	36625	RING, RETEX .57X.05TRU5133-75	2
39	40394	HUB CAP, 1.500ID X 7/8LG	2

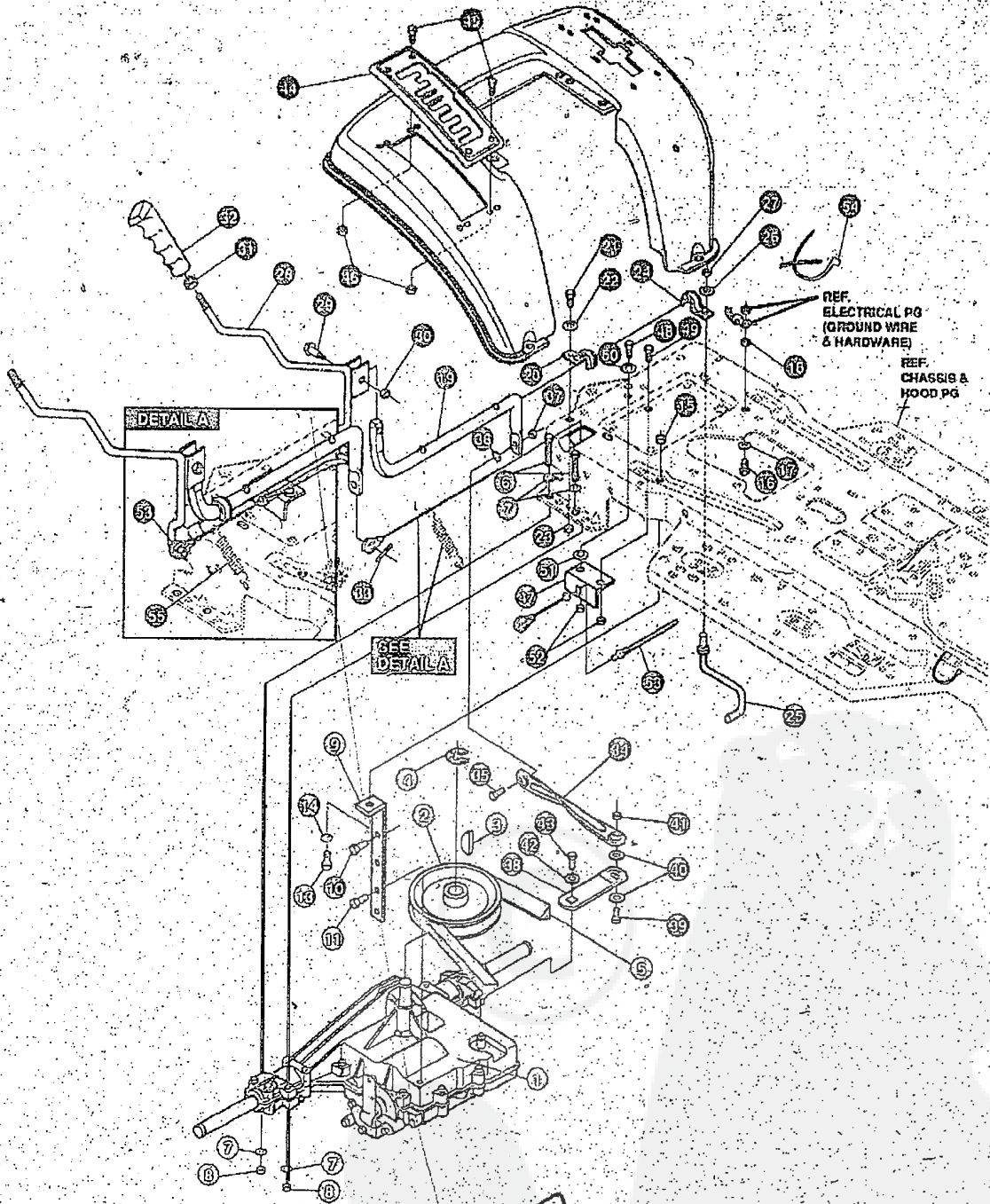


NOTE: ALWAYS USE ORIGINAL EQUIPMENT PARTS. Use of service/replacement parts other than original equipment parts may void your warranty.

ALL UNNUMBERED ITEMS ARE INTERCHANGEABLE WITH OPPOSITE SIDE

KEY#	PART#	DESCRIPTION	QTY
1	327021-859	ASSY,WELD,CLUTCH HDLE	1
3	55514	KNOB, ROUND 1.50 DIA BLACK	1
4	9129	CLIP, RETAIN BRKT	2
5	44811	SCREW, 1/4-20X .75 WAHHTAP	2
6	1288	BRKT, CABLE RETAIN	1
7	48306	PULLEY, POWDER METAL	1
8	57322	BOLT, 3/75X .375 HHSH 1/4-20	1
9	1502	NUT, 1/4-20 REGHEXCTRLK	1
10	328369	ASM.PTO BRKT. CABLE 39"40"843"	1
11	120613	NUT, 1/4-28 HJAM	1
12	35498	SCREW, 5/16-18X .75 WAHHTAP	1
13	57444	TIE, CABLE BLACK NYLON 5.62L	1
14	300169-853	LIFT ASSY, LH	1
15	300169-853	LIFT ASSY, RH	1
16	1.80079	SCREW, 5/16-18X1.00 HHC	1
17	58247	NUT, ADJUST	1
18	1498	NUT, 5/16-18 REGHEXCTRLK	1
19	417098	WASHER, FLAT .531X1.06X.063	2
20	8260	PIN, HAIR .091 DIA X 1.66LG	2
21	58248-853	BRACKET, REAR HANG SUSP	2
22	57072	BOLT, 5/16-18X .63 CARRLN	4
23	1498	NUT, 5/16-18 REGHEXCTRLK	4
24	313926	BRACKET, HGT/ADJUST SUPPORT	1
25	180077	SCREW, 5/16-18X .75 HHC	4
26	1498	NUT, 5/16-18 REGHEXCTRLK	4
31	180077	SCREW, 5/16-18X .75 HHC	1
32	1498	NUT, 5/16-18 REGHEXCTRLK	1
33	301238	QUADRANT, HEIGHT ADJUST	1
34	180077	SCREW, 5/16-18X .75 HHC	2
35	1498	NUT, 5/16-18 REGHEXCTRLK	2
36	322292-853	HANDLE, LIFT SHORT(30" S.F.)	1
37	300171	BOLT, .500X .270 HHSH 5/16-18	1
38	996418	WASHER, FLAT .506X .75X .024	1
39	44108	NUT, 5/16-18 HWDFLCTRLK	1
40	301239	PAWL, SQUARE	1
41	300171	BOLT, .500X .270 HHSH 5/16-18	1
42	44108	NUT, 5/16-18 HWDFLCTRLK	1
43	9435	POINTER, HEIGHT ADJ	1
44	138479	WASHER, EXLK .195X.41X.03	1
45	35287	SCREW, #8-32X.38 HHWATAP	1
46	303027	ROD, ACTUATOR SHORT	1
47	58326	SPRING, HEIGHT ADJUST	1
48	58325	KNOB, HEIGHT ADJ PUSH BUTTON	1
49	58329	GRIP, .750 OD W/ HOLE BLACK	1
50	9149	BRKT, CABLE RETAIN	1
51	48306	PULLEY, POWDER METAL	1
52	58336	BOLT, 3/75X .375 HHSH 1/4-20	1
53	1502	NUT, 1/4-20 REGHEXCTRLK	1
54	314177	CABLE, LIFT 22.92 F-5 20X8-6	1
55	300310	PIN, CLEVIS .310DIA+ .475LG	1
56	300311	RING, RET E .31X.25TRUX5133-31	1
57	120375	NUT, 1/4-20 REGHEX	1
58	48306	PULLEY, POWDER METAL	1
59	300317	PIN, CLEVIS .375DIA X .81LG	1
60	8260	PIN, HAIR .091 DIA X 1.66LG	1
61	9405	CLEVIS, LIFT CABLE	1
62	129372	NUT, 1/4-20 REGSQ	1
63	39522	PIN, CLEVIS .312X .812	1
64	121222	PIN, COTTER .690 DIA X .75LG	1
65	300335	LIFT COVER-39" F5	1
66	300340	SCREW, #10 X .75 HHPLAST BLK	3





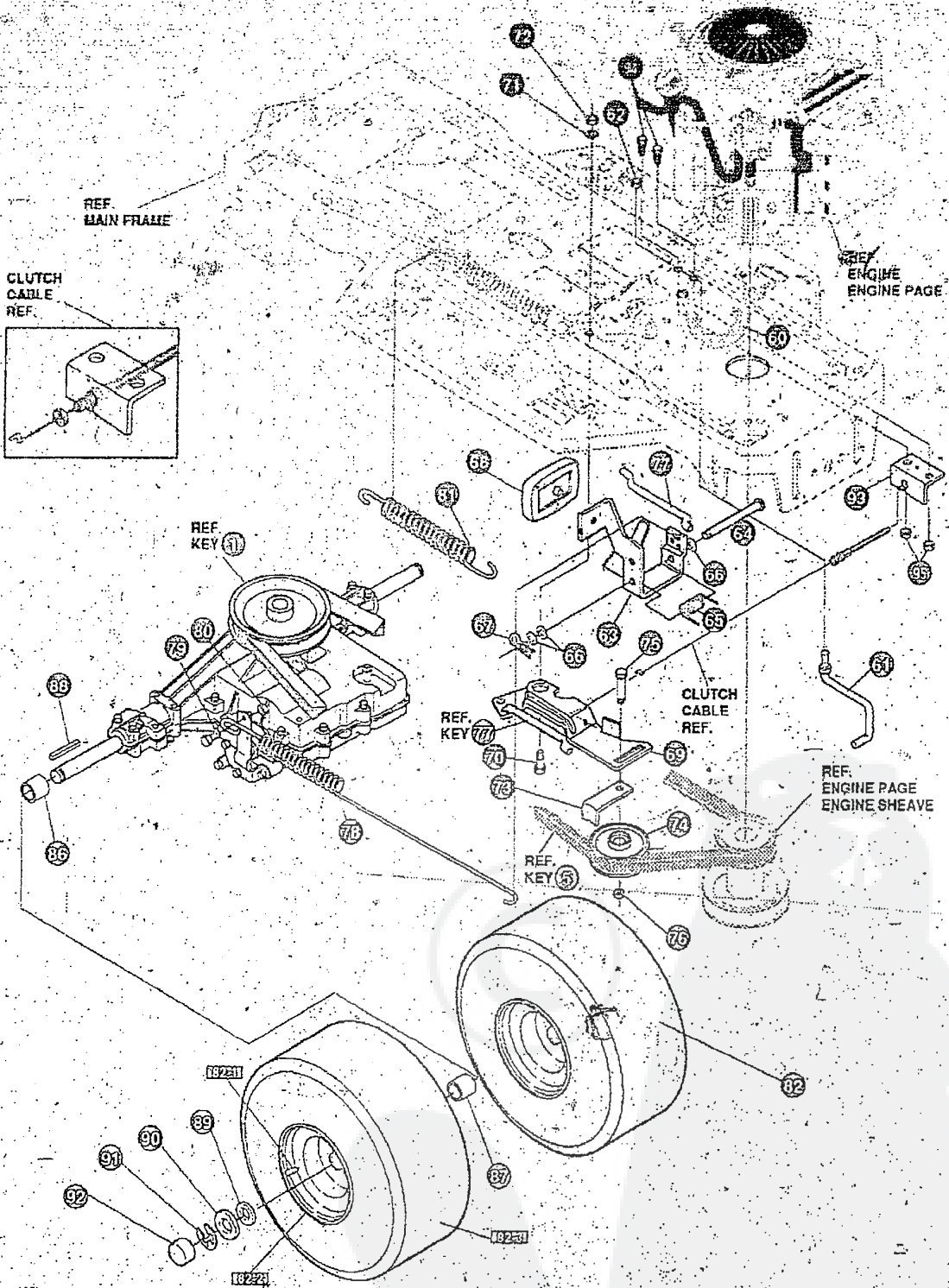
NOTE: ALWAYS USE ORIGINAL EQUIPMENT PARTS. Use of service/replacement parts other than original equipment parts may void your warranty.

ALL UNNUMBERED ITEMS ARE INTERCHANGEABLE WITH OPPOSITE SIDE

327752 C

KEY#	PART#	DESCRIPTION	QTY
1	^	TRANSAXLE FOOTE 4360-6SPHD	1
2	302745	PULLEY, 6.6 OD V4L T/A	1
3	50795	KEY, HI-PRO 608 .75DIA X 187WD	1
4	22053	RING, RETEX .58X.035TRU5100-62	1
5	314120	BELT, V.4L 87.25 4WS LF	1
6	180113	SCREW, 5/16-18X3.00 HHC	4
7	120393	WASHER, FLAT .344X .69X.065	8
8	1498	NUT, 5/16-18 REGHEXCTRLK	4
9	323739	BRKT, STABILIZER BLK	1
10	50947	SCREW, 3/8-16X1.25 WAHHTAPBLKP	1
11	35498	SCREW, 5/16-18X .75 WAHHTAP	1
12	120638	WASHER, HVSP TLK .328X.60X.09	1
13	180079	SCREW, 5/16-18X1.00 HHC	1
14	120393	WASHER, FLAT .344X .69X.065	1
15	1498	NUT, 5/16-18 REGHEXCTRLK	1
16	180077	SCREW, 5/16-18X.75 HHC	1
17	138538	WASHER, REGINTLK.320X.61X.03	1
18	1498	NUT, 5/16-18 REGHEXCTRLK	1
19	319209	LEVER,SHIFT-LWR,SHIFT N GO LF	1
20	310347-853	CLIP- SHIFT LEVER .625 ROD	1
21	180077	SCREW, 5/16-18X .75 HHC	1
22	996413	WASHER, FLAT .391X1.00X.125	1
23	1498	NUT, 5/16-18 REGHEXCTRLK	1
24	310347-853	CLIP- SHIFT LEVER .625 ROD	1
25	57259	GUIDE, BELT 5/16-18THD	1
26	996416	WASHER, FLAT .391X1.00X.125	1
27	1498	NUT, 5/16-18 REGHEXCTRLK	1
28	320383	UPR SHIFT LEV ASSY	1
29	321092	BOLT, .380X .500 HHSH 1/4-20	1
30	50352	NUT, 1/4-20 WDFLLK.TOPLOCK	1
31	120377	NUT, 3/8-16 REGHX	1
32	306689	HANDLE 3/8-16 MOLDED BLACK	1
33	137185	PIN, COTTER .125 DIA X 1.00LG	1
34	316557	LINK TIE ROD SHIFT 7.477C/L	1
35	180124	SCREW, 3/8-16X1.25 HHC	1
36	120382	WASHER, REGSPTLK.393X.68X.10	1
37	1499	NUT, 3/8-16 REGHXCTRLK	1
38	308637	BRKT,SHIFT 5SP SF	1
39	180124	SCREW, 3/8-16X1.25 HHC	1
40	120394	WASHER, FLAT .408X .81X.065	2
41	1499	NUT, 3/8-16 REGHXCTRLK	1
42	57157	WASHER, .750X.250 SP-TRANSAXLE	1
43	56255	SCREW, 1/4-28X .75 NYLHHC	1
44	319806-853	QUADRANT,SHIFT FOOTE F4360-6HD	1
45	305850	SCREW, 1/4-20X.50PHPNTAP	4
46	1502	NUT, 1/4-20 REGHEXCTRLK	4
47	321517	BRKT, FRAME SHIFT	1
48	180022	SCREW, 1/4-20X1.00 HHC	1
49	57038	BOLT, 1/4-20X .63 CARRLN	1
50	120392	WASHER, FLAT .281X .63X.065	1
51	316080	SPACER .328 X .50 X .38	4
52	1502	NUT, 1/4-20 REGHEXCTRLK	2
53	319803	CABLE, SHIFT N GO	1
54	57444	TIE, CABLE BLACK NYLON 5.62L	1
55	314897	SPRING, MEMORY	1

^ CONTACT YOUR NEAREST TRANSAXLE DEALER FOR PARTS & SERVICE

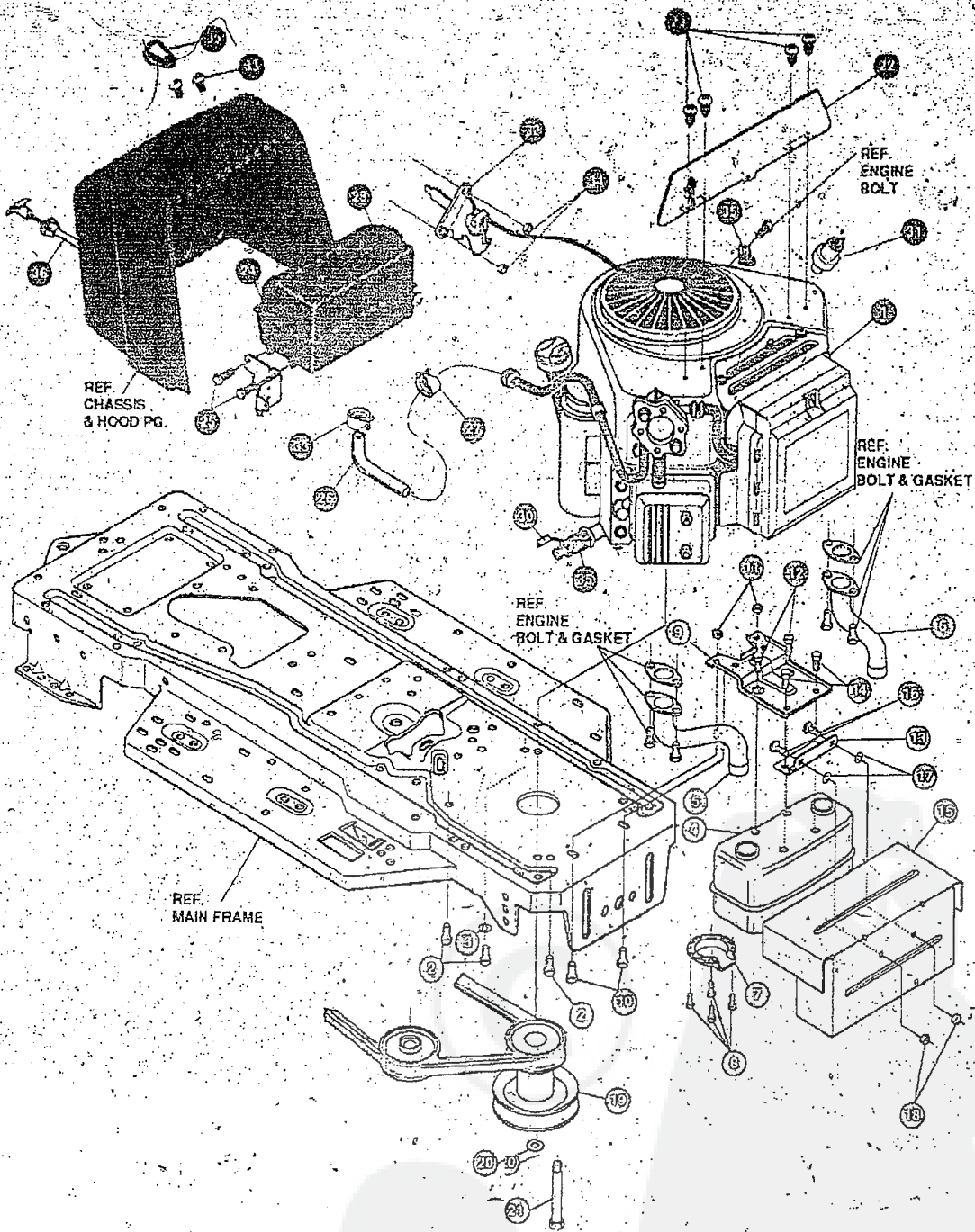


**NOTE:** ALWAYS USE ORIGINAL EQUIPMENT PARTS. Use of service/replacement parts other than original equipment parts may void your warranty.

**ALL UNNUMBERED ITEMS ARE INTERCHANGEABLE WITH OPPOSITE SIDE**

327752 C

KEY#	PART#	DESCRIPTION	QTY
60	321514	SPRING, DRAG LINK BIAS	1
61	304016	GUIDE, BELT R.H.	1
62	1498	NUT, 5/16-18 REGHEXCTRLK	1
63	325942	PEDAL ASSY, BRAKE/CLUTCH, LF	1
64	319675	PIN, CLEVIS .500DX4.53LG	1
65	57847	SPRING, BRAKE PEDAL	1
66	2968	WASHER, FLAT .584X .75X.059	3
67	56180	PIN, HAIR .091 DIA X 1.62LG	1
68	48160	PAD, CLUTCH BRAKE W/PRINTING	1
69	320381	ARM, IDLER TRACTION, SOG LF	1
70	329989	BOLT, .625X .135 HSSH 5/16-18	1
71	45602	WASHER, FLAT .333X .87X.119	1
72	1498	NUT, 5/16-18 REGHEXCTRLK	1
73	39659	RETAINER, BELT	1
74	35374	PULLEY, IDLER V4L 3.06X .62	1
75	45892	BOLT, 3/8-16X1.50 CARRSN	1
76	1499	NUT, 3/8-16 REGHXCTRLK	1
77	57204	ROD, CLUTCH 3.92"	1
78	325937	SPRING, BRAKE 28.00 930, 4360	1
79	326131	BOLT, .495X .31 HSSH 5/16-18	1
80	1498	NUT, 5/16-18 REGHEXCTRLK	1
81	322609	SPRING, CLUTCH	1
82	301318	TIRE & RIM, 20X10.00-8 WHITE	2
82-1	24167	VALVE STEM	
82-2	301366	RIM, WHEEL	
82-3		REFER TO TIRE TREAD PAGE	
86	57479	SPACER, SLEV .75 X1.25X1.32	2
87	301565	SPACER, SLEV .750X1.25X .50 PL	2
88	52928	KEY, SQUARE .187SQX2.25LG	2
89	642	WASHER, FLAT .755X1.31X.075	4
90	42815	WASHER, FLAT .755X1.53X.07	2
91	36625	RING, RETEX .57X.05TRU5133-75	2
92	40394	HUB CAP, 1.500ID X-7/8LG	2
93	321517	BRKT, FRAME SHIFT	1
94	180020	SCREW, 1/4-20X .75 HHC	1
95	1502	NUT, 1/4-20 REGHEXCTRLK	2

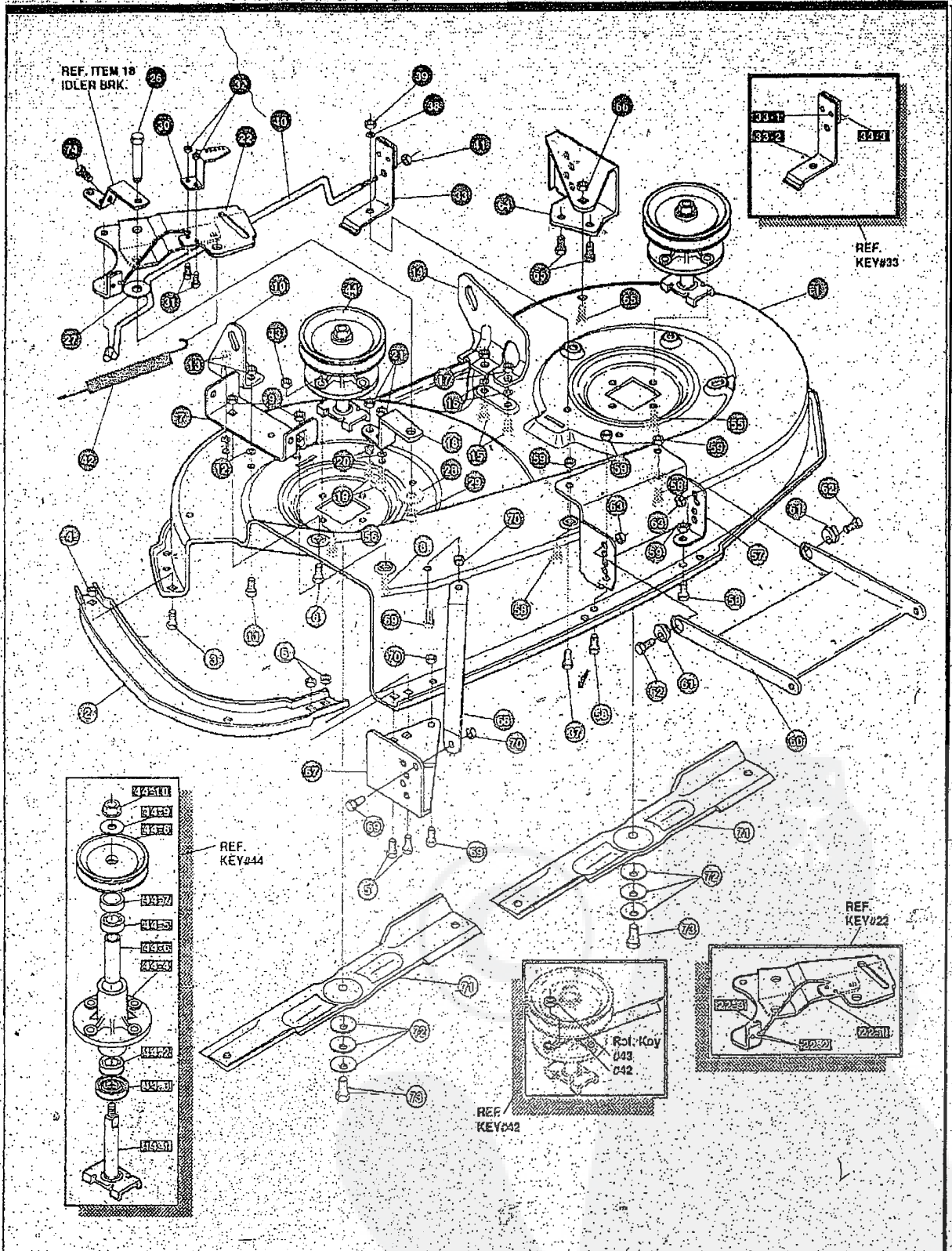


**NOTE: ALWAYS USE ORIGINAL EQUIPMENT PARTS.** Use of service/replacement parts other than original equipment parts may void your warranty.

**ALL UNNUMBERED ITEMS ARE INTERCHANGEABLE WITH OPPOSITE SIDE**

**E3560-640****ENGINE & CONTROL ASSEMBLY**

KEY#	PART#	DESCRIPTION	QTY
1	ENGINE	14-16HP VANG(SEE ENGINE MANUAL)	1
2	50947	SCREW, 3/8-16X1.25 WAHHTAPBLK	4
3	138489	WASHER, EXLK 3/8X.69X.04	1
4	305553	MUFFLER 14/18 TWIN NLSN 22795C	1
5	305554	EXHAUST TUBE 15HP RH B&S VANG	1
6	305555	EXHAUST TUBE 15HP LH B&S VANG	1
7	56472	DEFLECTOR SIDE OUT	1
8	35287	SCREW, #8-32X .38 HHWATAP	4
9	304709-853	BRACKET, MUFFLER	1
10	56030	SCREW, 5/16-18X.75WDFLLK	2
11	55273	NUT, 5/16-18 HXWDFLLK	2
12	995346	SCREW, 1/4-20X .50 WAHHTAP	2
13	9796	BRKT, TRANSAXLE	1
14	44811	SCREW, 1/4-20X .75 WAHHTAP	2
15	320922-853	SHIELD, MUFFLER HEAT TWIN	1
16	57072	BOLT, 5/16-18X .63 CARRLN	2
17	309436	PUSHNUT, 5/16 BOLT RETAINER	2
18	55273	NUT, 5/16-18 HXWDFLLK	2
19	328028	PULLEY, ENG 3.0D X 4.0LG X 5.0D	1
20	120383	WASHER, REGSPTLK, 459X.78X.12	1
21	433146	SCREW, 7/16-20X4.25 HHC BLK PH	1
22	312728-853	HEAT SHIELD VANG (MF. HOOD)	1
23	57366	SCREW, 10-16X .50 DRILLTITE	4
24	309853	TANK, FUEL 1.5 WO/SENSOR CLEAR	1
25	49050	SCREW, 1/4-10X .75PHPNTAP	4
26	48049	TUBING, .25X.50X BULK GAS LINE	10.0
27	47345	CLAMP, HOSE SCREW TYPE	2
28	12501	CAP, FUEL 2.5" THROAT	1
29	325547	OIL DRAIN VALVE ASSEMBLY	1
30	327422	CAP, OIL DRAIN VALVE ASM, YELLOW	1
31	314797	OIL SENSOR, B&S TWIN CYL	1
32	329218	CONTROL THROTTLE 33.1LG BS VAN	1
33	155941	SCREW, 10-24X.63 PHFLTMA	2
34	308459	NUT, #10-24 HXHDNYLK	2
35	50607	KNOB, ROUND THROTTLE BLACK	1
36	329219	CONTROL CHOKE 28.0LG	1



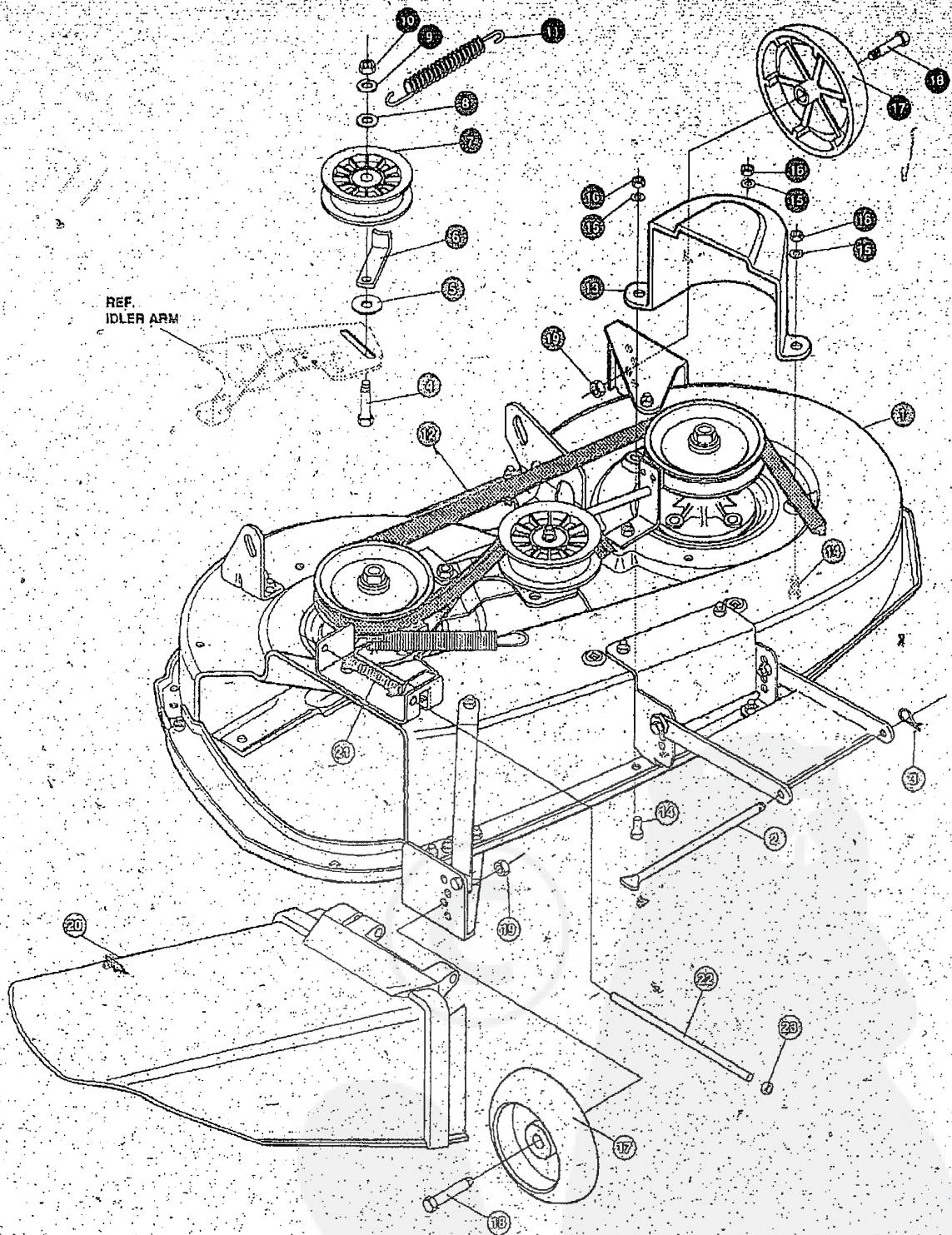
**NOTE: ALWAYS USE ORIGINAL EQUIPMENT PARTS.** Use of service/replacement parts other than original equipment parts may void your warranty.

**ALL UNNUMBERED ITEMS ARE INTERCHANGEABLE WITH OPPOSITE SIDE**

320109 H

KEY#	PART#	DEWSCRIPTON	QTY
1	325103	40" DECK KIT	1
2	326480-853	TOE GUARD - MULCHER	1
3	180077	SCREW, 5/16-18X .75 HHC	1
4	1498	NUT, 5/16-18 REGHEXCTRLK	1
5	180077	SCREW, 5/16-18X .75 HHC	2
6	1498	NUT, 5/16-18 REGHEXCTRLK	2
7	317017	BRACKET CHUTE MOUNT BLACK	1
8	180077	SCREW, 5/16-18X .75 HHC	2
9	1498	NUT, 5/16-18 REGHEXCTRLK	2
10	313929	LIFT BRKT, REAR RH BLK 85	1
11	180077	SCREW, 5/16-18X .75 HHC	2
12	120393	WASHER, FLAT .344X .69X.065	2
13	1498	NUT, 5/16-18 REGHEXCTRLK	2
14	310667	BRACKET, DECK LIFTEAR LHBLK	1
15	180077	SCREW, 5/16-18X .75 HHC	2
16	120393	WASHER, FLAT .344X .69X.065	2
17	1498	NUT, 5/16-18 REGHEXCTRLK	2
18	326893-853	BRACE IDLER SUPPORT 40", 43"	1
19	180077	SCREW, 5/16-18X .75 HHC	2
20	120393	WASHER, FLAT .344X .69X.065	2
21	44108	NUT, 5/16-18 HWDFLCTRLK	2
22	320576-853	IDLER ARM ASSEMBLY	1
22-1	322116-853	ARM IDLER 40/43" DECK	1
22-2	41601	RIVET, OVSET .187DIA X .50LG ST	2
22-3	306973	BRAKE PAD - HARD - 232AF	1
26	304420	BOLT, .500X2.15 HSH	1
27	996307	WASHER, FLAT .391X1.00X.209	1
28	996416	WASHER, FLAT .391X1.00X.125	2
29	45171	NUT, 3/8-16 HWDFL WHIZ LOCK	1
30	326249-853	BRACKET, EXTENSION IDLER	1
31	180077	SCREW, 5/16-18X .75 HHC	2
32	1498	NUT, 5/16-18 REGHEXCTRLK	2
33	321828	BLADE BRAKE ASSY	1
33-1	135624	RIVET, TRSET .185DIA X .41LG ST	2
33-2	904119	BRAKE ARM	1
33-3	306973	BRAKE PAD - HARD - 232AF	1
37	180077	SCREW, 5/16-18X .75 HHC	1
38	120393	WASHER, FLAT .344X .69X.065	1
39	1498	NUT, 5/16-18 REGHEXCTRLK	1
40	302714	ROD, BRAKE	1
41	1502	NUT, 1/4-20 REGHEXCTRLK	1
42	35410	SPRING .071 X .62 X 4.37	1
43	1498	NUT, 5/16-18 REGHEXCTRLK	1
44	56424-853	QUILL ASSY, 36/39/40/43	2
44-1	56425	SHAFT/SADDLE 36"	1
44-2	49562	BRNG, BALL 6203-2AA(SEALS)-C3	1
44-3	50616	DUST SHIELD	1
44-4	55547	QUILL CASTING (1046)	1
44-5	49562	BRNG, BALL 6203-2AA(SEALS)-C3	1
44-6	50818	SPACER, SLEV .669X .88X3.797	1
44-7	51449	SPACER, SLEV .672X .93X .438PM	1
44-8	313898	PULLEY ASSY	1
44-9	56365	WASHER, SPECIAL QUILL	1
44-10	1282	NUT, 7/16-20 WDFLLK	1
55	35498	SCREW, 5/16-18X .75 WAHTAP	7
56	300345	SCREW, 5/16-18X1.98 WAHTAP	1
57	318445	BRACKET, 40 LF FRONT DECK	1
58	180077	SCREW, 5/16-18X .75 HHC	4
59	1498	NUT, 5/16-18 REGHEXCTRLK	4
60	58305-853	BRACKET, LINK DECK FRONT	1
61	58247	NUT, ADJUST	2
62	180079	SCREW, 5/16-18X1.00 HHC	2
63	1498	NUT, 5/16-18 REGHEXCTRLK	2
64	317041	BRKT, GAGE WHEEL LH BLACK	1
65	180077	SCREW, 5/16-18X .75 HHC	3
66	1498	NUT, 5/16-18 REGHEXCTRLK	3
67	322464-853	BRACKET, GAGE WHEEL R.H. FRNT	1
68	314282-853	BRACKET, STABILIZER	1
69	180077	SCREW, 5/16-18X .75 HHC	3
70	1498	NUT, 5/16-18 REGHEXCTRLK	3
71	313316	BLADE, 40" STD-LIFT 20.32BLK	2
72	2483	WASHER, 39ID X 1.25DX .07 BELLVIL	6
73	39573	SCREW, 3/8-24X1.00 NYLHHC	2
74	308231	SCREW, 1/4-20X1.25 HHWATAP	1



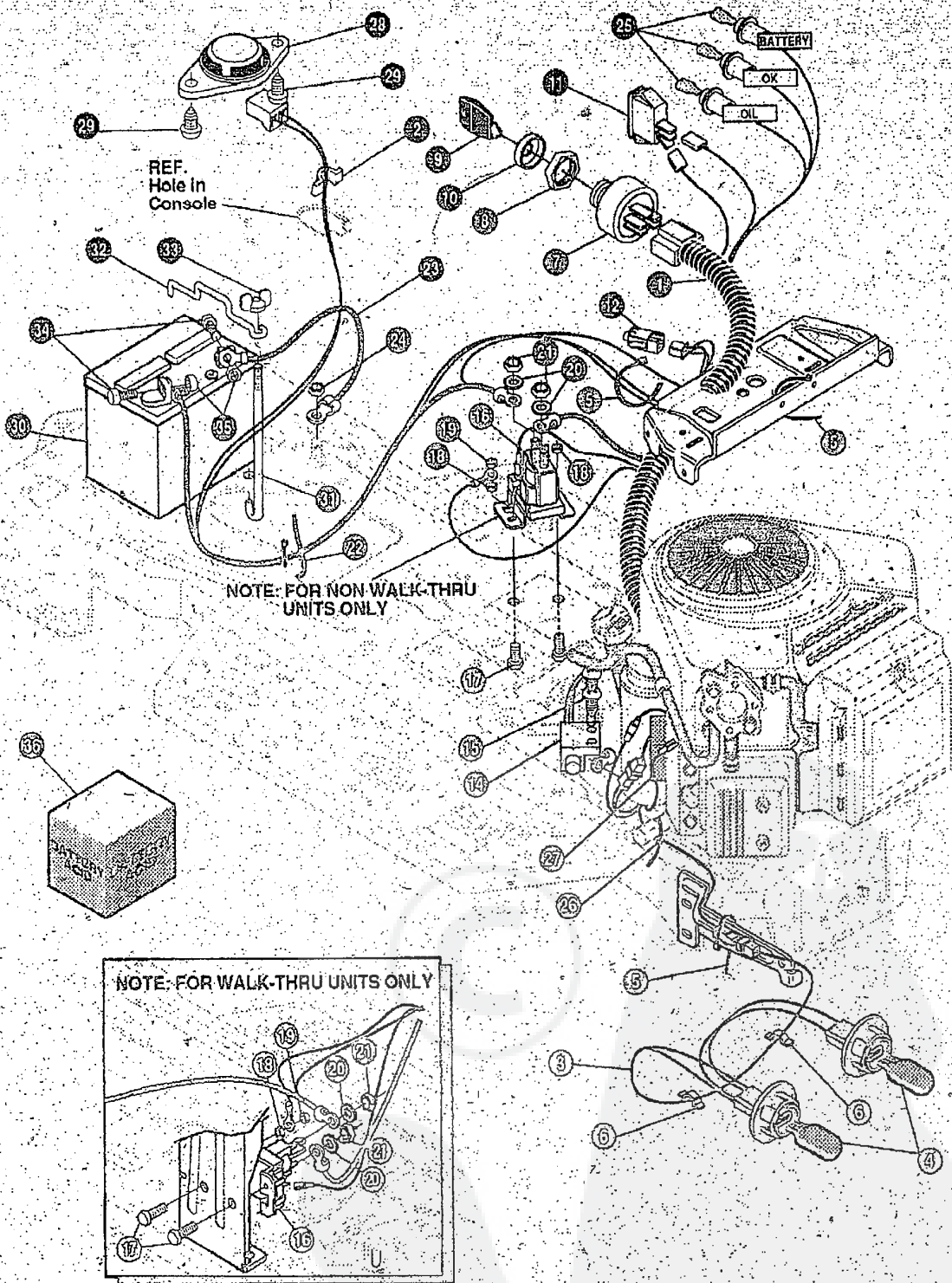


NOTE: ALWAYS USE ORIGINAL EQUIPMENT PARTS. Use of service/replacement parts other than original equipment parts may void your warranty.

ALL UNNUMBERED ITEMS ARE INTERCHANGEABLE WITH OPPOSITE SIDE

325684 A

KEY#	PART#	DESCRIPTION	QTY
1	329035	ASM. 40" SUS DECK EXPORT .....	1
2	58306	ROD, DECK HITCH .....	1
3	8260	PIN, HAIR .091 DIA X 1.66 LG .....	1
4	57325	BOLT, 3/8-16 X 2.00 CARRSN .....	1
5	25210	WASHER, FLAT .386 X 1.25 X .09 HT .....	1
6	1346	RETAINER, BELT .....	1
7	310326	PULLEY, IDLER BFF 4.00 WIDE FL .....	1
8	996307	WASHER, FLAT .391 X 1.00 X .209 .....	1
9	120382	WASHER, REGSPTLK .393 X .68 X .10 .....	1
10	120377	NUT, 3/8-16 REGHX .....	1
11	300473	SPRING, TENSION 7.52 LG X 17 LB/IN .....	1
12	319005	BELT, V 5L 61.00 DECK 40 LF .....	1
13	325234	GUARD, BELT LH-PLASTIC EXPORT .....	1
	14 180075	SCREW, 5/16-18 X .63 HHC .....	3
15	120393	WASHER, FLAT .344 X .69 X .065 .....	3
16	1498	NUT, 5/16-18 REGHX CTRLK .....	3
17	302611	GAUGE WHEEL, EURO 6.00 ODX 1.38 WD .....	2
18	23763	BOLT, .500 X 1.390 HSSH 3/8-16 .....	2
19	1 4 9 9	NUT, 3/8-16 REGHX CTRLK .....	2
20	3 0 4 4 2 2	CHUTE DEFLECTOR 40" 42" X 43" .....	1
21	314975	SPRING, TORSION CHUTE DEFLECTOR .....	1
2 2	304424	ROD, PIVOT DECK .312 OX 7.25 .....	1
23	3 5 3 5	NUT, PUSH ON CAP .312 OD .....	1



NOTE: ALWAYS USE ORIGINAL EQUIPMENT PARTS. Use of service/replacement parts other than original equipment parts may void your warranty.

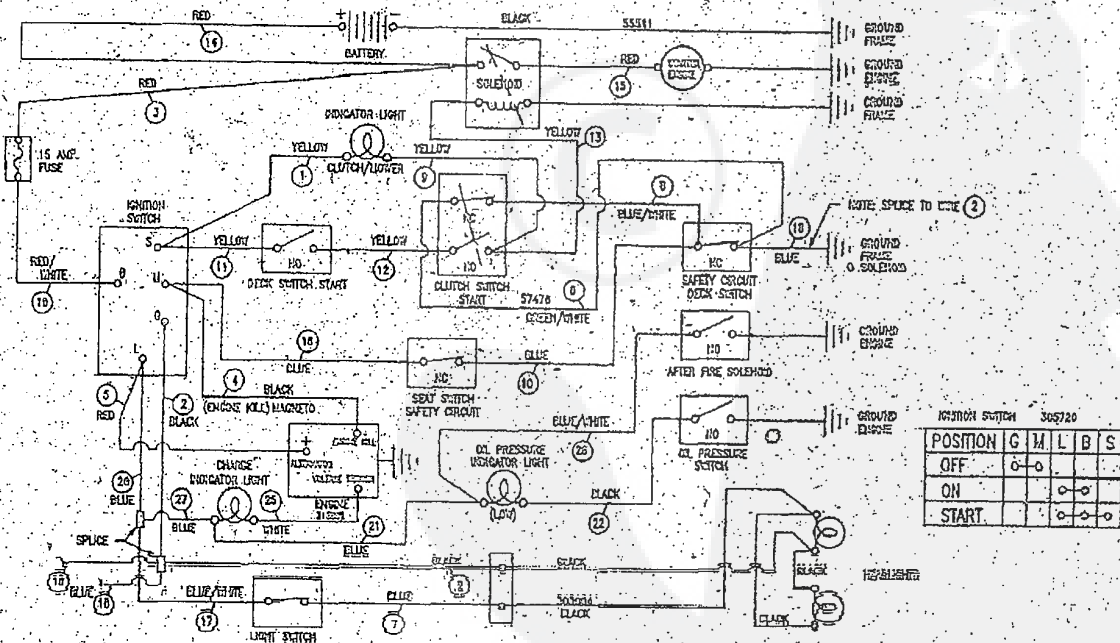
ALL UNNUMBERED ITEMS ARE INTERCHANGEABLE WITH OPPOSITE SIDE.

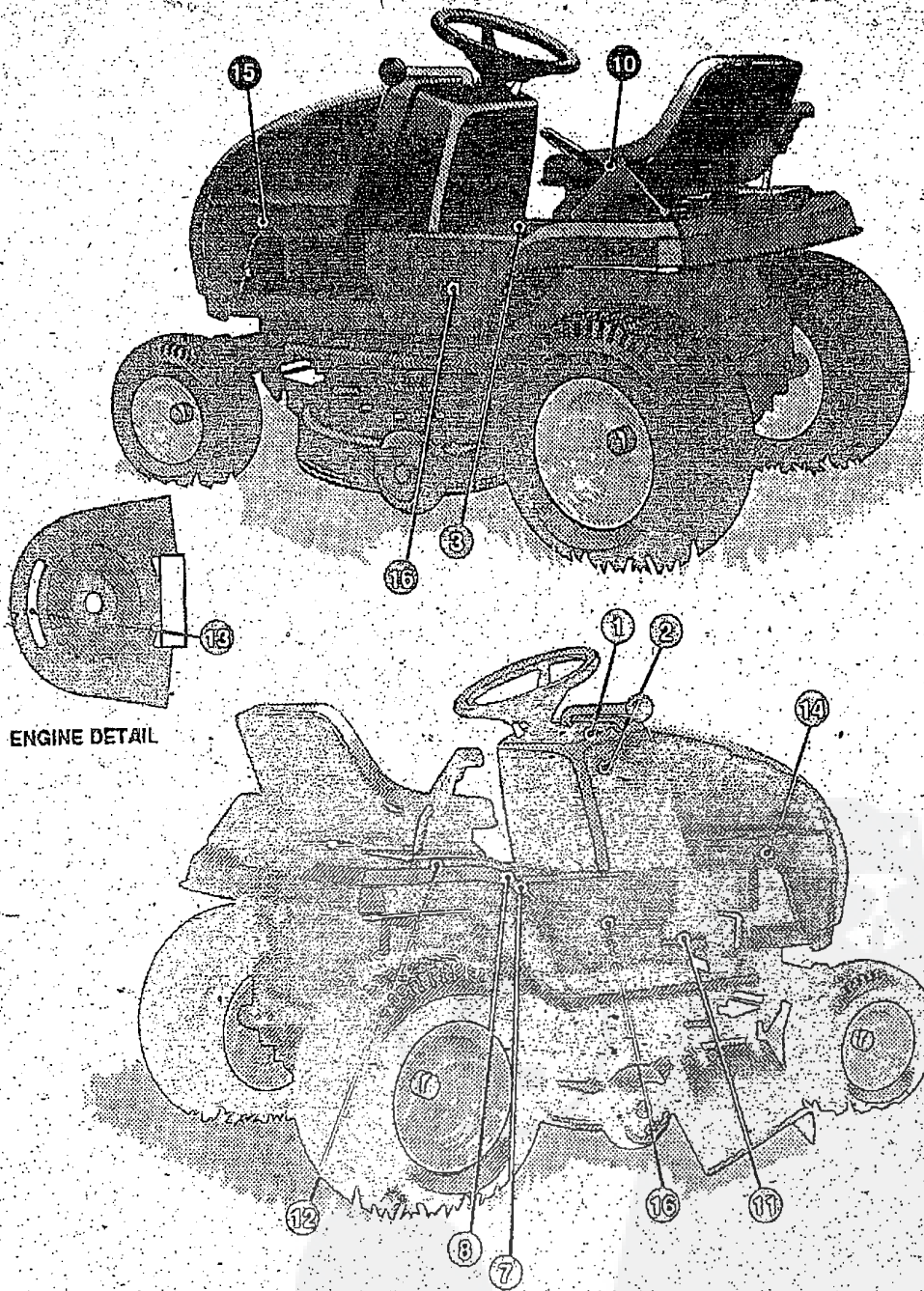
329224 C

KEY#	PART#	DESCRIPTION	QTY
1	329223	WIRE HARNESS 14-18VAN H25G22	1
2	41482	PRESS CLIP, 1.380LG, 255ID	1
3	303064	ASSY, LIGHT WIRE 1/4 TURN	1
4	52572	BULB, HEADLAMP	2
5	57444	TIE, CABLE BLACK NYLON 5.62L	4
6	41482	PRESS CLIP, 1.380LG, 255ID	2
7	327355	SWITCH-IGN.(AFTER FIRE) 3-POSN	1
8	327352	NUT, 5/8-BACME DELTA FOR BOOT	1
9	327350	KEY, IGNITION GENERIC DELTA	2
10	300194	BOOT, IGN SWITCH	1
11	328826	LIGHTSWITCH PANEL MNT	1
12	320082	SWITCH, DOUBLE POLE NO/NC GRAY	1
13	57444	TIE, CABLE BLACK NYLON 5.62L	1
14	57476	SWITCH, SCR MNT DP NC NO BLK	1
15	57220	SCREW, #12 X .50 PHPNHT-AP BLK	2
16	53716	SOLENOID	1
17	187745	SCREW, 1/4-20X .75 HXSEMMA	2
18	1502	NUT, 1/4-20 REGHEXCTRLK	2
19	271172	NUT, 1/4-20 REGHEXKEPS	1
20	138485	WASHER, EXLK .320X.61X.09	2
21	120368	NUT, 5/16-24 REGHEX	2
22	57444	TIE, CABLE BLACK NYLON 5.62L	1
23	55511	WIRE, GROUND, 12.5"	1
24	271184	NUT, 5/16-18 HEXKEPS	1
25	57769	BULB, INDICATOR	3
26	57444	TIE, CABLE BLACK NYLON 5.62L	1
27	315602	REGULATOR, SEN VOLT BS W/SENSOR	1
28	57547	SWITCH, SEAT	1
29	160505	SCREW, 1/4-20X .38PHPNHMA	2
30	302257	BATTERY, 12V	1
31	57551	ROD, BATTERY	1
32	57552	ROD, BATTERY, TOP	1
33	325232	NUT, WING 1/4-20 NYLON	1
34	180020	SCREW, 1/4-20X .75 HHC	2
35	271172	NUT, 1/4-20 REGHEXKEPS	2
36		BATTERY ACID PACK, 80 OZ.	1

^ CAN BE PURCHASED LOCALLY

**WIRING SCHEMATIC**





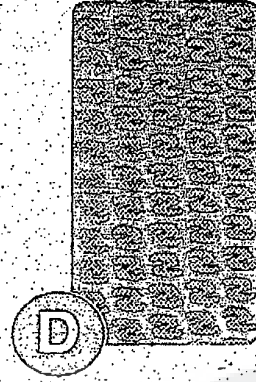
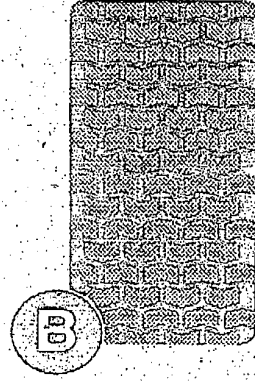
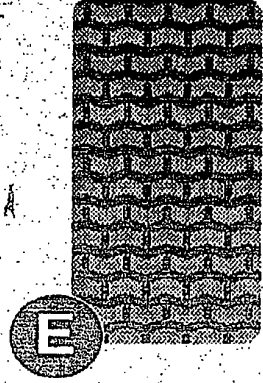
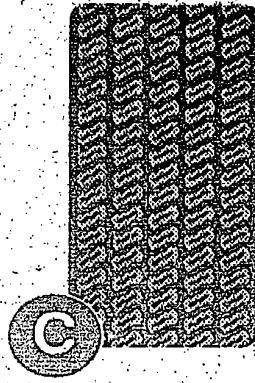
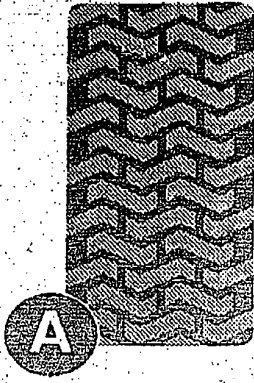
**NOTE:** ALWAYS USE ORIGINAL EQUIPMENT PARTS. Use of service/replacement parts other than original equipment parts may void your warranty.

ALL UNNUMBERED  
ITEMS ARE INTERCHANGEABLE  
WITH OPPOSITE SIDE

333216 A

KEY#	PART#	DESCRIPTION	QTY
1	329211	DECAL DASH:H24/H25	1
2	68900	DECAL, BLADE EN G A GE EUROPE	1
3	69524	DECAL, INSTRUCT CONSOLE TOP GER	1
7	3057.70	DECAL, CAUTION TRIANGLE EUROPE	1
8	311066	DECAL, DANGER GERMAN	1
10	402214	DECAL, HEIGHT ADJUST	1
11	6.8.9.0.3	DECAL, BRAKE/CLUTCH ISO	1
12	322169	DECAL, FENDER 6 SPEED SOG	1
13	311811	DECAL, ENGINE 14BS V-TWIN 2YR	1
14	329076	DECAL, HOOD POWERTRAC RH	1
15	329575	DECAL, HOOD POWERTRAC LH	1
16	3 2 9 0 7 7	DECAL, POWERTRAC HOOD TOPSIDE	1
17	403161	NAMEPLATE 14/40 SIL/BLK	2

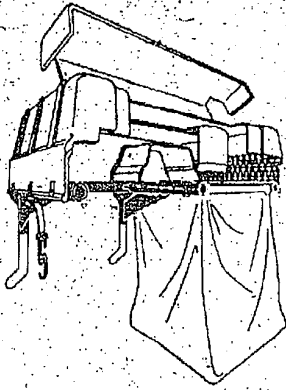
# TREAD PATTERNS



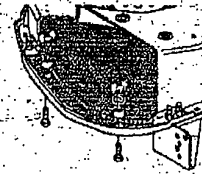
TIRE SIZE	"A"	"B"	"C"	"D"	"E"
11 X 4.00 - 5	42295	319679			
13 X 5.00 - 6	41060	319680			
15 X 6.00 - 6	39830	316702	301140	313952	
16 X 4.80 - 8		305035			
16 X 6.50 - 8	41081	319682		314539	
18 X 6.50 - 8		42091			
18 X 8.50 - 8	319683	317400			
18 X 9.50 - 8	41106	316701		313950	
20 X 8.00 - 8	319685	319684	57164	314584	331606
20 X 10.00 - 8	58276	319686		313654	
20 X 10.00 - 10	55893	319687			
23 X 9.50 - 12	53655	319690	319689	314370	

Contact the dealer where your tractor was purchased for the available accessories. If you are unable to contact the dealer, write to the address on the front cover of this manual.

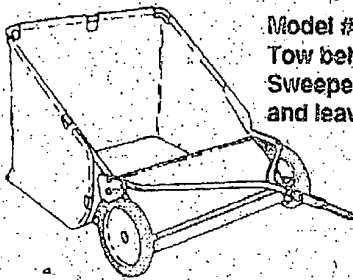
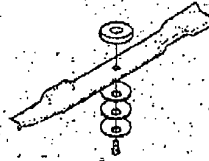
**Large Lawn Tractor**



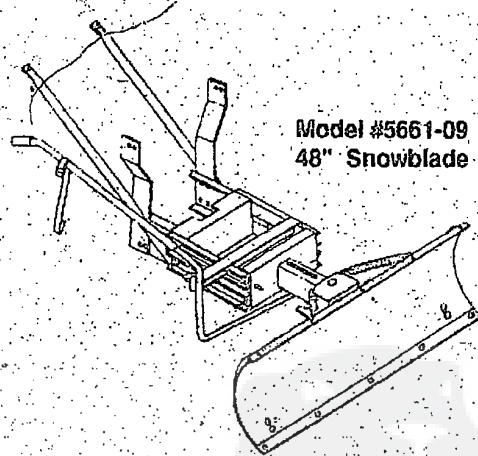
**Model # 5708-34**  
**Grass Collector for**  
**40, 42, 43" decks**  
**For heavy duty grass**  
**collection order Model**  
**#5709-10 Air Assist**



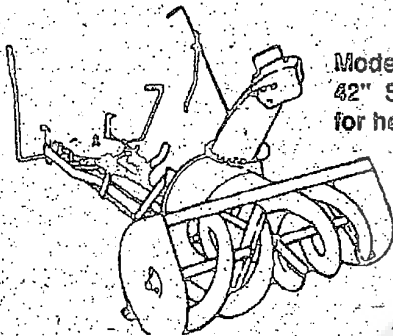
**5717-00**  
**Mulching Kit (42/43" Deck)**  
**5716-00**  
**Mulching Kit (40" Deck)**



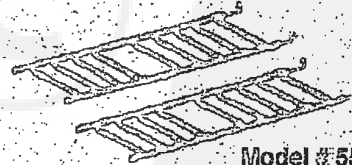
**Model # 5648-16**  
**Tow behind Lawn**  
**Sweeper for grass**  
**and leaves**



**Model #5661-09**  
**48" Snowblade**



**Model #5705-06**  
**42" Snowthrower**  
**for heavy snowfall**



**Model # 5585-00**  
**Tire Chains - 20" x 8.0" tires**  
**Model # 5706-00**  
**Tire Chains - 20" x 10.0" tires**

**OTHER ACCESSORIES**

Model	Description
5672-01	Wheel Weights - Front - 1 pr. w/mtg. hdw. - Fits 15" tires
5673-02	Wheel Weights - Rear - 1 pr. w/mtg. hdw. - Fits 18" & 20" tires
316608	43" High Lift Blade for Bagging or Side Discharge (Requires 2)
325762	43" Mulching Blade (Requires 2)