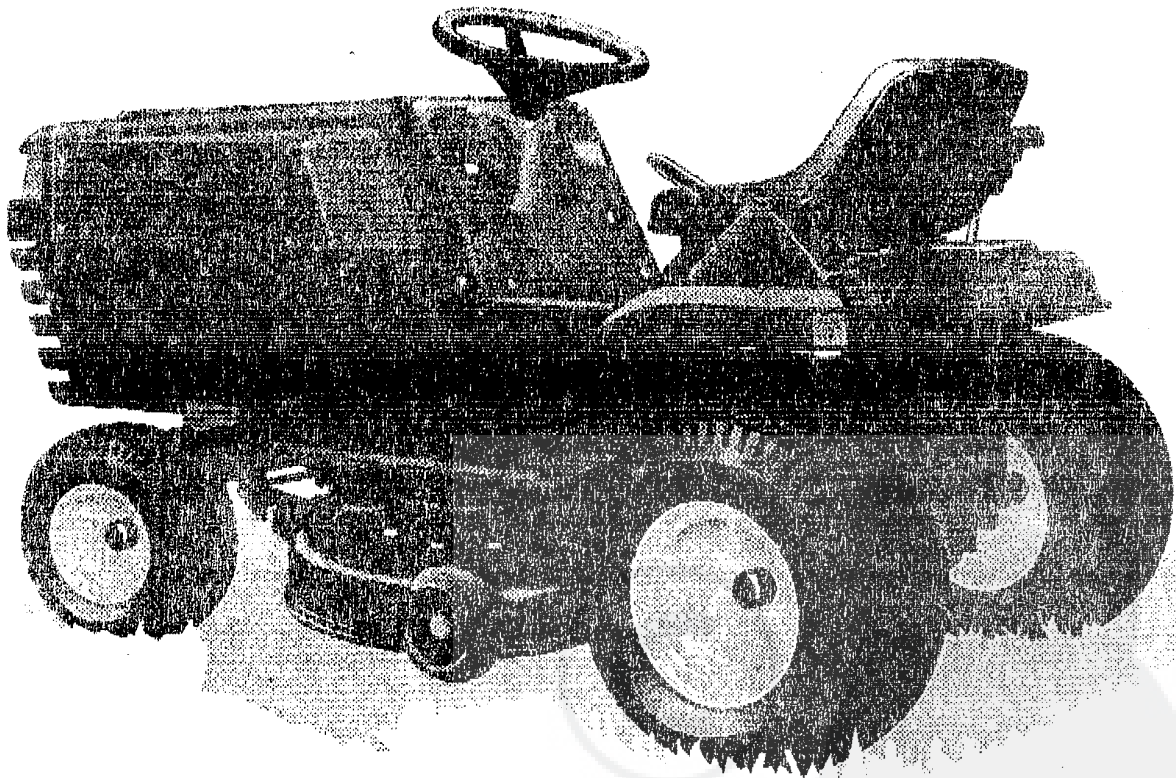


PARTS MANUAL

Lawn Tractors



Model E3560-680

E3550-680**OWNER'S INFORMATION**

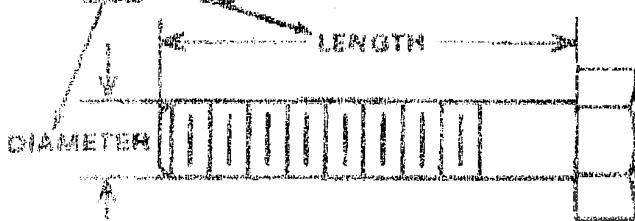
Record the following information about your unit so that you will be able to provide it in case of loss or theft.

MODEL NUMBER: (Enter complete 8 digit number from model plate on unit)
 PURCHASE DATE: ___ / ___ / ___ CCDF NO.: _____ SERIAL NO.: _____
 DEALER'S NAME AND ADDRESS: _____
 CITY: _____ STATE: _____ TELEPHONE: _____

TOOLS REQUIRED FOR ASSEMBLY

- 2 - 7/16 inch Wrenches (or adjustable wrench)
- 1 - 1/2 inch Wrench (or adjustable wrench)
- 1 - Small Phillips Screwdriver with a 1/4 inch shank
- 1 - Hammer

HOW TO MEASURE SCREW SIZE
(6/16 x 1 1/2 INCH)

**DANGER**

This lawn tractor can be dangerous if carelessly used.

Read your Operator's Manual thoroughly before operating your lawn tractor.

Always wear safety glasses or eye shields while assembling or operating your lawn tractor.

DO NOT carry passengers at any time.

Keep your hands, feet, hair and loose clothing away from the discharge area, the under side of the mower deck or any moving parts while the engine is running.

DO NOT allow children or young teenagers to operate or be near your lawn tractor while it is operating.

ALWAYS GIVE THE FOLLOWING INFORMATION WHEN ORDERING REPAIR PARTS:
 1. The PART NUMBER; 2. The PART NAME; 3. QUANTITY DESIRED; 4. The MODEL NUMBER (As shown on Model Plate).
 SEND PART ORDERS AS PER INSTRUCTIONS ON THE FRONT PAGE.

DO NOT USE KEY NUMBERS WHEN ORDERING REPAIR PARTS. ALWAYS USE PART NUMBERS.

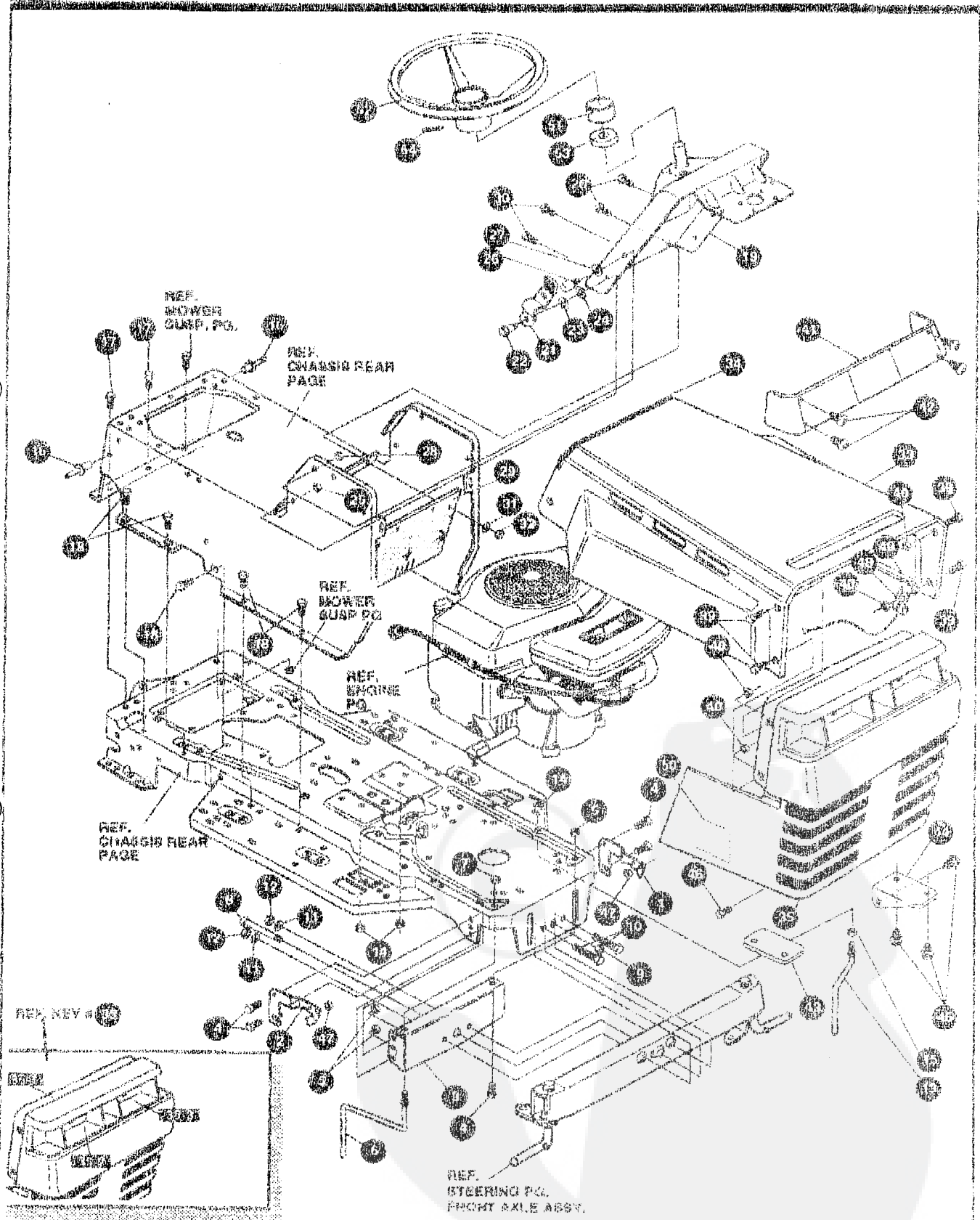
All replacement parts will be supplied in current production colors or in a neutral color.

A handling fee is applicable to small parts orders.

YOUR UNIT IS RIGHT HAND (RH) OR LEFT HAND (LH) AS YOU STAND BEHIND IT.

E3560-680

REPAIR PARTS



NOTE: ALWAYS USE ORIGINAL EQUIPMENT PARTS. Use of service/replacement parts other than original equipment parts may void your warranty.

ALL UNNUMBERED ITEMS ARE INTERCHANGEABLE WITH OPPOSITE SIDE

3262050

3560-080

CHASSIS & HOOD ASSEMBLY

KEY#	PART#	DESCRIPTION	QTY
1	58089-853	BRACKET, GRILLE LH	1
2	58089-853	BRACKET, GRILLE RH	1
3	313541-853	BRACKET, FRONT AXLE	1
4	58030	SCREW, 5/16-18X 75WDFLLK	5
5	58273	NUT, 5/16-18 HEXWDFLLK	5
6	900440	GUIDE, BELT, RIDER	1
7	1499	NUT, 5/16-18 REGHEXOTRLK	1
8	308207	BOLT, 5/16X2-18 HNSN 1-2-13	1
9	309006	NUT, 1/2-13 HEXJAM OTRLK	1
10	180130	SCREW, 3/8-16X3.00 RHC	2
11	2489	WASHER, 3/16X1.25DX.07 BELLV	2
12	1499	NUT, 3/8-16 REGHXOTRLK	2
13	300635	GUIDE, BELT, SHORT 16" WHEEL	1
14	124824	NUT, 5/16-18 HEXJAM	1
15	271190	NUT, 3/8-16 HEXKEPS	1
16	46768	KEY, POP, 187DIA X 450LG ST	3
17	36497	SCREW, 5/16-18X .50 WAHHTAP	2
18	995946	SCREW, 1/4-20X .50 WAHHTAP	10
19	308447-500	DASH	1
20	995946	SCREW, 1/4-20X .50 WAHHTAP	2
21	57159	LATCH, 3/4WDX.047 ASSY HOOD	2
22	9482	BOLT, 3/75X 1.50 HNSH 5/16-18	2
23	120394	WASHER, FLAT, 408X .81X.065	2
24	120393	WASHER, FLAT, 344X .69X.065	2
25	1499	NUT, 5/16-18 REGHEXOTRLK	2
26	53446	PIN, 5/16-18 HOOD LATCH	2
27	138538	WASHER, REGINTLK, 320X.61X.03	2
28	45174	NUT, 5/16-18 HEXWDFLLK WHIZ	2
29	312305	BAFFLE, CONSOLE, SOUND EXPORT	1
30	300314	SCREW, 1/4-20X .68WAHHTAP	2
31	120392	WASHER, FLAT, 281X .63X.065	2
32	1502	NUT, 1/4-20 REGHEXOTRLK	2
33	52561-850	HOOD, BULGE	1
34	56304	EDGING (75-47453) WIDE BLK	27.5
35	303055	ASM, GRILLE	1
36	53225	SCREW, 1/4-20X1.25 WAHHC	4
37	50382	NUT, 1/4-20 WDFLLK TOPLOCK	4
38	302073	LENS, CLEAR W/O TABS NO LOGO	1
39	57794	SCREW, #6 X .30 PLASTITE/HI-LO	4
40	301894-853	SUPPORT, GRILLE RH	1
41	301895-853	SUPPORT, GRILLE LH	1
42	38021	SCREW, 1/4-14X .75 SLWATAP	5
43	33149	BOLT, 3/75X .500 HNSH 5/16-18	2
44	1499	NUT, 5/16-18 REGHEXOTRLK	2
45	310748	LANYARD, HOOD 15.77LG H15	1
46	50352	NUT, 1/4-20 WDFLLK TOPLOCK	1
47	301452	FOIL, HEAT REFLECTOR	2
48	311485	COVER, STEERING SHAFT	1
49	390848	STEERING WHEEL	1
50	301413	SPACER, STEERING SHAFT	1
51	458378	PIN, SPRING 250DIA X 2.00LG HV	1
52	332214	GERMAN OPERATOR'S MANUAL	1
53	333714	PARTS MANUAL	1
54	327627	GRASS CATCHER MANUAL	1
55	328165	AIR ASSIST MANUAL	1

83560-880

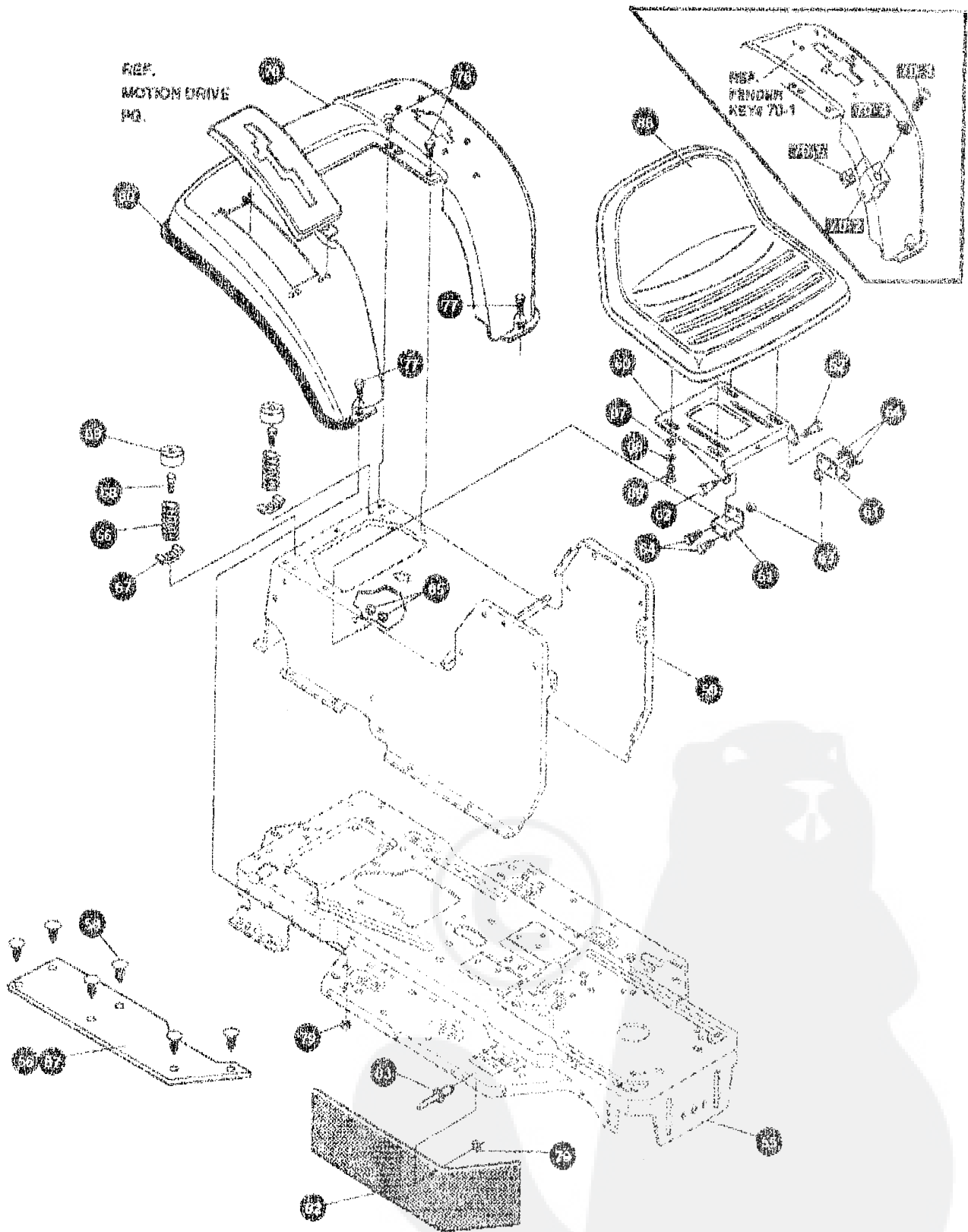
CHASSIS & HOOD ASSEMBLY

KEY#	PART#	DESCRIPTION	QTY
56	319579-880	FRAME, DRILLED	1
56	810006	FOOT PAD, LH 22 1/2LG	1
57	310006	FOOT PAD, RH 22 1/2 LG	1
58	509295	FASTENER, RATCHET	12
59	803695-880	CONSOLE	1
60	55367-880	PLATE, SEAT	1
61	810690-880	BRACKET, SEAT SUPPORT	2
62	20607	BOLT, 487X, 156 HPSH 5/16-18	2
63	1498	NUT, 5/16-18 REGHEXGTRLK	2
64	42901	SCREW, 5/16-18X .63VAPHC	4
65	1498	NUT, 5/16-18 REGHEXGTRLK	4
66	57153	SPRING, SEAT 2.63LG 1 490D BLK	2
67	1341	CLAMP, SPNG 1.127ID	2
68	44911	SCREW, 1/4-20X .76 WAHTAP	2
69	56907	COVER, SEAT SPRING 1.510X1.0LG	2
70	*	ASM FENDER	1
70-1	32747-880	FENDER	1
70-2	9236	OLEVIS	1
70-3	439455	SCREW, 5/16-18X .56PHPNMA BK	1
70-4	391551	WASHER, 3/4IDX1.50DX .09 CU. ZN	1
70-5	120373	NUT, 5/16-18 SQ	1
76	995346	SCREW, 1/4-20X .50 WAHTAP	4
77	126368	BOLT, 5/16 18X1.00 CARBLN	2
79	55273	NUT, 5/16-18 HXWDFLLK	2
80	55023	TRIM, 77.5" BLACK NARROW	77.5 in.
81	805356	SKIRT, TUY RUBBER 7 X 26.03	1
82	805354	SKIRT, TUY RUBBER 7 X 15.64	1
83	329236	RIVET, POP 3/16DIA X .75 LG FLG	10
84	1501	WASHER, FLAT .203X .56X .040	10
86	57455	SEAT, MICHIGAN W/SW HOLE	1
87	120363	WASHER, FLAT .244X .69X .085	4
88	120632	WASHER, HV8PTLK .328X .60X .09	4
89	180077	SCREW, 5/16-18X .75 HHC	4

* ORDER INDIVIDUAL PARTS.

E3560-680

REPAIR PARTS



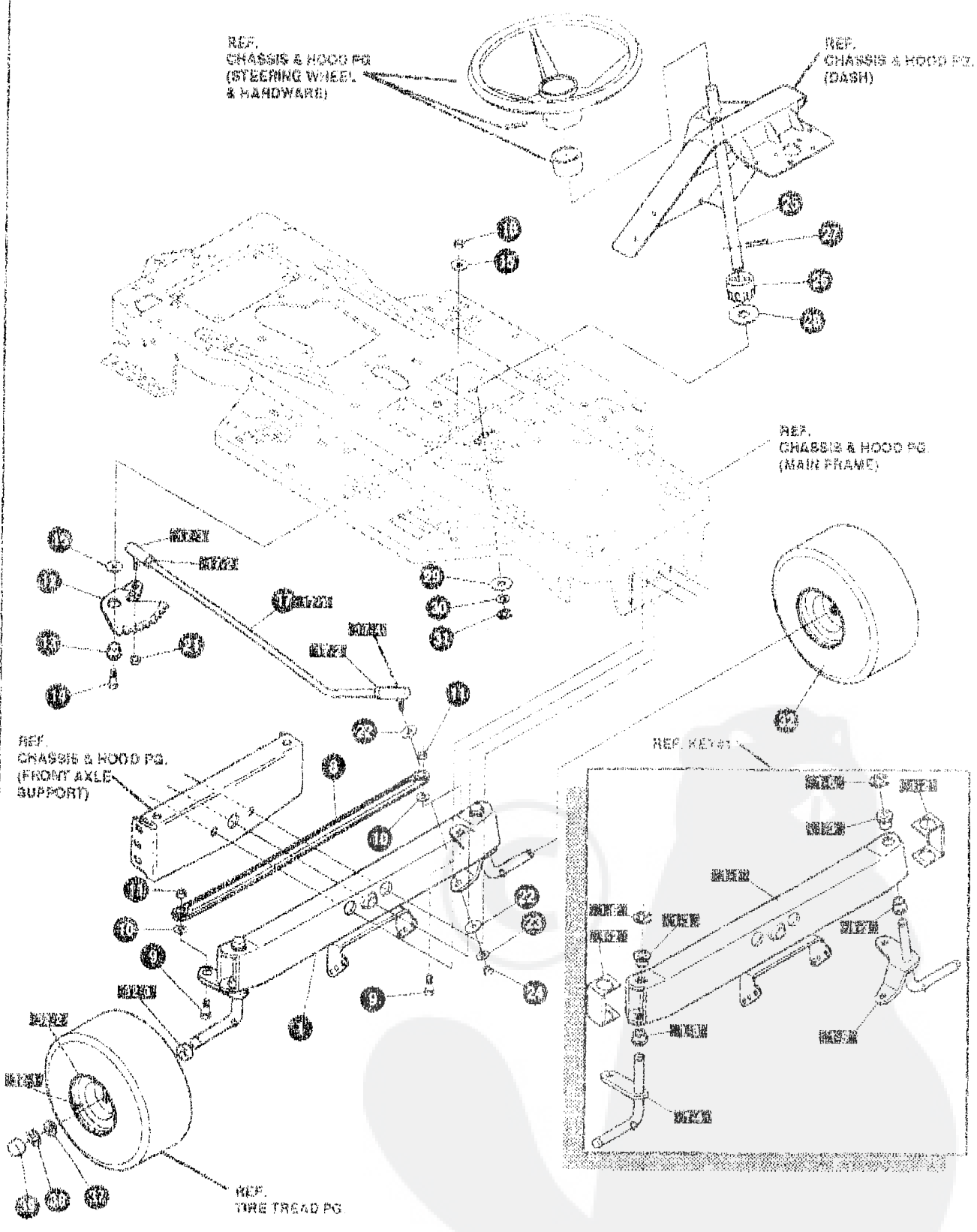
NOTE: ALWAYS USE ORIGINAL EQUIPMENT PARTS. Use of service/replacement parts other than original equipment parts may void your warranty.

ALL UNNUMBERED ITEMS ARE INTERCHANGEABLE WITH OPPOSITE SIDE

3258530

3560-680

REPAIR PARTS



NOTE: ALWAYS USE ORIGINAL EQUIPMENT PARTS. Use of service/replacement parts other than original equipment parts may void your warranty.

ALL UNNUMBERED ITEMS ARE INTERCHANGEABLE WITH OPPOSITE SIDE

E9500-680

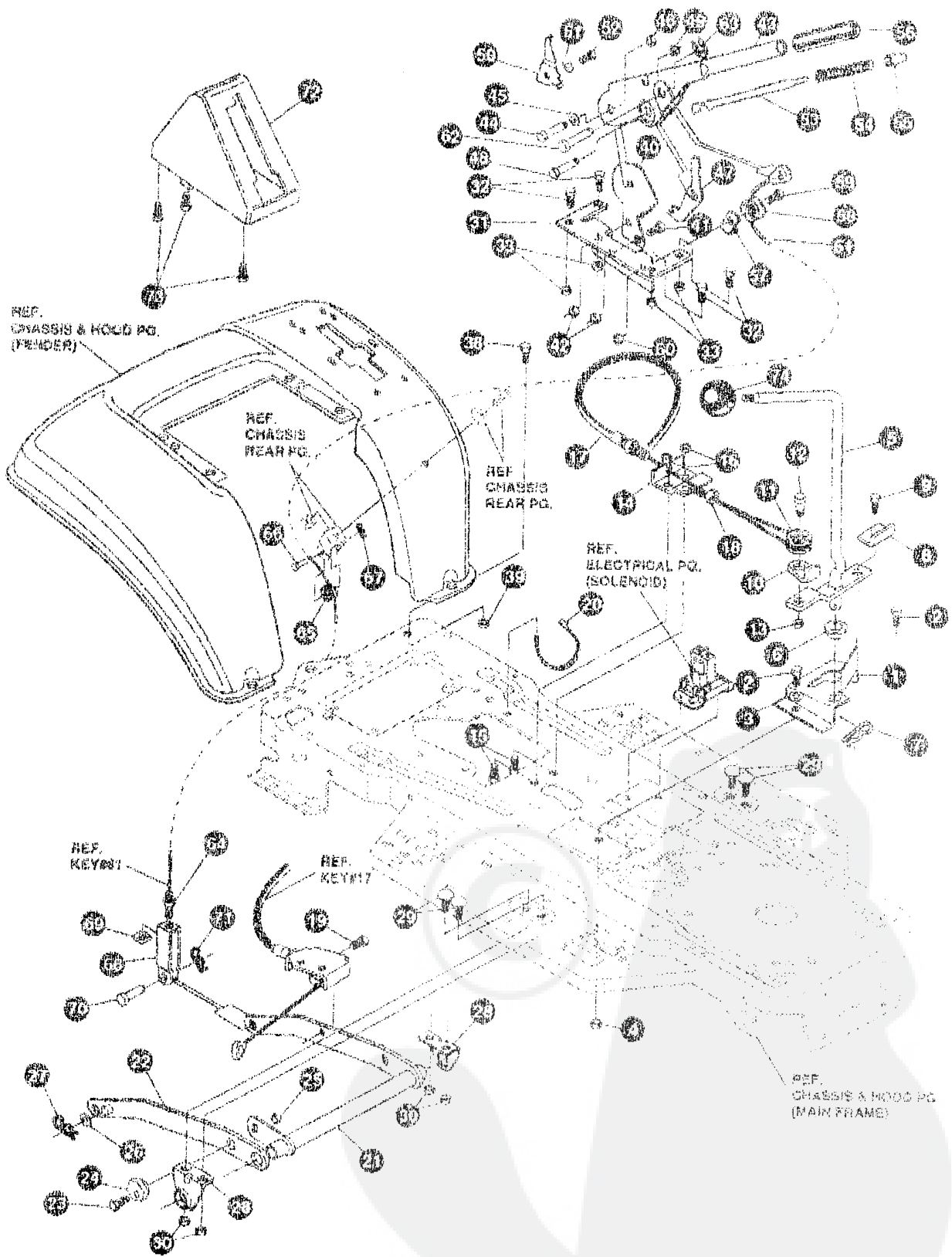
STEERING ASSEMBLY

KEY#	PART#	DESCRIPTION	QTY
1	^	ASSY AXLE FRONT 4WS SUSP	1
1-2	59373-050	AXLE COVER	2
1-3	52407	SPINDLE BEARING	4
1-4	302826	ASSY SPINDLE RH	1
1-5	313888	ASSY SPINDLE LH	1
1-6	36625	RING RETEX .57X.05TRU5133-75	2
8	304590	TIE ROD ASSY 19.81LG W-SECTION	1
9	180129	SCREW, 3/8-16X1.75 HHC	2
10	120382	WASHER, REGSPTLK 393X.68X.10	2
11	120377	NUT, 3/8-16 REGHXX	2
12	58289	SECTOR, STEERING	1
13	52405	BEARING FL ECC.610DX .8960DX .56	1
14	180177	SCREW, 1/2-13X1.50 HHC	1
15	22265	WASHER, FLAT .515X1.38X.119	2
16	1500	NUT, 1/2-13 REGHCTRLK	1
17	31115X	KIT 300746 DRAGLINK FOR SERVICE	1
17-1	58291	STEERING LINK	1
17-2	124925	NUT, 3/8-24 REGHEXJAM	2
17-3	57158	BALL JOINT 3/8 THD SHORT STUD	1
17-4	21275	BALL JOINT 3/8 THD LONG STUD	1
21	46692	NUT, 3/8-24 WDFLHLK WHIZ	1
22	996416	WASHER, FLAT .391X1.00X.125	2
23	120382	WASHER, REGSPTLK 393X.68X.10	1
24	120969	NUT, 3/8-24 REGHEX	1
25	58243	SHAFT, STEERING	1
26	58244	PINION, STEERING	1
27	56274	PIN, DOWEL .2500 OD+1.75LG	1
28	301410	BEARING, FL .752DX1.0610DX .24	1
29	301398	WASHER, FORMED1.195X1.53X.12	1
30	21682	WASHER, FLAT .765X1.25X.042	1
31	36625	RING, RETEX .57X.05TRU5133-76	1
32	302828	TIRE & RIM, PU 15X6.0X6 TURWHI	2
	TIRE	SEE TIRE TREAD PAGE	
32-1	24157	VALVE STEM	
32-2	36823	HUB, WHEEL	
32-3	314416	BEARING	
37	642	WASHER, FLAT .755X1.31X.076	4
36	36625	RING, RETEX .57X.05TRU5133-75	2
39	46394	HUB CAP, 1.500ID X 7.9BLG	2

^ ORDER INDIVIDUAL PARTS.

E3560-680

REPAIR PARTS



NOTE: ALWAYS USE ORIGINAL EQUIPMENT PARTS. Use of service/replacement parts other than original equipment parts may void your warranty

ALL UNNUMBERED ITEMS ARE INTERCHANGEABLE WITH OPPOSITE SIDE

325815D

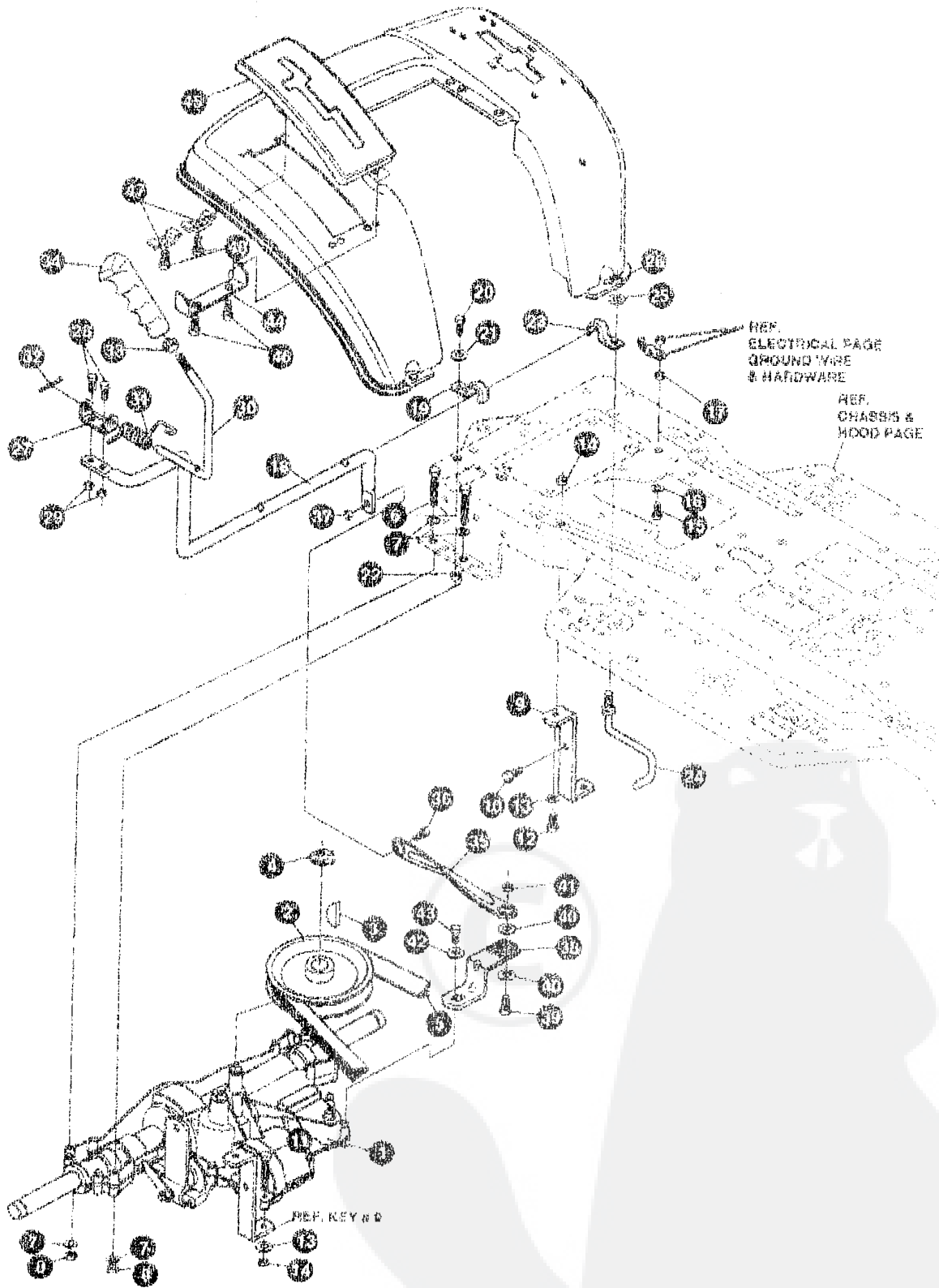
21560-680

MOWER SUSPENSION ASSEMBLY

KEY#	PART#	DESCRIPTION	QTY
1	320075-853	BRACKET,CLUTCH ENGAGE LEVER	1
2	160075	SCREW, 5/16-18X1.00 HHC	2
3	120383	WASHER, FLAT .344X .69X .065	2
4	1405	NUT, 5/16-18 REGHEXCTRLK	2
5	304791	ASSY, CLUTCH LEVER	1
6	60148	BEARING, FL 503IDX .63CDX .60	1
7	8260	PIN, HAIR .091 DIA X 1.66LG	1
8	318341	BRACKET, SWITCH ENGAGE	1
9	35498	SCREW, 5/16-18X .75 WAHTAP	1
10	1288	BRACKET, CABLE RETAIN	1
11	48308	PULLEY, POWDER METAL	1
12	68436	BOLT, .375X .375 HHSX 1/4-20	1
13	1502	NUT, 1/4-20 REGHEXCTRLK	1
14	300609-853	BRACKET FRAME CABLE	1
15	180070	SCREW, 1/4-20X .75 HHC	2
16	1502	NUT, 1/4-20 REGHEXCTRLK	2
17	301503	ASSY,CABLE BLADE ENGAGE	1
18	120513	NUT, 1/4-28 HJAM	1
19	35498	SCREW, 5/16-18X .75 WAHTAP	1
20	37444	TIE, CABLE BLACK NYLON 5 S2L	1
21	300160-853	LIFT ASSY, LH	1
22	300165-853	LIFT ASSY, RH	1
23	180078	SCREW, 5/16-15X 1.00 HHC	1
24	58247	NUT, ADJUST	1
25	1498	NUT, 5/16-18 REGHEXCTRLK	1
26	417088	WASHER, FLAT .531X1.06X.060	2
27	8260	PIN, HAIR .091 DIA X 1.66LG	2
28	38248-853	BRACKET, REAR HANG SUSP	2
29	57072	BOLT, 5/16-18X .53 CARBLN	4
30	1498	NUT, 5/16-18 REGHEXCTRLK	4
31	318928	SHACKET, HGT/ADJUST SUPPORT	1
32	180077	SCREW, 5/16-18X .75 HHC	4
33	1498	NUT, 5/16-18 REGHEXCTRLK	4
34	180077	SCREW, 5/16-18X .75 HHC	1
35	1498	NUT, 5/16-18 REGHEXCTRLK	1
40	301238	QUADRANT, HEIGHT ADJUST	1
41	180077	SCREW, 5/16-18X .75 HHC	2
42	1498	NUT, 5/16-18 REGHEXCTRLK	2
43	322292-853	HANDLE, LIFT SHORT	1
44	300171	BOLT, .500X .270 HHSX 5/16-18	1
45	996418	WASHER, FLAT .506X .75X .024	1
46	44108	NUT, 5/16-18 HWDFLCTRLK	1
47	301238	PAWL, SQUARE	1
48	300171	BOLT, .500X .270 HHSX 5/16-18	1
49	44108	NUT, 5/16-18 HWDFLCTRLK	1
50	9495	POINTER, HEIGHT ADJ	1
51	158479	WASHER, EXLK .156X.41X.03	1
52	35287	SCREW, #8-32X .36 HHWATAP	1
53	303027	ROD,ACTUATOR SHORT	1
54	58325	SPRING, HEIGHT ADJUST	1
55	58325	KNOB, HEIGHT ADJ PUSH BUTTON	1
56	58329	GRIP, .750 OD W/ HOLE BLACK	1
57	9149	BRACKET, CABLE RETAIN	1
58	48308	PULLEY, POWDER METAL	1
59	58336	BOLT, .375X .375 HHSX 1/4-20	1
60	1502	NUT, 1/4-20 REGHEXCTRLK	1
61	314177	CABLE, LIFT 22.92 20X8-8	1
62	300310	PIN, CLEVIS .310DIA X 1.475LG	1
63	300311	RING, RET E .31X.25THUX5133-31	1
64	120375	NUT, 1/4-20 REGHEX	1
65	48308	PULLEY, POWDER METAL	1
66	300317	PIN, CLEVIS .375DIA X .81 LG	1
67	8260	PIN, HAIR .091 DIA X 1.66LG	1
68	9405	CLEVIS, LIFT CABLE	1
69	120372	NUT, 1/4-20 REGSO	1
70	98522	PIN, CLEVIS .312 X .812	1
71	121222	PIN, CUTTER .090 DIA X .76LG	1
72	300336	LIFT COVER 30" F5	1
73	300340	SCREW, #10 X .75 HHPLAST BLK	3
74	55514	KNOB, ROUND 1.50 DIA BLACK	1

E3560-680

REPAIR PARTS



NOTE: ALWAYS USE ORIGINAL EQUIPMENT PARTS. Use of service/replacement parts other than original equipment parts may void your warranty

ALL UNNUMBERED ITEMS ARE INTERCHANGEABLE WITH OPPOSITE SIDE

356581C

E3560-080

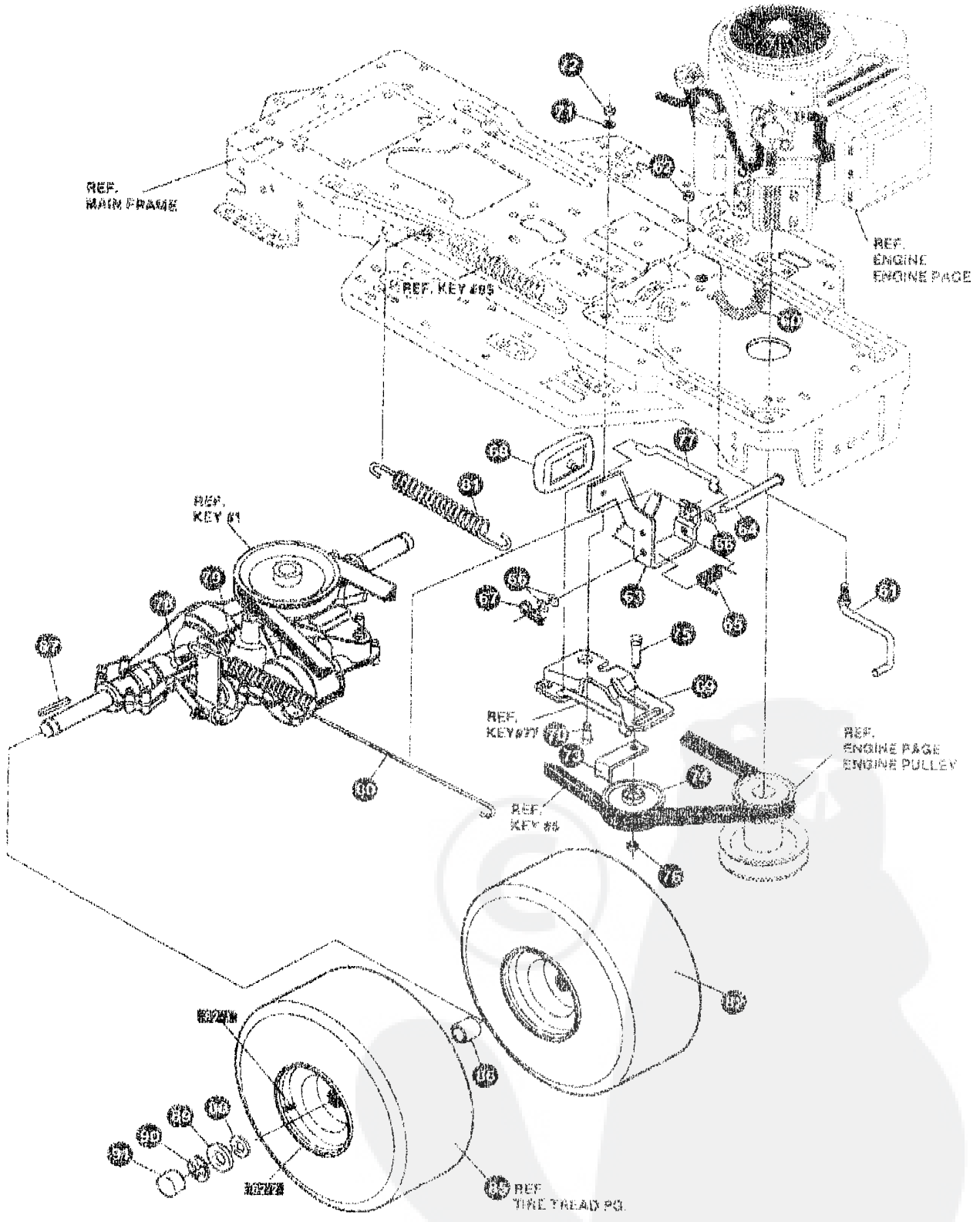
MOTION DRIVE ASSEMBLY

KEY#	PART#	DESCRIPTION	QTY
1		TRANSAXLE 940-007 2WS	1
2	302745	PULLEY, 5.6 OD V41 T/A	1
3	50795	KEY, HI-PRO 606 .75DIA X 1.87WD	1
4	22053	HING, RETEX 58X 036TR05100-62	1
5	314120	BELT V 4L 67.25 2WS	1
6	180061	SCREW, 5/16-18X2.50 HHC	4
7	120393	WASHER, FLAT .344X .69X .065	8
8	1498	NUT, 5/16-18 REGHEXOTRLK	4
9	325202-853	BRACKET, STABILIZER	1
10	50947	SCREW, 3/8-12X1.25 WAHHTAPBLK	1
11	180077	SCREW, 5/16-18X2.00 HHC	1
12	180079	SCREW, 5/16-18X1.00 HHC	1
13	120393	WASHER, FLAT .344X .69X .065	2
14	1498	NUT, 5/16-18 REGHEXOTRLK	2
15	180077	SCREW, 5/16-18X .75 HHC	1
16	126532	WASHER, REGINTLK 320X 61X 03	1
17	1498	NUT, 5/16-18 REGHEXOTRLK	1
18	300462	LEVER, SHIFT LWR P940	1
19	310347-853	CLIP, SHIFT LEVER .625 ROD	1
20	180077	SCREW, 5/16-18X .75 HHC	1
21	956416	WASHER, FLAT .391X1.00X .125	1
22	1498	NUT, 5/16-18 REGHEXOTRLK	1
23	310347-853	CLIP, SHIFT LEVER .625 ROD	1
24	57259	GUIDE, BELT 5/16-18THD	1
25	956416	WASHER, FLAT .391X1.00X .125	1
26	1498	NUT, 5/16-18 REGHEXOTRLK	1
27	310366	BRACKET, PIVOT SH LEV	1
28	180020	SCREW, 1/4-20X .75 HHC	2
29	1502	NUT, 1/4-20 REGHEXOTRLK	2
30	309635	LEVER, SHIFT UPPER SOP 1/2-13	1
31	310266	SPRING, TORS. .56X .95X .095	1
32	137185	PIN, COTTER .125 DIA X 1.00LG	1
33	120239	NUT, 1/2-13 HEXJAM	1
34	306590	HANDLE 1/2-13 MOLDED BLACK	1
35	325192	LINK TIE ROD SHIFT P940-5 & 6 SPD	1
36	180124	SCREW, 3/8-16X1.25 HHC	1
37	1499	NUT, 3/8-16 REGHEXOTRLK	1
38	327450	BRACKET, SHIFTSPP FEND	1
39	180124	SCREW, 3/8-16X1.25 HHC	1
40	120394	WASHER, FLAT .406X .81X .065	2
41	1499	NUT, 3/8-16 REGHEXOTRLK	1
42	57157	WASHER 750X 250 SP-TRANSAXLE	1
43	96255	SCREW, 1/4-28X .75 NYLHHC	1
44	311257-853	BRACKET COVER FNDP SHIFT	1
45	311209	COVER PLASTIC P930/F4300-6	1
46	311331	SCREW, 1/4-15X .44/.53 HILOPHWA	2
47	1341	CLAMP, SPRG 1.17"ID	2
48	311331	SCREW, 1/4-15X .44/.53 HILOPHWA	2

*CONTACT YOUR NEAREST TRANSAXLE DEALER FOR PARTS AND SERVICE.

13560-680

REPAIR PARTS



NOTE: ALWAYS USE ORIGINAL EQUIPMENT PARTS. Use of service/replacement parts other than original equipment parts may void your warranty.

ALL UNNUMBERED ITEMS ARE INTERCHANGEABLE WITH OPPOSITE SIDE

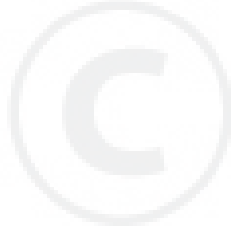
326581C

E3560-080

MOTION DRIVE ASSEMBLY

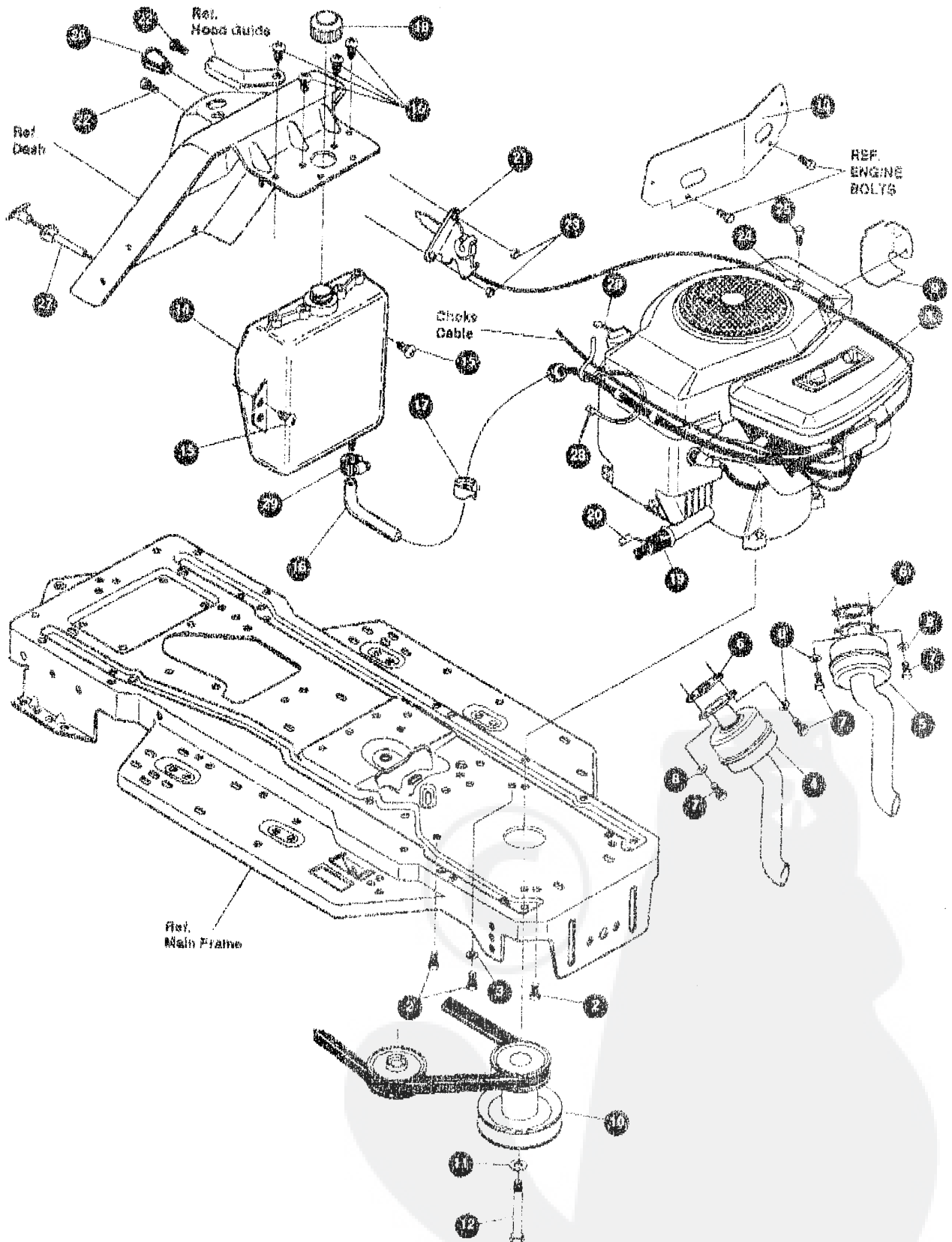
KEY#	PART#	DESCRIPTION	QTY
60	321514	SPRING, DRAG LINK BIAS	1
61	304016	GUIDE, BELT R.H.	1
62	1498	NUT, 5/16-18 REGHEXCTRLK	1
63	325042	PEDAL ASSY, BRAKE/CLUTCH	1
64	319576	PIN, CLEVIS 500DX4.53LG	1
65	57847	SPRING, BRAKE PEDAL	1
66	2969	WASHER, FLAT .504X.75X.059	3
67	56180	PIN, HAIR .091 DIA X .62LG	1
68	48160	PAD, CLUTCH BRAKE W/PINNING	1
69	320381-350	ARM, IDLER TRACTION, SOG	1
70	329629	BOLT, 625X.185 HSSH 5/16-18	1
71	45602	WASHER, FLAT .933X.87X.119	1
72	1408	NUT, 5/16-18 REGHEXCTRLK	1
73	39659	RETAINER, BELT	1
74	35374	PULLEY, IDLER V4L 3.06X.82	1
75	45892	BOLT, 3/8-16X1.50 CARRSN	1
76	1499	NUT, 3/8-16 REGHXCTRLK	1
77	57204	ROD, CLUTCH 3.02"	1
78	326131	BOLT, 495X.31 HSSH5/16-18	1
79	1495	NUT, 5/16-18 REGHEXCTRLK	1
80	325910	SPRING, BRAKE 31.12 P940	1
81	330505	SPRING, CLUTCH .113X.750X8.75	1
82	301318	TIRE & RIM 20X10.00-8 WHITE	2
		TIRE	
82-1	24157	VALVE STEM	
82-2	301308	HIM, WHEEL	
85	301565	SPACER, SLEV .750X1.25X.50	2
87	59920	KEY, SQUARE .187SQX2.25LG	2
88	642	WASHER, FLAT .755X1.31X.075	4
89	42815	WASHER, FLAT .755X1.53X.07	2
90	36625	RING, RETEX .57X.05TRU5183-75	2
91	40394	MUB CAP. 1.500ID X 7/8LG	2

* ORDER INDIVIDUAL PARTS.



3560-680

REPAIR PARTS



NOTE: ALWAYS USE ORIGINAL EQUIPMENT PARTS. Use of service/replacement parts other than original equipment parts may void your warranty.

ALL UNNUMBERED ITEMS ARE INTERCHANGEABLE WITH OPPOSITE SIDE

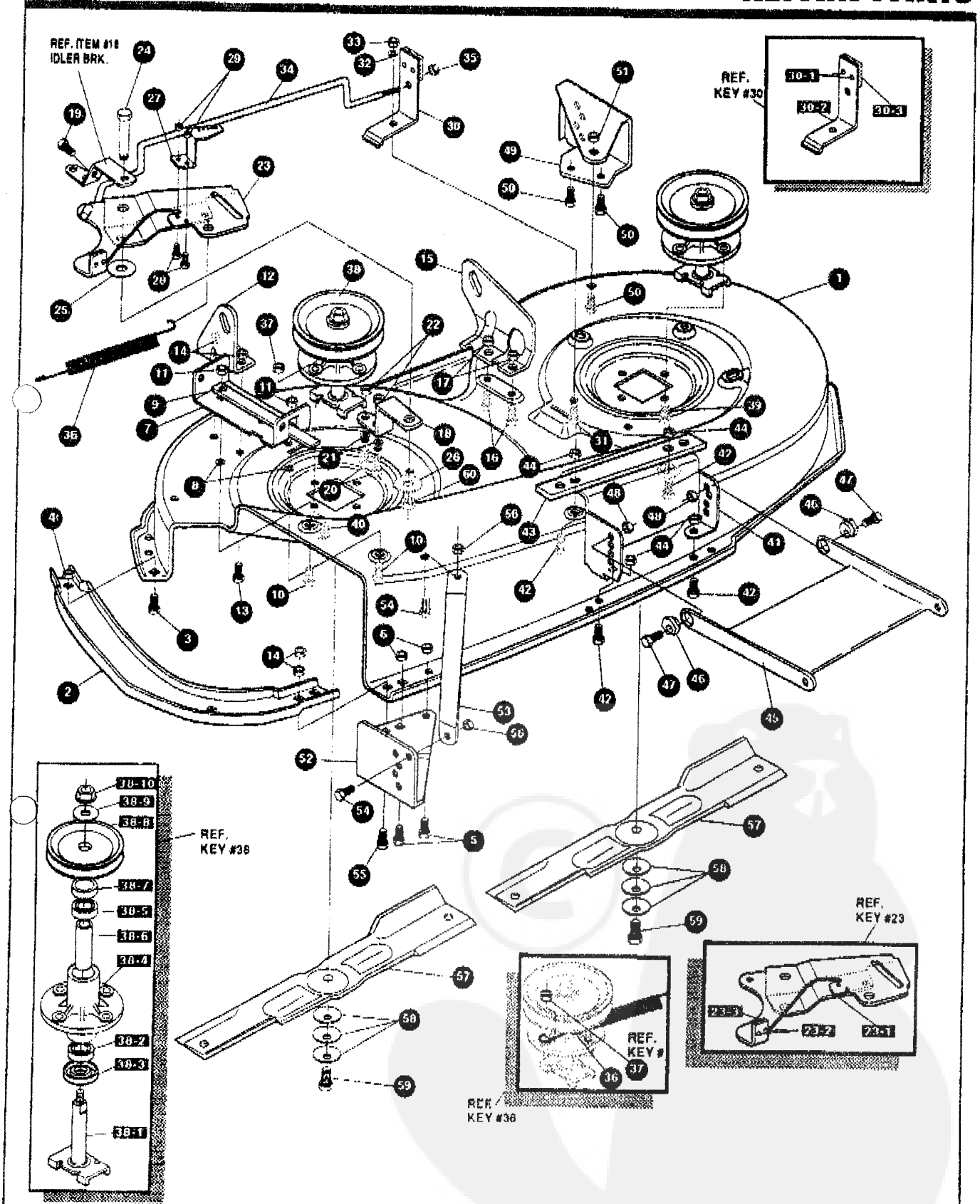
3288400

E3560-680**ENGINE & CONTROL ASSEMBLY**

KEY#	PART#	DESCRIPTION	QTY
1	ENGINE	14-18STD/IC DUAL CIR (SEE ENGINE MANUAL)	1
2	50947	SCREW, 3/8-16X1.25 WAHHTAPBLKP	2
3	38489	WASHER, EXLK .384X.69X.04	1
4	58144	MUFFLER RH	1
5	58145	MUFFLER LH	1
6	56640	GASKET, MUFFLER	2
7	180020	SCREW, 1/4-20X .75 HHC	4
8	120380	WASHER, REGSPTLK 263X.49X.07	4
9	56470-853	DEFLECTOR, COOL AIR	1
10	328028	PULLEY, ENG 3.0D X 4.0LG X 5.0D	1
11	120383	WASHER, REGSPTLK 459X.78X.12	1
12	433146	SCREW, 7/16-20X4.25 HHC BLK	1
13	52796-853	BULKHEAD, HOOD	1
14	314992	TANK, FUEL 2 GAL CLEAR	1
15	49050	SCREW, 1/4-10X .75PHPNTAP	6
16	41007	TUBING, .25X.50X BULK GAS LINE	15.5 In.
17	47345	CLAMP, HOSE SCREW TYPE	1
18	46704	CAP, GAS 1-1/2-7 THD BLK	1
19	325547	OIL DRAIN VALVE ASSEMBLY	1
20	327422	CAP, OIL DRAIN VALVE ASM YELLOW	1
21	300456	CONTROL, THROTTLE 31LG TWIN BS	1
22	320553	SCREW, 10-24X .63PHPNMA CRSS	2
23	308459	NUT, #10-24 HXHDNYLK	2
24	56538	RETAINER, WIRE	1
25	36258	SCREW, 10-24X .38 SLHWATAP	1
26	50607	KNOB, ROUND THROTTLE BLACK	1
27	300432	CONTROL, CHOKE 47.13LG PAN TK	1
28	57444	TIE, CABLE BLACK NYLON 5.62L	2
29	47345	CLAMP, HOSE SCREW TYPE	1

E3560-680

REPAIR PARTS



NOTE: ALWAYS USE ORIGINAL EQUIPMENT PARTS. Use of service/replacement parts other than original equipment parts may void your warranty.

ALL UNNUMBERED ITEMS ARE INTERCHANGEABLE WITH OPPOSITE SIDE

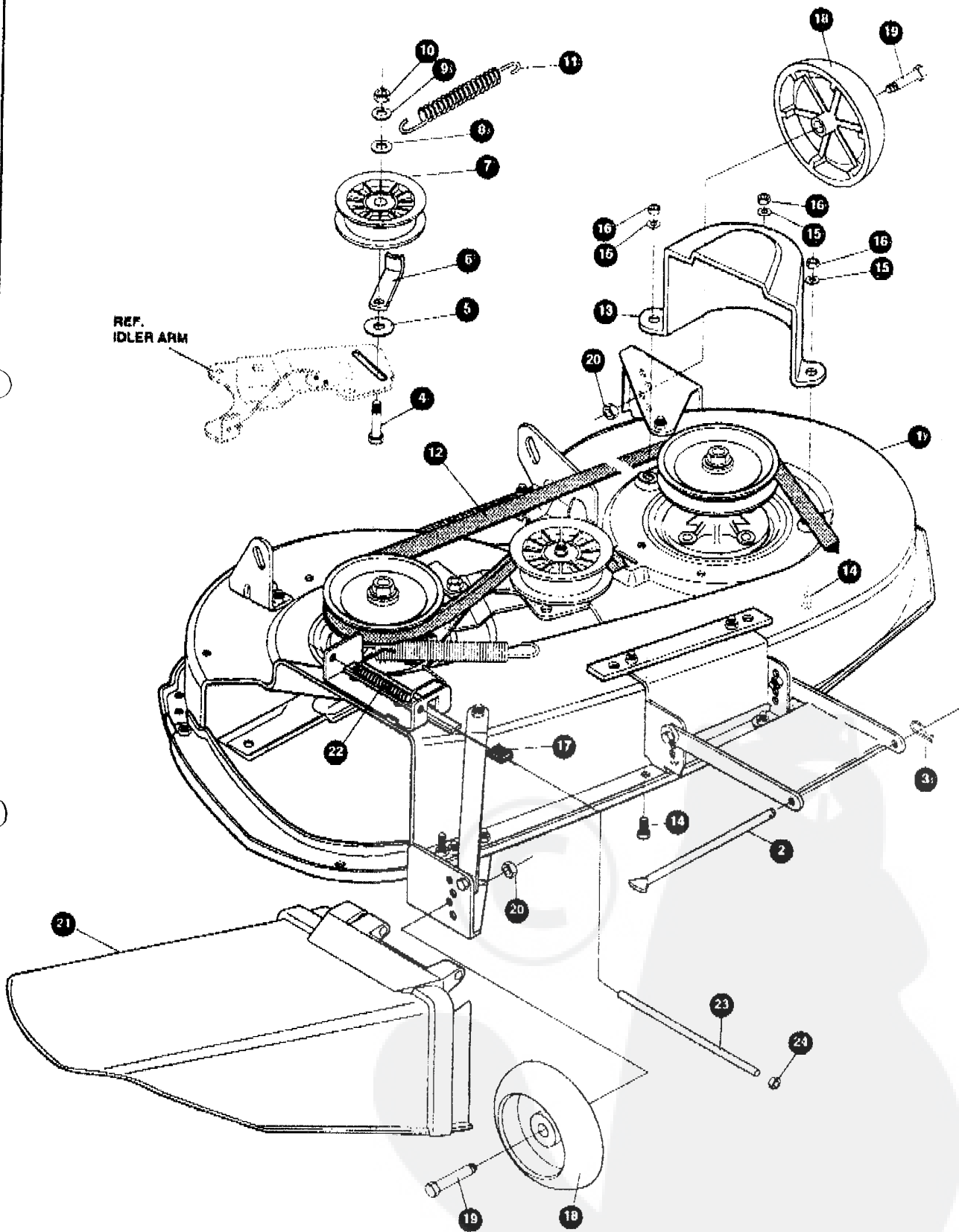
331147C

E3560-680**PRE-PAINTED DECK ASSEMBLY**

KEY#	PART#	DESCRIPTION	QTY
1	325103	40" DECK KIT	1
2	326480-853	TOE GUARD - MULCHER	1
3	180077	SCREW, 5/16-18X .75 HHC	1
4	1498	NUT, 5/16-18 REGHEXCTRLK	1
5	180077	SCREW, 5/16-18X .75 HHC	1
6	1498	NUT, 5/16-18 REGHEXCTRLK	2
7	317017	BRACKET CHUTE MOUNT BLACK	1
8	120393	WASHER, FLAT .344X .69X.065	2
9	322320-853	LEVER ASSY (SHORT)	1
10	180077	SCREW, 5/16-18X .75 HHC	2
11	1498	NUT, 5/16-18 REGHEXCTRLK	2
12	313929	LIFT BRACKET, REAR RH BLK	1
13	180077	SCREW, 5/16-18X .75 HHC	2
14	1498	NUT, 5/16-18 REGHEXCTRLK	2
15	310667	BRACKET, DECK LIFT REAR LHBLK	1
16	180077	SCREW, 5/16-18X .75 HHC	2
17	1498	NUT, 5/16-18 REGHEXCTRLK	2
18	326893-853	BRACE IDLER SUPPORT 40", 43"	1
19	308231	SCREW, 1/4-20X1.25 HHWATAP	1
20	180077	SCREW, 5/16-18X .75 HHC	2
21	120393	WASHER, FLAT .344X .69X.065	2
22	44108	NUT, 5/16-18 HWDFLCTRLK	2
23	320578-853	IDLER ARM ASSEMBLY	1
23-1	322118-853	ARM IDLER 40/43" DECK	1
23-2	41601	RIVET, CVSET .187DIAX .50LG ST	2
23-3	306973	BRAKE PAD - HARD - 232AF	1
24	304420	BOLT, .600X2.15 HHSH	1
25	996307	WASHER, FLAT .391X1.00X.209	1
26	996416	WASHER, FLAT .391X1.00X.125	2
27	326249-853	BRACKET, EXTENSION IDLER	1
28	180077	SCREW, 5/16-18X .75 HHC	2
29	1498	NUT, 5/16-18 REGHEXCTRLK	2
30	321828	BLADE BRAKE ASSY	1
30-1	135624	RIVET, TRSET .185DIAX .41LG ST	2
30-2	304119-853	BRAKE ARM HT 955	1
30-3	306973	BRAKE PAD - HARD - 232AF	1
31	180077	SCREW, 5/16-18X .75 HHC	1
32	120393	WASHER, FLAT .344X .69X.065	1
33	1498	NUT, 5/16-18 REGHEXCTRLK	1
34	315396	ROD, BRAKE 40" DECK	1
35	1502	NUT, 1/4-20 REGHEXCTRLK	1
36	35410	SPRING .071 X .62 X 4.37	1
37	1498	NUT, 5/16-18 REGHEXCTRLK	1
38	56424-853	QUILL ASSY, 36/39/40/43	2
38-1	56425	SHAFT/SADDLE 36"	1
38-2	49562	BEARING, BALL 6203-2AA(SEALS)-C3	1
38-3	60616	DUST SHIELD	1
38-4	56547	QUILL CASTING (1046)	1
38-5	49562	BEARING, BALL 6203-2AA(SEALS)-C3	1
38-6	60818	SPACER, SLEV .669X .88X3.797	1
38-7	51449	SPACER, SLEV .672X .93X .439PM	1
38-8	313898	PULLEY ASSY	1
38-9	56365	WASHER, SPECIAL QUILL	1
38-10	1282	NUT, 7/16-20 WDFLLK	1
39	35498	SCREW, 5/16-18X .75 WAHTAP	7
40	300345	SCREW, 5/16-18X1.38 WAHTAP	1
41	318445-853	BRACKET, 40 LF FRONT DECK	1
42	180077	SCREW, 5/16-18X .75 HHC	4
43	328155-853	PLATE-MOUNTING	1
44	1498	NUT, 5/16-18 REGHEXCTRLK	4
45	58305-853	BRACKET, LINK DECK FRONT	1
46	58247	NUT, ADJUST	2
47	180079	SCREW, 5/16-18X1.00 HHC	2
48	1498	NUT, 5/16-18 REGHEXCTRLK	2
49	317041	BRACKET, GAGE WHEEL LH BLACK	1
50	180077	SCREW, 5/16-18X .75 HHC	3
51	1498	NUT, 5/16-18 REGHEXCTRLK	3
52	322464-853	BRACKET, GAGE WHEEL R.H. FRNT	1
53	314282-853	BRACKET, STABILIZER	1
54	180077	SCREW, 5/16-18X .75 HHC	1
55	12685	SCREW, 5/16-18X1.50HHOFT	1
56	1498	NUT, 5/16-18 REGHEXCTRLK	1
57	309070	BLADE, 20.32 HIGH-LIFT 853	2
58	2483	WASHER, 39IDX1.25DX.07 BELLVIL	6
59	39573	SCREW, 3/8-24X1.00 NYLHHC	2
60	45171	NUT, 3/8-16 HWDFL WHIZ-LOCK ZN	1

E3560-680

REPAIR PARTS



NOTE: ALWAYS USE ORIGINAL EQUIPMENT PARTS. Use of service/replacement parts other than original equipment parts may void your warranty.

ALL UNNUMBERED ITEMS ARE INTERCHANGEABLE WITH OPPOSITE SIDE

331146B

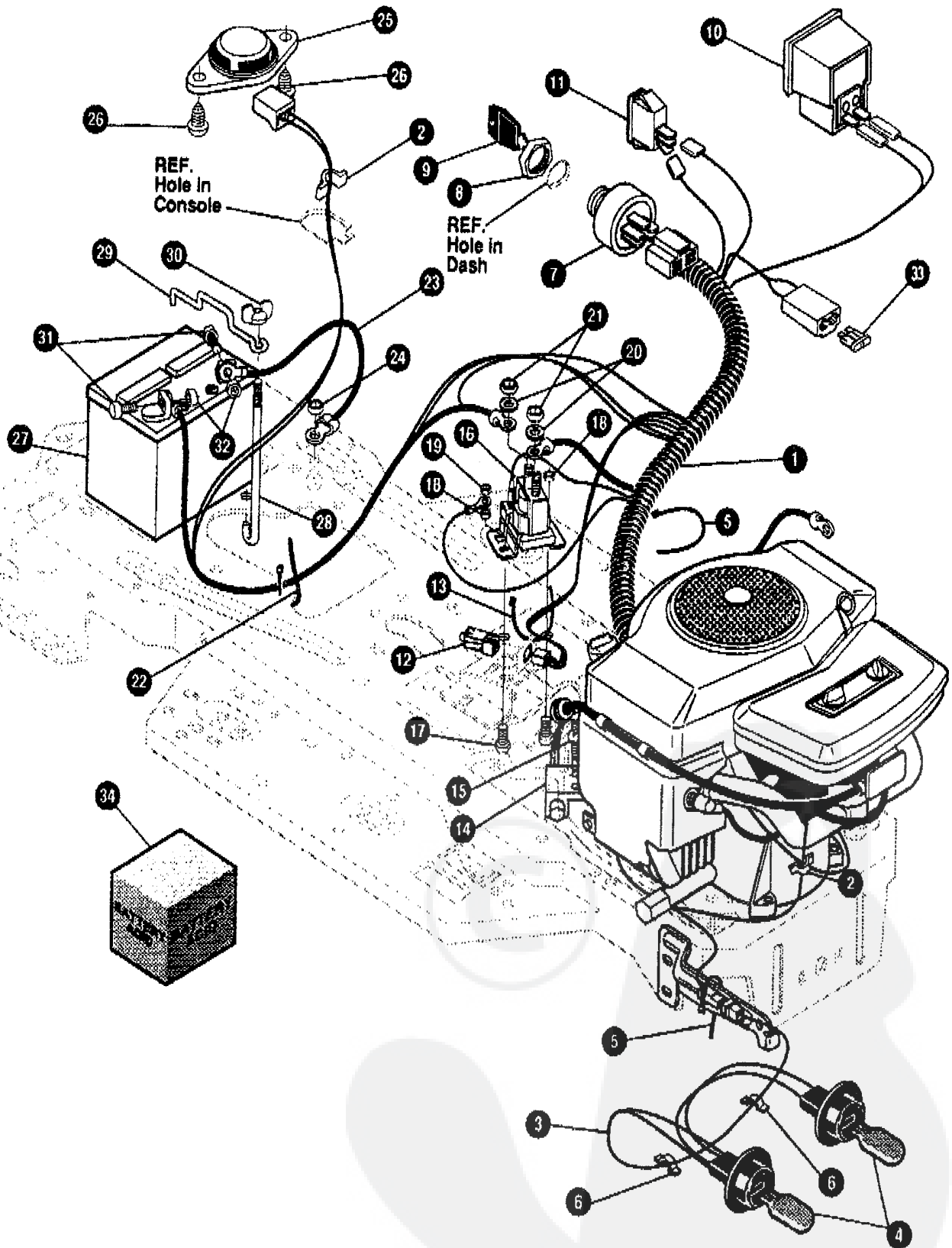
E3560-680**FINAL DECK ASSEMBLY**

KEY#	PART#	DESCRIPTION	QTY
1	*	ASM.40"DECK FOR AIR ASSIST	1
2	58306	ROD, DECK HITCH	1
3	8260	PIN, HAIR .091 DIA X 1.66LG	1
4	57325	BOLT, 3/8-16 X 2.00 CARRSN	1
5	25210	WASHER, FLAT .386X1.25X.09HT	1
6	1346	RETAINER, BELT	1
7	310326	PULLEY, IDLER BFF 4.00 WIDE FL	1
8	996307	WASHER, FLAT .391X1.00X.209	1
9	120382	WASHER, REGSPTLK.393X.68X.10	1
10	120377	NUT, 3/8-16 REGHX	1
11	300473	SPRING, TENSION 7.52LG+17LB/IN	1
12	319005	BELT, V 5L 81.00 DECK 40	1
13	325234	GUARD, BELT LH PLASTIC EXPORT	1
14	180077	SCREW, 5/16-18 X .75 HHC	3
15	120393	WASHER, FLAT .344X .69X.065	3
16	1498	NUT, 5/16-18 REGHEXCTRLK	3
17	42348	GRIP, LEVER GRASS COLLECTOR	1
18	302611	GAUGE WHEEL EURO 6.00OD X 1.38WD	2
19	23763	BOLT, .500X1.390 HSSH 3/8-16	2
20	1499	NUT, 3/8-16 REGHXCTRLK	2
21	304422	CHUTE DEFLECTOR 40", 42" & 43"	1
22	314975	SPRING TORSION CHUTE DEFLECTOR	1
23	304424	ROD, PIVOT DECK .312DX7.25	1
24	3535	NUT, PUSH ON CAP .312 OD	1

* ORDER INDIVIDUAL PARTS

E3560-680

REPAIR PARTS



NOTE: ALWAYS USE ORIGINAL EQUIPMENT PARTS. Use of service/replacement parts other than original equipment parts may void your warranty.

ALL UNNUMBERED ITEMS ARE INTERCHANGEABLE WITH OPPOSITE SIDE

325513C

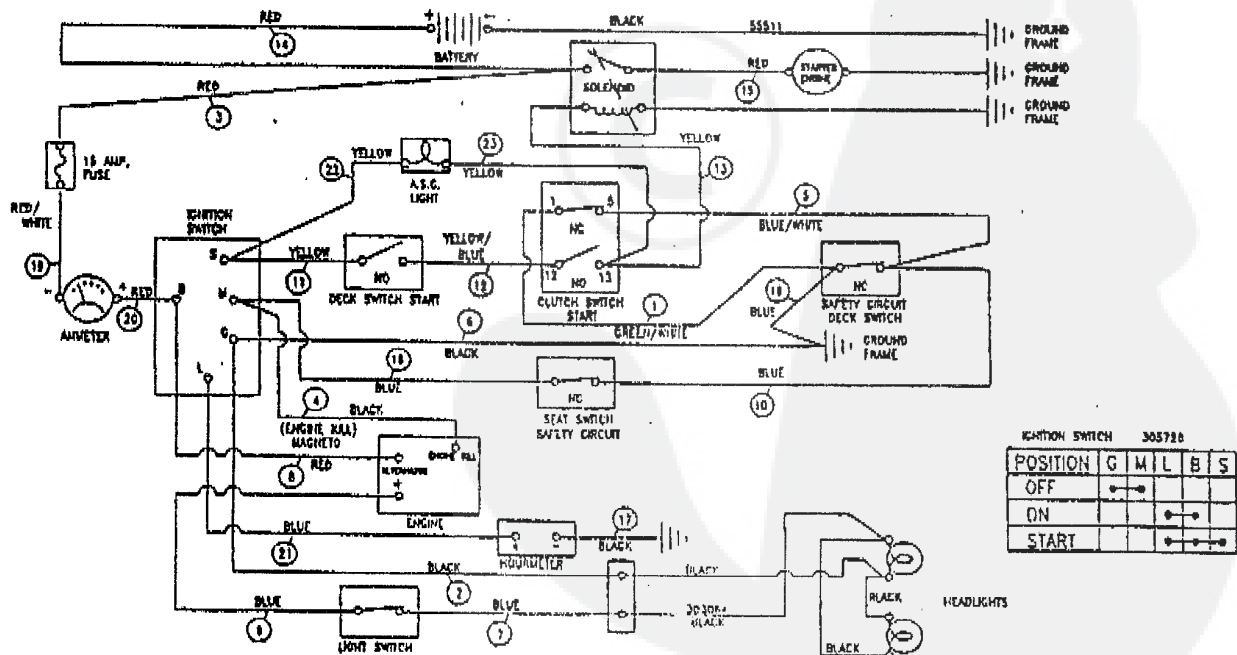
E3560-680

ELECTRICAL ASSEMBLY

KEY#	PART#	DESCRIPTION	QTY
1	322799	WIRE HARNESS 14-18TWIN OPP	1
2	41482	PRESS CLIP, 1.380LG 255ID	2
3	303064	ASSY, LIGHT WIRE-1/4 TURN	1
4	52572	BULB, HEADLAMP	2
5	57444	TIE, CABLE BLACK NYLON 5.62L	2
6	41482	PRESS CLIP, 1.380LG 255ID	2
7	327355	SWITCH-IGN.(AFTER FIRE) 3 POSN	1
8	327352	NUT, 5/8-8ACME DELTA FOR BOOT	1
9	327350	KEY,IGNITION DELTA	2
10	300133	AMMETER	1
11	300334	LIGHT SWITCH ON/OFF PANEL MNT	1
12	320082	SWITCH,DOUBLE POLE NO/NC GRAY	1
13	57444	TIE, CABLE BLACK NYLON 5.62L	1
14	57476	SWITCH,SCR MNT DP NC NO BLK	1
15	57220	SCREW, #12 X .50 PHPNHTAP BLK	2
16	53716	SOLENOID	1
17	187745	SCREW, 1/4-20X .75 HXSEMMA	2
18	1502	NUT, 1/4-20 REGHEXCTRLK	2
19	271172	NUT, 1/4-20 REGHEXKEPS	1
20	138485	WASHER, EXLK .320X.61X.03	2
21	120368	NUT, 5/16-24 REGHEX	2
22	57444	TIE, CABLE BLACK NYLON 5.62L	1
23	55511	WIRE, GROUND, 12.5"	1
24	271184	NUT, 5/16-18 HEXKEPS	1
25	57547	SWITCH, SEAT	1
26	160505	SCREW, 1/4-20X .38PHPNHMA	2
27	302257	BATTERY, 12V	1
28	57551	ROD, BATTERY	1
29	57552	ROD, BATTERY, TOP	1
30	325232	NUT, WING 1/4-20 NYLON	1
31	180020	SCREW, 1/4-20X .75 HHC	2
32	271172	NUT, 1/4-20 REGHEXKEPS	2
34	A	BATTERY ACID PACK, 80 OZ	1

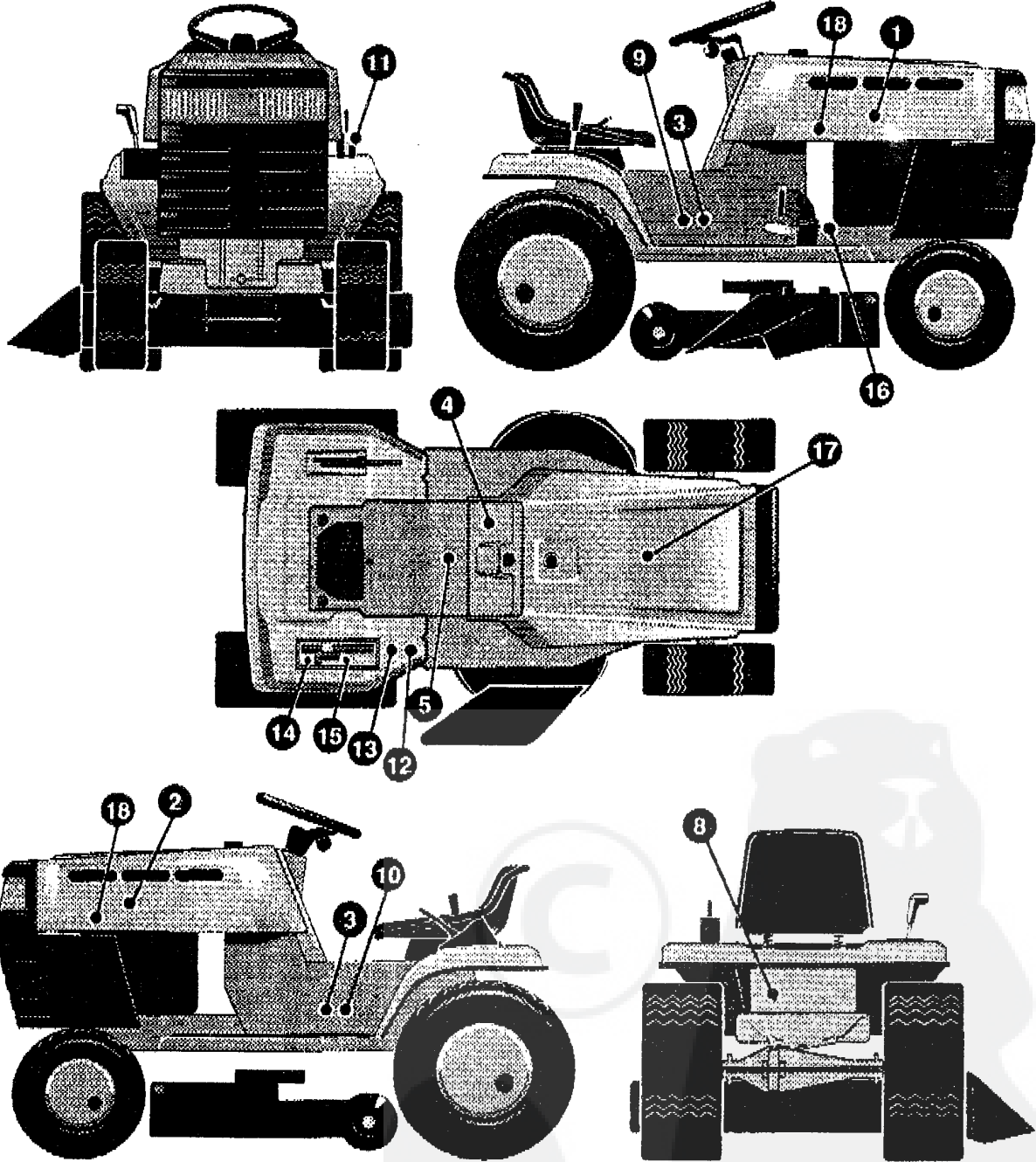
*MAY BE PURCHASED AT YOUR LOCAL HARDWARE STORE.

WIRING SCHEMATIC



E3560-680

REPAIR PARTS



NOTE: ALWAYS USE ORIGINAL EQUIPMENT PARTS. Use of service/replacement parts other than original equipment parts may void your warranty.

ALL UNNUMBERED ITEMS ARE INTERCHANGEABLE WITH OPPOSITE SIDE

333001B

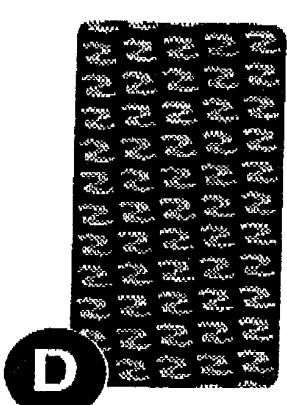
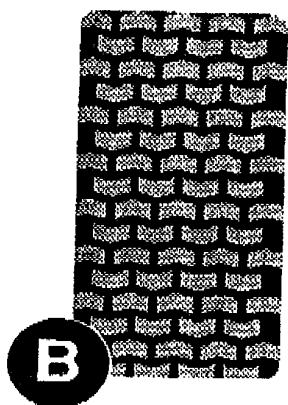
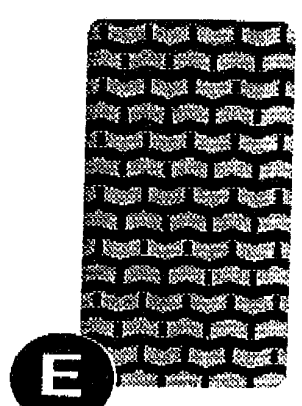
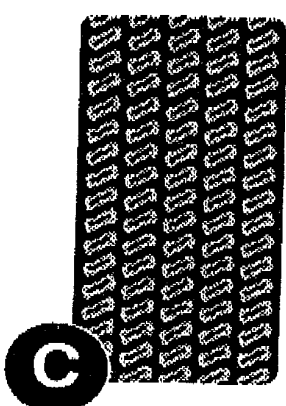
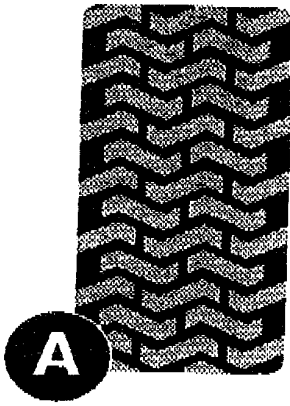
E3560-680**DECAL ASSEMBLY**

KEY#	PART#	DESCRIPTION	QTY
1	402222	DECAL, HOOD STRIPE RH	1
2	402223	DECAL, HOOD STRIPE LH	1
3	402161	NAMEPLATE, 14/40 SIL/BLK	2
4	324534	DECAL, LF DASH LSW/CHOK EXP	1
5	69524	DECAL, INSTRUCT CONSOLE TOP GER	1
8	318010	DECAL, TUV GS	1
9	314462	DECAL, CONSOLE RH LARGE FRAME	1
10	314463	DECAL, CONSOLE LH LARGE FRAME	1
11	402214	DECAL, HEIGHT ADJUST	1
12	305770	DECAL, CAUTION TRIANGLE EUROPE	1
13	311066	DECAL, DANGER GERMAN	1
14	311394	DECAL SHIFT REV/NEUTRAL	1
15	331013	DECAL SHIFTER POSITION	1
16	68903	DECAL, BRAKE/CLUTCH ISO	1
17	56734	FOAM, HOOD, TOP	1
18	56735	FOAM, HOOD, SIDE	2

E3560-680

TIRE TREAD PAGE

TREAD PATTERNS

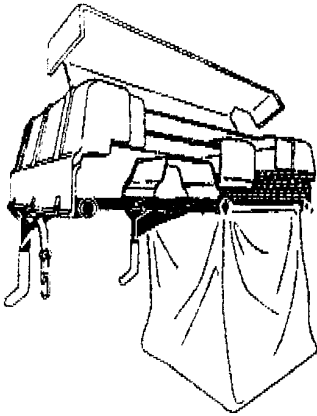


TIRE SIZE	"A"	"B"	"C"	"D"	"E"
11 X 4.00 - 5	42295	319679			
13 X 5.00 - 6	41060	319680			
15 X 6.00 - 6	39830	316702	301140	313952	
16 X 4.80 - 8		305035			
16 X 6.50 - 8	41081	319682		314539	
18 X 6.50 - 8		42091			
18 X 8.50 - 8	319683	317400			
18 X 9.50 - 8	41106	316701		313950	
20 X 8.00 - 8	319685	319684	57164	314584	331606
20 X 10.00 - 8	58276	319686		313654	
20 X 10.00 - 10	55893	319687			
23 X 9.50 - 12	53655	319690	319689	314370	

ACCESSORIES

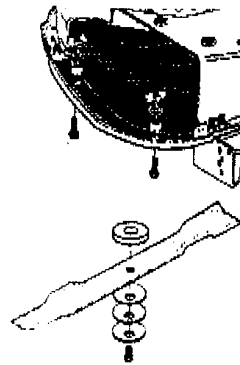
Contact the dealer where your tractor was purchased for the available accessories. If you are unable to contact the dealer, write to the address on the front cover of this manual.

Large Lawn Tractor

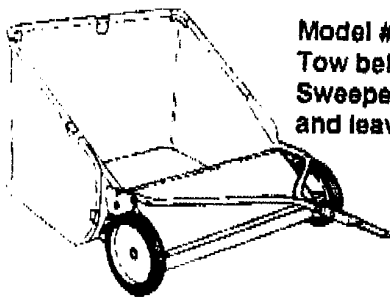


Model # 5708-34
Grass Collector for
40, 42, 43" decks

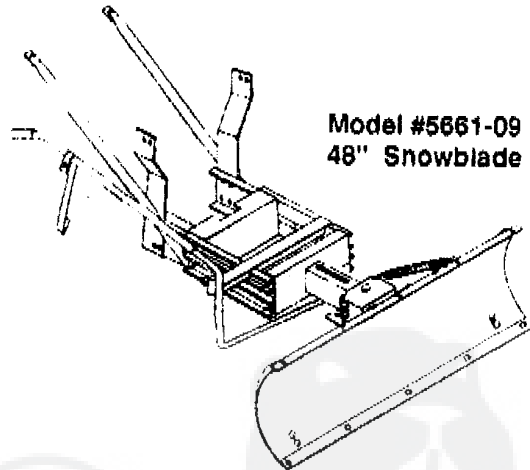
For heavy duty grass
collection order Model
#5709-10 Air Assist



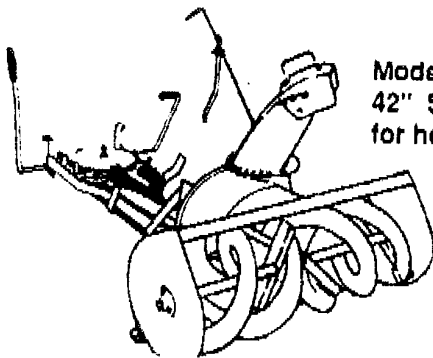
5717-00
Mulching Kit (42/43" Deck)
5716-00
Mulching Kit (40" Deck)



Model # 5648-16
Tow behind Lawn
Sweeper for grass
and leaves



Model #5661-09
48" Snowblade



Model #5705-06
42" Snowthrower
for heavy snowfall



Model # 5585-00
Tire Chains - 20" x 8.0" tires
Model # 5706-00
Tire Chains - 20" x 10.0" tires

OTHER ACCESSORIES

Model	Description
5672-01	Wheel Weights - Front - 1 pr. w/mtg. hdw. - Fits 15" tires
5673-02	Wheel Weights - Rear - 1 pr. w/mtg. hdw. - Fits 18" & 20" tires
316608	43" High Lift Blade for Bagging or Side Discharge (Requires 2)
325762	43" Mulching Blade (Requires 2)

ONE YEAR LIMITED WARRANTY

For one (1) year from date of purchase by the first consumer for residential use (thirty (30) days commercial use), NOMA Outdoor Products Incorporated warrants that it will replace free of charge, including labor, any original part of any NOMA Outdoor Products Incorporated product found to be defective by any authorized Service Dealer or the factory, except the battery which is warranted for ninety (90) days from date of purchase.

This warranty does not cover engine, transmission, transaxle or differential (these items are covered by their manufacturer's own warranty). This warranty does not cover parts that have failed due to normal wear or parts that have failed subject to misuse or abuse. Transportation of the unit or part to and from an authorized Service Dealer or factory is the responsibility of the owner.

A step by step explanation as to what procedure should be followed for this warranty is:

1. If a part becomes defective, contact the store where the unit was purchased for the name and address of the authorized Service Dealer nearest to you.
2. If you cannot locate an authorized Service Dealer, write Service Department of NOMA Outdoor Products Incorporated for the name and address of the authorized Service Dealer in your area or call the Service Department at 1-901-422-1690.
3. Return the defective product, along with proof of purchase to such authorized Service Dealer for replacement of any defective part where covered by this warranty.

There is no other express warranty. Implied warranties, including those of merchantability and fitness for a particular purpose are limited to one (1) year from date of purchase. Liability for incidental or consequential damages are excluded.

Some states do not allow limitations on how long an implied warranty lasts, so the above limitation may not apply to you. Some states do not allow the exclusion of incidental or consequential damages, so the above exclusion may not apply to you. This warranty gives you specific legal rights, and you may have other rights which vary from state to state.

NOMA Outdoor Products Incorporated

Call 800

Jackson, TN 38308-8000