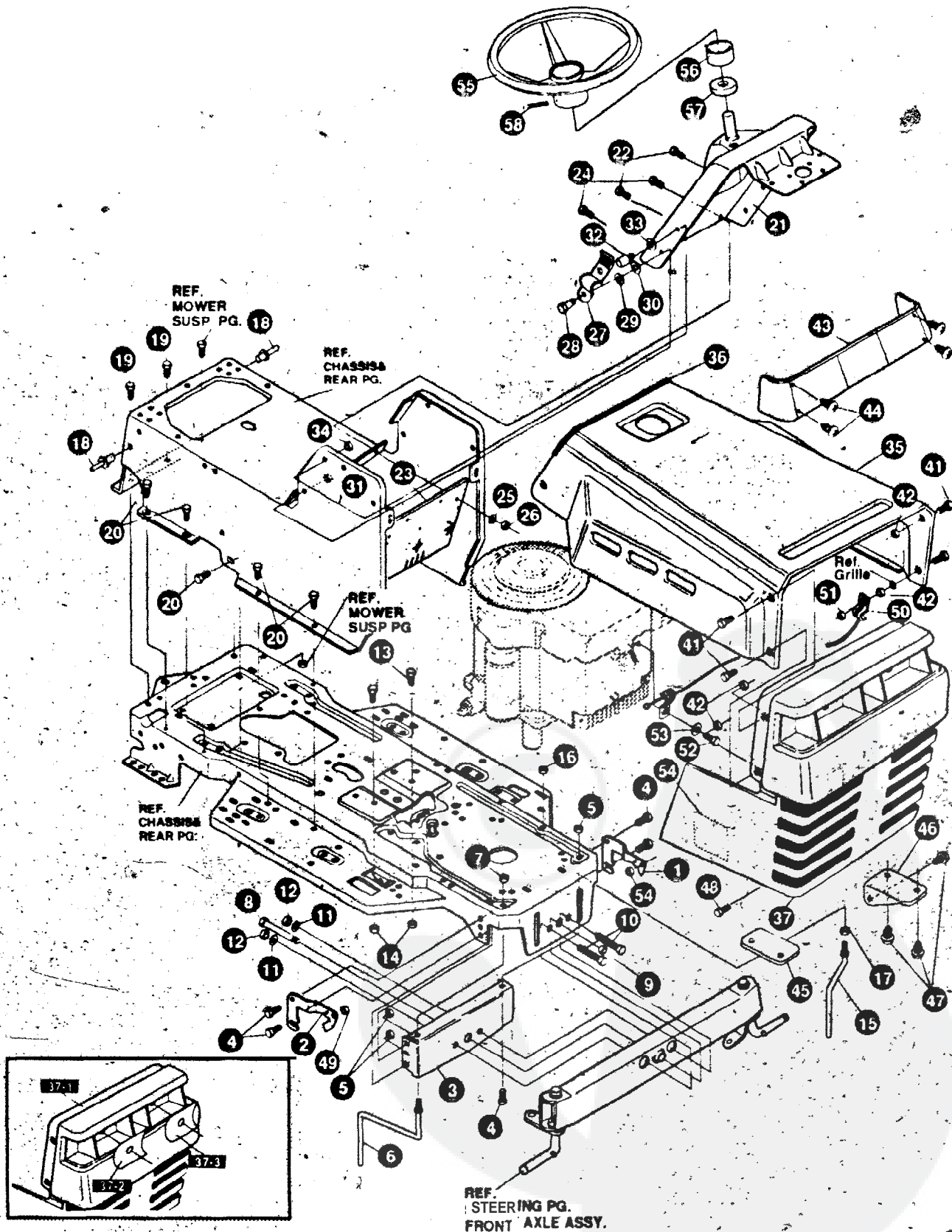


TRACTEUR TONDEUSE 40" MODELE E3560-850

ENSEMBLE CHASSIS & CAPOT (AVANT)



UTILISEZ DES PIÈCES D'ORIGINE POUR CONSERVER
L'APPLICATION DE LA GARANTIE.

TOUTES LES PIÈCES NON
REFEREES SONT
INTERCHANGEABLES AVEC
LEURS OPPOSEES.

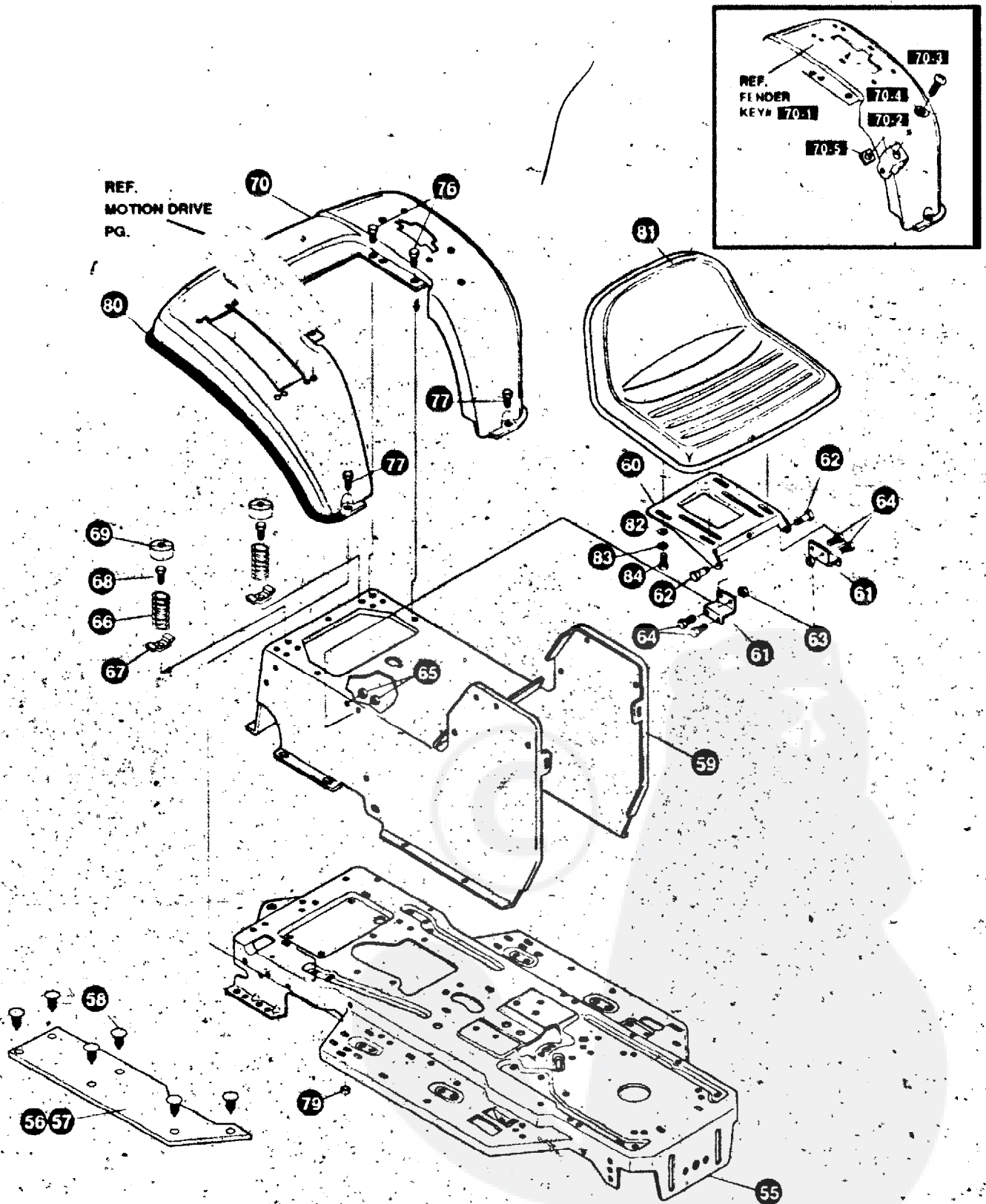
325878

TRACTEUR TONDEUSE 40" MODELE E3500-850

KEY#	PART#	DESCRIPTION	QTY
1		BRACKET, GRILLE, LH	1
2	58089-85358088-853	BRACKET, GRILLE RH	1
3	560301-853	BRACKET, FRONT AXLE	1
4		SCREW, 5/16-18X.75WDFLLK	5
5	55273	HUT, Y16-18 HXWOFLLK	5
6	300440,	GUIDE, BELT, RIDER	1
7	1498	NUT, 5/16-18 REGHEXCTRLK	1
8	308207 A	BOLT, 625X2.18 HSSH 1/2-13	1
9	309008	NUT, 1/2-13 HEXJAM CTRLK	1
10		SCREW, 3/8-16X300 HHG	2
11	2483 180138	WASHER, 39IDX1.25DX.07 BELLVIL	2
12	1499	NUT, 3/8-16 REGHEXCTRLK	2
13	180079	SCREW, 5/16-18X100HHC	2
14	1498	NUT, 5/16-18 REGHEXCTRLK	2
15	300635	GUIDE, BELT SHORT 15' WHEEL	1
16	124824	NUT, 5/16-18 HEXJAM	1
17	271190	NUT, 3/8-16 HEXKEPS	1
18	46763	RIVET, POP. 187DIA X 450LG ST	3
19	35497	SCREW, 5/16-18X .50 WAHTAP	2
20	995346	SCREW, 1/4-20X .50 WAHTAP	10
21	309447-853	DASH STEEL LF SUSP DYN	1
22	995346	SCREW, 1/4-20X .50 WAHTAP	2
23	312306	BAFFLE, CONSOLE SOUND EXPORT LF	1
24	300314	SCREW, 1/4-20X .88WAHTAP	2
25	120392	WASHER, FLAT .281X .63X.065	2
26	1502	NUT, 1/4-20 REGHEXCTRLK	2
27	57159	LATCH, 94WDX 047 ASSY HOOD	2
28	8 4 8 2	BOLT, .375X .156 HSSH 5/16-18	2
29	120394	WASHER, FLAT .406X .81X.065	2
30	120393	WASHER, FLAT .344X .69X.065	2
31	1498	NUT, 5/16-18 REGHEXCTRLK	2
32	53446	PIN, 5/16-18 HOOD LATCH	2
33	138538	WASHER, REGINTLK 320X 61X.03	2
34	455174	NUT, 5/16-18 HEXWDFLLK WHIZ	2
35	52661-837	HOOD, BULGE H-8	1
36	52151	EDGING (78'-47453) WIDE BLK	27.5
37	302954	GRILLE G-12 BLACK	1
41	53225	SCREW, 1/4-20X1.25 WAHHC	1
42	50352	NUT, 1/4-20 WDFLLK TOPLOCK	4
43	302073	LENS, CLEAR W/O TABS NO LOGO	1
44	57796	SCREW, #6 X .50 PLASTITE/HI-LO	4
45	301894-853	SUPPORT, GRILLE AH	1
46	301895-853	SUPPORT, GRILLE LH	1
47	56021	SCREW, 1/4-14X .75 SLWATAP	6
48	36149	BOLT, .375X .500 HSSH 5/16-18	2
49	1498	NUT, 5/16-18 REGHEXCTRLK	2
50	310748	LANYARD, HOOD 15.77LG H15	1
51	50352	NUT, 1/4-20 WDFLLK TOPLOCK	1
52	180020	SCREW, 1/4-20X .75HHC	1
53	120380	WASHER, REGSPTLK 283X49X.07	1
54	301452	FOIL, HEAT REFLECTOR	1
55	330510	STEERING WHEEL	1
56	311465	COVER, STEERING SHAFT	1
57	301413	SPACER, STEERING SHAFT	1
58	456378	PIN, SPRING 250DIA X 2.00LG HVPL	1
59	333627	PARTS MANUAL	1
60	333622	OPERATORS MANUAL (FRENCH)	1
61	327627	GRASS CATCHER MANUAL	1
62	328195	AIR ASSIST MANUAL (ENGLISH)	1
63	330272	AIR ASSIST MANUAL (FRENCH)	1

TRACTEUR TONDEUSE 40" MODELE E3560-850

ENSEMBLE CHASSIS & CAPOT (ARRIERE)



UTILISEZ DES PIÈCES D'ORIGINE POUR CONSERVER L'APPLICATION DE LA GARANTIE.

TOUTES LES PIÈCES NON RÉFÉREES, SONT INTERCHANGEABLES AVEC LEURS OPPOSÉS.

325855 B

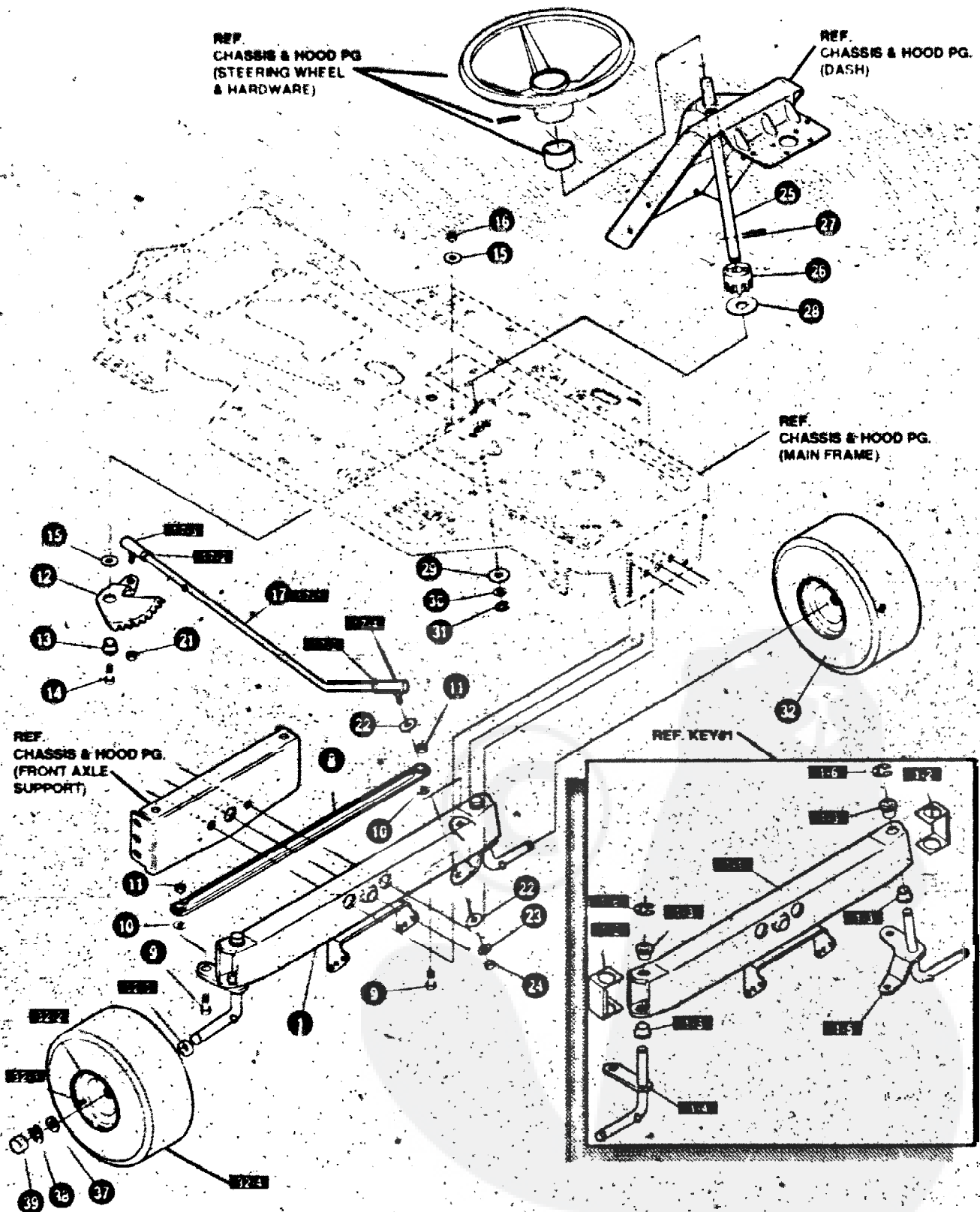
TRACTEUR TONDEUSE 40" MODELE E3560-650

KEY#	PART#	DESCRIPTION	QTY
55	326577437	FRAME	1
56	310005	FOOT PAD, LH 22 12LG	1
57	310006	FOOT PAD, RH 22 12LG	1
58	309235	FASTENER, RATCHET BLACK	12
59	308665-837	CONSOLE	1
60	58367-837	PLATE, SEAT	1
61	310660837	BRACKET, SEAT SUPPORT	2
62	20507	BOLT, .437X .156 HSSH 5/16-18	2
63	t498	NUT, 5/16-18 REGHEXCTRLK	2
64	48901	SCREW, 5/16-18X .63WAHHC	4
65	1496	NUT, 5/16-18 REGHEXCTRLK	4
66	57153	SPRING, SEAT 2 63LG, 149OD BLK	2
67	1341	CLAMP, SPRG 1 17"ID	2
68	44811	SCREW, 1/4-20X 75 WAHHTAP	2
69	56907	COVER, SEAT SPRING 15IDX10LG	2
70		ASM FENOER	1
70-1	332185-837	FENDER	1
70-2	9239	CLEVIS	1
70-3	439455	SCREW, 5/16-18X .56PHPNMA	1
70-4	3 0 1 5 5 1	WASHER, 344IDX150DX 09	1
70-5	120373	NUT, 5/16-18 SQ	1
76	995348	SCREW, 1/4-20X 50 WAHHTAP	4
77	126358	BOLT, 5/16-18X1.00 CARRLN	2
79	55273	NUT, 5/16-18 HXWDFLLK	2
80	55023	TRIM, 77.5" BLACK NARROW	77.5
81	304316	SEAT MICHIGAN GEN, W/SW HOLE	1
62	120393	WASHER, FLAT 344X .69X.065	4
83	120638	WASHER, HVSPTLK 328X 60X 09	4
84	180077	SCREW, 5/16-18X 75 HHC	4

* ORDER INDIVIDUAL PARTS

TRACTEUR-TONDEUSE 40" MODELE EG560-850

ENSEMBLE DIRECTION (AVANT)



UTILISEZ DES PIÈCES D'ORIGINE POUR CONSERVER L'APPLICATION DE LA GARANTIE.

TOUTES LES PIÈCES NON REFEREES SONT INTERCHANGEABLES AVEC LEURS OPPOSEES.

315136 1

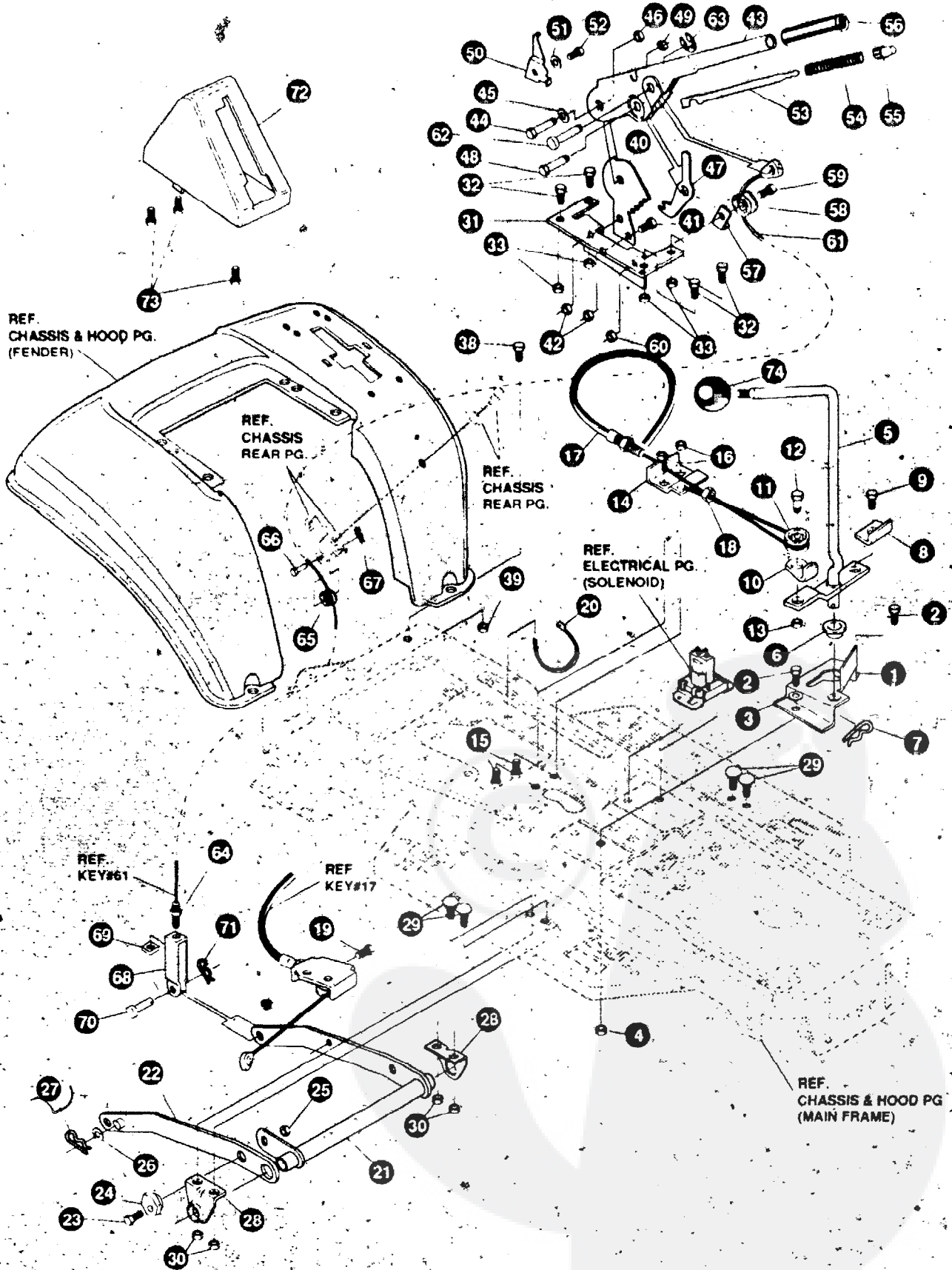
TRACTEUR TONDEUSE 40" MODELE E3500-650

KEY#	PART#	DESCRIPTION	QTY
1	A	ASSY, AXLE FRONT	1
1-1	310170-853	AXLE, FRONT	1
1-2	53373-853	AXLE COVER	2
1-3	52407	SPINDLE BEARING	4
1-4	302926	ASSY, SPINDLE RH	1
1-5	315886	ASSY, SPINDLE LH	1
1-6	36625	RING, RETEX .57X.05TRU5133-75	2
8	304590	TIE ROD ASSY 19.81LG W-SECTION	1
9	1 8 0 1 2 8	SCREW, 318-16X1.75 HHC	2
1	0 120382	WASHER, REGSPTLK 393X 68X 10	2
1	1 120377	NUT, 3/8-16 REGHX	2
12	59289	SECTOR, STEERING	1
13	52406	BRNG, FL ECC 510IDX 998ODX 56	1
14	1 8 0 1 7 7	SCREW, 112-13X1.50 HHC	1
15	22265	WASHER, FLAT .515X1.38X 119	2
16	1500	NUT, 1/2-13 REGHCTRLK	1
1	7 311100	KIT 300146 DRAGUNK	1
17-t	56291	STEERING LINK	1
17-2	124925	NUT, 3/8-24 REGHEXJAM	2
17-3	57158	BALL JOINT 3/8 THD SHORT STUD	1
17-4	21275	BALL JOINT 3/8 THD LONG STUD	1
21	46692	NUT, 3/8-24 WDFLHLK WHIZ	1
22	996416	WASHER, FLAT .391X1.00X 125	2
23	120382	WASHER, REGSPTLK 393X 68X 10	1
24	120369	NUT, 3/8-24 REGHEX	1
25	58243	SHAFT, STEERING	1
26	58244	PINION, STEERING	1
27	58274	PIN, DOWEL .2500 OD+1.75LG PL	1
28	301410	BRNG, FL .752IDX1.061ODX 24	1
29	301398	WASHER, FORMED1.135X1.53X 12	1
30	21682	WASHER, FLAT .765X1.25X 042PL	1
31	36625	RING, RETEX .57X.05TRU5133-75	1
32	302828	TIRE & RIM, PU 15X6 0X6	2
32-1	24167	VALVE STEM	1
32-2	39829	RIM, WHEEL	1
32-3	314416	BEARING, FL	1
32-4	39830	TIRE, 15X6X6	1
37	642	WASHER, FLAT .755X1.31X 075	4
38	36625	RING, RETEX .57X.05TRU5133-75	2
39	40394	HUB CAP, 1 500ID X 7/8LG	2

* ORDER INDIVIDUAL PARTS

TRACTEUR TONDEUSE 40" MODELE E3560-850

ENSEMBLE DE SUSPENSION DE LA TONDEUSES



UTILISEZ DES PIÈCES D'ORIGINE POUR CONSERVER L'APPLICATION DE LA GARANTIE.

TOUTES LES PIÈCES NON REFEREES SONT INTERCHANGEABLES AVEC LEURS OPPOSEES.

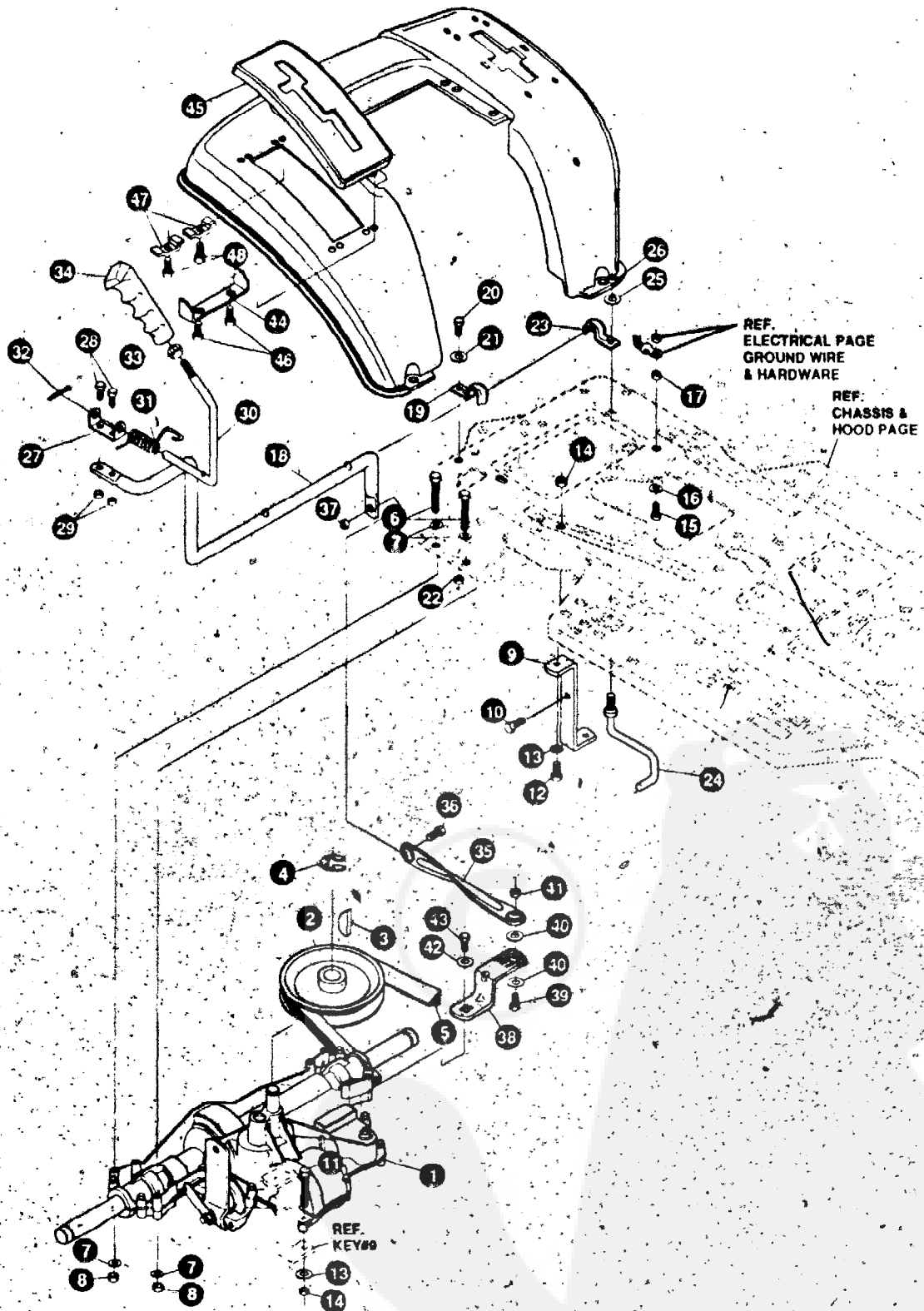
325815 D

TRACTEUR TONDEUSE 40" MODELE E3560-850

KEY#	PART#	DESCRIPTION	QTY
1	320075-853	BRACKET, CLUTCH ENGAGE LEVER	1
2	180079	SCREW, 5/16-18X100 HHC	2
3	120393	WASHER, FLAT 344X 69X 065	2
4	1498	NUT, 5/16-18 REGHEXCTRLK	2
5	304791	ASSY. CLUTCH LEVER	1
6	50148	BRNG. FL 503IDX 63ODX 50	1
7	8260	PIN, HAIR.091DIA X 1.66LG	1
8	318341	BRKT, SWITCH ENGAGE	1
9	35498	SCREW, 5/16-18X 75 WAHTAP	1
10	1288	BRKT, CABLE RETAIN	1
11	48306	PULLEY, POWDER METAL	1
12	68336	BOLT, 375X 375 HSSH 1/4-20	1
13	1502	NUT, 1/4-20 REGHEXCTRLK	1
14	300698-853	BRACKET FRAME CABLE	2
15	180020	SCREW, 1/4-20X 75 HHC	2
16	1502	NUT, 1/4-20 REGHEXCTRLK	2
17	301503	ASSY. CABLE, BLADE ENGAGE	1
18	120613	NUT, 1/4-28 HJAM	1
19	35498	SCREW, 5/16-18X 75 WAHTAP	1
20	57444	TIE, CABLE BLACK NYLON 5 62L	1
21	300158-853	LIFT ASSY. LH	1
22	300169-853	LIFT ASSY. RH	1
23	180079	SCREW, 5/16-18X1.00 HHC	1
24	68247	NUT, ADJUST	1
25	1 4 9 8	NUT, 5/16-18 REGHEXCTRLK	1
26	417098	WASHER, FLAT 531X106X 063	2
27	8260	PIN, HAIR.091DIA X 1.66LG	2
28	58248-853	BRACKET, REAR HANG SUSP	2
29	57072	BOLT, 5/16-18X.63 CARRLN	4
30	1498	NUT, 5/16-18 REGHEXCTRLK	4
31	313926	BRACKET, HGT/ADJUST SUPPORT	1
32	180077	SCREW, 5/16-18X 75 HHC	4
33	1498	NUT, 5/16-18 REGHEXCTRLK	4
38	180077	SCREW, 5/16-18X 75 HHC	1
39	1498	NUT, 5/16-18 REGHEXCTRLK	1
40	301238	QUADRANT HEIGHT ADJUST	1
41	180077	SCREW, 5/16-18X 75 HHC	2
42	1498	NUT, 5/16-18 REGHEXCTRLK	2
43	322292-853	HANDLE, LIFT SHORT	1
44	300171	BOLT, 500X .270 HSSH 5/16-18	1
45	996418	WASHER, FLAT .506X .75X .024	1
46	44108	NUT, 5/16-18 HWDFLCTRLK	1
47	301239	PAWL, SQUARE	1
48	300171	BOLT, 500X .270 HSSH 5/16-18	1
49	44108	NUT, 5/16-18 HWDFLCTRLK	1
50	9435	POINTER, HEIGHT ADJ	1
51	1 3 8 4 7 9	WASHER, EXLK 195X 41X 03	1
52	35207	SCREW, #8-32X .38 HHWATAP	1
53	303027	ROD, ACTUATOR-SHORT	1
54	58326	SPRING, HEIGHT ADJUST	1
55	58325	KNOB, HEIGHT ADJ PUSH BUTTON	1
56	58329	GRIP, 750 OD W/ HOLE BLACK	1
57	9149	BRKT, CABLE RETAIN	1
58	48306	PULLEY, POWDER METAL	1
59	58336	BOLT, 375X 375 HSSH 1/4-20	1
60	1.502	NUT, 1/4-20 REGHEXCTRLK	1
61	314177	CABLE, LIFT 22 92 F-5 20X8-8	1
62	300310	PIN, CLEVIS 310DIA X .475LG	1
63	300311	RING, RETE 31X 25TRUX5133-31	1
64	120375	NUT, 1/4-20 REGHEX	1
65	48306	PULLEY, POWDER METAL	1
66	300317	PIN, CLEVIS 375DIA X .81LG	1
67	8260	PIN, HAIR.091 DIA X 1.66LG	1
69	9405	CLEVIS, LIFT CABLE	1
70	120372	NUT, 1/4-20 REGSQ	1
	39522	PIN, CLEVIS .312 X .812	1
71	121222	PIN, COTTER .090 DIA X .75LG	1
72	300335	LIFT COVER	1
73	300340	SCREW, #10 X .75 HHPLAST	3
74	55514	KNOB, ROUND 1.50 DIA	1

TRACTEUR-TONDEUSE 40" MODELE E3560-850

TRANSMISSION



UTILISEZ DES PIÈCES D'ORIGINE POUR CONSERVER
L'APPLICATION DE LA GARANTIE.

TOUTES LES PIÈCES NON
REFEREES SONT
INTERCHANGEABLES AVEC
LEURS OPPOSEES.

326573 C

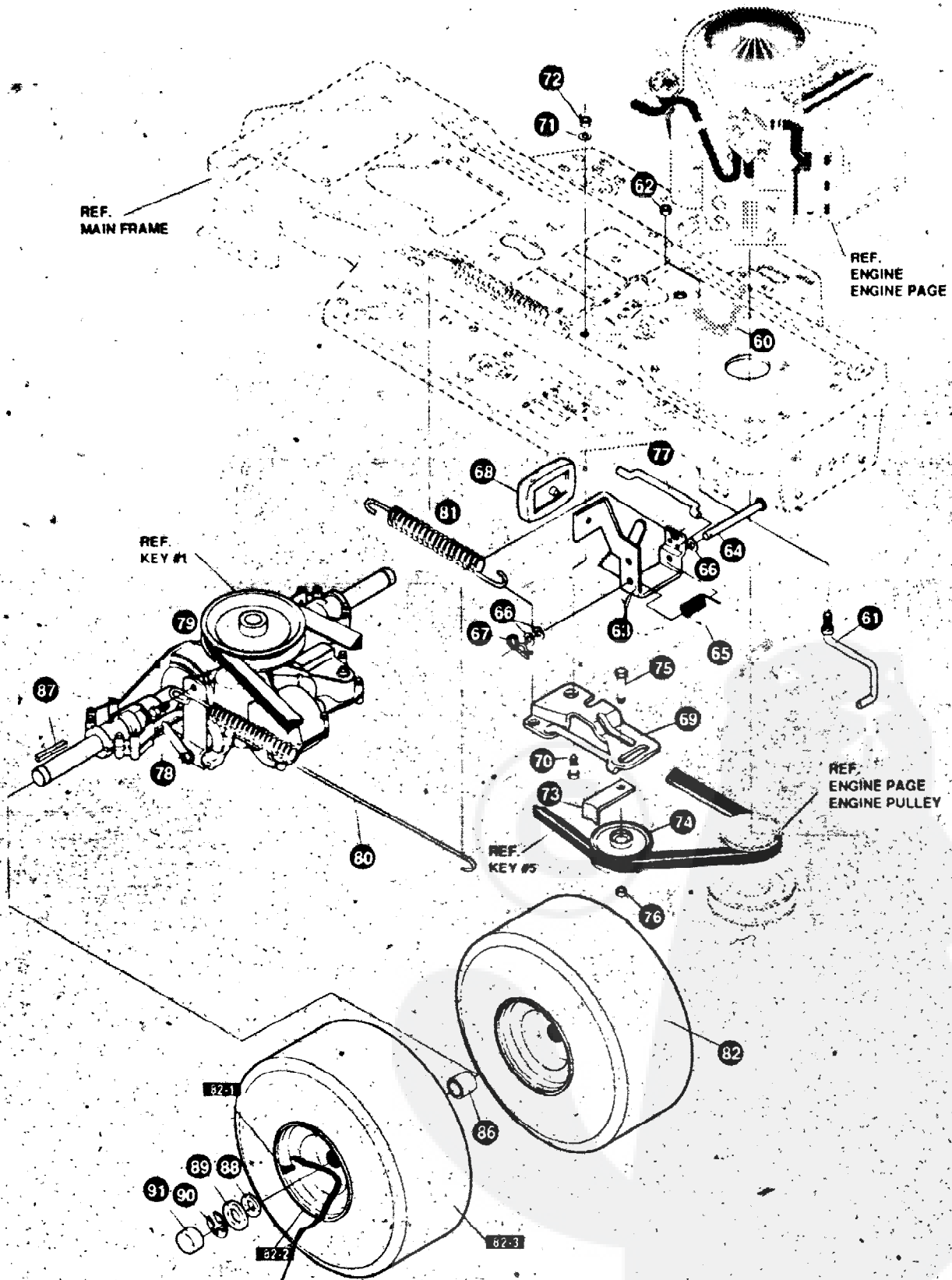
TRACTEUR TONDEUSE 40" MODELE E3560-850

KEY#	PART#	DESCRIPTION	QTY	
1	A	TRANSAXLE 940-007 2WS LF,SF	1	
2	302745	PULLEY, 6 6 ODV4L T/A	1	
3	50795	KEY, HI-PRO 606.75DIAX187WD	1	
4	22053	RING, RETEX 56X 035TRU5100-62	1	
5	314120	BELT, V 4L 67 25 4WS LF	1	
6	180091	SCREW, 5/16-18X2.50 HHC	4	
7	120393	WASHER, FLAT 344X .69X.065	8	
8	1498	NUT, 5/16-18 REGHEXCTRLK	4	
9	3 2 5 2 0 2	BRACKET,STABILIZER	1	
10	50947	SCREW, 3/8-16X1.25 WAHTAP	1	
11	180087	SCREW, 5/16-18X2.00 HHC	2	
12	180079	SCREW, 5/16-18X1.00HHC	1	
13	120393	WASHER, FLAT .344X .69X .065	2	
14	1498	NUT, 5/16-18 REGHEXCTRLK	2	
15	180077	SCREW, 5/16-18X .75 HHC	1	
16	138538	WASHER, REGINTLK 320X 61X .03	1	
17	1498	NUT, 5/16-18 REGHEXCTRLK	1	
18	330462	LEVER,SHIFT-LWRP940 LF	1	
19	310347-853	CLIP- SHIFT LEVER .625 ROD	1	
20	180077	SCREW, 5/16-18X .75 HHC	1	
21	996416	WASHER, FLAT .391X1.00X.125	1	
22	1498	NUT, 5/16-18 REGHEXCTRLK	1	
23	310347-853	CLIP- SHIFT LEVER .625 ROD	1	
24	57259	GUIDE, BELT 5/16-18THD	1	
25	996416	WASHER, FLAT .391X1.00X.125	1	
26	1498	NUT, 5/16-18 REGHEXCTRLK	1	
27	310356	BRKT, PIVOT SH LEV	1	
28	180020	SCREW, 1/4-20X .75 HHC	2	
29	1502	NUT, 1/4-20 REGHEXCTRLK	2	
3	0	309636	LEVER, SHIFT UPPER SOF 1/2-13	1
31	310265	SPRING, TORS. .56X .95X .095	1	
32	137165	PIN, COTTER .125 DIAX1.00LG	1	
33	120238	NUT, 1/2-13 HEXJAM	1	
34	306690	HANDLE 1/2-13 MOLDED BLACK	1	
35	325192	LINK TIEROD SHIFT P940-5 86SPD	1	
36	180124	SCREW, 3/8-16X1.25 HHC	1	
37	1499	NUT, 3/8-16 REGHXCTRLK	1	
38	327460	BRKT. SHIFT6SP LF FEND	1	
39	180124	SCREW, 3/8-16X1.25 HHC	1	
40	120394	WASHER, FLAT .406X.81X.065	2	
41	1499	NUT, 3/8-16 REGHXCTRLK	1	
4	2	57157	WASHER, 750X250 SP-TRANSAXLE	1
43	56255	SCREW, 17428X .75NYLHHC	1	
44	311257-853	BRACKET COVER F-5 FNDR SHIFT	1	
45	311209	COVER PLASTIC LF P930/F4360-6	1	
46	311331	SCREW, 1/4-15X.44/53 HILOHHWA	2	
47	1341	CLAMP, SPRG 117"ID	2	
48	311331	SCREW, 1/4-15X.44/ 53 HILOHHWA	2	

* CONTACT YOUR NEAREST TRANSAXLE DEALER FOR PARTS & SERVICE

TRACTEUR-TONDEUSE 40" MODELE E3560-850

TRANSMISSION



UTILISEZ DES PIÈCES D'ORIGINE POUR CONSERVER L'APPLICATION DE LA GARANTIE.

TOUTES LES PIÈCES NON REFEREES SONT INTERCHANGEABLES AVEC LEURS OPPOSEES.

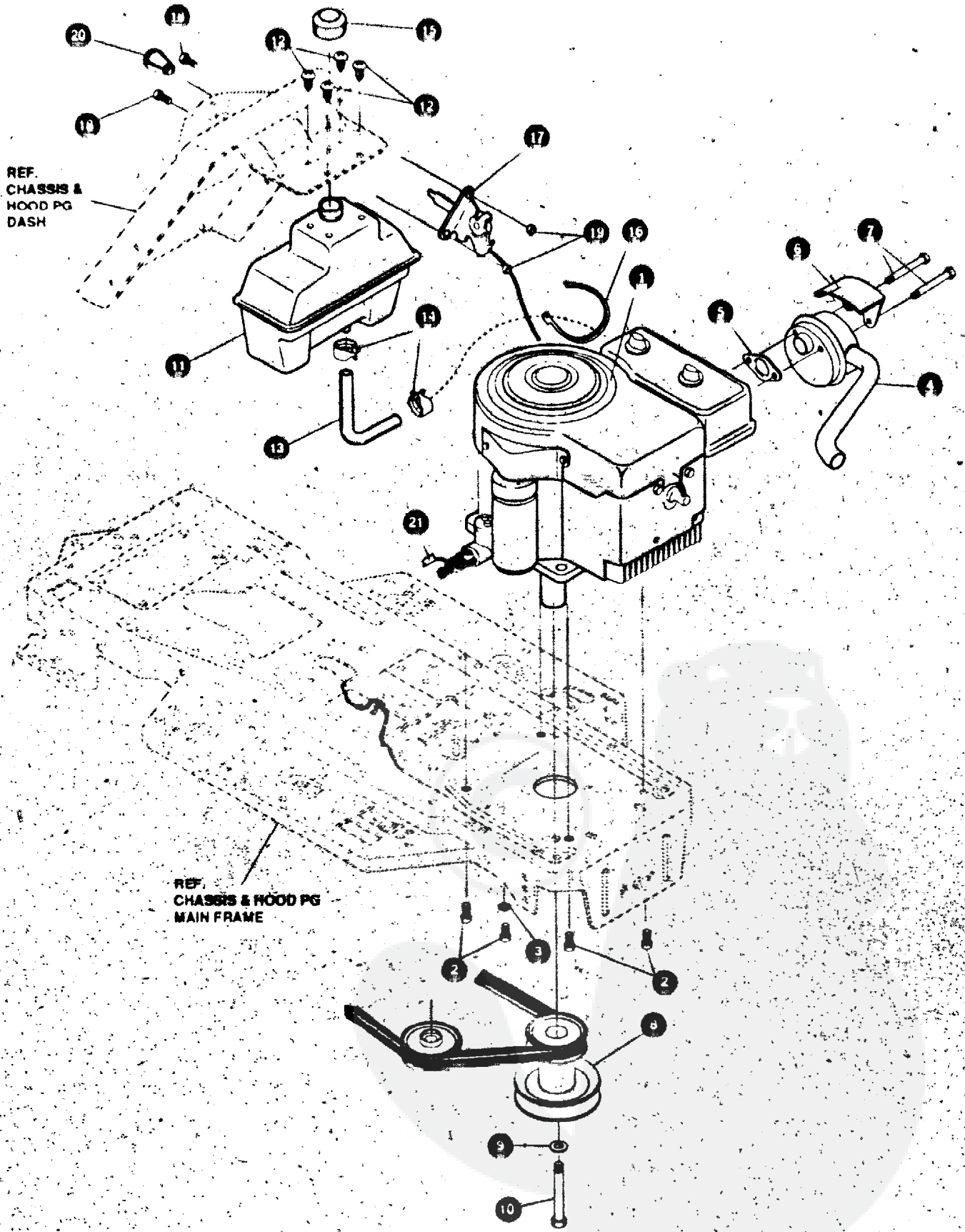
326573 C

TRACTEUR TONDEUSE 40" MODELE E3560-850

KEY#	PART#	DESCRIPTION	QTY
60	321514	SPRING. DRAG LINKBIAS	1
61	304016	GUIDE. BELT R H	1
62	1498	NUT, 5/16-18 REGHEXCTRLK	1
63	325942	PEDAL ASSY BRAKE/CLUTCH LF	1
64	319675	PIN, CLEVIS .500DX4.53LG	1
65	57647	SPRING, BRAKE PEDAL	1
66	2968	WASHER, FLAT .504X.75X.059	3
67	56180	PIN, HAIR 091 DIA X 162LG	1
68	48160	PAD, CLUTCH BRAKE W/PRINTING	1
69	320381-853	ARM, IDLER TRACTION, SOG LF	1
70	329989	BOLT, 625X.135 HSSH 5/16-18	1
71	45602	WASHER, FLAT .333X.87X.119	1
72	1498	NUT, 5/16-18 REGHEXCTRLK	1
73	39659	RETAINER, BELT	1
74	35374	PULLEY, IDLER V4L 3.06X.62	1
75	45892	BOLT, 3/8-16X1.50 CARRSN	1
76	1499	NUT, 3/8-16 REGHXCTRLK	1
77	57204	ROD, CLUTCH 3.92	1
78	326131	BOLT, 495X.31 HSSH 5/16-18	1
79	1498	NUT, 5/16-18 REGHEXCTRLK	1
80	325910	SPRING, BRAKE 31 12 P940 LF	1
81	330505	SPRING, CLUTCH 113X.750X8.75	1
82	67166	TIRE & RIM, 20X8 00-8 WHITE	2
82-1	24167	VALVE STEM	
82-2	57165	RIM, WHEEL	
82-3	57164	TIRE, 20X8-8	
86	301665	SPACER, SLEV .750X1.25X.50 PL	2
87	52928	KEY, SQUARE .1875SQX2.25LG	2
88	642	WASHER, FLAT .755X1.31X.075	4
89	42815	WASHER, FIAT .755X1.53X.07	2
90	36625	RING, RETEX .57X.05TRU5133-75	2
91	40394	HUB CAP, 1500ID X 7/8LG	2

TRACTEUR TONDEUSE 40" MODELE E3560-850

MOTEUR ENSEMBLE



UTILISEZ DES PIÈCES D'ORIGINE POUR CONSERVER L'APPLICATION DE LA GARANTIE.

TOUTES LES PIÈCES NON REFEREES SONT INTERCHANGEABLES AVEC LEURS DPOSEES.

326187 | D

TRACTEUR TONDEUSE 40" MODELE E3560-830

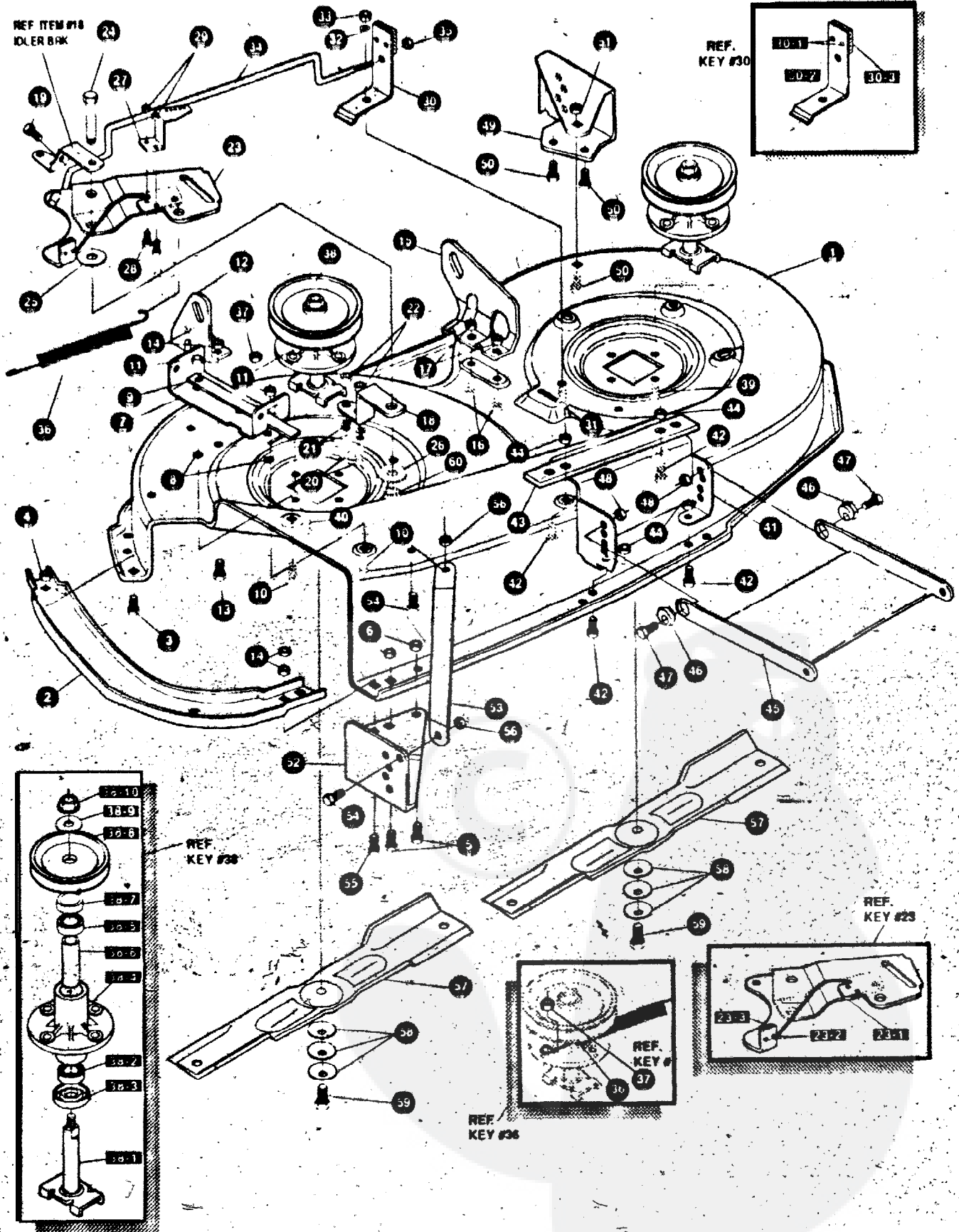
KEY #	PART #	DESCRIPTION	QTY
1	ENGINE	12-12 5HP BASIC DUAL (SEE ENGINE MANUAL)	1
2	50947	SCREW, 3/8-16X125 WAHHTAPBLKP	4
3	138409	WASHER, EXLK 384X 69X 04	1
4	305367	MUFFLER-LOTONE NELSON	1
5	46708	GASKET, MUFFLER	1
6	54767	SHIELD, HEAT FOR ROUND MUFFLER	1
7	54980	SCREW, 5/16-18X3 50 HHC	2
8	328028	PULLEY, ENG 3 OD X 4 OLG X 5 OD	1
9	120383	WASHER, REGSPTLK 459X 78X 12	1
10	433146	SCREW, 7/16-20X4 25 HHC BLK PH	1
11	314989	TANK, FUEL 1 GAL CLEAR	1
12	49050	SCREW, 1/4-10X 75PHPNTAP	4
13	5 0 1 1 8	TUBING, 25X 50X BULK GAS LINE	13 IN
14	47345	CLAMP, FUEL LINE RED	2
15	46704	CAP, GAS 1-1/2-7 THD BLK	1
16	57444	TIE, CABLE BLACK NYLON 5 62L	1
17	3 2 1 2 7 3	CONTROL, THROTTLE 12-12 5HP	1
18	320553	S C R E W 10-24X 63PHPNMA CRCS	2
1 9	2 7 1 1 6 6	NUT, x10-24 HEXKEPS	2
20	50607	KNOB, ROUND THROTTLE	1
21	3 2 5 5 4 7	OIL DRAIN VALVE ASSEMBLY	1

TRACTEUR-TONDEUSE 40" MODELE E35601850

CARTER DE TONDEUSE

REF ITEM #18
IDLER BAR

REF.
KEY #30



UTILISEZ DES PIÈCES D'ORIGINE POUR CONSERVER L'APPLICATION DE LA GARANTIE.

TOUTES LES PIÈCES NON REFEREES SONT INTERCHANGEABLES AVEC LEURS OPPOSEES.

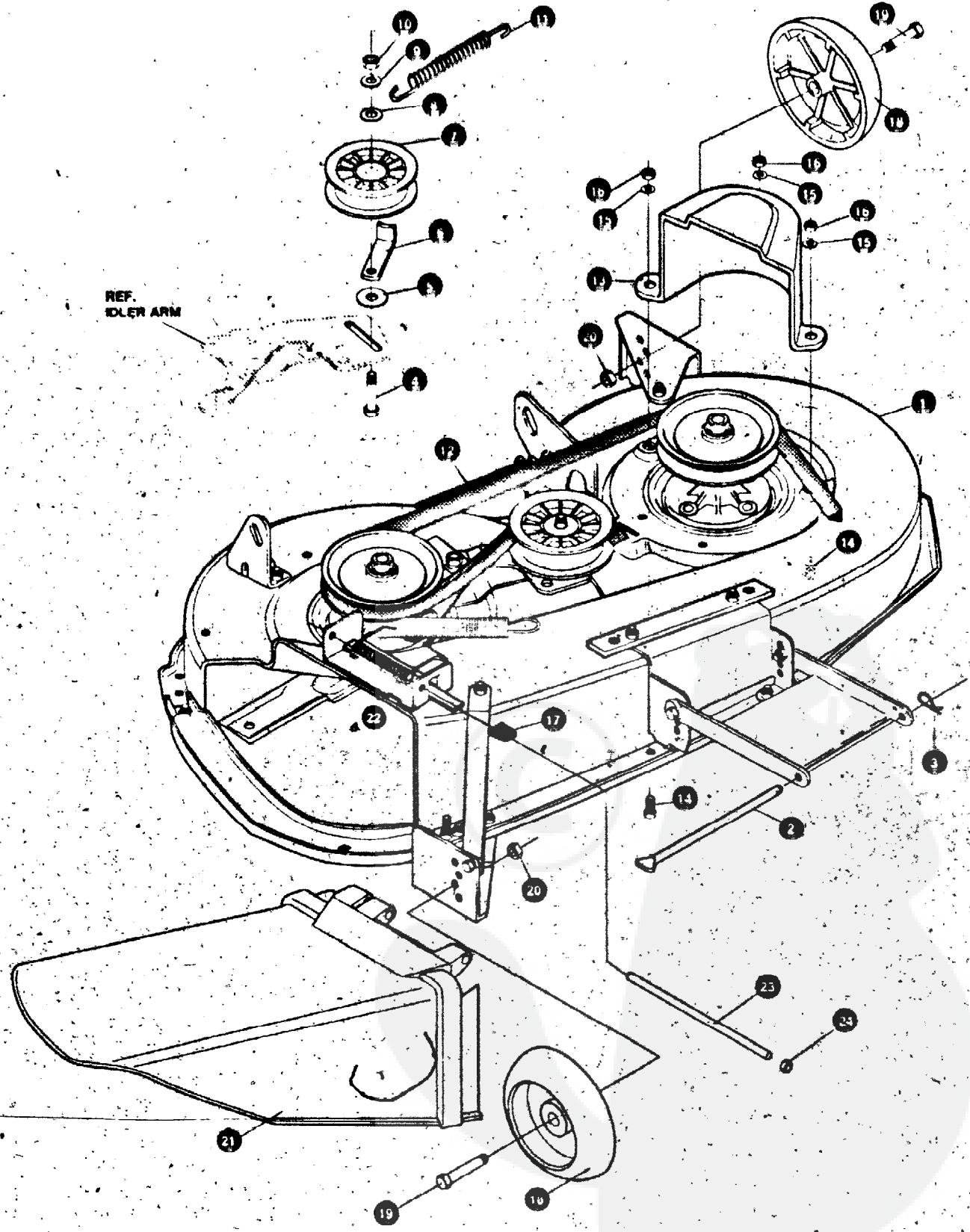
331147 C

TRACTEUR TONDEUSE 40" MODELE E3560-850

KEY#	PART#	DESCRIPTION	QTY
1	325103	40" DECK KIT	1
2	326480 853	TOE GUARD MULCHER	1
3	180077	SCREW, 5/16-18X.75 HHC	1
4	1498	NUT, 5/16-18 REGHEXCTRLK	1
5	180077	SCREW, 5/16-18X.75 HHC	1
6	1498	NUT, 5/16-18 REGHEXCTRLK	2
7	317017	BRACKET CHUTE MOUNT BLACK	1
8	120393	WASHER, FLAT .344X.69X.065	2
9	322320-853	LEVER ASSY (SHORT)	1
10	180077	SCREW, 5/16-18X.75 HHC	1
11	1498	NUT, 5/16-18 REGHEXCTRLK	1
12	313929	LIFT BRKT. REAR RH BLK 853	1
13	180077	SCREW, 5/16-18X.75 HHC	2
14	1498	NUT, 5/16-18 REGHEXCTRLK	2
15	310667	BRACKET, DECK LIFT REAR LH BLK	1
16	100077	SCREW, 5/16-18X.75 HHC	2
17	1498	NUT, 5/16-18 REGHEXCTRLK	2
18	326893-853	BRACE IDLER SUPPORT 40" 43"	1
19	308231	SCREW, 1/4-20X1.25 HHWATAP	1
20	180077	SCREW, 5/16-18X.75 HHC	2
21	120393	WASHER, FLAT .344X.69X.065	2
22	44108	NUT, 5/16-18 HWDFLCTRLK	2
23	320576-853	IDLER ARM ASSEMBLY	1
23-1	322116-853	ARM IDLER 40/43" DECK	1
23-2	41601	RIVET OVSET 187DIA X 50LG ST	2
23-3	306973	BRAKE PAD-HARD - 232AF	1
24	304420	BOLT, 500X2.15 HHSH	1
25	996307	WASHER, FLAT .391X1.00X.209	1
26	996416	WASHER, FLAT .391X1.00X.125	2
27	326249-853	BRACKET, EXTENSIDDLER	1
28	180077	SCREW, 5/16-18X.75 HHC	2
29	1498	NUT, 5/16-18 REGHEXCTRLK	2
30	321828	BLADE BRAKE ASSEMBLY	1
30-1	136624	RIVET TRSET 185DIA X 41LG ST	2
30-2	304119-853	BRAKE ARM	1
30-3	356973	BRAKE PAD-HARD - 232AF	1
31-1	180077	SCREW, 5/16-18X.75 HHC	1
32	120393	WASHER, FLAT .344X.69X.065	1
33	1498	NUT, 5/16-18 REGHEXCTRLK	1
34	315396	ROD BRAKE 40" DECK	1
35	1502	NUT, 1/4-20 REGHEXCTRLK	1
36	35410	SPRING .071X1.625X1.837	1
37	1498	NUT, 5/16-18 REGHEXCTRLK	1
38	56424-853	QUILL ASSY 36/39/40/43	2
38-1	56425	SHAFT/SADDLE 36"	1
38-2	49562	BRNG BALL 6203-2AA(SEALS)-C3	1
38-3	50616	DUST SHIELD	1
38-4	55947	QUILL CASTING (1046)	1
38-5	49562	BRNG BALL 6203-2AA(SEALS)-C3	1
38-6	50818	SPACER, 1/2 X 88X3.797	1
38-7	51449	SPACER, SLEV 672X 93X 438PM	1
38-8	313898	PULLEY ASSY	1
38-9	56365	WASHER, SPECIAL QUILL	1
38-10	1282	NUT, 711620 WDFLLK	1
39	35498	SCREW, 5/16-18X.75 WAHHTAP	7
40	300345	SCREW, 5/16-18X1.38 WAHHTAP	1
41	318445-MO	BRACKET, 40 LF FRONT DECK	1
42	180077	SCREW, 5/16-18X.75 HHC	4
43	328155-853	PLATE-MOUNTING	1
44	1498	NUT, 5/16-18 REGHEXCTRLK	14
45	58305	BRACKET LINK DECK FRONT	1
46	58247	NUT, ADJUST	2
47	180079	SCREW, 5/16-18X1.00 HHC	2
48	1498	NUT, 5/16-18 REGHEXCTRLK	2
49	317041	BRKT GAGE WHEEL LH BLACK	1
50	180077	SCREW, 5/16-18X.75 HHC	3
51	1498	NUT, 5/16-18 REGHEXCTRLK	3
52	322464-853	BRACKET GAGE WHEEL H FRNT	1
53	314282-853	BRACKET STABILIZER	1
54	180077	SCREW, 5/16-18 X .75 HHC	1
55	12685	SCREW, 5/16-18X1.50 HHCFT	1
56	1498	NUT, 5/16-18 REGHEXCTRLK	1
57	309070	BLADE, 20.32 HIGH-LIFT 853	2
58	2483	WASHER, 39ID X 1.25D X .07 BELLVIL	6
59	39573	SCREW, 3/8-24X1.00 NYLHHC	2
60	45171	NUT, 3/8-16 HWDFL WHIZ-LOCK	1

TRACTEUR TONDEUSE 40" MODELE E3560-850

CARTER DE TONDEUSE



UTILISEZ DES PIÈCES D'ORIGINE POUR CONSERVER L'APPLICATION DE LA GARANTIE.

TOUTES LES PIÈCES NON REFEREESSENT INTERCHANGEABLES AVEC LEURS OPPOSEES.

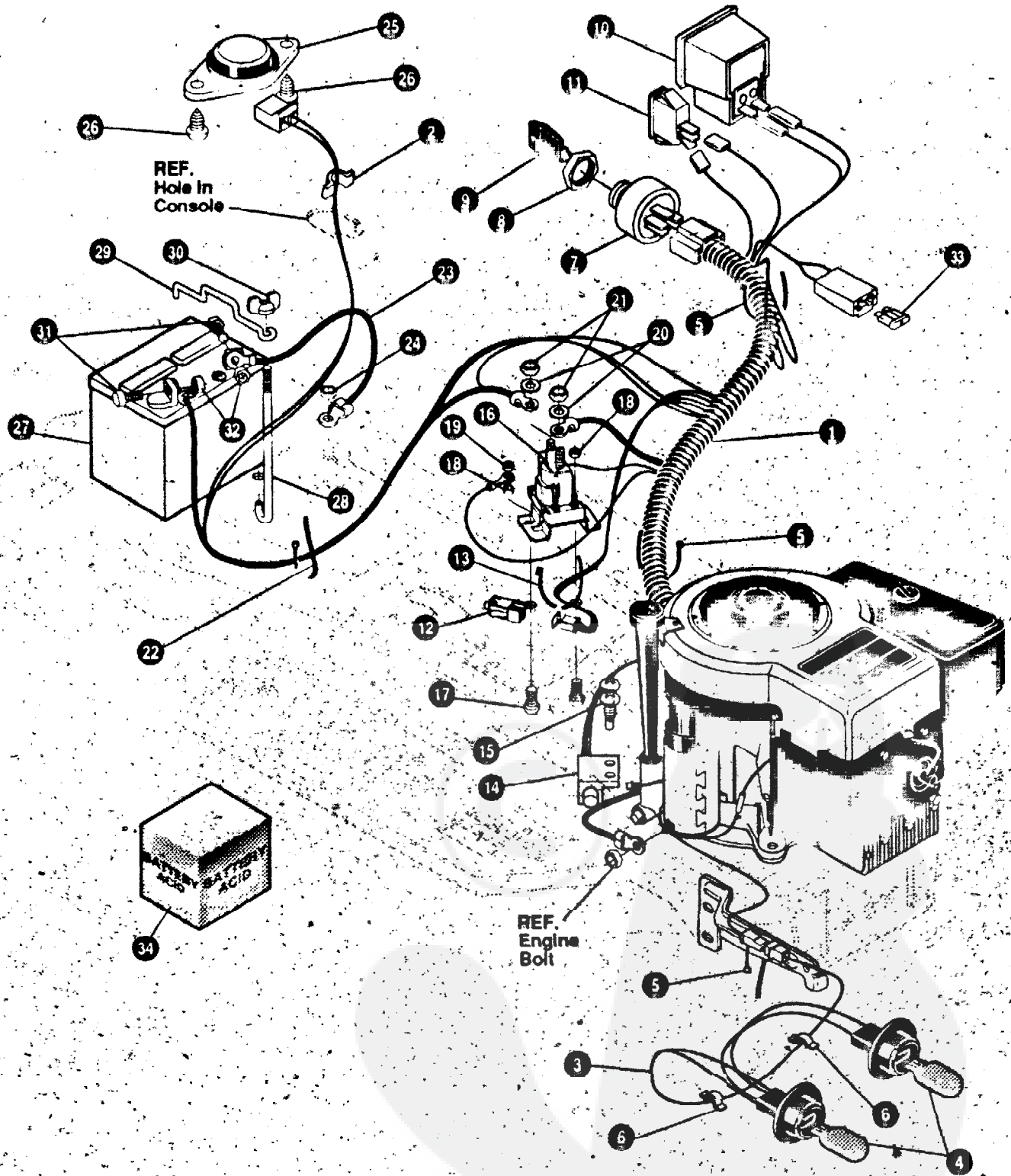
331145 B

TRACTEUR TONDEUSE 40" MODELE E3560-850

KEY#	PART#	DESCRIPTION	QTY
1	329035	ASM 40" DECK FOR AIR ASSIST	1
2	58306	ROD, DECK HITCH t-PL	1
3	8260	PIN, HAIR 091 DIA X 1.66 LG	1
4	53325	BOLT, 3/8-16 X 2.00 CARRSN	1
6	25210	WASHER, FLAT .386 X 1.25 X .09 HT	1
6	1346	RETAINER, BELT	1
7	310326	PULLEY, IDLER BFF 4.00 WIDE FL	1
8	996307	WASHER, FLAT .391 X 1.00 X .209	1
9	120382	WASHER, REGSPTER 393 X 68 X .10	1
10	120377	NUT, 3/8-16 REGHX	1
11	300473	SPRING, TENSION 7.52 LG + 17 LB/IN	1
12	319005	BELT, V 5L 81 00 DECK 40 LF	1
13	328257	GUARD, BELT LH PLASTIC	1
14	180075	SCREW, 5/16-18 X .63 HHC	3
15	120393	WASHER, FLAT .344 X .69 X .065	3
16	1498	NUT, 5/16-18 REG HEX CTRLK	3
18	42348	GRIP-LEVER GRASS COLLECTOR	1
19	302611 23763	GAUGE WHEEL EURO 6.00 O D X 1.38 WD	2
20	1499	BOLT, 500 X 1.390 HSSH 3/8-16	2
21	304422	NUT, 3/8-16 REGHX CTRLK	2
22	314975	CHUTE DEFLECTOR 40" 42" 843"	1
23	304424	SPRING, TORSION CHUTE DEFLECTOR	1
24	3535	ROD, PIVOT DECK 3/2 D X 7/25	1
		NUT, PUSH-ON CAP 312 OD	1

TRACTEUR TONDEUSE 40" MODELE E3560-850

FAISCEAU ELECTRIQUE



UTILISEZ DES PIÈCES D'ORIGINE POUR CONSERVER L'APPLICATION DE LA GARANTIE.

TOUTES LES PIÈCES NON REFERENCEES SONT ICHANGEABLES AVEC LEURS OPPOSEES.

325502 C

TRACTEUR TONDEUSE 40" MODELE E3560/850

KEY#	PART#	DESCRIPTION	QTY
1	320065	HARNES 12-125BS.H14.WRAP.LF	1
2	41482	PRESS CLIP.1 380LG255ID	1
3	3 0 3 0 6 4	ASSY.LIGHT WIRE 114 TURN	1
4	52572	BULB. HEADLAMP	2
5	57444	TIE. CABLE BLACK NYLON 5 62L	3
6	41482	PRESS CLIP.1380LG 255ID	2
7	327355	SWITCH-IGN (AFTER FIRE) 3 POSN	1
8	327352	NUT. 5/8 8ACME OELTA FOR BOOT	1
9	327350	KEY.IGNITION GENERIC DELTA	2
10	300133	AMMETER	1
11	300334	LIGHT SWITCH ON/OFF PANEL MNT	1
12	320082	SWITCH DOUBLE POLE NO/NC GRAY	1
13	57444	TIE. CABLE BLACK NYLON 5 62L	1
14	57476	SWITCH SGR MNT DP NC NO BLK	1
15	57220	SCREW. X12 X 50 PHPNHTAP BLK	2
16	53716	SOLENOID	1
17	187745	SCREW. 1/4-20X .75 HXSEMMA	2
18	1502	NUT. 1/4-20 REGHEXCTRLK	2
19	271172	NUT. 1/4-20 REGHEXKEPS	1
20	138485	WASHER. EXLK 320X61X03	2
21	120366	NUT. 5/16-24 REGHEX	2
22	57444	TIE. CABLE BLACK NYLON 5 62L	1
23	55511	WIRE. GROUND 12 5"	1
24	271184	NUT. 5/16-18 HEXKEPS	1
25	57547	SWITCH. SEAT	1
26	160505	SCREW. 1/4-20X .38PHPNHMA	2
27	302257	BATTERY. 12V	1
28	57551	ROD. BATTERY	1
29	57552	ROD. BATTERY. TOP	1
30	325232	NUT. WING 1/4-20 NYLON	1
31	180020	SCREW. 1/4-20X .75 HHC	2
32	271122	NUT. 1/4-20 REGHEXKEPS	2
34	*	BATTERY ACID PACK. 80 OZ	1

* CAN BE PURCHASED LOCALLY

