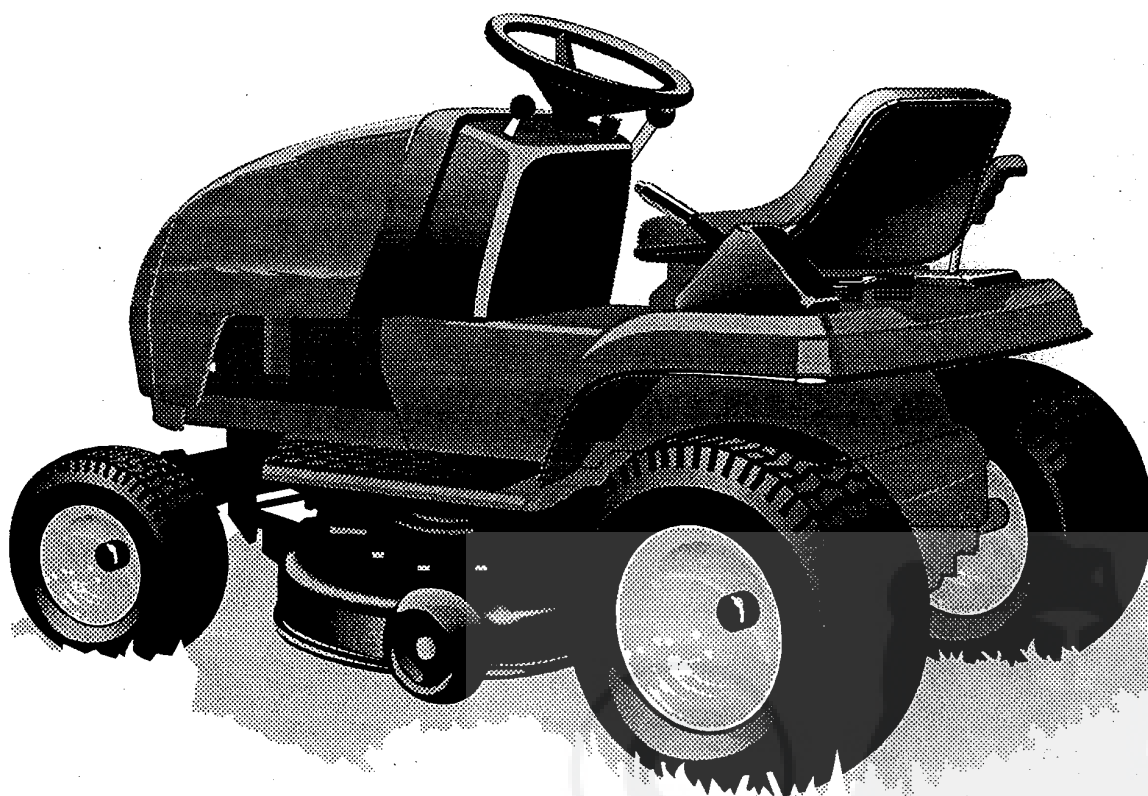


PARTS MANUAL

Lawn Tractors



Model E3560-920



SAFETY RULES

THESE INSTRUCTIONS ARE FOR YOUR PROTECTION. PLEASE READ THEM CAREFULLY.

IMPORTANT

THIS CUTTING MACHINE IS CAPABLE OF AMPUTATING HANDS AND FEET AND THROWING OBJECTS. FAILURE TO OBSERVE THE FOLLOWING SAFETY INSTRUCTIONS COULD RESULT IN SERIOUS INJURY OR DEATH.

I. GENERAL OPERATION:

- Know controls and how to stop quickly.
- Read, understand, and follow all instructions in the manual and on the machine before starting.
- Only allow responsible adults, who are familiar with instructions, to operate the machine.
- Wear safety glasses or eye shields when assembling or operating the machine.
- Do not operate machine when barefooted. Always wear substantial footwear, preferably steel-toed shoes.
- Do not wear loose fitting clothing that could get caught in moving parts.
- Clear the area of objects such as rocks, toys, wire, etc., which could be picked up and thrown by the blade(s).
- Be sure the area is clear of other people before mowing. Stop machine if anyone enters the area.
- Never carry passengers.
- Do not mow in reverse unless absolutely necessary. Always look down and behind before and while backing.
- Be aware of the mower discharge direction and do not point it at anyone. Do not operate the mower without either the entire grass catcher or the guard in place.
- Slow down before turning.
- Never leave a running machine unattended. Always turn off blades, set parking brake, stop engine, and remove keys before dismounting.
- Turn off blade(s) when not mowing.
- Stop engine before removing grass catcher or unclogging chute.
- Mow only in daylight or good artificial light.
- Do not operate the machine while under the influence of alcohol or drugs.
- Watch for traffic when operating near or crossing roadways.
- Use care when mowing around a fixed object to prevent the blade(s) from striking it. Never deliberately run over any foreign object.
- Use extra care when loading or unloading the machine into a trailer or truck.
- Use care when pulling loads or using heavy equipment.
 - a. Use only approved drawbar hitch points.
 - b. Limit loads to those that you can safely control.
 - c. Do not turn sharply. Use care when backing.
 - d. Use counterweight(s), wheel weight or tire chains when suggested in attachment(s) instructions.

II. SLOPE OPERATION:

Slopes are a major factor related to loss-of-control and tip-over accidents, which can result in severe injury or death. *All slopes require extra caution.* If you cannot back up the slope or if you feel uneasy on it, do not mow it.

DO

- Mow up and down slopes, not across.
- Remove obstacles such as rocks, tree limbs, etc.
- Watch for holes, ruts, or bumps. Uneven terrain could overturn the machine. *Tall grass can hide obstacles.*
- Use slow speed. Choose a low gear so that you will not have to stop or shift while on the slope.
- Follow the manufacturer's recommendations for wheel weights or counterweights to improve stability.
- Use extra care with grass catchers or other attachments. These can change the stability of the machine.
- Keep all movement on the slopes *slow and gradual*. Do not make sudden changes in speed or direction.
- Avoid starting or stopping on a slope. If tires lose traction, turn off the blade(s) and proceed slowly *straight* down the slope.

DO NOT

- Do not turn on slopes unless necessary, and then slowly and gradually downhill, if possible.
- Do not mow near drop-offs, ditches or embankments. The

mower could suddenly turn over if a wheel is over the edge of a cliff or ditch, or if an edge caves in.

- Do not mow on wet grass. Reduced traction could cause sliding.
- Do not try to stabilize the machine by putting your foot on the ground.
- Do not use grass catcher on steep slopes.

III. CHILDREN:

Tragic accidents can occur if the operator is not alert to the presence of children. Children are often attracted to the machine and the mowing activity. *Never* assume that children will remain where you last saw them.

- Keep children out of the mowing area and under the watchful care of another responsible adult.
- Be alert and turn machine off if children enter the area.
- Before and when backing, look behind and *down* for small children.
- Never carry children. They may fall off and be seriously injured or interfere with safe machine operation.
- Never allow children to operate the machine.
- Use extra care when approaching blind corners, shrubs, trees, or other objects that may obscure vision.

IV. SERVICE:

- Use extra care in handling gasoline and other fuels. They are flammable and vapors are explosive.
 - a. Use only an approved container.
 - b. Never remove gas cap or add fuel with the engine running. Allow engine to cool before refueling. Do not smoke.
 - c. Never refuel the machine indoors.
 - d. Never store the machine or fuel container inside where there is an open flame, such as in a water heater.
- Check fuel supply before each use allowing space for expansion as the heat of the engine and/or sun can cause gasoline to expand and overflow the tank.
- Use extra care when handling battery acid. Acid contact with skin may cause severe burns. Eye contact may cause blindness.
- Use extra care when servicing the battery. Explosive gas is produced in the battery. Do not service the battery while smoking or near an open spark or flame. This may cause the battery to explode causing serious injury.
- Never run a machine inside a closed area. Exhaust fumes contain CARBON MONOXIDE, an ODORLESS and DEADLY GAS.
- Keep nuts and bolts, especially blade attachment bolts, tight and keep equipment in good condition.
- Never tamper with safety devices. Check their operation regularly.
- Do not change the engine governor settings or overspeed engine.
- Reduce fire hazards. Keep machine free of grass, leaves, or other debris build-up. Clean up oil or fuel spillage. Allow machine to cool before storing.
- Stop and inspect the equipment if you strike an object. Repair, if necessary, before restarting.
- Never make adjustments or repairs with the engine running.
- Grass catcher components are subject to wear, damage, and deterioration, which could expose moving parts or allow objects to be thrown. Frequently check components and replace with manufacturer's recommended parts, when necessary.
- Mower blade(s) are sharp and can cut. Wrap the blade(s) or wear gloves, and use extra caution when servicing them.
- Check brake operation frequently. Adjust and service as required.



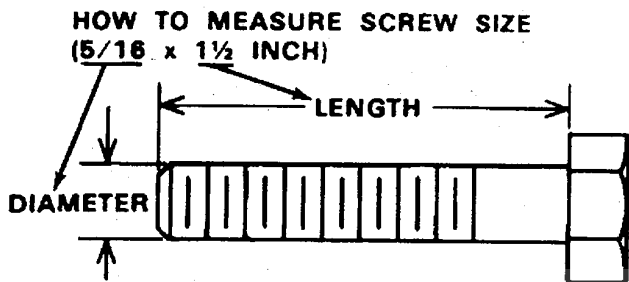
LOOK FOR THIS SYMBOL TO POINT OUT IMPORTANT SAFETY PRECAUTIONS. IT MEANS--ATTENTION!!! BECOME ALERT!!! YOUR SAFETY IS INVOLVED.

Record the following information about your unit so that you will be able to provide it in case of loss or theft.

MODEL NUMBER: - (Enter complete 8 digit number from model plate on unit)
PURCHASE DATE: ___ / ___ / ___ CODE NO.: _____ SERIAL NO.: _____
DEALER'S NAME AND ADDRESS: _____
CITY: _____ STATE: _____ TELEPHONE: _____

TOOLS REQUIRED FOR ASSEMBLY

- 2 - 7/16 inch Wrenches (or adjustable wrench)
- 1 - 1/2 inch Wrench (or adjustable wrench)
- 1 - Small Phillips Screwdriver with a 1/4 inch shank
- 1 - Hammer



DANGER



This lawn tractor can be dangerous if carelessly used.

Read your Operator's Manual thoroughly before operating your lawn tractor.

Always wear safety glasses or eye shields while assembling or operating your lawn tractor.

DO NOT carry passengers at any time.

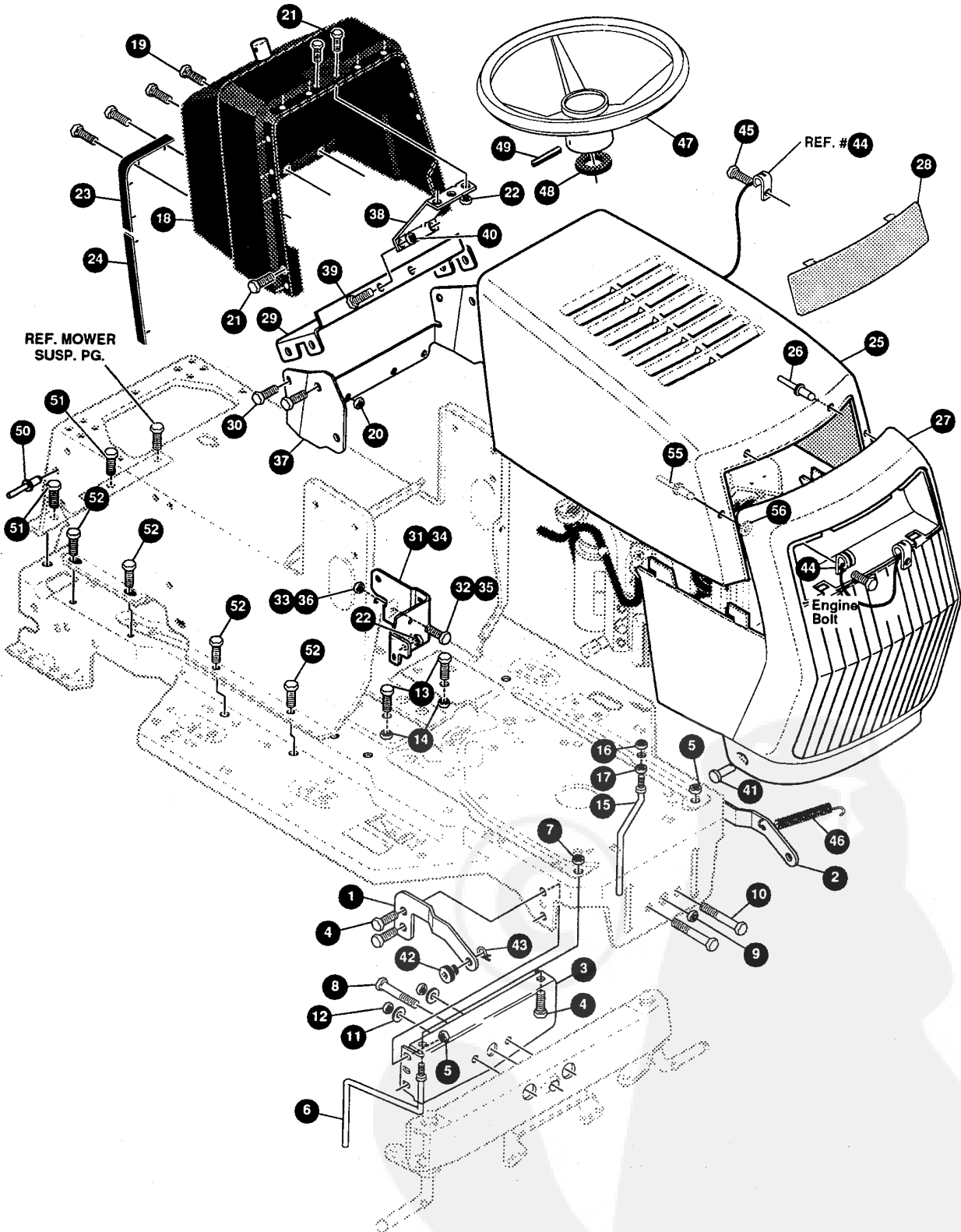
Keep your hands, feet, hair and loose clothing away from the discharge area, the underside of the mower deck or any moving parts while the engine is running.

DO NOT allow children or young teenagers to operate or be near your lawn tractor while it is operating.

- ALWAYS GIVE THE FOLLOWING INFORMATION WHEN ORDERING REPAIR PARTS:
1. The PART NUMBER; 2. The PART NAME; 3. QUANTITY DESIRED; 4. The MODEL NUMBER (As shown on Model Plate).
- SEND PART ORDERS AS PER INSTRUCTIONS ON THE FRONT PAGE.
DO NOT USE KEY NUMBERS WHEN ORDERING REPAIR PARTS, ALWAYS USE PART NUMBERS.
All replacement parts will be supplied in current production colors or in a neutral color.
A handling fee is applicable to small parts orders.
YOUR UNIT IS RIGHT HAND (RH) OR LEFT HAND (LH) AS YOU STAND BEHIND IT.

E3560-920

REPAIR PARTS



NOTE: ALWAYS USE ORIGINAL EQUIPMENT PARTS. Use of service/replacement parts other than original equipment parts may void your warranty.

ALL UNNUMBERED ITEMS ARE INTERCHANGEABLE WITH OPPOSITE SIDE

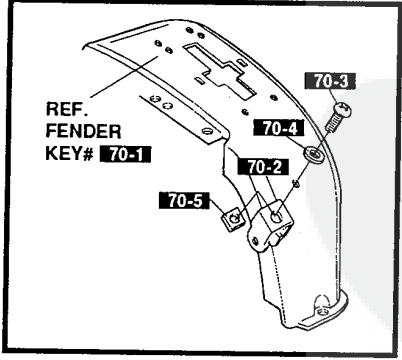
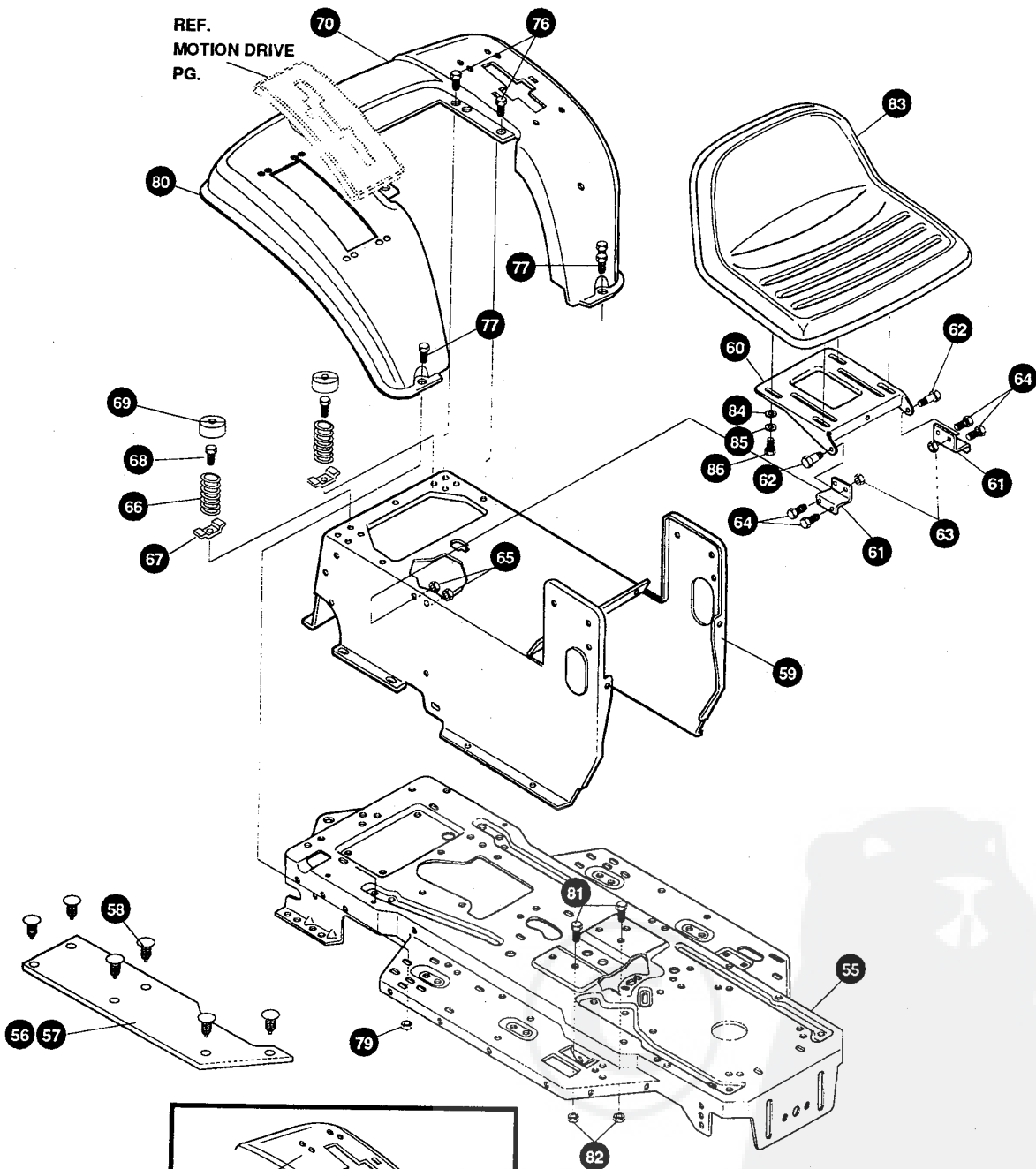
332592 B

E3560-920**CHASSIS & HOOD ASSEMBLY**

| KEY# | PART# | DESCRIPTION | QTY |
|------|------------|--|-----|
| 1 | 326203-853 | BRACKET, HOOD, LF, G21/22/23/24 | 1 |
| 2 | 326204-853 | BRACKET, HOOD, LF, G19/21/22/23 | 1 |
| 3 | 313541-853 | BRACKET, FRONT AXLE | 1 |
| 4 | 56030 | SCREW, 5/16- .75 WDFLLK | 5 |
| 5 | 55273 | NUT, 5/16-18 HXWDFLLK | 5 |
| 6 | 300440 | GUIDE, BELT, RIDER | 1 |
| 7 | 1498 | NUT, 5/16-18 REGHEXCTRLK | 1 |
| 8 | 308207 | BOLT, .625 X 2.18 HSH 1/2-13 | 1 |
| 9 | 309008 | NUT, 1/2-13 HEXJAM CTRLK | 1 |
| 10 | 180138 | SCREW, 3/8-16 X 3.00 HHC | 2 |
| 11 | 2483 | WASHER, .39 ID X 1.25 D X .07 BELLVIL | 2 |
| 12 | 1499 | NUT, 3/8-16 REGHXCTRLK | 2 |
| 13 | 180079 | SCREW, 5/16-18 X 1.00 HHC | 2 |
| 14 | 1498 | NUT, 5/16-18 REGHEXCTRLK | 2 |
| 15 | 300635 | GUIDE, BELT SHORT 15" WHEEL | 1 |
| 16 | 124824 | NUT, 5/16-18 HEXJAM | 1 |
| 17 | 271190 | NUT, 3/8-16 HEXKEPS | 1 |
| 18 | 329226 | DASH, W/CHOKE, H-PTO, V-IGNITION, LF | 1 |
| 19 | 318304 | SCREW, 1/4-14 X .75PHPNHDTP, BLACK | 4 |
| 20 | 50352 | NUT, 1/4-20 WDFLLK TOPLOCK | 4 |
| 21 | 155941 | SCREW, 10-24 X .63 PHFLTMA | 4 |
| 22 | 308459 | NUT, #10-24 HXHDNYLK | 4 |
| 23 | 328141 | BUMPER, HOOD/DASH, TOP & CORNER | 2 |
| 24 | 328142 | BUMPER, HOOD/DASH, SIDE STRIP | 2 |
| 25 | 329391 | HOOD, H25, LF/SF, MOLDED, LOUVERS | 1 |
| 26 | 329238 | RIVET, POP 3/16 DIA X .75 LONG | 2 |
| 27 | 329392 | 'J' GRILLE, G24, MOLDED PLASTIC | 1 |
| 28 | 326960 | LENS FOR 'L'G21 & 'J'G24 GRILLE | 1 |
| 29 | 324909-853 | SUPPORT, STEERING/PTO LF | 1 |
| 30 | 40886 | SCREW, 1/4-20 X .38 WAHTAP | 4 |
| 31 | 326320-853 | BRACKET, DASH/TANK, LF, RH | 1 |
| 32 | 180020 | SCREW, 1/4-20 X .75 HHC | 1 |
| 33 | 1502 | NUT, 1/4-20 REGHEXCTRLK | 1 |
| 34 | 326321-853 | BRACKET, DASH/TANK, LF, LH | 1 |
| 35 | 180020 | SCREW, 1/4-20 X .75 HHC | 1 |
| 36 | 1502 | NUT, 1/4-20 REGHEXCTRLK | 1 |
| 37 | 326640-853 | SUPPORT, LOWER DASH, STEEL | 1 |
| 38 | 327039-853 | DASH, SUPPORT BRACKET, STEEL | 1 |
| 39 | 180020 | SCREW, 1/4-20 X .75 HHC | 2 |
| 40 | 1502 | NUT, 1/4-20 REGHEXCTRLK | 2 |
| 41 | 323044 | PIN, CLEVIS .500 X .49/.51 LENGTH | 2 |
| 42 | 326522 | BEARING, HOOD .505 ID X .625 OD X 1.12 | 2 |
| 43 | 8260 | PIN, HAIR .091 DIA X 1.66 LONG | 2 |
| 44 | 310748 | LANYARD, HOOD, 15.77 LONG, H15 | 1 |
| 45 | 49050 | SCREW, 1/4-10 X .75 PHPNTAP | 1 |
| 46 | 304784 | SPRING, HOOD LATCH | 1 |
| 47 | 330847 | STEERING WHEEL | 1 |
| 48 | 301413 | SPACER, STEERING SHAFT | 1 |
| 49 | 456378 | PIN, SPRING .250 DIA X 2.00 LONG HVPL | 1 |
| 50 | 46763 | RIVET, POP .187 DIA X .450 LONG ST | 3 |
| 51 | 35497 | SCREW, 5/16-18 X .50 WAHTAP | 2 |
| 52 | 40886 | SCREW, 1/4-20 X .38 WAHTAP | 9 |
| 55 | 333225 | RIVET, POP 3/16 DIA X 1.0 LONG | 2 |
| 56 | 1501 | WASHER, FLAT .203 X .56 X .040 | 2 |
| | 334201 | PARTS MANUAL | 1 |
| | 332212 | OPERATOR'S MANUAL (ENGLISH) | 1 |
| | 332213 | OPERATOR'S MANUAL (FRENCH) | 1 |
| | 332214 | OPERATOR'S MANUAL (GERMAN) | 1 |

E3560-920

REPAIR PARTS



NOTE: ALWAYS USE ORIGINAL EQUIPMENT PARTS. Use of service/replacement parts other than original equipment parts may void your warranty.

ALL UNNUMBERED ITEMS ARE INTERCHANGEABLE WITH OPPOSITE SIDE

325905 B

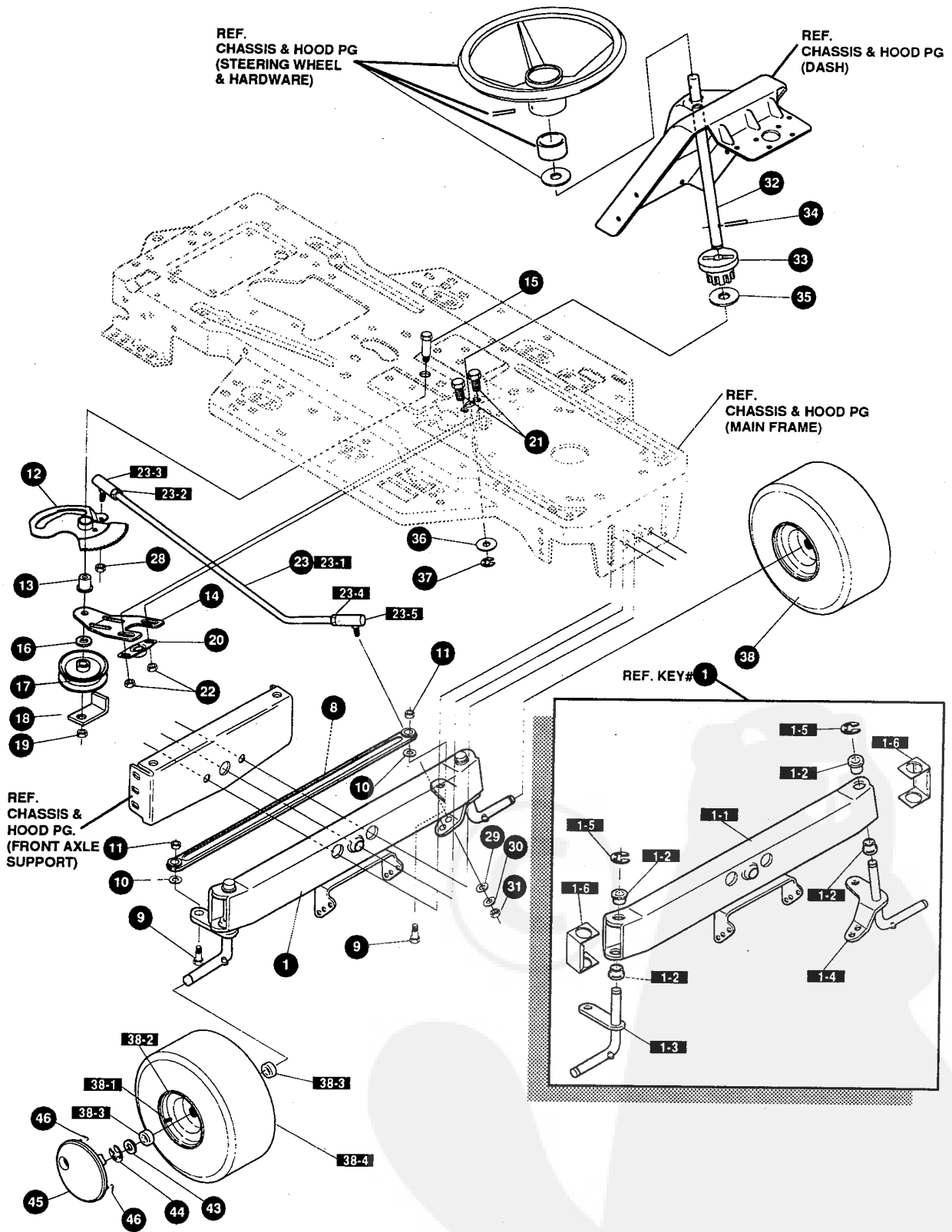
E3560-920**CHASSIS & HOOD ASSEMBLY**

| KEY# | PART# | DESCRIPTION | QTY |
|------|------------|---|-------|
| 55 | 326579-893 | FRAME, LF, DRILLED P920/F4360 | 1 |
| 56 | 310005 | FOOT PAD, LH, 22.12 LONG, F-5 | 1 |
| 57 | 310006 | FOOT PAD, RH, 22.12 LONG, F-5 | 1 |
| 58 | 311087 | FASTENER, RATCHET BLACK | 12 |
| 59 | 327575-830 | CONSOLE, NON-WALK THRU, LF, SOF | 1 |
| 60 | 58367-893 | SEAT PLATE, F5, SF, LF | 1 |
| 61 | 310660-893 | BRACKET, F-5, SEAT SUPPORT | 2 |
| 62 | 20507 | BOLT, .437 X .156 HSSH 5/16-18 | 2 |
| 63 | 1498 | NUT, 5/16-18 REGHEXCTRLK | 2 |
| 64 | 48901 | SCREW, 5/16-18 X .63 WAHHC | 4 |
| 65 | 1498 | NUT, 5/16-18 REGHEXCTRLK | 4 |
| 66 | 57153 | SPRING, SEAT 2.63 LONG, 1.49 OD BLACK | 2 |
| 67 | 1341 | CLAMP, SPRING 1.17" ID | 2 |
| 68 | 44811 | SCREW, 1/4-20 X .75 WAHTAP | 2 |
| 69 | 56907 | COVER, SEAT SPRING 1.5 ID X 1.0 LONG | 2 |
| 70 | ^ | ASSEMBLY FENDER, F5, LF, SOF, SUSPENDED | 1 |
| 70-1 | 332185-893 | FENDER, F5, SUSPENDED, LF, SOF | 1 |
| 70-2 | 9239 | CLEVIS | 1 |
| 70-3 | 439455 | SCREW, 5/16-18 X .56 PHPNMA | 1 |
| 70-4 | 301551 | WASHER, .344 ID X 1.50 D X .09 CU | 1 |
| 70-5 | 120373 | NUT, 5/16-18 SQUARE | 1 |
| 76 | 995346 | SCREW, 1/4-20 X .50 WAHTAP | 4 |
| 77 | 126358 | BOLT, 5/16-18 X 1.00 CARRLN | 2 |
| 79 | 55273 | NUT, 5/16-18 HXWDFLLK | 2 |
| 80 | 55023 | TRIM, 77.5" BLACK NARROW | 77.5" |
| 81 | 180079 | SCREW, 5/16-18 X 1.00 HHC | 2 |
| 82 | 1498 | NUT, 5/16-18 REGHEXCTRLK | 2 |
| 83 | 310384 | SEAT, MICHIGAN, W/SW HOLE | 1 |
| 84 | 120393 | WASHER, FLAT .344 X .69 X .065 | 4 |
| 85 | 120638 | WASHER, HVSPTLK .328 X .60 X .09 | 4 |
| 86 | 180077 | SCREW, 5/16-18 X .75 HHC | 4 |

^ ORDER INDIVIDUAL PARTS

E3560-920

REPAIR PARTS



NOTE: ALWAYS USE ORIGINAL EQUIPMENT PARTS. Use of service/replacement parts other than original equipment parts may void your warranty.

ALL UNNUMBERED ITEMS ARE INTERCHANGEABLE WITH OPPOSITE SIDE

322888 E

E3560-920

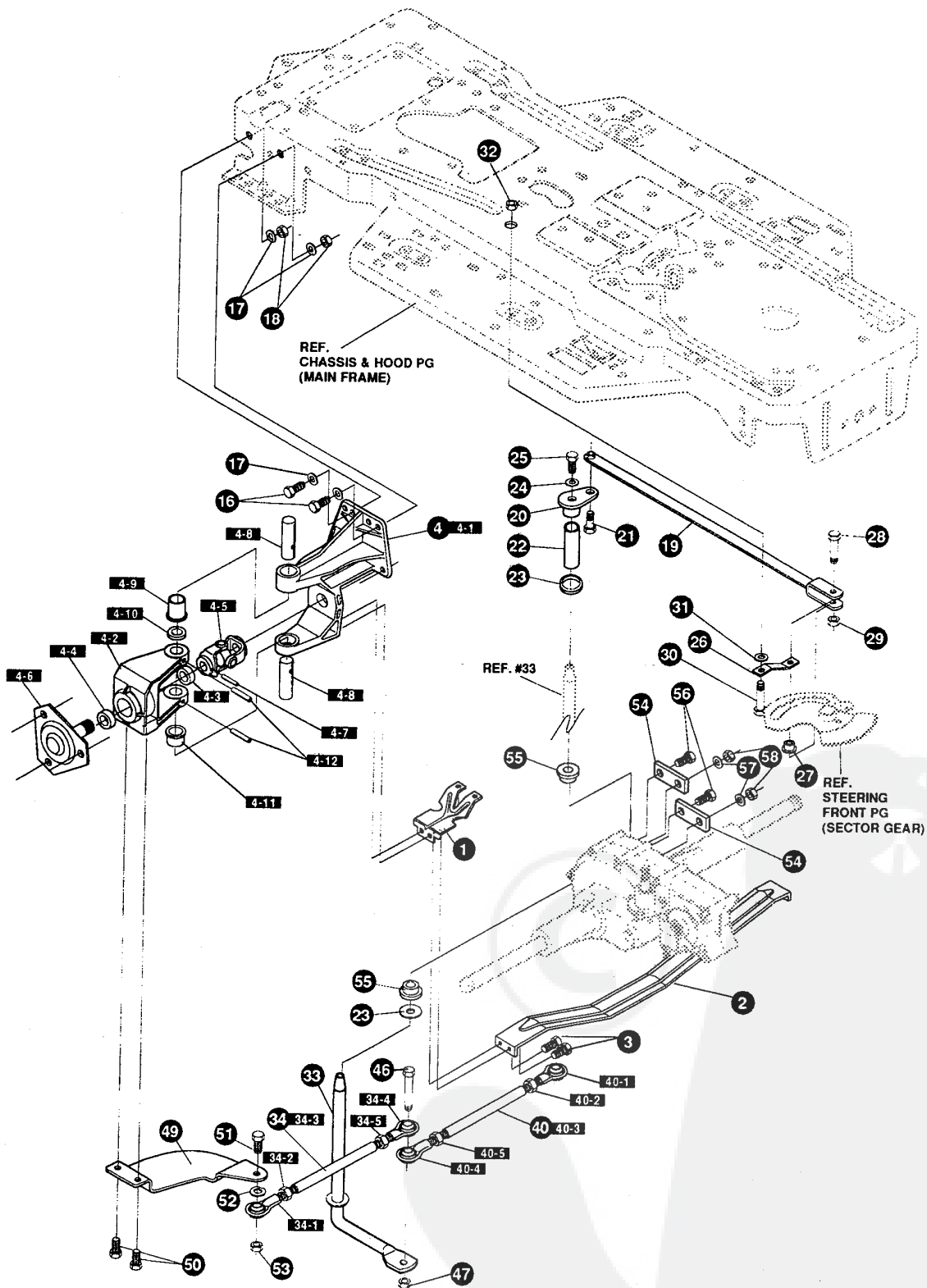
FRONT STEERING ASSEMBLY

| KEY# | PART# | DESCRIPTION | QTY |
|------|------------|--|-----|
| 1 | ^ | AXLE ASSEMBLY, FRONT, LONG, SUSP, 4WS, LF | 1 |
| 1-1 | 310170 | AXLE, FRONT | 1 |
| 1-2 | 52407 | SPINDLE BEARING | 4 |
| 1-3 | 9180 | ASSEMBLY, SPINDLE, RH, LONG | 1 |
| 1-4 | 314088 | ASSEMBLY, SPINDLE, LH, LONG | 1 |
| 1-5 | 36625 | RING, RETEX .57 X .05 TRU 5133-75 | 2 |
| 1-6 | 53373 | AXLE COVER | 2 |
| 8 | 304590 | TIE ROD ASSEMBLY, 19.81 LONG W-SECTION | 1 |
| 9 | 180128 | SCREW, 3/8-16 X 1.75 HHC | 2 |
| 10 | 120382 | WASHER, REGSPTLK .393 X .68 X .10 | 2 |
| 11 | 120377 | NUT, 3/8-16 REGHX | 2 |
| 12 | 313634 | ASSEMBLY, SECTOR GEAR, BLACK | 1 |
| 13 | 313629 | BEARING, SLEEVE | 1 |
| 14 | 313671-853 | SUPPORT, SECTOR GEAR, 4WS, LF | 1 |
| 15 | 323005 | BOLT, .500 X 2.26 SHWA 3/8-16 | 1 |
| 16 | 25210 | WASHER, FLAT .386 X 1.25 X .09 | 1 |
| 17 | 35374 | PULLEY, IDLER V4L 3.06 X .62 | 1 |
| 18 | 39659 | RETAINER, BELT | 1 |
| 19 | 1499 | NUT, 3/8-16 REGHXCTRLK | 1 |
| 20 | 302498 | BEARING, SFAL .500 ID X . OD X .75 | 1 |
| 21 | 323731 | SCREW, 5/16-24 X .75 (TQ 30-35 FT#) | 2 |
| 22 | 71100 | NUT, 5/16-24 HEXWDFLLK | 2 |
| 23 | 323752 | ASSEMBLY, DRAG LINK, 4WS, GEAR, LF | 1 |
| 23-1 | 321449 | DRAG LINK, .625 DIA FOR 4WS, LF | 1 |
| 23-2 | 124925 | NUT, 3/8-24 REGHEXJAM | 1 |
| 23-3 | 57158 | BALL JOINT, 3/8 THD SHORT STUD | 1 |
| 23-4 | 272123 | NUT, 7/16-20 HXJAM | 1 |
| 23-5 | 302865 | BALL JOINT, 7/16-20 | 1 |
| 28 | 46692 | NUT, 3/8-24 WDFLHLK WHIZ | 1 |
| 29 | 120396 | WASHER, FLAT .531 X 1.06 X .095 | 1 |
| 30 | 120383 | WASHER, REGSPTLK .459 X .78 X .12 | 1 |
| 31 | 271506 | NUT, 7/16-20 REGHX | 1 |
| 32 | 313699 | SHAFT, STEERING, 4WS, LF | 1 |
| 33 | 302314 | PINION, STEERING | 1 |
| 34 | 302524 | PIN, DOWEL STEER EURO LT | 1 |
| 35 | 315194 | WASHER, FLAT .51 X 1.38 X .043 | 1 |
| 36 | 2968 | WASHER, FLAT .504 X .75 X .059 | 1 |
| 37 | 20864 | RING, RET E .39 X .04 TRU 5133-50 | 1 |
| 38 | 321515 | TIRE & RIM, PU 15 X 6.0 X 6 | 2 |
| 38-1 | 24167 | VALVE STEM | |
| 38-2 | 321516 | RIM, WHEEL | |
| 38-3 | 314416 | BEARING, FLANGE .753 ID X 1.38 OD | |
| 38-4 | TIRE | REFER TO TIRE TREAD PAGE | |
| 43 | 642 | WASHER, FLAT .755 X 1.31 X .075 | 4 |
| 44 | 36625 | RING, RETEX .57 X .05 TRU 5133-75 | 2 |
| 45 | 304444 | HUB CAP, 6" EURO | 2 |
| 46 | 306669 | CLIP, HUBCAP TINN #C25467-017-4 | 8 |

^ ORDER INDIVIDUAL PARTS

E3560-920

REPAIR PARTS



NOTE: ALWAYS USE ORIGINAL EQUIPMENT PARTS. Use of service/replacement parts other than original equipment parts may void your warranty.

ALL UNNUMBERED ITEMS ARE INTERCHANGEABLE WITH OPPOSITE SIDE

322362 H

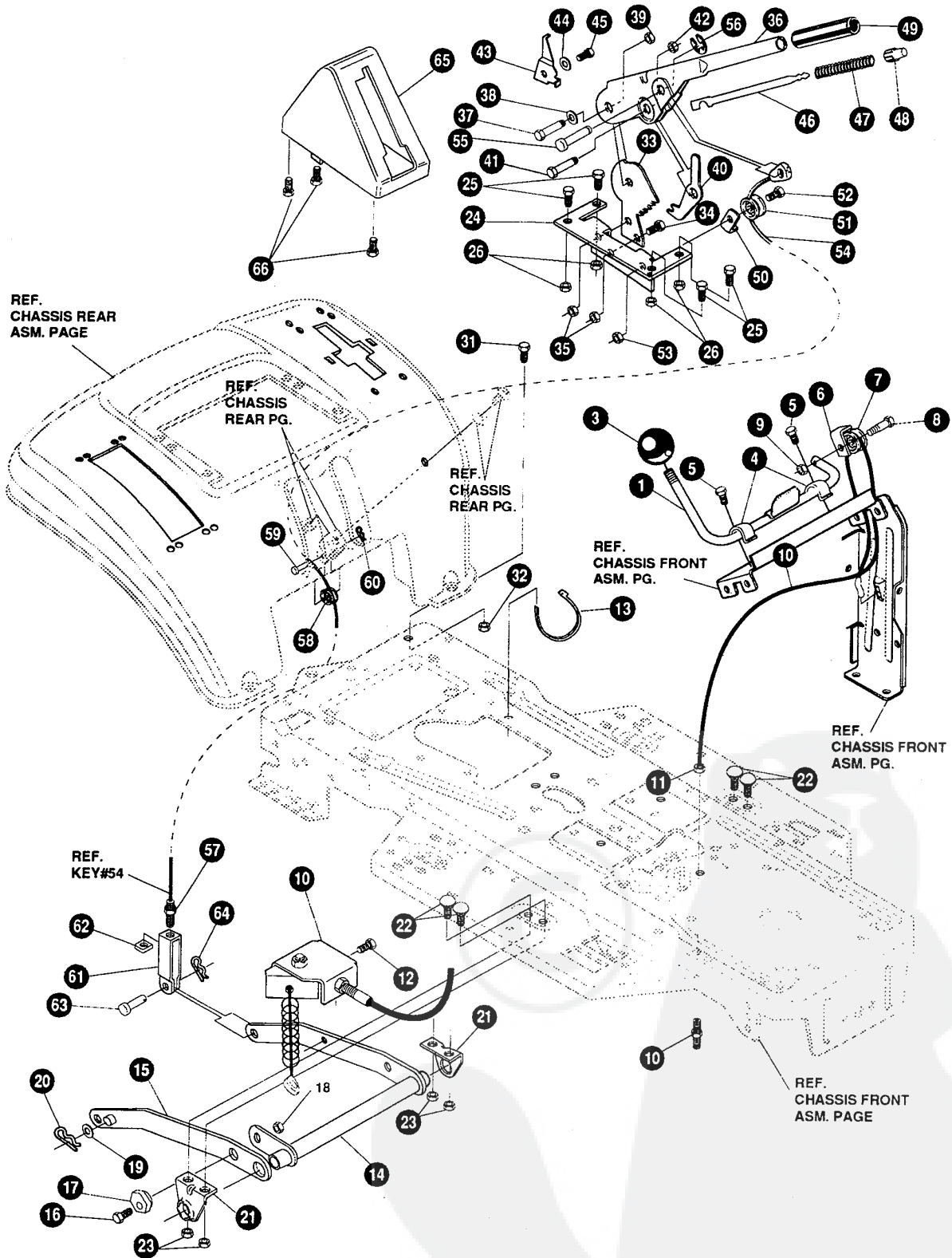
E3560-920

REAR STEERING ASSEMBLY

| KEY# | PART# | DESCRIPTION | QTY |
|------|------------|---|-----|
| 1 | 313645-853 | BRACKET, X-AXLE MOUNTING, 4WS, HYDRO | 2 |
| 2 | 322959-853 | BRACKET, HYDRO, 4WS, SUPPORT | 1 |
| 3 | 35498 | SCREW, 5/16-18 X .75 WAHHTAP | 4 |
| 4 | 324359 | U-JOINT, 4WS, HEAVY DUTY | 2 |
| 4-1 | 314267 | BRACKET, STEERING PIVOT, DRILLED | 1 |
| 4-2 | 315267 | BRACKET, STEERING PIVOT, 6204 BEARING | 1 |
| 4-3 | 12325 | BEARING, BALL 6203-2AA-3/4 | 1 |
| 4-4 | 315268 | BEARING, BALL 6204-2AA -7/8 | 1 |
| 4-5 | 320531 | U-JOINT ASSEMBLY, W/ZERK (LONG) | 1 |
| 4-6 | 315264-853 | HUB ASSEMBLY, HEAVY | 1 |
| 4-7 | 36311 | PIN, GROOVED .250 DIA X 1.50 LONG | 1 |
| 4-8 | 12289 | PIN, STEERING HINGE | 2 |
| 4-9 | | NON-SERVICEABLE (ORDER PART#324578) | 1 |
| 4-10 | 21682 | FLAT WASHER, .765 X 1.25 X .042 PL | 1 |
| 4-11 | | NON-SERVICEABLE (ORDER PART#324578) | 1 |
| 4-12 | 456722 | PIN, SPRING .250 DIA X 1.50 LONG | 2 |
| 16 | 180079 | SCREW, 5/16-18 X 1.00 HHC | 6 |
| 17 | 120393 | FLAT WASHER, .344 X .69 X .065 | 14 |
| 18 | 1498 | NUT, 5/16-18 REGHEXCTRLK | 8 |
| 19 | 323184 | BAR, DRAGLINK, BLACK | 1 |
| 20 | 308719 | PIVOT, STEERING | 1 |
| 21 | 322401 | BOLT, .562 X .340 HSSH 3/8-24 | 1 |
| 22 | 322402 | SPACER, STEERING SHAFT, HYDRO | 1 |
| 23 | 25177 | FLAT WASHER, .765 X 1.19 X .048 | 2 |
| 24 | 45602 | FLAT WASHER, .333 X .87 X .119 | 1 |
| 25 | 421051 | SCREW, 5/16-24 X 1.00 HHC | 1 |
| 26 | 302594 | FOLLOWER, ROLLER | 1 |
| 27 | 304116 | CAM YOKE, ROLLER | 1 |
| 28 | 304122 | BOLT, .625 X 1.175 HSSH | 1 |
| 29 | 274654 | NUT, 1/2-20 REGHXCTRLK | 1 |
| 30 | 324638 | BOLT, .265 X .980 HSSH 3/8-24 | 1 |
| 31 | 996307 | WASHER, FLAT .391 X 1.00 X .209 | 1 |
| 32 | 412349 | NUT, 3/8-24 HXCTRLK | 1 |
| 33 | 323189 | SHAFT, STEERING PIVOT | 1 |
| 34 | 323636 | TIE ROD ASSEMBLY, RH, 4WS & LF, HYDRO | 1 |
| 34-1 | 308384 | BALL JOINT, LH, 3/8-24 | 1 |
| 34-2 | 124925 | NUT, 3/8-24 REGHEXJAM | 1 |
| 34-3 | 313642 | ROD, TIE 1/2"D X 6.75 LONG | 1 |
| 34-4 | 304260 | BALL JOINT, RH, 3/8-24 | 1 |
| 34-5 | 308399 | NUT, 3/8-24, LH, THD REGHJAM | 1 |
| 40 | 323637 | TIE ROD ASSEMBLY, LH, EURO, 4WS & LF, HYDRO | 1 |
| 40-1 | 308384 | BALL JOINT, LH, 3/8-24 | 1 |
| 40-2 | 124925 | NUT, 3/8-24 REGHEXJAM | 1 |
| 40-3 | 313643 | ROD, TIE 1/2"D X 10.91 LONG | 1 |
| 40-4 | 304260 | BALL JOINT, RH, 3/8-24 | 1 |
| 40-5 | 308399 | NUT, 3/8-24 LH, THD REGHJAM | 1 |
| 46 | 181646 | SCREW, 3/8-24 X 1.75 HHC | 1 |
| 47 | 412349 | NUT, 3/8-24 HXCTRLK | 1 |
| 48 | 304120-853 | ARM, REAR WHEEL STEER, RH | 1 |
| 49 | 304121-853 | ARM, REAR WHEEL STEER, LH | 1 |
| 50 | 47792 | SCREW, 3/8-16 X 1.00 WAHHTAP, BLACK | 4 |
| 51 | 181639 | SCREW, 3/8-24 X 1.25 HHC | 2 |
| 52 | 120382 | WASHER, REGSPTLK .393 X .68 X .10 | 2 |
| 53 | 412349 | NUT, 3/8-24 HXCTRLK | 2 |
| 54 | 314511 | BRACKET, REAR PIVOT, HYDRO | 2 |
| 55 | 302303 | BEARING, SPINDLE FR W/HOLE | 2 |
| 56 | 44811 | SCREW, 1/4-20 X .75 WAHHTAP | 2 |
| 57 | 120380 | WASHER, REGSPTLK .263 X .49 X .07 | 2 |
| 58 | 120375 | NUT, 1/4-20 REGHEX | 2 |

E3560-920

REPAIR PARTS



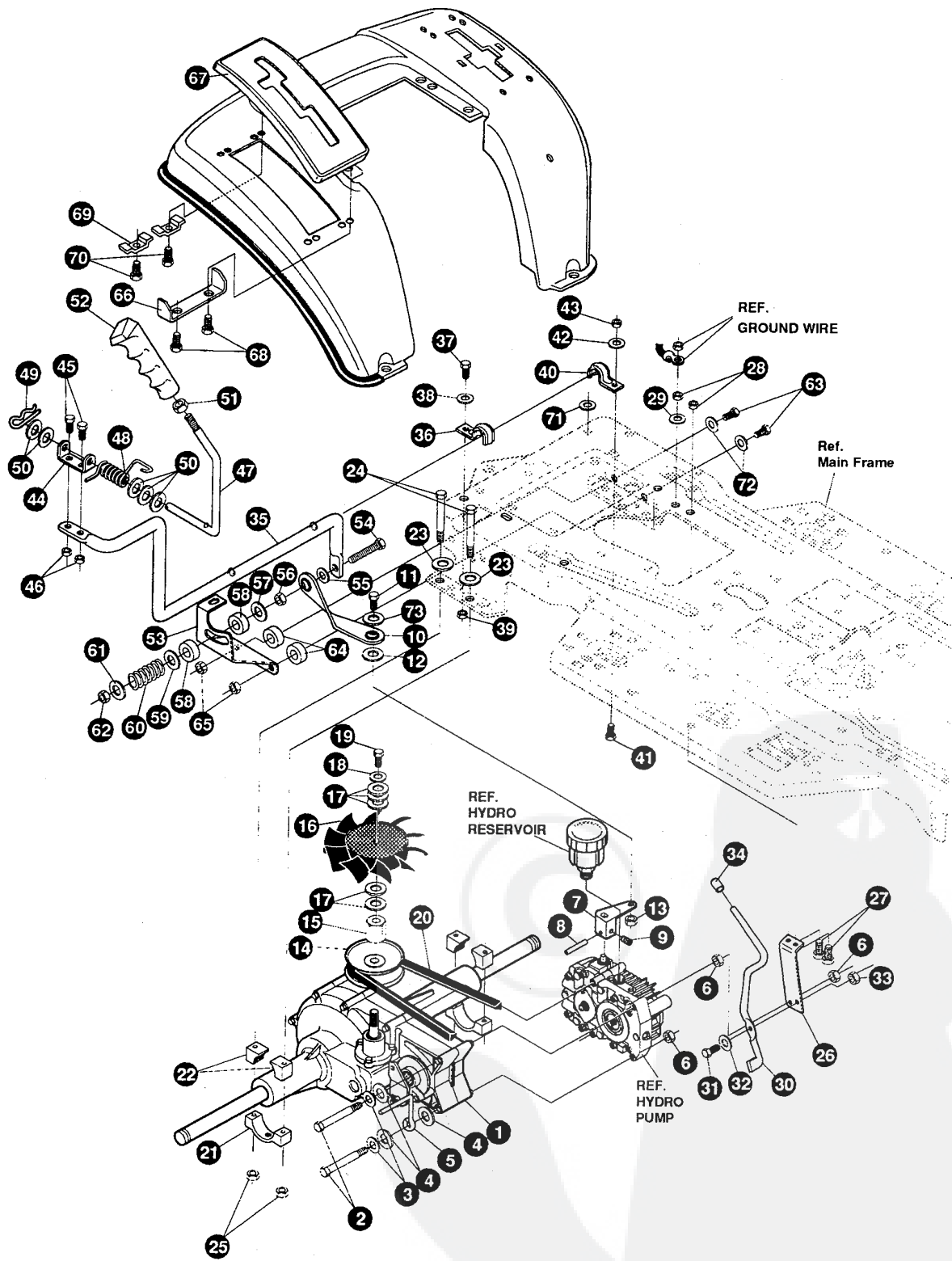
NOTE: ALWAYS USE ORIGINAL EQUIPMENT PARTS. Use of service/replacement parts other than original equipment parts may void your warranty.

ALL UNNUMBERED ITEMS ARE INTERCHANGEABLE WITH OPPOSITE SIDE

329633 B

E3560-920**MOWER SUSPENSION ASSEMBLY**

| KEY# | PART# | DESCRIPTION | QTY |
|------|------------|---|-----|
| 1 | 327021-853 | ASSEMBLY, WELD, CLUTCH HANDLE | 1 |
| 3 | 55514 | KNOB, ROUND 1.50 DIA BLACK | 1 |
| 4 | 9129 | CLIP, RETAINER BRACKET | 2 |
| 5 | 44811 | SCREW, 1/4-20 X .75 WAHTAP | 2 |
| 6 | 1288 | BRACKET, CABLE RETAINER | 1 |
| 7 | 48306 | PULLEY, POWDER METAL | 1 |
| 8 | 57322 | BOLT, .375 X .375 HSH 1/4-20 | 1 |
| 9 | 1502 | NUT, 1/4-20 REGHEXCTRLK | 1 |
| 10 | 328369 | ASSEMBLY, PTO BRACKET-CABLE 39" 40" & 43" | 1 |
| 11 | 120613 | NUT, 1/4-28 HJAM | 1 |
| 12 | 35498 | SCREW, 5/16-18 X .75 WAHTAP | 1 |
| 13 | 57444 | TIE, CABLE BLACK NYLON 5.62 LONG | 1 |
| 14 | 300158-853 | LIFT ASSEMBLY, LH | 1 |
| 15 | 300169-853 | LIFT ASSEMBLY, RH | 1 |
| 16 | 180079 | SCREW, 5/16-18 X 1.00 HHC | 1 |
| 17 | 58247 | NUT, ADJUST | 1 |
| 18 | 1498 | NUT, 5/16-18 REGHEXCTRLK | 1 |
| 19 | 417098 | WASHER, FLAT .531 X 1.06 X .063 | 2 |
| 20 | 8260 | PIN, HAIR .091 DIA X 1.66 LONG | 2 |
| 21 | 58248-853 | BRACKET, REAR HANG SUSPENSION | 2 |
| 22 | 57072 | BOLT, 5/16-18 X .63 CARRLN | 4 |
| 23 | 1498 | NUT, 5/16-18 REGHEXCTRLK | 4 |
| 24 | 313926 | BRACKET, HEIGHT/ADJUST SUPPORT | 1 |
| 25 | 180077 | SCREW, 5/16-18 X .75 HHC | 4 |
| 26 | 1498 | NUT, 5/16-18 REGHEXCTRLK | 4 |
| 31 | 180077 | SCREW, 5/16-18 X .75 HHC | 1 |
| 32 | 1498 | NUT, 5/16-18 REGHEXCTRLK | 1 |
| 33 | 301238 | QUADRANT, HEIGHT ADJUST | 1 |
| 34 | 180077 | SCREW, 5/16-18 X .75 HHC | 2 |
| 35 | 1498 | NUT, 5/16-18 REGHEXCTRLK | 2 |
| 36 | 322292-853 | HANDLE, LIFT SHORT (30" S.F.) | 1 |
| 37 | 300171 | BOLT, .500 X .270 HSH 5/16-18 | 1 |
| 38 | 996418 | WASHER, FLAT .506 X .75 X .024 | 1 |
| 39 | 44108 | NUT, 5/16-18 HWDFLCTRLK | 1 |
| 40 | 301239 | PAWL, SQUARE | 1 |
| 41 | 300171 | BOLT, .500 X .270 HSH 5/16-18 | 1 |
| 42 | 44108 | NUT, 5/16-18 HWDFLCTRLK | 1 |
| 43 | 9435 | POINTER, HEIGHT ADJUST | 1 |
| 44 | 138479 | WASHER, EXLK .195 X .41 X .03 | 1 |
| 45 | 35287 | SCREW, #8-32 X .38 HHWATAP | 1 |
| 46 | 303027 | ROD, ACTUATOR-SHORT | 1 |
| 47 | 58326 | SPRING, HEIGHT ADJUST | 1 |
| 48 | 58325 | KNOB, HEIGHT ADJUST PUSH BUTTON | 1 |
| 49 | 58329 | GRIP, .750 OD W/ HOLE BLACK | 1 |
| 50 | 9149 | BRACKET, CABLE RETAINER | 1 |
| 51 | 48306 | PULLEY, POWDER METAL | 1 |
| 52 | 58336 | BOLT, .375 X .375 HSH 1/4-20 | 1 |
| 53 | 1502 | NUT, 1/4-20 REGHEXCTRLK | 1 |
| 54 | 314177 | CABLE, LIFT 22.92 F-5 20 X 8-8 | 1 |
| 55 | 300310 | PIN, CLEVIS .310 DIA+ .475 LONG | 1 |
| 56 | 300311 | RING, RET E .31 X .25 TRU 5133-31 | 1 |
| 57 | 120375 | NUT, 1/4-20 REGHEX | 1 |
| 58 | 48306 | PULLEY, POWDER METAL | 1 |
| 59 | 300317 | PIN, CLEVIS .375 DIA X .81 LONG | 1 |
| 60 | 8260 | PIN, HAIR .091 DIA X 1.66 LONG | 1 |
| 61 | 9405 | CLEVIS, LIFT CABLE | 1 |
| 62 | 120372 | NUT, 1/4-20 REGSQ | 1 |
| 63 | 39522 | PIN, CLEVIS .312 X .812 | 1 |
| 64 | 121222 | PIN, COTTER .090 DIA X .75 LONG | 1 |
| 65 | 300335 | LIFT COVER-39" F5 | 1 |
| 66 | 300340 | SCREW, #10 X .75 HHPLAST BLACK | 3 |



NOTE: ALWAYS USE ORIGINAL EQUIPMENT PARTS. Use of service/replacement parts other than original equipment parts may void your warranty.

ALL UNNUMBERED ITEMS ARE INTERCHANGEABLE WITH OPPOSITE SIDE

330023 E

E3560-920

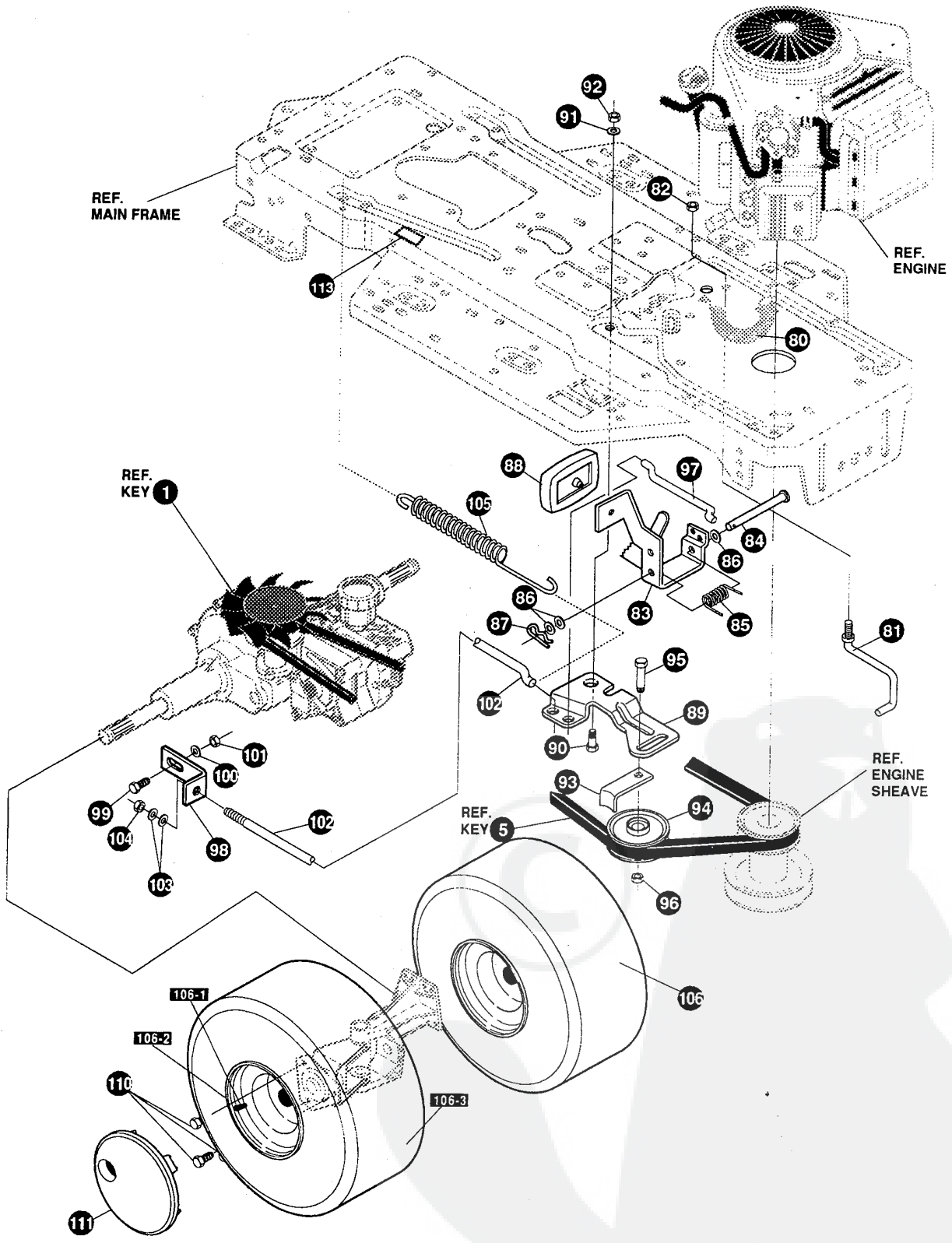
MOTION DRIVE ASSEMBLY

| KEY# | PART# | DESCRIPTION | QTY |
|------|------------|---------------------------------------|-----|
| 1 | ^ | TRANSAXLE, 4WS, HG, #217-1010S | 1 |
| 2 | 190628 | SCREW, 5/16-18 X 4.50 HHC | 2 |
| 3 | 120638 | WASHER, HVSP TLK .328 X .60 X .09 | 2 |
| 4 | 120393 | WASHER, FLAT .344 X .69 X .065 | 3 |
| 5 | 55480 | BELT GUIDE | 1 |
| 6 | 1498 | NUT, 5/16-18 REGHEX CTRLK | 3 |
| 7 | 310180 | SPEED CONTROL ARM, HYDRO | 1 |
| 8 | 456652 | SPRING PIN, .187 DIA X .88 LONG HVPL | 1 |
| 9 | 102570 | SCREW, 1/4-20 X .38 NYLALHSETCPPT | 1 |
| 10 | 314236 | SHIFT LINK, LF, HYDRO | 1 |
| 11 | 180124 | SCREW, 3/8-16 X 1.25 HHC | 1 |
| 12 | 120382 | WASHER, REGSPTLK .393 X .68 X .10 | 1 |
| 13 | 1499 | NUT, 3/8-16 REGHX CTRLK | 1 |
| 14 | 322403 | PULLEY ASSEMBLY, HYDRO | 1 |
| 15 | 322404 | PULLEY NUT, 1/2-20 AND 1/4-20 | 1 |
| 16 | 308523 | HYDRO FAN, 7.00 DIA-10 BLADES | 1 |
| 17 | 57626 | WASHER, FLAT .281 X 1.25 X .06 | 5 |
| 18 | 120380 | WASHER, REGSPTLK .263 X .49 X .07 | 1 |
| 19 | 180020 | SCREW, 1/4-20 X .75 HHC | 1 |
| 20 | 314572 | BELT, V 4L 80.16 HYDRO, LF | 1 |
| 21 | 310187 | MOUNTING BLOCKS, HYDRO | 2 |
| 22 | 310813 | MOUNTING BLOCK, LH, HYDRO | 4 |
| 23 | 120393 | WASHER, FLAT .344 X .69 X .065 | 4 |
| 24 | 180089 | SCREW, 5/16-18 X 2.25 HHC | 4 |
| 25 | 44108 | NUT, 5/16-18 HWD FL CTRLK | 4 |
| 26 | 314221 | STABILIZER BRACKET, LF, HYDRO | 1 |
| 27 | 180079 | SCREW, 5/16-18 X 1.00 HHC | 2 |
| 28 | 1498 | NUT, 5/16-18 REGHEX CTRLK | 2 |
| 29 | 138538 | WASHER, REGINTLK .320 X .61 X .03 | 1 |
| 30 | 314222 | ROD-DUMP VALVE, LF, HYDRO, ZINC | 1 |
| 31 | 310088 | BOLT, .250 X .312 HHSH 1/4-20 | 1 |
| 32 | 2483 | WASHER, .39 ID X 1.25 D X .07 BELLVIL | 1 |
| 33 | 1502 | NUT, 1/4-20 REGHEX CTRLK | 1 |
| 34 | 7289 | STOP, PLASTIC .375, BLACK | 1 |
| 35 | 319115 | LEVER, SHIFT-LOWER, LF, HYDRO | 1 |
| 36 | 310347-853 | CLIP- SHIFT LEVER .625 ROD | 1 |
| 37 | 180077 | SCREW, 5/16-18 X .75 HHC | 1 |
| 38 | 996416 | WASHER, FLAT .391 X 1.00 X .125 | 1 |
| 39 | 1498 | NUT, 5/16-18 REGHEX CTRLK | 1 |
| 40 | 310347-853 | CLIP, SHIFT LEVER .625 ROD | 1 |
| 41 | 180077 | SCREW, 5/16-18 X .75 HHC | 1 |
| 42 | 996416 | WASHER, FLAT .391 X 1.00 X .125 | 1 |
| 43 | 1498 | NUT, 5/16-18 REGHEX CTRLK | 1 |
| 44 | 310356 | BRACKET, PIVOT SHIFT LEVER | 1 |
| 45 | 180020 | SCREW, 1/4-20 X .75 HHC | 2 |
| 46 | 1502 | NUT, 1/4-20 REGHEX CTRLK | 2 |
| 47 | 318452 | LEVER, SHIFT UPPER, SOF 1/2-13 | 1 |
| 48 | 318451 | SPRING, TORSION .56 X .95 X .095 | 1 |
| 49 | 8260 | PIN, HAIR .091 DIA X 1.66 LONG | 1 |
| 50 | 2968 | WASHER, FLAT .504 X .75 X .059 | 5 |
| 51 | 120238 | NUT, 1/2-13 HEXJAM | 1 |
| 52 | 306690 | HANDLE, 1/2-13 MOLDED BLACK | 1 |
| 53 | 314473-853 | QUADRANT, SPEED CONTROL | 1 |
| 54 | 7288 | SCREW, 3/8-16 X 3.00 HHCFT | 1 |
| 55 | 120382 | WASHER, REGSPTLK .393 X .68 X .10 | 1 |
| 56 | 45171 | NUT, 3/8-16 HWD FL WHIZ-LOCK | 1 |
| 57 | 845 | WASHER, FLAT .390 X 1.25 X .119 | 1 |
| 58 | 314944 | WASHER, FRICTION FABOND 232 AF | 2 |
| 59 | 845 | WASHER, FLAT .390 X 1.25 X .119 | 1 |
| 60 | 29170 | SPRING | 1 |
| 61 | 120394 | WASHER, FLAT .406 X .81 X .065 | 1 |
| 62 | 1499 | NUT, 3/8-16 REGHX CTRLK | 1 |
| 63 | 180083 | SCREW, 5/16-18 X 1.50 HHC | 2 |
| 64 | 314702 | SPACER, SLEEVE .344 X 1.00 X .500 PM | 2 |
| 65 | 1498 | NUT, 5/16-18 REGHEX CTRLK | 2 |
| 66 | 311257-853 | BRACKET COVER, F-5, FENDER SHIFT | 1 |
| 67 | 314244 | PLASTIC COVER, LF, HYDRO, F-5 | 1 |
| 68 | 311331 | SCREW, 1/4-15 X .44/.53 HILOHWA | 2 |
| 69 | 1341 | CLAMP, SPRING 1.17" ID | 2 |
| 70 | 311331 | SCREW, 1/4-15 X .44/.53 HILOHWA | 2 |
| 71 | 309436 | PUSHNUT, 5/16 BOLT RETAINER | 1 |
| 72 | 120393 | WASHER, FLAT .344 X .69 X .065 | 2 |
| 73 | 120394 | WASHER, FLAT .406 X .81 X .065 | 1 |

^ SEE TRANSAXLE BREAKDOWN PAGES IN THIS MANUAL

E3560-920

REPAIR PARTS



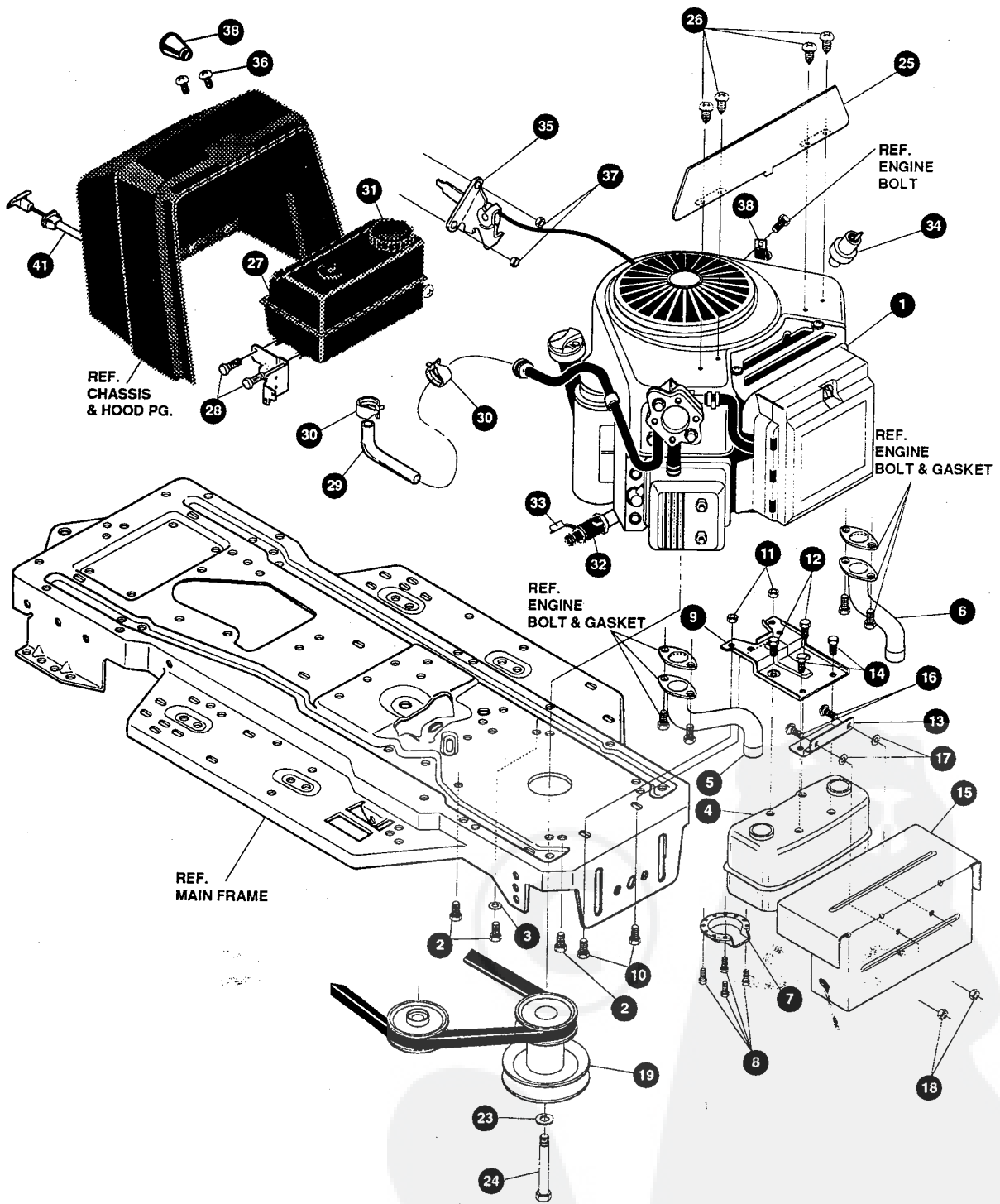
NOTE: ALWAYS USE ORIGINAL EQUIPMENT PARTS. Use of service/replacement parts other than original equipment parts may void your warranty.

ALL UNNUMBERED ITEMS ARE INTERCHANGEABLE WITH OPPOSITE SIDE

330023 E

E3560-920**MOTION DRIVE ASSEMBLY**

| KEY# | PART# | DESCRIPTION | QTY |
|-------|--------|--|-----|
| 80 | 321514 | SPRING, DRAG LINK BIAS..... | 1 |
| 81 | 304016 | GUIDE, BELT RH..... | 1 |
| 82 | 1498 | NUT, 5/16-18 REGHEXCTRLK..... | 1 |
| 83 | 325942 | PEDAL ASSEMBLY, BRAKE/CLUTCH, LF..... | 1 |
| 84 | 319675 | PIN, CLEVIS .500 D X 4.53 LONG..... | 1 |
| 85 | 57847 | SPRING, BRAKE PEDAL..... | 1 |
| 86 | 2968 | WASHER, FLAT .504X .75X.059..... | 3 |
| 87 | 56180 | PIN, HAIR .091 DIA X 1.62 LONG..... | 1 |
| 88 | 48160 | PAD, CLUTCH BRAKE W/PRINTING..... | 1 |
| 89 | 320381 | ARM, IDLER TRACTION, SOG, LF..... | 1 |
| 90 | 329989 | BOLT, .625 X .135 HSSH 5/16-18..... | 1 |
| 91 | 45602 | WASHER, FLAT .333 X .87 X .119..... | 1 |
| 92 | 1498 | NUT, 5/16-18 REGHEXCTRLK..... | 1 |
| 93 | 39659 | RETAINER, BELT..... | 1 |
| 94 | 35374 | PULLEY, IDLER V4L 3.06 X .62..... | 1 |
| 95 | 45892 | BOLT, 3/8-16 X 1.50 CARRSN..... | 1 |
| 96 | 1499 | NUT, 3/8-16 REGHXCTRLK..... | 1 |
| 97 | 57204 | ROD, CLUTCH 3.92"..... | 1 |
| 98 | 57217 | BRACKET, BRAKE ROD..... | 1 |
| 99 | 20507 | BOLT, .437 X .156 HSSH 5/16-18..... | 1 |
| 100 | 45602 | WASHER, FLAT .333 X .87 X .119..... | 1 |
| 101 | 1498 | NUT, 5/16-18 REGHEXCTRLK..... | 1 |
| 102 | 316293 | ROD, BRAKE 22.25, LF..... | 1 |
| 103 | 120393 | WASHER, FLAT .344 X .69 X .065..... | 2 |
| 104 | 1498 | NUT, 5/16-18 REGHEXCTRLK..... | 1 |
| 105 | 325123 | SPRING, CLUTCH 16.01 X 750 X 6.88..... | 1 |
| 106 | 316665 | TIRE & RIM, 20 X 10.00-8..... | 2 |
| 106-1 | 24167 | VALVE STEM | |
| 106-2 | 316667 | RIM, WHEEL | |
| 106-3 | TIRE | REFER TO TIRE TREAD PAGE | |
| 110 | 181683 | SCREW, 1/2-20 X .50 HHC..... | 6 |
| 111 | 304441 | HUB CAP, 8" EURO..... | 2 |
| 112 | 306669 | CLIP, HUBCAP TINN #C25467-017-4..... | 10 |
| 113 | 313039 | DECAL, 4WS PATENT NO. 5048853..... | 1 |



NOTE: ALWAYS USE ORIGINAL EQUIPMENT PARTS. Use of service/replacement parts other than original equipment parts may void your warranty.

ALL UNNUMBERED ITEMS ARE INTERCHANGEABLE WITH OPPOSITE SIDE

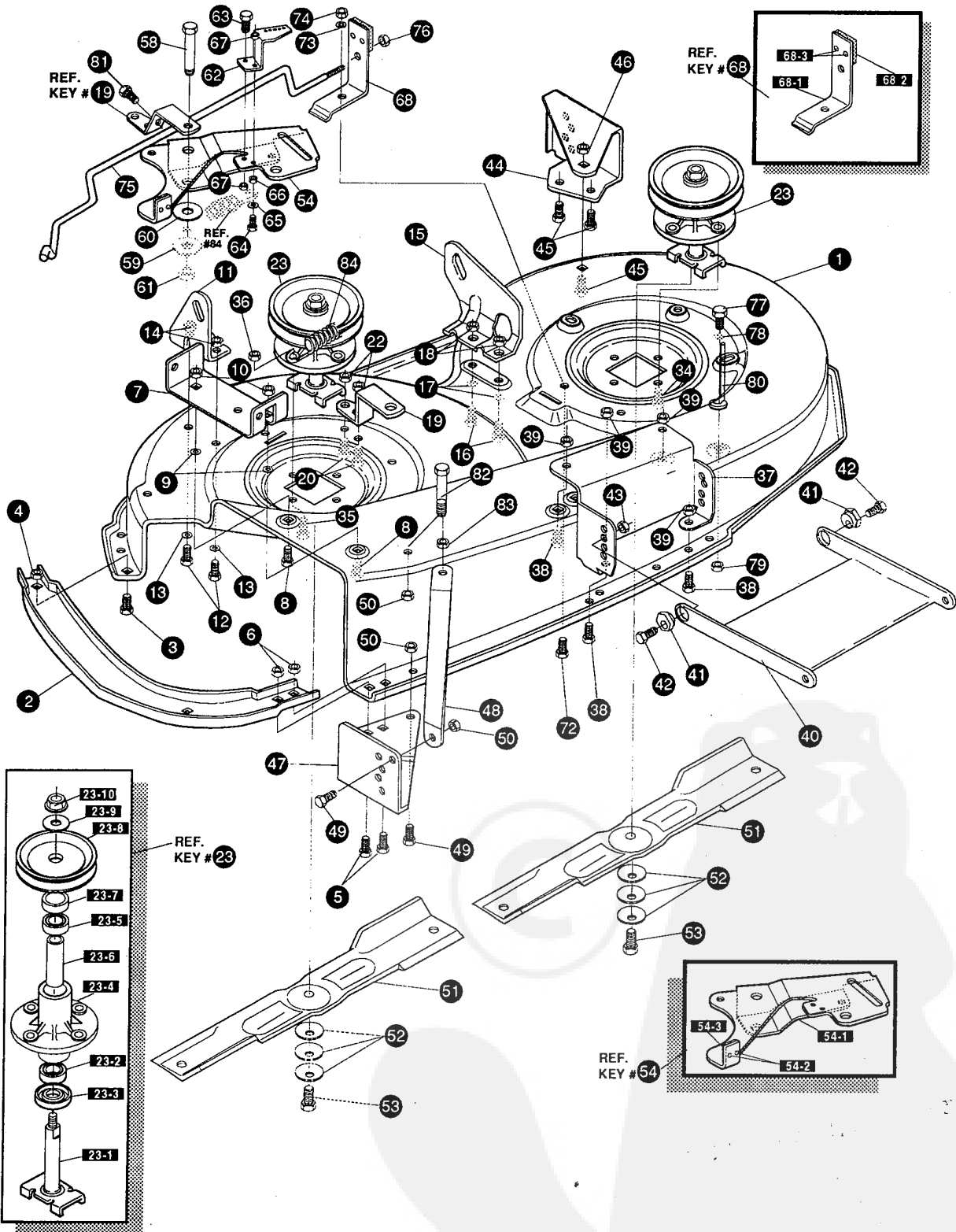
330404 A

E3560-920**ENGINE & CONTROL ASSEMBLY**

| KEY# | PART# | DESCRIPTION | QTY |
|------|------------|---|-------|
| 1 | ENGINE | 14-16HP, VANGUARD (SEE ENGINE MANUAL) | 1 |
| 2 | 50947 | SCREW, 3/8-16 X 1.25 WAHHTAP, BLACK | 4 |
| 3 | 138489 | WASHER, EXLK .384 X .69 X .04 | 1 |
| 4 | 305553 | MUFFLER, 14/18HP, TWIN NELSON, 22785 C | 1 |
| 5 | 305554 | EXHAUST TUBE, 15HP, RH, B&S, VANG | 1 |
| 6 | 305555 | EXHAUST TUBE, 15HP, LH, B&S, VANG | 1 |
| 7 | 56472 | DEFLECTOR SIDE OUT (BS222573) | 1 |
| 8 | 35287 | SCREW, #8-32 X .38 HHWATAP | 4 |
| 9 | 304709-853 | BRACKET, MUFFLER | 1 |
| 10 | 56030 | SCREW, 5/16-18 X .75 WDFLLK | 2 |
| 11 | 55273 | NUT, 5/16-18 HXWDFLLK | 2 |
| 12 | 995346 | SCREW, 1/4-20 X .50 WAHHTAP | 2 |
| 13 | 9796 | BRACKET, TRANSAXLE | 1 |
| 14 | 44811 | SCREW, 1/4-20 X .75 WAHHTAP | 2 |
| 15 | 320922-853 | SHIELD, MUFFLER HEAT, TWIN | 1 |
| 16 | 57072 | BOLT, 5/16-18 X .63 CARRLN | 2 |
| 17 | 309436 | PUSHNUT, 5/16 BOLT RETAINER | 2 |
| 18 | 55273 | NUT, 5/16-18 HXWDFLLK | 2 |
| 19 | 328029 | PULLEY, ENGINE, 4.40 OFF/5.00 D/3.00 D | 1 |
| 23 | 120383 | WASHER, REGSPTLK .459 X .78 X .12 | 1 |
| 24 | 428644 | SCREW, 7/16-20 X 5.00 HHC | 1 |
| 25 | 312728-853 | HEAT SHIELD, VANG | 1 |
| 26 | 57366 | SCREW, 10-16 X .50 DRILLTITE | 4 |
| 27 | 309853 | TANK, FUEL 1.5 WO/SENSOR, CLEAR | 1 |
| 28 | 49050 | SCREW, 1/4-10 X .75 PHPNTAP | 4 |
| 29 | 48049 | TUBING, .25 X .50 X BULK GAS LINE | 10.0" |
| 30 | 47345 | CLAMP, HOSE SCREW TYPE | 2 |
| 31 | 12501 | CAP, FUEL 2.5" THROAT | 1 |
| 32 | 325547 | OIL DRAIN VALVE ASSEMBLY | 1 |
| 33 | 327422 | CAP, OIL DRAIN VALVE ASSEMBLY, YELLOW | 1 |
| 34 | 314797 | OIL SENSOR, B&S, TWIN CYLINDER | 1 |
| 35 | 329218 | CONTROL, THROTTLE, 33.1 LONG, B&S, VANG | 1 |
| 36 | 155941 | SCREW, 10-24 X .63 PHFLTMA | 2 |
| 37 | 308459 | NUT, #10-24 HXHDNYLK | 2 |
| 38 | 50607 | KNOB, ROUND THROTTLE, BLACK | 1 |
| 38 | 50607 | KNOB, ROUND THROTTLE, BLACK | 1 |
| 41 | 329219 | CONTROL, CHOKE 28.0 LONG | 1 |

E3560-920

REPAIR PARTS



NOTE: ALWAYS USE ORIGINAL EQUIPMENT PARTS. Use of service/replacement parts other than original equipment parts may void your warranty.

ALL UNNUMBERED ITEMS ARE INTERCHANGEABLE WITH OPPOSITE SIDE

324144 G

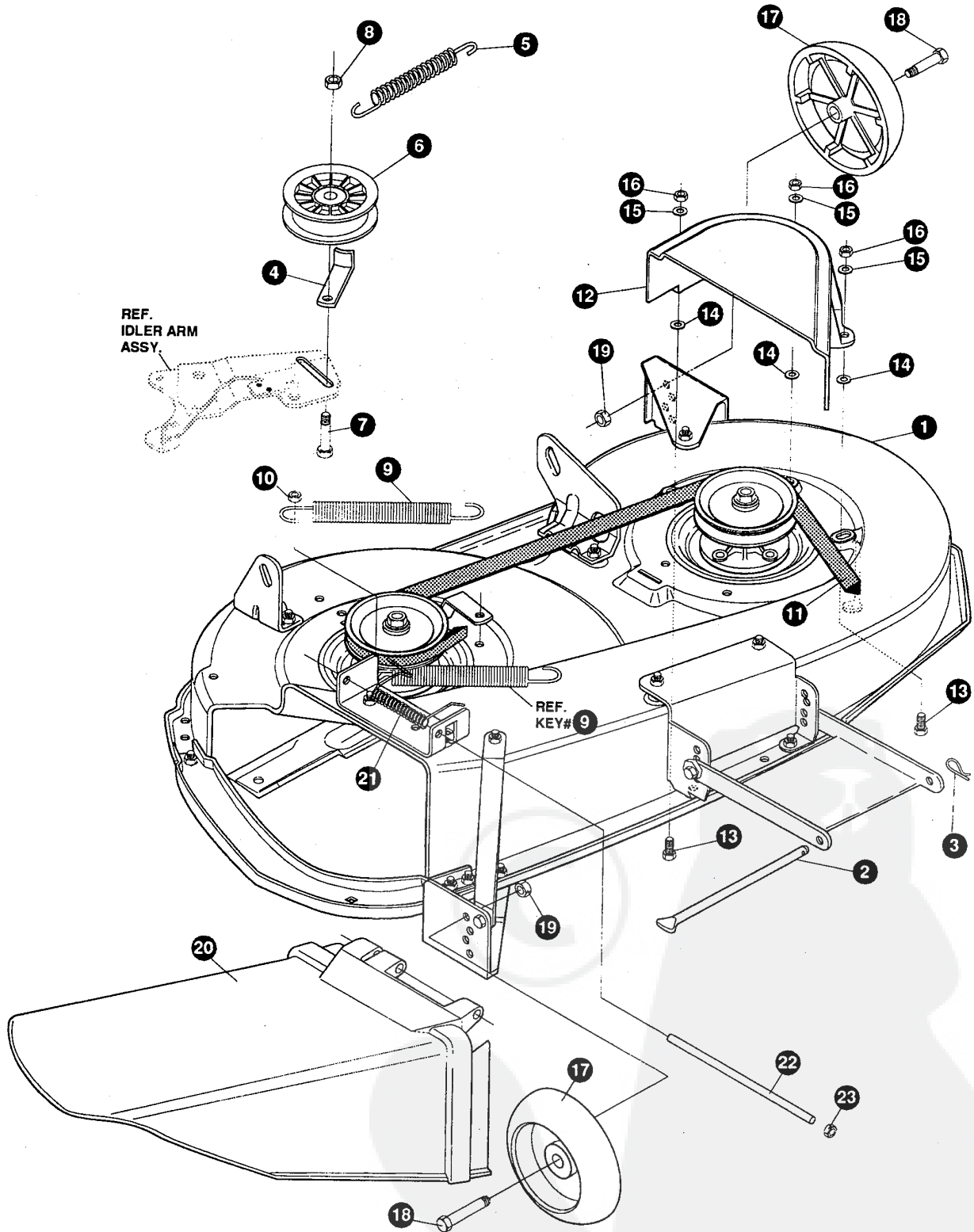
E3560-920

PRE-PAINTED DECK ASSEMBLY

| KEY# | PART# | DESCRIPTION | QTY |
|-------|--------|---------------------------------------|-----|
| 1 | 325116 | 43" DECK KIT | 1 |
| 2 | 326480 | TOE GUARD - MULCHER | 1 |
| 3 | 180077 | SCREW, 5/16-18 X .75 HHC | 1 |
| 4 | 1498 | NUT, 5/16-18 REGHEXCTRLK | 1 |
| 5 | 180077 | SCREW, 5/16-18 X .75 HHC | 2 |
| 6 | 1498 | NUT, 5/16-18 REGHEXCTRLK | 2 |
| 7 | 317017 | BRACKET, CHUTE MOUNT, BLACK | 1 |
| 8 | 180077 | SCREW, 5/16-18 X .75 HHC | 2 |
| 9 | 120393 | WASHER, FLAT .344 X .69 X .065 | 2 |
| 10 | 1498 | NUT, 5/16-18 REGHEXCTRLK | 2 |
| 11 | 313929 | LIFT BRACKET, REAR, RH, BLACK | 1 |
| 12 | 180077 | SCREW, 5/16-18 X .75 HHC | 2 |
| 13 | 120393 | WASHER, FLAT .344 X .69 X .065 | 2 |
| 14 | 1498 | NUT, 5/16-18 REGHEXCTRLK | 2 |
| 15 | 310667 | BRACKET, DECK, LIFT, REAR, LH, BLACK | 1 |
| 16 | 180077 | SCREW, 5/16-18 X .75 HHC | 2 |
| 17 | 120393 | WASHER, FLAT .344 X .69 X .065 | 2 |
| 18 | 1498 | NUT, 5/16-18 REGHEXCTRLK | 2 |
| 19 | 326893 | BRACE, IDLER SUPPORT 40", 43" | 1 |
| 20 | 180077 | SCREW, 5/16-18 X .75 HHC | 2 |
| 22 | 44108 | NUT, 5/16-18 HWDFLCTRLK | 2 |
| 23 | 56424 | QUILL ASSEMBLY, 36/39/40/43 | 2 |
| 23-1 | 56425 | SHAFT/SADDLE 36" | 1 |
| 23-2 | 49562 | BEARING, BALL 6203-2AA(SEALS)-C3 | 1 |
| 23-3 | 50616 | DUST SHIELD | 1 |
| 23-4 | 55547 | QUILL CASTING (1046) | 1 |
| 23-5 | 49562 | BEARING, BALL 6203-2AA (SEALS)-C3 | 1 |
| 23-6 | 50818 | SPACER, SLEEVE .669 X .88 X 3.797 | 1 |
| 23-7 | 51449 | SPACER, SLEEVE .672X .93X .438 | 1 |
| 23-8 | 313898 | PULLEY ASSEMBLY | 1 |
| 23-9 | 56365 | WASHER, SPECIAL QUILL | 1 |
| 23-10 | 1282 | NUT, 7/16-20 WDFLLK | 1 |
| 34 | 35498 | SCREW, 5/16-18 X .75 WAHHTAP | 7 |
| 35 | 300345 | SCREW, 5/16-18 X 1.38 WAHHTAP | 1 |
| 36 | 1498 | NUT, 5/16-18 REGHEXCTRLK | 1 |
| 37 | 317040 | BRACKET, FRONT, BLACK | 1 |
| 38 | 180077 | SCREW, 5/16-18 X .75 HHC | 4 |
| 39 | 1498 | NUT, 5/16-18 REGHEXCTRLK | 4 |
| 40 | 58305 | BRACKET, LINK DECK FRONT | 1 |
| 41 | 58247 | NUT, ADJUST | 2 |
| 42 | 180079 | SCREW, 5/16-18 X 1.00 HHC | 2 |
| 43 | 1498 | NUT, 5/16-18 REGHEXCTRLK | 2 |
| 44 | 317041 | BRACKET, GAGE WHEEL, LH, BLACK | 1 |
| 45 | 180077 | SCREW, 5/16-18 X .75 HHC | 3 |
| 46 | 1498 | NUT, 5/16-18 REGHEXCTRLK | 3 |
| 47 | 322464 | BRACKET, GAGE WHEEL, RH, FRONT | 1 |
| 48 | 314282 | BRACKET, STABILIZER | 1 |
| 49 | 180077 | SCREW, 5/16-18 X .75 HHC | 2 |
| 50 | 1498 | NUT, 5/16-18 REGHEXCTRLK | 3 |
| 51 | 326961 | BLADE, 43", BLACK | 2 |
| 52 | 2483 | WASHER, .39 ID X 1.25 D X .07 BELLVIL | 6 |
| 53 | 39573 | SCREW, 3/8-24 X 1.00 NYLHHC | 2 |
| 54 | 320576 | IDLER ARM ASSEMBLY | 1 |
| 54-1 | 322116 | ARM, IDLER 40/43" DECK | 1 |
| 54-2 | 41601 | RIVET, OVSET .187 DIA X .50 LONG | 2 |
| 54-3 | 306973 | BRAKE PAD - HARD - 232 AF | 1 |
| 58 | 304420 | BOLT, .500 X 2.15 HHSH | 1 |
| 59 | 996416 | WASHER, FLAT .391 X 1.00 X .125 | 1 |
| 60 | 996307 | WASHER, FLAT .391 X 1.00 X .209 | 1 |
| 61 | 45171 | NUT, 3/8-16 HWDFL WHIZ-LOCK | 1 |
| 62 | 326249 | BRACKET, EXTENSION IDLER | 1 |
| 63 | 180077 | SCREW, 5/16-18 X .75 HHC | 1 |
| 64 | 180083 | SCREW, 5/16-18 X 1.50 HHC | 1 |
| 65 | 446363 | WASHER, FLAT .375 X .88 X .082 | 1 |
| 66 | 271184 | NUT, 5/16-18 HEXKEPS | 1 |
| 67 | 1498 | NUT, 5/16-18 REGHEXCTRLK | 2 |
| 68 | 321828 | BLADE BRAKE ASSEMBLY | 1 |
| 68-1 | 135624 | RIVET, TRSET .185 DIA X .41 LONG | 2 |
| 68-2 | 304119 | BRAKE ARM | 1 |
| 68-3 | 306973 | BRAKE PAD - HARD - 232 AF | 1 |
| 72 | 180077 | SCREW, 5/16-18 X .75 HHC | 1 |
| 73 | 120393 | WASHER, FLAT .344 X .69 X .065 | 1 |
| 74 | 1498 | NUT, 5/16-18 REGHEXCTRLK | 1 |
| 75 | 314079 | ROD, BRAKE | 1 |
| 76 | 1502 | NUT, 1/4-20 REGHEXCTRLK | 1 |
| 77 | 180079 | SCREW, 5/16-18 X 1.00 HHC | 1 |
| 78 | 120393 | WASHER, FLAT .344 X .69 X .065 | 1 |
| 79 | 1498 | NUT, 5/16-18 REGHEXCTRLK | 1 |
| 80 | 325965 | BELT GUIDE, 43" DECK UPSTOP | 1 |
| 81 | 308231 | SCREW, 1/4-20 X 1.25 HHWATAP | 1 |
| 82 | 311104 | SCREW, 5/16-18 X 5.00 HHC | 1 |
| 83 | 271184 | NUT, 5/16-18 HEXKEPS | 1 |
| 84 | 35410 | SPRING, .071 X .62 X 4.37 | 1 |

E3560-920

REPAIR PARTS



NOTE: ALWAYS USE ORIGINAL EQUIPMENT PARTS. Use of service/replacement parts other than original equipment parts may void your warranty.

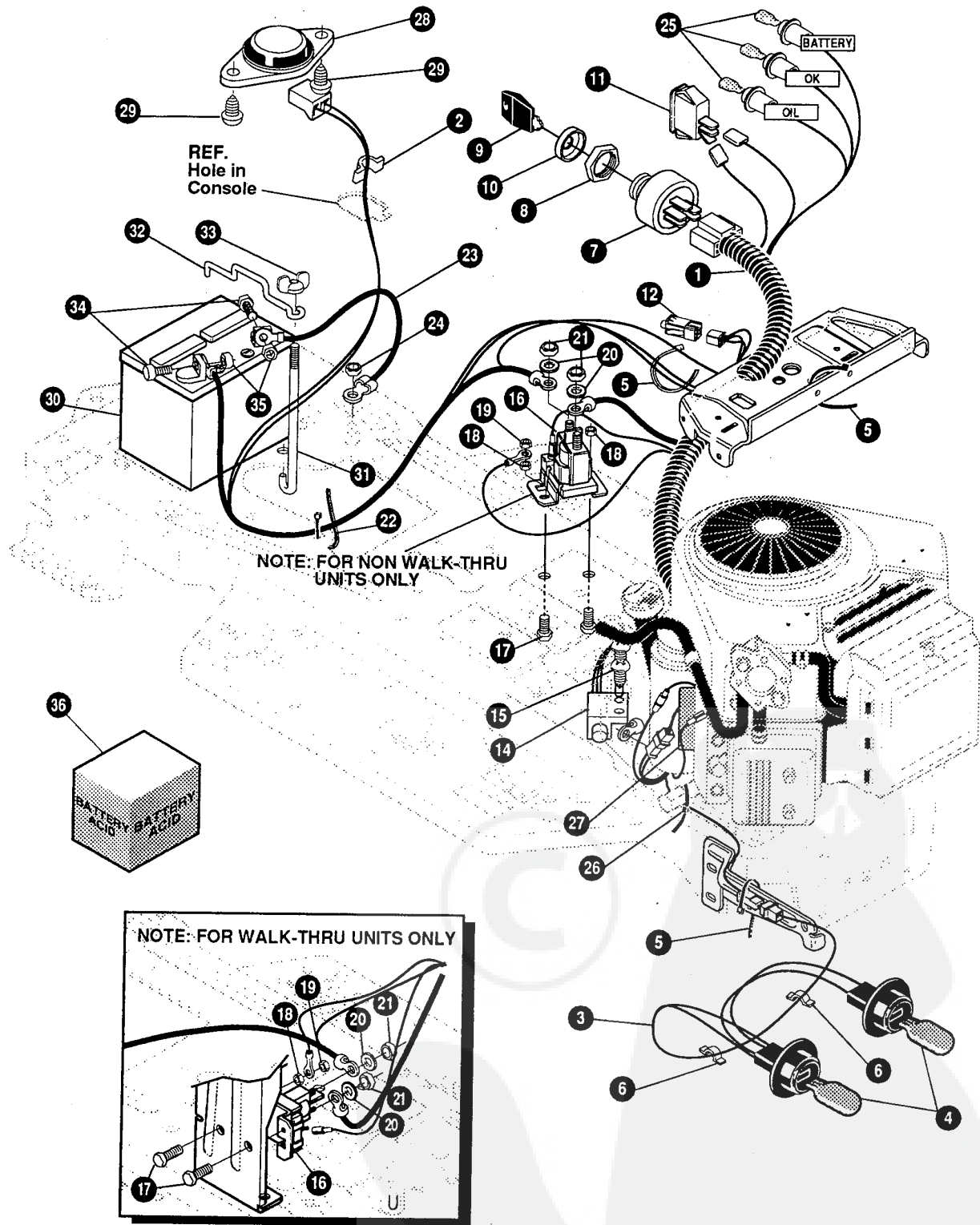
ALL UNNUMBERED ITEMS ARE INTERCHANGEABLE WITH OPPOSITE SIDE

326401 C

E3560-920

FINAL DECK ASSEMBLY

| KEY# | PART# | DESCRIPTION | QTY |
|------|--------|---|-----|
| 1 | 329036 | DECK, 43" MOWER, 2-WHEEL, EXPORT | 1 |
| 2 | 58306 | ROD, DECK HITCH | 1 |
| 3 | 8260 | PIN, HAIR .091 DIA X 1.66 LONG | 1 |
| 4 | 1346 | RETAINER, BELT | 1 |
| 5 | 314107 | SPRING, TENSION 5.00 LONG+17 LB/IN | 1 |
| 6 | 310326 | PULLEY, IDLER BFF 4.00 WIDE FL | 1 |
| 7 | 126416 | BOLT, 3/8-16 X 1.75 CARRLN | 1 |
| 8 | 45171 | NUT, 3/8-16 HWDFL WHIZ-LOCK | 1 |
| 9 | 35410 | SPRING, .071 X .62 X 4.37 | 1 |
| 10 | 1498 | NUT, 5/16-18 REGHEXCTRLK | 1 |
| 11 | 314108 | BELT, V 5L 86.00 KEVLAR | 1 |
| 12 | 333073 | GUARD, BELT, LH, PLASTIC | 1 |
| 13 | 57101 | BOLT, 5/16-18 X .75 CARRSN | 3 |
| 14 | 309436 | PUSHNUT, 5/16 BOLT RETAINER | 3 |
| 15 | 120393 | WASHER, FLAT .344 X .69 X .065 | 3 |
| 16 | 1498 | NUT, 5/16-18 REGHEXCTRLK | 3 |
| 17 | 302611 | GAUGE WHEEL, EURO 6.00 OD X 1.38 WD | 2 |
| 18 | 23763 | BOLT, .500 X 1.390 HSH 3/8-16 | 2 |
| 19 | 1499 | NUT, 3/8-16 REGHXCTRLK | 2 |
| 20 | 304422 | CHUTE DEFLECTOR, 40",42"&43" | 1 |
| 21 | 314975 | SPRING, TORSION, CHUTE DEFLECTOR | 1 |
| 22 | 304424 | ROD, PIVOT DECK .312 D X 7.25 | 1 |
| 23 | 3535 | NUT, PUSH ON CAP .312 OD | 1 |



NOTE: ALWAYS USE ORIGINAL EQUIPMENT PARTS. Use of service/replacement parts other than original equipment parts may void your warranty.

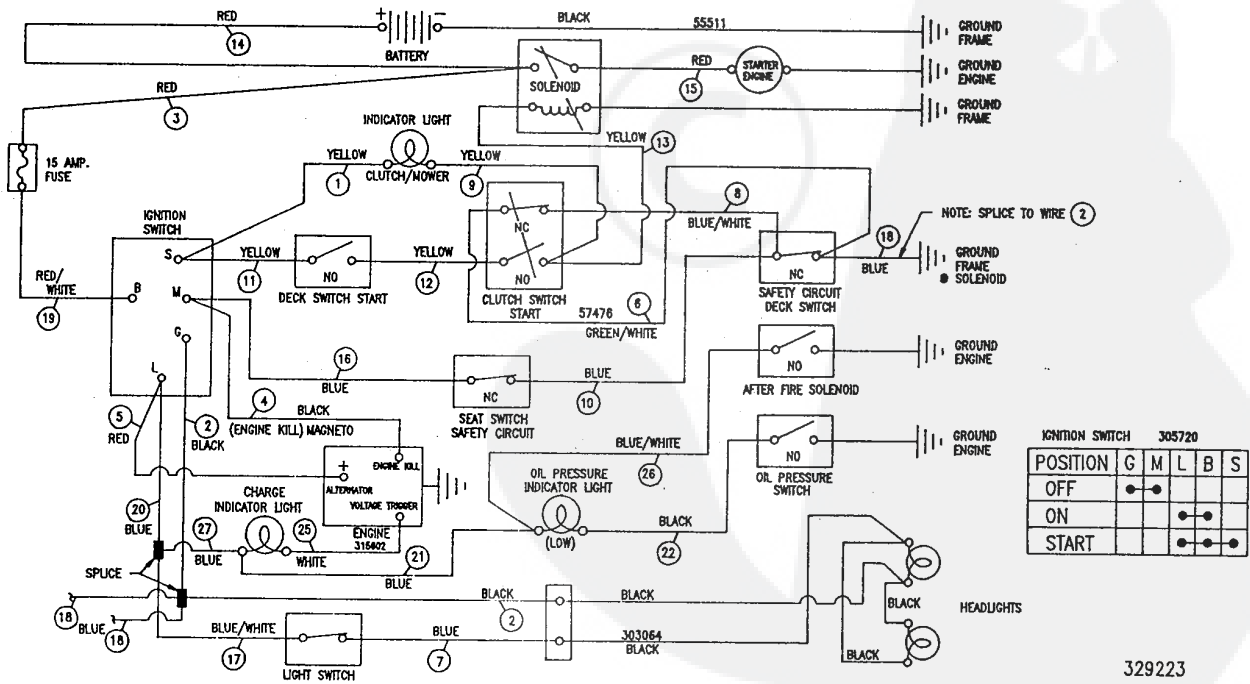
ALL UNNUMBERED ITEMS ARE INTERCHANGEABLE WITH OPPOSITE SIDE

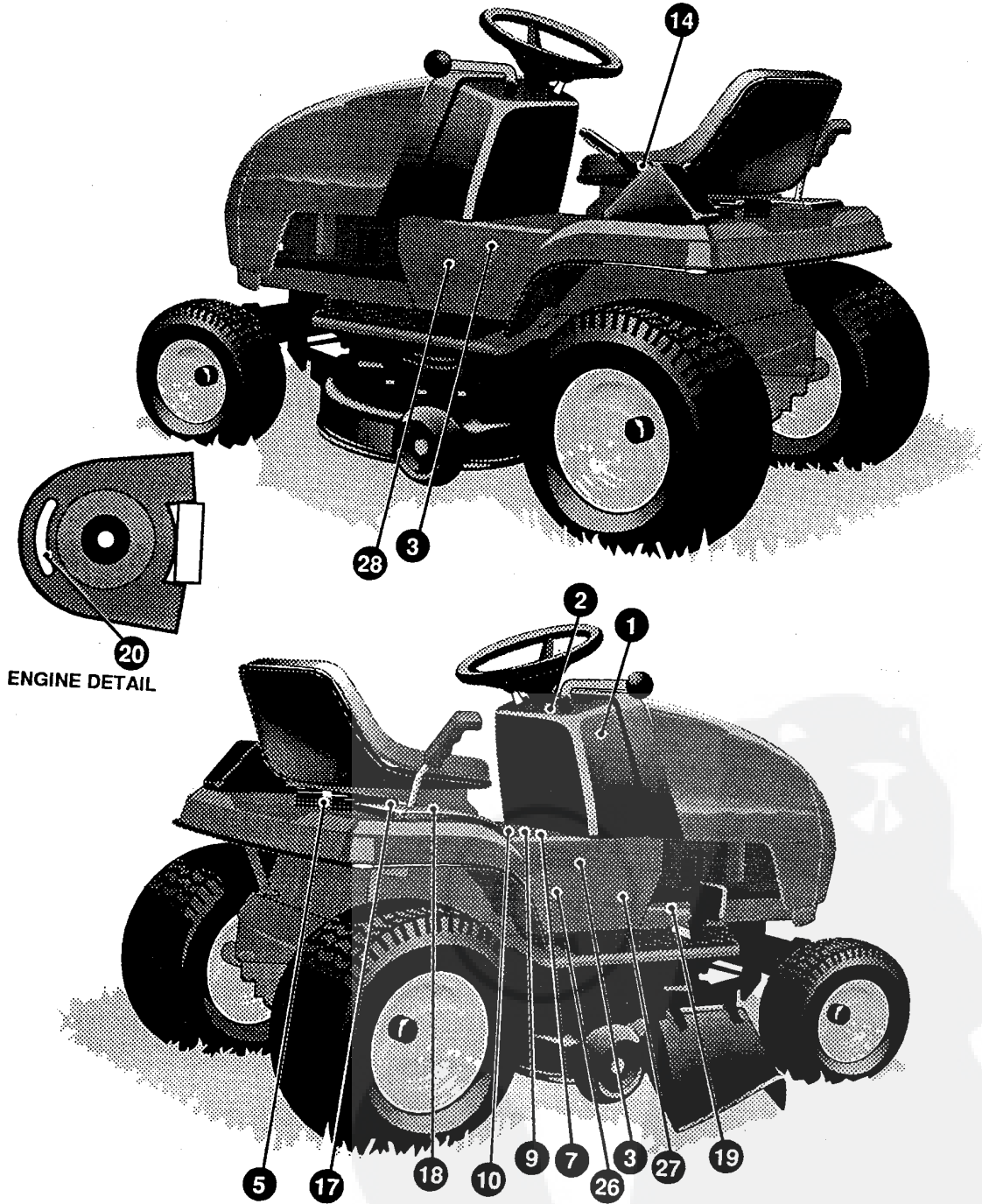
328783C

| KEY# | PART# | DESCRIPTION | QTY |
|------|--------|---|-----|
| 1 | 329223 | WIRE HARNESS, 14-18HP, VANG, H25/G22 | 1 |
| 2 | 41482 | PRESS CLIP, 1.380 LONG .255 ID | 1 |
| 3 | 303064 | ASSEMBLY, LIGHT WIRE-1/4 TURN | 1 |
| 4 | 52572 | BULB, HEADLAMP | 2 |
| 5 | 57444 | TIE, CABLE BLACK NYLON 5.62 LONG | 4 |
| 6 | 41482 | PRESS CLIP, 1.380 LONG .255ID | 2 |
| 7 | 327355 | SWITCH-IGNITION (AFTER FIRE) 3 POSITION | 1 |
| 8 | 327352 | NUT, 5/8-8 ACME DELTA FOR BOOT | 1 |
| 9 | 327350 | KEY, IGNITION, DELTA | 2 |
| 10 | 300194 | BOOT, IGNITION SWITCH | 1 |
| 11 | 328826 | LIGHT SWITCH, PANEL MOUNT | 1 |
| 12 | 320082 | SWITCH, DOUBLE POLE, NO/NC GRAY | 1 |
| 13 | 57444 | TIE, CABLE BLACK NYLON 5.62 LONG | 1 |
| 14 | 57476 | SWITCH, SCREW MOUNT, DP, NC, NO BLACK | 1 |
| 15 | 57220 | SCREW, #12 X .50 PHPNHTAP BLACK | 2 |
| 16 | 53716 | SOLENOID | 1 |
| 17 | 187745 | SCREW, 1/4-20 X .75 HXSEMMA | 2 |
| 18 | 1502 | NUT, 1/4-20 REGHEXCTRLK | 2 |
| 19 | 271172 | NUT, 1/4-20 REGHEXKEPS | 1 |
| 20 | 138485 | WASHER, EXLK .320 X .61 X .03 | 2 |
| 21 | 120368 | NUT, 5/16-24 REGHEX | 2 |
| 22 | 57444 | TIE, CABLE BLACK NYLON 5.62 LONG | 1 |
| 23 | 55511 | WIRE, GROUND, 12.5" | 1 |
| 24 | 271184 | NUT, 5/16-18 HEXKEPS | 1 |
| 25 | 57769 | BULB, INDICATOR | 3 |
| 26 | 57444 | TIE, CABLE BLACK NYLON 5.62 LONG | 1 |
| 27 | 315602 | REGULATOR, SENSOR VOLT, B&S, W/SENSOR | 1 |
| 28 | 57547 | SWITCH, SEAT | 1 |
| 29 | 160505 | SCREW, 1/4-20 X .38 PHPNHMA | 2 |
| 30 | 302257 | BATTERY, 12V | 1 |
| 31 | 57551 | ROD, BATTERY | 1 |
| 32 | 57552 | ROD, BATTERY, TOP | 1 |
| 33 | 325232 | NUT, WING 1/4-20 NYLON | 1 |
| 34 | 180020 | SCREW, 1/4-20 X .75 HHC | 2 |
| 35 | 271172 | NUT, 1/4-20 REGHEXKEPS | 2 |
| 36 | A | BATTERY ACID PACK, 80 OZ. | 1 |

^ CAN BE PURCHASED LOCALLY

SCHEMATIC DRAWING

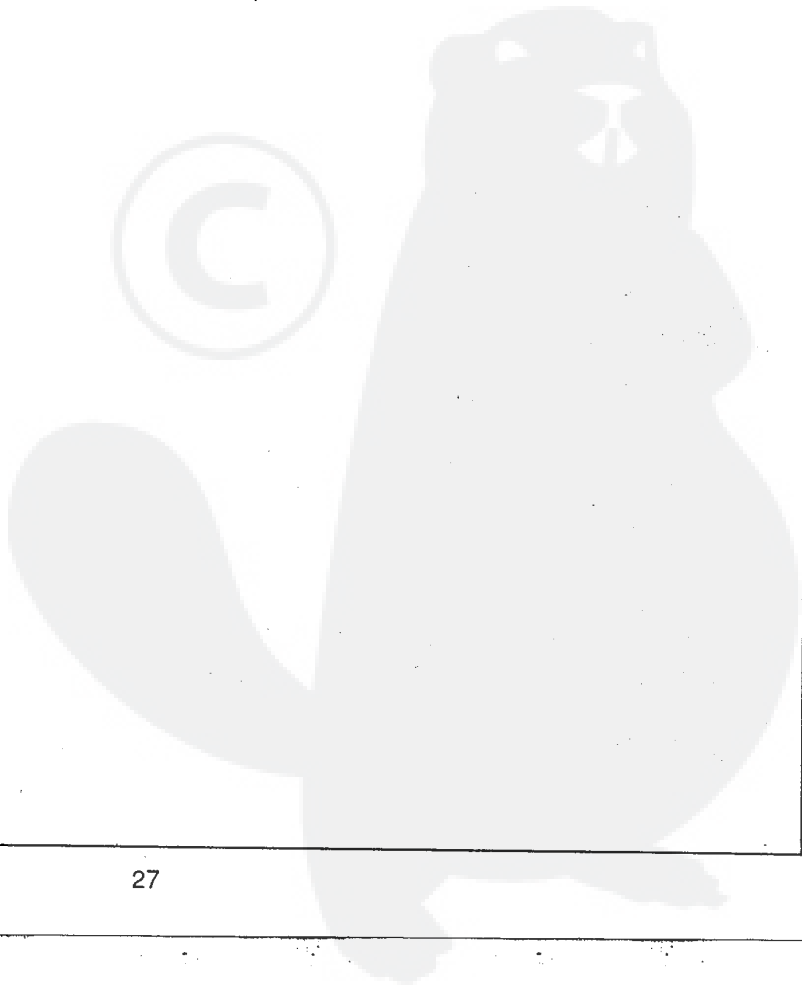
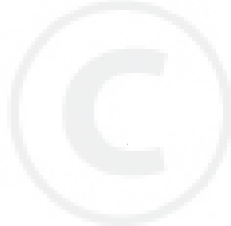




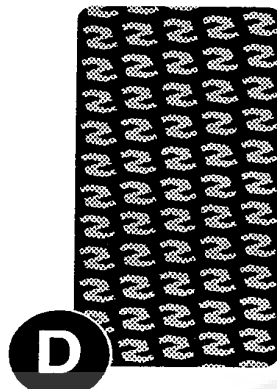
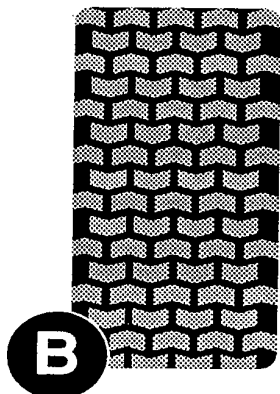
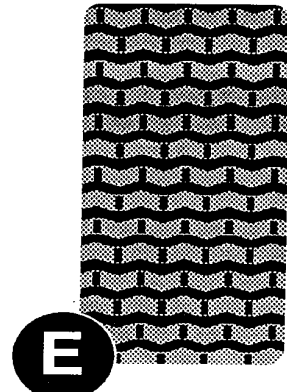
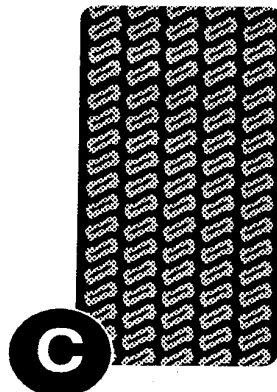
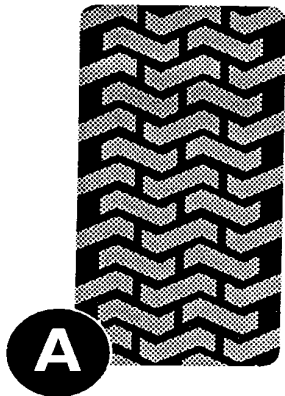
E3560-920

DECAL ASSEMBLY

| KEY# | PART# | DESCRIPTION | QTY |
|------|--------|--|-----|
| 1 | 68900 | DECAL, BLADE ENGAGE EUROPE | 1 |
| 2 | 329211 | DECAL, DASH, H24/H25 | 1 |
| 3 | 316594 | NAMEPLATE, 14/43 CHROME | 2 |
| 5 | 316861 | DECAL, RELIEF VALVE OPERATION | 1 |
| 7 | 69524 | DECAL, INSTRUCT CONSOLE TOP GERMAN | 1 |
| 9 | 69525 | DECAL, INSTRUCT CONSOLE TOP FRENCH | 1 |
| 10 | 307383 | DECAL, INSTRUCT CONSOLE TOP ENGLISH | 1 |
| 14 | 402214 | DECAL, HEIGHT ADJUST | 1 |
| 17 | 314925 | DECAL, SHIFT, LF, HYDRO REVERSE | 1 |
| 18 | 314923 | DECAL, SHIFTER, LF, HYDRO FORWARD | 1 |
| 19 | 68903 | DECAL, BRAKE/CLUTCH ISO | 1 |
| 20 | 311811 | DECAL, ENGINE 14HP, B&S, V-TWIN, 2YR | 1 |
| 26 | 317590 | DECAL, DANGER, GUT BROD, 6 LANG. | 1 |
| 27 | 305770 | DECAL, CAUTION TRIANGLE EUROPE | 1 |
| 28 | 328658 | DECAL, ADD OIL, GUT BROD | 1 |



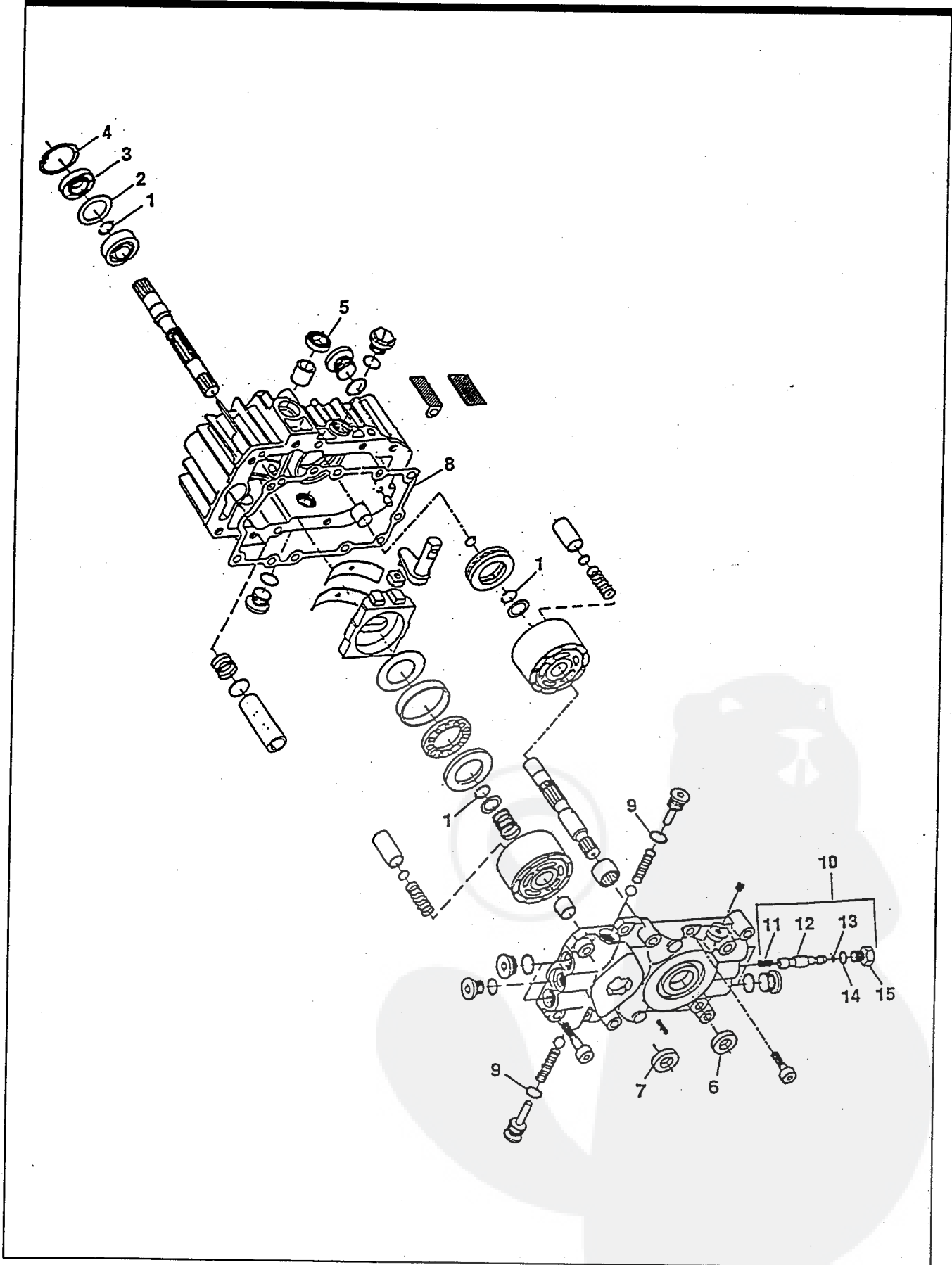
TREAD PATTERNS



| TIRE SIZE | "A" | "B" | "C" | "D" | "E" |
|-----------------|--------|--------|--------|--------|--------|
| 11 X 4.00 - 5 | 42295 | 319679 | | | |
| 13 X 5.00 - 6 | 41060 | 319680 | | | |
| 15 X 6.00 - 6 | 39830 | 316702 | 301140 | 313952 | |
| 16 X 4.80 - 8 | | 305035 | | | |
| 16 X 6.50 - 8 | 41081 | 319682 | | 314539 | |
| 18 X 6.50 - 8 | | 42091 | | | |
| 18 X 8.50 - 8 | 319683 | 317400 | | | |
| 18 X 9.50 - 8 | 41106 | 316701 | | 313950 | |
| 20 X 8.00 - 8 | 319685 | 319684 | 57164 | 314584 | 331606 |
| 20 X 10.00 - 8 | 58276 | 319686 | | 313654 | |
| 20 X 10.00 - 10 | 55893 | 319687 | | | |
| 23 X 9.50 - 12 | 53655 | 319690 | 319689 | 314370 | |

E3560-920

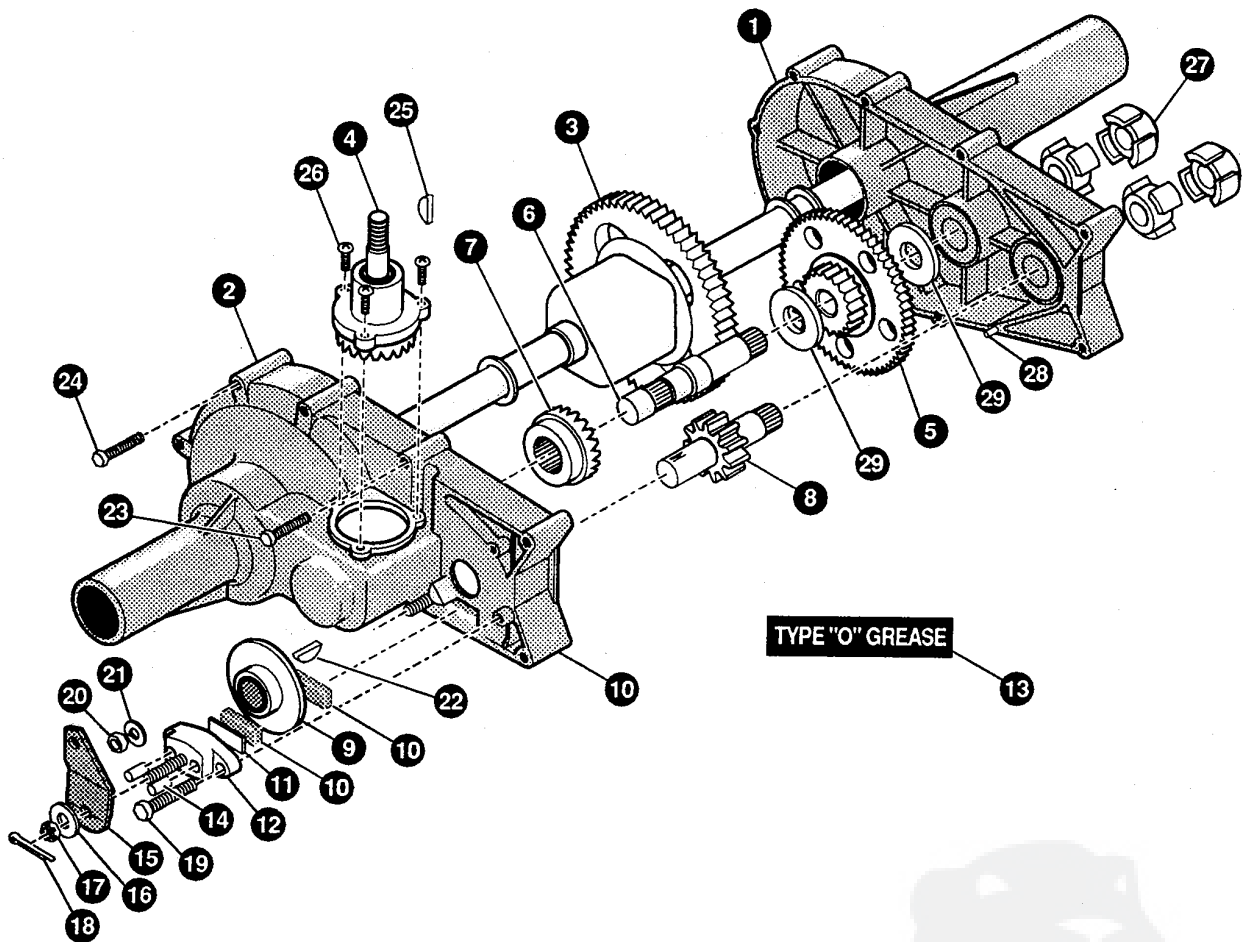
HYDROSTATIC PUMP



| Key # | Part # | Description |
|-------|--------|---|
| | 310227 | HYDROSTATIC PUMP (COMPLETE) |
| | 313306 | OVERHAUL SEAL KIT (CONTAINS KEY NO.'S 1-9, 13 AND 14) |
| 1 | | RING-RETAINING |
| 2 | | SPACER |
| 3 | | SEAL-LIP |
| 4 | | RING-RETAINING |
| 5 | | SEAL-LIP |
| 6 | | SEAL-LIP |
| 7 | | SEAL-LIP |
| 8 | | GASKET-CENTER SECTION |
| 9 | | O-RING |
| 10 | 313305 | BY-PASS VALVE KIT- COMPLETE (INCL. KEY NO.'S 11-15) |
| 11 | | SPRING-HELICAL COMP |
| 12 | | BY-PASS SPOOL |
| 13 | | O-RING |
| 14 | | O-RING |
| 15 | | PLUG-BY-PASS |

E3560-920

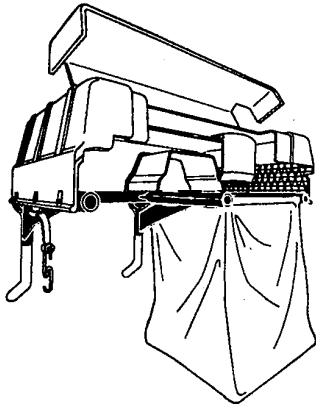
HYDRO TRANSAXLE



- | | | | | | |
|-----|--------|----------------------|-----|--------|---------------------|
| 1. | 324090 | HOUSING HALF, LH | 16. | 323684 | WASHER, FLAT |
| 2. | 324092 | HOUSING HALF, RH | 17. | 323691 | NUT, CASTLE |
| 3. | 324093 | GEAR, DIFFERENTIAL | 18. | 323671 | PIN, COTTER |
| 4. | 324095 | SHAFT, INPUT | 19. | 323711 | BOLT, HEX W/PATCH |
| 5. | 324096 | GEAR | 20. | 323650 | NUT, HEX |
| 6. | 323656 | SHAFT, DRIVE | 21. | 323649 | WASHER, SPRING LOCK |
| 7. | 323655 | GEAR, DRIVE PINION | 22. | 323692 | KEY, HI-PRO |
| 8. | 323660 | SHAFT, PINION | 23. | 323677 | BOLT, HEX SELF-TAP |
| 9. | 323663 | DISC, BRAKE | 24. | 323678 | BOLT, HEX SELF-TAP |
| 10. | 323685 | PUCK, BRAKE | 25. | 323688 | KEY, HI-PRO |
| 11. | 323687 | PLATE, PUCK | 26. | 329832 | SCREW, HEX W/PATCH |
| 12. | 324092 | BRAKE, YOKE | 27. | 323661 | COUPLING |
| 13. | 324089 | TYPE "O" GREASE | 28. | 323699 | PIN, ROLL |
| 14. | 323681 | PIN, BRAKE ACTUATING | 29. | 329833 | WASHER, FLAT |
| 15. | 323665 | ARM, BRAKE ACTUATOR | | | |

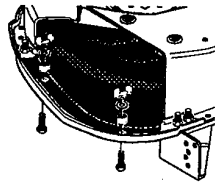
Contact the dealer where your tractor was purchased for the available accessories. If you are unable to contact the dealer, write to the address on the warranty page of this manual.

LARGE LAWN TRACTOR

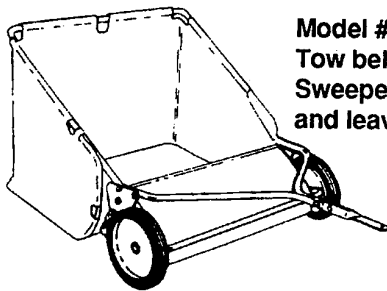
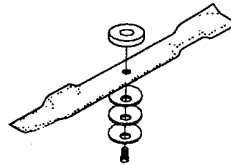


Model # 5708-34
Grass Collector for
40, 42, 43" decks

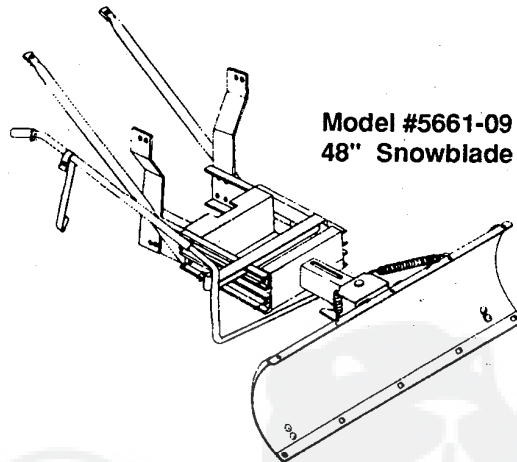
For heavy duty grass
collection order Model
#5709-10 Air Assist



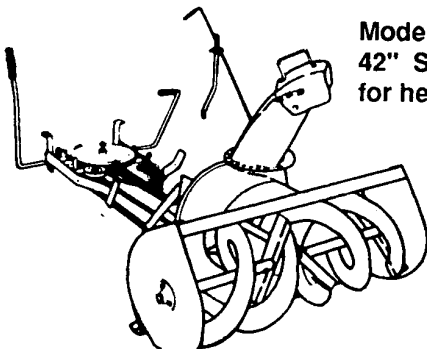
5717-00
Mulching Kit (42/43" Deck)
5716-00
Mulching Kit (40" Deck)



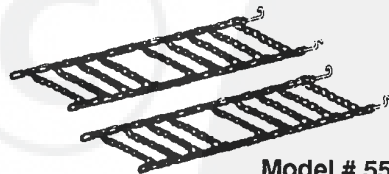
Model # 5648-16
Tow behind Lawn
Sweeper for grass
and leaves



Model #5661-09
48" Snowblade



Model #5705-06
42" Snowthrower
for heavy snowfall



Model # 5585-00
Tire Chains - 20" x 8.0" tires
Model # 5706-00
Tire Chains - 20" x 10.0" tires

OTHER ACCESSORIES

| Model | Description |
|---------|---|
| 5672-01 | Wheel Weights - Front - 1 pr. w/mtg. hdw. - Fits 15" tires |
| 5673-02 | Wheel Weights - Rear - 1 pr. w/mtg. hdw. - Fits 18" & 20" tires |
| 309070 | 40" High Lift Blade for Bagging or Side Discharge (Requires 2) |
| 330277 | 40" Mulching Blade (Requires 2) |
| 316608 | 43" High Lift Blade for Bagging or Side Discharge (Requires 2) |
| 325762 | 43" Mulching Blade (Requires 2) |

ONE YEAR LIMITED WARRANTY

For one (1) year from date of purchase by the first consumer for residential use (**thirty (30) days commercial use**), NOMA Outdoor Products Incorporated warrants that it will replace free of charge, including labor, any original part of any NOMA Outdoor Products Incorporated product found to be defective by any authorized Service Dealer or the factory, except the battery which is warranted for ninety (90) days from date of purchase.

This warranty does not cover engine, transmission, transaxle or differential (**these items are covered by their manufacturer's own warranty**). This warranty does not cover parts that have failed due to normal wear or parts that have failed subject to misuse or abuse. Transportation of the unit or part to and from an authorized Service Dealer or factory is the responsibility of the owner.

A step by step explanation as to what procedure should be followed for this warranty is:

1. If a part becomes defective, contact the store where the unit was purchased for the name and address of the authorized Service Dealer nearest to you.
2. If you cannot locate an authorized Service Dealer, write Service Department of NOMA Outdoor Products Incorporated for the name and address of the authorized Service Dealer in your area or call the Service Department at 1-901-422-1690.
3. Return the defective product, along with proof of purchase to such authorized Service Dealer for replacement of any defective part where covered by this warranty.

There is no other express warranty. Implied warranties, including those of merchantability and fitness for a particular purpose are limited to one (1) year from date of purchase. Liability for incidental or consequential damages are excluded.

Some states do not allow limitations on how long an implied warranty lasts, so the above limitation may not apply to you. Some states do not allow the exclusion of incidental or consequential damages, so the above exclusion may not apply to you. This warranty gives you specific legal rights, and you may have other rights which vary from state to state.

NOMA Outdoor Products Incorporated

Caller 8000

Jackson, TN 38308-8000

UNIT PARTS AND SERVICE

Fill in and mail the registration card packed with the unit. For service other than covered in this manual, contact an authorized service dealer. A nationwide parts and service organization has been established to provide locally available parts and service. A list of authorized parts distributors has been included in this manual. When ordering repair parts, always give the following information: 1. The Part Name; 2. The Part Number; 3. The Quantity desired; 4. The Full (eight digit) Model Number of the unit. The model number will be found on a plate attached to the unit.



Look for this symbol. It means - ATTENTION! BECOME ALERT! A HAZARD TO OPERATOR, BYSTANDER, PROPERTY OR EQUIPMENT MAY EXIST.

NOMA Outdoor Products Incorporated

Caller 8000

Jackson, TN 38308-8000