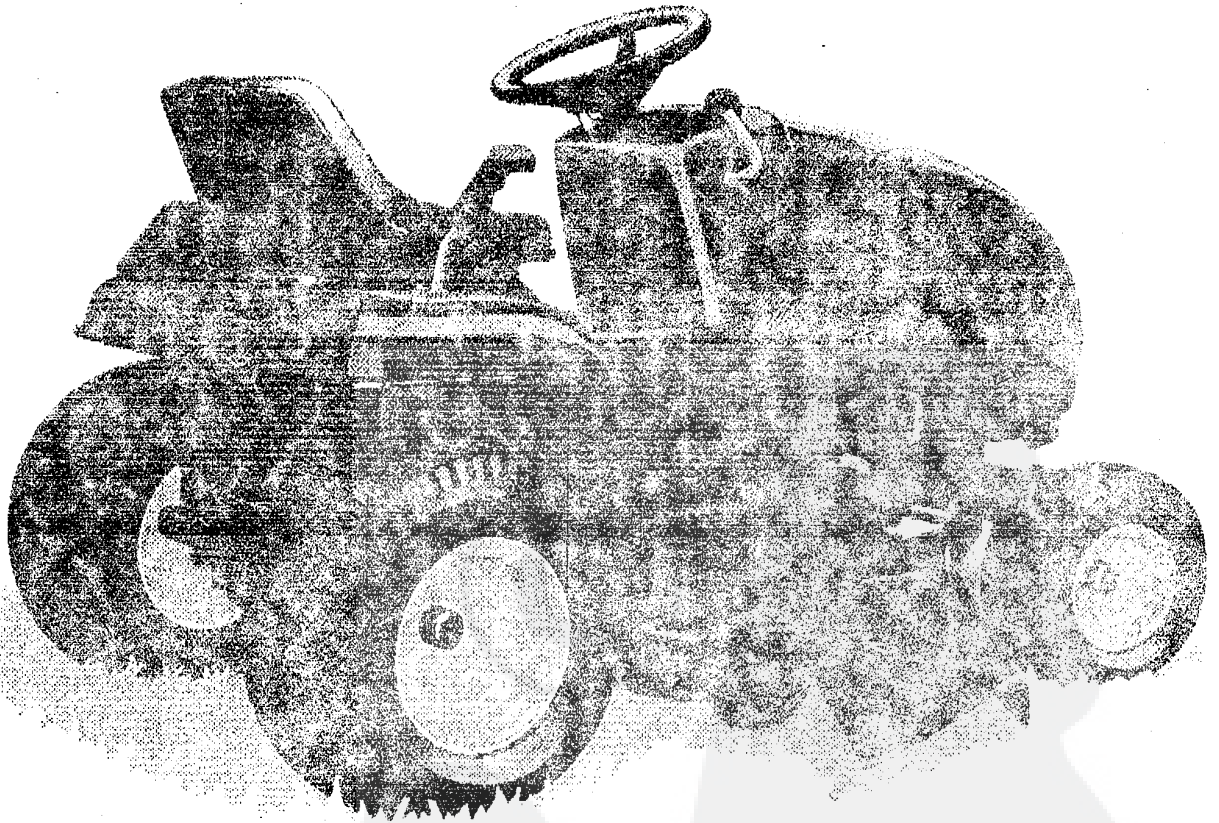
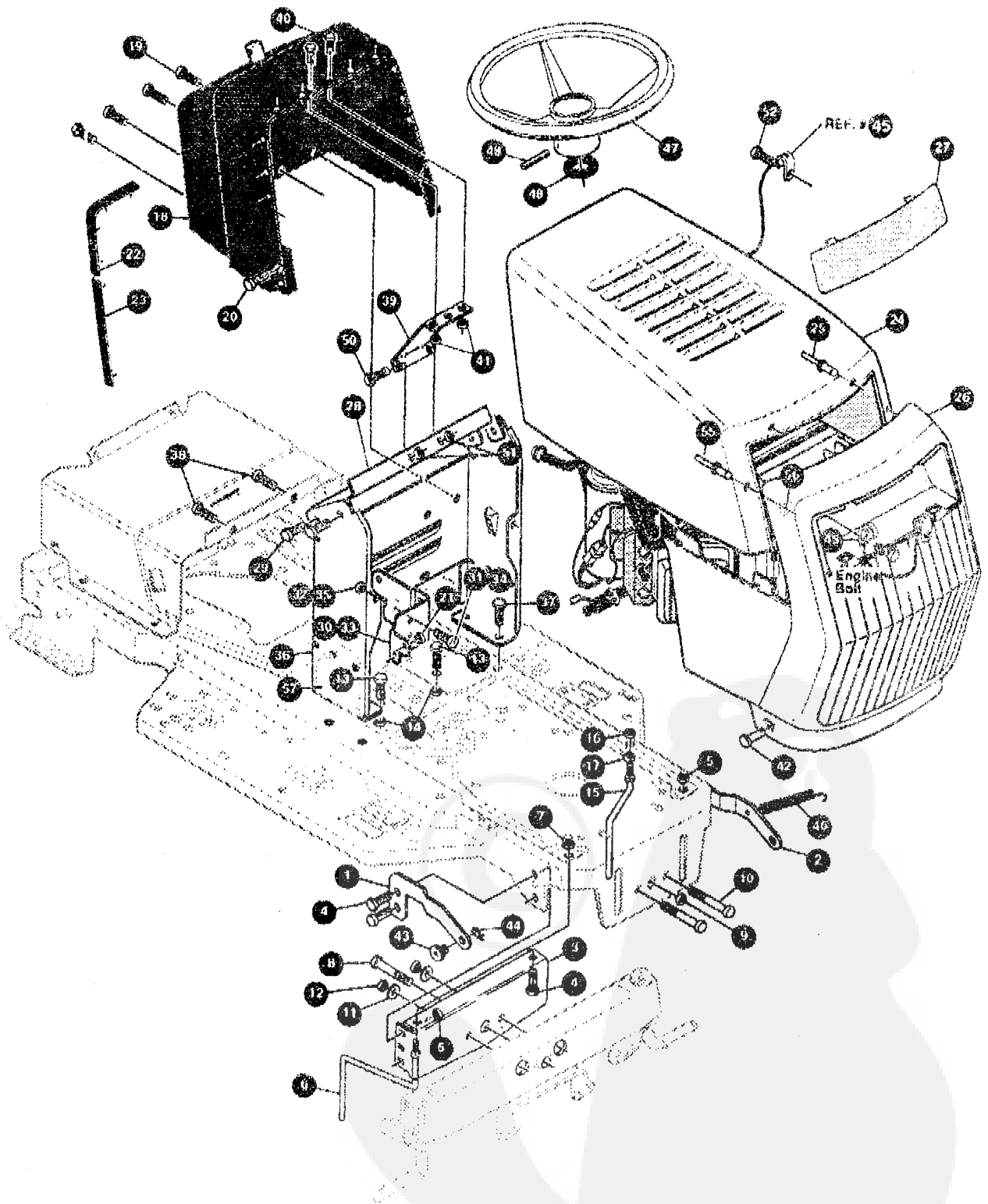


TONDEUSE AUTOPORTEE**CAST 18****MANUEL PIECES DE RECHANGE****Modèle E3583-030**

TRACTEUR TONDEUSE 43" MODELE E3583-030

ENSEMBLE CHASSIS & CAPOT (AVANT)



UTILISEZ DES PIÈCES D'ORIGINE POUR CONSERVER
L'APPLICATION DE LA GARANTIE.

TOUTES LES PIÈCES NON
REFEREES SONT
INTERCHANGEABLES AVEC
LEURS OPPOSEES.

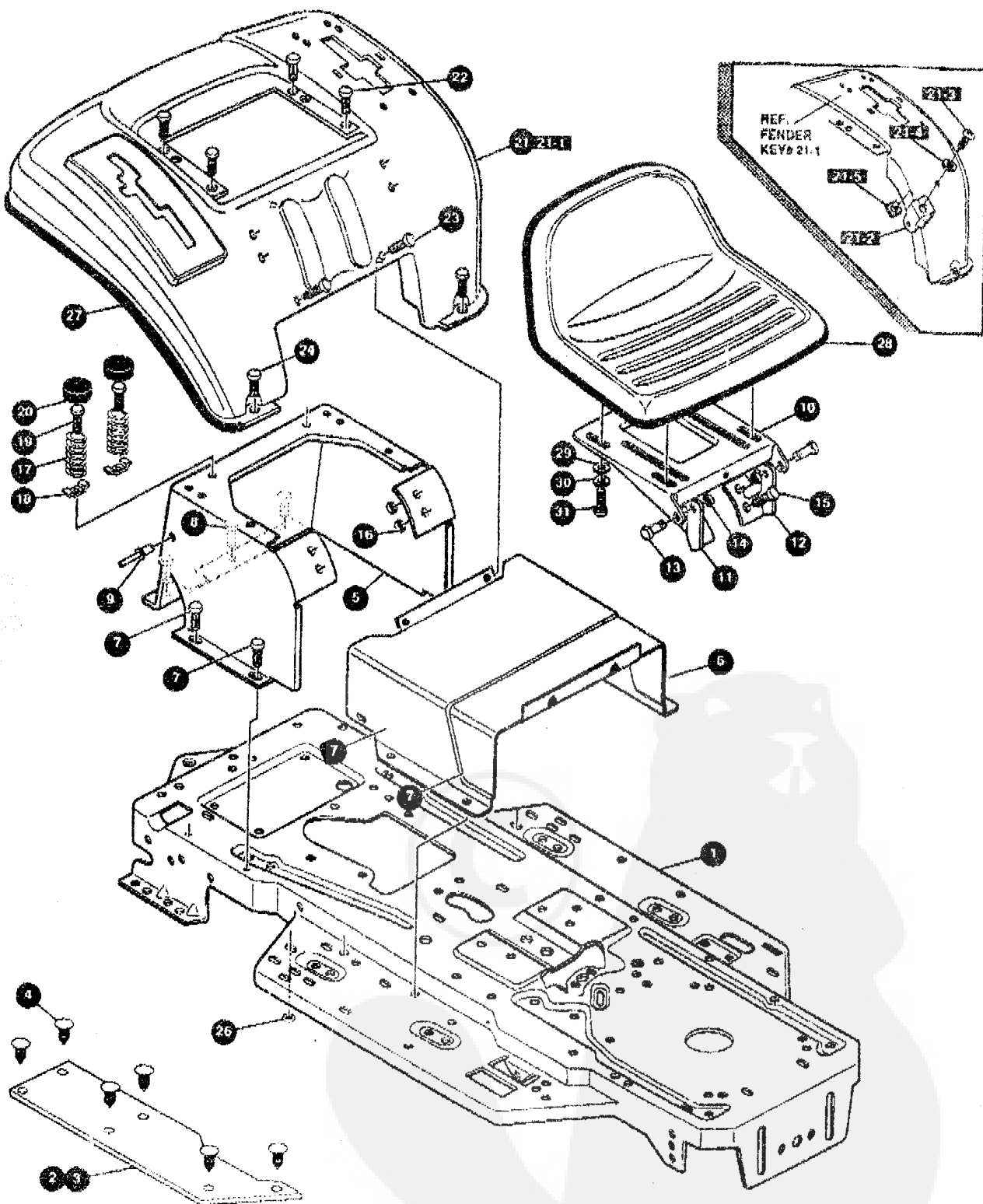
332559 A

TRACTEUR TONDEUSE 43" MODELE E3583-030

KEY#	PART#	DESCRIPTION	QTY
1	326203-853	BRKT,HOOD	1
2	326204-853	BRKT,HOOD	1
3	313541-853	BRACKET, FRONT AXLE	1
4	56030	SCREW, 5/16-18X.75WDFLLK	5
5	55273	NUT, 5/16-18 HXWDFLLK	5
6	300440	GUIDE, BELT, RIDER	1
7	1498 °	NUT, 5/16-18 REGHEXCTRLK	1
8	308207	BOLT, .825X2.18 HSSH 1/2-13	1
9	309008	NUT, 1/2-13 HEXJAM CTRLK	1
10	122207	SCREW, 3/8-16X3.00 HHC	2
11	2483	WASHER, .39IDX1.25DX.07 BELLVIL	2
12	1499	NUT, 3/8-16 REGHXCTRLK	2
13	180079	SCREW, 5/16-18X1.00 HHC	2
14	1498	NUT, 5/16-18 REGHEXCTRLK	2
15	300635	GUIDE,BELT SHORT 15" WHEEL	1
16	124824	NUT, 5/16-18 HEXJAM	1
17	271190	NUT, 3/8-16 HEXKEPS	1
18	329222	DASH, W/CHOKE,H-PTO,V-IGN	1
19	318304	SCREW, 1/4-14X.75PHPNHTAP BLK	4
20	155941	SCREW, 10-24X.63 PHFLTMA	2
21	308459	NUT, #10-24 HXHDNYLK	2
22	328141	BUMPER,HOOD/DASH TOP & CORNER	2
23	328142	BUMPER,HOOD/DASH SIDE STRIP	2
24	331768	HOOD,H25 LF/SF,MOLDED,LOUVERS	1
25	329238	RIVET, POP 3/16DIA X .75 LG FLG	4
26	332331	J' GRILLE	1
27	326960	LENS	1
28	324909-853	SUPPORT,STEERING/PTO	1
29	40886	SCREW, 1/4-20X .38 WAHTAP	4
30	326320-853	BRACKET, DASH/TANK LF RH	1
31	180020	SCREW, 1/4-20X .75 HHC	1
32	1502	NUT, 1/4-20 REGHEXCTRLK	1
33	326321-853	BRACKET, DASH/TANK LH	1
34	180020	SCREW, 1/4-20X .75 HHC	1
35	1502	NUT, 1/4-20 REGHEXCTRLK	1
36	333123-854	ASSY,DASH,TOWER WALKTHRU	1
37	35498	SCREW, 5/16-18X .75 WAHTAP	3
38	995946	SCREW, 1/4-20X .50 WAHTAP	2
39	327039-853	DASH,SUPPORT BRACKET STEEL	1
40	155941	SCREW, 10-24X.63 PHFLTMA	4
41	308459	NUT, #10-24 HXHDNYLK	4
42	323044	PIN, CLEVIS, .500 X .49/.51LGTH	2
43	326522	BRNG HOOD .505IDX.625ODX1.12FL	2
44	8260	PIN, HAIR .091 DIA X 1.66LG	2
45	310748	LANYARD,HOOD 15.77LG	1
46	49050	SCREW, 1/4-10X .75PHPNTAP	1
46	304784	SPRING, HOOD LATCH	1
47	330848	STEERING WHEEL	1
48	301413	SPACER, STEERING SHAFT	1
49	456378	PIN, SPRING, 250DIA X 2.00LG HVPL	1
50	180020	SCREW, 1/4-20X .75 HHC	2
51	1502	NUT, 1/4-20 REGHEXCTRLK	2
52	332374	PARTS MANUAL	1
53	332370	OPERATOR'S MANUAL	1
54	327627	GRASS CATCHER MANUAL	1
55	328195	AIR ASSIST MANUAL	1

TRACTEUR TONDEUSE 43" MODELE E3583-030

ENSEMBLE CHASSIS & CAPOT (ARRIERE)



UTILISEZ DES PIÈCES D'ORIGINE POUR CONSERVER
L'APPLICATION DE LA GARANTIE.

TOUTES LES PIÈCES NON
REFERÉES SONT
INTERCHANGEABLES AVEC
LEURS OPPOSÉES.

331757 A

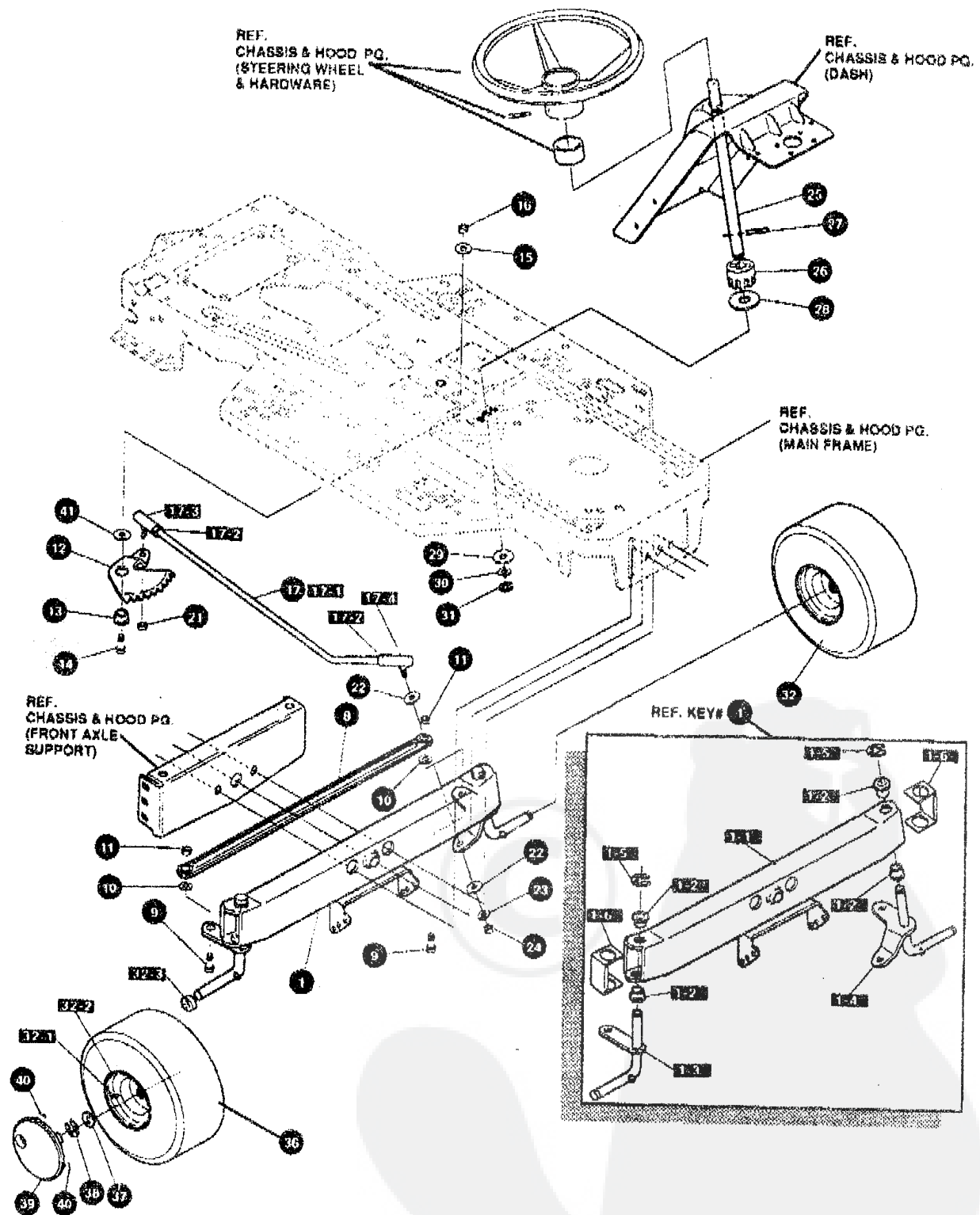
TRACTEUR TONDEUSE 43" MODELE E3583-030

KEY#	PART#	DESCRIPTION	QTY
1	326577-854	FRAME MAIN	1
2	310005	FOOT PAD, LH 22.12LG	1
3	310006	FOOT PAD, RH 22.12LG	1
4	308235	FASTENER, RATCHET BLACK	12
5	324912-854	SEAT/FNDR,SUPPORT WALK THRU	1
6	330865-854	CONSOLE,WALK-THRU NO SLT	1
7	995346	SCREW, 1/4-20X .50 WAHHTAP	10
8	35497	SCREW, 5/16-18X .50 WAHHTAP	2
9	46763	RIVET, POP. 187DIA X .450LG ST	3
10	56387-854	PLATE,SEAT F5 SF.LF	1
11	325053-854	BRACKET SEAT WALK-THRU RH	1
12	325054-854	BRACKET SEAT WALK-THRU LH	1
13	20507	BOLT, .437X .156 HSSH 5/16-18	2
14	1498	NUT, 5/16-18 REGHEXCTRLK	2
15	48901	SCREW, 5/16-18X .63WAHHC	4
16	1498	NUT, 5/16-18 REGHEXCTRLK	4
17	57153	SPRING,SEAT 2.63LG,1.49OD BLK	2
18	1341	CLAMP, SPRG 1.17"ID	2
19	44811	SCREW, 1/4-20X .75 WAHHTAP	2
20	56907	COVER,SEAT SPRING 1.5ID X 1.0LG	2
21	^	ASM,FNDR,F6 WALKTHRU SUS	1
21-1	332188-896	FENDER,WALK-THRU,SOF,SUS,	1
21-2	9239	CLEVIS	1
21-3	439455	SCREW, 5/16-18X .56PHPNMA	1
21-4	301551	WASHER, 344ID X 1.50DX .09 CU	1
21-5	120373	NUT, 5/16-18 SQ	1
22	995346	SCREW, 1/4-20X .50 WAHHTAP	4
23	35497	SCREW, 5/16-18X .50 WAHHTAP	2
24	126356	BOLT, 5/16-18X1.00 CARRLN	2
26	55273	NUT, 5/16-18 HXWDFLLK	2
27	55023	TRIM, 77.5" BLACK NARROW	77.5
28	331949	SEAT,MICHIGAN GEN, W/SW HOLE	1
29	120393	WASHER, FLAT .344X .69X .065	4
30	120638	WASHER, HVSP TLK .328X .60X .09	4
31	180077	SCREW, 5/16-18X .75 HHC	4

^ ORDER INDIVIDUAL PARTS

TRACTEUR TONDEUSE 43" MODELE E3583-030

ENSEMBLE DIRECTION



UTILISEZ DES PIÈCES D'ORIGINE POUR CONSERVER L'APPLICATION DE LA GARANTIE.

TOUTES LES PIÈCES NON RÉFÉREES SONT INTERCHANGÉABLES AVEC LEURS OPPOSÉES.

322616 F

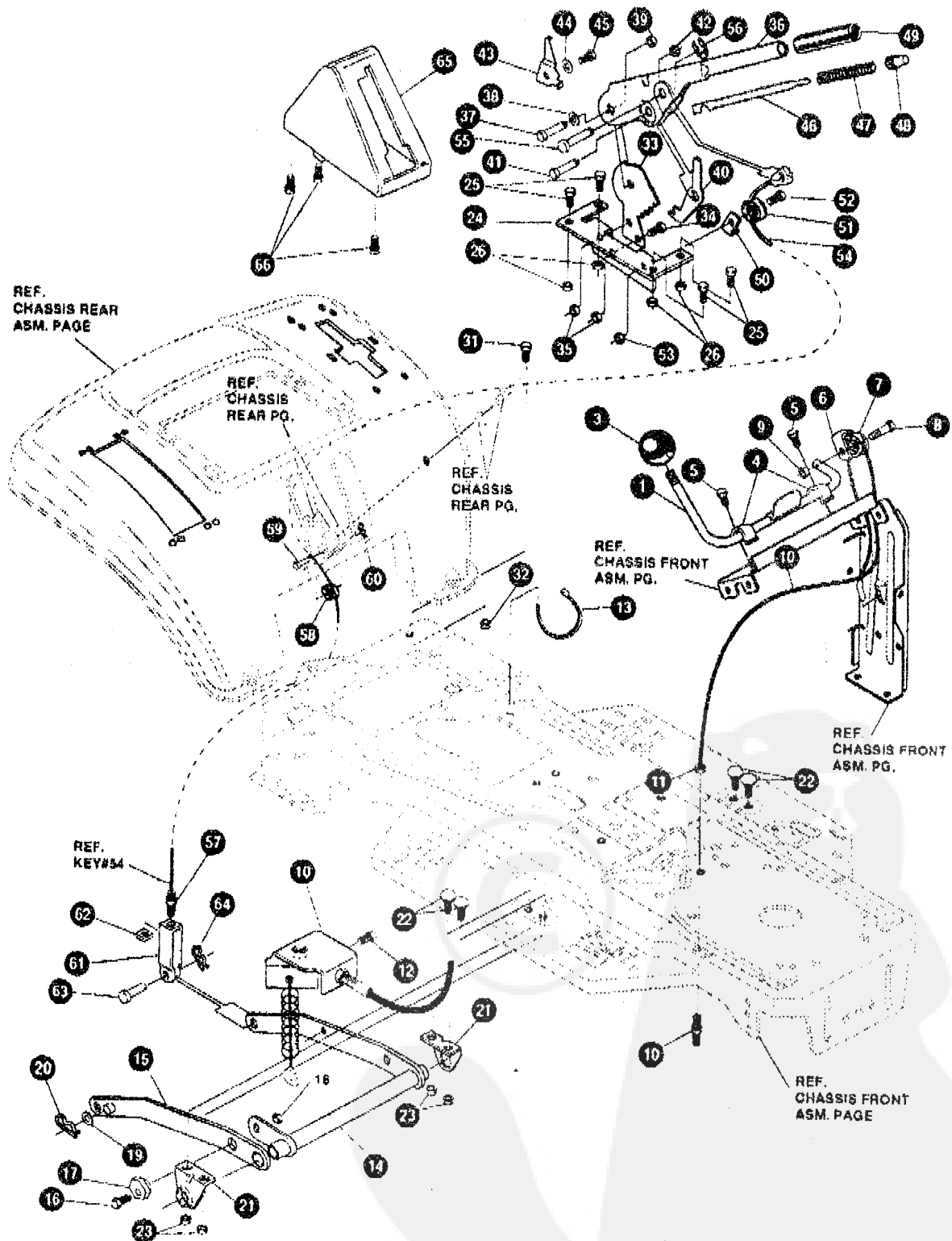
TRACTEUR TONDEUSE 43" MODELE E3583-030

KEY#	PART#	DESCRIPTION	QTY
1	A	AXLE, FRONT ASSY LONGSUS	1
1	310170	AXLE, FRONT	1
3	9180	ASSY, SPINDLE RH LG	1
4	314088	ASSY, SPINDLE, LH LG	1
5	36625	RING, RETEX .57X.05TRU5133-75	2
6	53373-854	AXLE COVER	2
8	304590	TIE ROD ASSY 19.81LG W-SECTION	1
9	180126	SCREW, 3/8-16X1.75 HHC	2
10	120382	WASHER, REGSPTLK 393X.68X.10	2
11	1499	NUT, 3/8-16 REGHXCTRLK	2
12	58289	SECTOR, STEERING LF	1
13	52406	BRNG, FL ECC. 510IDX .998ODX .56	1
14	180177	SCREW, 1/2-13X1.50 HHC	1
15	22265	WASHER, FLAT .515X1.38X.119PL	1
16	1500	NUT, 1/2-13 REGHXCTRLK	1
17	311100	KIT 300146 DRAGLINK FOR SERVICE	1
17-1	58291	STEERING LINK	1
17-2	124925	NUT, 3/8-24 REGHEXJAM	2
17-3	57158	BALL JOINT 3/8 TH'D SHORT STUD	1
17-4	21275	BALL JOINT 3/8 TH'D LONG STUD	1
21	46692	NUT, 3/8-24 WDFLHLK WHIZ	1
22	996416	WASHER, FLAT .391X1.00X.125	2
23	120382	WASHER, REGSPTLK 393X.68X.10	1
24	120369	NUT, 3/8-24 REGHEX	1
25	58243	SHAFT, STEERING	1
26	58244	PINION, STEERING	1
27	58274	PIN DOWEL .2500 OD+1.76LG PL	1
28	301410	BRNG, FL .752IDX1.061ODX .24	1
29	301398	WASHER, FORMED1.135X1.53X.12	1
30	21582	WASHER, FLAT .765X1.25X.042PL	1
31	36625	RING, RETEX .57X.05TRU5133-75	1
32	302828	TIRE & RIM, PU 15X6.0X6 TURWHI	2
32-1	24167	VALVE STEM	
32-2	39829	RIM, WHEEL	
32-3	314416	BEARING, FL	
35	316702	TIRE, 15 X 6 X 6	
37	642	WASHER, FLAT .755X1.31X.075	4
38	36625	RING, RETEX .57X.05TRU5133-75	2
39	304444	HUB CAP, 6" EURO GREY	2
40	306660	CLIP, HUBCAP TINN #C25467-017-4	8
41	49998	WASHER, FLAT .520X1.25X.209	1

^ ORDER INDIVIDUAL PARTS

TRACTEUR TONDEUSE 43" MODELE E3583-030

ENSEMBLE DE SUSPENSION DE LA TONDEUSES



UTILISEZ DES PIÈCES D'ORIGINE POUR CONSERVER
L'APPLICATION DE LA GARANTIE.

TOUTES LES PIÈCES NON
REFEREES SONT
INTERCHANGEABLES AVEC
LEURS OPPOSEES.

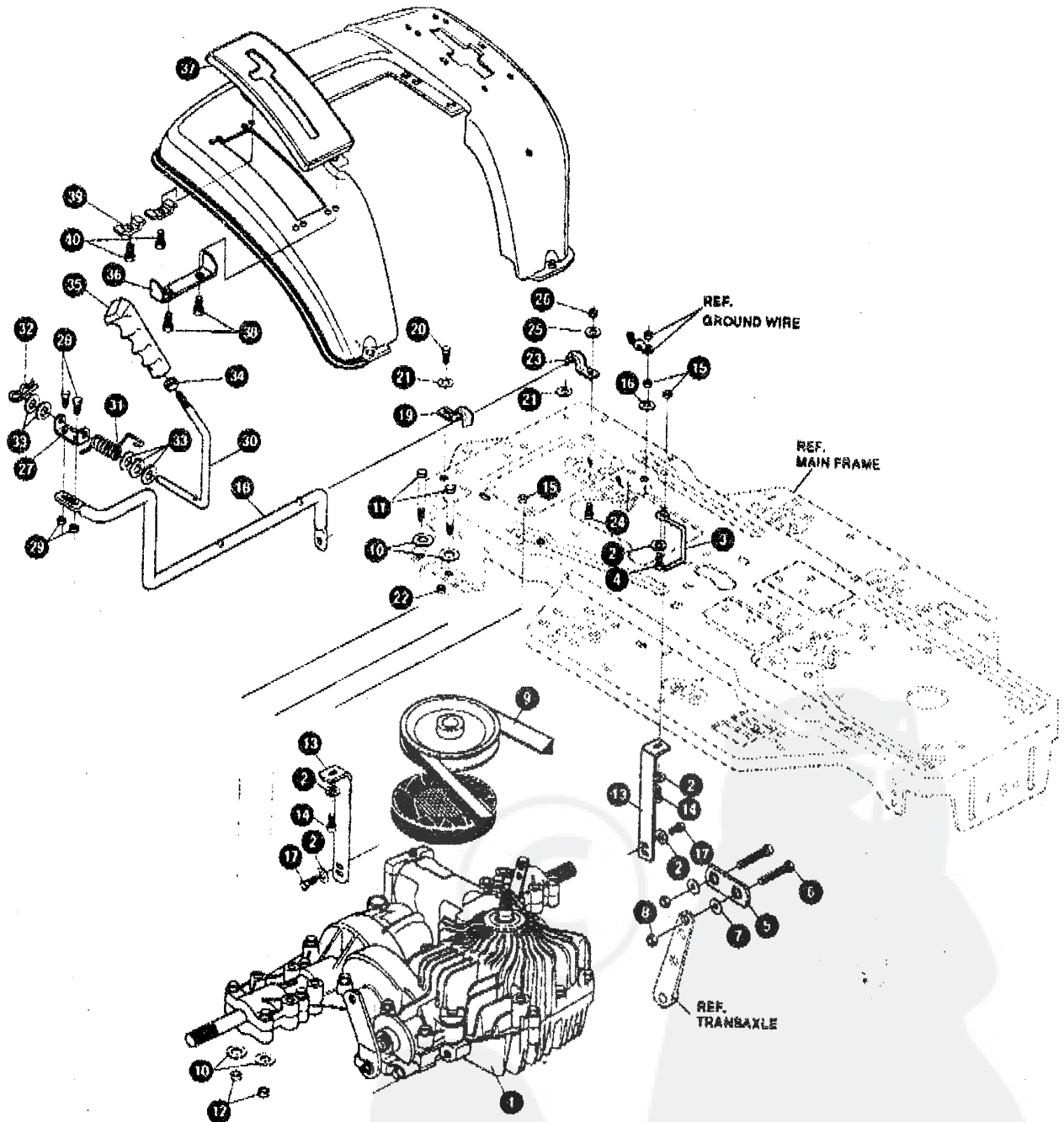
329633 B

TRACTEUR TONDEUSE 43" MODELE E3583-030

KEY#	PART#	DESCRIPTION	QTY
1	327021-853	ASSY.WELD.CLUTCH HDLE	1
3	55514	KNOB, ROUND 1.50 DIA BLACK	1
4	9129	CLIP, RETAIN BRKT	2
5	44811	SCREW, 1/4-20X .75 WAHHTAP	2
6	1288	BRKT,CABLE RETAIN	1
7	48306	PULLEY,POWDER METAL	1
8	57322	BOLT, .375X .375 HHSH 1/4-20	1
9	1502	NUT, 1/4-20 REGHEXCTRLK	1
10	328369	ASM.PTO BRKT -CABLE	1
11	120613	NUT, 1/4-28 HJAM	1
12	35498	SCREW, 5/16-18X .75 WAHHTAP	1
13	57444	TIE, CABLE BLACK NYLON 5.62L	1
14	300158-853	LIFT ASSY, LH	1
15	300169-853	LIFT ASSY, RH	1
16	180079	SCREW, 5/16-18X1.00 HHC	1
17	58247	NUT, ADJUST	1
18	1498	NUT, 5/16-18 REGHEXCTRLK	1
19	417098	WASHER, FLAT .531X1.06X.063	2
20	8260	PIN, HAIR .091 DIA X1.66LG	2
21	58248-853	BRACKET, REAR HANG SUSP	2
22	57072	BOLT, 5/16-18X .63 CARRLN	4
23	1498	NUT, 5/16-18 REGHEXCTRLK	4
24	313926	BRACKET, HGT/ADJUST SUPPORT	1
25	180077	SCREW, 5/16-18X .75 HHC	4
26	1498	NUT, 5/16-18 REGHEXCTRLK	4
31	180077	SCREW, 5/16-18X .75 HHC	1
32	1498	NUT, 5/16-18 REGHEXCTRLK	1
33	301238	QUADRANT,HEIGHT ADJUST	1
34	180077	SCREW, 5/16-18X .75 HHC	2
35	1498	NUT, 5/16-18 REGHEXCTRLK	2
36	322292-853	HANDLE,LIFT SHORT(30" S.F.)	1
37	300171	BOLT, 500X .270 HHSH 5/16-18	1
38	996418	WASHER, FLAT .506X .75X.024	1
39	44108	NUT, 5/16-18 HWDFLOTRLK	1
40	301239	PAWL, SQUARE	1
41	300171	BOLT, 500X .270 HHSH 5/16-18	1
42	44108	NUT, 5/16-18 HWDFLOTRLK	1
43	9435	POINTER, HEIGHT ADJ	1
44	138479	WASHER, EXLK .195X.41X.03	1
45	35287	SCREW, #8-32X .38 HHWATAP	1
46	303027	ROD,ACTUATOR-SHORT	1
47	58326	SPRING, HEIGHT ADJUST	1
48	58325	KNOB, HEIGHT ADJ PUSH BUTTON	1
49	58329	GRIP, .750 OD W/ HOLE BLACK	1
50	9149	BRKT, CABLE RETAIN	1
51	48306	PULLEY,POWDER METAL	1
52	58336	BOLT, .375X .375 HHSH 1/4-20	1
53	1502	NUT, 1/4-20 REGHEXCTRLK	1
54	314177	CABLE, LIFT 22.92 F-5 20X8-8	1
55	300310	PIN,CLEVIS .310DIA+.475LG	1
56	300311	RING, RET E .31X 25TRUX5133-31	1
57	120375	NUT, 1/4-20 REGHEX	1
58	48306	PULLEY,POWDER METAL	1
59	300317	PIN, CLEVIS .375DIA X .81 LG	1
60	8260	PIN, HAIR .091 DIA X1.66LG	1
61	9405	CLEVIS, LIFT CABLE	1
62	120372	NUT, 1/4-20 REGSQ	1
63	39522	PIN, CLEVIS .312 X .812	1
64	121222	PIN, COTTER .090 DIA X .75LG	1
65	300335	LIFT COVER	1
66	300340	SCREW, #10 X .75 HHPLAST BLK	3

TRACTEUR TONDEUSE 43" MODELE E3583-030

TRANSMISSION



UTILISEZ DES PIÈCES D'ORIGINE POUR CONSERVER
L'APPLICATION DE LA GARANTIE.

TOUTES LES PIÈCES NON
REFEREES SONT
INTERCHANGEABLES AVEC
LEURS OPPOSEES.

326645 E

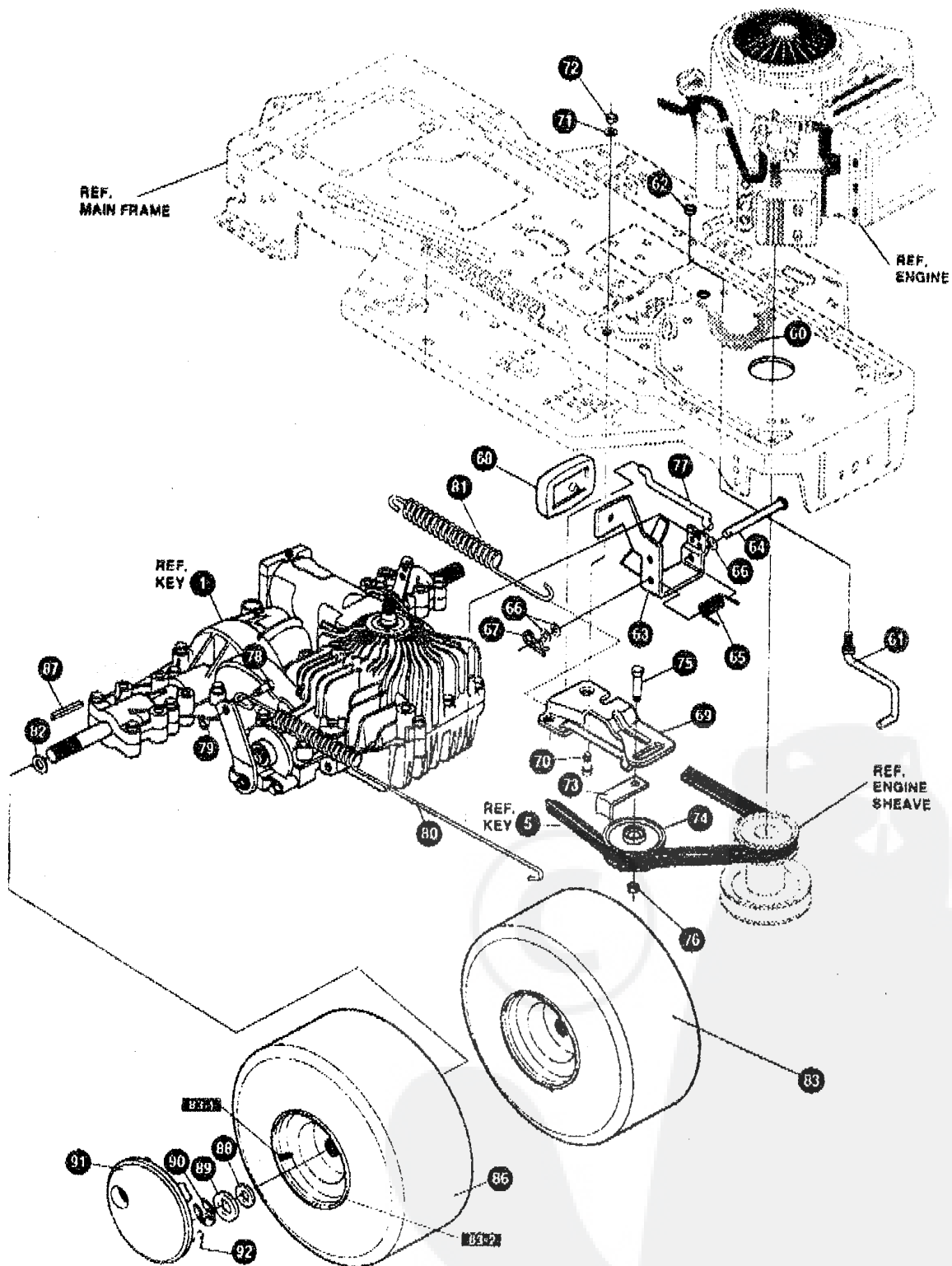
TRACTEUR TONDEUSE 43" MODELE E3583-030

KEY#	PART#	DESCRIPTION	QTY
1	^	TRANSAXLE 1800-001 HYDRO2WS	1
2	120393	WASHER, FLAT .344X.69X.065	6
3	326633	BELT GUIDE	1
4	180079	SCREW, 5/16-18X1.00 HHC	1
5	325391	LINK TIEROD SHIFT PEERLESS	1
6	122145	SCREW, 3/8-16X1.25 HHC	2
7	274517	WASHER, FLAT .406X.73X.063	2
8	1499	NUT, 3/8-16 REGHXCTRLK	2
9	314572	BELT, V 4L 80 16 HYDRO	1
10	120393	WASHER, FLAT .344X.69X.065	2
11	180099	SCREW, 5/16-18X2.25 HHC	4
12	1498	NUT, 5/16-18 REGHXCTRLK	4
13	326684	BRACKET, STABILIZER	2
14	180077	SCREW, 5/16-18X.75 HHC	1
15	1498	NUT, 5/16-18 REGHXCTRLK	3
16	138538	WASHER, REGINTLK.320X.61X.03	1
17	35498	SCREW, 5/16-18X.75 WAHHTAP	2
18	325392-853	LEVER, SHIFT-LWR LF BLK	1
19	310347-853	CLIP- SHIFT LEVER .625 ROD	1
20	180077	SCREW, 5/16-18X.75 HHC	1
21	996416	WASHER, FLAT .391X1.00X.125	1
22	1498	NUT, 5/16-18 REGHXCTRLK	1
23	310347-853	CLIP- SHIFT LEVER .625 ROD	1
24	180077	SCREW, 5/16-18X.75 HHC	1
25	996416	WASHER, FLAT .391X1.00X.125	1
26	1498	NUT, 5/16-18 REGHXCTRLK	1
27	310356	BRKT, PIVOT SH LEV	1
28	180020	SCREW, 1/4-20X.75 HHC	2
29	1502	NUT, 1/4-20 REGHXCTRLK	2
30	318452	LEVER, SHIFT UPPER SOF 1/2-13	1
31	318451	SPRING, TORS. .56X.95X.095	1
32	8260	PIN, HAIR .091 DIA X1.66LG	1
33	2968	WASHER, FLAT .504X.75X.059	5
34	120238	NUT, 1/2-13 HEXJAM	1
35	306690	HANDLE 1/2-13 MOLDED BLACK	1
36	311257-853	BRACKET COVER F-5 FNDR SHIFT	1
37	314244	COVER PLASTIC LF HYDRO F-5	1
38	311331	SCREW, 1/4-15X.44/53 HILOHHWA	2
39	1341	CLAMP, SPRG 1.17"ID	2
40	311331	SCREW, 1/4-15X.44/53 HILOHHWA	2

^ CONTACT YOUR NEAREST PEERLESS TRANSAXLE DEALER FOR PARTS AND SERVICE.

TRACTEUR TONDEUSE 43" MODELE E3583-030

TRANSMISSION



UTILISEZ DES PIÈCES D'ORIGINE POUR CONSERVER L'APPLICATION DE LA GARANTIE.

TOUTES LES PIÈCES NON REFÉREES SONT INTERCHANGEABLES AVEC LEURS OPPOSEES.

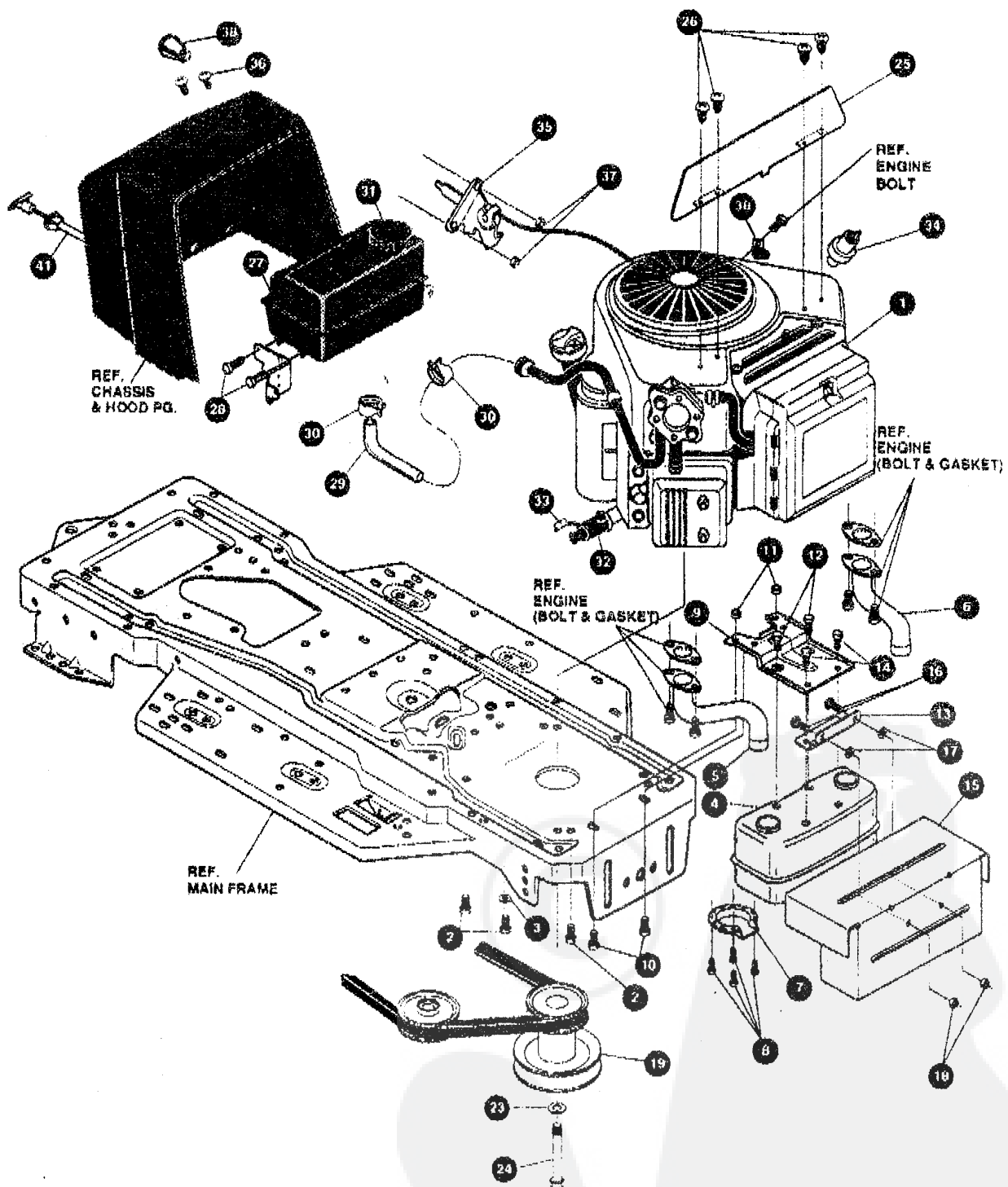
326645 E

TRACTEUR TONDEUSE 43" MODELE E3583-030

KEY#	PART#	DESCRIPTION	QTY
60	321514	SPRING, DRAG LINK BIAS	1
61	304016	GUIDE, BELT R.H.	1
62	1498	NUT, 5/16-18 REGHEXCTRLK	1
63	325942	PEDAL ASSY, BRAKE/CLUTCH LF	1
64	319675	PIN, CLEVIS 500DX4 53LG	1
65	57847,	SPRING, BRAKE PEDAL	1
66	2968	WASHER, FLAT .504X .75X.069	3
67	56180	PIN, HAIR .091 DIA X1.62LG	1
68	48160	PAD, CLUTCH BRAKE W/PRINTING	1
69	320381-853	ARM, IDLER TRACTION, SOG	1
70	329989	BOLT, .625X .135 HSH 5/16-18	1
71	45602	WASHER, FLAT .333X .87X.119	1
72	1498	NUT, 5/16-18 REGHEXCTRLK	1
73	39659	RETAINER, BELT	1
74	35374	PULLEY, IDLER V4L 3.06X .62	1
75	45892	BOLT, 3/8-16X1.50 CARRSN	1
76	1499	NUT, 3/8-16 REGHXCTRLK	1
77	57204	ROD, CLUTCH 3.92"	1
78	326131	BOLT, .495X .31 HSH5/16-18	1
79	1498	NUT, 5/16-18 REGHEXCTRLK	1
80	327947	SPRING, BRAKE 29.26 LF PEERHYD	1
81	330505	SPRING, CLUTCH .113X.750X8.75	1
82	42815	WASHER, FLAT .755X1.53X.07	2
83	301318	TIRE & RIM, 20X10.00-8 WHITE	2
83-1	24167	VALVE STEM	2
83-2	301366	RIM, WHEEL	2
86	319686	TIRE, 20 X 10 X 8	2
87	52928	KEY, SQUARE .1875SQX2.25LG	2
88	642	WASHER, FLAT .755X1.31X.075	4
89	42815	WASHER, FLAT .755X1.53X.07	2
90	36625	RING, RETEX .57X.05TRU5133-76	2
91	304441	HUB CAP, 8" EURO GREY 630	2
92	306669	CLIP, HUBCAP TINN #C25467-017-4	10

TRACTEUR TONDEUSE 43" MODELE E3583-030

MOTEUR ENSEMBLE



UTILISEZ DES PIÈCES D'ORIGINE POUR CONSERVER
L'APPLICATION DE LA GARANTIE.

TOUTES LES PIÈCES NON
REFEREES SONT
INTERCHANGEABLES AVEC
LEURS OPPOSEES.

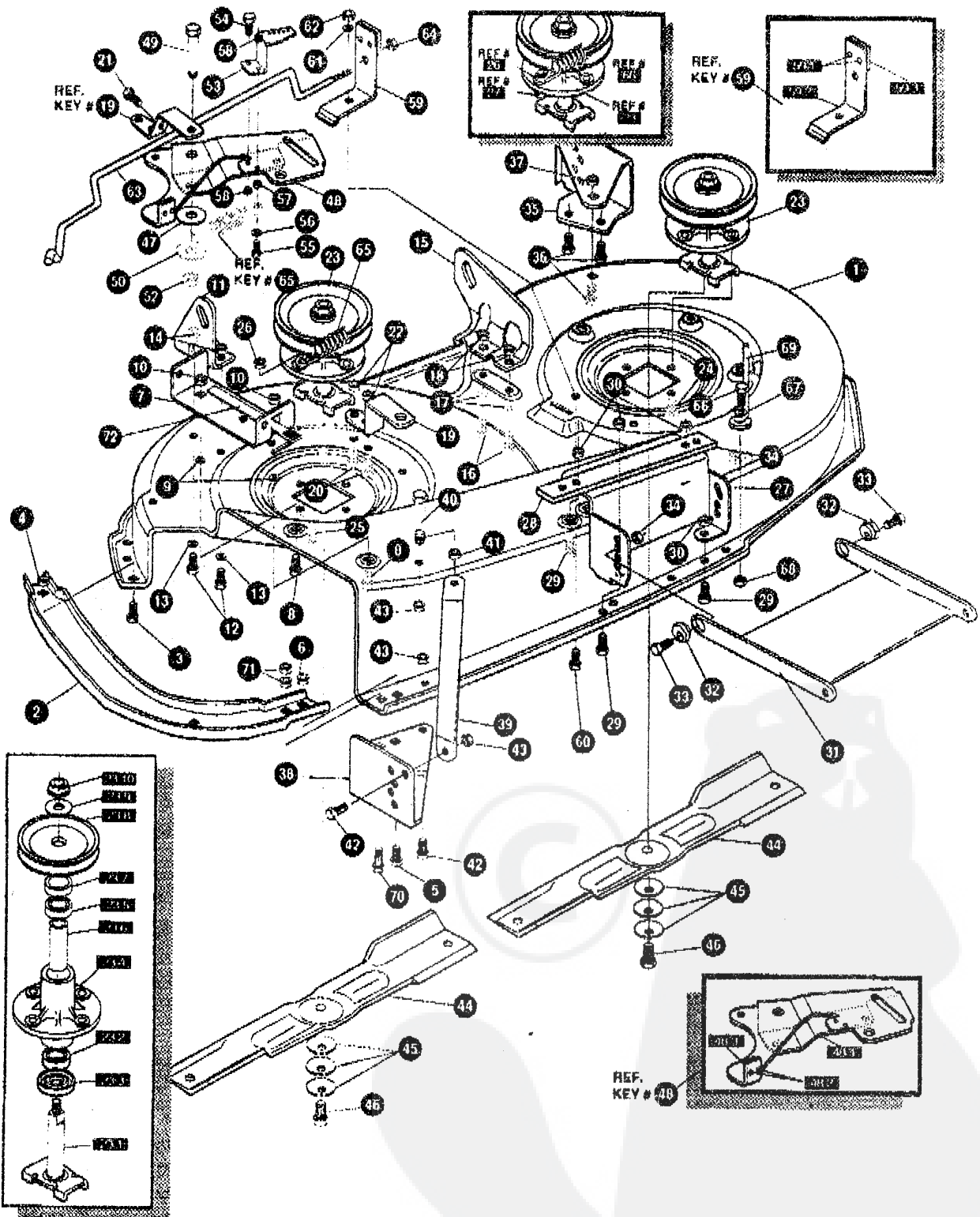
329220 B

TRACTEUR TONDEUSE 43" MODELE E3583-030

KEY#	PART#	DESCRIPTION	QTY
1	ENGINE	14-16HP VANGUARD(SEE ENGINE MANUAL)	1
2	50947	SCREW, 3/8-16X1.25 WAHHTAPBLKP	4
3	138489	WASHER, EXLK 384X.69X.04	1
4	305553	MUFFLER 14/18 TWIN NLSN 22785C	1
5	305554	EXHAUST TUBE 15HP RH B&S VANG	1
6	305555	EXHAUST TUBE 15HP LH B&S VANG	1
7	56472	DEFLECTOR SIDE OUT (BS222673)	1
8	35287	SCREW, #8-32X .38 HHWATAP	4
9	304709-853	BRACKET,MUFFLER	1
10	56030	SCREW, 5/16-18X.75WDFLLK	2
11	55273	NUT, 5/16-18 HXWDFLLK	2
12	995346	SCREW, 1/4-20X .50 WAHHTAP	2
13	9796	BRKT. TRANSAXLE	1
14	995338	SCREW, 1/4-20X .63 WAHHTAP	2
15	320922-853	SHIELD, MUFFLER HEAT TWIN	1
16	57072	BOLT 5/16-18X .63 CARRLN	2
17	309436	PUSHNUT, 5/16 BOLT RETAINER	2
18	55273	NUT, 5/16-18 HXWDFLLK	2
19	325565	PULLEY,ENG 4 OOD X4.4LG X6.OOD	1
23	120383	WASHER, REGSPTLK 459X.78X.12	1
24	428644	SCREW, 7/16-20X5.00 HHO	1
25	312728-853	HEAT SHIELD VANG (MF. HOOD)	1
26	57366	SCREW, 10-16X .50 DRILLTITE	4
27	309853	TANK, FUEL 1.5 WO/SENSOR CLEAR	1
28	49050	SCREW, 1/4-10X .75PHNTAP	4
29	48049	TUBING, .25X.50X BULK GAS LINE	10.0
30	47345	CLAMP HOSE SCREW TYPE	2
31	12501	CAP FUEL 2.5" THROAT	1
32	325547	OIL DRAIN VALVE ASSEMBLY	1
33	327422	CAP,OIL DRAIN VALVE ASM.YELLOW	1
34	314797	OIL SENSOR, B&S TWIN CYL	1
35	329218	CONTROL,THROTTLE 33.1LG BS VAN	1
36	155941	SCREW, 10-24X.63 PHFLTMA	2
37	271166	NUT, #10-24 HEXKEPS	2
38	50607	KNOB, ROUND THROTTLE BLACK	1
41	329219	CONTROL,CHOKE 28.0LG	1

TRACTEUR TONDEUSE 43" MODELE E3583-030

CARTER DE TONDEUSE



UTILISEZ DES PIÈCES D'ORIGINE POUR CONSERVER L'APPLICATION DE LA GARANTIE.

TOUTES LES PIÈCES NON REFEREES SONT INTERCHANGEABLES AVEC LEURS OPPOSEES.

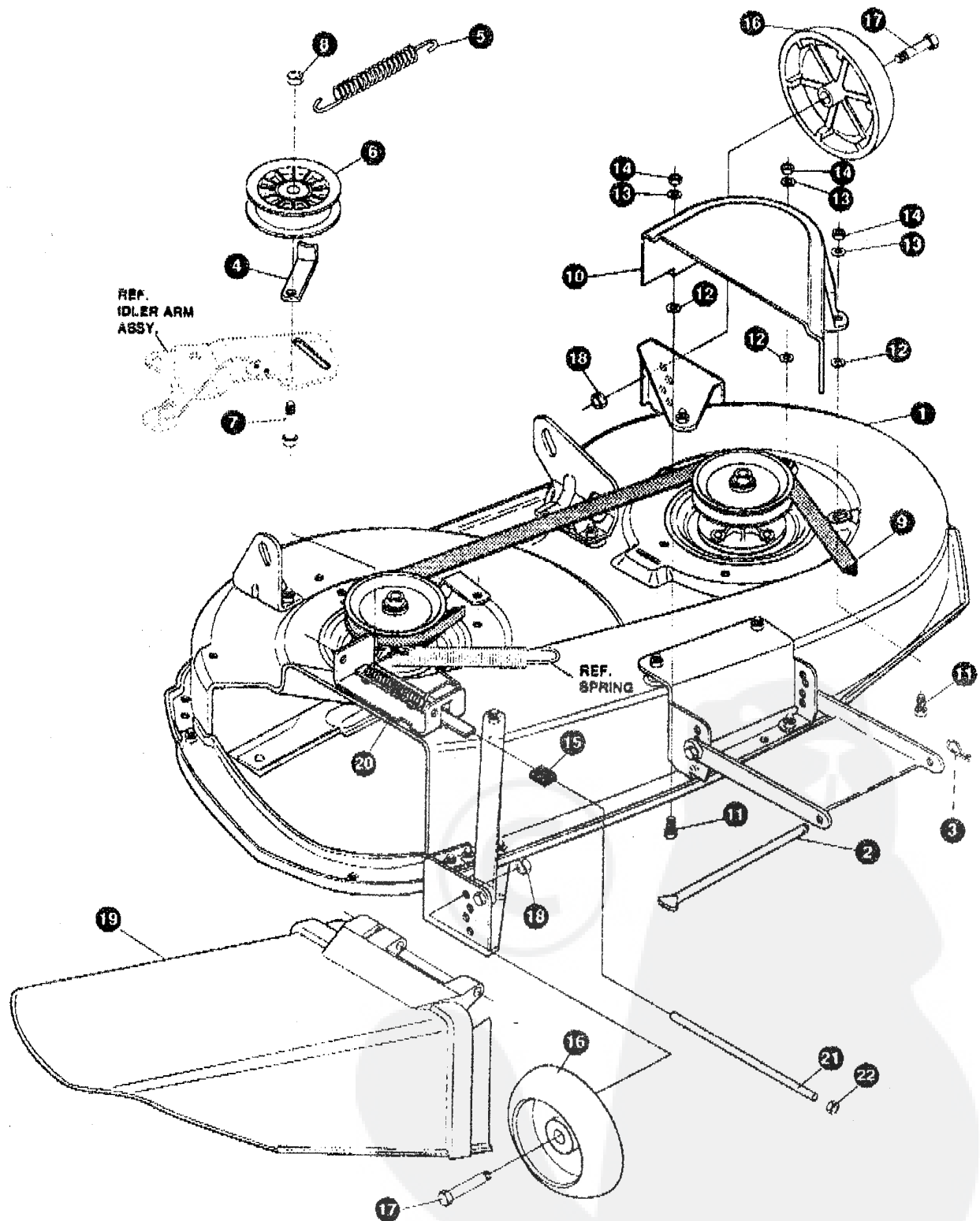
331508 A

TRACTEUR TONDEUSE 43" MODELE E3583-030

KEY#	PART#	DESCRIPTION	QTY
1	325116	43" DECK KIT	1
2	326480-853	TOE GUARD - MULCHER	1
3	180077	SCREW, 5/16-18X.75 HHC	1
4	1498	NUT, 5/16-18 REGHEXCTRLK	1
5	180077	SCREW, 5/16-18X.75 HHC	1
6	1498	NUT, 5/16-18 REGHEXCTRLK	1
7	317017	BRACKET CHUTE MOUNT BLACK	1
8	180077	SCREW, 5/16-18X.75 HHC	1
9	120393	WASHER, FLAT .344X.69X.065	2
10	1498	NUT, 5/16-18 REGHEXCTRLK	2
11	313929	LIFT BRKT, REAR RH BLK 853	2
12	180077	SCREW, 5/16-18X.75 HHC	1
13	120393	WASHER, FLAT .344X.69X.065	2
14	1498	NUT, 5/16-18 REGHEXCTRLK	2
15	310867	BRACKET DECK LIFTREAR LHBLK	2
16	180077	SCREW, 5/16-18X.75 HHC	1
17	120393	WASHER, FLAT .344X.69X.065	2
18	1498	NUT, 5/16-18 REGHEXCTRLK	2
19	326893-853	BRACE IDLER SUPPORT 40", 43"	2
20	180077	SCREW, 5/16-18X.75 HHC	1
21	308231	SCREW, 1/4-20X1.25 HHWATAP	2
22	44108	NUT, 5/16-18 HWDFLCTRLK	1
23	56424-853	QUILL ASSY, 36/39/40/43	2
23-1	56425	SHAFT/SADDLE 36"	2
23-2	49562	BRNG, BALL 6203-2AA(SEALS)-C3	1
23-3	50616	DUST SHIELD	1
23-4	55547	QUILL CASTING (1048)	1
23-5	49562	BRNG, BALL 6203-2AA(SEALS)-C3	1
23-6	50818	SPACER, SLEV 668X.88X3.797	1
23-7	51449	SPACER, SLEV 672X.93X.438PM	1
23-8	313898	PULLEY ASSY	1
23-9	56365	WASHER, SPECIAL QUILL	1
23-10	1282	NUT, 7/16-20 WDFLLK	1
24	50834	SCREW, 5/16-18X.88 WAHHTAP	1
25	300345	SCREW, 5/16-18X1.38 WAHHTAP	7
26	1498	NUT, 5/16-18 REGHEXCTRLK	1
27	317040	BRACKET FRNT. BLACK	1
28	328155-853	PLATE-MOUNTING	1
29	180077	SCREW, 5/16-18X.75 HHC	1
30	1498	NUT, 5/16-18 REGHEXCTRLK	4
31	58305-853	BRACKET, LINK DECK FRONT	4
32	58247	NUT, ADJUST	1
33	180079	SCREW, 5/16-18X1.00 HHC	2
34	1498	NUT, 5/16-18 REGHEXCTRLK	2
35	317041	BRKT, GAGE WHEEL LH. BLACK	1
36	180077	SCREW, 5/16-18X.75 HHC	1
37	1498	NUT, 5/16-18 REGHEXCTRLK	3
38	322484-853	BRACKET, GAGE WHEEL R.H. FRNT	3
39	314282-853	BRACKET, STABILIZER	1
40	311104	SCREW, 5/16-18X5.00 HHC	1
41	271184	NUT, 5/16-18 HEXKEPS	1
42	180077	SCREW, 5/16-18X.75 HHC	1
43	1498	NUT, 5/16-18 REGHEXCTRLK	2
44	326961	BLADE, 43"	3
45	2483	WASHER, 3/8DX1.25DX.07 BELLVIL	2
46	39573	SCREW, 3/8-24X1.00 NYLHHC	6
47	998307	WASHER, FLAT .391X1.00X.209	2
48	320576-853	IDLER ARM ASSEMBLY	1
48-1	322116-853	ARM IDLER 40/43" OECK	1
48-2	41601	RIVET, OVSET .187DIA X .50LG ST	1
48-3	306973	BRAKE PAD - HARD - 232AF	2
49	304420	BOLT, 500X2.15 HMSG	1
50	998416	WASHER, FLAT .391X1.00X.125	1
52	45171	NUT, 3/8-16 HWDFL WHIZ-LOCK	1
53	326249-853	BRACKET, EXTENSION IDLER	1
54	180077	SCREW, 5/16-18X.75 HHC	1
55	180083	SCREW, 5/16-18X1.50 HHC	1
56	448369	WASHER, FLAT .375X.88X.082	1
57	271184	NUT, 5/16-18 HEXKEPS	1
58	1498	NUT, 5/16-18 REGHEXCTRLK	1
59	321828	BLADE BRAKE ASSY.	2
59-1	135624	RIVET, TRSET .185DIA X .41LG ST	1
59-2	304119-853	BRAKE ARM HT 855	2
59-3	306973	BRAKE PAD - HARD - 232AF	1
60	180075	SCREW, 5/16-18X.63 HHC	1
61	120393	WASHER, FLAT .344X.69X.065	1
62	1498	NUT, 5/16-18 REGHEXCTRLK	1
63	315304	ROD, BRAKE	1
64	1502	NUT, 1/4-20 REGHEXCTRLK	1
65	35410	SPRING .071 X .62 X 4.37	1
66	180079	SCREW, 5/16-18X1.00 HHC	1
67	120393	WASHER, FLAT .344X.69X.065	1
68	1498	NUT, 5/16-18 REGHEXCTRLK	1
69	325965	BELT GUIDE, 43" DECK UPSTOP	1
70	12685	SCREW, 5/16-18X1.50HHCFT	1
71	1498	NUT, 5/16-18 REGHEXCTRLK	1
72	322320-853	LEVER ASSY (SHORT)	2

TRACTEUR TONDEUSE 43" MODELE E3583-030

CARTER DE TONDEUSE



UTILISEZ DES PIÈCES D'ORIGINE POUR CONSERVER
L'APPLICATION DE LA GARANTIE.

TOUTES LES PIÈCES NON
REFEREES SONT
INTERCHANGEABLES AVEC
LEURS OPPOSEES.

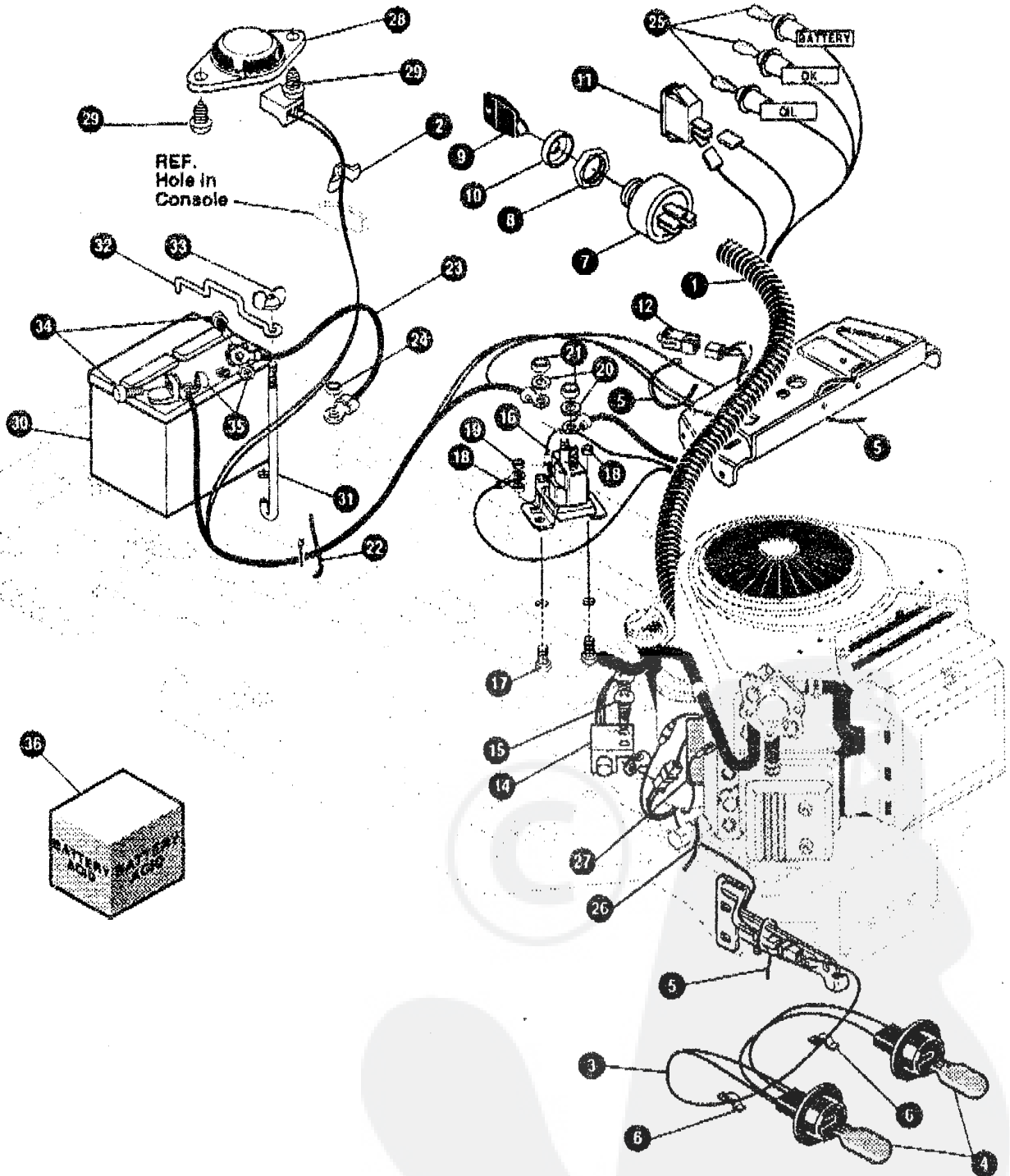
331509 A

TRACTEUR TONDEUSE 43" MODELE E3583-030

KEY#	PART#	DESCRIPTION	QTY
1	329036	DECK, 43" MOWER 2-WH DOM AIR	1
2	58306	ROD, DECK HITCH	1
3	8260	PIN, HAIR .091 DIA X 1.66 LG	1
4	1346	RETAINER, BELT	1
5	314107	SPRING, TENSION 5.00 LG x 17 LB/IN	1
6	310326	PULLEY, IDLER BFF 4.00 WIDE FL	1
7	126416	BOLT, 3/8-16 X 1.75 CARB LN	1
8	45171	NUT, 3/8-16 HWDFL WHIZ-LOCK	1
9	314108	BELT, V 5L 86.00 KEVLAR	1
10	330520	GUARD, BELT LH PLASTIC	1
11	57101	BOLT, 5/16-18 X .75 CARB LN	3
12	309436	PUSHNUT, 5/16 BOLT RETAINER	3
13	120393	WASHER, FLAT .344 X .69 X .065	3
14	1498	NUT, 5/16-18 REG HEX CTRLK	3
15	42348	GRIP-LEVER GRASS COLLECTOR	1
16	302611	GAUGE WHEEL EURO 6.00 OD X 1.38 WD	2
17	29763	BOLT, .500 X 1.990 HHSH 3/8-16	2
18	1499	NUT, 3/8-16 REG HEX CTRLK	2
19	304422	CHUTE DEFLECTOR 40"	1
20	314975	SPRING, TORSION CHUTE DEFLECTOR	1
21	304424	ROD, PIVOT DECK .312 X 7.25	1

TRACTEUR TONDEUSE 43" MODELE E3583-030

FAISCEAU ELECTRIQUE



UTILISEZ DES PIÈCES D'ORIGINE POUR CONSERVER L'APPLICATION DE LA GARANTIE.

TOUTES LES PIÈCES NON REFERÉES SONT INTERCHANGEABLES AVEC LEURS OPPOSÉS.

329224 B

TRACTEUR TONDEUSE 43" MODELE E3583-030

KEY#	PART#	DESCRIPTION	QTY
1	329223	WIRE HARNESS 14-18VAN H26Q22	1
2	41482	PRESS CLIP, 1.380LG, 255ID	1
3	303064	ASSY LIGHT WIRE-1/4 TURN	1
4	52572	BULB, HEADLAMP	2
5	57444	TIE, CABLE BLACK NYLON 5.62L	4
6	41482	PRESS CLIP, 1.380LG, 255ID	2
7	327353	SWITCH IGN (AFTER FIRE) 3 POSN	1
8	327352	NUT, 5/8-8ACME DELTA FOR BOOT	1
9	327350	KEY, IGNITION GENERIC DELTA	2
10	300194	BOOT, IGN SWITCH	1
11	328626	LIGHT SWITCH PANEL MNT	1
12	320082	SWITCH, DOUBLE POLE NO/NC GRAY	1
13	57444	TIE, CABLE BLACK NYLON 5.62L	1
14	57476	SWITCH, SCR MNT DP NC NO BLK	1
15	57220	SCREW, #12 X .50 PHPNHTAP BLK	2
16	59716	SOLENOID	1
17	187745	SCREW, 1/4-20X .75 HXSEMMA	2
18	1502	NUT, 1/4-20 REGHEXCTRLK	2
19	271172	NUT, 1/4-20 REGHEXKEPS	1
20	136485	WASHER, EXLK, 320X.61X.03	2
21	120368	NUT, 5/16-24 REGHEX	2
22	57444	TIE, CABLE BLACK NYLON 5.62L	1
23	55511	WIRE, GROUND, 12.5"	1
24	271184	NUT, 5/16-18 HEXKEPS	1
25	57789	BULB, INDICATOR	3
26	57444	TIE, CABLE BLACK NYLON 5.62L	1
27	315602	REGULATOR, SEN VOLT BS W/SENSOR	1
28	57547	SWITCH, SEAT	1
29	180505	SCREW, 1/4-20X .38PHPNHMA	2
30	302257	BATTERY 12V	1
31	57551	ROD, BATTERY	1
32	57552	ROD, BATTERY, TOP	1
33	325232	NUT, WING 1/4-20 NYLON	1
34	180020	SCREW, 1/4-20X .75 HHC	2
35	271172	NUT, 1/4-20 REGHEXKEPS	2
36	^	BATTERY ACID PACK, 80 OZ	1

^ CAN BE PURCHASED LOCALLY

