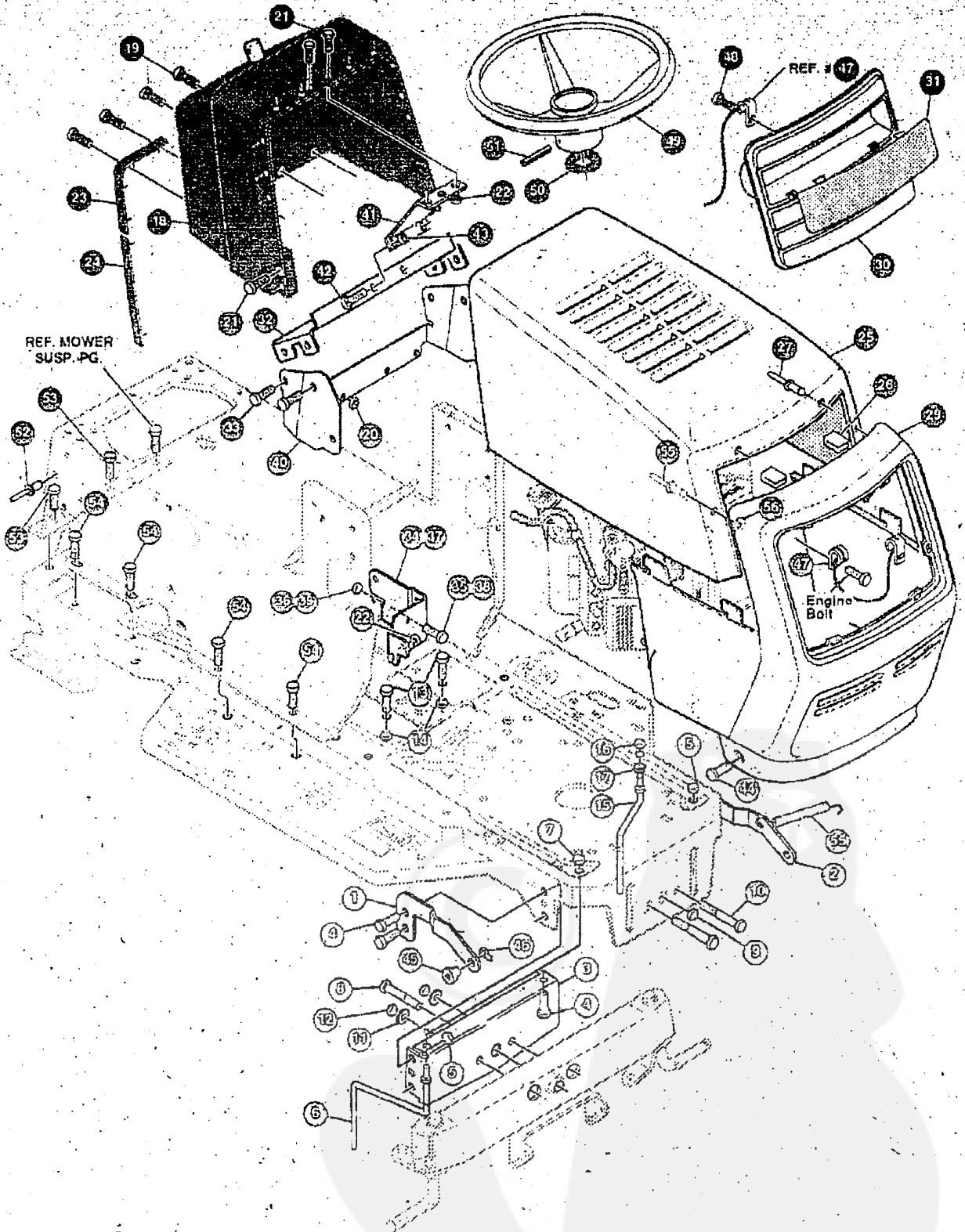


JTM: Veronique

E3583-100

REPAIR PARTS

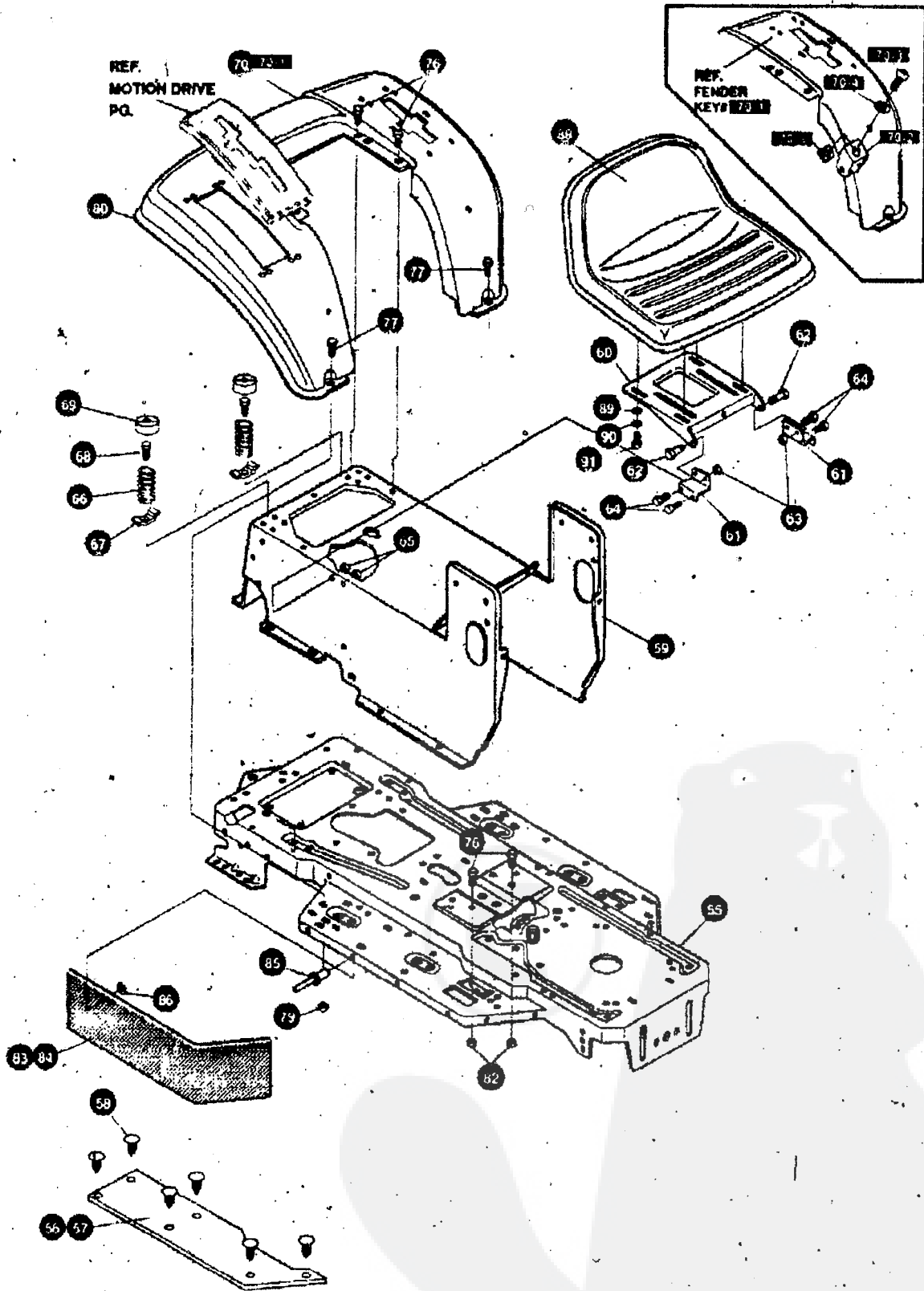


NOTE: ALWAYS USE ORIGINAL EQUIPMENT PARTS. Use of service/replacement parts other than original equipment parts may void your warranty.

ALL UNNUMBERED ITEMS ARE INTERCHANGEABLE WITH OPPOSITE SIDE

329221 E

KEY#	PART#	DESCRIPTION	QTY
1	328203-853	BRACKET, HOOD LF G21/22/23/24	1
2	328204-853	BRACKET, HOOD LF G19/21/22/23	1
3	313541-853	BRACKET, FRONT AXLE	1
4	56030	SCREW, 5/16-18X.75WDFLLK	5
5	55273	NUT, 5/16-18 HXWDFLLK	5
6	300440	GUIDE, BELT, RIDER	1
7	1498	NUT, 5/16-18 REGHEXCTRLK	1
8	308207	BOLT, .625X2.18 HSSH 1/2-13	1
9	309008	NUT, 1/2-13 HEXJAM CTRLK	1
10	180138	SCREW, 3/8-16X3.00 HHC	2
11	2483	WASHER, .391DX1.25DX.07 BELLVIL	2
12	1499	NUT, 3/8-16 REGHXCTRLK	2
13	180079	SCREW, 5/16-18X1.00 HHC	2
14	1498	NUT, 5/16-18 REGHEXCTRLK	2
15	300635	GUIDE, BELT SHORT 15" WHEEL	1
16	124824	NUT, 5/16-18 HEXJAM	1
17	271190	NUT, 3/8-16 HEXKEPS	1
18	329226	DASH, W/CHOKE, H-PTO, V-IGN, LF	1
19	318304	SCREW, 1/4-14X.75PHPHDTAP BLK	4
20	50352	NUT, 1/4-20 WDFLLK TOPLOCK	1
21	155941	SCREW, 10-24X.63 PHFLTMA	4
22	308459	NUT, #10-24 HXHDNYLK	4
23	328141	BUMPER, HOOD/DASH TOP & CORNER	2
24	328142	BUMPER, HOOD/DASH SIDE STRIP	2
25	329145	HOOD, H25 LFSF, MOLDED, LOUVERS	1
26	306857	CLIP, TINNERMAN VER II HOOD	7
27	329238	RIVET, POP 3/16DIA X .75 LG FLG	2
29	329178	GRILLE, G-22 MOLDED PLASTICK	1
30	329144	INSERT, GRILLE G22 'K' STYLE	1
31	325184	LENS, G22 'K' STYLE	1
32	324909-853	SUPPORT, STEERING/PTO LF	1
33	995346	SCREW, 1/4-20X .50 WAHTAP	4
34	326320-853	BRACKET, DASH/TANK LF RH	1
35	180020	SCREW, 1/4-20X .75 HHC	1
36	1502	NUT, 1/4-20 REGHEXCTRLK	1
37	326321-853	BRACKET, DASH/TANK LF LH	1
38	180020	SCREW, 1/4-20X .75 HHC	1
39	1502	NUT, 1/4-20 REGHEXCTRLK	1
40	326640-853	SUPPORT, LOWER DASH STEEL	1
41	327039-853	DASH, SUPPORT BRACKET STEEL	1
42	180020	SCREW, 1/4-20X .75 HHC	2
43	1502	NUT, 1/4-20 REGHEXCTRLK	2
44	323044	PIN, CLEVIS .500 X .49/.51 LGTH	2
45	326522	BEARING, HOOD .5051DX.625ODX1.12FL	2
46	8260	PIN, HAIR .091 DIA X 1.68LG	2
47	310748	LANYARD, HOOD 15.77LG H15	1
48	49050	SCREW, 1/4-10X .75PHPNTP	1
49	330847	STEERING WHEEL	1
50	301413	SPACER, STEERING SHAFT	1
51	456378	PIN, SPRING.250DIA X 2.00LG HVPL	1
52	46763	RIVET, POP .187DIA X .450LG ST	3
53	35497	SCREW, 5/16-18X .50 WAHTAP	2
54	40886	SCREW, 1/4-20X .38 WAHTAP	9
55	304784	SPRING, HOOD LATCH	1
56	393225	RIVET, POP 3/16DIA X 1.0 LG FLG	2
56	1501	WASHER, FLAT .203X .56X.040	2
57	333632	PARTS MANUAL	1
58	332212	OPERATOR'S MANUAL (ENGLISH)	1
58	332213	OPERATOR'S MANUAL (FRENCH)	1
59	332214	OPERATOR'S MANUAL (GERMAN)	1



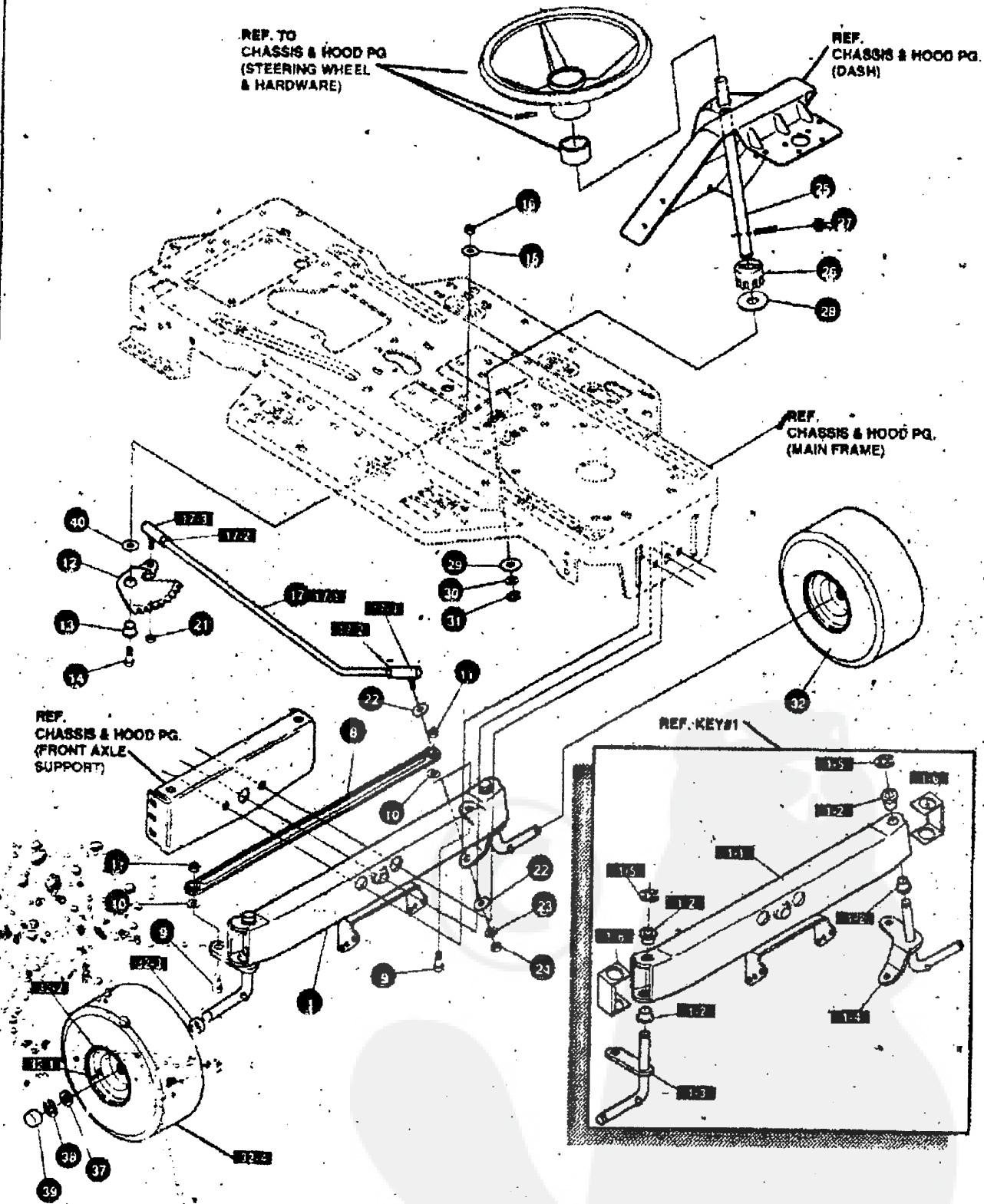
NOTE: ALWAYS USE ORIGINAL EQUIPMENT PARTS. Use of service/replacement parts other than original equipment parts may void your warranty.

ALL UNNUMBERED ITEMS ARE INTERCHANGEABLE WITH OPPOSITE SIDE

327732 C

KEY#	PART#	DESCRIPTION	QTY
55	326579-879	FRAME, LF DRILLED P920/F4360	1
56	310006	FOOT PAD, RH 22.12LG DYNA F-5	1
57	310005	FOOT PAD, LH 22.12LG DYNA F-5	1
58	309235	FASTENER, RATCHET BLACK	12
59	327575-830	CONSOLE, NON-WALK THRU, LFSOF	1
60	58367-879	PLATE, SEAT F5 SF, LF	1
61	310660-879	BRACKET, F-5 SEAT SUPPORT	2
62	20507	BOLT, .437X .156 HSSH 5/16-18	2
63	1498	NUT, 5/16-18 REGHEXCTRLK	2
64	48901	SCREW, 5/16-18X .63WAHHC	4
65	1498	NUT, 5/16-18 REGHEXCTRLK	4
66	57153	SPRING, SEAT 2.63LG, 1.49OD BLK	2
67	1341	CLAMP, SPRING 1.17ID	2
68	44811	SCREW, 1/4-20X .75 WAHTAP	2
69	56907	COVER, SEAT SPRING 1.5IDX1.0LG	2
70		ASSEMBLY, FENDER F5, LF, S OF, SUSP	1
70-1	332185-879	FENDER, F5, SUS, LF, S OF	1
70-2	9239	CLEVIS	1
70-3	439465	SCREW, 5/16-18X .56PHPNMA	1
70-4	301551	WASHER, .344IDX1.50DX.09	1
70-5	120373	NUT, 5/16-18 SQ	1
76	995346	SCREW, 1/4-20X .50 WAHTAP	4
77	126385	BOLT, 5/16-18X2.25 CARRLN	2
79	55273	NUT, 5/16-18 HXWDFLLK	2
80	55023	TRIM, 77.5" BLACK NARROW	77.5
81	180079	SCREW, 5/16-18X1.00 HHC	2
82	1498	NUT, 5/16-18 REGHEXCTRLK	2
83	305386	SKIRT, TUY LF RUBBER 7 X 28.03	1
84	305354	SKIRT, TUY LF RUBBER 7 X 15.64	1
85	329238	RIVET, POP 3/16DIA X .75 LG FLG	10
86	1501	WASHER, FLAT .203X .56X.040	10
88	310384	SEAT, MICHIGAN GEN, W/SW HOLE	1
89	120393	WASHER, FLAT .344X .69X.065	4
90	120638	WASHER, HVSP TLK 328X.60X.09	4
91	180077	SCREW, 5/16-18X .75 HHC	4

\* ORDER INDIVIDUAL PARTS



**NOTE: ALWAYS USE ORIGINAL EQUIPMENT PARTS** Use of service/replacement parts other than original equipment parts may void your warranty.

**ALL UNNUMBERED ITEMS ARE INTERCHANGEABLE WITH OPPOSITE SIDE**

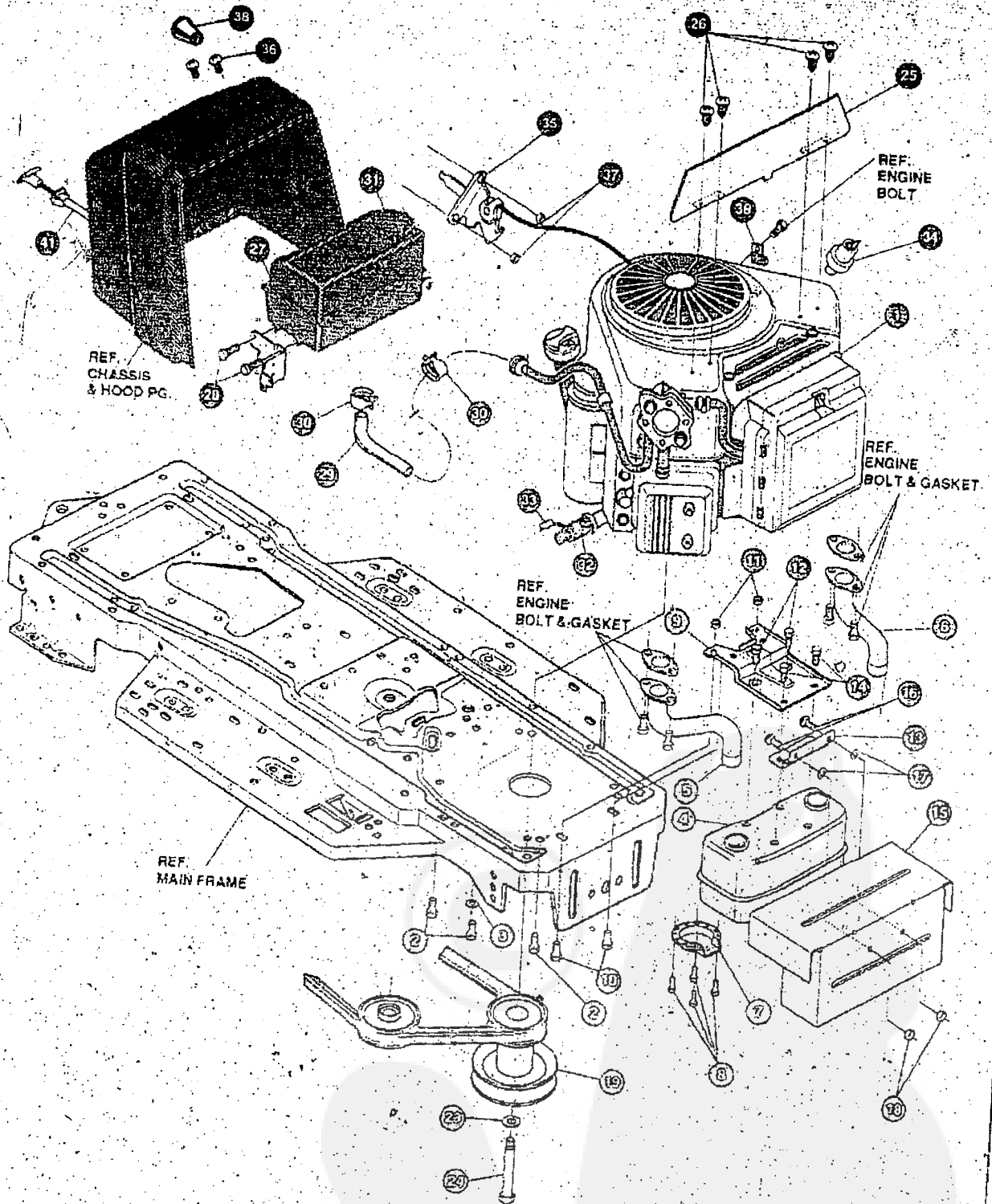
3171241

KEY#	PART#	DESCRIPTION	QTY
1	327021-853	ASSEMBLY, WELD, CLUTCH HDLE	1
3	55514	KNOB, ROUND 1.50 DIA BLACK	1
4	9129	CLIP, RETAIN BRACKET	2
5	44811	SCREW, 1/4-20X .75 WASH TAP	2
6	1288	BRACKET, CABLE RETAIN	1
7	48306	PULLEY, POWDER METAL	1
8	57322	BOLT, .375X .375 HSSH 1/4-20	1
9	1502	NUT, 1/4-20 REGHEXCTRLK	1
10	328368	ASSEMBLY, PTO BRACKET-CABLE 43"	1
11	120613	NUT, 1/4-28 HJAM	1
12	35498	SCREW, 5/16-18X .75 WASH TAP	1
13	57444	TIE, CABLE BLACK NYLON 5.82L	1
14	300158-853	LIFT ASSEMBLY, LH	1
15	300169-853	LIFT ASSEMBLY, RH	1
16	180079	SCREW, 5/16-18X1.00 HHC	1
17	58247	NUT, ADJUST	1
18	1498	NUT, 5/16-18 REGHEXCTRLK	1
19	417098	WASHER, FLAT .531X1.06X.063	2
20	8260	PIN, HAIR .091 DIA X 1.66LG	2
21	58248-853	BRACKET, REAR HANG SUSP	2
22	57072	BOLT, 5/16-18X .63 CARRLN	4
23	1498	NUT, 5/16-18 REGHEXCTRLK	4
24	313926	BRACKET, HGT/ADJUST SUPPORT	1
25	180077	SCREW, 5/16-18X .75 HHC	4
26	1498	NUT, 5/16-18 REGHEXCTRLK	4
31	180077	SCREW, 5/16-18X .75 HHC	1
32	1498	NUT, 5/16-18 REGHEXCTRLK	1
33	301238	QUADRANT, HEIGHT ADJUST	1
34	180077	SCREW, 5/16-18X .75 HHC	2
35	1498	NUT, 5/16-18 REGHEXCTRLK	2
36	322292-853	HANDLE, LIFT SHORT(30" S.F.)	1
37	300171	BOLT, 500X .270 HSSH 5/16-18	1
38	996418	WASHER, FLAT .506X .75X.024	1
39	44108	NUT, 5/16-18 HWDFLCTRLK	1
40	301239	PAWL, SQUARE	1
41	300171	BOLT, 500X .270 HSSH 5/16-18	1
42	44108	NUT, 5/16-18 HWDFLCTRLK	1
43	9435	POINTER, HEIGHT ADJ	1
44	138479	WASHER, EXLK 1.95X .41X .03	1
45	35287	SCREW, #8-32X .38 HHWATAP	1
46	303027	ROD, ACTUATOR-SHORT	1
47	58326	SPRING, HEIGHT ADJUST	1
48	58325	KNOB, HEIGHT ADJ PUSH BUTTON	1
49	58329	GRIP, .750 OD W/ HOLE BLACK	1
50	9149	BRACKET, CABLE RETAIN	1
51	48306	PULLEY, POWDER METAL	1
52	58336	BOLT, .375X .375 HSSH 1/4-20	1
53	1502	NUT, 1/4-20 REGHEXCTRLK	1
54	314177	CABLE, LIFT 22.92 F-5 20X8-8	1
55	300310	PIN, CLEVIS .310DIA+ .475LG	1
56	300311	RING, RET E .31X.25TRUX5133-31	1
57	120375	NUT, 1/4-20 REGHEX	1
58	48306	PULLEY, POWDER METAL	1
59	300317	PIN, CLEVIS .375DIA X .81 LG	1
60	8260	PIN, HAIR .091 DIA X 1.66LG	1
61	9405	CLEVIS, LIFT CABLE	1
62	120372	NUT, 1/4-20 REGSSO	1
63	39522	PIN, CLEVIS .312 X .812	1
64	121222	PIN, COTTER .090 DIA X .75LG	1
65	300335	LIFT COVER-39" F5	1
66	300340	SCREW, #10 X .75 HHPLAST BLK	3

E3583-100

## MOTION DRIVE ASSEMBLY

KEY#	PART#	DESCRIPTION	QTY
80	321514	SPRING, DRAG LINK BIAS	1
81	304016	GUIDE, BELT R.H.	1
82	1498	NUT, 5/16-18 REGHEXCTRLK	1
83	325942	PEDAL ASSEMBLY, BRAKE/CLUTCH LF	1
84	319675	PIN, CLEVIS 500DX4.53LG	1
85	57847	SPRING, BRAKE PEDAL	1
86	2968	WASHER, FLAT .504X .75X.059	1
87	56180	PIN, HAIR .091 DIA X1.62LG	3
88	48160	PAD, CLUTCH BRAKE W/PRINTING	1
89	320381	ARM, IDLER TRACTION, SOG LF	1
90	329989	BOLT, .625X .135 HSSH 5/16-18	1
91	45602	WASHER, FLAT .333X .87X.119	1
92	1498	NUT, 5/16-18 REGHEXCTRLK	1
93	39659	RETAINER, BELT	1
94	35374	PULLEY, IDLER V4L 3.06X .62	1
95	45892	BOLT, 3/8-16X1.50 CARRSN	1
96	1499	NUT, 3/8-16 REGHEXCTRLK	1
97	57204	ROD, CLUTCH 3.92	1
98	57217	BRACKET, BRAKE ROD	1
99	20507	BOLT, .437X .156 HSSH 5/16-18	1
100	45602	WASHER, FLAT .333X .87X.119	1
101	1498	NUT, 5/16-18 REGHEXCTRLK	1
102	316293	ROD, BRAKE 22.25 LF	1
103	120383	WASHER, FLAT .344X .69X.065	1
104	1498	NUT, 5/16-18 REGHEXCTRLK	2
105	330505	SPRING, CLUTCH .113X.750X8.75	1
106	42815	WASHER, FLAT .755X1.53X.07	1
107	57479	SPACER, SLEEVE .75 X1.25X1.32	2
108	301565	SPACER, SLEEVE .750X1.25X .50	2
109	301318	TIRE & RIM, 20X10 00-8	2
109-1	24167	VALVE STEM	2
109-2	301366	RIM, WHEEL	2
109-3	TIRE	REFER TO TIRE TREAD PAGE	
113	52928	KEY, SQUARE .1875X2.25LG	2
114	642	WASHER, FLAT .755X1.31X.075	4
115	42815	WASHER, FLAT .755X1.53X.07	2
116	36625	RING, RETEX .57X .05TRUS133-75	2
117	40394	HUB CAP, 1.500ID X 7/8LG	2



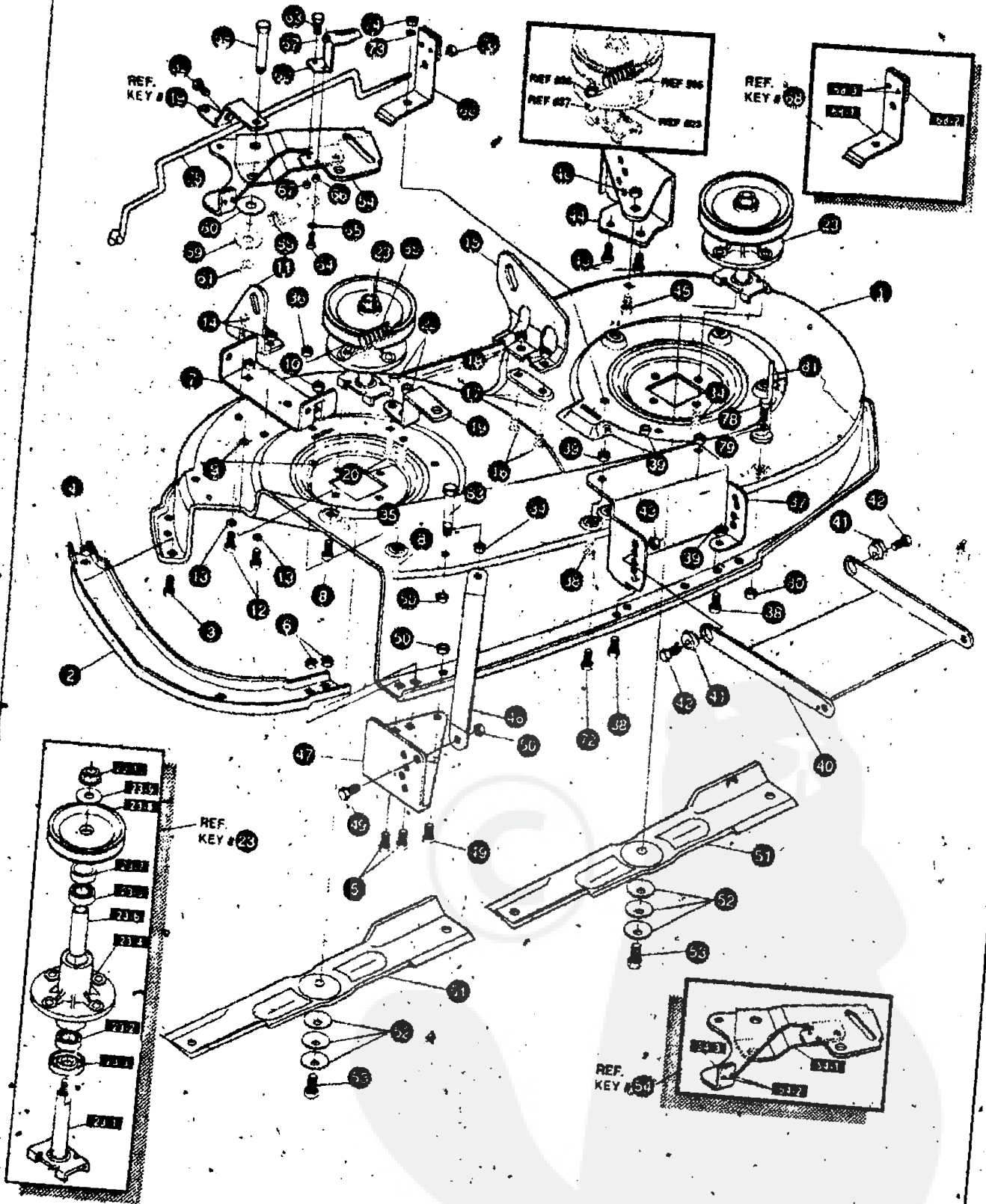
NOTE: ALWAYS USE ORIGINAL EQUIPMENT PARTS. Use of service/replacement parts other than original equipment parts may void your warranty.

ALL UNNUMBERED ITEMS ARE INTERCHANGEABLE WITH OPPOSITE SIDE

330404-A



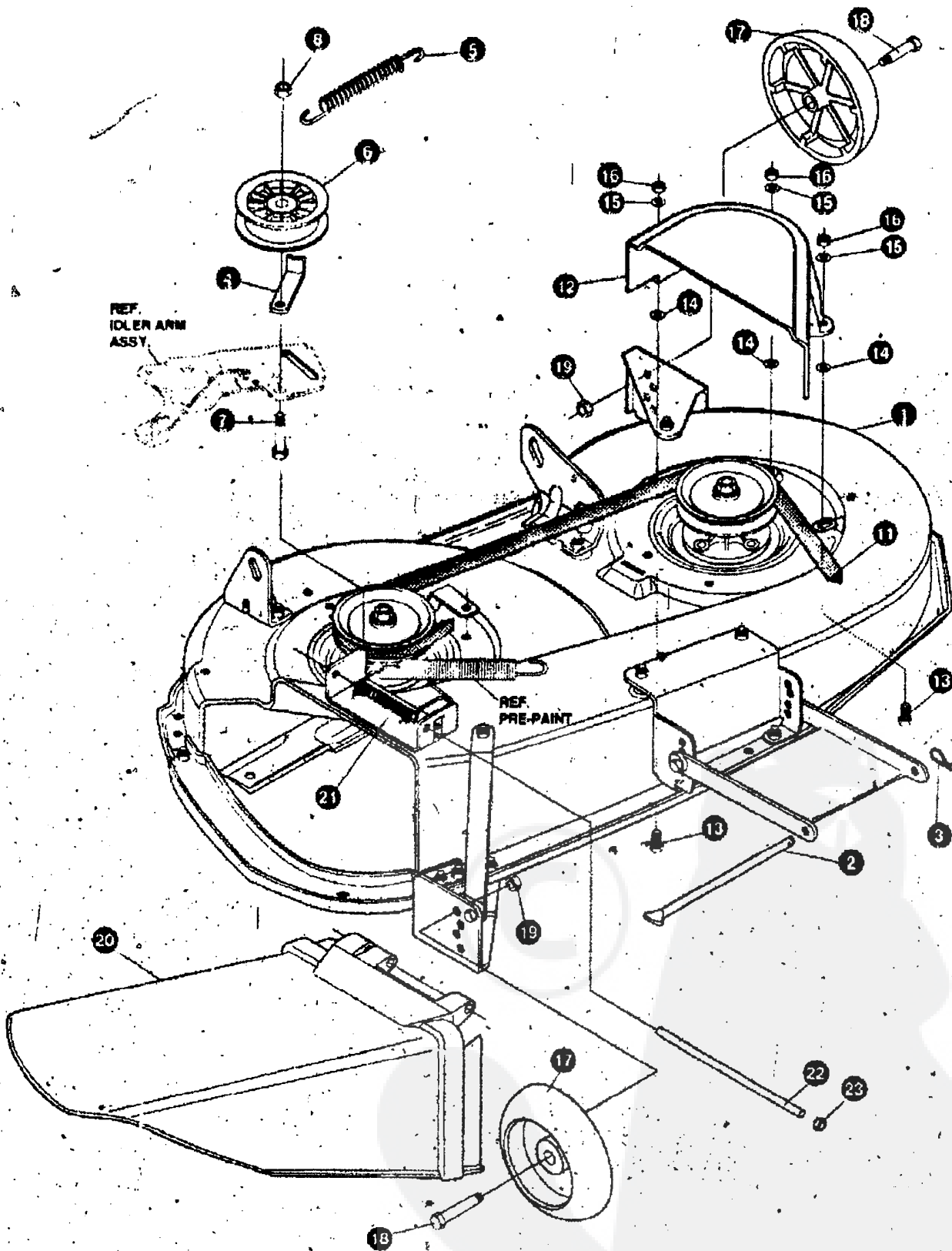
KEY#	PART#	DESCRIPTION	QTY
1	ENGINE	14-18HP VANGUARD(SEE ENGINE MANUAL)	1
2	50947	SCREW, 3/8-16X1.25 WAHHTAPBLKP	4
3	138409	WASHER, EXLK 384X.69X.04	1
4	305553	MUFFLER, 14/18 TWIN NLSN 227B5C	1
5	305554	EXHAUST TUBE 15HP RH B&S VANG	1
6	305555	EXHAUST TUBE 15HP LH B&S VANG	1
7	56472	DEFLECTOR SIDE OUT (BS222573)	1
8	35287	SCREW, #8-32X .38 HHWATAP	4
9	304709-853	BRACKET, MUFFLER	2
10	56030	NUT, 5/16-18 HXWDFLLK	2
11	55273	SCREW, 1/4-20X .50 WAHHTAP	2
12	995346	BRACKET, TRANSAXLE	2
13	9796	SCREW, 1/4-20X .75 WAHHTAP	1
14	44811	SHIELD, MUFFLER HEAT TWIN	2
15	320922-853	BOLT, 5/16-18X .63 CARRLN	2
16	57072	PUSHNUT, 5/16 BOLT RETAINER	2
17	309436	NUT, 5/16-18 HXWDFLLK	2
18	55273	PULLEY, ENG 4.40OFF/5.00D/3.00D	1
19	328029	WASHER, REGSPTLK.459X 78X.12	1
20	120363	SCREW, 7/16-20X5 00 HHC	1
21	428644	HEAT SHIELD VANG (MF. HOOD)	1
22	312728-853	SCREW, 10-16X .50 DRILLTITE	4
23	57366	TANK, FUEL 1.5 WO/SENSOR CLEAR	1
24	309853	SCREW, 1/4-10X .75PHNTAP	4
25	49050	TUBING, .25X.50X BULK GAS LINE	10'
26	48049	CLAMP, HOSE SCREW TYPE	2
27	47345	CAP, FUEL 2.5" THROAT	1
28	12501	OIL DRAIN VALVE ASSEMBLY	1
29	325547	CAP, OIL DRAIN VALVE ASM. YELLOW	1
30	327422	OIL SENSOR, B&S TWIN CYL	1
31	314797	CONTROL, THROTTLE 33.1LG BS VAN	1
32	329218	SCREW, 10-24X.63 PHFLTMA	2
33	155941	NUT, #10-24 HXHDNYLK	2
34	308459	KNOB, ROUND THROTTLE BLACK	1
35	155941	KNOB, ROUND THROTTLE BLACK	1
36	50607	CONTROL CHOKE 28.0LG	1
37	50607		
38	50607		
39	50607		
40	50607		
41	329219		



**NOTE: ALWAYS USE ORIGINAL EQUIPMENT PARTS.** Use of service/replacement parts other than original equipment parts may void your warranty.

ALL UNNUMBERED ITEMS ARE INTERCHANGEABLE WITH OPPOSITE SIDE

KEY#	PART#	DESCRIPTION	QTY
1	325116	43" DECK KIT	1
2	326480	TOE GUARD - MULCHER	1
3	180077	SCREW, 5/16-18X .75 HHC	1
4	1498	NUT, 5/16-18 REGHEXCTRLK	1
5	180077	SCREW, 5/16-18X .75 HHC	2
6	1498	NUT, 5/16-18 REGHEXCTRLK	2
7	317017	BRACKET, CHUTE MOUNT BLACK	1
8	180077	SCREW, 5/16-18X .75 HHC	2
9	120393	WASHER, FLAT .344X .69X .065	2
10	1498	NUT, 5/16-18 REGHEXCTRLK	2
11	313929	LIFT BRACKET, REAR RH BLK 853	1
12	180077	SCREW, 5/16-18X .75 HHC	2
13	120393	WASHER, FLAT .344X .69X .065	2
14	1498	NUT, 5/16-18 REGHEXCTRLK	2
15	310667	BRACKET, DECK LIFTREAR LHBLK	1
16	180077	SCREW, 5/16-18X .75 HHC	2
17	120393	WASHER, FLAT .344X .69X .065	2
18	1498	NUT, 5/16-18 REGHEXCTRLK	2
19	326893	BRACE, IDLER SUPPORT 40" 43"	1
20	180077	SCREW, 5/16-18X .75 HHC	2
22	44108	NUT, 5/16-18 HWDFLCTRLK	2
23	56424	QUILL ASSEMBLY .36/39/40/43	2
23-1	56425	SHAFT/SADDLE 36"	1
23-2	49562	BEARING, BALL 6203-2AA(SEALS)-C3	1
23-3	50616	DUST SHIELD	1
23-4	55547	QUILL CASTING (1048)	1
23-5	49562	BEARING, BALL 6203-2AA(SEALS)-C3	1
23-6	50818	SPACER, SLEEVE .669X .88X3.797	1
23-7	51449	SPACER, SLEEVE .672X .93X 4.38PM	1
23-8	313898	PULLEY ASSEMBLY	1
23-9	56365	WASHER, SPECIAL QUILL	1
23-10	1282	NUT, 7/16-20 WDFLLK	1
34	35498	SCREW, 5/16-18X .75 WAMHTAP	7
35	300345	SCREW, 5/16-18X1.38 WAMHTAP	1
36	1498	NUT, 5/16-18 REGHEXCTRLK	1
37	317040	BRACKET FRONT BLACK	1
38	180077	SCREW, 5/16-18X .75 HHC	4
39	1498	NUT, 5/16-18 REGHEXCTRLK	4
40	58305	BRACKET, LINK DECK FRONT	1
41	58247	NUT, ADJUST	2
42	180079	SCREW, 5/16-18X1.00 HHC	2
43	1498	NUT, 5/16-18 REGHEXCTRLK	2
44	317041	BRACKET, GAGE WHEEL LH BLACK	1
45	180077	SCREW, 5/16-18X .75 HHC	3
46	1498	NUT, 5/16-18 REGHEXCTRLK	3
47	322464	BRACKET, GAGE WHEEL R.H. FRNT	1
48	314282	BRACKET, STABILIZER	1
49	180077	SCREW, 5/16-18X .75 HHC	2
50	1498	NUT, 5/16-18 REGHEXCTRLK	3
51	316608	BLADE, 21.70 HIGH-LIFT BLK	2
52	2483	WASHER, .39IDX1.25DX.07 BELLVIL	6
53	99573	SCREW, 3/8-24X1.00 NYLHHC	2
54	320576	IDLER ARM ASSEMBLY	1
54-1	322116	ARM IDLER, 40/43" DECK	1
54-2	41601	RIVET, OVSET .187DIA X .50LG ST	2
54-3	306973	BRAKE PAD - HARD - 232AF	1
58	304420	BOLT, .500X2.15 HHSH	1
59	996416	WASHER, FLAT .391X1.00X .125	1
60	996307	WASHER, FLAT .391X1.00X .209	1
61	45171	NUT, 3/8-16 HWDFL WHIZ-LOCK	1
62	326249	BRACKET, EXTENSION IDLER	1
63	180077	SCREW, 5/16-18X .75 HHC	1
64	180083	SCREW, 5/16-18X1.50 HHC	1
65	446363	WASHER, FLAT .375X .88X .082	1
66	271184	NUT, 5/16-18 HEXKEPS	1
67	1498	NUT, 5/16-18 REGHEXCTRLK	2
68	321828	BLADE BRAKE ASSEMBLY	1
68-1	135624	RIVET, TRSET .185DIA X .41LG ST	2
68-2	304119	BRAKE ARM	1
68-3	306973	BRAKE PAD - HARD - 232AF	1
72	180077	SCREW, 5/16-18X .75 HHC	1
73	120393	WASHER, FLAT .344X .69X .065	1
74	1498	NUT, 5/16-18 REGHEXCTRLK	1
75	314079	ROD, BRAKE	1
76	1502	NUT, 1/4-20 REGHEXCTRLK	1
78	180079	SCREW, 5/16-18X1.00 HHC	1
79	120393	WASHER, FLAT .344X .69X .065	1
80	1498	NUT, 5/16-18 REGHEXCTRLK	1
81	325965	BELT GUIDE, 43" DECK UPSTOP	1
82	308231	SCREW, 1/4-20X1.25 HHWATAP	1
83	311104	SCREW, 5/16-18X5.00 HHC	1
84	271184	NUT, 5/16-18 HEXKEPS	1
85	35410	SPRING .071 X .62 X 4.37	1

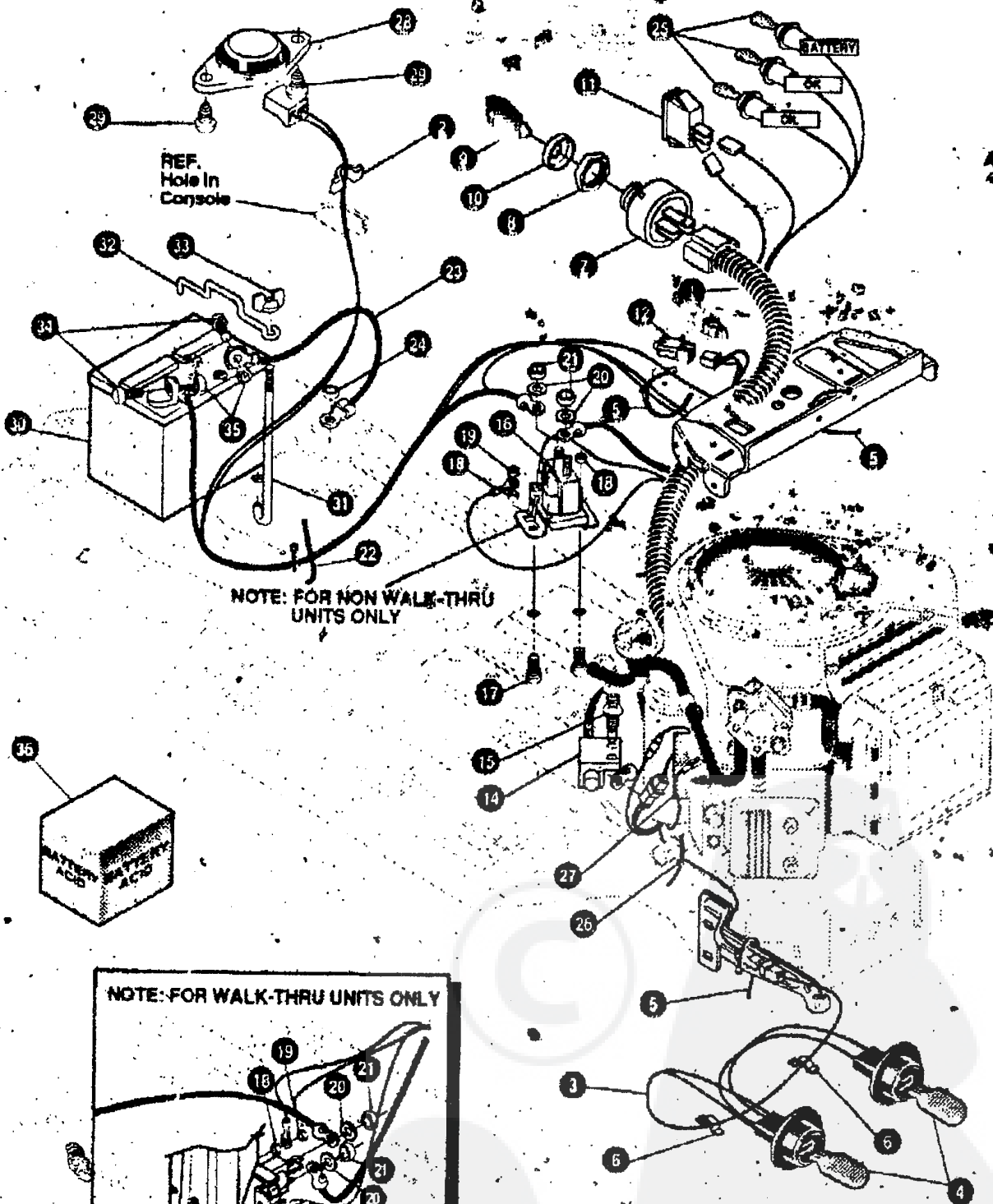


**NOTE: ALWAYS USE ORIGINAL EQUIPMENT PARTS** Use of service/replacement parts other than original equipment parts may void your warranty.

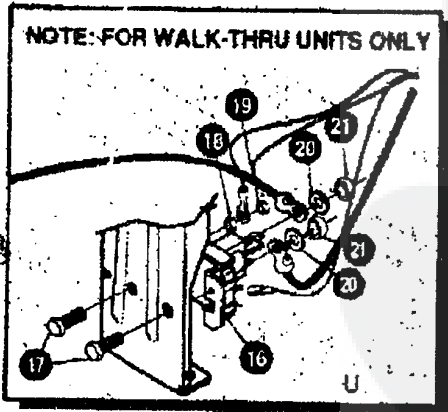
**ALL UNNUMBERED ITEMS ARE INTERCHANGEABLE WITH OPPOSITE SIDE**

326415 B

KEY#	PART#	DESCRIPTION	QTY
1	329036	DECK, 43" MOWER 2-WH DOM .....	1
2	58306	ROD, DECK HITCH .....	1
3	8260	PIN, HAIR .091 DIA X 1.66 LG .....	1
4	1346	RETAINER, BELT .....	1
5	314107	SPRING, TENSION 5.00 LG + 17 LB IN .....	1
6	310326	PULLEY, IDLER BFF 4.00 WIDE FL .....	1
7	126416	BOLT, 3/8-16 X 1.75 CARRLN .....	1
8	45171	NUT, 3/8-16 HWDFL WHIZ-LOCK .....	1
11	314108	BELT, V 5L 86.00 KEVLAR .....	1
12	333073	GUARD, BELT LH PLASTIC .....	1
13	57101	BOLT, 5/16-18 X .75 CARRSN .....	3
14	309496	PUSHNUT, 5/16 BOLT RETAINER .....	3
15	120393	WASHER, FLAT .344 X .69 X .065 .....	3
16	1499	NUT, 5/16-18 REG HEX CTRLK .....	3
17	302611	GAUGE WHEEL, EURO 6.00 ODX 1.38 WD .....	2
18	23763	BOLT, 5/00 X 1.390 HSSH 3/8-16 .....	2
19	1499	NUT, 3/8-16 REG HEX CTRLK .....	2
20	304422	CHUTE DEFLECTOR 40" 42" & 43" .....	1
21	314975	SPRING, TORSION CHUTE DEFLECTOR .....	1
22	304424	ROD, PIVOT DECK .312 ODX 7.25 .....	1
23	3535	NUT, PUSH ON CAP .312 OD .....	1



NOTE: FOR NON WALK-THRU UNITS ONLY

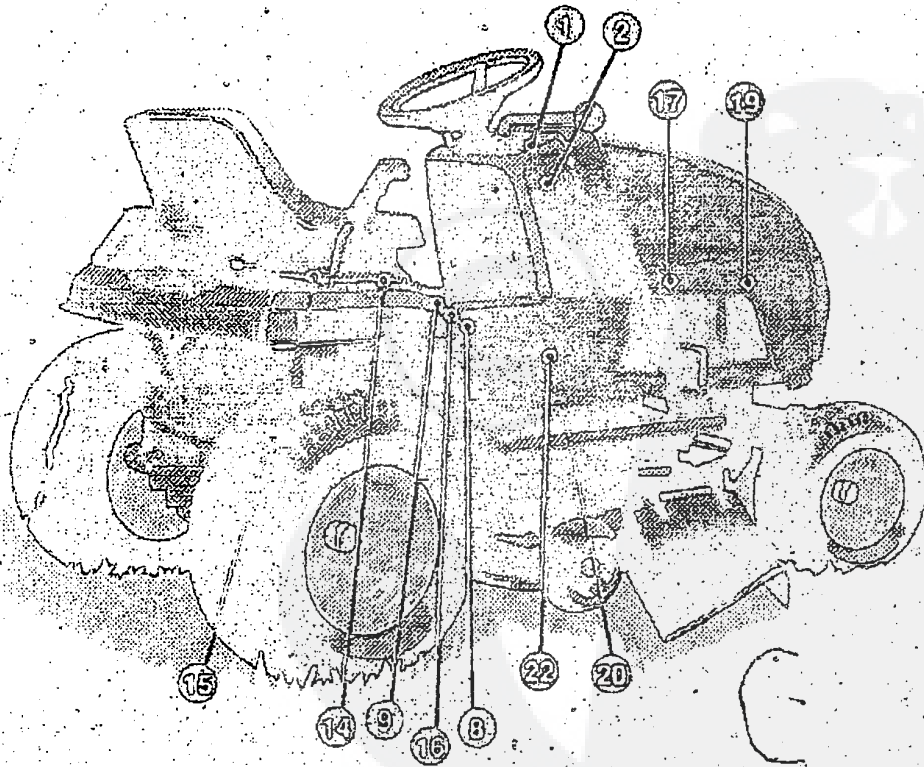
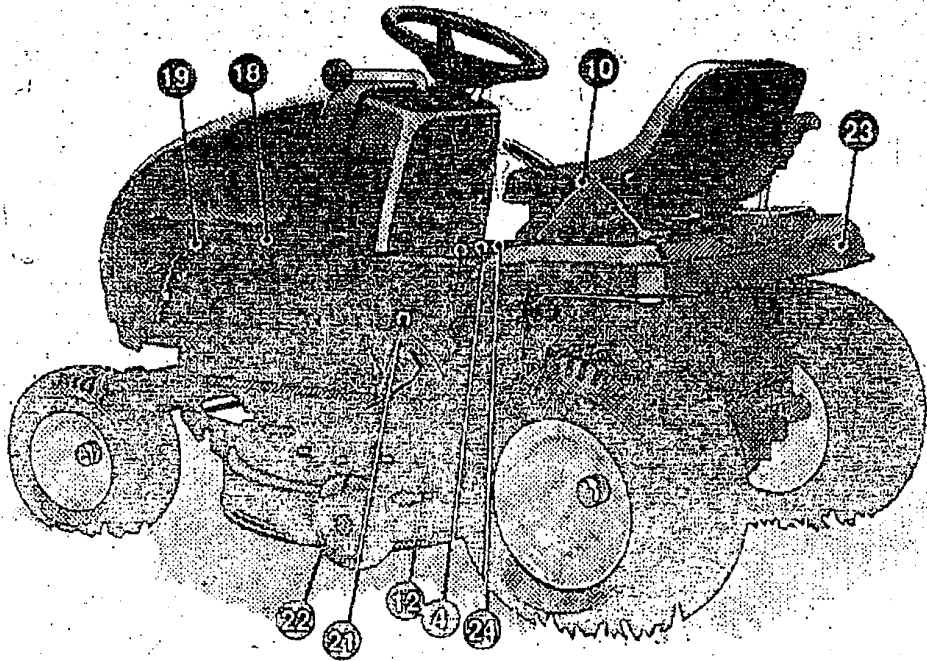


NOTE: FOR WALK-THRU UNITS ONLY

NOTE: ALWAYS USE ORIGINAL EQUIPMENT PARTS. Use of service/replacement parts other than original equipment parts may void your warranty.

ALL UNNUMBERED ITEMS ARE INTERCHANGEABLE WITH OPPOSITE SIDE

329224 C



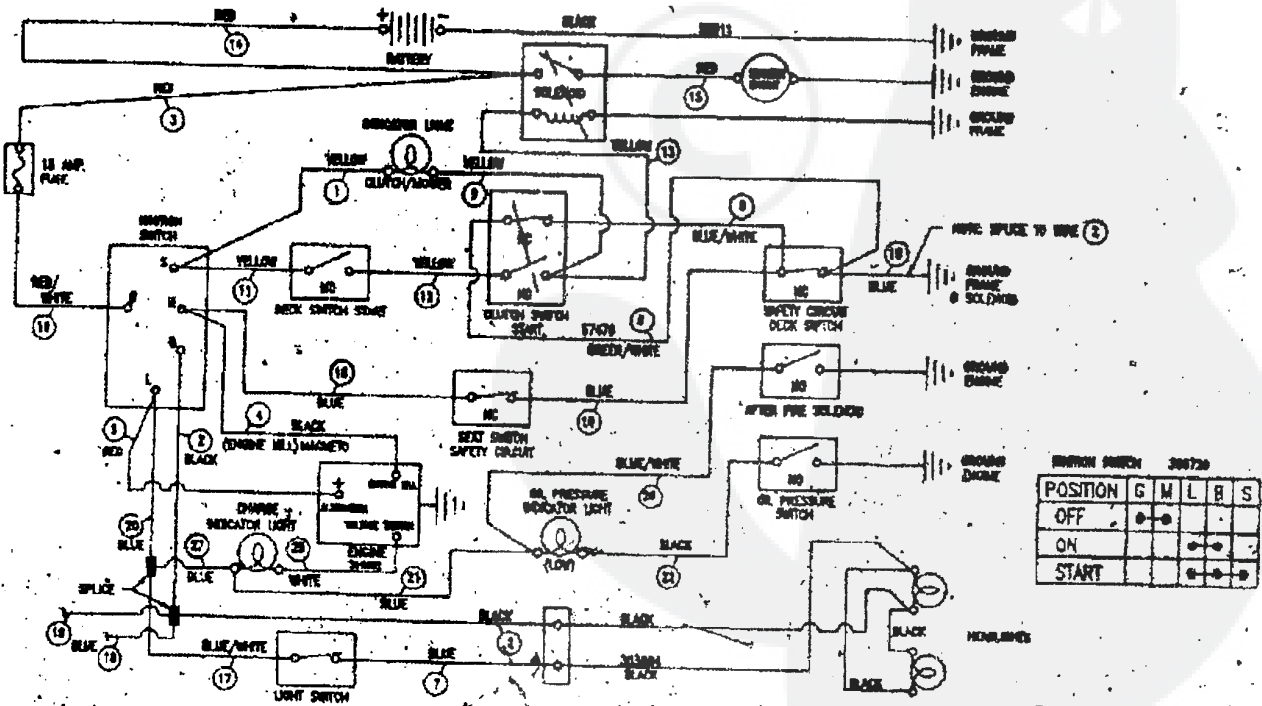
KEY#	PART#	DESCRIPTION	QTY
1	329211	DECAL, DASH, H24/H25 .....	1
2	68900	DECAL, BLADE ENGAGE EUROPE .....	1
4	69524	DECAL, INSTRUCT CONSOLE TOP GER .....	1
8	305770	DECAL, CAUTION TRIANGLE EUROPE .....	1
9	310553	DECAL, DANGER ENGLISH .....	1
10	402214	DECAL, HEIGHT ADJUST .....	1
11	68903	DECAL, BRAKE/CLUTCH ISO .....	1
12	307383	DECAL, INSTR. CONSOLE TOP ENGL .....	1
14	314923	DECAL, SHIFTER LF HYDRO FORWARD .....	1
15	314925	DECAL, SHIFT LF HYDRO REVERSE .....	1
16	68902	DECAL, WARNING, FRENCH/GERMAN .....	1
17	402486	DECAL, HOOD R/H "HYDRO" .....	1
18	402487	DECAL, HOOD L/H "HYDRO" .....	1
19	402137	NAMEPLATE, UNITECH MEDIUM SIL .....	2
20	320856	DECAL, CONSOLE RH LF .....	1
21	320855	DECAL, CONSOLE SIDE LH LF .....	1
22	402162	NAMEPLATE, 16/43 SIL/BLK .....	2
23	402138	NAMEPLATE, UNITECH SMALL SIL .....	1
24	69525	DECAL, INSTRUCT CONSOLE TOP FR .....	1



KEY#	PART#	DESCRIPTION	QTY
1	329223	WIRE HARNESS 14-18VAN H25G22	1
2	41482	PRESS CLIP, 1.380LG .255ID	1
3	303064	ASSEMBLY, LIGHT WIRE-1/4 TURN	1
4	52572	BULB, HEADLAMP	1
5	57444	TIE, CABLE BLACK NYLON 5.62L	2
6	41482	PRESS CLIP, 1.380LG .255ID	2
7	327355	SWITCH-IGN.(AFTER FIRE) 3' POSN	1
8	327352	NUT, 5/8-8ACME DELTA FOR BOOT	1
9	327350	KEY, IGNITION DELTA	2
10	300194	BOOT, IGN SWITCH	1
11	328826	LIGHT SWITCH, PANEL MNT	1
12	320082	SWITCH, DOUBLE POLE NO/NC GRAY	1
13	57444	TIE, CABLE BLACK NYLON 5.62L	1
14	57476	SWITCH, SCREW MNT DP NC NO BLK	1
15	57220	SCREW, #12 X .50 PHPNHTAP BLK	2
16	53716	SOLENOID	1
17	187745	SCREW, 1/4-20X .75 HXSEMMA	2
18	1502	NUT, 1/4-20 REGHEXCTRLK	2
19	271172	NUT, 1/4-20 REGHEXKEPS	1
20	138485	WASHER, EXLK .320X.61X.03	2
21	120368	NUT, 5/16-24 REGHEX	2
22	57444	TIE, CABLE BLACK NYLON 5.62L	1
23	55511	WIRE, GROUND, 12.5"	1
24	271184	NUT, 5/16-18 HEXKEPS	1
25	57769	BULB, INDICATOR	3
26	57444	TIE, CABLE BLACK NYLON 5.62L	1
27	315602	REGULATOR, SEN VOLT BS W/SENSOR	1
28	57547	SWITCH, SEAT	1
29	160505	SCREW, 1/4-20X .38PHPNHMA	2
30	302257	BATTERY, 12V	1
31	57551	ROD, BATTERY	1
32	57552	ROD, BATTERY, TOP	1
33	325232	NUT, WING 1/4-20 NYLON	1
34	180020	SCREW, 1/4-20X .75 HHC	2
35	271172	NUT, 1/4-20 REGHEXKEPS	2
36	A	BATTERY, ACID PACK, 80 OZ.	1

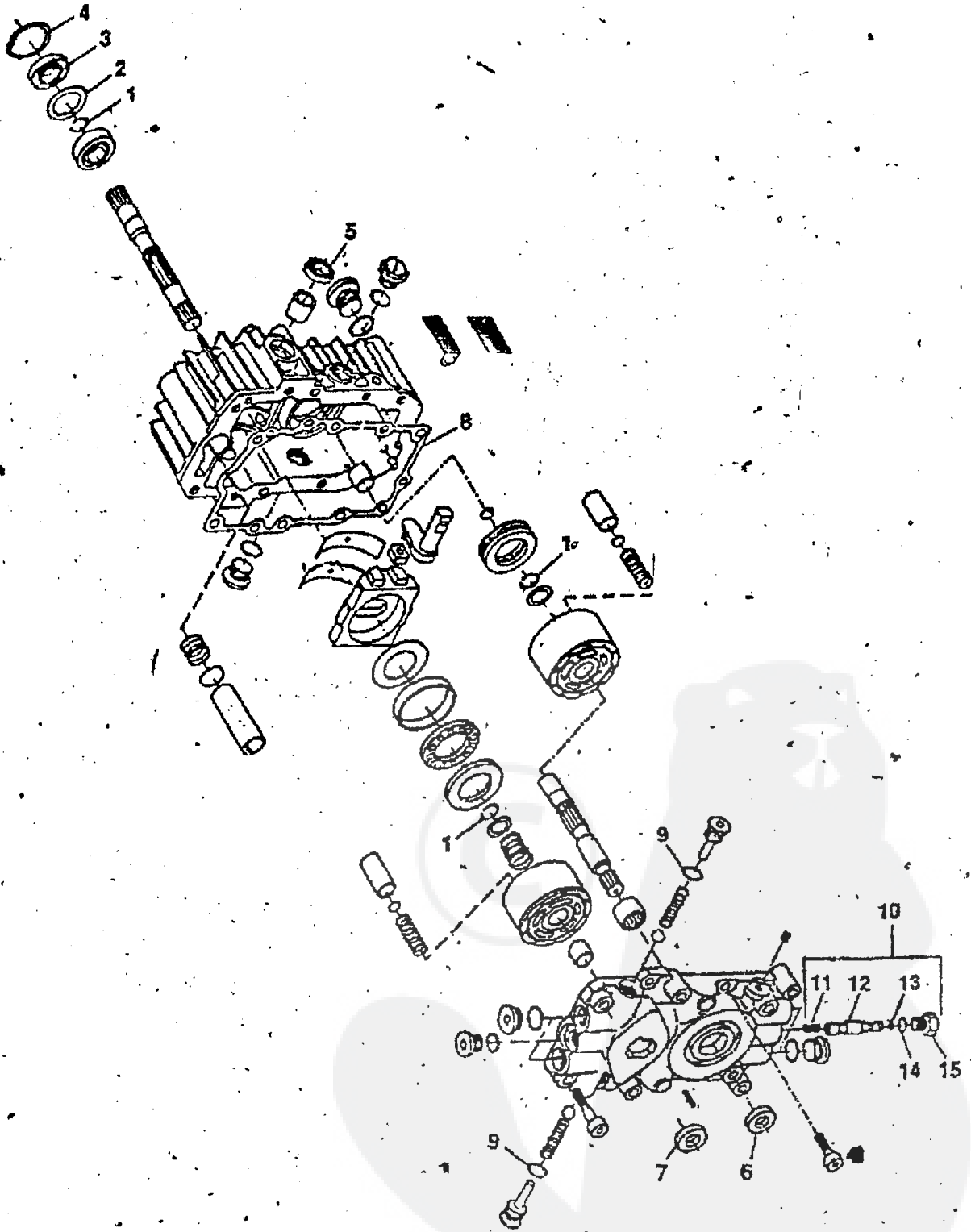
\* CAN BE PURCHASED LOCALLY

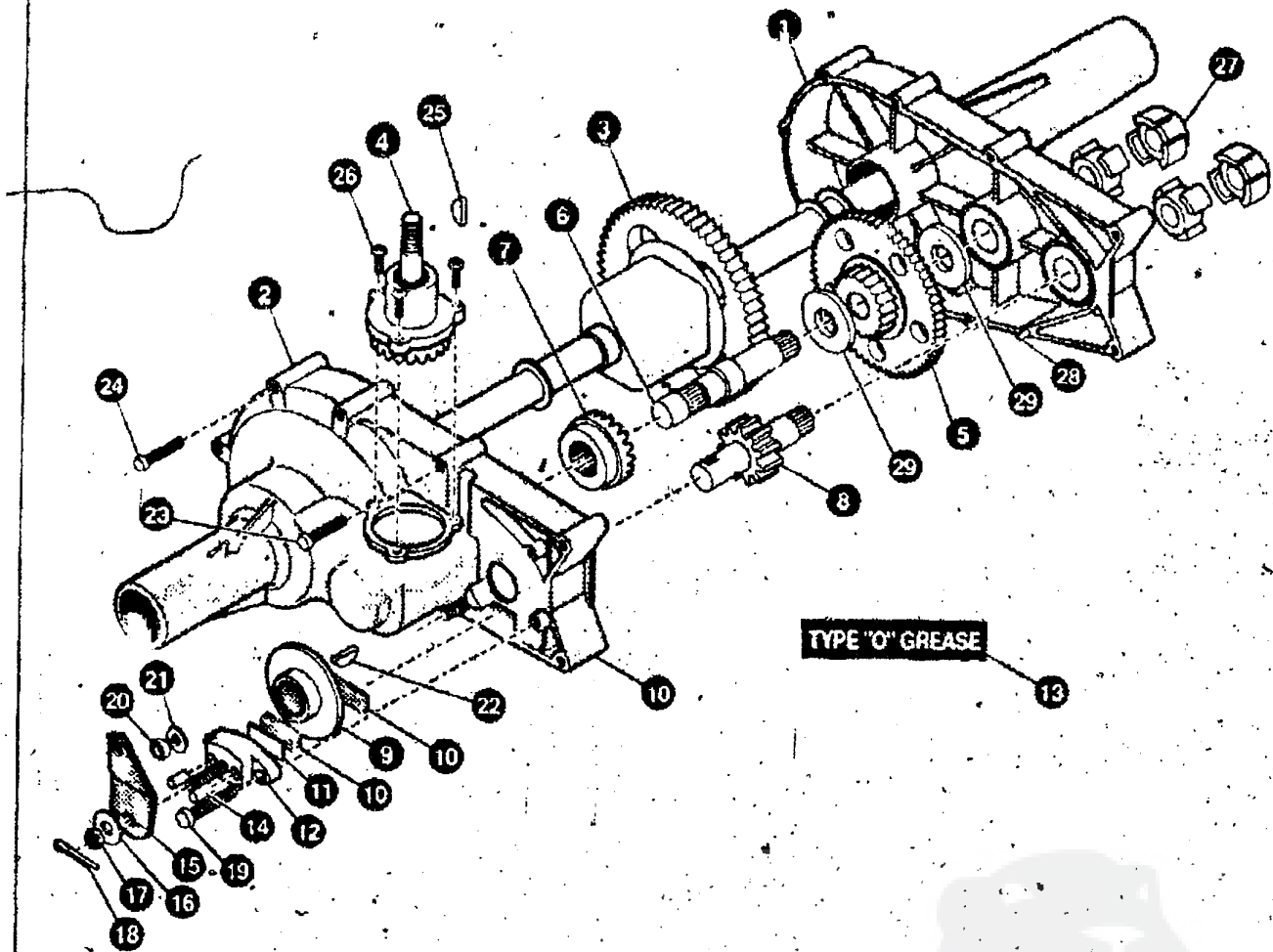
**WIRING SCHEMATIC**



E3583-100

# HYDROSTATIC PUMP

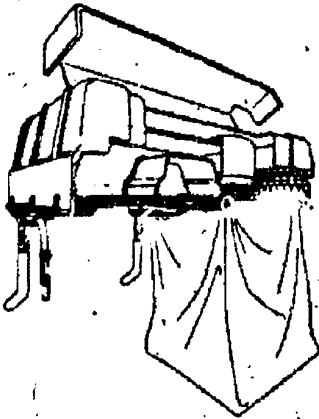




1.	324090	HOUSING HALF, LH	16.	323684	WASHER, FLAT
2.	324092	HOUSING HALF, RH	17.	323691	NUT, CASTLE
3.	324093	GEAR, DIFFERENTIAL	18.	323671	PIN, COTTER
4.	324095	SHAFT, INPUT	19.	323711	BOLT, HEX W/PATCH
5.	324096	GEAR	20.	323650	NUT, HEX
6.	323656	SHAFT, DRIVE	21.	323649	WASHER, SPRING LOCK
7.	323655	GEAR, DRIVE PINION	22.	323692	KEY, HI-PRO
8.	323660	SHAFT, PINION	23.	323677	BOLT, HEX SELF-TAP
9.	323663	DISC, BRAKE	24.	323678	BOLT, HEX SELF-TAP
10.	323685	PUCK, BRAKE	25.	323688	KEY, HI-PRO
11.	323687	PLATE, PUCK	26.	329832	SCREW, HEX W/PATCH
12.	324092	BRAKE, YOKE	27.	323661	COUPLING
13.	324089	TYPE "O" GREASE	28.	323699	PIN, ROLL
14.	323681	PIN, BRAKE ACTUATING	29.	329833	WASHER, FLAT
15.	323665	ARM, BRAKE ACTUATOR			

Contact the dealer where your tractor was purchased for the available accessories. If you are unable to contact the dealer, write to the address on the front cover of this manual.

**Large Lawn Tractor**

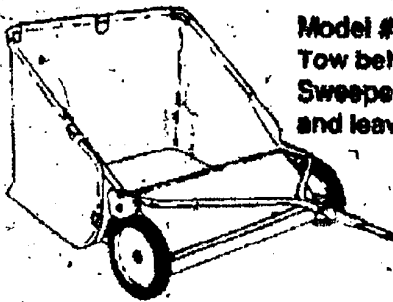
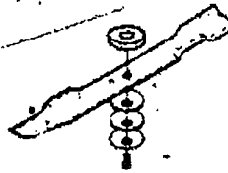


**Model # 5708-34**  
Grass Collector for  
40, 42, 43" decks

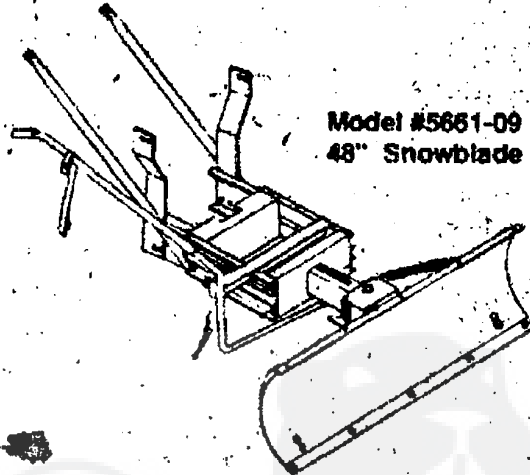
For heavy duty grass  
collection order Model  
#5709-10 Air Assist



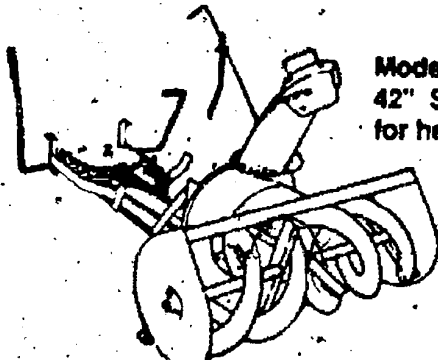
**5717-00**  
Mulching Kit (42/43" Deck)  
**5716-00**  
Mulching Kit (40" Deck)



**Model # 5648-16**  
Tow behind Lawn  
Sweeper for grass  
and leaves



**Model #5661-09**  
48" Snowblade



**Model #5705-06**  
42" Snowthrower  
for heavy snowfall



**Model # 5585-00**  
Tire Chains - 20" x 8.0" tires  
**Model # 5706-00**  
Tire Chains - 20" x 10.0" tires

**OTHER ACCESSORIES**

Model	Description
5672-01	Wheel Weights - Front - 1 pr. w/mtg. hdw. - Fits 15" tires
5673-02	Wheel Weights - Rear - 1 pr. w/mtg. hdw. - Fits 18" & 20" tires
316608	43" High Lift Blade for Bagging or Side Discharge (Requires 2)
325762	43" Mulching Blade (Requires 2)