

PARTS MANUAL

Lawn Tractors



Model E4314-080



SAFETY RULES

THESE INSTRUCTIONS ARE FOR YOUR PROTECTION. PLEASE READ THEM CAREFULLY.

IMPORTANT

THIS CUTTING MACHINE IS CAPABLE OF AMPUTATING HANDS AND FEET AND THROWING OBJECTS. FAILURE TO OBSERVE THE FOLLOWING SAFETY INSTRUCTIONS COULD RESULT IN SERIOUS INJURY OR DEATH.

I. GENERAL OPERATION:

- Know controls and how to stop quickly.
- Read, understand, and follow all instructions in the manual and on the machine before starting.
- Only allow responsible adults, who are familiar with instructions, to operate the machine.
- Wear safety glasses or eye shields when assembling or operating the machine.
- Do not operate machine when barefooted. Always wear substantial footwear, preferably steel-toed shoes.
- Do not wear loose fitting clothing that could get caught in moving parts.
- Clear the area of objects such as rocks, toys, wire, etc., which could be picked up and thrown by the blade(s).
- Be sure the area is clear of other people before mowing. Stop machine if anyone enters the area.
- Never carry passengers.
- Do not mow in reverse unless absolutely necessary. Always look down and behind before and while backing.
- Be aware of the mower discharge direction and do not point it at anyone. Do not operate the mower without either the entire grass catcher or the guard in place.
- Slow down before turning.
- Never leave a running machine unattended. Always turn off blades, set parking brake, stop engine, and remove keys before dismounting.
- Turn off blade(s) when not mowing.
- Stop engine before removing grass catcher or unclogging chute.
- Mow only in daylight or good artificial light.
- Do not operate the machine while under the influence of alcohol or drugs.
- Watch for traffic when operating near or crossing roadways.
- Use care when mowing around a fixed object to prevent the blade(s) from striking it. Never deliberately run over any foreign object.
- Use extra care when loading or unloading the machine into a trailer or truck.
- Use care when pulling loads or using heavy equipment.
 - a. Use only approved drawbar hitch points.
 - b. Limit loads to those that you can safely control.
 - c. Do not turn sharply. Use care when backing.
 - d. Use counterweight(s), wheel weight or tire chains when suggested in attachment(s) instructions.

II. SLOPE OPERATION:

Slopes are a major factor related to loss-of-control and tip-over accidents, which can result in severe injury or death. *All slopes require extra caution.* If you cannot back up the slope or if you feel uneasy on it, do not mow it.

DO

- Mow up and down slopes, not across.
- Remove obstacles such as rocks, tree limbs, etc.
- Watch for holes, ruts, or bumps. Uneven terrain could overturn the machine. *Tall grass can hide obstacles.*
- Use slow speed. Choose a low gear so that you will not have to stop or shift while on the slope.
- Follow the manufacturer's recommendations for wheel weights or counterweights to improve stability.
- Use extra care with grass catchers or other attachments. These can change the stability of the machine.
- Keep all movement on the slopes *slow and gradual*. Do not make sudden changes in speed or direction.
- Avoid starting or stopping on a slope. If tires lose traction, turn off the blade(s) and proceed slowly *straight* down the slope.

DO NOT

- Do not turn on slopes unless necessary, and then slowly and gradually downhill, if possible.
- Do not mow near drop-offs, ditches or embankments. The

mower could suddenly turn over if a wheel is over the edge of a cliff or ditch, or if an edge caves in.

- Do not mow on wet grass. Reduced traction could cause sliding.
- Do not try to stabilize the machine by putting your foot on the ground.
- Do not use grass catcher on steep slopes.

III. CHILDREN:

Tragic accidents can occur if the operator is not alert to the presence of children. Children are often attracted to the machine and the mowing activity. *Never* assume that children will remain where you last saw them.

- Keep children out of the mowing area and under the watchful care of another responsible adult.
- Be alert and turn machine off if children enter the area.
- Before and when backing, look behind and *down* for small children.
- Never carry children. They may fall off and be seriously injured or interfere with safe machine operation.
- Never allow children to operate the machine.
- Use extra care when approaching blind corners, shrubs, trees, or other objects that may obscure vision.

IV. SERVICE:

- Use extra care in handling gasoline and other fuels. They are flammable and vapors are explosive.
 - a. Use only an approved container.
 - b. Never remove gas cap or add fuel with the engine running. Allow engine to cool before refueling. Do not smoke.
 - c. Never refuel the machine indoors.
 - d. Never store the machine or fuel container inside where there is an open flame, such as in a water heater.
- Check fuel supply before each use allowing space for expansion as the heat of the engine and/or sun can cause gasoline to expand and overflow the tank.
- Use extra care when handling battery acid. Acid contact with skin may cause severe burns. Eye contact may cause blindness.
- Use extra care when servicing the battery. Explosive gas is produced in the battery. Do not service the battery while smoking or near an open spark or flame. This may cause the battery to explode causing serious injury.
- Never run a machine inside a closed area. Exhaust fumes contain CARBON MONOXIDE, an ODORLESS and DEADLY GAS.
- Keep nuts and bolts, especially blade attachment bolts, tight and keep equipment in good condition.
- Never tamper with safety devices. Check their operation regularly.
- Do not change the engine governor settings or overspeed engine.
- Reduce fire hazards. Keep machine free of grass, leaves, or other debris build-up. Clean up oil or fuel spillage. Allow machine to cool before storing.
- Stop and inspect the equipment if you strike an object. Repair, if necessary, before restarting.
- Never make adjustments or repairs with the engine running.
- Grass catcher components are subject to wear, damage, and deterioration, which could expose moving parts or allow objects to be thrown. Frequently check components and replace with manufacturer's recommended parts, when necessary.
- Mower blade(s) are sharp and can cut. Wrap the blade(s) or wear gloves, and use extra caution when servicing them.
- Check brake operation frequently. Adjust and service as required.



LOOK FOR THIS SYMBOL TO POINT OUT IMPORTANT SAFETY PRECAUTIONS. IT MEANS--ATTENTION!!! BECOME ALERT!!! YOUR SAFETY IS INVOLVED.

Record the following information about your unit so that you will be able to provide it in case of loss or theft.

MODEL NUMBER: - (Enter complete 8 digit number from model plate on unit)

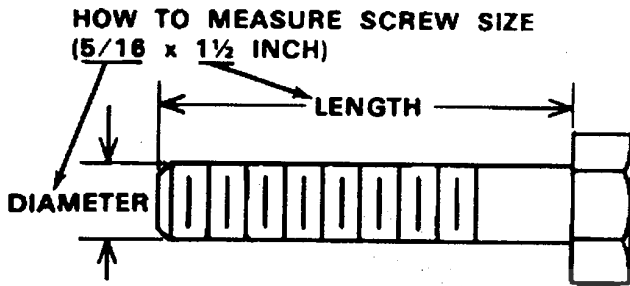
PURCHASE DATE: ___ / ___ / ___ CODE NO.: _____ SERIAL NO.: _____

DEALER'S NAME AND ADDRESS: _____

CITY: _____ STATE: _____ TELEPHONE: _____

TOOLS REQUIRED FOR ASSEMBLY

- 2 - 7/16 inch Wrenches (or adjustable wrench)
- 1 - 1/2 inch Wrench (or adjustable wrench)
- 1 - Small Phillips Screwdriver with a 1/4 inch shank
- 1 - Hammer



⚠ DANGER ⚠

This lawn tractor can be dangerous if carelessly used.

Read your Operator's Manual thoroughly before operating your lawn tractor.

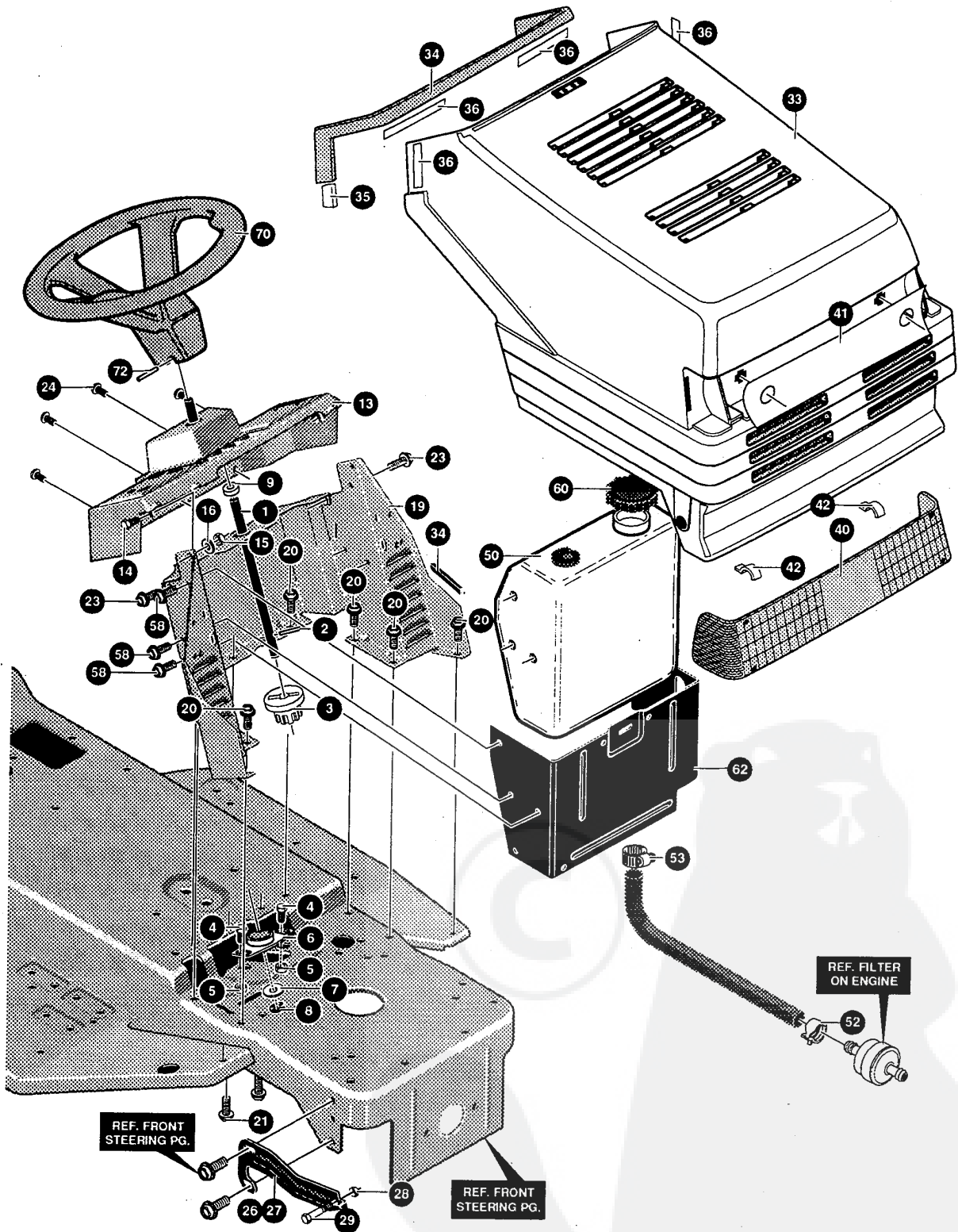
Always wear safety glasses or eye shields while assembling or operating your lawn tractor.

DO NOT carry passengers at any time.

Keep your hands, feet, hair and loose clothing away from the discharge area, the underside of the mower deck or any moving parts while the engine is running.

DO NOT allow children or young teenagers to operate or be near your lawn tractor while it is operating.

ALWAYS GIVE THE FOLLOWING INFORMATION WHEN ORDERING REPAIR PARTS:
1. The PART NUMBER; 2. The PART NAME; 3. QUANTITY DESIRED; 4. The MODEL NUMBER (As shown on Model Plate).
SEND PART ORDERS AS PER INSTRUCTIONS ON THE FRONT PAGE.
DO NOT USE KEY NUMBERS WHEN ORDERING REPAIR PARTS, ALWAYS USE PART NUMBERS.
All replacement parts will be supplied in current production colors or in a neutral color.
A handling fee is applicable to small parts orders.
YOUR UNIT IS RIGHT HAND (RH) OR LEFT HAND (LH) AS YOU STAND BEHIND IT.



NOTE: ALWAYS USE ORIGINAL EQUIPMENT PARTS. Use of service/replacement parts other than original equipment parts may void your warranty.

ALL UNNUMBERED ITEMS ARE INTERCHANGEABLE WITH OPPOSITE SIDE

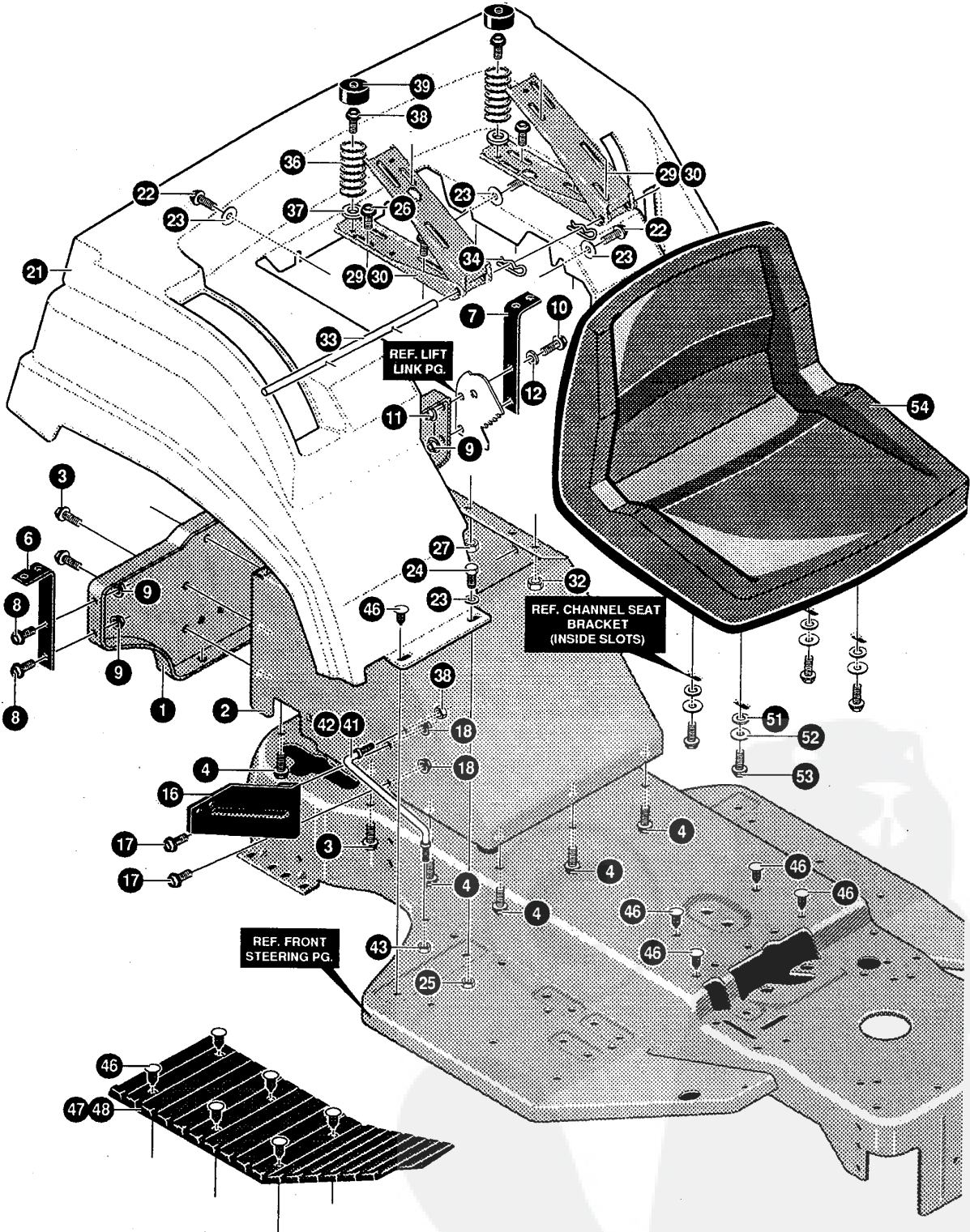
331885 A

E4314-080**HOOD/DASH & SHAFT ASSEMBLY**

KEY#	PART#	DESCRIPTION	QTY
1	302528	SHAFT,STEERING EURO GT LONG	1
2	302524	PIN DOWEL STR ERO LT	1
3	302314	PINION,STEERING	1
4	323731	SCREW, 5/16-24X.75 (TQ 30-35 FT#)	2
5	71100	NUT, 5/16-24 HEXWDFLLK	2
6	302498	BRNG, SFAL .500IDX . ODX .75	1
7	2968	WASHER, FLAT .504X .75X.059	1
8	20864	RING, RET E .39X.04TRU5133-50	1
9	303228	BUSHING STR SHFT UPPER	1
13	331383	DASH,SHORT H17 MC/EC NOAMP	1
14	180020	SCREW, 1/4-20X .75 HHC	2
15	1502	NUT, 1/4-20 REGHEXCTRLK	2
16	120392	WASHER, FLAT .281X .63X.065	2
19	302920-830	DASH LOWER TALL LT EURO GT	1
20	35497	SCREW, 5/16-18X .50 WAHHTAP	8
21	45263	SCREW, 5/16-18X .37 WAHHTAP	2
23	995346	SCREW, 1/4-20X .50 WAHHTAP	2
24	305850	SCREW, 1/4-20X.50PHPNTAP	4
26	310578-853	BRACKET, HOOD GT RH	1
27	310579-853	BRACKET, HOOD GT LH	1
28	1498	NUT, 5/16-18 REGHEXCTRLK	2
29	25086	BOLT, .500X .375 HSH 5/16-18	2
33	313421	HOOD,EURO H-17 GT MOLD	1
34	12675	TRIM PIECE PLASTIC GREY861/630	1
35	306822	CLIP,U-TYPE TINN C27637-014-4	2
36	12599	FASTENER, VELCRO, 2" X 1"	4
40	304708	LENS HEADLIGHT ERO GT SMOKE	1
41	308200	DECAL, REFLECTOR EURO LT	1
42	41482	PRESS CLIP,1.380LG .255ID	2
50	315263	ASSY GAS TANK 1.5GAL (OPTION)	1
52	47345	CLAMP,HOSE SCREW TYPE	2
53	47345	CLAMP,HOSE SCREW TYPE	1
58	180073	SCREW, 5/16-18X .50 HHC	6
60	12501	CAP,FUEL 2.5" THROAT	1
62	324795-853	HEAT SHIELD ERO 1.5 & 3 GAL	1
70	302835	STEERING WHEEL	1
72	456378	PIN, SPRING.250DIAx2.00LG HVPL	1
73	333319	PARTS MANUAL	1
78	331610	OPERATOR'S MANUAL (ENGLISH)	1
79	331611	OPERATOR'S MANUAL (FRENCH)	1
80	331612	OPERATOR'S MANUAL (GERMAN)	1

E4314-080

REPAIR PARTS



NOTE: ALWAYS USE ORIGINAL EQUIPMENT PARTS. Use of service/replacement parts other than original equipment parts may void your warranty.

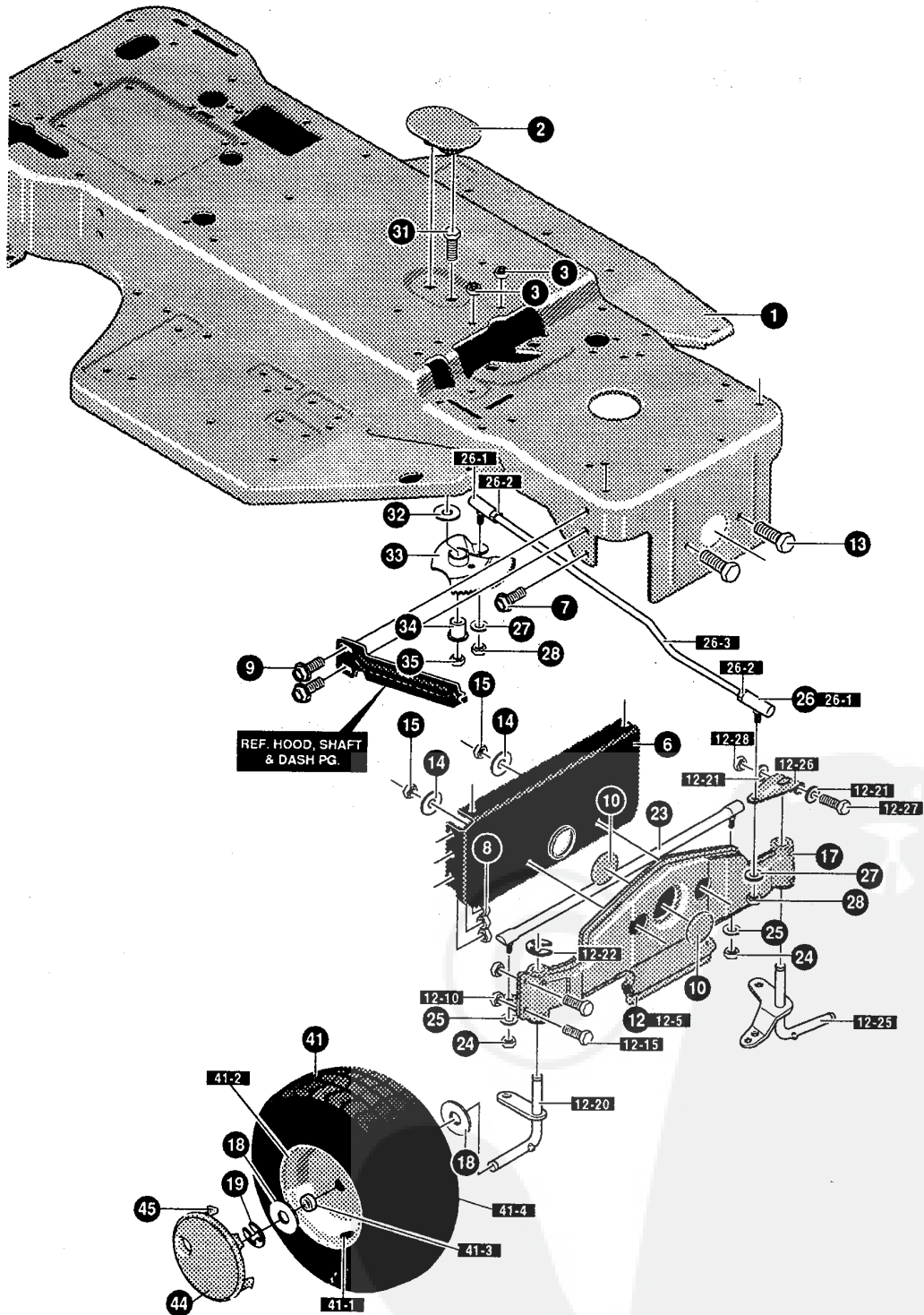
ALL UNNUMBERED ITEMS ARE INTERCHANGEABLE WITH OPPOSITE SIDE

325970 F

E4314-080

FENDER/SEAT ASSEMBLY

KEY#	PART#	DESCRIPTION	QTY
1	322068-830	SEAT SUPPORT ELECTRIC LIFT	1
2	322069-830	SUPT,FENDER&SEAT ELECT/LIFT	1
3	35498	SCREW, 5/16-18X .75 WAHHTAP	5
4	35497	SCREW, 5/16-18X .50 WAHHTAP	10
6	306399	SUPT FEND RIGHT BLACK	1
7	306397	SUPT FEND LEFT BLACK	1
8	56030	SCREW, 5/16-18X.75WDFLLK	3
9	55273	NUT, 5/16-18 HXWDFLLK	3
10	180020	SCREW, 1/4-20X .75 HHC	1
11	51335	NUT, 1/4-20 WDFLWHIZ-LK	1
12	120385	WASHER, FLAT .250X .56X.049	1
16	305381-853	SUPPORT,SHIFT PLATE	1
17	56030	SCREW, 5/16-18X.75WDFLLK	2
18	55273	NUT, 5/16-18 HXWDFLLK	2
21	306798	FENDER,EURO F-10 GT MOLD GREY	1
22	44811	SCREW, 1/4-20X .75 WAHHTAP	6
23	1084	WASHER, FLAT .281X1.00X.063PL	8
24	180020	SCREW, 1/4-20X .75 HHC	2
25	1502	NUT, 1/4-20 REGHEXCTRLK	2
29	302897-830	CHANNEL SEAT RH	2
30	305424-830	CHANNEL SEAT LH	2
31	56030	SCREW, 5/16-18X.75WDFLLK	4
32	1498	NUT, 5/16-18 REGHEXCTRLK	4
33	304481	ROD, SEAT SUPPORT	1
34	36368	PIN, HAIR .072 DIA X1.13LG	2
36	305520	SPRING, SEAT 1.50ODX2.25LG BLK	2
37	120393	WASHER, FLAT .344X .69X.065	2
38	35498	SCREW, 5/16-18X .75 WAHHTAP	2
39	56907	COVER,SEAT SPRING 1.5IDX1.0LG	2
41	319388	SUPPORT,FOOTREST STIFNR RH	1
42	319387	SUPPORT,FOOTREST STIFNR LH	1
43	1498	NUT, 5/16-18 REGHEXCTRLK	4
46	309235	FASTENER, RATCHET BLACK	18
47	314890	FOOT PAD, ASSYRH ERO W/ADH	1
48	314891	FOOT PAD, ASSYLH ERO W/ADH	1
51	120393	WASHER, FLAT .344X .69X.065	4
52	120638	WASHER, HVSPTLK .328X.60X.09	4
53	180077	SCREW, 5/16-18X .75 HHC	4
54	331458	SEAT,MICHIGAN GEN, W/SW HOLE	1



NOTE: ALWAYS USE ORIGINAL EQUIPMENT PARTS. Use of service/replacement parts other than original equipment parts may void your warranty.

ALL UNNUMBERED ITEMS ARE INTERCHANGEABLE WITH OPPOSITE SIDE

331877 A

E4314-080

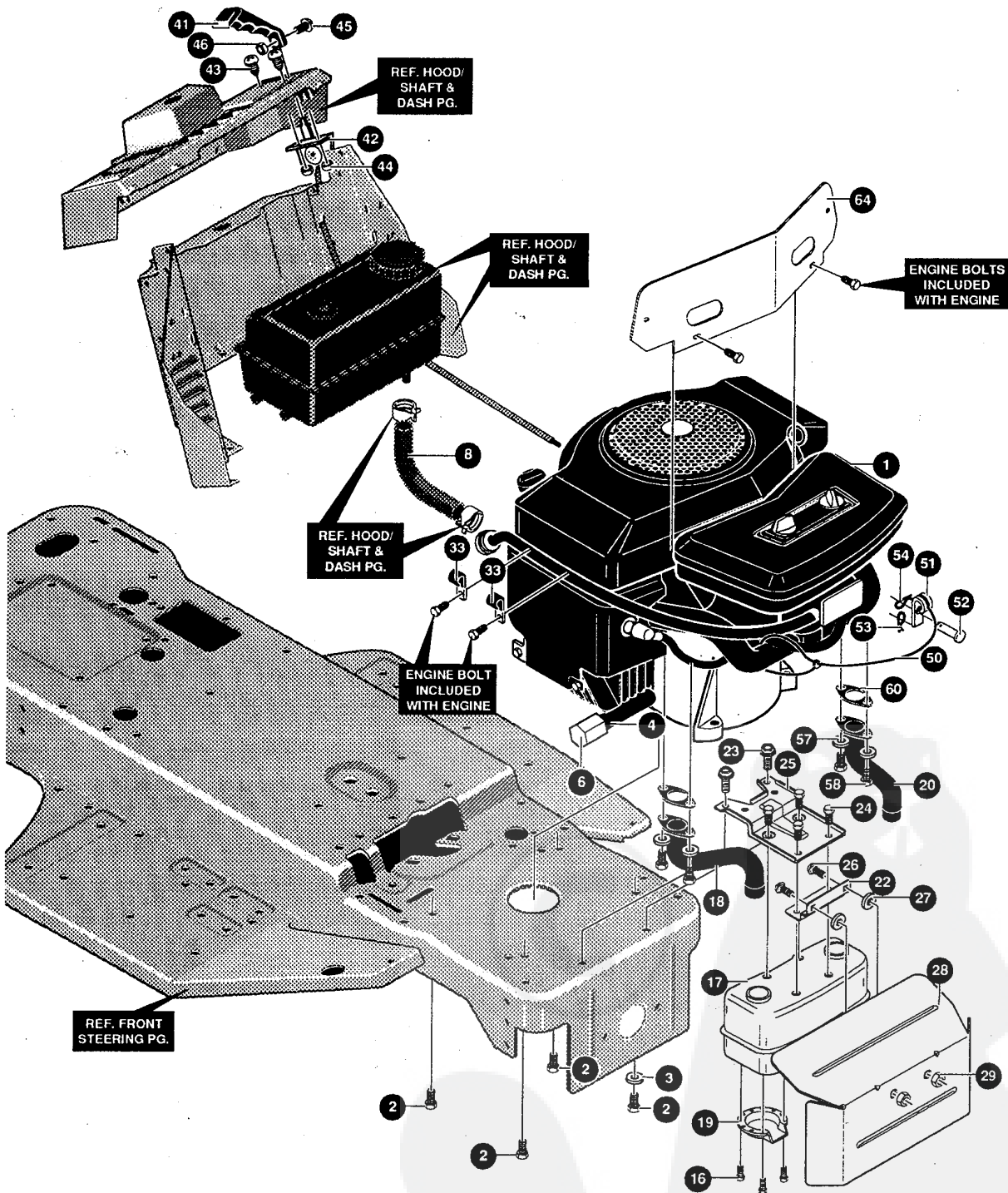
STEERING ASSEMBLY

KEY#	PART#	DESCRIPTION	QTY
1	331674-830	FRAME, EURO	1
2	305280	COVER,SECTOR BOLT PLAS GREY	1
3	55273	NUT, 5/16-18 HXWDFLLK	2
6	302321-853	BRACKET, FRONT AXLE SUPPORT	1
7	56030	SCREW, 5/16-18X.75WDFLLK	2
8	55273	NUT, 5/16-18 HXWDFLLK	6
9	53652	SCREW, 5/16-18X.75 HXWDFL	4
10	307112	PLUG,FRONT AXLE 1.938DIAX.062"	2
12	^	AXLE,ASSY FRONT WELD BLK	1
12-5	310670-830	AXLE,ASSY FRONT WELD	1
12-15	1498	NUT, 5/16-18 REGHEXCTRLK	4
12-20	305340	ASSY SPDLE RH EROLT	1
12-21	996416	WASHER, FLAT .391X1.00X.125	2
12-22	36625	RING, RETEX .57X.05TRU5133-75	1
12-25	305339	ASSY SPDLE LH EROLT	1
12-26	317019	ARM STEERING UPPER BLACK	1
12-27	180134	SCREW, 3/8-16X2.50 HHC	1
12-28	1499	NUT, 3/8-16 REGHXCTRLK	1
13	180138	SCREW, 3/8-16X3.00 HHC	2
14	2483	WASHER, 39IDX1.25DX.07 BELLVIL	2
15	1499	NUT, 3/8-16 REGHXCTRLK	2
17	706	ZERK, GREASE FITTING	4
18	642	WASHER, FLAT .755X1.31X.075	4
19	36625	RING, RETEX .57X.05TRU5133-75	2
23	300328	TIE ROD .625DIA GRND ENGAGER	1
24	120369	NUT, 3/8-24 REGHEX	2
25	120382	WASHER, REGSPTLK.393X.68X.10	2
26	302385	LINK, ASSY .50DIA DRAG LT 2WS	1
26-1	57158	BALL JOINT 3/8 THD SHORT STUD	2
26-2	124925	NUT, 3/8-24 REGHEXJAM	2
26-3	302386	LINK, DRAG .50DIA LT 2WS	1
27	120382	WASHER, REGSPTLK.393X.68X.10	2
28	124925	NUT, 3/8-24 REGHEXJAM	2
31	180177	SCREW, 1/2-13X1.50 HHC	1
32	22265	WASHER, FLAT .515X1.38X.119	1
33	302301	GEAR, STEERING SECTOR	1
34	302879	BUSHING SECTOR GEAR EURO 2WS	1
35	1500	NUT, 1/2-13 REGHCTRLK	1
41	321515	TIRE & RIM, PU 15X6.0X6 WHI	2
41-1	24167	VALVE STEM	
41-2	321516	RIM, WHEEL	
41-3	314416	BEARING, FL	
41-4		REFER TO TIRE TREAD PAGE	
44	304444	HUB CAP, 6" EURO GREY	2
45	306669	CLIP,HUBCAP TINN #C25467-017-4	8

^ ORDER INDIVIDUAL PARTS

E4314-080

REPAIR PARTS



NOTE: ALWAYS USE ORIGINAL EQUIPMENT PARTS. Use of service/replacement parts other than original equipment parts may void your warranty.

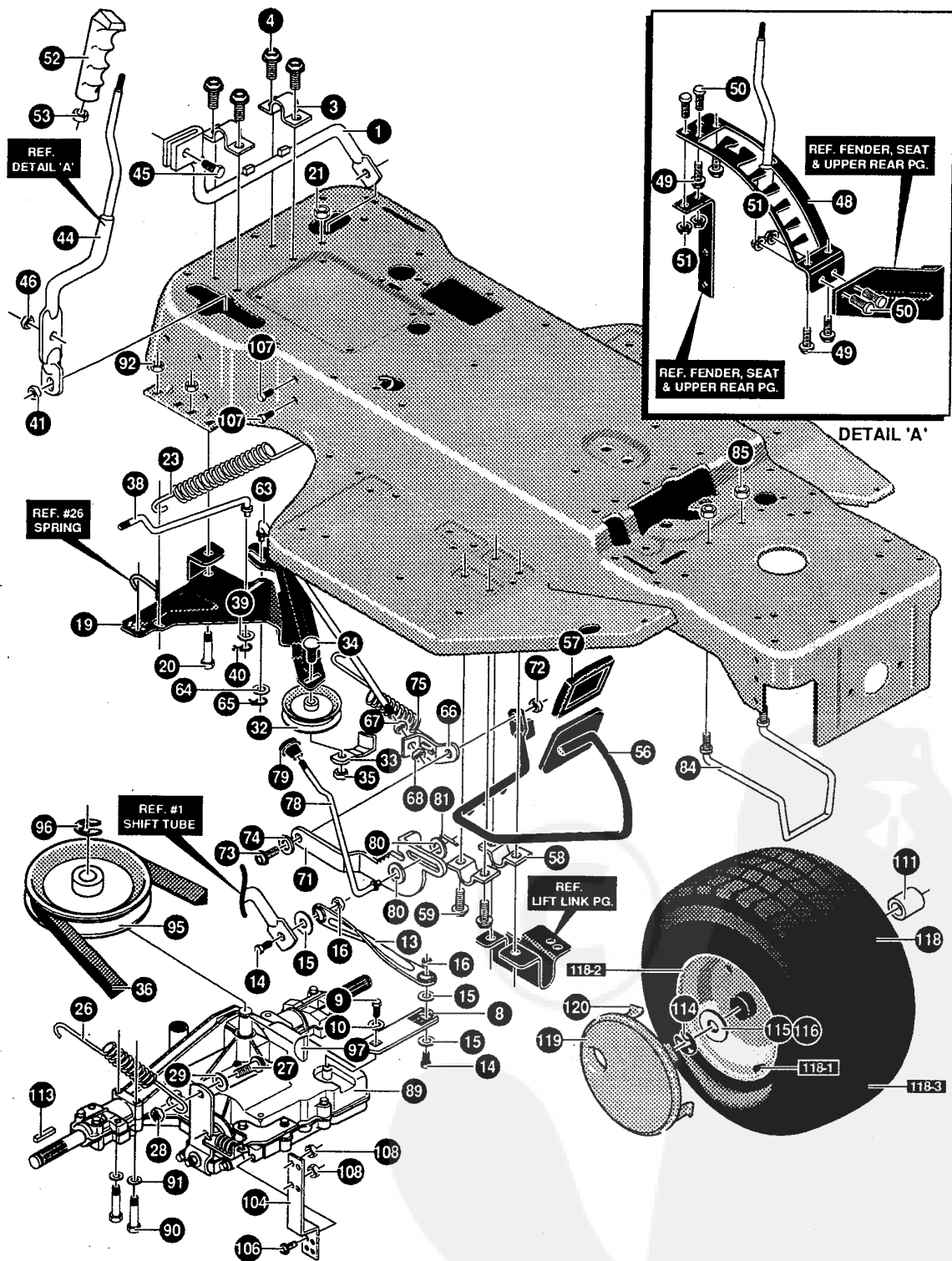
ALL UNNUMBERED ITEMS ARE INTERCHANGEABLE WITH OPPOSITE SIDE

325733 C

KEY#	PART#	DESCRIPTION	QTY
1	302379-853	SHAFT, ASSY FRONT LIFT EURO	1
2	304967-853	BRACKET, FRONT HANGER RH	1
3	302338-853	BRACKET, FRONT HANGER LH	1
4	180077	SCREW, 5/16-18X .75 HHC	4
5	1498	NUT, 5/16-18 REGHEXCTRLK	4
10	302206-853	SHAFT, ASSY REAR LIFT	1
11	302360-853	BRACKET, REAR HANGER EURO	2
12	180077	SCREW, 5/16-18X .75 HHC	4
13	1498	NUT, 5/16-18 REGHEXCTRLK	4
15	302380	RODS, TIE	1
16	120394	WASHER, FLAT .406X .81X.065	2
17	121222	PIN, COTTER .090 DIA X .75LG	2
30	303230	ASSY, PULLEY BRKT	1
31	55273	NUT, 5/16-18 HXWDFLLK	3
32	57072	BOLT, 5/16-18X .63 CARRLN	1
33	48306	PULLEY, POWDER METAL	1
34	305522	BOLT, .375X .700 HSH 5/16-18	1
35	1498	NUT, 5/16-18 REGHEXCTRLK	1
40	303227	CABLE, DECK LIFT	1
41	121222	PIN, COTTER .090 DIA X .75LG	2
42	120393	WASHER, FLAT .344X .69X.065	2
46	302205	ASSY, UPPER SHAFT	1
47	1498	NUT, 5/16-18 REGHEXCTRLK	1
48	45602	WASHER, FLAT .333X .87X.119	1
49	36149	BOLT, .375X .500 HSH 5/16-18	1
50	302357	LINK	1
51	300310	PIN, CLEVIS .310DIA+ .475LG	1
52	300311	RING, RET E .31X.25TRUX5133-31	1
55	58332-853	HEIGHT LEVER	1
56	58330	ROD, ACTUATOR	1
57	58325	KNOB, HEIGHT ADJ PUSH BUTTON	1
58	58326	SPRING, HEIGHT ADJUST	1
59	304730	GRIP, HAND .74IDX5.15	1
65	301239	PAWL, SQUARE	1
66	300171	BOLT, .500X .270 HSH 5/16-18	1
67	44108	NUT, 5/16-18 HWDFLCTRLK	1
71	302383	QUADRANT	1
72	1498	NUT, 5/16-18 REGHEXCTRLK	1
73	300171	BOLT, .500X .270 HSH 5/16-18	1
77	304729	HANDLE, 1/2-13 MOLDED	1
78	120238	NUT, 1/2-13 HEXJAM	1
79	307385-853	SUB ASSY BRKT & ENGAGE HAND	1
79-1	306391	ASSY ENGAGE ROD BLACK 173	1
79-2	302208-853	BRACKET, SUPPORT ENGAGE	1
79-3	312701	CLIP, BLACK	2
79-4	180016	SCREW, 1/4-20X .50 HHC	2
79-5	1502	NUT, 1/4-20 REGHEXCTRLK	2
79-6	120385	WASHER, FLAT .250X .56X.049	2
80	35497	SCREW, 5/16-18X .50 WAHHTAP	4
81	305306	SPRING, TENSION	1
82	180134	SCREW, 3/8-16X2.50 HHC	1
83	271190	NUT, 3/8-16 HEXKEPS	2
87	305989	BOLT, .437X .43 HSH	1
88	304448	ASSY SPRING CARTRIDGE	1
89	20507	BOLT, .437X .156 HSH 5/16-18	1
90	1498	NUT, 5/16-18 REGHEXCTRLK	1

E4314-080

REPAIR PARTS



NOTE: ALWAYS USE ORIGINAL EQUIPMENT PARTS. Use of service/replacement parts other than original equipment parts may void your warranty.

ALL UNNUMBERED ITEMS ARE INTERCHANGEABLE WITH OPPOSITE SIDE

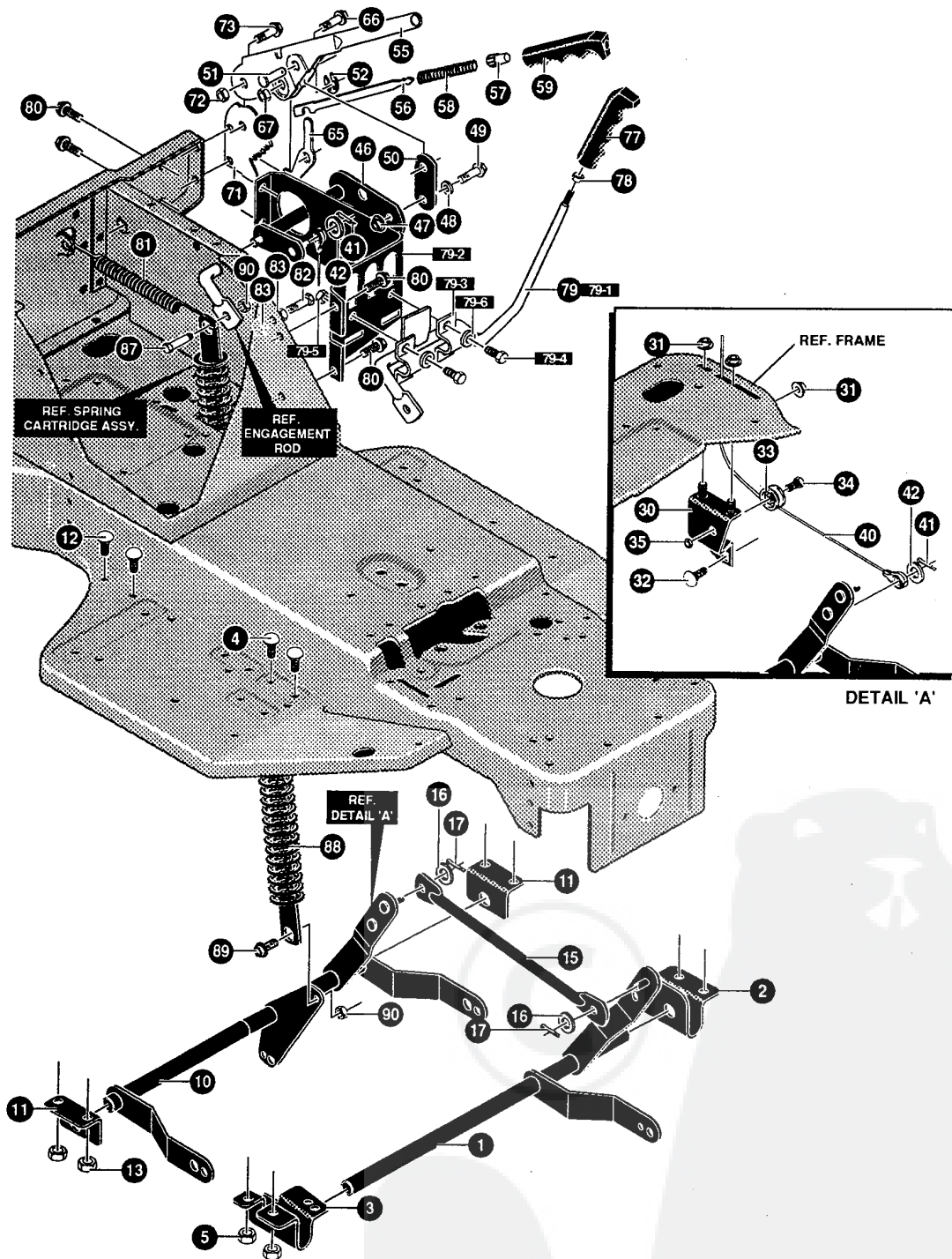
325724 A

E4314-080

SHIFT/DRIVE ASSEMBLY

KEY#	PART#	DESCRIPTION	QTY
1	321421	TUBE ASSY, SHIFT BLACK	1
3	302538	CLIP, SHIFT LEVER	2
4	35497	SCREW, 5/16-18X .50 WAHTAP	4
8	302582	LEVER, TRANS SHIFT	1
9	56255	SCREW, 1/4-28X .75 NYLHHC	1
10	57157	WASHER, .750X.250 SP-TRANSAXLE	1
13	309546	LINK, TIE ROD SHIFT 7.812C/L	1
14	180124	SCREW, 3/8-16X1.25 HHC	2
15	120394	WASHER, FLAT .406X .81X.065	2
16	1499	NUT, 3/8-16 REGHXCTRLK	2
19	304049	ARM IDLER	1
20	51189	BOLT, .500X1.280 HSH 3/8-16	1
21	1499	NUT, 3/8-16 REGHXCTRLK	1
23	304209	SPRING, CLUTCH	1
26	304130	SPRING, BRAKE 1.00DX3.12X.120	1
27	25086	BOLT, .500X .375 HSH 5/16-18	1
28	1498	NUT, 5/16-18 REGHEXCTRLK	1
29	308188	WASHER, FLAT .515X1.31X.09	1
32	40223	PULLEY, IDLER BFF	1
33	304105	BELT RETAINER	1
34	57325	BOLT, 3/8-16X2.00 CARRSN	1
35	45171	NUT, 3/8-16 HWDFL WHIZ-LOCK	1
36	303241	BELT, V 4L 90.00 LG	1
38	304083	ROD, SHIFT-ON-THE-GO	1
39	120394	WASHER, FLAT .406X .81X.065	1
40	36368	PIN, HAIR .072 DIA X1.13LG	1
41	71046	NUT, 3/8-16 HEXNYL	1
44	304025-853	TUBE ASSY, SHIFT PIVOT	1
45	304086	BOLT, 3/8X.400 1/4-20X.47HSH	1
46	1502	NUT, 1/4-20 REGHEXCTRLK	1
48	302383	QUADRANT, SHIFT P930-6SP ERO	1
49	300302	SCREW, #10 X .50 HHTAPPST BLK	4
50	180020	SCREW, 1/4-20X .75 HHC	4
51	51335	NUT, 1/4-20 WDFLWHIZ-LK	4
52	304728	HANDLE, 3/8-16 MOLDED GREY	1
53	120377	NUT, 3/8-16 REGHX	1
56	302319-853	WELD ASSY CL/BR ARM	1
57	302335	PAD, CLUTCH/BRAKE MOLD W/L BLK	1
58	313271	BRACKET CL/BR ARM	2
59	35497	SCREW, 5/16-18X .50 WAHTAP	2
63	304212	ROD, CLUTCH	1
64	120392	WASHER, FLAT .281X .63X.065	1
65	121223	PIN, COTTER .062 DIA X .75LG	1
66	304125	BRACKET, BRAKE ROD	1
67	271184	NUT, 5/16-18 HEXKEPS	1
68	1498	NUT, 5/16-18 REGHEXCTRLK	1
71	304208	LEVER, PARK BRAKE	1
72	1498	NUT, 5/16-18 REGHEXCTRLK	1
73	25086	BOLT, .500X .375 HSH 5/16-18	1
74	30289	WASHER, WAVE .50 ID	1
75	305501	SPRING CL/BR PEDAL RETURN	1
78	304217	ROD, PARKING BRAKE	1
79	304367	KNOB, PARK BRAKE BLK853	1
80	120385	WASHER, FLAT .250X .56X.049	2
81	121223	PIN, COTTER .062 DIA X .75LG	1
84	310162	GUIDE, BELT 820 TRANSAXLE	1
85	1498	NUT, 5/16-18 REGHEXCTRLK	2
89	^	TRANSAXLE P930-037A 6HD ERO	1
90	180091	SCREW, 5/16-18X2.50 HHC	4
91	120393	WASHER, FLAT .344X .69X.065	4
92	1498	NUT, 5/16-18 REGHEXCTRLK	4
95	303109	PULLEY, 6.6 OD V4L T/A	1
96	22053	RING, RETEX .58X.035TRU5100-62	1
97	50795	KEY, HI-PRO 606 .75DIA X.187WD	1
104	321382	BRKT, STAB EURO BLK	1
106	35498	SCREW, 5/16-18X .75 WAHTAP	2
107	180077	SCREW, 5/16-18X .75 HHC	1
108	1498	NUT, 5/16-18 REGHEXCTRLK	1
111	57744	SPACER .75 X 1.25 X 1.64	2
113	39628	KEY, SQUARE .187SQX2.50LG	2
114	36625	RING, RETEX .57X.05TRU5133-75	2
115	73840	WASHER, FLAT .765X1.12X.06	1
116	21682	WASHER, FLAT .765X1.25X.042PL	1
118	301318	TIRE & RIM, 20X10.00-8 WHITE	2
118-1	24167	VALVE STEM	
118-2	316667	RIM, WHEEL	
118-3		REFER TO TIRE TREAD PAGE	
119	304441	HUB CAP, 8" EURO GREY	2
120	306669	CLIP, HUBCAP TINN #C25467-017-4	10

^ CONTACT YOUR NEAREST TRANSAXLE DEALER FOR PARTS & SERVICE



NOTE: ALWAYS USE ORIGINAL EQUIPMENT PARTS. Use of service/replacement parts other than original equipment parts may void your warranty.

ALL UNNUMBERED ITEMS ARE INTERCHANGEABLE WITH OPPOSITE SIDE

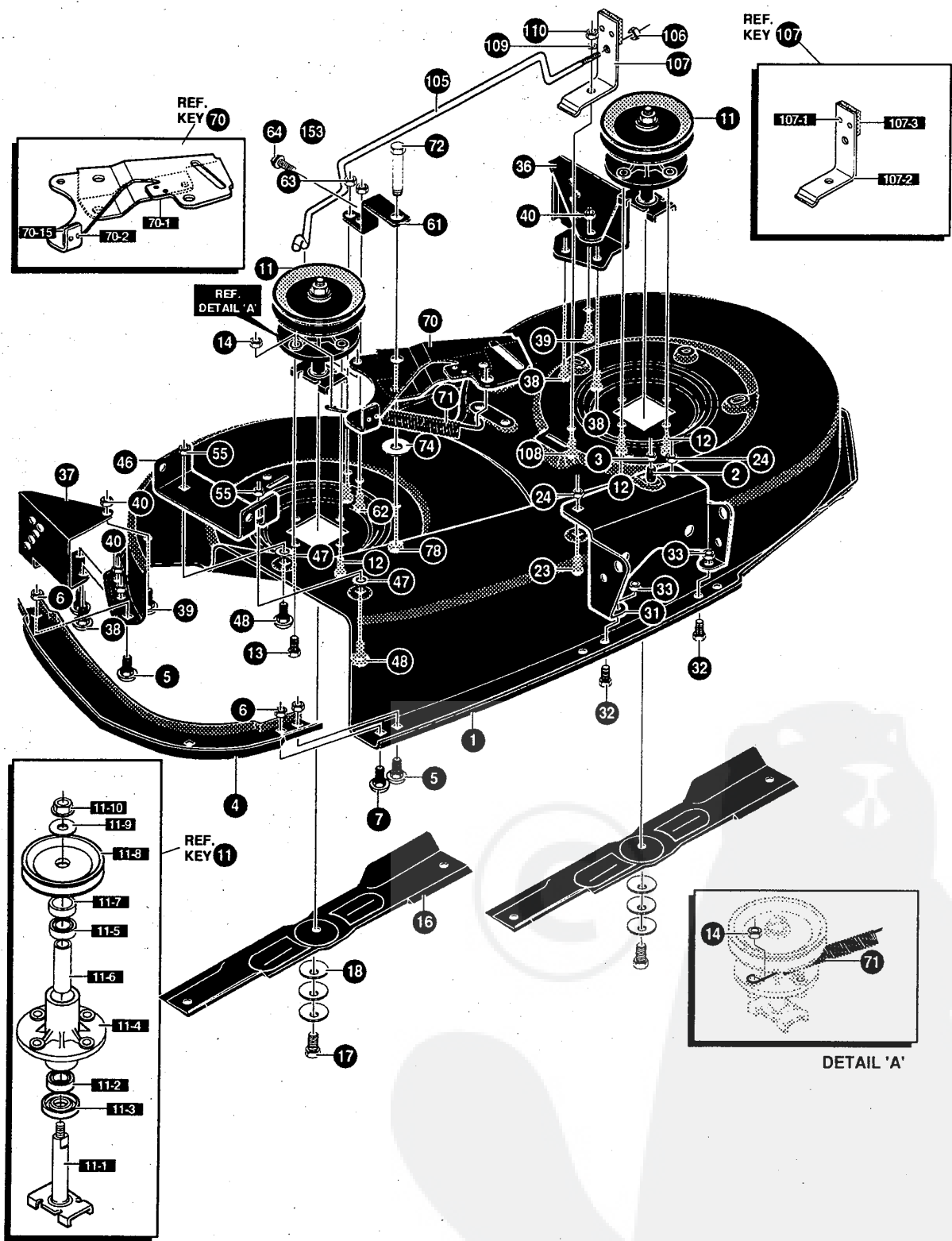
326773 A

E4314-080**ENGINE & CONTROL ASSEMBLY**

KEY#	PART#	DESCRIPTION	QTY
1	ENGINE	14-18HP BS OP-TWIN(SEE ENGINE MANUAL)	1
2	50947	SCREW, 3/8-16X1.25 WAHHTAPBLK	4
3	138489	WASHER, EXLK .384X.69X.04	1
4	307174	NIPPLE 3/8-18 NPT X 4" ZINC	1
6	47828	CAP, PIPE 3/8-18 NPT ZN PL	1
8	47452	TUBING, .25X.50X BULK GAS LINE	18.0
16	35287	SCREW, #8-32X .38 HHWATAP	3
17	305550	MUFFLER,16/18HP LARGE LO-TONE	1
18	305552	EXHAUST TUBE 18HP B&S RH	1
19	56472	DEFLECTOR SIDE OUT (BS222573)	1
20	305551	EXHAUST TUBE 18HP LH	1
22	9796	BRKT, TRANSAXLE	1
23	35497	SCREW, 5/16-18X .50 WAHHTAP	2
24	44811	SCREW, 1/4-20X .75 WAHHTAP	4
25	304709-853	BRACKET,MUFFLER	1
26	57072	BOLT, 5/16-18X .63 CARRLN	2
27	309436	PUSHNUT, 5/16 BOLT RETAINER	2
28	327937	HEAT SHIELD,14-18HP TWIN OP	1
29	55273	NUT, 5/16-18 HXWDFLLK	2
33	57569	RETAINER, .31IDX.62X.03 WIRE	2
41	304439	KNOB, THROTTLE CTL MOLD	1
42	307362	THROTTLE CONTROL ERO 18 TWIN	1
43	320553	SCREW, 10-24X.63PHPNMA CRSS	2
44	308459	NUT, #10-24 HXHDNYLK	2
45	159585	SCREW, #8-32X .38 PHPNMA	1
46	120622	NUT, #8-32 REGHX	1
50	310748	LANYARD,HOOD 15.77LG H15	1
51	310801	ANCHOR, HOODLANYARD	1
52	138077	PIN, CLEVIS .672LGX.248DIA	1
53	121222	PIN, COTTER .090 DIA X .75LG	1
54	121223	PIN, COTTER .062 DIA X .75LG	1
57	120380	WASHER, REGSPTLK.263X.49X.07	4
58	180020	SCREW, 1/4-20X .75 HHC	4
60	56640	GASKET, MUFFLER	2
64	308574-853	BAFFLE,ENGINE,B&S TWIN ERO GT	1

E4314-080

REPAIR PARTS



NOTE: ALWAYS USE ORIGINAL EQUIPMENT PARTS. Use of service/replacement parts other than original equipment parts may void your warranty.

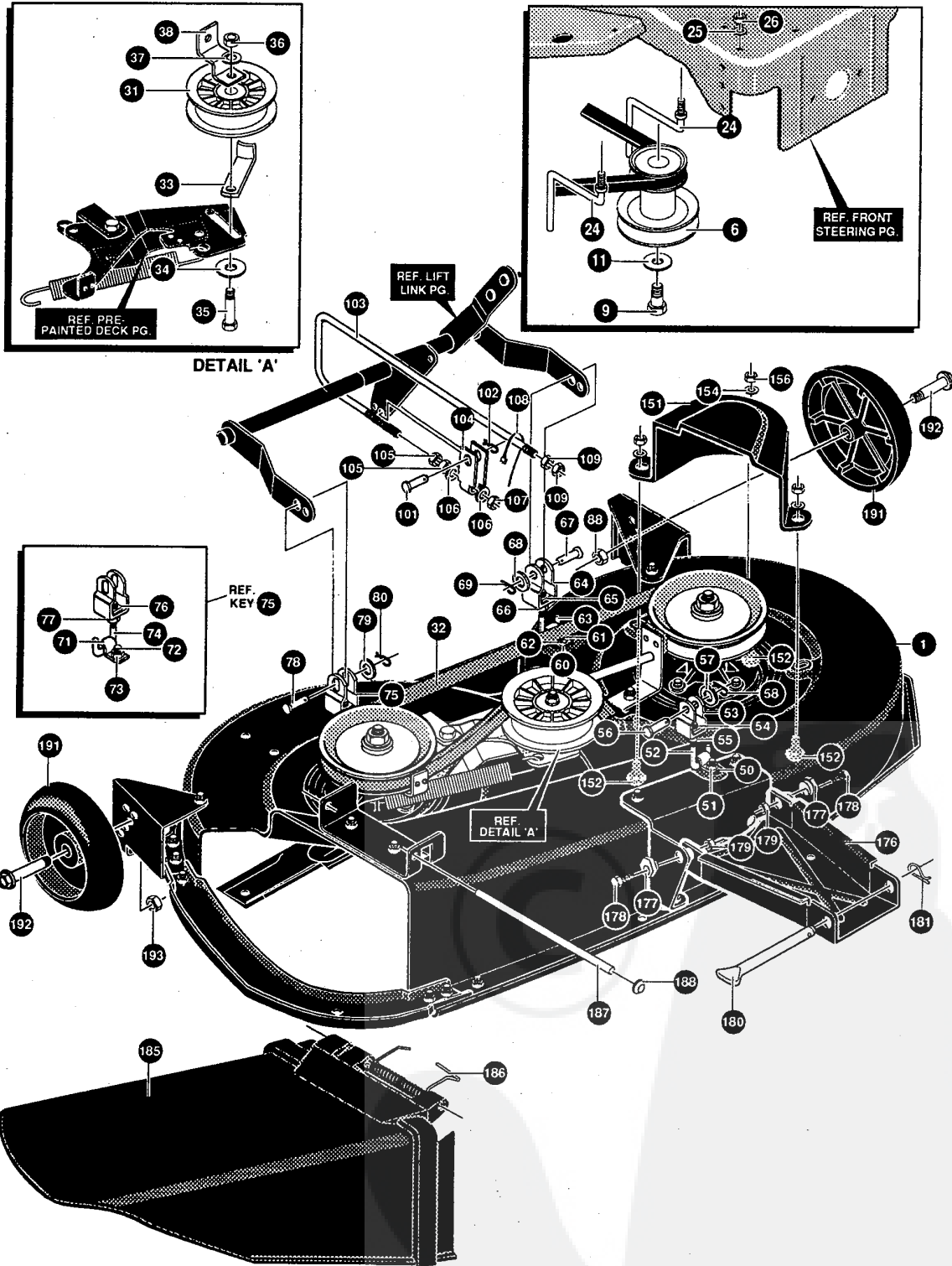
ALL UNNUMBERED ITEMS ARE INTERCHANGEABLE WITH OPPOSITE SIDE

333324 A

E4314-080

PRE-PAINTED DECK ASSEMBLY

KEY#	PART#	DESCRIPTION	QTY
1	325116	43" DECK KIT	1
2	57072	BOLT, 5/16-18X .63 CARRLN	3
2	180077	SCREW, 5/16-18X .75 HHC	1
3	1498	NUT, 5/16-18 REGHEXCTRLK	1
4	326480-853	TOE GUARD - MULCHER	1
6	1498	NUT, 5/16-18 REGHEXCTRLK	3
7	12685	SCREW, 5/16-18X1.50HHCF	1
11	56424-853	QUILL ASSY, 36/39/40/43	2
11-1	56425	SHAFT/SADDLE 36"	1
11-2	49562	BRNG, BALL 6203-2AA(SEALS)-C3	1
11-3	50616	DUST SHIELD	1
11-4	55547	QUILL CASTING (1046)	1
11-5	49562	BRNG, BALL 6203-2AA(SEALS)-C3	1
11-6	50818	SPACER, SLEV .669X .88X3.797	1
11-7	51449	SPACER, SLEV .672X .93X .438PM	1
11-8	313898	PULLEY ASSY	1
11-9	56365	WASHER, SPECIAL QUILL	1
11-10	1282	NUT, 7/16-20 WDFLLK	1
12	35498	SCREW, 5/16-18X .75 WAHTAP	7
13	300345	SCREW, 5/16-18X1.38 WAHTAP	1
14	1498	NUT, 5/16-18 REGHEXCTRLK	1
16	316608	BLADE, 21.70 HIGH-LIFT BLK	2
17	39573	SCREW, 3/8-24X1.00 NYLHHC	2
18	2483	WASHER, 39IDX1.25DX.07 BELLVIL	6
19	66609	DECAL, REGISTRATION	1
23	57072	BOLT, 5/16-18X .63 CARRLN	2
24	1498	NUT, 5/16-18 REGHEXCTRLK	2
31	312342	BRACKET FRT	1
32	57072	BOLT, 5/16-18X .63 CARRLN	2
33	1498	NUT, 5/16-18 REGHEXCTRLK	2
36	317041	BRKT, GAGE WHEEL LH BLACK	1
37	317018	BRKT, GUAGE WHEEL RH BLACK	1
38	180077	SCREW, 5/16-18X .75 HHC	4
39	57072	BOLT, 5/16-18X .63 CARRLN	2
40	1498	NUT, 5/16-18 REGHEXCTRLK	6
46	317017	BRACKET CHUTE MOUNT BLACK	1
47	120395	WASHER, FLAT .469X .92X.065	2
48	57072	BOLT, 5/16-18X .63 CARRLN	2
55	1498	NUT, 5/16-18 REGHEXCTRLK	2
61	326893-853	BRACE IDLER SUPPORT 40",43"	1
62	180077	SCREW, 5/16-18X .75 HHC	2
63	44108	NUT, 5/16-18 HWDFLCTRLK	2
64	308231	SCREW, 1/4-20X1.25-HHWATAP	1
70	320576-853	IDLER ARM ASSEMBLY	1
70-1	322116-853	ARM IDLER 40/43"DECK	1
70-2	41601	RIVET, OVSET .187DIA X .50LG ST	2
70-3	306973	BRAKE PAD - HARD - 232AF	1
71	35410	SPRING .071 X .62 X 4.37	1
72	304420	BOLT, .500X2.15 HHSH	1
74	996307	WASHER, FLAT .391X1.00X.209	1
78	45905	NUT, 3/8-16 HWDFLLK MACK	1
105	315304	ROD, BRAKE	1
106	1502	NUT, 1/4-20 REGHEXCTRLK	1
107	304118	BLADE BRAKE ASSY.	1
107-1	304119-853	BRAKE ARM	1
107-2	306973	BRAKE PAD - HARD - 232AF	1
107-3	135624	RIVET, TRSET .185DIA X .41LG ST	2
108	180077	SCREW, 5/16-18X .75 HHC	1
109	120393	WASHER, FLAT .344X .69X.065	1
110	1498	NUT, 5/16-18 REGHEXCTRLK	1



NOTE: ALWAYS USE ORIGINAL EQUIPMENT PARTS. Use of service/replacement parts other than original equipment parts may void your warranty.

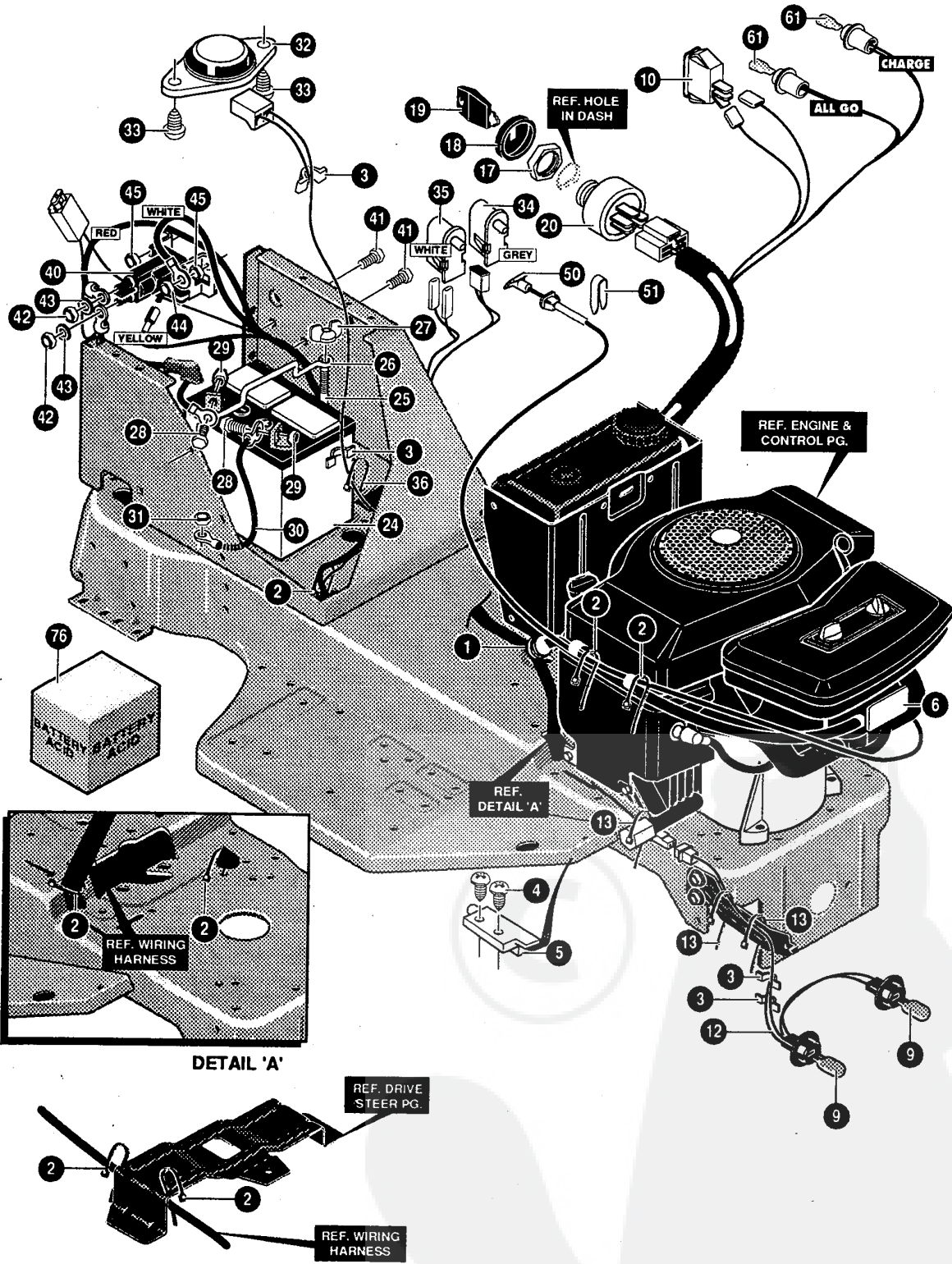
ALL UNNUMBERED ITEMS ARE INTERCHANGEABLE WITH OPPOSITE SIDE

333323 A

KEY#	PART#	DESCRIPTION	QTY
1	333324-830	43 DECK MC,HL,AIRASSISTN/R&Z	1
6	328026	PULLEY,ENG 4.75OFF/5.00D/3.00D	1
9	428644	SCREW, 7/16-20X5.00 HHC	1
11	120383	WASHER, REGSPTLK.459X.78X.12	1
24	300440	GUIDE, BELT, RIDER	2
25	138538	WASHER, REGINTLK.320X.61X.03	2
26	1498	NUT, 5/16-18 REGHEXCTRLK	2
31	310326	PULLEY, IDLER BFF 4.00 WIDE FL	1
32	318372	BELT, V 5L85 KEVLAR	1
33	1346	RETAINER, BELT	1
34	446363	WASHER, FLAT .375X .88X.082	1
35	57325	BOLT, 3/8-16X2.00 CARRSN	1
36	120377	NUT, 3/8-16 REGHX	1
37	120382	WASHER, REGSPTLK.393X.68X.10	1
38	318466	BRKT, CLUTCH IDLER	1
50	319868	CLIP, 40/46 HANGER	1
51	1498	NUT, 5/16-18 REGHEXCTRLK	1
52	309615	ROD, 40" REAR DECK LIFT	1
53	304443	CLEVIS	1
54	109527	NUT, 1/2-13 .458 SQ	1
55	120238	NUT, 1/2-13 HEXJAM	1
56	300317	PIN, CLEVIS .375DIA.X .81 LG	1
57	120394	WASHER, FLAT .406X .81X.065	1
58	56180	PIN, HAIR .091 DIA X1.62LG	1
60	319868	CLIP, 40/46 HANGER	1
61	180077	SCREW, 5/16-18X .75 HHC	1
62	1498	NUT, 5/16-18 REGHEXCTRLK	1
63	312302	ROD, 40" REAR DECK LIFT	1
64	304443	CLEVIS	1
65	109527	NUT, 1/2-13 .458 SQ	1
66	120238	NUT, 1/2-13 HEXJAM	1
67	300317	PIN, CLEVIS .375DIA.X .81 LG	1
68	120394	WASHER, FLAT .406X .81X.065	1
69	56180	PIN, HAIR .091 DIA X1.62LG	1
71	319868	CLIP, 40/46 HANGER	1
72	180077	SCREW, 5/16-18X .75 HHC	1
73	1498	NUT, 5/16-18 REGHEXCTRLK	1
74	309615	ROD, 40" REAR DECK LIFT	1
75	305283	CLEVIS, SLOT EURO	1
76	109527	NUT, 1/2-13 .458 SQ	1
77	120238	NUT, 1/2-13 HEXJAM	1
78	300317	PIN, CLEVIS .375DIA.X .81 LG	1
79	120394	WASHER, FLAT .406X .81X.065	1
80	56180	PIN, HAIR .091 DIA X1.62LG	1
101	49332	PIN, CLEVIS .375DX.81LG	1
102	56180	PIN, HAIR .091 DIA X1.62LG	1
103	316380	ROD, CLUTCH	1
104	305284	CLEVIS, EURO	1
105	120376	NUT, 5/16-18 REGHEX	2
106	120393	WASHER, FLAT .344X .69X.065	2
107	1498	NUT, 5/16-18 REGHEXCTRLK	1
108	57444	TIE, CABLE BLACK NYLON 5.62L	1
109	120376	NUT, 5/16-18 REGHEX	2
151	328257	GUARD, BELT LH PLASTIC	1
152	57072	BOLT, 5/16-18X .63 CARRLN	3
154	120393	WASHER, FLAT .344X .69X.065	3
156	1498	NUT, 5/16-18 REGHEXCTRLK	3
176	321346-830	CHANNEL DRAWBAR 43" EURO	1
177	58247	NUT, ADJUST	2
178	180079	SCREW, 5/16-18X1.00 HHC	2
179	1498	NUT, 5/16-18 REGHEXCTRLK	2
180	302963	ROD, DRAWBAR	1
181	56180	PIN, HAIR .091 DIA X1.62LG	1
185	304422	CHUTE DEFLECTOR 40",42"&43"	1
186	314975	SPRING, TORSION CHUTE DEFLECTOR	1

E4314-080

REPAIR PARTS



NOTE: ALWAYS USE ORIGINAL EQUIPMENT PARTS. Use of service/replacement parts other than original equipment parts may void your warranty.

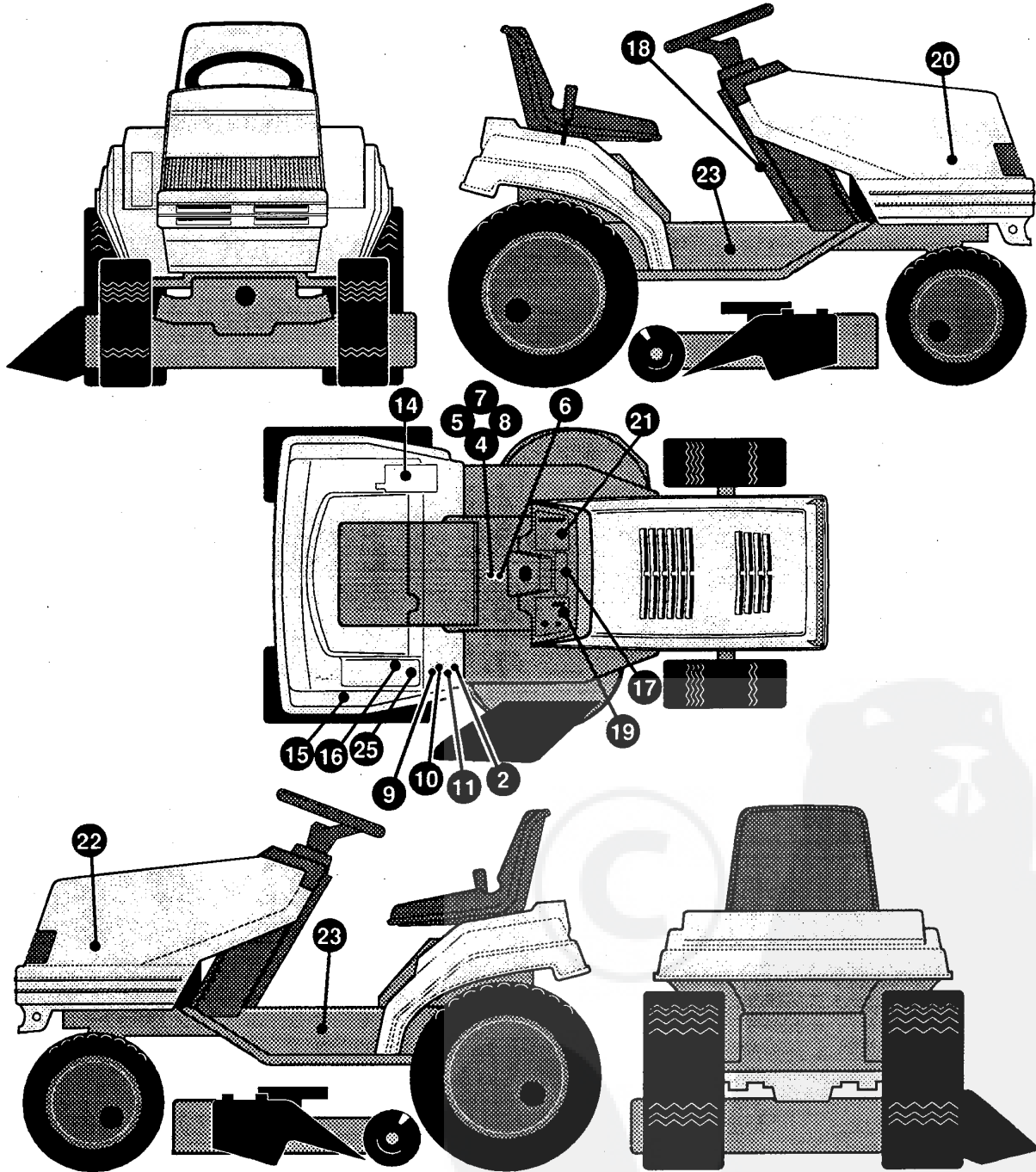
ALL UNNUMBERED ITEMS ARE INTERCHANGEABLE WITH OPPOSITE SIDE

331482 A

E4314-080**ELECTRICAL ASSEMBLY**

KEY#	PART#	DESCRIPTION	QTY
1	332060	HARNESS WIRING B&S TWIN OPPOSED	1
2	57444	TIE, CABLE BLACK NYLON 5.62L	7
3	41482	PRESS CLIP, 1.380LG .255ID	5
4	57220	SCREW, #12 X .50 PHPNHTAP BLK	2
5	57476	SWITCH, SCR MNT DP NC NO BLK	1
6	305578	SOLENOID AFTER FIRE 12V	1
9	52572	BULB, HEADLAMP	2
10	300334	LIGHT SWITCH ON/OFF PANEL MNT	1
12	303064	ASSY, LIGHT WIRE-1/4 TURN	1
13	57444	TIE, CABLE BLACK NYLON 5.62L	3
17	327352	NUT, 5/8-8ACME DELTA FOR BOOT	1
18	300194	BOOT, IGN SWITCH	1
19	327350	KEY, IGNITION DELTA	2
20	327355	SWITCH-IGN.(AFTER FIRE) 3 POSN	1
24	306694	BATTERY, 12V	1
25	57551	ROD, BATTERY	1
26	302912	ROD, BATTERY TOP .209DIA	1
27	325232	NUT, WING 1/4-20 NYLON	1
28	180020	SCREW, 1/4-20X .75 HHC	2
29	271172	NUT, 1/4-20 REGHEXKEPS	2
30	55511	WIRE, GROUND, 12.5"	1
31	271184	NUT, 5/16-18 HEXKEPS	1
32	57547	SWITCH, SEAT	1
33	160505	SCREW, 1/4-20X .38PHPNHMA	2
34	326654	SWITCH, SNAP MNT NC .140 BLUE	1
35	326653	SWITCH, SNAPMNT NO .055/.116GRY	1
36	57444	TIE, CABLE BLACK NYLON 5.62L	2
40	53716	SOLENOID	1
41	187745	SCREW, 1/4-20X .75 HXSEMMA	2
42	120368	NUT, 5/16-24 REGHEX	2
43	138485	WASHER, EXLK .320X.61X.03	2
44	271172	NUT, 1/4-20 REGHEXKEPS	1
45	1502	NUT, 1/4-20 REGHEXCTRLK	2
50	307113	CHOKE CONT BS TWIN ERO LONG	1
51	314522	CLIP, CHOKE CONTROL	1
61	57769	BULB, INDICATOR	2
76	^	BATTERY ACID PACK, 80 OZ	1

^ CAN BE PURCHASED LOCALLY



NOTE: ALWAYS USE ORIGINAL EQUIPMENT PARTS. Use of service/replacement parts other than original equipment parts may void your warranty.

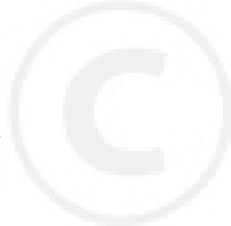
ALL UNNUMBERED ITEMS ARE INTERCHANGEABLE WITH OPPOSITE SIDE

331248 B

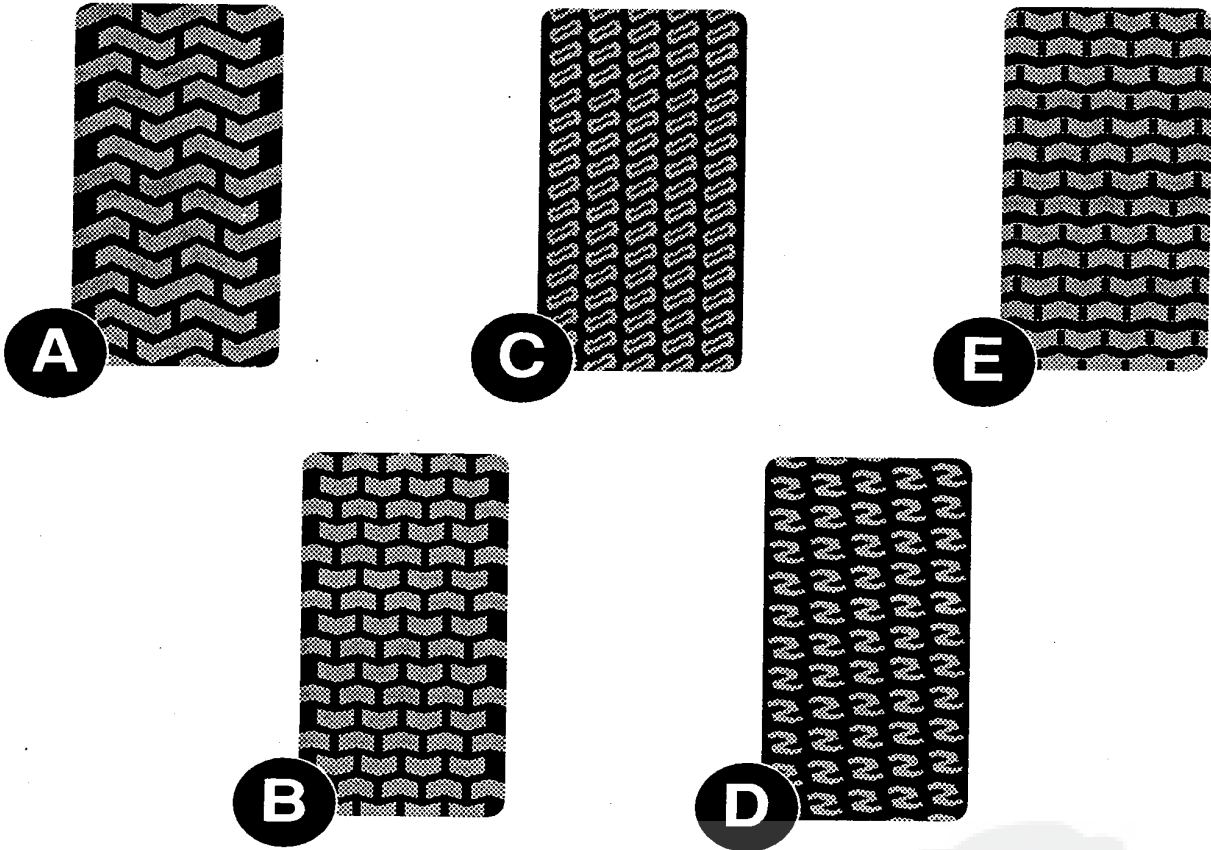
E4316-040

DECAL ASSEMBLY

KEY#	PART#	DESCRIPTION	QTY
2	305770	DECAL, CAUTION TRIANGLE EUROPE	1
4	322763	DECAL, OPER INST ERO TOP FRAME	1
5	311971	DECAL, INSTR, TOP CONSOLE DUTCH	1
6	311973	DECAL, INSTR. CONSOLE TOP ENGL	1
7	311976	DECAL, INSTRUCT CONSOLE TOP FR	1
8	311977	DECAL, INSTRUCT CONSOLE TOP GER	1
9	310553	DECAL, DANGER ENGLISH	1
10	68902	DECAL, WARNING, FRENCH/GERMAN	1
11	311070	DECAL, DANGER DUTCH	1
14	316851	DECAL, EXPORT BL. CL. @ DECK HT.	1
15	307817	DECAL SHIFT INDICATOR EXPORT	1
16	316886	DECAL GEAR SHIFT 6 SPEED ERO	1
17	308473	DECAL DASH CHG, ALL SYS, PLAIN	1
18	307820	DECAL PARK BRAKE EXPORT	1
19	331818	DECAL DSH RH ISO CH, W/O HMETER	1
20	402396	DECAL, STATESMAN HOOD	1
21	311010	DECAL DASH LH ISO	1
22	402397	DECAL STATESMAN HOOD	1
23	321759	NAMEPLATE, 14/42 WHITE/BLK	2
25	318431	DECAL, DPRESS CL/BR HDRO FRENCH	1



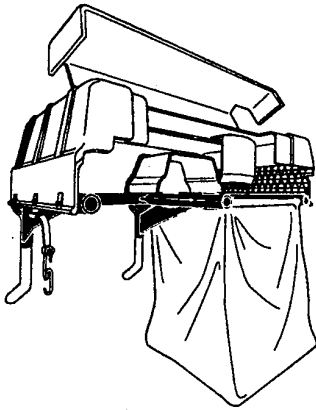
TREAD PATTERNS



TIRE SIZE	"A"	"B"	"C"	"D"	"E"
11 X 4.00 - 5	42295	319679			
13 X 5.00 - 6	41060	319680			
15 X 6.00 - 6	39830	316702	301140	313952	
16 X 4.80 - 8		305035			
16 X 6.50 - 8	41081	319682		314539	
18 X 6.50 - 8		42091			
18 X 8.50 - 8	319683	317400			
18 X 9.50 - 8	41106	316701		313950	
20 X 8.00 - 8	319685	319684	57164	314584	331606
20 X 10.00 - 8	58276	319686		313654	
20 X 10.00 - 10	55893	319687			
23 X 9.50 - 12	53655	319690	319689	314370	

Contact the dealer where your tractor was purchased for the available accessories. If you are unable to contact the dealer, write to the address on the front cover of this manual.

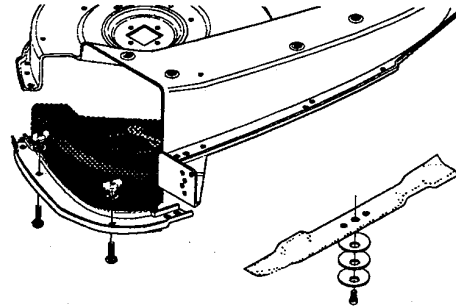
Euro Lawn Tractor



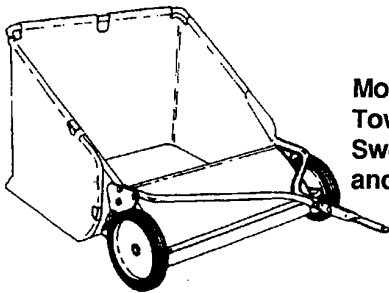
Model # 5708-14
Grass Collector for
43" decks only

For heavy duty grass collection order
Model # 5709-08 Air Assist

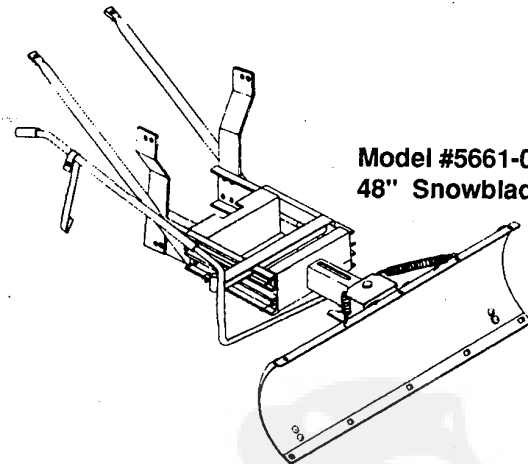
Model # 5708-34
Grass Collector for
46" decks only



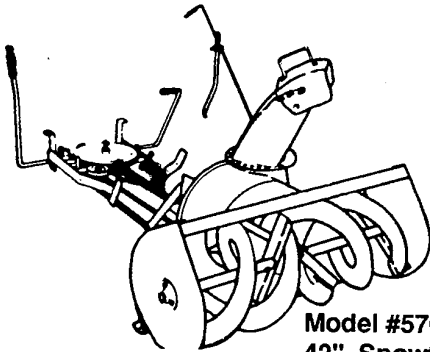
Model # 5717-00
Mulching Kit
(40,42&43" Deck)



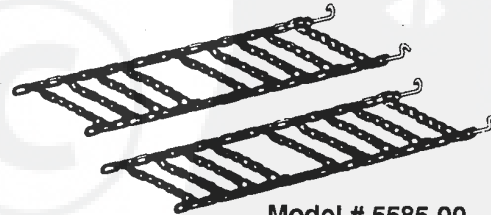
Model # 5648-16
Tow behind Lawn
Sweeper for grass
and leaves



Model #5661-07
48" Snowblade



Model #5705-05
42" Snowthrower for
heavy snowfall



Model # 5585-00
Tire Chains - 20" x 8.0" tires
Model # 5706-00
Tire Chains - 20" x 10.0" tires

OTHER ACCESSORIES

Model	Description
5672-01	Wheel Weights - Front - 1 pr. w/mtg. hdw. - Fits 15" tires
5673-02	Wheel Weights - Rear - 1 pr. w/mtg. hdw. - Fits 18" & 20" tires
5709-04	Rear Wheel Box
316608	43" High lift blade for bagging or side discharge (requires 2)
325762	43" Mulching blade (requires 2)
317071	46" High lift blade for bagging or side discharge (requires 2)