

# **PARTS MANUAL**

## **Lawn Tractors**



**Model E4316-040**



## SAFETY RULES

THESE INSTRUCTIONS ARE FOR YOUR PROTECTION. PLEASE READ THEM CAREFULLY.

### IMPORTANT

THIS CUTTING MACHINE IS CAPABLE OF AMPUTATING HANDS AND FEET AND THROWING OBJECTS. FAILURE TO OBSERVE THE FOLLOWING SAFETY INSTRUCTIONS COULD RESULT IN SERIOUS INJURY OR DEATH.

#### I. GENERAL OPERATION:

- Know controls and how to stop quickly.
- Read, understand, and follow all instructions in the manual and on the machine before starting.
- Only allow responsible adults, who are familiar with instructions, to operate the machine.
- Wear safety glasses or eye shields when assembling or operating the machine.
- Do not operate machine when barefooted. Always wear substantial footwear, preferably steel-toed shoes.
- Do not wear loose fitting clothing that could get caught in moving parts.
- Clear the area of objects such as rocks, toys, wire, etc., which could be picked up and thrown by the blade(s).
- Be sure the area is clear of other people before mowing. Stop machine if anyone enters the area.
- Never carry passengers.
- Do not mow in reverse unless absolutely necessary. Always look down and behind before and while backing.
- Be aware of the mower discharge direction and do not point it at anyone. Do not operate the mower without either the entire grass catcher or the guard in place.
- Slow down before turning.
- Never leave a running machine unattended. Always turn off blades, set parking brake, stop engine, and remove keys before dismantling.
- Turn off blade(s) when not mowing.
- Stop engine before removing grass catcher or unclogging chute.
- Mow only in daylight or good artificial light.
- Do not operate the machine while under the influence of alcohol or drugs.
- Watch for traffic when operating near or crossing roadways.
- Use care when mowing around a fixed object to prevent the blade(s) from striking it. Never deliberately run over any foreign object.
- Use extra care when loading or unloading the machine into a trailer or truck.
- Use care when pulling loads or using heavy equipment.
  - a. Use only approved drawbar hitch points.
  - b. Limit loads to those that you can safely control.
  - c. Do not turn sharply. Use care when backing.
  - d. Use counterweight(s), wheel weight or tire chains when suggested in attachment(s) instructions.

#### II. SLOPE OPERATION:

Slopes are a major factor related to loss-of-control and tip-over accidents, which can result in severe injury or death. *All slopes require extra caution.* If you cannot back up the slope or if you feel uneasy on it, do not mow it.

##### DO

- Mow up and down slopes, not across.
- Remove obstacles such as rocks, tree limbs, etc.
- Watch for holes, ruts, or bumps. Uneven terrain could overturn the machine. *Tall grass can hide obstacles.*
- Use slow speed. Choose a low gear so that you will not have to stop or shift while on the slope.
- Follow the manufacturer's recommendations for wheel weights or counterweights to improve stability.
- Use extra care with grass catchers or other attachments. These can change the stability of the machine.
- Keep all movement on the slopes *slow and gradual*. Do not make sudden changes in speed or direction.
- Avoid starting or stopping on a slope. If tires lose traction, turn off the blade(s) and proceed slowly *straight* down the slope.

##### DO NOT

- Do not turn on slopes unless necessary, and then slowly and gradually downhill, if possible.
- Do not mow near drop-offs, ditches or embankments. The

mower could suddenly turn over if a wheel is over the edge of a cliff or ditch, or if an edge caves in.

- Do not mow on wet grass. Reduced traction could cause sliding.
- Do not try to stabilize the machine by putting your foot on the ground.
- Do not use grass catcher on steep slopes.

#### III. CHILDREN:

Tragic accidents can occur if the operator is not alert to the presence of children. Children are often attracted to the machine and the mowing activity. *Never* assume that children will remain where you last saw them.

- Keep children out of the mowing area and under the watchful care of another responsible adult.
- Be alert and turn machine off if children enter the area.
- Before and when backing, look behind and *down* for small children.
- Never carry children. They may fall off and be seriously injured or interfere with safe machine operation.
- Never allow children to operate the machine.
- Use extra care when approaching blind corners, shrubs, trees, or other objects that may obscure vision.

#### IV. SERVICE:

- Use extra care in handling gasoline and other fuels. They are flammable and vapors are explosive.
  - a. Use only an approved container.
  - b. Never remove gas cap or add fuel with the engine running. Allow engine to cool before refueling. Do not smoke.
  - c. Never refuel the machine indoors.
  - d. Never store the machine or fuel container inside where there is an open flame, such as in a water heater.
- Check fuel supply before each use allowing space for expansion as the heat of the engine and/or sun can cause gasoline to expand and overflow the tank.
- Use extra care when handling battery acid. Acid contact with skin may cause severe burns. Eye contact may cause blindness.
- Use extra care when servicing the battery. Explosive gas is produced in the battery. Do not service the battery while smoking or near an open spark or flame. This may cause the battery to explode causing serious injury.
- Never run a machine inside a closed area. Exhaust fumes contain CARBON MONOXIDE, an ODORLESS and DEADLY GAS.
- Keep nuts and bolts, especially blade attachment bolts, tight and keep equipment in good condition.
- Never tamper with safety devices. Check their operation regularly.
- Do not change the engine governor settings or overspeed engine.
- Reduce fire hazards. Keep machine free of grass, leaves, or other debris build-up. Clean up oil or fuel spillage. Allow machine to cool before storing.
- Stop and inspect the equipment if you strike an object. Repair, if necessary, before restarting.
- Never make adjustments or repairs with the engine running.
- Grass catcher components are subject to wear, damage, and deterioration, which could expose moving parts or allow objects to be thrown. Frequently check components and replace with manufacturer's recommended parts, when necessary.
- Mower blade(s) are sharp and can cut. Wrap the blade(s) or wear gloves, and use extra caution when servicing them.
- Check brake operation frequently. Adjust and service as required.



LOOK FOR THIS SYMBOL TO POINT OUT IMPORTANT SAFETY PRECAUTIONS. IT MEANS--ATTENTION!!!  
BECOME ALERT!!! YOUR SAFETY IS INVOLVED.

# E4316-040

# OWNER'S INFORMATION

Record the following information about your unit so that you will be able to provide it in case of loss or theft.

MODEL NUMBER:  -  (Enter complete 8 digit number from model plate on unit)

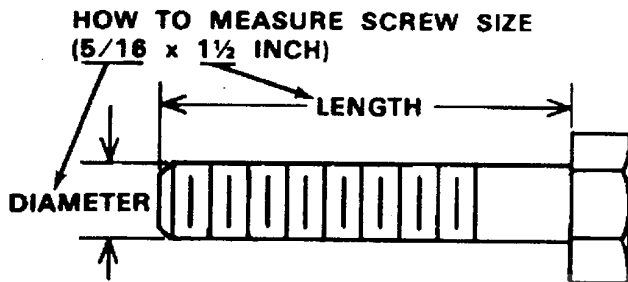
PURCHASE DATE: \_\_\_ / \_\_\_ / \_\_\_ CODE NO.: \_\_\_\_\_ SERIAL NO.: \_\_\_\_\_

DEALER'S NAME AND ADDRESS: \_\_\_\_\_

CITY: \_\_\_\_\_ STATE: \_\_\_\_\_ TELEPHONE: \_\_\_\_\_

## TOOLS REQUIRED FOR ASSEMBLY

- 2 - 7/16 inch Wrenches (or adjustable wrench)
- 1 - 1/2 inch Wrench (or adjustable wrench)
- 1 - Small Phillips Screwdriver with a 1/4 inch shank
- 1 - Hammer



## DANGER



This lawn tractor can be dangerous if carelessly used.

Read your Operator's Manual thoroughly before operating your lawn tractor.

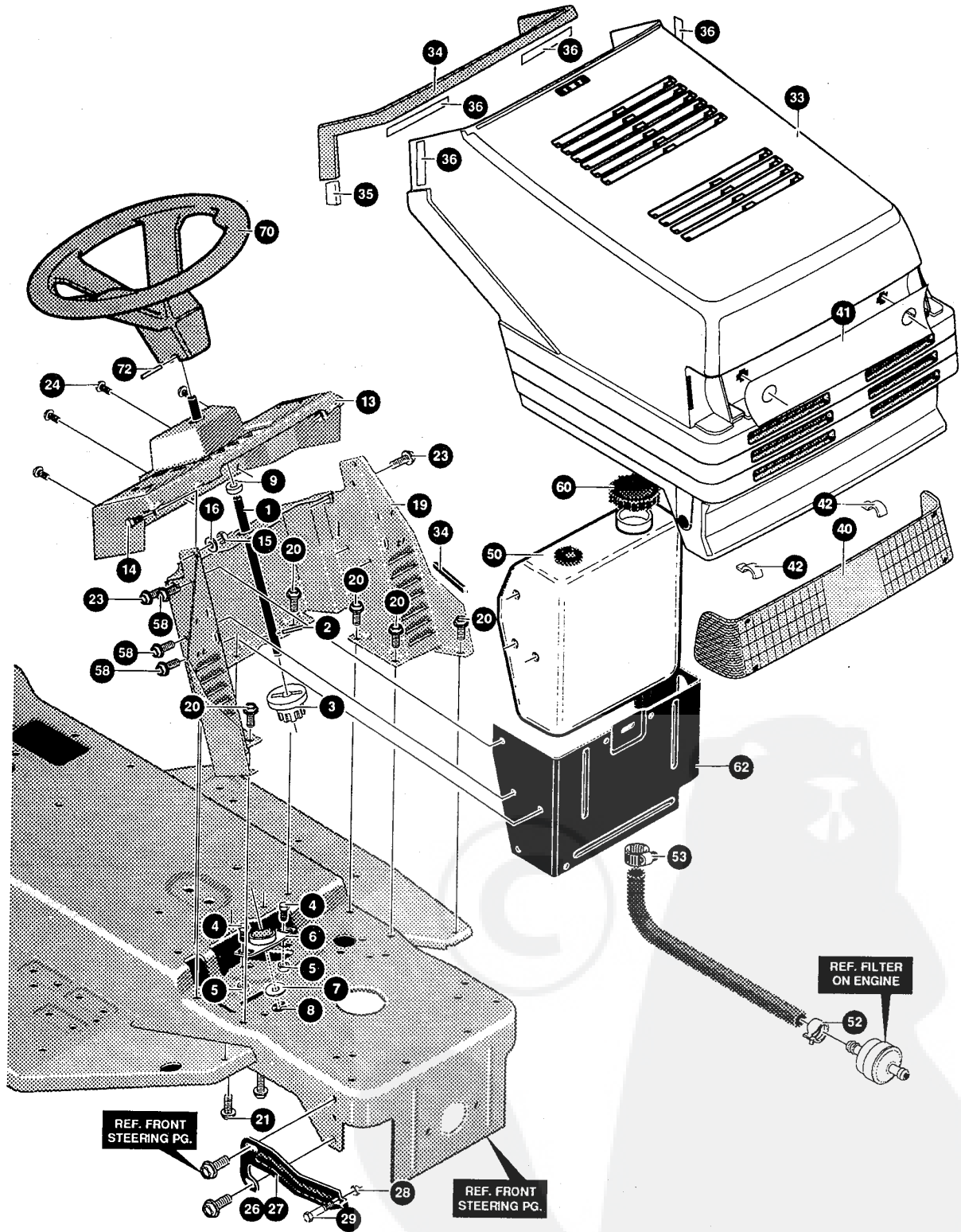
Always wear safety glasses or eye shields while assembling or operating your lawn tractor.

DO NOT carry passengers at any time.

Keep your hands, feet, hair and loose clothing away from the discharge area, the underside of the mower deck or any moving parts while the engine is running.

DO NOT allow children or young teenagers to operate or be near your lawn tractor while it is operating.

- ALWAYS GIVE THE FOLLOWING INFORMATION WHEN ORDERING REPAIR PARTS:
1. The PART NUMBER; 2. The PART NAME; 3. QUANTITY DESIRED; 4. The MODEL NUMBER (As shown on Model Plate).
- SEND PART ORDERS AS PER INSTRUCTIONS ON THE FRONT PAGE.
- DO NOT USE KEY NUMBERS WHEN ORDERING REPAIR PARTS, ALWAYS USE PART NUMBERS.
- All replacement parts will be supplied in current production colors or in a neutral color.
- A handling fee is applicable to small parts orders.
- YOUR UNIT IS RIGHT HAND (RH) OR LEFT HAND (LH) AS YOU STAND BEHIND IT.



**NOTE:** ALWAYS USE ORIGINAL EQUIPMENT PARTS. Use of service/replacement parts other than original equipment parts may void your warranty.

**ALL UNNUMBERED ITEMS ARE INTERCHANGEABLE WITH OPPOSITE SIDE**

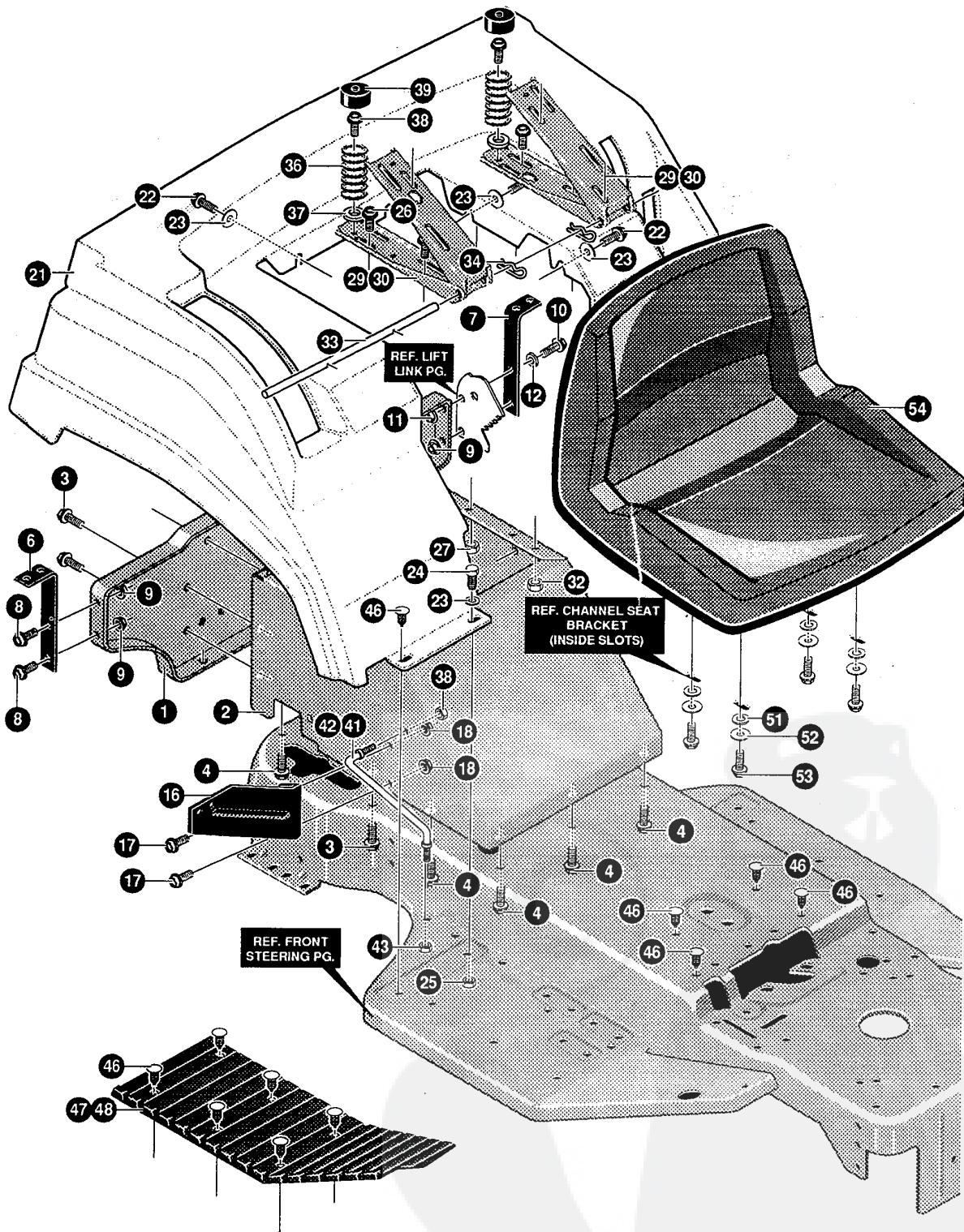
331885 A

**E4316-040****HOOD/DASH & SHAFT ASSEMBLY**

KEY#	PART#	DESCRIPTION	QTY
1	302528	SHAFT,STEERING EURO GT LONG .....	1
2	302524	PIN DOWEL STR ERO LT .....	1
3	302314	PINION,STEERING .....	1
4	323731	SCREW, 5/16-24X.75 (TQ 30-35 FT#) .....	2
5	71100	NUT, 5/16-24 HEXWDFLLK .....	2
6	302498	BRNG, SFAL .500IDX . ODX .75 .....	1
7	2968	WASHER, FLAT .504X .75X.059 .....	1
8	20864	RING, RET E .39X.04TRU5133-50 .....	1
9	303228	BUSHING STR SHFT UPPER .....	1
13	331383	DASH,SHORT H17 MC/EC NOAMP .....	1
14	180020	SCREW, 1/4-20X .75 HHC .....	2
15	1502	NUT, 1/4-20 REGHEXCTRLK .....	2
16	120392	WASHER, FLAT .281X .63X.065 .....	2
19	302920-830	DASH LOWER TALL LT EURO GT .....	1
20	35497	SCREW, 5/16-18X .50 WAHTAP .....	8
21	45263	SCREW, 5/16-18X .37 WAHTAP .....	2
23	995346	SCREW, 1/4-20X .50 WAHTAP .....	2
24	305850	SCREW, 1/4-20X.50PHPNTAP .....	4
26	310578-853	BRACKET, HOOD GT RH .....	1
27	310579-853	BRACKET, HOOD GT LH .....	1
28	1498	NUT, 5/16-18 REGHEXCTRLK .....	2
29	25086	BOLT, .500X .375 HSSH 5/16-18 .....	2
33	313421	HOOD,EURO H-17 GT MOLD .....	1
34	12675	TRIM PIECE PLASTIC GREY861/630 .....	1
35	306822	CLIP,U-TYPE TINN C27637-014-4 .....	2
36	12599	FASTENER, VELCRO, 2" X 1" .....	4
40	304708	LENS HEADLIGHT ERO GT SMOKE .....	1
41	308200	DECAL, REFLECTOR EURO LT .....	1
42	41482	PRESS CLIP,1.380LG .255ID .....	2
50	315263	ASSY GAS TANK 1.5GAL (OPTION) .....	1
52	47345	CLAMP,HOSE SCREW TYPE .....	2
53	47345	CLAMP,HOSE SCREW TYPE .....	1
58	180073	SCREW, 5/16-18X .50 HHC .....	6
60	12501	CAP,FUEL 2.5" THROAT .....	1
62	324795-853	HEAT SHIELD ERO 1.5 & 3 GAL .....	1
70	302835	STEERING WHEEL .....	1
72	456378	PIN, SPRING.250DIAx2.00LG HVPL .....	1
73	393327	PARTS MANUAL .....	1
74	327706	GRASS CATCHER MANUAL .....	1
75	327332	AIR ASSIST MANUAL (FRENCH) .....	1
76	327333	AIR ASSIST MANUAL (GERMAN) .....	1
77	322415	AIR ASSIST MANUAL (ENGLISH) .....	1
78	331610	OPERATOR'S MANUAL (ENGLISH) .....	1
79	331611	OPERATOR'S MANUAL (FRENCH) .....	1
80	331612	OPERATOR'S MANUAL (GERMAN) .....	1

# E4316-040

# REPAIR PARTS



**NOTE:** ALWAYS USE ORIGINAL EQUIPMENT PARTS. Use of service/replacement parts other than original equipment parts may void your warranty.

ALL UNNUMBERED ITEMS ARE INTERCHANGEABLE WITH OPPOSITE SIDE

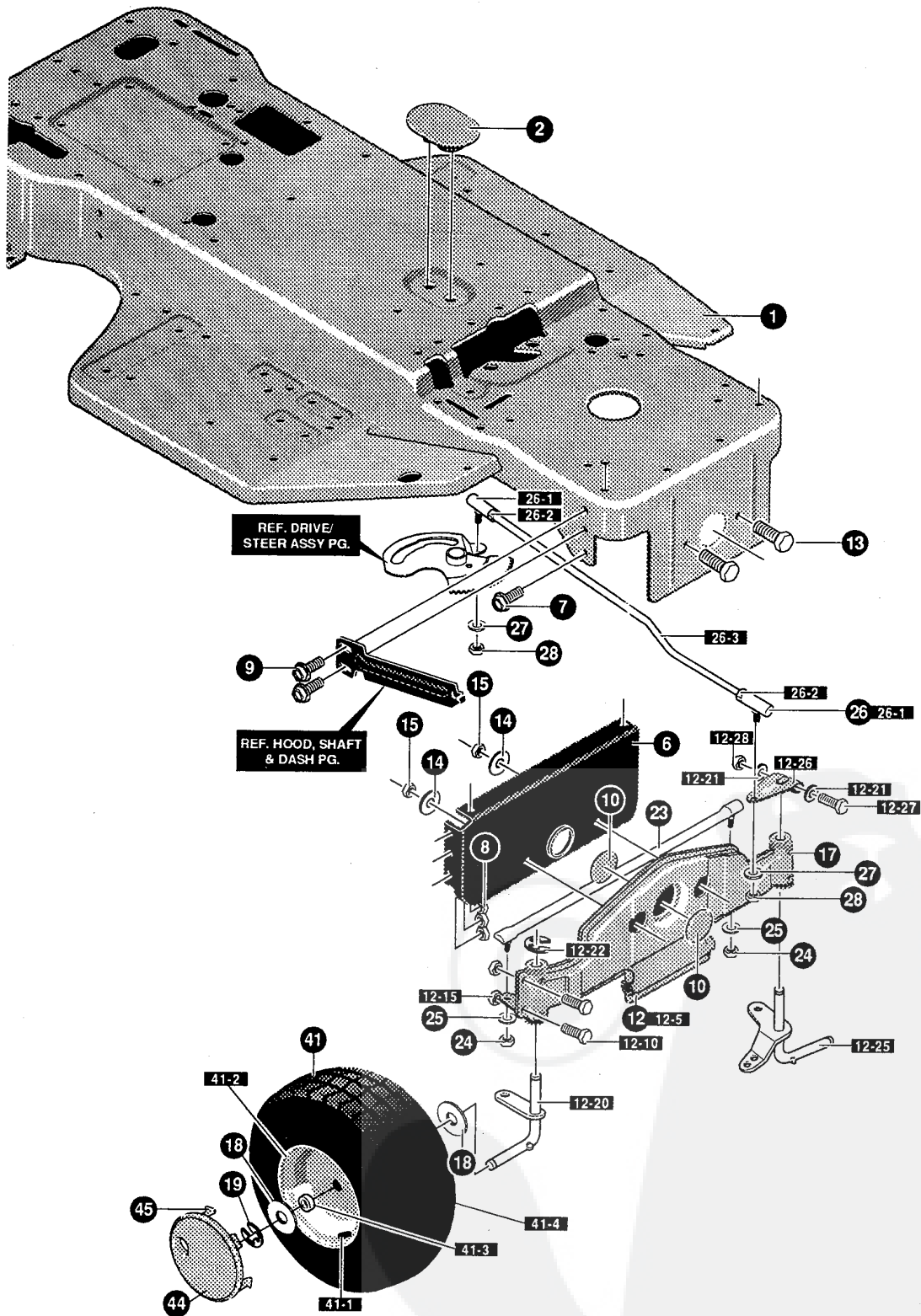
325970 F

**E4316-040****FENDER/SEAT ASSEMBLY**

KEY#	PART#	DESCRIPTION	QTY
1	322068-830	SEAT SUPPORT ELECTRIC LIFT .....	1
2	322069-830	SUPT,FENDER&SEAT ELECT/LIFT .....	1
3	35498	SCREW, 5/16-18X .75 WAHHTAP .....	5
4	35497	SCREW, 5/16-18X .50 WAHHTAP .....	10
6	306399	SUPT FEND RIGHT BLACK .....	1
7	306397	SUPT FEND LEFT BLACK .....	1
8	56030	SCREW, 5/16-18X.75WDFLLK .....	3
9	55273	NUT, 5/16-18 HXWDFLLK .....	3
10	180020	SCREW, 1/4-20X .75 HHC .....	1
11	51335	NUT, 1/4-20 WDFLWHIZ-LK .....	1
12	120385	WASHER, FLAT .250X .56X.049 .....	1
16	305381-853	SUPPORT,SHIFT PLATE .....	1
17	56030	SCREW, 5/16-18X.75WDFLLK .....	2
18	55273	NUT, 5/16-18 HXWDFLLK .....	2
21	306798	FENDER,EURO F-10 GT MOLD GREY .....	1
22	44811	SCREW, 1/4-20X .75 WAHHTAP .....	6
23	1084	WASHER, FLAT .281X1.00X.063PL .....	8
24	180020	SCREW, 1/4-20X .75 HHC .....	2
25	1502	NUT, 1/4-20 REGHEXCTRLK .....	2
29	302897-830	CHANNEL SEAT RH .....	2
30	305424-830	CHANNEL SEAT LH .....	2
31	56030	SCREW, 5/16-18X.75WDFLLK .....	4
32	1498	NUT, 5/16-18 REGHEXCTRLK .....	4
33	304481	ROD, SEAT SUPPORT .....	1
34	36368	PIN, HAIR .072 DIA X1.13LG .....	2
36	305520	SPRING, SEAT 1.50ODX2.25LG BLK .....	2
37	120393	WASHER, FLAT .344X .69X.065 .....	2
38	35498	SCREW, 5/16-18X .75 WAHHTAP .....	2
39	56907	COVER,SEAT SPRING 1.5IDX1.0LG .....	2
41	319388	SUPPORT,FOOTREST STIFNR RH .....	1
42	319387	SUPPORT,FOOTREST STIFNR LH .....	1
43	1498	NUT, 5/16-18 REGHEXCTRLK .....	4
46	309235	FASTENER, RATCHET BLACK .....	18
47	314890	FOOT PAD, ASSYRH ERO W/ADH .....	1
48	314891	FOOT PAD, ASSYLH ERO W/ADH .....	1
51	120393	WASHER, FLAT .344X .69X.065 .....	4
52	120638	WASHER, HVSP TLK .328X.60X.09 .....	4
53	180077	SCREW, 5/16-18X .75 HHC .....	4
54	331458	SEAT,MICHIGAN GEN, W/SW HOLE .....	1

# E4316-040

# REPAIR PARTS



**NOTE:** ALWAYS USE ORIGINAL EQUIPMENT PARTS. Use of service/replacement parts other than original equipment parts may void your warranty.

ALL UNNUMBERED ITEMS ARE INTERCHANGEABLE WITH OPPOSITE SIDE

331878 C

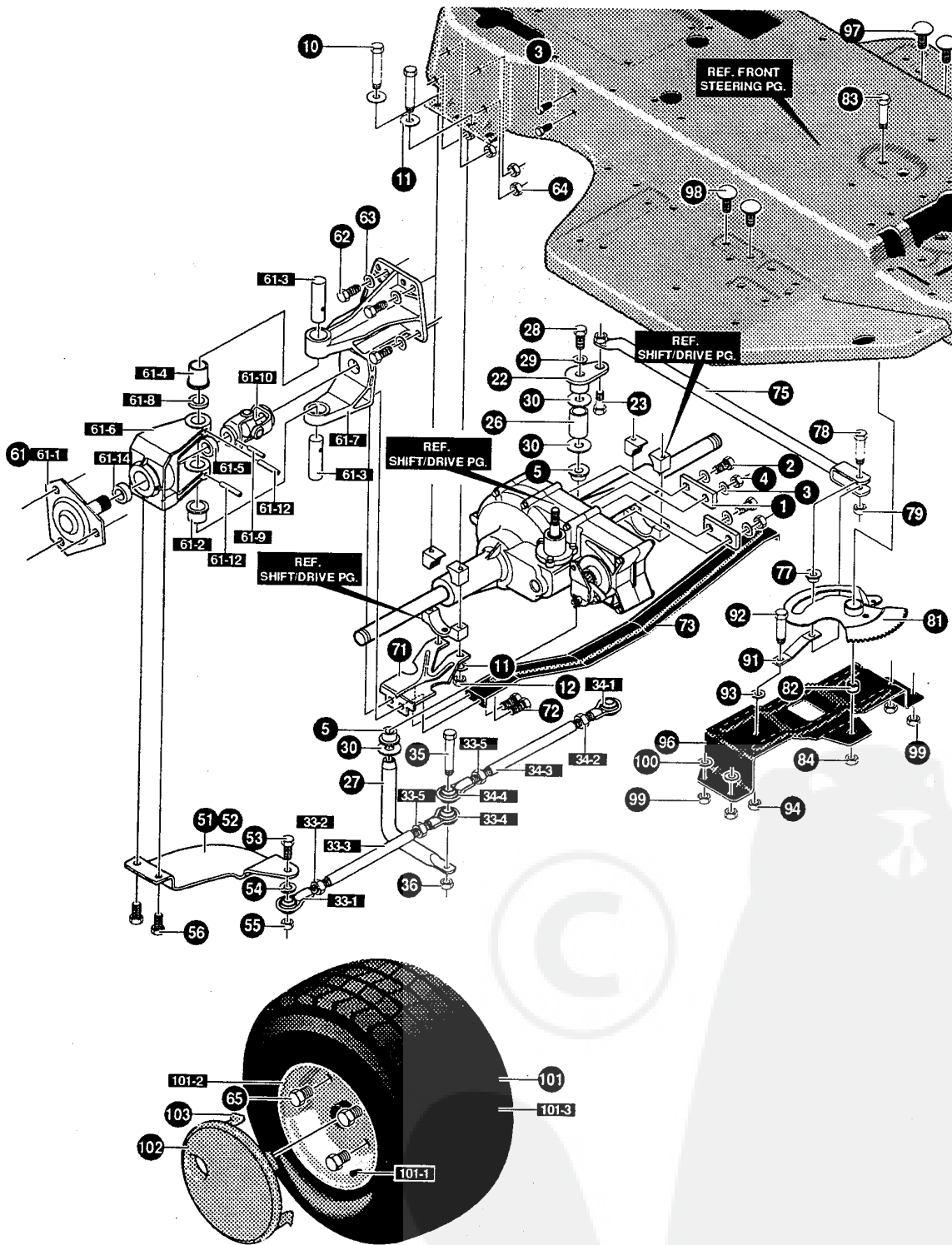


# E4316-040

# STEERING ASSEMBLY

KEY#	PART#	DESCRIPTION	QTY
1	331674-830	FRAME, EURO .....	1
2	305280	COVER,SECTOR BOLT PLAS .....	1
6	302321-853	BRACKET, FRONT AXLE SUPPORT .....	1
7	56030	SCREW, 5/16-18X.75WDFLLK .....	2
8	55273	NUT, 5/16-18 HXWDFLLK .....	6
9	53652	SCREW, 5/16-18X.75 HXWDFL .....	4
10	307112	PLUG,FRONT AXLE 1.938DIAX.062" .....	2
12	^	AXLE,ASSY FRONT WELD BLK .....	1
12-5	310670-830	AXLE,ASSY FRONT WELD BLK .....	1
12-15	1498	NUT, 5/16-18 REGHXCTRLK .....	4
12-20	305340	ASSY SPDLE RH EROLT .....	1
12-21	996416	WASHER, FLAT .391X1.0OX.125 .....	2
12-22	36625	RING, RETEX .57X.05TRU5133-75 .....	1
12-25	305339	ASSY SPDLE LH EROLT .....	1
12-26	317019	ARM STEERING UPPER BLACK .....	1
12-27	180134	SCREW, 3/8-16X2.50 HHC .....	1
12-28	1499	NUT, 3/8-16 REGHXCTRLK .....	1
13	180138	SCREW, 3/8-16X3.00 HHC .....	2
14	2483	WASHER, 39IDX1.25DX.07 BELLVIL .....	2
15	1499	NUT, 3/8-16 REGHXCTRLK .....	2
17	706	ZERK, GREASE FITTING .....	4
18	642	WASHER, FLAT .755X1.31X.075 .....	4
19	36625	RING, RETEX .57X.05TRU5133-75 .....	2
23	300328	TIE ROD .625DIA GRND ENGAGER .....	1
24	120369	NUT, 3/8-24 REGHEX .....	2
25	120382	WASHER, REGSPTLK.393X.68X.10 .....	2
26	302908	LINK, ASSY .625DIA DRAG LT 4WS .....	1
26-1	57158	BALL JOINT 3/8 THD SHORT STUD .....	2
26-2	124925	NUT, 3/8-24 REGHEXJAM .....	2
26-3	302907	LINK, .625DIA DRAG LT 4WS .....	1
27	120382	WASHER, REGSPTLK.393X.68X.10 .....	2
28	124925	NUT, 3/8-24 REGHEXJAM .....	2
41	321515	TIRE & RIM, PU 15X6.0X6 .....	2
41-1	24167	VALVE STEM	
41-2	321516	RIM, WHEEL	
41-3	314416	BEARING, FL	
41-4		REFER TO TIRE TREAD PAGE	
44	304444	HUB CAP, 6" EURO GREY .....	2
45	306669	CLIP,HUBCAP TINN #C25467-017-4 .....	8

^ ORDER INDIVIDUAL PARTS



**NOTE:** ALWAYS USE ORIGINAL EQUIPMENT PARTS. Use of service/replacement parts other than original equipment parts may void your warranty.

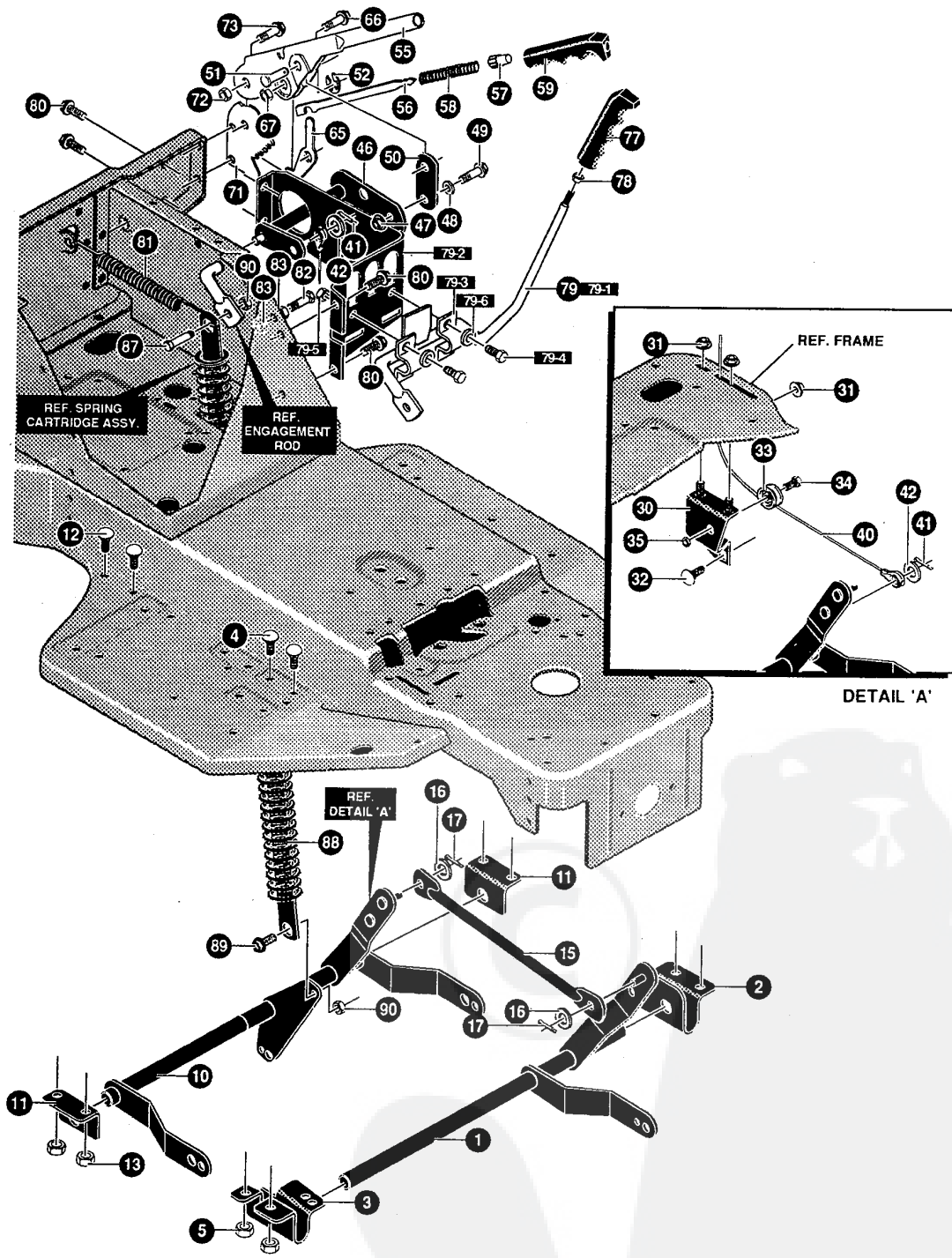
ALL UNNUMBERED ITEMS ARE INTERCHANGEABLE WITH OPPOSITE SIDE

325737 D

# E4316-040

# DRIVE/STEER ASSEMBLY

KEY#	PART#	DESCRIPTION	QTY
1	314511	BRACKET, REAR PIVOT HYDRO	2
2	44811	SCREW, 1/4-20X .75 WAHTAP	2
3	120380	WASHER, REGSPTLK.263X.49X.07	4
4	120375	NUT, 1/4-20 REGHEX	2
5	302303	BEARING SPINDLE FR W/HOLE	2
10	180091	SCREW, 5/16-18X2.50 HHC	4
11	120393	WASHER, FLAT .344X .69X.065	8
12	44108	NUT, 5/16-18 HWDFLCTRLK	4
22	308719	PIVOT, STEERING	1
23	12319	BOLT, .562X .340 HSH 3/8-24	1
26	313641	SPACER, STEERING SHAFT HYDRO	1
27	313649	SHAFT, STEERING PIVOT HYDRO	1
28	421051	SCREW, 5/16-24X1.00 HHC	1
29	45602	WASHER, FLAT .333X .87X.119	1
30	25177	WASHER, FLAT .765X1.19X.048	3
33	323636	TIE ROD, ASSYRH EURO 4WS&LFHYDR	1
33-1	308384	BALL JOINT LH 3/8-24	1
33-2	124925	NUT, 3/8-24 REGHEXJAM	1
33-3	313642	ROD, TIE 1/2"D X 6.75LG	1
33-4	304260	BALL JOINT, RH 3/8-24	1
33-5	308399	NUT, 3/8-24 LH THD REGHJAM	1
34	323637	TIE ROD, ASSYLH EURO 4WS&LFHYDR	1
34-1	308384	BALL JOINT LH 3/8-24	1
34-2	124925	NUT, 3/8-24 REGHEXJAM	1
34-3	313643	ROD, TIE 1/2"D X 10.91LG ZINC	1
34-4	304260	BALL JOINT, RH 3/8-24	1
34-5	308399	NUT, 3/8-24 LH THD REGHJAM	1
35	181646	SCREW, 3/8-24X1.75 HHC	1
36	412349	NUT, 3/8-24 HXCTRLK	1
51	304120-853	ARM REAR WHL STR (FER) R.H	1
52	304121-853	ARM, REAR WHEEL STEER L.H.	1
53	181639	SCREW, 3/8-24X1.25 HHC	2
54	120382	WASHER, REGSPTLK.393X.68X.10	2
55	412349	NUT, 3/8-24 HXCTRLK	2
56	47792	SCREW, 3/8-16X1.00 WAHTAP BLK	4
61	323736	U-JOINT, 4-WS HEAVY DUTY	2
61-1	315264	HUB ASSEMBLY HEAVY	1
61-2	12288	BEARING, FLSH .752 ID X .937 OD X .75	1
61-3	12289	PIN, STEERING HINGE	2
61-4	12321	BEARING, FLSH	1
61-5	12325	BEARING, BALL 6203-2AA-3/4	1
61-6	315267	BRACKET, STR PIVOT 6204 BEARING	1
61-7	12466	BRACKET, STR PIVOT	1
61-8	21682	WASHER, FLAT .765 X 1.25 X .042	1
61-9	36311	PIN, GROOVED .250 DIA X 1.50LG	1
61-10	320531	U-JOINT ASSEMBLY W/ZERK (LONG)	1
61-12	456722	PIN, SPRING .250 DIA X 1.50LG HVPL	2
61-14	315268	BEARING, BALL 6204-2AA-7/8	1
62	180079	SCREW, 5/16-18X1.00 HHC	8
63	120393	WASHER, FLAT .344X .69X.065	8
64	1498	NUT, 5/16-18 REGHEXCTRLK	8
65	181683	SCREW, 1/2-20X .50 HHC	6
71	313645-853	BRKT X-AXLE MTG 4WS HYDRO	2
72	35498	SCREW, 5/16-18X .75 WAHTAP	4
73	322959-853	BRACKET HYDRO 4WS SUPPORT	1
75	313639	ROD R WHL STR 4WS(HYDRO)	1
77	304116	CAM YOKE ROLLER	1
78	304122	BOLT, .625 X1.175HSH	1
79	274654	NUT, 1/2-20 REGHXCTRLK	1
81	302877	ASSY SECTOR GEAR 4WS	1
82	302878	BRNG, SLEV . IDX . ODX	1
83	181709	SCREW, 1/2-20X2.50 HHC	1
84	274654	NUT, 1/2-20 REGHXCTRLK	1
91	302594	FOLLOWER, ROLLER	1
92	302588	BOLT, .265X .800 HSH 3/8-24	1
93	446363	WASHER, FLAT .375X .88X.082	1
94	412349	NUT, 3/8-24 HXCTRLK	1
96	302583-853	PLATE, PIVOT STEERING EURO	1
97	35497	SCREW, 5/16-18X .50 WAHTAP	2
98	35498	SCREW, 5/16-18X .75 WAHTAP	2
99	1498	NUT, 5/16-18 REGHEXCTRLK	4
100	446363	WASHER, FLAT .375X .88X.082	2
101	316665	TIRE & RIM, 20X10.00-8 WHITE	2
101-1	24167	VALVE STEM	
101-2	316667	RIM, WHEEL	
101-3		REFER TO TIRE TREAD PAGE	
102	304441	HUB CAP, 8" EURO GREY	2
103	306669	CLIP, HUBCAP TINN #C25467-017-4	10



**NOTE:** ALWAYS USE ORIGINAL EQUIPMENT PARTS. Use of service/replacement parts other than original equipment parts may void your warranty.

ALL UNNUMBERED ITEMS ARE INTERCHANGEABLE WITH OPPOSITE SIDE

325733 C

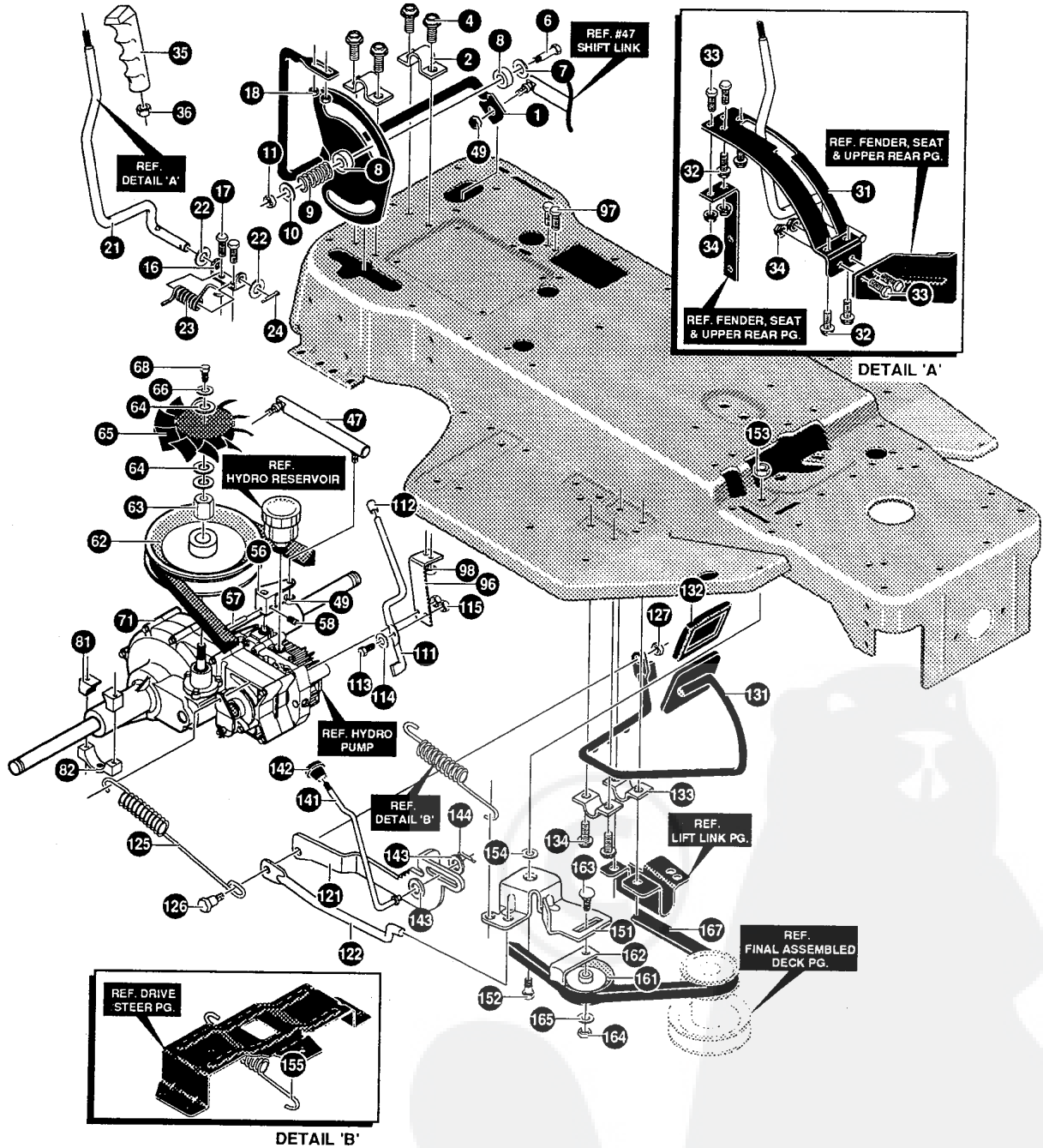
# E4316-040

# LIFT/LINK ASSEMBLY

KEY#	PART#	DESCRIPTION	QTY
1	302379-853	SHAFT, ASSY FRONT LIFT EURO .....	1
2	304967-853	BRACKET, FRONT HANGER RH .....	1
3	302338-853	BRACKET, FRONT HANGER LH .....	1
4	180077	SCREW, 5/16-18X .75 HHC .....	4
5	1498	NUT, 5/16-18 REGHEXCTRLK .....	4
10	302206-853	SHAFT, ASSY REAR LIFT .....	1
11	302360-853	BRACKET, REAR HANGER EURO .....	2
12	180077	SCREW, 5/16-18X .75 HHC .....	4
13	1498	NUT, 5/16-18 REGHEXCTRLK .....	4
15	302380	RODS,TIE .....	1
16	120394	WASHER, FLAT .406X .81X.065 .....	2
17	121222	PIN, COTTER .090 DIA X .75LG .....	2
30	303230	ASSY,PULLEY BRKT .....	1
31	55273	NUT, 5/16-18 HXWDFLLK .....	3
32	57072	BOLT, 5/16-18X .63 CARRLN .....	1
33	48306	PULLEY,POWDER METAL .....	1
34	305522	BOLT, .375X .700 HSH 5/16-18 .....	1
35	1498	NUT, 5/16-18 REGHEXCTRLK .....	1
40	303227	CABLE,DECK LIFT .....	1
41	121222	PIN, COTTER .090 DIA X .75LG .....	2
42	120393	WASHER, FLAT .344X .69X.065 .....	2
46	302205	ASSY, UPPER SHAFT .....	1
47	1498	NUT, 5/16-18 REGHEXCTRLK .....	1
48	45602	WASHER, FLAT .333X .87X.119 .....	1
49	36149	BOLT, .375X .500 HSH 5/16-18 .....	1
50	302357	LINK .....	1
51	300310	PIN,CLEVIS .310DIA+.475LG .....	1
52	300311	RING, RET E .31X.25TRUX5133-31 .....	1
55	58332-853	HEIGHT LEVER .....	1
56	58330	ROD, ACTUATOR .....	1
57	58325	KNOB, HEIGHT ADJ PUSH BUTTON .....	1
58	58326	SPRING, HEIGHT ADJUST .....	1
59	304730	GRIP, HAND .74IDX5.15 .....	1
65	301239	PAWL, SQUARE .....	1
66	300171	BOLT, .500X .270 HSH 5/16-18 .....	1
67	44108	NUT, 5/16-18 HWDFLCTRLK .....	1
71	302383	QUADRANT .....	1
72	1498	NUT, 5/16-18 REGHEXCTRLK .....	1
73	300171	BOLT, .500X .270 HSH 5/16-18 .....	1
77	304729	HANDLE, 1/2-13 MOLDED .....	1
78	120238	NUT, 1/2-13 HEXJAM .....	1
79	307385-853	SUB ASSY BRKT & ENGAGE HAND .....	1
79-1	306391	ASSY ENGAGE ROD BLACK 173 .....	1
79-2	302208-853	BRACKET, SUPPORT ENGAGE .....	1
79-3	312701	CLIP, BLACK .....	2
79-4	180016	SCREW, 1/4-20X .50 HHC .....	2
79-5	1502	NUT, 1/4-20 REGHEXCTRLK .....	2
79-6	120385	WASHER, FLAT .250X .56X.049 .....	2
80	35497	SCREW, 5/16-18X .50 WAHTAP .....	4
81	305306	SPRING, TENSION .....	1
82	180134	SCREW, 3/8-16X2.50 HHC .....	1
83	271190	NUT, 3/8-16 HEXKEPS .....	2
87	305989	BOLT, .437X .43 HSH .....	1
88	304448	ASSY SPRING CARTRIDGE .....	1
89	20507	BOLT, .437X .156 HSH 5/16-18 .....	1
90	1498	NUT, 5/16-18 REGHEXCTRLK .....	1

# E4316-040

# REPAIR PARTS



**NOTE:** ALWAYS USE ORIGINAL EQUIPMENT PARTS. Use of service/replacement parts other than original equipment parts may void your warranty.

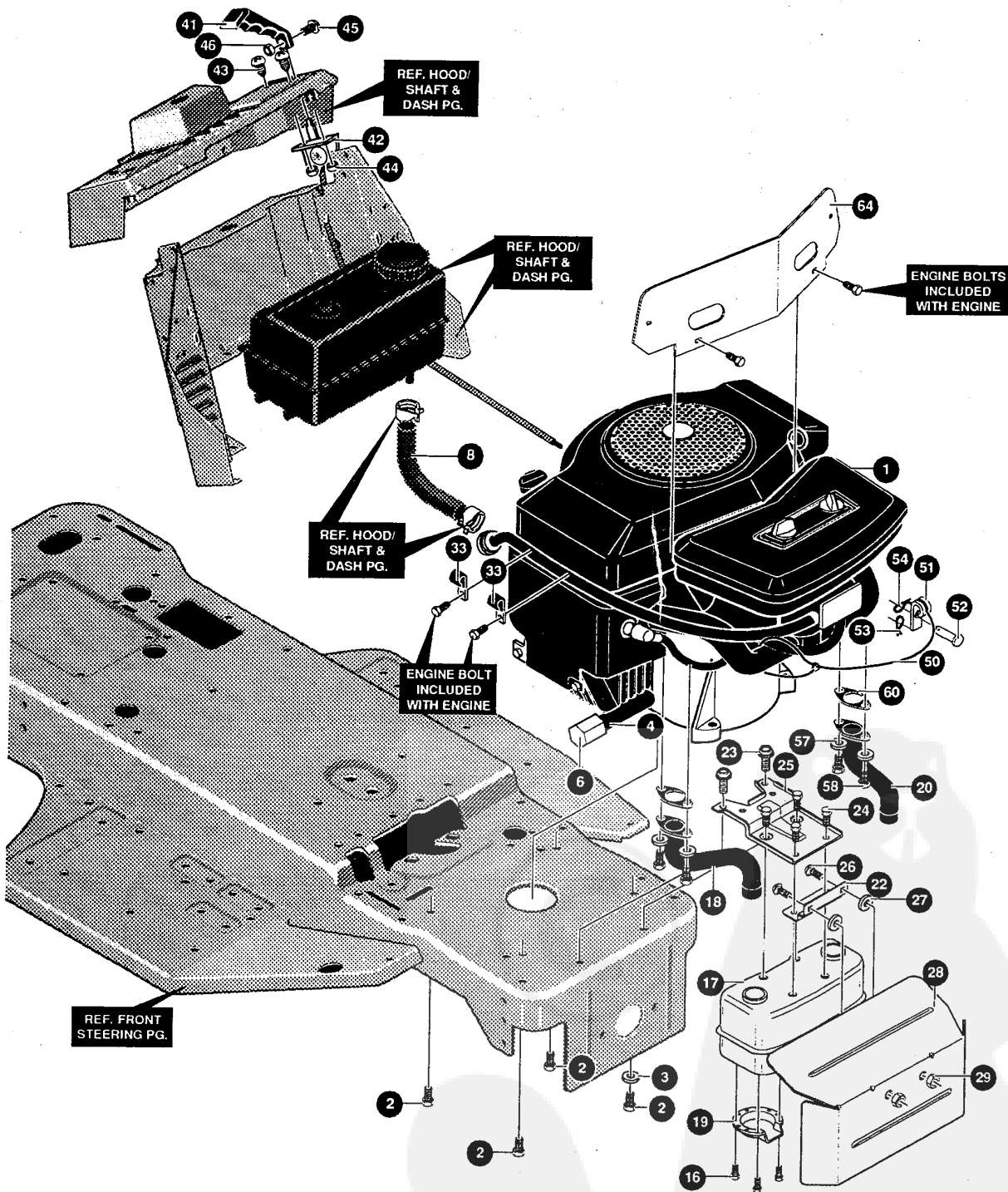
ALL UNNUMBERED ITEMS ARE INTERCHANGEABLE WITH OPPOSITE SIDE

325730 D

**E4316-040****SHIFT/DRIVE ASSEMBLY**

KEY#	PART#	DESCRIPTION	QTY
1	310206-853	SHIFT ROD, ASSY BLK .....	1
2	313271	BRACKET CL/BR ARM .....	2
4	35497	SCREW, 5/16-18X .50 WAHHTAP .....	4
6	180087	SCREW, 5/16-18X2.00 HHC .....	1
7	845	WASHER, FLAT .390X1.25X.119 .....	1
8	49922	WASHER, FRICTION 1.25ODX.34ID .....	2
9	29170	SPRING .....	1
10	120393	WASHER, FLAT .344X .69X.065 .....	1
11	1498	NUT, 5/16-18 REGHEXCTRLK .....	1
16	310356	BRKT, PIVOT SH LEV .....	1
17	180020	SCREW, 1/4-20X .75 HHC .....	2
18	46931	NUT, 1/4-20 WDFL MAC-LOCK .....	2
21	326925	ROD SHIFT .....	1
22	71073	WASHER, FLAT .469X .92X.065 .....	5
23	310336	SPRING-TORSION HYDRO SHIFT .....	1
24	121222	PIN, COTTER .090 DIA X .75LG .....	1
31	310263-830	QUADRANT SHIFT HYDRO .....	1
32	300302	SCREW, #10 X .50 HHTAPPST BLK .....	4
33	180020	SCREW, 1/4-20X .75 HHC .....	4
34	51335	NUT, 1/4-20 WDFLWHIZ-LK .....	4
35	304729	HANDLE, 1/2-13 MOLDED .....	1
36	120238	NUT, 1/2-13 HEXJAM .....	1
47	324936	SHIFT LINK ASS'Y .625DIA. ....	1
49	412349	NUT, 3/8-24 HXCTRLK .....	2
56	310180	ARM SPEED CONTROL HYDRO .....	1
57	456652	PIN, SPRING.187DIA X .88LG HVPL .....	1
58	102570	SCREW, 1/4-20X.38NYLALHSETCPPT .....	1
62	310098	PULLEY ASSY HYDRO .....	1
63	310094	NUT PULLEY 1/2-20 AND 1/4-20 .....	1
64	57626	WASHER, FLAT .281X1.25X.06 .....	3
65	308523	FAN, HYDRO 7.00DIA-10 BLADES .....	1
66	120380	WASHER, REGSPTLK.263X.49X.07 .....	1
68	180020	SCREW, 1/4-20X .75 HHC .....	1
71	A	4WS TRNSAXLE, HG #217-1010S .....	1
81	310813	MOUNTING BLOCK LH HYDRO .....	4
82	310187	MOUNTING BLOCKS HYDRO .....	2
96	310179	STABILIZER BRACKET .....	1
97	180077	SCREW, 5/16-18X .75 HHC .....	2
98	1498	NUT, 5/16-18 REGHEXCTRLK .....	3
111	310261	ROD-RELIEF VALVE ZINC .....	1
112	314969	CAP, MEMORY ROD .38ID X .75 BK .....	1
113	310088	BOLT, .250X .312 HHSH 1/4-20 .....	1
114	2483	WASHER, .39ID X 1.25DX.07 BELLVIL .....	1
115	1498	NUT, 5/16-18 REGHEXCTRLK .....	1
121	310260	LEVER PARK BRAKE .....	1
122	314738	ROD CLUTCH .....	1
125	325009	SPRING, BRAKE HG HYDRO (EURO) .....	1
126	310087	BOLT, .500X .500 HHSH 5/16-18 .....	1
127	1498	NUT, 5/16-18 REGHEXCTRLK .....	1
131	310257-853	ASSY, WELD CL/BR ROD .....	1
132	302335	PAD, CLUTCH/BRAKE MOLD W/L BLK .....	1
133	313271	BRACKET CL/BR ARM .....	2
134	35497	SCREW, 5/16-18X .50 WAHHTAP .....	2
141	304217	ROD, PARKING BRAKE .....	1
142	304367	KNOB, PARK BRAKE BLK853 .....	1
143	120385	WASHER, FLAT .250X .56X.049 .....	2
144	121223	PIN, COTTER .062 DIA X .75LG .....	1
151	314786	ARM IDLERS .....	1
152	310269	BOLT, .621X .143 HHSH 5/16-18 .....	1
153	1498	NUT, 5/16-18 REGHEXCTRLK .....	1
154	45602	WASHER, FLAT .333X .87X.119 .....	1
155	313660	SPRING, CLUTCH .113X.750X6.88 .....	1
161	303031	PULLEY, IDLER V4L 3.12EFF DIA .....	1
162	39659	RETAINER, BELT .....	1
163	45892	BOLT, 3/8-16X1.50 CARRSN .....	1
164	120377	NUT, 3/8-16 REGHX .....	1
165	120382	WASHER, REGSPTLK.393X.68X.10 .....	1
167	310275	BELT, V 4L 82.5 HYDRO TRACTION .....	1

^ SEE TRANSAXLE BREAKDOWN PAGES IN THIS MANUAL



**NOTE:** ALWAYS USE ORIGINAL EQUIPMENT PARTS. Use of service/replacement parts other than original equipment parts may void your warranty.

ALL UNNUMBERED ITEMS ARE INTERCHANGEABLE WITH OPPOSITE SIDE

326773 A

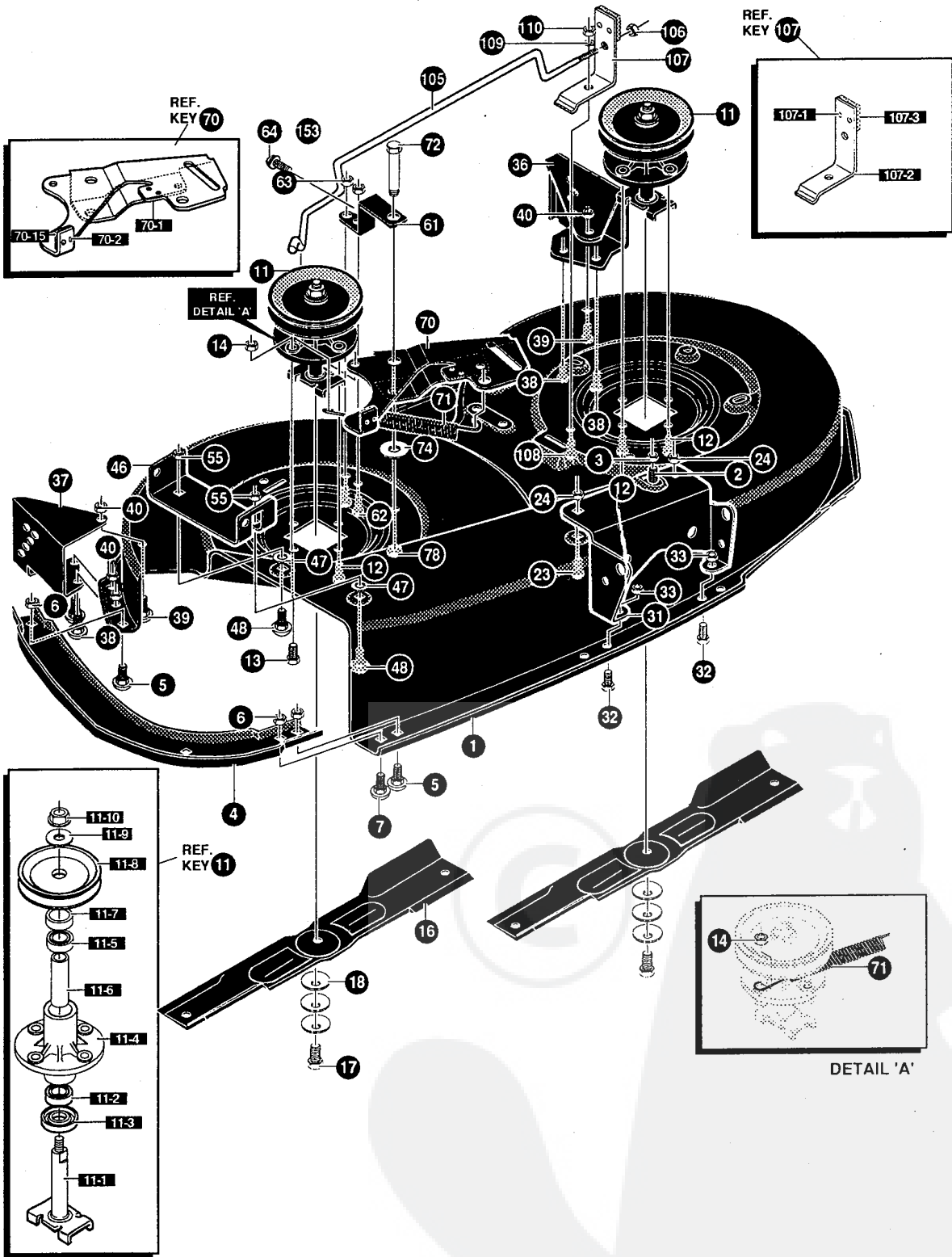


**E4316-040****ENGINE & CONTROL ASSEMBLY**

KEY#	PART#	DESCRIPTION	QTY
1	ENGINE	14-18HP BS OP-TWIN(SEE ENGINE MANUAL) .....	1
2	50947	SCREW, 3/8-16X1.25 WAHHTAPBLK .....	4
3	138489	WASHER, EXLK.384X.69X.04 .....	1
4	307174	NIPPLE 3/8-18 NPT X 4" ZINC .....	1
6	47828	CAP. PIPE 3/8-18 NPT ZN PL .....	1
8	47452	TUBING, .25X.50X BULK GAS LINE .....	18.0
16	35287	SCREW, #8-32X .38 HHWATAP .....	3
17	305550	MUFFLER,16/18HP LARGE LO-TONE .....	1
18	305552	EXHAUST TUBE 18HP B&S RH .....	1
19	56472	DEFLECTOR SIDE OUT (BS222573) .....	1
20	305551	EXHAUST TUBE 18HP LH .....	1
22	9796	BRKT, TRANSAXLE .....	1
23	35497	SCREW, 5/16-18X .50 WAHHTAP .....	2
24	44811	SCREW, 1/4-20X .75 WAHHTAP .....	4
25	304709-853	BRACKET,MUFFLER .....	1
26	57072	BOLT, 5/16-18X .63 CARRLN .....	2
27	309436	PUSHNUT, 5/16 BOLT RETAINER .....	2
28	327937	HEAT SHIELD,14-18HP TWIN OP .....	1
29	55273	NUT, 5/16-18 HXWDFLLK .....	2
33	57569	RETAINER, .31IDX.62X.03 WIRE .....	2
41	304439	KNOB, THROTTLE CTL MOLD .....	1
42	307362	THROTTLE CONTROL ERO 18 TWIN .....	1
43	320553	SCREW, 10-24X.63PHPNMA CRSS .....	2
44	308459	NUT, #10-24 HXHDNYLK .....	2
45	159585	SCREW, #8-32X .38 PHPNMA .....	1
46	120622	NUT, #8-32 REGHX .....	1
50	310748	LANYARD,HOOD 15.77LG H15 .....	1
51	310801	ANCHOR, HOODLANYARD .....	1
52	138077	PIN, CLEVIS .672LGX.248DIA .....	1
53	121222	PIN, COTTER .090 DIA X .75LG .....	1
54	121223	PIN, COTTER .062 DIA X .75LG .....	1
57	120380	WASHER, REGSPTLK.263X.49X.07 .....	4
58	180020	SCREW, 1/4-20X .75 HHC .....	4
60	56640	GASKET, MUFFLER .....	2
64	308574-853	BAFFLE,ENGINE,B&S TWIN ERO GT .....	1

# E4316-040

# REPAIR PARTS



**NOTE:** ALWAYS USE ORIGINAL EQUIPMENT PARTS. Use of service/replacement parts other than original equipment parts may void your warranty.

ALL UNNUMBERED ITEMS ARE INTERCHANGEABLE WITH OPPOSITE SIDE

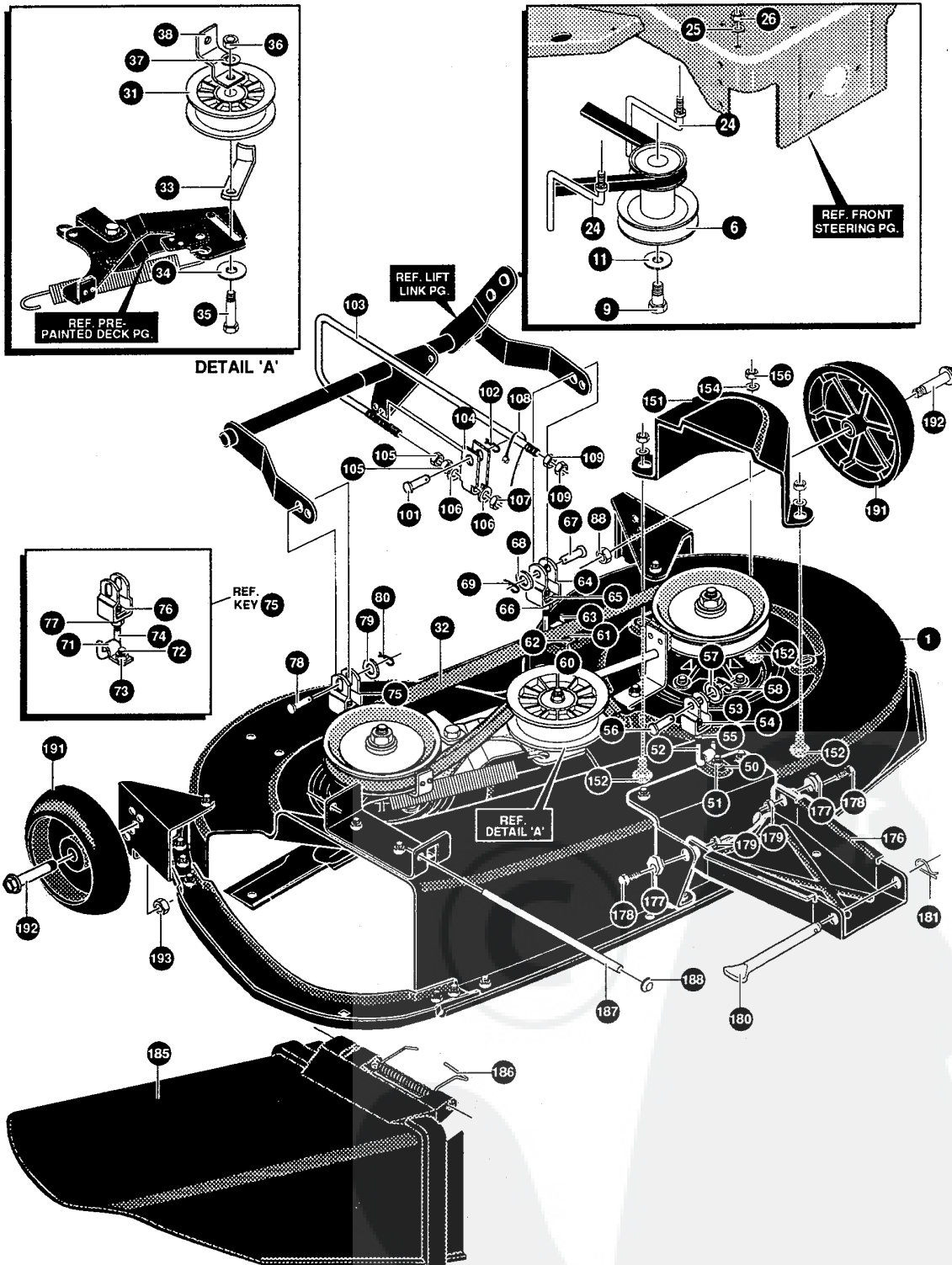
333324 A

**E4316-040****PRE-PAINTED DECK ASSEMBLY**

KEY#	PART#	DESCRIPTION	QTY
1	325116	43" DECK KIT .....	1
2	57072	BOLT, 5/16-18X .63 CARRLN .....	3
2	180077	SCREW, 5/16-18X .75 HHC .....	1
3	1498	NUT, 5/16-18 REGHEXCTRLK .....	1
4	326480-853	TOE GUARD - MULCHER .....	1
6	1498	NUT, 5/16-18 REGHEXCTRLK .....	3
7	12685	SCREW, 5/16-18X1.50HHCFT .....	1
11	56424-853	QUILL ASSY, 36/39/40/43 .....	2
11-1	56425	SHAFT/SADDLE 36" .....	1
11-2	49562	BRNG, BALL 6203-2AA(SEALS)-C3 .....	1
11-3	50616	DUST SHIELD .....	1
11-4	55547	QUILL CASTING (1046) .....	1
11-5	49562	BRNG, BALL 6203-2AA(SEALS)-C3 .....	1
11-6	50818	SPACER, SLEV .669X .88X3.797 .....	1
11-7	51449	SPACER, SLEV .672X .93X .438PM .....	1
11-8	313898	PULLEY ASSY .....	1
11-9	56365	WASHER, SPECIAL QUILL .....	1
11-10	1282	NUT, 7/16-20 WDFLLK .....	1
12	35498	SCREW, 5/16-18X .75 WAHHTAP .....	7
13	300345	SCREW, 5/16-18X1.38 WAHHTAP .....	1
14	1498	NUT, 5/16-18 REGHEXCTRLK .....	1
16	316608	BLADE, 21.70 HIGH-LIFT BLK .....	2
17	39573	SCREW, 3/8-24X1.00 NYLHHC .....	2
18	2483	WASHER, .39IDX1.25DX.07 BELLVIL .....	6
19	66609	DECAL, REGISTRATION .....	1
23	57072	BOLT, 5/16-18X .63 CARRLN .....	2
24	1498	NUT, 5/16-18 REGHEXCTRLK .....	2
31	312342	BRACKET FRT .....	1
32	57072	BOLT, 5/16-18X .63 CARRLN .....	2
33	1498	NUT, 5/16-18 REGHEXCTRLK .....	2
36	317041	BRKT, GAGE WHEEL LH BLACK .....	1
37	317018	BRKT, GUAGE WHEEL RH BLACK .....	1
38	180077	SCREW, 5/16-18X .75 HHC .....	4
39	57072	BOLT, 5/16-18X .63 CARRLN .....	2
40	1498	NUT, 5/16-18 REGHEXCTRLK .....	6
46	317017	BRACKET CHUTE MOUNT BLACK .....	1
47	120395	WASHER, FLAT .469X .92X.065 .....	2
48	57072	BOLT, 5/16-18X .63 CARRLN .....	2
55	1498	NUT, 5/16-18 REGHEXCTRLK .....	2
61	326893-853	BRACE IDLER SUPPORT 40", 43" .....	1
62	180077	SCREW, 5/16-18X .75 HHC .....	2
63	44108	NUT, 5/16-18 HWDFLCTRLK .....	2
64	308231	SCREW, 1/4-20X1.25 HHWATAP .....	1
70	320576-853	IDLER ARM ASSEMBLY .....	1
70-1	322116-853	ARM IDLER 40/43" DECK .....	1
70-2	41601	RIVET, OVSET .187DIA X .50LG ST .....	2
70-3	306973	BRAKE PAD - HARD - 232AF .....	1
71	35410	SPRING .071 X .62 X 4.37 .....	1
72	304420	BOLT, .500X2.15 HSSH .....	1
74	996307	WASHER, FLAT .391X1.00X.209 .....	1
78	45905	NUT, 3/8-16 HWDFLLK MACK .....	1
105	315304	ROD, BRAKE .....	1
106	1502	NUT, 1/4-20 REGHEXCTRLK .....	1
107	304118	BLADE BRAKE ASSY. ....	1
107-1	304119-853	BRAKE ARM .....	1
107-2	306973	BRAKE PAD - HARD - 232AF .....	1
107-3	135624	RIVET, TRSET .185DIA X .41LG ST .....	2
108	180077	SCREW, 5/16-18X .75 HHC .....	1
109	120393	WASHER, FLAT .344X .69X.065 .....	1
110	1498	NUT, 5/16-18 REGHEXCTRLK .....	1

# E4316-040

# REPAIR PARTS



**NOTE:** ALWAYS USE ORIGINAL EQUIPMENT PARTS. Use of service/replacement parts other than original equipment parts may void your warranty.

ALL UNNUMBERED ITEMS ARE INTERCHANGEABLE WITH OPPOSITE SIDE

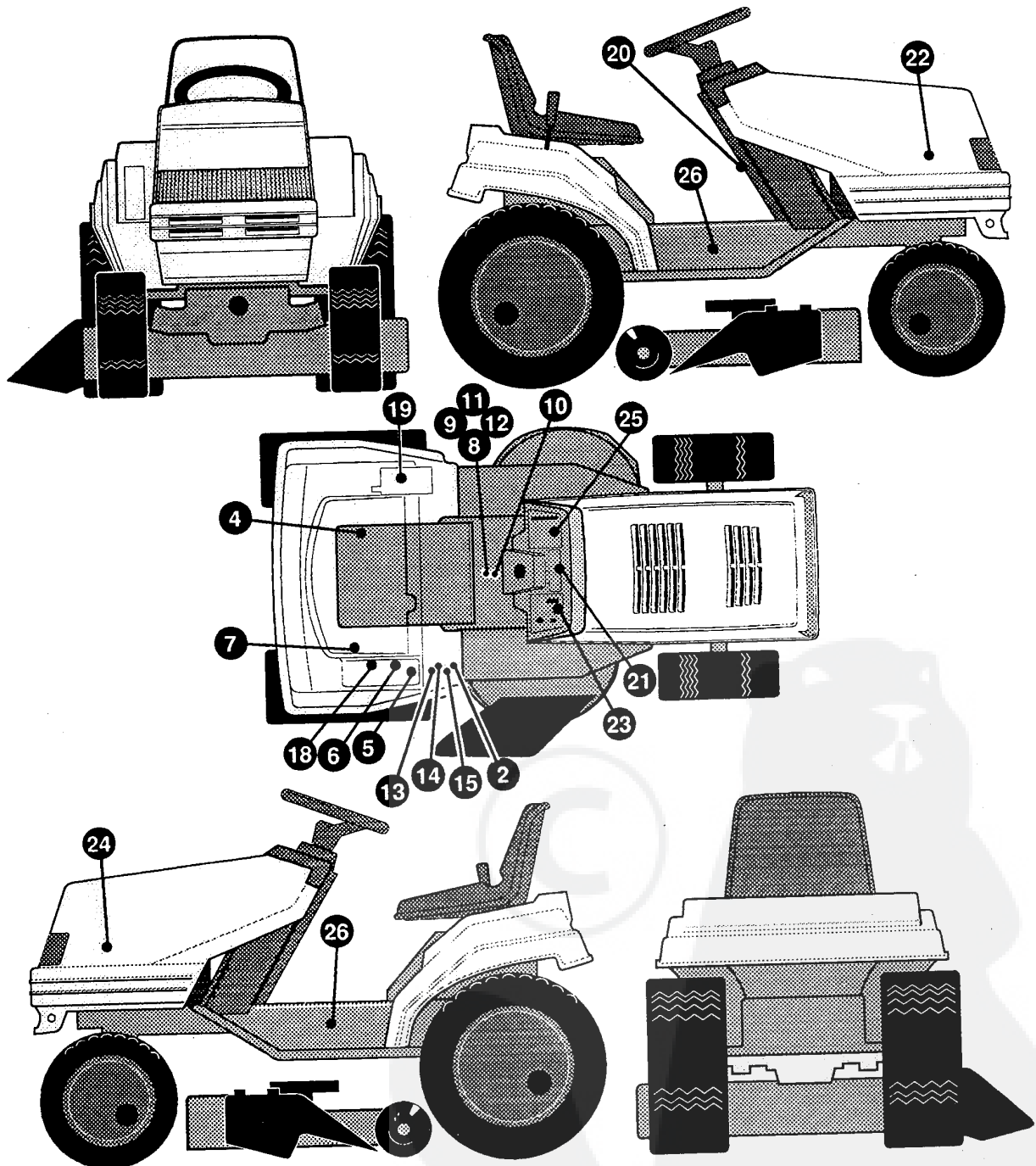
333323 A

KEY#	PART#	DESCRIPTION	QTY
1	333324-830	43 DECK MC,HL,AIRASSISTN/R&Z	1
6	328026	PULLEY,ENG 4.75OFF/5.00D/3.00D	1
9	428644	SCREW, 7/16-20X5.00 HHC	1
11	120383	WASHER, REGSPTLK.459X.78X.12	1
24	300440	GUIDE, BELT, RIDER	2
25	138538	WASHER, REGINTLK.320X.61X.03	2
26	1498	NUT, 5/16-18 REGHEXCTRLK	2
31	310326	PULLEY, IDLER BFF 4.00 WIDE FL	1
32	318372	BELT, V 5L85 KEVLAR	1
33	1346	RETAINER, BELT	1
34	446363	WASHER, FLAT .375X .88X.082	1
35	57325	BOLT, 3/8-16X2.00 CARRSN	1
36	120377	NUT, 3/8-16 REGHX	1
37	120382	WASHER, REGSPTLK.393X.68X.10	1
38	318466	BRKT, CLUTCH IDLER	1
50	319868	CLIP, 40/46 HANGER	1
51	1498	NUT, 5/16-18 REGHEXCTRLK	1
52	309615	ROD, 40" REAR DECK LIFT	1
53	304443	CLEVIS	1
54	109527	NUT, 1/2-13 .458 SQ	1
55	120238	NUT, 1/2-13 HEXJAM	1
56	300317	PIN, CLEVIS .375DIA.X .81 LG	1
57	120394	WASHER, FLAT .406X .81X.065	1
58	56180	PIN, HAIR .091 DIA X1.62LG	1
60	319868	CLIP, 40/46 HANGER	1
61	180077	SCREW, 5/16-18X .75 HHC	1
62	1498	NUT, 5/16-18 REGHEXCTRLK	1
63	312302	ROD, 40" REAR DECK LIFT	1
64	304443	CLEVIS	1
65	109527	NUT, 1/2-13 .458 SQ	1
66	120238	NUT, 1/2-13 HEXJAM	1
67	300317	PIN, CLEVIS .375DIA.X .81 LG	1
68	120394	WASHER, FLAT .406X .81X.065	1
69	56180	PIN, HAIR .091 DIA X1.62LG	1
71	319868	CLIP, 40/46 HANGER	1
72	180077	SCREW, 5/16-18X .75 HHC	1
73	1498	NUT, 5/16-18 REGHEXCTRLK	1
74	309615	ROD, 40" REAR DECK LIFT	1
75	305283	CLEVIS, SLOT EURO	1
76	109527	NUT, 1/2-13 .458 SQ	1
77	120238	NUT, 1/2-13 HEXJAM	1
78	300317	PIN, CLEVIS .375DIA.X .81 LG	1
79	120394	WASHER, FLAT .406X .81X.065	1
80	56180	PIN, HAIR .091 DIA X1.62LG	1
101	49332	PIN, CLEVIS .375DX.81LG	1
102	56180	PIN, HAIR .091 DIA X1.62LG	1
103	316380	ROD, CLUTCH	1
104	305284	CLEVIS, EURO	1
105	120376	NUT, 5/16-18 REGHEX	2
106	120393	WASHER, FLAT .344X .69X.065	2
107	1498	NUT, 5/16-18 REGHEXCTRLK	1
108	57444	TIE, CABLE BLACK NYLON 5.62L	1
109	120376	NUT, 5/16-18 REGHEX	2
151	328257	GUARD, BELT LH PLASTIC	1
152	57072	BOLT, 5/16-18X .63 CARRLN	3
154	120393	WASHER, FLAT .344X .69X.065	3
156	1498	NUT, 5/16-18 REGHEXCTRLK	3
176	321346-830	CHANNEL DRAWBAR 43" EURO	1
177	58247	NUT, ADJUST	2
178	180079	SCREW, 5/16-18X1.00 HHC	2
179	1498	NUT, 5/16-18 REGHEXCTRLK	2
180	302963	ROD.DRAWBAR	1
181	56180	PIN, HAIR .091 DIA X1.62LG	1
185	304422	CHUTE DEFLECTOR 40",42"&43"	1
186	314975	SPRING,TORSION CHUTE DEFLECTOR	1



KEY#	PART#	DESCRIPTION	QTY
1	332060	HARNESS WIRING B&S TWIN OPPOSED .....	1
2	57444	TIE, CABLE BLACK NYLON 5.62L .....	7
3	41482	PRESS CLIP, 1.380LG .255ID .....	5
4	57220	SCREW, #12 X .50 PHPNHTAP BLK .....	2
5	57476	SWITCH, SCR MNT DP NC NO BLK .....	1
6	305578	SOLENOID AFTER FIRE 12V .....	1
9	52572	BULB, HEADLAMP .....	2
10	300334	LIGHT SWITCH ON/OFF PANEL MNT .....	1
12	303064	ASSY, LIGHT WIRE-1/4 TURN .....	1
13	57444	TIE, CABLE BLACK NYLON 5.62L .....	3
17	327352	NUT, 5/8-8ACME DELTA FOR BOOT .....	1
18	300194	BOOT, IGN SWITCH .....	1
19	327350	KEY, IGNITION DELTA .....	2
20	327355	SWITCH-IGN. (AFTER FIRE) 3 POSN .....	1
24	306694	BATTERY, 12V .....	1
25	57551	ROD, BATTERY .....	1
26	302912	ROD, BATTERY TOP .209DIA .....	1
27	325232	NUT, WING 1/4-20 NYLON .....	1
28	180020	SCREW, 1/4-20X .75 HHC .....	2
29	271172	NUT, 1/4-20 REGHEXKEPS .....	2
30	55511	WIRE, GROUND, 12.5" .....	1
31	271184	NUT, 5/16-18 HEXKEPS .....	1
32	57547	SWITCH, SEAT .....	1
33	160505	SCREW, 1/4-20X .38PHPNHMA .....	2
34	326654	SWITCH, SNAP MNT NC .140 BLUE .....	1
35	326653	SWITCH, SNAPMNT NO .055/.116GRY .....	1
36	57444	TIE, CABLE BLACK NYLON 5.62L .....	2
40	53716	SOLENOID .....	1
41	187745	SCREW, 1/4-20X .75 HXSEMMA .....	2
42	120368	NUT, 5/16-24 REGHEX .....	2
43	138485	WASHER, EXLK .320X.61X.03 .....	2
44	271172	NUT, 1/4-20 REGHEXKEPS .....	1
45	1502	NUT, 1/4-20 REGHEXCTRLK .....	2
50	307113	CHOKE CONT BS TWIN ERO LONG .....	1
51	314522	CLIP, CHOKE CONTROL .....	1
61	57769	BULB, INDICATOR .....	2
76	^	BATTERY ACID PACK, 80 OZ .....	1

^ CAN BE PURCHASED LOCALLY



**NOTE:** ALWAYS USE ORIGINAL EQUIPMENT PARTS. Use of service/replacement parts other than original equipment parts may void your warranty.

ALL UNNUMBERED ITEMS ARE INTERCHANGEABLE WITH OPPOSITE SIDE

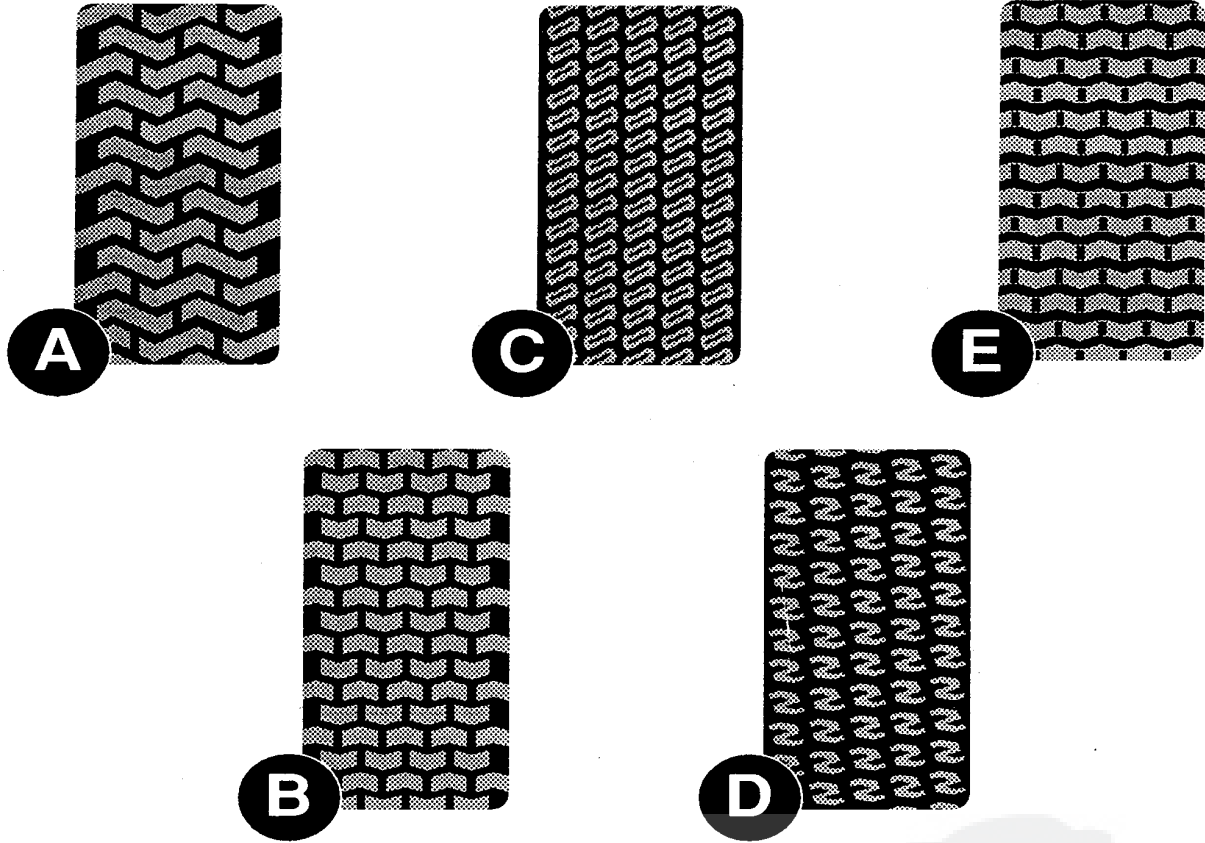
331247 A



**E4316-040****DECAL ASSEMBLY**

KEY#	PART#	DESCRIPTION	QTY
2	305770	DECAL, CAUTION TRIANGLE EUROPE .....	1
4	316861	DECAL, RELIEF VALVE OPERATION .....	1
5	313539	DECAL, DEPRESS CL/BRAKE BLACK .....	1
6	318431	DECAL, DPRESS CL/BR HDRO FRENCH .....	1
7	313039	DECAL, 4WS PATENT NO. 5048853 .....	1
8	322763	DECAL, OPER INST ERO TOP FRAME .....	1
9	311971	DECAL, INSTR. TOP CONSOLE DUTCH .....	1
10	311973	DECAL, INSTR. CONSOLE TOP ENGL .....	1
11	311976	DECAL, INSTRUCT CONSOLE TOP FR .....	1
12	311977	DECAL, INSTRUCT CONSOLE TOP GER .....	1
13	310553	DECAL, DANGER ENGLISH .....	1
14	68902	DECAL, WARNING, FRENCH/GERMAN .....	1
15	311070	DECAL, DANGER DUTCH .....	1
18	316816	DECAL, MOTION HYDRO-EXPORT .....	1
19	316851	DECAL, EXPORT BL. CL. @ DECK HT. ....	1
20	307820	DECAL PARK BRAKE EXPORT .....	1
21	308473	DECAL DASH CHG, ALL SYS, PLAIN .....	1
22	402396	DECAL, STATESMAN HOOD .....	1
23	331818	DECAL DSH RH ISO CH, W/O HMETER .....	1
24	402397	DECAL STATESMAN HOOD .....	1
25	311010	DECAL DASH LH ISO .....	1
26	402347	DECAL, NAMEPLATE 16.5/43 .....	2

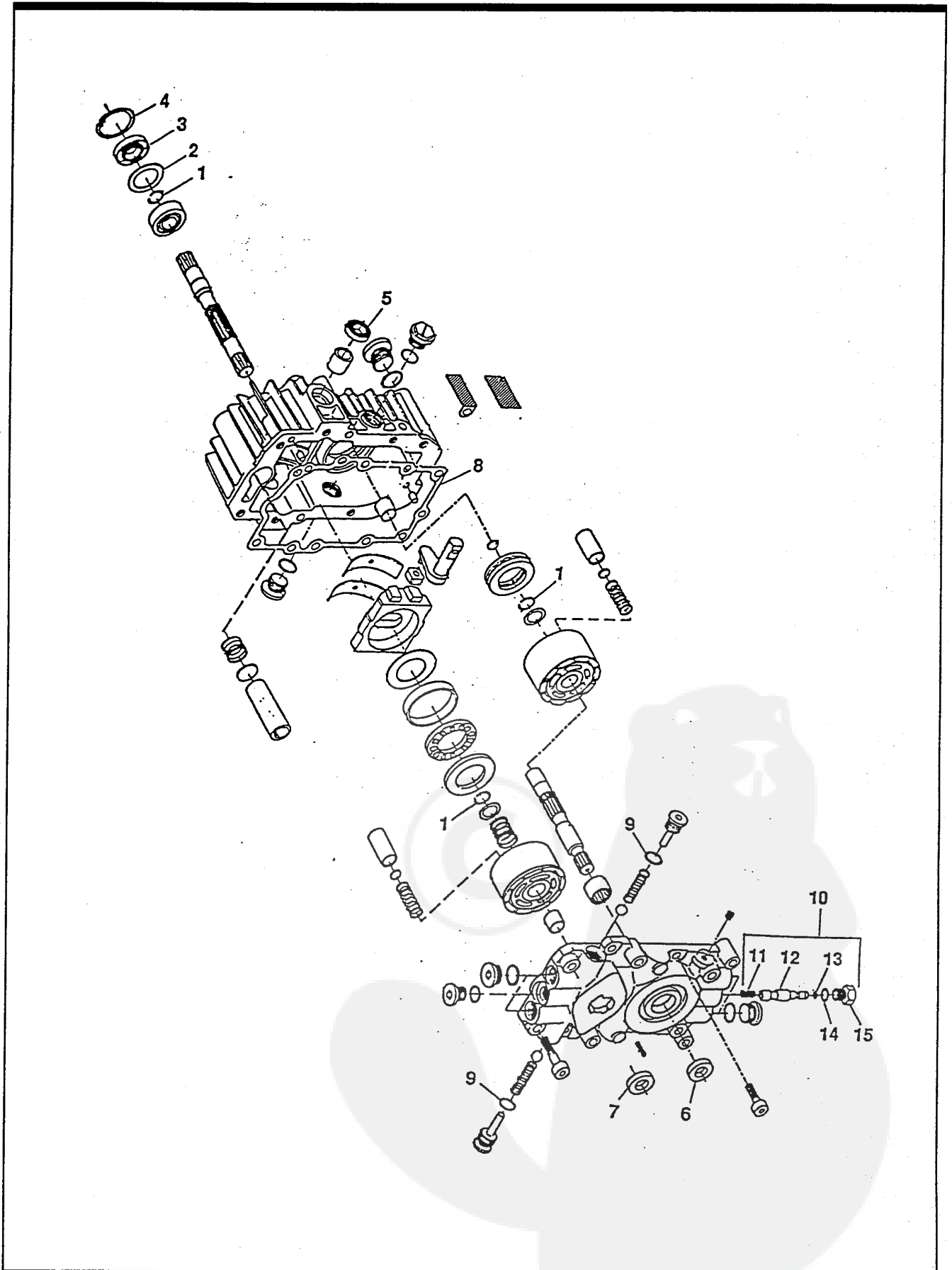
# TREAD PATTERNS



TIRE SIZE	"A"	"B"	"C"	"D"	"E"
11 X 4.00 - 5	42295	319679			
13 X 5.00 - 6	41060	319680			
15 X 6.00 - 6	39830	316702	301140	313952	
16 X 4.80 - 8		305035			
16 X 6.50 - 8	41081	319682		314539	
18 X 6.50 - 8		42091			
18 X 8.50 - 8	319683	317400			
18 X 9.50 - 8	41106	316701		313950	
20 X 8.00 - 8	319685	319684	57164	314584	331606
20 X 10.00 - 8	58276	319686		313654	
20 X 10.00 - 10	55893	319687			
23 X 9.50 - 12	53655	319690	319689	314370	

**E4316-040**

**HYDROSTATIC PUMP**



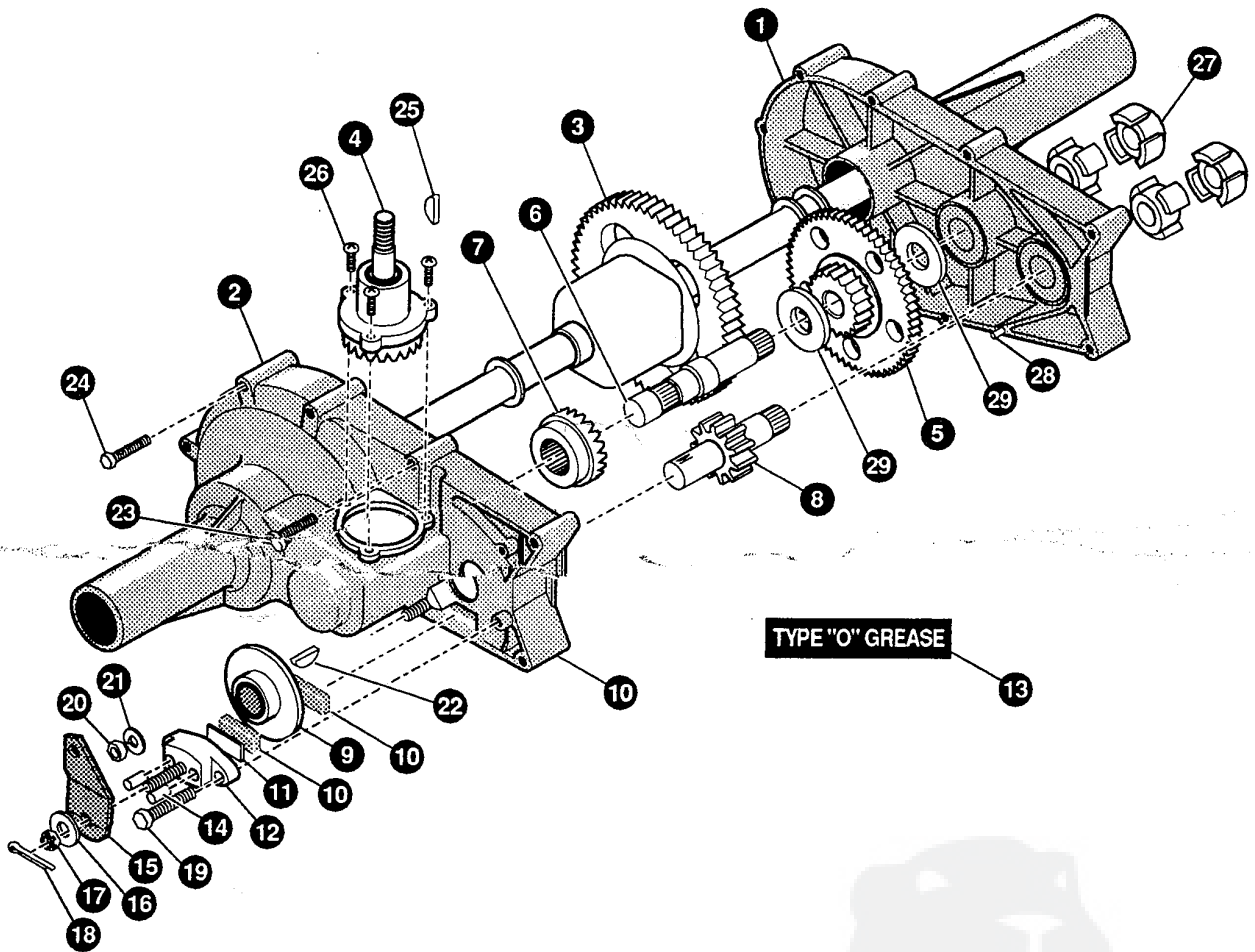
# E4316-040

# REPAIR PARTS

Key #	Part #	Description
	310227	HYDROSTATIC PUMP (COMPLETE)
	313306	OVERHAUL SEAL KIT (CONTAINS KEY NO.'S 1-9, 13 AND 14)
1		RING-RETAINING
2		SPACER
3		SEAL-LIP
4		RING-RETAINING
5		SEAL-LIP
6		SEAL-LIP
7		SEAL-LIP
8		GASKET-CENTER SECTION
9		O-RING
10	313305	BY-PASS VALVE KIT- COMPLETE (INCL. KEY NO.'S 11-15)
11		SPRING-HELICAL COMP
12		BY-PASS SPOOL
13		O-RING
14		O-RING
15		PLUG-BY-PASS

# E4316-040

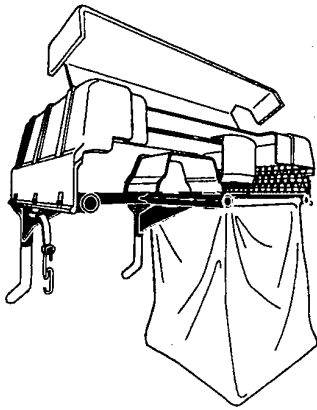
# HYDRO TRANSAXLE



- |     |        |                      |     |        |                     |
|-----|--------|----------------------|-----|--------|---------------------|
| 1.  | 324090 | HOUSING HALF, LH     | 16. | 323684 | WASHER, FLAT        |
| 2.  | 324092 | HOUSING HALF, RH     | 17. | 323691 | NUT, CASTLE         |
| 3.  | 324093 | GEAR, DIFFERENTIAL   | 18. | 323671 | PIN, COTTER         |
| 4.  | 324095 | SHAFT, INPUT         | 19. | 323711 | BOLT, HEX W/PATCH   |
| 5.  | 324096 | GEAR                 | 20. | 323650 | NUT, HEX            |
| 6.  | 323656 | SHAFT, DRIVE         | 21. | 323649 | WASHER, SPRING LOCK |
| 7.  | 323655 | GEAR, DRIVE PINION   | 22. | 323692 | KEY, HI-PRO         |
| 8.  | 323660 | SHAFT, PINION        | 23. | 323677 | BOLT, HEX SELF-TAP  |
| 9.  | 323663 | DISC, BRAKE          | 24. | 323678 | BOLT, HEX SELF-TAP  |
| 10. | 323685 | PUCK, BRAKE          | 25. | 323688 | KEY, HI-PRO         |
| 11. | 323687 | PLATE, PUCK          | 26. | 329832 | SCREW, HEX W/PATCH  |
| 12. | 324092 | BRAKE, YOKE          | 27. | 323661 | COUPLING            |
| 13. | 324089 | TYPE "O" GREASE      | 28. | 323699 | PIN, ROLL           |
| 14. | 323681 | PIN, BRAKE ACTUATING | 29. | 329833 | WASHER, FLAT        |
| 15. | 323665 | ARM, BRAKE ACTUATOR  |     |        |                     |

Contact the dealer where your tractor was purchased for the available accessories. If you are unable to contact the dealer, write to the address on the front cover of this manual.

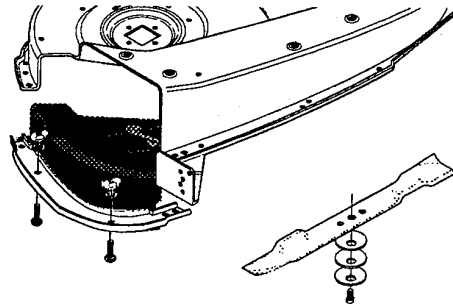
**Euro Lawn Tractor**



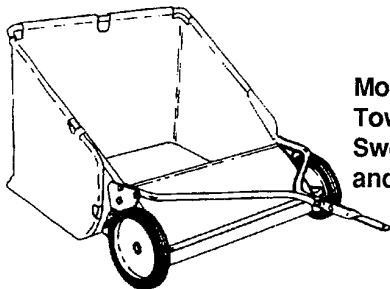
**Model # 5708-14**  
Grass Collector for  
43" decks only

For heavy duty grass  
collection order  
Model # 5709-08 Air  
Assist

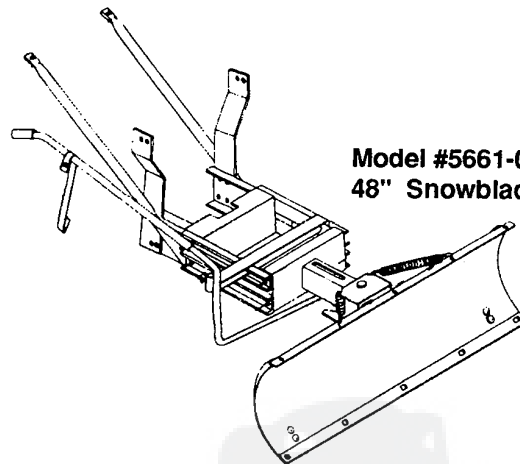
**Model # 5708-34**  
Grass Collector for  
46" decks only



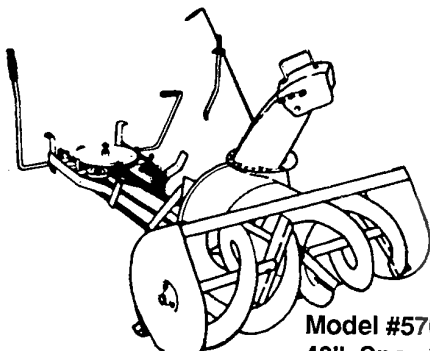
**Model # 5717-00**  
Mulching Kit  
(40,42&43" Deck)



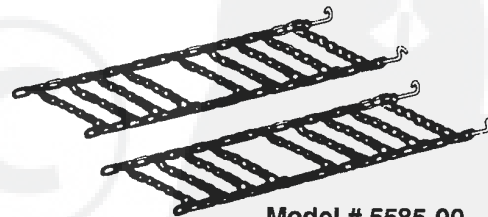
**Model # 5648-16**  
Tow behind Lawn  
Sweeper for grass  
and leaves



**Model #5661-07**  
48" Snowblade



**Model #5705-05**  
42" Snowthrower for  
heavy snowfall



**Model # 5585-00**  
Tire Chains - 20" x 8.0" tires  
**Model # 5706-00**  
Tire Chains - 20" x 10.0" tires

**OTHER ACCESSORIES**

Model	Description
5672-01	Wheel Weights - Front - 1 pr. w/mtg. hdw. - Fits 15" tires
5673-02	Wheel Weights - Rear - 1 pr. w/mtg. hdw. - Fits 18" & 20" tires
5709-04	Rear Wheel Box
316608	43" High lift blade for bagging or side discharge (requires 2)
325762	43" Mulching blade (requires 2)
317071	46" High lift blade for bagging or side discharge (requires 2)