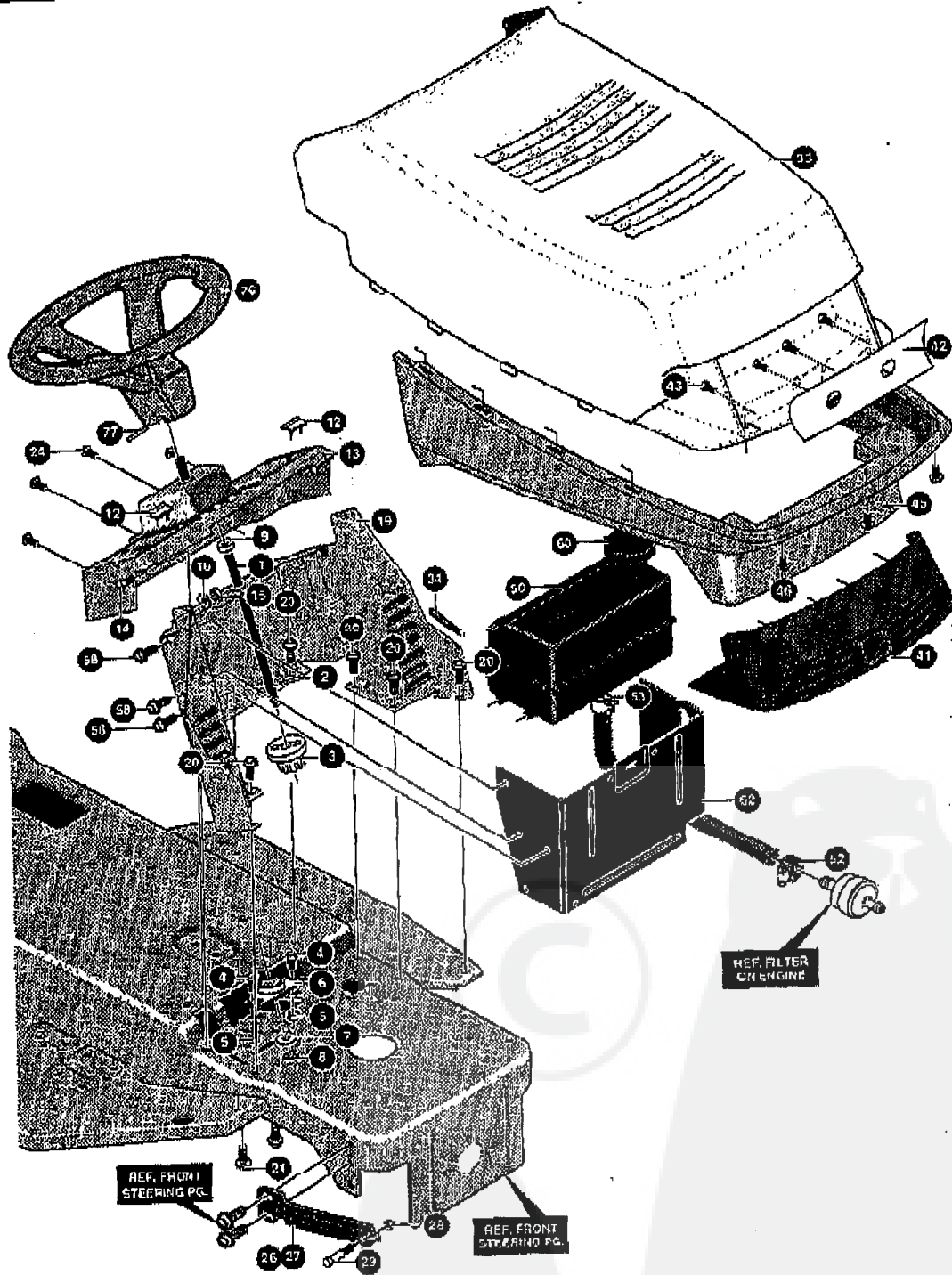


E4620-030

REPAIR PARTS



NOTE: ALWAYS USE ORIGINAL EQUIPMENT PARTS. Use of service/replacement parts other than original equipment parts may void your warranty.

ALL UNNUMBERED ITEMS ARE INTERCHANGEABLE WITH OPPOSITE SIDE

331883 D

4 65

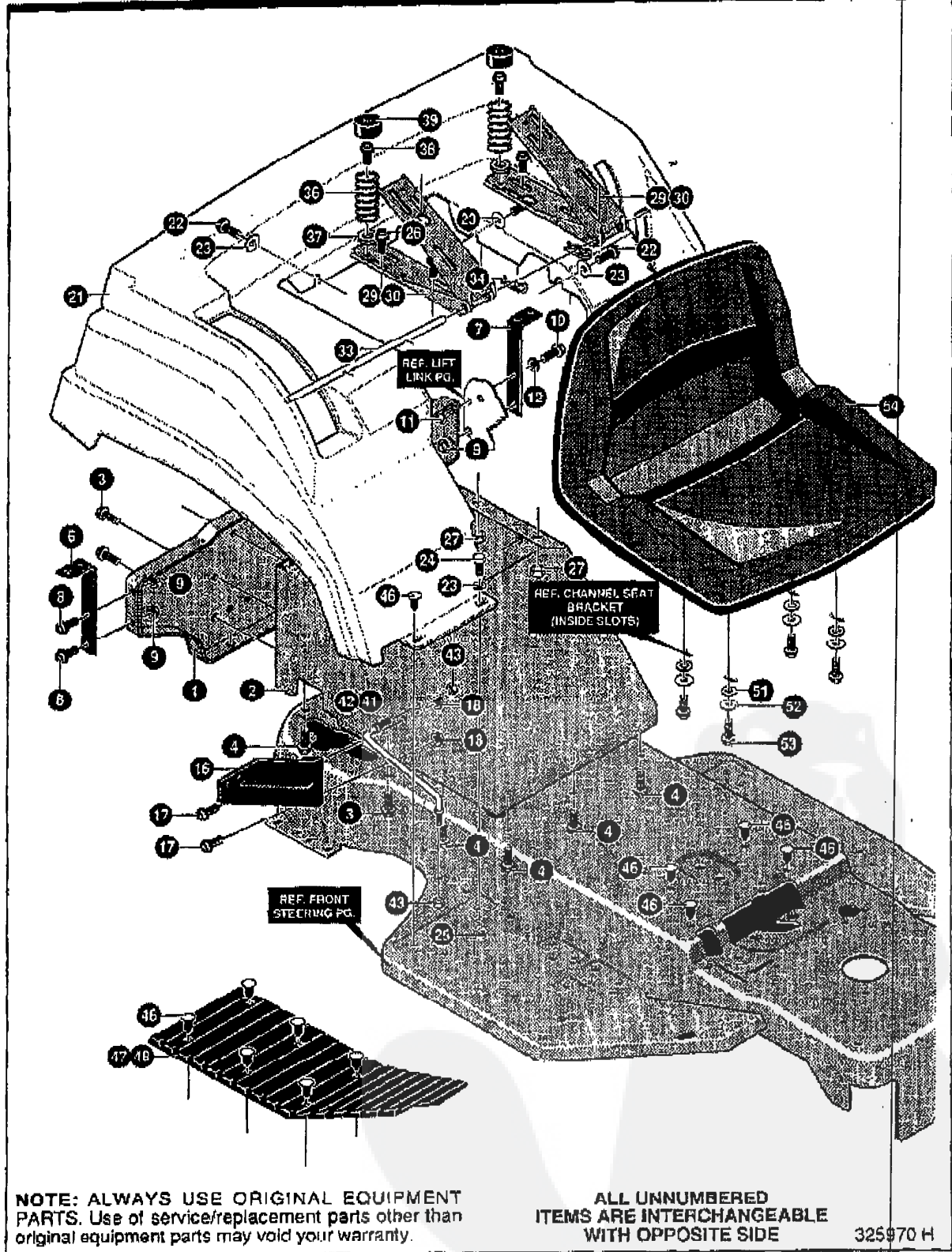
E4620-030

HOOD/DASH/SHAFT ASSEMBLY

KEY#	PART#	DESCRIPTION	QTY
1	302307	SHAFT, STEERING EURO LT SHORT	1
2	302524	PIN DOWEL STR ERO LT	1
3	302314	FINION, STEERING	1
4	323731	SCREW, 5/16-24X.75 (TO 30-35 FT#)	2
5	71100	NUT, 5/16-24 HEXWDFLLK	2
6	302498	BEARING, SFAL .500IDX, ODX .75	1
7	2968	WASHER, FLAT .504X .75X.059	1
8	20964	RING, RET E .39X.04TRU5133-50	1
9	303228	BUSHING STR SHFT UPPER	1
12	821810	BUMPER, HOOD/DASH MF EURO TOP	2
13	331379	DASH, TALL LT (H19)	1
14	180020	SCREW, 1/4-20X .75 HHC	2
15	1502	NUT, 1/4-20 REGHEXCTRLK	2
16	120392	WASHER, FLAT .281X .63X.065	2
19	302331-830	DASH LOWER SHORT LT	1
20	35497	SCREW, 5/16-18X .50 WAHHTAP	8
21	45263	SCREW, 5/16-18X .37 WAHHTAP	2
23	995346	SCREW, 1/4-20X .50 WAHHTAP	2
24	305850	SCREW, 1/4-20X.50PHPNTAP	4
26	308888-853	BRACKET, HOOD RH H19/G16	1
27	308897-853	BRACKET, HOOD LH G-16	1
28	1498	NUT, 5/16-18 REGHEXCTRLK	2
29	25086	BOLT, .500X .375 HSH 5/16-18	2
33	392114	HOOD, EURO H-18 LT UPPER -94	1
34	52151	EDGING (78"-47453) WIDE BLK	18.0'
41	331177	LENS EURO II HOOD SMOKED GREY	1
42	310534	DECAL REFLECTOR VERII HOOD	1
43	300302	SCREW, #10 X .50 HHTAPPST BLK	4
45	331184	GRILLE, G-16 LT	1
46	318304	SCREW, 1/4-14X.75PHPNHTAP BLK	3
50	305820	ASSY GAS TANK 1.5GAL (OPTION)	1
52	47345	CLAMP, HOSE SCREW TYPE	1
53	47345	CLAMP, HOSE SCREW TYPE	1
58	200303	SCREW, .25X.75X.51HHWAPLASTITE	6
60	12501	CAP, FUEL 2.5" THROAT	1
62	024705-853	HEAT SHIELD FRO 1.5 & 3 GAL	1
76	330847	STEERING WHEEL	1
77	456378	PIN, SPRING.250DIAx2.00LG HVPL	1
78	333697	PARTS MANUAL	1
79	333630	OPERATOR'S MANUAL	1

E4620-030

REPAIR PARTS



NOTE: ALWAYS USE ORIGINAL EQUIPMENT PARTS. Use of service/replacement parts other than original equipment parts may void your warranty.

ALL UNNUMBERED ITEMS ARE INTERCHANGEABLE WITH OPPOSITE SIDE

325970 H

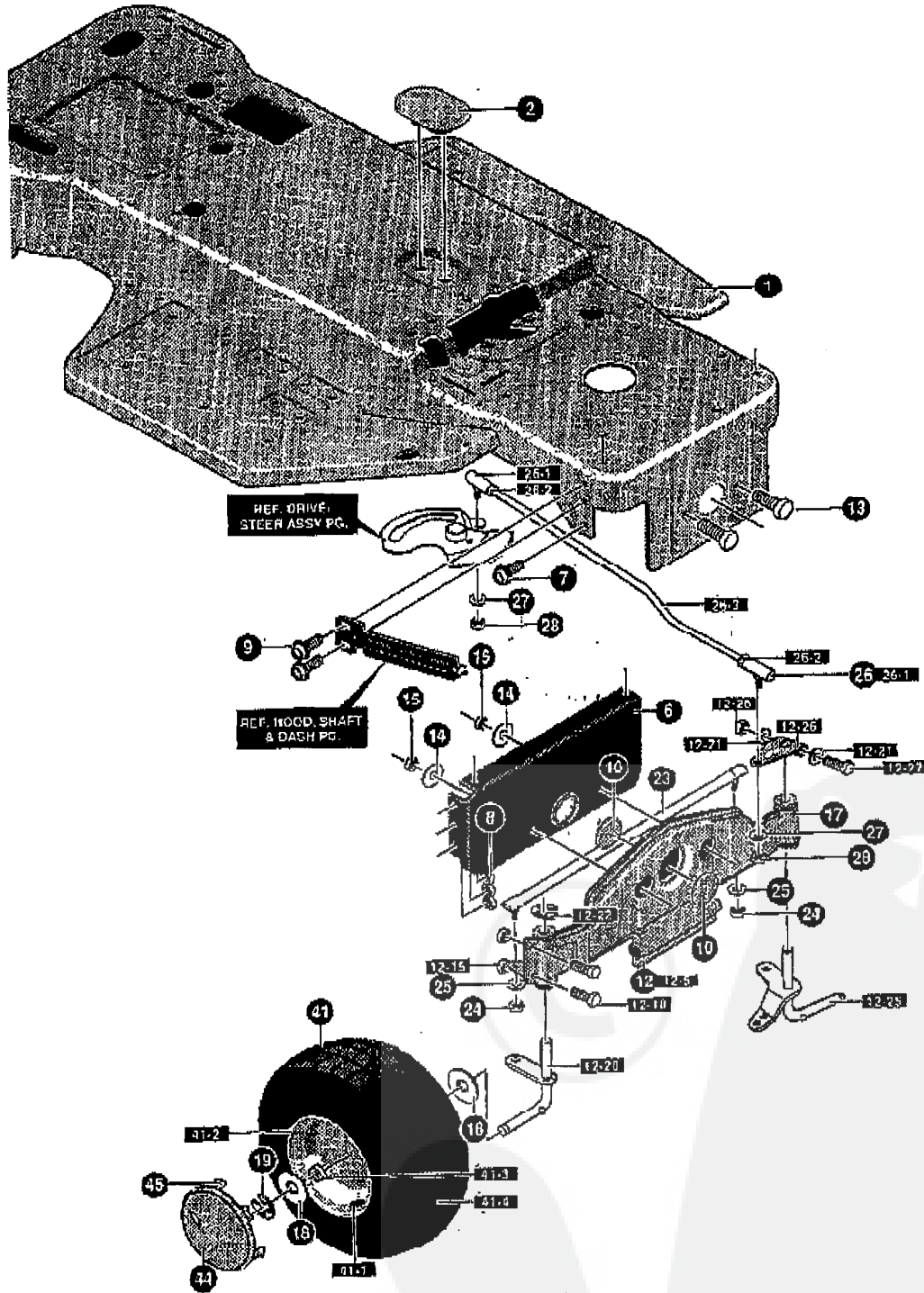
E4620-030

FENDER/SEAT/CHASSIS

KEY#	PART#	DESCRIPTION	QTY
1	322068-830	SEAT SUPPORT ELECTRIC LIFT	1
2	322069-830	SUPPORT,FENDER&SEAT ELECT/LIFT	1
3	35498	SCREW, 5/16-18X .75 WAHTAP	5
4	35497	SCREW, 5/16-18X .50 WAHTAP	10
6	306389	SUPPORT FENDER RIGHT BLACK	1
7	306397	SUPPORT FENDER LEFT BLACK	1
8	56030	SCREW, 5/16-18X.75WDFLLK	3
9	55273	NUT, 5/16-18 HXWDFLLK	3
10	180020	SCREW, 1/4-20X .75 HHC	1
11	51335	NUT, 1/4-20 WDFLWHIZ-LK	1
12	120385	WASHER, FLAT .250X .56X.049	1
16	305381	SUPPORT SHIFT PLATE	1
17	56030	SCREW, 5/16-18X.75WDFLLK	2
18	55273	NUT, 5/16-18 HXWDFLLK	2
21	303155	FENDER,EURO F-10 GT	1
22	44911	SCREW, 1/4-30X .75 WAHTAP	6
23	1084	WASHER, FLAT .281X1.00X.063PL	8
24	180020	SCREW, 1/4-20X .75 HHC	2
25	1502	NUT, 1/4-20 REGHEXCTRLK	2
26	56030	SCREW, 5/16-18X.75WDFLLK	4
27	1498	NUT, 5/16-18 REGHEXCTRLK	4
29	302897-830	CHANNEL SEAT RH	2
30	305424-830	CHANNEL SEAT LH	2
33	304481	ROD, SEAT SUPPORT	1
34	36368	PIN, HAIR .072 DIA X 1.13LG	2
36	830463	SPRING, SEAT 1.500DX2.25LG	2
37	120393	WASHER, FLAT .344X .69X.065	2
38	35498	SCREW, 5/16-18X .75 WAHTAP	2
39	56907	COVER,SEAT SPRING 1.51DX1.0LG	2
41	318388	SUPPORT,FOOTREST STIFNR RH	1
42	318387	SUPPORT,FOOTREST STIFNR LH	1
43	1498	NUT, 5/16-18 REGHEXCTRLK	4
46	309235	FASTENER, RATCHET BLACK	18
47	314888	FOOT PAD, ASSY RH ERO W/ADH	1
48	314889	FOOT PAD, ASSY LH ERO W/ADH	1
51	120393	WASHER, FLAT .344X .69X.065	4
52	120638	WASHER, HVSP TLK .328X.60X.09	4
53	180077	SCREW, 5/16-18X .75 HHC	4
54	306867	SEAT,MICHIGAN GEN, W/SW HOLE	1

E4620-030

REPAIR PARTS



NOTE: ALWAYS USE ORIGINAL EQUIPMENT PARTS. Use of service/replacement parts other than original equipment parts may void your warranty.

ALL UNNUMBERED ITEMS ARE INTERCHANGEABLE WITH OPPOSITE SIDE

331878 D

E4620-030

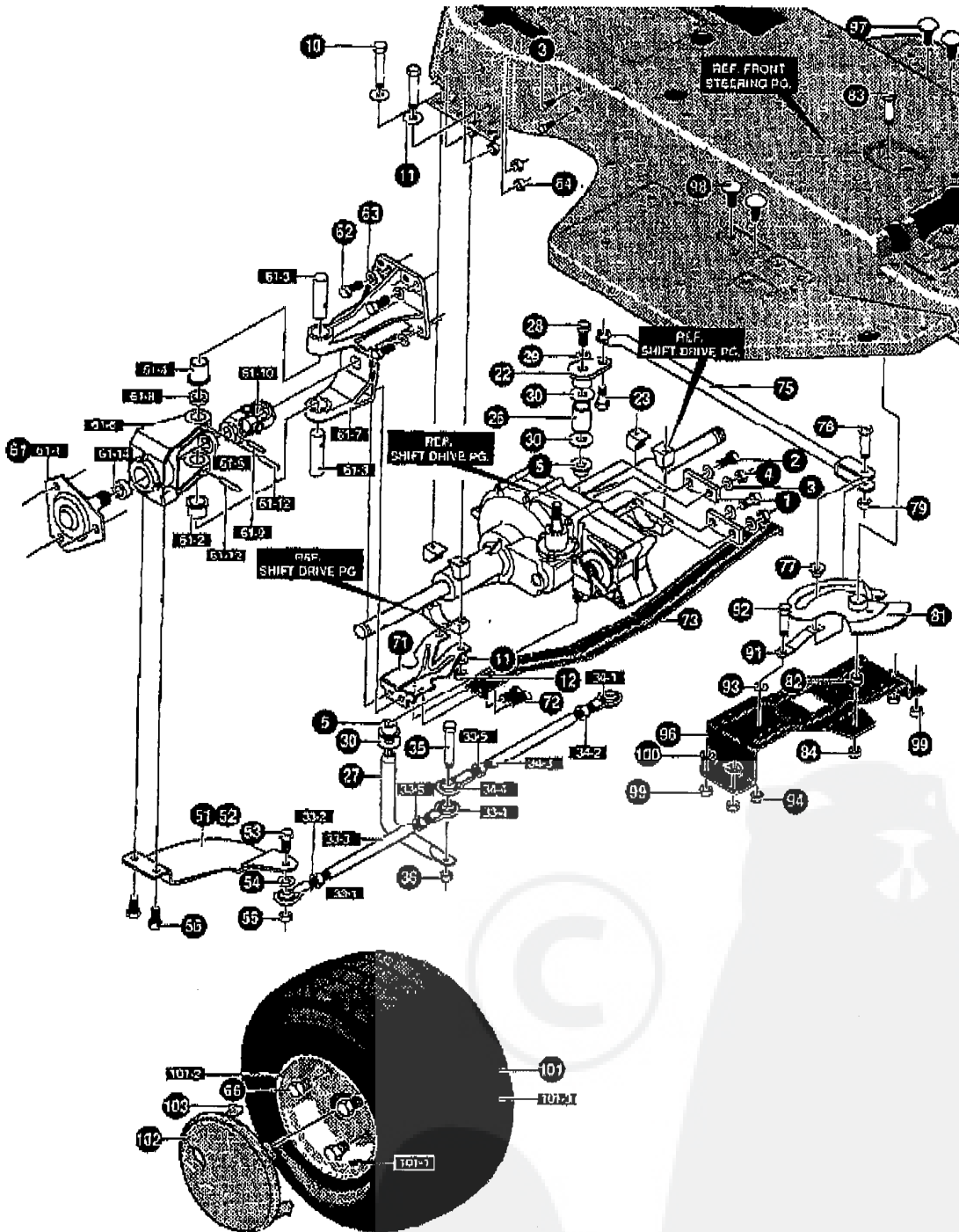
STEERING ASSEMBLY

KEY#	PART#	DESCRIPTION	QTY
1	331674-830	FRAME, EURO	1
2	305280	COVER,SECTOR BOLT PLAS	1
6	302921-853	BRACKET, FRONT AXLE SUPPORT	1
7	56030	SCREW, 5/16-18X.75WDFLK	2
8	55273	NUT, 5/16-18 HXWDFLK	6
9	53652	SCREW, 5/16-18X.75 HXWDFL	4
10	307112	PLUG,FRONT AXLE 1.988DIA X.062	2
12	^	SUB-ASSY FR AX ERO LT SHORT	1
12-5	310670-830	AXLE,ASSY FRONT WELD BLK	1
12-10	180077	SCREW, 5/16-18X.75 HHC	4
12-15	1498	NUT, 5/16-18 REGHEXCTRLK	4
12-20	305040	ASSY SPOLE RH EROIT	1
12-21	996416	WASHER, FLAT .391X1.00X.125	2
12-22	36626	RING, RETEX .57X.05TRUS133-75	1
12-25	305339	ASSY SPOLE LH EROIT	1
12-26	317018	ARM STEERING UPPER BLACK	1
12-27	180134	SCREW, 3/8-16X2.50 HHC	1
12-28	1499	NUT, 3/8-16 REGHXCTRLK	1
13	180138	SCREW, 3/8-16X3.00 HHC	2
14	2483	WASHER, .391DX1.25DX.07 BELLVIL	2
15	1499	NUT, 3/8-16 REGHXCTRLK	2
17	706	ZERK, GREASE FITTING	4
18	642	WASHER, FLAT .755X1.31X.075	4
19	36625	RING, RETEX .57X.05TRUS133-75	2
23	300328	TIE ROD, .625DIA GRND ENGAGER	1
24	120369	NUT, 3/8-24 REGHEX	2
25	120382	WASHER, REGSPTLK.393X.68X.10	2
26	302908	LINK, ASSY .625DIA DRAG LT 4WS	1
26-1	57158	BALL JOINT 3/8 THD SHORT STUD	2
26-2	124925	NUT, 3/8-24 REGHEXJAM	2
26-3	302907	LINK, .625DIA DRAG LT 4WS	1
27	120382	WASHER, REGSPTLK.393X.68X.10	2
28	124925	NUT, 3/8-24 REGHEXJAM	2
41	321515	TIRE & RIM, PU 15X6.0X6	2
41-1	24167	VALVE STEM	
41-2	321516	RIM, WHEEL	
41-3	314418	BEARING, FL	
41-4	TIRE	REFER TO TIRE TREAD PAGE	
44	304444	HUB CAP, 6" EURO	2
45	306669	CLIP,HUBCAP TINN #C25467-017-4	8

^ ORDER INDIVIDUAL PARTS

E4620-030

REPAIR PARTS



NOTE: ALWAYS USE ORIGINAL EQUIPMENT PARTS. Use of service/replacement parts other than original equipment parts may void your warranty.

ALL UNNUMBERED ITEMS ARE INTERCHANGEABLE WITH OPPOSITE SIDE

325737 D

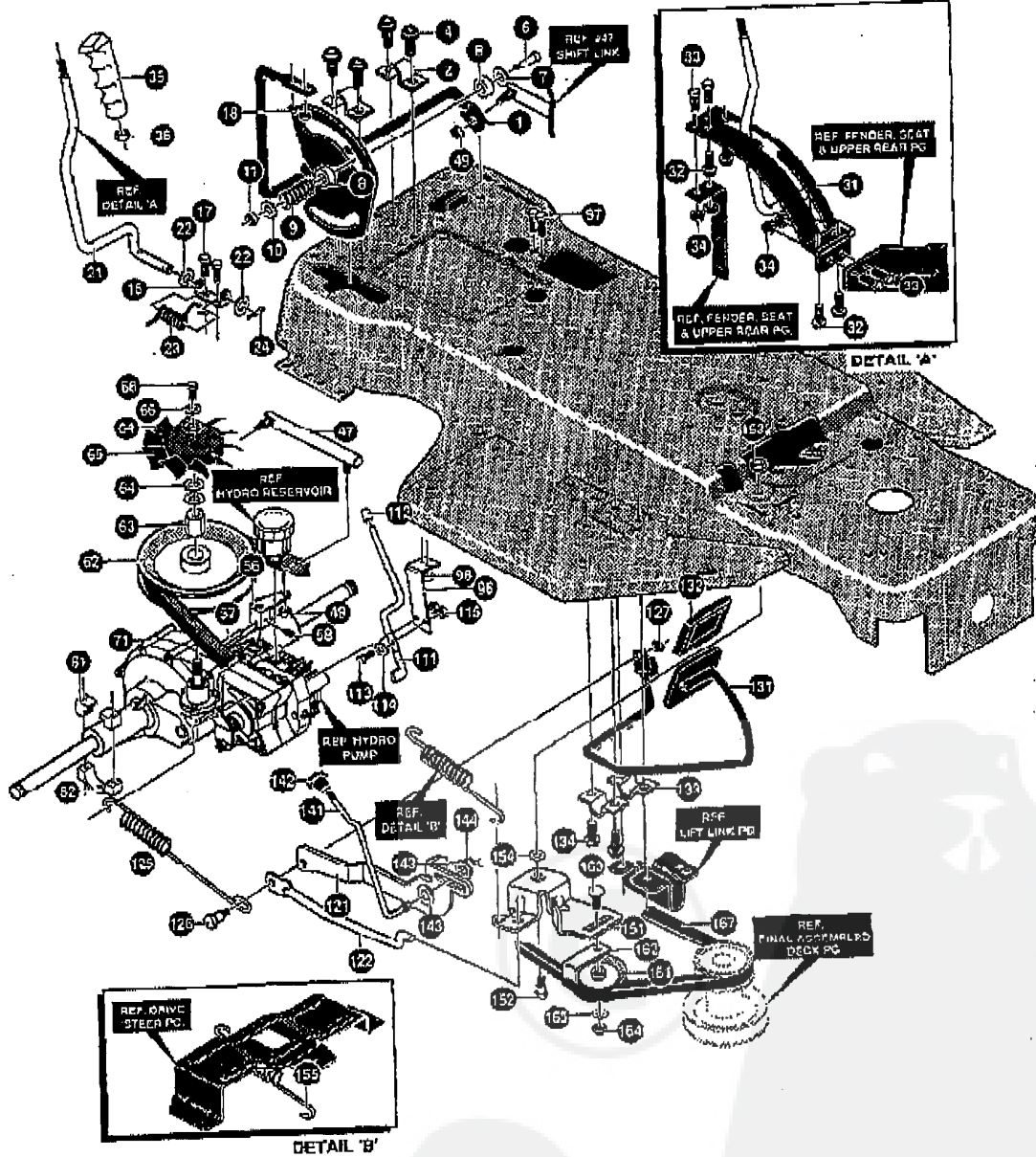
E4620-030

DRIVE/STEER ASSEMBLY

KEY#	PART#	DESCRIPTION	QTY
1	314511	BRACKET, REAR PIVOT HYDRO	2
2	44811	SCREW, 1/4-20X .75 WAHHTAP	2
3	120380	WASHER, REGSPTLK, 263X.49X.07	4
4	120375	NUT, 1/4-20 REGHEX	2
5	302303	BEARING SPINDLE FR WHOLE	2
10	180081	SCREW, 5/16-18X2.50 HHC	4
11	120393	WASHER, FLAT, 344X .69X.065	8
12	44108	NUT, 5/16-18 HWDFLCTRLK	4
22	308719	PIVOT, STEERING	1
23	12319	BOLT, .562X .340 HSSH 3/8-24	1
26	313641	SPACER, STEERING SHAFT HYDRO	1
27	313649	SHAFT, STEERING PIVOT HYDRO	1
28	421051	SCREW, 5/16-24X1.00 HHC	1
29	45602	WASHER, FLAT, .333X .87X.119	1
30	25177	WASHER, FLAT, .705X1.19X.048	3
33	323636	TIE ROD ASSY RH EURO 4WS&LFHYDR	1
33-1	306384	BALL JOINT LH 3/8-24	1
33-2	124925	NUT, 3/8-24 REGHEXJAM	1
33-3	818442	ROD, TIE 1/2" O X 6.75 LG	1
33-4	304260	BALL JOINT RH 3/8-24	1
33-5	308389	NUT, 3/8-24 LH THD REGHJAM	1
34	323637	TIE ROD ASSY LH EURO 4WS&LFHYDR	1
34-1	306384	BALL JOINT LH 3/8-24	1
34-2	124925	NUT, 3/8-24 REGHEXJAM	1
34-3	313643	ROD, TIE 1/2" O X 10.91 LG ZINC	1
34-4	304260	BALL JOINT RH 3/8-24	1
34-5	308389	NUT, 3/8-24 LH THD REGHJAM	1
35	181646	SCREW, 3/8-24X1.75 HHC	1
36	412349	NUT, 3/8-24 HXCTRLK	1
51	304120-853	ARM REAR WHL STR (FER) R.H	1
52	304121-853	ARM, REAR WHEEL STEER L.H	1
53	181639	SCREW, 3/8-24X1.25 HHC	2
54	120382	WASHER, REGSPTLK, 393X.68X.10	2
55	412349	NUT, 3/8-24 HXCTRLK	2
56	47792	SCREW, 3/8-16X1.00 WAHHTAP BLK	4
51	323736	U-JOINT, 4-WS HEAVY DUTY	2
61-1	315264-830	HUB ASSEMBLY HEAVY	1
61-2		NON-SERVICEABLE (ORDER PART#324578)	
61-3	12289	PIN, STEERING HINGE	2
61-4		NON-SERVICEABLE (ORDER PART#324578)	
61-5	12325	BRNG, BALL 6203-2AA-3/4	1
61-6	315287	BRACKET, STR PIVOT 6204 BEARING	1
61-7	12456	BRACKET, STR PIVOT	1
61-8	21682	WASHER, FLAT, .785X1.25X.042PL	1
61-9	35911	PIN, GROOVED, 260 DIA X1.50 LG	1
61-10	320531	U-JOINT ASSEMBLY W/ZERK (LONG)	1
61-12	456722	PIN, SPRING, 260 DIA X1.50 LG HVPL	2
61-14	315269	BRNG, BALL 6204-2AA -7/8	1
62	180079	SCREW, 5/16-18X1.00 HHC	8
63	120393	WASHER, FLAT, 344X .69X.065	8
64	1458	NUT, 5/16-18 REGHEXCTRLK	8
65	181683	SCREW, 1/2-20X .50 HHC	6
71	313645-853	BRKT X-AXLE M/G 4WS HYDRO	2
72	35498	SCREW, 5/16-18X .75 WAHHTAP	4
73	322959-853	BRACKET HYDRO 4WS SUPPORT	1
75	313639	ROD R WHL STR 4WS(HYDRO)	1
77	304116	CAM YOKE ROLLER	1
78	304122	BOLT, .625 X1.175 HSSH	1
79	274654	NUT, 1/2-20 REGHXCTRLK	1
81	302877	ASSY SECTOR GEAR 4WS	1
82	302878	BRNG, 3/4 LEV, 10X, CDX	1
83	181709	SCREW, 1/2-20X2.50 HHC	1
84	274654	NUT, 1/2-20 REGHXCTRLK	1
91	302594	FOLLOWER, ROLLER	1
92	302588	BOLT, .265X .800 HSSH 3/8-24	1
93	445363	WASHER, FLAT, .375X .88X.082	1
94	412349	NUT, 3/8-24 HXCTRLK	1
96	302583-853	PLATE, PIVOT STEERING EURO	1
97	35497	SCREW, 5/16-18X .50 WAHHTAP	2
98	85498	SCREW, 5/16-18X .75 WAHHTAP	2
99	1498	NUT, 5/16-18 REGHEXCTRLK	4
100	446363	WASHER, FLAT, .375X .88X.082	2
101	316685	TIRE & RIM, 20X10.00-8	2
101-1	24167	VALVE STEM	
101-2	316667	RIM, WHEEL	
101-3		REFER TO TIRE TREAD PAGE	
102	304441	HUB CAP, 8" EURO	2
103	306669	CLIP, HUBCAP TINN #C25487-017-4	10

E4620-030

REPAIR PARTS



NOTE: ALWAYS USE ORIGINAL EQUIPMENT PARTS. Use of service/replacement parts other than original equipment parts may void your warranty.

ALL UNNUMBERED ITEMS ARE INTERCHANGEABLE WITH OPPOSITE SIDE

325730 E

E4620-030

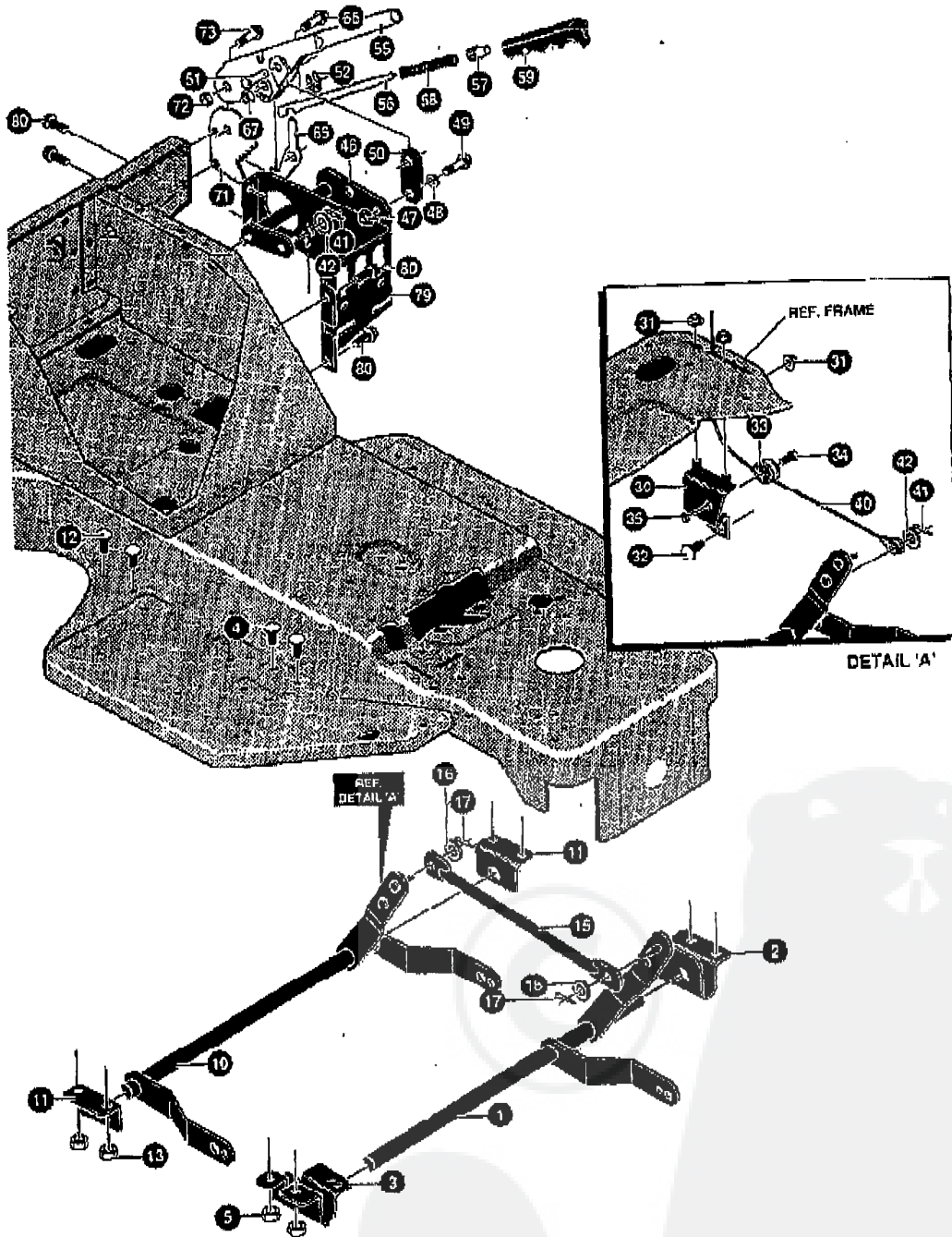
SHIFT/DRIVE ASSEMBLY

KEY#	PART#	DESCRIPTION	QTY
1	310206	SHIFT ROD, ASSY BLK	1
2	313271	BRACKET CL/BR ARM	2
4	35497	SCREW, 5/16-18X .50 WAHHTAP	4
6	180087	SCREW, 5/16-18X2.00 HHC	1
7	845	WASHER, FLAT .390X1.25X.119	1
8	49922	WASHER, FRICTION 1.25ODX.34ID	2
9	29170	SPRING	1
10	120093	WASHER, FLAT .344X .69X.065	1
11	1498	NUT, 5/16-18 REGHEXCTRLK	1
16	310356	BRKT, PIVOT SH LEV	1
17	180020	SCREW, 1/4-20X .75 HHC	2
18	46931	NUT, 1/4-20 WDFL MAC-LOOK	2
21	326925	ROD SHIFT	1
22	71073	WASHER, FLAT .469X .92X.065	5
23	330107	SPRING, TORS. .562X1.05X.095	1
24	121222	PIN, COTTER .090 DIA X .75LG	1
31	310263-830	QUADRANT SHIFT HYDRO	1
32	300302	SCREW, #10 X .50 HHTAPPST BLK	4
33	180020	SCREW, 1/4-20X .75 HHC	4
34	51335	NUT, 1/4-20 WDFLWHIZ-LK	4
35	304729	HANDLE, 1/2-13	1
36	120238	NUT, 1/2-13 HEXJAM	1
47	324936	SHIFT LINK ASS'Y .625DIA	1
49	412349	NUT, 3/8-24 HXCTRLK	2
56	310180	ARM SPEED CONTROL HYDRO	1
57	456652	PIN, SPRING, 1.87DIA X .88LG HVPL	1
58	102570	SCREW, 1/4-20X .98 NYLALHGETCPPT	1
62	310098	PULLEY ASSY HYDRO	1
63	310094	NUT PULLEY 1/2-20 AND 1/4-20	1
64	57626	WASHER, FLAT .281X1.25X.06	3
65	308523	FAN, HYDRO 7.00DIA-10 BLADES	1
66	120380	WASHER, REGSPTLK.283X.49X.07	1
68	180020	SCREW, 1/4-20X .75 HHC	1
71	A	4WS TRANSAXLE, HG #217-1010S	1
81	310819	MOUNTING BLOCK LH HYDRO	4
82	310167	MOUNTING BLOCKS HYDRO	2
96	310179	STABILIZER BRACKET	1
97	180077	SCREW, 5/16-18X .75 HHC	2
98	1498	NUT, 5/16-18 REGHEXCTRLK	3
111	310261	ROD-RELIEF VALVE ZINC	1
112	314969	CAP, MEMORY ROD .38ID X .75 BK	1
113	310088	BOLT, .250X .312 HHS 1/4-20	1
114	2483	WASHER, .39IDX1.25DX.07 BELLVIL	1
115	1498	NUT, 5/16-18 REGHEXCTRLK	1
121	310260	LEVER PARK BRAKE	1
122	314738	ROD CLUTCH	1
125	325009	SPRING, BRAKE HG HYDRO (EURO)	1
126	310087	BOLT, .500X .500 HHS 5/16-18	1
127	1498	NUT, 5/16-18 REGHEXCTRLK	1
131	310257-853	ASSY, WELD CL/BR ROD	1
132	302335	PAD, CLUTCH/BRAKE MOLD W/L BLK	1
133	313271	BRACKET CL/BR ARM	2
134	35497	SCREW, 5/16-18X .50 WAHHTAP	2
141	304217	ROD, PARKING BRAKE	1
142	304367	KNOB, PARK BRAKE BLK853	1
143	120385	WASHER, FLAT .250X .56X.049	2
144	121223	PIN, COTTER .062 DIA X .75LG	1
151	314786	ARM IDLERS	1
152	310269	BOLT, .621X .143 HHS 5/16-18	1
153	1498	NUT, 5/16-18 REGHEXCTRLK	1
154	45602	WASHER, FLAT .330X .87X.119	1
155	313660	SPRING, CLUTCH .113X.750X6.88	1
161	303031	PULLEY, IDLER V4L 3.12EFF DIA	1
162	39659	RETAINER, BELT	1
163	45892	BOLT, 3/8-16X1.50 CARBON	1
164	120377	NUT, 3/8-16 REGHX	1
165	120382	WASHER, REGSPTLK.393X.68X.10	1
167	310275	BELT, V 4L 62.5 HYDRO TRACTION	1

* SEE TRANSAXLE BREAKDOWN PAGES IN THIS MANUAL

E4620-030

REPAIR PARTS



NOTE: ALWAYS USE ORIGINAL EQUIPMENT PARTS. Use of service/replacement parts other than original equipment parts may void your warranty.

ALL UNNUMBERED ITEMS ARE INTERCHANGEABLE WITH OPPOSITE SIDE

325734 B

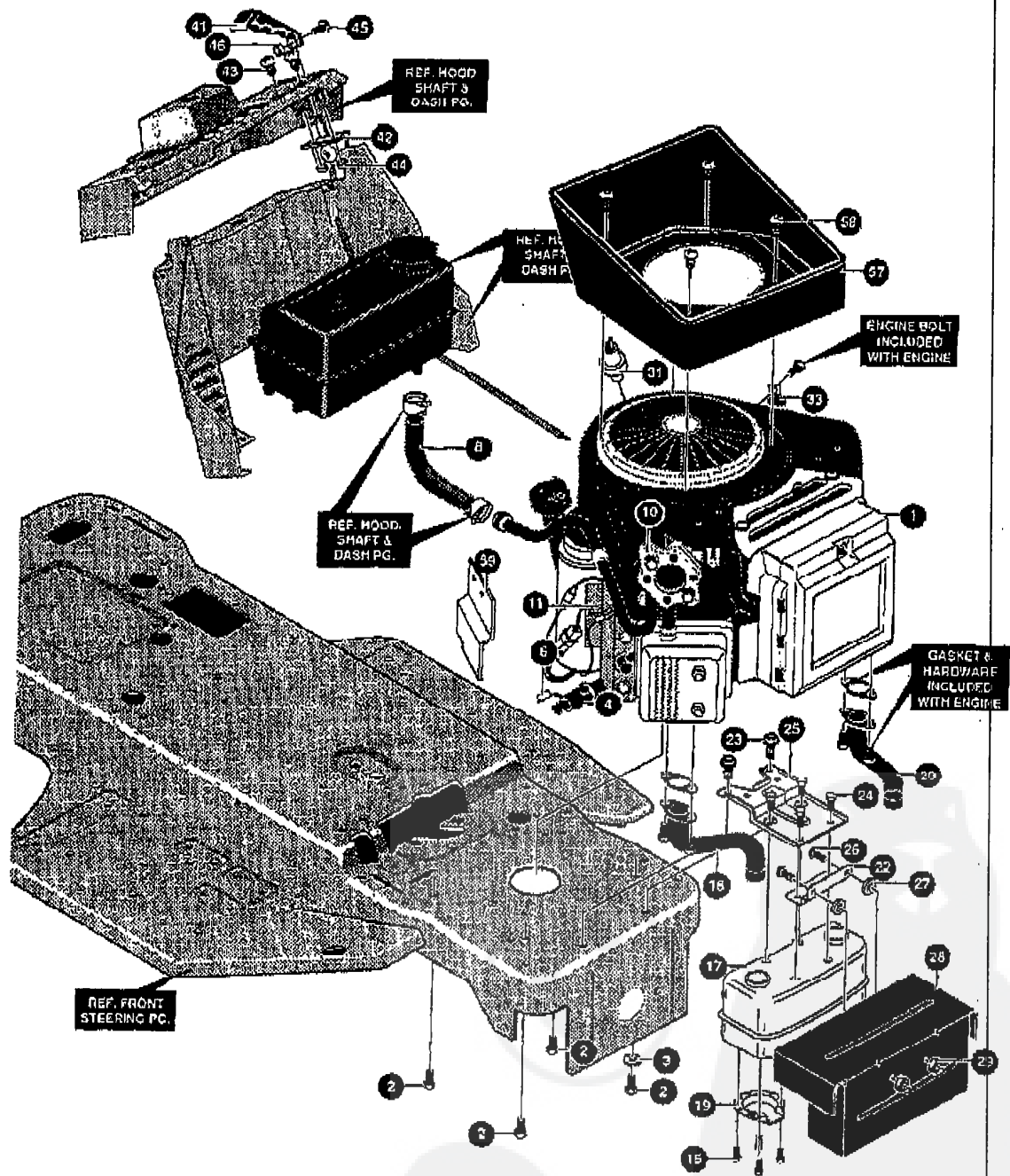
E4620-030

LIFT/LINK ASSEMBLY

KEY#	PART#	DESCRIPTION	QTY
1	302379-853	SHAFT, ASSY FRONT LIFT EURO	1
2	304067-853	BRACKET, FRONT HANGER RH	1
3	302338-853	BRACKET, FRONT HANGER LH	1
4	180077	SCREW, 5/16-18X .75 HHC	4
5	1498	NUT, 5/16-18 REGHEXCTRLK	4
10	309213-853	SHAFT, ASSY REARLIFT E/C EUR	1
11	302360-853	BRACKET, REAR HANGER EURO	2
12	180077	SCREW, 5/16-18X .75 HHC	4
13	1498	NUT, 5/16-18 REGHEXCTRLK	4
15	302380	RODS, TIE	1
16	120394	WASHER, FLAT .406X .81X .065	2
17	121222	PIN, COTTER .090 DIA X .75LG	2
30	309290	ASSY, PULLEY BRKT	1
31	55273	NUT, 5/16-18 HXWDFLLK	3
32	57072	BOLT, 5/16-18X .63 CARRLN	1
33	48906	PULLEY, POWDER METAL	1
34	305522	ROL T .375X .700 HSH 5/16-18	1
35	1498	NUT, 5/16-18 REGHEXCTRLK	1
40	303227	CABLE, DECK LIFT	1
41	121222	PIN, COTTER .090 DIA X .75LG	2
42	120393	WASHER, FLAT .344X .69X .065	2
46	302205	ASSY, UPPER SHAFT	1
47	1498	NUT, 5/16-18 REGHEXCTRLK	1
48	45602	WASHER, FLAT .333X .87X .119	1
49	36149	BOLT, 3/8X .500 HSH 5/16-10	1
50	302357	LINK	1
51	300310	PIN, CLEVIS .310DIA+.475LG	1
52	300311	RING, RET E .31X.25TRUXS133-31	1
55	58392-853	HEIGHT LEVER	1
56	58330	ROD, ACTUATOR	1
57	58325	KNOB, HEIGHT ADJ PUSH BUTTON	1
58	58326	SPRING, HEIGHT ADJUST	1
59	304730	GRIP, HAND .74IDX5.15	1
65	301239	PAWL, SQUARE	1
66	300171	BOLT, .500X .270 HSH 5/16-18	1
67	44108	NUT, 5/16-18 HXWDFLCTRLK	1
71	302388	QUADRANT	1
72	1498	NUT, 5/16-18 REGHEXCTRLK	1
73	300171	BOLT, .500X .270 HSH 5/16-18	1
79	302208-853	BRACKET, SUPPORT ENGAGE	1
80	35487	SCREW, 5/16-18X .50 WAHTAP	4

E4620-030

REPAIR PARTS



NOTE: ALWAYS USE ORIGINAL EQUIPMENT PARTS. Use of service/replacement parts other than original equipment parts may void your warranty.

ALL UNNUMBERED ITEMS ARE INTERCHANGEABLE WITH OPPOSITE SIDE

333266 A

E4620-030

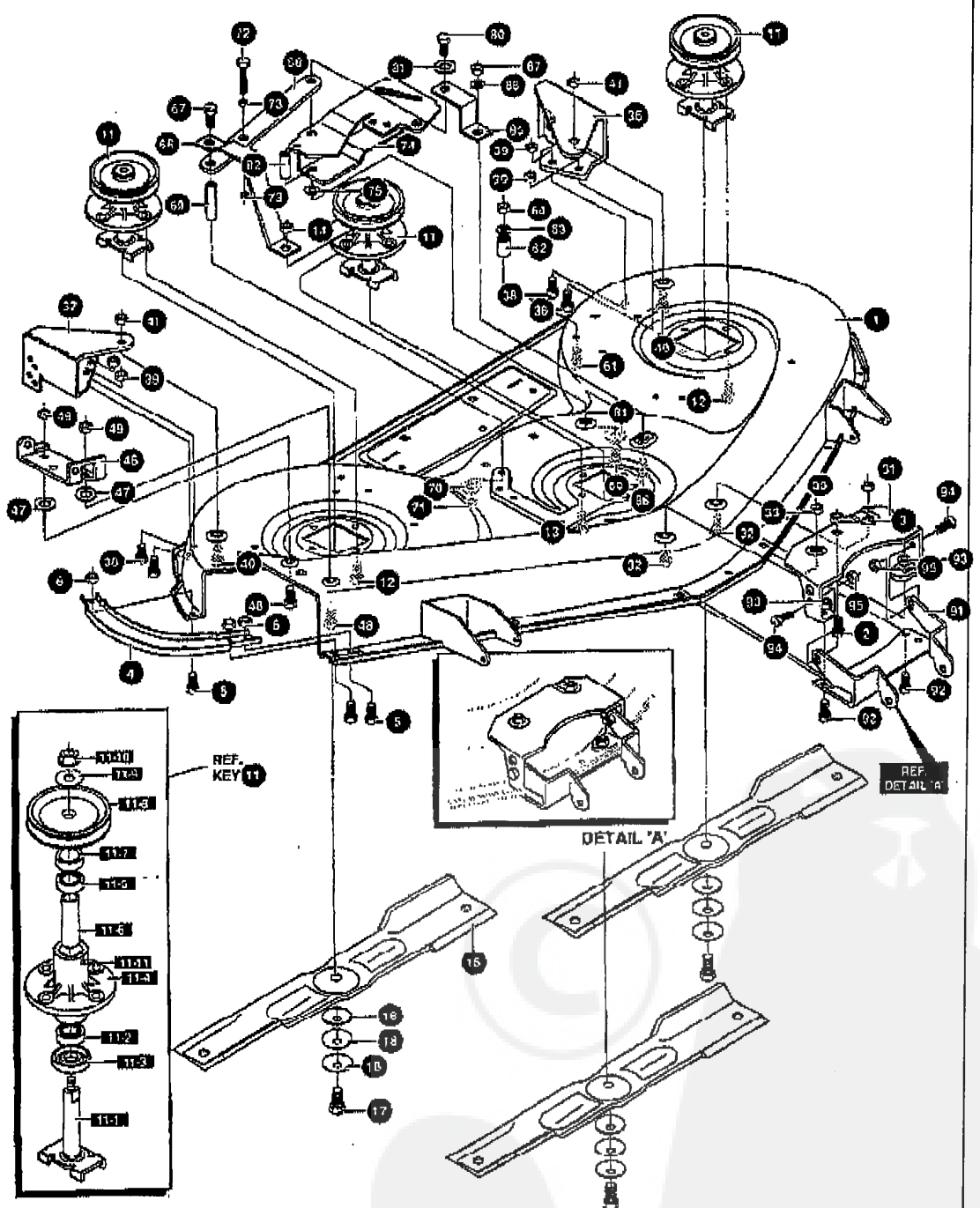
ENGINE & CONTROL ASSEMBLY

KEY#	PART#	DESCRIPTION	QTY
1	A	ENGINE, 14-16HP VANGUARD	1
2	50947	SCREW, 3/8-16X1.25 WAHHTAPBLKP	4
3	138489	WASHER, EXLK .384X.69X.04	1
4	307174	NIPPLE 3/8-18 NPT X 4" ZINC	1
6	47828	CAP, PIPE 3/8-18 NPT 2N PL	1
8	48049	TUBING, .25X.50X BULK GAS LINE	10.0'
11	315590	REGULATOR VOLTAGE BS W/O SENSOR	1
16	35287	SCREW, #8-32X .38 HHWATAP	4
17	305553	MUFFLER 14/18 TWIN NLSN 22785C	1
18	305554	EXHAUST TUBE 15HP RH B&S VANG	1
19	56472	DEFLECTOR SIDE OUT (BS222573)	1
20	305555	EXHAUST TUBE 15HP LH B&S VANG	1
22	9796	BRACKET, TRANSAXLE	1
23	35497	SCREW, 5/16-18X .50 WAHHTAP	2
24	44811	SCREW, 1/4-20X .75 WAHHTAP	4
25	304709-853	BRACKET, MUFFLER	1
26	57072	BOLT, 5/16-18X .63 CARRLN	2
27	10A436	PUSHNUT, 5/16 BOLT RETAINER	2
28	320922-853	SHIELD, MUFFLER HEAT TWIN	1
29	55273	NUT, 5/16-18 HXWDFLLK	2
31	314797	OIL SENSOR, B&S TWIN CYL	1
33	57669	RETAINER, .010X.02X.03 WIRE	1
41	304439	KNOB, THROTTLE CTL MOLD	1
42	307362	THROTTLE CONTROL ERO 18 TWIN	1
43	320553	SCREW, 10-24X.63PHPNMA CRSS	2
44	308459	NUT, #10-24 HXHDNYLK	2
45	159585	SCREW, #8-32X .38 PHPNMA	1
46	120622	NUT, #8-32 REGHX	1
57	333264	PLENUM 20HP B&S H19 VT BLK	1
58	57365	SCREW, 10-16X .50 DRILLTITE	4
59	324297	SHIELD, HEAT 18HP VANGUARD RH	1

* SEE ENGINE MANUAL

E4620-030

REPAIR PARTS



NOTE: ALWAYS USE ORIGINAL EQUIPMENT PARTS. Use of service/replacement parts other than original equipment parts may void your warranty.

ALL UNNUMBERED ITEMS ARE INTERCHANGEABLE WITH OPPOSITE SIDE

329072 C

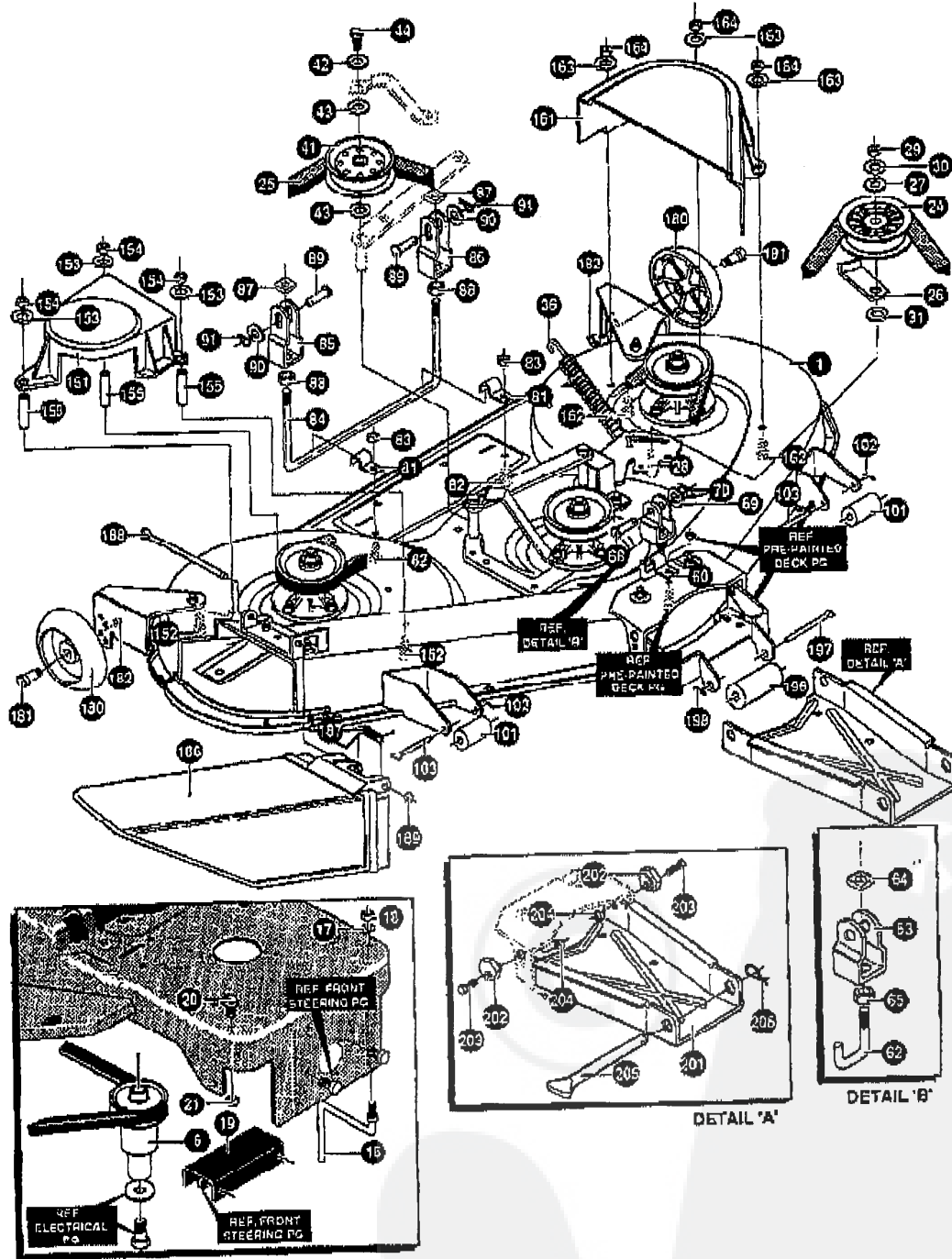
E4620-030

PRE-PAINTED DECK ASSEMBLY

KEY#	PART#	DESCRIPTION	QTY
1	322056-830	MOWER DECK 46"SD ASSY EURO	1
3	1498	NUT, 5/16-18 REGHEXCTRLK	1
4	312702	BRACE, SKID	1
5	57072	BOLT, 5/16-18X .63 CARRLN	3
6	1498	NUT, 5/16-18 REGHEXCTRLK	3
11	320038-853	QUILL 46"DECK W/ZERKS ASSY	3
11-1	320034	SHAFT/SADDLE 46" DECK	1
11-2	1255	BEARING, BALL 6203-A-C3 (SEAL)	1
11-3	50616	DUST SHIELD	1
11-4	320037	QUILL CASTING 46"DECK MACHINED	1
11-5	49562	BEARING, BALL 6203-2AA(SEALS)-C3	1
11-6	320032	SPACER, SLEV .669X .88X4.281	1
11-7	320567	SPACER QUILL 46 INCH DECK	1
11-8	320046	46" QUILL PULLEY SPLIT-STEEL	1
11-9	320566	WASHER, SPECIAL QUILL 46 DECK	1
11-10	1282	NUT, 7/16-20 WDFLLK	1
11-11	706	ZERK, GREASE FITTING	1
12	35498	SCREW, 5/16-18X .75 WAHHTAP	11
13	300345	SCREW, 5/16-18X1.38 WAHHTAP	1
14	1498	NUT, 5/16-18 REGHEXCTRLK	1
15	317071	BLADE, 16.13 HIGHLIFT BLACK	3
17	32573	SCREW, 3/8-24X1.00 NYLHHC	3
18	2483	WASHER, 39IDX1.25DX.07 BELLVIL	9
19	66609	DECAL, REGISTRATION	1
31	312705	LIFT SUPT. BRKT	1
32	57072	BOLT, 5/16-18X .63 CARRLN	2
33	1498	NUT, 5/16-18 REGHEXCTRLK	2
36	312708	BRACKET, GAUGE WHEEL LH BLACK	1
37	312700	BRACKET GAUGE WHEEL R.H.	1
38	180077	SCREW, 5/16-18X .75 HHC	4
39	1498	NUT, 5/16-18 REGHEXCTRLK	4
40	57072	BOLT, 5/16-18X .63 CARRLN	2
41	1498	NUT, 5/16-18 REGHEXCTRLK	2
46	322248-853	BRACKET CHUTE MOUNT 46	1
47	120395	WASHER, FLAT .469X .92X.065	2
48	57072	BOLT, 5/16-18X .63 CARRLN	9
49	1498	NUT, 5/16-18 REGHEXCTRLK	2
61	126358	BOLT, 5/16-18X1.00 CARRLN	1
62	50520	SPACER	1
63	35214	WASHER, FLAT .328X1.06X.062	1
64	1498	NUT, 5/16-18 REGHEXCTRLK	1
66	320873-853	BRACKET, PULLEY SUPPORT	1
67	122194	SCREW, 3/8-16X2.50 HHC	1
68	320371-853	SUPPORT, STRAP	1
69	320369-853	SUPPORT SHAFT	1
70	120382	WASHER, REGSPTLK .993X.68X.10	1
71	122119	SCREW, 3/8-16X .75 HHC	1
72	121940	SCREW, 1/4-20X1.75 HHC	2
73	271172	NUT, 1/4-20 REGHEXKEPS	1
74	322117-853	IDLER ARM40/49/48DECK EC	1
75	417098	WASHER, FLAT .591X1.06X.063	1
80	181908	SCREW, 5/16-24X1.00 HHC G	2
81	120638	WASHER, HVSPTLK .328X.60X.09	2
82	320370	IDLER SHAFT 46" DECK	1
85	320872-853	BRACKET, IDLER SUPPORT	1
86	57081	BOLT, 3/8-16X .75 CARRLN	1
87	271190	NUT, 3/8-16 HEXKEPS	1
88	120394	WASHER, FLAT .406X .81X.065	1
91	312704	BRACKET, MOUNTING 46" DECK	1
92	180077	SCREW, 5/16-18X .75 HHC	2
93	1498	NUT, 5/16-18 REGHEXCTRLK	2
94	180079	SCREW, 5/16-18X1.00 HHC	2
95	1498	NUT, 5/16-18 REGHEXCTRLK	2

E4620-030

REPAIR PARTS



NOTE: ALWAYS USE ORIGINAL EQUIPMENT PARTS. Use of service/replacement parts other than original equipment parts may void your warranty.

ALL UNNUMBERED ITEMS ARE INTERCHANGEABLE WITH OPPOSITE SIDE

331719 B

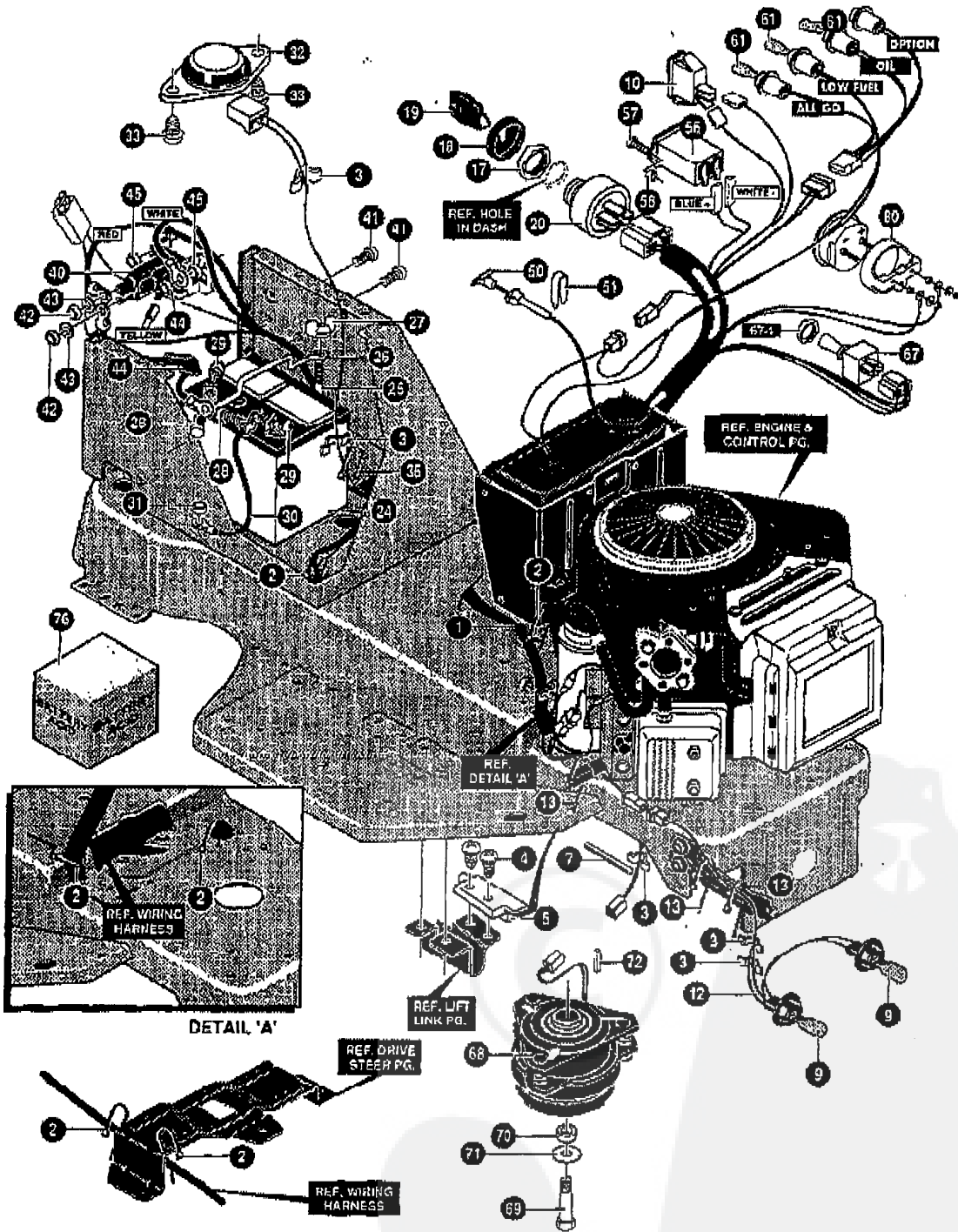
E4620-030

FINAL DECK ASSEMBLY

KEY#	PART#	DESCRIPTION	QTY
1	329072-830	DECK, 46 EQ, WZ, W/R, HI LF	1
6	302351	PULLEY, ENGINE EL/CL EURO LT	1
16	300440	GUIDE, BELT, RIDER	1
17	138538	WASHER, REGINTLK, 320X, 61X, 03	1
18	1498	NUT, 5/16-18 REGHEXCTRLK	1
19	309011-853	BRACKET, CLUTCH STOP 40/46 E/C	1
20	180077	SCREW, 5/16-18X .75 HHC	1
21	1498	NUT, 5/16-18 REGHEXCTRLK	1
24	310326	PULLEY, IDLER BFF 4.00 WIDE FL	1
25	319869	BELT, V 5L 129LG 46" EURO E/C	1
26	1346	RETAINER, BELT	1
27	446363	WASHER, FLAT .375X .88X .082	1
28	57326	BOLT, 3/8-16X2.00 CARRSN	1
29	120377	NUT, 3/8-16 REGHX	1
30	120362	WASHER, REGSPTLK, 393X, 68X, 10	1
31	595416	WASHER, FLAT .391X1.00X.125	1
36	320375	SPRING, 46" ELECT/CLUTCH EURO	1
41	303030	PULLEY, IDLER BFF 4.00 DIA	1
42	120382	WASHER, REGSPTLK, 393X, 68X, 10	1
43	596416	WASHER, FLAT .391X1.00X.125	1
50	319868	CLIP, 40/46 HANGER	2
62	300615	ROD, 40" REAR DECK LIFT	1
69	304443	CLEVIS	1
64	109527	NUT, 1/2-13 .458 SQ	1
65	126238	NUT, 1/2-13 HEXJAM	1
68	300317	PIN, CLEVIS .375DIA, X .81 LG	1
69	274517	WASHER, FLAT .406X .79X.063	1
70	56180	PIN, HAIR .091 DIA X 1.62LG	1
81	312701	CLIP, BLACK	2
82	180077	SCREW, 5/16-18X .75 HHC	2
83	1498	NUT, 5/16-18 REGHEXCTRLK	2
84	322179	ROD, LIFT 46" DECK EURO LT	1
85	305283	CLEVIS, SLOT EURO	1
86	304443	CLEVIS	1
87	109527	NUT, 1/2-13 .458 SQ	2
88	120238	NUT, 1/2-13 HEXJAM	2
89	300317	PIN, CLEVIS .375DIA, X .81 LG	2
90	274517	WASHER, FLAT .406X .79X.063	2
91	56180	PIN, HAIR .091 DIA X 1.62LG	2
101	310072	ROLLER 9 X 5.15 I.D. X 2.5 O.D.	2
102	121222	PIN, COTTER .090 DIA X .75LG	2
103	309229	ROD SUPPORT, ZINC	2
151	320569	GUARD BELT R.H, 46" DECK LF	1
152	126385	BOLT, 5/16-18X2.25 CARRLN	3
153	120393	WASHER, FLAT .344X .69X.065	3
154	1498	NUT, 5/16-18 REGHEXCTRLK	3
155	321173	SPACER, GUARD 46" LF/EURO -LONG	3
161	333073	GUARD BELT LH PLASTIC	1
162	67072	BOLT, 5/16-18X .63 CARRLN	3
163	120393	WASHER, FLAT .344X .69X.065	3
164	1498	NUT, 5/16-18 REGHEXCTRLK	3
180	302611	GAUGE WHEEL, EURO 6.00 ODX 1.38WD	2
181	23763	BOLT, .500X1.320 HSH 3/8-16	2
182	1498	NUT, 3/8-16 REGHXCTRLK	2
186	304733	CHUTE, DISCHARGE 46" DECK	1
187	314875	SPRING, TORSION CHUTE DEFLECTOR	1
188	305251	ROD, PIVOT 46" DECK .312DX8.12	1
189	309436	PUSHNUT, 5/16 BOLT RETAINER	1
196	310071	ROLLER 6 X 5.15 I.D. X 2.5 O.D.	1
197	309186	ROD, SUPPORT ZINC	1
198	137185	PIN, COTTER .125 DIA X 1.00LG	1
201	310900-830	CHANNEL DRAWBAR 40 EURO	1
202	58247	NUT, ADJUST	2
203	180079	SCREW, 5/16-18X1.00 HHC	2
204	1498	NUT, 5/16-18 REGHEXCTRLK	2
205	302963	ROD, DRAWBAR	1
206	56180	PIN, HAIR .091 DIA X 1.62LG	1

E4620-030

REPAIR PARTS



NOTE: ALWAYS USE ORIGINAL EQUIPMENT PARTS. Use of service/replacement parts other than original equipment parts may void your warranty.

ALL UNNUMBERED ITEMS ARE INTERCHANGEABLE WITH OPPOSITE SIDE

331681 B

E4620-030

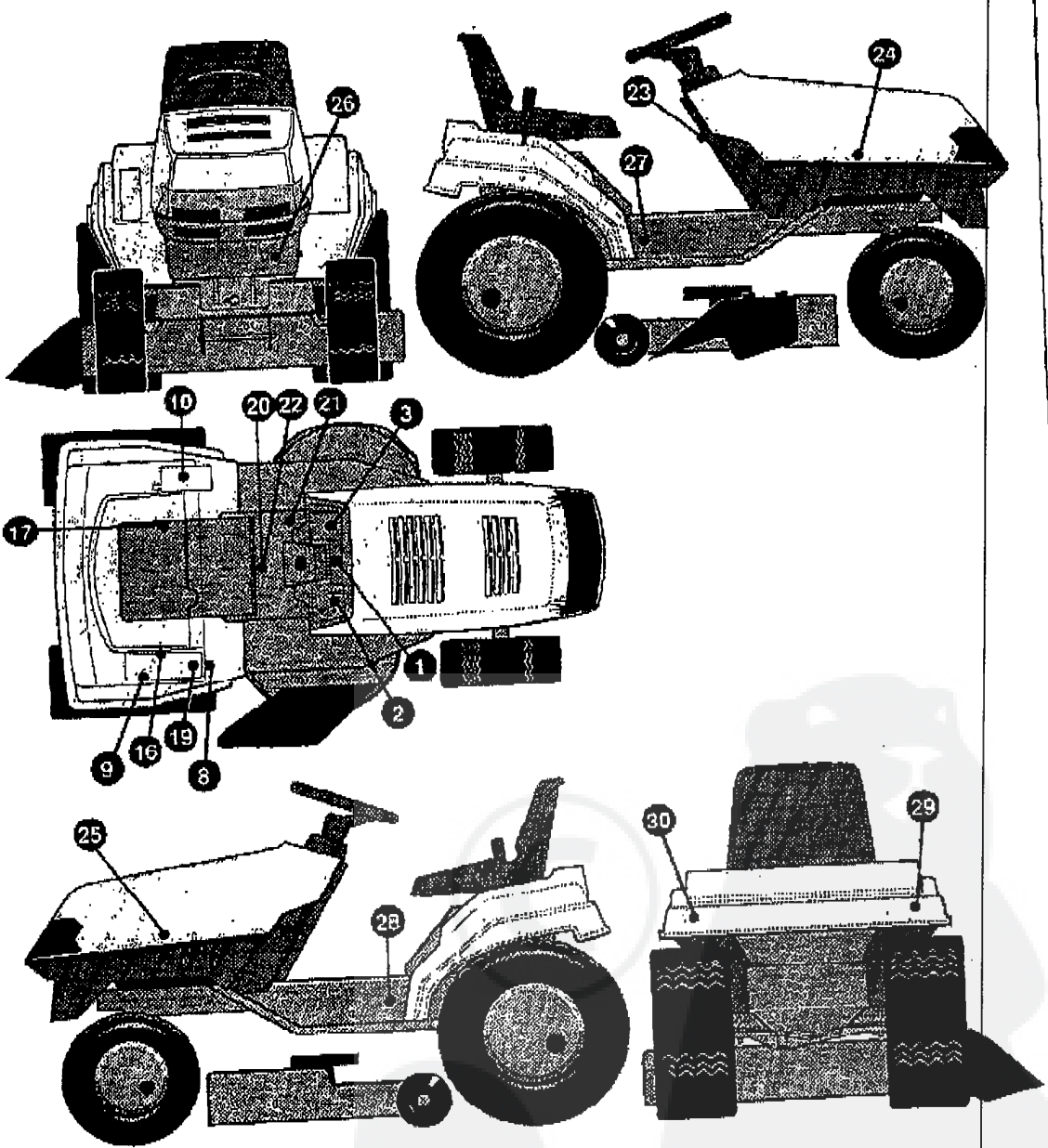
ELECTRICAL ASSEMBLY

KEY#	PART#	DESCRIPTION	QTY
1	331931	HARNASS, WIRING EURO VG/TW E/C AMP	1
2	57444	TIE, CABLE BLACK NYLON 5.62L	6
3	41482	PRESS CLIP, 1.380LG, 255SID	3
4	57220	SCREW, #12 X .50 PHPNHTAP DLK	2
5	57476	SWITCH, SCR MNT DP NC NO BLK	1
7	52151	EDGING (78"-47453) WIDE BLK	3
9	52572	BULB, HEADLAMP	2
10	300334	LIGHT SWITCH ON/OFF PANEL MNT	1
12	303064	ASSY, LIGHT WIRE-1/4 TURN	1
13	57444	TIE, CABLE BLACK NYLON 5.62L	3
17	327352	NUT, 5/8-8AGME DELTA FOR BOOT	1
18	300194	BOOT, IGN SWITCH	1
19	327350	KEY, IGNITION DELTA	2
20	327355	SWITCH-IGN (AFTER FIRE) 3 POSN	1
24	306884	BATTERY, 12V	1
25	57551	ROD, BATTERY	1
26	302812	ROD, BATTERY TOP, 209DIA	1
27	325232	NUT, WING 1/4-20 NYLON	1
28	180020	SCREW, 1/4-20X .75 HHC	2
29	271172	NUT, 1/4-20 REGHEXKEPS	2
30	55511	WIRE, GROUND, 12.5'	1
31	271184	NUT, 5/16-18 HEXKEPS	1
32	57547	SWITCH, SEAT	1
33	160505	SCREW, 1/4-20X .38PHPNHMA	2
36	57444	TIE, CABLE BLACK NYLON 5.62L	2
40	310066	SOLENOID STARTER - ISOLATED	1
41	187745	SCREW, 1/4-20X .75 HXSEMMA	2
42	120368	NUT, 5/16-24 REGHEX	2
43	138485	WASHER, EXLK 320X.61X.03	2
44	271172	NUT, 1/4-20 REGHEXKEPS	1
45	1502	NUT, 1/4-20 REGHEXCTRLK	2
46	57444	TIE, CABLE BLACK NYLON 5.62L	1
50	307113	CHOKE CONT BS TWIN ERO LONG	1
51	314522	CLIP, CHOKE CONTROL	1
56	304739	MINIATURE HOUR METER 4-40V DC	1
57	320554	SCREW, #6-32X .50 PHPNMA CRSS	2
58	271482	NUT, #6-32 HEXKEPS	2
61	57769	BULB, INDICATOR	3
67	308285	SWITCH, ELEC/CLUT ACTUATOR EURO	1
68	328108	CLUTCH, EL 12/18HP REG CHARGER	1
69	216649	SCREW, 7/16-20X.50 HHC	1
70	319622	BEARING, FL .510DX .100DX .56L	1
71	120383	WASHER, REGSPTLK 459X.78X.12	1
72	305562	KEY, SQUARE .250SQX2.12LG	1
76	A	BATTERY ACID PACK, 80 OZ.	1
80	315902	AMMETER ASSY=>309373, 121685	1

* CAN BE PURCHASED LOCALLY

REPAIR PARTS

E4620-030



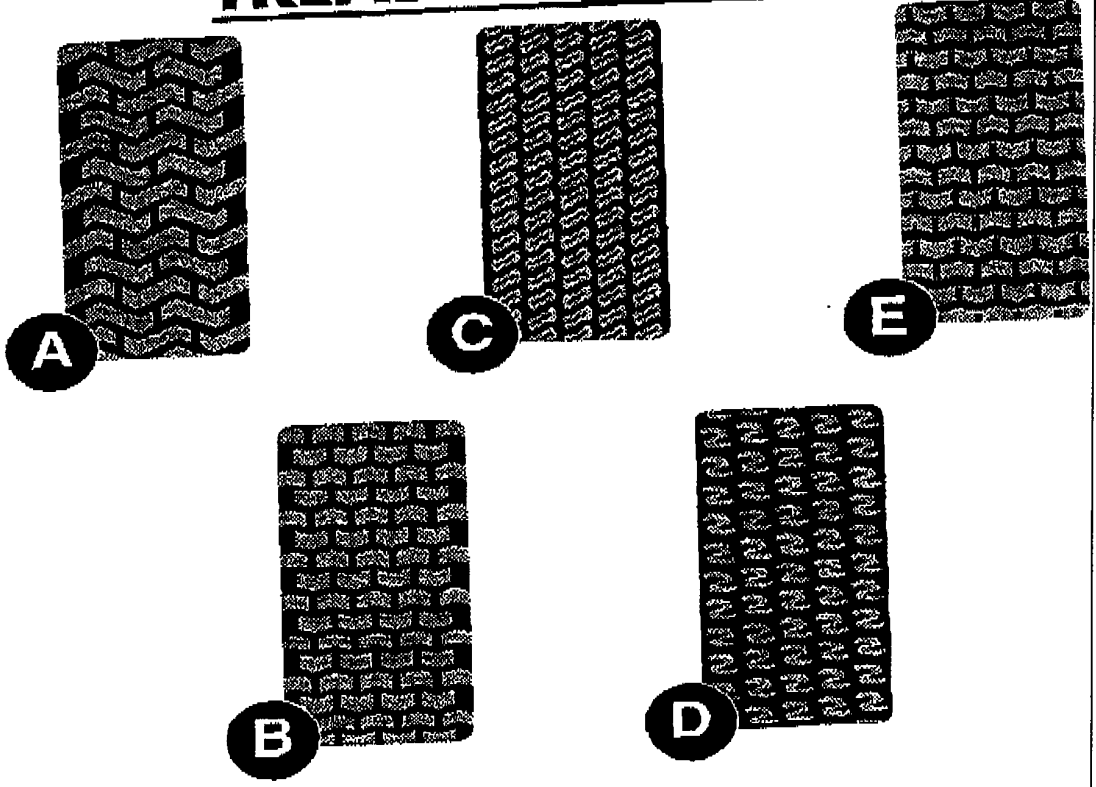
332152 A

E4620-030

DECAL ASSEMBLY

KEY#	PART#	DESCRIPTION	QTY
1	332096	DECAL,DASH OIL,FUEL,ASG,NO CHG	1
2	331817	DECAL DASH RH ISO CH,HR,LS,IS	1
3	331809	DECAL DSH LH ISO,AMM,E/CL,M/CH	1
8	307381	DECAL DANGFR FRENCH ENGLISH	1
9	310609	DECAL SPEED HYDRO SIGNATURE	1
10	311591	DECAL-DECK HEIGHT EURO ELEC/CL	1
16	313539	DECAL, DEPRESS CL/BRAKE BLACK	1
17	316861	DECAL, RELIEF VALVE OPERATION	1
19	318431	DECAL,DPRESS CL/BR HDRO FRENCH	1
20	322763	DECAL,OPER INST ERO TOP FRAME	1
21	307808	DECAL INSTR FRENCH(CAN)ERO LT	1
22	311876	DECAL,INSTRUCT CONSOLE TOP FR	1
23	307820	DECAL PARK BRAKE EXPORT	1
24	402500	DECAL, SIGNATURE PREMIER HOOD	1
25	402501	DECAL, SIGNATURE PREMIER	1
26	402507	DECAL, GRILLE 2046P 4WS	1
27	402518	DECAL, CONSOLE 2046P 4WS	1
28	402519	DECAL, CONSOLE 2046P 4WS	1
29	402521	DECAL, FENDER SIGNATURF	1
30	402522	DECAL, FENDER NOMA	1

TREAD PATTERNS

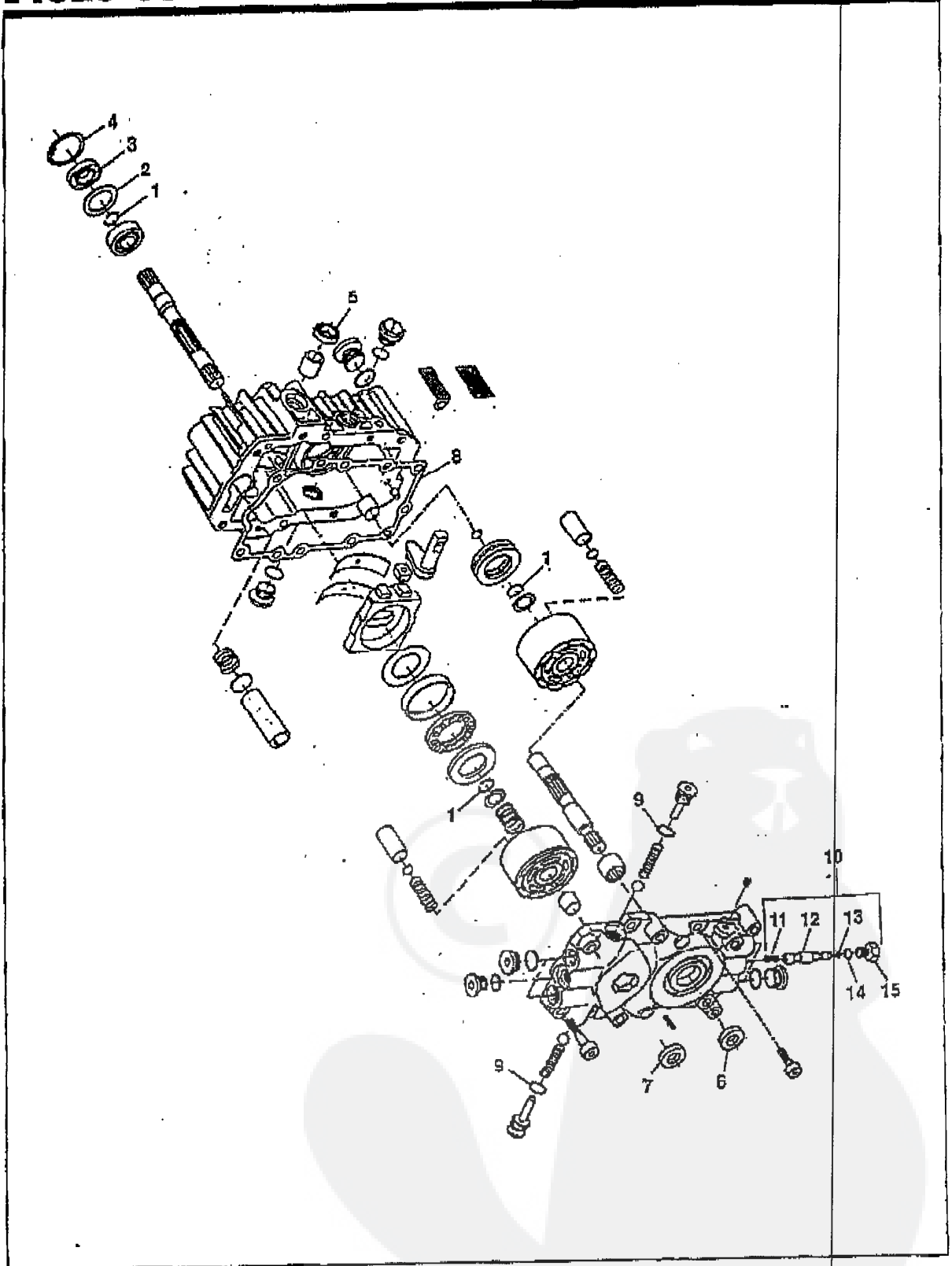


TIRE SIZE	"A"	"B"	"C"	"D"	"E"
11 X 4.00 - 5	42295	319679			
13 X 5.00 - 6	41060	319680			
15 X 6.00 - 6	39830	316702	301140	313952	
16 X 4.80 - 8		305035			
16 X 6.50 - 8	41081	319682		314539	
18 X 6.50 - 8		42091			
18 X 8.50 - 8	319683	317400			
18 X 9.50 - 8	41106	316701		313950	
20 X 8.00 - 8	319685	319684	57164	314584	331606
20 X 10.00 - 8	58276	319686		313654	
20 X 10.00 - 10	55893	319687			
23 X 9.50 - 12	53655	319690	319689	314370	

316711 D

E4620-030

HYDROSTATIC PUMP



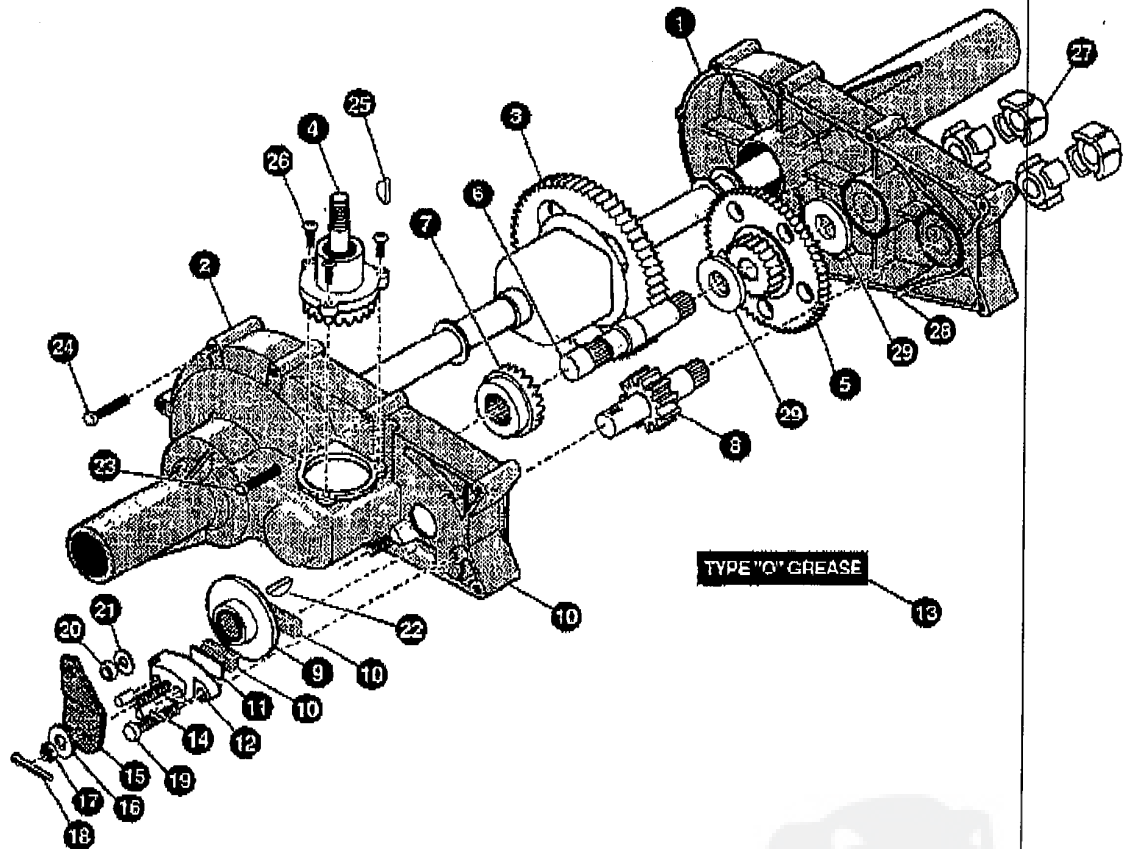
E4620-030

REPAIR PARTS

Key #	Part #	Description
	310227	HYDROSTATIC PUMP (COMPLETE)
	313306	OVERHAUL SEAL KIT (CONTAINS KEY NO.'S 1-9, 13 AND 14)
1		RING-RETAINING
2		SPACER
3		SEAL-LIP
4		RING-RETAINING
5		SEAL-LIP
6		SEAL-LIP
7		SEAL-LIP
8		GASKET-CENTER SECTION
9		O-RING
10	313305	BY-PASS VALVE KIT- COMPLETE (INCL. KEY NO.'S 11-15)
11		SPRING-HELICAL COMP
12		BY-PASS SPOOL
13		O-RING
14		O-RING
15		PLUG-BY-PASS

E4620-030

HYDRO TRANSAXLE



- | | | | | | |
|-----|--------|----------------------|-----|--------|---------------------|
| 1. | 324090 | HOUSING HALF, LH | 16. | 323684 | WASHER, FLAT |
| 2. | 324092 | HOUSING HALF, RH | 17. | 323691 | NUT, CASTLE |
| 3. | 324093 | GEAR, DIFFERENTIAL | 18. | 323671 | PIN, COTTER |
| 4. | 324095 | SHAFT, INPUT | 19. | 323711 | BOLT, HEX W/PATCH |
| 5. | 324096 | GEAR | 20. | 323650 | NUT, HEX |
| 6. | 323656 | SHAFT, DRIVE | 21. | 323649 | WASHER, SPRING LOCK |
| 7. | 323655 | GEAR, DRIVE PINION | 22. | 323692 | KEY, HI-PRO |
| 8. | 323660 | SHAFT, PINION | 23. | 323677 | BOLT, HEX SELF-TAP |
| 9. | 323683 | DISC, BRAKE | 24. | 323678 | BOLT, HEX SELF-TAP |
| 10. | 323685 | PUCK, BRAKE | 25. | 323688 | KEY, HI-PRO |
| 11. | 323687 | PLATE, PUCK | 26. | 329832 | SCREW, HEX W/PATCH |
| 12. | 324092 | BRAKE, YOKE | 27. | 323661 | COUPLING |
| 13. | 324089 | TYPE "O" GREASE | 28. | 323699 | PIN, ROLL |
| 14. | 323681 | PIN, BRAKE ACTUATING | 29. | 329833 | WASHER, FLAT |
| 15. | 323685 | ARM, BRAKE ACTUATOR | | | |