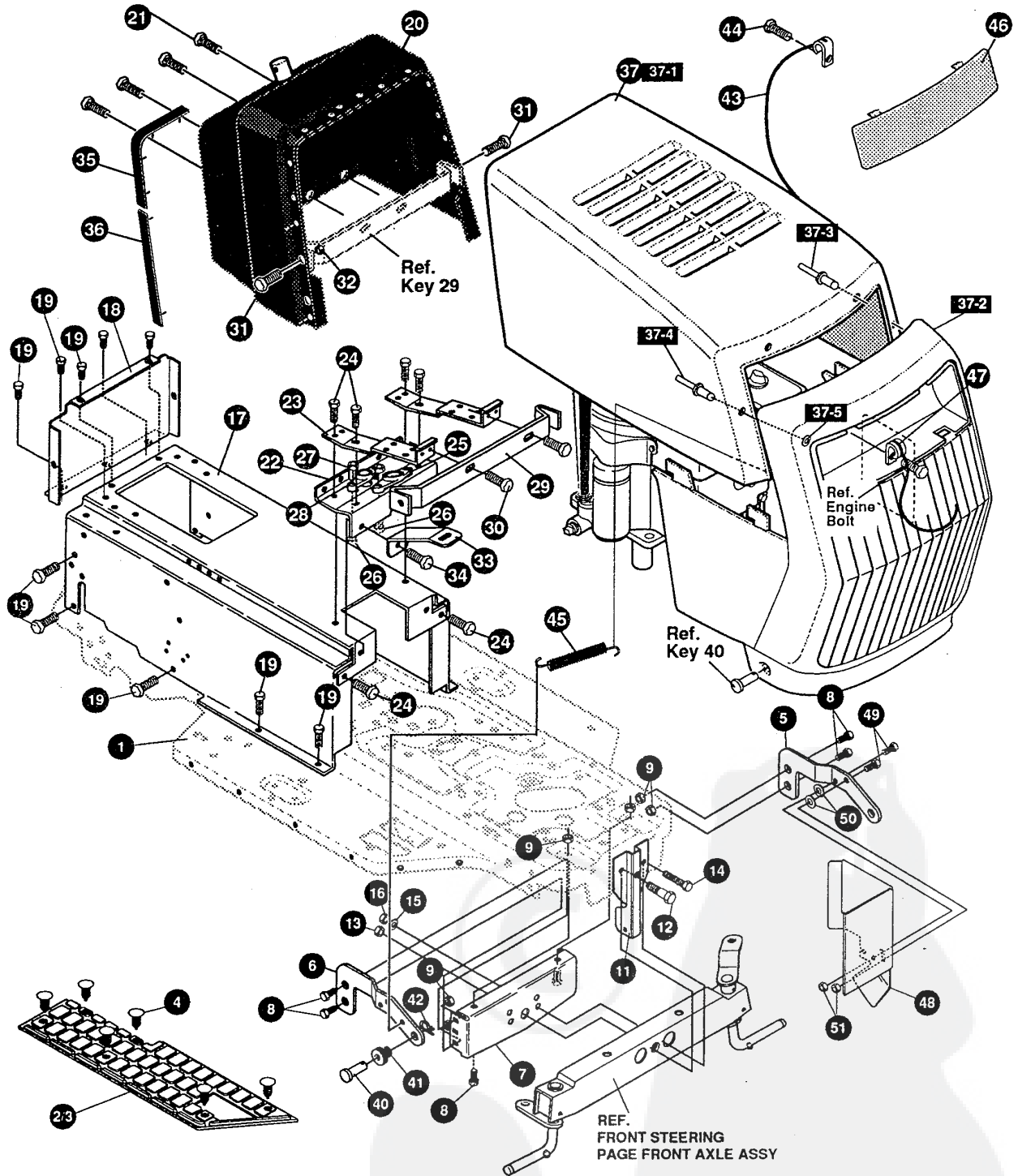




**F3554-100**  
**12HP/30"**

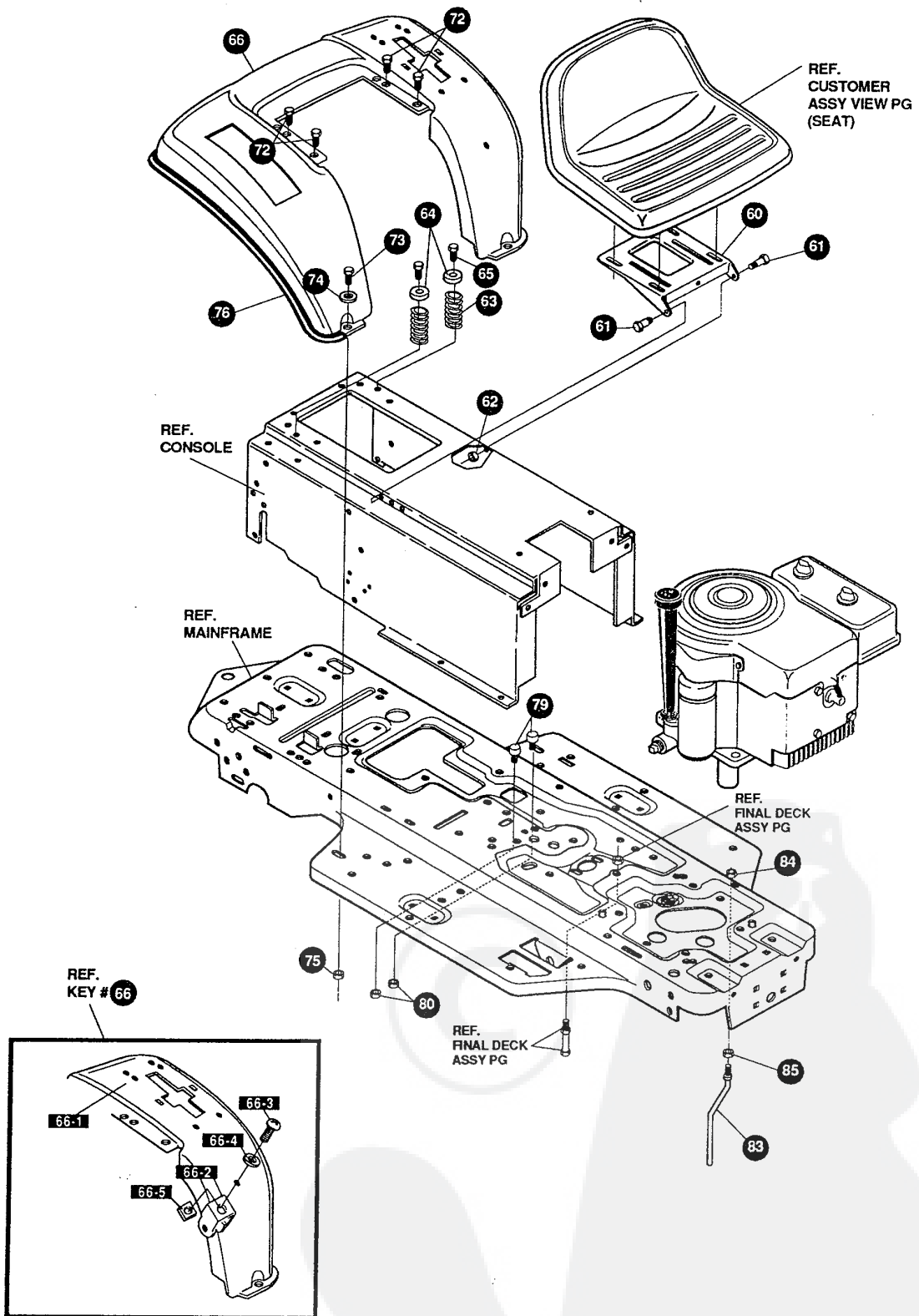


**NOTE: ALWAYS USE ORIGINAL EQUIPMENT PARTS.**  
 Use of service/replacement parts other than original equipment parts may void your warranty.

**ALL UNNUMBERED ITEMS ARE INTERCHANGEABLE WITH OPPOSITE SIDE**

329429 G

| KEY# | PART#      | DESCRIPTION                                      | QTY |
|------|------------|--|-----|
| 1    | 332319-893 | MAIN FRAME, SF, RIDER, TUV .....                 | 1   |
| 2    | 310003     | FOOT PAD, LH, SF, MOLDED DYNA .....              | 1   |
| 3    | 310004     | FOOT PAD, RH, SF, MOLDED DYNA .....              | 1   |
| 4    | 309235     | FASTENER, RATCHET BLACK .....                    | 12  |
| 5    | 326873-853 | BRACKET, GRILLE, LH, H-25 .....                  | 1   |
| 6    | 326874-853 | BRACKET, GRILLE, RH, H-25 .....                  | 1   |
| 7    | 56362-853  | BRACKET, SUPPORT, FRONT AXLE, SF .....           | 1   |
| 8    | 328154     | SCREW, 5/16-18 X 1.0 WDFLLK .....                | 6   |
| 9    | 55273      | NUT, 5/16-18 WDFLLKLRG, WHIZ .....               | 6   |
| 11   | 321136-893 | BRACKET, HANGER, 30", SF .....                   | 1   |
| 12   | 50720      | BOLT, .625 X 2.875 SPSH, 1/2-20 .....            | 1   |
| 13   | 274654     | NUT, 1/2-20 REGHXCTRLK .....                     | 1   |
| 14   | 180138     | SCREW, 3/8-16 X 3.00 HHC .....                   | 4   |
| 15   | 2483       | WASHER, .39 ID X 1.25 D X .07 BELLVIL .....      | 4   |
| 16   | 1499       | NUT, 3/8-16 REGHXCTRLK .....                     | 4   |
| 17   | 324996-830 | CONSOLE, SF, MOLDED, DASH, H-25 .....            | 1   |
| 18   | 56235-830  | CONSOLE, REAR COVER .....                        | 1   |
| 19   | 995346     | SCREW, 1/4-20 X .50 WAHTAP .....                 | 15  |
| 20   | 325766     | DASH, SF, W/O AMP, W/O CHK .....                 | 1   |
| 21   | 305850     | SCREW, 1/4-20 X .50 PHPNTAP .....                | 4   |
| 22   | 327583-853 | SUPPORT, SF, MOLDED DASH .....                   | 1   |
| 23   | 327584-853 | SUPPORT, SF, MOLDED DASH, GAS TANK .....         | 2   |
| 24   | 995346     | SCREW, 1/4-20 X .50 WAHTAP .....                 | 6   |
| 25   | 327444     | BEARING, FLANGE .755ID, .226 MOUTING HOLES ..... | 1   |
| 26   | 180020     | SCREW, 1/4-20 X .75 HHC .....                    | 4   |
| 27   | 46931      | NUT, 1/4-20 WDFL MAC-LOCK .....                  | 4   |
| 28   | 327390     | BEARING, FLANGE .560ID, .228 MOUTING HOLES ..... | 1   |
| 29   | 327078-853 | STRAP, DASH SUPPORT .....                        | 1   |
| 30   | 995346     | SCREW, 1/4-20 X .50 WAHTAP .....                 | 2   |
| 31   | 155941     | SCREW, 10-24 X .63 PHFLTMA .....                 | 2   |
| 32   | 308459     | NUT, #10-24 HXHDNYLK .....                       | 2   |
| 33   | 328924-853 | CONSOLE SUPPORT BRACKET .....                    | 2   |
| 34   | 995346     | SCREW, 1/4-20 X .50 WAHTAP .....                 | 2   |
| 35   | 328141     | BUMPER, HOOD/DASH, TOP & CORNER .....            | 2   |
| 36   | 328142     | BUMPER, HOOD/DASH, SIDE STRIP .....              | 2   |
| 37   | 336507     | HOOD/GRILLE ASSEMBLY .....                       | 1   |
| 37-1 | 329391     | HOOD, H25, LF/SF, LOUVERS .....                  | 1   |
| 37-2 | 329392     | 'J' GRILLE, G24 .....                            | 1   |
| 37-3 | 329238     | 'RIVET, POP 3/16 DIA X .75 LG .....              | 2   |
| 37-4 | 333225     | RIVET, POP 3/16 DIA X 1.0 LG .....               | 2   |
| 37-5 | 1501       | WASHER, FLAT .203 X .56 X .040 .....             | 2   |
| 40   | 323044     | PIN, CLEVIS .500 X .49/.51 LONG .....            | 2   |
| 41   | 326522     | BEARING HOOD .505 ID X .625 OD X 1.12 FL .....   | 2   |
| 42   | 8260       | PIN, HAIR .091 DIA X 1.66 LONG .....             | 2   |
| 43   | 315899     | LANYARD, HOOD, 15.00 LONG, LF .....              | 1   |
| 44   | 49050      | SCREW, 1/4-10 X .75 PHPNTAP .....                | 1   |
| 45   | 304784     | SPRING, HOOD LATCH .....                         | 1   |
| 46   | 326960     | LENS, FOR 'L'G21 & 'J'G24 GRILL .....            | 1   |
| 47   | 301452     | FOIL, HEAT REFLECTOR .....                       | 1   |
| 48   | 312908-853 | SHIELD, HEAT 11&12HP, B&S & TEC, SF .....        | 1   |
| 49   | 180020     | SCREW, 1/4-20 X .75 HHC .....                    | 2   |
| 50   | 311245     | WASHER, FLAT .250 X .75 X INSULATE .....         | 2   |
| 51   | 51335      | NUT, 1/4-20 WDFLWHIZ-LK .....                    | 2   |
|      | 336459     | PARTS MANUAL .....                               | 1   |
|      | 336569     | OPERATOR'S MANUAL (ENGLISH) .....                | 1   |
|      | 336571     | OPERATOR'S MANUAL (FRENCH) .....                 | 1   |
|      | 336570     | OPERATOR'S MANUAL (GERMAN) .....                 | 1   |
|      | 323000     | GRASS CATCHER MANUAL (ENGLISH) .....             | 1   |
|      | 323208     | GRASS CATCHER MANUAL (FRENCH) .....              | 1   |
|      | 323207     | GRASS CATCHER MANUAL (GERMAN) .....              | 1   |



**NOTE: ALWAYS USE ORIGINAL EQUIPMENT PARTS.**  
Use of service/replacement parts other than original equipment parts may void your warranty.

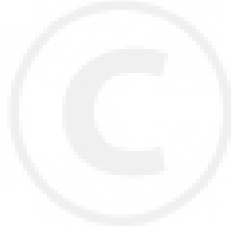
**ALL UNNUMBERED ITEMS ARE INTERCHANGEABLE WITH OPPOSITE SIDE**

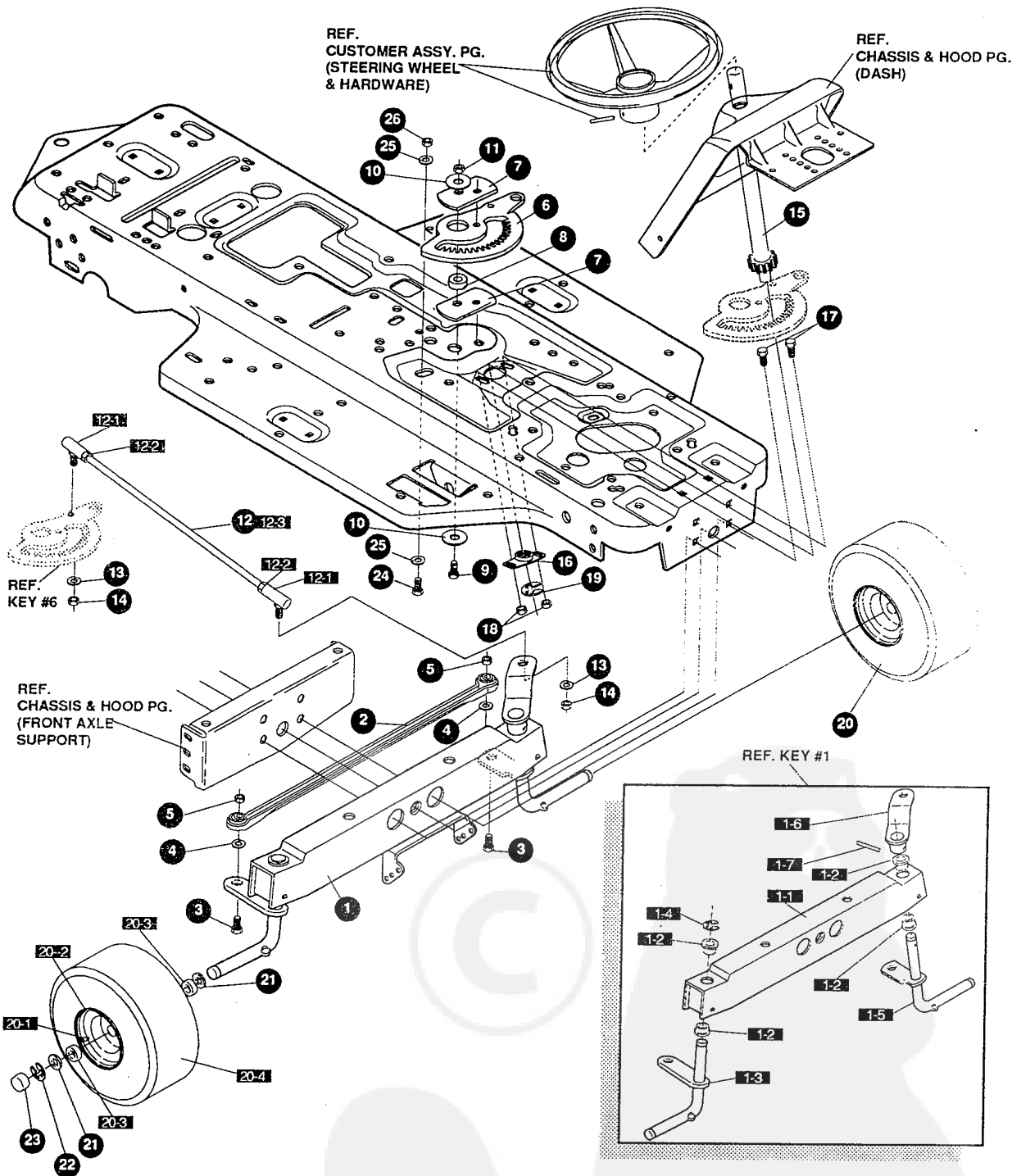
329429 G

N  
U  
e

| KEY# | PART#      | DESCRIPTION                             | QTY   |
|------|------------|---|-------|
| 60   | 58367-893  | PLATE, SEAT, F5, SF, LF .....           | 1     |
| 61   | 20507      | BOLT, .437 X .156 HHSH, 5/16-18 .....   | 2     |
| 62   | 1498       | NUT, 5/16-18 REGHEXCTRLK .....          | 2     |
| 63   | 330463     | SPRING, SEAT 1.50 OD X 2.25 LONG .....  | 2     |
| 64   | 120392     | WASHER, FLAT .281 X .63 X .065 .....    | 2     |
| 65   | 995346     | SCREW, 1/4-20 X .50 WAHTAP .....        | 2     |
| 66   | *          | ASSEMBLY, FENDER F-5, SF, SOF/LOF ..... | 1     |
| 66-1 | 332423-893 | FENDER, F-5, SF, SOF/LOF .....          | 1     |
| 66-2 | 9239       | CLEVIS .....                            | 1     |
| 66-3 | 439455     | SCREW, 5/16-18 X .56 PHPNMA .....       | 1     |
| 66-4 | 301551     | WASHER, .344 ID X 1.50 D X .09 .....    | 1     |
| 66-5 | 120373     | NUT, 5/16-18 SQUARE .....               | 1     |
| 72   | 995346     | SCREW, 1/4-20 X .50 WAHTAP .....        | 4     |
| 73   | 180081     | SCREW, 5/16-18 X 1.25 HHC .....         | 2     |
| 74   | 446363     | WASHER, FLAT .375 X .88 X .082 .....    | 2     |
| 75   | 55273      | NUT, 5/16-18 WDFLLKLRG, WHIZ .....      | 2     |
| 76   | 55023      | TRIM, STRIP, BLACK—SMALL, W/ ADH .....  | 75.0" |
| 79   | 53446      | PIN, 5/16-18 HOOD LATCH .....           | 2     |
| 80   | 271184     | NUT, 5/16-18 HEXKEPS .....              | 2     |
| 83   | 50653      | GUIDE, BELT .....                       | 1     |
| 84   | 41529      | NUT, 3/8-16 HXCTRLKJAM .....            | 1     |
| 85   | 271190     | NUT, 3/8-16 HEXKEPS .....               | 1     |

\* ORDER INDIVIDUAL PARTS - ASSEMBLY NOT AVAILABLE





**NOTE: ALWAYS USE ORIGINAL EQUIPMENT PARTS.**  
 Use of service/replacement parts other than original equipment parts may void your warranty.

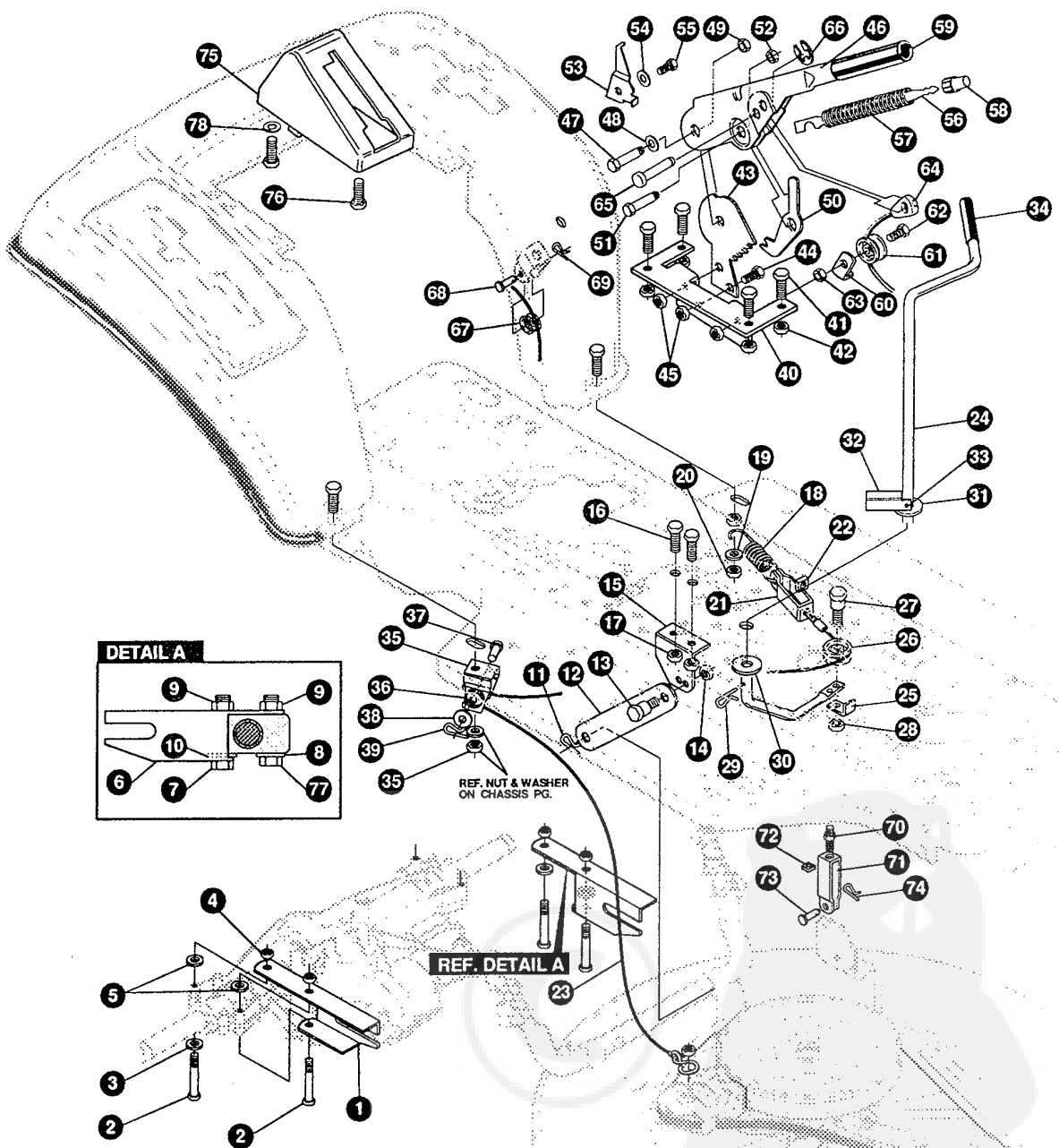
**ALL UNNUMBERED ITEMS ARE INTERCHANGEABLE WITH OPPOSITE SIDE**

329283 D

F  
L  
E

| KEY# | PART#  | DESCRIPTION                                    | QTY |
|------|--------|--|-----|
| 1    | *      | AXLE FRONT ASSEMBLY, SF, LONG .....            | 1   |
| 1-1  | 312280 | FRONT AXLE, ASSEMBLY, SF .....                 | 1   |
| 1-2  | 50546  | BEARING, FLANGE .759 ID X 1.002 OD X .75 ..... | 4   |
| 1-3  | 310368 | SPINDLE, ASSEMBLY, RH, LONG, SF .....          | 1   |
| 1-4  | 36625  | RING, RETEX .57 X.05 TRU 5133-75 .....         | 1   |
| 1-5  | 310367 | SPINDLE ASSEMBLY, LH, LONG, SF .....           | 1   |
| 1-6  | 327619 | ARM ASSEMBLY, SF, 4WS, FRONT STEERING .....    | 1   |
| 1-7  | 454565 | PIN, SPRING .250 DIA X 1.25 LONG .....         | 1   |
| 2    | 302688 | ASSEMBLY, TIE ROD, 19.31 LONG .....            | 1   |
| 3    | 180124 | SCREW, 3/8-16 X 1.25 HHC .....                 | 2   |
| 4    | 120382 | WASHER, REGSPTLK .393 X .68 X .10 .....        | 2   |
| 5    | 1499   | NUT, 3/8-16 REGHXCTRLK .....                   | 2   |
| 6    | 327399 | GEAR, SECTOR, SF, 2WS .....                    | 1   |
| 7    | 333289 | PLATE, SECTOR, SF, 4WS, BLACK .....            | 2   |
| 8    | 330021 | BUSHING, SECTOR GEAR, SF, 4WS .....            | 1   |
| 9    | 181643 | SCREW, 3/8-24 X 1.50 HHC .....                 | 1   |
| 10   | 845    | WASHER, FLAT .390 X 1.25 X .119 .....          | 2   |
| 11   | 412349 | NUT, 3/8-24 HXCTRLK .....                      | 1   |
| 12   | 328808 | DRAG LINK ASSEMBLY, 17.69 LONG .....           | 1   |
| 12-1 | 57158  | BALL JOINT, 3/8 THD, SHORT STUD .....          | 2   |
| 12-2 | 124925 | NUT, 3/8-24 REGHEXJAM .....                    | 2   |
| 12-3 | 56190  | DRAG LINK .....                                | 1   |
| 13   | 120382 | WASHER, REGSPTLK .393 X .68 X .10 .....        | 2   |
| 14   | 120369 | NUT, 3/8-24 REGHEX .....                       | 2   |
| 15   | 327395 | SHAFT, PIN-STEER, BLACK .....                  | 1   |
| 16   | 325692 | BEARING, FLANGE .50 ID X 1.370 OD X .....      | 1   |
| 17   | 326505 | SCREW, 1/4-20 X .75 (TQ 30-35 FT#) .....       | 2   |
| 18   | 46931  | NUT, 1/4-20 WDFL MAC-LOCK .....                | 2   |
| 19   | 20864  | RING, RET E .39 X .04 TRU 5133-50 .....        | 1   |
| 20   | *      | TIRE & RIM, PU 13 X 5.0 X 6 .....              | 2   |
| 20-1 | 24167  | VALVE STEM                                     |     |
| 20-2 | 39937  | RIM, WHEEL                                     |     |
| 20-3 | 314416 | BEARING, FLANGE                                |     |
| 20-4 | TIRE   | REFER TO TIRE TREAD PAGE                       |     |
| 21   | 642    | WASHER, FLAT .755 X 1.31 X .075 .....          | 4   |
| 22   | 36625  | RING, RETEX .57 X .05 TRU 5133-75 .....        | 2   |
| 23   | 40394  | HUB CAP, 1.500 ID X 7/8 LONG .....             | 2   |
| 24   | 180124 | SCREW, 3/8-16 X 1.25 HHC .....                 | 1   |
| 25   | 120394 | WASHER, FLAT .406 X .81 X .065 .....           | 2   |
| 26   | 45171  | NUT, 3/8-16 HWDWL WHIZ-LOCK .....              | 1   |

\* ORDER INDIVIDUAL PARTS - ASSEMBLY NOT AVAILABLE



**NOTE: ALWAYS USE ORIGINAL EQUIPMENT PARTS.**  
 Use of service/replacement parts other than original equipment parts may void your warranty.

**ALL UNNUMBERED ITEMS ARE INTERCHANGEABLE WITH OPPOSITE SIDE**

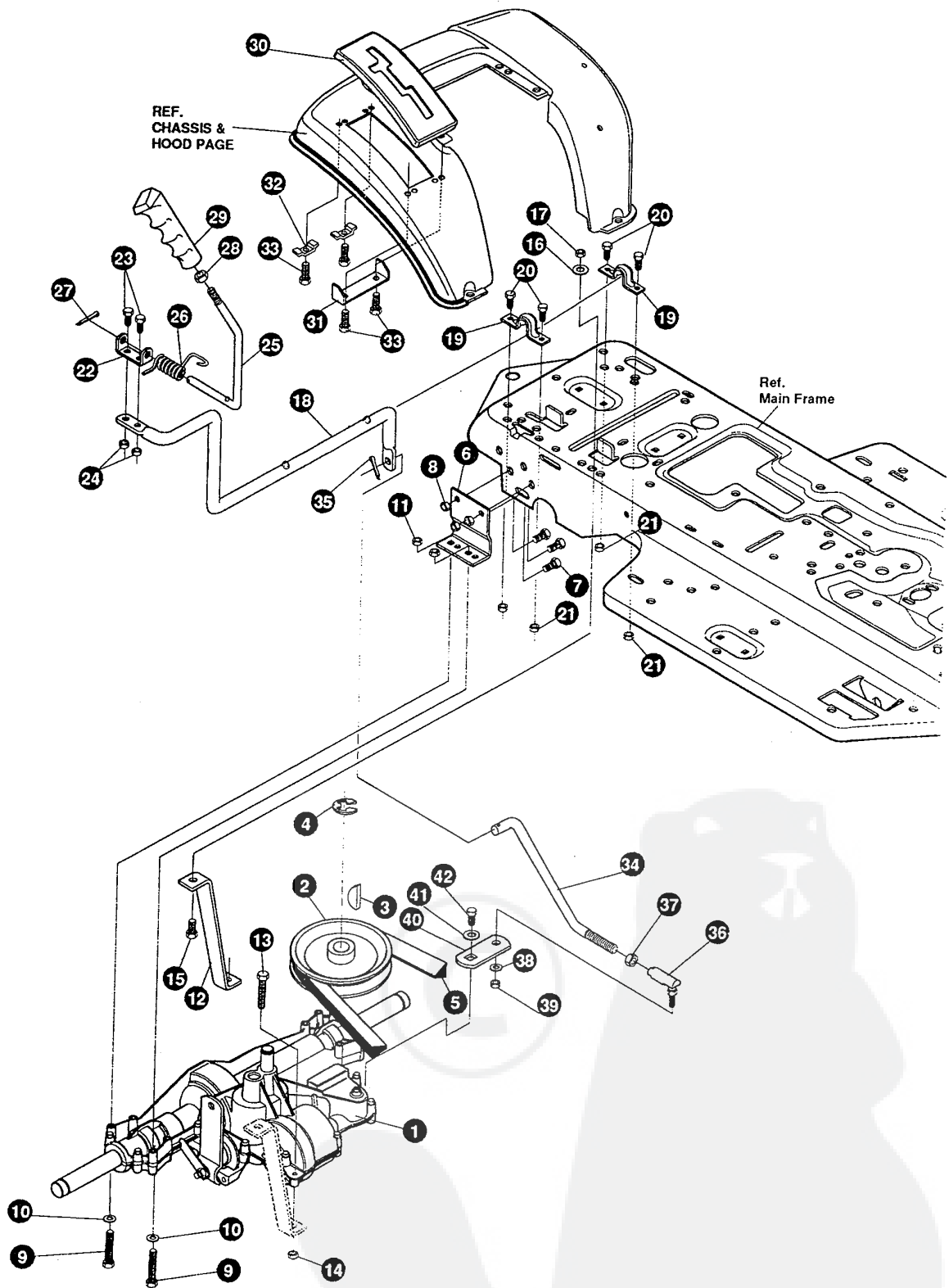
331231 D



# F3554-100

# MOWER SUSPENSION ASSEMBLY

| KEY# | PART#      | DESCRIPTION                        | QTY |
|------|------------|------------------------------------|-----|
| 1    | 321371     | BRACKET, REAR SUPPORT, RH          | 1   |
| 2    | 180113     | SCREW, 5/16-18 X 3.00 HHC          | 2   |
| 3    | 120393     | WASHER, FLAT .344 X .69 X .065     | 1   |
| 4    | 1498       | NUT, 5/16-18 REGHEXCTRLK           | 2   |
| 5    | 314702     | SPACER, SLEEVE .344 X 1.00 X .500  | 2   |
| 6    | 321370     | BRACKET, REAR SUPPORT, LH          | 1   |
| 7    | 180113     | SCREW, 5/16-18 X 3.00 HHC          | 1   |
| 8    | 120393     | WASHER, FLAT .344 X .69 X .065     | 1   |
| 9    | 1498       | NUT, 5/16-18 REGHEXCTRLK           | 2   |
| 10   | 314702     | SPACER, SLEEVE .344 X 1.00 X .500  | 1   |
| 11   | 56180      | PIN, HAIR .091 DIA X 1.62 LONG     | 1   |
| 12   | 323899     | BRACKET, LINK, LOWER, BLACK        | 1   |
| 13   | 313560     | BOLT, .500 X .225 HSSH, 5/16-18    | 1   |
| 14   | 1498       | NUT, 5/16-18 REGHEXCTRLK           | 1   |
| 15   | 320605     | BRACKET, LIFT, BAR, 30", SF        | 1   |
| 16   | 180077     | SCREW, 5/16-18 X .75 HHC           | 2   |
| 17   | 1498       | NUT, 5/16-18 REGHEXCTRLK           | 2   |
| 18   | 300473     | SPRING, TENSION 7.52 LONG+17 LB/IN | 1   |
| 19   | 418924     | WASHER, FLAT .344 X 1.13 X .062    | 1   |
| 20   | 1498       | NUT, 5/16-18 REGHEXCTRLK           | 1   |
| 21   | 9405       | CLEVIS, LIFT CABLE                 | 1   |
| 22   | 120372     | NUT, 1/4-20 REGSQ                  | 1   |
| 23   | 322261     | CABLE, CLUTCH, 31.31 LONG, (30"SF) | 1   |
| 24   | 328139     | LEVER, CLUTCH, SF, 30", SUS        | 1   |
| 25   | 1288       | BRACKET, CABLE RETAINER            | 1   |
| 26   | 48306      | PULLEY, METAL                      | 1   |
| 27   | 58336      | BOLT, .375 X .375 HSSH, 1/4-20     | 1   |
| 28   | 1502       | NUT, 1/4-20 REGHEXCTRLK            | 1   |
| 29   | 8260       | PIN, HAIR .091 DIA X 1.66 LONG     | 1   |
| 30   | 996425     | WASHER, FLAT .515 X .88 X .064     | 1   |
| 31   | 22265      | WASHER, FLAT .515 X 1.38 X .119    | 1   |
| 32   | 305225     | STOP, PTO ENGAGE                   | 1   |
| 33   | 326386     | PIN, SPRING.187 DIA X 1.13 LONG    | 1   |
| 34   | 331624     | KNOB, ROUND 1.50 DIA OR GRIP, SF   | 1   |
| 35   | 321295-853 | CLEVIS, PTO. PULLY                 | 1   |
| 36   | 48306      | PULLEY, METAL                      | 1   |
| 37   | 300317     | PIN, CLEVIS .375 DIA X .81 LONG    | 1   |
| 38   | 996416     | WASHER, FLAT .391 X 1.00 X .125    | 1   |
| 39   | 8260       | PIN, HAIR .091 DIA X 1.66 LONG     | 1   |
| 40   | 313926     | BRACKET, HEIGHT ADJUST             | 1   |
| 41   | 180077     | SCREW, 5/16-18 X .75 HHC           | 4   |
| 42   | 1498       | NUT, 5/16-18 REGHEXCTRLK           | 4   |
| 43   | 301238     | QUADRANT, HEIGHT ADJUST            | 1   |
| 44   | 180077     | SCREW, 5/16-18 X .75 HHC           | 2   |
| 45   | 1498       | NUT, 5/16-18 REGHEXCTRLK           | 2   |
| 46   | 322292-853 | HANDLE, LIFT SHORT (30" S.F.)      | 1   |
| 47   | 300171     | BOLT, .500 X .270 HSSH, 5/16-18    | 1   |
| 48   | 996418     | WASHER, FLAT .506 X .75 X .024     | 1   |
| 49   | 44108      | NUT, 5/16-18 HWDFLCTRLK            | 1   |
| 50   | 301239     | PAWL, SQUARE                       | 1   |
| 51   | 300171     | BOLT, .500 X .270 HSSH, 5/16-18    | 1   |
| 52   | 44108      | NUT, 5/16-18 HWDFLCTRLK            | 1   |
| 53   | 9435       | POINTER, HEIGHT ADJUST             | 1   |
| 54   | 138479     | WASHER, EXLK .195 X .41 X .03      | 1   |
| 55   | 35287      | SCREW, #8-32 X .38 HHWATAP         | 1   |
| 56   | 303027     | ROD, ACTUATOR-SHORT                | 1   |
| 57   | 58326      | SPRING, HEIGHT ADJUST              | 1   |
| 58   | 58325      | KNOB, HEIGHT ADJUST, PUSH BUTTON   | 1   |
| 59   | 58329      | GRIP, .750 OD W/ HOLE BLACK        | 1   |
| 60   | 9149       | BRACKET, CABLE RETAINER            | 1   |
| 61   | 48306      | PULLEY, METAL                      | 1   |
| 62   | 58336      | BOLT, .375 X .375 HSSH, 1/4-20     | 1   |
| 63   | 1502       | NUT, 1/4-20 REGHEXCTRLK            | 1   |
| 64   | 321430     | CABLE, LIFT, 21.50 - 30" SF        | 1   |
| 65   | 300310     | PIN, CLEVIS .310 DIA+.475 LONG     | 1   |
| 66   | 300311     | RING, RET E .31 X .25 TRU 5133-31  | 1   |
| 67   | 48306      | PULLEY, METAL                      | 1   |
| 68   | 300317     | PIN, CLEVIS .375 DIA X .81 LONG    | 1   |
| 69   | 8260       | PIN, HAIR .091 DIA X 1.66 LONG     | 1   |
| 70   | 120375     | NUT, 1/4-20 REGHEX                 | 1   |
| 71   | 9405       | CLEVIS, LIFT CABLE                 | 1   |
| 72   | 120372     | NUT, 1/4-20 REGSQ                  | 1   |
| 73   | 39522      | PIN, CLEVIS .312 X .812            | 1   |
| 74   | 121222     | PIN, COTTER .090 DIA X .75 LONG    | 1   |
| 75   | 300335     | LIFT COVER, 39", F5                | 1   |
| 76   | 300340     | SCREW, #10 X .75 HHPLAST, BLACK    | 3   |
| 77   | 180091     | SCREW, 5/16-18 X 2.50 HHC          | 1   |
| 78   | 120392     | WASHER, FLAT .281 X .63 X .065     | 1   |



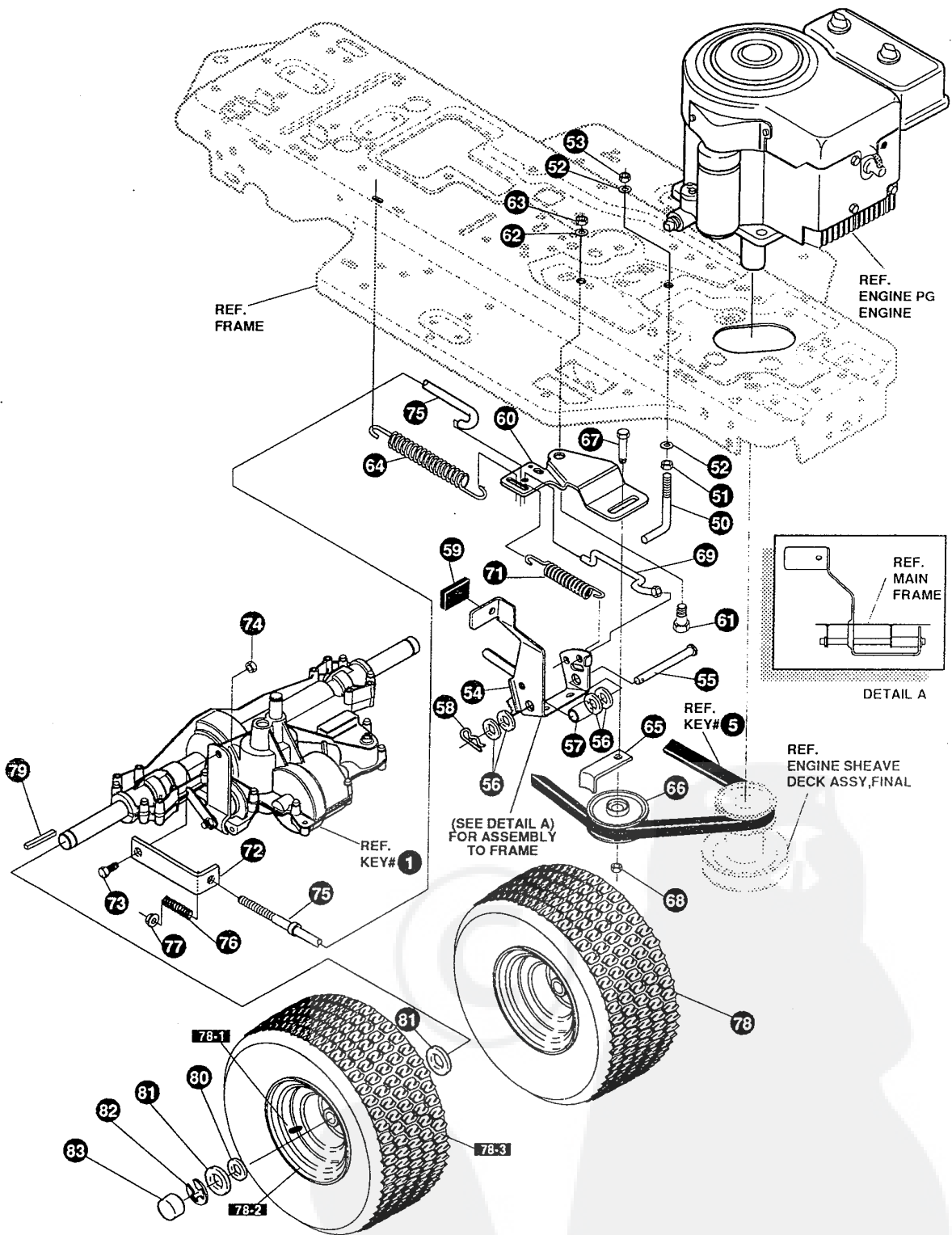
**NOTE: ALWAYS USE ORIGINAL EQUIPMENT PARTS.**  
 Use of service/replacement parts other than original  
 equipment parts may void your warranty.

**ALL UNNUMBERED  
 ITEMS ARE INTERCHANGEABLE  
 WITH OPPOSITE SIDE**

333359 A

| KEY# | PART#      | DESCRIPTION                                     | QTY |
|------|------------|---|-----|
| 1    | *          | TRANSAXLE, 940-007, 2WS, LF, SF .....           | 1   |
| 2    | 303109     | PULLEY, 6.6 OD, V4L, T/A .....                  | 1   |
| 3    | 50795      | KEY, HI-PRO 606 .75 DIA X .187 WD .....         | 1   |
| 4    | 22053      | RING, RETEX .58 X .035 TRU 5100-62 .....        | 1   |
| 5    | 54758      | BELT, V 4L, 82.00, SF, DRIVE .....              | 1   |
| 6    | 53768-853  | BRACKET, TRANSAXLE .....                        | 2   |
| 7    | 180077     | SCREW, 5/16-18 X .75 HHC .....                  | 6   |
| 8    | 1498       | NUT, 5/16-18 REGHEXCTRLK .....                  | 6   |
| 9    | 180091     | SCREW, 5/16-18 X 2.50 HHC .....                 | 4   |
| 10   | 120393     | WASHER, FLAT .344 X .69 X .065 .....            | 4   |
| 11   | 1498       | NUT, 5/16-18 REGHEXCTRLK .....                  | 4   |
| 12   | 323213     | BRACKET, T/A TORQ. BLACK .....                  | 1   |
| 13   | 180087     | SCREW, 5/16-18 X 2.00 HHC .....                 | 1   |
| 14   | 1498       | NUT, 5/16-18 REGHEXCTRLK .....                  | 1   |
| 15   | 180079     | SCREW, 5/16-18 X 1.00 HHC .....                 | 1   |
| 16   | 138485     | WASHER, EXLK .320 X .61 X .03 .....             | 1   |
| 17   | 1498       | NUT, 5/16-18 REGHEXCTRLK .....                  | 1   |
| 18   | 321849     | LEVER, SHIFT LOWER, SF, FENDER SHIFT, 915 ..... | 1   |
| 19   | 302760     | CLAMP .625 DIA .....                            | 2   |
| 20   | 180077     | SCREW, 5/16-18 X .75 HHC .....                  | 4   |
| 21   | 1498       | NUT, 5/16-18 REGHEXCTRLK .....                  | 4   |
| 22   | 310356     | BRACKET, PIVOT SHIFT LEVER .....                | 1   |
| 23   | 180020     | SCREW, 1/4-20 X .75 HHC .....                   | 2   |
| 24   | 1502       | NUT, 1/4-20 REGHEXCTRLK .....                   | 2   |
| 25   | 324798     | LEVER, SHIFT, UPPER, SOF, 1/2-13 .....          | 1   |
| 26   | 310265     | SPRING, TORSION .56 X .95 X .095 .....          | 1   |
| 27   | 137185     | PIN, COTTER .125 DIA X 1.00 LONG .....          | 1   |
| 28   | 120238     | NUT, 1/2-13 HEXJAM .....                        | 1   |
| 29   | 304729     | KNOB, ROUND 1.50 DIA OR GRIP, SF .....          | 1   |
| 30   | 311209     | COVER, PLASTIC, LF, P930/F4360-6 .....          | 1   |
| 31   | 311257-853 | BRACKET, COVER, F-5, FENDER SHIFT .....         | 1   |
| 32   | 1341       | CLAMP, SPRING 1.17"ID .....                     | 2   |
| 33   | 311331     | SCREW, 1/4-15 X .44/.53 HILOHWA .....           | 4   |
| 34   | 321844     | ROD, CONNECTING, SHIFT .....                    | 1   |
| 35   | 137185     | PIN, COTTER .125 DIA X 1.00 LONG .....          | 1   |
| 36   | 57158      | BALL JOINT, 3/8 THD, SHORT STUD .....           | 1   |
| 37   | 124925     | NUT, 3/8-24 REGHEXJAM .....                     | 1   |
| 38   | 120382     | WASHER, REGSPTLK .393 X .68 X .10 .....         | 1   |
| 39   | 120369     | NUT, 3/8-24 REGHEX .....                        | 1   |
| 40   | 323212     | BRACKET, SHIFT, SF, BLACK .....                 | 1   |
| 41   | 57157      | WASHER, .750 X .250 SP-TRANSAXLE .....          | 1   |
| 42   | 56255      | SCREW, 1/4-28 X .75 NYLHHC .....                | 1   |

\* CONTACT YOUR NEAREST TRANSAXLE DEALER FOR PARTS & SERVICE



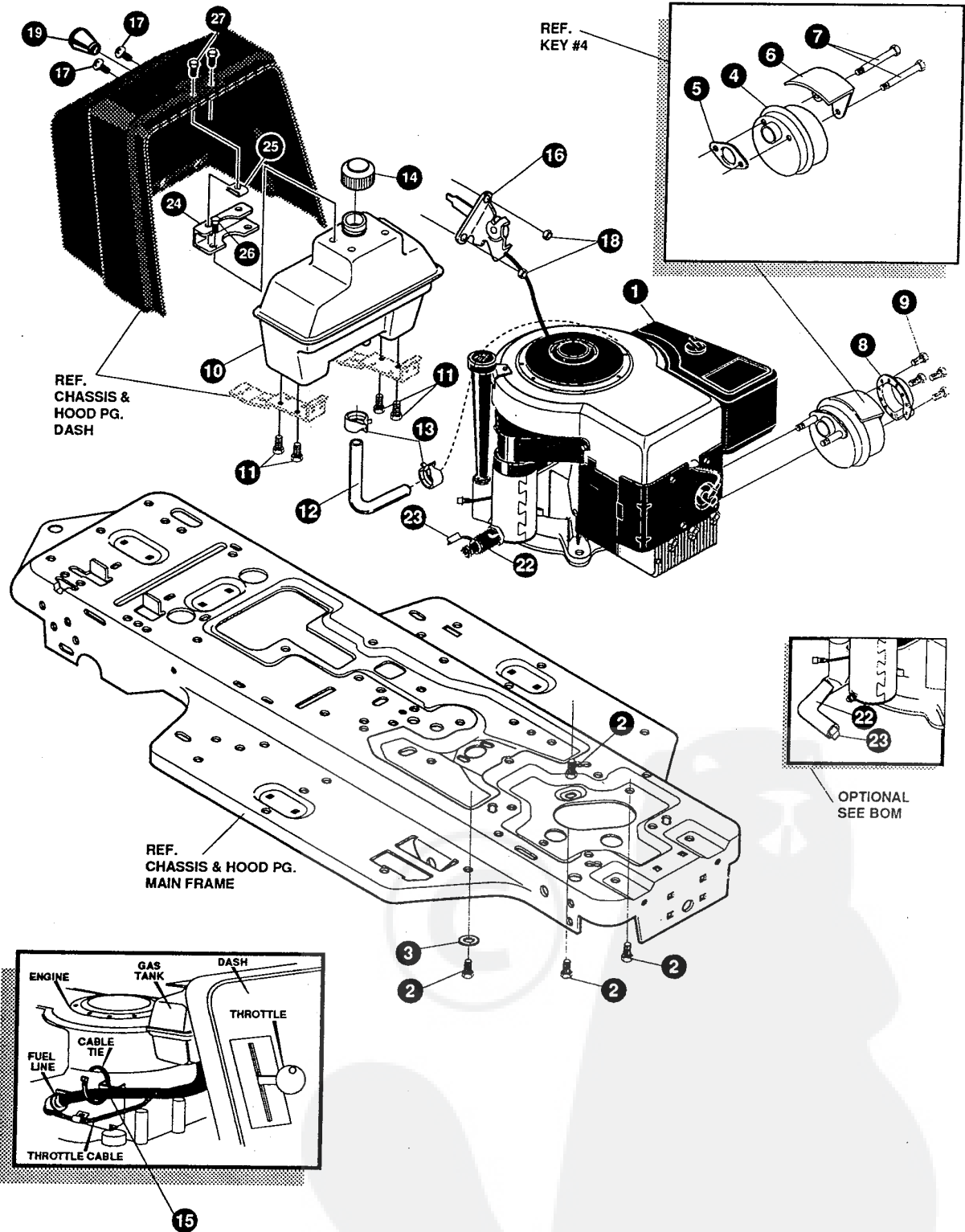
**NOTE: ALWAYS USE ORIGINAL EQUIPMENT PARTS.**  
 Use of service/replacement parts other than original equipment parts may void your warranty.

**ALL UNNUMBERED ITEMS ARE INTERCHANGEABLE WITH OPPOSITE SIDE**

333359 A

| KEY# | PART#  | DESCRIPTION                                | QTY |
|------|--------|--|-----|
| 50   | 49896  | BELT GUIDE .....                           | 1   |
| 51   | 271184 | NUT, 5/16-18 HEXKEPS .....                 | 1   |
| 52   | 120393 | WASHER, FLAT .344 X .69 X .065 .....       | 2   |
| 53   | 1498   | NUT, 5/16-18 REGHEXCTRLK .....             | 1   |
| 54   | 331836 | ASSEMBLY, PEDAL, BRAKE, CLUTCH, SF .....   | 1   |
| 55   | 319676 | PIN, CLEVIS .500 D X 4.87 LONG .....       | 1   |
| 56   | 2968   | WASHER, FLAT .504 X .75 X .059 .....       | 4   |
| 57   | 331972 | SPACER, SLEEVE .53 X .62 X 1.240 .....     | 1   |
| 58   | 56180  | PIN, HAIR .091 DIA X 1.62 LONG .....       | 1   |
| 59   | 48761  | PAD, CLUTCH/BRAKE PEDAL .....              | 1   |
| 60   | 321969 | IDLER ARM BRACKET, TRACTION, SF .....      | 1   |
| 61   | 329989 | BOLT, .625 X .135 HSH, 5/16-18 .....       | 1   |
| 62   | 45602  | WASHER, FLAT .333 X .87 X .119 .....       | 1   |
| 63   | 1498   | NUT, 5/16-18 REGHEXCTRLK .....             | 1   |
| 64   | 327867 | SPRING, 3/4 OD X 7.75 X .091 TENSION ..... | 1   |
| 65   | 39659  | RETAINER, BELT .....                       | 1   |
| 66   | 35374  | PULLEY, IDLER, V4L, 3.06 X .62 .....       | 1   |
| 67   | 45892  | BOLT, 3/8-16 X 1.50 CARRSN .....           | 1   |
| 68   | 1499   | NUT, 3/8-16 REGHXCTRLK .....               | 1   |
| 69   | 333175 | CLUTCH ROD ASSEMBLY, .268 DIA 3.92 .....   | 1   |
| 71   | 326780 | SPRING, 3/8 OD X 2.18 X .055 TENSION ..... | 1   |
| 72   | 323210 | BRACKET, TRACTION, SF, BLACK .....         | 1   |
| 73   | 46824  | BOLT, .500 X .188 HSH, 5/16-18 .....       | 1   |
| 74   | 1498   | NUT, 5/16-18 REGHEXCTRLK .....             | 1   |
| 75   | 333263 | ROD, BRAKE 940, BLACK .....                | 1   |
| 76   | 313881 | CLUTCH SPRING .....                        | 1   |
| 77   | 50352  | NUT, 1/4-20 WDFLLK, TOPLOCK .....          | 1   |
| 78   | *      | TIRE & RIM, PU 18 X 6.5 X 8 .....          | 2   |
| 78-1 | 21467  | VALVE STEM                                 |     |
| 78-2 | 36182  | RIM, WHEEL                                 |     |
| 78-3 | TIRE   | REFER TO TIRE TREAD PAGE                   |     |
| 79   | 52928  | KEY, SQUARE .187 SQUARE X 2.25 LONG .....  | 2   |
| 80   | 642    | WASHER, FLAT .755 X 1.31 X .075 .....      | 4   |
| 81   | 42815  | WASHER, FLAT .755 X 1.53 X .07 .....       | 2   |
| 82   | 36625  | RING, RETEX .57 X .05 TRU 5133-75 .....    | 2   |
| 83   | 40394  | HUB CAP, 1.500 ID X 7/8 LONG .....         | 2   |

\* ORDER INDIVIDUAL PARTS - ASSEMBLY NOT AVAILABLE



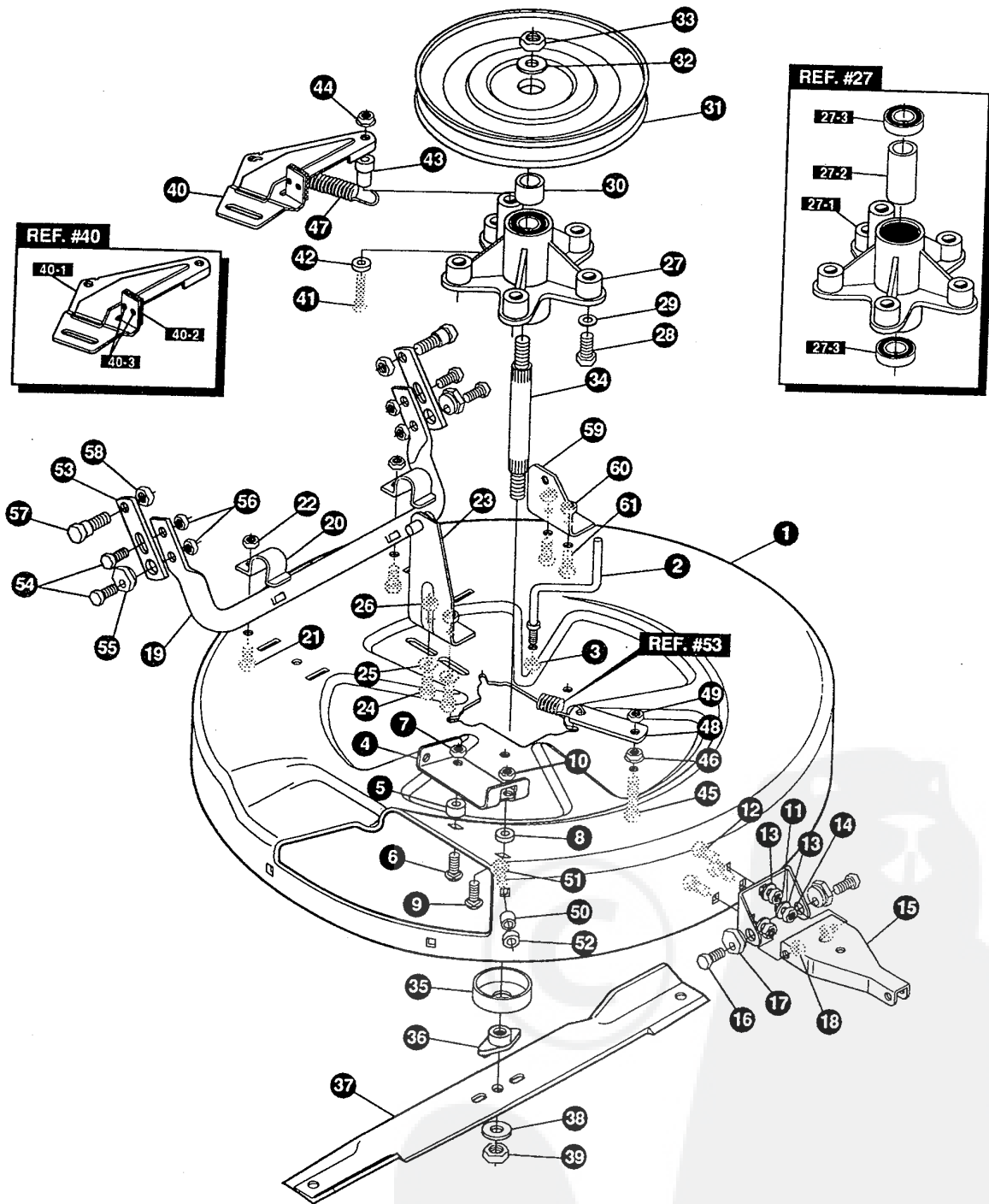
**NOTE: ALWAYS USE ORIGINAL EQUIPMENT PARTS.**  
 Use of service/replacement parts other than original equipment parts may void your warranty.

**ALL UNNUMBERED ITEMS ARE INTERCHANGEABLE WITH OPPOSITE SIDE**

331113 C

| KEY# | PART#      | DESCRIPTION                               | QTY   |
|------|------------|---|-------|
| 1    | *          | ENGINE, 10-12HP, B&S, 3A 1                |       |
| 2    | 50947      | SCREW, 3/8-16 X 1.25 WAHHTAP .....        | 4     |
| 3    | 138489     | WASHER, EXLK .384 X .69 X .04 .....       | 1     |
| 4    | 57908      | MUFFLER-DOMESTIC/EXPORT, ROUND .....      | 1     |
| 5    | 46708      | GASKET, MUFFLER .....                     | 1     |
| 6    | 54767      | SHIELD, HEAT, FOR ROUND MUFFLER .....     | 1     |
| 7    | 54980      | SCREW, 5/16-18 X 3.50 HHC .....           | 2     |
| 8    | 56472      | DEFLECTOR SIDE OUT (BS222573) .....       | 1     |
| 9    | 35287      | SCREW, #8-32 X .38 HHWATAP .....          | 4     |
| 10   | 314989     | TANK, FUEL 1 GALLON, CLEAR .....          | 1     |
| 11   | 300303     | SCREW, .25 X .75 X .51 HHWAPLASTITE ..... | 4     |
| 12   | 42258      | TUBING, .25 X .50 X BULK GAS LINE .....   | 12.0" |
| 13   | 47345      | CLAMP, HOSE SCREW TYPE .....              | 2     |
| 14   | 46704      | CAP, GAS 1-1/2-7 THD, BLACK .....         | 1     |
| 15   | 57444      | TIE, CABLE BLACK NYLON, 5.62 LONG .....   | 1     |
| 16   | 56534      | CONTROL, THROTTLE, LF, 12HP, 20.5 .....   | 1     |
| 17   | 155941     | SCREW, 10-24 X .63 PHFLTMA .....          | 2     |
| 18   | 308459     | NUT, #10-24 HXHDNYLK .....                | 2     |
| 19   | 50607      | KNOB, ROUND THROTTLE, BLACK .....         | 1     |
| 22   | 325547     | OIL DRAIN VALVE OR TUBE .....             | 1     |
| 23   | 327422     | CAP OR PLUG FOR OIL DRAIN .....           | 1     |
| 24   | 328942-853 | CENTER SUPPORT, PLASTIC DASH .....        | 1     |
| 25   | 328685     | TINNERMAN CLIP, C8114-1024-4 .....        | 2     |
| 26   | 300303     | SCREW, .25 X .75 X .51 HHWAPLASTITE ..... | 2     |
| 27   | 274707     | SCREW, 10-24 X .50 WAHMA .....            | 2     |

\* SEE ENGINE MANUAL



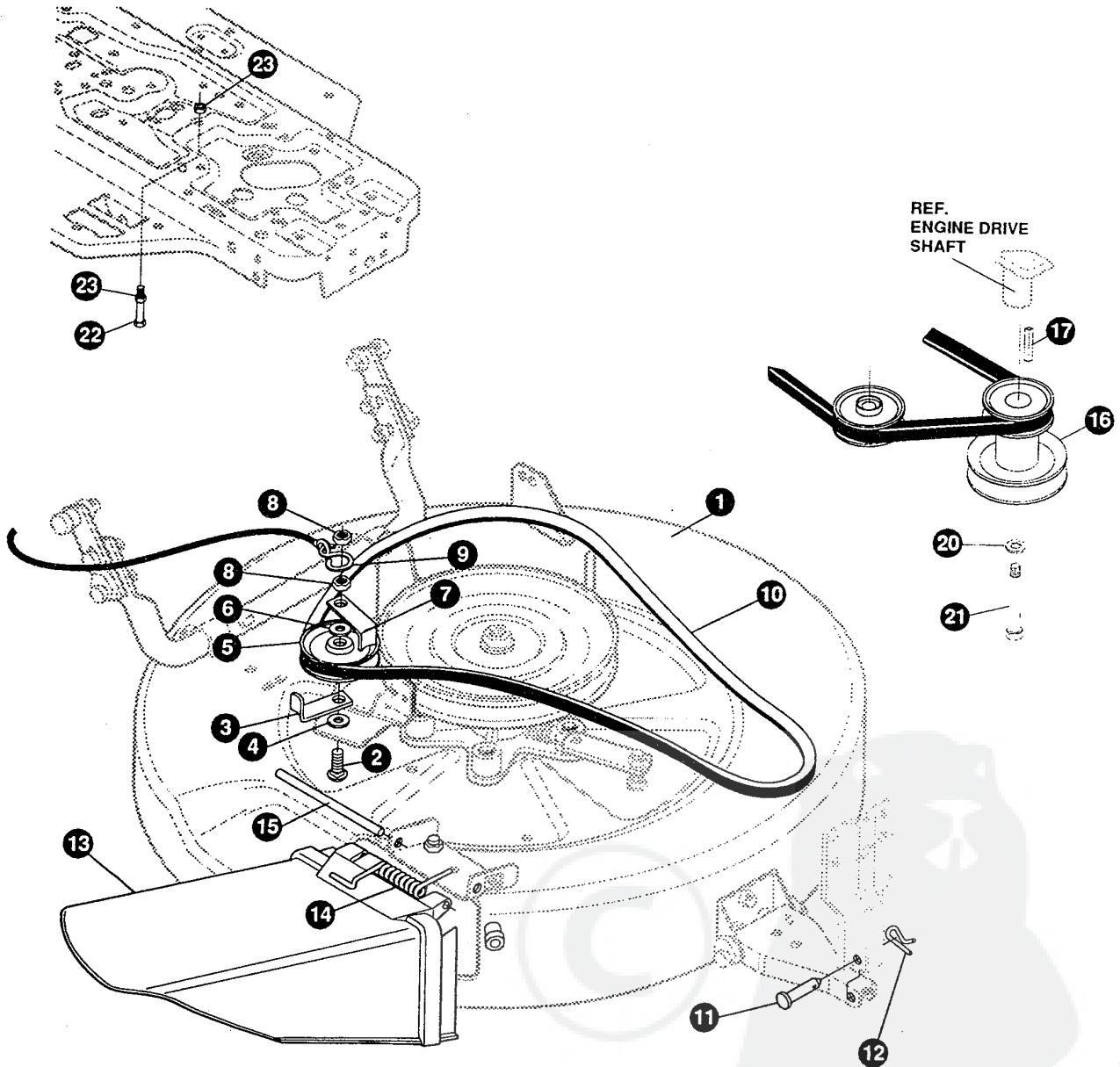
**NOTE: ALWAYS USE ORIGINAL EQUIPMENT PARTS.**  
 Use of service/replacement parts other than original equipment parts may void your warranty.

**ALL UNNUMBERED ITEMS ARE INTERCHANGEABLE WITH OPPOSITE SIDE**

323276 C



| KEY# | PART#  | DESCRIPTION                              | QTY |
|------|--------|--|-----|
| 1    | 321982 | DECK, MOWER, 30", SF, RER .....          | 1   |
| 2    | 57318  | GUIDE, BELT 5/16-18 THD .....            | 1   |
| 3    | 1498   | NUT, 5/16-18 REGHEXCTRLK .....           | 1   |
| 4    | 317017 | BRACKET, CHUTE MOUNT, BLACK .....        | 1   |
| 5    | 314702 | SPACER, SLEEVE .344 X 1.00 X .500 .....  | 1   |
| 6    | 120230 | BOLT, 5/16-18 X 1.25 CARRLN .....        | 1   |
| 7    | 1498   | NUT, 5/16-18 REGHEXCTRLK .....           | 1   |
| 8    | 45602  | WASHER, FLAT .333 X .87 X .119 .....     | 1   |
| 9    | 126216 | BOLT, 5/16-18 X .75 CARRLN .....         | 1   |
| 10   | 1498   | NUT, 5/16-18 REGHEXCTRLK .....           | 1   |
| 11   | 311237 | BRACKET, MOUNTING, FRONT .....           | 1   |
| 12   | 57072  | BOLT, 5/16-18 X .63 CARRLN .....         | 3   |
| 13   | 120393 | WASHER, FLAT .344 X .69 X .065 .....     | 3   |
| 14   | 1498   | NUT, 5/16-18 REGHEXCTRLK .....           | 3   |
| 15   | 311236 | BRACKET, BAR, TOW, FRONT .....           | 1   |
| 16   | 180079 | SCREW, 5/16-18 X 1.00 HHC .....          | 2   |
| 17   | 58247  | NUT, ADJUST .....                        | 2   |
| 18   | 1498   | NUT, 5/16-18 REGHEXCTRLK .....           | 2   |
| 19   | 313372 | ASSEMBLY, TUBE, PIVOT .....              | 1   |
| 20   | 310672 | SUPPORT, PIVOT TUBE, BLACK .....         | 2   |
| 21   | 180077 | SCREW, 5/16-18 X .75 HHC .....           | 2   |
| 22   | 1498   | NUT, 5/16-18 REGHEXCTRLK .....           | 2   |
| 23   | 314119 | ASSEMBLY, LIFT BRACKET .....             | 1   |
| 24   | 180077 | SCREW, 5/16-18 X .75 HHC .....           | 2   |
| 25   | 120393 | WASHER, FLAT .344 X .69 X .065 .....     | 2   |
| 26   | 1498   | NUT, 5/16-18 REGHEXCTRLK .....           | 2   |
| 27   | 313588 | ASSEMBLY, QUILL .....                    | 1   |
| 27-1 | 314272 | QUILL, MACHINED CASTING .....            | 1   |
| 27-2 | 314274 | TUBE, SPACER, STEEL .....                | 1   |
| 27-3 | 313576 | BEARING, BALL 6204-2AA-C3 .....          | 2   |
| 29   | 138485 | WASHER, EXLK .320 X .61 X .03 .....      | 5   |
| 30   | 321146 | SPACER, SLEEVE .790 X 1.250 X .500 ..... | 1   |
| 31   | 314273 | PULLEY ASSEMBLY .....                    | 1   |
| 32   | 22265  | WASHER, FLAT .515 X 1.38 X .119 .....    | 1   |
| 33   | 1500   | NUT, 1/2-13 REGHCTRLK .....              | 1   |
| 34   | 321144 | SHAFT, QUILL 30" MOWER - SF .....        | 1   |
| 35   | 313577 | SHIELD, DUST, BEARING .....              | 1   |
| 36   | 313584 | HUB, BLADE ADAPTOR .....                 | 1   |
| 37   | 329988 | BLADE, 30", TD MOWER, 0.7 WING .....     | 1   |
| 38   | 22265  | WASHER, FLAT .515 X 1.38 X .119 .....    | 1   |
| 39   | 1500   | NUT, 1/2-13 REGHCTRLK .....              | 1   |
| 40   | 12229  | BRACKET, IDLER ASSEMBLY .....            | 1   |
| 40-1 | 313510 | BRACKET, ARM, IDLER .....                | 1   |
| 40-2 | 306973 | BRAKE PAD - HARD-NF343 (X-31) .....      | 1   |
| 40-3 | 41601  | RIVET, OVSET .187 DIA X .50 LONG .....   | 2   |
| 41   | 180113 | SCREW, 5/16-18 X 3.00 HHC .....          | 1   |
| 42   | 45602  | WASHER, FLAT .333 X .87 X .119 .....     | 1   |
| 43   | 321145 | SPACER, SLEEVE .322 X .63 X 2.310 .....  | 1   |
| 44   | 44108  | NUT, 5/16-18 HWDFLCTRLK .....            | 1   |
| 45   | 180081 | SCREW, 5/16-18 X 1.25 HHC .....          | 1   |
| 46   | 44108  | NUT, 5/16-18 HWDFLCTRLK .....            | 1   |
| 47   | 35410  | SPRING, .071 X .62 X 4.37 .....          | 1   |
| 48   | 302357 | LINK .....                               | 1   |
| 49   | 1498   | NUT, 5/16-18 REGHEXCTRLK .....           | 1   |
| 50   | 50520  | SPACER .....                             | 1   |
| 51   | 126216 | BOLT, 5/16-18 X .75 CARRLN .....         | 1   |
| 52   | 1498   | NUT, 5/16-18 REGHEXCTRLK .....           | 1   |
| 53   | 314099 | BRACKET, BAR, REAR STABILIZER .....      | 2   |
| 54   | 180079 | SCREW, 5/16-18 X 1.00 HHC .....          | 4   |
| 55   | 58247  | NUT, ADJUST .....                        | 2   |
| 56   | 1498   | NUT, 5/16-18 REGHEXCTRLK .....           | 4   |
| 57   | 51940  | BOLT, .500 X .437 HHSH, 3/8-16 .....     | 2   |
| 58   | 1499   | NUT, 3/8-16 REGHXCTRLK .....             | 2   |
| 59   | 320605 | BRACKET, LIFT BAR 30" SF .....           | 1   |
| 60   | 1498   | NUT, 5/16-18 REGHEXCTRLK .....           | 2   |
| 61   | 180077 | SCREW, 5/16-18 X .75 HHC .....           | 2   |

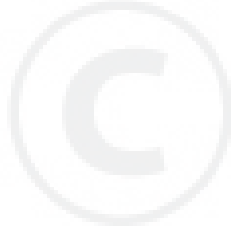


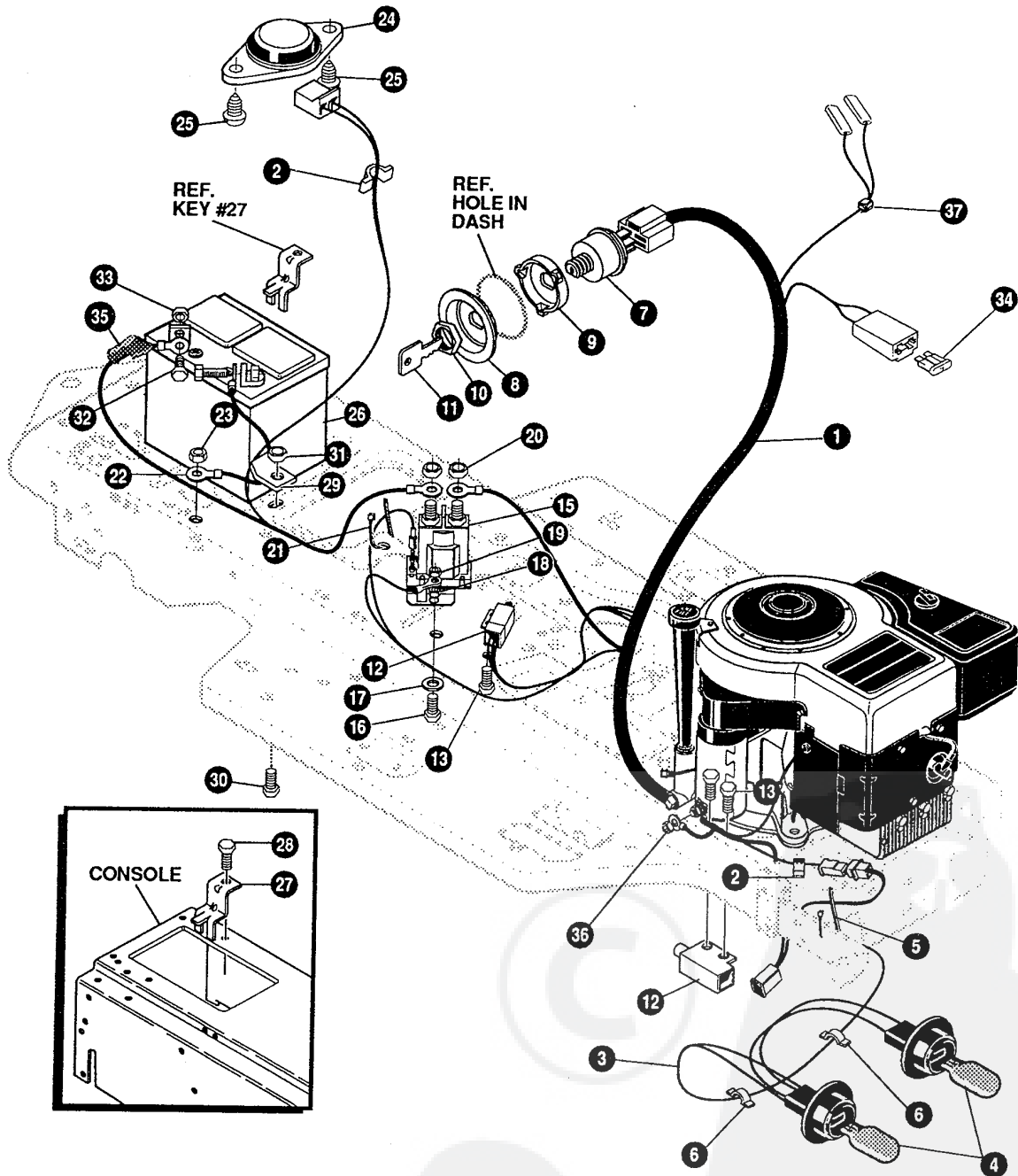
**NOTE: ALWAYS USE ORIGINAL EQUIPMENT PARTS.**  
Use of service/replacement parts other than original equipment parts may void your warranty.

**ALL UNNUMBERED  
ITEMS ARE INTERCHANGEABLE  
WITH OPPOSITE SIDE**

325643 C

| KEY# | PART#  | DESCRIPTION                               | QTY |
|------|--------|---|-----|
| 1    | 328711 | ASSEMBLY, DECK, PRE-PAINT 30" .....       | 1   |
| 2    | 301340 | BOLT, 3/8-16 X 2.50 CARR .....            | 1   |
| 3    | 39659  | RETAINER, BELT .....                      | 1   |
| 4    | 22265  | WASHER, FLAT .515 X 1.38 X .119 .....     | 1   |
| 5    | 45074  | PULLEY, IDLER V4L, 3.06 X .72 .....       | 1   |
| 6    | 25210  | WASHER, FLAT .386 X 1.25 X .09 .....      | 1   |
| 7    | 39659  | RETAINER, BELT .....                      | 1   |
| 8    | 1499   | NUT, 3/8-16 REGHXCTRLK .....              | 2   |
| 9    | 310734 | HOOK, S, 10 GA. STEEL .....               | 1   |
| 10   | 321147 | BELT, V 4L, 54.0 - MOD SEC .....          | 1   |
| 11   | 47817  | PIN, CLEVIS LONG .....                    | 1   |
| 12   | 56180  | PIN, HAIR .091 DIA X 1.62 LONG .....      | 1   |
| 13   | 315314 | CHUTE DEFLECTOR, 30" DECK .....           | 1   |
| 14   | 314975 | SPRING, TORSION, CHUTE DEFLECTOR .....    | 1   |
| 15   | 304424 | ROD, PIVOT, DECK .312 D X 7.25 .....      | 1   |
| 16   | 328035 | PULLEY, ENGINE, 2.94OF/5.5D/3.00D .....   | 1   |
| 17   | 26655  | KEY, SQUARE .250 SQUARE X 2.50 LONG ..... | 1   |
| 20   | 120383 | WASHER, REGSPTLK .459 X .78 X .12 .....   | 1   |
| 21   | 182764 | SCREW, 7/16-20 X 3.25 HHC .....           | 1   |
| 22   | 49930  | SCREW, 3/8-16 X 7.50 HHC .....            | 1   |
| 23   | 1499   | NUT, 3/8-16 REGHXCTRLK .....              | 2   |





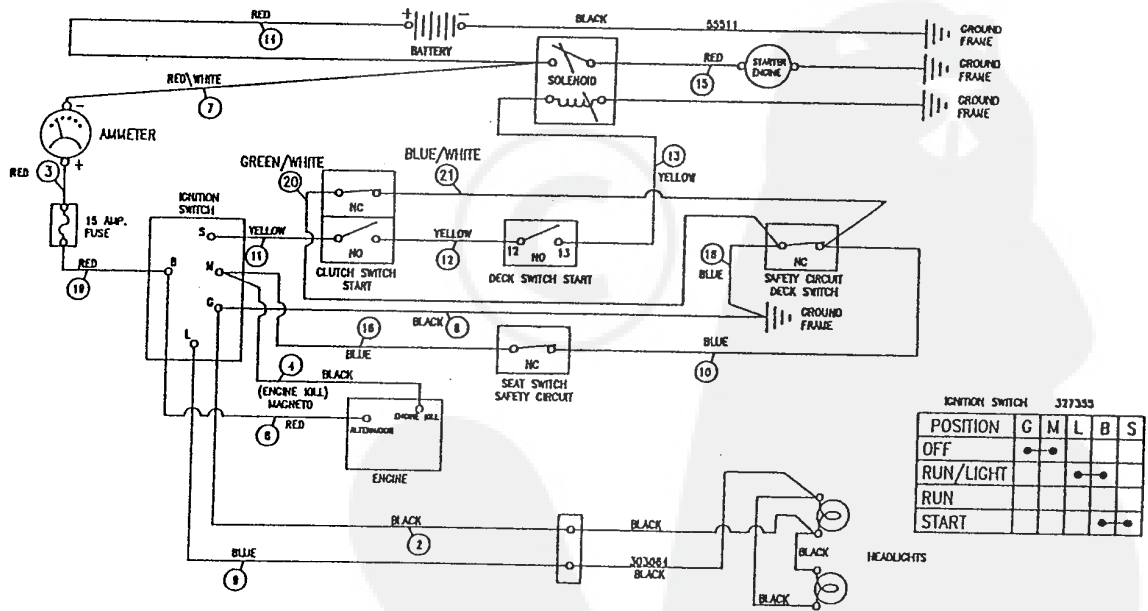
**NOTE: ALWAYS USE ORIGINAL EQUIPMENT PARTS.**  
 Use of service/replacement parts other than original equipment parts may void your warranty.

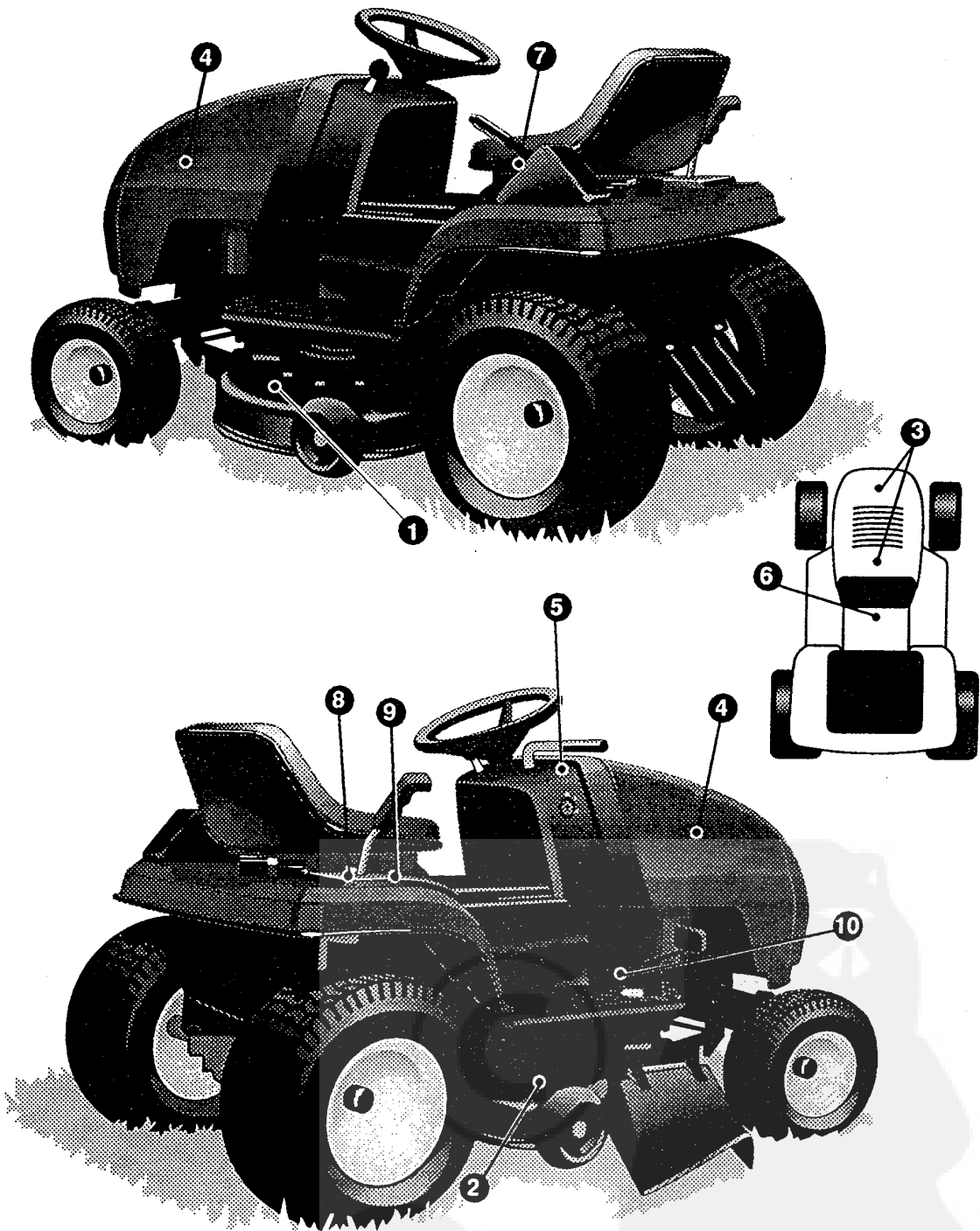
**ALL UNNUMBERED ITEMS ARE INTERCHANGEABLE WITH OPPOSITE SIDE**

332051 E

| KEY# | PART#  | DESCRIPTION                           | QTY |
|------|--------|---------------------------------------|-----|
| 1    | 331453 | WIRE HARNESS, SF, 8-12HP, B&S, W/AMM  | 1   |
| 2    | 41482  | PRESS CLIP, 1.380 LONG .255 ID        | 2   |
| 3    | 303064 | ASSEMBLY, LIGHT WIRE-1/4 TURN         | 1   |
| 4    | 52572  | BULB, HEADLAMP                        | 2   |
| 5    | 57444  | TIE, CABLE BLACK NYLON, 5.62 LONG     | 1   |
| 6    | 41482  | PRESS CLIP, 1.380 LONG .255 ID        | 2   |
| 7    | 327354 | SWITCH, IGNITION & LIGHTS DELTA       | 1   |
| 8    | 327234 | CUP-IGNITION (OFF-LIGHT-ON-START)     | 1   |
| 9    | 327238 | CAP-IGNITION INSIDE SEE DWG 321692    | 1   |
| 10   | 327352 | NUT, 5/8-8 ACME DELTA FOR BOOT        | 1   |
| 11   | 327350 | KEY, IGNITION                         | 1   |
| 12   | 57476  | SWITCH, SCREW MOUNT, DP, NC, NO BLACK | 2   |
| 13   | 300302 | SCREW, #10 X .50 HHTAPPST, BLACK      | 4   |
| 15   | 53716  | SOLENOID                              | 1   |
| 16   | 187745 | SCREW, 1/4-20 X .75 HXSEMMA           | 2   |
| 17   | 1084   | WASHER, FLAT .281 X 1.00 X .063       | 1   |
| 18   | 1502   | NUT, 1/4-20 REGHEXCTRLK               | 2   |
| 19   | 271172 | NUT, 1/4-20 REGHEXKEPS                | 1   |
| 20   | 271187 | NUT, 5/16-24 HKEPS                    | 2   |
| 21   | 57444  | TIE, CABLE BLACK NYLON, 5.62 LONG     | 1   |
| 22   | 55511  | WIRE, GROUND, 12.5"                   | 1   |
| 23   | 271184 | NUT, 5/16-18 HEXKEPS                  | 1   |
| 24   | 57547  | SWITCH, SEAT                          | 1   |
| 25   | 160505 | SCREW, 1/4-20 X .38 PHPNHMA           | 2   |
| 26   | 92693  | BATTERY, 12V                          | 1   |
| 27   | 329175 | BATTERY BRACKET                       | 1   |
| 28   | 995346 | SCREW, 1/4-20 X .50 WAHHTAP           | 1   |
| 29   | 9149   | BRACKET, CABLE RETAINER               | 1   |
| 30   | 187745 | SCREW, 1/4-20 X .75 HXSEMMA           | 1   |
| 31   | 1502   | NUT, 1/4-20 REGHEXCTRLK               | 1   |
| 32   | 180020 | SCREW, 1/4-20 X .75 HHC               | 2   |
| 33   | 271172 | NUT, 1/4-20 REGHEXKEPS                | 2   |
| 34   | 302031 | FUSE SPADE TYPE 32V 15A               | 1   |
| 35   | 308201 | INSULATOR, BATTERY BOOT EURO          | 1   |
| 36   | 124818 | NUT, 1/4-20 REGHXJAM                  | 1   |
| 37   | 322298 | SPLICER                               | 1   |

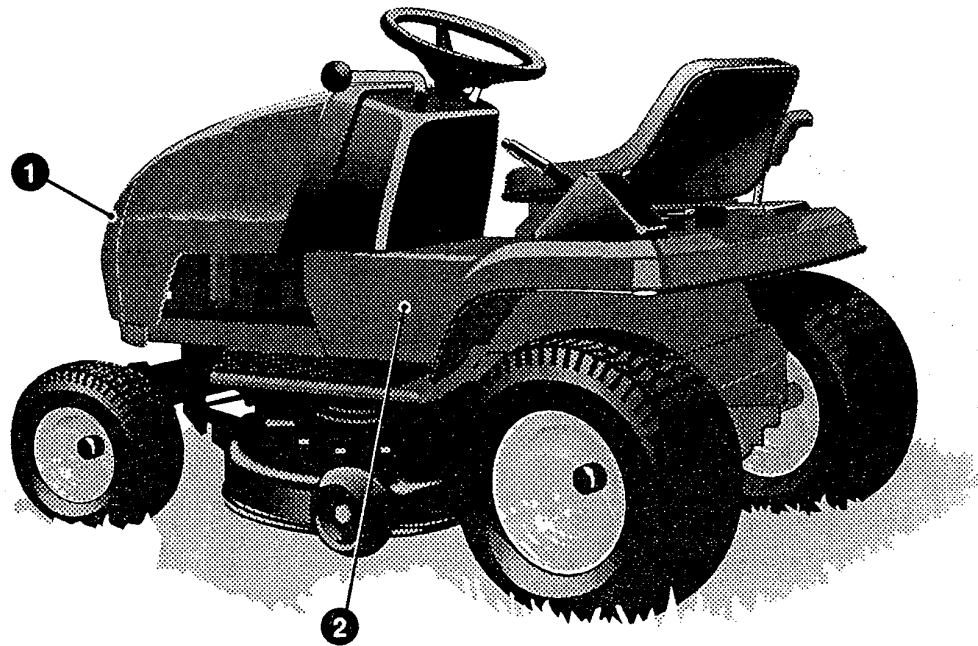
SCHEMATIC DRAWING



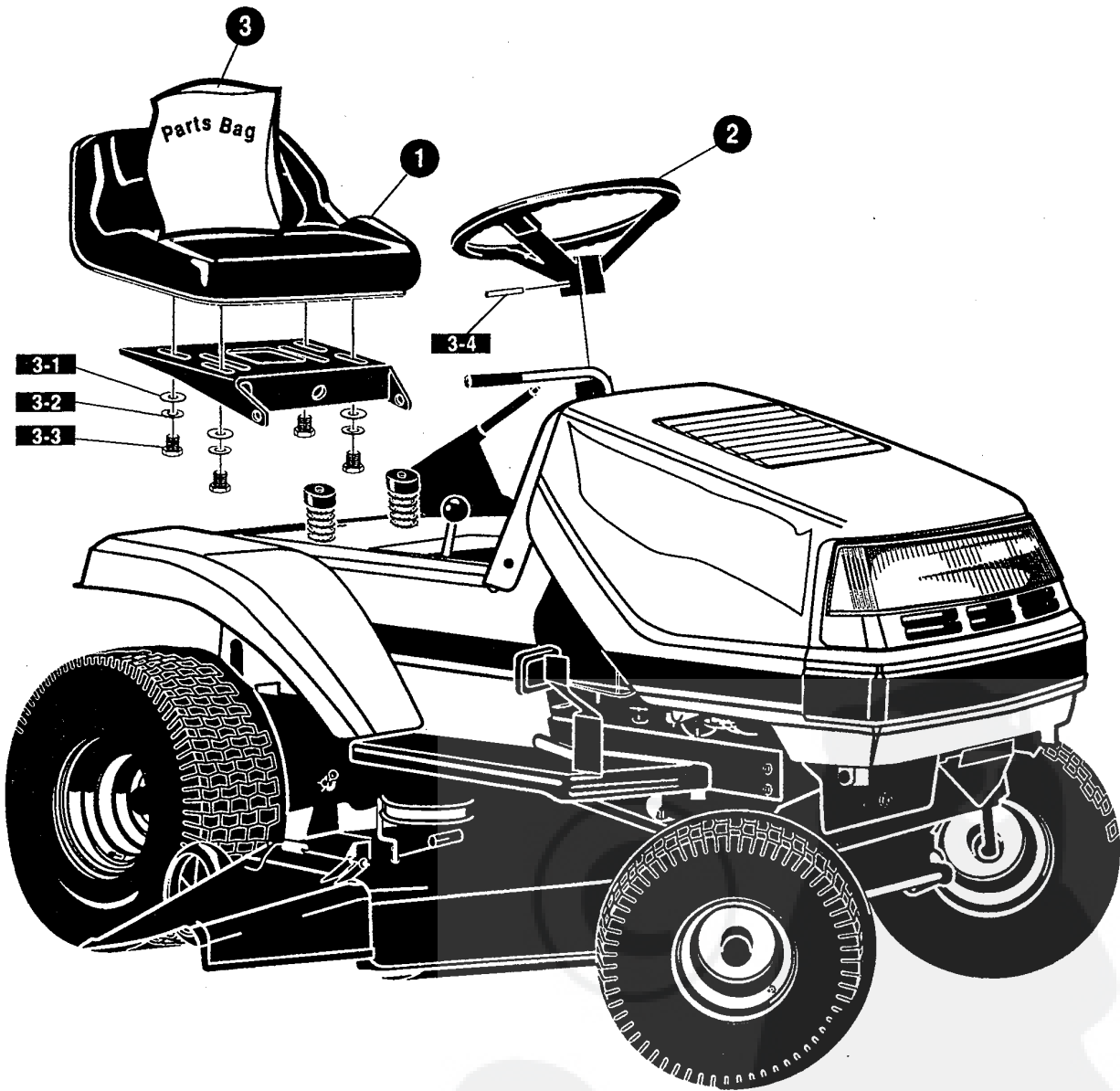


| KEY# | PART#  | DESCRIPTION                        | QTY |
|------|--------|------------------------------------|-----|
| 1    | 402700 | DECAL, CAUTION, DECK, LH .....     | 1   |
| 2    | 402701 | DECAL, CAUTION, DECK, RH .....     | 1   |
| 3    | 305602 | FOAM, HOOD 4X15 .....              | 2   |
| 4    | 305603 | PAD, 18 X 6 FOAM HOOD .....        | 2   |
| 5    | 329371 | DECAL, DASH, PLAIN, EXPORT .....   | 1   |
| 6    | 402747 | DECAL, CONSOLE, SYMBOLIC, SF ..... | 1   |
| 7    | 402214 | DECAL, HEIGHT ADJUST .....         | 1   |
| 8    | 311394 | DECAL, SHIFT REVERSE/NEUTRAL ..... | 1   |
| 9    | 331013 | DECAL, SHIFTER POSITION .....      | 1   |
| 10   | 402702 | DECAL, BRAKE/CLUTCH .....          | 1   |

335087 B



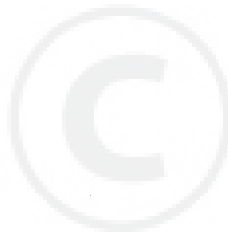
| KEY# | PART#  | DESCRIPTION                     | QTY |          |
|------|--------|---------------------------------|-----|----------|
| 1    | 333276 | FOIL, LENS REFLECTOR G-24 ..... | 1   |          |
| 2    | 402725 | NAMEPLATE, 12/30 CHROME .....   | 2   | 335088 A |



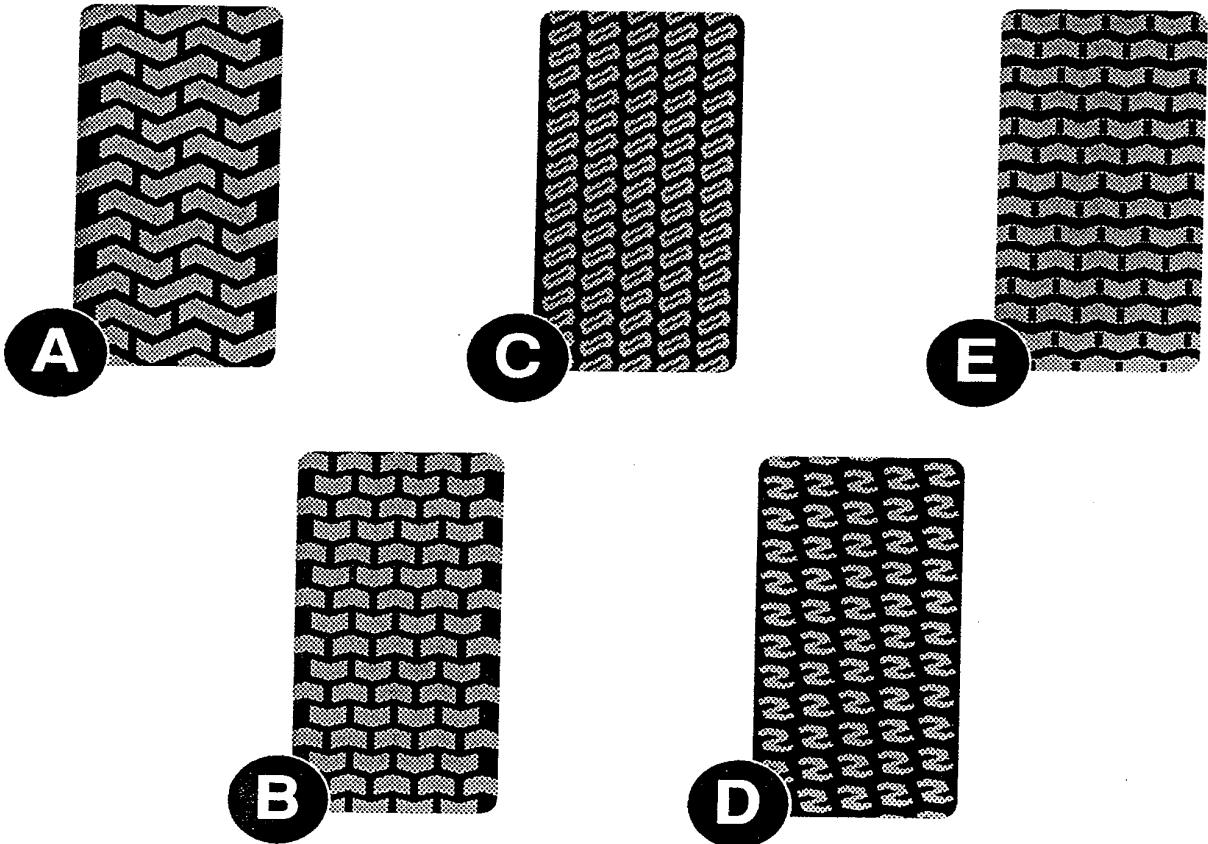
330669 C



| KEY# | PART#  | DESCRIPTION                             | QTY |
|------|--------|---|-----|
| 1    | 310384 | SEAT, MICHIGAN GEN, W/SWITCH HOLE ..... | 1   |
| 2    | 330847 | STEERING WHEEL .....                    | 1   |
| 3    | 323760 | PARTS BAG, ASSEMBLY SEAT/STEER .....    | 1   |
| 3-1  | 120393 | WASHER, FLAT .344 X .69 X .065 .....    | 4   |
| 3-2  | 120638 | WASHER, HVSP TLK .328 X .60 X .09 ..... | 4   |
| 3-3  | 180077 | SCREW, 5/16-18X .75 HHC .....           | 4   |
| 3-4  | 456378 | PIN, SPRING .250 DIA X 2.00 LONG .....  | 1   |



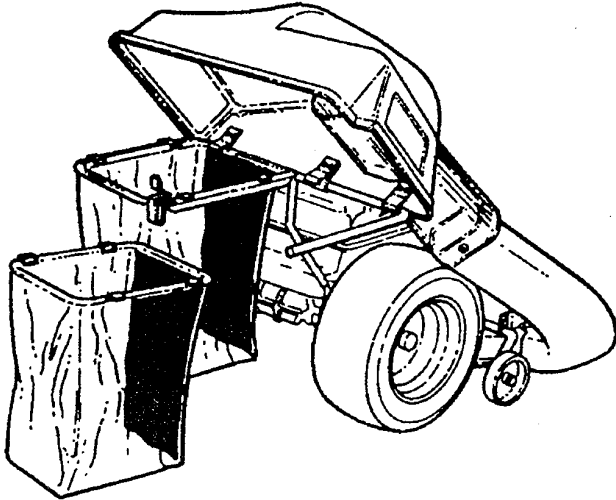
# TREAD PATTERNS



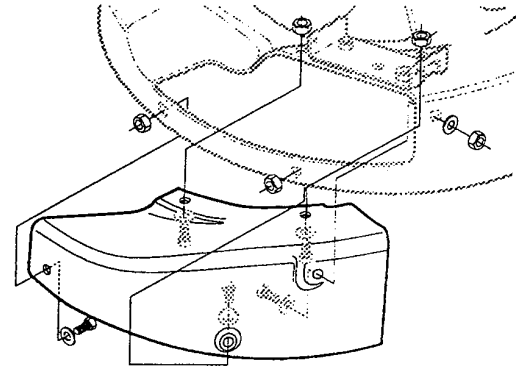
| TIRE SIZE       | "A"    | "B"    | "C"    | "D"    | "E"    |
|-----------------|--------|--------|--------|--------|--------|
| 11 X 4.00 - 5   | 42295  | 319679 |        |        |        |
| 13 X 5.00 - 6   | 41060  | 319680 |        |        |        |
| 15 X 6.00 - 6   | 39830  | 316702 | 301140 | 313952 |        |
| 16 X 4.80 - 8   |        | 305035 |        |        |        |
| 16 X 6.50 - 8   | 41081  | 319682 |        | 314539 |        |
| 18 X 6.50 - 8   |        | 42091  |        |        |        |
| 18 X 8.50 - 8   | 319683 | 317400 |        |        |        |
| 18 X 9.50 - 8   | 41106  | 316701 |        | 313950 |        |
| 20 X 8.00 - 8   | 319685 | 319684 | 57164  | 314584 | 331606 |
| 20 X 10.00 - 8  | 58276  | 319686 |        | 313654 |        |
| 20 X 10.00 - 10 | 55893  | 319687 |        |        |        |
| 23 X 9.50 - 12  | 53655  | 319690 | 319689 | 314370 |        |

Contact the dealer where your tractor was purchased for the available accessories. If you are unable to contact the dealer, write to the address on the warranty page of your operator's manual.

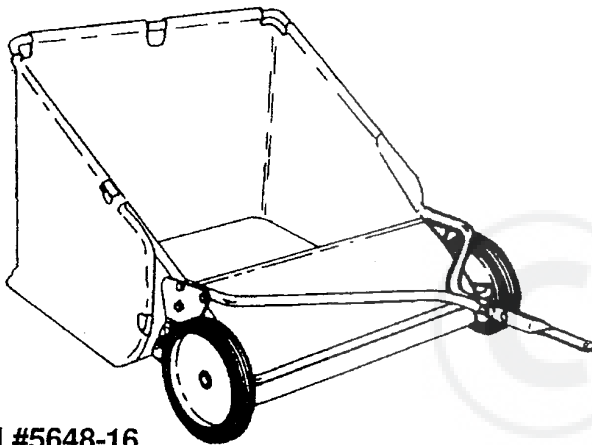
**30" STANDARD LAWN RIDER**



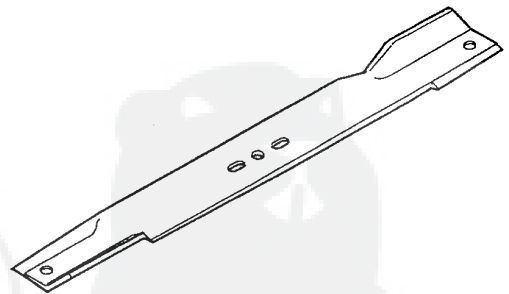
**Model #5708-17**  
**Grass Collector (30" decks)**



**5714-00 Mulching Kit (30" Deck)**



**Model #5648-16**  
**Tow Behind Lawn Sweeper for Grass and Leaves**



**314275 -30" Standard Lift Blade**

**OTHER ACCESSORIES**

| <b>Model</b>   | <b>Description</b>                      |
|----------------|---|
| <b>5709-02</b> | <b>Front Weight Box - holds 35 lbs.</b> |
| <b>322397</b>  | <b>30" Mulching blade</b>               |