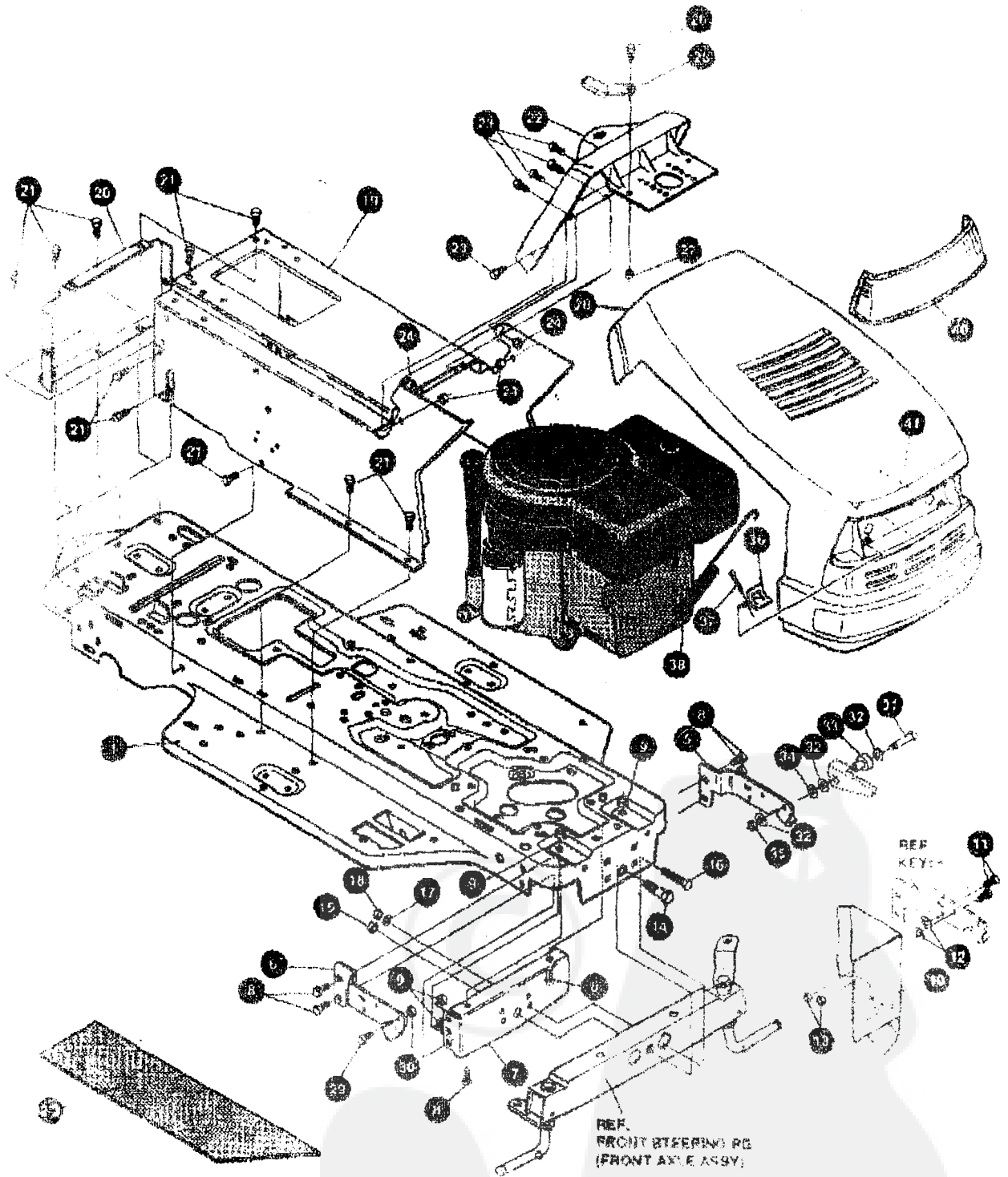


F3554-231
12HP/39"

F3554-231

REPAIR PARTS



NOTE: ALWAYS USE ORIGINAL EQUIPMENT PARTS.
 Replacement parts other than original
 equipment may void your warranty.

ALL UNNUMBERED
 PARTS ARE INTERCHANGEABLE
 WITH OPPOSITE SIDE

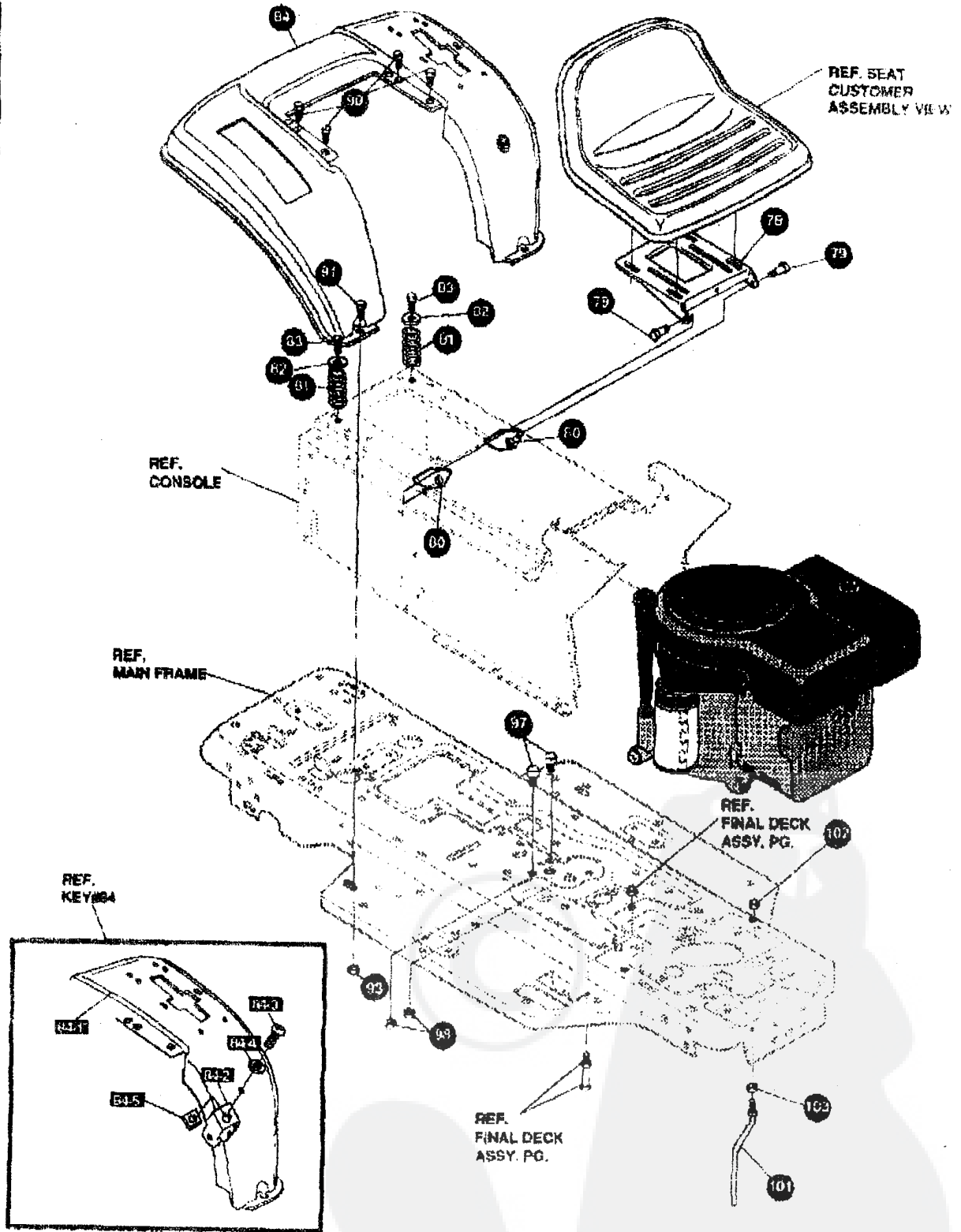
F3554-231

CHASSIS & HOOD ASSEMBLY

KEY#	PART#	DESCRIPTION	QTY
1	331173-889	FRAME, MAIN, SF, RIDER	1
2	331834	FOOT PAD, RH, SF, FULL WIDTH	1
3	331835	FOOT PAD, LH, SF, FULL WIDTH	1
5	313001-853	BRACKET, GRILLE, SUPPORT, LH	1
6	315002-853	BRACKET, GRILLE, RH	1
7	58362-853	BRACKET, SUPPORT, FRONT, AXLE, SF	1
8	328154	SCREW, 5/16-18 X 1.0 WDFLLK	6
9	55273	NUT, 5/16-18 WDFLLK/RG WHIZ	6
10	312908-853	SHIELD, HEAT 11&12HP, B&S & TEC, SF	1
11	180020	SCREW, 1/4-20 X .75 HHC	2
12	311245	WASHER, FLAT, 250 X .75 X INSULATE	2
13	51335	NUT, 1/4-20 WDFLWHIZ-LK	2
14	29616	BOLT, .625 X 1.680 HHSH, 1/2-20	1
15	274654	NUT, 1/2-20 REGHXCTRLK	1
16	180138	SCREW, 3/8-16 X 3.00 HHC	2
17	2483	WASHER, .38 ID X 1.25 D X .07 BELLVIL	2
18	1499	NUT, 3/8-16 REGHXCTRLK	2
19	324748-889	CONSOLE, SF, DYNA, FENDER SHIFT	1
20	58235-889	CONSOLE, REAR COVER	1
21	995346	SCREW, 1/4-20 X .50 WAHHTAP	15
22	320466-830	DASH, SF	1
23	44811	SCREW, 1/4-20 X .75 WAHHTAP	6
24	50352	NUT, 1/4-20 WDFLLK TOPLOCK	4
25	313021-853	GUIDE, HOOD, SF & LF, H13, H14, H15	2
26	180020	SCREW, 1/4-20 X .75 HHC	2
27	51335	NUT, 1/4-20 WDFLWHIZ-LK	2
28	335409	HOOD, SMALL, H-13	1
29	58676	BOLT, .375 X .580 HHSH, 5/16-18	1
30	1498	NUT, 5/16-18 REGHEXCTRLK	1
31	180042	SCREW, 1/4-20 X 1.75 HHC	1
32	120392	WASHER, FLAT, 281 X .60 X .065	3
33	308532	BEARING, FLANGED, PLASTIC, HOOD	1
34	311245	WASHER, FLAT, 250 X .75 X INSULATE	1
35	1502	NUT, 1/4-20 REGHEXCTRLK	1
36	310801	ANCHOR, HOOD LANYARD	1
37	121222	PIN, COTTER, .090 DIA X .75 LONG	1
38	304734	SPRING, HOOD LATCH	1
40	302670	LENS, HEADLAMP	1
41	301452	FOIL, HEAT REFLECTOR	1
	336713	PARTS MANUAL	1
	336047	OPERATOR'S MANUAL (DANISH)	1

F3554-231

REPAIR PARTS



NOTE: ALWAYS USE ORIGINAL EQUIPMENT PARTS.
 Use of service/replacement parts other than original equipment parts may void your warranty.

ALL UNNUMBERED ITEMS ARE INTERCHANGEABLE WITH OPPOSITE SIDE

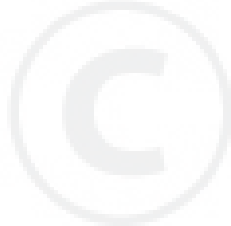
375335 B

F3554-231

CHASSIS & HOOD ASSEMBLY

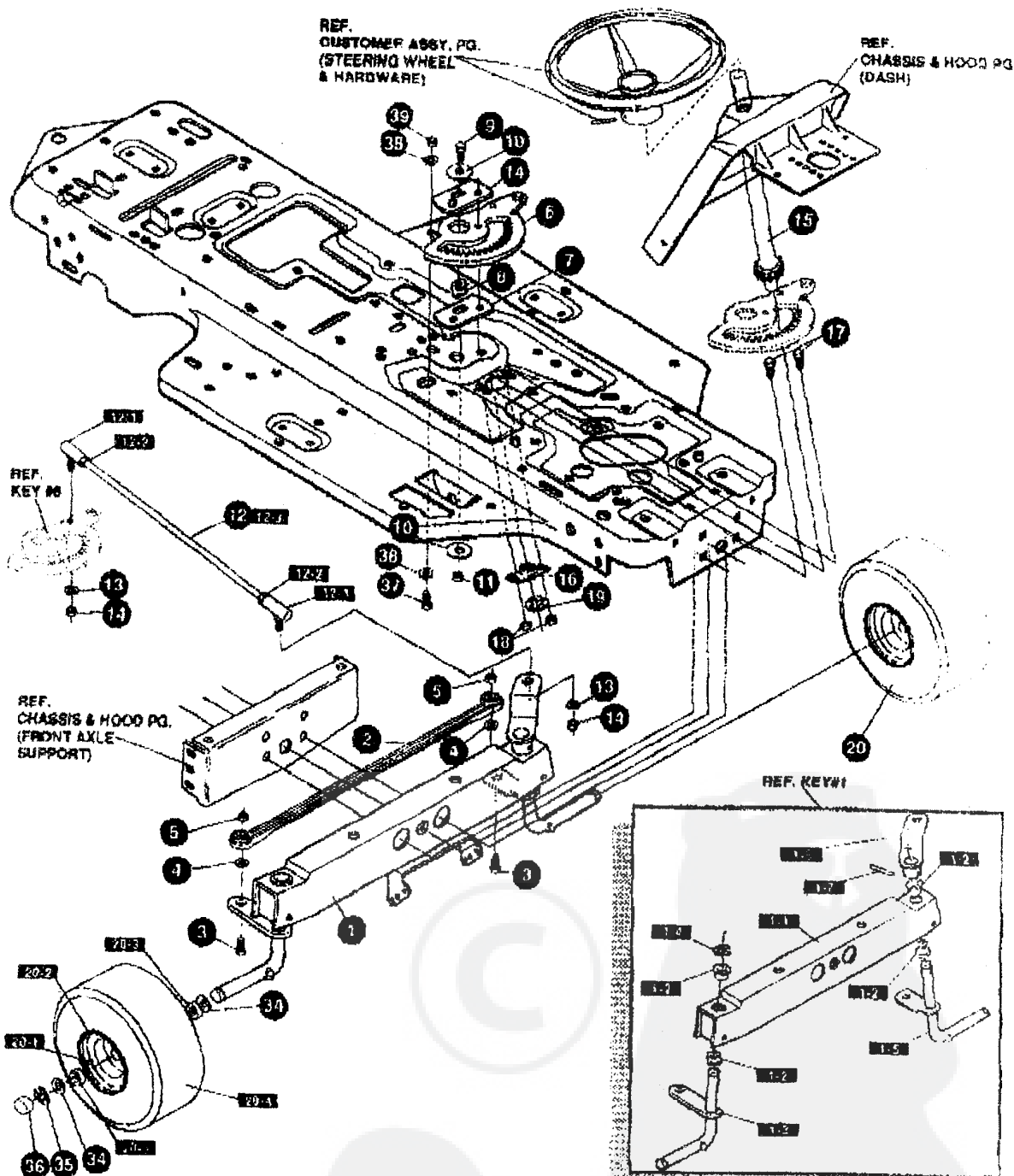
KEY#	PART#	DESCRIPTION	QTY
78	58387-889	PLATE, SEAT	1
79	20507	BOLT, .437 X .158 HSSH, 5/16-18	2
80	1488	NUT, 5/16-18 REGHEXCTRLK	2
81	330483	SPRING, SEAT 1.50 OD X 2.25 LONG	2
82	120392	WASHER, FLAT .281 X .83 X .065	2
83	995948	SCREW, 1/4-20 X .50 WAHTAP	2
84	327334-889	ASSEMBLY, FENDER	1
84-1	*	FENDER	1
84-2	9239	CLEVIS	1
84-3	439455	SCREW, 5/16-18 X .58 PHPNMA	1
84-4	301551	WASHER, .344 ID X 1.50 D X .09	1
84-5	120373	NUT, 5/16-18 SQUARE	1
90	995946	SCREW, 1/4-20 X .50 WAHTAP	4
91	126358	BOLT, 5/16-18 X 1.00 CARRLN	2
93	55273	NUT, 5/16-18 WDFLLKLRG, WHIZ	2
97	53446	PIN, 5/16-18 HOOD LATCH	2
98	271184	NUT, 5/16-18 HEXKEPS	2
101	50883	GUIDE, BELT	1
102	41529	NUT, 3/8-16 HXCTRLKJAM	1
103	271190	NUT, 3/8-16 HEXKEPS	1

* REFERENCE ONLY



F3554-231

REPAIR PARTS



NOTE: ALWAYS USE ORIGINAL EQUIPMENT PARTS.
 Use of service/replacement parts other than original equipment parts may void your warranty

ALL UNNUMBERED ITEMS ARE INTERCHANGEABLE WITH OPPOSITE SIDE

321972 14

F3554-231

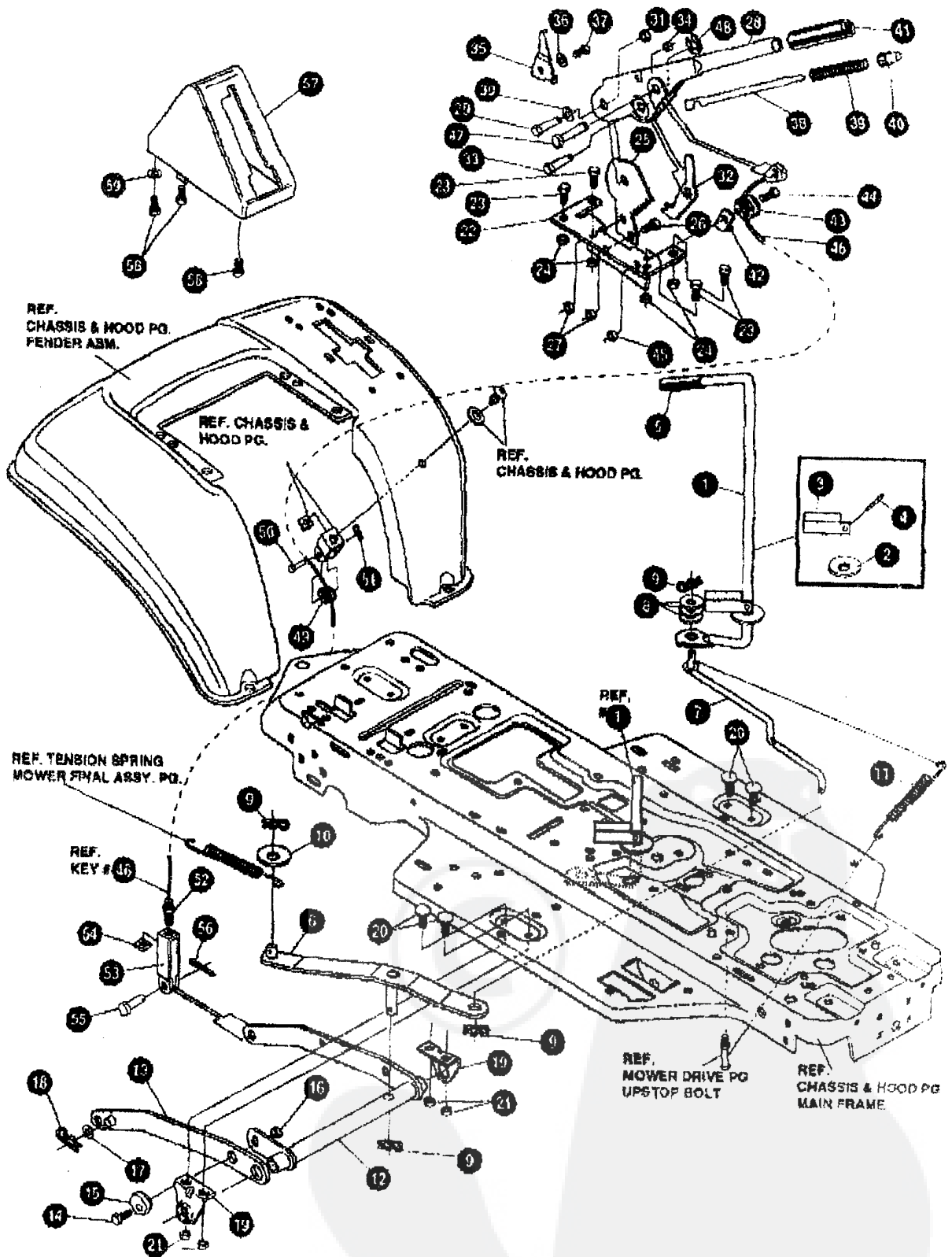
STEERING ASSEMBLY

KEY#	PART#	DESCRIPTION	QTY
1	*	AXLE, FRONT ASSEMBLY, SF, LONG	1
1-1	324915-889	ASSEMBLY, FRONT AXLE, SF, GS	1
1-2	50546	BEARING, FLANGE .759 ID X 1.002 OD X .75	4
1-3	310368	SPINDLE, ASSEMBLY, RH, LONG, SF	1
1-4	36625	RING, RETEX .57 X .05 TRU 5133-75	1
1-5	310367	SPINDLE, ASSEMBLY, LH, LONG, SF	1
1-6	327619-853	ARM ASSEMBLY, SF, 4WS, FRONT STEERING	1
1-7	454585	PIN, SPRING .250 DIA X 1.25 LONG	1
2	302688	ASSEMBLY, TIE ROD, 19.31 LONG	1
3	180124	SCREW, 3/8-16 X 1.25 HHC	2
4	120382	WASHER, REGSPTLK .393 X .68 X .10	2
5	1499	NUT, 3/8-16 REGHXCTRLK	2
6	327399	GEAR, SECTOR, SF, 2WS	1
7	333289	PLATE SECTOR, SF, 4WS, BLACK	2
8	330021	BUSHING, SECTOR, GEAR, SF, 4WS	1
9	181643	SCREW, 3/8-24 X 1.50 HHC	1
10	845	WASHER, FLAT .390 X 1.25 X .119	2
11	412949	NUT, 3/8-24 HXCTRLK	1
12	328808	DRAG LINK ASSEMBLY, 17.69 LONG	1
12-1	57158	BALL JOINT, 3/8 THD, SHORT STUD	2
12-2	124925	NUT, 3/8-24 REGHEXJAM	2
12-3	56180	DRAG LINK	1
13	120382	WASHER, REGSPTLK .393 X .68 X .10	2
14	120389	NUT, 3/8-24 REGHEX	2
15	327834	SHAFT, PIN-STEER, BLACK	1
16	325692	BEARING, FLANGE .50 ID X 1.370 OD	1
17	328505	SCREW, 1/4-20 X .75 (TO 30-35 FT#)	2
18	46931	NUT, 1/4-20 WDFL MAC-LOCK	2
19	20864	RING, RET E .39 X .04 TRU 5133-50	1
20	302828	TIRE & RIM ASSEMBLY, PU 15 X 6.0 X 6	2
20-1	24167	VALVE STEM	
20-2	39829	RIM, WHEEL	
20-3	314416	BEARING, FLANGE	
20-4	316702	TIRE, 15 X 6 X 6	
34	642	WASHER, FLAT .765 X 1.31 X .075	4
35	36525	RING, RETEX .57 X .05 TRU 5133-75	2
36	40394	HUB CAP, 1.500 ID X 7/8 LONG	2
37	180124	SCREW, 3/8-16 X 1.25 HHC	1
38	120394	WASHER, FLAT .406 X .81 X .065	2
39	45171	NUT, 3/8-16 HWDFL WHIZ-LOCK	1

* ORDER INDIVIDUAL PARTS - ASSEMBLY NOT AVAILABLE

F3554-231

REPAIR PARTS



NOTE: ALWAYS USE ORIGINAL EQUIPMENT PARTS
 Use of service/replacement parts other than original equipment parts may void your warranty.

ALL UNNUMBERED ITEMS ARE INTERCHANGEABLE WITH OPPOSITE SIDE

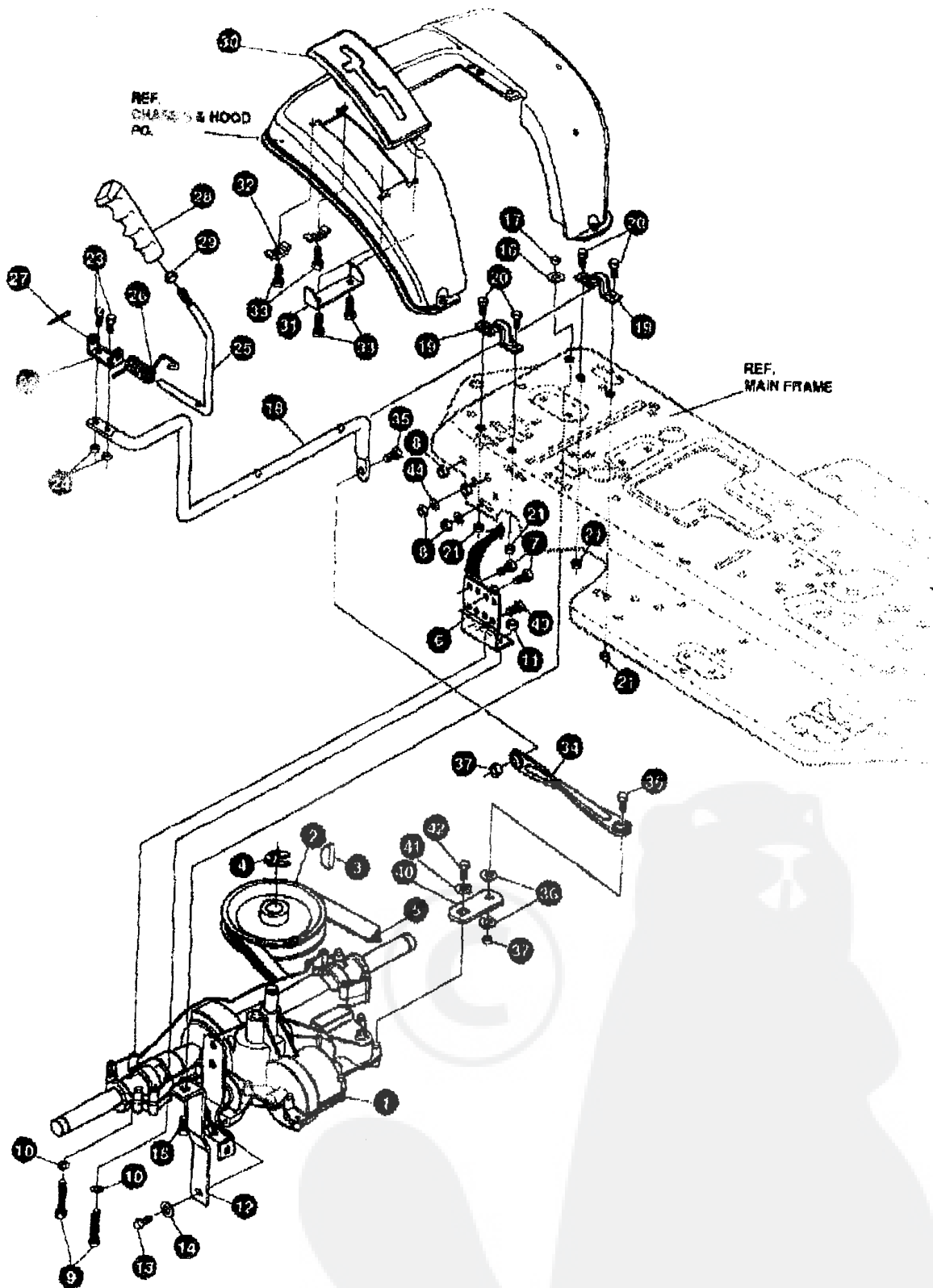
F3554-231

MOWER SUSPENSION ASSEMBLY

KEY#	PART#	DESCRIPTION	QTY
1	325591	LEVER, CLUTCH, RH, PTO	1
2	22265	WASHER, FLAT .515 X 1.39 X .119	1
3	905225	STOP, PTO ENGAGE	1
4	326388	PIN, SPRING, .187 DIA X 1.19 LONG	1
5	331624	KNOB, ROUND 1.50 DIA OR GRIP, SF	1
6	326587-853	STRAP ASSEMBLY, PTO, BELCRANK, SF	1
7	326690	ROD, BELCRANK, LINK, SF	1
8	274617	WASHER, FLAT .406 X .73 X .063	3
9	8260	PIN, HAIR .091 DIA X 1.66 LONG	4
10	25210	WASHER, FLAT .396 X 1.25 X .09	1
11	325602	SPRING, .69 X 7.75 X .0697 TENSION	1
12	326114-859	LIFT ASSEMBLY, LH	1
13	326130-863	LIFT ASSEMBLY, RH, SF	1
14	180079	SCREW, 5/16-18 X 1.00 HHC	1
15	68247	NUT, ADJUST	1
16	1498	NUT, 5/16-18 REGHEXCTRLK	1
17	417099	WASHER, FLAT .531 X 1.06 X .063	2
18	8260	PIN, HAIR .091 DIA X 1.66 LONG	2
19	325495-853	BRACKET, REAR HANG, SUSP	2
20	330967	BOLT, 5/16-18 X 1.00 QARR	4
21	1498	NUT, 5/16-18 REGHEXCTRLK	4
22	313926	BRACKET, HEIGHT ADJUST	1
23	180077	SCREW, 5/16-18 X .75 HHC	4
24	1498	NUT, 5/16-18 REGHEXCTRLK	4
25	501239	QUADRANT, HEIGHT ADJUST	1
26	180077	SCREW, 5/16-18 X .75 HHC	2
27	1498	NUT, 5/16-18 REGHEXCTRLK	2
28	322292-853	HANDLE, LIFT SHORT (30" S.F.)	1
29	300171	BOLT, .500 X .270 HHSH, 5/16-18	1
30	995419	WASHER, FLAT .508 X .75 X .024	1
31	44108	NUT, 5/16-18 HWDFLCTRLK	1
32	301239	PAWL, SQUARE	1
33	300171	BOLT, .500 X .270 HHSH, 5/16-18	1
34	44108	NUT, 5/16-18 HWDFLCTRLK	1
35	9435	POINTER, HEIGHT ADJUST	1
36	138479	WASHER, EXLK, 195 X .41 X .03	1
37	35287	SCREW, #8-32 X .38 HHWATAP	1
38	303027	ROD, ACTUATOR-SHORT	1
39	58326	SPRING, HEIGHT ADJUST	1
40	58325	KNOB, HEIGHT ADJUST, PUSH BUTTON	1
41	58329	GRIP, .750 OD W/ HOLE, BLACK	1
42	9149	BRACKET, CABLE RETAINER	1
43	48306	PULLEY, METAL	1
44	58336	BOLT, .375 X .375 HHSH, 1/4-20	1
45	1502	NUT, 1/4-20 REGHEXCTRLK	1
46	321430	CABLE, LIFT 21.50 - 30" S.F.	1
47	300310	PIN, CLEVIS .310 DIA X .475 LONG	1
48	300311	RING, RET E .31 X .25 TRU 5133-31	1
49	48306	PULLEY, METAL	1
50	300317	PIN, CLEVIS .375 DIA X .81 LONG	1
51	8260	PIN, HAIR .091 DIA X 1.66 LONG	1
52	120375	NUT, 1/4-20 REGHEX	1
53	9405	CLEVIS, LIFT CABLE	1
54	120372	NUT, 1/4-20 REGSQ	1
55	39522	PIN, CLEVIS .312 X .812	1
56	121222	PIN, COTTER .090 DIA X .75 LONG	1
57	833903	LIFT COVER, FS, LF, SF, BLACK	1
58	300340	SCREW, #10 X .75 HHPLAST, BLACK	3
59	120392	WASHER, FLAT .281 X .63 X .065	1

F3554-231

REPAIR PARTS



NOTE: ALWAYS USE ORIGINAL EQUIPMENT PARTS.
Use of service/replacement parts other than original equipment parts may void your warranty.

**ALL UNNUMBERED
ITEMS ARE INTERCHANGEABLE
WITH OPPOSITE SIDE**

136288 A

F3554-231

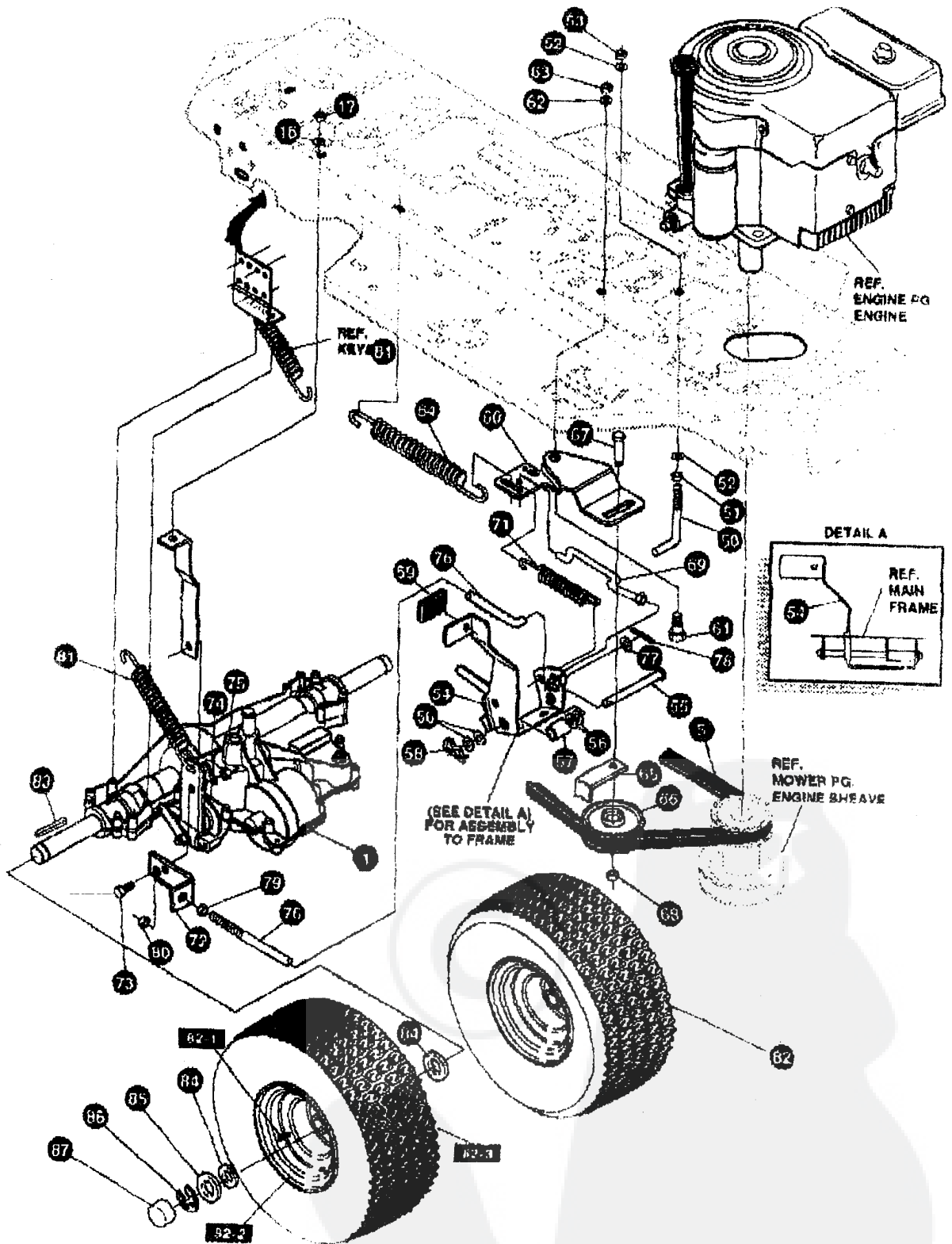
MOTION DRIVE ASSEMBLY

KEY#	PART#	DESCRIPTION	QTY
1	*	TRANSAXLE, PEERLESS, 930-5, LF/SF	1
2	303109	PULLEY, 6.6 OD, V4L, T/A	1
3	50795	KEY, HI-PRO 508, .75 DIA X .187 WD	1
4	22053	RING, RETEX .58 X .035 THRU 5100-62	1
5	54759	BELT, V 4L, 82.00, SF, DRIVE	1
6	326815-853	BRACKET, TRANSAXLE	2
7	180077	SCREW, 5/16-18 X .75 HHC	4
8	1498	NUT, 5/16-18 REGHEXOTRLK	8
9	180091	SCREW, 5/16-18 X 2.50 HHC	4
10	120399	WASHER, FLAT .344 X .69 X .065	4
11	1498	NUT, 5/16-18 REGHEXOTRLK	4
12	325126	BRACKET, STABILIZER, BLACK	1
13	95498	SCREW, 5/16-18 X .75 WAHTAP	1
14	120898	WASHER, HVSPYLK .928 X .60 X .09	1
15	180079	SCREW, 5/16-18 X 1.00 HHC	1
16	138485	WASHER, EXLK .920 X .61 X .09	1
17	1498	NUT, 5/16-18 REGHEXOTRLK	1
18	319113	LEVER, SHIFT, LOWER, SF, FENDER SHIFT	1
19	302760	CLAMP, 625 DIA	2
20	180077	SCREW, 5/16-18 X .75 HHC	4
21	1498	NUT, 5/16-18 REGHEXOTRLK	4
22	310356	BRACKET, PIVOT, SHIFT LEVER	1
23	180020	SCREW, 1/4-20 X .75 HHC	2
24	1802	NUT, 1/4-20 REGHEXOTRLK	2
25	324798	LEVER, SHIFT UPPER, SOF, 1/2-13	1
26	310266	SPRING, TORSION .56 X .05 X .095	1
27	137185	PIN, COTTER .125 DIA X 1.00 LONG	1
28	808899	KNOB, ROUND 1.50 DIA OR GRIP, SF	1
29	120238	NUT, 1/2-13 HEXJAM	1
30	311209	COVER, PLASTIC, LF, P930/F4360-6	1
31	311257-853	BRACKET COVER, F-5, FENDER SHIFT	1
32	1841	CLAMP, SPRING 1.17"ID	2
33	311391	SCREW, 1/4-15 X .44/53 HILCHHWA	4
34	309546	LINK, TIE ROD SHIFT, 7.812C/L	1
35	180124	SCREW, 3/8-16 X 1.25 HHC	2
36	120394	WASHER, FLAT .406 X .81 X .085	2
37	1499	NUT, 3/8-16 REGHXOTRLK	2
40	309837	BRACKET, SHIFT, SSP, SF	1
41	57157	WASHER, .750 X .250 SP-TRANSAXLE	1
42	56255	SCREW, 1/4-28 X .75 NYLHHC	1
43	327917	SCREW, 5/16-18 X 1.50 HHCFT	4
44	78787	WASHER, FLAT .390 X .75 X .1783	4

* CONTACT YOUR NEAREST TRANSAXLE DEALER FOR PARTS & SERVICE

F3554-231

REPAIR PARTS



NOTE: ALWAYS USE ORIGINAL EQUIPMENT PARTS.
 Use of service/replacement parts other than original equipment parts may void your warranty.

ALL UNNUMBERED ITEMS ARE INTERCHANGEABLE WITH OPPOSITE SIDE

336211

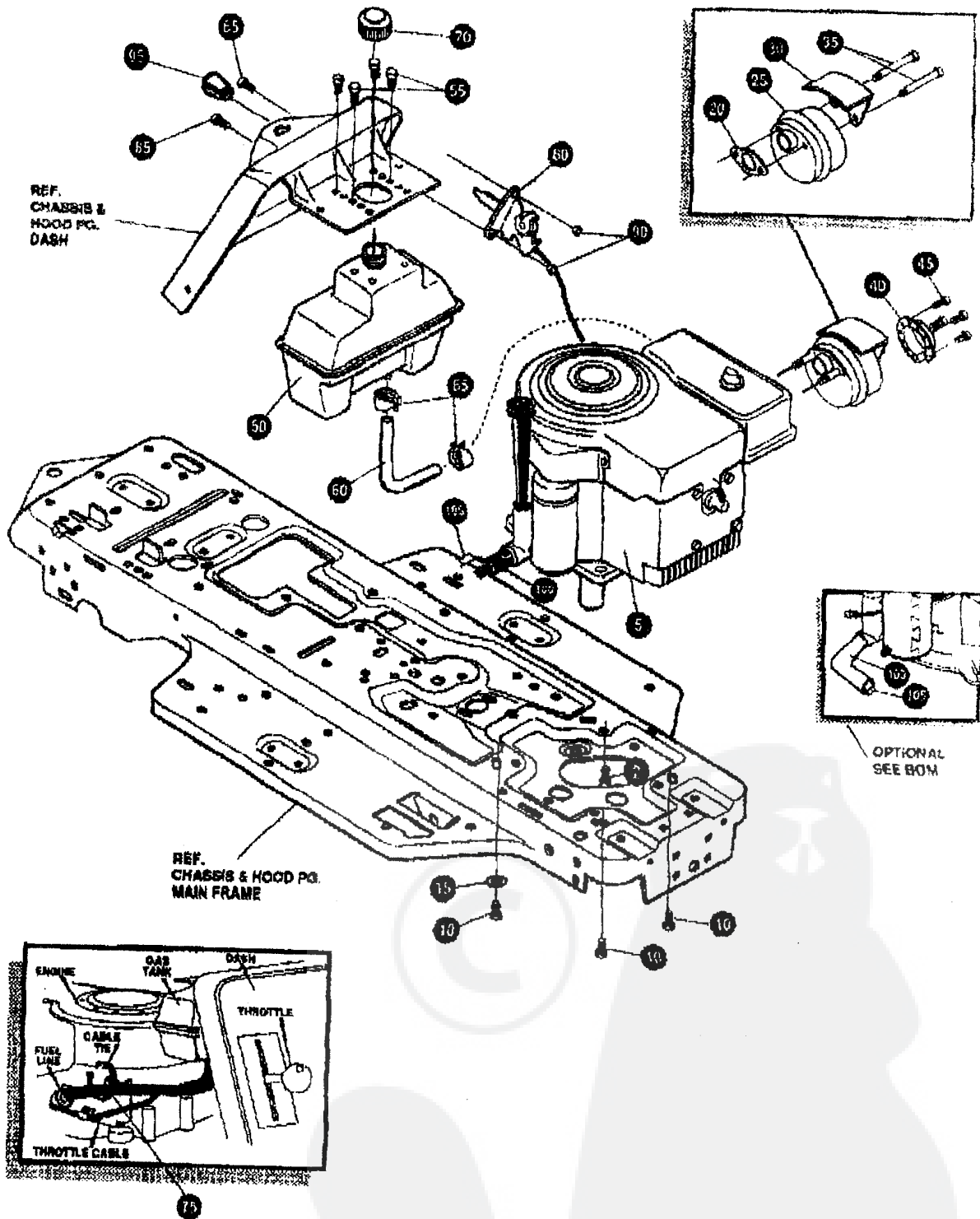
F3554-231

MOTION DRIVE ASSEMBLY

KEY#	PART#	DESCRIPTION	QTY
50	49896	BELT GUIDE	1
51	271184	NUT, 5/16-18 HEXKEPS	1
52	120393	WASHER, FLAT .344 X .69 X .065	2
53	1498	NUT, 5/16-18 REGHEXCTRLK	1
54	331838	ASSEMBLY, PEDAL, BRAKE, CLUTCH, SF	1
55	319876	PIN, CLEVIS .500 D X 4.87 LONG	1
56	2968	WASHER, FLAT .504 X .75 X .059	4
57	331972	SPACER, SLEEVE .53 X .82 X 1.240	1
58	56180	PIN, HAIR .091 DIA X 1.62 LONG	1
59	48761	PAD, CLUTCH/BRAKE PEDAL	1
60	321969-953	IDLER ARM BRACKET, TRACTION, SF	1
61	329989	BOLT, .625 X .196 HSSH, 5/16-18	1
62	45602	WASHER, FLAT .333 X .87 X .119	1
63	1498	NUT, 5/16-18 REGHEXCTRLK	1
64	327867	SPRING, 3/4 OD X 7.75 X .091 TENSION	1
65	39659	RETAINER, BELT	1
66	35374	PULLEY, IDLER V4L, 3.08 X .62	1
67	45892	BOLT, 3/8-16X1.50 CARBON	1
68	1498	NUT, 3/8-16 REGHXCTRLK	1
69	333175	CLUTCH ROD ASSEMBLY, 268 DIA 3.92	1
71	326780	SPRING, 3/8 OD X 2.18 X .055 TENSION	1
72	323127	BRACKET, BRAKE ROD, BLACK	1
73	20507	BOLT, .437 X .166 HSSH, 5/16-18	1
74	4230	WASHER, FLAT .328 X .68 X .104	1
75	1498	NUT, 5/16-18 REGHEXCTRLK	1
76	323222	BRAKE ROD, RIDER, BLACK	1
77	120393	WASHER, FLAT .344 X .69 X .065	1
78	121222	PIN, COTTER .090 DIA X .75 LONG	1
79	271184	NUT, 5/16-18 HEXKEPS	1
80	44108	NUT, 5/16-18 HWDFLCTRLK	1
81	35410	SPRING, .071 X .82 X 4.37	1
82	326363	TIRE & RIM ASSEMBLY, 20 X 8.00-8	2
82-1	24167	VALVE STEM	
82-2	326362	RIM, WHEEL	
82-3	319684	TIRE, 20 X 8 X 8	
83	52928	KEY, SQUARE .187 SQUARE X 2.25 LONG	2
84	642	WASHER, FLAT .755 X 1.31 X .075	4
85	42815	WASHER, FLAT .755 X 1.53 X .07	2
86	36825	RING, RETEX .57 X .06 TRU 5133-75	2
87	40394	HUB CAP, 1.50 OID X 7/8 LONG	2

F3554-231

REPAIR PARTS



NOTE: ALWAYS USE ORIGINAL EQUIPMENT PARTS.
 Use of service/replacement parts other than original equipment parts may void your warranty.

ALL UNNUMBERED ITEMS ARE INTERCHANGEABLE WITH OPPOSITE SIDE

331639 B

F3554-231

ENGINE & CONTROL ASSEMBLY

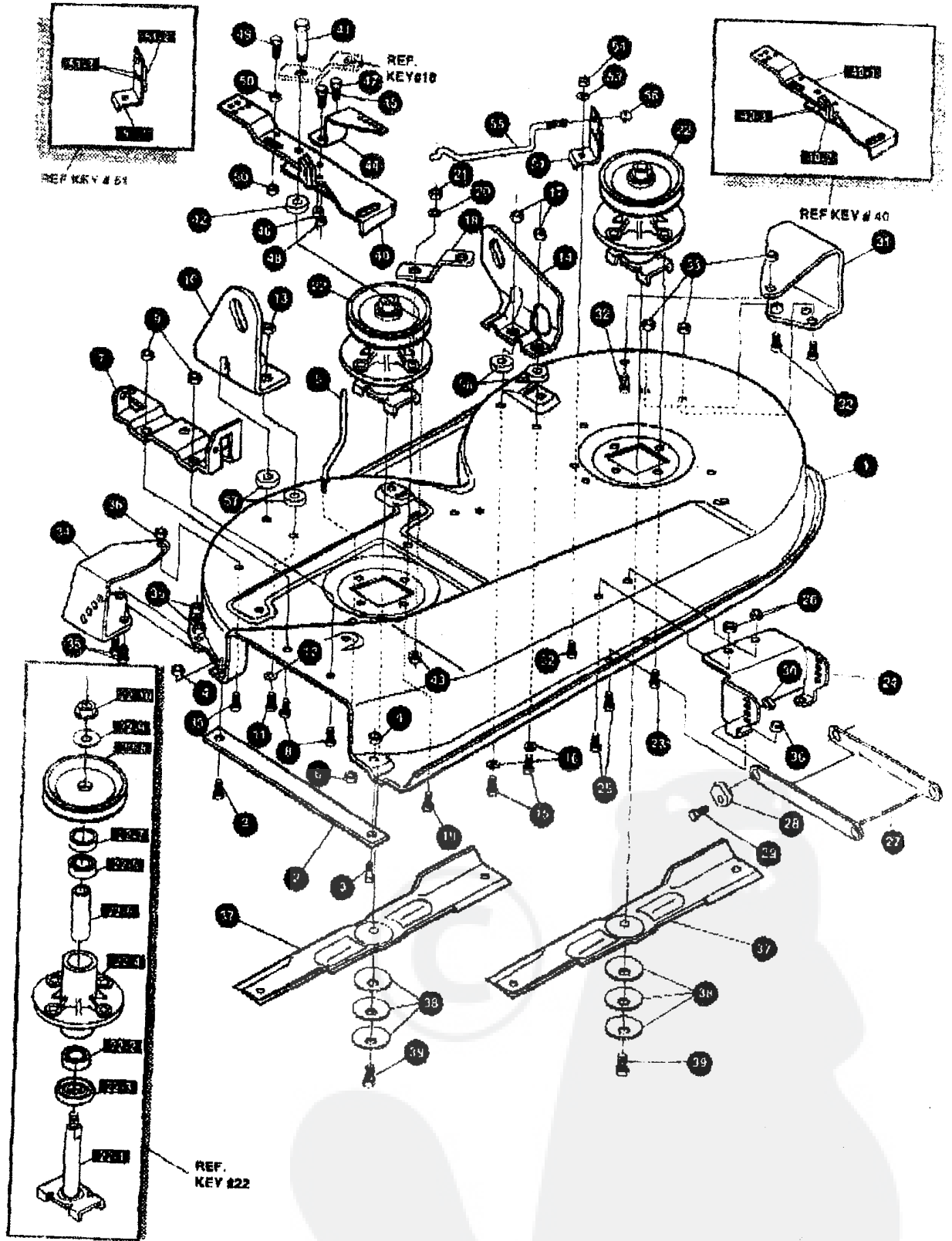
KEY#	PART#	DESCRIPTION	QTY
5	.	ENGINE, 10-12HP, B&S, 3A	1
10	50947	SCREW, 3/8-16 X 1.25 WAHTAP, BLACK	4
15	198489	WASHER, EXLK .384 X .69 X .04	1
20	46708	GASKET, MUFFLER	1
25	57908	MUFFLER-DOMESTIC/EXPORT ROUND	1
30	54787	SHIELD, HEAT, FOR ROUND MUFFLER	1
35	54980	SCREW, 5/16-18 X 3.50 HHC	2
40	56472	DEFLECTOR SIDE OUT (BS222573)	1
45	35287	SCREW, #8-32 X .38 HHWATAP	4
50	314989	TANK, FUEL, 1 GALLON, CLEAR	1
55	300303	SCREW, .25 X .75 X .51 HHWA, PLASTITE	4
60	42258	TUBING, .25 X .50 X BULK GAS LINE	12 0'
65	336890	CLAMP, HOSE SCREW TYPE	2
70	48704	CAP, GAS 1-1/2-7 THD, BLACK	1
75	57444	TIE, CABLE BLACK NYLON, 5.62 LONG	1
80	320031	THROTTLE CONTROL	1
85	274707	SCREW, 10-24 X .50 WAHMA	2
90	308459	NUT, #10-24 HXHDNYLK	2
95	50607	KNOB, ROUND THROTTLE, BLACK	1
100	325547	OIL DRAIN VALVE OR TUBE	1
105	327422	CAP OR PLUG FOR OIL DRAIN	1

* SEE ENGINE MANUAL



F3554-231

REPAIR PARTS



NOTE: ALWAYS USE ORIGINAL EQUIPMENT PARTS.
 Use of service/replacement parts other than original
 equipment parts may void your warranty.

**ALL UNNUMBERED
 ITEMS ARE INTERCHANGEABLE
 WITH OPPOSITE SIDE**

333272 C

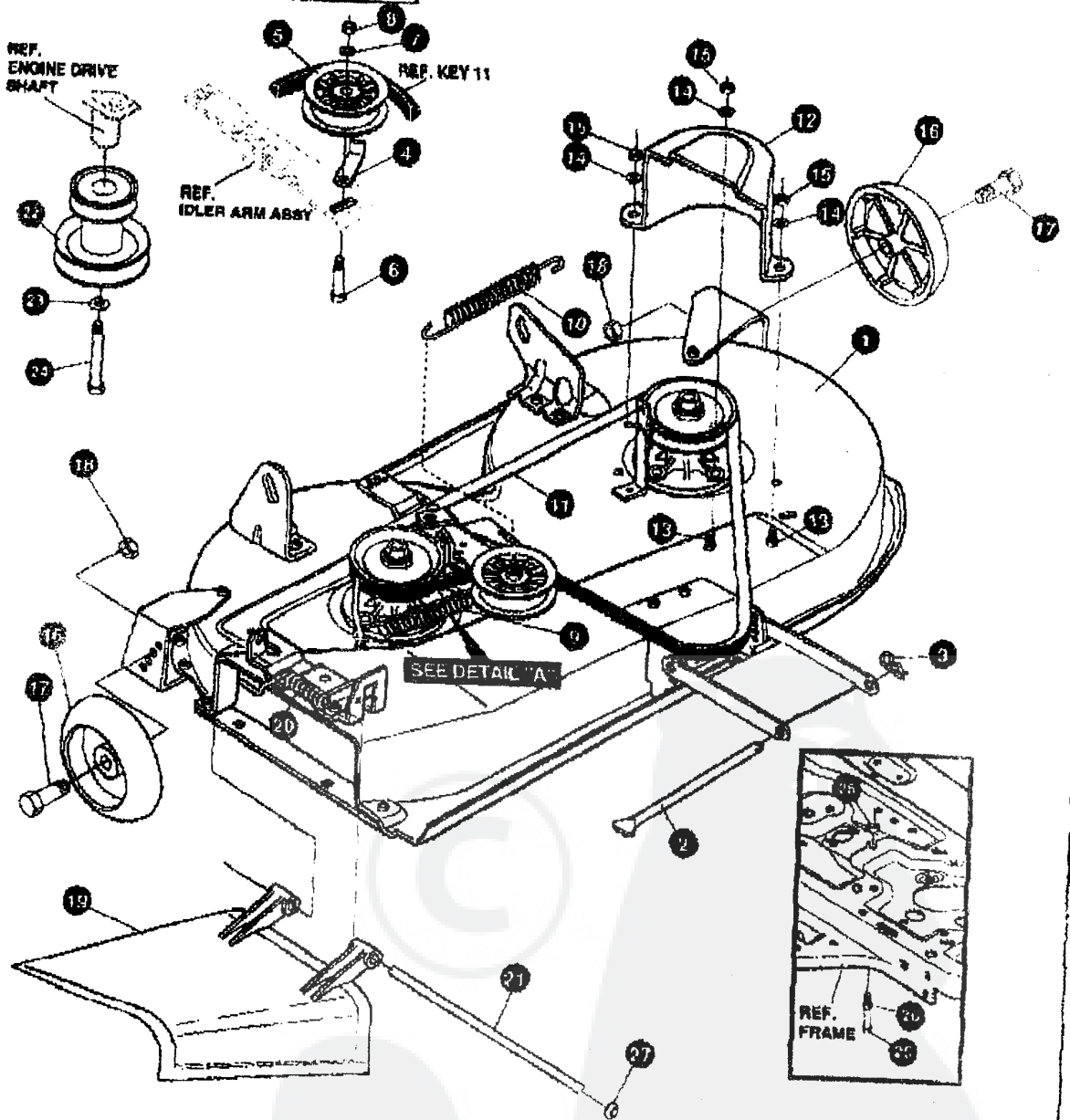
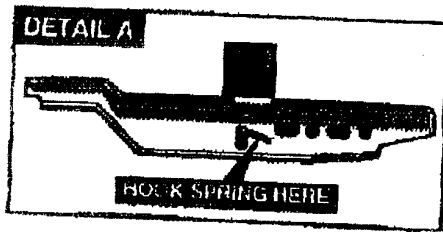
F3554-231

PRE-PAINTED DECK ASSEMBLY

KEY#	PART#	DESCRIPTION	QTY
1	326106	39" DECK KIT	1
2	326295-853	BAR, SKID	1
3	126216	BOLT, 5/16-18 X .75 CARB LN	2
4	271164	NUT, 5/16-18 HEXKEPS	2
5	57316	GUIDE, BELT 5/16-18 THD	1
6	1498	NUT, 5/16-18 REGHEXCTRLK	1
7	319928	BRACKET, CHUTE	1
8	180073	SCREW, 5/16-18 X .60 HHC	2
9	1498	NUT, 5/16-18 REGHEXCTRLK	2
10	313929	BRACKET, RH, LIFT REAR	1
11	180081	SCREW, 5/16-18 X 1.25 HHC	2
12	120393	WASHER, FLAT .344 X .69 X .065	2
13	1498	NUT, 5/16-18 REGHEXCTRLK	2
14	310667	BRACKET, LH, LIFT REAR	1
15	180081	SCREW, 5/16-18 X 1.25 HHC	2
16	120393	WASHER, FLAT .344 X .69 X .065	2
17	1498	NUT, 5/16-18 REGHEXCTRLK	2
18	315302-853	BRACKET, IDLER SUPPORT	1
19	300345	SCREW, 5/16-18 X 1.39 WAHHTAP	1
20	120393	WASHER, FLAT .344 X .69 X .065	1
21	1498	NUT, 5/16-18 REGHEXCTRLK	1
22	56424-853	QUILL ASSEMBLY, 38/39/40/43	2
22-1	56425	SHAFT/SADDLE 38"	1
22-2	49562	BEARING, BALL 6203-2AA-C3 ARMORED	1
22-3	50015	DUST SHIELD	1
22-4		QUILL CASTING (1046)	1
22-5		BEARING, BALL 6203-2AA-C3 ARMORED	1
22-6	50815	SPACER, SLEEVE .689 X .88 X 3.797	1
22-7	51449	SPACER, SLEEVE .672 X .93 X .438	1
22-8	313898	PULLEY, 26/36" QUILL, V5L	1
22-9	56365	WASHER, SPECIAL QUILL	1
22-10	1282	NUT, 7/16-20 WDFLK	1
23	36498	SCREW, 5/16-18 X .75 WAHHTAP	7
24	312526	SUPPORT, LIFT DECK FRONT	1
25	180077	SCREW, 5/16-18 X .75 HHC	4
26	1498	NUT, 5/16-18 REGHEXCTRLK	4
27	58305-853	BRACKET, LINK DECK FRONT	1
28	58247	NUT, ADJUST	2
29	180079	SCREW, 5/16-18 X 1.00 HHC	2
30	1498	NUT, 5/16-18 REGHEXCTRLK	2
31	312477	BRACKET, LH, WHEEL	1
32	180077	SCREW, 5/16-18 X .75 HHC	3
33	1498	NUT, 5/16-18 REGHEXCTRLK	3
34	300102-853	WHEEL BRACKET, RH	1
35	180077	SCREW, 5/16-18 X .75 HHC	3
36	1498	NUT, 5/16-18 REGHEXCTRLK	3
37	309069	BLADE, 19.69 LOW-LIFT	2
38	2483	WASHER, 39 ID X 1.25 D X .07 BELLVIL	5
39	99573	SCREW, 3/8-24 X 1.00 NYL.HHC	2
40	300481-853	IDLER ARM ASSEMBLY	1
40-1	300490-853	IDLER ARM, 36 38 39, & 45 SD	1
40-2	308973	BRAKE PAD - HARD-NF343 (X-31)	1
40-3	41601	RIVET, OVSE .87 DIA X .50 LONG	2
41	300180	BOLT, .50 X 1.00 HSH, 3/8-16	1
42	998418	WASHER, FLAT .391 X 1.00 X .125	1
43	45171	NUT, 3/8-16 HWDFL WHIZ-LOCK	1
44	326248-853	BRACKET, EXTENSION IDLER	1
45	180077	SCREW, 5/16-18 X .75 HHC	1
46	1498	NUT, 5/16-18 REGHEXCTRLK	1
47	180020	SCREW, 1/4-20 X .75 HHC	1
48	1502	NUT, 1/4-20 REGHEXCTRLK	1
49	121954	SCREW, 1/4-20 X 2.00 HHC	1
50	271172	NUT, 1/4-20 REGHEXCTRLK	1
51	303247	ASSEMBLY, BLADE BRAKE 36, 39, 45	1
51-1	303246	BRAKE ARM	1
51-2	308973	BRAKE PAD - HARD-NF343 (X-31)	1
51-3	135624	RIVET, TRSET .185 DIA X .41 LONG	2
52	180077	SCREW, 5/16-18 X .75 HHC	1
53	120393	WASHER, FLAT .344 X .69 X .065	1
54	1498	NUT, 5/16-18 REGHEXCTRLK	1
55	300316	ROD, BRAKE RELEASE, 14.7 39" DECK	1
56	1502	NUT, 1/4-20 REGHEXCTRLK	1
57	314702	SPACER, SLEEVE .344 X 1.00 X .500	2
58	314702	SPACER, SLEEVE .344 X 1.00 X .500	2

F3554-231

REPAIR PARTS



NOTE: ALWAYS USE ORIGINAL EQUIPMENT PARTS
Use of service/replacement parts other than original equipment parts may void your warranty.

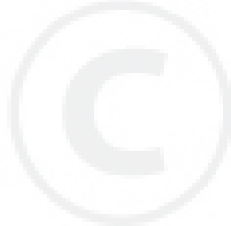
ALL UNNUMBERED ITEMS ARE INTERCHANGEABLE WITH OPPOSITE SIDE

333274 B

F3554-231

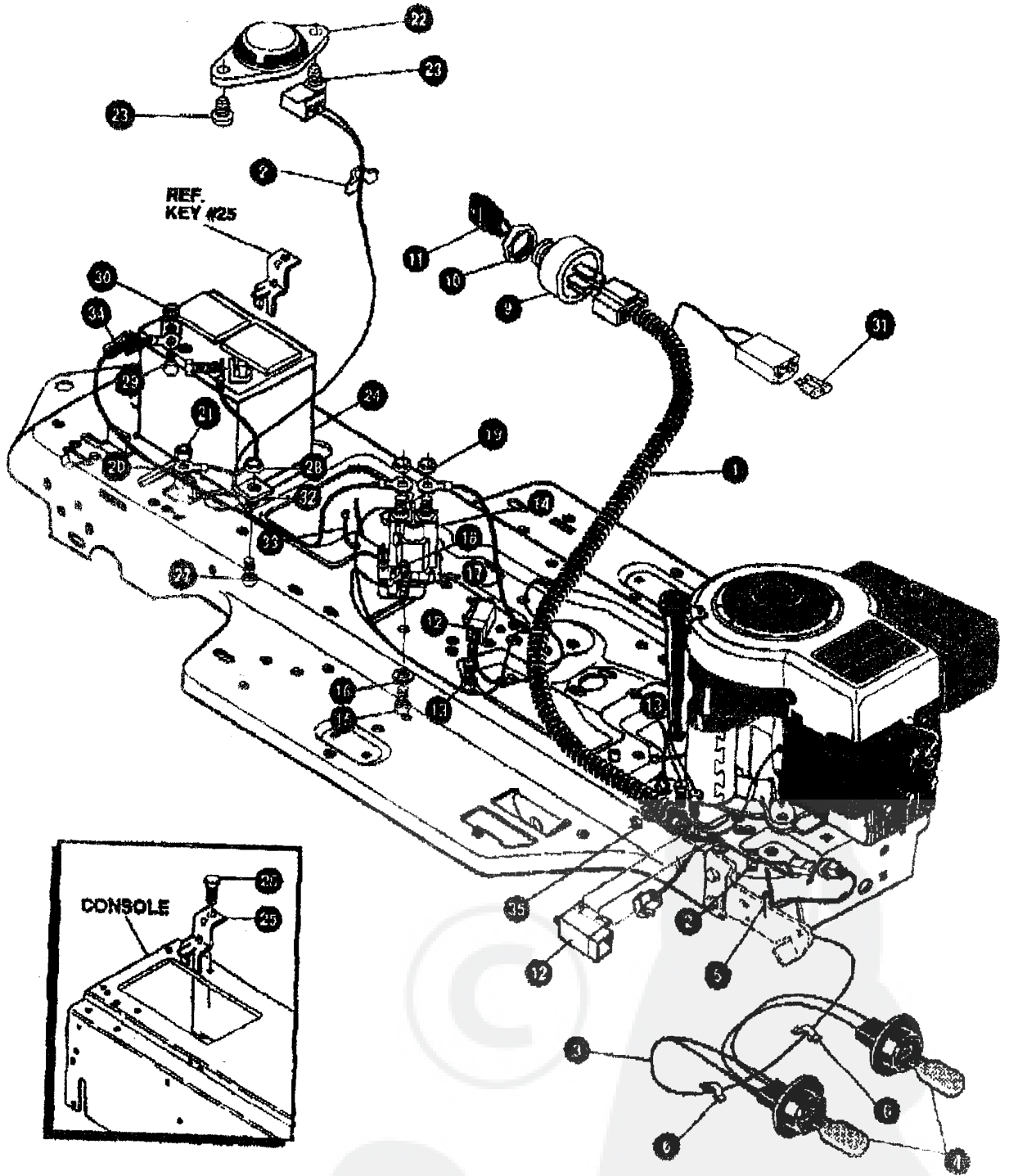
FINAL DECK ASSEMBLY

KEY#	PART#	DESCRIPTION	QTY
1	329456	ASSEMBLY, DECK, SF, 39' SD/20 X 8-8	1
2	58306	ROD, DECK HITCH	1
3	8260	PIN, HAIR, .091 DIA X 1.66 LONG	1
4	1346	RETAINER, BELT	1
5	10328	PULLEY, IDLER BFF 4.00 WIDE FL	1
6	57325	BOLT, 3/8-16 X 2.00 CARRSN	1
7	120982	WASHER, REGSPTLK 393 X .68 X .10	1
8	120377	NUT, 3/8-16 REGHX	1
9	322064	SPRING, .75 X 8.4 X .105 TENSION	1
10	326256	SPRING, .75 X 10.0 X .105 TENSION	1
11	300680	BELT, V 5L, 77.75, KEVLAR	1
12	326257	GUARD, BELT LH, PLASTIC	1
13	15	SCREW, 5/16-18 X .75 HHC	3
14		WASHER, FLAT .344 X .69 X .065	3
15		NUT, 5/16-18 REGHEXCTRLK	3
16		GAUGE WHEEL, EURO 6.00 OD X 1.38 WD	2
17	28758	BOLT, .500 X 1.390 HNSH, 3/8-16	2
18	1499	NUT, 3/8-16 REGHXCTRLK	2
19	57818	CHUTE DEFLECTOR, 36", 39", 45"	1
20	314975	SPRING, TORSION, CHUTE DEFLECTOR	1
21	334908	KIT FOR 57317 PIVOT ROD	1
22	326034	PULLEY, ENGINE, V3L, 4.00 OFFSET	1
23	120383	WASHER, REGSPTLK .459 X .78 X .12	1
24	433146	SCREW, 7/16-20 X 4.25 HHC, BLACK	1
25	180128	SCREW, 3/8-16 X 1.75 HHC	1
26	1499	NUT, 3/8-16 REGHXCTRLK	2
27	332178	CA. PUSH ON, FOR DIA 250 ROD	1



F3554-231

REPAIR PARTS



NOTE: ALWAYS USE ORIGINAL EQUIPMENT PARTS.
 Use of service/replacement parts other than original equipment parts may void your warranty.

ALL UNNUMBERED ITEMS ARE INTERCHANGEABLE WITH OPPOSITE SIDE

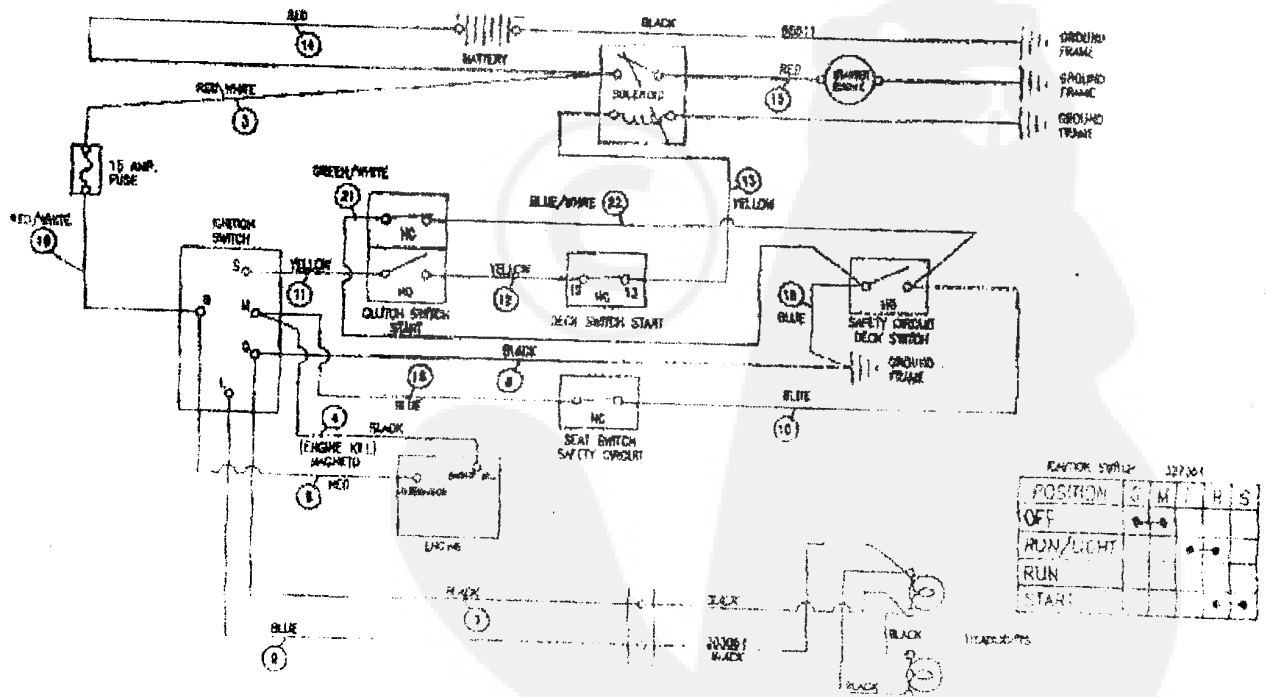
331669 C

F3554-231

ELECTRICAL ASSEMBLY

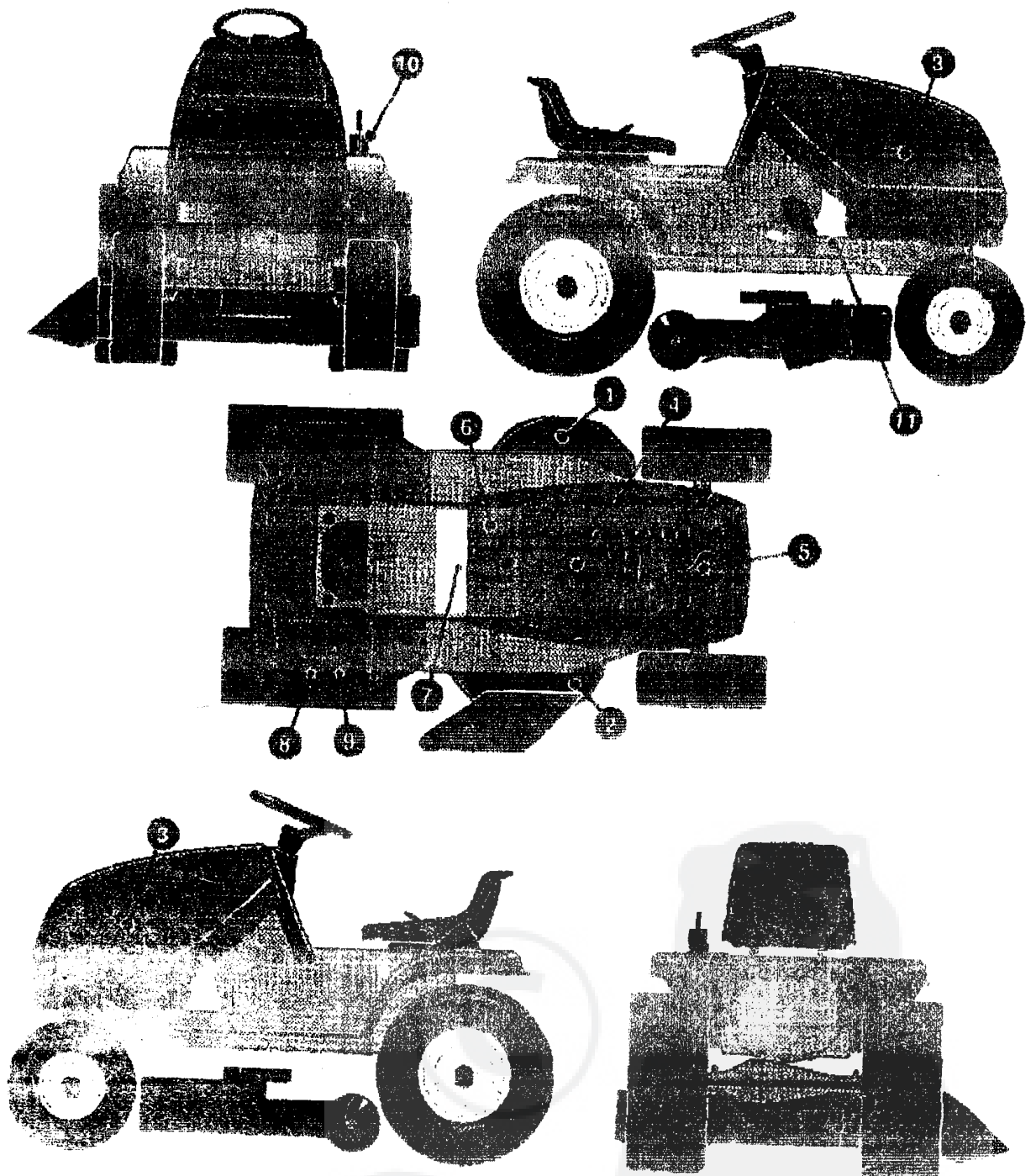
KEY#	PART#	DESCRIPTION	QTY
1	391739	WIRE HARNESS, SF 8-12HP GAS	1
2	41482	PRESS CLIP, 1.380 LONG .255 ID	2
3	303064	ASSEMBLY, LIGHT WIRE-1/4 TURN	1
4	52672	BULB, HEADLAMP	2
5	57444	TIE, CABLE BLACK NYLON, 5.62 LONG	1
6	41482	PRESS CLIP, 1.380 LONG .255 ID	2
9	327354	SWITCH,IGNITION & LIGHTS DELTA	1
10	327352	NUT, 5/8-BACME DELTA FOR BOOT	1
11	327350	KEY, IGNITION	1
12	57476	SWITCH, SCREW MOUNT, DP, NO, NO BLACK	2
13	300302	SCREW, #10 X .50 HMTAPPST, BLACK	4
14	53716	SOLENOID	1
15	187745	SCREW, 1/4-20 X .75 HXSEMMA	2
16	1054	WASHER, FLAT .261 X 1.00 X .065	1
17	1502	NUT, 1/4-20 REGHEXCTRLK	2
18	271172	NUT, 1/4-20 REGHEXKEPS	1
19	271187	NUT, 5/16-24 HKEPS	2
20	55511	WIRE, GROUND, 12.6"	1
21	271184	NUT, 5/16-18 HEXKEPS	1
22	57547	SWITCH, SEAT	1
23	160305	SCREW, 1/4-20 X .58 PHPNHMA	2
24	302257	BATTERY, 12V	1
25	329175	BATTERY BRACKET	1
26	995346	SCREW, 1/4-20 X .50 WAHHTAP	1
27	187745	SCREW, 1/4-20 X .75 HXSEMMA	1
28	1502	NUT, 1/4-20 REGHEXCTRLK	1
29	180020	SCREW, 1/4-20 X .75 HMC	2
30	271172	NUT, 1/4-20 REGHEXKEPS	2
31	302081	FUSE, SPADE TYPE, 32V, 15A	1
32	6149	BRACKET, CABLE RETAINER	1
33	57444	TIE, CABLE BLACK NYLON, 5.62 LONG	1
34	309201	INSULATOR, BATTERY BOOT	1
35	124819	NUT, 1/4-20 REGHXJAM	1

SCHEMATIC DRAWING



F3554-231

REPAIR PARTS



KEY#	PART#	DESCRIPTION	QTY
1	402700	DECAL, CAUTION, DECK, LH	1
2	402701	DECAL, CAUTION, DECK, RH	1
3	305503	PAD, 18 X 6 FOAM HOOD	2
4	307276	PAD, 15 X 7 FOAM HOOD	2
5	307277	PAD, 12 X 4 FOAM HOOD	2
6	308587	DECAL, DASH, EXPORT	1
7	402889	DECAL, CONSOLE, SYMBOLIC CAUTION	1
8	311984	DECAL, SHIFT REVERSE/NEUTRAL	1
9	31018	DECAL, SHIFTER POSITION	1
10	402214	DECAL, HEIGHT ADJUST	1
11	402702	DECAL, BRAKE/CLUTCH	1