

# NOMA



**F3560-041**  
**12.5HP/43"**



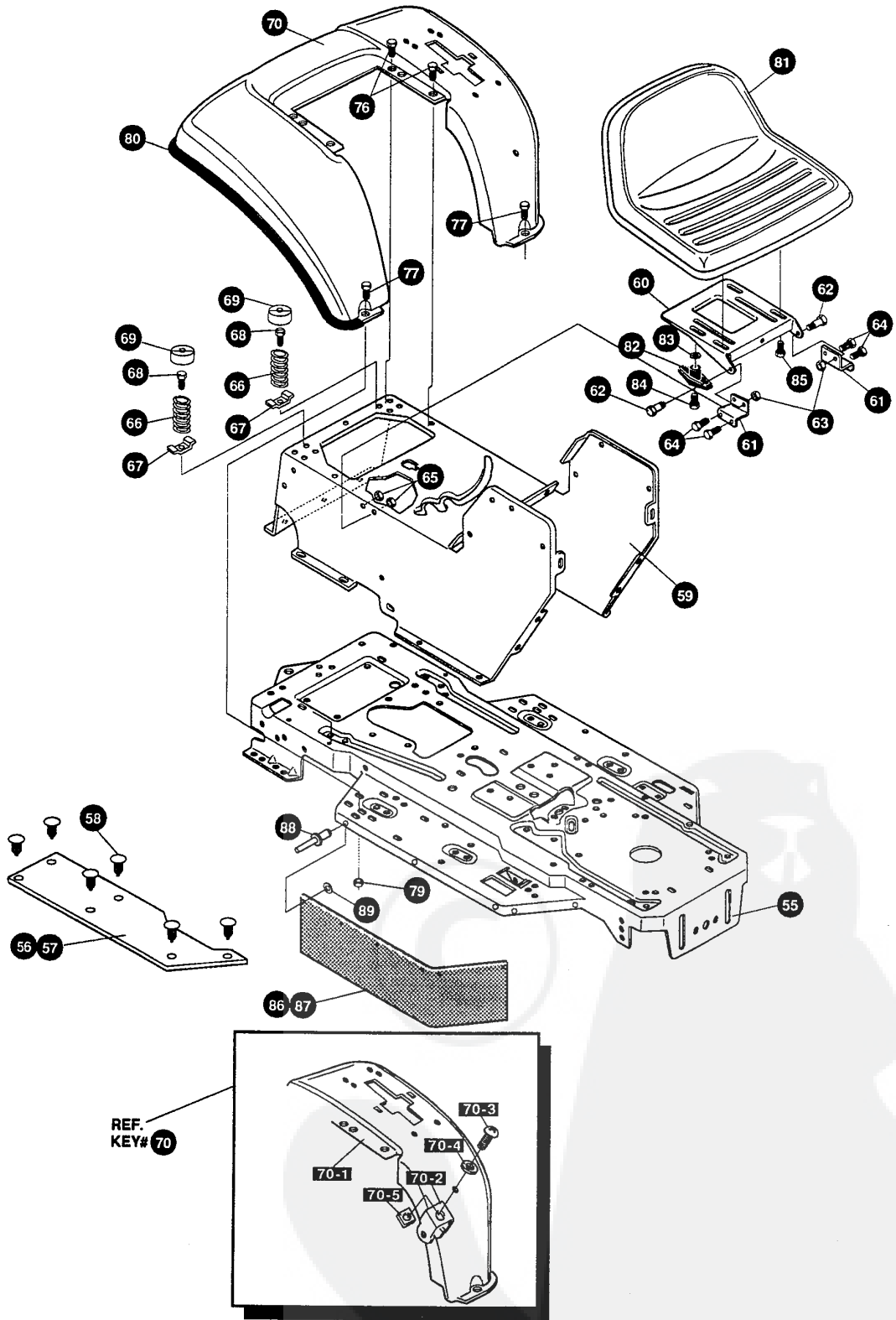
# F3560-041

# FRONT CHASSIS & HOOD ASSEMBLY

KEY#	PART#	DESCRIPTION	QTY
1	302857-853	BRACKET, GRILLE, LH, H-14	1
2	302856-853	BRACKET, GRILLE, RH, H-14	1
3	313541-853	BRACKET, FRONT AXLE	1
4	56030	SCREW, 5/16-18 X .75 WDFLLK	5
5	55273	NUT, 5/16-18 WDFLLKLRG	5
6	300440	GUIDE, BELT, RIDER	1
7	1498	NUT, 5/16-18 REGHEXCTRLK	1
8	308207	BOLT, .625 X 2.18 HSSH, 1/2-13	1
9	309008	NUT, 1/2-13 HEXJAM CTRLK	1
10	180138	SCREW, 3/8-16 X 3.00 HHC	2
11	2483	WASHER, .39 ID X 1.25 D X .07 BELLVIL	2
12	1499	NUT, 3/8-16 REGHXCTRLK	2
13	300635	GUIDE, BELT SHORT, 15" WHEEL	1
14	124824	NUT, 5/16-18 HEXJAM	1
15	46763	RIVET, POP .187 DIA X .450 LONG	3
16	35497	SCREW, 5/16-18 X .50 WAHHTAP	2
17	995346	SCREW, 1/4-20 X .50 WAHHTAP	10
18	309447-854	DASH, STEEL, LF	1
19	995346	SCREW, 1/4-20 X .50 WAHHTAP	2
20	44811	SCREW, 1/4-20 X .75 WAHHTAP	4
21	50352	NUT, 1/4-20 WDFLLK TOPLOCK	4
22	312306	BAFFLE, CONSOLE, SOUND EXPORT, LF	1
23	44811	SCREW, 1/4-20 X .75 WAHHTAP	2
24	120392	WASHER, FLAT .281 X .63 X .065	2
25	1502	NUT, 1/4-20 REGHEXCTRLK	2
26	313021-853	GUIDE, HOOD	2
27	180020	SCREW, 1/4-20 X .75 HHC	2
28	51335	NUT, 1/4-20 WDFLWHIZ-LK	2
29	321185	HOOD	1
30	322700	DECAL, TAPE H14 8MIL VINYL	1
31	302670	LENS, HEADLAMP	1
33	56676	BOLT, .375 X .580 HSSH 5/16-18	2
34	1498	NUT, 5/16-18 REGHEXCTRLK	2
35	310749	LANYARD, HOOD, 9.16 LONG, H14	1
36	180020	SCREW, 1/4-20 X .75 HHC	1
37	120380	WASHER, REGSPTLK .263 X .49 X .07	1
38	49050	SCREW, 1/4-10 X .75 PHPNTAP	1
39	301452	FOIL, HEAT REFLECTOR	1
40	311465	COVER, STEERING SHAFT	1
41	330510	STEERING WHEEL	1
42	301413	SPACER, STEERING SHAFT	1
43	456378	PIN, SPRING .250 DIA X 2.00 LONG	1
44	271190	NUT, 3/8-16 HEXKEPS	1
45	308492	FOIL, LENS, REFLECTOR	1
	336776	PARTS MANUAL	1
	335154	OPERATOR'S MANUAL (ENGLISH)	1
	335155	OPERATOR'S MANUAL (FRENCH)	1
	335156	OPERATOR'S MANUAL (GERMAN)	1

# F3560-041

# REPAIR PARTS



**NOTE: ALWAYS USE ORIGINAL EQUIPMENT PARTS.**  
Use of service/replacement parts other than original equipment parts may void your warranty.

**ALL UNNUMBERED ITEMS ARE INTERCHANGEABLE WITH OPPOSITE SIDE**

336234 A

# F3560-041

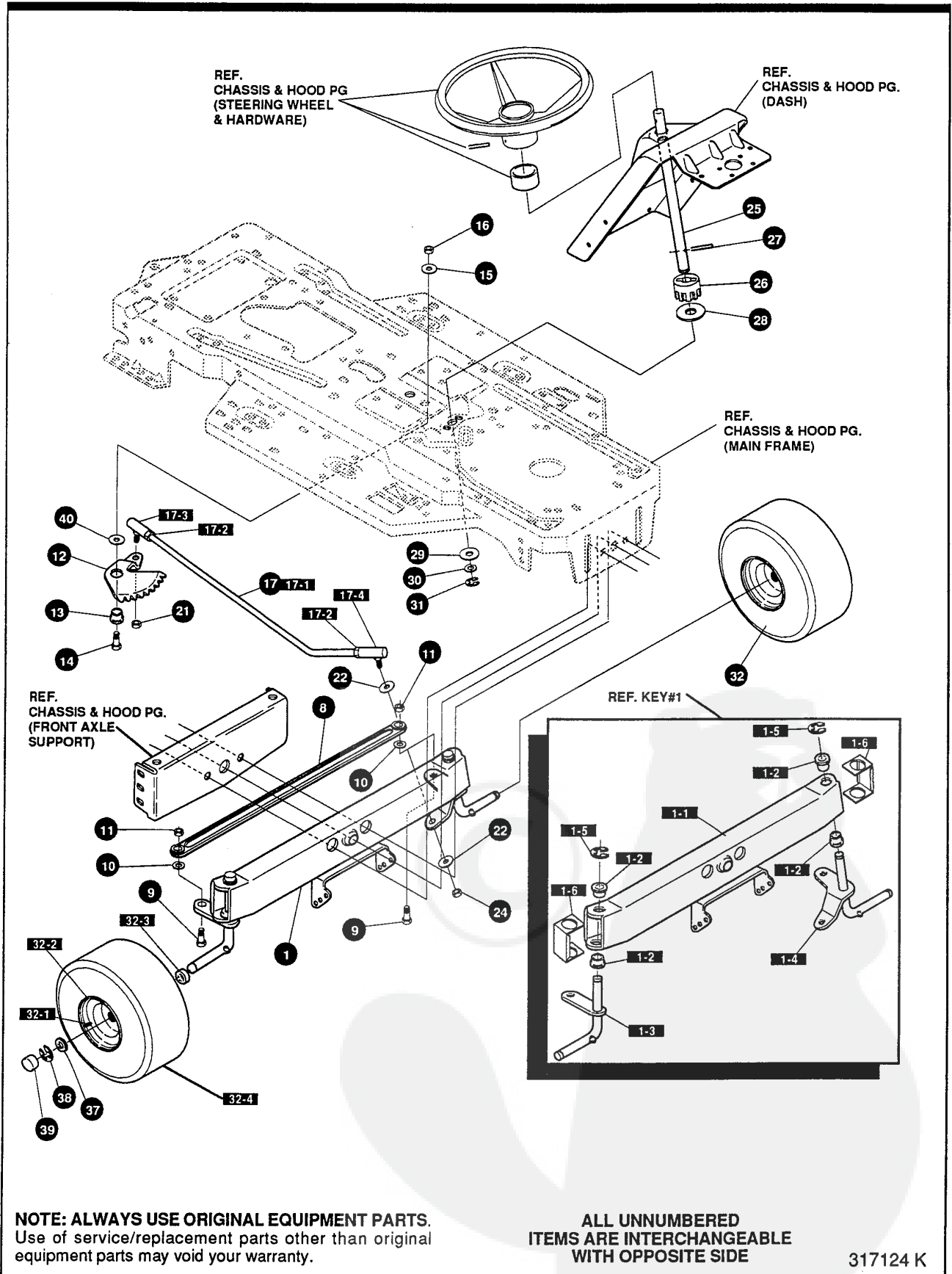
# REAR CHASSIS & HOOD ASSEMBLY

KEY#	PART#	DESCRIPTION	QTY
55	335851-853	FRAME, LF .....	1
56	310005	FOOT PAD, LH, 22.12 LONG, F-5 .....	1
57	310006	FOOT PAD, RH, 22.12 LONG, F-5 .....	1
58	309235	FASTENER, RATCHET BLACK .....	12
59	309657-854	CONSOLE, LF, TOPSHIFT .....	1
60	331535-853	PLATE, SEAT F5, SF/LF QUICK .....	1
61	310660-853	BRACKET, F-5, SEAT SUPPORT .....	2
62	20507	BOLT, .437 X .156 HHSH, 5/16-18 .....	2
63	1498	NUT, 5/16-18 REGHEXCTRLK .....	2
64	48901	SCREW, 5/16-18 X .63 WAHHC .....	4
65	1498	NUT, 5/16-18 REGHEXCTRLK .....	4
66	57153	SPRING, SEAT 2.63 LONG, 1.49OD BLACK .....	2
67	1341	CLAMP, SPRING 1.17"ID .....	2
68	44811	SCREW, 1/4-20 X .75 WAHHTAP .....	2
69	56907	COVER, SEAT SPRING 1.5 ID X 1.0 LONG .....	2
70	327470-854	ASSEMBLY, FENDER, F5 .....	1
70-1	*	FENDER, F5, STD SHIFT .....	1
70-2	9239	CLEVIS .....	1
70-3	439455	SCREW, 5/16-18 X .56 PHPNMA .....	1
70-4	301551	WASHER, .344 ID X 1.50 D X .09 .....	1
70-5	120373	NUT, 5/16-18 SQUARE .....	1
76	995346	SCREW, 1/4-20 X .50 WAHHTAP .....	4
77	126358	BOLT, 5/16-18 X 1.00 CARRLN .....	2
79	55273	NUT, 5/16-18 WDFLLKLRG .....	2
80	55023	TRIM, STRIP, BLACK—SMALL, W/ ADH .....	77.5"
81	331524	SEAT, MICHIGAN, LF, QUICK .....	1
82	13527	KNOB, T 2BLADE, W/516/18 NUT .....	1
83	120393	WASHER, FLAT .344 X .69 X .065 .....	1
84	180079	SCREW, 5/16-18 X 1.00 HHC .....	1
85	331637	BOLT, .500 X .10 HHSH, 5/16-18 .....	2
86	305354	SKIRT, TUV, LF, RUBBER 7 X 15.64 .....	1
87	305386	SKIRT, TUV, LF, RUBBER 7 X 28.03 .....	1
88	328683	RIVET, POP 3/16 DIA X .50 LONG .....	10
89	1501	WASHER, FLAT .203 X .56 X .040 .....	10

\* REFERENCE ONLY

# F3560-041

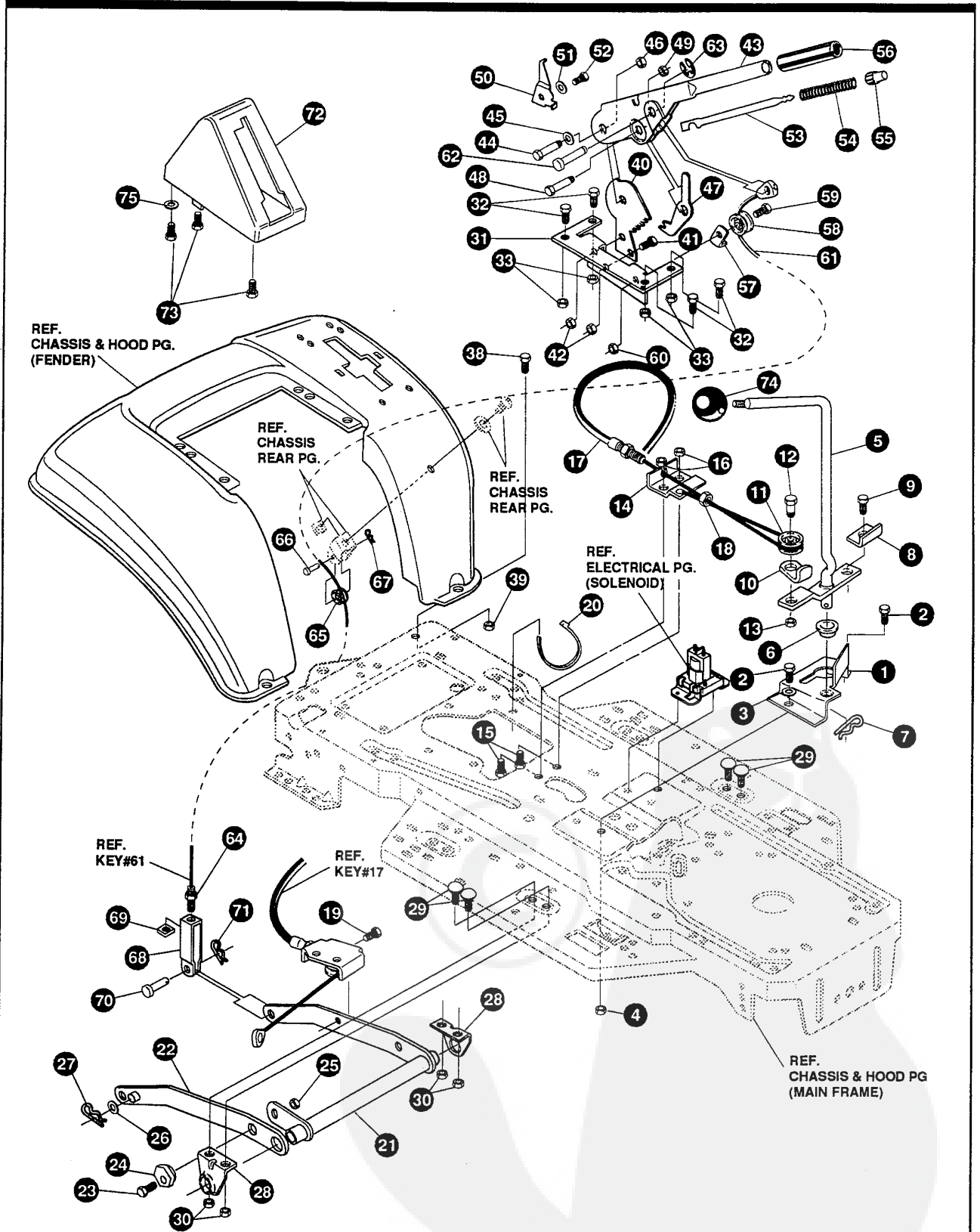
# REPAIR PARTS





# F3560-041

# REPAIR PARTS



**NOTE: ALWAYS USE ORIGINAL EQUIPMENT PARTS.**  
 Use of service/replacement parts other than original equipment parts may void your warranty.

**ALL UNNUMBERED ITEMS ARE INTERCHANGEABLE WITH OPPOSITE SIDE**

325815 F

8

○  
○

9

○  
○





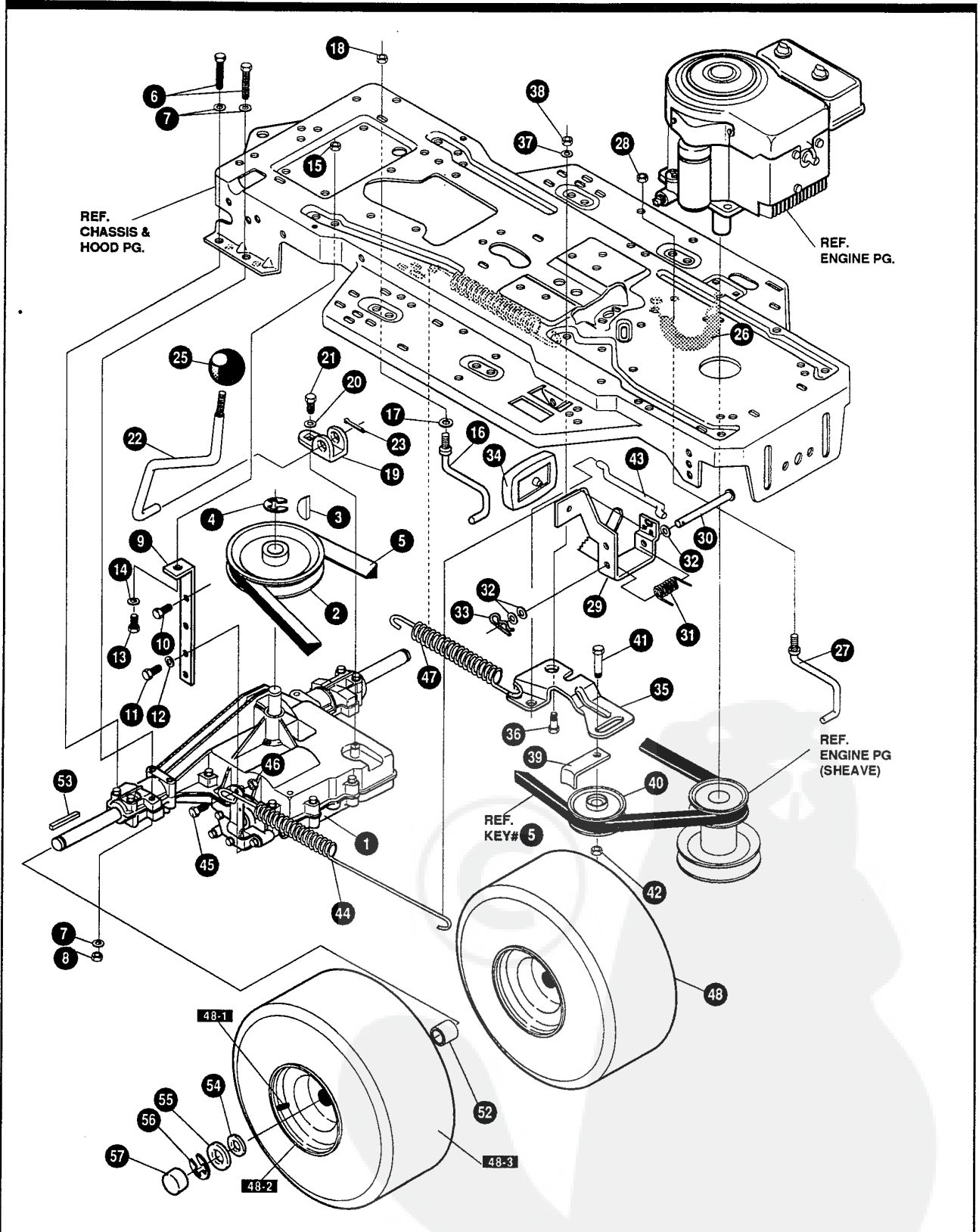
# F3560-041

# MOWER SUSPENSION ASSEMBLY

KEY#	PART#	DESCRIPTION	QTY
1	320075-853	BRACKET, CLUTCH ENGAGE LEVER .....	1
2	180079	SCREW, 5/16-18 X 1.00 HHC .....	2
3	120393	WASHER, FLAT .344 X .69 X .065 .....	2
4	1498	NUT, 5/16-18 REGHEXCTRLK .....	2
5	304791	ASSEMBLY, CLUTCH LEVER .....	1
6	50148	BEARING, FLANGE .503 ID X .63 OD X .50 .....	1
7	8260	PIN, HAIR .091 DIA X 1.66 LONG .....	1
8	318341	BRACKET, SWITCH ENGAGE .....	1
9	35498	SCREW, 5/16-18 X .75 WAHHTAP .....	1
10	1288	BRACKET, CABLE RETAINER .....	1
11	48306	PULLEY, METAL .....	1
12	58336	BOLT, .375 X .375 HSSH, 1/4-20 .....	1
13	1502	NUT, 1/4-20 REGHEXCTRLK .....	1
14	300698-853	BRACKET, FRAME CABLE .....	1
15	180020	SCREW, 1/4-20 X .75 HHC .....	2
16	1502	NUT, 1/4-20 REGHEXCTRLK .....	2
17	301503	ASSEMBLY, CABLE, BLADE ENGAGE .....	1
18	120613	NUT, 1/4-28 HJAM .....	1
19	35498	SCREW, 5/16-18 X .75 WAHHTAP .....	1
20	57444	TIE, CABLE BLACK NYLON, 5.62 LONG .....	1
21	300158-853	LIFT ASSEMBLY, LH .....	1
22	300169-853	LIFT ASSEMBLY, RH .....	1
23	180079	SCREW, 5/16-18 X 1.00 HHC .....	1
24	58247	NUT, ADJUST .....	1
25	1498	NUT, 5/16-18 REGHEXCTRLK .....	1
26	417098	WASHER, FLAT .531 X 1.06 X .063 .....	2
27	8260	PIN, HAIR .091 DIA X 1.66 LONG .....	2
28	58248-853	BRACKET, REAR HANG SUSPENSION .....	2
29	57072	BOLT, 5/16-18 X .63 CARRLN .....	4
30	1498	NUT, 5/16-18 REGHEXCTRLK .....	4
31	313926	BRACKET, HEIGHT/ADJUST SUPPORT .....	1
32	180077	SCREW, 5/16-18 X .75 HHC .....	4
33	1498	NUT, 5/16-18 REGHEXCTRLK .....	4
38	180077	SCREW, 5/16-18 X .75 HHC .....	1
39	1498	NUT, 5/16-18 REGHEXCTRLK .....	1
40	301238	QUADRANT, HEIGHT ADJUST .....	1
41	180077	SCREW, 5/16-18 X .75 HHC .....	2
42	1498	NUT, 5/16-18 REGHEXCTRLK .....	2
43	322292-853	HANDLE,LIFT SHORT(30" S.F.) .....	1
44	300171	BOLT, .500 X .270 HSSH, 5/16-18 .....	1
45	996418	WASHER, FLAT .506 X .75 X .024 .....	1
46	44108	NUT, 5/16-18 HWDFLCTRLK .....	1
47	301239	PAWL, SQUARE .....	1
48	300171	BOLT, .500X .270 HSSH, 5/16-18 .....	1
49	44108	NUT, 5/16-18 HWDFLCTRLK .....	1
50	9435	POINTER, HEIGHT ADJUST .....	1
51	138479	WASHER, EXLK .195 X .41 X .03 .....	1
52	35287	SCREW, #8-32 X .38 HHWATAP .....	1
53	303027	ROD, ACTUATOR-SHORT .....	1
54	58326	SPRING, HEIGHT ADJUST .....	1
55	58325	KNOB, HEIGHT ADJUST, PUSH BUTTON .....	1
56	58329	GRIP, .750 OD, W/ HOLE BLACK .....	1
57	9149	BRACKET, CABLE RETAINER .....	1
58	48306	PULLEY, METAL .....	1
59	58336	BOLT, .375 X .375 HSSH, 1/4-20 .....	1
60	1502	NUT, 1/4-20 REGHEXCTRLK .....	1
61	314177	CABLE, LIFT, 22.92, F-5, 20 X 8-8 .....	1
62	300310	PIN, CLEVIS .310 DIA+ .475 LONG .....	1
63	300311	RING, RET E .31 X .25 TRU 5133-31 .....	1
64	120375	NUT, 1/4-20 REGHEX .....	1
65	48306	PULLEY, METAL .....	1
66	300317	PIN, CLEVIS .375 DIA X .81 LONG .....	1
67	8260	PIN, HAIR .091 DIA X 1.66 LONG .....	1
68	9405	CLEVIS, LIFT CABLE .....	1
69	120372	NUT, 1/4-20 REGSQ .....	1
70	39522	PIN, CLEVIS .312 X .812 .....	1
71	121222	PIN, COTTER .090 DIA X .75 LONG .....	1
72	333903	LIFT COVER, F5, LF, SF, BLACK .....	1
73	300340	SCREW, #10 X .75 HHPLAST, BLACK .....	3
74	55514	KNOB, ROUND 1.50 DIA, BLACK .....	1
75	120392	WASHER, FLAT .281 X .63 X .065 .....	1

# F3560-041

# REPAIR PARTS



**NOTE: ALWAYS USE ORIGINAL EQUIPMENT PARTS.**  
 Use of service/replacement parts other than original equipment parts may void your warranty.

**ALL UNNUMBERED ITEMS ARE INTERCHANGEABLE WITH OPPOSITE SIDE**

328261 D

# F3560-041

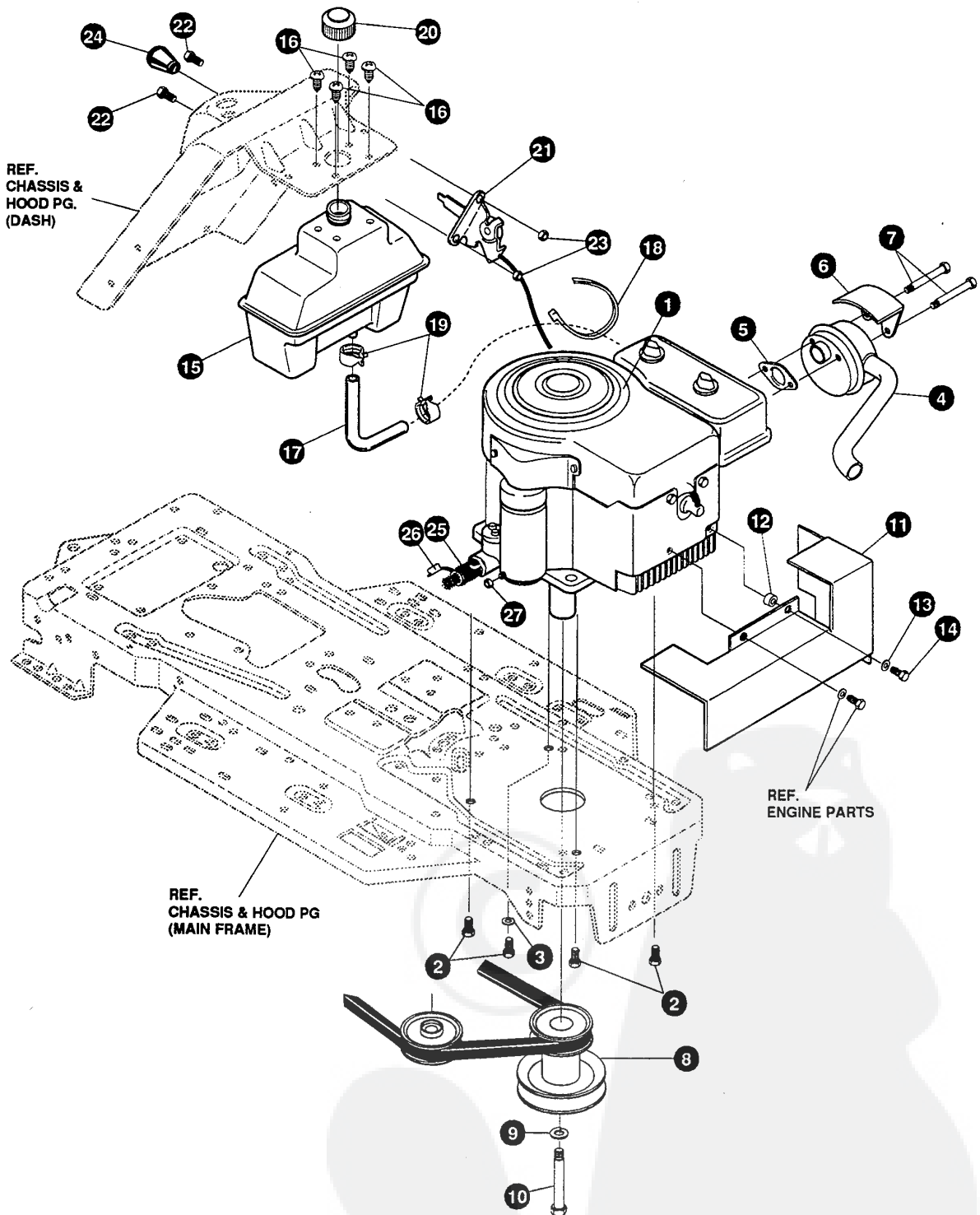
# MOTION DRIVE ASSEMBLY

KEY#	PART#	DESCRIPTION	QTY
1	*	TRANSAXLE, FOOTE, 4360-5 .....	1
2	302745	PULLEY, 6.6 OD V4L T/A .....	1
3	50795	KEY, HI-PRO, 606 .75 DIA X .187 WD .....	1
4	22053	RING, RETEX .58 X .035 TRU 5100-62 .....	1
5	314120	BELT, V 4L, 87.25, 4WS, LF .....	1
6	180113	SCREW, 5/16-18 X 3.00 HHC .....	4
7	120393	WASHER, FLAT .344 X .69 X .065 .....	8
8	1498	NUT, 5/16-18 REGHEXCTRLK .....	4
9	323739	BRACKET, STABILIZER .....	1
10	50947	SCREW, 3/8-16 X 1.25 WAHTAP .....	1
11	35498	SCREW, 5/16-18 X .75 WAHTAP .....	1
12	120638	WASHER, HVSPTLK .328 X .60 X .09 .....	1
13	180079	SCREW, 5/16-18 X 1.00 HHC .....	1
14	120393	WASHER, FLAT .344 X .69 X .065 .....	1
15	1498	NUT, 5/16-18 REGHEXCTRLK .....	1
16	57259	GUIDE, BELT 5/16-18 THD .....	1
17	138538	WASHER, REGINTLK .320 X .61 X .03 .....	1
18	1498	NUT, 5/16-18 REGHEXCTRLK .....	1
19	57480	BRACKET, SHIFT, P920-5 .....	1
20	57157	WASHER, .750 X .250 SP-TRANSAXLE .....	1
21	56255	SCREW, 1/4-28 X .75 NYLHHC .....	1
22	302743	LEVER, SHIFT FOOT, 4360-5&6, LF .....	1
23	137185	PIN, COTTER .125 DIA X 1.00 LONG .....	1
25	55514	KNOB, ROUND 1.50 DIA, BLACK .....	1
26	321514	SPRING, DRAG LINK BIAS .....	1
27	304016	GUIDE, BELT RH .....	1
28	1498	NUT, 5/16-18 REGHEXCTRLK .....	1
29	325942	PEDAL ASSEMBLY, BRAKE/CLUTCH, LF .....	1
30	319675	PIN, CLEVIS .500 D X 4.53 LONG .....	1
31	57847	SPRING, BRAKE PEDAL .....	1
32	2968	WASHER, FLAT .504 X .75 X .059 .....	3
33	56180	PIN, HAIR .091 DIA X 1.62 LONG .....	1
34	48160	PAD, CLUTCH BRAKE W/PRINTING .....	1
35	320381-853	ARM, IDLER TRACTION, SOG, LF .....	1
36	329989	BOLT, .625 X .135 HHSH, 5/16-18 .....	1
37	45602	WASHER, FLAT .333 X .87 X .119 .....	1
38	1498	NUT, 5/16-18 REGHEXCTRLK .....	1
39	39659	RETAINER, BELT .....	1
40	35374	PULLEY, IDLER V4L, 3.06 X .62 .....	1
41	45892	BOLT, 3/8-16 X 1.50 CARRSN .....	1
42	1499	NUT, 3/8-16 REGHXCTRLK .....	1
43	57204	ROD, CLUTCH 3.92" .....	1
44	325937	SPRING, BRAKE, 28.80, 930, 4360 .....	1
45	326131	BOLT, .495 X .31 HHSH, 5/16-18 .....	1
46	1498	NUT, 5/16-18 REGHEXCTRLK .....	1
47	330505	SPRING, CLUTCH .113 X .750 X 8.75 .....	1
48	327630	TIRE & RIM ASSEMBLY, 20 X 8.00-8 .....	2
48-1	24167	VALVE STEM	
48-2	57165	RIM, WHEEL	
48-3	319684	TIRE, 20 X 8 X 8	
52	57479	SPACER, SLEEVE .75 X 1.25 X 1.32 .....	2
53	52928	KEY, SQUARE .187 SQUARE X 2.25 LONG .....	2
54	642	WASHER, FLAT .755 X 1.31 X .075 .....	4
55	42815	WASHER, FLAT .755 X 1.53 X .07 .....	2
56	36625	RING, RETEX .57 X .05 TRU 5133-75 .....	2
57	40394	HUB CAP, 1.500 ID X 7/8 LONG .....	2

\* CONTACT YOUR NEAREST TRANSAXLE DEALER FOR PARTS & SERVICE

# F3560-041

# REPAIR PARTS



**NOTE: ALWAYS USE ORIGINAL EQUIPMENT PARTS.**  
Use of service/replacement parts other than original equipment parts may void your warranty.

**ALL UNNUMBERED ITEMS ARE INTERCHANGEABLE WITH OPPOSITE SIDE**

336211 A

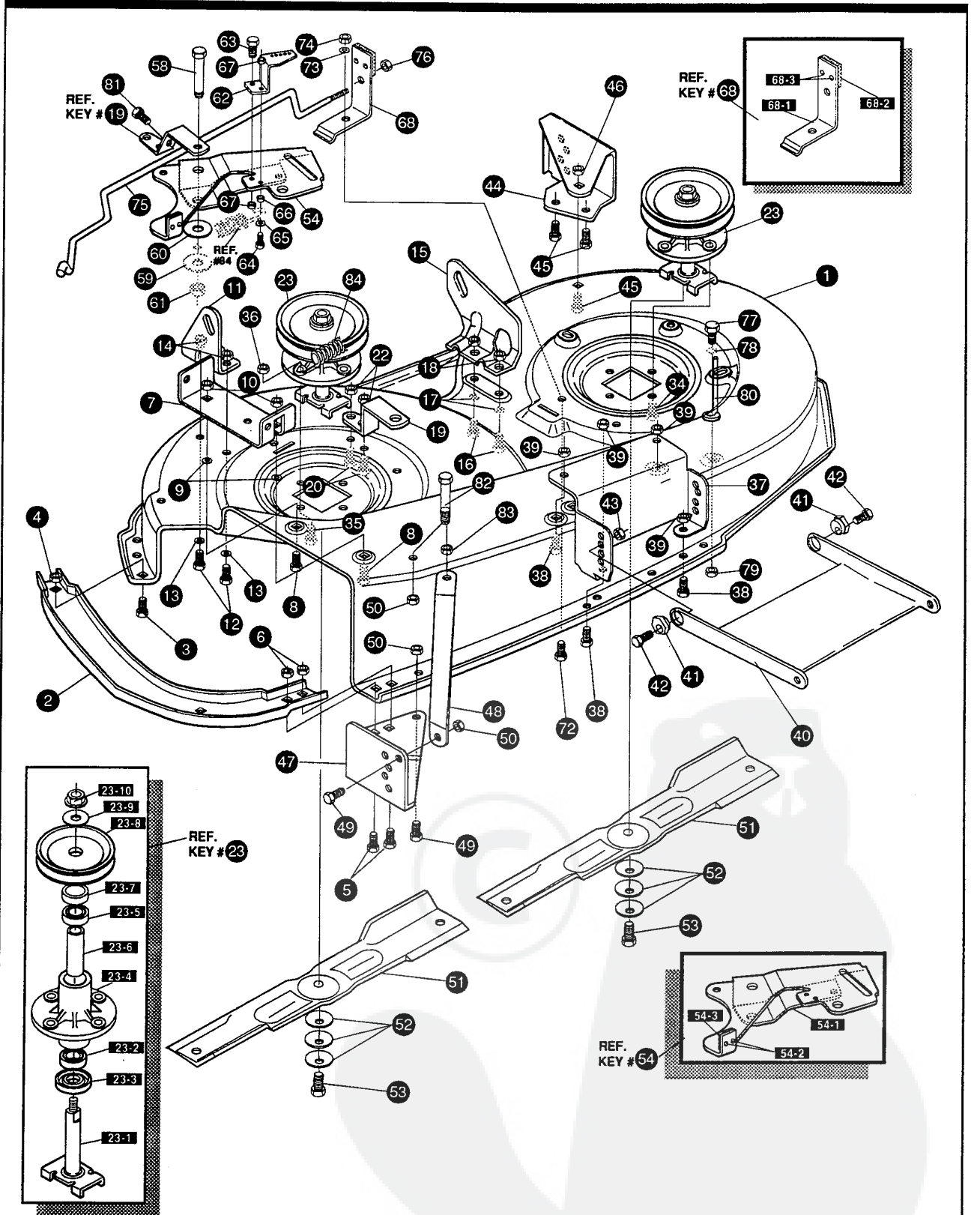
**F3560-041****ENGINE & CONTROL ASSEMBLY**

KEY#	PART#	DESCRIPTION	QTY
1	*	ENGINE, 12-12.5HP, B&S, IC DUAL .....	1
2	50947	SCREW, 3/8-16 X 1.25 WAHTAP .....	4
3	138489	WASHER, EXLK .384 X .69 X .04 .....	1
4	305367	MUFFLER, LO TONE NELSON, EXPORT .....	1
5	46708	GASKET, MUFFLER .....	1
6	54767	SHIELD, HEAT, FOR ROUND MUFFLER .....	1
7	54980	SCREW, 5/16-18 X 3.50 HHC .....	2
8	328029	PULLEY, ENGINE, 4.40OFF/5.00D/3.00D .....	1
9	120383	WASHER, REGSPTLK .459 X .78 X .12 .....	1
10	428644	SCREW, 7/16-20 X 5.00 HHC .....	1
11	308543-853	HEAT SHIELD ASSEMBLY, 11 & 12HP .....	1
12	41462	SPACER, SLEEVE .328 X .75 X .312 .....	1
13	120380	WASHER, REGSPTLK .263 X .49 X .07 .....	1
14	180022	SCREW, 1/4-20X1.00 HHC .....	1
15	314989	TANK, FUEL 1 GALLON, CLEAR .....	1
16	49050	SCREW, 1/4-10 X .75 PHPNTAP .....	4
17	50118	TUBING, .25 X .50 X BULK GAS LINE .....	13.5"
18	57444	TIE, CABLE BLACK NYLON, 5.62 LONG .....	1
19	47345	CLAMP, HOSE SCREW TYPE .....	2
20	46704	CAP, GAS 1-1/2-7 THD, BLACK .....	1
21	321273	CONTROL, THROTTLE 12-12.5HP, LF .....	1
22	320553	SCREW, 10-24 X .63 PHPNMA .....	2
23	308459	NUT, #10-24 HXHDNYLK .....	2
24	50607	KNOB, ROUND THROTTLE, BLACK .....	1
25	325547	OIL DRAIN VALVE ASSEMBLY .....	1
26	327422	CAP, OIL DRAIN VALVE ASSEMBLY, YELLOW .....	1
27	124818	NUT, 1/4-20 REGHXJAM .....	1

\* SEE ENGINE MANUAL

# F3560-041

# REPAIR PARTS



**NOTE: ALWAYS USE ORIGINAL EQUIPMENT PARTS.**  
 Use of service/replacement parts other than original equipment parts may void your warranty.

**ALL UNNUMBERED ITEMS ARE INTERCHANGEABLE WITH OPPOSITE SIDE**

324144 G



# F3560-041

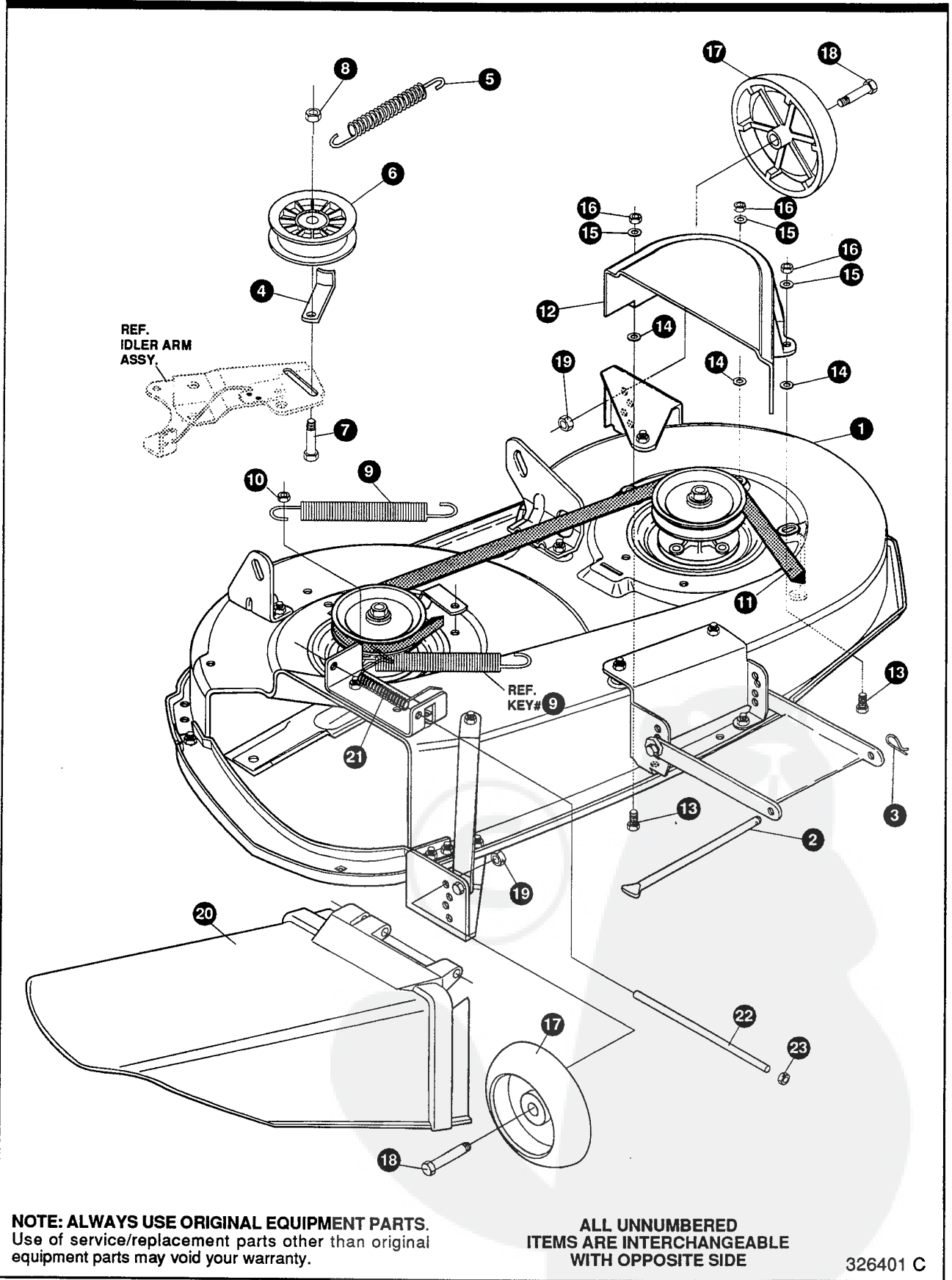
# PRE-PAINTED DECK ASSEMBLY

KEY#	PART#	DESCRIPTION	QTY
1	325116	43" DECK KIT	1
2	326480-853	TOE GUARD - MULCHER	1
3	180077	SCREW, 5/16-18 X .75 HHC	1
4	1498	NUT, 5/16-18 REGHEXCTRLK	1
5	180077	SCREW, 5/16-18 X .75 HHC	2
6	1498	NUT, 5/16-18 REGHEXCTRLK	2
7	317017	BRACKET, CHUTE MOUNT, BLACK	1
8	180077	SCREW, 5/16-18 X .75 HHC	2
9	120393	WASHER, FLAT .344 X .69 X .065	2
10	1498	NUT, 5/16-18 REGHEXCTRLK	2
11	313929	LIFT BRACKET, REAR, RH, BLACK 853	1
12	180077	SCREW, 5/16-18 X .75 HHC	2
13	120393	WASHER, FLAT .344 X .69 X .065	2
14	1498	NUT, 5/16-18 REGHEXCTRLK	2
15	310667	BRACKET, DECK, LIFT, REAR, LH, BLACK	1
16	180077	SCREW, 5/16-18 X .75 HHC	2
17	120393	WASHER, FLAT .344 X .69 X .065	2
18	1498	NUT, 5/16-18 REGHEXCTRLK	2
19	326893-853	BRACE, IDLER SUPPORT, 40", 43"	1
20	180077	SCREW, 5/16-18 X .75 HHC	2
22	44108	NUT, 5/16-18 HWDFLCTRLK	2
23	56424-853	QUILL ASSEMBLY, 36/39/40/43	2
23-1	56425	SHAFT/SADDLE 36"	1
23-2	49562	BEARING, BALL 6203-2AA-C3 ARMORED	1
23-3	50616	DUST SHIELD	1
23-4	55547	QUILL CASTING (1046)	1
23-5	49562	BEARING, BALL 6203-2AA-C3 ARMORED	1
23-6	50818	SPACER, SLEEVE .669 X .88 X 3.797	1
23-7	51449	SPACER, SLEEVE .672 X .93 X .438	1
23-8	313898	PULLEY ASSEMBLY	1
23-9	56365	WASHER, SPECIAL QUILL	1
23-10	1282	NUT, 7/16-20 WDFLLK	1
34	35498	SCREW, 5/16-18 X .75 WAHHTAP	7
35	300345	SCREW, 5/16-18 X 1.38 WAHHTAP	1
36	1498	NUT, 5/16-18 REGHEXCTRLK	1
37	317040	BRACKET FRONT, BLACK	1
38	180077	SCREW, 5/16-18 X .75 HHC	4
39	1498	NUT, 5/16-18 REGHEXCTRLK	4
40	58305-853	BRACKET, LINK, DECK, FRONT	1
41	58247	NUT, ADJUST	2
42	180079	SCREW, 5/16-18 X 1.00 HHC	2
43	1498	NUT, 5/16-18 REGHEXCTRLK	2
44	317041	BRACKET, GAGE WHEEL, LH, BLACK	1
45	180077	SCREW, 5/16-18 X .75 HHC	3
46	1498	NUT, 5/16-18 REGHEXCTRLK	3
47	322464-853	BRACKET, GAGE WHEEL, RH, FRONT	1
48	314282-853	BRACKET, STABILIZER	1
49	180077	SCREW, 5/16-18 X .75 HHC	2
50	1498	NUT, 5/16-18 REGHEXCTRLK	3
51	326961	BLADE, 43", BLACK	2
52	2483	WASHER, .39 ID X 1.25 D X .07 BELLVIL	6
53	39573	SCREW, 3/8-24 X 1.00 NYLHHC	2
54	320576-853	IDLER ARM ASSEMBLY	1
54-1	322116-853	ARM, IDLER 40/43", DECK	1
54-2	41601	RIVET, OVSET .187 DIA X .50 LONG	2
54-3	306973	BRAKE PAD - HARD-NF343 (X-31)	1
58	304420	BOLT, .500 X 2.15 HHSH	1
59	996416	WASHER, FLAT .391 X 1.00 X .125	1
60	996307	WASHER, FLAT .391 X 1.00 X .209	1
61	45171	NUT, 3/8-16 HWDFL, WHIZ-LOCK	1
62	326249-853	BRACKET, EXTENSION IDLER	1
63	180077	SCREW, 5/16-18 X .75 HHC	1
64	180083	SCREW, 5/16-18 X 1.50 HHC	1
65	446363	WASHER, FLAT .375 X .88 X .082	1
66	271184	NUT, 5/16-18 HEXKEPS	1
67	1498	NUT, 5/16-18 REGHEXCTRLK	2
68	321828	BLADE BRAKE ASSEMBLY	1
68-1	135624	RIVET, TRSET .185 DIA X .41 LONG	2
68-2	304119-853	BRAKE ARM	1
68-3	306973	BRAKE PAD - HARD-NF343 (X-31)	1
72	180077	SCREW, 5/16-18 X .75 HHC	1
73	120393	WASHER, FLAT .344 X .69 X .065	1
74	1498	NUT, 5/16-18 REGHEXCTRLK	1
75	314079	ROD, BRAKE	1
76	1502	NUT, 1/4-20 REGHEXCTRLK	1
77	180079	SCREW, 5/16-18 X 1.00 HHC	1
78	120393	WASHER, FLAT .344 X .69 X .065	1
79	1498	NUT, 5/16-18 REGHEXCTRLK	1
80	325965	BELT GUIDE, 43" DECK, UPSTOP	1
81	308231	SCREW, 1/4-20 X 1.25 HHWATAP	1
82	311104	SCREW, 5/16-18 X 5.00 HHC	1
83	271184	NUT, 5/16-18 HEXKEPS	1
84	35410	SPRING, .071 X .62 X 4.37	1



# F3560-041

# REPAIR PARTS



**NOTE: ALWAYS USE ORIGINAL EQUIPMENT PARTS.**  
Use of service/replacement parts other than original equipment parts may void your warranty.

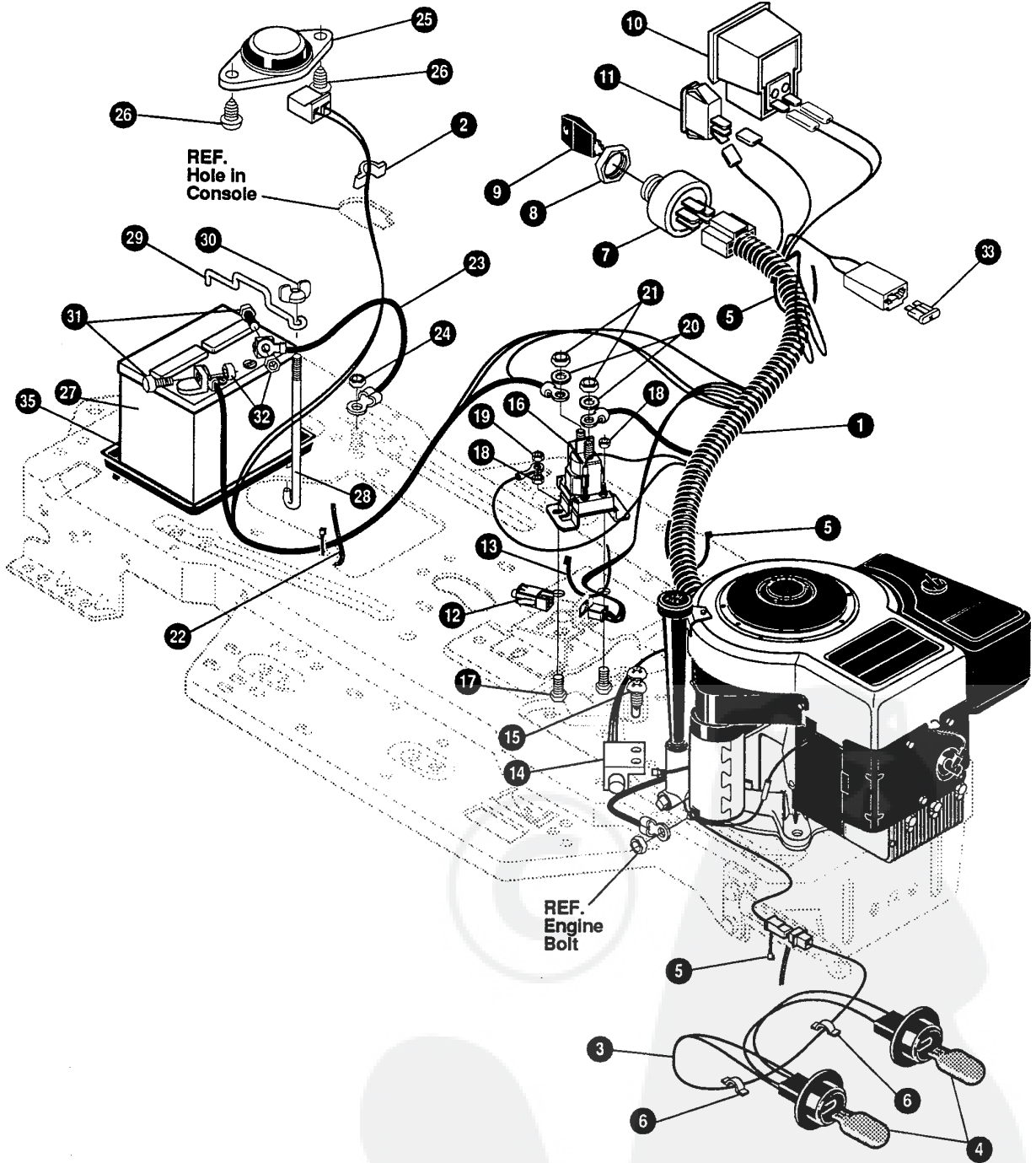
**ALL UNNUMBERED  
ITEMS ARE INTERCHANGEABLE  
WITH OPPOSITE SIDE**

326401 C

KEY#	PART#	DESCRIPTION	QTY
1	329036	DECK, 43" MOWER, 2-WHEEL EXPORT .....	1
2	58306	ROD, DECK HITCH .....	1
3	8260	PIN, HAIR .091 DIA X1.66 LONG .....	1
4	1346	RETAINER, BELT .....	1
5	314107	SPRING, TENSION 5.00 LONG+17LB/IN .....	1
6	310326	PULLEY, IDLER BFF 4.00 WIDE .....	1
7	126416	BOLT, 3/8-16 X 1.75 CARRLN .....	1
8	45171	NUT, 3/8-16 HWDFL WHIZ-LOCK .....	1
9	35410	SPRING, .071 X .62 X 4.37 .....	1
10	1498	NUT, 5/16-18 REGHEXCTRLK .....	1
11	314108	BELT, V 5L, 86.00 KEVLAR .....	1
12	333073	GUARD, BELT, LH, PLASTIC .....	1
13	57101	BOLT, 5/16-18 X .75 CARRSN .....	3
14	309436	PUSHNUT, 5/16 BOLT RETAINER .....	3
15	120393	WASHER, FLAT .344 X .69 X .065 .....	3
16	1498	NUT, 5/16-18 REGHEXCTRLK .....	3
17	302611	GAUGE WHEEL, EURO 6.00 OD X 1.38 WD .....	2
18	23763	BOLT, .500 X 1.390 HSSH, 3/8-16 .....	2
19	1499	NUT, 3/8-16 REGHXCTRLK .....	2
20	304422	CHUTE DEFLECTOR, 40", 42" & 43" .....	1
21	314975	SPRING, TORSION, CHUTE DEFLECTOR .....	1
22	304424	ROD, PIVOT DECK .312 D X 7.25 .....	1
23	3535	NUT, PUSH ON CAP .312 OD .....	1

# F3560-041

# REPAIR PARTS



**NOTE: ALWAYS USE ORIGINAL EQUIPMENT PARTS.**  
Use of service/replacement parts other than original equipment parts may void your warranty.

**ALL UNNUMBERED  
ITEMS ARE INTERCHANGEABLE  
WITH OPPOSITE SIDE**

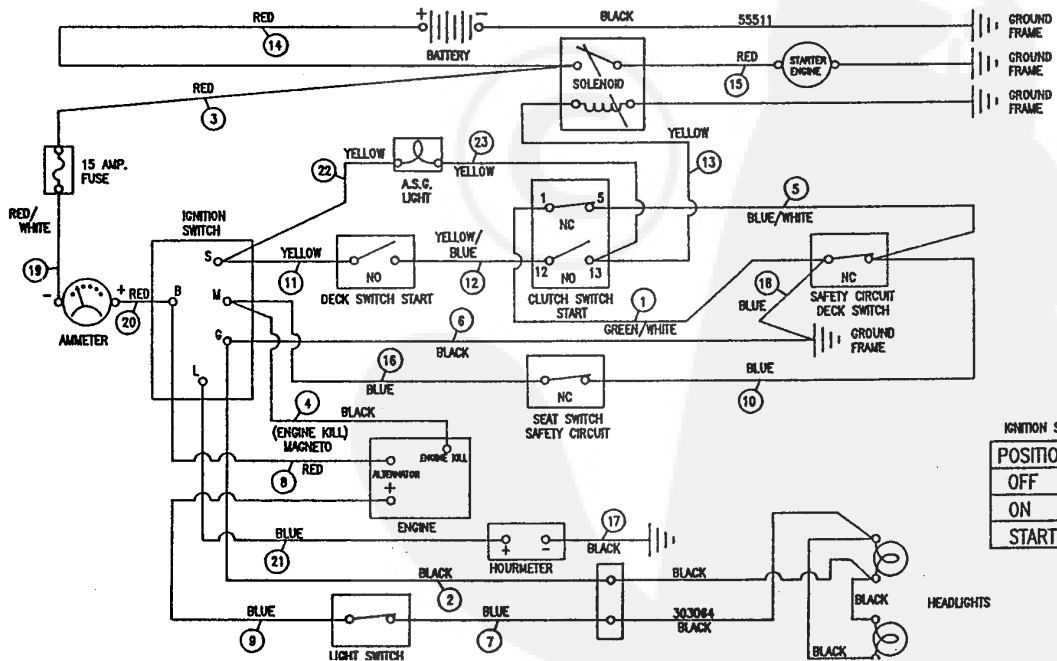
325502 D

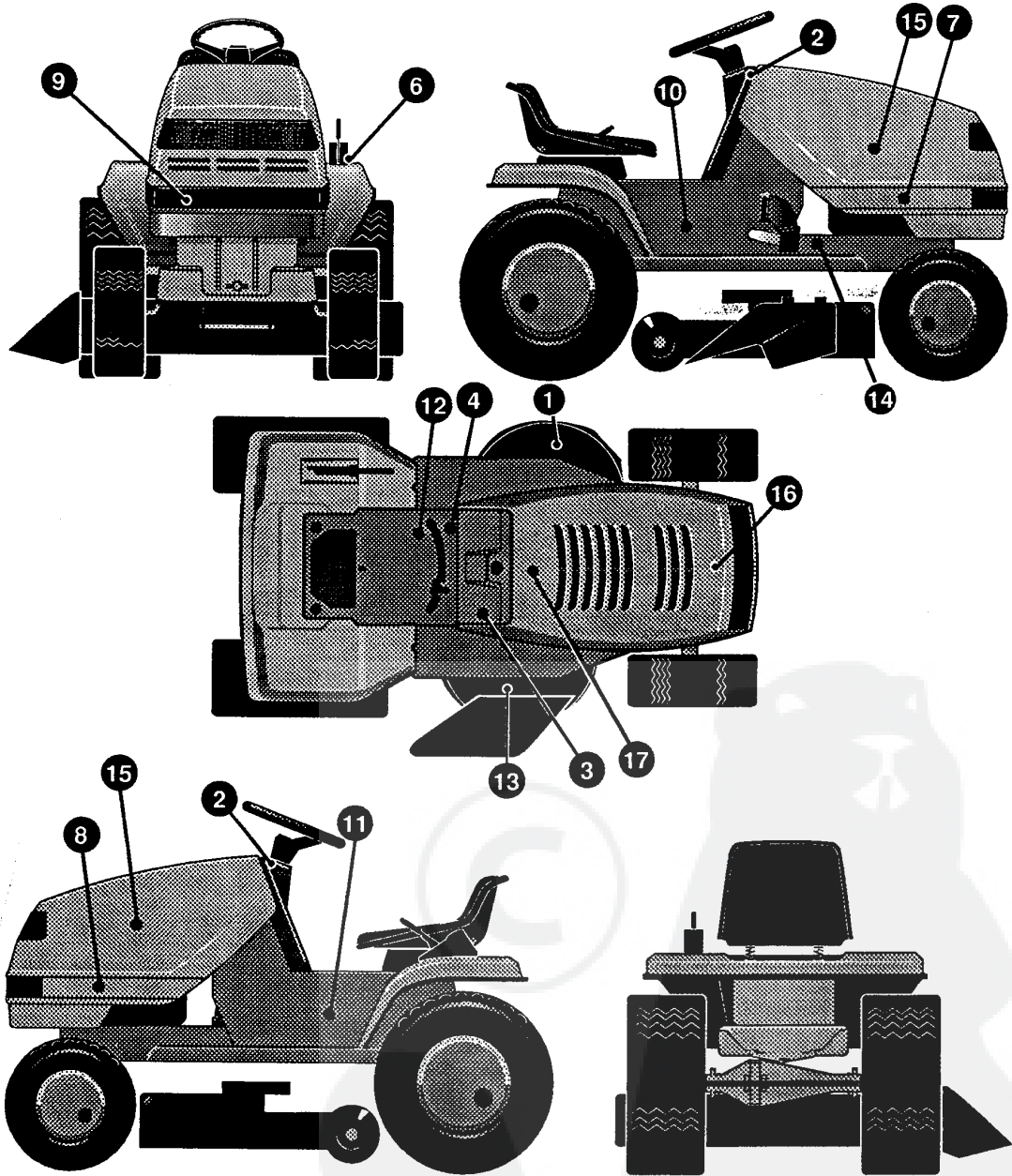
# F3560-041

# ELECTRICAL ASSEMBLY

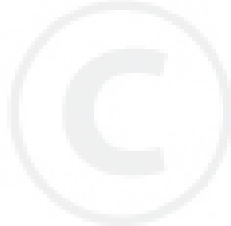
KEY#	PART#	DESCRIPTION	QTY
1	320065	HARNES, 12-12.5HP, B&S, H14, WRAP, LF	1
2	41482	PRESS CLIP, 1.380 LONG .255 ID	1
3	303064	ASSEMBLY, LIGHT WIRE-1/4 TURN	1
4	52572	BULB, HEADLAMP	2
5	57444	TIE, CABLE BLACK NYLON, 5.62 LONG	3
6	41482	PRESS CLIP, 1.380 LONG .255 ID	2
7	327355	SWITCH-IGNITION AFTER FIRE) 3 POSITION	1
8	327352	NUT, 5/8-8 ACME DELTA FOR BOOT	1
9	327350	KEY, IGNITION	2
10	300133	AMMETER	1
11	300334	LIGHT SWITCH, ON/OFF PANEL MOUNT	1
12	320082	SWITCH, DOUBLE POLE, NO/NC GRAY	1
13	57444	TIE, CABLE BLACK NYLON, 5.62 LONG	1
14	57476	SWITCH, SCREW MOUNT, DP NC NO, BLACK	1
15	57220	SCREW, #12 X .50 PHPNHTAP, BLACK	2
16	53716	SOLENOID	1
17	187745	SCREW, 1/4-20 X .75 HXSEMMA	2
18	1502	NUT, 1/4-20 REGHEXCTRLK	2
19	271172	NUT, 1/4-20 REGHEXKEPS	1
20	138485	WASHER, EXLK .320 X .61 X .03	2
21	120368	NUT, 5/16-24 REGHEX	2
22	57444	TIE, CABLE BLACK NYLON, 5.62 LONG	1
23	55511	WIRE, GROUND, 12.5"	1
24	271184	NUT, 5/16-18 HEXKEPS	1
25	57547	SWITCH, SEAT	1
26	160505	SCREW, 1/4-20 X .38 PHPNHMA	2
27	302257	BATTERY, 12V	1
28	57551	ROD, BATTERY	1
29	57552	ROD, BATTERY, TOP	1
30	325232	NUT, WING 1/4-20 NYLON	1
31	180020	SCREW, 1/4-20 X .75 HHC	2
32	271172	NUT, 1/4-20 REGHEXKEPS	2
35	91895	TRAY - BATTERY	1

## SCHEMATIC DRAWING





KEY#	PART#	DESCRIPTION	QTY
1	402700	DECAL, CAUTION DECK, LH .....	1
2	313210	DECAL, DASH WEAR STRIP, BLACK .....	2
3	321765	DECAL, LF, DASH, PTO/LIGHT SWITCH, EXP .....	1
4	301104	DECAL, CONSOLE, TOP SHIFT, 5-SP .....	1
6	402214	DECAL, HEIGHT ADJUST .....	1
7	402328	DECAL, HOOD, (RH) LF .....	1
8	402329	DECAL, HOOD, (LH) LF .....	1
9	322700	DECAL, TAPE H14 8MIL VINYL .....	1
10	402330	DECAL, CONSOLE, (RH), 12.5/43 .....	1
11	402331	DECAL, CONSOLE, (LH), 12.5/43 .....	1
12	402689	DECAL, CONSOLE SYMBOLIC, CAUTION .....	1
13	402701	DECAL, CAUTION DECK RH, CUT HAND .....	1
14	402702	DECAL, BRAKE/CLUTCH .....	1
15	305603	PAD, 18 X 6 FOAM HOOD .....	2
16	305602	FOAM, HOOD 4 X 15 .....	1
17	307277	PAD, 12 X 4 FOAM HOOD .....	1

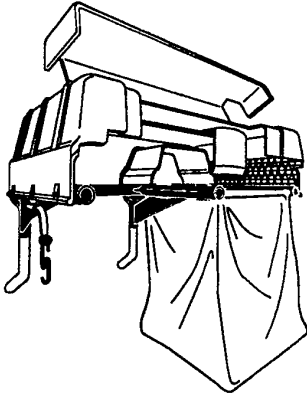


# F3560-041

# ACCESSORIES

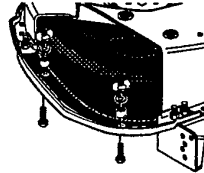
Contact the dealer where your tractor was purchased for the available accessories. If you are unable to contact the dealer, write to the address on the warranty page of your Operator's manual.

## LARGE LAWN TRACTOR

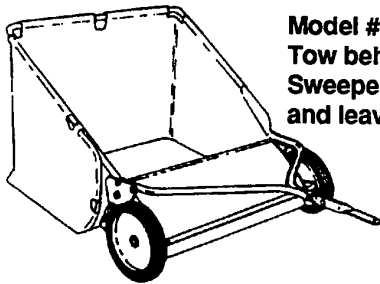
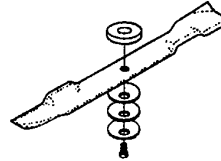


Model # 5708-34  
Grass Collector for  
40, 42, 43" decks

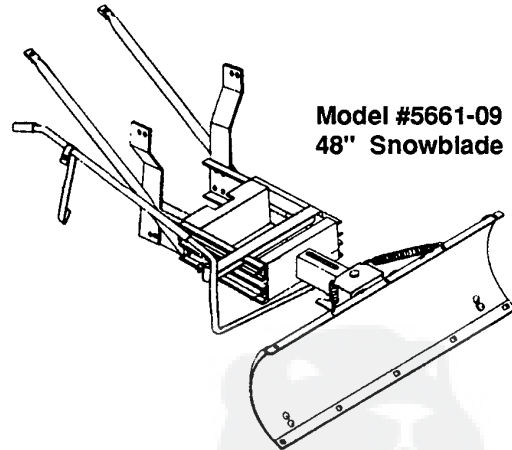
For heavy duty grass  
collection order Model  
#5709-10 Air Assist



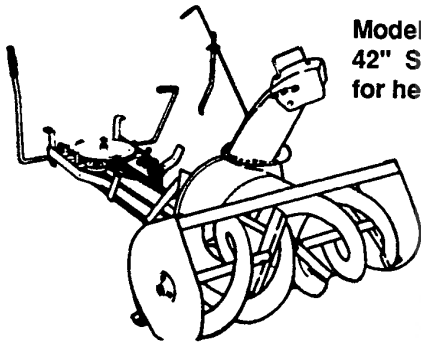
5717-00  
Mulching Kit (42/43" Deck)  
5716-00  
Mulching Kit (40" Deck)



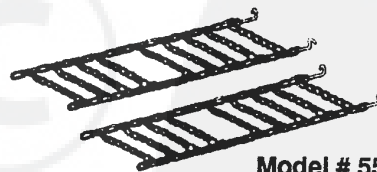
Model # 5648-16  
Tow behind Lawn  
Sweeper for grass  
and leaves



Model #5661-09  
48" Snowblade



Model #5705-06  
42" Snowthrower  
for heavy snowfall



Model # 5585-00  
Tire Chains - 20" x 8.0" tires  
Model # 5706-00  
Tire Chains - 20" x 10.0" tires

## OTHER ACCESSORIES

Model	Description
5672-01	Wheel Weights - Front - 1 pr. w/mtg. hdw. - Fits 15" tires
5673-02	Wheel Weights - Rear - 1 pr. w/mtg. hdw. - Fits 18" & 20" tires
309070	40" High Lift Blade for Bagging or Side Discharge (Requires 2)
330277	40" Mulching Blade (Requires 2)
316608	43" High Lift Blade for Bagging or Side Discharge (Requires 2)
325762	43" Mulching Blade (Requires 2)