

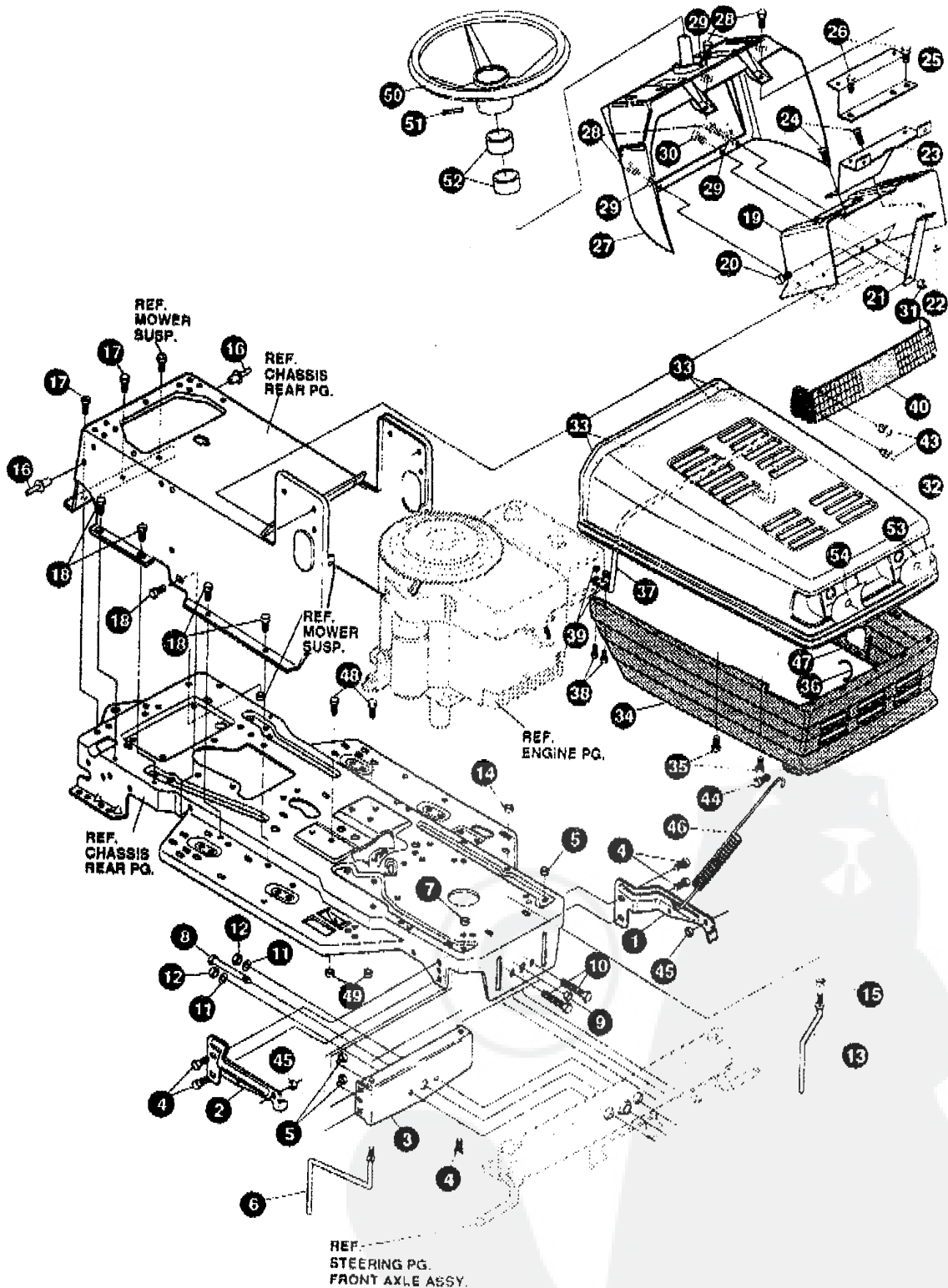
MANUEL

PIÈCES DE RECHANGE

Tracteurs



TONDEUSE AUTOPORTEE
Modèle F3560-150

F3560-150**PIÈCES DE RECHANGE**

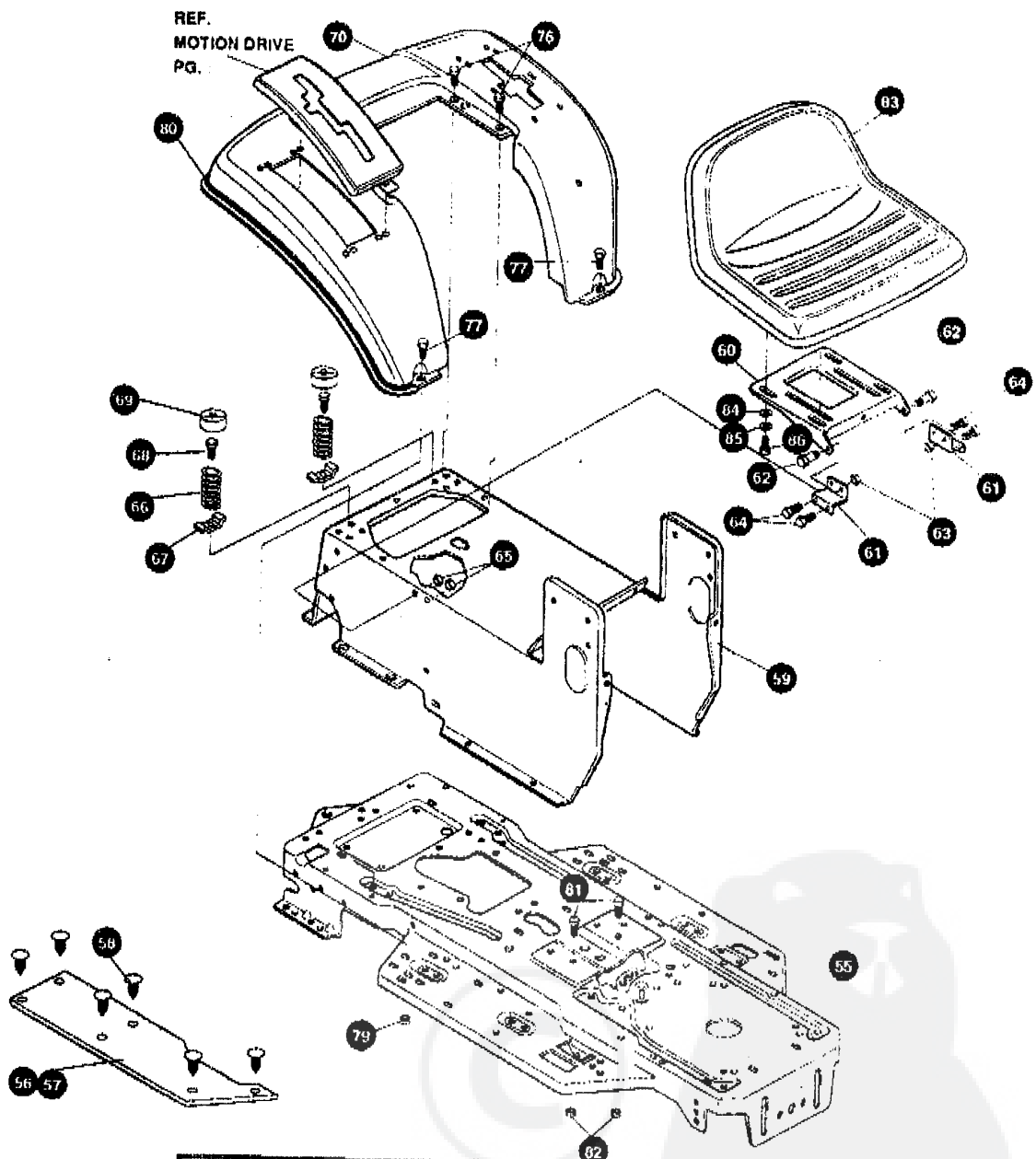
NOTE: UTILISEZ TOUJOURS DES PIÈCES DU FABRICANT D'ORIGINE. L'utilisation de pièces de rechange d'une autre marque peut entraîner l'annulation de votre garantie.

LES PIÈCES NE PORTANT PAS DE NUMÉRO SONT INTERCHANGEABLES AVEC LES PIÈCES CORRESPONDANTES DU CÔTÉ OPPOSÉ

325876 E

F3560-150**CHASSIS & CAPOT ASSEMBLAGE**

KEY#	PART#	DESCRIPTION	QTY
1	326569-853	BRACKET, GRILLE, LH	1
2	326568-853	BRACKET, GRILLE, RH	1
3	313541-853	BRACKET, FRONT AXLE	1
4	56030	SCREW, 5/16-18 X .75 WDFLLK	5
5	55273	NUT, 5/16-18 WDFLLKLRG WHIZ	5
6	300440	GUIDE, BELT, RIDER	1
7	1498	NUT, 5/16-18 REGHEXCTRLK	1
8	308207	BOLT, .625 X 2.18 HHSH, 1/2-13	1
9	309008	NUT, 1/2-13 HEXJAM CTRLK	1
10	180138	SCREW, 3/8-16 X 3.00 HHC	2
11	2483	WASHER, .39 ID X 1.25 D X .07 BELLVIL	2
12	1499	NUT, 3/8-16 REGHXCTRLK	2
13	300635	GUIDE, BELT, SHORT, 15" WHEEL	1
14	124824	NUT, 5/16-18 HEXJAM	1
15	271190	NUT, 3/8-16 HEXKEPS	1
16	46763	RIVET, POP 187 DIA X .450 LONG	3
17	35497	SCREW, 5/16-18 X .50 WAHTAP	2
18	995346	SCREW, 1/4-20 X .50 WAHTAP	10
19	58312-853	SUPPORT, DASH, STEEL	1
20	300303	SCREW, .25 X .75 X .51 HHWAPLASTITE	2
21	300201-853	BRACE, DASH, SUPPORT LOWER	1
22	1502	NUT, 1/4-20 REGHEXCTRLK	1
23	302530-853	BRACKET, GAS TANK	1
24	995346	SCREW, 1/4-20 X .50 WAHTAP	2
25	300264-853	BRACE, DASH, SUPPORT, UPPER	1
26	995346	SCREW, 1/4-20 X .50 WAHTAP	2
27	305428	DASH, GP, W/O GRAPHIC, SUS, BLACK	1
28	995346	SCREW, 1/4-20 X .50 WAHTAP	4
29	316868	WASHER, SHOULDER NYLON, .255 X .46	4
30	44811	SCREW, 1/4-20 X .75 WAHTAP	1
31	1502	NUT, 1/4-20 REGHEXCTRLK	1
32	307033	HOOD, H-11, PLASTIC	1
33	318197	PAD, ADHESIVE, 1.00 X 1.50 X .12	4
34	328044	GRILL, LOWER GPOWER, LG, G-14	1
35	300302	SCREW, #10 X .50 HHTAPPST, BLACK	4
36	310203	CLIP, HOG RING, C-SHAPED	1
37	301425	BRACE, HOOD SUPPORT, H-11, GP	1
38	301542	SCREW, 10-24 X 1.00 HWATAP, BLACK	4
39	308459	NUT, #10-24 HXHDNYLK	4
40	302333	LENS, SMOKED, W/TAB, NO LOGO	1
43	57796	SCREW, #6 X .50 PLASTITE/HI-LO	4
44	56876	BOLT, .375 X .580 HHSH, 5/16-18	2
45	1498	NUT, 5/16-18 REGHEXCTRLK	2
46	57478	SPRING, HOOD LATCH	2
47	301452	FOIL, HEAT REFLECTOR	1
48	180079	SCREW, 5/16-18 X 1.00 HHC	2
49	1498	NUT, 5/16-18 REGHEXCTRLK	2
50	330848	STEERING WHEEL	1
51	456378	PIN, SPRING, .250 DIA X 2.00 LONG	1
52	301413	SPACER, STEERING SHAFT	2
53	301541	FOIL, REFLECTOR, LENS, H-11, LH	1
54	301540	FOIL, REFLECTOR, LENS, H-11, RH	1
	336402	PARTS MANUAL	1
	395155	OPERATOR'S MANUAL (FRENCH)	1

F3560-150**PIÈCES DE RECHANGE**

NOTE: UTILISEZ TOUJOURS DES PIÈCES DU FABRICANT D'ORIGINE. L'utilisation de pièces de rechange d'une autre marque peut entraîner l'annulation de votre garantie.

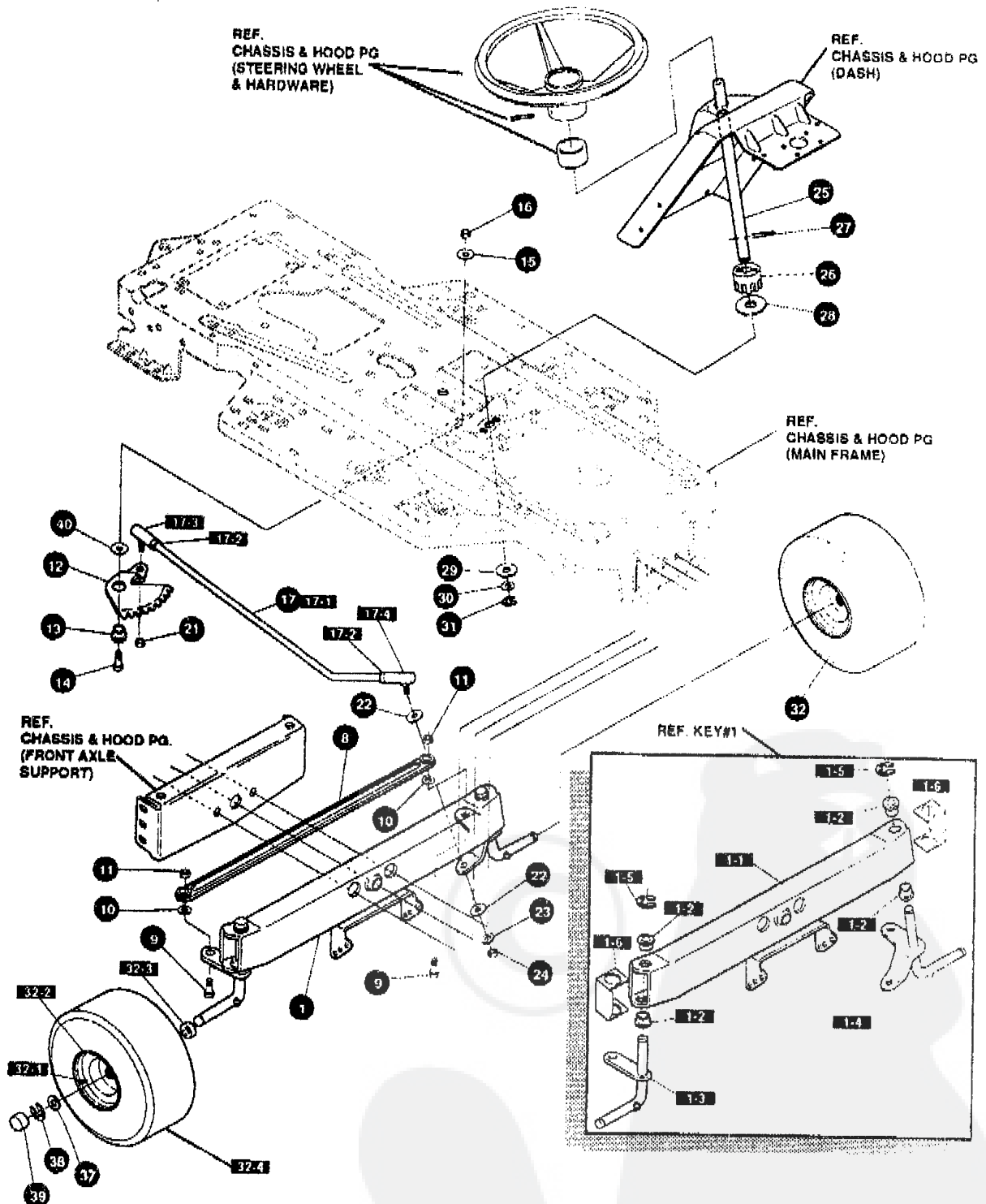
LES PIÈCES NE PORTANT PAS DE NUMÉRO SONT INTERCHANGEABLES AVEC LES PIÈCES CORRESPONDANTES DU CÔTÉ OPPOSÉ

325904 C

F3560-150**CHASSIS & CAPOT ASSEMBLAGE**

KEY#	PART#	DESCRIPTION	QTY
55	335697-860	FRAME, LF, MAIN, P820/F4360.....	1
56	310005	FOOT PAD, LH, 22 12 LONG, DYNA, F-5.....	1
57	310006	FOOT PAD, RH, 22 12 LONG, DYNA, F-5.....	1
58	309235	FASTENER, RATCHET, BLACK.....	12
59	327575-860	CONSOLE, NON-WALK THRU, LF, SOF.....	1
60	59367-853	PLATE, SEAT, F5, SF, LF.....	1
61	310660-853	BRACKET, F-5, SEAT SUPPORT.....	2
62	20507	BOLT, .437 X .156 HSSH, 5/16-18.....	2
63	1498	NUT, 5/16-18 REGHEXCTRLK.....	2
64	48901	SCREW, 5/16-18 X .83 WAHHC.....	4
65	1498	NUT, 5/16-18 REGHEXCTRLK.....	4
66	57153	SPRING, SEAT 2.63 LONG, 1.49 OD, BLACK.....	2
67	1341	CLAMP, SPRING, 1.17" D.....	2
68	44811	SCREW, 1/4-20 X .75 WAHTAP.....	2
69	56907	COVER, SEAT SPRING, 1.5 ID X 1.0 LONG.....	2
70	*	ASSEMBLY, FENDER, F5, LF, SOF, SUSP.....	1
70-1	332185-860	FENDER, F5, SUS, LF, SOF.....	1
70-2	9239	CLEVIS.....	1
70-3	439455	SCREW, 5/16-18 X .56 PHPNMA.....	1
70-4	301551	WASHER, .344 ID X 1.50 D X .09.....	1
70-5	120373	NUT, 5/16-18 SQUARE.....	1
76	995346	SCREW, 1/4-20 X .50 WAHTAP.....	4
77	126358	BOLT, 5/16-18 X 1.00 CARRLN.....	2
79	55273	NUT, 5/16-18 WDFLLKLRG.....	2
80	55023	TRIM, STRIP, BLACK—SMALL, W/ADH.....	77 5
81	180079	SCREW, 5/16-18 X 1.00 HHC.....	2
82	1498	NUT, 5/16-18 REGHEXCTRLK.....	2
83	57455	SEAT, MICHIGAN GEN. W/SWITCH HOLE.....	1
84	120393	WASHER, FLAT .344 X .69 X .065.....	4
85	120638	WASHER, HVSPYTK .328 X .60 X .09.....	4
86	180077	SCREW, 5/16-18 X .75 HHC.....	4

* ORDER INDIVIDUAL PARTS

F3560-150**PIÈCES DE RECHANGE**

NOTE: UTILISEZ TOUJOURS DES PIÈCES DU FABRICANT D'ORIGINE. L'utilisation de pièces de rechange d'une autre marque peut entraîner l'annulation de votre garantie.

LES PIÈCES NE PORTANT PAS DE NUMÉRO SONT INTERCHANGEABLES AVEC LES PIÈCES CORRESPONDANTES DU CÔTÉ OPPOSÉ

3171241

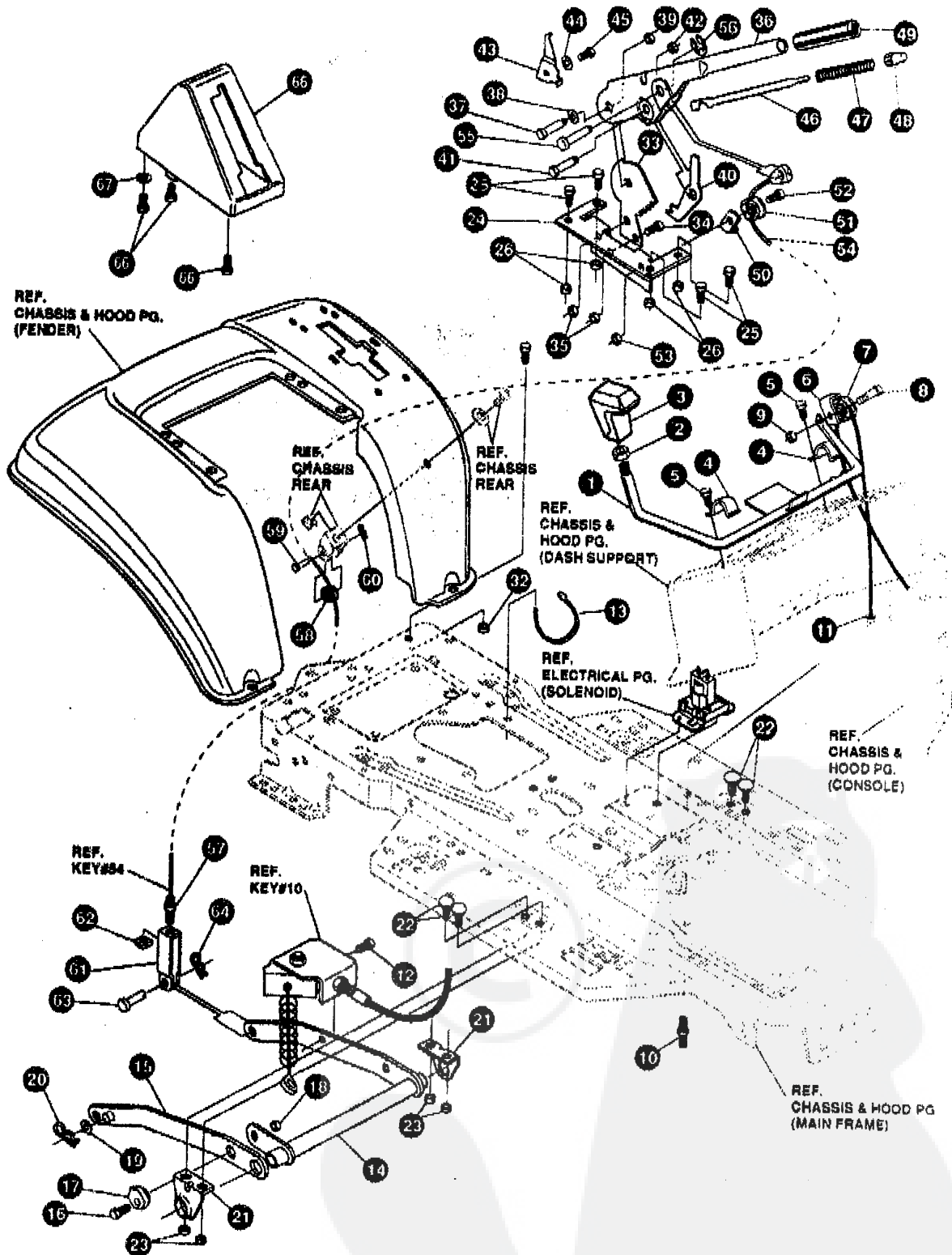
F3560-150**ASSEMBLAGE DE DIRECTION**

KEY#	PART#	DESCRIPTION	QTY
1	*	AXLE, FRONT ASSEMBLY, LONG, SUS, 4WS, LF	1
1-1	310170	AXLE, FRONT	1
1-2	52407	SPINDLE BEARING	4
1-3	9180	ASSEMBLY, SPINDLE, RH, LONG	1
1-4	314088	ASSEMBLY, SPINDLE, LH, LONG	1
1-5	36625	RING, RETEX .57 X .05 TRU 5133-75	2
1-6	53373-853	AXLE COVER	2
8	304590	TIE ROD ASSEMBLY, 19 81 LONG W-SECTION	1
9	180128	SCREW, 3/8-16 X 1.75 HHC	2
10	120382	WASHER, REGSPTLK .393 X .68 X .10	2
11	1499	NUT, 3/8-16 REGHXCTALK	2
12	58289	SECTOR, STEERING, LF	1
13	52406	BEARING, FLANGE ECC .510 ID X .998 OD X .56	1
14	180177	SCREW, 1/2-13 X 1.50 HHC	1
15	22265	WASHER, FLAT .515 X 1.38 X .119	1
16	1500	NUT, 1/2-13 REGHCTRLK	1
17	311100	KIT 300146 DRAGLINK	1
17-1	58291	STEERING LINK	1
17-2	124925	NUT, 3/8-24 REGHEXJAM	2
17-3	57158	BALL JOINT, 3/8 THD SHORT STUD	1
17-4	21275	BALL JOINT, 3/8 THD LONG STUD	1
21	46692	NUT, 3/8-24 WDFLHLK WHIZ	1
22	996416	WASHER, FLAT .391 X 1.00 X .125	2
23	120382	WASHER, REGSPTLK .393 X .68 X .10	1
24	120369	NUT, 3/8-24 REGHEX	1
25	58243	SHAFT, STEERING, LF, 2WS	1
26	58244	PINION, STEERING, LF	1
27	58274	PIN, DOWEL .2500 OD X 1.75 LONG	1
28	301410	BEARING, FLANGE .752 ID X 1.061 OD X .24	1
29	301398	WASHER, FORMED 1.135 X 1.53 X .12	1
30	21682	WASHER, FLAT .765 X 1.25 X .042	1
31	36625	RING, RETEX .57 X .05 TRU 5133-75	1
32	*	TIRE & RIM, PU 15 X 6.0 X 6	2
32-1	24167	VALVE STEM	
32-2	39829	RIM, WHEEL	
32-3	314416	BEARING, FLANGE	
32-4	316702	TIRE, 15 X 6 X 6	
37	642	WASHER, FLAT .755 X 1.31 X .075	1
38	36625	RING, RETEX .57 X .05 TRU 5133-75	2
39	40394	HUB CAP, 1.500 ID X 7/8 LONG	2
40	49998	WASHER, FLAT .520 X 1.25 X .209	1

* ORDER INDIVIDUAL PARTS - ASSEMBLY NOT AVAILABLE

F3560-150

PIÈCES DE RECHANGE



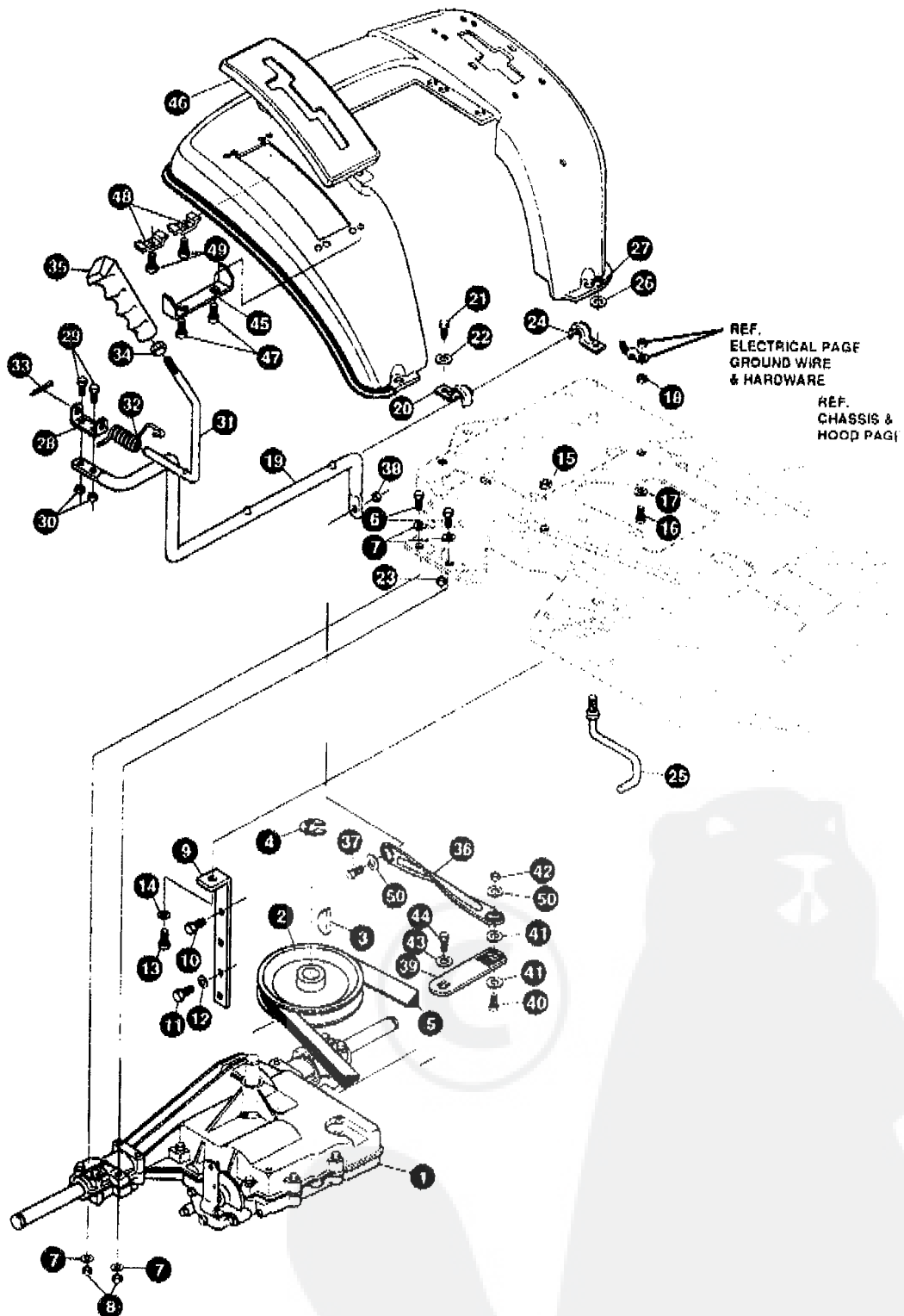
NOTE: UTILISEZ TOUJOURS DES PIÈCES DU FABRICANT D'ORIGINE. L'utilisation de pièces de rechange d'une autre marque peut entraîner l'annulation de votre garantie.

LES PIÈCES NE PORTANT PAS DE NUMÉRO SONT INTERCHANGEABLES AVEC LES PIÈCES CORRESPONDANTES DU CÔTÉ OPPOSÉ

315597 1

F3560-150**ASSEMBLAGE DE LA SUSPENSION**

KEY#	PART#	DESCRIPTION	QTY
1	303044-853	ASSEMBLY, WELD, CLUTCH HANDLE	1
2	120238	NUT, 1/2-13 HEXJAM	1
3	304438	KNOB, SHIFT NOMA, 1/2-13, BLACK	1
4	9129	CLIP, RETAINER BRACKET	2
5	44811	SCREW, 1/4-20 X .75 WAHTAP	2
6	1288	BRACKET, CABLE RETAINER	1
7	48306	PULLEY, POWDER METAL	1
8	57322	BOLT, .375 X .375 HHSH, 1/4-20	1
9	1502	NUT, 1/4-20 REGHEXCTRLK	1
10	301491	ASSEMBLY, CLUTCH CABLE, 39, SD, SUS	1
11	120613	NUT, 1/4-28 HJAM	1
12	35498	SCREW, 5/16-18 X .75 WAHTAP	1
13	57444	TIE, CABLE BLACK NYLON, 5.62 LONG	1
14	300158-853	LIFT ASSEMBLY, LH	1
15	300169-853	LIFT ASSEMBLY, RH	1
16	180079	SCREW, 5/16-18 X 1.00 HHC	1
17	58247	NUT, ADJUST	1
18	1498	NUT, 5/16-18 REGHEXCTRLK	1
19	417098	WASHER, FLAT .531 X 1.06 X .063	2
20	8260	PIN, HAIR .091 DIA X 1.66 LONG	2
21	58248-853	BRACKET, REAR HANG, SUSP	2
22	57072	BOLT, 5/16-18 X .63 CARRLN	4
23	1498	NUT, 5/16-18 REGHEXCTRLK	4
24	313926	BRACKET, HEIGHT/ADJUST SUPPORT	1
25	180077	SCREW, 5/16-18 X .75 HHC	4
26	1498	NUT, 5/16-18 REGHEXCTRLK	4
31	180077	SCREW, 5/16-18 X .75 HHC	1
32	1498	NUT, 5/16-18 REGHEXCTRLK	1
33	301238	QUADRANT, HEIGHT ADJUST	1
34	180077	SCREW, 5/16-18 X .75 HHC	2
35	1498	NUT, 5/16-18 REGHEXCTRLK	2
36	322292-853	HANDLE, LIFT SHORT (30" S.F.)	1
37	300171	BOLT, .500 X .270 HHSH, 5/16-18	1
38	996418	WASHER, FLAT .506 X .75 X .024	1
39	44108	NUT, 5/16-18 HWDFLCTRLK	1
40	301239	PAWL, SQUARE	1
41	300171	BOLT, .500 X .270 HHSH, 5/16-18	1
42	44108	NUT, 5/16-18 HWDFLCTRLK	1
43	9435	POINTER, HEIGHT ADJUST	1
44	138479	WASHER, EXLK .195 X .41 X .03	1
45	35287	SCREW, #8-32 X .38 HHWATAP	1
46	303027	ROD, ACTUATOR-SHORT	1
47	58326	SPRING, HEIGHT ADJUST	1
48	58325	KNOB, HEIGHT ADJUST PUSH BUTTON	1
49	58329	GRIP, .750 OD W/ HOLE BLACK	1
50	9149	BRACKET, CABLE RETAINER	1
51	48306	PULLEY, POWDER METAL	1
52	58336	BOLT, .375 X .375 HHSH, 1/4-20	1
53	1502	NUT, 1/4-20 REGHEXCTRLK	1
54	314177	CABLE, LIFT, 22 92, F-5, 20 X 8-8	1
55	300310	PIN, CLEVIS .310 DIA+ .475 LONG	1
56	300311	RING, RET E .31 X .25 TRU 5133-31	1
57	120375	NUT, 1/4-20 REGHEX	1
58	48306	PULLEY, POWDER METAL	1
59	300317	PIN, CLEVIS .375 DIA X .81 LONG	1
60	8260	PIN, HAIR .091 DIA X 1.66 LONG	1
61	9405	CLEVIS, LIFT CABLE	1
62	120372	NUT, 1/4-20 REGSO	1
63	39522	PIN, CLEVIS .312 X .812	1
64	121222	PIN, COTTER .090 DIA X .75 LONG	1
65	333903	LIFT COVER, F5, LF, SF, BLACK	1
66	300340	SCREW, #10 X .75 HHPLAST, BLACK	3
67	120392	WASHER, FLAT .281 X .63 X .065	1

F3560-150**PIÈCES DE RECHANGE**

NOTE: UTILISEZ TOUJOURS DES PIÈCES DU FABRICANT D'ORIGINE. L'utilisation de pièces de rechange d'une autre marque peut entraîner l'annulation de votre garantie.

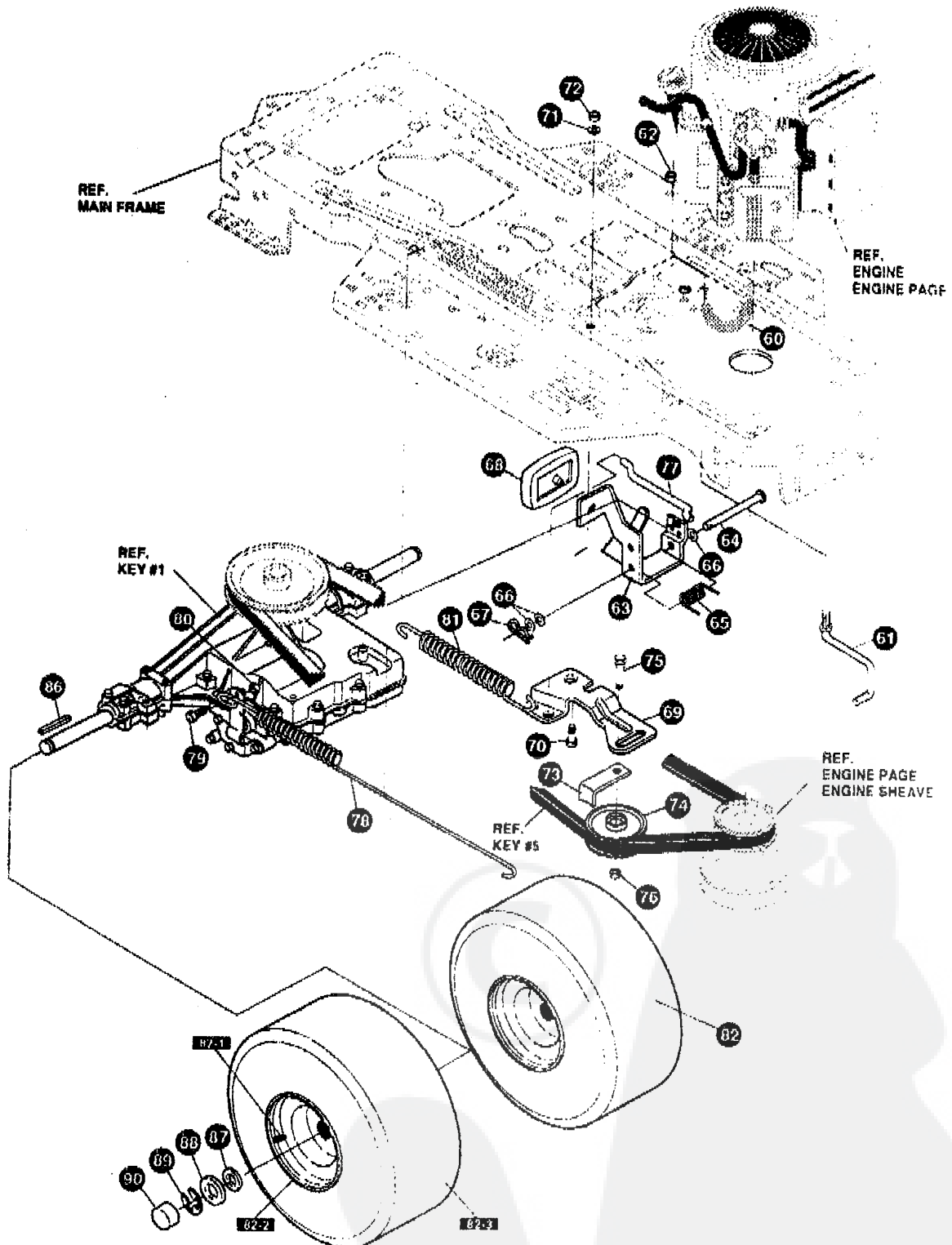
LES PIÈCES NE PORTANT PAS DE NUMÉRO SONT INTERCHANGEABLES AVEC LES PIÈCES CORRESPONDANTES DU CÔTÉ OPPOSÉ

327671 D

F3560-150**ASSEMBLAGE DE ENTRAÎNEMENT**

KEY#	PART#	DESCRIPTION	QTY
1	*	TRANSAXLE, 930-017A, 6SP, 2WS, LF	1
2	302745	PULLEY, 6.6 OD, V4L, T/A	1
3	50795	KEY, HI-PRO 606, .75 DIA X .187 WD	1
4	22053	RING, RETEX .58 X .035 TRU 5100-62	1
5	314120	BELT, V 4L, 87.25, 4WS, LF	1
6	180091	SCREW, 5/16-18 X 2.50 HHC	4
7	120393	WASHER, FLAT .344 X .69 X .065	8
8	1498	NUT, 5/16-18 REGHEXCTRLK	4
9	323739	BRACKET, STABILIZER, BLACK	1
10	50947	SCREW, 3/8-16 X 1.25 WAHTAP	1
11	35498	SCREW, 5/16-18 X .75 WAHTAP	2
12	120638	WASHER, HVSP TLK .328 X .60 X .08	2
13	180079	SCREW, 5/16-18 X 1.00 HHC	1
14	120393	WASHER, FLAT .344 X .69 X .065	1
15	1498	NUT, 5/16-18 REGHEXCTRLK	1
16	180077	SCREW, 5/16-18 X .75 HHC	1
17	136538	WASHER, REGINTLK .320 X .61 X .03	1
18	1498	NUT, 5/16-18 REGHEXCTRLK	1
19	319111	LEVER, SHIFT-LOWER, P930/4360, LF	1
20	310347-853	CLIP- SHIFT LEVER, .625 ROD	1
21	180077	SCREW, 5/16-18 X .75 HHC	1
22	998416	WASHER, FLAT .391 X 1.00 X .125	1
23	1498	NUT, 5/16-18 REGHEXCTRLK	1
24	310347-853	CLIP- SHIFT LEVER, .625 ROD	1
25	57259	GUIDE, BELT 5/16-18 THD	1
26	998416	WASHER, FLAT .391 X 1.00 X .125	1
27	1498	NUT, 5/16-18 REGHEXCTRLK	1
28	310356	BRACKET, PIVOT, SHIFT LEVER	1
29	180020	SCREW, 1/4-20 X .75 HHC	2
30	1502	NUT, 1/4-20 REGHEXCTRLK	2
31	324798	LEVER, SHIFT UPPER, SOF, 1/2-13	1
32	310265	SPRING, TORSION, .56 X .95 X .095	1
33	137185	PIN, COTTER, .125 DIA X 1.00 LONG	1
34	120238	NUT, 1/2-13 HEXJAM	1
35	306690	HANDLE, 1/2-13 MOLDED, BLACK	1
36	314965	LINK, TIE ROD, SHIFT, P930-6, SHORT	1
37	180124	SCREW, 3/8-16 X 1.25 HHC	1
38	1499	NUT, 3/8-16 REGHXCTRLK	1
39	309637	BRACKET, SHIFT, 5SP, SF	1
40	180124	SCREW, 3/8-16 X 1.25 HHC	1
41	120394	WASHER, FLAT .406 X .81 X .065	2
42	1499	NUT, 3/8-16 REGHXCTRLK	1
43	57157	WASHER, .750 X .250 SP-TRANSAXLE	1
44	56255	SCREW, 1/4-28 X .75 NYLHHC	1
45	311257-853	BRACKET, COVER, F-5, FENDER SHIFT	1
46	311209	COVER, PLASTIC, LF, P930/F4360-6	1
47	311331	SCREW, 1/4-15 X .44/53 HILOHWA	2
48	1341	CLAMP, SPRING 1 1/2" ID	2
49	311331	SCREW, 1/4-15 X .44/53 HILOHWA	2
50	120394	WASHER, FLAT .406 X .81 X .065	2

* CONTACT YOUR NEAREST TRANSAXLE DEALER FOR PARTS & SERVICE

F3560-150**PIÈCES DE RECHANGE**

NOTE: UTILISEZ TOUJOURS DES PIÈCES DU FABRICANT D'ORIGINE. L'utilisation de pièces de rechange d'une autre marque peut entraîner l'annulation de votre garantie.

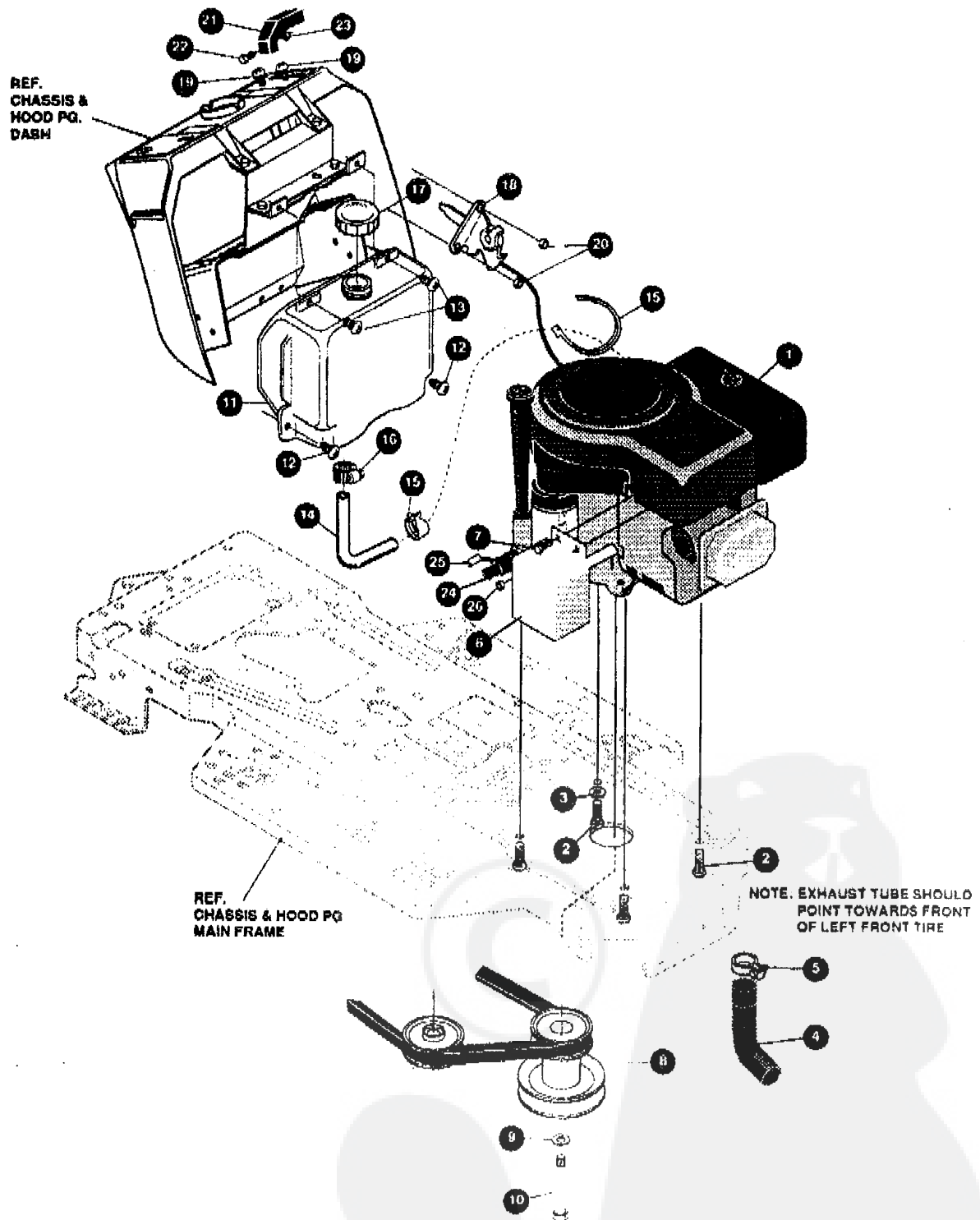
LES PIÈCES NE PORTANT PAS DE NUMÉRO SONT INTERCHANGEABLES AVEC LES PIÈCES CORRESPONDANTES DU CÔTÉ OPPOSÉ

327671 D

F3560-150**ASSEMBLAGE DE ENTRAINEMENT**

KEY#	PART#	DESCRIPTION	QTY
60	321514	SPRING, DRAG LINK BIAS	1
61	304016	GUIDE, BELT, RH	1
62	1498	NUT, 5/16-18 REGHEXCTRLK	1
63	325942	PEDAL ASSEMBLY, BRAKE/CLUTCH, LF	1
64	319675	PIN, CLEVIS .500 D X 4.53 LONG	1
65	57847	SPRING, BRAKE PEDAL	1
66	2968	WASHER, FLAT .504 X .75 X .059	3
67	56180	PIN, HAIR .091 DIA X 1.62 LONG	1
68	48160	PAD, CLUTCH, BRAKE W/PRINTING	1
69	320381	ARM, IDLER, TRACTION, SOG, LF	1
70	329989	BOLT, .625 X .135 HSSH, 5/16-18	1
71	45602	WASHER, FLAT .333 X .87 X .119	1
72	1498	NUT, 5/16-18 REGHEXCTRLK	1
73	39659	RETAINER, BELT	1
74	35374	PULLEY, IDLER V4L, 3.06 X .62	1
75	45892	BOLT, 3/8-16 X 1.50 CARRSN	1
76	1499	NUT, 3/8-16 REGHXCTRLK	1
77	57204	ROD, CLUTCH 3.92"	1
78	325937	SPRING, BRAKE, 28.80 930, 4360	1
79	326131	BOLT, .495 X .31 HSSH, 5/16-18	1
80	1498	NUT, 5/16-18 REGHEXCTRLK	1
81	330505	SPRING, CLUTCH .113 X .750 X 8 75	1
82	*	TIRE & RIM, 20 X 10.00-8	2
82-1	24167	VALVE STEM	
82-2	301366	RIM, WHEEL	
82-3	319686	TIRE, 20 X 10 -8	
86	52928	KEY, SQUARE .187 SQUARE X 2.25 LONG	2
87	642	WASHER, FLAT .755 X 1.31 X .075	4
88	42815	WASHER, FLAT .755 X 1.53 X .07	2
89	36625	RING, RETEX .57 X .05 TRU 5133-75	2
90	40394	HUB CAP, 1.500 ID X 7/8 LONG	2

* ORDER INDIVIDUAL PARTS - ASSEMBLY NOT AVAILABLE

F3560-150**PIÈCES DE RECHANGE**

NOTE: UTILISEZ TOUJOURS DES PIÈCES DU FABRICANT D'ORIGINE. L'utilisation de pièces de rechange d'une autre marque peut entraîner l'annulation de votre garantie.

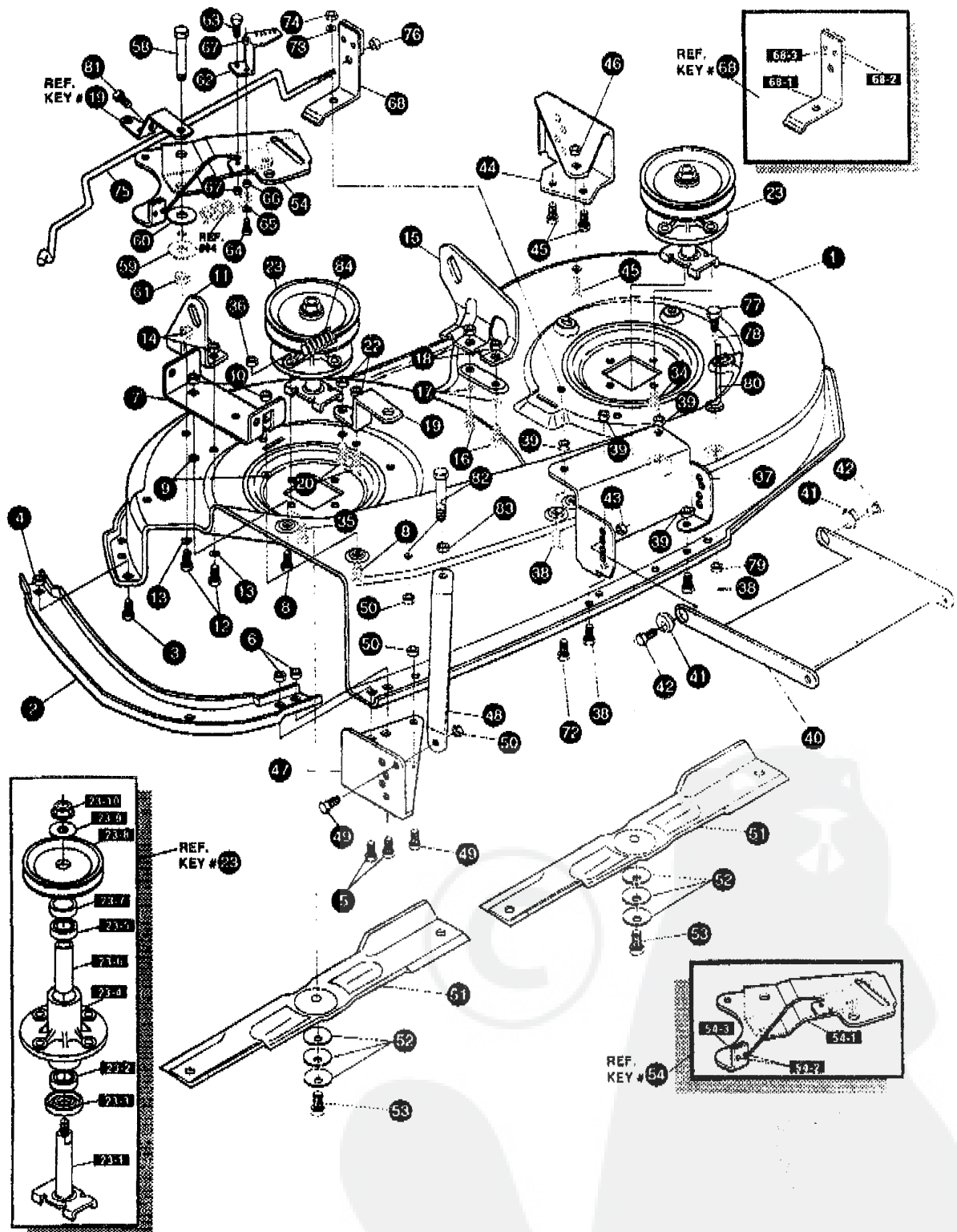
LES PIÈCES NE PORTANT PAS DE NUMÉRO SONT INTERCHANGEABLES AVEC LES PIÈCES CORRESPONDANTES DU CÔTÉ OPPOSÉ

333221 B

F3560-150**MOTEUR ET COMMANDE ASSEMBLAGE**

KEY#	PART#	DESCRIPTION	QTY
1	*	ENGINE, 14HP, B&S, IC, OHV, DUAL CIRCUIT	1
2	50947	SCREW, 3/8-16 X 1.25 WAHTAP	4
3	138489	WASHER, EXLK 384 X .69 X .04	1
4	327868	EXHAUST TUBE, 14HP, OHV, B&S, LF, H15	1
5	328024	CLAMP, EXHAUST 1.37 DIA	1
6	327785-853	HEAT SHIELD, 14HP, OHV, B&S	1
7	995346	SCREW, 1/4-20 X .50 WAHTAP	3
8	328029	PULLEY, ENGINE, 4.40OFF/5.00D/3.00D	1
9	120383	WASHER, REGSPTLK .459 X .78 X .12	1
10	428644	SCREW, 7/16-20 X 5.00 HHC	1
11	314991	TANK, FUEL 2-GALLON, GPWR, CLEAR	1
12	300303	SCREW, .25 X .75 X .51 HHWA, PLASTITE	2
13	995346	SCREW, 1/4-20 X .50 WAHTAP	2
14	50118	TUBING, .25 X .50 X BULK GAS LINE	14 0'
15	47345	CLAMP, HOSE SCREW TYPE	1
16	47345	CLAMP, HOSE SCREW TYPE	1
17	300304	CAP, GAS - 2.0 THROAT	1
18	303159	THROTTLE, CONTROL, 11HP, B&S, GP	1
19	320553	SCREW, 10-24 X .63 PHPNMA CRSS	2
20	308459	NUT, #10-24 HXHDNYLK	2
21	300508	KNOB, THROTTLE CONTROL GP STYLE	1
22	159585	SCREW, #8-32 X .38 PHPNMA	1
23	120622	NUT, #8-32 REGHX	1
24	325547	OIL DRAIN VALVE ASSEMBLY	1
25	327422	CAP, OIL DRAIN VALVE ASSEMBLY, YELLOW	1
26	124818	NUT, 1/4-20 REGHXJAM	1

* SEE ENGINE MANUAL

F3560-150**PIÈCES DE RECHANGE**

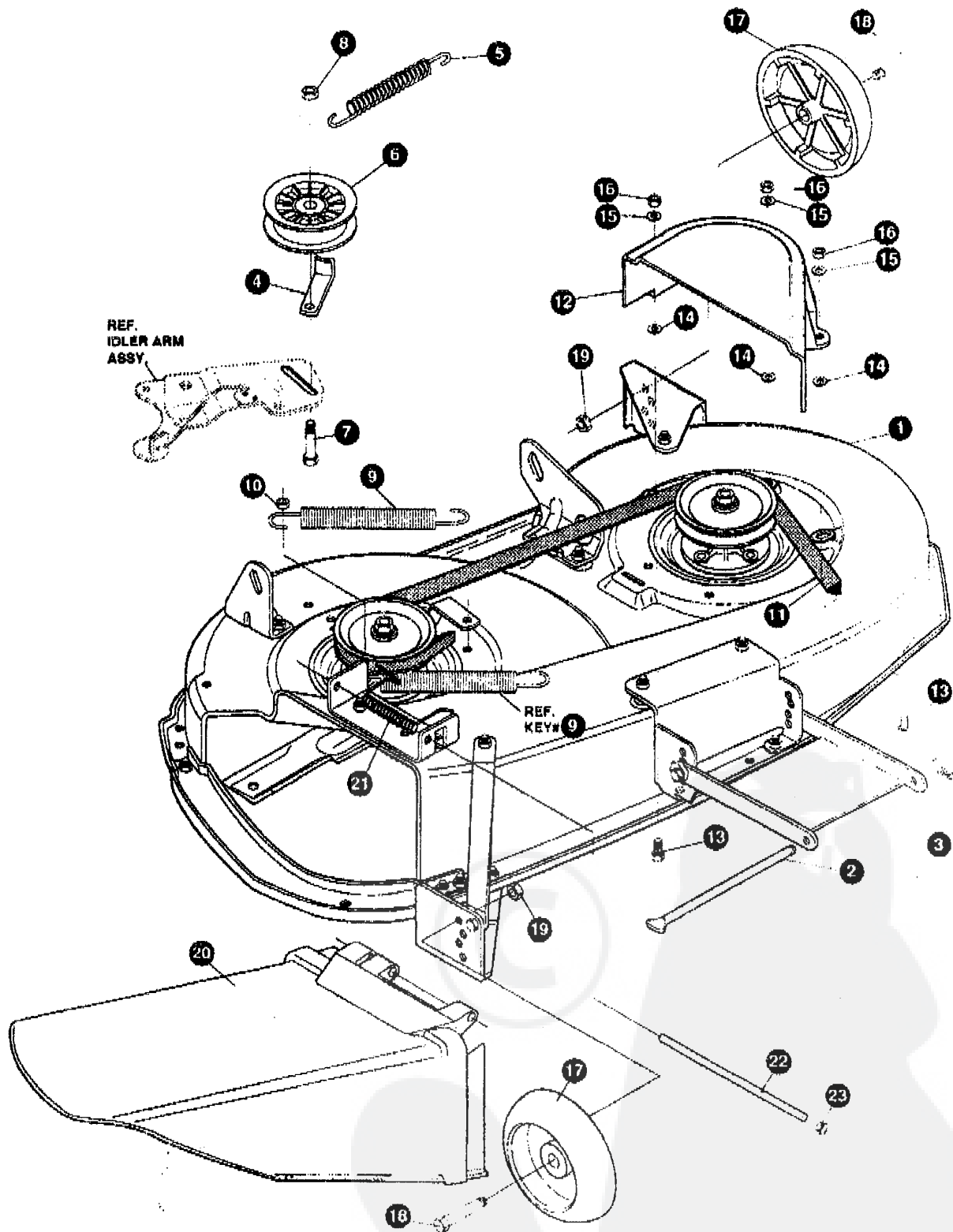
NOTE: UTILISEZ TOUJOURS DES PIÈCES DU FABRICANT D'ORIGINE. L'utilisation de pièces de rechange d'une autre marque peut entraîner l'annulation de votre garantie.

LES PIÈCES NE PORTANT PAS DE NUMÉRO SONT INTERCHANGEABLES AVEC LES PIÈCES CORRESPONDANTES DU CÔTÉ OPPOSÉ

324144 G

F3560-150**CARTER DE COUPE ASSEMBLAGE**

KEY#	PART#	DESCRIPTION	QTY
1	325116	43" DECK KIT	1
2	326480	TOE GUARD - MULCHER	1
3	180077	SCREW, 5/16-18 X .75 HHC	1
4	1498	NUT, 5/16-18 REGHEXCTRLK	1
5	180077	SCREW, 5/16-18 X .75 HHC	2
6	1498	NUT, 5/16-18 REGHEXCTRLK	2
7	317017	BRACKET, CHUTE MOUNT, BLACK	1
8	180077	SCREW, 5/16-18 X .75 HHC	2
9	120393	WASHER, FLAT .344 X .69 X .065	2
10	1498	NUT, 5/16-18 REGHEXCTRLK	2
11	313929	LIFT BRACKET, REAR, RH, BLACK 853	1
12	180077	SCREW, 5/16-18 X .75 HHC	2
13	120393	WASHER, FLAT .344 X .69 X .065	2
14	1498	NUT, 5/16-18 REGHEXCTRLK	2
15	310667	BRACKET, DECK, LIFT, REAR, LH, BLACK	1
16	180077	SCREW, 5/16-18 X .75 HHC	2
17	120393	WASHER, FLAT .344 X .69 X .065	2
18	1498	NUT, 5/16-18 REGHEXCTRLK	2
19	326893	BRACE, IDLER SUPPORT, 40", 43"	1
20	180077	SCREW, 5/16-18 X .75 HHC	2
22	44108	NUT, 5/16-18 HWDFLCTRLK	2
23	56424	QUILL ASSEMBLY, 36/39/40/43	2
23-1	56425	SHAFT/SADDLE 38"	1
23-2	49562	BEARING, BALL 6203-2AA-C3 ARMORED	1
23-3	50616	DUST SHIELD	1
23-4	55547	QUILL CASTING (1046)	1
23-5	49562	BEARING, BALL 6203-2AA-C3 ARMORED	1
23-6	50818	SPACER, SLEEVE .669 X .88 X 3.787	1
23-7	51449	SPACER, SLEEVE .672 X .93 X .438	1
23-8	313898	PULLEY ASSEMBLY	1
23-9	56365	WASHER, SPECIAL QUILL	1
23-10	1282	NUT, 7/16-20 WDFLLK	1
34	35498	SCREW, 5/16-18 X .75 WAHTAP	7
35	300345	SCREW, 5/16-18 X 1.38 WAHTAP	1
36	1498	NUT, 5/16-18 REGHEXCTRLK	1
37	317040	BRACKET FRONT, BLACK	1
38	180077	SCREW, 5/16-18 X .75 HHC	4
39	1498	NUT, 5/16-18 REGHEXCTRLK	4
40	58305	BRACKET, LINK, DECK, FRONT	1
41	58247	NUT, ADJUST	2
42	180079	SCREW, 5/16-18 X 1.00 HHC	2
43	1498	NUT, 5/16-18 REGHEXCTRLK	2
44	317041	BRACKET, GAGE WHEEL, LH, BLACK	1
45	180077	SCREW, 5/16-18 X .75 HHC	3
46	1498	NUT, 5/16-18 REGHEXCTRLK	3
47	322454	BRACKET, GAGE WHEEL, RH, FRONT	1
48	314282	BRACKET, STABILIZER	1
49	180077	SCREW, 5/16-18 X .75 HHC	2
50	1498	NUT, 5/16-18 REGHEXCTRLK	3
51	326961	BLADE, 43", BLACK	2
52	2493	WASHER, .39 ID X 1.25 D X .07 BELLVIL	6
53	89573	SCREW, 3/8-24 X 1.00 NYLHHC	2
54	320576	IDLER ARM ASSEMBLY	1
54-1	322116	ARM, IDLER 40/43", DECK	1
54-2	41601	RIVET, OVSET .187 DIA X .50 LONG	2
54-3	306973	BRAKE PAD - HARD-NF343 (X-31)	1
58	304420	BOLT, .500 X 2.15 HSH	1
59	996416	WASHER, FLAT .391 X 1.00 X .125	1
60	996307	WASHER, FLAT .391 X 1.00 X .209	1
61	45171	NUT, 3/8-16 HWDFL, WHIZ-LOCK	1
62	326249	BRACKET, EXTENSION IDLER	1
63	180077	SCREW, 5/16-18 X .75 HHC	1
64	180083	SCREW, 5/16-18 X 1.50 HHC	1
65	446363	WASHER, FLAT .375 X .88 X .082	1
66	271184	NUT, 5/16-18 HEXKEPS	1
67	1498	NUT, 5/16-18 REGHEXCTRLK	2
68	321828	BLADE BRAKE ASSEMBLY	1
68-1	135824	RIVET, TRSET .185 DIA X .41 LONG	2
68-2	304119	BRAKE ARM	1
68-3	306973	BRAKE PAD - HARD-NF343 (X-31)	1
72	180077	SCREW, 5/16-18 X .75 HHC	1
73	120393	WASHER, FLAT .344 X .69 X .065	1
74	1498	NUT, 5/16-18 REGHEXCTRLK	1
75	314079	ROD, BRAKE	1
76	1502	NUT, 1/4-20 REGHEXCTRLK	1
77	180079	SCREW, 5/16-18 X 1.00 HHC	1
78	120393	WASHER, FLAT .344 X .69 X .065	1
79	1498	NUT, 5/16-18 REGHEXCTRLK	1
80	325965	BELT GUIDE, 43" DECK, UPSTOP	1
81	308231	SCREW, 1/4-20 X 1.25 HHWATAP	1
82	311104	SCREW, 5/16-18 X 5.00 HHC	1
83	271184	NUT, 5/16-18 HEXKEPS	1
84	35410	SPRING, .071 X .62 X 4.37	1

F3560-150**PIÈCES DE RECHANGE**

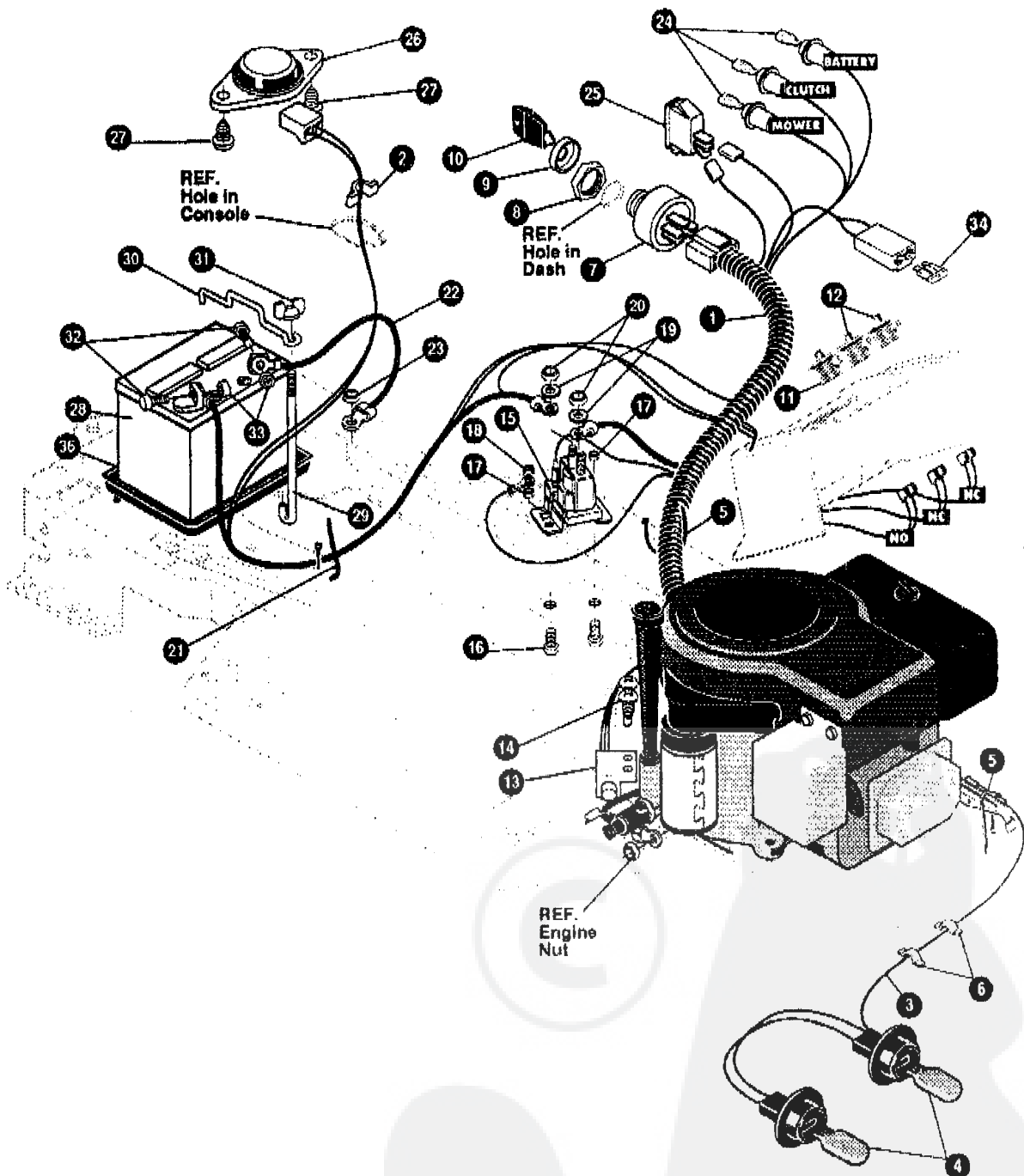
NOTE: UTILISEZ TOUJOURS DES PIÈCES DU FABRICANT D'ORIGINE. L'utilisation de pièces de rechange d'une autre marque peut entraîner l'annulation de votre garantie.

LES PIÈCES NE PORTANT PAS DE NUMÉRO SONT INTERCHANGEABLES AVEC LES PIÈCES CORRESPONDANTES DU CÔTÉ OPPOSÉ

326401 C

F3560-150**CARTER ASSEMBLAGE**

KEY#	PART#	DESCRIPTION	QTY
1	329036	DECK, 43" MOWER, 2-WHEEL, EXPORT	1
2	58306	ROD, DECK HITCH	1
3	8260	PIN, HAIR .091 DIA X 1.68 LONG	1
4	1346	RETAINER, BELT	1
5	314107	SPRING, TENSION 5.00 LONG+17 LB/IN	1
6	310326	PULLEY, IDLER, BFF 4.00 WIDE FLANGE	1
7	126416	BOLT, 3/8-16 X 1.75 CARRLN	1
8	45171	NUT, 3/8-16 HWDFL WHIZ-LOCK	1
9	35410	SPRING, .071 X .62 X 4.37	1
10	1498	NUT, 5/16-18 REGHEXCTRLK	1
11	314108	BELT, V 5L, 86.00 KEVLAR	1
12	333073	GUARD, BELT, LH, PLASTIC	1
13	57101	BOLT, 5/16-18 X .75 CARRSN	3
14	309436	PUSHNUT, 5/16 BOLT RETAINER	3
15	120393	WASHER, FLAT .344 X .69 X .065	3
16	1498	NUT, 5/16-18 REGHEXCTRLK	3
17	302611	GAUGE WHEEL, EURO 6.00 OD X 1.38 WD	2
18	23763	BOLT, .500 X 1.390 HSSH, 3/8-16	2
19	1499	NUT, 3/8-16 REGHXCTRLK	2
20	304422	CHUTE DEFLECTOR, 40", 42" & 43"	1
21	314975	SPRING, TORSION, CHUTE DEFLECTOR	1
22	304424	ROD, PIVOT DECK, .312 D X 7.25	1
23	3535	NUT, PUSH ON CAP .312 OD	1

F3560-150**PIÈCES DE RECHANGE**

NOTE: UTILISEZ TOUJOURS DES PIÈCES DU FABRICANT D'ORIGINE. L'utilisation de pièces de rechange d'une autre marque peut entraîner l'annulation de votre garantie.

LES PIÈCES NE PORTANT PAS DE NUMÉRO SONT INTERCHANGEABLES AVEC LES PIÈCES CORRESPONDANTES DU CÔTÉ OPPOSÉ

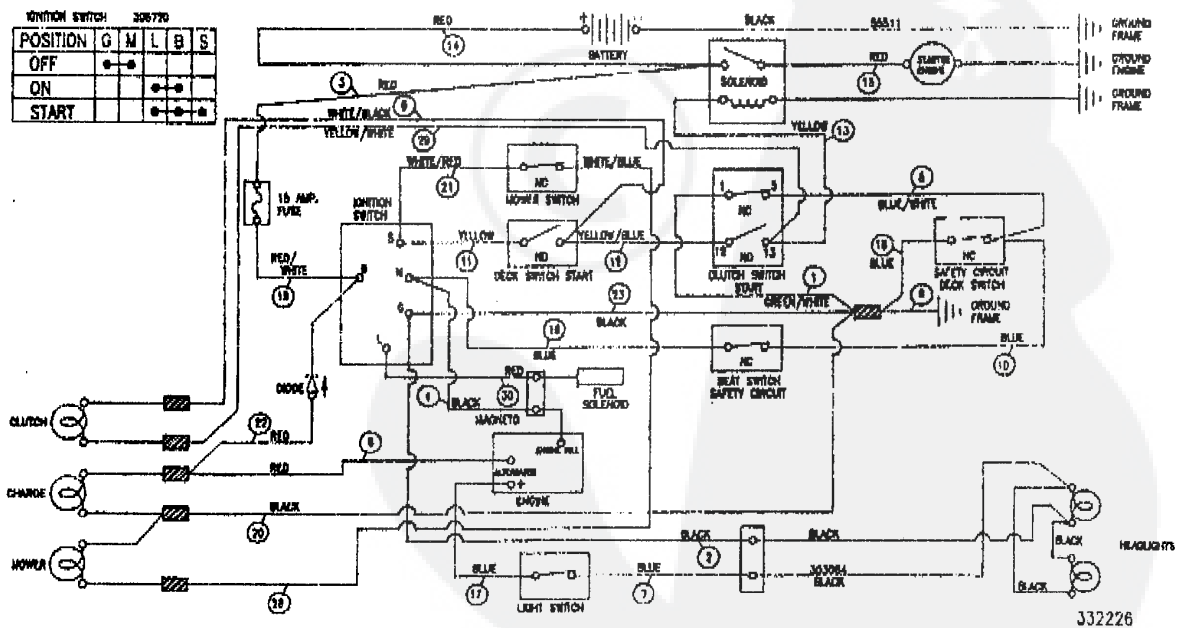
332572 D

F3560-150

ASSEMBLAGE ÉLECTRIQUE

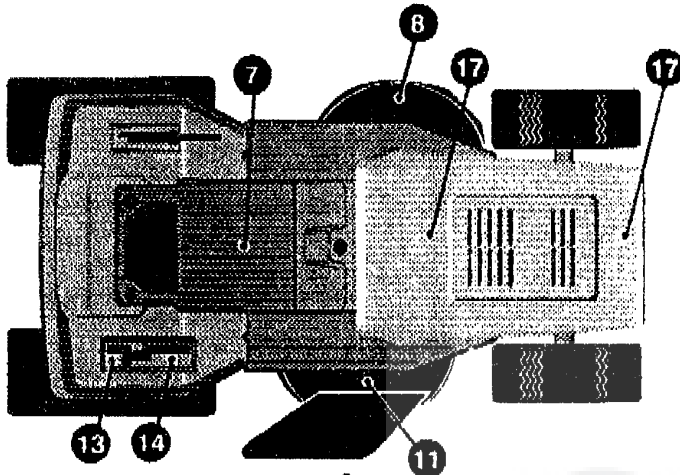
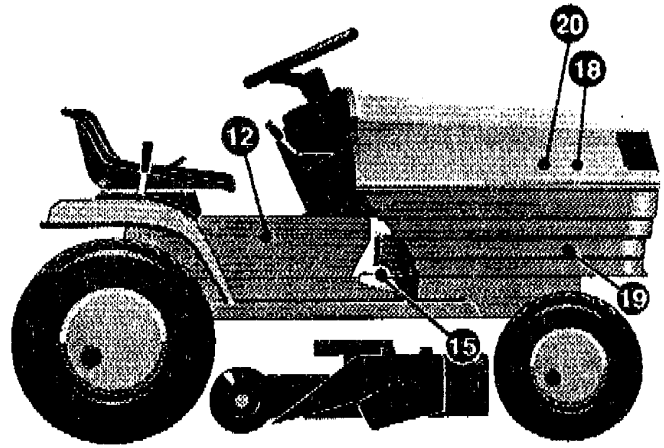
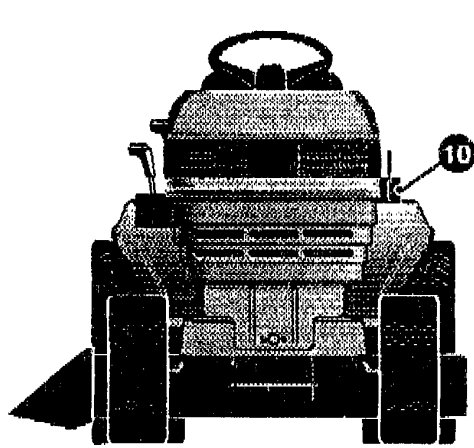
KEY#	PART#	DESCRIPTION	QTY
1	332226	HARNESS, 14HP, OHV, B&S, H11/G14, WRAP, LF	1
2	41482	PRESS CLIP, 1.380 LONG .255 ID	1
3	303064	ASSEMBLY, LIGHT WIRE-1/4 TURN	1
4	52572	BULB, HEADLAMP	2
5	57444	TIE, CABLE BLACK NYLON, 5.62 LONG	2
6	41482	PRESS CLIP, 1.380 LONG .255 ID	2
7	327355	SWITCH-IGNITION (AFTER FIRE) 3 POSITION	1
8	327352	NUT, 5/8-8 ACME DELTA FOR BOOT	1
9	300194	BOOT, IGNITION SWITCH	1
10	327350	KEY, IGNITION	2
11	326653	SWITCH, SNAP MOUNT, NO .055/.116 GRAY	1
12	326654	SWITCH, SNAP MOUNT, NC .140 BLUE	2
13	57476	SWITCH, SCREW MOUNT, DP, NC, NO BLACK	1
14	57220	SCREW, #12 X .50 PHPNHTAP, BLACK	2
15	53716	SOLENOID	1
16	187745	SCREW, 1/4-20 X .75 HXSEMMA	2
17	1502	NUT, 1/4-20 REGHEXCTRLK	2
18	271172	NUT, 1/4-20 REGHEXKEPS	1
19	138485	WASHER, EXLK .320 X .61 X .03	2
20	120368	NUT, 5/16-24 REGHEX	2
21	57444	TIE, CABLE BLACK NYLON, 5.62 LONG	1
22	55511	WIRE, GROUND, 12.5"	1
23	271184	NUT, 5/16-18 HEXKEPS	1
24	57769	BULB, INDICATOR	3
25	300934	LIGHT SWITCH, ON/OFF, PANEL MOUNT	1
26	57547	SWITCH, SEAT	1
27	160505	SCREW, 1/4-20 X .38 PHPNHMA	2
28	92693	BATTERY, 12V	1
29	57551	ROD, BATTERY	1
30	57552	ROD, BATTERY, TOP	1
31	325232	NUT, WING 1/4-20 NYLON	1
32	180020	SCREW, 1/4-20 X .75 HHC	2
33	271172	NUT, 1/4-20 REGHEXKEPS	2
36	91895	TRAY - BATTERY	1

SCHEMATIC DRAWING

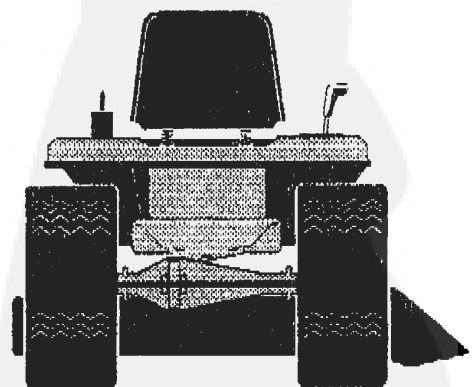
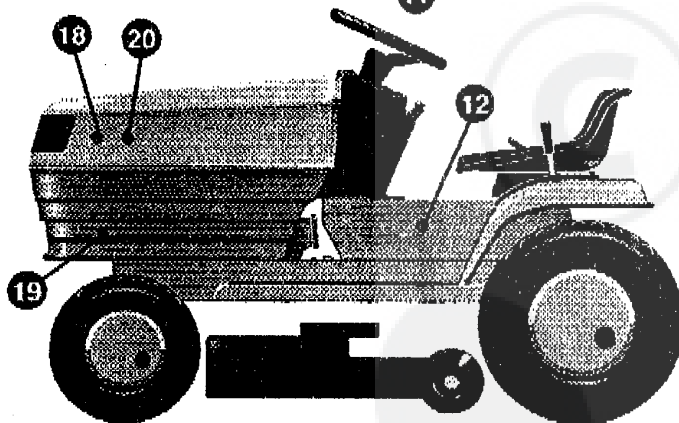
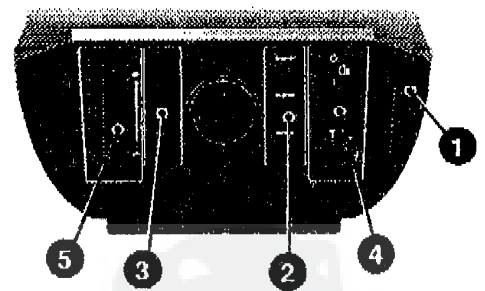


F3560-150

PIÈCES DE RECHANGE



DASH OVERVIEW



F3560-150**DÉCALQUES**

KEY#	PART#	DESCRIPTION	QTY
1	68900	DECAL, BLADE ENGAGE, EUROPE	1
2	300445	DECAL, DASH, RH, TRANSLUCENT	1
3	302049	DECAL, DASH, LH, PLAIN	1
4	305766	DECAL, DASH, RH, IGNITION	1
5	305767	DECAL, DASH, LH	1
7	402689	DECAL, CONSOLE, SYMBOLIC, CAUTION	1
8	402700	DECAL, CAUTION DECK, LH	1
10	402214	DECAL, HEIGHT ADJUST	1
11	402701	DECAL, CAUTION DECK, RH	1
12	320812	NAMEPLATE, 15/42, WHT/BLK	2
13	311394	DECAL, SHIFT, REVERSE/NEUTRAL	1
14	331005	DECAL, SHIFTER POSITION, P930-6	1
15	402702	DECAL, BRAKE/CLUTCH	1
17	305602	FOAM, HOOD 4 X 15	2
18	305603	PAD, 18 X 6 FOAM HOOD	2
19	305604	FOAM, HOOD 7 X 12	2
20	402186	DECAL, NAMEPLATE, GRANDAIR	2

