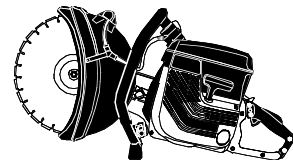


# ***PARTNER***



***IPL, K650 Active III, K700 Aktive III, 2006-08, 544 93 67-01***

***K650 Active III***

***K700 Active III***

***Reservdelar***

***Spare parts***

***Ersatzteile***

***Pieces de rechange***

***Piezas de repuesto***

***Ricambi***

***Peças  
sobresselente***

***544 93 67-01***

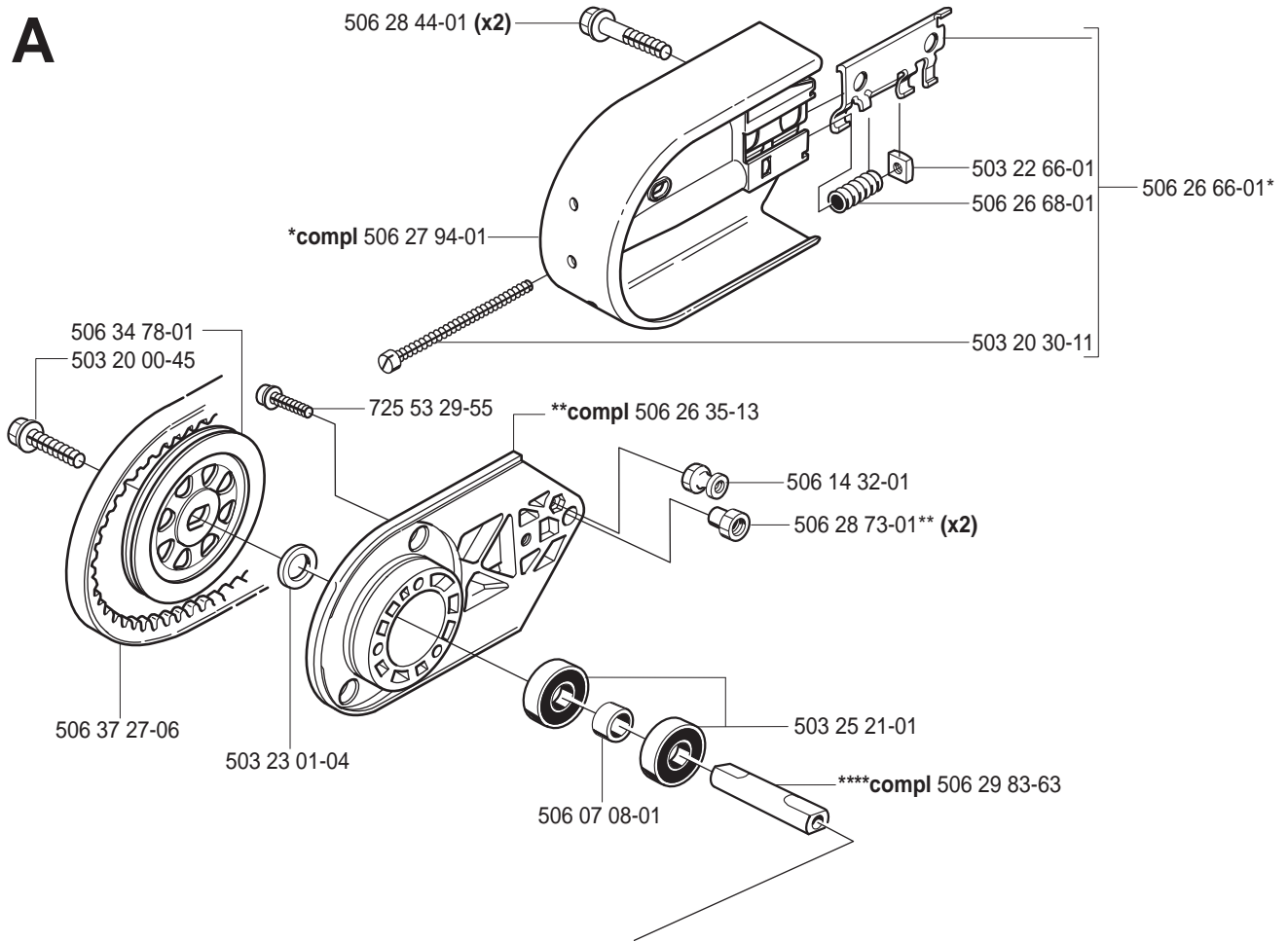
---

***PARTNER®***

No.	Pos.	Description	No.	Pos.	Description
501 22 02-01	P	PLUG	503 41 18-02	GK	CABLE
501 22 03-01	P	PLUG	503 49 10-01	E	GASKET
501 22 04-01	P	BALL	503 53 40-01	P	NIPPLE
501 22 05-01	P	SPRING	503 55 22-01	E	PLUG
501 22 08-01	P	GASKET, METERING SIDE	503 57 86-01	P	BALL
501 22 09-01	P	METERING DIAPHRAGM	503 57 87-01	P	SCREW
501 22 12-01	P	FUEL PUMP DIAPHRAGM	503 57 89-01	D	HOLDER
501 22 13-01	P	GASKET, PUMP SIDE	503 65 27-01	P	SCREW
501 22 14-01	P	CAP	503 65 30-01	P	WASHER
501 22 15-01	P	SCREW	503 65 31-01	P	WASHER
501 22 20-01	P	LEVER	503 71 53-01	E	VALVE DEKOMPR.
501 22 21-01	P	SHAFT	503 74 43-01	C	SPRING
501 22 25-01	P	SPRING	503 74 44-04	C	CLUTCH
501 42 71-01	P	BUSHING	503 77 98-01	P	VALVE
501 48 52-01	P	SCREW	503 89 16-01	G	SPRING
501 48 54-02	K	SPARK PLUG CONN. KIT	503 98 82-01	P	SCREEN
501 49 48-02	P	DIAPHRAGM SET	504 35 72-01	D	FUEL FILTER
501 63 48-01	K	SPRING	505 26 76-73	G	SPACER
501 67 32-03	K	PAWL	505 26 94-27	G	THROTTLE ROD
501 69 17-02	N	COMB.TOOL	505 27 75-16	K	INSULATING CAP
501 76 83-04	D	HOSE	505 27 90-60	M	INSUL. FLANGE
501 76 83-26	D	HOSE, 245MM.	505 27 91-03	G	THROTTLE CONTROL
501 81 99-01	K	SCREW	505 27 91-04	G	THROTTLE CATCH
501 82 18-01	P	RETAINING RING	505 29 56-14	G	SPRING
503 12 79-02	J	STARTER HANDLE	505 30 23-33	EF	SUPPORT BUSHING
503 14 29-02	R	WASHER	505 30 24-15	C	SUPPORT BUSHING
503 15 59-02	G	BRACKET RIGHT	505 31 61-14	P	THROTTLE FLAP
503 20 00-01	G	SCREW	505 31 64-95	P	SEALING RING
503 20 00-02	G	SCREW	505 31 65-50	P	INLET NEEDLE
503 20 00-03	L	SCREW	505 31 66-05	P	SPRING
503 20 00-04	H	SCREW	505 31 66-19	P	THROTTLE SHAFT
503 20 00-05	E	SCREW	506 02 87-01	B	WASHER
503 20 00-08	DGH	SCREW	506 02 88-30	B	BUSHING
503 20 00-09	G	SCREW	506 07 08-01	A	SPACER
503 20 00-10	G	SCREW	506 07 11-13	D	HOSE
503 20 00-16	H	SCREW	506 09 56-02	Q	CLAMP
503 20 00-44	DGH	SCREW	506 09 58-24	Q	HOSE
503 20 00-45	A	SCREW	506 09 64-01	M	GASKET
503 20 00-47	E	SCREW	506 09 75-02	Q	HOSE
503 20 02-12	B	SCREW	506 09 90-01	E	PISTON CPL 50 MM
503 20 02-16	R	SCREW	506 09 92-12	E	CYLINDER CPL.
503 20 02-35	H	SCREW	506 13 95-11	B	WASHER
503 20 02-90	L	SCREW	506 13 96-01	B	SCREW
503 20 21-75	M	SCRUW	506 14 32-01	A	CATCH
503 20 25-20	K	SCREW	506 21 77-14	L	CYLINDER COVER
503 20 30-11	A	SCREW	506 21 78-12	L	BASE
503 20 34-19	CHJ	SCREW	506 21 79-01	L	FILTER COVER
503 20 34-25	J	SCREW	506 21 86-02	K	FLYWEEL COMPL.
503 20 34-42	L	SCREW	506 21 89-02	J	STARTER DEVICE
503 21 06-19	Q	SCREW	506 21 90-01	J	AIR CONDUCTOR
503 21 06-25	H	SCREW	506 21 91-01	D	GROMMET
503 21 06-43	H	SCREW	506 21 98-01	L	AIR JET
503 21 07-22	J	SCREW	506 22 23-01	L	SEALING
503 21 28-10	GJ	SCREW	506 22 24-01	L	SEALING
503 22 04-01	K	NUT	506 22 42-01	L	AIR FILTER
503 22 05-01	H	NUT	506 22 44-01	G	GUIDE
503 22 65-04	GHR	NUT	506 22 45-01	G	CHOKE CONTROL
503 22 66-01	A	NUT	506 22 47-03	G	BRAKER
503 23 00-11	G	WASHER	506 22 48-01	G	HOLDER
503 23 00-42	KM	WASHER	506 22 63-01	L	FILTER
503 23 00-73	C	WASHER	506 23 54-02	J	DECAL
503 23 01-04	A	WASHER	506 23 61-01	D	TANK VENT.
503 23 51-09	K	SPARK PLUG	506 23 83-01	P	CHOKE FLAP
503 25 00-01	DF	BALL BEARING	506 23 93-01	L	DECAL
503 25 21-01	A	BALL BEARING	506 24 37-14	E	CYLINDER
503 26 02-04	D	SEALING RING	506 25 14-01	J	WASHER
503 26 30-21	Q	O-RING	506 25 30-01	J	SPRING
503 26 60-01	Q	FEMALE QUICK COUPLER	506 25 59-32	D	TANK CAP
503 28 04-18	MP	CARBURETOR	506 25 61-01	D	TANK UNIT
503 28 90-17	E	PISTON RING	506 25 81-02	J	STARTER PULLEY
503 40 13-02	G	BRACKET LEFT	506 25 82-01	L	GUARD
503 40 17-01	G	CONTACT SPRING	506 25 89-01	J	RETURN SPRING

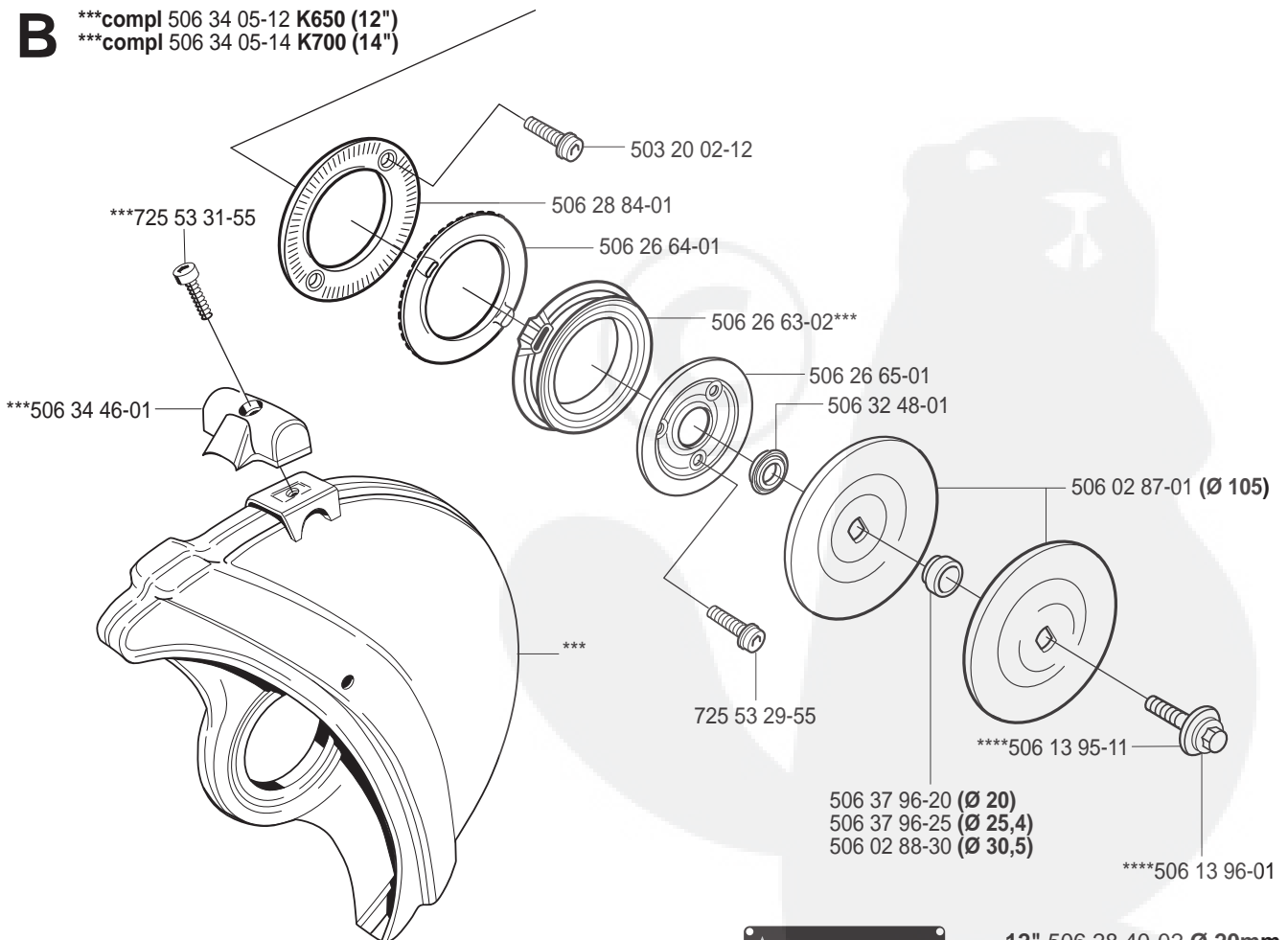
No.	Pos.	Description	No.	Pos.	Description
506 25 95-01	J	STARTER DEVICE	506 34 05-12	B	GURAD
506 26 28-01	G	SPRING	506 34 05-14	B	GUARD
506 26 30-02	G	STOP SWITCH	506 34 05-28	R	PROTECTOR
506 26 31-01	J	SLEEVE	506 34 06-01	E	GASKET
506 26 35-13	A	HOUSING	506 34 07-01	E	PLATE
506 26 41-01	D	FILTER	506 34 28-02	D	CRANKCASE
506 26 41-11	D	FILTER	506 34 40-01	D	GASKET
506 26 63-02	BR	LINING	506 34 46-01	BR	HANDLE
506 26 64-01	B	FLANGE	506 34 56-01	D	PROTECTOR
506 26 65-01	B	FLANGE	506 34 78-01	A	PULLEY
506 26 66-01	A	TENSIONER	506 34 82-01	H	CLAMP
506 26 68-01	A	SPRING	506 34 84-01	H	HANDLE WRAP
506 26 85-01	M	SEALING	506 34 88-01	DN	GASKET SET
506 27 11-01	D	PENDULUM	506 35 08-04	G	HANDLE
506 27 14-01	P	SCREW	506 35 10-01	F	CRANKSHAFT
506 27 56-01	P	SHAFT	506 35 27-01	Q	SPRING
506 27 57-01	P	SEALING	506 35 33-01	H	SPRING CPL
506 27 61-01	P	HOLDER	506 35 37-01	H	SUPPORT
506 27 84-42	L	DECAL	506 35 51-01	H	HANDLE WRAP CPL
506 27 84-64	L	DECAL	506 35 81-01	C	WHEEL CPL
506 27 84-65	L	DECAL	506 36 80-01	D	SPACER
506 27 94-01	A	PROTECTOR	506 37 27-06	A	BELT
506 28 39-30	L	SEALING	506 37 66-01	R	DECAL
506 28 40-02	B	LABEL	506 37 96-20	B	BUSHING
506 28 40-04	B	LABEL	506 37 96-25	B	BUSHING
506 28 40-12	B	LABEL	506 38 08-14	E	MUFFLER
506 28 40-14	B	LABEL	506 38 46-02	E	PISTON
506 28 44-01	A	BOLT	506 38 59-02	Q	HOSE & VALVE CPL
506 28 73-01	A	NUT	506 38 69-01	G	VIBRATION ABSORBER
506 28 84-01	B	FLANGE	506 38 78-34	K	CABLE
506 29 21-01	D	GASKET	506 38 87-01	G	WEIGHT HANDLE RIGHT
506 29 56-01	Q	NIPPLE	506 38 88-01	G	WEIGHT HANDLE LEFT
506 29 57-02	Q	NIPPLE	506 38 89-01	G	WEIGHT GROUND SUPPORT
506 29 65-01	H	BRACKET	506 39 48-01	G	HANDLE
506 29 75-02	R	HANDLE	506 39 49-01	G	WEIGHT HANDLE REAR
506 29 76-01	R	HARNESS	506 39 50-06	G	HANDLE
506 29 83-63	A	SHAFT	544 01 88-01	K	IGNITION MODULE
506 29 88-01	Q	SCREEN	720 13 07-10	D	PIN
506 30 23-01	R	DECAL	721 42 58-20	G	SPRING PIN
506 30 25-02	R	BRACKET CPL	725 52 95-55	L	SCREW
506 30 40-22	R	DECAL	725 53 29-55	AB	SCREW
506 30 40-31	R	DECAL	725 53 31-55	BR	SCREW
506 30 40-33	R	DECAL	735 58 18-00	G	LOCK WASHER
506 31 15-01	P	INSERT	735 88 06-00	F	WOODRUFF KEY
506 31 61-01	P	COVER	737 43 12-00	E	RETAINING
506 31 74-01	D	BUSHING	740 42 01-00	M	O-RING
506 31 77-11	Q	VALVE CPL	740 43 13-00	J	O-RING
506 31 88-01	M	INTAKE	740 48 07-03	C	O-RING
506 31 96-01	H	BRACKET			
506 32 02-01	M	GASKET			
506 32 03-01	M	GASKET			
506 32 12-01	P	REPAIR KIT			
506 32 15-03	M	CARBURETOR			
506 32 21-02	L	DECAL			
506 32 22-01	R	DECAL			
506 32 48-01	B	FLANGE			
506 32 87-01	Q	Y TUBE			
506 32 89-03	Q	WET CUTTING KIT			
506 32 91-02	C	PROTECTOR			
506 33 16-01	C	SUPPORT BUSHING			
506 33 56-15	J	STARTER ROPE			
506 33 57-01	H	HANDLE			
506 33 58-01	H	SUPPORT			
506 33 59-01	H	SUPPORT			
506 33 60-01	H	SUPPORT			
506 33 61-01	H	SUPPORT			
506 33 68-01	H	BRACKET			
506 33 69-01	H	BRACKET			
506 33 94-01	D	COVER			
506 33 97-01	L	DECAL			
506 33 97-02	L	DECAL			
506 33 98-01	C	DECAL			

**A**



**B**

\*\*\*compl 506 34 05-12 K650 (12")  
 \*\*\*compl 506 34 05-14 K700 (14")

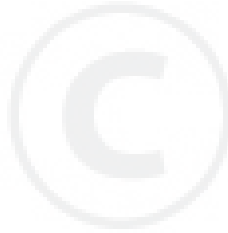
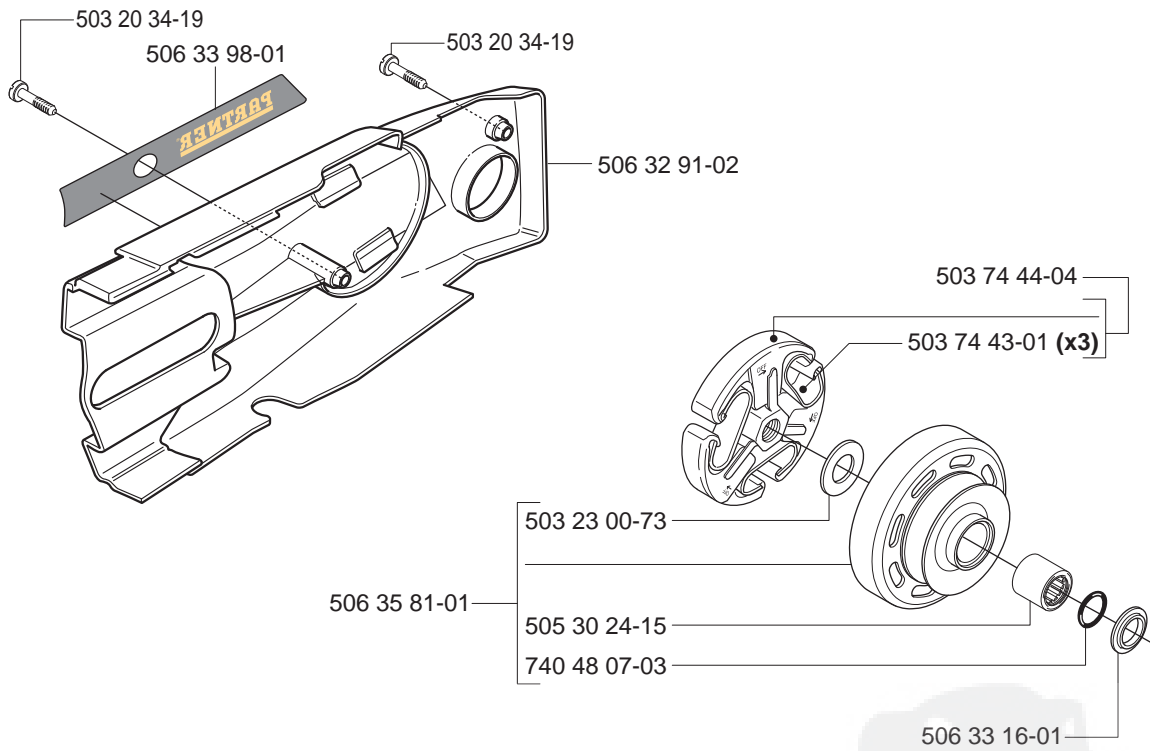


12" 506 28 40-02 Ø 20mm  
 12" 506 28 40-04 Ø 1"  
 14" 506 28 40-12 Ø 20mm  
 14" 506 28 40-14 Ø 1"

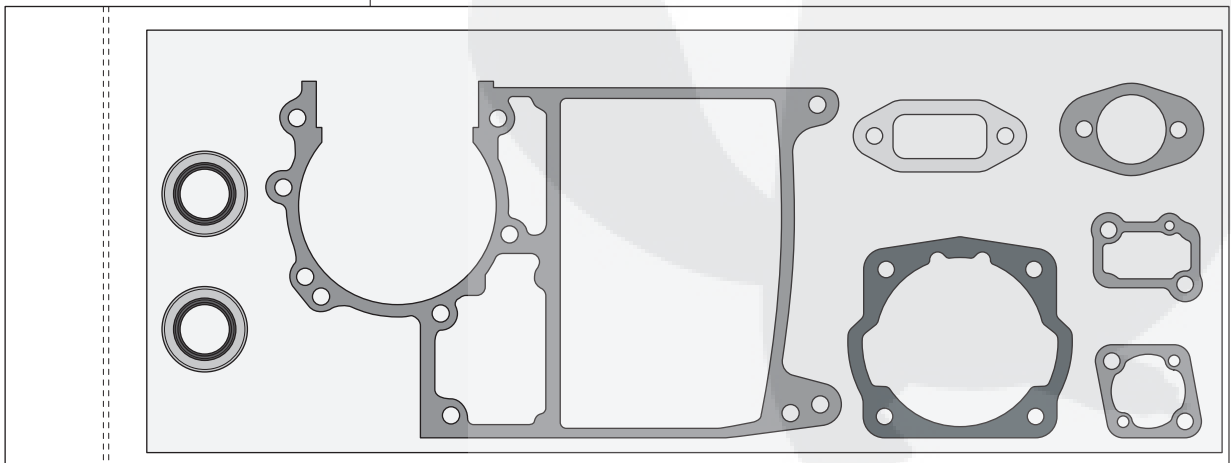
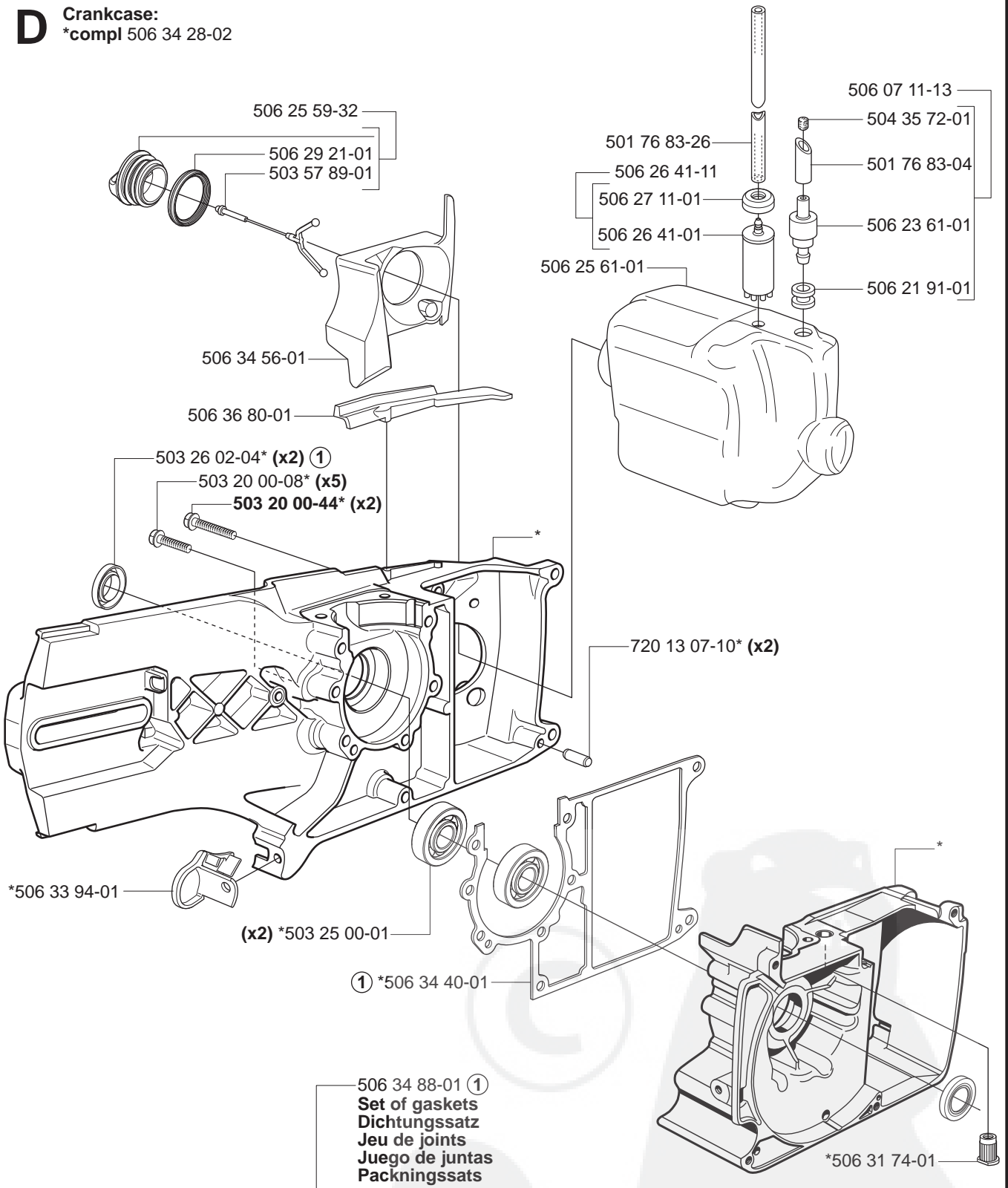
**C** Clutch parts:

506 33 98-01

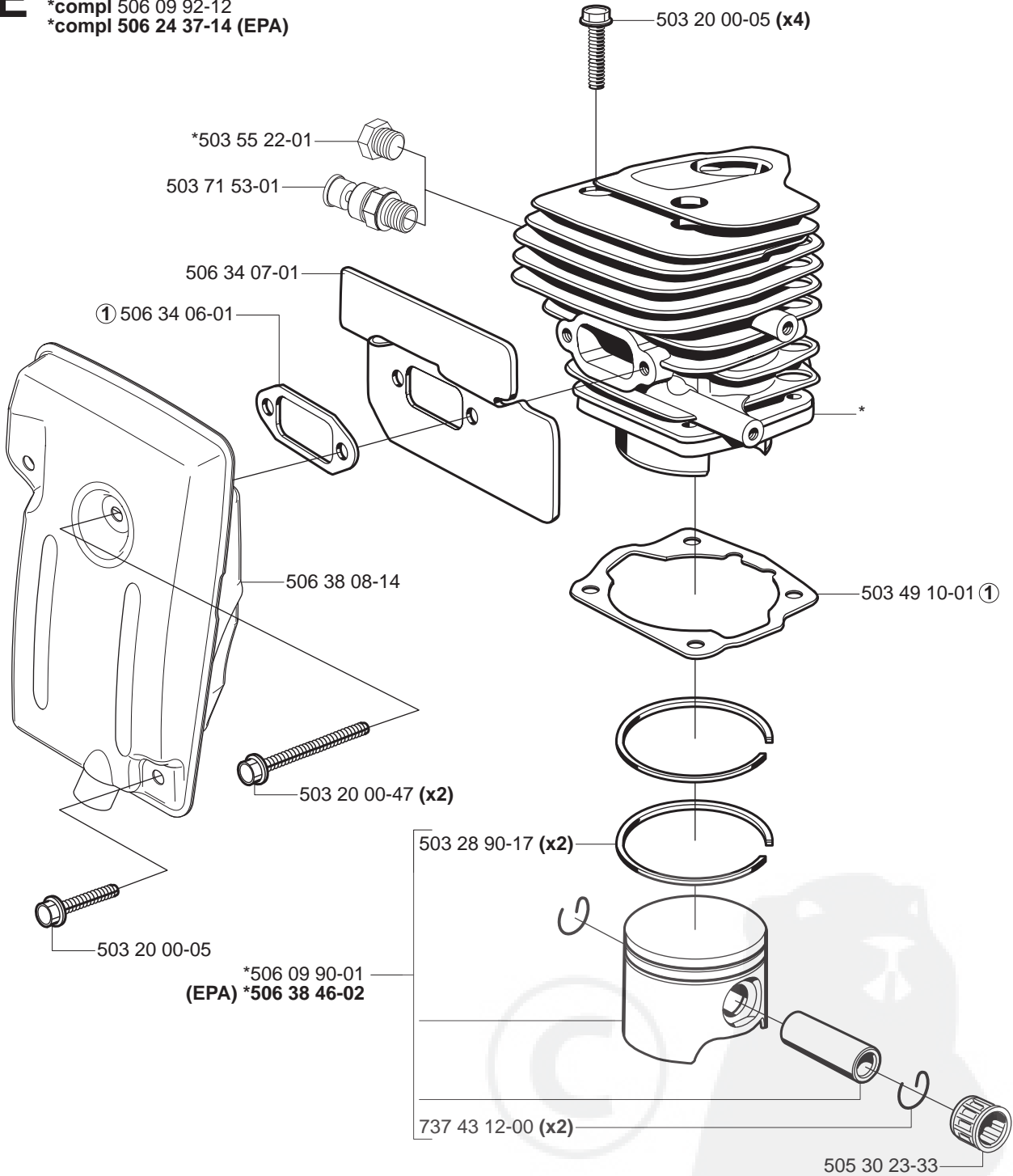
**PARTNER**



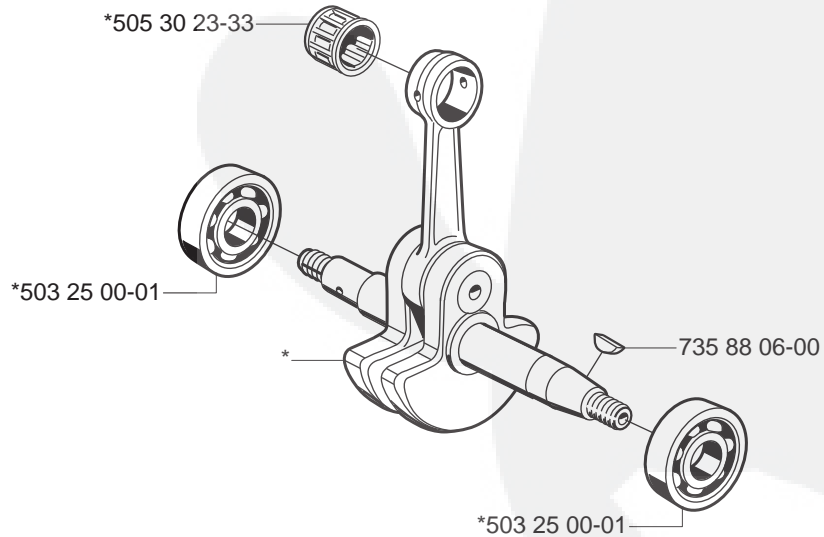
**D** Crankcase:  
\*compl 506 34 28-02



**E** Cylinder & Piston  
 \*compl 506 09 92-12  
 \*compl 506 24 37-14 (EPA)



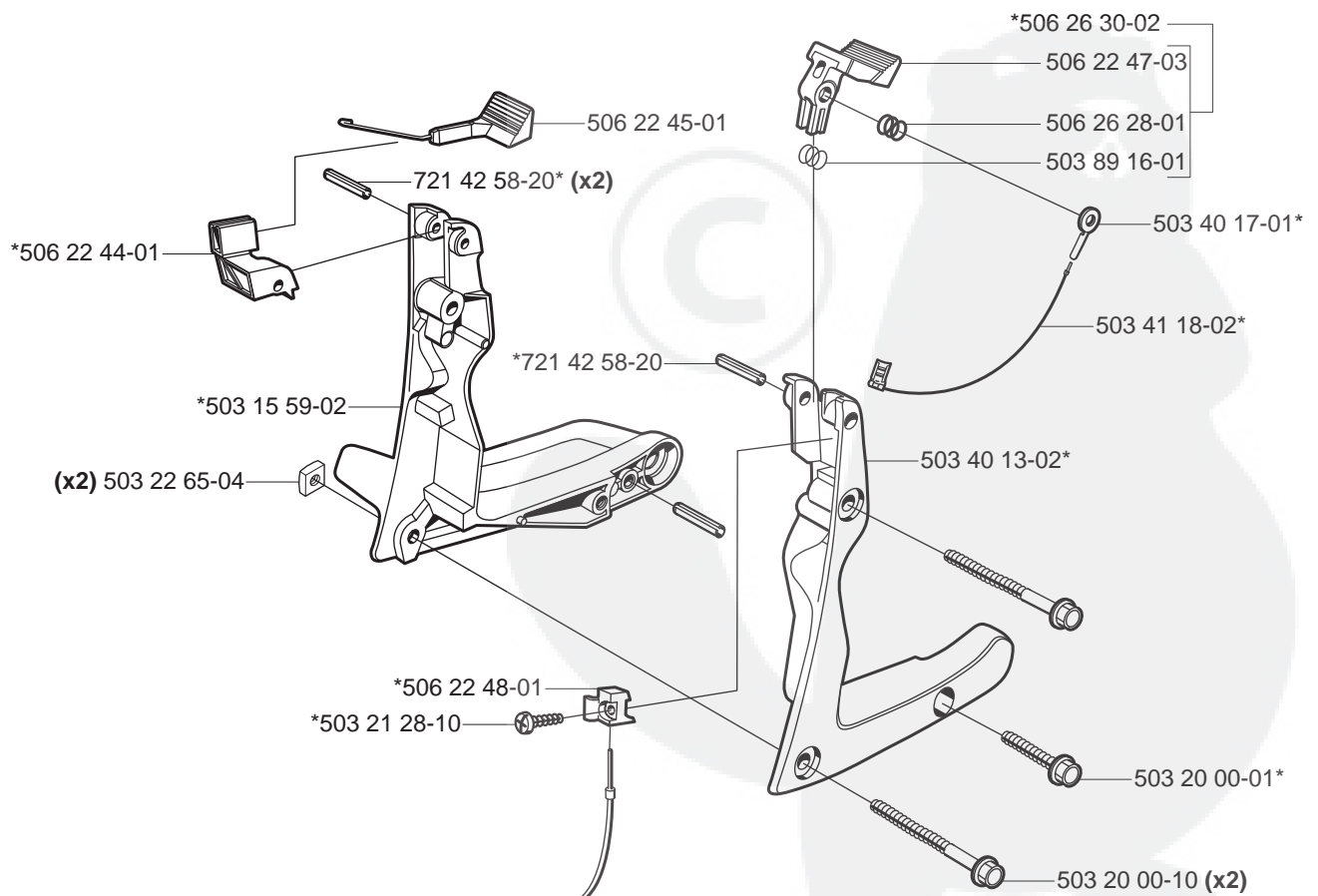
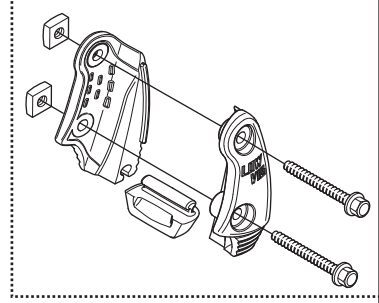
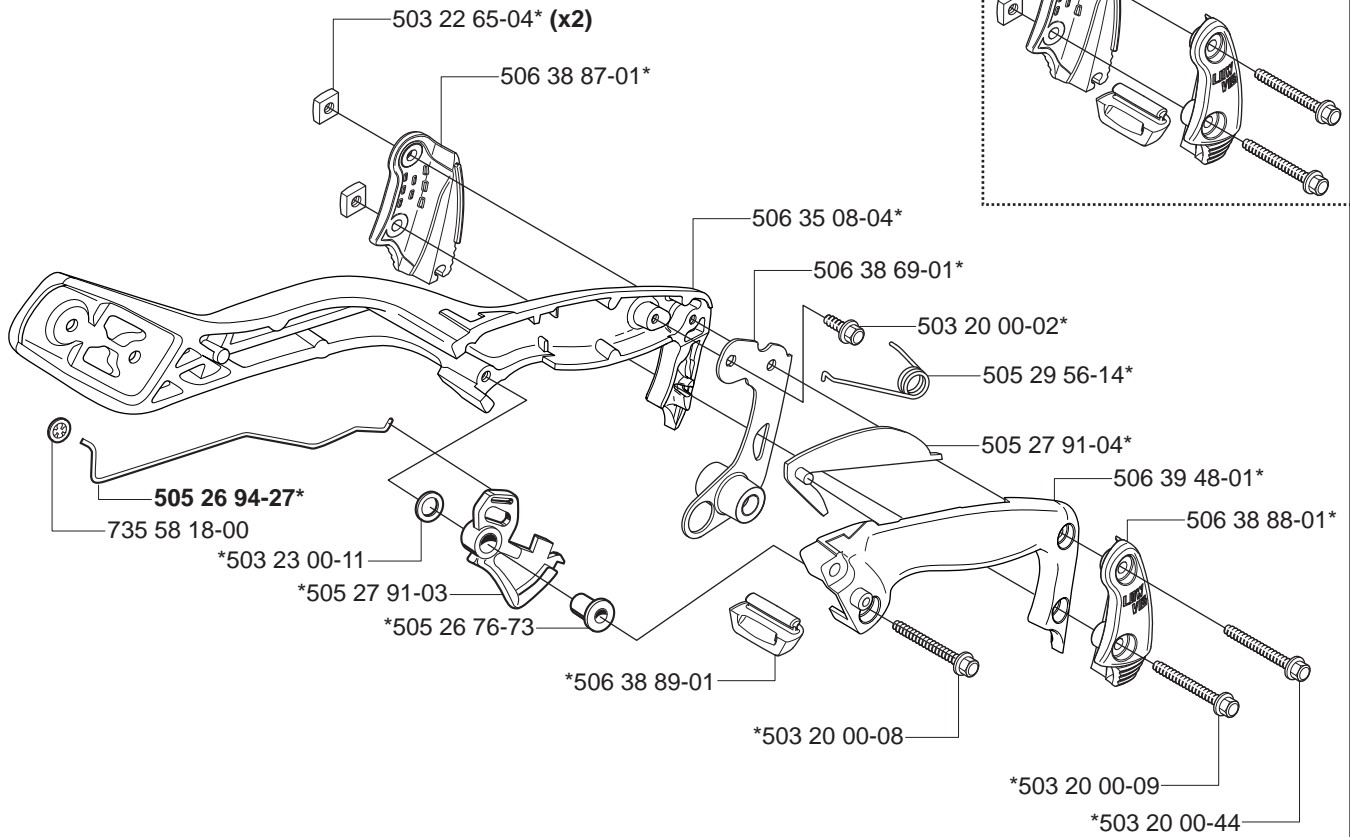
**F** \*compl 506 35 10-01



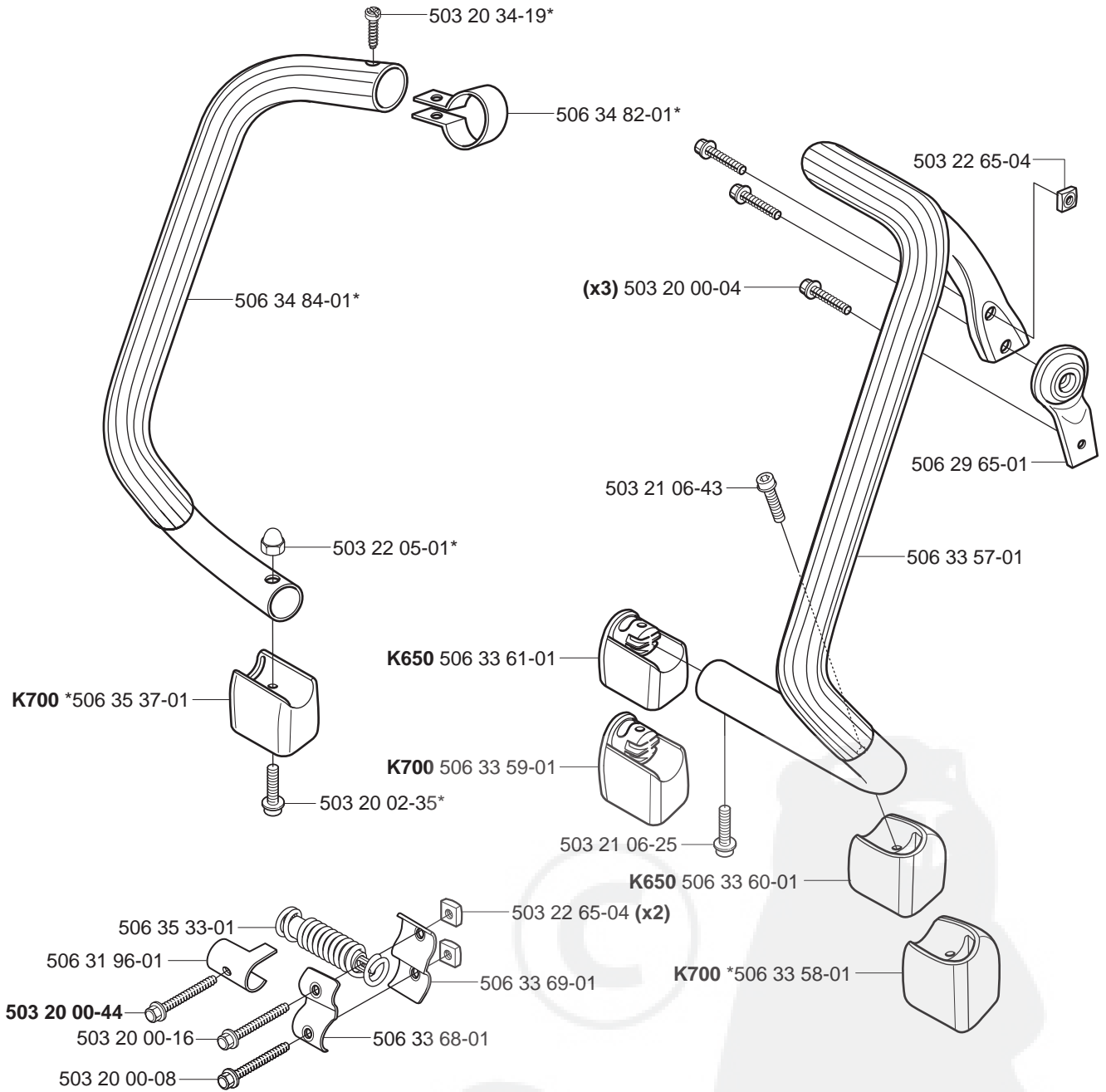
**G**

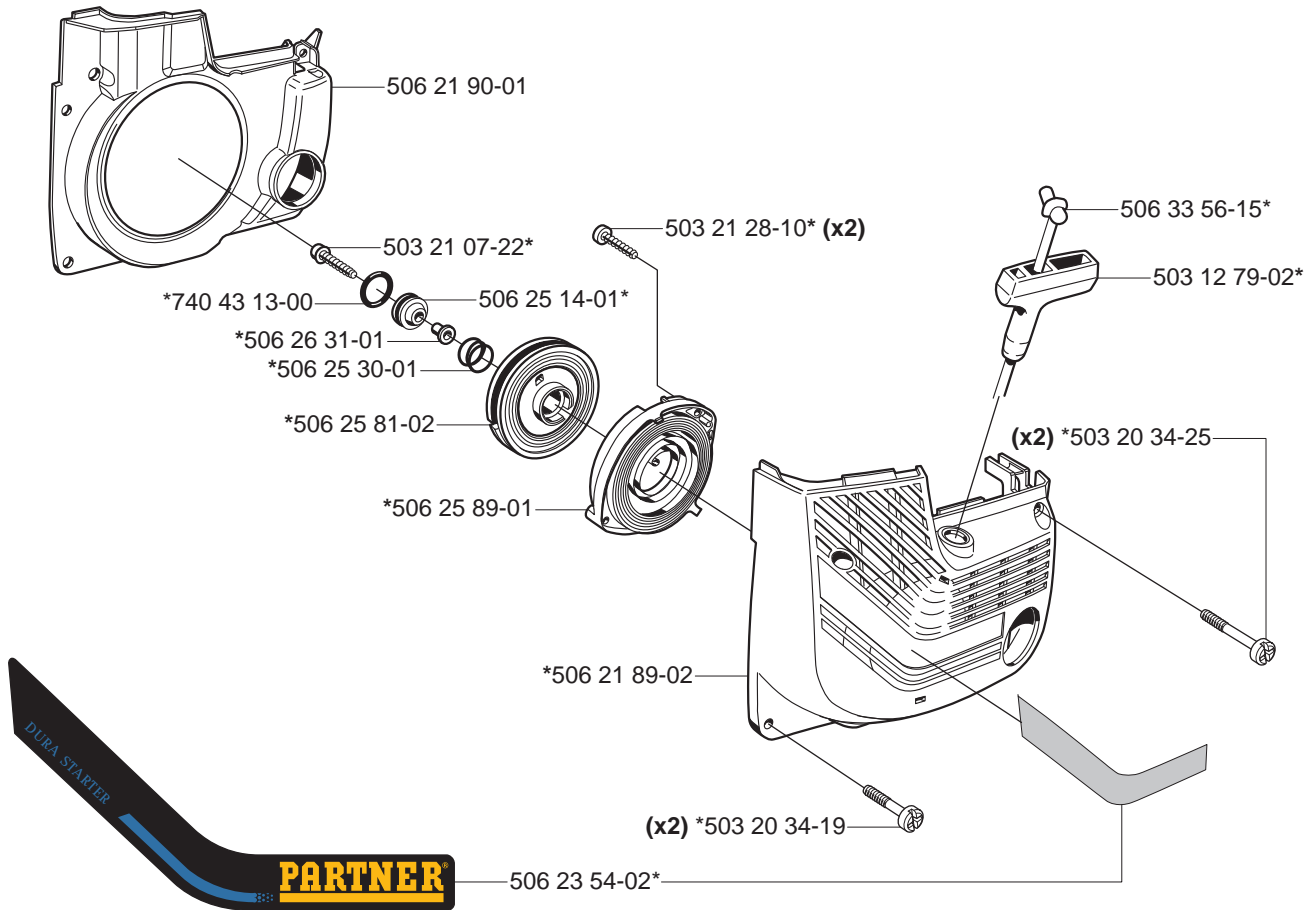
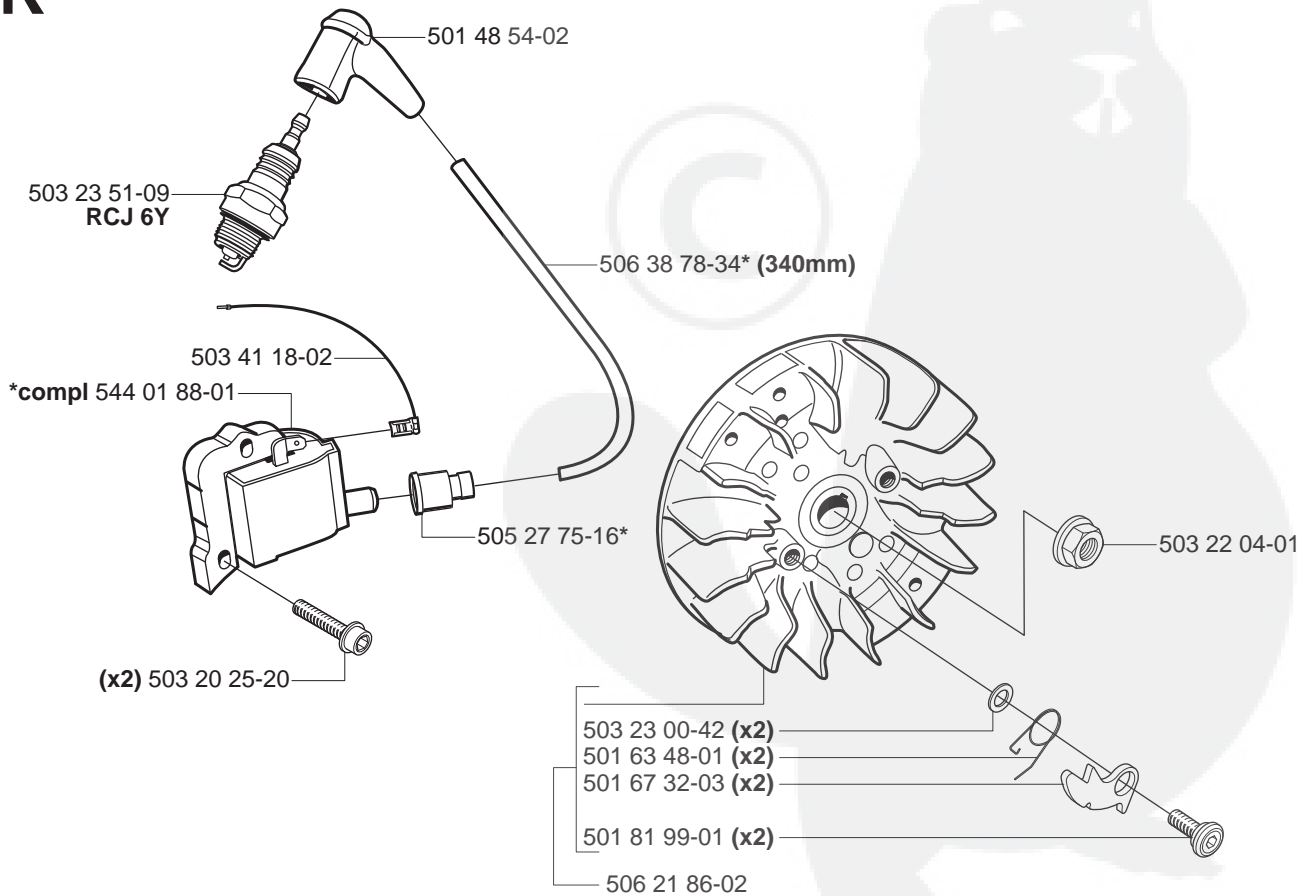
\*compl 506 39 50-06

compl 506 39 49-01





**H****\*compl 506 35 51-01**

**J****\*compl 506 25 95-01****K**

L

(x2) 503 20 34-42

Decompression Valve  
Push button quickly

506 32 21-02

506 21 79-01

506 22 63-01

\*\*506 25 82-01

\*\*506 28 39-30

\*\*compl 506 21 78-12

503 20 02-90

506 22 42-01

506 28 39-30\*

\*compl 506 21 77-14

506 23 93-01\*

506 22 23-01

506 21 98-01

506 22 24-01

725 52 95-55

503 20 00-03

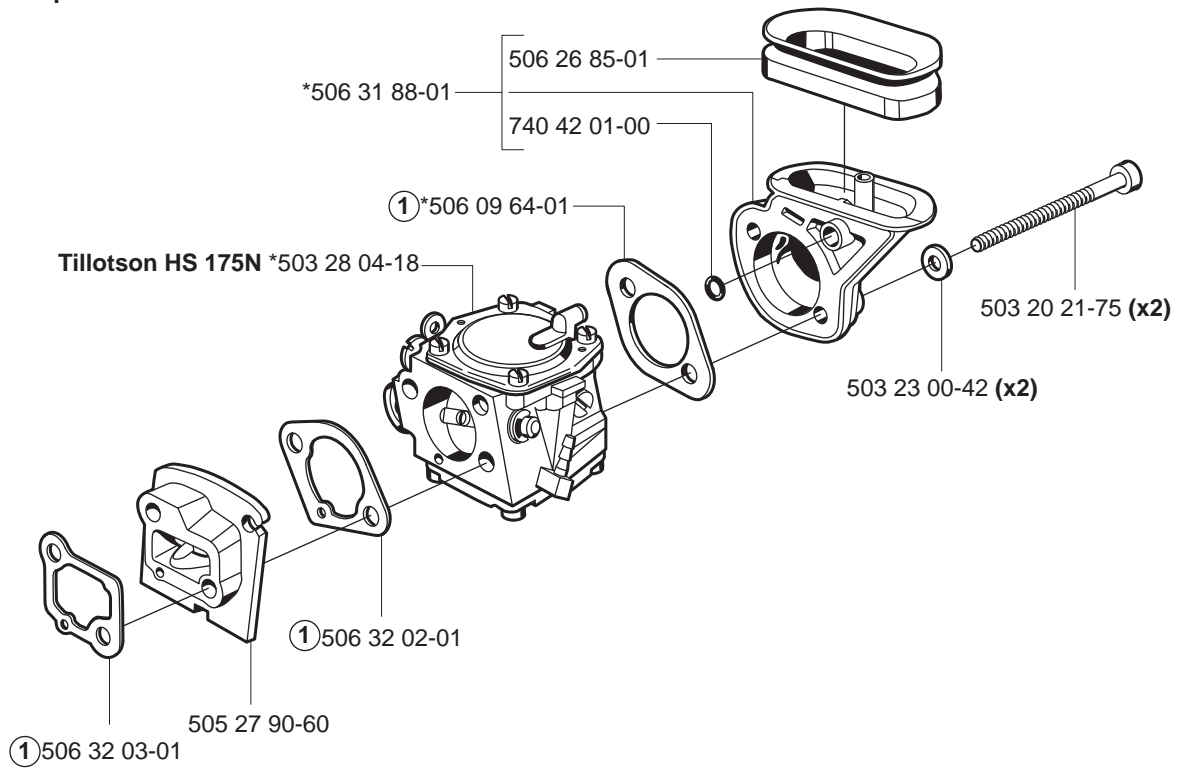
506 27 84-42  
CE

506 27 84-65  
EPA Canada

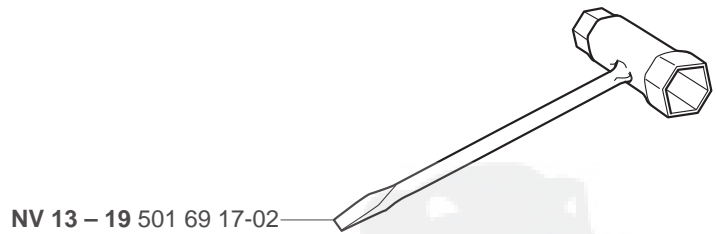
506 27 84-64  
EPA USA



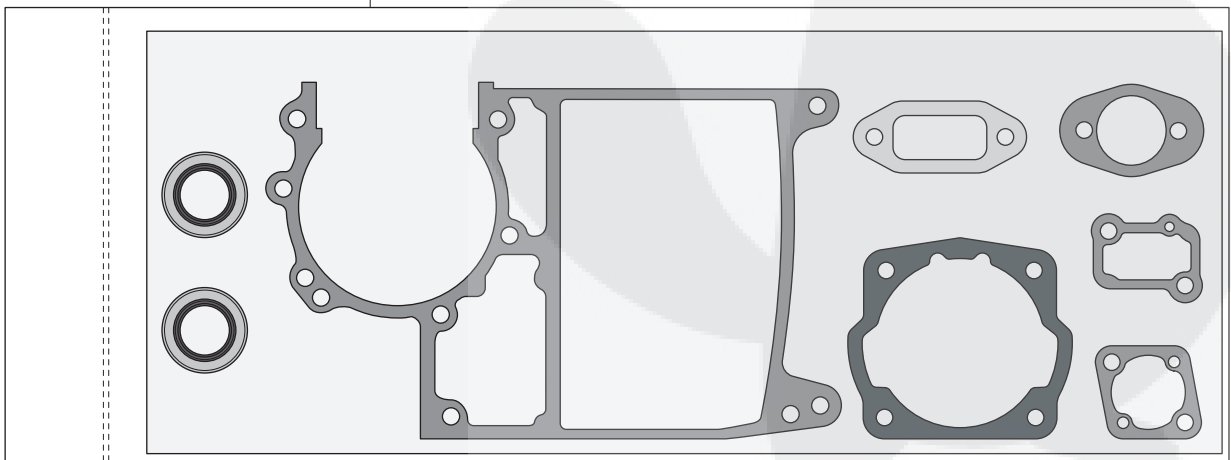
**M** Carburettor kit:  
\*compl 506 32 15-03



**N** Accessories  
Zubehöre  
Accessoires  
Accesorios  
Tillbehör



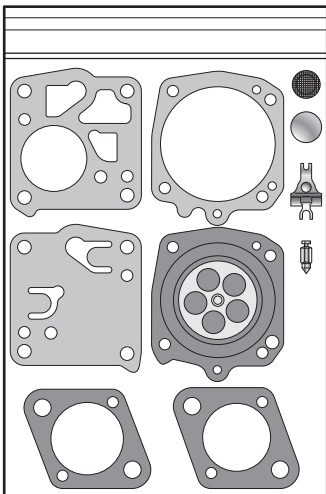
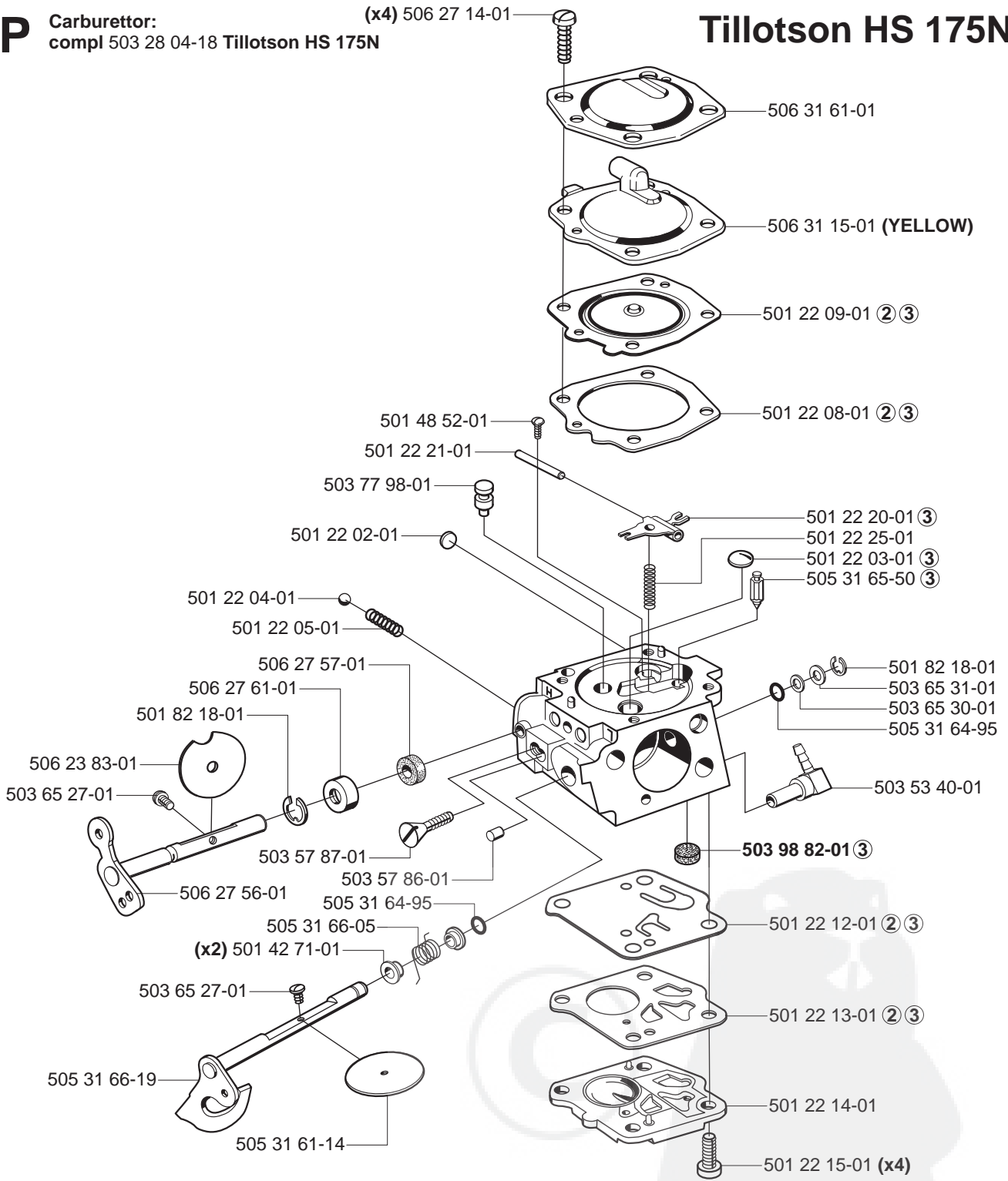
506 34 88-01 ①  
Set of gaskets  
Dichtungssatz  
Jeu de joints  
Juego de juntas  
Packningssats



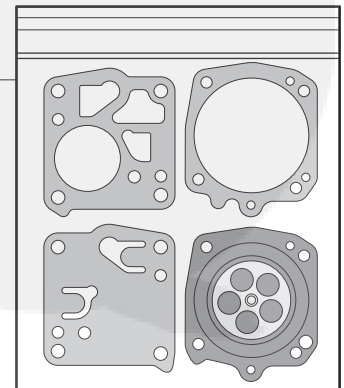
**P**

**Carburettor:**  
compl 503 28 04-18 Tillotson HS 175N

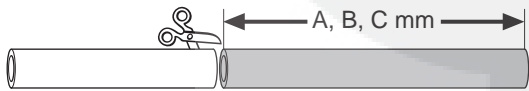
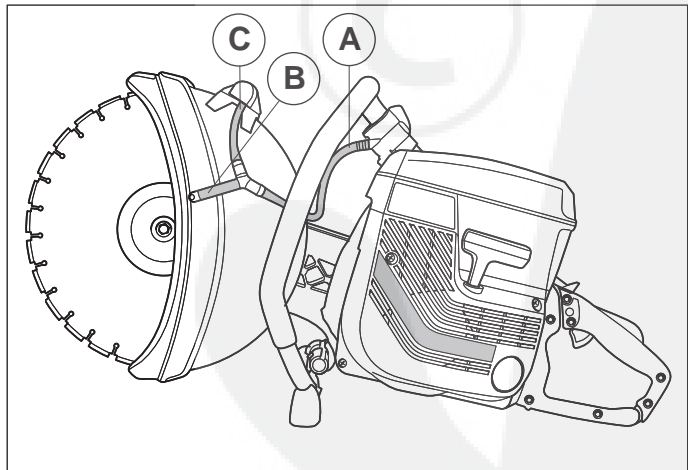
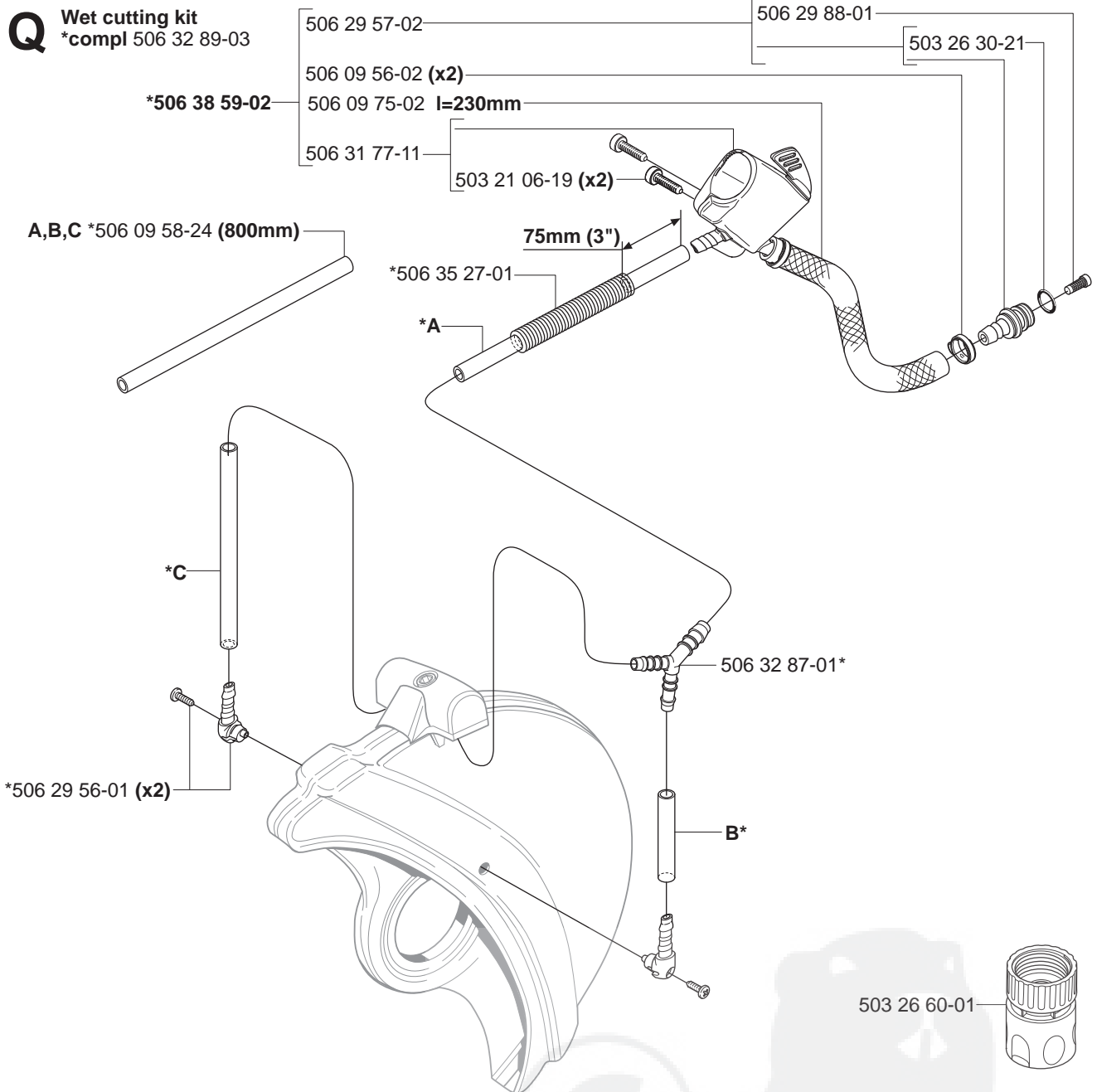
# Tillotson HS 175N



② 501 49 48-02  
**Diaphragm and gasket set DG-5HS/T**

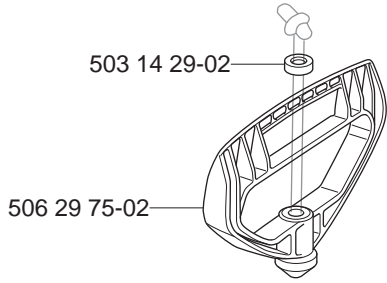


**Q Wet cutting kit**  
 \*compl 506 32 89-03



Product		A (mm)	B (mm)	C (mm)
K650A-III	12"	240	45	240
K700A-III	14"	240	45	280

**R** Rescue  
\*compl 506 34 05-28 (12")



506 30 23-01

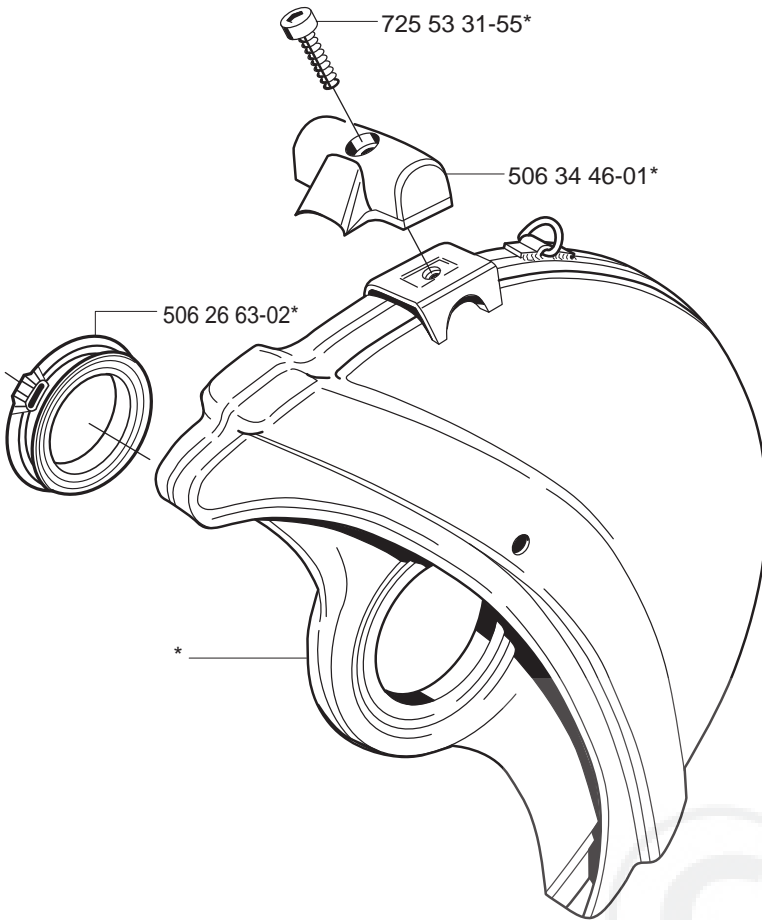
**Rescue**

506 37 66-01

PARTNER K650 *Rescue*  
max 5100 rpm  
Ø25,4(Ø1") - Ø300(Ø12")

506 32 22-01

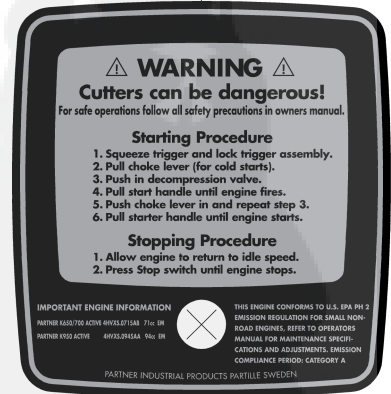
**ATTENTION**  
This product has been modified for use by  
trained fire rescue personnel only.



506 30 40-22 (CE)



506 30 40-31 (EPA USA)



506 30 40-33 (EPA Canada)

